

1/1/92  
Baze Book Binding  
514 W 7th St  
Amarillo TX 79101

Amarillo--CCCCC  
End Of Amarillo  
Amarillo Bag TX 79100  
zzxxxxxxxxxxxxxx

# Haskell digs out

## Devastating tornado rips through city

Striking without warning, a devastating tornado ripped through Haskell at 4:30 p.m. last Wednesday (April 24), cutting a wide path of destruction in a southwest-to-northeast direction across the city.

Miraculously, no one was killed, nor seriously injured, but property losses were staggering.

According to the Red Cross damage assessment released Monday afternoon of this week:

- 177 families suffered losses,
- Two single family dwellings were destroyed, 31 had

major damage, 139 had minor damage,

- One multi-family unit had major damage, two had minor damage,

- Two businesses were destroyed, 17 others had major damage.

Not included in this report were losses to public facilities and utilities.

Heaviest losses were to school property, primarily in the secondary school area. The west stands of the Haskell High School football stadium were ripped out and depos-

ited on the playing field. The east stands suffered lesser damage, three light poles were knocked down and others damaged.

There was considerable damage to other school facilities. Roofs were destroyed or damaged at the elementary school (from hail), bus barn, field house, gymnasium and ag building. Five buses, two pickups, a van and a Suburban owned by the school suffered damage.

Superintendent Bill Stewart estimated school property losses at \$200,000, but said the property was covered by insurance

To the east of the football stadium, Farmers Co-op Gin had severe damage. Manager Tommy Matthews said losses were estimated at \$110,000, in addition to 300 cotton trailers which were destroyed or damaged.

A laundry at the northwest corner of North First and Avenue L was flattened, as was a building on the northeast corner of the same intersection.

West Texas Utilities losses were monumental. The company lost 23 poles in the storm. Harmon Cable suffered severe losses to its facilities, as did GTE Southwest.

City administrator Bob Baker estimated losses to the city at \$132,000. Of this, he estimated the cost of the gigantic cleanup at \$100,000. Damage to streets and water facilities accounted for the balance of his estimate.

There was no way to put a dollar figure on the hundreds of trees which were destroyed, damages to vehicles, fences and outbuildings.

The storm caught residents of Haskell by surprise. Although a tornado warning had been issued and a twister had been spotted earlier in the Old Glory area, there had been no official report of a tornado approaching Haskell until the storm hit. Spotters from the Haskell Volunteer Fire Department and various law enforcement agencies had been summoned to their posts only minutes before the storm, but none of them had seen the tornado approaching.

A warning was sounded about the time the storm arrived, but was aborted almost immediately when the electricity went off. Consequently, few Haskell residents had taken shelter.

The outpouring of help was overwhelming. Fire departments from Knox City, Munday, Benjamin, Hamlin, Anson, Roby, Snyder and Paint Creek sent personnel to assist the local fire department and law officers in controlling traffic on the debris-filled streets and to check homes and other areas for possible victims.

WTU brought in equipment and crews from throughout the district. Forty WTU employees were working in Haskell Thursday morning, manning 25 trucks and about 10 pickups.

The State Highway Department also dispatched men and equipment from throughout the area to help in the big cleanup task. The American Red Cross set up an emergency center at the fire station and gave help to those who lost their possessions.

The State Health Department has given permission to the City of Haskell to re-open its old landfill to handle the

Continued on page 2



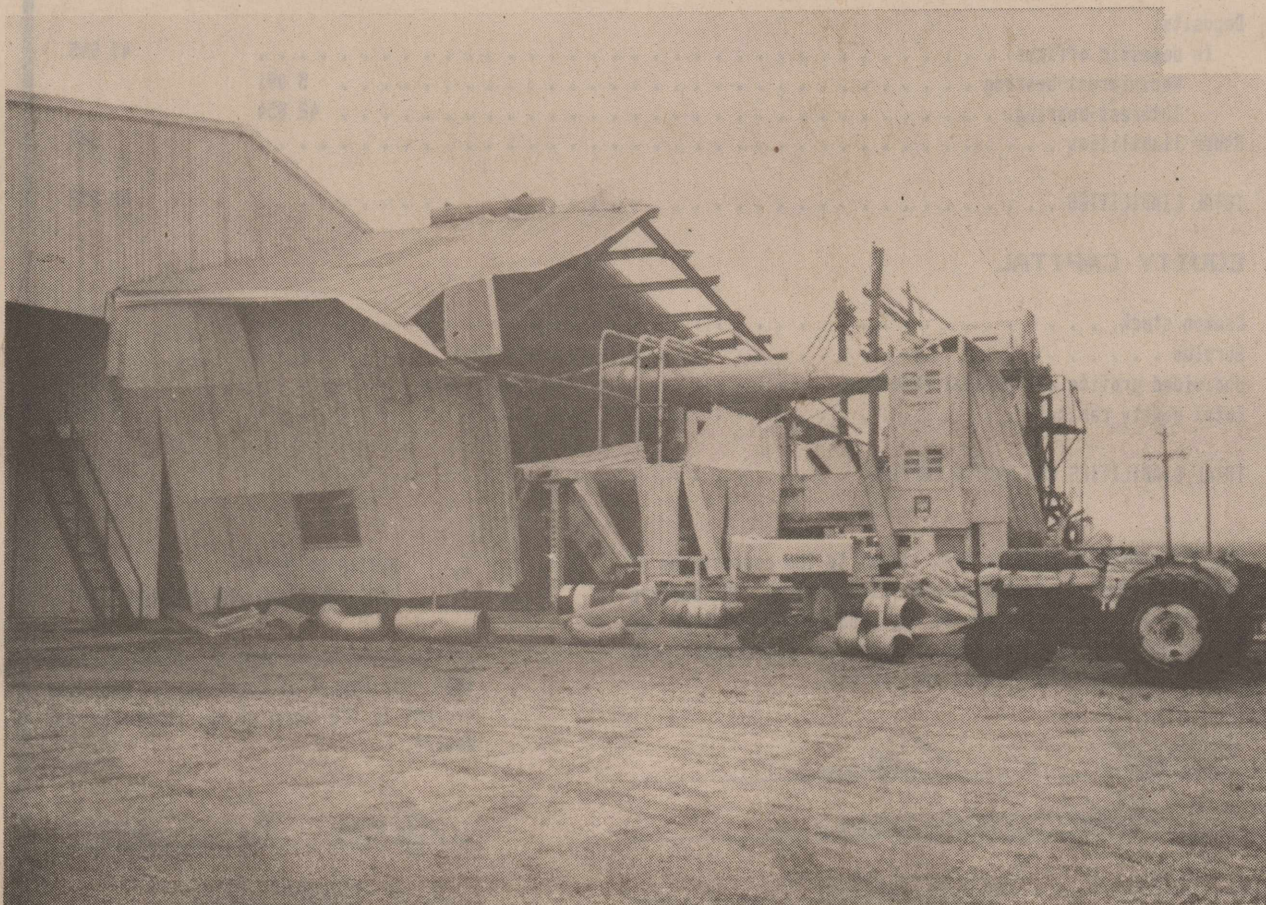
A laundry at North 1st and Avenue L



A home at 801 North Avenue E



A building at the corner of North First and Avenue L



Farmer's Co-op Gin



Haskell High School football stadium

## Poem contributors are needed

The International Society of Poets (ISP) is accepting poems for its "World's Largest Poem for Peace." Anyone may contribute to this worldwide effort. Responses have already been received from President Bush and nearly every governor.

The World's Largest Poem for Peace, a document expected to be longer than several football fields, will be presented to the Secretary General of the United Nations following the Society's Aug. 16-18 National Poetry Symposium in Washington, D.C.

In addition to this literary donation, ISP will donate 10 cents to the United Nation's International Children's Education Fund (UNICEF) on behalf of everyone who shows support for world peace by submitting a poem.

To be a part of this monumental effort, send one original poem (20 lines or less) to: World's Largest Poem for Peace, P.O. Box 626, Wings Mills, Md. 21117.

Thank you for reading The Haskell Free Press.

## Tornado facts

Tornadoes can occur any time during the year, but are most frequent in Texas during the months of April, May and June.

Tornadoes can occur any time of the day, but are most frequent in Texas between 3 p.m. and 6 p.m.

Sometimes tornado outbreaks occur where tornadoes cause widespread damage over an extensive area. During the afternoon and evening of April 3 and the early morning of April 4, 1974, a "super outbreak" of 148 tornadoes across 13 states killed more than 300 people, injured more than 6,000 and caused \$600 million in damage.

On March 18, 1925, the "Tri-State" tornado traveled 219 miles across Missouri, Illinois and Indiana. It lasted three and a half hours and killed 689 people.

Cordell, Kan., was hit by tornadoes on May 20, 1916, May 20, 1917, and May 20, 1918.

Most tornadoes (about 7 out of 10) are weak with wind speeds no greater than about 110 miles per hour, and a path length which averages three miles.

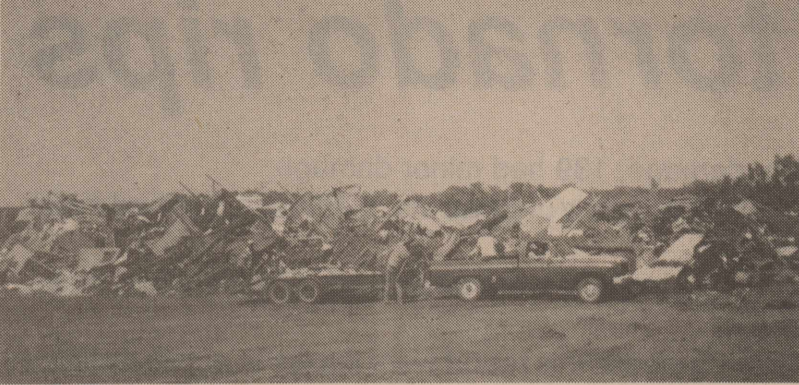
Nearly three of every 10 tornadoes are strong, with wind speeds between 110 and 200 miles per hour and a path length which averages nine miles.

Since 1950, there have been more than 4,700 tornadoes in Texas.



### Filling up

This photo was taken Monday afternoon at the old city landfill where debris from Wednesday's tornado is being dumped.



### Old landfill

Hundreds of trees have been taken to the old landfill. The city has received permission from the State Health Department to burn the trees after they are dried out.

## Tornado . . .

Continued from page 1

debris from Wednesday's storm.

The landfill will be open daily from 8 to 5 through next Wednesday (Sunday 1 to 5).

City crews, along with personnel from other agencies immediately started using the facility. Hundreds of truckloads of debris have been deposited at the old dump.

City administrator Bob Baker praised all those who helped with the cleanup. He was especially appreciative of help from the State Highway Department, Haskell County commissioners and other organizations and individuals who pitched in, including personnel from many neighboring communities.

There will be no charge for using the old landfill for storm-related materials to be disposed of. After Wednesday, the landfill will be closed.

The City of Haskell will continue to pick up debris from the storm through next Wednesday. Those capable of doing so are requested to clean up their own property. The city trailer is available to citizens of the city.

## Unemployment here at 4 percent

Unemployment rate in Haskell County was 4.0 percent in March, compared to a statewide jobless rate of 6.4 percent.

The Texas Employment Commission reported 3,263 employed from Haskell County's labor force of 3,398.

Unemployment rate in the Abilene Metropolitan Statistical Area (MSA), of which Haskell is a part, was 5.5 percent.

Lowest unemployment rates among the MSAs were Bryan-College Station (3.2 percent), Austin (4.4), Victoria (4.7) and San Angelo (4.8).

Highest unemployment rates were McAllen-Edinburg-Mission (19.8), Brownsville-Harlingen (12.8), Laredo (12.0), El Paso (10.7) and Longview-Marshall (7.7).

## New officers to assume duties

New officers will take over tonight (Thursday) when the Haskell Business Association meets at 6:30 p.m. at the Pizza Barn.

Officers are: Lois Richardson, president; Von Marr, first vice president; Dorothy Hartsfield, second vice president; Opal Letterman, secretary; and Sandy Forehand, treasurer.

Outgoing officials include Conrad Roewe, president, and Dorothy Hartsfield, secretary.

Frances Lane has been named chairman of the membership committee and Suzanne Starr is chairman of the Super 2nd Saturday committee.



I will appreciate your vote for Rule City Council Vicky Anderson

Political advertisement paid for by Vicky Anderson

## Nurse course

Area nurses will have an opportunity to learn more about the state's rules and regulations on nursing practice at a one-day workshop sponsored by the Board of Nurse Examiners (BNE).

The workshop is scheduled from 8 a.m. to 3:30 p.m. Wednesday, May 8, at Hendrick Medical Center in Abilene. Registration is open to registered nurses.

**JAMES CASTAGNA & JEFF GREGG**  
**Certified Public Accountants**  
**Computerized Tax Returns and Bookkeeping**  
**Auditing, Financial Statements and Estate Work**

**SEYMOUR OFFICE**      **HASKELL OFFICE**  
 115 W. McLain Street      316 1/2 North First  
 817-888-5539      817-864-3931  
 8-5 M-F      10-4 Thursday  
 (After Hours by Appointment)

**Vote Sue Smith**  
**Rule City Council**  
**May 4, 1991**  
**I'll work for you!**  
 Paid political advertisement  
 Paid for by Sue Smith

**For Your Sheet Metal Work**  
**Water Storage Tanks**  
**All Kinds of metal duct work**  
 See or call:  
**Guinn Sheet Metal & Plumbing**  
 817-658-3341    L.C. Guinn    Knox City, TX

**Horseshoeing & Trimming**

Gary Harris  
 Haskell      864-3608

**This Weekend SAVE \$500 \$1,000 \$2,000 COME SEE US!**

**91 Ranger with 864E Package**  
**Your Delivery Price \$9,414**

**With This Equipment**

Air Conditioning	Sliding Rear Window	Sticker Price 12,683.00
Power Steering	5 Sp. Man. Overdr.	Factory D's 2,139.00
Tachometer	Cloth Bench Seat	Wilson's 1,130.00
AM/FM/Cassette	2.3L EFI I-4 Eng.	<b>9,414.00</b>
Deep Dish Wheels	Accent Tape Stripe	<b>YOUR DELIVERED PRICE</b>
Ch. Rear Step Bumper	Much More	<b>Available for immediate Delivery</b>

1989 Olds Cutless Ciera \$8,450	1990 Pontiac Grand AM LE \$10,250	1990 Sable LS Keyless Entry All Power \$11,995
1989 Escort LX 2-Dr., Blue, 5 Spd. Man. \$5,495	1989 Pontiac Grand AM LE \$9,150	1988 Ford Supercab White, 6 Cyl., 5 Spd., Man. \$9,995

**Bill Wilson Motor Co.**  
 Your Transportation Headquarters for over 45 years  
 Hwy 277 South Haskell, Texas  
 817-864-2611  
 1-800-749-5576

\*With Approved Credit Does Not Include Tax, Title & License

FORD  
 MERCURY  
 LINCOLN

**REPORT OF CONDITION**

Consolidating domestic subsidiaries of the

HASKELL NATIONAL BANK of HASKELL in the state of TEXAS at the close of business on MARCH 31, 1991, published in response to call made by Comptroller of the Currency, under title 12, United States Code, Section 161. Charter Number 14149 Comptroller of the Currency SOUTHWESTERN District.

State of Resources and Liabilities	Thousands of dollars
<b>ASSETS</b>	
Cash and balances due from depository institutions:	
Noninterest-bearing balances and currency and coin	1 263
Interest-bearing balances	200
Securities	34 027
Federal funds sold	2 150
Loans and lease financing receivables:	
Loans and leases, net of unearned income	13 246
LESS: Allowance for loan and lease losses	405
Loans and leases, net of unearned income, allowance, and reserve	12 841
Premises and fixed assets (including capitalized leases)	434
Other real estate owned	231
Other assets	993
<b>TOTAL ASSETS</b>	<b>52 139</b>
<b>LIABILITIES</b>	
Deposits:	
In domestic offices	47 945
Noninterest-bearing	5 091
Interest-bearing	42 854
Other liabilities	307
<b>TOTAL LIABILITIES</b>	<b>48 252</b>
<b>EQUITY CAPITAL</b>	
Common stock	300
Surplus	300
Undivided profits and capital reserves	3 287
Total equity capital	3 887
<b>TOTAL LIABILITIES AND EQUITY CAPITAL</b>	<b>52 139</b>

We, the undersigned directors, attest to the correctness of this statement of resources and liabilities. We declare that it has been examined by us, and to the best of our knowledge and belief has been prepared in conformance with the instructions and is true and correct.

I, BETTIE WAINSCOTT  
 VICE PRESIDENT AND CASHIER

of the above-named bank do hereby declare that this Report of Condition is true and correct to the best of my knowledge and belief.

*John L. Wilson*  
*Bob Turner*  
*Andrew Romanow*  
 Directors

*Bettie Waincott*  
 4-25-91  
 Date

# 16 to compete in 4-H contests

Sixteen Haskell County 4-H members will participate in the Rolling Plains District 4-H Roundup contests Saturday on the campus of Midwestern State University in Wichita Falls.

The event will determine individuals and teams in the senior division from the 21-county district who will compete against other district winners in the State 4-H Roundup in June at Texas A&M University.

Haskell County participants and their categories include:

Lucas Castillo and Timmy Perez of Weinert, companion animals.  
Charisse Felty and Amy Moeller of Weinert, family life educational activity.

Vanessa Miller and Kaki Stapleton of Haskell, food and nutrition educational activity.

Kim Gilly and Shana McKenzie

of Haskell, food and nutrition educational activity (senior division).

Heath Guess and T. Nichols of Weinert, focus on health.

Shannon Jordan of Haskell and Sara Kitley of Rule, horse.

Heather Guess and Jace Yates of Weinert, horticulture preparation and use.

Jessica Comedy and Shayne McKenzie of Haskell, pork.

Lane Murphy and Dusty Yates of Weinert, open class.

Thank you for reading the Haskell Free Press

# Cities, schools have elections this Saturday

There will be seven elections in Haskell County Saturday.

Included will be city elections in Haskell, Rule and Rochester, and school elections in Haskell, Rule, Rochester and Paint Creek.

City elections will be held at the various city halls, and the school elections at the schools, except for Haskell. Haskell school voters will cast their ballots at the Haskell National Bank community room and at the Weinert school.

All elections will be from 7 a.m. to 7 p.m.

### HASKELL

City: Kenny Watson and Tony Burson, incumbents, and Dickie Greenwood are unopposed for the City Council. But most interest in the city election centers on the two tax proposals which will be on the ballot. One calls for a half-cent city sales tax to finance industrial

development and the other calls for a half-cent city sales tax to offset a corresponding decrease in property taxes.

School: Eight candidates are running for the three positions to be decided in the School Board. Terry Blanks and Bill Perry, incumbents, are seeking re-election. Other candidates are Tiffen Mayfield, Lupe Guadalcazar, Steve McGuire, Tom Hairgrove, Jack Cline and Jerry Stocks.

### RULE

City: Rule has six candidates for three positions on the City Council. J. N. Cornelius and Russell Beakley are running for re-election. Other candidates are Sue Smith, Chris Trussell, Vicky Anderson and Ralph Torres.

School: Clayton Stegemoller, Kenny Tanner and Ernest Carreon are candidates for the two seats on the Rule School Board. Stegemoller is an incumbent.

### ROCHESTER

City: Mayor Alton Byrd is opposed for re-election by Rod Townsend. City councilmen John Andrada and Clifford Byrd are being opposed by Mark Easterling and Bob Easterling.

School: George Mullino, Joel Bevel and Danny Bass all are unopposed for re-election.

### PAINT CREEK

School: Two new School Board members will be elected since no incumbent filed for re-election. Candidates for the two positions are Larry Walton, Stanley Morton and Vern Howard.

# New members initiated

The annual initiation meeting of the Beta Chi Chapter of Delta Kappa Gamma Society International was held Sunday, April 7, in the Aspermont Elementary School Library.

President Phyllis Letz called the meeting to order and then invited Melodee Christian, chairman of ceremonies, to commence the initiation. Presented to take the oath of membership were: from Haskell, Susan Blanks, Jo McGuire and Betsy McManamon; from Aspermont, Patty Sedberry, Karla Smith and Karen Noble; from Paint Creek, Judy New; from Knox City, Kim Kuehler and Sheryl Urbanczyk.

New members were welcomed by the president, who then introduced the area coordinator, Carmen Camp of Brownfield. Mrs. Camp pointed out that Delta Kappa Gamma International is a society of key women teachers in the world, and she encouraged members to become familiar with the work of the society.

Gerre Larned presented the "Red Rose Salute" to Margaret Chafin, a teacher of 27 years and longtime treasurer of Beta Chi Chapter.

Members voted to award a \$250 chapter scholarship to Mary Beth Williams. Mrs. Williams will pursue graduate studies in her field.

## --Market Report-- Haskell Livestock Auction

The market was steady on all classes of cattle at Saturday's sale at Haskell Livestock Auction. The sale was on a run of 2,025 head of cattle.

Cows: fat 50-54; cutters 53-59; canners 42-52.

Bulls: bologna 66-70; feeder 75-85; utility 56-62.50.

Steers: 200-300 lbs. 135-165; 300-400 lbs. 130-150; 400-500 lbs. 115-130; 500-600 lbs. 95-110; 600-700 lbs. 87-97; 700-800 lbs.

82-87.50; 800 lbs. up 76-83.50.  
Heifers: 200-300 lbs. 125-135; 300-400 lbs. 110-125; 400-500 lbs. 100-115; 500-600 lbs. 86-100; 600 lbs. up 75-84.50.

Bred heifers: 600-885.

Bred cows: young to middle age 750-850; aged or small 525-625.

Cows with calves: young and middle age 825-1080; small or aged 525-755.

## Twice as nice!

Just call or visit us today to send Mom the FTD® Blossoms & Bows Bouquet. Mother's Day is Sunday, May 12. Fresh or silk flower arrangements, Balloons, Fudge, Plants, Cards, & Frames. Spinner dominoes



Sue's Flowers, Gifts, and Photography  
SE Corner of the Square  
Haskell, Texas  
817-864-2204



### Haskell Tire and Appliance Center

(Formerly Anderson Tire Co)



### Hot Weather Is on The Way

Come in for Pre-Season Check up

Tire Rotation .....	\$5.00
Oil Change & Lubrication	
5 qts. oil (filter not incl.) .....	\$13.50
Wheel Alignment (+ Parts) .....	\$19.95
Wheel bearings packed .....	\$22.50
Wheels balanced .....	\$20.00

We can check and replace Worn mufflers and tailpipes  
Shocks  
Brake linings and pads 

Chainsaws & Chainsaw Sharpeners  
Refrigerated Air Conditioners  
Evaporative Air Conditioners  
Lawn Mowers

Open 7:30 a.m. - 5:30 p.m. Monday - Friday  
7:30 - noon on Saturdays  
Lavon Beakley, Owner - Operator  
Kenneth Campbell, Manager

*Janice Minick*  
Area Director, at goal weight for over 23 years.

## "Weight Watchers® knows what you expect from a weight loss plan."

# RESULTS!

**"I'm losing weight like never before."**  
Carol Wilk, Member Houston, TX

**"I trust Weight Watchers. It really works."**  
Ann Berry, Member Amarillo, TX

**"Believe me, the results are truly amazing."**  
Cathy Holt, Area Manager San Antonio, TX

**"Our members are ecstatic."**  
Kathi Eimore, Leader Lubbock, TX

**"It's the simplest Weight Watchers program ever."**  
Karen Draper, Area Manager Santa Barbara County, CA

**Our New Personal Choice® Program Offers You 3 Different Food Plans.**

1. If you are really motivated to lose weight, Level One is the plan for you. It's a little more structured. But you'll see amazing results.
2. You'll get more food choices with Level Two, yet maintain a moderate weight loss. This plan gives you the structure you need with the results you want.
3. Level Three allows you to eat more food, and the widest variety of food, while still moving toward your weight-loss goal. You'll get more than enough to eat, and you'll love the results.

**JOIN NOW FOR ONLY... \$12**

Registration Fee ..... \$19.00  
First Meeting Fee ..... \$ 9.00  
Regular Price ..... \$28.00  
**YOU SAVE \$16.00**  
Still only \$9 per week!

Come to the Weight Watchers meeting nearest you.

SEYMOUR  
First Baptist Church  
420 North Washington  
Every Monday at 5:30 pm

**WEIGHT WATCHERS**  
Call Toll Free 1-800-359-3131

Offer ends May 11, 1991. Offer valid at participating locations (South Texas, West Texas and Santa Barbara County, CA) Areas 27, 36, 107 only. Offer not valid with any other offer or special rate. Offer valid for new and renewing members only. Offer valid for Traditional Weight Watchers meetings only. Weight Watchers is a registered trademark of WEIGHT WATCHERS INTERNATIONAL, INC. ©WEIGHT WATCHERS INTERNATIONAL, INC. 1991. All rights reserved.

## In May 1938, Pogue Grocery was opened by my Dad and brother, Curtis Pogue and now, 53 years later, I will be closing and retiring. I will do so with mixed feelings, some sad and some glad. We have enjoyed serving some of the nicest people in the state of Texas. We appreciate you so much, thank you so much, and we will miss you so much. We will be selling all cigarettes at our wholesale cost and will discount most everything else in the store at 20 %. Cases sold at our cost.

Sincerely,  
Bud Pogue

--Out of the Past--  
From the Files of The Haskell Free Press

May 6, 1971

According to a statement issued at the close of business on April 20, by the Haskell National Bank, deposits were well above the \$10 million mark.

A very successful Haskell Country Club Golf Tournament ended Sunday with R. C. Couch and Buck Everett teaming up to win for a low-ball score of 6-under-par 65 to win the pro-am Friday.

Mr. and Mrs. Jasper W. Wheeler of Route 1 will celebrate their golden wedding anniversary with an open house reception Sunday at their home.

Airman Gary D. Druessedow has completed basic training at Lackland AFB. He has been assigned to Sheppard AFB for training as a medical services specialist.

Jerry Larned, defensive secondary coach at Sul Ross State University, has been named head football coach and athletic director at Monahans High School. He is the son of Mr. and Mrs. Joe Larned of Haskell.

May 4, 1961

Members of the 1961 graduating class at Paint Creek Rural High School are JoAnn Griffith, Mary Lou McLennan, Patsy Bischofhausen, Mike Shaw, John R. Watson and Martin Dale Coleman.

Voters in Justice Precinct No. 4, which includes Sagerton, Plainview and McConnell voting boxes, will ballot Saturday in an election to determine whether the sale of all alcoholic beverages for off-premises consumption only, will be legalized in the precinct.

Sponsored by the Retail Trade Committee of the Chamber of Commerce, Haskell business and civic leaders will be hosts at a "Friendship Dinner" Monday evening with residents of the Paint Creek community as their guests. The dinner-banquet, being planned for 200 persons, will be in the lunch room of the Paint Creek Rural High School.

Tommy Hester, junior in Haskell High School, has been notified of his selection to participate in a program of Astronomy and Astronautics at A&M College of Texas, sponsored by the National Science Foundation.

A frail, bright-eyed woman, born in Missouri the year the Civil War started, was the center of attention Sunday at open house in the Magazine Club, held in honor of her 100th birthday, which was celebrated April 25. Honor guest was Mrs. M. E. Lancaster, believed to be Haskell County's oldest resident and one of the few surviving pioneers who were the first permanent settlers here in the early days of the century.

The senior class of Weinert High School will sponsor a domino tournament tonight in the Weinert gymnasium.

May 1, 1942

A total of 1,260 men between the ages of 45 and 64 years were registered in Haskell County Monday in the nation's fourth registration of manpower for the war effort.

Mrs. Kate Morris and Mr. and Mrs. Bill Walton of Spur were weekend guests in the home of Mr. and Mrs. T. J. Arbuckle.

Mrs. Lewis Allen of Dallas has returned home after a visit in the

home of her daughter and son-in-law, Dr. and Mrs. Ernest Kimbrough.

Frank Welsh of Randolph Field, San Antonio, visited his parents, Mr. and Mrs. E. E. Welsh last weekend.

Mr. and Mrs. Crockett English and Raul English went to Plainview Wednesday where they visited relatives and friends.

Mrs. T. A. Odell is in San Antonio this week, attending the convention of the national Congress of Parents and Teachers.

Mrs. Dayton C. McWhorter, the former Henriett Perrin, left Monday morning for Boston, Mass., to join her husband, Lieut. McWhorter.

April 30, 1931

Hugh Ratliff of Haskell, who enlisted in the Army Air Corps about two years ago, has been advanced to the rank of sergeant major. He is now stationed at Mather Field, Calif.

Earl Kennedy has returned to his home in Vernon after spending several weeks here with his parents, Mr. and Mrs. J. F. Kennedy.

Mrs. Raymond Lusk of Haskell spent several days this week with her parents, Mr. and Mrs. N. J. Ivy in the Post community.

Cole Menefee and family from Wichita Falls spent a part of last week with his mother, Mrs. Sloan, and his brother, Emory Menefee.

At the M-System: Salt Pork Jowls, 9c pound; Bread, 16 oz. loaf, 7c; coffee, 4 pounds, 59c; sugar cured bacon, 23c pound.

Deputies L. H. Highnote and Olen Dotson of the sheriff's department made a trip to Aspermont Tuesday on official business.

May 6, 1911

Haskell is making plans to welcome a special train carrying a Trade Excursion of Dallas businessmen, scheduled to visit this city May 9.

Paul Zahn brought 10 Duroc Jersey pigs to town Monday that were six weeks old and weighed from 25 to 28 pounds each. He sold several of them at fancy prices. This was the best bunch of pigs we have seen exhibited on the streets of Haskell.

Mr. Langford, cashier of the Haskell National Bank, will leave today to join Mrs. Langford, who has been visiting in Fort Worth, Ennis and other points.

E. E. Marvin has installed in a convenient place in front of his garage, a Bowser gasoline supply tank which has a capacity of five barrels. This is a very handy way of supplying an auto with gasoline which has been thoroughly strained to remove all water and trash.

Mr. and Mrs. J. F. Jones of Rule were guests of Mr. and Mrs. B. Cox Tuesday.

Thanks

Editor: The American Legion and Ladies Auxiliary would like to thank all of our generous and dedicated supporters of Boys and Girls State.

Boys and girls selected were Heath McMeans, Mike Layland, Kim Gilly and Deanna Scheets.

American Legion  
Ladies Auxiliary

Thank you for reading The Haskell Free Press.



Mrs. Donald Charles Swenson II

Julia Coston marries at TCU

Julia Claire Coston and Donald Charles Swenson II were united in marriage April 27 at 7 o'clock in the evening at Robert Carr Chapel of TCU in Fort Worth.

Julia is the daughter of Mr. and Mrs. Tom Coston of Fort Worth and the granddaughter of Mr. and Mrs. Ferrell Coston and Mrs. Pauline Norman, all of Haskell.

The bridegroom's parents are Mr. and Mrs. Donald C. Swenson of Perham, Minn. He is the grandson of Mr. and Mrs. Charles F. Swenson of Minneapolis, Minn., and Mrs. Frances Haas of Perham, Minn.

Given in marriage by her father, the bride wore a Christos dress of ivory shantung fashioned with a V-neckline, short set-in sleeves, and a full length straight skirt with an attached tubular chapel length train. Beaded alenco lace covered the bodice and edged the sleeves and neckline. A wide ancelon lace bordered the skirt and train. Scattered lace medallions were on the skirt and train. The skirt featured a self fabric poufed bustle at the top of the train.

Her headpiece was formed of aleon lace medallions that formed a band with a double tiered illusion veil flowed past the end of her train.

The bride's bouquet featured a cascade design carried on her mother's wedding Bible of white cattleya orchids, gardenias, stephanotis, white dendrobium orchid sprays and foliage of English ivy. She carried a white lace handkerchief that her grandmother, Pauline Norman, carried at her wedding.

Vows were exchanged before two large 10-foot trees holding arrangements of white gladiola, white stock and white chrysanthemums placed on each side of the window featuring the bronze cross. The windows of the chapel were illuminated with candles and flowers in white and green ferns spilled in garlands from each window. Two antique candelabra accented with crystal prisms flanked the altar. Pews were garlanded with white ribbons, white stock flowers and cascading springiri fern.

Mrs. Leona Janes and Mrs. Rosie Landis registered guests in the foyer of the chapel. The registry table was draped with a white lace cloth. A crystal bud vase of white roses decorated the table. Sharla Norman, cousin of the bride, and Jill Reimers greeted guests as they arrived. Guests were given a program of the ceremony with a thank you from the bride and groom.

Guests were ushered by Bobby Arnold, Grant Bannen, Scott Hughes and Brett Johnson. Music was provided by organist Prof. Emmet G. Smith and soloist Dave Cave who sang "O Perfect Love," "Wither Thou Goest" and "The Lord's Prayer."

After their wedding vows, the couple took the Lord's Supper as a symbol of the covenant commitment of their vows and their

commitment to Jesus Christ. A unity candle was lit to symbolize the joining of the two lives into one.

Mother of the bride was escorted by the groom. She wore an ivory two-piece dress of silk shantung and ribbon lace. The groom's mother was also escorted by her son, the groom. She wore a black crepe suit. Both mothers wore corsages of mystery gardenias.

As the bride was escorted to the altar by her father, she paused to give her mother a white rose. On leaving the chapel, Julia paused once more to give her new mother-in-law a matching rose.

Laura and Stacy Coston of Fort Worth were maids of honor to their sister. Bridesmaids were Keri Cauthorn, cousin of the bride from Del Rio; Monica Druley of Houston; Melinda Judd of Fort Worth; Alicia Monroe of Austin; and Ann and Sara Swenson, sisters of the groom, from Perham, Minn.

The attendants wore full-length ivory gowns of silk shantung, featuring shirred poufed sleeves and deep V-backs accented with large bows. Each carried a bouquet of white glamelias, gypsophila, purple sprays of dendrobium orchids backed with lush of runners of English ivy.

The groom was attired in a black full formal tuxedo by Christian Dior with black vest and tie. He wore white stephanotis that matched the bride's bouquet.

Lee Burton of Dallas was best man and groomsmen were Scott Chappel of Houston, Joe Eckert of Wahpeton, N.D., Eric Edwards of Perham, Minn., Galen Ellis of Marshall, Jeff Harris of San Antonio, Kyle Jackson of Houston and Rick Sheils of Fergus Falls, Minn. Ushers were Grant Bannen of Laurence, Texas, Bobby Arnold of Houston, Scott Hughes of Saint Cloud, Minn., and Brett Johnson of Mankato, Minn. They were all attired in black tuxedos with black ties and cummerbunds. Each wore a white rose on his lapel.

The bride's parents hosted a reception at Mira Vista Country Club immediately following the ceremony.

A groom's dinner for the wedding party and out-of-town guests was hosted by the groom's parents April 26 at Joe T. Garcia's Restaurant.

Mrs. Carolyn Norman, aunt of the bride, and Mrs. Keri Cauthorn, cousin of the bride, hosted a bridesmaids' luncheon at Le Chardonnay on the day of the wedding.

-o-

If you're average, you'll walk about 115,000 miles in your lifetime. That's more than four times the distance around the earth.

That startling piece of information comes from the American Podiatric Medical Association, which is promoting May as "Foot Health Month."

-LETTERS-

Gentle people

Dear Hearts and Gentle People: I do not know how to express my gratitude to all of my many friends and my family for all their help after the storm Wednesday afternoon.

I have always said I could not tell the difference between relatives and friends. Every hug and every pat on the shoulder meant more than you will ever know.

A very special thanks to all the firemen, the law officers, the city crew, the highway crew, the Red Cross and a special thank you to Ervin Unger for his help and the use of his heavy equipment. Thanks also to all the men who came with their pickups and moved all my household goods, the women that came and packed and worked so hard, to the ladies that took wet clothes to wash and dry, for all the food that was brought to Dorothy's home, for the refreshments that were brought to the work crew and for all your special thoughts and prayers and phone calls.

I wish I could thank each of you personally but that is impossible because there were so many. Words cannot express my appreciation for good friends in my hour of need.

Beulah "Maw" Toliver  
And Family

Grateful

Editor: Always, we are aware of and thankful for the support and cooperation offered to Haskell School by many people and organizations.

In the aftermath of the April 24 tornado, we were overwhelmed by the many acts of kindness and helpfulness that enabled us to recover quickly from all the damage.

We cannot begin to thank each individual or group personally but would like to take this opportunity to express our profound gratitude to everyone who assisted in any manner.

We would especially like to thank:

WTU, Highway Department, DPS, Parks and Wildlife, County, Sheriff, Lone Star Gas, City of Haskell, GTE, citizens, area emergency and law, medical service persons, Red Cross, Haskell Fire Department and any other group or person who helped.

With much thanks,  
Haskell CISD Board of Trustees  
William H. Stewart  
Superintendent.

On fair

Editor: I have tried for the last eight years to have agricultural entries labeled as to variety (and if irrigated or dryland would be helpful also).

I have asked at least six members of the committee over the years and was always told "it would be brought up at a meeting."

After an absence of two years, I and four others attended last year but saw no changes so I decided then and there it would be my last attendance.

I don't understand why anyone would want to look at cars, horses, agricultural entries, or whatever and not want to know what kind they are. This is the main reason I'd go to a County Fair.

How many un-named stalks of cotton can a person enjoy looking at (or wheat, or milo, or tomatoes)?

Jean Baugh  
Rt. 1  
Old Glory

Red Cross

Editor: The mission of the American Red Cross is to promote self-reliance and help people avoid, prepare for and cope with emergencies--such as tornadoes, floods, earthquakes and other disasters.

All Red Cross disaster assistance is free and is made possible through the generosity of the American people. If you would like to join the Red Cross in supporting disaster relief efforts, you may send your donation to the address below:

American Red Cross  
Disaster Services  
P.O. Box 1382  
Mineral Wells, TX 76067

Eighty percent of prostitutes report histories of child sexual abuse.



BY WENDELL FAUGHT

Quotable: "I hope the next time she is crossing the street, four blind guys come along driving cars." ... Frank Sinatra on Kitty Kelley, author of Nancy Reagan's unauthorized biography.

-o-

You're not alone.

Someone mows the lawn at 61 million of America's 93 million households, read a statistic I saw the other day.

But the article said nothing about the other 22 million households. Are there really that many apartments?

-o-

The editor of a Christian-owned tabloid in Indonesia is facing a five-year sentence for insulting the Muslim religion.

His crime: Publishing a poll in which the Prophet Muhammad finished 11th among the people most admired.

Not only was the editor arrested, the newspaper was shut down.

For the record, the poll's winner was President Suharto. Saddam Hussein, in seventh place, was four notches above Mohammad.

-o-

A wax version of the bust of Saddam Hussein now stands beside those of Jack the Ripper, Nero and Adolph Hitler in The Palace of Wax in Grand Prairie.

It's in the section of the museum which contrasts the best and worst of "The Spirit of Man."

On the good side are the busts of Gandhi, Abraham Lincoln, Mother Teresa and Martin Luther King Jr.

-o-

A cartoon in the Palm Beach (Fla.) Post refers to the closing of a bunch of military bases as the "Cheney-Saw Massacre."

-o-

And the Fitchburg-Leominster (Mass.) Sentinel and Enterprise apologizes for an error: "Due to a typing error, Gov. Dukakis was incorrectly identified in the third paragraph as Mike Tyson."

-o-

They franchise just about every kind of business nowadays, but buying a franchise is no certain way to make a lot of money.

In the past three or four years, we've seen the closing of several fast-food franchises in Abilene-- Wendy's, Burger King, Pelican's and Fudrucker's. No doubt there have been many other types of franchised businesses bite the dust.

And buying a franchise is no game for the non-gambler. A lot of money can be lost.

Looking through the offerings in Friday's Wall Street Journal, I found out:

•To buy an Arby's franchise, you have to have a net worth of \$250,000, including at least \$100,000 in liquid assets.

•A Fajita Junction (Mexican food) franchise can be had for "under \$300,000".

•A Jiffy Lube franchise will cost you "approximately \$158,000".

•A franchise for an Alphagraphics print shop goes for \$295,000.

•Before you can open a cash-checking business for Check-X-Change, the company requires your own check for \$90,000.

•Something called "Cosserco" (Postal, Business and Communication Centers, Inc.) charges \$44,900 to set you up.

•Poor folks have to dig up \$30,000 to \$50,000 to open a Just Like Home Laundry.

-o-

Daffynition: "Scuba" is an acronym for "self-contained underwater breathing apparatus."

-o-

Put the word "Lite" or "Light" on a product and health conscious Americans will buy it. And often, at a higher price.

That seems to be theory of manufacturers, who are flooding the market with all kinds of "lightened" products.

One of the latest to join the trend is the distillery industry which is now marketing "light" whiskey, vodka, etc.

The alcoholic content of a pint of whiskey is reduced by one-third by adding four extra ounces of water to the 16-ounce bottle.

One of these days an enterprising tipster is going to discover that he can buy the regular strength stuff and add his own water, giving him more booze at the old familiar price.

THE HASKELL FREE PRESS

Established January 1, 1886  
PUBLISHED EVERY THURSDAY  
401 S. First St

P. O. DRAWER 1058 HASKELL, TEXAS 79521

Don Comedy.....Publisher  
Wendell Faught.....Editor  
Lisa Shaw.....Business Manager  
Mickey Holloway.....Production

Second Class Postage Paid Haskell, Texas 79521

(USPS 237-040)  
SUBSCRIPTION RATES:

In Haskell and adjoining counties, one year, \$12.00; six months, \$10.00; two years, \$23.00; Elsewhere in Texas, one year, \$15.00; six months, \$13.00; two years, \$29.00; outside Texas, one year, \$17.50; six months, \$15.50, two years, \$34.00.

NOTICE TO PUBLIC-Any erroneous reflection upon the character, reputation or standing of any firm, individual or corporation will be gladly corrected upon being called to the attention of the publisher.  
POSTMASTER:Send address changes to The Haskell Free Press, P.O. Box 1058, Haskell, TX. 79521-1058.





Mr. and Mrs. Jim Simpson

## Kemp, Simpson vows exchanged

Kerry Jean Kemp and Jim Simpson were married April 6 at the First United Methodist Church. The Rev. Kenney Kirk, pastor, officiated.

Parents of the bride are Giles Marion and Jean Kemp of Haskell. The groom's parents were the late Mr. and Mrs. Bernie Simpson of Nocona.

Kathy Copeland of Lubbock and Donna Kemp of Abilene, sisters of the bride, were bridal attendants. Birt Simpson of Houston, brother of the groom, and Zane Meekins of Fort Worth were groomsmen. Giles Bryan Kemp of Snyder and Kelly Copeland of Lubbock ushered guests.

Ken Lambert of Dallas began the ceremony with "The Wedding Song." Larry Lewis of Wichita Falls sang "The Lord's Prayer" during the ceremony. Nelda Lane provided wedding music.

The reception was given in the church's Fellowship Hall. Parent of the bride hosted a dinner following the reception for the wedding party and out-of-town guests.

The bride is a graduate of West Texas State University and Texas Tech University School of Law. She is employed by the Wichita County District Attorney's office.

The bridegroom is a graduate of Texas A&M University and Texas Tech University School of Law. He

is employed by Stevens and Crawford, a law firm in Graham. The couple will live in Wichita Falls.

### Parent meetings set for area

Several area schools will be conducting parent advisory committee meetings for each of the special programs during the coming week.

Programs to be discussed include Chapter I Regular, Chapter I Migrant, Chapter II, Vocational English as a Second Language, Special Education, Technology, Gifted and Talented, Library and At Risk Students.

These programs will be evaluated and plans made for the coming year. Committee members also will be elected.

Meetings scheduled include: Paint Creek: Friday, May 3, 12 noon in the library.

Rule: Tuesday, May 7, at 2:30 p.m. in the school cafeteria.

Benjamin: Wednesday, May 8, at 12 noon in the school cafeteria.

Goree: Thursday, May 9, at 2:30 p.m. in the homemaking department.

Thank you for reading The Haskell Free Press.

### Little League season to begin here Monday

The Little League season will begin at 5 p.m. Monday at the Little League Field.

Tee-ball, coach-pitch, minor and major league players and coaches will be introduced at that time.

Players and coaches are to be at the field at 4:45 p.m.

Parents, grandparents and friends are invited to attend. There will be no charge for admission.

Minor and major league team pictures will be taken the week of May 6-10 before each scheduled game. Pictures will be ready by the end of the game. Cost is \$5.

### School to host 'Lift-a-thon'

Haskell High School boys will compete in a "Lift-a-thon" (bench press) tonight (Thursday) to raise money for supplies and equipment for the girls' and boys' athletic departments.

The activity will begin at 6 o'clock in the big gym, and the public is invited.

Competing will be boys who will be in high school next year. They have taken pledges of so much per pound from townspeople.

### Playday winners announced

Here are results of the Haskell Horse Club's Jackpot Playday Sunday:

**8 & Under Novice**  
Barrels: 1. Lacy Hollabaugh, 2. Ross Bullinger.

Flags: 1. Ross Bullinger.  
Poles: 1. Ross Bullinger.

**8 & Under Regular**  
Barrels: 1. Rusty Camacho, 2. Cassie Lamb, 3. Jed Gray, 4. Morgan Cox, 5. Casey Moeller.

Flags: 1. Rusty Camacho, 2. Cassie Lamb, 3. Morgan Cox, 4. Casey Moeller, 5. Jed Gray.

Poles: 1. Jed Gray, 2. Rusty Camacho, 3. Morgan Cox, 4. Casey Moeller.

**9 through 12**  
Barrels: 1. Jodi Pope, 2. Brittany Bartley, 3. Shayne McKenzie.

Flags: 1. Brittany Bartley, 3. Shayne McKenzie, 3. Jodi Pope.

Poles: 1. Brittany Bartley, 2. Jodi Pope, 3. Shayne McKenzie.

**13 through 15**  
Barrels: 1. Laura Shaw, 2. Ginger Seidenberger

Flags: 1. Laura Shaw, 2. Ginger Seidenberger.

Poles: 1. Laura Shaw, 2. Ginger Seidenberger.

**16 through 19**  
Barrels: 1. Casey Cooper, 2. Shana McKenzie, 3. Robin Harrell.

Flags: 1. Shana McKenzie, 2. Robin Harrell, 3. Casey Cooper.

Poles: 1. Robin Harrell.

### "DECISIONS MADE EARLY"

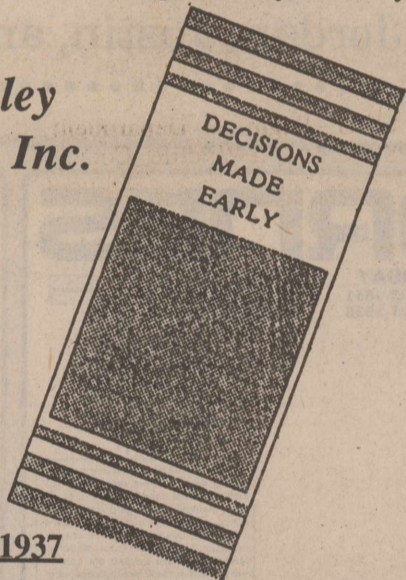


Many people plan for what might happen—fire, burglary, injury, and accidents. Now more and more people are planning for what will inevitably happen. It simply makes good sense to prepare for that which we can not avoid.

Pre-need funeral arranging allows one to control the type of service they would prefer, select a means of financing it, freeze the prices at today's price, and save loved ones the anguish of deciding these matters at a later date. Really it is the loving thing to do for your family.

Simply come by or call and we will come by to see you.

**Holden - McCauley Funeral Directors, Inc.**  
304 No. 2nd Street  
Haskell, Tx. 79521  
864-2151



Earning your trust since 1937

# Coming Soon!

## Haskell Coin-Op Laundry

102 N. Ave F  
(behind Kay's Cleaners)  
Darrell & Kay Smith

## Haskell Eye Clinic


Located at  
**Haskell Memorial Hospital**  
For Appointments Phone  
817-864-2621

Complete Eye Exam  
Contact Lens, Full Optical Service  
Out-Patient Surgery at  
Haskell Hospital  
including  
Cataracts With Implant  
Laser Surgery  
Medicare & Medicaid Accepted

Thomas Labbe', O. D.  
Larry Abernathy, O. D.  
Russell Kuempel, M. D.

## TAX PLANNING

Written By  
**James E. Rodgers CPA**



**WHAT TO DO WHEN YOU'RE ABOUT TO RETIRE**  
If your retirement is just around the corner, you should start preparing now. Choices you make before retirement can have a significant impact on how comfortable your retirement will be. Take a close look at your pension options. Deferring the starting date by six months or a year sometimes makes a big difference in the amount you receive. You'll have pension payout choices. Get advice on whether you're better off with a lump sum payment or periodic payments. Most people take their pension in a series of monthly installments, called an annuity. Joint and survivor annuity are most popular. Regardless of which spouse dies first, the survivor annuities are most popular. Regardless of which spouse dies first, the survivor continues to draw a monthly benefit. If your spouse agrees, you can select a single-life annuity with no benefits to your survivor. This may make sense if your spouse has his or her own pension or other sources of income. Plan for ways to continue medical insurance. Check your company plan to see if retirees are covered. The law says you can stay in your employer's group health plan for 18 months if you pay for the coverage. Afterward, you'll want an individual policy, but expect to pay several hundred dollars a month. Look into Medigap coverage a few months before you turn 65. Depending on your age and the scope of the policy, expect to pay \$50 to \$120 a month. Later this year you'll have a choice of nine policies authorized by federal law to pickup protection where Medicare leaves off. Approved policies can reimburse the 20 percent share of a doctor's bill that isn't paid by Medicare, and cover the hospital deductible, currently \$628 for each admittance. You will be able to arrange for limited amounts of care in a skilled nursing home. If you are selling property and relocating after retirement, you will have still other tax and financial concerns. Call us; we'll be happy to assist you.

**RODGERS & COMPANY**  
Certified Public Accountant  
20 Southwest Third Street  
Haskell, Texas

Monthly Calendar of Events		MAY 1991					Haskell Independent School District	
SUN	MON	TUE	WED	THU	FRI	SAT		
			1 Cheerleader Tryouts	2 Lift-a-thon 6:00	3 Elementary Balloon Lift-Off 2:00 Band Spring Concert	4 Band Banquet		
5	6	7 Homemaking Fashion Show 7:00	8 Elementary Band Concert 10:10	9 Elementary Field Day	10 FFA Convention, San Angelo State Track Meet	11		
12	13	14 Secondary Awards Day	15 World of Work (7-8)	16 6th Grade Pre-Registration	17 Kindergarten Pre-Registration Slam-Dunk Contest	18 All Sports Banquet Civic Center		
19	20	21 K-3 Awards Ceremony	22 4-6 Awards Ceremony	23	24 Graduation All Night Party 8:00	25 Teacher Workday		
26	27	28	29	30	31			

The Friendly  First People Put People First

**First National Bank - Haskell**  
200 South Avenue E • 864-8555 • Member FDIC

## Happenings...

by Lois Redwine

It wasn't the mother of all storms, but close enough. So very many dear and irreplaceable things were lost, but thank God, no lives.

Claude and Jimmie Young of Pitkin, Co. spent the weekend with her parents, Ted and Faye Jetton in Weinert. Jackie Frantz of Dallas, Jimmie's twin sister, and brother, Bill Jetton of Brownwood, also spent the weekend with their parents and sister.

Jack Larned, San Antonio, has heard from one member of the class of '34 and gave his permission to pass the news along. Helen Higgins lives in Lewisville, north of Dallas. She worked for Southwestern Bell in Dallas until 1977, was in Haskell in 1987 for Ruby Elmore's services and has some distant cousins here. Jack, 303 Basin St., San Antonio, 78216, would like to hear from the rest of the class and says San Antonio has some very fine golf courses.

Mr. and Mrs. Nick Long and Molly of Floydada spent the weekend with Mrs. Long's parents, Judge and Mrs. B. O. Roberson. They also visited a number of friends here.

Kay Looney of Midland visited her father, Leon Newton and Mrs.

Newton, Kay and my daughter, Suzy Lundy, work together for the Midland Chamber of Commerce.

Chris Howeth and Steve Wright, both Agricultural students in Tarleton State University, Stephenville, visited Chris' dad, Bud Howeth and granny, Marie Howeth. They also visited Chris' other grandmother, Lucille Adams in Weinert and his mother, Donna Howeth in Stamford.

Lee Gray, Barbara and Missy from Odessa visited his parents, George and Faye Gray and helped repair damage done to their trailer home last Wednesday. Also visiting were daughter, Georgia Turnbow, Weinert and Mrs. Gray's sister and brother-in-law, Pauline and Nathan Gruben.

Joe Larned, Jr. of Port Neches visited his mother, Mrs. Joe Larned, Sr. and sister and brother-in-law, Alta Faye and Jack Harvey.

Tracey Donette Yeldell will graduate with a Bachelor of Science degree, May 11, from Bowie State University in Bowie, Md. She was raised in Stamford, the daughter of the late Mr. and Mrs. Nathaniel Yeldell and is the niece of Bob and Mae Lou Yeldell.

Janice Lauderdale, Irving, and

Wanda Jackson, Ft. Worth, spent the weekend with their mother, Clariss Jones. Janice's son, Sean, has returned to Ca. from Saudi Arabia and expects to be home the middle of May.

Mr. and Mrs. Bill Middlebrook have returned from a trip to San Antonio and Yoakum. Mr. Middlebrook is a member of the Board of Directors for the Stamford Electric Cooperative and attended a NRECA workshop in San Antonio. They visited in Yoakum with their aunt, Hazel Bland, cousins, the Bobby Blands, the Richard Karls, Mrs. Leon Bland and from Ft. Worth, Martha Auten.

Edna Calloway of Kaufman has been visiting her sister, Mrs. Joe Larned, Sr.

Captola Davis of Pasadena visited her brothers, N.J., John and Dee Larned and other relatives and friends.

Bobby Wheatley of Picayune, Ms. visited last week with his mother, Allene Wheatley and his mother-in-law, Margaret Ratliff.

Randy O'Neal of Amarillo came last Thursday to check on his mother, Gladys O'Neal and help clean up the storm's debris.

Elbert and Franceine Johnson returned Sunday from Orlando, Fl. While there, they visited nephews, Kyle and Joel Johnson and Epcot Center where Mrs. Johnson sustained a broken ankle during a rain storm. Mr. Johnson attended the annual meeting of the Legend Pharmacy Coop held on Hutchison Island. They also saw the Discovery blast off from Kennedy Space Center.

Mrs. Fadwa Hassen and son, Raja, were in Dallas last weekend to attend the wedding of Omar Chaucair, formerly of Munday, and Allison Barto, Dallas. They saw many old friends there.

## Grand Jury indicts 15

A 39th District Court Grand Jury returned indictments against 15 persons when it met in Haskell April 22.

Indicted were:

Robert Castilla, attempted murder.

Joyce Marglous Crain, two counts, forgery and possession with intent to pass.

Gerald Ray Purcell, burglary of a building.

Jason Sullivan, arson.

Anthony Randle, two counts, forgery and possession with intent to pass.

Buck Conner Jr., burglary of a vehicle.

Christopher Bruce Conner, burglary of a vehicle.

Leslie Ray Lane, DWI, subsequent offense.

Stormie Gayle Trussell, forgery, possession with intent to pass.

Cindy Hardin, theft over \$750.

Jesus Cedillo, DWI, subsequent offense.

Seferina Edward Sanchez, DWI, subsequent offense.

John Lester Walker, unlawful use of a motor vehicle.

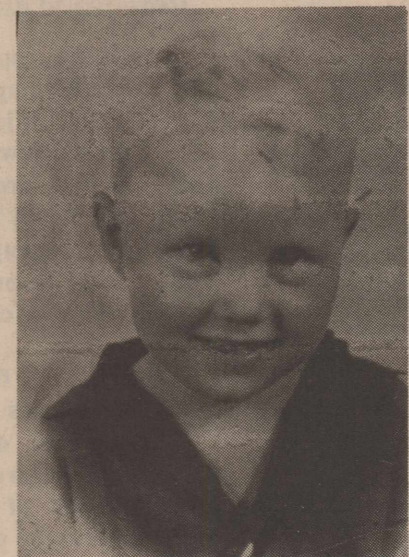
Michael Barry Dulaney, two counts, criminally negligent homicide, transferred to county court as a Class A misdemeanor.



## Off to state

Getting ready to depart last Thursday for the state FFA livestock judging contests in College Station is this Haskell team of Kim Gilly, Brooke Baker, Shanna McKenzie and Tommy Isbell. They were accompanied by James Bevel.

## Nifty Fifty



Doris, Jerry Don, Cindy, Deena, Barry, Amy, Leesha, Stacey & Rick, Jordan, Justin, and Rance

## Public invited to fashion show

The public is invited to attend the 1991 Haskell County 4-H Fashion Show to be held at 3 p.m. Sunday in the Rochester School auditorium.

Nineteen 4-H clothing project participants, representing all of the communities in Haskell County, will model their creations. Each participant will receive an individual gift, compliments of the Haskell County Extension Homemakers.

After the fashion show, clothing leaders will be recognized and awards presented.

Thank you for reading The Haskell Free Press.

### Major Medical Hospitalization

Affordable Comprehensive Protection

**Dennis Smith**  
Throckmorton 849-0021

## You own your Farm . . . why rent your Health Insurance

There's a reason the Texas Wheat Producers Association sponsors AIA Health Insurance. It's because this major medical plan was designed by farmers and ranchers like yourself.

AIA's Universal Plan for Health is the first health plan that accumulates cash value.\* A portion of your premiums accumulate in an interest bearing account.

An AIA agent representing the Texas Wheat Producers Association will be in Haskell County calling on you during May. To take advantage of special rates during the TWPA enrollment period, speak to an agent and ask to view our video presentation.

Your opportunity will only last until May 31, 1991.

For more information, call toll-free 1-800-635-1519

\*subject to surrender charge  
Insured by The Universe Life Insurance Co.

## Get Our Interest the Old-Fashioned Way

Set up an old-fashioned savings account today and watch your money GROW.

Need more services than basic checking and savings accounts?  
Ask us about our competitive-rate IRA'S and certificates of Deposit.  
Come to think of it, for an old-fashioned, community-based bank, we've got a lot of newfangled ideas.  
**See us today.**

FDIC

Post Office Box 10  
Phone (817) 997-2216  
Rule, Texas 79547

**The Farmers NATIONAL BANK**

## -HOSPITAL-

**Medical Patients**  
Willie Tibbits, Knox City  
Allen Meier, Rule  
Opal Hutchinson, Knox City  
Nellie Ash, Haskell

**Dismissals**  
Bill St. John, Julia Ruiz, Jessie Teague, Cecil Pittman.

## Hermann Lodge to meet Sunday

Members of Sons of Hermann Lodge 241 will meet at 3:30 p.m. Sunday for food and games.

Each member is being asked to bring a can of food without a label. Games will follow the pot luck meal. Each member also has been asked to bring a future member to the meeting.

The club's dances this month will be May 10 and May 24.

### For health insurance, check with State Farm.

**BRIAN BURGESS, Agent**  
705 North Avenue E.  
Haskell, Texas 79521  
Off. 864-3250

Personal Health Insurance the State Farm way!

State Farm Mutual Automobile Insurance Company  
Home Office, Bloomington, Illinois

## Hearing Loss Is Not A Sign Of Old Age.

Chicago, Ill. - A free offer of special interest to those who hear but do not understand words has been announced by Beltone. A non-operating model of the smallest hearing aid Beltone has ever developed will be given absolutely free to anyone requesting it.

It's yours for the asking, so send for it now. It is not a real hearing aid, but it will show you how tiny hearing help can be. The actual aid weighs less than an eighth of an ounce, and it fits completely into the ear canal.

These models are free, so we suggest you write for yours now. Again, there is no cost, and certainly no obligation. Although a hearing aid may not help everyone, more and more people with hearing losses are being helped. For your free sample send your name, address, and phone number today to: Department 06650, Beltone Electronics Corporation, 4201 West Victoria Street, Chicago, Illinois 60646.

### OSBORNES

VERNON (817) 552-7631 (800) 327-6641  
MUNDAY (817) 422-4851 (800) 327-1936  
STAMFORD (915) 773-5006 (800) 327-2918

#### RAIN OR SHINE SALE

HOPEFULLY RAIN!

PRICES GOOD THROUGH MAY 8, 1991

Prices advertised were current at press closing date; however, due to the fluctuating market conditions, we must reserve the right to change prices without notice to reflect the current costs. Items advertised were either in stock or confirmed for shipment prior to our sale dates. Market conditions beyond our control will sometimes result in late deliveries of items advertised. We reserve the right to limit quantities and correct printing errors.

### RAYVAC

STOCK UP NOW  
SPECIAL SAVINGS ON ALL HEAVY DUTY BATTERIES

C OR D - 2 PACK 79¢  
AA - 2 PACK 59¢  
9 VOLT - SINGLE 94¢  
380006 380007  
380008 380009

BUY THREE PACKS AND GET A FREE EVERGREEN SEEDLING!

### Easy-Care Coveralls

SHORT SLEEVE POPLIN COVERALLS in your choice of Navy, Tan, Blue or Brown.  
Sizes Small thru Extra Large

\$16.99  
\$18.99

### IGLOO

IGLOO 2 GALLON INDUSTRIAL YELLOW WATER COOLER \$12.99  
IGLOO 7 QT. LITTLE PLAYMATE \$9.99

**igloo. Built to survive the real world.**

### BEAR OF THE WOODS

QUALITY FOOTWEAR  
SUEDE WEDGE SOLE WORK BOOTS \$49.95  
875212 thru 875720

EVERYDAY LOW PRICE!

BLACK LEATHER WEDGE SOLE WORK BOOT \$59.95  
875700 thru 875708

EVERYDAY LOW PRICE!

### YOUR SAVINGS ARE IN THE BAG!

25-3-3 WEED & FEED FERTILIZER  
130707 - 20 Lbs. \$4.99  
130708 - 40 Lbs. \$9.99

26-3-3 LAWN FERTILIZER WITH IRON  
130705 - 20 Lbs. \$3.99  
130706 - 40 Lbs. \$7.99

### 25% OFF FERRY-MORSE GARDEN SEED

OUR 25% OFF SALE IS ONE TO GROW ON!  
25% off our entire stock of quality Ferry-Morse Seeds. Choose from a wide variety of beautiful flowers, vegetables, houseplants, hybrids and herbs. Ferry-Morse Seeds. The Capital Brand in Great Gardening.

### WEED EATER

Trims small to medium-size lawns.

- 12" cutting path
- Tap-N-Go® automatic line advance
- Durable 3.1 amp motor
- Adjustable assist handle
- Trigger handle with extension cord retainer
- Double insulated, UL listed
- One-year limited warranty
- Lightweight, only 4.3 lbs.

670453 \$29.99

### WELLS LAMONT

7 oz. CANVAS GLOVES 99¢  
18 oz. DOUBLE PALM CANVAS GLOVES 1.69

MADE IN AMERICA

# New coordinator for Noah Project

By Marsha G. Whittemore  
Donna Sue Anders, appointed April 8 as outreach coordinator for the Noah Project North, is striving to build a solid volunteer program to better serve her district which



Donna Sue Anders

covers Haskell, Knox and Throckmorton counties, as well as Stamford in Jones County.

"I love Haskell and I'm looking forward to working here and serving the people," she said.

A "New Life, New Hope, New Beginning" is offered by Noah Project North, a nonprofit organization designed to assist victims of family violence. The organization staffs a 24-hour hotline, offers counseling with victims and provides limited, short-term assistance and shelter.

Dave Rodriguez, Phil Konty and Paul Cheatham, members of the Advisory Board, will assist Donna Sue in the program. Cheatham, pastor of East Side Baptist Church, is chairperson of the Advisory Committee. Konty is manager of Wal Mart in Stamford and Rodriguez is a policeman in Stamford and a counselor at the Rape Crisis Center in Abilene.



## Park event

Everyone passing through Haskell on US 277 knows that next Sunday will be "Sunday in the Park". This banner was erected by the City of Haskell.

# Many expected for 'Sunday in Park' this weekend

With a banner across US 277 reminding all that a big day is approaching, plans for the third annual Sunday in the Park are gaining momentum.

The co-sponsors, the City of Haskell and the Haskell Chamber of Commerce, are anticipating an even larger attendance than that of last year.

Beginning at noon Sunday, festivities will include entertainment, games, food and arts and crafts booths.

Among the entertainers already booked are the Haskell High School Band, directed by Joe Waldrop; the Texas Squares square dance club with caller Leon Ivey; "Faith" singers of Rule (the Landeses and the LeFevres; Bonnie Workman, fiddler; and the Roundup Bunch; Randy McLelland, Cathy Garison and Ginny Kloog. Other musical groups are expected to participate.

The Kiwanis Club will sell

barbecue and operate a game called Scud Missile; the Rotary Club will have a duck race with chances for an \$800 computer, plus homemade ice cream; the Bass Club will offer hamburgers and sausage on a stick; Cub Scouts will sell snow cones and hot dogs; the American Legion and Auxiliary will offer chili dogs and nachos; the Texas Chiefs model airplane club will have a display and sell brisket sandwiches; Noah Project will have funnel cakes; the Experienced Citizens Center will have homemade ice cream and other goodies; St. George's Catholic Church will sell Mexican food; and the Assembly of God will have hamburgers, frito pies and other food.

Other groups are expected to join in the festivities.

Those attending are invited to wear casual clothes and comfortable shoes and bring folding chairs to help them enjoy the food, relaxation, fellowship and fun in the beautiful park.

# Students attend crisis session

Haskell students in pre-kindergarten through third grade this week attended a tornado crisis intervention session, presented by the school counselor.

Students were given pictures to color and notes to be carried home. Older students were given fact sheets on how to spot a tornado and where to go during a storm.

The notes to parents contained the following information:

It's important to remember that after a tornado, or other disaster, it's perfectly normal to feel uncomfortable. It's common to feel shock and disbelief. For several months you may feel angry and depressed. Thunderstorms may make you nervous even though you know it isn't another tornado. These unpleasant feelings generally go away in time.

This coloring book was developed for children who have these feelings, but have a hard time expressing them. Sometimes they aren't sure how to ask for help in overcoming fears and bad memories. The book allows children to draw their thoughts and ideas, and share them with you.

If your children seem anxious about dark clouds, rain or anything else associated with tornadoes, talk with them about their feelings. Help them learn the differences between the signs of a tornado and other weather conditions.

The loss of possessions causes hardships for the whole family.

Rebuilding the old neighborhood or moving to a new place adds to the confusion. Losing important personal belongings, like a favorite teddy bear, can be especially painful to children. Even children who are not in the destruction area may be upset over what they see and hear about the damage.

Part of being a parent is letting children know they are not alone; that they are still loved. Listening, understanding and giving a little extra care can help ease troublesome feelings.

## Rochester student wins in typing

Jenna Lea Byrd of Rochester High School won fifth place in a field of 45 at the A. B. Dick typing contest held April 23 in the Mall of Abilene.

Students entered in the competition represented Big Country schools, ranging in size from 1A to 5A.

First-place winner was Crissy Bonds of Cooper High School, who typed 66 words per minute. Jenna typed 56.2 words per minute with eight errors. The first-place winner received a \$500 scholarship.

Also entering from Rochester was Alexy Lampe.

The Rochester students' advisor is Sandra Fry, Rochester business teacher.

*Lane - Felker*

*Bargains*

*Lane - Felker is going to maintain sale racks of current fashions in the mirrored room at all times. Browse through these spring and summer clothes when in Lane - Felker shopping*

*Lane-Felker*  
"West Texas' Fashion Center"  
Haskell, Texas 79521 Phone 817-864-2856

**Wrangler CONSTRUCTION CO.**

**Metal Buildings, Carports, Roofing, Carpentry, and Other General Construction**

Route 1, Box 9 B  
Hawley, Texas 79525

George S. Hicks  
915-537-2246

**Dillon Greenhouse**

Bedding Plants • Hanging Baskets • Herbs

Tomatoes • Peppers Eggplants <b>12/\$1.00</b>	<i>Everything is grown in our Greenhouse!</i>
---	---

Open 10 to 6 Mon. thru Sat. • Closed Sundays  
4 miles East of Knox City • Hwy 222

**817-658-3605**

**MID**

SIX REASONS TO BUY YOUR NEXT LAWNMOWER AT OSBORNE!

- Largest selection in the area at the lowest everyday prices around.
- We honor local competitors' sale prices on identical makes and models.
- All mowers assembled, serviced, ready to mow. We don't sell mowers in the box.
- Free local delivery.
- Trade-ins considered.
- Financing available to qualified buyers.

<p>3 1/2HP 20" PUSH MOWER • Briggs &amp; Stratton Engine • Extended Rope Start \$700.60 <b>\$98.95</b> Everyday Low Price</p>	<p>3 1/2HP 22" SELF-PROPELLED MOWER • Briggs &amp; Stratton Engine • Individual Height Adjustment \$700.69 <b>\$184.95</b> Everyday Low Price</p>	<p>3 1/2HP 21" REAR BAGGER • Briggs &amp; Stratton Engine • Cloth Bag • Individual Height Adjustment \$700.68 <b>\$169.95</b> Everyday Low Price</p>	<p>5HP QUANTUM 22" SELF-PROPELLED REAR BAGGER • Briggs &amp; Stratton Engine • Cloth Bag • Single Lever Height Adjustment \$700.72 <b>\$269.95</b> Everyday Low Price</p>
---	---	--	---

**Rubbermaid**

**GET A GRIP ON OUR CAN. GOTT® GAS CANS KEEP A LOW PROFILE. FILL 'ER UP.**

GET A GRIP ON OUR CAN. GOTT® GAS CANS KEEP A LOW PROFILE. FILL 'ER UP.

2 1/2 Gallon Plastic Gas Can  
\$3.69 550092

Renovate that old barb wire fence for pennies a foot. The off-set power fence will stop bulls in their tracks, turn wild hogs and coyotes, and turn an ineffective fence into a stock proof fence. Energizer extra.

**INEXPENSIVE**  
\*Under \$300.00 Per Mile

**EASY!**  
No Braces, No Come-A-Longs  
No Post Drivers, No Chain Saw

**FAST!**  
1-man, 1-mile, 1-day

**GALLAGHER POWER FENCE Inc.**

Check with the Gallagher power fence experts at OSBORNE!

**Gilmour**  
A SUBSIDIARY OF VERMONT AMERICAN CORPORATION

**25' 3-TUBE SPRINKLER SOAKER**  
Soft, uniform spray ideal for new grass, gardens, trees and shrubs. This lightweight vinyl hose strands up to sun, weather and abrasion with ease. Hose while strips to show correct position, brass couplings. And comes with removable end cap for easy flushing or with sealed end.  
\$20356  
**\$3.99**

**25' WATER WEEPER SOFT SOAKING**  
Assures even, thorough, gentle water soaking alongside flower beds, ground plants, above or below the ground. Water softly "weeps" through those sands or pores in this flexible hose made of vinyl with brass couplings.  
\$20440  
**\$5.99**

**SUPER 75 5/8" x 75' FOR THE PRICE OF 50'**  
The strength of rubber, the flexibility of vinyl and an economical price. A great find for orange groves and garden use. Free-card reinforced... with stands made shut-off. With Full Flo® couplings for unrestricted water flow. In black with extruded green double stripes.  
\$20364  
**\$9.99 c**

**ACE Hardware Satisfaction Guaranteed**  
on ACE 7 Star Paints  
plus It's on sale!

<b>ACE</b> Flat Latex Wall Paint \$12.99 Gal	<b>ACE</b> Semi-Gloss Latex Enamel \$15.99 Gal	<b>ACE</b> Satin Latex Wall & Trim Paint \$15.99 Gal
--	--	--

**Our Best House Paints Now on Sale!**

<b>ACE</b> Flat Latex House Paints \$15.99 Gal	<b>ACE</b> Semi-Gloss Latex House & Trim \$16.99 Gal
--	--

**OSBORNES**

**Seymour man wins microwave**

Eric Hostas of Seymour was winner of the microwave oven given away last month by the American Legion.

The winning ticket was sold by Truett Parsons and the ticket was drawn by Abe Turner.

The Legion expressed its thanks to all who participated in the fundraiser.

**Booster Club meets Thursday**

Members of the Haskell Indian Booster Club will meet tonight (Thursday) in the ag building.

The meeting begins at 8 o'clock and all members are urged to attend.

**RENTAL & SALES**

24-Hour Emergency Service  
•FREE AREA WIDE DELIVERY

**HOME OXYGEN**

817-864-2258  
We Care For Your Medical Needs

**NEMIR MEDICAL SUPPLY CO.**  
510 N. 2nd  
Haskell, Texas

**Tower Drive-In Theater**  
Showing this weekend  
**April 19-20-21**  
Hwy. 6 - Ph. 997-2124 - Rule, Tx.

**From John Hughes Home Alone**

A family comedy without the family  
Macaulay Culkin • Catherine O'Hara • John Heard • Joe Pesci • Daniel Stern

Rated PG

**SPRING SALE!**

MAY 2 - MAY 12, 1991

**Christian Dior**  
LEGWEAR

Style	Description	1 Pr. Reg. Price	Multiple Pr. Sale Price
923	Shiny Opaque Pantyhose Sandalfoot	\$7.00	6/\$31.50
1443	Ultra Dior Sheer Stocking Sandalfoot	\$7.00 (2 Pr.)	\$15.75 3/2 Pr. Pk.
1467	Tight High Sheer Stretch Sandalfoot	\$5.00	6/\$22.50
4419	Diorella Control Top Pantyhose Sandalfoot	\$5.00	6/\$22.50
4533	Diorissimo Ultra Sheer Leg Control Top Pantyhose Sandalfoot	\$6.50	6/\$29.22
4479	L'Allure Control Top Ultra Sheer 10 Denier Lycra Pantyhose Sandalfoot	\$7.00	6/\$31.50

Come in and see our assortment of legwear from one of the most famous names in fashion.

*Lane-Felker*  
"West Texas' Fashion Center"  
Haskell, Texas 79521 Phone 817-864-2856

# SAVE NOW!

## AND BEAT THE PRICE HIKE!

We have done our best to hold the line with our subscription prices. However, the U. S. Postal Service has again hit the newspaper industry with another increase in mail rates. Mail rates for newspapers increased again in February and we are forced to raise our subscription rates.

But, you can renew now at the present low rate and SAVE! During our Special Offer, it makes no difference when your subscription expires, it can be extended for up to THREE YEARS.

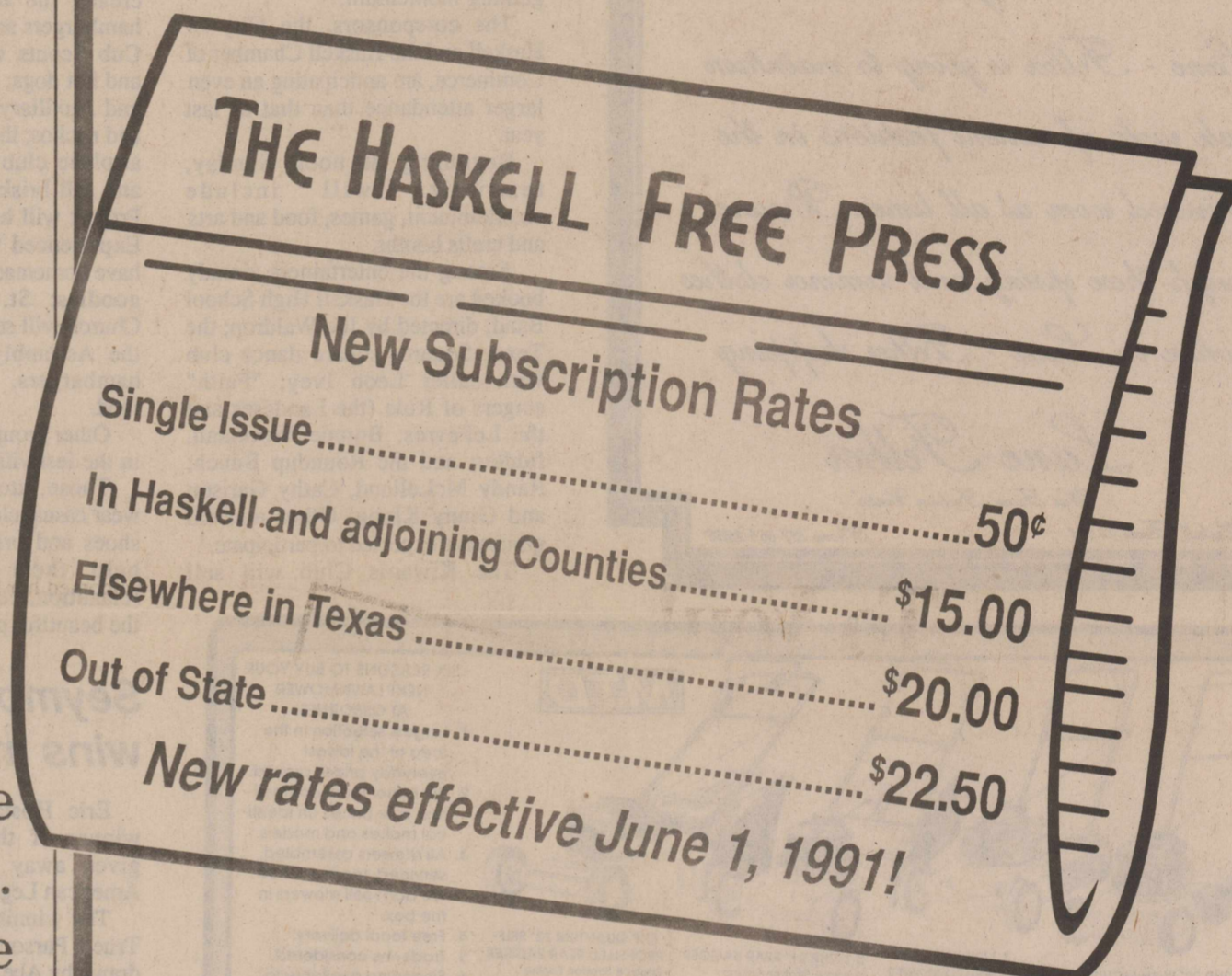
We urge you to take advantage of this special offer and SAVE NOW!

## Current Subscription Rates

SUBSCRIBE NOW AND SAVE!

Single Issue .....	35¢
In Haskell and adjoining Counties .....	\$12.00
Elsewhere in Texas .....	\$15.00
Out of State .....	\$17.50

*These rates good until June 1, 1991!*



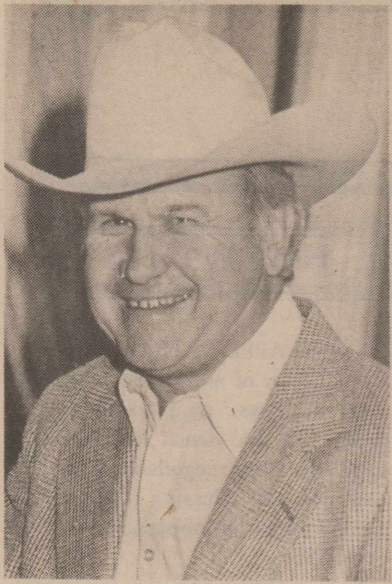
## Recording the history of Haskell County since 1886.

*The only newspaper in the world that cares about Haskell, Texas!*

## HASKELL FREE PRESS

P. O. Box 1058 • 401 South First  
Haskell, Texas 79521-1058





Jim Fullingim

## Gospel concert scheduled

Guests to the Sunday in the Park activities Sunday are invited to attend a gospel music concert that evening at East Side Baptist Church.

Jim Fullingim, a cotton farmer from Lubbock, will present the concert, beginning at 7 p.m.

Fullingim sings a West Texas kind of music. A gospel singer, he sings in churches, at conferences and crusades. He was the music evangelist for the August 1989 city-wide crusade.

The concert is free, and a nursery will be provided.

Those attending the afternoon party in the park are invited to come in their picnic clothes.

We have more to gain if all of us protect and nurture children, instead of considering them someone else's problem.



## Rule winners

Rule students who won honors in last weekend's math and Science state championship meet in San Antonio included, front row from left, Justin Sanders, Allison Pike, Denise Wilson; back row, Michael Murray, Kacy Baitz and Cory Robinson.

## Rule team wins state championship

The Rule Junior High math/science team completed a successful year by winning the Texas Math and Science Coaches (TMSCA) state championship at San Antonio last weekend.

Competition was divided into two school divisions, large school and small school. The small school division had competitors from 1A to 3A schools, while the large school division was made up of 4A and 5A schools. Approximately 100 schools and 375 students had qualified for the state meet from regional competitions held April 6.

The Rule, seventh- and eighth-grade calculator team, composed of Allison Pike, Cory Robinson, Denise Wilson and Kacy Baitz, placed first with a team total of 2,308 points.

In addition to team victories,

Rule Junior High competitors placed in individual events as follows:

Allison Pike: First in eighth-grade calculator.

Denise Wilson: First in seventh-grade number sense and second in seventh-grade calculator.

Cory Robinson: First in seventh grade calculator and seventh in seventh-grade science.

Michael Murray: Third in sixth-grade science.

Jerry Cannon, Rule math teacher, is coach/sponsor of the Rule students.



## Haskell School Menu-

May 6-10  
BREAKFAST

**Monday:** Juice or fruit, cereal, buttered toast, milk.

**Tuesday:** Juice or fruit, pancakes with syrup, peanut granules, milk.

**Wednesday:** Juice or fruit, scrambled eggs, toast, milk.

**Thursday:** Juice or fruit, biscuits with gravy, sausage, milk.

**Friday:** No school.

LUNCH

Elementary School

**Monday:** Sloppy Joes, french fries, pickle spears, spiced apples, milk, juice.

**Tuesday:** Taco salad, grated cheese, lettuce and tomatoes, fruit, milk, juice.

**Wednesday:** Corndogs, pinto beans, carrot sticks, cherry dump cake, milk, juice.

**Thursday:** (Brown bag lunch for Field Day): Ham and cheese sandwiches with lettuce, pickle spears, potato chips, apple, milk, juice.

**Friday:** No school.

LUNCH

High School

**Monday:** Hamburgers or fish nuggets, pork and beans, buttered cornbread, french fries, salad bar, cherry dump cake.

**Tuesday:** Hamburgers or pizza, french fries, buttered corn, salad bar, fruit.

**Wednesday:** Hamburgers or taco salad, tater tots, ranch style beans, salad bar, brownies.

**Thursday:** Pot Luck.

**Friday:** No school.



## Double winner

Johnie Billington of the Haskell Indians won first places in the 100- and 200-meter dashes in Saturday's regional track meet in Abilene. He will compete in both events next week at the state track meet.



## Wins regional

Haskell's Regina Dever beats out Sara Alexander of Post to win the 400-meter dash at the regional track meet in Abilene Saturday.

## Billington, Dever qualify for state

Johnie Billington of the Indians and Regina Dever of the Maidens will represent Haskell High School in next week's state track meet in Austin.

Billington won both the 100- and 200-meter dashes in last weekend's regional meet in Abilene and Dever took first place in the 400-meter dash.

Billington ran the 100 in 10.96 seconds, considerably below his best time of the year but good

enough to beat out Anthony Deal of Bangs who was timed in 11.12.

His 22.39 time in the 200 gave him first place over Willie Belk of Winters who finished second at 22.58.

Dever took the 400 win with a time of 59.38. Sara Alexander of Post was second at 59.46.

Class 2A running events in Austin will begin at 5:45 p.m. on Saturday, May 11.

## -BIRTHS-

Mr. and Mrs. Mario Abila Jr. of Haskell announce the birth of their daughter, Mealinda Abila, born at 9:57 p.m. on April 16 in Hendrick Medical Center in Abilene.

She weighed 7 pounds, 8 ounces and was 20 inches long.

Sisters, Lezli, 5, and Lindsey, 4, welcomed her home.

## Golf tourney Saturday, Sunday

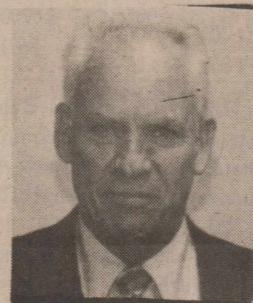
The annual 2-man scramble golf tournament is scheduled for this weekend at Haskell Country Club.

The tournament will be played Saturday and Sunday with tee times of 8:30 and 1:30.

A steak dinner will be fed Saturday night. Cost for non-golfers will be \$5 per person.

To enter, call 864-3400.

## PHARMACY TOPICS



By Elbert Johnson, Registered Pharmacist

Americans are living longer. A boy born in 1989 had a life expectancy of 71.8 years, a girl, 78.6 years.

Doctors at the University of Michigan Medical Center in Ann Arbor report 90 percent success with a new procedure to treat tachycardia, a condition in which the heart races extra-fast. A tiny wire is threaded through a vein to cauterize portions of the heart.

If you're taking allergy medication, be aware that most antihistamines cause severe drowsiness and affect the ability to drive. Some prescription products are safer for drivers.

Stretch marks can be faded with topical application of a vitamin A derivative, according to doctors at the Dermatology Center in Nashville. Therapy is most effective when the stretch marks are new and still pink, they say.

Lyme disease vaccine is being tested successfully on mice at Yale University School of Medicine. It may be ready for pet use in two or three years, and for humans in five to eight years.

What's new in medicine? We keep up, the better to serve your health needs at

Free Prescription Delivery

Johnson

Prescription Pharmacy  
418 N. 1st, Haskell  
864-3331, Nights 864-3439

Our New Name Means A Great Deal To You!

# Toliver

AUTO GROUP

## So What's The Big Deal?

The Big Deal is...that by combining three dealerships under one name, you get three times the inventory, three times the service, and best of all three times the savings!

And right now, for a limited time only, Toliver is offering a GREAT BIG DEAL:

**Pay Absolutely No Money Down** on any new car purchase.\*

Add that to our every day low

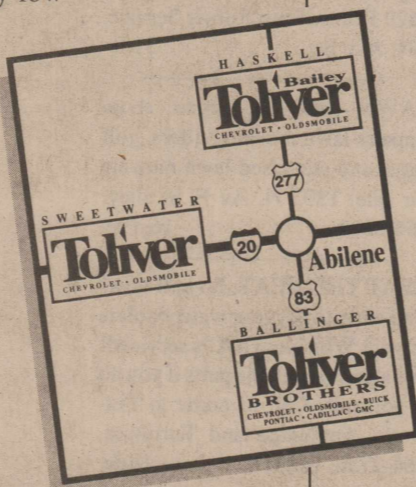
"Clobber Big City Prices"

and a Toliver Deal really is a BIG DEAL!

No matter which direction you go... the Big Country is Toliver Country!

**Toliver CLOBBERS**  
Big City Prices

**NO DOWN PAYMENT**



Bailey  
**Toliver**  
HASKELL  
CHEVROLET • OLDSMOBILE

517 North 1st • Haskell, Texas 79521  
817-864-2626 • 800-588-2626

\* With approved credit

## Jones County Fence

Chain Link and Wood Fences and fence repairs

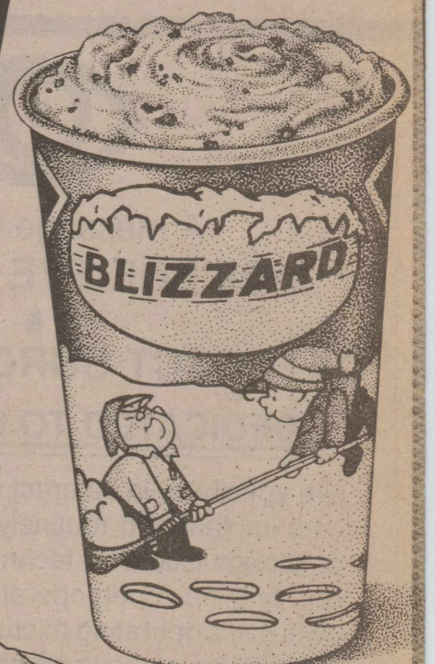
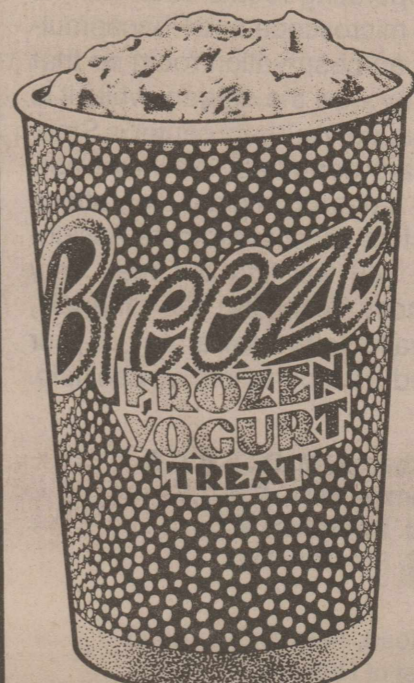
call Anson: 915-823-2282

99¢

**BLIZZARD**  
FLAVOR TREAT  
12-oz.

YOUR CHOICE!

**BREEZE**  
FROZEN YOGURT TREAT  
12-oz.



ON SALE AT  
DAIRY QUEEN  
APRIL 29 -  
MAY 19, 1991

THIS WEEK'S

**DQ**  
VALUE

© Reg. U.S. Pat. & Tm. Off. Am. D.Q. Corp.  
© Tx. D.Q. Op. Coun. At participating Dairy Queen stores.

# CLASSIFIEDS

## Rawlins Monuments

Granite-Marble-Bronze  
Highest Quality  
Reasonable Prices

Satisfaction Guaranteed  
Delivery within 6 weeks

Price includes:  
Lettering and Custom Designs

Cemetery Lettering done  
anywhere in the Area

## David Davis Agent

204 N 1st Haskell  
864-2607 or 864-3340

See Us Before You Buy!  
Pictures and Samples Available

*Congratulations to a little town that became a Family!  
Congratulations to the Municipal entities and individuals who,  
in a fine performance, reached out to touch someone and helped a  
neighbor. We are "beholden" to a Son who came -- and to his  
Brother-in-law, who claims a "part-time endeavor" that became  
a "full-time effort". Our best recommendation is to NEVER  
have a tornado without the entire Steve Alsbrook family on your  
rescue team!*

*Thank you each,  
Jim and Louise Isbell*

**NOTICE**  
The deadline for Classified  
Advertising is 12 noon on  
Tuesday.  
*Haskell Free Press*

### For Sale

FOR SALE: 1975 Chevrolet  
Monte Carlo. J. B. Kirby, 864-  
3459. 17-18p

FOR SALE: Garage door, maple  
room divider, Singer sewing ma-  
chine in cabinet. Garage full.  
Something for everyone. Friday  
and Saturday, 8 a.m. 1303 N. Av L.  
18p

FOR SALE: Double wide mobile  
home to be moved. 3 bedroom, 1 1/2  
bath, air conditioner, fireplace.  
Call 864-3951 after 5:30 p.m. 18p

## Johnson



**Bobbie Johnson**  
Owner  
**Photographer**  
West Side of Square • Haskell

### For Sale

IF YOU MOTHER is one-of-a-  
kind, Shop at Land O' Cotton  
Mercantile. Good assortment  
kitchen, bath towels, jewelry,  
clothing, baskets, rugs, decorative  
items, pottery, wood, more. Coun-  
try, Victorian, Southwestern, and  
handcrafted one-of-a-kind gifts.  
Also doing bridal selections. Sale  
tables. 300 S. Ave. E (S. Old Stuff)  
864-2430. 18p

HEARING AID compatible tele-  
phones with volume control,  
\$49.95. Hearing aid batteries at  
Walling TV & Electronics Radio  
Shack dealer. Northside of square.  
18-19c

FOR SALE: 1967 Chevy van. Has  
good motor, \$500 as is; 24" cabinet  
color TV. Works good, \$100.00;  
Call 997-2649 or can be seen at  
1201 McCarty in Rule. 18p

OKLAHOMA RED sweet potato  
slips. 25 for \$2.50 or 100 for \$8.00.  
H. A. Wilson, Rochester, 743-  
3556. Turn west at new church, 4th  
house on right. 18p

FOR SALE: Solid state Zenith  
black and white 16 inch screen TV,  
\$40.00 with stand \$50.00; nice  
light fixture, \$5.00; regular size  
green hidabed sofa, \$25.00. Gladys  
O'Neal, 864-2414. 18p

FOR SALE: Camper shell, white,  
long wide bed, \$100.00. Call 864-  
2369 after 5 p.m. 18p

ASGRO, Funks, Terra, DeKolb  
milo seed. Grazer, good selection.  
Red Top Kane. Weinert Grain,  
673-8212. Weinert and 864-8176,  
Haskell. 18-26c

FREE PUPPIES. Small dog, 997-  
2652. 18nc

FOR SALE: Formals, sizes 5, 7  
and 9. Sandra Wallace, 864-3509.  
18-19c

COMPLETE RV PARTS service  
and repair. Driveshaft repair,  
power takeoff. Sales and service.  
Longhorn Trailer and Body Co.,  
Wichita Falls, TX, 1-800-772-  
0855 or 817-322-5259. 51tfc

FOR SALE: Air Conditioner fil-  
ters, water cooler pads, pumps,  
motors, floats, tubing or whatever  
you need to "Beat the Heat" at  
Frazier's Appliance and Furniture,  
864-2756, Haskell. 14tfc

FOR SALE: 1977 Datsun B210,  
1979 Buick Regal. 906 N Av K,  
after 5 p.m. 15tfc

FOR SALE: 1982 Coachman  
travel trailer. 29'. Call 817-864-  
2569. 16-19p

FOR SALE: 1983 Ford Ranger  
pickup. 10,000 miles on complete  
overhaul. Standard, air, new AM/  
FM stereo taperadio, camper shell.  
Avg. 20 mpg. \$3000.00. 1976  
Walk-thru boat and trailer, motor  
needs overhaul, boat cover,  
\$1500.00. 817-864-3882. 16tfc

CHEMICAL SPRAYER PARTS.  
Richardson Case IH is stocking  
spray tips, fittings, hoses, and  
pumps for your farming needs.  
864-3474 or 1-800-243-7110.  
16-18c

FOR SALE: 1 new 6 row John  
Deere rotary hoe, \$2500.00.  
Marvin Letz, 864-2104. 17-18c

COOK & BAILEY SPRINKLER  
systems. 864-2226. 17tfc

FOR SALE: No. 1 rye hay. 4 ft.  
bales. Call W. T. Adkins, 743-  
3289. 17-18c

FOR SALE: 1979 Buick LeSabre,  
4 door. Everything  
works--including clock. No oil  
between changes. Reliable family  
or college car. \$2200.00. 817-864-  
2836. 17-18p

FOR SALE: 14' aluminum fishing  
boat. 18 hp Evinrude motor. 864-  
3572 after 5 p.m. 18c

### Garage Sales

GARAGE SALE: 701 8th Rule.  
Furniture, childrens clothes, misc.  
Fri. & Sat. 9 to 5. No early sales.  
18c

### Garage Sales

GARAGE (Moving) SALE:  
Dishes, tools, clothes, appliances,  
etc. Fri., Sat., and Sun., May 3, 4, 5.  
Lake Stamford, Veda's Camp,  
near pavement end. Bruce  
McCain. 18p

3 FAMILY GARAGE SALE: Sat.,  
8 to 5. 1100 N. Av J. Some furni-  
ture, a roll-away bed, misc. items.  
Clothes and toys. 18p

INSIDE SALE: Sat., 200 S. Av L.  
Stove, dishwasher, furniture, lots  
of misc. Galvanized water tank.  
18c

GARAGE SALE: Thursday and  
Friday. 109 South Avenue N. 9 til  
5 p.m. 18p

GARAGE SALE: Friday 7:45 to  
5:30; Sat., 7:45 to 4:00. Pool table,  
electric range, couch, chair, cloth-  
ing, misc. 1107 N. 7th St. Frances  
Arend. 18c

GARAGE SALE: Fri. & Sat. only  
8 a.m. to 4 p.m. Antiques, books,  
clothes (Infant-adult). Lots of  
misc. No early sales. 714 N. E.  
Second. 18p

3 FAMILY GARAGE SALE: Fri.  
-Sat, May 3-4. 9 a.m. to 5 p.m. 305  
N. E. Avenue K. Reasonable  
prices. 18p

2 FAMILY GARAGE SALE: Sat.,  
May 4, 8 to 5. Couch and chair,  
desk, VCR, stereo system, several  
small appliances, home decora-  
tions, lots of clothes in lots of sizes,  
lots of misc. 1205 8th, Rule.  
Brenda Turner. 18c

### Wanted

I AM LOOKING FOR A HOUSE  
in Haskell to rent or long term  
lease. 3 bedroom house central  
heat/air preferred. Call Ronnie at,  
658-3535 anytime day or night.  
17-18c

### Miscellaneous

HOME DECORATORS. Painting  
-Insulation. Free estimates. Phone  
743-3550. Bobby O'Neal. Roches-  
ter. 3tfc

### Jobs Wanted

LOT SHREDDING. Septic tank  
pumping. Call Tony Williams,  
864-3674 anytime. 43tfc

WATER WELL DRILLING. Lic.  
#1578. House wells, test holes, W.  
P. Hise. 817-864-3727 day or  
night. 12tfc

FAST, RELIABLE, Guaranteed,  
service to Haskell, Stamford and  
Hamlin and surrounding areas for  
General Electric, Whirlpool,  
Sears, Kenmore, Kitchenaid,  
Maytag and most other brands of  
refrigerators, freezers, dishwash-  
ers, washers and dryers and gas and  
electric ranges. Anderson Appli-  
ance Service, Haskell, Texas 817-  
864-3545. Factory authorized for  
G.E. and Hotpoint and RCA war-  
ranty repairs. 18tfc

HOUSE LEVELING. Floor brac-  
ing. Free estimates. References.  
Call 915-773-5197. Ask for David  
Lee. 27tfc

Call RODELA PLUMBING for  
all your Plumbing Service and  
Repairs, 864-2460 Office or 864-  
3629 Home. Roto Rooter Service.  
4 N. Ave B. 31tfc

LAWN MOWER repair shop.  
Repairs lawn mowers, tillers, golf  
carts, and etc. Used lawn mowers  
for sale. 1303 N. Av F, in alley.  
864-3321. 16-19p

BEAT THE HEAT, So call now!  
Call early to get your water coolers  
or your Whirlpool A/C's serviced!  
We also stock all the parts if you do  
it yourself. Call or come to Fra-  
zier's Appliance and Furniture,  
864-2756, Haskell. 14tfc

WILL DO BABYSITTING in my  
home. Neoma Kirby, 864-3459.  
17-18p

LIVE AT THE LAKE. Will clean  
houses in Haskell, Stamford and  
lake areas. Patty Morton, 817-864-  
3470. 18p

### Jobs Wanted

TIDROW CONSTRUCTION.  
Painting, remodeling, storage  
buildings, garages, even build  
houses. Add ons, storm windows,  
cabinets, roofing, no job to big or  
small. Free estimate. 1-817-864-  
2109, Haskell, TX. 18-21c

10% OFF any home improvement.  
Excellent references. Affordable  
Painting and Home Improve-  
ments. Call collect 817-766-6816.  
18-21c

FRANK CEDILLO & SONS. All  
types roofing, drywall. 511 E. Ol-  
iver, Stamford. 915-773-2511 or  
915-773-2258. 18-20p

### Help Wanted

BEVERLY ENTERPRISES,  
Munday Nursing Center now tak-  
ing applications for weekend RN  
coverage, 10-6 LVN shift and part  
time nurse aide positions. Com-  
petitive (plus) wages. Please call  
Charlotte Welch, RN, or Rachel  
Gray, LVN, at 817-422-4541 for  
details. 14tfc

PAINT CREEK ISD announces an  
opening for a bookkeeper. Persons  
interested in applying may contact  
Jerry Morgan at 864-2471. 17-18c

TAKING APPLICATIONS for  
experienced floral designer to  
work Mother's Day week. Sue's  
Flowers, Southeast corner of  
square, Haskell, Texas. 18-19c

PART-TIME DIETARY worker  
needed at Haskell Memorial Hos-  
pital. Contact Sheila Tidrow, 817-  
864-2621. 18c

MANY EXCELLENT PAYING  
hand-crafted jobs available with  
national company. Call and get  
started immediately! 504-641-  
8003 Ext. 4891. 18p

### Help Wanted

TAKING APPLICATIONS FOR  
RN, director of nurses. Benefits  
paid holidays, paid vacation,  
health, life and dental insurance  
available. Salary negotiable. Con-  
tact Haskell Nursing Center,  
Donna Knight, administrator, 817-  
864-3556. 18c

### For Rent

FOR RENT: 1 bedroom furnished  
duplex, \$200.00 a month. Call  
864-8905. 28tfc

FOR RENT: 3 bedroom house, and  
apartment. 2 bedroom apartment.  
Call 864-2504. 18p

### Real Estate

FOR SALE: REDUCED: Great  
home for a family with children. 1  
block from Elementary school. 3  
bedroom, 2 bath, den, kitchen, liv-  
ing room, covered patio, carport,  
cellar and fenced-in backyard. Hot  
tub and sprinkler system. 606 S.  
6th, 817-864-2718 or 817-864-  
3915. 27tfc

FOR SALE: 3 bedroom brick  
house. 1, 3/4, 1/2 baths. Large liv-  
ing, dining area. Big kitchen,  
breakfast area. Den, utility room.  
Hobby room or office. New central  
electronic air cleaner, heat, cool-  
ing. Cellar, well, new sprinkling  
system. Good carpet, custom made  
drapes. Large sun porch. 2 car  
garage. Many extras. 1606 North  
Avenue F. 864-2530. REDUCED  
PRICE. 18-21c

FOR SALE: 3 bedroom, 3 bath, 2  
1/2 car garage on half acre with 4  
pecan trees, water well and satel-  
lite dish. All built-in appliances.  
Assume 9 3/4% FHA loan. 864-  
8905. 6tfc

## TexSCAN

Statewide Classified Advertising Network  
Advertise in 279 Texas newspapers for \$250.  
Reach 2.3 MILLION Texans. Call this newspaper for details.

1991 PALM HARBOR  
DOUBLEWIDE \$250.67/  
month. Visit the factory, save  
thousands. Free factory  
tours. Eliminate the middle-  
man. \$24,900, 10% down,  
240 months, 12.25% APR  
1-800-880-SAVE.

DALKON SHIELD US-  
ERS - Need assistance?  
Experienced Dalkon  
Shield Attorney. Call  
Charles Johnson toll-free  
for free consultation - 1-  
800-535-5727.

COVENANT TRANS-  
PORT hiring tractor trailer  
drivers \*1 yr. O.T.R. Expe-  
rience \*Single 19-22¢  
\*East Coast Pay \*Incentive  
pay \*Benefits package  
\*Minimum Age 23 \*Teams  
27-31¢ \*1-800-458-1344.

HAPPY JACK MANGELO-  
TION: Promotes healing &  
hair growth to any mange or  
hot spot, on dogs & horses  
without cortisone. At Farm-  
land/Double Circle Co-Ops  
& Better Feed Stores.

AAA COMPANY SEEKS lo-  
cal vending partner handling  
Tropicana and other pure  
fruit juices. Company estab-  
lishes accounts. Average  
monthly income \$1,956.  
\$13,000 cash needed. 1-  
800-654-2419.

ADOPTION: LOVE, TOYS,  
FRIENDS, kittens, pretty  
mom (lawyer), funny dad  
(consultant), cute adopted  
sister, large home &  
Grandpa's lap await your  
baby. Legal/confidential. Ex-  
penses paid. Call collect  
anytime Diane & Ron 1-800-  
736-3712, 212-734-3732.

MAJOR MEDICAL. You  
pay deductible, company  
pays up to \$1,000,000. In-  
hospital 100 percent; Out-  
hospital 100 percent (pre-  
scriptions, tests, surgery,  
therapy, doctors, in-office,  
out-patient, hospital). 1-800-  
256-7515.

FOR SALE: 1988  
WINNEBAGO motor home.  
6,500 miles. Color TV, VCR,  
Microwave/convection oven.  
Dual air conditioners. Tow  
trailer included. Call 915-676-  
3117 after 5:00 p.m.

CATALOG STORE IN cen-

tral Texas with established  
clientele. Practically new  
metal roof and carpet and A/  
C. Selling for health reason.  
817-471-5644.

CAR BUYING FORMULA  
ABC's easy step by step  
formula assures you the best  
price. \$3. Contact, Car For-  
mula, P.O. Box 1628, Con-  
roe, Texas 77305.

A WONDERFUL FAMILY  
EXPERIENCE. Australian,  
European, Scandinavian,  
Japanese high school ex-  
change students arriving in  
August. Become a host fam-  
ily/American Intercultural  
Student Exchange. Call 1-  
800-SIBLING.

THE CHURCH OF CHRIST.  
The only true church. No a  
denomination. Independent  
congregations. New Testa-  
ment its only creed. Mr.  
O'Temas Howel Albright.

FRIENDLY HOME PAR-  
TIES has openings for dem-  
onstrators. No cash invest-  
ment. No service charge.  
Highest commission and  
hostess awards. Three cata-  
logs, over 800 items. Call 1-  
800-488-4875.

ADOPT: A BEAUTIFUL  
LIFE awaits your baby in  
our warm, happy home.  
Expenses paid. Confiden-  
tial. Call David &  
Laurie at home toll free  
1-800-457-8359.

BECOME A PARALEGAL.  
Join America's fastest  
growing profession. Work  
with attorneys. Lawyer in-  
structed home study. The  
finest paralegal program  
available. Free catalogue.  
1-800-362-7070 Dept.  
LF722.

WATKINS PRODUCTS.  
Now you can order directly  
from Watkins. For a free  
catalog and a \$5 rebate  
certificate, write: Watkins,  
P.O. Box 1160, Princeton,  
Texas 75077, 1-800-659-  
6990.

WE NEED RELIABLE  
PEOPLE a few hours a  
day to assist high school  
and college students with  
scholarship applications.  
1-900-776-0400 Ex. 615,  
\$14.88.

Since 1967  
• Residential • Commercial  
ROOFING

STEVE KNIGHT CONSTRUCTION  
915-537-9248 or 864-2556

Composition - Cedar - Shake - Builtup  
SIDING

Repair existing siding and install new siding  
We appreciated your business last year and  
look forward to serving you this year!

Free Estimates

We are bonded by the City!

Contact Ken Marr, Sales  
915-773-2303 Stamford



## A message from the ABILENE EYE INSTITUTE & CATARACT SURGERY CENTER DEDICATED TO EXCELLENCE

We specialize in cataract surgery with intraocular  
lens implant and routinely use the small incision  
phacoemulsification technique. We have 2 mod-  
ern, fully equipped operating rooms each with its  
own Zeiss operating microscope and Phacoemul-  
sifier. We also have an observation room so that  
family and friends may view the surgery while it is  
happening. Our ambulatory surgery center is State  
licensed and Medicare approved. We have per-  
formed over 3,000 cataract implant operations  
since 1987. Our doctors accept Medicare Assign-  
ment and we think you will find our fees very  
competitive with most hospitals. Our friendly,  
dedicated staff is available to answer any of your  
questions. If you need transportation, we can help.

Robert W. Cameron, M.D., F.A.C.S.  
Paul B. Thames, M.D., F.A.C.S.  
Vincent J. Priestner, M.D.  
Kerry C. Preston, O.D.

2120 Antilley Road, Abilene, TX 79605  
3/10 mile west of Humana Hospital  
915-695-2020 or 1-800-692-2020

# Shop the Haskell Free Press

# CLASSIFIEDS

## Real Estate

FARM FOR SALE: 100 acres 5 miles south west of Haskell. Contact Ed Melton, 915-672-9622, Abilene, Texas. 15-18p

FOR SALE BY OWNER: 2000+ sq. ft. home, possible rent house, 2 shops with office, 6 acres. Water wells, fruit trees, calf pens, garden area. Call 864-3835 days or 864-8131 after 5 p.m. 16-19p

FOR SALE: BY OWNER: 3 bedroom, 3 bath brick home on corner lot near schools. 2550 square ft. spacious open living, dining kitchen den. Fireplace, water well, pecan trees and extras. 607 N. Av G. Call 864-2414. Shown by appointment. 16-19p

FOR SALE BY OWNER: Brick 3 bedroom 1 1/2 bath. 1502 Adams, Rule, Texas. Storm cellar, fenced. See to appreciate. Call 997-2765. 17-19p

HOUSE FOR SALE: 3 bedroom, 2 bath, den, kitchen, air conditioning, cellar. Call 915-773-2940. 18-19p

## Public Notices

### NOTICE OF OPPORTUNITY

Notice is hereby given that Aspermont Small Business Development Center, Inc., is seeking financial assistance from the U. S. Department of Transportation under Section 18 grant program. Grant funds will be used to continue providing rural public transportation on demand responsive and a fixed schedule based on location with a 24-hour advance notice. Services are available in Haskell, Jones, Kent, Knox, Stonewall and Throckmorton counties. Special provisions for the elderly and handicapped are available. The system will charge a small fee, however, some passengers may qualify for fare subsidy.

A copy of the grant proposal is available for inspection by the public at 650 Washington Street, Aspermont, Texas 79502, Monday through Friday, 9:00 a.m. to 4:00 p.m.

If requested, a public hearing will be held on May 20, 1991 at the address below. Submit request for public hearing in writing to 650 Washington Street, Aspermont, Texas 79502 prior to May 15, 1991.

Don Mullis, Executive Director 17-18c

### NOTICE OF SCHOOL TRUSTEE ELECTION (ADVISORIO DE ELECCION PARA ESCOLARES)

To the registered voters of Haskell, Texas: (A los votantes registrados de Haskell, Texas:)

Notice is hereby given that the polling places listed below will be open from 7:00 a.m., to 7:00 P.M., on May 4, 1991, for voting in a school trustee election, to elect three trustees. (Notifiquese, por las presente, que las casillas electorales sítados abajo se abrirán desde las 7:00 a.m., hasta las 7:00 p.m. el 4 de mayo de 1991 para tres nuevas votantes en la elección para escolares.)

Location of polling place: Community Room, Haskell National Bank; and the Weinert School house. (Dirección de las casillas electorales: Community Room, Haskell National Bank; and the Weinert School house.)

Absentee voting by personal appearance will be conducted each weekday at the Administration Office, 605 North Avenue E, Haskell, Texas, between the hours of 8:00 a.m. and 4:00 p.m. beginning Monday, April 15, 1991, and ending on April 30, 1991. (La votación en ausencia en persona se llevará a cabo de lunes a viernes Administración Office, 605 North Avenue E, Haskell, Texas, 8:00 de la mañana y las 4:00 de la tarde empezando el lunes, 15 de abril, 1991 y terminando el 30 de abril, 1991.)

Applications for ballot by mail shall be mailed to: Selina McGuire, Absentee Clerk, P. O. Box 937, Haskell, Texas 79521. (Las solicitudes para boletas que se votaran en ausencia por correo deberan enviarse a Selina McGuire, Absentee Clerk, P. O. Box 937, Haskell, Texas 79521.)

Applications for ballots by mail must be received no later than the close of business on April 26, 1991. (Las solicitudes para boletas que se votaran en ausencia por correo deberan recibirse para el fin de las horas de negocio el 26 de abril, 1991.)

Mike Guess, President Haskell Consolidated Independent School District (Mike Guess, el presidente) (La escuela independiente de Haskell) 17-18c

### NOTICE OF APPLICATION FOR AMENDMENT TO THE ZONING ORDINANCE

A request has been received from Kendra Sammons to change the following described property: Lot number 1 block 2A address 1303 N. Ave. E other description Robertson's & Day Addition from residential zoning district to special purpose zoning district. The applicant proposes to use the property for group day care home (12 children) if rezoning is achieved.

The planning and zoning commission of the City of Haskell, Texas, will hold a public hearing pursuant to this request on May 9, 1991 at 1:30 p.m. in Haskell City Council Room. 18c

### NOTICE OF APPLICATION FOR AMENDMENT TO THE ZONING ORDINANCE

A request has been received from Cary Headstream to change the following described property: Lot number block Original #84 & #85 Hask address 204 North Ave L from agricultural zoning district to special purpose zoning district. The applicant proposes to use the property for livestock, feeding, pens and yard if rezoning is achieved.

The planning and zoning commission of the City of Haskell, Texas, will hold a public hearing pursuant to this request on May 9, 1991 at 1:30 p.m. in Haskell City Council Room. 18c

### NOTICE OF SHERIFF'S SALE THE STATE OF TEXAS County of Haskell

NOTICE IS HEREBY GIVEN That by virtue of a certain judgement issued out of the Honorable 39th Judicial District Court of Haskell County of the 28th day of January, 1991, by 39th Judicial District Court of said County for the sum of Sixty Seven Thousand One Hundred Forty Six and 54/100 Dollars and costs of suit, under a

Judgement Lien, in favor of Miles Homes Division of Insilco Corporation, a corp. in a certain cause in said Court, No. 9670 and styled Miles Home Division of Insilco Corp., a Corp. vs. Claude D. Stout and wife, Dorothy A. Stout, placed in my hands for service, I, Johnny L. Mills as Sheriff of Haskell County, Texas, did, on the 23rd day of April 1991, levy on certain Real Estate, situated in Haskell County, Texas, described as follows, to-wit: All of Lots Fifteen (15) and Sixteen (16) in Block C of the T. C. Carney Addition to the Town of Haskell, Texas and levied upon as the property of Claude D. Stout and Dorothy A. Stout and that on the first Tuesday in June 1991, the same being the 4th day of said month at the Court House door, of Haskell County, in the City of Haskell, Texas, between the hours of 10 a.m. and 4 p.m., by virtue of said levy and said Order of Sale I will sell said above described Real Estate as public venue, for each, to the highest bidder, as the property of said Claude D. Stout and Dorothy A. Stout.

And in compliance with law, I give this notice by publication, in the English language, once a week for three consecutive weeks immediately preceding said day of sale, in the Haskell Free Press, a newspaper published in Haskell County, Texas. Witness my hand, this 23rd day of April 1991 Johnny L. Mills Sheriff Haskell County, Texas 18-20p

### AN ORDINANCE

Declaring the existence of an emergency and a public calamity, as well as a state of disaster, as a result of a storm which struck the City of Haskell, Texas on April 24, 1991; requiring the registration of all entities before soliciting or engaging in activities as contractor, builder, or repairman with regard to any building damaged or destroyed by the storm; requiring the payment of a registration fee and the posting of a penal bond by such registrant; exempting unpaid volunteers from the provision of the registration fee and bond requirements; providing that the violation of this ordinance is a misdemeanor; providing a penalty and declaring an emergency.

WHEREAS, on April 24, 1991, a storm struck the City of Haskell, Haskell County, Texas with attendant injury, and severe damage to public and private property, a public necessity exists for the taking of extraordinary measures by the City Council of Haskell, Texas, in order to preserve the public health and to limit or minimize the effect of damage to public and private property;

NOW, THEREFORE, BE IT ORDAINED BY THE CITY COUNCIL OF THE CITY OF HASKELL, TEXAS, that:

1. Since April 24, 1991, a pub-

lic calamity has existed and continues to exist as the term "public calamity" is used in Article 2368a of the Revised Civil Statutes of Texas.

2. Since April 24, 1991, a time of natural disaster has existed within the corporate limits of the City of Haskell, Texas and a state of emergency has resulted therefrom as those terms are defined in Article 5890e(3) of the Revised Civil Statutes of Texas.

3. Due to the windstorm referred to above, a local state of disaster has existed in the City of Haskell, Texas since April 24, 1991 as that term is used in Article 6889-7(10) of the Revised Civil Statutes of Texas. Such state of disaster is proclaimed to remain in existence until midnight of May 9, 1991, unless it is, prior to that time, renewed and extended with the consent of the City Council of the City of Haskell, Texas. In this connection, the City Secretary of the City of Haskell is directed to give this ordinance prompt and general publicity throughout the City of Haskell, Texas and a copy hereof shall be promptly filed with the City of Haskell, Texas and a copy hereof shall be promptly filed with the City Secretary of that city.

4. BE IT FURTHER ORDAINED that, during the existence of the state of disaster and as such state of disaster may be renewed or continued, it shall be unlawful for any person, firm or corporation to solicit contracts or to engage in contracting or to engage in activities as a contractor, builder, or repairman, for the purpose of repairing, demolishing, removing, or reconstructing any building damaged or destroyed by the wind storm giving rise to this state of disaster and for which a building permit is required by the ordinances of the City of Haskell, Texas, unless such person, firm, or corporation has:

(a) Registered with the City Administrator of the City of Haskell, Texas, or his designee, and provided such information as may be required by that officer.

(b) Secured the building permit or permits and any other necessary permits required by the ordinances of the City of Haskell, Texas.

(c) Paid to the City of Haskell, Texas a registration fee of \$75.00.

(d) Posted with the City of Haskell, Texas a cash bond in an amount of not less than \$2,000.00, payable to the City of Haskell,

(e) Provided, that volunteer workers in the disaster area who work without compensation will not be required to pay a registration fee or to post a bond under the provisions of this ordinance, but such volunteers are not exempt from full and faithful compliance with the Building Code, Electrical Code and the Plumbing Code, and any other applicable ordinances of the City of Haskell, Texas.

5. The violation of any provision of this ordinance shall constitute a misdemeanor and shall be punishable by a fine not to exceed \$200.00. Provided, however that each day during which the violation continues shall constitute a separate offense.

This ordinance constitutes an emergency measure for the im-

mediate preservation of the public business, property, health and safety of the citizens of the City of Haskell, Texas, and the ordinance shall be effective immediately upon its adoption and first publication.

READ, PASSED AND ADOPTED this 26th day of April, 1991.

Mayor, Greg Melton  
City Secretary, Ann Young

Two bedroom 1 bath stucco, carpet, ceiling fan, central H/A, garage, water well and 5 storage bldgs. Owner financed.

Two bedroom 1 bath frame, carpet, furnace, evap. cooling, and carport. Owner would finance.

Two bedroom 1 bath stucco, carpet, ref. air, furnace heat. 1 bedroom house in rear.

Arrowhead Motel, 277 S. Make an offer.

Frances Arend  
Real Estate & Insurance  
Medicare Supplement, Life Hospitalization  
817-864-3680  
817-864-3156 14c

LANCO  
864-2629  
510 N. 1st  
FOR SALE  
520 acre farm, 150 acres in pasture and 370 acres in CRP. WILL CAPITALIZE AT HIGH RATE OF RETURN. Pasture is mostly creek bottom. Some owner financing.

320 acres 3 miles west of Rochester, 2 center pivots, immediate possession. Possible financing available to qualified party.

393 acres. 181 acres in pasture with a high percentage in bottom. 212 acres of cropland. Some Farm to Market Frontage. Deeded road out back.

3 bedroom, 3 baths. New hot tub, formal dining room, 12 ft. ceiling, crystal chandelier. Large trees for backyard entertaining. 4 car carport. Owner moved and anxious to SELL.

3 bedroom, 2 baths, fenced yard, large den. Well located on north side. 1007 North Ave. G.

3 bedroom, 2 baths on eastside. Water well, orchard, rear parking. 903 North East 3rd.

4 bedrooms, 2 baths on 7 acres with horse barn. 4 miles West of Haskell.

3 bedroom, 3 baths. New hot tub, formal dining room, 12 ft. ceiling, crystal chandelier. Large trees for backyard entertaining. 4 car carport. Owner moved and anxious to SELL.

3 bedroom, 2 baths, fenced yard, large den. Well located on north side. 1007 North Ave. G.

3 bedroom, 2 baths on eastside. Water well, orchard, rear parking. 903 North East 3rd.

4 bedrooms, 2 baths on 7 acres with horse barn. 4 miles West of Haskell.

## Independent Roofing

J. C. Tidrow  
817-864-3390

J. T. Tidrow  
817-864-2109  
18-21c

For A Hole in your Roof or a Whole New Roof Call

## Hatfield Roofing

Complete Roofing Service - New - Reroofing - Repairs

817-864-2165 Haskell  
17-22p

Free Estimates Written Contracts Reasonable Rates

## J. K. CONSTRUCTION CO.

Roofing - Plumbing - Add On's - Carpentry - Electrical  
Attic Bracing - Painting - Paneling - Concrete  
House Leveling - Metal Roofs - Metal Buildings

Keith Fishel  
915-762-2751

Albany  
Night 762-3108  
18-19p

## HOMER EDMONDS ROOFING CO.

2326 Sherman  
"A Roof for Every Building"

Phone 817-552-5563  
Phone 817-552-7694

HOMER EDMONDS

VERNON, TX 76384  
18-19p

604 N. 4th  
Haskell, Texas

Phone 864-8003  
after 5 p.m.

## D. W. GORDY JR.

CONSTRUCTION AND REMODELING - ROOFING - ALL TYPES FENCING

Electrical Work  
Plumbing

Custom Cabinets  
Painting  
18-21p



## National Anxiety 4th

### Hereford Female Sale

Selling 135 Females • Cows & Calves • Bred Heifers  
Monday, May 6 • 12:30 p.m.  
Scurry Co. Coliseum & Ag Complex  
On East U. S. Hiway 180

For more information call  
David Moore—(915) 576-3684 office; 576-2205 home

## Decker Electric

Residential  
Commercial

Call for free  
electrical inspection

864-8926

We appreciate  
your business! 381c

SELLING HASKELL FOR OVER 25 YEARS

**Hartfield Realty**  
South Side of Square  
864-2665

BUYING OR SELLING A HOME OR BUSINESS? We have skilled realtors to help you in every way from a market analysis to the closing. Over 25 years selling Haskell County.

We have listings for over ten three-bedroom, one four-bedroom and one five-bedroom home ready for occupancy. The following homes are just a few of what we have to offer. Please call us for details!

- ★ HASKELL
- ★ FARM FOR SALE: 161.7 acres northwest of Haskell, 160 cultivated cotton land. Call for details.
- ★ PRETTY RED BRICK with carport, three bedrooms, bath, central heating and cooling, fenced yard and priced under \$30,000.
- ★ CLOSE BUT NOT TOO CLOSE. Three bedroom, two full baths, living-den with fireplace, central heating and cooling, two car garage. All this on one acre and only two miles from town. Priced at \$30,500.
- ★ EXCELLENT INCOME PROPERTY. Has been reduced. Property can be house or duplex with garage apartment. Large fenced back yard with lots of pecan trees.
- ★ SECLUDED, PRIVATE and convenient. 3 bedroom, 1 bath, C/H and cooling. Metal shop building (18x24), 2 car garage, brick on .7 acre and only 2 miles from town.
- ★ EXCELLENT LOCATION. Remodeled and ready for new owner. Two-bedroom, one bath with ceiling fans, security system, new plumbing, wiring and fence. Perfect for young couple. 1006 N. Ave. F.
- ★ Call us about our many other listings. We have homes and businesses available to meet your need and budget.
- ★ Hess Hartfield, Broker 864-2004
- ★ Mary Rike 864-2332
- ★ Dorothy Hartfield 864-2069
- ★ Esther Conn 658-3904
- ★ Pat Speer, GRI 864-2318

## Apartments For Rent

2 bedroom, 1 bath, carpeted. 700 sq. ft.  
Call  
Haskell  
National Bank  
864-2631.

## LORAIN JOHNSON, BROKER

NORTHWEST PART of Haskell. Brick 3 bedroom, 1 3/4 baths. Many extras at a sacrificed price.

FOR RENT: 3 bedroom. 507 North Avenue L.  
3 bedroom, 2 bath, \$900.00. Munday.

Clean 2 bedroom, 302 Sunny Avenue, Rule.

WANTED: A few good listings.

FOR RENT: 2 bedroom apartment.

GREATLY REDUCED: 4 bedroom, 2 bath. Located on 17 acres. 8 miles N.W. of Haskell.

COMMERCIAL BLDG. in downtown Haskell. 40' front.

NICE LAKE HOUSE at Veda's with boat house. A good buy.

FOR SALE: 3 bedroom on large corner lot, large att., double garage with shop space, fenced yard. Reduced.

TWO WATERFRONT adjoining lots with lake house, large shop and carport. Lakeshore Sites. Reduced.

VEDAS. 2 bedroom double garage, large covered patio. Private boat dock. A beautiful lot.

**JOHNSON REAL ESTATE**  
864-2951

# --Obituaries--

## Virgil H. Wall

Virgil H. Wall died Sunday at Haskell Memorial Hospital. He was 81.

Funeral services were Monday morning at the First Baptist Church with Dr. Troy Culppepper and the Rev. Jim Turner officiating. Burial was in the Ringgold Cemetery. Arrangements were by Holden-Caulley Funeral Home.

Pallbearers were Chester Abbott, Earl Bailey, Harold Jewell, Lee McCullure, Jimmy Owens, Alvin Sherman, Charles Swenson and J. Toliver.

Honorary pallbearers were Fred Brown, Joe Davis, Frank Jircik, Morris Jones, John Long, Pete Mullins, Johnny Perrin, Richard Wiley, Bob Stephenson, Charles E. Smith and members of the Business Men's Bible Class.

Born Jan. 29, 1913, in Nocona, Okla., Mr. Wall was a retired district manager for Amoco Oil Co. He married Margaret Alice Williamson in Ringgold on Dec. 24, 1940. He was a long time resident of Haskell where he was a member of the First Baptist Church, the Business Men's Bible Class and a former member of the Masonic Lodge. He also was a former city councilman. He lived in Haskell from 1970 to 1975.

He is survived by his wife; a son, James H. Wall of Lubbock; two daughters, Margaret Ann Hough and Janis Ellen McMillion, both of Lubbock; a sister, Dessie Graham of Nocona; five

grandchildren, Amanda Hough, Aaron Hough, Tara Wall, Tanna Wall and Josh Wall, all of Lubbock; and three step-grandchildren, Brent McMillion and Meredith McMillion of Lubbock and Corbin McMillion of Austin.

## Elizabeth Zahn

Elizabeth L. Zahn died April 22 in Portales, N.M.

Funeral services were April 24 at Wheeler Mortuary with the Rev. Don Holladay, pastor of the First Methodist Church, officiating. Burial was in the Portales cemetery.

Mrs. Zahn was born in Salzburg, Austria. She grew up in Texas and moved to Portales in 1942. Her husband, Richard O. Zahn, passed away in April 1987.

Survivors include two sons, Richard Zahn of Portales and Melvin Zahn of Slaton; three grandchildren; and two great-grandchildren.

She was a sister-in-law of Alma Merchant of Haskell, and also to Elsie Klaiber and Willie K. Zahn of Littlefield, Herman Zahn of Hobbs, N.M., Walter Zahn of Mulberry, Ore., and Herbert Joe Zahn of California.

## Buckle Up



May we take this opportunity to say how much we appreciate the many acts of kindness shown our family. We can never say enough about the ladies that came and so lovingly helped care for Lula, Mrs. Lorene Adams and Mrs. Anna Mae Davis and so many others. Also for the food and beautiful flowers.

Charles E. (Smitty) Smith  
Children and Grandchildren



## Returns from war

M/Sgt. Clarence Dukatnik pauses for a break as his outfit returns to Saudi Arabia from Iraq following the cease-fire.

# Haskell soldier returns from Gulf

By Wendell Faught

M/Sgt. Clarence Dukatnik wasn't surprised when the Gulf War ended 100 hours after ground combat began.

Well, maybe a little bit. "I thought it would last a couple of weeks," said the 21-year military veteran who was one of the first Haskell soldiers to be sent to the Gulf area when the military buildup began.

Dukatnik, a maintenance NCO with the 101st Airborne Division, was in Haskell last week, visiting his parents, Emil and Agnes Dukatnik. He returned to his home base at Fort Campbell, Ky., April 12, after being in Saudi Arabia and Iraq since Sept. 12.

Dukatnik's outfit moved into Iraq when the ground fighting started, entering the country from Saudi Arabia in the direction of Baghdad. At the Euphrates River, the 101st turned toward Basra, helping capture Iraq's second largest city.

"I wasn't scared," said the

Haskell soldier. "After seeing all of our weaponry and manpower--and all the damage done by the air strikes--I knew we weren't going to have much trouble."

But it was even less trouble than he expected. "We never did get involved in a battle," he said. "The country was all bombed out when we got there and all we had to do was take prisoners."

He was in the Basra area when the cease-fire went into effect.

Until the ground war started, Dukatnik was in Saudi Arabia, spending most of his time at King Faud Field near Dhahran, a coastal city on the Persian Gulf. It was here that he witnessed a number of Scud missile attacks and saw the effectiveness of the Patriot missiles which excelled in the missile war.

Dukatnik had been scheduled to retire from the service on March 31

of this year, but he fell under the army's "stop loss" program, which froze discharges until the war was over.

Now, he plans to retire Oct. 1 at Fort Campbell. He has resumed studies at nearby Austin-Peay College in Clarksville, Tenn., where he is completing requirements for an associate degree in automotive technology.

Dukatnik was born in Haskell and grew up in the Paint Creek community. He graduated from Paint Creek High School in 1970 and enlisted in the Air Force a short time later. After four years in the Air Force, he was discharged, and then promptly joined the Army.

Mrs. Dukatnik (Madeline) stayed in Clarksville when he was overseas. "He called about once a week until the war started, and then I didn't hear from him for several weeks," she recalled. The couple met and married in England in 1973 when he was stationed there. They have no children.

Thursday morning, Dukatnik spoke to elementary students at Paint Creek School.

## Sports banquet set for May 18

The Haskell Indian all-sports banquet will be May 18, beginning at 7 p.m. in the Haskell Civic Center.

Tickets, priced at \$6 each, are available at Sport-About, The Drug Store, Haskell High School or from any Booster club member.

## Homemakers attend TEHA district meet

Haskell County clubs sent 14 delegates to the Rolling Plains Extension Homemakers annual district meeting in Anson April 17.

The program included Charlotte Watson, treasurer of the Texas Extension Homemakers Association, of Georgetown. Other featured speakers included Dr. Dan Hale, extension meats specialist, Texas A&M University, who addressed food safety issues; Gerry Hollinger from "Lifegift", and Mrs. Kila Lackey of Jones County, who addressed literacy.

Conducting the meeting was Mrs. Fern Maxwell, district 3 TEHA director from Burkburnett.

Approximately 200 members of Rolling Plains District homemaker clubs attended, including the following from Haskell County:

Betty Sanders, Alice Yates, Myrtle Phemister, Jimmie Weinert and Alta McGuire of Weinert; Reatha Mullins, Edna Anderson, Margaret Jones, Mildred Robertson and Phylecia Bailey of the Josselet club; and Delores Medford, Ann Sinclair and Francis Fischer of Paint Creek.

The Children's Trust Fund of Texas logo is a broken heart within the Lone Star of Texas. The heart and star cannot be whole until child abuse and neglect come to an end.

## Arts and Crafts Sale

Sat. May 4, 9:00 - 5:00

Sun. May 5, 1:00 - 5:00

## Just in time for Mother's Day

We have a great selection of beautiful hand crafted gifts for Mom. Choose from grapevine wreaths & swags, quilt dolls, mop dolls, Americana folk art, decorative pillows, carousels, many wood craft items, Unique wood work, etc. . . .

307 N. Ave G - or by appt. phone 864-8059

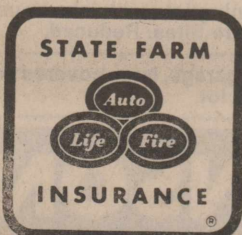
# SPECIAL REPORT TO STATE FARM POLICYHOLDERS:

## WHEN, WHERE AND HOW TO GET YOUR CLAIM SERVICED

If you're a State Farm policyholder and your home or car was damaged by the tornado or hail storm on April 24, it's best to report the damage right away. For immediate assistance, call Brian Burgess, 864-3250, now.

If your home is damaged, please wait for a State Farm representative to visit you. We have people out in the field now, and they will get to you as soon as possible.

We're trying to process all damage claims as soon as possible. Your patience and understanding will be greatly appreciated.



State Farm Customer Service  
1-800-326-2431

State Farm Insurance Companies  
Home Offices: Bloomington, Illinois

# ALLSUP'S

HASKELL #91 RULE #153

APRIL 28 - MAY 5

CHICKEN STRIPS

"ORDER OF THREE"

Wolf Chili w/ beans  
19 oz.  
**\$1.49**

SAUSAGE, EGG & BISCUIT  
**79¢**

OSCAR MAYER LUNCHABLES  
**\$1.19**

GERMAN SAUSAGE  
**99¢**

POP Special  
**69¢**

6 pk, 12 oz cans **\$1.99**

ALLSUPS MILK  
1/2 Gallon  
**\$1.09**

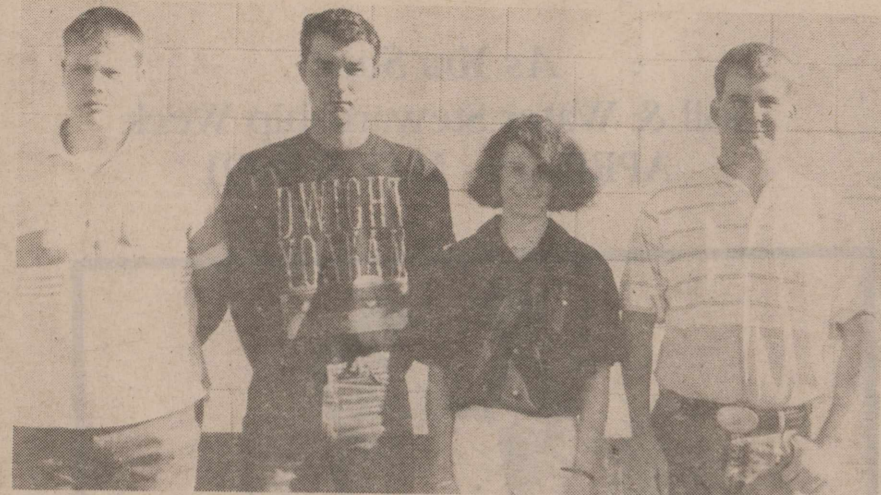
CHEE-TOS  
REG. \$1.79  
**\$1.39**

CRISCO 48 OZ. <b>\$1.99</b>	SHURFINE TOMATO SAUCE 8 OZ. <b>5/ \$1.00</b>	NEW "BIG EASY" REFILLABLE MUG 52 OZ. <b>\$3.99</b> REFILLS 99¢
BRAWNY PAPER Towels <b>79¢</b>		

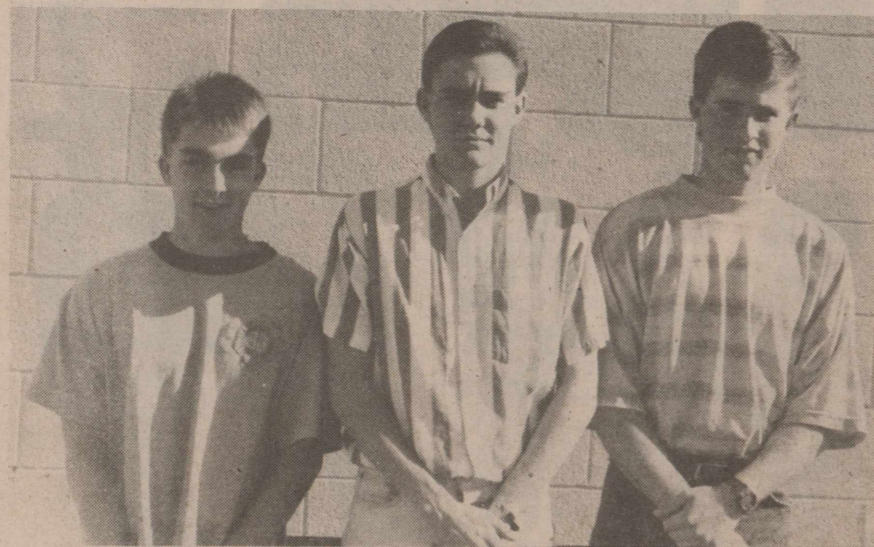
COOKED FRESH 24 HRS. A DAY **HOT FOODS MENU** AVAILABLE AT ALL ALLSUP'S LOCATIONS

BARBECUE-BEEF SANDWICH	99¢	8 PIECE BOX CHICKEN	\$4.99
BARBECUE PORK RIBS (L.B.)	\$3.99	BEEF & CHEESE CHIMICHANGA	\$1.19
BARBECUE WHOLE CHICKEN	\$3.99	(MEAT) CORN DOG	69¢
ALLSUPS BURRITO	79¢	DELICIOUS HAMBURGER	59¢
BREAKFAST BURRITO	99¢	WILSON HOT LINKS	99¢
BURRITO BEEF & SALSA	\$1.19	SAUSAGE ON A STICK	\$1.59
DELICIOUS CHEESEBURGER	79¢	SAUSAGE & BISCUIT	79¢
CHICKEN FRIED STEAK	\$1.59	SAUSAGE, EGG & BISCUIT	\$1.09
3 COUNT CHICKEN STRIPS	\$1.49	SAUTEYA SAUSAGE	\$1.09
W/POTATO WEDGES/CHICKEN (2 PCS) BISCUIT	\$1.99	4 COUNT STEAK FINGERS	\$1.00

**CALL-IN ORDERS WELCOME CHECK OUR WEEKLY SPECIALS**



1st Place Land Judging: Nored Lane, Tommy Isbell, Kim Gilly, Jason Davis.



2nd Place Range and Pasture Judging: Cole Calloway, Craig Hanson, Jason Hall.



3rd Place Land Judging: Coach Rod Townsend, Brad Bevel, Alexy Londe, Michael Hester, Ross Shaver.



2nd Place Greenhand: Nicole Cothron, Cindy Henry, Ela Yeary.

# THE HASKELL FREE PRESS

Special Edition Soil Stewardship Week Thursday May 2, 1991

## District asks all to join in special week

Suggesting that everyone can help care for our earth's environment by looking for things to do right outside their doorway, the Haskell Soil and Water Conservation District is encouraging local churches, organizations and individuals to join the nationwide observance of Soil and Water Stewardship Week, April 28-May 5, 1991.

Our local conservation district, which works throughout the year on soil and water conservation measures, is providing color literature that highlight humanity's responsibility to be active stewards of our nation's soil and water resources. The Haskell SWCD is one of nearly 3,000 conservation districts nationwide that work with the National Association of Conservation Districts to encourage

greater resource stewardship through the annual week-long observance.

R. V. Earles, chairman of the Haskell SWCD, said he hopes Stewardship Week will help individuals realize that their own actions will reap results on the environment. "By taking positive environmental steps--as simple as planting a tree or reducing pesticide use--every person can be a sower, not just in the fields where food and fiber crops are grown, but in the broader fields of life," said Earles.

Materials especially designed to convey the 1991 theme, "As You Sow," are being distributed by the Haskell Soil and Water Conservation District and may be obtained by calling or visiting the district office during business hours at 1203A South Avenue E in Haskell, Phone 817-864-3212.

## Spring is wind erosion time

We are getting into the critical erosion period in Haskell County. Approximately 15 million acres are damaged in the U.S. each year by wind erosion with about 125,000 acres of that total occurring in Haskell County. Accelerated soil erosion by wind is the most dramatic form of soil erosion. It was the dust storms of the 1930s that focused national attention on the problem of soil erosion.

Understanding how wind moves soil helps in deciding how to reduce its damaging effects. Soil moves by siltation, suspension and surface creep. Siltation moves the fine and medium sand-sized particles. They are lifted off of the surface at a 50-90 degree angle and then follow a distinct course under the influence of wind and gravity. The material within one foot of the surface usually makes up 50-80 percent of soil movement during any erosive event. Suspension occurs when the light organic matter, fine sand and clay particles that are knocked loose, get suspended in the

air and are carried for hundreds of miles. Surface creep is made up of large sand particles that are set in motion and roll along the ground.

Any soil that is loose, dry, bare and smooth is a candidate to be blown by the wind. If the soil is also unprotected for some distance, it will erode under windy conditions. The dust high in the air is what most people notice. While it does contain particles of the most valuable topsoil, it also contains only a small percentage of the soil moved by the wind. Most soil movement is within a foot of the ground. Under field conditions, soil begins to move when the wind velocity reaches about 13 miles per hour at one foot above the ground surface.

The amount of soil erosion from wind is predictable to some extent. Factors are climate, soil type, roughness of soil ridges, distance across field with no wind barrier, and vegetative cover. Farmers can do little to control soil erodibility

Continued on next page

**The Board of Directors of the Haskell Soil and Water Conservation District gratefully acknowledge the advertisers in this special section for making its publication possible and the 1000 cooperating farmers and ranchers in Haskell County for their conservation agreements.**

### Proclamation

Whereas our well-being depends on the production of ample food, fiber and other products of the soil; and

Whereas the quality and quantity of these products depends on the conservation, wise use and proper management of soil and water resources; and

Whereas protection of our water from pollution depends on sound conservation practices; and

Whereas conservation districts provide a practical and democratic organization through which landowners take the initiative to conserve and make proper use of these resources; and

Whereas the conservation movement is carrying forward a program of soil and water conservation in cooperation with numerous agencies and countless individuals:

Therefore I, in full appreciation of the value of our soil and water to the public welfare, and desiring to honor those who protect those resources, do hereby proclaim April 28 through May 5, 1991

*Soil and Water Stewardship Week*

in Haskell County, Texas

IN OFFICIAL RECOGNITION WHEREOF,  
I hereby affix my signature this

28th day of April, 1991

*B. O. Robinson*  
County Judge of Haskell  
County

## Sowing and reaping...

As a minister, I'm very concerned about the spiritual concerns of sowing and reaping in the lives of the people I pastor and in my own life as well. Sowing and reaping continue much deeper in all aspects of life.

Being raised with an agricultural background, I know the importance of conserving our precious resources. Water, land and animals to name a few. The theme of sowing and reaping continues throughout the Bible. Everyone is sowing spiritual seeds and the reaping depends upon what kind of soil the seeds were sown in--meaning light or darkness. But throughout the Bible sowing can be seen in the physical realm as well. How well we take care of the things that have been entrusted to us by God through his creation. The land we till and the crops we plant are all physical, but we don't always see the top soil erosion, the water tables being lowered and wildlife being damaged.

There are many problems facing us today in conservation of our natural resources. We are bound by God to share our love and care with all creatures, human and non-

human. We must be careful not to destroy our resources. The underlying theme of sowing and reaping is no one else is going to be responsible for your actions except you. Please be careful in what you sow spiritually and physically against our natural resources.

I urge you to join me during Soil and Water Stewardship Week to think before we act. I urge you to think about those seeds you are sowing spiritually and think about the results of your sowing.

Think about our precious natural resources before you use chemicals or pollute the air.

We have only one earth that was created by God, won't you let your grandchildren have the same opportunities you have to enjoy our world? As a pastor, one involved in agriculture, and an outdoorsman, join with me, the Haskell Soil and Water Conservation District and hundreds of others in conserving our natural resources as we observe Soil and Water Stewardship Week.

God Bless,  
Ricky Carstensen  
Methodist Minister, Rule



John Ben and Elaine Glover

## Conservation Farmer

John Ben Glover has been selected as the Conservation Farmer for 1991 by the Haskell Soil and Water Conservation District. John Ben and his wife, Elaine, live and farm approximately three miles southwest of Rochester, on the same farm where John Ben was raised. Their son, Chad, also helps with the farm operation.

John Ben is a graduate of Rochester High School. He also attended Tarleton Junior College for two years. Then during 1958, he started to farm full time.

John Ben's farming operation today includes 785 acres of land that he owns and another 1,050 acres that he rents. He irrigates most of this land with 12 sideroll sprinkler systems and two center pivot sprinkler systems. Installation of a third center pivot sprinkler system is near completion.

Crops such as cotton, peanuts, wheat, sudan and a herd of 240 head of livestock add diversity to John Ben's operation. Last year he irrigated 400 acres of peanuts and 200 acres of cotton. He also produced another 200 acres of dryland cotton and sowed 430 acres of wheat. Only 30 acres of wheat were harvested, the other 400 acres were grazed out. Sudan was sown on the remaining acres for hay.

As John Ben says, "It takes a lot of hay for 240 head of cattle."

All of the land John Ben farms has sandy soils. Crop rotation and crop residue management are essential on sandy soils to keep productivity up and to prevent wind erosion. John Ben rotates cotton each year with other crops that produce higher amounts of residues such as wheat, sudan and irrigated peanuts. He does not plant cotton behind cotton.

John Ben also believes that crop rotation will help prevent many crop diseases, especially in peanuts.

"The secret to preventing disease is rotating your crops," he says.

Crop residues are also left on the land as long as possible to prevent wind erosion. Peanut residues provide protection when left undisturbed on the ground. John

Ben has noticed cotton stalk ground can be blowing during a strong wind, while land next to it with peanut residue may only be sifting in a place or two. He tries to leave peanut residue until March before he plows it.

John Ben says, "If a man could get to it all in time, it would be better to wait until the last week in March to start plowing residues."

He also leaves wheat stubble until July and sudan residue until March. Wheat ground is

moldboarded only one time every three years.

Water erosion problems are quickly solved by John Ben also. Runoff water began cutting across one of his fields a few years ago. He constructed a grassed waterway along the side of the field to contain the water as it drained across and to prevent further damage to the soil. He continually keeps the waterway in good working condition.

Due to his dedication in protecting and maintaining productivity of the land he farms, the Haskell Soil and Water Conservation District is proud to recognize John Ben Glover as the "Conservation Farmer" for 1991.



Andrea Calloway won third place in the poster contest.

## Erosion...

Continued from front page and climate, but they can manage ridge roughness, width of field strips, distance between barriers, and amount of cover on the soil.

The first way to reduce wind erosion is to cover the ground. That can be done with crop residues, permanent grass planting, crop rotation, and cover crops.

Another way to reduce erosion is to slow the wind. Wind barriers and field windbreaks can help. Ridge roughness is also a factor. Proper ridging, row spacing and direction can cut wind erosion by as much as 50 percent.

Field size is an important factor in wind erosion control. Any vegetation planted to break up long expanses of bare soil helps stabilize an area against wind erosion by reducing the length and width of an unprotected area of soil.

Technical help in solving soil erosion problems is available at the Soil Conservation Service in Haskell, located at 1203A S. Ave. E. They can provide you with information about soil types, wind and water erosion, and conservation practices that can help you conserve your soil.



Rochester poster winners: Stephanie Estrada, Chance Martin, Julie Penman, Dusty Hastey, and John Mark Lopez.



Haskell poster winners: front row, Jeff Blanks, Aaron Kirk, Brandt Gardner; back row, Sara SoRelle, Amy McWhorter, Wendy Dulaney, and Nisha Patel.

## Poster winners

Top three posters:  
Grand Champion: Hegan Lamb, Paint Creek School.

Second: Amy Barbour, Paint Creek School.

Third: Andrea Callaway, Haskell Elementary School.

Other winners:

Grade 1: 1. Stephanie Estrada, Rochester Elementary School, 2. Martin Numez, Rochester Elementary School, 3. Chance Martin, Rochester Elementary School.

Grade 2: 1. Jeff Blanks, Haskell Elementary School, 2. Julie Penman, Rochester Elementary School, 3. Dusty Hastey, Rochester Elementary School.

Grade 3: 1. Brandy Gardner, Haskell Elementary School, 2. Donald Short, Paint Creek Elementary School, 3. Blayne Davis, Paint Creek Elementary School.

Grade 4: 1. Hegan Lamb, Paint Creek Elementary School, 2. John Mark Lopez, Rochester Elementary School, 3. Jodie Reel, Paint Creek Elementary School.

Grade 5: 1. Aaron Kirk, Haskell Elementary School, 2. Andrea Callaway, Haskell Elementary School, 3. Nisha Patel, Haskell Elementary School.

Grade 6: 1. Amy Barbour, Paint Creek Elementary School, 2. Amy McWhorter, Haskell Elementary School, 3. Wendy Dulaney, Haskell Elementary School.

Judges were Mabel Overton, Ernestine Herren and Geraldine Spain.

*As You Sow*

# Soil Stewardship Week

April 28 - May 5



We salute our farmers and ranchers on their conservation practices

## Home State Bank

"Home Owned by Home Folks"

Member FDIC

Rochester

743-3511

*As You Sow*  
Soil & Water Stewardship Week  
APRIL 28 - MAY 5, 1991



SOIL STEWARDSHIP WEEK  
APRIL 28 - MAY 5

## Steele Machine

Hwy 380 E  
864-2208

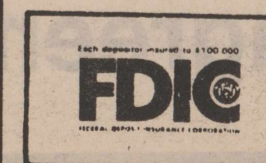
# Soil Stewardship Week

April 28 - May 5

Food & Fiber Supplies Depend  
On Conservation, and Wise &  
Proper Management of  
Soil & Water Resources



**The Farmers**  
NATIONAL BANK



Post Office Box 10  
Phone (817) 997-2216  
Rule, Texas 79547

## Conservation Homemaker

Elaine Glover has been chosen as the "Conservation Homemaker" for 1991 by the Haskell Soil and Water Conservation District. She was born and raised in Haskell County. Her father, I. E. Alvis, farmed in the Rochester community and the family lived in Rochester. Elaine married her childhood sweetheart, John Ben Glover, in February, 1958.

Elaine says that even though she was a "city girl", she was happy and content to marry a "country boy". She and John Ben lived in Rochester until 1964, then moved out to the farm southwest of Rochester. They raised two children, daughter Camey Ely of Longview and son Chad Glover of Rochester.

Elaine is very active in her church and community. Though her children are grown, she has continued to work with the local 4-H group. She has also helped with booths and displays at the Haskell County Fair, and she has served on the Homecoming Committee for Rochester School.

A great deal of Elaine's time is spent helping with the farm. She might be selling alfalfa or sudan hay to a prospective buyer, or she may be on the phone calling a mechanic to work on farm equipment. She can also be found carrying food to the field for her hungry men so they can continue to work. When Elaine is not lending a helping hand on the farm, she can be found at home fulfilling her other roles as secretary and bookkeeper for John Ben and Chad.

Elaine also loves to keep a garden. However, since her son Chad is an avid gardener too, she

does not keep one of her own anymore. Two gardens would produce more than she would want to cook, can or freeze. During the last few years she and Chad have had a pact, he has planted and cared for the garden, and she has gathered and cooked or frozen what it produced.

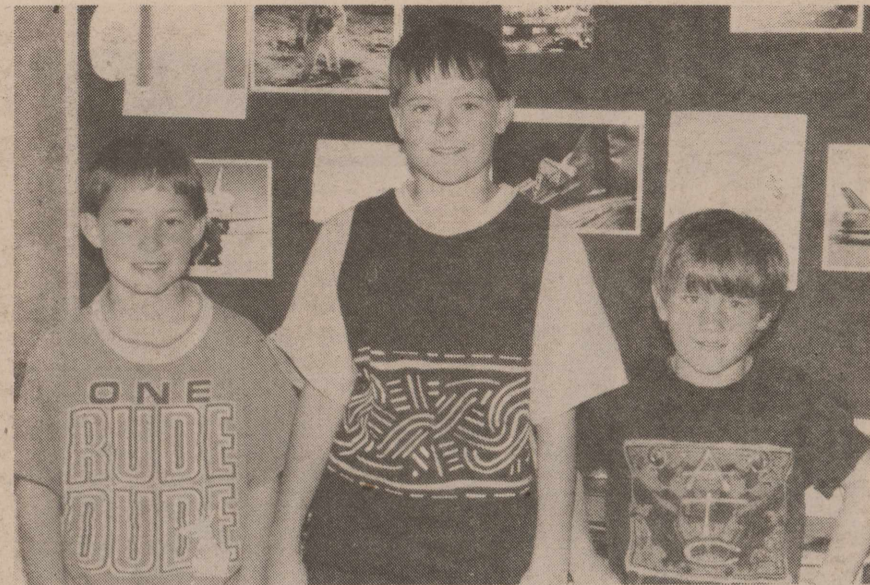
Elaine's concern for conservation is most evident by the dual waste baskets in her kitchen. One is for discarded glass bottles, the other is for aluminum cans. She takes them to a recycling center when she goes to town.

For relaxation and fun, Elaine does aerobics, walks from three to five miles each morning, collects stamps, and works in her yard. She is a summer person since she loves to be outdoors doing something in her yard.

Because of pride and dedication to her family and community, the Haskell Soil and Water Conservation District is proud to recognize Elaine Glover as the "Conservation Homemaker" for 1991.



FAITH

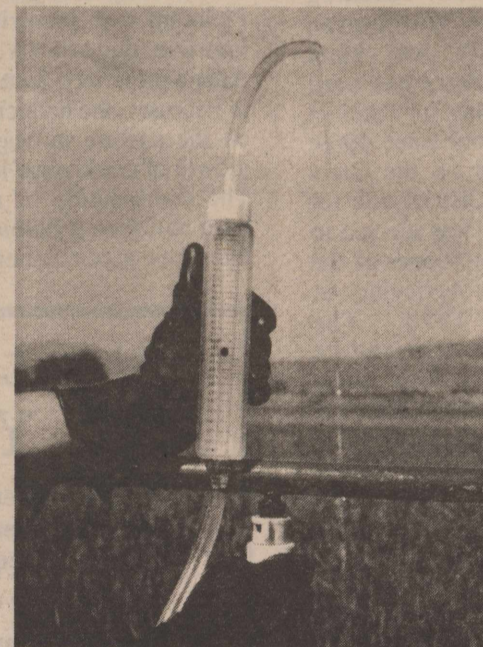


Paint Creek poster winners: Blayne Davis, Jodie Reel and Donald Short.

*As You Sow*  
Soil & Water Stewardship Week  
APRIL 28 - MAY 5, 1991

From Sprayer Calibrator Corporation

### The McKenzie™ Spray Tip Tester



Identify Worn  
Spray Tips

Fast, Easy, Accurate

The new McKenzie Spray Tip Tester instantly and accurately identifies gallons per minute (GPM) flow rates of spray tips. A convenient table is included to determine gallons per acre (GPA) application rate. No catching, timing, or calculator necessary!

The Haskell Soil and Water Conservation District is making available to area producers the McKenzie Spray Tip Tester.

The tester is useful in eliminating over application of chemicals. The testers are available at the Haskell Soil and Water Conservation District office, 1203A South Ave E, for the reduced cost of \$24.50. For more information: 817-864-3212

## Judging contests

Haskell and Rochester teams win at the Haskell-California Creek Soil and Water Conservation District Judging Contests.

Haskell FFA---Craig Hanson, Cole Callaway and Jason Hall placed second in the Range and Pasture Judging Contest. Haskell also placed second in the Greenhand Division of the Range and Pasture Judging Contest. Team members were Ela Yeary, Cindy Henry and Nicole Cothron. Both teams were coached by James Bevel.

Haskell placed first in the Land Judging Contest. Team members were Nored Lane, Jason Davis, Tommy Isbell and Kim Gilly. Rochester team---Alexy Lande, Brad Bevel, Ross Shaver and Michael Hester. Haskell took all high point individual awards: first, Nored Lane; second, Tommy Isbell; third, Jason Davis.

Assisting with the contest were the Haskell and Anson SCS field offices, Rochester FFA and Rod Townsend.

## StressTakers. YieldMakers.



Plant the Newest Leaders:  
**8855 • 8493**

See your local  
Pioneer representative:

Steve Alsabrook  
864-2906



©Registered trademark of Pioneer Hi-Bred International, Inc., Des Moines, IA. All sales are subject to the terms of labeling and sale documents.  
©1990 Pioneer Hi-Bred International, Inc.

**Soil  
Stewardship  
Week**  
April 28 - May 5  
**Haskell Livestock  
Auction**

Gary & Jo Tate, Owners  
Sale Sat. 12 Noon

**Food & Fiber. . .  
. . .Fruits of the soil**

Let's save Them for the generations to  
Come.  
Soil Stewardship Week April 28 - May 5



Haskell County Farm Bureau  
508 N. 1st. Haskell 864-2647

**Soil erosion  
is an  
ugly waste**



**Smitty's Auto  
Supply**

204 N. 1st

Haskell

864-2607

**We Appreciate Our  
Farmers & Ranchers**

**Soil Stewardship Week**  
April 28 - May 5

**Haskell  
Butane**



Stamford Hwy.  
Hours 7:30 am - 5:30 pm

(817) 864-2424  
Nights (817) 864-3915

Rex & Camin Pittman Owners

## Soil Stewardship Week

People, Land and Purpose.

Generations working hand-in-hand-  
passing along a love for  
the land and a respect  
for living things.

Eddie Klose, Operator

**Jones Welding**

201 NE 1st. Haskell

864-2342



Melodee Christian

## Conservation Teacher

Melodee Christian has been named "Conservation Teacher" for 1991 by the Haskell Soil and Water Conservation District. Melodee is a third grade teacher at Haskell Elementary School.

Melodee was raised in the Sagerton community by her parents, Mr. and Mrs. Leroy Vanderworth. Her father farmed for a living. Melodee graduated from Stamford High School and North Texas State University. She later earned a Master's Degree as a Reading Specialist from Abilene Christian University. After she had taught school in California and overseas for a few years, Melodee returned "home" to live and teach. She has been teaching in the Haskell School system since 1982.

Melodee married Milton Christian in 1980. Milton farms land north and northeast of Haskell in the Mattson Community. They

have two children, a son Lee, and a daughter Kristi.

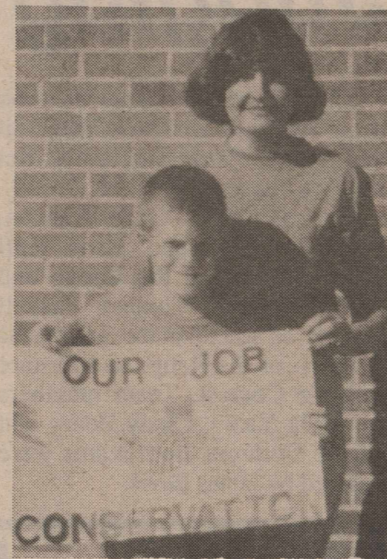
Melodee has a genuine interest and concern for conservation. She believes in teaching conservation awareness to her students in the classroom. They study different soil types, animal and plant life, and discuss things that affect their environment.

Over the past several years, Melodee's third grade classes have collected and sold aluminum cans. The proceeds from these sales have usually been given to Safety City in Abilene, when the third grade visits each year. One year her class decided to donate half of the proceeds from the sale of cans to purchase and establish vegetation around the elementary school's flagpole. They also bought eight shrubs and planted them in the school's flower bed. Through projects like these, her students

learn the values of conservation.

Melodee encourages her students to enter the conservation poster contest each year. This contest gives the students an opportunity to learn more about conservation and to illustrate their ideas. They spend time in the classroom discussing and preparing for their poster projects. Melodee provided leadership to all the third grade students this year with their conservation poster projects. She says it was a group effort, though, with a lot of help from the other third grade teachers.

Due to her interest and commitment in teaching conservation values and principles to her students, the Haskell Soil and Water Conservation District recognizes Melodee Christian as "Conservation Teacher" for 1991.



Hegan Lamb was district champion of the poster contest.

## Soil Stewardship Week

April 28 - May 5

Conservation & Development  
of the Soil Insures  
Food and Fiber  
for the Future

K. R. Blair

Conservation Contractor

For all types of land clearing, tanking,  
water ways, and terracing  
Call us today (817)864-2352



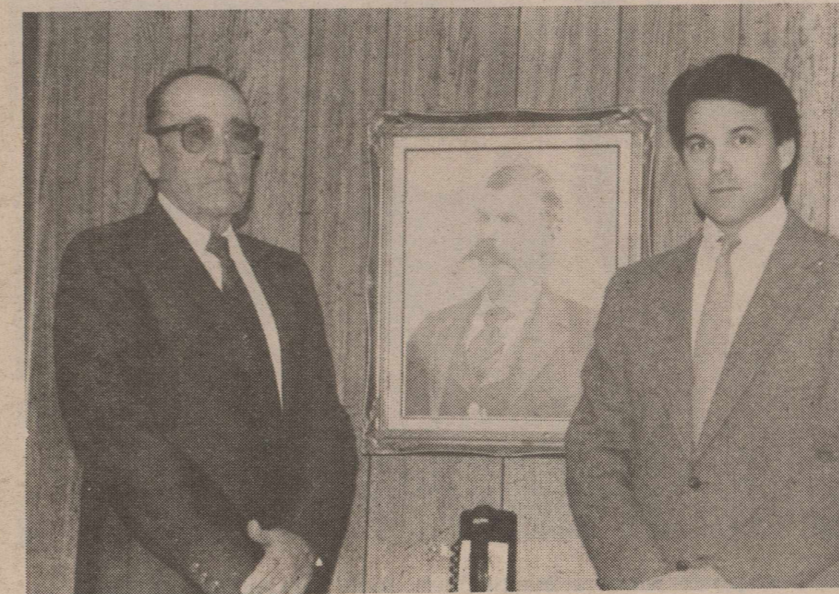
We salute our Conservation  
Farmers and Ranchers During

Soil Stewardship Week  
April 28 - May 5

"The Next Greatest Thing"  
brought to you  
since 1939  
by

Stamford Electric  
Cooperative

915-773-3684



J. R. and Rick Perry

## Conservation Rancher

J. R. Perry Farms, owned and operated by Ray Perry of Paint Creek and his son, Rick Perry of Haskell, have been selected to receive the "Conservation Rancher" award for 1991 by the Haskell Soil and Water Conservation District. J. R. Perry Farms operate land in the Paint Creek community and at locations south and southeast of Lake Stamford.

Ray and Rick Perry are life-long residents of Haskell County. Both are active in their ranching operation, and are also proven leaders in county and state government. Ray Perry has been County Commissioner for Precinct #3 in Haskell County since 1969. Rick Perry served as the State Representative of District #64 for six years before he was elected to the office of Commissioner of the Texas Department of Agriculture in November of 1990. The responsibilities as Agriculture Commissioner keep Rick away from Haskell much of the time, but he remains an active partner in the decision making process for J. R. Perry Farms.

J. R. Perry Farms, primarily a wheat and livestock enterprise, operate a total of 6,948 acres of land. Approximately 1,368 acres of it are owned by the Perrys and 5,580 acres are leased. Most of the land is in native and improved grasses. Wheat is sown on 1,280 acres for winter grazing. A cow-calf herd had been maintained until 1989 when most of the stock water in ponds dried up. Cows were sold during that time. Since then, only heifers have been purchased. This year, a total of 874 heifers will graze wheat and grass and will be sold in mid to late spring.

Ray and Rick Perry take care of their land. Waterways and terraces have been constructed on cropland to control soil erosion. Several acres of pasture have been seeded to Kleingrass to increase production. Stock ponds have been cleaned out in order to hold water longer during dry periods. Herbicides and

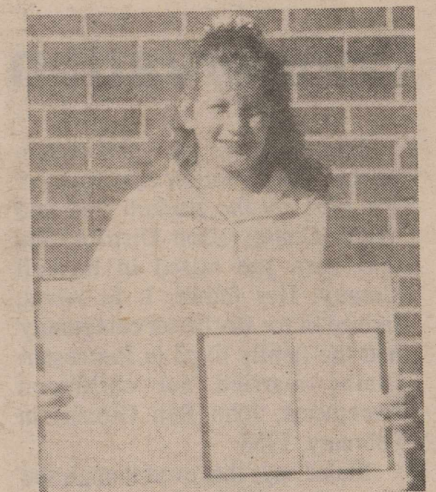
prescribed burns have been used to control mesquite and pricklypear on rangeland.

The Perrys have used prescribed burns to stop the growth of mesquite and pricklypear since 1985. They try to apply prescribed burns on 20 percent of their rangeland each year, except during extremely dry years. These burns are normally completed during late February and early March under mild weather conditions.

The Perrys also use the herbicide Picloram with prescribed burns to improve the kill on pricklypear. After a prescribed burn is completed in February, the herbicide is sprayed on the pasture in May when new growth of pricklypear has appeared. The combination of a prescribed burn and then a herbicide sprayed later has given better control on

pricklypear than when either method has been used alone. Ray believes that root kill has increased to 90 percent on pricklypear when this combination is used.

Due to the commitment and success in the improvement of rangeland resources, the Haskell Soil and Water Conservation District is pleased to recognize J. R. Perry Farms as the "Conservation Rancher" for 1991.



Amy Barbour won second place in the poster contest.

As You Sow

## Conservation Pays!

We salute our  
farmers & ranchers  
during

Soil Stewardship Week

April 28 - May 5

Rule  
Co-Op Gin

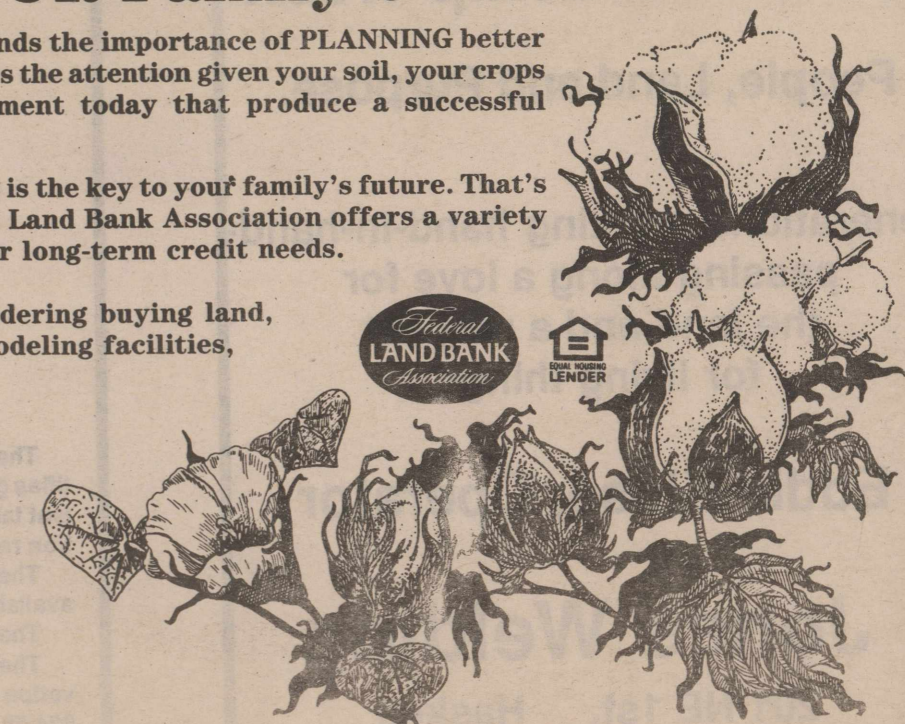
301 Adams John Pike, Manager 997-2421

## Next Years Crop ... YOUR Family's FUTURE

No one understands the importance of PLANNING better than a farmer. It's the attention given your soil, your crops and your equipment today that produce a successful tomorrow.

Careful planning is the key to your family's future. That's why the Federal Land Bank Association offers a variety of loans for your long-term credit needs.

If you are considering buying land, building or remodeling facilities, come see us.



Federal Land Bank Association of Haskell

Dale Bullinger - Pres.  
Telephone 864-2062

We salute our Conservation  
Farmers and Ranchers During

Soil Stewardship Week  
April 28 - May 5

Crop Hail Insurance  
Multi Peril Insurance



510 S. 2nd.  
Haskell, Texas 79521