





Kimberly Lane Cram

## Kimberly Lane weds Gary Cram

Kimberly Kay Lane and Gary Lee Cram were married Saturday, March 24, at University United Methodist Church in San Antonio.

Parents of the couple are Mr. and Mrs. Kenneth Lane of Haskell and Norma Cram of San Antonio.

The Rev. Glenn Hall officiated. Organist for the ceremony, Madolyn Fallis, played prelude music from Bach, Handel, Pachelbel, Boellmann and Dubois. Also part of the prelude music was a choral arrangement of "Jesu, Joy of Man's Desiring" by J. S. Bach presented by an ensemble from the church choir.

The chancel area of the church was enhanced by four large ivory candles.

The bride, presented in marriage by her father, wore a full tea-length ivory dress of lace and satin. The original design by Phyllis for Bianchi had an elongated bodice of imported venice lace with a sabrina neckline and brief sleeves. The entire bodice was enhanced with tiny seed pearls. She wore pink roses and alstroemeria in her hair. Her bouquet was a cascade of the roses and alstroemeria and Queen Anne's lace. She carried a blue handkerchief used by her maternal grandmother in her wedding, and a mother-of-pearl Bible belonging to Mrs. Fadwa Hassen.

The groom wore a formal black tuxedo with ivory shirt accessories. His boutonniere was a white rose with gypsophila.

Matrons of honor were Kiersta Garcia of Abilene and Shannon Lane Williams of Rowlett, sisters of the bride, and Sarah Cox Snailum of Abilene. They wore full tea-length dresses of polished cotton. The floral pattern was predominately rose and blue. The elongated bodice had a sweetheart neckline and brief puff sleeves.

Groomsmen were Dan Jansen, Jerry Joyce and Brad Stewart, all of San Antonio. Ushers were Shawn Lane and Matt Lane, brothers of the bride, of Austin. They wore black tuxedos, and their boutonnieres were white roses with gypsophila.

The wedding party processed to Andre Campra's "Rigaudon,"

followed by the bride's processional, "Prince of Denmark March" by Jeremiah Clarke. Following the Words of Gathering, the congregation sang "The Doxology." After the exchange of rings, Sarah Snailum sang "He Has Chosen You For Me" by Pat Terry.

The Service of Holy Communion was celebrated as part of the ceremony. It was served to the wedding party and then to the entire congregation with the bride and groom assisting in serving by intinction. During the serving, the ensemble sang "In Remembrance of Me" by Buryle Red.

After the Pronouncement of Marriage, John Rutter's arrangement of "The Lord Bless You and Keep You" was sung by the ensemble. Following the Blessing of the Marriage, the wedding party recessed to "Toccata" from Symphony V by Charles Marie Widor.

The reception, hosted by the bride and groom, was held at the Woman's Club of San Antonio. Guests were registered by Emily Thigpen at the wedding and at the reception.

The bride graduated from Haskell High School and the University of Texas with a bachelor's degree in pharmacy. She is employed by Garden Park Pharmacy in New Braunfels, and Village Oaks North Pharmacy in San Antonio.

The bridegroom graduated from East High School in Des Moines, Iowa, and Bartlesville Wesleyan College in Bartlesville, Okla., with a bachelor's degree in business administration. He is self employed with Cram Roofing Co.

Following a wedding trip to San Francisco, the couple will live in San Antonio.

\*\*\*

A personal shower was held for the bride Saturday, March 17, in San Antonio. It was hosted by Jane Watson and Kitty Palmer and was in the home of Mrs. Palmer.

A San Francisco "Send Off" was held honoring the bride and the bridegroom Friday, March 23, at AmeriSuites Hotel North in San Antonio. Hostesses were Jackie Kemp, Sarah Snailum, Emily Thigpen and Beunis Thigpen.

### Haskell School Menu-

April 2-6 LUNCH

**Monday:** Corndogs with mustard, tater tots with catsup, pickle spears, cinnamon rolls, milk, juice, tea.

**Tuesday:** Steak fingers with gravy, creamed potatoes, blackeyed peas, buttered hot rolls, sliced peaches, milk, juice, tea.

**Wednesday:** Pizza, buttered corn on cob, cole slaw, fruit Jello, milk, juice, tea.

**Thursday:** Cheeseburgers, french fries with catsup, lettuce and tomatoes, pickles and onions, chocolate pudding, milk, juice, tea.

**Friday:** Fish sticks with tarter sauce or catsup, pinto beans, spinach or carrot sticks, buttered cornbread, juicy treats, milk, juice, tea.

#### BREAKFAST

**Monday:** Juice or fruit, cereal, buttered toast with jelly, milk.

**Tuesday:** Juice or fruit, biscuits with jelly, sausage, milk.

**Wednesday:** Juice or fruit, pancakes with syrup, peanuts, milk.

**Thursday:** Juice or fruit, Malt-O-Meal, toast, milk.

**Friday:** Juice or fruit, cereal, toasted rolls, milk.

Menus subject to change

### -HOSPITAL-

**Medical Patients**  
Eleanor King, Goree  
Royce Dean, Haskell  
**Dismissals**  
Harvey Norwood, Willie Tibbets

### -BIRTHS-

Mr. and Mrs. Patricio A. Garcia of Knox County announce the birth of a daughter, Ashley Garcia, born March 25, 1990 in Haskell Memorial Hospital weighing 6 lbs. 7 1/2 oz.

### Officers elected by PC 4-H club

The Paint Creek 4-H Club met March 13 at the Paint Creek school with nine members present.

Officers elected included: Leigh Ann Reel, president; Jim Crawford, vice president; Jodie Reel, secretary; Johnny Martinez, reporter.

Members set the regular meeting day for the second Tuesday of each month after school.

Need a stapler for your purse or briefcase? Come see our selection of mini staplers. *Haskell Free Press.*

### Couple to mark 50th anniversary

The children of Alton and Wretha Fitzgerald will honor their parents with a reception April 7 in honor of their 50th wedding anniversary. All friends are invited.

The reception will be from 2 to 4 p.m. in the First United Methodist Church fellowship hall in Knox City.

### -Obituaries-

#### Polly Stewart

Maurine E. "Polly" Stewart died Sunday (March 25) in Haskell.

Funeral services were Tuesday afternoon at Little River, Texas. Burial was in the Little River-Wilson Valley Cemetery under the direction of Harper-Talask Funeral Home of Temple. Nephews served as pallbearers.

Polly was born in Bell County, the youngest of 11 children of Walter Allen and Elizabeth Ellen (Hammond) Stewart.

Survivors are one sister, Nora of Dallas, a sister-in-law, Ruth Stewart of Abilene. There are numerous nieces and nephews, including Mrs. B. O. (Billyjo) Roberson of Haskell. Preceding her in death was G. C. Clint Stewart who came to Taylor County in 1904.

After graduating from high school, Polly attended business school in Abilene, then moved to Wichita Falls. She was employed by Perkins Timberlake and later went into civil service work at Sheppard Field, now Sheppard Air Force Base. In the late 1940s, she moved to Dallas to work for the Internal Revenue Service until her retirement.

Polly was a member of North Dallas Baptist Church and served as treasurer of her Sunday School class for many years. She belonged to a Christian Business Women's organization and attended international meetings in the Bahamas and in Mexico.

#### Hospital Memorials

Jim and Louise Isbell in memory of Guy Kennedy.

Desmond and Joan Dulancy in memory of Harold Ford.

Mary C. Ogilvie in memory of Bill Baxter.

Mr. and Mrs. C. W. Dunnam in memory of W. S. Cole.

Mr. and Mrs. Bill Lane in memory of Guy Kennedy and Bill Strain.

Like a little color in your life? We have letter size and junior size legal pads in blue, rose, orchid, ivory, gray, and of course, canary. *Haskell Free Press.*

### We're committed to you.

In this farming community, we're committed to offer the kind of services and personal attention you want and need. When you bank with us, you'll find that we're much more than just a financial institution.



Post Office Box 10  
Phone (817) 997-2216  
Rule, Texas 79547

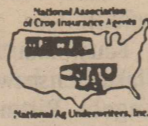
### Cooper Insurance Agency

Specializing in

## Multi-Peril Crop Insurance

Contact Linda Cooper today for details

(915) 576-3193 or 576-3139  
136 S. Central ~ Hamlin, Texas



### To the people of Haskell County

My thanks to each one of you for your continued support.

### Carolyn Reynolds District Clerk

Pd. Pol. Adv. Pd for by Carolyn Reynolds

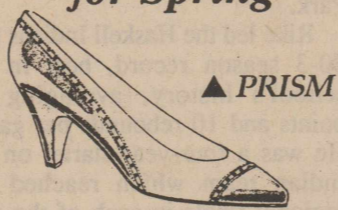
### "GARY LATHAM" is BACK! at

Bailey Toliver Chevrolet - Oldsmobile in Haskell

Big Country Dealers Association  
Come by and see our nice cars and trucks at the **LOWEST PRICES EVER!**

The Call is **FREE 1-800-588-2626**  
517 N. 1st Haskell, Texas 817-864-2626

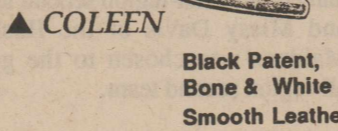
### Spectators from Selby® for Spring



▲ PRISM



White Smooth, Navy Kid, Red & White



▲ COLEEN

Black Patent, Bone & White Smooth Leather

**The Slipper Shoppe**  
14 1/2 N. Ave D  
East Side of Square  
Haskell  
864-3051

### New members to be initiated

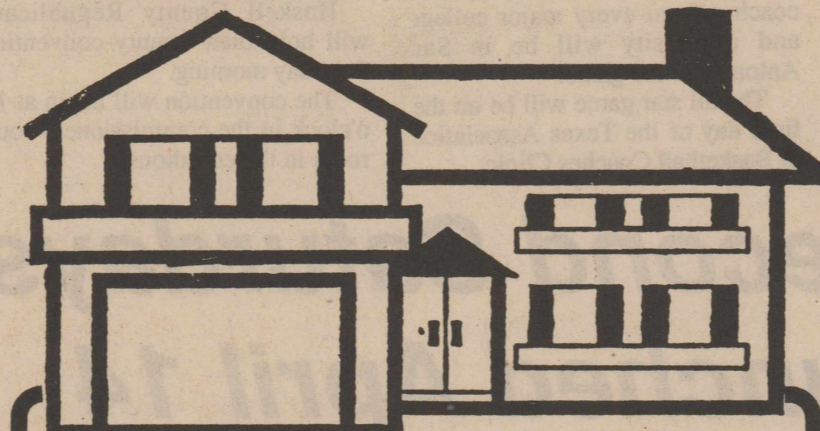
The regular meeting of the Sons of Hermann Lodge will be Sunday, beginning at 3:30 p.m.

Members are to bring chickens (thawed) and sausage for the barbecue. The lodge will furnish bread, pickles, onions, beans, cole slaw and drinks. Members will bring any side dish and desserts they wish.

New members will be initiated and introduced to the lodge. Members are invited to bring guests.

Hosts and hostesses for April are Alton and Nadine Middleton and Wilton and Elna Weise.

Need a Catchall? Eldon has one for your desk, countertop or any area in your home or office. *Haskell Free Press.*



### ★ YOUR HOME ★

THE RIGHT HOME - THE RIGHT PRICE - RIGHT NOW!

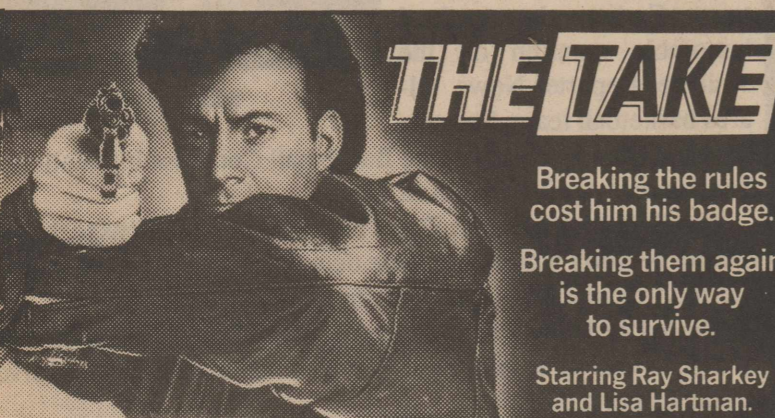
We're professional builders, helping you decide what kind of home you want. We can draw up your plans, build, paint and wire your new home.

Also Remodeling, Custom Cabinets, Concrete Work

### TURNER CONSTRUCTION

DALE TURNER, OWNER  
817-658-3165

USA WORLD PREMIERE MOVIE



### THE TAKE

Breaking the rules cost him his badge.

Breaking them again is the only way to survive.

Starring Ray Sharkey and Lisa Hartman.

**USA** AMERICA'S FAVORITE CABLE NETWORK  
Harmon Cable Communications  
Tonight at 8:00 PM  
Channel 3  
773-3391 or 800-527-4331

# HHS track teams to run in Hamlin

Haskell Indian and Maiden track teams will be in Hamlin Saturday to participate in the Pied Piper Relays.

Last weekend's cold spell forced the postponement of the meet in Roscoe.

Indian participants are expected to be:

Joe Ray Camacho and Carlos Mendoza in the 3200.

Eric Harvey, Jonathon Dever, Jeremy Fuentes and Rodney Johnson in the 400 relay.

Medoza, Noel Hadaway and Sherwin Everton in the 800.

Harper Stewart and Ron Davis in the high hurdles.

Johnson, Harvey and Johnnie Billington in the 100.

Dever, Adam Coleman and Billington in the 400.

Stewart, Harvey and Davis in the intermediate hurdles.

Fuentes, Billington and Coleman in the 200.

Camacho, Hadaway and Everton in the 1600.

Dever, Johnson, Camacho in the 1600 relay (the fourth member of the team has not been decided).

Roger Roewe and Chad Gibson in the shot.

Roewe and Gibson in the discus.

Dever and Fuentes in the long jump.

Dever, Johnson and Davis in the triple jump.

Competing for the Maidens will be:

Missy Davis, Shana McKenzie and Elsie Ruiz in the 100 hurdles.

Shelia Unger and Daniela Guadalucazar in the 800.

Regina Dever, Deanne Wallace and Holly Hobgood in the 100.

Dever, Hobgood and Mary Alice Olvera in the 400.

Guadalcazar, Sarah Mullen, Mary Esther Villereal and Olvera in the 800 relay.

Unger, Emily SoRelle and Lora Headstream in the 200.

Claudia Payne, Erika Kilgore and Guadalcazar in the 1600.

Jana Payne and Claudia Payne in the 3200.

Jana Payne, Hobgood, Unger and Dever in the 1600 relay.

Davis and McKenzie in the 300 hurdles.

Guadalcazar, Davis and McKenzie in the discus.

Guadalcazar, Davis and Ovilda Guadalcazar in the shot put.

Dever, Mullen and McKenzie in the high jump.

Unger, Hobgood and Mullen in the long jump.

Unger, Dever and Jana Payne in the triple jump.

## Around town

Amanda Cune made her first trip to Haskell over spring break. Five-month-old Amanda had her parents, Carol and Brad Cune of Lancaster bring her to see her grandma, Isabella Lehde, and other relatives and friends.

# Committee nominations now open

Eligible farmers in the Haskell-Throckmorton area are invited to become nominees for the Farmers Home Administration (FmHA) area committee.

As a result of the 1985 Farm Bill, two of the three members of the FmHA area committee must be elected. The third member is designated by FmHA. The Haskell-Throckmorton area committee assists the FmHA county office in determining the eligibility of applicants for certain types of FmHA loans.

Generally, farmers who are residents of the county are eligible to become nominees for the area committee.

"Farmers in this county, serving on the committee, play an important role by assisting in the process of loan applications and reviews," said Larry McDaniel, FmHA county supervisor.

All terms of service will be for three years each on a staggered basis.

Nominating petitions must be returned to the FmHA Haskell County office by May 18.

Additional information and application forms for those who are interested in becoming nominees for the area committee are available at the FmHA county office, 1203B S. Ave. E, P.O. Box 587, Haskell, or by calling 864-2615.

We have pens that write pink, light blue, purple and burgundy to match your favorite stationery. Pick a color at the *Haskell Free Press*.

## --Market Report--

Haskell Livestock Auction

The market at Haskell Livestock Auction Saturday was on a run of 1,025 head of cattle.

Cows: fat 48-54.50; cutters 53-59.50; canners 42-52.25.

Bulls: bologna 62-72.50; feeder 75-85; utility 55-60.

Steers: 200-300 lbs. 120-155; 300-400 lbs. 110-125; 400-500 lbs. 100-115; 500-600 lbs. 82-105; 600-700 lbs. 85-92.50; 700-800 lbs. 79-87.50; 800-lbs. up 75-

82.50.

Heifers: 200-300 lbs. 110-125; 300-400 lbs. 100-110; 400-500 lbs. 87-105; 500-600 lbs. 85-92.50; 600 lbs. up 74-84.

Bred heifers: 550-650.

Bred cows: young to middle age 650-795; aged or small 450-600.

Cows with calves: young and middle age 750-980; small or aged 550-650.

# Student pen pals enjoy home video

Weinert kindergarten and pre-kindergarten students finished their Texas study unit with a special surprise for their writing pals in Boca Raton, Fla. They shared their Texas knowledge with their Florida friends by way of a home video.

Responses from their Florida friends included:

"I loved the video, especially

## 'Ain't over,' says state farm leader

"It ain't over til it's over," Texas Farm Bureau President S. M. True said of the defeat of six farmers running against incumbent Jim Hightower for Texas commissioner of agriculture in the Democratic party.

"We are very proud of the effort and the courage that these farmers showed in taking on one of the favorite sons of the Democratic party hierarchy," the farm leader said.

True said it was evident from the beginning that the Democratic party officials "did not welcome the opposition from our grass roots candidates, or the effort to increase interest in the democratic process."

"But, those folks had better wake up, because farm and ranch people will not be denied," he said. "More than 400,000 Democrats showed that and we suspect that more crossed over and voted in the other primary."

"The so-called 'six-pack' candidates and the Republican candidates for ag commissioner outpolled the Democratic party leader's fair-haired boy by about a quarter million votes."

"That means we are on course for a November showdown. Hightower has led the game for three quarters, but a lot of games are won or lost in the fourth quarter," True said.

when you sang 'I'm a Texas Star.' Thank you very much." Chris.

"I liked all the songs you kids sang, too." Brian.

"It was fun to see you all on TV." Mitra.

"I loved seeing how your school looks. It's nice." Brett.

"I liked seeing the grandma who cooks the food. My grandma takes me to school every day. I love her." Rory.

"I liked the part in the classroom when you showed us all about Texas. The kids are great." Matthew.

"Thanks for showing us a bit of Texas. We could hear the wind blowing." Eric.

"I would like always to watch your movie." Hayley.

"I'm going to Texas soon. I will try to call you. I will visit Tanya in Houston." Juan.

"I need to watch it at home. I was sick with the chicken pox." Tiffany.

"I loved your Texas movie---the whole thing---your teacher is very pretty." Kendra.

"I wish I could really see you all." Mario.

"Your video was terrific. You all look so happy and friendly. I'm sure glad we met you." Sasha.

The Weekly Reader Writing Pals Program introduces classrooms across the nation to a variety of climates, geographic locations and customs. The program encourages the use of map skills, written communication skills, oral communication skills and visual communication skills.

The Weinert students are preparing an Easter basket to mail to their Florida friends.

# Group attends meeting

Representatives of the Federal Land Bank Association (FLBA) of Haskell were among more than 60 attendees at the 1990 Farm Credit Bank of Texas annual meeting held March 15-16 in Austin.

Local FLBA directors and staff who attended included Dale E Bullinger of Haskell, president; Lynn White of Stamford, Dal Middlebrook of Haskell, Mack Spurgin of Anson, Ernest Beck of Big Spring and Wayland Hardin of Seymour.

"Last year, the Farm Credit Bank of Texas purchased 17,000 long term loans valued at \$1.1 billion in Alabama, Louisiana and Mississippi and received charters for six new FLBAs in those three states," Bullinger said.

"This was the first monthly meeting attended by stockholders and staff of the new association and it provided an opportunity to meet other shareholders and staff and to discuss district operations," he said.

The program included reports from bank management and directors on 1989 operations and 1990 plans and programs. In addition, the attendees were informed that the interest rate on variable rate loans would be reduced effective May 1. The variable rate for agricultural loans will decrease from 10.25 percent to 9.95 percent and the rate on rural housing loans will decrease from 10.50 percent to 9.95 percent. Bank management projects that the rate reduction will save borrowers approximately \$ million annually. It is anticipated that the rate reduction will help strengthen the agricultural economy throughout the Texas district.

A net profit of \$28.4 million in 1989 by the Texas Farm Credit District enabled the bank to make patronage distribution of \$13. million to its Texas FLBAs at year end.

The FLBA of Haskell has \$35.1 million in long-term agricultural loans to farmers and ranchers in the counties of Haskell, Jones, Baylor and Knox. Offices are located at 50 S. 1st in Haskell.

The association is one of 5 FLBAs through which the Farm Credit Bank of Texas make agricultural loans in Alabama, Louisiana, Mississippi and Texas. With \$3.7 billion in loans outstanding to nearly 60,000 farmers and ranchers, the bank is the largest agricultural lender in the four-state region.

## Statement of Nondiscrimination

Stamford Electric Cooperative, Inc., has filed with the Federal Government a Compliance Assurance in which it assures the Rural Electrification Administration that it will comply fully with all requirements of Title VI of the Civil Rights Act of 1964, all requirements of Section 504 of the Rehabilitation Act of 1973, as amended, and all requirements of the Age Discrimination Act of 1975, as amended, and all requirements of the rules and regulations of the U.S. Department of Agriculture, to the end that no person in the United States shall, on the ground of race, color, or national origin, or solely by reason of such person's handicap, or on the basis of age, be excluded from participation in, be denied the benefits of, or be otherwise subjected to discrimination in the conduct of its program or the operation of its facilities. Under this Assurance, this organization is committed not to discriminate against any person on the ground of race, color or national origin, solely by reason of such person's handicap, or on the basis of age, in its policies and practices relating to applications for service or any other policies and practices relating to treatment of beneficiaries and participants including employment, rates, conditions and extension of service, admission or access to or use of any of its facilities, attendance at and participation in any meetings of beneficiaries and participants or the exercise of any rights of such beneficiaries and participants in the conduct of the operations of this organization. The person in this organization responsible for coordinating the nondiscrimination compliance efforts of this organization is Jerry Terrell, General Manager.

Any individual, or any specific class of individuals, who feels subjected by this organization to discrimination prohibited by Title VI of the Civil Rights Act, by Section 504 of the Rehabilitation Act, by the Age Discrimination Act or by the rules and regulations of the U.S. Department of Agriculture may personally or through a representative, file with the Office of the Secretary, U.S. Department of Agriculture, Washington D.C. 20250; the Office of the Administrator, Rural Electrification Administration, Washington D.C. 20250, the Office of Advocacy and Enterprise, U.S. Department of Agriculture, Washington D.C. 20250; or this organization, or all a written complaint. Such complaint must be filed not later than 180 days after the alleged discrimination, or such later date to which the Secretary of Agriculture or the Administrator of the Rural Electrification Administration extends the time for filing. Identity of complaints will be kept confidential except to the extent necessary to carry out the purposes of the rules and regulations of the U.S. Department of Agriculture.

## Public Notice

Southwestern Bell Telephone Company hereby gives notice that it has filed an application requesting the PUC to declare Southwestern Bell's intrastate Billing and Collection market subject to significant competition and to authorize the following form of pricing flexibility: detariffing of the rates, terms and conditions of the Billing and Collection services now offered in Section 8 of Southwestern Bell's intrastate Access Service Tariff. Approval of the application as filed would result in all tariff sheets in Section 8 (Billing and Collection) of Southwestern Bell's Intrastate Access Service Tariff being cancelled, and the service thereafter being provided on a contract basis. Through this application, using procedures established by P.U.C. SUBST. R. 23.27, Southwestern Bell seeks to obtain uniformity of rates, rules and regulations for intrastate and interstate Billing and Collection services.

Approval of this application would remove all rates, terms and conditions applicable to billing and collection from Southwestern Bell's Intrastate Access Service Tariff. Intrastate billing and collection service would continue to be subject to PUC regulatory oversight only to the extent that (1) Southwestern Bell would be required to maintain current price lists at the Commission for the service, and (2) the revenues or losses from the service would be subject to the regulatory treatment specified in P.U.C. SUBST. R. 23.27(p). Further, under procedures established by P.U.C. SUBST. R. 23.27, the PUC's General Counsel, the Public Utility Counsel or any affected person could seek a subsequent review of the rates, terms and conditions of this service.

Persons who wish to intervene or otherwise participate in these proceedings, or who would like further information, should call or contact the Public Utility Commission of Texas, 7800 Shoal Creek Boulevard, Suite 400N, Austin, Texas 78757, (512) 458-0100. Further information may also be obtained by calling the Public Information Office at (512) 458-0227, or (512) 458-0221, teletypewriter for the deaf.

The PUC has assigned this matter to Docket No. 9224. A prehearing conference will be held on April 19, 1990, at 9:00 a.m. at the Commission's offices at 7800 Shoal Creek Boulevard in Austin, Texas. The deadline for filing motions to intervene is April 26, 1990.

Southwestern Bell Telephone

## TOWER DRIVE-IN THEATER

Hwy 6 Rule, Tx.  
Ph. 997-2124

Showing Fri - Sat - Sun  
Mar. 30, 31 & April 1  
**The BEAR**

A Rousing Wildlife Movie!  
One of the Most Perfect Films Imaginable for Parents to See with Their Children.  
Starring: Jack Wallace,  
Tcheyk Karyo &  
Andre Lacombe  
Rated PG-13

"See me for all your family insurance needs."

BRIAN BURGESS, Agent  
703 North Avenue E.  
Haskell, Texas 79521  
Off. 864-3250

Like a good neighbor, State Farm is there.  
State Farm Insurance Companies Home Offices Bloomington, Illinois

At Greater Independent Baptist Church  
300 North 3rd  
Haskell  
Barbecue Dinners  
\$4<sup>00</sup> Per Plate  
Saturday, March 31  
11:00 a.m. Until

## WEINERT GROCERY & CAFE

announces  
Come and Dine Out with us on  
Sunday, 12 noon to 2 p.m.  
Each Sunday a different lunch special.

This Sunday, April 1st  
Roast Beef lunches, Hamburgers,  
Salads and Sandwiches.

Also will have a game room  
"Open Soon". Fun for the  
whole family to enjoy.

Under new ownership by  
Ann Horan

**For Your Sheet Metal Work**  
Water Storage Tanks  
All Kinds of metal duct work  
See or call:  
**Guinn Sheet Metal & Plumbing**  
817-658-3341 L.C. Guinn Knox City, TX

**JAMES CASTAGNA & JEFF GREGG**  
Certified Public Accountants  
Computerized Tax Returns and Bookkeeping  
Auditing, Financial Statements and Estate Work  
SEYMOUR OFFICE HASKELL OFFICE  
115 W. McLain Street 316 1/2 North First  
817-888-5539 817-864-3931  
8-6 M-F; 8-5 Sat. 10-4 Tuesday & Thursday  
(After Hours by Appointment)

Come  
Check Out  
Our New  
1990  
**Straw Hats**  
Heads or Tails  
Western Wear  
Haskell, Texas

# Second session coming

AUSTIN - Amid predictions the special session was derailed, Texas House members killed a \$450 million school finance reform plan that opponents say is too complicated and the governor says is too costly.

The session ended Wednesday, but Gov. Bill Clements will call legislators into a second session to

**STATE CAPITAL**

**HIGHLIGHTS**

By Lyndell Williams  
TEXAS PRESS ASSOCIATION

attempt to comply with a Texas Supreme Court order to equalize public school funding.

Despite its Republican sponsor, Kent Grusendorf of Arlington, some 57 of the House's 60 GOP members voted against the bill.

This bloc, coupled with 12 of 18 Hispanic members, doomed the measure which would have required a second special session to fund it with a new tax bill.

The real roadblock is the unwillingness of some lawmakers, bent on a collision course with Clements' veto stamp, to draft legislation in line with the \$300 million in new funds that Clements says is available.

The governor has won the first skirmish.

### Whose Pockets Lined?

Just days after she wiped out former Gov. Mark White's comeback bid by charging that he "lined his pockets" at the public's expense, Ann Richards has to defend herself against similar media reports, including:

- A sweetheart home mortgage loan made to her by an Austin bank shortly after it became a major repository of state funds;

- A \$10,000 contribution from NCNB of North Carolina just seven months after she successfully lobbied to kill a bill on the House floor which targeted the out-of-state bank; and

- Her interest in 100 acres near the proposed intersection of a state highway, and her efforts to get the majority partner appointed to that highway's advisory construction board.

### CDs for Collateral

In the matter of the home mortgage loan, in 1983, Richards received \$250,000 at the prime lending rate from United Bank of Texas after it became a repository for up to \$100 million a day in state funds.

The chairman of United Bank, Ruben Johnson, was later convicted on a bank fraud charge.

The Richards campaign denied any sweetheart deal and said the collateral for the prime rate loan was two \$100,000 CDs.

The sponsor of the legislation to prevent deposit of state funds in most banks owned by out-of-state interests said NCNB was the

prime target and Richards was instrumental in killing it.

A campaign aide said she opposed the bill after learning of it the night before debate because it would leave the treasury with only one major clearinghouse for checks in Austin.

Richards also wrote on treasury stationery to the Texas Highways Commission, asking that Austin developer Gary Bradley be named to the board overseeing state highway construction near his property.

She later bought a 2.5 percent interest in his 100 acres near the highway's intersection for \$50,000, then sold it for an \$1,100 profit.

**Grande Dame Endorsement**  
In the first significant event in the primary runoff elections, Richards' Democratic opponent, Attorney General Jim Mattox, received the endorsement of the grande dame of Texas political feminists, Sissy Farenthold.

Farenthold, a House member and gubernatorial candidate in the 70s, is also a former president of the National Organization of Women. Her endorsement of Mattox is a real blow to the feminist-based campaign of Treasurer Richards.

Meanwhile, GOP nominee Clayton Williams met with and continues to woo Democrat White for his endorsement.

Though the Democratic Party's Bob Slagle says it's an exercise in futility, Williams says he now has commitment from many top White supporters and contributors. Williams said he raised more than \$1 million the week after the primary election.

### Other Highlights

- State Sen. Chet Brooks, D-Pasadena, re-nominated after charges of being in the lobby's pocket, said he will return some of the honoraria he received for speaking to a state troopers group.
- State law limits legislators to one honorarium per year from a group, and Brooks received three totaling \$2,500 from the Texas Department of Public Safety Officers Association; State Rep. Bill Carter, R-Fort Worth, received two for \$1,500.

Brooks led all legislators for honoraria received in 1989 with \$7,600.

- Brooks was directed by Lt. Gov. Bill Hobby to convene his committee to sort out why the Texas Department of Human Services has projected a budget overrun of \$77 million.

Asked about cutting fat from the agency, DHS head Ron Lindsey said, "we could fire every person in the entire agency and still not have enough money to offset the projected shortfall."

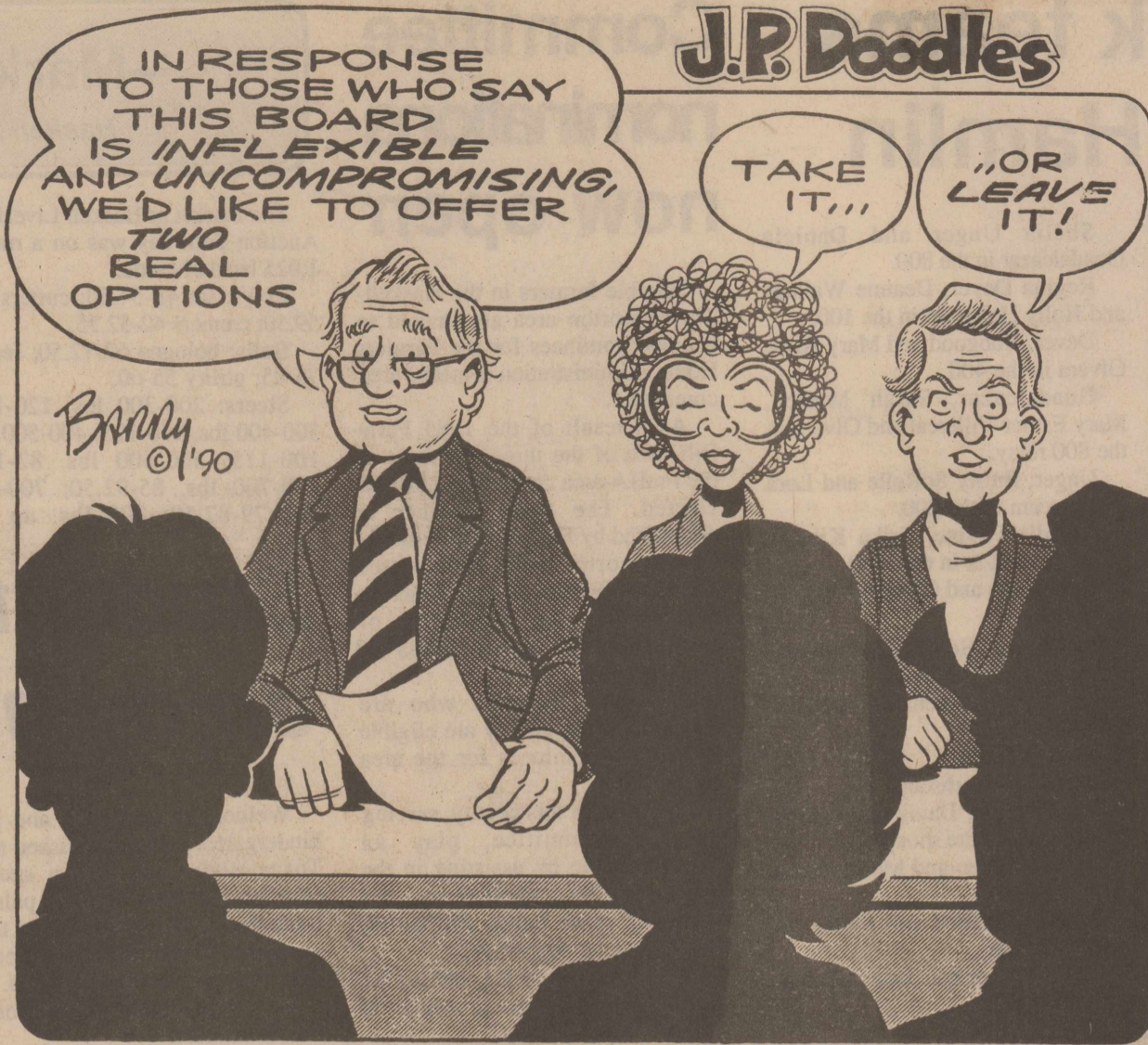
- Comptroller Bob Bullock, in the first of a series of five reports, estimates Texas is being short-changed by the feds by at least \$2.4 billion.

Bullock said Texas ranks 49th among states in grants to state and local governments, and he recommended changing local policies and laws to qualify for \$1.7 billion without raising any matching money.

## Demo convention to be Saturday

The Haskell County Democratic convention will be Saturday afternoon.

The convention will begin at 2 o'clock in the district court room in the courthouse.



## --From Out of the Past--

From the Files of The Haskell Free Press

### 20 Years Ago April 2, 1970

Merritt E. "Gene" Overton of Paint Creek, was presented the coveted Fort Worth Chamber of Commerce Conservationist of the Year plaque by the Haskell Lions Club Tuesday.

The Gloryland Quartet of Roswell, N.M. will present a concert of gospel music here Saturday.

Seven boys from Troop 36 have completed their Junior Red Cross course in first aid. They are Danny Miller, Jim Pippin, Darrell Smith, Danny Hartsfield, Art Williams, Mike Medley and Ollie Johnson.

Mrs. R. C. Liles, Mrs. W. A. King, Mrs. R. W. Raynes, Mrs. Fred Monke and Mrs. M. W. Phemister attended the district meeting of the Texas Federation of Women's Clubs in Abilene Monday and Tuesday of last week.

A meeting will be held April 10 in the home of Lynn Toliver for the purpose of organizing a Roberts Cemetery Association.

Ronnie Reed, Haskell High School agriculture teacher, and student Riley Middleton presented the program at the Rotary Club last Thursday.

Announcement was made this week that Margie Langford, former resident of Haskell, is now associated with Christine's Beauty Salon.

W. D. Larned of Bill Wilson Motor Co. has been named winner of Ford's coveted Top Hatter award for his sales performance during 1969.

### 30 Years Ago April 7, 1960

Mayor-elect J. E. Walling Jr. Wednesday expressed his gratitude to the people of Haskell for the substantial vote given him in Tuesday's election.

Allen Rieves was elected president of Haskell Jaycees in the annual election of officers and will succeed Virgil Cobb as head of the organization on May 1.

First Lt. Thomas H. Holland, who has been in Korea the past 13 months, arrived in San Francisco last Thursday. In a telephone call to his parents, Mr. and Mrs. Tom Holland, the young officer stated he expected to be home some time next week.

Jack Jones of Plainview spent the weekend here visiting relatives and friends.

A former Haskell man has been named "Psychiatric Aide of the Year" at the U.S. Public Health Service Hospital in Fort Worth. He is C. B. Cagle, son of Mr. and Mrs. J. H. Cagle and son-in-law of Mrs. J. A. Yancey of Haskell.

### 50 Years Ago April 5, 1940

Registering the same motor vehicle for 21 years in succession is the unusual record of a Sagerton farmer, E. W. Fricke, who Friday secured the new 1940 license plates for his Model T Ford touring car which he has operated since 1920.

Believed the heaviest vote ever polled in a city election, 961 ballots were cast by Haskell voters Tuesday in electing J. E. Leflar, mayor; Austin Coburn, city secretary; and Sebo Britton, city

marshal. Three aldermen elected were Henry Atkeison, Bill Richey and John A. Couch.

Miss Madalin Hunt spent the spring holidays with relatives and friends in Dallas.

Miss Mattie Letha Pippin spent the holidays with friends in Iowa Park and Burk Burnett.

### 60 Years Ago April 3, 1930

According to a report given out by the registrar of the North Texas Agricultural College at Arlington, James Mullino, son of Mr. and Mrs. G. F. Mullino, has made the honor roll on his work in that institution during the winter term just closing. The young man graduated from Haskell High School in 1929 on the day he was 16 years of age. Besides making his excellent record in his school work, young Mullino is first trombonist in the college band.

Mrs. F. M. Robertson is visiting her parents, Mr. and Mrs. W. E. Lowe of DeLeon.

On Friday evening at a junior class meeting, a baseball team was organized. Dennis Wilson was elected captain with Floyd Taylor treasurer. The team will enter the High School League which is made up of the four classes in high school.

A flock of 395 hens on the J. T. Therwhanger farm has returned a net profit of more than \$50 per month for the first three months of this year, County Agent Joe C. Williams reported.

### 80 Years Ago April 2, 1910

At the last meeting of the Mother's Club, it was voted that Mrs. J. F. Posey organize two new clubs, one at the South Ward and one at the East Ward school.

Judge J. E. Poole, secretary of the Board of Trade, is negotiating with Prof. Campbell, author of the Dry Farming System, to deliver a lecture in Haskell.

Pres Baldwin, who has been attending school at Waco, returned home Saturday.

Hon. Cone Johnson, candidate for governor, will speak here Saturday, April 9, at 2 p.m.

Mr. and Mrs. E. A. Chambers returned Sunday night from Seymour where they have been visiting Mrs. Chambers' parents.

John Oates, who is attending school in Waco, has returned home for the summer vacation.

Morris Gilbert, who is attending Stamford Collegiate Institute, spent Sunday with his parents, Dr. and Mrs. E. E. Gilbert.

### 90 Years Ago April 7, 1900

Mrs. R. W. Tyson, who has been away on a visit several weeks, returned Wednesday.

Prof. D. R. Couch and wife came down from Benjamin Monday, the term of his school at that place having expired.

Dr. J. E. Lindsey reports the arrival of daughters at the homes of Mr. and Mrs. A. C. Foster and Mr. and Mrs. H. S. Post last Sunday morning.

Jerold Hills, who has been attending Reynolds Presbyterian Academy at Albany, came home this week and will again take up his

job on the X. Ranch. The Brass Band paraded the town yesterday in a wagon and gave citizens a musical treat.

## Dates, deadlines

**Monday, April 2:** Last day runoff candidates may file campaign contribution and expenditure reports for period ending March 31.

**Monday, April 2:** Extended absentee voting period begins for runoff elections.

**Friday, April 6:** Extended absentee voting period ends for runoff elections.

**Tuesday, April 10:** Runoff for primary elections.

**Tuesday, Nov. 6:** General election day.

## Medicare seminar set for Abilene

Area senior citizens are invited to attend a free seminar on Medicare to be held at University Inn in Abilene on Wednesday, April 4.

The seminar, entitled "Medicare As It Is Today", will be given by Vernon Tunnel with Human Gold Plan. He will discuss the changes in Medicare that repealing the Catastrophic Health Care Act created.

The seminar will begin at 2:30 p.m. and refreshments will be served. No reservations are required.

University Inn is located at 1250 E.N. 10th St. in Abilene.

## Senior girls invited to tea

Haskell area senior girls and their mothers who are interested in national sorority rush at college next year are invited to an afternoon tea in Abilene on April 1.

The tea, sponsored by the Abilene Panhellenic Association, will begin at 2 p.m. at the Abilene Junior League headquarters at 774 Butternut.

Information explaining sorority rush and forms concerning rush will be handed out during a question and answer session.

For more information, call (915) 673-4307 or 928-3776.

## HSU to get new field house

Hardin-Simmons University's Board of Trustees has approved the building of a new field house to serve the new football and current baseball programs, based on a lead gift of oilman Jackie Sandefer of Houston and a support gift by A. B. "Stormy" Shelton of Abilene.

The 20,000-square-foot building, projected to cost just over a half million dollars, will be named the Jake Sandefer Field House in honor of the lead donor's late father.



"If It Ain't Broke, Break It." That was the headline Newsweek put on a story about NBC's moving of Jane Pauley off the "Today" show.

"It's shaping up as the most destructive act of self-inflicted sabotage since Coke changed its formula," said the magazine.

It's not very smart of those who think politicians should be forbidden to stay in office after a certain number of years.

It's a mighty expensive way to run a railroad. Ex-politicians cost us more than politicians.

The Washington Post reports that former President Gerald Ford will make more money from the taxpayers this year than President Bush.

While Ford lounges at his retreats in Vail and Palm Springs, he will collect a federal pension of \$219,199, the combined pension for his years as a congressman and president. Bush, who still must show up at the office every day, will get only \$200,000.

Albert Gore made \$42,500 the last year he was a senator, but today he collects a pension of \$88,564. COLA calculations have treated him kindly.

By the first of next year, House members will be making 40 percent more money than they were at the first of this year. And since congressional pensions are based on a member's three highest income years, those retiring after 1993 will have their pensions based on a salary of at least \$125,218.

If the entire U.S. Congress retired in 1993, the Post calculates the government would pay at least \$1 billion each to more than 300 of the 535 retirees before they died.

If Congress were a private business, the IRS would disqualify its pension plan.

When you order coffee at a lot of these fast food places, they don't give you cream unless you request it.

Presumably, this is to keep from wasting cream on people who don't want it.

But when I ordered cream with my coffee the other day, I was given five (yes, 5) containers of the stuff.

Talk about waste.

Went back to the home grounds the other day for the 100th anniversary celebration of the old family church. Saw a lot of people I had not seen for many moons.

Huddling with a couple of former classmates and trying to figure out who had become the most successful of our fellow graduates, a startling conclusion was revealed:

The most successful was not the smartest, the best looking or the best liked. Nope, he was the one whose father had the most money.

Somehow, that story doesn't seem too original.

Out of the blue the other day came a call from the publisher of the newspaper in Haskell, Okla. He just wanted to visit via phone.

Bill Guy, who has been at that other Haskell since 1962, is an old friend. We were next-door neighbors as kids in another Oklahoma town. Way back yonder, we toiled side-by-side in the employ of his dad who owned the local newspaper.

## Tax, tax, tax

Tax his cow, tax his goat, Tax his pants, tax his coat, Tax his crops, tax his work, Tax his tie, tax his shirt, Tax his chew, tax his smoke, Teach him taxes are no joke, Tax his tractor, tax his mule, Teach him taxes are a rule, Tax his oil, tax his gas, Tax his notes, tax his cash, Tax him good and let him know After taxes he has no dough, If he hollers, tax him more, Tax him 'til he's good and sore, Tax his coffin, tax his grave, Tax the sod in which he lays, Put these words upon his tomb: "Taxes drove me to my doom." And after he's gone he can't relax, They'll still be after inheritance tax.

**THE HASKELL FREE PRESS**

Established January 1, 1886  
PUBLISHED EVERY THURSDAY  
401 S. First St  
P. O. DRAWER 1058 HASKELL, TEXAS 79521

Don Comedy.....Publisher  
Wendell Faught.....Editor  
Lisa Shaw.....Business Manager  
Alice Ballard.....Production  
Charles Thornhill.....Advertising

Second Class Postage Paid Haskell, Texas 79521  
(USPS 237-040)  
SUBSCRIPTION RATES:  
In Haskell and adjoining counties, one year, \$12.00; six months, \$10.00; two years, \$23.00; Elsewhere in Texas, one year, \$15.00; six months, \$13.00; two years, \$29.00; outside Texas, one year, \$17.50; six months, \$15.50, two years, \$34.00.

NOTICE TO PUBLIC-Any erroneous reflection upon the character, reputation or standing of any firm, individual or corporation will be gladly corrected upon being called to the attention of the publisher.

POSTMASTER:Send address changes to The Haskell Free Press, P.O. Box 1058, Haskell, TX, 79521-1058.

# M SYSTEM

Your FRIENDLY

## AFFILIATED SUPER MARKETS

Haskell, Texas Open 7 days a week  
Monday-Saturday 7:00 a.m. til 8 p.m. • Sundays 8 a.m. til 7 p.m.

### DOUBLE COUPONS 7 DAYS A WEEK!

We will redeem your manufacturers' cents-off coupons for double their face value up to 50¢ when the product is purchased. We will double only one coupon per item. All others redeemed at face value. Limit one coupon per item. Coupon not to exceed value of item. This policy does not include "Free" coupons, cigarette and tobacco, or refund coupons. Offer good for a limited time only. Super value offer from M-System in Haskell.

### We Gladly Accept Food Stamps

Prices Good  
March 28-April 1



We reserve the right to limit quantities.

Your M-System Supermarket Cash Register Tapes Can Win A

## Free Computer for Schools!

**HERE'S HOW:** You simply drop your original M-System supermarket cash register tapes into the collection boxes in our store. Each school has a collection box, and each school can win a NEW APPLE IIGS COMPUTER!!!

**IT'S EASIER!  
IT'S FASTER!**  
Than any other computer give-away!

WATCH THE TOTAL GROW EACH WEEK FOR YOUR FAVORITE SCHOOL!

**WHICH SCHOOL WILL BE THE FIRST TO WIN A COMPUTER!!**  
Help your school get off to a FAST START this week as you SAVE on your total food bill



### Shurfine Coffee

Regular, Drip, Perk  
**\$1.19**  
13-oz. Can

Limit 1 with additional purchase of only \$10.00 or more excluding cigarettes and beer.

### Coke & 7-Up

6 pack **\$1.75**

Slim Fast  
15 oz can

**\$3.99**

Ultra Slim Fast  
15 oz can

**\$4.99**

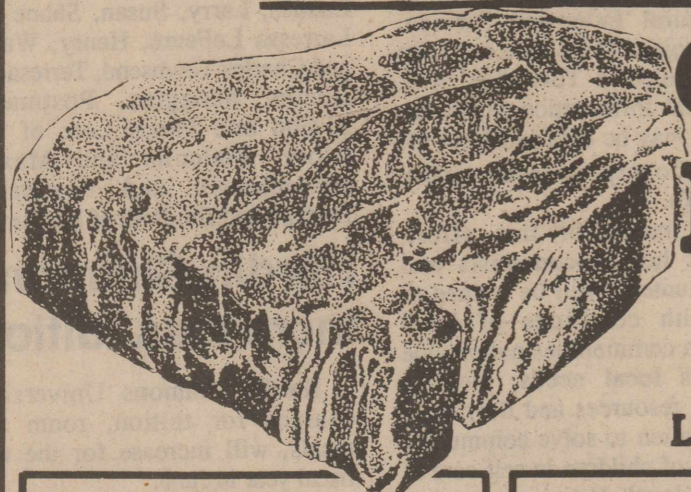
Scott Paper

### Towels

Assorted, Jumbo Roll (Limit 2)

**69¢**

### QUALITY MEATS



### Chuck Roast

Lb. **\$1.39**

Del Monte  
Tomato Sauce  
8-oz. Cans

**4 88¢**  
For

Shurfine  
Vegetable Oil  
48-oz. Bottle

**\$1.59**

Chicken of the Sea  
Tuna  
In Oil or Water, 6½-oz. Can

Limit 3, Please **57¢**

Shurfine Cream of  
Chicken or Mushroom

Soup  
10.5-oz. Cans  
**2 89¢**  
For

Heinz Keg'O  
Ketchup

32-oz. Glass Bottle  
**\$1.19**

Shurfine  
Dog Food  
Chicken-Beef-Liver, 14-oz. Cans

**5 \$1.00**  
For

Fresh  
Ground Beef  
**\$1.19**  
Lb.

Pilgrim's Pride  
Fryer Breast  
**\$1.69**  
Lb.

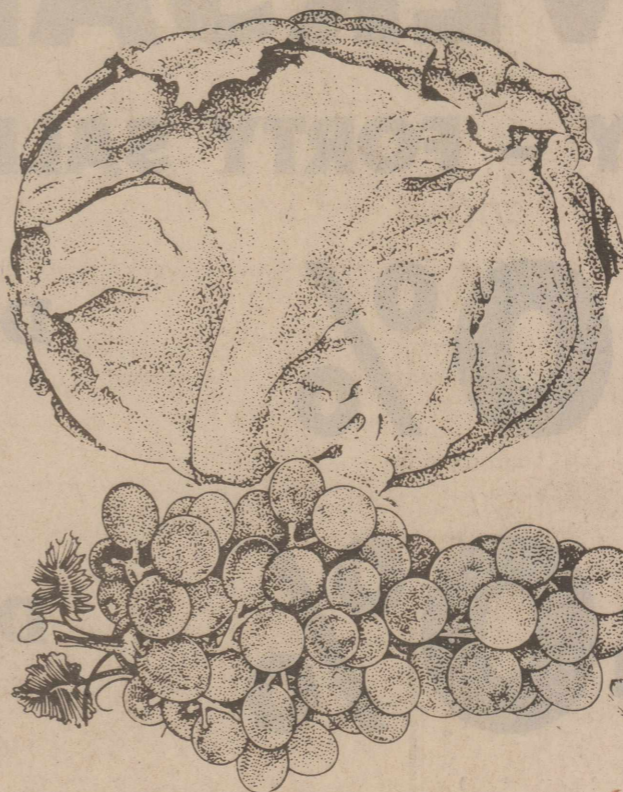
Jimmy Dean  
Pork Sausage  
**\$1.79**  
1-Lb. Pkg. 2-Lb. Pkg. \$3.56

Jimmy Dean Smoked  
Sausage  
**\$1.99**  
Original/Jalapeno/Mesquite  
1-Lb. Pkg.

- Scott Bath Tissue Assorted ..... 4-Roll Pack **\$1.99**
- Welch's Grape Jelly ..... 32-oz. Jar **\$1.49**
- Sunlight Liquid Dish Detergent .... 40¢ Off Label, 22-oz. **\$1.19**
- Sue Bee Honey ..... 12-oz. Squeeze Bottle **\$1.19**
- Shurfine Salt Plain or Iodized ..... 26-oz. Box **3 For \$1.00**
- Pet-Ritz Cobblers Apple-Blackberry-Peach-Cherry ..... 26-oz. **\$2.19**

- Turbot Fillets Market Pack ..... Lb. **\$1.99**
- Delta Pride Catfish Nuggets Market Pack .... Lb. **\$1.99**
- Shoulder Roast ..... Lb. **\$1.69**
- Chuck Steak ..... Lb. **\$1.79**
- Boneless Pork Chops Lean & Tender ..... Lb. **\$3.59**
- Oscar Mayer Wieners Bun Size All Meat ..... 1-Lb. **\$1.69**
- Decker Sliced Bacon Orig./Low Salt. .... 1-Lb. **\$1.49**
- Oscar Mayer All Meat Bologna and Cotto Salami ..... 8 oz **\$1.19**
- Oscar Mayer Ham & Cheese & Chopped Ham ..... 8 oz **\$1.79**
- Oscar Mayer Lunchables ..... 4.5 oz **\$1.29**

### FARM FRESH PRODUCE



Western Iceberg

### Lettuce

**2 \$1.00**  
Heads

- Sunkist Calif. Navel Oranges ..... Lb. **39¢**
- Red Seedless Grapes ..... Lb. **89¢**
- Sunkist Red Grapefruit ..... 5-Lb. Bag **\$1.99**
- Fresh Broccoli ..... Bunch **99¢**
- Calif. Snowball Cauliflower ..... Lb. **69¢**
- California Avocados ..... 2 For **\$1.00**
- Roma Tomatoes ..... Lb. **69¢**
- White Onions ..... 2 Lbs. **\$1.00**
- Fresh Asparagus ..... Lb. **\$1.49**

Price's  
Pimento  
Cheese  
14-oz. Tub  
**\$2.19**

Pillsbury  
Hungry Jack  
Biscuits  
5-oz. Cans  
**2/95¢**

Parkay  
Margarine  
1-Lb. Pkg.  
(Quarters)  
**59¢**

- Eversoft Unscented/Scented ..... 6-oz. **\$2.49**
- Lady Smooth On Reg./Fresh/Unscented. .... 1.5-oz. **\$1.79**
- Mink Difference Hair Spray ..... 7-oz. **\$2.59**
- Neo-Synephrine Mild Spray ..... 15 ML. **\$2.79**
- New Visine Eye Drops ..... 5-oz. **\$2.45**

## Couple share profession

(Randy Ivy is a 1974 graduate of Haskell High School. The following story appeared in the Corsicana Daily Sun.)

By Mike Bazemore

Sharing a marriage and a profession has been a perfect combination, say Diane and Randy Ivy, although not without some anxious moments along the way.

Diane, head girls basketball coach at Frost High School, and Randy, head boys basketball coach at Mildred High School, are normally separated during the high school basketball season as they are constantly on the go with coaching. But that is offset by the fact that after the game there is always a knowledgeable ear at home to talk over games with.

"I think it makes it easier," Randy says. "Having those things in common is good."

Not all is common ground for these two as their coaching styles are vastly different.

"She does a lot more studying on basketball than I do," says Randy. "I've kind of got my set ways because of the way I played in high school. I feel like it's the only way to play."

Diane will watch a game on TV and pick up ideas as well as picking up ideas at different coaching schools and clinics.

"I get her to show me some of the things she's learned," says Randy.

Both styles have resulted in playoff berths this season which makes the Ivy household a nice place to be these days. But because of their differing styles, neither offers too much unsolicited help.

"She gets mad if I tell her," says Randy.

"When I come to his games I mainly come to watch," says Diane, who rarely gets a chance to watch her husband because both normally play at different sites on the same nights.

The marriage and coaching has not mixed without a great deal of effort from both sides. In fact Randy even coaching basketball is probably attributed to his marriage to Diane.

In his first year out of Texas Tech he landed a job in the Crowley school district. At the time he took the job he didn't realize he would get more than a start in the coaching profession from the stint.

Diane had graduated from Crowley the year before and was attending Texas-Arlington. The younger sister of a friend was still in the Crowley system and decided to try to play match maker.

"She went up and asked him if he was married," says Diane. "And he said no. She said, 'well I've got somebody I want you to meet.'"

"In the meantime they were telling me the same thing, 'we've got somebody we want you to meet.' I said no way, no more blind dates because they had already done that to me before."

But eventually the match was indeed made. On the night of one of Randy's junior high football games they were to get together.

"She came to the game and got to see what I looked like," says Randy. "I was out there coaching and she was in the stands somewhere so she cheated. But at least she came down."

The two found a great deal in common and started dating but when Randy decided to take a job in Knox City they were faced with a decision.

"I decided it was time to either get married or spend a lot of money on long distance phone calls," says Diane.

Marriage was the choice and what followed was a hectic lifestyle as Diane constantly changed schools to follow Randy's progression. When he took the job at Knox City she transferred to Midwestern. One year later Randy moved on to Hamlin while Diane switched to Abilene Christian where she eventually graduated.

The most recent move came as result of Diane taking a job at Frost which sent Randy looking for a job in the area.

"Her superintendent, Gene Burton, started looking for something for me," says Randy. "We came down and visited one day and he said let's drive over to Mildred, they've got an opening

over there."

The opening was head basketball coach and Randy landed the position.

The move has worked out well for both, as both have been in charge of successful programs this season.

And even when they aren't at the gym together each offers strong support for the other.

"She wants me to win as bad as she wants her girls to win and I think it's vice versa," says Randy. "Of course, I know her girls pretty well and she knows my boys."

Basketball is also a big part of the lives of the couple's children, Brittany, 7, and Brad, who will turn 5 later this month.

"I guess in a way a parent's interests become your kids' interests," says Diane.

Hanging around a gym Brittany has been picking up some basketball skills which Diane says will benefit her down the line if she continues to show an interest.

"It's really been nice for her," says Diane, "and I think it will be good when she's ready to play that she's been in a gym, and Brad the same way."

And while styles may be different, philosophy is the same for both.

"My kids are like his," says Diane. "They're good kids and it you prove to them you care about them and want them to do well and expect them to do well, then they're going to."

"Basically that's what we both try to do."

Since Diane coaches girls and Randy coaches boys, the two haven't found themselves on opposite benches. But they wouldn't mind having that chance.

"That would be fun," says Randy.

"I think at the game we'd still do what we had to do to see that our team won," says Diane.

"And I'm sure whoever won would have something smart to say," says Randy.

Thank you for reading The Haskell Free Press.

## Low income may qualify for assistance

Some low-income families may be eligible for help in paying heating bills this winter through the Home Energy Assistance Program.

One-time payment is available to many low-income households in Texas. Applications for energy assistance were mailed to households that received food stamps, Aid to Families with Dependent Children or Supplemental Security Income in December. Other low-income individuals may request an application by calling the toll-free number 1-800-252-8060 during the enrollment period of Jan. 22 through Feb. 28.

Eligibility is limited by gross income and resources. Aid is available for a one-person household having less than \$589.49 gross income per month. The gross income limits are \$781.49 for households of two persons, \$973.49 for three, \$1,165.49 for four, \$1,357.49 for five and \$1,549.49 for six.

Households are eligible if the cost for heating is included in the rent payment or if the household pays a portion of its home energy costs.

Energy assistance checks are sent directly to the people who are eligible for assistance. However, the checks are made payable to the energy provider.

People receiving one of these energy assistance checks should mail it or take it in person to the energy provider business office with their regular energy bill. The check can be cashed only by the energy provider.

If the check is more than the energy bill, the additional amount will be credited to the person's account for the next month's bill. If the energy bill is higher than the check, the person is responsible for paying the difference.

We have pens that write pink, light blue, purple and burgundy to match your favorite stationery. Pick a color at the Haskell Free Press.

## Program targets latchkey kids

Training for a new project aimed at helping children who are at home alone after school has been completed by the Texas Agricultural Extension Service at Vernon.

Dr. Sarah L. Anderson, CHE, an extension family sciences specialist at Texas A&M University, conducted the two-day training to 25 participants, including Lou Gilly, Haskell County extension home economist.

The goal of Project Home Safe is to provide home economists and other volunteers with the necessary technical resources so they can help local communities develop and implement support services for latchkey children and their families as well as after-school child care programs for school-age children.

Project Home Safe is a national outreach program developed by the American Home Economics Association and is being implemented by professional home economists across the country. The three-year project includes research, training, materials development, and start up or strengthening of community school-age child care programs throughout the country.

Project Home Safe is being implemented in Texas by the Texas Agricultural Extension Service. Seven Project Home Safe trainings are scheduled in Texas for 1990. Additional information about the program may be obtained from the Haskell County extension office (864-2546).

As a result of this effort, qualified home economists and other volunteers will be trained to work with coalitions of local leaders in communities nationwide to assess local needs, identify available resources and develop a plan of action to solve community problems of children in self care at the local level. Home economists and volunteers will also receive information on how to plan, conduct and evaluate life-skills training for children in self care and will work to increase national awareness of the needs and

problems of young children who care for themselves.

A national hotline for adults seeking more information about Project Home Safe or for those who need additional resources for self-care training programs, materials and resources for school age children in self-care, or resources for supervised school age child care has been established by the American Home Economics Association. The toll-free number is 1-800-252-SAFE.

## Retirement party

On Monday night, Feb. 26, a surprise retirement party was given for Delbert LeFevre of Sagerton who is retiring from the Rule Post Office after serving 38 1/2 years as a rural carrier.

The party was at Andy's Barbecue in Stamford. LeFevre received the 40-year longevity service award pin from the U.S. Postal Service. He also was presented with a replica of the Rule Post Office.

Those attending the party were Joyce and Delbert LeFevre, Charles and Dorothy Clark, Jana and Johnny Manske, Ronnie and Lou Landes, Larry, Susan, Shane and Larressa LeFevre, Henry, Wanda and Charles Townsend, Teresa and Johnny Scoggins, Postmaster Lisbon and Farris Letz of Old Glory, Malcolm and Maxine Hertenberger and Postmaster Barbara and Jim Pratt of Benjamin.

## Hardin-Simmons increases tuition

Hardin-Simmons University's charges for tuition, room and meals, will increase for the new fiscal year in June.

A typical student enrolled for 15 semester hours and living on the campus will pay approximately 8.7 percent more in the new fiscal year.

Tuition will increase from \$147 per semester hour to \$165. Fees will remain the same.

# A CONTINUATION OF OUR 85th ANNIVERSARY SALE

"A THIRTY - FORTY SALE"

30%

DISCOUNT ON ALL HARDWARE, HOUSEWARES AND GIFTS

40%

DISCOUNT ON ALL FURNITURE

Jones Cox & Company  
Country Store

THREE DAYS ONLY!!

Thursday, Friday and Saturday  
March 29th, 30th and 31st



CASH ONLY

-Established in 1905-

# --Letters to the Editor--

## Super Saturday

Editor: I am writing in regard to the Second Super Saturday in Haskell campaign. The Haskell merchants have been planning for the 10-month event for quite some time and now the time has come for the creators of the plan to persuade their merchants to participate.

For a fee of \$500 a merchant can be included in the campaign and only 80 percent of that fee will go to advertising. Bumper stickers will be given away to patrons advertising the event. Considering the small amount of the bumper stickers that will actually make it in the car bumpers instead of tossed in the bottom kitchen drawer, 40 cents seems a little bit high for merchants to pay for each bumper sticker to give them away free.

"You need to participate," participating merchants tell the others. Well, what we need to do is think wisely, efficiently and spend our advertising dollar in the most effective way possible.

The non-participants are accused of "riding free" on the participants' advertising dollars, but to my knowledge, none of the non-participants asked for such a campaign in Haskell.

For some, business is doing very well without any Saturday extravaganza and to participate in something that is really non-applicable to these businesses would be foolish.

"If your business is doing well, you should help the others do well." My answer: No one helped us get up on our feet. A good businessman or businesswoman should be able to make it regardless of what the other merchants choose to do.

To top it all off, "in just 10 short months we predict that with the Super Saturday plan Haskell

will be as big as the Canton Flea Market." Realistically, how feasible is that when we have only a fraction of the businesses that Canton has and twice the prices?

For those merchants who are having a hard time, I sympathize, but times will only get better when they start putting their dollar into effect in efficient, realistic ways and they begin to realize the actual size of Haskell and its potential.

Improvement, maybe so--- Canton, Never.

Kacye Nemir  
Haskell

## From the Indians

Editor: The Haskell Indian basketball team would like to thank all the fans who supported us during this season. We appreciate all the people who traveled to see us play. It was nice to see more people from Haskell than from opposing schools. It does make a difference.

We would like to extend a special thanks to the administration, faculty, school board, cheerleaders and Booster Club for all the extra support and help through the season.

Coach Randy Stone  
and the Haskell Indian  
Basketball Team

## Washington trip

Editor: I would like to take this opportunity to publically thank each and every person and organization in town who helped make the Washington, D.C., trip possible for our Student Council and National Honor Society.

I only wish you could have shared the pleasure I received in watching their faces as they took in the sights and experiences of Monticello, Colonial Williams-

burg, Jamestown, the Atlantic Ocean and Chesapeake Bay, and the nation's capitol.

The young people I took on this trip behaved impeccably. They represented our town, their parents, the school and themselves in a way we can all be proud of.

Our guide in Washington even volunteered an extra half day of her time to our group because she said they were the best-behaved school group she had worked with.

All students in the Haskell school system represent our future, and they all have great potential, thanks to a community who supports and believes in them. Thanks again for that support.

Susan Pope

## Apathy

Editor: People sing about it. Parents preach against it. Teachers teach about it. The federal government has declared war on it.

The networks are getting ratings and make money dramatizing it. Politicians build platforms based on it.

Good citizens are outraged by it. Bad citizens make money and kill for it.

Public and private institutions try sobering up those who have abused it.

Law enforcement spends a lifetime trying to "arrest" it.

And then, there are those of you, who believe in your hearts, that it doesn't affect you.

It, of course, is drugs.

On March 17, our community (14 counties including Haskell) had the opportunity to support the fight on drugs in our area. About 35 entertainers and volunteers donated not only their fine talents, but their own travel expenses, to raise funds for the West Central Texas Interlocal Crime Task Force.

Food and soft drinks were donated to help sustain performers through two performances. Printing of programs was donated; advertising was provided as a community service; volunteers worked for days, weeks and months to put on shows that were outstanding. It was 3 1/2 hours of country music, barbershop singing, Bluegrass, comedy and gospel. Proceeds were to provide the desperately needed funds to be able

to continue the work of the Task Force to fight the war on drugs.

But, there was a shocking lack of support from our community for the cause, for the efforts, and for the need. Tickets were only \$5---the price of a movie ticket, a few games of bowling, a quick meal---and every dollar went directly to the Crime Task Force. Out of a 14-county community, consisting of almost 300,000 people, only 200 came to support the event.

Maybe this entertainment is not everyone's favorite. Maybe everyone was busy Saturday afternoon and Saturday evening. Maybe no one in the community has had a son, daughter, mom or dad affected by drugs or drug dealers. Maybe no one in the community has ever been robbed, burglarized, mugged, defrauded, lied to or cheated out of anything because of drugs. Maybe taxes don't go up annually so more people can be hired to deal with the problem. Maybe there is a Utopia. But, chances are you do know someone who has, and taxes do go up every year because of it. There is no Utopia.

Locally, our Crime Task Force must raise one-fourth of their own funds to keep operating and keep the struggle with drugs going. The President's declaration of War on Drugs is only three-fourths of what we need---we in our community are responsible for the rest. In general terms, it translates into only one dollar from each person in our area.

We didn't have an entertainment star or Hollywood name in our corner to raise big dollars and convince everyone this is a good cause---but, we shouldn't have to. We should have been able to carry this off with just keeping the "Main Thing" the "Main Thing"---and that is getting drugs out of our communities.

After all, everyone is talking about what a problem this is and about how "those" people need to do something. Unfortunately, I've discovered that "those" people who are fighting it are getting beat, frustrated and worn out. They're fighting a battle they didn't create, for people who seem to not care, under conditions that, at best, are bad enough for the rest of us to avoid working under.

For those of you who do help fight---God Bless You.

For those of you who support those who fight it: Thank You.

For those of you who are apathetic and tired of hearing about it: I pity you. Your world is not real and when reality hits, it'll be hard and heartless.

Jennifer Cleveland  
Abilene  
(915) 698-9949

## Vote

Editor: Texans return to the polls Tuesday, April 10, for round two of the 1990 election year nominating process. On that day, several statewide and local Democratic and Republican party primary runoff elections will be held.

On Tuesday, March 13, Texans went to the polls in record numbers to nominate hundreds of statewide and local candidates. The primary runoff elections will determine the outcome of those races in which no candidate received more than 50 percent of the votes cast.

It is imperative that Texas voters participate on April 10 as they did on March 13 when statewide primary voter turnout reached an all-time, non-presidential year high.

Many important decisions at all levels of government will be made in the runoffs, but, if history repeats itself, a relatively small number of Texans will make those decisions.

At the statewide level, Democratic party voters will nominate candidates for Governor, State Treasurer, Justice, Supreme Court, Place 2, and Judge, Court of Criminal Appeals, Place 1, while Republican party voters will nominate candidates for Agriculture Commissioner and Land Commissioner.

In recent years, the drop in voter turnout from the primary election to the runoff has been substantial. For example, take the 1984 Democratic party primary race for the U.S. Senate when turnout dropped from 21 percent in the primary to 14 percent in the runoff. Another dramatic decline took place in the 1988 Republican party primary for U.S. Senate when the turnout rate dropped from 10 percent to 2 percent.

We can and we must do better, particularly when you consider the importance of runoff elections. By

not participating in this final round of the nominating process, we let others decide who will be on the general election ballot in November.

Fellow Texans, I challenge you to return to the polls on April 10. Make your voice heard. If you are registered, but did not vote on March 13 you can still participate in round two on April 10.

The rules for voting in the runoff are simple. If you did not vote in either political party's primary, you can still have a voice in the nominating process by voting in the runoff elections. If you voted in one political party's primary, you can't vote in the other political party's runoff.

This year's primary runoff election officially gets underway with the Monday, April 2, opening of the extended absentee voting period. From April 2 until April 6, Texans who are registered to vote can appear at polling places across the state and cast absentee ballots.

In the most recent primary elections, approximately 15 percent of those who voted cast their ballots during the "no excuse" extended absentee voting period.

On March 13, Texas recorded its highest primary election turnout ever in a non-presidential year. More than 2.3 million Texans cast ballots in the Democratic and Republican primaries, a turnout believed to be the second highest total for any primary election in state history. We need to maintain that enthusiasm and continue the momentum as we approach April 10.

I have said this before, but I believe it bears repeating. Voting is one of the most---if not the most---important privileges of American citizenship. People throughout the world are bravely standing up and fighting for democracy, a right that many Americans so often take for granted. Let's show the world that in Texas, we practice what we preach by voting on April 10.

George S. Bayoud, Jr.  
Secretary of State

## Watchdog award

U.S. Sen. Phil Gramm has been awarded a Watchdog of the Treasury Inc. award for his efforts in 1989 to eliminate government waste and reduce the federal budget deficit.

**Stamford Chiropractic Clinic**  
915-773-5012

- Neck Pain
- Back Pain
- Leg Pain
- Arm Pain
- Joint Pain
- Headaches

Dr. Stephen Hambricht  
1511 Columbia, Stamford  
-Office hours-  
Mon.-Fri. 9-12, 1-5 and Sat. 9-12  
We accept Medicare, Medicaid, Workers Comp.,  
Personal Injury and most personal insurance.

**THE WIX ANNUAL FARM FILTER SALE**  
50% OFF\*  
ALL FARM FILTERS

No matter what heavy duty equipment you have... no matter who the manufacturer --- WIX has you covered with any type filter you need. So stop by now and stock up while the savings are the greatest!

\*Manufacturers suggested list price.

**FREE! WIX Cap with 2 filters purchased**  
**SMITTY'S AUTO SUPPLY**  
204 N. 1ST. • HASKELL • 864-2607

**We've Done Our Spring Cleaning and Reduced Prices Up to 50% Savings on Selected Over the Counter Health & Beauty Aids Gift Items**

**Leggs Hosiery & MAX FACTOR Cosmetics**

**25% Off**

**Make Plans for Blood Pressure & Blood Cholesterol Screening Coming Thursday April 5th**

**DOYLE HIGH'S THE DRUG STORE**  
100 S. AVE. E OPEN 8:00-6:00 864-2515

**ENDS MAR. 31ST!**

**GUARANTEED REBATE EXTENDED.**  
IF THE REBATE GOES UP, CHRYSLER WILL PAY THE DIFFERENCE. NOBODY ELSE DOES THAT.  
**ADVANTAGE: CHRYSLER-PLYMOUTH!**

**1990 CHRYSLER LeBARON COUPE**  
Crafted for Luxury and High Performance  
**\$1000 GUARANTEED\* OR 2.9% A.P.R.!**

- 2.5-Liter Electronic Fuel Injected Engine
- All-New Cockpit Style Interior
- Power-Assisted Rack-and-Pinion Steering
- Power-Assisted Four-Wheel Disc Brakes
- Road Touring Suspension
- Message Center and Mini-Trip Computer



**1990 NEW YORKER FIFTH AVENUE**  
The All New Prestigious Addition to the New Yorker Line  
**\$1000 GUARANTEED\* OR 2.9% A.P.R.!**

- Smooth, Responsive new 3.3-Liter V-6 engine
- More Legroom than the biggest Cadillac\*
- Automatic Temperature Control Air Conditioning
- World's Most Advanced Automatic Transmission
- Crystal Key 5 Year or 50,000 Mile Owner Care Warranty\*\*



**1990 CHRYSLER LeBARON SEDAN**  
Take A Test Drive in LeBaron  
**\$1000 GUARANTEED\* OR 2.9% A.P.R.!**

- 3.0-Liter multipoint Fuel Injected V-6 Engine
- World's Most Advanced Transmission
- Tinted Glass, All Windows
- Power-Assisted Steering
- Air Conditioning



**THERE'S NO REASON TO WAIT FOR THAT NEW CAR!**  
\*Must take delivery from new dealer stock by March 31. See dealer for details and Guarantee Claim Form. See dealer for additional vehicles with cash back. Rebate guaranteed through Sept. 30, 1990. \*\*Excludes normal maintenance, adjustments and certain wear items. See a copy of limited warranty at dealer; restrictions apply. \*Comparison to Cadillac Brougham. †Short-term financing for qualified retail buyers through Chrysler Credit on new '90 stock. Longer term rates available.

**Bill Wilson Motor Co.**  
"Where You Get Service After The Sale"  
209 S. Ave. E • Haskell • 864-2611

America's way to go! 

## Texas crime rate shows slight drop

The Texas crime rate decreased in 1989 and the number of major crimes reported increased only 0.1 percent compared with 1988 figures.

The 1989 crime rate---the number of major crimes reported per 100,000 population, dropped 1.2 percent, from a rate of 8,019.6 in 1988 to 7,926.8 in 1989, according to Texas Department of Public Safety (DPS), records.

"Considering some of the past increases in crime Texas has experienced, we are very pleased to see the crime rate has actually dropped and the number of crimes reported has grown only slightly," DPS Director Col. Joe Milner said.

Major crimes in Texas, which include murder, rape, robbery, aggravated assault, burglary, theft and motor vehicle theft, edged up from 1,345,688 to 1,346,846---and increase of 1,158 offenses.

"Unfortunately, the news is not all good," Milner said. "Motor vehicle theft, which has been a major problem in Texas for several years, increased by 12.4 percent. That was the largest gain in any of the categories."

Milner said increases also were reported in aggravated assault (6.5 percent), murder (0.4 percent) and theft (.03 percent).

All other crime categories were down, including burglary (5.5 percent), robbery (3.6 percent) and rape (2.1 percent)," Milner noted.

Texas peace officers cleared 20 percent of the major crimes they investigated, the same clearance rate reported in 1988.

Arrests in Texas increased by 5.8 percent, from 855,259 in 1988 to 905,166 in 1989. Arrests for drug-related offenses soared 13.2 percent, from 63,450 in 1988 to 71,800 in 1989.

Arrests for drunkenness increased by 4 percent, from 159,096 in 1988 to 165,495 in 1989, while DWI arrests decreased slightly (0.5 percent), from 103,482 in 1988 to 103,008 in 1989.

"Law enforcement in Texas has had a price," Milner said. "In 1989, 17 law enforcement officers died in the line of duty---eight in criminal actions and nine in duty-related accidents."

The number of peace officers assaulted in Texas increased by 8 percent, from 4,242 cases in 1988

to 4,580 in 1989.

Here are the 1988 and 1989 comparisons:

	1989	1988
Murder	2,029	2,021
Rape	7,953	8,122
Robbery	37,910	39,307
Assault	63,978	60,084
Burglary	342,360	362,099
Theft	741,642	739,784
Veh. Theft	150,974	134,271
Total	1,346,846	1,345,688

## Baptists oppose 'tax cut'

Based on pari-mutuel promoters' own promise of \$100 million in tax revenue, a proposed tax cut could mean "an \$80 million pork barrel" for the racing industry, according to the Texas Baptist Christian Life Commission.

At its February meeting in Dallas, the 15-member commission approved a statement urging the Texas Legislature not to provide the pari-mutuel industry a proposed 80-percent tax cut. The Christian Life Commission is the public policy and moral concerns agency of the Baptist General Convention of Texas that speaks to, but not for, Southern Baptists in Texas.

"Don't bait the people of Texas with claims of \$100 million in income, then switch and ask the state to subsidize gambling," the commission stated.

The CLC noted that two years ago, the racing industry promised that they would "fill the coffers of the state with tax dollars" if Texas voters would allow betting on horse and dog races.

"Now it becomes obvious to all that the racing industry never intended to live with that deal," the CLC stated. "They immediately came back to ask the legislature to lower their tax."

Claims that a lower tax actually will result in higher tax income for the state "are as empty as the rest of the promises they have made," the commission stated.



## Intramural basketball

Southwestern Oklahoma State University in Weatherford has one of the largest intramural basketball programs among the universities of Oklahoma. The program, designed to provide recreational entertainment, is a popular pastime for many students. More than 60 teams are participating in the men's and women's leagues this season. Members of Kappa Psi "B" are, kneeling from left, Brad Pickett of Altus, James Dixon of McAlester, Eddie Wynn of Fairview, Tony Knickle of Calera; standing, Shannon Forehand of Weinert, Tim Heird of Cashion and Freddie Norton of Cordell.

## Stay healthy by eating right

Eating right is your best defense to staying healthy, says Lou Gilly, Haskell County agent-home economics. The challenge is deciding what "eating right" really means.

It's so easy to become confused with so much misinformation about nutrition making the headlines and appearing in numerous television commercials directed toward health-conscious consumers.

Consider a recent television commercial featuring a consumer who said she is now "eating healthy." She avoided red meat and poultry for the last year and hasn't eaten an egg since Easter, several years before. She said she has found cheese which is low in fat and cholesterol.

Viewers who are guided by this testimonial might avoid eating all red meat, eggs and poultry to lower their blood cholesterol. Eating healthy does not mean eliminating or limiting certain foods in the diet. Most health organizations describe healthy eating as a prudent, low-fat diet based on all the food groups, explained Gilly. For example, red meat should be included. It provides many of the minerals and vitamins

and helps to prevent anemia. For many people, especially women, eliminating red meat is not a good choice, explains Gilly. "When thinking about limiting meat, think about small servings if you are watching calories and fat consumption. Be reasonable.

The agent said strict vegetarians have a tough time eating a balanced diet. If you are a strict vegetarian you would consume no animal products. That means no milk, no eggs, no fish nor chicken. If that's true, you'd have a hard time meeting your iron requirement, your zinc requirement and getting many of the B-vitamins you need.

One of the crucial B-vitamins is B12. This vitamin can only be obtained from animal products. If you don't get this vitamin in adequate amounts, there could be serious health problems.

Studies show that people who follow a good diet and exercise program have less stress and feel better about themselves, Gilly explained.

If you have questions about the validity of diet and nutrition information you see or hear, call the county extension office at 864-2546.

## Rule remembers Carl Thomas Hunt

(Second in a Series)

By Jack Westbrook

Technical Sergeant Carl Thomas Hunt was born Nov. 14, 1917, to Robert Taylor and Amanda Florence Hunt near Rule, Haskell County, Texas.

He was the ninth of 13 brothers and sisters. Carl was raised on his family's farm, learning early the meaning of work. He was taught by his father to contribute to the family's well being which provided him with the strength to meet the challenges which were to face him.

He attended Tonk Creek School, graduating from Old Glory High School. He was brought up in the church to be a God-fearing man. He was a farmer at heart.

T/Sgt. Hunt entered his country's service on Feb. 13, 1941, at Abilene, Texas, immediately being assigned to Texas' own 36th "Arrowhead" Infantry Division. He trained with them at Camp Bowie near Brownwood, Texas.

He later transferred to the Air Arm of the Army, trained at Sheppard Field, Texas, and Santa Monica, Calif., qualifying as an expert in the wide field of aircraft crewmanship. He was crew chief and engineer on an officer's airplane when he died in a crash of his plane at Kharagpur, India, on Nov. 19, 1944.

He was brought home where he and his brother, Pfc. James R. Hunt, were buried side by side with a joint service. They were honored with a memorial service by the community of Rule.

He was awarded posthumously the Purple Heart, the American



T/Sgt. Carl Thomas Hunt

Defense Service Medal, the African-European-Middle East Campaign Medal, the China-Burma-India Campaign Medal with one Bronze Star and the World War II Victory Medal.

T/Sgt. Carl Thomas Hunt is one of the servicemen who made the ultimate sacrifice, that are being honored by the Rule community with a memorial monument. This seems to be the least that the community can do and does it with deep humility and appreciation, bowed in the view of what their fallen citizen gave for us. The memorial serves as a reminder of the deep debt we owe these heroes, and, the greatness of the responsibility which lies with us to continue the quest which they were pursuing. It cannot be taken lightly.

## Twelve added to Quill & Scroll

Twelve new members have recently been named to the Lon Pate chapter of Quill and Scroll at Haskell High School.

Membership is limited to students who have done superior work in some phase of journalism.

New members are Harper Stewart, Marty Trussell, Shane Osborne, Tiffany Bradford, Dusty Burson, Chad Gibson, Nole Hadaway, Erik Harvey and Chris McGhee.

## Wax museum opens March 31

The world's premier wax museum, The Palace of Wax, will open between Dallas and Fort Worth in Grand Prairie on Saturday, March 31.

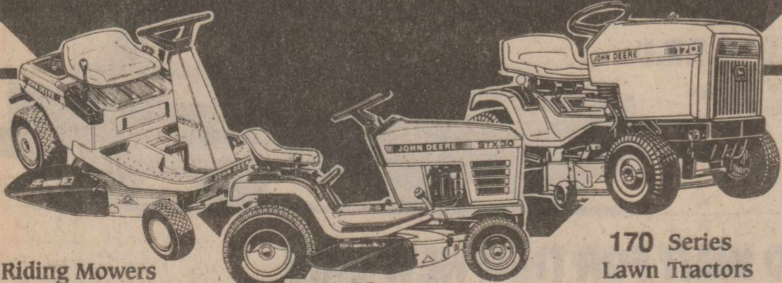
The all-new Palace of Wax replaces the Wax Museum of the Southwest which was completely destroyed by an electrical fire in September 1988.

Thank you to Dr. McSmith, Dr. Thigpen, and the staff of people who provided such loving care to Aunt Isla through the years and especially through the last week she had in the Haskell Memorial Hospital.

Our prayer is that God will bless each of you and walk by your side now and right on through that valley as He did with her. We love you all.

The family of Isla N. Corley

## Prices That Will STOP You in Your Tracks



Riding Mowers Starting at \$1595<sup>00</sup>

STX 30 Lawn Tractors \$1850<sup>00</sup>

170 Series Lawn Tractors \$2600<sup>00</sup>

See your John Deere dealer now during Deere Season. He'll help you track down the right tractor at the right price for your specific outdoor needs. Until May 31 you can get 90 days same as cash with a John Deere Credit Card. All it takes is a 10% down payment and approved credit.\*

Nothing Runs Like a Deere!

Rolling Plains Farm Supply  
Stamford, Texas 915-713-2788

Deere Season prices end May 31.

\*After 90 days, finance charge will begin to accrue at 19.8% APR (APR may be lower in some states). Except where prohibited by law, minimum monthly finance charge is \$0.50.

24 HOUR SERVICE  
**Nemir Medical, Inc.**  
WE BILL MEDICARE & OTHER CARRIERS

510 N. 2nd Haskell, Texas 817-864-2258

Mere words cannot express the sincere appreciation for the love and care provided for our loved one by the employees at Haskell Nursing Center, Hospital Clinic and Haskell Memorial Hospital. Thank you for your special efforts to bring comfort to a dear lady. We are truly grateful to each and every one of you.

We will not forget the many kindnesses extended by Dr. McSmith, Dr. Thigpen and Dr. Wayne Cadenhead.

We appreciate the friends who were always a source of help and comfort.

May God bless each and every one of you.  
The family of Maurine E. Polly Stewart

**RANDY WISEMAN INSURANCE SERVICES**  
"Insuring Tomorrow Today"  
Auto, Home, Business, Life, Health, Disability, Retirement

Call Today For a Quote  
1-800-234-1167 or 1-817-761-1136

Affiliated With:  
**BOLEY FEATHERSTON INSURANCE**  
P. O. Drawer 10  
Wichita Falls, Texas 76307

One Hour Photo Service offered on Film Developing & Prints  
Latest Equipment - Competitive Prices

**JOHNSON'S Kis Photo**  
OWNED & OPERATED BY LORRAINE & BOBBIE JOHNSON  
West Side of Square - Haskell

\$1.00 off  
On Processing, per roll with Coupon  
Specials Good Thru April 4, 1990  
Kodak and Fuji Film For Sale  
Phone 864-2951

**DANCE**  
at Aspermont American Legion Hall  
"Bareback"  
Sat., March 31 • 9 to 1 • \$6.00 per person

**Estate Auction**  
ESTATE OF M. L. "TIP" TIPTON  
800 N. Arkansas  
Seymour, Texas  
SUNDAY APRIL 1, 1990 1:30 P.M.

This Auction Has Been Re-Scheduled Due to Bad Weather.

Check Last Week's Haskell Free Press for Complete Listing.

This is a complete household of merchandise and will be a sale you will not want to miss.

James Powell TXS-7827  
Joe Dickson TXS-9092 RE#-403210  
Seymour, Texas 76380  
Food & Drinks Available  
817-888-2964 817-888-5271



# Shop the Haskell Free Press

# CLASSIFIEDS

**NOTICE**  
The Haskell Free Press reserves the right to edit and/or delete all news stories and locals for length and liability and to refuse to print anything deemed not newsworthy.

**NOTICE**  
The deadline for Classified Advertising is 12 noon on Tuesday.  
Haskell Free Press

### For Sale

Alcoholics Anonymous and Al-Anon meetings. Mondays, Thursdays, Saturdays, 8 p.m. 400 South Avenue C, Haskell. 13c

**SPRINKLER SYSTEMS.** Designed by Mark Bailey, #3721. Installation by Cook Heating-Cooling-Plumbing. Call us for details, 864-2226. 10-13c

**PRESCRIPTIONS, Cosmetics, Gifts.** Shop Johnson Pharmacy where the savings are real. 38tfc

**THE FRAME SHED.** Custom picture frames, custom mats, plain or non-glare glass. We do repair work. 411 S. First, Haskell, 864-2901. 51tfc

**KILL ROACHES.** Buy Enforcer OverNite® Roach Spray. Kills roaches overnight or your money back. Guaranteed! Available at Agriculture Services, Inc. Haskell, Tx. 3-14p

**FOR SALE:** 1976 Datsun, 1979 Chevy pickup, 1981 Triumph convertible. 906 N. Av K, Haskell. Call 864-8926. 9tfc

**FOR SALE:** Mike Benet formal, royal blue bridal satin, size 6/8. Call 743-3434 before 7:30 a.m. or after 5 p.m. 11tfc

**JAKE'S Bar-b-q** will be at Cecil's Market Saturday. Weather permitting. 13c

**FOR SALE:** 1971 Starcraft pop-up camper trailer. Sleeps 8. Stove top, refrigerator. Call 864-3267. 13c

**FOR SALE:** Used 6' patio door. Call McGee's Lumber Yard. 12-13c

**FOR SALE:** Side-by-side refrigerator-freezer, 3 door, \$150.00 firm. Contact Steven Foster, 8 to 5, 864-2536 or evenings 864-3273. 13c

**FOR SALE:** 1 Ruger Super Single Six, 22 cal. convertible, asking \$160.00; 1 Winchester Mod. 120 Win. choke 12 ga. shotgun, asking \$200.00 or OBO; 1 Marlin 30/30 lever action rifle with 3-9 variable scope, asking \$200.00 for both or will sell separate. 1 Marlin 22 cal. semi-auto rifle with good 4X scope, \$70.00. Call 864-8111 after 6 p.m. 13p

**FOR SALE:** 1987 blue and tan Silverado Suburban. Fully loaded, low mileage. Great family vehicle. Reasonably priced. Call 864-3698. 13p

**TO GIVE AWAY:** Cowdog puppies. Part blue healer, part border collie. 743-3270. 13p

**FOR SALE:** 16' upright deep freeze. Also ladies bicycle. Call 817-864-3785. 13p

**FOR SALE:** 1985 Ford Tempo, 82,000 miles. Good condition. Call 864-2753 after 5:30 p.m. 13-15c

### For Sale

**FREE PUPPIES:** Mixed blue healer and German shepherd. 1 white with black. 2 females, 5 males. 9 weeks old. 997-2330 after 5:30 p.m. 13nc

**FOR SALE:** Kenmore washer, \$125.00. 864-8925. 13p

**FOR SALE:** 1983 Ford conversion van. Extra clean, low mileage—a beauty. Call 864-2867. \$6800.00. 13p

**FOR SALE:** 8 hp riding lawnmower, electric start. 864-3083. 13p

**FOR SALE:** 1974 Ford 3/4 T, 4 WD pickup, gooseneck hitch, good condition. Call and make an offer, 997-2729. 13-14p

**OLD STUFF ANTIQUES** has moved to 300 S. Av. E and now has a telephone. Call 864-2430 days and check with us when buying or selling. New items in stock: metal wardrobe, solid rock maple (nice) dining set, recliner, twin bed, much more furniture, antiques, and household. Open daily. 13p

**FOR SALE:** 1989 F150 Ford XLT Lariat pickup, 302 (5.0), loaded, 2916 actual miles, \$12,500.00. Serious inquiries only. Phone 817-888-2184. 13c

**Cleaners in Haskell.** Steamers Carpet Cleaners at Kay's. (This ad is upside down at the advertiser's request.) 11-14c

**FOR SALE:** 6' satellite with 80' cable. \$100.00 or best offer. 743-3417 after 4 p.m. 12-13p

**PIANO FOR SALE:** Wanted: Responsible party to take on small monthly payments on piano. See locally. Call manager at 800-635-7611 anytime. 12-14p

### Garage Sales

**GARAGE SALE:** ASPERMONT. Kaye King's, 1 block west of Dairy Queen, brown brick home. Sat., March 31 from 9 to 4 and Sunday, April 1 from 1 to 5 p.m. New sofa and chair, sofa, rocker, chair, 2 wall recliners, lamp, cabinet color TV, 3 kitchen chairs, full size bed with box springs and mattress, built-in oven, vent a hood, kitchen sink, cabinet top, new adobe formica, shower door, drapes and queen bedspread to match, new drapery material for 1 window, used carpet, home interior, boots, Kirby vacuum attachments, saddle, new KitchenAid mixer, 1 year old Amana washer, and lots of odds and ends. 13p

### Lost & Found

**LOST:** Black and white female cat. Reward. Call 864-2369 after 5:30 p.m. 13p

**LOST:** Female black dog with white spot on neck. Lost on South Ave. L. Wearing blue collar with tag, name is Sarah. If found, please call 864-2517 after 5 p.m. 13p

### Jobs Wanted

**LOT SHREDDING.** Septic tank pumping. Call Tony Williams, 864-3674 anytime. 43tfc

**WATER WELL DRILLING.** Lic. #1578. House wells, test holes, W. P. Hise. 817-864-3727 day or night. 12tfc

**FAST, DEPENDABLE SERVICE** on General Electric, Sears, Kenmore, Whirlpool and many other brands of refrigerators, freezers, washers, and dryers, ranges, dishwashers. 864-3545 Ricky Anderson. All work guaranteed. 18tfc

**WILL DO BERMUDA GRASS** sprigging. Call 743-3434 (Before 7:30 a.m. or after 5 p.m.) 11tfc.

### Miscellaneous

**HOME DECORATORS.** Painting -Insulation. Free estimates. Phone 743-3592 or 743-3550. V. A. Mitchell-Bobby O'Neal. Rochester. 3tfc

**I WILL RECORD** family reunions, weddings or safekeep your valuables on VHS tape for insurance purposes. Contact Steven Foster, 8 to 5, 864-2536 or evenings, 864-3273. 13-14c

### Help Wanted

**HASKELL COUNTRY CLUB** is now taking applications for certified lifeguard. Mail application to First National Bank, Box 527, Haskell, TX 79521 by March 31, 1990. 11-13c

**FULL TIME EMPLOYEE** needed at Texaco Warehouse for truck delivery and warehouse. Salary negotiable. Contact Buddy Cypert at 864-2656. 12-13c

**WANTED:** Immediately. Nurses aides for 3-11 shift (full and part-time) and all other shifts part-time. Compatible wages. Good benefits. Haskell Nursing Center. 12-13c

**WANTED:** Beauty operator at Mini Mall in Knox City. Apply in person. 12-13c

**TEXAS REFINERY CORP.** offers plenty of money plus cash bonuses, fringe benefits to responsible individual in Haskell area. Regardless of experience, write W. K. Pate, Texas Refinery Corp., Box 711, Ft. Worth, TX 76101. 13p

**HOME CARE ATTENDANTS.** This position requires light house-keeping and assisting with personal care. To be considered for employment, call 1-800-580-4475. Girling Health Care, Inc. EOE. 13-14c

**IMMEDIATE OPENING** for activity director. Experience preferred, but not necessary. Apply in person. Haskell Nursing Center. Salary negotiable. 13-14c

### Public Notices

**RAILROAD COMMISSION OF TEXAS OIL AND GAS DIVISION**  
DISTRICT 7B  
DATE OF ISSUANCE: March 8, 1990  
CASE NO. 106,910  
NOTICE OF APPLICATION  
NOTICE IS HEREBY GIVEN that the Applicant, TKP Petroleum Inc., P. O. Box 64664, Lubbock, TX 79464, has made application for a spacing exception permit under the provisions of 16 Texas Administrative Code §3.37 (Railroad Commission Statewide Rule 37). Applicant seeks exception to the lease line distance requirement to

drill Well No. 1, FCSF Unit Lease, 40 Acres, Red River CSL LGE 71, Lot 12 Survey, Rule (5000), Wildcat and Haskell County Regular Fields, Haskell County, being in the townsite of Rule, Texas  
The location of this well is as follows:  
254' from northwest line and 483' from most northerly south line of lease.  
2195' from north line and 1730' from east line of survey. Field Rules for the Rule (5000) and Wildcat Fields are 467/1200, 40 Acres. Field Rules for the Haskell County Regular Field are 330/933, 20 Acres.  
This well is to be completed at an approximate depth of 5999 feet.

**Decker Electric**  
Residential Commercial  
Call for free electrical inspection  
864-8926  
We appreciate your business! 38tfc

PURSUANT to the terms of Railroad Commission Statewide Rule 37(h) (2) (A), this permit may be granted administratively if no protest to the application is received. An offset mineral interest owner and lessee is entitled to request a hearing on this application. They must be prepared to appear at the hearing either in person or by qualified representative and protest this application through cross-examination or presentation of a direct case subject to all applicable rules of evidence. If a hearing is called, the burden of proof of the need for an exception is placed on the applicant. A protestant should be prepared, however, to establish your standing to protest as an affected person, if challenged. If you have questions regarding why the applicant is seeking this exception, contact the Applicant's representative, Thomas K. Payne, President, at (806) 799-1888. If you have any questions regarding standing or other matters, please contact the Commission at (512) 463-6718.

If you wish to request a hearing on this application, you must fill out, sign and mail or deliver to the Austin office of the Railroad Commission of Texas Notice of Intent to Appear in Protest. A copy of the intent to appear in protest must also be mailed or delivered on the same date to applicant at the address shown above. This intent to appear in protest must be RECEIVED in the Railroad Commission's Austin Office by April 19, 1990. If no protest is received by said date, the requested permit will be granted administratively, to be effective the following day. 11-14c

**NOTICE**  
The City of Haskell will accept bids for seal coating for approximately 40,000 sq. yds. of existing pavement. For bid specifications contact City Hall. The City of Haskell reserves the right to refuse or accept bids. Bids will be opened at 7 p.m., April 10, 1990. City Secretary Ann Young 12-13c

**NOTICE OF IMPOUNDMENT OF ESTRAY**  
On the 17th day of March, 1990, I impounded the following estray:  
Kind of Animal: Beef cow and calf  
Breed: Hereford cow-Black white face calf  
Color: Cow-red with white face-calf-black with white face  
Sex: Female with bull calf  
Age: Cow 8 years-calf 2 months

\*\*\*\*\*  
SELLING HASKELL FOR OVER 25 YEARS  
**Hartsfield Realty**  
South Side of Square  
864-2665  
BUYING OR SELLING A HOME OR BUSINESS? We have skilled realtors to help you in every way from a market analysis to the closing. Over 25 years selling Haskell County.  
This week featuring...  
HASKELL  
★ BEAUTIFUL PANELLING, ★ beautiful baths in this 4 bedroom ★ in northwest Haskell. Located on ★ corner lot, water well, outside ★ storage and two-car garage.  
★ COMFORT YOU CAN AFFORD. Newly redecorated in a ★ great location. Three bedroom, 1 ★ bath, ceiling fans, central heating ★ and cooling, good closet space ★ with many extras. 805 N. Ave. G. ★ REDUCED.  
★ BEAUTIFUL AUSTIN STONE, ★ four bedroom, two bath home ★ with perfect kitchen for the gourmet ★ cook, large dining and living ★ rooms, large basement and detached ★ two-car garage on two and ★ one-half acres. Many extras in ★ this quality constructed home. ★ Additional acres with barn available. ★ Call us for details.  
★ SPRING HAS ARRIVED: ★ LAKE CABIN at Earle's Camp. ★ Has covered parking, deck and ★ close to water and dock. Sleeps ★ 10.  
★ Call us about our many other listings. We have homes and ★ businesses available to meet your need and budget.  
★ Hess Hartsfield, Broker 864-2004  
★ Mary Rilke 864-2332  
★ Dorothy Hartsfield 864-2069  
★ Esther Conn 658-3904  
★ Pat Speer, GRI 864-2318  
\*\*\*\*\*

Size: 1000 lb. cow-200 lb. calf Brand, Mark, Identifying Characteristics: End of both ears cut off on cow, no other markings on either, and on the 19th day of March, 1990, I filed a Notice of Estray in the Estray Book of Haskell County, Texas. I have made a diligent search of the register of recorded brands in Haskell County, Texas, for the owner of said estray, but the search did not reveal the owner.

Notice is hereby given that, if the ownership of said estray is not determined by the 7th day of April, 1990, said estray will be sold at public auction at Haskell Livestock Auction.

WITNESS my hand this 19th day of March, 1990.  
Martin Coleman  
Deputy Sheriff of Haskell County, Texas 12-13c

### For Rent

**FOR RENT:** Nice 2 bedroom house. Good location. Call days, 864-3852 or nights 864-2052. Alice Larned. 13-14c

### Real Estate

**FOR SALE:** Remodeled 2 bedroom, nice yard, trees, garden spot, well. 1106 N Ave L. 1-849-3272. 29tfc

**FOR SALE: BY OWNER:** Brick, 3 bedroom, 1 3/4 baths, den, living room, formal dining area, large like new kitchen, utility room, lots of closets. 6 refrigerated window units, 2 car carport, 2 room shop and storage house. Water well, corner lot. See at 900 N. Av G. Phone 864-8196. 15tfc

**FOR SALE:** 3 bedroom, 2 bath brick home located on three lots in Rule. Has lots of extras. Call 997-2319 after 5 p.m. 33tfc

**FOR SALE:** 3 bedroom, 1 3/4 baths, den, carport, storage, central heat and air. 605 N. 9th. 864-3571. Mid 20s. 10-13p

**Apartments For Rent**  
2 bedroom, 1 bath, carpeted. 700 sq. ft.  
Call Haskell National Bank 864-2631.

### Real Estate

**FOR SALE:** 490 acre farm Northwest of Weinert, \$600 per acre. Call 1-800-666-7287. 11-20c

**FOR SALE:** 139.48 acres cultivation. 4 miles NE of Stamford. 915-773-3912. Wayne Peiser. 11-13c

**HOUSE FOR SALE:** 106 Gladstone, Rule. On 2 lots. 3 bedroom, 2 bath, large living, dining, den combination, fireplace, large utility room, water well, one large shed, two small sheds in back. 2 large pecan trees. Call 997-2106. 11-13p

**FOR SALE:** 387 acres 6 miles west Weinert Hwy. 2163 frontage. Barn, three tanks, coastal, favorable bases cotton and wheat, three tanks, hunting, fishing. Call 817-743-3304. 12-13c

### Real Estate

**FOR SALE:** 160 acre Haskell County farm. Call 989-2808. 13-14p

**FOR SALE:** 3 bedroom brick house, 1, 3/4, and 1/2 baths. Hobby room or office. New central heat, air. Well, new sprinkling system. Good carpet, custom made drapes. Many extras. 2 car garage. Large sun porch. 1606 N. Av F. Appointment. 864-2530. 13p

**FOR SALE:** Brick home, 3 bedroom, 2 bath on 1 acre, 2 miles from Lake Stamford. 915-773-3912, Wayne Peiser. 11-13c

### FOR SALE

2 - Southside 3 bedroom, 1 bath frame, carpet, gas heat.

4 business buildings on the square.

Southside 1 bath stucco, new wall furnaces, carpet, chain link fence, storage, garage and 2 car carport.

Nice house in Veda's Camp. Central heat and air, garage, travel wagon garage, boat and shop storage.

Arrowhead Motel, 20 rooms at a sacrifice.

**Frances Arend Real Estate & Insurance Agency**  
Health, Life, Burial, Medicare & Nursing Home Coverage  
817-864-5880  
817-864-3155 12c

**LANCO**  
864-2629  
510 N. 1st  
**FOR SALE**  
4 bedroom, 2 bath brick with 6 acres on Rule Highway. 2400 Sq. ft. living area.  
393 acre farm 7 miles east of Haskell. 212 acres in cropland. 181 acres in pasture. FM road frontage.  
3 bedroom brick 903 N.E. 3rd. Orchard and well. \$40,000.  
3 bedroom, 2 bath. 1007 N. Av G. \$42,000.00.  
**FOR RENT STORAGE STALLS**

**Home For Sale**  
Brick, 4 bedroom, 2 bath, 2 1/2 lots, fenced yard, large covered patio. Call 864-3682 after 5 p.m.

**LORAIN JOHNSON, BROKER**  
FOR RENT: 3 bedroom house.  
BEAUTIFUL HOME on a full city block, large finished basement, main floor has a large formal living room and den, both have fireplaces. 2 large bedrooms and a bath upstairs. Many extras at a greatly reduced price.  
CLEAN, 3 bedroom on corner lot, new wiring, sliding and storm cellar, \$11,500.00.  
SMALL 2 BEDROOM, 2 blocks from square. \$4700.00.  
WILLIE BERRYHILL estate. 706 N. Av H. Brick 2 bedroom with finished basement for 3rd bedroom. Shop building.  
TWO WATERFRONT adjoining lots with lake house, large shop and carport. Lakeshore Sites. \$10,500.00.  
3 BEDROOM IN WEINERT. \$3900.00 or best offer.  
BRICK, 1 1/2 story, 3 bedroom, 2 bath, formal living room, den, kitchen with dining area. Fenced yard, water well.  
Small cabin at Vedas. \$6000.00.  
3 BEDROOM 2 bath, den with fireplace, large living room, patio, water well, carport. 145' lot close to elementary school. \$19,900.00.  
OUTSIDE city limits: City water. 4 bedroom, 3 bath brick.  
VEDAS. 2 bedroom double garage, large covered patio. Private boat dock. A beautiful lot.  
2 GOOD FARMS in Paint Creek Community.  
GOOD BUY. Great location on N. 8th. Two bedroom.  
Large 3 bedroom with double attached garage, fenced yard, corner lot, clean.  
LARGE 2 bedroom, 2 bath, double garage, shop building, fenced yard, exceptionally clean, corner lot.  
EXCEPTIONAL Value: 4 bedroom, 2 bath, brick, set in fireplace, fenced yard, storm cellar, 3 ref. units.  
FOR RENT OR FOR SALE: Bldg. on Hwy 380 East. 110 ft. hwy. frontage. A bargain with many possibilities.  
LUXURIOUS LAKE HOME. 3 bedroom at Veda's.  
GREAT NEIGHBORHOOD, 3 bedroom, formal L.R., den with fire box, large dining area, utility room.

**JOHNSON REAL ESTATE**  
864-2951

**HASKELL BANCSHARES, INC.**  
Stock  
817-892-1850  
Wichita Falls, TX  
11-13-15-17c



# --Weinert--

by Myrtle Plemister  
We experienced a late winter storm this past week, that blew in on Friday, dropping the temperatures to below freezing, continuing through Monday.

We fear for the survival of the fruit, and some of the grain, that was growing so rapidly during the warm days just previous to the cold snap.

The mist, fog and light snow made driving very hazardous but helped coat the fruit buds, making little ice igloos which may have saved some of the fruit.

Weinert school teachers and students enjoyed a "spring break" from school last week, and many were out of town for a while.

Chet and Jeanie Forehand, with Kenny, spent a few days with her mother, Grace Skipworth, in Robert Lee.

Helen and Floyd Stout took their trailer to the Ben Brook lake area for a week's stay and visited with relatives in Ft. Worth.

While there Floyd had a doctor's appointment and received a good report.

John and Laverne Mayfield were in Dallas and DeSoto for a visit with their daughters, Evelyn and Alexia, and their families.

Amanda Sanders has returned to her home in Merkel after spending her week's vacation with grandparents, Alton and Mildred Sanders.

Other visitors to town includes

Audra and Bob Schindler of Abilene, and Faye Crawford with Sue Alexander of San Antonio, who were here for a visit in the home of their mother, Bertie Alexander.

Joe Dixon, with daughters Jennifer and Karen, of Rotan were guests in the home of Mr. and Mrs. Donnie Harbers and children for a few days.

Linda, Ricky and Taylor Wade of Kermit spent part of their spring break with her parents, Toby and Alice Yates.

Dale and Dianne Huff and children of Haskell were dinner guests of Mattie and D. I. White on Sunday.

Visiting in the home of Ted and Faye Jetton were their grandchildren, Kelly and Brennan Frantz, of Dallas and Tiny Frantz with Amanda and Hunter of Searcy, Arkansas.

The Pud Brocketts entertained Mark and Darla Coffman, Drew and Jordan of Bridgeport and Pete and Imo Brockett with Reneau, Justin and Jimmy of Munday.

Twyla and Tommy Sorrells with Luke, Levi and Tabitha of Weatherford were up for a visit with Woody, Georgia and Greg Turnbow, while they were out of school.

Lester and Kathi Hutchinson were in Junction for the marriage of their daughter, Debbie, who became the bride of Jamie Newbury on Sat.

night. Others from Weinert in attendance were Todd and Angela Herricks and son, Alton and Mildred Sanders with Amanda Sanders of Merkel.

The Plemisters returned safely from a week's visit with relatives in Harlingen, McAllen and Edinburg.

They stopped in Carrizo Springs on their way home for a visit with Frank and Marion Urban, former Weinert residents.

The Urbans are well, he is very involved in organic gardening. This year he has 10 acres in garden and has outlets for his vegetables in Austin, San Antonio, and a few other places.

They sent their regards to all their friends in our area.

Sarah and H. L. Guess entertained several of their family last week.

Her brother, Mr. and Mrs. Bill Young with Amanda and Emily (twins) and Bobby and Tammy of San Angelo came for a family reunion, with Christie Herricks and Bill Little of Graham; Sarah's sister, Kayle Daniels of Ft. Worth; Wayne and Laquita Liles with Tommy of Haskell; Joe and Karen Yates with T. J., Dusty and Jace; and Hal, and Cindy Guess with Heath and Heather of Weinert.

Donald Mahan spent his week from school in Mineral Wells with his sister, Michelle Saddler, and his brother, Len Mahan, while his mother Linda and grandmother Frances Mahan visited his dad and other relatives in Odessa.

Leonard has found employment in Odessa, and his family is making plans to join him when school is out in May.

Janet and Joey Frazier spent some time in Central Texas visiting Joey's relatives and while there he had the opportunity to help his dad with some farm work.

Janet reports the wildflowers were lovely.

T Nichols joined his cousin Nick Wright of Dallas, and Nick's parents, for a trip to the Big Bend country for a week of touring, exploring and river rafting.

Ida and Willie Farrel were in Abilene at Humana hospital where her brother, Joe Garrett, was hospitalized. Joe's son was killed in a one vehicle car wreck in east Texas and Joe was taking it very hard. Our sympathy to him.

Alton and Mildred Sanders were in Centerpoint where Alton was music director for a revival at the First Baptist Church there.

Weinert extends sympathy to the Alexander families upon the decease of "Buddy" Simmie Alexander of Cisco, who died in his sleep in a nursing home on Tuesday. He had enjoyed a visit and romp with his son and grandchildren the night before he died.

His memorial services were held on March 22 in the Cisco Church of Christ.

In attendance from Weinert were his brother, Edward and Zella Alexander, sister, Rene Vojkufka; and a sister in law, Pearl Alexander.

Also in attendance from Weinert were cousins, Eddie and Alton Sanders, with Donnie Harbers, pastor of First Baptist Church.

Congratulations are in order for the Wood and Vojkufka families upon the arrival of Whitney Noel Wood, 7 lbs. 13 oz, 19 inches tall, daughter of Bob and Melanie Wood who arrived at the Stamford hospital on Tuesday, March 20.

To welcome her home were brothers, Cary and Zachry Wood; grandparents, Wanda and Scooney Vojkufka and DeAlyss Wood. Great grandmother is Rene Vojkufka.

Our birthday people this week are Bobby Raynes, Brenda Hager and Wanda Vojkufka. Happy birthday, all!

Have a nice day!

## NOTICE OF TARIFF CHANGE TO CENTRANET® SERVICE

GTE Southwest Incorporated gives notice of its proposed tariff changes to CentraNet® service, which is a Central Office-based service that provides PBX-type features to multi-line business customers and is currently being offered in all company wire centers where such facilities exist to provide the service.

The Public Utility Commission of Texas approved a generic tariff for CentraNet® service up to 100 lines in Docket No. 7652. The proposed tariff revision would establish specific rates for CentraNet® service involving 101 to 400 lines. Other proposed revisions involve the rate applicable to changes, additions, or deletions to the data bases and a new rate is proposed for additional trunks.

The names of the three CentraNet® packages have changed from Standard, Premium, and Deluxe to CentraNet® 1000, CentraNet® 2000, and CentraNet® 3000, respectively. Direct Call Pickup has been added to the three CentraNet® packages while Multiple Call Park and Shared Speed Call 30 have been added to CentraNet® 2000, and Speed Call 30 and Call Forward Busy/No Answer Split have been added to CentraNet® 3000. Flexible Night Answer and Automatic Route Selection also have been added as new optional features.

The proposed changes and new service offerings have been assigned Docket No. 9251, and pursuant to Section 43(d) of the Public Utility Regulatory Act will become effective June 23, 1990. Rates for service will be applicable to customers who subscribe to the service as well as existing customers. Therefore, there will be no effect on any other rates of the company. The company's gross annual revenues will increase by approximately \$399,600, or less than one percent annually.

The proposed rates are on file with the Public Utility Commission of Texas, and are available for public inspection at the offices of GTE Southwest Incorporated. Persons who wish to intervene or otherwise participate in these proceedings should notify the Commission. The deadline to intervene in this docket is 3:00 p.m., April 9, 1990.

A request to intervene, participate, or for further information, should be mailed to the Public Utility Commission of Texas, 7800 Shoal Creek Blvd., Suite 400N, Austin, Texas, 78757. Further information may also be obtained by calling the Public Utility Commission Consumer Affairs Division at (512) 458-0223 or (512) 458-0227 or (512) 458-0221 teletypewriter for the deaf.

**GTE**  
**GTE Southwest Incorporated**

# --Sagerton--

by Alice Bredthauer

Those who were at the Friendship Club which meets in the Fellowship Hall of Faith Lutheran Church were Mr. and Mrs. Dan Rinn, Buster and Norma Tredemeyer, Mary Neinast, Carrie Bredthauer, Mrs. Louise Stegemoeller, Mrs. M. Y. Benton, Delbert and Joyce LeFevre, Kit LeFevre, Larry and Shane LeFevre, J. B. and Dorothy Toney, Tarah Toney, Glyn and Ethel Quade, Arthur Knipling, C. E. Stegemoeller, Franklin and Isabell Mrazek, Charles Clark, Sylvia Crowe, Pastor Mel Swoyer, Mrs. Alvin Bredthauer.

Mrs. Reece Clark kept her two great grandchildren last week.

Rosemary White of Sanger, bride-elect of Tom Bivins of Argyle and formerly of Sagerton, was honored at a bridal shower in the community center March 24. The bride-elect's chosen colors of mauve and country blue were used in the table decorations and spring bouquets of honeysuckle iris and tulips were used on the gift tables.

Hostesses for the party were aunts of the groom, Mrs. George Olson of Ozona, Mrs. Leon Stegemoeller and Mrs. Melvin Baitz. Stephanie Stegemoeller registered the guests and Tami Baitz, Paula, Michelle and Cherry Lynn Stegemoeller and Kami Baitz assisted in the houseparty.

Tom Bivins grew up in Sagerton, attended school in Rule and is now living in Argyle. He is employed by Tree Systems, Inc. He and Rosemary will be married April 14 an live in Pilot Point.

Weekend guests in the home of Mr. and Mrs. Joe Clark included Mr. and Mrs. Don Bivins, Tom and Emmalee of Argyle, Rosemary White of Sanger and Melody Owens

of Argyle. Other guests for Sunday dinner were Mr. and Mrs. Ray Clark of Stamford, Mrs. Emma Raphael of Stamford and Mr. and Mrs. Leon Stegemoeller, Mr. and Mrs. Melvin Baitz.

Mrs. Lena Schaake and Mrs. Alvin Bredthauer went to Stamford Wednesday to do some shopping and went to see Erna and Walter Schaake. Erna has been on the sick list.

The ladies of Faith Lutheran Church had a quilting in the Fellowship Hall of Faith Lutheran Church recently and quilted 14 quilts for Lutheran World Relief. They will have another day to do some more quilting.

Those who are to be confirmed here at Faith Lutheran Church on Palm Sunday are Kacy Baitz, Chad Teichelman, Toby Teichelman.

Bill Tabor of Dallas visited in the home of his mother, Mrs. John L. Brooks over the weekend.

Those who visited in the home of Mr. and Mrs. Delbert LeFevre last week were Mr. and Mrs. Kent LeFevre and son, Mr. and Mrs. Ken Brown and children.

Mrs. Clancy Lehrmann visited in the home of Mrs. Mary Neinast one day last week.

Mrs. Francis Davis, Mrs. Tessie Callicoate and Mrs. Mary Neinast played bridge in the home of Mrs. Cliff Ghoslon in Old Glory on Tuesday.

Having problems with those office supply or bookkeeping needs? Come by the Haskell Free Press. We can help you find a solution.

## Public Notice

Southwestern Bell Telephone Company intends to file an application with the Texas Public Utility Commission to introduce new optional services - Call Control Options. The initial service areas will be Laredo, McAllen and Austin. Expansion into other service areas will be based on availability. Customers in other areas will be notified when these services become available.

Call Control Options include six new services - Call Blocker, Call Cue, Call Return, Priority Call, Call Trace and Selective Call Forwarding. The features will be available to single-line residence and business customers.

**Call Blocker** - enables the customer to block incoming calls from a maximum of three specified telephone numbers and/or to block the last incoming call.

**Call Cue** - enables the customer to automatically redial the last outgoing telephone number dialed. If the recalled number is busy, equipment will monitor the line for a maximum of 30 minutes and will let the customer know when the call can go through.

**Call Return** - enables the customer to automatically redial the telephone number of the most recent incoming call. If the number is busy, Call Return will continue to dial the number for up to 30 minutes, or until it completes the call.

**Priority Call** - provides the customer with a distinctive alerting signal, ring or Call Waiting Tone (if the customer has subscribed to Call Waiting), when the customer is called from a maximum of three preselected telephone numbers.

**Call Trace** - enables the customer to initiate a trace of the last incoming call received. The number, date and time will be recorded by Southwestern Bell Telephone so that the call's origin can be identified.

**Selective Call Forwarding** - enables the customer to forward incoming calls from specified telephone numbers (maximum of three) to another telephone number.

### Proposed Rates (monthly)

	Residence		Business	
	Individual	Packaged	Individual	Packaged
Call Blocker	\$3.00	3.00	\$3.00	2.00
Call Return	3.00	3.00	4.00	3.50
Priority Call	2.50	1.00	3.00	2.00
Call Cue	2.00	2.00	4.00	3.50
Selective Call Forwarding	2.00	1.00	2.65	1.00
Call Trace**	1.00	1.00	1.00	1.00

Installation charges for residence customers will be \$2.70 per feature, with a maximum installation charge of \$5.40 per request per line. Installation charges for business customers will be \$5.40 per feature, with a maximum installation charge of \$10.75 per request per line.

The proposed date for Call Control Options to be offered is May 1, 1990. These services, however, will not immediately be available to all customers in all areas of the state. Customers in other areas will be notified when these services become available.

Call Control Options are projected to generate first-year annual revenues of \$1,761,000.

Persons who wish to comment on this application should notify the commission by April 20, 1990. Requests for further information should be mailed to the Public Utility Commission of Texas, 7800 Shoal Creek Boulevard, Suite 400N, Austin, Texas 78757, or you may call the Public Utility Commission Public Information Office at (512) 458-0223 or (512) 458-0227 or (512) 458-0221 teletypewriter for the deaf.

**Southwestern Bell Telephone**

\*Some telephone equipment may not be compatible with Priority Call Service.  
\*\*In addition to the \$1.00 monthly rate, Call Trace will cost \$8.00 per use.

**Chopped Ham** Market Sliced lb. **\$1.69**

**German Sausage** Each **\$1.09**

**Ham Hock** For Boiling lb. **98¢**

**Summer Sausage** lb. **\$1.59**

**Bell Peppers** Each **10¢**

**Cucumbers** Each **10¢**

**Chicken of the Sea Tuna** 6.5 oz. Can **59¢**

**Kraft BBQ Sauce** 18 oz. Bottle **89¢**

**Campbell Cream of Chicken Soup** Can **47¢**

**Parade Pineapple** 20 oz. Can **69¢**

**Cheer** 136 oz. Box \$2.00 Off **\$5.99**

**Cottonelle Tissue** 4 Rolls **99¢**

**POGUE GROCERY**

-Extra Parking Behind The Store. Home Owned and Operated- 113 North Avenue E Phone 864-2015 Haskell, Texas Thurs. Fri. Sat. Specials

# Super Second Saturday begins in April

A gigantic, ongoing promotion by the Haskell Business Association of the Haskell Chamber of Commerce will be called "Super 2nd Saturdays" for 1990, according to Conrad Roewe, chairman.

The Steering Committee is Suzanne Starr, chairman; Lois Richardson, Conrad Roewe, Peggy Lane and Charles Thornhill.

On this day every month, participating businesses will run extensive collective promotions via the media, mailings, posters, etc., and each will fly a flag designed especially for the purpose.

The overall theme of the 1990 events will be Southwestern and the flags will be turquoise with shocking pink lettering and logo. They were designed by Suzanne

Starr.

In addition to tremendous bargains at each participating business, entertainment and activities will be planned for each Super 2nd Saturday.

To launch the first event, the day before Easter, April 14, there will be a big free Easter Party on the courthouse lawn, a look-alike contest for children and pets, special

music and acts, with Brian Burgess as master of ceremonies.

Each month will be planned by a different committee and the April activities are being handled by Lois Richardson, chairman; Dorothy Hartsfield, Sandy Forehand, Opal Letterman and Jennifer Burgess.

Some 50 businesses have already signed up for the program, with others expected to join.

54th Annual Banquet

# Haskell Chamber of Commerce

and launching of

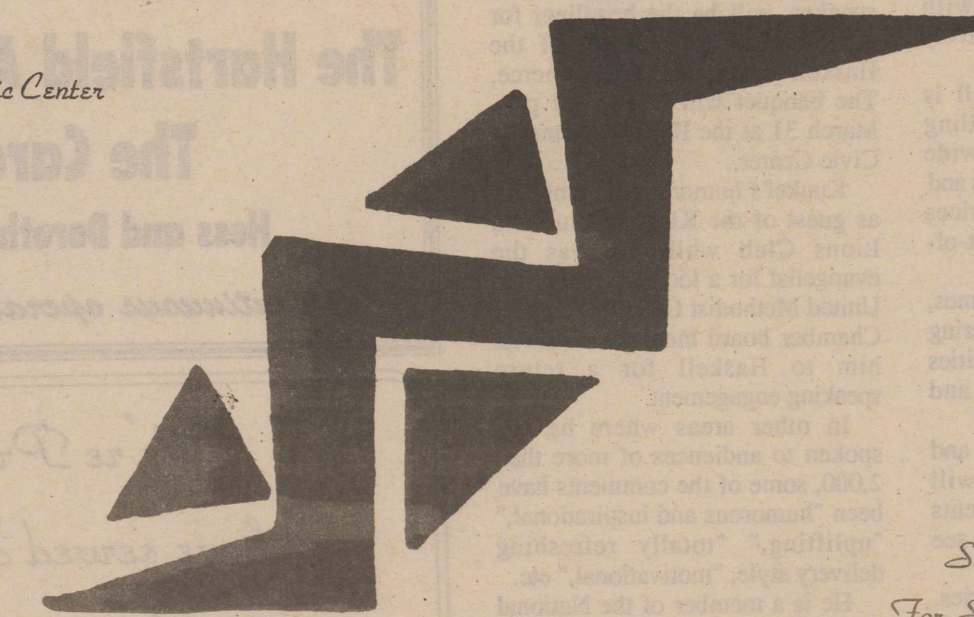
## Super Second Saturday Activities

of the Haskell Business Association

Saturday, March 31, 1990

7:00 P.M.

Haskell Memorial Civic Center



LOGO:

Southwestern Theme

For Super Second Saturday

Designed by Suzanne Starr

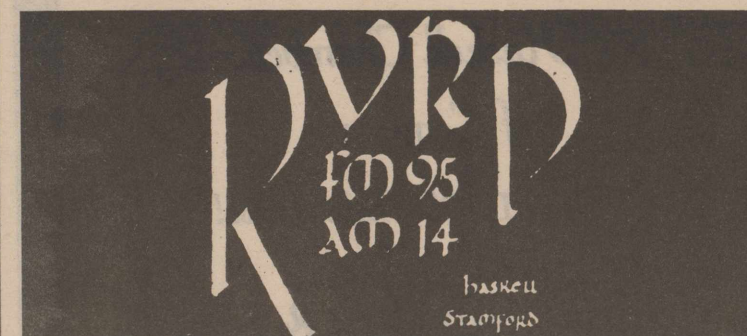
### Program

Presiding .....	Bud Lane President
Dinner .....	Served by Welcoming Committee Prepared by Board of Directors and Spouses, Tom Watson, W. H. McBroom, Sonny Reynolds
Invocation .....	Kenny Kirk Pastor, First United Methodist Church
Introduction of Guests .....	Delight Jones First Vice President
Introduction of Officers and Directors .....	Sue McGee Nominating Committee
Introduction of Past Presidents .....	Elbert Johnson Treasurer
Most Outstanding Citizen Award .....	Bud Lane
Super 2nd Saturdays .....	Suzanne Starr Chairman
Speaker .....	Jerry Kunkel Eules, Texas

Adjourn

Special Section The Haskell Free Press Thursday, March 29, 1990

**Haskell Chamber  
of Commerce**  
is Good News to us everyday!



The Radio Voice of the Rolling Plains

Take a Bow!

You deserve it along  
with our best wishes!

Keep up the good work!

The Clothes Closet

10 Ave D • East side of Square • Haskell • 817-864-3781

We salute the  
**Haskell Chamber  
of Commerce**

**Nanny Plumbing**

Serving Haskell Since 1949

301 S. Ave. E Haskell 864-3043

Haskell's future depends on its  
economic success.

The Haskell  
Chamber of Commerce  
is working toward this goal.

Congratulations on continued success.



**Bailey Toliver**



**Chevrolet-Oldsmobile**

Mr. Goodenough

517 N. 1st 864-2626

We would like to take  
this opportunity to salute the  
Haskell Chamber of Commerce

Congratulations on a year  
of outstanding achievements.

409 South First  
Haskell, Texas  
Phone 864-2901



**The Frame Shed**  
411 South First • 864-2901

Haskell Chamber of Commerce

...Making a positive statement  
for our future

Congratulations on 54 years  
of service to Haskell

**Haskell Commercial Printing**

Bill Comedy, Owner

## Presidents Message

Bud Lane

As Shakespeare said, "We study the past to plan the future."

A town that pulls together like Haskell can well be proud of its achievements since most successes are due to team effort.

This community's sense of pride is evident in the appearance of well-kept premises, both in businesses and in residential areas.

Its sense of loyalty is reflected in sports, businesses, churches and service organizations.

Haskell is a town filled with volunteers who spend countless hours for the benefit of others--volunteers who are totally dedicated and equally productive.

We live in a place that is peaceful, yet exciting--with challenges every day, collectively and individually.

As a trade center, Haskell is truly the "Hub of the Rolling Plains," where there is a wide choice of merchandise, products and services, with competitive prices that appeal to far-reaching out-of-town customers.

Haskell changes with the times, and grows accordingly, weathering poor economy and other adversities with sheer determination and positive thinking.

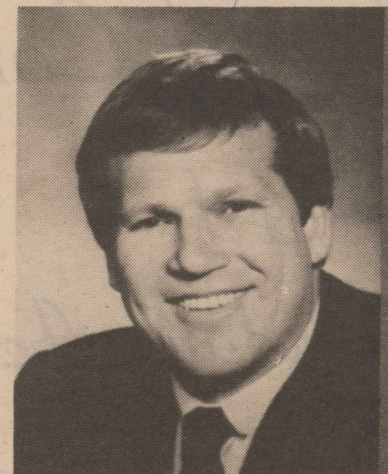
These facts are as we are and what we were, and they will continue in future developments because our young people will see to it.

It is OK to reflect past glories, past achievements, but our time is better spent in planning for the days ahead.

We are convinced that the members of the Haskell Chamber of Commerce and all of our citizens will continue to work together for the betterment of our city, keeping in mind that the key words are TOGETHERNESS, SERVICE, LOYALTY, DEDICATION, PERSISTENCE, PRIDE AND POSITIVE THINKING.

Let's go for it, team!

## Jerry Kunkel to address banquet



Jerry Kunkel

Jerry Kunkel, renown as an entertaining and thought-provoking speaker, will be the headliner for the 54th annual banquet of the Haskell Chamber of Commerce. The banquet will begin at 7 p.m. March 31 at the Haskell Memorial Civic Center.

Kunkel's humorous presentation as guest of the Kiwanis Club and Lions Club while he was the evangelist for a local revival at the United Methodist Church prompted Chamber board members to invite him to Haskell for a return speaking engagement.

In other areas where he has spoken to audiences of more than 2,000, some of the comments have been "humorous and inspirational," "uplifting," "totally refreshing delivery style," "motivational," etc.

He is a member of the National Speakers' Association and resides in Euless.

Elected president of his senior class in high school by his peers, and "most likely to succeed" by his teachers, he earned early recognition for his philosophy of success. An all-state performer in track, he set a record in shot put that still stands as the best in his school's history. He was an all-state nominee in football and all-state in track. He went to the U.S. Naval Academy where he was recognized as an

Olympic hopeful and was offered a professional football career.

Returning to Texas, he married his high school sweetheart, Kathy, and entered the ministry of the United Methodist Church. After earning a BA in religion and a BS in philosophy from McMurry College, he earned his master's

from Southern Methodist University in Dallas.

Now a full time motivational speaker, he is much in demand from chambers of commerce, businesses, civic clubs and corporations across the United States to provide "non-stop laughter" for his varied audiences.

*We Salute the  
Haskell Chamber  
of Commerce*

**The Hartsfield Agency/Realty  
The Carousel**

**Hess and Dorothy Hartsfield**

*In continuous operation since 1892*

*We're Proud to  
have served Haskell  
for 44 years*

and

*Salute the  
Haskell Chamber of Commerce*

*Keep up the Good Work!*

"Smart Wear for Women"

**THE Personality SHOPPE**

Supporting the Haskell Chamber of Commerce  
Since 1946

Opal Adkins - Veta Furrh

## Past Presidents to be recognized

A special Presidents' Table is set up at the annual Chamber of Commerce banquet to seat the past leaders of the organization and to recognize them for their efforts.

Invited to the 1990 banquet are Past Presidents W. O. Holden, H. V. Woodard, Ira Hester, Tom Watson, Raja Hassen, Wallace Cox Jr., Bailey Toliver, Charles Thornhill, Abe Turner, Gene Long, Royce Williams, George Fouts, Bill Comedy, Tom Barfield, Don Munsler, Robert Greenroy, Bob Philpot, John Rike, Wayne Leher, Aubrey Carroll, John Wayne McDermott and Dickie Greenwood.

Deceased past presidents are Sam Roberts, Chesley Phelps, John A. Couch, J. M. Crawford, Alfred C. Pierson, Hallie Chapman, Harold Spain, Carl Wheatley, Gaston Hattox, James A. Byrd, Joe Williams, Myron Beard, Dr. T. W. Williams, J. E. Walling Jr. and Olin Dotson.

## Chamber Membership

The Haskell Chamber of Commerce serves as an information bureau, a training agent, a sales manager, a business motivator, a public relations team, a spokesman for the city, a mail service, a goodwill ambassador, and a publicity agent.

It is made up of large and small businesses, industries, specialty houses, varied companies, with representatives from different walks of life, various ages, and interests.

Minimum dues asked for businesses are \$10 per month, and \$5 per month for individuals, with each member asked to pay what they can afford.

Others who are interested in joining concerned, active citizens are also invited to join.

The chamber office is located at 112 1/2 N. Ave. E, and is open Mondays, Tuesdays, Thursdays and Fridays.

## Why shop in Haskell?

- +Competitive prices
- +Quality merchandise
- +Friendly service
- +Wide choices
- +Easy access to businesses
- +Ample parking
- +Service after the sale
- +Your business is appreciated
- +Sales people know you by name
- +You save time, money, gas
- +You support the town that supports you.

*Congratulations  
to the  
Haskell Chamber  
of Commerce*

*We're 100% Behind You!*

**Conner Nursery & Floral**  
864-3121

**Congratulations  
to the  
Haskell Chamber of Commerce**

on another outstanding year.  
We're proud to be a part  
of this fine organization.

**Hassen's**  
Haskell

*Everyday the  
Haskell Chamber of Commerce  
is working for You.*

We're looking forward  
to the future together!

**M SYSTEM**  
*Your FRIENDLY*  
AFFILIATED  
SUPER MARKETS  
Haskell, Texas

*Build with our*



**Chamber of  
Commerce**

**Williams**  
N. 277 Paint & Body Shop  
Rt. 1 Box 100 • Haskell, Texas  
Jim Williams, Owner

Day 817-864-8125

Nights 817-864-8131

**We are proud  
to be a part of a  
progressive Chamber  
Congratulations**

**Fieldan Inn**

Haskell's Finest Downtown  
115 A. Ave. E, Haskell  
864-2251 or 864-2568

Like a Fine



**We Salute The  
Multi-Faceted Talents of  
The Haskell  
Chamber of Commerce!**

*Lyles Jewelry*

Since 1935

East Side of Square

Haskell, Texas

1890 - 1990

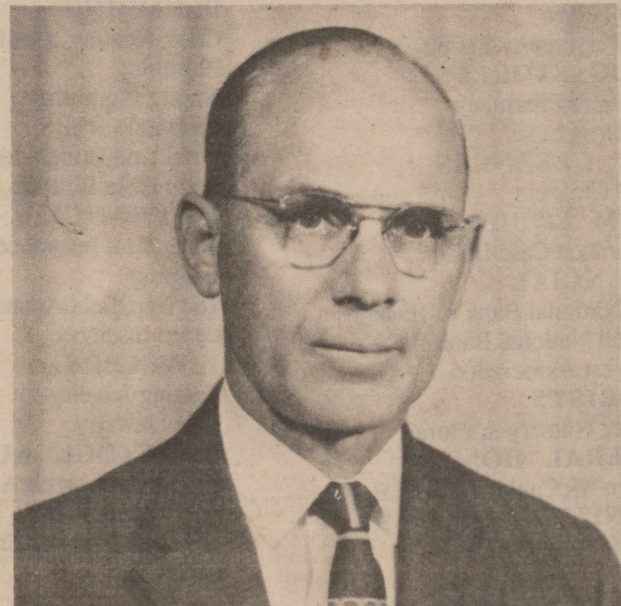
# A CENTURY of VISION

Haskell National Bank 1890 - 1990

Haskell Chamber of Commerce 1936 - 1990

The Haskell Chamber of Commerce was organized in 1936 by a group of citizens who were "Banking on the Future".

Haskell National Bank would like to take this opportunity to pay a special tribute to:



Dr. T. W. Williams  
Chamber of Commerce President  
1936 - 1937, 1937 - 1938

Dr. Williams, longtime Haskell Physician was the first president of the Haskell Chamber of Commerce and also served as a lifetime director for the West Texas Chamber of Commerce. Dr. Williams was associated with the Haskell National Bank, serving as a director for many years. The people at Haskell National Bank have made a difference in the growth of the Chamber of Commerce, being involved almost daily in its affairs. Many of its officers, directors, and employees have held offices and served as officers and directors of the Chamber - following in the footsteps of Dr. Williams - in building a strong Chamber for a growing City.

<b>OFFICERS</b>		<b>DIRECTORS</b>	
ROYCE L. WILLIAMS	Chief Executive Officer	RILEY COUCH	Chairman of Board
ABE TURNER	President	BOBBIE HERREN CORZINE	Vice Chairman of Board
ANDREW GANNAWAY	Executive Vice President & Security Officer	ROYCE ADKINS	
CAROLYN EVERETT	Senior Vice President & Trust Officer	CAROLYN EVERETT	
BETTIE WAINSCOTT	Vice President & Cashier	ANDREW GANNAWAY	
RANDY HISE	Vice President/Agriculture	DAN RILEY GRIFFITH	
MELVA EVERETT	Vice President & Auditor	RAJA HASSEN	
BETTY SUE McDERMETT	Assistant Vice President Head Teller	ROBERT A. HOWARD	
JOHN M. HICKS	Assistant Vice President-Credit Analyst/Compliance Officer	WILDA D. MEDFORD	
		ABE TURNER	
		ROYCE L. WILLIAMS	
		Advisory Directors	
		R. W. HERREN	Chairman of Board-Emeritus
		MATTIE MURIEL ENGLISH	
		RICK PERRY	

Banking on the Future Since 1890  
**Haskell National Bank**

601 N. First • Haskell • 864-2631  
Member FDIC

## Outstanding citizen to be named at banquet

The Most Outstanding Citizen will be announced at the 1990 banquet.

Nominations for this honor come from the membership of the Chamber of Commerce.

Previous winners were: Jane McAdoo, Myron Biard, Mrs. Charles M. Conner, Satch Lusk,

Charles Thornhill, J. H. Strain, Tom Watson, Elsie McGee, Royce Williams, Lois Richardson, Dudley Phelps, Abe Turner, Charles Swinson, Mattie Felker English, Frances Lane, R. C. and Jerrene Couch, Buddy Lane and Conrad Roewe.

**OFFERED BY  
JOHNSON**

**864-2951**

**LORAIN JOHNSON, BROKER**

I am on call and ready to talk to you about your Real Estate at any time if you are interested in buying or selling, please call me. I will try harder to please you.

One Hour Photo Service offered on  
Film Developing & Prints  
Latest Equipment - Competitive Prices

Kodak and Fuji Film For Sale  
Phone 864-2951

**Johnsons' Kis Photo**

Owned and Operated by - Loraine & Bobbie Johnson  
West Side of Square - Haskell

## West Texas Utilities Company

proudly supports the

**Haskell Chamber  
of Commerce**

WEST TEXAS UTILITIES COMPANY



Remember

**REDDY** Supplies the energy—

but only YOU can use it wisely!

## WHAT DOES YOUR CHAMBER OF COMMERCE DO FOR YOU?

The Haskell Chamber of Commerce is responsible for:

1. Planning activities to draw large crowds to Haskell.
2. Publicizing our town.
3. Attracting tourists and new residents.
4. Expanding retail trade.
5. Working with Haskell Industrial Foundation to pursue further industrial development.
6. Making known the resources of Haskell and promoting the town in its endeavors.
7. Working with other organizations and groups, often serving as an umbrella for combined efforts.
8. Keeping abreast of developments in oil and agriculture and other interests.
9. Maintaining liaison with churches, schools, city and county governments, service clubs, and other organizations.
10. Promoting professional development.

## Congratulations

to the

**Haskell Chamber  
of Commerce**

**Best of Luck  
in 1990**



## Chamber Directors lead organization

### Bob Baker

Bob Baker has been Haskell's City Administrator since 1983. Prior to that he was with the Drug Enforcement Administration, for 17 years in San Antonio, Houston and New Orleans. He spent six years with the Police Department in Abilene.

Born in Stamford, he attended Haskell Schools and is on the Council of the Lutheran Church. He spent four years in the U.S. Air Force with service in Morocco.

A new director of the Chamber of Commerce and on the Military Affairs Committee of the Abilene Chamber of Commerce, Bob is a past president of the Kiwanis Club, a past secretary of the Rotary Club and vice president of the Haskell Industrial Foundation.

He and his wife, Lowell Anne, are parents of Jeff, Robin, Shelley, Brooke, Robert, Bruce, Wayne and Lorry.

### Jim Bridwell

Jim Bridwell is a re-elected member of the Chamber of Commerce Board of Directors. He was chairman of the 1989 Fly-In at the airport.

He is the owner of Bridwell Spraying Services of Haskell.

Jim attended San Marcos Academy and has served with the U.S. Navy. He is a member of the Haskell Kiwanis Club.

Jim and his wife Joyce are the parents of Andrea and Jessica Bridwell.

### Charlene Dumas

Charlene Dumas was appointed to the Board of the Haskell Chamber of Commerce to fill the unexpired term of Grace Womack.

She is secretary of Owens' TV and Electric in Haskell, a graduate of Roaring Springs High School and a member of the First Baptist Church.

Charlene and her husband, Billy, are the parents of Gina Foster and Sheree Dumas and grandparents of Kory Foster.

### Andy Gannaway

Executive vice president of the Haskell National Bank, Andy Gannaway is taking an extended course at Southern Methodist University School of Banking.

He was born and educated in Haskell. Andy is a new director of the Haskell Chamber of Commerce, a member of the Lions Club and Rotary Club.

He is a member of the First Baptist Church where he is

chairman of the Budget Committee and assistant treasurer.

Andy is married to the former Christye Greenwood and they are parents of two sons, Kurt and Matthew.

### Dickie Greenwood

Dickie Greenwood has served two years as Chamber president and six years on the board of directors.

He has served two terms as president of the Haskell Rotary Club, has been active in the Haskell Industrial Foundation, Haskell Memorial Civic Center Association, Beautify Haskell Program, Heart Fund Campaign and the United Way.

Dickie and two others, Abe Turner and Bobby Hobgood, were co-chairmen for the special campaign to raise necessary funds for the United Sewing Agency fund campaign.

Dickie is vice president and Haskell Branch Manager of AmWest Savings Association.

He is a graduate of Rochester High School and Tarleton State University with a degree in Agricultural Business.

Dickie and his wife Melissa are the parents of a son, Adam, and a daughter, Shannon, and are members of the First Baptist Church.

### Bobby Hobgood

Bobby Hobgood has completed three years on the the Chamber Board of Directors. Prior to moving to Haskell, he served six years with the Wollforth Chamber of Commerce as secretary, treasurer and president.

Bobby headed the successful Beautify Haskell Program and served with co-chairmen Dickie Greenwood and Abe Turner on the fund campaign to secure United Sewing Agency. He is treasurer of the Haskell Industrial Foundation, active with the Band Boosters, show superintendent for the Haskell County Fair Stock Show, coach of Little Dribblers and Little League, director of the Haskell Lions Club and president of the Kiwanis Club.

He is a Sunday School teacher at the First United Methodist Church for high school and junior high members.

Bobby is president of First National Bank of Haskell, a graduate of Frenship High School and holds a BBA degree from Texas Tech University.

Bobby and his wife Debbie have three children, Holly, Heather and Jason.

## Haskell Chamber of Commerce Membership Roster

### ABSTRACT COMPANIES

Dulaney Abstract Co.

### APPLIANCES

Frazier Appliance Co.

### ATTORNEYS

Royce Adkins

Charles Chapman

Johnny Fouts

Joseph Thigpen

### AUDIO-VISUAL

Owens TV & Electric

Walling TV & Electronics

### AUTOMOBILE DEALERS

Medford Buick-Pontiac-GMC

Bailey Toiliver Chevrolet-Olds

Bill Wilson Motor Company

### AUTO PARTS/SERVICES

Smitty's Auto Supply

Williams N. 277 Paint & Body

### BAKERIES

The Sweet Shop

### BEAUTY PRODUCTS

Town & Country Beauty Supply

### BEAUTY SHOPS

Martha's Beauty Center

### BLDG/CONSTRUCTION

Kennedy Lumber Co.

Letz Builders Supply

McGee's Lumber Yard

### CATALOG STORES

Sears Catalog Store

### CHILDREN'S STORES

Kids' Duds

### COTTON GINS

Farmers Co-op Soc. #1 Haskell

### DEPARTMENT STORES

Hassen's

Heidenheimer's

### DRESS SHOPS

Barbara's Boutique

The Clothes Closet

The Hayloft

Lane Felker

The Personality Shoppe

### DRUG STORES

Johnson's Pharmacy

The Drug Store

### DRY CLEANERS

Kay's Cleaners

### FARM EQUIPMENT

Richardson Case-IH

### FINANCIAL

First National Bank of Haskell

Haskell National Bank

AmWest Association

### FLORISTS

Conner Nursery & Floral

### FUNERAL HOMES

Holden-McCauley Funeral Home

### FURNITURE STORES

Aladdin House

Boggs & Johnson Furniture

Jones Cox & Co.

### GRAIN & COTTON

Haskell Warehouse & Compress

Nine-Point Grain Co.

### GROCERS

M-System Supermarkets

Modern Way Foods

Pogue Grocery

Pogue's Meat Processing

### HEATING/COOLING

### PLUMBING

Cook Heating, Cooling & Plumbing

Nanny Plumbing

### INDUSTRIES

Strickland Bridge, Inc.

Coca-Cola Bottling Co.

### INSURANCE

State Farm Insurance (Brian Burgess)

The Hartsfield Agency

Lanco Insurance

### JEWELERS

Bassing Jewelry

Lyles Jewelry

### LIVESTOCK AUCTIONS

Haskell Livestock Auction

### MARINAS

Lake Stamford Marina

### MEDIA

The Haskell Free Press

KVRP Radio AM/FM

### MEDICAL & NURSING

Dr. Tom Hairgrove, Veterinarian

Dr. Cliff Ray, DDS

Haskell Clinic

Haskell Nursing Center

Hospital Clinic

Dr. Wm. J. Kemp, DDS

Dr. J. G. Vaughtner, DDS

Haskell Memorial Hospital

### MOTELS

The Fieldan Inn

### OIL COMPANIES

Drinnon Oil Co.

Haskell Butane Co.

The Reedy Co.-Exxon

King Hoermann Oil Co.

Wooten Oil Co.

### PRINTING

Haskell Commercial Printing

### RADIATORS/MUFFLERS

J&R Radiator and Muffler

### REAL ESTATE

The Hartsfield Agency

Johnson's Real Estate

Lanco Real Estate

### RESTAURANTS

Double A Drive In

Kountry Kookin'

Pizza Barn

### SHOE STORES

The Slipper Shoppe

### SPORTING GOODS

Sport-About of Haskell

### SPRAYING SERVICE

Bridwell Spraying Service

### TAX PREPARATION

Bernard Godley, Inc.

### TIRE DEALERS

Anderson Tire Co.

Trussell Tire Center

### TOY STORES

The Carousel #2

### UTILITY COMPANIES

GTE Southwest

Lone Star Gas Co.

Stamford Electric Co-op

West Texas Utilities Co.

### VARIETY STORES

Perry Brothers

### WELDING

Leon Jones Welding

### WESTERN WEAR

Heads or Tails Western Wear

### INDIVIDUAL MEMBERS

Bob Baker

Mrs. R. C. Couch, Jr.

Mr. & Mrs. Desmond Dulaney

Belton Duncan

Woodrow Frazier

Cary Headstream

John W. McDermett

Mr. & Mrs. Rick Perry

Mr. & Mrs. Lynn Pace Jr.

Sue Pate

Margaret Ratliff

Billy Jack Ray

Doris Reeves Jordan

Mr. & Mrs. Sonny Reynolds

Mr. and Mrs. Glenn Sammons

Mr. & Mrs. Clay Smith

Mr. & Mrs. Charles Swinson

Charles Thornhill

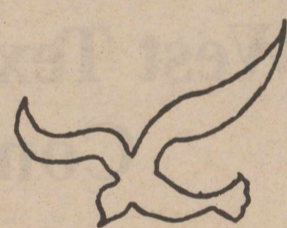
Mr. & Mrs. Abe Turner

Tom Watson

Mr. and Mrs. Mike Harrell



Thanks to the people of Haskell  
and to the  
Haskell Chamber of Commerce  
for their continued support of the



Haskell Memorial Civic Center

Take a Bow!

Your deserve it along  
with our best wishes!

Keep up the Good Work!

Frazier's  
Appliance & Furniture  
in Haskell

"Serving the Big Country for 42 Years"

We proudly support our  
Chamber of Commerce,  
its programs, projects,  
and its efforts in bringing  
progress to our community.

McGee's Lumber Yard

105 N. 1st 864-3552

You're a Credit  
to the Community  
and

We appreciate you!

James Castagna & Jeff Gregg  
Certified Public Accountants

Seymour Office  
115 W. McClain Street  
817-888-5539

Haskell Office  
312 N. 1st  
817-864-3931

# We're Growing on You, Haskell



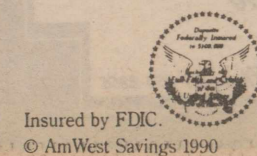
Just as the Haskell Chamber of Commerce is working for you, so are we.

We've changed our name from Olney Savings to AmWest Savings to better reflect what we've become and, more importantly, where we're going. Even though we are as much a part of the Texas heritage as the legend of the Yellow Rose, our energies are directed to the future. To keeping Texas communities like Haskell strong by keeping Texas money right here in Texas, by offering banking services that will make your investments go farther - make your money grow faster - and make banking easier than ever before - they're coming from AmWest Savings.

We think our new name suits us and hope you will come to know it well. AmWest Savings. We're Texas grown and growing stronger every day.

**Our Haskell Chamber of Commerce!  
It Works for All of Us!**

Put Your Money on Texas.



Insured by FDIC.  
© AmWest Savings 1990

HASKELL: 518 South Second, 817-864-3179

## Directors provide leadership for Chamber

### Conrad Roewe

For four years, Conrad Roewe has served as chairman of the Haskell Retail Merchants Association. In 1989, Conrad was voted Haskell's Most Outstanding Citizen.

He is serving a second three-year term on the Haskell Chamber of Commerce Board of Directors.

Owner of The Sport-About in Haskell, he is past president of the Kiwanis Club, vice president of the Indian Booster Club, president of Haskell Youth Baseball, Pony League coach, coordinator of Haskell Softball Association and Haskell Little Dribblers, active with the Band Boosters and was active with the Beautify Haskell program.

Conrad attended Pilot Point High School and North Texas State University, served with the U.S. Coast Guard, and attends St. George Catholic Church.

Conrad and his wife Betty are parents of Randy, Julie and Roger Roewe.

### Abe Turner

Abe Turner, Haskell's Most Outstanding Citizen of 1983, has

served four terms in the past two decades as a Chamber director. He has served three terms as Chamber president, 1965-66, 1966-67 and 1969-70. He is a former mayor of Haskell, former president of the Kiwanis and Rotary clubs.

Other activities have included involvement in the Haskell Industrial Foundation, Civic Center Association, Beautify Haskell program, Indian Booster Club, Band Boosters, Heart Fund, United Way, Noah Project and Boy Scouts.

He is a past president of the Haskell Jaycees, a director of Sportsman's Club of Texas, past director of Independent Bankers Association of America and recipient of the Silver Beaver award of Boy Scouts of America.

He and two other chamber directors, Bobby Hobgood and Dickie Greenwood, headed the special fund drive to raise funds for the operation and equipment to secure United Sewing Agency in Haskell.

He is a graduate of Haskell High School and Texas Tech University with a BS degree in Agricultural Education, and served in the U.S. Army.

Abe and his wife Ruby are the parents of Mike, Sharon and April, and grandparents of Jessica and Lori Turner.

### Sam Watson

Sam Watson has been manager of M System in Haskell since 1985. He formerly served as manager of M System at Anson. Prior to that he worked for Borden's and he became an independent distributor from 1982-84.

Born and educated in Haskell, Sam is president of the Fire Department, a member of the Lions Club, a member of the Council of the Lutheran Church and a new director of the Chamber of Commerce.

Sam and his wife Jo Ann have two children, Brent William and Erma Jill.

### Mike Martindale

The Chamber's incoming vice president is Mike Martindale.

He came to Haskell in November 1987 as local manager of West Texas Utilities Co., after serving 17 years with the company,

most recently as manager of the Aspermont office.

While in Aspermont, he served on the Housing Authority, as president of the Lions Club, Jaycee vice president, J. W. and S. W. Masonic Lodge and in Haskell is second vice president of the Chamber Board of Directors and a member of the Haskell Lions Club.

He attended elementary school in Haskell six years, six years secondary school at Palacios, Wharton County Junior College and Texas Tech University.

Mike's work with youth includes coaching a Little Dribblers basketball team.

He has served with the Haskell Industrial Foundation, Civic Center, Beautify Haskell program, Booster Club, Band Boosters, Heart Fund, United Way, Noah Project and Rolling Plains Industrial Foundation.

Mike and his wife Glenda are parents of Joni and Lori and are members of the First Baptist Church where Mike serves as an usher.

## Kay's Cleaners

proudly supports

the Haskell  
Chamber of Commerce

We Do Laundry  
Darrell G. & Kay Smith, Owners

## CATALOG CUSTOMERS

Did You Know?

- That the Local Sears Catalog Sales Merchant is Locally Owned and That our Catalog Business is Growing.
  - That Catalog Shopping offers you a wide selection of merchandise.
  - That Catalog Shopping can save you both time and money.
  - That we are as close as your telephone.
- "We salute our Chamber of Commerce"

Shop by phone  
864-2671



Authorized  
CATALOG SALES  
MERCHANT

Owned operated by  
Roy and Sandy  
Forehand

Celebrating our  
14th Anniversary in Haskell

We are proud to be part of Haskell County History with the founder of our store coming to Throckmorton County in the late 1800's.

Burwell Cox came by wagon with a herd of sheep, wagons and teams.

For 85 years we have attempted to serve our customers during both good times and bad...for this we are thankful.



JONES COX & COMPANY  
COUNTRY STORE  
—Established in 1905—  
Hardware, Fine Furniture and Gifts

The Haskell  
Chamber of Commerce  
is looking good!



Owens TV & Electric

512 N. 1st 864-2536

## Directors provide leadership for Chamber

### Elbert Johnson

Elected treasurer of the Chamber of Commerce for 1989-90 and re-elected for 1990-91, Elbert Johnson is owner of Johnson Pharmacy.

A resident of Haskell since 1966, he is president of the Big Country Pharmaceutical Association.

He is a former president of the Haskell Chamber of Commerce, is secretary of the Kiwanis Club, former Country Club president, vice president and secretary on the school board for nine years, has been active with the Industrial Foundation, Beautify Haskell Program, Booster Club, Heart Fund, Boy Scouts and Haskell Little League.

Elbert graduated from Texas Tech in 1951 where he played football two years. He coached eight years at Muleshoe, Belton and Bryan. He attended the University of Texas Pharmacy School and received a master's degree and PHD in Health Education through a correspondence course from the University of Phoenix. He also served in the U.S. Marine Corps, stationed at San Diego and Treasure Island.

Elbert and his wife Franciene are members of the Chamber Welcoming Committee and are the parents of two sons, Gary and Jarrel, and a grandson, Toby.

### Delight Jones

First vice president of the Haskell Chamber of Commerce is Delight Jones, now serving a second three-year term on the board of directors. She is chairman of this year's Chamber banquet.

For three years she and her husband Leon have been active with the Chamber Welcoming Committee.

Delight is business manager of Bill Wilson Motor Co., and has served as an officer of the Haskell Memorial Civic Center Association, was active with the Booster Club and Band Boosters, and with the Heart Association and American Cancer Society.

A member of the First Baptist Church, she is a choir member and a teacher in the kindergarten department.

Her children are Ed Harris of Abilene, Cynthia Jones of Morton and Mynea Short of Haskell. She and Leon are the proud grandparents of Evan Harris, Peyton Harris and Cameron Short.

### Gene Long

Born in Quanah, Gene Long was educated at Kermit, Texas. He and his son Thomas are co-owners of Boggs and Johnson and he was formerly with National Cash Register Co.

Gene is an elder of the Church of Christ, a member and past president of the Lions Club, newly elected director and past president of the Chamber of Commerce, on the board of directors of the Haskell Industrial Foundation, former Little League president.

He was with the U.S. Army Signal Corps, stationed in Korea.

Gene and his wife Jo Iva are the parents of Thomas Long and Shelly Jo Hodde and grandparents of Nathan, Debbie and Andrew Long and Sarah Hodde.

### Bud Lane

The re-elected president of the Haskell Chamber of Commerce was named Haskell's Most Outstanding Citizen in 1988. He has been a member of the Chamber 28 years, a director six years and treasurer for two years.

Owner of Lanco Insurance, Bud is a graduate of Texas Tech University, with a BS degree in Agri-Business and is also a farmer.

He served in the U.S. Army and is a member of the First Methodist Church of Haskell.

Bud is president of the Texas Tech Dads Club, a past president of Haskell Rotary Club; has served for 11 years as county chairman for the Salvation Army and treasurer for 10 years prior to that; a director and former vice president of the Haskell Industrial Foundation, past board member of the Civic Center Association, was active with the Beautify Haskell Program, Booster Club and Band Boosters.

In addition to serving as chairman of the 1988 Fly-In, he was head of the Chamber of Commerce Automobile Show in 1986 and 1987.

The Chamber's First Lady, Peggy, is very active with the chamber and she and Bud are parents of Eugene Pickering, Leslie Lane, Lee Lane and Lori Lane. Their grandchildren are Chad, Clay and Kaci Pickering.



Wanda Dulaney

Our congratulations to the Chamber for another successful year of outstanding service

Earning your trust since 1937  
Service is our security

**Holden-McCauley  
Funeral Home**

304 N. 2nd 864-2151

Congratulations to an aggressive and progressive Chamber of Commerce

**HEADS OR TAILS WESTERN WEAR**

Haskell, Texas

We salute the Haskell Chamber of Commerce

**'B' Andrada's  
CARPET EXPRESS**

1204 S. Av E • Haskell  
864-8128

Thanks and congratulations to the Haskell Chamber of Commerce

*"Plowing the way for progress"*



**Richardson Case-IH**

5 N. 1st 864-3474

**The Haskell Chamber of Commerce**

is #1 with us!

*"Where Winners Shop"*

Conrad Roewe's Sport-About of Haskell



817-864-3891  
402 N. 1st  
Haskell, TX 79521

Congratulations to the Haskell Chamber of Commerce

**Heidenheimer's**

419 S. 1st Haskell 864-2508

We're proud to be a Part of the

**Haskell Chamber of Commerce**

DOYLE HIGH'S

**THE DRUG STORE**

100 S. Av E Haskell 817-864-2515

Investing in and Insuring Our Progress The Haskell Chamber of Commerce and

**Lanco Insurance and Realty**

510 N. 1st 864-2629

We salute the Haskell Chamber of Commerce for their continued leadership and service in our community.



**Medford**



**Buick-Pontiac-GMC**



200 N. Ave. E 864-2644

*Lane-Felker Gold Rush*

*Celebrating 50 Years of Partnership with the Haskell Chamber of Commerce.*

*Fashions Change but Our Personal Service to You, Our Customer, Will Never Change.*

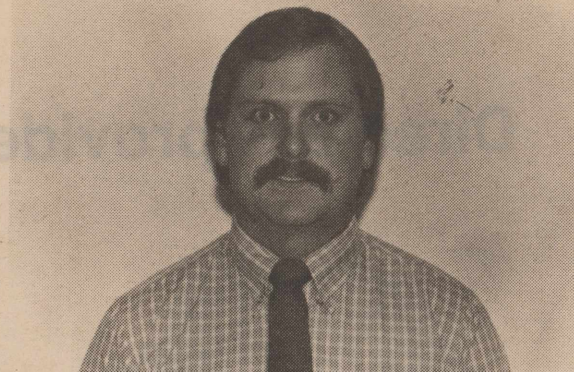
*Lane-Felker*

*West Texas Fashion Center  
Haskell, Texas 79521 Phone 817-864-2265*





Dr. Cliff Ray



Gil Richardson

## Chamber Directors lead organization

### Sue McGee

Mrs. Ben (Sue) McGee was appointed to serve the two-year unexpired term of Brian Toliver on the Chamber of Commerce board of directors.

Her husband is a former chamber director also.

Sue is a social service worker with the Department of Human Services and was distinguished in December 1987 as the Employee of the Quarter for her region, a 44-county area.

She is a graduate of Rule High School and attended Western Texas College.

Other local affiliations include membership in the Booster Club, Band Boosters, was formerly a director of the Heart Association and secretary of the Noah Project.

Sue and Ben are members of East Side Baptist Church and are the parents of two daughters, Lori and Mindy.

### Carolyn Reynolds

Mrs. James H. (Carolyn) Reynolds has been elected to her third three-year term on the Board of

Directors and continues as chairman of the Chamber Welcoming Committee, of which her husband is also a very active member.

Carolyn is District Clerk of the 39th Judicial District, and has been active with the Civic Center Association, Indian Booster Club, Haskell Band Boosters, Heart campaign and United Way.

A member of the First Baptist Church, she is a director and teacher in the kindergarten department and a member of the church choir.

Carolyn and Sonny have three children: Leisa Hutchinson of Haskell, Laurie Gross of Vernon and Mark Reynolds of Haskell. They have three grandchildren: Lauren, Matt and Leslie.

### Dr. Cliff Ray

Cliff Ray, DDS, is chairman of the Professional Development Committee of the Haskell Chamber of Commerce and has been elected to a second three-year term on the Board of Directors.

He is affiliated with the Texas Dental Association, American Academy of Dental Radiologists.

He attended Knox City High School, received a BS degree from Abilene Christian University and received his doctorate from the University of Texas at San Antonio. Dr. Ray gave volunteer services in India in 1989.

He is a member of the Haskell Lions Club and the First Baptist Church.

Cliff and his wife Judy are the parents of two children, Amanda and Brittany.

### Gil Richardson

Gil Richardson is serving a second three-year term on the Haskell Chamber of Commerce board of directors.

He is general manager of Richardson Case-III in Haskell and a member of the Southwest Hardware and Implement Association.

Gil is a graduate of Haskell High School and of Tarleton State University with a bachelor of science degree.

He and his wife Norma attend the First Baptist Church in Haskell and are the proud parents of a new baby son, William Bryan.

### Jimmie Williams

Jimmie C. Williams is serving a second term on the Board of Directors of the Haskell Chamber of Commerce.

He is the owner of Williams N. 277 Paint and Body Shop in Haskell.

Jimmy is a member of the Kiwanis Club, a former Rotarian, and a Methodist. He serves on the board of the Haskell Country Club.

He and his wife, Debbie, are the parents of Tammie, Joy, Tiffany and Kendi.

### Wanda Dulaney

Wanda Dulaney has served as manager of the Haskell Chamber of Commerce since Jan. 1, 1981.

In addition to regular operational responsibilities of the Chamber of Commerce, she is the originator and coordinator of Haskell's Night Christmas Parade and coordinated the fund campaign for the acquiring of United Sewing Agency by the Haskell Industrial Foundation for the three co-chairmen, Abe Turner, Dickie Greenwood and Bobby Hobgood.

**Congratulations**  
to  
**Haskell Chamber of Commerce**



**Jones Welding**  
Leon & Delight Jones, Owner

201 NE 1st Haskell 864-2342

**A Better tomorrow begins today with Progress**

**Let's dedicate our efforts to A Brighter Future**

**We want to be your furniture store!**

**Boggs & Johnson**

Haskell, Texas

First National Bank is a people's bank, and we're committed to serving the banking needs of our growing community in Haskell and all over Haskell County.

We're here with all the services you need—high interest checking and savings, a wide variety of loans, IRA's, drive-thru banking—you name it—and all delivered to you in a friendly, confidential, home town sort of way. We know what you want and expect from your bank, and we make sure you get it.

We are proud to be a part of this community and its future.

*We salute the*  
**Haskell Chamber of Commerce**  
*for a Job Well Done*

*You can Bank on Us!*

The Friendly



*First People put People First*

**First National Bank**  
HASKELL TEXAS  
200 South Avenue E 864-8555 Member FDIC

*Best Wishes*

for

**Continued Services**

**Harmon Cable Communications**

USA, CNN, WGN, TDC, CVN,  
Family Channel, WTBS, ESPN,  
TNT, MTV, Univision, CNN II, TNN,  
Nickelodeon, KTVT,  
HBO, Disney, Showtime

**Harmon Cable Communications** 1-800-527-4331

Sharing in the challenges and responsibilities of building for the future and perfecting the present, we salute the members of



Haskell's  
Chamber of Commerce



**Anderson Tire Co.**

Haskell

*Celebrating our 44th Year in Haskell*  
**Congratulations to**  
**Haskell Chamber of Commerce**  
*We're behind you all the way.*  
Now Chrysler, Plymouth, Dodge,  
Ford, Lincoln, Mercury

**Bill Wilson Motor Co.**

Sales & Service  
209 S. Ave E Haskell 864-2611

Proud to be a  
**PARTNER**

with the Haskell Chamber  
of Commerce

**Smitty's Auto Supply**

"For all your auto parts"  
204 N. 1st 864-2607

*We would like to take this opportunity to salute the Haskell Chamber of Commerce.*

*Congratulations on a year of outstanding achievements.*

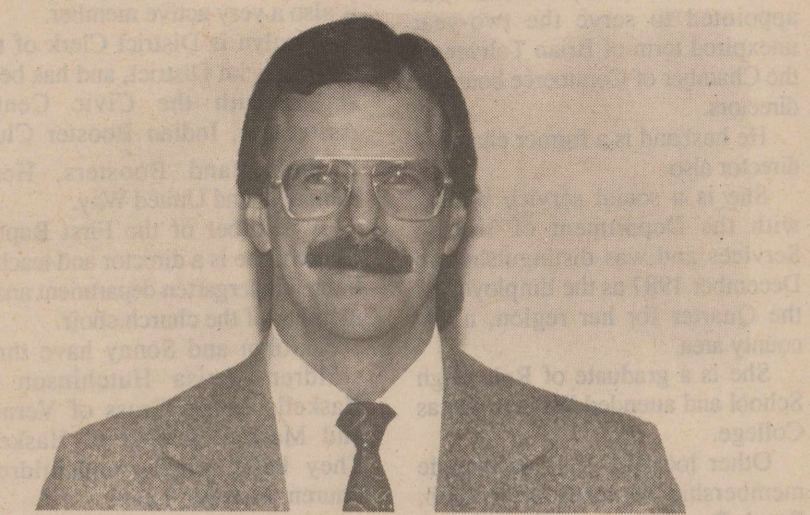
**Johnson**  
PRESCRIPTION PHARMACY

418 N. 1st 864-3331

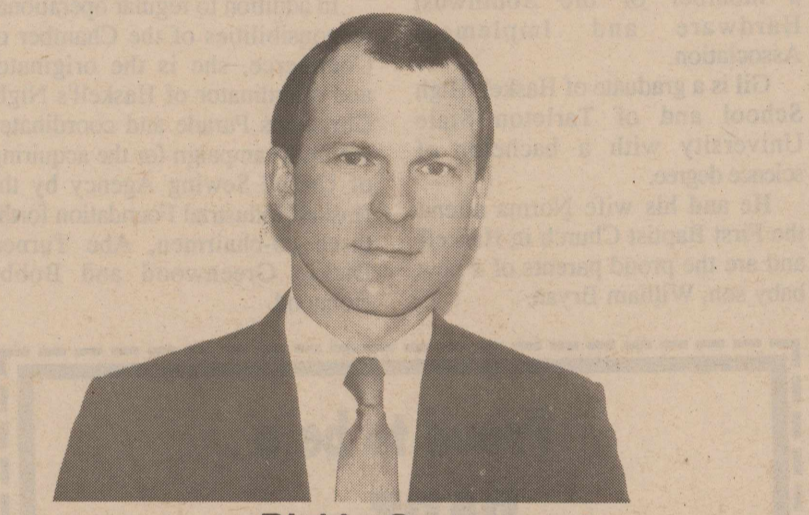
# Chamber Directors lead organization



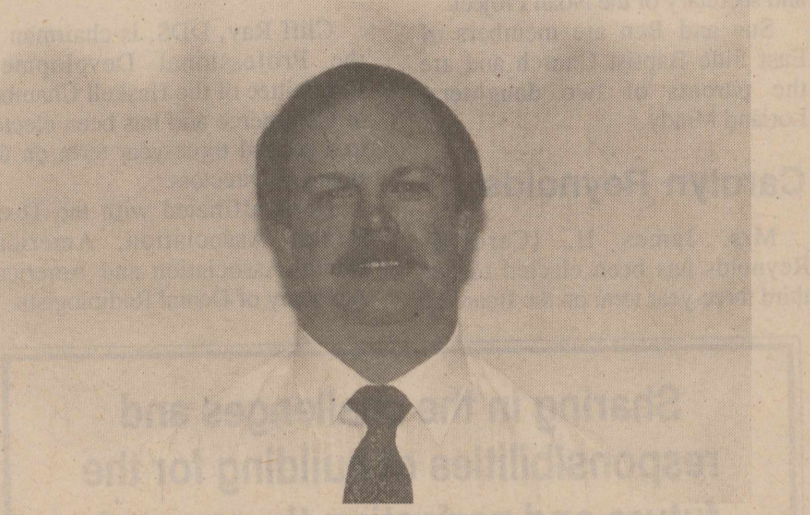
**Charlene Dumas**



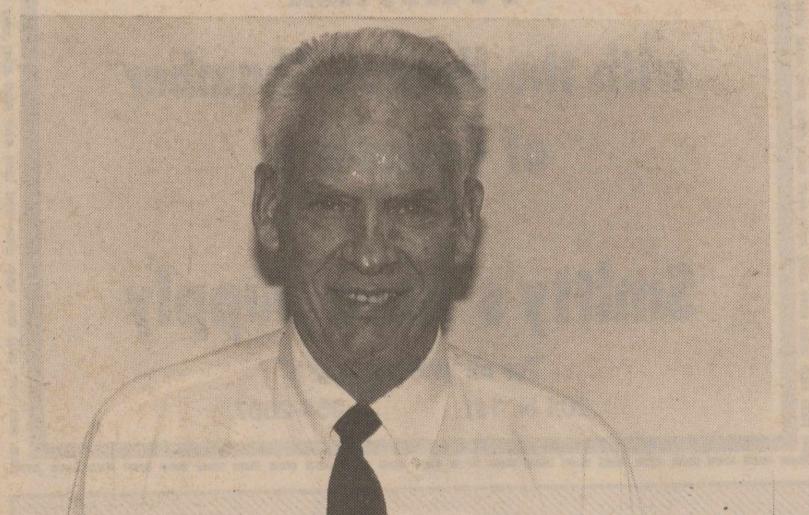
**Andy Gannaway**



**Dickie Greenwood**



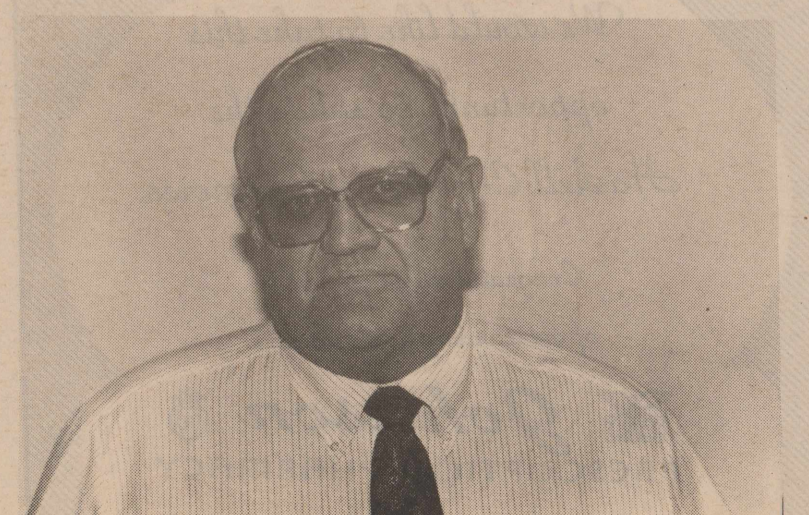
**Bobby Hobgood**



**Elbert Johnson**



**Delight Jones**

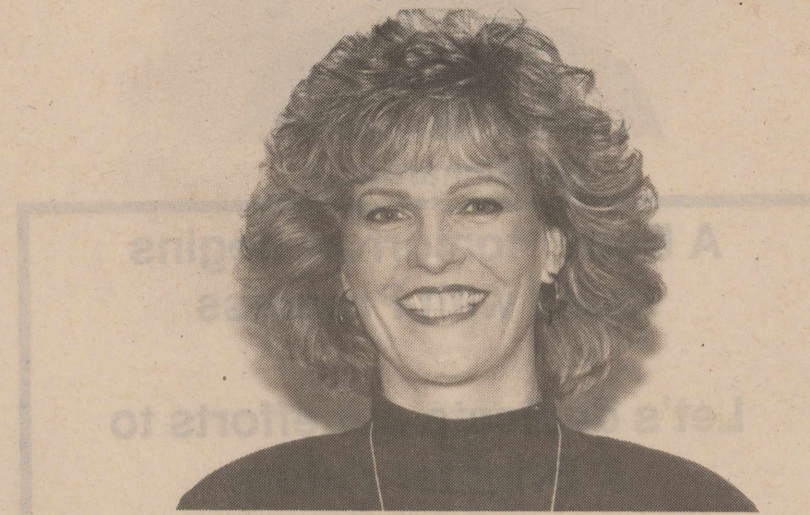


**Gene Long**



**Bud Lane**

# Directors provide leadership for Chamber



**Sue McGee**



**Carolyn Reynolds**



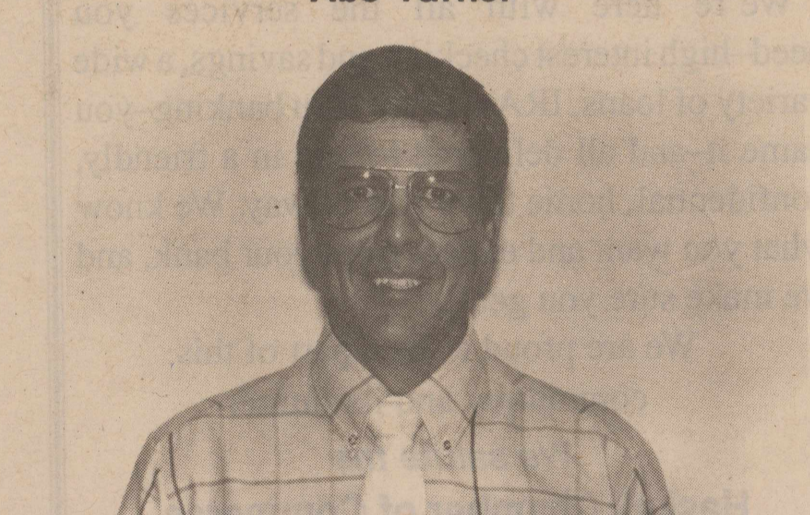
**Conrad Roewe**



**Abe Turner**



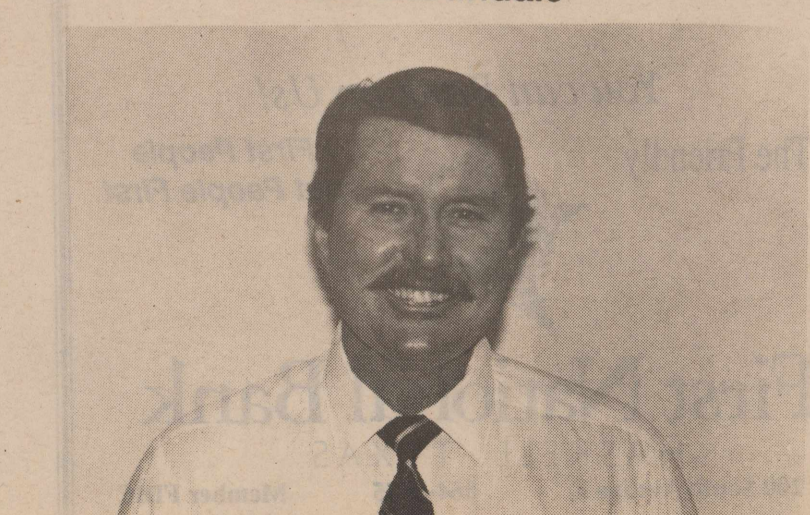
**Sam Watson**



**Mike Martindale**



**Bob Baker**



**Jim Bridwell**