

--Rice Springs Care Home--

By Judy Wolsch
Activity Director

We would like to say a special thanks to the Old Glory Sons of Hermann Lodge for the delicious cookies they made and brought to our home. They were really enjoyed by all residents.

We welcome May Wimberley and Lois Speck to our home. May their stay be a pleasure.

Everyone is looking forward to the luncheon by the Sunshine Ladies of East Side on Thursday, good country music Thursday night and the green St. Patrick's Day party to be hosted

by the Experienced Citizens Center on Friday.

Visitors have been Marlene Mueller of Friona with Alice Allen; DeAnn and Traci Stiewert of Monahans with Frieda Carter; Kenneth and Doris Tooley of Austin with Oscar Tooley; Fern, E. L. Basing of Bloomfield, N.M., Wynell Ford of Wenatchee, Wash., Tina Holland of Moab, Utah, Terry, Ruth and Haylee Chapman of Norman, Okla., Keith Chapman of Austin, G. G., John and Britney Rutkoski of San Antonio, Gary Tertie and Blake Cobb of Lubbock, all with Myrtle Cobb; Mr. and Mrs. Rick Irvin and children with Alice Allen.

The Frame Shed

411 South First St.
Custom picture frames
Any size
Wood or Metal
Custom mats
Plain or non-glare glass
We do repair work
864-2901

Legion to meet

Members of American Legion Post 221 and Auxiliary will have a meeting Tuesday evening (March 21) at the Legion Hall.

The meeting begins at 7:30 and all members of both organizations are urged to attend.

**Carrie Crenwelge
weds Elliott Cox**

Carrie Crenwelge of Snyder became the bride of Elliott Cox of Snyder at 4 p.m. Jan. 21 in the home of Mr. and Mrs. Travis Hatter of Snyder. Miller Robinson, minister of Colonial Hill Baptist Church, officiated the double-ring ceremony with family members present.

Parents of the bride are Ted and Jane Crenwelge of Snyder. The groom's parents are Wallace and Jo Cox of Haskell.

The home was decorated with large baskets of mixed spring flowers.

Kim Gorman of Snyder provided music on the harp.

Given in marriage by her father, the bride wore a formal tea-length bridal gown of ivory versailles taffeta. The fitted wrap bodice featured a sweetheart neckline of alencon lace, beaded with seed pearls, oat pearls and iridescent sequins.

The natural fitted waistline formed a petit point trimmed in alencon lace. The short puffed sleeves were trimmed in alencon lace. The back's V-neckline topped the fitted waist. A large butterfly bow of versailles taffeta accented the back. The full circle skirt was of versailles taffeta with a hi/low hem line trimmed in

scalloped alencon lace.

The bride carried a large cascading bouquet of creme gardenias, creme roses, stephanotis and baby's breath with trailing English ivy and picot ribbon. It was carried atop a 100-year-old Bible which had belonged to the bride's great-grandmother, Ellie Joyce.

Lana Crenwelge, sister-in-law of the bride, was matron of honor. She wore a tea-length gown of teal taffeta.

The fitted bodice featured a sweetheart neckline, and puffed sleeves. She carried a bouquet of mixed spring flowers.

The groom wore a black tuxedo, ivory shirt, black cummerbund and bow tie with a creme rose and stephanotis boutonniere. He was attended by Danny Brumley of Midland as best man. He was attired like the groom with a creme rose boutonniere.

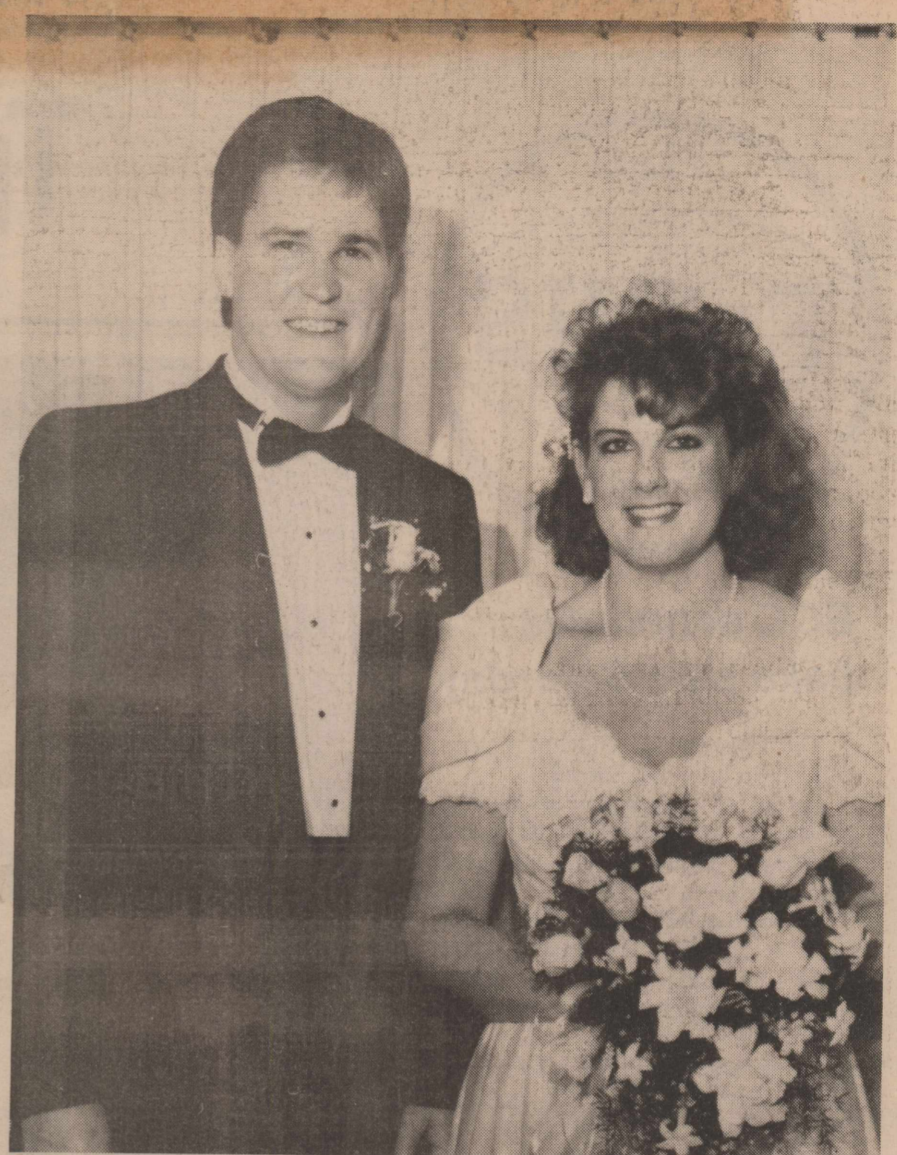
Guests were registered by Mary Boone of Lampasas, cousin of the bride.

Following the ceremony, a reception was held in the home. The serving table was covered by an ivory cutwork cloth. The three-tiered wedding cake was decorated with miniature peach bouquets throughout the cake. Punch was served from a silver punch bowl. Also served were coffee, mints and mixed nuts. Servers were Lisa Brumley of Midland, Becky Eaton of Snyder, Sarah Snailum of Odessa, sister of the groom, and Emily Cox of Pennsylvania, also a sister of the groom.

Following a trip to Abilene, the couple is at home in Snyder.

The bride graduated from Snyder High School and attended Western Texas College. The groom, a graduate of Haskell High School and Western Texas College, is employed at Wilson Motors in Snyder.

The couple was honored with a reception in Haskell and a couple's party given by Mr. and Mrs. Bill Wilson III and Mr. and Mrs. Scotty Sullivan. The bride was honored with a brunch given by Mrs. Pete Greene and Mrs. Steve Talbott.



Mr. and Mrs. Elliott Cox

-BIRTHS-

Bryant and Brenda Tidrow are proud to announce the birth of their daughter, Lyndsey Nicole, born March 8 at Haskell Memorial Hospital.

She weighed 9 pounds, 2 1/2 ounces and was 21 inches long.

She was welcomed home by a big sister, Ashley.

Born at Hendrick Hospital March 11 to Morgan and Tricia McNelly of Rochester, a boy, Joshua Morgan, weighing in at 8 pounds, 1/2 ounce and 21 1/4 inches long.

Grandparents are Mr. and Mrs. Richard McNelly of Rochester and Mr. and Mrs. James McFadden of Haskell.

Hobby Club

At the March 7 meeting of the Rochester Hobby Club, 15 members and one visitor were present for a very enjoyable day. Lots of quilting and visiting made the day so pleasant.

Mattie Lou Cole, hostess, provided a delicious cocoa angel food cake for our dessert. The members brought sack lunches or bought hamburgers for lunch.

When completed, the club's king-size "Lone Star" quilt will be beautiful. The other quilt being quilted is an antique unusual arrangement of "Grandmother's Flower Garden", brought in by Dorothy Carmack.

March 21 will be the next meeting date. Ethel Dabney is to be hostess.

Thank you for reading THE HASKELL FREE PRESS.

**Art association
sees demonstration**

The Brazos West Art Association held its monthly meeting Monday in the Community Room of the Haskell National Bank.

Fern Livengood of Stamford gave a demonstration on drawing windmills, reducing them in size or enlarging them. Sixteen members and two guests worked along during her demonstration.

During the business meeting, officers for the next club year were nominated and reports were made by officers and committee chairmen.

Hostesses for the evening were Judy Benton, Betty Hook and Faye Stiewert.

Words cannot express our appreciation and sincere thanks for all the kindness and support to all who reached out to us during the loss of our loved one. Every prayer, visit, card, food, flowers, and memorials is a blessing. A special thanks to the staff, nurses, and doctors of the Haskell Hospital and Clinic for their tender care and to Rev. Jim Turner and Dr. Troy Culpepper for his special service. The Four Friends for their songs and the Holden-McCauley Funeral Home's help in our time of need.

The families of Gracie May Moore

In celebration of
Saint Patrick's Day
and
Bettye being gone
Sidewalk Sale
Friday and Saturday
\$5.00 rack \$10.00 rack
\$15.00 rack \$20.00 rack
"The Hayloft Looks Good on You"

MasterCard
VISA

409 S. First
Haskell

The Hayloft

THE Personality SHOPPE

STRIKING SILHOUETTE

For the fashion conscious, this long torso tunic dress is a spring classic. Henry-Lee piped the neck and sleeves in white and adds a band of white over the attached pleated skirt. One piece with a two piece look in poly/rayon linen. Sizes 8 to 20 Rose or Blue

Henry-Lee

Featuring Exciting Fashions
Fabulous Selections
Accessories that Make the Difference
Bags - Belts - Scarves - Jewelry

Easter March 26
Layaways Welcome

Special - One Week Only

VHS Video Camera/Recorder/Player

Realistic Model 100 Movie Corder
Accessories included!
One Hour Rechargeable Battery - Hard Case and Shoulder Strap - Audio/Video Output Cable - AC Adapter/Charger

Regular \$1299.00
Price
NOW!
\$899.00 Plus Tax

A BIG SAVINGS OF \$400.00

Walling TV and Electronics
414 N. 1st.
Haskell
Phone 864-2870
Sale ends March 22, 1989

Radio Shack
DEALER

LUZIER
Personalized Cosmetics

SINCE 1923

Doris Walker
Licensed Cosmetologist
Home (817) 673-8234

Mane Tamer Beauty Shop
Weinert, Texas 76388
(817) 673-8208

We know you'll like our style!

Slipper Shoppe
presents the most fashionable Easter shoes from the designers you love. Choose from a striking collection of shoes that range from classical to utterly feminine.

East side of square
817-864-3051
Haskell, Texas

Slipper Shoppe
"Your Style Our Passion"

Carolyn Pippin gives book review

The topic of the Progressive Study Club's March 9 meeting was Education and Literature With Designs on Development: Rewards of Reading.

Jimmy Weinert, program director, introduced Carolyn Pippin "reviewer extraordinaire", who delighted members and a guest, Peggy Stone from Anadarko, Okla., with the story of Missy; Octavia, her mother; and her Aunt Drusilla, who lived in Byron, Australia and were the main characters in "The Ladies of Missalongha," the latest novel written by Colleen McCulloch.

Mrs. Pippin's word pictures of the spinster ladies in their genteel poverty, even though they had shares in the bottling company and how the crisis of a leaky roof was finally resolved kept everyone's interest.

Her descriptive terms of the peaceful valley, the brush, the Missalongha River and waterfall, as well as Missy, who was always dressed in brown, which she hated, but appeared in a scarlet dress at a wedding and who later walked nine miles to ask John Smith to marry her, were excellent.

The club presented Mrs. Pippin a beautiful scarf as an act of appreciation for the book review.

Several members brought books for the county library to carry out the idea of "Recycle, Re-circulate and Re-use Our Books."

Anita Herren, federation counselor, encouraged members to attend the TFWC Mesquite district 1989 spring convention March 17-18 at Kiva Inn in Abilene. The theme chosen by district president Winifred White of Knox City is "Rededication of Unity, Integrity and Love." The main session begins on Friday at 1:30 p.m. The banquet, which features the club residents' reports, will begin at 6:30 p.m. The Saturday session begins with hospitality at 8:30 and concludes after the luncheon. Door prizes will be awarded throughout the sessions. Jane Coston, club treasurer, will send in reservations for those attending.

Hostesses Donna Cole, Jane Coston, Mary Holden and Gladys O'Neal served refreshments after the book review. The table featured Easter decorations made by Mrs. O'Neal.

Finances studied by club

The Weinert Extension Club met in the home of Debbie Crump on Tuesday, March 7.

Betty Sanders called the meeting to order. Debbie Crump read a poem, "Time to Pray", then all members read the TEHA prayer.

Ten members and one visitor answered the roll call by giving a "time-saving appliance I wish I'd never purchased. Henrietta Rueffer gave the council report.

Plans were made for club members to attend Tri-County Rally Day in Seymour March 14, with Debbie-Crump driving the bus.

The quilt committee reported on the quilt that is in progress. It is being put together by Jimmie Weinert. Club members have been working at the school house on decorations for the district TEHA meeting April 12.

Jimmie Weinert was elected TEHA chairman nominee, with Betty Sanders as alternate for the district meeting.

Faye Jetton and Alice Yates presented the program for the day, "Managing Your Personal Finances", which emphasized putting the puzzle together and brought out important findings to go by: values, goals, wants, needs, resources, income, expenses, planning, changes.

Refreshments were served by the hostess to the following members: Betty Sanders, Jimmie Weinert, Faye Jetton, Alice Yates, Myrtle Phemister, Henrietta Rueffer, Agnes Winchester, Cordie Cunningham, Ruth Jimenez and Erma Liles, a guest.

Garden club meets

The Haskell Garden Club met Thursday, March 9, at the Haskell National Bank Community Building.

Mollie Carlisle presided for the opening of the meeting in the absence of the president, Linda King.

Roll call was answered by naming a bird wintering in your garden. Lorene Dewey read the minutes. The Spring Convention meeting in Abilene April 4-5 was discussed. Mrs. Helen Girdner will present a program on table decorations.

Mrs. Juanita Bevel presented an interesting program on the topic of enticing birds into your garden. She had on display beautiful pictures in color of different kinds of birds. She also exhibited bird houses, food and nest building materials. It all was beautifully done and most interesting.

The next meeting will be April 13 at 2 p.m. It will be a program on Easter symbols and nature lore.

Guests are always welcome, so please feel free to come to our meetings.

Refreshments were served by the hostesses, Callie Robison, Mollie Carlisle and Mary Bischofhausen.



Tammy Reding and Gaylon McDorman

Reding-McDorman wedding planned

Mr. and Mrs. James Reding wish to announce the engagement of their daughter, Tammy, to Gaylon McDorman, son of Mr. and Mrs. Larry McDorman.

An Aug. 19 wedding is planned at the First United Methodist Church in Seymour.

The bride-elect is the granddaughter of Mr. and Mrs. Frank White and Mr.

and Mrs. Howard Reding. She attends Midwestern State University where she is majoring in accounting.

The prospective bridegroom also attends Midwestern State University where he is majoring in business administration.

Wild and zany student dividers. Fits 2 and 3 ring notebooks. Reinforced. Available at the Haskell Free Press.

Stamford Chiropractic Clinic

1511 Columbia * Stamford, 773-5012
Hours: 9-5, Mon., Tues., Thurs., Fri. & Wed. 9-12
Knox City Hours: Wed. & Sat. 9-12

HEADS OR TAILS WESTERN WEAR

Haskell, Texas

SADDLE SALE MARCH 17 - 20

OVER 50 SADDLES SALE PRICED

NOW BUYING

Aluminum Cans
45¢ per lb.

- Copper
- Brass
- Radiators
- Car Batteries
- Heavy Aluminum

Open Monday, Friday, and Saturday
8 a.m.-4p.m.
at Dave's Cave in Haskell

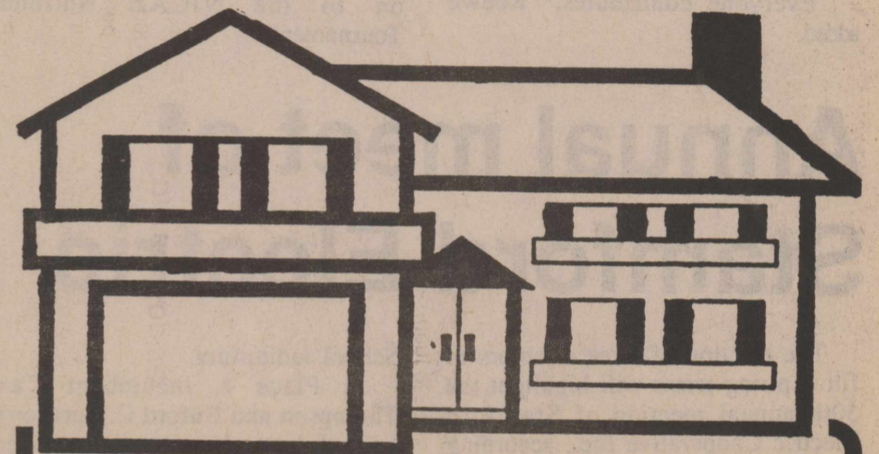
Cooper Insurance Agency

Specializing in

Multi-Peril Crop Insurance

Contact Linda Cooper today for details

(915) 576-3193 or 576-3139
136 S. Central ~ Hamlin, Texas



☆ YOUR HOME ☆

THE RIGHT HOME - THE RIGHT PRICE - RIGHT NOW!

We're professional builders, helping you decide what kind of home you want. We can draw up your plans, build, paint and wire your new home.

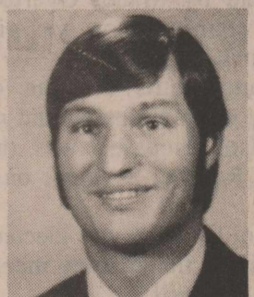
Also Remodeling, Custom Cabinets, Concrete Work

TURNER CONSTRUCTION

DALE TURNER, OWNER
817-864-3165

TAX PLANNING

Written By
Richard E. Rodgers, CPA



BREAKEVEN ANALYSIS (An effective business tool)

Before any company can earn a profit, it must pass the "breakeven point," the level where total sales equal total expenses (costs).

Fixed costs are those that do not change with the level of sales (rent, insurance, etc.) Variable costs change depending on the level of business activity (inventory, commissions, etc.) Some costs have both fixed and variable components which should be separated.

The breakeven point in dollars is calculated by dividing total fixed costs by the gross profit percentage.

For example, let's look at a company selling pencils for ten cents each, with total fixed costs of \$100. If each pencil costs six cents (the variable cost), then four cents from each pencil sold is the profit margin (40% gross profit). Given these facts, how many pencils must be sold to break even?

Fixed costs of \$100 divided by the 40% profit equals \$250 of sales needed to break even. The pencil company must sell at least 2,500 pencils just to break even. They must sell more than that to make a profit.

Before starting a new business, you can use breakeven analysis to find out what it will take to turn a profit and whether expectations for the business are realistic.

For an existing business, breakeven analysis can help determine the number of sales needed to make a new product profitable, or show the effect of different price structures and sales levels, or let you see how cutting fixed or variable expenses will change the company's net profit picture.

Call us for details on how breakeven analysis can help you make business decisions.

Sponsored By

JAMES E. RODGERS & COMPANY

Certified Public Accountant
20 Southwest Third Street
Hamlin, Texas

SWENSON MEATS, Inc.

17 W. McHarg Stamford, Texas (915) 773-3412

Featuring

RANCH BEEF

Custom Slaughtering & Processing

Retail Specials -- While Supplies Last

Arm Roast	lb.	\$1.45
Lean Ground Beef 10 lb. or more	lb	\$1.59
Beef Tenderloin.....	lb.	\$6.25
Beef Ribs	lb.	99¢

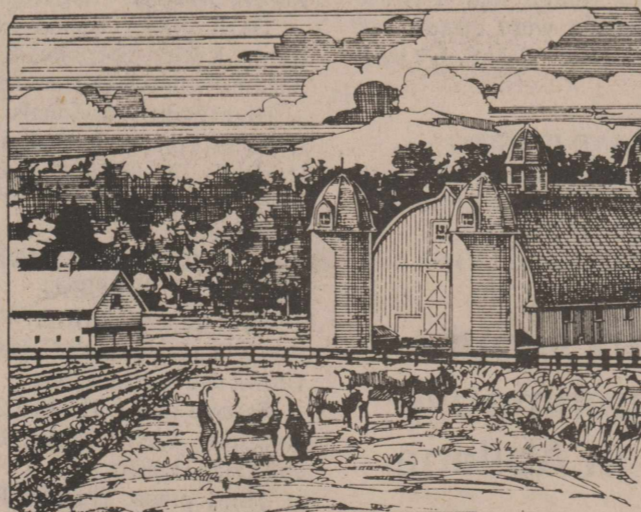
Prices effective through March 31, 1989

Most Retail Cuts available Fresh or Frozen
SPECIAL Orders Welcome

- Beef Halves & Quarters Cut to Your Specifications -

Store Hours: 8 to 5:30 Mon. thru Fri.
8 to 12:00 Saturday

WE SALUTE AGRICULTURE EVERY DAY



This month the nation pays tribute to farmers on Agriculture Day. We're pleased to join in that effort, but

for us, every day is "Ag Day", because serving the farming community is a full-time, year-round job.



The Farmers NATIONAL BANK

Post Office Box 10
Phone (817) 997-2216
Rule, Texas 79547

Julie Roewe

(Continued from page 1)

That the Dusters came back so strong in 1989 is a tribute to WTC tradition. Western was coming off of a bewildering 1987-88 season when the team was forced to forfeit its final eight games. Had misfortune not dominated in the form of grade problems, homesickness and discipline, the prospects were looking good for the Dusters to better their previous season performance of fourth in the national tournament.

But that misfortune only made this season's squad more determined.

"We were pretty much frustrated by it," said Allen a 5-11 All-American prospect from Amarillo. "We made up our minds that we would come out and take our revenge, I guess."

Rallying from an abbreviated season, the Dusters not only got back in the regional tournament, but finished as co-champions in the conference.

Allen leads the team in scoring and rebounding with figures of 17.8 points and 9.4 boards an outing. Roewe, who also contributes 7.5 points and 4.6 rebounds, leads in assists with a 6.3 average. But having just two good players on a team in the WJCAC isn't good enough.

"Basically it's been teamwork. Teamwork and hard work," said Allen on how the Dusters have achieved success this season.

"Everyone contributes," Roewe added.

Versatile sophomore Stacy Smith moved to the point-guard position at mid-season and has been an all-around threat, averaging 8.1 points, 4.3 rebounds, 2.8 steals and 3.3 assists. Tabitha Walton, a sophomore from Beaumont, has been a key player off the bench for the Dusters as the season has progressed. Elayne Maddox, the team's other sophomore, is a strong inside rebounder.

Two of the top newcomers in the conference are WTC freshmen Valery Jackson and Tami Wilson. Jackson, 5-10 from Morton, is a game-player who attacks her opponent. Tough at either the wing or point, she averages 7.5 points a game.

Wilson is the starting low post for the Dusters, averaging 12.3 points, 9.2 rebounds and 3.2 blocked shots a game. She is 5-11, from Seagraves.

Ready to step in at any time are Bobbie Brown, a 5-11 sharp-shooting freshman from Jayton who plays the wing, and point-guard Jackie Harris, a 5-6 Rising Star standout.

"I feel like we have worked hard and I think we have a good chance to win it," said Roewe. "As far as the competition goes, the best teams down there are usually from our conference and we believe we can beat them."

If the Dusters' dream of winning a Region V crown is realized, they'll have another goal. The winner goes on to the NJCAA National Tournament.



plain talk

BY WENDELL FAUGHT

Speaking of John Tower earlier this year,

Sen. John Glenn said: "I have no doubt he'd make a good secretary of defense."

Sen. Al Gore said: "Mr. Tower's performance (as START negotiator in Geneva) was exemplary in every way."

And when Tower left the Senate in 1984,

Sen. Daniel Inouye said: "John Tower's dedication and attention to detail has been unsurpassed. None of us could have asked more of a chairman."

Sen. Ted Kennedy said: "His knowledge of the myriad, complex defense issues facing the country is unsurpassed."

Sen. Sam Nunn said: "His talent, wisdom and experience are indeed national assets."

And when the Senate voted last Thursday for his confirmation as secretary of defense, Sens. Glenn, Gore, Inouye, Kennedy and Nunn said:

"No".

Did you know that television Emmy award is named for the inventor of the orthicon tube, not some legendary woman in the industry; the white half-moons at the base of your fingernails are caused by trapped air; the glue on U.S. postage stamp comes in two flavors, one for commemoratives and one for regular issues?

These and many more earth-shattering revelations can be found in "Why Do Clocks Run Clockwise?" a new book on the insignificant things in life, which can be yours for \$14.95.

Is there an "adequate cause" to commit murder?

There will be if a bill filed by a couple of state representatives passes the legislature.

A bill by Reps. Gregory Luna of San Antonio and Bill Carter of Fort Worth defines "adequate cause" as "that which would commonly produce a degree of anger, rage, resentment or terror in a person of ordinary temperament sufficient to render the mind incapable of cool reflection."

Under the bill, a defendant who could prove that he killed someone under those circumstances would be charged only with a second degree felony.

The carpet sweeper was invented 1876 by Melville R. Bissell. Just thought you'd like to know.

A 250-percent increase in the state tax on cigarettes is being blamed for rise in burglaries in California.

A Fresno grocery store was burglarized twice in less than a week and both times the burglars took only cigarettes.

The owner blames the burglar on the 25-cent-per-pack tax increase that went into effect Jan. 1, raising the price on a carton of cigarettes to about \$15. He says similar burglaries are taking place all over town. The thieves sell the cigarettes to other stores, he said.

Three hundred people were killed last year in the occupied territories in the Middle East, an area often described as a powder keg waiting to explode.

That's far fewer than were murdered in Washington, D. C.

You may not agree with his thinking, but if you like colorful prose, you'll love Benjamin Friedman's assessment of his book "Day of Reckoning".

"The thesis of this book is that the radical course upon which United States economic policy was launched in the 1980s violated the basic moral principle that had bound each generation of Americans to the next: that men and women should work, eat, earn and spend, so that their children and their children's children would inherit a better world."

"Since 1980 we have broken with that tradition by pursuing a policy that amounts to living not just in the present, but for the present. We are living well by running up our debt and selling off our assets. America has thrown itself a party and billed the tab to the future."

That's what I call pretty writing.

Annual meet of Stamford Electric

The election of three directors to fill expiring terms will highlight the 50th annual meeting of Stamford Electric Cooperative Inc., according to President John E. Youngquist. The meeting will be Saturday, beginning at 6:30 p.m., in the Stamford High

School auditorium.

In Place 1, incumbent Carl Thompson and Buford C. Spraberry, both of Anson have been nominated. In Place 2, incumbent Sam Turner and Norris Anders of Rule are the nominees. Incumbent Leroy Lundgren and Hollis Muehlstein of Avoca have been nominated for Place 3.

The Roundup Boys will entertain the crowd before the business session. A barbecue dinner will be held for cooperative members, beginning at 5 p.m. with registration to follow at 6 p.m.

Jerry Terrell, general manager, stated that the history of the cooperative is truly a success story. He said the organization has experienced tremendous growth since its beginning in 1939 when the first lines were built. He pointed out that the firm has come through bad times, a few better times and through drought and flood to become what it is today.

Stamford Electric Cooperative serves rural areas in parts of six counties, Jones, Haskell, Fisher, Shackelford, Stonewall and Throckmorton.

Medical fund for Thane family

A fund to assist in medical expenses has been set up for the benefit of Mr. and Mrs. Leland Thane.

Contributions to the fund may be made at the First National Bank in Haskell, or mailed to the bank at Box 527.

Extension Club has meeting

The Paint Creek Home Extension Club met March 6 at 2 p.m. in the Paint Creek cafeteria.

The meeting was called to order by Frances Fischer, president. Roll call was answered with "a time-saving appliance I wish I'd never purchased." The secretary-treasurer's report was given and approved.

A thank you note from Lou Gilly was read by Mabel Overton. The county council report was given by Ann Sinclair.

Arrangements for the district meeting were discussed and planned for. Also discussed was the Tri-County Rally at Seymour on March 14.

Mabel Overton was elected to be delegate to the district meeting in Haskell on April 12.

The program, "Managing Your Personal Finances," was given by Lorene Harris and Dolores Medford.

Refreshments of sandwiches, cookie bars and tea were served to Dolores Medford, Mabel Overton, Ann Sinclair and Frances Fischer by the hostess, Lorene Harris.

Next meeting will be April 13 with Dorothy Wells as hostess.



John and Joyce Hawkins

Hawkins couple to celebrate 50th

The children and their families of J. W. and Joyce Hawkins extend an open invitation to their friends and relatives to attend a 50th anniversary celebration Saturday, March 18, from 2 to 4 p.m. at the Haskell National Bank building.

John and Joyce have resided in Haskell since 1968 when they moved

here from Weinert.

John is retired from the oil field services and works during the ginning season at Farmers Co-op Gin. Joyce is an Avon representative and works part time at Haskell Memorial Hospital.

No gifts please.

Winner named in judging contests

The Haskell-California Creek Land Judging and Range and Pasture Judging contests were conducted Monday in the Paint Creek community.

Results were:

LAND JUDGING

First place: Sweetwater FFA with Benny Cornett, Mike McEllyea, Jeff McEllyea and Shad Schlueter.

Second place: Rochester FFA with

Kelly Sprayberry, Wayne Hester, Robert Ortiz and Craig Rogers.

Third place: Anson FFA with Larry Lytle, Stephen Simpson, Sharon Nichols and Trampas Graham.

High point individuals: 1. Larry Lytle of Anson, 2. Dalyn Gilly of Haskell, 3. Randy Cornett of Sweetwater, 4. Craig Rogers of Rochester.

RANGE AND PASTURE JUDGING

First place: Anson FFA with Randy Heald, Brandi Coffee, Brenna Brown and Katrina Cook.

Second place: Haskell FFA with Rod Jeter, Rusty Stocks, Jason Hall and Crain Hanson.

Third place: Haskell FFA with Chad Gipson, Cole Callaway and Adam Coleman.

High point individuals: 1. Katrina Cook of Anson, 2. Brandi Coffee of Anson, 3. Brenna Brown of Anson, 4. Adam Coleman of Haskell.

Weinert scouts win pushmobile races in Abilene

Cub scouts of Weinert were in Abilene Sunday afternoon for the annual pushmobile race.

The Wolf scouts, which included Lucas Castillo, Heath Guess and Dusty Yates won first place in their age division.

The Webelos team, on which Cory Wood and Jace Yates were members, won second place in their age division.

The Wolf scouts also won second in the overall competition among the three age divisions. They were awarded a trophy and silver medals.

Boys and parents reported an exciting time at the races.

VFW to have stew supper

The VFW post in Stamford will have an Irish stew supper Friday beginning at 6:30 p.m. at the organization's building.

Members and guests are invited to attend.

Letters

From the coach

Editor: The Haskell Indian boys' basketball team and I would like to thank you for all the support at our games this season.

It really makes a difference when we see so many people backing us. We appreciate the cards, letters, cartoons and all the wonderful signs that were made.

A special thanks to all parents, teachers, coaches, faculty members and citizens who helped in many different ways. We could not make it without you.

Thanks!

Randy Stone

Thanks

Editor: On behalf of Noah Project-North, the Advisory Board wants to take this opportunity to thank all who donated time, money, food and soft drinks to the concession stand during the recent basketball playoff tournaments.

We also appreciate all of those who stopped by to show their support by purchasing from our concession stand as well as attending the games.

This was a profitable fundraiser for Noah Project-North.

It is only through your support that the Noah Project can continue to help victims of family violence.

Essie Hall
Vice Chairman
Advisory Board
Noah Project-North

Support group

Editor: Women's support group meetings are held every second and fourth Wednesday at 1:30 p.m. and every fourth Tuesday at 7 p.m. at East Side Baptist Church, 600 N. 1st, in Haskell.

All sessions are confidential.

Betsy Nanny
Outreach Coordinator
Noah Project-North

Renew

Editor: Enclosed you will find a check for \$15 for our subscription for the next year to The Haskell Free Press.

Yes, we enjoy reading the paper and hearing all the news from our hometown. Would like to say "Hello" to all our friends and send our love to all.

Mrs. S. V. Jordan
Fort Worth

Bass tourney winners named

Bill Thomas, with 11.22 pounds, was first-place winner at the first two-day tournament of the year by the Haskell Bass Club.

Donnie Frazier of Aspermont, with 9.86 pounds, won second place, and Bill Perry took third with 5.68 pounds.

Biggest fish caught Saturday was by Glen Pogue, 5.13 pounds. Sunday's biggest fish, weighing 4.98 pounds, was caught by Donnie Frazier.

The club reported a large turnout for a beautiful weekend.

Next month's tournament will be at Miller Creek.

THE HASKELL FREE PRESS


Established January 1, 1886
PUBLISHED EVERY THURSDAY
401 S. First St
P. O. DRAWER 1058 HASKELL, TEXAS 79521

Don Comedy.....Publisher
Wendell Faught.....Editor
Lisa Shaw.....Business Manager
Mary Kennedy.....Production
Charles Thornhill.....Advertising

Second Class Postage Paid Haskell, Texas 79521
 (USPS 237-040)
SUBSCRIPTION RATES:
 In Haskell and adjoining counties, one year, \$12.00; six months, \$10.00;
 two years, \$23.00; Elsewhere in Texas, one year, \$15.00; six months, \$13.00;
 two years, \$29.00; outside Texas, one year, \$17.50; six months, \$15.50, two
 years, \$34.00.

NOTICE TO PUBLIC-Any erroneous reflection upon the character, reputation or standing of any firm, individual or corporation will be gladly corrected upon being called to the attention of the publisher.

POSTMASTER:Send address changes to The Haskell Free Press, P.O. Box 1058, Haskell, TX. 79521-1058.



Our Classifieds Measure Up!

The Haskell Free Press



We are proud to announce the addition of Joseph Toliver to the staff of Bailey Toliver Chevrolet-Oldsmobile.

Joseph will carry on the tradition of quality sales and service in the Haskell area.

See Joseph for these specials and more:

LET'S MAKE A DEAL!

DEAL

1

EXXON GAS FOR A YEAR

OR

DEAL

2

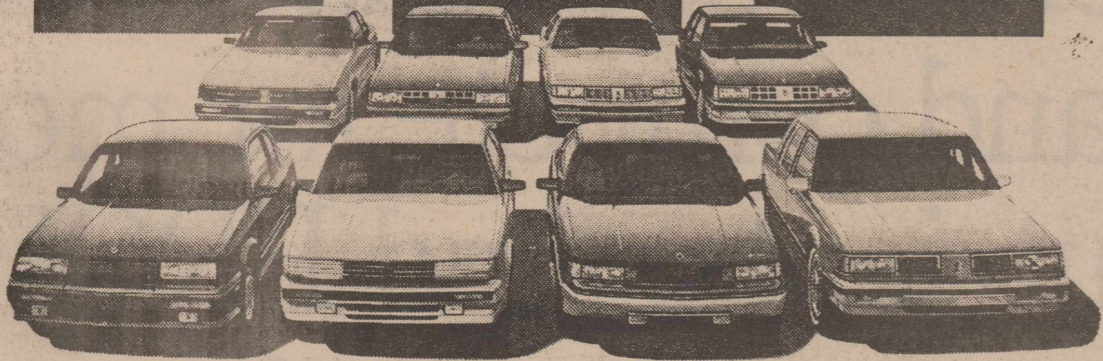
4.9% GMAC FINANCING

OR

DEAL

3

UP TO \$1500 CASH BACK



on a New Generation Oldsmobile. Plus many great deals on selected Chevrolet Cars and Trucks

Bailey Toliver

Chevrolet - Oldsmobile

517 N. First Haskell Phone 864-2626

Griffith celebrates birthday

Sammie Lee Griffith of the Paint Creek community celebrated his 80th birthday Saturday with a party given by his five children and their spouses. The party was given in the home of his daughter and son-in-law, Kenny and Wanda Thompson of Paint Creek.

His birthday cake was a vegetable garden scene representing Mr. Griffith's favorite hobby. Each summer he has a large and healthy garden producing many vegetables that he shares with friends and family. The table was decorated with a Texas Lone Star patterned quilt, and punch was served from a butter churn. Various appetizers were served.

Helping Sammie celebrate were his four brothers and their spouses, Bill and Bertha Griffith of Paint Creek, Woodrow and Liz Griffith, Roy and Ora Griffith and Jack and Ruby Griffith, all of Abilene.

Also attending were Brenda and Ronnie Reel, Leigh Ann, Jodie and Lindsay of Paint Creek; Jimmy and Dorothy Griffith of Paducah; Juanita Zachry of Abilene; and Beth Pate of Garland.

Along with his wife, Emma Griffith, family members attending were Dan and Earlene Griffith, Danny and Shelia Griffith, Kim and Robert Cheek, Kourtney, Megan and Emma Sue of Abilene, Andy Griffith of Texas Tech, Jo Ann Poyer of Claremore, Okla., Marilyn Griffith of Abilene and the Thompson children, Casey and Katherine Ann.

Sammie received a telephone call Saturday from his oldest daughter, Emilee Goff of Los Teques, Venezuela.

Sammie was guest of honor Thursday night with a birthday supper in the home of his son and daughter-in-law, Dan and Earlene Griffith. Those attending were Sammie and Emma Griffith, Danny and Shelia Griffith, Andy Griffith of Texas Tech, Marilyn Griffith, Jo Ann Poyer, Kenny and Wanda Thompson, Casey and Katherine.

Mr. Griffith was born March 9, 1909, on the family farm near Weinert. He and Emma Daniel married July 25, 1936. They have lived in Paint Creek since 1945.

--Obituaries--

Gracie Moore

Gracie May Medford Moore died Wednesday, March 8, at Haskell Memorial Hospital. She was 98.

Funeral services were held Saturday at the First Baptist Church with the Rev. Jim Turner and Dr. Troy Culpepper officiating. Burial, under direction of Holden-McCauley Funeral Home, was in Willow Cemetery.

Pallbearers were Felton Everett, John Miller, Tom Paul Barnett, Willie Buerger, Bill Blakley and Jake Whiteker.

Mrs. Moore was born May 29, 1890, in Bonham. She married Oscar Lee Moore on Dec. 16, 1916, in Fannin County. He died May 27, 1961. She had lived in Haskell since July 4, 1925, having lived in Savoy and Quanah before coming to Haskell. She was a member of the First Baptist Church.

She is survived by a daughter and son-in-law, Pansy Ruth and Henry Harris of Haskell; two sons and daughters-in-law, Theo Lee and Marge Moore of West Chicago, Ill., and Douglas Dewayne and Doris Moore of Haskell; a special friend, Lillie Kreger of Haskell. She also is survived by 15 grandchildren, 18 great-grandchildren, eight step-great-grandchildren and two step-great-great-grandchildren.

In addition to her husband she was preceded in death by a son, Velton Moore, and a daughter, Onella Ellis.

Villa, infant son of Mr. and Mrs. Domingo Villa of Denton.

The Rev. Alphonse Boardway officiated and burial was in Willow Cemetery under direction of Holden-McCauley Funeral Home.

The boy was born Feb. 28 in Denton. He died in Fort Worth Children's Hospital.

In addition to his parents, he is survived by a brother, Brandon, a sister, Deborah, both of Denton. He was the grandson of Delia Villa of Haskell and Tony and Susie Escobedo of Stamford.

Lewis Tatum

Lewis Tatum, 29, a carpenter, died March 5 at Dallas-Fort Worth Medical Center of an aneurysm.

Services were March 7 with burial at Southland Memorial Park.

He was born in Haskell and lived in Grand Prairie for 22 years. He attended Grand Prairie High School.

He was the nephew of Arvil and Mary Ann McFadden of Haskell and the grandson of C. C. and Lorene McFadden of Graham. He also was a great-nephew of Billie Jean Walters, Opal Isabell, Mr. and Mrs. A. D. McFadden and Mr. and Mrs. Jim McFadden, all of Haskell.

Other survivors include his parents, George and Betty Tatum of Grand Prairie; two brothers, Michael Tatum of Arlington and Larry Tatum of Grand Prairie; and a sister, Beky Tatum of Grand Prairie.

Josselet reunion

Descendants of the late Victor J. and Catherine Josselet will have a reunion March 26 at the Haskell Civic Center.

Justin Villa

Funeral services were held Thursday, March 9, at St. George Catholic Church for Justin Ryan

John Lee Wilde Building Company

New Home Construction
Remodeling
All types of concrete work

422-4650 Munday

Announcing

HALE FARM SUPPLY

Wainert
Rule Haskell
Old Glory
Sagerton
25 mi.
our store Stamford
Hamlin
250
Avoca
Lueders
FREE
Anson
HAULING PLAN

Hale Farm Supply is now offering FREE Hauling to all customers within 25 mi. of our store if the repair bill totals \$250.00 or more. If you live outside the 25 mi. range, we haven't forgotten you. All that you pay for is the distance from your tractor back to the 25 mi. range. This offer applies to pick-up and delivery of your tractor.

Genuine John Deere Parts

BUY THE **JOHN DEERE** DIFFERENCE

Reasonable Repair Rates

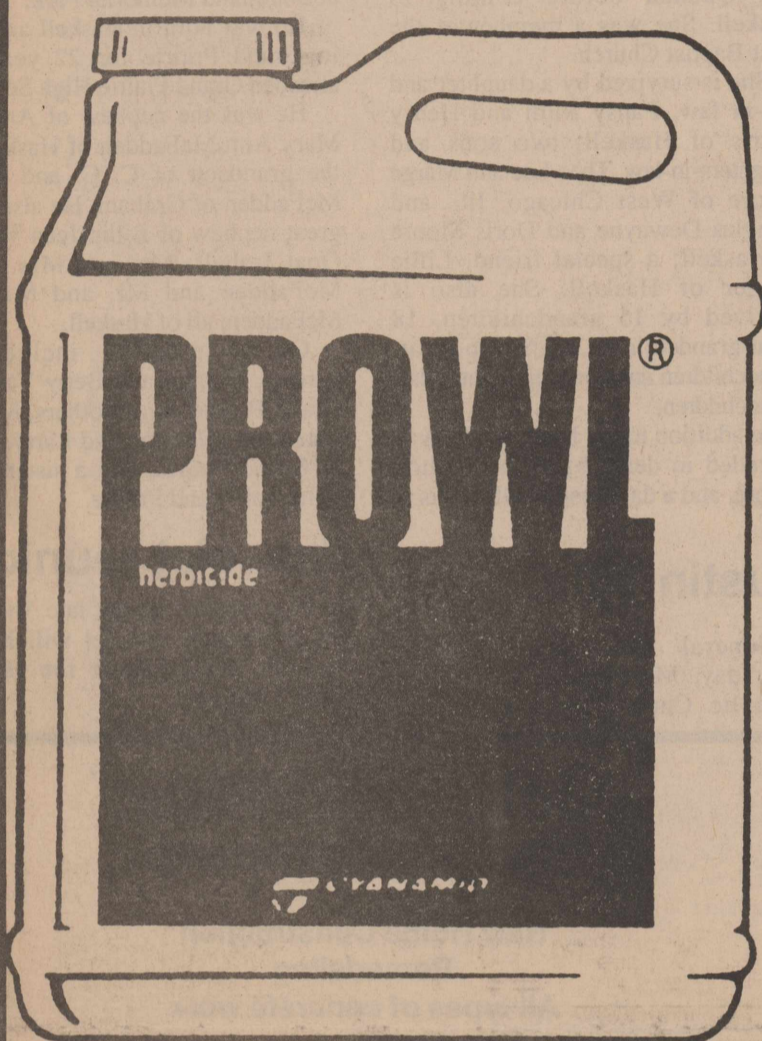
Hale Farm Supply

Stamford, Texas
915-773-2788



<p>Valu-Rite</p> <p>Fresh Shipment Pangburns Candies for Easter</p>	
<p>B-D Syringes</p> <p>1 cc 1/2 cc Box of 100 Your Choice</p> <p>16⁷⁹</p>	<p>DOYLE HIGH'S</p> <p>THE DRUG STORE</p> <p>100 So. "E" HASKELL, TEXAS</p> <p>Prices Good March 16-22</p>
<p>Theragan or Theragan-M vitamins 100 + 30 FREE</p> <p>789</p>	<p>Alka-Seltzer Plus cold Medicine 20 Tablets</p> <p>219</p>
<p>Senokot 100 tablets Senokot NATURAL VEGETABLE LAXATIVE RELIEVES CONSTIPATION GENTLY 100 TABLETS Puritan Products</p> <p>SENOKOT 100 Tablets</p> <p>819</p>	<p>allertest maximum strength 24 Tablets</p> <p>229</p>
<p>Advil 24's</p> <p>219</p>	<p>Tinactin Antifungal Powder Aerosol 3.5 oz.</p> <p>297</p>
	<p>Imodium A-D Anti-Diarrheal 2 oz.</p> <p>289</p>

PROWL[®] CAN HELP BRING IN A HIGHER QUALITY COTTON CROP



PROWL[®] herbicide gives season-long control of weeds that crowd your crop and compete for moisture and nutrients. And PROWL is easy on young cotton plants. Lets the crop get off to a fast healthy start. That can mean more squares on the first bearing branches and a higher quality bottom crop.

See us today. We have the products and the service to help your farming operation.

CYANAMID
AGRICENTER[™]

Always read and follow label directions carefully.
[™]Trademark, American Cyanamid Company © 1988

BULK PROWL[®] Available
At
Bridwell Spraying Service
At Haskell Airport
Phone: 817-864-2456 or 817-864-3115

Perry appointed to Legislative Council

Texas House Speaker Gib Lewis, D-Fort Worth, has named State Rep. Rick Perry to a two-year term on the Texas Legislative Council.

The 17-member council is a nonpartisan legislative agency that serves as a source of impartial research and information. Among its responsibilities is the duty to investigate various state departments, agencies and officers, conduct studies and any necessary investigations for the legislative branch and gather information for use by the legislature.

Additionally, the council reports its recommendations on various proposals to the legislature and

assists in drafting proposed legislation.

Perry, a three-term Democratic lawmaker from Haskell, is a member of the House Appropriations and Calendars committees. He also serves as chairman for Budget Oversight for the Energy committee of the House.

In announcing the appointment, Lewis said, "Rep. Perry's insight into the legislative process as well as his tireless commitment to enhancing state government operations will make him an effective member of this very important agency."

"Perry is a recognized leader in the Texas Legislature."



Kathy Hager

Kathy Hager included in 'Who's Who'

Kathy Hager, daughter of Mr. and Mrs. W. R. Hager Jr. of Weinert, has been named in the 1989-90 edition of *Who's Who in American Women*.

Kathy serves on the national board of directors and is president-elect of the Texas Council of the National Association of Accountants. This international management accounting organization consists of 85,000 members.

She is supervisor of Financial Planning and Analysis in the executive offices of Santa Fe Energy Co. in Houston.

Catch the team spirit! Clipboards in your team's colors: black, gold, red or blue. Catch one now at the Haskell Free Press.

THE HASKELL FREE PRESS

HASKELL, TEXAS 79521, March 16, 1989

National Agriculture Week to be observed March 19-25

One might say that urban dwellers, farmers and ranchers are "partners".

Their partnership involves their dependency on each other for the products and services essential to their busy lifestyles and businesses, says Dr. Carl Anderson.

Anderson said that's a major reason why business and consumer groups will have an opportunity to join in a special observance honoring food and fiber providers of the nation.

The occasion will be National Agriculture Day on Monday, March 20. National Agriculture Week, planned in conjunction with Ag Day, will be March 19-25.

National Agriculture Day is timed to coincide with the arrival of spring, the season of growth and development, and is tied to the March equinox, Anderson said.

He said the two observances are intended to give state and national recognition to the people, organizations and businesses responsible for producing the "most abundant, highest quality and most reasonably priced food and fiber supply in history."

All groups work together in processing and marketing food and fiber products. In addition, they are all consumers of these products.

Movement of food and fiber from its place of origin to supermarkets and family tables provides jobs and

income for about one-fifth of the work force.

One of every 40 Texans is a farmer or rancher. In addition, about 20 percent of the state's retail trade business is closely associated with agricultural production and marketing of food and fiber products.

One of every five jobs in private enterprises is tied to agriculture. With roughly \$11.5 billion in cash receipts from farm and ranch products in 1988, Texas continues to rank second behind California nationally. Farm and ranch receipts have a total economic impact of more than \$35 billion. Texas traditionally is No. 1 in the sales of cattle and calves, cotton, sheep and wool, goats and mohair, cabbage and spinach.

With production of an abundance of high quality food and fiber an inherent mark of American agriculture, consumers spend far less of their take-home pay on food than people elsewhere in the world.

Today, that averages about 15

cents of every dollar of disposable income, with five cents of that spent on food eaten outside the home.

Farm and urban residents together make the best food and fiber combination team anywhere in the world. This gives the U.S. the capacity to feed its own people and to export for economic gain and humanitarian purposes as well.

Student named to select group

William B. DeLoach of Dallas has been selected to membership in the Outstanding High School Students of America.

Selection is based on outstanding merit and accomplishment as an American high school student.

He is a junior at Lake Highlands High School in Dallas and is the son of Mr. and Mrs. Jim DeLoach. His grandparents are Mr. and Mrs. Parnell Anderson of Rule.

To all customers of Southwestern Bell Telephone Company:

Public Notice

On December 22, 1988 Southwestern Bell Telephone Company filed with the Public Utility Commission of Texas several proposed changes in its Universal Emergency Number Service (911) Tariff. These proposals include:

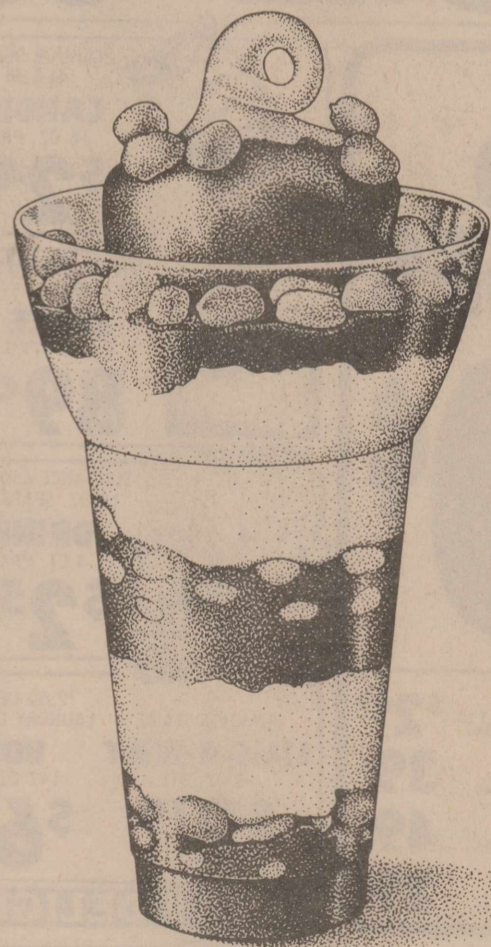
- deletion of the current regulation which restricts E911 Service to a single exchange area which has 50,000 exchange access arrangements or more;
- revising the tariff text to clarify that costs associated with network rearrangements required to accommodate the 911 code may result in additional charges to be determined on an individual case basis;
- a text addition to clarify that telephone company provided Public Safety Answering Equipment is required when a service includes Automatic Location Identification (ALI); and
- a text addition to explain emergency ringback.

The application is styled Docket No. 8565, Application of Southwestern Bell Telephone Company for Approval of Amendment of Universal Emergency Number Service (911) Tariff. It is anticipated that Docket No. 8565 will be evidentiary in nature.

The public may intervene or participate in this docket but it is not required to do so. Anyone who wishes to intervene in this proceeding or comment on the relief sought by Southwestern Bell Telephone Company should contact the Public Utility Commission of Texas, 7800 Shoal Creek Blvd., Suite 400N, Austin, Texas 78757 or call the Public Utility Commission Information Office at (512) 458-0010 or (512) 458-0221, teletypewriter for the deaf. Motions to intervene in this proceeding must be filed with the Commission's filing clerk by April 12, 1989.



PEANUT BUSTER PARFAIT® FOR PEANUTS!



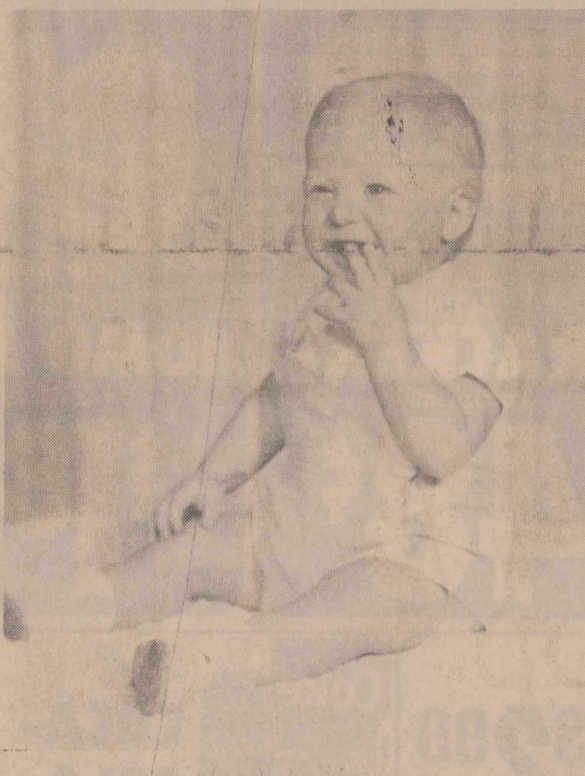
99¢*

Everybody's going nutty for the DAIRY QUEEN PEANUT BUSTER PARFAIT! With layers of DQ goodness, peanuts, and plenty of hot fudge. On sale now for under a buck! Peanuts! ON SALE MARCH 13-MARCH 26, 1989

THIS IS **DQ** COUNTRY

* Reg. TM Am. D.Q. Corp. 1988 Tex. D.Q. Op. Coun. *At participating Dairy Queen stores.

"TRUST ME"



HE'S REALLY 32!

I would like to thank all my friends for the lovely cards, flowers and many phone calls I received during my recent stay at the hospital in Abilene. Also, I thank God each day for the love and support shown to me by my doctor, Wayne Cadenhead.

I will be spending the next few weeks at the care home and would appreciate a visit from any of my friends.

Mildred Kelso

We wish to express our sincere appreciation and gratitude to each of our friends and relatives for the many acts of kindness and consideration shown during the illness and death of our loved one. Every prayer, visit, call, card, food, flower and memorial was greatly appreciated.

A very special thanks to our ministers John Greeson and Dale Huff.

The family of Willie Berryhill

We would like to thank our friends and family, who gave of themselves to us during our recent loss of our son, Justin Ryan Villa.

Although Justin was only with us for a short while, he has taught us so very much. Including how special our families and friends are.

Once again, thank you for your support and love.

Domingo, Elvia, and Brandon Delia Villa and family

Dear Haskell friends,
Well, you all never let me down. I can always depend on you. Thanks to Eula Mae Herren for opening up her beautiful home to me and my family and friends. Thanks to the ladies that fixed the pies and cakes. Thanks to the people that did things for mother without my knowledge. Thanks also for the flowers, contributions to the Rehab, contributions to other funds, cards, and the prayers that kept us both going during her illness. I will always love my Haskell friends. Keep praying for me.

Love, Jan.



Stamford Electric Cooperative, Inc.

50th Annual Meeting of the Membership
March 18, 1989

High School Auditorium beginning at 5:00 p.m. with a barbecue dinner followed by entertainment. Business meeting begins at 6:30 p.m.

--Weinert--

by Myrtle Phemister
 Never try to outguess the Texas weather! For years to come the "oldtimers" will remember March of '89, when one Saturday we had ice and snow and the following Saturday the temperature was near 100 degrees.
 Damage of last week's freeze has not been estimated, but the wheat has a brown tinge of color, and what were onion plants are now dry, brown wisps of straw. They will all survive. Next Monday, March 20th, Spring begins!
 Birthdays balloons will be flying all over town this week as Mark Jimenez, Mildred Offutt, Joyce Robertson, Linda Mahan, Ricky Harlan, and R. S. Sanders celebrate birthdays. Happy birthday, all!
 Congratulations to several people this week. To J. T. and Florence Alexander who are celebrating the arrival of a new great-granddaughter,

who was born last week to Mr. and Mrs. Wade Harlan of Giddings. Their daughter, Charlene Harlan, is the little one's grandmother.
 Congratulations to Coach Forehand and his Pee-Wee basketball teams who were awarded the winning trophy at the weekend tournament.
 And to the following who were listed on the honor roll at Munday: Shanna Murphy, Kole Sanders and Kent Sanders; also to Randy Joe Phemister for being listed on the Dean's list at McMurry College. Congratulations, all.
 Mr. and Mrs. Ed Murphy accompanied their children to Rotan last week where they competed at the District 5 Tumbling meet. Lane Murphy won second place in his division, and Shanna Murphy won fourth place in 12-13 year old division. They will compete in the State meet in Abilene on May 20th. Good luck!

Donald Griffiths was a lucky winner in the Merchants Appreciation Drawing held in Munday last week. Next drawing will be April 1st.
 Freddy Horan accepted a job as truck driver for the R.A.S. Company this week, and his first assignment was as trip to Mississippi. He left Sunday morning, and was accompanied by his wife, Daisy. Congratulations, and good luck!
 Floyd and Hellen Stout returned safely from a trip to Ft. Worth in their travel trailer. They were iced in several days, but managed a visit with several relatives, and kept an appointment with Floyd's doctor.
 H. H. and Juanita Grimes were in Wichita Falls for a visit with her son, Mr. and Mrs. Ricky Hambleton, Scotty and Mandy.
 W. R. and Joyce Hager trekked to Houston to see their daughter, Kathy and as it just happened to be during the Houston Livestock Show, they had to attend that!
 On the way home, they visited with good friends in Llanof.
 Rex and Tinka Herricks joined the crowd at the track meet held in Breckenridge on Saturday and watched their daughter, Tina, run in the Spring relay with the Rochester team.
 Toby and Alice Yates were in Kermit for a visit in the home of their daughter, Linda and Ricky Wade with Taylor.
 On their return, they visited with Alice's brother, Mr. and Mrs. Bobby Cypert, in Odessa and a sister-in-law, Anna Bell Cypert in Jal, New Mexico, who are all ex-"Weinerties!"

and sent greetings to us all.
 Ted and Faye Jetton were in Temple this week where a sister-in-law, Mrs. Stanley McMillen, is seriously ill in Scott and White Hospital.
 Leatha Halloway has returned to her home in Dallas after a two weeks visit with her sister, Faye Brian.
 Visitors to Weinert include Kelly and Wayne Hutchinson of San Angelo who spent the weekend with her parents, Mr. and Mrs. Johnny Earp.
 Kelly is an important player on her brother-in-law's volleyball team, the Munday team, who participated in the Rochester tournament on Saturday.

rural areas.
 She attended the slide presentation of early day Weinert, which was prepared and presented to the primary grades, by Mrs. R. S. Sanders, on Monday, and later visited with her nephew's family, Mr. and Mrs. Wayne Phemister, of Avoca.
 The members of the Weinert Home Extension Club attended the Tri-County Rally day held in Seymour on Tuesday, March 14, hosted by the Baylor County Club members.
 The Weinert Club has been involved in making decorations and plate favors for the upcoming district meet to be hosted in Haskell Civic Center. Twenty-one counties are in our district, and attendance is expected to be around 250.
 Mrs. R. S. Sanders and Mrs. Donnie Crump are chairmen for the decoration committee.
 Have a nice day!

-School Menu-

March 20-24
LUNCH
 Monday: Corn dogs with mustard, french fries with catsup, pickle spears, peanut butter and crackers, apple sauce, milk, juice (elementary), milk Hi C or tea (high school).
 Tuesday: Fajitas, seasoned pinto beans, tossed salad with dressing, buttered cornbread, sliced peaches, milk or juice (elementary), milk, Hi C or tea (high school).
 Wednesday: Turkey dressing with gravy, candied yams, green beans, buttered hot rolls, cranberry sauce, fruit salad, milk or juice (elementary), milk, Hi C or tea (high school).
 Thursday: Ham and cheese sandwiches, curly Q's with catsup, lettuce, tomatoes and pickles, juicy treats, milk or juice (elementary) milk, Hi C or tea (high school).
 Friday: No school.
BREAKFAST
 Monday: Juice or fruit, cereal, milk.
 Tuesday: Juice or fruit, blueberry muffins, milk.
 Wednesday: Juice or fruit, scrambled eggs, buttered toast, milk.
 Thursday: Juice or fruit, sausage and pancakes on stick with syrup, milk.
 Friday: No school.
 "Have A Happy Easter"

\$100,000⁰⁰ Term Life Insurance

ANNUAL PREMIUM

AGE	ANNUAL RENEWABLE		10 YEAR LEVEL	
	MALE	FEMALE	MALE	FEMALE
25	\$124.	\$100.	\$140.	\$115.
35	\$125.	\$106.	\$140.	\$120.
40	\$133.	\$120.	\$205.	\$170.
45	\$150.	\$140.	\$280.	\$210.
50	\$191.	\$160.	\$380.	\$265.
55	\$225.	\$185.	\$550.	\$350.
60	\$365.	\$240.	\$825.	\$480.

Lanco Insurance
 510 N 1st • Haskell • 817/864-2629
MAJOR MEDICAL RATES SKYROCKETING?
 Let Lanco Give you a quote. We could be saving you Money!

Darlene and Kerry Therwhanger of Megargel were guests in the home of her parents, Dale and Doris Carroll.
 Mr. and Mrs. W. C. Nance of Houston were here to see her parents, Pud and Susie Brockett, and to visit other relatives also.
 Shadella Foster, with her daughters, Savannah and Ashley of Stamford and Mr. and Mrs. David Boling and children of Knox City, were in Weinert on Sunday in the home of their parents, Mr. and Mrs. Freddy Horan, Pennie and Kristy.
 Kregg Sanders, son of Mr. and Mrs. Kenneth Sanders, was home for Spring break from college. He left on Tuesday for Del Rio for a visit with his brother, Lt. Keith Sanders, in the Air Force there.
 Mrs. David C. Sanders of Austin was in town for a visit with her deceased husband's family, and to enjoy a quiet time away from the busy life in Austin.
 She is principal of one of Austin's Elementary schools and was amazed at the low school enrollment in our

VFW to feed Irish stew Friday

The VFW post in Stamford will have an Irish stew supper Friday beginning at 6:30 p.m. at the organization's building.
 Members and guests are invited to attend.

One Hour Photo Service offered on Film Developing & Prints
 Latest Equipment - Competitive Prices

KIS
 1 HOUR PHOTO

\$1.00 off
 On Processing, per roll with Coupon
 Specials Good Thru March 22nd

Kodak and Fujifilm For Sale
 Phone 864-2951

Johnson's Kis Photo
 OWNED & OPERATED BY LORAIN & BOBBIE JOHNSON
 West Side of Square - Haskell

Meinzer Exterior Siding Co.
 Aside United States Steel Siding
 Storm Windows
 Phone (817) 422-4417
 Rt. 2
 Munday, Texas 76371

JAMES CASTAGNA & JEFF GREGG
 Certified Public Accountants
 Computerized Tax Returns and Bookkeeping
 Auditing, Financial Statements and Estate Work

SEYMOUR OFFICE
 115 W. McLain Street
 817-888-5539
 8-6 M-F; 8-5 Sat.


HASKELL OFFICE
 316 1/2 North First
 817-864-3931
 10-4 Tues. & Thurs.
 (After Hours by Appointment)

BACON	No. 1 Sliced lb.	99¢
CHOPPED HAM	Market Sliced lb.	\$1 69
SAUSAGE	Summer lb.	\$1 49
SAUSAGE	2 lb. Bag	\$3 79
CHEESE	American Sliced lb.	\$1 89
POTATOES	10 lb. Bag	\$1 59
CARROTS	1 lb. Cello Bag	19¢
VIENNAS	Libby 2 Cans	89¢
CORN KITS		3 for 79¢
PINEAPPLE	Parade 20 oz. Can	69¢
NAPKINS	Viva 140 Count Box	59¢
TIDE	Family Size 9 lb. 3 oz. Box	\$6 99

The Texas Coffee for Texas Tastes.

It's no surprise that the state of Texas has its own great coffee. Maryland Club coffee is made right in Houston, with roots going back to 1918. Whether you choose Roast and Ground, Decaffeinated, Custom Roast, 100% Colombian, or Instant, Maryland Club coffee has the rich coffee flavor Texans love. Enjoy Maryland Club coffee... a Texas tradition.






40¢ 2261 204060 Manufacturer Coupon Expires 6/30/89 40¢

SAVE 40¢

Good on your next purchase of Maryland Club® ROAST AND GROUND, Maryland Club® DECAFFEINATED, Maryland Club® CUSTOM ROAST, Maryland Club® 100% COLOMBIAN or Maryland Club® INSTANT Coffee.

LIMIT ONE COUPON PER PURCHASE OF PRODUCT AT VALUE SPECIFIED. Other use constitutes fraud under U.S. Mail Statutes, and coupons may be confiscated. Coupons are void if transferred, assigned, reproduced, taxed, restricted, prohibited, or license is required. Consumer must pay sales tax. Coupons accepted only from retailer or authorized clearinghouse. 8¢ handling will be paid on properly redeemed coupons. Products invoices may be required. Presentation for payment represents compliance with these terms. Cash value 1/20 of 1¢. Valid only in U.S.A. MAILING ADDRESS: Maryland Club Foods, Inc., CMS Department No. 91494, 1 Fawcett Drive, Del Rio, Texas 78840.

40¢ 2500070040 3 40¢

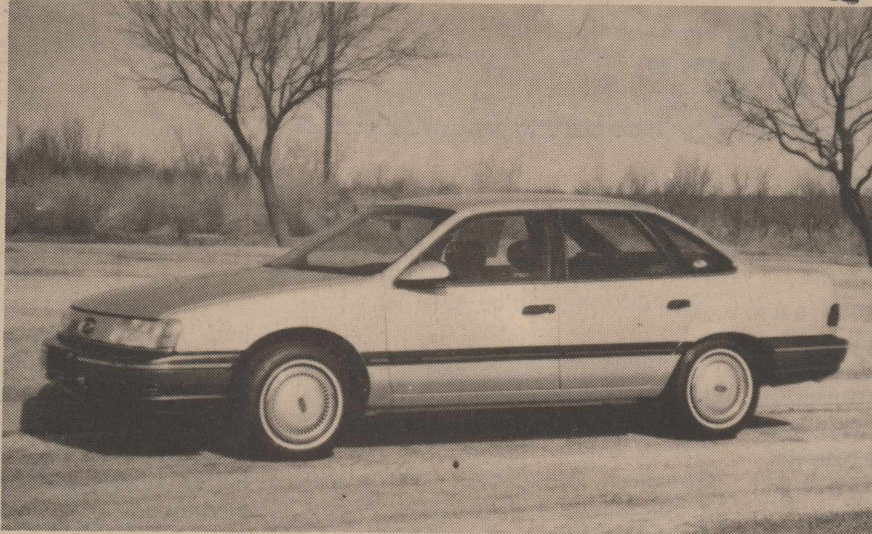
POGUE GROCERY
 -Extra Parking Behind The Store. Home Owned and Operated-
 113 North Avenue E Phone 864-2015 Haskell, Texas
 Thurs. Fri. Sat. Specials

M SYSTEM

Your FRIENDLY

AFFILIATED SUPER MARKETS

Haskell, Texas
Open 7 days a week
Monday-Saturday 7:30 a.m. til 8 p.m. • Sundays 8 a.m. til 7 p.m.



Register for 1989 FORD TAURUS Spring Bonanza

March 1 through May 31, 1989
at any M*System Store
in Anson, Knox City, Haskell, Munday and Seymour
See rules at participating stores!

SAVING On the Green FOOD DOLLAR

DOUBLE COUPONS 7 DAYS A WEEK!

We will redeem your manufacturer's cents off coupons for double their face value up to 50¢ when the product is purchased. We will double only one coupon per item. All others redeemed at face value. Limit one coupon per item. Coupon not to exceed value of item. This policy does not include "Free" coupons, cigarette and tobacco, or refund coupons. Offer good for a limited time only. Super value offer from M-System in Haskell.

We Gladly Accept Food Stamps

Prices Good
March 15 thru March 19



We reserve the right to limit quantities.

Shop in Your Home Town and Save
on Your Total Bill PLUS Save Your
Home-Town Merchants!

Folger's COFFEE

REGULAR-ADC-FINE, 13-oz. BAG

\$1.79

Limit 1 Can with \$10.00
or More Purchase!

Del Monte Vegetables

Mix or Match

15-oz. to 17-oz. Cans, Your Choice

- Cut or French Style Green Beans
- Golden Whole Kernel or Cream Corn
- Sliced Carrots
- Leaf or Chopped Spinach
- Whole New Potatoes
- Mixed Vegetables

2 For 88¢



Del Monte Regular, Italian or Mexican Stewed

Tomatoes 59¢

14.5-oz. to 15.5-oz. Cans

Duncan Hines Cake Mixes

All Varieties Except Angel Food

18.2-oz. to 18.5-oz. Boxes

Ea.

69¢



Bounty Paper Towels

88¢



Regular, Unscented, With Bleach
40¢ Off!

Tide

Laundry Detergent
42-oz. Box

\$1.99

Limit 1 Box with 10.00
or more purchase!

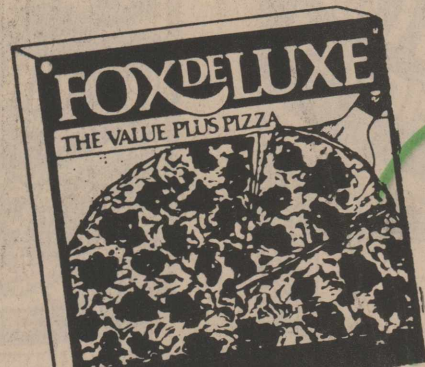


NORTHERN BATHROOM TISSUE

Assorted Colors and White

4-Roll Package

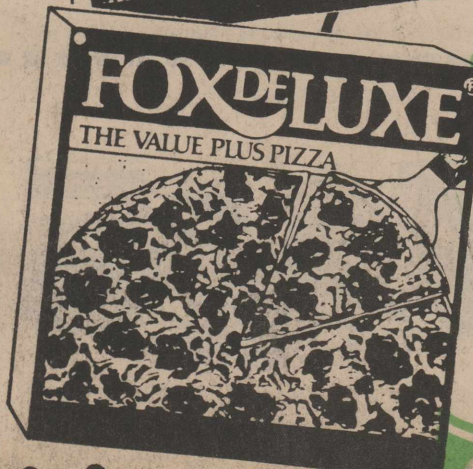
\$1.09



Fox Deluxe PIZZA

Assorted Varieties!
5.6-oz. to 7.6-oz. Sizes (Limit 4, Please!)

58¢ Each



Regular or Butter Flavored

Crisco Shortening

HEINZ TOMATO

3-lb. Can

2.59

Keg O' Ketchup

GLADIOLA ASSORTED

32-oz. Jug

1.19

Pouch MIXES

LIBBY'S 5-oz. Cans

6-oz. Pkg.

3/1.00

Vienna SAUSAGES

2/1.00

STILLWELL FROZEN ASSORTED

Fruit COBBLERS

DISHWASHING DETERGENT (Reg., Liquid, Lemon)

2-lb. Pkg.

1.79

CASCADE

REGULAR OR MOUNTAIN SPRING

60¢ Off 65-oz. Pkg.

2.99

DAWN LIQUID

ASSORTED KINDS 40¢ BARS!

3-oz. Jar

1.49

Nestea Instant Tea

2.99

Nestle Candy Bars

3/1.00

Hams

Whole, Bone-In

Pound

88¢

Better Meat Buys from M-System

LEAN AND TENDER BOSTON STYLE BONE-IN

PORK ROAST Pound **99¢**

SHURFRESH

MEAT FRANKS 12-oz. Pkg. **89¢**

SHURFRESH

Sliced BACON 1-Lb. Pkg. **1.19**

KRAFT CHEDDAR OR COLBY (10-oz. PKg.)

Half-Moon CHEESE **1.99**



Shank or Butt
Portion
Pound

88¢

Lean,
Tender Family Pack

**PORK
CHOPS**

\$1.29
Lb.

CENTER CUT

Pork Chops

1.69

Lb.

1-Lb. Quarters

MARGARINE

Parkay

Limit 2, Please!

39¢



Wise

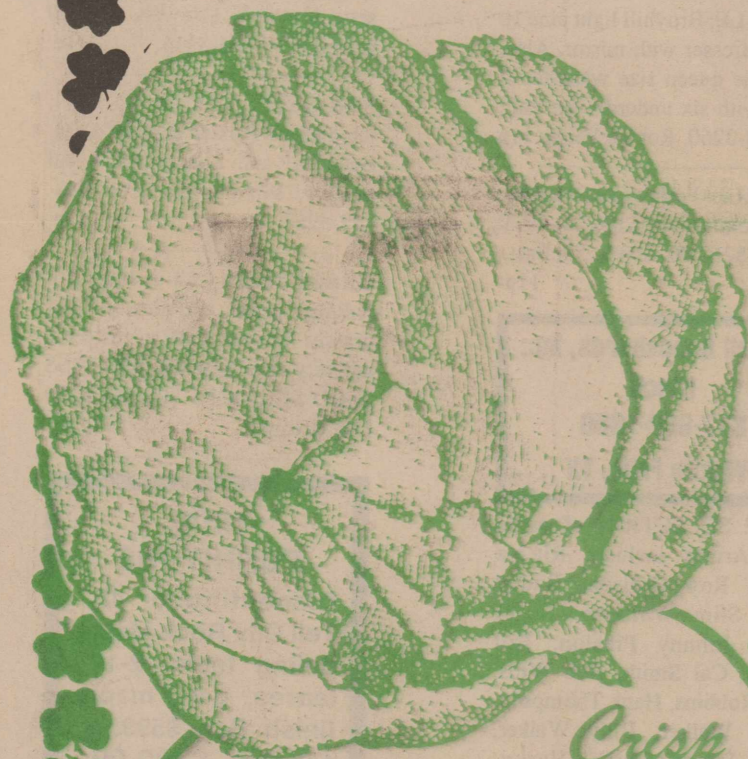
Potato Chips

6 1/2 oz

Plain, Rigid, Bar-B-Q

Rigid, Sour Cream

99¢



Crisp

Iceberg

LETTUCE

38¢

Large,
Crisp
Head

EXTRA FANCY GOLDEN DELICIOUS

APPLES Pound **69¢**

FANCY NEW CROP

OKRA Pound **89¢**

TREE RIPENED D'ANJOU

PEARS Pound **79¢**

JUMBO SIZE

Red Onions Pound **69¢**

23-Count Size DELICIOUS

Cantaloupes Each **69¢**

CALIFORNIA FULL OF JUICE

LEMONS 2-Lb. Bag **99¢**

Vine Ripe ROMA

Tomatoes

Pound



59¢

**Ranch Style
Beans**



5 \$2

15-oz Cans



GLADIOLA

Flour

5-LB. BAG

99¢

**SAVING
ON THE
GREEN**

M SYSTEM

**AFFILIATED
SUPER MARKETS**

Shop in Your Home Town and Save
on Your Total Bill PLUS Save Your
Home-Town Merchants!

Shop the Haskell Free Press

CLASSIFIEDS

For Sale

FOR SALE: 24 inch Chisel sweeps, \$14.95 each. Everyday low price. Richardson Truck and Tractor in Haskell. Come by and check out our low prices or call 817-864-3474 or 864-2939. 11-13c

FOR SALE: Riding lawn mower batteries. Only \$24.95. Richardson Truck and Tractor in Haskell can fit all your battery needs at the right price! 11-13c

BEGINNING now there will be someone to help you at S&P Car Wash in Haskell. We will wash cars for you. \$10.00 per car and up for larger ones. 9-12p

For Sale

PRESCRIPTIONS, Cosmetics, Gifts. Shop Johnson Pharmacy where the savings are real. 38tfc

FOR SALE: Radio Shack TRS 80 Color Computer. Excellent condition. Joy sticks, games. Call 864-3682 after 5 p.m. 42dcc

Mary Kay
COSMETICS
Sara Hodgins
Haskell
817-864-2031
10-13c

For Sale

JAKE'S Bar-b-q will be at Cecil's Market Saturday. Weather permitting. 11p

FOR SALE: 2 electronic cash registers, 4 departments. Good working condition. Reduced to \$200.00 each. Tanner Grocery, Rule. 4tfc

FOR SALE: 1984 Suburban. 89,000 miles. Excellent condition. 864-2607 or after 6 p.m., 864-3340. 5tfc

FOR SALE: 1983 15 1/2' Skeeter with 115 hp Mariner, 2 depth finders and trolling motor. Clean. Call 864-2607. 5tfc

FOR SALE: 1981 Mobile Scout 21' travel trailer. Sleeps 8. Clean. 864-2607 or 864-3340. 5tfc

For Sale

ON SALE for limited time only. World Book Encyclopedias, \$200.00 off regular price. Call Esther Conn, Box 73, O'Brien, Texas 79539. 817-658-3904. 7-11p

FOR SALE: Good spa hot tub. 6'x6'. Also green chair and green rocker-recliner. Call 864-2686 or after 5 p.m., 864-3575. 6tfc

BARLEY GREEN: A.I.M.'s guarantee. Feel the difference, more energy, vitality, health or your money back! Available at Kids Duds in Haskell. 8-11c

FOR SALE: Late model almond colored refrigerator with ice maker. Reasonable. 997-2640. 11c

For Sale

FOR SALE: 14x70 mobile home in Haskell. Phone after 6 p.m., 864-3027. 11-12p

FOR SALE: 2 wheel utility trailer with 4x6 ft. bed and 12 inch wheels. Also, 10 cu. ft. Frigidaire chest type freezer. Call 864-3590 weekends only. 11tfc

HONEY FOR SALE: 864-3021. 11p

FOR SALE: 1981 Datsun 280ZX, silver with red interior, recently overhauled. Extra clean. Call 864-3830 after 5 p.m. 11p

NINTENDO RENTALS. Many game cartridges to choose from. Also Sega. Walling TV & Electronics, 414 N. 1st, Haskell, Texas. 11c

For Sale

FOR SALE: 8 hp riding mower, 3 new tires. 864-2087. 11p

FOR SALE: 1972 IH 1600 Loadstar transmission. Rear end and clutch. 864-2721. 11c

NINTENDO T Shirts for sale: Childrens and adult sizes. Walling TV. 414 N. 1st, Haskell, TX. 11c

FOR SALE: VCR-VHS, \$175.00; color Sylvania TV, \$100.00; couch, \$20.00; hydabed, \$125.00; 2 iron bedsteads, \$95.00 each complete; bed and chest, \$125.00; Encyclopedias, \$100.00; rocker, \$20.00; loveseat, \$35.00; table and 6 chairs, \$125.00; lamps, \$25.00; chest, \$20.00; chest, \$25.00; bed mattress, \$30.00; 2 shelves of real wood \$85.00 each; refrigerator \$125.00; wood stove, complete, \$45.00. See at Rt. 2. 6 1/2 miles South on Jim Strain Rd. Call 864-3335 after 4 p.m. for appointment. 11p

LUMBER FROM a 14x24 ft. 2 room house. Metal roof. Exterior, 205 siding, interior 1x5 car siding, 2x4 studs and rafters; tongue and groove pine flooring, 2x8 floor joists and sills. This material is stacked on a trailer ready to move. Call 997-2394. 11-12p

ELECTRONIC AND EDUCATIONAL Toys for birthdays or any occasion. Walling TV, Haskell, TX. 11c

FOR SALE: Broyhill light pine 10 drawer dresser with mirror. Also, light pine queen size waterbed 4 poster with six underdrawer unit. Call 864-3260. Robbie Peiser. 11p

FOR SALE: Friday and Saturday. Small boat trailer, \$100.00; 1979 Monza, \$250.00. 600 S. 5th East. 11p

For Sale

FOR SALE: 1977 Cadillac Eldorado. Less than 80,000 miles. New tires. All leather upholstery. 817-743-3278. 10-11p

FOR SALE: 1985 Chevrolet Silverado Suburban, 58,000 miles. New tires, nice condition. 1988 C-110 Chevrolet Cheyenne pickup with V-6 and 5 speed. Call after 5:30, 864-3890. 11c

WE NOW HAVE onion sets, in bunches or buttons; Seed potatoes. Available soon-Tomato plants, pepper plants, bulk garden seed. Trees will be available by order only. Smitty's Auto Supply. 10-11c

FOR SALE: 5 hp tiller, \$125.00; used 30 gal. hot water heater, \$35.00; Frigidaire electric stove, \$100.00; boat, motor and trailer, \$250.00; electric welder, \$100.00. Western Auto. 10-11c

ATTENTION-Government seized vehicles from \$100. Fords, Mercedes, Corvettes, Chevys. Surplus Buyers Guide. 1-602-838-8885 Ext. A4517. 11-14p

ATTENTION-Government homes from \$1 (U-repair). Delinquent tax property. Repossessions. Call 1-602-838-8885 Ext. GH4517. 11-14p

FOR SALE: 19" color TV with remote, \$200.00; Marantz stereo system, compact disc, dual cassette, turntable, 110 watt, \$800.00 (Firm). Call 864-8116. 11c

FOR SALE: 5 month old registered silver Persian female kitten. Beautiful and loving. Must sell quickly, son allergic. Call 817-422-4267. 11p

GRASS SEED. Call us today for reduced prices on most of our grasses for your CRP needs. Free delivery on all orders. Call GRASS SEED SERVICES 806-385-5229 Day or night. 11-14c

Haskell Bancshares, Inc.
Stock
817-692-1850
Wichita Falls, TX 11-12p

LARGE SELECTION of audio tapes. Artists include: Ritchie Valens, Roy Orbison, Buddy Holly, Slim Whitman, Roger Miller, Johnny Preston, Bill Monroe, Cal Smith, Bob Wills, Marty Robbins, Hank Thompson, Charlie Walker, Billy Walker, Sonny James, Ferlin Husky, Johnny Gimble, Merle Travis, Floyd Cramer, Boxcar Willie, Patsy Cline, Leon Rausch, Jim Gough, Asleep at the Wheel, Jim Reeves, Red Steagall, Jim Ed Brown, Jeannie C. Riley, Hank Williams Sr., Lyle Lovett, George Strait, Reba McEntire, Ray Price, and much more. "Good selection of Gospel Tapes". All tapes 10% off at Walling TV and Electronics, 414 N. 1st, 864-2870, Haskell, TX 79521. 11c

NEW FURNITURE
Discontinued 48" Tell City Rock Maple dining table. 2-12" leaves, dark maple finish. Reg. \$599.99, 1/2 price, \$299.99.
Jones Cox
Country Store
Haskell, Texas 11-12c

FOR SALE: Two refrigerated air conditioners, window units. Call 864-3332. 11p

FOR SALE: Bulk garden seed. Ag Services, 864-2642. 11c

WAL-MART

LAWN & GARDEN

Grand Opening

WAL-MART LIVE PLANT GUARANTEE
All live plants purchased at Wal-Mart are fully guaranteed. Simply return any dead plants with register receipt, and Wal-Mart will replace it or if not in stock, we will cheerfully refund your money.

PLUS THESE GREAT VALUES

Onion Bulbs	86¢
Bulbs-Mammoth Packs	3.97
Dormant Rose Bush	2.97
Potting Soil, 10 Lbs.	96¢
Top Soil, 40 lbs.	1.54
Cow Manure, 40 lbs.	1.54
Organic Peat, 40 lbs.	1.47
Pine Bark Mulch, 2 cu. Ft.	2.17
Pine Bark Nuggets, 2 cu. Ft.	2.54

EVERYDAY
4.96 Your Choice
Long Handle Garden Tools.
Choose from round point shovel, garden hoe or bow rake. Nos. AR248, RGE1, 2000P.

Reg. 5.97
4.97 Your Choice
Ortho Insect Sprays
One pint. Malathion 50 Plus Insect Spray or Diazinon Insect Spray.

EVERYDAY
3.97 Each
Red Clay Pot
12 inch diameter Azalea three quarter pot.

Reg. 18.96
16.44 Reg.
Poly Tank Sprayer
Two gallon. See through tank. Brass wand. No. 1992.

WEED-X LANDSCAPING BARRIER
3 x 50 Foot roll. Porous landscaping barrier with a 5 year guarantee against weed penetration. The choice of landscaping professionals. No. WX-50D.
10.94 Reg. 12.94

EVERYDAY
3.96
Tire-Cord Reinforced Hose
1/2 inch x 50 feet. All brass couplings. Flexible, burst-resistant under pressure. No. LO1250.

EVERYDAY
4.97
Industrial Lawn Edging
4 1/4 inches x 20 feet.
Polyethylene. No. 1ND20.

EVERYDAY
\$118 Reg. 128.88
Sunbeam Cart Gas Grill
422 Square inch cooking area. 30,000 BTU dual burner. Has two red wood side tables, space saver warming rack with basket and temperature indicator. No. 3649.

Reg. 74.94
\$69
Weed Eater Gas String Trimmer
19 inch cutting path. 22cc engine with anti-vibe handle and Tap-N-Go line advance. No. GT-15.

MURRAY
129.96
Murray Deluxe Push Mower
22 inch cutting width with easy height adjusters. 35 HP Briggs and Stratton engine. Fully ballbed for smooth grass flow. 8 inch radial tires. No. 9-22251X92.

EVERYDAY
2.36
Men's Wells Lamont Leather Gloves
Suede leather with bander top.
No. 4116-WAL

Reg. 27.96
22.96
SAVE \$5.00
True Temper Wheelbarrow
4 Cubic foot capacity. Heavy duty steel tray with rolled edges and pneumatic tire. No. 5W-1.

For Your Sheet Metal Work
Water Storage Tanks
All Kinds of metal duct work
See or call:
Guinn Sheet Metal & Plumbing
817-658-3341 L.C. Guinn Knox City, TX

SIMPSON GRAIN and IRON CO.
3 Miles North on US 277
Stamford 915-773-2287
NOW in STOCK

Cattle Panels
52" x 16' x 4 Ga. \$13.50 Ea.
5' x 20' x 6 Ga. \$22.00 Ea.
Barbed Wire
Import 12 1/2 Ga. \$18.00 Roll
T Post
5 1/2 Ft. 125# with Clips \$1.75 Ea.
6 1/2 Ft. 125# with Clips \$1.95 Ea.
8 Ft. x 4 1/2 Ft. Corner \$10.00 Ea.
Sheet Tin 26 Ga.
Galvanized and Mixed Colors
\$30.00 to \$40.00 Sq.

We have large inventory steel and pipe.

Shop the Haskell Free Press

CLASSIFIEDS

NOTICE
The Haskell Free Press reserves the right to edit and/or delete all news stories and locals for length and liability and to refuse to print anything deemed not newsworthy.

NOTICE
The deadline for Classified Advertising is 12 noon on Tuesday.
Haskell Free Press

Garage Sales

GARAGE SALE: Fri. & Sat. March 17 and 18. Color TV, divan, bed frame, mattress, etc.; chairs, lots of misc. 108-108 1/2 N. 1st, Haskell. 11c

HUGE GARAGE SALE of 3 families. Dishes, pans, sheets, furniture, carpet, drapes, mens and womens clothes, ski boots. Ya'll come Fri. & Sat. to 1803 N. Av F, Haskell. 11c

PORCH SALE: Back of 1300 N. Av G. Friday the 17th starts 7:30 a.m. Nice clean merchandise, priced low. Hardback books, 25¢, softback 10¢. Some antique items, some almost new. Dishes, electric appliances, etc. 11p

GARAGE SALE at J & B Storage, Haskell. All through this coming week until Thurs., March 23. Weather permitting. 11p

Miscellaneous

HOME DECORATORS. Painting -Insulation. Free estimates. Phone 743-3592 or 743-3550. V. A. Mitchell-Bobby O'Neal. Rochester. 31c

FLEX BANK ONE
Get up to \$5000 instant credit here.
Sherman's Carpets and Draperies
Haskell * 864-3513
Visa & MasterCard also accepted

ASK ME ABOUT METRIN
Scientific Skin Care.
Lois Richardson at Kids Duds
817-864-3852

GET A BIGGER INCOME TAX RETURN!
Here's how:
•Come into Boggs & Johnson Furniture and make your best deal on any regular priced merchandise.
•Whip out your copy of your 1988 income tax return papers, showing you have a return for enough to cover merchandise cost, **less 10%!**
•Leave your copy of return on file along with a signed contract.
•When your IRS return check arrives, come in, pick up your IRS return copy, and pay your account. You gain a 10% bigger return.
WE WANT TO BE YOUR FURNITURE STORE!
Boggs & Johnson Furniture
East Side of Square - Haskell, Texas 61c

Farmers Home Apartments
for rent through the Housing Authority of the City of Haskell. 1 bedroom starts at \$103.00 per month and 2 bedroom starts at \$135 per month.
For more information
Call 864-3685
or come by 702 South Avenue H
between 2 and 5 p.m. Mon. thru Fri.
Equal Housing Opportunity. 10-11c

Business Opportunies

DEALERSHIP LOG HOMES. Your complete log homes manufacturing company has all of America's finest lines, starting at \$9,199. Great earning potential, will not interfere with present employment. Investment 100% secured by model home. Call Mr. Lamont, toll free 1-800-321-5647. The Original Old Timer Log Homes & Supply, Rt. 6 Box 346 Logue Rd, Mt. Juliet, TN 37122. 11p

CASH BUSINESS... Buy this high profit candy vending route. Nationally proven program since 1959. Nice family business--includes training. Requires cash investment of \$4237 to \$14,070. Call 1-800-328-0723. Eagle Industries. Since 1959. 11p

Wanted

WANTED: Twin mattress in good condition. Call after 6:30 p.m., 864-2800. 10-12c

WANTED: Used CB beam antenna. Call after 4:30, 864-2023. 1stfc

WE WANT to lease or rent farm land. Contact George Brown, 864-2754 or Paul Brown, 864-3840. 101c

I BUY and sell windmills and parts. Want: 8' Monitor wheel. Also regulator weights for old Eclipse, Star or Standard. \$25 to \$50 each. 806-271-4180, Spur. 11p

Decker Electric
Residential Commercial
Call for free electrical inspection
864-8926
We appreciate your business! 381c

Jobs Wanted

LOT SHREDDING. Septic tank pumping. Call Tony Williams, 864-3674 anytime. 431c

DALE CASSELBERRY Appliance Repair Service. Now associated with Cook & Rodela Heating, Plumbing & Cooling. All brands and models. Washers, dryers, refrigeration, cook stoves, freezers, dishwashers, garbage disposals. 864-2226. 8-11c

FOR HIRE: Motor grader and operator to grade fire control fence rows; and we build terraces. Call Darel Anderson, 864-2721.11-12c

CARPET & UPHOLSTERY CLEANING
Residential, Commercial
Water Damage, (In Place Drying)
Jack Cline Carpet/Craft
864-3978 864-2566 71c

Help Wanted

GIRLING HEALTH CARE attendant needed immediately for personal care and housekeeping chores. Call 915-643-5604. EOE. 10-11c

ATTENTION--Hiring! Government jobs--your area. Many immediate openings without waiting list or test. \$17,840-\$69,485. Call 1-602-838-8885. Ext. R4517.11-14p

Public Notices

NOTICE OF APPLICATION FOR FLUID INJECTION WELL PERMIT
Gunn Oil Company, P. O. Box GOCO, Wichita Falls, Texas 76307, has applied to the Railroad Commission of Texas for a permit to inject fluid into a formation which is productive of oil or gas.
The applicant proposes to inject fluid into the Strawn 4500' Sand, Hester "A", Well Number 2-30. The proposed injection well is located 2 miles northeast from Haskell in the Shields (Strawn 4500) Field, in Haskell County, Texas. Fluid will be injected into strata in the subsurface depth interval from 4524 to 4546 feet.
LEGAL AUTHORITY: Chapter 27 of the Texas Water Code, as amended, Title 3 of the Natural Resources Code, as amended, and the Statewide Rules of the Oil and Gas Division of the Railroad Commission of Texas.
Requests for a public hearing from persons who can show they are adversely affected, or a request for further information concerning any aspect of the application should be submitted in writing, within fifteen days of publication, to the Underground Injection Control Section, Oil and Gas Division, Railroad Commission of Texas, Drawer 12967, Capitol Station, Austin, Texas 78711 (Telephone 512/445-1373). 11c

For Rent

FOR RENT: Office space at 314 N. 1st. Fully carpeted, paneled. Call for information, 817-864-2305. 491c

FOR RENT: 1, 2 and 3 bedroom apartments. 864-3722 or 864-2504. 11p

FOR RENT: 1 bedroom furnished apartment. Nice. Call 864-3509 or 864-3964. 81c

FOR RENT: Recently redone 2 bedroom house on North Ave. D, Haskell. Call 864-2398. 11c

FOR RENT: 1 bedroom house, close to town. Some utilities paid. Call 864-8014. 11c

FOR RENT: 3 and 1 bedroom duplex. Some utilities paid. Call 864-8014. 11c

Apartments For Rent

2 bedroom, 1 bath, carpeted. 700 sq. ft.
Call
Haskell National Bank
864-2631.

Real Estate

FOR SALE by owner. 3 bedroom, 2 bath, large utility room, new carpet, central heat and air. Cooling unit 2 years old. Corner lot, north-east part of town, good neighborhood. 864-2647 or 864-2793 after 5. 501c

FOR SALE: Solitaire mobile home. 2 bedroom, 2 bath, built-in microwave, stereo, dishwasher, oven and cooktop. Central air and heat. Nice. Assume loan. 864-2751 or 864-3807 with low equity. 61c

FOR SALE by owner: 3 bedroom, 2 bath, 2 car garage, fireplace, brick, water well, outside city limits. Low \$60's. Brian Toliver, 864-2626 or 864-3650. Will trade. 61c

FOR SALE: 1468 acres pasture, 196 acres farm, minerals. Located 12 miles Southeast Gore, Texas, Throckmorton County; adjacent to 30,000 acre feet municipal Miller Creek Reservoir and Miller Creek. Great potential for cattle operation and recreation. Owner controls to water edge. Fair improvements. M. S. Gerry Allen Richardson, Box 687, Seymour, TX 76380, Phone 817-422-5382. 101c

FARM FOR SALE 3 1/2 miles east of Rochester. Good location for house or mobile home on 4 1/2 acres. 2 wells and tank with barns and farrowing house. Call after 6 p.m., 743-3433. 10-12p

TV Entertainment is Starview Satellite Systems
COMPLETE SATELLITE SYSTEM \$1195.00
INSTALLATION INCLUDED
Offer Good thru March 16, 1989
Offer Extended through Saturday
Easy Payments \$35* mo.*
INCLUDES: Receiver, Descrambler, Electronics, Dish--All Installation.
Upon approved credit; \$25.73 down payment, \$1022.92 amount financed 16% APR @ 36 months
Frank's TV/Electronics
Starview Satellite Systems
218 S. Central
Hamlin, TX
(915) 576-2122

Real Estate

FOR SALE: 20 acres land. Westside of 277 bypass. \$20,000. Phone 915-773-9045. 8-11p

FOR SALE: Remodeled 2 bedroom, nice yard, trees, garden spot, well. 1106 N Ave L. 1-849-3272. 291c

FOR SALE
J. E. WALLING ESTATE
Beautiful Two-Story Austin Stone - One of Haskell's Finest
Large three bedroom, two full baths, kitchen-dining combination, cathedral ceiling den with fireplace, living room, large finished basement (Utility and playroom), 2 car garage with automatic openers. Property has many extra amenities (sprinkler system, circle drive, pecan trees, out building) and is practically maintenance free. For more information, call Ed Walling, 864-2870 or 864-3845 or Ellen Walling Rieger, 864-3957. 10p

SELLING HASKELL FOR OVER 25 YEARS
Hartsfield Realty
South Side of Square
864-2665
BUYING OR SELLING A HOME OR BUSINESS? We have skilled realtors to help you in every way from a market analysis to the closing. Over 25 years selling Haskell County.

GOOD INVESTMENT PROPERTY DUPLEX on North 5th. Each apt. has two large bedrooms. All carpeted, kitchen appliances, central H/C, storm cellar. Nice and clean.

THREE BEDROOM, one bath, 2 car garage, storage buildings. Garden plot. Very nice condition.

TWO STORY, 3 bedroom, two bath on full block. Appliances go with sale including washer-dryer, side by side electric and gas range, central plumbing. New wiring. Also two bedroom stucco, barn full of hay, 2 wells with pumps. Crossed fenced, large trees. Priced to sell.

TWO STORY, three bedroom, one bath, recently redecorated. Large living, dining, kitchen and extra large utility. Close to town and excellent buy.

GREAT LOCATION, 3 bedroom, 2 bath on N. Ave. H. Corner lot, large rooms, two nice porches. By appointment only.

LARGE TWO BEDROOM across from Elementary school. Large corner lot, extra clean, some furnishings, go with sale. Two car garage with storage, good concrete storm cellar, metal storage, water well with pump. Many shade and pecan trees. Owner financing.

BEAUTIFUL THREE BEDROOM, 1 1/2 ceramic tile bath with country decor. This one has it all...fireplace, large living-dining combination, built in hutch, oak cabinets, fenced yard. Many restored antique features. Property has building in back for business. **REDUCED.**

EXCELLENT BUY AT 107 N. AV. A. Three bedroom 1 bath on nice corner lot, paved streets. Has central heat, new siding and panelling. Five ceiling fans, storm cellar, good well with pump. Reduced 20% for quick sale.

PRICE REDUCED. Nice two bedroom on small corner lot. Storm cellar.

LARGE OFFICE OR STORE BLDG with upstairs, 3 bedroom living quarters, 6 unit covered parking in rear. **ANOTHER STEAL.**

BUILDING SITES. 1 acre or more, outside city limits, city water.

THREE ACRE TRACT with barn just outside city limit. Excellent building site with city water available. Priced below market.

THREE BEDROOM, two bath with game room, central heating and cooling, fenced yard with landscaping and wind-break, loads of storage inside and out, new carpet and fireplace insert. Located just south of Haskell.

Real Estate

FOR SALE: 3 bedroom, 1 3/4 bath house, 2 car garage, out buildings, 2.4 acres, irrigation well, 1/2 mile west of Rule. Hwy 380. 817-997-2713. 11p

FOR SALE: 1972 14x68 custom built mobile home on 3 lots at Lake Stamford. Lakeshore Sites. Fully furnished with new furniture. Washer/dryer. Call 806-637-4887. Ask for Bill or Best. 11c

FOR SALE
Two bedroom 1 bath frame, carpet, carport, chain link fence on two lots. Owner financed.
Two bedroom 1 1/2 bath mobile home on large lot, central heat, evaporative cooling, carpet, deck and water well.
Arrowhead Motel twenty units, living quarters and upstairs apartment.
Station building 380 South.
We need listings.
Frances Arend Real Estate & Insurance Agency
Major Medical Life, Burial, Medicare & Nursing Home Supplements
817-864-3880
817-864-3156 11c

NEWLY REDECORATED in a great location. Three bedroom, 1 bath, ceiling fans, central heating and cooling, good closet space with many extras. 805 N. Av G.

NEW LISTINGS
• **OPERATING RESTAURANT** Fully equipped, building less than ten years old. Over 3,000 sq. ft. Ideal for franchise business. Located in area with great potential.
• **OUTSTANDING VALUE**
Extra clean 3 bedroom 1 1/2 bath, living room, den, modern kitchen, large utility room, central heat, new shop building on slab, well with pump house, big garden area and nice fruit trees.
• **COMMERCIAL LOT** on highway 380. Priced to sell.
• **NICE CLEAN 3 BDR.** 2 bath in excellent condition and in a great location. Living room, den-kitchen combination, fenced yard with well and lots of shade. 304 N. D.
• **LAKE CABIN** On channel at Veda's. Extra clean 2 bedroom, bath, den-kitchen and enclosed porch. Furnished and ready for summer.
• **GOOD THINGS CAN COME IN SMALL PACKETS.** Two bedroom 1 1/2 bath on small lot with lots of extras, central heat, storm windows, large double carport and patio, shop buildings, well with garden plot, fenced yard, pecan trees and owner financing.
• **BEAUTIFUL INTERIOR.** This two bedroom must be seen to be appreciated. Master bedroom is large and very cheerful, nice breakfast area, garage, fenced yard, great shade trees and water well. Good location. Under \$18,000.
• **NEWLY REDONE LAKE CABIN AT VEDA'S CAMP.** Choice water front lot with a great dock and 24x30 boat house 100' into water with electric door and lifts, cleaning facilities and plenty of fishing room inside as well as out. Completely furnished and equipped. Ready for occupancy. Owner will finance with good down payment.

ATTRACTIVE 3 bedroom, 2 bath, brick with formal living room, den and large game room. Great location was \$59,000. Reduced to \$45,000 for fast sale.
2 BEDROOM on South 7th. \$5000.00 Cash.
3 BEDROOM 2 bath, den with fireplace, large living room, patio, water well, carport. 145' lot close to elementary school. \$19,900.00.
LARGE 2 bedroom, 2 bath, double garage, shop building, fenced yard, exceptionally clean, corner lot. Lake Cabin with lot. Lakeshore sites, large garage.
IN RULE: 3 bedroom, 2 bath. Has many extras. Water well, fenced yard, St. Bldg., fireplace. \$25,000.
EXTRA CLEAN 2 bedroom, central heating and cooling. Fenced yard, storage, carport. 105 N. M. A good buy.
3 bedroom, 1 1/2 bath mobile home at Kelso Park.
Large 3 bedroom with double attached garage, fenced yard, corner lot, clean.
EXTRA CLEAN 2 bedroom brick central H/A. Attached carport, large trees. 705 Union, Rule.
LARGE LIVING AREA with fireplace, 3 bedroom, double attached garage. North Avenue E. \$35,000.00
COMMERCIAL... one of Haskell's largest buildings, plenty of parking. Good location, make an offer.
Small cabin at Vedas. \$6000.00.
GOREE: 3 bedroom, 2 bath brick. \$39,500.00.
GOREE (2 for 1 special) 2 bedroom rock C/H.A. Also 3 bedroom frame. \$25,000.00.
GREAT LOCATION: 3 bedroom 2 bath brick, large shop building, fenced backyard, many extras, a neighborhood you'll be proud to call home.
EXCEPTIONAL Value: 4 bedroom, 2 bath, brick, set in fireplace, fenced yard, storm cellar, 3 ref. units.
Clothing store building ready to open in Haskell. All fixtures and a modern clean building.
IN ROCHESTER: Strickland home 2 blocks south of school. Extra clean inside and out.
Small 2 bedroom on Hwy. 380. \$4500.00.
OUTSIDE city limits. 3 bedroom, 3 bath brick. Many extras. 1/2 acre. Fenced yard, storage, water well. **REDUCED.**
ILA MOODY HOME IN WEINERT. Make an offer.
3 BEDROOM 2 bath with fireplace, fenced yard, large shop building, water well, storm cellar. Also has a small rent house. All on 10 large lots.
VEDAS, 2 bedroom double garage, large covered patio. Private boat dock. A beautiful lot.
GREAT NEIGHBORHOOD, 3 bedroom, formal L.R., den with fire box, large dining area, utility room, central heat, ref. window units, carport, storage.
Paint Creek Hwy. Large 3 bedroom 2 bath with game room, white brick. Many extras.
LET YOUR DREAM come true! 3 bedroom, 3 bath with office space, large living area with fireplace this 2 story home has many built-ins and extras. Beautiful backyard with screened area, carport, garage and large shop building.

FOR RENT 1972 14x68 custom built mobile home on 3 lots at Lake Stamford. Lakeshore Sites. Fully furnished with new furniture. Washer/dryer. Call 806-637-4887. Ask for Bill or Best. 11c

FOR RENT: 1972 14x68 custom built mobile home on 3 lots at Lake Stamford. Lakeshore Sites. Fully furnished with new furniture. Washer/dryer. Call 806-637-4887. Ask for Bill or Best. 11c

FOR RENT: 1972 14x68 custom built mobile home on 3 lots at Lake Stamford. Lakeshore Sites. Fully furnished with new furniture. Washer/dryer. Call 806-637-4887. Ask for Bill or Best. 11c

FOR RENT: 1972 14x68 custom built mobile home on 3 lots at Lake Stamford. Lakeshore Sites. Fully furnished with new furniture. Washer/dryer. Call 806-637-4887. Ask for Bill or Best. 11c

FOR RENT: 1972 14x68 custom built mobile home on 3 lots at Lake Stamford. Lakeshore Sites. Fully furnished with new furniture. Washer/dryer. Call 806-637-4887. Ask for Bill or Best. 11c

FOR RENT: 1972 14x68 custom built mobile home on 3 lots at Lake Stamford. Lakeshore Sites. Fully furnished with new furniture. Washer/dryer. Call 806-637-4887. Ask for Bill or Best. 11c

Real Estate

FOR SALE: 3 bedroom, 1 3/4 bath house, 2 car garage, out buildings, 2.4 acres, irrigation well, 1/2 mile west of Rule. Hwy 380. 817-997-2713. 11p

FOR SALE: 1972 14x68 custom built mobile home on 3 lots at Lake Stamford. Lakeshore Sites. Fully furnished with new furniture. Washer/dryer. Call 806-637-4887. Ask for Bill or Best. 11c

FOR SALE
Two bedroom 1 bath frame, carpet, carport, chain link fence on two lots. Owner financed.
Two bedroom 1 1/2 bath mobile home on large lot, central heat, evaporative cooling, carpet, deck and water well.
Arrowhead Motel twenty units, living quarters and upstairs apartment.
Station building 380 South.
We need listings.
Frances Arend Real Estate & Insurance Agency
Major Medical Life, Burial, Medicare & Nursing Home Supplements
817-864-3880
817-864-3156 11c

NEWLY REDECORATED in a great location. Three bedroom, 1 bath, ceiling fans, central heating and cooling, good closet space with many extras. 805 N. Av G.

NEW LISTINGS
• **OPERATING RESTAURANT** Fully equipped, building less than ten years old. Over 3,000 sq. ft. Ideal for franchise business. Located in area with great potential.
• **OUTSTANDING VALUE**
Extra clean 3 bedroom 1 1/2 bath, living room, den, modern kitchen, large utility room, central heat, new shop building on slab, well with pump house, big garden area and nice fruit trees.
• **COMMERCIAL LOT** on highway 380. Priced to sell.
• **NICE CLEAN 3 BDR.** 2 bath in excellent condition and in a great location. Living room, den-kitchen combination, fenced yard with well and lots of shade. 304 N. D.
• **LAKE CABIN** On channel at Veda's. Extra clean 2 bedroom, bath, den-kitchen and enclosed porch. Furnished and ready for summer.
• **GOOD THINGS CAN COME IN SMALL PACKETS.** Two bedroom 1 1/2 bath on small lot with lots of extras, central heat, storm windows, large double carport and patio, shop buildings, well with garden plot, fenced yard, pecan trees and owner financing.
• **BEAUTIFUL INTERIOR.** This two bedroom must be seen to be appreciated. Master bedroom is large and very cheerful, nice breakfast area, garage, fenced yard, great shade trees and water well. Good location. Under \$18,000.
• **NEWLY REDONE LAKE CABIN AT VEDA'S CAMP.** Choice water front lot with a great dock and 24x30 boat house 100' into water with electric door and lifts, cleaning facilities and plenty of fishing room inside as well as out. Completely furnished and equipped. Ready for occupancy. Owner will finance with good down payment.

ATTRACTIVE 3 bedroom, 2 bath, brick with formal living room, den and large game room. Great location was \$59,000. Reduced to \$45,000 for fast sale.
2 BEDROOM on South 7th. \$5000.00 Cash.
3 BEDROOM 2 bath, den with fireplace, large living room, patio, water well, carport. 145' lot close to elementary school. \$19,900.00.
LARGE 2 bedroom, 2 bath, double garage, shop building, fenced yard, exceptionally clean, corner lot. Lake Cabin with lot. Lakeshore sites, large garage.
IN RULE: 3 bedroom, 2 bath. Has many extras. Water well, fenced yard, St. Bldg., fireplace. \$25,000.
EXTRA CLEAN 2 bedroom, central heating and cooling. Fenced yard, storage, carport. 105 N. M. A good buy.
3 bedroom, 1 1/2 bath mobile home at Kelso Park.
Large 3 bedroom with double attached garage, fenced yard, corner lot, clean.
EXTRA CLEAN 2 bedroom brick central H/A. Attached carport, large trees. 705 Union, Rule.
LARGE LIVING AREA with fireplace, 3 bedroom, double attached garage. North Avenue E. \$35,000.00
COMMERCIAL... one of Haskell's largest buildings, plenty of parking. Good location, make an offer.
Small cabin at Vedas. \$6000.00.
GOREE: 3 bedroom, 2 bath brick. \$39,500.00.
GOREE (2 for 1 special) 2 bedroom rock C/H.A. Also 3 bedroom frame. \$25,000.00.
GREAT LOCATION: 3 bedroom 2 bath brick, large shop building, fenced backyard, many extras, a neighborhood you'll be proud to call home.
EXCEPTIONAL Value: 4 bedroom, 2 bath, brick, set in fireplace, fenced yard, storm cellar, 3 ref. units.
Clothing store building ready to open in Haskell. All fixtures and a modern clean building.
IN ROCHESTER: Strickland home 2 blocks south of school. Extra clean inside and out.
Small 2 bedroom on Hwy. 380. \$4500.00.
OUTSIDE city limits. 3 bedroom, 3 bath brick. Many extras. 1/2 acre. Fenced yard, storage, water well. **REDUCED.**
ILA MOODY HOME IN WEINERT. Make an offer.
3 BEDROOM 2 bath with fireplace, fenced yard, large shop building, water well, storm cellar. Also has a small rent house. All on 10 large lots.
VEDAS, 2 bedroom double garage, large covered patio. Private boat dock. A beautiful lot.
GREAT NEIGHBORHOOD, 3 bedroom, formal L.R., den with fire box, large dining area, utility room, central heat, ref. window units, carport, storage.
Paint Creek Hwy. Large 3 bedroom 2 bath with game room, white brick. Many extras.
LET YOUR DREAM come true! 3 bedroom, 3 bath with office space, large living area with fireplace this 2 story home has many built-ins and extras. Beautiful backyard with screened area, carport, garage and large shop building.

FOR RENT 1972 14x68 custom built mobile home on 3 lots at Lake Stamford. Lakeshore Sites. Fully furnished with new furniture. Washer/dryer. Call 806-637-4887. Ask for Bill or Best. 11c

FOR RENT: 1972 14x68 custom built mobile home on 3 lots at Lake Stamford. Lakeshore Sites. Fully furnished with new furniture. Washer/dryer. Call 806-637-4887. Ask for Bill or Best. 11c

FOR RENT: 1972 14x68 custom built mobile home on 3 lots at Lake Stamford. Lakeshore Sites. Fully furnished with new furniture. Washer/dryer. Call 806-637-4887. Ask for Bill or Best. 11c

FOR RENT: 1972 14x68 custom built mobile home on 3 lots at Lake Stamford. Lakeshore Sites. Fully furnished with new furniture. Washer/dryer. Call 806-637-4887. Ask for Bill or Best. 11c

FOR RENT: 1972 14x68 custom built mobile home on 3 lots at Lake Stamford. Lakeshore Sites. Fully furnished with new furniture. Washer/dryer. Call 806-637-4887. Ask for Bill or Best. 11c

FOR RENT: 1972 14x68 custom built mobile home on 3 lots at Lake Stamford. Lakeshore Sites. Fully furnished with new furniture. Washer/dryer. Call 806-637-4887. Ask for Bill or Best. 11c

LANCO
864-2629
510 N. 1st
FOR SALE
Two bedroom brick with 5 acres. SW of City.
4 bedroom, 2 bath brick with 6 acres on Rule Highway.
393 acre farm 7 miles east of Haskell. 212 acres in cropland. 181 acres in pasture. FM road frontage.
Duplex, clean, well located, and maintained. 100% occupancy for past 5 years. \$300.00 per month rent income. Cash Sale, \$15,000.00. Furnished.
FOR RENT STORAGE STALLS

LORAIN JOHNSON, BROKER
I am on call and ready to talk to you about your Real Estate at any time if you are interested in buying or selling please call me. I will try harder to please you.

JOHNSON REAL ESTATE
864-2951
Broker
Loraine Johnson Lisa Sherman

Honoring America's Providers

An upbeat outlook

*And now the 1989 forecasts As in 1988, they're generally upbeat, at least that's true for the forecasts coming from the U.S. Department of Agriculture's Annual Outlook Conference in Washington during late November and early December.

Here's a summary of the outlook for U.S. agriculture, according to reports released during the conference.

Production-U.S. production of wheat, corn and soybeans is expected to rebound in 1989 in response to higher prices from drought reduced harvests. For some crops, the government also has eased its land idling requirements for subsidy programs. In general, global grain and soybean stocks were down about one third in 1988, with reserves good for about two months of use for grains and 1 1/2 months for soybeans.

Exports-U.S. export values should rise by about \$1 billion to \$36.5 billion in fiscal year 1989, while volumes are forecast to decline by 8 percent to 1.36 million metric tonnes. The U.S. share of world grain trade is expected to slip to 46 percent from 50 percent in 1988.

Prices-World prices for wheat, corn and soybeans are expected to be at their highest point since 1985. Food prices are forecast to climb 3 percent to 5 percent, which compares with a 4 percent rise this year

that included the effects of the drought.

Income-Net farm income, which includes rising values of inventories of commodities, will increase by about 20 percent to between 44 billion and \$48 billion in 1989. Cash farm income is expected to fall about 10 percent to \$48 billion to \$52 billion. Higher production costs and lower direct government payments will draw down cash gains from rising farm prices.

Weather-Forecasters are assuming there will be a rebound from the drought in 1988. If not, all bets are off. Statistics do favor a return to more normal production, but climatologists are concerned about possible global warming trends.

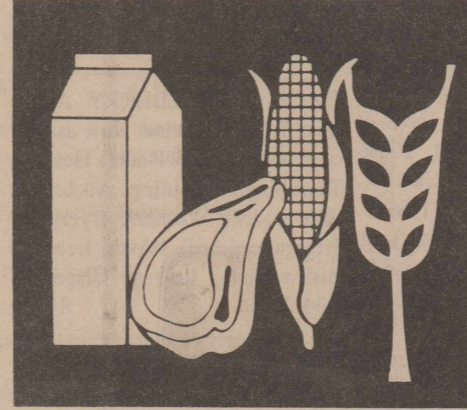
Now for some details:
The global agricultural outlook for 1989 will be highlighted by smaller crops and higher prices but near-record meat supplies, a senior U.S. Department of Agriculture official said at the opening of the USDA annual Agricultural Outlook Conference. James Donald, chairman of the World Agricultural Outlook Board, said demand for both crop and animal products will be firm next year and crop prices will be strong. Expanded crop production is likely by the second half of the year.

Supplies of animal products will continue to be large, dampening livestock price increases, he said.

People Get More For Their Money

Table 1. The amount of food a factory worker's hourly pay would buy

Food item	1950	1986
White bread	10.1 lbs.	15.6 lbs.
Frying chickens	2.5 lbs.	10.4 lbs.
Milk	8.0 qts.	7.9 half gals.
Fresh potatoes	32.7 lbs.	36.5 lbs.
Eggs	2.4 doz.	10.1 doz.
Pork	2.7 lbs.	4.9 lbs.



NATIONAL AGRICULTURE DAY, March 20, 1989 - in honoring America's providers: the 21 million men and women who make up the food and fiber industry.

* 1988 Fact Book of Agriculture
Agriculture Council of America Education Foundation



Honoring America's Providers

National Agriculture Day - Honoring America's Providers

National Agriculture Day is an annual observance which focuses national attention on the important contribution the food and fiber industry makes to the American economy. The official observance for 1989 Ag Day is March 20th.

All across the country people celebrate agriculture on this day, and during the week of March 19-25, to help increase the awareness of agriculture's accomplishments and the challenges it faces in continuing to meet the world's food and fiber needs.

How many people know American agriculture a production miracle? Well, it is! Consider these facts.
*Fewer than 2.5% of the nation's population, using only 60% of production capacity, can provide 250 million Americans food of the highest quality and purity at less cost as a percentage of income than any other country in the world.

*The food and fiber industry alone generates approximately 20% of the nation's Gross National Product and 20% of the national employment.

Farmers are consumers as well as producers

Like everyone else, the U.S. farmer is a consumer and a taxpayer, as well as a producer.

Farmers pay about \$3.7 billion in farm real estate taxes annually, and \$474 million in personal property taxes.

In 1986, farm operators spent about \$122 billion for goods and services to produce crops and livestock. They had available \$37.5 billion in personal income from production activities and government payment and \$44.7 billion from nonfarm sources to spend for personal taxes, debt reduction, investments, and some of the same things that city people buy.

Farmers 1986 purchases included the following:

- \$6.4 billion for farm tractors and other motor vehicles, machinery, and equipment;
- \$9.5 billion for fuel, lubricants, and maintenance for machinery and motor vehicles used in the farm business;
- \$19 billion for feed and seed;
- \$5.8 billion for fertilizer and lime.

Table 30.—Number of farms and land in farms, by States, June 1, 1985-87¹

State	Farms			Land in Farms		
	1985	1986	1987 ²	1985	1986	1987 ²
	Number			1,000 Acres		
Alabama	54,000	51,000	49,000	11,500	11,000	11,000
Arkansas	53,000	50,000	49,000	16,100	15,700	15,400
California	79,000	79,000	77,000	32,900	32,800	32,600
Georgia	50,000	49,000	48,000	13,500	13,500	13,000
Illinois	90,000	86,000	84,000	28,700	28,700	28,600
Indiana	80,000	77,000	72,000	16,400	16,400	16,200
Iowa	111,000	119,000	107,000	33,600	33,600	33,500
Kansas	72,000	70,000	70,000	48,000	47,900	47,900
Kentucky	100,000	99,000	99,000	14,500	14,500	14,500
Louisiana	36,000	36,000	36,000	10,100	10,000	9,700
Michigan	62,000	60,000	58,000	11,400	11,300	11,300
Minnesota	96,000	93,000	92,000	30,400	30,000	30,000
Mississippi	48,000	46,000	45,000	14,100	14,000	13,800
Missouri	115,000	115,000	114,000	30,800	30,700	30,600
Montana	23,800	23,600	23,300	61,000	61,900	60,800
Nebraska	59,000	57,000	56,000	47,200	47,200	47,200
North Carolina	76,000	73,000	72,000	10,800	10,800	10,800
North Dakota	34,000	33,000	32,500	40,900	40,700	40,500
Ohio	89,000	88,000	84,000	15,800	15,800	15,600
Oklahoma	71,000	71,000	70,000	33,000	33,000	33,000
South Carolina	27,500	27,000	26,000	5,500	5,400	5,200
South Dakota	36,500	36,000	35,000	44,500	44,500	44,500
Tennessee	98,000	96,000	96,000	13,400	13,000	12,600
Texas	177,000	162,000	160,000	135,500	134,000	133,200
Virginia	54,000	50,000	50,000	9,600	9,600	9,600
West Virginia	21,000	21,000	21,000	3,600	3,700	3,700
Wisconsin	83,000	82,000	80,000	17,700	17,600	17,500
Wyoming	9,000	8,800	8,700	34,800	34,800	34,800
United States	2,274,730	2,211,920	2,173,410	1,014,383	1,007,643	1,002,463

¹A farm is a place as of June 1 that sells or could sell \$1,000 of agriculture products during the year.
²Preliminary.

Small-scale agriculture

Small-scale agriculture implies people utilizing alternative systems to attain gainful employment. Small-scale agriculture, sometimes referred to as "small farms," constitutes a significant number of the Nation's 2.2 million farms, as noted in the 1988 Fact Book of Agriculture introduction.

When farms grossing less than \$40,000 annually are defined as "small," then more than 7 out of 10 U.S. farms are classified as small.

Awareness is growing that small-scale farmers make a significant contribution to economic development of both agribusiness and consumer industries of rural communities throughout the United States. Some say such people are the "mortar" providing rural communities with social and economic strengths.

USDA's Office for Small-Scale Agriculture was created as part of the Cooperative State Research Service to increase and improve the flow of information about small-scale farming to agricultural producers and consumers. It is a focal point for distribution of USDA resources on this subject.

The office functions as a liaison to other USDA agencies such as the Extension Service and the Agricultural Research Service in identifying and directing research and educational programs to improve usefulness of information received by all small-scale farmers and others wishing to join their ranks.

Ongoing and planned activities of the office include:

- A bimonthly newsletter on small-scale agriculture;
- Factsheets on small-scale agriculture;
- A national directory of small-scale agriculture contacts;

• An assessment of all ongoing USDA research and educational efforts that target on small-scale agriculture;

• Continual monitoring and/or implementing of conferences on small-scale agriculture.

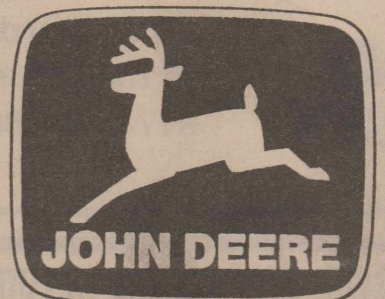
Table 15.—Agricultural productivity

Year	U.S. Population (July 1) (millions)	Index of total farm output (1977 = 100)	Index of* output per work hour (1977 = 100)	Crops harvested (million) acres
1930	123.1	43	NA	369
1940	132.1	50	NA	341
1950	151.7	61	22	345
1955	165.3	69	30	340
1960	180.8	76	42	324
1965	194.4	82	56	298
1970	205.1	84	74	293
1975	216.0	95	90	336
1976	218.0	97	97	337
1977	220.2	100	100	345
1978	222.6	104	104	338
1979	225.1	111	113	348
1980	227.8	104	109	352
1981	230.1	118	123	366
1982	232.5	116	125	362
1983	234.8	96	99	306
1984	237.0	112	121	348
1985	239.3	119	140	342
1986	241.5	2113	2135	325

*Includes 50 States.
*Estimated
*Revisions made last year in the labor input series produced extensive changes to the indexes for labor and total output per work hour.

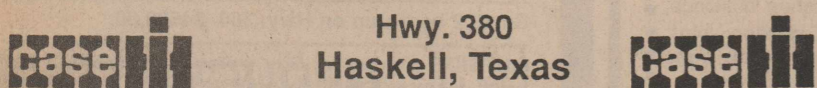
*January Harvest States Journal

This Special Ag Day Message Sponsored By These Companies ...



...And These Supporters Of Area Agri-Business...

RICHARDSON TRUCK and TRACTOR
817-864-3474 or 864-2939



Hwy. 380
Haskell, Texas

FARMERS CO-OP GIN & ELEVATOR

301 Adams 997-2421

Rule

HALE FARM SUPPLY

Phone (915)773-2788

Hwy. 277 North

Stamford



SMITTY'S AUTO SUPPLY

204 N. 1ST. Haskell
PHONE 864-3051

The Friendly



First People put People First!

First National Bank-Haskell
200 S. Ave. E 864-8555

Ag Management is here to serve the needs of all area farmers. We have soil testing for fertility management, water management and insect management. I would like to thank the area farmers who have used my services in the past years and look forward to working with you again in the future.

Steve Morren
Owner/Operator

AG MANAGEMENT

(817) 422-4026

Mobile Phone (817) 864-3784-6

J & R Radiator and Muffler

1200 S. Ave. E 864-2641

Haskell



HASKELL BUTANE



Stamford Hwy.

864-2424 864-3915

YOUR DOLLAR GOES FURTHER ON WARRENGAS

The Proven Performance for 54 Years.



Rolling Plains Production Credit Association

Offices in Stamford, Munday, Abilene, Spur, Matador, Childress!
Part of the Farm Credit System

FEDERAL LAND BANK

509 S. 1ST. 864-2062

HASKELL



ROCHESTER COTTON WAREHOUSE



743-3215

ROCHESTER

GIBSON COTTON CO.

is now taking SEED orders for the 1989 growing season!

Your Local SEEDCO DEALER and HANDLER of Cotton in the BALE or in the SACK

706 N. Ave. B

Haskell, Texas 79521

Office 864-2248

Home 864-2393



*Everyday the
Haskell Chamber of Commerce
is working for You.*

We're looking forward
to the future together!

M SYSTEM
Your FRIENDLY
AFFILIATED
SUPER MARKETS
Haskell, Texas

Why Shop in Haskell?

- Competitive Prices
- Quality Merchandise
- Friendly Service
- Wide Choices
- Easy Access to Businesses
- Ample Parking
- Service after the Sale
- Your Business is Appreciated
- Sales People Know You by Name
- You Save Time, Money, Gas
- You Support the Town that Supports You

The Haskell Retail Merchants Association, with Conrad Roewe as Chairman, meets for breakfast at 7 A. M. on the first Friday of each month at Kountry Kookin' in Haskell to plan joint promotions, special sales, and various ways to accomodate Haskell customers. All Merchants are urged to attend these sessions to help make Haskell an even greater shopping center for the area.

We proudly support our
Chamber of Commerce,
its programs, projects,
and its efforts in bringing
progress to our community.

McGee's Lumber Yard
105 N. 1st 864-3552

Thank You

**Haskell Chamber
of Commerce
For Making much
of the Good News you
Read in**

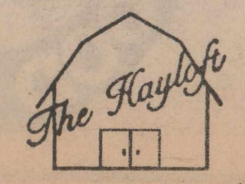
THE HASKELL FREE PRESS

*Serving Haskell
and Haskell County
for 103 Years*

We would like to take
this opportunity to salute the
Haskell Chamber of Commerce

*Congratulations on a year
of outstanding achievements.*

409 South First
Haskell, Texas
Phone 864-2901

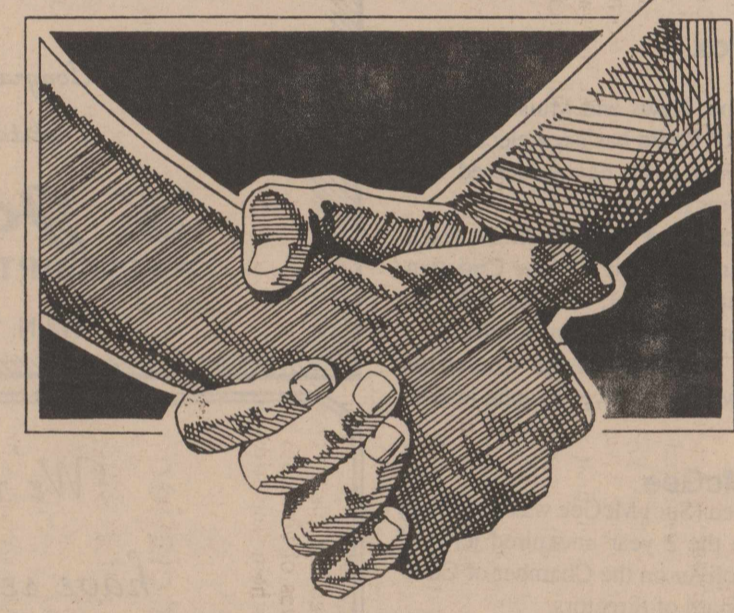


S·P·R·I·N·G IS IN THE AIR

53RD ANNUAL BANQUET
HASKELL
CHAMBER OF COMMERCE

MARCH 18, 1989
7:00 P.M.
CIVIC CENTER

TOGETHER



PROGRAM

PRESIDING	PRESIDENT DICKIE GREENWOOD
DINNER	SERVED BY WELCOMING COMMITTEE
WELCOME	DUSTY GARISON
INVOCATION	PRESIDENT, HASKELL MINISTERIAL ALLIANCE
INTRODUCTION OF GUESTS	BRIAN TOLIVER
INTRODUCTION OF OFFICERS AND DIRECTORS	ABE TURNER
INTRODUCTION OF PAST PRESIDENTS	BILL COMEDY
MOST OUTSTANDING CITIZEN AWARD	DICKIE GREENWOOD
ENTERTAINMENT	MINOR CHORD BARBERSHOP QUARTETTE MUNDAY, TEXAS
PASSING THE GAVEL	
ADJOURN	

Special Section

The Haskell Free Press
Thursday, March 16, 1989

OUTGOING BOARD MEMBERS

Bill Comedy

Outgoing ExOfficio, Bill Comedy has served ten years with the Chamber, including two terms as president.

Bill is owner of Haskell Commercial Printing Company and prior to that was owner and publisher of the Haskell Free Press.

He grew up in Coleman and served with the U. S. Army during World War II.

He is a past president of the West Texas Press Association and former board member of the Texas Press Association.

Local affiliations have included that of president and board member of the Haskell Rotary Club, director for six years of the Haskell County Jr. Livestock Association, retired member of the Haskell Fire Department, former vice president and director of the Haskell County Fair Association, past vice-president of the Haskell Industrial Foundation, and active with the Haskell Memorial Civic Center Association, Beautify Haskell Program, Booster Club, Heart Fund, and United Way.

Bill and his wife Bud are the parents of Don Comedy, Mike Cook, Sam Cook, Margaret Hall, and grandparents of Jennifer Comedy, Jessica Comedy, Amy Cook, Sam Cook, Colby Cook, Emily Medford, Matt Dunham and Christopher Cook. We are grateful to the Comedys for their leadership and their loyalty.

Tom Richardson

Completing six years of service with the Chamber of Commerce, Tom's most outstanding areas were those of chairman of the country dinner theater, which was held its first two years at the Richardson's barn. The barn has also been used each year to build many of the community floats for the Christmas Parades. His wife Lois preceeded him as a dedicated board member and has remained active also.

Tom is a farmer and a contractor and the Richardsons own Kid's Duds and Pat Walker's in Haskell.

They are the parents of Cathy Marion, Tad Richardson, Flint Richardson, Sid Richardson and the grandparents of Rance, Mitzi and Ryan Marion; Chad and Carrin Richardson, Kristie and Eric Richardson, Miles and L. S. Richardson.

Thank you, Tom and Lois, for your dedication and untiring efforts through the years.

Brian Toliver

Brian, general manager of Bailey Toliver Chevrolet-Oldsmobile in Haskell, was re-elected to a second three year term with the Chamber and named Second Vice-president.

He has been an active leader who will be greatly missed by the chamber and the community. We wish him well in his new endeavors.

Brian is a graduate of Haskell High School and holds a degree in Ag Business from Texas Tech University.

A member of the First Baptist Church of Haskell, he is assistant secretary of Sunday School.

Other affiliations have included work with the Haskell Industrial Foundation, and the Beautify Haskell Program.

Brian and his wife Leesa have two children, Brent and Jonathan.

Leesa, the Chamber also thanks you for all your help while Brian has served the Board.

INCOMING DIRECTORS

Jim Bridwell

Jim Bridwell begins his first year of a three year term on the Chamber of Commerce Board of Directors.

He is the owner of Bridwell Spraying Services of Haskell.

Jim attended San Marcos Academy and has served with the U. S. Navy. He is a member of the Haskell Kiwanis Club.

Jim and his wife Joyce are the parents of Andrea and Jessica Bridwell.

Joel Fox

Joel Fox, News and Muisic director for KVRP Radio has been elected to a new 3 year term, having served tow other terms previously.

He graduated from Kaufman High School in 1976 and Abilene Christian University in 1981, holding a B. A. degree in Mass Communications.

He is a member of the Church of Christ, where he serves as song leader.

Sue McGee

Mrs. Ben (Sue) McGee was appointed to serve the 2 year unexpired term of Brian Toliver on the Chamber of Commerce board of directors.

Her husband is a former chamber director also.

Sue is a social service worker with the Department of Human Services and was distinguished in December 1987 as the Employee of the Quarter for her region, a 44 county area.

She is a graduate of Rule High School and attended Western Texas College.

Other local affiliations include membership in the Booster Club, Band Boosters, was formerly a director of the Heart Association and Secretary of the Noah Project.

Sue and Ben are members of East Side Baptist Church and are the parents of two daughters, Lauri and Mendi.

Dr. Cliff Ray

Cliff Ray, DDS, is chairman of the Professional Development Committee of the Haskell Chamber of Commerce and is entering his third year as director.

He is affiliated with the Texas Dental Association, American Dental Association, and American Academy of Dental Radiologists. He attended Knox City High School, received a B.S. degree from Abilene Christian University and received his doctorate from the University of Texas at San Antonio.

He is a member of the Haskell Lions Club and the First Baptist Church.

Cliff and his wife Judy are the parents of two children, Amanda and Brittany.

Congratulations to Haskell Chamber of Commerce



Jones Welding

Leon & Delight Jones, Owner

201 NE 1st Haskell 864-2342

We would like to take this opportunity to salute the Haskell Chamber of Commerce.

Congratulations on a year of outstanding achievements.

Johnson
PRESCRIPTION PHARMACY

418 N. 1st 864-3331

We're Proud to have served Haskell for 43 years

and

Salute the Haskell Chamber of Commerce

Keep up the Good Work!

"Smart Wear for Women"

THE Personality SHOPPE

Supporting the Haskell Chamber of Commerce Since 1946

Opal Adkins - Veta Furrh

Gil Richardson

Gil Richardson has been elected to a second 3-year term on the Haskell Chamber of Commerce board of directors.

He is general manager of Richardson Truck and Tractor in Haskell and a member of the Southwest Hardware and Implement Association.

Gil is a graduate of Haskell High School and of Tarleton State University with a Bachelor of Science Degree.

He and his wife, Norma, attend the First Baptist Church in Haskell.

Abe Turner

Abe Turner, Haskell's Most Outstanding Citizen of 1983, has been reelected to a 3 year term, his fourth such in the past 2 decades. He has served three terms as Chamber President: 1965-1966, 1966-1967, and 1969-1970.

He is a former mayor of Haskell, former president of the Kiwanis and Rotary clubs.

Other activities have included involvement in the Haskell Industrial Foundation, Civic Center Association, Beautify Haskell Program, Indian Booster Club, Band Boosters, Heart Fund, United Way, Noah Project, and Boy Scouts.

He is a past president of the Haskell Jaycees, a director of Sportsman's Clubs of Texas, past director of Inde-

pendent Bankers Association of America, and Silver Beaver of Boy Scouts of America.

He and 2 other chamber directors, Bobby Hobgood and Dickie Greenwood, headed the special fund drive to raise funds for the operation and equipment to secure United Sewing Agency in Haskell.

He is a graduate of Haskell High School, and Texas Tech University, with a B.S. degree in Agricultural Education, and served in the U. S. Army.

Abe and his wife Ruby are the parents of Mike, Sharon and April, and grandparents of Jesscia and Lori Turner.

Charlene Dumas

Charlene Dumas was appointed to the Board of The Haskell Chamber of Commerce to fill the unexpired term of Grace Womack.

She is secretary of Owens' TV and Electric in Haskell, a graduate of Roaring Springs High School and a member of the First Baptist Church.

Charlene and her husband, Billy, are the parents of Gina Foster and Sheree Dumas and grandparents of Kory Foster.

Carolyn Reynolds

Mrs. James H. (Carolyn) Reynolds is serving her second three year term on the Board of Directors and continues as chairman of the Chamber Welcoming Committee, of which her husband is also a very active member.

Carolyn is District Clerk of the 39th.

Judicial District, and has been active with the Civic Center Association, Indian Booster Club, Haskell Band Boosters, Heart campaign and United Way.

A member of the First Baptist Church, she is a director and teacher in the kindergarten department and a member of the church choir.

Carolyn and Sonny have three children: Lisa Hutchinson of Haskell, Laurie Gross of Vernon, and Mark Reynolds of Haskell. They have three grandchildren: Loures, Matt, and Leslie.

Bobby Hobgood

Bobby Hobgood is beginning his third term on the Chamber Board of Directors. Prior to moving to Haskell, he served six years with the Woofforth Chamber of Commerce as secretary, treasurer and president.

This past year Bobby headed the successful Beautify Haskell Program and served with Co-chairmen Dickie Greenwood and Abe Turner on the fund campaign to secure United Sewing Agency.

He is treasurer of the Haskell Industrial Foundation, active with the Band Boosters, show superintendent for the Haskell Co. Fair Stock Show, coach of Little Dribblers and Little League, director of Haskell Lions Club, and treasurer of the Kiwanis Club.

He is a Sunday School teacher at the First United Methodist Church for high school and junior high members.

Bobby is the President of First National Bank of Haskell, a graduate of Friendship High School and holds a

BBA degree from Texas Tech University.

Bobby and his wife Debbie have three children, Holly, Heather, and Jason.

Jimmie Williams

Jimmie C. Williams is serving a second term on the Board of Directors the Haskell Chamber of Commerce.

He is the owner of Williams N. 27 Paint and Body Shop in Haskell.

Jimmie is a member of the Kiwanis Club, a former Rotarian, and a Methodist. He serves on the board of Haskell Country Club.

He and his wife Debbie are the parents of Tammie, Joy, Tiffany, and Kendi.

Wanda Dulaney

Wanda Dulaney has served as Manager of the Haskell Chamber of Commerce since January 1, 1981.

In addition to regular operational responsibilities of the Chamber of Commerce, she is the originator and coordinator of Haskell's Night Christmas parade and coordinated the fund campaign for the acquiring of United Sewing Agency by the Haskell Industrial Foundation with the three co-chairmen, A. Turner, Dickie Greenwood, and Bobby Hobgood.

Wanda, Haskell City Administrator Bob Baker, and Franciene Johnson (District Governor of Keep Texas Beautiful) were coordinators for the Beautify Haskell Program, headed by Bobby Hobgood.

Congratulations

to the

Haskell Chamber of Commerce

Best of Luck in 1989



Best Wishes

for

Continued Services

Harmon Cable Communications

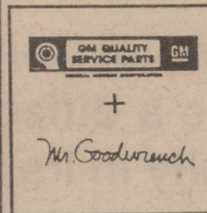
USA, CNN, WGN, TDC, CVN, Family Channel, WTBS, ESPN, TNT, MTV, Univision, CNN II, TNN, Nickelodeon, KTVT, HBO, Disney, Showtime

Harmon Cable Communications

1-800-527-4331

The Haskell Chamber of Commerce thanks you for your support during 1988 and we pledge to continue our efforts on your behalf during 1989

We salute the Haskell Chamber of Commerce for their continued leadership and service in our community.



Medford

Buick-Pontiac-GMC
200 N. Ave. E 864-2644

We Salute the Haskell Chamber of Commerce
The Hartsfield Agency/Realty
The Carousel
Hess and Dorothy Hartsfield
In continuous operation since 1892

Congratulations to the Haskell Chamber of Commerce
Heidenheimer's
419 S. 1st Haskell 864-2508

The Haskell Chamber of Commerce is #1 with us!

"Where Winners Shop"

Conrad Roewe's Sport-About of Haskell



817-864-3891
402 N. 1st
Haskell, TX 79521

Congratulations to the Haskell Chamber of Commerce
We're 100% Behind You!

Conner Nursery & Floral
864-3121

Sharing in the challenges and responsibilities of building for the future and perfecting the present, we salute the members of Haskell's Chamber of Commerce

Anderson Tire Co.
Haskell

OFFERED BY
JOHNSON
864-2951

LORAIN JOHNSON, BROKER
I am on call and ready to talk to you about your Real Estate at any time if you are interested in buying or selling please call me. I will try harder to please you.

One Hour Photo Service offered on Film Developing & Prints
Latest Equipment - Competitive Prices



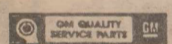
Kodak and Fuji Film For Sale
Phone 864-2951

Johnsons' Kis Photo
Owned & Operated By - Loraine & Bobbie Johnson
West Side of Square - Haskell

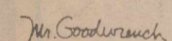
Haskell's future depends on its economic success.

The Haskell Chamber of Commerce is working toward this goal.

Congratulations on continued success.



Bailey Tolliver
Chevrolet-Oldsmobile



517 N. 1st 864-2626

We salute the Haskell Chamber of Commerce

Nanny Plumbing

Serving Haskell Since 1949
301 S. Ave. E Haskell 864-3043

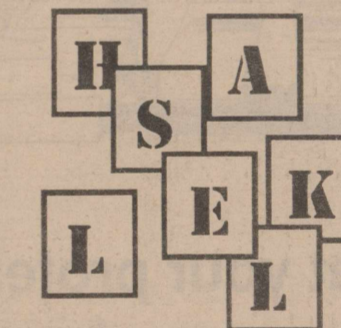
Thanks and congratulations to the Haskell Chamber of Commerce

"Plowing the way for progress"



Richardson Truck & Tractor
5 N. 1st 864-3474

Build with our Chamber of Commerce



Williams

N. 277 Paint & Body Shop
Rt. 1 Box 100 - Haskell, Texas
Jim Williams, Owner

Day 817-864-8215

Nights 817-864-8131

Like a Fine



We Salute The Multi-Faceted Talents of The Haskell Chamber of Commerce!

Lyles Jewelry

Since 1935

East Side of square

Haskell, Texas

You're A Credit to the Community

and

We appreciate you

James Castagna & Jeff Gregg

Certified Public Accountants

Seymour Office
115 W. McClain Street
817-888-5539

Haskell Office
312 N. 1st
817-864-3931

We're on your side working to make

Haskell Grow

The Haskell Chamber of Commerce



**YOUR
Haskell
Chamber of
Commerce**

**It
Works
For All
Of Us!**

No matter what your profession – whether you're a retailer, rancher, secretary, oilfield worker, etc. in Haskell County – your Haskell Chamber of Commerce is working for you. But it needs your help! So let's all show our support and do our part to make Haskell County a great place to live.

"We can do it together!"



**OLNEY
SAVINGS**

We're neighbors. You can believe in us.

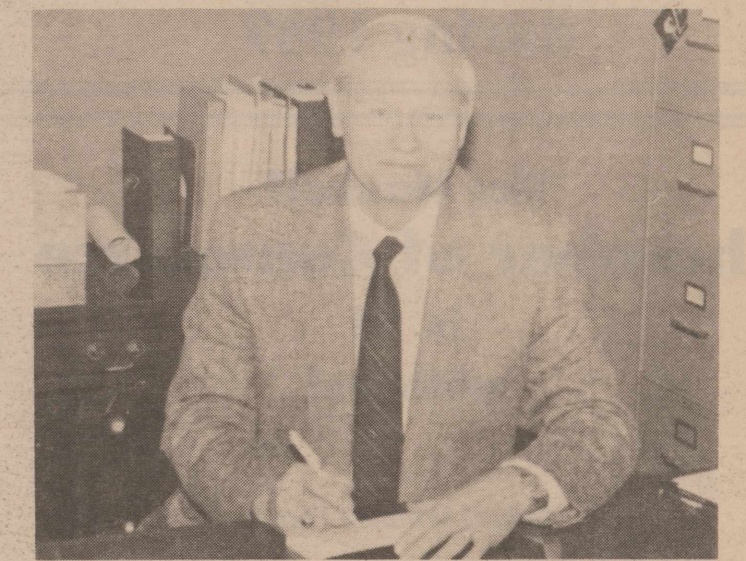
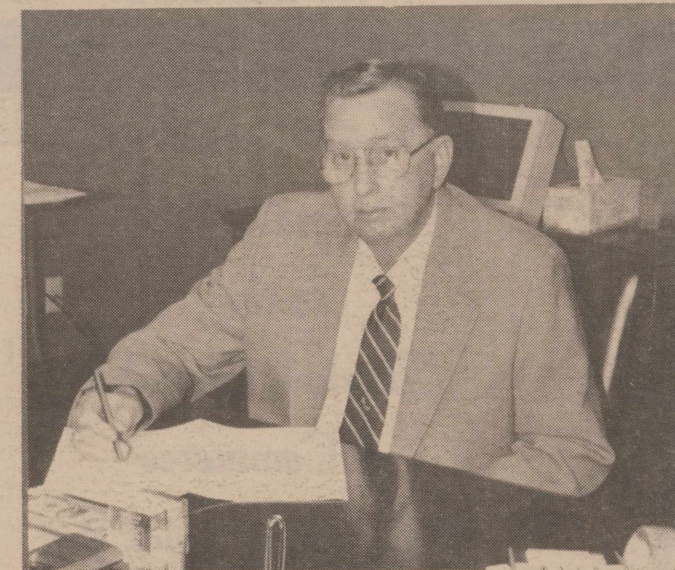
518 S. 2nd — Haskell, Texas — 817-864-8577



IN BANKING—

It's People Who Make The Difference!

Since the Haskell Chamber of Commerce began, the people at Haskell National Bank have made a difference in the growth of the Chamber, being involved almost daily in its affairs.



Royce Williams, C.E.O., and Abe Turner, president of Haskell National Bank, have contributed substantially to the Haskell Chamber of Commerce and the community both serving as president of the Chamber, Royce in 1974-75, and Abe in 1963-64, 1964-65 and 1968-69, (3 terms), and both have served as Mayor of Haskell.

As Haskell National Bank begins its 99th year of service to the Haskell area, they remain committed to service with the "People" touch as "Your Partner in the Community".

OFFICERS

ROYCE L. WILLIAMS-Chief Executive Officer
 ABE TURNER-President
 ANDREW GANNAWAY-Executive Vice President & Security Officer
 CAROLYN EVERETT-Senior Vice President & Trust Officer
 BETTIE WAINSCOTT-Vice President & Cashier
 RANDY HISE-Vice President/Agriculture
 LADELLE OPITZ-Vice President & Auditor
 MELVA EVERETT-Vice President-EDP
 BETTY SUE McDERMETT-Assistant Vice President -Head Teller
 JOHN M. HICKS-Assistant Vice President-Credit Analyst/Compliance Officer

DIRECTORS

RILEY COUCH-Chairman of Board
 BOBBIE HERREN CORZINE-Vice Chairman of Board
 ROYCE ADKINS
 CAROLYN EVERETT
 ANDREW GANNAWAY
 DAN RILEY GRIFFITH
 RAJA HASSEN
 ROBERT A. HOWARD
 WILDA D. MEDFORD
 ABE TURNER
 ROYCE L. WILLIAMS
 Advisory Directors
 R. W. HERREN-Chairman of Board-Emeritus
 MATTIE MURIEL ENGLISH
 RICK PERRY

You Know Us. We Know You.

Haskell National Bank

Member F.D.I.C.

601 N. 1st Haskell, Texas 864-2631

Your Chamber of Commerce
supplies the proper
attitude for
building communities...

We supply the boards and nails.

Kennedy Lumber Co.

106 NE 1st Haskell 864-2861

We are proud to be part of Haskell County History with the founder of our store coming to Throckmorton County in the late 1800's.

Burwell Cox came by wagon with a herd of sheep, wagons and teams.

For 82 years we have attempted to serve our customers during both good times and bad...for this we are thankful.



JONES COX & COMPANY
COUNTRY STORE
—Established in 1905—
Hardware, Fine Furniture and Gifts

Congratulations

to an aggressive
and progressive
Chamber of Commerce

HEADS OR TAILS WESTERN WEAR

Haskell, Texas

Congratulations
to the
Haskell Chamber of Commerce

on another outstanding year.
We're proud to be a part
of their fine organization.

Hassen's

Haskell

Kay's Cleaners

proudly supports

the Haskell
Chamber of Commerce

We Do Laundry

Darrell G. & Kay Smith, Owners

Take a Bow!

Your deserve it along
with our best wishes!

Keep up the Good Work!

Frazier's Appliance

13 Av E 864-2756

Our congratulations to the
Chamber for another successful
year of outstanding service

Earning your trust since 1937
Service is our security

Holden-McCauley
Funeral Home

304 N. 2nd 864-2151

Proud to be a
PARTNER
with the Haskell Chamber
of Commerce

Smitty's Auto Supply

"For all your auto parts"
204 N. 1st 864-2607



**WE
WELCOME
EACH OF
YOU
TO
HASKELL**



OFFICIAL GREETERS



The Welcoming Committee of the Haskell Chamber of Commerce serves as its official greeter.

Carolyn Reynolds is chairman of the committee.

The members are easily recognized in their red vests, white shirts, blue bandanas, denim skirts or pants.

They attend grand openings of new businesses, greet and serve chamber banquet guests, and are the chambers' official representatives in the Christmas and Rodeo parades.

Welcoming Committee members are: Carolyn and Sonny Reynolds, Mac and Bettye McBroom, Dorothy and Hess Hartsfield, Delight and Leon Jones, Sandy and Roy Forehand, Franciene and Elbert Johnson, Tom Watson, Tommy Watson, Bobbye Collins, Andy Gannaway, Betty and John McDermett, Sheree Gardner, Nancy and Gene Plunkett.



A Better tomorrow begins
today with Progress

Let's dedicate our efforts to
A Brighter Future

We want to be your furniture store!

Boggs & Johnson

Haskell, Texas

We're Proud to be a
Part of the
Haskell
Chamber of Commerce

DOYLE HIGH'S
THE DRUG STORE

100 S Ave E Haskell 817-854-2515

PAST PRESIDENTS TO BE RECOGNIZED

A special Presidents' Table is set up at the annual Chamber of Commerce banquet to seat the past leaders of the organization and to recognize them for their efforts.

In 1988 the Chamber lost three such leaders: Dr. T. W. Williams, first president and honorary lifetime member, J. E. Walling Jr. and Olin Dotson. They will long be remembered for their service to the Chamber.

Invited to the 1989 banquet are Past Presidents W. O. Holden, H. V. Woodard, Ira Hester, Tom Watson, Raja Hassen, Wallace Cox Jr., Bailey Toliver, Charles Thornhill, Abe Turner,

Gene Long, Royce Williams, George Fouts, Bill Comedy, Tom Barfield, Don Munster, Robert Greenroy, Bob Philpot, John Rike, Wayne Leher, Aubrey Carroll, and John Wayne McDermott.

Dickie Greenwood is the outgoing president.

Other deceased past presidents are: Sam Roberts, Chesley Phelps, John A. Couch, J. M. Crawford, Alfred C. Pierson, Hallie Chapman, Harold Spain, Carl Wheatley, Gaston Hattox, James A. Byrd, Joe Williams, and Myron Baird.

OUTSTANDING CITIZEN TO BE ANNOUNCED

The Most Outstanding Citizen will be announced at the 1989 banquet.

Nominations for this honor come from the membership of the Chamber of Commerce.

Previous winners were: Jane McAdoo, Myron Biard, Mrs. Charles M. Conner,

Satch Lusk, Charles Thornhill, J. H. Strain, Tom Watson, Elsie McGee, Royce Williams, Lois Richardson, Dudley Phelps, Abe Turner, Charles Swinson, Mattie Felker English, Frances Lane, R. C. and Jerrene Couch, and Buddy Lane.

**Support your Chamber
and your Community!
Join us Today**

*We're proud to be a part of Haskell
and the
Haskell Chamber of Commerce*

Kids Duds

310 N. 1st • Haskell

Fae Walker's

Figure Perfection Salons International

308 N. 1st • Haskell

"Metren Scientific Skin Care"

**The Haskell
Chamber of Commerce
is looking good!**

Owens TV & Electric

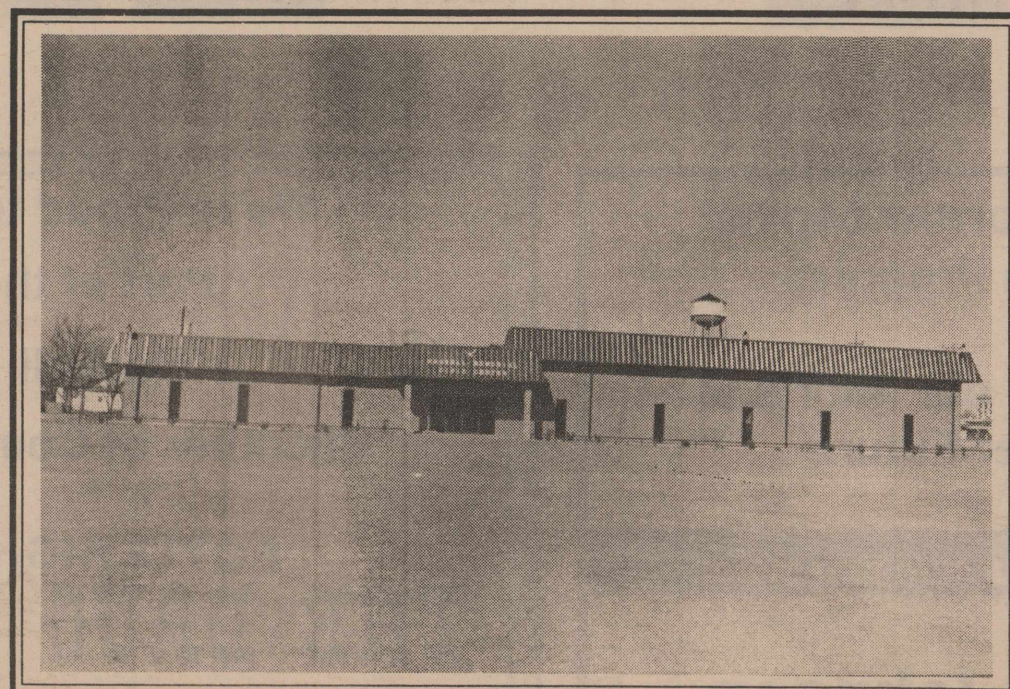
512 N. 1st 864-2536

Plan to attend the
Haskell Memorial Civic Center Board's
Hamburger Supper and "A Night of One-Act Plays"
Friday, March 24, 1989

Supper served at 5:30 p.m. – Entertainment at 7:00 p.m.

Proceeds to benefit the purchase of a stage curtain.

All gifts and donations are Tax FREE and greatly appreciated.



Haskell Memorial Civic Center

CHAMBER MEMBERSHIP TOTALS 129

Abstract Companies
Dulaney Abstract Co.
Appliances
Frazier's Appliance Co.

ATTORNEYS

Royce Adkins
Charles Chapman
Johnny Fouts
Joseph Thigpen

AUDIO-VISUAL

Owen's TV and Electric
Walling TV and Electric

AUTOMOBILE DEALERS

Medford Buick-Pontiac-GMC
Bailey Toliver Chevrolet-Olds
Bill Wilson Motor Company

AUTO PARTS/SERVICES

Smitty's Auto Supply
Williams N.277 Paint and Body

BAKERIES

The Sweet Shop

BEAUTY PRODUCTS

Image Enhancement

BEAUTY SHOPS

Martha's Beauty Center

BOAT DEALERS

Haskell Marine

BUILDING AND CONSTRUCTION

Kennedy Lumber Co.
Letz Builders Supply
McGee's Lumber Yard

CARPETS

Sherman's Carpets and Interiors

CATALOG STORES

Sears Catalog Store

CHILDREN'S STORES

Kid's Duds

COTTON GINS

Farmers Co-op Society #1 Haskell

DEPARTMENT STORES

Hassen's

Heidenheimers

DRESS SHOPS

The Clothes Closet

The Hayloft

Homespun Boutique

Lane Felker

The Personality Shoppe

DRUG STORES

Johnson's Pharmacy

The Drug Store

DRY CLEANERS

Kay's Cleaners

FARM EQUIPMENT

Hale Farm Supply

Richardson Truck and Tractor

FINANCIAL INSTITUTIONS

First National Bank of Haskell

Haskell National Bank

Olney Savings Association

FLORISTS

Conner Nursery and Floral

FUNERAL HOMES

Holden-McCauley Funeral Home

FURNITURE STORES

Aladdin House

Boggs and Johnson Furniture

Jones Cox & Co.

GRAIN AND COTTON

Haskell Warehouse and Compress

Nine-Point Grain Co.

GROCERS

Bill's Drive In Grocery

M-System Supermarkets

Modern Way Foods

Pogue Grocery

Pogue's Meat Processing

HEATING /COOLING/PLUMBING

Cook and Rodela Heating, Cooling
and Plumbing

Nanny Plumbing

INDUSTRIES

Strickland Bridge, Inc.
Coca-Cola Bottling Co.

INSURANCE

State Farm Insurance (Brian Burgess)
The Hartsfield Agency
Lanco Insurance
A. L. Williams (Rosemary Brown)

JEWELERS

Bassing Jewelry
Lyles Jewelry

LIQUOR STORES

Time Out Beverages

LIVESTOCK AUCTIONS

Haskell Livestock Auction

MARINAS

Lake Stamford Marina

MEDIA

The Haskell Free Press
KVRP Radio AM/FM

Harmon Cable Communications

MEDICAL AND NURSING

Dr. Tom Hairgrove, Veterinarian

Dr. Cliff Ray, DDS

Haskell Clinic

Haskell Nursing Center

Hospital Clinic

Dr. Wm. J. Kemp, DDS

Dr. J. G. Vaughter, DDS

Haskell Memorial Hospital

MOTELS

The Fieldan Inn

MUSIC

The Music Box

OIL COMPANIES

Drinon Oil Co.

Haskell Butane Co.

The Reedy Co.-Exxon

King Hoermann Oil Co.

Wooten Oil Co.

Organizations

Experienced Citizens Center

PRINTING

Haskell Commercial Printing

Radiators/Mufflers

J&R Radiator and Muffler

REAL ESTATE

The Hartsfield Agency

Johnson's Real Estate

Lanco Real Estate

RESTAURANTS

Double A Drive In

Kountry Kookin'

Markey's Place

Pizza Barn

Indian Drive In

SHOE STORES

The Slipper Shoppe

SPORTING GOODS

Sport-About of Haskell

SPRAYING SERVICE

Bridwell Spraying Service

TAX PREPARATION

Bernard Godley, Inc.

H & R Block (Evelyn Cobb)

TIRE DEALERS

Anderson Tire Co.

Trussell Tire Center

TOY STORES

The Carousel #2

UTILITY COMPANIES

GTE Southwest

Lone Star Gas Co.

Stamford Electric Co-op

West Texas Utilities Co.

VARIETY STORES

Perry Brothers

WELDING

Leon Jones Welding

WESTERN WEAR

Heads of Tails Western Wear

INDIVIDUAL MEMBERS

Bob Baker
Mrs. R. C. Couch, Jr.
Mr. & Mrs. Desmond Dulaney

Belton Duncan

Woodrow Frazier

John W. McDermott

Mr. & Mrs. Rick Perry

Mr. & Mrs. Lynn Pace Jr.

Sue Pate

Margaret Ratliff

Billy Jack Ray

Doris Reeves Jordan

Mr. & Mrs. Sonny Reynolds

Mr. & Mrs. Glenn Sammons

Mr. & Mrs. Clay Smith

Mr. & Mrs. J. H. Strain

Mr. & Mrs. Charles Swinson

Charles Thornhill

Mr. & Mrs. Abe Turner

Tom Watson

**Support
The
Haskell
Chamber of
Commerce**

**Investing in and Insuring
Our Progress
The Haskell Chamber
of Commerce**

and

**Lanco
Insurance and Realty**

510 N. 1st

864-2629

CATALOG CUSTOMERS

Did You Know?

- That the Local Sears Catalog Sales Merchant is Locally Owned and That our Catalog Business is Growing.
- That Catalog Shopping offers you a wide selection of merchandise.
- That Catalog Shopping can save you both time and money.
- That we are as close as your telephone.

Shop by phone
864-2671

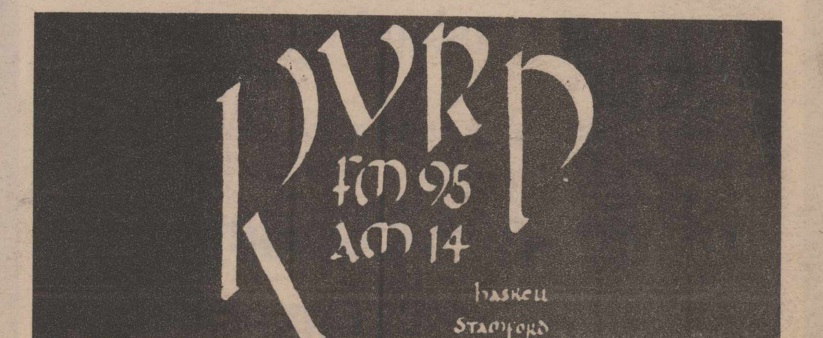


Authorized
CATALOG SALES
MERCHANT

Owned and operated by
**Roy and Sandy
Forehand**

*Celebrating our
12th Anniversary in Haskell*

**Haskell Chamber
of Commerce
is Good News to us everyday!**



The Radio Voice of the Rolling Plains

Celebrating our 43rd Year in Haskell
Congratulations to
Haskell Chamber of Commerce
We're behind you all the way.
 Now Chrysler, Plymouth, Dodge,
 Ford, Lincoln, Mercury

Bill Wilson Motor Co.
 Sales & Service
 209 S. Ave E Haskell 864-2611

We are proud
 to be a part of a
 progressive Chamber
 Congratulations

Fieldan Inn

Haskell's Finest Downtown
 115 A. Ave. E, Haskell
 864-2251 or 864-2568

At First National, our goal is to provide the best professional innovative banking services to Haskell.

Our Free Checking to the Senior Citizens and Students of Haskell and our Saturday Drive-In banking from 9 a.m. to noon, reflect our attitude and our commitment.

We are proud to be a part of this community and its future.

We salute the
**Haskell Chamber
 of Commerce**
 for a Job Well Done

The Friendly



First People
 put People First

First National Bank

HASKELL TEXAS
 200 South Avenue E 864-8555 Member FDIC

**WHAT DOES YOUR
 CHAMBER OF
 COMMERCE
 DO FOR YOU?**

The Haskell Chamber of Commerce is responsible for:

1. Planning activities to draw large crowds to Haskell.
2. Publicizing our town.
3. Attracting tourists and new residents.
4. Expanding retail trade.
5. Working with Haskell Industrial Foundation to pursue further industrial development.
6. Making known the resources of Haskell and promoting the town in its endeavors.
7. Working with other organizations and groups, often serving as an umbrella for combined efforts.
8. Keeping abreast of developments in oil and agriculture and other interests.
9. Maintaining liaison with churches, schools, city and county government, service clubs, and other organizations.
10. Promoting professional development.

**CHAMBER
 MEMBERSHIP**

The Haskell Chamber of Commerce serves as an information bureau, a training agent, a sales manager, a business motivator, a public relations team, a spokesman for the city, a mail service, a goodwill ambassador, and publicity agent.

It is made up of large and small businesses, industries, specialty houses, varied companies, with representatives from different walks of life, various ages, and interests.

Minimum dues asked for businesses are \$10 per month, and \$5 per month for individuals, with each member asked to pay what they can afford.

Others who are interested in joining concerned, active citizens are also invited to join.

The chamber office is located at 112 1/2 N. Ave. E, and is open Mondays, Tuesdays, Thursdays and Fridays.



Entertainment for the banquet is presented by the Minor Chord Quartet from Munday. Members of the group are, seated, Lyndle Reeves and Russ Byard; Standing, Pat Smith and Ray Hunter.

The entertainment for the banquet is sponsored by Dickie Greenwood, Buddy Lane, Abe Turner, Jim Bridwell, Dr. Cliff Ray, Gil Richardson, Brian Toliver, Bobby Hobgood, Bill Comedy, Elbert Johnson.

**West Texas Utilities
 Company**

proudly supports the

**Haskell Chamber
 of Commerce**

WEST TEXAS UTILITIES COMPANY



A Member of The Central and South West System

Remember

REDDY Supplies the energy—

but only YOU can use it wisely!

Haskell Chamber of Commerce

...Making a positive statement
 for our future

*Congratulations on 53 years
 of service to Haskell*

Haskell Commercial Printing

Bill Comedy, Owner

*The Haskell
 Chamber of Commerce*

*A picture of progress
 for Haskell!*

The Frame Shed

411 South First St. • 864-2901

**Help Us
 Help You
 Join**

The Haskell Chamber of Commerce

Haskell, Texas *Lane-Felker* 817-864-2266

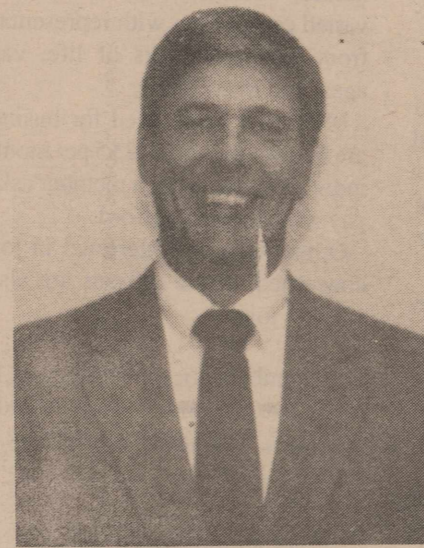
BOARD OF DIRECTORS HASKELL CHAMBER OF COMMERCE



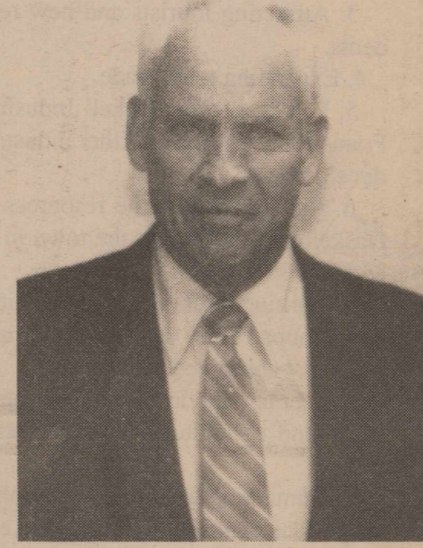
Buddy Lane



Delight Jones



Mike Martindale



Elbert Johnson

Buddy Lane

The newly elected president of the Haskell Chamber of Commerce was named Haskell's Most Outstanding Citizen in 1988. He has been a member of the Chamber 27 years, a director five years, and treasurer for 2 years.

Owner of Lanco Insurance, Bud is a graduate of Texas Tech University, with a B. S. degree in Agri-Business, and is also a farmer.

He served in the U. S. Army and is a member of the First Methodist Church of Haskell.

Bud is president of the Texas Tech Dads Club, a past president of Haskell Rotary Club; has served for ten years as county chairman for the Salvation Army and treasurer for ten years prior to that; a director and former vice-president of the Haskell Industrial Foundation, past board member of the Civic Center Association, was active with the Beautify Haskell Program, Booster Club, and Band Boosters.

In addition to serving as chairman of the 1988 Fly-In, he was head of the Chamber of Commerce Automobile Show in 1986 and 1987.

The Chamber's new First Lady, Peggy, is very active with chamber and she and Bud are the parents of Lugene Pickering, Leslie Lane, Lee Lane, and Lori Lane. Their grandchildren are Chad and Clay Pickering.

Delight Jones

First Vice-President of the Haskell Chamber of Commerce is Delight Jones, now serving a second 3 year term on the board of directors.

For three years she and her husband Leon have been active with the Chamber Welcoming Committee.

Delight is business manager of Bill Wilson Motor Co., and has served as an

officer of the Haskell Memorial Civic Center Association, was active with the Booster Club and Band Boosters, and with Heart Association and American Cancer Society.

A member of the First Baptist Church, she is a choir member and a teacher in the kindergarten department.

Her children are Ed Harris of Abilene, Cynthia Jones of Morton and Mynea Short of Haskell. She and Leon are the proud grandparents of Evan Harris, Peyton Harris and Cameron Short.

Mike Martindale

The Chamber's incoming second vice-president is Mike Martindale.

He came to Haskell in November 1987 as local manager of West Texas Utilities Co. after serving 17 years with the company, most recently as manager of the Aspermont office.

While in Aspermont, he served on the Housing Authority, as president of the Lions Club, Jaycee vice-president, J.W. and S.W. Masonic Lodge, and in Haskell is a member of the Chamber Board of Directors, and member of the Haskell Lions Club.

He attended elementary school in Haskell six years, six years secondary school at Palacios, Warden County Junior College, and Texas Tech University.

Mike's work with youth includes coaching a Little Dribblers basketball team.

He has served with the Industrial Foundation, Civic Center, Beautify Haskell Program, Booster Club, Band Boosters, Heart Fund, United Way and Noah Project.

Mike and his wife Glenda are parents of Joni and Lori and are members of the First Baptist Church where Mike serves as an usher.

Elbert Johnson

Elected Treasurer of the Chamber of Commerce for 1989-90, Elbert Johnson is owner of Johnson Pharmacy.

A resident of Haskell since 1966, he is president of the Big Country Pharmaceutical Association.

He is a former president of the Haskell Chamber of Commerce, is secretary of the Kiwanis Club, former Country club President, vice-president and secretary on school board for nine years, has been active with the Industrial Foundation, Beautify Haskell Program, Booster Club, Heart Fund, Bouy Scouts, and Haskell Little League.

Elbert graduated from Texas Tech in 1951, playing football 2 years and coaching for 8 years at Muleshoe, Belton, and Bryan. He attended the University of Texas Pharmacy School and received a Masters Degree and PHD in Health Education through a correspondence course from the University of Phoenix. He also served in the U.S. Marine Corps, stationed at San Diego and Treasure Island.

Elbert and his wife Franceine are members of the Chamber Welcoming Committee and are the parents of two sons, Gary and Jarrell, and a grandson Toby.

Dickie Greenwood

Immediate Past President of the Haskell Chamber of Commerce, Dickie will continue on the executive committee as Ex-officio. He has served 2 terms as Chamber president and five year on the board of directors.

He has served two terms as president of the Haskell Rotary Club, has been active in the Haskell Industrial Foundation, Haskell Memorial Civic Center

Association, Beautify Haskell Program, Heart Fund Campaign, and the United Way.

Dickie and two others, Abe Turner and Bobby Hobgood were co-chairmen for the special campaign to raise necessary funds for the United Sewing Agency fund Campaign.

Dickie is Vic-President and Haskell Branch Manager for Olney Savings Association.

He is a graduate of Rochester High School and Tarleton State University with a degree in Agricultural Business.

Dickie and his wife Melissa are the parents of a son, Adam, and are members of the First Baptist Church.

As immediate past president and first lady, the Greenwoods have served their community well through the Haskell Chamber of Commerce.

Conrad Roewe

For three years, Conrad Roewe has served as chairman of the Haskell Retail Merchants Association.

He has been elected to a second three-year term on the Haskell Chamber of Commerce Board of Directors.

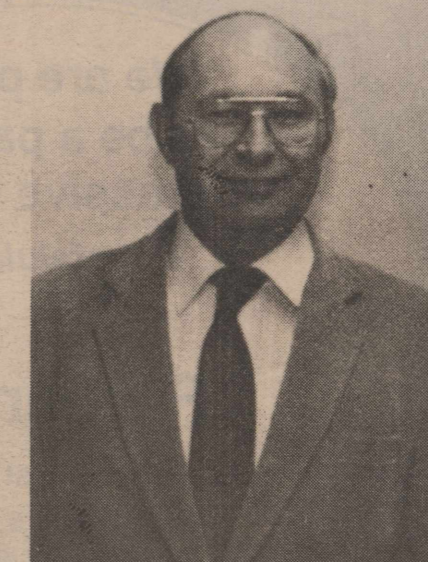
Owner of The Sport-About in Haskell, he is past president of the Kiwanis Club, Vice President of the Indian Booster Club, President of Haskell Youth Baseball, Pony League Coach, Coordinator of Haskell Softball Association, and Haskell Little Dribbler, and is active with the Beautify Haskell Program, and Band Boosters.

Conrad attended Pilot Point High School and North Texas State University, served with the U. S. Coast Guard, and attends St. George Catholic Church.

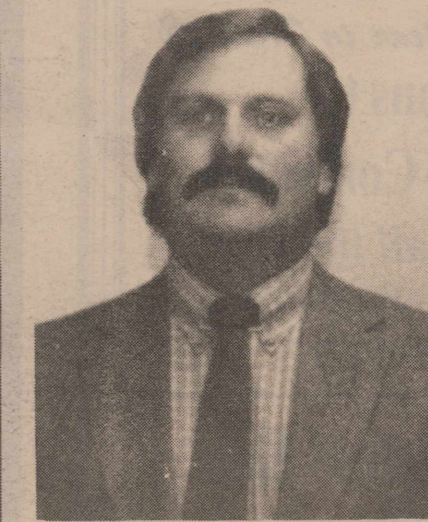
Conrad and his wife Betty are parents of Randy, Julie, and Roger Roewe.



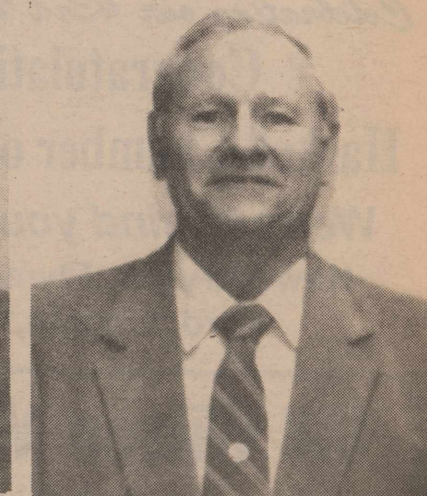
Dickie Greenwood



Conrad Roewe



Gil Richardson



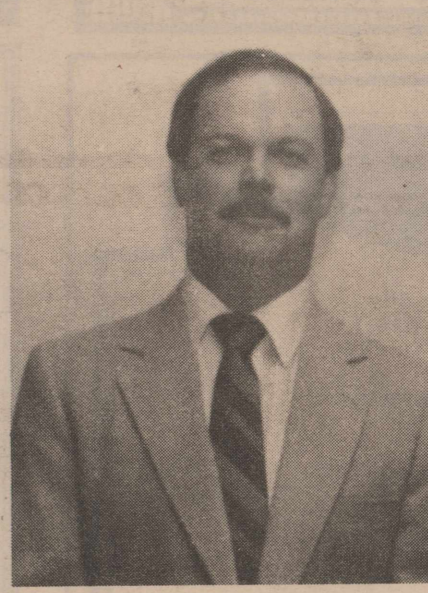
Abe Turner



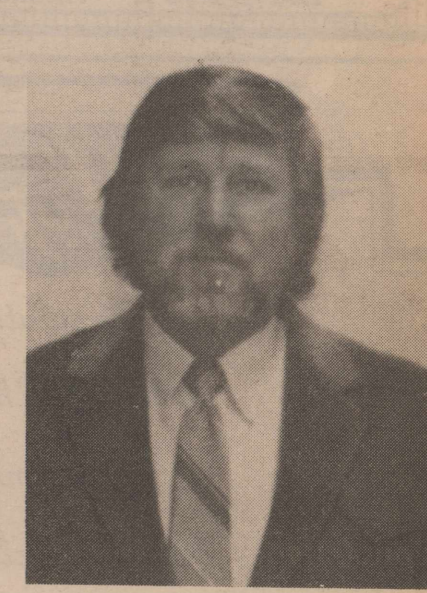
Charlene Dumas



Carolyn Reynolds



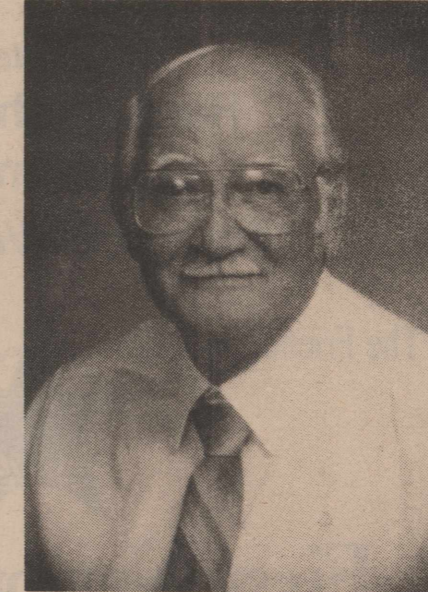
Bobby Hobgood



Jimmie Williams



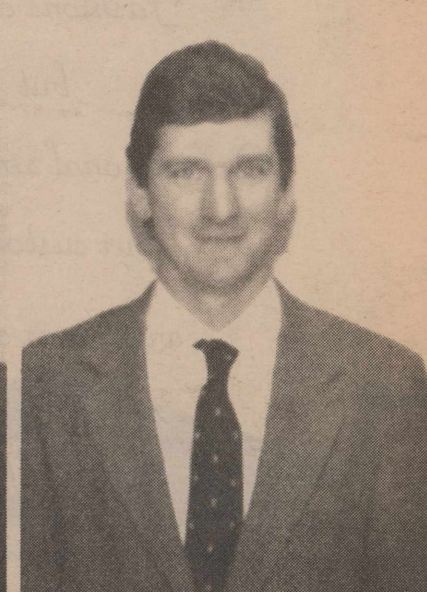
Wanda Dulaney



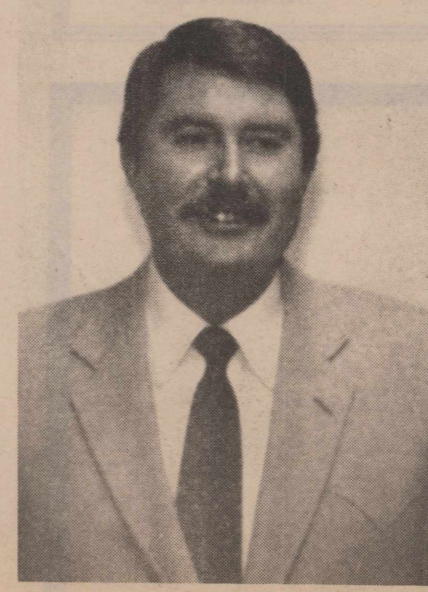
Bill Comedy



Tom Richardson



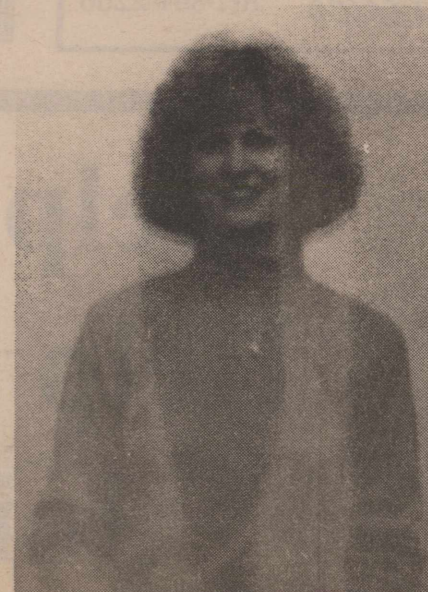
Brian Toliver



Jim Bridwell



Joel Fox



Sue McGee



Dr. Cliff Ray