

Garden Club meets for luncheon

The Haskell Garden Club met Jan. 12 at the Community Room. Members treated themselves to a casserole luncheon at 11:30. Board members furnished drinks and desserts.

Linda King, president, presided for a business session. Lorene Dewey called the roll with each member answering by showing a horticultural item and telling something interesting about it. Several plans were shown that attract birds, others that dry well, some that bloom well and others that just add beauty.

The theme "The Pursuit of Gardening" was further discussed with the program on guide plans. Linda King talked about Arbor Day, its purpose and observance. Different states celebrate different times and in various ways.

The importance of trees cannot be overstressed. Green areas with trees are now incorporated into the plans of new buildings. Trees reduce the heat in homes and let more sun in homes in the winter. They reduce the horrible dust bowls of the 1930s. Native trees are beautiful and help to conserve water.

Bernadine Blankenship talked about "Basic Landscape Guide Plans" She used a picture of homes with correct and incorrect uses of plants and trees. She suggested that when landscaping homes, one should start with the door by placing the pretties

Jennifer Lundy named outstanding

Jennifer S. Lundy of Odessa has been selected as a new member of the Outstanding High School Students of America.

Her selection was based on outstanding merit and accomplishment as an American high school student.

Jennifer is the daughter of Suzy Lundy of Odessa and the granddaughter of Lois Redwine of Haskell.

**Over 200 Boxes
Federal & Active Game
Loads**

**12 gage ONLY
Reg. \$4.99 per Box 25
NOW**

**3 Boxes \$10.00
Wooten's**

307 So. Ave E 864-3692

plants near the door. Trees add depth to the home, by carrying the eyes to the vertical and horizontal lines around the house. Avoid plants that grow too tall by a window.

It is best to plant in groups of masses and let the plants go around the corner of the house for an interesting effect. When thinking of color in the yard, always place colors in complimentary fashion e.g. violet next to yellow.

This was a great program, one that we will long remember.
Eleven members were present.

Marriage licenses go to four couples

Receiving marriage licenses during the month of December from the office of County Clerk Woodrow Frazier were:

George Dayton Giles of Stamford and Wilda Ruth Smith of Munday.

Kevin Carroll Ryan and Teresa Frances Meadors, both of Haskell.

Richie Brent Perez of Weinert and Adelaida Fernandez of Munday.

Phillip Dale Casselberry and Donna Lynn Howeth, both of Haskell.

Bass Club to meet Monday

Members of the Haskell Bass Club will have their monthly meeting at 7 p.m. Monday, Jan. 23, at the Haskell National Bank Community Room.

All members are invited to attend, watch a film, and eat.

Electronic cash

State Comptroller Bob Bullock says that nearly half of the statewide November local sales tax rebate was sent through a new electronic funds transfer program.

"It's just another in a long line of improvements we've made in getting cities their money," Bullock said. "First, we went from quarterly payments to monthly payments, then moved the payment dates earlier into the month. Next we went to overnight delivery, and now we're using electronic transfer."

Homemakers meet with Mrs. Jones

The Josselet Extension Homemakers met Jan. 10 in the home of Margaret Jones.

The hostess read a poem entitled, "There Is A Reason for Everything," by Helen Steiner Rice.

The TEHA Prayer was read by everyone present. The roll call was answered by giving a New Year's resolution each planned to keep. There were 13 members present.

Minutes of Nov. 8 were read and approved.

Dorothy Trussell gave the council report and also passed out copies of the "Standing Committee Recommendations" for 1989.

The Haskell Junior Livestock show will be Jan. 26, 27 and 28. Each club member helps during that time in the concession stand.

The district meeting is to be at the Civic Center, probably around April 18, although the date is not definite.

The new club president, Margaret Jones, appointed all committee members for the new year.

A motion was made by Eral Bevel and seconded by Dorothy Trussell that the club continue to deliver meals for the Experienced Citizens Center.

On Jan. 18, Margaret Jones and Mildred Robertson will attend a training meeting, "Financial Record Keeping and Taxes."

A motion was made by Mildred Robertson to accept as is the "Standing Committee Recommendations." A second was given by Eral Bevel.

Martha Toliver's name was drawn for the door prize.

Refreshments were served by the hostess to the following members:

Mary Abbott, Eral Bevel, Flo Holder, Reatha Mullins, Gladys O'Neal, Helen Owens, Eloise Perrin, Mildred Robertson, Margaret Simmons, Martha Toliver, Dorothy Trussell and Margaret Wall.

Remember loved ones with a Memorial Donation to the Mental Health Building Fund

MHMR Outreach Center
Box 746, Haskell, TX 79521

John Lee Wilde Building Company

New Home Construction
Remodeling
All types of concrete work

422-4650 Munday

Local scouts tops in popcorn sales

The Cub Scouts of Pack 136 took top honors in the popcorn sales in the Chisholm Trail Council district. They sold 1,002 boxes for a net profit of \$1,500. Last year the pack sold about 700 boxes.

"They were really proud of our Cubs and we appreciate all the people who bought popcorn from our pack," said Jim Bob Mickler, scoutmaster.

At the December pack meeting, pinewood derby car kits were distributed. All Cub Scouts and Tiger Cubs will compete by divisions at 4 p.m. Jan. 28 in the junior high gym.

This popular event draws attendance from both family and friends of scouts.

"Because of the popularity of the event, we've moved the derby to a Saturday afternoon," Mickler said. "We hope this will be more convenient for the scouts and their families."

Any scout who hasn't received a pinewood car kit should contact Mickler.

Forty-eight scouts earned activity badges or merit awards in November and December.

In Den 1, seven scouts earned the outdoorsman, citizenship and handyman badges. They were Joseph Fuentes, Bradley Herpeche, Adrian Serrano, Salvador Serrano, Theodore Silvas, Christopher Tatum and Tyrone Thomas.

Dick Stoval also earned the citizenship and handyman badges.

In Den 2, Joe Salinas earned four badges: craftsman, citizen, family member and handyman.

Jace Yates and Corey Wood each earned craftsman and artist badges, while five other scouts earned the craftsman badge--Mike Bagot, Harrison Druesedow, Jeremy Futch, Jay Mickler and Brett Proctor.

Three scouts in Den 3 earned rank badges and eight earned activity badges.

Gary Acosta received a bobcat rank badge while Marcus Overton and Casey Thompson received the Webelos rank badge.

Jonathan Lefevre earned the scholar, outdoorsman and engineer activity badges.

Casey McDaniel earned handyman athlete and artist activity badges.

Alan Merchant added fitness and handyman to his activity badges. All the above scouts in Den 3, plus Anthony Gonzales and Jude Pardo, earned the communicator activity badge.

Earning the outdoorsman, readyman, athlete and Cub Scout fitness activity badges in Den 4 were Daniel Alvarez, Tim Dewey, Mick Jimenez, Greg Rodriguez and Derrick Stoval.

Joseph Address and Will Clay each earned a readyman activity badge.

Den 5 scouts earned three rank

badges and four merit badges.

Philip Huff, Michael Rodriguez and Christopher McSmith each earned a Bear badge. McSmith earned a gold arrow and two silver arrow points. Rodriguez earned a gold arrow point.

Earning rank and merit badges in Den 6 were Eric Andersen and Lee Christian, wolf badge; Cy McGuire and Joshua Roydson each earned a wolf badge, one gold arrow point and one silver arrow point. Jake Roysdon earned a wolf badge, one gold arrow point and two silver arrow points.

In Den 8, Randy Cass, Michael Guzman and Mickey Guzman each earned a wolf badge, one gold arrow point and four silver arrow points.

Alex Albila, Lucas Castillo, Heath Guess, Lucas Jones, T. Nicholas and Dusty Yates each earned a wolf badge.

Indians ranked fifth

The Haskell Indians were ranked fifth in the state in this week's Texas Association of Basketball Coaches - Lubbock Avalanche-Journal basketball poll.

Troup, which has won 20 consecutive games, was named the No. 1 2A team in the state this week. Hughes Springs, Shelbyville and Karnes City were other teams ranked ahead of the Indians.

At the end of last week, the Indians stood 17-3, the losses all being to teams of higher classification, Wylie, Vernon and Mineral Wells. The Indians split games with Wylie and Vernon, but have played Mineral Wells only once.

Top ranked girls' team in 2A this week is Shelbyville. Wall is ranked No. 2.

DID YOU KNOW?

Most cats weigh between seven and 12 pounds.

Haskell Nursing Center

By Mary Beth Hunt
Activity Director

In the month of January we celebrate several birthdays at the Center. They are as follows:

Connie Cook, Jan 7, 1905; Theda Neal, Jan. 21, 1922; Tommie Anders, Jan. 26, 1896.

Our staff birthdays are Kevin Ryan, 1-02; Nelda Davis, 1-11; Georgia Shipman, 1-18; Bert Kreger, 1-22.

We will have our monthly birthday party on Monday, the 30th at 3 p.m. We invite all our friends and families to join in our celebration.

The residents and staff wish to convey our deepest sympathies to the family of Ester Perez. Our prayers are with you in your loss.

On Jan. 11 we welcomed a new resident. She is Mrs. Vera Cook from Rule. Visits from old friends would certainly help Mrs. Cook feel at home.

Wednesday, Rev. Hodge brought us his special message about the word of God. On Thursday night, Bonnie Workman brought her country band out and entertained everyone with her fiddle and country music. The residents love to hear them play and always look forward to their coming.

The week of Jan. 9 through 15 brought several visitors to the Center. They were:

Mary Harvey to visit Mabel Witt; Karen Johnson of Haskell to visit Fannie Wilson; Mary and Lane Murphy of Weinert with Ima Stewart; Charlie and Jewell Norman of Fort Worth, Onita Robinson to visit Vera Cook.

Fr. Matilde, Isabel Diaz of Rule, Humberto Diaz and Baby, Mike, Ben Gonzales to visit with Ester Perez; Frank and Isabell Mrazek of Aspermont, Virgil and Geneva Vahlenkamp of Denton to visit Fred, Ted and Robert Monse; Janie Fernandez and family with Geronimo and Minfa Aldaco.

Truett and Laverne Kuentler of Rochester to visit with Ruby Clemmer and Eunice Newberry; Tanya Lewis of Knox City with D. L. Kinney; Leta B. and Jack Sellers, Beatrice Curd to visit Garth Garrett; Mr. and Mrs. Lonie Force of Breckenridge with Perry Force.

One Hour Photo Service offered on Film Developing & Prints
Latest Equipment - Competitive Prices



\$1.00 off
On Processing, per roll with Coupon
Specials Good Thru January 25th

Kodak and Fuji Film For Sale
Phone 864-2951

Johnson's Kis Photo
OWNED & OPERATED BY LORAIN & BOBBIE JOHNSON
West Side of Square - Haskell

TAX PLANNING

Written By
Gerald Rodgers, CPA



NEW LAWS AFFECT CHILDREN

The Technical and Miscellaneous Revenue Act of 1988 has a number of provisions that will affect parents and children.

To help pay for college costs, the new law provides that Series EE Savings Bond interest will be tax-free on bonds issued after 1989 that are used to finance the higher education of a taxpayer, his or her spouse, or his or her dependents. To be tax-free, these bonds cannot be purchased by anyone under the age of 24 nor can they be purchased by parents and later transferred to children. At higher incomes, the tax exemption is phased out. The phase-out starts at \$60,000 for married joint filers and at \$40,000 for single filers; it is lost completely at \$90,000 joint and \$55,000 single.

The 1986 Tax Reform Act made it necessary for many more children to file tax returns. Beginning with 1989 returns, parents can elect to include a child's income on the parents' return under certain circumstances. All of the child's income must be from interest and dividends and cannot exceed \$5,000, and the child cannot have made separate estimated tax payments.

Beginning in 1989, parents will lose the exemption for a child 24 years or older who is a full-time student unless the child's income for the year is lower than the personal exemption amount.

The Family Support Act of 1988, a welfare reform law passed last October, contained several tax provisions affecting children. The current requirement to provide social security numbers for dependents who are five years and older decreases with 1989 tax returns to two years and older.

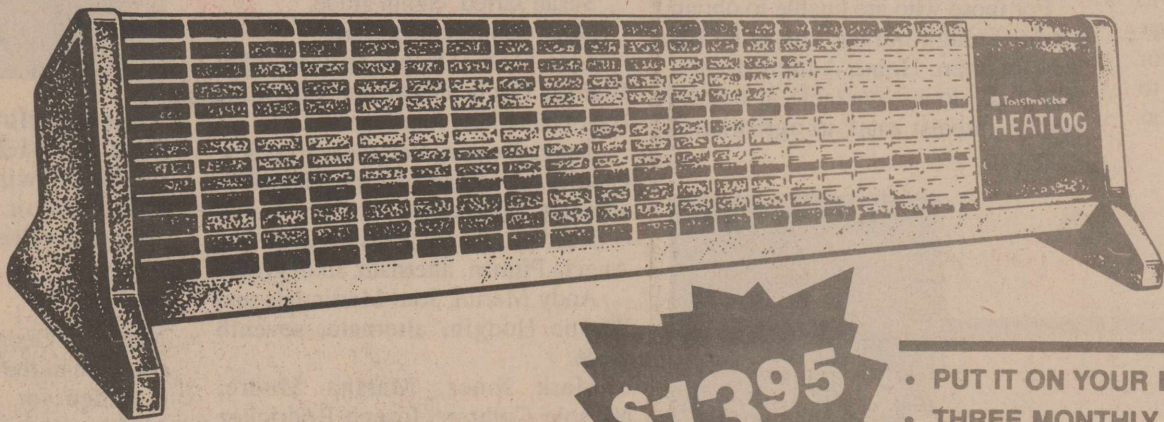
The child care credit will be available beginning in 1989 for dependents under the age of 13, rather than under the age of 15 as previously allowed. Taxpayers must also furnish the IRS with the name, address, and ID number of all be tax-exempt providers of child care services.

Sponsored By

JAMES E. RODGERS & COMPANY

Certified Public Accountant
20 Southwest Third Street

A GREAT DEAL ON A SAFE BUY!



PORTABLE ELECTRIC HEATERS

You won't find a better bargain than this. This attractive 25-inch Heatlog™ by Toastmaster® is the safe, convenient way to warm up cold spots. Weighing only four pounds, it fits into out-of-the-way places and plugs into any 110-volt outlet. This durable heater has a simulated pecan woodgrain case and grill.

Unlike kerosene heaters, this electric heater eliminates the danger of flammable liquids, odors and fumes. It meets the high safety standards set by Underwriters Laboratories (UL). And, should the heater be accidentally knocked over, it will automatically turn itself off.

**\$13.95
PLUS TAX**

- PUT IT ON YOUR ELECTRIC BILL
- THREE MONTHLY PAYMENTS
- NO INTEREST CHARGES

While Supplies Last!

Stop by your Local WTU Office today and see this great bargain on Portable Electric Heaters!

WEST TEXAS UTILITIES COMPANY



A Member of The Central and South West System

Mothers March coming up here

This year's Mothers March to raise funds to continue the March of Dimes battle against birth defects will take place in Haskell starting Saturday (Jan. 21) and run through Monday, Jan. 30.

More than 500 volunteer marchers will call at an estimated 7,000 homes in the Big Country area in this annual, nationwide campaign to improve the health of America's babies.

The 1989 Mothers March chairperson is Sharee Gardner. The Mothers March is the March of Dimes special and personalized way of reaching into every neighborhood to ask for help. Great progress has been made since the March of Dimes started the fight against birth defects in 1958, and every year brings more knowledge, more help for the unborn

and newborn. A quarter of a million babies are born each year with birth defects.

Money collected during the Mothers March helps support programs in birth defects research, medical services and education programs. Last year more than 13 million households were reached in Mothers Marches around the country.

Anyone interested in joining the Mothers March effort should call Ms. Gardner at 864-2992 or call the March of Dimes office in Abilene at (915)-672-3463.

DID YOU KNOW?

The first submarine was a leather-covered rowboat which Cornelius Van Drebbel, a Dutch scientist, demonstrated in England in about 1620.

-HOSPITAL-

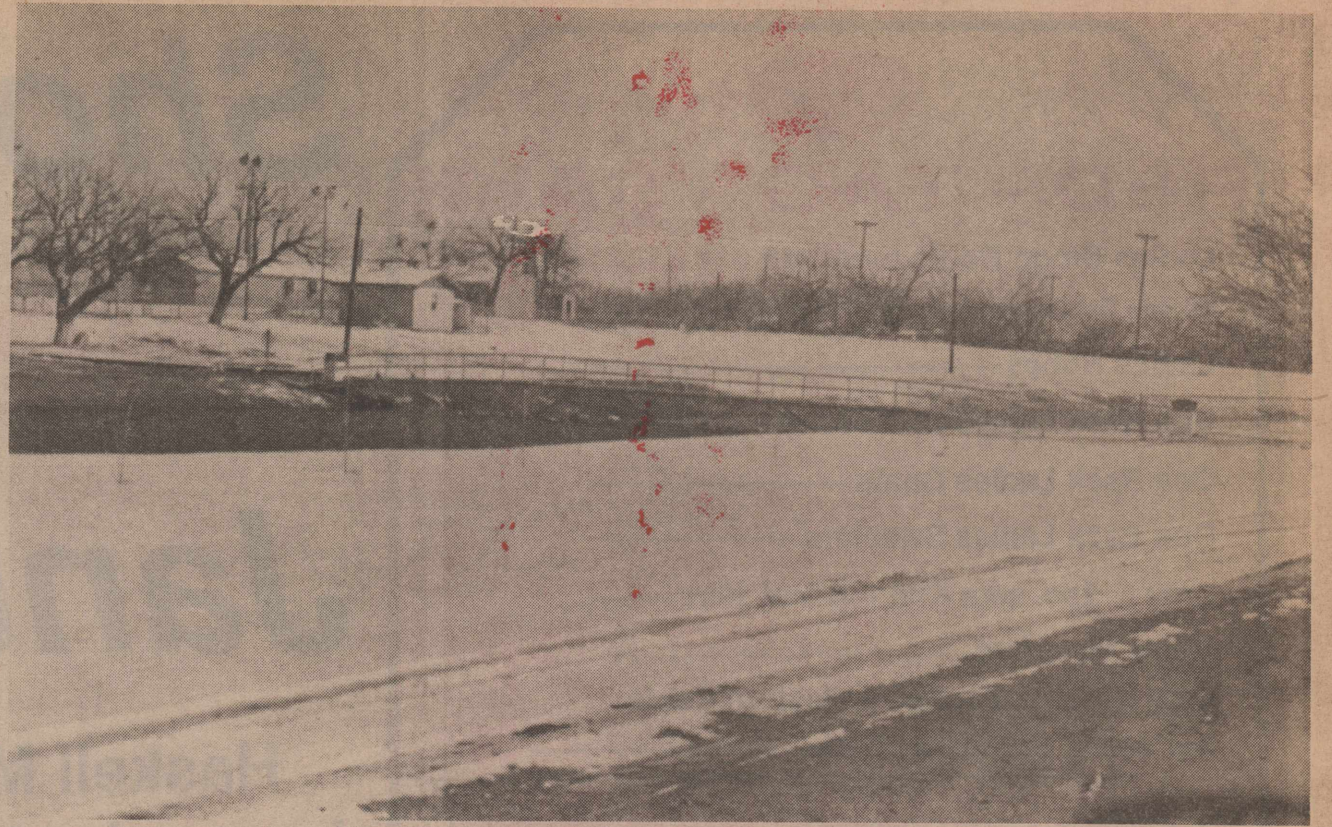
ADMISSIONS
MEDICAL: Nola Parker, Aspermont; Letha Flippo, Haskell; Oscar Lopez, Stamford; Marcelina Martinez, Haskell; Otis Stone, Rule; Frankie Henry, Haskell; Ted Watson, Rule; Ocie Carruth, Haskell; Lyla Mary Isbell, Haskell.

DISMISSALS
Otto Wittenborn, Raymond Guzman, John Darnell, Matthew McFadden, Minnie Holcombe, Alice Andrada, Lavada Burleson, Shirley Mickler, Durwood White, Fay Fowler, W. C. Sheets.

Olney Savings has new president

Matthew A. Landry has been appointed president and chief operating officer of Olney Savings and Loan Association.

Landry has been with United Bankers, Inc., a bank holding company in Waco, since 1983.

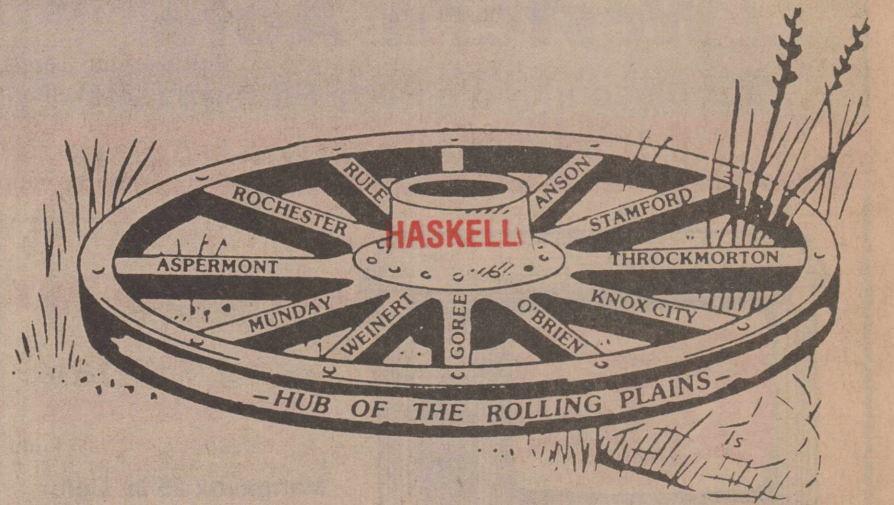


Best we can do

A blanket of snow covered the ground in Haskell Friday night, representing the first ground-covering snowfall of the winter. Saturday's bright sun quickly melted the covering.

Shop Haskell First!

Red Letter Days January 19 - 20 - 21



RED LETTER DAYS SPECIALS!

- | | | |
|--|--|------------------|
| A
B
C
D
E
E | LANE ELECTRIC RECLINER | 1/2 PRICE |
| | ONE STRATFORD LOVESEAT | 1/2 PRICE |
| | ALL SILK FLOWER ARRANGEMENTS | 1/2 PRICE |
| | METAL SINK UNIT W/FAUCETS | 1/2 PRICE |
| | GROUP OF LAMPS | 1/2 PRICE |
| H
L
J
K | ALL THROW PILLOWS | 1/2 PRICE |
| | SELECTION OF LIVING ROOM TABLES | 1/2 PRICE |
| | -AND- | |
| | GROUP OF SWIVEL ROCKERS | 35% OFF |
| | ONE INCLINER SOFA | 35% OFF |
| | 3 PC. OAK WALL UNIT/ENTERTAINMENT CENTER | 35% OFF |
| | ALL BRASS ANIMALS | 35% OFF |

NO SECONDS--
All Regular Stock Merchandise
and At Terrific Prices!
Cash Preferred on all Half-Priced Items!

WE WANT TO BE YOUR FURNITURE STORE!

Boggs & Johnson



East Side of Square Haskell, TX 817-864-2346



Haskell Merchants have lowered prices
all over town to bring you the lowest
prices - best service - greatest selections
Shop Haskell - The Hub of the Rolling Plains

The Clothes Closet

"Fashion at Affordable Price"
Sizes 6-46

Red Letter Days

Winter Clearance

30 - 40% OFF

Rocky Mt. Jeans
Broken Lots & Sizes

25% OFF

10 Ave D • East side of Square • Haskell • 817-864-3781

The Slipper Shoppe

Red Letter Days Sale

Fall & Winter Sale
Shoes and Boots

1/2 Price Less \$1.00

Group Isotoner Gloves

1/2 Price

Dearfoam House Shoes

\$5.00

864-3051 East Side of Square Haskell, Texas

January Sale ..continues

Merchandise Regrouped and Reduced Further for

Final Clearance

Great selections of

Sportswear .. Sweaters .. Skirts

Coats .. Knit Caps, Scarves

Gloves ... Dresses ... Robes

50% to 75% off

First Time Reductions

Special Group Suits

Regular Sportswear - Pastel Colors

Finer Sportswear - Separates

Dresses - Day Time Casuals, Special Occasion and After Five

A Special Group Designers

Blouses, Soft Print Silks and Solids

1/3 & 1/2 off

Shop early for best selection of styles and sizes

THE Personality SHOPPE



January's Red Letter Days

The Legend Guarantee:
We are positive that you will be pleased with our Legend products. If you are not completely satisfied with any product, regardless of reason your entire purchase price will be cheerfully refunded.

Legend Vitamin E 400 I.U. DL-Alpha 100's - #1082 4.79	Legend Vitamin C 1000 Mg. With Rose Hips Time Release 60's - #1448 4.49	Legend Spectrovites 130's - #1196 Compare To Centrum 4.99	
Legend Oyster Shell Calcium 500 Mg. - 100's - #1535 Compare To Oscal 500 3.99	Legend Iron (Ferrous Sulfate) 100's - #1073 Compare To Ferrosol 2.29	Legend Child's Allergy Elixir 4 Oz. Compare To Benadril Elixir 1.99	
Legend Cuticle Scissor Or Nail Scissor Your Choice 5.99	Legend Twin Blade Disposable Razors Compare to Good News 10's 1.29	Legend Alkums 150's Compare to Tums 1.99	Legend Peppermint Mouthwash 32 oz. Compare to Scope 2.49

Some items not available where prohibited by law or order. We reserve the right to limit sales of any item. Not responsible for typographical errors. Some reserves the right to restrict distribution and charges on sale items. Some items not available in some quantities limited while supplies last.



Johnson's



PRESCRIPTION PHARMACY

418 N First Haskell 864-3331 • Night Dial 864-3439

ZENITH VHS HQ

Easy To Use
Compact 4-Head VCRs
Double Azimuth Heads for Clear
Still, Slow Motion, Speed Search



Model VRE205
\$348.00

Model VRE200
\$348.00

- On-Screen Remote Programming commands On-Screen Menus and programs the 2 Week, 4 Event Timer
- 157 Channel quartz electronic tuning, with 101 cable channels
- 5-Speed Slow Motion with 1/30, 1/24, 1/18, 1/12 and 1/6 speed
- New Index Search System
- Counter Go-To Search for fast, accurate tape search
- New compact size, only 14 1/4" wide

ZENITH The quality goes in before the name goes on.
Owens TV & Electric

512 N. 1st Haskell, Texas 864-2546

RED - TAG - SALE

- Ladies Dingo Boots by ACME
- White - Beige - Red ----- 50% off
- Ladies Robes----- 30% off
- One Rack Ladies Dresses ----- 50% off
- One Rack Ladies Coats----- 30% off
- One Rack Ladies Sweaters ----- 30% off
- Only 5 2pc. sets Knit top and skirt ----- 50% off
- Men's Sweaters ----- 1/2 price
- Only 5 Men's Corduroy Western Coats
- Reg. \$69.99 Red Tag Sale----- **\$39⁹⁹**

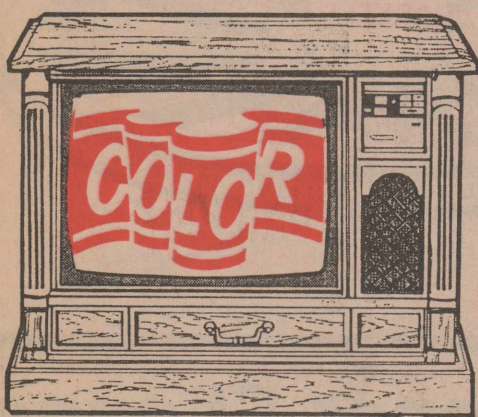
HEIDENHEIMERS

Haskell, Texas
3 Days ONLY - Jan. 19-20-21

Western Auto

Your Discount Auto Parts Supermarket

Save During Our Big Electronics Sale!



Color TV's and VCR's
at
Super Sale Prices!

Mangavox 25 in. Color
Console with Wireless
Remote Control

Direct access remote control plus alternate
channel selection. 152 channel reception
capacity. Mediterranean 24-2606-2.

\$499⁰⁰

403 S. 1st Haskell, Texas 864-2236

B Andrada's

Carpet Express

Red Letter Days
January
Carpet Clearance

StainMaster Carpet

From **\$6⁹⁵** sq. yd.

(Installation & Pad Extra)
Large Selection in Stock

Special order on Request
Special Prices on Linoleum Also
Check With Us!

1204 S Ave E Haskell 817-864-8128

Red Letter Day Specials

A selected group of odds & ends
merchandise

While it lasts - to go at

1/2 of 1/2 price

Other fall merchandise -
most of it marked to go at

1/2 price & less

Lane-Felker

"WEST TEXAS' FASHION CENTER"

Haskell, Texas

Phone 864-2266

Shop Haskell First! Red Letter Days January 19 - 20 - 21

Haskell Merchants have rolled out the red carpet and lowered prices all over town to bring you RED HOT January Specials - so don't miss out - Shop Haskell and Save!

EXXON

THE REEDY CO. -- DISTRIBUTOR

2 NORTH 1ST STREET HASKELL 817/864-2959

A Complete line of
quality EXXON Products
Gasoline, Diesel - Oils

Also distributor for Quaker State,
Pennzoil, Texaco, and Mobil oils.

This Weeks Red Letter Special

Antifreeze

\$ 6⁹⁵ gallon

B. J. Ray Clayton Pannell Billy Seelke

Red Letter Day Specials

Sea Breeze

Antiseptic for the Skin

10 oz
Bottle **\$2⁸⁹**
Reg. \$4.29



Trisudex

Nasal Decongestant
Antihistamine

100
Tablet
Bottle **\$2⁶⁹**

Compare to Actifed



ACT

Fluoride
Anti-Cavity Dental Rinse

12 oz.
Bottle **\$1⁹⁹**
\$2.49 value



Tums

Antacid Tablets
Original or assorted flavors

75 ct.
Bottle **\$1⁶⁹**

Fiber All

Natural Fiber Laxative
Sugar Free

15 oz.
can **\$7²⁹**
Reg. \$11.29

Value-Rite
Children's

Acetaminophen Elixir

4 oz.
Bottle **\$1²⁹**
Reg. \$2.09

Tinactin

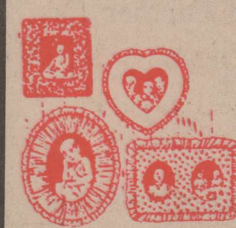
Antifungal Cream

1 oz.
Tube **\$5⁴⁹**
\$9.29
Value

Country Corner

Gift Items

20% off



Vicks

Formula 44 - 44-M - 44-D

Cough Mixture
4 oz.
Bottle **\$2³⁹**
value



Open 365 Days a Year

8 a.m. to 6 p.m. weekdays

8:30 to 10:30 a.m.

Sundays and Holidays

DRIVE-IN

WINDOW

FOR YOUR

CONVENIENCE

Delivery Service

Fresh shipment
of
Pangburns Candies
Millionaires - Valentine
and Sugar Free Candies

Radio Shack
DEALER

January Clearance

and

Red Tag Sale

- RCA Stereo 27" color TV **\$799⁹⁹**
 - Realistic Pro 2003 Scanner - Reg. \$349.95 **\$199⁹⁵**
 - Realistic Voice Activated Portable
 - Cassette Recorder Reg. \$49.95 **\$ 29⁹⁵**
 - Duo Phone #166 Reg. \$129.95
 - Speaker Phone with memory Display **\$ 99⁹⁵**
 - Realistic Model 25 Reg. \$399.95
 - VCR with on screen programming **\$279⁹⁵**
 - Cassette Recording Tape LN-60 **99¢**
- Hundreds of Unadvertised Specials
Look for the Red Tag & Get BIG Savings

Walling TV & Electronics

414 N 1st Haskell 864-2870

DOYLE HIGH'S

THE DRUG STORE

Fast, Friendly Service at a Competitive Price
100 S Ave E • Haskell • 864-2515

Shop Haskell First!

Red Letter Days January 19 - 20 - 21

Red Hot Specials!



Price Selections
Quality
Service before and after the Sale -
Friendliness -
You'll find it all in Haskell!

Shop These Haskell Businesses

HEY! Don't miss the **RED LETTER SPECIALS!**

Prices down for the count on many items throughout the store!

<p>OP Sportswear 30% off</p>	<p>DOWN TENNIS SHOES NIKE - REEBOK KANGAROO CHILDREN'S - LADIES - MEN'S</p>
<p>DOWN Warmups Jogging Suits, Etc. Drastically Reduced</p>	<p>SUPER BOWL Party Shirts Bengals - '49ers \$7.95</p>

"Where Winners Shop"

Conrad Rowe's Sport-About of Haskell 817-864-3891
402 N. 1st Haskell, Tx 79521

Haskell's Red Letter Days

Save now on new and used Cars & Pickups
25 NEW OLDSMOBILES IN STOCK
Factory Rebates From \$500 - \$1000
14 NEW CHEVROLETS IN STOCK
Factory Rebates from \$300 - \$1000
See Us Before You Buy!

Member of **BIG COUNTRY CHEVROLET DEALERS**
THE HUB OF WEST TEXAS CHEVROLET

Bailey Toliver Chevrolet - Oldsmobile
Haskell, Texas 817-864-2626

RED LETTER DAY SPECIALS

Baskets 1/2 price	Selected Hallmark Items 1/2 price
Table Lamps Large Selection 1/2 price	Many other items REDUCED! Shop and Save!

Aladdin House
19 N Av E 864-8936

Red Letter Specials

SAVE NOW!

10% Additional Off
on Floor Stock Appliances Already on Sale
January 19th thru February 1st 1989

Sandy Horton | 12 N Ave D | *There's more for your life at*
Authorized SEARS MERCHANT | Haskell | 817-864-2671 | **SEARS**
©Sears, Roebuck and Co., 1988
Satisfaction guaranteed or your money back

Homespun Boutique
112 North Ave. E Haskell, Texas
Owners - Barbara Harris & Mary Lynn Denton

ANNOUNCE

RED LETTER DAYS EVERY DAY
Beginning Immediately
No Item In Store OVER
\$39.95

Image Enhancement
BeutiControl Cosmetics • Color and Computer Analysis
Barbara Harris
Certified Make-over Artist
112 N Ave E Haskell 864-3608-Home 864-2386-Business

Shop Now & Save

Skirts 50% OFF Blouses
Sweaters Gowns
Pants Robes

The Hayloft "The Hayloft Looks Good On You"
409 South First Haskell
MasterCard Visa Welcome

Red Letter Days Specials

Coffee Mugs 1/3 off
Costume Jewelry 1/2 off
Stainless Soup Spoon 50¢ each
1 Service of 4 in Stainless \$25.00

Lyles Jewelry
Since 1935
East Side of Square • Haskell, Texas

RED Letter Day Special

with this coupon
Save On Additional
10% off
Marked Down SPECIALS
Coupon Expires 1/21/89

NEW! Valentine Party Favors
Arriving Daily

CAROUSEL
415 S. First Haskell 864-2069

Kountry Kookin
1308 N. Ave. E Haskell 864-3894

New Hours
Beginning Monday, January 16th
We will be open from
6:00 a.m. until 8:00 p.m.
Monday thru Friday.
Closed Saturday

Sunday
6:00 a.m. till 2:00 p.m.

Eat with us!
We appreciate YOUR business
Betty Lacey, owner

Clearance
Winter Merchandise
1/2 Price

Red Letter Special
One rack Girls Toddler - Pre-teen
Blouses • Sweaters
\$5.00
values to \$30.00
3 Days Only

Kids Duds
310 N First Haskell 864-3852

Challenges of Youth

Parent-teen communication

By Lou Gilly
County Extension Agent
Home Economics
(Last in a Series)

Keeping open the channels of communication so that family members can talk meaningfully to one another is a major challenge to parents.

In the not-too-distant past, family communication and decision-making were rather simple. The father's supremacy was never questioned. Children were seen and not heard. But this was one-way communication, and healthy interaction between the generations was usually blocked.

Today more parents try to understand their children's needs by tuning into their ideas, feelings and behavior. Parents are seeking the opinions of their mates and their children, thus lending dignity and recognition to all family members as worthwhile persons.

Family group activities are highly prevalent in families experiencing good parent-teen communication. The opposite is true in families with poor parent-teen communication. Doing things together as a group, where relations are otherwise good, should help promote the frequency of communication. It makes for fun, companionship and laughter, which enhance the morale of the whole family. But group activities alone may not open the channels of communication. If parents want to open and maintain contact with their children through adolescence, they can:

1. Be an example. One of the greatest criticisms which the younger generation makes of adults is that they say one thing and mean (or do) another. Family values are learned for the most part, indirectly, and teens tend to judge them by seeing how they work through the example adults set. "What's wrong with smoking pot?" youngsters ask. "My parents get

wiped out on bourbon. Both marijuana and alcohol are drugs, but adults seldom perceive alcohol as a drug. Therefore, parents may say to teens, "No drugs" but they are not examples of that behavior.

2. Supervise and guide. Although teens are capable of freedom, privileges and responsibility, they still need help in setting limits on their freedom and behavior. Deciding with the teen what these limits and policies are usually tends to bring about a more reasonable attitude on his part. Adolescents need and want limits and supervision, but at the same time they rebel against having to account for every minute of their time. They want adults to stand by them, not over them. A fair, moderate and selective amount of guidance is one of the best ways to prevent a breakdown in the lines of communication.

3. Become interested in your teen's activities and friends. This helps to reduce the distance between the generations since it demonstrates an acceptance of the adolescent's world. Adults can talk to teens or their friends, read about them, listen to their music--all with an open mind. Parents can give youth a chance to display their point of view. When adults differ, why not confess, "I guess we do differ about this. Maybe if I found out more about it, I might change my mind. Where can I learn more about it?" Give the youngsters time to be with their friends and make them welcome to visit in your home. Teens very much want adults to be interested and enthusiastic without smothering them or trying to control them. It is important, too, to respect a teenager's need for privacy. A parent should not be invasive.

4. Respect the adolescents' desire for individuality and independence. Avoid the impulse to mold teens into what parents think teens should be. Respect them as persons, as

individuals, even though you are not obligated to accept all their ideas. One expert in family problems suggests that parents should assume the role of "watchful bystanders," ready to come forward when help is needed. Establishing closeness when it is needed and then withdrawing to a certain distance when young people want to be on their own is a good way to handle independence and keep communication flowing.

5. Communicate, in words and actions, what is expected of teens. Teenagers need to know where parents stand and what parents expect of them. Too many parents are wishy-washy in handling their children, are insecure in decision-making, inconsistent among themselves and confused about firmness and discipline. All these characteristics represent to the child a weak and divided parental front.

No young person can develop his traits without knowing what his parents expect of him. Consistency between mothers and fathers is important. Otherwise, a teen soon learns to play one parent against the other to get his way.

6. Don't over-react. Parents tend to brace themselves for the onslaught of adolescence, convinced that it is bound to be a long, hard struggle. Consequently, they are quick to over-react the first time a teen steps out of line. Parents tend to punish severely, withdraw trust and lose confidence in the youngster, thus severing the lines of communication.

It is only natural to expect (and hope) that at times the adolescent will want to assert himself and try out his own competence while he tests parental authority. This is part of "breaking away" and learning what life is all about. Sometimes parents must let the teen make his mistakes--but at the same time be ready to help him up.

The Art of Listening

Listening is the foundation of genuine communication. To be listened to is a basic need of both youth and adults. To become good

listeners and confidants of youth, it is important that parents practice the following:

• Find a time to talk when young people want it. Give your undivided attention; concentrate and try to avoid interrupting. Attention is a prerequisite for true listening.

• Hear the adolescent out without interrupting his conversation. To often we tend to say "yes, but," before the other person has finished talking. Too frequently we have our responses made up--our rebuttal prepared--as soon as the person begins to speak. The speaker is discouraged from proceeding further, when actually his main points may be forthcoming.

• Try to listen calmly. In the heat of parent-teen differences, anger or excitement can prevent one's listening to the other person. As a result, you misunderstand or do not know what has been said. When a teen wants to tell a parent something, try to settle down, arrange for some privacy and concentrate on hearing and understanding his point of view.

• Avoid being judgmental. A teen will not confide in someone who judges him or is critical of his behavior. It is not necessary, nor advisable, to condone a youngster's attitude or habits, but it is important to accept his feelings about what he does.

• Learn to listen "between the lines." Many young people have views different from adults with respect to morality, marriage, work, education, time, money and whatever else is inherent in the current way of life. Parents should endeavor to recognize a teen's wishes and acknowledge their opinions. But the fact that their views and philosophies are different does not mean that they are always correct or that they actually believe in them. Very often young people are merely testing their ideas.

Avoid barriers to self-expression. Nagging, sarcasm, preaching and making unimportant things seem important are forms of destructive communication. Belittling, humiliating and laughing at youngsters causes deep wounds and shortcircuits the lines of communication.

• Develop a courteous tone of voice in communication. All of us have a built-in sensitivity to the

voices of others, especially of those closest to us. This feeling influences largely the way we respond to other family members. Gruffness, abruptness or peculiarities of voice can arouse hostility, whereas a pleasant tone of voice will pay great dividends in improved relationships.

If we talked to our offspring as we talk to our neighbors' children, they would be much more likely to seek us out as confidants. Respect engenders respect.

Free trees

Ten free trees will be given to each person who joins The National Arbor Day Foundation during January. Send a \$10 membership contribution to Ten Trees, National Arbor Day Foundation, 100 Arbor Ave., Nebraska City, NE 68410 by Jan. 31.

Farm Bureau chief wants secretary out

The president of the state's largest farm organization has called on Texas Commissioner of Agriculture Jim Hightower to resign because of what he called the "damage" Hightower had caused livestock producers through public statements about the European ban on U.S. meat imports.

S. M. True, a grain, cotton and beef cattle producer from Plainview, said in a letter to Hightower: "I am extremely disappointed at your press response to the European Economic Community ban on U.S. meat imports. The damage you have done to the state's \$6 billion livestock industry warrants your immediate resignation as Texas Commissioner of Agriculture."

In a statement to the press Dec. 27, Hightower said the European Community, in opposing meat treated with growth hormones, "is not expressing the views of a group of hippies. The reality is a concern that is growing worldwide about chemicals and drugs in feed products."

Hightower said there is a "clear trend among consumers who are concerned about food."

In his letter to the commissioner, the Farm Bureau president said the agricultural industry in Texas and the nation has united over the years to support exports for meat and other products.

"Trade negotiations with the EEC have been very sensitive due to their highly protected and subsidized domestic agricultural programs," True said.

"These programs have created a

surplus situation for European meat products, and the hormone issue has become a scapegoat for other political considerations.

"The Texas Commissioner of Agriculture should be aware of and help promote the point that no scientist--or either side of the Atlantic--has provided any evidence that current methods of hormone use provide a health hazard.

"In your quest to oppose mainstream agriculture to chase self-promoting political headlines, you have either ignored or misunderstood the basics of international trade policy. You have created unnecessary embarrassment and economic difficulty for livestock producers.

"Your immediate resignation will provide relief to U.S. trade negotiators who must now face European counterparts now armed with supportive remarks from an agriculture official."

Bond sales short

Haskell County attained only 68.8 percent of its goal in Series EE Savings Bonds during the fiscal year running from October 1987 through September 1988.

Bond sales during the period totaled \$61,948. The goal was \$90,000.

Haskell County was by no means the only county in Texas to fall short of its assigned goal. Texans bought \$305 million in bonds during the year, 87 percent of the \$350 million goal.

For Your Sheet Metal Work
Water Storage Tanks
All Kinds of metal duct work
See or call:
Guinn Sheet Metal & Plumbing
817-658-3341 L.C. Guinn Knox City, TX



Lester Humphrey
PEST CONTROL SERVICE
TEXAS' LEADING EXTERMINATOR

SERVING THE BIG COUNTRY
FOR 42 YEARS...

**IT'S TIME TO CHECK FOR
RODENT INFESTATION**

Rodents like warm weather ... so when it gets cold outside, they go inside. Rats, mice and other unwelcome guests may be in your home now. Call the experts and make your home rodent free.

FOR A NO-OBLIGATION ESTIMATE,
Collect
CALL 915-677-2413



☆ **YOUR HOME** ☆
THE RIGHT HOME--THE RIGHT PRICE--RIGHT NOW!

We're professional builders, helping you decide what kind of home you want. We can draw up your plans, build, paint and wire your new home. Also Remodeling, Custom Cabinets

TURNER CONSTRUCTION
DALE TURNER, OWNER
817-658-3165

\$100,000⁰⁰ Term Life Insurance

AGE	ANNUAL RENEWABLE		10 YEAR LEVEL	
	MALE	FEMALE	MALE	FEMALE
25	\$124.	\$100.	\$140.	\$115.
35	\$125.	\$106.	\$140.	\$120.
40	\$133.	\$120.	\$205.	\$170.
45	\$150.	\$140.	\$280.	\$210.
50	\$191.	\$160.	\$380.	\$265.
55	\$225.	\$185.	\$550.	\$350.
60	\$365.	\$240.	\$825.	\$480.

Lanco Insurance
510 N 1st • Haskell • 817/864-2629

Cook and Rodela
Heating, Cooling and Plumbing
Sales, Service and Installation
Call today for
Free Estimates

CALL ME RHEEM!  THE AIR OF QUALITY

State License: #TACLB006947
817-864-2226 • 15 N Ave E • Haskell

Weinert Grocery & Cafe

We would like to take this opportunity to thank everyone who has patronized our business over the past few months. And also to announce that we have reopened our meat market. Come in and try our fresh cut quality meat at competitive prices. We have round steak, T-bones, tenderized cutlets, hamburger meat, roast, sirloin, etc. We are open from 7:00 a.m. to 6:00 p.m. Monday-Saturday. Also during the month of February we will be having weekly drawings. For every \$10 worth or more purchased during the week you can put your name in our drawing box. On Saturday mornings at 10:00 a.m. we will draw three names for first, second, and third prizes. First prize will be \$15 worth of free groceries. Second prize will be \$10 worth of free groceries. And third prize will be \$5 worth of free gasoline at the Weinert Station. Shop with us first and remember that every dollar you spend here at home helps our community.

Thanks again,
Weinert Grocery

Stamford
Chiropractic Clinic

1511 Columbia • Stamford, 773-5012
Hours: 9-5, Mon., Tues., Thurs., Fri.
& Wed. 9-12
Knox City Hours: Wed. & Sat. 9-12

JAMES CASTAGNA & JEFF GREGG
Certified Public Accountants

Computerized Tax Returns and Bookkeeping
Auditing, Financial Statements and Estate Work



SEYMOUR OFFICE: 115 W. McLain Street, 817-888-5539, 8-6 M-F; 8-5 Sat.
HASKELL OFFICE: 316 1/2 North First, 817-864-3931, 10-4 Tues. & Thurs.
(After Hours by Appointment)

**A Penny Saved
...Is a Penny Earned**

Ben Franklin knew what he was talking about.

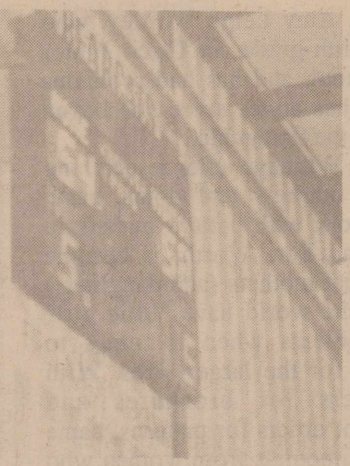
Whether it's for a new car, college education or satisfaction and security, saving money is a wise habit. And when you save with us, you're even wiser. We offer a variety of savings plans - and one is sure to be perfect for you!

Sign up for a savings account and start earning money today.

Post Office Box 10
Phone (817) 997-2216
Rule, Texas 79547

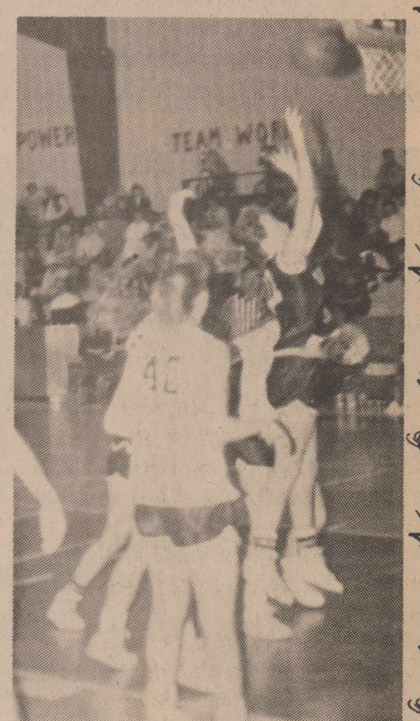
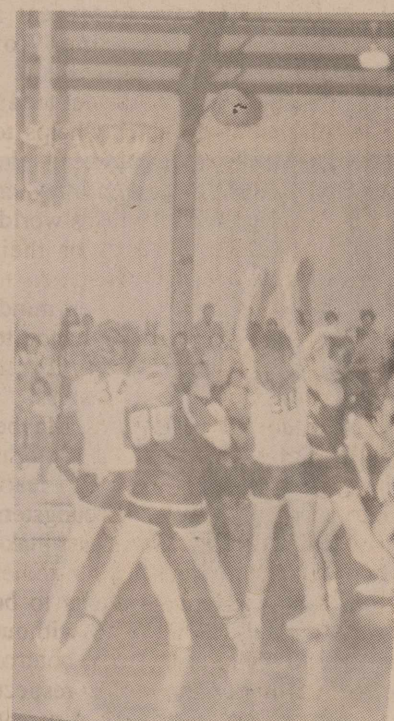
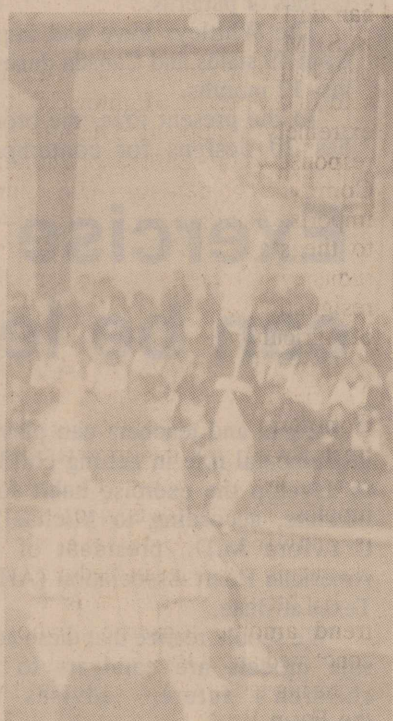
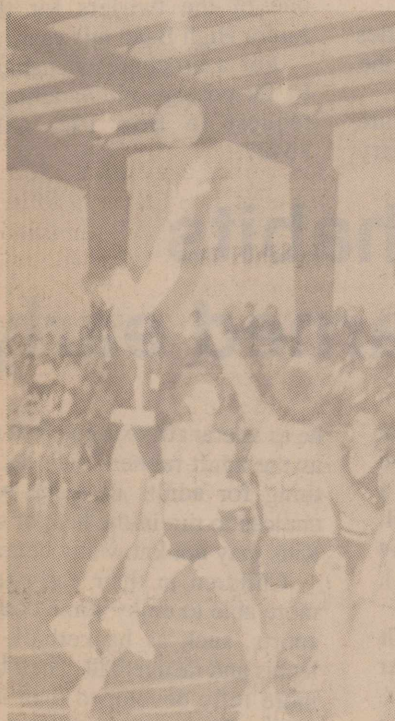
BASKETBALL



Maidens clinch first half 58 - 54



Indians over Hawley 62 - 48



Congratulations Haskell Maidens

First-half Champions District 7-2A

SUPPORT
These Haskell Boosters

SUPPORT
These Haskell Boosters

Sears
Catalog Store
Sandy Horton, Owner
12 N. Ave. D Haskell
864-2671

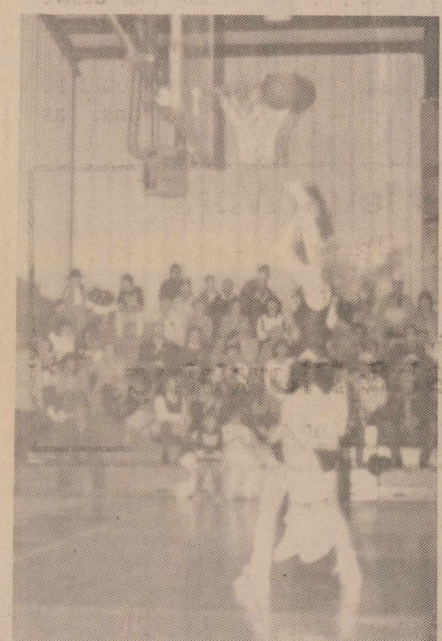
Markey's Place
"For Fine Dining"
Steaks - Bar-be-que
550 S. 2nd. Haskell
864-8116

The Sweet Shop
507 N. Ave. F Haskell
864-2711

Bill Wilson Motor Co.
Since 1945
Quality Cars and Trucks
Now Your Dealer for Dodge Chrysler
and Plymouth
Plus our line of Ford, Lincoln, Mercury

Western Auto
Low Discount Prices
Everyday
403 South 1st. Haskell
864-2236

Bird's EXXON
Service Station
107 N 1st. Haskell
864-2676



January 20th Anson Here

January 25th at Jim Ned

RVPD
Haskell, Stamford
The Voice of the Rolling Plains

Lane - Fellers
West Texas Fashion Center
103 N. Ave. E Haskell
864-2266

MODERN WAY FOOD STORE
1202 N. AVE. E HASKELL
Phone 864-3763

HASKELL BUTANE COMPANY
Stamford Hwy - Haskell
864-2424
Rex and Camin Pittman, Owners

Cook and Rodela
Heating - Cooling & Plumbing
115 N. Ave. E Haskell
864-2226

Slipper Shoppe
The Slipper Shoppe
East side of Square Haskell
864-3051

Steele Machine
Hwy 380 East Haskell
864-2208
"See Us For Quality Work"

Kennedy Lumber Co.
106 NE 1st. Haskell
864-2861

Smitty's Auto Supply
David Davis
204 N. 1st. Haskell
864-2607

Double A Drive Inn
864-2466 1103 N. 1st.
Double A Exxon
864-8902 1105 N. 1st.
Haskell

Ben McGee's "The Lumber Yard"
105 N 1st. Haskell
864-3552

Williams Hwy 277 N. Paint & Body Shop
Jim Williams
864-2536

THE Personality SHOPPE

Aladdin House
Furniture - Gifts - Hallmark
19 N. Ave. E Haskell
864-8936

Buster's Drive In Grocery
"Home Owned"
605 N. 1st. Haskell
864-2929

The Clothes Closet
Fashion at Affordable Prices
10 Ave. D Haskell
864-3781
Donna Markey, Owner

Conner Nursery & Floral
505 N. Ave. H Haskell
Flowers and Gifts for Every Occasion
864-3121

Drinnon Oil Co.
Biggon and Glenda Drinnon
103 N. 1st. Haskell
864-2146
For Fine Fina Products

Haskell Livestock Auction
Sale Every Saturday
HWY 277 South Haskell
Phone 864-2624

Hedges or Tails Western Wear
707 S. Ave. E Haskell
864-3320

Heidenheimer's Department Store
Clothes for the Entire Family
419 S. 1st. Haskell
864-2508

Leon Jones Welding
201 NE 1st. Haskell
864-2342

Kid's Duds
310 N. 1st. Haskell
Phone 864-3852

Lyles Jewelry Store
Since 1935
East Side of the Square
Haskell, Texas

Medford
Buick - Pontiac - GMC
200 N. Ave. E Haskell
864-2644

Conrad Roeme's Sport>About of Haskell
402 N. 1st
Haskell, Texas
864-3891

W-W MOTORS
For Quality Used Cars and Trucks
Mark & J. W. Wallace
Hwy 380 East Haskell
864-3964

Kis 1-HOUR PHOTO
Johnson's Kis Photo
Johnson Real Estate
Haskell 864-2951

Your Partner in the Community
Haskell National Bank
601 N. 1st Haskell
Phone 864-2631
Member FDIC

JONES COX & COMPANY COUNTRY STORE
Established in 1905
Hardware, Fine Furnishings and Gifts

Kennedy Lumber Co.
Phone 864-2861
106 NE 1st. Haskell

Kountry Kookin'
Betty Lacey, Owner
HWY 277 N. Haskell
864-3894

MSYSTEM
Your FRIENDLY AFFILIATED SUPER MARKETS
Haskell, Texas

Nanny Plumbing
301 N. Ave. E Haskell
864-3043

Bailey Toliver
Chevrolet - Oldsmobile
Phone 864-2626
517 N. 1st Haskell

Indian Drive In
Fine - Fast - Good - Food
Open after the home games
1402 N. Ave. E 864-3318
Donna Howeth, Owner

Johnson PRESCRIPTION PHARMACY
418 N. 1st. Haskell
Phone 864-3331

The Friendly First People Put People First
First National Bank-Haskell
Member FDIC

Federal Land Bank Association of Haskell
Dale Bullinger
President
Phone 864-2062

The Hartsfield Agency
417 S. 1st. Haskell
864-2665

THE HASKELL FREE PRESS
For all your local Basketball News

Anderson Tire Company
206 S. Ave. E. Haskell 864-2900

Harmon Cable
Call Toll Free 1-800-527-4331

The Frame Shed
409 S. First Haskell
864-2901

Queen Roofing
Friendly Service
864-3381
301 S. Ave. G Haskell

Holden-McCauley Funeral Home
864-2151
304 N. 2nd Haskell

Owens TV & Electric
Zenith Sales & Service
512 N. 1st. Haskell
864-2536

Fieldan Inn
115 S. Ave. E Haskell
864-2251

Walling TV & Electronics
414 N. 1st. Haskell
864-2870

Radio Shack

Boggs & Johnson Furniture
East Side of Square - Haskell
864-2346
We Want To Be YOUR Furniture Store

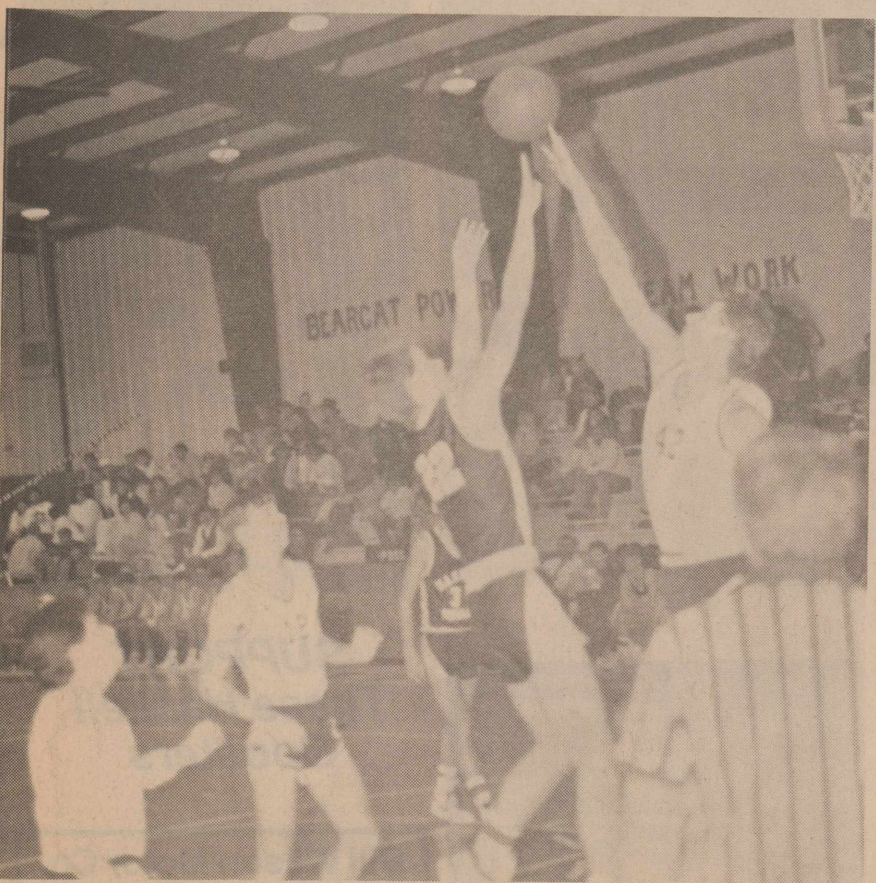
K. R. Blair
Conservation Contractor
1607 N. 1st. Haskell
864-2352

Gibson Cotton Co.
864-2248
706 N. Ave. B Haskell

Hanson Paint & Body Shop
Phone 864-3631
207 S. 1st. Haskell

Haskell Co-op Gin
Wayne Adkins, Mgr.
N. Ave. B East Haskell
864-2046

Haskell vs. Hawley



You have right to die naturally

You and your doctor work together to make important treatment decisions that help preserve your health. One important decision that you may want to discuss now with your doctor and family is the Texas Natural Death Act, says the Texas Medical Association.

The act guarantees the right of individuals and families to direct the withholding and withdrawal of life-sustaining procedures from terminally ill patients.

A terminally ill patient is defined as one who has an incurable illness or injury, which in a physician's medical judgment will result in death despite life-saving procedures. The act does not condone, authorize or approve mercy killing.

A form called a "directive" is one way for you to inform your doctor of your wishes not to use artificial methods to extend the natural process of dying. Your doctor will keep it on file if the time for such a decision ever arises.

In addition, terminally ill patients can express their wishes verbally, provided it is observed by two qualified witnesses and the patient's physician. These wishes also must be noted in the patient's medical record.

For persons under age 18, certain persons can carry out the wishes of the patient. These persons include the patient's spouse (if over age 18), the patient's parents and the patient's legal guardian.

Also, an adult can designate a person to make a treatment decision when they are incompetent or comatose. In this case, the attending physician and the designated person make the decision to withhold or withdraw life-sustaining procedures.

The wishes of any patient who remains competent and decides to change the directive always override the wishes in a directive.

TMA advises anyone who wants to make the directive to talk it over with family members and with his or her doctor first.

For a Texas Natural Death Act guidelines and directive form, send a self-addressed, stamped envelope to the Texas Medical Association, Attention B. Nettle, 1801 N. Lamar Blvd., Austin 78701. (No phone calls please.)

School reform

Four and a half years after the enactment of sweeping reforms in the state's public schools, nearly 80 percent of Texas citizens believe the reforms have had a positive effect on education.

A survey commissioned by the Texas Education Agency and conducted in November as part of the statewide Texas Poll also revealed that 56.1 percent of Texans favor increasing state taxes to improve equity in school finance, while 35.9 percent oppose higher taxes for educational equity.

In Cisco

Necessity is mother of invention

"Necessity is the mother of invention" may be somewhat trite, but to mothers of young girls with weight problems, this has been their lot when it comes to style in clothes. A Cisco mother with such a problem--no "chubby" clothes or patterns for her daughter--has led her to establish a business specializing in fashions for young girls with size problems.

The mother is Deborah Whitley, who with her husband, Arlie, has established "Amy Leigh Fashions, Inc.", which is dedicated to a special market which had been overlooked by manufacturers and pattern designers. The firm name matches that of the

daughter, Amy Leigh Whitley, who is an eighth-grader in Cisco Junior High School, and has had problems with clothes styles since she began school in the first grade.

To the Whitleys, after researching possible markets and doing basic design work with pattern makers in Dallas and Fort Worth, it became evident that mothers (and daughters) all over the world have "little girl" style problems when it comes to shopping for the larger sizes. With the orders for brochures and subsequent orders for patterns, came many testimonials from women who had experiences similar to Mrs. Whitley's, no luck in finding stylish clothes or patterns.

The Whitleys have had inquiries from 49 states and Canada during the last 12 months.

At the present time, the brochure has 20 designs for contemporary

juvenile fashion ensembles and dresses, with additional patterns in developmental stages.

What comes next? "We are expanding our pattern marketing effort to fabric outlets at present," Mrs. Whitley says. "From that, we expect to be able to begin manufacturing ready-to-wear clothes from our pattern experience. It is obvious that the problem I had finding the right clothes and patterns is really a universal situation."

The Whitleys are excited by the prospects for national distribution of their patterns and beginning the ready-to-wear phase of the business. And Amy Leigh? She has been elected as one of the twirlers for the Cisco Junior High Band this year.

For a brochure on patterns, send \$1 for postage and handling with the request to Box 192, Cisco, TX 76427.

Prostrate cancer detection

A specialized Prostate Cancer Detection Clinic at the University of Texas M.D. Anderson Cancer Center in Houston now provides men with the type of benefits currently available to women through low-cost mammograms.

The examination and ultrasound procedure used in the clinic can detect prostate cancer early, before any symptoms occur, much like a breast x-ray or mammogram detects early breast cancer, explained Dr. Richard Babaian, clinic director.

"This new program speaks to M.D. Anderson's commitment to finding ways to detect cancer early, when it is most treatable," Dr. Babaian said. "This is an early detection method and cannot be expected to find every case of prostate cancer, but by using modern technology, we hope to improve on the disappointing results of rectal examinations."

After lung cancer, prostate cancer is the second most common cancer among American men and is highly curable if found at an early stage. Unfortunately, like breast cancer, once it is large enough to cause symptoms it is likely to have spread, greatly reducing the possibility of cure.

An estimated 99,000 new cases of prostate cancer will be diagnosed in the United States during 1988 and one in every 11 men will develop prostate cancer at some time during his life, according to the American Cancer Society. An estimated 27,000 deaths occurred from prostate cancer in 1987, making it the second leading cause of cancer deaths among men.

Since the clinic's opening earlier this year, dozens of men from Texas and Louisiana have been referred to M.D. Anderson for the examination. Because prostate cancer normally is a disease of older men, the clinic at M.D. Anderson focuses its efforts on men between the ages of 55 and 70.

Exercise habits can be learned early

Parents and teachers can play an instrumental role in getting children to develop the exercise habit for a lifetime, according to Michael H. Crawford M.D., president of the American Heart Association (AHA), Texas affiliate.

"We should realize that these adult role models are catalysts to our children's future," advises Dr. Crawford.

He cautions that various types of exercise and sports should be introduced to children during different stages of their development.

"Adults need to consider the child's age and physical and mental growth. Pressure from adults to learn certain sports or forms of exercise can cause physical harm," warns Dr. Crawford. He adds that "when adults lean on children too much to participate in a particular type of exercise, the child could end up abandoning any form of exercise. And that's a tragedy."

What are the best exercises for children?

"For preteens, the AHA recommends jogging, rowing, stationary cycling, swimming laps, running in place, and rope jumping," suggests Dr. Crawford. These exercises are the best for conditioning. They're great since these kids haven't fully developed their motor control and coordination. Contact sports require such control."

Although jogging is one of the suggested exercises for preteens, the AHA cautions parents about permitting children to run in long-distance races. There has been evidence of children receiving short-term injuries in the feet from long-distance running. Even worse, such exercise can adversely affect this age group's bone growth. Dr. Crawford also hinted that "these kids may not

be as tolerant of extreme heat and cold as the adult runners may be. It's one thing for adults to make personal choices to run in the heat of summer. Kids may not know any better."

Children in their early teens are more able to enjoy some competitive sports, such as basketball, soccer, tennis and racquetball. Their bones are more fully developed than in earlier years. They can usually count on improved eye-hand coordination, too. "But they can still enjoy jogging, bicycling, walking and swimming," says Dr. Crawford.

He does advise, however, that adolescents can dangerously increase their blood pressure by using free weights for weight training. "If a teen is going to participate in weight training, the American Heart Association suggests the use of weight machines," says Dr. Crawford. "These devices can increase muscle mass, but when used properly, they don't cause the blood pressure extremes as seen in free weight use."

Sports such as football, bowling, golf and baseball are good choices for high school students because they can help contribute to young adults' self-esteem. Plus teens are better able to handle these sports than they were when younger. Their minds and bodies are more fully developed.

Dr. Crawford advises that high-schoolers should still continue with walking, jogging and other conditioning exercises. "Over a lifetime, these exercises will do more to improve their overall physical condition than other forms of exercises," he said. "They're also exercises that can be carried into adulthood, long after they're physically unable to play contact sports."

STOREWIDE JANUARY CLEARANCE

Group Men's Justin Ropers \$79 ⁹⁵	Group Ladies Justin Ropers \$79 ⁹⁵	Group Ladies Justin Ropers \$69 ⁹⁵	Tony Lama Mule Work Boots \$99 ⁹⁵	Tony Lama Full Quill Ostrich \$395 ⁰⁰
Ladies Wrangler Mesa denim Cowboy Cuts \$18 ⁹⁵	Ladies Wrangler Colored Cowboy Cuts Tapered Leg \$19 ⁹⁵	Student Cowboy Cuts \$12 ⁹⁵	Boy's Cowboy Cuts \$9 ⁹⁵	Group Men's Shirts 1/3 off
Laredo Brown Cow & Black Bull \$59 ⁹⁵	Rack of Belts 1/2 price	All Felt Hats 20% off	All Coats 20-75% off	All Winter Caps 1/3 off
All New Saddles Up to \$400 ⁰⁰ off	Box Mic. Tack 1/2 Price	All Straw Hats 40% off	Remaining Ladies Sweaters 1/2 price	Men's Wrangler Hurricane Wash Cowboy Cuts \$19 ⁹⁵
Men's Wrangler Reg. Fit & Slim Fit Boot Jean \$12 ⁹⁵	All Ladies Blouses 1/2 price	All Ladies Skirts 1/4 off		

HEADS OR TAILS WESTERN WEAR

707 S. Ave E Haskell, Texas Phone 864-3320

-Green Thumb-

By Gladys O'Neal

For you who have poinsettias from Christmas, I would like to tell you how to grow and keep them for another Christmas.

After the poinsettia has finished blooming, begin to gradually withhold water. This treatment causes the leaves to yellow and drop. Store the dried-off poinsettia in a cool (50 to 60 degrees), dry, dark place, such as a basement, until April or May. During this period, water the plant lightly to prevent the roots from drying out completely.

Bring the plant back into normal light conditions when weather has warmed, repot it, and cut the stem back to 6 inches; after all danger of frost has passed, sink the pot in the outdoor garden where it will get plenty of sun and keep the plant well watered. Lift it from time to time to keep the roots from growing down into the soil of the garden. You may have to repot it, to a larger pot.

To keep it growing rapidly, feed it every two weeks with liquid fertilizer. Pinch out new shoots until early August, leaving only a few strong ones to develop. If insects, such as mealybugs, get on the plant, spray or dust the plant with malathion, being careful not to let insecticide come in contact with the flower bracts. Bring flowers back inside in advance of fall frost. Put in a sunny place. Night temperature of about 60 degrees and daytime of 70 to 75 degrees.

Beginning early in October, shade plants completely for at least 14 to 16 hours a day. A cellar would be about dark and cool enough.

It is very important that the plant receive no light, not even from a flashlight, during the night. During the day, give it as much light as possible.

Given correct cultural attention, poinsettias will hold their flowers for weeks.

Gun Show

One of the top gun shows in the Southwest will be Jan. 21-22 at the Wichita Falls Activities Center, 10th and Indiana. The Texas Weapon Collectors Gun Show will feature new as well as antique bargains for sportsmen and collectors.

Getting to know Randall

By Janoma Rueffer

I have a brother named Randall Linton, and I want to tell you that you missed a great get-together Tuesday, Jan. 10, at Rice Springs Care Home when you missed Randall's 38th birthday celebration.

Randall never misses many affairs at the care home, even though he doesn't live there. Everyone knows him because he is there visiting when he is not working at the Haskell Training Center, which has recently relocated across from the fire station. Since the center acquired the new rug weaving machine they have all been busier than squirrels in a pecan tree. They already have a nice supply of rugs and are making more. They are also learning to cook on an electric stove in their shop kitchen. Randall is a graduate of Abilene State School.

You have probably seen Randall riding his three wheel bike somewhere in Haskell's back streets because he has been riding quite a few years and has had only one accident. You may have seen him cross the highway in two places in the morning on his way to his training center or on his way back home after they have finished their day's work.

Maybe you remember him from the days of the Art Plaster Shop, which was the old Trice Grocery Store, moved in just east of Dr. William J. Kemp's dentist office. The shop was in operation for years, but had to close due to lack of demand for plaster products. Of interest to note, you might watch for a new opening of the shop in the near future.

Randall had a bad start in life when oxygen was cut off to his brain when his mama was in labor too many hours. Anyone who takes the time to know Randall will find out how loving and kind he is and that he is never in a hurry to get anywhere, but to listen to the weather report or eat.

Ruth Ann Klose can tell you what a help he is at the nursing home. She can tell you that Randall knows all the major teams, what games are



Randall Linton

being played and where, who is likely to be in the Super Bowl, who is the best player on local teams, and which teams are in tournament play. He watches television and listens to the radio and can give accurate reports on many subjects. Betty Stocks of the training center can tell you all manner of things about him at work.

If you are interested in learning more about Randall, just read "The Great White Eagle", written by Mrs. Lona Linton, Randall's mother. One copy is in the local library. Or ask Loretta Gray at City Hall where you can purchase a book for \$5.

So from now on, please slow down for my younger brother when he is crossing the highway. He is a treasure to us and we appreciate his protection.

And oh yes, about his party. There was a huge birthday banner, art work by his great nieces and nephews, many gifts, birthday cake, cookies,

punch and many, many good wishes. Among those attending were his friend Marvin, who you might have seen on his own three wheeled cycle out collecting aluminum cans for spending money. So, it you have a few cans just put them in a bag and leave them at the old Art Plaster Shop and Randall will see that Marvin gets them. Another friend who was there was Floyd. You may have seen him in his battery powered wheelchair and you may also know that this man has more wisdom and understanding in his little finger than most of us do in our whole body.

This has been a little public interest article. I appreciate your time in reading it, and hope it gave you a little pleasure. In times like these, we need more human interest articles to give us a little lift, tell the good about people and leave us with hope for the future.



Marvin and Ruby Letz

Letz couple to mark 50th

Children and grandchildren of Marvin and Ruby Letz invite friends to share in celebrating their 50th wedding anniversary between 2 and 4 p.m. Saturday (Jan. 21) at the Haskell National Bank Community Room.

Their children are Kent and Marlene Denton of Dallas, Mike and Sandra Parker of Norman, Okla., and Fred and Linda Letz of Bedford. They have seven grandchildren.

Ruby is the daughter of the late A. H. and Eva Hisey and was born and reared in Haskell County and graduated from Haskell High School. She has been a housewife and helps with the family business, Letz Builders Supply.

Marvin is the son of Herman Letz and the late Lizzie Letz. He was born and reared in the Old Glory community and graduated from school there. When Marvin and Ruby married, they lived in Haskell where Marvin worked as a barber for a few years. After that he began farming in the Old Glory community. He also worked as a carpenter and started

building houses in the Old Glory, Aspermont and Haskell areas.

Around 1958-59, Marvin, along with his family, opened Letz Builders Supply and it has been a continuous business in the community.

Both Marvin and Ruby are active members of the Church of Christ.

Carriker named

State Sen. Steven A. Carriker will serve on three Senate standing committees during the 1989 Legislature.

Lt. Gov. Bill Hobby announced Thursday that the new 30th district senator would serve on the committees on Natural Resources, Economic Development and Intergovernmental Relations.

"These committees will provide an excellent base from which to do work beneficial to the 30th district," Carriker said. "I am fortunate to receive such choice assignments in my first term. I am looking forward to the challenges ahead."

Coming
Feb. 1st

Harmon Cable Communications
JUST KEEPS GETTING BETTER

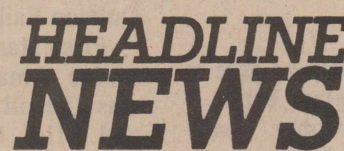
TNT - Turner Network Television is a cable exclusive with classic movies, special children's programming, exciting TNT originals 24 hours a day.



KTVT - This Dallas superstation brings you your favorite television shows, Dallas sporting events, and your favorite movies - all with the Texas spirit.

Coming
Feb. 1st

Will be part of our Basic Cable Service beginning February 1st.



To receive these exciting new services some of our customers may need a cable converter. Those customers who do not have a "Cable Ready" TV or VCR or one of our 36 channel converters will need a new converter.

To make this easier for you we are throwing a
GET CONNECTED PARTY
and you're invited!

Date: Saturday, January 21, 1989

Time: 10:00 to 5:00

Place: Owens TV & Electric
512 N. 1st. Haskell

We will have your new converter ready for you to pick up.

A \$5.00 refundable security deposit is required on the converter. Applies to 1st converter only.
Receive a \$10.00 savings by picking up your converter. Each additional converter is \$15.00 deposit.

Call for more
information
Toll-Free
1-800-527-4331

Be one of the
first 50 people
to pick up your
converter and
receive a
FREE gift!

Commentary

Crude oil prices make pleasing sound

AUSTIN—Texans heard a double-barrel blast of pleasing noise last week when crude oil pierced the \$18 price range and lawmakers convened saying, "no new taxes."

The Big Four leadership—Gov. Bill Clements, Lt. Gov. Bill Hobby, Speaker Gib Lewis and Comptroller Bob Bullock—all agreed new taxes were off the menu.

Lawmakers accepted it, since no faction between Austin and the White House can outmuscle that quartet, at least not on state capitol turf.

This unity against taxes is new

Hightower said he wouldn't run against Sen. Phil Gramm next year, and Democrats, looking for a new challenger, thought of Bill Hobby.

Two years ago, Hobby declared himself out in 1990, but who else could take on Gramm? A new tax bill surely would remove that option.

Bullock has apparently found the \$1 billion for lawmakers to spend. The tax issue, barring a catastrophe, is closed for now.

Rapid Growth Rate

The Texas Department of Commerce predicts the state's population growth rate will be more than double the nation's rate through 2025, with a projected population that year of 29.6 million.

The predicted Texas rate is 1.5 percent per year, compared to 0.6 percent per year for the nation.

Rapid growth here will be in minority population, especially Hispanics, according to the TDC spokesman, who said by 2025 one in two Texans will be from a minority group.

The southern tip of Texas, Cameron and Hidalgo counties, is expected to join the top ten most populous counties.

In an unrelated study, Southern Methodist University analysts predicted economic growth will be strongest in the Rio Grande Valley and Gulf Coast areas.

Slow growth will continue for Dallas-Fort Worth, Austin and San Antonio, while West Texas and Panhandle growth is uncertain.

Short Takes

- Speaking of collision courses, in the wake of Hightower's pull-out, the gubernatorial campaign camps of Atty. Gen. Jim Mattox and Treasurer Ann Richards think a great idea is for the other to run against Gramm.

- Mattox said he supports giving juries an alternative to the death sentence, such as a life sentence without parole.

- As the 15 members of the new elected State Board of Education took office last week, state leaders urged them not to unravel recent education reforms.

- Gov. Clements designated legislation to pay for new prisons through bonds as an "emergency" measure, with the goal of having voters approve issuing bonds as early as May.

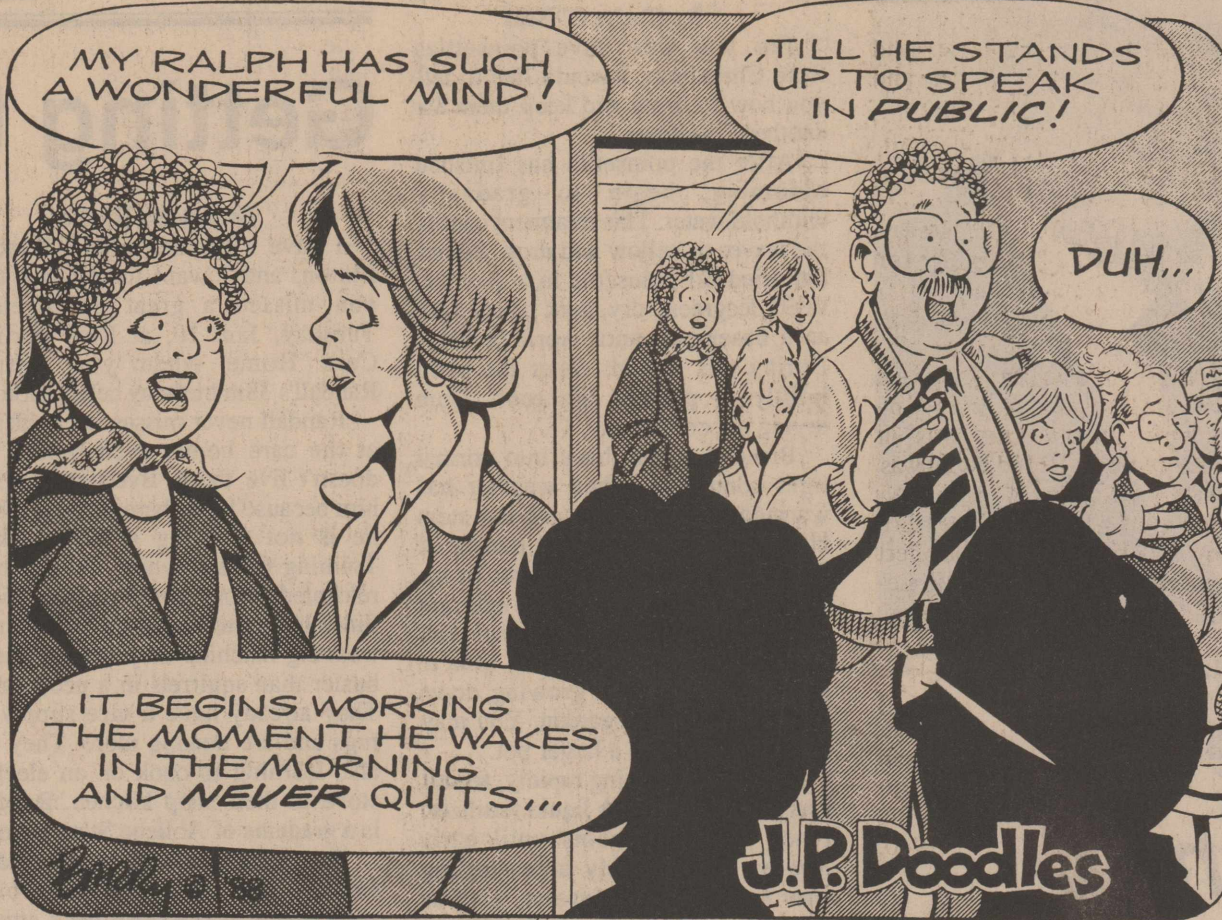
- State Sen. John Leedom, R-Dallas, was named president pro tem of the Senate. He is third in succession if the governor and lieutenant governor should die in office.

- William Kilgarlin, loser by three-tenths of a percent in the Supreme Court race, will practice law with an Austin firm.

- The U.S. Supreme Court accepted a lower court's decision to not require cabooses on trains in Texas. The decision preempts a Railroad Commission regulation.

DID YOU KNOW?

Your young child may be able to hold onto a drinking glass better if you place two tight rubber bands around the glass an inch or so apart. This makes it easier for little hands to hold.



BY WENDELL FAUGHT

How we do forget—and forgive. Our homage to the late Japanese emperor Hirohito no doubt makes some of us older Americans remember the war time song: *We'll Tie Hirohito To The Inboard Magneto Of An RAF Mosquito.*

If you have a gross estate of \$325,000, the IRS considers you a "top wealth holder."

That's the figure the government came up with in 1982 to single out taxpayers for "special attention."

It's quite a boost from the figure of 10 years earlier when a piddling \$60,000 would have put you in the select group. It doubled to \$120,000 in 1976.

A study published in *Statistics of Income Bulletin* found there were 4.5 million top wealth holders. They represent only 2.8 percent of the adult population and had a collective net worth of \$2.7 trillion, or nearly 30 percent of all the personal wealth in the United States.

The study revealed there are 38,200 people with a net worth of more than \$5 million, 437,000 with net worths between \$1 million and \$5 million, nearly a million with net worths between \$500,000 and \$1 million and more than 2 million people with net worths between \$250,000 and \$500,000. Only 650,000 had net worths of \$100,000 to \$250,000.

Of the top 10 percent of the population, those with a net worth of \$209,000 or more, only 4 million had a net worth greater than \$100,000.

Of the top wealth holders, 343,000 are in Texas, more than any other state except California. Oddly, women in the group outnumber the men, 176,000 to 167,000, in Texas. Women wealth holders in California also outnumber the male kind, 341,000 to 347,900.

Not so in No. 3 New York where men lead women, 200,000 to 126,000, or No. 4 Florida (288,000 to 169,000) or No. 5 Illinois (230,000 to 150,000).

Now comes Gregory Curtis, editor of *Texas Monthly*, who says his magazine will list the 100 wealthiest Texans in its August issue.

He estimates it will take a net worth of about \$100 million to make the list.

Quick turn-around:

Not long ago Braniff Airlines was in serious financial trouble. Last week, the company announced plans to buy 100 new aircraft at a cost of \$3.5 billion.

Among the thousands of bills to be considered by the 71st Texas Legislature is one proposed by Rep. Ric Williamson of Weatherford which would enable the establishment of "no-cruising zones".

It would allow local authorities to designate a street or other public property as a no-cruising zone and restrict how many times someone could drive past within a specific period.

Prompting the Weatherford legislator to come up with the idea is a situation in his hometown where kids cruising Main Street can't get back without using a side street through a district of Civil War-era homes. "They're throwing beer cans and condoms and hypodermic needles on the yards. It's really destroying the quality of life," Williamson said.

Clipped from the Quanh Tribune-Chief:

Some things you probably never knew had names:

Alget: the plastic or metal tip of a shoelace.

Bolster: the part of a knife that separates the blade from the handle.

Bow: the top part of a key.

Chuck: the hole in a pencil sharpener into which the pencil is placed to be sharpened.

Counter: the piece of leather used to stiffen the rear part of a shoe.

Plunger: the disconnect button on a telephone.

Rictus: the space or gap inside the open beak of a bird.

Remember this name:

Shaquille O'Neal. He's a hotrod basketball player at San Antonio Cole High School.

If his athletic stature doesn't impress you, surely his poetic moniker will.

--From Out of the Past--

From the Files of The Haskell Free Press

20 Years Ago Jan. 9, 1969

C. O. Holt, superintendent of the West Texas Utilities Power Plant at Lake Stamford, spoke to members of the Rotary Club last Thursday. He said the plant has a yearly payroll in excess of \$228,000.

Miss Patricia Ballard, 18, daughter of Mr. and Mrs. Fletcher Ballard of Rochester, was in Dallas Jan. 1 to attend festivities for entries in the Cotton Bowl Parade. Miss Ballard was first runnerup in the "Miss Cotton Contest of Texas" held in Dallas last fall.

The Rule school will start a breakfast program Jan. 13. The lunch room will be open at 8 a.m. until 8:30 a.m. each school day to serve breakfast to those students who wish to be served. Cost will be 15 cents per day.

Sgt. and Mrs. David Hiebert of Laredo visited in Abilene and Haskell during the holidays. They also visited in Colorado before returning to Laredo where David is in the Air Force and Judy is teaching.

In the interest of applying for state aid and to improve the airport facilities, the Haskell Flying Club is sponsoring a meeting Monday. Bud Lane, president of the club, said the meeting will be open to all citizens interested in the airport project.

50 Years Ago Jan. 13, 1939

Seventeen lettermen of the 1938 Haskell High School Indians were presented with new sweaters Friday in recognition of the team's outstanding record during the past season in winning the district title. Awards were made to Gene Rogers, Sam Henshaw, Otis Henshaw, Zeldon Thomason, Wayne Laird, Curtis Ballard, J. C. Scott, Jack Simmons, Buster Gholson, Milton Wilfong, Fred Barnett, Chester Via, Ray Buford, Curtis Jordan, Bob Cousins, Quinton Bailey, Marvin Huff.

First Haskell County couple to secure a marriage license this year was Carroll A. Benton of this city and Miss Chellie Sue Bragg of Rochester on Friday, Jan. 6.

Courtney Hunt, representative of the 113th District, left for Austin Sunday.

Mmes. Leon Gilliam, R. J. Reynolds, R. C. Couch, D. Scott, John A. Couch and B. M. Whitaker attended an all-day meeting Tuesday of the WMU of the Haskell Association in Monday.

Mr. and Mrs. Ralph Duncan visited relatives and friends in Abilene Sunday.

60 Years Ago Jan. 19, 1929

Mr. and Mrs. E. T. Sanders are enjoying the company of their three sons home from college for the holiday season, Earnest, Jerome and Roy.

Lynette pens a poem

Have all your hope come true, and people that love you too....Let your heart full of love and joy and to be a brother to all....Be kind and love all just like Jesus did to us....And died on the cross for all the people in the world....And he still loves us all.

Composed by Lynette Sanders, 7, daughter of Larry and Linda Sanders of Los Alamos, N.M., and granddaughter of Bill and Bertha Griffith of Paint Creek and R. S. and Betty Sanders of Weinert.

Rev. and Mrs. E. Gaston Foote returned Friday from Stephenville where they spent the season's holiday.

Mr. and Mrs. G. F. Mullino had their following daughters home for the holiday season: Miss Louise Mullino, teacher of music in Amarillo schools; Miss Cathleen Mullino, teacher in the Memphis schools; and Miss Nettie Mullino, teacher in the Spur schools.

W. L. Wingo, an oldtimer of Haskell, called at the Free Press office Monday.

80 Years Ago Jan. 9, 1909

The first through freight train on the Orient Railroad passed through Benjamin Wednesday, enroute from Kansas City to Sweetwater. Among other things, this train contained one full car of soap, billed from Chicago

to San Francisco, thus showing how readily the northern manufacturers take advantage of a direct route to the Pacific Coast.

Mr. and Mrs. L. D. Morgan have moved to the Boone Ranch in the northeast part of the county.

Misses Dora and Ella Ballew and Mrs. Minnie Pritchett have returned from an extended visit to relatives and friends of Clyde.

G. R. Couch visited several parts in Oklahoma this week on a business mission.

Last Monday the public square was crowded with horses, mules and vehicles.

Messrs. W. A. Marsh, T. A. Williams and B. D. English have purchased the grain and coal business of Mr. J. L. Means and are conducting the business under the name of Marsh-Williams Company.

--Letters to the Editor--

To the heart of the matter

As president of the Haskell County chapter of the American Heart Association, I would like to take the opportunity to thank the residents of Haskell County and its surrounding communities for your overwhelming support so far this year. We initiated our term of service to you several months ago and have had our "Cardiac Arrest" and "Turkey Walk" fund raisers with excellent response.

I feel it is important to let you know the goals of the AHA and why this organization is important to each of us in Haskell County:

Cardiovascular disease is the No. 1 killer in Haskell County, accounting for approximately 50 percent of the deaths in the county. This means that all of the other causes of death, including accidents, cancer, etc., make up the other 50 percent. Each year in Texas, over 10,000 people lose their lives because of heart disease before the age of 65. This year, these diseases will result in an estimated annual economic cost of more than \$72 billion in lost wages, lost productivity and medical expenses.

The American Heart Association is the only national health organization dedicated solely to the prevention of premature death and disability due to heart disease, stroke and related disorders.

The AHA is fighting the cardiovascular disease problems through research, public and professional education and community service. The AHA continues to stress prevention in all our messages to the public. The major risk factors influencing cardiovascular disease include the following:

Elevated cholesterol or triglycerides, high blood pressure, smoking, diabetes, family history of heart disease under the age of 65, stress, obesity, being male and being over 40 years old. There are obviously some of the risk factors we can't control, but what is important is that, obviously, there are many of these we can control. The three major risk factors currently being stressed by the AHA are high blood pressure,

smoking and high blood cholesterol.

If you don't think that the research is paying off, just ask one of the many people in this area who has incurred a heart attack within the past couple years who just 10 years ago might not have survived it.

As your local chapter of the AHA, we sincerely hope to return all we possibly can to Haskell County. We want to make its residents the best informed in the State of Texas.

You will, therefore, see us frequently in the coming months offering free blood pressure checks at the local banks and savings and loan, cholesterol screening programs and CPR classes. You will also hear of programs to stop smoking within the school system and a Jump Rope for Heart coming soon. We will also submit a series of articles in the future to better inform you about cardiovascular disease.

Once again, we greatly appreciate your support, and hope to be of service to you.

Dr. Bill McSmith
President

Haskell County Division
American Heart Association

Superintendent

Editor: We have noticed in the paper that Mr. Kemp, present school superintendent has resigned from the Haskell school system.

This is a position of great responsibility and long hours of discussion, trying to plan a program that will better educate our own children for an even better way of life. All school board members, present and past employees are to be commended for a job well done.

This letter is forwarded with the idea of considering the present high school principal, Mr. Gerald McCoy, as being hired for the superintendent's position. We feel that Mr. McCoy is well qualified and would be an even greater asset to our school system as its superintendent.

H.V. and Mae Woodard

STATE CAPITAL



HIGHLIGHTS

By Lyndell Williams
TEXAS PRESS ASSOCIATION

and wasn't forged until just before the session began.

Credit Bullock with quietly drawing the line with his sword. And politics played a part.

In December, Speaker Lewis hinted no new taxes, but hedged on a firm stand. After all, he still faced an opening-day vote on his fourth term, and there are many House members who will raise taxes in a heartbeat.

Statements by some of the speaker's lieutenants rode the grapevine all the way to the governor's office.

Spectre of Collision

Clements, the tax hater, vowed to veto any new taxes, period, and the spectre of a collision again raised its ugly head.

The veto threat made some budget shapers nervous, since lawmakers must trim \$1 billion this session.

Hobby, the top budget architect, went so far as to call Clements' veto threat "irresponsible." Like any smart businessman, the lieutenant governor doesn't give away options.

This spectre lingered for a couple of days until Bullock emerged with a way \$1 billion could be had by shifting funds on a one-time-only basis.

Breath of Fresh Air

Bullock also advised that no new taxes would be a breath of fresh air to the Texas economy and help spur diversification.

Bullock's budget advice is always respected, and besides, it made the Big Four score two to two on taxes, if anyone cared to count.

Bullock is running for higher office. Bullock is smart. He just helped a lot of Democrats get re-elected in 1990.

Tax Issue Closed

While the comptroller was helping solve the tax issue, Agriculture Commissioner Jim

THE HASKELL FREE PRESS

Established January 1, 1886
PUBLISHED EVERY THURSDAY
401 S. First St
P.O. DRAWER 1058 HASKELL, TEXAS 79521

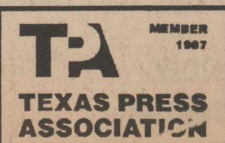
Don Comedy.....Publisher
Wendell Faught.....Editor
Lisa Shaw.....Business Manager
Mary Kennedy.....Production
Charles Thornhill.....Advertising

Second Class Postage Paid Haskell, Texas 79521
(USPS 237-040)

SUBSCRIPTION RATES:

In Haskell and adjoining counties, one year, \$12.00; six months, \$10.00; two years, \$23.00; Elsewhere in Texas, one year, \$15.00; six months, \$13.00; two years, \$29.00; outside Texas, one year, \$17.50; six months, \$15.50, two years, \$34.00.

NOTICE TO PUBLIC—Any erroneous reflection upon the character, reputation or standing of any firm, individual or corporation will be gladly corrected upon being called to the attention of the publisher.
POSTMASTER—Send address changes to The Haskell Free Press, P.O. Box 1058, Haskell, TX, 79521-1058.



--Obituaries--



Clotilda Moeller

Clotilda Moeller

Clotilda Moeller died Jan. 10 at Garland Community Hospital in Garland. She was 76.

Funeral services were held here Thursday (Jan. 12) at Trinity Lutheran Church with the Rev. Victor Andersen officiating. Burial was in Willow Cemetery, under direction of Holden-McCauley Funeral Home. Nephews and nephews-in-law served as pallbearers.

She was born in Haskell County on Feb. 14, 1912, and had lived in the county all of her life. She lived in the Irby community until 1962 when she moved to Haskell. She was the kitchen supervisor at Rice Springs Care Home before retiring in 1987. She was a member of Trinity Lutheran Church and Sons of Hermann Lodge.

She is survived by three sisters, Mary Moeller and Louise Force, both of Haskell, and Helen Ray of Throckmorton; three brothers, John P. Moeller Jr. of Kaufman and Frank

Moeller of Haskell; 13 nieces and nephews and 20 grand nieces and nephews.

George Moeller

Funeral services were held Tuesday at Trinity Lutheran Church for George Moeller.

Moeller, 73, died Sunday at Rice Springs Care Home.

The Rev. Victor Andersen officiated at the services. Holden-McCauley Funeral Home was in charge of arrangements and burial was in Willow Cemetery.

Pallbearers were Glenn Brzozowski, Tim Everett, Robert Weaver, Curtis Weise, Wilton Weise, Leonard Weise and Walter Bredthauer.

He was born March 31, 1915, in Haskell County and was a life-long resident of the county. He was a retired farmer, a World War II veteran and a member of Trinity Lutheran Church and Sons of Hermann Lodge. He was married to Lydia Martha Weise in Sagerton on Oct. 2, 1940. She died May 23, 1987.

Survivors include a son, Roger Moeller of Haskell; two daughters, Yvonne Wilde of Fort Worth and Kathy Wallace of Irving; five sisters, Lena Kubena, Edna Thompson, Ella (Mrs. Alton) Peiser and Lydia (Mrs. Felix) Klose, all of Haskell, and Amanda (Mrs. Eugene) Teichelmann of Sagerton; two brothers, Walter Moeller of Haskell and Edward Moeller of San Angelo; and six grandchildren.

Opal Simpson

Funeral services for Opal Simpson, 73, of Levelland were held last Monday at Geo. Price Funeral Chapel. The Rev. Charles Thrasher, pastor of the First Baptist Church of Levelland, officiated.

Burial was in the City of Levelland Cemetery under the direction of Go. C. Price, funeral directors.

Mrs. Simpson died Friday in Methodist Hospital in Levelland after a lengthy illness.

She was born in Rule Sept. 7, 1915, and was married to Everett Simpson on July 2, 1935. They moved to Levelland in 1937 where she was a homemaker and a member

of the First Baptist Church.

Survivors include her husband; three sons, Ronney of Levelland, Robert of Novato, Calif., and Vic of Lake Dallas; two sisters, Eunice Hunt of Rule and Mavis Williamson of Plainview; and six grandchildren.

Pallbearers were Kevin Simpson, Brandon Simpson, Charles Williamson, Nick Hunt, Hal Hunt and Jimmy McCain.

Etta Faye Wallace

Etta Faye Wallace, 42, died Sunday morning at her home in Haskell.

Funeral services will be at 11 a.m. today (Thursday) at Greater Independent Baptist Church with the Rev. J. W. Hansen officiating. Burial will be in Willow Cemetery, directed by Curtis-Starks Funeral Home of Abilene.

A native of Haskell, she was born Feb. 6, 1946, to Mr. and Mrs. Lish Mosee. She attended Haskell schools and was a member of the Greater Independent Baptist Church. She was employed at the training center. In

1975 she was awarded a bronze medal in the Special Olympics in Austin.

She is survived by her mother, Mrs. Bessie Hansen of Haskell; two brothers, the Rev. J. W. Hansen of Odessa and Ray Hansen of Oakland, Calif.; and three sisters, Mrs. Verda Calloway of Haskell and Mrs. Earlene Wheeler and Mrs. Lizzie Phillips, both of Fort Worth.

Anna Odell

Graveside service for Anna B. Odell, 89, of Liberty were held Tuesday (Jan. 10) in Lubbock's Resthaven Mausoleum. Entombment was under direction of Allison Funeral Services.

She died Jan. 6 at her home after a brief illness. She had been under a doctor's care.

She was born in Kemp and lived in Lubbock until moving to Liberty in 1980. She was a member of the Order of the Eastern Star and the First United Methodist Church.

Survivors include a son, Tom of Liberty; a sister, Edna Lowrey of Fort Worth; three grandchildren and six great-grandchildren.

Lucy Lancaster

Lucy Lancaster, 89, of Abilene, died Wednesday (Jan. 11) in an Abilene nursing home.

Services were at 2 p.m. Saturday at Elliott-Hamil Funeral Home Chapel

of Faith with the Rev. Alfred C. Altum officiating, assisted by the Rev. H. S. Calahan. Burial was in Elmwood Memorial Park.

Born in Tarrant County on March 5, 1899, she moved to Abilene in 1975 from Haskell. She was a retired licensed vocational nurse and was employed by Haskell Memorial Hospital for 30 years. She was a member of Immanuel Baptist Church and the widow of the late Eugene L. Lancaster.

Survivors include two daughters, Murl Altum of Abilene and Louise Richards of Potosi; two sisters, Kate Mitchell of Moran and Ora Bradford of Midland; four grandchildren and a great-grandchild.

Timothy Medford gets recognition

Timothy C. Medford of Odessa has been selected as a member of the Outstanding High School Students of America.

Selection was based on outstanding merit and accomplishment as an American high school student.

Timothy is the son of Jean and Ronnie Medford of Odessa. His grandparents are Mrs. W. R. Carter and Mrs. Lula May Medford of Haskell.

Paint Creek basketball

Pirates 85, Lueders-Avoca 30
The Paint Creek Pirates upped their district record to 1-1 by defeating the Raiders of Lueders-Avoca by 55 points Friday night.

The game featured six three-pointers and a 54-point second half by the Pirates.

Sophomore Dane Morgan paced the scoring with 24 points, while freshman Rodney Medford had 23.

Paint Creek hosts Aspermont this Tuesday.

Lady Pirates 55, Goree 52
Paint Creek's Lady Pirates avenged an earlier season loss by defeating the Goree Lady Wildcats in Goree last Tuesday night.

A 37-point second half clinched the victory after the Lady Pirates trailed 29-18 at the half.

Sherlene Grisham scored 25 points, Francine Barnes had 15 and Monica Howeth scored 10.

Lady Pirates 48, Lueders-Avoca 55
The Lady Pirates dropped their first district home game to Lueders this Tuesday.

Trailing 38-20 at the half, PC rallied to a 28-17 second half scoring advantage but just didn't have the firepower to pull it off at the end.

Francine Barnes led the scoring with 15 points, while Sharlen Grisham had 13.

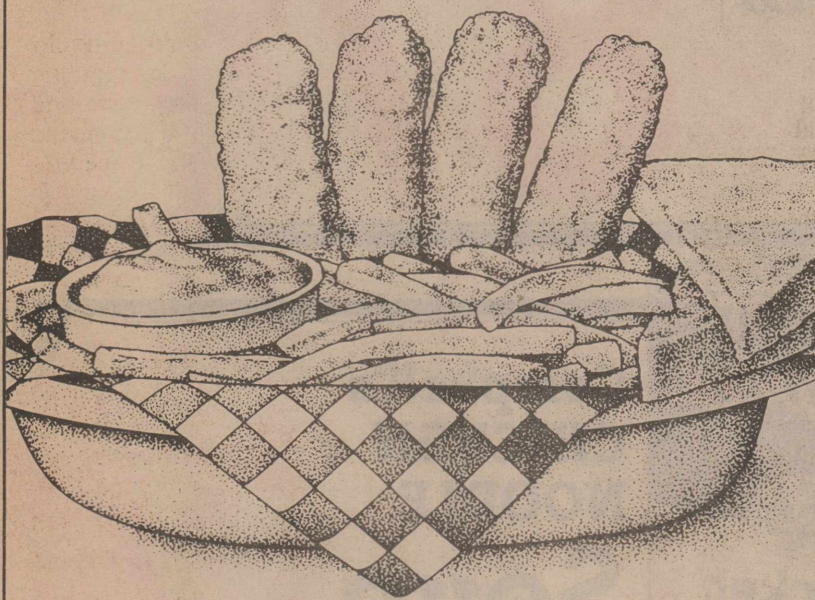
The Frame Shed

411 South First St.
Custom picture frames

Any size
Wood or Metal
Custom mats

Plain or non-glare glass
We do repair work
864-2901

BARGAIN BASKET!



\$1.99* Regular Size

The COUNTRY BASKET is a genuine legend in DQ Country! With four steak fingers, golden fries, Texas toast, and DQ's own special country gravy. All yours, with a basket full of savings!
ON SALE JANUARY 16-29, 1989

THIS IS **DQ** COUNTRY

* Reg. TM Tex. D.Q. Op. Coun. ® Reg TM Am. D.Q. Corp. © 1989 Tex. D.Q. Op. Coun.
*At participating Dairy Queen stores.

January CLEARANCE 25% OFF!

Take an additional 25% Off all previously reduced yellow ticket fall and winter merchandise. You'll find savings in all departments!

HURRY!
This Sale ends **Jan. 24, 1989!**

All Yellow Ticket Items

Does not include entire stock. Applies only to yellow tag fall and winter clearance items. Intermediate markdowns may have been taken. Limited to merchandise on hand. Selection may vary by store. Sorry, no layaways. All yellow tagged denim jeans are not included in this promotion.

ANTHONY'S

Example

Regular 9.99

Yellow Ticket 7.99

NOW ... 5.99

ANTHONY'S™
Your Family Fashion & Value Store



114 S. Swenson Stamford 773-2795

M SYSTEM

Your FRIENDLY

AFFILIATED SUPER MARKETS

Haskell, Texas
Open 7 days a week
Monday-Saturday 7:30 a.m. til 8 p.m.
Sundays 8 a.m. til 7 p.m.

SUPER BOWL SPECTACULAR SALE!!!

DOUBLE COUPONS 7 DAYS A WEEK!

We will redeem your manufacturers' cents-off coupons for double their face value up to 50¢ when the product is purchased. We will double only one coupon per item. All others redeemed at face value. Limit one coupon per item. Coupon not to exceed value of item. This policy does not include "Free" coupons, cigarette and tobacco, or refund coupons. Offer good for a limited time only. Super value offer from M-System in Haskell.

We Gladly Accept Food Stamps

Prices Good
January 19th thru 22nd



We reserve the right to limit quantities.

PRICE SAVER BATHROOM TISSUE

White
4-Roll Pkg. **48¢**

Limit 1 with the purchase of \$10.00 or more in groceries.

Dairygold Milk
HOMOGENIZED GRADE A MILK
\$1.89
Gal

Shurfine Vegetables

- Cream Style or Whole Kernel Corn
- Tomatoes • Cut Green Beans

16-oz. Cans
2 For 79¢



PRICE SAVER Paper Plates

9-Inch 100-Ct. **99¢**

MSystem Bread

Del Monte Fruit Cocktail or Sliced or Halves Peaches



16-oz. Can **77¢**

Totino's CRISP CRUST Party Pizza

9.6-oz. to 10.6-oz. Packages All Varieties Limit 4, Please

88¢



PRICE SAVER POTATO CHIPS

Plain or Ripple Style 16-oz. Pkg. **89¢**

1 1/2 lb. loaf **59¢**

Pepsi
6 pack cans 12 oz. **\$1.79**



LIGHT CRUST FLOUR

5-lb. Bag

87¢



KRAFT Regular or Lite (32-oz.)

Miracle Whip **1.85**

PRICE SAVER FROZEN (12-oz.)

Orange Juice **89¢**

HEINZ SQUEEZABLE (28-oz.)

Ketchup **1.29**

COMSTOCK Cherry, Peach, Pineapple (20 & 21-oz.)

Pie Filling **1.39**



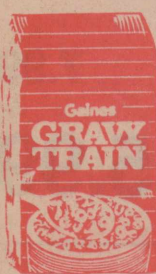
Campbell's CHICKEN NOODLE Soup
10.75-oz. Can

Limit 3, Please

3 \$1

Cans

LOW PRICE



- Beef, Liver & Bacon
- Beef

\$5.99

WITH COUPON BELOW
WITHOUT COUPON \$9.99

LOW PRICE

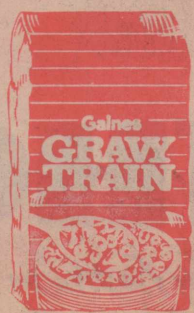


\$5.99

WITH COUPON BELOW
WITHOUT COUPON \$9.99

\$4.00 OFF
25 LB. BAG

ANY FLAVOR
Gaines GRAVY TRAIN
DOG FOOD

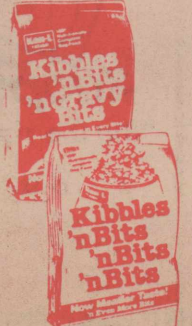


Good week of Jan. 19, 20, 21 at M-System



\$4.00 OFF
ANY

20 LB. BAG
Kibbles 'n Bits 'n Bits 'n Bits
or
Kibbles 'n Bits 'n Gravy Bits



Good week of Jan. 19, 20, 21 at M-System



Jumbo Roll PAPER TOWELS

Brawny **59¢**

meat prices CUT TO THE BONE!



T-Bone Steak

Extra Tender Beef

\$3⁹⁹

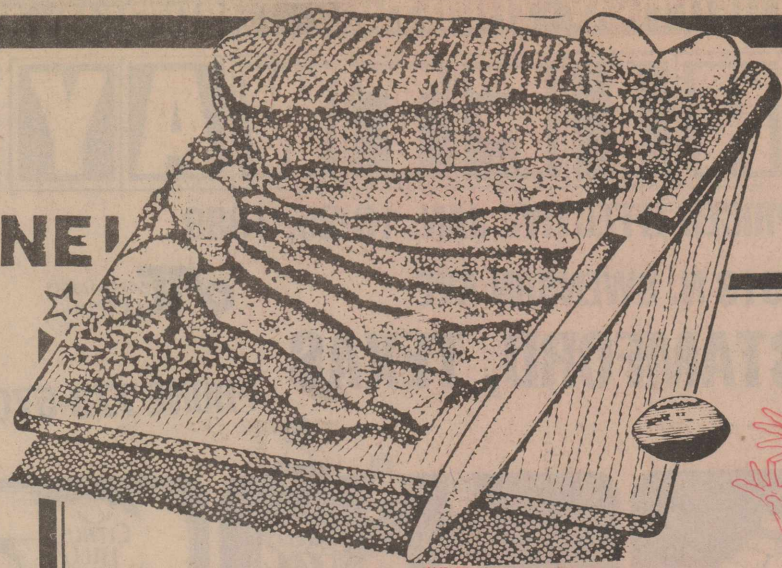
Lb.

Sirloin Steak

Great for Grilling

\$2²⁹

Lb.



BRISKET

USDA CHOICE BEEF

\$1⁰⁷

Lb.



PRICE SAVER Sweetmilk or Buttermilk

BISCUITS.....6.5-oz. Cans

6/89¢

PRICE SAVER LEAN (10-Lb. Box)

Ground Beef Patties.....

7⁹⁹

LEAN BEEF

Cube Steak.....Lb.

2⁴⁹

Baby Swiss or Muenster WISCONSIN

CHEESE.....Lb.

2³⁹

CALIFORNIA 70-ct. Size

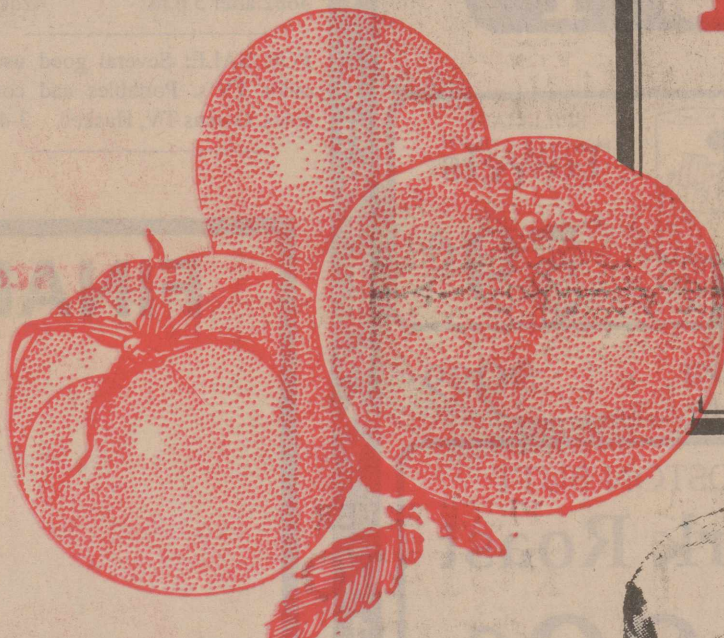
AVOCADOS.....3/1.00

CRISP WHITE

Cauliflower.....Lb. **99¢**

FRESH, GREEN

BROCCOLI.....Bunch **99¢**



LARGE, RED RIPE

Tomatoes

3 Lbs. \$1⁰⁰



GREEN ONIONS OR CELLO RADISHES

Mix or Match.....Ea. **3/1.**

HAWAIIAN 10-ct. Size

PINEAPPLE.....Ea. **1.99**

ESTRA FANCY RED DELICIOUS

APPLES.....3-lb. Bag **1.39**

EAST No. 1 TEXAS SWEET

POTATOES.....Lb. **49¢**

Large Stalk

Celery

Each

39¢

Pilgrim Pride Mixed

FRYER PARTS

59¢

Lb.

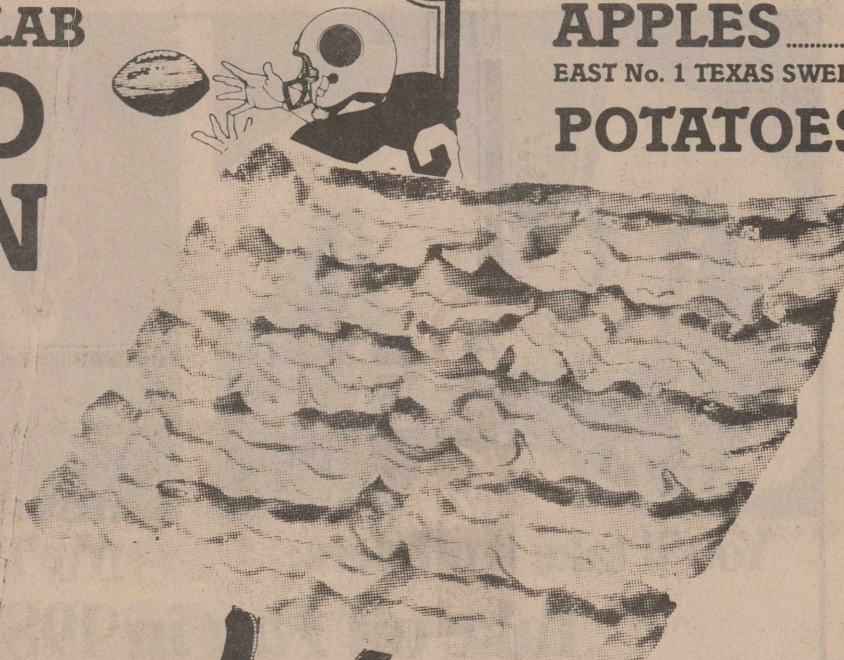


SILVER SPUR SLAB

SLICED BACON

\$1⁰⁹

Lb.

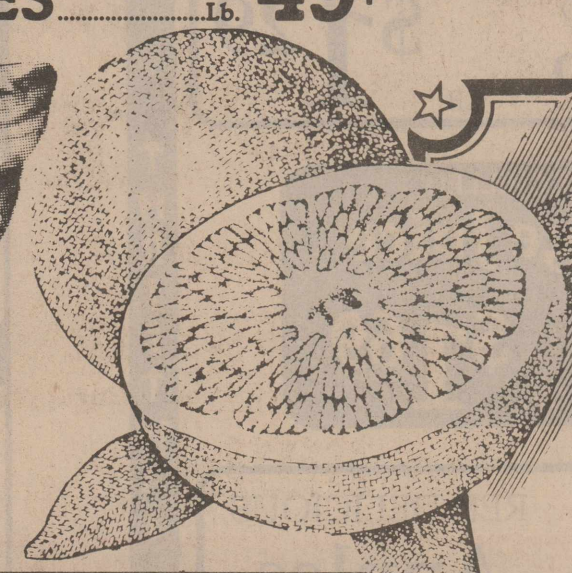


California NAVEL

Oranges

49¢

Lb.



Alka-Seltzer Tablets
36-Ct. Foil Pack

2⁶⁹



Aspercreme Rub
3-oz. Tube

3¹⁹



Correctol Gentler Laxative
30-Ct. Package

2⁹⁹



Kaopectate...
"The Diarrhea Specialist."
8-oz. Bottle

3⁵⁹

M SYSTEM
Your FRIENDLY
AFFILIATED SUPER MARKETS

THRIFTWAY · THRIFTWAY · THRIFTWAY · THRIFTWAY · THRIFTWAY

THRIFTWAY

STORE HOURS: 8:00 A.M. TO 8:00 P.M. SEVEN DAYS A WEEK 8-8:00 SUNDAY

PRICES EFFECTIVE JAN. 19-25, 1989

1513 N. SWENSON AVE STAMFORD, TEXAS

PHONE 773-5701

WE ACCEPT FOOD STAMPS & MANUFACTURERS' COUPONS

WE RESERVE THE RIGHT TO LIMIT

 <p>SHURFINE Large Eggs</p> <p>DOZ. 69^c</p>	 <p>R.C. Cola</p> <p>2 LITER BOTTLE ALL FLAVORS</p> <p>69^c</p>	 <p>CITRUS HILL FROZEN Orange Juice</p> <p>16 OZ. CAN 99^c</p>
--	---	--

 <p>CAMPBELL'S Tomato Soup</p> <p>10.75 OZ. CAN 3/89^c</p>	 <p>Surf Detergent</p> <p>147 OZ. BOX \$4⁹⁹</p>
---	---



 <p>NICE 'N SOFT Bath Tissue</p> <p>4-ROLL 89^c</p>	 <p>PILLSBURY HUNGRY JACK Biscuits</p> <p>10 OZ. 2/\$1</p>
---	--


 <p>Doritos TORTILLA CHIPS</p> <p>REG. \$2.89 \$1⁸⁹</p>	 <p>PACE Picante Sauce</p> <p>16 OZ. 99^c</p>	 <p>SPILLMATE Towels</p> <p>JUMBO ROLL 59^c</p>
--	---	---

TEXSUN Grapefruit Juice 46 OZ. **99^c** 66 SMALL/48 MED./32 LARGE Pampers Diapers **\$9⁹⁹**

 <p>Stew Meat</p> <p>LB. \$1⁹⁸</p>	 <p>BOSTON BUTT Pork Roast</p> <p>LB. 89^c</p>
 <p>Top Sirloin Steak</p> <p>LB. \$1⁸⁹</p>	 <p>Pork Steak</p> <p>LB. \$1³⁹</p>

 <p>Beef Tripe</p> <p>LB. 39^c</p>	 <p>SAN ANTONIO Chorizo</p> <p>LB. \$1²⁹</p>
--	---

 <p>BANQUET REGULAR Fried Chicken</p> <p>28 OZ. \$2⁴⁹</p>	 <p>KRAFT CHILLED Orange Juice</p> <p>64 OZ. \$1⁶⁹</p>
--	---

 <p>YELLOW RIPE Bananas</p> <p>5 LBS. \$1</p>	 <p>RED DELICIOUS Apples</p> <p>LARGE SIZE 29^c</p>
<p>FRESH, NICE LARGE SLICERS Cucumbers 5/\$1</p>	<p>FRESH BUNCHES Spinach 2/49^c</p>

Check our receipts against anyone else's. We're your **TOTAL** store - compare the **TOTAL** difference!

DOUBLE COUPONS EVERY DAY

THRIFTWAY · THRIFTWAY · THRIFTWAY · THRIFTWAY · THRIFTWAY

CLASSIFIEDS

<p>NOTICE</p> <p>The Haskell Free Press reserves the right to edit and/or delete all news stories and locals for length and liability and to refuse to print anything deemed not newsworthy.</p>	<p>For Sale</p> <p>OIL FILTER SALE: Richardson Truck & Tractor has oil filters for most Ford and General Motors cars and pickups. Only \$2.49 each. Everyday low prices for your Case, IH, and John Deere farm filters, too. 3-6c</p>	<p>Miscellaneous</p> <p>HOME DECORATORS. Painting -Insulation. Free estimates. Phone 743-3592 or 743-3550. V. A. Mitchell-Bobby O'Neal. Rochester. 3tfc</p>
<p>NOTICE</p> <p>The deadline for Classified Advertising is 12 noon on Tuesday.</p> <p>Haskell Free Press</p>	<p>For Sale</p> <p>Whirlpool-Complete kitchen! S/S refrigerator W/I/M, oven, cook-top, vent-hood, dishwasher and M/oven. 3-6c</p>	<p>Garage Sales</p> <p>GARAGE SALE: Saturday, Jan. 21. 8 a.m. to 5 p.m. Household items. First house South of Exxon Station, Sagerton. 3p</p>
<p>For Sale</p> <p>SHAKLEE Products, 100% NATURAL VITAMINS herb lax, food supplements and cosmetics. Products in stock at 300 N. Av H. 864-3330. Free deliveries in Haskell. 26tfc</p>	<p>PRICED to SELL-FAST!!</p> <p>Imperial-Gas range! 30 inch-black glass front, surface light, oven light, porcelain top, warming shelf, and guaranteed and warranted! 3-6c</p>	<p>Business Opportunies</p> <p>OWN YOUR OWN apparel or shoe store, choose from: jeans/sportswear, ladies, men's, children/maternity, large sizes, petite, dancewear/aerobic, bridal, lingerie or accessories store. Add color analysis. Brand names: Liz Claiborne, Healthtex, Chaus, Lee, St. Michele, Forenza, Bugle Boy, Levi, Camp Beverly Hills, Organically Grown, Lucia, over 2000 others. Or \$13.99 one price designer, multi tier pricing discount or family shoe store. Retail prices unbelievable for top quality shoes normally priced from \$19 to \$60. Over 250 brands 2600 styles. \$18,900 to \$29,900: Inventory, training, fixtures, airfare, grand opening, etc. Can open 15 days. Mr. Loughlin (612) 888-4228. 3p</p>
<p>COUNTRY EGGS. 864-3349. 2-3c</p>	<p>Kenmore-Electric dryer! Large drop down door! Some new parts! Works great. 3-6c</p>	<p>Jobs Wanted</p> <p>LOT SHREDDING. Call Tony Williams, 864-3674 anytime. 43tfc</p>
<p>INTRODUCTORY SPECIAL by Delia Pipkin. Free manicure with shampoo and set. Perms \$25.00. Monday thru Friday, 8 to 5. Shear Perfection & Hair Designs. Walk-ins welcome. No appointment necessary. 864-8031. 407 N. Av C. 2-3c</p>	<p>Autocrat-Gas range! 24 inch-works perfect! Extremely clean-like new!</p>	<p>JOB WANTED: General office work, bookkeeping, typing, filing. Full or part time. Call 864-2252. 2-3p</p>
<p>BIG OX POINTS: Richardson Truck and Tractor has Hensley 3 pound points for only \$9.99 each. 3-4c</p>	<p>Kenmore-Portable washer! 8 lb. wash-Ideal for 1 or 2 people! Not very old!</p>	<p>MARSHALL'S TREE SERVICE. Tree trimming and removal. Fruit tree pruning and grafting. Landscape maintenance and installation. Odd jobs, reasonable rates. Free estimates. 864-8085. 3-6p</p>
<p>FOR SALE: Radio Shack TRS 80 Color Computer. Excellent condition. Joy sticks, games. Call 864-3682 after 5 p.m. 42dcc</p>	<p>86", high back-Country style sofa. Maple Wood trim!</p>	<p>Free estimates. 864-8085. 3-6p</p>
<p>FOR SALE: Several good used color TV's. Portables and consoles. Owens TV, Haskell. 3-4c</p>	<p>Come in and look as we do not quote used prices over the phone!</p>	<p>Frazier's Appliance and Furniture Haskell, Texas 3c</p>

FINAL WINTER CLEARANCE!

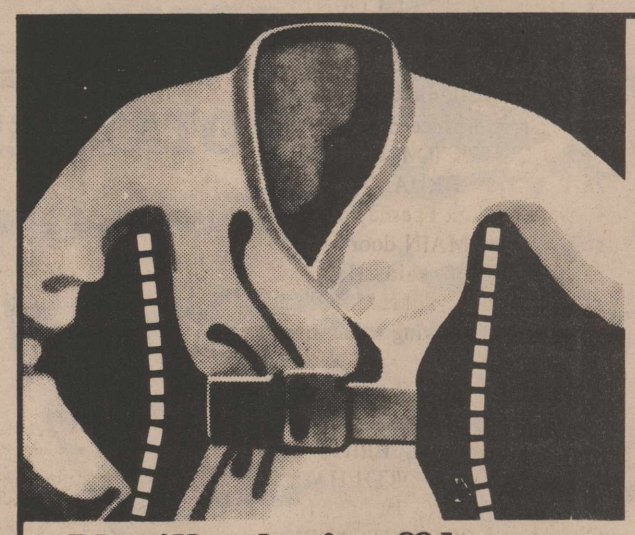
ALL SEASONAL APPARELS

1/2 PRICE

REDUCED STORE - WIDE

HASSEN'S

HASKELL



JOIN FOR ONLY

\$8

You Save \$17.00

You'll take it off here. We'll take it off here!

Take off Fast in 1989 with WEIGHT WATCHERS® New Quick Success® Program

- Last year, Weight Watchers members lost weight 20% faster than ever. This year, it's even easier.
- Our New Quick Success Program lets you enjoy the foods you like most so you'll never feel hungry.
- We've simplified our optional exercise plan and made our weekly meetings even more exciting.
- This is the weight loss program that you can really count on in 1989. Come discover it for yourself!



Sheila Falk, Area Director

JOIN NOW FOR ONLY... **\$8**

Registration Fee \$17.00
First Meeting Fee \$ 8.00
Regular Price \$25.00

YOU SAVE \$17.00
Offer Ends January 29, 1989

Come to the Weight Watchers meeting nearest you.

HASKELL
First Baptist Church
House of Life
203 North Avenue E
Tue: 6:30 pm

JOIN WEIGHT WATCHERS NOW!

Offer valid January 2 through January 29, 1989. Offer valid at locations listed (Areas 37, 96, 107) only. Offer valid for new and renewing members only. Offer not valid with any other offer or special rate.

Weight Watchers and Quick Success are trademarks of WEIGHT WATCHERS INTERNATIONAL, INC. ©WEIGHT WATCHERS INT'L. 1989

TOLL FREE
1-800-692-4329

Shop the Haskell Free Press

CLASSIFIEDS

Help Wanted

ATTENTION-HIRING! Government jobs-your area. \$17,840-\$69,485. Call 1-602-838-8885 EXT R 4517. 1-4p

GET PAID for reading books! \$3.00.00 per title. Write: PASE-J1232, 161 S. Lincolnway, N.Aurora, IL 60542. 1-4p

HELP WANTED: Experienced seamstresses. Sewing Factory, Hwy 80 West, Haskell. Apply in person. 1-4c

A COMPANY expanding into your area. Looking for several area people to work full time and make good money. Call 1-800-284-8004. 3-4p

Public Notices

NOTICE OF SHERIFFS SALE THE STATE OF TEXAS COUNTY OF HASKELL

By virtue of an Order of Sale issued out of the Honorable 39th Judicial District Court of HASKELL County, on the 12 day of Dec., 1988 by the Clerk thereof, in the case of HASKELL COUNTY APPRAISAL DISTRICT VS. MRS. LOULAH POSEY Cause #9830 and to me, as Sheriff, directed and delivered, I will proceed to sell, at 1:00 O'CLOCK P.M. on the 7TH DAY OF FEBRUARY, 1989 which is the first Tuesday of said month, at the MAIN door of the Courthouse of said Haskell County, in the City of HASKELL Texas, the following described property, to wit:

TRACT 1: FRACTIONAL LOT TWELVE (12) IN BLOCK TWENTY (20), IN THE TOWN OF SAGERTON, HASKELL COUNTY, TEXAS.

Levied on the 19 day of December, 1988 as the property of MRS. LOULAH POSEY to satisfy a judgment amounting to \$158.22 with interest from the 4TH DAY OF NOVEMBER, 1988 at 10 per cent, per annum, and all costs of suit in favor of HASKELL COUNTY APPRAISAL DISTRICT

GIVEN UNDER MY HAND THIS 19 day of December, 1988 Johnny L. Mills SHERIFF HASKELL COUNTY, TEXAS. 2-4c

NOTICE OF SHERIFFS SALE THE STATE OF TEXAS COUNTY OF HASKELL

By virtue of an Order of Sale issued out of the Honorable 39th Judicial District Court of HASKELL County, on the 12 day of Dec., 1988 by the Clerk thereof, in the case of HASKELL COUNTY APPRAISAL DISTRICT VS. RULE REALTY COMPANY, ETAL Cause #9831 and to me, as Sheriff, directed and delivered, I will proceed to sell, at 1:00 O'CLOCK P.M. on the 7TH DAY OF FEBRUARY, 1989 which is the first Tuesday of said month, at the MAIN door of the Courthouse of said Haskell County, in the City of HASKELL Texas, the following described property, to wit:

TRACT 1: LOT NOS. FIFTEEN (15) AND SIXTEEN (16), IN BLOCK TWENTY-SIX (26) OF THE ORIGINAL TOWN OF SAGERTON, HASKELL COUNTY, TEXAS.

TRACT 2: LOT NOS. SEVENTEEN (17) AND EIGHTEEN (18), IN BLOCK TWENTY-SIX (26) OF THE ORIGINAL TOWN OF SAGERTON, HASKELL COUNTY, TEXAS.

TRACT 3: LOT NOS. SEVENTEEN (17) AND EIGHTEEN (18), IN BLOCK THIRTEEN (13) OF THE ORIGINAL TOWN OF SAGERTON, HASKELL COUNTY, TEXAS.

Levied on the 19 day of December, 1988 as the property of RULE REALTY COMPANY, ETAL to satisfy a judgment amounting to \$268.96 with interest from the 4TH DAY OF NOVEMBER, 1988 at 10 per cent, per annum, and all costs of suit in favor of HASKELL COUNTY APPRAISAL DISTRICT

GIVEN UNDER MY HAND THIS 19 day of December, 1988 Johnny L. Mills SHERIFF HASKELL COUNTY, TEXAS. 2-4c

NOTICE OF SHERIFFS SALE THE STATE OF TEXAS COUNTY OF HASKELL

By virtue of an Order of Sale issued out of the Honorable 39th Judicial District Court of HASKELL County, on the 12 day of Dec. 1988 by the Clerk thereof, in the case of HASKELL COUNTY APPRAISAL DISTRICT VS. W. A. J. HALL Cause #9826 and to me, as Sheriff, directed and delivered, I will proceed to sell, at 1:00 O'CLOCK P.M. on the 7th DAY OF FEBRUARY, 1989 which is the first Tuesday of said month, at the MAIN door of the Courthouse of said Haskell County, in the City of HASKELL, Texas, the following described property, to wit:

TRACT 1: LOTS NOS. 5 AND 6 BLOCK 25 OF THE BROWN & ROBERTS ADDITION TO THE TOWN OF HASKELL, HASKELL COUNTY, TEXAS.

TRACT 2: LOT NO. 7 IN BLOCK NO. 25 OF THE BROWN & ROBERTS ADDITION TO THE TOWN OF HASKELL, HASKELL COUNTY, TEXAS.

TRACT 3: LOT NO. 8 IN BLOCK NO. 25 OF THE BROWN & ROBERTS ADDITION TO THE TOWN OF HASKELL, HASKELL COUNTY, TEXAS.

Levied on the 19 day of Decem-

Mary Kay
COSMETICS
Sara Hodgkin
Haskell
817-864-2031 1-4c

FLEX
Get up to \$5000 instant credit here.
Sherman's Carpets and Draperies
Haskell * 864-3513
Visa & MasterCard also accepted

Farm Equipment Consignment Auction
Sat., Feb. 4, 1989
Location: Herman Cox lot-3 miles North of Stamford on Hwy. 277.
Contact Herman Cox to consign or if you need hauling.
915-773-3656
Burns-Hutson Auctioneers
915-235-9639 Sweetwater, Texas TXS-013-0935 511c

NOTICE TO CONTRACTORS OF PROPOSED TEXAS HIGHWAY MAINTENANCE WORK
Sealed proposals for: Picnic areas, litter barrels, and grounds maintenance located on various highways in Haskell County (ies).
Will be received by the State Department of Highways and Public Transportation located at: 4250 N. Clack, Abilene, Texas until 11:00 a.m.; Wednesday, January 25, 1989 Then publicly read.
All prospective bidders are advised that there will not be a Pre-Bidders' Conference for this project.
Bidding proposals, plans and specifications will be available at the District Maintenance Office at 4250 N. Clack, Abilene, Texas Telephone (915) 673-3761.
Usual rights reserved. 2-3c

ber 1988 as the property of W.A.J. HALL to satisfy a judgment amounting to \$1,369.09 with interest from the 4TH DAY OF NOVEMBER, 1988 at 10 per cent, per annum, and all costs of suit in favor of HASKELL COUNTY APPRAISAL DISTRICT.

GIVEN UNDER MY HAND THIS 19th day of December, 1988. Johnny L. Mills SHERIFF, HASKELL COUNTY, TEXAS 2-4c

NOTICE OF SHERIFFS SALE THE STATE OF TEXAS COUNTY OF HASKELL

By virtue of an Order of Sale issued out of the Honorable 39th Judicial District Court of HASKELL County, on the 12th day of Dec. 1988 by the Clerk thereof, in the case of HASKELL COUNTY APPRAISAL DISTRICT VS. RAMON BERNAL & GREGORIA C. BERNAL Cause #9825 and to me, as Sheriff, directed and delivered, I will proceed to sell, at 1:00 O'CLOCK P.M. on the 7th DAY OF FEBRUARY, 1989 which is the first Tuesday of said month, at the MAIN door of the Courthouse of said Haskell County, in the City of HASKELL, Texas, the following described property, to wit:

TRACT 1: ALL OF OUT LOT NUMBER THIRTY-THREE (33) OF THE BROWN & ROBERTS ADDITION TO THE TOWN OF HASKELL, HASKELL COUNTY, TEXAS.

TRACT 2: LOT NOS. THREE (3), FOUR (4), FIVE (5), AND SIX (6) OF BLOCK TWENTY-SIX (26) OF THE BROWN AND ROBERTS ADDITION TO THE TOWN OF HASKELL, HASKELL COUNTY, TEXAS.

Levied on the 19 day of December 1988 as the property of RAMON BERNAL & GREGORIA C. BERNAL to satisfy a judgment amounting to \$993.21 with interest from the 4TH DAY OF NOVEMBER, 1988 at 10 per cent, per annum, and all costs of suit in favor of HASKELL COUNTY APPRAISAL DISTRICT.

GIVEN UNDER MY HAND THIS 19 day of December 1988. Johnny L. Mills SHERIFF HASKELL COUNTY, TEXAS 2-4c

NOTICE OF SHERIFFS SALE THE STATE OF TEXAS COUNTY OF HASKELL

By virtue of an Order of Sale issued out of the Honorable 39th Judicial District Court of HASKELL County, on the 12 day of Dec. 1988 by the Clerk thereof, in the case of HASKELL COUNTY APPRAISAL DISTRICT VS. JOE G. AVILA Cause #9824 and to me, as Sheriff, directed and delivered, I will proceed to sell, at 1:00 O'CLOCK P.M. on the 7th DAY OF FEBRUARY, 1989 which is the first Tuesday of said month, at the MAIN door of the Courthouse of said Haskell County, in the City of HASKELL, Texas, the following described property, to wit:

TRACT 1: TRACT OF LAND SITUATED IN HASKELL COUNTY, TEXAS, BEING A PART OF THE NORTH-HALF OF OUT LOT NO. 12 OF THE BROWN & ROBERTS ADDITION TO THE TOWN OF HASKELL, TEXAS. BEGINNING AT A POINT 452.5 FEET EAST OF THE SOUTHWEST CORNER

Decker Electric
Residential Commercial
Call for free electrical inspection
864-8926
We appreciate your business! 381c

Diaz Carpentry
Also Roofing & Mobile Home Service
905 S. Ave E
817-864-8004 Haskell, TX 79521 3p

OF THE NORTH HALF OF OUT LOT NO. 12 FOR THE PLACE OF BEGINNING AND THE SW CORNER OF THIS TRACT; THENCE NORTH 155 FEET FOR THE NW CORNER OF THIS TRACT; THENCE EAST 50 FEET TO THE NE CORNER OF THIS TRACT; THENCE SOUTH 155 FEET TO THE SE CORNER OF THIS TRACT; THENCE WEST 50 FEET TO THE PLACE OF BEGINNING, THE NORTH BOUNDARY LINE OF STATE HIGHWAY NO. 24 IS THE SOUTH BOUNDARY LINE OF SAID OUT LOT NO. 12.

Levied on the 19th day of December 1988 as the property of JOE G. AVILA to satisfy a judgment amounting to \$646.46 with interest from the 4TH DAY OF NOVEMBER, 1988 at 10 per cent, per annum, and all costs of suit in favor of HASKELL COUNTY APPRAISAL DISTRICT.

GIVEN UNDER MY HAND THIS 19 day of December 1988. Johnny L. Mills SHERIFF HASKELL COUNTY, TEXAS 2-4c

PUBLIC NOTICE
The Haskell Independent School District will accept bids for reroofing of the Secondary school main building until 3:00 P.M., Friday, January 27, 1989. Bid specifications are available at 605 North Avenue E, Haskell, Texas 79521 (817-864-2602). The Board reserves the right to reject any or all bids.
James Kemp Superintendent 2-4c

For Rent
FOR RENT: One bedroom furnished apartment with carport. Call 864-3509. 361c

FOR RENT: Office space at 314 N. 1st. Fully carpeted, paneled. Call for information, 817-864-2305. 491c

FOR RENT
1, 2, and 3 bedroom apartments. Gas and water paid. Also One 2 bedroom trailer.
Call 864-2504 or 864-3722. 3c

Apartments For Rent
2 bedroom, 1 bath, carpeted. 700 sq. ft.
Call Haskell National Bank 864-2631.

dealership log homes
Your complete Log Home Company has all of America's finest lines, starting at \$12,422. Great earning potential, will not interfere with present employment. Investment 100% secured by model home. Call Don Hickman Toll Free 1-800-633-0670.
COUNTRY LIVING LOG HOMES
P.O. Box 171080 Nashville, TN 37217

Real Estate

FOR SALE by owner. 3 bedroom, 2 bath, large utility room, new carpet, central heat and air. Cooling unit 2 years old. Corner lot, northeast part of town, good neighborhood. 864-2647 or 864-2793 after 5. 501c

FOR SALE: 3 bedroom, central H/A, nice cellar, 204 N. Av M. Make offer, 817-658-3291. 511c

FOR SALE: 103 N. Av L. (Behind laundry on 380). 2 bedroom mobile home with washer and dryer, new gas oven and refrigerator. Carpeted and refrigerated air. Chain link fence, carport and storage shed. Call 864-3218. 52-3c

HOME FOR SALE: 704 N. 4th in Haskell. 3 bedroom brick, Carrier heating and cooling, large backyard with water well. Call E. H. Tankersley, Route 1, O'Brien, Texas 79539. 658-3289. 521c

ROOMY 4 bedroom, 2 bathroom, brick house for sale. 1602 N Ave H. Call 864-2703 for appointment. 1-4p

Real Estate

MAKE AN OFFER: Remodeled 2 bedroom, nice yard, trees, garden spot, well. 1106 N Ave L. Immediate possession. 1-849-3272. 291c

LANCO
864-2629
510 N. 1st
FOR SALE

Two bedroom brick with 5 acres. SW of City.

4 bedroom, 2 bath brick with 6 acres on Rule Highway.

393 acre farm 7 miles east of Haskell. 212 acres in cropland. 181 acres in pasture. FM road frontage.

Duplex, clean, well located, and maintained. 100% occupancy for past 5 years. \$300.00 per month rent income. Cash Sale, \$15,000.00.

FOR RENT STORAGE STALLS

Real Estate

Sealed bids will be accepted through January 31, 1989 on John Bowers Estate property consisting of two, two bedroom dwellings located at 905 and 907 N. 2nd St, Haskell, Texas.

One has 1 and 1/2 baths, breakfast, utility, some furnishings, good well with pump and storage buildings, carport and fenced yard. One has fenced yard and storm cellar.

To be sold together under one bid. Executor reserves the right to refuse any or all bids.

For showing call
Hartsfield Realty
864-2665 864-2004 864-2332
Hess Hartsfield, Broker 211c

Real Estate

SEALED BID SALE
Sealed bids will be accepted through January 31, 1989 on John Bowers Estate property consisting of two, two bedroom dwellings located at 905 and 907 N. 2nd St, Haskell, Texas.
One has 1 and 1/2 baths, breakfast, utility, some furnishings, good well with pump and storage buildings, carport and fenced yard. One has fenced yard and storm cellar.
To be sold together under one bid. Executor reserves the right to refuse any or all bids.
For showing call
Hartsfield Realty
864-2665 864-2004 864-2332
Hess Hartsfield, Broker 211c

REAL ESTATE FOR SALE
CLOSE IN Remodeled two bedroom, 1 bath frame, carpet, range, carport and carport.
IDEAL FOR RETIRED COUPLE Arrowhead Motel Highway S. 277, 20 rooms, upstairs apt., manager's living quarters.
STATION Building on Highway 380 West.
NEED LISTINGS on two and three bedroom homes.
Frances Arend Real Estate and Insurance
Life-Major Medical-Medicare Supplements.
817-864-3880 817-864-3156

LORRAINE JOHNSON, BROKER
I am on call and ready to talk to you about your Real Estate at any time if you are interested in buying or selling please call me. I will try harder to please you.

EXTRA CLEAN 2 bedroom, central heating and cooling. Fenced yard, storage, carport. 105 N. M. A good buy.

3 bedroom, 1 1/2 bath mobile home at Kelso Park.

Large 3 bedroom with double attached garage, fenced yard, corner lot, clean.

LARGE 2 bedroom, 2 bath, double garage, shop building, fenced yard, exceptionally clean, corner lot.

Lake Cabin with lot. Lakeshore sites, large garage.

IN RULE: 3 bedroom, 2 bath. Has many extras. Water well, fenced yard, St. Bldg., fireplace. \$25,000.

EXTRA CLEAN 2 bedroom brick central H/A. Attached carport, large trees. 705 Union, Rule.

KNOX CITY 3 bedroom 2 bath, water well, fenced yard, den, living and dining room.

LARGE LIVING AREA with fireplace. 3 bedroom, double attached garage. North Avenue E. \$35,000.00

COMMERCIAL... one of Haskell's largest buildings, plenty of parking. Good location, make an offer.

EXCEPTIONAL Value: 4 bedroom, 2 bath, brick, set in fireplace, fenced yard, storm cellar, 3 ref. units.

Clothing store building ready to open in Haskell. All fixtures and a modern clean building.

IN ROCHESTER: Strickland home 2 blocks south of school. Extra clean inside and out.

Small cabin at Vedas. \$6000.00.

GOREE: 3 bedroom, 2 bath brick. \$39,500.00.

GOREE (2 for 1 special) 2 bedroom rock C/H.A. Also 3 bedroom frame. \$25,000.00.

GREAT LOCATION: 3 bedroom 2 bath brick, large shop building, fenced backyard, many extras, a neighborhood you'll be proud to call home.

Small 2 bedroom on Hwy. 380. \$4500.00.

OUTSIDE city limits. City water, 3 bedroom, 3 bath brick. Many extras. Fenced yard, storage, water well.

ILA MOODY HOME IN WEINERT. Make an offer.

GREAT NEIGHBORHOOD, 3 bedroom, formal L.R., den with fire box, large dining area, utility room, central heat, ref. window units, carport, storage.

WESTERN WIND MOTEL and Drive-in Restaurant in Rule, Texas. Reduced.

Paint Creek Hwy. Large 3 bedroom 2 bath with game room, white brick. Many extras.

LET YOUR DREAM come true! 3 bedroom, 3 bath with office space, large living area with fireplace this 2 story home has many built-ins and extras. Beautiful backyard with screened area, carport, garage and large shop building.

3 BEDROOM 2 bath with fireplace, fenced yard, large shop building, water well, storm cellar. Also has a small rent house. All on 10 large lots.

VEDAS. 2 bedroom double garage, large covered patio. Private boat dock. A beautiful lot.

JOHNSON REAL ESTATE
864-2951
Broker
Lorraine Johnson Lisa Sherman

SELLING HASKELL FOR OVER 25 YEARS
Hartsfield Realty
South Side of Square 864-2665

BUYING OR SELLING A HOME OR BUSINESS? We have skilled realtors to help you in every way from a market analysis to the closing. Over 25 years selling Haskell County.

THREE BEDROOM, one bath, 2 car garage, storage buildings. Garden plot. Very nice condition.

TWO STORY, 3 bedroom, two bath on full block. Appliances go with sale including washer-dryer, side by side electric and gas range, two refrigerators, one freezer, all new plumbing. New wiring. Also two bedroom stucco, barn full of hay, 2 wells with pumps. Crossed fenced, large trees. Priced to sell.

TWO-STORY, three bedroom, one bath, recently redecorated. Large living, dining, kitchen and extra large utility. Close to town and excellent buy.

GREAT LOCATION, 3 bedroom, 2 bath on N. Ave. H. Corner lot, large rooms, two nice porches. By appointment only.

LARGE TWO BEDROOM across from Elementary school. Large corner lot, extra clean, some furnishings, go with sale. Two car garage with storage, good concrete storm cellar, metal storage, water well with pump. Many shade and pecan trees. Owner financing.

BEAUTIFUL THIRTEEN BEDROOM, 1 1/2 ceramic tile bath with country decor. This one has it all...fireplace, large living-dining combination, built in hutch, oak cabinets, fenced yard. Many restored antique features. Property has building in back for business.

COUNTRY LIVING in city limit. Three bedroom, 2 bath with over four acres. House has living room with fireplace and insert, ceiling fans, all electric and large utility. Acreage is fenced with two barns, pens and lots of room for horses.

EXCELLENT BUY AT 107 N. Av A. Three bedroom 1 bath on nice corner lot, paved streets. Has central heat, new siding and panelling. Five ceiling fans, storm cellar, good well with pump. Reduced 20% for quick sale.

PRICE REDUCED. Nice two bedroom on small corner lot. Storm cellar.

FOUR BEDROOM 1 3/4 baths. Close in. In Northwest Haskell. Choice corner lot.

O'BRIEN
Nice, clean home near school, 2 bath, central heating and cooling, storm cellar, fireplace, water well. Priced to sell.

Hess Hartsfield, Broker 864-2004
Mary Rike 864-2332
Dorothy Hartsfield 864-2069
Esther Conn 658-3904

--Weinert--

by Myrtle Plemister

Weinert enjoyed a light snow this week, about 1 1/2 to 2 inches, with the 20 to 22° weather. It lasted through Saturday noon, but it cleared the air, froze a few insects, perked the wheat a bit, and perhaps helped a few allergy patients.

The sun came out bright and beautiful on Sunday and was just a perfect day.

There are no birthdays in Weinert this week, as far as I have found, and we will spend our time congratulating Donald and Gracie Griffis and Jerry and Doris Walker as they celebrate a wedding anniversary on the 24th. Congratulations!

Our sick are recuperating well. We are happy to report that Henry Rueffer is at home after spending many days in the hospital in Abilene following a heart attack. That was not a good way to celebrate an 80th birthday, we are hoping for a complete and quick recovery for him.

R. S. Sanders was in Knox City last week to visit with a cousin, Jessie Yost of Munday who was hospitalized there.

The Willie Farrell's are such good neighbors, and check on the sick in Weinert, as well as going often to the Haskell Nursing Center to visit with Garth Garrett, Ida's brother. We appreciate the Farrell's.

We extend sympathy to the Furrh family upon the death of L. S. (Boze) Furrh whose memorial services were held on Friday, January 13th. His family was one of Weinert's pioneer families, he was one of eleven children, and 90 year old "Boze" leaves behind two sisters, Dovie

Furrh and Mae Holcombe of Haskell. Many nieces and nephews still reside here. He was buried in the Stamford cemetery.

Those from Weinert who attended the services included Mr. and Mrs. J. A. Mayfield, Mr. and Mrs. Tiffen Mayfield, Clyde Mayfield, Jeff Teague, and Mildred Guess. Archie Mayfield of Plainview was here to attend the services with his parents, the John Mayfields.

Guests in the home of Florence and J. I. Alexander this week were Lucy Alexander of Phoenix, Arizona, and Mr. and Mrs. Bill White of Haskell.

Mary Murphy, with Lane and Shanna were at the Haskell Nursing Center to visit with our dear Ima Stewart whom we all miss to much. Ima sends greeting to everyone.

Mr. and Mrs. Rickey Perez was also one of Ima's visitors on Saturday.

Mr. and Mrs. Gus Rueffer were in Thorndale last week to attend the 50th wedding anniversary of Mr. and Mrs. Alfred Woelfel. Gus was an attendant in the Woelfel's wedding party, and it was a happy time of reunion for them all. The Rueffers spent some time in the home of their daughter, Catherine and Lawrence Schonertstedt, of Decatur and their children.

Wayne and Kelly Hutchinson of San Angelo were in Weinert for a weekend visit with her parents, the Johnny Earps, and attended worship services with them at the First Baptist Church.

Several members of the Foursquare Church were in Abilene on Sunday to attend the dedication services of the

New Hope Chapel, a new Foursquare Church sanctuary recently constructed. Bob Brown serves the church as pastor, and a feature story of him and his work ran in Saturday's Abilene Reporter News.

Our town was the scene of a recent train derailment, with two boxcars, a tanker and the caboose turning over and upside down. A brake-man in the caboose suffered the only injury, with some broken bones and burns caused from a battery stored there. He was hospitalized in Haskell.

Cause of the broken rails are unknown, but vandalism is not suspected. Three cranes were brought to Weinert to lift the cars back onto the tracks. The accident occurred about three a.m. so there were no witnesses to the accident.

Donnie Crump, pastor of the First Baptist Church, attended the Texas Baptist Evangelical Conference held in Ft. Worth last week. Many outstanding Baptist men were in attendance, including Charles Swendal, and Donnie reports it was an inspirational three days for him.

On Wednesday, there were approximately 10,000 people in attendance. The conference was held Monday through Wednesday.

Alice and Toby Yates were in Knox City on Monday to attend memorial services for Alice's cousin, Mrs. Morris (Arnell) Denton. Our sympathy.

January 22nd is Baptist men's day at the First Baptist Church. Jerry Hester and Johnny Earp will be the speakers at the morning worship service.

Marvin and Myrtle Plemister received word that their new great-grandson had arrived to bless the home of Jennifer and Gene Pollastro in Phoenix, Arizona. The 8 lb. boy will answer to the name Dominick Allen, and with his sister, 2 year old Emily, will call Lola Williams, of Harlingen, "Ma-Maw." The

Plemisters will spend a few days in Phoenix this week.

Mildred Sanders spent last week in Hamlin with grandchildren David and Kerri, while their parents, Terry and Beth Sanders attended the Baptist Evangelical Conference in Fort Worth.

We extend congratulations to Janet Frazier and her students in the elementary school for her participation in the writing pals program of the Weekly Reader. We know the Vermont children will enjoy news about Texas rural life.

We also congratulate Nan Reeves, daughter of Edwin and Nelta Reeves for being selected as the Outstanding Employee of the Year with her minor emergency clinic in Abilene. We are proud of you!

Have a nice day!

Rule student receives degree

Joyce Elaine Saffel was one of 164 students to receive degrees during summer commencement ceremonies at Abilene Christian University.

The daughter of Mr. and Mrs. Parnell Anderson of Rule, she received a bachelor of arts degree in communication disorders and graduated summa cum laude.

Jennifer Hefler rated outstanding

Jennifer L. Hefler of Bedford has been selected as a member of the Outstanding High School Students of America.

She is the daughter of Mr. and Mrs. Harold Hefler of Bedford and the granddaughter of Mr. and Mrs. W. B. Griffith of Haskell.

Membership in the select group is based on merit and accomplishment as a high school student.

Barbara Mandrell coming to Abilene

Well-known country singer Barbara Mandrell will perform a concert a 7:30 p.m. Feb. 23 in Abilene Christian University's Moody Coliseum.

Cost for the concert is \$15 per ticket. All seats are reserved. Tickets may be purchased by sending a check to Barbara Mandrell Concert, ACU Station, Box 8300, Abilene 79699.

The Amazon is too wide at many points for a person on one bank to see the opposite shore.

--Sagerton--

by Alice Bredthauer

There will be a meeting at the Community Center on Thursday night at 7 o'clock to plan for the annual Hee Haw show. Everyone is asked to please come at 7:00 January 26.

The Faith Circle met Tuesday at 2:30 in the Fellowship Hall of Faith Lutheran Church with Mrs. Mary Neinast holding the meeting since Mrs. J. B. Toney couldn't be there. Pastor Mel Swoyer had the topic. Mrs. Betty Balzer served the refreshments to the following people: Mrs. Louise Stegemoeller, Mrs. Lena Schaake, Mrs. Lillie Lehmann, Mrs. Henrietta Stegemoeller, Mrs. Alvin Bredthauer, Mrs. Mary Neinast, Mrs. Glyn Quade, Mrs. Norma Tredeymer, Pastor Mel Swoyer and Mrs. Betty Balzer.

Mr. and Mrs. Herbert Lammert of Rule visited in the home of Mr. and Mrs. Alvin Bredthauer Wednesday afternoon.

Clarence Stegemoeller and Joe Clark are in the Stamford hospital.

There will be a meeting of the Sagerton Water Supply Corporation Monday, Jan. 30th at 7:00 in the Community Center which is very important for everyone to attend.

Those who went to Abilene Thursday to bowl were Mr. and Mrs. Alvin Bredthauer, Mrs. Adela Niedieck of Sagerton, Mr. and Mrs. Herbert Williams, Herbert Rinn of Rule, Mr. and Mrs. Fred Teichelman of Hamlin.

Those who enjoyed the fellowship and food in the Fellowship Hall of Faith Lutheran Church last Thursday were Sis Smith, Mrs. Lena Boedeker of Stamford, Mrs. Minnie Monse, Delbert and Joyce LeFevre, Kathy and Russ Teichelman, Herbert and Velma Lou Lammert, Glyn and Ethel Quade, Anton and Evelyn Teichelman, Reece and Francis Clark, G. W. and Ophelia LeFevre, Franklin and Isbell Mrazek, J. B. Toney.

Mr. and Mrs. Alvin Bredthauer visited Clarence Stegemoeller and Byron Lewis in the Stamford hospital Sunday afternoon.

Mr. and Mrs. Jimmy Teichelman, Chad and Greg had lunch in the home of Mr. and Mrs. Herbert Teichelman Sunday.

Those who visited in the home of Mr. and Mrs. J. B. Toney were Rene Toney of Abilene, Mr. and Mrs. Bruce Toney and Tara of Haskell, also J. B.'s mother who is spending some time with the Toneyes.

Those who have birthdays this week are Mrs. Norva Smith, Clarence Stegemoeller, Marvin Stegemoeller, Fred Baitz, Tommy Davis, Craig

Smith, Arthur Knipping, Tommy Manske.

Mr. and Mrs. Delbert LeFevre went to Abilene Saturday to help their grandson Tully celebrate his first birthday.

The Sagerton Club will meet Thursday in the home of Mrs. Herbert Stremmel.

Ema and Walter Schaake visited in the home of Mr. and Mrs. Arthur Knipping Sunday and others that also visited in the Knipping home were Mrs. Danny Lammert and Paige, Mr. and Mrs. Clancy Lehmann, Pastor Mel Swoyer and Mr. and Mrs. Dan Rinn.

Mrs. Ladain Anderson is visiting in the home of Mr. and Mrs. Reece Clark and her brother, Van Laughlin of Rule.

Mrs. Mary Neinast visited in the home of Mrs. J. E. Walling Saturday and played 42 with the ladies.

-School Menu-

LUNCH

Monday: Old fashioned pizza, buttered corn, cole slaw, orange halves, milk, juice or tea.

Tuesday: Soft taco, grated cheese, lettuce and tomatoes, pinto beans, banana pudding, milk, juice or tea.

Wednesday: Hoagie on buns, french fries with catsup, pickle spears, fruit cocktail, milk, juice or tea.

Thursday: Steak fingers with gravy, creamed potatoes, tossed salad dressing, peanut clusters, milk, juice or tea.

Friday: No school.

BREAKFAST

Monday: Juice or fruit, cereal, milk.

Tuesday: Juice or fruit, biscuits with jelly, milk.

Wednesday: Juice or fruit, waffles with syrup, milk.

Thursday: Juice or fruit, buttered toast with honey whip, milk.

Friday: No school.

(Menus subject to change)

For health insurance with old-fashioned personal attention, see me.

Brian Burgess
703 N Ave E,
Haskell
817-864-3250

Personal Health Insurance
the State Farmway!

STATE FARM
INSURANCE
Like a good neighbor,
State Farm is there.

State Farm Mutual Automobile Insurance Company
Home Office: Bloomington, Illinois

We do not have words to express our thanks and love for you, for all the kindness, love and support you gave us during the illness and death of our loved one. Every prayer, call, card, flowers, food, and memorial is a blessing.

God Bless You Each

The family of Tom Ed Simpson

In Banking— It's People who make the difference!



Ladell Opitz, Vice President and Auditor

As the bank's internal auditor, Ladell's responsibility is to the Board of Directors. Her reports to them are made from her official examination of the accounts. She has been with the bank since 1967.

Ladelle is married to Milbert Opitz. They are active members of Trinity Lutheran Church. Children and grandchildren are an important part of her leisure time.

**You Know Us. We Know You.
Your Partner in the Community.**

Haskell National Bank

Member F.D.I.C.
601 N. 1st Haskell, Texas 864-2631

Summer Sausage	Ready To Eat, Lb.	\$1.49
Pork Roast	Lb.	\$1.29
Sausage	Store Made Lb.	99¢
Bacon	No 1 Sliced Lb.	\$1.19
Mac. & Cheese Dinner	Kraft	39¢
Ketchup	Parade 28 oz. Bottle	99¢
Cheez Whiz	8 oz.	\$1.19
Wolf Chili	19 oz. Can	\$1.29
Vlasic Pickle Chips	32 oz. Jar	\$1.39
Hominy	Van Camp 3 14 1/2 oz. cans	\$1.00
Garden Seed	Your Choice, Package	39¢
Kleenex	250 Count Box	\$1.19

POGUE GROCERY

-Extra Parking Behind The Store. Home Owned and Operated-
113 North Avenue E Phone 864-2015 Haskell, Texas

Thurs. Fri. Sat.
Specials