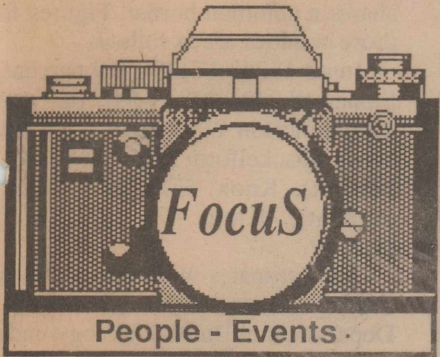


1/1/89
Baze Book Binding
514 W 7th St
Amarillo TX 79101

Amarillo--CCCCC ZZXXXXXXXXXXXXX
End Of Amarillo
Amarillo Bag TX 79100



THE HASKELL FREE PRESS

35¢

VOL. 103--NO. 1

HASKELL, TEXAS 79521, January 5, 1989

12 PAGES-ONE SECTION

Annual chili supper Tuesday

The annual bean, chili and cornbread supper of the Haskell County Junior Livestock Association will be next Tuesday (Jan. 10).

Serving will be from 5 to 8 p.m. in the Haskell High School cafeteria.

Tickets to the "all-you-can-eat" affair are \$4 for everyone 12 and older. Children 6 to 11 will pay \$2 at the door and those 5 and under will be admitted free. Take out orders will be \$4, regardless of age.

Advance tickets are available from any member of the association, any county 4-H or FFA member or from the county extension office. They also will be available at the door.

Proceeds from the supper will help finance the annual Haskell County Junior Livestock Show, scheduled this year on Jan. 27-28.

Registration hours given for students

New hours have been set for registration for spring semester classes at the Haskell extension center of Western Texas College.

Registration will be Thursday, Jan. 12, at Haskell High School. Hours will be 11 a.m. to 1 p.m., 2:30 to 5 p.m. and 6:30 to 7:30 p.m. Classes will begin Jan. 18.

Textbooks will be sold during registration.

Courses on the spring schedule are Criminal Justice 132 and 138, English 132 (two sections), Government 231 and Music 232 (music for elementary teachers).

Coordinator for the Haskell extension center is Mrs. Pat Blakely who may be reached at 864-2949.

City has engravers to mark property

The City of Haskell has purchased three engraving machines to assist in the recently organized Neighborhood Watch program.

An engraving machine may be borrowed without charge for 24 hours by any citizen coming by City Hall to sign it out.

Citizens are being encouraged to mark their television and VCR sets and other possessions with their driver's licenses' numbers. City administrator Robert Baker said a driver's license is much easier to verify than a Social Security number and that it will provide positive identification in a court of law.

Retail Merchants

Members of the Haskell Retail Merchants Committee will meet at 7 a.m. Friday at Kountry Kookin'.

Population

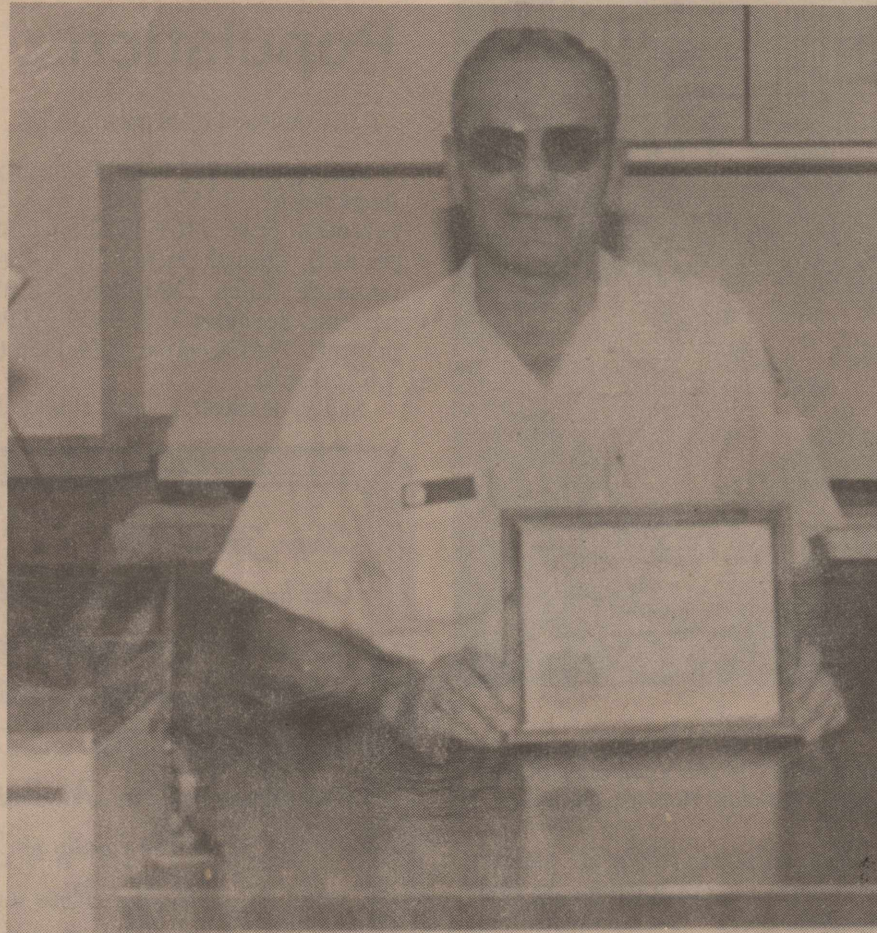
Estimate places Haskell loss at 517

The population of Haskell decreased by 517, or 13.67 percent, between 1980 and 1987, according to estimates released last month by the Texas Department of Commerce's State Data Center (SDC).

While the official population of Haskell in the 1980 census was 3782, the SDC estimates the 1987 head count was 3265.

Rule, Rochester, Weinert and O'Brien also decreased in population, according to the SDC estimates.

Rule fell from 1015 to 875 (13.79 percent), Rochester went from 492 to 437 (11.18 percent), Weinert from 253 to 233 (7.91 percent) and O'Brien



Achievement award

Veteran postal clerk Glenn Darden of Haskell has received a special achievement award in recognition of noble service to the U.S. Postal Service. Darden led all postal clerks in the 795 ZIP area in the sale of express mail during a three-month contest period. Darden has been with the Postal Service 28 years.

Baird man named postmaster here

James Robert Park has been appointed postmaster at Haskell, effective Dec. 31.

Park, 49, a native of Baird, has been postmaster at Baird for the past seven years.

He succeeds Joe Alves who was transferred last year to the Abilene post office. Lola Gholson of Aspermont has been filling in as officer in charge.

Park graduated from Baird High School and is a member of the First Baptist Church. He and his wife, JoAnn, have three children, Karen and Sharon of San Angelo, and Brenda of Baird. He is the son of Mrs. Luna Park of Baird.

The oath of office will be administered at 10 a.m. next Wednesday, Jan. 11, at the Haskell

Post Office.

Postmaster selections are made on the basis of merit from a list of qualified candidates submitted to the sectional center by a Review Committee. The Review Committee, composed of a division director from the same division, a sectional center director from the same sectional center and a postmaster from a different section center, reviews the applicants for the position and recommends to the sectional center manager the candidates for interview.

The sectional center manager then selects and recommends to the division manager for appointment the candidate who best meets the position requirements.

Indians place two on all-area team

Two members of the 1988 Haskell Indian football team were named to the Abilene Reporter-News all-area team.

Bo Watson, senior offensive center and defensive end, and Derrick Billington, running back and defensive back, won first-team honors on the select group.

Watson, a four-year starter for the Indians and a two-time all-district selection, was a mainstay on both offense and defense for the Indians.

Billington was honored despite a

bothered season in which he suffered a season-ending injury in the first quarter of the seventh game.

Haskell was the only district 7-2A team with two members of the all-area squad.

Other 7-2A players chosen were Randy Guerra, Hamlin lineman; Monty Hall, Anson quarterback; and Eddie Hall, Stamford end. Receiving honorable mention were Eric Keen, Stamford running back, and Todd Harrison, Stamford quarterback.

Young Brazilian girl visiting friends here

By Wendell Faught

A 19-year-old Brazilian girl arrived in Haskell Christmas Day to spend three months with local friends. She also hopes to learn a great deal about the U.S., Texas, Haskell, schools, churches, American culture and the English language.

Valeria Rocha Ramos of Cubatao in the state of Sao Paulo became acquainted with a Haskell group last March when she served as interpreter for delegates to the International Crusades who had gone to Brazil on a Baptist Church mission. Among those delegates were Mike New, Julie Walker and Darrell and Connie Feemster of Haskell. (The Feemsters have since moved to Lampasas.)

New and his wife, Teresa, picked up Valeria at Dallas/Fort Worth Airport and brought her to their home in Haskell. She also will be spending time with Mrs. Walker and her husband, Kevin, before returning to Brazil March 30.

When she gets home, she will begin her third year of study at Pontificia Universidade Catolica. The university is 56 kilometers from her home and it takes her four hours to reach the campus by bus, subway and then bus again. Five days a week, she attends classes between 2 and 6:30 p.m., after which she spends another four hours getting home.

In college, she is concentrating on languages and American literature since she plans a career as a translator. In addition to Portuguese, the native tongue of Brazil, she speaks English, French and "some Spanish", she says.

Valeria sees her visit to this country as an opportunity to learn more about America and its cultures and to perfect her English. She wants to help in the church since she hopes to continue with the religious crusades. She also is interested in visiting some universities to get ideas on enrollment procedures and costs as she would like to attend a university in this country in the future.

Her Haskell hosts say they will look into the possibility of enrolling her in an English class at either high school or college level.

Valeria says she is excited about being in Haskell and visiting with people "who are very special to me." She hopes to have a chance to visit other Americans she met during the International Crusades. The Feemsters stopped by to see her Tuesday as they were passing through Haskell.

Also excited is the New family, including the three New boys, Joshua, 9, Micah, 6, and Aaron, 2. "Aaron already is learning Portuguese," Mrs. New laughs.

Back home in Cubatao, Valeria is



Valeria Rocha Ramos ... visits Haskell friends

a licensed manicurist and a certified secretary. She is the oldest sibling in a family of four girls and two boys. Her father is a brick mason and her mother a hairdresser.

There are a lot of things she wants

to see in her first visit to the U.S. One of them is snow, something unknown in her part of the world where winter temperatures never fall below 40 degrees.

Indians, Maidens play Hamlin next

Haskell basketball teams, both riding at the top of the district 7-2A standings, entertain Hamlin here Friday night.

Due to semester tests next week, there will be no games Tuesday. The district race will resume Jan. 13 when Haskell travels to Hawley.

The Indians made it 2-0 Tuesday night at Albany by running past the Lions, 79-41. Dusty Meeks scored 24 points, Brad Bevel had 17 and James Rike 16 as the Indians brought their season record to 13-3.

The Maidens scored a 68-50 victory over the Lady Lions to make their district record 4-0. A 23-point outburst in the third period overcame a 33-27 halftime deficit and the Maidens went on to win easily.

Missy Davis scored 18 points, Joy

McKeever scored 17 and Dala Harris and LaKay Gibbs each had 14.

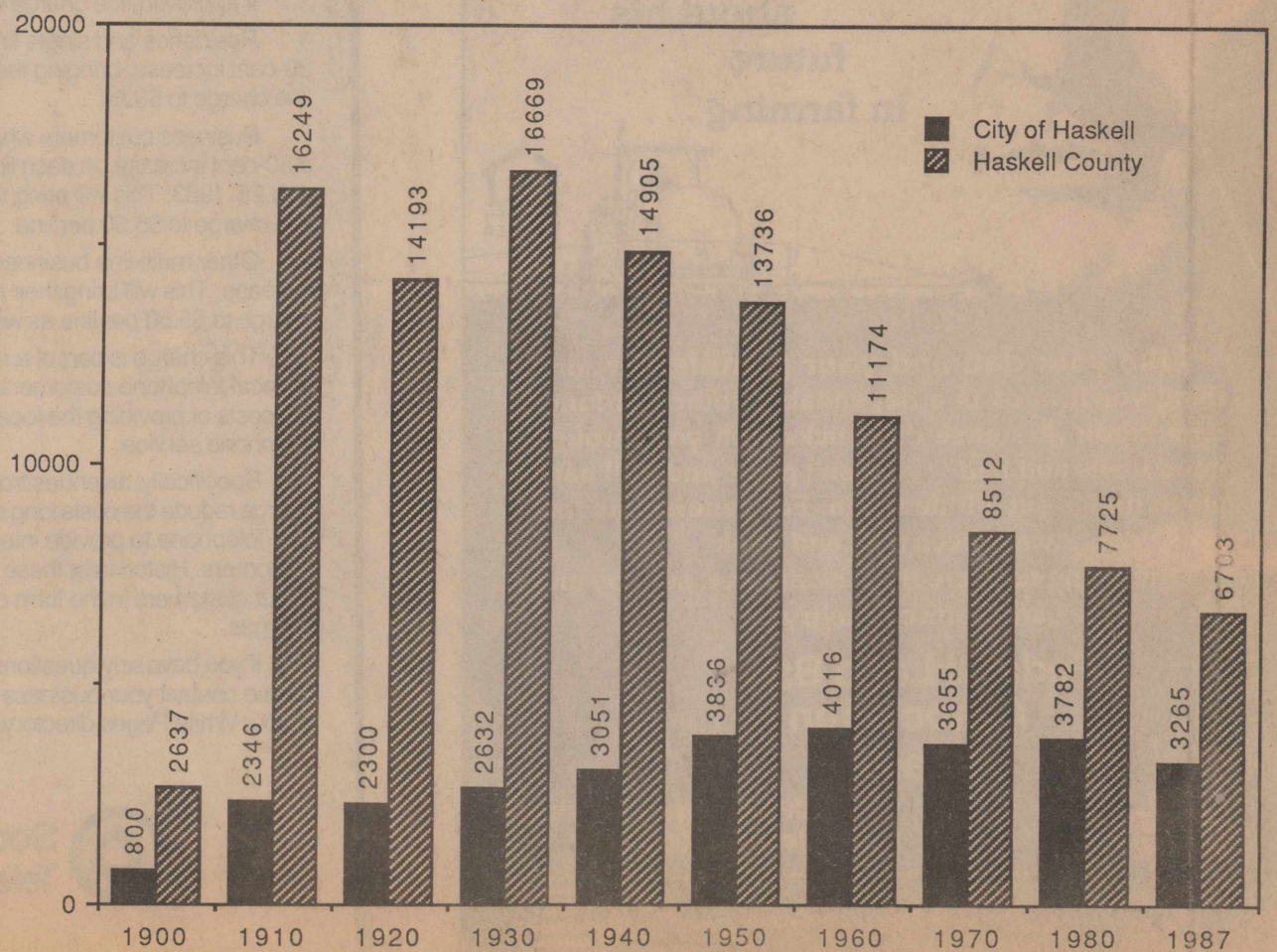
How dry it was...

It was dry in Haskell in 1988. Official rainfall for the year measured 20.63 inches, or 3 1/2 inches below the normal of 24.13, said Sam Herren, weather recorder.

Moisture during the month of December measured 1.23 inches. Normal for the month is .89.

Temperatures during the month ranged from a high of 75 degrees on Dec. 23 to a low of 22 on Dec. 28. There was a trace of snow on Dec. 9.

Haskell's changing population



(Continued on page 2)

State tournament tickets available

Haskell basketball fans are reminded that tickets to the state tournaments may be purchased in advance.

The girls' tournament will be Thursday through Saturday, March 2-4, and the boys' tournament Thursday through Saturday March 9-11.

The day has come and gone when you can assure yourself of a ticket to the UIL tournaments by just showing up at the window.

Until the past two years, a lengthy line in cold blustery winds was about the worst penalty you had to pay for waiting until game day to buy your tickets.

No more. As thousands of fans have discovered too late, the last four Class 5A sessions have been sold out. Not SRO; sold out. Lots of people drove long distances to find that they weren't going to the game after all.

Last year's Class 4A championship game drew a near-capacity crowd of 15,000 fans, and will probably be a sellout this year.

The only way to assure yourself a seat for the game of your choice is to

buy an all-tournament ticket through the advance ticket sale offered by the UIL.

All-tourney ticket sales for both boys' and girls' UIL state tournaments will begin Tuesday, Jan. 17, at the Frank Erwin Center's box office in Austin and will remain on sale until 11 a.m. on the Thursday of each tournament. Box office hours are 10-8 on weekdays, 9-6 on Saturday. An all-tournament ticket, priced at \$35, entitles you to the same reserved seat for all nine sessions of either tournament.

As a convenience, tickets may be ordered by phone, using either VISA or Mastercard. Call (512) 477-6060 to charge tickets or for further information. There is a \$2 per order convenience charge on phone orders.

TRY THIS

As the cold winds howl, warm your family from the inside out with Cincinnati-style chili. Serve chili with beans over cooked spaghetti noodles. Top with shredded cheddar cheese and chopped onions.

--Haskell Nursing Center--



Volunteer honored

Vivian Shaw, right, was honored last month as "Texas Volunteer of the Year" for her volunteer work with residents of Haskell Nursing Center.

By Mary Beth Hunt

The month of December was especially enjoyable for the residents of Haskell Nursing Center. Our Christmas party was held on the 16th. Family and friends, as well as old St. Nick, were on hand to make this a wonderful occasion for all.

Throughout the month, caroling was done by the various scout groups as well as by the church choirs. Our residents always enjoy this special music.

There were many gifts given or

donated and they were all greatly appreciated and cherished for the kind thoughts.

We would like to take this opportunity to express our sincerest thanks to all of you volunteers, church, civic and social groups for all your many hours of kind work done for us. Words cannot express the pleasure you bring into our lives.

There was a resident meeting called to discuss our New Year's resolutions, which are as follows:

(1) We will all try to live closer to

God.

(2) We will do our best to stay well.

(3) We will each endeavor to do something nice for someone, at least once a day.

The residents and staff would like to extend a warm welcome to our new administrator, Mrs. LaFerne Terrell and also welcome back our bookkeeper, Mrs. Mary Jennings.

We will be looking forward to seeing all of you in 1989.

population during the seven-year period was much greater, both in number and in percentage, than any of the seven counties with which it shares a common border. Figures for those counties are as follows:

Jones 17268-17113 (-0.9 percent), Stonewall 2406-2284 (-5.07 percent), Throckmorton 2053-2016 (-1.8 percent), Shackelford 3915-3668 (-6.3 percent), Knox 5329-5227 (-1.9 percent), King 425-388 (-8.71 percent).

The estimates were developed by staff at Texas A&M University's Department of Rural Sociology under contract with the Texas State Data Center. This is the second annual set of estimates for Texas counties and municipalities prepared under the SDC program. The report provides detailed estimates by age, sex and race/ethnicity for all 254 counties. The data is available in paper copy from the Department of Commerce.

You are reading The Haskell Free Press and we thank you.

Population...

(Continued from page 1)

Albany 2450-2285 (-6.73 percent); Aspermont 1357-1299 (-4.27 percent), Post 3961-4022 (+1.29 percent), Quanah 3890-3721 (-4.34 percent); Rotan 2284-2080 (-8.93 percent), Seymour 3657-3439 (-5.96 percent), Throckmorton 1174-1155 (-1.62 percent).

Sadly, Haskell County's loss in

Dear Friends:

Our heartfelt thanks goes out to everyone who in any way shared with us during the lengthy illness and loss of our dear husband and father. The cards, flowers and food were greatly appreciated. A special thanks to Mr. and Mrs. C. E. Gary for all their love and support, to Dr. McSmith for his concern and help.

The family of Jose Martinez Sr.
 Marcy, Rosa and Danny Rodriguez,
 Joe Jr., Isabell and Martin Perea

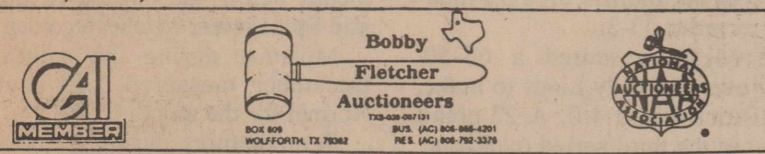
**For Your Sheet Metal Work
 Water Storage Tanks
 All Kinds of metal duct work**
 See or call:
Guinn Sheet Metal & Plumbing
 817-658-3341 L.C. Guinn Knox City, TX

AUCTION

SATURDAY JANUARY 7, 1989 10:00 A.M.
JOHN PIKE, L.B. COX, JR. & OTHERS—Owners
RULE (HASKELL COUNTY) TEXAS
 Located: 1 mile East of Rule, Tx on US 380

- TRACTORS:**
 1-1979 John Deere 4240 diesel tractor, LOADED & NICE
 1-1975 John Deere 4430 diesel tractor, cab clean, 18.4-34 rubber, Sn. 044978R
 1-1978 IHC 1086 diesel tractor, new clutch and pressure plate 18.4-38 rubber, Sn. 2610181030819
 1-1970 John Deere 4020 diesel tractor, cab. GOOD
PICK-UPS:
 1-1979 Ford F150 1/2 ton custom pick-up, 400 engine, 4 WD
 1-1978 GMC 1/2 ton pick-up, 4 WD
 1-1967 Ford 1/2 ton pick-up utility bed
HARVEST EQUIPMENT:
 1-1976 AC 860 self-propelled cotton stripper with Ladd Bros. basket extension
 2-John Deere 283 cotton strippers
 2-8 ft. x 9 ft. x 32 ft. cotton trailers, BIG 12
 1-8 ft. x 9 ft. x 28 ft. cotton trailer, BIG 12
 5-8 ft. x 9 ft. x 24 ft. cotton trailers, BIG 12 & COBEY
 8-8 ft. x 8 ft. x 24 ft. cotton trailers, VARIOUS CHASSIS
EQUIPMENT:
 1-Case International front-end loader, model 2355, Mount-O-Matic, NEW
 1-8 row John Deere planter, folding bar, with individual picker wheel planters
 1-8 row Lilliston rolling cultivator
 1-8 row Hamby sweep rig, double 4x4 bar
 8-IHC planter units
 1-6 row John Deere planter, fiberglass boxes, 60 series
 1-6 row John Deere planter
 1-21 ft. ROC sweep rig, double 4x4 bar
 1-21 ft. ROC cultivator, double 4x4 bar
 1-21 ft. ROC disc lister, double 4x4 bar
 1-23 ft. Speed King springtooth harrow
 1-19 shank ROC ripper plow, triple 4x4 bar
 1-9 shank ROC Wedge ripper plow
 1-6 row dry fertilizer rig, on 8 row 4x4 bar
 1-6 row Lilliston cultivator
 1-6 row John Deere cultivator w/rolling fenders
 1-6 row 7 1/2 disc-bedder
 1-6 row Yetter gang rotary hoe
 1-13 shank Hamby hoeme
 1-14 ft. IHC grain drill, 10 in. spacing
 1-7 shank Big-Ox ripper plow
 1-15 shank Graham hoeme chisel plow
 1-14 ft. John Deere tandem disk
 1-6 row ROC cultivator
 1-6 row ROC fertilizer rig, double tool bar
 2-6 row Hamby knifing slides
 1-3 row sandlighter, SM
 1-8 row ROC cultivator, spring shank, triple tool bar
 1-6 row John Deere rolling cultivator
 1-4 bim. John Deere moldboard, drag type
 1-6 row ROC Bedknifer, double tool bar
 1-16-8 John Deere grain drill
 1-6 row Stalkcutter, SM
 1-2 wheel stock trailer, SM
 1-John Deere seed trailer
 1-Utility trailer, tandem axle
 1-6 row scraper
 1-4 row lister, SM
 1-14 ft. MM tandem disk
 1-3 bim. John Deere moldboard
 2-1000 gal. nurse tanks
 2-200 gal. spray tanks
 1-500 gal. fuel tank on skids
 1-500 gal. fuel tank on stand
 1-300 gal. fuel tank on stand
 1-16 ft. cattle feeder on wheels
 1-2 row Ford planter
 1-2 row Ford cultivator
 1-2 row Ford slide
 1-2 row Ford fertilizer rig
 1-2 bim. John Deere moldboard
 1-4 row stalkcutter, drag type
 2-1 row antique horse-drawn moldboards
 1-lot of cultivator sweeps, chisel points, buster points, buster wings, and planter plates.

CONSIGMENTS WELCOME
 CONTACT:
WALLACE ALLISON
 Rt. 1, Rule, Texas TXS 1944 817/997-2561



**SERVING THE BIG COUNTRY
 FOR 42 YEARS...**

IT'S TIME TO CHECK FOR RODENT INFESTATION

Rodents like warm weather ... so when it gets cold outside, they go inside. Rats, mice and other unwelcome guests may be in your home now. Call the experts and make your home rodent free.

FOR A NO-OBLIGATION ESTIMATE,
 Collect
CALL 915-677-2413

Public Notice

On December 30, 1988, Southwestern Bell Telephone filed tariff revisions with the Federal Communications Commission (FCC) to institute the last scheduled increase in the FCC-approved customer line charge. This monthly charge appears on the Detail of Charges page of your Southwestern Bell Telephone bill.

If approved, the charge will increase on April 1, 1989.

Residence and single-line business customers will incur a 30-cent increase, bringing their monthly FCC-approved customer line charge to \$3.50.

Business customers who have Centrex service will realize a 50-cent increase on each line installed or ordered before July 28, 1983. This will bring their monthly FCC-approved customer line charge to \$5.50 per line.

Other multi-line business customers will incur a 10-cent increase. This will bring their monthly FCC-approved customer line charge to \$5.50 per line as well.

This charge is part of a nationwide plan originated by the FCC so local telephone customers would more directly contribute toward the costs of providing the local portion of their long distance telephone service.

Specifically, revenues from the FCC-approved customer line charge reduce the costs long distance companies pay Southwestern Bell Telephone to provide interstate long distance services to our customers. Historically, these cost savings have been passed on to our customers in the form of decreased interstate long distance charges.

If you have any questions or need additional information, please contact your business office at the number listed in the front of your White Pages directory.



To a young man wondering about his future in farming...

Like your dad and your grandfather, one thing you'll need is a dependable source of long-term credit. A source that sticks with you through good times and bad... doesn't panic and pull back when things get a little tough. For generations that has always been the Land Bank.

When long-term credit is the answer, stop by and see how the Land Bank can help you.

Federal Land Bank Association of Haskell
 Dale Bullinger - President
 Telephone 864-2062

Part of the Farm Credit System

★ YOUR HOME ★
 THE RIGHT HOME—THE RIGHT PRICE—RIGHT NOW!

We're professional builders, helping you decide what kind of home you want. We can draw up your plans, build, paint and wire your new home. Also Remodeling, Custom Cabinets

TURNER CONSTRUCTION
 DALE TURNER, OWNER
 817-658-3165

TAX PLANNING

Written By
James E. Rodgers, CPA

1989 TAX DEADLINE SCHEDULE

Clip and save this schedule of important tax deadlines to help you keep track of some of the major requirements in the next several months.

Before April 15 - Apply for social security numbers for any dependents you'll be claiming on your 1988 tax return who are five years or older. On your 1989 tax return, you'll need numbers for dependents two years or older.

January 17 - Due date for the fourth installment of 1988 estimated tax.

January 31 - Employers must furnish W-2 statements to employees. 1099 information statements must be furnished by banks, brokers, and other payors.

January 31 - Employers must file 1988 federal unemployment tax returns and pay any tax due.

February 28 - Businesses must file information returns (such as 1099s) with IRS; employers must send W-2 copies to Social Security Administration.

March 1 - Farmers or fisherman who did not make 1988 estimated tax payments must file tax returns and pay taxes in full.

March 15 - 1988 calendar year corporation income tax returns are due.

April 17 - Individual income tax returns for calendar year 1988 are due unless you file for an automatic extension.

April 17 - First installment of 1989 individual estimated tax is due.

April 17 - 1988 partnership information returns are due.

April 17 - 1988 annual gift tax returns are due.

April 17 - Deadline for making your 1988 IRA contribution.

Call our office for more information or for assistance with any filings required of you in 1989.

Sponsored By
JAMES E. RODGERS & COMPANY
 Certified Public Accountant
 20 Southwest Third Street



Youth hunt

Several Haskell County boys participated in a deer hunt Dec. 17-18 at the Early Ranch, operated by Patrick Pace, Jerry Hannsz and Sam Pace.

Youths participate in first annual hunt

The first annual Youth Hunt was held over the Dec. 17-18 weekend on the Early Ranch in Haskell County. Patrick Pace, Jerry Hannsz and Sam Pace, who operate the ranch, allowed Steve Barbour, local game warden with the Texas Parks and Wildlife Department to select five young boys from the county to come to the ranch for a special spike buck and doe hunt.

Steve then asked the five vocational agricultural teachers in the county to each select one boy to make up the five.

Don Ballard of Rule chose Johnny

Cole, Rod Townsend of Rochester selected Brian Holmes, Duane Gilly and James Bevel of Haskell chose Jeffrey Brister and Heath McMeans and Steve Green of Paint Creek selected Mark Green, no relation. Each sponsor accompanied the boy at the hunt with the exception of Green and Townsend who were unable to attend.

Groceries and supplies were donated by Modern Way, Pogue's Meat Processing and The Sweet Shop of Haskell; Thriftway of Stamford; Tanner Grocery of Rule; City Grocery of Rochester; and Mryle and Vernay

Address at the Anchor. Ken Nevins of Sweetwater, game warden in Nolan County, furnished the tent which the boys stayed in. Nevins hosts the annual deer hunt for underprivileged children which has been held for several years at the 69 Ranch at Maryneal.

Helping host the hunt in addition to the vo-ag teachers were Bobby Joe Lusk, cook, and guides Casey Hannsz, Jerry Hannsz, Sam Pace and Patrick Pace. Chuck Vest, Jones County game warden, assisted Barbour. Others present to enjoy the outing were Joseph Pace, Lynn Pace Jr., Shawn Barbour (Steve's son) and Keith Holmes, brother of Brian Holmes.

The hunt was considered by all to be a success. Two deer were harvested, a spike by Jeffrey Brister and a doe by Brian Holmes. However, Johnny Cole came close on two separate occasions. Food was great and the weather was perfect. It is hoped that the hunt can become an annual event on the Early Ranch.

Thanks were expressed to Steve Barbour. Everyone had a fun and rewarding weekend that would not have been possible if not for this man. He put in several hours away from his family and traveled many miles collecting food and supplies to make the outing possible.

Wylie falls

Indians crush Bulldogs, 68-46

The Haskell Indians avenged one of the three losses on their record Friday night with a convincing 68-46 victory over the 3A Wylie Bulldogs at Wylie.

After leading only 11-9 at the end of the first period, the Indians scored 18 points in the second quarter while holding the Bulldogs to 6 and building up a 29-15 advantage by intermission. They outscored Wylie 17-13 in the third quarter and 22-18 in

the final frame.

Dusty Meeks led the Indian scoring with 21 points, Brad Bevel had 17 and Chan Guess scored 11 to pace the attack.

It was the 12th victory for the Indians against three losses. (The Indians have split two games each with 3A Vernon and Wylie. The other loss was to 4A Mineral Wells.)

Haskell	11	18	17	22	-68
Wylie	9	6	13	18	-46

Maidens win cliffhanger

The Haskell Maidens came from behind in the last quarter to register a 62-61 victory over Wylie in Wylie Friday night and improve their record to 11-5.

Wylie, which entered the game with a 12-3 record, led 35-24 at halftime. After falling behind by 15 points in the third period, the Maidens poured it on in the final

minutes. Joy McKeever scored 10 points in the final quarter, including a field goal with 17 seconds left which brought her team from behind.

Missy Davis led Haskell scoring with 19 points, followed by McKeever with 18 and Dala Harris with 12.

Haskell	12	12	24	14	-62
Wylie	15	20	18	8	-61

Gas tax would hurt economy

Levying additional federal taxes on motor fuels to reduce the federal budget deficit would further strain Texas' struggle toward economic recovery and destroy the user-tax concept for financing highway improvements, Robert H. Dedman, chairman of the state high commission, says.

"A 30-cent increase would put 525,000 persons out of work by the end of 1990," he said.

During its December meeting, the commission passed a special resolution condemning the scheme.

-BIRTHS-

Rick and Deena Hacker of Weinert are proud to announce the birth of a baby girl. Jordan Mackenzie Hacker was born at 3:12 a.m. on Dec. 26 at Haskell Memorial Hospital. She weighed 8 pounds and measured 18 1/2 inches.

Grandparents are Mr. and Mrs. C. L. Hacker of Knox City and Mr. and Mrs. Jerry L. Walker of Weinert.

Jordan also has a big sister, Meredith, of Wichita Falls.

January Clearance

1/3 to 1/2 off

Begins Thursday
January 5

Kids Duds

Haskell
817-864-3852

January
Clearance Sale
Savings of
50% to 75%

No layaways
All Sales Final

Family Boutique
Knox City

After
Christmas
Sale

SAVE 1/4 TO 1/2!

Now Play Santa To Yourself. The Lane Felker Quality that is always at the top of your wish list is on sale!

A bountiful selection of fashions for women and girls, Storewide.

Lane-Felker Inc.

"WEST TEXAS' FASHION CENTER"

Phone 817-864-2266
Haskell, Texas 79521

Coty Silkstick Lipstick **\$1.49**
24 Silky Moist Colors
Reg. \$4.35

L'Origan & Emeraude **\$5.50**
Fragrances
\$10.75 - \$11.50 Value

Emeraude **\$4.50**
Hand & Body Lotion
10 oz Bottle

Johnson
PRESCRIPTION PHARMACY

418 N First Haskell 864-3331 • Night Dial 864-3439

January Clearance Sale

Fabulous Reductions on
Early Fall and Winter Merchandise

50% to 70% off

Finer Groups of Sportswear

Coats -- Blouses -- Sweaters
Skirts & Pants

Coats - Fashions Finest

Wool Blends -- Tissavel Furs and others
A Very Select Group

Dresses - A great selection

Many in Fabrics that Know No Season
Sizes for all

Sportswear -- An Exciting Group of
broken styles - colors - Sizes

A great selection for that extra piece you might need

Robes -- Short & Full Length

Fleece included

Fur Trim Tams - Caps - Scarfs - Gloves

Hanes Anniversary Sale Continues

Reg. \$3.95 to \$7.50

Now \$3.16 to \$6.00

Special Group discontinued

Styles and colors

1/2 price

THE *Personality* SHOPPE

The family of Correne Montgomery wishes to express our gratitude for all the kindness shown us during our bereavement.

We appreciated the lovely flowers, cards, food and the memorials, but most of all, we shall always remember the compliments paid to Mother and the concern shown for ourselves. We tend to forget how warm and caring people in a small town can be, but the people in Haskell truly reminded us.

We especially want to thank the members of the Paint Creek Methodist Church and Rev. Kenny Kirk.

Dianne, Suzie, and Families

Shoe Sale

NOW
in
Progress

Buy One Pair of Shoes
at regular price and get

another pair for only.....

Paying the Price of the
More Expensive pair
All Sales Cash and Final



The Slipper Shoppe

864-3051

817-864-3051

Haskell, Texas

SERENDIPITY

Serendipity means SURPRISE!

East Side Baptist Church

in Haskell invites you to hear this surprise guest on January 15 at 7 p.m.

SURPRISE!

Serendipity is free of charge and a love offering will be taken.

Watch next week's paper for the unveiling of Serendipity!

Jerry Hitt to appear in concert at East Side

Jerry Hitt will appear in concert Jan. 15 at East Side Baptist Church, 600 N. 1st. The program begins at 7 p.m.

Hitt, a native of Slaton, grew up in Post. He majored in applied piano at Hardin-Simmons University, served in the Air Force and toured with the armed forces entertainment company, "The Flying Blues." Afterwards, he continued his studies at the University of Texas and then signed with a personal manager and agent in Dallas. He toured the country 12 years, playing and singing in major hotels, supper clubs and concert halls.

His radio credits include the "Pop Echols Show" in Lubbock and his television credits include the "Danny Thomas Show", "Spring Byington Show", "Merv Griffin Show", "Live from Las Vegas", "Billy Miller Show," and local TV shows from coast to coast. He has appeared with such stars as Dean Martin, Englebert Humperdink, Jack Jones and Patti Page.

He has several recordings to his credit, including "Golden Hits from Hittland", "You've Got a Friend", "Jerry Hitt", "New Hits from Dallas", "Jerry and Joanna Do Cole

Porter" "The Great Indoors Presents Jerry Hitt" and "This Is My Life."

After touring for 12 years, Jerry opened The Great Indoors club in Dallas featuring shows and dancing nightly, and occasional concerts featuring stars such as Jerry Van Dyke, Martha Raye, Billy Daniels and Marilyn Maye.

He went back on tour with a 17-piece show, then returned to Dallas and opened a new supper club called The Great Indoors. The club was open for three months when the Holy Spirit started convicting him to get out of the club business, which he immediately did. He moved to Austin and attended Allandale Baptist Church where he went through deliverance. He worked as a water blaster in

Austin for about a year while serving as church pianist at Allandale, after which he became the church pianist and church printer.

In September 1985, Jerry joined with Jack Taylor as a member of the Praise Team at Anchor Church of Fort Worth where he is currently serving as minister of worship. He keeps busy doing concerts, retreats, praise conferences and revivals throughout the country.

TRY THIS

Add shredded cheddar cheese to crumb topping in apple crisp. Or, combine the shredded cheese with the pastry dough when making apple pie or dumplings.

STAMFORD • THRIFTWAY • THRIFTWAY • THRIFTWAY

THRIFTWAY

STORE HOURS: 8:00 A.M. TO 8:00 P.M. SEVEN DAYS A WEEK 8-8:00 SUNDAY

PRICES EFFECTIVE JANUARY 5 THRU 11th 1989

1513 N. SWENSON AVE STAMFORD, TEXAS

PHONE 773-5701

WE ACCEPT FOOD STAMPS & MANUFACTURERS COUPONS

WE RESERVE THE RIGHT TO LIMIT

<p>SHURSAVINGS</p> <p>Tomato Sauce</p> <p>8 for 99¢</p>	<p>SHURSAVINGS</p> <p>Shortening</p> <p>42 oz. can</p> <p>99¢</p>	<p>SHURSAVINGS</p> <p>MILK</p>  <p>\$1.79 Gal.</p>
---	---	---

<p>SHURSAVINGS</p> <p>SUGAR</p> <p>\$1.49 5 LB. BAG</p>	<p>SHURSAVE</p> <p>PAPER TOWELS</p> <p>3/\$1</p>	<p>SHURSAVINGS</p> <p>SALTINE CRACKERS</p> <p>2/99¢</p>
---	--	---

<p>SHURSAVINGS</p> <p>CORN & GR. BEANS</p> <p>3/99¢</p>	<p>SHURSAVE</p> <p>FRENCH FRIES</p> <p>2 LB. PKG. 2/\$1</p>	<p>SHURSAVINGS</p> <p>BABY DIAPERS</p> <p>48 MED/32 LGE. PKG.</p> <p>\$4.99</p>
---	---	---

USDA GRADE "A" Pilgrims Pride

WHOLE FRYERS 49¢ LB.



<p>SHURFINE WHOLE HOG</p> <p>99¢</p> <p>1 LB. ROLL</p> 	<p>WRIGHT'S Sliced Slab</p> <p>BACON 99¢</p> <p>LB.</p> 
---	--

— THE THRIFTWAY CHALLENGE —

CHECK OUR RECEIPT TAPE AGAINST ANYONE ELSE! WE'RE YOUR TOTAL STORE - COMPARE THE TOTAL DIFFERENCE

<p>RED RIPE</p> <p>TOMATOES</p>  <p>39¢ LB.</p>	<p>ALL PURPOSE</p> <p>POTATOES</p> <p>15 LB. BAG</p> <p>\$1.49</p> 
--	--

ACCEPT THE THRIFTWAY CHALLENGE! DOUBLE COUPONS EVERY DAY

Stamford Chiropractic Clinic

1511 Columbia * Stamford, 773-5012

Hours: 9-5, Mon., Tues., Thurs., Fri. & Wed. 9-12

Knox City Hours: Wed. & Sat. 9-12

Clearance Sale

in Full Swing

1/3 off

on all Fall & Winter Merchandise



409 S First Haskell, Texas

all sales final MasterCard & VISA Welcome

Save Every Day With Us!

<p>Visine Eye Drops</p> <p>1 oz.</p> <p>\$3.19</p> 	<p>Value Rite Effervescent Cold Relief</p> <p>20 Tablets</p> <p>\$1.59</p> <p>Compare to Alka Seltzer Plus</p>	<p>Tylenol Cold Medication</p> <p>5 oz. Bottle</p> <p>\$3.29</p> 
<p>New Ban</p> <p>Antiperspirant Deodorant</p> <p>4 oz. Ass'd. Fragrances</p> <p>\$1.39</p>	<p>Some of Many Reasons To Make Us "Your Drug Store"</p> <p>Three Pharmacists to Consult With You About Your Medications</p> <p>24 HOUR EMERGENCY PRESCRIPTION SERVICE</p> <p>Open 365 Days a Year</p> <p>8 a.m. to 6 p.m. weekdays</p> <p>8:30 to 10:30 a.m. Sundays and Holidays</p> <p>P.C.S., Blue Cross, PAID, Medicaid, and</p> <p>30 day Charge Accounts Welcome</p> <p>Computerized Records Kept for Insurance and Tax Purposes</p>	<p>Home Permanents Assorted Brands</p> <p>25% off</p>
<p>Fiber Con Bulk Forming Fiber Laxative</p> <p>36 Tablets</p> <p>\$3.59</p>	<p>SENIOR CITIZEN DISCOUNT</p> <p>10% Prescription discount Given to Persons over 60</p> <p>Years of Age if the Prescription is picked up at the Store and Paid at time of purchase.</p>	<p>Crest Toothpaste</p> <p>All Flavors</p> <p>6.4 oz. Tube</p> <p>\$1.69</p>
<p>New! Children's Nyquil</p> <p>Nighttime Cold Medicine</p> <p>4 oz. Bottle</p> <p>\$3.09</p> <p>Prices Good January 5 - 11th</p>	<p>DRIVE-IN WINDOW FOR YOUR CONVENIENCE</p> <p>DELIVERY SERVICE For Those Who Are Homebound or Just Unable to Come After Their Prescriptions</p>	<p>IT'S TAX TIME!</p> <p>If you had a Prescription filled at The Drug Store in 1988 and would like a computer printout of your Prescription Profile for Insurance and Income Tax Filing - Come by! We'll be happy to help you!</p>

DOYLE HIGH'S THE DRUG STORE

Fast, Friendly Service at a Competitive Price

100 S Ave E • Haskell • 864-2515

M SYSTEM

Your FRIENDLY

AFFILIATED SUPER MARKETS

Haskell, Texas
 Open 7 days a week
 Monday-Saturday 7:30 a.m. til 8 p.m.
 Sundays 8 a.m. til 7 p.m.

DOUBLE COUPONS 7 DAYS A WEEK!

We will redeem your manufacturers' cents-off coupons for double their face value up to 50¢ when the product is purchased. We will double only one coupon per item. All others redeemed at face value. Limit one coupon per item. Coupon not to exceed value of item. This policy does not include "Free" coupons, cigarette and tobacco, or refund coupons. Offer good for a limited time only. Super value offer from M-System in Haskell.

We Gladly Accept Food Stamps

Prices Good
 January 5th thru 8th

We reserve the right to limit quantities.



Our New Year's Resolution For Savings



Crisco Oil

48-oz. Bottle

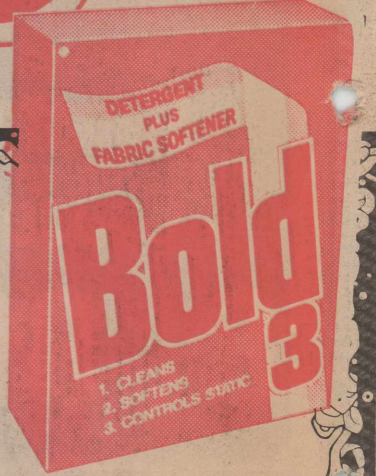
\$2³⁹



HUNTS
TOMATO SAUCE
 8 OZ. CAN

4/\$1

40¢ Off Label



Bold Detergent

42-oz. Box

\$1⁶⁹

All Varieties Excluding Angel Food

Duncan Hines Cake Mixes

68¢

Ea. Limit 2

GLADIOLA
 POUCH MIXES
 6 oz.

3/89¢

Charmin Bathroom Tissue

4-Roll Package

White, Yellow or Blue. Limit 1 Package with \$10.00 or More Grocery Purchase

99¢



DAWN

Dish Liquid
 40¢ off Label
 22-oz. Bottle
 Regular or Mountain Spring

\$1³⁹

CITRUS HILL
 Select



Orange Juice
 REGULAR OR PLUS CALCIUM

12-oz. Can

Your Choice! **\$1³⁹**



Saltine Crackers

NABISCO, REGULAR OR UNSALTED
 16-oz. Box

Your Choice! **88¢**

Spill-Mate

Paper Towels
 Assorted or Print

Jumbo Roll

69¢



150-count

Puffs Facial Tissue

Your Choice! **\$1³⁹**

GLADIOLA
FLOUR

5-lb. Bag

89¢



CLOROX BLEACH

99¢



COFFEE

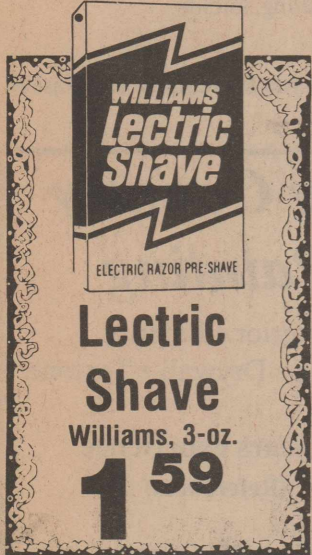
Shurfine Regular, Drip or electropark
 1-lb. Can

\$1⁸⁹

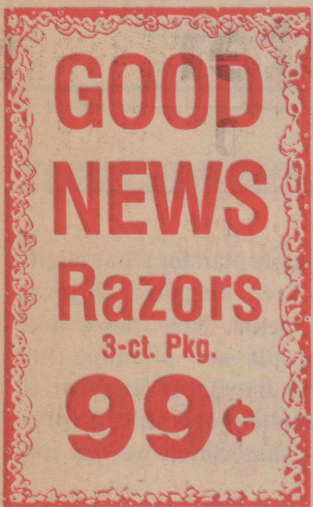




Contac Capsules
10-count Package
3 49



Letric Shave
Williams, 3-oz.
1 59



GOOD NEWS Razors
3-ct. Pkg.
99¢



Vivarin Tablets
16-count Pkg.
1 69

Beef Stew MEAT
Boneless, Pound
1 89

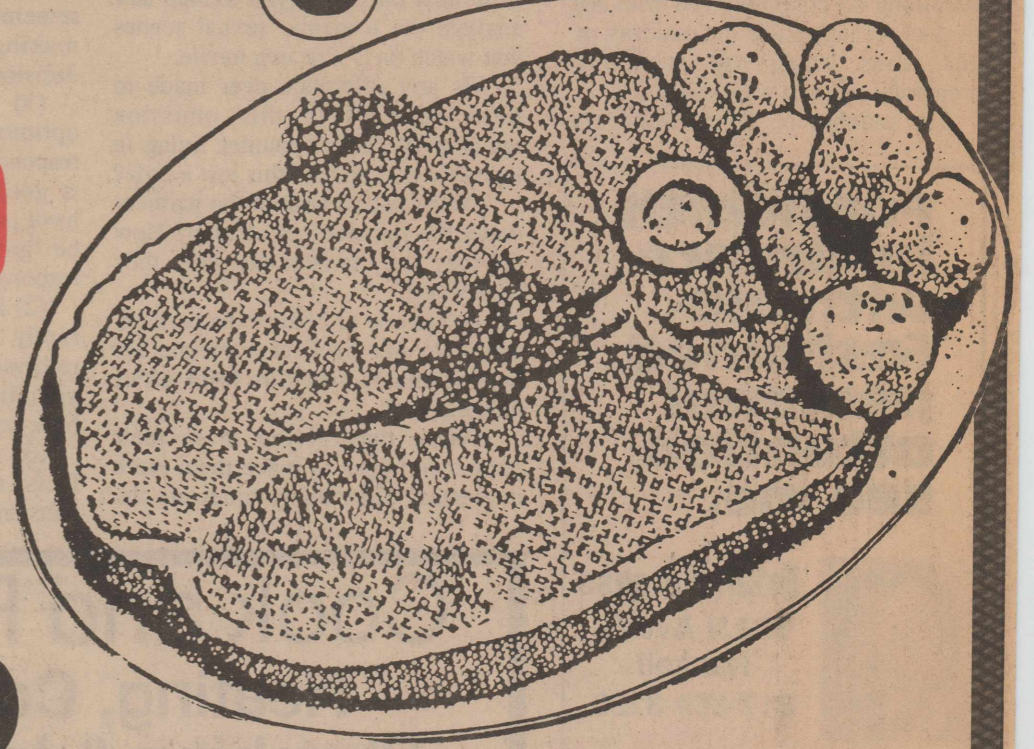
GROUND BEEF
Lb.
1 49

Our New Year's Resolution For
Savings

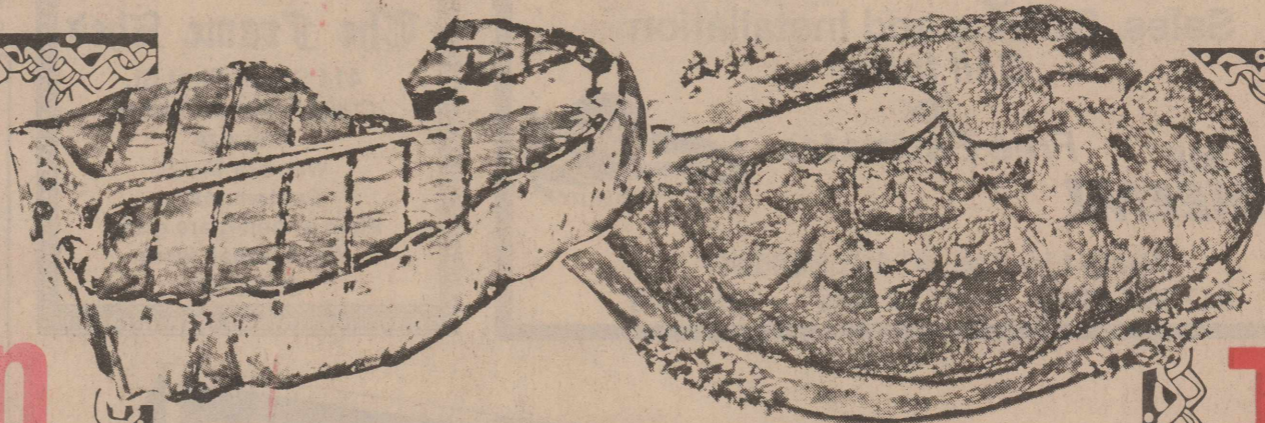
BEEF Specials!

Full Cut or Bone-in **\$1 39**
Round Steak
Pound

Boneless Round Steak...Lb. **1.59**

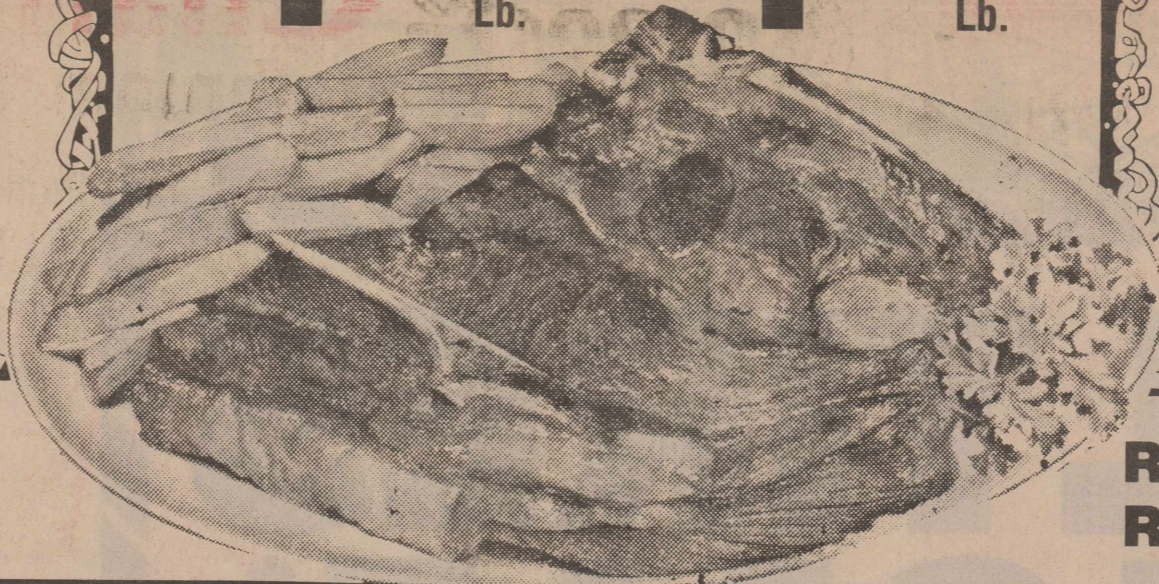


BONE-IN Sirloin Steak
\$2 29 Lb.



BONE-IN CHUCK ROAST **1 69** Lb.
BONE-IN Chuck STEAK **1 89** Lb.

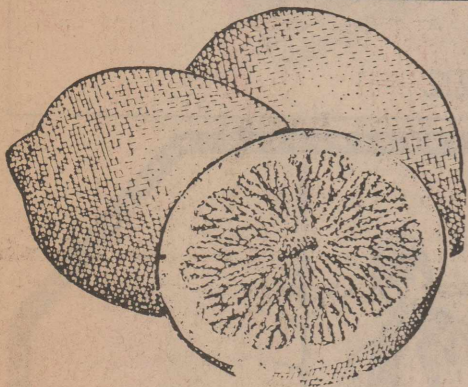
TENDER T-Bone Steak
\$3 89 Lb.



Rump or Arm ROAST **1 99** Lb.

TENDER STEAK SIRLOIN TIP
2.49 Lb.

BONE IN BEEF Shoulder Steak
2.19 Lb.



FANCY Dole Lemons
165-count size
Full of Juice!
6 \$1 For

LARGE PERSIAN LIMES
Pound
99¢

Del Mineola Tangerines
Tangy and Juicy!
59¢ Lb.

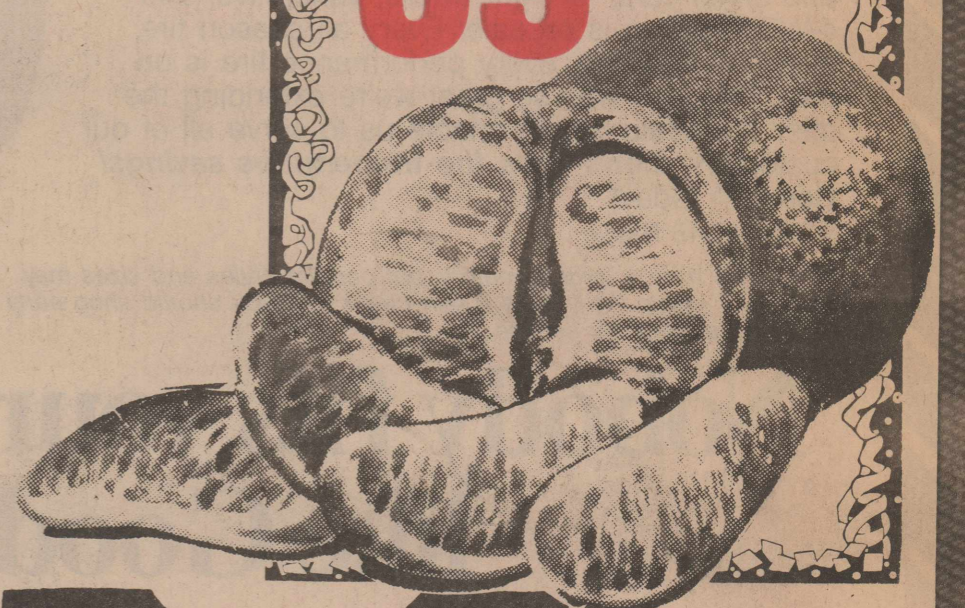
Texas Ruby Red Grapefruit
5-lb. Bag
99¢

Texas Ruby Red Grapefruit
48-count Size
5 \$1 For



Texas JUICE Oranges
From the Valley!
5-lb. Bag
99¢

California Navel ORANGES
Full of Juice!
88-ct. size
Lb. **49¢**



M SYSTEM
Your FRIENDLY
AFFILIATED SUPER MARKETS

Challenges of youth

Teen pregnancy and sexuality

By Lou Gilly
County Extension Agent
Home Economics
(Sixth in a Series)

Sometime during every week of a young person's life, he/she views a romantic sexual scene either on TV or in a movie. These scenes are becoming so commonplace with the lives of teenagers that the majority of our teens today are accepting premarital sex as a way of life.

The number of Texas teenagers

marrying is increasing at a rate four times that of all Texans, and teenage marriages fail at a rate up to three times greater than marriages of older persons. The greater likelihood of marriage failure occurs when the marriage is pregnancy-related.

Now that I have your attention, from now on I want you to stop and analyze the romantic sexual scenes you watch on TV or in a movie:

--Is any reference ever made to birth control? Is this omission realistic? Wouldn't couples living in today's world discuss this just a little?

--Were one or both of the partners under the influence of alcohol? How did they feel the next day when they were sober?

--Were one or both of the partners trying to get back at someone for hurting them? Did this brief affair help matters?

--Were they giving in to their partner in hopes to make them more interested? How many times are the

sex partners ignored and discarded for a good moral person?

--Is anything ever perfect 100 percent of the time? Sexual experiences portrayed in TV shows and in movies always seem to be ideal. Is this realistic?

After you have analyzed the sexual situations you watch from now on, remember you are responsible for making efficient and effective decisions about your sexual activity.

(1) Recognize that there are options. You have the right and responsibility to make the choice that is good for you. If you choose to have premarital sex are you ready to be "grounded" for 18 years with the responsibility of raising a child?

(2) Be open to re-decision. There rarely are issues that are forever resolved. It is never too late to change your lifestyle and feel better about how you act.

(3) Learn to base decisions on facts, not emotions. Deal with the facts and then celebrate. The facts are

that 50,000-plus teenage girls between the ages of 15 and 19 and 1,000-plus under 14 in Texas become pregnant each year.

(4) Evaluate options. Look at the best and worst that could happen if a certain option is chosen. The best that could happen is that you won't become pregnant but could be left with deep emotional scars. The worst is that you could become pregnant, have to drop out of school, give birth to an unhealthy baby and have to remain on welfare for the rest of your life.

(5) Take the initiative. By being on the offensive in decision making, we improve our chances of getting what we want. Anything worth having and doing is worth waiting for.

(6) Accept that all decisions won't be good ones. The evidence to make "perfect" decisions rarely exists. If you do make a wrong decision about your sexual activity and are expecting a baby, take care of yourself and your baby so you both will be healthy.

(7) Be persistent in following through after making a decision. When you have decided to say no to premarital sex, don't let yourself be pressured into changing your mind for fear of hurting someone's feelings.

SAYING NO

There are lots of ways to say no when it is appropriate to do so. It's all right to be different once in a while. Real friends respect your individuality and honesty. Bucking

the crowd can actually be a source of strength, and so can speaking up in an effort to change minds among your friends.

Peer pressure is often a power play. People who try to control other people may not be as confident as they seem. Your own insecurities sometimes may make you follow people against your better judgement. Friends who are pressuring you may be feeling pressure themselves and may even be relieved if someone else has the courage to say no and to explain why.

People admire those who offer new ideas and seem confident of themselves and their beliefs. Saying no doesn't have to mean being left stranded by friends and peers. One can disagree and gain support by offering a better idea. A polite "No, Thank You" will have a better effect than a rude or insulting refusal. Giving a reason without being critical is less threatening to the other person. Using humor eases the tension and takes the spotlight off a refusal.

Suggesting alternatives will let friends know that you still want to be with them, even if you don't want to do what they have suggested. Sometimes you have to be direct, while at other times you can simply avoid an activity or a situation. Sometimes you have to give a reason, and sometimes you can just say no.

DID YOU KNOW?

It may be surprising to learn that sour cream contains only 25 calories per tablespoon while mayonnaise contains 101 calories per tablespoon.

Teen suicide doubles in Texas

Teenage suicide rates have more than doubled in Texas over the past decade, making it the third leading cause of death among young people, after accidents and homicide.

A recent spate of teen suicides in the Dallas, Austin and San Antonio areas has prompted the Texas State Teachers Association to publish thousands of informational brochures for Texas parents as well as its 95,000 members. The brochures alert teachers and parents to warning signs exhibited by students who may be contemplating suicide.

Thank you for reading The Haskell Free Press.

Big Country Painting

Interior • Exterior
Painting • Drywall • Textone

15 years experience
(References)

Free Estimates

Danny Myers
Contractor

817-864-2859

For health insurance with old-fashioned personal attention, see me.



Brian Burgess
703 N Ave E,
Haskell
817-864-3250

Personal Health Insurance
the State Farm way!

Like a good neighbor,
State Farm is there.

State Farm Mutual Automobile Insurance Company
Home Office: Bloomington, Illinois

Cook and Rodela
Heating, Cooling,
Plumbing & Insulation
Sales, Service and Installation

Call today for
Free Estimates
CALL ME RHEEM!

State License: #TACLB006947

817/864-2226 • 15 N. Ave • Haskell

The Frame Shed

411 South First St.
Custom picture frames
Any size
Wood or Metal
Custom mats
Plain or non-glare glass
We do repair work
864-2901

"DECISIONS MADE EARLY"

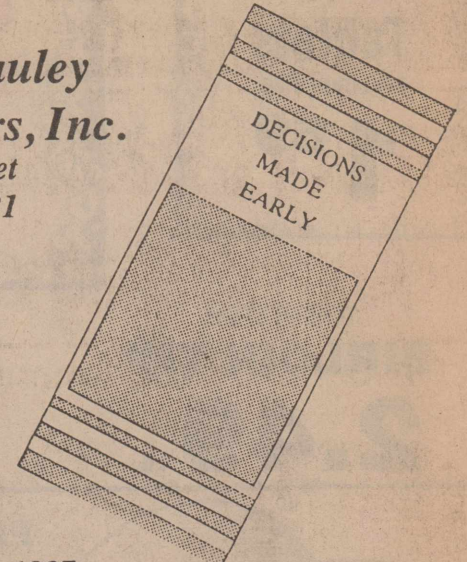


Simply come by or call and we will come by to see you.

Many people plan for what might happen—fire, burglary, injury, and accidents. Now more and more people are planning for what will inevitably happen. It simply makes good sense to prepare for that which we can not avoid.

Pre-need funeral arranging allows one to control the type of service they would prefer, select a means of financing it, freeze the prices at to-days price, and save loved ones the anguish of deciding these matters at a later date. Really it is the loving thing to do for your family.

Holden - McCauley
Funeral Directors, Inc.
304 No. 2nd Street
Haskell, Tx. 79521
864-2151



Earning your trust since 1937



TODAY'S FARMER: BUILDING A BRIGHT FUTURE

The American farmer has set standards for innovation and productivity that are a model for the entire world. We're proud to be a part of that continuing success, and look forward to doing everything we can to keep American agriculture moving forward in the years to come.



Post Office Box 10
Phone (817) 997-2216
Rule, Texas 79547

The Farmers
NATIONAL BANK



ALL TIRES ON SALE*

No matter what you drive...No matter how you drive...You'll save on the quality Goodyear tires you need.

This is the time to buy! Every radial, every bias ply tire Goodyear makes is on sale. Every sidewall styling, every size is on sale. Every tire for big cars and small cars, for light trucks, vans, RVs, and 4-WD vehicles is on sale. Every all season tire, every off-road tire, every performance tire is on sale. Demand was so great we're extending the offer thru Saturday to enable us to serve all of our customers. **Don't miss the tremendous savings!** Come in today!

*Except S4S Radial

NOTE: We have a large inventory, but popular styles and sizes may sell out of stock. We'll issue a rain check, but you should shop early for the best possible service.

Nobody fits your tire budget like Goodyear.



Just Say Charge It!
You may use Goodyear's own credit card or MasterCard or Visa.

PRICES, LIMITED WARRANTIES, CREDIT TERMS, AND AUTO SERVICE OFFERS SHOWN AVAILABLE AT GOODYEAR AUTO SERVICE CENTERS. SEE ANY OF THE BELOW LISTED INDEPENDENT DEALERS FOR THEIR COMPETITIVE PRICES, WARRANTIES AND CREDIT TERMS.

RAIN CHECK--If we sell out of your size we will issue you a rain check, assuring future delivery at the advertised price.

ANDERSON TIRE CO.

206 S. AVE. E • Haskell, Texas • 817/864-2900

Indians win over Wylie



★ **MEDICARE SUPPLEMENT** ★

AGE	BASIC		DELUXE	
	YEARLY	MONTHLY	YEARLY	MONTHLY
65-69	\$314.50	\$26.98	\$517.75	\$44.42
70-74	\$371.03	\$31.83	\$578.58	\$49.64
75-79	\$459.41	\$39.42	\$718.05	\$61.61
80-& over	\$547.80	\$47.00	\$857.51	\$73.57

★ **Lanco Insurance** ★

510 N 1st • Haskell
817/864-2629

Tape & Bedding • Mud Work • Acoustic • Painting
Carpentry Work

VANSTORY PAINTING

Free Estimates

Donald VanStory
817/ 864-3903 - after 5
817/864-2651

P.O. Box 571
Haskell, Texas 79521

John Lee Wilde Building Company

New Home Construction
Remodeling
All types of concrete work

422-4650 Munday

For all your **SIDING** needs Contact:

GONZALES CONST.
706 SO. 4TH ST., KNOX CITY, TEXAS 79529
(817) 658-3732

DEALER ALSIDE BUILDING PRODUCTS
NEFRO R. GONZALES - OWNER

Alside
First On America's Homes

Radio Shack DEALER

Look for the Red Tag and Save on Exclusive Electronics Values!

SALE

On-Screen-Programming VHS VCR
Model 25 By Realistic®

On-screen prompts make timer programming easy. One-touch Quick-Timer recording, wireless remote, HQ. #16-513 Remote batteries extra

Save \$120
27995 Reg. 399.95
1-Year/6-Event Timer

Tandy® 1000 TX System

Includes Top-Rated Q&A™ Software

80286 PC compatible with Q&A database/word processing software. Includes CM-5 color monitor, 3 1/2" 720K drive and Personal DeskMate™ 2.

Save \$648.95
1199.00 Reg. 1847.95

Q&A mfr. sugg. retail price \$349.00
Q&A/TM Symantec Corp.

100-Watt Digital Stereo Receiver
STA-2150 By Realistic

Has 12-station memory, search, LED output power meter, fluorescent display. #31-3003

Save \$110
23995 Reg. 349.95

Budget-Priced Personal Printer
DMP 106 By Tandy

MS-DOS® compatible dot-matrix ideal for data processing. Bit-image graphics. Prints 80 cps. #26-2802

Save \$60
15995 Reg. 219.95

Bi-Directional
MS-DOS/Reg. TM Microsoft Corp.

3-Channel Walkie-Talkie
TRC-219 By Realistic

Range-Boost antenna system and 3-watt power extend signal reach. With Ch. 14 crystals. #21-1639
Batteries, additional crystals extra

3995 Each Reg. 59.95
33% Off

Voice-Actuated Cassette
CTR-85 By Realistic

Auto-level recording. Built-in mike, ear-phone jack. #14-1056
Batteries extra

Cut 40%
2995 Reg. 49.95

Hands-Free Recording

Desktop Review Calculator
EC-2015 By Radio Shack

Recalls up to 32 entries for checking calculations. With batteries. #65-577

38% Off
988 Reg. 15.95

Telephone Answerer
TAD-245 By DUOFONE®

Dual microcassettes. Voice activation, Toll-Saver. #43-394

Save \$30
9995 Reg. 129.95

"Beeperless" Remote

Stereo Headphones
Nova®-55 By Realistic

Digital ready—ideal for CD listening! Soft foam ear-cushions, 10-foot cord. #33-2004

33% Off
1995 Reg. 29.95

Low-Noise Audio Cassettes
SUPERTAPE® By Realistic

Type I standard ferric tape. Stock up and save—no limit! #44-602/603

HALF PRICE!

LN-60 LN-90
99c Each Reg. 1.99
139 Each Reg. 2.79

Haskell Butane Co.

We sell:
* Propane
* Diesel
* Kerosene
* Gasoline (Regular, Unleaded, Super Unleaded)
* Oil

We can:
Convert your car or pickup to propane, also we can convert fuel injected engines.

Our New Hours Are -
8:00 am - 6:00 pm - Monday thru Friday
8:00 am - 12:00 noon on Saturdays

Call us! We appreciate your business!
Rex and Camin Pittman
817-864-2424 817-864-3915
Hwy. 277 Haskell

Come by and SEE!!!

The XL credit plan is a customized credit plan For Trane Customers.

XL80 Gas Furnace + **XL Credit Plan** = **TRANE**

50 million people take comfort in it

Winter is Coming!! Be warm and comfortable with a Trane XL 80 gas Furnace and SAVE\$\$\$

The Trane XL80 Gas Furnace is up to 81% energy efficient to help you save on heating costs all winter: you get high efficiency, energy savings and Cash Rebates on selected models, plus financing! Call us Today!

Nanny Plumbing
301 S Ave E • Haskell • 864-3043
Complete Plumbing-Heating/Cooling Sales and Service
Roto Rooter Service - Lawn Sprinkler Systems
Serving the Big Country Since 1950
"Estimates Gladly Given"
TACL006602C

WALLING TV and ELECTRONICS Most Major Credit Cards Welcome

A RADIO SHACK DEALER 414 N. 1st. • Haskell • 864-2870

--Weinert--

by Myrtle Phemister

The cold front brought the temperature down to the teens, with some high winds and one tenth of an inch of rain.

The gins are almost finished with the '88 crop, with the Paymaster Gin reporting 6155 bales and the Weinert Gin reporting 4722 bales as of today.

The holidays wound down on Tuesday as the school resumed regular schedules, and everyone, except a few "ski-ers" and winter vacationers, settled into the new year, 1989. Happy New Year!

Birthdays will be sung this week to Henry Rueffer, Betty Raynes, and Lupe Castorena. Happy Birthday!

Celebrating anniversaries this week are Herschel and Myrtle Alexander, Joe and Caron Yates, and Hal and Cindy Guess. Congratulations.

Many in our community have been quite ill with severe colds and flu, we assume the germs blew in from the south, or north, with the extremely high winds we experienced.

We extend sympathy to Mr. and Mrs. Allan Heard upon the death of their infant son, Christopher Allan, who was still born on December 27th in the Haskell Hospital.

Memorial services were conducted Friday morning at 10 a.m., with Paris Barton in charge. Christopher was buried in the Weinert Cemetery.

Debbie Hutchinson has returned to her home in Junction after spending the Christmas holidays here. Her brother, Wayne and Cherie Hutchinson returned home with her for a few days of hunting in the Hill Country.

Derinda and Johnny Larned have returned to their home in New Braunfels after spending some time with her parents, Donald and Gracie Griffiths, and sisters, Donna and Darla, of Texas Tech.

The Griffiths' hosted Donalds family dinner, with his parents, Mr. and Mrs. Harvey Griffiths, and his sisters, Mr. and Mrs. Herschel Alexander, Mr. and Mrs. Robert Horan, and Mr. and Mrs. R.C. Langford of Rule, and a part of their families being present for the occasion.

The Weinert Church of Christ, though not meeting together as such, gathered in the Marvin Phemister home for their monthly get-together on Thursday night, Dec. 29th.

They hope to continue the tradition, even though they decided to dis-band the congregation to go elsewhere.

The Chet Forehands were in Haskell this week to spend some time with his parents, Mr. and Mrs. C.B. Forehand, and his sister, Mr. and Mrs. Leroy Hix who came from Odessa for a visit.

Mr. H.L. Guess has retired as Superintendent of schools, and plans to devote his time to his hobby of farming.

Mr. Guess has spent 33 years in the class room, serving at Mattson, Trent, and Weinert. He has served as superintendent here the past twenty-two years, and will continue his duties until the end of the school year. We wish him the best!

Returning from a ski trip to Angel Fire, N.M. on Friday were Bob and Melanie Wood, with Cary; Joe and Caron Yates, with Jace and Dusty; Ed and Mary Murphy, with Shanna and Lane; and Heather Guess.

Have a nice day and Happy New Year!

Child Welfare Board

Linda Haynes, Child Protective Services, and members of the Haskell County Child Welfare Board are grateful for the care and concern and the spirit of giving of many people who made it possible for 44 families and 124 children to be provided with clothing, food and toys at Christmas.

Cash donations were received from the Trinity Baptist Church, Mr. and Mrs. Harlan Weinert, Mr. and Mrs. Roy T. Everett, Rev. and Mrs. David Green, Mrs. Ozelle Frierson, First

United Methodist Church, Dr. Bill McSmith, Foursquare Church, Mrs. Hortense Lees, Rob McKnight and Mrs. W. H. Pitman.

Lois Richardson of Kids' Duds again gave a generous amount of clothing, especially baby garments. Others supplying clothing, toys and/or food were The Carousel, First Baptist Church Youth, Haskell Elementary students and staff, The Sunshine Gift Shop, First United Methodist Church congregation, Janis Briggs, Candice Shifflett, Amanda Gulley, Joan Strickland, the Bob Earles family, Peggy Adams and Pam Gibson.

A special thanks goes to Brian Burgess for supplying the film for making pictures with Santa Claus and to about 100 parents and grandparents who donated to the fund by having pictures made and to David Green Jr. for his hours of service. Another special thanks goes to Nick Ortiz for his extra help and to all the various individuals and groups who provided "Sounds of Christmas" on Dec. 11.

Together, much has been accomplished.

Thank you for reading The Haskell Free Press.

-HOSPITAL-

ADMISSIONS
MEDICAL: Ralph Walkins, Wichita Falls; Lena Overcash, Haskell; Marie Jamerson, Haskell.
SURGICAL: Rickey Bejar, Haskell.

Getting a break
Texan dictating his will: "To my son I leave \$3 million. He's lucky I didn't cut him off entirely."

WINTER CLEARANCE!

ALL SEASONAL APPARELS

DRASTICALLY

REDUCED STORE-WIDE

HASSEN'S

HASKELL

WESTERN TEXAS COLLEGE

Spring 1989 Registration

Haskell Extension

Course	Comp#	Course	Days	Period	Credit Hours	Instructor	Lab Fee
CJ	132 925	Intro to CJ	M	6:30-9:20	03	COLEMAN	
CJ	138 926	Patrol Admin	W	6:30-9:20	03	COLEMAN	
ENG	132 825	Composition II	M	6:30-9:20	03	McKEEVER	
		Lab (1 hour)	TBA	TBA		McKEEVER	
ENG	132 826	Composition II	TH	6:30-9:20	03	McKEEVER	
		Lab (1 hour)	TBA	TBA		McKEEVER	
GOV	231 827	Am/St/Loc Gov (Texas)	W	6:30-9:20	03	MELTON	
MUS	232 828	Mus/Elem/Teach	TH	6:30-9:20	03	HARDEGREE	

Registration: Jan. 12, Thursday
11:00 a.m. - 1:00 p.m.

High School 2:30 p.m. - 5:30 p.m.
6:30 p.m. - 7:30 p.m.

Cost: 3 hours \$ 83.00 plus lab fees and books
6 hours \$131.00 plus lab fees and books

Classes Begin: January 18

Classes End: May 10

Last Day to Register: January 24

Last Day to Drop: March 3

For Information: Bill Blakley
817/864-2949

MasterCard and VISA Accepted

For Additional Information on Extensions:

Western Texas College

Adult Education and Extension Services Division

South College Avenue ~ Snyder, Texas 79549

915/573-8511, Ext. 240,390



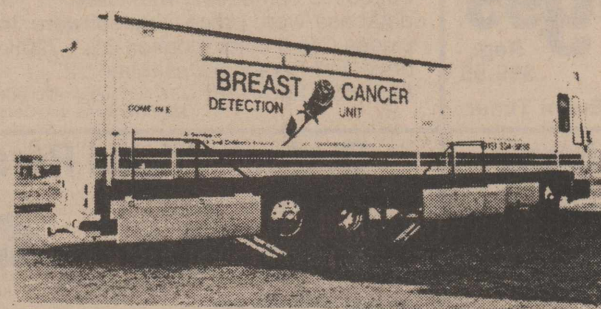
BREAST CANCER DETECTION UNIT AVAILABLE TO AREA WOMEN

FRIDAY, JANUARY 6, 1989

HASKELL, TEXAS

A Service of

HASKELL MEMORIAL HOSPITAL



CALL 864-2621 FOR APPOINTMENT

According to the American Cancer Society, one out of ten women in the United States will develop breast cancer sometime in her lifetime. It is currently estimated that over 37,000 women die each year as the result of breast cancer.

Ninety percent of breast cancers are diagnosed by women or their physicians finding a lump in the breast. Women who are diagnosed with a lump large enough to feel have a 50 percent five year survival rate. A woman who is diagnosed as having breast cancer by mammography, before a lump can be felt, has a 97% five year survival rate and a 90% 10 year survival rate.

A mammogram can detect a cancer this small, even before it can be felt.

Appointments may be made by calling 864-2621.

The Mobile Breast Cancer Detection Unit will be in Haskell on Friday January 6th.

The American Cancer Society has established guidelines for a mammography in asymptomatic women. (Women who have no symptoms of disease). Those guidelines have been adopted by the American Academy of Family Physicians, American College of Obstetricians and Gynecologists, and The American College of Radiology. Those guidelines are:

- 35-40 years of age - One baseline mammogram.
- 40-50 years of age - A mammogram every 1-2 years depending on breast type and risk factor.
- 50 years of age and over - An annual physical examination and annual mammogram.
- Asymptomatic women under 50 years of age with

significant high risk factors should be examined at appropriate intervals. These risk factors include previous breast cancer and family history of cancer.

V. A symptomatic woman should have a mammogram at any age when she experiences a mass, nipple discharge, skin changes or unexplained breast pain.

A screening mammogram is an x-ray of the breast using extremely low dosages of radiation (usually comparable to dental x-rays) and is designed to find very early cancers.

A female technologist who is highly trained in mammography will perform the examination.

The charge for the screening mammogram is \$50.00. The Unit accepts cash, check, VISA, MasterCard and American Express.

For more information or to make an appointment call 864-2621.



You'll take it off here.

We'll take it off here!

Take off Fast in 1989 with WEIGHT WATCHERS® New Quick Success® Program

- Last year, Weight Watchers members lost weight 20% faster than ever. This year, it's even easier.
- Our New Quick Success Program lets you enjoy the foods you like most so you'll never feel hungry.
- We've simplified our optional exercise plan and made our weekly meetings even more exciting.
- This is the weight loss program that you can really count on in 1989. Come discover it for yourself!



Sheila Falk, Area Director

JOIN NOW FOR ONLY... \$8
Registration Fee \$17.00
First Meeting Fee \$ 8.00
Regular Price \$25.00
YOU SAVE \$17.00
Offer Ends January 29, 1989

Come to the Weight Watchers meeting nearest you.

HASKELL
First Baptist Church
House of Life
203 North Avenue E
Tue: 6:30 pm

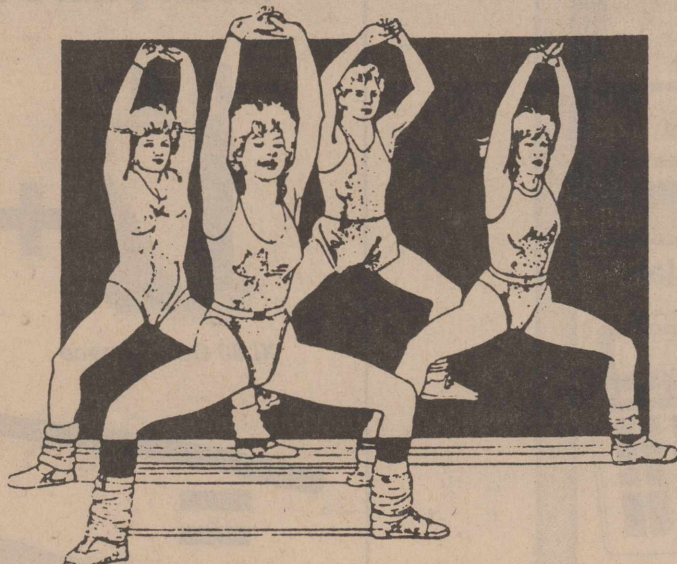


JOIN WEIGHT WATCHERS NOW!

Offer valid January 2 through January 29, 1989. Offer valid at locations listed (Areas 37, 96, 107) only. Offer valid for new and renewing members only. Offer not valid with any other offer or special rate.

TOLL FREE
1-800-692-4329

TRIM DOWN,
KEEP FIT,
SHAPE UP!



If the mid-winter blahs are bogging you down, come see us and get with it!

6 Weeks Aerobic Classes

Beginning Monday, January 9th

Monday - Tuesday - Thursday nights at 6:00 P.M.

and

Monday - Wednesday - Friday at 6:00 A.M.

\$30⁰⁰ (18 sessions)

Call: Laura Tidwell 817-864-8933

The Fitness Shop

1303 N Ave I Haskell

Shop the Haskell Free Press

CLASSIFIEDS

NOTICE
The deadline for Classified Advertising is 12 noon on Tuesday.
Haskell Free Press

For Sale

PRESCRIPTIONS, Cosmetics, Gifts. Shop Johnson Pharmacy where the savings are real. 38tfc

SHAKLEE Products, 100% NATURAL VITAMINS herb lax, food supplements and cosmetics. Products in stock at 300 N. Av H. 864-3330. Free deliveries in Haskell. 26tfc

FOR SALE: Used 19" color TV. Call Fieldan Inn, 864-2251, Haskell. 1p

FOR SALE: 1978 Mercury Zephyr. 906N. Av K, Haskell. Call 864-8926 after 5 p.m. 1-2c

FOR SALE: Yamaha 80 Enduro motorcycle. Make offer. Call 864-2671 day or 864-3504 evenings. 1p

FOR SALE: Long wide bed camper top with bubble windows, \$75.00; 8 hp rototiller (Sears) with reverse and 2 forward gears, \$200.00; 8 hp Riding lawn mower, \$175.00. Call 864-2087. 1p

For Sale

FOR SALE: 19' 1979 Invader 260 hp, 350 cu. in. 4BBC, tilt-trim trailer, canopy top, tarp, large gas tank, AM-FM radio. 864-2607, 864-3340. 14tfc

FOR SALE: Radio Shack TRS 80 Color Computer. Excellent condition. Joy sticks, games. Call 864-3682 after 5 p.m. 42dccc

NICE SHELLED PECANS for sale. Contact Charles Swinson, 864-2963. 1p

FOR SALE: Two 3/8 in. construction pipe, 45¢ per ft. Don Norris Construction, Inc. 915-576-2695. Hamlin, TX. 1-2c

Mary Kay COSMETICS
Sara Hodgkin
Haskell
817-864-2031
1-4c

Lost & Found

MISSING OR STOLEN from Haskell Livestock Auction: 1 red two wheeled Round Bale hauler. If you have any information call 817-864-2624. 1-2c

STRAYED from 5 miles north of town. Black heifer calf approximately 300 lbs. V in end of right ear or in bottom of left ear. John W. Wallace, 817-864-3001. 1p

Miscellaneous

HOME DECORATORS. Painting -Insulation. Free estimates. Phone 743-3592 or 743-3550. V. A. Mitchell-Bobby O'Neal. Rochester. 3tfc

AEROBICS CLASS beginning Monday, Jan. 9th. Mon., Tuesday, Thurs. nights. 6 p.m. \$30.00. (18 sessions). Call Laura Tidwell 864-8933. The Fitness Shop, 1303 N. Av I, Haskell. 1-2c

We have pens that write pink, light blue, purple and burgundy to match your favorite stationery. Pick a color at the Haskell Free Press.

Business Opportunities

OWN YOUR OWN apparel or shoe store, choose from: jeans/sportswear, ladies, men's, children/maternity, large sizes, petite, dancewear/aerobic, bridal, lingerie or accessories store. Add color analysis. Brand names: Liz Claiborne, Healthtex, Chau, Lee, St. Michele, Forenza, Bugle Boy, Levi, Camp Beverly Hills, Organically Grown, Lucia, over 2000 others. Or \$13.99 one price designer, multi tier pricing discount or family shoe store. Retail prices unbelievable for top quality shoes normally priced from \$19 to \$60. Over 250 brands 2600 styles. \$17,900 to \$29,900: Inventory, training, fixtures, airfare, grand opening, etc. Can open 15 days. Mr. Schneider (612) 888-1009. 1p

Help Wanted

ATTENTION-HIRING! Government jobs-your area. \$17,840-\$69,485. Call 1-602-838-8885 EXT R 4517. 1-4p

GET PAID for reading books! \$100.00 per title. Write: PASE-J1232, 161 S. Lincolnway, N. Aurora, IL 60542. 1-4p

HELP WANTED: Experienced seamstresses. Sewing Factory, Hwy 80 West, Haskell. Apply in person. 1-4c

Jobs Wanted

LOT SHREDDING. Call Tony Williams, 864-3674 anytime. 43tfc

ABC Day Care has openings for Infant care. Age 0 to 18 months. Open Mon. thru Fri. 7:30 to 5:30. State licensed day care and preschool facility. Drop-ins and full time openings welcome. Laura Tidwell, owner. 864-8933, 1303 N. Av I, Haskell. 1-2c

WOULD LIKE to have farm job. Have worked as farm hand for years. Call Junior White, 864-2764. 1p

Public Notices

NOTICE OF APPLICATION FOR FLUID INJECTION WELL PERMIT
C&L Equipment, Box 1112, Albany, Tx 76430 has applied to the Railroad Commission of Texas for a permit to inject fluid into a formation which is productive of oil or gas.

The applicant proposes to inject fluid into the Flippen Sand, Hendrick, Well Number 5. The proposed injection well is located 10 miles ENE from Stamford in the Haskell County Regular Field, in Haskell County. Fluid will be injected into strata in the subsurface depth interval from 1562 to 1572 feet.

LEGAL AUTHORITY: Chapter 27 of the Texas Water Code, as amended, Title 3 of the Natural Resources Code, as amended, and the Statewide Rules of the Oil and Gas Division of the Railroad Commission of Texas.

Requests for a public hearing from persons who can show they are adversely affected, or requests for further information concerning any aspect of the application should be submitted in writing, within fifteen days of publication, to the Underground Injection Control Section, Oil and Gas Division, Railroad Commission of Texas, Drawer 12967, Capitol Station, Austin, Texas 78711 (Telephone 512/445-1373). 1p

Decker Electric

Residential Commercial
Call for free electrical inspection
864-8926
We appreciate your business! 38tfc

NOTICE

The Haskell Free Press reserves the right to edit and/or delete all news stories and locals for length and liability and to refuse to print anything deemed not newsworthy.

For Rent

FOR RENT: One bedroom furnished apartment with carport. Call 864-3509. 36tfc

FOR RENT: Office space at 314 N. 1st. Fully carpeted, paneled. Call for information, 817-864-2305. 49tfc

FOR RENT: 3 bedroom duplex, unfurnished. \$275.00 month. Call 864-8014. 1c

FOR RENT: 3 bedroom, 1 bath, central heat and air. 1403 N. Av L. Call after 4:30. 864-2911. 1tfc

Apartments For Rent

2 bedroom, 1 bath, carpeted. 700 sq. ft. Call Haskell National Bank 864-2631.

SELLING HASKELL FOR OVER 25 YEARS Hartsfield Realty

South Side of Square 864-2665
BUYING OR SELLING A HOME OR BUSINESS? We have skilled realtors to help you in every way from a market analysis to the closing. Over 25 years selling Haskell County.

TWO-STORY, three bedroom, one bath, recently redecorated. Large living, dining, kitchen and extra large utility. Close to town and excellent buy.

TO SETTLE ESTATE. Two two bedroom houses on adjoining lots. One has 1 1/2 baths, new evaporative window units, good well with pump, satellite dish, fenced yard with nice pecan trees. Range and clothes dryer. Will sell separately or together discounted. REDUCED.

LARGE TWO BEDROOM across from Elementary school. Large corner lot, extra clean, some furnishings, go with sale. Two car garage with storage, good concrete storm cellar, metal storage, water well with pump. Many shade and pecan trees. Owner financing.

BEAUTIFUL THREE BEDROOM. 1 1/2 ceramic tile bath with country decor. This one has it all...fireplace, large living-dining combination, built in hutch, oak cabinets, fenced yard. Many restored antique features. Property has building in back for business.

COUNTRY LIVING in city limit. Three bedroom, 2 bath with over four acres. House has living room with fireplace and insert, ceiling fans, all electric and large utility. Acreage is fenced with two barns, pens and lots of room for horses.

EXCELLENT BUY at 107 N. Av A. Three bedroom 1 bath on nice corner lot, paved streets. Has central heat, new siding and panelling. Five ceiling fans, storm cellar, good well with pump. Reduced 20% for quick sale.

PRICE REDUCED. Nice two bedroom on small corner lot. Storm cellar.

FOUR BEDROOM 1 3/4 baths. Close in. In Northwest Haskell. Choice corner lot.

CLOSE TO TOWN: 2 bedroom, 1 1/2 bath, central heating and cooling, storm cellar, fireplace, water well. Priced to sell.

Newly redecorated in a great location. Three bedroom, 1 bath, ceiling fans, central heating and cooling, good closet space with many extras. 805 N. Av G.

Hess Hartsfield, Broker 864-2004
Mary Rike 864-2332
Dorothy Hartsfield 864-2069
Esther Conn 658-3904

Real Estate

FOR SALE by owner. 3 bedroom, 2 bath, large utility room, new carpet, central heat and air. Cooling unit 2 years old. Corner lot, northeast part of town, good neighborhood. 864-2647 or 864-2793 after 5. 50tfc

LANCO 864-2629 510 N. 1st FOR SALE

Two bedroom brick with 5 acres. SW of City.

4 bedroom, 2 bath brick with 6 acres on Rule Highway.

393 acre farm 7 miles east of Haskell. 212 acres in cropland. 181 acres in pasture. FM road frontage.

Duplex, clean, well located, and maintained. 100% occupancy for past 5 years. \$300.00 per month rent income. Cash Sale, \$15,000.00.

FOR RENT STORAGE STALLS

Real Estate

FOR SALE: 3 bedroom, central H/A, nice cellar, 204 N. Av M. Make offer. 817-658-3291. 51tfc

FOR SALE: 103 N. Av L. (Behind laundry on 380). 2 bedroom mobile home with washer and dryer, new gas oven and refrigerator. Sold with or without furniture. Carpeted and refrigerated air. Chain link fence, carport and storage shed. Call 864-3218. 52-3c

HOME FOR SALE: 704 N. 4th in Haskell. 3 bedroom brick, Carrier heating and cooling, large backyard with water well. Call E. H. Tankersley, Route 1, O'Brien, Texas 79539. 658-3289. 52tfc

ROOMY 4 bedroom, 2 bathroom, brick house for sale. 1602 N. Av H. Call 864-2703 for appointment. 1-4p

Real Estate

MAKE AN OFFER: Remodeled 2 bedroom, nice yard, trees, garden spot, well. 1106 N. Av L. Immediate possession. 1-849-3272. 29tfc

FOR SALE: Spacious town and country frame home on Hwy. 380 west of Rule. Reasonable offers will be considered for this 3 bedroom, 2 bath home with central heat air, fireplace, ceiling fans throughout, metal fence, cellar and water well. Call 817-864-2996. 39tfc

IN HASKELL: House for sale by owner. 2 bedroom, 1 bath living room and dining room combination. Large closet space. Central air, C, fenced backyard, storage house, storm cellar, carport, water well. Call 817-864-2432. 50tfc

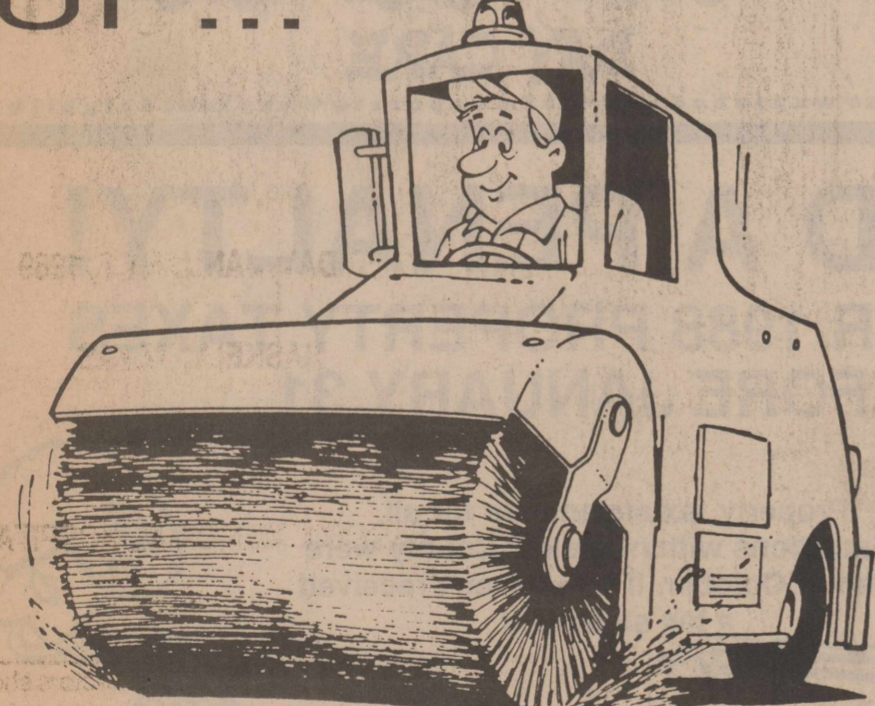
REAL ESTATE FOR SALE
IDEAL FOR RETIRED COUPLE needing to supplement their S.S. Arrowhead Motel, 20 rooms, upstairs 2 bedroom apartment manager's living quarters. Located on South 277 highway.
STATION BUILDING on Highway 380 West.
NEED LISTINGS on 2 and 3 bedroom homes. I have sold all I had listed.
Frances Arend Real Estate and Insurance
Life-Major Medical-Medicare Supplements.
817-864-3880 817-864-3156

LORAIN JOHNSON, BROKER
I am on call and ready to talk to you about your Real Estate at any time if you are interested in buying or selling please call me. I will try harder to please you.

- 3 bedroom, 1 1/2 bath mobile home at Kelso Park.
- Large 3 bedroom with double attached garage, fenced yard, corner lot, clean.
- LARGE 2 bedroom, 2 bath, double garage, shop building, fenced yard, exceptionally clean, corner lot.
- Lake Cabin with lot. Lakeshore sites, large garage.
- IN RULE: 3 bedroom, 2 bath. Has many extras. Water well, fenced yard, St. Bldg., fireplace. \$25,000.
- EXTRA CLEAN 2 bedroom brick central H/A. Attached carport, large trees. 705 Union, Rule.
- KNOX CITY 3 bedroom 2 bath, water well, fenced yard, den, living and dining room.
- LARGE LIVING AREA with fireplace. 3 bedroom, double attached garage. North Avenue E. \$35,000.00
- COMMERCIAL... one of Haskell's largest buildings, plenty of parking. Good location, make an offer.
- EXCEPTIONAL Value: 4 bedroom, 2 bath, brick, set in fireplace, fenced yard, storm cellar, 3 ref. units.
- Clothing store building ready to open in Haskell. All fixtures and a modern clean building.
- IN ROCHESTER: Strickland home 2 blocks south of school. Extra clean inside and out.
- Small cabin at Vedas. \$6000.00.
- GORE: 3 bedroom, 2 bath brick. \$39,500.00.
- GORE (2 for 1 special) 2 bedroom rock C/H/A. Also 3 bedroom frame. \$25,000.00.
- GREAT LOCATION: 3 bedroom 2 bath brick, large shop building, fenced backyard, many extras, a neighborhood you'll be proud to call home.
- 2 bedroom on South ~~800~~ \$6000.00.
- Small 2 bedroom on Hwy. 380. \$4500.00.
- OUTSIDE city limits: City water. 4 bedroom, 3 bath brick. Many extras. Only a few years old. Fenced yard, storage, water well.
- ILA MOODY HOME IN WEINERT. Make an offer.
- GREAT NEIGHBORHOOD, 3 bedroom, formal L.R., den with fire box, large dining area, utility room, central heat, ref. window units, carport, storage.
- WESTERN WIND MOTEL and Drive-in Restaurant in Rule, Texas. Reduced.
- Paint Creek Hwy. Large 3 bedroom 2 bath with game room, white brick. Many extras
- LET YOUR DREAM come true! 3 bedroom, 3 bath with office space, large living area with fireplace this 2 story home has many built-ins and extras. Beautiful backyard with screened area, carport, garage and large shop building.
- 3 BEDROOM 2 bath with fireplace, fenced yard, large shop building, water well, storm cellar. Also has a small rent house. All on 10 large lots
- VEDAS. 2 bedroom double garage, large covered patio. Private boat dock. A beautiful lot.

JOHNSON REAL ESTATE
864-2951
Broker
Loraine Johnson Lisa Sherman

YOU'LL CLEAN UP...



WITH CLASSIFIED ADVERTISING!

It's a profitable way to get buyers. Thousands of readers of our Classified section will see your ad and take action! Take the first step to getting into the action by placing your Classified ad with us - today!

Haskell Free Press

--Obituaries--

Christopher Heard

Graveside services were held Friday at the Weinert Cemetery for Christopher Allan Heard, infant son of Allan and Kathy Heard of Weinert. The baby died Tuesday (Dec. 27) at Haskell Memorial Hospital.

The Rev. Paris Barton officiated and burial was under direction of Holden-McCauley Funeral Home.

In addition to his parents, he is survived by his grandparents, Mr. and Mrs. Richard Roberts of Seymour and Mr. and Mrs. Lloyd Heard of Truscott; an aunt, Rhonda Kessler of Newcastle; and two uncles, Cecil Roberts of Seymour and Glen Heard of Truscott.

Jose Martinez

Funeral services were held Dec. 29 at Calvary Baptist Church for Jose Martinez Sr., 66. He died Dec. 27 at Stamford Memorial Hospital.

The Rev. Robert Ocha officiated and burial was in Willow Cemetery under direction of Holden-McCauley Funeral Home. Members of the Veterans of Foreign Wars served as pallbearers.

A resident of Haskell since 1972,

he was a farmer for C. E. Gary Farms for more than 30 years. He was a member of the Foursquare Church and an Army veteran of World War II.

He was born Sept. 30, 1922, in Mathis. He was married to Marcelina Sepeda in Benjamin on Jan. 19, 1959.

He is survived by his wife; two daughters, Rosa M. Rodriguez of Haskell and Isabell (Ann) Perea of Bosque Farms, N.M.; a son, Jose Martinez Jr. of Haskell; two brothers, Frank R. Martinez of Haskell and Carlos Martinez of Munday; and four grandchildren. Two sisters, Rosa and Lydia, preceded him in death.

Rachel R. Graham

Rachel R. Graham, 66, died Dec. 28 at Hendrick Medical Center in Abilene.

Funeral services were held Friday (Dec. 30) at First Assembly of God Church with the Rev. J. C. Amburn and Elder Hodges officiating. Burial, under direction of Holden-McCauley Funeral Home, was in Willow Cemetery.

Pallbearers were Claude Payne, Robert Payne, Kenneth Campbell, Travis Soloman Jr., Doyle Mitchell and Larry Brothers. Honorary

pallbearers were her grandsons.

Mrs. Graham was born Jan. 31, 1922, in De Kalb. She moved to Haskell from Brownfield in 1975. She was a Baptist. She was married to L. J. Dunn Jr. in Brownfield on Dec. 24, 1939. After his death in 1986, she married Onis W. Graham in Haskell.

She is survived by her husband; two daughters, Jeanelle Williams of Belton and Glenda Payne of Haskell; a son, L. J. (Sonny) Dunn III of Gonzales, La.; a sister, Hazel Dumas of Brownfield; two brothers, Carl Shaddock of Bossier City, La., and Joe C. Shaddock of Brazoria, Texas; eight grandchildren, four great-grandchildren and two step-grandchildren.

Lounge lizards: Some 100 species of animals at the San Diego Zoo are luxuriating on the latest innovation in zoo habitat--waterbeds. The zoo models are basically the same as human waterbeds, except they are covered with claw-proof aluminum. Unlike heat lamps, they provide an even temperature similar to warm rocks or beds of leaves where animals sleep in the wild. (*International Wildlife*)

Thank you for reading The Haskell Free Press.

Heart donations announced

Memorial donations made to the Haskell County division of the American Heart Association during the month of December included:

Phillip F. Arrien: Norma Richardson, Mr. and Mrs. Tom Senter.

A. D. Carmack: Dr. Bill McSmith.

Charlie Cook: Bob and Henrietta Sego.

Clara Holt: Norris and Mary Anders, Vernay and Betty Burson, Wayne and Nelda Davis, Raja Hassen, Mrs. S. Hassen, Mrs. W. A. Lyles, Mrs. Frank Spencer.

Danna Knapp: Raja Hassen, Mrs. S. Hassen.

R. T. Landess: Dorothy Spann. Edna Lemley: Dr. Bill McSmith.

Bernice Norman: Dr. Bill McSmith.

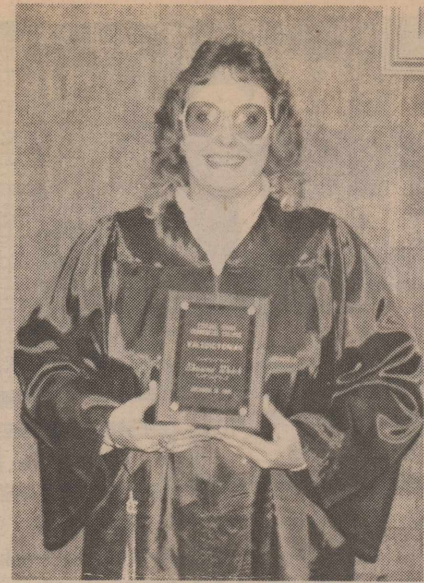
J. E. Walling Jr.: Donald Cunningham and family.

Dr. T. W. Williams: Mrs. W. A. Lyles, Dr. Bill McSmith, Mrs. Frank Spencer.

General donation: C. B. Sprayberry.

To make a donation to the American Heart Association, contact Norma Richardson at Olney Savings and Loan Assn., Box 848, Haskell.

Call your news: 864-2686.



VALEDICTORIAN--Shawna Welch completed her course of study as an executive secretary from Central Texas Commercial College in Brownwood Dec. 15 as valedictorian of her class. She also received a certificate for perfect attendance. A 1985 graduate of Haskell High School, she is the daughter of Laquita Kirkland of Haskell and Whitey Welch of Knox City.

Deadline near for officer course

Jan. 10 is the last day to apply for admission to the correctional officer training class which begins Feb. 11 at Western Texas College in Snyder.

Application forms are available in the WTC Adult Education office in the Resource Center. Applicants will be pre-screened by Texas Department of Corrections personnel on Jan. 31 and Feb. 1 at WTC.

Tuition and fees for the 120-hour course are \$200, with payment due in full at registration on Feb. 9. Funds for eligible applicants are available through the Texas Employment Commission.

Information about the correctional officer training course can be obtained by calling the WTC Continuing Education office at (915) 573-8511 during regular office hours Monday through Friday.

Heard this one? Doctor: You have acute appendicitis.

Wave: Listen, Doc. I came here to be examined, not admired.

30% off
all
Fishing Tackle & Supplies
BJ's Camp
on Lake Stamford

abcdefghijklmnopqrstuvwxyzabcdefghijklmnopqrstuvwxyzabcdefghijklmnopqrstuvwxyz

ABC Day Care

Openings for
Infant Care - Age 0 to 18 Months
Open Monday - Friday
7:30 - 5:30

State Licensed Day Care

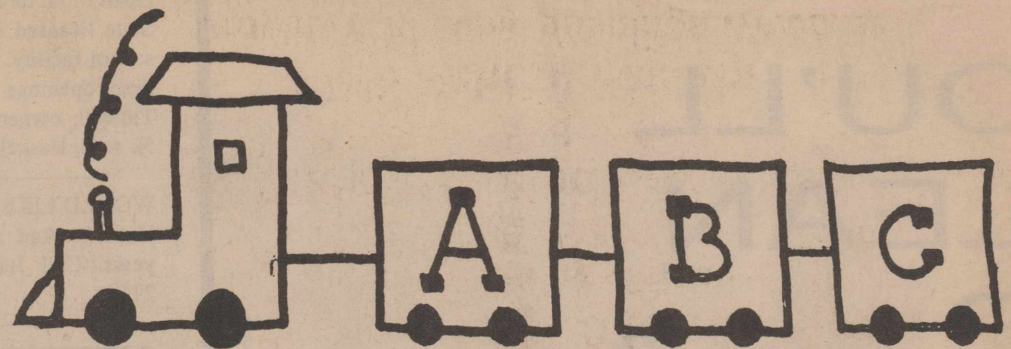
and
Pre School Facility

Dropins & full time openings *Welcome*

Laura Tidwell - Owner

817-864-8933

1303 N Ave I Haskell



DAY CARE

abcdefghijklmnopqrstuvwxyzabcdefghijklmnopqrstuvwxyz

AVOID A PENALTY! PAY YOUR 1988 PROPERTY TAXES BEFORE JANUARY 31

Property tax statements for all Jurisdictions within Haskell County were mailed in October. If you haven't received a tax statement

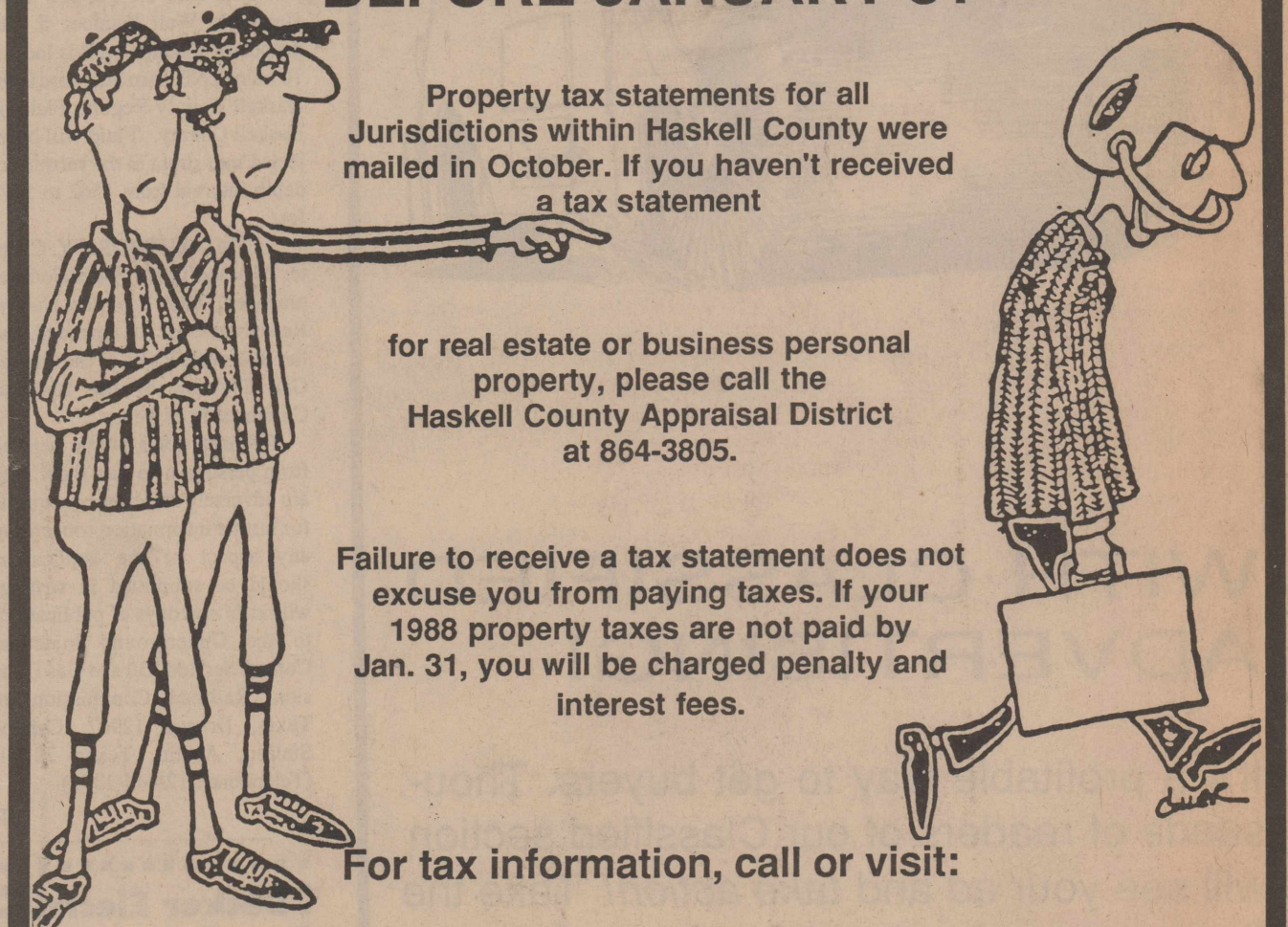
for real estate or business personal property, please call the Haskell County Appraisal District at 864-3805.

Failure to receive a tax statement does not excuse you from paying taxes. If your 1988 property taxes are not paid by Jan. 31, you will be charged penalty and interest fees.

For tax information, call or visit:

Haskell County Appraisal District

604 North First Haskell
864-3805



One Hour Photo Service offered on Film Developing & Prints
Latest Equipment - Competitive Prices

KIS
1-HOUR PHOTO

\$1.00 off
On Processing, per roll with Coupon
Specials Good Thru January 11th

Kodak and Fuji Film For Sale
Phone 864-2951

Johnson's Kis Photo
OWNED & OPERATED BY LORAIN & BOBBIE JOHNSON
West Side of Square - Haskell

Big Country Sweep

**Chimney and Fireplace
Cleaning and Repair**
Don't risk Fire
and Smoke damage
Call 817-864-2859

German Sausage	Gooch Each	99¢
Sliced Bacon	No. 1 Lb.	\$1 19
Stew Meat	Lean Boneless Cubes, lb.	\$1 69
Pet Milk	Tall Can	49¢
Promise Oleo	1 lb. Quarters	79¢
Corn Kits	3 For	79¢
Comet Rice	28 oz. Box	99¢
Keebler Pie Crust		89¢
Cookies	True Blue 24 oz. Pkg.	\$1 19
Crisco Oil	32 oz. Bottle	\$1 69
Spinach	Del Monte 15 oz. Can	49¢
Bounty Towels	Large Roll	79¢

POGUE GROCERY

-Extra Parking Behind The Store. Home Owned and Operated-
113 North Avenue E Phone 864-2015 Haskell, Texas

Thurs. Fri. Sat.
Specials