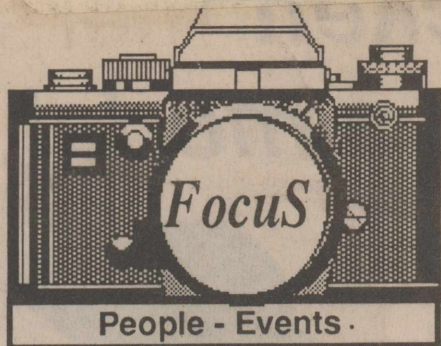


1/1/89
Baze Book Binding
514 W 7th St
Amarillo TX 79101

Amarillo--CCCCC
End Of Amarillo
Amarillo TX 791--



THE HASKELL FREE PRESS

35¢

VOLUME NO. 30

HASKELL, TEXAS 79521, July 28, 1988

16 PAGES-TWO SECTIONS-PLUS ONE INSERT

ECC bake sale to be Saturday

The Experienced Citizens Center will have a bake sale Saturday in front of The Carousel on the south side of the square. It will begin at 8:30 a.m.

All proceeds will go to the ECC nutrition and financial support of the center.

4-H members invited to party

All Haskell County 4-H club members and all county youth in the third grade through 19 years interested in joining 4-H are invited to attend a countywide swimming party and hamburger supper next Thursday, Aug. 4. Family members also are invited.

The event will be at the Haskell city swimming pool and City Park. Swimming will be from 6:30 to 7:30 p.m. at the pool. Hamburgers will be served at the City Park, beginning at 7:30 p.m.

The party is being sponsored by the Haskell County 4-H Council.

Sweethome church revival next week

Sweethome Baptist Church of Rule will have a revival next week. The revival begins Sunday and continues through Friday.

Sunday services will be at 11 a.m. and 6 p.m. Services will begin at 7:30 p.m. Monday through Friday.

Evangelist will be Bob Clements. Music director will be Cooter Boles.

Bible school set for Aug. 8-12

"Jesus Loves Me" will be the theme for this year's vacation Bible school sponsored by the Lutheran, Methodist and Presbyterian churches.

The school will be during the week of Aug. 8-12 at the First United Methodist Church. Classes will be from 8:30 to 11:30 a.m. for children from 2 years to sixth grade.

Classes will include instruction in Bible, art and music, as well as recreation and refreshments.

The closing program will be Friday, Aug. 12, at 7 p.m. Refreshments of homemade ice cream and cookies will be served.

Stone speaks at coaching clinic

Haskell basketball Randy Stone was one of the speakers at the six-man coaches' basketball seminar recently in Stephenville.

The Haskell coach spoke on the 1-2-1 press and the 2-2-1 press.

Band director to be welcomed

Band students, parents and others interested in the school band program are encouraged to attend a welcoming reception tonight (Thursday) for new band director Ronald Chapman.

The event will begin at 7 o'clock in the Band Hall.

American Legion to sponsor dance

Dee-Jay Bill Rollins will furnish the music for a dance at the American Legion building next Saturday, Aug. 6. The dance begins at 9 and will continue until midnight.

Admission will be \$3 per person and the public is invited to attend.

The dance is being sponsored by American Legion Post 221 and the Women's Auxiliary.

Summer Sizzler Saturday, Aug. 6



Shelly Hester and Dala Harris

Cheerleaders-to-be in training camp

Future cheerleaders from Knox City, Rochester, Paint Creek and Haskell are attending this week's mini cheerleading camp sponsored by the Haskell cheerleaders.

Participants are learning cheers, chants, jumps, stunts and pom-pom routines each morning.

In addition to learning cheerleading skills, each participant will receive a camp T-shirt, buttons and a certificate of achievement.

The camp will conclude with a program at 11 a.m. today (Thursday) to which parents and other interested persons are invited to attend.

Those attending the camp are Dacia Phemister, Amanda Crawford, Lori Martindale, Jamie Johnson,

Tiffany McAdams, Brittany Bartley, Mandi Pope, Lisa Rodriguez, Jodi Pope, Heather Hobgood, Brandi Risinger, Amy Deering, Amy Carver, April Tankersley, Leigh Ann Reel, Nancy Hefler, Bonnie Boring, Hilee Mulligan, Mary Jane Short, Anna Rieger, Brooke McGuire and Shelly Hester.

Leading the camp are Haskell varsity cheerleaders, Sylvia Alvarez, Missy Phemister, Teresa Rodriguez, Teresa Unger, Dala Harris and Joy McKeever.

Assisting with the instruction are junior varsity cheerleaders Amanda Diaz, Tiffany Williams, Becky Kline and Corie Brzozowski.



Heather Hobgood and Joy McKeever

Fund drive progressing on schedule

The campaign to raise \$60,000 for equipment for the new sewing factory which will open soon in Haskell is well underway.

Campaign chairmen Abe Turner, Bobby Hobgood and Dickie Greenwood announced that fund workers in all divisions will be meeting this week to report their progress.

In the special gifts division for donations of \$500 or more, co-chairmen Mattie Felker English and Jerene Couch reported the following donations as of Tuesday:

\$1,000
Lanco Insurance Co.
\$2,500
Modern Way
\$5,000
Haskell National Bank
Olney Savings Association
Lane-Felker
West Texas Utilities

Blood quota missed

The summer slump hit the Red Cross Bloodmobile Tuesday when only 31 donors showed up to give a total of 29 units of blood. County bloodmobile chairman Brian Burgess said this was 29 units short of the goal of 68.

Donors included: Charles Harvey, Dorothy Cox, Dusty Garrison, Kim Crawford, Olen King, Lowell Ann Baker, Robert Baker, Glenn Brzozowski, Gene Long, Tom Long.

Brian Burgess, Randy McLelland, Joel Fox, Billie McKeever, Mike New, Dennis Grand, Dale Huff, Casey Caldwell, Mary Dewey, Chris Whitaker.

Merry Harvey, Donna Spikes, Joe Ortiz, Lois Richardson, Basilio Andrada, Gwen Unger, Jean Kemp, Max McMeans and Donna Kemp.

Volunteering time to man the typewriters, refreshment canteen and bag table were:

Dolores Medford, Kim Crawford, Laura Barbour, Francis Fischer, Kim Gilly, Ann Sinclair, James Sinclair, Mildred Robertson, Reatha Mullins and Phoi McGuire.

The volunteer professional staff included Gwen Unger, RN, and Casey Caldwell, Bruce Toney and Tempa Toney, EMTs.

The First Baptist Church provided the use of its family activity center for the bloodmobile.

Next bloodmobile in Haskell will be Tuesday, Nov. 29, from 1 to 5 p.m. at the same location.

School homecoming Aug. 6-7

The 21st annual Sayles-Centerpoint School Homecoming Reunion will be held Aug. 6-7 in the Haskell Memorial Civic Center. Ed Melton of Abilene, ex-student of Sayles, is president of the 1988 homecoming.

The two rural schools, once located in the southwest part of Haskell County, enrolled a large number of students for many years. They were closed years ago.

All ex-students, teachers and families which lived in either of the communities are invited to attend the homecoming reunion.

A catered lunch will be served Sunday by Haskell Steak House.

Direct mail invitations were sent to those with distant addresses. Those living in Haskell are asked to call Claudia Mae Bland or Avis Pennington for luncheon tickets.

The group will gather Saturday night, Aug. 6, for visitation and refreshments.

Big weekend Gun and Coin Show

The Haskell Rotary Club's third annual Gun and Coin Show is scheduled for Saturday and Sunday at the Haskell Memorial Civic Center.

Gun and coin dealers and enthusiasts from a wide area are expected to display their merchandise during the two-day event.

The public is invited to come out and buy, sell, trade or just look. Admission will be \$2 for adults, \$1 for children 6 to 12. Children under 6 will be admitted free if accompanied by a parent.

The show has become one of the best-attended events of its kind in the area. Last year, all display tables were sold out. Displays are limited to quality merchandise and no "flea market" material is allowed.

Art Festival

The third annual Art Festival, sponsored by Brazos West Art Association will be held Saturday and Sunday at the Corral Building on the fairgrounds.

Hours will be 10 a.m. to 6 p.m. Saturday and noon to 4 p.m. Sunday.

Artists from several points in Texas are expected to participate in the show. Last year, New Mexico artists were represented and may be again this year.

Craft booths will have crafts for viewing and for sale, including a number of clothing items.

Entries in the crafts show are expected from a number of Texas cities, including Abilene, Graham, Irving, Lubbock, Seymour, Goree and Stamford.

There will be door prizes, and homemade ice cream will be served.

Bike-a-thon

Area youths will ride for the American Cancer Society Saturday and all participants are urged to be on time for the event.

Riders will meet at Haskell Elementary School with 6-to-12-year-olds meeting at 8 a.m. for the 8:30 ride. Riders in the 13-to-18-age group will meet at 9:30 for their ride which begins at 9:45.

The bike-a-thon is sponsored by the American Cancer Society and features a number of prizes for winners in each category. Prizes include tickets to Six Flags Over Texas, Wet 'N Wild and a Texas Rangers baseball game.

There still is time to obtain more pledges from friends, neighbors, family members and business acquaintances. The more pledges a participant has, the better chance he or she has to win one of the prizes.

Spectators are welcome to attend the event and encourage their riders.

For additional information, contact Darlene Walton, 864-2920.

Softball tournament

The Haskell Kiwanis Club has challenged the Lions Club to a softball game and the challenge has been accepted.

The game will be played Friday night, beginning at 7, just prior to the opening of the Kiwanis' annual softball tournament.

The tournament begins at 8 o'clock Friday. Play will continue through Saturday, and possibly Sunday, depending on the number of teams entered in the tournament.

Proceeds of the tournament will go to the Haskell Industrial Foundation.

Supreme Court rejects tax petition

A meeting of the Haskell County Taxpayers Association has been called for Monday evening, Aug. 1, at Sue's Flowers, southeast corner of the square in Haskell. The group will discuss the Supreme Court ruling on the rollback election. Everyone is invited to attend.

... The Texas Supreme Court has overruled a motion for leave to file an original writ of mandamus proceeding arising from the failure of the Haskell County Commissioners Court to call a referendum election on the 1987 county tax rate.

A petition had been filed by the attorney of a local group which last year had petitioned the county commissioners to call a rollback election.

In reaction to the Supreme Court decision, the Haskell County Taxpayers Association issued a joint statement which read in part:

"Taxpayers in each of the 254

Texas counties should prepare for the worst now that the Texas Supreme Court has refused to enforce the Texas Bill of Rights. Unless the highest Texas court changes its position, there will be no county rollback elections until taxpayers obtain a constitutional amendment to restore the right which was first obtained during Governor Clements' first term.

"Taxpayers should turn out in force for both budget and tax rate hearings this year. As long as the required notices are given and hearings held, county commissioners can increase tax rates by more than 8 percent without fear of a rollback election."

Earlier, a petition calling for a rollback election had been filed in district court here. It was later withdrawn when a number of the signatories said they did not want to be involved in a suit.

The attorney for the taxpayer group then filed a petition in the Texas Supreme Court.

Family has reunion at Corral Building

The Fischer family reunion was held July 16 at the Corral Building in Haskell.

Fifty-eight family members were in attendance with Carl Fischer, Freida Marugg, Walter Fischer and Herbert Fischer, as the surviving children of Mr. and Mrs. Carl Fischer, hosting the reunion.

The oldest family member represented at the gathering was Carl Fischer of Paint Creek, who is 85. The youngest member was Jonathan Johnson, 3 months, son of Mr. and Mrs. Tim Johnson of Lockhart. Mrs.

Johnson is the former Marilyn Fischer, daughter of Mr. and Mrs. Herbert Fischer of Haskell.

David Bittner, son of Mr. and Mrs. Walter Bittner, traveled 455 miles from east of Houston to attend the reunion.

The family reunion greeted as first time guests: Jane Bittner, Waldeen Bittner Womack and Donna Rinehart, daughters of Mr. and Mrs. Walter Bittner; Mr. and Mrs. Gene Bittner (he is the son of Mr. and Mrs. Otto Bittner); and Dr. Freddie Sagebiel, husband of Carolyn Fischer Sagebiel.

The business meeting portion re-elected David Fischer, son of Mr. and Mrs. Herbert Fischer, as president. David and his family live in Plano. Sharon Stuart, daughter of Mr. and Mrs. Walter Fischer, was re-elected secretary-treasurer. Sharon and her family live in Richardson.

Plans for the 1990 Fischer reunion were discussed to include updating the family tree and enlarging the picture album for future generations. An arts and white elephant auction is being organized.

Miss Thornhill to marry Abilene man

Sandra Thornhill of Haskell and Phillip Hearn of Abilene will be married Aug. 27 in the Minter Lane Church of Christ in Abilene.

The bride-to-be is the daughter of Charles Thornhill and Louise Thornhill of Haskell and the prospective bridegroom is the son of Mr. and Mrs. Robert Heard of Abilene.

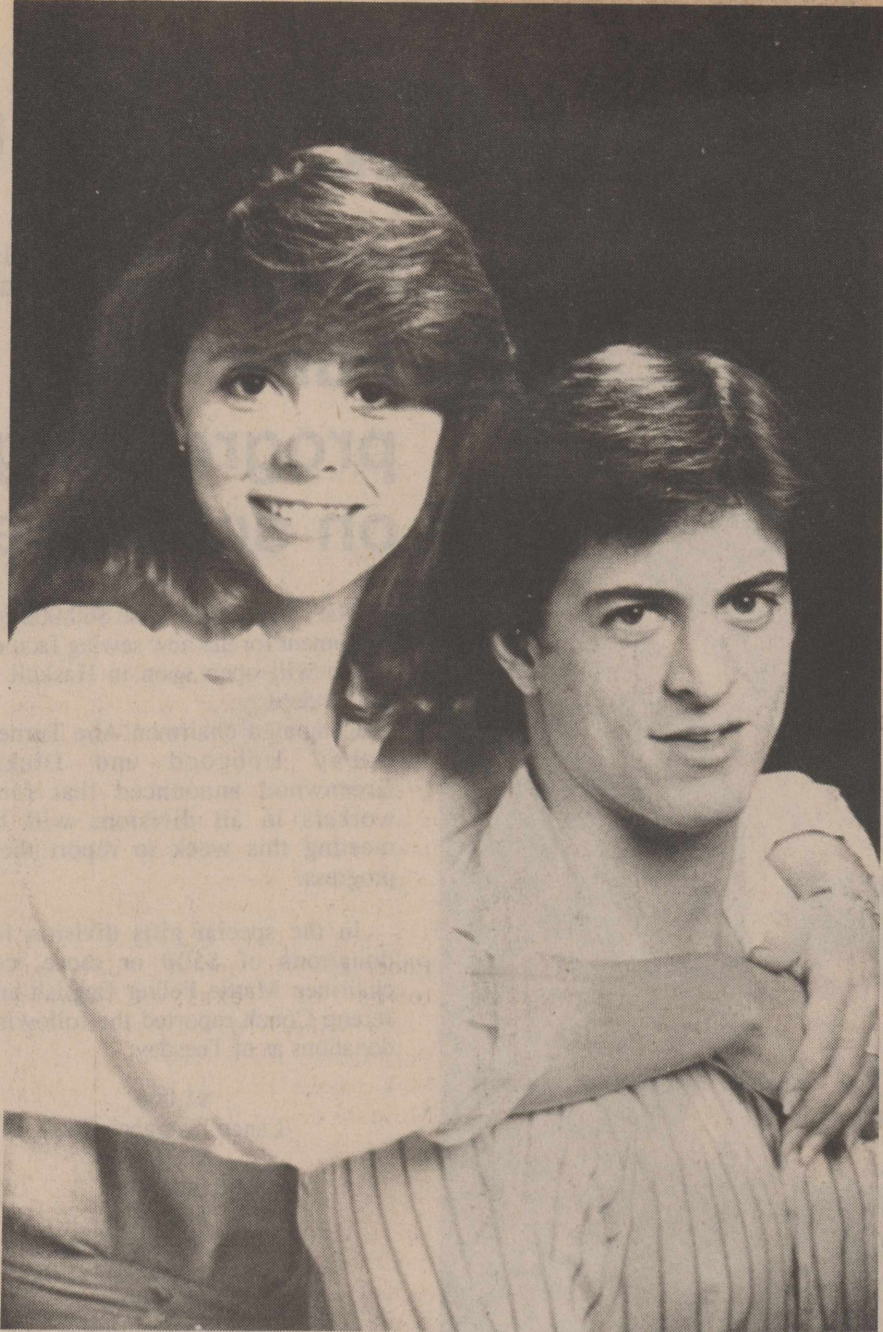
Miss Thornhill is a graduate of Haskell High School and is attending Texas University of Cosmetology in Abilene.

Hearn, a graduate of Abilene High School, attended Odessa College and is employed by Marty Scott Roofing of Abilene.

Moonstruck

The next full moon might cause some strange goings on. But if you're daring enough to brave the werewolves, you might try planting a garden.

National Wildlife magazine reports that many vegetables, particularly tomatoes, corn and sweet peas, grow better when planted under a full moon.



Sahudi and John McMillen

Couple married in Puerto Rico

Sahudi Annette Marrero of Gainesville, Fla., became the bride of John Arthur McMillen of Orlando, Fla., in a ceremony performed July 23 at San Carlos Borromeo Church in Aguadilla, Puerto Rico. Gerald McSwiggan officiated.

The bride is the daughter of Mr. and Mrs. Humberto Marrero of Aguadilla. The bridegroom is the son of Mr. and Mrs. James J. McMillen of Fort Pierce, Fla., and the grandson of Mrs. George W. McMillen of Haskell.

Maid of honor was Christina

Marrero and bridesmaid was Vionette Marrero, both sisters of the bride. James Michael McMillen served his brother as best man.

A reception at the Coast Guard Club in Ramey, P.R., followed the ceremony.

The bridegroom is employed by Rick Day Communications in Orlando.

Following a wedding trip to Caracas, Venequela, the couple will reside in Casselberry, Fla., near Orlando.

Imo Brockett becomes a model

By Myrtle Phemister

For her 50th birthday present to herself, Imo Brockett enrolled in the Ruth Ann Malm Modeling Agency and School of Abilene in May 1987, thus realizing a dream she had had since a young girl growing up in Goree.

After graduation from high school, her modeling career was delayed many years as she chose being a wife to Pete Brockett and mother of two daughters, Kim and Monica, and grandmother to three.

Imo graduated from the modeling school in September 1987, and soon after she was sent to New York City in the contemporary division competition of the Modeling Association of America International, where she entered four categories. She won first in three: runway, photography and make-up, and received honorable mention in television commercials. There were 40 agencies from around the world represented in the competition.

Imo designs and makes her own clothes and she was pleased at the compliments she received on her wardrobe from the New York agents. Suzie Segal, an associate editor of Lear's Magazine, paid particular attention to Imo and asked her for an appointment for photographs and interviews for an appearance in the magazine, a publication which is aimed at women above age 40. Imo has been in New York for two photography sessions and will be featured in the September-October and November-December issues of the magazine. She returned home from her last session Friday.

A genetic eye disorder that tears the retinas of her eyes has caused Imo to have to undergo 17 operations to correct and repair the damage, but she



Imo Brockett

refused to become depressed and despondent. She is under contract with the Ruth Ann Malm Agency, and in addition to modeling, she is studying to become an instructor. She will begin teaching in August.

In an interview, Imo said, "I love being a wife, mother, grandmother and model. My life has balance and I would encourage anyone to go ahead and do that 'one thing' they have always wanted to do. I never dreamed I would be a winner or I would ever appear in a major magazine, but I am thoroughly enjoying it."

And as for Pete: "This new career has given my wife something to get excited about. I'm proud of her. She still drives the tractor at times, and loves living on the farm."



People believe if you carry a potato with you, you will be healthy.

1/2 Price Sale

Now In Progress
Spring & Summer Sale Shoes
Reduced 50%

All Sales Cash

No exchanges or Refunds



The Slipper Shoppe

East Side of Square

Haskell, Texas

The Clothes Closet

"Fashion at Affordable Price"
Sizes 6-46

Summer Clearance

All Summer Apparel

40 - 50% off

Broken lots & Sizes

10 Ave D • East side of Square • Haskell • 817-864-3781

Robbie's Beauty Salon announces Missy Collins

specializing in
Up To Date Teenagers Styles
Men's Hair Cuts

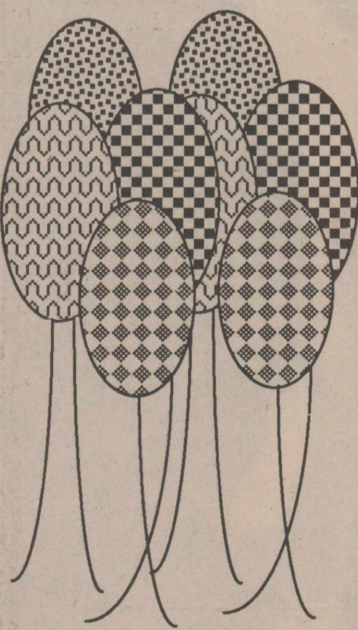
Specials - permanents \$20⁰⁰

Shampoo, Cut & Blow Dry \$10⁰⁰

Open Monday - Saturday
Call for Appointment: 864-2566
864-2352

Robbie's Beauty Salon

1406 N. Ave F Haskell, Texas



60th
Happy Birthday

to Wallace Cox
who now qualifies for his
senior citizen discount

This shoe soothes and supports hard-working feet.

- Glove-soft brown leather
- Cambrelle® lining absorbs perspiration
- Perforated insole ventilates your feet
- Soft, wedge sole supports your foot — cushions shock

COMFORT SIZES 7-14 / Narrow / Medium / Wide
Sizes / widths vary by style
MADE IN U.S.A.

SOFT - SUPPORTIVE - LIGHTWEIGHT FOR WEAR ON CONCRETE!

Heidenheimers **RED WING SHOES**
419 S. 1st
Haskell, Texas

LOVE YOUR LAWN

with a

RAIN BIRD®

Sprinkler System

Fully Automated
or Manually Controlled
From

Nanny Plumbing

301 S. Ave. E Haskell
Phone 864-3043

Call or Come By
For Details and Estimates
Let us take the work out of your
lawn care this year!

Licensed Air Conditioning Contractor #TACLB006602

SALE

50% off SALE

1/2 price SALE

The Hayloft

All Sales Final

409 S. First
Haskell, Texas

Harrell families re-unite

The families of Will, Ike, Nathan Sr. and Charlie Harrell had their reunion Saturday at the Haskell Country Club.

Sixty relatives and friends attended. Will Harrell's children attending were Jerry Harrell, Minnie Holt, Viola Tidwell, all of Haskell, and Eudella Goode of Rochester.

Ike Harrell's children were Dovie Carroll of Hale Center and Violet Allen of Haskell. Rollo Harrell of Plainview was unable to attend.

Nathan Harrell Sr.'s children were Nathan Harrell of Burk Burnett; and J. R. Harrell of California and Ardellia Corzine of California, who were unable to attend.

Charlie Harrell's children were Barney Harrell of Hereford, Calif., and Lonnie Harrell of California who was unable to attend.

A big lunch was served at the noon hour, consisting of brisket and German sausage, prepared by Gene and Mike Harrell. Each family brought vegetables, salad and dessert.

Lots of visiting, picture taking and swimming was done. An auction was held with Larry Dobbs of Rockwall doing the auction. Larry is the grandson of Minnie Holt, the son of Imogene Glover Dobbs. The auction went over well and all enjoyed it.

Jerry Harrell was the oldest one there. Youngest was Sarah Dressler of Mesquite. Traveling the farthest was Barney Harrell of Hansford, Calif.

Nathan and Margie Harrell will be in charge of getting the letters out next year.



To celebrate 50th anniversary

A reception honoring Mr. and Mrs. Taylor Childress on their golden anniversary will be held from 2 to 4 p.m. Aug. 7 at the First Baptist Church in Guymon, Okla. The reception will be hosted by their children and grandchildren, Rodney and Raeleen Childress and children Racheal and Shawn of Hooker, Okla., and Lonnie and Nancy Childress and children Kristi, Kari and Lance of rural Guymon. Friends and relatives are invited to attend.

Alexander family gathers Program on AIDS scheduled Aug. 6

The annual reunion of the descendants of George William and Harriet Evelyn Alexander, longtime residents of Weinert and Haskell County, was a two-day affair at Seymour City Park July 16-17.

Saturday activities of the pioneer family included registration, visiting, swimming, and an auction of antique relics to pay for the catered supper of barbecue, beans and salads of all kinds.

All four of the living children were present for this year's reunion: Mrs. Sallie Sanders of Weinert, Mrs. Lola Tidrow of Paradise, J. T. Alexander of Weinert and Mrs. Melba Kim of Phoenix, Ariz.; also a daughter-in-law, Mrs. Washington (Bertie) Alexander of Weinert.

Those attending were from Micanopy, Fla., Columbus, Ga., Phoenix, Ariz. and the following towns of Texas; Coleman, Farmersville, Denton, Wichita Falls, Paradise, Eastland, Midland, McKinney, Haskell, Cross Plains, Muleshoe, Gorman, Weinert, Lubbock, Abilene, Odessa, Stamford and Burk Burnett.

Eighty-seven registered for this year's reunion. Recognized as the oldest family member was Mrs. Washington (Bertie) Alexander of Weinert and youngest present was Brieanne Gregg, 4-month-old daughter of Dr. Mark and Lori Gregg of Denton. Traveling the farthest distance were Mr. and Mrs. Troy Blakely of Micanopy, Fla.

Troy Wayne Blakely prints the programs for each year's reunion, with pictures of a different family member and their children each year. This year's invitation program was of the Washington and Bertie Alexander family of Weinert and their 10 children, five of whom were at the reunion.

Sunday activities included a devotional and Weinert remembered, picture taking and a covered dish luncheon.

J. W. (Jake) Alexander of McKinney, son of Mr. and Mrs. J. T. Alexander of Weinert, was chosen as president of next year's reunion.

A short educational program on AIDS will be conducted Saturday, Aug. 6, in the county extension office kitchen, located at 101 South Ave. D in Haskell. The first program begins at 10 a.m. and it will be repeated at 3 p.m.

Rule schedules neighborhood night

"Neighborhood Night Out" in Rule this year will be Aug. 9.

The event is being sponsored by the Rule City Council, the Chamber of Commerce and the Philadelphain Club.

Rochester Legion elects officers

Recently elected officers for Rochester American Legion Post 584 are:

Jimmy Strickland, commander; Cecil Sarabia, vice commander; Don Smith, adjutant and finance officer; Herman Hearn, service officer; Kenneth Strickland, chaplain; and Coleman Wright, sergeant-at-arms.

The program is being sponsored by the Home Economics Committee of the Haskell County Extension Program Council in an effort to acquaint local citizens with the facts about AIDS.

Those attending will see a video presentation and will be given printed pamphlets to take home and read during their leisure.

Sponsors point out that there is no charge for the program, being held during the annual Haskell Summer Sizzler.

Scientists estimate that as many as 200 million meteors enter the earth's atmosphere every day.

Summer Clearance

40% off

New for Fall

Girls 7-14



Also Now Available In Girls 4-6X

Kids Duds

310 N 1st Haskell

July SPECIAL

Heel Caps for Ladies Shoes

Reg. \$5.00 **\$3.50**

Spikes

Boot & Shoe Repair

107 S Ave D
Haskell • 864-8151

REPORT OF CONDITION

Consolidating domestic and foreign subsidiaries of the

HASKELL NATIONAL BANK of HASKELL

Name of Bank City

In the state of TEXAS, at the close of business on JUNE 30, 1988

published in response to call made by Comptroller of the Currency, under title 12, United States Code, Section 161.

Charter Number 14149 Comptroller of the Currency ELEVENTH District

Statement of Resources and Liabilities

		Thousands of dollars
ASSETS	Cash and balances due from depository institutions:	
	Noninterest-bearing balances and currency and coin	1 877
	Interest-bearing balances	1 789
	Securities	34 447
	Federal funds sold	2 050
	Securities purchased under agreements to resell	-0-
	Loans and lease financing receivables:	
	Loans and leases, net of unearned income	13 718
	LESS: Allowance for loan and lease losses	129
	LESS: Allocated transfer risk reserve	-0-
	Loans and leases, net of unearned income, allowance, and reserve	13 589
	Assets held in trading accounts	-0-
	Premises and fixed assets (including capitalized leases)	494
	Other real estate owned	268
	Investments in unconsolidated subsidiaries and associated companies	-0-
Customers' liability to this bank on acceptances outstanding	-0-	
Intangible assets	-0-	
Other assets	1 104	
Total assets	55 618	
Losses deferred pursuant to 12 U.S.C. 1823(j)	N/A	
Total assets and losses deferred pursuant to 12 U.S.C. 1823(j)	55 618	

LIABILITIES	Deposits:	
	In domestic offices	50 493
	Noninterest-bearing	5 949
	Interest-bearing	44 544
	Federal funds purchased	-0-
	Securities sold under agreements to repurchase	-0-
	Demand notes issued to the U.S. Treasury	-0-
	Other borrowed money	-0-
	Mortgage indebtedness and obligations under capitalized leases	-0-
	Bank's liability on acceptances executed and outstanding	-0-
	Notes and debentures subordinated to deposits	-0-
	Other liabilities	467
	Total liabilities	50 960
	Limited-life preferred stock	-0-

EQUITY CAPITAL	Perpetual preferred stock	-0-
	Common stock	300
	Surplus	300
	Undivided profits and capital reserves	4 058
	Total equity capital	4 658
	Losses deferred pursuant to 12 U.S.C. 1823(j)	N/A
	Total equity capital and losses deferred pursuant to 12 U.S.C. 1823(j)	4 658
Total liabilities, limited-life preferred stock, equity capital, and losses deferred pursuant to 12 U.S.C. 1823(j)	55 618	

We, the undersigned directors, attest to the correctness of this statement of resources and liabilities. We declare that it has been examined by us, and to the best of our knowledge and belief has been prepared in conformance with the instructions and is true and correct.

Ray R. Wilfong
Richard L. Wilfong
Ake Zuercher

Directors

Bettie Wainscott
Name
Vice President & Cashier
Title

of the above-named bank do hereby declare that this Report of Condition is true and correct to the best of my knowledge and belief.

Bettie Wainscott
Signature

July 21, 1988
Date

Save Every Day With Us!

Bayer Aspirin
200 Tablet Bottle

\$6¹⁹

Valu-Rite Valu-Dryl
Allergy Medicine
24 capsules

\$1²⁹

NEW TUMS
Liquid Antacid/Antigas
24 capsules

12 oz. Bt. Extra Strength \$2⁹⁹

Hi-Dri Towels

2 Rolls \$1

Check our Clearance-Baskets and SAVE \$\$\$

Some of Many Reasons To Make Us "Your Drug Store"

Three Pharmacists to Consult With You About Your Medications
24 HOUR EMERGENCY PRESCRIPTION SERVICE
Open 365 Days a Year
8 a.m. to 6 p.m. weekdays
8:30 to 10:30 a.m. Sundays and Holidays
P.C.S., Blue Cross, PAID, Medicaid, and

30 day Charge Accounts Welcome
Computerized Records Kept for Insurance and Tax Purposes

SENIOR CITIZEN DISCOUNT
10% Prescription discount Given to Persons over 60
Years of Age if the Prescription is picked up at the Store and Paid at time of purchase.

DRIVE-IN WINDOW FOR YOUR CONVENIENCE

DELIVERY SERVICE For Those Who Are Home-bound or Just Unable to Come After Their Prescriptions

Max Factor Sun-Smart Makeup and Suntan Lotion in one "Outsmart The Sun"

25% off

Neovadrin Vitamin C

Time Release
500 Mg. 100 capsules
\$3³⁹

DOYLE HIGH'S THE DRUG STORE

Fast, Friendly Service at a Competitive Price
100 S Ave E • Haskell • 864-2515

M SYSTEM

Your FRIENDLY
AFFILIATED
SUPER MARKETS

Haskell, Texas
Open 7 days a week
Monday-Saturday 7:30 a.m. til 8 p.m.
Sundays 8 a.m. til 7 p.m.

DOUBLE COUPONS 7 DAYS A WEEK!

We will redeem your manufacturers' cents-off coupons for double their face value up to 50¢ when the product is purchased. We will double only one coupon per item. All others redeemed at face value. Limit one coupon per item. Coupon not to exceed value of item. This policy does not include "Free" coupons, cigarette and tobacco, or refund coupons. Offer good for a limited time only. Super value offer from M-System in Haskell.

We Gladly Accept Food Stamps

Prices Good
July 28 thru August 3



We reserve the right to limit quantities.

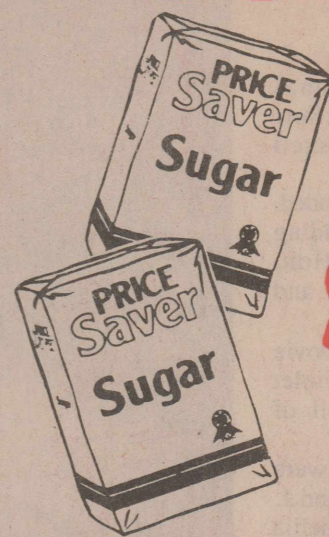


Shurfine Paper
Towels
4 JUMBO ROLLS **\$1**

Limit 4 With \$10.00 or More Grocery Purchase

PRICE SAVER

SUGAR
5 LB. BAG



\$1.47

SHURFINE EARLY HARVEST
PEAS



5 17 OZ. CAN **\$2**

SHURFINE
REG./DRIP/ELEC. PERK

COFFEE



1 LB. CAN

\$1.89



Shurfine Barbecue

SAUCE

18-oz BOTTLE
(Limit 2)

48¢



Shurfine

Shortening

3 lb can

\$1.39

SHURFINE

TOMATOES



16 OZ. CANS

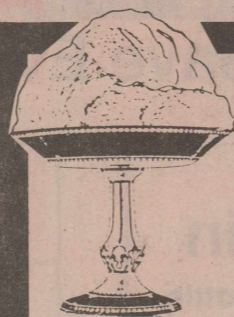
5 **\$2**



SHURFRESH GRADE "A"

Large Eggs

59¢
DOZEN



SHURFRESH

ICE CREAM

(Assorted Flavors)

2 HALF GALLON SQUARE CARTONS **\$3**

Potatoes

SHURFINE FROZEN Crinkle Cut 2-Lb. Pkg.

99¢

SHURFINE WHOLE KERNEL

GOLDEN CORN

16 oz can



3 FOR 99¢

SHURFINE

MACARONI & CHEESE DINNERS

7.25 oz. boxes



5 FOR 99¢
LIMIT 5

SHURFINE HAMBURGER SLICED

Dill Pickles **\$1.19**
32-oz. Jar

SHURFINE (Beef-Liver-Chicken)

DOG FOOD **3** 15-oz CANS **\$1**

Angel Soft Tissue ⁴ roll **95¢**
V-8 VEGETABLE JUICE 46-oz. Can **\$1.19**

STOCK-UP SALE!!



USDA CHOICE BEEF BONELESS
BRISKET
UNTRIMMED
LB. **98¢**

SHURFRESH
OLD FASHIONED/BUTTERMILK
BISCUITS



5\$1
7.5 OZ.
CAN

SHURFRESH
MARGARINE



3\$1
1 LB.
QTRS.



FRYER PARTS
PILGRIM'S PRIDE
GRADE "A" MIXED,
LB. **68¢**

PRICE
SAVER
SLICED



Bacon
1-LB.
PKG. **99¢**

LEAN
Ground
CHUCK **\$149**
LB.

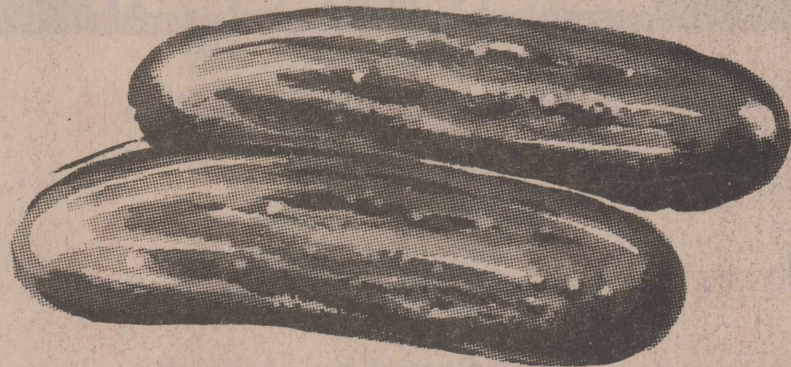


SHURFRESH
BONELESS WHOLE
Hams **\$159**
LB.

- HEALTH AND BEAUTY AIDS —
- Edge** Shave Gel (Assorted) 7-oz. **\$1 79**
 - Shampoo** Johnson's Baby.... 11-oz. **\$2 59**
 - Comtrex** Cold Tablets..... 50's **\$5 99**
 - Chlortrimeton** 24-Tablets **\$3 45**

- SHURFRESH SQUEEZE
MUSTARD 16-oz. **59¢**
- SHURFINE SLICED
Strawberries 10-oz. Ctn. **79¢**
- SMUCKER'S
GRAPE JELLY 32-oz. Jar **\$1 29**
- SHURFINE
PINTO BEANS 1-Lb. **29¢**

★ FARM FRESH FRUITS and VEGETABLES ★



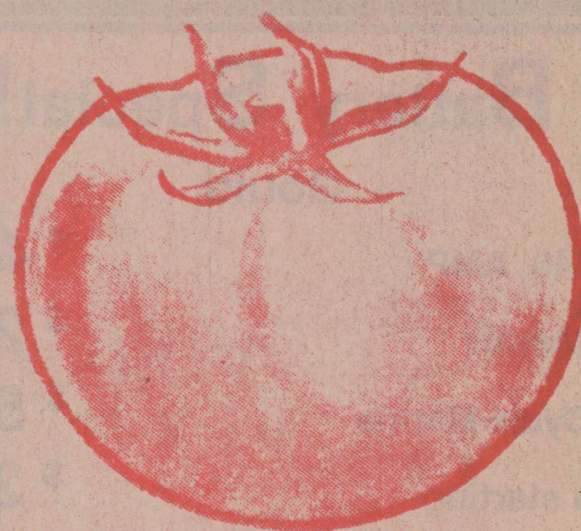
CUCUMBERS
FANCY
LONG
GREEN **5** **\$1**
FOR

CELLO BAG
SPINACH 10-oz. **89¢**

GRAPEFRUIT
SUNKIST
RED
5-LB.
BAG **\$1 49**



- PEACHES SOUTHEASTERN 3 Lbs. **\$1**
- RED PLUMS CALIF. Lb. **59¢**
- YELLOW SQUASH Lb. **49¢**
- ZUCCHINI SQUASH Lb. **49¢**
- JALAPENO HOT PEPPERS Lb. **79¢**
- WHITE ONIONS Lb. **29¢**



VINE
RIPENED
Tomatoes
6
PACK
CTN. **89¢**

Pack 136 has busy summer

Pack 136 has had a very busy summer. The last week in June the pack hosted a group swim and hamburger broil. All in all over 120 burgers were served.

The second week in July, 13 Webelos Scouts and four dads enjoyed four days at Camp Tonkawa. The scouts worked on all or part of six different activity badges in spite of alternating showers, insects and scorching heat.

Scouts attending were Jeremy Futch, James Mickler, Ryan Nanny, Aaron Earles, Chris Tatum, Justin Stewart, Cody Ender, Casey McDaniel, Casey Thompson, Jude Pardo, Marcus Overton, Anthony Gonzales, Allan Merchant and Johnathan Lefevre. Their leaders were Larry McDaniel, Kenny Thompson and Jim Bob Mickler. Wallar Overton joined the scouts for the last night

and day. Scout Justin Stewart was honored at the closing campfire ceremony for running the obstacle course in 42 seconds which allowed him to finish second out of 78 scouts competing. The Webelos did an excellent job at their first overnight camp.

On July 23, eight Tiger Cubs and their sponsoring parents attended a day long camp at Tonkawa which included swimming, games, nature and making their own camp tee-shirt by silk screening. Scouts and parents attending were Cody and Randy Stone, Joseph and Randy Phemister, Brent and Brian Toliver, Lupe and Rickey Paul Santellana, Joshua and Pat Mickler, Randy and Bob Cass, Lee and Milton Christian and Jackie and Kathy Roysdon.

This week, 18 Cub Scouts and four leaders are involved in a Cub

Day camp. Scouts Cory Wood, Harrison Druessedow, Kevin Billington, Rusty Howeth, Chris McSmith, Michael Rodriguez, Riley Pace, Aaron Kirk, Jason Briles, Bobby Gonzales, Joseph Andress, Tim Dewey, Chancey Pogue, James Cowptherwaite, Greg Rodriguez, Daniel Alvarez, Mario Alvarez and Joe Salinas are swimming, singing, shooting BB guns, arrows and generally having a good time.

Their leaders, Carol McSmith, Becky Howeth, Mary Dewey and Jim Bob Mickler, are looking for good things this week.

Scout Tim Dewey has had a full two weeks in that he, his dad Tom and Chris and Justin Arendall attended last week's day camp also. Tim, like a lot of young men from the community, just can't seem to get enough of Camp Tonkawa. It's just good clean fun.

Speaking of fun, Pack 136 will hold its monthly pack meeting at the pool this Saturday from 6 to 8 p.m. Races will be held and watermelon is on the refreshment list. See you Scouts there.

Young to compete in Greenbelt game

Haskell's Mark Young will play in the 39th annual Greenbelt Football classic next week in Childress.

The game, featuring 44 top performers from Texas and Oklahoma schools within a 175-mile radius of Childress, will begin at 7:30 p.m. next Friday, Aug. 5.

Young, an all-district and all-area running back for the Indians last fall, will attend Abilene Christian University this fall on a track scholarship. He is a two-time state 800-meter champion, helping lead the

Indians to the state championship last spring. He also received all-state recognition as a member of last season's state semifinalist Indian basketball team.

A special feature of this year's Greenbelt Classic will be a queen pageant, to be held at 8 p.m. next Thursday, the night before the game.

Sheree Dumas of Haskell is one of the contestants in the queen contest.

Tickets to the Childress game are priced at \$5 for adults and \$3 for children 12 and younger.

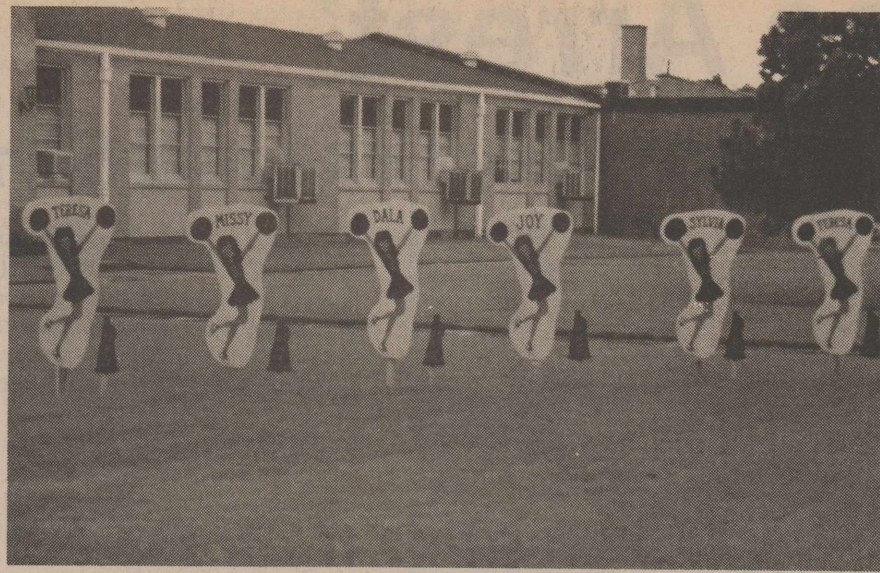
Rule soldier arrives in Germany

Army Pvt. Ronald C. Hertel has arrived for duty in West Germany.

He is a light wheel vehicle mechanic with the 2nd Armored Cavalry Regiment.

Hertel is the son of Alvin C. and Sue Hertel of Rule.

Thank you for reading The Haskell Free Press.



Cheerleader cutouts

Parents of Haskell High School varsity cheerleaders have made these cutout yard signs which will be displayed in the yards of the cheerleaders' homes.

Cleansing agents can cause irritation

Exposure to a variety of cleansing agents can cause severe irritation to the skin, especially the hands, says the Texas Medical Association.

People who work with oven cleaners, scouring cleansers, bleaches, ammonia, polishes, and soaps of all kinds often develop contact dermatitis, commonly known as dishpan hands.

In addition to an itchy rash on the hands, dermatitis causes pain and burning. The rash may be made up of tiny blisters, and cracks may appear in the skin.

Sometimes the rash is caused by allergies to the chemical substances in the cleaners.

Rubber gloves, often used to prevent the skin problem, may make

the symptoms worse. Rubber gloves trap perspiration, which can aggravate dermatitis, and prevent the rash from healing properly.

TMA suggests the following tips to prevent dishpan hands:

--If you must wear rubber gloves, avoid wearing them in hot water, which causes your hands to perspire and aggravates the rash.

--Cotton gloves can be worn under rubber gloves to absorb perspiration.

--Remove jewelry before using the cleaners. Residue under jewelry can lead to a rash on the skin.

--Moisturize your skin with creams to keep hands soft. Avoid using creams and lotions containing anesthetics or antibiotics because they can make the condition worse.

Lodge to begin campaign

Sons of Hermann Lodge No. 241 of Haskell will join with the other 159 Hermann lodges in Texas Aug. 1 to Nov. 10 in a campaign to enroll new members.

Harry Koehler and Alton Middleton will represent the local organization in the drive.

The 160 state lodges, located in 143 cities and towns of Texas, have 80,000 members.

On July 17, approximately 800 lodge leaders from around Texas met in San Antonio, headquarters of the fraternal benefit society, in a rally for the campaign. The rally followed a seminar attended by 160 local lodge membership representatives.

Hermann Sons in Texas dates back to July 6, 1861, when Harmonia Lodge No. 1 was officially chartered in San Antonio. Originally part of a national society founded in New York in 1840, Hermann Sons in Texas became autonomous in 1921. Headquarters are located in San Antonio where the grand lodge was established in 1890.

The not-for-profit order in Texas operates a retirement home for aged members and a youth summer camp, both near Comfort, and sponsors 37 dancing schools for its junior members. Local lodges sponsor both social and benevolent activities. As required by law, the fraternal benefit society also provides life insurance for the benefit of adult and junior members.

Thank you for reading The Haskell Free Press.

REPORT OF CONDITION

Consolidating domestic and foreign subsidiaries of the

FARMERS NATIONAL BANK of RULE City, Texas, at the close of business on June 30, 1988 published in response to call made by Comptroller of the Currency, under title 12, United States Code, Section 161. Charter Number 14539 Comptroller of the Currency Eleventh District

Statement of Resources and Liabilities

		Thousands of dollars
ASSETS	Cash and balances due from depository institutions:	
	Noninterest-bearing balances and currency and coin	850
	Interest-bearing balances	1,800
	Securities	4,923
	Federal funds sold	875
	Securities purchased under agreements to resell	-0-
	Loans and lease financing receivables:	
	Loans and leases, net of unearned income	7,692
	LESS: Allowance for loan and lease losses	148
	LESS: Allocated transfer risk reserve	-0-
	Loans and leases, net of unearned income, allowance, and reserve	7,544
	Assets held in trading accounts	-0-
	Premises and fixed assets (including capitalized leases)	120
	Other real estate owned	140
	Investments in unconsolidated subsidiaries and associated companies	-0-
Customers' liability to this bank on acceptances outstanding	-0-	
Intangible assets	-0-	
Other assets	360	
Total assets	16,612	
Losses deferred pursuant to 12 U.S.C. 1823(j)	-0-	
Total assets and losses deferred pursuant to 12 U.S.C. 1823(j)	16,612	
LIABILITIES	Deposits:	
	In domestic offices	15,119
	Noninterest-bearing	2,192
	Interest-bearing	12,927
	Federal funds purchased	-0-
	Securities sold under agreements to repurchase	-0-
	Demand notes issued to the U.S. Treasury	-0-
	Other borrowed money	-0-
	Mortgage indebtedness and obligations under capitalized leases	-0-
	Bank's liability on acceptances executed and outstanding	-0-
	Notes and debentures subordinated to deposits	-0-
	Other liabilities	178
Total liabilities	15,297	
Limited-life preferred stock	-0-	
EQUITY CAPITAL	Perpetual preferred stock	-0-
	Common stock	50
	Surplus	200
	Undivided profits and capital reserves	1,065
	Total equity capital	1,315
	Losses deferred pursuant to 12 U.S.C. 1823(j)	-0-
	Total equity capital and losses deferred pursuant to 12 U.S.C. 1823(j)	1,315
Total liabilities, limited-life preferred stock, equity capital, and losses deferred pursuant to 12 U.S.C. 1823(j)	16,612	

We, the undersigned directors, attest to the correctness of this statement of resources and liabilities. We declare that it has been examined by us, and to the best of our knowledge and belief has been prepared in conformance with the instructions and is true and correct.

[Signatures]
Directors

Mary Lou Landes
Name
Vice President & Cashier
Title

of the above-named bank do hereby declare that this Report of Condition is true and correct to the best of my knowledge and belief.

[Signature]
Mary Lou Landes
Signature
July 20, 1988
Date

Pre-school Childcare 18 months - 5 yrs. old Mon. - Fri. 7:30am - 5:30pm

Drop-ins Welcome Full or half days

Also Offering Educational Curriculum for Pre-Schoolers

ABC Day Care 1301 N. Ave I 864-8933 Registrations now being accepted... Laura Tidwell, Director Opening in September

Infant Care 0 - 17 months old Monday - Friday 7:30 am - 5:30 pm

A B C DAY CARE

1301 N. Ave. I • Haskell • 864-8933

Afterschool Childcare Mon. - Fri. 2:30 pm - 5:30 pm Transportation provided

Gold ★	Silver ★	Diamonds
We Buy	We Sell	We Trade
• Coins • Class Rings • Dental Gold • Broken Jewelry • Watches • any gold or silver in any condition	14K chains - by the weight \$16 ⁰⁰ per gram	If you've got it, we'll try to trade for it!
Highest cash prices Paid!	Gold & diamond jewelry at wholesale or below	
Penny Weight Gold Co. At The Haskell Gun Show Haskell Civic Center Saturday & Sunday, July 30-31		

'Cardiac Arrest'

To raise funds for heart association



Trooper Don Collins arrests "you know who"

Several leading citizens of Haskell will be arrested next Saturday (Aug. 6) and turned over to the custody of the American Heart Association on Haskell's courthouse square in conjunction with the annual Summer Sizzler.

As part of the AHA "Cardiac Arrest" fund-raising event, the prisoners will be held behind bars until they donate sufficient "bail" to win release.

In a pre-arranged setup, state trooper Don Collins cleverly apprehended some of the criminals at the scene of the crime, Markey's Place, Monday. Each criminal has been convicted of a serious crime against the heart--over-indulging. As a consequence, they must serve time in the slammer.

Local citizens may donate to help the criminals raise bail or may donate to keep them in the slammer. Pledges and donations may be made at the criminal's place of business or during the "Cardiac Arrest" event.

The money these prisoners raise as a result of their terms in the slammer will support the AHA's research, professional and public education and community service programs.

By donating to "Cardiac Arrest" Haskell county citizens will be helping raise money to fight the No. 1 killer in the country--heart disease.



'Cardiac Arrest' volunteers over-indulge at Markey's Place



Debra Coker became the bride of Jerry Andrews July 1 in Abilene with Clarence Collins officiating. Debra is the daughter of Mr. and Mrs. Jack Coker of Rule and is a 1988 graduate of Rule High School. Jerry, the son of Mr. and Mrs. Floyd Andrews of Abilene, is a 1986 graduate of Cooper High School. They are residing in Rule where Jerry is employed by Mahler Supply Co.

Ask VA

Q: Do the eligibility assessment procedures for VA medical care apply to veterans age 65 and older?

A: VA's eligibility assessment procedures apply to all nonservice-connected veterans regardless of age. Public Law 99-272 repealed a provision in the Veterans Omnibus Health Care Act of 1970 that allowed veterans 65 years of age or older to receive care in VA facilities regardless of income.

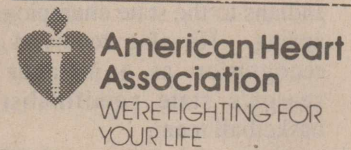
Q: I have questions about my recent agent orange examination. Whom should I talk to about my concerns?

A: If you have questions about your agent orange examination,

contact the environmental physician at the VA medical center where you had the examination.

Q: Can a veteran get a VA-guaranteed loan to purchase a condominium unit?

A: Yes, provided the unit is located in a condominium complex approved by the Veterans Administration.



Did you know?

If you start with a penny and double your money every day, you will have:

Sixty-four cents after seven days, \$81.92 after 14 days, \$10,485.76 after 21 days, \$1,342,177.28 after 28 days and more than \$5 million after 30 days.

Indian Drive-In
(Formerly Sonic Drive In)
Our Special!!
Steak Sandwich
French Fries \$2.25
Medium Drink

Remember Happy Hour every afternoon
3-4 and 6-7 Everyday

1402 N. Ave E Haskell
Phone 864-3318

Nemir Medical, Inc.
817-864-2258 - 510 N. 2nd
Haskell - Mon.-Sat. 10:00-5:00

HOME OXYGEN
CRTT-CRNA, RN and
RESPIRATORY THERAPISTS ON STAFF
REPAIR DEPT.
ALL TYPES MEDICAL EQUIPMENT

RENTAL & SALES

- Wheelchairs
- Walkers
- Commodes
- Cranes
- Trapeze Bars
- Traction
- Suction Machines
- Hospital Beds
- Crutches
- Inhalation Therapy
- Ostomy Supplies
- Orthotic Supports
- Exercise Bicycles
- Trauma Tissue Skin Supplies

•OSTOMY/INCONTINENT NEEDS
•MEDICARE ASSIGNMENTS ACCEPTED

24-Hour Emergency Service
•FREE AREA WIDE DELIVERY

Conserve Your Cash. We Bill Medicare For You On All Rentals.

All Ocean Pacific Spring and Summer SPORTSWEAR
Ladie's - Men's
On SALE NOW!!
25% off

Conrad Rowe's Sport-About of Haskell
817-864-3891
402 N. 1st
Haskell, Tx 79521

HEADS OR TAILS WESTERN WEAR Anniversary BLOWOUT

10 DAYS ONLY SATURDAY ONLY

Brown Bag Special 20% OFF Regular Price

Everything You Can Fit into One Brown Paper Sack (Bring Your Own Sack)

817/864-3320 Haskell, Texas

All Laredo Ropers \$49.95 or 2 for \$89.95

All Justin Ropers \$89.95

Group of Ladies Justin Ropers \$69.95

All Straw Hats 30% OFF

All Men's Short Sleeve Shirts 30% OFF

All New Saddles Marked Down Up To \$385.00 OFF

OPEN 9:00-5:30

1988 PROPERTY TAX RATES IN HASKELL ISD

THIS NOTICE CONCERNS 1988 PROPERTY TAX RATES FOR HASKELL ISD. IT PRESENTS INFORMATION ABOUT THREE TAX RATES. LAST YEAR'S TAX RATE IS THE ACTUAL RATE THE TAXING UNIT USED TO DETERMINE PROPERTY TAXES LAST YEAR. THIS YEAR'S EFFECTIVE TAX RATE WOULD IMPOSE THE SAME TOTAL TAXES AS LAST YEAR IF YOU COMPARE PROPERTIES TAXED IN BOTH YEARS. COMPARE IT TO THE TAX RATE THE TAXING UNIT PROPOSES FOR THIS YEAR. THIS YEAR'S ROLLBACK TAX RATE IS THE HIGHEST TAX RATE THE TAXING UNIT CAN SET BEFORE TAXPAYERS CAN START TAX ROLLBACK PROCEDURES. IN EACH CASE THESE RATES ARE FOUND BY DIVIDING THE TOTAL AMOUNT OF TAXES BY THE TAX BASE (THE TOTAL VALUE OF TAXABLE PROPERTY) WITH ADJUSTMENTS AS REQUIRED BY STATE LAW. THE RATES ARE GIVEN PER \$100 OF PROPERTY VALUE.

LAST YEAR'S TAX RATE:		
LAST YEAR'S OPERATING TAXES	\$	530,051.38
+ LAST YEAR'S DEBT TAXES	\$	0.00
= LAST YEAR'S TOTAL TAXES	\$	530,051.38
LAST YEAR'S TAX BASE	\$	62,454,504
= LAST YEAR'S TOTAL TAX RATE	\$.8487/\$100

THIS YEAR'S EFFECTIVE TAX RATE:		
LAST YEAR'S ADJUSTED TAXES (AFTER SUBTRACTING TAXES ON LOST PROPERTY AND TAXES TO CORRECT APPRAISAL ROLL ERRORS)	\$	526,782.70
THIS YEAR'S ADJUSTED TAX BASE (AFTER SUBTRACTING TAXES ON NEW PROPERTY)	\$	60,788,897
= THIS YEAR'S EFFECTIVE TAX RATE	\$.8665/\$100
x 1.03		
= MAXIMUM RATE UNLESS UNIT PUBLISHES NOTICES AND HOLDS HEARINGS	\$.8925/\$100

THIS YEAR'S ROLLBACK TAX RATE:		
LAST YEAR'S ADJUSTED OPERATING TAXES (AFTER SUBTRACTING TAXES ON LOST PROPERTY AND TAXES TO CORRECT APPRAISAL ROLL ERRORS AND ADDING TAXES LOST IN COURT SUITS)	\$	526,782.70
THIS YEAR'S ADJUSTED TAX BASE (AFTER SUBTRACTING TAXES ON NEW PROPERTY)	\$	60,788,897
= THIS YEAR'S EFFECTIVE OPERATING RATE	\$.8665/\$100
x 1.08		
= THIS YEAR'S MAXIMUM OPERATING RATE	\$.9358/\$100
+ THIS YEAR'S DEBT RATE	\$.0000/\$100
= THIS YEAR'S ROLLBACK RATE	\$.9358/\$100

SCHEDULE A: UNENCUMBERED FUND BALANCES

THE FOLLOWING BALANCES WILL PROBABLY BE LEFT IN THE UNIT'S PROPERTY TAX ACCOUNTS AT THE END OF THE FISCAL YEAR. THESE BALANCES ARE NOT ENCUMBERED BY A CORRESPONDING DEBT OBLIGATION

TYPE OF PROPERTY TAX FUND	BALANCE
GENERAL OPERATING	\$ 492,632.00

SCHEDULE B: 1988 DEBTS SERVICE (NONE)

THIS NOTICE CONTAINS A SUMMARY OF ACTUAL EFFECTIVE AND ROLLBACK TAX RATE CALCULATIONS. YOU CAN INSPECT A COPY OF THE FULL CALCULATIONS AT THE:

HASKELL COUNTY APPRAISAL DISTRICT,
604 NORTH 1ST
HASKELL, TX 79521

NAME OF PERSON PREPARING THIS NOTICE J. L. GRISSOM
TITLE CHIEF APPRAISER
DATE PREPARED 22 Jul 1988

1988 PROPERTY TAX RATES IN HASKELL MEMORIAL HOSPITAL DISTRICT

THIS NOTICE CONCERNS 1988 PROPERTY TAX RATES FOR HASKELL MEMORIAL HOSPITAL DISTRICT. IT PRESENTS INFORMATION ABOUT THREE TAX RATES. LAST YEAR'S TAX RATE IS THE ACTUAL RATE THE TAXING UNIT USED TO DETERMINE PROPERTY TAXES LAST YEAR. THIS YEAR'S EFFECTIVE TAX RATE WOULD IMPOSE THE SAME TOTAL TAXES AS LAST YEAR IF YOU COMPARE PROPERTIES TAXED IN BOTH YEARS. COMPARE IT TO THE TAX RATE THE TAXING UNIT PROPOSES FOR THIS YEAR. THIS YEAR'S ROLLBACK TAX RATE IS THE HIGHEST TAX RATE THE TAXING UNIT CAN SET BEFORE TAXPAYERS CAN START TAX ROLLBACK PROCEDURES. IN EACH CASE THESE RATES ARE FOUND BY DIVIDING THE TOTAL AMOUNT OF TAXES BY THE TAX BASE (THE TOTAL VALUE OF TAXABLE PROPERTY) WITH ADJUSTMENTS AS REQUIRED BY STATE LAW. THE RATES ARE GIVEN PER \$100 OF PROPERTY VALUE.

LAST YEAR'S TAX RATE:		
LAST YEAR'S OPERATING TAXES	\$	453,489.31
+ LAST YEAR'S DEBT TAXES	\$.00
= LAST YEAR'S TOTAL TAXES	\$	453,489.31
LAST YEAR'S TAX BASE	\$	227,769,617
= LAST YEAR'S TOTAL TAX RATE	\$	0.1991/\$100

THIS YEAR'S EFFECTIVE TAX RATE:		
LAST YEAR'S ADJUSTED TAXES (AFTER SUBTRACTING TAXES ON LOST PROPERTY AND TAXES TO CORRECT APPRAISAL ROLL ERRORS)	\$	453,464.24
THIS YEAR'S ADJUSTED TAX BASE (AFTER SUBTRACTING TAXES ON NEW PROPERTY)	\$	222,187,639
= THIS YEAR'S EFFECTIVE TAX RATE	\$	0.2040/\$100
x 1.03		
= MAXIMUM RATE UNLESS UNIT PUBLISHES NOTICES AND HOLDS HEARINGS	\$	0.2101/\$100

THIS YEAR'S ROLLBACK TAX RATE:		
LAST YEAR'S ADJUSTED OPERATING TAXES (AFTER SUBTRACTING TAXES ON LOST PROPERTY AND TAXES TO CORRECT APPRAISAL ROLL ERRORS AND ADDING TAXES LOST IN COURT SUITS)	\$	453,464.24
THIS YEAR'S ADJUSTED TAX BASE (AFTER SUBTRACTING TAXES ON NEW PROPERTY)	\$	222,187,639
= THIS YEAR'S EFFECTIVE OPERATING RATE	\$	0.2040/\$100
x 1.08		
= THIS YEAR'S MAXIMUM OPERATING RATE	\$	0.2203/\$100
+ THIS YEAR'S DEBT RATE	\$	0.0000/\$100
= THIS YEAR'S ROLLBACK RATE	\$	0.2203/\$100

SCHEDULE A: UNENCUMBERED FUND BALANCES

THE FOLLOWING BALANCES WILL PROBABLY BE LEFT IN THE UNIT'S PROPERTY TAX ACCOUNTS AT THE END OF THE FISCAL YEAR. THESE BALANCES ARE NOT ENCUMBERED BY A CORRESPONDING DEBT OBLIGATION

TYPE OF PROPERTY TAX FUND	BALANCE
(NONE)	

SCHEDULE B: 1988 DEBTS SERVICE (NONE)

THIS NOTICE CONTAINS A SUMMARY OF ACTUAL EFFECTIVE AND ROLLBACK TAX RATE CALCULATIONS. YOU CAN INSPECT A COPY OF THE FULL CALCULATIONS AT THE:

HASKELL COUNTY APPRAISAL DISTRICT,
604 NORTH 1ST
HASKELL, TX 79521

NAME OF PERSON PREPARING THIS NOTICE J. L. GRISSOM
TITLE CHIEF APPRAISER
DATE PREPARED 20 Jul 1988

1988 PROPERTY TAX RATES IN CITY OF WEINERT

THIS NOTICE CONCERNS 1988 PROPERTY TAX RATES FOR CITY OF WEINERT. IT PRESENTS INFORMATION ABOUT THREE TAX RATES. LAST YEAR'S TAX RATE IS THE ACTUAL RATE THE TAXING UNIT USED TO DETERMINE PROPERTY TAXES LAST YEAR. THIS YEAR'S EFFECTIVE TAX RATE WOULD IMPOSE THE SAME TOTAL TAXES AS LAST YEAR IF YOU COMPARE PROPERTIES TAXED IN BOTH YEARS. COMPARE IT TO THE TAX RATE THE TAXING UNIT PROPOSES FOR THIS YEAR. THIS YEAR'S ROLLBACK TAX RATE IS THE HIGHEST TAX RATE THE TAXING UNIT CAN SET BEFORE TAXPAYERS CAN START TAX ROLLBACK PROCEDURES. IN EACH CASE THESE RATES ARE FOUND BY DIVIDING THE TOTAL AMOUNT OF TAXES BY THE TAX BASE (THE TOTAL VALUE OF TAXABLE PROPERTY) WITH ADJUSTMENTS AS REQUIRED BY STATE LAW. THE RATES ARE GIVEN PER \$100 OF PROPERTY VALUE.

LAST YEAR'S TAX RATE:		
LAST YEAR'S OPERATING TAXES	\$	5,367.80
+ LAST YEAR'S DEBT TAXES	\$	2,781.63
= LAST YEAR'S TOTAL TAXES	\$	8,149.43
LAST YEAR'S TAX BASE	\$	3,758,963
= LAST YEAR'S TOTAL TAX RATE	\$	0.2168/\$100

THIS YEAR'S EFFECTIVE TAX RATE:		
LAST YEAR'S ADJUSTED TAXES (AFTER SUBTRACTING TAXES ON LOST PROPERTY AND TAXES TO CORRECT APPRAISAL ROLL ERRORS)	\$	8,149.43
THIS YEAR'S ADJUSTED TAX BASE (AFTER SUBTRACTING TAXES ON NEW PROPERTY)	\$	3,532,870
= THIS YEAR'S EFFECTIVE TAX RATE	\$	0.2306/\$100
x 1.03		
= MAXIMUM RATE UNLESS UNIT PUBLISHES NOTICES AND HOLDS HEARINGS	\$	0.2375/\$100

THIS YEAR'S ROLLBACK TAX RATE:		
LAST YEAR'S ADJUSTED OPERATING TAXES (AFTER SUBTRACTING TAXES ON LOST PROPERTY AND TAXES TO CORRECT APPRAISAL ROLL ERRORS AND ADDING TAXES LOST IN COURT SUITS)	\$	5,367.80
THIS YEAR'S ADJUSTED TAX BASE (AFTER SUBTRACTING TAXES ON NEW PROPERTY)	\$	3,532,870
= THIS YEAR'S EFFECTIVE OPERATING RATE	\$	0.1519/\$100
x 1.08		
= THIS YEAR'S MAXIMUM OPERATING RATE	\$	0.1641/\$100
+ THIS YEAR'S DEBT RATE	\$	0.0000/\$100
= THIS YEAR'S ROLLBACK RATE	\$	0.1641/\$100

SCHEDULE A: UNENCUMBERED FUND BALANCES

THE FOLLOWING BALANCES WILL PROBABLY BE LEFT IN THE UNIT'S PROPERTY TAX ACCOUNTS AT THE END OF THE FISCAL YEAR. THESE BALANCES ARE NOT ENCUMBERED BY A CORRESPONDING DEBT OBLIGATION

TYPE OF PROPERTY TAX FUND	BALANCE
MAINTENANCE ACCT	\$ 1,200.00

SCHEDULE B: 1988 DEBTS SERVICE (NONE)

THIS NOTICE CONTAINS A SUMMARY OF ACTUAL EFFECTIVE AND ROLLBACK TAX RATE CALCULATIONS. YOU CAN INSPECT A COPY OF THE FULL CALCULATIONS AT THE:

HASKELL COUNTY APPRAISAL DISTRICT,
604 NORTH 1ST
HASKELL, TX 79521

NAME OF PERSON PREPARING THIS NOTICE J. L. GRISSOM
TITLE CHIEF APPRAISER
DATE PREPARED 20 Jul 1988

1988 PROPERTY TAX RATES IN CITY OF RULE

THIS NOTICE CONCERNS 1988 PROPERTY TAX RATES FOR CITY OF RULE. IT PRESENTS INFORMATION ABOUT THREE TAX RATES. LAST YEAR'S TAX RATE IS THE ACTUAL RATE THE TAXING UNIT USED TO DETERMINE PROPERTY TAXES LAST YEAR. THIS YEAR'S EFFECTIVE TAX RATE WOULD IMPOSE THE SAME TOTAL TAXES AS LAST YEAR IF YOU COMPARE PROPERTIES TAXED IN BOTH YEARS. COMPARE IT TO THE TAX RATE THE TAXING UNIT PROPOSES FOR THIS YEAR. THIS YEAR'S ROLLBACK TAX RATE IS THE HIGHEST TAX RATE THE TAXING UNIT CAN SET BEFORE TAXPAYERS CAN START TAX ROLLBACK PROCEDURES. IN EACH CASE THESE RATES ARE FOUND BY DIVIDING THE TOTAL AMOUNT OF TAXES BY THE TAX BASE (THE TOTAL VALUE OF TAXABLE PROPERTY) WITH ADJUSTMENTS AS REQUIRED BY STATE LAW. THE RATES ARE GIVEN PER \$100 OF PROPERTY VALUE.

LAST YEAR'S TAX RATE:		
LAST YEAR'S OPERATING TAXES	\$	27,700.41
+ LAST YEAR'S DEBT TAXES	\$.00
= LAST YEAR'S TOTAL TAXES	\$	27,700.41
LAST YEAR'S TAX BASE	\$	13,692,740
= LAST YEAR'S TOTAL TAX RATE	\$	0.2023/\$100

THIS YEAR'S EFFECTIVE TAX RATE:		
LAST YEAR'S ADJUSTED TAXES (AFTER SUBTRACTING TAXES ON LOST PROPERTY AND TAXES TO CORRECT APPRAISAL ROLL ERRORS)	\$	27,690.11
THIS YEAR'S ADJUSTED TAX BASE (AFTER SUBTRACTING TAXES ON NEW PROPERTY)	\$	12,729,354
= THIS YEAR'S EFFECTIVE TAX RATE	\$	0.2175/\$100
x 1.03		
= MAXIMUM RATE UNLESS UNIT PUBLISHES NOTICES AND HOLDS HEARINGS	\$	0.2240/\$100

THIS YEAR'S ROLLBACK TAX RATE:		
LAST YEAR'S ADJUSTED OPERATING TAXES (AFTER SUBTRACTING TAXES ON LOST PROPERTY AND TAXES TO CORRECT APPRAISAL ROLL ERRORS AND ADDING TAXES LOST IN COURT SUITS)	\$	27,690.11
THIS YEAR'S ADJUSTED TAX BASE (AFTER SUBTRACTING TAXES ON NEW PROPERTY)	\$	12,729,354
= THIS YEAR'S EFFECTIVE OPERATING RATE	\$	0.2175/\$100
x 1.08		
= THIS YEAR'S MAXIMUM OPERATING RATE	\$	0.2349/\$100
+ THIS YEAR'S DEBT RATE	\$	0.0000/\$100
= THIS YEAR'S ROLLBACK RATE	\$	0.2349/\$100

SCHEDULE A: UNENCUMBERED FUND BALANCES

THE FOLLOWING BALANCES WILL PROBABLY BE LEFT IN THE UNIT'S PROPERTY TAX ACCOUNTS AT THE END OF THE FISCAL YEAR. THESE BALANCES ARE NOT ENCUMBERED BY A CORRESPONDING DEBT OBLIGATION

TYPE OF PROPERTY TAX FUND	BALANCE
(NONE)	

SCHEDULE B: 1988 DEBTS SERVICE (NONE)

THIS NOTICE CONTAINS A SUMMARY OF ACTUAL EFFECTIVE AND ROLLBACK TAX RATE CALCULATIONS. YOU CAN INSPECT A COPY OF THE FULL CALCULATIONS AT THE:

HASKELL COUNTY APPRAISAL DISTRICT,
604 NORTH 1ST
HASKELL, TX 79521

NAME OF PERSON PREPARING THIS NOTICE J. L. GRISSOM
TITLE CHIEF APPRAISER
DATE PREPARED 21 Jul 1988

1988 PROPERTY TAX RATES IN WATER DISTRICT #1

THIS NOTICE CONCERNS 1988 PROPERTY TAX RATES FOR WATER DISTRICT #1. IT PRESENTS INFORMATION ABOUT THREE TAX RATES. LAST YEAR'S TAX RATE IS THE ACTUAL RATE THE TAXING UNIT USED TO DETERMINE PROPERTY TAXES LAST YEAR. THIS YEAR'S EFFECTIVE TAX RATE WOULD IMPOSE THE SAME TOTAL TAXES AS LAST YEAR IF YOU COMPARE PROPERTIES TAXED IN BOTH YEARS. COMPARE IT TO THE TAX RATE THE TAXING UNIT PROPOSES FOR THIS YEAR. THIS YEAR'S ROLLBACK TAX RATE IS THE HIGHEST TAX RATE THE TAXING UNIT CAN SET BEFORE TAXPAYERS CAN START TAX ROLLBACK PROCEDURES. IN EACH CASE THESE RATES ARE FOUND BY DIVIDING THE TOTAL AMOUNT OF TAXES BY THE TAX BASE (THE TOTAL VALUE OF TAXABLE PROPERTY) WITH ADJUSTMENTS AS REQUIRED BY STATE LAW. THE RATES ARE GIVEN PER \$100 OF PROPERTY VALUE.

LAST YEAR'S TAX RATE:	
LAST YEAR'S OPERATING TAXES	\$ 3,007.54
+ LAST YEAR'S DEBT TAXES	\$ 5,408.72
= LAST YEAR'S TOTAL TAXES	\$ 8,416.26
LAST YEAR'S TAX BASE	\$ 24,254,363
= LAST YEAR'S TOTAL TAX RATE	\$.0347/\$100

THIS YEAR'S EFFECTIVE TAX RATE:	
LAST YEAR'S ADJUSTED TAXES (AFTER SUBTRACTING TAXES ON LOST PROPERTY AND TAXES TO CORRECT APPRAISAL ROLL ERRORS)	\$ 8,416.26
+ THIS YEAR'S ADJUSTED TAX BASE (AFTER SUBTRACTING TAXES ON NEW PROPERTY)	\$ 22,033,610
= THIS YEAR'S EFFECTIVE TAX RATE	\$.0381/\$100
x 1.03	
= MAXIMUM RATE UNLESS UNIT PUBLISHES NOTICES AND HOLDS HEARINGS	\$.0392/\$100

THIS YEAR'S ROLLBACK TAX RATE:	
LAST YEAR'S ADJUSTED OPERATING TAXES (AFTER SUBTRACTING TAXES ON LOST PROPERTY AND TAXES TO CORRECT APPRAISAL ROLL ERRORS AND ADDING TAXES LOST IN COURT SUITS)	\$ 3,007.54
+ THIS YEAR'S ADJUSTED TAX BASE (AFTER SUBTRACTING TAXES ON NEW PROPERTY)	\$ 22,033,610
= THIS YEAR'S EFFECTIVE OPERATING RATE	\$.0136/\$100
x 1.08	
= THIS YEAR'S MAXIMUM OPERATING RATE	\$.0147/\$100
+ THIS YEAR'S DEBT RATE	\$.0000/\$100
= THIS YEAR'S ROLLBACK RATE	\$.0147/\$100

SCHEDULE A: UNENCUMBERED FUND BALANCES

THE FOLLOWING BALANCES WILL PROBABLY BE LEFT IN THE UNIT'S PROPERTY TAX ACCOUNTS AT THE END OF THE FISCAL YEAR. THESE BALANCES ARE NOT ENCUMBERED BY A CORRESPONDING DEBT OBLIGATION

TYPE OF PROPERTY TAX FUND	BALANCE
CONSTRUCTION	\$ 6,084.45
INT. & SINKING	\$ 252.04
INVESTMENTS(CD/MM)	\$ 73,206.28

SCHEDULE B: 1988 DEBTS SERVICE (NONE)

THIS NOTICE CONTAINS A SUMMARY OF ACTUAL EFFECTIVE AND ROLLBACK TAX RATE CALCULATIONS. YOU CAN INSPECT A COPY OF THE FULL CALCULATIONS AT THE:

HASKELL COUNTY APPRAISAL DISTRICT,
604 NORTH 1ST
HASKELL, TX 79521

NAME OF PERSON PREPARING THIS NOTICE J. L. GRISSOM
TITLE CHIEF APPRAISER
DATE PREPARED 25 Jul 1988

1988 PROPERTY TAX RATES IN WEINERT ISD

THIS NOTICE CONCERNS 1988 PROPERTY TAX RATES FOR WEINERT ISD. IT PRESENTS INFORMATION ABOUT THREE TAX RATES. LAST YEAR'S TAX RATE IS THE ACTUAL RATE THE TAXING UNIT USED TO DETERMINE PROPERTY TAXES LAST YEAR. THIS YEAR'S EFFECTIVE TAX RATE WOULD IMPOSE THE SAME TOTAL TAXES AS LAST YEAR IF YOU COMPARE PROPERTIES TAXED IN BOTH YEARS. COMPARE IT TO THE TAX RATE THE TAXING UNIT PROPOSES FOR THIS YEAR. THIS YEAR'S ROLLBACK TAX RATE IS THE HIGHEST TAX RATE THE TAXING UNIT CAN SET BEFORE TAXPAYERS CAN START TAX ROLLBACK PROCEDURES. IN EACH CASE THESE RATES ARE FOUND BY DIVIDING THE TOTAL AMOUNT OF TAXES BY THE TAX BASE (THE TOTAL VALUE OF TAXABLE PROPERTY) WITH ADJUSTMENTS AS REQUIRED BY STATE LAW. THE RATES ARE GIVEN PER \$100 OF PROPERTY VALUE.

LAST YEAR'S TAX RATE:	
LAST YEAR'S OPERATING TAXES	\$ 297,969.43
+ LAST YEAR'S DEBT TAXES	\$.00
= LAST YEAR'S TOTAL TAXES	\$ 297,969.43
LAST YEAR'S TAX BASE	\$ 24,639,827
= LAST YEAR'S TOTAL TAX RATE	\$ 1.2093/\$100

THIS YEAR'S EFFECTIVE TAX RATE:	
LAST YEAR'S ADJUSTED TAXES (AFTER SUBTRACTING TAXES ON LOST PROPERTY AND TAXES TO CORRECT APPRAISAL ROLL ERRORS)	\$ 297,848.50
+ THIS YEAR'S ADJUSTED TAX BASE (AFTER SUBTRACTING TAXES ON NEW PROPERTY)	\$ 22,654,279
= THIS YEAR'S EFFECTIVE TAX RATE	\$ 1.3147/\$100
x 1.03	
= MAXIMUM RATE UNLESS UNIT PUBLISHES NOTICES AND HOLDS HEARINGS	\$ 1.3541/\$100

THIS YEAR'S ROLLBACK TAX RATE:	
LAST YEAR'S ADJUSTED OPERATING TAXES (AFTER SUBTRACTING TAXES ON LOST PROPERTY AND TAXES TO CORRECT APPRAISAL ROLL ERRORS AND ADDING TAXES LOST IN COURT SUITS)	\$ 297,848.50
+ THIS YEAR'S ADJUSTED TAX BASE (AFTER SUBTRACTING TAXES ON NEW PROPERTY)	\$ 22,654,279
= THIS YEAR'S EFFECTIVE OPERATING RATE	\$ 1.3147/\$100
x 1.08	
= THIS YEAR'S MAXIMUM OPERATING RATE	\$ 1.4199/\$100
+ THIS YEAR'S DEBT RATE	\$ 0.0000/\$100
= THIS YEAR'S ROLLBACK RATE	\$ 1.4199/\$100

SCHEDULE A: UNENCUMBERED FUND BALANCES

THE FOLLOWING BALANCES WILL PROBABLY BE LEFT IN THE UNIT'S PROPERTY TAX ACCOUNTS AT THE END OF THE FISCAL YEAR. THESE BALANCES ARE NOT ENCUMBERED BY A CORRESPONDING DEBT OBLIGATION

TYPE OF PROPERTY TAX FUND	BALANCE
WEINERT SCHOOL OPERATION FUND	\$ 146,158.84

SCHEDULE B: 1988 DEBTS SERVICE (NONE)

THIS NOTICE CONTAINS A SUMMARY OF ACTUAL EFFECTIVE AND ROLLBACK TAX RATE CALCULATIONS. YOU CAN INSPECT A COPY OF THE FULL CALCULATIONS AT THE:

HASKELL COUNTY APPRAISAL DISTRICT,
604 NORTH 1ST
HASKELL, TX 79521

NAME OF PERSON PREPARING THIS NOTICE J. L. GRISSOM
TITLE CHIEF APPRAISER
DATE PREPARED 20 Jul 1988

1988 PROPERTY TAX RATES IN PAINT CREEK ISD

THIS NOTICE CONCERNS 1988 PROPERTY TAX RATES FOR PAINT CREEK ISD. IT PRESENTS INFORMATION ABOUT THREE TAX RATES. LAST YEAR'S TAX RATE IS THE ACTUAL RATE THE TAXING UNIT USED TO DETERMINE PROPERTY TAXES LAST YEAR. THIS YEAR'S EFFECTIVE TAX RATE WOULD IMPOSE THE SAME TOTAL TAXES AS LAST YEAR IF YOU COMPARE PROPERTIES TAXED IN BOTH YEARS. COMPARE IT TO THE TAX RATE THE TAXING UNIT PROPOSES FOR THIS YEAR. THIS YEAR'S ROLLBACK TAX RATE IS THE HIGHEST TAX RATE THE TAXING UNIT CAN SET BEFORE TAXPAYERS CAN START TAX ROLLBACK PROCEDURES. IN EACH CASE THESE RATES ARE FOUND BY DIVIDING THE TOTAL AMOUNT OF TAXES BY THE TAX BASE (THE TOTAL VALUE OF TAXABLE PROPERTY) WITH ADJUSTMENTS AS REQUIRED BY STATE LAW. THE RATES ARE GIVEN PER \$100 OF PROPERTY VALUE.

LAST YEAR'S TAX RATE:	
LAST YEAR'S OPERATING TAXES	\$ 429.936
+ LAST YEAR'S DEBT TAXES	\$ -0-
= LAST YEAR'S TOTAL TAXES	\$ 429.936
LAST YEAR'S TAX BASE	\$ 45,256.440
= LAST YEAR'S TOTAL TAX RATE	\$.9500/\$100

THIS YEAR'S EFFECTIVE TAX RATE:	
LAST YEAR'S ADJUSTED TAXES (AFTER SUBTRACTING TAXES ON LOST PROPERTY AND TAXES TO CORRECT APPRAISAL ROLL ERRORS)	\$ 429.603
+ THIS YEAR'S ADJUSTED TAX BASE (AFTER SUBTRACTING TAXES ON NEW PROPERTY)	\$ 43,852.644
= THIS YEAR'S EFFECTIVE TAX RATE	\$.9796/\$100
x 1.03	
= MAXIMUM RATE UNLESS UNIT PUBLISHES NOTICES AND HOLDS HEARINGS	\$ 1.009/\$100

THIS YEAR'S ROLLBACK TAX RATE:	
LAST YEAR'S ADJUSTED OPERATING TAXES (AFTER SUBTRACTING TAXES ON LOST PROPERTY AND TAXES TO CORRECT APPRAISAL ROLL ERRORS AND ADDING TAXES LOST IN COURT SUITS)	\$ 429.603
+ THIS YEAR'S ADJUSTED TAX BASE (AFTER SUBTRACTING TAXES ON NEW PROPERTY)	\$ 43,852.644
= THIS YEAR'S EFFECTIVE OPERATING RATE	\$.9796/\$100
x 1.08	
= THIS YEAR'S MAXIMUM OPERATING RATE	\$ 1.0580/\$100
+ THIS YEAR'S DEBT RATE	\$ -0-
= THIS YEAR'S ROLLBACK RATE	\$ 1.0580/\$100

SCHEDULE A: UNENCUMBERED FUND BALANCES

THE FOLLOWING BALANCES WILL PROBABLY BE LEFT IN THE UNIT'S PROPERTY TAX ACCOUNTS AT THE END OF THE FISCAL YEAR. THESE BALANCES ARE NOT ENCUMBERED BY A CORRESPONDING DEBT OBLIGATION

TYPE OF PROPERTY TAX FUND	BALANCE
Maintenance & Operations	\$201,411

SCHEDULE B: 1988 DEBTS SERVICE (NONE)

THIS NOTICE CONTAINS A SUMMARY OF ACTUAL EFFECTIVE AND ROLLBACK TAX RATE CALCULATIONS. YOU CAN INSPECT A COPY OF THE FULL CALCULATIONS AT THE:

NAME OF PERSON PREPARING THIS NOTICE JENNY BRAZELL, TAX A/C
TITLE Paint Creek ISD
DATE PREPARED July 22, 1988

1988 PROPERTY TAX RATES IN CITY OF HASKELL

THIS NOTICE CONCERNS 1988 PROPERTY TAX RATES FOR CITY OF HASKELL. IT PRESENTS INFORMATION ABOUT THREE TAX RATES. LAST YEAR'S TAX RATE IS THE ACTUAL RATE THE TAXING UNIT USED TO DETERMINE PROPERTY TAXES LAST YEAR. THIS YEAR'S EFFECTIVE TAX RATE WOULD IMPOSE THE SAME TOTAL TAXES AS LAST YEAR IF YOU COMPARE PROPERTIES TAXED IN BOTH YEARS. COMPARE IT TO THE TAX RATE THE TAXING UNIT PROPOSES FOR THIS YEAR. THIS YEAR'S ROLLBACK TAX RATE IS THE HIGHEST TAX RATE THE TAXING UNIT CAN SET BEFORE TAXPAYERS CAN START TAX ROLLBACK PROCEDURES. IN EACH CASE THESE RATES ARE FOUND BY DIVIDING THE TOTAL AMOUNT OF TAXES BY THE TAX BASE (THE TOTAL VALUE OF TAXABLE PROPERTY) WITH ADJUSTMENTS AS REQUIRED BY STATE LAW. THE RATES ARE GIVEN PER \$100 OF PROPERTY VALUE.

LAST YEAR'S TAX RATE:	
LAST YEAR'S OPERATING TAXES	\$ 130,267.75
+ LAST YEAR'S DEBT TAXES	\$.00
= LAST YEAR'S TOTAL TAXES	\$ 130,267.75
LAST YEAR'S TAX BASE	\$ 53,941,097
= LAST YEAR'S TOTAL TAX RATE	\$ 0.2415/\$100

THIS YEAR'S EFFECTIVE TAX RATE:	
LAST YEAR'S ADJUSTED TAXES (AFTER SUBTRACTING TAXES ON LOST PROPERTY AND TAXES TO CORRECT APPRAISAL ROLL ERRORS)	\$ 130,256.88
+ THIS YEAR'S ADJUSTED TAX BASE (AFTER SUBTRACTING TAXES ON NEW PROPERTY)	\$ 52,419,565
= THIS YEAR'S EFFECTIVE TAX RATE	\$ 0.2484/\$100
x 1.03	
= MAXIMUM RATE UNLESS UNIT PUBLISHES NOTICES AND HOLDS HEARINGS	\$ 0.2559/\$100

THIS YEAR'S ROLLBACK TAX RATE:	
LAST YEAR'S ADJUSTED OPERATING TAXES (AFTER SUBTRACTING TAXES ON LOST PROPERTY AND TAXES TO CORRECT APPRAISAL ROLL ERRORS AND ADDING TAXES LOST IN COURT SUITS)	\$ 130,256.88
+ THIS YEAR'S ADJUSTED TAX BASE (AFTER SUBTRACTING TAXES ON NEW PROPERTY)	\$ 52,419,565
= THIS YEAR'S EFFECTIVE OPERATING RATE	\$ 0.2484/\$100
x 1.08	
= THIS YEAR'S MAXIMUM OPERATING RATE	\$ 0.2683/\$100
+ THIS YEAR'S DEBT RATE	\$ 0.00/\$100
= THIS YEAR'S ROLLBACK RATE	\$ 0.2683/\$100

SCHEDULE A: UNENCUMBERED FUND BALANCES

THE FOLLOWING BALANCES WILL PROBABLY BE LEFT IN THE UNIT'S PROPERTY TAX ACCOUNTS AT THE END OF THE FISCAL YEAR. THESE BALANCES ARE NOT ENCUMBERED BY A CORRESPONDING DEBT OBLIGATION

TYPE OF PROPERTY TAX FUND	BALANCE
GENERAL	\$ 38,000.00
ENTERPRISE	\$ 270,000.00
AIRPORT	\$ 17,000.00

SCHEDULE B: 1988 DEBTS SERVICE (NONE)

THIS NOTICE CONTAINS A SUMMARY OF ACTUAL EFFECTIVE AND ROLLBACK TAX RATE CALCULATIONS. YOU CAN INSPECT A COPY OF THE FULL CALCULATIONS AT THE:

HASKELL COUNTY APPRAISAL DISTRICT,
604 NORTH 1ST
HASKELL, TX 79521

NAME OF PERSON PREPARING THIS NOTICE J. L. GRISSOM
TITLE CHIEF APPRAISER
DATE PREPARED 20 Jul 1988

--Haskell Nursing Center--

By Debbie Merchant
Activity Director

Our deepest sympathy goes to the family of Mrs. Alice Denson. Mrs. Denson will be missed by all of us at Haskell Nursing Center. May God's comforting hand be with each family member in their time of sorrow.

The residents had their monthly Sunshine lunch at the East Side Baptist Church. The ladies prepared a wonderful lunch for our residents. My mother, Mrs. Aleta Medford, and I were asked to bring the devotion for the group. Thank you ladies for a very enjoyable outing for our residents.

The ladies of the Methodist Church had their monthly birthday party for our residents. Cake and punch were served to everyone attending. Those having birthdays were Erwin King, Lucille McCurley, Pearly Kingsberry, Lillian Greenwood and Lyda Green.

Those visiting with us have been Mrs. Becky Whitney, Cade, Shannon and Becca of Marlow, Okla., with Ray and Willmet Oliphant; Mrs. W. C. Camp of Rule with Steve Ezell

and Connie Cook; Bob Herren of Haskell and Faye Simpson of Rule with Steve Ezell.

Tommie, Barbara and John Michaels of Rule and Evelyn O'Neill of Clyde with Bessie Davidson.

Jo Ann Lindeman of Kress with Eunice Newberry; and Wendell Rose of California with Pauline Williams.

Bill's to open 25 more stores

Bill's Dollar Stores, which has a store in Haskell, has announced that 25 more stores will open Aug. 4, giving the firm nearly 400 stores in 11 southern states from Florida to Oklahoma.

Nine of the stores will be in Texas, bringing Bill's Texas stores total to 76.

The company is headquartered in Jackson, Miss.

BEAUTIFY
HASKELL
TOGETHER

To John McDermott and the Staff of the Haskell Nursing Center:

We would like to thank you for the special attention and excellent care given Alice Denson during her stay with you. Also for the consideration and patience with which you treated her family.
May God Bless Everyone of You.

The Family of Alice Denson



Cheerleading camp

Girls taking part in this week's cheerleading mini camp, being sponsored by Haskell varsity cheerleaders, go through their routines.

--Market Report--

Haskell Livestock Auction

Cow prices were \$1 higher with all other classes steady at last week's sale at Haskell Livestock Auction.

The sale was on a run of 1,023 head of cattle and nine hogs.

Cows: fat 46-49; cutters 47-51; canners 36-46; stockers by head 525-675.

Bulls: bologna 54-59; stockers 60-75; utility 50-54.

Stocker steer calves: choice 110-140; good 95-105; medium 85-95; common 70-85.

Stocker heifer calves: choice 88-110; good 70-88; medium 65-75; common 50-65.

Feeder steer yearlings: choice 80-92; good 70-80; medium 60-70; common 50-60.

Feeder heifer yearlings: choice 80-85; good 70-80; medium 60-70; common 50-60.

Cows and calves: good 725-850; plain 650-700.

New rep

Bill Bailey has been promoted to senior field representative for the American Cancer Society, Texas division. He is assigned to the district 16 office in Abilene which services Haskell and 14 other counties.

It's Coming!

August 6th

Watch For
IT!

You Can't Afford Not
To Be There!
DOWNTOWN
HASKELL!!

--Rice Springs Care Home--

By Judy Wolsch
Activity Director

We want to say a grateful thanks to the East Side Baptist Sunshine Ladies who prepared and served a wonderful lunch on Thursday for the residents. Their program was very nice, the Medford's songs and testimony. It touched each one of us. Thanks again.

We also appreciate the fresh vegetables being donated. Mrs. Brown donated okra, Floyd Rodgers squash and Judy donated onions picked up in Monday.

Residents tried a new craft or art Friday. They did some marble painting. A couple are hanging on the front bulletin board for everyone to see.

Visitors this week were Sue and Bill Bartes, Mary Ogilvie, Mary Ann and Donna Ashley with Hassie Couch; Bill and Jeff Sellers with Alice Allen; Frances Dilliard from Houston and Wellie Wisdom from Porter with Joe Teague and Lucy Harrell. Lucinda Taylor from Hobbs, N.M. with Lillie Davis; Amanda Tiechelma and Edna Thompson with Ella Peiser; Mrs. Becky Whitney, Cade, Shannon and Becca from Marlow, Okla., and Mrs. W. C. Camp with Mae May.

Photographs published in The Free Press are filed by dates. If you want to pick up a picture, please let us know the date it was published.

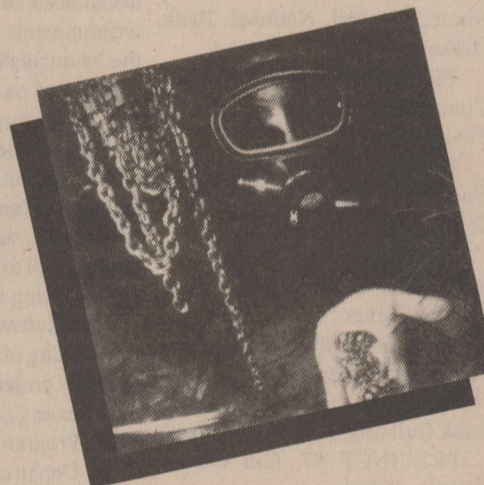
One Hour Photo Service offered on Film Developing & Prints
Latest Equipment - Competitive Prices



\$1.00 off
On Processing, per roll with Coupon
Specials Good Thru August 3rd

Kodak and Fuji Film For Sale
Phone 864-2951

Johnson's Kis Photo
OWNED & OPERATED BY LORAIN & BOBBIE JOHNSON
West Side of Square - Haskell



SUNDAY
ON CABLE
NATIONAL
GEOGRAPHIC
EXPLORER

In Sunday's presentation, hit the jackpot on a quest for treasure beneath the sea.

SUNDAY AT 8PM
CHANNEL 11

SuperStation
TBS
GREAT AMERICAN TELEVISION

Harmon Cable Communications
Phone Number:
1-800-527-4331

Beef Liver Select Sliced lb. **59¢**

Ground Round Lean, lb. **\$1 59**

Sliced Bacon No. 1 lb. **\$1 19**

Danish Ham Sliced or Shaved lb. **\$2 99**

Dr. Pepper 6 16 oz. Bottles **\$1 97**

Le Sueur Peas 303 can **79¢**

Pinto Beans Casserole 2 lb. bag **69¢**

Peach Preserves Bama 16 oz. **\$1 19**

Miracle Whip 16 oz. **98¢**

Parkay 2 1 lb. Quarters **89¢**

Surf Giant Size **\$1 69**

Charmin 4 Rolls **\$1 09**

POGUE GROCERY

-Extra Parking Behind The Store. Home Owned and Operated-
113 North Avenue E Phone 864-2015 Haskell, Texas

Thurs. Fri. Sat.
Specials

Report of Condition

First National Bank

OF HASKELL

IN THE STATE OF TEXAS

AT THE CLOSE OF BUSINESS ON

June 30, 1988

PUBLISHED IN RESPONSE TO CALL MADE BY COMPTROLLER OF THE CURRENCY, UNDER TITLE 12, UNITED STATES CODE, SECTION 161.

Charter Number 18479

Comptroller of the Currency Southwestern District

ASSETS		Thousands of dollars
Cash and balances due from depository institutions:		
Noninterest-bearing balances and currency and coin		525
Interest-bearing balances		691
Securities		1,882
Federal funds sold		775
Loans and lease financing receivables:		
Loans and leases, net of unearned income		8,986
LESS: Allowance for loan and lease losses		44
Loans and leases, net of unearned income, allowance, and reserve		8,942
Premises and fixed assets (including capitalized leases)		696
Other assets		245
TOTAL ASSETS		13,756
LIABILITIES		
Deposits:		
In domestic offices		12,650
Noninterest-bearing		2,688
Interest-bearing		9,962
Demand notes issued to the U. S. Treasury		81
Other borrowed money		5
Other liabilities		78
TOTAL LIABILITIES		12,814
EQUITY CAPITAL		
Common Stock		875
Surplus		625
Undivided profits and capital reserves		(558)
Total equity capital		942
TOTAL LIABILITIES AND EQUITY CAPITAL		13,756

I, Clayton Fowler, Vice President & Cashier of the above-named bank do hereby declare that this Report of Condition is true and correct to the best of my knowledge and belief.

/s/ Clayton Fowler
July 26, 1988

We, the undersigned directors, attest to the correctness of this statement of resources and liabilities. We declare that it has been examined by us, and to the best of our knowledge and belief has been prepared in conformance with the instructions and is true and correct.

Directors
/s/ Robert C. Hobgood
/s/ Doyle High
/s/ Burnell Gilleland