











# **M SYSTEM** *Your FRIENDLY*

## **AFFILIATED SUPER MARKETS**

Haskell, Texas  
Open 7 days a week  
Monday-Saturday 7:30 a.m. til 8 p.m.  
Sundays 8 a.m. til 7 p.m.

### **DOUBLE COUPONS 7 DAYS A WEEK!**

We will redeem your manufacturers' cents-off coupons for double their face value up to 50¢ when the product is purchased. We will double only one coupon per item. All others redeemed at face value. Limit one coupon per item. Coupon not to exceed value of item. This policy does not include "Free" coupons, cigarette and tobacco, or refund coupons. Offer good for a limited time only. Super value offer from **M-System** in Haskell.

### **We Gladly Accept Food Stamps**

**Prices Good  
July 21 thru July 27**



**QUALIFIED**

We reserve the right to limit quantities.



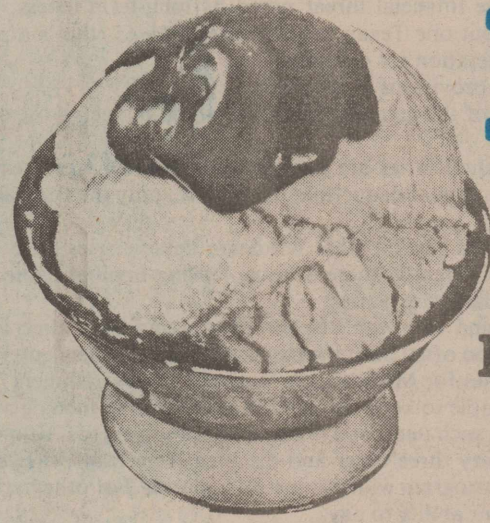
# **Folger's Coffee**

Regular-ADC-  
Electric Perk

# \$1.99

(Limit one with  
\$10.00 or more  
grocery purchase)

13-oz Bag



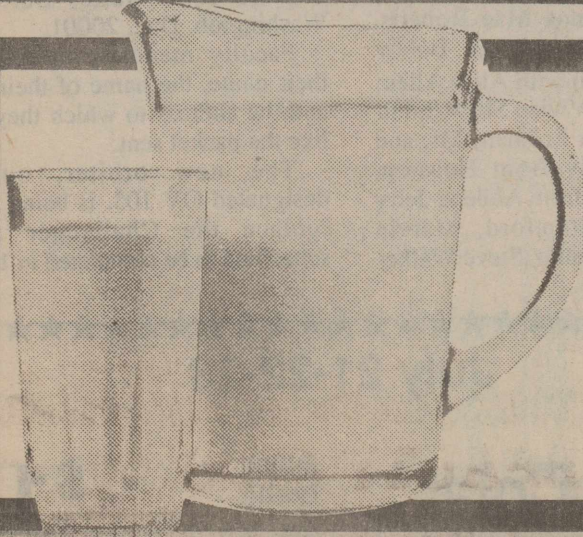
Classic Delight

# **ICE CREAM**

Assorted  
Flavors  
Half Gallon Carton

# \$1.99

(Limit 2)



# **Milk**

Dairygold  
Homo  
Half  
Gallon  
Jug

# 89¢



# **Paper Towels**

Sparkle  
(White or Prints)  
Jumbo Roll

# 69¢

# **Lipton Tea Bags**

24-Count  
Family Size

# \$1.49



# **BBQ SAUCE**

Kraft  
(All Flavors)  
18-oz Bottle

# 99¢

# **Imperial SUGAR**

Pure Cane  
10¢ Off Label  
5-Lb. Bag

# \$1.59



# **Shurfine Soft Drinks**

2 liter

# 59¢



# **TIDE** LAUNDRY DETERGENT

\$1.50 Off  
Label  
147-oz

# \$6.29

# **Ore-Ida Potatoes**

Golden  
Crinkles  
or Fries  
2-Lb. Pkg

# \$1.49



# **Apple Juice**

Tree Top  
Frozen  
12-oz Can

# 99¢

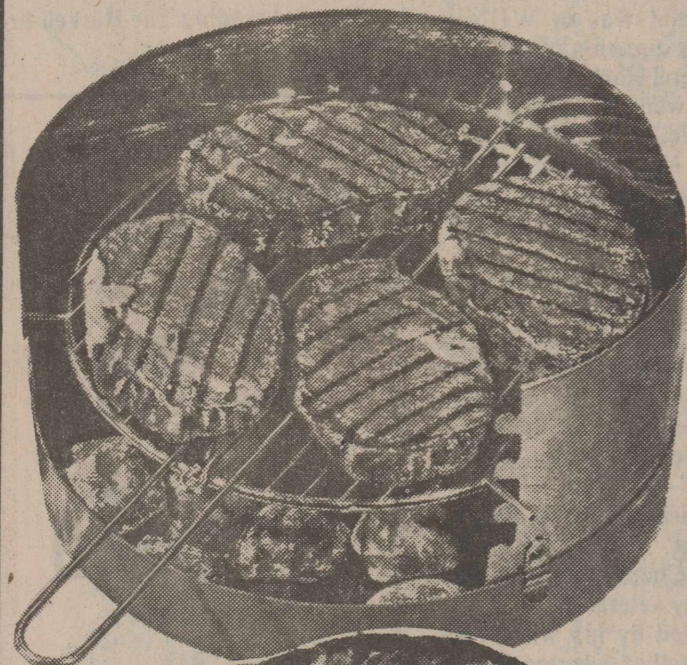


# **VELVEETA**

Shells &  
Cheese  
Dinners  
12-oz Box

# \$1.29

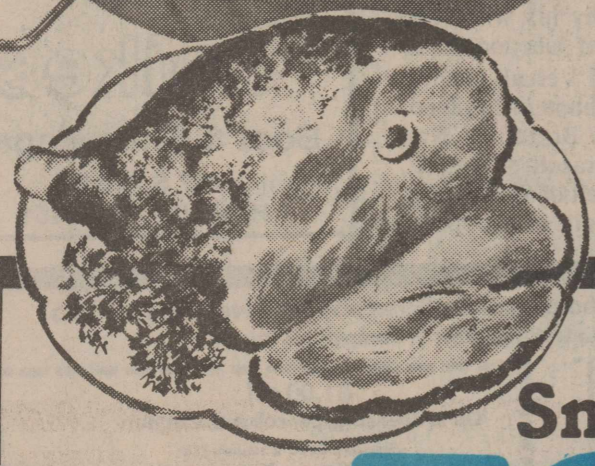
# SUPER FOOD SAVINGS



FRESH  
**Ground BEEF**  
 Family Pack  
**88¢**  
 Lb.



Shurfresh  
 Meat  
**Franks** **79¢**  
 12-oz Package



Smoked  
**Pork Shoulder Picnic**  
**79¢**  
 Lb.

**LIVER**  
 Sliced Beef  
**59¢**  
 Lb.

**BACON**  
 Silver Spur Sliced Slab  
**\$1.09**  
 Lb.

- DIXIE 9" PASTEL PAPER PLATES..... 48-Ct Pkg **\$1.69**
- COOKING OIL CRISCO..... 64-oz Bottle **\$3.29**
- ARMOUR VIENNA SAUSAGE..... 5-oz **2 For \$1**
- DISH LIQUID (Regular/Mountain Spring) DAWN..... 22-oz Bottle **\$1.29**

- HEALTH AND BEAUTY AIDS**
- Right Guard Sport Stick..... 2-oz **\$1.69**
  - Skin Bracer Mennen..... 3.5-oz **\$1.99**
  - Allerest Tablets..... 24-Count **\$2.69**
  - Visine A.C..... (.5-oz) **\$2.39**

## FRESH FRUIT SEASON!



Large Calif  
**Nectarines**  
**79¢**  
 Lb.



**Grapes** **68¢**  
 Calif. White or Red  
 Seedless or Black Exotic  
 Lb.

Calif Bartlett  
**Pears**  
**69¢**  
 Lb.



- TOMATOES CALIF. RED RIPE..... Lb **45¢**
- FANCY BELL PEPPERS..... 5 For **\$1.00**
- SNOWBALL CAULIFLOWER CALIF..... Lb **79¢**
- FRESH WHITE MUSHROOMS..... 8-oz Carton **99¢**
- BAKER RUSSET POTATOES..... 4 Lbs **79¢**
- JUMBO ITALIAN Sweet Red ONIONS .... Lb **35¢**

**Kiwi Fruit**... **2 For 79¢**







# Little Leaguers bow out in district

The Haskell Little League All-Stars played in the area tournament in Stamford last week.

They went up against Twin Cities Monday night and came home with a win. Cody Cypert was winning pitcher and Brian Brzozowski had a home run. The final score was 27-1.

They went back again Tuesday night and met Stamford. They came home with a loss. Mart Guess was losing pitcher with the final score being 8-6.

They played again Wednesday night against Twin Cities and came home with a win. Mathew McFadden pitched three innings and Brian Brzozowski pitched three innings. Shannon Meeks had a home run. The final score was 21-10.

They went back again Thursday night, playing against Stamford and came home with a win. Jason Torres was winning pitcher and also winning scorer. The final score was 6-5.

They then had to go back Friday night and play Stamford again to determine the winner of area play. Haskell pulled it off again to win

area. There were two outs and two men on base in the bottom of the sixth inning. Matt Perry stepped up to bat and knocked a homerun to bring Haskell ahead 5-3 for a win. Mart Guess pitched five innings and Cody Cypert pitched one inning.

They were then able to go into district play Monday night at Munday with one loss. Going up against Iowa Park Monday night they were defeated 5-0. Jason Torres was losing pitcher. With this loss, Haskell was eliminated from district play.

We were very proud of all our boys for their fine job and good sportsmanship during play. A special thanks for all the backing and support from Haskell fans during their play.

## All-Stars finish third in area

The Brazos Valley 14-15-year-old All-Stars finished third in the area tournament at Burkburnett last week.

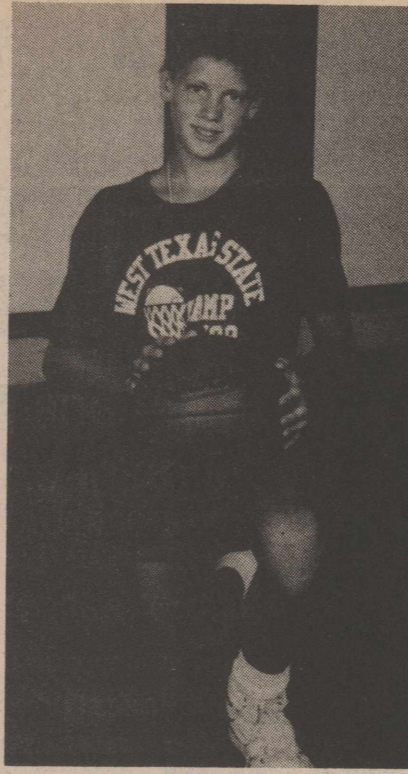
On Tuesday night, Brazos Valley scored 4 runs in the last inning to come from behind and beat Iowa Park 16-14. Winning pitcher was Paul Page of Aspermont.

On Thursday night, Brazos Valley played a doubleheader, losing the first game to Burkburnett 18-4 and the second game to Iowa Park 9-2. Losing pitchers for Brazos Valley were Marc McMillin, Jay Miller and Paul Page.

You are reading The Haskell Free Press and we thank you.



Paul Gibson



Casey Coleman

# Haskell boys attend basketball camp

Two boys from Haskell attended the West Texas State University basketball camp held in Canyon July 10-15.

Paul Jon Gibson and Casey Coleman were among 112 boys participating. They participated in the Buffalo camp for a week's worth of pure work, sweat and fun.

The boys worked hard on fundamentals, learned about pride, teamwork, dedication, desire, attitude and enthusiasm it takes to become a champion.

Paul Jon and Casey both were selected as all-stars for the Thursday night game with Paul's team, the West, winning.

Casey, a Cavalier, played in the championship game Friday morning when his team lost to the Spurs.

Casey finished as one of the top three in fundamentals of dribbling his

his 12-year age bracketed.

The camp ended Friday with demonstrations, the championship game, lunch and awards presentations by Coach Mark Adams.

## "Cinderella" scheduled in Rotan

Theatre on the Brazos of Fisher County is preparing for its second production, "Cinderella," dramatized by Charlotte B. Chorprenning.

Curtain time is 7:30 on July 28 and 29 at the Rotan High School auditorium.

Admissions are \$3.50 for adults, \$2.50 for senior citizens and \$1 for children.

Thank you for reading The Haskell Free Press.

# Take a walk... Best antidote for aging

What type of exercise requires no special equipment, can be done almost anywhere at any time by anyone, costs nothing, and has the lowest injury rate of any fitness activity?

Walking, of course.

According to M. Jay Porcelli, D.O., a regular program of walking will increase flexibility, strength and endurance.

"Walking is probably the best antidote for aging," says Dr. Porcelli, an osteopathic physician. "It's an aerobic exercise which benefits large muscle groups, gives the heart a healthy workout, strengthens bones, increases energy levels and helps control high blood pressure."

Dr. Porcelli offers several cautions for walkers. "If you have chronic medical problems, be sure to check with your physician before beginning any fitness program. Be sure to wear loose, comfortable clothing and supportive shoes."

Before walking, be sure to stretch your hamstring, calf, upper thigh and low back muscles. "When you begin to walk, go slowly for about five minutes to warm up your muscles," Dr. Porcelli suggests. "Then you may gradually increase your pace to a brisk level for five to 30 minutes. Be sure to allow five minutes more for a cool-down period of slow walking at the end of your exercise period."

Once you have started a program of walking, how do you make sure you stick with it? "You have to make exercise a habit," Dr. Porcelli explains. "Begin by walking at the same time over the same route every other day for a few weeks. Once you have this habit established you can vary your routine a bit. Finding a partner to walk with also is a good strategy."

"In nice weather walk outside and enjoy the great outdoors. But on

extremely cold or hot days, find an indoor area like an enclosed shopping mall for your walk. The important thing to realize is that no matter what your age, right now is the perfect time to get up, get out, and get fit by adding a regular walking program to your life."

## CLASSIFIEDS

### For Sale

PRESCRIPTIONS, Cosmetics, Gifts. Shop Johnson Pharmacy where the savings are real. 38tfc

SHAKLEE Products, 100% NATURAL VITAMINS herb lax, food supplements and cosmetics. Products in stock at 300 N. Av H. 864-3330. Free deliveries in Haskell. 26tfc

WATER WELL Drilling; House well, stock, irrigation wells, test holes. Call W. P. Hise 864-3727 Haskell, Tx. (Day or night). 7tfc

HOMES BUILT ON YOUR LOT. No down payment, no closing costs, 10% annual percentage rate to qualified buyers. Phone collect for free booklet and info., Jim Walter Homes, Abilene, Tx. 915-672-4249. 28-51c

FOR SALE: Waterfront 2 bedroom cabin at Veda's Camp. 14' fiberglass boat, 35 hp Evinrude motor. Call 864-2973. 29-30c

**Irby Dance**  
Friday - July 22nd  
Music by  
**George Maxwell**  
8:30 - 12:30  
Members & Invited Guests Welcome

# Petty Floor Covering

Owners: Rod and Julie Petty  
Come see our complete line of carpets, linoleum, and tile.  
For residential and commercial floors.

Call after 5:00 P.M.  
**(817) 997-2802 Rule**

# GMC Pickups

"NOT JUST ANOTHER TRUCK"  
Save \$500 with Cash Back Rebates on Selected GMC TRUCKS

**SAVE ON BUICK**

with Cash Back Rebates

Park Avenue **\$1000** CASH BACK  
Century **\$ 500** CASH BACK

**GM QUALITY SERVICE PARTS** **GM** **Mr. Goodwrench**

**MEDFORD**  
**BUICK-PONTIAC-GMC**  
200 N. AVE. E HASKELL PHONE 864-2644

# Cook and Rodela

Heating, Cooling and Plumbing  
Sales, Service and Installation  
State License: #TACL006947

817-864-2226  
15 N Ave E • Haskell

## TAX PLANNING

Written By  
**Richard E. Rodgers, CPA**

## DOMESTIC EMPLOYEES

You are liable for social security taxes to be submitted quarterly on Form 942 (Form 941 or Form 943 under certain circumstances) if you pay \$50 or more in any calendar quarter for domestic help.

Generally, domestic help includes services performed in your home by cooks, butlers, housekeepers, governesses, maids, cleaning people, babysitters, janitors, caretakers, handy persons, gardeners, and chauffeurs.

Paying the social security tax and filing the appropriate quarterly return are not optional. Neither you nor the employee can elect to forego the tax. The quarterly return must be accompanied by payment of 15.02 percent (7.51 percent from the employee and 7.51 percent matching funds from the employer) of total wages paid in the quarter. The employer is liable for the 15.02 percent even if none is withheld from the employee's wages.

Here's an example of taxable and nontaxable wage amounts. You hire household help and pay \$45 in the first quarter, \$55 in each of the second and third quarters, and \$49 in the fourth quarter. Your liability for filing the report and paying the tax is based on when the wages are paid, regardless of when they were earned. In our example, you'll be liable for tax in the second and third quarters only. On the year-end W-2 (wage statement), show \$204 as total wages, but only \$110 as wages subject to social security. The value of food, lodging, clothing, bus or subway tokens, and other noncash items you give to the employee is not subject to social security tax.

The statute of limitations does not run when a tax return is not filed. In other words, the government can assess you for all the prior years for which you have failed to file a return.

Sponsored By  
**JAMES E. RODGERS & COMPANY**  
Certified Public Accountant  
20 Southwest Third Street

# July Clearance Sale

Continues---

Great Selections  
Beautiful Bargains

**50% to 70% off**

Special Group odds and Ends  
**1/2 of 1/2 off**

THE *Personality* SHOPPE

## WE'VE GOT OUR EYES On Your Future!

Whatever your future holds, in business or in personal life, to make it in this world, you need the expert advice of the right bank looking after you!

Our point of view is to serve our customers with a solid base of financial resources and a wide range of banking services. For personal banking needs or business planning expertise, in the long and short view, the outstanding background, reputation and the full banking services we offer, make us your wisest choice, any way you look at it.

**FDIC**

Post Office Box 10  
Phone (817) 997-2216  
Rule, Texas 79547

**The Farmers NATIONAL BANK**



## Ask VA

**Q:** I am a Vietnam era veteran and used my VA education benefits to attend college. While attending school, I was injured in an automobile accident and under a doctor's care for almost two years, unable to continue my education. I am now able and ready to go back to school, but I can't without financial assistance. Am I still eligible for VA education benefits?

**A:** Normally a veteran must use education benefits within 10 years from the date of discharge. However the delimiting date for educational benefits may be extended if it is determined that the veteran was prevented from initiating or completing a chosen program of education because of a physical or mental disability. Any extension granted will be equal to the length of time the eligible person was prevented from initiating or completing a program of education within the basic 10-year period of eligibility.



**It's Coming!**  
August 6th

**Watch For IT!**

**You Can't Afford Not To Be There! DOWNTOWN HASKELL!!**



### To marry

Wade M. Bland and De'Anna Salas will be married Aug. 27 in a garden ceremony at the home of Mr. and Mrs. Kenneth Koon in Lufkin. Both are students at Kilgore Junior College. She is the daughter of Dr. and Mrs. Daniel Salas of Lufkin and he is the son of Dwayne Lynn and Dianne Bland of Greenville. He is the grandson of Clyde and Claudie Mae Bland of Haskell.



The United States has about 16,500 magazines, more than any other country.

## Insects worry cotton farmers

By Steve Davis  
Extension Agent-Entomologist  
July 14

Cotton over the five-county area is in excellent condition except for increased insect pressure. Recent rains have improved growers' attitudes as well as crop condition.

Boll weevil numbers in the field are on the rise as evidenced by weevil egg punctures. Most problem areas exist in remote areas surrounded by pastures, creek beds, etc. Weevil egg punctures are excellent indicators of pest populations and numbers exceeding 15 percent should be treated. Another treatment five to seven days after the first will probably be needed since cotton is lush, numbers are parallel with 1987 and weevil numbers may be compounded, in most cases, with bollworm problems.

Bollworm moth numbers are on the rise again according to trap catches in Fisher County. Normal peaks occur in relation with full moon cycles; however, this year being somewhat abnormal, is not true to form.

Bollworm egg numbers are very high in South Jones County and will probably affect the entire five-county area within the next week to 10 days. The Ft. Phantom area has been hit with egg numbers ranging from 0-8 per plant; in some spots up to 200 percent egg infestations. Unless other insects compound this type of problem, growers should wait for the "hatch" and treat small worms that are most vulnerable.

Fleahoppers will still be a problem in smaller cotton and should be watched closely until the field begins to bloom. Most fleas seen this week are adults and may infest a field overnight, especially in areas of good secondary hosts such as pastures, road ditches, etc.

When planning an application of insecticides, growers must consider just how busy their applicator is or

how much ground they have to cover themselves. Economic thresholds will have to be lowered according to days of delay in treatment. Also, cottonseed oil or other spreader/stickers may be employed to effectively stretch chemical longevity, which may, in the long run, save on application.

Area wide, beneficials are of little consequence at present. Most fields have some but these are usually general predators and are not in adequate numbers to modify pest species.

Turn row meetings are being

scheduled with local gins in order to show growers the presence and magnitude of bollworm problems. Farmers should check with their gins in the next week to plan an hour or two in the field.

Pecan growers should be checking trees at this time for second generation pecan nut casebearers. Spray dates for first generation were June 3-10, so second generation dates will be 40 to 45 days later, or July 15-22. Trees should be checked for worm damage prior to treatment as treatments are not always necessary.

## Students' careers should be planned

The 15 million students in American high schools will be faced with a wide range of choices after graduation. More than half of these students will go to college. Others will go through office training, technical education or on-the-job training, said Dorothy Taylor, family life specialist with the Texas Extension Service.

However, students need to prepare for this in the last few years of high school. Only then can young adults determine goals, examine the options and make the choice best suited to fulfilling those goals, the extension specialist said.

There are four steps students can take before a career decision is made.

The student's first concern is to do well in high school courses. Good grades enable a student to choose from a wider array of colleges, and make financial aid easier to obtain.

Secondly, students should honestly evaluate their abilities, look at their interests and choose a general

field that is suitable. Although most students do not decide on a specific career until their second year in college, getting a general sense of direction as early as possible is best, said Taylor.

The third and perhaps most important step is to get help. There are thousands of careers, and a guidance counselor can be of tremendous assistance in directing students toward those careers and higher education.

The fourth and most realistic step is to make an honest appraisal of the money a student will need for a career route. The earlier a student applies for financial aid, the better the chances of getting it.

**WEIGHTY WOOD:** The lumber of the leadwood, or black ironwood tree, is the heaviest timber in North America. *Ranger Rick* magazine reports that the wood from this Florida tree is so heavy that it sinks in water.

**Cured Hams** 17-20 lbs. (1.09 Sliced) **99¢** lb.

**Cured Ham** Butt Portion - \$1<sup>39</sup> lb. Shank Portion - \$1<sup>09</sup> lb.

**Ham Hock** lb. **98¢**

**Bacon** No 1 Sliced lb. **\$1<sup>19</sup>**

**Wieners** Gooch Package **79¢**

**Lettuce** Head **39¢**

**Hormel Viennas** 2 for **89¢**

**Cherry Coke** 6 cans **\$1<sup>49</sup>**

**Rice** 2 lb. Bag **89¢**

**Corn** Kounty Kist 3 cans **\$1<sup>00</sup>**

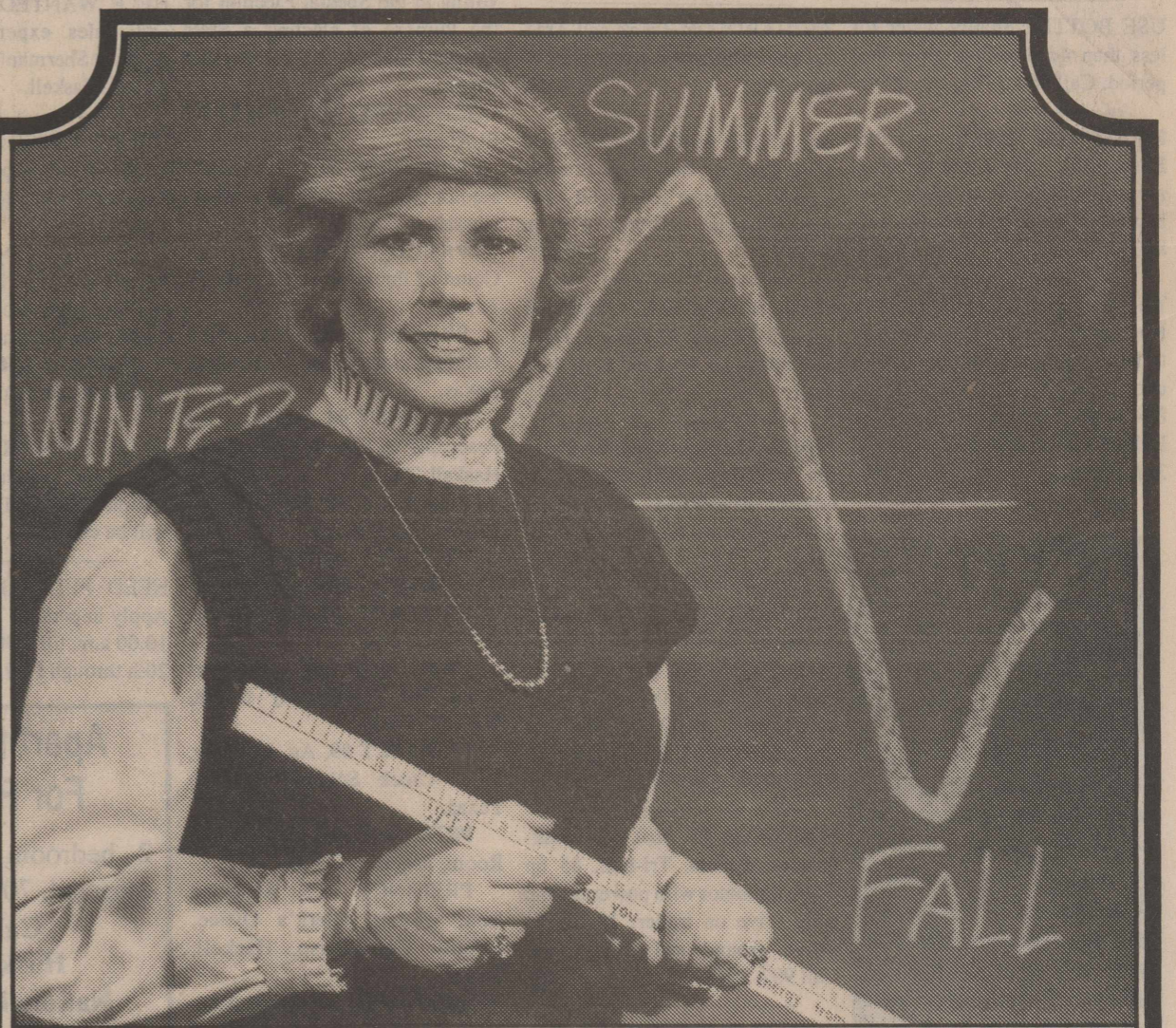
**Napkins** Northern 140 Count Pkg. **79¢**

**Room Deodorant** Wizard 8 oz. can **89¢**

# POGUE GROCERY

-Extra Parking Behind The Store. Home Owned and Operated-  
113 North Avenue E Phone 864-2015 Haskell, Texas

Thurs. Fri. Sat. Specials

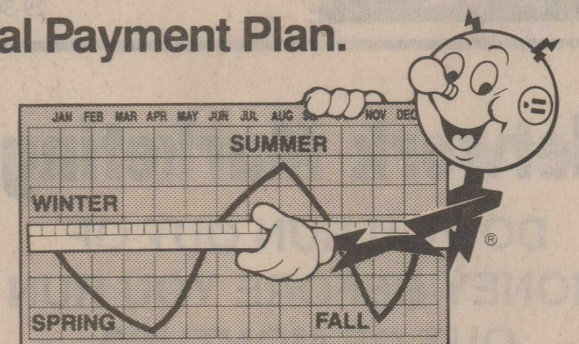


**"Now you can pay the same amount every month of the year for your electric bill!"**

It's easy with WTU's Equal Payment Plan.

Electric bills peak in the Summer and Winter when demand is up and are lower in the Spring and Fall. With the **Equal Payment Plan**, you can level out your electric bill because the monthly payments are averaged and adjusted over a year.

Any WTU residential customer or church with approved credit and a monthly bill of \$15.00 or more can qualify.



"Level out your electric bills with the Equal Payment Plan."



For more information on the Equal Payment Plan, contact your local WTU office.