

Book Binding  
514 W 7th St  
Amarillo TX 79101

AMARILLO--CCCCC ZZXXXXXXXXXXXXXX  
End Of Amarillo  
Amarillo TX 791--

# THE HASKELL FREE PRESS

35¢

VOL. 102--NO. 23

HASKELL, TEXAS 79521, June 9, 1988

12 PAGES--ONE SECTION



## Imitation Stats to play at benefit

"Imitation Stats" of Seymour will perform June 24 in a musical benefit for the Haskell Civic Center.

Proceeds from the event will go toward the \$15,000 needed for the paving around the Civic Center building.

Tickets will go on sale June 13.

## Scouts selling flags for bus fund

Members of Boy Scout Troop 136 are selling flags to raise money for the bus fund.

U.S. flags, are priced at \$10 each, and flag poles are \$7.50, if purchased separately, or \$15 for both.

Texas flags also are available.

To order a flag, call Terri or George Martin at 864-3124, or Ann Johnston at 864-3116.

## Paint Creek man has winning poem

A 22-year-old Paint Creek man has won a national award for a poem he wrote when he was eight years old.

Charles P. Wells has been notified by The World of Poetry of Anaheim, Calif., that his poem, "Linda," was selected as one of 10 finalists for the Golden Poet award.

The poem will be included in a book of poetry to be published in August by The World of Poetry.

## Rule Methodists have new pastor

W. H. Brown is the new pastor of the First United Methodist Church of Rule-Sagerton.

He comes from Petersburg, Carr's Chapel, where he served two years. He replaces Thomas Lynn Wilson who served five years.

The announcement of the change came during the Northwest Texas annual conference of the United Methodist Church which is meeting this week in Abilene.

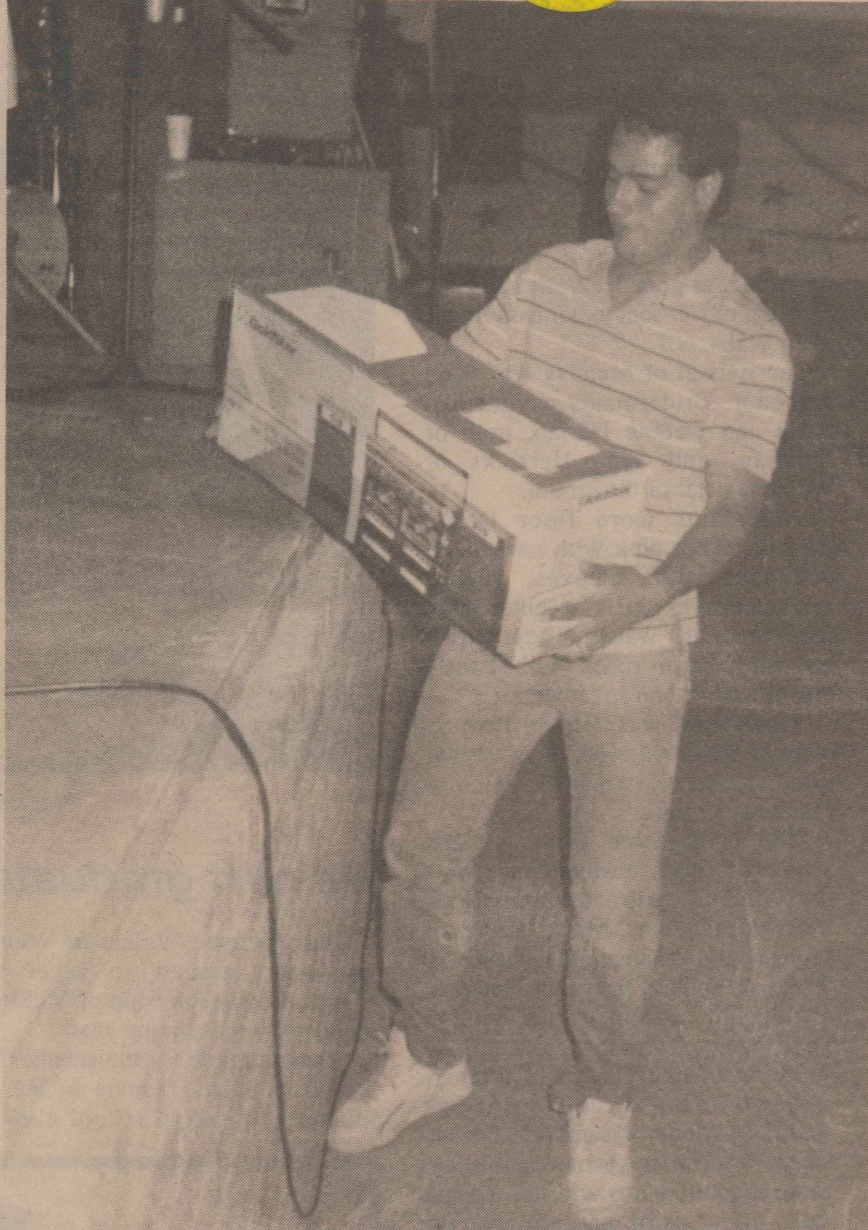
No other pastor changes were made in the Haskell area.

## Tech honor roll

Tiffany Welborn of Rule was listed on the Dean's honor roll for the spring semester at Texas Tech University.

Miss Welborn had a grade-point average of 3.6.

The daughter of Mr. and Mrs. Jerry Cannon of Rule, she is a junior majoring in dietetics and nutrition.



## Prize winner

HHS graduate Joel Torres won a stereo at the Party '88 drawing May 28. It was one of approximately \$7,500 worth of prizes given to those attending the graduation party.

## Computer course offered by school

A computer literacy course is being offered this summer by the Haskell Independent School District.

Open to adults interested in learning the basics about computers and their applications, it is being offered as a service to the community and does not carry any college credit.

The 12-hour course will be taught on Apple IIe computers and will be

## Swim lessons to be given

Swimming lessons will begin June 27 at the city swimming pool.

Sandy Clay will be instructor for classes for moms and tots and for beginners through 4 years. They will begin at 5:30 and 6:15 p.m., respectively, from June 27 through July 2.

Classes for beginners 5 and older, novice and intermediates will start at 5:30, 6:30 and 7:30 June 27 through July 8.

Jimmy Lisle will be instructor, assisted by Teresa Unger.

Cost of the six lessons for tots and beginners through 4 will be \$20. The 10-session classes will cost \$35. To register, call 864-8104 during pool hours.

for those who have had no experience or instruction on computers.

The course will be taught in the Haskell High School computer lab from 7 to 9 p.m. on Tuesdays and Thursdays, beginning June 21 and ending July 7. Cost per person is \$10, and the class will be limited to 13 students.

Instructor will be Susan Pope. To register, call 864-2848, or go by the high school office.

Also being offered by the school this summer are basketball camps for boys and girls. The boys' camp will be June 13-17 and the girls' June 20-24.

Exactly 100 youngsters, 47 boys and 53 girls, had signed up by Tuesday morning for the camps being conducted by coaches Randy Stone and George Martin, assisted by Julie Roewe.

## They lay eggs

The city is harvesting eggs from the duck flock at Rice Springs Park.

City Administrator Bob Baker said that as of Tuesday morning, nine eggs had been gathered.

He said he was giving the eggs to Police Chief Tom Paul Barnett in hopes he can find someone with a setting hen to hatch the eggs.

## GTE Southwest seeks telephone rate increase

A proposed rate increase by GTE Southwest would increase basic residential telephone rates in Haskell by 69 percent. Business rates would increase by 52 percent.

Under the proposal, basic rates in Haskell would jump from \$8.55 per month to \$14.45 for one-party residential lines. One-party business phone rates would increase from \$22.15 per month to \$33.65.

Exchange access rates would increase from \$1.35 to \$1.40 for residences, but would decrease from \$3.55 to \$3.25 for businesses.

GTE Southwest has filed updated rate schedules in accordance with directives of the Public Utility Commission of Texas to update the company's unresolved 1984 filing for additional revenues.

GTE Southwest failed to gain acceptance of an offer to withdraw its 1984 rate filing.

The company says financial information in the updated rate filing shows the company has an \$81 million revenue deficiency based on a rate of return which is actually lower than the commission's last authorized rate of return.

"The last time the company raised rates was in 1983," said GTE Southwest president E. L. "Buddy" Langley. We have known, with increased expenses and capital investments, that eventually we would have to ask for increased revenues. With the downturn in the Texas economy we wanted to delay this as long as possible. However, since we are being required to update the current financials and process the merits of the rate filing, we have decided to seek the rates necessary to cover the revenue deficiency."

The company filed a petition early in 1987 to withdraw its 1984 filing, but some participants in the case resisted the move, voicing concern the company could be overrearning because of changes in state and federal tax laws. As a result, the company was ordered to prepare the updated information by April 30. An extension was granted to allow for additional negotiation, but the parties to the case were unable to resolve the issues.

Langley said the four-year delay in the rate proceeding illustrates the complexities caused by deregulation and other major changes affecting the telecommunications industry in the 1980s.

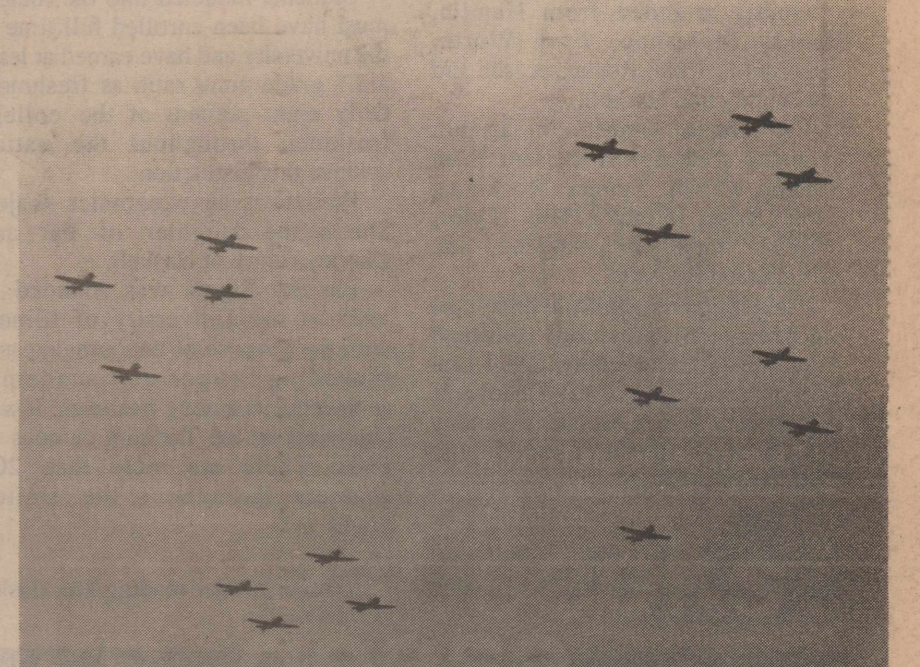
GTE Southwest initially filed for \$84.4 million in additional revenues in February 1984. Prior to hearings, the case was suspended to await a decision in another commission proceeding concerning changes brought about by the AT&T divestiture and competition in long-distance service. Due to the many complexities associated with these issues, a final order was not issued in this proceeding until September 1986.

"Our updated financials show we are not overrearning," Langley said. "We have factored in all the changes affecting the company, both positive and negative, and the result is that the

company still has an \$81 million revenue deficiency.

"The reduced expenses, such as the reduction in both state and federal taxes, have been more than offset by increases in other expenses and in our investment in providing service in the state," he said.

The company now expects the administrative law judge in charge of the company's filing will set a schedule of dates to allow other parties in the case to file appropriate testimony and data, and set hearing dates to consider the proposed new rates.



## Warbirds

Warbirds from the Confederate Air Force flew in formation May 30 at the Breckenridge Air Show. The previous day, the planes had flown over Haskell and participated in the pilots' fly-in and breakfast at the Haskell Airport.

## Rule Baptists plan 'Dr. Howell Day'

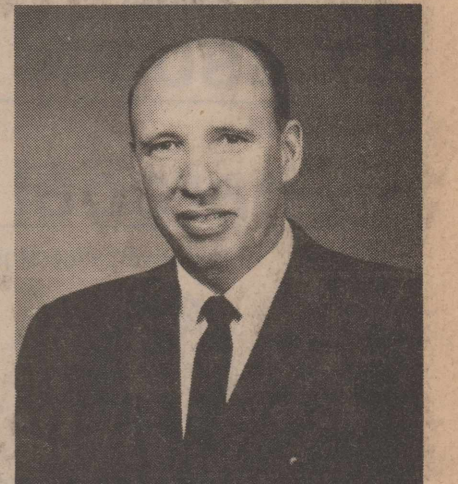
Dr. E. Milford Howell will be honored Sunday with a "Dr. Howell Day" at the First Baptist Church in Rule, in recognition of his 50 years of service in the mission field and preaching the gospel at home.

Howell will preach at both the morning and evening services. A noon luncheon will give friends an opportunity to visit with Dr. Howell and his family.

Reared in Rule and a graduate of Rule High School, Howell answered the call to preach on April 19, 1938. He recently observed his 50th year in the ministry as a preacher and missionary to Nigeria, Africa. He received his appointment from the Foreign Mission Board of the Southern Baptist Convention in 1943 and then served in Nigeria for 21 years (until 1964) before retiring due to serious health problems of his daughter.

For three and a half years he was pastor of North Lake Baptist Church in Dallas. Following his pastorate he was asked to be state director of missions of Maryland, which was composed of 11 Eastern states. He served seven years in this capacity.

His next call was to Florida where he was director of missions for 12 years. He retired from the Foreign



Dr. E. Milford Howell

Mission Board in 1984. Since retirement he has served four churches as interim pastor, has held many revivals and filled many and various speaking engagements.

Howell holds five degrees from universities and seminaries. The first one, a bachelor of science, was earned from Hardin-Simmons University in Abilene, and the last one was a doctor of philosophy from Southwestern Baptist Theological Seminary in Fort Worth. He is a member of "Who's Who in Religion in America."

Howell and his wife live in Carrollton.



## New Park inhabitant

Jean Baugh of Rule shows off one of the two geese she delivered to Rice Springs Park last Thursday. To her left are councilman Darrell Smith, Mayor Greg Melton and councilmen Jerry Stocks and Larry McMillin. The geese, along with 10 ducks, were given to the city by Haskell National Bank.

## Park gets ducks, geese

Ten ducks and a pair of geese have taken up residence in Haskell's Rice Springs Park.

They were presented to the City of Haskell as a gift from Haskell National Bank.

The flock consists of nine pedigreed Khaki Campbell ducks, six females and three males; a Blue Magpie female duck; and a pair of white Chinese geese.

Larry McMillin, a senior vice president at Haskell National and a member of the City Council, presented the ducks to the city in a brief ceremony at the park last Thursday.

The animals were purchased by the bank from Jean Baugh of Rule.

During the first few days, the ducks and geese were caged in pens

the city erected for them. They are now being released in the day time to roam in the area and swim in Rice Springs Creek which runs through the park.

The confinement was recommended by Mrs. Baugh who said this would enable them to become adjusted to their new surroundings so they won't stray off.

During their confinement, the city is feeding them, but Mrs. Baugh said they probably will be able to fend for themselves after they are freed.

The ducks and geese are expected to become quite an attraction at the park. City administrator Robert Baker said someone suggested some time ago the idea of getting some ducks. He said everyone he talked with liked the idea.

The flock represents only the latest in a number of improvements and additions to Rice Springs Park. Earlier, the city built a dam across the creek to create an attractive lake. The Rotary Club built a foot bridge across the creek and the Boy Scouts painted the bridge. The city has just completed installation of a sprinkler system.

Helping pay for the city's work at the park were a couple of cash donations, \$400 from the American Legion and \$200 from the Young Homemakers Club.

The American Legion planted cottonwood trees along the creek and whitewashed all of the existing trees in the park.

Last year, the city completely renovated the swimming pool at a cost of more than \$100,000.

## Another pair

Another pair of ducks joined the flock at Rice Springs Park Monday when Arthur Barrios presented the city with a pair of large white ducks.

## Missing duck

For a while this week, the city thought a dog had killed one of the ducks at Rice Springs Park.

When the pens were checked Monday morning, one of the ducks was missing. A hole, apparently the work of a dog, had been dug under the fence. The conclusion was that the duck had gotten out and was killed by the dog.

This theory was dispelled Monday afternoon when Sandy Clay, who lives two blocks away, found the missing duck in her swimming pool.

## Ruby Clemmer celebrates 90th birthday

Ruby Clemmer was guest of honor at a 90th birthday celebration Saturday in the home of County Judge and Mrs. B. O. Roberson. A large number of long-time friends and neighbors attended the party.

Ruby Faye Swinson was born June 3, 1898, in Wolfe City, Hunt County, Texas. She married John Luther Clemmer in Dallas on Jan. 14, 1925. Mr. and Mrs. Clemmer lived in Clyde, Rule, the Jud community and Rochester. She is now a resident of the Haskell Nursing Center.

The Clemmers were always good neighbors and attended the Baptist church regularly. She taught Sunday School and he was a deacon. Both Ruby and John made lasting friends with people of all ages where ever they lived. The Clemmers never had children but it is almost impossible to count the number of people who regard her as their "other mother."

Guests attended from Hamlin, Bangs, Mulshoe, Fort Worth, Aspermont, Rule, Rochester, the Jud community and Haskell.

For those unable to attend, personal greetings were sent from Ranger, Clyde, Pampa, Rockport, Glen Rose, Cedar Hill, Tyler, O'Brien, Richmond, Abilene, San Antonio and Perryton.

Friends and neighbors helping host the party were Keele and Elizabeth Acree, Louise Chambers, Ethel Lou Shelton, Jane Short, Betty Hearn and members of Mrs. Clemmer's Sunday School class of the First Baptist Church of Rochester.

Nine million tons of salt are applied to American highways each year for road de-icing.

## -BIRTHS-

Jimmy and Tracy Bilbo of Rule announce the birth of a daughter, Maegan Elizabeth Serena Bilbo, born Friday, May 27, at 10:08 p.m. in Hendricks Medical Center. She weighed 6 pounds and 1 ounce and was 19 inches long.

Maternal grandparents are Dr. Roy C. and Betty Mathews of Little Rock, Ark. Paternal grandparents are Jim and Pat Bilbo of Sweetwater.

Great-grandparents are Serena Willey of Port Neches, Roy Mathews of Banks, Jack and Merle Nichols and Nona Mae Bilbo of Rotan.

## Patricia Henry in honor society

Patricia Henry, a Tarleton State University sophomore from Haskell, was one of 66 students inducted this spring into the Phi Eta Sigma national freshman honor society.

Students inducted into the society must have been enrolled full time at the university and have earned at least a 3.5 grade-point ratio as freshmen. Only eight percent of the college freshmen throughout the nation achieve this distinction.

Patricia is an economics major. She is the daughter of Pat and Charley Henry of Haskell.

Phi Eta Sigma was founded in 1923 at the University of Illinois with the purpose of encouraging and rewarding superior academic achievements among freshmen. It was chartered on the Tarleton campus in 1981. There are more than 200 chapters throughout the United States.

Thank you for reading The Haskell Free Press.

## Meers, Herricks wed in Munday

Angela Lynn Meers became the bride of Todd Denton Herricks in a wedding ceremony performed May 28 in the First Baptist Church of Munday. Dr. H. B. Graves Jr. performed the ceremony.

The bride is the daughter of Boyd Lynn and Christine Meers of Munday. The bridegroom is the son of Rex and Tinka Herricks of Weinert.

Sandy King was organist, Karen Harlin was pianist and Leissa Bubliss of Wichita Falls was soloist.

Given in marriage by her parents, the bride carried a bouquet of white roses, gardenias, azaleas, stephanotis, bear-grass and Boston fern with seed pearls and streamers of black, pink and white ribbon.

Her designer gown was of white bridal satin. An open neckline trimmed with re-embroidered appliques added an elegant touch to a flattering natural waistline. Short puff sleeves were beautifully adorned with satin bows on top. The bodice was covered with appliques which were dotted with seed pearls and shimmering iridescents. The full skirt gracefully flowed into a semi-cathedral length train and a deep flounce of matching lace bordered the skirt.

## Moore's visit with his mother

Theo and Marge Moore of West Chicago, Ill., spent last week with his mother, Gracie Moore. The highlight of their visit in Haskell is the celebration of Mrs. Moore's 98th birthday with family and friends.

Theo is employed with the FFA at the Du Page Airport. He enjoyed being with fellow pilots at the fly-in breakfast May 28. On May 31, he spoke to members of the Stamford Rotary Club on air safety.



Angela Meers Herricks

## Weinert graduate gets scholarship

Barry Wayne Walker of Weinert has been named to receive a Presidential scholarship at McMurry College for the coming year.

To be eligible for the scholarship, a student must graduate in the top quarter of his high school class. A

score of 21 or better on the ACT qualifies a recipient for additional Presidential scholarship funds.

Barry is a 1988 graduate of Weinert High School. He is the son of Mr. and Mrs. Jerry Walker.

June 9-10-11		
Mrs. Bairds		
<b>Fried Pies</b>	<b>3 for</b>	<b>\$1<sup>00</sup></b>
Fresh Scent		
<b>Tide</b>	42 oz. Box	<b>\$1<sup>90</sup></b>
Post		
<b>Raisin Bran</b>	10 oz. Box	<b>\$1<sup>29</sup></b>
Generic Bathroom		
<b>Tissue</b>	4 Roll Pack	<b>59<sup>c</sup></b>
Kingford		
<b>Charcoal</b>	With Mesquite 10# bag	<b>\$2<sup>99</sup></b>
The Convenience Store with Competitive Prices		
<b>Buster's Drive-In</b>		
Your home owned convenience store		

## -HOSPITAL-

**ADMISSIONS**  
MEDICAL: George Raines, Haskell; George Wester, Haskell.  
**DISMISSALS**  
Calvin Wheeler, Vera Bell, Frankie Cloud, Alice Muegge, Julia Callaway, R. T. Landess.

**Irby Dance**  
Friday - June 10th  
Music by  
**Arthur Newton**  
8:30 - 12:30  
Members & Invited Guests Welcome

TONIGHT ON CABLE  
**PETER USTINOV IN CHINA**

Actor Peter Ustinov turns tour guide as he leads viewers on a journey through the fascinating country of China. Dispelling stereotypes of a camera-shy and homogeneous population, Ustinov enlightens viewers with his quick wit and humorous insights into an often misunderstood society.

**THURSDAY AT 8PM CHANNEL 6**

**Harmon Cable Communications** Phone Number: 1-800-527-4331

**The Churches and Ministers of The Haskell Ministerial Alliance would like to thank sincerely and publicly these individuals or local businesses for being pledge and prayer partners to the Haskell Ministerial Alliance Crisis Ministry for 1988.**

Mr. and Mrs. Royce Adkins. Agricultural Services, Inc. The Drug Store First National Bank Mrs. R. G. Foote Mr. and Mrs. George Fouts The Haskell Free Press Haskell National Bank Hassen's Department Store (Haskell) The Hayloft Jones Cox & Co. Kay's Cleaners	KVRP Radio Lane-Felker Mr. and Mrs. Dee Larned Lydia Sunday School Bible Class of First Baptist Church Mary Martin Menefee Bible Class of First United Methodist Church Olney Savings of Haskell The Sport-About Trinity Lutheran Church Western Auto of Haskell Others anonymously
---	---

*"Lord, when did we see thee hungry and feed thee, or thirsty and give thee drink? And when did we see thee a stranger and welcome thee, or naked and clothe thee?" ...And the King will answer them, 'Truly, I say to you, as you did it to one of the least of these my brethren, you did it to me.'"—Matthew 25:37, 38, & 40.*

**BREAST CANCER DETECTION UNIT AVAILABLE TO AREA WOMEN**

FRIDAY, JUNE 17, 1988  
HASKELL, TEXAS  
A Service of  
HASKELL MEMORIAL HOSPITAL

**CALL 864-2621 FOR APPOINTMENT**

According to the American Cancer Society, one out of ten women in the United States will develop breast cancer sometime in her lifetime. It is currently estimated that over 37,000 women die each year as the result of breast cancer.

Ninety percent of breast cancers are diagnosed by women or their physicians finding a lump in the breast. Women who are diagnosed with a lump large enough to feel have a 50 percent five year survival rate. A woman who is diagnosed as having breast cancer by mammography, before a lump can be felt, has a 97% five year survival rate and a 90% 10 year survival rate.

A mammogram can detect a cancer this small, even before it can be felt.

**Appointments may be made by calling 864-2621.**

The Mobile Breast Cancer Detection Unit will be in Haskell on Friday, June 17th.

The American Cancer Society has established guidelines for a mammography in asymptomatic women. (Women who have no symptoms of disease). Those guidelines have been adopted by the American Academy of Family Physicians, American College of Obstetricians and Gynecologists, and The American College of Radiology. Those guidelines are:

1. 35-40 years of age - One baseline mammogram.
2. 40-50 years of age - A mammogram every 1-2 years depending on breast type and risk factor.
3. 50 years of age and over - An annual physical examination and annual mammogram.
4. Asymptomatic women under 50 years of age with significant high risk factors should be examined at appropriate intervals. These risk factors include previous breast cancer and family history of cancer.

V. A symptomatic woman should have a mammogram at any age when she experiences a mass, nipple discharge, skin changes or unexplained breast pain.

A screening mammogram is an x-ray of the breast using extremely low dosages of radiation (usually comparable to dental x-rays) and is designed to find very early cancers.

A female technologist who is highly trained in mammography will perform the examination.

The charge for the screening mammogram is \$50.00. The Unit accepts cash, check, VISA, MasterCard and American Express.

**For more information or to make an appointment call 864-2621.**

# --Weinert--

**By Myrtle Plemister**  
 The weather is still unsettled in the Big Country, but Weinert has had no hail, very little rain, with only minor wind damage.  
 The farmers are planting cotton and harvesting grain. We have a few of our "migrant" harvesters in town. We always welcome them as they add to our population and community life.  
 The Weinert Cafe has a new cook, as Darla Griffis is fast learning to take Linda Mahan's place in the kitchen. We expect many young men from area towns to be coming in to "eat!"  
 \*\*\*  
 Our sick are doing very well. Willie Moeller returned home from a Dallas hospital on Friday. He would love company, as he is not very strong after 27 days in the hospital. It was no vacation for his faithful wife, Betty, either.  
 \*\*\*  
 Floyd and Helen Stout have returned from a 2 weeks stay at Lake Proctor, where they had so much fish to eat they shared with others.

The storm was bad there, but no serious damage was reported.  
 Floyd's younger brother, Mr. and Mrs. Wesley Stout of Paris are in town for a visit with the Floyd Stouts, and the Thurman Stouts.  
 \*\*\*  
 Mr. and Mrs. Ted Jetton attended the wedding of a granddaughter on Saturday, June 4th in Wichita Falls at 2 p.m.  
 Miss Kelly Young, daughter of Mr. and Mrs. Claude Young of Holliday was married to Richard Osborne in a ceremony performed by Jack Cummings minister for the Loop 11 Church of Christ in Wichita.  
 A reception for the wedding party was hosted by the bride's parents in the church's fellowship hall.  
 The bride and groom are both employed at the Shepherd Air Force Base Post Office, and will make their home in Wichita Falls.  
 \*\*\*  
 Mr. and Mrs. D. I. attended high school graduation exercises in Saginaw on Friday where their grandson, Todd Hackney was a

graduating senior.  
 \*\*\*  
 Mr. and Mrs. Donnie Crump spent a few days with Donnie's parents in Blue Grove last week, where Donnie helped his father get the combine ready for harvest.  
 The Crumps are involved with the VBS at First Baptist Church this week.  
 \*\*\*  
 Some of our children attended the movie shown at the Haskell County library last week. Those attending were Heath and Justin Guess, David and Tabitha Crump, with Debbie Crump as sponsor.  
 \*\*\*  
 Mr. and Mrs. Ricky Wade with Taylor of Abilene spent the weekend with her parents, Mr. and Mrs. Toby Yates and attended worship services with them at First Baptist Church.  
 \*\*\*  
 Guests of Veta Alexander, Missy and Randy, were Mr. and Mrs. DeWayne Bearden with Kim and Anthony of Kreem.  
 Anthony is spending the week with Randy, and attending the VBS.  
 \*\*\*  
 Visitors at the worship services at the Church of Christ included Eldon Amont with Shana, of Denver City and another daughter, Kay Rodriguez of Abilene.  
 Also, Mrs. Jimmy Glasscock with her children of San Angelo who were guests of the Roy Plemisters for the weekend.  
 \*\*\*  
 Jim Allen of Mesa, Arizona is spending a few days with his mother, Francis Mahan.  
 \*\*\*  
 Carina and Caroline, twin daughters of Gilbert and Ruth Jimenez are attending Bible Camp at Iowa Park this week.  
 \*\*\*  
 Bob and Virginia Melvin of Lubbock were in town for a visit with Alton and Mildred Sanders. Both couples traveled to Azel for a Lay Renewal Revival at the Walnut Creek Baptist Church this past weekend.  
 \*\*\*  
 R. S. and Betty Sanders were in Lubbock for a visit with Claude and Vera Mae Harrison, and went on to Clovis, NM for a weekend retreat with their sons family, Larry, Linda,

Robert and Lynette of Los Alamos, NM.  
 Betty's mother, Mrs Ras Gideon of Winters has been hospitalized in Abilene because of after-effect of the radiation treatments she had to undergo. She has improved and has returned to her home.  
 \*\*\*  
 Ed and Mary Murphy with Lane and Shanna spent a few days in White City, NM and made a trip into the Carlsbad Caverns while there.  
 This was their first family outing in their plane, and they were excited that they made the 7 hour trip (by car) in a little over 3 hours! They look forward to more flying.  
 \*\*\*  
 We have birthday bells ringing all over town to celebrate the birthdays of Bob Raynes, Bub Adams, Larry Brueggeman, Joe Yates and Raymond Mathison. Happy Birthday!  
 Alton and Mildred Sanders and Ricky and Karen Harlan will celebrate wedding anniversaries.  
 Congratulations.  
 \*\*\*  
 Congratulations are in order for Kelly Earp, bride-elect of Wayne Hutchinson, of Knox City, who was honored with a wedding shower on Sunday, June 4th in the home of Wanda Hester.  
 Hostess gift was a set of cookware.  
 The couple will be married on June 25th in the Weinert Baptist Church.  
 \*\*\*  
 Mr. and Mrs. Fred Green have accepted a place on the Paint Creek School faculty and will be moving there in the near future.  
 We have learned to love the Green's and regret the necessity of their leaving. He has served as agriculture teacher while here in Weinert.  
 \*\*\*  
 Approximately 75 descendants of the family of Cleve and Ruthie Garrett met at the Weinert Community Center for a family reunion on Saturday and Sunday, June 3rd and 4th.  
 Ida and Willie Farrel served as hosts, and welcomed all the Garrett children to Weinert, save Leroy, who lives in Las Vegas, Nevada, and was not well enough to attend.  
 Those attending from out of town included Frank and Fauna Garrett of Las Vegas, Nev. and their daughter Brenda and Don Elliot of Midland; Garth and Ocie Garrett of Haskell, and their son, Don, of Grand Prairie;

Weldon and Maria Garrett, with Harvey Jr. and Marilyn, of Andrews, and Maxine and Roy Boling of Olney; Beatrice Curd and Dora Woosley of Haskell.  
 A cousin, Orwood Garrett, son of Uncle Frank, was present, from Wichita Falls.  
 \*\*\*  
 Cristy Guess has moved to Throckmorton to be near her school there. We miss her, but are proud of her love and ability to teach children.  
 \*\*\*  
 Recent guests in the Pud Brockett home were two of their grandsons and families.  
 Mr. and Mrs. Ricky Nance with Shannon, Rick Jr., and Clint of Huntsville were here for a few days as was,  
 Mr. and Mrs. Mark Coffman, Drew and Jordan of Bridgeport. Drew is recuperating from a tonsillectomy he underwent in Abilene a few days ago.  
 \*\*\*  
 Have a nice day!

## Three couple get marriage licenses

Three couples were issued marriage licenses last month by the office of County Clerk Woodrow Frazier.  
 They were:  
 Danny Joe Sherman and Phebe Ann Hornback, both of Haskell; Ronald Edward Wendeborn of Rule and Kimla Ann Strickland of Haskell; and Douglas Allen Boling of Weinert and Christina Lynn Rowan of Haskell.

## 4-H youth attend leadership lab

Seven 4-H members from Haskell County participated in the recent 4-H Teen Leadership Lab at the Texas 4-H Center on Lake Brownwood.  
 Representing Haskell County were Dalyn and Kim Gilly, Penny Peden and Emily SoRelle from Haskell; Michael Hester of Rochester; and Mitch and Mondy Mayfield of Weinert.  
 The lab included educational workshops, vespers and recreation.

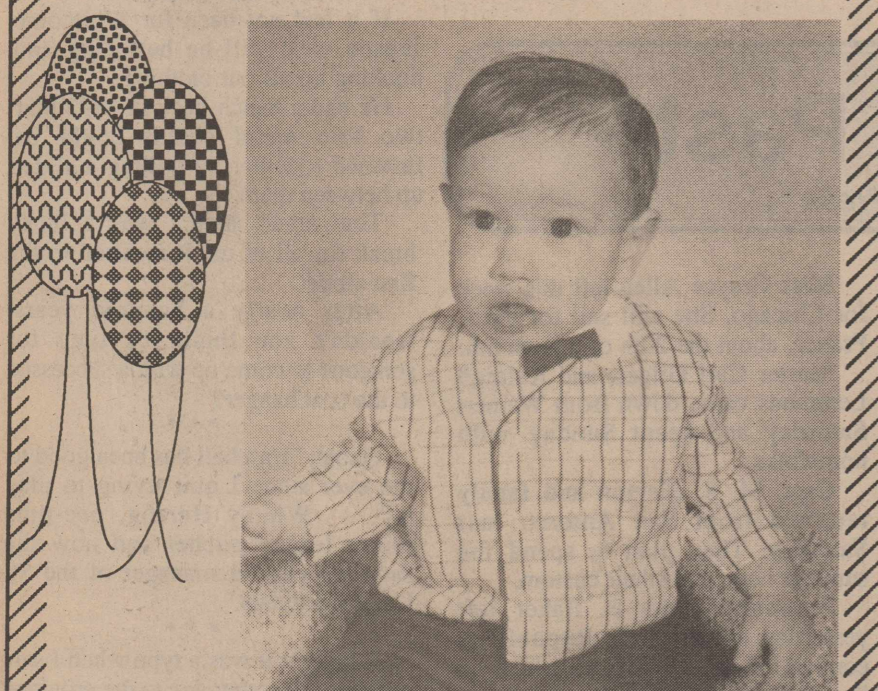
## Light news

Researchers have learned that each of the thousand or so firefly species has its own distinctive light pattern.  
 The insect's special glow is usually used to attract a mate.

## 'Texas' to open 23rd season

"Texas" begins its 23rd season in the open-air Pioneer Amphitheatre beneath the enormous cliffs of Palo Duro Canyon on Wednesday, June 15.  
 The musical drama will play nightly except Sundays through Aug. 27 in the state park near Amarillo.

## I'll be a man Today!



Happy Birthday Buckweat

*I would like to thank everyone of my friends from the Haskell I.S. D., Elem., and High School for the love offering that was given to me and Willie during Willie's long stay in the hospital. It helped me so much to know that we had your love and prayers while he was so sick.*  
*I would also like to thank our family members for giving me all their love and support when I needed it the most.*  
*My thanks also goes to Bro. J.C. Amburn for his love offering, and his spiritual help, prayers and phone calls while we were in Dallas.*  
*May the Lord bless and keep each and everyone of you because there is no place like Home.*

*Betsy and Willie Moeller*

# checking\*

# FREE

and it's a good time to talk about Retirement Accounts and Annuities.

**OLNEY SAVINGS**  
 Member FSLIC  
 All checking accounts now receive free \$1,000 of 24-hour Accidental Death Insurance. Talk to one of our counselors for details.  
 Come see us soon. Or call and we'll come see you.  
 \*check printing extra

## Save Every Day With Us!

### Advil

50 tablets

\$3.39



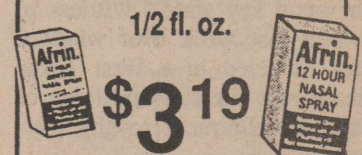
### New Shipment

Spinner Dominoes

### Afrin

Nasal Spray  
 12 hr. or Menthol  
 1/2 fl. oz.

\$3.19



### Some of Many Reasons To Make Us "Your Drug Store"

- Three Pharmacists to Consult With You About Your Medications
- 24 HOUR EMERGENCY PRESCRIPTION SERVICE Open 365 Days a Year 8 a.m. to 6 p.m. weekdays
- 8:30 to 10:30 a.m. Sundays and Holidays
- P.C.S., Blue Cross, PAID, Medicaid, and
- 30 day Charge Accounts Welcome
- Computerized Records Kept for Insurance and Tax Purposes
- SENIOR CITIZEN DISCOUNT 10% Prescription discount Given to Persons over 60 Years of Age If the Prescription is picked up at the Store and Paid at time of purchase.
- DRIVE-IN WINDOW FOR YOUR CONVENIENCE
- DELIVERY SERVICE For Those Who Are Homebound or Just Unable to Come After Their Prescriptions

### Sunglasses

30% off



### Men's Shaving Kits

20% off



FREE Gift Wrap

**For Father's Day**  
 A unique Gift  
**Bob White Quail**  
 preserved under Glass Dome

**Special Gifts For Special Dads & Grads!**

- Clocks and watches
- Keychains
- Leather billfolds
- Sunglasses
- Shaving kits
- Colognes
- Cards



## DOYLE HIGH'S THE DRUG STORE

Fast, Friendly Service at a Competitive Price  
 100 S Ave E • Haskell • 864-2515



## New names added to grid schedule

Three new non-district foes appear on the Haskell Indians' 1988 football schedule.

Seymour, Merkel and Rotan will replace Holliday, Quana and Knox City on this year's slate.

The Indians will play Munday and Electra, along with district foes Hamlin, Albany, Stamford, Hawley and Anson in other 1988 contests.

The schedule:

- Sept. 2: Munday here.
- Sept. 9: Seymour there.
- Sept. 16: Merkel there.
- Sept. 23: Electra here.
- Sept. 30: Rotan here.
- Oct. 7: Hamlin here.
- Oct. 14: Albany there.
- Oct. 21: Stamford there.
- Oct. 28: Hawley here.
- Nov. 4: Anson here.

## Pony League team wins opener

Haskell's Pony League team started the season off on the right foot Friday night by defeating Knox City 21-6.

Every player on the Haskell team got on base at least twice. Mark Jones hit a triple, double and single, and Greg Williams had three doubles. Jay Miller was the winning pitcher and also hit the first homerun of the season.

Haskell will play at Aspermont and Rule this week.

## School athletic facilities to open

The gym and weight rooms of the Haskell schools will be open for use between June 13 and July 29.

The facilities will be available between 7 and 9 p.m. on Monday, Tuesday and Thursday and from 4 to 6 p.m. on Friday during that period, except for July 4.

Supervisors will be on duty.

## Junior golf tourney set

A junior golf tournament is scheduled at the Stamford Country Club Thursday, June 16. It is sponsored by the Stamford Lady Golfers.

Entry fee is \$5 and participants must be in school. Age flights will be 9 years old and younger, 10-12 years, 13-15 and 16-18. Nine-year-olds and younger will play nine holes. Other flights will play 18 holes.

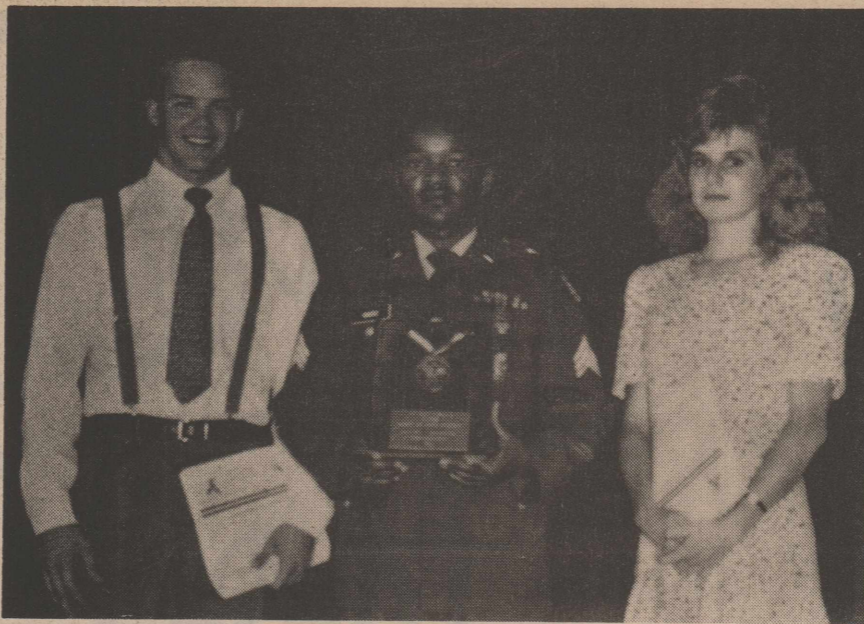
Lunch will be served to entrants and trophies will be awarded to winners.

For more information, call 915-773-5001, 773-3146 or 773-2721.

## Borrowed nests

Instead of building their own nests, female European cuckoos lay their eggs in other birds' nests.

The female cuckoo usually lays her eggs in the nest of birds with eggs that look like hers. The other birds are often tricked into raising the cuckoo babies just as they would their own.



## Scholar/Athlete awards

Matt Lane and Sheree Dumas were named winners of the Army Reserve National Scholar/Athlete award.

## --Market Report--

### Haskell Livestock Auction

Prices on light calves, packer cows and packer bulls were \$2 to \$3 higher at Saturday's sale at Haskell Livestock Auction. Feeder cattle prices were \$1 to \$2 higher, while prices on all cows and calves and stocker cows were steady.

Cows: fat 44-48; cutters 45-53; canners 36-45; stockers by head 550-700.

Bulls: bologna 60-66.50; stockers 70-80; utility 48-56.

Stocker steer calves: choice 117-132; good 100-110; medium 85-100; common 70-85.

Stocker heifer calves: choice 92-107; good 80-92; medium 72-82; common 60-72.

Feeder steer yearlings: choice 86-96; good 76-86; medium 72-85; common 60-72.

Feeder heifer yearlings: choice 82-88; good 75-82; medium 68-75; common 55-65.

Cows and calves: good 660-840; plain 500-650.



The earliest known zoo belonged to Queen Hatshepsut of Egypt about 1500 B.C.

## HURRY—LIMITED TIME OFFER!



# NATIONAL APPLIANCE SALE!

**SATISFACTION GUARANTEED ...OR YOUR MONEY BACK!**

90-day money-back or exchange option from GE on any new washer, dryer, refrigerator, freezer, range product, dishwasher, compactor or microwave oven purchased at retail.

**Heavy Duty Automatic Dryer**

Model DDE5300G  
4 cycles including permanent press/knits, 3 drying selections. Durable porcelain enamel drum. Removable up-front lint filter.

WAS \$319  
NOW \$279  
SAVE \$40

\*90-Day Money-back or Exchange Option from GE on retail purchases.

**Heavy Duty Washer**

Model WWA5600G  
Large capacity, 2 cycles—regular and permanent press, 3 wash/rinse temperature combinations with energy-saving cold water selections. Soak cycle.

WAS \$429  
NOW \$349  
SAVE \$80

\*90-Day Money-back or Exchange Option from GE on retail purchases.

**5-Cycle Convertible Dishwasher**

Model GSC402  
5-cycle wash selection including energy saver dry option. Rolls where needed now, can be built-in later. Cherry wood veneer top.

WAS \$469  
NOW \$399  
SAVE \$70

\*90-Day Money-back or Exchange Option from GE on retail purchases.

**Single Door Refrigerator**

Model TA11SJ  
10.6 cu. ft. manual defrost refrigerator. 1.75 cu. ft. compartment for short-term frozen food storage. 2 ice trays. Door shelves for eggs, butter, half-gallon milk cartons and tall bottles.

WAS \$399  
NOW \$309  
SAVE \$90

\*90-Day Money-back or Exchange Option from GE on retail purchases.

**Bottom Mount Freezer Refrigerator**

Model TCX20ZJ  
20.2 cu. ft. capacity; 6.61 cu. ft. freezer on the bottom. Adjustable glass shelves. Food Saver System. Textured doors. Equipped for optional icemaker. Snuggers on door keep small items from tipping over.

WAS \$959  
NOW \$829  
SAVE \$130

\*90-Day Money-back or Exchange Option from GE on retail purchases.

**Large Capacity Refrigerator**

Model TBX24KK  
23.6 cu. ft. capacity; 7.21 cu. ft. freezer. Adjustable tempered glass shelves. Equipped for optional automatic icemaker. Door shelves hold six-packs and 3-liter bottles. Sealed Snack Pan.

WAS \$869  
NOW \$789  
SAVE \$80

\*90-Day Money-back or Exchange Option from GE on retail purchases.

**Space Center 27 Refrigerator**

Model TFX27RJ  
26.7 cu. ft. capacity; 9.88 cu. ft. freezer. Automatic icemaker with dispenser for crushed ice, cubes and water. Adjustable glass shelves. Spacemaker™ doors hold gallon containers.

WAS \$1695  
NOW \$1495  
SAVE \$200

\*90-Day Money-back or Exchange Option from GE on retail purchases.

**Big 16.0 Cu. Ft. Upright Freezer**

Model CA16DK  
Temperature Monitor warns you of warm freezer temperature. 3 refrigerated shelves plus top cold plate for fast freezing. Efficient urethane foam insulation. Drop-front bulk storage rack. Defrost drain. Interior light. Built-in lock.

WAS \$479  
NOW \$399  
SAVE \$80

\*90-Day Money-back or Exchange Option from GE on retail purchases.

**GE**

*We bring good things to life.*

**MORE THAN A PRODUCT**

GE ANSWER CENTER® SERVICE  
800.626.2000

Convenient Credit  
Written Warranty Protection  
Do-It-Yourself Help  
Prompt, Reliable Service

## FATHER'S DAY SUNDAY, JUNE 19



Tell Dad he's swell with a Hallmark card and gift. Add the finishing touch to your gift with attractive Hallmark gift wraps.



**ALADDIN HOUSE**  
19 N. Ave. E 864-8936

## TAX PLANNING

Written By  
**Richard E. Rodgers, CPA**



### A FEW BUSINESS IDEAS

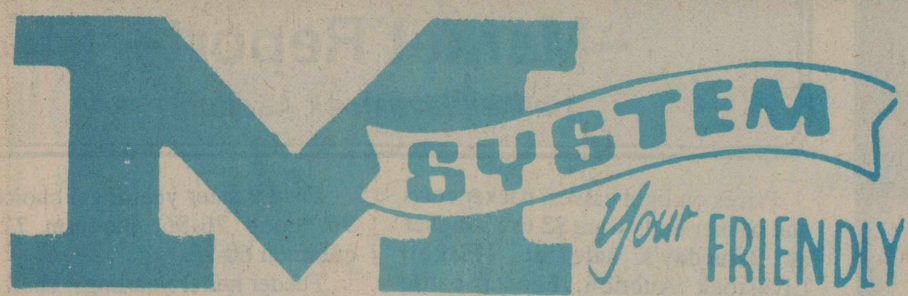
Managers of small businesses can benefit from what other small businesses have been through. The following ideas are generated, in part, by the mistakes other businesses have made.

- \* One day you or your heirs will want to sell the business. See that such a transfer is properly provided for in the following documents:
  1. your will
  2. a sales agreement to transfer the business
  3. insurance to fund a buy-sell
  4. a trust if minor children are involved
- \* If you solicit investment money from outsiders without registering with the proper authorities, you could be in violation of investment laws. Check with your attorney.
- \* Avoid having a partner if possible. If you can't hire the expertise you need, or borrow the money you need, perhaps a partnership is unavoidable. Keep in mind that all partnerships terminate sooner or later; death, disability, retirement, or disgruntlement will end the partnership.
- \* Have your insurance agent meet with you at least annually on your premises to discuss all necessary insurance coverage changes.
- \* Formal employee pension plans for small companies can be very expensive to administer. As an alternative, consider establishing an IRA for each staff member. Even at 6% earnings, a thirty-year-old person can accumulate over \$220,000 in his or her IRA by age 65.
- \* Let us help you keep your accounting fees at a minimum. We will work with you to plan your record system and to train your staff to do tasks which you might normally pay us to do.

Sponsored By  
**JAMES E. RODGERS & COMPANY**  
Certified Public Accountant  
20 Southwest Third Street

# ANDERSON TIRE CO.

206 S Ave E Haskell 817-864-2900



**AFFILIATED SUPER MARKETS**

Haskell, Texas  
Open 7 days a week  
Monday-Saturday 7:30 a.m. til 8 p.m.  
Sundays 8 a.m. til 7 p.m.

More for your Food Dollar

**DOUBLE COUPONS 7 DAYS A WEEK!**

We will redeem your manufacturers' cents-off coupons for double their face value up to 50¢ when the product is purchased. We will double only one coupon per item. All others redeemed at face value. Limit one coupon per item. Coupon not to exceed value of item. This policy does not include "Free" coupons, cigarette and tobacco, or refund coupons. Offer good for a limited time only. Super value offer from M-System in Haskell.

**We Gladly Accept Food Stamps**

Prices Good  
June 9 thru June 15



QUALIFIED

We reserve the right to limit quantities.



**Coffee**  
SHURFINE

**\$1.89**  
(All Grinds)  
1-Lb. Can

Stillwell Frozen Fruit

**Cobblers**

Assorted Flavors  
2-Lb. Pkg

**\$1.59**

DAIRYGOLD  
HOMOGENIZED

**MILK**

1/2 GALLON



**79¢**

ARROW  
**Charcoal**  
BRIQUETS



10-Lb Bag

Limit 1 With \$10.00 or More Grocery Purchase

**99¢**

Delta Bathroom  
**TISSUE**  
4-Roll Pack



**89¢**

DELTA PAPER  
**TOWELS**

Jumbo Roll

**3 FOR \$1**

Limit 3 with \$10.00 Purchase



PRICE SAVER  
MACARONI & CHEESE

**Dinners**

**5 \$1**  
7-oz Boxes

SHURFINE CHUNK LIGHT

**TUNA**



Oil or Water  
6.5-oz Can

**69¢**

NABISCO  
CHIPS AHOY

**Cookies**

Regular or Chewy

18-oz Pkg **\$2.19**

ARMOUR VIENNA  
**SAUSAGE**

**2 \$1**  
5-oz Cans

PRICE SAVER LIQUID

**BLEACH**

(Limit 2)  
Gallon Jug

**58¢**



BETTY CROCKER ASST'D.  
HAMBURGER HELPER

3 to 9.5 OZ. SIZE **\$1.29**

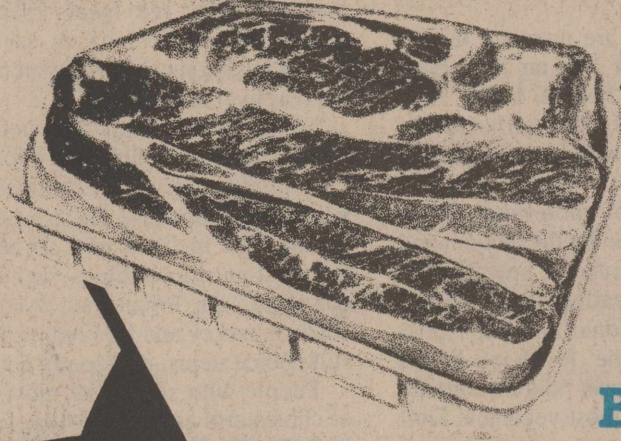
LIGHT CRUST  
**FLOUR**

5-Lb. Bag **89¢**

SHURFINE  
PINTO BEANS

**3 \$1**  
1 LB. BAGS

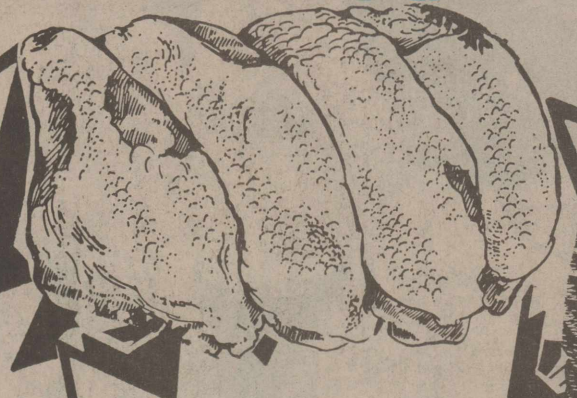
**We've got MEATY SAVINGS**



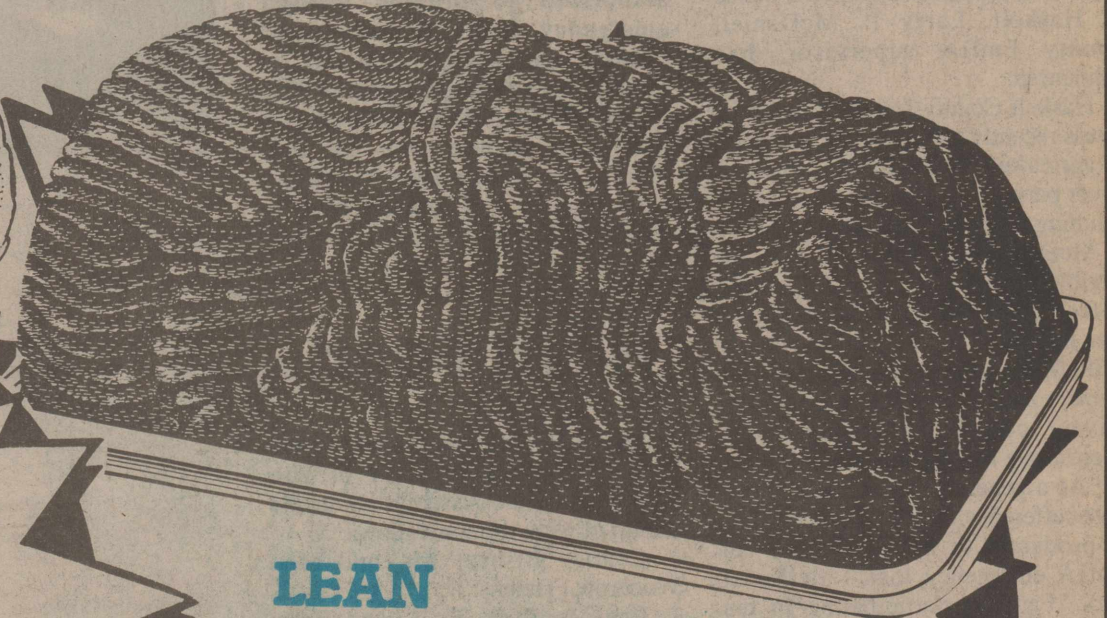
**USDA CHOICE BONELESS**

**Chuck Roast**  
Lb. **\$1.38**

**Chuck Steak**  
Lb. **\$1.68**



**Pilgrim's Pride Fryer Breast Quarters**  
Lb. **\$1.29**



**LEAN Ground Chuck**  
Lb. **\$1.59**

**SHURFRESH BONELESS Ham Halves**  
3/4# Average Lb. **\$1.59**

**USDA CHOICE BONELESS Arm Roast**  
Lb. **\$1.68**

**Kraft Halfmoon Longhorn Colby or Cheddar Cheese** 10-oz Pkg **\$1.79**  
**Armour Chicken Fried Steaks** Lb. **\$1.19**

**IVORY Shampoo**  
Oily-Dry-Normal  
15-oz Bottle **\$1.79**

**Vaseline Intensive Care Lotion**  
10-oz Bottle **\$2.19**

**CONTAC**  
10 Caplets **\$2.99**

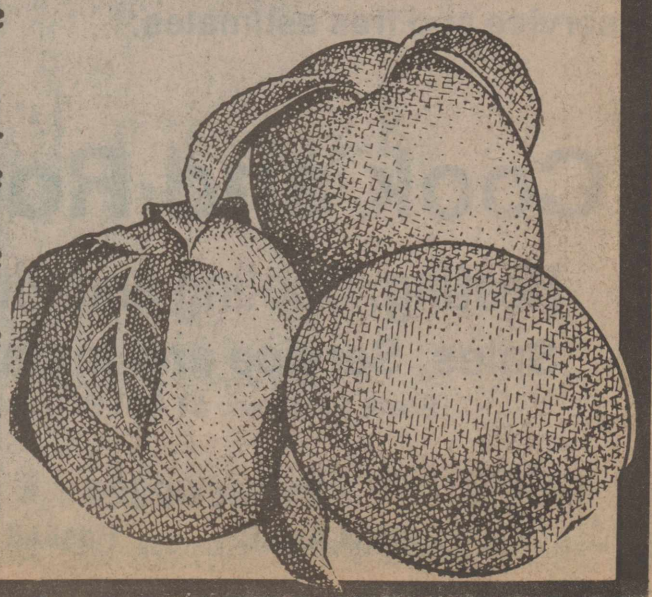
**Regular Strength Tylenol**  
100 Tablets **\$3.99**



**White or Red Seedless GRAPES**  
Lb. **75¢**

**U.S. No.1 Russet Potatoes**  
5 Lb. Bag **49¢**

- Nectarines** Fresh .....Lb. **59¢**
- Limes** Persian ..... **10 For \$1**
- Radishes** or Green Onions ..... **4 for 89¢**
- Mangoes** Fresh ..... Each **89¢**
- Cantaloupes** Fresh ..... Lb. **29¢**
- Okra** Fresh Home Grown ..... Lb. **69¢**
- Yellow Squash** ..... Lb. **49¢**



## FmHA accepting loan applications

Applications for emergency farm loans for losses caused by late freeze are being accepted at the Farmers Home Administration (FmHA) office in Haskell, Larry P. McDaniel, county FmHA supervisor, has announced.

Haskell County is one of seven in Texas recently named by the secretary of agriculture as eligible for loans to cover part of actual production losses resulting from the late freeze.

McDaniel said farmers may be eligible for loans of up to 80 percent of their actual losses or the operating loan needed to continue in business or \$500,000, whichever is less. For farmers unable to obtain credit from private commercial lenders, the interest rate is 4.5 percent.

"As a general rule, a farmer must have suffered at least a 30-percent loss of production to be eligible for an FmHA emergency loan," McDaniel said. "Farmers participating in the PIK or Federal Crop Insurance programs will have to figure in proceeds from those programs in determining their loss."

"Applications for loans under this emergency designation will be accepted until Dec. 29, but farmers should apply as soon as possible. Delays in applying could create backlogs in processing and possibly

over into the new farming season."

FmHA is a credit agency of the U.S. Department of Agriculture. It is authorized to provide disaster emergency loans to recognized farmers who work at and rely on farming for a substantial part of their living. Eligibility is extended to individual farmers who are U.S. citizens and to farming partnerships, corporations and cooperatives in which U.S. citizens hold majority interest.

## Heart Fund

Memorial donations made to the Haskell County division of the American Heart Association in the month of May were as follows:

Charles Bisbee: Mr. and Mrs. Woodrow Frazier.

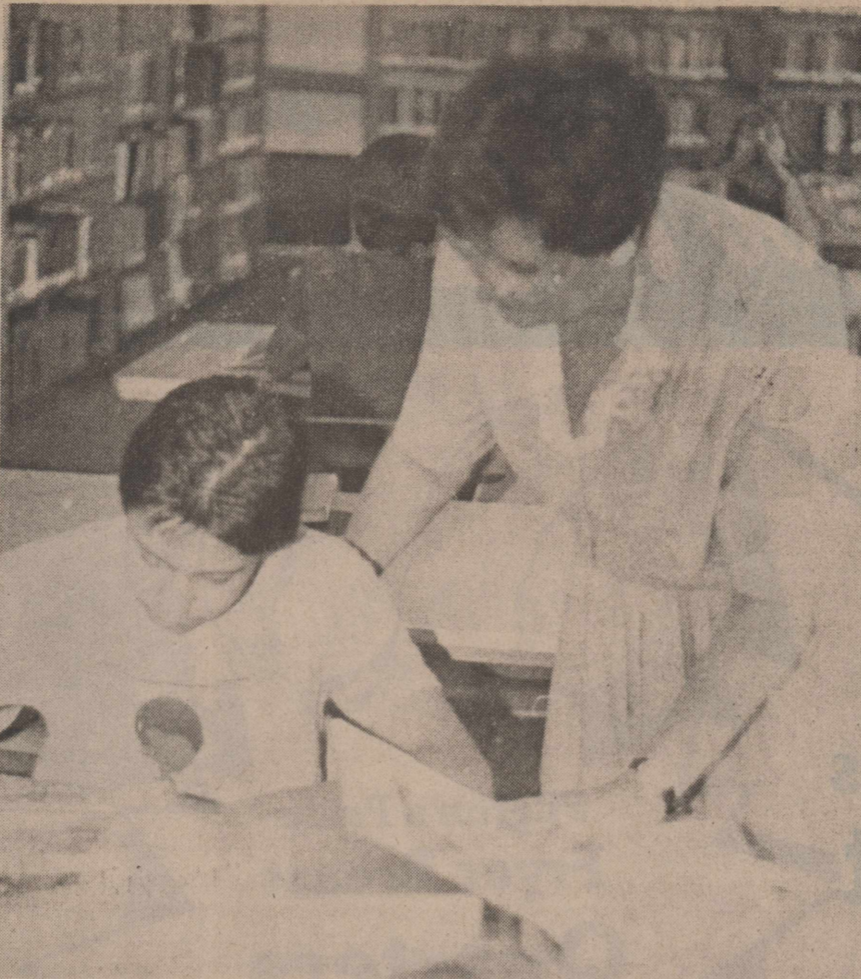
Ima Medford: T. V. and Betty Burson.

Angie Mullino: Dr. and Mrs. W. J. Kemp.

Elsie Roberts: Bessie Evans, Bob and Henrietta Segó.

Gustave Ullrich: Joey and Janet Frazier.

General donations made during the month included one by Maggie Threat.



## Research

Paint Creek student Rodney Tsoodle receives assistance from his teacher, Mrs. Monique Morgan, as he works on his history research paper at the Haskell school library. Paint Creek students recently used the facilities of the Haskell library. (Photo by Joey Swinney)

## Fandangle tickets are now available

Tickets are on sale for the 50th anniversary version of the Fort Griffin Fandangle set for its traditional six performances June 16-18 and June 23-25 at the Prairie Theater just northwest of the Albany city limits.

Herds of buffalo and longhorns, Indian villages, covered wagons loaded down with pioneers, cowboys and their horses, and gunslingers and their women will be filling the theater with the sights and sounds of the "Old West" as over 300 local residents prepare to celebrate their rich heritage and bring back to life the

founding of this portion of the state.

Ticket prices range from \$3 to \$10 depending on seat location. Seats for the six-night run of the show can be purchased in advance through the Fandangle office in Albany. Phone orders can be placed by calling 915-762-3642 or 762-2294. Ticket orders can be mailed to the Fandangle, Box 155, Albany, TX 76430. MasterCard and Visa are accepted for phone orders, or checks can be sent to the office.

Advance tickets are recommended in order to insure seats are available.

## Excess cholesterol is life-threatening

Cholesterol has earned a bad reputation in recent years because too much of it in the bloodstream is dangerous.

Many people are unaware that in safe amounts, it has an important function in the human body. It is essential in the creation of hormones and nerve cells, and as a component to vitamin D.

The amount of cholesterol in the blood is influenced by the amount and kinds of fats consumed. Specifically, diets rich in so-called saturated fats (animal fats, coconut and palm oils) tend to raise the level of blood cholesterol, whereas polyunsaturated fats (fish oil and most vegetable fats) help to lower it.

A build-up of cholesterol reduces the size of blood vessels, requiring more pressure for blood to flow throughout the body. The result can be high blood pressure, heart attack or stroke.

Dr. Clift Price, associate commissioner for Personal Health Services at the Texas Department of Health, said overconsumption of animal fats is much like pouring the wrong things down a kitchen sink. "If you often pour skillet grease down the drain, congealed fat will eventually slow the flow of water out of the sink," he points out. "Other impurities may help the fat to solidify. Then you have to call someone to fix or replace your pipes. Unfortunately, the human body cannot be as easily repaired."

Dr. Price recommends carefully selecting foods low in animal fats, regular and appropriate exercise and routine medical checkups.

He said persons should be aware of

which foods are cholesterol-rich. These include eggs, dairy products (such as whole milk, cream and most cheeses), fatty red meats (such as corned beef and ribs), bacon, sausage, lard, luncheon meats and organ meats (such as liver and gizzards).

"With fewer high-fat foods, a proper diet can include more low-fat dairy products, fruits, vegetables and whole grain products. These are lower in fat, high in fiber, and are among the most nutritious things we need in our diets," Dr. Price said. "And fish, chicken, turkey and lean red meats are still choice items, if properly cooked."

People who should be most wary of cholesterol are those whose family histories include heart diseases or stroke, who eat fatty foods, or who rarely exercise. Such persons are advised to ask their physicians for a routine blood test which shows cholesterol levels.

## Vet scholarships given by Coors

Applications are available for the 1988 Coors Veterans Memorial Scholarships which provide more than \$500,000 to the sons and daughters of American veterans.

Haskell County veterans service officer D. E. Livengood said this is the fourth year that Coors and the Texas Coors distributors will award scholarships through the Texas Veterans Commission.

Applications can be obtained at the veterans service office. Deadline for completed applications and accompanying data is July 1.

BRIGHTEN YOUR HOME

**VINYL & STEEL SIDING**

Storm Windows  
Storm Doors  
Room Additions

Any Type of Residential Const.  
**NO DOWN PAYMENT**  
**100% FINANCING**

Call For **FREE** Estimate  
**817-997-2809**

**BUDDY TIBBETS CONSTRUCTION**

**ORDER A BANANA SPLIT.  
GET A BUNCH OFF.  
99¢\***

Fresh, delicious bananas. Your favorite fruit toppings: strawberry, pineapple, and chocolate. And plenty of whipped topping, too! No one makes 'em like DQ--and they're on sale now!

**THIS IS DQ COUNTRY**

\* Reg. TM Am. D.Q. Corp. © 1988 Tex. D.Q. Op. Coun. \*At participating Dairy Queen stores

**Beat the heat This Summer**

See that your air conditioner is running at peak efficiency. Call us now for the best in air conditioning maintenance and repair. We'll help you beat the heat with reasonable rates, speedy service and free estimates.

**Cook and Rodela**  
Heating, Cooling and Plumbing  
Sales, Service and Installation  
State License: #TACL006947

817-864-2226  
15 N Ave E • Haskell

**Announcing money-saving news for State Farm drivers 50 and over.**

State Farm Mutual policyholders 50 and over who have no male drivers under 25 and no unmarried female drivers under 25 in their household will be getting a break on the cost of their car insurance.

If you're 50 or over, call 864-3250 to see if you qualify.



**Brian Burgess**  
703 N Ave E, Haskell  
817-864-3250

Like a good neighbor, State Farm is there.

State Farm Mutual Automobile Insurance Company  
Home Office: Bloomington, Illinois

**John Lee Wilde Building Company**

New Home Construction  
Remodeling  
All types of concrete work

422-4650 Munday

**GRASS**

for porches, etc.  
**\$4.95** sq. yd. and up

Other Carpet on Sale  
from **\$4.95**

See us today!

**Sherman's Carpets**  
Haskell, Texas



**SAFE AT HOME!**

Your HOMETOWN BANK can give you banking services you'll NEVER get from a big (out of town) financial institution.

Our SERVICE, PEOPLE, AND SPIRIT make the difference!





Post Office Box 10  
Phone (817) 997-2216  
Rule, Texas 79547



**Sale!!!**

Everything in our **NEW** Performance Center is **10% Off** Regular Price

Come and see name brands like:  
Crane - Edelbrock  
Accel - Russell  
Proform

Headquarters for All Your Parts Needs  
Auto - Truck - Tractor

**SMITTY'S AUTO SUPPLY**  
204 N. 1ST. HASKELL  
PHONE 864-3051



## Traffic deaths decrease

Fewer persons died on Texas streets and highways during 1987 than in any year since 1976, according to the Department of Public Safety.

The official overall fatality count was 3,261, down 8.6 percent from the 3,568 recorded in the state during 1986.

Fatalities in the front seats of cars and light trucks, the positions covered by the safety belt law, have declined 18.1 percent since 1984, the last full year before the law took effect.

"This good news has occurred despite the continued increase in the number of drivers and miles driven in this state," noted Col. Leo Gossett, director of the DPS.

The ratio of traffic deaths to the number of miles driven reached a record low in 1987 of 2.2 fatalities per 100 million miles. The 1986 mileage death rate was 2.4 and the 1985 rate was 2.6.

The national mileage death rate for 1987 was 2.4 per 100 million miles, slightly higher than the Texas rate, but still the lowest on record for the United States as a whole.

## Tree brochure free to public

The National Arbor Day Foundation has published a conservation trees brochure which is available to the public free of charge.

The brochure uses colorful photos and illustrations and easy-to-understand descriptions to help people plant and care for conservation trees.

For a free brochure, send your name and address to: The National Arbor Day Foundation, Nebraska City, NE 68410.

## Planning a reunion? this book may help

*A Practical Guide to Planning a Family Reunion*, written by Emma J. Wisdom, is an easy-to-understand, step-by-step guide through the detailed process of arranging a "successful" family reunion.

The word "successful" is emphasized because many believe a family reunion simply consists of a potluck dinner with immediate family members in attendance. This book, however, examines the framework of more elaborate affairs like those held once a year, every other year, every five years, 10 years, or even for the first time.

Since the publication of Alex Haley's *Roots* in 1976, people all across the country have been enthralled with discovering their ancestry. Wisdom used this as a premise for her work. While the emphasis is not necessarily on locating distant relatives, helpful hints are included. The central theme, however, focuses on answering the questions involved in structuring such an event. Who? What? Where? How much? Each one is covered in a manner which turns challenges into minute tasks.

First, the book suggests, a timetable should be established detailing the event. Then a spark of excitement and enthusiasm must be lit under other relatives to encourage participation. A handy checklist of 21 critical "Things to Do" is provided, covering everything from calling the first meeting to arranging for photographers and musicians.

Throughout the book, readers will find sample forms and letters, game ideas, sample menus and more. Each one is designed to attract both young and old participants.

The most noted chapter pertains to the creation of a working budget for a reunion. According to Wisdom, "in planning other reunions as well as

my own, costs have always been a major factor. I've developed a dollars and sense approach that makes it possible to have a cost-conscious approach while still organizing a terrific affair."

While the book is designed primarily as a guide for family reunions, its usefulness is not limited only to this type. Wisdom advises that church groups, social clubs, class reunion organizers, military veterans and small businesses will find it helpful in planning gatherings or conventions. "Many of the details in my book are easily translatable to other functions," she added.

Wisdom is a professional organizer who has planned hundreds of meetings for all types of organizations, including family reunions. From an avid story writer as a child, acting in school plays, sales clerk, hair stylist, certified professional secretary, public speaker, to administrator and author, Wisdom has come full circle in search of her career niche. A regular contributor to *Aim Magazine*, Wisdom has also written articles in other publications. Her topics have brought helpful insight to such subjects as efficient office procedures, employee supervision and women's issues. She holds a degree from the University of Tennessee.

The book is published by Post Oak Publications and illustrated by Mary Elizabeth Townsel. For more information contact Post Oak Publications, P.O. Box 8455, Nashville, Tenn. 37207-0455. Allow 4-6 weeks for delivery.

## Homeowner's dream

Scientists have developed a miracle strain of grass that could someday make lawn mowers obsolete.

The new grass grows only two to eight inches a year. This new grass comes up in early spring and is greener than most other varieties.

## -Green Thumb-

By Gladys O'Neal  
Haskell Garden Club

This will be my last article until fall. So I am deviating some from the usual and will write about the sweet scents of Potpourri and Sachet. They both require flowers and herbs. I am very interested in growing herbs and cooking with them.

The wonderful thing about herbs is that they last. The herbs harvested in summer bring pleasure to us months, sometimes years, later. They have so many uses as seasonings and in potpourri, and too as ornamental art. Some of the common ones are sage, basil, thyme, lemon verbeua, lavender, bay and laurel.

Try a cooking wreath. Use a straw or styrofoam one. Wrap parsley, basil and sage on the wreath. A 10-inch one is a nice size. Garnish with dried flowers. When cooking, just reach and get what you need from the wreath.

Women have loved beautiful fragrances as far back as Cleopatra's day as she covered her palace floors 18 inches deep with rose petals. I have noticed lots of roses now blooming in Haskell.

Pick flowers and cut herbs in the early morning after dew has dried, but before the sun is hot. Air-dry in the warmest place in the house. Spread the plants on an old window screen, pan or tray. Gently turn the material daily. I hang mine by securing the stems with a rubber band and hang them in my kitchen to dry.

When making potpourri, mix it only in glass, graniteware, stainless steel or glazed pottery. The oils will corrode aluminum containers, and plastic will absorb some of the potpourri's aroma.

Mix orrisroot or calamus fixative with oils. It will take several days for the fixative to absorb the oils. But you will have a long-lasting fragrance for your potpourri. Store in a tightly covered jar and place in a cool dark place for six weeks. Stir daily for the first week.

**Potpourri recipe:**  
4 cups dreid pink rosebuds and petals, 1 cup dried red rosebud and petals, 2 cups dried lavender flowers, 1/4 cup dried blue cornflowers, 1 cup dried scented geranium leaves (use scents of lemon, rose or orange), 1 cup lemon or orange peel soaked in 1/4 oz. lemon oil, 1/4 cup whole clovers (crushed) 1/4 cup cinnamon sticks (broken), 1/4 cup whole allspice (crushed) 1/2 tsp. mace or nutmet (ground), 3/4 cup orrisroot (cut), 1/4 oz. rose oil, 1/8 oz. lavender oil, 1/8 oz. patchouli oil.

Aladdin House and Sonshine Shop here in Haskell have oils for potpourri.

I hope you have a very happy summer. Grow and enjoy your flowers.

About half as much hot water is used in the average shower as in the average bath.

## Ministerial Alliance hears good reports

Ministers of the Haskell Ministerial Alliance had their final meeting for 1987-88 on Friday, May 30, when they met with spouses and children as special guests in the home of the Revs. Katie and Jimmy Hopper.

Updated financial reports of the Crisis Ministry, Transient Fund and Savings Account were received and all were reported in good shape, thanks to the Thanksgiving service offering in 1987, the round robin revival offerings during 1988 and pledges from local businesses and individuals.

Concerns in the community were lifted up in prayer, especially the many individuals and families who were helped by the ministries of the Haskell Ministerial Alliance during 1987-88 and those local residents who have recently been hurt emotionally or financially by drought or economic conditions.

After thanking the officers for a job well done, new officers were elected for 1988-89. Outgoing officers were Rev. Victor Andersen, president; Rev. Katie Hopper, vice president;

and Rev. Jimmy Hopper, secretary/treasurer.

New officers are Rev. Katie Hopper, president; Rev. Dusty Garison, vice president; and Rev. Kenny Kirk, secretary/treasurer.

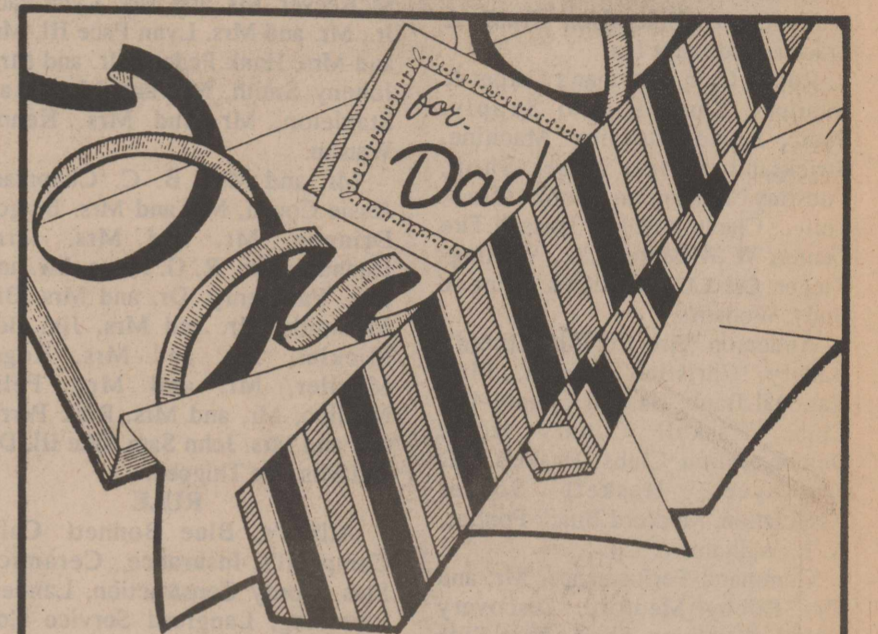
Ministers from eight churches and their families were in attendance. The next regular meeting will be in September.

A horse's easy gallop is called a canter from the gait believed to have been used by pilgrims to Canterbury Cathedral.

**Lower Drive in Theatre**  
Kula, Texas

**Fri.-Sat.-Sun. June 10-11-12**  
**Police Academy 5**  
**Assignment Miami Beach**

Rated PG



## Tie Up The Perfect Gift For Dad

- Shorts
- Ties
- Robes
- Jeans
- Pajamas
- Work clothes
- Shoes and boots
- Sport and dress shirts
- Casual and dress slacks

**HASSEN'S HASKELL**

Come see our **Creative and Fun Patchwork T-Shirts!**

**Back Door**

BACK ROOM DESIGNS

"The Fashion Place of the Big Country"

**The Hayloft**

409 So. First  
Haskell, Texas

**FREE Cap**  
when you buy a pair of **Red Wings**

**HEIDENHEIMERS HASKELL**

**RED WING SHOES**

**SUMMER CLASSES TO BEGIN JUNE 15TH**

Summer registration for those interested in tumbling during the summer will be held Saturday, June 11, 1988, at the tumbling building (next door to Rodriguez Inn) from 12:00 p.m. to 1:30 p.m. Classes will be offered for a 10-week session, from Wednesday, June 15th through August 17th. The cost is \$60.00 for 1 child and \$100.00 for 2 children. Classes are limited so sign up now.

**The summer schedule is:**

- 9:00 am ----- Beginners
- 10:00 am ----- 3 and 4 year olds
- 11:00 am ----- Flip floppers
- 12:00 noon ----- 5 and 6 years olds
- 1:00 pm ----- 7 - 9 year olds
- 2 pm ----- Intermediate, advanced
- 3:00 pm ----- Advanced

For more information feel free to call me at home any afternoon (817/849-3118).  
**Sharon Snead**

**Swimming Lessons**

**Sandy Clay - Instructor**

June 27 - July 2  
Mom & Tot Classes - 5:30  
Beginners - thru 4 yrs. - 6:15  
Fee - \$20 for 6 lessons  
To register call  
**864-8955 after 5:00 pm**

**June 27 - July 8th**

**Jimmy Lisle - Instructor**  
**Teresa Unger - Assistant**

Beginner - 5 and up - 5:30 pm  
Novice - 6:30 pm  
Intermediate - 7:30 pm

10 lessons - \$35  
To Register Call  
**City Pool 864-8104**





# Final honor roll announced

Here is the final six-weeks' honor roll for 1987-88 at Haskell Elementary School:

**ALLA**

**First grade:** Alex Abila, Eric Andersen, Amy Aycock, Angela Aycock, Monique Barrantes, Jenny Brzozowski, Wayne Briggs, Ethan Brown, Bree Burgess, Tiffany Cadenhead, Lee Christian, Kerre Cole, Jessica Comedy, Daisy Cothron, Johnny Diaz, Sarah Dulaney.

**D'Nae Elmore, Jennifer Enriquez, Erik Everett, Jesse Guadalucazar, Mickey Guzman, Paula Harvey, Jason Hobgood, Whitney Hudson, Tanya Johnson, Rochelle McCulloch, Shayne McKenzie, Kelli Moeller, Conrad Palacios, Joseph Plemister, Mary Jane Rodriguez, Joshua Roysdon, Cody Stone, Missy Teague, Tasha Williams, Shauna Wolsch.**

**Second grade:** Kristy Arellano, Kevin Billington, Jason Briles, Kasha Brister, James Bustamante, Andrea Callaway, Amanda Cothron, Summer Coulter, Courtney Donnelly, Marci Elmore, Melissa Guzman, Rusty Howeth, Philip Huff, Shannon Jordan, Robert Kirkland.

**Beau Klose, Ebony McCulloch, Brooke McGuire, Paul McGuire, Chris McSmith, Marci McSmith, Vanessa Miller, Gavino Ortiz, Laura Ortiz, Adrian Palacios, Nisha Patel, Breann Peiser, Anna Rieger, Brandon Rodela, Shannon Sanford, Misty Silva, Stephanie Solomon, Sherita**

Tidrow, Crystal Watson.

**Third grade:** Justin Arendall, Lori Bailiff, Matt Blanks, Casey Burgess, Will Clay, Sarah Cothron, Kelli Kay Cunningham, Harrison Druessedow, Wendy Dulaney, Lyle Fouts, Matthew McCord, Nya McCulloch, Betsy McDermett, Amy McWhorter, Shelly Palacios, Dacia Plemister, Chancey Pogue, Kimberly Skiles, Sarah SoRelle, Debbie Watson.

**Fourth grade:** Jessica Bridwell, Tonya Burson, Aaron Earles, Mik Everett, Mirana Fox, Jamie Hodgins, Charissa Huff, Jamie Johnston, Misty McMeans, Melanie Michaels, J Mickler, Carol Thornhill, Rebecca Unger.

**Fifth grade:** Brandi Briles, Jennifer Comedy, Amy Cunningham, Keith McDonald, Tara Moeller, Angela Pittman, Mandi Pope.

**Sixth grade:** Trecci Burson, Teresa Diaz, Alisa Green, Cynthia Halliburton, Wayne Hodgins, William Holley, Joni Martindale, Sherry Mueller, Kelly Nanny, Cynthia Rodriguez.

**A&B HONOR ROLL**

**First grade:** Randy Cass, Julie Conn, Colby Cook, Veronica Fuentes, Michael Guzman, Mindy Howard, Wesley Lefevre, Jay Louder, Ruben Martinez, Leland Reid, Santana Silvas, Brent Toliver, Freddie Williams.

**Second grade:** John Abila, Stephanie Alsabrook, Jessica Alvarez, Melanie Alvarez, Jennifer Andress, Caridad Anguiano, Caleb Brown,

Amy Burson, Wendy Cadenhead, James Cowperthwait, Mathew Cunningham, Tim Dewey.

**Marcus Fernandez, Audrea Fox, Sarah Gibbs, Bobby Gonzales, Aaron Kirk, Jessica Martinez, Julie Meadors, Andrew Melton, Cristal Mendoza, Joshua New, Riley Pace, Daniel Payne, Johanna Payne, Robbie Riggs, Michael Rodriguez, Betty Ruiz, Lucas Sammons, Holly Smith, Kaki Stapleton, Melissa Stovall, Creora Tatum, Landon Terry, Will Trammell, Lisa Whitaker.**

**Third grade:** Priscilla Abila, Mario Alvarez, Syretta Billington, Michelle Green, Ember Josselet, Jennifer Kluth, John Lopez, Joseph Lopez,

## Thriftway having its grand opening

Stamford Thriftway will be having its grand opening today through next Wednesday (June 15).

Kenneth Marr, co-owner and manager of the new supermarket, said that many special bargains are being offered during the week-long grand opening, including a number of two-for-one-price specials.

Stamford Thriftway is located in a new 17,000-plus square-foot building north of the downtown area with access from the freeway. Marr grew up in Haskell and lived here before moving to Stamford. He spent 19 years with Coca-Cola.

Lori Martindale, Tenille Mathis, Bobby Ortiz, Jodi Pope, Greg Rodriguez, Jeanette Rodriguez, Jessica Rodriguez, Joe Salinas, Adrian Serrano, Salvador Serrano, Chris Strickland, Regina Tatum, Mary Kay Watson.

**Fourth grade:** April Abila, Crystal Dewey, Jeremy Futch, Veronica Gonzales, Stephanie Hooten, Jonathon Lefevre, Justin Lisle, Crystal Newman, Brandi Ramos, Lisa Rodriguez, Justin Stewart, Joseph Thigpen, Tyrone Thomas, Kory Tidrow.

**Fifth grade:** Amniti Alvarez, Veronica Barrios, Christy Cadenhead, Chuckie Castillo, Bobbie Cothron, Shayla Jeter, Casey Larned, Katy Martin, Tammy Mendoza, Jill Mullen, Ryan Olson, Hughie Peiser, Chris Silvas.

**Sixth grade:** Natonia Anderson, Jeremy Andress, Andrea Bridwell, Brian Brzozowski, Tommi Clay, Richard Collins, Paul Gibson, Eddy Gonzales, Mart Guess, Amanda Gulley, Robert Huff, Manuel Ibarra, Robert Johnson, Jonathan Lindsey, Andy Martin, Matthew McFadden, Matt Perry, Marcello Rodriguez, Heather Stewart, Jonathan Tatum, Jason Torres, Manuel Villarreal.

## Play night scheduled Saturday

A play night is scheduled Saturday by the Haskell Horse Club. It begins at 7:30.

Participants in five age groups will compete in barrels, flags, poles, goat tying and calf roping.

## --Rice Springs Care Home--

By Judy Wolsch  
Activity Director

Residents will enjoy a picnic on Wednesday, consisting of barbecue hamburgers, Sweethome Singers on Tuesday at 7 p.m. and some marble paintings on Friday afternoon. The First Assembly of God is June host for Sunday services.

Rick, Darla, Kyle and Lacey Kepner from Arizona visited with Agnes Schmidt; Carrie Montgomery with Laura Overton; Alicia, Alisa, Brandy Cooksey with Edna Collins; Mr. and Mrs. J. T. Pennington family, Mr. and Mrs. J. R. Pennington from Ennis, Ray McDonald from Lamesa, all with Bill Pennington.

Terry and Ruth Chapman and daughter from Duncanville, Okla., Fayma Drummond, Henry and Gladys Downey with Myrtle Cobb; Mable

Tanner, Bob and Martha Pratt from Ruidoso, N.M., also visited in the home.

We welcome C. A. Wheeler, Frieda Erdman and Nannie Miller to RSCH.

## Health care seminars set

University Inn retirement community in Abilene is offering a number of events and programs for area senior citizens this month, starting with a cholesterol screening June 10 and a general health clinic June 13.

For more information, call 915-676-9946.

One Hour Photo Service offered on Film Developing & Prints  
Latest Equipment - Competitive Prices

**kis**  
1-HOUR PHOTO

\$1.00 off  
On Processing, per roll with Coupon  
Specials Good Thru June 15th

Kodak and Fuji Film For Sale  
Phone 864-2951

**Johnson's Kis Photo**  
OWNED & OPERATED BY LORRAINE & BOBBIE JOHNSON  
West Side of Square - Haskell

**ATTENTION**

I will be washing cars from 10 am - 7:00 pm this week.  
Car or Pickup \$10<sup>00</sup> (inside and out)  
Van or Suburban \$15<sup>00</sup> (inside and out)  
Call: 864-2870 for appointment

*We pickup and deliver*

**Haskell Butane Co.**

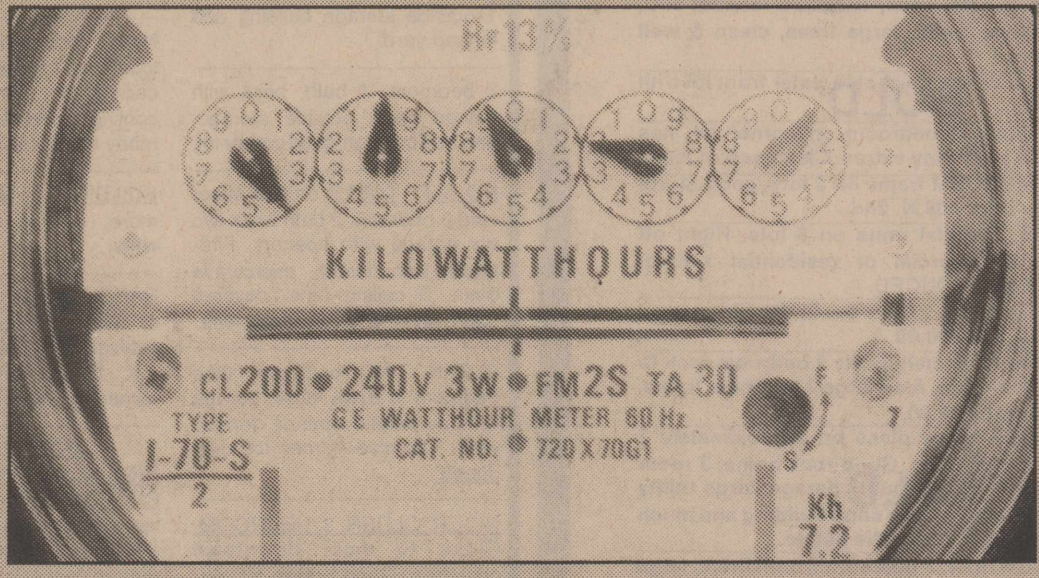
We sell:  
\* Propane  
\* Diesel  
\* Kerosene  
\* Gasoline (Regular, Unleaded, Super Unleaded)  
\* Oil

We can:  
Convert your car or pickup to propane, also we can convert fuel injected engines.

Our New Summer Hours -  
7:30 am - 5:30 pm - Monday thru Friday  
7:30 am - 12:00 noon on Saturdays

Call us! We appreciate your business!  
Rex and Camin Pittman  
817-864-2424 Hwy. 277 817-864-3915  
Haskell


**GIVE YOUR ELECTRIC METER A TURN FOR THE BETTER.**



**You can slow down the wheels on your Electric Meter and lower Summer Cooling Bills when you follow these helpful tips:**

- Set your thermostat on 78° or higher and use ceiling or portable fans to help circulate the air.
- Have your air conditioner serviced annually and once a month, check the filter. A dirty filter can keep your air conditioner from working efficiently.
- Keep doors, windows, and drapes firmly closed to keep cool air in and heat out.
- Protect ceiling and walls with adequate insulation. Make sure cracks around windows, doors, pipes and wiring are tightly sealed with caulking and weatherstripping.
- Use heat producing appliances, like ranges, dishwashers, and dryers during the cooler part of the day.

**WEST TEXAS UTILITIES COMPANY**  
An Equal Opportunity Employer



A Member of The Central and South West System

Remember REDDY supplies the energy — but only YOU can use it wisely!

<b>Cured Ham</b>	Whole lb.	<b>99¢</b>
<b>Cured Ham</b>	Butt lb.	<b>\$1 39</b>
<b>Cured Ham</b>	Shank lb.	<b>\$1 19</b>
<b>Cured Ham</b>	Center Slices lb.	<b>\$1 99</b>
<b>Round Steak</b>	Full Slices lb.	<b>\$1 89</b>
<b>Summer Sausage</b>	Ready To Eat lb.	<b>\$1 49</b>
<b>Milk</b>	Parade Gallon	<b>\$1 99</b>
<b>Tomato Sauce</b>	Hunts 8 oz. cans	<b>3 for \$1 00</b>
<b>Sweet Peas</b>	Del Monte 17 oz.	<b>49¢</b>
<b>Green Beans</b>	Del Monte Italian	<b>49¢</b>
<b>Powdered Sugar</b>	2 lb. Bag	<b>\$1 19</b>
<b>Tide</b>	4 lb., 8 oz. King Size	<b>\$3 39</b>

**POGUE GROCERY**

-Extra Parking Behind The Store. Home Owned and Operated-  
113 North Avenue E Phone 864-2015 Haskell, Texas

Thurs. Fri. Sat. Specials