

1/1/89
Baze Book Binding
514 W 7th St
Amarillo TX 79101

Supplies available locally

Since the majority of businesses and residences in Haskell are pledging participation in the community beautification program, many citizens will be purchasing yard and garden supplies.

The Haskell Chamber of Commerce and the Retail Merchants Association are pointing out the availability and convenience of shopping locally for the items needed. This will save time, energy and gasoline while supporting the town which supports them, the chamber points out.

In a spot check made by the Chamber of Commerce, the following merchants either have in stock or can get their customers the following supplies:

Conner Nursery: Bedding plants, potting soil, peat moss, big planter pots, hanging baskets, shrubbery.

Sue's Flowers/Gifts/Photography: Outside containers, peat moss, potting soil, bedding plants.

McGee's Lumber Yard: Trees, shrubs, bedding plants, fertilizer, potting soil, hanging baskets, containers, bark cover.

White's Auto: Planters.

Western Auto: Gardening tools, seeds, potting soil.

Pogues's Grocery: Flower and vegetable seeds.

Strickland Bridge: Stepping stones, concrete rings, contractual services.

Agricultural Services Inc: Fertilizer, potting soil, peat moss, hose, garden tools.

Modern Way: Bedding plants, fertilizer, potting soil, peat moss, rose bushes, flower and vegetable seeds, containers.

M System: Garden gloves, fertilizer, potting soil, peat moss, bedding plants, rose bushes, flower and garden seeds.

Winn's Department Store: Bedding plants, flower and vegetable seeds, potting soil, peat moss, hanging baskets, large containers, rose bushes.

Bill's Dollar Store: Flower and vegetable seeds, fruit trees, rose bushes, shrubs, shade trees, potting soil, flower pots, bedding plants, bulbs, garden tools, straw hats, water hose, watering cans.

Perry Bros. Variety Store: Rose bushes, flower and vegetable seeds, hanging baskets, big planter pots, potting soil, peat moss, gardening tools.

Haskell to host tumblers

Haskell's Lone Star Tumblers will be hosts Saturday to a state-qualifying tumbling meet.

Competitions will be from 9 a.m. to 3 p.m. in the Haskell High School gymnasium. The meet will be open to the public at no charge.

Area teams competing will be the Munday Gym Dandeez, R&R Acrostars, Quannah Dyna Flites, Crowell Twist-n-Tumblers, Vernon Acro-Lions, Throckmorton Turn Overs, Stamford Texas Twisters and Haskell Lone Star Tumblers.

Top three winners of each category will advance to the state competition to be held in Lubbock.

A concession stand will be open during the day and T-shirts will be sold as souvenirs of the meet.

January rain totals .28 inch

January rainfall total in Haskell came to .28 of an inch, considerably below the normal of .81 for the month.

Sam Herren, official weather recorder, reported that temperatures during the month ranged from a low of 14 degrees on Jan. 8 to a high of 73 degrees Jan. 16.

There was a trace of snow and sleet on Jan. 6 and 7.

Absentee voting

Absentee voting by personal appearance for the March 8 primary will open Feb. 17 and continue until March 4.

Church of Christ has new minister

Page 3

Complete results of livestock show

Page 8

Indians, Maidens get by Stamford

Page 9

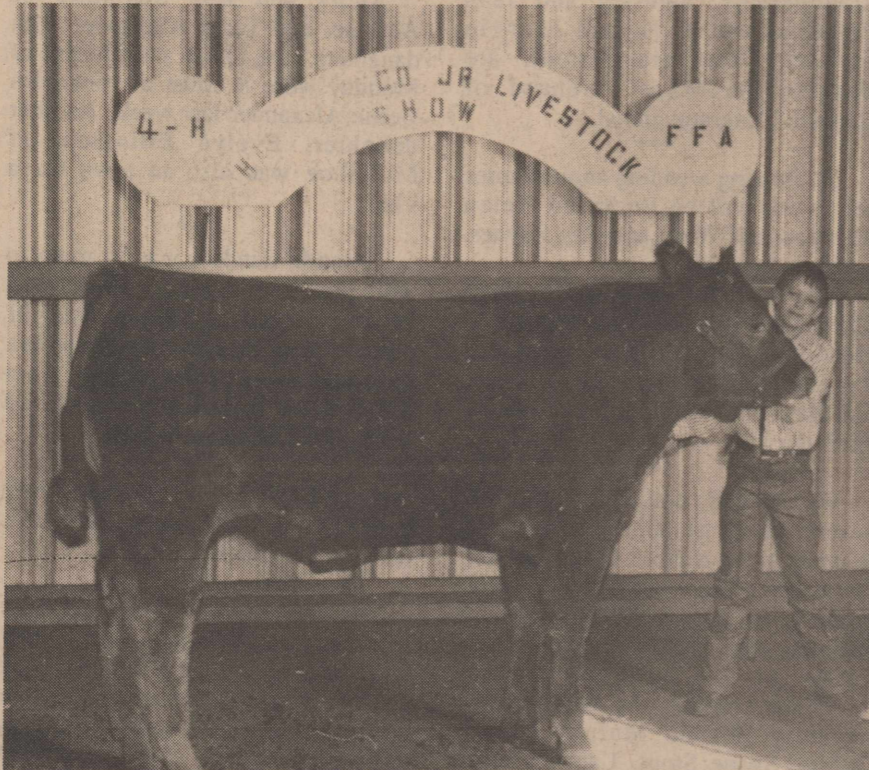
THE HASKELL FREE PRESS

35¢

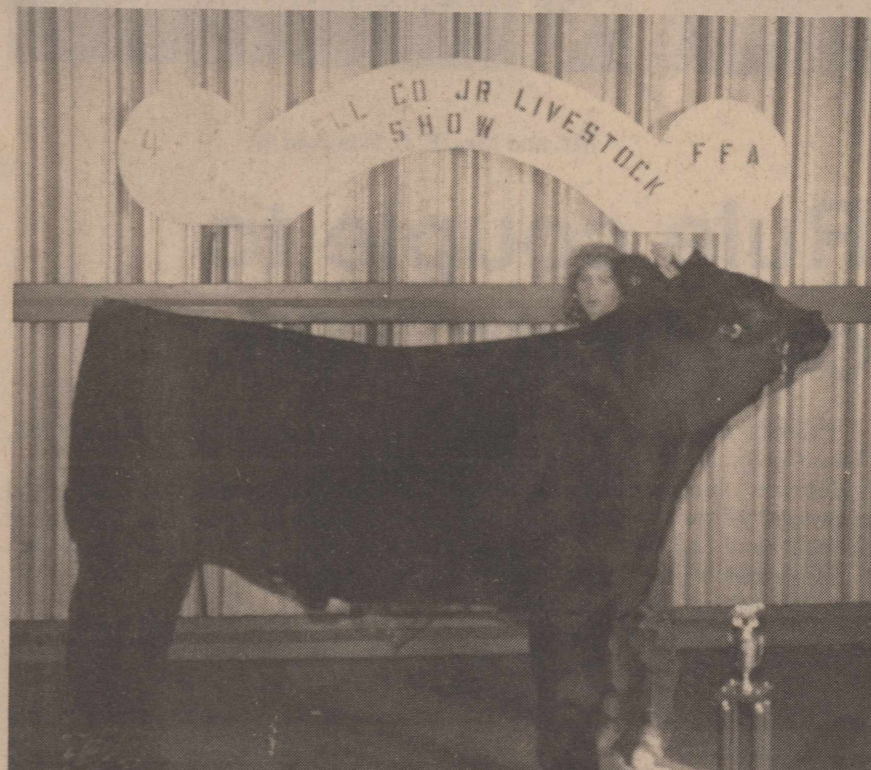
VOL. 102--NO. 5

HASKELL, TEXAS 79521, February 4, 1988

12 PAGES-ONE SECTION



Grand Champion Steer: Matt Pace



Reserve Champion Steer: Mindy Ballard



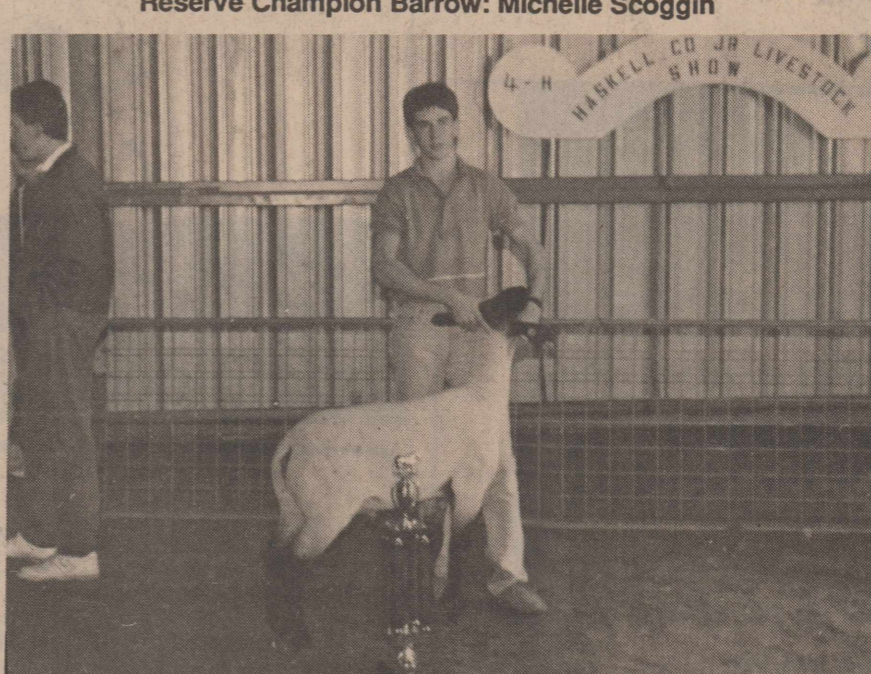
Grand Champion Barrow: Gia Henshaw



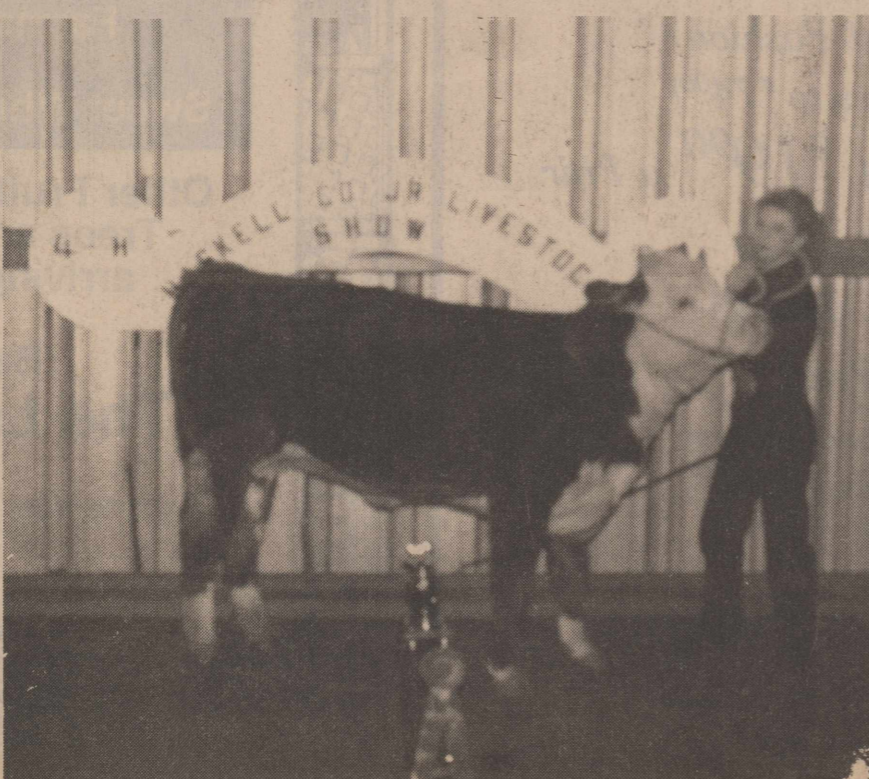
Reserve Champion Barrow: Michelle Scoggin



Grand Champion Lamb: Dalyn Gilly



Reserve Champion Lamb: Kirk High



Grand Champion Heifer: Faye Mullino

County to set CRP rate

The Haskell County Agricultural Stabilization and Conservation (ASC) Committee will establish a maximum county rental rate for the conservation reserve program that does not exceed the prevailing local rental rate for land in the county.

The secretary of agriculture will announce a maximum acceptable rental rate (MARR) for bid pools and the maximum county rental rate shall not exceed the pool MARR, says Glenn R. Brzozowski, county executive director of ASCS. In addition, for each bid, the COC will determine whether the bid exceeds the prevailing local rental rate for an acre of comparable land.

Previous, USDA established rental rates for pools which included many counties with uniform agriculture. "This is one of the legislative changes made in the program effecting with the opening of sign up on Feb. 1, 1989," Brzozowski said.

Highly erodible cropland that enters the CRP will be ineligible for farming for 10 years and must be planted with permanent vegetative cover. To compensate producers for retiring this land from crop production, Brzozowski said the CRP authorizes annual rental payments. The program also authorizes the Commodity Credit Corporation to pay 50 percent of the cost of planting trees or grass on the acres placed in the program.

To increase tree plantings, as well as improve water quality, USDA also expanded the CRP eligibility standards. "Filter strips will be eligible for the program even if the soil erosion criteria are not met on the strips," Brzozowski said. Also, USDA changed the erosion criteria that otherwise applied to certain land classes from 3 times T to 2 times T, or twice the normal soil loss tolerance for farmers who plant trees on CRP acres.

In addition, for land to be planted to trees, the highly erodible predominance criteria was changed from two-thirds to one-third of the field, according to Brzozowski. "Non-federal organizations are encouraged to provide additional incentives to bring eligible acres into the Conservation Reserve Program," he explained. He said this can be done by offering bonus-type incentives for program participation.

The CRP sign up began Feb. 1 and will continue through Feb. 19.

City buys new loader for streets

The City of Haskell now has a landscape loader for use by the street department.

In its monthly meeting Thursday, the City Council accepted a bid of \$19,206.63 for a John Deere loader. It was chosen over a bid of \$19,776 for a Case loader.

The council approved the city's participation with other area cities in appealing the utility rates of West Texas Utilities. Councilmen authorized the mayor to sign any necessary documents pertaining to the appeal.

The council agreed to give a two-year contract for operation of the swimming pool to Jimmy Lisle. The lessor had requested a two-year contract instead of the normal one-year lease in order to justify some improvements he wants to make at the pool.

Stock show winners named

Matt Pace of Rule showed the grand champion steer at last week's Haskell County Junior Livestock Show.

The grand champion heifer was shown by Faye Mullino of Rochester, the grand champion barrow by Gia Henshaw of Haskell and the grand champion lamb by Dalyn Gilly of Haskell.

The reserve champion steer was exhibited by Mindy Ballard of Rochester, the reserve champion heifer by Miss Mullino, the reserve champion barrow by Michelle Scoggin of Rochester and the reserve champion lamb by Kirk High of

Haskell. Jonathan Lammert of Sagerton had the champion rabbit and Kyle Wilson of Rule had the champion broiler chicken.

Showmanship awards went to Joseph Pace (steer), Michelle Scoggins (barrow) and Kirk High (lamb).

The Saturday sale, along with premium contributions netted county youngsters approximately \$40,000, some \$2,000 more than last year.

The champion steer earned \$866, the champion hog \$635, the champion lamb \$675, the rabbit \$205 and the broiler \$295.

-School Menu-

Feb. 8-12
LUNCH

Monday: Corn dogs with mustard, tater tots with catsup, pickle spears, apple crisp, milk or tea.

Tuesday: (Elementary) Meat loaf, scalloped potatoes, green beans, hot rolls with butter, orange halves, milk.

(High School): Meat balls with brown gravy, scalloped potatoes, green beans, hot rolls with butter, orange halves, milk or tea.

Wednesday: (Elementary): Chicken nuggets with gravy, creamed potatoes, carrot and celery sticks, hot rolls with butter, fruit cocktail, milk.

(High School): Chicken nuggets with gravy, creamed potatoes, broccoli with cheese sauce, hot rolls with butter, pineapple tidbits, milk or tea.

Thursday: (Elementary): Impossible taco pie, buttered corn, tossed salad with dressing, applesauce, peanut butter and crackers, milk.

(High School) Chili and beans, grated cheese, buttered spinach, cornbread with butter, applesauce, peanut butter and crackers, milk.

Friday: Cheeseburgers, french fries with catsup, lettuce and tomatoes, pickles and onions, peanut cups, milk or tea.

BREAKFAST

Monday: Grape juice, cereal, milk.
Tuesday: Apple juice, biscuits with jelly, milk.

Wednesday: Orange juice, waffles with syrup, milk.

Thursday: Pineapple juice, malt-o-meal, buttered toast, milk.

Friday: Fruit juice, cereal, milk.

The male ostrich is a conscientious father who whiles away his nights sitting on his female's eggs.



Mr. and Mrs. E. B. Whorton Sr.

Rule couple to celebrate '50th'

Friends of Mr. and Mrs. E. B. Whorton Sr. are invited to help them celebrate their 50th wedding anniversary from 2 to 5 p.m. Sunday at their home in Rule.

Hostesses will be their children, Mr. and Mrs. E. B. Whorton Jr. of Galveston, Mr. and Mrs. R. A. Whorton Sr. of San Saba, Mr. and Mrs. Nathan Morris of Abilene and Jack Whorton of Rule, and five grandchildren.

He was born in Barry, Texas, and has lived all his life in Rule except for five years at McMurry. She was

born in Haskell County July 28, 1918.

They were married in Dallas and have spent all their married life in Rule. They own and operate Motion Picture Theatres.

Window treatments

Like a thief in the night, your windows may be robbing your home of valuable heat and comfort. A typical home can lose between 20 and 50 percent of its heat through windows. A single-paned window can conduct 20 times as much heat from your home as a comparable area of well-insulated wall.

--Weinert--

By Myrtle Phemister

The beautiful weather we have been enjoying caused the seed catalogs and garden magazines to come out of the racks, as garden buffs got the fever to dig in the soil. But the cool front today changed all our plans.

We have a long list of ones to congratulate! Our very newest resident arrived via Hendricks Hospital at 3 a.m. on January 30th, weighing in at 7 lbs. 11 oz. and wearing the name Payden James Stewart. He will make his home with his parents, Mark and Kim, and bless the lives of his grandparents, Chesley and Jean Forehand and J. N. and Margie Stewart. Great grandparents are Burgess and Maye Forehand of Haskell. Congratulations!

Celebrating wedding anniversaries this week will be Buck and Helen Turnbow and Wade and Gay Raynes. Congratulations!

Our birthday people include Chesley Forehand, Jody Ejems, Cristi Herricks, Eric Turnbow, Helen Turnbow, Betty Sanders, Amy Castillo, and Kim Stewart. Happy Birthday, all!

We extend congratulations to several of our students who entered animals in the Haskell County Junior Livestock show, and brought home ribbons in several categories of rabbits, pigs, lambs, chickens and calves.

Those entering the competition included Shanna Murphy, Kevin White, Shane Stout, Laurie Hester and Mondy Mayfield.

Steve Green is Weinert's Ag teacher, and serves as sponsor and counselor for the young people. He left Tuesday at 9 a.m. with a group

bound for the Fort Worth Fat Stock show, and will return Friday. Those who took their animals to show are Laurie Hester, Mondy Mayfield, Kevin White and Shane Stout.

Several parents will also be in attendance and we hope for nice weather for the events.

Cole Sanders entertained three of his friends over the weekend. They attended the basketball game, spent Saturday hunting and playing games, and attended worship services at the First Baptist Church on Sunday. The guests were Jason Bowman, Jeffrey Cook and Aaron Kiser of Munday.

Audra and Bob Schindler of Abilene, and Terry Alexander with daughters Tara, Diana and Breeane of Munday were in town to visit with Bertie Alexander last week. Another daughter, Evelyn Ellington of Muleshoe was also in town for a visit.

Amanda Sanders was in town to visit her grandparents, Alton and Mildred Sanders, and to sell some girl scout cookies for her troop in Merkel. Amanda is recovering quickly from the bout of hepatitis she endured during the Christmas holidays.

Faye Brian is home and recovering her health after her stay in the Anson hospital last week.

John and LaVerne Mayfield have returned from Dallas where they enjoyed a get together with all of their children, and attended the basketball game between the Dallas Mavericks and the Houston Rockettes.

Their daughter, Alexia Rimmer, was a featured vocalist, and sang the National Anthem before the game. Two things marred the time they

spent together; a sick grandchild and the defeat of the Mavericks!

At last report, Adrienne Wynn was much improved.

Claude and Vera Mae Harrison of Lubbock were in town to visit with R. S. and Betty Sanders. They all made a trip to Brownwood for an outing.

Sallie Sanders has returned from Ft. Worth from a visit in the home of her daughter, Marie Kirkland and family. While in Ft. Worth, they spent some time with Lola Tidrow, a sister of Sallie's, who was hospitalized with a very serious heart condition. The doctors do not give the family much hope for Lola's recovery.

Eddie and Myrnie Sanders were in Wichita Falls on business one day last week, and visited with their daughter, Shirley and Wayne Offutt and children.

The Weinert Extension Club was involved in the concession stand at the Haskell Livestock Show, by furnishing food and helping with serving.

The women who worked were Faye Jetton, Betty Sanders, Debbie Crump and Alice Yates. Mrs. Yates is Finance chairman for the County Council, who was in charge of the concessions.

Coming Saturday, February 4th, 10 to 3 will be the State qualifiers meet of the Tumbling and Gymnastics students. The meet will be held in the Haskell High School gym, and the public is invited to attend.

Thank you for reading The Haskell Free Press.

Cupid's arrows are pointing to the Hayloft for great Valentine Gifts

New Spring Merchandise Arriving Daily!

The Hayloft
409 S First
Haskell

Give That Special person A Little Gift with A Lot of heart

See our selections of fine jewelry gifts for men and women.

- Heart Pendants
- Earrings
- Necklaces
- Rings
- Bracelets
- Watches

Lyles Jewelry Store
Since 1935
East Side of Square
Haskell, Texas

NOW OPEN!

Homespun Botique

Open Tuesday - Saturday
10-5 or by Appointment

Handmade Fashion & Gifts

Featuring

Image Enhancement

BeautiControl Cosmetics and Complimentary Color Analysis Computer Image Analysis

112 N Ave. E Haskell
864-3608-Home 864-2386-Business

Lane-Felker

Bids farewell to Fall/Winter Wait til you see what we've drummed up for you now!

L.F. has never had as many great dresses to go on sale at such low prices

All to go
50% to 75% off

We still have a big selection of sweaters - jackets - blouses - skirts and pants to go at

50% to 75% off

If you need party things - like skirts - blouse and dresses - browse through the mirrored room.

50% to 75% off

103 N Ave E Haskell 864-2266

FINAL MARKDOWNS

Semiannual
Shoe Clearance

Casual and Fashion Shoes (Values to \$74⁰⁰)
only \$14⁹⁰ and \$19⁹⁰ a Pair

Aigner Leather Blazers & Jackets
1/2 Price

Aigner Shirts and Sweaters
only \$10⁰⁰ (Values to \$42⁰⁰)
"All Sales cash and final"

The Slipper Shoppe

14 1/2 Ave D East Side of Square
Haskell 864-3051

"Your Business is Appreciated"

Here Come the Plants!

The trucks are rolling in.

Indian Name
Pecan Trees
6' to 8'
\$16.50 each
or 2 for \$30.00

Farmersville Onions are Here
Sweet White, Yellow & Purple

Other Fruit Trees, Ornamental Trees and Shrubs will be arriving March 1, 1988

Ben McGee's The Lumber Yard

105 N. 1st. Haskell 864-3552

--Haskell Nursing Center--

**By Jo Fischer
Activity Director**

Music plays an important role in everyone's life. For nursing home residents it is especially important. It is a means of self expression and gives the residents a chance to socialize with members of the outside community. It is entertaining, creative and helps them release emotions. Music is a great way to jog one's memory.

There are several groups who bring music to our home each month. Among these are:

Naomi, Dorcas and Lydia Sunday school classes of First Baptist Church, Assembly of God ladies, First United Methodist Church ladies. Other individuals are Mrs. Hodge and Randy McLelland. We appreciate all of these and their special talents.

Those visiting us were Mr. and Mrs. Johnny Darnell of Dallas with

Lucille Sherrill, Cora Johnson of Henrietta with Connie Cook, Mary Rachel Densman with everyone, Mattie Bell Grimsley of Muleshoe, Mr. and Mrs. Ken Williams of Abilene with Lucille McCurley, Mel Swoyer with Robert Monse, Shirley and Craig Story of Wichita Falls with Mabelle Turnbow.

John, Gena, Lindsay and Allison Pike with Ruby Clemmer and Robert Monse, Steve and Jerita Taylor with Bessie Davidson, Margie Cardwell of Waco and Bill Cardwell of Mabank with Clint Langford.

Taxpayer group to meet Wednesday

Members of the Haskell County Association of Concerned Taxpayers will meet in an emergency called meeting at 5:30 p.m. Wednesday (Feb. 10) at Sue's Flowers, southeast corner of the square.

Eric Samuelson of Waco, the group's attorney, will speak to the group. He is expected to file a writ of mandamus against the Commissioners Court earlier that day.

HCACT members also are being urged to attend the Commissioners Court meeting at 9:45 a.m. Monday.

You're never too old to quit blowing smoke.



Dale Huff family

Church of Christ has new minister

New minister of the Haskell Church of Christ is Dale Huff, who came here last week from LaMarque.

A native of Abilene and a graduate of Abilene Christian University, Huff is no stranger to the Haskell area. He lived in Weinert and preached at the Weinert Church of Christ during his senior year at ACU in 1975. Mrs. Huff (Diane) worked as secretary of the Haskell Church of Christ for

several months when they were living in Weinert.

The Huffs have four children, Robert 11, Charissa 9, Philip 8, and Jimmy 5.

Before living in LaMarque, Huff was minister of churches in Portland, Ore., Del Rio and Eldorado.

He succeeds Jim Crain as minister of the Haskell church. Crain moved to Rogers, Ark., several months ago.

--Market Report--

Haskell Livestock Auction

Prices paid for feeder cattle were \$1 to \$2 higher at the Haskell Livestock Auction Saturday, but prices for all other types of cattle were steady.

Last week's sale was on a run of 1,534 head of cattle and 12 hogs.

Cows: fat 47-51; cutters 47-54; canners 42-48; stockers by head 450-625.

Bulls: bologna 58-65; stockers 60-70; utility 50-57.

Stocker steer calves: choice 92-112; good 82-92; medium 72-82; common 62-72.

Stocker heifer calves: choice 82-92; good 72-82; medium 62-72; common 52-62.

Feeder steer yearlings: choice 76-86; good 69-76; medium 60-69; common 50-60.

Feeder heifer yearlings: choice 74-82; good 64-74; medium 57-64; common 50-60.

Cows and calves: good 550-700; plain 400-550.

Business recognition planned

Special recognition will go to businesses which show the most improvement in appearance between now and April 30.

Members of the steering committee of the Beautify Haskell Council voted last Wednesday to recognize the businesses for their participation in the program.

Bobby Hoogood, chairman, said that highway captains within the city limits will gather nominations for the designations. Persons wishing to list a business for consideration should contact one of the captains: Bill Trammell (South), Sharee Gardner (North), David Davis (East) and Brian Toliver (West).

A Valentine's gift that'll bowl her over.



Send the FTD® Crystal Bowl Bouquet.

Call or visit us today. Don't Forget - Homemade Fudge in Heart Shaped Boxes Valentine Balloons

**Sue's
Flowers Gifts-Photography
The Candy Nook**
SE Corner Square
Haskell
864-2204



® A Registered Trademark of FTDA. © 1987 FTDA

The children of TODAY are The future of TOMORROW
Child Abuse HOTLINE
R
1-800-252-5400
W

Join us every afternoon for "Happy Hour"
All Fountain Drinks 1/2 Price
3 pm til 4 pm and 6 pm til 7 pm Daily

SONIC
Happy Eating

HAMBURGERS ONION RINGS

Fish Sandwich \$1.25
Reg: \$1.70 Save 45¢

Don't worry about Cholesterol- All of our Foods are now cooked in Low Calorie - Low Cholesterol Peanut Oil

1402 N. Ave. E Haskell 864-3318

Cook & Rodela Plumbing

Sales, Service and Installation
Roto-Rooter Service
864-2226

Mike Cook 115 N. Ave E
Raymond Rodela Haskell

For Universal Life Insurance, check with State Farm.
BRIAN BURGESS, Agent
703 North Avenue E.
Haskell, Texas 79521
Off. 864-3250

Like a good neighbor, State Farm is there.

State Farm Life Insurance Company
Home Office Bloomington, Illinois

VALENTINE PARTY SUPPLIES.
The finishing touch for your party. Brightly colored cups, plates, and napkins with a special Valentine design.

Your Choice! 99¢

YOUR CHOICE!

30 Garfield VALENTINES
36 VALENTINES
30 SESAME STREET

BOXED VALENTINE CARDS.
Boxed assortment of cards with non-mailable envelopes. Each set includes teacher card. Garfield, Sesame Street and other assortments.

99¢

NOW THRU **Winn's** FEB. 14th

VALENTINE SALE

MasterCard
VISA
DISCOVER

PRICES GOOD WHILE QUANTITIES LAST
Winn's Advertising Policy

Winn's attempts to please our customers at all times. That includes having ample quantities of advertised items on hand. Subject to availability, due to unforeseen reasons, an advertised item may not be available for purchase in this event. Winn's will issue a Rain Check (upon request) for the item to be purchased at the same price as soon as it becomes available. If the item is not available within a reasonable time, the customer may purchase a similar item at a comparable reduction or price. Merchandise designated as a "limited" or "special" quantity will be sold on a first come, first served basis while quantities last. Winn's reserves the right to limit quantities purchased so that as many customers as possible may benefit from advertised items.

10 N. Ave. D Haskell 864-8135

BORDEN'S SPECIAL DELUXE HEART.
You'll leave an impression with this richly decorated Valentine Heart Box. 28 ounces of assorted cremes covered in dark and milk chocolate.

7.98

RED SILK ROSES.
The perfect rose for your Valentine. Choose from red open rose or red rosebud.

3/\$1

DEAR HEART AND CUTE HEART.
9 ounce bag. Candy hearts with Valentine sentiments.

77¢

ASSORTED HEART BOXES.
Say "Be My Valentine" with a 1 lb. box of Elmer's assorted chocolates trimmed with flowers and lace.

5.44

GIRL'S FASHION JEWELRY.
A wide assortment of heart, bow, star, beaded necklace and bracelet sets.

99¢

VHS PRO SERIES VIDEO TAPE.
Record your TV movies and shows on this Memorex VHS cassette

5.99

KEEL KITE ASSORTMENT OR KITE TWINE WITH WINDER.
From camouflage Invader to Happy Hearts. 42" wing span Also 400 ft. kite twine.

KITES
1.99
TWINE
1.59

VALENTINE MASCOT.
Adorable thumb sucking gorilla in soft plush pile. Red plush with vinyl face, feet and hands.

2.99

GOLDEN ROSE HEARTS.
Pretty heart-shaped gift boxes of fancy chocolate candies. Assorted dark and milk chocolate. In 3 sizes.

3 OUNCE .99
6 OUNCE 1.99
14 OUNCE 2.99

-BIRTHS-

Rusty and Kim Schoedf of Lubbock announce the arrival of a son, Justin Lee, born Jan. 23. He weighed 7 pounds, 10 ounces and was 20 1/2 inches long.

Grandparents are Mr. and Mrs. Jackie Daniels of Wolfforth and Mr. and Mrs. Burl Schoedf of Ropesville.

Great-grandparents are Mr. and Mrs. Jack Daniels and Mr. and Mrs. T. J. Poer of Haskell.

Mr. and Mrs. David Lisle of Rule announce the arrival of a daughter, Ashley Denise, born Tuesday, Jan. 19, at Hendrick Medical Center in Abilene.

Ashley weighed 7 pounds, 14 1/2 ounces and was 22 inches long.

Welcoming Ashley home was a sister, Tara.

Maternal grandparents are Mr. and Mrs. Kendall Carmack of Rochester and paternal grandparents are Mr. and Mrs. J. A. Lisle Jr. of Rule.

Great-grandparents are Mr. and Mrs. Doc Carmack of Rochester, Mrs. Estell Mays of Rochester and Mrs. J. A. Lisle of Rule.

Mr. and Mrs. Don Wally Kretschmer of Hempstead announce the arrival of a son, Cody Don, born Jan. 28. He weighed 5 pounds, 1 ounce.

Grandparents are Mr. and Mrs. Walter Kretschmer of Haskell and Mr. and Mrs. Jene Paul Cornelius of San Angelo.

Great-parents are Alfred Letz of Old Glory (paternal) and Mrs. Nova Riley and Mrs. Chlois Cornelius of Thorckmorton (maternal).



Downtown gardens

Work got underway last week with the landscaping and sidewalk construction to fill the areas on the west side of the old Green Stamp building and the Heidenheimer building. Co-sponsors for the project are the Haskell Garden Club, Boy Scouts and City of Haskell. Also participating is the Brazos West Art Association, whose members will re-paint the historical mural they designed on the Green Stamp building when Haskell celebrated its 100th anniversary in 1982. Painting will begin when freezing weather is over.

Abilene artist to give program

Ruth Jackson, eminent Abilene artist, will present a program on pastel landscape with animals at a meeting Feb. 8 of the Brazos West Art Association.

Members extend an open invitation to the public to attend the session.

The meeting will be in the Haskell National Bank Community Room, beginning at 7 p.m.

Of every million codfish eggs laid, about five will hatch.

City completes flower bed, walk

The City of Haskell has completed the flower bed and sidewalk along the west side of the former Green Stamp building.

Members of the Boy Scouts and the Haskell Garden Club will plant flowers in the area.

A similar project along the west side of Heidenheimer's got underway this week.

Cost of the city's work is being financed through the hotel/motel tax. City administrator Robert Baker said these funds may be used only for tourism or beautification projects.

Property rendition forms available

Property rendition forms must be in the Haskell County Appraisal District office by March 31, John Grissom, chief appraiser, reminded local property owners this week. A 30-day extension of the deadline is available to property owners who file a written request for it.

A rendition is a special form, available at the local appraisal district office, on which a property owner lists taxable property. It also can list the owner's opinion of the property's value. Property owners file these renditions with the chief appraiser of the appraisal district in which the property is located.

The new law requires certain property owners to file renditions each year. Anyone who on Jan. 1 owns or manages tangible personal property used to produce income must render that property for taxation. Business inventories, office furniture and fixtures and business vehicles are examples of income-producing personal property.

The chief appraiser may also require others to render property they own or manage. If so, the property owner will receive a written notice of the rendition requirement and an appropriate rendition form.

Anyone may voluntarily file a rendition with the appraisal district, although Texas law does not require the average property owner to render a home or personal property not used to produce income. Further, property owners do not need to estimate property value. However, there are several good reasons to do so.

First, rendition is a means for a property owner to record an opinion of the property's value.

Second, by recording an opinion of the property's value, the property owner has ensured that the chief appraiser must send a notice before placing a higher value on the property. This notice allows the property owner time to gather information to protest the value to

the appraisal review board.

Third, the property owner ensures that the appraisal district has the correct mailing address and property description.

A "report of decreased value" is also filed by March 31 with the chief appraiser. A property owner who believes property value has decreased during the preceding tax year, for reasons other than normal depreciation, files the report which describes the property and the nature and cause of the decrease.

Rendition forms and reports of decreased value are available at the

Haskell County Appraisal District office. Law requires that each form or report must include all information requested and that it must be signed by the property owner or the owner's authorized agent.

Grissom reminds property owners that rendition forms and property reports are confidential and therefore not open to public inspection.

Sirens to be tested Friday

Storm warning sirens in Haskell will be tested at 12 noon on Fridays, beginning this week.

Sirens are located at the sheriff's office, the school, and the fire department.

Thank You

We would like to express our sincere thanks and appreciation for all the love and friendship shown during Crystal's stay in the hospital. Thank-you, for all the cards, calls, flowers and visits. Each and everyone was heart felt.

We would like to express a special and sincere thank-you for the love donations made to Crystal's medical fund started by Karen Brown.

Connie Pace, Crystal Motley

NOTICE TO AT&T CUSTOMERS

The Public Utility Commission of Texas has initiated a proceeding to consider the following: whether any long distance telephone company that does not provide local telephone service has the ability to control prices in Texas; the status of long distance competition; and the effect of competition on the public interest. In this proceeding AT&T will be seeking the right to compete in Texas on an equal basis with other long distance companies.

This matter has been assigned Docket No. 7790 and hearings have been set to begin May 31, 1988. Persons who wish to intervene or otherwise participate in these proceedings should notify the PUC as soon as possible. A request to intervene, participate, or for further information should be mailed to the Public Utility Commission of Texas, 7800 Shoal Creek Boulevard, Suite 400N, Austin, Texas, 78757, or by calling the PUC Public Information Office at (512) 458-0223 or (512) 458-0227 or (512) 458-0221 for teletypewriter for the deaf.



400 N. Ave. E Haskell Phone 864-3691

SAV-M

Gandy's Milk 1 gal. \$2.25

Dr. Pepper 16 OZ BOTTLE 43¢

Mrs. Bairds Individual Fruit Cinnamon Rolls 3 / 99¢

From the Deli

Burritos 3 for \$1


Bake Sale

The Haskell Voluntary Fire Department Auxiliary will have a Valentine's Day bake sale Saturday, Feb. 13, in front of The Hayloft.

VOTE FOR

Wallace Allison


Candidate For Commissioner Precinct 1 Haskell County Democratic Primary March 8, 1988



(Pd. Pol. Adv. Pd. for by Wallace Allison)

TAX PLANNING

Written By **Richard E. Rodgers, CPA**



PRESIDENT REAGAN SIGNS NEW TAX LAW

On December 22, 1987, President Reagan signed the Revenue Act of 1987. The intent of the law, which will affect mainly corporations and wealthier individuals, is to increase taxes by \$23 billion over a two-year period. Here are some of the more noteworthy provisions in the new law:

- * Beginning in 1988, interest on home acquisition indebtedness up to \$1,000,000 will be deductible. The interest deduction on home-equity loans will be limited to loans up to \$100,000 with no concern for how loan proceeds are used. Interest on refinanced mortgages will be deductible to the extent that the loan balance doesn't exceed what it was immediately before refinancing. Indebtedness incurred to substantially improve a qualified residence will increase acquisition indebtedness.
- * Personal service corporations will be taxed at a flat rate of 34%, effective for tax years beginning after 1987.
- * Perhaps the most important provision for businesses is the one that allows partnerships, S corporations, and personal service corporations to retain or elect fiscal years. The 1986 Tax Reform Act required many of these entities to shift to a calendar tax year. The 1987 law will enable these entities to keep their previous fiscal years, and it will allow new entities to adopt fiscal years ending no earlier than September 30. Partnerships and S corporations wishing to retain or adopt a fiscal year under this provision must file an election to do so and must make "required payments" in the amount of the tax deferral resulting from the use of the fiscal year. The wording of this provision in the new law has created so much confusion that the IRS is under pressure to quickly publish clarifying rules.
- * More wages will be subject to social security (FICA) taxes beginning in 1988. Employers must pay FICA taxes on all their employees' cash tips. Wages paid to one's own spouse and children over 18 are subject to FICA taxes. Also, the tests for determining whether farm wages are subject to FICA taxes are changed.

Sponsored By **JAMES E. RODGERS & COMPANY**
 Certified Public Accountant
 20 Southwest Third Street

PROPERTY TAX RENDITIONS

31 Monday March 1988
file tax rendition!

HELP YOU PROTECT YOUR RIGHTS AS A TAXPAYER

A rendition is a report to the appraisal district that lists all the taxable property you own or control on January 1, 1988. You may also give your opinion of the property's value, if you wish.

You must file a rendition if you own tangible personal property used to produce income—such as the machinery and equipment used by a business.

The appraisal district may require any taxpayer to file a rendition by sending the taxpayer a written notice and a rendition form.

You may want to file a rendition, even if you aren't required to file, to preserve some of your rights as a taxpayer:

- * You put your correct mailing address on record so your tax bills will go to the right address. Even if your bill goes to the wrong address, the law still holds you responsible for paying your taxes on time or else paying extra charges for late payments.
- * You can put your own opinion of your property's value on record. If the appraisal district then places a higher value on your property, it must notify you in writing of the higher value and explain how you can protest that value to the appraisal review board.
- * By filing a special type of rendition called a *report of decreased value*, you can notify the appraisal district of significant damage to your property that occurred in 1987. The district will send someone to verify the damage and take it into account when assigning a 1988 value to your property.

File renditions with your local appraisal district at the address shown below. Forms are available at this office.

The deadline for 1988 renditions is March 31. You can get an extra 30 days if you ask for it in writing before the March 31 deadline.

For more information, get a free copy of the pamphlet, *Taxpayers' Rights, Remedies, Responsibilities*, at your appraisal district office or from the State Property Tax Board in Austin.

Haskell County Appraisal District
 604 N First (817) 864-3805 Haskell, Texas 79521

State Property Tax Board
 Box 138081 Austin 78781-3808

Why a heat pump is not so hot.

Air from an electric heat pump is only heated to around 95° F. That's lower than your body temperature. That's also why many heat pump owners complain that their houses feel drafty and cool.

A propane gas furnace sends air into your home at 130° F. That's why gas heat always feels so nice and warm.

Before you invest in a heat pump, get the cold facts. Then you'll warm up to the comfort and efficiency of gas heating.

Warrengas YOUR DOLLAR GOES FURTHER ON WARRENGAS.

Haskell Butane

817-864-2424 Hwy. 277 S. 817-864-3915 Haskell

--Sagerton--

On Tuesday January 26 twelve families met at the Royal Inn in Abilene for a birthday party for those who had birthdays in January. Mr. and Mrs. Carl Opitz of Abilene, Mr. and Mrs. Clancy Lehrmann of Old Glory, Mr. and Mrs. Clarence Teichelman, Mr. and Mrs. Carl Lunn of Stamford, Mr. and Mrs. Alvin Ulmer, Mr. and Mrs. Reece Clark, Mr. and Mrs. Joe Clark, Mr. and Mrs. David Letz, Mr. and Mrs. Fred Kupatt, Mr. and Mrs. Arthur Knipling, Clarence Stegemoeller of Sagerton, Mr. and Mrs. Marvin Stegemoeller of Rochester.

Rev. and Mrs. Tommy Wilson of Rule are moving to Sunray, Texas February first where Rev. Wilson will pastor the Sunray United Methodist Church. A farewell party was given in their honor Wednesday night in Sagerton Methodist Church with a supper and fellowship.

The Sagerton Hobby Club met January 21 in the home of Mrs. Eugene Teichelman with 10 members present. Mrs. J. C. Wendeborn was the club's new member.

Mrs. Bill Hettel conducted the business meeting. The club voted to

donate \$300.00 toward buying a firefighting uniform. They also decided to donate \$200.00 to the Community Center to put screens in the lunchroom area. It was suggested that each member bring a 12 inch quilt square of her choice to the next club meeting which will be Feb. 18 in the home of Mrs. Clarence Teichelman. Refreshments were served to Mrs. Zenor Summers, Mrs. Alvin Ulmer, Mrs. J. C. Wendeborn, Mrs. Bill Hertel, Mrs. John Teichelman, Mrs. J. B. Toney, Mrs. Herbert Stremmel, Mrs. Reece Clark, Mrs. Herbert Lammert, and the hostess Mrs. Eugene Teichelman.

Mrs. Ione Sheid formerly of Sagerton passed away late Friday in the Rice Springs Care Home. She was 97 years old.

Arthur Knipling was honored on his birthday January 21 with a supper given by Mrs. Knipling. Those who attended were Mr. and Mrs. Clarence Teichelman, Mr. and Mrs. Dan Rinn, Mr. and Mrs. Lewis Corzine, Erna and Walter Schaaake, Mr. and Mrs. Leonard Kieke, all of Stamford, Mrs. Bruce Toney and Tarah of Haskell, Mr. and Mrs. Herbert Lammert,

Herbert Rinn of Rule, Mr. and Mrs. Eugene Teichelman, Pastor and Mrs. Mel Swoyer, Jennifer and Marcia, Mrs. Adela Niedieck, Clarence Stegemoeller, Mr. and Mrs. J. B. Toney.

Mrs. M. Y. Benton had lunch in the home of Mr. and Mrs. Charles Clark Sunday.

Mr. and Mrs. Alvin Bredthauer went to Amarillo recently to visit Mrs. T. C. Herring who is the hospital. Also visited in the home of Mr. and Mrs. Paul Summers who live in Canyon.

Mr. and Mrs. Kenneth Stegemoeller of DeSoto visited in the home of his mother, Mrs. Henrietta Stegemoeller over the weekend.

Those who attended the Friendship Club dinner in the Faith Lutheran Church in the Fellowship Hall were Leo and Minnie Monse, Mrs. M. Y. Benton, Pastor Mel Swoyer, Mrs. Alvin Bredthauer, Mrs. Sylvia Crowe of Haskell, Mrs. Mary Neinast, Mrs. Ethel Quade, Mrs. Carrie Bredthauer, Tommy and Eugene Wilson, C. E. Stegemoeller, Mrs. Betty Balzer, Buster and Norma Tredemeyer, Buddy Tredemeyer of Albuquerque, N.M., Delbert and Joyce LeFevre, Anton and Evelyn Teichelman, Charles Clark, Alvin and Ev Ulmer, Dorothy and J. B. Toney, Karen, Steven, M'Lynn, Joanna Lehrmann, Alvin Bredthauer, G. W. and Ophelia LeFevre, Reece and Francis Clark, Louise Stegemoeller.

Everyone enjoyed being together and a going away part for Rev. and Mrs. Tommy Wilson of Rule who are moving to Sunray.

Mr. and Mrs. Melvin Baitz, Mr.

and Mrs. Herbert Lammert, Mr. and Mrs. Bill Hertel were in Brownfield last Monday to attend the funeral of Felix York, nephew of Velma L. They also visited in Ralls with Mr. and Mrs. Lee DuBose, which is Velma's sister.

The annual community meeting was held at the Community Center Jan. 18. A nice crowd was in attendance. The following people were elected to serve as officers for the 88 term. President, Johnny Baitz; vice president, Danny Lammert; Secretary and treasurer, Margie Hertel; property chairman, Alvin Ulmer and Alvin Bredthauer; keeps of key, Delbert LeFevre; Fire chief, Allen Meier, Director of Hee Haw, Billie Kupatt. The following dates were set for Sagerton Hee Haw, April 15-16. Show at 8 p.m. and lunchroom open at 5:30 p.m. Tickets this year will be \$3.00. Ticket chairmen are J. B. and Dorothy Toney. Danny Lammert publicity; co-food chairmen, Joyce LeFevre and Ev Ulmer.

Allen Meier talked to the group about getting firemen suits at least two complete suits for the Sagerton Fire Dept.

Rochester honor roll students announced

Here is the third six weeks' honor roll at Rochester schools:

First Grade: A--Blake Adkins, Michael Adkis, Cody Byrd, Dusty Garcia, Amber Hearn, Erika Nicholson, Josephine Nunez, Jennifer Saucedo, Elizabeth Sheets, Mary Jane Short, Mary Belle Turner.

AB--Erick Aguilera, James Bass, Stacy Leija, Joey Garcia, Gary Strickland.

Second Grade: A--Shelly Hester. AB--Erica Hollingsworth, Mark Marin, Brandy Brown, Charli McGhee, Misty Hearn.

Third Grade: A--Charlie Parks, Susan Sheets.

AB--Asa Jillson, Abi Lindsey, Jodi Penman, Joey Saucedo.

Fourth Grade: AB--Thomas Parks.

Fifth Grade: AB--Spivey Jones, Karmen Adkins, Jason Smart, Robin Strickland, Stacie Bevel, Elizabeth Lomeli.

Sixth Grade: A--Vanessa Walker.

AB--Angela Adkins, Kyle Hollingsworth, Ela Jillson, Shannon King, Joni Penman, J. L. Strickland.

Seventh Grade: AB--Chris Carver, Jacob Marin, Kurt Sloan.

Eighth Grade: A--Ross Shaver.

AB--Bryan Cox, Mindy Ballard, Michael Hester, Jennifer Smart.

Ninth Grade: AB--Alexy Reeves, Brad Bevel.

10th Grade: A--Stephen Andrada, Lenore Medina, Jennifer Shaver.

AB--Melissa Saucedo, Sammy Wyatt, Wes Gonzales, Corky Speck.

11th Grade: A--Patricia Andrada, Wayne Hester.

AB--Maxine Martin, Morgen Walker.

12th Grade: A--Liz Carrasco, Lance Sloan, James Wyatt.

AB--Larry King, Kim Short, Michelle Scoggins, Melody Speck, Michelle Ortiz, Bobby Short.

-HOSPITAL-

ADMISSIONS

MEDICAL: Clifton Duncan, O'Brien; Pauline Reding, Haskell; Willia Rogers, Haskell; Margie Clonts, Knox City; Lonelle McCandless, Rule.

DISMISSALS

Margie Dunn, Jona Caddell, J. W. Aycock, Frank Macias, Alva Camp, Dovey Pate, George Wester, Lee Decker, Ninfa Aldau, Pete Kitley.

We want you to know how much we do appreciate the various expressions of love and concern shown to us, since I've been ill. The visits, calls, cards, food, flowers and love offerings were accepted with deep gratitude.

The prayers from concerned individuals as well as church groups from Haskell as well as the surrounding area have given us the strength and encouragement we need so much.

*In Loving Appreciation
Janet & Leland Thane*

One Hour Photo Service offered on Film Developing & Prints
Latest Equipment - Competitive Prices



\$1.00 off
On Processing, per roll with Coupon
Specials Good Thru February 10

Kodak and Fuji Film For Sale
Phone 864-2951

Johnsons' Kis Photo
OWNED & OPERATED BY LORAIN & BOBBIE JOHNSON
West Side of Square - Haskell

The family of Clay Pogue wish to express our sincere appreciation for the prayers, visits, flowers, cards and contributions made in behalf of the death of our beloved son, grandson and nephew.

It is very comforting to know we have such friends to help us through this time of sorrow.

*Mr. and Mrs. Perry Pogue & Carie
Mr. and Mrs. Bud Pogue
Mr. and Mrs. Glenn Pogue & Chancy
Mr. John Wisdom*

MARY KAY

MEN HAVE SKIN, TOO!

Mary Kay has a complete skin care program for men that's simple and effective. Skin Management for Men. For information, call today.

*Professional Mary Kay
Skin Care Consultant*

Pat Mickler

864-8093 207 N Ave G Haskell

Debbie Miller

864-3010 901 NE 3rd Haskell

You'll Find **BIG SAVINGS** THROUGHOUT THE STORE!

PERRYS

Now is the Time to Buy with Every Item in the STORE REDUCED

STOCK REDUCTION

SALE

IN EVERY DEPARTMENT

TOYS!

**SUPER SAVING!
SUPER VALUES!
WE ARE OVERSTOCKED
ON MANY ITEMS
IN OUR STORE!
WE NEED TO REDUCE
OUR INVENTORY NOW!
IN EVERY
DEPARTMENT**

**HARDWARE
ITEMS!**

**BEAUTY
AIDS!**

**GLASSWARE!
WINDOW
SHADES!**

**FABRIC!
NOTIONS!**

**GIFT
ITEMS!**

We want to Pass this **INCREDIBLE SAVINGS** on to our **VALUABLE CUSTOMERS!**

SHOP EARLY TO GET THE BEST BARGAINS...

20% OFF MARKED PRICE



Valentine Gifts from the Heart

We have hundreds of ways to say "I Love You"! Here are just a few of them:

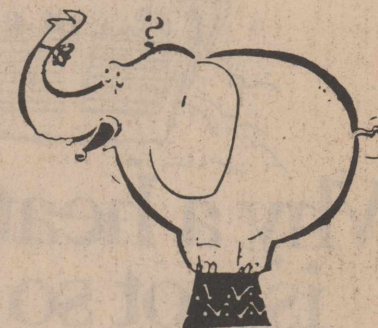
- Jewelry
- Perfumes
- Cards
- Personal Appliances
- Candy
- Makeup
- Wallets
- Watches
- Gift Certificates
- Hair Accessories
- Pen & Pencil Sets

**DOYLE HIGH'S
THE DRUG STORE**

100 S. Ave E Haskell 864-2515

Some stores call it a "White Elephant" Sale but when you're from **THROCKMORTON**

(and the Capital of the Cow Country)



Fayes' Fashions
(Next to Post Office)

calls it a

"BUM STEER" SALE!



PRICES SLASHED FOR Pre-inventory
(We don't want to count our mistakes so you can have them cheap.)

Come on over, you'll enjoy the Drive

Surplus food distributions to be resumed

The year's first distribution of commodities will be made in Haskell and Rule next Thursday (Feb. 11).

In Haskell, the distributions will be at the Experienced Citizens Center, from 8 to 9 a.m. for those 60 and older, and from 9 to 10 a.m. for others.

In Rule, food will be distributed between 9 and 10 a.m. at the Church of Christ.

Distributions at Sagerton will be Wednesday (Feb. 10) at Faith Lutheran Church. Rochester distributions will be the following week, Feb. 16.

George Abernathy, program director with the Aspermont Small Business Development Center which administers the program, said that distributions also will be made in March, but after that, will be made on an every-other-month basis.



The first successful gasoline-driven car was created in 1885.

Partial exemptions can reduce taxes

Homeowners can reduce their property tax bills in 1988 by taking advantage of partial exemptions for residence homesteads. Application forms are available at the Haskell County Appraisal District office, 604 N. 1st.

John Grissom, chief appraiser for the district, explains that Texas law allows homeowners to make a single, one-time only application for residence homestead exemptions.

Taxpayers who have never received residence homestead exemptions on the homes in which they were living on Jan. 1, and those who became 65 or disabled during 1987 must apply this year to receive exemptions for 1988. Homeowners must file signed, completed applications at the appraisal district office by April 30.

A homeowner's principal residence and yard are considered as the residence homestead. It can include up to 20 acres of land and any improvements like a swimming pool, greenhouse or spa, as long as the owner uses them for residential purposes.

Grissom said that a property must

meet four tests set by law in order to qualify for the residence homestead exemption. The person or persons claiming the exemption must own it; it must be designed or adapted for human residence; it must be actually used as a residence; and it must be the principal residence of an owner who qualifies for the exemption.

A mobile home, even on leased land, can qualify for a residence homestead exemption if it meets the four tests.

"A taxpayer can still qualify for the homestead exemption if part of the residence is rented out or used for other purposes, such as a home business," Grissom said. "And the home will not lose its exemption if the owner moves away temporarily, so long as he intends to return and doesn't claim another homestead elsewhere."

Texas law provides several types of homestead exemptions for homeowners, including two for school districts. They offer a \$5,000 general homestead exemption to all homeowners and an additional \$10,000 exemption to those 65 or older or disabled.

The over-65 school exemption provides a special property tax "ceiling" for taxes. While the market value of an elderly person's homestead may fluctuate with the market, the taxes due to the school district cannot

increase. The ceiling is raised, however, if the owner adds an improvement, other than normal maintenance or repair. When that happens, the new improvement is taxed at its current market value and the school's current tax rate, and the taxes due are added to the previous tax ceiling to create a new ceiling.

The elderly homeowner must apply for the exemption before April 30, Grissom stressed. To qualify, the homeowner must be 65 or older on Jan. 1, 1988.

Counties must offer a \$3,000 general homestead exemption to all taxpayers, given only on the portion of the county tax levied for farm-to-market roads or flood control.

Any taxing unit's governing body may grant a minimum \$3,000 exemption on the homesteads of disabled or elderly residents, or both. Only school district taxes establish a ceiling on taxes, however.

Taxing units may also take official action to offer a local option homestead exemption based on a percentage of a home's appraised value. In 1988, any taxing unit can exempt up to 20 percent of the value of each qualified homestead in the unit. No matter what percentage is adopted, the dollar amount for any homestead exemption must be at least \$5,000.

Percentage homestead exemptions of 20 percent are granted by the school districts of Rule, Rochester and Weinert.

For more information, homeowners may contact the Haskell County Appraisal District, 604 N. 1st, phone 864-3805.



Special award

Jim Hudson of the Haskell County Junior Livestock Association presented a special award Saturday to Mrs. R. C. Couch, Jr. whose late husband was a long time supporter of the Livestock Show and sale.

Knox County Vegetable Coop is now contracting onion and cabbage growers for the 1988 crop year. All farmers interested in growing these vegetables contact David Gray or Ellen Wulf at 422-4587 day or night or come by the Vegetable Shed office from 9-11 Monday thru Friday. This acreage is limited to 300 acres. If you are interested it is important to make arrangements in the very near future.

February 4-5-6

Mix or Match Parade

Whole Kernel Corn, Cream Style

Golden Corn, Cut Green Beans, 303 can

Sweet Peas, Sliced Carrots,

Sliced Beets

4 for 99¢

Wolf Chili 19 oz can

99¢

Kleenex

250 Count Box

\$1.09

The Convenience Store with Competitive Prices



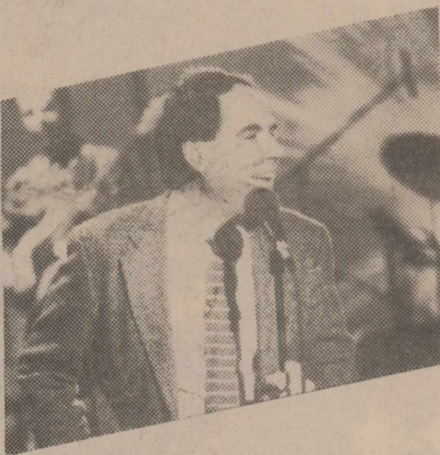
Buster's Drive-In

Your home owned convenience store

John Lee Wilde Building Company

New Home Construction
Remodeling
All types of concrete work

422-4650 Munday



TONIGHT ON CABLE
ROBERT KLEIN TIME

No more Sunday evening TV doldrums with Robert Klein on the scene! Head into Monday with a comedy high from Robert and his guests, on cable's USA Network.

SUNDAY AT 9:00PM
CHANNEL 3

USA NETWORK

Harmon Cable Communications New Phone Number: 1-800-527-4331

HOMESTEAD EXEMPTIONS



CAN LOWER THE PROPERTY TAXES ON YOUR HOME

A homestead exemption lowers the property taxes on your home by lowering its taxable value. For example, if your home is valued at \$50,000 and you receive a \$5,000 homestead exemption, your home will be taxed as if it were worth only \$45,000.

You qualify for a homestead exemption if you owned your home on January 1 and used it as your primary residence on January 1. It doesn't matter whether your home is a house, a condominium or a mobile home.

Exemptions are available to all homeowners on their school taxes. Additional exemptions are available to homeowners who are disabled or age 65 and over. Other exemptions may be offered to homeowners by school districts, counties, cities, and special districts. All taxing units offer exemptions to disabled veterans.

Apply to your local appraisal district office at the address shown below for all exemptions you may qualify for. Application forms are available at this office.

If you received a homestead exemption on your present home in 1987, you won't need to apply again for 1988 unless the chief appraiser requires you to reapply.

However, if you passed your 65th birthday or became disabled before January 1, file a new application to receive the additional exemptions.

If you haven't received an exemption on your present home, or if you've moved to a new home, make a new application for 1988.

The deadline for applications is April 30, 1988. Contact your appraisal district before then if you need more time.

For more information, get a free copy of the pamphlet, *Taxpayers' Rights, Remedies, Responsibilities*, at your appraisal district office or from the State Property Tax Board in Austin.

Haskell County Appraisal Dist.

604 N. First
(817) 864-3805
Haskell, Tx. 79521

State Property Tax Board

Box 13000 Austin 78711-3000

"Sizzling Specials" From Your Legend Pharmacy

The Legend Guarantee: We are positive that you will be pleased with our Legend products. If you are not completely satisfied with any product, regardless of reason your entire purchase price will be cheerfully refunded.

Legend Multi-Symptom Cough/Cold Formula 4 oz. 3.99

Legend Milk of Magnesia 16 oz. 2.69

Legend Non-Aspirin Extra Strength Pain Reliever 500 MG 50 Caplets 2.99

Legend Expectorant Cough Formula 4 oz. 1.79

Legend Alkums 150's 3.29

Legend Non-Aspirin Pain Reliever 325 MG 100 Tablets 2.99

Legend Iron Tablets (Ferrous Sulfate) 100's 1.99

Legend Thera M Multivites W/Minerals 130's 4.99

Legend Vitamin C 500 MG 100's 1.99

Legend Thermometers Baby Oral Rectal 2.59

Johnson PRESCRIPTION PHARMACY

418 N 1st Haskell 864-3331

SEE US FOR ALL YOUR PLUMBING & HEATING-COOLING PROBLEMS

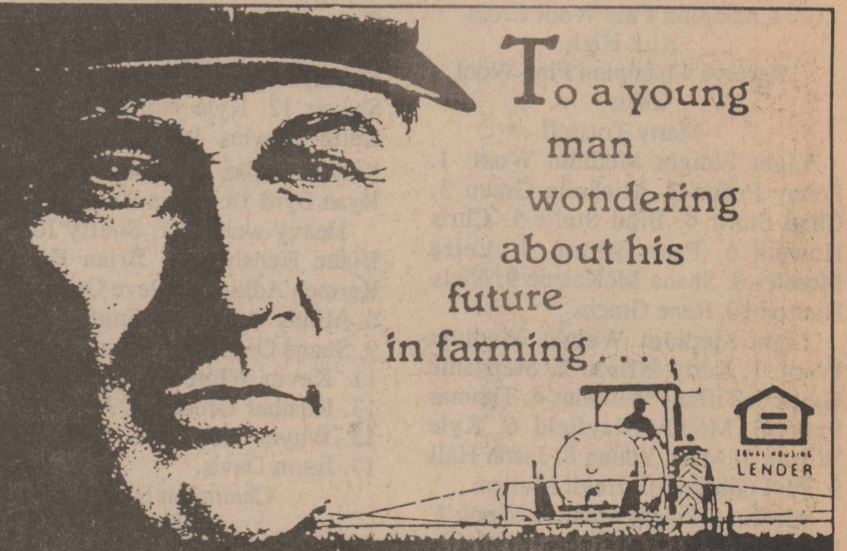
REMODELING • WATERMANS INSTALLED
ALTERATIONS • HOT WATER HEATERS
PUMPS • SEWERS & DRAINS
ELECTRICALLY CLEANED
"Estimates Gladly given"

Rheem Heating & Cooling

Nanny Plumbing

864-3043 Haskell 301 S. Ave E

Licensed Air Conditioning Contractor #TACLB006602



To a young man wondering about his future in farming...

Like your dad and your grandfather, one thing you'll need is a dependable source of long-term credit. A source that sticks with you through good times and bad... doesn't panic and pull back when things get a little tough. For generations that source has always been the Land Bank.

When long-term credit is the answer, stop by and see how the Land Bank can help you.

Federal Land Bank Association of Haskell

Dale Bullinger - President
Telephone 864-2062



Part of the Farm Credit System



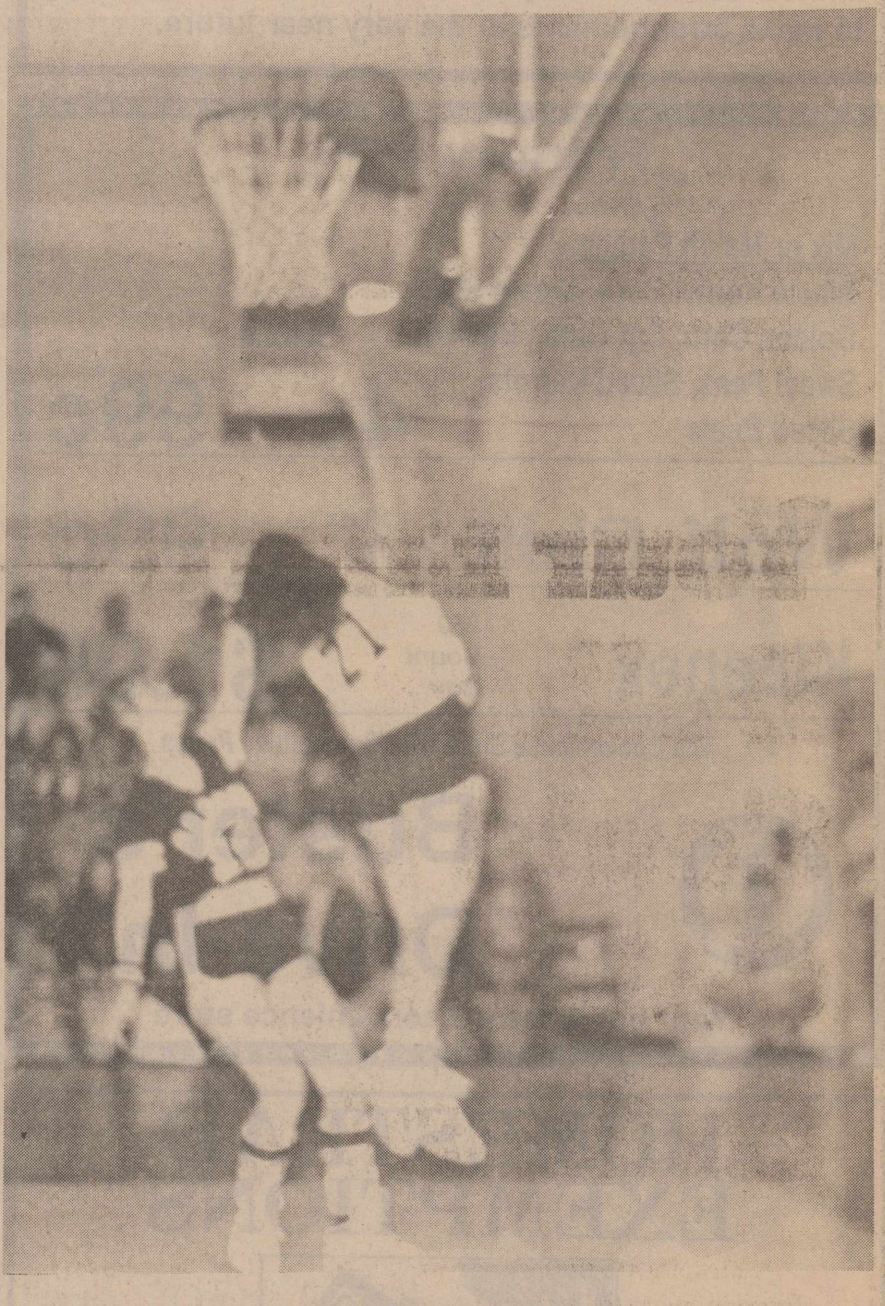
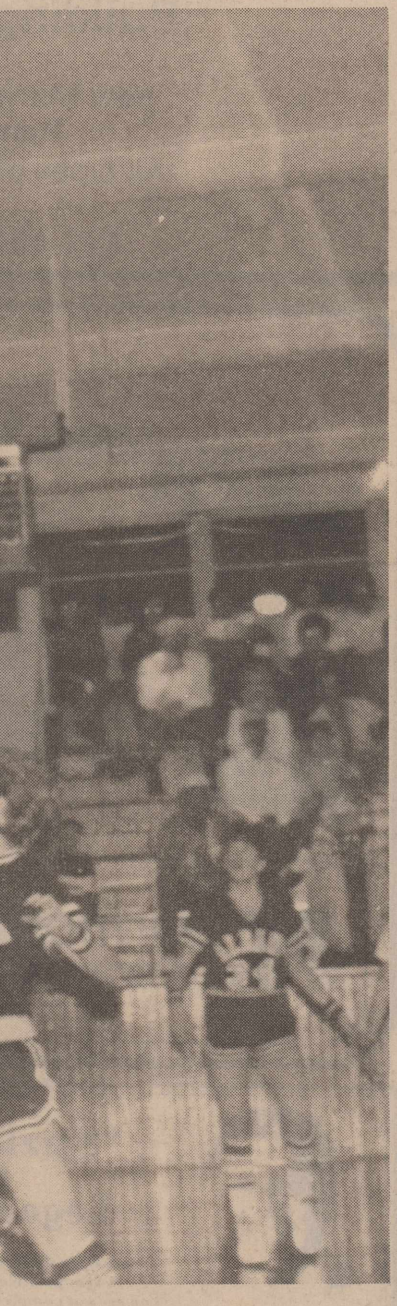
Livestock show winners

Haskell vs. Albany

Rabbits
Jr. White Doe
 1st Denny Tibbits, 2nd Jonathan Lammert.
Sr. White Doe
 1st John Cannon, 2nd Mondy Mayfield, 3rd Joe Salinas, 4th Monday Mayfield, 5th Michael Salinas, 6th Jonathan Lammert, 7th Lolo Martinez, 8th Bobby Medford, 9th Chance Williams.
Jr. Colored Doe
 1st Jonathan Lammert, 2nd Asa Jillson, 3rd Johnny Hoadley, 4th Johnny Hoadley.
Sr. Colored Doe
 1st Mondy Mayfield, 2nd Tony Martinez, 3rd Jonathan Lammert, 4th Lolo Martinez, 5th Jonathan Lammert, 6th Mary Martinez, 7th Ela Jillson, 8th Michael Salinas.
Best Doe
 John Cannon
Jr. White Buck
 1st Denny Tibbits, 2nd Johnny Hoadley, 3rd Johnny Hoadley.
Sr. White Buck
 1st Joe Salinas, 2nd John Cannon, 3rd Mondy Mayfield, 4th Michael Salinas, 5th Bobby Medford, 6th Robert Ortiz, 7th Traci Sanders.
Jr. Colored Buck
 1st Bobby Medford, 2nd Chuck Hudspeth, 3rd Jonathan Lammert.
Sr. Colored Buck
 1st Jonathan Lammert, 2nd Johnny Hoadley, 3rd Asa Jillson, 4th Johnny Hoadley, 5th Bobby Medford, 6th Stephen Andrada
Best Buck
 Joe Salinas
Best of Show
 Joe Salinas
Best Opposite Sex
 John Cannon
Fryer Rabbits
 1st Jonathan Lammert, 2nd John Cannon, 5th Bobby Medford, 7th Tony Martinez, 9th Joe Salinas, 10th John Cannon.
Broilers
 1st Kody Wilson, 2nd Kyle Wilson, 3rd Tracie Sanders, 4th Michael Hester, 5th Shane Stout, 6th Wayne Hester, 7th Brian Holmes, 8th Michael Salinas, 9th Jason Torres, 10th Rueben Salias, 11th Roy Helms, 12th Charles Helms.
SHEEP
Light Weight Fine Wool: 1. Jennifer Comedy 2. Jason Hall 3. Roman Morgan 4. Dane Morgan 5. Shannon Langford 6. Chris Cockerell 7. Rodney Tsoodle 8. William Green.
Medium Weight Fine Wool: 1. Kim Gilly 2. Kirk High 3. Dalyn Gilly 4. Charlie Parks 5. Pete Torres 6. Marty Trussell 7. Stony Trussell 8. Gina Calk.
Heavy Weight Fine Wool: 1. Kirk High 2. Kirk High 3. Alexy Hearn 4. Jennifer Comedy 5. Shana McKenzie 6. Spivey Jones 7. Gina Calk 8. Gina Calk.
Champion Fine Wool
 Heavy Weight
 Kirk High
Reserve Champion Fine Wool
 Medium Weight
 Kim Gilly
Light Weight Fine Wool Cross: 1. Chris Howeth 2. Kim Gilly 3. Penny Peden 4. Thomas Parks 5. Johnie Billington 6. Kristen Campbell 7. Leiza Morales 8. Shanna Murphy.
Heavy Weight Fine Wool Cross: 1. Kirk High 2. Marty Trussell 3. Kirk High 4. Jennifer Comedy 5. Cayce Reed 6. Gina Calk 7. Gina Calk 8. Cina Calk.
Champion Fine Wool Cross
 Kirk High
Reserve Champion Fine Wool Cross
 Marty Trussell
Light Weight Medium Wool: 1. Penny Peden 2. Michelle Green 3. Chad Stulir 4. Brad Stulir 5. Chris Howeth 6. Paul Gibson 7. Leiza Morales 8. Shana McKenzie 9. Niels Nielsen 10. Rene Gracia.
Light Medium Weight Medium Wool: 1. Kody Wilson 2. Stephanie Green 3. Tiffany Williams 4. Thomas Parks 5. Mondy Mayfield 6. Kyle Wilson 7. Mark Young 8. Jason Hall 9. Paul Gibson 10. Heidi Mullen.
Medium Weight Medium Wool: 1. Dalyn Gilly 2. Kirk High 3. Mondy Mayfield 4. Spivey Jones 5. Jennifer Comedy 6. Stephenie Green 7. Thomas Parks 8. Snuffy Jones 9. Tanner Childress.
Heavy Medium Weight Medium Wool: 1. Kirk High 2. Kim Gilly 3. Leiza Morales 4. Jennifer Comedy 5. Charlie Parks 6. Leiza Morales 7. Stony Trussell 8. Janet Quade 9. Brian Hearn 10. Alexy Hearn.
Heavy Weight Medium Wool: 1. Kirk High 2. Dalyn Gilly 3. Stephanie Green 4. Spivey Jones 5. Alexy Hearn 6. Philip Quade 7. Gina Calk 8. Snuffy Jones 9. Gina Calk 10. Gina Calk.
Champion Medium Wool
 Medium Weight
 Dalyn Gilly
Reserve Champion Medium Wool
 Heavy Weight
 Kirk High

Southdown: 1. Kim Gilly 2. Dalyn Gilly 3. Kirk High 4. Stephanie Green 5. Michelle Green 6. Kirk High 7. Alexy Hearn 8. Brian Hearn 9. Gina Calk.
Champion Southdown
 Kim Gilly
Reserve Champion Southdown
 Dalyn Gilly
Grand Champion of Show
 Dalyn Gilly
Reserve Grand Champion of Show
 Kirk High
Showmanship Award
 Kirk High
STEERS
Class I. 1. Faye Mullino 2. Dalyn Gilly 3. Chris Carver 4. Kim Gilly 5. Stacy Bevel.
Class II. 1. Brad Bevel 2. Tommy Casey 3. Jennifer Shaver 4. Tommy Casey 5. Ross Shaver.
Class III. 1. Kim Gilly 2. Faye Mullino 3. Michelle Scoggins 4. Tracy Landes 5. Jennifer Shaver.
Class IV. 1. Ross Shaver 2. Dalyn Gilly 3. Joseph Pace 4. J. Brad Bevel 5. Chad Gibson.
Class V. 1. Joseph Pace 2. Chad Gibson 3. Michelle Scoggins 4. Tracy Landes 5. J. Brad Bevel.
Class VI. 1. Mindy Ballard 2. Heather Stewart 3. Michelle Scoggins 4. Tracy Landes 5. Patrick Burson 6. Brad Bevel.
Class VII. 1. Heather Stewart 2. Justin Stewart 3. Mindy Ballard 4. Mondy Mayfield 5. Chris Carver 6. Shane Buchanan.
Class VIII. Matt Pace 2. Justin Stewart 3. Heather Stewart 4. Kirk High 5. Shane Buchanan.
Champion
 Matt Pace
Reserve Champion
 Mindy Ballard
Showmanship
 Joseph Pace
HEIFERS
Champion and Reserve
 Faye Mullino
DUROCS
Light weight: 1. Hughie Peiser 2. Jennifer Shaver 3. Chris Brown 4. Tracie Bevel 5. Ruben Lopez 6. Steven Klose 7. Corey Speck 8. Craig New 9. Shelly Briscoe 10. Ross Shaver 11. Kathleen Kutch 12. Phillip Manske 13. Mike Bailey.
Middle weight: 1. Jeffrey Hollingsworth 2. Kyle Hollingsworth 3. Faye Mullino 4. Laurie Hester 5. Holly Hobgood 6. Kevin White 7. Corky Speck 8. Kathleen Kutch 9. Kurt Sloan 10. Spivey Jones 11. Rod Jeter 12. Kevin White.
Heavy weight: 1. Justin Holcomb 2. Corky Speck 3. Melody Speck 4. Hughie Peiser 5. Alexy Hearn 6. Cole Callaway 7. Jay Miller 8. Wayne Hester 9. Shane Stout 10. Chance Williams 11. Brian Bevel 12. Stacie Bevel.
Champion Duroc
 Justin Holcomb
Reserve Champion Duroc
 Jeffrey Hollingsworth
Hampshire
Light weight: 1. Angela Hisey 2. Kurt Sloan 3. Mindy Ballard 4. Craig New 5. Craig New 6. Jeff Hollingsworth 7. Missy Davis 8. Paul Gibson 9. Kyle Hollingsworth 10. Tracie Bevel 11. Jeffrey Hollingsworth 12. Mondy Mayfield 13. Wes Pierce 14. Missy Davis 15. Bryan Cox 16. Steven Klose.
Middle weight: 1. Heather Hobgood 2. Jason Tanner 3. Sam Wyatt 4. Paul Leonard 5. Brad Bevel 6. Stacie Bevel 7. Kevin Saffel 8. Michelle Scoggins 9. Michael Murray 10. Traci Landes 11. Jennifer Shaver 12. Kyle Hollingsworth 13. Keith Bowles 14. Ryan Byrd 15. Steven Klose 16. Joey Mathis 17. Ryan Byrd 18. Justin Holcomb.
Heavy weight: 1. Snuffy Jones 2. Blake Henshaw 3. Brian Hearn 4. Karmen Adkins 5. Steve Quattlebaum 6. Mindy Ballard 7. Snuffy Jones 8. 9. Shane Osborne 10. Angela Adkins 11. Kevin White 12. Brian Manske 13. Heather Green 14. Rusty Stocks 15. Wayne Hester 16. Kevin White 17. Jason Davis.
Champion Hampshire
 Snuffy Jones
Reserve Champion
 Angela Hisey
OTHER PURE BREDS
Light weight: 1. Mitch Mayfield 2. Lance Sloan 3. James Wyatt 4. Heather Hobgood 5. Craig Rogers 6. Brian Hearn. 7. Snuffy Jones 8. Mondy Mayfield 9. Scott Wooldridge 10. Cole Callaway 11. Sam Wyatt.
Middle weight: 1. Michael Hester 2. Snuffy Jones 3. Craig New 4. J. Brad Bevel 5. Michael Hester 6. Shane Stout 7. Michael Murray 8. Rusty White 9. Rodney Johnson 10. Craig New 11. Laurie Hester 12. Derrick Billington.
Heavy weight: 1. Wayne Hester 2. Kellie Sprayberry 3. Holly Hobgood 4. Spivey Jones 5. Traci Landes 6. Laurie Hester 7. Shane Stout 8. Wes Pierce 9. Snuffy Jones 10. Craig Rogers 11. Derrick Billington.

Champion OPB
 Mitch Mayfield
Reserve Champion OPB
 Wayne Hester
CROSSES
Light weight: 1. Bryan Cox 2. Angela Hisey 3. Mindy Ballard 4. John Leonard 5. Snuffy Jones 6. Kevin Conner 7. Missy Davis 8. Ross Shaver 9. Melody Speck 10. Kyle Hollingsworth 11. Jeff Hollingsworth 12. Brad Bevel 13. Jay Miller 14. Derrick Billington 15. Kevin White 16. Rodney Medford.
Middle weight: 1. Michele Scoggins 2. Holly Hobgood 3. J. Brad Bevel 4. Jeff Hollingsworth 5. Keith Bowles 6. Tracie Bevel 7. Shane Stout 8. J. Brad Bevel 9. Kurt Sloan 10. Ryan Byrd 11. Brian Bevel 12. Mik Everett 13. Michael Hester 14. Kamen Adkins 15. George Mayen 16. Garland Medford 17. Adam Coleman.
Heavy weight: 1. Gia Henshaw 2. Spivey Jones 3. Mitch Mayfield 4. Heather Hobgood 5. Kellie Sprayberry 6. James Wyatt 7. Faye Mullino 8. Lance Sloan 9. Brian Holmes 10. Cole Larned 11. Gary Scheets 12. Angela Adkins 13. Chad Gibson 14. Ty Williams 15. Kevin White.
Champion Cross
 Gia Henshaw
Reserve Champion
 Michelle Scoggins
Grand Champion Barrow
 Gia Henshaw
Reserve Champion Barrow
 Michelle Scoggins
Champion Showmanship Swine
 Michelle Scoggins



Spend too much? take action now

If you're facing a stack of bills from the holidays that you can't pay, one of the worst things you can do is delay action, says a family economics expert.

"You'll be far better off to make efforts immediately to work out a payment plan with the creditor," advises Nancy Granovsky, a home economist with Texas A&M.

"Two of the most important factors to creditors is that they be paid regularly and one time," she explains. "Write a letter to the creditor as soon as possible and offer a monthly amount of payment that you know you can handle. The final decision will be up to the creditor."

"Before contacting creditors, review all of your more flexible expenses, such as the money spent on food or entertainment, to make sure they have been reduced as much as possible," Granovsky suggests. "You may find that by eliminating non-essentials you can increase the amount you can pay to reduce your debts."

If you have major debt problems, she recommends checking with a non-profit consumer credit counseling service office for assistance in working with creditors and organizing your debt.

"Taking out a consolidation loan

from a finance company or other financial institution to pay off credit bills is generally not recommended," Granovsky said.

"When bills are consolidated, it's easy for people to deceive themselves into thinking they aren't deeply in debt because the monthly payment is reduced. They forget the payments are simply being stretched out over a longer period of time and usually at the same rate of interest or more than they are currently paying on credit cards."

Since the consolidation loan pays off the original creditors, people may also be tempted to continue spending on credit cards, piling new bills on top of the old, cautions the specialist.

To avoid the same problem next year, the family economics specialist offers several suggestions:

- After you have paid this year's debt, start setting aside some money each month for holiday expenses.
- Evaluate this year's expenses and find ways to reduce them next year. For example, you may decide to cut back on the number or expense of gifts or reduce travel.
- Find alternatives to spending money, such as making gifts or planning "free" entertainment like caroling.
- Spread holiday spending over the year.

7th Warriors

By Bo Watson

The seventh-grade Warriors walked off with the championship trophy at the Haskell tournament last week.

Mark Jones, Cody Josselet and Joseph Rodriguez led the scoring in the tournament.

The Warriors defeated the Hawley Bearcats 47-13 as they kept their undefeated roll alive.

The unbeaten Warriors will face the Stamford Bulldogs here Feb. 8 at 4:30 p.m.

7th Maidens

By Sheree Dumas

The seventh-grade Maidens placed second in the Haskell Booster Club tournament last weekend.

Their first game was against Hamlin. The Maidens defeated them 23-20.

"They played real well throughout the entire game," Coach Walter Hargrove said.

During the championship game on Saturday, the Maidens lost to O'Brien.

Shanna McKenzie led the scoring with 5 points, followed by Sunny Lindsay with 3.

The Maidens once again fell short of a victory when they played Hawley Feb. 1. The Lady Bearcats defeated the Maidens 23-16.

High scorer for the Maidens was Holly Hobgood with 11 points.

"We were simply outthrustled," Coach Hargrove said.

Their final game for the season will be against Stamford Feb. 8. The game will be played in Stamford at 5 p.m.

JV Maidens

By Tiffany Moeller

The JV Maidens will attempt upping their record as they travel to Hawley. They will take on the Lady Bearcats in the fourth game of the second half of district play. The Maidens took on fierce rivals, the Stamford Lady Bulldogs, Tuesday night but scores were unavailable at press time.

Starting the second half of district competition, the Maidens battled Hamlin. The Maidens squeaked to a 34-30 victory. Shelia Unger had 12 points to lead all scorers, followed by Holly Reed with 6 points.

The Maidens then played hosts to the Albany Lionettes and were again victorious with a romping 38-28 final score. Unger again had the hot hand with 12 points, followed by Gloria Castillo with 10 points.

Rule Mason gets 50-year pin

Allen Davis of Rule received his 50th anniversary pin recently at the 91st Masonic district meeting held in Haskell.

It was presented by Joe Roberts of Munday, who was assisted by C. T. Pierce, Boyd Baird and J. N. Cornelius of Rule.

Haskell teams rip Stamford

Haskell basketball teams defeated Stamford here Tuesday night to keep their second-half unbeaten district records alive.

Both the Indians and Maidens are now 3-0 in district play, while the Stamford teams, first-half champions, saw their teams' records drop to 2-1.

But Haskell must travel to Hawley Friday night to take on that school's teams. Both Hawley teams also stand 3-0 in second-half district play.

The district season comes to an end next Tuesday when the Indians and Maidens travel to Anson.

Indians

The Haskell Indians brought their second-half district record to 3-0 here Friday night with a 55-49 victory over first-half champion Stamford.

It was the Indians' 20th victory of the season, against only four losses.

To win the crucial contest, the Indians had to come from behind in the final quarter as they overcame a 43-40 Bulldog lead by scoring 15 points in the fourth period while

holding the visitors to 6.

The game was nip and tuck all the way with the lead changing hands numerous times. Stamford led 13-11 at the end of the first quarter, but the Indians were ahead 28-26 by halftime.

After the Indians went up by 8 points in the third period, the Bulldogs stormed back to overtake them. But Haskell pulled away in the final frame.

Dusty Meeks and James Rike scored 14 and 12 points respectively to pace the Indian attack.

Haskell defeated Albany 73-54 here last Friday. The Indians led all the way in taking the easy victory.

Meeks led the scoring with 19 points, while Brad Bevel had 18. Mark Young also was in double figures with 11 points.

Maidens

The Haskell Maidens took out sweet revenge on the only district team to defeat them this year when they stormed past the Stamford Lady Bulldogs 52-34 here Tuesday night.

In bringing their second-half

district record to 3-0, the Maidens found themselves in a tie with Hawley for first place in 7-2A standings.

The Maidens are now 20-4 for the season.

Haskell jumped out front early and was never seriously threatened. The Maidens led 10-6 at the end of the first period, and 24-15 at halftime. The score at the three-quarter mark was 40-26.

Joy McKeever scored 20 points to pace the Maiden scoring. Missy Davis scored 12 and Robyn Weaver had 10.

The Maidens crushed Albany 53-30 here last Friday in another 7-2A contest. They bolted to a 22-3 lead in the first period and then coasted to the one-sided victory. Sheree Dumas scored 10 points to top the scoring.

District 7-2A remains as is

District 7-2A was one of few districts in the area to be left intact last week when the University Interscholastic League announced the alignments for the next two years.

For football, basketball and volleyball, district 7-2A will continue to include Haskell, Albany, Anson, Hamlin, Hawley and Stamford.

In six-man football, Rochester and Weinert will be in district 9, while Paint Creek and Rule will be in district 11.

Class 2-A schools are those with enrollments between 145 and 299. Six-man schools have fewer than 95 students, but those eligible for six-man competition may choose to compete in Class 1-A.

Winner of the all-time greatest good housekeeper award: It's said Hercules, the hero of Greek mythology, washed the huge stables of King Augeas, which had not been cleaned out for many years, by making two rivers flow through them.

Basketball organization ready to go

Haskell Youth Basketball had its organizational meeting last Wednesday and named Conrad Roewe as president. Jim Bob Mickler is vice president, Debbie Burson is secretary-treasurer and Charles Thornhill is reporter. Head referee will be Ricky Rojas. Betty McDermott will be in charge of the door.

Tryouts and drafts were to get underway at 5 p.m. Wednesday for girls and at 6 p.m. today (Thursday) for boys. The season begins Feb. 18 with introduction of all players.

To encourage sportsmanship by players and coaches, a sportsmanship trophy will be awarded to each player of a team selected by all players at the end of the season. The idea was overwhelmingly approved at Wednesday's meeting.

Rule chamber names speaker

The Rev. Mike Herrington of Freer will be speaker at the April 5 banquet of the Rule Chamber of Commerce.

He is a former pastor of the First Baptist Church in Rule.

Bobby Robinson's drama class at Rule High School will provide the entertainment.

During the banquet, the chamber will announce the man and woman of the year, as well as the outstanding boy and girl students.

30% DISCOUNT 30%

SUPERIOR HOME EXTERIORS, INC.
4051 West Lake Rd. FM 600
Abilene, Texas 79601
(915) 676-0051

The Complete Home Improvement Company
Call Collect - Ask for
References on completed jobs in your area
Replacement Windows • Patios • Carports • Insulation
100% Financing No down Payment

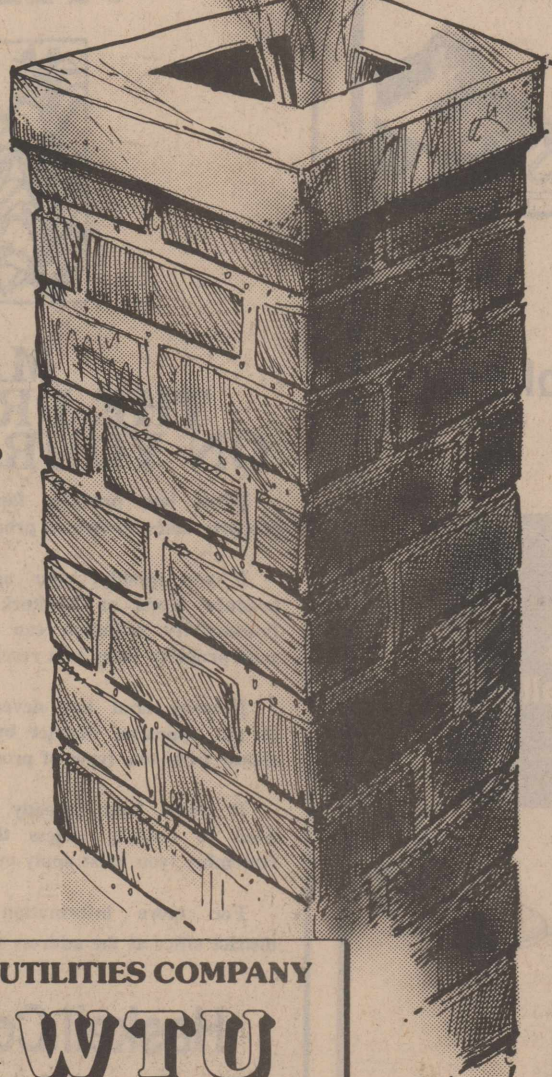
30% DISCOUNT 30%

Your Energy Dollars Could Be Going Up In Smoke!

Fireplaces are built to draw. Even when there's no fire, this massive column is drawing air from inside your home — air you have paid to heat.

Closing the damper in your fireplace when it's not in use keeps winter heat from escaping up your chimney. This reduces the natural draft created by warm air inside the house as it rises. It also prevents any down drafts.

A glass fireplace cover can also help save you energy and money by decreasing the amount of inside air going up the chimney. When selecting glass door covers check for the following: air tightness, glass thickness (3/16" to 1/4"), frame strength, frame insulation and be sure they are heat tempered.



WEST TEXAS UTILITIES COMPANY
An Equal Opportunity Employer
WTU
A Member of The Central and South West System

Serving you with dependable electrical energy from the Red River to the Rio Grande.

Hatfield Roofing

Commercial and Residential

30 yrs. experience

864-2165
Haskell, Texas

VOTE FOR John L. (Bud) Grand

Commissioner
Precinct #1
Democratic Primary March 8, 1988

(Political Advertising Paid for by John L. Grand-Treasurer)



Our financial muscle can help you pull ahead.

What are your needs and dreams? A home improvement? A business of your own? A vacation? A college education for the kids? We're here to help. By putting our financial weight behind your hard work, we can help you accomplish your goals.

You'll find we offer competitive interest rates on all types of loans. Because we're a community bank, you'll find us comfortable folks to deal with. And you'll find you get your answer fast.

Pulling together. It's the best way to move ahead.

You Know Us. We Know You.
Your Community Partner

HASKELL NATIONAL BANK

Member F.D.I.C.
601 N. 1st Haskell, Texas 864-2631

--Obituaries--

Clay Pogue

Clay Pogue of Conroe, 17-year-old grandson of Mr. and Mrs. Bud Pogue of Haskell, died in a two-car accident near Conroe Saturday, Jan. 23.

Funeral services for the high school student were held Jan. 25 at Oakridge Baptist Church in Conroe. Burial was in the Conroe Cemetery. Born Dec. 13, 1970, in Winnsboro, he was the son of Mr. and Mrs. Perry Pogue of Conroe. He was a member of the Oakridge Baptist Church.

Other survivors include a sister, Cari Pogue of Conroe, and his maternal grandparents, Mr. and Mrs. H. Thompson, formerly of Rotan.

Hoie Harrell

Funeral services were held Friday afternoon in the Haskell Church of Christ for Hoie Harrell. He was 79.

Harrell died Wednesday morning (Jan. 27) in an automobile accident eight miles northwest of Haskell.

Charlie Basing and Dale Huff officiated at the services. Burial, under direction of Holden-McCauley Funeral Home, was in Willow Cemetery.

Pallbearers were Wayne Bradford, Randy Phemister, Billy Middlebrook, Ronnie Tanner, Billy Jack Ray, Bill

Shaw, John Sam Rike and Wes Jones.

A retired farmer, Harrell was born Jan. 24, 1909, in Houston, Ark. He came to Haskell in 1917. Her served several years as a director of the Haskell Co-op Gin and had served as a deacon of the Church of Christ.

He was married to Blanche Long in Lawton, Okla., on May 24, 1960. She survives him.

Other survivors include three daughters, Frances L. Bowen of San Angelo, Wanda Long Ottmers of Longview and Glenda Kay Reed of Roswell, Ga.; a son, Jimmy Don Harrell of Plainview; two sisters, Dovie Harrell Carroll of Hale Center and Violet Harrell Allen of Haskell; 13 grandchildren and 11 great-grandchildren.

He was preceded in death by a son, Donald Royce Harrell, on Sept. 6, 1951, two brothers and two sisters.

Addie Lee Brown

Addie Lee Hayes Brown, formerly of Haskell, passed away Jan. 17 at her home in Bellaire, Texas.

She was a 1937 graduate of Haskell High School and a 1941 graduate of Houston Beauty College.

Services were held Jan. 20 at Christian Temple Assembly of God Church with the Rev. O. C. Bates officiating. Interment was in South

Memorial Park Cemetery.

She is survived by her husband, Nealy O. Brown; a daughter, Neala Ann Hardie; a son, Jerry Brown; a brother, S. M. Hayes of Carlsbad, N.M.; three sisters, Lorene Adams of Haskell, Christine Hancock of Benton, Ark., and Cora Faye Starr of Pamona, Calif.; and three granddaughters.

Fund raiser nets \$600 for Noah

The Super Bowl may have been a disaster for Denver, but it was a big success for the Noah Project North which held a fund raiser in connection with the game.

Betsy Nanny, project coordinator, said more than \$600 was raised to support the local project.

Rocky Underwood of Stamford was the winner of a half beef in the contest. There were 100 entries from five counties served by the Noah Project.

The Noah Project is a program designed to assist victims of family violence. It serves clients from Haskell, Knox, Stonewall and Throckmorton counties, as well as Stamford in Jones County. In operation since September, it serves an average of 30 clients per month.

The Noah Project operates a 24-hour hotline (817-864-3972).

Nelda Lane of the fund-raising committee expressed appreciation to all who supported the contest. "We couldn't do this without the support of the communities," she said.

Did you know?

To remove odors from smelly bottles, pour a little hot water with a generous pinch of mustard powder. Shake and let stand overnight. Then rinse with hot water.

Honor roll announced

Honor rolls for the third six weeks and for the first semester were announced this week by the Haskell secondary school.

Honor students are
Third Six-Weeks "A" Honor Roll

Seventh Grade: Brooke Baker, Nichole Cothron, Cindy Henry, Holly Hobgood, Mark Jones.

Ninth Grade: Tiffany Bradford, Craig Hanson, Rod Jeter, Rusty Stocks, Shelia Unger.

10th Grade: Davis Chapman, Kyle Darden.

11th Grade: Gina Turnbow.

12th Grade: Wayne Geilhausen, Kirk High, Sharla Jetton, Steven Klose, Matt Lane, Michael Rodriguez.

First Semester "A" Honor Roll

Seventh Grade: Brooke Baker, Holly Hobgood, Mark Jones, Stacey Martin, Marsha Moore.

Eighth Grade: Chris Tanner.

Ninth Grade: Tiffany Bradford, Amanda Diaz, Rod Jeter, Rusty Stocks, Shelia Unger.

10th Grade: Davis Chapman.
11th Grade: Alberto Alvarez, Joy McKeever.

12th Grade: Sheree Dumas, Wayne Geilhausen, Kirk High, Sharla Jetton, Steven Klose, Matt Lane, Michael Rodriguez.

Third Six Weeks A-B Honor Roll

Seventh Grade: Michele Espinoza, Susan Jarred, Cody Josselet, Erika Kilgore, Stacey Martin, Shana McKenzie, Marsha Moore, Sarah Mullen, Joseph Rodriguez, Shawn Sanford, Bonnie Silvas.

Eighth Grade: Misti Bartley, Jeffrey Brister, Denise Collins, Kim Gilly, Amanda Mamykon, Deanna Scheets, Emily SoRelle, Chris Tanner.

Ninth Grade: Dusty Burson, Becky Cline, Adam Coleman, Amanda Diaz,

Nole Hadaway, Jason Hall, Erik Harvey, Chris McGhee, Steve Quattlebaum, Wendi Watson.

10th Grade: Sylvia Alvarez, Missy Davis, Julie Nanny, Missy Phemister, James Rike, Marty Trussell, Joann Villa.

11th Grade: Alberto Alvarez, Christi Bartley, Sam Beakey, Derrick Billington, Kristi Brister, Gloria Castillo, Gena Decker, LaKay Gibbs, Dalyn Gilly, Chan Guess, Loutina Hadaway, Dala Harris, Gia Henshaw, Cole Larned, Joy McKeever, Bobby Medford, Corye Mills, Eric Mullen, Kacye Nemir, Tony Ozuna, Penny Peden, Teresa Rodriguez.

12th Grade: Lorie Alvarez, Tamra Burnett, Kristen Campbell, Vicky Chavez, Donna Chesnut, Lori Darden, Sheree Dumas, Bruce Geilhausen, John Halliburton, Lori Lane, Elizabeth Lopez, Marty Martinez, Rusty Meeks, Tiffany Moeller, Leiza Morales, Shanna Mueller, Tammi Pannell, Vance Roberts, Sandra Thornhill, Robyne Weaver, Jason Whitehead, Mark Young.

First Semester A-B Honor Roll

Seventh Grade: Nichole Cothron, Michelle Espinoza, Cindy Henry, Susan Jarred, Cody Josselet, Erika Kilgore, Sunny Lindsey, Shana McKenzie, Sarah Mullen, Joseph Rodriguez, Shawn Sanford, Bonnie Silvas, Deanne Wallace.

Eighth Grade: Misti Bartley,

Jeffrey Brister, Denise Collins, Kim Gilly, Amanda Mamykon, Heath McMeans, Deanna Scheets, Emily SoRelle, Jay Williams.

Ninth Grade: Dusty Burson, Cole Callaway, Becky Cline, Nole Hadaway, Jason Hall, Craig Hanson, Erik Harvey, Chris McGhee, Wendi Watson.

10th Grade: Sylvia Alvarez, Kyle Darden, Missy Davis, Tonya Isbell, Julie Nanny, Missy Phemister, James Rike, Holly Reed, Marty Trussell, Joann Villa.

11th Grade: Christi Bartley, Sam Beakey, Derrick Billington, Kristi Brister, Gena Decker, LaKay Gibbs, Dalyn Gilly, Chan Guess, Loutina Hadaway, Dala Harris, Cole Larned, Bobby Medford, Kacye Nemir, Tony Ozuna, Gina Turnbow.

12th Grade: Lorie Alvarez, Tamra Burnett, Kristen Campbell, Vicky Chavez, Donna Chesnut, Lori Darden, Russ Flanary, Bruce Geilhausen, Elizabeth Lopez, Marty Martinez, Rusty Meeks, Tiffany Moeller, Shanna Mueller, Tammi Pannell, Patrick Perez, Vance Roberts, Sandra Thornhill, Robyne Weaver, Jason Whitehead, Mark Young.

Did you know?

Books are so called from the German *buche* meaning a beech tree, since beech bark was used for writing on before the invention of printing.

Re-Elect T. C. (Tim) Burson

Commissioner Precinct #1

Your Support and Influence Appreciated!

(P. Pol. Adv. Paid for by T. C. Burson, Camp. Treasurer)

Questions about the sweeping tax changes?

H&R Block has the answers.



Everybody's asking questions about the most sweeping tax changes in history. Our experienced preparers know the answers. We know the new laws and the new forms. We'll save you every dollar possible. And, you'll get the biggest refund you have coming! If there's ever a time for H&R Block, it's now.

H&R BLOCK DON'T FACE THE NEW TAX LAWS ALONE.

East Side Square Haskell, Texas Phone 864-3087
Hours: 9 a.m. to 5 p.m. Monday thru Friday
Appointments Available (Saturday by appointment also)

Tax Time!



Good old-fashioned tax time.

Tax time, tax time.

Has the sum total of your tax indebtedness struck a low blow, right in your checking account?

The travails of tax time take their toll for a lot of us. That's when we're ready to come to your aid. If you find yourself in a financial pinch, our low-interest tax loans are designed to help. It's the easy way to take care of the trials and tribulations of tax time.

Come talk to us today!



Post Office Box 10
Phone (817) 997-2216
Rule, Texas 79547

The Farmers NATIONAL BANK

AUCTION

LOCATION

BIG COUNTRY BAPTIST ASSEMBLY

1 Mile East of Lueders at Highway 6 & FM 142

SATURDAY FEBRUARY 6TH 10:00 AM

- 3 bedroom (14x60) Sequoia mobile home
- 2 buildings to be moved - approx. 30x30 & 30x40
- 22 ft. StarCraft offshore boat w/tandem trailer
- 83 ATV 3 wheeler w/trailer
- 40x14 Army kitchen tent w/poles & instructions (w/flaps up extends another 12 ft.)
- Pickup bed maintenance trailer
- Hobart mixer - 60 qt.
- Stainless steel coffee maker
- Potato peeling machine
- Large coffee maker
- Ice cream storage box w/sliding top
- Hot chocolate machine
- Ice machine
- Double reach-in refrigerator (5 yr. warranty)
- New Star popcorn machine w/5 gal. oil & 100# corn
- Upholstered restaurant chairs
- Folding chairs
- Syracuse restaurant china
- Roll-away silverware tray holders
- Vacuum cleaner - carpet shampooer
- Earth woodburning stove
- Evaporative cooler
- 100 gal. latex house paint
- Old dishes
- Old kitchen utensils
- Crocks
- Iron bedstead
- Antique dresser w/beveled mirror
- Old rockers
- Antique chest
- Cast iron bath tub legs
- Antique gas range
- Treadle sewing machine
- 3 antique pianos
- 22 cal. antique Mossberg w/Jensen telescope
- 6 oak desks
- Bi-fold garage doors
- Snow skis
- Foot lockers
- Ceiling fans
- Several pieces of modern type furniture
- Bunk beds & mattresses
- Hollywood frames
- Steel beds - single & double.

MANY, MANY OTHER ITEMS!

GERALD LAWRENCE AUCTION CO.

Abilene 915/676-2332 or 673-8527-TXS-018-006812



HEY!!



Little Dribblers

If you Play in Little Dribblers We Will Give you a

FREE

Pair of Team Color Socks With Each pair of Basketball Shoes Purchased

Basketball Check List

- ✓ Shorts
- ✓ Sweats
- ✓ Sweat Bands
- ✓ Balls - All sizes
- ✓ Goals
- ✓ Knee Pads

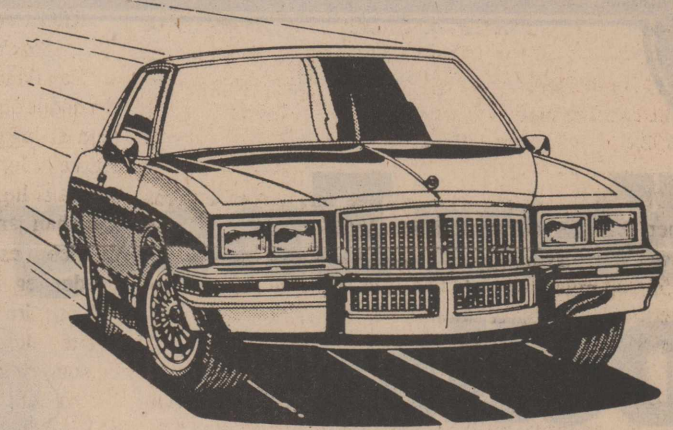


Conrad Rowe's Sport-About of Haskell



817-864-3891
402 N 1st
Haskell, Tx. 79521

See Motor Trend Magazine's Car of the Year PONTIAC Grand Prix



Grand Prix LE

Medford

Buick-Pontiac-GMC

200 N. Ave. E Haskell Phone 864-2644

LAND PRODUCTIVITY VALUATION



MAY LOWER THE PROPERTY TAXES ON YOUR FARM OR RANCH

Texas law provides farmers and ranchers with a way to lower their property taxes, known as productivity valuation.

If you qualify, your agricultural land will be taxed on its capacity to produce crops or livestock, instead of its value on the real estate market. Productivity valuation can lower the taxable value of your land, and lower your property taxes as a result.

If your land has never received productivity valuation, you must apply to the appraisal district by April 30 to get tax benefits for 1988. You can choose from two types of productivity valuation.

If your land already receives open-space (1-d-1) valuation, you don't need to reapply unless the chief appraiser requires you to reapply. But remember, you must apply every year for ag-use (1-d) valuation.

For more information and application forms, contact the appraisal district office at the address shown below:

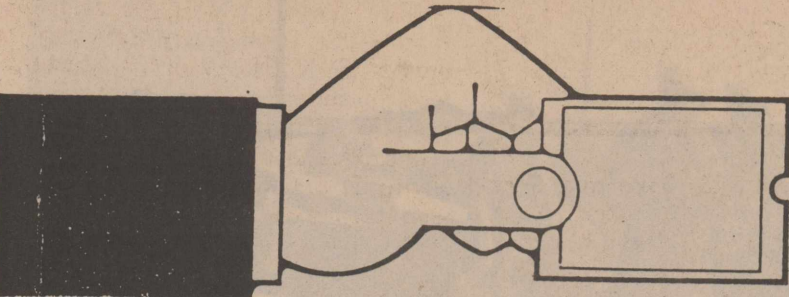
Haskell County Appraisal District

604 N. First (817) 864-3805
Haskell, Texas 79521

State Property Tax Board

Box 15080 Austin 78761-5080

THE CLASSIFIEDS



YOUR TICKET
TO
JOBS
HOMES
EVERYTHING

NOTICE
The Haskell Free Press reserves the right to edit and/or delete all news stories and locals for length and liability and to refuse to print anything deemed not newsworthy.

NOTICE
The deadline for Classified Advertising is 12 noon on Tuesday.
Haskell Free Press

For Sale
FOR SALE: 1983 Chevrolet 4 door Impala. Automatic, air, extra clean. See at 601 N. Av L or call 864-3885. 5p

FOR SALE: Chromcraft glass table and 6 cane chairs, Simmons hide-a-bed sofa, Whirlpool refrigerated air conditioner. All in excellent condition. Rhonda Lisle 864-3820. 5p

MOBILE HOME: 1983 14x60 2 bedroom, 1 bath, central air and heat, take up payments or for sale to be moved. 817-849-6071. 5-6c

PORT-A-BLOCKS. 20"x20" or 36" by 36" for patio or sidewalk. Phone 864-2721. 5fc

WOW! New dresser, mirror, headboard, chest, nightstand and frame with full-sized reconditioned bedding...All for \$399.00! Financing available. Boggs & Johnson Furniture, Haskell, 864-2346. 5-6c

FARMERSVILLE ONIONS at Ben McGee's The Lumber Yard in Haskell, 864-3552. 5-6c

FOR SALE: 1984 Buick Regal Limited. Leather seats, AM/FM Cassette, power everything, cruise and tilt. 55,000 miles, wire wheels. Inquire at Kinney's in Stamford. Phone 915-773-2232. 3fc

FOR SALE: 1/4 interest in Cessna 172. 1958 model. Phone 864-3397 after 6 p.m. Sam Wester. 3-5c

Our Classifieds Measure Up!

For Sale
PRESCRIPTIONS, Cosmetics, Gifts. Shop Johnson Pharmacy where the savings are real. 38fc

FOR SALE: 5/8-3/4-7/8 sucker rods. Call 864-2721. 38fc

SHAKLEE Products, 100% NATURAL VITAMINS herb lax, food supplements and cosmetics. Products in stock at 300 N. Av H. 864-3330. Free deliveries in Haskell 26fc

WATER WELL Drilling; House well, stock, irrigation wells, test holes. Call W. P. Hise 864-3727 Haskell, Tx. (Day or night). 7fc

FOR SALE: 1983 mobile home. 14x70. 2 bedroom, 2 bath. Central heat and cooling. Nice. Best offer. 817-673-8233 or 817-673-8283. 52fc

FOR SALE: 1983 4-door Mark VI. One of the last 4 door Mark VI made. 50,000 miles. New tires. Henry Druessedow, 864-3642. 3-5p

FARMERSVILLE ONIONS at Ben McGee's The Lumber Yard in Haskell, 864-3552. 5-6c

FOR SALE: 24' travel trailer fully self-contained or 16' deck boat to sell or trade for a tractor of equal value. 817-997-2394 or see 6 miles west of Haskell. 5c

FOR SALE: 1988 World Book Encyclopedia for a limited time only. Sales representative, Esther Conn, 817-658-3904 or Box 73, O'Brien, Texas 79539. 5-7c

FOR SALE: 1988 Dirt mover, 5 yards. Call 864-3566. 5-6

VALUE! New table, 4 chairs, and small china cabinet in Oak finish...all for \$499.00! Financing available. Boggs & Johnson Furniture, Haskell, 864-2346. 5-6c

FOR SALE: 1981 Chevrolet El Camino. Auto, V6, power and air, tilt wheel, cruise, real clean, 56,000 miles. Good rubber. Call 864-2208 or 864-8427. 3fc

FARMERSVILLE ONIONS at Ben McGee's The Lumber Yard in Haskell, 864-3552. 5-6c

EXTRA STORAGE. Come see our new drawer units that attach to nearly any bed frame or rails to give you 2 extra drawers under the bed. These space-saving units come packed 2 to a box. Boggs & Johnson Furniture, Haskell, 864-2346. 5-6c

FOR SALE: 1965 Chevrolet pickup, short, narrow, 454. 864-3662. 5p

HAY FOR SALE: HayGrazer and coastal. Call 864-3600 or 997-2752 or 806-237-3322. 5-6p

FOR SALE: 44" maple roll top desk, \$250.00; pine double dresser, \$25.00. 864-2241 after 5 p.m. 5c

Card of Thanks
CARD OF THANKS
We would like to express our gratitude to each person who expressed love and concern for our loved one. The lovely flowers, cards, memorials and all the nice food, and especially your comforting words and prayers. Tony Cox, Elva Kuenstler, Danny and Gaynell Langford and family, Stan and Beverly Conrow and family, Tamara Olive and family, Mikal and Tami Cox. 5p

Baldwin Electric
1508 N. Ave. E--Haskell
817-864-8055 or 915-773-2862
after 6 p.m. -- 817-864-8926
No Charge for estimates
--Complete Electrical Service--
Jerry Baldwin, Owner
•Commercial •New Construction
•Industrial •Rewiring
•Residential •Repairs

Public Notices
BID NOTICE
The Indian Booster Club is soliciting bids for its annual sports banquet meal to be held Friday, April 22, 1988. All bids must be submitted in writing no later than Wed., Feb. 10 to Indian Booster Club, 307 N. Av B, Haskell, TX 79521. Call Mary Rike, 864-2332 for menu and details. 4-5c

FILING NOTICE
BOARD OF DIRECTORS
REGION 14/EDUCATION
SERVICE CENTER
Candidates for Place 1 (Mitchell and Scurry Counties), Place 3 (Haskell, Jones and Shackelford Counties), and Place 5 (Callahan and Taylor Counties), except Abilene Independent School District) may file between February 1 and February 20, 1988 either in person at the center offices located at 1850 State Highway 351 (Albany), Abilene, Texas, between 8:00 a.m. and 5:00 p.m. Monday through Friday, or be certified mail to the Executive Director, Region 14/Education Service Center, Rt. 1, Box 70A, Abilene, Texas 79601. There is no filing fee. Eligibility requirements, further information, and filing forms may be received from Dr. Thomas Lawrence, Executive Director, Region 14/ Education Service Center.

NOTICE DE REGISTRATION PARA LA JUNTA DIRECTIVA DE REGION 14/EDUCATION SERVICE CENTER
Candidatos para el lugar 1 (los condados de Mitchell and Scurry), para el lugar 3 (los condados de Haskell, Jones and Shackelford), y para el lugar 5 (los condados de Callahan and Taylor, menos el distrito escolar de Abilene) pueden registrarse entre las fechas del primero de Febrero hasta el veinte de Febrero, 1988 en persona en las oficinas del Region 14, en calle 1850 State Highway 351 (Albany), Abilene, Texas, desde las ocho de las manana hasta las cinco de la tarde de lunes a viernes: o por carta certificada dirigida al director ejecutivo, Region 14/Education Service Center, Rt. 1, Box 70A, Abilene, TX 79601. No hay cobro para registrarse. Mas informacion sobre las formas de registracion, y sobre los requisitos necesarios para estos puestos pueden ser obtenidos de Dr. Thomas Lawrence, el director ejecutivo, Region 14/Education Service Center. 5-6c

HELP WANTED
AIRLINE JOBS available now! Earn up to \$50,000. Mechanics, flight attendants, customer service. 1-315-733-6062 Ext. A1768 for info/listings. 3-5p

HELP WANTED
GET PAID for doing easy basic research! \$10-20 p. hour. Write: Ace Research-A10017, 161 S. Lincolnway, N. Aurora, IL 60542. 4-7p

HELP WANTED
TEXAS REFINERY CORP. needs mature person now in Haskell area. Regardless of experience, write A. D. Hopkins, Box 711, Fort Worth, TX 76101. 5p

HELP WANTED
HALF PRICE! Flashing arrow signs \$299! Lighted, non-arrow \$289! Unlighted \$249! Free letters! See locally. Call today! Factory: 1 (800) 423-0163, anytime. 5p

Little Gallery
A beautiful picture is a cherished gift forever! We have a good selection of Texas prints and provide a high quality framing service. We also do shadow boxes, certificates, medals, Christening dresses, etc.
North Swenson
Stamford, Texas

Lost & Found
FOUND: Small rat terrier with bob tail. About 1 year old. Purebred. If not claimed, will give to good home. Call 997-2186. 5c

Wanted
I WOULD like to rent or lease farm land in the Haskell area. Possible option to buy later. My name is Kevin O'Keefe. I'm wanting to move back to the Haskell area. You can call me collect after 5 p.m. at 214-271-9032 or my father Pat O'Keefe at 864-2542. 4-7p

Jobs Wanted
LOT SHREDDING. \$10.00 and up. Call Tony Williams, 864-3674 anytime. 43fc

Business Opportunies
CUSTOM WORK wanted. Deep breaking, discing, chiseling. Anything you need we can do. Call 864-3600, 997-2752, 806-237-3322. 5-6p

Business Opportunies
OWN YOUR OWN apparel or shoe store, choose from: jeans/sportswear, ladies, men's, children/maternity, large sizes, petite, dancewear/aerobic, bridal, lingerie or accessories store. Add color analysis. Brand names: Liz Claiborne, Healthtex, Chaus, Lee, St. Michele, Forezza, Bugle Boy, Levi, Camp Beverly Hills, Organically Grown, Lucia, over 2000 others. Or \$13.99 one price designer, multi tier pricing discount or family shoe store. Retail prices unbelievable for top quality shoes normally priced from \$19 to \$60. Over 250 brands 2600 styles. \$17,900 to \$29,900: Inventory, training, fixtures, airfare, grand opening, etc. Can open 15 days. Mr. Loughlin (612) 888-6555. 5p

POL. CALENDAR
The Haskell Free Press is authorized to make the following announcement for the political office in Haskell County, subject to the action of the Democratic Primaries in 1988.
Unless otherwise specified the candidates listed paid for the announcement, and have designed themselves as campaign treasurer.
All political advertising, announcements, and printing is cash in advance.

U. S. Representative
Charles Stenholm (re-election)
(Pd. for by Charles Brownfield, campgn. treasurer)
Justice of Court of Appeals 11th Judicial District
Bud Amot (Pd. for by Kelley G. Kinard, campgn. treasurer)
District Attorney 39th Judicial Dist.
John Fouts (re-election)
Sheriff
Johnny L. Mills (re-election)
County Attorney
Art Williams (re-election)
(Pd. for by Beverly Williams, campgn. treasurer)
County Tax Assessor
Collector
Bobbye Collins (re-election)
Comm. Precinct 1
Ozzie J. Tibbets
T. C. (Tim) Burson (re-election)
Sue Patterson
John L. (Bud) Grand
Wallace Allison
Comm. Precinct 3
J. R. (Ray) Perry (re-election)
Dennis (Eddie) Grand
Walter E. (Gene) Fischer
Larry Jeffcoat
Constable
Troy P. Brown (re-election)
Coyt Hix (Pd. for by Sophia Hix, campgn. treas.)
Gregg Hearn (Pd. for by Ellen Hearn, campgn. treas.)
Jim Wilkinsor (Pd. for by Kenneth Russell, campgn. treas.)

Miscellaneous
HOME DECORATORS. Painting -Insulation. Free estimates. Phone 743-3592 or 743-3550. V. A. Mitchell-Bobby O'Neal. Rochester. 3fc

OLD GLORY UPHOLSTERY, specializing in antiques, boats, recliners, sofas, kitchen and dining room chairs, etc. Located in Old Glory school. After 5, call 989-2868. 2-5p

For Rent
FOR RENT: S & S Storage 10x20 storage stalls. Call 864-2208 or come by Steele Machine. 17fc

FOR RENT: Storage stalls. 10x10 or 10x20. Call Lanco Insurance, 864-2629. 3fc

FOR RENT: One 3 bedroom with fireplace and back fence, unfurnished house; One 2 bedroom and One 1 bedroom apartment. Call 864-2504 or 864-3722. 4-5c

Apartments For Rent
2 bedroom, 1 bath, carpeted. 700 sq. ft.
Call Haskell National Bank 864-2631. 27fc

LORAIN JOHNSON, BROKER
I am on call and ready to talk to you about your Real Estate at any time if you are interested in buying or selling please call me. I will try harder to please you.

KNOX CITY 3BR 2bath, water well, fenced yard, den with fire place, formal living & dining room. Storage. LARGE LIVING AREA with fireplace. 3 bedroom, double attached garage. North Ave. E. \$35,000
CLEAN 2 bedroom on 4th, has utility room, close to town. Large living room and kitchen. \$9,000
DRASTICALLY REDUCED Large 2 story rock home with guest house, pecan trees, fenced yard located on a large corner lot on Hwy. 277
COMMERCIAL...one of Haskell's largest buildings, plenty of parking. Good location, make an offer.
EXCEPTIONAL Value: 4 bedroom, 2 bath, brick, set in fireplace, fenced yard, storm cellar, 3 ref. window units. All this and more. Reduced
Large 2 bedroom brick, 2 bath, central H/A extra large living room and kitchen. Has large pecan trees on corner lot. Shop and storage bldg, water well and garden plot. N. Ave. G.
Clothing store building ready to open in Haskell. All fixtures and a modern clean building.
IN ROCHESTER: Strickland home 2 blocks south of School. Extra clean inside and out.
Beautiful brick 4 bedroom 2bath, water well, fenced yard, shop & office Bldg., on North G.
A good house in a great location for a little money. 605 N. 5th

Lake Cabin with lot. Lakeshore sites, large garage.
3 bedroom lake cabin, waterfront lot. Veda's.
RULE: 3 bedroom brick 1 1/2 bath, beautiful yard, stormcellar, storage, water well, private fence, many extras. 1500 Adams. Reduced
CLEAN 3 BEDROOM frame on 2 lots, good storm cellar. Knox City. 408 N. 2nd.
CLEAN 2 BEDROOM on water front lot. Located at Vedas, Lake Stamford
315 ACRES LOCATED 8 miles N.W. of Haskell.
LAKE SHORE SITES Large Lake cabin, 3 car carport, water front, owned lot. A good place to call home.
IN RULE: 3 bedroom, 2 bath. Has many extras. Water well, fenced yard, St. Bldg., fireplace. Reduced to \$25,000.
EXTRA CLEAN 2 bedroom brick central H/A. Attached car port, large trees. 705 Union, Rule. A house ready to live in.
Large Barn on several lots just outside city limits
3 bedroom 2 bath, rock, fireplace, central H/C, storm windows, patio, large trees, clean & well built.
Great Buy Great Location. 3 bedroom 2 bath brick 903 N.E. 3rd.
FOR RENT: 3 bedroom close to town.
Lake cabin at Vedas on choice water front lot with boat house.
Great location on North H. fireplace, large den, 2 bath, fenced yard, patio, pecan trees. Choice neighborhood.
CLEAN LITTLE cottage with many extras. 504 S. 8th.
3 BEDROOM. Central heat, air, modern in every way. 102 N. 3rd. Exceptional buy.

JOHNSON REAL ESTATE
864-2951
Broker
Loraine Johnson Lisa Sherman

Real Estate
FOR SALE: 3 BR, 2 bath rockhouse, 2 acres, city water, water well on Hwy 277. 864-3727. 22fc

FOR SALE: Remodeled 2 bedroom, nice yard, trees, garden spot, well. 1106 N Ave L. Immediate possession. 1-849-3272. 29fc

FOR SALE: House in Rochester. Beautiful rock house in Rochester with new heating and cooling unit, new carpet, 3 bedroom, 2 bath, large storage building and fenced in backyard. Day 864-2641 or after 6 p.m. 743-3560. 5c

Real Estate
FOR SALE

GREATLY REDUCED 552 acres of excellent irrigated farmland, all or part. Will Divide favorable. Financing - Call today

Excellent dry land & irrigated farms. Greatly reduced. Lowest price on this type land in years. SE of O'Brien. Give us a call.

Beautifully remodeled older home in Rochester. 4 Bedroom. Owner will consider carrying note. Reasonable priced.
Counts Real Estate
658-3211 tfc

Real Estate
FOR SALE: 2 bedroom house, \$8000.00. Must sell. Frankie SoRelle, 864-2642 or 864-3977. 50fc

CROPLAND WANTED: 200-5000 acres of reasonably priced cropland in CRP or acceptable for CRP. Cash purchase at above market price if terms are agreeable. Call 512-689-3525 after 5 p.m. or write Charles Whittle, P. O. Box 194, Raymondville, Texas 78580. 2-7c

FOR SALE: 2 bedroom house, 302 N. 4th. \$7500.00. 864-2841. 4-7p

FOR SALE: Nice 3 bedroom home on Hwy. 380 at Old Glory. Large back yard, covered patio, storage building, central heat and air, well insulated. Must see to appreciate. Reasonably priced. Will consider selling to be moved. Call Guy or Sue Callicoaite, 989-2204 or 989-2980. 4fc

FOR SALE: House and 40 acres land. 1 mile south of Rule. Call 997-2119 or 997-2339. 5-8p

LANCO
864-2629
510 N 1st
FOR SALE

FARM - 93 Acres 4 Miles Southeast of Rochester. \$500 per acre.

TWO BEDROOM house with 10 lots. North 3rd. Behind Rest Home.
Three Bedroom House in Rochester
Two Bedroom House in Haskell 1302 N. Ave G

Two Bedroom Brick with 5 acres. S.W. of City.

4 bedroom, 2 bath brick with 6 acres on Rule Highway
Clothing store. Building, equipment and fixtures. Owner financing.
Craft store. Building, equipment, stock and fixtures.

Well located service station. Could be converted to convenience store.
FOR RENT STORAGE STALLS tfc

SELLING HASKELL FOR OVER 25 YEARS
Hartsfield Realty
South Side of Square
864-2665
BUYING OR SELLING A HOME OR BUSINESS We have skilled realtors to help you in every way. From a market analysis to the closing. Over 25 years selling Haskell County.

TWO BEDROOM 1 1/2 BATH
Good N.W. Location, Has utility room, central heat, fenced yard with garden-plot, trees, water well, double carport, great out building. Priced for QUICK SALE.

BRICK STREET Three BR, 2 car garage, 1800 N. Ave. F., central air, large dining room, beautiful corner lot with trees & fence. Kitchen Appliances Go.

UNDER \$7,000 Really clean small shop on N. Ave L. Floor Fridge, table closets & cabinets partly furnished, great storm cellar - own for less than rent.

NO CITY TAXES on this super nice 3 BR 2 bath brick two car garage with openers. Fireplace with insert, microwave oven, 3 ceiling fans, covered patio, privacy fence, water well.

THREE BEDROOM STUCCO BRICK extra large living room and kitchen, attached garage, 3 window units.

REALLY CLEAN two BDR. has ceiling fans, window units, washer & dryer, range and oven, privacy fence, water well.

NICER OLDER 3 BDR. Close to most downtown churches. Good corner lot, numerous builtins, central H/C

FULL 1/2 OR 1/4 BLK. Goes with three BDR older home also storm windows, 2 water wells, some furniture.

PRICE REDUCED Nice two bedroom on small corner lot. Storm cellar.

SHOOK ADDITION Extra Nice 2 bedroom, with attached garage, central H/C, fenced yard.

COMPLETELY FURNISHED 2 bedroom in Northwest section. Bargain.

WEINERT MOBILE HOME TO BE MOVED: TWO BEDROOM, 2 bath in Good Condition. 1983 Fleetwood. Going for 1/2 of original cost.
THREE BEDROOM frame dwelling with carport, carpet and paneling. Only \$5500.00

MOVING UP? How About to: 4 bdrs. 4 baths, 3 car garage with openers, 500 sq. ft. Finished attic on full 1/4 block. Many More Amenities. Trade in Considered.

ASPERMONT Really Nice 3 bdr. frame in great location, has 1 3/4 bath. Large garage & boat storage.

RANCH LAND 240 Acres East of Scott's Crossing. 30 acres cultivation, corral barn & windmill-Good hunting land. 1/2 owned minerals go.

BUILDING SITES 1 acre or more outside city limits, city owned.

HIGHWAY 380 EAST Large Lot with 41x80 ft. building, overhead doors, office space and large covered working area. Extra lots available.

COMMERCIAL HIGHWAY 277 NORTH INSIDE CITY LIMITS. Large new building with central H/C, 3 BDR dwelling, 2 smaller bldgs. Both rented, garage, RV Hookups UNBELIEVABLE PRICED.

THREE BAY MODERN CARWASH can handle largest rigs. on 4 lots with dwelling.

LARGE OFFICE OR STORE BLDG. with upstairs, 3 bdr. living quarters, 6 unit covered parking in rear, ANOTHER STEAL.

SEVERAL GOOD BUYS IN KNOX CITY

RULE GREATLY REDUCED 3 BDR. BRICK on two lots, good storm cellar.

CLEAN AS A WHISTLE 3 BDR completely redone, has large living room with wood builtins, double carport, water well. New Energy Efficient H/C PRICED RIGHT

REALLY NICE WITH LOTS OF EXTRAS large two bedroom 1 3/4 bath on large corner lot. Has 2 car garage, double carport, water well. Two car garage and concrete storm cellar. Priced right for today's market.
STUCCO BRICK TWO BEDROOM ON CORNER LOT has wooden privacy fence carport, storm-cellar, Only \$12,500.00

Hess Hartsfield, Broker
Mary Rike
Dorothy Hartsfield
Esther Conn
864-2004
864-2332
864-2069
658-3904

Two attend workshop in Abilene

Two area learning resource center specialists attended a workshop in Abilene Friday.

Mrs. Maxine Hamilton, librarian for Rule Independent School District, and Mrs. Betsy McManamon, cooperative librarian for Benjamin, Goree, Paint Creek, Rochester and Weinert school districts, attended the workshop for learning resource center personnel held at the region 14 Education Service Center offices in Abilene. It was hosted by Mrs. June Carden, specialist, region 14 Education Service Center.

Topics addressed at the workshop included: "Elimination of Sex Bias/Stereotyping in Vocational Education" by Dr. Ann McLennan; "Motivating Kids to Want to Read and Write Through Library Materials" by Dr. Bertie Kingore; and "Art Activities to Extend Reading Materials" by Ms. Carolyn Brodie.

A surprise visit by author John Erickson ("Hank the Cowdog" series) highlighted an exceptional day of excellent speakers and much useful information for all who attended.

The onion was worshipped in ancient Egypt and regarded by the Romans as a God who guarded the kitchen and guided the healing of battle wounds and skin diseases.

Greater Independent Baptist Church

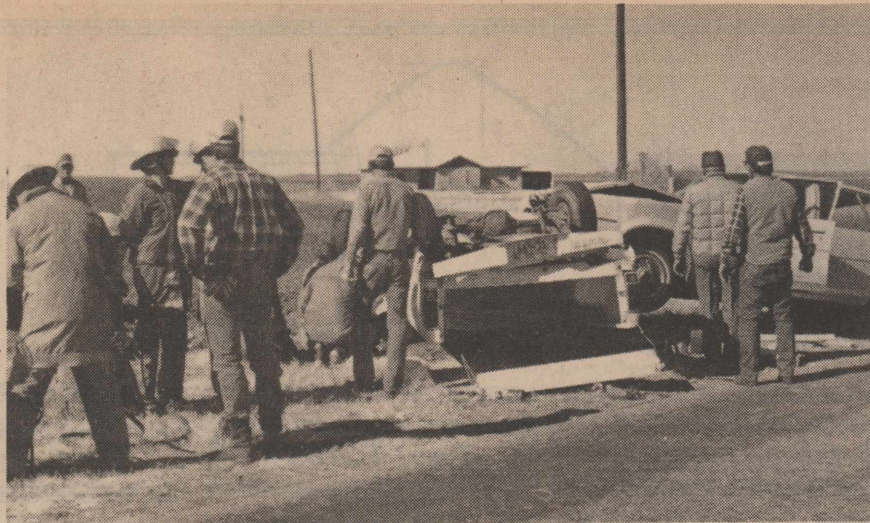
300 N3rd

Will Be Sponsoring A Bar-Be-Que

By the Young Adult Choir, Brethren and the Pastor

Menu will be
Ribs - Brisket - Chicken
and Sausage
Plates \$4.00

Saturday, February 6th
11 a.m. to 4 p.m.



Fatal crash

Haskell firemen work to free the body of Hole Harrell from his pickup following a two-vehicle accident last Wednesday on FM 2407 eight miles northwest of Haskell. The 79-year-old retired farmer was pronounced dead at the scene. Harrell was attempting to make a left turn when his pickup collided with a car driven by Isla Corley of Rochester. A passenger in Mrs. Corley's car, Jan Corley, was injured.

Phone solicitations sometimes costly

North Central Texas Better Business Bureau

The Federal Trade Commission (FTC) estimates that American consumers lose \$1 billion a year from the deceptive peddling of goods and services over the telephone.

The National Association of Attorneys General (NAAG), the FTC and others are taking steps to battle telemarketing fraud.

Southwestern Bell Telephone Co. also is concerned about this issue. The company would like to pass along some information that can help you handle telephone sales calls to protect yourself from possible fraudulent calls.

The telephone company has no

control over who uses the telephone, but everyone has the choice of talking with the person or simply saying "I'm not interested."

The great majority of companies involved in telemarketing are reputable firms which use the telephone to sell quality goods and services. However, there are companies which are involved in telemarketing fraud. According to the FTC and NAAG, telemarketing fraud is the use of telephone communications to fraudulently promote goods or services.

Fraudulent sales callers use phony prizes, cheap products and high-pressure sales tactics to defraud Americans.

A DEFENSIVE DRIVING COURSE

will be sponsored by Haskell Co. Farm Bureau Members on February 8-9. This will be FREE to Haskell Co. Farm Bureau Members only. If you are interested, call the local office at 817-864-2647 for further information.

Perry appointed to insurance panel

State Rep. Rick Perry, D-Haskell, has been appointed to the Joint Select Committee on Workers' Compensation Insurance.

The appointment was announced last week by Texas House Speaker Gib Lewis, D-Fort Worth.

The committee was established with the passage of HCR-27 during the second called session of the 70th Legislature. It is charged with studying the worker's compensation system in Texas, the impact of the system on employees and employers, and how other states have addressed the problems that Texas now faces.

The study will include, but not be limited to:

- 1) A study to gather information relating to the procedure for the payment of claims,
- 2) A determination of the actual impact of the workers' compensation system on economic development and job creation,
- 3) An investigation of the system provided by current Texas law for the delivery of workers' compensation benefits to injured workers to determine whether or not that system is the most efficient possible,
- 4) A comprehensive study of the organization and operation of the Industrial Accident Board,
- 5) A probe into the means and methods by which employers may seek indemnification against claims for workers' compensation benefits,
- 6) A study of job safety in general and how to provide additional incentives to employers to increase safety in the workplace,
- 7) An investigation of the workers' compensation assigned risk pool generally, with specific emphasis on finding ways to increase the efficiency of the pool and to decrease its operating costs,
- 8) A study of the manner in which

other jurisdictions have approached the problems Texas currently faces in the delivery of workers' compensation benefits, and

9) Any other matter calculated to yield useful data that could make the Texas workers' compensation system more efficient and more responsive to the needs of most workers and employers.

The committee will report its findings and recommended legislation to the 71st Legislature when it convenes in January 1989.

Perry is a two-term, Democratic lawmaker from Haskell. He serves as chairman for budget and oversight for the House Judicial Affairs Committee, and is a member of the House Appropriations and Calendars committees.

In making the announcement of Perry's appointment, Lewis stated, "Texas' businesses continue to be faced with skyrocketing premiums for workers' compensation insurance while benefits to injured workers continue to be low. The problems we are experiencing with our workers' compensation system are not unique and this committee will provide an excellent opportunity to examine how other states are addressing these concerns as well as identifying the ever-changing needs of employers and employees."

He added, "Rick Perry has the ability and energy needed to aggressively examine alternatives to the shortcomings of the current system. I am pleased he is willing to commit his time to such an important task."

The hearing of an elephant is about as acute as that of a cat. Both animals can hear sounds as soft as the footsteps of a mouse.

Rule honor roll

Here is the third six week's honor roll at Rule Elementary School:

First Grade: A--Erika Sanders, Deborah Wilson, Lezli Jenkins, Eric Robinson, Lindsay Pike, Cinda Martinez, Brandon Williams, Josh Ledbetter, Jessica Frazier, Jace Manske, Bobbie Jo Alaniz.

AB--Adam Boger, Austin Boger, Michael Hertel, Melissa Anderson, Mike Smith, Nathan Bowles, Doug Easterling, Princess Sanders, Amber Desavia.

Second Grade: A--Kayla Allison, Amy Hisey, Megan Jones, Jennifer Lehrmann, Maria Martinez, Matthew Ramirez.

AB--Angie Guadalucazar, Justin Halliburton, Khalilah Mason, Ben Pace, Brad Simpson, Jenni Slayton.

Third Grade: A--Michael Murray. **AB--Isabell Baez, Mike Bagot, Christopher Boger, Mitzi Barbee, Sara Kitley, Stephanie Stegemoeller, Laura Tibbets, Kalith Trussell.**

Fourth Grade: A--Scott Landreth, Cory Robinson, Julie Saffel, Susan Saffel, Denise Wilson.

AB--Kacy Baitz, Cathy Berry, Matt Pace, Chance Williams.

Fifth Grade: A--Amy Tibbets, Heather Simpson, Allison Pike.

AB--Margie Seballos, Justin Sanders, Nicole Holcomb, Kristy Guadalucazar, Tomika Griffin, John Cannon.

Candidate injured

Campaigning can be hazardous to your health, Sue Patterson found out last week.

The precinct 1 commissioner candidate was attacked by a dog while campaigning in a neighborhood last Tuesday. The resulting injury required 21 stitches in her arm.

Congratulations to the Haskell County Junior Livestock Show!

We congratulate all the youngsters, parents, buyers, and sponsors who participated in the Haskell County Junior Livestock Show. This dedication makes you a winner and a real asset to our community.



The Friendly



First People put People First!

First National Bank-Haskell

HASKELL TEXAS
200 South Avenue E 864-8555 Member FDIC

Pork Ribs	Small Sides, lb.	\$1 49
German Sausage	Each	\$1 19
Chili Meat	lb.	\$1 39
Chili Seasoning	Williams	49¢
Potatoes	No. 1 Russets 10 lb.	89¢
Bell Peppers	Each	10¢
Orange Juice	Texsun 46 oz. can	\$1 09
Zesta Crackers	1 lb. box	79¢
Dr. Pepper 4	16 oz. Bottles	\$1 49
Shortening	Mrs. Tuckers can	\$1 29
Prunes	Del Monte Pitted 12 oz Bag	89¢
Bathroom Tissue	Northern 4 Roll Pkg.	99¢

POGUE GROCERY

-Extra Parking Behind The Store. Home Owned and Operated-
113 North Avenue E Phone 864-2015 Haskell, Texas

Thurs. Fri. Sat. Specials