

Muleshoe Journal

Volume 86, No. 28

Muleshoe, Texas

50¢

July 14, 2005

Council moves forward on housing development

By Larry Thornton
Managing Editor

The Muleshoe City Council authorized City Manager David Brunson and the city's attorney to negotiate with representatives of Living Good Homes in reference to a housing development on blocks 30 and 31 of the Country Club Addition.

During the council's June meeting, it authorized

Brunson to solicit proposals for a housing development to be constructed on municipal property for low to moderate-income dwellings.

At the June meeting, the council reached a consensus that the company selected to develop the area would also need to pave the streets adjacent to the development, an issue

which the city manager said was mentioned in the proposal received by the city, but which needed to be addressed further.

Brunson said he agreed with the council's concern about the streets being paved, and said Living Good Homes was willing to pave the streets immediately adjacent to the property... if the city would build the roadbed. However, the city

manager said he believed curbing would be needed to prevent damage from water drainage in the area.

The city manager also noted that while paving the 325-foot frontage on East Birch was included in the proposal, a 350-foot strip of roadway extending from the frontage area to the section of Birch that is already paved is not included.

The motion received from

Mayor Pro-Tem James Roy Jones also authorized the mayor to sign the agreement should negotiations be successful.

In other business, the city council:

- Conducted a required EPA hearing for consumer confidence reports about the municipal water system. No one appeared to express his or her concerns.
- Received and approved

the city's financial statement and investment summary for the quarter ending June 30.

- Authorized the city manager to solicit bids for a new fire truck. Currently, the city has a 1978 pumper that meets state requirements, and a 1963 pumper that doesn't meet the requirements. It was also noted that parts are

Continued on Page 12

Commissions ask about reimbursement

By Larry Thornton
Managing Editor

Bailey County Commissioners expressed concerns about the costs associated with the employment of new jailers during Monday's Commissioners Court.

Specifically, the commissioners were asking County Judge Sherri Harrison if there was any way to recoup the cost of such things as the psychological tests that law enforcement officers are required to take, at a cost of \$125, especially when — as in one instance — a county correctional officer quits after only two days of employment and takes a position with another county's sheriff's

Continued on page 12

Local Weather

Thurs.
Mt. Sunny.... 96/60

Fri.
Pt. Cloudy.... 94/61

Sat.
Sunny..... 96/63

Sun.
Mt. Sunny.... 95/62

Mon.
Mt. Sunny.... 94/62

Tue.
S. T-Storms. 92/60

Wed.
Pt. Cloudy.... 92/61

Give It A Thought

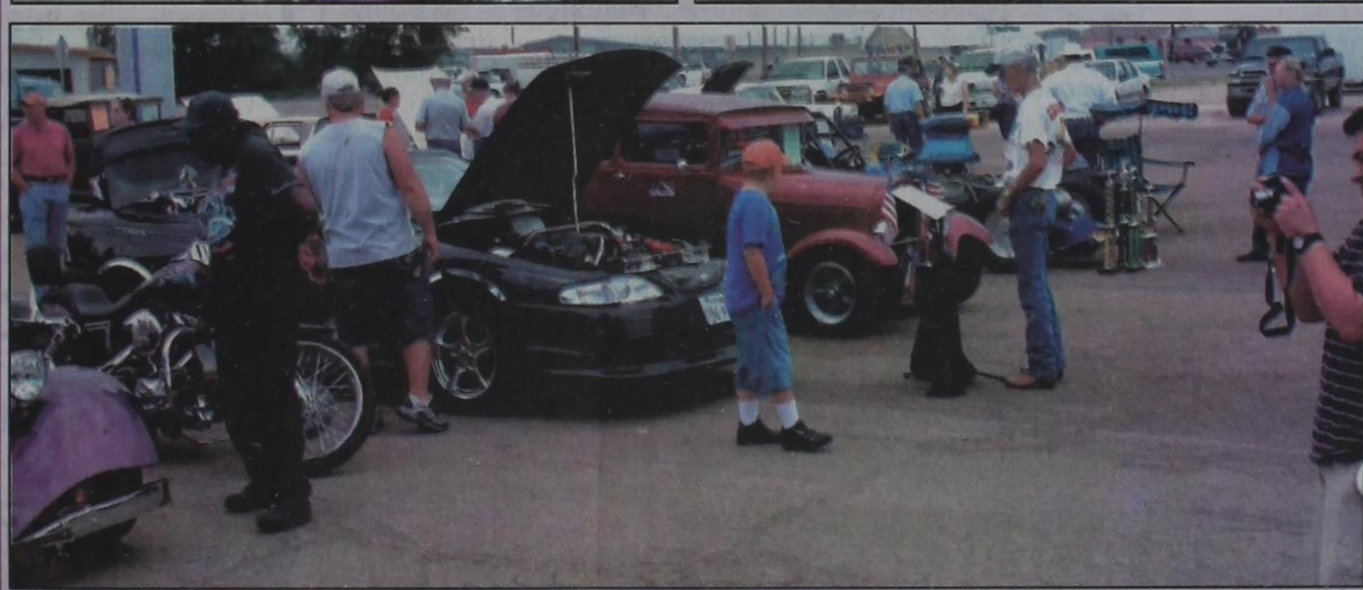
Whatever we do or say today, we have to sleep with tonight.

Words to ponder from Beverly

Missed your paper?
Call Yolanda Martinez at 272-4536, between 8:30 a.m. and 5 p.m.



Photographs by Larry Thornton



Car show draws a crowd

Car enthusiasts gathered in Muleshoe Saturday as Muleshoe Motor Company held its first annual car show, with proceeds to benefit the Bailey County "Meals on Wheels" program.

"We didn't know, at 6:30 a.m., what the weather was going to do," MMC sales manager Rick Wilcox said, "but it turned out nice. What a great day! Cars started showing up from everywhere, after the early morning showers. We were very pleased with the cars and trucks... a little bit of everything — Model "A"s to modern age, it was nice."

Wilcox said the event was a "tremendous success" with a total of 31 entries.

According to Wanda Hooten of MMC, the event took in \$690 in entry fees, another \$500 in hamburger sales and some other funds from cap sales and donations. Along with a donation from Muleshoe Motors, the "Meals on Wheels" program would be receiving \$2,000.

Among the divisions, the winners and their entries are:

Street rods — J.D. Johnson of Lubbock, first place with a 1923 Model T; Russell Johnson of Littlefield, second place with a 1929 Ford 2-door.

Early, 1960 — Angela Wade of Artesia, N.M., first place with a 1930 Model A; Howard Watson of Muleshoe, second place with a 1926 TT.

1961 to 1979 — Danny and Bobbie Bowman of Plainview, first place with a 1967 Ford Galaxie; Gary and Georgeanne Williams of Lubbock, second place with a 1978 Grand Marquis.

1980 to 1990 — Pete Hettinga of Muleshoe, first place with a 1987 Ford F150 RC 4x4; no second place

Continued on Page 12

City manager to address concerns of chamber committee

By Larry Thornton
Managing Editor

Muleshoe City Manager David Brunson is looking into issues about itinerant vendors that have been raised by the Retail Committee of the Muleshoe Chamber of Commerce & Agriculture.

The city manager said he received a letter from the Retail Committee shortly before Independence Day asking for the city's assistance in "controlling itinerant vendors" during the upcoming festivities.

The letter from the Retail Committee reads as follows: "The Retail Committee of

the Muleshoe Chamber of Commerce and Agriculture requests your assistance in controlling itinerant vendors in Muleshoe. Our immediate concern is that noncontributing vendors be excluded from 4th of July street sales unless they purchase space through the chamber.

"Our long range goal is to eliminate their unsightly blot on the community landscape. It is our considered opinion that they are a community eyesore. They sell inferior products and collect no sales tax in their competition with local contributing businesses.

Because they have no overhead, they can undercut the prices of established businesses that are vital to our prosperity.

"I look forward to working with them... These are people who uphold the community."
— David Brunson

We would ask that the city council work with our committee in providing a solution to this situation."

Brunson said there were

several related issues involved and that he would be sitting down with the committee to gather additional information from its members to determine how best the city could assist the local business leaders.

"I look forward to working with them," Brunson said. "...These are people who uphold the community."

Brunson said when the issue was first raised with him he took steps to temporarily address the situation by having the required vendor permits issued to the chamber and waiving the permit fees.

These permits in turn were reissued by the chamber to the vendors wishing to set up for the July 4th activities in Muleshoe.

The city manager explained that transient merchants are required to purchase a 30-day permit through city hall for \$20, and that minimal information has been gathered on the vendors in the past. He noted that the police department routinely checks these vendors to make sure they have the required permit.

However, he pointed out

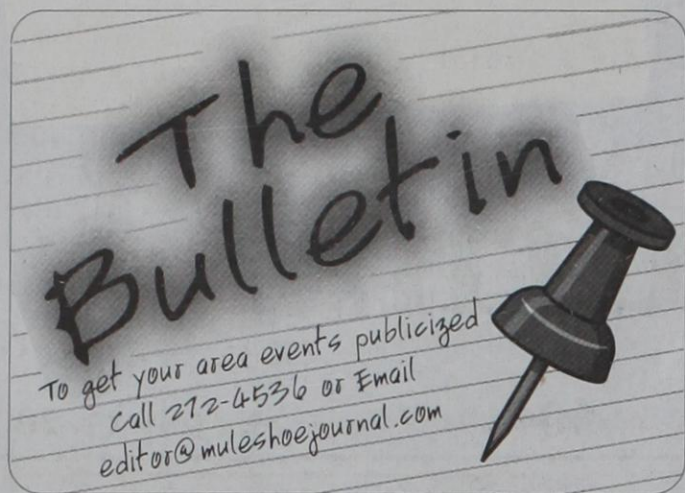
Continued on page 3



HOME OWNED AND HOME OPERATED

MULESHOE STATE BANK

Muleshoe Branch:
272-4561
101 W. American Blvd.
Farwell Branch:
481-9580
801 Ave. A



Compassionate Care fundraiser

Compassionate Care of Muleshoe will be holding its second annual city-wide garage sale on July 23, at the First Assembly of God, 521 S. First, Muleshoe.

Individuals wishing to participate in the event are encouraged to "empty their closets and help others in the process" by purchasing space and setting up their own indoor sale.

Community band members sought

Danny Rodriguez and D.J. Dominguez are looking for individuals interested in forming a community-wide band to play at community events, social occasions, outdoor concerts and various other events. This is not a paid position at this time.

The duo hopes to gather numerous musicians to play all types of music, including jazz, big band, funk, pop and rock. They are also looking for singers.

Charts are available and reading music isn't necessary, but would be helpful since some of the music is "challenging."

All types of instruments will be used and every musician is encouraged to make contact.

"From brass to woodwinds, drums to electric guitars, every instrument can be utilized. Even if you haven't played in 15 or 20 years, give it a try," he said. "We really want this band to be something special and fun for the community."

If you're interested in more information about the concept, contact Danny Rodriguez at 272-3345 or D.J. Dominguez at 272-6814.

Golf scramble

Bailey County EMS Organization is hosting a 4-person golf scramble on July 30, at the Muleshoe Country Club. The cost is \$40 per person, cart not included. Mixed and ladies teams are encouraged to participate. To sign up or for more information, call 806-272-4390.

Bula School, Enoch-Bula reunion

A reunion has been planned for Bula School and the Enochs-Bula community on July 23 at the Holiday Inn Park Plaza, at 3201 S. Loop 289, in Lubbock.

Reservations are required and must be made not later than July 15.

For additional information, contact Brenda George at 1002 N. 21st, Slayton, TX 79364, by calling 1-806-828-4078, or emailing "brgeorge@sbcglobal.net".

Carrying On" County history

Orders for the reprint of the Bailey County history book "Early Bailey County History" are being taken now by members of the "Carrying On" Committee of the Muleshoe Chamber of Commerce and Agriculture.

The book, originally printed in 1978, was compiled by seventh and eighth grade students in the Muleshoe Junior High Historical Society.

The price for the pre-ordered hardback books is \$50. If you would like to order a book send your checks to: Muleshoe Chamber of Commerce & Agriculture, "Carrying On Committee," P.O. Box 356, Muleshoe, TX 79347.

Friona Stick Horse Rodeo

A stick horse rodeo has been set for July 16, beginning at 2 p.m., at the Friona City Park. Stick horses will be provided for the four-person teams. Divisions for the event are: Pee-Wee, ages 4-7; Junior, ages 8-11; and Senior, ages 12-16. There is a \$20 entry fee per team. Call 806-250-3491 for additional information.

Drivers License Office closed

The Drivers License Office in Muleshoe will be closed until July 15. It will also be closed July 27-29.

Diabetes Support Group to meet

The Bailey County Diabetes Support Group will be meeting again on Tuesday, July 19, in the Bailey County Coliseum meeting room, at 7 p.m. The program will be "Maintaining Your Good Health." This program is free of charge to anyone interested. For more information, contact Mandi Seaton, Bailey County extension agent, Family and Consumer Sciences, 306 West Second, Muleshoe, TX 79347, 806-272-4583.

AA meeting

Those looking for help with problem drinking can do so at open AA meetings being held at 7 p.m. each Saturday at the First United Methodist Church, at 507 W. 2nd. Please use the west side entrance. For information about these meetings or AA in general, call Bobby F. at 272-8948 or 272-4433.

West Texas Rocks

TOTAL Youth Ministries and New Covenant Church of Muleshoe plan to hold an area-wide outreach July 30, beginning at 9 a.m., at the New City Park, Eighth and West Ave. H. The event, entitled "West Texas Rocks" will feature several bands and speakers and will focus on reaching a wide variety of age groups from teens to mature adults. For additional information contact Rev. Mike Kelly at (806)965-2787.

Athletic Booster Club meeting set

Parents of students participating in Muleshoe athletics and other interested persons are invited to attend the Muleshoe Athletic Booster Club's first meeting of the season to be held Thursday, Aug. 4, in the meeting room at Five Area Telephone at 7 p.m.

Judge Stone warns of telephone scam

Muleshoe's Judge Deb Stone cautions local residents to be careful about giving personal or banking information over the telephone.

According to the judge, several in the Muleshoe area have received calls from individuals purporting to be associated with American Consumer Benefits or Consumer Resources, and asking for information that would allow the callers to either

electronically draft the resident's bank account or produce counterfeit checks on the resident's bank accounts.

Muleshoe and Bailey County residents who have received such calls — especially if they provided the information requested to such a caller — should contact the Muleshoe Police Department, or the Bailey County Sheriff's Department.

History Notes

At one time, the location of the City of Muleshoe was part of the XIT Ranch.

The XIT Ranch was established in 1882 after Tom Lynch drove a herd of

cattle from New Mexico to the Spring Lake camp.



Buster picked up a new sport while on vacation...

Why not pick up a sporty model for yourself from M-Pyre!

NEWER, CLEANER PRE-OWNED CARS

M-PYRE
AUTO SALES INC.

1112 W. American Blvd. Muleshoe

Muleshoe Journal USPS 367820

Established February 23, 1924. Published by CJB Publications, Inc. Every Thursday at 201 W. Ave. C, P.O. Box 449, Muleshoe, TX 79347.

Periodicals Postage paid at Muleshoe, TX.

POSTMASTER: Send address changes to the Muleshoe Journal, P.O. Box 449, Muleshoe, TX 79347.

We are qualified members of:
Panhandle Press Association, National Newspaper Association, West Texas Press Association and Texas Press Association © 2005

Chris Bradford, Publisher
cbradford@castrocountynews.com

Leah Bell, General Manager
ads@muleshoejournal.com

Larry Thornton, Managing Editor
editor@muleshoejournal.com

Yolanda Martinez, Office Assistant
news@muleshoejournal.com

Larry Ayers, Sales Representative
ads@muleshoejournal.com

SUBSCRIPTIONS:
By Carrier Yearly - \$22.00
Bailey County — By Mail - \$24.00
Elsewhere - \$26.00

Advertising Rate Cards On Application

Advertisers should check their ad the first day of insertion. The Journal will not be liable for failure to publish an ad or for a typographical error or errors in publications except to the extent of the cost of the ad for the first day of insertion. Adjustment for errors will be limited to the cost of that portion of the ad where the error occurred.

Member TPA 2005 TEXAS PRESS ASSOCIATION

PPA Panhandle Press Association

WEST TEXAS PRESS ASSOCIATION

NEWSPAPER POLICIES

EDITORIALS are the opinion of the newspaper. They are written by staff members of the *Muleshoe Journal*. They are not signed because they express the position of the publisher, owners and newspaper staff.

LETTERS TO THE EDITOR are written by readers of the newspaper. They are brief expressions of opinion, most concerning issues of local interest. Letters must be legible. They may be edited for content, length and space. All letters must be signed by the writer and must include a daytime telephone number (used solely for verification). Open letters, letters to third parties and/or unsigned letters will not be published.

COLUMNS are the personal opinion of the writer whose by-line appears. Columns from readers should address an issue of local concern and general interest. Columns may be edited for content, length and space.

Letters to the Editor and Columns can be sent to:
Editor - Muleshoe Journal
P.O. Box 449, Muleshoe, Texas 79347
FAX 806.272.3567 or e-mail editor@muleshoejournal.com

Cal Farley's Girlstown, U.S.A. Presents...

Oasis on the Rock

Twelve groups or solo artists performing throughout the day

Music ranging from contemporary Christian and southern gospel to rock-n-roll and rap

Music Festival
Sunday, July 17, 2005
at Girlstown, U.S.A.
(9 miles south of Whiteface, Texas on Farm to Market 1780)

10 a.m.-9 p.m.
FREE ADMISSION*

Food, drinks and snacks will be for sale during the event. *Love offerings will be taken with all proceeds going to defray the expenses of Paul Comer's cancer treatment.

For more information, call 806-229-6361

Lamplight By Larry Thornton

When tragedy strikes, turn to God for comfort

Several years ago, a small child here in Texas fell into a well that was left uncovered in her parents' yard. Fortunately, through the actions of numerous rescue workers — as well as those of a merciful God, little Jessica was saved. But through it all America watched, worried... and in many cases prayed.

Since that time there have been numerous such broadcasts that have drawn people from across the country and around the world to their television sets, listening and watching as the minute-by-minute details of this rescue operation or that police action is covered. Los Angeles, Waco, Oklahoma City and New York are but a few of the locations marked by tragedy.

This past week it was the streets and subways of London that drew our attention, but the tragedy and horror felt by the people who have lost family members is just as heart-

rending as if it had occurred upon our own shores

In the Book of Job, we read of a man who loved God and was in turn blessed mightily by God. But one day Satan approached God and said, in paraphrase, "Of course, he loves you and worships you. Haven't you built a wall around him, protecting him and all he possesses from harm?"

In response, God stepped back and told the fallen angel to literally do his best to make Job turn from his heavenly father. The scriptures tell us that Job's children were killed and all of his earthly blessings, one by one, were stripped away.

Tragedy after tragedy befell this man of Uz. At one point, Job's wife even suggested that it would be better if he sought an end to his suffering. "His wife said to him, 'Are you still holding on to your integrity? Curse God and die!'" — Job 2:9, NIV.

Yet through it all Job remained a follower of the

one true God.

Most times it's hard to understand what is happening when you're in the midst of the storm. Tragedy may assail us from all directions, and the advice we receive from friends and acquaintances, like the three friends of Job, may be misguided at best. It is at such a time that the only one on whom we can lean is the God on whom Job leaned so long ago.

The lyrics of my favorite song were written by Horatio G. Spafford. Whenever I hear it — and especially when my little sister sings it — the words always bring tears to my eyes. Entitled, "It is Well with My Soul," this grand old hymn resulted from the tragic death of Spafford's daughters at sea more than a century ago.

*When peace like a river
attendeth my way,
When sorrows like sea-
billows roll,
Whatever my lot, Thou*

*has taught me to know;
"It is well, it is well with my
soul."*

*Tho' Satan should buffet,
tho' trials should come,
Let this blest assurance
control,
That Christ hath regarded
my helpless estate,
And hath shed his own
blood for my soul.*

*My sin - oh, the bliss of
this glorious thought!
My sin - not in part but the
whole,
Is nailed to His cross and
I bear it no more;
Praise the Lord, praise
the Lord, oh, my soul.*

*And, Lord, haste the day
when the faith shall be sight,
The clouds be rolled back
as a scroll,
The trump shall resound,
and the Lord shall descend-
"Even so - it is well with
my soul."*

*For me, be it Christ, be it
Christ hence to live,
If Jordan above me shall roll,
No pang shall be mine, for
in death as in life
Thou shalt whisper Thy
peace to my soul.*

When tragedy strikes it isn't unusual for us to rage against the injustice of having a loved one removed from our midst. But there will eventually come a time when the rage must subside to allow the healing to begin. At that time, God the Father — who knows what it is like to experience the death of a Son, is there ready to comfort all who turn to him.

History Notes

- In 1914, both the Muleshoe Post Office and the Muleshoe School District were established.
- In 1919, the first marriage license was issued in Bailey County to Melvin Rutherford and Rosa Dyer.


- In 1939, the home of Walter Damron was the first residence to receive electricity from the Bailey County Electric Cooperative Association.

THANKS FOR SUBSCRIBING!



WE ARE YOUR HOMETOWN WHIRLPOOL DEALER.
"Let Us Give You A Quote On Your Next Appliance!"
McDaniel's APPLIANCES
 1020 Main Street, Clovis, NM • 505-762-4481 or 800-682-7891

DR. J.W. HALTOM
Family Dentistry



Office Hours:
 Mon.-Thurs.: 8 am-5 pm
 Friday: 8 am-noon

- Nitrous Oxide available
- Emergencies seen promptly
- Insurance and credit cards accepted

RECEIVE \$50 OFF ANY CROWN, BRIDGE, PARTIAL OR COMPLETE DENTURE
Limit 1 per person.

320 E. 8th St. • Littlefield • 385-6935

Commentary

By Leah Bell
 General Manager

I haven't taken the time in recent months to jot down any thoughts on what I believe to be strengths and weaknesses in people, places and things around Muleshoe and our neck of the woods. You know these random thoughts as my "Whoopie! and Big Whoop" column. Here's another installment.

"Whoopie!" — This past Independence Day in Muleshoe made me so proud, I couldn't help but brag on our town for just a paragraph or two!

The way this town, its businesses and chamber pulled together to show not only hometown folks but visitors (and there were lots of them) a good time was nothing less than spectacular. Although somewhat biased, I don't think there was a better celebration anywhere.

Every comment I heard from our out-of-town guests about the fourth was positive. People mentioned how friendly locals are and I have to agree. Those who came to Muleshoe as strangers, left as friends this past holiday. I have an overwhelming feeling they'll be back.

"Whoopie!" — A big thank you and nod of

recognition to the folks who sponsor everything that comes across their desk - t-ball, baseball, church events, scout events, and every crazy idea our newspaper has, too. (These examples only skim the surface of all that these businesses sponsor).

Though I don't want to go into specifics for fear of leaving any of these generous businesses out, you know who you are as does most of the community who sees your commitment to Muleshoe and this area through these sponsorships. It's nice to have your support and friendship.

"Big Whoop." — Pointing the finger at wrongdoing may not get much done, but it sure makes me feel better, how about you?

A "big whoop" goes to the Levelland little league baseball team coaches for pitting their 9-10 year-olds against our 7-8 year-olds in a recent tournament.

Our organizers go to great lengths to verify ages when setting up their teams. Apparently that isn't a common practice. So, "Whoopie!" to our league organizers — thank you for caring.

Let's face it, around this age a couple of years

makes a big difference in size, agility and coordination. Scoring 25 runs against opponents up to four years younger doesn't make your team a winner — it just makes your league's organizing skills pathetic.

"Whoopie!" — Most of us notice the improvement but don't know who to thank. This "Whoopie!" goes out to the farmers and other citizens who help keep bar ditches mowed and dirt roads graded.

It isn't in the county budget to have this stuff done as often as it should be and that's just the way it is — no blame here. No pointing fingers. It isn't something the Commissioners' Court can do much about. As they say, you can't get blood from a turnip.

The folks who pitch in and get something done for themselves (vigilantes of a sort) don't just take that for an answer and I for one appreciate it. You're making Bailey County look better and helping conservation efforts in the process. Good job!

"Big Whoop." — Shame on organizations who forget that the customer is always right.

Recently, hundreds of customers were asked to do something (make a change) that would inconvenience them both financially and physically for the convenience of an employee at a local business — to make his or her job easier.

Though all compassionate toward the situation and employee, these customers range in age from young to very old and many of the older people would be devastated by the change.

While the business is asking for compliance on a voluntary basis, most customers don't understand this fact and feel pressured to make the change.

To the organization — Isn't there another way to help your employee without causing this physical and financial stress on many of your best customers?

Street vendors... Continued from page 1

that such issues as a street vendor's alleged product inferiority wasn't something on which the city

could take action. Brunson also said the city would be prohibited in taking actions on "free trade" issues.

Brunson said he needed to check municipal ordinances and state laws, and possible talk with the city's attorney, to determine what additional information may be required from street vendors, such as a vendor's sales tax identification number.

He also said he would be talking with other Texas communities to see how their vendor permit fee schedules are structured, and to see if raising Muleshoe's permit fees might be an additional tool the city could use to reach a solution to the problem.

Hospital Report

The Muleshoe Area Medical Center has released the following list of admissions:

- June 29 — Elvis Powell.
- June 30 — Felipe Guerrero and Virginia Estrada, Elvira Trevino.
- July 1 — No report.
- July 2 — Antonia Guzman.
- July 3 — No report.
- July 4 — No report.
- July 5 — Miranda Wildman.

Make it a big splash...



with Cebridge Cable TVSM

- ✈ Learn about great TRAVEL destinations
- 🍴 Learn family-fun RECIPES and ACTIVITIES
- ☀ Check the WEATHER before you go to the pool
- 👁 Stay UP-TO-DATE on local and world events
- 💰 CONVENIENT with FREE basic cable on additional TV's
- 🏎 NASCAR to baseball, there's SPORTS for everyone

Get Cable TV as low as \$17.95
per month plus taxes and fees

- No equipment to buy
- Local broadcast channels
- Professional installation

Cebridge connectionsSM

Order online at cebridge.net
 call us at **866.705.2701**

©Cebridge Connections 2005. Cebridge is among the trademarks of Cebridge Connections. For new residential customers and offer expires 08-12-05. Services may not be available in all areas. Installation fees may apply for complex installation and more than one outlet. A cable set-top box may be required at installation. Franchise fees, taxes, and other fees and restrictions may apply, with the actual amount depending on location and service ordered. To be considered a new customer for customer's account must have been inactive for a minimum of 180 days and customer must have no outstanding obligation to Cebridge Connections. Installation fees may apply for complex installation and more than one outlet. Offer subject to change. Offers may require a 12 month commitment.

PN7590

BAILEY COUNTY DEVOTIONAL PAGE

MULESHOE FEED BARN
311 W. American Blvd. **HI-PRO**
Muleshoe, TX
272-5626

1ST BANK MEMBER FDIC
202 South First 272-4515

IRRIGATION PUMPS & POWER

Zimmatic W. Hwy. 84
CENTER-PIVOTS 272-5597

WESTERN DRUG
& Something Special Gifts
1411 W. American Blvd. 272-3106 Muleshoe

BLACKWATER AGRI ASSN. INC.
272-4962
Cell: 946-8943 — Muleshoe, TX

MULESHOE AREA HOSPITAL DISTRICT
708 South First, Muleshoe 272-4524
1-800-770-6262
Jim Bone CEO/Hospital Administrator FAX 806-272-4938

Stoney Point Muleshoe
"Custom Growing Dairy Heifers"
965-2856

MULESHOE ANIMAL CLINIC
GENERAL PRACTICE
1430 US Hwy. 84 • Muleshoe Office: 272-3061

WEST CAMP GIN, INC.
Better Ginning & Courteous Service
James & Phyllis Rt. 2 Box 1000 • 925-6681
Shepard Muleshoe, TX

CENTRAL COMPRESS & WAREHOUSE
SUDAN, TEXAS

MCCORMICK SEEDS, INC.
400 East Ash • 272-3156
Muleshoe, Texas
A COMPLETE LINE OF FIELD SEEDS

Burr's Collision Center
B&B SUPER LUBE
Burr's Collision Center Jockey W. Burris 1300 W. American Blvd., 272-3031
B&B Super Lube Brandon Burris 402 North 1st Street 272-3511

Ellis Funeral Homes
Muleshoe - Morton - Earth - Sudan
272-4574 Todd Ellis

Runningwater Draw Care Center & Sandhills Village
NONPROFIT SKILLED NURSING FACILITY WITH REHABILITATION UNIT ASSISTED LIVING
"We Care...Because We Care, We Serve"
Olton, TX • 285-2677 • www.runningwaterdraw.com • Dona Kelly, Administrator

THE CONNECTION WAREHOUSE
RadioShack 272-5532
AND THE RENTAL PLACE - 272-4037
117 Main • Muleshoe, Texas

PASSENGER • TRUCK • TRACTOR
Alex's Tire Service
For Service 24 Hrs. A Day
272-5012
302 E. American Blvd. Alex Aguirre Muleshoe, Texas

SOUTHWESTERN GEO-THERMAL WILSON DRILLING CO.
806/272-5557 806/272-5521
STANLEY WILSON
P.O. Box 405 - Hwy. 84 West - Muleshoe

Hwy. 84 Muleshoe, TX 272-4203
Manager Bruce Bruns **AGRILIANCE**

United Supermarkets

PACO FEED YARD, LTD.
Commercial Cattle Feeders
P.O. Box 956 265-3281
Friona, TX
Feller Hughs-Mgr.

466 *Facts About The BIBLE* BY JOHN LEHTI

This is a dramatized version of facts taken from the book of Judges, intending to show some of the customs of these ancient and traditional times.

JEPHTHAH
ON THE DEATH OF HIS FATHER, JEPHTHAH, CAST OUT OF THE HOUSE BY HIS HALF BROTHERS BECAUSE HIS OWN MOTHER WAS NOT AN ISRAELITE, GOES TO LIVE IN THE LAND OF TOB, BORDERING ON THE DESERT...

...AND MANY OF THE CAREFREE YOUNG MEN OF ISRAEL JOIN HIM TO LIVE A WILD LIFE...

COME, JEPHTHAH, LEAD US IN ANOTHER RAID UPON THE AMMONITES!

WITH HIS FOLLOWERS, JEPHTHAH SETS OUT ON A RAID UPON THE AMMONITES...

THERE, IN YONDER AMMONITE TOWN, WILL WE FIND MANY RICHES AND SPOILS!

BUT THE GATES OF THE TOWN ARE TOO STRONG AND THE WALLS ARE TOO HIGH!

BEFORE WE COULD SMASH IN THE GATES THEY WOULD KILL US ALL WITH THEIR ARROWS!

NEVER FEAR! WE SHALL WAIT UNTIL NIGHT FALLS—THEN SHALL YOU SEE HOW WE WILL ENTER THE TOWN.

Next Week Dark night

SAVE THIS FOR YOUR SUNDAY SCHOOL SCRAPBOOK

This devotional & directory is made possible by these businesses who encourage all of us to attend worship services.

- ASSEMBLY OF GOD**
FIRST ASSEMBLY OF GOD
521 South First Street • 272-3017
Jack Stone, Pastor • 272-3984
S.S. 9:45 am, W.S. 11 am & 6:30 pm,
Wed. 7:00 pm
EL BUEN PASTOR
415 E. Ave. F • 272-5455
Pastor Domingo Luna - 272-4542
S.S. 9:45 am, W.S. 11 am & 6 pm; Wed. 7 pm
- BAPTIST**
CALVARY BAPTIST
1733 W. Ave. C • Rev. Jeff Coffman
CIRCLE BACK BAPTIST
Intersection FM 3397 & FM 298 • 946-3676
FIRST BAPTIST
220 West Ave. E. • Dr. Stacy Conner
FIRST BAPTIST
Lazbuddie • 965-2126
PRIMERA IGLESIA BAUTISTA
223 E. Ave. E • Rev. Greg Guzman
PRIMITIVE BAPTIST
621 South First
Elder Bernard Gowens, Min.
PROGRESS BAPTIST
Progress, TX
PROGRESS SECOND BAPTIST
Arthur Hays, Min. • 1st & 3rd Sundays
RICHLAND HILLS BAPTIST
17th & West Ave. D
George Malis, Pastor
TRINITY BAPTIST
314 E. Ave. B, Bennie Wright, Min.
- CATHOLIC**
IMMACULATE CONCEPTION
CATHOLIC CHURCH
805 E. Hickory • Leonardo Pahamtang, Min.
- CHARISMATIC EPISCOPAL**
ST. CLEMENTS
1536 W. American Blvd. • 272-5954
Father Sergio Leal • Sun. W.S. 10:30 am
- CHRISTIAN**
TRINITY CHRISTIAN CENTER
1723 W. American Blvd. • 272-3877
Reydon Stanford, Pastor
- CHURCH OF CHRIST**
LARIAT CHURCH OF CHRIST
Sam Billingsley, Min.
S.S. 10 a.m.; W.S. 11 a.m. & 6 p.m.,
Wed. 7 p.m.
LAZBUDDIE CHURCH OF CHRIST
Nathan Crawford, Min.
S.S. 9:30 am; W.S. 10:20 am & 5 pm;
Wed. 7 pm
- MULESHOE CHURCH OF CHRIST**
22nd & W. American Blvd.
Minister Barry Wiseman
S.S. 9:30 am; W.S. 10:20 am
& 6 pm; Wed. 7:30 pm
16th & AVE. D CHURCH OF CHRIST
Curtis Shelburne, Min. • 272-4619
S.S. 9:30 am; W.S. 10:30 am;
Growth Gr. 1:30 pm; Wed. 7:00 pm
- LUTHERAN**
ST. JOHN LUTHERAN
Lariat, TX • David Symm, Min.
S.S. 10:30 am; W.S. 9:30 am
- METHODIST**
FIRST UNITED METHODIST
HISPANIC MINISTRIES
E. 5th and E. Ave. D
Pastor Javier Careaga
FIRST UNITED METHODIST
507 W. 2nd St.
S.S. 9:45; W.S. 11:00
Pastor Monty Leavell, 272-5517
LAZBUDDIE METHODIST
S.S. 9:30 am; W.S. 10:30 am
Rev. Randy Thomas • 965-2121
EL DIVINO SALVADOR U.M.C.
619 E. 5th Street & Ave. G, Muleshoe
Javier Careaga, Pastor • 272-6888
- NAZARENE**
ROCA DE SALVACION
814 W. Ave. C • Pastor Rafael Quezada
Sunday, S.S./W.S. 10:00 a.m.,
Evening 6 p.m.; Wednesday, W.S. 7 p.m.
- PENTECOSTAL**
UNITED PENTECOSTAL LIGHTHOUSE
207 East Ave. G • 1-800-454-6051
S.S. 10 am; Thursday, Bible Study 7 pm
- INTER DENOMINATIONAL**
NEW COVENANT
Plainview Hwy.
Steve Claybrook, Pastor
W.S. 10 am; Wed. 7 pm
MULESHOE COWBOY FELLOWSHIP
117 E. Birch Street, Muleshoe
Steve Friskup, Minister • 272-5199
Service: 7:30 p.m. Thursday

Henry Insurance Agency
"Serving You Since 1964"
111 West Avenue B 272-4581
Muleshoe, TX

1412 W. American Blvd.
Muleshoe • 272-4213
Open: Sun.-Mon. 11 AM to 11 PM
Lunch Buffet: Sun.-Fri. 11:30 AM to 1:30 PM
"Gather round the Good Stuff"

MULESHOE PEA & BEAN, INC.
1680 CR 1044 272-5589
Muleshoe, TX

Serve Wholeheartedly, as if you were serving the Lord, not men Ephesians 6:7
MULESHOE VALLEY INC.
2601 W. American Blvd. P.O. Box 631
Muleshoe, Texas
(806) 272-4266
Mobile (806) 946-8763
mviinc@fivearea.com

Farmers Coop Ass'n of Sudan
P.O. Box 120 • Sudan, Texas
227-2461
Mobile: (806) 638-7692 FAX (806) 227-2102
Dennis Flowers, Gen. Manager Email: dflowers@fivearea.com

"THE FIVE AREA TELEPHONE COOPERATIVE, INC."
West Plains Telecommunications, Inc.
Five Area Systems, Inc., Plateau Wireless
Five Area Long Distance - Five Area Internet
302 Uvalde Muleshoe, USA (806) 272-5533

Lazbuddie Garage & Supply
Glenn, Adora, Terry and Lee Scott
Specializing in irrigation motor parts and service since 1957
AUTO PARTS P.O. Box 100 • Lazbuddie • 965-2188

T-L Irrigation Systems Dealer
PRECURE ELECTRIC
Carroll Precure - Owner
424 N. 1st, Muleshoe 272-4844
General Electrical Contracting Residential • Commercial • Irrigation

MAPLE COOP GIN
927-5501
Maple, Texas

NEWTON APPLIANCE - HVAC
Appliance Repair • TV Antenna Installation
"We sell Frigidaire brand heating & cooling equipment and service all brands."
SAVE MONEY WITH A HEAT PUMP!
1116 W. American Blvd., Muleshoe • Bus. 272-3272 or Res. 272-5056
Presley Newton, Owner • Since 1989 • TACLB020265E

MULESHOE LIVESTOCK AUCTION
Muleshoe, TX • Sale Every Saturday
Clayton, C.L. & Thurman Myers • 272-4201

BAILEY COUNTY ELECTRIC COOPERATIVE ASSN.
Muleshoe — 272-4504 Morton — 266-8600

minsa corporation
P.O. Box 484 272-5545
Muleshoe, TX
FAX (806) 272-5135 (800) 852-8291

Little Real Estate & Appraisal Services
Residential • Commercial • Farm & Ranch Walter B. "Jack" Little
272-4805
MOBILE: 946-7965 FAX: 272-3729 1913 US 70-MULESHOE

SINCE 1957 **Leal's**
1010 W. AMERICAN BLVD., MULESHOE • 272-1294
CATERING FOR ALL OCCASIONS!

Lazbuddie Feeders, Ltd.
"We make your dairy bull calves worth more!"
Lazbuddie, Texas
965-2435

AGP Grain Marketing
Bovina • Lariat • Farwell • Lazbuddie
Toll Free: 866-583-7362

Life-Auto-Home-Crop
TEXAS FARM BUREAU INSURANCE CO.
1612 W. American Blvd. • 272-4567 • Muleshoe

AG AVIATION
2 1/2 miles North on HWY 214
272-3066 FAX 272-8981
P.O. Box 68 • Muleshoe, TX

MCDONALD'S OF MULESHOE
1315 W. American Blvd. • 272-3333
Open at 5:30 a.m. every day! i'm lovin' it

Jarman Seed
801 W. American Blvd. Muleshoe, TX • 272-5985

FIRST UNITED BANK
Member FDIC
200 Main St. Sudan, Texas 227-2411

SAIN IRRIGATION & MACHINES
Complete Pump Service
W. American Blvd. 272-4397
Walt Sain Muleshoe, TX 272-4148

TRIPLE S'S Auto Glass
Windshield Replacement & Repair
Insurance Approved & Claims Welcome
FREE MOBILE SERVICE
Terry Steinbock Lazbuddie, Texas 806-946-9964

Lowe's MARKETPLACE
401 W. American Blvd. • Muleshoe • 272-4585

H & W HAY COMPANY
Alan & Ted Harrison
Rt. 1 Box 5 272-3825 Muleshoe

PRAIRIE VIEW DAIRY
Just southeast of Muleshoe

Obituaries

Loretta Celeste Flores-Goke

Loretta Celeste Flores-Goke, 49, a resident of Las Vegas N.M., passed away at the Lovelace Medical Center in Albuquerque, N.M., Thursday afternoon following a brief illness.

She was preceded in death by her maternal grandparents, Thomas and Louisa San Miguel; her paternal grandparents, Silverio and Concepcion Flores; and two aunts, Ava Castillo and Alicia Gonzales.

She is survived by her husband — Bruce Goke of Las Vegas, N.M.; her parents — Armando and Clara San Miguel Flores of Muleshoe; a stepson — Richard Goke and his wife Heidi of Albuquerque; a stepdaughter — Deseri Goke of Las Vegas, N.M.; her father-in-law — Ernesto C. Goke of Santa Fe, N.M.; five grandchildren — Derick, Miranda Jo, Adrianna, Antonio, and Nicholas Goke; and the following aunts and uncles — Robert and Seulema San Miguel of Fresno, Calif., Dolores and Adolfo Ruiz and Henry San Miguel, all of Earth, Paul and Anna San Miguel of Lubbock, Thomas and Mary San Miguel of New Braunfels, Guillermo and Mona Flores of Sheboygan, Wis., Mr. and Mrs. Frank Flores and Fermin and Mary Flores, all of San Antonio, Daniel and Dee Flores of Ft. Worth, Bertha Saldano of Corpus Christi, Connie Marinas of Houston, and Lupe Guajardo of Garland.

She was born in Dimmitt on Feb. 3, 1956, and received her BA and MA degrees from New Mexico Highlands University. She taught bilingual education in Artesia, Thoreau, Robertson High School, Santa Rosa Corrections Facility, Valmore, Luna Community College, and in Amarillo. Recently she taught school at the Los Alamitos Junior High School in Grants, N.M. She married Bruce Goke on Feb. 16, 1985 in Muleshoe.

A visitation was held on July 11, 2005, in St. Francis Chapel at Gonzales Funerals & Cremations, 2315 Hot Springs Blvd. A rosary was recited on the evening of July 11, at 7 p.m., from Our Lady of Sorrows Church. The Mass of Christian Burial was celebrated on Tuesday, July 12, 2005, at 9 a.m. from Our Lady of Sorrows Church. Services will be held at the Ellis Funeral Home on Tuesday and Wednesday evenings followed by a church mass on Thursday, July 14, 2005, in Muleshoe.

The interment will follow in Earth Memorial Park Cemetery in Earth. Memorials may be made in her honor to the Heating & Air Conditioning Fund at Our Lady of Sorrows Church, 403 Valencia, Las Vegas, N.M. 87701.

Local arrangements are under the direction of Billy G. Rogers at Gonzales Funeral & Cremations, 2315 Hot Springs Blvd., Las Vegas, N.M. 87701.

Rev. Milton Bascum Baldwin

Funeral services for the Rev. Milton Bascum Baldwin, 89, were held on Tuesday, July 12, 2005, at the First Baptist Church of Earth, Texas. Burial followed in the Springlake Cemetery, Springlake, Texas.

Rev. Baldwin was called home to be in the arms of the Lord on Tuesday evening, July 5, 2005. He was born in Paducah, Texas, where he grew up in a farm family that survived the "dust bowl" years and the Great Depression by picking grapes in California.

At the early age of 16, Rev. Baldwin surrendered to preach. In 1934, he enrolled in Wayland Baptist College and later attended Abilene Christian College. While teaching school in Reserve, N.M., he met and married Viola Bethel Childress, a school teacher at neighboring Greens Gap, N.M., on Dec. 16, 1939.

In 1954, Rev. Baldwin was graduated from Southwestern Theological Seminary in Fort Worth, Texas. After service in the U.S. Army Air Force during World War II, Rev. Baldwin served as a bi-vocational minister, and was employed as post engineer for the Atomic Energy Commission at Sandia Base in Albuquerque, N.M.

Three sons enlivened the union of Milton and Viola: Charles Milton who lives in Jackson, Tenn., with his wife Janice Ann; and Roy Everett and James Byron, both of whom preceded their father in death. After 41 years of marriage, Viola died on Dec. 23, 1980.

Rev. Baldwin pastored churches in Lampasas, Grand Prairie, Midlothian, Springlake and Earth, Texas, from 1952 until 1987.

In 1982, Rev. Baldwin married Flossie Yates, a gentle, generous woman from Virginia, and since 1988, they have made their home in Jackson, Tenn. They have been active members of the First Baptist Church, where Rev. Baldwin has taught a Sunday school class for the last several years.

Rev. Baldwin was an avid gardener who derived great joy from giving away the vegetables that he grew.

Rev. Baldwin leaves to cherish his memory his wife of 23 years, Flossie; one son Charles and his wife Janice; one stepdaughter — Genoa Strickland; five grandchildren — Lisa Renee Galletta and husband Gary, Darron White and wife Stacy, Michelle Baldwin, Jimmy White and Craig White; five great-grandchildren; many nieces and nephews, and a host of dear friends.


Local visitation was held in the Parsons-Ellis Funeral Home, Earth, Texas, on Monday, July 11, 2005. Local arrangements were under the direction of the Parsons-Ellis Funeral Home, Earth, Texas.

The family has requested that memorials be directed to Union University c/o the Baldwin Memorial Fund, 1050 Union University Drive, Jackson, TN 38305, or to the First Baptist Church, 1622 N. Highland Ave, Jackson, TN 38305.

BARRON'S ROOFING & REMODELING CO.
HEREFORD, TEXAS
806-206-7285
Time to change the roofing on your home? Call us for a free estimate.
All Types of Residential & Commercial Roofing
"We Specialize In Insurance Replacement"
Quality re-roofing for a price that's right - Se habla Espanol
Cell: 206-7285 Jose M. Barron, Owner Res. 363-1455

Join Us For Our 2nd Annual
Compassionate Care of Muleshoe
CITY WIDE GARAGE SALE
SAT., JULY 23
Spaces for rent now - Call David Pollard at
806-946-9241 and leave a message.
Thinking of having a garage sale? Why not have it in
an air conditioned building with lots of other folks!
FIRST ASSEMBLY OF GOD CHURCH
ACTIVITY CENTER ON HWY. 214
Don't get caught in the summer heat! Help yourself and Compassionate Care by
joining the City Wide Garage Sale on July 23, 2005! Food and drinks available on site.

¡Se Habla Español!



**TO ALL TEXAS
MEDICAID PERSONS**

We see Texas Medicaid people and want you to know that all Medicaid holders who are over 21 years of age are entitled to an eye exam when your card says you are eligible. We will get this exam done for you.

And of course, we also see children who are eligible for eye care.

Dr. A.R. Ploudre
OPTOMETRIST
1515 GIDDING STREET • CLOVIS
505-762-2951

Jimmy "Bo" Chunn

A graveside service for Jimmy "Bo" Chunn, 71, of Causey, N.M., is set for 10 a.m., Friday, July 15, 2005, at Causey Cemetery, with Leroy Thomas officiating.

Chunn died on Friday, July 8, 2005. He was born to Lola and Clovie S. Chunn on Jan. 9, 1934, at Pitchfork, N.M. He was preceded in death by his mother.

Chunn was a member of the 1952 Class of Portales High School. On July 18, 1954, he married Annette Judah. The couple had two children, and later divorced. He moved to Causey in 1959, where he ranched and operated Chunn's Well Service. He was a member of the Causey Church of Christ.

Survivors include a son and daughter-in-law — Rick and April Chunn of Woodland, Wash.; a daughter and son-in-law — Karen and Steve Chandler of Portales, N.M.; his father and stepmother — Clovie and Esther Chunn of Portales, N.M.; a brother and sister-in-law — Clovie L. and Valerie Chunn of Portales, N.M.; three sisters and brothers-in-law — Carmen and Roger Woods of Rogersville, Mo., Chari and Ronnie Wood of Roswell, N.M., and Sue and Blake Inge of Dora.

Athletic Booster Club meeting set

Parents of students participating in Muleshoe athletics are invited to attend the Muleshoe Athletic Booster Club's first meeting of the season to be held Thursday, Aug. 4, at 7 p.m. in the Five Area Telephone meeting room.

1/2 PRICE BURGERS

SINGLE BURGERS 5PM-CLOSE EVERY TUESDAY NIGHT



1633 American Blvd.
272-3998 • MULESHOE

SONIC
America's Drive-In.

1015 Hall • 385-5442 • LITTLEFIELD

Limited Time Only. At participating drive-ins only. Address extra.

"Dad, Do You Want To Run to . . ."

"Dad, do you want to run to Amarillo with me?" That was the question that came across the phone line into my office. My son is needing to pick up his international driver's license in Amarillo.

Hmm. I hadn't planned to take a trip today. I've got a long list of stuff I'd planned to do and thought I needed to scratch off the "To Do" list ASAP. And gas is bumping up toward \$2.30 a gallon. (But he needs to go anyway.) And we just got home from a trip of

first and I've felt some before but never as strongly as now: I've been enjoying my sons not just as dearly loved children, which they'll always be to me, but as adults who I love and respect. Lots of parents have already received that blessing and have told me about it, but I'm seeing it more and more for myself, and I'm very thankful for it. I felt it myself as a son when years ago that began to happen between me and my own father, and now I'm feeling it from the other perspective, and it is a very good thing.


"Do you want to run to Amarillo with me?" Yes! Because I know that next week I'll be aching to be able to go anywhere with you.

A few decades ago when my oldest brother and his wife left home to do mission work in Malawi, Africa, for what would become twenty years, they went for 3-4 year stays, and the mission in Malawi that now serves hundreds of churches was in its very early, very primitive state. We sent "air letters" back and forth that took over two weeks (not two nanoseconds like e-mail). Often we made cassette tapes and sent them. Long conversations, but pretty one-sided. We made a phone call or two a year, which were very expensive and not at all reliable (and now we call the guys' cell phone for 8 cents a minute or so and it usually sounds like they're in Lubbock). The world really is a much smaller place, and I'm glad. But, still, I know a little more now how Mom & Dad must have felt.

"Dad, do you want to run to Amarillo with me?" Yes! More than you know.

They've just been home for a few weeks, but I've been experiencing and relishing the taste of a really wonderful blessing, one that almost surprised me at

Focus On Faith
Curtis Shelburne



800 miles or so, and I really don't feel a huge need to travel. But there was the question: "Dad, do you want to run to Amarillo with me?" And today the answer is easy. "Yes! You bet!" And if he'd said, "Dad, do you want to run to Detroit with me?" I'd have been tempted to give the very same answer!

In two days, Stephan will be heading back to Africa to do mission work in Uganda for the next two years. I'm glad he's going!

Well, you know what I mean. I'm glad that he, and our oldest son who will be going back also in a few weeks, have been blessed with the opportunity to do what they're doing. But two years is a long time. They've just been home for a few weeks, but I've been experiencing and relishing the taste of a really wonderful blessing, one that almost surprised me at

Curtis Shelburne is minister of the 16th & D Church of Christ in Muleshoe.

Dr. A.R. Ploudre
OPTOMETRIST



Quality Family Vision Care
Tricare, Medicare, Medicaid
VSP, Eye Med, Others

**If You Suffer from Migraines
Come See Us! We Can Effect
Total Relief Without Medication**


For As Long As You Would Have Migraine Episodes
ONLY ONE VISIT REQUIRED

1515 GIDDING STREET • CLOVIS
505-762-2951
¡Se Habla Español!

Good Neighbor.
GREAT RATES.

SAVINGS ACCOUNTS		MONEY MARKET ACCOUNTS	
\$0 - \$24,999	1.60% APY*	\$0 - \$99	0.00% APY*
\$25,000 - \$49,999	1.85% APY*	\$100 - \$9,999	1.50% APY*
\$50,000 - \$99,999	2.85% APY*	\$10,000 - \$24,999	1.60% APY*
\$100,000 +	3.00% APY*	\$25,000 - \$49,999	2.10% APY*
		\$50,000 - \$99,999	3.00% APY*
		\$100,000 +	3.50% APY*

Please talk to your State Farm agent today for more information.



Mark W. Morton
State Farm Agent
Muleshoe, TX 79347
Bus: 806-272-7519
mark.morton.cv5g@statefarm.com

STATE FARM Bank.
LIKE A GOOD NEIGHBOR, STATE FARM IS THERE.

CERTIFICATES OF DEPOSIT

90 Day	2.85% APY*
180 Day	3.25% APY*
1 Year	4.04% APY*
2 Year	4.05% APY*
3 Year	4.10% APY*
4 Year	4.25% APY*
5 Year	4.35% APY*

*Annual Percentage Yields as of 07/13/05. Rates on all products subject to change without notice. Fees on Savings and Money Market Accounts could reduce earnings. Minimum opening deposits are \$100 for Savings Accounts and \$1,000 for Money Market Accounts. For CDs: minimum balance to open an account and obtain the stated APY is \$500. CD rates apply to deposits less than \$100,000. A penalty may be imposed for a withdrawal prior to maturity. Certificates automatically renew at maturity at the then-current rate for the same term.

FDIC
NBERA
P041007 STATE FARM BANK • HOME OFFICE: BLOOMINGTON, ILLINOIS • statefarm.com® 05/05

Don't miss out on local news this summer! Get the Journal!

Agricultural News

Water expert says drought may not be over

One or two good years have dropped the word "drought" from many Texans' vocabularies. But is the drought really over?

A Texas Cooperative Extension water expert here says, "No."

Mike Mecke is a drought pro. He is the extension's water management program specialist for far West Texas, one of the driest regions in the nation. He's also a native Texan who grew up during the infamous 1950s drought.

Fifteen years as a Natural Resources Conservation Service range conservationist in Texas, and later experience as a

rangeland manager on Arizona and New Mexico Indian reservations, taught him valuable lessons on drought preparations.

"Most of Texas has been blessed with ample rains for the past 20 months," Mecke said. "But the question remains, is this drought really over and how does the current situation rank with the 1950s drought?"

"It's a little too early to tell. One good year, or even two, does not necessarily break a drought. Records show the 1950s drought in Texas started in the southern Hill Country and San Antonio areas as early as 1948, and

didn't end until the fall of 1957.

"I was an aggie freshman in Texas A&M University's Corps of Cadets when the drought broke," Mecke said. "It rained so much that fall I thought the only clothes I needed were a helmet and a raincoat. But, boy, it was wonderful to see the world turn green again."

Mecke said even during the 1950s drought there were periods of almost normal rainfall — similar to what Texans are enjoying now.

"Some of our key lakes in the western half of Texas are pretty full now and in good shape," he said. "Others have recovered to varying degrees, but still are a long way from being full. We've had a lot of rain in far West Texas, so why aren't the lakes out here running over? It seems strange they are not, until you realize all their watersheds are still in a long-term drought condition."

"We've made progress, but water-catching native grasses and forbs are greatly reduced or gone, soils are dry many feet below the surface and streambanks (riparian areas) are dry as well. Aquifers and shallow groundwater areas have really suffered during this drought. It will take several good years of rainfall before springs will recharge and flow consistently."

Mecke said vegetation must recover before rainfall can become effective. Creeks and rivers have suffered for so long that many waterways have gone dry.

In good times creek banks absorb water much like a sponge, he said. This "sponge" supports tree growth and other vegetation when creek flow stops for brief intervals.

"These riparian areas remain dry over much of Texas," Mecke said. "It will take a long time to refill these natural sponges. You know how hard it is to build up your bank account. Well, riparian banks and underground

aquifer recharge areas work the same way... seems like slow coming in and fast going out!"

Mecke said along with ample rainfall, recovering from a long-standing drought takes time, patience and smart management by the land manager.

"Ranchers should consider holding off restocking drought-damaged ranges and check with their local Extension or Natural Resources Conservation Service offices for advice and technical assistance before buying those high-priced cows," Mecke said. "From a range management point of view, it may be wise to start back with stockers and only keep them briefly until pastures revegetate with good quality forage plants."

"In the meantime, emphasize your wildlife income and harvest more doe deer. Ranchers need to remember that they are actually grass farmers and livestock and wildlife are their harvesting tools."

Mecke said the better condition a rancher's rangelands are, the more profitable their ranching enterprises will be and the more effective their watersheds will be.

"Drought or not, water conservation is the name of the game," Mecke said. "In fact, with Texas expected to double its population by 2050, we will probably always be in a water-conserving mode."

"If we're not in a drought now, we must not forget that the next one is just around the corner. We need to be prepared for it not only in our rangeland and farming management, but also in our communities and personal lives as well," he said.

TxDOT plans work in county

The Texas Department of Transportation will spend about \$11 million this year to seal coat 442 miles of highway in the Lubbock district, including 17 miles in Bailey County.

The sections of highway target for the work in Bailey County are on FM 746, extending from FM 1731 to SH 214; and on FM 298,

extending from SH 214 to the Lamb County Line.

The work on the 442 miles of roadway began in June and is expected to be completed by the middle of September.

Keep Budworms and Bollworms Out of Cotton

Tobacco budworm and bollworm are the two most destructive pests in cotton. You can pretty much count on them year after year, and their impact on a cotton crop can be devastating.

Use of Bt cotton varieties have reduced some of the risk surrounding these pests. But due to movement and feeding habits of bollworms, experience has shown that an overspray of a worm treatment is usually needed on Bt varieties. And, of course, planned worm control programs are still needed for use on herbicide-tolerant and conventional cotton acres.

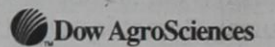
Tracer® Naturalyte® insect control has demonstrated effective, accurate control of worm pests, including tobacco budworm and cotton bollworm. Tracer allows you to control outbreaks of these damaging pests in all cotton production systems, whether you plant conventional or transgenic varieties.

Tracer offers a three-way mode of action — by contact, by ingestion and through ovicidal-like activity. While deadly to worms, it helps protect key beneficial insects such as ladybeetles and wasps in your crop, making it an ideal part of an Integrated Pest Management program as well. It is highly effective at low use rates, and also provides control of armyworms, loopers and thrips.

Be sure to scout for worm pests regularly to monitor egg laying and egg hatch, and be ready to treat when thresholds are reached.

Tracer performs best when applications are timed to coincide with the peak egg hatch of each generation.

For more information about use or rates for Tracer® Naturalyte® insect control, contact your local ag retailer or visit www.tracerworks.com.



®Trademark of Dow AgroSciences LLC. Always read and follow label directions. www.farmsmart.com



Greg Alpers
Sales Representative
Roswell, NM

Sorghum Report

According to the Texas Agricultural Statistics Service, June 1 stocks of sorghum in all positions totaled 7.3 million hundredweight (CWT), down 29 percent from the 10 million cwt on hand a year ago.

On-farm stocks totaled 336,000 cwt, up 100 percent from a year ago. Off-farm stocks, at 7.0 million cwt, were down 30 percent from June 1, 2004.

Stocks of wheat in all positions June 1, 2005, totaled 25.6 million bushels, down 31 percent from last year's level of 37.2 million bushels. On-farm stocks totaled one million bushels, up 67 percent from last year; off-farm stocks totaled 24.6 million bushels, down 33 percent from June 1, 2004.

The Texas Agricultural Statistics Service no longer publishes corn stocks on farms, but the off-farm storage, at 63.8 million bushels, was up 113 percent from a year earlier.

Stocks of corn in all positions in the United States totaled 4.3 billion bushels, up 45 percent from the June 1, 2004, level.

All old crop wheat stocks, at 539.8 million bushels, were down one percent from the June level of 546.4 million bushels a year ago.

U.S. stocks of sorghum totaled 58.4 million cwt, up 29 percent from last year. Soybean stocks totaled 699.6 million bushels, up 70 percent; oats on hand totaled 57.9 million bushels, down 11 percent from June 2004.

SBA economic injury loan deadline is Aug. 3

Businesses in some Texas and New Mexico counties have until Aug. 3 to file applications for low-interest disaster loans from the U.S. Small Business Administration.

The SBA's economic injury disaster loans are available for businesses dependent on farmers and ranchers sustaining crop losses due to excessive rain, flash flooding, hail, high winds, and lightning that occurred on Oct. 5, 2004. Farmers and ranchers are not eligible for these SBA loans.

Businesses in Bailey, Cockran, Hockley, Lamb and Parmer Counties of Texas are eligible to apply.

Also eligible to apply are businesses in Curry and Roosevelt Counties of New Mexico.

Applications and further information can be obtained by calling the SBA toll-free at 1-800-366-6303 or TDD 817-267-4688 for the hearing impaired

These loans are intended

to assist businesses in offsetting working capital losses which they suffered as a result of the severe weather reducing the crop income of the area farmers and ranchers.

Small businesses claiming to have been physically injured by the disaster are also not eligible.

We're In The Field With You.

So when you need us, we'll be there.

Farm & Ranch Loans at Competitive Rates

Land Loans • Production Loans • Equipment Loans
Cattle Loans • Rural Housing Loans

Also, Ask About Our

Cash Management Program • Equipment Leasing Program
Credit Life Insurance • Crop Insurance • Recreation Loans
Young and Beginning Farmer Program

www.agmoney.com

FIRST AG CREDIT
FARM CREDIT SERVICES

1601 West American Blvd, Muleshoe, TX 79347 • 272-3010

REPRESENTATIVE SALES

SAT., JULY 9, 2005

787 head of cattle, 112 hogs and 764 sheep and goats for a total of 1,663 livestock sold at the July 9th sale. Market steady on most all classes of cattle with good demand.

FOR INFORMATION ON SALES OR TO CONSIGN CATTLE-272-4201

Seller, City	# Type	Wt. CWT or PH
Ruben Saveedra, Albuquerque	3 Hol. bulls	185 lbs. at \$157.00
Sunrise Farms, Nazareth	17 Hol. bulls	275 lbs. at \$130.00
Joe Garcia, Albuquerque	6 Hol. bulls	288 lbs. at \$135.00
Eldorado Dairy, Clovis	3 Hol. str. per hd.	168 lbs. at \$290.00
Luis Flores, Muleshoe	2 Blk. str.	305 lbs. at \$162.50
Luis Flores, Muleshoe	6 Mxd. str.	385 lbs. at \$146.00
KC Land & Cattle, Muleshoe	2 Blk. bulls	340 lbs. at \$152.50
KC Land & Cattle, Muleshoe	3 Red bulls	420 lbs. at \$137.50
Larry Jesko, Muleshoe	3 Red bulls	392 lbs. at \$138.00
Larry Jesko, Muleshoe	4 Red str.	630 lbs. at \$113.00
Olivera Aldape, Plainview	2 Red bulls	428 lbs. at \$137.50
Laverne Coffman, Causey	3 Mxd. bulls	463 lbs. at \$129.00
Laverne Coffman, Causey	3 Blk. bulls	543 lbs. at \$119.00
Jack Tarver, Portales	4 Blk. str.	645 lbs. at \$109.00
Joe Garcia, Albuquerque	Red bull	645 lbs. at \$106.00
Liborio Avalos, Hereford	Blk. hfr per hd.	175 lbs. at \$400.00
Murta Rodriguez, Sudan	Blk. hfr per hd.	195 lbs. at \$400.00
Ginger Byrum, Plains	3 Char. hfrs	448 lbs. at \$119.00
Laverne Coffman, Causey	3 BMF hfrs	487 lbs. at \$114.00
Mike Beauchamp, Bovina	Char. hfrs	635 lbs. at \$101.00
Pat Demel, Littlefield	3 Blk. hfrs	657 lbs. at \$105.00
Evergreen Farms, Muleshoe	4 Blk. hfrs	710 lbs. at \$95.00
Evergreen Farms, Muleshoe	6 Blk. hfrs	1048 lbs. at \$92.00
Adam Mungin, Hereford	Blk. hfr	525 lbs. at \$116.00
Randy Johnson, Muleshoe	10 Mxd. hfrs	743 lbs. at \$94.50
John Knelsen, Muleshoe	Red cow	1205 lbs. at \$62.00
Mike Beauchamp, Bovina	3 Char. cows	1605 lbs. at \$59.50
Dale Demel, Sudan	Blk. cow	1605 lbs. at \$59.50
Marnell Farms, Hereford	2 Blk. cows	1320 lbs. at \$57.50
KC Land & Cattle, Muleshoe	Blk. cow	1080 lbs. at \$57.00
Bo Brown, Muleshoe	Brin. cow	1025 lbs. at \$57.00
Doug Clements, Muleshoe	Limo. bull	1730 lbs. at \$80.25

This Report Proudly Sponsored By:

Truck.Truck.
Gotta Get A Truck. Gotta Get A Truck At...

1504 Mabry Drive, Clovis • 505-762-3300

Attention Farmers

SEL-COR PEA & BEAN, Inc.

(4 Miles west of Brownfield on Hwy. 380)

IS NOW OFFERING

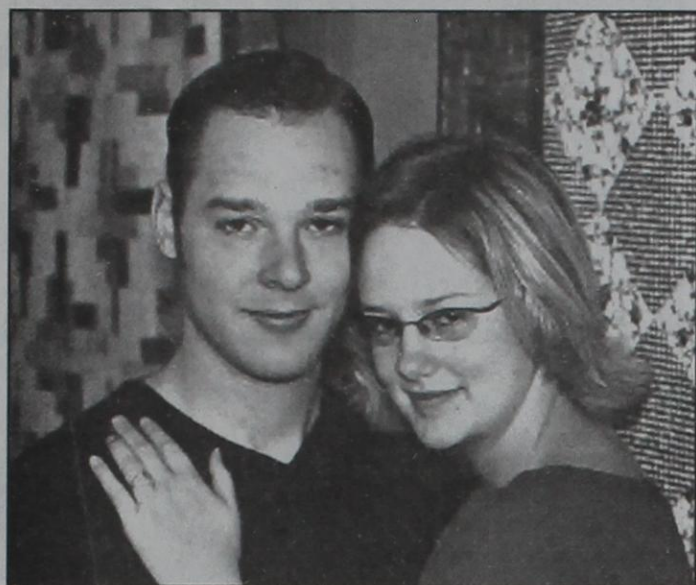
CONTRACTS ON BLACK EYE PEAS

B. Coronado (806) 893-0548

Mark Wilkes (806) 893-2782

Office (806) 522-6460 FAX (806) 522-6462

Engagements



Johnson, Patterson engaged

Don and Elaine Johnson of Pampa announce the engagement of their daughter, Emily Kate Johnson of Pampa, to Daniel Stuart Patterson of Plainview.

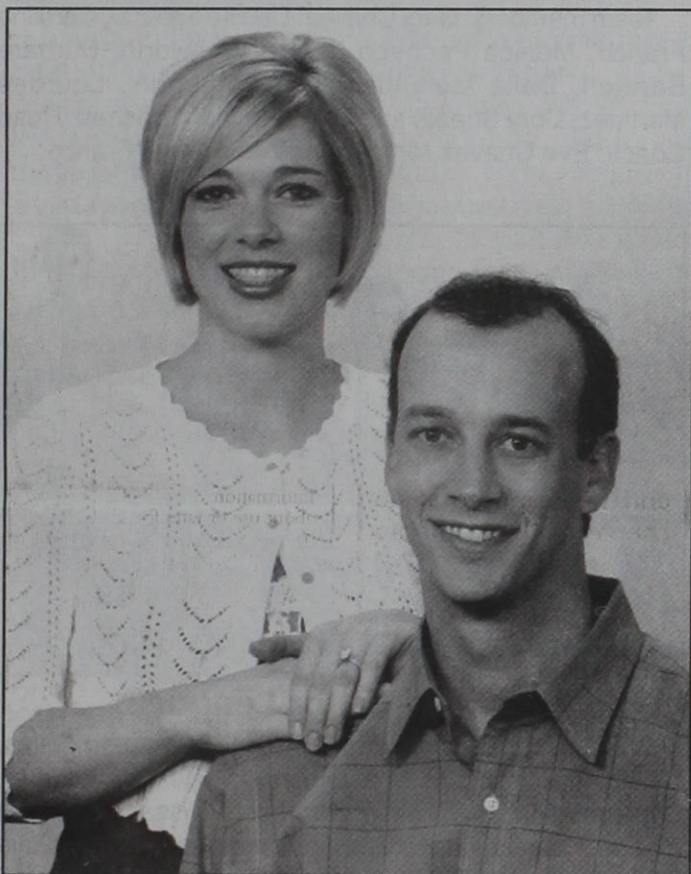
The prospective groom is the son of Lionel and Liz Patterson of Lubbock, formerly of Muleshoe.

The prospective bride is a graduate of Pampa High School, and has been attending Frank Phillips College.

The prospective groom is a graduate of Muleshoe High School, and a graduate of Eastern New Mexico University with bachelors degrees in psychology and religion. He is employed with the Hale County Sheriff's Department as a corrections officer.

The wedding has been set for July 23, 2005, at 2 p.m., at Central Baptist Church of Pampa, with a reception following in the fellowship hall.

A bridal shower was held on June 25 at Central Baptist Church and another was held on July 9 at Trinity Baptist Church of Muleshoe.



Ensor, Morris engaged

Marvin and Karen Ensor of San Angelo announce the engagement of their daughter, Emily Ensor of Georgetown, to Cade Morris, also of Georgetown.

The prospective bride is a 1999 graduate of Seminole High School, and a 2004 graduate of Texas Tech University Health Center with a bachelor of science in nursing. She is currently employed at St. David's Round Rock Medical Center as a neonatal registered nurse.

The prospective groom is the son of Gail and Marca Morris of Lazbuddie. He graduated from Lazbuddie High School in 1999, and from Texas Tech University in 2004 with a degree in animal science. He is currently employed by Capitol Land & Livestock in cattle sales and marketing.

A wedding date of Sept. 24, 2005, has been set, at 6 p.m., at Aldersgate Methodist Church of Lubbock, with a reception to follow, at 7 p.m., at the Merket Alumni Center, Texas Tech University.

Nursing Home News

Thursday, Anita Johnson and Janis Morrison directed the craft class. The residents created 4th of July firecracker decorations.

Thursday afternoon, Volunteers Plus and the Activity Department hosted the June birthday party. Residents having a birthday in June were Jack Graves, Nan Gatlin, Edna Duncan, Louise Agee, Erald Gross, G.R. Lasiter, Mary Johnson and Floy Hanson.

Decorators Floral made each birthday resident a corsage or boutonniere. Lasting Impression presented the birthday people with a Beanie Baby, attached to a big colorful balloon. Liz Howard entertained, joined by Blanca Logan and Paul Chaisson.

"Elvis Presley" made a surprise debut at Park View, and Anita Johnson and Alice Liles served the refreshments.

Friday afternoon, Janet Denton visited the residents and gave a great performance. Janet played her electric piano and sang for the residents.

Saturday, Buster Kittrell came to cut the men's hair.

Sunday afternoon, the Cowboy Fellowship directed the church services and visited with the residents.

Bro. Gary and Judy Hubbard directed a celebration of the life of Mary Holt Thursday, June 28.

Early Sunday afternoon, July 3, Elton Bass and Darlene Collins played and sang bluegrass music for the residents.

The First United Methodist Church came Sunday afternoon and directed a communion service and church services.

Frank Wabington was visited recently by Jason Wabington, Pheobe Wabington, Marion Wabington and Kacey Wabington.

Pauline Chappell was visited by Dorothy Sneller recently.

Park View hosted a July 4th cookout Monday for lunch, with hot dogs, hamburgers and all of the trimmings. Doug and Renda Logston did the grilling. The Sudduth brothers and their wives did a great job entertaining. The residents' families and volunteers were honored guests.

Tuesday afternoon, Pat Clark, Delores Garrett, Mary Jo Burge, Jan Crawford, and Marita Thomas shampooed and set the ladies' hair. Clark gave several haircuts. She also baked refreshments for the volunteers and residents.

Mr. and Mrs. Joe Jennings and Darrell and Glenda

Jennings visited Marlin and Loma Mosley during the July 4th holiday.

Paul Stanton visited Park View and played the piano for the residents recently.

Harold and Avis Carpenter came on Friday and played the piano as the residents sang songs of yesteryear. Janis Snell also visited and participated in the event.

Morris Nowlin and his daughter Darene Collins visited the residents and staff last week.

Stephanie Kirby has been volunteering in Park View this week.

Buster and Wanda Kittrel, and Harold and Mary Jo Burge, served coffee and donuts to the residents at coffee time Wednesday. Harold had words of inspiration for the group.

Following coffee time, Buster, James and Ann Sinclair and Jo Ellen Cowart directed our devotional and singspiration time.

The Tibbets family sent a nice plant to Park View.

Betty Burlsmith visited Park View Tuesday. Among those she visited were Hazel Ball and Hattie Heathington. Betty, a former Muleshoe resident, now lives in Lubbock.

Happy Birthday to the following residents: Pauline Guinn, Ruby Clark, Arnold Prater, Juanita Buchman, Josephine Fisher, Miller Johnston, Jonnie Kimbrough, Gladys Wright, Virgie Perry, Jewell Peeler and our valued volunteer Cari Kidd.

Gladys and Cathy Wilson were visited by Scott, Jana and Adam Finke and Karen and Clayton Ware. Marita Thomas took Cathy out for lunch Tuesday.

Lance Insurance

Competitive Rates, Variety of Leading Companies
For Home, Auto, Commercial and Crop
806-227-2466

TEXAS EARTH, INC.

Brownfield, Texas

Natural Balance with Natural Products

Improve crop production and reduce plant stress by applying humic acid blended with nitrogen

Humic Acid
Seaweed

Fulvic Acid
Micro Nutrients

OFFICE (806) 637-1265
CELL (806) 777-1615

Whirlpool
Home Appliances

WE ARE YOUR HOMETOWN
WHIRLPOOL DEALER.

"Let Us Give You A Quote On
Your Next Appliance!"

McDaniel's
APPLIANCES

1020 Main Street, Clovis, NM • 505-762-4481 or 800-682-7891

Thanks for reading!

Thank You!

Muleshoe Motor Co., Inc. wishes to thank every business and individual who helped to make our 1st Annual All Ford Car Show held this past Saturday such a great success. Thanks to your support of this event, Bailey County Meals On Wheels will receive a much needed and appreciated donation. If we have inadvertently omitted your name, please forgive us. Everyone worked so hard to make this show happen!

Special thanks to these Services/Door Prizes donors

- | | |
|---|--|
| Town & Country #72 | Fry & Cox/True Value |
| United Supermarkets #550 | The Spotted Leopard |
| Dinner Bell Restaurant | Lasting Impressions |
| First Bank of Muleshoe | Taqueria Guadalajara |
| Western Drug & Something Special Gifts | Alex's Tire Service |
| Five Area Systems | Pampered Chef/ Jessie Hanna |
| Higginbotham-Bartlett Co. | Mohawk Auto Parts |
| The Connection Warehouse/ RadioShack | Tong Sing Chinese Buffet/ Jimmy Huang |
| Carolyn's Christmas Creations | Scott's Car Wash |
| Dent & Co. | Pizza Hut of Muleshoe |
| Snap-On Tools/ Ricky Sisemore | Movie Gallery |
| The Donut Hole | Leal's Restaurant, Muleshoe |
| Sanitary Barber Shop | Decorators Floral & Gifts |
| Muleshoe Country Club | Bratcher Motor Supply |
| Muleshoe Tire | Master Trim - Clovis, NM |
| | McDonald's of Muleshoe |

Special thanks goes to the employees, spouses and special friends of Muleshoe Motor Co. Your help and encouragement during this event was invaluable!

MULESHOE MOTOR CO.

1125 W. American Blvd., Muleshoe

60th Anniversary Celebration

Mr. & Mrs.
Thomas Lee Harper
will celebrate their
60th Wedding Anniversary
July 13, 2005

2005

The Sudan Church of Christ will host a potluck dinner in celebration of their love on Sunday, July 17th.



1945

The Harpers have one son Craig and his wife Mary Ann of Sudan. They also have two grandsons.

Thomas Lee Harper and the former Bethlene Middleton were married July 13, 1945 at the Friendship Church of Christ in the Friendship Community south of Sudan.

Sports

Youth softball season closes

The Muleshoe youth Softball Association completed play for the 2005 season Saturday, June 25, with the Queens taking the major league trophy and the Pink Panthers taking the minor league trophy.

Pictured to the immediate right are the Queens. The team members are: Linda Sanchez, Jasmyn Guerra, Ruby Andrade, Marion Gutierrez, Autumn S  ller, Erica Strawn, Adriana Guerra, Selena Villegas, Alondra Villarreal, and Samantha Ramirez. Coaches are: Juan Sanchez, Adrian Guerra and Erica Sanchez.

Pictured below the Queens are the Pink Panthers. The team members are: Brenda Rodriguez, Marisela Casanova, Claudia Pena, Ruby Franco, Stephanie Garcia, Brooke May, Morgan Smith, Samantha Camarena, Samantha Reyna, Isabela Alfaro, Araceli Macias and Adriana Toscazo. Coaches are: Ricky Rodriguez, Diana Casanova and Minerva Martinez.



Most Valuable Players for the 2005 season, left to right: Back row — Valeria Olivas, Erika Rodriguez, Toti Alvarado; front row — Clara Reyes, Daniela Mendoza, Linda Sanchez and Britney Prater. Not pictured is Morgan Smith.



Renegades - Minor League
Team members: Gabi Chavez, Denise Salazar, Carolina Franco, Monica Pacheco, Sarah Whitworth, Barbara Bartholf, Dalia Melendez, Ivana Agundis, Lourdes Martinez, Cory Sheets and Clara Reyes. Coaches: Head Coach: Eve Chavez, Nina Agundiz and Goya Franco.

Photographs
by Leah Bell



Silver Bullets - Major League
Team members: Tori Alvarado, Julia Silva, Carlotta Schlomer, Sandra Leva, Lindsay Moulton, Ashley Cisneros, Heather Gutierrez, Adriana Martinez, Stephanie Vasquez, Jessica Winders, Mindy Hamilton and Luz Sital. Coaches: Eddie Alvarado, Eddie Alvarado Jr. and Elias Alvarado.



Purple Flames - Major League
Team members: Amber Fuentes, Gabriela Perez, Melissa Mendoza, Jessica Behrends, Erika Rodriguez, Caitlyn Durben, Skyler Smith, Devnie Orozco, Leslie Macias, Jennifer Vasquez, Alyssa Leal, Maria Quintanilla and Crystal Quintanilla. Coaches: Randy Perez and Lupita Pineda.



Lucky Charms - Minor League
Team members: Miranda DeBruin, Samantha Bales, Dallas Morrison, Victoria Guzman, Keelee Whitaker, Daniela Mendoza, Desiree Cisneros, Yulissa Pina, Perla Pina, Adriana Loya and Don Ann Rempe. Coaches: Julie De Bruin, Tanner Bales and Flora Orozco.



Golden Girls - Minor League
Team members: Alexis Fuentes, Astrid Nunez, Savana Hanaway, Bethany Prater, Brittany Prater, Shaylee Winchel, Alexis Cortez, Madison Jesko and Shelbi Harrison. Coaches: Lupita Pineda, Randy Perez and Ashley Dickson.



Starburst - Major League
Team members: Breann Baca, Lupita Andrade, Briana Anguiano, Crystal Olivas, Jenna Whitworth, Thalia Colunga, Valeria Olivas, Sabrina Chavez, Dominique Mata, Yagar  a Rodr  guez. Coaches: Elisa Baca, Rachel Olivas and Britney Ambriz.



The 2005 Board of Directors include: Eddie Alvarado - president, Robert Hall - second vice president, Elisa Baca - first vice president, Carla Ambriz - treasurer, Barry Wiseman - player representative, and Julie DeBruin - secretary. Pictured above are the board members, excluding Eddie Alvarado, and Rachel Alvarado.



Congratulations on a successful 2005 softball season!

Senior Citizen News

The Oneita Wagon Senior Center's new computer lab had 12 senior citizens on hand to begin learning computers Thursday afternoon at 1 p.m.

Patty Banks helped the seniors in the basics of the use of computers. The classes will continue every Thursday at 1 p.m. at the center.

The computer lab is available Monday through Friday, from 8 a.m. to 4 p.m. All seniors are invited to come and practice at any time. Many have found that playing the simple game of solitaire helps learn the use of the "mouse."

Knowledgeable seniors have begun helping others learn the basics.

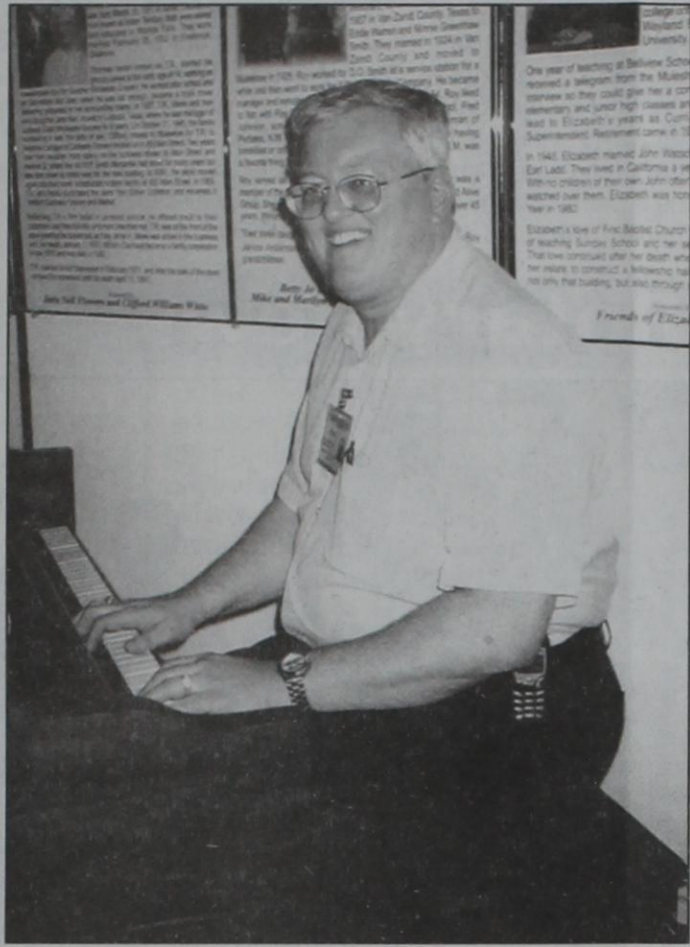
Wanda Kittrell and Shug Killough are hostesses for the 9 a.m. Tuesday morning games. All enjoy the great refreshments, the friendly atmosphere and even the bragging winners.

All enjoyed the special music on July 8 by W.T. and Pat Watson. About 15 seniors stayed to view the breathtaking documentary video, "Winged Migration."

July birthdays will be celebrated at noon on Friday, July 15th. James and Ann Sinclair will be bringing the music and a sing-a-long.

The attendance continues to grow at the Senior Dance each Tuesday evening at 7 pm.

We are promised that "Elvis" will put in an appearance singing many of



Paul Chaisson performing at the senior center.

his well-known songs on July 19th at the Senior Dance.

On Thursday, July 21, from 11:30 to 12:30 p.m. Paul Chaisson, administrator of Parkview Nursing Home, will bring his keyboard and entertain at the senior center.

On Friday, July 22, from 10 a.m to 12 noon, Jim Milner with Rightway Medical will be at the senior center to visit with senior citizens who are diabetic and may be in need of special shoes.

You may be eligible for a free pair of "diabetic" shoes, just stop by the senior

center for more information.

On July 29, The Senior Circle line dancers of Highland Medical, in Lubbock, will be coming to the senior center again. So plan to have a good time with the line dancers.

The senior citizen outing to see the production of "Texas Legacy" in Palo Duro Canyon will be on Saturday, July 30, due to availability of buses. More information and sign-up slips are available at the senior center beginning Wednesday afternoon, July 13.

The menu for the upcoming week is:

Monday, July 18 — Beef stroganoff, noodles, broccoli, wheat roll and strawberry shortcake.

Tuesday, July 19 — Baked ham, tator tots or fries, peas and carrots, sliced tomatoes and fruit salad.

Wednesday, July 20 — Turkey and gravy, cornbread dressing, green beans, wheat roll, grapefruit or orange sections and pumpkin pie.

Thursday, July 21 — Pork chop, mashed potatoes, mixed vegetables, coleslaw, raisin bread and baked apples.

Friday, July 22 — Braised steak with onions, scalloped potatoes, spinach, cornbread and apple cobbler.

History Notes

The first postmaster at the Enochs Post Office was L.H. Bates, who only served in that position for one year. In 1929, Maude Blalock Robinson was appointed and served until 1966.

Perry denounces "eminent domain" expansion

On July 8, Gov. Rick Perry expanded the call of the special legislative session to include legislation that limits government's ability to take property from private owners through eminent domain.

The U.S. Supreme Court recently set a new legal precedent that allows government entities to seize private property for economic development purposes.

"Today I am expanding the call of the special legislative session and asking lawmakers to take swift action to protect the private property rights of every Texan," Perry said.

"The Supreme Court's ruling would allow government to condemn your family's home, bulldoze it and build a new shopping mall or some other kind of economic development project simply to generate more tax revenue. I stand with an overwhelming majority of lawmakers and citizens who believe that this starts us down a slippery slope that will lead to the erosion of Texans' rights," the governor said.

"I support an amendment to the Texas Constitution because, by definition, the constitution is intended to protect the people from arbitrary acts by government that infringe on their basic rights. One of the most basic rights in Texas is the right to own property, and government shouldn't be able to take that away to pad its tax coffers," he added.

Gov. Perry's specific message allows lawmakers to consider "legislation relating to limiting the use of eminent domain to take private property for private parties or economic development purposes."

The Texas Constitution authorizes the governor to set the agenda during a special session of the legislature. The governor called lawmakers into special session beginning June 21, and has asked them to consider school finance, education reform and property tax relief

Legislation has already been filed in the Texas House and Senate that addresses the eminent domain issue. Today's action was required for lawmakers to have the authority to pass such legislation.

"I have expanded the purpose of this special session because this recent decision by the Supreme Court requires immediate action. We don't need to study this issue, we need to act, and I believe this legislature will," Perry said.

★★★★★★★★★★★★★★★★

Larry's Auto Sales, Inc.

(505) 762-8723 After Hours (505) 799-3331

PICKUP TRUCKS	Down	Mo. Payments
84 GMC Longbed PU	\$695	12@ \$187
91 GMC Sport-Bed PU	\$1,295	12@ \$243
92 CHEVY BLAZER 4 Door	\$995	9@ \$243
93 FORD EXPLORER 4 Door	\$1,095	12@ \$243
95 GMC S-15 SONOMA X-Cab Pickup	\$1,295	15@ \$269

QUALITY USED CARS	Down	Mo. Payments
90 FORD MUSTANG 2 Door, Auto	\$595	7@ \$184
90 OLDS CUTLASS CIERRA .. 4 Door, Auto	\$595	8@ \$176
91 HONDA ACCORD 4 Door, White	\$995	10@ \$253
92 DODGE SHADOW 4 Door, Auto	\$495	8@ \$176
94 CHEVY CORSICA 4 Door, Auto	\$895	8@ \$176
95 HONDA ACCORD 4 Door, Auto	\$1,495	17@ \$269
95 FORD THUNDERBIRD 2 Door, Auto	\$995	10@ \$220
96 DODGE NEON 4 Door, Auto	\$995	8@ \$230
97 CHRYSLER CONCORDE ... 4 Door, Auto	\$1,295	12@ \$271

421 W. 7th, Clovis - Across from Pawn City

Baylor seeks 'Family Business of the Year' nominations

The Institute for Family Business at Baylor University is currently accepting nominations for the Texas Family Business of the Year@ awards program.

This program is held to honor outstanding family-owned businesses in the areas of community commitment, family values and successful business management.

These awards are given in three categories - small (50 or fewer employees), medium (51 to 200 employees), and large (more than 200 employees). There are six other awards given in the areas of Family Values, Community Commitment, Fastest Growing, Well-Managed, Founder's Award (the business which has achieved success while still maintaining the vision of the founder), and Heritage Award (based on longevity.)

To be nominated, a firm must be headquartered in Texas and have one or more of the following characteristics:

Owned and operated by different generations of a family. Potential exists for ownership to be passed on to a younger generation. More than one member of a family has active employment in an organization owned by the family. Family holding company that is presently operating a business.

A nomination packet can be requested by calling Mary Abrahams at 254-710-4159 or by e-mail to Mary_Abrahams@baylor.edu. For more information visit our website at <http://www.baylor.edu/business/> entrepreneur and click on Texas Family Business of the Year.

Completed nomination packets will be accepted through July 15. Time extensions are available.

Publication of announcements in the Journal

The Muleshoe Journal invites your news of weddings, engagements, showers, anniversaries and births.

In order to be fair to everyone, we must limit the amount of space for certain events.

For weddings and quinceaneras 25 column inches, which includes a photo if desired, will be the limit. If the photo and announcement run longer, we reserve the right to eliminate parts of the story or the person placing the article may indicate which portions may be left out. However, if a longer write-up is desired, it may be purchased in the form of an ad.

For anniversaries, if two photos are included, the limit will be 25 inches. It will be 15 inches if only one photo is used. That space will be free for anniversaries of 50 years or more. A fee may be

charged for other anniversaries.

Birth announcements with one-column photos are run free of charge with names of immediate family, including grandparents and great-grandparents. Please understand that the permission of both parents is required for a birth announcement to be published.

Small stories describing showers are run free of charge after the fact and may include the names of the principals, items served at the showers, a brief description of the decor and the names of special or out-of-town guests.

A deadline of six months after an event will be the rule.

Drop by for a form or send the information via e-mail to editor@muleshoejournal.com. The deadline is Monday noon.

24 Hr. Service In the Field And On the Road...

FARM TIRES HEAVY EQUIPMENT TIRES PASSENGER TIRES

TOYO TIRES

TIRES THAT FIT YOU

We carry Michelin, Bridgestone & Toyo tires and can special order nearly any brand for you!

We also perform
Brake Jobs • Alignments
Oil Changes • Shock Replacement

2 SERVICE TRUCKS ON 24 HR. CALL

TIRE COUNTRY

101 First Street - Farwell, Texas
Office: (806) 481-9613 Cell: (505) 760-6785

Randall Gilbert
Manager

Muleshoe superintendent updates school finance situation

By Sup. Gene Sheets
Muleshoe ISD

The House plan...
This week the House passed the tax bill. Several impassioned pleas were sounded about the consequences of the tax bill. The bottom line on the House version is this: If you make \$140,000 per year or more the bill provides a tax cut.

Those who earn less will pay more in taxes. The general public will have a hard time understanding this. The average tax payer will think they got tax relief if this bill passes because many of them write a check for their property taxes and they will be less on average.

What they don't realize is because they pay sales tax in small increments that over time they will have paid a higher total tax bill than they are paying now! Those making over \$140,000 will see an overall decrease in their taxes. Those making under \$140,000 will see an overall increase in their taxes. With the close vote of the House, 70-69, it is evident that there is not overwhelming support for the plan.

The Senate plan...

After scaling back its promised property tax relief and the number of businesses it would hit, the Texas Senate early Monday approved a bill to raise state taxes by billions to cut local school property taxes. None of this money will go to schools. The Senate stayed up until 3:30 a.m. to try to figure out a plan to reduce property taxes. Because of the change in the proposed expanded business tax, the tax relief would be provided mainly through increases in sales, cigarette and alcohol taxes. To substitute the scaled-back business tax for a broader version, Lt. Gov. David Dewhurst was forced to cast his first-ever vote and break a 14-14 tie. The bill was approved 20-8 after 3:30 a.m. Monday after senators met through the night in a debate that finally started at 8 p.m. Sunday after hours of delays. Dewhurst, in anticipating approval of the less ambitious bill, said it would be a "victory" even though it wouldn't go as far as he originally hoped. Although he would have liked to see a deeper initial

School News

local property tax cuts and "reform of our business tax system," Dewhurst said, "... in reality that's not possible today in light of the governor's comments and the House's position."

Besides scaling back relief, the amendment would do away with the franchise tax in 2008 in an effort to force lawmakers to come up with a replacement. Senate passage of the tax-swap bill starts a race to negotiate remaining differences with the House — which earlier passed its own tax measure — before the special session on "school finance" must end July 20.

The Senate measure would increase sales taxes by 1/2 cent. The Senate measure also would increase cigarette taxes by \$1 a pack and alcohol taxes by 20 percent. The House measure wouldn't raise alcohol taxes.

Both plans will now go to a conference committee to try to work out a compromise plan. Perry has pushed a more limited business tax expansion and other elements that he said have a chance for approval in both chambers. He called lawmakers into special session on school finance after they failed to reach agreement in the recent regular session.

Very little time has been spent on the amount of money going to public education. Most of the time has been spent on trying to decide how to lower property taxes. The scaled-back Senate proposal would cut the maximum maintenance-and-operations school property tax rate from \$1.50 per \$100 valuation to \$1.30 this year and then to \$1.25. Senators originally hoped for a reduction to \$1.11. Sen. Eliot Shapleigh, D-El Paso, said the bill would mean an overall tax increase for nearly 94 percent of the families in his district.

Teacher retirement bill (SB 8)...

Senator Duncan has revived the teacher retirement bill that moves the retirement age of 450,000 educators to 60. Legislators' retirement pensions will also

be discussed during this special session.

With school finance reportedly headed into final negotiations, two additional topics — pay raises for state judges and tuition revenue bonds to allow colleges and universities to build new facilities — were added this afternoon to the agenda of the special legislative session.

Because legislators' retirement benefits are tied to how much judges are paid, lawmakers would also see an increase in their pensions if a bill passes and is signed into law. Under the judicial pay bill approved in May, all state judges — from district courts to appellate jurists to the Supreme Court — would get pay raises, in a move designed to keep them leaving the bench to go into higher-paying private law practice.

State district judges would see their pay rise from \$101,000 a year to \$125,000, a 24 percent increase, and the salaries of appellate judges would jump from \$107,000 to \$135,000, a 26 percent increase.

The Actual "School Bill"...

Regarding the actual "school bills" (House bill or Senate bill), neither bill solves the problems facing public education. Neither bill funds Texas schools to the level that we can meet the mandates

being imposed. Of the two, the Senate is the better bill because of its financial structure. It maintains the weighted system, defines the equalized system in terms of the percentage of students in the system, and includes the funding formulas for small

and mid-size schools. However, both bills include the 65 percent provision that requires 65 percent of a district's expenditures to be expended in the classroom. This is one of the most onerous provisions because of the shift it will cause in the

expenditure of district funds due to the very limited definition of what constitutes "classroom expenditures". AP classes, language classes, fine arts, vocational and other such classes will not count as eligible classroom expenditures.

Rotary News



2005-06 Rotary officers, from left to right, are : David Brunson, vice president, Mark Morton, secretary-treasurer, Janet Claborn, president, Gene Sheets, past president, and Kelly Kettner, sgt. at arms.

Muleshoe Rotary Club inducts new officers

The Muleshoe Rotary Club inducted its new officers on Tuesday, June 28. The organization's newly elected president, Janet Claborn, was inducted following a tasteful meal and meaningful speech given by Wanda Hooten on Rotary.

Muleshoe Rotary Club is a community service organization that supports

the Food Pantry, Meals on Wheels, MOST Scholarship program and numerous other programs.

Muleshoe Rotary club has been recognized by the District as a top performing club and was given many awards for their community

and international works. Rotary meets on Tuesdays at 12 noon in the Bailey Coliseum meeting room. All who would be interested in joining need to contact Janet Claborn for further information.

Immaculate Conception Catholic Church

JAMAICA

SUNDAY, JULY 17

Noon to 8:00 PM

Live Music • Games • Food & Drinks • Raffles

- Bingo, darts, duck pond, lucky colors, milk bottles, train rides, "Wheel of Fortune," moon walk & cake walk
- Cabrito, carnitas, beef/chicken fajitas, gorditas, hamburgers, turkey legs, roasted corn, mellejas, aguas frescas, water and sodas

RAFFLE TICKETS: \$5 EA.

Raffle Prizes: Side-by-side refrigerator, \$1,000 & \$500 cash, Jenn-Aire stainless steel BBQ grill & an electric scooter!

Everyone is invited to this church fund-raising event across the street from Immaculate Conception Catholic Church on East Hickory Street.

Kyle & Bernita Sheets invite you to join our family & friends for dessert as we celebrate the marriage of our daughter Terah to Nate Ott.

Saturday, July 16, 2005
7:30 pm

313 East Fir, Muleshoe, Texas

Terah & Nate were wed June 18, 2005 in Santa Fe, NM.

"THE GRAY PAGES" BUSINESS DIRECTORY

<p style="text-align: center;">ANTIQUES</p> <p style="text-align: center;">ANTIQUES & FINE THINGS</p> <p>2104 W. American Blvd., Muleshoe</p> <p>(806) 272-4217 • Open Mon.-Sat. 10-6 Credit Cards • Layaways Welcome</p> <p>Over 40 vendors in a 12,000 sq. ft. building full of collectibles, antiques, furniture, gifts, jewelry, and so much more! YOU MUST SEE TO BELIEVE!</p>	<p style="text-align: center;">ENTERTAINMENT</p> <p style="text-align: center;">ACE <small>dash</small></p> <p style="text-align: center;">SATELLITE & HOME ENTERTAINMENT</p> <p>Home Theater • HDTV • DVD • Plasma Residential • Commercial • RV Systems</p> <p style="text-align: center;">Gabriel Acevedo</p> <p style="text-align: center;">272-3215</p> <p>Toll Free: 1-800-269-3533 acesatellite@hotmail.com No More Hassle! No More Cable!</p>	<p style="text-align: center;">ELECTRONICS</p> <p style="text-align: center;">THE CONNECTION WAREHOUSE</p> <p style="text-align: center;">RadioShack Dealer</p> <p>Catch the Digital Wave!</p> <ul style="list-style-type: none"> • Digital Satellites • Digital Cell Phones • Digital Cameras • DVD • Music • Computer Access • And More! <p style="text-align: center;">117 Main • 272-5532 • Muleshoe</p> <p style="text-align: center;"><small>Don't forget our Appliances & Free Delivery!</small></p>	<p style="text-align: center;">INSURANCE</p> <p style="text-align: center;">Laurie Winchell</p> <p style="text-align: center;"><small>Insurance Agent</small></p> <p style="text-align: center;">FARMERS</p> <p>Call for a Free Quote.</p> <ul style="list-style-type: none"> • HEALTH • AUTO • LIFE • HOME • BUSINESS <p style="text-align: center;">1602 W. American Blvd., Muleshoe 272-7548 • FAX 272-4756</p>	<p style="text-align: center;">LAWN MOWER REPAIR</p> <p style="text-align: center;">BURRIS COLLISION CENTER</p> <p style="text-align: center;">IS NOW OFFERING LAWN MOWER & SMALL ENGINE REPAIR</p> <p style="text-align: center;">272-3031 or 632-2763</p> <p style="text-align: center;"><small>1300 W. American Blvd., Muleshoe</small></p>	<p style="text-align: center;">WELDING</p> <p style="text-align: center;">O&C WELDING</p> <p style="text-align: center;">Is Open For Business!</p> <p style="text-align: center;">1 Mile West of Muleshoe on Highway 84</p> <p style="text-align: center;">272-5018 or 946-8736</p> <p style="text-align: center;"><small>TRAILER REPAIRS & SERVICE ALL TYPES & ALUMINUM</small></p>								
<p style="text-align: center;">AUTO REPAIR</p> <p style="text-align: center;">HI-TEK AUTOMOTIVE</p> <p style="text-align: center;"><small>Complete Diagnostic & Repair Center Foreign & Domestic</small></p> <p style="text-align: center;">322 N. 1st • 272-3480</p> <p style="text-align: center;"><small>Joe Flores & Shawn Rajno, Owners</small></p>	<p style="text-align: center;">FURNITURE</p> <p style="text-align: center;">FURNITURE MARKET</p> <p style="text-align: center;"><small>New & Used Furniture Sales and Rental FREE DELIVERY</small></p> <p style="text-align: center;">103 MAIN ST. 272-4037 • Muleshoe</p>	<p style="text-align: center;">THE GRAY PAGES</p> <table style="width: 100%; border-collapse: collapse;"> <tr> <td>SMALL AD</td> <td style="text-align: right;">\$3.50/week</td> </tr> <tr> <td>MEDIUM AD</td> <td style="text-align: right;">\$5/week</td> </tr> <tr> <td>LARGE AD</td> <td style="text-align: right;">\$7/week</td> </tr> <tr> <td>X-LARGE AD</td> <td style="text-align: right;">\$9/week</td> </tr> </table> <p style="text-align: center;"><small>26 week commitment - Call Leah at 272-4536 for details</small></p>	SMALL AD	\$3.50/week	MEDIUM AD	\$5/week	LARGE AD	\$7/week	X-LARGE AD	\$9/week	<p style="text-align: center;">LAWN SERVICE</p> <p style="text-align: center;">FRIESEN LAWN SERVICE</p> <p style="text-align: center;">925-6789 Cell: 806-470-0406 JAY FRIESEN</p>	<p style="text-align: center;">PET GROOMING</p> <p style="text-align: center;">Are You In Need Of A Dog Groomer?</p> <p style="text-align: center;"><small>Does your dog need a bath, nail clipping or full makeover?</small></p> <p style="text-align: center;">CLASSY PAWS</p> <p style="text-align: center;">1916 W. AVE. C MULESHOE</p> <p style="text-align: center;">To make an appt. call: 806.272.4698 or 806.946.6133</p> <p style="text-align: center;"><small>HOURS: Mon.-Fri. 9:30-5:00 LOCAL PICK-UP & DELIVERY "I groom small & med. dogs!"</small></p>	<p style="text-align: center;">JUST STARTING A BUSINESS? DON'T HAVE MUCH MONEY TO SPEND ON ADVERTISING? LOOKING TO KEEP YOUR NAME ON CUSTOMERS' MINDS? THE GRAY PAGES ARE YOUR ANSWER! CALL LEAH @ 272-4536 FOR DETAILS.</p>
SMALL AD	\$3.50/week												
MEDIUM AD	\$5/week												
LARGE AD	\$7/week												
X-LARGE AD	\$9/week												
<p style="text-align: center;">DECORATING</p> <p style="text-align: center;"><small>When it comes time to decorate for the holidays or any special occasion, keep</small></p> <p style="text-align: center;">L&L DESIGN</p> <p style="text-align: center;"><small>in mind! We're fast, affordable & professional!</small></p> <p style="text-align: center;">806.777.7440</p>	<p style="text-align: center;">RENT</p> <p style="text-align: center;">THIS SPACE FOR \$5 A WEEK!</p>	<p style="text-align: center;">GIFTS</p> <p style="text-align: center;"><i>Carolyn's Christmas Creations</i></p> <p style="text-align: center;"><small>US Hwy. 84 & Main Street Muleshoe • 272-5911</small></p> <p style="text-align: center;">OPEN 7 DAYS A WEEK</p> <p style="text-align: center;">CREDIT CARDS ACCEPTED</p> <p style="text-align: center;">FREE DELIVERY EVERY DAY</p> <ul style="list-style-type: none"> • Bridal Registry & Gifts • Baby Items • Gift Baskets • Gift Certificates • Home Decor • Antiques & Fine Furniture • Bronzes • Much More! <p style="text-align: center;"><small>OVER 12,000 SQ. FT. OF FUN!!</small></p>	<p style="text-align: center;">YOUR HEADER HERE!</p>	<p style="text-align: center;">YOUR AD HERE!</p>									

Energy bill fosters independence

By U.S. Sen. Kay Bailey Hutchison

With oil prices hovering around \$60 a barrel, the price for petroleum is over 50 percent higher now than it was last year.

Energy affects every part of an industrial economy, from manufacturing and transportation to services. Petroleum is also the source from which we create plastics, adhesives and light-weight composite materials.

High oil prices have occurred in large part because of a tightening supply and increasing demand. China and India alone account for the majority of the increase in world demand. Consumers in the United States are feeling the effect of higher energy prices worldwide because we are increasingly dependent upon imports.

The American Petroleum Institute's latest data shows we depend on imports for 64.3 percent of our petroleum needs. In 1973, when an OPEC oil embargo hammered the U.S. economy, we were importing 28 percent of our oil.

Petroleum imports are rising because our domestic production is declining. New fields are no longer being drilled, existing fields are aging and consumption is rising. Helping offset these trends has been increased energy efficiency in the United States.

According to various sources, including the Energy Information Agency, the U.S. Gross Domestic Product rose 32.2 percent in the 10-year period from 1994 through 2003 and our population rose 13.1 percent, yet our total energy consumption rose by only

National Government

9.6 percent. While most regions of the world show an upward trend in per-capita energy consumption, in the United States, it has declined slightly since 1980.

Although America is becoming more efficient, we are facing growing exposure to changes and disruptions in the international energy markets, particularly involving petroleum. This is why our passage of the energy bill is vital for our national security.

The importance of a comprehensive energy bill cannot be overstated. It provides us a roadmap for achieving greater energy independence which will make us less vulnerable to price swings. The bill encourages domestic production, improves conservation efforts and promotes renewable sources of energy. This is good for consumers, for businesses and for the environment.

To boost domestic production, the bill streamlines oil and gas development on existing federal lease sites to bring fuel to market sooner. It seeks to diversify our sources of energy to give us flexibility and adaptability. It does this by stimulating use of clean nuclear power, providing incentives for solar, wind and geothermal energy. It establishes a federal loan guarantee program to encourage the design and development of clean innovative technology and new energy sources.

The bill requires fuel manufacturers to use eight

billion gallons of ethanol in gasoline by 2012.

An ambitious program to design and use clean coal burning technologies will help America use its 250-year supply of coal in environmentally safe power plants. A program researching the use of clean-burning hydrogen in cars is included in the legislation as well as provisions and mandates to encourage utilities to expand, modernize and improve the reliability of the electric power grid.

The energy bill is strong on conservation, too. It requires the federal government to devise a plan to save one million barrels of oil a day by 2015.

This legislation also provides help in dealing with environmental problems. The bill included the Coastal Impact Assistance amendment which I co-sponsored to ensure that Texas will get federal assistance for handling energy problems which may occur in areas with offshore oil exploration. The bill will provide funding for wetland restoration and coastal restoration.

I have long argued that our nation needs a coherent energy policy. I am gratified that the Senate has, at long last, passed this important and necessary bill.



Car show...

Continued from Page 1

awarded.

1991 to Present — Jeremy Connell of Lubbock, first place with a 1994 Mustang GT; Patti Kent of Muleshoe, second place with a 2004 Ford Thunderbird.

Peoples Choice — Wayne Harral of Abernathy with a 1959 Ford Thunderbird.

Best of Show (Non-Mustang) — Steve Peterson of Lubbock with a 1934 Ford Coup.

Best of Show (Mustang) — Win Jones of Hereford with a 1964-1/2 Ford Mustang convertible.

Harvestfest set for Sept. 17

The Slaton Chamber of Commerce and Women's Division will host their annual Harvestfest on Saturday, Sept. 17, on the city hall square from 9 a.m. until 4 p.m.

Among the events scheduled for the day will be arts and crafts, a pancake breakfast, and live entertainment. For additional information call (806)828-6238.



An American Dream...
 Ford Motor Will Offer To The Public
EMPLOYEE PRICING
 ON 2005 MODELS
JULY 6-AUG. 1, 2005
 (Excludes Mustang, Escape Hybrid and GT)
DON'T MISS YOUR CHANCE TO DRASTICALLY SAVE ON YOUR NEXT FORD PURCHASE!
800-432-7617
MULESHOE MOTOR CO.
 1125 W. AMERICAN BLVD., MULESHOE 272-4251

Commissioners court...

Continued from Page 1

department.

In his initial question to the judge, Commissioner Butch Vandiver also asked about the recovery of training expenses for such short-term employees.

Commissioner Juan Chavez voiced agreement with Vandiver, and asked the judge to see if there wasn't a way for the county to seek reimbursement if the officer didn't remain for a minimum of three to four months.

Discussion on the issue came during the commissioners' review and comment on the county's bills, which included a bill from Dr. Bill Locke, PhD, for a police psychological evaluation.

The commissioners approved payment of the county's bills, totaling \$240,535.53, but no action was taken on the reimbursement issue.

In other business, the commissioner's court:

- Approved in-county travel forms.

- Authorized Judge Harrison to advertize for bids on a new motor grader for Precinct 3.

- Authorized the judge to sign a Memorandum of Understanding between the Texas Department of Public Safety and Bailey County.

- Approved amendments to the FY 2005 budget.

City council...

Continued from Page 1

no longer available for the 1963 truck.

- Approved the 30-month lease purchase through Muleshoe State Bank of a landfill scraper at \$5,300 per month.

- Received an administrative report from the city manager, which included commendations for the efforts by public works employees, the fire department and police department, and the Muleshoe Chamber of Commerce & Agriculture for this year's Independence Day festivities.

Jamaica set for this weekend

Immaculate Conception Catholic Church will be holding it's annual Jamaica Sunday, July 17, from 12 noon until 8 p.m.

Among the events scheduled are live music, games — Bingo, darts, a duck pond, lucky colors, and milk bottles, etc., a moon walk, and a cake walk, lots of food and drinks, and a raffle.

Prizes for the raffle include a side-by-side refrigerator, a stainless steel grill, an electric scooter, and \$1,000 cash.

"Everyone is welcome to come by and enjoy the annual Jamaica, across the street from Immaculate Conception Catholic Church, on East Hickory Street," a church representative said.

Richard Barton says

Don't Miss Your Second Chance...

OVER 49 New Pontiacs, Buicks & GMCs at GM Employee Pricing!



GM EMPLOYEE DISCOUNT FOR EVERYONE!



+ You keep the rebate!

up to **\$3000**

 <p>#B3027 2005 Buick LaCrosse List Price.....\$25,417 GM's Price.....\$22,065 Customer Rebate.....1,000 YOU PAY \$21,065</p>	 <p>#B3005 2005 Buick LeSabre List Price.....\$30,032 GM's Price.....\$26,071 Customer Rebate.....\$3,000 YOU PAY \$23,071</p>	 <p>#P6043 2005 Pontiac G/6 List Price.....\$21,947 GM's Price.....\$19,018 Customer Rebate.....\$500 YOU PAY \$18,518</p>
 <p>#G9182 2005 GMC Envoy SLE List Price.....\$31,792 GM's Price.....\$27,346 Customer Rebate.....\$2,500 YOU PAY \$24,846</p>	 <p>#G9166 2005 GMC Yukon SLE List Price.....\$39,292 GM's Price.....\$32,862 Customer Rebate.....\$3,000 YOU PAY \$29,862</p>	 <p>#G9189 2005 GMC Yukon Denali XL List Price.....\$58,207 GM's Price.....\$48,303 Customer Rebate.....3,000 YOU PAY \$45,303</p>

There's never been a better time to buy! ¡Se Habla Español!

Richard Barton
 Nobody Beats a Richard Barton Deal - Nobody! Guaranteed!

PONTIAC ACTION dream up GMC We are professional grade.

3300 Mabry Drive Clovis, NM 88101 505-762-2986 / 1-888-569-1900
 Se Habla Espanol www.richardbarton.com

All vehicles subject to prior sale. Pictures for illustration only. Price includes factory rebate. Plus tax, title, licence & transfer fee.