

*****3-DIGIT 794
28P 12S
1405 06-01-07
SW COLLECTIONS/SPL COL LIBRARY
ATTN/FREEDONIA PASCHALL
BOX 41041
LUBBOCK TX 79409-1041

Muleshoe Journal

Volume 86, No. 24

Muleshoe, Texas

50¢

June 16, 2005

City council reinstates police canine program

By Larry Thornton
Managing Editor

The Muleshoe City Council voted 4-1 to reinstate the police department's canine program during Monday's regular meeting, following a presentation by Police Chief Don Carter and City Manager David.

During the police chief's presentation, he noted that local drug arrests were considerably lower than approximately three years

ago when the department had a canine unit in operation.

While Brunson pointed out that circumstances had come about that made reinstating the program a viable option.

According to Carter, the police department had an officer whom the chief felt met the requirements to handle the canine, which he later described as a police service dog because it would be trained for patrol

'For the services provided, the cost is very minute...'
— Councilman Mark Beard

functions as well as drug work.

Funding for the training and the purchase of the animal, along with funds for the purchase of equipment such as an SUV equipped as a canine unit were also

available.

"We've got all the right stuff in place," Carter said.

In his presentation to the council, Brunson noted that the city has the funds necessary for the purchase of the canine through

insurance proceeds from the police departments last canine unit, a total of \$5,500. According to the police chief, the previous animal died as a result of an excessive heat when the air conditioner in the police car it was in shut off.

An additional \$2,000 for the purchase and training necessary would be coming from the county attorney, Brunson said. Carter estimated the canine purchase and training for

the handler and animal at \$6,000 to 8,000. The annual upkeep for the animal was estimated at \$1,500, based upon the budget from the department's earlier unit.

The funds for the SUV would be provided through a \$64,900 matching grant the police department received from the State of Texas.

"For the services provided, the cost is very

Continued on page 3



Photograph by Leah Bell

11th Annual Tour de Muleshoe

A total of 202 cyclists traveled the streets of Muleshoe Saturday during the 11th annual Tour de Muleshoe. Pictured above, and below, some of the contestants in the event await the starting gun. Turn to page 14 for more Tour photographs.



Photograph by Leah Bell

Local Weather

Thurs.
Mt. Sunny.... 90/60

Fri.
Sunny..... 94/58

Sat.
Mt. Sunny.... 94/59

Sun.
Mt. Sunny.... 94/59

Mon.
Mt. Sunny.... 91/59

Tue.
Mt. Sunny.... 87/59

Wed.
Pt. Cloudy.... 89/59

Give It A Thought
Daddy and granddad... I miss, so very much, telling you how much I love you and how much I appreciate you every day.
LOVE THE MEN IN YOUR LIFE ALL DAY, EVERY DAY!
Words to ponder from Beverly

Missed your paper?
Call Yolanda Martinez at 272-4536, between 8:30 a.m. and 5 p.m.

Hospital district board approves upgrade to boiler room

By Larry Thornton
Managing Editor

The Muleshoe Area Hospital Board of Directors authorized CEO Jim Bone to use a windfall of medicare funds to pay for a needed upgrade in the hospital's boiler room.

At the June 9 regular meeting, Bone noted that only one bid had been received on the project. However, he also pointed out that because the meeting had initially been scheduled for June 16, the published date for the bid

closing was set at June 10.

Therefore, Bone requested, and received the authority to accept the \$69,792 bid received from Lubbock Heating and Air for the replacement of the chiller, provided there were no other bids received on the project.

Similar authority was granted in a second motion to repair other problems within the boiler room. The three stages of this repair project would cost an estimated \$13,575.

Although Bone said he'd

discussed financing the projects with officials at the two banks in Muleshoe, and received assurances that such a loan would be

possible, information was also presented to the MAHD board that the hospital district had received an unexpected windfall of

approximately \$270,000 in Medicare funds that had since been placed in the hospital's general fund.

Bone and the district's financial officer, Sharon Novak, explained that the hospital district may be required to refund the monies to the federal government at some later date, but that until such a notice was received the hospital district should be able to use the funds interest free.

Continued on page 3

MISD school board told new area dairies will reduce state funding

By Larry Thornton
Managing Editor

The Muleshoe Board of Education learned at Monday's regular meeting the dairies that have been built within the school district the last three years would result in a loss of school funding.

Kay Elliott from the Bailey Central Appraisal District told the school board the 2005 estimated taxable property values were jumping from \$189,503,766 to \$199,030,830 — an increase of almost \$10 million dollars, that would cause a significant reduction in the amount of funding the Muleshoe Independent

appraisals were made every year instead of every three years. He noted that the last appraisal in 2002 also resulted in a funding decrease for MISD.

"We're getting penalized for growing," Sheets said.

The only saving point appears to be that with the arrival of the dairies there should be an increase in the number of students, which Sheets said will help offset the losses caused by the valuation jump.

In related business, the school board set the proposed tax rate at \$1.37 per hundred. The current level is

'We're being penalized for growing'
— Gene Sheets

School District receives from the State of Texas.

Superintendent Gene Sheets explained to the school board that it wasn't the increase in the property valuations that would cause the drop in state funding but rather the sudden increase.

"If there's a jump, it's the disparity and we loose money," Sheets said. "Every three years, we loose the money...bad."

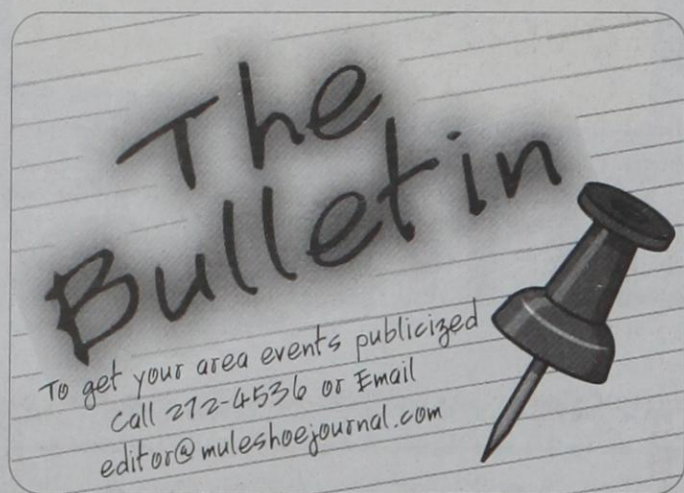
The superintendent said because the school funding formula was impacted most by the sudden valuation increase, the school district would fair better if

The superintendent explained that the school district was required to set its proposed rate at a level that will maintain the same level of funding as the previous year, a total combining local and state funding.

According to Sheets, the Rate of Maintain would be \$1.31 per hundred, but because of several "unfunded mandates" the state legislature is expected to pass along to the school districts — such as an increase in teachers' salary

Fireworks Display
Monday, July 4
10 PM
New City Park

HOME OWNED AND HOME OPERATED
MULESHOE STATE BANK
Muleshoe Branch: 272-4561, 101 W. American Blvd.
Farwell Branch: 481-9580, 801 Ave. A



Parade entries needed

This year's July 4th parade will take place at 10 a.m. on Main Street on July 4. The parade theme is "Fun in Muleshoe on the Fourth!" Entries will begin lining up at the boy scout grounds on south Main Street at 9:15 a.m.

Those interested in having a float or other type of entry in the parade should contact Heather Foley, parade chairperson, at 272-4102, or the Muleshoe Chamber of Commerce office at 272-4248 by 4 p.m. on June 30. Prizes will be awarded to first through third place entries. Entry forms are available at the chamber office, 115 E. American Blvd., and should be filled out and returned by the June 30 deadline.

Floats will be judged on best representation of "fun" in Muleshoe for the Fourth of July.

The parade route has been changed this year. Main Street will be blocked off allowing the parade to proceed all the way down Main Street to U.S. Hwy. 84 (American Blvd.), where entrants will make a left onto American Blvd. (eastbound traffic stopped) and then another left onto First Street (also blocked off) back toward the boy scout grounds.

July 4 vendors being sought

July 4 activities in Muleshoe have been moved to one centralized location — Main Street. Businesses and vendors are being asked to set up outside businesses on Monday, July 4.

Anyone interested in having a booth on Main Street for July 4 in Muleshoe should contact Carolyn Johnson at 272-5911 or Jim Ella Clemmons at 272-4726. A minimal fee is being charged for each booth participating.

The "Carrying On" committee of the chamber will be running this year's softball tournament at the new city park July 2-4.

Saturday, July 2 will feature co-ed play and men only will take the field Sunday, July 3. All finals will be played on Monday, July 4.

Other tournament plans haven't been finalized as of yet, but teams interested in playing should contact Stacy M. Thompson at 272-3652 for more details.

Those interested in being a food vendor at the new city park on July 4 should also contact Stacy. No outside vendors will be allowed to set up at the park July 2-3, but the chamber concession stand will be open. There will be a minimal fee for food vendors setting up on the fourth.

For other inquiries about "Fun In Muleshoe On The Fourth," contact Heather Foley at 272-4102.

July 4 Chamber Brisket Cookoff set

Chefs and "wannabe" cooks are invited to participate in the Muleshoe Chamber of Commerce's first annual

Brisket Cookoff to be held on the Chamber parking lot on July 4.

Deadline to enter is Friday, July 1 at 5 p.m. All brisket will be judged by three official judges and trophies will be awarded on July 4 at 4 p.m. to the top three winning entries.

All cooks and their cookers are asked to set up on Sunday, July 3, after a brief meeting beginning at 6 p.m. The contest rules will be read at this time. No cookers or meat will be allowed to leave the area once setup is complete.

To enter, pick up an entry form from either Mark Beard at Bailey County Electric Cooperative, 305 E. Ave. B, or Terral King at The Connection Warehouse, 117 Main St., or stop by the chamber office at 115 E. American Blvd.

All meat will be provided by the chamber. Once judged, all brisket will be auctioned off to the crowd.

For more Brisket Cookoff information, contact Beard at 272-4504 or King at 272-5532.

Scholarship donations sought

The Muleshoe Independent School District would like to make sure that every Muleshoe High School graduate has the opportunity to pursue an education beyond the high school level. Four years ago, the Muleshoe ISD Board of Trustees took a bold step toward this goal by establishing the Muleshoe Opportunity Scholarship Trust.

The MOST scholarship funded is through contributions, honorariums, gifts, and memorials. "We are inviting you to be a part of offering a successful beginning to our seniors by making certain that every individual who graduates from MHS has a scholarship," MISD Superintendent Gene Sheets said. "Your donation of any amount, large or small, will be appreciated. Even a small amount, when pooled with others, can make a difference in the lives of our graduates."

A fully tax-deductible donation can be made to: MOST Scholarship, c/o Muleshoe ISD, 514 West Ave. G, Muleshoe, TX 79347.

Women's softball tourney slated

The First Annual Muleshoe Women's Class D Softball Tournament has been scheduled for June 18-19, 2005. Teams interested in playing in the tourney should have their \$120 entry fee in to tournament organizers by 5:00 p.m. on June 17.

ASA rules apply and trophies will be given to first through third places. For more information, contact Randy at 806-272-5287 or Jorge, 806-272-3577.

Muleshoe Motor car show

The first annual Muleshoe Motor Co., Inc., All Ford Car Show has been scheduled for July 9, with proceeds supporting the Bailey County "Meals on Wheels" program. Individuals wishing to participate may register at Muleshoe Motor Co. There is a \$20 registration fee prior to July 1, and a \$30 fee after that and on the day of the show. Awards will be given for a variety of categories. For more information contact Muleshoe Motor Co., Inc., at 1-800-432-7617, or email david.hill@muleshoemotor.com.

Bailey County EMS golf scramble

Bailey County EMS Organization is hosting a 4-person golf scramble on July 30, at the Muleshoe Country Club. The cost is \$40 per person, cart not included. Mixed and ladies teams are encouraged to participate. To sign up or for more information, call 806-272-4390.

Continued on page 3

The Spotted LEOPARD TRUNK SHOW!
 10 AM to 1 PM **Friday June 17th**
 Fashion Jewelry
 Turquoise Jewelry
 Indian Pottery & More!
122 E. Ave. B
 Muleshoe • 272-8976

DR. J.W. HALTOM
Family Dentistry



Office Hours:
 Mon.-Thurs.: 8 am-5 pm
 Friday: 8 am-noon

- Nitrous Oxide available
- Emergencies seen promptly
- Insurance and credit cards accepted

RECEIVE \$50 OFF ANY CROWN, BRIDGE, PARTIAL OR COMPLETE DENTURE
Limit 1 per person.

320 E. 8th St. • Littlefield • 385-6935

Births



ALLISON MARLENE MALLARD

Allison Mallard

Joel and Stacy Mallard of Ft. Worth are proud to announce the birth of their daughter, Allison Marlene Mallard, on March 31, 2005, at 9:09 a.m., in Ft. Worth.

Allison weighed eight pounds at birth, and was 18 1/2 inches long.

Allison has an older brother, Jacob.

Allison is the granddaughter of Glynn and Carlene Stroud of Muleshoe, and John and Marjean Mallard of Centerville. She is the great-granddaughter of Roxie Stroud of Muleshoe and Grace Snyder of Austin.

History Notes

The first established in Bailey County was Old Hurley in 1907, about 2 1/2 miles north of the intersection of Hwy. 84 and Hwy. 70.

Thanks for reading!

Take A Walk On The Wild Side!

Join Us For Bible Adventures And Safari Fun As We Learn About The Lord's Prayer!

MULESHOE CHURCH OF CHRIST
 2201 WEST AMERICAN BLVD. • 272-4256

Sun., June 19-Weds., June 22
 6-8:30 P.M.



Muleshoe Journal USPS 367820

Established February 23, 1924. Published by CJB Publications, Inc. Every Thursday at 201 W. Ave. C, P.O. Box 449, Muleshoe, TX 79347. Periodicals Postage paid at Muleshoe, TX. POSTMASTER: Send address changes to the Muleshoe Journal, P.O. Box 449, Muleshoe, TX 79347. We are qualified members of: Panhandle Press Association, National Newspaper Association, West Texas Press Association and Texas Press Association © 2005

Chris Bradford, Publisher
 cbradford@castrocountynews.com
Leah Bell, General Manager
 ads@muleshojournal.com

Larry Thornton, Managing Editor
 editor@muleshojournal.com

Yolanda Martinez, Office Assistant
 news@muleshojournal.com

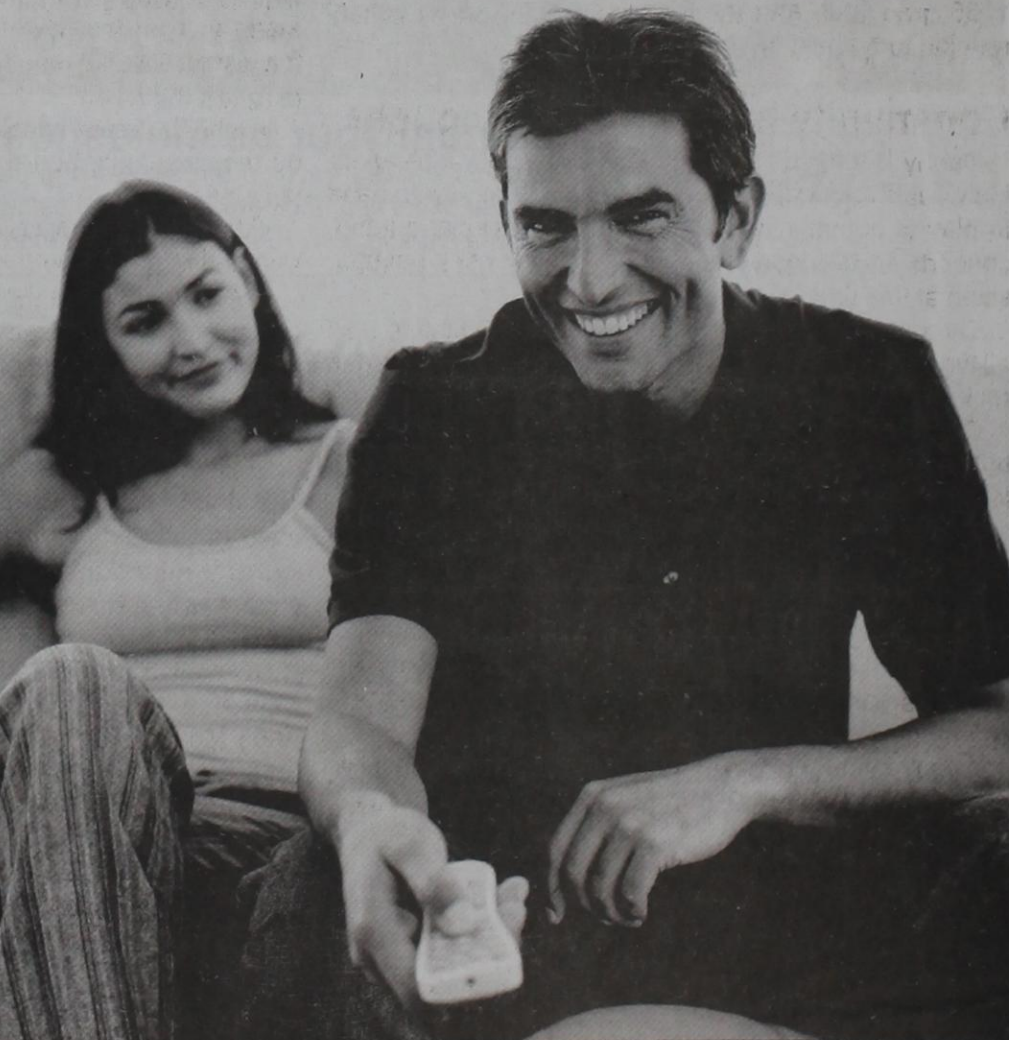
Larry Ayers, Sales Representative
 ads@muleshojournal.com

SUBSCRIPTIONS:
 By Carrier Yearly - \$22.00
 Bailey County — By Mail - \$24.00
 Elsewhere - \$26.00
 Advertising Rate Cards On Application

Advertisers should check their ad the first day of insertion. The Journal will not be liable for failure to publish an ad or for a typographical error or errors in publications except to the extent of the cost of the ad for the first day of insertion. Adjustment for errors will be limited to the cost of that portion of the ad where the error occurred.



Give Dad What He Wants This Father's Day!



Cebridge Cable TV

Get Cable as low as

17.95 plus tax and fees

- FREE basic cable on additional TVs
- Local channels at no extra cost
- No equipment to buy
- 30-day money-back guarantee

SAVE UP TO \$110!

Cebridge connections

Order online at cebridge.net

call us at **866.705.2701**

©Cebridge Connections 2005. Cebridge and Cebridge High-Speed Internet are among the trademarks of Cebridge Connections. For new residential customers and offer expires 05-30-05. Services may not be available in all areas. Prices and available speeds may vary by market. Download and upload speeds are maximum speeds. Actual speeds may vary and are not guaranteed. Taxes, other fees and restrictions may apply, with the actual amount depending on location and service ordered. To be considered a new customer, customer's account must have been inactive for a minimum of 180 days, or customer must not have received Cebridge Connections service for a minimum of 180 days, and customer must have no outstanding obligation to Cebridge Connections. A cable modem, network card or cable set top box may be required at installation. Installation fees may apply for complex installation and more than one outlet. Offer subject to change. This offer is for a 12 month commitment with a recurring monthly credit card payment.

Bulletin... continued from page 3

Diabetes Support Group to meet

The Bailey County Diabetes Support Group will be meeting again on Tuesday, June 21, in the Bailey County Coliseum meeting room, at 7 p.m. The program will be "Your Treatment Plan: Nutrition." This program is free of charge to anyone interested. For more information, contact Mandi Seaton, Bailey County extension agent, Family and Consumer Sciences, 306 West Second, Muleshoe, TX 79347, 806-272-4583.

Muleshoe AA meetings set

Those looking for help with problem drinking can do so at open AA meetings being held at 7 p.m. each Saturday at 121 W. Ave. C. For information about these meetings or AA in general, call Bobby F. at 272-8948 or 272-4433.

'Wild at Heart' offers free oil changes

"Wild at Heart" men's ministry of New Covenant Church is offering free oil changes to the elderly, disabled and single mothers with children. The ministry is a nondenominational mens ministry, teaching practical life skills and behavior management techniques.

Wild at Heart is open to all men regardless of denomination, and meets Tuesday evenings at 7:30 p.m. For more information, call 806-965-2787.

"Carrying On" County history

Pre-orders for the reprint of the Bailey County history book "Early Bailey County History" are being taken now by members of the "Carrying On" Committee of the Muleshoe Chamber of Commerce and Agriculture.

The price for the pre-ordered hardback books is \$45. After July 1, the price will be \$50 per book.

The book, originally printed in 1978, was compiled in two years by seventh and eighth grade students in the Muleshoe Junior High Historical Society.

If you would like to order a book, contact Stacy M. Thompson at 272-3652 or send your checks to: Muleshoe Chamber of Commerce and Agriculture, "Carrying On Committee," P.O. Box 356, Muleshoe, Texas 79347.

Old yearbooks wanted

Former Muleshoe students or anyone with old yearbooks, including parents who still have their kids' old yearbooks, are invited to contribute them to the Muleshoe Heritage Center. They will be placed in the Depot for people to take a mental stroll down memory lane.

To donate, call the Depot, (806) 272-5873, Monday through Friday from 1 to 5 p.m. and ask for Delores. Or mail them to the Heritage Depot, P.O. Box 201, Muleshoe, Texas 79347. At this time, yearbooks from 1950, 1951, 1952, 1962, 1970 and 1975-1979 are still needed.

Muleshoe Ex-Students to meet

The Ex-Student Association will be meeting June 24, at 7 p.m. at the Five Area meeting room.

Also, the Ex-Student Association is still looking for 1924-1985 graduates and former students for an all school reunion to be held on July 2, 2005.

Community band members sought

Danny Rodriguez and D.J. Dominguez are looking for individuals interested in forming a community-wide band to play at community events, social occasions, outdoor concerts and various other events. This is not a paid position at this time.

The duo hopes to gather numerous musicians to play all types of music, including jazz, big band, funk, pop and rock. They are also looking for singers.

Charts are available and reading music isn't necessary, but would be helpful since some of the music is "challenging."

All types of instruments will be used and every musician is encouraged to make contact.

"From brass to woodwinds, drums to electric guitars, every instrument can be utilized. Even if you haven't played in 15 or 20 years, give it a try," he said. "We really want this band to be something special and fun for the community."

If you're interested in more information about the concept, contact Danny Rodriguez at 272-3345 or D.J. Dominguez at 272-6814.

Rabies clinic set for July 12

A rabies clinic has been scheduled for July 12, from 4-6 p.m. at the Earl Ladd Fire Station in Muleshoe.

Williams graduates from LCU

Dan Williams of Muleshoe was one of 254 graduates who participated in commencement exercises for Lubbock Christian University on May 7.

Williams graduated with a bachelor of business administration in finance.

Lubbock Christian University is a liberal arts institution of higher learning dedicated to providing a quality education in a Christian environment. LCU was among only six Texas schools to be named in the John Templeton Foundation Honor Roll of Character

Building Universities. LCU offers 34 bachelor's degree programs and ten master's degrees with an enrollment of almost 2,000 students.

In recent years, LCU has enjoyed national recognition. The sports program has produced 12 national team championships, more than a dozen individual champions, and over 300 All-American performances. In addition to athletics, the Students In Free Enterprise team has won four international championships.

Williams is a member of the Alpha Chi honor society.

Police canine unit approved — Continued from page 1

minute," the council's newest member, Mark Beard, said.

Mayor Cliff Black agreed. "Ninety percent of the funding is from the state," he said, referring to the 10 percent the city will have to put up for the matching grant.

However, Councilman Earl Behrends, who cast the opposing vote later, expressed concern about the department getting an SUV and a patrol unit instead of the two patrol units which had been considered previously.

Behrends wondered what the police department would have to do several years down the line when the SUV needed to be replaced, and asked if not having an SUV would cause the canine program to be shut down.

In response, Mayor Pro-Tem James Jones pointed out the price difference between the patrol car and the SUV was only about

\$5,000, and that if an SUV lasted just a year longer — as the police chief suggested, the costs would equal out.

In other business, the city council:

- Approved a \$5,000 request from Jim Allison for the Muleshoe Heritage Foundation out of municipal hotel/motel tax funds. Allison's initial request was for \$20,000; however, the city manager explained that of the \$19,000 in the fund, the vast majority was needed for other municipal projects.

"We appreciate what you do out there," Jones said, "...Our problem is we don't have that much money."

During the past three years, the foundation has received \$30,000 from the hotel/motel funds.

- Approved a \$500 advertisement reimbursement for receipts from the Bell Ringer Stockdog Trials.

Hospital ...Continued from page 1

"Sounds to me like we can use this money, and pay it back whenever we need to," said MAHD board president Mike Miller.

Board member Ronnie Dent voiced agreement prior to the board's related motion and approval vote. "We're using their money finance free... let's do it."

Novak explained that should the federal government request the funds from the suspected Medicare overpayment the hospital district would have approximately 15 days to get a loan package in place with a local bank to replace the portion of the funds used in the boiler room upgrade.

Bone noted that the last time the federal government made such an overpayment the district was not required to return the funds.

In other business handled by the hospital's board of directors:

- Minutes were approved from the May 19 meeting.

- Received a financial report from Novak in which she noted that the hospital district was about eight percent above last year's figures in collections, and also that hospital revenues were up about 17 percent over the same period, while expenses and salaries were down.

Responding to a question from new board member Anna McElroy, Novak said the district's accounts payable were at approximately 29 days.

- Discussed attendance of a Covenant Board retreat July 22-23 in Lubbock.

- Noted that it was LeShea Mason's last meeting.

- Were informed that there were 58 residents at Park View.

- Were informed that the MAHD employee cookout on June 24 would be restricted to employees only, and that name badges would be required. Bone joked that since he has apparently misplaced his own name badge, he might not be able to attend unless he can get it replaced in time.

- Approved a bad debt write-off of \$35,305.25

- Voted to request proposals for the district's next audit and cost report.

- Discussed the Farwell

- Approved a \$392 reimbursement for receipts from Cinco de Mayo.

- Approved a letter and resolution supporting Clovis, N.M., and efforts to keep Cannon AFB from closing.

- Authorized the city manager to solicit proposals for the development of municipal property for low and moderate income housing on block 30 and 31 of the Country Club Addition.

Help Us Celebrate A Great Family Tradition!

FLOWERS FIREWORKS

2 Miles West of Muleshoe on the Clovis Highway

Only Air Conditioned, All Inside Stand In The Area!

Lots Of New Items!

Open June 24

33 Years In Business & Locally Owned

Best Prices!

Buy 1 Get 1 FREE!

Lots Of Family Packs!

Something For Everyone! Largest Selection Ever!

Open at 10 AM Daily!

TEXAS OUTLINE

Hog Wild.

WE SELL ONLY THE BEST!

REGISTER NOW

for the

MHS REUNION

(1920-1985)

SAT., JULY 2

Registration

9-11:30 AM at the Oneita Wagnon Senior Center, 319 Main Street

Lunch on your own.
Senior Center open for visiting in the afternoon.

Banquet Registration

5-6:30 PM at the Bailey County Coliseum, 2206 W. American Blvd.

Banquet, Awards & Visiting from 7-11 PM

\$20 PER PERSON

DEADLINE TO REGISTER IS JUNE 20

Send reunion registration money to:
MHS Ex Students Assn., P.O. Box 100, Muleshoe, Texas 79347

BAILEY COUNTY DEVOTIONAL PAGE

Lazbuddie Feeders, Ltd.
"We make your dairy bull calves worth more!"
Lazbuddie, Texas
965-2435

United Supermarkets

Jarman Seed
PIONEER 801 W. American Blvd. Muleshoe, TX • 272-5985

McDONALD'S OF MULESHOE
1315 W. American Blvd. • 272-3333
Open at 5:30 a.m. every day! **i'm lovin' it**

MULESHOE ANIMAL CLINIC
GENERAL PRACTICE
M V S
1430 US Hwy. 84 • Muleshoe Office: 272-3061

Little Real Estate & Appraisal Services
Residential • Commercial • Farm & Ranch **Walter B. "Jack" Little**
272-4805
MOBILE: 946-7965 FAX: 272-3729 1913 US 70-MULESHOE

H & W HAY COMPANY
Alan & Ted Harrison
Rt. 1 Box 5 272-3825 Muleshoe

T-L Irrigation Systems Dealer
PRECURE ELECTRIC
Carroll Precure - Owner
424 N. 1st, Muleshoe 272-4844
General Electrical Contracting
Residential • Commercial • Irrigation

Leal's
SINCE 1957
1010 W. AMERICAN BLVD., MULESHOE • 272-3294
CATERING FOR ALL OCCASIONS!

Stoney Point Muleshoe
"Custom Growing Dairy Heifers"
965-2856

He giveth power to the faint:
and to them that have no might
he increaseth strength.
—Isaiah 40:29

THE CONNECTION WAREHOUSE
RadioShack **272-5532**
AND THE RENTAL PLACE - 272-4037
117 Main • Muleshoe, Texas

AGP Grain Marketing
Bovina • Lariat • Farwell • Lazbuddie
Toll Free: 866-583-7362

MULESHOE PEA & BEAN, INC.
1680 CR 1044 272-5589
Muleshoe, TX

Henry Insurance Agency
"Serving You Since 1964"
111 West Avenue B 272-4581
Muleshoe, TX

WESTERN DRUG
& Something Special Gifts
1411 W. American Blvd. 272-3106 Muleshoe

minsa corporation
P.O. Box 484 272-5545
Muleshoe, TX
FAX (806) 272-5135 (800) 852-8291

MCCORMICK SEEDS, INC.
400 East Ash • 272-3156
Muleshoe, Texas
A COMPLETE LINE OF FIELD SEEDS
Tim McCormick & Roland McCormick

MULESHOE FEED BARN
311 W. American Blvd. **HI-PRO**
Muleshoe, TX
272-5626

MULESHOE VALLEY INC.
2601 W. American Blvd.
P.O. Box 631
Muleshoe, Texas
(806) 272-4266
Mobile (806) 946-8763
mvinc@fivearea.com

462 **Facts About The BIBLE** BY JOHN LEHTI

This is a dramatized version of facts taken from the book of Genesis intending to show some of the customs of these ancient and traditional times.

ABRAHAM'S BATTLE WITH THE FIVE KINGS
HAVING LEARNED THAT HIS NEPHEW LOT HAS BEEN TAKEN PRISONER BY THE KINGS WHO HAVE INVADED SODOM, ABRAHAM ARMS ALL HIS SERVANTS AND NOW PREPARES TO GO TO LOT'S RESCUE.

AS IT WAS TO BE IN THESE ANCIENT TIMES, ABRAHAM'S MEN ARE ALL TRAINED IN WAR, FOR THIS IS THE ONLY WAY SHEPHERDS CAN HOPE TO SURVIVE IN A WILDERNESS OF DANGER!

COME! FOLLOW AFTER ME!
...IN THE COOL NIGHT AIR, THESE HARDY MEN MOVE WITH RAPID EASE AT A STEADY MILE-EATING PACE—FOR THEIR NOMADIC LIFE HAS TRAINED THEM TO COVER GREAT DISTANCES IN LITTLE TIME!

...FINALLY, THEY COME UPON THE INVADING ARMY, ASLEEP IN A SECURE VALLEY—THE PRISONERS, BETWEEN THE TENTS, LYING IN TANGLED HEAPS ON THE GROUND!

FROM HIGH ON THE HILL ABOVE THE VALLEY, NOW ABRAHAM SURVEYS THE SCENE BELOW. HE HAS LITTLE MORE THAN THREE HUNDRED MEN, "THE INVADING ARMY NUMBERS IN THE THOUSANDS—SO HE MUST MAKE A DIFFICULT DECISION!"

JOHN LEHTI

Next Week
DIVIDED FORCES!

SAVE THIS FOR YOUR SUNDAY SCHOOL SCRAPBOOK

This devotional & directory is made possible by these businesses who encourage all of us to attend worship services.

ASSEMBLY OF GOD
FIRST ASSEMBLY OF GOD
521 South First Street • 272-3017
Jack Stone, Pastor • 272-3984
S.S. 9:45 am, W.S. 11 am & 6:30 pm,
Wed. 7:00 pm
EL BUEN PASTOR
415 E. Ave. F • 272-5455
Pastor Domingo Luna • 272-4542
S.S. 9:45 am, W.S. 11 am & 6 pm; Wed. 7 pm

BAPTIST
CALVARY BAPTIST
1733 W. Ave. C • Rev. Jeff Coffman
CIRCLE BACK BAPTIST
Intersection FM 3397 & FM 298 • 946-3676
FIRST BAPTIST
220 West Ave. E • Dr. Stacy Conner
FIRST BAPTIST
Lazbuddie • 965-2126
PRIMERA IGLESIA BAUTISTA
223 E. Ave. E • Rev. Greg Guzman
PRIMITIVE BAPTIST
621 South First
Elder Bernard Gowens, Min.
PROGRESS BAPTIST
Progress, TX
PROGRESS SECOND BAPTIST
Arthur Hays, Min. • 1st & 3rd Sundays
RICHLAND HILLS BAPTIST
17th & West Ave. D
George Malis, Pastor
TRINITY BAPTIST
314 E. Ave. B, Bennie Wright, Min.

CATHOLIC
IMMACULATE CONCEPTION CATHOLIC CHURCH
805 E. Hickory • Leonardo Pahamtang, Min.

CHARISMATIC EPISCOPAL
ST. CLEMENTS
1536 W. American Blvd. • 272-5954
Father Sergio Leal • Sun. W.S. 10:30 am

CHRISTIAN
TRINITY CHRISTIAN CENTER
1723 W. American Blvd. • 272-3877
Reydon Stanford, Pastor

CHURCH OF CHRIST
LARIAT CHURCH OF CHRIST
Sam Billingsley, Min.
S.S. 10 a.m.; W.S. 11 a.m. & 6 p.m.,
Wed. 7 p.m.
LAZBUDDIE CHURCH OF CHRIST
Nathan Crawford, Min.
S.S. 9:30 am; W.S. 10:20 am & 5 pm;
Wed. 7 pm

IRRIGATION PUMPS & POWER
Zimmatic W. Hwy. 84
CENTER-PIVOTS 272-4483

MULESHOE AREA HOSPITAL DISTRICT
708 South First, Muleshoe 272-4524
Jlm Bone 1-800-770-6262
CEO/Hospital Administrator FAX 806-272-4938

SAIN IRRIGATION & MACHINES
Complete Pump Service
W. American Blvd. 272-4397
Walt Sain Muleshoe, TX 272-4148

MULESHOE CHURCH OF CHRIST
22nd & W. American Blvd.
Minister Barry Wiseman
S.S. 9:30 am; W.S. 10:20 am
& 6 pm; Wed. 7:30 pm
16th & AVE. D CHURCH OF CHRIST
Curtis Shelburne, Min. • 272-4619
S.S. 9:30 am; W.S. 10:30 am;
Growth-Gr. 1:30 pm; Wed. 7:00 pm

LUTHERAN
ST. JOHN LUTHERAN
Lariat, TX • David Symm, Min.
S.S. 10:30 am; W.S. 9:30 am

METHODIST
FIRST UNITED METHODIST HISPANIC MINISTRIES
E. 5th and E. Ave. D
Pastor Javier Careaga
FIRST UNITED METHODIST
507 W. 2nd St.
S.S. 9:45; W.S. 11:00
Pastor Monty Leavell, 272-5517
LAZBUDDIE METHODIST
S.S. 9:30 am; W.S. 10:30 am
Rev. Randy Thomas • 965-2121
EL DIVINO SALVADOR U.M.C.
619 E. 5th Street & Ave. G, Muleshoe
Javier Careaga, Pastor • 272-6888

NAZARENE
ROCA DE SALVACION
814 W. Ave. C • Pastor Rafael Quezada
Sunday, S.S./W.S. 10:00 a.m.,
Evening 6 p.m.; Wednesday, W.S. 7 p.m.

PENTECOSTAL
UNITED PENTECOSTAL LIGHTHOUSE
207 East Ave. G • 1-800-454-6051
S.S. 10 am; Thursday, Bible Study 7 pm

INTER DENOMINATIONAL
NEW COVENANT
Plainview Hwy.
Steve Claybrook, Pastor
W.S. 10 am; Wed. 7 pm
MULESHOE COWBOY FELLOWSHIP
117 E. Birch Street, Muleshoe
Steve Friskup, Minister • 272-5199
Service: 7:30 p.m. Thursday

Hwy. 84
Muleshoe, TX
272-4203
Manager Bruce Bruns **AGRILIANCE**

"THE FIVE AREA TELEPHONE COOPERATIVE, INC."
West Plains Telecommunications, Inc.
Five Area Systems, Inc., Plateau Wireless
Five Area Long Distance - Five Area Internet
302 Uvalde Muleshoe, USA (806) 272-5533

Farmers Coop Ass'n of Sudan
P.O. Box 120 • Sudan, Texas
227-2461 FAX (806) 227-2102
Mobile: (806) 638-7692 Dennis Flowers, Gen. Manager Email: dflowers@fivearea.com

BLACKWATER AGRI ASSN. INC.
272-4962
Cell: 946-8943 — Muleshoe, TX

TRIPLE S S Auto Glass
Windshield Replacement & Repair
Insurance Approved & Claims Welcome
FREE MOBILE SERVICE
Terry Steinbock 806-946-9964
Lazbuddie, Texas

PASSENGER • TRUCK • TRACTOR
Alex's Tire Service
For Service 24 Hrs. A Day
272-5012
302 E. American Blvd. Alex Aguirre Muleshoe, Texas

AG AVIATION
2 1/2 miles North on HWY 214
272-3066 FAX 272-8981
P.O. Box 68 • Muleshoe, TX

MAPLE COOP GIN
927-5501
Maple, Texas

PRAIRIE VIEW DAIRY
Just southwest of Muleshoe

CENTRAL COMPRESS & WAREHOUSE
SUDAN, TEXAS

200 Main St.
Sudan, Texas 227-2411
FIRST UNITED BANK
Member FDIC

Lowe's MARKETPLACE
401 W. American Blvd. • Muleshoe • 272-4585

DODD COTTON GIN
2912 CR 504 • Muleshoe
Robert Boozer, manager Beverly Turney, office mgr. **965-2311**

Life-Auto-Home-Crop
TEXAS FARM BUREAU INSURANCE CO.
1612 W. American Blvd. • 272-4567 • Muleshoe

1st BANK MEMBER FDIC
202 South First 272-4515

BAILEY COUNTY ELECTRIC COOPERATIVE ASSN.
Muleshoe — 272-4504 Morton — 266-8600

PACO FEED YARD, LTD.
Commercial Cattle Feeders
P.O. Box 956 265-3281
Frona, TX
Feller Hughs-Mgr.

MULESHOE LIVESTOCK AUCTION
Muleshoe, TX • Sale Every Saturday
Clayton, C.L. & Thurman Myers • 272-4201

Lazbuddie Garage & Supply
Glenn, Adora, Terry and Lee Scott
Specializing in irrigation motor parts and service since 1957
AUTO PARTS P.O. Box 100 • Lazbuddie • 965-2188

M-PYRE
Auto Sales Inc.
806-272-7777
Muleshoe, Texas

WEST CAMP GIN, INC.
Better Ginning & Courteous Service
Rt. 2 Box 1000 • 925-6681
Muleshoe, TX

In the fear of the Lord is strong confidence: and his children shall have a place of refuge.
—Proverbs 14:26

A word fitly spoken is like apples of gold in pictures of silver.
—Proverbs 25:11

1412 W. American Blvd.
Muleshoe • 272-4213
Open: Sun.-Mon. 11 AM to 11 PM
Lunch Buffet: Sun.-Fri. 11:30 AM to 1:30 PM
Pizza Hut
"Gather round the Good Stuff"

Obituaries

Dorothy Lee Slayton

Funeral services for Dorothy Slayton, 84, of Lubbock were held on June 10, 2005, at Sanders Memorial Chapel with the Rev. Kenneth Staton officiating. Burial followed in the Lazbuddie Cemetery.

Slayton was born May 24, 1921, in Cottle County to the late Alfred and Tressie Nash. She married Weldon Slayton on Jan. 20, 1946. He preceded her in death in 1973. She worked several years in the lunch room and as a bus driver in Lazbuddie and one year in the lunch room at Dimmit. She was a member of the Lazbuddie Baptist Church before moving to Lubbock, where she was a member at Parkway Baptist Church.

She was preceded in death by a sister — Rose Kenley and a brother — Edgar Nash.

Slayton was survived by a daughter and son-in-law — Thresa Janette and Don Bentley of Lubbock; a sister — Altha Ginn of Littlefield, and several nieces and nephews.

Memorials can be made to the West Camp Gideon's of Lubbock.



DOROTHY LEE SLAYTON

Mary Frances Holt

A chapel service for Mary Frances Holt, 88, of Muleshoe was held Saturday, June 11, 2005, at the Ellis Funeral Home Chapel in Muleshoe with the Rev. Ferel Little of Mt. Pleasant officiating. Burial followed in Muleshoe Memorial Park Cemetery.

Holt died June 10, 2005, in Park view Nursing Home, Muleshoe. She was born on June 11, 1916, in Plainview, and married Clyde Holt in Happy on Jan. 6, 1935.

She moved to Muleshoe from Littlefield in 1930 and was a member of the First United Methodist church, a member of the Eastern Star, Epsilon Sigma Alpha Sorority and the Muleshoe Ladies Golf Association.

Holt was preceded in death by her husband Clyde in 1999 and a brother — R.E. Willis in 1982.

Survivors include a son and daughter-in-law — Jimmy Clyde and Wanda Holt of Muleshoe; a daughter — Mary Jo Black of Plainview; a sister — Irma Little of Stephenville; seven grandchildren and nine great-grandchildren.

Memorials may be sent to the Methodist Children's Home of Waco, or the Alzheimer Association, South Plains Chapter, TTU-HSC, 3601 - Fourth St., Room 3A 116, Lubbock, TX 779430.

Muleshoe AA meetings set

Those looking for help with problem drinking can do so at open AA meetings being held at 7 p.m. each Saturday at 121 W. Ave. C. For information about these meetings or AA in general, call Bobby F. at 272-8948 or 272-4433.

International youth speaker promises straight answers

"Making Sense Out Of Sex" will be the topic when Wayne Bristow, formerly of Muleshoe, who has addressed young people on five continents, speaks to a youth-only audience at Trinity Baptist Church at 312 E. Ave. B, Muleshoe, on Sunday, June 26, at 4:30 p.m.

Bristow promises to confront "real issues which are challenging today's teenagers, and not the questions that were being asked 25 or 30 years ago." This event is advertised as being "Y-rated, for youth only," and the crowd will be limited to single junior high, high school, university and career young people through age 25. The exceptions will be area pastors, youth ministers and church youth workers. These adults will be admitted as observers.

Internationally, thousands of young people each year hear Bristow speak plainly about sex. He discusses four questions about premarital sex which he believes demand straight answers.

He gives the young people seven questions which they can ask themselves to know if they're thinking and acting responsibly regarding sex. And he seeks to answer the question, "What if I have regrets and there is a chapter of my life that I can't rewrite?"

As a Christian communicator, Bristow has been talking to young people for more than 40 years. He has spoken in 39 foreign countries and throughout the United States. He is the founder and president of Total Life International Ministries, headquartered in Edmond, Okla.

Bristow says, "My greatest passions are to see young people discover a fullness of life and to see them living at



WAYNE BRISTOW

the outer limits of their potential. Having the right answers to their questions about sex is a vital part of putting all of this together. I don't talk about young people. I talk to them and with them. I tell them that I have a positive attitude about sex. It is beautiful and good.

"It is one of God's choicest and most powerful creations. It has the potential to generate life. Something of this magnitude demands great understanding and responsibility," he said.

Local youth, grades seven through twelve are invited. Fellowship and food will be served following the 6 p.m. evening worship.

For more information, call 272-3301.



Women's softball tourney this weekend

Muleshoe's womens softball league will be hosting a tournament this weekend, June 18-19. Pictured above, some the the local players prepare for the upcoming league play, which will start on June 20, at 6:30 p.m., at the Rocky Flores Softball Field. There are eight teams in the league. There will be games on Monday, Tuesday and Thursday, at 6:30, 7:45 and 9 p.m.

Top Tuesday

Off Right

5 PM to close

\$8.99

Plus tax.

Buy A Large, Single Topping Pizza For Only.....

Dine-in, Carryout or Delivery

Pizza Hut of Muleshoe
1412 W. American Blvd.
272-4213

IT'S A GREAT DAY TO SAVE BIG DURING

SUMMER SAVINGS DAYS

UP TO **\$5,000** CASH BACK OR **0% APR FINANCING***

2005 FORD EXPLORER

- World's Best-Selling SUV
- First-in-Class Independent Rear Suspension
- America's Most Trusted SUV

UP TO **\$5,000** CASH BACK OR **0% APR FINANCING***

2005 FORD EXPEDITION

- Standard V8 Engine
- First-in-Class Independent Rear Suspension
- First-in-Class Safety Canopy™ System

UP TO **\$4,000** CASH BACK** PLUS **HOME DEPOT® SPECIAL PACKAGE††** \$500 BONUS CASH OR

2005 FORD F-150 SUPERCAB

FORD F-SERIES
Best-Selling Truck in the World
28 Years in a Row!

UP TO **\$2,500** CASH BACK† PLUS **HOME DEPOT® SPECIAL PACKAGE††** \$500 BONUS CASH

2005 FORD SUPER DUTY

- Best-in-Class Horsepower
- Best-in-Class Towing Capacity
- Best-in-Class Payload Capacity

MULESHOE MOTOR CO.

1125 W. American Blvd. • 272-4251 or toll free 800-432-7617

Visit www.texasford.com to find the dealer nearest you!

*NOT ALL BUYERS WILL QUALIFY FOR FORD CREDIT APR FINANCING. 0% APR financing or \$5,000 cash back on 2005 Explorer 4-Dr. and 2005 Expedition includes \$1,000 FMCC Bonus Cash, available when financing through Ford Credit only. For APR financing or cash back on 2005 models, take new retail delivery from dealer stock by 6/30/05. See dealer for residency restrictions and complete details. **NOT ALL BUYERS WILL QUALIFY FOR FORD CREDIT FINANCING. \$4,000 cash back includes \$1,000 FMCC Bonus Cash available when financing through Ford Credit only. For cash back, take new retail delivery from dealer stock by 6/30/05. See dealer for residency restrictions and complete details. †Buy or lease any F-150, Super Duty or Ranger and get your choice of \$500 bonus cash or a package or Gift Card from The Home Depot®. The Home Depot® and The Home Depot® logo are registered trademarks of Home Depot, Inc. Must take new retail delivery from dealer stock by 6/30/05. See dealer for details.

Publication of Obituaries

Obituaries printed in the Muleshoe Journal are printed free of charge and contain the following types of information:

Date and details of funeral and place of burial; date and place of birth and parents names; date of marriage;

Limited biographical information, including the highest level of schooling achieved, service in the Armed Forces, profession (and retirement information if applicable); names of relatives who have preceded the person in death;

Names of survivors (including husband and wife, parents, in-laws, brothers, sisters, grandparents (only the number of grandchildren, great-grandchildren and great-great-grandchildren) will be included; and where memorials may be directed.

We will be pleased to run a one column black and white photo at no charge. A larger photo or a color photo will cause the obit to be paid.

Please keep in mind that everything must be submitted by your funeral home.

"Your Exhaust Specialist Since 1979"

KC MUFFLER & Mfg., Inc.

425 N. 1st • Muleshoe • 272-5333

ARE HIGH FUEL COSTS STRESSING YOU?

LET US HELP INCREASE YOUR FUEL ECONOMY

A new free-flowing exhaust & a K&N Air Filter CAN increase your MPG!

Trinity Baptist Church
Total Life Evangelistic Event
June 25-29

Saturday-Kick-off Dinner 6:30 PM
Muleshoe High School (MHS) Cafeteria

Sunday-Morning Worship 11:00 AM
Evening-Youth Grades 7-12 4:30 PM
"Making Sense Out of Sex"
Evening Worship 6:00 PM

Monday-Tuesday-Wednesday
Lite Lunch 12:00 noon
"A Time to Share with Wayne Bristow"
Public Invited (Please call ahead) - 272-3301
Worship 7:00 PM

Tuesday-Children's Night 6:00 PM
Worship 7:00 PM

Wednesday-Senior Adults 10:00 AM
Lite refreshments & coffee
Worship 7:00 PM

Sat., June 25-Friendship Dinner at MHS cafeteria @ 6:30 PM.
FREE tickets at Sanitary Barber Shop, Bratcher Motor Supply, Burton Service Center and Carolyn's Christmas Creations. You may also call 272-3301 to make a request for FREE tickets.
Limited seating. Get yours early!

Agricultural News

NGSP says change to grain sorghum is the best alternative

Grain sorghum is the best alternative for cotton producers on the Texas High Plains whose cotton crops fell victim recently to torrential storms, wind and damaging hail.

"Although there are many replanting options out there, sorghum is the best option in many cases," says Dr. Jeff Dahlberg, research director for the National Grain Sorghum Producers. Dahlberg cites favorable moisture profiles as well as adequate supplies of seed for short to mid-season sorghum varieties.

Sorghum can offer other long-term benefits to producers who traditionally grow cotton. Research conducted near Brownfield by Texas Tech agronomist Dr. Dan Krieg indicates that a crop rotation consisting of grain sorghum and cotton can increase cotton yields the following season by at least 10 percent. Krieg also has found that rotating sorghum with cotton can have positive impacts on sorghum yields.

Producers can help maximize yields by following recommended practices such as choosing

appropriate hybrids for maturity and planting based on "plants per acre" rather than "pounds of seed per acre."

"This means reading your seed labels and understanding how many 'seeds per pound' are in the hybrid seed bag," says Dahlberg, noting that specific recommendations will differ between locales and for dryland versus irrigated fields.

Producers may want to contact NGSP or their local Agricultural Extension offices for specific plant population

recommendations. Although soil moisture is favorable from a short-term standpoint, grain sorghum's drought tolerant characteristics could prove fruitful later this summer if moisture supplies tighten.

Additional grain sorghum production tips and management information can be found on the NGSP website at <http://www.sorghumgrowers.com> or by calling NGSP at (806) 749-3478.

NGSP represents U.S. sorghum producers nationwide. Headquartered in Lubbock, in the heart of

the U.S. grain sorghum belt that stretches from the Rockies to the Mississippi River and from South Texas to South Dakota, the organization works to ensure the profitability of sorghum production through market development, research, education and legislative representation.

Comment sought on USDA commodity rule

The U.S. Department of Agriculture has announced that farmers and other interested parties have until July 7 to comment on a proposed rule concerning the collection of commodity assessments.

Many states have statutes authorizing assessments on marketed agricultural commodities. State and federal assessments are used to increase domestic and international demand of the commodity through a variety of activities including product promotion, consumer information and research related to product improvement, safety, health and production technology.

If adopted, the proposal would allow USDA's Commodity Credit Corporation to deduct assessments from marketing assistance loan proceeds as authorized by state or federal laws. Such collections are specifically permitted by the provisions of Public Law 108-470.

For the collection of state commodity assessments, the major provisions of the proposed rule are:

- A request for CCC to engage in the collection activity must initially be submitted by the governor of the state;
- Such request must identify the entity that the governor has designated to enter into the collection agreement with CCC;
- A statement from the state's attorney general, at any time prior to final execution of the agreement, that the agreement is in compliance with applicable state laws and

FSA committee filing period opens; nominations sought

Bailey County Farms Service is accepting nomination forms for eligible candidates to serve on local FSA County Committees.

The nomination period is June 15 through Aug. 1. The committee seat up for election in 2005 represents LAA#1, with the Lamb County line as its east boundary, the New Mexico state line as its west boundary; the Parmer County line as a north boundary; and a southern boundary of Hwy. 746, extending east to west through the sand hills.

Tony Barrier is currently representing this community, and is eligible for re-election.

Local producers are encouraged to get involved in the agriculture industry by becoming a member of their local FSA County Committee.

Almost any person participating or cooperating in a local FSA program, and who is of legal voting age, can be nominated as a candidate. Individuals may nominate themselves or others.

All nomination forms must be received in the Bailey County FSA Office or postmarked by Aug. 1.

Voting takes place between Nov. 4 and Dec. 5.

To hold office as an FSA County Committee member, a person must meet the basic eligibility requirements described below:

1. Take part in a program administered by FSA.
2. Be eligible to vote in a county committee election
3. Reside in the LA in which the person is a candidate. (In some cases,

this requirement may be waived. Check with the local county office.)

4. A person must not have been:

- Removed or disqualified from the office of FSA County Committee member, alternate or employee;
- Removed for cause from any public office or have been convicted of fraud, larceny, embezzlement, or any other felony;
- Also, the candidate can't have been dishonorably discharged from any branch of the armed services.

Interested individuals who are uncertain about their eligibility to serve on the FSA County Committee should contact their local FSA Office for affirmation of eligibility to serve.

More information on the COC elections, including the nomination form, is available at the local USDA Service Centers.

Sports

All-district baseball selections announced

By Delton Wilhite
Sports Writer

District 2-3A announced the baseball all-district selections this week.

The Mules had one member of their 2005 squad named to the first team and two to the second team.

The senior laden Lubbock Cooper Pirates placed seven members on the 16-man first team.

Jakob Cunningham of Cooper was honored as the district's Most Valuable Player.

Geoffery Sirkel was the

the provisions of section 1(a) of Public Law 108-470;

- Collection of the assessment, as requested by the governor, may be at either the time the marketing assistance loan is disbursed to the producer or at the time of forfeiture of the commodity to CCC; and
- The state agrees to indemnify CCC for any costs incurred in collecting the assessment, including costs relating to resolution of disputes arising from the requested collection of the assessment.

For the collection of state or federal assessments, the proposed rule provides that collections will be made by CCC and the person to whom the secretary has delegated responsibility for collection activities, upon the approval of the agreement by the secretary or a representative of the secretary. Deductions of assessments and payment of such fees to applicable entities shall be made in a manner and time as determined by CCC.

The proposed rule was published yesterday in the Federal Register. The public is encouraged to read the proposed rule in its entirety and send comments to Kimberly_Graham@wdc.usda.gov or by facsimile to (202) 690-3307. Comments also can be mailed to Grady Bilberry, Director, Price Support Division (PSD), USDA, Farm Service Agency (FSA) STOP 0512, Room 4095-S, 1400 Independence Avenue, SW, Washington, DC 20250-0512.

For more information about FSA programs, visit a local USDA Service Center or www.fsa.usda.gov on the World Wide Web.

Haying, grazing on CRP land is allowed

Managed grazing is allowed on CRP land every three years after the cover is established. Grazing that occurred prior to 2003 is disregarded.

The managed grazing period is July 2 through Oct. 29.

The managed haying period is July 2 through Sept. 29. Only one cutting of hay is allowed. All hay must be removed from the field by Oct. 9. Hay may not be stored on any CRP acreage.

Managed haying and grazing shall not allow for year-round haying or grazing.

For additional details, contact the Bailey County FSA office.

You & Your Loved Ones Oughta Be in Pictures!

Only **\$39.95**
For Our **BEST** Plan

- > 1000 Anytime Minutes with **FREE** Nationwide Long Distance
- > **FREE** Unlimited Night and Weekend Minutes with **FREE** Nationwide Long Distance
- > **FREE** Unlimited Mobile-to-Mobile
- > **FREE** Carryover Minutes
- > **FREE** Loyalty Minutes

Find the **best coverage**, **great features** and **picture phones** for any occasion at Plateau Wireless.

TEXT MESSAGING ■■■ WEB BROWSING ■■■ PICTURE MESSAGING ■■■ WIRELESS INTERNET ■■■

"A CLOSER CONNECTION"
www.plateauwireless.com
877-PLATEAU (752-8328)

PLATEAU
Wireless

Race to any Plateau Wireless store to sign up!

Muleshoe Five Area Telephone Coop. 302 Uvalde (806) 272-7700	Muleshoe Connection Warehouse 117 Main St. (806) 272-5532	Friena WT Services 1010 Columbia (806) 250-5555	Friena Pancho's 611 W. 11th (806) 250-2299
--	---	---	--

Contact Term: 2 years. Early termination fees: \$200 per year, maximum of \$400. Night and Weekend hours are Monday through Thursday 7:00 PM through 6:59 AM and Friday 7:00 PM through Monday 6:59 AM. When outside the designated home area, Roaming: \$50 per minute with Free Long Distance. Additional taxes, fees, and surcharges may apply. Unused plan minutes carried over month to month. 30 minutes after one year of service, 60 minutes after three years of service and 100 minutes after five years of service. Certain restrictions apply. Plan only available on GSM phones. Offer not available in all markets. Offer good through 6/30/05.

1/2 PRICE BURGERS

SINGLE BURGERS 5PM-CLOSE EVERY TUESDAY NIGHT



1633 American Blvd.
272-3998 · MULESHOE

1015 Hall · 385-5442 · LITTLEFIELD

America's Drive-In.
Limited Time Only. At participating drive-ins only. Add on extra.

Do You Have Failed Cotton Or Other Crops?

Consider Blackeye Peas Or Seed Peas

They also work well double-cropped with wheat

Firm price for acre contracts offered.
Local delivery at Big N Farm Store in Tulia, TX.
Freight Allowance Provided.

Offered by C.T. Smith Ltd.
Pleasanton, Texas
Call (830) 569-2140 or (210) 867-9369
Ask for Jim Taylor.

Agricultural News

Texas entomologists think corn rootworm problem can be reduced

Western corn rootworm can chew through as much as \$1 billion yearly due to lost production and treatment costs across the corn belt.

But two Texas Agricultural Experiment Station entomologists think they can reduce these losses with a new model to predict and better target the pests.

The model developed by Dr. Jerry Michels, Experiment Station entomologist in Bushland, and Dr. Marvin Harris, Experiment Station entomologist in College Station, is based on temperature and number of adults emerged.

While crop rotation is the best way to control the corn rootworm, many corn growers don't have that option. So producers spray

Timing of the spray is critical, Michels said.

As much as 25 percent of the yield loss is from the adults clipping the silks, but the greater damage is done by the larvae, chewing off the roots of the corn and causing it to fall over, he said. As much as 75 percent of the crop can fall over.

"The idea behind this is to control more adults before the fall, so the number of eggs and resulting larvae the next spring will be lessened," Michels said.

He started collecting data on adult western corn rootworm emergence in 1996. Nine years of catching adult beetles in traps and comparing the data with temperature data from the North Plains potential evapotranspiration network helped the

researchers determine emergence patterns.

"The emergence pattern of the beetles is quite variable for a given year," Michels said. "However, because it is temperature-driven, the model is flexible and can account for differences in emergence due to normal, cool or hot years."

This flexibility can improve Western corn rootworm management decisions by showing when an insecticide application will do the most good, Michels said.

The model has been incorporated into the North Plains PET weather station network. Daily model output can be accessed by going to <http://amarillo2.tamu.edu/nppet/station.htm>, the weather station network

site. Select a station, then go to faxes and then to the date.

The recommendation is for producers to wait until they see about 50 percent emergence, he said. Because residual of most of the chemicals is a week to two weeks, a producer would miss a large part of the population by spraying too early, Michels said.

"We can control adults and if we get rid of enough of them, it will lessen the impact," Michels said. "If we can have a model to tell our producers when we have about 50 percent adult emergence, the producer can make an application at that time."

Over the years, he said, the model is showing 50 percent emergence can come anytime from July 13 to Aug. 15.

"If it is a hot year, emergence will be earlier than a cool year," Michels said. "So rather than saying we need to spray on July 15, some years it might need to be delayed."

"We feel this is a robust model," Harris said. "We think of this physiological model as providing us a bus schedule."

"When we have the bus schedule saying 25 percent of the adults will be out and active, we can go to the field and meet that bus and actually census the number of adult beetles there," he said.

A field census of beetles represents about one-fourth of what is actually there, Harris said.

"If the number is significant enough, we institute management. It lets us orient in time to make management decisions," he said. "When we incorporate this to overall management, we will limit pesticide usage to when it is needed."



Lance Insurance
Competitive Rates, Variety of Leading Companies
For Home, Auto, Commercial and Crop
806-227-2466

www.drippi.com

DIMMITT PUMP
1334 N. HWY. 385, DIMMITT
647-5253
Kennith Turney
Mobile: 647-7921
Irrigation Pumps Sales & Service
Lic#2427IW

Usda to hold public meeting conservation reserve program

Farmers and other landowners can advise USDA on how best to re-enroll and extend certain Conservation Reserve Program contracts that are expiring soon. Of the 34.8 million acres now enrolled in CRP, some 28 million acres, or about 80 percent, are scheduled come out of the program in fiscal years 2007 through 2010. The public meeting will be held on Friday, June 24, in Riverdale, Md.

USDA's Farm Service Administrator James R. Little said, "This meeting will provide a valuable opportunity for the public to help shape the future of CRP and to ensure continued environmental benefits."

The public meeting will be held at the USDA Conference Center in Riverdale, Md., on June 24, beginning with registration

at 8 a.m. FSA will provide an overview of the CRP followed by public presentations and discussion.

A shuttle will be running between the College Park Metro and the USDA Conference Center. If participants choose to drive, parking is available at the facility at the cost of \$2.25 per day.

Advance registration for the public meeting is required as space is limited. The workshop is free of charge and open to the public. For security purposes, all attendees will be required to present a valid picture ID to enter the meeting facility. Attendees must register in advance following this link:

<http://www.fsa.usda.gov/dafp/cepd/publicmeeting/register.htm> or by calling: (703) 412-9100.

The Conservation

Reserve Program is a voluntary program for agricultural landowners. Through CRP, landowners can receive annual rental payments and cost-share assistance to establish long-term, resource conserving covers on eligible farmland. The USDA's Commodity Credit Corporation makes annual rental payments based on the agriculture rental value of the land, and provides cost-share assistance for up to 50 percent of the participant's costs in establishing approved conservation practices. CRP is administered by the FSA, with program support provided by Natural Resources Conservation Service, Cooperative State Research and Education Extension Service, state forestry agencies, and local Soil and Water Conservation Districts.

Education

Area students on National Honor Roll list

A total of 22 students from the area have been inducted into the National Honor Roll for the 2004-05 school year.

Among the students honored, and their high schools are:

- Muleshoe**
Elena Aburto, James Coffman, Jamie Hall, Mitci Hawkins, Andrew Lancaster and Roxana Mendoza
- Springlake-Earth**
Bonnie Bagwell, Brook Bottelman, Laurie Davis, Haleigh Glasscock,

Andrew Lancaster, James McCurry, Logan McCurry, Courtney Miller and Erica Proctor.

Sudan
Nicholas Edwards, Kami Jones, Allison Layton and Seth Sowder.

Lazbuddie
Jason Davis, Brittney Schacher and Martha Smith.

The National Honor Roll recognizes high-achieving high school and middle school students.

"Young people like our inductees, who work hard to attain academic success, deserve to be

congratulated," says Lynn Romeo, publisher of the National Honor Roll. "Honoring their achievements provides motivation and encourages them to continue striving. We're proud to include them in the National Honor Roll."

For students in the 2004-05 school year, National Honor Roll set aside \$25,000 to be shared among 25 of its qualifying inductees. All members were entitled to compete for one of these National Honor Roll awards for academic achievement, which will be awarded in September.

Hospital Report

The Muleshoe Area Medical Center has reported the following admissions:

- June 3 — No report.
- June 4 — No report.
- June 5 — No report.
- June 6 — Gregoria Arredondo, Antonia Guzman and Monica Tyson.
- June 7 — Elizabeth Galaviz and Betty Johnson.
- June 8 — No report.
- June 9 — no report.

Former Littlefield teacher sentenced for child molestation

Charles Jarrod Fisher of Muleshoe, a former teacher at Littlefield, was sentenced Thursday, June 9, to 14 years for sexual assault and enticing a child.

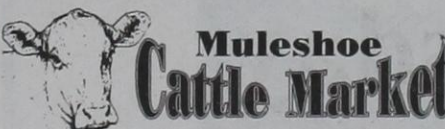
On April 26, Fisher plead guilty to all three charges.

District Judge Felix Klein sentenced Fisher on one count of enticing a

child and two counts of sexual assault on a child.

Although Fisher was sentenced to 14 years on each offense, the sentences will run concurrently.

At the time the offenses occurred, between June 2003 and April 2004, Fisher was employed at Littlefield Middle School as a teacher and coach.



The Muleshoe Cattle Market is brought to you each week by Muleshoe Livestock Auction, located east of Muleshoe on U.S. 84. Muleshoe Livestock conducts sales every Saturday, beginning with hogs, sheep and goats at 10 a.m. and cattle following at approximately noon.

REPRESENTATIVE SALES

SAT., JUNE 11, 2005

814 head of cattle, 131 hogs and 573 sheep and goats for a total of 1,518 livestock sold at the June 11th sale. Market steady to a little lower on stocker cifs. Feeder cattle 1-2 lower on a weak test. Not enough pairs and bred cows or Packer cows to truly test market. Remember NO SALE July 2nd!!

FOR INFORMATION ON SALES OR TO CONSIGN CATTLE-272-4201

Seller, City	# Type	Wt.	CWT or PH
Diego Anchondo, Tokio	Hol. bull	210 lbs.	at \$141.00
F&G Cattle, Tahoka	2 Mxd. bulls	375 lbs.	at \$135.00
F&G Cattle, Tahoka	5 BMF bulls	430 lbs.	at \$139.00
Hill Ranch, Hobbs, NM	5 Mxd. str	577 lbs.	at \$121.00
Hill Ranch, Hobbs, NM	5 Mxd. str	717 lbs.	at \$107.50
Ike Wilcox, Muleshoe	2 RWF bulls	585 lbs.	at \$119.50
Ike Wilcox, Muleshoe	5 Mxd. bulls	736 lbs.	at \$101.00
Bar F Angus, Hereford	BWF str	620 lbs.	at \$111.00
D.J. Robertson, Muleshoe	Blk. str	635 lbs.	at \$112.50
CM Cattle, Muleshoe	5 Mxd. str	719 lbs.	at \$106.50
CM Cattle, Muleshoe	23 Blk. str	988 lbs.	at \$87.25
Victor Coronado, Levelland	Char. bull	490 lbs.	at \$120.00
Albert Stoker, Causey, NM	BWF str	810 lbs.	at \$109.00
Kevin Carter, Farwell	Blk. str	865 lbs.	at \$101.00
Robert Fowler, Farwell	Blk. bull	900 lbs.	at \$90.00
Abraham Castanon, Friona	Char. hfr	200 lbs.	at \$350.00
Ramon Gonzales, Sudan	Blk. hfr	220 lbs.	at \$420.00
Ike Wilcox, Muleshoe	7 Mxd. hfrs	494 lbs.	at \$125.00
2W Inc., Littlefield	9 Blk. hfrs	549 lbs.	at \$115.50
Lee Billberly, Bledsoe	Red hfr	520 lbs.	at \$117.00
Jamie F. Grey, Littlefield	Gray pair		\$1275.00
Enrique Fierro, Plains	Blk. cow P6		\$725.00
Norris Conklin, Muleshoe	Blk. cow P5		\$760.00
Jamie Grey, Littlefield	Blk. cow	1555 lbs.	at \$57.00
Osterkamp Dairy, Hereford	Hol. cow	1385 lbs.	at \$58.00
T&K Dairy, Smyer	2 Hol. cows	1450 lbs.	at \$56.50

This Report Proudly Sponsored By:

Truck.Truck.
Gotta Get A Truck. Gotta Get A Truck At...
BIG VALLEY
USED CARS
1504 Mabry Drive, Clovis • 505-762-3300

Senior Citizen News

The Oneita Wagon Senior Center continues to be a hub of activity for senior citizens. Each morning about 7:45 a.m. several seniors come to walk and exercise in our "gym."

At 8 a.m. several exercise to the video, "Walk away the pounds." This video is repeated at 10 a.m. as well as folks who drop by to use the exercise bikes. The pool tables are enjoyed by many as well as the library. Tuesday morning games always see a good crowd, but "42" and domino players can be seen at almost any hour of the day.

And there's always good refreshments for the Tuesday morning game players.

The coffee pot is always on and there's usually a pitcher of tea in the refrigerator.

Usually there are cookies in the cookie jar too. The center closes at 4 p.m.

The co-directors, Nelda Merriott and Laverne Winn share responsibilities. The committed times to work at the center is: Laverne: Monday, Tuesday and until noon on Wednesday.

Nelda works Wednesday afternoon, and all day on Thursdays and Fridays.

But you can often find these ladies at the center at other times.

The Tuesday evening dancers appear at 7 p.m. and most stay till closing at 10 p.m.

There's always fun and laughter. Fifty seven dancers were at the center this past Tuesday and one fellow came from San Jon, stating that it was a round trip of 220 miles.

Merriott volunteers on Tuesday evenings as well as, Billie Harvey, Eva Atwood, Mary Nell Bleeker, Marie Williams, Ladene Spears, and Peggy and Jack Bates.



Birthdays at the senior center

Twelve senior citizens celebrated their May birthdays at the senior center. They were Kenneth Henry, and Lloyd Williams, in the back, and from left to right in front — Eulaine Phillips, Wilma Smith, Ethel Garlington, Mildred Williams, Pauletta Crawford, Billie Harvey, Ann Sinclair, Joyce Wright, Mary Jo Burge and Loyce Killingsworth.

They open the Center at 6 p.m. to get ready, making coffee, ice tea and ice water, and preparing tables for the pot luck meal.

They are often joined by others who help with the preparation and after ten cleanup. They are friendly ambassadors for the senior center and Muleshoe.

Saturday, June 11, the senior citizens partook of a fantastic pot luck lunch and then sat back to watch Steve Winger, "Juggler for Jesus."

He presented a great program which included seemingly impossible juggling acts as he presented stories of the Bible and his testimony. Cari Ann Kidd, demonstrated her faith by lying down while he juggled raw eggs above her. The crowd sang along to several songs and actively

took part in the presentations. The seniors enjoyed seeing a large group who came from Parkview Nursing home.

It was so good to see our former members again.

The menu for next week is:

Monday, June 20 — Roast beef sandwich on wheat toast, tater tots or fries, peas and carrots, sliced tomatoes and fruit salad.

Tuesday, June 21 — BBQ

chicken, green beans, cornbread, orange sections. Wednesday, June 22 — pork chop, mashed potatoes, mixed vegetables, coleslaw, raisen bread, applesauce.

Thursday, June 23 — Liver and onions, scalloped potatoes, spinach, cornbread and betty cobbler.

Friday, June 24 — Beef enchiladas, kidney beans, zucchini, tossed salad and ranch dressing.

Commissioners Court approves New Mexico prisoner contract

The Bailey County Commissioners Court approved a contract with Chavez County, N.M., during Monday's regular meeting.

According to Sheriff Richard Wills, Chavez County will be paying \$38 per day to house prisoners in the Bailey County Jail, including transportation costs.

In other business, the commissioners court:

- Approved payment of county bills totaling \$254,614.03.

- Approved the county treasurer's report for the month of April.

- Approved the minutes from the May 9 regular meeting. They also approved the May 23 special meeting minutes after correction.

- Authorized a request to the comptroller for unclaimed funds received from the Bailey County Electric Cooperative.

- Approved amendments to the FY2005 fiscal budget.

- Called a special meeting for June 30, at 10 a.m.

- Received a report from county extension agent Mandi Seaton.

Bridal Shower

Sheets, Ott shower held

A bridal shower honoring Terah Sheets, the prospective bride of Nate Ott, was held May 22 at the home of Rhonda Myers.

The prospective bride is the daughter of Dr. and Mrs. Kyle Sheets. The prospective groom is the son of Deborah Ott and the late Jack Ott.

Hostesses for the event included Nelda Wilhite, Ruth Locker, Peggy Dent, Robin Friskup, Kacy Miller, Jody Wood, Brenda Black, Deborah Kettner, Angela Babcock, Juana Shelburne, Rhonda Myers, Kay Leopard, Deena Hamilton, Laura Precure, Lisa Whalin, Jamie Myers and Melody Sheets.

Among the guests in attendance were the prospective bride's grandmothers, Alta Burkhalter and Mina Sheets, and her aunts, Shawn Brown and Melody Sheets.

The gifts included a coffee maker and a blender.

Muleshoe students placed on WBU lists

Students from Muleshoe received recognition for academic work in the classroom during the spring 2005 semester at Wayland Baptist University.

Christy Morgan was named to the President's List and Ryan Hodge made the Dean's List. Students must maintain a 4.0 grade point average for the semester to make the

President's List and a GPA of 3.5 or better to be named to the Dean's List. Morgan is the daughter of Ronald and Janet Morgan. Hodge is the son of Rhonda Eagle.

PUBLIC NOTICE

The Board of Trustees of the Muleshoe Independent School District will meet

**Thursday
June 30, 2005**

for the purpose of adopting a budget for the 2005-2006 school year.

The meeting will begin at

7:00 p.m.

in the

**School Administration
Building
514 W. Ave. G**

Any taxpayer of the district may be present and participate in the hearing.

NOTICE OF PUBLIC MEETING TO DISCUSS BUDGET AND PROPOSED TAX RATE

The Muleshoe Independent School District will hold a public meeting at 7:00 p.m., June 30, 2005 in the School Administration Building, 514 W. Ave G, Muleshoe, TX. The purpose of this meeting is to discuss the school district's budget that will determine the tax rate that will be adopted. Public participation in the discussion is invited.

The tax rate that is ultimately adopted at this meeting or at a separate meeting at a later date may not exceed the proposed rate shown below unless the district publishes a revised notice containing the same information and comparisons set out below and holds another public meeting to discuss the revised notice.

Comparison of Proposed Rate with Last Year's Rates

	Maintenance & Operations	Interest & Sinking Fund*	Total	Local Revenue Per Student	State Revenue Per Student
Last Year's Rate	\$1.4300	\$0.000 *	\$1.4300	\$1,963	\$4,716
Rate to Maintain Same Level of Maintenance & Operations Revenue & Pay Debt Service	\$1.3184	\$0.000 *	\$1.3184	\$1,796	\$4,883
Proposed Rate	\$1.3700	\$0.000 *	\$1.3700	\$1,883	\$4,883

* The Interest & Sinking Fund tax revenue is used to pay for bonded indebtedness on construction, equipment, or both. The bonds, and the tax rate necessary to pay those bonds, were approved by the voters of this district.

Comparison of Proposed Levy with Last Year's Levy on Average Residence

	Last Year	This Year
Average Market Value of Residences	\$39,343	\$39,343
Average Taxable Value of Residences	\$24,343	\$24,343
Last Year's Rate Versus Proposed Rate per \$100 Value	\$1.4300	\$1.3700
Taxes Due on Average Residence	\$348.11	\$333.50
Decrease in Taxes		\$14.61

Under state law, the dollar amount of school taxes imposed on the residence homestead of a person 65 years of age or older or of the surviving spouse of such a person, if the surviving spouse was 55 years of age or older when the person died, may not be increased above the amount paid in the first year after the person turned 65, regardless of changes in tax rate or property value.

Notice of Rollback Rate: The highest tax rate the district can adopt before requiring voter approval at an election is \$1.3700. This election will be automatically held if the district adopts a rate in excess of the rollback rate of \$1.3700.

Fund Balances

The following estimated balances will remain at the end of the current fiscal year and are not encumbered with or by a corresponding debt obligation, less estimated funds necessary for operating the district before receipt of the first state aid payment:

Maintenance and Operations Fund Balance(s)	\$0.000
Interest & Sinking Fund Balance(s)	\$0.000

Weddings

Hooten, Boyd united in matrimony

Heather Hollye Hooten and Daniel Oliver Boyd were united in marriage in a candlelight ceremony on Saturday, Jan. 8, 2005.

The couple was married at the Richardson East Church of Christ with Lanny Trussell of Muleshoe officiating the double ring ceremony.

Parents of the bride are Mr. and Mrs. Gary Hooten of Muleshoe. Parents of the groom are Mr. and Mrs. Gerald Boyd of Trenton.

Grandparents of the bride are the late Howard and Bonnie Crenshaw of Snyder and Robert and Maurine Hooten of Muleshoe. Grandparents of the groom are the late Henry T. and Marguerete Hogg of Eldorado, Ark., and Dewey and Margaret Boyd of Manitou Springs, Colo.

Presented in marriage by her father, the bride wore a white strapless tulle ball gown with beaded lace applique featuring a lace-up back and cathedral train.

The bride wore a tiara decorated with pearls that attached to an elbow length veil with seed pearls sprinkled at the bottom of the veil.

To complete her bridal ensemble was a bouquet of red roses with silver streamers. The bouquet was atop a Bible belonging to the bride's brother, Cade Hooten.

Carrying out tradition, for something old the bride carried a napkin from her parent's wedding inside her brother's Bible. For



Mrs. Heather Boyd

something new, the bride chose her wedding gown. For something borrowed, the bride wore the tiara and veil that her sister, Amy Turner, wore in her wedding and a pearl necklace and earrings belonging to her grandmother, Maurine Hooten. The blue Bible belonging to her brother completed the tradition.

In the bride's shoes were pennies minted in years of the couples' birth.

Serving the bride as matron of honor was Amy Turner of Lubbock. Bridesmaids were Sarah Boyd and Hannah Boyd, sisters of the groom, both of Trenton, Cari Faver of Lubbock, Kathleen

Weindorff of Galveston, Mitzi Jones of Irving and Julie Johanson of San Antonio. Mercy Boyd of Trenton, sister of the groom, served as flower girl.

Mercy carried a white satin basket that was made by the bride's grandmother, Bonnie Crenshaw.

Honorary bridesmaids were Courtney Conner, Leslye Starnes, Brooke Conner, all of Lubbock and Twyla Polasik of Ropes, cousins of the bride, Amy Chisholm of Piano, Kimberly McCaughan of Wylie, Heather Wellman of Denton, Brittney Rackley of Lufkin, and Brandi Harrison of San Angelo.

Jonathan Boyd of

McKinney served his brother as best man.

Groomsmen were David Boyd of Dallas brother of the groom, Cade Hooten of Lubbock, brother of the bride, Nathan Boyd, Joel Boyd, Joshua Boyd and Solomon Boyd, all brothers of the groom of Trenton.

The groom was attired in a black tuxedo with a white vest and tie.

Aaron Tungate of Ft. Worth performed special wedding music singing "I Can Only Imagine" Other music selections were "When We Get Married", "O Perfect Love", "And I Love You So", "I Will Be Here", and "Canon in D", all by Acapella.

The bride and groom exited the auditorium to "La Song and "Doubly Good" by Acapella. Brandi Harrison and Brittney Rackley presided over the registry table. After the ceremony, a reception was held at the Richardson Hotel.

The groom's parents hosted the rehearsal dinner at the Richardson East Church of Christ. The morning of the wedding, Heather was honored with a bridal luncheon at the Richardson Hotel hosted by her grandmothers, Bonnie Crenshaw and Maurine Hooten and her aunts, Kellye Starnes, Andra Conner, Gayla Gear and Wanda Hooten.

After a honeymoon cruise to the Panama Canal, the couple plans to reside in McKinney, where Heather is in family practice as a physician assistance. Daniel is a firefighter and paramedic for the City of Denton.

Announcing a **Grand Opening!**
Monday, June 27, 2005

Mexican Burrito Express

328 Main Street, Muleshoe
Open: 6 AM - 3 PM
272-3176
Call in orders welcome-272-3176
Owners: Ramiro & Yolanda "The Burrito Lady" Ramirez

Justin time for Father's Day!
Give dad a great gift & take advantage of great prices during Justin Boot Month!

All Justin Boots \$20 Off

ANNUAL TENT EVENT
Fri.-Mon. July 1-4

Straw & Felt Hats..... 25% Off

Jackets 35% Off

Long Sleeve Shirts..... 15% Off

Sale ends June 30.

Williams General Store
1405 W. American Blvd., Muleshoe • 272-6853

MISD school board... Continued from page 1

levels — along with the funding decrease due to the jump in property valuations, he thought the school board needed to increase the rate by six cents per hundred.

Sheets said the six cent increase was all the school board could do without holding a "rollback election." The final tax rate won't go into effect until after the board votes on it in August.

"This is a shot in the dark... It's a terrible way to plan," the superintendent said, adding that a clearer picture wouldn't be available until it was determined what state mandates were going to cost the school district.

Sheets said it was evident the school district would have to dip into its fund balance for the upcoming school year, but reminded the board that this was already known. At last month's regular meeting, the school board had voted to increase the amount paid to MISD teachers above the state base level.

However, with the state changing the base salary levels and other education mandates, it wasn't known as yet how deep the district would have to dip into the fund balance. The superintendent said he expects the school district would have a deficit budget, requiring the fund balance to be utilized, for the next two years.

"We're not in the business of making money or storing money, so we probably need to get it down" Sheets said about the fund balance.

In other business, the MISD school board:

- Approved an insurance renewal with TASB Property and Casualty at a reduced premium of \$54,284,

resulting from the low number of claims the school district has filed with the company.

- Approved a copyright release granting the Bailey County Historical Society permission to reprint the book, *Early Bailey County History*, which was written by MISD students a few years ago, until such time as the school district rescinds its permission.

- Accepted the resignations of home economics teacher Brenda Guzman, Steve Ballenger, kindergarten teacher Keila Morris, teacher Iva Noble, and teacher Angie Pierce.

- Approved the hiring of several teachers — Clay Ferguson, Amber Fuller, Shane Fuller, Patricia Dial, Ryan Shober, Mitzi Branscum, DeAnne Glover, and Toni King.

Complete Auto Repair

- Tune Ups
- Brake Service
- Computer Diagnostic Repair
- We Build Engines and Have Rebuilt Engines For Sale
- We Do On-The-Site Irrigation Motor Repairs

*All Work Guaranteed
We Pick Up and Deliver!*

Burton Service Center
803 W. American Blvd. • 272-5330
After hours: 946-8274 or 946-7996

Shirley B's Country Cookin'

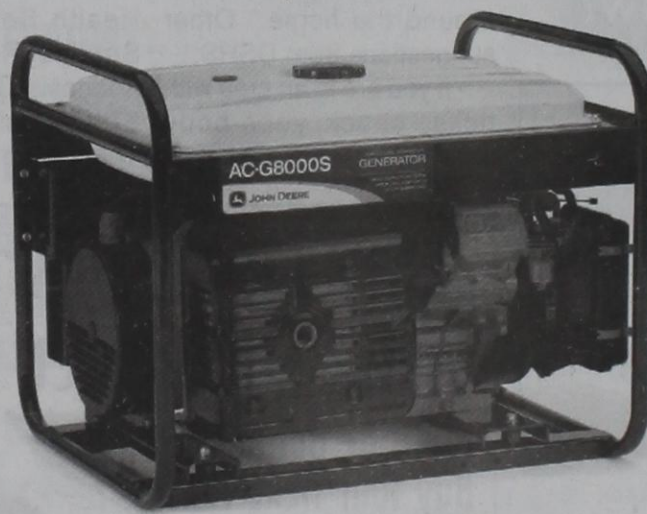
FAMOUS FRIDAY NIGHT FISH BUFFET

5 PM TO CLOSE

303 N. Main, Anton, Texas
(806) 997-5305

DENT & CO.

Get your Dad something he really wants at our Father's Day Sale.



AC-G8000S Generator

\$1699.00¹



CS52 Chainsaw
\$339.99¹



T105SLE Line Trimmer
\$259.99¹



JOHN DEERE
NOTHING RUNS LIKE A DEERE™

www.JohnDeere.com



DENT & CO.
2800 WEST AMERICAN BLVD
MULESHOE, TX 79347
(806) 272-4296
muleshoe@dentcompany.com

¹Offer ends 06/20/2005. Prices and model availability may vary by dealer. Some restrictions apply; other special rates and terms may be available, so see your dealer for details and other financing options. Available at participating dealers. John Deere's green and yellow color scheme, the leaping deer symbol, and JOHN DEERE are trademarks of Deere & Company.

Health

Avoiding ticks is the best way to prevent diseases they carry

Warm days and sunny skies draw many people outdoors this time of year. The same environment also brings out the insects, some of which carry diseases.

"It's tick time in Texas," said Glenna Teltow, a medical entomologist with the Texas Department of State Health Services. "Ticks often are found in the same spots people like to visit - wooded, brushy and grassy areas."

A bite from an infected tick can cause illnesses such as Lyme disease, Rocky Mountain spotted fever, tularemia and human ehrlichiosis. With prompt medical attention, these illnesses almost always can be successfully treated with antibiotics. But if people do not recognize the symptoms and seek treatment, the illnesses can be serious, some even fatal, Teltow said.

In Texas, the tick most likely to attach to humans is the lone star tick. "This tick, which is about the size of a watermelon seed, will readily feed on human blood," Teltow said. "The lone star female tick is easily recognized by a single white dot on her back, while the male tick has white markings around the edges of his back."

The most frequently diagnosed tick-borne illness in Texas is Lyme disease, a bacterial infection that can cause skin, joint, heart and nervous system problems. The disease usually begins with a characteristic "bull's-eye" rash followed by fatigue, headache, fever, stiff neck and joint pain. Symptoms usually appear in 7 to 14 days.

Rocky Mountain spotted fever is a serious disease transmitted most commonly by the bite of an infected tick. People who remove ticks also can become infected if they crush ticks between their fingers, allowing the bacteria to penetrate the skin or come in contact with mucous membranes. Initial symptoms, following an incubation period of three to 14 days, include sudden onset of high fever, headache, chills and muscle aches. A rash often appears a few days later.

Prompt medical attention is extremely important because Rocky Mountain spotted fever can be fatal without prompt treatment with antibiotics.

Tularemia is a bacterial disease affecting animals and humans. It can be spread through a tick bite or through contact with blood or tissue from infected animals, especially wild rabbits, or by handling or eating undercooked meat from infected animals. Symptoms include fever, an ulcerative skin sore at the site of the tick bite and painful swollen lymph glands. If the organism is ingested, the person may have a throat infection, abdominal pain, diarrhea and vomiting.

In Texas, human ehrlichiosis is a rare disease with fewer than 10 cases reported each year. Most infections cause a sudden onset of illness with fever, chills and headache, usually beginning about 12 days after the tick bite.

"Avoiding ticks is always the best prevention for any of these diseases," Teltow said. "Keep ticks off pets and discourage unwanted animals such as rats, mice and stray dogs and cats around the home." Other suggestions from DSHS:

- If you are in an area with ticks, check your body carefully for them every few

hours. Ticks are small and can be hard to see, and they can attach to any part of the body.

- Stay on trails, avoiding areas of overgrown brush and tall grasses.

- Wear light-colored clothes so that ticks are more easily spotted. Protect skin from ticks by wearing a hat, long-sleeved shirt and long pants tucked into boots or socks.

- Use insect repellent containing DEET applied to the skin or permethrin applied to clothing. Follow label directions.

- Check pets frequently and remove ticks from them immediately.

To remove an attached tick, use fine-tipped tweezers to grasp the tick at the skin surface. If tweezers are not available, use a tissue or paper towel to protect your fingers from possible exposure to the tick's body fluids.

With a steady motion, gently pull the tick straight out. Do not twist, jerk or crush the tick's body. After removal, clean site and hands with soap and water.

Only ticks that were attached to humans may be submitted to DSHS for identification and testing. They should be put in a small container or vial with a leak-proof lid. Ticks may be submitted live or preserved in 70 percent ethyl or isopropyl alcohol. Never mail ticks loose in an envelope. A tick submission form should be completed for each tick.

A copy of the tick submission form can be found online at: <http://www.tdh.state.tx.us/zoonosis/forms>.

Place the tick container in a padded envelope or mailing tube and mail to: Texas Department of State Health Services, Health Service Region 7, Attn: Zoonosis Control, 2408 S. 37th St., Temple, TX 76504. There is no testing charge.

Where Are They Now?



ANDY KIM BLACK

Andy Kim Black, the daughter of Shelia Black of Lubbock, formerly of Muleshoe, and Kim Black of Muleshoe, graduated Sunday, May 29, from Frenship Independent School District.

The graduation ceremonies were held at United Spirit Arena in Lubbock.

Andy is the granddaughter of Robert and Nelda Hunt of Muleshoe, and the great-granddaughter of Ruth Hunt, also of Muleshoe.

Andy plans to attend Austin Community College in Austin.

History Notes

The Muleshoe Post Office and the Muleshoe School District were both established in 1914.

During the same year, the First Methodist Sunday School was being held in the town's railroad depot.

Why Monkey Around With The Other Guys?

You'd Be Bananas To Buy Your Next Vehicle From Anyone But M-Pyre Auto!



This Father's Day, Dad should ride in style! Get a newer, cleaner pre-owned auto today!

Stop by and see Buster and the crew—they're more fun than a barrel of monkeys!

M-PYRE

AUTO SALES INC.

1112 W. American Blvd., Muleshoe • 272-7777

Roosevelt County Heritage Days

June 17 and 18, 2005

Portales City Park

7th and Abilene - Portales, NM

Schedule of Events

Friday, June 17

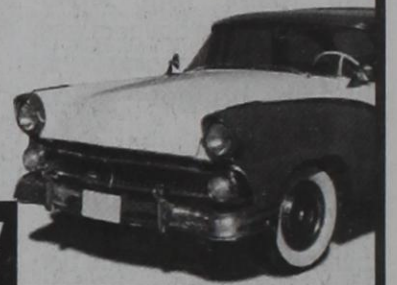
5-6 p.m. Pioneer Reception, Memorial Bldg.
6:30 p.m. Celebration of Christian Music, City Park

Saturday, June 18

7:30 a.m. MainStreet Fun Run
8 a.m. Car Show Registration
9 a.m. Car Show
9:30 a.m. Motorcycle Poker Run
10 a.m. Parade
10 a.m. Food and Craft Booths
11 a.m. GeoCache Event, Fairgrounds
Noon Pet Parade
Noon Heritage Days Fiddler's Contest
12:30 p.m. Tractor Games
1:30 p.m. Motorcycle Competitions
2 p.m. Rough Rider Relay Challenge
6:30 p.m. Celebration of Christian Music, City Park



Sponsored by Roosevelt County Chamber of Commerce, (505) 356-8541



WANTED

Are you a reliable, professional, motivated, self-starter ready to make great money?

Then apply at

Big Valley Ford, Dodge, Jeep, Chrysler in Portales or Clovis!

Positions Currently Available:

Our Portales location needs 6 salespeople. Contact Tommy Brown or Wade Rutter at 1115 N. Chicago in Portales.

Our Clovis location needs 3 salespeople. Contact Rick Harrison at 1504 Mabry Drive in Clovis.

Rewards:

- Best pay plan around • Up to 50% commissions
- Medical insurance

Qualifications:

At least 18 years old, high school graduate or GED, drug free, reliable transportation, and a desire to make \$5,000 a month or more!

Make up to \$60,000 a year - \$1,500 Sign-on Bonus

July 4 celebration to include a concert in the city park

Among the activities planned for the Independence Day celebration in Muleshoe will be a concert by The Fun Brothers, a musical group which includes Duane Castleberry, owner of KC Mufflers & Mfg. and co-owner of Complete Feed & Seed, both of Muleshoe.

The Fun Brothers will be the featured performers at the new city park on July 4 from 8-10 PM. They play a mixture of country, rock, classic rock, blues and some original material. Thought or the July 4th show, they won't be doing much original music according to Castleberry.

The other members of the musical group include Johnny Mulhair, Brad

Billingsley, L.D. Phillips, Kenny Milton and Andy Mason.

Castleberry plays the drums and percussion. He is also a vocalist and songwriter. Mulhair performs on the guitar, and is also a vocalist and songwriter. Billingsley plays drums and percussion. Phillips is on the bass guitar. He is also a vocalist. Milton plays the guitar, and Mason is a vocalist and plays the guitar.

Castleberry, who has been a member of The Fun Brothers for six months, has played music most of his life, claiming his talent came from his mother who sang and played the bass. "Music has always been in my blood. I come from a very musical family," he said.

Castleberry played in his junior high and high school band and took private piano lessons beginning in early childhood.

Castleberry began

traveling with various "nightclub" bands when he was too young to even be in a nightclub, which he said required the band members to be appointed as his legal guardians.

From 1974 to 1978, Castleberry worked as a studio musician in California, even performing in a mattress commercial, but quit the business to get married and have a family.

Before joining The Fun Brothers Castleberry said he hadn't played in a band for 23 years, but had been writing his own music periodically throughout those years.

The song he enjoys performing the most with his current band is "Pretty Woman," by Roy Orbison. He has played with big name band musicians such as Booker T. & the MG's, Richey Heyward and Bill Payne of Little Feat, Mark Olson of Rare Earth and Dennis Provisor,

keyboardist for the Grass Roots, all of which were on one compilation record.

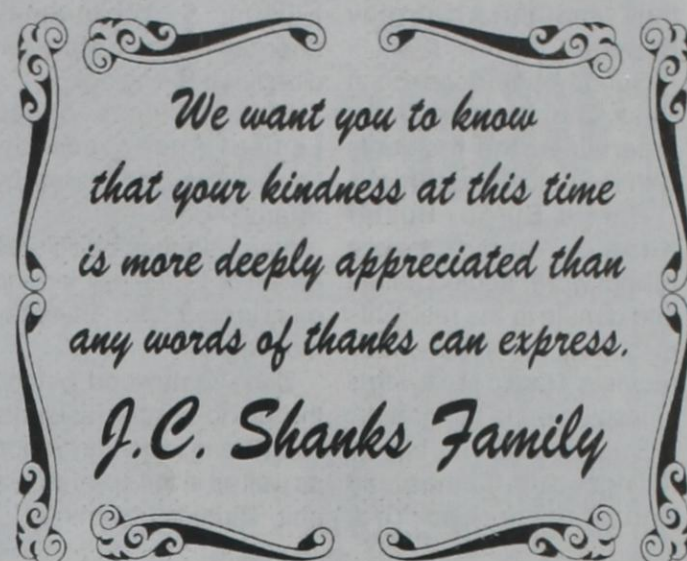
As singer and songwriter, Johnny Mulhair's biggest success may be as producer of LeAnn Rimes' first album, featuring her hit remake of Patsy Cline's "Blue." Mulhair continues to play guitar and is often called to perform with such bands as America and Big Voodoo Daddy. He is also associated with up-and-coming country artist Kyle Wylie.

Brad Billingsley is a graduate of the Music Institute, where he took college programs that engulfed him in every

aspect of music.

"Brad is truly a professional. He knows every type of music there is," Castleberry said.

The Fun Brothers play every Wednesday night at Clovis City Limits, on Mabry Drive in Clovis, N.M., from 8-12 New Mexico time.



Total Life Festival set for June 25-29

Trinity Baptist Church of Muleshoe will be sponsoring a Total Life Festival, June 25-29, featuring Muleshoe native and author Wayne Bristow as guest speaker, and Paula and Randy Sterrett as guest singers.

Bristow, the founder and president of Total Life International Ministries, is a harvest evangelist and a veteran of 50 years of active ministry.

Before beginning his work with this world evangelism organization in 1993, he had served as pastor of a local church for three years, spent 19 years in an itinerant ministry of evangelistic preaching, served for five years as an associate director of the Volunteers in Missions Department of the Foreign Mission Board — now the International Mission Board — of the Southern Baptist Convention, and almost eight years as director of the Evangelism Department for the Baptist General Convention of Oklahoma.

In addition to his preaching ministry, Mr. Bristow is also an author. His first book, *Total Life Now*, was released in 1996, and a second printing was released in 2000. *Invitation to Christ*, in book and audio cassette editions, was published in 1998 by Convention Press in Nashville, Tenn. His most popular book, *18 Miles From Earth*, was released in 2000. It is a collection of humorous stories about his childhood in West Texas. Bits of these stories often find their way into his sermons.

Wayne Bristow was converted to faith in Christ at the age of 11 and called to preach at the age of 16. He is a graduate of Wayland Baptist University in Plainview, and attended Midwestern Baptist Theological Seminary in Kansas City, Miss.

His wife, Robbie, usually travels with him as an active participant in his ministry. They make their home in Edmond, Okla.

Randall and Paula Sterrett have traveled abroad with a musical theater group.

In 1992, they began directing drama ministries in their local church, and in 1995 began By All Means Contemporary Christian Drama Ministry.

Randall holds a degree from Texas Tech University and attended the Southwestern Baptist Theological Seminary.

If Everybody Had a Father Like I Had a Father . . .

Note: This column was written in January, 2000.

It's been just a little over twenty-four hours since I got word that the kindest, gentlest, strongest, and best man I have ever known passed away. He was my father. Though many thoughts have been racing through my mind, I've realized that, if everybody had a father like I had a father, well, lots would be different in this world.

If everybody had a father like I had a father, no child



Focus On Faith
Curtis Shelburne

would ever have to walk out the door or crawl into bed wondering if his father loved and wanted him.

If everybody had a father like I had a father, no child would ever go to bed worried that his father might not really love his mother.

If everybody had a father like I had a father, no son or daughter would ever see his father raise his hand or even his voice in anger.

If everybody had a father like I had a father, no one would have to ask how it is possible to be strong and gentle, just and loving, all at the same time.

If everybody had a father like I had a father, nations would not fight nations, families would not fight families, and Christians would never fight Christians, because we would all rather be hurt than be hurtful. And the hurts that are

part and parcel of human existence would never be hurts we inflicted upon each other.

If everybody had a father like I had a father, every child would grow up knowing that the way to real happiness is to love the Father of all and the Son who died to save us.

If everybody had a father like I had a father, every child would grow up knowing that, even with all the church's imperfections, the Bride of Christ is still the finest family of all, and that in her warmth is found spiritual nourishment and fine fellowship and genuine love.

If everybody had a father like I had a father, good times would be even better and bad times would be more bearable, because of the unfailing love of our fathers.

If everybody had a father like I had a father, well, there would still be problems in this fallen world because we would all still be sons and daughters of our father Adam, too.

But if everyone had a father like I had a father, then everyone would grow up knowing a lot more what their Father God looks like and acts like and loves like.

If everyone had a father like I had a father, then everyone would know the Father's love largely because of their father's love.

If everyone had a father like I had a father, this world and life itself would be much, much better.

But if everyone had a father like I had a father, I might not know what a fine father I had. And, not knowing that, I might not know what a Father I have, and that the best Father of all is your Father, too.

Curtis Shelburne is minister of the 16th & D Church of Christ in Muleshoe.

Publication of announcements

The Muleshoe Journal invites your news of weddings, engagements, showers, anniversaries and births.

In order to be fair to everyone, we must limit the amount of space for certain events.

For weddings and quinceaneras 25 column inches, which includes a photo if desired, will be the limit. If the photo and announcement run longer, we reserve the right to eliminate parts of the story or the person placing the article may indicate which portions may be left out. However, if a longer write-up is desired, it may be purchased in the form of an ad.

For anniversaries, if two photos are included, the limit will be 25 inches. It will be 15 inches if only one photo is used. That space will be free for anniversaries of 50 years or more. A fee may be charged for other anniversaries.

Birth announcements with one-column photos are run free of charge with names of immediate family, including grandparents and great-grandparents. Please understand that the permission of both parents is required for a birth announcement to be published.

Small stories describing showers are run free of charge after the fact and may include the names of the principals, items served at the showers, a brief description of the decor and the names of special or out-of-town guests.

A deadline of six months after an event will be the rule. Drop by for a form or send the information via e-mail to editor@muleshoejournal.com. The deadline is Monday noon.

Discount Cars

At Richard Barton's Pontiac Buick GMC We Have A Mission Statement...

Choose From These Quality Cars & Trucks!! Offer Ends Tuesday Night, See Us Today!

NICEST CARS, TRUCKS & SUV'S IN EASTERN NEW MEXICO & WEST TEXAS

CARS	WAS	HOT PRICE
97 CHRYSLER SEBRING LXI #G9006A	\$7,995	\$5,550
03 CHEVY CAVALIER LS #G9098A	\$9,995	\$7,950
03 BUICK CENTURY #81495	\$10,995	\$7,950
03 BUICK CENTURY #81513	\$11,995	\$9,650
00 MERCURY GRAND MARQUIS LS #B3034A	\$10,995	\$9,850
03 PONTIAC VIBE #81480	\$14,995	\$9,950
03 FORD TAURUS SE #81508	\$11,995	\$10,250
04 CHEVY MALIBU CLASSIC #81510	\$12,995	\$10,250
04 HYUNDAI ELANTRA GLS #81500	\$11,995	\$10,750
02 MERCURY GRAND MARQUIS LS #81497	\$13,995	\$12,250
04 PONTIAC GRAND AM SE #81517	\$13,995	\$12,450
05 BUICK CENTURY #81518	\$15,995	\$13,350
04 DODGE STRATUS SXT #81514	\$14,995	\$13,450
05 BUICK LESABRE #81504	\$19,995	SOLD
02 PONTIAC TRANS AM #G9063B	\$20,995	\$18,850
SUV'S & TRUCKS		
03 FORD ESCAPE XLT 4X4 #G8641B	\$20,995	\$16,750
04 CHEVY BLAZER LS 4X4 #91189	\$20,995	SOLD
03 HONDA CR-V LX #91186	\$18,995	\$17,150
01 GMC SIERRA SLE 3/4T CREW CAB #G9117A	\$21,995	\$19,450
03 DODGE SLT QUAD CAB 4X4 #G9147B	\$22,995	\$20,650
04 DODGE SLT QUAD CAB #81516A	\$23,495	\$20,850
05 CHEVY SILVERADO LS X-CAB #91184	\$24,995	\$20,850
02 GMC YUKON SLT 4X4 #91183	\$28,995	\$20,850
03 CHEVY SILVERADO LS 4X4 #91187	\$23,995	\$20,950
04 DODGE SLT QUAD CAB W/HEMI #G9158A	\$25,995	\$21,850
02 CHEVY TAHOE LT 4X4 #G9134A	\$27,995	\$23,950
02 CHEVY SUBURBAN LT 4X4 #G8574A	\$26,995	\$24,650



Roy Snodgrass



Dominic Gutierrez



Darrel Green



Nathan Richardson



David Thompson

Richard Barton
Nobody Beats a Richard Barton Deal - Nobody! Guaranteed!

PONTIAC ACTION

GMC

3300 Mabry Drive Clovis, NM 88101 505-762-2986 / 1-888-569-1900
www.richardbarton.com

All vehicles subject to prior sale and lenders approval, plus TT&L, & Transfer Fees.

Nursing Home News

Our deepest and heartfelt sympathy goes to the family and friends of J.C. Shanks. We, too, will miss him.

Virginia Bowers visited her mother, Dorothy Bowers, Tuesday.

Sunday afternoon Elton Bass and Darrene Collis entertained the residents with their blue grass music.

Harold Burge, Buster Kittrell and Loyce Killingsworth served coffee and donuts to the residents at coffeetime Wednesday morning. Harold read words of inspiration to the group.

Buster Kittrell, Loyce Killingsworth, James and Ann Sinclair and Bro.

Bennie Wright directed the singspiration and devotional time Wednesday morning.

Jackie Scoggins came to play the piano for the Sing-a-Long Wednesday afternoon. Janis Morrison directed the singing.

Elsie Williams visited Louise Agee recently. Louise was also visited by Sharon Agee.

Nancy Lemons delivered ceramics for the residents to paint in craft class Thursday morning.

Zona Gatewood played the piano as the residents sang along in the day room, as well as in the special care unit, Thursday morning.

Friday morning the residents participated in a "Pop" theme party. Artifacts and items were displayed around the day room that were associated with the word "pop".

Friday afternoon Harold and Avis Carpenter came to visit the residents. Harold played songs of yesteryear as well as current songs.

Saturday afternoon the residents played Bingo, about 20 residents participated.

Sunday morning the Muleshoe Church of Christ directed the weekly communion service.

Harold Burge and Buster

Kittrell teach the Bible study on Sunday morning.

The United Methodist Church came Sunday afternoon for church services.

Saturday, Monday and Tuesday, Peggy Dent spent the day visiting the residents and doing special things for them.

Tuesday morning Bro. Gary and Judy Hubbard, directed a "Celebration of Life" in honor of Jim Kee. Gerry and Jan Pierce, Mr. Kee's granddaughter and her husband and their son attended, as well as Joyce Hunter, Delphine Gruda and Peggy Dent.

Pat Clark, Eva Nell Dale, Mary Jo Burge, and Jan Crawford shampooed and set the ladies hair, Tuesday afternoon. Pat gave several haircuts.

The Followers Sunday school class of the First Baptist Church gave a donation to Park View Tuesday.

Mary Frances Holt's family is here, including Mary Jo Black and Jim and Wanda Holt.

L.D. and Dorothy Plyler and Buster and Wanda Kittrell visited Grace Plyler. Nola Treider was visited by Lori Hall and Martha Stroud. Nola was also

visited by Carol Ring.

Gerry and Jan Pierce, Nacho, Susie and Nachito Perez were among those visiting Park View this week.

Pat and Arnold Prater planted flowers that Pat had purchased, in a big pot, out on the patio Tuesday afternoon.

Peggy Dent visited the residents Monday, Tuesday and Wednesday this week.

Joyce Hunter visited her son, Rick Hunter, Wednesday and other days to.

Renda Logsdon visited her brother Jimmy Dutton Wednesday.

Classifieds

Stop and Shop Deadline 5 p.m. Friday

NOTICE OF SHERIFF'S SALE

THE STATE OF TEXAS COUNTY OF BAILEY By virtue of an Order of Sale issued out of the Honorable 287th Judicial District Court of Bailey County, on the 6th day of June, by the Clerk thereof, in the case(s) styled as follows: **Cause No. 6548**, Bailey County Appraisal District v. David W. Bray, A 5.00 acre tract of land out of the Northeast Quarter of Section 56, Block Z, WD & FW Johnson Survey, Bailey County, Texas. **Cause No. 6558**, Bailey County Appraisal District v. Facundo Olivas, Lots 11, 12, Block 33, Original Town Addition of Muleshoe, Bailey County, Texas. **Cause No. 6635**, Bailey County Appraisal District v. Daniel Garcia Jr., Lot 16, Block 18, Country Club Addition of the City of Muleshoe, Bailey County, Texas. **Cause No. 6821**, Bailey County Appraisal District v. Simone Chavez, Lots 3-5, Block 1, George Addition to the City of Muleshoe, Bailey County, Texas. **Cause No. 6926**, Bailey County Appraisal District v. Francisco Gonzales, Lots 15, 16, Block 47, Original Town Addition of Muleshoe, Bailey County, Texas. **Cause No. 7111**, Bailey Central Appraisal District v. Inez Garza, Lots 8, 9, Block 34, Original Town Addition to the City of Muleshoe, Bailey County, Texas. **Cause No. 7249**, Bailey Central Appraisal District v. Rogelio Anzaldua, Lot 17, Block 7, Lenau Addition to the City of Muleshoe, Bailey County, Texas. **Cause No. 7276**, Bailey Central Appraisal District v. Vernon Ellis, Lot 1, Block 1, Gatlin Addition to the City of Muleshoe, 50% Undivided Interest, Bailey County, Texas. Lot 27, Block 1, Gatlin Addition to the City of Muleshoe 50% Undivided Interest, Bailey County, Texas. Lot 26, Block 1, George Addition to the City of Muleshoe, 50% Undivided Interest, Bailey County, Texas. Lot 15A, South 20' of lot 15, Block 1, Gatlin Addition to the City of Muleshoe, 50% Undivided Interest, Bailey County, Texas. Lot 28, Block 1, Gatlin Addition to the City of Muleshoe, 50% Undivided Interest, Bailey County, Texas. **Cause No. 7568**, Bailey Central Appraisal District v. Domingo Estrada, Lot 22, 23, Block 9, Morrison #2 Addition to the City of Muleshoe, Bailey County, Texas. Lot 21, Block 9, Morrison #2 Addition to the City of Muleshoe, Bailey County, Texas. **Cause No. 7984**, Bailey Central Appraisal District v. Jimmy Belvin, A 1.00 acre tract of land out of Southwest Quarter of Section 52, Block Y, WD & FW Johnson Survey, Bailey County, Texas. And to me, as Sheriff, directed and delivered, I will proceed to sell, at 10:00 o'clock a.m. on the **5th day of July, 2005**, which is the first Tuesday of said month, at the East door of the

Courthouse of Bailey County, in the City of Muleshoe, Texas. Levied on the 7th day of June, 2005, as property of said defendants, to satisfy the judgment rendered in the above styled and numbered cause, together with interest, at 12 percent per annum, and all costs of suit in favor of each jurisdiction. "ALL BIDDERS MUST NOW DISPLAY PROOF OF COMPLIANCE WITH 34.015 OF TEXAS TAX CODE." GIVEN UNDER MY HAND THIS 7TH DAY OF JUNE, 2005, RICHARD WILLS, SHERIFF, BAILEY COUNTY, TEXAS. *Published in the Muleshoe Journal, June 9 and 16, 2005.*

You read this ad. Chances are your neighbors did, too! Our classified section offers affordable rates and results in a hurry. Give us a try! Selling it beats dusting it doesn't it?

Smile!!

PUBLIC NOTICE

NOTICE TO BIDDERS MULESHOE MUNICIPAL AIRPORT TxDOT CSJ # 0405MULES A "Notice to Bidders" is issued for the construction of airport improvements at the Muleshoe Municipal Airport for: lighting improvements. Sealed proposals need to be addressed and delivered to Mr. David Brunson, City Manager, City of Muleshoe, 215 South First Street, Muleshoe, TX 79347. Proposals will be received until 2:00 PM, Tuesday, July 12, 2005, then publicly opened and read. You may view and obtained plan sets, free of charge, at our website, www.dot.state.tx.us/business/avncontractorinfo.htm. Or you may buy plan sets from the Reproduction companies that are listed on the Aviation website. Please call Amy Slaughter at 512-416-4519 for questions concerning the bid document or further information. Technical questions concerning the specifications and plans should be directed to Troy Swinney, PE with Parkhill, Smith & Cooper at (806) 473-2200. *Published in the Muleshoe Journal, June 16, 2005.*

SERVICES

MONEY BACK FAST WITH REFUND ANTICIPATION LOAN!!!
Call 806-272-3673 or come by Continental Credit, 206 S. Main, Muleshoe. ¡Se Habla Espanol!

HELP WANTED

INDEPENDENT CONTRACTOR needed in Muleshoe, Texas, able to start immediately. Must have current drivers license, vehicle, and proof of insurance. Apply in person to Circulation Department 521 Pile, Clovis, NM, or call 1-800-819-9925 ask for Bernice.

GARAGE SALES

Huge Indoor Garage Sale at Bargain Barn
216 Main, across from Higginbothams. Open Tues. - Sat., 10 am - 5 pm, irregular hours. Clothes, household items, furniture and lots more.

Garage Sale: 1729 W. Ave. D., Fri., June 17, 8 am-4 pm, Sat., June 18, 8 am-4 pm, Refrig. air condition, furniture, clothing, infant, teen and womens, baby items, tools and much more.

SERVICES

Will do shredding, lots and acreage. Call 946-8379 for an estimate.

House Painting Services Available

Indoor/Outdoor, repairs, faux finishes, **Free quotes.** Call Jeff Withrow 272-3522. Also furniture repair and refinishing.

Subscribe!! Call 272-4536.

SUBSCRIBE TO THE MULESHOE JOURNAL:

Carrier (Home) \$22 In Bailey County (Mailed) \$24 Or Outside of Bailey County (Mailed) \$26 Special rate for college students (Mailed) \$22 Call 272-4536 to subscribe or Send check to: Muleshoe Journal P.O. Box 449 Muleshoe, TX 79347 Let us be your local news source!

"THE GRAY PAGES" BUSINESS DIRECTORY

<p>ANTIQUES</p> <p>ANTIQUES & FINE THINGS 2104 W. American Blvd., Muleshoe (806) 272-4217 • Open Mon.-Sat. 10-6 Credit Cards • Layaways Welcome Over 40 vendors in a 12,000 sq. ft. building full of collectibles, antiques, furniture, gifts, jewelry, and so much more! YOU MUST SEE TO BELIEVE!</p>	<p>ENTERTAINMENT</p> <p>ACE DIRECTV SATELLITE & HOME ENTERTAINMENT Home Theater • HDTV • DVD • Plasma Residential • Commercial • RV Systems Gabriel Acevedo 272-3215 Toll Free: 1-800-269-3533 acesatellite@hotmail.com No More Hassle! No More Cable!</p>	<p>ELECTRONICS</p> <p>THE CONNECTION WAREHOUSE RadioShack Dealer Catch the Digital Wave! • Digital Satellites • Digital Cell Phones • Digital Cameras • DVD • Music • Computer Access • And More! 117 Main • 272-5532 • Muleshoe Don't forget our Appliances & Free Delivery!</p>	<p>INSURANCE</p> <p>Laurie Winchell Insurance Agent FARMERS Call for a Free Quote. • HEALTH • AUTO • LIFE • HOME • BUSINESS 1602 W. American Blvd., Muleshoe 272-7548 • FAX 272-4756</p>	<p>LAWN MOWER REPAIR</p> <p>BURRIS COLLISION CENTER IS NOW OFFERING LAWN MOWER & SMALL ENGINE REPAIR 272-3031 or 632-2763 1300 W. American Blvd., Muleshoe</p>	<p>WELDING</p> <p>O&C WELDING Is Open For Business! 1 Mile West of Muleshoe on Highway 84 272-5018 or 946-8736 TRAILER REPAIRS & SERVICE ALL TYPES & ALUMINUM</p>
<p>AUTO REPAIR</p> <p>All Phase General Mechanical • Electrical • A/C • Front-End • Brakes HI-TEK AUTOMOTIVE Complete Diagnostic & Repair Center Foreign & Domestic 322 N. 1st • 272-3480 Joe Flores & Shawn Rajno, Owners</p>	<p>FURNITURE</p> <p>FURNITURE MARKET New & Used Furniture Sales and Rental FREE DELIVERY 103 MAIN ST. 272-4037 • Muleshoe</p>	<p>THE GRAY PAGES</p> <p>SMALL AD \$3.50/week MEDIUM AD \$5/week LARGE AD \$7/week X-LARGE AD \$9/week 26 week commitment - Call Leah at 272-4536 for details</p>	<p>LAWN SERVICE</p> <p>FRIESEN LAWN SERVICE 925-6789 Cell: 806-470-0406 JAY FRIESEN</p>	<p>PET GROOMING</p> <p>Are You In Need Of A Dog Groomer? Does your dog need a bath, nail clipping or full makeover? CLASSY PAWS 1916 W. AVE. C MULESHOE To make an appt. call: 806.272.4698 OR 806.946.6133 HOURS: Mon.-Fri. 9:30-5:00 LOCAL PICK-UP & DELIVERY "I groom small & med. dogs!"</p>	<p>JUST STARTING A BUSINESS? DON'T HAVE MUCH MONEY TO SPEND ON ADVERTISING? LOOKING TO KEEP YOUR NAME ON CUSTOMERS' MINDS? THE GRAY PAGES ARE YOUR ANSWER! CALL LEAH @ 272-4536 FOR DETAILS.</p>
<p>DECORATING</p> <p>When it comes time to decorate for the holidays or any special occasion, keep L&L DESIGN in mind! We're fast, affordable & professional! 806.777.7440</p>	<p>RENT</p> <p>THIS SPACE FOR \$5 A WEEK!</p>	<p>GIFTS</p> <p>Carolyn's Christmas Creations US Hwy. 84 & Main Street Muleshoe • 272-5911 OPEN 7 DAYS A WEEK CREDIT CARDS ACCEPTED FREE DELIVERY EVERY DAY • Bridal Registry & Gifts • Baby Items • Gift Baskets • Gift Certificates • Home Decor • Antique & Fine Furniture • Bronzes • Much More! OVER 12,000 SQ. FT. OF FUN!!</p>	<p>RENT</p> <p>THIS SPACE FOR \$3.50 A WEEK!</p>	<p>YOUR HEADER HERE!</p> <p>YOUR AD HERE!</p>	

Classifieds

To advertise in the Classifieds,
call Yolanda @ 272-4536

Deadline 5 p.m. Friday

PUBLIC NOTICE

PUBLISHER'S NOTICE

All real estate advertising in this newspaper is subject to the Fair Housing Act which makes it illegal to advertise "any preference, limitation or discrimination based on race, color, religion, sex, handicap, familial status or national origin, or an intention, to make any such preference, limitation or discrimination." Familial status includes children under the age of 18 living with parents or legal custodians, pregnant women and people securing custody of children under 18.

This newspaper will not knowingly accept any advertising for real estate which is in violation of the law. Our readers are hereby informed that all dwellings advertised in this newspaper are available on an equal opportunity basis. To complain of discrimination, call HUD toll-free at 1-800-669-9777. The toll-free telephone number for the hearing impaired is 1-800-927-9275.

HELP WANTED

Providers/attendant (Part-time)

Providers needed in Lubbock, Brownfield, Plainview, Denver City, Muleshoe, and Post. Providers give non-technical, in-home care to persons who are elderly and/or disabled. This assistance enables the client to remain safely in their home. The most common duties are assistance with activities of daily living such as: bathing, dressing, cleaning, laundry, and preparing meals. Other tasks may be provided depending on the person's individual needs. Providers will be utilized on an "as needed" basis. Providers must be dependable and able to pass criminal history and reference checks. **MUST COMPLETE SPCAA APPLICATION TO BE CONSIDERED FOR ANY SPCAA POSITION.** Applications available online at www.spcaa.org or at these locations: Field's Building, 1946 Ave. Q, Lubbock; Community Action 111 N. Ave. D, Brownfield; Women's Health Clinic, 1501 C West 5th Street, Plainview; Community Action, 112 W 2nd, Denver City; Community Services, 804 W. American Blvd., Muleshoe; Community Action, S. Highway 84, Post.

South Plains Community Action Association, Inc. is an Equal Opportunity Employer. South Plains Community Action Association, Inc. reserves the right to not offer position.

Life In Christ Academy Pre-School is taking applications for the 2005/2006 school year. Need: A qualified trained Teacher, one classroom aide. Both position are part time. For information or an application, contact Tina at 806-825-3074.

HOUSES FOR RENT

House for Rent: 309 E. Date, 2 bedroom, 1 bath, 1 car garage, with cent H&A. Rent \$500. Call 272-4546 or 806-346-3695.

House for Rent: 323 W. Ave. K., 3 bedroom, 1 bath, single car garage, with cent H&A. Rent \$550. Call 272-4546 or 806-346-3695.

House for Rent: 804 W. 9th Street, 3 bedroom, 1 bath, single car garage. Rent \$550. Call 272-4546 or 806-346-3695.

REAL ESTATE

For Sale: 1914 W. Ave. E., Brick home, very nice, 3 bedroom, 2 bath, 1 car garage, fenced back yard, nice location. Call 806-745-0902.

For Sale: 902 W. 8th Str., Brick home, 3/2/1, double carport, large family room, workshop, fenced yard. Call 272-3463.

For Sale: **Furnished** 3 bedroom, 2 bath, home, fireplace, double carport, storage shed, fenced back yard with deck, pecan trees, central air and heat. **No Financing.** \$78,000 OBO. Call 272-4703 (days) or 272-4064 (evenings).

Vic Coker Land Co.

Agricultural Real Estate

• **Earth - Hite Park Addition** - 5 bedroom, 2 bath, 2 living areas, 2 storage buildings. Nice place for large family or if you need a home office.

• **Lamb County** - 1077 acres, 13 wells, 9 center pivots, soils suitable for peanuts and potatoes. Nice home, shop and other out-buildings.

• **Bailey County C.R.P.** - 656 deeded acres, 611.5 acres in C.R.P. Balance is native grass. Wildlife! Well and other depreciable assets.

• **Bailey County** - 164 acres of non-irrigated farmland. Good allotments and yields. Depreciable assets.

• **Earth Area** - 125 acres, center pivot with 2 wells. Lays good. Good soil.

• **Southeastern Bailey County** - Near Lamb, Hockley, Cochran County lines. 357 acres 2 Sprinklers, 7 Wells, allotments. Excellent live-stock place.

• **Bailey County** - 300 acres of C.R.P. Good stand of grass. 3 payments left. Nice rate of return on investment.

316 Main Street - Muleshoe, Texas
Office: 806-272-3100 Home: 806-965-2468
Website: www.vicoland.com

3BR/2BA/2 Car GA. Stucco home sitting on acre lot in Earth. This house is located at 806 N. FM 1055 in Earth. Includes central heat & air and lots of storage space. House living area almost 2000 sq. ft.

2BR/1Bath with patio/sunroom, 508 Furneaux, Sudan. House in excellent condition. Steel siding & "new" windows. Central A/C, located on corner lot one block from school. Buy and move in!

3BR/2-1/2 BA/2 Car GA. Brick home, 604 4th St., Earth, TX. Well kept home boasting great floor plan w/roomy kitchen, cozy den, workshop and cement storm cellar. Only 1 block from pool.

3BR/1Bath/1Studio Brick home, 4 miles south of Sudan, 5 acres will sell with house. Fully enclosed sunroom and storage shed. Well maintained, perfect for someone needing space for animals, etc....

Lutrick REAL ESTATE
Monty Edwards, Realtor Associate
806-786-5426 or 806-687-7355

HELP WANTED

Plant Operator-Muleshoe, TX
Great company, great people, great benefits. Plant operator will take hourly readings, monitor analytical equipment, use MS Word and MS Excel, climb ladders, use various wrenches and tools, be self-sufficient and able to work alone, supervise plant activities. Can get full major/medical, dental, vision, 401K. This is a great job and possible career for someone willing to start from the bottom and work their way up. Will train the right person. Send resume to: Reliant Processing, Ltd., Attn: Sandy, 3700 Kermit Highway, Odessa, TX 79764 or send e-mail to sandyd@floc2.com.

MIXER DRIVERS WITH 6 MONTHS EXPERIENCE START AT \$10.25. NEW MIXER DRIVERS START AT \$9.75 AND INCREASE TO \$10.25 AFTER 6 MONTHS.

Ready Mix drivers needed in Muleshoe. Full time position with Transit Mix Concrete & Materials Co., a leader in the ready mix industry in Texas. Full benefits package and new pay scale. 35 hours guaranteed. Must have good driving record and CDL license. Experience a plus. Apply at Transit Mix Concrete: 2901 West American Blvd., Muleshoe 806-272-4501. Transit Concrete is an EOE/AA employer.

NOW HIRING

MINSAS HAS SEVERAL POSITIONS AVAILABLE IN OUR PRODUCTION FACILITY.

We are looking for hardworking individuals to fill several positions. Apply in person at WorkSource, 201 S. Main St., Muleshoe. EOE

Now Hiring all positions.

Full time & Part time help. For Part time - Mon - Fri - Servers, 11 am - 2 pm.

Come by Pizza Hut 1412 W. Amer. Blvd., fill out an application.

Lazbuddle ISD has the following positions open for the 2005-2006 school year:

Secondary Math, Elementary Teaching Position, FCCLA/Testing Coordinator and Secondary Spanish. Applications are available at www.lazbuddleisd.org. All inquiries need to be directed to Karl Vaughn at (806) 965-2156.

HELP WANTED:

Experienced backhoe operator (Full - time)
Experienced Grader/Maintainer (Part - time)
Welder
Laborers/helpers
Experience in irrigation field preferred, but will train right person. Call 806-647-5574.

R.A.S.S. Security Co.

has positions open to work on weekends. Must be 18 years of age, have a diploma or GED, with no criminal record. Call (806) 272-6862 or (806) 946-6278 for applications.

Highway Construction laborers in the Muleshoe area.

Starting pay \$7.25 an hour and 40+ hours weekly. Se habla Espanol! Call 325-665-3170.

Delivery driver needed. Must have a CDL. Call Agro Distribution, 272-4203.

EXPERIENCED CATTLE PROCESSOR needed at Cattlemen's Feedlot, Olton, Tx. Call 806-285-2616.

Silverhawk Security has positions open for security guards. Must be 18, have diploma or GED, with no criminal record. Pays \$7.00/hr. Call (806) 295-8357 or come by security office at Excel in Friona, Texas.

Production position available. Now accepting applications for production position at Hi-Pro Feeds. Company insurance, 401K, paid holidays. Must pass drug screen. Apply in person at Hi-Pro Feeds in Friona.

Five persons needed immediately! Customer service positions in Muleshoe, Clovis and Portales area. Call (505) 359-0442.

Now Hiring! MINSAS IS ACCEPTING APPLICATIONS FOR POSITIONS IN THE MAINTENANCE DEPT. Including Electrician Some previous maintenance or welding experience preferred. Apply in person at WorkSource 201 S. Main, Muleshoe. EOE

REMODELED 3-2-5-2 Home, Cent. A&H, built-ins, gas FP, fans, parkway flooring, 1852' lv. area, fenced yd. Stor. Bldg.!! \$69.5K!! HS-1

• NICE 3-1-2 carport Home, cent. heat, cent. evap. air, screened porch, washer/dryer, house storage, fenced yd., corner lot!! \$43K!! HS-2

• 525' frontage on S. Hwy. 214, 24' x 50' shop, 24' x 30' office, chain link fence!! \$21K!

• VERY NICE 2300' bldg., cent. A&H, 175' frontage on Hwy.

All Offers End Monday!



04 CHEVY CAVALIER
ONLY \$199 per mo.

05 DODGE NEON
ONLY \$249 per mo.

04 FORD TAURUS
ONLY \$269 per mo.

05 DODGE DURANGO
Leather, Loaded, Low Miles!
Won't last at \$26,995

Huge Selection of Used! Summer Sale Priced!

95 Ford Taurus	#F830412	\$3,995
89 Chevy Cavalier	#0A105311	\$4,995
97 Dodge Caravan	#Y293430	\$4,995
99 Buick Century	#0A60534	\$6,995
97 Ford Contour	#F8107132	\$6,995
92 Cadillac Seville	#0A830412	\$6,995
00 Suzuki Swift	#Z662492	\$6,995
99 Toyota Corolla	#0A139883	\$6,995
96 Ford Explorer XLT	#F850580	\$7,995
98 Mazda 626	#0A729048	\$7,995
98 Oldsmobile 88	#0A839361	\$7,995
98 Plymouth Breeze	#0A191986	\$7,995
03 Dodge Neon	#0A193342	\$9,995
01 Ford F-150	#XA44186	\$9,995
97 Dodge Ram 1500	#Y222167	\$9,995
00 Pontiac Gr. Prix	#0A332174	\$10,595
02 Pontiac Gr. Am	#0A261370	\$11,595

00 Ford Windstar	#XAA16442	\$11,995
05 Dodge Neon	#0E12257	Must See!
04 Chevy Cavalier	#P169227	\$12,995
02 Mercury Sable	#MP649527	\$14,995
04 Ford Mustang	#F8132791	\$13,995
04 Dodge Stratus	#0E309568	\$14,995
04 Chrysler Sebring	#0E974451	\$14,995
02 Pontiac Montana	#ZP102017	\$14,995
00 Volkswagen S	#0A99866	\$15,995
01 Ford F-150	#0A230303	\$15,995
05 Ford Taurus	#FAE20340	\$16,995
00 Chevy Crew Cab 4x4	#ZP461817	\$18,995
02 Honda Accord	#0P007207	\$19,995
02 Ford Expedition	#XAA25089	\$21,995
04 Dodge Ram 1500	#YAG05119	\$22,995
05 Dodge Durango	#Y502277	\$28,995

Many more NOW on sale!

Operation Keep Cannon! STS will be donated for every new & used sold at either Big Valley locations in Clovis & Portales!

BIG VALLEY
truck truck gotta get a truck
505-356-8581 or 877-873-2325
1115 N. Chicago Ave., Portales, NM
www.bigvalleyautos.com

TRUCKS FOR SALE

For Sale - 1977 Ford F-150 Supercab pickup with topover. Also, a 1980 Ford 4-door Crown Victoria. 806-647-5517.

TRUCK FOR SALE - 1991 Peterbilt tractor and hopper bottom trailer. Call Cory Langford at 806-647-4633.

FOR SALE BY OWNER
For Sale: 1999 Lincoln Town car, 33K miles, A GOOD BUY at \$11,000! Call 272-6815 or 946-8826.

FOR SALE
AVON
272-4960

Wheat/Hay For Sale
big round bales.
\$50 a ton.
Call 806-965-2705.

Classifieds work, call Yolanda 272-4536.

Misc.
Smile!!

Wanted: Fenced pasture with water, near Muleshoe, for four horses. Call 272-4536.

Want to purchase mineral and other oil/gas interests. Send details to: PO Box 13557, Denver, CO 80201.

BEDDING PLANTS FOR SALE

Locally grown at Kress
Tyler Roses
DVJ GREENHOUSE
Hwy 84, Farwell
505-760-9570

REAL ESTATE

• **Irrigated farms.** Plains, Earth, Brownfield, Levelland.
• **40 A or 160 A,** 2 1/2 mi. N. of city limits on HWY 214 & 1/2 mi. E. to SW corner, \$400/A or \$500/A.
• **3/3/2 - 83 acres** with minerals 4 mi. East of Morton. \$157,900.
MAKE OFFERS!

FARRAR & ASSOCIATES
806-894-7099

REAL ESTATE

For Sale By Owner
3BR/1BA, new carpet, lots of extras, excellent condition.
★★★★★
3BR/1BA, great rental property (already rented).
Contact 965-2864.

Byrd Realty

Ronald Byrd
Licensed Broker
Crista Bass

1631 W. Amer. Blvd. Muleshoe, Texas
www.byrdrealestate.net

• **New Listing - Very nice 3 Br, 1 3/4 Ba,** home, nice wood floors, fireplace, lg. utility, washer/dryer, small freezer, central H/A, z-car carport and fenced backyard. Priced to Sell!!!

• **Commercial lot. Excellent location - American Blvd. 125' x 140'**

• **320 acres** NE of Muleshoe, 2 sprinklers systems, 4-wells, mobile home, priced for immediate sale! Call for details.

• **168 acres dryland. MAKE OFFER!!**

• **PRICE REDUCED - In Country on Hwy. - 3 Bedroom, 2 bath, Home, Cent. heat, den, dining room, 2 Car carport, all on 2 Acres.**

• **Lot for Sale - 67 x 122 Parkridge Addition.**

• **New Listing:** Nice 3 bedroom, 1 3/4 bathroom, Cent. H&A, large wood burning stove, single car garage, carport, storage building, fenced back yard, all on corner lot.

• **Thinking about building?** Take a look at this house first. For half the cost of new construction, you can own this beautiful, spacious 4BR, 3 1/2 bath, Brick home, approx. 5,000 sq. ft. built-ins, ref. air, central heat, 2 living areas, dining room, lg. utility, 2 fireplaces, office, lg. closets, lots of storage, sprinkler system, 2 car garage, nice fenced back yard, plus a lot more, all on corner lot.

Need House Listings! Have Buyers! Give us a call!
Office: (806) 272-5380
Toll Free: 1-888-999-3846

REAL ESTATE

Nieman Realty

116 E. Ave. C • George Nieman, Broker • 272-5285 or 272-5286
CHECK OUR LISTING INFO., PHOTOS, ETC. ON-LINE AT WWW.NIEMANREALTY.COM
HAVE BUYERS NEED HOME AND LAND LISTINGS!!

RICHLAND HILLS - PARKRIDGE AREA
• NICE LOTS AVAILABLE, CALL FOR DETAILS!!!!
HIGHLAND AREA
• VERY NICE 3-2-1/2-2 Brick Home, Cent. A&H, built-ins, FP, 2272' lv. area, basement, splkr. sys., 2 stor. bldgs. MUCH MORE!! Price Reduced!! \$155K!! HL-2
LENAU - COUNTRY CLUB AREA
• 2-1-2 carport Home, floor furn, heat, win. evap. air, stor. bldg., fenced yd.!! MORE!! \$33.5K!! L-1
• 3-2-1 Home, floor & wall furn. heat, win. air, built-ins, FP, fans, 1424' lv. area, cov. patio, fenced yd.!! \$49.5K!! L-2
• 3-2 Brick Home, Cent. A&H, metal roof, soffit, & fascia, storm win. & doors, stor. bldg., fenced yd., corner lot!! \$41.5K!! CC-1
• 3-2-2 carport, Cent. A&H, DW, w/durn stove, 2156' Lv. area, enclosed patio!! \$39.5K!! L-3
HIGH SCHOOL AREA
• REMODELED 3-2-5-2 Home, Cent. A&H, built-ins, gas FP, fans, parkway flooring, 1852' lv. area, fenced yd. Stor. Bldg.!! \$69.5K!! HS-1
• NICE 3-1-2 carport Home, cent. heat, cent. evap. air, screened porch, washer/dryer, house storage, fenced yd., corner lot!! \$43K!! HS-2

COMMERCIAL
• 525' frontage on S. Hwy. 214, 24' x 50' shop, 24' x 30' office, chain link fence!! \$21K!
• VERY NICE 2300' bldg., cent. A&H, 175' frontage on Hwy.

84 & 70!! MUCH MORE!! PRICE REDUCED \$72.5K!!
• GREAT BUSINESS LOCATION - 19,360' building, paved parking, 3.44 acres, Hwy. 84/70 !!! LET'S LOOK TODAY!!

• 4.2 acre tract at edge of town, 40' x 60' metal insulated bldg., 2 other sheetrock bldgs., chain link fenced area, numerous uses!! \$59,500!!
• SUDAN-NICE 3-2-5-2 Brick Home, Cent. A&H, built-ins, FP, 3200' LV area, cov. patio, 2 stor. bldgs. MORE!!! \$95K!!
RURAL
• S. OF FARWELL - 4-3-2 Brick Home, 69.6 acre tract, cent. A&H, built-ins, 4560' lv. area, 350' basement w/vault, 2940' garage/workshop, 2000' loft over garage, 6" well, barns, & corral!! MORE!! \$339K!!
• VERY NICE 3-2-5-5-2 Home on 3.67 acres, 1271 Hwy. 214 S., Cent. A&H, built-ins, FP, fenced yd., nicely landscaped, 2900+lv. area, 680'+additional area stor., gazebo, barns, MORE!! \$129K!!

• LAZBUDDIE AREA - 3-2-2 Home, Cent. A&H, built-ins, FP, deck, hot tub, cellar, stor. bldgs., on 2 acre tract!! \$95K!! Additional 158 acre farm w/circle sprinkler, 3-20 hp. sub. wells!! \$495 per acre!!
• 4Bdrm. 2 bath on 8.7 acres at edge of town, Cent. A&H, DW, workshop/storage, stock shed/pens!!
• 3-2-2 Brick Home on 5.67 acres, approx. 2647' lv. area, Cent. A&H, DW, FP, 7 fans, jacuzzi, horse barn, sod house, workshop/storage, other bldgs., MORE!! \$150K!!

2005 Tour de Muleshoe



Photographs by Leah Bell



Heritage Foundation News

Tour de Muleshoe is a success

The 11th annual Tour de Muleshoe Bike Ride was a tremendous success with more than 200 entrants participating.

Liz Tipps of Muleshoe won the \$500 given away by the Muleshoe Heritage Foundation Center. All proceeds from the Bike Ride went to the Heritage Center, the overall sponsor of this event.

Business sponsors were First Bank of Muleshoe, Muleshoe State Bank, Leal's Restaurant, United Supermarkets, Five Area Telephone Coop., Inc. and Bailey County Electric Coop.

At the drawing, after all of the riders were in, more than \$2,000 worth of door prizes were given to the participants.

The rider who came from the greatest distance was from Longeau, Belgium, and was the winner of a bird house donated by Charles Harvey.

By the way, Nicki Magermas plans to take the bird house home with her when she returns to Belgium.

Some of the other cities represented included Dorango, Colo.; Moore, Okla.; Albuquerque, Clovis and Portales, N.M.; and from Texas — Granbury, Austin, Lubbock, Amarillo, Hale Center, and Pampa.

As the bikers departed after the ride, many remarked, "We will be back, as this was the best ride ever!"

It was a beautiful day, not too hot with a soft breeze

blowing. Everything looked fresh and green due to the recent rains.

Why was the Bike Ride so successful? Many reasons:

- The over all chairman, Lonnie Adrian, left nothing to chance and worked out every detail.

- Members of the Muleshoe Heritage Foundation Board worked very hard doing all of the necessary tasks.

- The StudentCommunity Action Club (SCAC) members were there to help set up, clean up and manned one of the rest stops.

- Other willing groups manned the other rest stops.

- The Muleshoe Police Department did its part by directing traffic.

- The news media, both the *Muleshoe Journal* and Channel 6 Television went way beyond expected by covering this event.

- And many other citizens came to help register the entrants, drive SAAG wagons and many othe ways.

Lonnie's daughter, Christie, cooked and served the free spaghetti lunch which was served to those attending.

Enough cannot be said for the generous businesses who contributed the unique door prizes won by the bikers after the ride was over.

You cannot beat the Muleshoe area for a place where all of the citizens work together to make the area a vibrant, going community where something is happening!

We are most grateful for the prayers and expressions of concern during our recent medical crisis.

Thank you and God bless you.

Buck & Carolyn Johnson

The End of Season CLEARANCE SALE Starts Thursday, June 16!

Kristy's Flower Haven

703 W. Ave. J, Muleshoe
272-5134

05 Blowout



'05 EXPEDITION EDDIE BAUER, 4X4

2 tone, running boards, third row power seat, DVD, Home Link

\$10,000 Off or 0% APR*



'05 F150 REG. CAB 4X2

Air conditioning, V6, cloth seats

\$6,000 Off or 0% APR*



'05 FORD F250 STYLESIDE

Trailer tow, V8, auto., aluminum wheels, air, cruise, tilt

\$4,000 Off



'05 FORD MUSTANG

V6, manuel, spoiler, racing stripes, air

Blowout Price..... \$19,566



'05 FIVE HUNDRED SEL

Leather, Traction Control, MP3 radio, 17" wheels

MSRP \$28,285
\$25,500 +TT&L

'05 FORD ESCAPE XLT

V6, auto., step bars, alarm, tint

\$21,995 +TT&L

'05 F150 SUPERCAB XLT

V8, auto., cruise, MP3, 17" wheels

\$6,000 Off*

'05 FORD FOCUS ZX3

Power windows, cruise, air

\$15,500
\$2,500 Rebate or 0%

WHAT IS MEANS TO BE FORD CERTIFIED

THE RIGHT CHOICE

When you decide to purchase a Ford Quality Certified Pre-owned vehicle, you can be confident that you've made the right choice. Why? Ford Certified Pre-owned vehicles must pass a rigorous 115-point inspection. That's why. You can be confident that you will receive the same high level services that new Ford buyers receive. You can be confident that your needs will be met and that your Pre-owned experience with Muleshoe Motor Co. will be all that you can expect it to be...and more.

YOUR PEACE OF MIND IS OUR FIRST PRIORITY

There is nothing like peace of mind. When you own a Ford Quality Checked Certified Pre-owned vehicle, it just comes naturally.

NEW CAR RATES BACKED BY FORD

The Quality Checked Powertrain Limited Warranty (5-year, 75,000-mile warranty with Roadside Assistance) is backed by Ford Motor Company or Ford Motor Service Company and honored at any Ford dealership in the 50 states and Canada.

YOU CAN DEPEND ON US

At Muleshoe Motor Co., no one knows Ford vehicles better than our certified, trained Sales and Service Department personnel.

Factory Trained & Certified Service Techs

Sales Mgr.

SE HABLA ESPANOL

MULESHOE MOTOR CO.

1125 W. American Blvd., Muleshoe • 272-4251

1-800-432-7617

www.muleshoemotor.com

All vehicles shown for advertising purposes only. Colors will vary. *If financed with Ford.

Why not subscribe?

Heritage news is just one of many reasons to read the Muleshoe Journal! 272-4536