



WEATHER SUMMARY



SLIGHTLY WARMER temperatures are expected in the Southwest but much of the nation will remain cold.

MIDLAND STATISTICS

FORECAST: Clear and partly cloudy through Friday. Cooler today and cold again tonight. High today in the low 50's. Low tonight in the mid 20's.

will remain cold. Showers are predicted for the East Coast and Northwest.

Extended forecast

Nov. 22-24 Incl. North Central and Northeast Texas: Fair Saturday through Monday. Continued cool Saturday and Sunday warmer Monday.

Weather elsewhere

Table listing weather conditions for various cities including Albany, Albuquerque, Amarillo, Ansonia, Atlanta, Birmingham, Birmingham, Birmingham, Boise, Boston, Brownsville, Buffalo, Charleston, Charlotte, Chicago, Cincinnati, Cleveland, Denver, Des Moines, Detroit, Duluth, Fairbanks, Fort Worth, Green Bay, Helena, Honolulu, Houston, Indianapolis, Jacksonville, Juneau, Kansas City, Las Vegas, Little Rock, Los Angeles, Louisville, Marietta, Memphis, Miami, Milwaukee, Minneapolis-St. P., New Orleans, New York, Oklahoma City, Omaha, Orlando, Philadelphia, Phoenix, Pittsburgh, Portland, Me., Rapid City, Richmond, St. Louis, Salt Lake, San Diego, San Francisco, Seattle, Spokane, Tampa, and Washington.

Texas area forecasts

North Central and Northeast Texas: Fair tonight and Friday. Colder tonight with low 25 to 34. High Friday 52 to 62.

Oklahoma, New Mexico

New Mexico: Fair through Friday. Low tonight 5 below to 10 above mountains 10 to 25 at lower levels.

Winter weather arrives in Midland

West Texans are to have a touch of winter weather today and Friday with temperatures dropping into the 20's and not exceeding the 50's, the National Weather Service said.

on the Mexican border by this morning. Turbulence stirred up with the unruly weather also subsided after generating a couple of tornadoes in the Texas Panhandle.

were 67 at Brownsville and 68 at McAllen in the Lower Rio Grande Valley.

Top marks Wednesday afternoon went no higher than 37 at Dalhart while the mercury climbed to 87 at Cotulla and McAllen in the south.

Tammy Edds selected FFA district sweetheart

Miss Edds won the title Tuesday during a day-long session of leadership contests and FFA quizzes held at Lee High School for El Rancho District.



Tammy Edds

Schools participating in the meet include those from Odessa, Stanton, Big Spring, Andrews, Sands, Flower Grove-Klondike, Grady, Coahoma, Ackerly and Midland.

First place winner will compete Saturday in the District II contest at Howard College in Big Spring.

Master's program meet set Friday

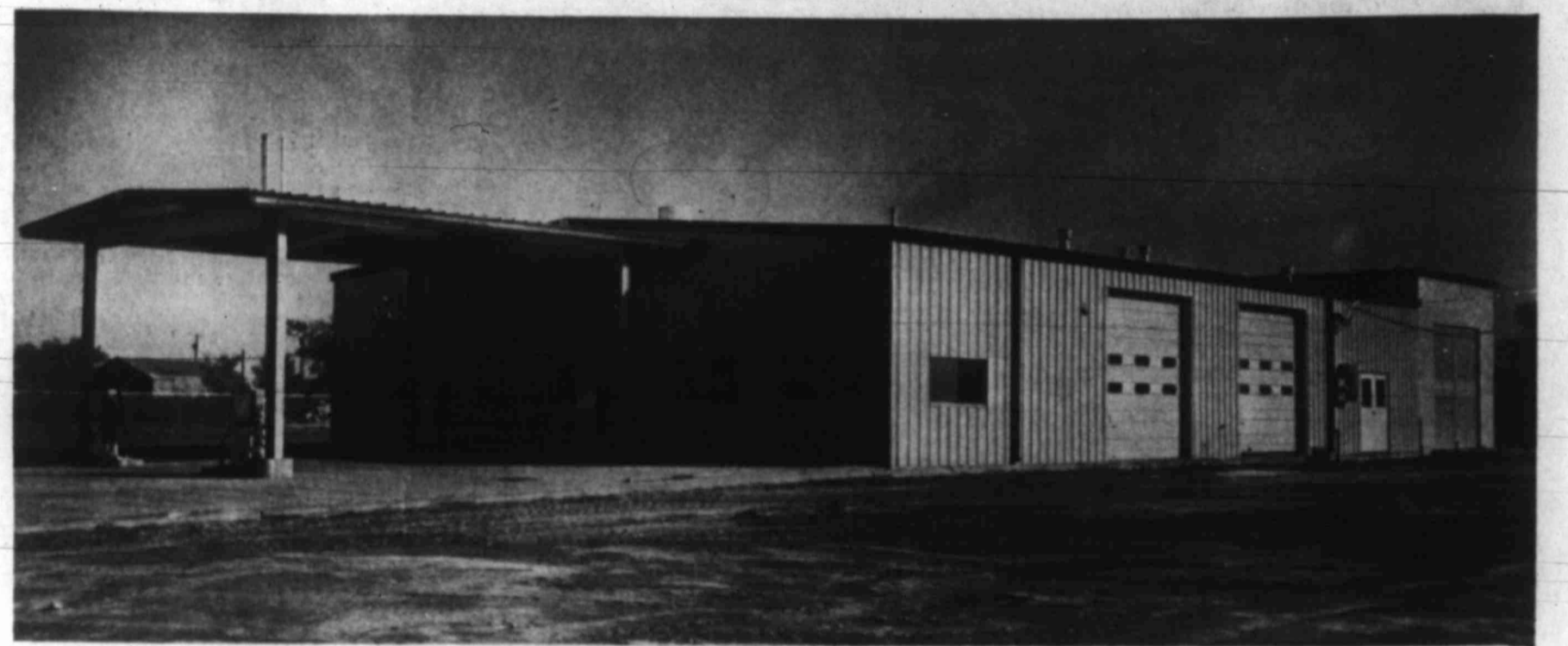
Two representatives of The University of Texas at Arlington's geology department will be in Midland Friday to address persons interested in the master's program to be offered through the Permian Basin Graduate Center here.

Master's program

State police reported the nearest trouble spots for travelers were on U.S. 87 between Clayton and Raton in Northeast New Mexico and on U.S. 287 north of Boise City in the Oklahoma Panhandle.

Weather elsewhere

Table listing weather conditions for various cities including Albany, Albuquerque, Amarillo, Ansonia, Atlanta, Birmingham, Birmingham, Birmingham, Boise, Boston, Brownsville, Buffalo, Charleston, Charlotte, Chicago, Cincinnati, Cleveland, Denver, Des Moines, Detroit, Duluth, Fairbanks, Fort Worth, Green Bay, Helena, Honolulu, Houston, Indianapolis, Jacksonville, Juneau, Kansas City, Las Vegas, Little Rock, Los Angeles, Louisville, Marietta, Memphis, Miami, Milwaukee, Minneapolis-St. P., New Orleans, New York, Oklahoma City, Omaha, Orlando, Philadelphia, Phoenix, Pittsburgh, Portland, Me., Rapid City, Richmond, St. Louis, Salt Lake, San Diego, San Francisco, Seattle, Spokane, Tampa, and Washington.



The new municipal garage will soon be ready for use.

DEATHS

George Vineyard services today

Services for George Vineyard were to be at 2 p.m. today in the Newnie W. Ellis Chapel with the Rev. Bob Smith of First Presbyterian Church officiating.

Midlander's mother dies at Floydada

FLOYDADA — Mrs. Ollie Jarnagin, 93, mother of Floyd Jarnagin of Midland, died Tuesday evening in a Floydada nursing home.

George M. Ramage dies at Lubbock

POST — George Melton Ramage, 73, brother of Mrs. Bert Bedwell of Lamesa, died Tuesday in a Lubbock hospital.

Mary Helen Lang services today

Services for Mary Helen Lang were to be today at 3 p.m. in Antioch Baptist Church. Burial was to be in Fairview Cemetery.

Mike L. McGannon dies at Big Spring

BIG SPRING — Mike L. McGannon, 82, died Wednesday at a Big Spring hospital. He resided at 1605 N. Midkiff Road in Midland.

BIRTHS

MIDLAND MEMORIAL Tuesday, Nov. 18 Mr. and Mrs. Jerry Bruce Elger, 3320 W. Ohio St., boy.

Humane Society to meet

The Humane Society of the Permian Basin will hold a meeting tonight at 7 p.m. at St. Paul's Presbyterian Church in the fellowship hall.

City to get new municipal garage

By DEBBIE PIERCE

Operating the Municipal Garage from a lot where a garbage dump used to be has not been easy for Midland city officials, but a new, soon-to-be-completed facility is expected to improve the situation.

only add to the problem of working on an ex-garbage dump — and a sinking one, at that.

The department recommended the area across the street from the old garage be used to construct a second building for garbage purposes. Tommy Service General Contractor Inc. of Odessa was hired by the council as contractor for the facility at a cost of about \$210,576.

and an automatic car wash. Baker said that up until now, much of the maintenance work done at the garage had to be done outdoors regardless of the weather.

Four new hydraulic lifts were also purchased so all four wheels on a car can be repaired at once. Four additional heavy equipment bays have been added, plus an area for maintenance of city garbage containers.

and, when it was cleared for the garage, workers found a 25-year-old newspaper rolled up and in readable condition.

"We may have saved money back then by building on this site, but we're sure paying for it now," he noted.

Midland man gets five-year sentence

A 30-year-old former Midlander convicted in 142nd State District Court two months ago of shooting to death Charles Ray Collins, 28, with a shotgun blast and rounds from a .22-caliber pistol here in 1973 has been sentenced to five years in the state penitentiary.

Found guilty of murder without malice aforethought by a jury here was Lorenzo Leon Dunford, now of Tulsa.

Exchange student speaks to Lions

Maralee Buttery, a Lee High School student who spent last summer as an exchange student in Uruguay, was the speaker at the meeting of the Midland Downtown Lions Club in the American Legion Hall.

Lingerie stolen

Assorted lingerie valued at \$200 reportedly was stolen in a burglary of the residence of Mrs. Dorris Kee Miller, of 3804 Tanner St., Wednesday between 7:45 a.m. and 3 p.m., police said.

Metric system expected to bring radical changes

(Continued From Page 1A)

that Midland is 32 kilometers from Odessa.

It's the adults who are worried about the change.

Actually, more will be affected than the American system of measurement. The metric system will pay havoc, also, with our cliches, song titles and certain criteria in the animal kingdom.

place. Because the metric system is based on 10, a word such as "decem" — Latin for 10 — would be appropriate.

A "baker's decem" would count out 11.

A young lover would order a decem roses for his sweetheart.

The novel "Cheaper by the Dozen" could be retitled "Cheaper by the Decem Plus Two."

Further examples of the effects of the metric system abound. There are, in fact, as many examples as there are measurements.

Cri for

LISBON, I — The government today it was all its ope President Costa Gome the army's

Does you have a CERTIFICATE 915-6

Miss Yo If you miss Telegram, before 6:30 and before 1 day and a co to you by a

When Paying Newspaper Please make able to The gram.

682-3396

Comp Silho delu mag to and C

# Crisis deepens for Portugal

LISBON, Portugal (AP) — The Portuguese government announced today it was suspending all its operations until President Francisco de Costa Gomes guarantees it the army's full backing.

A communique issued after an all-night meeting of Premier Jose Pinheiro de Azevedo and his cabinet said: "Recent events show that the government, which does not have the armed forces under its jurisdiction, does not have the possibility of effectively assuring normal government activity in certain zones of the country."

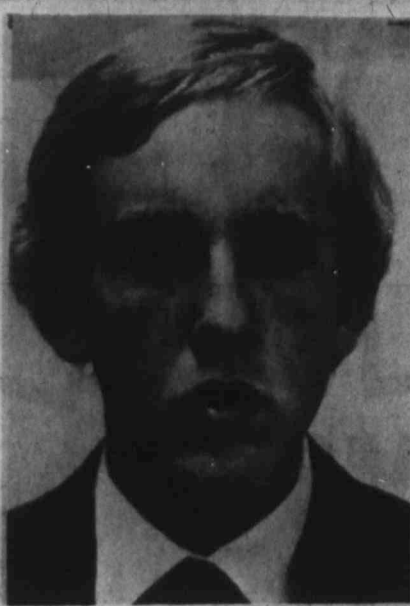
This was a reference to the 36-hour blockade of the premier's official residence and the constitutional assembly by 20,000 workers demanding higher wages last week. The leftist commander of military forces in the Lisbon area refused to intervene to rescue the premier when requested.

There was no immediate reaction from Costa Gomes, who is also titular head of the armed forces.

The communique was issued a few hours before a scheduled meeting of the Revolutionary Council, the nation's ruling military Politburo.

The council could direct Costa Gomes to dismiss the government and appoint a new premier, or it could take over the government's functions itself. The latter action would probably force the resignation of the cabinet, which is dominated by the Socialists and Popular Democrats, the country's two biggest parties.

The communique said the present political crisis was threatening not only



**NOMINATED** for the Youth of the Month award by the Downtown Optimist Club is Charles D. Fraser Jr., son of Mr. and Mrs. Charles D. Fraser of 1201 Harvard St. A Midland High School honor student, he is a student council member and captain of the tennis team.

# Many doubt Don Carlos' ability to rule nation

By EMILIO MOYA  
MADRID, Spain (AP) — Prince Juan Carlos de Borbon y Borbon, who will become King Juan Carlos I on Saturday, is a handsome, outdoor family man who is expected to try to bring democracy to Spain. But some Spaniards and foreign observers doubt he has the force and popular following to do it.

When he accepted the designation as successor to Generalissimo Francisco Franco in July, 1969, Juan Carlos pledged loyalty to Spain's political principles but said, "The purest essence of our glorious tradition must be always maintained without permitting that cult of the past that hampers evolution."

He also said Spain's — meaning Franco's — "fundamental laws show the pathway that political development will follow in the future." But

he added that "both development and application of such laws must be adjusted whenever it is necessary, provided the changes are compatible with law and carried out in the framework of liberty and order."

Spain's last king was Juan Carlos' grandfather, Alfonso XIII, who was driven out of Spain in 1931 by supporters of the Republican government and died in Rome in 1941. His oldest son was a hemophiliac and his second son a deaf mute so he named his third son, Don Juan, the Count of Barcelona, his successor. But Don Juan was too liberal for Franco, and the dictator chose Don Juan's son, Juan Carlos, to restore the throne to the Spanish branch of the Bourbons.

Now 37, tall and blond, Juan Carlos has been educated and trained in Spain under Franco's watchful eye since he was 11. After his school days, he trained in all three military branches, becoming a captain in the army and air force and a lieutenant of the navy. He has visited the United States several times and once took a trip around the world with the Spanish navy.

After his years of growing up in Franco's shadow, the prince since 1969 has gradually taken over many

of the chief of state's ceremonial functions and has been closely associated with his regime. A number of political groups and some members of the government urged Franco to give his heir some of his power, but the dictator refused to let any of it go.

Juan Carlos had a taste of what was to come in the summer of 1974, when Franco was critically ill with phlebitis. His advisers prevailed on the old man to name the prince temporary chief of state. But Franco recovered and shelved Juan Carlos again after 40 days.

When Franco in September ordered the execution of five terrorists for killing policemen and let off a storm of protest in Western Europe, Juan Carlos appeared at his side at a public rally to demonstrate support for the regime. It turned out to be Franco's last public appearance, and some foreign observers speculated that the prince's show of support for Franco lost him favor with the liberals without winning him any support from the rightists who believe he is out to undermine them.

# Snow storm rolls over Midwest

By The Associated Press  
Snow accompanied by winds up to 70 miles an hour whipped across Kansas and other parts of the Midwest early today, leaving motorists stranded, power lines cut and many schools and businesses closed.

A 450-mile stretch of Interstate 70 was closed between Hays, Kan., and Denver, Colo. The Kansas Highway Patrol was closing the highway eastward in stages, saying it might be closed as far east as Salinas by today.

Ten inches of snow were reported in the Goodland area, about 18 miles east of the Kansas-Colorado border, and citizens band radio operators reported at least 25 motorists stranded. In Garden City, a highway patrol dispatcher said, "Travelers are stranded in every direction."

With more than a foot of snow reported in some places, the storm was moving from western and central Kansas into Minnesota and southern Wisconsin into western Kansas into Southeast South Dakota. Visibility throughout the

area was near zero.

Sioux Falls, Pierre, Huron and Watertown, S.D., also reported high winds and blinding snow, as well as power outages in some areas of the state.

Heavy snow warnings remained in effect from the eastern Nebraska and South Dakota into upper Michigan.

Rain and thundershowers were moving in advance of the snow area from upper Michigan into Iowa, then south into Louisiana and eastern Texas.

Temperatures dropped below zero in parts of Montana and Wyoming.

In the Pacific Coast states skies were overcast with some rain in southern Oregon and northern California. Mild fall weather with clear to partly cloudy skies continued over the eastern third of the nation.

Some other reports: Anchorage 43 partly cloudy, Atlanta 52 clear, Boston 51 mostly cloudy, Buffalo 42 clear, Chicago 50 partly cloudy, Cincinnati 49 clear, Cleveland 46 clear, Dallas 46 clear, Denver 15 clear, Detroit 39 clear, Indianapolis 47 clear, Kansas City 44 cloudy, Los Angeles 53 clear, Louisville 46 clear, Miami 68 partly cloudy, Minneapolis-St. Paul 39

**Does your business have approved first aid? CERTIFIED FIRST AID 915-683-7566**

**Miss Your Paper?**  
If you miss your Reporter-Telegram, call 682-3311 before 6:30 p.m. Weekdays and before 10:30 a.m. Sunday and a copy will be sent to you by a special carrier.

**When Paying Your Newspaper by Check**  
Please make all checks payable to The Reporter-Telegram.

**FOR LEASE**  
New Commercial Building  
1800 sq. ft.  
1201-C Garden City Hwy.  
682-3396 694-8416



LIMITED TIME - SPECIAL COLORS

# SAMSONITE SALE

For a limited time only—famous Silhouette luggage available in special fashion colors at tremendous savings off current Silhouette prices

Complete matching sets for men and women. All the Silhouette features—classic styling—recessed lock—deluxe linings—Absolite® sides and lightweight magnesium frames. Select your matching sets of Silhouette fashion colors today and SAVE. Comes in Blue-Gold and Olive.



|                     | Regular Price | Sale  |
|---------------------|---------------|-------|
| Ladies' Beauty Case | 44.00         | 29.99 |
| Ladies' O'N         | 48.00         | 35.99 |
| 24 Ladies' Pullman  | 62.00         | 46.49 |
| 26 Pullman Case     | 74.00         | 55.49 |
| Ladies' Handi-Tote  | 38.00         | 28.49 |
| 24 Men's Companion  | 62.00         | 46.69 |
| Men's Two-Suiter    | 74.00         | 55.49 |
| Men's Three-Suiter  | 78.00         | 58.49 |

# DUNLAPS

## Houston employees get raise

HOUSTON (AP) — City Council has approved \$18.8 million annually for pay increases for 14,600 city employees, effective in December.

Included in the package is an increase of \$110 or eight per cent, whichever is greater, for the city's policemen and firemen. Houston has 2,380 firemen and 2,596 policemen.

Salaries for other city employees were increased \$75 per month or eight per cent, whichever is greater.

Policemen currently make \$927.70 per month upon graduation from the city's cadet academy and increase to \$1,132.10 per month after five years. Firefighters receive \$887.75 per month after they complete training and increase to \$1,084.35 after five years.

Police and firemen with advanced education courses also were granted incentive pay ranging from \$45 to \$90 per month.

**The Midland Reporter-Telegram**  
Published by Reporter-Telegram Publishing Company evenings (except Saturday and Sunday) and Sunday morning, 201 East Illinois Street, P. O. Box 1500, Midland, Texas 79701.

Second Class Postage Paid at Midland, Texas.

**HOME DELIVERY** by the month  
Evening Only \$1.95  
Sunday with Evening, 62¢ plus 7¢ tax .58

Evening and Sunday \$2.60  
Sunday Only \$1.43 plus 7¢ tax \$1.50

**HOME DELIVERY** Post-to-Advance  
1-Yr. 6-Mon.  
Evening and Sunday \$29.70 \$15.10  
Evening Only \$25.40 \$11.70  
Sunday Only \$18.00 \$9.00

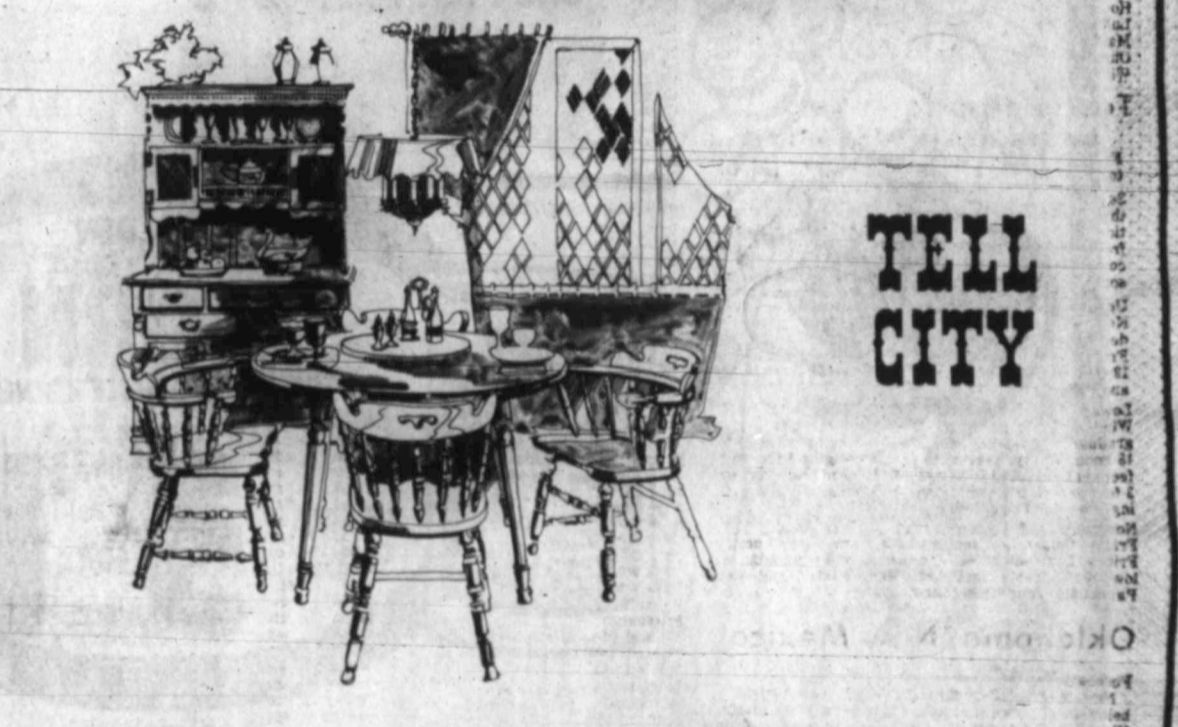
**MAIL RATES IN TEXAS**  
1-Yr. 6-Mon. 13mo.  
Evening and Sunday \$31.20 \$15.60 \$2.60  
Evening Only \$25.40 \$11.70 \$1.95  
Sunday Only \$18.00 \$9.00 \$1.50

All prices include applicable sales taxes. All subscriptions payable in advance.

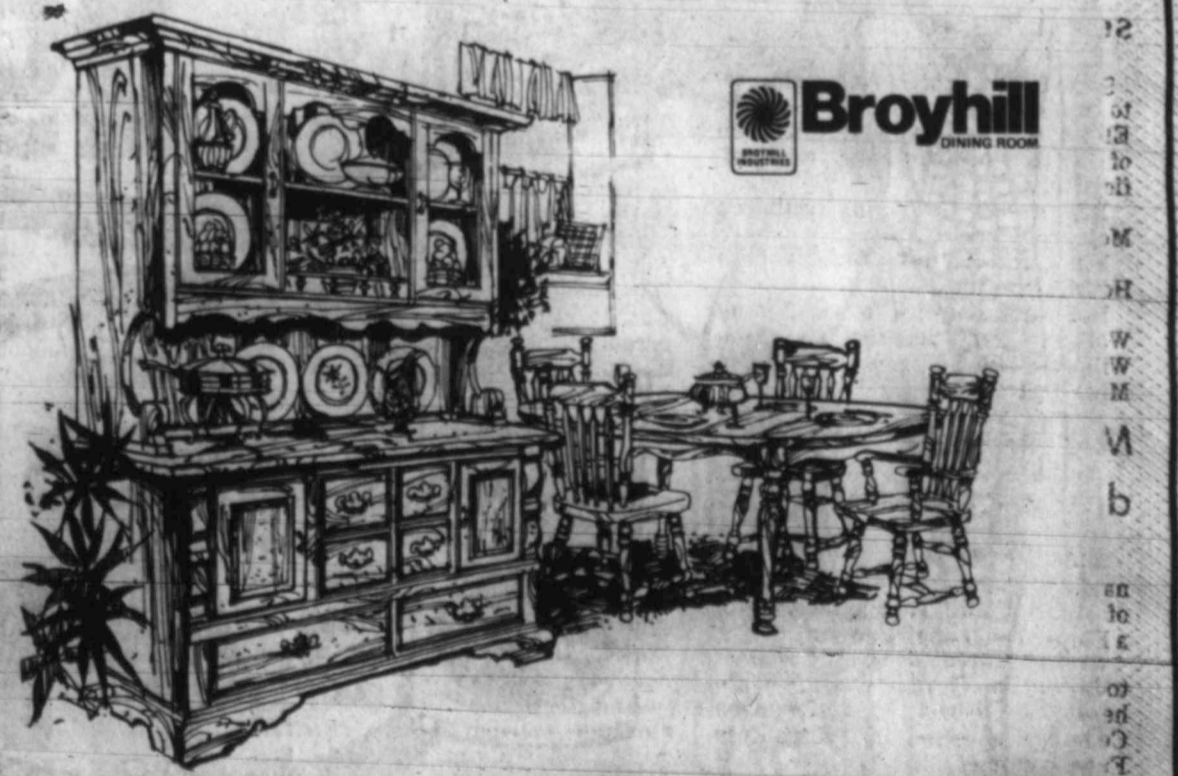
**MAIL RATES OFFSHORE TEXAS**  
Evening & Sunday \$38.00 \$19.00 \$3.00  
Evening Only \$34.00 \$17.00 \$2.00  
Sunday Only \$24.00 \$12.00 \$2.00

Foreign and other rates furnished upon request. All subscriptions payable in advance.

## Quality Dining at Affordable Prices from Carter's



**Tell City Solid Hard Rock Maple with Formica®-top tables**  
Some people like it for dining rooms. Some buy it for living kitchens. But wherever you put our Tell City Solid Hard Rock Maple, it's thoroughly practical for everyday use. And also a great source of pride when friends and family come. The table tops are a special kind of Formica® laminated plastic with a warm, beautiful grain-pattern that's so maple-like most people can't tell it from the real thing. The Solid Hard Rock Maple is so hard it resists dents and scratches. It's the same kind of wood used to make bowling alleys. Come in and see our Tell City collection of combination everyday/guest furniture. You'll want to take some home.



**Broyhill**  
DINING ROOM

**DARK PINE NEW BEDFORD COUNTRY DINING ROOM**

**INCLUDES:**  
ROUND TABLE  
2-ARM CHAIRS  
4-SIDE CHAIRS

**\$539**

CHINA.....\$359

Country styling at its Early American best. A rich dark, hand rubbed look with distressed, highlighted effects... constructed of select Pine hardwood solids and veneers. Authentic styled hardware and ogee base on china. The right way to start that country dining room you've always dreamed of... at a price you can afford.

**Carter's FURNITURE**

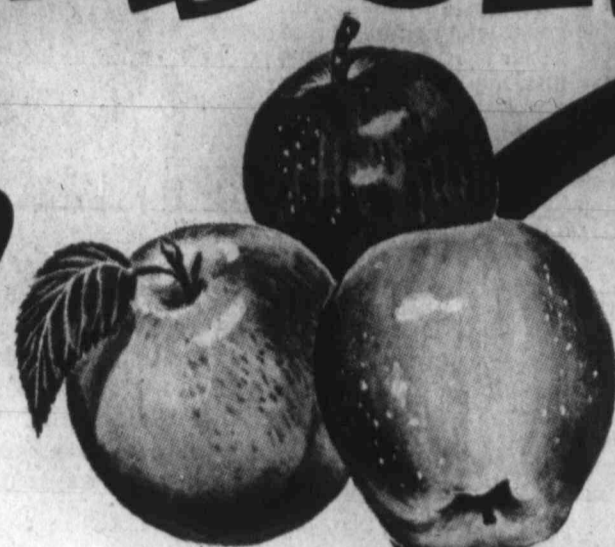
**We take trade-ins on Dining Room Suites**

**OPEN MON.-SAT. 8:00 A.M.-6:00 P.M.**  
501 East Illinois  
Phone 682-0082



# THANKSGIVING

**MUMS**  
ASSORTED COLORS  
EACH . . . **3<sup>29</sup>**



**APPLES**  
WASHINGTON  
RED DELICIOUS

**5** FOR **1<sup>00</sup>**  
LB . . .

**ORANGES** NEW CROP  
NAVELS  
LB . . . **29<sup>c</sup>**

**CABBAGE** LG. FIRM  
HEADS WE RESERVE THE  
RIGHT TO LIMIT  
QUANTITIES  
LB. . . . . **10<sup>c</sup>**

**BANANAS** GOLDEN  
RIPE  
LB . . . . . **19<sup>c</sup>**

**YELLOW ONIONS** SPANISH  
SWEET  
LB. . . . . **15<sup>c</sup>**

**BAG POTATOES**  
10  
LB.  
BAG . . . . . **99<sup>c</sup>**

**SWEET POTATOES** EAST TEXAS  
FINEST  
LB. . . . . **29<sup>c</sup>**

**LETTUCE** CALIFORNIA ICEBERG  
LB. . . . . **29<sup>c</sup>**



**GOLDEN CORN**  
FOOD CLUB WHOLE KERNEL OR  
CREAM STYLE  
NO. 303  
CAN . . . . . **3** FOR **1<sup>00</sup>**

**CAKE MIX** FOOD CLUB  
ASSORTED FLAVORS  
PACKAGE . . . . . **59<sup>c</sup>**

**PEACHES** ELNA  
NO. 2 1/2  
CAN . . . . . **49<sup>c</sup>**

**PUMPKIN** DEL MONTE  
NO. 303  
CAN . . . . . **4** FOR **1<sup>00</sup>**

**COCONUT** FOOD CLUB  
FLAKE,  
14-OZ. PKG. . . . . **99<sup>c</sup>**

**ASPARAGUS** FOOD CLUB, ALL  
GREEN CUT,  
14 1/2 OZ. CAN . . . . . **49<sup>c</sup>**

**PEARS** GAYLORD  
NO. 2 1/2  
CAN . . . . . **59<sup>c</sup>**

**BROWN N SERVE  
ROLLS**  
FARM PAC  
EACH . . . . . **3** FOR **1<sup>00</sup>**

**BEETS** FOOD CLUB WHOLE  
OR SLICED  
NO. 303 CAN . . . . . **3** FOR **89<sup>c</sup>**

**SWEET POTATOES**  
GAYLORD NO. 303 . . . . . **3** FOR **1<sup>00</sup>**

**CUT GREEN BEANS**  
FOOD CLUB  
NO. 303  
CAN . . . . . **4** FOR **1<sup>00</sup>**

**VANILLA** SCHILLINGS  
PURE, 2-OZ. . . . . **69<sup>c</sup>**

**DATE BAR MIX** BETTY CROCKER  
14-OZ. PKG. . . . . **96<sup>c</sup>**

**FORMULA 409** REFILL,  
64-OZ. . . . . **1<sup>76</sup>**

**OLEO** BLUE BONNET  
REGULAR, LB . . . . . **60<sup>c</sup>**

**CATSUP** DEL MONTE  
38-OZ. . . . . **99<sup>c</sup>**

**SOAP** PALMOLIVE GOLD, 6" OFF LABEL  
5-OZ. BAR . . . . . **27<sup>c</sup>**

**CAKE MIX** BETTY CROCKER PINEAPPLE  
UPSIDE DOWN, PKG . . . . . **97<sup>c</sup>**

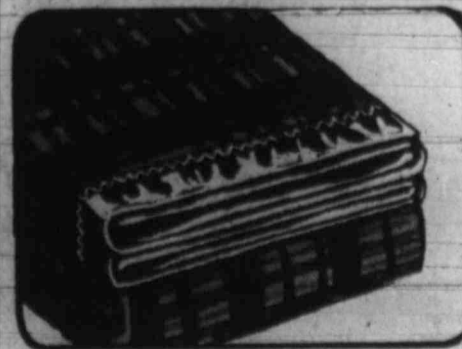
**DETERGENT** AJAX LIQUID 13"  
OFF LABEL 22-OZ . . . . . **73<sup>c</sup>**



**EXTRA  
ABSORBENT**  
24's  
DAYTIME 30's . . . . . **1<sup>99</sup>**

**ANTI-FREEZE**  
PRESTONE II  
1 GAL . . . . . **3<sup>49</sup>**

**STERNO LOGS**  
FOR FIREPLACE  
CASE OF  
6 . . . . . **3<sup>99</sup>**



**BLANKET  
SALE!**

**LACE GARDEN**  
Beacon 60%-40% Acrylic All  
nylon binding. Machines  
washable. 72" x 90" . . . . . **7<sup>49</sup>**

**"MISTY" BLANKET**  
Springcrest, 2 1/2 lb. Handwoven  
100% Acrylic, 4" Nylon Binding,  
72" x 90". Blue, Gold, Green  
each . . . . . **4<sup>49</sup>**

**"SOLID THERMAL"**  
Springcrest Waves solid color.  
Thermal Perma-napped, 100%  
Acrylic, 4" Nylon Binding, Blue,  
Gold, Green, White, 72" x 90".  
each . . . . . **5<sup>99</sup>**

**PLAID BLANKET**  
New Beautiful Woodland Striped  
Plaid, 2 1/2 lb. Waves, Perma-  
napped, 100% Acrylic, orange or  
blue . . . . . **7<sup>99</sup>**

**"GARDEN PRINT"**  
Springcrest Royal Print. Array of  
floral patterns on 2 1/2 lb. weight  
Handwoven 100% Polyester, 4"  
Nylon Binding. . . . . **6<sup>99</sup>**

SIRLOIN  
ROUNDER  
RIB STEAK  
CHUCK  
RANGERS  
CANNED  
CLUB STEAK  
T-BONE  
FAMILY  
RUMP  
DELUXE  
SWISS STEAK

GO  
S

SCH  
GROUND SAGE  
7/8-OZ . . . . .  
CINNAMON  
1 1/8-OZ . . . . .

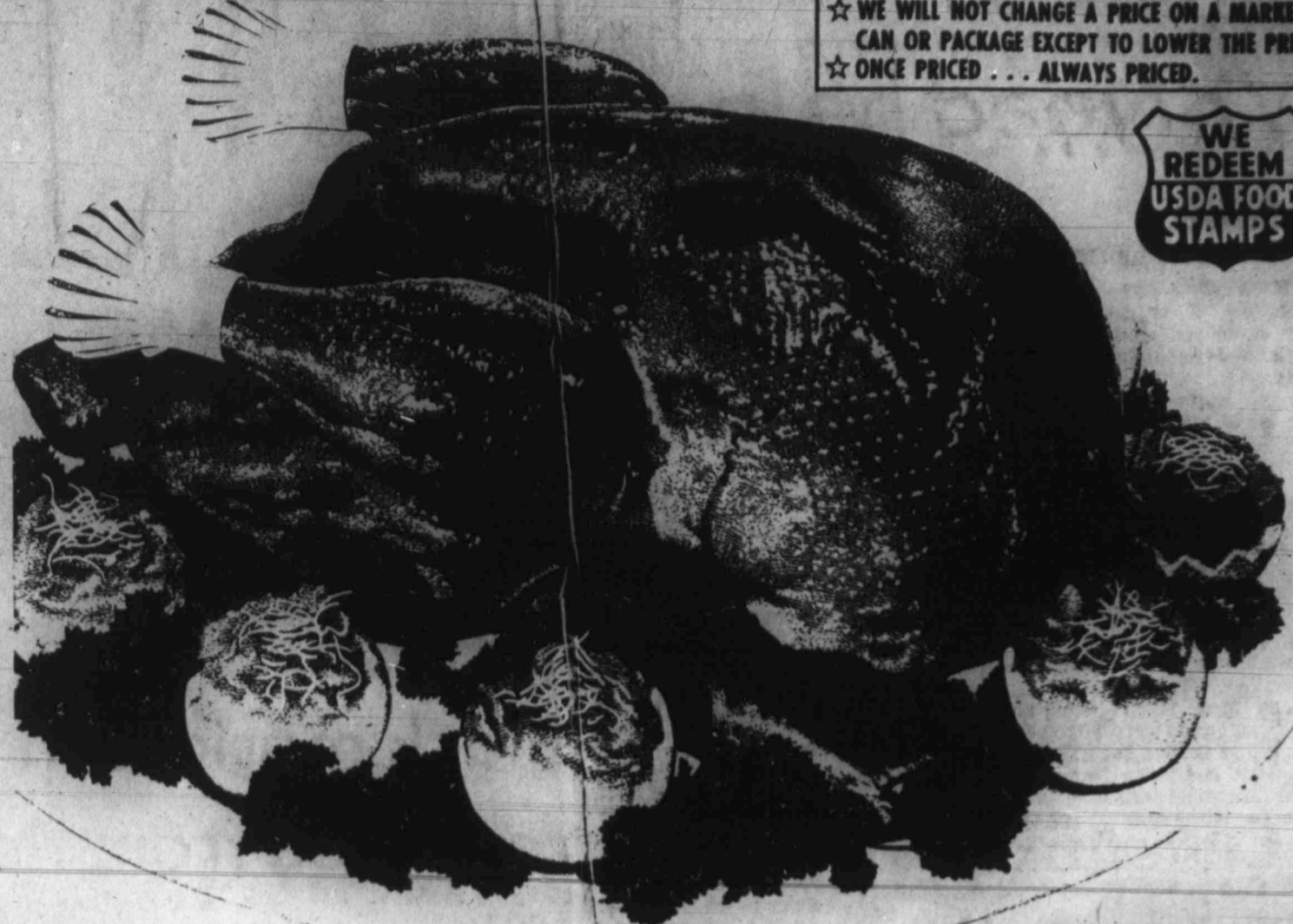
PU  
CO  
CO  
PI  
GR

25-COU  
PACKA

TOOTH  
20" OF  
TUBE,

# FOODS

★ YOU PAY THE LOWER PRICE AT FURR'S  
★ WE WILL NOT CHANGE A PRICE ON A MARKED  
CAN OR PACKAGE EXCEPT TO LOWER THE PRICE.  
★ ONCE PRICED . . . ALWAYS PRICED.



|                      |                     |              |                         |
|----------------------|---------------------|--------------|-------------------------|
| <b>SIRLOIN STEAK</b> | FURR'S PROTEIN LB   | ADV. SPECIAL | <b>1<sup>19</sup></b>   |
| <b>ROUND STEAK</b>   | FURR'S PROTEIN LB   | ADV. SPECIAL | <b>\$1<sup>19</sup></b> |
| <b>RIB STEAK</b>     | FURR'S PROTEIN LB   | ADV. SPECIAL | <b>\$1<sup>19</sup></b> |
| <b>CHUCK STEAK</b>   | FURR'S PROTEIN LB   | ADV. SPECIAL | <b>98<sup>c</sup></b>   |
| <b>RANCH STEAK</b>   | FURR'S PROTEIN LB   | ADV. SPECIAL | <b>\$1<sup>09</sup></b> |
| <b>CANNED HAM</b>    | FOOD CLUB 3-LB. CAN |              | <b>\$6<sup>59</sup></b> |

|                                    |                                  |                         |                       |  |                               |
|------------------------------------|----------------------------------|-------------------------|-----------------------|--|-------------------------------|
| <b>15<sup>c</sup> CLUB STEAK</b>   | FURR'S PROTEIN, LB               | <b>\$1<sup>59</sup></b> | <b>STEWMEAT</b>       | FURR'S PROTEIN BONELESS, LEAN, LB        | <b>\$1<sup>29</sup></b>       |
| <b>29<sup>c</sup> T-BONE STEAK</b> | FURR'S PROTEIN, LB               | <b>\$1<sup>69</sup></b> | <b>TURBOT FILLETS</b> | LB                                       | <b>98<sup>c</sup></b>         |
| <b>29<sup>c</sup> FAMILY STEAK</b> | FURR'S PROTEIN BONELESS, LB      | <b>\$1<sup>19</sup></b> | <b>HALIBUT</b>        | INDIVIDUAL SIZE SQUARES FRESH-FROZEN, LB | <b>\$1<sup>29</sup></b>       |
| <b>29<sup>c</sup> RUMP ROAST</b>   | FURR'S PROTEIN LB                | <b>\$1<sup>19</sup></b> | <b>BOLOGNA</b>        | FARM PAC SLICED, 12-OZ. PKG              | <b>89<sup>c</sup></b>         |
| <b>29<sup>c</sup> DELUXE RIBS</b>  | FURR'S PROTEIN FOR BARBECUE, LB  | <b>89<sup>c</sup></b>   | <b>FISH STICKS</b>    | GAYLORD 8-OZ. PKG                        | <b>49<sup>c</sup></b>         |
| <b>29<sup>c</sup> SWISS STEAK</b>  | FURR'S PROTEIN ROUND BONE ARM LB | <b>\$1<sup>09</sup></b> | <b>BISCUITS</b>       | TEXAS STYLE, BUTTER FLAVOR, 12-OZ.       | <b>4 FOR \$1<sup>00</sup></b> |

## TURKEYS

TOP FROST USDA GRADE A

|             |                    |                       |             |                   |                       |                           |                       |
|-------------|--------------------|-----------------------|-------------|-------------------|-----------------------|---------------------------|-----------------------|
| <b>HENS</b> | 10-14 LB. AVG. LB. | <b>65<sup>c</sup></b> | <b>TOMS</b> | 16-22 LB. AVG. B. | <b>62<sup>c</sup></b> | <b>10-22 LB. AVG. LB.</b> | <b>69<sup>c</sup></b> |
|-------------|--------------------|-----------------------|-------------|-------------------|-----------------------|---------------------------|-----------------------|

USDA INSPECTED  
**TURKEY TOMS**  
MEDALLION

USDA GRADE A  
18-22 LB. AVG. LB. . . . **53<sup>c</sup>**

**HONEYSUCKLE OR BUTTERBALL**

**59<sup>c</sup>**  
**49<sup>c</sup>**  
**\$1<sup>00</sup>**

**WE GIVE GOLD BOND STAMPS**

|                     |  |                               |                      |                           |                         |
|---------------------|--|-------------------------------|----------------------|---------------------------|-------------------------|
| <b>IRISH SPRING</b> | 5 <sup>o</sup> OFF LABEL 5-OZ. BAR             | <b>31<sup>c</sup></b>         | <b>QUICK</b>         | NESTLE'S CHOCOLATE 16-OZ. | <b>\$1<sup>07</sup></b> |
| <b>POTTED MEAT</b>  | LIBBY'S 3-OZ. CAN                              | <b>5 FOR \$1<sup>00</sup></b> | <b>COOKING SAUCE</b> | RAGU ITALIAN 21-OZ.       | <b>99<sup>c</sup></b>   |
| <b>GRAVY MIX</b>    | SCHILLING TURKEY, CHICKEN, ONION, 7/8-OZ. PKG. | <b>29<sup>c</sup></b>         |                      |                           |                         |

|                  |  |                       |                 |                         |                       |
|------------------|--|-----------------------|-----------------|-------------------------|-----------------------|
| <b>DYNAMO</b>    | 10 <sup>o</sup> OFF LABEL 28 OZ            | <b>86<sup>c</sup></b> | <b>SAUSAGES</b> | LIBBY'S VIENNA 5-OZ CAN | <b>39<sup>c</sup></b> |
| <b>DIAL SOAP</b> | 5 <sup>o</sup> OFF LABEL FAMILY SIZE, 7-OZ | <b>40<sup>c</sup></b> |                 |                         |                       |

**COFFEE**  
MAXWELL HOUSE  
1-LB. \$1<sup>39</sup> 2-LB. \$2<sup>67</sup>

**99<sup>c</sup>**  
**49<sup>c</sup>**

**SCHILLING SPICES**

|                    |                       |                           |                       |
|--------------------|-----------------------|---------------------------|-----------------------|
| GROUND SAGE 7/8-OZ | <b>47<sup>c</sup></b> | NUTMEG 1 3/8-OZ           | <b>81<sup>c</sup></b> |
| CINNAMON 1 1/8-OZ  | <b>57<sup>c</sup></b> | POULTRY SEASONING, 3/4-OZ | <b>45<sup>c</sup></b> |

|                        |                       |   |
|------------------------|-----------------------|---|
| <b>POPCORN</b>         | <b>JOLLY TIME</b>     | <b>KARO</b>   |
| WHITE OR YELLOW, 10-OZ | <b>32<sup>c</sup></b> | RED LABEL-WHITE STRUP                                     |
| YELLOW, 1-LB           | <b>34<sup>c</sup></b> | PINT.. <b>57<sup>c</sup></b> QT.. <b>\$1<sup>03</sup></b> |
| YELLOW, 2-LB           | <b>67<sup>c</sup></b> | <b>BLUE LABEL</b>   |
| YELLOW, 20-OZ          | <b>62<sup>c</sup></b> | PINT.. <b>53<sup>c</sup></b> QT.. <b>\$1<sup>02</sup></b> |
| in oil, 19-OZ          | <b>77<sup>c</sup></b> |   |

**BROWN-IN-BAGS**  
REYNOLD'S

|             |                       |
|-------------|-----------------------|
| FAMILY size | <b>77<sup>c</sup></b> |
| TURKEY SIZE | <b>48<sup>c</sup></b> |

**50<sup>c</sup> OFF**

**Cheer**

**\$3<sup>97</sup>**

50<sup>c</sup> OFF 171-OZ. PACKAGE

**IN SERVE**  
**ROLLS**  
**\$1<sup>00</sup>**  
**96<sup>c</sup>**  
**60<sup>c</sup>**  
**27<sup>c</sup>**  
**73<sup>c</sup>**

**Frozen Food Favorites**

**PUMPKIN PIE** MRS. SMITH, APPLE OR PEACH, GOLDEN DELUXE. FRESH FROZEN, 46-OZ. PACKAGE **\$1<sup>39</sup>**

**COBBLERS** STILWELL, FRESH FROZEN ASS'T FRUITS, 2-LB **89<sup>c</sup>**

**CORN** LIBBY'S FRESH FROZEN WHOLE KERNEL, 24 OZ. PKG **49<sup>c</sup>**

**PIE SHELLS** TOP FROST 9-INCH 2 PC. PKG **49<sup>c</sup>**

**GRAPE JUICE** TOP FROST 12-OZ CAN **59<sup>c</sup>**  
COFFEERICH 16-OZ. . . . **38<sup>c</sup>**

**JENO'S PIZZA** SAUSAGE, HAMBURGER CHEESE, PEPPERONI EACH **89<sup>c</sup>**

**COOL WHIP** BIRDSEYE 9-OZ. PKG **69<sup>c</sup>**

**4-LITTLE PIZZAS** CHEF BOY-AR-DEE SAUSAGE **89<sup>c</sup>** CHEESE **79<sup>c</sup>**

**Dairy Delights**

**BORDEN'S**

**Mix or Match**

Whipping Cream 8 oz.  
Sour Cream 8 oz.  
Half & Half 16 oz.

**3 FOR \$1<sup>00</sup>**

**Alka-Seltzer**

**ALKA-SELTZER**

25-COUNT PACKAGE **57<sup>c</sup>**

**Your Choice**

**ARRID** DEODORANT

15<sup>o</sup> OFF LABEL 5-OZ. CAN **78<sup>c</sup>**

**SHAMPOO** HEAD & SHOULDERS 7-OZ. LOTION OR TUBE EA **\$1<sup>17</sup>**

**Visine** EYE DROPS 1/2-OZ. PLASTIC EA **\$1<sup>36</sup>**

**pepsodent**

**PEPSODENT**

TOOTHPASTE 20<sup>o</sup> OFF LABEL TUBE, EACH **72<sup>c</sup>**

**LADY RAZOR** DAISY BY GILLETTE

EACH **90<sup>c</sup>**

**VASELINE** PETROLEUM JELLY 3 3/4-OZ. SIZE **59<sup>c</sup>**

**HOME PERMANENT** OGILVIE **\$2<sup>23</sup>**

**Furr's**

**SUPER MARKETS**



DEAR ABBY

Need help

By ABIGAIL VAN BUREN
DEAR ABBY: Here among us Florida retirees, more and more of our widowed friends are "shacking up." If they marry, the widow loses part or all of her Social Security payments.

Mrs. Mary Jones' not brother died and left a widow. (No children.) She slightly salacious. Their mailman is a very straightlaced, conservative type, which makes matters worse. Shacked up or not, these are very proper people, which was understandable.

WOMEN'S NEWS

Security payments. Our problem is how to address these couples. "Mr. John Smith and Mrs. Robert Jones" is probably His job is to deliver the correct, but it sounds so stilted, and besides, I think old-Bob would want no part of this whole deal.

DEAR RETIREES: The only correct way to address one is by his (or her) legal name. Don't worry about the mailman. His job is to deliver the correct, but it sounds so stilted, and besides, I think old-Bob would want no part of this whole deal.



MRS. JACK SAYERS, right, is president of the Women's Auxiliary to the American Institute of Metallurgical and Petroleum Engineers and Mrs. Cecil Lohn is corresponding secretary.

Auxiliary lists new officer slate

Mrs. Jack Sayers was elected president of the newly organized Women's Institute of Mining, Metallurgical and Petroleum Engineers.

Mrs. G. H. Hacke, hospitality; Mrs. Don Sparks, liaison; Mrs. John Hammett, library; and Mrs. Richard Williams, publicity and scrapbook.

Protection film shown

Sgt. Fred Johnson of the Midland Police Department presented a film discussion on "Lady Beware" for Chapter DD of P.E.O. Sisterhood.

AFTAH Printing 694-4373 A. D. "Skeet" Hall 4805 Andrews Hwy.

Sale

'til Thanksgiving Christmas Cards & Notes \$2.00 a box of 25 Italian hand blown Crystal Ornaments Reduced \$1.25-\$7.50



FOODS FROM MEXICO "LA AMISTAD" Restaurant and Cafe. Temporary Hours: 5:00 p.m.-8:00 p.m., 8:00 a.m.-8:00 p.m., 11:00 a.m.-2:00 p.m. 1401-D N. Lamesa Road • 684-9529

Black marks can be removed from floors

By GENE GARY Copley News Service Q. When we moved some furniture on our hardwood floors, it caused some black marks. We have tried detergent and water to clean them, but with no luck. Is there another method we can use to eliminate these marks? —L.S.L.

A. Apparently the grain is crushed and the dirt is embedded in the wood. Water would only carry the dirt, which may include the substance of the furniture casters, deeper into the wood. Use two tablespoons of ammonia in a quart of water and scrub the marks with a fine wire brush along the grain. Unless the finish is damaged, nothing else needs to be done.

Q. I am looking for instructions to complete a shower stall. It is 3x5 feet. I will have to make a base. What kind of tile is best? Also I have a sunken tub made from ceramic tile. The grout keeps coming off and the water gets under the tiles and they keep coming loose. The surface has a waterproof cement base. Is there any way I can solve this problem, or would it be better to replace the tiled tub with a molded tub? —Mrs. Richard R.J.

A. Anything that protrudes through the roof is a potential danger for leaks. Check the caulking around pipes, vents, skylights or chimney. Also caulk any cracked slate shingles. If there are some shingles that need replacing, consult a roofing contractor, as this is a job for a professional. Slate roofs require special methods for repair and are a difficult do-it-yourself project.

Sorority has ritual

The Iota Beta Chapter of Beta Sigma-Phi met in the home of Mrs. Dan O'Grady to honor new transferees.

COMING EVENTS

Friday MCC Ladies' Association, duplicate bridge games, 12:45 p.m., clubhouse. St. Nicholas Episcopal Church, W-Study, 9:30 a.m., church. Midland Newtimers Couples' Bridge, 8 p.m., RHCC. Reservations: Mrs. Bill Marshall, 682-1025. MSUW, 10 a.m., Flame Room. Pioneer Natural Gas Co. Midland Senior Center, 9:30 a.m.-12 noon, Christmas arts and crafts with Shirley, 1 p.m., table games, First Christian Church. Midland Chapter No. 32, Parents Without Partners, 9 p.m., adult social, Carpenter's Hall, 2211 W. Florida St.

Reports given to teachers

Mrs. James P. Crawford of 3408 Humble St. was hostess to a meeting of the Midland Music Teachers Association. The co-hostess was Mrs. William H. Maitland.

Service reports were made concerning the "Dress a Living Doll" project for Christmas, and ushering at Midland Community Theatre for its next play.

Midkiff club tours museum

MIDKIFF — Ten members and two guests of the Midkiff Study Club toured the Permian Basin Petroleum Museum-Library and Hall of Fame at Midland.

Club has style show

One hundred Mobil Women and their guests attended a style show at Midland Country Club.

Horoscope

By Carroll Righter Institute (Fri. Nov. 21) GENERAL TENDENCIES: The a.m. finds you with considerable ingenuity and the ability to put across plans so others understand them. Salesmanship of a high order is now possible. You can find some unique and unusual solution to family and other basic matters later, but avoid emotionalism.

Midkiff club lists winners

MIDKIFF — Mrs. Bill Winters was high scorer and Mrs. Willie D. Poyner was second for members when the Midkiff Bridge Club met in the home of Mrs. Son Jackson.

Christmas Shop Stout Fashions

Stout Fashions Located in The Village, behind Walgreens, Across from Green Stamp office! Great Co-Ordinates in Diagonal Twill Double Knit Poly. Tunic Jacket-Vest and Blouse, Pant and Skirt. Separates that deserve fashion's nicest compliments. from \$16. Sizes 14 1/2 to 32 1/2. Phone 682-1888

MISS CO-ED EXCLUSIVE BUT NOT EXPENSIVE. CHECK OUT YOUR MOOD... WITH OUR EMOTION RING. Watch it go from over worked black, to passionate dark blue. As your mood changes so will the color of your ring. A great gift idea from Miss Co-ed. We'll gift wrap it without charge. 600. Your "Emotional Ring" allows you to see yourself in a new colorful way. Your own energy will cause the Emotional Ring to change color to reveal your inner emotions. Relax, give the stone time to warm up to your inner emotions.

Club has style show. One hundred Mobil Women and their guests attended a style show at Midland Country Club. Fashions were by Yvonne's Apparel and decorations by Linda's Place. Special prizes were donated by several Midland merchants. Hostesses were Mrs. W. D. Gill, Mrs. E. A. Busch, Mrs. P. W. Terry and Mrs. D. W. Clark. The next meeting will be Dec. 8 at Salmagundi.

Horoscope. By Carroll Righter Institute (Fri. Nov. 21) GENERAL TENDENCIES: The a.m. finds you with considerable ingenuity and the ability to put across plans so others understand them. Salesmanship of a high order is now possible. You can find some unique and unusual solution to family and other basic matters later, but avoid emotionalism.

SHERWIN Williams SALE! SAVE 19% TO 37% ON RUBBERSET FLO-MATIC PAINT SPRAY EQUIPMENT. RUBBERSET FLO-MATIC HOMEOWNER COMPRESSOR sale 89.95. RUBBERSET FLO-MATIC UNIVERSAL COMPACT SPRAYER sale 79.95. RUBBERSET FLO-MATIC HOMEOWNER COMPRESSOR sale 159.95. SALE ENDS NOVEMBER 26th. WE MAKE YOU FEEL RIGHT AT HOME. 403 ANDREWS HWY 683-5244

GET BACK TO THE OLD-FASHIONED GOODNESS OF BREAD. AND GET BACK 20¢. Now there's a new line of bread called Earth Grains that will give you 20¢ off on any of their pan and herb baked breads. Each is baked from original recipes, with only the finest ingredients. So you can get back to the old-fashioned goodness of all natural 100% Whole Wheat, Light or Dark Rye, Oatmeal Raisin or Sour-dough French breads. Or maybe you prefer Hard Rolls or Kaiser Rolls or little Mini-Loaves that are just big enough to share. Nearly thirty deliciously different breads in all, and they're all Earth Grains. So get back to some old-fashioned goodness with Earth Grains, and get back 20¢ with this coupon! 20¢ OFF ON ANY EARTH GRAINS PRODUCT. 20¢ OFF. OFFER EXPIRES: July 31, 1976.

GOSPEL MUSIC CONCERT. Featuring The Gaileans, also The Good-news Quartet and Masters Four. Friday Nov. 21st. at 8:00 P.M. ALAMO JUNIOR HIGH AUDITORIUM. Advance ticket sales at The Bible & Book House. To Benefit The Arthritis Foundation.

LUBBOCK C... will have a G... Dellwood Plaza the items are, le... 1st QUALITY KING... QUEEN... FULL... TWIN... CAS... ELEC... KING & QUEEN REG... FULL & TWIN REG... CHR... BATH PER CIGAR MASSAC... FR... be... DELLW... PRO \$500 fo... Holid... Col...



LUBBOCK CHRISTIAN COLLEGE Associates will have a Gift Fair Friday and Saturday in Dellwood Plaza Mall. Members shown with some of the items are, left to right, Mr. Ray Chappelle, Mrs. I. J. Holder, Mrs. Ralph Parvin and Mrs. Prather Standefer (seated). New cookbooks also will be available at the fair.

## Bridge unit slates game

The Permian Basin Unit 209 of the American Contract Bridge League will sponsor a charity game Tuesday at the Midland Country Club.

Mrs. R. L. Spencer and Mrs. V. V. McGrew will direct the game, scheduled to get under way at 7:30 p.m.

The event is part of the Fall 1975 ACBL Continental Charity Game. Proceeds will go to the American Cancer Society.

The competition is international, with players from the United States, Canada, Mexico and Bermuda taking part, and unique because every player in every game in every city will play the exact same hands under near identical conditions.

Only one winner, nationwide, will emerge — the pair with the best percentage score on the computer-dealt set of hands.

The public is invited to participate in the game here. No affiliation with any bridge unit is required.

Prizes will be presented to the ACBL nationwide winners as well as to the victors in each of the local games. Masterpoint awards also will be made.

Proceeds will be distributed through the ACBL to the American Cancer Society. The grant will be used to improve the care, treatment and prevention of cancer.

The entry fee is \$2.50 per person. Persons planning on participating should contact Mrs. James N. Allison, 682-4222.

## HINTS FROM HELOISE

### Quite sufficient

Dear Heloise: In knitting an afghan that had five knit-in pictures, of birds and animals, I found my little packet of four yarn holders quite insufficient.

Thought sure I'd have to make a trip to town to buy some, but my eye fell on a handful of those plastic hangers we buy men's ties on.

My husband had put them aside to be thrown out, but — you guessed it — they were perfect to wind my yarns on and save a trip to town — gas, money, time!

Wow! I knitted in perfect contentment, attached to as many as eleven or twelve different hanks of yarn. And what a beautiful afghan resulted!

Beth Robinett

much warmer than cold Sew lace or other edging plastic seat and in around the ends. It may one day be an heirloom.

Helen Sbarra

I went back and bought two more scrap capter squares and keep them in the car all the time now.

Victoria

Dear Heloise:

Here is a lovely idea for ladies who like to embroider.

Cut a piece of plain material for a tablecloth or table scarf and have your friends write their names (in pencil) on it — just all over, every which way.

Then embroider the names with a plain chain stitch in assorted colors:

Glory be! I hadn't thought of this in ages.

I remember my mother used a similar method when I was a young girl to make "Friendship" quilts.

Friends would write their name on a square of cloth (usually unbleached domestic), and embroider the block.

The blocks would then be set together and made into a quilt, that would be quilted at a quilting bee. Your letter brought back memories.

Oh! for the good old days... (Or were they?) Heloise

**IMPERIAL PRODUCE**

"The Finest in Fresh Fruits and Vegetables"

**RETAIL WHOLESALE**

Imperial Shopping Center, 3206-A Midkiff near Wadley

Winter Store Hours: 9:00 A.M. to 6:00 P.M.

**PRICES EFFECTIVE THURS, FRI, SAT.**

California, Iceberg, Head, Large, Crisp, Green, Head

**LETTUCE**

3 heads for \$1.00

Mexico Zipper-skin

**TANGERINES**

Lb. 23¢

New Crop, Georgia (Stewart's)

**PECANS**

Lb. 79¢

New Crop! Walnuts, Almonds, Filberts, Brazils, Roasted or Raw Peanuts

**NUTS**

Lb. 69¢

York "Lopsided" or Red Rome

**APPLES**

Lb. 24¢

Texas, Ruby Red

**GRAPEFRUIT**

Lb. 14¢

18 to 20 Lb. Bag, Texas Ruby Red

**GRAPEFRUIT**

Bag \$1.59

18 to 20 Lb. Bag, Texas Sweet, Juicy,

**ORANGES**

Bag \$1.59

Texas, Blue Lake,

**GREEN BEANS**

Lb. 33¢

New Red

**POTATOES**

Lb. 19¢

Florida, Large Size, Ready-Ripe

**AVOCADOS**

3 for \$1.00

1st QUALITY **SHEETS** by WANSUTTA

KING ..... 11<sup>97</sup>

QUEEN ..... 9<sup>97</sup>

FULL ..... 6<sup>97</sup>

TWIN ..... 5<sup>97</sup>

**CASES TO MATCH**

**ELECTRIC BLANKETS** by NORTHERN

KING & QUEEN REG. 74.97 ..... 54<sup>97</sup>

FULL & TWIN REG. 34.97 ..... 24<sup>97</sup>

**CHRISTMAS GIFTS FOR MEN**

BATH SHEETS, ASH TRAYS, PERPETUAL CALENDARS, CIGARETTE LIGHTERS, SHOWER MASSAGER, COLOGNE SETS, ETC.

FREE CHRISTMAS WRAP

**bed and bath**

THE KITCHEN HOOK

DELLWOOD PLAZA 694-8091

OPEN LATE THURSDAY

**AT WIT'S END**

**Bait kabobs**

By ERMA BOMBECK

I've heard of bake-offs, sew-offs, eat-offs and cook-offs, but the North American Bait Farms, Inc., of Ontario, Calif., is conducting a contest to find the best recipe using earthworms.

You heard right. That's earth as in ground and worms as in Yuuuck!

Ronald Gaddie, president of the company, asks that before you make a decision, consider the pros and cons.

PRO: These little creatures can turn waste into fertilizer for plants, they can feed fish and other animals, and when properly prepared make excellent eating for people.

CON: They can also turn your stomach.

PRO: They are low in calories.

CON: Then how come a carp has no waistline?

PRO: They can be baked in cookies, added to casseroles, or sprinkled on salads.

CON: So can coconut and it doesn't wriggle while you are baking, adding, and sprinkling.

CON: Money can't buy new friends.

PRO: Call them "Ver de terre" and they become a gourmet dish.

CON: Get a smart-aleck translator and we're back to "bait" again.

PRO: They are an acquired taste.

CON: So is hemlock.

PRO: It would be handy to have gourmet food right in your own back yard.

CON: That's what Euell Gibbons said when he nearly choked to death on a hickory nut.

PRO: Cooking with earthworms leaves the taste to your imagination.

CON: My imagination would do better if the earthworm had two thighs, two wings and white meat.

Speaking as a truly biased bigot who has definite prejudices against the eating of earthworms, I'd like to enter my recipe early.

**BAIT KABOBS**

Take one Dixie cup of earthworms, coat with rich soil and pack in a coffee can (not too firmly).

Take individually and thread on a hooked skewer. Marinate in fresh water for as long as it takes. Feeds a family of four curious fish.

**Children make it easy**

HUNTINGTON, W. Va. outlined by children at (AP) — Want a recipe for pork chops? Robbie Neilson, 5 has one: "My mother just puts them in the oven—made out of pig—and they store in a box. Then have butter and potatoes, mother throws the box and sometimes green stuff on them." Among other recipes ter."

**Joins fraternity**

AUSTIN — David James Hartman, son of Midlander James K. Hartman, has been elected to Tau Beta Pi, Texas Alpha Chapter at the University of Texas at Austin.

In the winter, it is

**CHAPARRAL SHOP**

TURQUOISE & INDIAN JEWELRY

FREE GIFT WRAPPING

1015 N. Midkiff Mon.-Sat. 10-6

**A Free Furnace**

Yours when you buy Coleman Residential Central Air now during our "Spirit of '76 Sale"

Year-round comfort at a low price: buy Coleman air conditioning now and you'll receive a matching gas or electric furnace free!

Enjoy quiet, efficient performance season after season. Pay only for the air conditioning, receive the furnace free (Plus installation.)

Call your Coleman dealer now! This offer good for a limited time only.

**SANITARY PLUMBING** WILL HONOR ALL AIR CONDITIONING BIDS FROM MAY 1, 1975

Special Spirit of '76 Gift, too! Buy during the Bicentennial and celebrate the Spirit of '76 with a free 3 by 5 foot U.S. flag!

**SANITARY PLUMBING-HEATING AIR CONDITIONING** 694-8871

PRO: There is a prize of \$500 for the best recipe.

**Holiday Fashions from College Town**

**the Gazebo**

3207-B West Wadley

**Friday & Saturday Special!!**

Free pack of Polaroid's Super Type 108 Polacolor 2 film with the first twenty cameras sold.

This is Polaroid's most versatile camera. It's specially designed for ultra-brilliant Polacolor 2, the film that will saturate your pictures with holiday color and sparkle. Plus it uses five other instant film colors and black-and-white. Just the gift for those who recognize value and versatility.

Offer good on FRI-SAT., NOV. 21-22. Doors open at 8 A.M. For your convenience, Shop 'til midnight!

**\$19<sup>77</sup>**

**SKAGGS ALBERTSONS DRUGS & FOODS**

1002 ANDREWS HWY.

HOURS 8 AM-12 PM MON.-SAT. 8 AM-10 PM SUNDAY

PRICE EFFECTIVE NOV. 21-22, 1975

**GRAPEFRUIT**

Lb. 14¢

**ORANGES**

Bag \$1.59

**GREEN BEANS**

Lb. 33¢

**POTATOES**

Lb. 19¢

**AVOCADOS**

3 for \$1.00

# Health service act sets up new program

Two new titles to the Public Health Service Act signed by President Ford establish a new program for health planning and resources development through a network of Health Systems Agencies and revise existing programs for construction and modernization of health care facilities with funds for developing health resources.

The law combines three programs which expired last year regarding facilities construction, research and health planning.

The Health Systems Agency is designed to prepare and implement plans to improve health in residents of its area, increase the accessibility and continuity of health services in the area, restrain increases in costs of health services and prevent unnecessary duplication of health services.

The steering committee of the agency has recommended for the Permian Basin that the legal structure of the HSA be that of a public regional planning body and that the draft bylaws be used as procedure to nominate and appoint the initial members of the HSA governing body.

According to the bylaws, the county nominating committee will be made up of the judge, mayors, hospital administrators, chiefs of staff and three to five others from civic and professional organizations. Each county committee will select a single representative to serve on the regional nominating committee.

The 30-member governing body, to be appointed by the PBRPC board of directors Dec. 10, will comprise 16

consumers of health care services and 14 providers of health care. Ratios include consumers — Midland, three; Ector, five; Howard, two; Dawson, Pecos, Gaines, Winkler and Upton, one each, and Borden, Terrell, Glasscock and Loving, one for all four; and providers — Midland, three; Ector, four; Howard, two; and Reeves, Ward, Andrews, Martin and Crane, one each.

## Health system will be discussed Friday

The operations of the Permian Basin Health System Agency are to be explained in a public hearing to be held at 3 p.m. Friday in the Midland County Commissioners Courtroom, according to County Judge Barbara Culver.

In addition, a nine-member nominating committee is to consider the make up of the agency's governing body. Midland County has been allocated three professionals in the health service field and three from other professions, the judge announced, on the governing board.

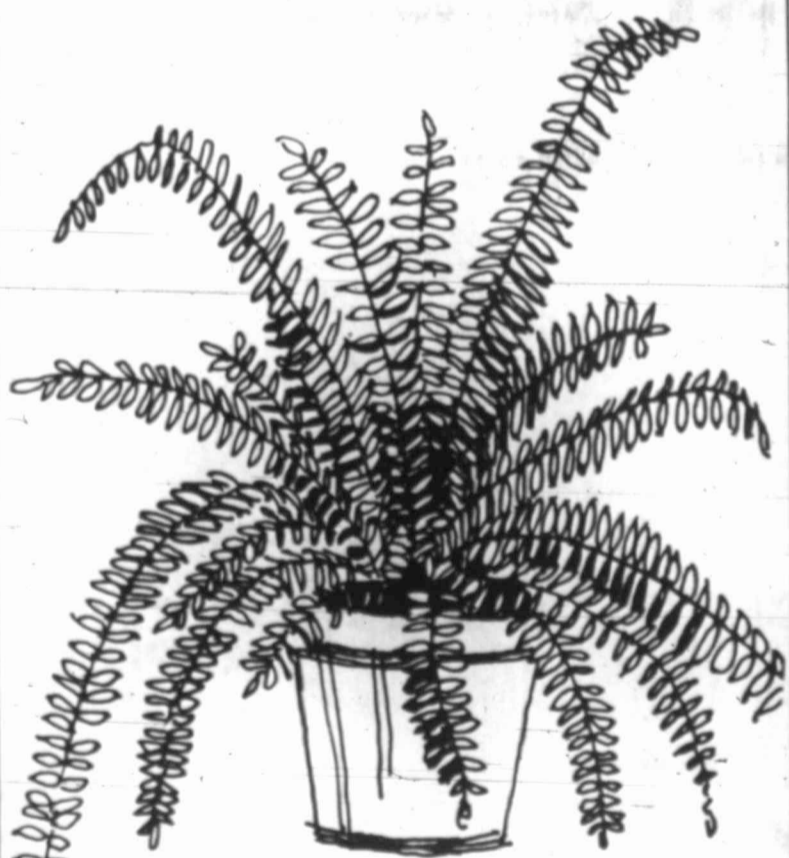
Making up the nominating committee are Ernest Angelo, Midland mayor; Wayne Ulrich, administrator of Midland Memorial Hospital, and Dr. Joe B. Hilliard, Dr. Viola Coleman, Rodriguez Lopez, Mrs. Gladys Thomason, Kenny Jastrow, Mrs. Marcielle Moore and Judge Culver.

# last 2 days emergency sale

free gift wrap 'til thanksgiving



## Holiday Plant Sale



**BOSTON FERN**  
Pot size: 6"

Accent a sunny room with a graceful fern. Long arching fronds make it a favorite for hanging baskets. Rosette of dense greenery grows to 3-5 feet across.  
Reg. \$5.99

**\$2.44**

Sale .....

Yucca Cane. Distinctive dagger-like leaves atop thick cane-like stems.

Reg. 6.99

**\$3.88**

Pot size: 6"

# Pier 1 Imports

1215 N. MIDKIFF  
694-1321  
OPEN MON.-SAT. 10-9 P.M.  
SUNDAY 1-6 P.M.

| LADIES' COORDINATED SPORTSWEAR |                              |
|--------------------------------|------------------------------|
| <b>SPECIAL GROUP I</b>         | <b>SPECIAL GROUP II</b>      |
| REGULAR \$8 TO \$68            | REGULAR \$10 TO \$64         |
| <b>NOW \$5.00 TO \$37.00</b>   | <b>NOW \$7.00 TO \$48.00</b> |
| <b>SPECIAL GROUP III</b>       | <b>SPECIAL GROUP IV</b>      |
| REGULAR \$10 TO \$48           | REGULAR \$34 TO \$110        |
| <b>NOW \$6.00 TO \$31.00</b>   | <b>NOW \$18 TO \$60</b>      |

| JUNIOR COORDINATED SPORTSWEAR |                              |
|-------------------------------|------------------------------|
| <b>SPECIAL GROUP</b>          | <b>SPECIAL GROUP</b>         |
| REGULAR \$8 TO \$52           | REGULAR \$8 TO \$48          |
| <b>NOW \$5.00 TO \$30.00</b>  | <b>NOW \$4.00 TO \$31.00</b> |

| WOMEN'S AND JUNIOR DRESSES |                         |
|----------------------------|-------------------------|
| <b>WOMEN'S</b>             | <b>JUNIORS</b>          |
| REGULAR \$29 TO \$140      | REGULAR \$24 TO \$60    |
| <b>NOW \$19 TO \$93</b>    | <b>NOW \$15 TO \$37</b> |

| JEWELRY             |
|---------------------|
| REGULAR \$7 TO \$25 |
| <b>1/2 PRICE</b>    |

| BILLFOLDS            |
|----------------------|
| <b>SPECIAL GROUP</b> |
| <b>1/2 PRICE</b>     |

| CARPET BAGS                |
|----------------------------|
| <b>SPECIAL GROUP</b> ..... |
| <b>1/2 PRICE!</b>          |

| MISSY PANTSUITS               |
|-------------------------------|
| REGULAR \$29 TO \$60          |
| <b>NOW \$23.00 TO \$47.00</b> |

| JUNIOR PANTSUITS        |
|-------------------------|
| REGULAR \$31 TO \$60    |
| <b>NOW \$25 TO \$37</b> |

| JUNIOR PANTS       |
|--------------------|
| REGULAR \$20       |
| <b>NOW \$12.00</b> |

| ALL WEATHER COATS       |
|-------------------------|
| REGULAR \$33 TO \$421   |
| <b>NOW \$27 TO \$35</b> |

| MISSY SWEATERS       |
|----------------------|
| REGULAR \$25 TO \$30 |
| <b>NOW \$19.00</b>   |

| JUNIOR SWEATERS      |
|----------------------|
| REGULAR \$18 TO \$22 |
| <b>NOW \$13.00</b>   |

| COATS                    |
|--------------------------|
| REGULAR \$55 TO \$270    |
| <b>NOW \$44 TO \$199</b> |

| MEN'S SPORT COATS        |                           |
|--------------------------|---------------------------|
| <b>SPECIAL GROUP</b>     | <b>FLANNEL BLAZERS</b>    |
| REGULAR \$75 .....       | REGULAR \$75 .....        |
| <b>\$26</b>              | <b>\$53</b>               |
| VALUES TO \$65 NOW ..... | VALUES TO \$80 NOW .....  |
| <b>\$46.00</b>           | <b>\$76.00</b>            |
| VALUES TO \$80 NOW ..... | VALUES TO \$120 NOW ..... |
| <b>\$56.00</b>           | <b>\$96.00</b>            |
| VALUES TO \$90 NOW ..... | VALUES TO \$135 NOW ..... |
| <b>\$66.00</b>           | <b>\$106.00</b>           |

| MEN'S SPORT SHIRTS   |                           |
|----------------------|---------------------------|
| <b>SPECIAL GROUP</b> | <b>REGULAR \$12</b> ..... |
| <b>NOW \$6.00</b>    |                           |

| MEN'S SUITS           |
|-----------------------|
| <b>SPECIAL GROUP</b>  |
| VALUES \$120 TO \$140 |
| <b>NOW \$78.00</b>    |

| SPECIAL GROUP      |
|--------------------|
| REGULAR \$145      |
| <b>NOW \$98.00</b> |

| SPECIAL GROUP      |
|--------------------|
| VALUES TO \$135    |
| <b>NOW \$58.00</b> |

| ENTIRE INVENTORY OF SUITS |                    |
|---------------------------|--------------------|
| VALUES TO \$115 .....     | <b>NOW \$58.00</b> |
| VALUES TO \$140 .....     | <b>NOW \$98.00</b> |
| VALUES TO \$150 .....     | <b>NOW \$108</b>   |
| VALUES TO \$165 .....     | <b>NOW \$128</b>   |
| VALUES TO \$190 .....     | <b>NOW \$138</b>   |

| MEN'S SLACKS         |
|----------------------|
| <b>SPECIAL GROUP</b> |
| REGULAR \$32.50      |
| <b>NOW \$16.00</b>   |







JOAN LITTLE'S conviction on breaking and entering charges was upheld Wednesday by the North Carolina Court of Appeals. The court let stand a 7- to 10-year prison sentence.

# Busing ban amendment ploy fails

The Washington Post — House Democrats demonstrated Wednesday that a constitutional amendment to ban forced school busing could not pass the House as they rejected such a proposal, 172 to 96.

The vote tabled and thus killed a resolution in the caucus of all House Democratic members of the House Judiciary Committee to report to the House for a vote within 30 days a proposed constitutional amendment banning busing of public school students to provide a racial mix. A constitutional amendment must be approved by a two-thirds vote of each house of Congress. The 172 votes against the proposal was considerably more than one-third of the house.

The motion to table the proposal, at the first public session of the House Democratic Caucus, was made by Speaker Carl Albert, who said the "Explosive issue" would harm the Democratic party and would "usurp that part of the Constitution allocated to the Supreme Court."

Rep. Dale Milford (D-Tex.), co-sponsor of the resolution, said the amendment would simply add another citizen's right to the list of

constitutional rights such as speech, religion and assembly.

Rep. Lucian Nedzi (D-Mich.), a liberal from Detroit, where busing has been a hot issue, supported the resolution, calling busing a "dead-end." He called on liberals to "set aside symbols," such as, he said, believing that everything the South wants is wrong and everything the NAACP wants is right.

But Rep. Peter W. Rodino (D-N.J.), chairman of the House Judiciary Committee, strongly opposed the resolution, saying Congress should not strip courts of "remedial powers" that may be essential to eliminating racial segregation in the schools.

Support for the resolution also came from usually liberal members in Boston, Louisville and elsewhere where busing has caused community strife.

Rep. Richardson Preyer (D-N.C.), a former federal judge who opposes forced busing as "wrongheaded policy," opposed a constitutional amendment as the wrong way to stop busing. Preyer said a constitutional amendment banning busing would signal a retreat from the goal of desegregating the nation's school systems. It would leave the right proclaimed by the Supreme Court in 1954 but deny a remedy, he said.

Preyer said it is possible to deal with busing by simple act of Congress.

The courts have ordered busing on constitutional grounds that cannot be overturned by simple acts of Congress. Busing opponents, frustrated because several anti-busing laws have proven ineffective, finally tried to push through a constitutional amendment as their only workable vehicle.

Rodino not only opposed the resolution, but rejected the idea that the caucus could direct him how to vote on a constitutional question against a member's conscience. One purpose of conservatives in pushing the resolution probably was the hope of provoking such a response from liberals.

It has been Democratic liberals so far who have tried to use the caucus as a vehicle for setting party legislative policy, mostly in opposition to the conservative minority. Three years ago the caucus ordered Democrats on the Foreign Affairs Committee to report out a resolution fixing a date for U.S. military withdrawal from Indochina. This year the caucus ordered Democrats on the Ways and Means Committee to approve a resolution permitting the House to vote on repeal of the oil depletion allowance.

Conservatives hope that by opening the caucus to the public and by pressing conservative issues they will weaken the caucus' ability to set party legislative policy.

Caucus Chairman Phillip Burton (D-Calif.) said he didn't believe Wednesday's experience supported this view. He said he thought the conservative minority would fare better in closed caucuses where accommodation of opposing views may be more easily reached.

## Cleaver now in California

The Los Angeles Times — Former Black Panther leader Eldridge Cleaver entered the Metropolitan Correctional Center here Wednesday to await a hearing on parole violation and court proceedings in Oakland on charges of assault and attempted murder.

He also faces a federal fugitive charge of "travel in interstate commerce with intent to avoid confinement and custody after conviction and parole revocation."

## Europeans hope to see Spanish democracy

By The Associated Press — Western European democracy leaders expressed hope today that the death of Generalissimo Francisco Franco will bring Spanish nation will manage to find the transition into a new phase of its political and social development without disturbances and take its place on the side of the democratic states in Europe.

government statement without comment but give any information noted that Franco came about the Republicans' plans "out of respect for the dead."

In Mexico City the head of the Spanish Republican government-in-exile said Spanish civil war in Mexico is the only the new era that begins Western nation to maintain diplomatic relations with the Republican government, which has its headquarters in Paris.

## Wichita Falls mayor quits due to health

WICHITA FALLS, Tex. (AP) — Mayor Max Kruger, who suffered a heart attack last Sept. 6 and has been unable to attend city council functions since then, announced his resignation Wednesday.

The Wichita Falls mayor said he was resigning because of his health and following his doctor's recommendations.

Danish Prime Minister Anker Joergesen said he hoped Franco's death will bring the end of Spain's era of Fascist rule. Joergesen said he believed Spain will now go through "peaceful transition to more democratic conditions." High Danish officials said the government plans only limited representation at the funeral.

An official Dutch statement said it hoped Spain would now move towards a true democracy. "We sincerely hope that a new period in Spanish history will start and that developments will lead to a situation where human as well as political freedom will be completely guaranteed," a

**Genuine Levi's**  
GENERAL CLOTHING  
300 E. Florida

---

**BLUE BONNET FENCE**  
• FREE ESTIMATES • BEAUTIFUL RESULTS  
• 1 YEAR GUARANTEE • FAST SERVICE  
Midland, Texas 683-7364

CLIP HERE

**THREE DAYS ONLY**

Thurs., Fri., Sat., Nov., 20, 21, 22  
9 A.M. to 7 P.M. at  
**WALGREENS**  
\$3.71 - \$19.95 with this coupon

Lifetime Guarantee  
PRONG MOUNTED—HAND SET STONE  
18K NGC or "Sterling Silver"

"Bring in your diamonds and see if you can tell the Difference!"

**Rainbo Supreme Fruit Cake...**

When your gift is a matter of taste.

When you select one of our delicious fruit cakes there's never a worry about sizes, colors, or whether or not they already have one. This is the distinctive gift everyone likes to give... and loves to receive. Quality you can taste... our exclusive recipe... calls for the finest fruits and fancy pecans baked in a pure butter batter. You'll be remembered with each delicious slice.

Reusable tin. Each of our delicious ring cakes is packaged in a beautiful reusable gift tin (each tin is carefully packed in an individual mailer designed to insure safe sound delivery).

Unconditional guarantee. If you have any doubts about the quality of our cakes we will refund your money or replace your cake.



## TRUNK SHOWING

### Of Fashion Scarves And Jewelry

Presented in Person  
**BY LANE KALMIN**

**He Will Show The Newest Way to Wear Scarves And Jewelry for The Holidays Ahead**

**OVER \$6000 OF MERCHANDISE TO SELECT FROM**  
FRIDAY NOV. 21st. Starting At 10:30 AM

Fashion Scarves.

Many Beautiful Colors To Choose From In The Smartest New Styles For Dress Or Casual

## A RING OF TRUTH! MAGIC LOVE STONE

Test Your Mood....

Its changing colors match your emotional ups and downs. If it turns blue, you're feeling loose and relaxed; but if it turns black—look out

5<sup>99</sup> EACH

|  |  |
|--|--|
| <p><b>BLACK</b> Tense, Nervous, Harassed, Over Worked</p> <p><b>GRAY</b> Anxieties Nervous Strained</p> <p><b>AMBER</b> Nervous Emotions Mixed Unsettled Cool</p> <p><b>BLUE/GREEN</b> Inner Emotions Charged Somewhat Relaxed</p> | <p><b>GREEN</b> Average Reading Active Not Under Great Stress</p> <p><b>BLUE</b> Relaxed at Ease Calm, Loveable</p> <p><b>DK. BLUE</b> Very Happy Love Passion Romance</p> |
|--|--|

NOTHING CHAINS AND EARRINGS NOW **99<sup>c</sup>** EACH DURING OUR SHOWING

TS  
00  
00  
08  
28  
38  
S  
\$53  
\$76.00  
\$96.00  
106.00  
00  
EY

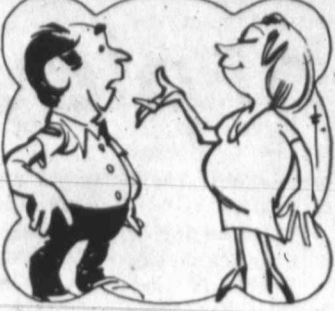
© 1975 LOS ANGELES TIMES

SCRAM-LETS

That Intriguing Word Game with a Chuckle

Edited by CLAY R. FOLLAN

1 Rearrange letters of the four scrambled words below to form four simple words...



My wife is such a considerate woman. Yesterday she heard we were gonna have a long, hard winter, so she went right out and bought a heavier coat for the car.

PRINT NUMBERED LETTERS IN THESE SQUARES

UNSCRAMBLE LETTERS TO GET ANSWER

- ACROSS 1 Social groups 7 Place of worship 13 Choral work 14 Methodical 16 Book of church ceremonies 17 Spring forth 18 Gems 19 These: Sp. 21 Sister to Beth and Jo 22 Seine span 23 High Dam 24 Exhaust 25 Carry: Colloq. 26 Treasury employe 27 A must for a maestro 28 From an ace, in bridge 30 Forcible 31 Forbid 32 Term of endearment 33 Adroit 37 New England resort area 41 Refrain from exacting 42 Henry VIII's Catherine 43 De novo 45 Bath's river 46 Washington Zoo attraction 47 Philippine palm wine 48 Old stager 49 Florist's best sellers 50 Commonout Gherman 51 The Furies, in Greek myth 53 Black hard rubber 56 Turn aside from a course 56 Football players 57 Youngster: Slang 58 Ransacked DOWN 1 Commuter's gas-saving arrangement 2 Moderately slow: Mus. 3 Stiffly dignified or formal 4 Treats, as hide 5 Age, in Italy 6 Drummer 7 Native of Canea 8 French-Canadian novelist 9 Titles in Turkey 10 Play on words 11 Clizen of ancient Susa 12 Not now 13 Elect to be a fel low member 15 Famous London street 20 Oscillate 23 "A Family series" 24 The "it" game 27 Femur 29 Encourage 30 Dried coconut meat 32 Denoting certain TV commercials 33 Longed for 34 Young hare 35 Showing feeling 36 Item on a French menu 37 Candy or sugar group 38 Washington Former 40 Indicated 42 Fullback, at times 44 Designating certain fabrics 46 Type of writer: Fr. 49 One of the O'Neals 50 Up good 52 Never: Ger. 54 Living things: Prefix

FUNKY WINKERBEAN



BLONDIE



MARY WORTH



JUDGE PARKER



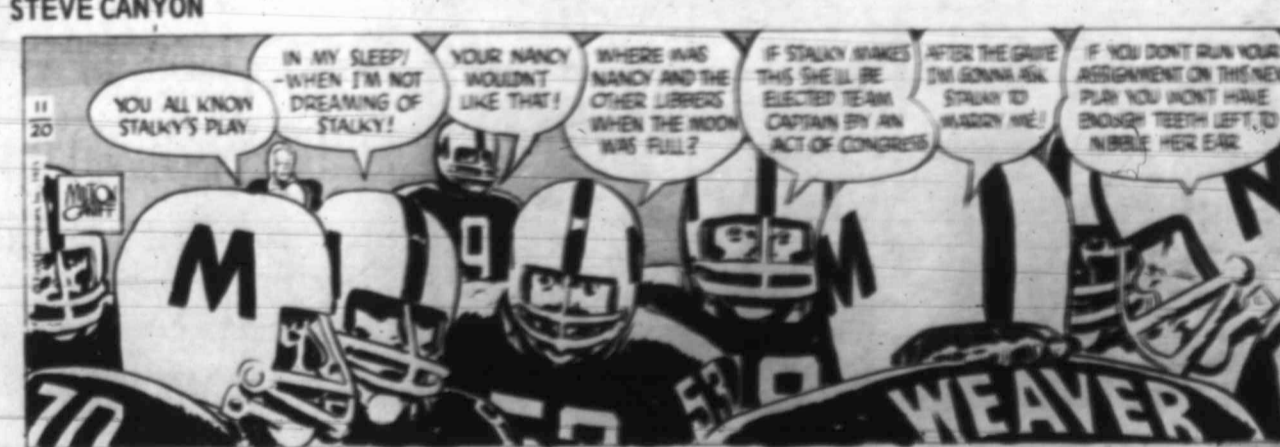
STEVE ROPER



NUBBIN



STEVE CANYON



HEATHCLIFF



THE BETTER HALF

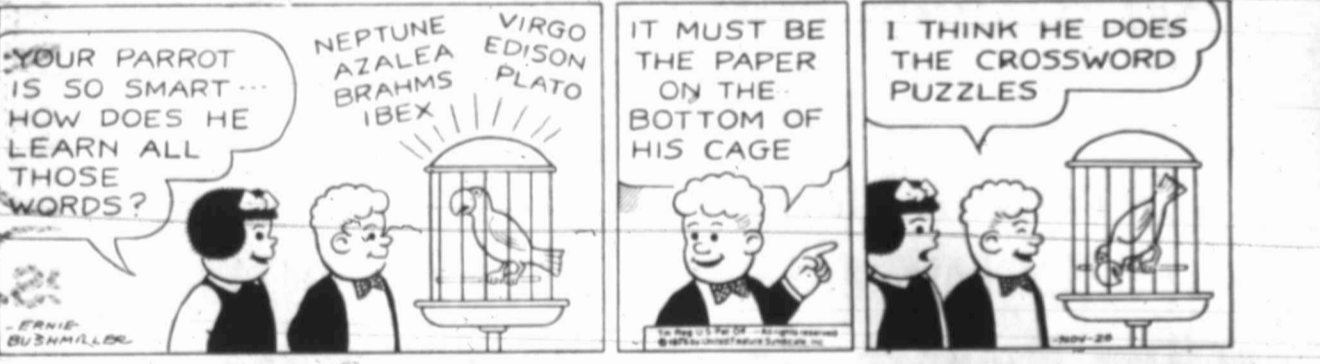


Crossword puzzle grid with numbers 1-58 indicating starting positions.

ANDY CAPP



NANCY



PIG TRACY



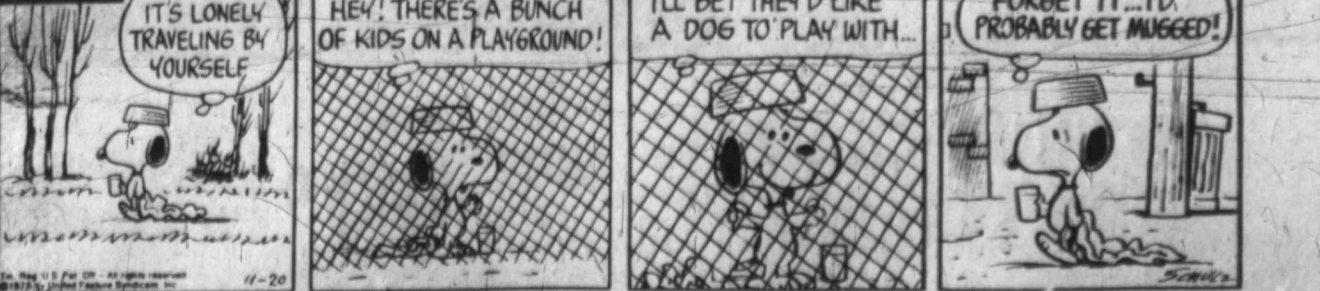
L'IL ABNER



REX MORGAN, M.D.



PEANUTS



Washington... Washing... Christm... nouncen... human... garde... disappe... year... Indee... tional se... abandon... white... own... In s...t... suprgr... stars of... we have... landscap... church... The religio... servatis... money... the Bi... afterma... ing sick... And 1... 1975 Ch... size if n... More... pearn... Cooper... Greeting... partrid... other 1... lions a... Christm... COL... slightl... kept t... veivet... look ha... green... finding... pink an... The... hunk of... Bill... admits... cards t... ductio... IT'S CLEA... Project... your dr... cleared... Decorat... The... 801 V... CC... AND... FRE... WEAV... DENNIS THE MENACE... HEATHCLIFF... NUBBIN... STEVE CANYON... STEVE ROPER... JUDGE PARKER... MARY WORTH... BLONDIE... FUNKY WINKERBEAN... SCRAM-LETS... THE BETTER HALF... ANDY CAPP... NANCY... PIG TRACY... L'IL ABNER... REX MORGAN, M.D... PEANUTS... DENNIS THE MENACE... HEATHCLIFF... NUBBIN... STEVE CANYON... STEVE ROPER... JUDGE PARKER... MARY WORTH... BLONDIE... FUNKY WINKERBEAN...

# Do-it-yourself Christmas card messages in vogue

**Washington Post** — The message Christmas card, devoted to pronouncements on peace, ecology, human rights, animal rights, avant garde design, etc., has just about disappeared from the card racks this year.

Indeed, in many cards even traditional sentimental verses have been abandoned in favor of noncommittal white space for you to write your own.

Instead of hip Santas, supergraphic reindeers, abstract stars or peace movement symbols we have historical scenes, pre-people landscapes, madonnas and children, churches, holly and Santa Claus.

The return to nostalgia and religion fits in with the swing to conservatism, caused perhaps by tight money times, the post-war letdown, the Bicentennial, the Watergate aftermath, or a large helping of being sick and tired of all that jazz.

And like the 1975 candy bar, the 1975 Christmas card has shrunk in size if not in price.

More mysterious is the disappearance, according to Harry Cooper of the National Association of Greeting Card Publishers, of the partridge in the pear tree and the other 11 days of Christmas, and the lions and the lambs as popular Christmas card designs.

**COLORS** this year have that slightly faded look of having been kept tucked away in somebody's velvet covered album. You'll have to look hard and long for a good clear-green or red, and your chances of finding an honest blue-green or hot pink and red are really slim.

The other thing missing is a good hunk of the card.

Bill Johnson of Hallmark Cards admits that they're making smaller cards to save paper (and thus production costs) but adds that they're

also making postcard Christmas cards to save the sender postage. Christmas postcards go for 7 cents instead of the 10-cent letter rate. And of course, it was heavy lobbying on the part of the greeting card industry that postponed the coming stamp price hike until after Christmas.

Prices are roughly the same as last year.

Religious themes, which have been creeping up for the last two years, are with us in abundance — Cooper's estimate is a 30 per cent increase in nativity scenes over last year. Landscapes, of the pastoral, when-things-were-better type, are big. Watercolor scenes abound, such as those by Tyrus Wong for Looart Press and Su-Li Hung Sloat for American Artists Group. Cooper has also been struck by the number of cards with pictures of beautiful young couples walking off into the future hand in hand.

Contrary to some years, there is a plentiful crop of holly, candles, fireplaces and Santas. American Artists Group and Hallmark are heavily into "personal expression" cards showing tennis, camping and skiing scenes. And most manufacturers are offering cards without messages or with a choice of messages so if it's not your sentiment, you don't have to express it.

Sad to report, there are still a number of comic Christmas cards of the "I don't blow a dollar on a card just to say Merry Christmas or Happy New Year, a spooky Halloween, Happy Easter, a Bountiful Thanksgiving, a Happy Birthday and Get Well Soon ilk.

Or, there's the "This is my Christmas money enclosure card to you, please fill and return."

Saturday Evening Post covers of years past are expected by

Hallmark Cards to be big nostalgia sellers.

**FITTING RIGHT** into this year's trends are the cards from the Library of Congress, the National Gallery of Art and the Smithsonian Institution.

Madonna and child with gilded backgrounds have always been a National Gallery specialty and this year there are two new ones from the Samuel H. Kress Collection, Carlo Crivelli (1457-1493) and Domenico Ghirlandaio (1449-1494), plus an annunciation by Jan van

Eyck (1380-1400-1441) from the Andrew Mellon Collection. The National Gallery is also adding to the popular, nostalgic cards from the Index of American Design. One of the best is the "Circus Wagon United States," a rendering by Frank M. Keane. There are also a toy train and a rooster weathervane from the Index.

The Smithsonian, for the first year, is going into the greeting card business in a big way. The institution is offering 20 new designs, ranging from the evocative "Russian Tea" by Irvin wiles, an oil on canvas from

the national Collection of Fine Arts, to a card of Gene Davis stripes.

Even New York's Museum of Modern Art is into the nostalgia bit this Christmas, a continuation of its step backward with its current Beaux Arts show. MOMA cards this year include Paul Davis' "Matthew's Cat," a straightforward representation of an aggressively masculine-looking tom cat; Murray Alcosser's realistic "Christmas Candy," which looks good enough to eat, and Richard Hamilton's impression of Bing Crosby called "I'm Dreaming of a White Christmas."

**GILDED GLORIES** from the Middle Ages continue to be a Metropolitan Museum of Art specialty. One of the best is the "Twelve Knights of Christmas" as envisioned by Helmut Nickel, curator of arms and armor. The card, silkscreened in eight colors, opens out to 5 1/2 feet (and costs \$2.95). The Metropolitan follows the interest in antique photographs with a card called "Visitors at the Museum," dating from 1908. There is also a box of winter scenes of America made 100 years ago by pioneer photographers.

20% off infants' sleepwear.



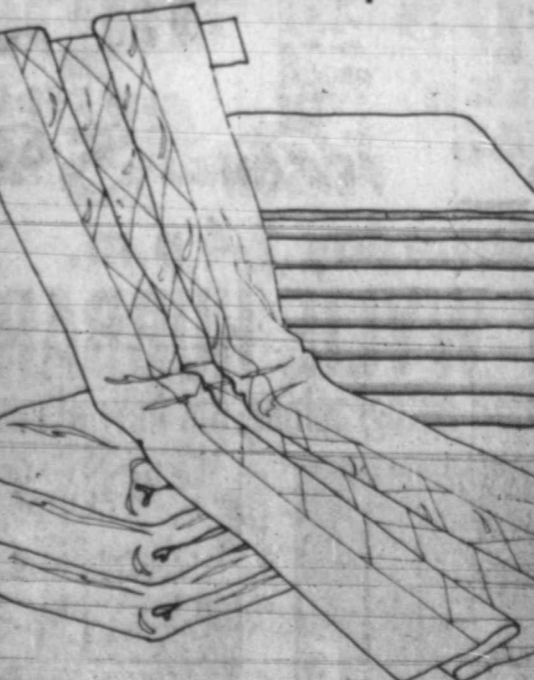
Sale 3.98

Reg. 4.98. Infants' sleeper of flame resistant\* polyester with Padi-bumper® feet. Print top, solid bottom in assorted colors. Gripper waist, sizes 1-3 or boxer waist, sizes 4-8.

Sale 2.57

Reg. 3.22. Infants' lightweight sleeper of flame resistant\* polyester with feet. Select from assorted colors. Gripper waist, sizes 1-3 have a gripper waist, boxer waist for sizes 4-8.

Save 20% On Disposable and Cloth Diapers



Stock up on our own disposable diapers and save 20%. A range of sizes for newborns through toddlers, several absorbencies. Come in and save today. Save even more by the case.

Use Our Layaway Plan

# JCPenney

Super value in our leisure suit for men.

Special 17.99

5.99

Men's crepe stitch polyester double knit leisure suit. Military style jacket with flared pants. Choose navy, tan or green. Regular sizes 38 to 46.

Choose from a good selection of Men's leisure suits that coordinate with the leisure suit. Choose from several different fabrics and patterns.



Sale 3.19

Girl's cardigan sweaters

Size 7-14, Reg. 3.99. Cashmilon® acrylic knit. Choose from white, navy, red or rust. Sizes S, M, L for girls 7 to 14.



Special 2.88

Men's plaid cotton flannel sport shirts. Long sleeve styling. In assorted colors and plaids. S, M, L, XL.



Jade coordinates.

Special 8.99

Either jacket

Special 5.99

Shirt, pants or skirt



Solid and stripes combine in delectable holiday jade fashion mixers. Polyester doubleknit in sizes 10-18.

Use Your Penney Charge Card

**IT'S DRAPERY CLEANING TIME!**

Protect your drapery investment. Extend the life of your draperies. Have them cleaned regularly, fresh. Decorator folded!

**Fashion CLEANERS**

"Your Full Service Cleaners"

801 W. Wall 684-6657

**Attorney makes point**

Agence France-Presse Bologna, Italy (AP)—A prostitute who was stripped of her driving license after being caught plying her trade in her car can have the license back, a local judge has ruled.

The prostitute's attorney had objected to the reason given by a policeman for taking the license away.

**SPECTACULAR CLOSE SALE!**

**COLOR TILE AND WALLPAPER**

**VINYLOX FLOOR TILE** — ALL PURPOSE FLOOR LOOKS GREAT IN ANY ROOM & IS SO EASY TO INSTALL! — UNMATCHED FINISH — EASY CLEANING — LEAKS — EASY TO REMOVE

**DELUXE PATTERNS—VINYLOX TILE** — EACH TILE HAS 3 COLORS — IN EASY CARE "DORM" PATTERNS YOU'LL LOVE! — LETS YOU "PERSONALIZE" YOUR FLOORING!

**DECORATIVE MOSAIC TILE** — BEAUTIFUL MULTI-COLOR SURFACE WITH UNMATCHED LOOK OF LEXON! — CONCRETE — PSE. FINISHED ON SHEETS

**RICH WALLPAPER PRINTS** — A HOOD OF ARTISTIC COLORS AND PATTERNS FOR HANDSOME WALLS! — PSE. FINISHED & PSE. FINISHED!

**PLACE 'N PRESS FLOOR TILE** — THE "NO MORTAR" FLOOR — EASY CLEANING! — JUST PEEL OFF BACK AND PRESS DOWN! — HOLD OVER THE SAME DAY! — EXISTING COLORS & PATTERNS GO ON ANY ROOM!

**LUXURIOUS SOLID VINYL TILE** — CONCRETE MARBLE TERRAZZO LOOK ON A FLOOR WITH EASY CARE SURFACE! — DECORATE & TRANSFORM ROOM INTERIORS! — FLEXIBLE — EASY TO CUT & FIT!

**CERAMIC WALL TILE** — KEEPS SPARKLING SHINE WITH LITTLE CARE — FOR EASY LINES! — SUNNY KIDS TO BRIGHTEN ANY ROOM! — COLORS NEVER STAIN OR FADE!

**VINYL SHEET FLOORING** — CUSHIONED FOR COMFORT & QUIET! — GREATEST SHINE NEVER QUITS! — TIES MOST ROOMS WITHOUT SEAMS! — MAR-RESISTANT FINISH!

**DENSE SHAG CARPET TILE** — WALL-TO-WALL CARPET IN MINUTES! — SOFT WYLOX PILE HIDE SEAMS! — RESISTS STAINS & GRAY — TONGUE & GROOVE JOINTS FOR COMFORT!

**IMPORTED QUARRY TILE** — DECORATOR STYLE PATTERNS & COLORS — GLAZED, STONE HARD SURFACE! — SPLITS HOPE AWAY FAST & EASY! — INSTALLS IN A JOFF!

2126 E. 8th St. ODESSA 332-6401

Open Mon. & Thurs. 8 a.m. to 9 p.m. Tues., Wed., Fri. 8 a.m. to 6 p.m. Sat. 8 a.m. to 5 p.m.

212 N. Main-Downtown Shop 'til 9 Thursday & Friday Phone 682-9471 to Shop Catalog

# Musical performances to highlight weekend

Two performances of the classic musical "Carousel" will be weekend entertainment highlights in the city.

The production, presented jointly by the drama, art, choral and band departments of Lee High School, will open at 8 p.m. Friday in the school auditorium. A second performance is scheduled for 8 p.m. Saturday. Tickets will be available to the public before curtain time each night.

"Carousel," with music by Richard Rodgers and lyrics Oscar Hammerstein II, closely followed the famous pair's celebrated "Oklahoma!" back in the 1940s and, like "Oklahoma!," has become one of the standard favorites of theatergoers throughout the world. The show offers some of Rodgers and Hammerstein's best-loved songs, among them the haunting "If I Loved You,"

the rollicking "June Is Bustin' Out All Over," the tender-teasing "Mr. Snow" and the gravely concluding "You'll Never Walk Alone."

Heading director Horace Griffin's cast of "Carousel" are Bill Moore as

Billy Bigelow and Julie Miller as Julie Jordan, backed by numerous LHS students in supporting roles. There are also dancers and singers.

Doug Browne and Ike Nail are choral and music directors, Liz An-

ding is the choreographer, sets are by Herb Cooper. Lighting is being handled by Bruce Chadwick and Tom Bruton. Irene Gould and Paula de Masi within charge of props. Stage manager Kelly Hewitt's crew is made

up of Doug Heck, John Hodge and Steve Moore. Others with production responsibilities include Kelly Westerman, Robin Barron, Carol Ann Hall, Donna Spry, June Adcock, Ruth Ann Griffin and Kathy Ferry.

## Dallas Opera to offer 'Madame Butterfly'

DALLAS — The Dallas Civic Opera will unveil the third production of its current season, Puccini's "Madame Butterfly," with a matinee performance Sunday in the Fair Park Music Hall.

DCO is announcing a change of

Formerly a member of the Metropolitan Opera's national touring company, Miss Carson made her Met debut in 1967. The Montreal native had won wide acclaim for her singing in Canada before coming to the U. S. Miss Carson now sings regularly in Met productions in New York City and also fills engagements with opera companies throughout the U. S. and elsewhere.

### ENTERTAINMENT

Joining the soprano in the Nov. 23, 25 and 28 performances of "Butterfly" will be Beverly Evans as Suzuki, Beniamino Prior as Lt. Pinkerton, Julian Patrick as Sharpless and Piero de Palma as the Goro. Nicola Rescigno, the DCO's general manager, will conduct the performances, sung in Italian. Up-to-date information on ticket availability for the performs is obtainable from the DCO box office, 214-742-1008.

singers for the title role in the opera. Marina Krilovici, who was engaged for the role several months ago, has had to cancel her Dallas appearances because of illness. She is being replaced by Clarice Carson.



DANCERS AND SINGERS go through their paces in one of the colorful dance routines in "Carousel," the classic musical being readied for a Friday night opening in Lee High School auditorium. A second presentation is scheduled Saturday night.

## Tech theater schedules 'The Adding Machine'

LUBBOCK — Playwright Elmer Rice's most famous stage work, "The Adding Machine," will open a five-performance run in the Texas Tech University Theatre this weekend.

Presentations will be at 8:15 p.m. Friday through next Tuesday and tickets have gone on sale at the box office, priced at \$2.50 for the public, \$1.75 for area students and \$1 for Tech students with validated ID cards. Reservations may be made through 806-742-2153.

Written in the 1920s, "The Adding Machine" is Rice's dramatic protest against slavery—human slavery in the business world through conformity, anonymity and insensitivity.

stage work outlines the life and death of Mr. Zero who, as his name suggests, has fallen prey to this slavery and has ceased to exist as a sensitive, aware human being. Hopelessly inept and inadequate, Zero dreams of confronting his boss to ask for a raise, but when the boss confronts him and fires him from the job, he murders his superior in a whirl of confusion. Still conforming to societal rules, Zero surrenders, stands trial and is executed. In the Elysian Fields he is given one last opportunity to achieve happiness but, in the critical moment of the play, he decides he still prefers the world of conformity.

Now Playing At The  
**D & C PONY EXPRESS CLUB**  
3838 W. Wall 694-1165  
**RON MONTGOMERY**  
8:30-1:30 Monday thru Saturday

**HURLEY WATER PURIFIER**  
MAKE YOUR OWN WATER FIT TO DRINK

- No Plumbing
- No electrical hook-up
- No refills
- Your own tap water purified!
- Chlorine and pollutants out!

Bottled water without the bottle or make your own bottle water cheap!!  
Phone or write for free brochure or demonstration.

409 Kent Drive  
Midland, Texas 79701 **682-3377**

Opry series continues

ODESSA — The Globe Theater continues its weekly "Odessa Brand New Opry" entertainment series with a fourth presentation at 7:30 p.m. Saturday. Tickets will be available at the box office from 6:30 p.m. on.

A variety of area and regional entertainers are booked, including country, Western, bluegrass and gospel musicians.

**Lonely Days & Nights Are Over!**  
Now Opening Thursday November 20th  
FINEST DISCO CLUB  
EVER PRESENTED IN WEST TEXAS

3920 W. WALL  
Unique Dance Floor

**THE PLACE**

NEXT TO SUPER BOWL  
Large Game Room

# anniversary sale

**HELEN REDDY'S GREATEST HITS**

**ANNE MURRAY Together**

**The O'Jays Family Reunion**  
including:  
I Love Music, Live For The Weekend, Unity, You And Me, She's Only A Woman, Steppin' To Heaven

**MFSB PHILADELPHIA FREEDOM**  
including:  
The Zip! Get Down With The Philly Sound, South Philly, Ferry Avenue, When Your Love Is Gone, Brothers And Sisters

**Michael Murphy Swears Against The Sun**  
including:  
A Mission On The Hill, Renegade, Rhythms Of The Road, Buffalo Gals/Pink Lady

SAT 2-4

Register for Door Prizes

**OLIVIA NEWTON-JOHN CLEARLY LOVE**

**ELTON JOHN GREATEST HITS**

**Lp's Tapes**  
code 6.98 lp IN code 7.98 tape  
**4<sup>66</sup> PERSON 5<sup>66</sup>**

**RAY WYLIE HUBBARD**  
Hubbard autographing his new album

**DAVID ALLAN COE ONE UPON A BENTON**  
including:  
Would You Lay With Me (In A Field Of Stone), Another Pretty Country Song, Shine It On Me, You Never Even Called Me By My Name

**TAMMY WYNETTE I STILL BELIEVE IN FAIRY TALES**  
including:  
The Man From Bowling Green, I'll Take What You Can Give Me (When You Can), The Boots, Dallas, I Still Believe In Fairy Tales

**CONWAY TWITTY THE HIGH PRIEST OF COUNTRY MUSIC**

**Leon Russell Will O The Wisp**

**JOHNNY MATHIS FEELINGS**  
including:  
What I Did For Love, Midnight Blue, Subliminal, The Greatest Gift

**CHICAGO'S GREATEST HITS**  
including:  
Just You 'n Me, Call Me My World, Saturday In The Park, 25 Or 6 To 4, I've Heard That One, So Long, Wishin' You Were Here

**GEORGE JONES Memories Of Us**  
including:  
Have You Seen My Chicken, Bring On The Clouds (She Should Belong To Me), I Just Don't Give A Damn, Memories Of Us

IN THE VILLAGE  
NO. 11  
META DRIVE

# MUSIC HAUL

**683-7885**  
9:30-6 p.m.



# MHS Center Chatter

By CORRINNE CAHOON  
CAROLINE KEMPER  
and SUSAN TIGHE

Now is the time for a new beginning, in more ways than one. It's the beginning of a new quarter and we hope that everyone has started out on the right foot. And speaking of feet... football season is over, and what a way to end it with a 5-2-1 record! Now what were we ranked?

We think that Coach Reedell and all of the football players deserve a big congrats for such a outstanding season. Another thing that really made this season such a good one were the extra spirit groups; the cheerleaders (Diane Freshour, Tim Cannon, Patty Qualia, Terry Haddock, Janet Baker and Lynn Cowden), the possessives (Kathy O'Neill) you and the girls did a great job, and the band.

The band really needs a paragraph of their own. Saturday after the game Friday night the band went to marching contest in Odessa. They brought back a division 1 for MHS. We wanted to congratulate the twirlers on their new look! The band is going to need a truckload of dirt to fill up the ruts from the many hours of marching practice, but it sure paid off!

The Midland High Youth Center had a great representation at the Charles Shed 'rap' session. It is true that football is over, but there are still things to occupy your lonely nights... Basketball is beginning. And these are school nights so you have a legitimate reason to get out of the house. Last weekend the basketball team traveled to Del Rio. The varsity lost a hard fought battle to Del Rio, but the JV brought back a win. Friday the basketball team travels to Pampa, to play starting at 7:30.

Congrats to Mary Raschke, Tish Madison, and Staci Moore, who were named to the all district team. The volleyball team won district over Castelberry 15-8, 9-15, 11-9. Now they advance to Regional Tournament at McMurry College in Abilene. This weekend. If they win this tournament its NO TO STATE!!!

The MHS Tennis team travels to Abilene to play in the state team tournament. Come on team!

The girls Golf team came in second in the tournament last weekend, trailing the 'winners' by five strokes. On the first team were, Kathy Johnson, Christy Pulte, Cary Nixon, Barbara Thompson, and Dikka Pitting. Kathy Johnson was the second place medalist. Ya'll are really getting into the swing of things. (you would never believe who wanted to put

Who, who, who, who, who, who, who, who, that was an Indian if you couldn't tell. Meanwhile, back on the reservation. The MHS drama production, "Indians", has already begun, tonight and tomorrow night is your last chance to see this fine production. Get you tickets from a drama student are at the door. Don't miss it!

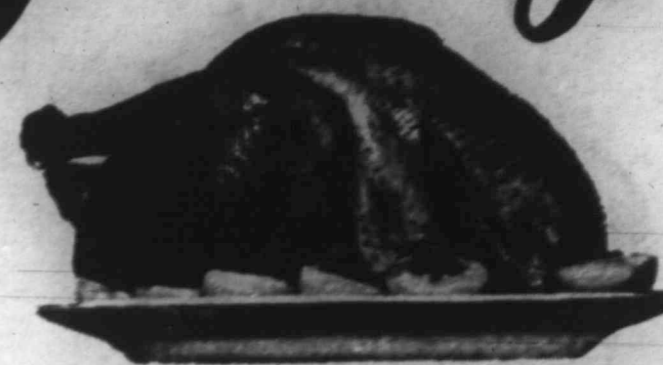
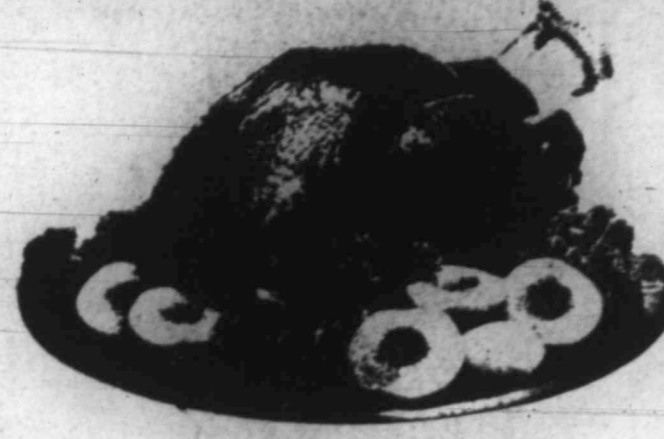
P.S. Jr. Council meeting 7:30 Wed. the 26th. 100 club 7:00 Wed. night. Everyone must attend!!

Next week we will try to recognize all of the wonderful people at MHS who feel they are important enough to get their names in the Chatter. Next week will be the last chance to fill in the Chatter Writers on your accomplishments.



# Thanks giving

Prices good thru 20-28, 1975. We reserve the right to limit quantities. None sold to dealers.



## Fresh Dairy

**Piggy Wiggly Oleo**

**3 \$1**  
16-oz. Pkgs.

Grade A, 16 Lbs. and up, Swifts  
**Butterball Turkeys**

USDA Grade A., 16-20 Lbs. Avg.  
**Yearling Turkeys**

Cottage Cheese 24-oz. 85¢  
Piggy Wiggly, All Flavors, Refrigerated Cookies 16-oz. Pkg. 79¢  
Fresh Half & Half 49¢  
Piggy Wiggly Buttermilk 1/2-Gal. Ctn. 83¢

Piggy Wiggly, Buttermilk or Sweetmilk  
**Canned Biscuits** 8-oz. Can **10¢**

**69¢**  
Lb

**59¢**  
Lb



USDA Good Shide Steak \$1.49  
Swift's Bone-Roll-Tied Turkey Roast 4 Lb. Whole \$6.29  
Swift's, All Dark, Turkey Roast 2-Lb. Box \$2.59

USDA Good Beef, Boneless  
**Chuck Roast** Lb. **\$1.29**  
10-16 Lbs. Avg., Swift's Turkey  
**Butterball** Lb. **79¢**

Chicken Gizzards 99¢  
Pork Chops \$1.49  
Picnics 98¢  
Farmer Jones, Boneless, Whole 3-5 Avg. Buffet Hams \$2.99  
Piggy Wiggly, No. 1, Slice Bacon \$2.09  
3-Lbs. or More, Fresh Ground Beef 79¢

Piggy Wiggly, Self Basting, Grade A, 10-14 Lbs. Avg. **Turkeys** Lb. **79¢**  
4-7 Lbs. Avg., Grade A **Baking Hens** Lb. **59¢**



Vegetable Shortening  
**Crisco**  
**99¢**  
3-Lb. Can



**Gold Medal Flour**  
**79¢**  
5-Lb. Bag

|   |   |   |  |
|---|---|---|--|
| Calrose Mandarin Oranges 11-oz. Can 29¢ | Piggy Wiggly, Fancy Cut Asparagus 14-oz. Can 59¢                | Early California, Med. Pitted, Olive 14-oz. Can 69¢ | Piggy Wiggly, Small Sweet, Fancy Peas 16-oz. Can 47¢ |
| Libby's Pumpkin 16-oz. 3/\$1.00         | Piggy Wiggly, Whole or strained, Cranberry Sauce 15-oz. Can 37¢ | Brunswick Pitted Dates 9-oz. Pkg 73¢                | Del Monte Sweet Pickles 12-oz. Jar 65¢               |
| Party Mix Egg Nog 8-oz. Can 79¢         | Lipton, Onion Soup Mix 2-Pk. Box 63¢                            | Lucky Leaf, Cherry Pie Filling 22-oz. Can 69¢       | Reddy's Mayonnaise 16-oz. Jar 79¢                    |

Del Monte 46-oz. Can  
**Tomato Juice** 49¢

Piggy Wiggly, Instant  
**Potatoes** 15-oz. Pkg. 69¢

Piggy Wiggly, Cut  
**Yams** 29-oz. Can 49¢

Sunshine, Krispy  
**Crackers** 1-lb. Pkg. 49¢

Del Monte, Crushed, Chunk, or Sliced  
**Pineapple** 2 15-oz. Cans 89¢

Wolf Plain  
**Chili** 19-oz. Can 69¢

# Meaning of spur varies

By JOHN CUNIFF  
NEW YORK (AP) — The big increase in housing starts during October means many things, depending upon your viewpoint.

To furniture makers it suggests the likelihood of higher sales. To builders it's a signal to contact hands, if they haven't already done so. To lenders it's a warning to prepare for more mortgage requests.

To economic forecasters the increase means other things. Some view the October rate of 1,458,000 units as 15 percent higher than the month before. Some say it's an aberration. Others claim it is unhealthy.

TO CERTAIN other analysts, all these considerations are secondary. Urbanologists recognize the need for brand-new homes, and they know that construction has a catalytic impact on business in general, but they think the emphasis is wrong.

To them, the construction of a new house often represents the flight from the city. Americans, they say, have been fleeing for decades, discarding the process houses that neighborhoods should have been rehabilitated.

THE THROWAWAY generation is passing, they say. Our resources, including money, are limited. We must conserve, not waste, that applies to housing too. The throwaway house is out of fashion, they say.

"We can no longer accept the traditional notion that the way to deal with a 'used' house is to throw it away and build a new one somewhere else," said Carla A. Hills, secretary of housing and urban development, in an address to lenders.

Instead, she said, "We must seek to preserve and recycle the wealth of housing we have in our cities and suburbs."

MRS. HILLS and others are concerned about the enormous assets — cultural and physical — that lay abandoned, relatively unused, underfinanced or seemingly destined for that fate, in the nation's cities.

Included in the list are one degree or another, are billions of dollars of educational, recreational and health facilities; transportation systems; streets, sewer and water systems, theaters, utilities, churches, parks, stores, factories. And housing.

THOSE CLOSE to housing and urban matters are appalled by the abandonment of well-constructed private homes and multifamily units, many of which could be replaced at a fraction of their original costs.

The problem is easily recognized, and so is what needs to be done: Bring back investments and entrepreneurs and residents. The real problem isn't one of recognition — it's taking the first step.

PRIVATE LENDERS don't hesitate to flatly say that they cannot risk their deposits on investments in the blighted, inner city areas. That, they say, is simply a sound business decision.

Government officials say they cannot do the job alone.

So there are government-industry programs, and industry-government programs. Neither wants to go it alone, and together they apparently have not, as yet, come up with programs they agree must be developed. Restoration is to take place.

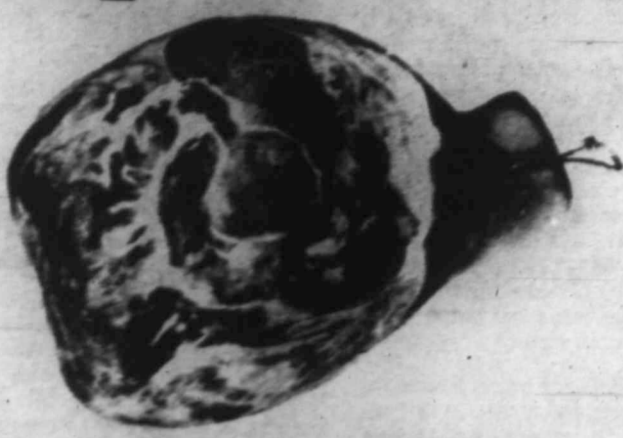
# Specials

## American's First Holiday

Although the Pilgrims of the Massachusetts Colony celebrated the first Thanksgiving in 1621, the traditional Thanksgiving held on the last Thursday in November was established by proclamation by President George Washington in 1789. Our first President and the Congress agreed to establish a day of public thanksgiving to offer thanks in the tradition of our Pilgrim forefathers for the opportunity to establish a nation based on the principles of freedom. As we approach the 200th Anniversary of the United States, we should pause and be grateful for the opportunity to live in a land where peace and freedom are our sacred rights guaranteed in a Constitution and based on a tradition which was started more than 350 years ago by a group of Pilgrims seeking religious freedom in a new land.



We Give S & H Green Stamps



6-8 Lbs. Avg., Whole  
**Smoked Picnic**  
**89¢**  
Lb



Holiday Favorite With Ham  
Maryland Sweet  
**Potatoes**  
**19¢**  
Lb

## BAKING NEEDS

Light Brown, Dark Brown or Powdered

**C&H Sugar** 1-Lb. Box **29¢**

Borden's Condensed, Eagle Brand Milk 14-oz. Can **69¢**

Karo Syrup 16-oz. Btl. **63¢**

Marshmallows 10-oz. Jar **47¢**

Coconut 14-oz. Pkg. **89¢**

Piggly Wiggly, Vegetable Oil 24-oz. Btl. **89¢**

Schilling, Vanilla Extract 2-oz. Btl. **77¢**

Kraft, Cream Marshmallow Topping 7-oz. Jar **49¢**

Shady Lane, Maraschino Cherries 10-oz. Jar **59¢**

Flavored, Baker's Baking **Chocolate Chips** 12-oz. Pkg. **79¢**

Top With Cheese Sauce  
**Cauliflower** Lb. **69¢**

Scan Spray, Fresh **Cranberries** 1-Lb. Pkg. **59¢**

Fruit Sliced Favorite **Tangerines** Lb. **29¢**

Mild Yellow **Onions** Lb. **19¢**

Choice California, Red **Grapes** Lb. **59¢**

Crisp, Romaine **Lettuce** Lb. **49¢**

Chuck Quality, Chili Meat or Ground **Beef** Lb. **19¢**

Lean, Boneless Stewing **Beef** Lb. **59¢**

Fresh Breast or Leg, Fryer **Quarters** Lb. **49¢**

Farmer Jones **Franks** Lb. **19¢**

Osceola, Slice **Bologna** Lb. **19¢**

Eckrich, Smoked, Heat & Serve **Sausage** Lb. **67¢**

Extra Choice, Jumbo, Sunkist Navel **Oranges** 3 Lbs. for **\$1**

Large Crisp Stalks, California **Pascal Celery** Lb. **29¢**

3-Lbs. Avg., Grade A Fresh Roasting **Chicken** Lb. **89¢**

Swift's, Grade A, Cornish **Game Hens** 20-oz. Size **\$1.19**



Betty Crocker, All Layer Varieties  
**Cake Mix**  
**59¢**  
18 1/2-oz. Pkg.

LOOKING FOR A HOLIDAY GIFT IDEA?  
GIVE PIGGLY WIGGLY "Gift Certificates"

For More Information See Your Local Store Manager  
Washington State Extra Fancy Red or Golden Delicious

**Apples**  
**4 LBS. FOR \$1**

Piggly Wiggly, 350 Sheet, 1 Ply Paper **Towels** 145-Ct. Roll **2.84¢**

Piggly Wiggly, Snow & Serve **Rolls** 12-Ct. **3/\$1.00**

Piggly Wiggly **Bleach** 1 1/2-Gal. Btl. **47¢**

Piggly Wiggly, 5-oz. Pkg. **Waffles** **2.45¢**

Piggly Wiggly, On The Cob **Corn** 4-Ct. Pkg. **89¢**

Mountain Fresh, 10-oz. Pkg. **Strawberries** **45¢**

Piggly Wiggly, Fruit **Cocktail** 3 16-oz. Cans **\$1**

Mrs. Smith's, 8 Inch **Pumpkin Pie** 26-oz. Pkg. **69¢**

Piggly Wiggly, Sliced or Halves **Peaches** 3 10-oz. Cans **\$1**

Piggly Wiggly, Whipped **Topping** 10-oz. Ctn. **49¢**

Piggly Wiggly, Whole Green **Beans** 3 16-oz. Cans **\$1**

Pet-Ritz **Pie Shells** 10-oz. 2-Pack **39¢**

Piggly Wiggly, Cut Green **Beans** 4 16-oz. Cans **\$1**



Whole Lb. \$2.99  
Lb. \$2.09  
Lb. 79¢  
99¢  
99¢

47¢  
65¢  
79¢

69¢  
49¢  
69¢





# U.S. team makes war on 'Thai Connection'

By DENIS D. GRAY  
 BANGKOK, Thailand (AP) — United States military and civilian narcotics agents, international police experts, supersniffing dogs and a team of Thai policemen are moving to crack a "Thai Connection" that supplies more than \$250 million worth of heroin to American addicts each year, informed sources say.

They report that by conservative estimate about 600 pounds of heroin from Thailand has reached American shores over the past six months and they add this is enough to keep 16,500 addicts in the habit for a year.

THE LATEST weapon in the Southeast Asian antidrug war is "Operation Commando Plug," a U.S. military effort to stop servicemen from taking advantage of the inevitable snafus and "last-minute rush" anticipated during the final withdrawal of American troops from Thailand to sneak drugs out of the United States.

"Commando Plug," expected to intensify as the March withdrawal deadline approaches, already has notched some successes.

Last month, U.S. military customs inspector discovered more than 100 pounds of heroin stashed in compartments of furniture belonging to a enlisted man. The furniture — with more than \$21 million worth of heroin tucked inside — was about to be shipped to Ft. Benning, Ga.

THE U.S. military is only a small source for the "Thai Connection," which Thai and Western experts say is supplying heroin to the United States and Europe at an increasing rate, possibly because of the reportedly successful curbs on opium growing in Turkey. Heroin is made from opium.

U.S. military officials estimate that a kilo—2.2 pounds—of heroin can bring as much as \$450,000 from dealers in the United States.

(New York City police say that dealers usually cut their overseas supplies of pure or nearly pure heroin seven or eight times and from one kilo can sell as many as 185,011 shots, which currently sell on the

streets of New York for \$7 each. Thus a dealer in heroin can gross as much as \$1,295,077 from each kilo.)

Besides hidden compartments of furniture, military and civilian narcotics agents cite international mail, "certain cavities of the body" or, more conventionally, shipments on seagoing vessels, as preferred ways of getting drugs out of Thailand.

"COMMANDO PLUG" is using a variety of techniques to stop drug trafficking.

Officials say about 450 military customs inspectors are working to handle processing out of the remaining 16,500 U.S. troops in Thailand. Everyone's outgoing household goods are thoroughly checked. Before departure, Alsatian dogs — taught to detect marijuana, heroin and explosives — sniff over carry-on baggage.

Even U.S. combat aircraft in Thailand are "sterilized" before take-off on training missions, military authorities say. At one of the three remaining U.S. air bases in Thailand a Dachshund named "Rolland" and his American mongrel partner "Daisy" are slipped inside the tight cockpits of F4 Phantom jets and other warplanes where the beeper Alsatians can't maneuver to ferret out possible drug caches.

THE AUTHORITIES say that in the six months between April and September, they have seized six heroin shipments, 39 marijuana packets and almost 1,300 contraband items of various kinds which U.S. servicemen tried to get out of Thailand.

On the civilian side, agents of the U.S. Drug Enforcement Agency—DEA, which has its Southeast Asian headquarters in Bangkok, operate closely with their Thai counterparts to prevent smuggling into the United States, although they themselves have no arrest powers.

The United States spends about half a million dollars a year on anti-narcotics support in Thailand and there are several U.S. customs officials acting as advisers to the Bangkok government.

An agent for the international police organization Interpol and a United Nations representative are to be stationed in Bangkok's police department early next year to help the Thais cope with drug traffickers.

Thailand is generally recognized as "the weak link" in the region's fight against drugs.

THE COUNTRY'S antidrug nerve center employs only seven agents who say they must battle not only a highly organized drug racket known to include more than 20 large organizers, but also deal with what they say is corruption.

Agents of the national narcotics suppression center say that Thailand has yet to bring a large drug operator to justice and note that the more powerful — and wealthier suspects — have a better chance of getting off the hook than smaller, less dangerous operators.

# Truckers on strike in Valley

PHARR, Tex. (AP) — A truckers strike called early today by the Produce Haulers of Texas got off to a quiet start with virtually no truck traffic on Lower Rio Grande Valley highways.

David Coers, president of the recently organized truckers group, said the strike was called because Valley produce shippers refused to grant a requested 25 per cent rate increase.

COERS SAID there would be little strike activity until later in the day when trucks started loading produce for shipment to Northern markets. He has said the strike will include picketing and roadblocks and warned there may be violence.

"If they (truckers) don't shut down, I know there's going to be violence," Coers said. "I hope we don't see any violence, but we've got a lot of hot folks down here."

He said truckers from Pennsylvania, Missouri and Arkansas are in the South Texas area to support the strike and he had heard reports that roadblocks might be set up on U.S. 281 and U.S. 77, the two highways leading north from the Valley.

EXTRA TEXAS Department of Public Safety units were on duty in the Pharr area and on U.S. 77 near Raymondville, but no incidents were reported.

The DPS director, Col. Wilson E. Speir, said his department will not get involved in the strike but it is the department's responsibility "to prevent any infringement on the free and open use of our highway system, to prevent violence and to provide protection to lives and property."

"We will therefore take such action as is necessary to keep the roads open and to protect against lawlessness," Speir said.

In a letter circulated to truckers, Mike Parkhurst, editor of Overdrive Magazine, told truckers they should "stay the hell out of the McAllen-Pharr area if you want to keep your trucks running."



tasty **GO-TOGETHER** treats

**CARTER'S MARKETS**  
 1411 N. LAMESA - 900 S. MAIN ST.

**NORBEST SELF BASTING TURKEYS**  
 69¢ lb.

DON MASON IS NOW THE MARKET MANAGER AT E. FLORIDA & S. MAIN

**MEAT**  
 ...AT BEST BUY PRICES  
**FRYERS 49¢** lb.

**GROUND ROUND**  
 98¢ lb.

**BOLOGNA**  
 MARKET SLICED PEYTON—LB ..... 89¢

**FAMILY STEAK 89¢** lb.

SAVE BY THE BUSHEL 'N PECK... **PRODUCE**

**SIRLOIN STEAK \$1.29** lb.

**APPLES**  
 WASHINGTON FANCY DELICIOUS RED. 3 lb. 69¢

**MIXED NUTS**  
 89¢ lb.

**POTATOES**  
 10 lb. bag 79¢

**ORANGES**  
 5 lbs. \$1.00

**BANANAS**  
 lb. 19¢

**GRAPES**  
 lb. 39¢

**DEL MONTE SPECIALS**  
 PEAS, CORN OR CUT GREEN BEANS 303 CANS 3 FOR \$1.00

**SPINACH OR SAUERKRAUT**  
 303 CANS 4 FOR \$1.00

**SWEET POTATOES**  
 lb. 19¢

**GOLD MEDAL FLOUR**  
 5 lb. bag 79¢

**DEL MONTE SPINACH**  
 SAUERKRAUT

**FRUIT COCKTAIL OR PEACHES**  
 303 CAN 39¢

**COCA-COLA**  
 64 OZ. 79¢

**SUGAR**  
 \$1.29

**GESHA MANDARIN ORANGE**  
 11 oz. Can. .... 39¢

**CRANBERRY SAUCE**  
 300 CAN 43¢

**EGGS**  
 LARGE 69¢

**COFFEE**  
 WITH \$7.50 PURCHASE 1 lb. CAN 99¢

**MILK PRESTON**  
 GAL. \$1.49

**ZEE PAPER TOWELS**  
 LARGE ROLL 59¢

# Jackie cancels

# Caroline's party

LONDON (AP) — Jacqueline Kennedy Onassis' transatlantic telephone call has led to the cancellation of an elaborate 18th birthday party planned for her daughter Caroline next Thursday, a gossip columnist says.

"The party is off. I'm not holding one next week, and that's that," Caroline was quoted as saying.

Daily Mirror columnist Paul Callan said the call was "urgent and shrill" and added: "Mother gave the 17-year-old child a sharp wiggling (scolding) for going to too many parties and paying scant attention to her alleged art studies."

Mr. Ford's decision to head the party's festivities next week is a surprise, since the president's daughter is expected to be in Orange County, Calif., when Mr. Ford is scheduled to speak at a public reception in the county on Nov. 21.

The banner for the reception reads "Mr. Ford's West Coast Dinner" and is expected to be a major event in the state's political calendar.

Mr. Ford's decision to head the party's festivities next week is a surprise, since the president's daughter is expected to be in Orange County, Calif., when Mr. Ford is scheduled to speak at a public reception in the county on Nov. 21.

The banner for the reception reads "Mr. Ford's West Coast Dinner" and is expected to be a major event in the state's political calendar.

Mr. Ford's decision to head the party's festivities next week is a surprise, since the president's daughter is expected to be in Orange County, Calif., when Mr. Ford is scheduled to speak at a public reception in the county on Nov. 21.

The banner for the reception reads "Mr. Ford's West Coast Dinner" and is expected to be a major event in the state's political calendar.

REDEEM PROMPTLY

**Save 15¢ ON KRAFT 12 OZ. AMERICAN SINGLES PROCESS CHEESE FOOD**

15¢ STORE COUPON

15¢

ONE COUPON PER ITEM PURCHASED

COUPON EXPIRES APRIL 30, 1976

**Cut your cost!**

**SINGLES** EACH SLICE WRAPPED

**KRAFT**

**16 AMERICAN SICES** PASTEURIZED PROCESS CHEESE FOOD

16 SICES (1 1/2 OZ. EA.) NET WT. 12 OZ. (3/4 LB.)

KRAFT Division of Kraftco Corporation

ORIAL

Novak

members of committee of conservative dale — taken Mr. Ford a Reagan 38 per decided.

nt sentiment ated aversion Republicans st turning out nt, even an Hence, one all-important eveloped by al strategist. Ford will be if the in- nished.

in that 70 per strength within es from in- r that a Ford w Hampshire im between 7 its in the two- west. Why? w Hampshire, defeat, would cloak of in-

currency also dged sword for ering asset and r example, no re explosive re Cuba, par- "Little Cuba" the 120,000 ty Republicans cians who fled dnt. Mr. Ford axation of U.S. e has now been s here to do ter the Florida

iami operatives ry registration m to train 100 a costly media r thousands of b voters among ban refugees in y. Although the ch last-minute ten accomplish believe that registrant they eagan.

ord could at any te a decision on heavily in the e same is true l, an issue only sive than Cuba anish-speaking

r Mr. Ford's eaded by the s Frey, is the unawareness here that could his presidency. ed Republican e House has a wn here, it is a

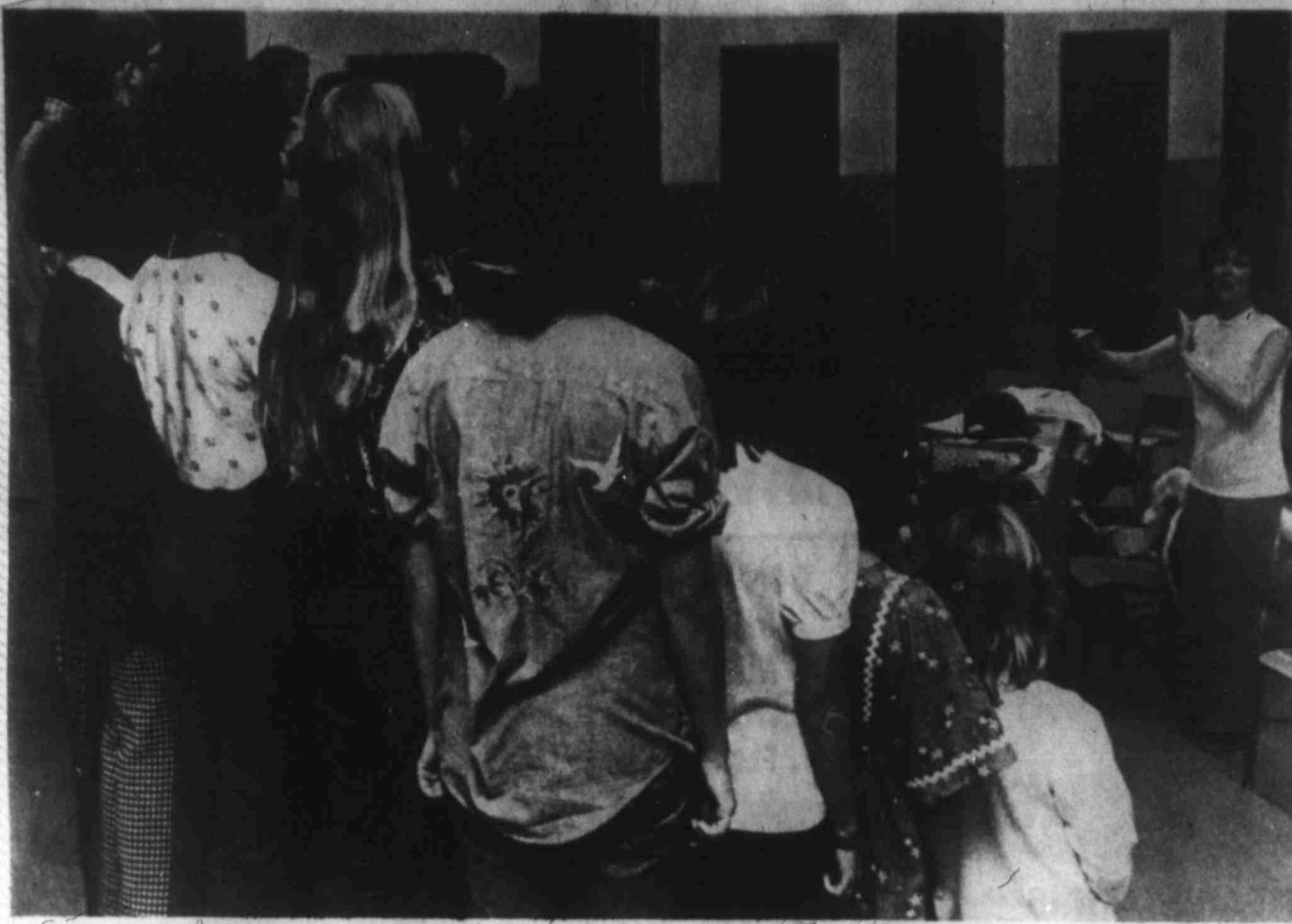
here in Orange asted when Mr. itation to speak ublican fund- g the party's ivities next titute: Ronald

House decision ch at a special ad of Honor d Nov. 11 in-. The banner and Ledger — " — ran over a dressing a West ising dinner the

stment is not d's effort to s leaders and e rank-and-file with him next

ickman

11-20



MARJORIE DODSON directs the all-city choir in rehearsal, preparing for tonight's free concert at 7:30 p.m. in the Austin Freshman School auditorium. The concert will be prefaced by a day-long clinic by Dr. Charles Nelson of East Texas State University, who will conduct tonight's concert.

# Election board plugs campaign law loophole

The Washington Post WASHINGTON — The Federal Election Commission has sealed a major loophole — concerning the selecting of delegates to national party conventions — in the new federal campaign laws.

Last year, after revelations about irregularities in the 1972 Presidential campaign, Congress imposed sharp new limits on contributions to and expenditures by federal candidates.

In the speed of the legislative process, however, Congress overlooked the impact that the process of delegate selection could have on the limits set for Presidential candidates.

As the law ultimately was enacted, candidates for convention delegate conceivably could have spent unlimited amounts, in effect negating the law imposed on the candidates for the Presidency.

In an advisory opinion, the Commission voted 6 to 0 to extend the limitations the new law applies to

candidates for federal office to delegate candidates.

The Commission's decision stretched a provision of the law to cover delegates, said member Thomas E. Harris, "to try to minimize the damage of the fact that Congress didn't squarely face the fact of delegate selection."

The opinion divides delegate candidates into three categories — those authorized by a Presidential candidate, those pledged to a candidate but unauthorized by him, and unpledged delegates.

Expenditures of those in the first category will be charged against the Presidential candidate's limits.

Delegate-candidates who are supporting a Presidential candidate but who are not authorized to raise or spend money on behalf of the candidate are limited to spending \$1,000.

Persons or committees contributing to delegate candidates will be under the same limits as they are

for other candidates for federal office.

Uncommitted, unpledged candidates for delegates, the opinion said, can spend any amount they wish under the law.

While saying that, the Commission said it "would regard a delegate who spuriously maintains that he or she is unpledged and who exceeds the \$1,000 ceiling to be in violation" of the federal criminal code.

The Commission said that the limitations would not include the costs of travel and subsistence at convention. But it did preclude company or union treasuries from underwriting these kinds of costs.

The Commission also stated that any candidate for delegate who spends more than \$100 will have to file regular reports of receipts and expenditures with the Commission.

Another spending question not touched by the new law will be taken up at the Commission's meeting next Thursday.



**GOOD NEWS**  
**HONEY BOY PRICES ARE LOWER**

## Did ancient man soar with balloons ?

MIAMI (AP) — Two men hope to soar high above the mysterious markings on Peru's Plains of Nazca next week to prove that ancient balloonists, not visitors from another planet, carved the strange symbols.

Jim Woodman of Miami and Julian Knott of Great Britain said Tuesday they

believe the ancient Incas had the imagination, intelligence and materials to fly.

"We've taken 3,000-year-old textiles from the balloonists, not visitors from another planet, carved the strange symbols," said Woodman. "The word was always the same. This stuff could be used to

make balloons that could carry men."

A popular book, "Chariot of the Gods," and a television program have suggested that the markings, miles long and believed to be thousands of years old, were landing strips for ancient spacemen.

"We think that's wrong," said Woodman.

"We think ancient man himself flew, and we think we can build and fly the same kind of craft he may have flown in."

About 110 miles from Nazca is Lake Titicaca, where for, thousands of years the Incas have woven lightweight reed boats. Woodman said the boats were light enough to be used as gondolas.

### HONEY COOKERY Use Burlinson's Honey



... in any food that needs sweetening  
Beverages, Breads, Cakes, Candies, Cookies, Desserts, Frostings, Meats, Salads, Vegetables.

#### YULETIDE SALAD

Good during holidays. No dressing needed.  
1 package (3 ounces) lemon-flavored gelatin • 1 1/2 cups boiling water • 2 tablespoons white wine vinegar • 2 tablespoons honey • 1 cup crushed pineapple, drained • 1 cup grated sharp cheese • 1 cup heavy cream, whipped • Salad greens • Pimientos or cherries

Dissolve gelatin in boiling water. Add vinegar and honey; chill until slightly thickened. Fold in pineapple, cheese, and whipped cream. Pour into individual bell-shaped molds or use a quart mold. Chill until thoroughly set. Unmold on crisp salad greens. Garnish with bits of pimiento or cherries. Serves 6 to 8.

Burlinson's HONEY a natural unmanufactured sweetener

# WALLACE

PRICES GOOD NOW THROUGH WEDNESDAY

## GROCERY & MARKET

WE ACCEPT FOOD STAMPS  
OPEN 7 DAYS-8 A.M.-9 P.M.  
1700 Cloverdale Road Phone 682-2754

### Feast Fixins!

**FRESH HENS 79¢ LB.**

**CELERY CRISP STALK 19¢ EA.**

**3 for \$1.00**

- Gandy's HALF & HALF
- WHIPPED CREAM
- SOUR CREAM

**BROWN & SERVE**

- ROLLS RAINBO 39¢ Doz.
- OCEAN SPRAY CRANBERRY SAUCE 39¢ CAN
- Coca-Cola 32 oz. 3 for \$1.00
- PECANS NEW CROP 89¢ LB.
- WALNUTS CALIFORNIA 69¢ LB.
- PORK CHOPS FIRST CUT \$1.09 LB.
- HAM GLOVER'S SMOKED \$1.47 LB.
- SIRLOIN STEAK \$1.19 LB.
- FAMILY STEAK 89¢ LB.
- T-BONE STEAK \$1.49 LB.
- FRESH OYSTERS 10 oz. JAR \$1.39
- MILK PRESTON GAL. \$1.49

**MOGEN DAVID WINE FIFTH 1.49**

**COORS BEER PK \$1.59**

**SEAFOOD-CATFISH SHRIMP-DRUM BUFFALO**

**IMPERIAL PURE CANE SUGAR 5-Lb. Bag \$1.39**

**Your Friendly Store With Good Service**

### Sakharov support growing

MOSCOW — The campaign for signatures supporting Andrei Sakharov, refused a visa by Soviet authorities to go to Ohio to receive his Nobel Peace Prize, continued in the Soviet Union Wednesday, bringing to 130 the number of people who have expressed support publicly for the dissident physicist.

A new declaration, the third in three weeks and signed by 77 people, was given to foreign correspondents Wednesday. It said, "Sakharov is fighting for the democratization of our society, for freedom of information and for other civil rights" in the conditions currently existing in the Soviet Union. This was, in effect, a fight for peace, the statement said.

"the award of the Nobel Prize to Sakharov," the declaration said, "is international recognition of the fact that this fight, although an internal affair, contributes in fact to peace throughout the world and international security."

The Soviet government Wednesday published a response in the weekly press from a representative of the Soviet visa office. "Given the fact that Sakharov was familiar with state military secrets," the government said, "the visa had been denied for reasons of security and in accordance with existing (Soviet) regulations."

**LEGAL NOTICES**  
NOTICE OF PUBLIC HEARING  
There will be a Public Hearing at 3:00 p.m., Friday, November 21, 1975, in the Midland County Commissioners Courtroom, second floor, Midland County Courthouse, Midland, Texas for the purpose of explaining the Health System Agency, which is being organized in the Permian Basin Area, as required by E. S. 2441. Nominations will be considered for the area wide governing body from this county. Midland County has been allocated three professionals in the health service field and three from other professions. The nominating committee is composed of Mayor Ernest Angelo, Mr. Wayne Ulrich, Dr. Joe E. Hillard, Dr. Viola Coleman, Mr. Rodriguez Lopez, Mrs. Gladys Thomason, Mr. Kenny Jastrow, Mrs. Marcelle Moore, and Judge Barbara G. Culver, chairman.

BARBARA G. CULVER  
COUNTY JUDGE  
MIDLAND COUNTY, TEXAS  
(November 20, 1975)

Pursuant to Sections 6036 and 6104 of the Internal Revenue Code, notice is hereby given that Permian Charitable Foundation of Midland, Texas, Inc. has filed its annual report of its operations for years ended June 30, 1974 and 1975 as required by the Internal Revenue Code. The annual report of Permian Charitable Foundation of Midland, Texas, Inc. which is a private foundation, is available for inspection at 800 First National Bank Bldg., Midland, Texas. Upon request of any citizen, this annual report will be made available to him for inspection during business hours at the above address, for a period of 180 days after the publication of this notice.

(November 20, 1975)

# Wonder Worker

Our Sour Cream is a wonder worker! Brightens up a salad soups-up a soup. Crowns a casserole. Lifts a potato, with luscious, mouth-watering flavor. It's hard to believe one little carton of Quality Cherd Sour Cream can do so many things!

all the goodness you expect

# Gandy's

QUALITY CHERD

**Adv**  
The Washington Post WASHINGTON Ford's advisers should counter Rothenberg's challenge more time "being less time at Republic" At a closed-door Mayflower Hotel

**Serving**

**SC**  
12-OZ. C 6-PA \$1

**GOOCH-WATER ADDED**

**Shank Port RUMP PORT**

**GOOCH DRY CU**

**GOOCH COOKED**

**MINU**

**MRS. SMIT BIRDS EYE**

**OCEAN CRAN**

# Advisers agree President should campaign less

The Washington Post WASHINGTON — President Ford's advisers have agreed that he should counter Ronald Reagan's forthcoming challenge by spending more time "being presidential" and less time at Republican fundraisers. At a closed-door meeting at the Mayflower Hotel RECENTLY, a

presidential campaign steering committee listened to a variety of complaints about Mr. Ford's political strategy and tactics. Richard L. Herman, former GOP national committeeman from Nebraska, said he thought that Mr. Ford could be more effective in the White House attending to presiden-

tial duties than he could on the campaign trail. There was widespread agreement with this view, which provoked a reply from White House cabinet secretary Jerry Jones that Mr. Ford's trip to Georgia last week was "his last speech to a Republican fundraiser in a long time and maybe

forever." Jones represented the White House at the meeting in the absence of White House chief of staff Richard Cheney, who accompanied the President on his world economic summit trip to Paris. Along with the criticisms there was some good news for the Ford ad-

visers, including optimistic reports of successful campaign organization in a number of early primary states, including the first primary in New Hampshire. The best news of all from the committee's point of view was the presence of Sen. Barry Goldwater of

Arizona, who is being counted on by the Ford committee to defuse the Reagan challenge among conservatives. Goldwater has yet to formally endorse a candidate for president, but he came close to it again Monday.

federal of  
dged can-  
the opinion  
mount they  
Commission  
delegate who  
he or she  
exceeds the  
"olation" of  
that the  
include the  
assistance at  
clude com-  
from under-  
stated that  
legate who  
will have to  
receipts and  
mission.  
question not  
will be taken  
meeting next

Honey  
stening  
ookies,  
etables.  
ded  
n 1 1/2 cups  
inggs + 2  
le, drained  
cream,  
ries  
nd honey, chill  
and whipped  
or use a quart  
salad greens  
6 to 8  
sweet

e Lifts  
ing  
carton  
ESS



**M SYSTEM FOOD STORES**  
Serving West Texas Since 1924

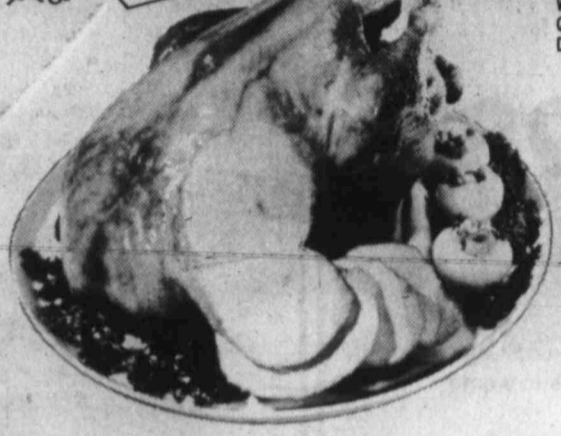
**SCHLITZ BEER**  
12-OZ. CANS  
6-PACK  
**\$1.29**




**GOOCH-WATER ADDED CURED HAMS**  
Shank Portion Lb. .... **\$1.09**  
RUMP PORTION Lb. \$1.19 CENTER SLICES Lb. \$1.98

**GOOCH DRY CURED HAMS** 1/2 or Whole Lb. .... **\$1.49**  
**GOOCH COOKED HAMS** 1/2 or Whole Lb. .... **\$1.69**

We have everything You need for  
**THANKSGIVING DINNER**



We Reserve Right to Limit Quantities & Refuse Sales to Dealers!

U.S.D.A. GRADE "A"

## TURKEYS



**BUTTERBALL TURKEYS** 10 to 20 Lbs. Lb. .... **79¢**

**WIN YOUR TURKEY**  
REGISTER FOR FREE TURKEY!  
One 28-lb. Butterball Turkey to be given away FREE in each 'M' SYSTEM FOOD STORE!  
• Drawing to be held Nov. 26th at 12 noon!  
• Do not have to be present to win!  
• No purchase Necessary  
REGISTER TODAY

**OPEN 'TIL 10 P.M. MONDAY THRU SATURDAY!**

**Staff TURKEYS**  
Young and Tender  
**63¢**  
Lb.

**SLICED BACON** Lb. Cuddy's Bulk Sliced ..... **\$1.69**



**-Fresh and Lean-GROUND BEEF**  
Family-Pak!  
Lb. **79¢**

**FRANKS** Cuddy's "Cruck Wagon" 12-oz. Pkg. .... **73¢**  
**CUDAHY'S Boneless, Fully Cooked! CANNED PICNICS** 3 Lb. Can ... **\$4.99**

**Andre' COLD DUCK**  
4/5 Quart Bottle. . . **\$1.99**

**TRELLIS SWEET PEAS**  
303 Can  
**4 FOR \$1**

**DOUBLE LUCK CUT GREEN BEANS**  
303 CAN  
**5 FOR \$1**


**DEL MONTE PUMPKIN**  
303 Can  
**3 FOR \$1**

**FROZEN FOOD VALUES**  
**MINUTE MAID ORANGE JUICE** 6-OZ. CAN ... **4 FOR \$1**  
**MRS. SMITH'S PUMPKIN PIES** 26-OZ. SIZE ... **79¢**  
MRS. SMITH'S PIE SHELLS 3-INCH SIZE 3-CT. PKG. .... **39¢**  
BIRDS EYE COOL WHIP 3-OZ. TUB ... **59¢**

**Staff ICE CREAM** Assorted Flavors! 1/2 Gal. Round Carton **89¢**




**Staff FLOUR** PRE-SIFTED ALL PURPOSE FLOUR 5 Lb. Bag **69¢**



**DEL MONTE GOLDEN CORN** Cream Style or Whole Kernel 303 CAN **3 FOR \$1**



**OCEAN SPRAY CRANBERRY SAUCE** Whole or Jellied No. 300 Can **3 FOR \$1.**



**COLORADO RUSSET POTATOES** 10 Lb. Bag **99¢**  
**SWEET POTATOES** Texas Grown! Lb. .... **29¢**  
**ACORN SQUASH** Lb. .... **19¢**  
**DRIED FIGS** 14-OZ. PKG. .... **99¢**  
**DATES** (Random Weight Pkgs.) .... **99¢**  
**CHESTNUTS** Lb. .... **89¢**



**JELLO GELATIN** All Flavors 3-OZ. PKG. .... **5 FOR \$1**  
**WESSON OIL** 45-oz. Decanter **\$1.59**  
**BRUCE'S CUT YAMS** 303 can **3 for \$1**



**FOLGER'S COFFEE** 1-Lb. Can .... **\$1.19**  
**MAZOLA STICK MARGARINE** 1-Lb. Carton .... **75¢**  
**A-1 STEAK SAUCE** 10-OZ. BOTTLE. .... **99¢**



**M SYSTEM FOOD STORES**  
3421 W. Illinois • 1200 Rankin Hwy. • North "A" & W. Scharbauer Dr.

# Catholic group loaned Mandel money for divorce

The Washington Post business partner Harry W. Rodgers III, at the Baltimore branch of the Pallottine Fathers, a missionary society of the Catholic Church, lent Maryland Gov. Marvin Mandel the \$54,000 he used to help pay for his 1974 divorce settlement, according to informed sources.

The loan was arranged in part by Donald Webster, who was Mandel's 1974 campaign treasurer and also an investment adviser to the Pallottines. The money was channeled through a Baltimore used car dealer to conceal its origin and avoid possible embarrassment for the Pallottines, the sources said.

A source familiar with the Pallottines in Baltimore said the priests there did not know the money would be used in connection with Mandel's divorce.

The Pallottine Fathers in Baltimore invest money in a variety of Maryland business enterprises to finance their missionary work. They have invested occasionally in ventures that included W. Dale Hess, Mandel's close friend and campaign fund raiser, sources said.

Mandel and Hess, a millionaire businessman, are targets of a U.S. grand jury investigation being conducted by the U.S. attorney for Maryland. Prosecutors are investigating an alleged pattern in which Mandel received favors from Hess and Hess'

the Francis Scott Key bank. Webster described himself as an investment adviser to the Baltimore order.

The Very Rev. g. John Carcich, a Pallottine official, was one of the original incorporators of the Francis Scott Key bank. The Pallottines ultimately purchased 5,000 of the bank's 100,000 shares of stock according to state records.

The loan from the Pallottines to Mandel was channeled through a Baltimore car dealer, William May, who passed it on to the governor.

The governor was divorced from Barbara Mandel in the summer of 1974 and immediately remarried Jeanne Dorsey, a 36-year-old St. Mary's County divorcee. The full amount of the settlement \$78,000. In an interview

with Barbara Mandel last fall, Mandel described himself as a relatively poor man with no significant financial assets.

The formal name of the Pallottines is the Society of the Catholic Apostolate. It was founded in Rome in 1835 by Vincent Pallotti.

In the United States, the Pallottines were known for ministering to immigrant groups, particularly Italian-Americans. More recently, the Pallottine Fathers have been criticized by some other Catholics for their direct mail fund-

raising techniques. Although the eastern province of the Pallottines is headquartered in Baltimore, the order does not fall under the jurisdiction of the Baltimore Archdiocese, according to an archdiocese spokesman.

## Japan to catch U.S. in GNP race by 1985

**The Los Angeles Times**  
TOKYO — Herman Kahn, head of the Hudson Institute who predicted more than a decade ago that Japan would eventually outstrip the United States in per capita income, hasn't changed his mind.

The futurologist and sometimes consultant to the Defense Department told a luncheon meeting of the foreign correspondents club here Tuesday he has made only one change in his original prediction that Japan would surpass the per capita wealth of the United States by the year 2000.

"NOW, THE YEAR will be 1985," he said. Kahn, who was among the first to single out Japan as a nation destined for economic superpower status back in 1963, qualified his new prediction by saying it was predicated on an assumption that Japan's economy would grow by 8 or 9 per cent in real terms each year for the next nine years, compared with an average of around 4 per cent for the United States.

"If the economy grows at 5 or 6 per cent, then it will still take until the year 2000," he said. An 8 to 9 per cent annual growth rate for Japan was possible, he said, because of the nation's proven ability to increase productivity by 8 or 8 per cent a year and add another 1 or 2 per cent in production by increasing the total hours worked by a growing labor force.

**THE THINK TANK** leader said he based his faith in the ability of Japan to grow in the future of the outlook that public investments in infrastructure — highways, bridges, railways and housing — and private investments in anti-pollution equipment will take over the role once played by domestic consumption in spurring on the economy.

With exports accounting for only 9 per cent of Japan's GNP, growth won't come through trade expansion, he said. And with consumers already possessing virtually every description of consumer goods, private consumption can't be expected to act as the prop it once was, he added.

Kahn pointed out that with production in Japan running "at least 15 per cent and probably 20 per cent below capacity," Japan has the leeway to grow at a rate of 12 per cent a year for two or three years "if it wanted to."

One other prop for future growth, he said, was that "Japan has already achieved the hard thing — a \$500 billion economy."

"With money, it's surprising how easy it is to be successful. The first \$500 billion is always the hardest," he quipped, only half in jest.

Kahn praised Japan for adopting, successfully, what he called "the toughest anti-inflation policy in the world" which enabled the nation to bring its trade back into surplus.

**Scholarship winners honored**  
LUBBOCK — Two Midland scholarship recipients were recognized here recently during the annual pig roast of the Texas Tech University College of Agricultural Sciences.

William Buehler, son of G. A. Buehler of 1600 Cimmaron St., received a \$200 King Ranch scholarship, and Douglas J. Burger, son of Tommie L. Burger of 3321 Camarie St., received a \$100 agricultural seniors scholarship.



**STRATOLOUNGER CLOSE-UP IT RECLINES... EVEN AGAINST A WALL**

No more scarred walls! Position it just 3" from the wall. When you recline it moves forward, saves space. Easy care Bolt-A-Flex vinyl.

**\$198**  
Charge It!

it moves forward

**A SPECIAL PURCHASE FROM STRATOLOUNGER WHILE QUANTITIES LAST**

The buy of the year. Get it now for instant comfort for anyone. Tailored head-to-toe in carefree green or gold Herculon over billowy soft cushioning. Three comfort positions. Stunning nail head trim.



**\$139**  
Charge It!

SIT STRETCH RELAX

# PRE-HOLIDAY SALE

Shop NOW... Avoid The Crowds... Shop While Selection Is Complete  
With Savings Like This... You'll Be Glad In December That You Shopped In November.



**5 PIECE DAYSTROM BUTCHER BLOCK CONTEMPORARY**  
Trestle Table & 4 Chairs

**\$258**  
Charge It!

Handsome 35" x 67" trestle table is surfaced in a handsome butcher block design plastic veneer that's mar and stain resistant. Striking gleaming chromed steel chairs are upholstered in heavy duty vinyl.

Something Extra! Buy 5 Pcs. Get 2 EXTRA Chairs for \$45

**Daystrom FURNITURE**

**GRANDFATHER CLOCK SALE**

*Ridgeway*

Stately elegance. Brass tubular chime bars, pendulum and weights. Full length glass door and sides. Vintage cherry finish.

**\$50 holds til Christmas!**

**\$599**  
REG. 699.00



**All wood "Oak Country" by Vaughan**



**MASTER BEDROOM VALUE 3 PIECES**

**66" TRIPLE DRESSER, MIRROR, HEAD BOARD**

So magnificent! So much for your money! quality made throughout. Solid oak moldings and turnings. Selected oak veneers on sturdy wood products. Beautifully captured in a painstaking 16 steps finish! Mirror of finest plate glass. Dust proofed interiors. Chest available for only \$239.

Triple Dresser Mirror & Headboard

**\$369** CHARGE IT!



**THOUSANDS OF THESE MATTRESSES HAVE BEEN SOLD AT \$89.95 AND UP!**

**\$69.95**  
Charge it!

**BUY A NATIONAL TWIN MATTRESS OR BOX SPRING TODAY FOR AS LITTLE AS**

These days it's really hard to beat the high cost of almost everything it seems. But here's your opportunity to beat the high cost of sleep. An outstanding firm mattress with the same cover formerly sold on famous mattresses at \$89.95 and up. Quilted with Felt and Tufflex. With patented Coil construction for added support and firmness.

CHOOSE THE SIZE YOU NEED!  
•Regular Size Mattress or Box Spring \$89.95  
•Queen Set Mattress & Box Spring \$239.95  
•King Set Mattress & 2 Box Springs \$339.95

**SERVICE**

It's Not Just A Word... It's A Policy At Aladdin House

**MEMBER**

MORE THAN 1000 STORES WORKING TOGETHER TO BRING YOU MORE VALUE... MORE QUALITY FOR YOUR FURNITURE DOLLAR

**Aladdin House FURNITURE**

3504 W. WALL  
694-6649

**OPEN THURS 'TIL 8:30 P.M.**  
**WEEKDAYS 9 A.M. 'TIL 6 P.M.**  
**SUNDAY BROWSING 1 P.M. - 5 P.M.**

IT'S NO wouldn't give the plenty. 1

Ch in

ODESS its 4-4 Odessa. Tourna Junior Co

A & clas in L

By The J No. 1 Southwe Star Co day bar make the Unbes consec of How Texas h subdue South in the L winning by Joe minutes for the For 1 the 230 lins to 33-yard of the n In off State 4 14, Ab Houston blanker Ange with th over th for the

5

IF: 3 17' 8 ONE 9

# NFL releases stock plan

NEW YORK (AP) — The ramifications of the formula adopted by the National Football League to stock its new Tampa Bay and Seattle franchises could be widespread.

First of all, the plan may be subject to collective bargaining between the NFL Management Council and the Players Association.

Then, the liberal aspects of the plan which makes available not only active players but those players on various reserve lists as well, could produce widespread movement of some very well-known names.

And finally, the college draft formula could provide Tampa Bay and Seattle with some attractive young talent to go with the basic veterans provided by the expansion draft.

"Tampa Bay and Seattle will be picking their players from the largest pool of quality players ever available in football expansion," said Commissioner Pete Rozelle, who announced the plan Wednesday.

The formula works this way: Each of the 26 existing clubs will be permitted to freeze two players from their total reserve lists as of Oct. 28. Those lists include players injured for the season, players performing in Canada, retired players and players in other miscellaneous categories.

The teams may also protect 30 other players from the active 43-man rosters. That creates an instant pool of 338 players currently active plus scores of players from the reserve lists.

Each team can lose a maximum of three players and may protect an additional player each time it loses one.

There are 139 players currently on injured reserve alone. If all 26 clubs decided to freeze two of those players, that would still leave an available pool of 87 players currently on injured reserve as well as all the players in all the other reserve categories.

Some players currently on injured reserve in the NFL include defensive back Dick Anderson, tackle Bob Heinz and linebackers Mike Kolen and Nick Buoniconti of Miami; wide receiver Otis Taylor, guard Ed Budde and defensive end Marvin Upshaw of Kansas City; quarterback Bill Munson and wide receivers Larry Walton and Dennis Franklin of Detroit; defensive end Claude Humphrey of Atlanta; place kicker Chester Marcol and defensive back Willie Buchanan of Green Bay; defensive end Verlon Biggs of Washington Redskins and running

back Don Woods of San Diego.

There are many others of similar quality.

Other players available to the two new clubs—and to the other clubs as well—are running backs Calvin Hill, Larry Csonka, Jim Kiick, Duane Thomas and wide receiver Paul Warfield, all of whom have played out their option years. And there are retired players such as guard Gale Gillingham and others who could help teams getting started.

In the college draft, Tampa Bay and Seattle will alternate with the first two picks in each of the 17 draft rounds and each will also be permitted two additional choices at the end of rounds two through five.

"After they make their picks at the start of the sixth round," said Rozelle, "they will have chosen 28 of the 158 players selected at that point, or 18 per cent."

John Jennings, a director of the

Tampa Bay club and John Thompson, general manager of the Seattle team, both expressed pleasure with the draft formulas.

"I'm pleased with the program," said Jennings. "It will give us quality veteran players to help us in our first year."

Thompson said he was particularly impressed with the size and quality of the pool.

"There's no question," he said, "that there are more quality players available to us than there have been in any prior expansion and I am pleased with the formula."

But it was Thompson, former executive director of the NFL Management Council, who sounded a voice of caution over all the optimistic plans.

"The decision to expand in management's view is not a negotiable matter," he said. "But everything effecting the employees may be negotiable."



IT'S NOT THE ROCKETTES—This chorus line wouldn't give the Rockettes much trouble, but they give their rivals in the National Football League plenty. They are Los Angeles Rams from left, Tom Mack, Fred Dryer, Cody Jones, Jack Youngblood, Bob Klein and Merlin Olsen dancing for a Multiple Sclerosis Society benefit.

## Chaps meet Temple JC in Odessa tournament

ODESSA — Midland College takes its 4-0 basketball record into the Odessa Junior College Basketball Tournament and will meet Temple Junior College at 9 p.m. today.

### A & I, SWTS clash for first in Lone Star

By The Associated Press

No. 1 ranked Texas A&I and Southwest Texas collide for the Lone Star Conference football title Saturday but the latter almost didn't make the party.

Unbeaten A&I breezed to its sixth consecutive victory with a 48-28 rout of Howard Payne but Southwest Texas had to sweat and then some to subdue stubborn Sul Ross 15-14.

Southwest Texas scored 39 points in the last 11 minutes, including the winning touchdown run of two yards by Joe Guiterres with less than five minutes remaining. SWTS is now 8-1 for the year and 7-1 in LSC play.

For A&I, the Javelinas followed the 233 yards rushing of Larry Collins to victory. Collins scored on a 53-yard run for his longest outburst of the night.

In other games Saturday, Tarleton State edged Stephen F. Austin 15-14. Abilene Christian ripped Sam Houston 55-20 and Angelo State blanked East Texas State 51-4.

Angelo State served up thirdplace with the surprising lopsided victory over the Lions. Angelo State is 7-3-1 for the year.

Coached by Danny Scott, Temple had a 15-26 record last year.

In the first game of the doubleheader, Odessa College plays Schreiner at 7 p.m.

If MC wins, it will play Howard County College at 7 p.m. Friday. If the Chaparrals advance to the semifinals, the Howard Hawks probably will present the toughest opposition to date. Coach Harold Wilder's team was 26-21 last season in Western Junior College Athletic Conference play.

The Odessa-Schreiner winner meets Wayland College JV's in the other game Friday.

The finals are scheduled for Saturday with consolation and championship games.

MC defeated Lubbock Christian College, 80-78, in action Monday night and also holds victories over Texas State Technical Institute, Hill County and Cisco JC.

PROBABLE STARTERS for MC tonight will be 6-2 Rick Daniel,

Louisville, Ky., 6-4 Crawford Williams, Andrews; 6-4 Dan Vandervee, Hereford; 6-5 Jackson Pace, Lubbock; Monterey; 6-0, Tommy Parks, Fort Worth Poly.

Next week, MC travels to Ranger for two nights of doubleheaders against Ranger and Cisco junior colleges. That will mark the final action before the opening of the WJAC on Dec. 1. The Chaps draw Amarillo College as their first league foe and it's a tough one since the Panhandle team has been labeled the favorite in this season's race.

The game also will mark the dedication of the Midland College Physical Education facility.

### Buffalo owner threatens move

BUFFALO (AP) — The intentions of Buffalo Braves owner Paul Snyder remained unclear today after his apparently conflicting statements about moving the National Basketball Association club to Toronto.

Snyder told radio reporters from Buffalo and Toronto that he would have to take the team to Toronto or elsewhere if conflicts with the City of Buffalo were not resolved to his satisfaction in the near future.

## Mini Mack on waivers

FOXBORO, Mass. (AP) — Tough and tiny "Mini" Mack Herron, the Patriots' running back who set last season's National Football League record for total yardage, is up for grabs.

Coach Chuck Fairbanks placed Herron on waivers Wednesday, saying only that he was "unsatisfied with the contribution he (Herron) was making to our team."

The 5-foot-5, 175-pounder was sidelined Sunday when the Patriots lost 34-31 to the Dallas Cowboys, giving the club a 3-6 record.

Herron's 2,444 combined yardage a year ago wiped out Gale Sayers' all-time pro record, and it was 40 per cent of New England's offense.

Herron, a two-year veteran, was a Big Eight top receiver at Kansas State in 1969 and came to the Patriots in 1973 after he was waived by Winnipeg.

Fairbanks, who convinced Herron to try the NFL, said he had a number of discussions with Herron and the situation had been "building" for some time.

Fairbanks said the talks went back to last winter when Herron had publicly indicated unhappiness with his contract and playing conditions.

"I informed him the last time about three weeks ago that I was upset with his performance," Fairbanks said.

Herron had been producing yardage at only about a quarter of the record pace he set last season.

Herron's waiver is irrevocable, but if no club claims him by 4 p.m. today, he will become a free agent. The waiver claiming price after the sixth game is \$100.

"I didn't try to trade him," Fairbanks said. "I told him Wednesday before practice, he didn't have anything to say."

The 27-year-old runner was Atlanta's sixth-round draft choice in 1970 but went to Winnipeg. He was named to the All-Star teams in the Western Division of the Canadian Football League in 1971 and 1972 where he rushed for 1,527 yards and scored 18 touchdowns.

In 1973, officers raided his Winnipeg apartment and arrested Herron on charges of possession of illicit drugs. He pleaded innocent but was dropped by the Blue Bombers, returning to Chicago in the spring of that year. He signed with the Pats in October 1973.

After the signing, Herron returned to Winnipeg, pleaded guilty to charges of possession of marijuana and cocaine and got a suspended sentence and a \$1,000 fine.

That year he led the NFL in kickoff return yardage, broke eight Patriots' individual records and tied another.

Patriots' management also said Wednesday that offensive tackle Shelby Jordan and guard Bill DuLac missed practice. The two would be dealt with "in compliance with club policy," officials said.

Jordan faces trial next month in Providence on drug charges. Fairbanks said he had heard from Jordan but not from DuLac.

Meanwhile, quarterback Jim Plunkett remains a doubtful starter in this Sunday's game at Buffalo. Plunkett returned last Sunday after surgery for a separated shoulder and played in the Patriots' loss to Dallas but received a knee injury in the second period.

### Dodger ace wants huge money pact

LOS ANGELES (AP) — Pitcher Andy Messersmith is lobbying for free agent status so baseball club owners can start a bidding war for his talents, but the Los Angeles ace may be trying to reach an accommodation with the Dodgers.

Messersmith and his agent, Herb O'Malley, accepted a club offer to travel to New York with President Peter O'Malley and Vice President Al Campanis.

Although O'Malley would not go into details about the case, he said the Dodgers would continue to negotiate with Messersmith until the arbitration begins. The arbitration panel is scheduled to meet Friday on Messersmith's grievance filed with the Major League Players Association that the 26 clubs violated his rights when they failed to declare him a free agent at the end of last season.

Osmund said the Dodgers had made their "first real new offer since July," but, he added, "it wasn't enough."

## Pick up some extra change.



### Collect 15¢ a pound for all aluminum cans.

You'll be surprised at how easy to spot. They're light-weight, have smooth, rounded bottoms, and magnets won't stick to them.

And delighted at how much money you can make just by collecting them.

All-aluminum cans are easy to spot. They're light-weight, have smooth, rounded bottoms, and magnets won't stick to them.

Just bring them to a recycling center listed below. You'll help improve the environment, recycle a valuable natural resource, and save precious energy in the bargain.

While you pick up a profit of 15¢ a pound for yourself.

Alcoa in cooperation with aluminum can recycling centers coast to coast.

**COORS RECYCLING CENTER**  
9:00 a.m. to 6:00 p.m. - Tuesday thru Friday  
9:00 a.m. to 4:00 p.m. - Saturday

**West Texas Beer Distributing Co.**  
9:00 to 12:00 a.m. - Wednesday  
1:00 to 4:00 p.m. - Wednesday

**FOR RENT**  
(2000 W. Kentucky St., Marathonee Co.)  
**52 BRAND NEW SMALL WAREHOUSES - TWO SIZES**  
17' x 27' and 17' x 32'  
17' Overhead Doors  
**ONE PRICE \$25 PER MO.**  
**HAROLD B. SHULL**  
Room 671, 1st National Bank Bldg.  
**PHONE 682-7021**

**ONLY 14.95**

**Timely Gifts!**

A beautiful watch in your price. Shows both digital and analog time. Water resistant. Shock resistant. 100% reliable. 100% accurate. 100% guaranteed. 100% satisfaction. 100% happy customers. 100% of the time. 100% of the way.

Watch Model: 1000 Type  
Watch Model: 1000 Type  
Watch Model: 1000 Type  
Watch Model: 1000 Type

Special check or money order (M.O.) for better delivery. Includes 100% satisfaction guarantee. \$14.95 for more than one watch. Taxes extra. plus 2% delivery fee.

Can only accept cash payments.

NAME \_\_\_\_\_  
ADDRESS \_\_\_\_\_  
CITY \_\_\_\_\_ STATE \_\_\_\_\_ ZIP CODE \_\_\_\_\_

Mail to: **Hot Items Inc.**  
P.O. Box 2708, Dallas, Texas 75220

iques. the eastern the Pallot-dquartered in the order does under the on of the Archdiocese, to an ark-kesman.

ER  
R88  
QUALITY PURE DOLLAR  
OUSE  
RE





# Shop Safeway... Your G



## EXPRESS CHECKSTAND always OPEN

Our EXPRESS CHECKSTAND is always open for 8 items or less. It's a fact, you don't have to pay high prices for convenience. You'll save time and money at Safeway. The next time you need just a few items try our Express Checkstand.

## Friendly People . . . Friendly Service

From the moment you enter Safeway, you know you're welcome. You find friendly, courteous people ready and eager to provide the best in service, just as Safeway provides the best in foods and many other things. Our low prices save you money and this helps make every shopping trip a pleasant experience. We want to assist you in every way possible because we think that's what being a good neighbor is all about. If you haven't discovered the many advantages of shopping here, come in and see for yourself. We hope you'll make Safeway your good neighbor store!

|                        |  |            |                       |  |            |
|------------------------|--|------------|-----------------------|--|------------|
| <b>Green Goddess</b>   | SEVEN SEAS Salad Dressing . . . . . 8-Oz. Btl. | <b>57¢</b> | <b>Tomato Sauce</b>   | CONTADINA . . . . . 8-Oz. Can                                    | <b>20¢</b> |
| <b>French Dressing</b> | SEVEN SEAS Family French . . . . . 8-Oz. Btl.  | <b>55¢</b> | <b>Magi</b>           | Inst. Bouillon Cubes 2.3-Oz. Beef . . . . . CHICKEN 2.5-Oz. Ctn. | <b>39¢</b> |
| <b>Dressing</b>        | SEVEN SEAS Creamy Italian . . . . . 8-Oz. Btl. | <b>57¢</b> | <b>Bouillon Cubes</b> | MAGGI Chicken . . . . . 3-Ctn. Ctn.                              | <b>14¢</b> |

|                               |  |               |               |
|-------------------------------|--|---------------|---------------|
| <b>Chuck Steak</b>            | USDA Choice Grade Beef 7-Bone Cut Lb. \$1.28 | Black Cut Lb. | <b>99¢</b>    |
| <b>Round Rump Roast</b>       | USDA Choice Grade Beef Bone In Lb. \$1.37    |               | <b>\$1.19</b> |
| <b>Butterball Turkeys</b>     | SWIFT Grade-A Tom or Hen                     | Lb.           | <b>69¢</b>    |
| <b>Grade-A Fryers</b>         | U.S. Govt. Inspected Deep Chilled Whole      | Lb.           | <b>54¢</b>    |
| <b>Hormel Little Sizzlers</b> | 12-Oz. Pkg.                                  |               | <b>\$1.19</b> |
| <b>Sausage</b>                | SAFEWAY Whole Hog Hot or Mild                | 1-Lb. Roll    | <b>\$1.65</b> |
| <b>Frankfurters</b>           | SAFEWAY Beef or Meat                         | 12-Oz. Pkg.   | <b>89¢</b>    |
| <b>Sliced Bacon</b>           | SMOK-A-ROMA Breakfast Treat                  | 1-Lb. Pkg.    | <b>\$1.59</b> |
| <b>Fish Sticks</b>            | TROPHY Heat and Serve                        | 8-Oz. Pkg.    | <b>35¢</b>    |
| <b>Shrimp Cocktail</b>        | CAPTAIN'S CHOICE 3                           | 4-Oz. Jars    | <b>\$1.55</b> |

Serving Suggestion

ON ANY SIZE PACKAGE

## GROUND BEEF

SAFEWAY PREMIUM Lb. **99¢**      SAFEWAY REGULAR Lb. **79¢**

### MIX 'EM OR MATCH

**Meal For Two**

\* TOWN HOUSE: Fruit Cocktail 8.75-Oz., Sliced Peaches 8.75-Oz., Sliced Pineapple 8.25-Oz., Pear Halves 8.5-Oz., Applesauce 8.5-Oz.

## Buffet CAN FRUITS

**SUPER SAVER 4 Cans For \$1**

### MIX 'EM OR MATCH

**Meal For Two**

\* TOWN HOUSE: 8.75-Oz. Sliced Beets 8.75-Oz., Whole Kernel or Cream Style Corn 8.75-Oz., Green Peas 8.5-Oz. or Stewed Tomatoes 5-Oz.

## Buffet VEGETABLES

**SUPER SAVER 5 Cans For \$1**

|                                |                    |                   |                        |                   |                |               |              |
|--------------------------------|--------------------|-------------------|------------------------|-------------------|----------------|---------------|--------------|
| <b>BROWN &amp; SERVE ROLLS</b> | <b>Pancake Mix</b> | <b>Croutettes</b> | <b>Libby's Pumpkin</b> | <b>Dream Whip</b> | <b>Egg Nog</b> | <b>Q-Tips</b> | <b>Cough</b> |
| <b>3 \$1</b>                   | <b>79¢</b>         | <b>55¢</b>        | <b>29¢</b>             | <b>58¢</b>        | <b>99¢</b>     | <b>39¢</b>    | <b>39¢</b>   |

### FROZEN FOODS AT SAFEWAY LOW PRICES

**SUPER SAVER Orange Juice 59¢**

**EVERY DAY LOW PRICE Pumpkin Pie 59¢**

**SUPER SAVER Corn on the Cob 59¢**

**SUPER SAVER Mince Pie 69¢**

|                           |                               |                                      |
|---------------------------|-------------------------------|--------------------------------------|
| <b>SODA CRACKERS</b>      | <b>TOWN HOUSE GREEN BEANS</b> | <b>CRAGMONT SODA</b>                 |
| <b>39¢</b>                | <b>6 \$1</b>                  | <b>99¢</b>                           |
| <b>TOWN HOUSE PICKLES</b> | <b>LARGE EGGS</b>             | <b>NABISCO NUTTER BUTTER COOKIES</b> |
| <b>63¢</b>                | <b>69¢</b>                    | <b>\$76</b>                          |
| <b>PANCAKE SYRUP</b>      | <b>VELKAY SHORTENING</b>      | <b>UN</b>                            |
| <b>\$1.19</b>             | <b>\$1.39</b>                 | <b>99¢</b>                           |
| <b>3-MIN. OATS</b>        | <b>DESSERT GELATIN</b>        | <b>INST. DRINK</b>                   |
| <b>\$1.03</b>             | <b>5 \$1</b>                  | <b>\$1.39</b>                        |
| <b>DRY ONION SOUP MIX</b> | <b>OVENJOY FLOUR</b>          | <b>TOWN HOUSE</b>                    |
| <b>58¢</b>                | <b>\$3.99</b>                 | <b>99¢</b>                           |

### MIX 'EM OR MATCH

## BEL-AIR VEGETABLES

**SUPER SAVER 3 Pkgs. For \$1**

|  |               |               |
|--|---------------|---------------|
| <b>Bird's Eye Broccoli Spears</b>            | 10-Oz. Pkg.   | <b>36¢</b>    |
| <b>Cook-in-Bag BANQUET Salisbury Steak</b>   | 5-Oz. Bag     | <b>32¢</b>    |
| <b>Pizza CHEF-ROY-AR-DEE 4 Little Pizzas</b> | 10-Oz. Pkg.   | <b>79¢</b>    |
| <b>Pie Shells BEL-AIR 2-Ct. 9-Inch Each</b>  | 11-Oz. Pkg.   | <b>49¢</b>    |
| <b>Bel-Air Limeade</b>                       | 6-Oz. Can     | <b>21¢</b>    |
| <b>Onion Rings BEL-AIR</b>                   | 7-Oz. Box     | <b>46¢</b>    |
| <b>Beverage Ice PARTY PRIDE</b>              | 10-Lb. Bag    | <b>59¢</b>    |
| <b>Orange Juice TREESWEET</b>                | 6-Oz. Can     | <b>29¢</b>    |
| <b>Ice Cream SNOW STAR</b>                   | 1/2-Gal. Ctn. | <b>\$1.09</b> |



THESE ITEMS AND PRICES ARE AVAILABLE NOVEMBER 20, 21, 22, 1975 AT YOUR NEARBY SAFEWAY STORE LISTED BELOW:

☆ 3200 ANDREWS HWY.  
☆ 2500 W. ILLINOIS

FOR A LOWER TOTAL FOOD BILL . . . SHOP SAFEWAY

OFFICIAL U. S. D. A. FOOD STAMP REDEMPTION STORE



# Our Good Neighbor Store

|                               |   |   |  |
|-------------------------------|---|---|--|
| <p>ANY PACKAGE</p> <p>79¢</p> |  <p><b>ROUND STEAK</b></p> <p>USDA CHOICE</p> <p>USDA Choice Grade Beef Cube Steak Lb. \$1.89</p> <p>FULL CENTER CUT Lb. <b>\$1.19</b></p> |  <p><b>CHUCK POT ROAST</b></p> <p>USDA CHOICE</p> <p>USDA Choice Grade Beef 7-Bone Cut Lb. 99¢</p> <p>BLADE CUT Lb. <b>78¢</b></p> |  <p><b>TOM TURKEYS</b></p> <p>Serving Suggestion</p> <p>TROPHY HENS Lb. 63¢</p> <p>Lb. <b>59¢</b></p> |
|-------------------------------|---|---|--|

**Dairy-Deli Selections**

|                  |   |        |     |
|------------------|---|--------|-----|
| Whipping Cream   | LUCERNE 1/2-Pt. Pt. Ctn.                                | 69¢    | 39¢ |
| Sour Cream       | LUCERNE 16-Oz. Cup                                      | 59¢    | 32¢ |
| Cheese Slices    | BORDEN Lite-Line 12-Oz. Pkg.                            | \$1.29 |     |
| Bakers Chocolate | German Sweet 4-Oz. Pkg.                                 | 56¢    |     |
| Handi-Snacks     | KRAFT Flavor Links 6-Oz. Pkg.                           | 74¢    |     |
| Kraft Singles    | Sharp, Onion Chive, Jalapeno or Cheese/Bacon 6-Oz. Pkg. | 65¢    |     |
| Lucerne Dips     | Party Favorite 8-Oz. Cup                                | 39¢    |     |
| Avocado Dip      | Serve with Chips 8-Oz. Cup                              | 59¢    |     |
| Cream Cheese     | LUCERNE 8-Oz. Pkg.                                      | 49¢    |     |
| Cottage Cheese   | Lucerne 24-Oz. Cup                                      | 99¢    |     |

|  |   |  |   |  |
|--|---|--|---|--|
| <p>ATCH</p> <p>Two</p> <p>or Cream</p> <p>en Peas</p> <p>oes 5-Oz.</p> <p>ABLES</p> <p>\$1</p> | <p><b>MIX' EM OR MATCH</b></p> <p>Take Your Pick!</p> <p>* TOWN HOUSE: Whole Beans 16-Oz., Whole Kernel or Cream Style Corn 17-Oz., Green Peas 17-Oz., Whole Peeled Tomatoes or Stewed Tomatoes 16-Oz.</p> <p><b>CANNED FOODS</b></p> <p><b>SUPER SAVER</b> 3 Cans For <b>\$1</b></p> | <p><b>MIX' EM OR MATCH</b></p> <p>Your Choice!</p> <p>* TOWN HOUSE: Cut or French Style Green Beans 16-Oz., Cut, Sliced or Whole Beets 16-Oz., Spinach 15-Oz., Pork &amp; Beans 16-Oz., Whole or Sliced New Potatoes 15-Oz.</p> <p><b>CAN VEGETABLES</b></p> <p><b>SUPER SAVER</b> 4 Cans For <b>\$1</b></p> | <p><b>MIX' EM OR MATCH</b></p> <p>Choose Any!</p> <p>* TOWN HOUSE: Blended Orange Grapefruit Juice 46-Oz. Pink, Grapefruit Juice 46-Oz., Orange Juice 46-Oz. or Prune Juice 32-Oz. BH.</p> <p><b>FRUIT JUICE</b></p> <p><b>SUPER SAVER</b> 2 For <b>\$1</b></p> | <p><b>MIX' EM OR MATCH</b></p> <p>Delicious Treat!</p> <p>* TOWN HOUSE: Fruit Cocktail 17-Oz. or Mandarin Oranges 11-Oz.</p> <p><b>CANNED FRUITS</b></p> <p><b>SUPER SAVER</b> 3 Cans For <b>\$1</b></p> |
|--|---|--|---|--|

|        |             |           |              |               |               |                |               |               |
|--------|-------------|-----------|--------------|---------------|---------------|----------------|---------------|---------------|
| Q-Tips | Cough Syrup | Detergent | Oven Cleaner | Air Freshener | Aluminum Foil | Dinner Napkins | Paper Napkins | Facial Tissue |
| 39¢    | \$1.19      | 89¢       | 98¢          | 49¢           | 62¢           | 45¢            | 49¢           | 39¢           |

|                               |                        |                     |                            |                             |
|-------------------------------|------------------------|---------------------|----------------------------|-----------------------------|
| DREAM WHIP                    | HOT ROLL MIX           | CHEDDAR CHEESE      | FRESH BUTTER               | HERSHEY Chocolate Chips     |
| 99¢                           | 67¢                    | \$1.59              | \$1.19                     | 69¢                         |
| NABISCO NUTTER BUTTER COOKIES | BUTTERMILK PANCAKE MIX | RONI-MAC            | BETTY CROCKER CAKE MIX     | BETTY CROCKER PIE CRUST MIX |
| \$76                          | 69¢                    | 71¢                 | 69¢                        | 49¢                         |
| KAYENING                      | UNCLE BEN'S RICE       | BAVARIAN SAUERKRAUT | TOWN HOUSE MUSHROOMS       | CRISP CELERY                |
| 39                            | 79¢                    | 35¢                 | 3 \$1                      | Each Stalk 19¢              |
| INST. DRINK                   | SALAD DRESSING         | INSTANT RICE        | NESTLE'S MORSELS           | BORDEN CAN MILK             |
| \$1.39                        | 79¢                    | 69¢                 | \$1.09                     | 68¢                         |
| TOWN HOUSE                    | NU-MADE MAYONNAISE     | NU-MADE OIL         | BLUE BONNET Soft Margarine | INSTANT CHOCOLATE           |
|                               | \$1.19                 | 85¢                 | 72¢                        | \$1.39                      |

|                            |                          |                      |                     |
|----------------------------|--------------------------|----------------------|---------------------|
| <b>Variety Merchandise</b> | <b>Pet Selections</b>    | <b>NAVEL ORANGES</b> | <b>RIPE BANANAS</b> |
| Oven Liners                | ALPO DOG FOOD            | 4 Lbs. For \$1       | Golden Ripe Lb. 17¢ |
| Roaster Baker Pan          | LOVIN SPOONFULS CAT FOOD |                      |                     |
| Pie Pan                    |                          |                      |                     |
| Cake Pan                   |                          |                      |                     |



# Female criminals being ignored

NEW YORK (AP) — Women are going into crime in a bigger way but law enforcement officials are ignoring it, the deputy chief of the Law Enforcement Assistance Administration said today.

Criminologists have done little, if any, research to determine why some women turn to crime and what might be done to prevent it, and the courts and prison system pay little attention to the particular needs of women offenders, said Charles R. Work in a speech prepared for regional LEAA administrators.

In addition, he said, law enforcement officials have failed to provide equal job opportunities for women and have neglected the women victims of rape and other crimes especially directed at them.

He said the criminal justice system "is a system run by males, predominantly for males. Consequently, it has demonstrated little concern with or interest in the problems of women — either as offenders, victims or as employees."

Work spoke on his last day in office. He submitted his resignation about a month ago and plans to join a private Washington law firm.

He said an LEAA task force on women has found that "law enforcement officials are largely unaware of the status and needs of women in all facets of the criminal justice system."

Women and crime have received recent attention following the federal indictments in California earlier this year of Lynette Fromme and Sara

Jane Moore on charges of trying to kill President Ford.

FBI figures indicate that the number of crimes committed by women soared 246 per cent between 1960 and 1972, although women still commit far fewer crimes than men do, he noted.

FBI crime statistics released this week showed that the number of women arrested in 1974 was 9 per cent greater than the number arrested the previous year. The number of men arrested rose 2 per

cent during the same period. "Arrests of males were up 35 per cent and female arrests increased 68 per cent" for the seven crime categories measured, the FBI report said.

Work said several recent studies indicate that women who commit crimes often are poor and unemployed. But he said that few prisons "offer any meaningful educational or vocational opportunities for women."

There are almost 16,000 inmates in federal, state and local prisons for women.



JACK DANIELS, director of High Sky Girls Ranch, accepts a check for the ranch from Letha Grannas, left, and Tommie Wooten, representing 7-Eleven Food Stores employees.

# Storm hits Oklahoma

By The Associated Press

A winter storm front whipped into Oklahoma Wednesday, dropping rain ahead of it, snow behind it and slamming a tornado into Oklahoma City.

No injuries were reported from the tornado, which hit a motel and a vacant restaurant building in northeast Oklahoma City.

The buildings were demolished, however.

In the western part of the state, meanwhile, blowing snow packed roads north and west of Boise City in the Panhandle and all travel in those directions was discouraged as forecasters predicted more snow and temperatures in the 20s.

Straight, hard winds were blamed for minor damage around the state, breaking limbs, damaging some farm buildings and overturning a mobile home.

Snow started falling at Boise City about midnight and by 9 a.m. Wednesday had piled up two to three inches. Snow was still falling in the Panhandle area late Wednesday night and was being whipped by wind gusting to 40 miles per hour.

Although Oklahoma roads were open, all roads north of the Oklahoma border in Southeast Colorado were closed because of blowing snow and drifts.

The Colorado State Patrol reported 14 inches of snow had fallen at Lamar and Springfield.

State Highway 18 from Clayton, N.M., north to Raton was closed and all roads in eastern New Mexico were snowpacked and hazardous, the Oklahoma Highway Patrol reported.

Roads in the Texas Panhandle were reported wet, and snow packed on highways around Dalhart.

The tornado struck at the Wilson House motel and its vacant restaurant.

"It looked like a bunch of grass and leaves in the wind coming up the hill and I thought that was all there was to it," said desk clerk Ray Bloedau, 22. "But then it knocked over the restaurant sign and took the big sheet glass window and was coming my way."

"The office is all glass, so I jumped under the counter and when I looked up the front of the restaurant was gone and it had knocked over a semi-trailer truck in the Big Town Truck Stop across the street."

When the tornado hit, manager Bill Hackett of the Country Kitchen, about a half-mile south of the Wilson House, said, "It got awful quiet, then started raining real hard and then the lights went out."

Carved elegance with your choice of gem stone at a surprising affordability.  
215 W. WALL

**Gals to fly, says general**  
SAN ANTONIO, Tex. — Some 150 women in the U.S. Air Force may see it's first training as their male counterparts except they will get about the same. James R. Allen, superintendent of the Air Force Academy predicts. However, Allen said the academy probably will recruit young women as women flyers Wednesday non-combat pilots during a recruiting trip eventually, "perhaps by for the first women cadets the time the first class has at the academy."

## Levines WE HAVE TWO STORES TO SERVE YOU BETTER

# CHRISTMAS in NOVEMBER Sale

|  |  |   |
|--|--|---|
| <b>Misses' &amp; Half-Size Double Knit POLYESTER PANTSUITS</b><br><b>15.88</b> | <b>Your Choice Of Misses' Gauze And Calcutta BIG SHIRTS</b><br><b>5.88</b> | <b>SALE Mens PVC Leather Look LEISURE COATS</b><br><b>14.99</b>     |
| <b>SALE! Misses' Short Nylon PEIGNOIRS</b><br><b>9.99</b>                      | <b>SALE! Boys' 2 Pc. CPO LEISURE SUITS</b><br><b>18.99</b>                 | <b>SALE! Mens' Corduroy SLIPPERS</b><br><b>3.88</b>                 |
| <b>Misses' Solid Nylon CAFTANS</b><br><b>6.88</b>                              | <b>SALE! Mens Western Or PRINT BODY SHIRTS</b><br><b>8.99</b>              | <b>SALE! Womens' Soft Warm Acrylic Pile SLIPPERS</b><br><b>2.88</b> |
| <b>Print &amp; Solid SHIRTS</b><br><b>3.33</b>                                 | <b>Misses' Knit TOPS</b><br><b>2.99</b>                                    | <b>Boys' Knit SHIRTS</b><br><b>3.99</b>                             |
| <b>Toddler's Denim OVERALLS</b><br><b>5.99</b>                                 | <b>Boys' &amp; Girls' SLACK SETS</b><br><b>3.99</b>                        | <b>Mens Dress SOCKS</b><br><b>2.99</b>                              |
|  |  | <b>Boys' Desert BOOTS</b><br><b>6.88</b>                            |

USE YOUR FLEX-A-CHARGE, MASTERCARD, BANKAMERICARD OR LAY IT AWAY NOW!

## Anthony's

### SHOP MIDLAND AND ODESSA

# Open House!

## OUR ENTIRE STOCK

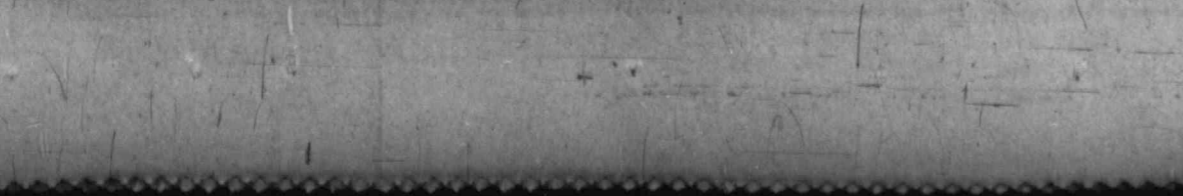
# Save 20% off...

ON ALL PURCHASES OTHER THAN LAY AWAY

### Thursday 5 P.M. to 10 P.M. November 20th Only

### Shop Now For Gifts, Needs for the home and the family at BIG SAVINGS!

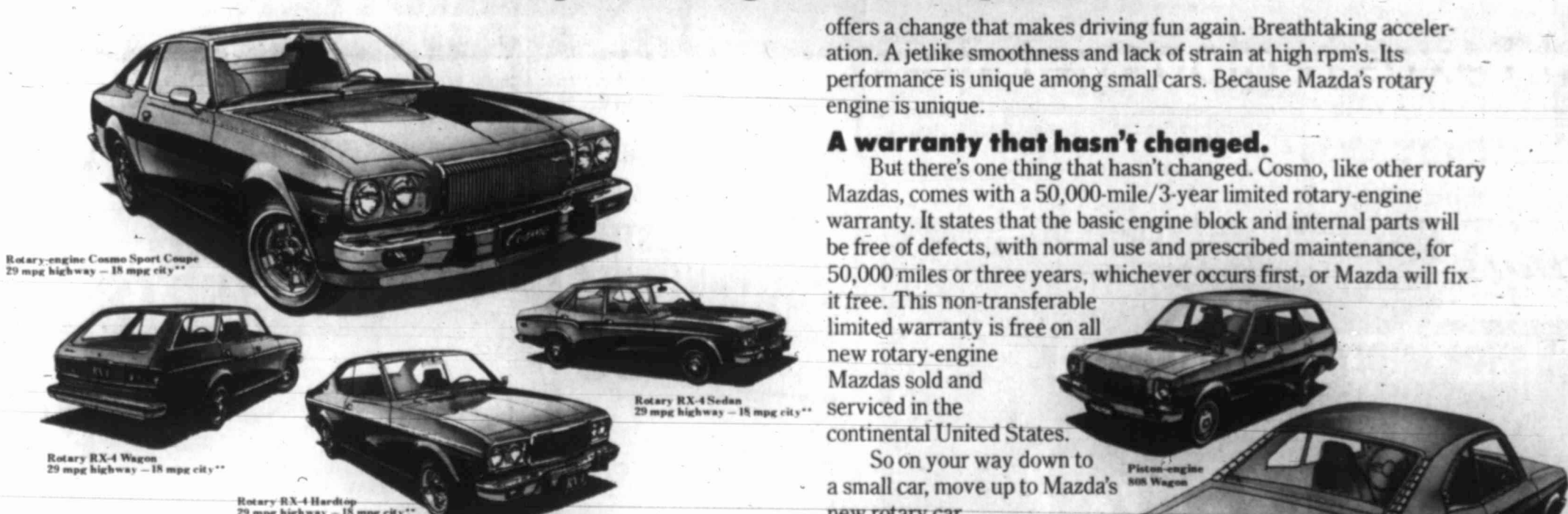
Anthony's



Electric center

# THE WORLD HAS CHANGED. SO HAS MAZDA.

**Dramatically increased rotary gas mileage: up to 50% more.\***  
**New luxury sport coupe: Cosmo.**  
**Six new rotary-engine models.**  
**Two new piston-engine economy models.**



Rotary-engine Cosmo Sport Coupe  
29 mpg highway - 18 mpg city\*\*

Rotary RX-4 Wagon  
29 mpg highway - 18 mpg city\*\*

Rotary RX-4 Hardtop  
29 mpg highway - 18 mpg city\*\*

Rotary RX-4 Sedan  
29 mpg highway - 18 mpg city\*\*

Piston-engine 808 Wagon

Piston-engine 808 Coupe

Rotary RX-3 Wagon  
30 mpg highway - 19 mpg city\*\*

Rotary RX-3 Coupe  
30 mpg highway - 19 mpg city\*\*

**A change for the better in rotary gas mileage.**  
 All rotary-engine Mazdas for 1976 show a dramatic increase in gasoline mileage over earlier models without sacrificing performance. Up to 50% more in the RX-3, 45% more in the RX-4\*

Using an improved combustion, a leaner fuel mixture, an improved thermal reactor with heat exchanger, a lower gear ratio and five-speed manual transmission (optional in certain states), the new Mazdas deliver up to 30 mpg on the highway, 19 in the city, according to EPA estimates\*\*

**A change to new luxury: Cosmo.**  
 Low and wide, sleek and swift, Cosmo is easily the most advanced Mazda ever built.

Cosmo strides the highways like the classic road car it is. With anti-sway bars fore and aft. A front spoiler for greater stability at highway speeds. And steel-belted radial white-line tires.

Cosmo surrounds you with luxury. Inside, the glow of real wood. Reclining seats in soft velour, or vinyl that breathes. Deep carpeting from door to door - and even on the doors. And Cosmo's quiet rotary engine makes long trips seem shorter.

Cosmo provides stopping power to match its going power with power-assisted disc brakes on all four wheels - not just two. The front discs are ventilated for greater fade resistance.

**A change from ordinary small-car performance.**  
 Many small cars are small performers. Mazda

offers a change that makes driving fun again. Breathtaking acceleration. A jetlike smoothness and lack of strain at high rpm's. Its performance is unique among small cars. Because Mazda's rotary engine is unique.

**A warranty that hasn't changed.**  
 But there's one thing that hasn't changed. Cosmo, like other rotary Mazdas, comes with a 50,000-mile/3-year limited rotary-engine warranty. It states that the basic engine block and internal parts will be free of defects, with normal use and prescribed maintenance, for 50,000 miles or three years, whichever occurs first, or Mazda will fix it free. This non-transferable limited warranty is free on all new rotary-engine Mazdas sold and serviced in the continental United States.

So on your way down to a small car, move up to Mazda's new rotary car.

**A change to more quality in small economy cars.**  
 The piston-engine Mazda 808s are a far cry from economy cars that are under-equipped and underpowered. Up front, there's a spirited 1600-cc engine, combining efficiency with brisk performance. Interiors are completely finished. Nylon carpeting. Vinyl upholstery. Full instrumentation. Standard features include tinted glass, reclining bucket seats, power-assisted front disc brakes.

And the 808s, like all Mazdas, are carefully put together. So if you're looking for something more than economy alone in a small car, our 808s have it. We offer you a change to quality.

**Make a change now. See your Mazda dealer.**

\*EPA estimates for 1976 RX-3 Coupe with 5-speed manual transmission: 19 mpg city - 30 mpg highway.  
 EPA estimates for 1976 RX-4 Hardtop with 5-speed manual transmission: 18 mpg city - 29 mpg highway.  
 EPA estimates for 1975 RX-3 Coupe and RX-4 Hardtop with 4-speed manual transmission: 14 mpg city - 20 mpg highway.  
 Mileage increases based upon comparison of above highway estimates. Your mileage may vary.  
 \*\*EPA estimates for Cosmo, RX-4 series, and RX-3 series, with 5-speed manual transmission. Your mileage will vary depending on how and where you drive, your car's condition and optional equipment. Estimates lower in California.  
 Mazda's rotary engine licensed by NSU-WANKEL.



Odessa  
**BASIN MAZDA**  
 2310 E. 8th St.  
 (915) 333-2963





This afternoon's market report

New York Exchange

New York (AP) - New York Stock Exchange selected stock prices:

Table of New York Exchange stock prices including columns for stock names, prices, and changes.

Sales PE Mds High Low Last Chg

Table listing various stocks and their sales performance metrics.

Main table of stock sales data with multiple columns for stock names, sales volume, and price changes.

Sales PE Mds High Low Last Chg

Table listing various stocks and their sales performance metrics.

Main table of stock sales data with multiple columns for stock names, sales volume, and price changes.

Over the counter

Table listing over-the-counter stock prices and changes.

Mutual funds

Table listing mutual fund performance and prices.

Stock averages

Table showing average stock prices and market indicators.

Midland-based stocks

Table listing stocks based in the Midland area.

Bond averages

Table showing average bond prices and yields.

Market index

Table listing various market indices and their values.

Loge Notices - Keynote Chapter No. 172 and Council No. 112 stated...

FOR sale by closed bids - 1965 Chevrolet...

Public Notices - A drinking problem in your life? Call Midland Council on Alcoholism...

Somebody Cares - God has a plan for your life.

Mary Kay Cosmetics - Choice cosmetics for the sophisticated woman.

Continental Employment - Need experienced financial accountant?

Welders - Pressure vessel and structural welders.

Machinist - 2 years experience. Top pay.

CSi Farm Market Road 1788 - Now hiring experienced commercial driver.

Snelling & Snelling - Personnel Service.

IMMEDIATE OPENING - Posting machine operator.

Wanted - Mature, responsible, Christian lady to babysit two children.

Wanted - Experienced person for large car rental south of town.

Wanted - Male, single, white with brown hair...

Wanted - Retail sales, good benefits.

Wanted - Experienced code, light wall pressed. Good pay.

Wanted - Knowledge of oil field equipment for manufacturing firm.

Wanted - To manage bakery for 30-system food store.

Wanted - Waitress wanted. Part time or full time.

Wanted - Experienced call type party-shift artist with accuracy in typing contact.

Wanted - People who can learn to sew.

Wanted - Oil field service and construction company.

THE PERMAN CORPORATION - Immediate Openings for qualified

BETTER PAY for a 5 day Work Week

BETTER BENEFITS PAID RETIREMENT

PARTICIPATION THRIFT PLAN PAID HOSPITALIZATION INS.

PAID LIFE INSURANCE FREE UNIFORM PROGRAM

SICK PAY ASSISTANCE PAID HOLIDAYS PAID VACATION

EMPLOYMENT AGENCY - After 5:00 and Saturday by Appointment

Oil Field Sales - Reliable, Mature, Intelligent Train for oil field sales.

Need experienced financial accountant.

Pressure vessel and structural welders.

2 years experience. Top pay. 50 hour week.

Posting machine operator.

Mature, responsible, Christian lady to babysit two children.

Experienced person for large car rental south of town.

Male, single, white with brown hair...

Retail sales, good benefits.

Experienced code, light wall pressed. Good pay.

Knowledge of oil field equipment for manufacturing firm.

To manage bakery for 30-system food store.

Waitress wanted. Part time or full time.

Experienced call type party-shift artist with accuracy in typing contact.

People who can learn to sew.

Oil field service and construction company.





**1974 GMC Sierra Grande**  
1/2 ton V-4, all extras plus camper shell, saddle tanks, extra clean and sharp, priced to sell now. \$2990. 494-1024 or 494-3377

**1974 Chevrolet Malibu** 4 speed manual shift. Good condition. \$1450. 494-4044

**1974 Chevrolet Vega GT**  
Four speed, radio and sport wheels. Pretty red. First. \$2100 cash or will finance.

**1974 Chevrolet Malibu** 4 speed manual shift. Good condition. \$1450. 494-4044

**1974 Chevrolet Vega GT**  
Four speed, radio and sport wheels. Pretty red. First. \$2100 cash or will finance.

**1974 Chevrolet Malibu** 4 speed manual shift. Good condition. \$1450. 494-4044

**1974 Chevrolet Vega GT**  
Four speed, radio and sport wheels. Pretty red. First. \$2100 cash or will finance.

**1974 Chevrolet Malibu** 4 speed manual shift. Good condition. \$1450. 494-4044

**1974 Chevrolet Vega GT**  
Four speed, radio and sport wheels. Pretty red. First. \$2100 cash or will finance.

**1974 Chevrolet Malibu** 4 speed manual shift. Good condition. \$1450. 494-4044

**1974 Chevrolet Vega GT**  
Four speed, radio and sport wheels. Pretty red. First. \$2100 cash or will finance.

**1974 GMC Sierra Grande**  
1/2 ton V-4, all extras plus camper shell, saddle tanks, extra clean and sharp, priced to sell now. \$2990. 494-1024 or 494-3377

**1974 Chevrolet Malibu** 4 speed manual shift. Good condition. \$1450. 494-4044

**1974 Chevrolet Vega GT**  
Four speed, radio and sport wheels. Pretty red. First. \$2100 cash or will finance.

**1974 Chevrolet Malibu** 4 speed manual shift. Good condition. \$1450. 494-4044

**1974 Chevrolet Vega GT**  
Four speed, radio and sport wheels. Pretty red. First. \$2100 cash or will finance.

**1974 Chevrolet Malibu** 4 speed manual shift. Good condition. \$1450. 494-4044

**1974 Chevrolet Vega GT**  
Four speed, radio and sport wheels. Pretty red. First. \$2100 cash or will finance.

**1974 Chevrolet Malibu** 4 speed manual shift. Good condition. \$1450. 494-4044

**1974 Chevrolet Vega GT**  
Four speed, radio and sport wheels. Pretty red. First. \$2100 cash or will finance.

**1974 Chevrolet Malibu** 4 speed manual shift. Good condition. \$1450. 494-4044

**1974 Chevrolet Vega GT**  
Four speed, radio and sport wheels. Pretty red. First. \$2100 cash or will finance.

**GREENHOUSE**  
6x12-2x4 frame on 4x4 skids. Fiberglass outside walls. 16' ground floor. 8' plywood walls 4' high. Has 1 door, 1 window. Can be used as a greenhouse or storage room.

**2309 West Kentucky 682-5677**

**NOW REOPENED**  
CUSTOM PICTURE FRAMING  
Restored after remodeling. Nice selection, large or small. Open mounting up to 8 feet. Open 10:00 a.m.

**4602 Thomason Drive 697-1212**

**MILDEW REMOVER**  
X-14  
Just spray - Let dry. Mildew is gone. ONLY \$2.98

**TRIGGER SPRAY ADDITIONAL MODERN FLOORS & PAINT, INC.**  
2105 W. Industrial 482-7291

**SINGER CLINIC**  
TUNE-UP SPECIAL \$4.95  
Adjust tensions, complete oil, check timing for seating of seat, check motor and wiring, etc. All other brands included.

**SEWING MACHINE SUPPLY**  
401 NORTH BIG SPRING 483-8088

**G.E. stereo console, modern style walnut cabinet like new. Call 483-8267**

**WANT to buy Business/industry and income tax practicing C.A. Stroud 807 S. Marietta 482-9183**

**DAMAGED 700 portable stereo building, 1000 watts, 300 watts. 483-8267**

**DRYERS, 520 and up, washers, 50 and up, chest, 512 and up, bedroom suite, 542 and up, Hancock Second Hand Store, 315 East Wall.**

**JOHN'S SWAP SHOP**  
SPECIAL THIS WEEK  
Just cleaned cool coaches. Your choice. \$17.50. Really nice new raincoat. Interested in buying or selling. Come see us.

**YOUR Patronage is appreciated. 2111 South Big Spring, 483-7872**

**KEENWOOD model 3120 stereo amplifier and 818 Pro portable. \$128. Call 482-5221 days, 484-7228 evenings.**

**NAME brand and designer clothing in excellent condition. Sizes 10, 12 and 14. 484-7528**

**CHRISTMAS DECORATIONS AND ACCESSORIES**  
50 to 75 percent off  
**THE HOUSE NEXT DOOR**  
(to Decorating Center)  
1606 North Big Spring  
CLASSIFIED DISPLAY

**JUST LIKE FINDING GOLD!**

**75 FORD BRAND NEW & FACTORY FRESH**

**OPEN EVENINGS UNTIL 7 PM FOR YOUR CONVENIENCE!**

**WE'RE TRADING WILD! Save \$500! \$700! \$900! \$1200! up to \$1500!**

**11 ONLY \$3495**  
NEW 1975 MUSTANGS!  
Some with 4-speed transmissions, some with automatics. Some with power and speed controls. Choose 4, 6 or V8 engines. Prices cut as low as \$3495. SAVE UP TO \$750

**5 ONLY \$4895**  
NEW 1975 ELITES  
3-door hardtops. All with power, air, WSW tires, vinyl tops, radios. Some with tilt steering wheels, power windows and seats, speed control. Prices reduced as low as \$4895. SAVE UP TO \$1200

**7 ONLY \$3395**  
NEW '75 MAVERICKS  
Choose from 2 doors and 4 doors. Some with automatic transmissions, some 3-speeds. Some have factory air, and power seats. 6 and V8 engines. Priced reduced as low as \$3395. SAVE UP TO \$500

**7 ONLY \$4245**  
NEW 1975 TORINO 4-DRS  
Automatic transmission, power seats, radios, WSW tires and much more. We've cut the prices as low as \$4245. SAVE UP TO \$900

**YOUR CHOICE \$4895 6 ONLY**  
NEW '75 LTD PILLARED HDTS  
Most are equipped with automatic, power steering/brakes, factory air, radios, wheel covers, WSW tires. Some with tilt steering wheels and speed control. List prices \$5977. 4 DOORS

**6 ONLY \$5395**  
1975 FORD COUNTRY SQUIRE WAGONS  
Automatic, power and air, radios. Some with speed controls, stereo radios, luggage racks. Choose from 6 and 10 passenger models. Prices cut as low as \$5395. SAVE UP TO \$1500

**Our TOP DOLLAR Allowance for Your Present Car Will Stack Your Savings Even Higher!!**

**ROGERS FORD SALES**

**WE WELCOME FLEET AND LEASE BUSINESS**

**4200 WEST HIGHWAY 80 694-8801**

**IF THESE PRICES DON'T SUIT YOU, MAKE US AN OFFER**

**Hurry! No More When These Are Gone! Save First Year's Depreciation! Never Again Will Prices Be So Little! We're Movin' 'Em Out At Your Price! Nobody Beat Our Deal!**

**Ad!**

**Answer for you.**

**Automobiles**

**1973 COLT \$2095**  
Low mileage, 4 speed, 35 MPG, light blue, Call 694-8448 after 5:00 p.m.

**A CLASSIC**  
1957 Chrysler Saratoga. 4 door hard top. Everything works, even the clock. 87,000 original miles. Body in good shape. Engine in excellent running condition. All power equipment. I bought it from the original owner. Sacrifice for \$300 694-2627

**CLASSIFIED DISPLAY**

**'74 SUZUKI 750cc \$1695**  
NICKEL CHRYSLER 3705 W. Wall 694-6664

**'74 KAWASAKI 750 Series, windomper \$2139.69**  
NICKEL CHRYSLER 3705 W. Wall 694-6664

**EXECUTIVE CAR**  
1975 BUICK LeSabre 4-dr sedan, 2-tone, automatic, air, power windows, 30,000 miles. \$1307.30 NOW \$4958.77 \$434.77 DOWN \$131.51 per month

**1975 MAVERICK 2 DR.**  
6 cyl. auto trans, radio

**3411 W. WALL 694-9740**

**PLUS FRT. TAXES-PREP**

**YOTA 684-7101**

**OK USED TRUCKS**

**CS**

**4-DOOR \$2395**

**ACK COUPE \$2795**

**IBU \$3795**

**PALA \$2195**

**VA 4-DR. \$1995**

**ACK CPE \$2795**

**EDS 694-8801**

**IC. 63-0214**





### Wedding means parting

(AP) — Two children at Fairview State Hospital, will be getting new "grandparents" soon, because grandma and grandpa have decided to get married and move away.

That's the way it was explained to Tammy and Jean Marie, both 12, when their "foster grandmother," Esther Gershen, 64, of Anaheim, decided to marry a "foster grandfather," Walter Fry, 72, of Huntington Beach.

THE COUPLE met while participating in the hospital's federally funded foster grandparents program. They fell in love. The four children — including two cared for by Fry — are happy for them, but sad to see them go.

"I've been sitting on a bench with Tammy for the last two days," said Mrs. Gershen. "When she understood, she walked away as if to say, 'I'm going to go — go now.' That's her way of telling me she can't handle something. She walks away."

"It'll be a little more difficult for Jean Marie. She's not as outgoing as Tammy. That's one of the things I was trying to work with her on."

FRY, WHO LEFT last July on a job hunting trip to Spokane, said his two boys "had seemed to sense something was wrong. They'd come up in the morning and say, 'Grandpa, me, me, me!'"

Mrs. Gershen, a widow, and Fry, a retired volunteer fire chief from Mead, Wash., will be married Friday in the hospital chapel with all the grandchildren in attendance.

"We wanted to marry sooner, but I was told that if you get married they take off \$50 a month in your Social Security (benefits)," said Mrs. Gershen. "We just couldn't make it."

THEY CONSIDERED ignoring their conventional upbringing — she's Jewish and he's Methodist — and moving in together "like some other couples do," she said, but they couldn't get over feeling it was somehow wrong.

In Spokane, Fry became a security guard and found a hospital for the mentally retarded where Esther can work.

"He finally wrote to me and said, 'Esther, I think we can make it now,'" she said.

The \$171,303-a-year Fairview program gives 85 low-income pensioners two "grandchildren," institutionalized because of mental retardation or emotional problems.

THERE ARE about 800 eligible children, but the program has been limited by budget to just 130, Eileen Cunningham, program director, said Tuesday, adding that more positions may soon become available.

Each grandparent receives \$1.60 an hour for 20 hours' work a week.

"But it really helps the children, too, especially the ones who are withdrawn. The one-to-one relationship really brings them out of their shell," Mrs. Cunningham said.

In some cases, she said, the children have improved sufficiently so they can go back to their parents or into foster homes.

The two foster grandparents will be replaced quickly. There is a waiting list, said Mrs. Cunningham.

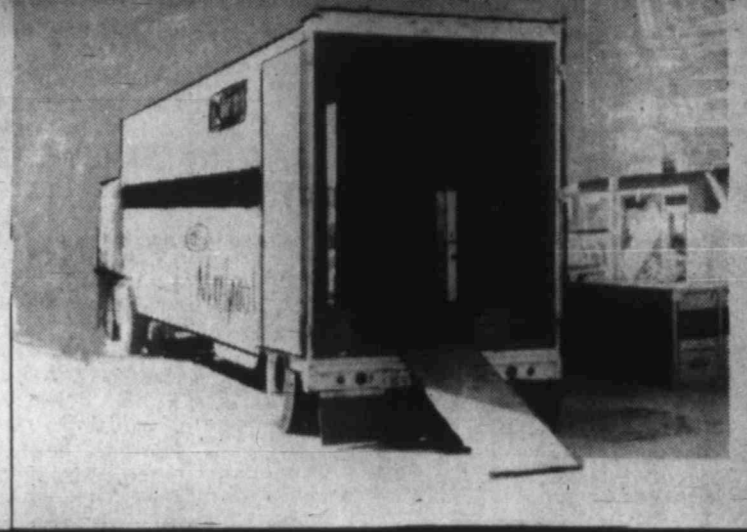
"The program offers a stepping stone for senior citizens who want better jobs. It's pure fulfillment for others," she said.

# Bolin Appliance MART



## TRUCKLOAD SALE!

**2 DAYS ONLY!**  
FRI. & SAT.



### "This is No Ordinary Sale"

We'll be selling a whole semi-load of Whirlpool Washers, Dryers, Refrigerators, Freezers, Dishwashers, Trash Mashers, Ranges, Also All RCA Color TV's, Stereos & Litton Microwave Ovens-Soundesign Radios, 8 tracks Ect.

\*Interest will be charged on deferred period

**90 Days no Interest or No Payment Until Feb. 1976**

#### RCA TRUCKLOAD SPECIALS



RCA 25-INCH  
COLOR TV \$498<sup>00</sup>  
A LOT OF TV FOR THE MONEY



RCA XL-100 19" diagonal  
MODEL FT488  
SAVE \$100.00 ON THIS 19" TV  
RCA XL-100 100% SOLID STATE COLOR  
REGULAR \$598.95  
CARLOAD SALE SPECIAL ONLY  
**\$498**  
YOU SAVE \$100.00



RCA XL-100 15" diagonal  
RCA'S PORTABLE COLOR TV  
15" DIAGONAL SCREEN  
XL-100 100% SOLID STATE  
RCA CARLOAD SALE PRICE ONLY  
**\$338**



MODEL 4456-607  
AM, FM, FM stereo radio  
8-track stereo tape player  
Slide controls for volume, balance, treble, bass  
Deluxe speaker set and much more...  
**\$88**

#### BIG 12 cu. ft. UPRIGHT FREEZER



Lowest PRICE EVER  
Only... **\$239**

#### Big 17' Cu. ft. Whirlpool Frost Free Refrigerator

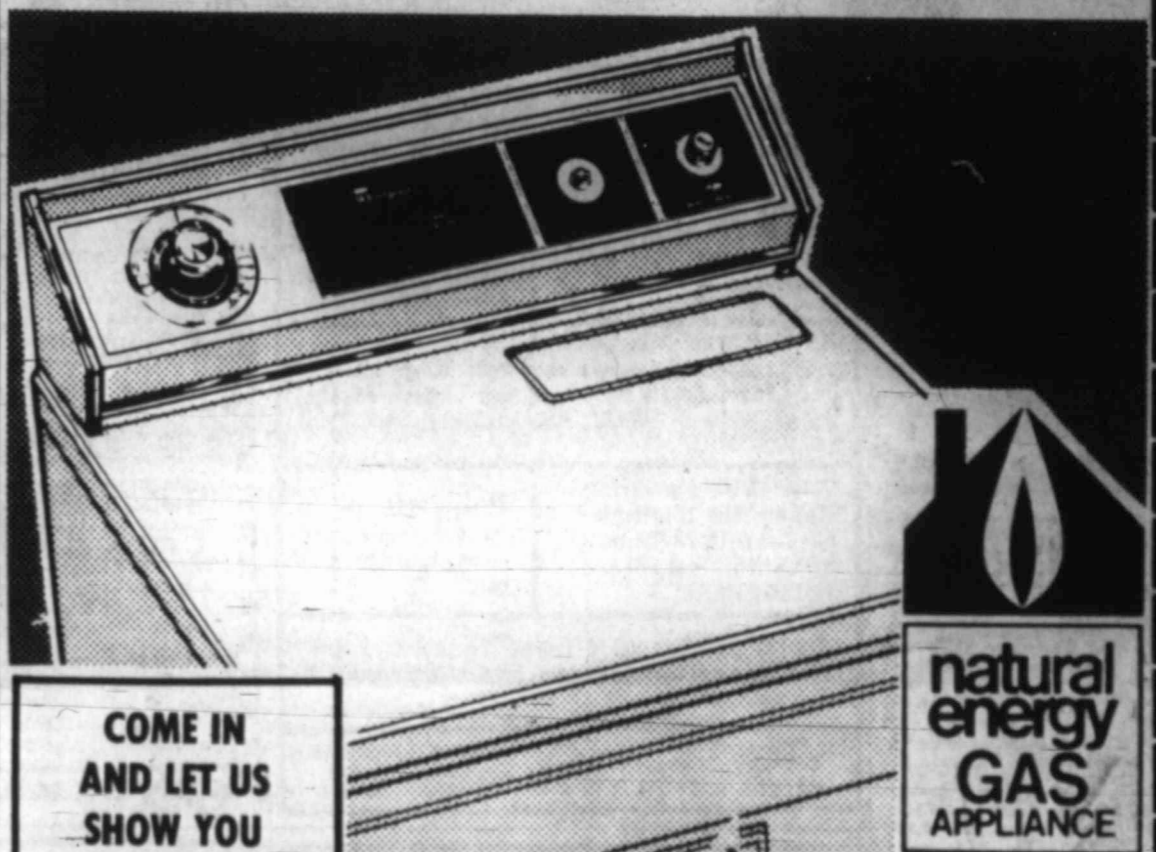


Truck Load Price  
only **\$348** w/t

#### WHIRLPOOL

## BEST VALUE

### SALE!



COME IN AND LET US SHOW YOU HOW YOU CAN SAVE THE PRICE OF A GAS DRYER IN OPERATING COSTS.

natural energy GAS APPLIANCE

MATCHING Whirlpool WASHER \$198<sup>00</sup>

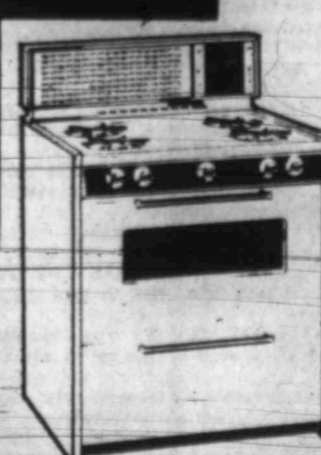
**\$148<sup>00</sup>** DON'T WAIT! w/t

REG. 219<sup>95</sup>

SAVE 71<sup>95</sup>

#### IMPERIAL

Makes The Most of Good Cooking



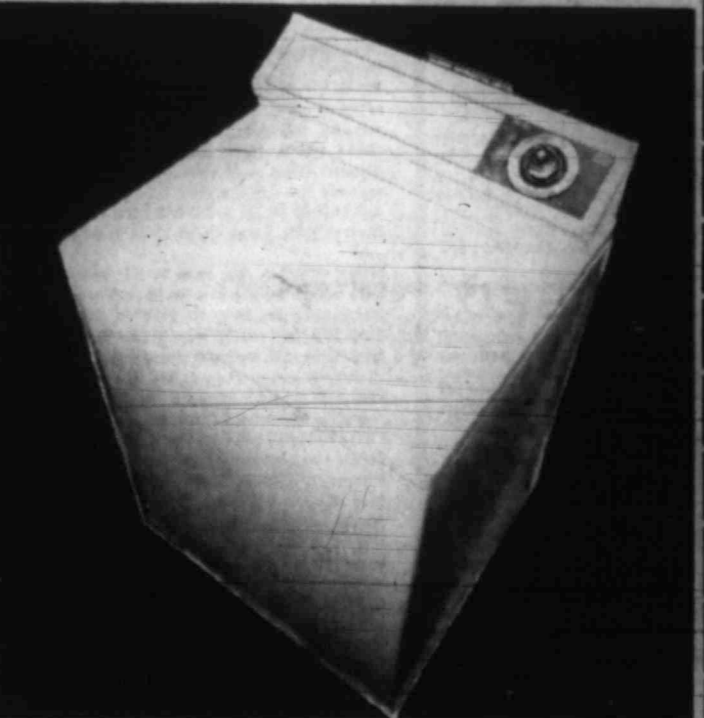
TRUCK Load SPECIAL  
30" Gas Range  
**\$199**

MODEL 330 Similar to illustration

RCA RADIO ONLY **3<sup>99</sup>**



Black/White TV Truck load Price **\$88**



Model LDA 3000-2 wash and 2 spin washer with upper SURGICLON agitator. 3-cycle selections - NORMAL, GENTLE and SOAK. Manually selected water temperatures.

**\$198**

SERVICE AFTER THE SALE! A MATTER OF FACT

3108 CUTHBERT

694-1682

# Bolin Appliance MART

