

HEADING FOR THE PENS — Two rodeo hands urge part of the stock for this weekend's AJRA rodeo toward the pens Monday at Midland Downs. The rodeo starts Thursday at 7:30 p.m. with performances also scheduled Friday and Saturday nights. Terry Walls of Stephenville is furnishing the stock. (Staff Photo by Johnny Virden)

### Growers Expect Short Corn Crop

BOONE, Iowa (AP) — Corn had the driest July on record as the corn crop entered the critical pollination period. Goepfinger says South Dakota's crop is in worse condition than Iowa's and southern will not make up for corn lost to drought in Iowa, South Dakota and Minnesota. "It won't balance," Walter Goepfinger, president of the Iowa Corn Growers Association and chairman of the national group, said Monday. "The injury is greater than the gain. The acreage (in eastern Corn Belt states) isn't large enough to do it. We're going to probably be down 6 per cent from the total anticipated crop. "East of the Mississippi River, the corn crop is very good. Illinois will probably have the best corn crop they have ever had. They've been getting the rains when they needed them. "Indiana is having a fine crop. Michigan is up about 30 per cent from last year and Ohio is enjoying one of the best crops in a long time. "But he said the anticipated harvest in Iowa, which produces about 20 per cent of the nation's total corn crop, continues to slip. Many areas of the state

### Bentsen Criticizes Ford's Inaction About Portugal

WASHINGTON (AP) — Texas Sen. Lloyd Bentsen says President Ford should tell the Soviet Union "to keep its hands off" Portugal, a fellow member of the North Atlantic Treaty Organization. Bentsen, a candidate for the Democratic presidential nomination, made his remarks in a statement issued by his Washington office Monday. Bentsen said his statement was prompted by Ford's assertion in a U.S. News and World Report interview that it is "tragic" that the United States cannot covertly help democratic movements in Portugal because of the CIA investigation. Bentsen said: "The real tragedy is that the President of the United States is sitting around bemoaning the situation while his administration fails to take any forceful public stand against this interference in the affairs of Portugal."

### Colby Gives CIA Figures

WASHINGTON (AP) — Central Intelligence Director William E. Colby says covert CIA operations abroad are down to "almost nothing" now but that heavy use could be required again some time in the future. Colby gave the assessment Monday to the Select House Intelligence Committee, which today questions Assistant Secretary of Defense Albert Hall on defense intelligence spending. Colby said the CIA is conducting only limited covert operations now both because of the world situation and because of "this present atmosphere of sensationalism" over intelligence. "Consequently, we have to restrain ourselves to what would be in the interests of our nation," Colby said. "I think it is very important to our country that we keep the capability to do this kind of covert activity in the future because the world situation can change in the next five or ten years." Colby gave the committee details on total U.S. intelligence costs in closed session Monday afternoon but committee members refused afterward to say if he confirmed previous unofficial estimates of about \$6 billion per year. One member said only that the \$9 billion figure he had heard previously turned out to be "too heavy."

### State Files Sales Tax Liens Against Two Gas Companies

AUSTIN, Tex. (AP) — The state comptroller has filed about \$5 million in tax liens against Coastal States Producing Co. and Lo Vaca Gathering Co. to protect state and local claims for sales taxes. A spokesman for Comptroller Bob Bullock said Monday the liens were filed the last two weeks with county clerks of Bexar (San Antonio), Harris (Houston) and Nueces (Corpus Christi) counties: The liens would give the state a prior legal claim on any assets of the firms in the case of any bankruptcy proceedings or sale of holdings. The comptroller's department said the liens include \$1,929,784 against Coastal States for state sales taxes and \$603,747 for city sales taxes. The liens against Lo Vaca include \$1,911,563 for state sales taxes and \$601,268 for local sales taxes.

### Agnew, Connally, Shivers Seek Beer Distributorships

HOUSTON, Tex. (AP) — officials in Golden Monday. He is trying to get one of four new franchises in Houston, a company spokesman said. "And former governors John Connally and Allan Shivers have applied for distributorships in Austin," he said. Agnew was accompanied by professional golfer Doug Sanders when he applied Monday. It was not clear why Sanders was with Agnew but the Coors spokesman said Texas law requires that a person live in the state three years before he can be granted a beer distributorship. Both Agnew and Sanders refused to answer newsmen's questions. "Why don't you guys get lost," Agnew told a reporter and a photographer. "I don't have anything to say."

**GREEN ACRES**  
MINIATURE GOLF  
● Beauty Spot of West Texas  
● 1 Mile East on Hwy. 80  
**OPEN DAILY**

**AT SHAKEY'S**  
**2 FOR 1 SALE**  
WE SERVE FUN (ALSO PIZZA)  
Take this coupon to Shakey's  
**SHAKEY'S** Pizza Parlor & Ye Public House  
3305 Andrews Hwy.  
This coupon is good for 2 pizzas for the price of one (some stuff of your choice when you eat in Shakey's).  
Offer Good Aug. 4 - Aug. 7  
Special Good After 2 P.M. each day.  
NO PHONE OR CARRY-OUT ORDERS  
Good only at location above. Coupon expires on date indicated above. Void where prohibited or restricted. Cash value 1/100¢. One coupon per family. Not honored for take-out orders. Not transferable. Use other than indicated card.  
© 1969 by Shakey's Incorporated

**TO: AUDIENCE MEMBERS FROM: PICKWICK PLAYERS**  
**DUE TO A LACK OF INTEREST TOMORROW HAS BEEN CANCELLED**  
**ED GRACZYK SHIRLEY HANSEN**  
NOW PLAYING  
AUGUST 7, 8, 9 - 2:30  
THEATRE CENTRE  
682-2544

### Postal Service Again Plans To Use City-Name Postmarks

By JEFFREY MILLS  
WASHINGTON (AP) — The Postal Service soon will be stamping the names of cities on letters, but the postmark won't necessarily be the place where a letter is mailed. The postmarks that will appear under the new program will be those of about 250 cities that have mail-processing centers, postal officials said Monday. Since 1970 the Postal Service has been marking first-class letters only with the name of the state and the zip code of the city where the letter was processed but with no city name.

postmark. A Postal Service spokesman said that when the Post Office began using area mail-processing centers, it was decided to use only the state abbreviation and the zip code of the processing area. "There was some feeling that some people wouldn't want to have the name of a larger city on their letters," the spokesman said. Now, however, the 90-day test conducted at 20 area mail-processing centers shows otherwise, he said. "Under the new program, you'll be able to know at least the area where the letter came from," he said.

The new procedure means that persons living in medium-sized and large cities will have their hometown marked on their letters. However, letters deposited in small-population areas will bear the postmark of a larger city. The new postmarks, the outgrowth of a test conducted earlier this year, will begin in several months after the required equipment is available, postal officials said. "We received only favorable comments from our customers during the test, indicating acceptance wide enough to warrant implementation on a nationwide basis," Postmaster General Benjamin F. Bailar said in announcing the change. Postal officials say that a policy will be continued that allows anyone to obtain a postmark from a city or town by going to the local post office. Letters can be dropped in specially marked slots to obtain the postmark of the city of mailing or window clerks can be asked to give the hometown

Your Midland Theatres Present:  
**WESTWOOD cinema**  
4310 ANDREWS HWY. 694-2261  
★ TODAY thru THURS. ★  
**MATINEE DAILY** at 2:00 P.M.  
NIGHTLY at 8:00 P.M.  
ADMISSION \$2.50 UNDER 12 YRS. \$1.00  
(R) NO ONE UNDER 17 YEARS OF AGE WILL BE ADMITTED UNLESS ACCOMPANIED BY A PARENT  
**EVIL GROWS BEYOND THE DOOR!**  
**BEYOND the DOOR**  
demonic possession lives, and grows... and grows... and grows... and  
JULIET MILLS as Jessica • RICHARD JOHNSON as Dr. ...

**HOWARD Lodge THEATRE**  
BOX OFFICE OPENS 1:45 P.M.  
ADMISSION \$2.00 UNDER 12 YEARS \$1.00  
★ TODAY thru THURS. ★  
FEATURE TIMES  
"DINOSAURS" 3:10-6:05-9:00 • "CINDERELLA" 2:00-4:50-7:45  
EVERYONE OCCUPYING A SEAT MUST HAVE A TICKET  
**The WALT DISNEY comedy caper of the year AND the most magical cartoon classic!**  
**One of our Dinosaurs is Missing** & **WALT DISNEY'S CINDERELLA**

**RITZ** ★ NOW SHOWING ★  
Matinee Sat - Sun, and Holidays at 2:00 P.M.  
Box Office Opens 7 P.M.  
203 N. MAIN ST. DIAL 684-7687  
ONE PERFORMANCE NIGHTLY at 8:00 P.M.  
ADMISSION \$2.50 • UNDER 12 YEARS \$1.25  
... PASS LIST SUSPENDED ...  
**JAWS**  
The terrifying motion picture from the terrifying No. 1 best seller.  
ROBERT SHAW RICHARD SCHEIDER ROY SHAW RICHARD BRYFUSS  
PG ... MAY BE TOO INTENSE FOR YOUNGER CHILDREN

**CHIEF** • Tonight thru Thurs. •  
8:00 P.M. Starts at Dusk  
On Andrews Hwy. 694-5811  
ADMISSION \$1.50 UNDER 12 YEARS 50¢  
ONE PERFORMANCE ONLY EACH EVENING  
"TIDAL WAVE" FIRST — "WHEELS" SECOND  
**THE ULTIMATE DISASTER TIDAL WAVE**  
starring LORNE GREENE PG  
**HELL & WHEELS**  
—starring— MARTY ROBBINS (PG)

PHONE 694-1411  
★ Last Times Tonight ★  
**TEXAN**  
Open First Show  
8:00 P.M. • Starts at Dusk  
ADMISSION \$1.50 UNDER 12 YEARS 50¢  
ONE PERFORMANCE ONLY EACH EVENING  
"SADDLES" FIRST — "BONNIE" SECOND  
(R) UNSUITABLE FOR THOSE UNDER 17 YEARS OF AGE  
CLEVON LITTLE in "BLAZING SADDLES"  
WARREN BEATTY in "BONNIE and CLYDE"

★ Last Times Tonight ★  
Open 8:00 P.M.  
FIRST SHOW STARTS AT DUSK  
**Fiesta**  
N. Big Spring, 682-0981  
ADMISSION \$1.50 • UNDER 12 YEARS 50¢  
ONE PERFORMANCE ONLY EACH EVENING  
"BILLY" FIRST — "TURKEY" SECOND  
ANTHONY QUINN in "BILLY TWO HATS"  
DICK VAN DYKE in "COLD TURKEY"  
—BOTH RATED (PG)—

**WATER HEATER SALES & SERVICE**  
Sales, Service & Repair  
Radio Dispatched Trucks  
**SANITARY PLUMBING CO.**  
3204 W. Wall  
Phone 694-8871

**SHUGART COUPON**  
Thurs., Fri., & Sat., Aug. 7-8-9  
**T. G. & Y. Family Center**  
36 Village Center  
**9 WALLET SIZE COLOR PORTRAITS 99¢**  
ASK About FREE 8 x 10 OFFER  
Extra charge for GROUPS

# Minnesota Gas Co. Eyes Peat As Source Of Fuel

By AUSTIN WEHRWEIN  
Special To The Washington Post  
MINNEAPOLIS — In the hope of opening up a vast new source of energy, the Minnesota Gas Co. has applied for a 25-year lease on 200,000 acres of state-owned peat bog in northwestern Minnesota.

Peat, in effect, is coal that hasn't grown up, and the objective is to convert peat into synthetic natural gas by a process similar to that used in the gasification of coal — a technology that is under intensive research and development with federal government support.

Minnegasco (as the company calls itself for short) is the

largest natural gas-distributing company in this state. It has 350,000 customers in 150 communities in southern and central Minnesota, including the Minneapolis metropolitan area.

Minnesota is without its own natural gas, oil or coal. Minnegasco's supplies come from Montana, Oklahoma, Kansas and Texas.

A Minnegasco spokesman said the proposed gas-from-peat development is believed to be a first of its kind anywhere, although the Soviet Union is said to be using peat gasification for "low BTU" gas, inferior to American "high-heating value" gas of pipeline quality.

Minnesota has more than 7 million acres of peat land, half

of the entire U.S. reserves. Of the Minnesota share, about half is regarded as useful for gas technology, but even so, Minnegasco president Paul W. Kraemer theorized that the total state reserves would last 225 years at the current Minnesota consumption level. Minnegasco's lease, if granted, would cover about 3 per cent of the state's peat reserves.

Kraemer cautioned that "many" engineering-economic problems must be solved "in concert with the highest standards of environmental quality."

But he added, "The potential exists that our state could use its peat to become partially self-sufficient in its energy requirements while actually im-

proving some of its unused land."

He said the land was now unsuitable for farming or forestry, but could be so used after the peat was harvested.

An advantage of peat is that like timber, it is a renewable resource. Rouse S. Farnham, a University of Minnesota soils scientist and Minnegasco consultant, says that in Minnesota, peat grows at the rate of 15 million tons a year.

Before the company can go ahead with its plans it needs the approval of state department of natural resources. It must file an environmental impact statement and meet regulations of various other state agencies concerned with pollu-

tion, energy and rates.

Although Gov. Wendell Anderson, a Democrat, joined Kraemer in announcing the proposed development, environmentalists expressed fears about what they see as a new version of strip mining. The director of the Minnesota Pollution Control Agency, Peter Gove, has called for a thorough analysis of the program, especially of any possible effect on protected wilderness regions in northern Minnesota.

Gove was backed by state Rep. Willard Munger, a Duluth Democrat who chairs the House Committee on Natural Resources and Environmental Preservation. He urged that the lease be delayed until the im-

act statement can be prepared.

"There has been no discussion of the peat bogs' value as wildlife habitat and water recharge areas, nor has there been discussion of the impacts of peat harvesting and the methods of energy conservation," he said.

Power to grant the lease resides in the state executive council, composed of the state's six top constitutional officers, including the governor. They do not always see eye to eye.

If the program proves commercially feasible, the next step would be to build a \$250 million demonstration plant. The company hopes some of the cost could be offset with federal money now being spent on

energy research and development.

Peat, typically formed by the accumulation of partially decomposed vegetation in drying lakes and ponds, is found in quantity not only in Minnesota but in Wisconsin, Michigan, Florida and the Dismal Swamp of Virginia and South Carolina. It burns with a smoky flame and while it is little used for fuel in this country, Ireland is famous for its peat fires. Peat is also consumed in Scotland, England, Denmark, Finland, Norway and the Soviet Union.

The gas-from-peat process envisioned here would not, however, involve burning

Rather, after the soggy material is dried and reduced to a powder it would probably be mixed with steam and oxygen under high temperature conditions as part of a complex transformation.

Minnegasco's plans assume a delay pending the state's assessment, but in the meantime, the company will continue its own research. Meanwhile the promise of economic growth based on the project has already generated a \$94,000 grant from the Upper Great Lakes Regional Commission to the Minnesota Department of Natural Resources for research on peat as an energy source.

# Flow Of Basques Into Idaho Diminishing

By JIM McLAUGHLIN  
The Idaho Statesman  
BOISE, Idaho (AP) — The flow of Basques into Idaho is diminishing.

For years men from the Basque provinces of Spain arrived here on three-year contracts as sheepherders. Many settled, moving into other pursuits or acquired their own ranches and contributed a conspicuous share of the color in Idaho life.

Idaho Secretary of State Pete T. Cenarrusa, a Basque, says there are approximately 20,000 Basques in Idaho, ranging from immigrants to fourth-generation Americans of Basque descent. The federal census does not give accurate figures on the national origins of Americans.

For the past three years, Idaho sheepmen have been em-

ploying more Mexican and Peruvian nationals, according to both Lew Williams, executive secretary of the Idaho Wool Growers Association, and John Basabe, president of the livestock division of J.R. Simplot Co.

Both men blame complications of Labor Department regulations for the difficulty in recruiting sheepherders outside the country. They say employment offices are helping sheepmen contact unemployed Americans to work as herders, but tending flocks does not appeal to Americans, employed or not.

One ranch tried hiring Navajo Indians from a reservation in New Mexico. Cenarrusa, Basabe and Williams all said it was not successful.

A spokesman for the Idaho

Historical Society said the Basques were not originally brought into the country specifically for sheepherding jobs. In the 1860s Basques were one of the many immigrant nationalities coming from Europe and the principal concentrations were in Mexico and California.

Their language, unlike any other, was a barrier to their assimilation into the American melting pot.

Basques found the Idaho mountains similar to their native Pyrenees and moved into the area to raise their own sheep, a vocation not in their previous experience. The historical society spokesman said they found no need to solve the language problem in the lonely life of a shepherd.

Basques moved into Nevada

in the 1870s and 1880s, then from 1890 to 1920 a steady stream came into the western states.

Cenarrusa said the 20,000 Basques in Idaho are the biggest concentration in the United States.

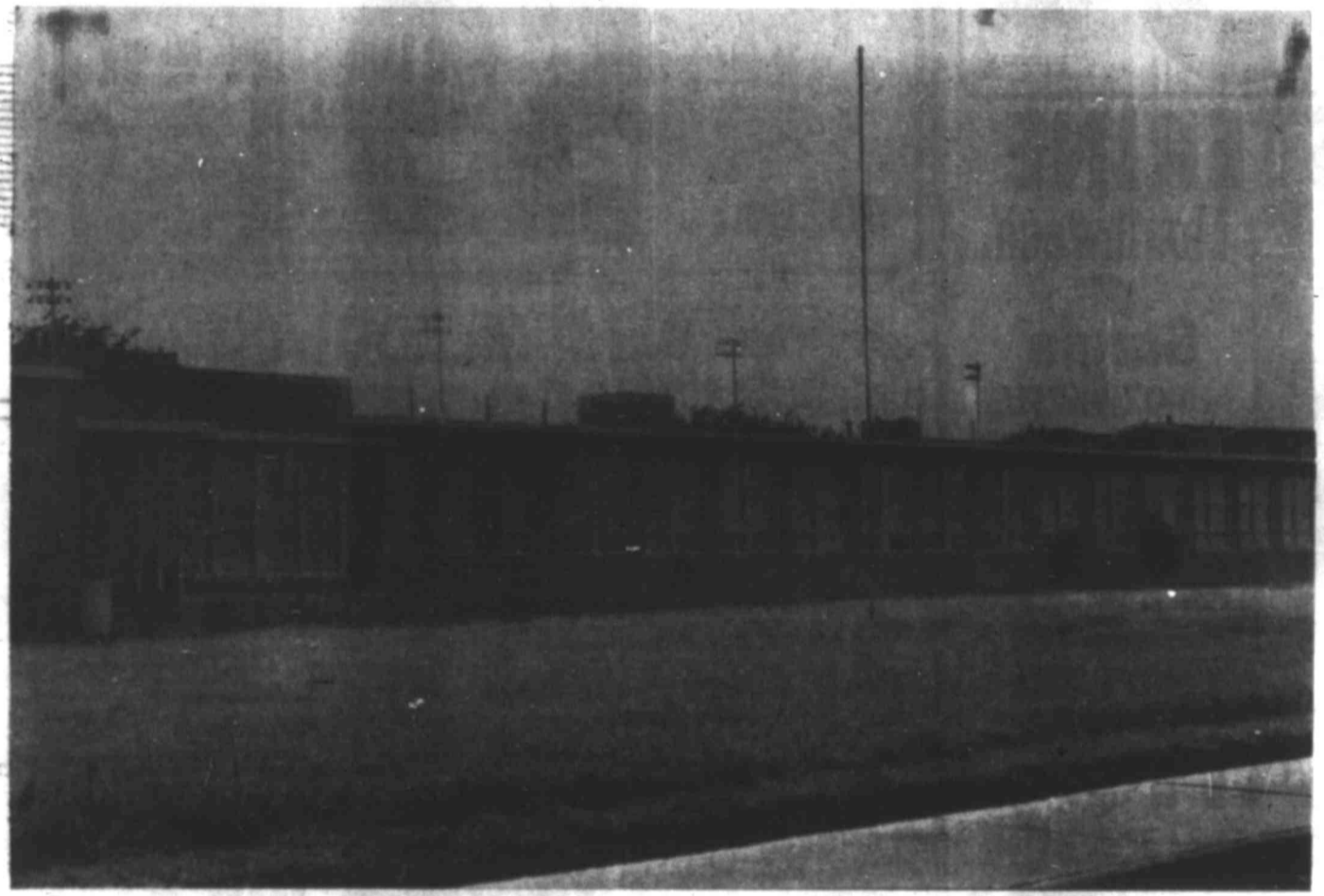
The historical society said Basques tend to gather in groups from their native provinces in Spain. Cenarrusa said most of Idaho's Basques are from Vizcaya, while most of those in Nevada and California are from Guipuscoa Province.

No one knew when the practice of attracting Basques as sheepherders began. Basabe and the historical society spokesman said there are strong bonds of communication. They said Basques here wrote to Spain of opportunities and

life here.

Cenarrusa said Basques are known for their dependability, honesty and physical stamina.

**Back To School Levis**  
GENERAL CLOTHING  
300 E. Florida



STANTON HIGH SCHOOL—Stanton schools begin their fall terms Aug. 18, with teachers' in-service scheduled for Aug. 12-15.

## Pennian Basin OIL & GAS LOG

(Continued From Page 1A)  
from 6,367-6,415 feet recovered 120 feet of mud and 234 feet of heavily gas-cut mud, with a trace of oil.

Salt water was recovered on tests of the Noodle Creek at 3,992-4,010 feet, and 4,047-4,060 feet.

Location is 660 feet from north and 1,900 feet from west lines of section 7, block 3, H&TC survey, 10 miles southwest of Rotan.

## Prospector Set In North Concho

Texas American Oil Corp., operating from Midland, has made plans to drill a 3,800-foot venture in North Central Concho County. It is No. 1 Otto Sultemeier.

Location is 1,320 feet from north and east lines of section 133, block 72, T&NO survey, 3/4 mile northwest of the Paint Rock (Strawn) gas field and 1 1/2 mile southeast of Paint Rock townsite.

## Services Held For Tracy Rhodes

Services for Tracy Rhodes, 13, who died Friday afternoon in a two-car collision, were held at 11 a.m. Monday in the St. Mark's Methodist Church.

Palbearers for the service were Dan Williams, Allen Jones, Jayson Foreman, Nathan Foreman, Phil Foreman and Steve Underwood.

## America's Colonial Past Inspiration To Craftsmen

By JERRY HARKAVY  
YORK, Maine (AP) — Disenchanted with contemporary home building, small groups of northern New England craftsmen are turning to America's colonial past for old construction techniques and new inspiration.

These groups have been attracting customers by building homes the way they were built more than 200 years ago, using methods known as timber framing or post-and-beam construction.

"All of us have worked with conventional methods and materials, which is why we're doing this," said Stewart Elliott of York, a 32-year-old carpenter who organized Housesmiths three years ago.

He said similar groups have been formed in Marshfield, Vt., and Alstead and Barrington, N.H.

Elliott claims his timber-framed houses, using posts and beams as large as 9-by-15-inches, are sturdier than conventionally framed dwellings, which get their structural strength from plywood sheathing nailed to 2 by 4-building studs.

"Drive a truck through a conventional house and it will collapse," he said. "Drive it through a timber-framed house and you'll have a hole in the wall, but the house will remain standing."

Housesmiths models its homes after Cape Cods, salt-boxes and garrisons. The group claims its buildings will last 200 or 300 years.

Thus far, the group has built houses ranging in price from \$25,000 to \$85,000, depending on size and finishing. Housesmiths members say their buildings cost about \$24 to \$26 a square foot, compared to \$30 a square foot for conventional homes.

Elliott gets his designs from scale drawings of classic 18th century homes, prepared as a WPA project during the 1930s and available from the Library of Congress.

"We try to reproduce a house in as close detail as possible to the traditional house" while meeting state and local building codes and adding bathrooms, laundry rooms and other amenities, he said.

The group's carpentry tools are a mixture of old and new. Power saws are used alongside antique adzes, mallets and chisels, often collected from old barns. The older hand tools are used to fashion joints. Timbers are linked with wooden pegs, known as trenails.

Housesmiths, which took its name from an 18th century term describing a craftsman who constructed houses, has a nucleus of five carpenters, with up to 15 other workers, including masons, plasterers and cabinetmakers, who do interior finishing. Elliott said the group builds four or five homes a year.

The group has resurrected the traditional ridge pole party, which takes place at a home site after the final timber is set into place. A small pine bough, sometimes known as a tree of liberty, is nailed to the peak of the house, and the owner joins the builder for a celebration.

"You get a barrel of beer and some music," said Elliott. "Then you hoot and you holler and you have a dance."

**Cards Double Population**  
CLEVELAND (AP) — There are more than two plastic credit cards in use for every man, woman and child in America. A majority of yours probably were made by Addressograph Multigraph Corp. here, which produces more than 100 million cards a year.

**FOR RENT**  
(2900 W. Kentucky St., Warehouse Co.)  
**52 BRAND NEW SMALL WAREHOUSES - TWO SIZES**  
10' x 30' and 10' x 22'  
9'9" Overhead Doors  
ONE PRICE ..... **\$25 PER MO.**  
**HAROLD B. SHULL**  
Room 811, 1st National Bank Bldg.  
**PHONE 682-7021**

# SOUND ON ALBUMS AND TAPES


**ALBUMS 4.99**      **TAPES 6.49**

SUGGESTED RET. \$6.98      SUGGESTED RETAIL \$7.98


**RCA RECORDS & TAPES**

**SPECIAL SELECTION COLUMBIA**

**ALBUMS REG. RET. \$4.98**      **2.99**

**SKAGGS ALBERTSONS DRUGS & FOODS**

**1002 ANDREWS HWY.**

arks  
a larger city  
the spokes-  
the 90-day test  
lea mail-proc-  
ows otherwise)  
the new pro-  
le the letter  
aid.  
THURS. ★  
DAILY  
M.  
Y.M.  
\$100  
RENT  
DOOR!  
ND  
OR  
grows...  
..and  
SON as a...  
THURS. ★  
PMS 1-45 P.M.  
ON-12.00  
YEARS-11.00  
2.00-4.50-7.45  
ST  
medy  
D the  
classic!  
DISNEY'S  
RELLA  
SHOWING ★  
Sat - Sun and  
days of 2:00 P.M.  
ice Opens 7 P.M.  
P.M.  
25  
ying motion  
from the  
No. 1 best seller.  
WS  
BERT  
AW RICHARD  
BNEYFUSS  
THURS. ★  
First Show  
Starts at Dusk  
SION \$1.50  
2 YEARS 50'  
LLR  
HEELS  
starring—  
ROBBINS (PO)  
Times Tonite ★  
First Show  
Starts at Dusk  
MISSION \$1.50  
R 12 YEARS 50'  
VENING  
ECOND  
S OF AGE.  
BEATTY in  
INIE and  
DE"  
Times Tonite ★  
Open 8:00 P.M.  
FIRST SHOW  
STARTS AT DUSK  
YEARS 50'  
ING  
VAN DYKE in  
COLD  
RKEY"

### Southern School Aids 53 Youths

By C. G. McDANIEL

CHICAGO (AP) — Patrick Zimmerman never planned to start a school when he began helping neighborhood children with school problems. But he did.

The Southern School in the Uptown area of the North Side of Chicago teaches and helps 53 youths rejected by the public school system or sent there by mental health agencies.

It is regarded as a model of what can be done for violent and emotionally disturbed youths.

"Myself, I'd fight for it," one pupil said. "You learn more here." What else? "You learn about changing your attitudes."

"If you don't grow up in a poor neighborhood you don't realize how much violence is an everyday part of life," said Dr. Jerry Rothman, administrative director.

#### One Of Poor Sections

The Uptown section, just a few blocks west of Chicago's well-to-do lakefront residential area, is one of the poorest sections of the city and has one of the highest crime and unemployment rates.

It is made up largely of white Southern families, with significant numbers of blacks, Puerto Ricans, Indians and Latin Americans.

Zimmerman, 33, a native of South Carolina, became a teacher in South Side schools after obtaining a master's degree in political science from the University of Chicago.

Youngsters in his home neighborhood who were in trouble at school learned that they were welcome at his apartment to listen to his rock records and look at his books.

#### On Their Way Out

In talking with the children and their parents, Zimmerman learned that they were on their way out of the public school system. They were truant, had a tendency to get into heated arguments and attacked their teachers.

"I didn't intend to start a school, but only to teach these kids," he said.

He took the money he had in the teachers' pension fund and started with eight youngsters, ages 8 to 11, in a rent-free storefront church. That was in December 1969.

Word got around about the school and Zimmerman obtained funding from the Illinois Department of Mental Health.

#### Geographic Name

It is called the Southern School because, Zimmerman explained, "The kids wanted to call it something so they could tell their friends they went somewhere." The name reflects the geographic background of the first pupils.

The school now has six teachers. Its annual budget is over \$100,000 and it is formally affiliated with the Edgewater-Uptown Community Mental Health Center. The money comes from city, state and federal mental health and education funds.

The pupils—33 boys and 20 girls—are adolescents and pre-adolescents. The formal curriculum emphasizes basic skills: reading, math, vocabulary, grammar.

It is possible to earn a high school diploma by completing the courses offered, but most of the pupils are more interested in getting a job, Zimmerman said.

### Judge Delays Bell Trial

SAN ANTONIO, Tex. (AP) — A federal judge has delayed trial of a \$3 million antitrust suit against Southwestern Bell Telephone Co. by three smaller firms.

"In view of certain legal developments, certain values (questions) have been raised concerning this matter," said U.S. District Court Judge John H. Wood Jr. in dismissing jurors until Aug. 14.

San Antonio Telephone Co., known locally as Santel, filed suit in Oct. 1972 and since has been joined in the suit by El Paso Telephone Co. and Northeastern Telephone Co. of Connecticut.

Santel, now defunct, originally asked for \$25 million from American Telephone & Telegraph Co. and Western Electric Co. But later narrowed the suit to Southwestern Bell. Several joint plaintiffs in the case have withdrawn.

**CLOROX** 2  
all fabric bleach

**Dry Bleach**  
CLOXOX  
40-OZ BOX

**79c**

**WOOLITE**  
COLD WATER WASH

LIQUID  
16-OZ BOTTLE

**1.09**

**Fabric Softener**

CLING FREE  
13-OZ CAN

**1.89**

**DASH**  
HOME LAUNDRY DETERGENT

20-LB BOX

**5.97**

**VANISH** ... BLUE AUTOMATIC  
TOILET BOWL CLEANER

12-OZ. SIZE

**77c**

**DOVE** ...  
BAR SOAP

2 BARS FOR

**59c**

**NEW Jet Stream PISTOL HOSE NOZZLE**

Sprays from fine mist to full stream... locks off any spray... shuts off instantly... resets of exact spray automatically. Gleaming lustrous-plated finish. Precision engineered.

Model No. 970-C

REG. 1.79, NOW

**99c**

**SPECTRACIDE**  
INSECTICIDE

PINT SIZE

REG. 4.37, NOW

**3.19**

CLAIROL ... Herbal Essence

**SHAMPOO**

12-OZ BTL. ....

**1.29**

**DAWN** ... LIQUID DETERGENT

22-OZ BTL.

**59c**

**EASY-OFF** ... SPRAY OVEN CLEANER

REGULAR OR LEMON  
16-OZ CAN

**99c**

**LISTERINE**  
Mouthwash and Gargle

20-OZ BOTTLE

**97c**

**DRANO**  
AEROSOL PLUNGER

5-OZ SIZE

**1.29**

**MIRACLE-GRO**  
or MIRACLE PLANT FOOD

1 1/2-LB. PKG.

REG. 2.77, NOW

**1.99**

**50-FT. WATER HOSE**

Nylon Reinforced  
50' x 3/4" No. U-34-50

REG. 14.59, NOW

**9.88**

WE'RE SERVING

**SUPER S**

**GIBSON'S**

**DISCOUNT CENTER**

PRICES EFFECITVE  
5 P.M. TUESDAY THRU 5 P.M. THURSDAY

**GIBSON'S** ... Grade "A" LARGE EGGS

DOZEN ..

**59c**

**MEADOLAKE**  
SOFT SPREAD MARGARINE

TOASTETTES  
NABISCO  
6 1/2-OZ PKGS.

**TREETOP** ... FROZEN ... APPLE JUICE

12-OZ CAN

**57c**

**ALPEN** 12-OZ BOX

**39c**

**ORANGE JUICE**

GOLDEN FRESH Frozen

12-OZ CAN

**37c**

**Black & Decker**  
1/2-SHEET FINISHING SANDER

Large 4 1/2" x 11" sanding surface. Gets jobs done faster, easier... Double insulated. Exclusive detachable 6 ft. cord can be locked away for safety. Accepts optional 74-000 Dust Collecting Sanding Attachment.

Model No. 7414

NOW ONLY

**17.88**

**50-FT. WATER HOSE**

Nylon Reinforced  
50' x 3/4" No. U-34-50

REG. 14.59, NOW

**9.88**





### Southern School Aids 53 Youths

By C. G. McDANIEL  
CHICAGO (AP) — Patrick Zimmerman never planned to start a school when he began helping neighborhood children with school problems. But he did.

The Southern School in the Uptown area of the North Side of Chicago teaches and helps 53 youths rejected by the public school system or sent there by mental health agencies.

It is regarded as a model of what can be done for violent and emotionally disturbed youths.

"Myself, I'd fight for it," one pupil said. "You learn more here." What else? "You learn about changing your attitudes."

"If you don't grow up in a poor neighborhood you don't realize how much violence is an everyday part of life," said Dr. Jerry Rothman, administrative director.

#### One Of Poor Sections

The Uptown section, just a few blocks west of Chicago's well-to-do lakefront residential area, is one of the poorest sections of the city and has one of the highest crime and unemployment rates.

It is made up largely of white Southern families, with significant numbers of blacks, Puerto Ricans, Indians and Latin Americans.

Zimmerman, 33, a native of South Carolina, became a teacher in South Side schools after obtaining a master's degree in political science from the University of Chicago.

Youngsters in his home neighborhood who were in trouble at school learned that they were welcome at his apartment to listen to his rock records and look at his books.

#### On Their Way Out

In talking with the children and their parents, Zimmerman learned that they were on their way out of the public school system. They were truant, had a tendency to get into heated arguments and attacked their teachers.

"I didn't intend to start a school, but only to teach these kids," he said.

He took the money he had in the teachers' pension fund and started with eight youngsters, ages 8 to 11, in a rent-free storefront church. That was in December 1969.

Word got around about the school and Zimmerman obtained funding from the Illinois Department of Mental Health.

#### Geographic Name

It is called the Southern School because, Zimmerman explained, "The kids wanted to call it something so they could tell their friends they went somewhere." The name reflects the geographic background of the first pupils.

The school now has six teachers. Its annual budget is over \$100,000 and it is formally affiliated with the Edgewater-Uptown Community Mental Health Center. The money comes from city, state and federal mental health and education funds.

The pupils—33 boys and 20 girls—are adolescents and pre-adolescents. The formal curriculum emphasizes basic skills: reading, math, vocabulary, grammar.

It is possible to earn a high school diploma by completing the courses offered, but most of the pupils are more interested in getting a job, Zimmerman said.

### Judge Delays Bell Trial

SAN ANTONIO, Tex. (AP) — A federal judge has delayed trial of a \$3 million antitrust suit against Southwestern Bell Telephone Co. by three smaller firms.

"In view of certain legal developments, certain values (questions) have been raised concerning this matter," said U.S. District Court Judge John H. Wood Jr. in dismissing jurors until Aug. 14.

San Antonio Telephone Co., known locally as Santel, filed suit in Oct. 1972 and since has been joined in the suit by El Paso Telephone Co. and Northeastern Telephone Co. of Connecticut.

Santel, now defunct, originally asked for \$25 million from American Telephone & Telegraph Co. and Western Electric Co. But later narrowed the suit to Southwestern Bell. Several joint plaintiffs in the case have withdrawn.

**CLOROX 2** Dry Bleach  
all fabric bleach  
40-OZ BOX  
**79<sup>c</sup>**

**WOOLITE** COLD WATER WASH  
LIQUID 16-OZ BOTTLE ..... **1<sup>09</sup>**

**Fabric Softener**  
CLING FREE 13-OZ CAN ..... **1<sup>89</sup>**

**DASH HOME LAUNDRY DETERGENT**  
20-LB BOX **5<sup>97</sup>**

**VANISH ... BLUE AUTOMATIC TOILET BOWL CLEANER**  
12-OZ SIZE ..... **77<sup>c</sup>**

**DOVE ... BAR SOAP** ..... 2 BARS FOR **59<sup>c</sup>**

CLAIROL ... Herbal Essence  
**SHAMPOO**  
12-OZ BTL ..... **1<sup>29</sup>**

**DAWN ... LIQUID DETERGENT**  
22-OZ BTL ..... **59<sup>c</sup>**

**EASY-OFF ... SPRAY OVEN CLEANER**  
REGULAR OR LEMON 16-OZ CAN ..... **99<sup>c</sup>**

**LISTERINE Mouthwash and Gargle**  
20-OZ BOTTLE ..... **97<sup>c</sup>**

**DRANO AEROSOL PLUNGER**  
5-OZ SIZE ..... **1<sup>29</sup>**

**NEW Jet Stream PISTOL HOSE NOZZLE**  
Spreys from fine mist to full stream ... locks at any spray ... shuts off instantly ... resets at next spray automatically. Gleaming, lustrous-plated finish. Precision engineered.  
Model No. 970-C  
REG. 1.79, NOW ..... **99<sup>c</sup>**

**SPECTRACIDE INSECTICIDE**  
PINT SIZE REG. 4.37, NOW ..... **3<sup>19</sup>**

**MIRACLE-GRO or MIRACLE PLANT FOOD**  
1 1/2-LB. PKG. REG. 2.77, NOW ..... **1<sup>99</sup>**

**50-FT. WATER HOSE**  
Nylon Reinforced 50' x 3/4" No. U-34-50 REG. 14.59, NOW ..... **9<sup>88</sup>**

WE'RE SERVING **SUPER SAVINGS**  
**GIBSON'S DISCOUNT CENTER**  
PRICES EFFECTIVE 5 P.M. TUESDAY THRU 5 P.M. THURSDAY

**GIBSON'S ... Grade "A" LARGE EGGS**  
DOZEN .. **59<sup>c</sup>**

**MEADOLAKE SOFT MARGARINE**  
1-LB TUB **2**

**TREETOP ... FROZEN ... APPLE JUICE** 12-OZ CAN ..... **57<sup>c</sup>**  
**ALPEN** 12-OZ BOX ..... **39<sup>c</sup>**

**ORANGE JUICE**  
GOLDEN FRESH Frozen 12-OZ CAN .... **37<sup>c</sup>**

**Black & Decker 1/2-SHEET FINISHING SANDER**  
Large 4 1/4" x 11" sanding surface. Gets jobs done faster, easier. Orbital action for fast material removal. Double insulated. Exclusive detachable 6 ft. cord can be locked away for safety. Accepts optional 74-000 Dust Collecting Sanding Attachment.  
Model No. 7414 NOW ONLY **17<sup>88</sup>**

**50-FT. WATER HOSE**  
Nylon Reinforced 50' x 3/4" No. U-34-50 REG. 14.59, NOW ..... **9<sup>88</sup>**

**Fluffo Shortening** 3-LB. CAN **17**  
**TOASTETTES** NABISCO 6 1/2-OZ PKGS. **3**

**SKINNEE SPAGHETTI** 11-OZ **49**

**SINNER'S ... SPAGHETTI** 11-OZ **49**

# SAVINGS!

**Fluffo Shortening**  
3-LB. CAN



**RED HEART DOG FOOD**  
15-OZ CAN... 7 FOR 1<sup>00</sup>

**BAMA... APRICOT PRESERVES**  
18-OZ GLASS... 79<sup>c</sup>

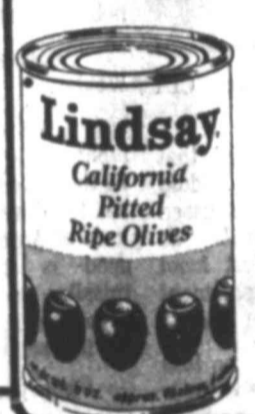
**179**

**PEANUT BUTTER**  
BAMA... 18-OZ JAR

**79<sup>c</sup>**



**RIPE OLIVES**  
Lindsay... Pitted



**49<sup>c</sup>**

**TOASTETTES**  
NABISCO



6 1/2-OZ PKGS. 3 FOR 1<sup>00</sup>

**Vlasic... Sweet Butter Stix**

**PICKLES**  
16-OZ JAR

**59<sup>c</sup>**



**FAMOUS... SWEET PECOS**

**CANTALOUPE**



3 FOR 1<sup>00</sup>

**CALIFORNIA... LARGE NO. 1**

**VINE RIPENED TOMATOES**



FIRM & JUICY  
LB... 39<sup>c</sup>

**TOP OF THE SEASON... CALIFORNIA FREESTONE**

**PEACHES** LB... 45<sup>c</sup>

**RUSSET POTATOES** 10-LB BAG... 1<sup>19</sup>

**SWEET PLUMS** LB... 39<sup>c</sup>

**LOCAL GROWN... SWEET BELL PEPPERS**

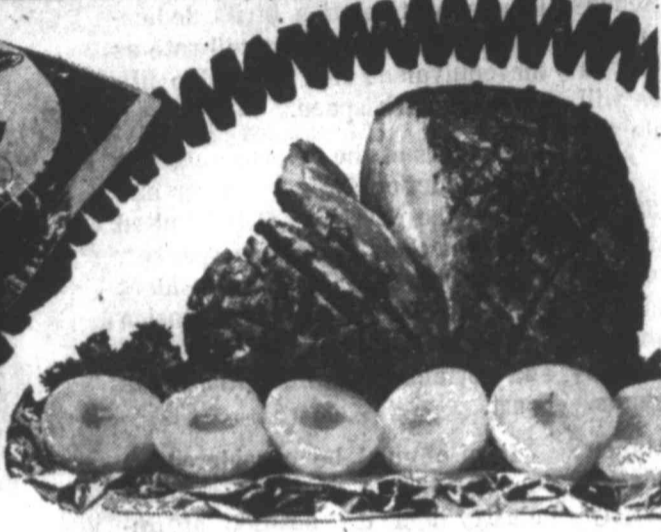
Stuffing Size or Salad Tidbits

EACH... 9<sup>c</sup>



**GLOVER'S ALL-MEAT BOLOGNA**

OR **FRANKS** 12-OZ PKG. EACH... 79<sup>c</sup>



**Glover's Dutch Oven Smoked Boneless Hams**

FULLY COOKED

**169**

**GLOVER'S 9 VARIETIES LUNCH MEAT** 6-OZ PKG... 49<sup>c</sup>

**RICH'S SLICED TURKEY BREAST** 1-OZ... 98<sup>c</sup>

**MOREHEAD'S ASSORTED GELATIN SALADS** 15-OZ TUB... 49<sup>c</sup>



**SAUSAGE**

**OWEN'S PURE PORK 1-LB ROLL... 169**

**Gooch's Pure**

**BEEF PATTIES**

**97<sup>c</sup>**

**HORMEL'S LINK SAUSAGE LITTLE SIZZLERS** 13-OZ PKG... 1<sup>07</sup>

**ECKRICH'S SMOKED SAUSAGE** LB... 1<sup>59</sup>

**ECKRICH'S LUNCH MEATS SMORGAS-VARIETY PAK** LB... 1<sup>59</sup>

**Mrs. PAUL'S Combination**

**SEAFOOD PLATTER**

9-OZ PKG... 99<sup>c</sup>



**MRS. PAUL'S FISH STICKS**

14-OZ PKG... 99<sup>c</sup>

**SPAGHETTI**  
11-OZ PKG.

**49<sup>c</sup>**

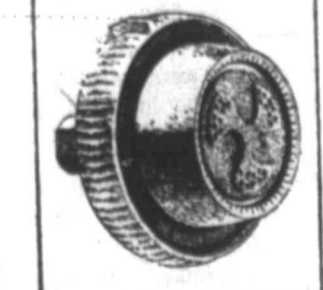
**Black Pepper**

**SCHILLING 4-OZ CAN 59<sup>c</sup>**

**Shower Massage**



**WaterPik SHOWER MASSAGE**



New showerhead's unique massaging action delivers pulsating bursts that soothe, stimulate, massage your whole body.

**24<sup>88</sup>**

**Anchor-Hocking BI-CENTENNIAL DESIGN FRUIT JARS**  
Case of 8-Quart Size



**1<sup>29</sup>**



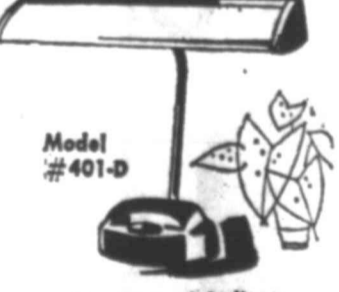
**LADY SEYMOUR... All-Metal ADJUSTABLE IRONING BOARD**

NO. 011-11 REG. 8.49 NOW... 6<sup>88</sup>



**THE Astra 2-SLOT TOASTER**  
With Black Phenolic End Panels

REG. 13.57 NOW... 10<sup>49</sup>



**HAMILTON OF INDIANA SINGLE LIGHT FLUORESCENT DESK LAMP**

REG. 13.99 NOW... 10<sup>88</sup>



**Model #HB5135 from Norelco AUTOMATIC DRIP FILTER COFFEE MAKER**

REG. 25.99 NOW... 29<sup>88</sup>

**ReynoldsWrap 75' Household FOIL**  
12" x 75" Roll REG. 91<sup>c</sup> NOW... 79<sup>c</sup>

**GUSTIN-KRAEMER NO. 535 IRONING BOARD PAD & COVER SET**  
REG. 1.85, Now... 1<sup>39</sup>

## Wolf Pack Protected At Center

By ED SCHAFER

EUREKA, Mo. (AP) — The eerie sound of howling wolves floating down the heavily wooded Tyson Valley might once have caused nearby farmers to fear for the lives of their stock — or even themselves.

But today the howls mean only that the wolf pack maintained here by the Wild Canine Survival and Research Center is alive and well, protected from the outside by several lines of high chain-link fence. That wolves need protection from humans, and not vice versa, is one of the primary reasons for the existence of this refuge which harbors a pack of 12 Mexican grey wolves and four young imported Iranian wolves. Researchers feel their work here may help prevent the wolf from becoming extinct.

**'Misunderstood Mammals'**  
"Wolves have historically been the most misunderstood and maligned mammals in America," said Dr. Richard Coles, naturalist and director of Washington University's Tyson Valley Research Center.

"It's true that a hungry wolf might have taken a few head of livestock," Coles explained, "but there is no evidence that wolves are a threat to humans. Like many other wild animals, unless they are cornered wolves would prefer to go the other way in a chance encounter with a man."

**'Excellent Place'**  
Tyson Valley, made up of 2,000 acres of rugged Ozark foothills effectively cut off from the rest of the world by its fences and locked gates, bears few marks of civilization, aside from 52 reinforced concrete bunkers used to store powder and munitions during World War II.

"It's an excellent place for the wolves," Coles said. "The public can be sure it is safe from the animals and the setting provides a perfect place for students and other researchers to observe the wolves in their natural environment. The only difference between this and their natural setting is the limited range and an artificial feeding of special chow."

Seven grey wolves from Mexico were placed in a spacious compound in the fall of 1973, with only a few fallen logs to shelter them from the winter. They survived and a later litter of five cubs born to the dominant male and female brought the pack to its current level of 12, about half the size of a pack in the wild.

**Regulate Pack Size**  
"One of the interesting things we have learned," said Coles, "is that wolves, which as top carnivores were responsible for keeping herds of deer and other animals from becoming too large for their good, have a way of regulating the size of their own packs as well."

"We've found that wolves are extremely social animals. Quite often a pack is made up of just one family. Within that family, there is a very definite peck order. Every member of the pack has his place, and to step out of that place usually brings down the wrath of the offended wolf or even the whole pack."

"Within this framework, which is ordinarily maintained by growls, threatening glances or a nasty snap rather than an out-and-out fight, only the dominant male and female are permitted to mate."

This selectivity, the naturalist said, holds down the number of new wolves and makes sure only the animals best suited for survival bear offspring.

**Students Study Pack**  
Students armed with cameras, large note pads and seemingly infinite patience study the structure of this pack from an enclosure mounted on an old railway loading platform now used as an observation post.

Washington University, less than an hour away by automobile, received the land from the federal government in 1963. University officials make every effort to see that the wolves and other wildlife here are protected from the outside. Special permission is required for entry through the heavy gates. Even so, on a normal working day traffic is brisk as physicists, biologists, and psychologists travel to and from modern laboratories set up in five of the partially underground bunkers which have been improved and air conditioned. Other bunkers provide storage.

The Associated Press is entitled exclusively to the use for republication of all the local news printed in this newspaper, as well as all AP news dispatches.

JAMES N. ALLISON (1902-1975)

JIM ALLISON JR. PUBLISHER
ADVERTISING RATES: Display advertising and legal notice rates on application.

The publisher is not responsible for copy omissions or typographical errors which may occur other than to correct them in the next issue after it is brought to his attention.

EDITORIALS

Presidential Visit

President Gerald Ford's scheduled appearance here next month will mark the first time that a President of the United States will have visited Midland while in office.

He will be in the Tall City to speak at the formal dedication of the new Permian Basin Petroleum Museum, Library and Hall of Fame.

Congressman George Mahon Saturday advised the Reporter-Telegram that Mr. Ford definitely plans to be in Midland for the museum dedication on Sept. 13.

Midlanders generally speaking are as thrilled as can be at the announcement, and well they should be.

This will be an event of tremendous significance for the Tall City, which that day will bask in the national spotlight.

But even more important is the sendoff it will give the multi-million dollar Permian Basin Petroleum Museum, the very finest, most complete and most modern facility of its kind in the world.

The Country Parson



A preacher is expected to condemn sin without stepping on any toes.

NICK THIMMESCH

The Good Purpose Of Helsinki Conference

HELSINKI — The European Security Conference should not be pooh-poohed or easily dismissed as another exercise in nice-sounding rhetoric.

After all, 35 nations met, talked with and at each other in meaningful terms, for the most part, and signed a principled document reflecting two years of hard work.

A variety of skeptics have downplayed or attacked the conference. Some say that the European borders resulting from World War II are a reality, so why the fuss?

True, the Soviets initiated and ran this conference, but somewhere en route to Helsinki the Western nations, particularly the United States, insisted on including statements concerning the opening of all of Europe, allowing families to be reunited, people to marry whom they please, making access by journalists and educators easier in all nations.

The Soviets didn't like this add-on feature, but the conference was too far along, and the Soviet commitment too

ident's participation in its dedication ceremony. It truly will rate as the equivalent of a spaceship lift-off into outer space.

Leaders of the museum are due commendation for going after and getting the President of the United States as their dedication speaker.

It also must be considered as due recognition of the petroleum industry and the position of importance which it holds in the nation's overall energy picture.

The occasion will bring hundreds of visitors to the Tall City from "all over." It will be a great and historic happening, one which long will be remembered.

Midlanders should begin right now in preparing for the President's visit. There is much to be done, and a short period of time in which to do it.

It Happened Here—

40 Years Ago (Aug. 5, 1935): Committees are at work raising funds for purchase of right-of-way and erecting fences along new Midland-Andrews highway.

Billy Graves Nobel, 1st Class Boy Scout of Troop 54, has been appointed to the art staff of the Jamboree Journal, publication of the first annual national Boy Scout Jamboree at Washington, D.C.

"Hell's Angels," said to be the most outstanding field achievement of all time, is showing in a return engagement at the Ritz Theater.

Mr. and Mrs. Jim Flanigan of Gilmer are leaving Midland today after spending the weekend with his parents, Mr. and Mrs. J. M. Flanigan.

Nick Thimmesch



deep, for them to make trouble or quit. So the Soviets wound up with more than they cared to chew.

The result is that the West reluctantly accepted the frontiers in return for acknowledgment that new frontiers in human relations should be established.

President Ford's speech was first rate in dealing with the West's insistence on human rights. The delegates showed their strong approval by giving Mr. Ford the longest applause for any speech at the conference.

In saying that peace is not a piece of paper, that detente is evolutionary and a two-way street, that in view of the long and sorry volume of unfulfilled declarations, noble sentiments must be translated into actions, President Ford hit hard for practicality.

"The people of Europe and, I assure you, the people of North America," he said, "are thoroughly tired of having their hopes raised and then shattered by empty words and unfulfilled pledges. We had better say what we mean and mean what we say, or we will have



The Washington Merry-Go-Round

By JACK ANDERSON with LES WHITTEN

WASHINGTON — It has become part of our political folkways for candidates to spout hokum. For some, lying becomes a habit they cannot break after they are elected to office.

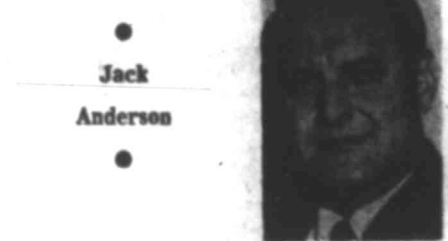
This may explain why so many politicians are willing to place the full weight of the U.S. government behind flagrant falsehoods. At all levels of government, officials play loose with the truth to cover up mistakes, hide corruption and make bad policies look good.

But let an investigative reporter make a mistake or wrongly condemn someone in authority, and there are howls of outrage. Perhaps we may be excused, therefore, if we occasionally remind our readers who has been telling them the truth.

On March 21, 1972, for example, we reported that International Telephone and Telegraph had feared its assets in Chile might be nationalized if Salvador Allende, a Marxist, were installed as president.

To protect its investments, ITT had tried to inveigle the U.S. government to help subvert Chile's constitutional processes. ITT and the CIA actually had plotted together to "create economic chaos in Chile," we reported, "hoping this would cause the Chilean army to pull a coup that would block Allende from coming to power."

White House aides and CIA officials alike categorically denied that the plot against Allende was anything more than an ITT pipe dream. But now, sworn testimony has established that the CIA schemed against Allende not only before but after he became president.



We began another series of columns on May 1, 1972, charging that the FBI, CIA and Secret Service kept dossiers on the private lives of prominent Americans.

Patrick Gray, the acting FBI chief, called a press conference to deny it. "There are no dossiers or secret files," he declared. We responded on May 11 that we would be "happy to tell you Pat, since he's new around the FBI, where some of the secret files are stashed."

Thereafter, we published the file numbers and quoted excerpts from secret dossiers on political figures, movie stars, football heroes and newsmen. The existence of these FBI-CIA dossiers, of course, no longer is disputed.

Each new development in the unfolding of the CIA assassination attempts also confirms the details that we first published in a series of columns beginning Jan. 17, 1971. The plotters whom we named have now confessed their participation.

Yet our columns about the assassination plots were summarily denied and dismissed four and a half years ago. "No plot was authorized or implemented to assassinate (Cuban Premier Fidel) Castro, (Dominican dictator Rafael) Trujillo or anyone else," lied former CIA chief John McCone in 1971.

ART BUCHWALD

Garbage Is Issue As Columnist Tours NYC

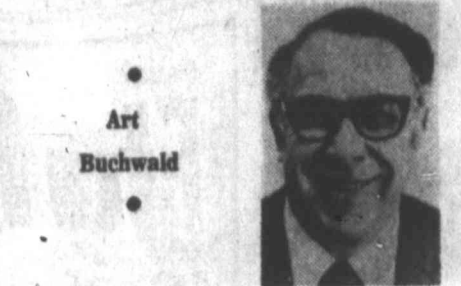
NEW YORK — What is the burning issue of America today? If you talk to New Yorkers it's garbage. I was walking through the streets of Manhattan the other day with Wexler and we saw the large piles of plastic bags and garbage cans overflowing the brim.

Wexler said, "There it is, the one political issue that our leaders will have to come to terms with or they're going to be thrown out on their ears."

"You think garbage is the thing that has most people upset?" I asked him. "Not garbage," he replied, "but the failure to pick it up. There are a lot of issues that upset people in this country — unemployment, inflation, wheat deals with Russia and crime in the streets. But those are things you read about and hear about. Garbage is something you can see with your own eyes and smell with your own nose. It reminds you 24 hours a day that there's something wrong with the country and the people who are running it. When it isn't picked up, the rich as well as the poor go bonkers."

"Then if you were running the city you wouldn't cut back on sanitation men?"

"I'd give them everything they asked for." Wexler pointed to the glass skyscrapers we were passing. "Up there in those offices are men making thirty, forty, fifty and one hundred thousand dollars a year. One hundred of them aren't worth one garbage man. If anything they are probably running companies that contribute to the refuse problem. I say the guys who take the garbage away should make as much money as the people who make it."



"That's fair but nobody wants to pay a sanitation man the salary of a beer can executive."

"They don't now, but they will soon if somebody doesn't take their garbage away. The country's changing. If the people have the choice of spending a billion dollars for a new aircraft carrier or having a decent refuse disposal system, they'll take the latter any day of the week. You think anyone cares about giving military aid to Turkey? Nobody. But they do care about who removes the snow from their streets. Washington has their priorities all mixed up. And I'll tell you something. If this garbage isn't removed by 1976, everyone is going to be in for a big surprise at election time."

"Then you think garbage is more important than detente?"

"There are some people who would say it is the same thing. But the trouble in Washington is nobody cares what happens to people's garbage in the rest of the country. Henry Kissinger sure doesn't care, because he has the press cart his way every night. President Ford doesn't care because he has Marines dumping his garbage. Everyone in Washington talks about garbage, but nobody does anything about it."

"What are you suggesting?" I asked Wexler.

"I think we should have a Department of Garbage with the same budget as the Defense Department. Its job would be to develop new weapons to take care of America's refuse problems. What good is it to have intercontinental missiles to protect the country when nobody will pick up your plastic bags on the sidewalk?"

"But isn't it true that a country's wealth can be calculated on how much refuse it has in its streets?"

"No. The economic prosperity of a nation depends on how many men it can afford to cart its garbage away. You know why nobody will buy New York City bonds right now? It's because every banker and broker keeps tripping over garbage pails on his way to work. Who wants to invest in a city that doesn't know what to do with its trash cans?"

We reached Tenth Avenue with garbage piles as far as the eye could see.

"Our mistake," said Wexler, "is every time the President, the Vice President or the secretary of the treasury comes to New York we drive him down Park Avenue. If we had taken him over here and given him a clothespin for his nose, he might have thought twice before he turned poor Abe Beame down."

THE BIBLE

Can you quote it?

By LAVINA ROSS FOWLER

1. Spikenard, an aromatic flower of India, has rose purple flowers and is said to resemble lavender or vitex. It is or was also called frankincense. In Biblical times it was said to cost about a whole year's pay. What was its use? Mark 14

2. In what city did Paul re-baptize about twelve men? Acts 19:7

3. What people tried to dissuade the Jews from rebuilding Jerusalem? Nehemiah 4

4. How many couriers were sent out with the warning, "I send you forth as lambs among wolves." Luke 10

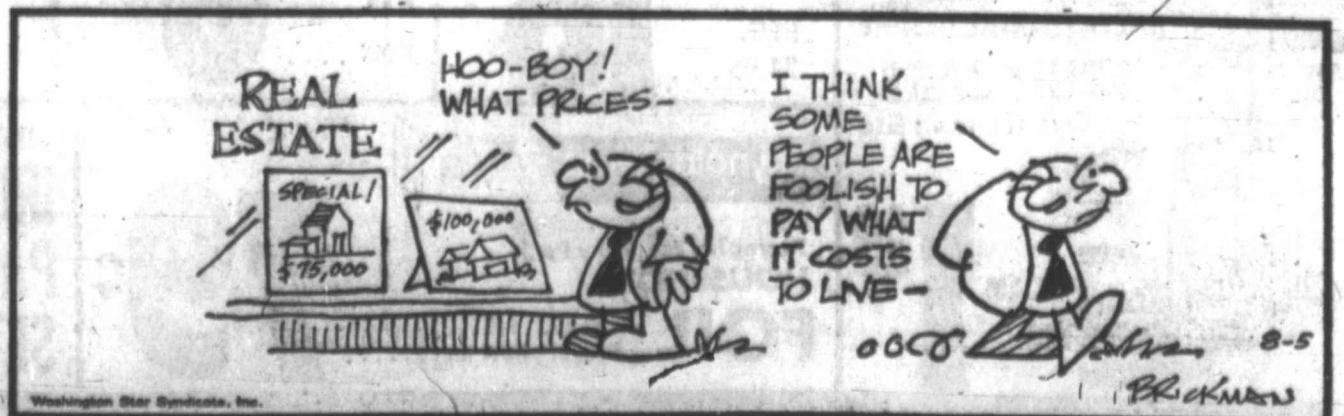
5. Which of the following names is out of place: Shadrach, Adam and Abednego? Daniel 2:49

Four correct. . . excellent. Three correct. . . good.

Bible Verse

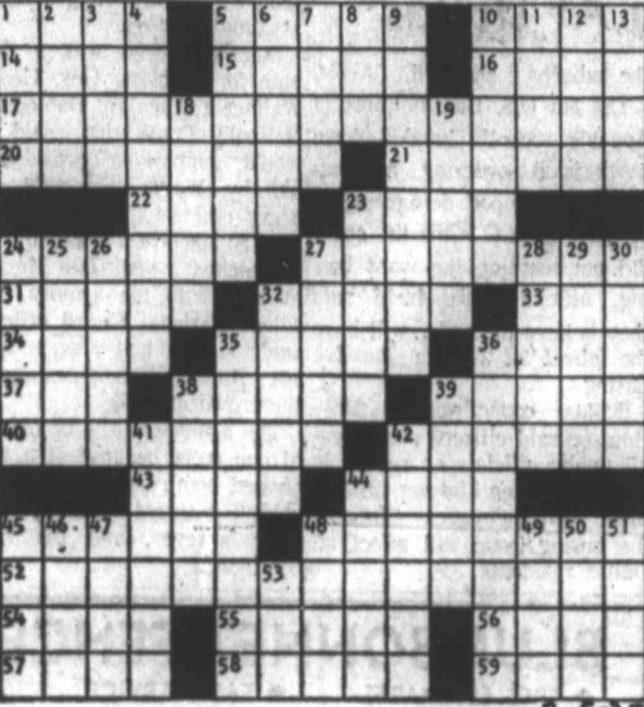
And Jesus answered and said unto him, "What wilt thou that I should do unto thee?" The blind man said unto him, Lord, that I might receive my sight.—Mark 10:51

the small society



# DAILY CROSSWORD PUZZLE

- © 1975 LOS ANGELES TIMES
- ACROSS
- 1 Feet
  - 5 Fury
  - 10 Stimlar
  - 14 Biblical giant
  - 15 Pertaining to the hipbone
  - 16 Work, as in music
  - 17 Classic comedy
  - 20 Life preservers
  - 21 Seward's Folly
  - 22 Sword
  - 23 "Boowulf," for instance
  - 24 City near Jerusalem
  - 27 Game to pass
  - 31 Back street
  - 32 Flowers
  - 33 Suffix on feminine names
  - 34 Competed with
  - 35 Sounded like a bird
  - 36 Part of Istanbul
  - 37 Greek letter
  - 38 Put in the fridge
  - 39 City in Georgia
  - 40 Profits
  - 42 Rebuffs
  - 43 "— a Rose"
  - 44 Yorkshire
- DOWN
- 1 Date tree
  - 2 An ox in Macassar
  - 3 — goodbye
  - 4 Fastened, as meat for cooking
  - 5 "The Prince of"
  - 6 Make happy (improvises)
  - 7 Ad
  - 8 Path of truth, in China
  - 9 Junked
  - 10 Assigns
  - 11 Address for G.I.'s
  - 12 Basis of numerous perfumes
  - 13 This; Sp. Indian in British Army
  - 19 Garments
  - 23 Artist's stand
  - 24 Place of anchorage
  - 25 Choicest
  - 26 Blather
  - 27 Cries loudly
  - 28 Relative
  - 29 Sign up
  - 30 College officials
  - 32 Describing wet weather
  - 35 Hansel and Gretel
  - 36 Party favor
  - 38 City in Crete
  - 39 Deserve
  - 41 New York, to Irving
  - 42 Mellows
  - 44 Pale
  - 45 Go-cart
  - 46 Girl's name
  - 47 Deeds; Lat.
  - 48 Far north island
  - 49 Diva's role
  - 50 Vacation journey
  - 51 Millay
  - 53 Large P.I. tree



Answer to yesterday's puzzle on second page of Classifieds.

# SCRAM-LETS

That Intriguing Word Game with a Chuckle

Edited by CLAY E. POLLAN

1 Rearrange letters of the four scrambled words below to form four simple words.

S I M T I F

T A H H C

S C M A H

M I W G A W

2 Complete the chuckle quoted by filling in the missing word you develop from step No. 3 below.

3 PRINT NUMBERED LETTERS IN THESE SQUARES

4 UNSCRAMBLE ABOVE LETTERS TO GET ANSWER

TV is a good substitute for romance. If you don't like the reception you're getting you can always —

Complete the chuckle quoted by filling in the missing word you develop from step No. 3 below.

PRINT NUMBERED LETTERS IN THESE SQUARES

UNSCRAMBLE ABOVE LETTERS TO GET ANSWER

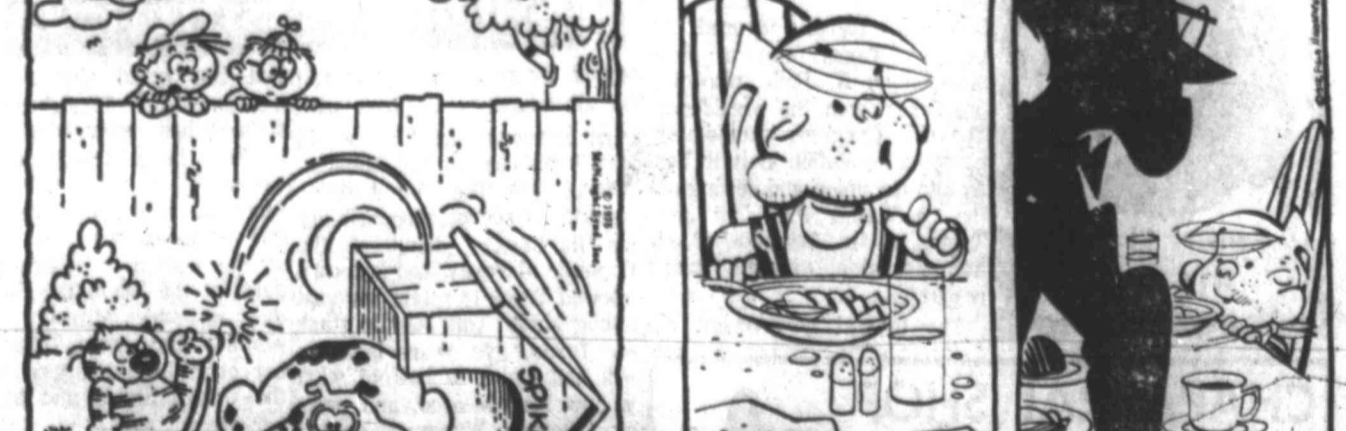
SCRAM-LETS ANSWERS

## THE BETTER HALF

By Bob Barnes



"Need some quick-energy fuel to strengthen my resolve not to eat."



# As NYC



body wants to the salary of a

t they will soon e their garbage hanging. If the of spending a aircraft carrier refuse disposal latter any day k anyone cares aid to Turkey? care about who n their streets, forties all mixed ome thing. If this by 1976, everyone a big surprise

garbage is more

people who would g. But the trouble body cares what garbage in the rest y Kissinger sure he has the press ight. President because he has garbage. Everyone out garbage, but about it."

uggesting?" I asked

ld have a Depart- n the same budget ment. Its job would weapons to take use problems. What e intercontinental the country when your plastic bags

e that a country's lated on how much streets?"

mic prosperity of a how many men it its garbage away, body will buy New t now? It's because roker keeps tripping on his way to work. at in a city that to do with its trash

enth Avenue with r as the eye could

said Wexler, "is ident, the Vice Presi- ary of the treasury e drive him down e had taken him n him a clothespin might have thought ed poor Abe Beame

# BIBLE

quote it?

ROSS FOWLER

1 aromatic flower of purple flowers and is lavender or violet. It is called frankincense. In as said to cost about 7. What was its use?

2 did Paul re-baptize? Acts 19:7

3 tried to dissuade the king Jerusalem?

4 couriers were sent out "I send you forth olives." Luke 10

5 following names in hadrach, Adam and 2:49

6 excellent. Three

7 overed and said unto hou that I should do nd man said unto him, t receive my sight.—

8 SPIKE? WHO IN THE WORLD IS SPIKE?

9 HE'S SNOOPY'S OLDER BROTHER...HE'S COMING TO VISIT FOR A FEW DAYS

10 HEY BANANA NOSE, I NEVER KNEW YOU HAD AN OLDER BROTHER!

11 DO I BITE HER ON THE LEG NOW OR DO I WAIT UNTIL SPIKE GETS HERE, AND LET HIM BITE HER?

12 ON CH...OL SPIKES REALLY IN FOR IT THIS TIME!

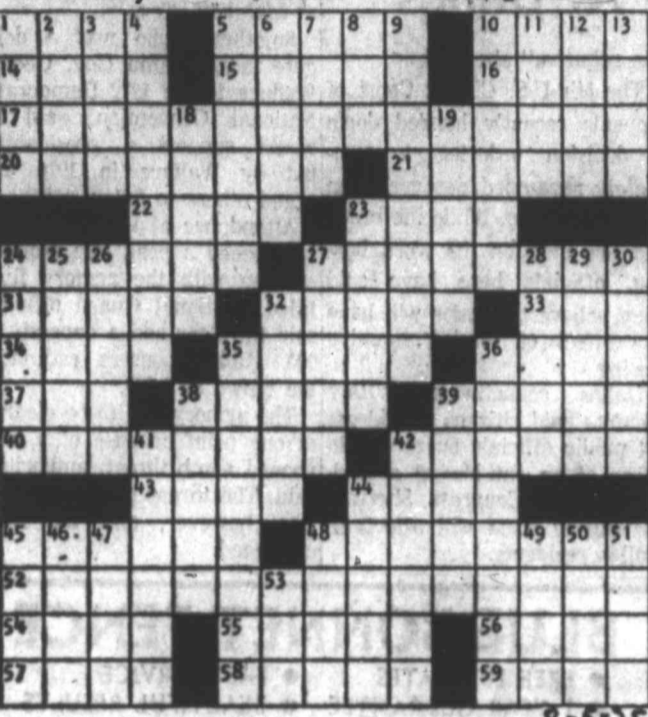
13 YOU EAT WHAT YOU WANT AND I'LL EAT... WHAT YOU WANT ME TO EAT.



### DAILY CROSSWORD PUZZLE

© 1975 LOS ANGELES TIMES

- ACROSS**
- 1 Feet
  - 5 Pairs
  - 10 Similar
  - 14 Biblical giant
  - 15 Pertaining to the hipbone
  - 16 Work, as in music
  - 17 Classic comedy
  - 20 Life preservers
  - 21 Seward's Folly
  - 22 Sword
  - 23 "Beowulf," for instance
  - 24 City near Jerusalem
  - 27 Came to pass
  - 31 Back street
  - 32 Flowers
  - 33 Suffix on feminine names
  - 34 Competed with
  - 35 Sounded like a bird
  - 36 Part of Istanbul
  - 37 Greek letter
  - 38 Put in the fridge
  - 39 City in Georgia
  - 40 Profile
  - 42 Rebuffs
  - 43 "— a Rose"
  - 44 Yorkshire
- DOWN**
- 18 This? Sp. Army
  - 19 Indian in British
  - 20 Garments
  - 23 Artist's stand
  - 24 Place of anchorage
  - 25 Choicest
  - 26 Blather
  - 27 Orles loudly
  - 28 Relative
  - 29 Sign up
  - 30 College officials
  - 32 Describing wet weather
  - 35 Handed and Gretel
  - 36 Party favor
  - 38 City in Crete
  - 39 Deserve
  - 41 New York, to Washington Irving
  - 42 Mellows
  - 44 Pale
  - 45 Go-cart
  - 46 Girl's name
  - 47 Deeds: Lat.
  - 48 Far north island
  - 49 Diva's role
  - 50 Vacation journey
  - 51 Millay
  - 53 Large P.I. tree



Answer to yesterday's puzzle on second page of Classifieds.

### SCRAM-LETS

That Intriguing Word Game with a Chuckle

Edited by CLAY R. FOLLAN

1 Rearrange letters of the four scrambled words below to form four simple words.

S I M T I F

T A H H C

S C M A H

M I N G A N

2 Complete the chuckle quoted by filling in the missing word you develop from step No. 3 below.

3 PRINT NUMBERED LETTERS IN THESE SQUARES

4 UNSCRAMBLE ABOVE LETTERS TO GET ANSWER

TV is a good substitute for romance. If you don't like the reception you're getting you can always ———.

5 Complete the chuckle quoted by filling in the missing word you develop from step No. 3 below.

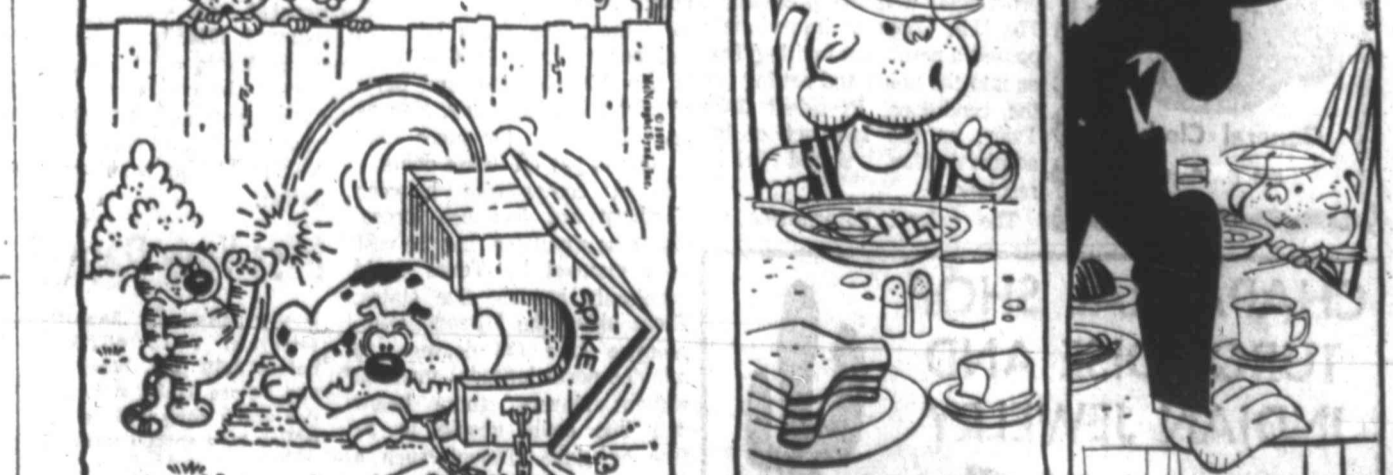
6 PRINT NUMBERED LETTERS IN THESE SQUARES

7 UNSCRAMBLE ABOVE LETTERS TO GET ANSWER

Light - Hatch - Chasm - Wigwag - Switch 8-5  
 Miff - Hach - Chasm - Wigwag - Switch 8-5  
 Miff - Hatch - Chasm - Wigwag - Switch 8-5

### THE BETTER HALF

By Bob Barnes



ENCE  
VICE  
RESULTS  
683-7364

rest

te

only you  
rel On  
fieldcrest  
lid

awcases,  
t miss  
White  
intage  
hite Sale

w \$7.20  
w \$3.60  
w \$1.65  
w \$1.80

Now \$5.30  
Now \$5.60  
Now \$6.75  
Now \$7.85  
aw \$10.95  
ow \$14.45

Now \$4.45  
Now \$5.60  
Now \$6.75  
Now \$9.10  
low \$12.70

Y









Sports Scoreboard

Pro Tennis

Table with columns: Eastern Division, Western Division, Monday's Match, and Tuesday's Matches. Lists tennis matches and scores for various locations like Pittsburgh, New York, and San Diego.

Pro Deals

NATIONAL FOOTBALL LEAGUE: MINNESOTA VIKINGS-Rookies: Ralph Bunch, defensive back; Gregg Curston, linebacker; Tom Givens, defensive back; Lelroy Hayes, defensive back; (S.D.) Lelroy Hunt, defensive back; Southwestern: Frank Roberts, end; Alvin Williams, defensive back; Koolie Mike Hunt, wide receiver; Mitch Miller, defensive back; Baltimore Colts-Rookies: running back John Gordon, Lamarion corner back Bill Makou, Mississippi; both defensive back James Johnson, Tennessee; Christian; offensive back Mike Hanna, Texas State; offensive back Bob Olson, Arizona State; offensive back Bob Olson, Stanford; all undrafted; defensive back Doug Wyatt, claimed on waivers from Detroit Lions.

Fight Results

BRISBANE, Australia, (AP) - Hector Tompkins, 41, Australia, knocked out Alvin Kadda, 19, Japan, 5, in the first round of the 1975 World Amateur Boxing Championships. Commack, N.Y. - Domenico Monaco, 21, Brooklyn, 1, stopped Tony Ostridge, 19, Hartford, Conn., 4, in the first round of the 1975 World Amateur Boxing Championships.

Minor Leagues

EASTERN LEAGUE: Monday's Games: Reading 7, Pawtucket 4; Charlotte 3, Rochester 1; Syracuse 5, Memphis 1. Only games scheduled. SOUTHERN LEAGUE: Monday's Games: Orlando 5, Montgomery 4; Birmingham 11, Jacksonville 4; Asheville 3, Savannah 0-3; Knoxville at Columbus, post. rain. AMERICAN ASSOCIATION: Monday's Games: Oklahoma City 3, Indianapolis 3-4; Evansville 4-4, Wichita 3-3; Denver 1, Omaha 1, 11 innings; Iowa 5, Tulsa 4. PACIFIC COAST LEAGUE: Monday's Games: Hawaii 12, Tacoma 7; Spokane 3, Sacramento 1; Albuquerque 3, Phoenix 1; Tucson 1, Salt Lake 4.

Teacher Upsets Richey In Clay Courts

INDIANAPOLIS (AP) - The student went to school at the \$150,000 U.S. Clay Court tennis championships Monday night and walked away as the teacher... Brian Teacher, that is.

Teacher, 20, a UCLA senior, defeated sixth-ranked Cliff Richey 6-3, 6-4, the biggest upset of the opening round Monday.

"I didn't want him to come to the net at all," Teacher said. "I knew I couldn't let him get in the groove, so when I saw he was having trouble with his volleying I just took my time and didn't rush my strokes."

Teacher, of San Diego, who upset Dick Stockton in the Western Open last week, passed off his latest victory as just one of many.

It seemed like Cliff was really tight tonight," Teacher said. "I think he got a little mad because he didn't want to get beat by a young kid. He just wasn't hitting as usual."

Unseeded Alvin Gardiner of Australia gave No. 4 Raul Ramirez more problems than the 22-year-old Mexican prob-

Big Eight Coaches Upset Over NCAA Cutbacks

KANSAS CITY (AP) - Big Eight Conference football coaches-are up in arms over proposed cutbacks in recruiting procedures, coaching staffs and scholarships under consideration by the National Collegiate Athletic Association.

The NCAA, seeking ways to whittle expenses from the costs of athletic programs, will vote on the proposals Aug. 14 and 15 at its convention in Chicago.

Coaches Tom Osborne of Nebraska and Barry Switzer of Oklahoma expressed bitter opposition to the legislation. The other Big Eight coaches agreed with Osborne and Switzer.

Osborne, speaking to some 1,000 persons attending the conference football kickoff luncheon, said he's "sure there will be some discussion about realignment" if certain proposals

are adopted. "We'll spend twice as much money recruiting... and I resent having to fire some of my coaches. They're families... kids."

Switzer said there is a need for reorganization of Division I in the NCAA. The division is composed of the country's biggest colleges and universities.

"The Robin Hood plan to take away from the rich and give to the poor is not advantageous to our program," said Oklahoma cut down on his product to the State's Jim Stanley. "There has point it won't sell on the mar-

ket. They're trying to legislate quality. Diluting football will affect the whole athletic structure."

"Big Eight schools are located in sparsely populated areas," said Bud Moore, the new Kansas coach. "We will have to go to other parts of the country to sell our program. We're going to do whatever it takes to win."

"Any time you diminish numbers," said new Coach Ellis Rainsberger of Kansas State, "you're going to diminish quality."

Levi Big Bells GENERAL CLOTHING 300 E. Florida

The Tiger's got a New Economy Radial.

New Atlas SS Radial.

Now you can move up to big radial performance without a big move up in price! The new Atlas SS Radial is designed for long mileage, ease of handling and gas-saving economy. Take advantage of special introductory savings on pairs and sets, now through August 31.

- European-style tread. Heavy and deep for sure traction and long mileage. Twin fiberglass cord belts provide stability and puncture protection. Polyester cord radial-ply body helps absorb shocks.



Sports Gambler Molinas Shot Down At Home

LOS ANGELES (AP) - Detectives were investigating the possibility today of gangland ties in the murder of sports gambling figure Jacob "Jack" Molinas, who was gunned down in his back yard.

Authorities said they were considering a possible connection between the ambush and the unsolved 1974 murder of Bernard Gussoff, Molinas' one-time business partner.

Sports Shorts

LAFAYETTE, La. (AP) - Elmer Hohl of Wellesley, Ont., won his fifth World Horseshoe Pitching championship Monday, beating defending champion Curt Day of Frankfort, Ind., by two games.

Hohl, who had a ringer average of 84.5, finished with a 33-2 record. Day, a three-time world titlist, wound up at 31-4 with an 81.9 ringer average.

ENJOY!

GO! WIN! DONE!

MS

MS final

Introductory savings on pairs & sets!

Table with columns: Whitewall Sizes, Make of Car (most standard late models), Single Tire (with trade-in), Buy 2 (with 2 trade-ins), Save (this month), Buy 4 (with 4 trade-ins), Save (this month), Fed. Ex. Tax (each tire). Rows include DR78-14, ER78-14, FR78-14, HR78-14, GR78-15, LR78-15.

Check our values for other makes & models. Your tires installed free. NOTE: Radial tires should not be used with non-radials on the same car.

End-of-summer values on our bias-ply whitewall tires.

Atlas Cushionaire Whitewalls 4 for \$97.68. Four full plies of polyester cord and a computer-designed tread for good mileage and traction. Big values now on a variety of sizes! Offers end August 31.

Table with columns: Whitewall Sizes, Trade-In Price Each, 2 For (with 2 trade-ins), 4 For (with 4 trade-ins), Federal Excise Tax (Each Tire). Rows include A78-13, E78-14, F78-14, H78-14, G78-15, H78-15.

Charge it on your Exxon Credit Card. Charge it on your Exxon Credit Card.

Shop at the ValueCenter sign.

Prices and offers shown above are available at Exxon service stations identified by a ValueCenter door sign reading, "Operated by Exxon Company, U.S.A."

EXXON ValueCenter logo and text.

This Afternoon's Market Report

New York Exchange

Table with columns: NY Stock Exchange selected stock prices, including symbols like ABC, DEF, GHI and their respective prices.

Late Morning Rally Sends Stock Prices Into Upswing

NEW YORK (AP) — The stock market swung upward today with a late-morning rally. The Dow Jones average of 30 industrials was up 4.31 at 822.35.

Dow Jones Averages

Table showing Dow Jones averages and other market indicators, including S&P 500, NYSE Composite, and various indices.

Bond Sales

Table listing bond sales with columns for auction date, issue, and price.

Bond Prices

Table listing bond prices for various issues, including Treasury bills and government securities.

Treasury Bonds

Table listing Treasury bond prices and yields for different maturities.

Stock Sale

Table listing stock sale information, including company names and share counts.

Dividends Declared

Table listing companies that have declared dividends, including dividend amounts and dates.

Classified Advertising Information Dial 682-5311

OFFICE HOURS: Week Days 8 a.m. to 5 p.m. Saturdays 8 a.m. to 12 noon

WANT AD WORD AD SPACE AD RATES: \$24 per column inch per day. Outside trade area \$3.00 per inch per day.

300 REWARD: for information leading to the arrest and conviction of persons involved in vandalizing 2313 Stanolind.

PERSONALS: WAITERS, EXPERIENCED IN HOTEL, CLUBS OR FINE RESTAURANT SERVICE.

SECRETARY \$550: Good news for the smart secretary who drives on cleanest, typing talent and shorthand ability.

SECRETARY \$600: Something special for the smart secretary who enjoys diverse duties.

AVON: Bills coming? Pay them with excellent earnings. Sell just 4 hours a day.

WANTED MECHANIC: Call 682-2091 or 694-4600

EXPERIENCED HAIRDRESSER: Full or part-time to take over established clientele.

WANTED: Executive Secretary \$700 and up. A favorite client of ours who handles a beautiful office with personal touch.

RODEWAY INN: Executive Secretary \$700 and up. A favorite client of ours who handles a beautiful office with personal touch.

SECRETARY \$600: Something special for the smart secretary who enjoys diverse duties.

SECRETARY \$550: Good news for the smart secretary who drives on cleanest, typing talent and shorthand ability.

SECRETARY \$600: Something special for the smart secretary who enjoys diverse duties.

SECRETARY \$550: Good news for the smart secretary who drives on cleanest, typing talent and shorthand ability.

SECRETARY \$600: Something special for the smart secretary who enjoys diverse duties.

SECRETARY \$550: Good news for the smart secretary who drives on cleanest, typing talent and shorthand ability.

SECRETARY \$600: Something special for the smart secretary who enjoys diverse duties.

NOTICES: Keynotes Chapter 172 and Council 1242...

NOTICES: Keynotes Chapter 172 and Council 1242...

NOTICES: Keynotes Chapter 172 and Council 1242...

NOTICES: Keynotes Chapter 172 and Council 1242...

NOTICES: Keynotes Chapter 172 and Council 1242...

NOTICES: Keynotes Chapter 172 and Council 1242...

NOTICES: Keynotes Chapter 172 and Council 1242...

NOTICES: Keynotes Chapter 172 and Council 1242...

NOTICES: Keynotes Chapter 172 and Council 1242...

NOTICES: Keynotes Chapter 172 and Council 1242...

NOTICES: Keynotes Chapter 172 and Council 1242...

NOTICES: Keynotes Chapter 172 and Council 1242...

NOTICES: Keynotes Chapter 172 and Council 1242...

NOTICES: Keynotes Chapter 172 and Council 1242...

NOTICES: Keynotes Chapter 172 and Council 1242...

NOTICES: Keynotes Chapter 172 and Council 1242...

NOTICES: Keynotes Chapter 172 and Council 1242...

NOTICES: Keynotes Chapter 172 and Council 1242...







PSST... Only 3 new '74 Opels left and we HAVE TO DEAL - NOW! No Reasonable Offer Refused!

LEASING These cars are on hand: 1975 Continental limo car, 1974 Oldsmobile... BROKERS LEASING CORP.

1974 PONTIAC LEMANS Four door, only 12,000 miles. All power and air, automatic. A real budget buster!

EDDIE SMITH MOTOR CO. 2700 W. Wall 694-6586 FOR sale 1969 Cougar...

1971 Oldsmobile Cutlass. All power and air, brand new tires, motor in excellent condition...

1974 Buick Wildcat. White, automatic, air conditioner, steel belted tires, cloth seats...

1973 Chevrolet 1 1/2 ton. Super power windows, air conditioner, 1975 Pontiac...

SMILEY GIBONS EXPERT BODY WORK ADVANCED AUTO CLINIC 2110 W. Front

RECREATIONS BOATS & MOTORS FOR sale International 14-foot sail boat...

32 RECREATIONAL VEHICLES & CAMPERs 1973 18' Winnebago Brave...

ITEMS FOR SALE GARAGE SALES Every Tuesday, 7:30 p.m. Lots of miscellaneous glass...

MOBILE, SCOUTS, VAQUERO, NOMADS TWILIGHT BUNGA... 1974 Scion 360...

NEW 1975 31/2 ton front wheel vehicle. Fully self-contained with air, two in chassis...

1974 Honda 360. Excellent condition. 21,000 miles. Call 693-3356.

1974 Suzuki 750 cc. Windshield and fender. Excellent condition. 11,000 miles.

1974 Honda 360. Excellent condition. 21,000 miles. Call 693-3356.

BACK TO SCHOOL SPECIALS! Little Cars - Middle Size Cars - Big Cars...

NEW FLAVORS FOR AUGUST Peanuts and Peppercorns Pistachio Almond...

WANTED: Good used screen doors, interior and exterior doors...

HOUSEHOLD GOODS 37 GIRLS bedroom suite in Mexican style. Beautiful excellent quality...

DEN FURNITURE Couch, chair, ottoman, coffee table, end table, lamp, Magnavox portable stereo.

NOTICE! Prices slashed on all new Neccchi machines this week. In order to win trip to Las Vegas...

Merriman Appliance 2611 Bushwood Highway 684-6774 PICKUP frame for long bed truck...

WANT TO BUY a good used refrigerator, freezer and washing machine. Write details to P. O. Box 2133, Midland, Texas 79701.

4-WHEEL DRIVE HEADQUARTERS Jeep Wagoneers Jeep Cherokee Wagons...

MUSICAL RADIO, TV 52 COBRA CB RADIOS \$119.95 and up. Mobile and base units...

GOOD THINGS TO EAT PINTO beans and black eyed peas. 34 lb bushel. Call 682-5022.

OFFICE SUPPLIES RECONDITIONED TYPEWRITERS Royal, Remington, Underwood (pica type) \$30 to \$60

55 FARM EQUIP. & SUPPLIES FOR sale 1974 New Holland hay baler, equipment...

57 OIL FIELD SUPPLIES Gasoline and Diesel Storage Tanks 1,000 to 10,000 gallon capacity...

58 PORTABLE BUILDINGS BARGAIN! 12 x 36 office with 12 x 36 warehouse...

59 WANTED TO BUY WANT to buy large sale, must be at least 50 inches high inside dimension.

60 MOBILE HOMES FOR RENT 60' lease, 3 bedroom, 2 bath, unfurnished mobile home. 684-3900.

62 MOBILE HOMES FOR SALE WE have 3 new homes in stock that will qualify for Uncle Sam to pay 3 percent of your down payment...

3 for the ROAD! KAWASAKI N-1500 Reg. \$1542 FACTORY DISCOUNT...

NEVER PRICED LOWER, COMPARE! DOG-GONE GOOD USED CARS!

1973 FORD LTD 2-dr. h.t., power, air, vinyl top. REAL NICE... \$2995

1973 AMC SPORTABOUT Sedan wagon, air, power, luggage rack. SHARP WAGON... \$2995

1973 FORD GALAXY 4 dr. h.t., air, power, vinyl top. REAL PRETTY... \$2695

1973 PONTIAC GRAND PRIZ Maroon with vinyl top, etc. REAL NICE... \$3995

1972 CHEV. KINGWOOD Extra Station wagon, air, power, cruise, AM-FM, etc. NEW... \$2895

1974 AMC SPORTABOUT Sedan wagon, air, power, luggage rack. SHARP WAGON... \$2995

1974 CHEV. CORONET 4-door. V8, auto. PS, PB. Air, vinyl top, radio, WSW tires, wheel covers. Low mileage. \$2895

1974 PLYMOUTH FURY II 4-door. Auto. PS, PB, air, radio, rear wipers, WSW tires. \$2185

1974 CHEVY NOVA Coupe. 250 V8, auto. PS, PB, air, radio, rear wipers, WSW tires. \$2015

1974 FORD MUSTANG 4-door. Auto. PS, PB, air, vinyl top, radio, WSW tires, wheel covers. \$2115

1974 FORD LTD 4-door. Auto. PS, PB, air, vinyl top, radio, WSW tires, wheel covers. \$2115

1974 FORD LTD 4-door. Auto. PS, PB, air, vinyl top, radio, WSW tires, wheel covers. \$2115

JULY CLEARANCE SALE! WEDNESDAY, THURSDAY, FRIDAY ONLY. NICKEL CHRYSLER Plymouth-Dodge-Jeep-Honda

ROGERS FORD SALES WEST HIGHWAY 80 PH. 694-8801. PRE '76 CLEARANCE THERE WILL NEVER BE A BETTER TIME TO OWN A NEW FORD THAN RIGHT NOW!

ALL-RICH MOTORS 2810 W. Wall 683-4865. 1973 FORD LTD \$2995, 1973 AMC SPORTABOUT \$2995, 1973 FORD GALAXY \$2695, 1973 PONTIAC GRAND PRIZ \$3995

1972 CHEV. KINGWOOD Extra Station wagon, air, power, cruise, AM-FM, etc. NEW \$2895

Berg Motor Co. 3205 W. WALL "Where Generosity Lives" 694-7741. SPECIAL OF THE WEEK: 1972 OLDSMOBILE 88 LUXURY SEDAN, Sable brown with tan vinyl top and tan vinyl interior...

Midland Kawasaki 903 S. Midkiff 694-7338. Great Handling Great Performance

NICKEL MAIN & FLORIDA USED CARS & TRUCKS BACK TO SCHOOL SPECIALS. 60 OLDSMOBILE 88 4-dr. Auto. PS, PB, air, radio, WSW tires \$ 895

Dee Carter Motor Co. 208 North A 682-8152/563-0504. Late Model Used Cars! See our buyer for top prices.

Permian Pontiac-Toyota 701 W. Texas 684-7107/563-1543. SAVE 21% OFF, 16% OFF. Grand Prix Grandville Bonneville Catalina Grand Safari

REAL ESTATE 60 MOBILE HOMES FOR RENT 60' lease, 3 bedroom, 2 bath, unfurnished mobile home. 684-3900.

62 MOBILE HOMES FOR SALE WE have 3 new homes in stock that will qualify for Uncle Sam to pay 3 percent of your down payment...

GOOD NEWS! Buick's beautifully designed Skylark is here and waiting for you! \$350 DOWN Only \$116.90 per month!

FURNITURE SPECIALS! 1-GROUP ONLY Dresser & Mirror 4-Drawer Chest Bookend Metal Frame \$159.00

WESTERN MATTRESS 306 Secor St. 682-6981. 1-GROUP ONLY Triple Dresser & Mirror Regular or Queen Size Headboard Metal Frame \$169.00

WESTERN MATTRESS 306 Secor St. 682-6981. 1-GROUP ONLY Triple Dresser & Mirror Door Chest Night Stand Queen Headboard \$229.00

Vertical text on the right edge of the page, including '62 MOBILE', '67 PERSON', '68 SPAC', '69 OW', '70 FU', '71 IN', '72 SU', '73 FU', '74 IN', '75 FU', '76 FU', '77 FU', '78 FU', '79 FU', '80 FU', '81 FU', '82 FU', '83 FU', '84 FU', '85 FU', '86 FU', '87 FU', '88 FU', '89 FU', '90 FU', '91 FU', '92 FU', '93 FU', '94 FU', '95 FU', '96 FU', '97 FU', '98 FU', '99 FU', '100 FU'





COUNTRY CHARM
3 bedrooms, 1 1/2 baths, with lovely separate brick patio...

SUPER SUPERLATIVE
4 ACRES ON INTERSTATE CORNER
Invest, enjoy... has 3 bedroom rock house, 2 WATER WELLS
ONLY \$27,500

IMMEDIATE OCCUPANCY
3 bedroom, freshly painted, new shag carpet throughout, covered patio bar-be-que, only \$119 per month.

GOOD LOCATION FOR FINE HOME
Lot in Warwick, \$4,500.
MARY ELLEN WARD
682-5541

FOR SALE BY OWNER
13/4 acres with beautiful traditional home located in Grove of Oaks and overlooking Lake Frisco...

79 INCOME PROPERTY FOR SALE
Motel for sale or lease for farm land. Will carry the sale. G. C. George, 682-5511 or 262-5112.

TO SETTLE AN ESTATE
90 acres, Coleman County, 40 acres cultivated, 50 miles paved frontage, good fences, well watered by surface ponds...

RUIDOSO PROPERTIES
Lots in upper canyon, tall pine trees behind Whispering Pines, start at \$2,300. 2-3 bedroom, 2 bath, modified A frame. Horse privileges. Under \$40,000. 2 bedroom trailer, on lot, \$13,500. 5, 10 and 15 acre tracts.

1 1/2 YEARS REMAINING
Exceptionally clean three bedroom brick home on Sunwood, double garage, recent back porch, monthly payments \$128.00. Best price in Midland. Call Central Realty.

WANTED
Double share used car operation to be sold. Good profit. Only \$50,000. Call Mary Ann Carr, Realtor, 682-5156.

PRIME LOCATION
Corner Scharbauer Drive and Rippling. 46 acre with two buildings. TALK TO Pat Weismann, Associate, Don Johnson, Realtors 682-5553, 682-5554.

GREENWOOD SCHOOL
Three bedrooms, two bath ranch home has 20 acres, 2 wide miles, 33 acres cultivated, good pasture. R. E. A. Electric, 682-5541.

510 ACRES on FM Hwy 963
In Burnet County, 8 room house and 2 room apartment, both on 100 acre tract. Also 400 acres irrigated farm land. Subdivision for suburban developer. Ask for Alva McKee, 682-5553.

OUT OF TOWN REALTY
FOR SALE
Lovely Llano County home on Lake Lake. Native stone, 3 bedrooms, all electric, all conveniences, 1.5 acres, high level oak, 400 feet waterfront (constant level) with boat house and power lift, with nice guest house.

JUNCTION, TEXAS
Excellent investment property. 811 acre rolling hills. Pecos and oak trees. Spring-fed creek. Deer, bear and turkey. Priced below \$500,000. TALK TO C. P. Barnett or Gordon Jennings, Associate, Don Johnson, Realtors, 682-5553, 682-5554.

CLASSIFIED DISPLAY
180 Acres prime farm land. All cultivated, 3 working wells, 3 reservoirs. Levelly large 4 bedroom home has fireplace, large country kitchen, den. All the comforts of city living. Barn and well shop. Priced \$179,000. Convenient Midland-Odessa location.

NEW HOUSES
With one living area, close to Emerson and Goodland schools. Three bedrooms, one bath, two full, one half, one has two baths. Many nice features, such as refrigerated, covered patio, etc. Call Today. TALK TO Donna West, Associate, Don Johnson, Realtors, 682-5553, 682-5554.

4 Acres On I-20
Great for business, rock house to live in or for office.

GREENWOOD SCHOOL DISTRICT
5-10 new tracts priced \$200 to \$750 per acre. Good soil and water. Water will be drilled up in date have produced 10 to 60 ppm. Financing arranged. TALK TO Gordon Jennings, Associate, Don Johnson, Realtors, 682-5553, 682-5554.

FOR FARMS OR RANCHES CALL KNIFFEN REAL ESTATE
915-682-4878

CLASSIFIED DISPLAY
BUNNIE KENT'S Gallery of Homes REALTORS MULTIPLE LISTING SERVICE 684-6363

CLASSIFIED DISPLAY
ERNESTINE BROWNING 683-1923
BERYLENE HOUSE, GRI 694-8834

HOUSE & HOUSE REALTORS, Inc. 12804 Whitney 694-8834

INCOME PROPERTY
NORTH LORAIN \$18,000
NORTH COLORADO \$15,000
NORTH BAIRD \$3,800
WEST KANSAS \$2,600
PET STORE ON WADLEY \$21,500

HASHA Realtors
CUTBERT... New listing: 3 bedroom, 3 full baths, 622,000
CUDAS SPRING... 5 bedroom, 1 bath, den, carpet, \$125,000
DEWEY... white brick, 3 bedroom, 2 car garage, extras \$129,000

HOOKS AND SLICES
If you are giving up golf get your nooks on a nice slice of cash by selling your clubs through a low cost REPORTER-TELEGRAM Want Ad. You can't beat these little ads for buying and selling all types of sports equipment.

LAND MARK REALTORS
Roy McGuffey Alice McGuffey La Delle Swint 683-5363

RONALD JAMES REALTORS
MLS - RENTALS - COMMERCIAL
404 W. Illinois 682-0581 - 697-2068

THE CARRIAGE CO. REALTORS
OAKRIDGE SQUARE 684-5881

CREATORS OF REAL OWNERSHIP
AFFERSON—New listing, Kimber-lea privileges. Beautiful yard, 4 large bedrooms—2 1/2 baths, screened patio \$55,000

DON JOHNSON REALTORS
2318 W. Ohio M.L.S. 683-5333

THE BUYER OF YOUR PROPERTY MAY BE NO FURTHER THAN YOUR TELEPHONE... call

WELDON TAYLOR REALTOR
DESIGNED ESPECIALLY FOR A HAPPY FAMILY: 4 bedrooms, 2 baths, large yard with built-in trampoline, water well, refrigerated air—call us to see \$48,600

VA-HA LISTINGS
2107 N. Benton \$ 8,200
1908 Hudson \$ 9,950

RONALD JAMES REALTORS
GUITARS, CASTNETS, AND SENORITAS belong in the scene of this patio entry. Hacienda side den: 3 bedrooms. Full electric kitchen. \$55,000

CREATORS OF REAL OWNERSHIP
AFFERSON—New listing, Kimber-lea privileges. Beautiful yard, 4 large bedrooms—2 1/2 baths, screened patio \$55,000

CREATORS OF REAL OWNERSHIP
AUBURN—Quiet cul-de-sac. Unique exterior. Many extras. 4-3-D \$69,500

CREATORS OF REAL OWNERSHIP
AUBURN—Traditional styling completely sprinklered. Room for a pool. 4-2 1/2-D \$75,000

CREATORS OF REAL OWNERSHIP
AUBURN—Great floor plan, well arranged for large family. Contemporary \$82,500

CREATORS OF REAL OWNERSHIP
AUBURN—Must sell. Make offer. Lovely contemporary with lots of glass, hobby room, 2 fireplaces, sprinklered 4-2-D \$59,500

RODERICK & LINEBARGER REALTORS & INSURANCE
1900 W. Illinois - 683-6331

RODERICK & LINEBARGER REALTORS & INSURANCE
1900 W. Illinois - 683-6331

ROBERTS REALTORS
1400 WEST WALL 683-4686

ROBERTS REALTORS
1400 WEST WALL 683-4686

INVESTMENTS
CIRCLE—Duplex investment close to all shopping. Live in one side and let tenants pay your rent \$2,500

UNDER CONSTRUCTION
FOUR DUPLEXES for sale—luxury 3 bedroom—2 bath—fireplace. Great tax benefits. \$55,000

TALK TO THE FACE SETTERS
Shepherd Cox 682-1400
Pat Weismann, GRI 682-5553

TALK TO THE FACE SETTERS
Shepherd Cox 682-1400
Pat Weismann, GRI 682-5553