

THE MULESHOE JOURNAL

Dedicated to the Progress and Development of Bailey County and the South Plains of Texas

VOLUME 8.

MULESHOE, BAILEY COUNTY, TEXAS, FRIDAY, MAY 23, 1930.

NUMBER 15

Kiwanians Receive Charter

Two Hundred Attend Presentation Banquet Thursday Night

DELEGATIONS FROM CLOVIS, LUBBOCK, AMARILLO, SUDAN AND PLANVIEW ARE HERE

Lubbock Club Sponsors Program; District Gov. E. Lon Mitchell Presents Charter.

A crowd, estimated at 200, including delegations from Lubbock, Clovis, Plainview, Amarillo, Sudan, and other points attended the charter presentation banquet of the Kiwanis Club of Muleshoe at the High school gymnasium Thursday night, marking perhaps one of the biggest gatherings of its kind ever held in Muleshoe.

Under the sponsorship of the Kiwanis Club of Lubbock, K. K. Smith, president of the local organization, accepted the club charter from District Governor E. Lon Mitchell of Clinton, Oklahoma, expressing for the club its appreciation of the opportunity of being numbered among the many Kiwanis Clubs over the land, and outlining briefly the work that the Muleshoe club proposes to do in the future.

Elaborate Program

An elaborate program was arranged by the Lubbock Club, with A. D. (Dean) Leidigh, district trustee and Dean of the School of Agriculture of Texas Tech as toastmaster. The program as arranged and carried out is as follows:

America, sung by all; Invocation by Ray Griffiths, director of the Muleshoe Club; Welcome in the spirit of Kiwanis to Muleshoe, J. E. Adams, County Judge of Bailey County; Response, Chas. Whitacre, Lubbock Club; Welcome to Division No. 6; Dinner; Songs of Kiwanis led by Edgar Shelton of the Lubbock Club, which everybody joined. At this point members of other clubs were introduced; vocal number by Clovis Kiwanis Quartet. Presentation of a beautiful American flag by Col. Clark Mullican, president of the Lubbock Club; acceptance of flag, J. E. Leidigh, banker of Muleshoe; special music arranged by Lubbock club; presentation of charter, Gov. E. Lon Mitchell, Clinton, Oklahoma; acceptance of charter by K. K. Smith, president of the Kiwanis Club of Muleshoe; songs, "Till We Meet Again."

Ladies' Organization Serves Dinner
A most delicious three-course dinner was served by the Ladies' Missionary Society of the Baptist church of Muleshoe. The menu was as follows:

First course, fruit, cocktail, wafers and olives; second course, chicken a la cream, potatoes in white sauce, buttered peas in timbale shells, tomatoes and lettuce salad, gherkins, hot rolls; third course, ice cream and angel food cake, candy wafers, coffee and cigars. At the time the smokes were puffed to the men the ladies were each given a carnation.

The dinner was served by twenty local girls dressed in white uniforms, blue aprons and blue caps, carrying out the Kiwanis colors of white and blue.

Sleepy Johnson's Harmony Six of Clovis furnished the music for the evening.

The gymnasium was beautifully decorated by a local committee, headed by Cecil H. Tate, chairman of the house and reception committee. The color scheme was white and blue, while above the speakers' table was hung a large Kiwanis International emblem.

Fat R. Bobo, secretary of the Muleshoe club, was general supervisor of the arrangements leading up to the presentation program, and has labored untiringly during the past week in behalf of general arrangements.

The tables were arranged in four sections, each extending the length of the gymnasium, and leading up to the speakers' table on the east end of the room.

Many Towns Represented

A last minute check-up of visiting delegations revealed 56 from Lubbock, 22 from Plainview, 17 from Sudan, 30 (Continued on Page 5, col. 1.)

FIRST SUNDAY MOVIES AT CLOVIS DRAWS LARGE CROWD

Clovis citizens welcomed Sunday movies at the Lyceum Theatre last Sunday for the first time. Clovis was about the last city in the state of New Mexico to have Sunday movies. Every large city in New Mexico, excepting Roswell, has Sunday shows, and Amarillo, Plainview, Lubbock, Sudan and all of the neighboring cities near here have had Sunday movies for some time. Going to the movies proved a welcome diversion from the usual monotonous automobile ride up and down Main street.

The management of the Lyceum Theatre of Clovis announces that it will run two complete matinees in the afternoon, at two and four o'clock, and two shows at night, at seven and nine o'clock.

Lieut.-Governor Sends Regrets Upon Absence

The membership of the local Kiwanis club was greatly disappointed tonight due to the absence of Lieut.-Gov. F. Marion Bralley, Jr. of Amarillo. On account of Federal court being in session in that city, it was impossible for him to leave, but sent congratulations to the Muleshoe club and the assurance that he would visit this place within a short time. Mr. Bralley's message is as follows:

"Please convey to the members of the Muleshoe Kiwanis Club my heartiest congratulations on securing a charter for Muleshoe. In my opinion the night of May 22nd will be a great event in the future life of Muleshoe, Texas, as regardless of the size of the city and the mixture of the population, you will find that Kiwanis will soon be felt. As it carries out its program there are many things that it does that no Chamber of Commerce can accomplish. In fact, various Kiwanis clubs have been instrumental in establishing some fifty chambers of commerce within the past twelve months.

"It is also with great joy that the other eleven clubs in Division Six welcome you to their fold. I think it is fairly positive that Division Six covers more territory than possibly any other division in the United States and Canada, as the distance between the two extreme clubs is some 380 miles. We think that we have the best division in our district and if one should visit the clubs in this division as I have they will readily see that, not only to have better clubs, but to equal the clubs in this division, that they would certainly have a long way to go."

Andy Hellacker of Oklahoma was a business visitor in Muleshoe the first of the week.

Local Markets

This report is received each Thursday morning between the hours of 9 a. m. and 11:30 a. m., and is subject to change without notice. Markets are furnished by local dealers for the benefit of their patrons.
Corn, ear ..... 50c
Corn, mixed ..... 72c
Corn, white ..... 75c
Maize heads ..... \$20.00
Kaffir heads ..... \$18.00
Kaffir, threshed ..... \$11.25
Maize, threshed ..... \$11.45
Cottonseed cake ..... \$2.75
Cottonseed meal ..... \$2.75
Shorts ..... \$2.00
Bran ..... \$1.75
Tankage ..... \$5.00
Meat Scraps ..... \$5.25
Hogs, tops ..... \$9.05

GOVERNOR E. LON MITCHELL



E. Lon Mitchell of Clinton, Oklahoma, Governor of Texas and Oklahoma District of International Kiwanis, who was the principal speaker and presented the charter to the local club at its presentation program Thursday night. Gov. Mitchell has served as Lieut.-Governor of the State of Oklahoma, Industrial Accident Board and other executive positions in the state of Oklahoma, and is at the present time a District Judge. He is a gentleman, scholar, orator, and above all a REAL KIWANIAN.

Clovis Lad Near Death As Result Of Auto Smashup Tuesday Night

Youth Thrown Out Of Car On Curve; Body Found Two Hours Later By Sheriff.

A young man by the name of Hodges is near death, according to physicians, and a man, injured due to an automobile accident on the Plainview road about two miles north of Muleshoe Tuesday night.

Young Hodges' mother, who was one of the party enroute from Clovis to Plainview, stated that she and her son, and a man named Miller and a Mrs. Miller, all of Clovis, were on their way to Plainview on business when the accident occurred. Mrs. Hodges and son were riding in one car and the Miller couple in another. When some distance past the big curve on the Plainview road the Hodges car ran out of gas and Miller and young Hodges started back to Muleshoe in the Miller car, a Buick coupe, to obtain more. It is supposed that Miller had forgotten the curve in the road and was traveling at a high rate of speed when he came upon it.

The car went into the barpit, throwing Hodges out. Miller received a blow on the head which almost scalped him. He was so dazed that he remembers little of what happened for the next two hours.

Sheriff Douglass, who was called about 2 a. m., stated that after the car had gone into the ditch that it had turned completely around, jumped back to the road again and proceeded in the original direction toward Plainview with Miller at the wheel almost unconscious. Miller is understood to have stated that he did not know how long he traveled, but finally realized that he should turn back. He arrived at the car occupied by the women about two hours later, without knowledge as to what had happened to Hodges, who was found by Sheriff Douglass just after Miller and the women reported the accident to him. He had been thrown some distance from the road and when picked up was bleeding slightly at the mouth. Physicians say that his skull is fractured and that he is probably injured internally. He had not regained consciousness at 5 p. m. Wednesday afternoon.

Who's Who On Kiwanis Program

A. H. Leidigh, former president of the Lubbock club, Dean of Agriculture of Texas Technological College, and now district trustee of the Lubbock club. "A job without meaning," he says, "but it carries a particular responsibility in the formation of new clubs."
Ray Griffiths, director of Muleshoe club, local grain dealer—anyway, everybody knows Ray.
J. E. Adams, county judge and ex-officio school superintendent for Bailey county, and a doggone good one. The Judge is a director in the Muleshoe organization.

Chas. Whitacre, Lubbock club, peddles insurance. Charley is also considered a citizen of Muleshoe.

Edgar Shelton got a good start in life by being reared down in Austin, Texas, and is a graduate of Texas university, now an associate professor of architectural engineering at Tech.
Clavis Kiwanis Stwartet, composed of T. W. Jones, James Hendrix, Carl Allison, and Giles Miller, with Misses Zella Mae Pierce and Lorene Miller as accompanists.
Col. Clark Mullican, president of Lubbock (Continued on page 4, col. 1.)

CENSUS CHECK-UP GIVES MULESHOE POPULATION OF 779; PRELIMINARY REPORT

JUDGE CHAS. CLEMENTS AS CANDIDAT FOR RE-ELECTION

The Journal is authorized to announce the candidacy of District Judge Charles Clements for re-election for the 64th Judicial District, subject to the action of the Democratic primary in July. Judge Clements is serving his first term as District Judge and has proven himself a very efficient official, his cases having been approved by the higher courts. He has many friends in Bailey County, as well as the entire district who wish him well in his candidacy for re-election.

The Judge will greatly appreciate the vote and influence of the voters of this county.

Oklahoma Men Would Build New Cotton Gin Here

W. W. Jones of Hobart, Okla., has been in Muleshoe the past two or three days checking up on the cotton acreage here preparatory to the building of another gin in Muleshoe.

Messrs. Jones and Burrow are experienced gin men and stated Wednesday morning that they had purchased a site in Ollen for the erection of a new plant at that place. Work there would start some time next month and they were anxious to complete arrangements for the plant here.

The information they had received as to crop conditions and additional new acreage in this territory were satisfactory, they said, and they will return here in about two weeks to complete plans for building as soon as possible.

SUDAN LUMBER AND VARIETY MEN VISIT HERE TUESDAY

Messrs. S. A. Beecroft and Sam M. Saunders of Sudan were in Muleshoe Tuesday on business, and while in town made a call at The Journal office. Mr. Beecroft is connected with the Foxworth-Galbraith Lumber Co. of Sudan, and Mr. Saunders a owner of a variety store at that place. We are very glad to have the business men and other citizens of our neighboring towns visit us and welcome them back again.

PLAINVIEW CLUB MEMBERS ATTEND CHARTER BANQUET

Among the representatives attending the charter Banquet here Thursday night from Plainview were O. J. Sexton, secretary Kiwanis Club and manager of Western Union Telegraph; R. Q. Silverthorne, president of the Plainview Chamber of Commerce; J. J. Steakley, Vice-Pres. Plainview National Bank; T. C. Shepard, owner and manager Shepard Chevrolet Co.; E. B. Miller, Advertising Manager Plainview Evening Herald; C. A. Pierce, Dry Goods owner and manager; J. G. Daugherty, Cashier First National Bank; A. G. Hinn, owner Harvest Queen Mills; Judge Chas. Clements and District Attorney Meade F. Griffin.

INTERNATIONAL SECRETARY EXTENDS CONGRATULATIONS

During the course of the Charter presentation program of the Kiwanis Club the following telegram was received and read from Fred C. W. Parker, International secretary of Chicago, Ill.:
"Kindly extend my congratulations to the Club upon receipt of its officers. I assure you that officers and members of my presence in spirit. The thousands of Kiwanians throughout Canada and the United States welcome you and wish you unqualified success in spreading Kiwanis gospel of Fellowship, business integrity and service.
FRED C. W. PARKER.

Population For 1920 Not Shown; 103 Poll Tax Receipts Issued In County That Year.

According to figures received here this week from the supervisor of the census for this district, Muleshoe has a population of 779. These figures are preliminary and subject to correction.

The population for Muleshoe was not shown in 1920 and there were no farms enumerated in that year. No report has been made on the population of the county. Records at the tax collector's office show that there were 103 poll tax receipts issued in the county in 1920. Practically all of the town of Muleshoe has been built in the past four years.

Population figures for 22 towns in this district were announced last Saturday by Owen M. Unger, district supervisor. Ten of the towns have a population of over 1000.

Plainview, with a population of 8,834, is the largest in the district. The figures up to the present time show Quannah with 4,464, and Littlefield, 3,218.

Following are the figures made public by the supervisor:
Plainview, 8,834; Quannah, 4,464; Littlefield, 3,218; Paducah, 2,802; Foy, 2,636; Tulsa, 2,202; Chillicothe, 1,610; Lockney, 1,469; Matador, 1,309; Sudan, 1,014; Hale Center, 995; Turkey, 975; Estelline, 920; Quitaque, 945; Silverton, 873; Dimmitt, 830; Muleshoe, 779; Happy, 725; Abernathy, 705; Ollon, 674; Petersburg, 548; Roaring Springs, 405.

Variety Store To Start Business Here Saturday

I. L. St. Clair of Hale Center, has secured the building formerly occupied by the Williams Grocery and is busy this week unpacking a stock of variety goods. Mr. St. Clair will be open for business Saturday, May 24th, with a complete line, and to get better acquainted with the public, he is listing some special prices for that day.

Mr. St. Clair is an experienced variety goods man and stated that he considered Muleshoe a fine town in which to live and do business. We wish to call your attention to his address which appears in this issue of The Journal.

A. E. ROBINSON ANNOUNCES FOR COMMISSIONER, PRECINCT NO. 3

Mr. A. E. Robinson announced his candidacy for Commissioner, Precinct No. 3, this week, subject to the action of the Democratic primaries in July. Mr. Robinson has lived in that precinct for the past five years, and says he appreciates support given him in the last election, and will appreciate the support given him in this election.

WHEAT CROP FALLS SHORT RECENT ESTIMATE SHOWS

A survey of the Plains wheat belt by grain men shows that the crop will be from 15 to 20 million bushels short of the estimates of one month ago. Reports on the crop in this section give estimates from six to eighteen bushels per acre. High winds the past few weeks will cut the crop short, growers say. Scarcest rains a few days ago helped the situation in some sections and quite a few fields promise to make a fair crop.
Cecil H. Tate was in Clovis on business Monday of this week.

# HELLO KIWANIANIANS



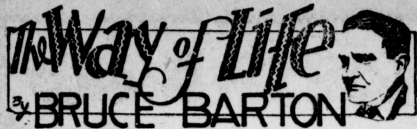
**We want you to feel at home here; the town is yours. Q We would give you the key, but we never had one. Q Call on all of us; look us over —we are right in the middle of the "Cream of the Plains." Q Get right and be one of us!**



**Valley Motor Company  
Henington Grocery  
Gardner Dry Goods Co.  
Blackwater Valley State Bank  
Gupton Grocery Company  
Pat. R. Bobo  
Muleshoe Journal  
Bailey County Elevator  
Dr. A. R. Matthews  
J. E. Adams**

**R. L. Brown  
R. B. Canfield  
Panhandle Lumber Co.  
McCoy Service Station  
McCarty Drug Store  
Muleshoe Motor Co.  
Muleshoe Elevator Co.  
Joe March  
Cecil H. Tate  
Jack McIntosh**

IF YOU WANT YOUR TIRE AND TUBE WORK DONE RIGHT, SEE WEAVER -- MULESHOE TEXAS



"IF A MAN DIE, SHALL HE LIVE AGAIN?"

It is the age-old question, asked at the side of every bier. And what can one say in answer to it? Every one of us is taught in childhood to believe in God and an after life.

And if there be a Personality in the Universe—a God—what kind of God is He?

He must be at least as good as you or I. He could not have made us better than Himself. The worse can not create the better.

ROAD NOTICE TO NON-RESIDENT LAND OWNERS

THE STATE OF TEXAS, County of Bailey.

We the undersigned Jury of Freeholders, citizens of said Bailey County, Texas, duly appointed by the Commissioner's Court of Bailey County, Texas, at its second April Term, 1930, to view, and establish a 60 foot, first class Road and having been duly sworn as the law directs, hereby give notice that we will on the 14th day of June, 1930, assemble at a place convenient to all and thence proceed to survey, locate view, mark out and establish said road, beginning at a point where the State Highway crosses the Labor Line between Labors No. 5 and 6, League No. 180 Ector County School Land, thence west on the labor line between Labors No. 5 and 6, League No. 180 Ector County School Land and continuing west on the Labor line between Labors No. 1 and 10, 2 and 9, 3 and 8, 4 and 7, 5 and 6, League No. 189 Sutton County School Land, thence west on the Labor Line between Labors No. 1 and 10, 2 and 9, 3 and 8, 4 and 7, 5 and 6, League No. 173 Sutton County School Land, thence south of the League Line between League No. 172 and 173, to the northeast corner of Labor No. 9, League No. 172 Sutton County School Land, thence west on the Labor line between Labors No. 3 and 9, 7 and 10, 6 and 11, 5 and 12, League No. 173 Sutton County School Land, to the southwest corner of Labor No. 5, the same being the northwest corner of Labor No. 12, League No. 172 Sutton County School Land.

And we do hereby notify all land owners and any and all persons owning lands through which said road may run, that we will at the same time proceed to assess the damages incidental to the opening and establishment of said road, when they may, either in person or by agent or attorney, present to us a written statement of the amount of damages, if any, claimed by them.

ROAD NOTICE TO NON-RESIDENT LAND OWNERS

THE STATE OF TEXAS, County of Bailey.

We the undersigned Jury of Freeholders, citizens of Bailey County, Texas, duly appointed by the Commissioner's Court of Bailey County, Texas, at its first April term, 1930, to view and establish a 60 foot first class Road, and establish a 60 foot first class Road, and hereby give notice that we will on the 14th day of June, 1930, assemble at a place convenient to all and thence proceed to survey, locate view, mark out and establish said road, beginning at the southwest corner of Labor No. 4, the same being the northwest corner of Labor No. 7, League No. 178, Motley County School Land, thence east on the Labor line between the Labors No. 4 and 7, 3 and 8, 2 and 9, 1 and 10, to the southeast corner of Labor No. 1, the same being the northeast corner of Labor No. 10, League No. 178, Motley County School Land, thence south on the League line between League No. 178, Motley County School Land and League No. 185, Swisher County School Land, to the southwest corner of Block No. 1, the same being the northwest corner of Block No. 6, League No. 185, Swisher County School Land, thence east on the Block line between Block No. 1 and 6, 2 and 5, 3 and 4, to the southeast corner of Block No. 3, the same being the northeast corner of Block No. 4, League No. 185, Swisher County School Land, and 194 Foard County School Land, to the northeast corner of Block No. 3, League No. 185, Swisher County School Land, the same being the northwest corner of Labor No. 5, Foard County School Land.

ROAD NOTICE TO NON-RESIDENT LAND OWNERS

THE STATE OF TEXAS, County of Bailey.

We the undersigned Jury of Freeholders, citizens of Bailey County, Texas, duly appointed by the Commissioner's Court of Bailey County, Texas, at its first April term, 1930, to view and establish a 60 foot first class Road, and hereby give notice that we will on the 14th day of June, 1930, assemble at a place convenient to all and thence proceed to survey, locate view, mark out and establish said road, beginning at the southwest corner of Labor No. 4, the same being the northwest corner of Labor No. 7, League No. 178, Motley County School Land, thence east on the Labor line between the Labors No. 4 and 7, 3 and 8, 2 and 9, 1 and 10, to the southeast corner of Labor No. 1, the same being the northeast corner of Labor No. 10, League No. 178, Motley County School Land, thence south on the League line between League No. 178, Motley County School Land and League No. 185, Swisher County School Land, to the southwest corner of Block No. 1, the same being the northwest corner of Block No. 6, League No. 185, Swisher County School Land, thence east on the Block line between Block No. 1 and 6, 2 and 5, 3 and 4, to the southeast corner of Block No. 3, the same being the northeast corner of Block No. 4, League No. 185, Swisher County School Land, and 194 Foard County School Land, to the northeast corner of Block No. 3, League No. 185, Swisher County School Land, the same being the northwest corner of Labor No. 5, Foard County School Land.

ROAD NOTICE TO NON-RESIDENT LAND OWNERS

THE STATE OF TEXAS, County of Bailey.

We the undersigned Jury of Freeholders, citizens of Bailey County, Texas, duly appointed by the Commissioner's Court of Bailey County, Texas, at its first April term, 1930, to view and establish a 60 foot first class Road, and hereby give notice that we will on the 14th day of June, 1930, assemble at a place convenient to all and thence proceed to survey, locate view, mark out and establish said road, beginning at the southwest corner of Labor No. 4, the same being the northwest corner of Labor No. 7, League No. 178, Motley County School Land, thence east on the Labor line between the Labors No. 4 and 7, 3 and 8, 2 and 9, 1 and 10, to the southeast corner of Labor No. 1, the same being the northeast corner of Labor No. 10, League No. 178, Motley County School Land, thence south on the League line between League No. 178, Motley County School Land and League No. 185, Swisher County School Land, to the southwest corner of Block No. 1, the same being the northwest corner of Block No. 6, League No. 185, Swisher County School Land, thence east on the Block line between Block No. 1 and 6, 2 and 5, 3 and 4, to the southeast corner of Block No. 3, the same being the northeast corner of Block No. 4, League No. 185, Swisher County School Land, and 194 Foard County School Land, to the northeast corner of Block No. 3, League No. 185, Swisher County School Land, the same being the northwest corner of Labor No. 5, Foard County School Land.

ROAD NOTICE TO NON-RESIDENT LAND OWNERS

THE STATE OF TEXAS, County of Bailey.

We the undersigned Jury of Freeholders, citizens of Bailey County, Texas, duly appointed by the Commissioner's Court of Bailey County, Texas, at its first April term, 1930, to view and establish a 60 foot first class Road, and hereby give notice that we will on the 14th day of June, 1930, assemble at a place convenient to all and thence proceed to survey, locate view, mark out and establish said road, beginning at the southwest corner of Labor No. 4, the same being the northwest corner of Labor No. 7, League No. 178, Motley County School Land, thence east on the Labor line between the Labors No. 4 and 7, 3 and 8, 2 and 9, 1 and 10, to the southeast corner of Labor No. 1, the same being the northeast corner of Labor No. 10, League No. 178, Motley County School Land, thence south on the League line between League No. 178, Motley County School Land and League No. 185, Swisher County School Land, to the southwest corner of Block No. 1, the same being the northwest corner of Block No. 6, League No. 185, Swisher County School Land, thence east on the Block line between Block No. 1 and 6, 2 and 5, 3 and 4, to the southeast corner of Block No. 3, the same being the northeast corner of Block No. 4, League No. 185, Swisher County School Land, and 194 Foard County School Land, to the northeast corner of Block No. 3, League No. 185, Swisher County School Land, the same being the northwest corner of Labor No. 5, Foard County School Land.

ROAD NOTICE TO NON-RESIDENT LAND OWNERS

THE STATE OF TEXAS, County of Bailey.

We the undersigned Jury of Freeholders, citizens of Bailey County, Texas, duly appointed by the Commissioner's Court of Bailey County, Texas, at its first April term, 1930, to view and establish a 60 foot first class Road, and hereby give notice that we will on the 14th day of June, 1930, assemble at a place convenient to all and thence proceed to survey, locate view, mark out and establish said road, beginning at the southwest corner of Labor No. 4, the same being the northwest corner of Labor No. 7, League No. 178, Motley County School Land, thence east on the Labor line between the Labors No. 4 and 7, 3 and 8, 2 and 9, 1 and 10, to the southeast corner of Labor No. 1, the same being the northeast corner of Labor No. 10, League No. 178, Motley County School Land, thence south on the League line between League No. 178, Motley County School Land and League No. 185, Swisher County School Land, to the southwest corner of Block No. 1, the same being the northwest corner of Block No. 6, League No. 185, Swisher County School Land, thence east on the Block line between Block No. 1 and 6, 2 and 5, 3 and 4, to the southeast corner of Block No. 3, the same being the northeast corner of Block No. 4, League No. 185, Swisher County School Land, and 194 Foard County School Land, to the northeast corner of Block No. 3, League No. 185, Swisher County School Land, the same being the northwest corner of Labor No. 5, Foard County School Land.

ROAD NOTICE TO NON-RESIDENT LAND OWNERS

THE STATE OF TEXAS, County of Bailey.

We the undersigned Jury of Freeholders, citizens of Bailey County, Texas, duly appointed by the Commissioner's Court of Bailey County, Texas, at its first April term, 1930, to view and establish a 60 foot first class Road, and hereby give notice that we will on the 14th day of June, 1930, assemble at a place convenient to all and thence proceed to survey, locate view, mark out and establish said road, beginning at the southwest corner of Labor No. 4, the same being the northwest corner of Labor No. 7, League No. 178, Motley County School Land, thence east on the Labor line between the Labors No. 4 and 7, 3 and 8, 2 and 9, 1 and 10, to the southeast corner of Labor No. 1, the same being the northeast corner of Labor No. 10, League No. 178, Motley County School Land, thence south on the League line between League No. 178, Motley County School Land and League No. 185, Swisher County School Land, to the southwest corner of Block No. 1, the same being the northwest corner of Block No. 6, League No. 185, Swisher County School Land, thence east on the Block line between Block No. 1 and 6, 2 and 5, 3 and 4, to the southeast corner of Block No. 3, the same being the northeast corner of Block No. 4, League No. 185, Swisher County School Land, and 194 Foard County School Land, to the northeast corner of Block No. 3, League No. 185, Swisher County School Land, the same being the northwest corner of Labor No. 5, Foard County School Land.

Konjola Ended Neuritis And Kidney Trouble

Well Known Waco Photographer Enthusiastic About New Medicine "Proven Wonderful Remedy."



MR. H. O. BRUBAKER

"I suffered for six years with neuritis, kidney trouble and constipation," said Mr. H. O. Brubaker, well known photographer, residing at 623 1/2 Austin Avenue, Waco. "My ankles and my limbs above the knees were badly swollen and gave me considerable trouble. It became an effort for me to walk. My kidneys were out of order making night risings necessary and causing me to lose restful sleep. My eye-sight seemed to be failing on account of these conditions."

"Much to my surprise, I began to get immediate results after taking his medicine. The swelling left my ankles and limbs and I became stronger. I can now go about my work without stopping to rest. I have been relieved of constipation and my eye-sight has improved since taking this medicine. I have and will continue to recommend Konjola to all who suffer from such ailments as I had. Konjola has proven to me that it is a different and wonderful medicine. It certainly proved its merits in my case."

Konjola was not designed to afford mere temporary relief. Taken systematically, over a period of from six to eight weeks, this medicine will amaze sufferers by the results obtained. Konjola is sold in Muleshoe at McCarty drug store, and by all the best druggists in all towns throughout this entire section.—Adv

Judge: The two men were fighting with chairs. Didn't you try to establish peace? Witness: No, there was not a third chair.

Advertisement for J. R. Denhof, Optometrist, featuring an image of glasses and the text 'Better Vision With Comfort'.

Advertisement for Col. Bob Sammons, Auctioneer, with the text 'Services Guaranteed' and contact information for Muleshoe, Texas.

Advertisement for Moellers Cafe, Muleshoe, Texas, with the headline 'Why Worry' and text about hot weather meals.

Large advertisement for Savings Groceries, featuring the headline 'Savings' and 'In BEST QUALITY GROCERIES'.

Advertisement for The New Chevrolet, featuring a list of models and prices, including Roadster, Coupe, Club Sedan, and Coach.

Large advertisement for Blackwater Valley State Bank, featuring the headline '16 YEARS of SAFE, CONSTRUCTIVE BANKING SERVICE IN MULESHOE'.

Large advertisement for Panhandle Lumber Co., featuring the headline 'We didn't move we MODERNIZED our home' and an image of a house.

**The Muleshoe Journal**

C. S. HOLLAND, Editor

Entered as second-class matter at the Muleshoe Postoffice under the act of Congress, March 3, 1879.

Resolutions, Cards of Thanks, etc., are charged for at the rate of 10 cents per line. Advertising Rates on application.

**SUBSCRIPTION RATES**  
 In Bailey County, 1 Year .....\$1.50  
 Outside of County.....\$2.00

Member Texas Press Association  
 Member National Editorial Association

**WHO'S WHO, CONTINUED**

book club for second time, was a regimental officer in the 36th Division in the World War, and now is district judge at Lubbock.  
 J. E. Aldridge, district trustee of Muleshoe club, local banker, formerly of Kansas City.  
 Gov. E. Lon Mitchell, judge in district court at Clinton, Okla. Some of his friends sometimes try to compare him to Abraham Lincoln, but the Governor claims that Lincoln was a better looking man. He is a great booster of Western Oklahoma and Northwest Texas.

K. K. Smith, president of the Muleshoe club and a local Chevrolet dealer, hadn't slept a wink since he started preparing his speech in acceptance of the charter, but says he's going to make up for it after the festivities tonight.



**Ladies 'n Gentlemen**

(By OLD BALDY, Himself)

Well, Well! Just look at Old Baldy's picture. It's one of about a half dozen I had made recently, and that grin on my face is a "Kiwanis grin." Being a member of this fine organization just simply makes a fellow feel better. Its great to be at these meetings and hear what is going on in other towns and meet the fine business men who are helping to build this section of the Plains. There are farmers, ranchmen, lawyers, doctors, business men, who are all high class gentlemen, and occasionally a newspaper man.

There were lots of folks here Thursday night whom Old Baldy had known for some time—men from neighboring towns. I got a great kick from one of the local boys telling me about a prominent Lubbock man the other day. He was telling me about Col. Clark

Mulligan. Say, I knew the Colonel "way back when." In fact, he was a good friend of mine, although he probably didn't know it. I now have a very valuable document which is autographed—I suppose that is what you could call it—by the Colonel. It is headed "Honorable Discharge from the U. S. Army" or words to that effect, and on down a ways it says "Character, excellent." That means that I was never in the hogswog more than 7 times, nor in gang-fights in France to exceed three dozen, and always divided my "Three Star" with the Top like a good soldier should. Anyway this fellow Mulligan was wagon boss over about thirty-six hundred men, any one of which would punch the guy's jaw that so much as hinted that the Colonel wasn't the greatest officer in the A. E. F. Yeah, I know Col. Mulligan.

Lots of folks around here are sorely disappointed about the census figures for Muleshoe. Some of 'em think there are more people than the enumerators said there were, and this argument seems to be going on all over the United States. Every day you see in the papers where some nut is going to line the whole town up and count the folks over again on his own hook. We might do that here so as to satisfy some of the disappointed ones. Personally, I think we have made a very good showing.

Business Man: Do you think you know enough to be useful in this office?  
 Boy: Know enough? Why, I left my last place because the boss said I knew too much.

**HOUSE PARTY**

Misses Lyndell Gaddy and Mike Johnson entertained friends with a house party last week-end in the home of Mr. and Mrs. T. G. Gaddy near Goodland. The main event of the party was a treasure hunt Saturday night after which pink ice cream and angel food cake were served. Pink and white was the color scheme carried throughout, pirate colors being used for the hunt. After a trip to Monument Lake in which biking, kodaking and shooting contests were held the party broke up Sunday afternoon at 5 o'clock. Among those present were Misses Alice Ragsdale, Toby Shuman, Mike Johnson, Lyndell Gaddy, Messrs. Herschel Alsop, Crede Goer, of Brownfield, Buford Butts, Paul Griffiths of Lubbock, Keith Stegall, Mr. and Mrs. H. A. Towery and Mr. and Mrs. M. D. Gaddy.

**YL MISSIONARY SOCIETY**

The YL Missionary Society met at the home of Mrs. Mervin Wilterding with sixteen present.

The meeting was opened with song and prayer, followed by a business meeting. Mrs. Bahman gave an outline of the lesson found in the first three chapters of Acts. Mrs. Shofner gave a talk on the "Country Church." The next meeting will be at the home of Mrs. Arthur Ryan, June 3.—Reporter.

Mr. and Mrs. Ivan Mardis of Tulsa spent several days in Muleshoe this week visiting relatives.

"What heavy, unwieldy things the old-fashioned wedding rings were," said the young girl catching sight of her grandmother's ring.

"Yes dear," was the reply. "In my day they were made to last a lifetime." Jno. A. Dryden, J. C. Barron and E. L. Slate were here Tuesday from Sudan.



**NOTICE**

We will make our last set Wednesday, May 28. We still have plenty of baby chicks of most all breeds. Bring in your eggs and let us set them for you.

**MULESHOE HATCHERY**  
 Muleshoe, Texas

**Permanent Expert Service...**

**T**HE McCormick-Deering No. 8 Harvester-Thresher is built to do good work with a minimum of attention, expert service, and upkeep cost. It is a source of satisfaction to an owner, however, to know that in case of minor adjustment or unforeseen emergency, mechanical service and parts are readily available without expensive delays.

International Harvester is always close to owners of McCormick-Deering Harvester-Threshers. This is accomplished through the extensive dealer and branch house organization. Every McCormick-Deering sold receives careful field inspection to be sure it is working properly. Owners are often visited two or three times during their first harvest after purchase of a machine.

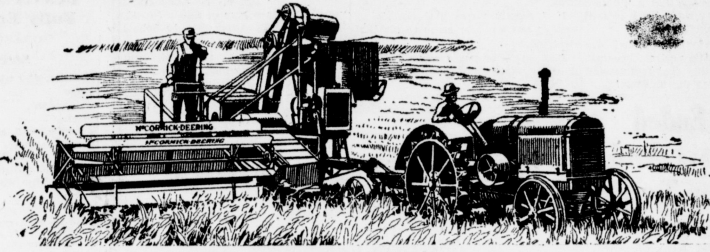
**Permanent Dealer Organization**

The McCormick-Deering dealer organization is permanent. These dealers have represented the line for years. Many of them have been with us since long before our first harvester-thresher went onto the market 16 years ago. They are experts on harvester-threshers—they are equipped to service more than the engine—they know the entire machine. They have repair parts in stock for the complete machine and can give service on a minute's notice. When you own a McCormick-Deering, one dealer services the entire machine—you don't have to go to one for service on the combine and to another for service on the engine.

McCormick-Deering dealer service is backed up in Kansas and all over the country by Company-owned branches. They dot the state of Kansas, at strategic points, ready to answer any call that comes.

**Unexcelled Service on the Spot**

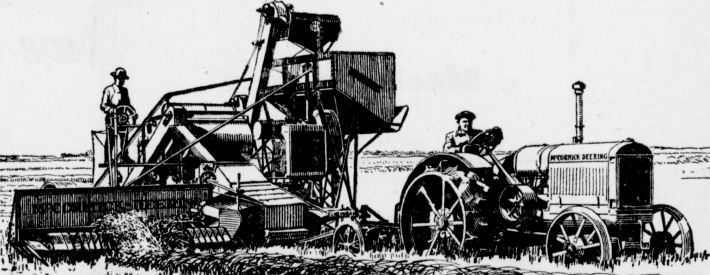
McCormick-Deering service is unexcelled. It is right on the spot, close by, whenever you need it. There are no costly delays. This is the kind of service you want when you are in the midst of the harvest—you can get this from McCormick-Deering dealers and International Harvester branches.



McCormick-Deering No. 8 Harvester-Thresher

**12 Important McCormick-Deering Points**

- 1 Adjustable to cut low. Gets lodged and tangled grain.
- 2 Continuation of grain-tight platform canvas forms lower elevator canvas. No grain lost at end of platform. Large capacity, wide elevator carries all grain to feeder.
- 3 Chain and slat feeder carries grain, heads first, into the cylinder. Direct front feed.
- 4 Spiked beater in feeder assures positive feeding and controls delivery of grain to cylinder.
- 5 Ninety per cent separation at cylinder. Straw and grain thus separated never mix again.
- 6 Four-section straw rack. Extends entire length of thresher from cylinder to straw spreader. Combs straw apart, drops it three times, thoroughly shakes out all the grain.
- 7 Extra long chaffer and cleaning sieve thoroughly cleans grain.
- 8 Revolving weed screen takes weed seeds out of threshed grain and bags them. Saves dockage and reduces spread of weeds.
- 9 Platform folds for transportation—does not have to be detached. No transport truck to buy.
- 10 A pioneer of small combines—backed by 99 years of practical harvesting-machine experience and by field tests under difficult conditions in the harvest fields of the world.
- 11 Expert service on the entire machine by permanent dealers and Company-owned branches.
- 12 Handles a variety of crops under a variety of conditions and seasons.



McCormick-Deering No. 11 Harvester-Thresher with 6½-foot pick-up device, handling the grain from a 16-foot swath cut by windrow-harvester

**INTERNATIONAL HARVESTER COMPANY**

606 S. Michigan Ave. OF AMERICA Chicago, Illinois  
 (Incorporated)

E. R. Hart Lumber Company  
 Muleshoe, Texas

**MCCORMICK-DEERING**

**Popular Modern Harvester-Threshers**

No. 20—8 ft. cut . . . No. 8—10 and 12 ft. cut . . . No. 11—12 and 16 ft. cut

POLITICAL COLUMN

The following Political announcements are made subject to the action of the Democratic Primaries in July, 1930.

Fees for all announcements must be paid before name is placed in this column. All cards, advertising, etc. are charged for at the usual rates and must be cash in advance.

- For Judge, 64th Judicial District CHAS. CLEMENTS
For County Judge and Ex-Officio Supt. of Public Instruction J. E. ADAMS
For Sheriff and Tax Collector C. E. DOTSON
H. STERLING
J. M. BELL
F. G. RICE
For County and District Clerk J. L. ALSUP
For Tax Assessor MRS. W. C. BUCY
MRS. R. L. TIVIS
A. W. EARLY
For County Treasurer VIRGIE MAE CLARK
For County Attorney PAT. R. BOBO
For Commissioner, Precinct No. 1 Wm S. F. MATTHIASEN
S. A. (SAMMY) GOODSON
A. J. HICKS
For Commissioner, Precinct No. 2 D. W. DANIELSON
H. M. THOMPSON
For Commissioner, Precinct No. 3 J. A. BEATY
T. G. GADDDY
W. E. RENFROW
F. N. HOOD
A. E. ROBINSON
For Commissioner, Precinct No. 4 A. L. CARPENTER
W. R. CARTER
R. D. MCCORMACK
W. H. WALKER
W. L. MORRIS

KIWANIS CHARTER— (Continued from page 1.) from Clovis, 5 from Amarillo, and it was understood that a delegation from Childress was present but this could not be verified at the time this edition went to press. There were also two visiting Kiwanians from Hollis, Okla., and two from Vega, Texas.

Want Ads

FOR SALE—Pinto beans and cotton seed. H. E. Lindsey, 3 miles N. E. of town, 1/4 mi. N. of Plainview hwy. 12-4p
FOR BEST Half and Half Cotton seed see S. S. Bozeman, Muleshoe. 13-2tc

IF YOU WANT something good, buy popcorn meal from Josh Blocker at Progress. 14-1p

WANTED—Good cook for family. C. D. Guppton, Muleshoe, Texas.

M. E. MISSIONARY SOCIETY

The Missionary Society of the M. E. church met in the church choir loft with twenty-four members and eight children present. The meeting was opened by the president reading from the 6th chapter of Luke. A song was then sung, "Beautiful Garden of prayer," followed with prayer by Mrs. Haney. The lesson was from the study book, subject, "Jesus Our Ideal," then the business was taken care of. Opal and Jewel Haney with Jewel at the piano rendered a very beautiful song. The next meeting will be the social meeting, which will be at the home of Mrs. Jay Weyer, with Mrs. Pearson and Mrs. Wallace as assistant hostesses.

CARD OF THANKS

We wish to express our appreciation and love to our friends for their kindness and flowers during the sickness and death of our beloved brother and uncle.

G. T. HAMBLIN, MR. & MRS. W. S. BELLER AND FLOY, MR. & MRS. O. B. GRIFFITH

WE SERVE TO SERVE AGAIN

Vogue Beauty Shoppe Lilla Bucy Daniel, Moeller Bldg.

MRS. TOWERY GIVEN SHOWER

Misses Lyndell Gaddy, Mike Johnson and Mrs. Marie Sikes gave a shower in honor of Mrs. H. A. Towery in the home of Mrs. Sikes last week. The bride's colors, pink and white were carried out throughout the afternoon. From the chandeliers in the living and dining room hung tiny cupid on pink and white streamers. On the mantel-piece two large kewpies impersonated the bride and groom, even to the veil. Pink and white snap-dragons adorned the room. The visitors slipped ice tea ribbed pink and white cookies while they waited for the arrival of the lovely bride who was bound hand and foot and blindfolded and carried in by the two charming pirates, Misses Iris Harden and Alice Ragsdale. The pirates then placed before her an old chest filled with lovely presents.

BUILDER'S S. S. CLASS, M. E.

The Builder's Sunday school class of the M. E. Church met at the home of Mrs. Dr. Moore with eight members and four children and one visitor present. After the business was taken care of the rest of the afternoon was spent in playing games and enjoying a social hour. Mrs. Hicks, Mrs. Hobbs and Mrs. Taylor were the lucky ones in winning the prizes. The hostess and lady of the house, Mrs. Isaac, served iced grape juice and cake. The guests expressed themselves as having had a fine time.—Rep.

Lazbuddie News

The Lazbuddie Study Club met two weeks ago in the home of Mrs. C. E. Briscoe and were charmingly entertained. An interesting Mother's Day program was rendered with a trio number by Mmes. Bledsoe, Disch and Abney as a special number. Quite a bit of enjoyment was realized from a collection of old fashioned relics. Especially attractive was the wedding dress displayed by Mrs. C. E. Merritt, which was used quite a few years ago. At the close of the afternoon a delicious salad course was served to fifteen members and visitors.

The last meeting of the Lazbuddie Study Club was held Thursday, May 15th, in the home of Mrs. Charles Julian. The new year books which were to have been distributed at this meeting were not yet off the press, so we were handicapped to a certain extent in rendering the program. However Mrs. Julian was a charming hostess and the afternoon was a success. So many were present including several visitors that the reporter did not attempt to take all the names. Mrs. Julian served ice cream and cake to those present and brought to a close the first meeting in the new club year. Mr. and Mrs. Maurice Bohanan of Shawnee, Okla., are making a temporary home near Lazbuddie in the homes of the B. Y. Burtons and Ira G. Roberts. Mr. Bohanan is in ill health and it is undecided whether he will stay here or go to a higher climate. If this climate agrees with him they will locate permanently near Lazbuddie. Mrs. Bohanan is a niece of Mr. Burton and Mrs. Roberts.

Mr. and Mrs. Ralph Disch entertained Thursday evening with a "fried chicken dinner" after which two tables were arranged for bridge. Those present were Mr. and Mrs. Loyal Lust, Mr. and Mrs. R. L. Bledsoe, Mr. and Mrs. Bruse Abney, Mrs. Eva Abney and the host and hostess.

The new congregation of the church of Christ at Lazbuddie is progressing nicely. The record attendance so far has been 84 in Sunday school, but the regular attendance ranges from 45 to 50 every Sunday. The members of this church are making plans for securing a minister to take charge of the work here at an early date. They have a capable man in view and will be fortunate if they are able to engage him.

A protracted series of meetings will be held by this church the last two weeks in August. Please help to make this widely known as a great spiritual feast is anticipated. Will M. Thompson of Farwell will conduct these services. The teachers of the Lazbuddie high school were entertained Saturday night by the Lazbuddie Study club at the home of Mr. Bill Shirley. Several tables were set for the occasion.

MONUMENTS

BUY HERE, SAVE AGENT'S COMMISSION AND GET A BETTER CLASS OF WORK.

Clovis Monument Works CLOVIS, N. M.

Schedule of New Low Prices

FULLY EQUIPPED DELIVERED

Table with 2 columns: Model Name and Price. Includes Tudor Sedan (\$638.30), Fordor Sedan 2W (738.30), Fordor Sedan 3W (763.30), Town Sedan (808.30), Standard Coupe (638.30), Cabriolet (783.30), Sport Coupe (668.30), Roadster (566.30), Phaeton (571.50), 1 1/2-ton, 5 Speeds, Truck and Cab (\$725.30)

MULESHOE MOTOR CO. MULESHOE, TEXAS

Sunday Movies at the Lyceum Theatre

CLOVIS, N. M.

TWO COMPLETE MATINEES—2:00 AND 4:00 TWO NIGHT SHOWS—7:00 AND 9:00

Sunday and Monday

MAY 25th AND 26th

All-Talking Laugh Riot

"THE KIBITZER"

With Harry Green and Mary Brian

Lloyd Hamilton all-talking Comedy "Good Morning Sheriff"

LYCEUM THEATRE

CLOVIS, N. M.

Sunday, May 25th

PIKE'S PEAK TEST JOLTS AMERICA'S MOTOR OIL OPINIONS



Here's How

Some men prefer one kind of motor oil, some another. The jolt comes when the Pike's Peak Tests prove that most of these opinions may be comfortable, convenient, but not correct. The generality that certain brands are better merely because they come from certain States has been quietly exploded. Thousands buy by a respected color or trade mark, and not a few just buy at a low price. The time is ripe for real facts. By the Pike's Peak Tests, conducted under the supervision of AAA observers, we are prepared to present dependable facts on CONOCO Germ-Processed Oils.

The outstanding results of these Pike's Peak Tests reveal many points of unusual significance. Under the conditions of the tests, which were comparable to severe service, these points were: Motor Wear... Germ-Processed oil reduced it 76.4% throughout these tests, under that of the other oils used as a group. Cost of Lubrication... Germ-Processed oil showed an appreciable saving of 6.1% Oil Economy... win by 3.9% Gasoline Economy... a gain of 7.2% Loss of Viscosity... Germ-Processed oil was in 34% better condition after the tests than were the others! Carbon... shows an appreciable decrease after Germ-Processed oil was used. Water Temperature... was lower with CONOCO Germ-Processed Motor Oil.

Remember, CONOCO uses Mid-Continent paraffin base crude, then the "germ-essence" is added, which gives this oil that remarkable ability to penetrate metal surfaces. "Penetrative Lubricity." The Germ-Process is Conoco-owned. And Germ-Process positively will reduce your car-operation expense, and lengthen motor life, by providing Penetrative Lubricity.

We invite you to select any operating condition, no matter how severe, and we guarantee that CONOCO Germ-Processed Motor Oil will meet them better than the oil you have been using!

THE NEW FREE BOOKLET, "Pike's Peak Tests Confirm CONOCO'S Challenge," is ready. It will give you the detailed story of these tests, with photographs. Address Continental Oil Company, Ponca City, Oklahoma, or inquire at the nearest service station displaying the Red Triangle.

CONOCO GERM PROCESSED PARAFFIN BASE MOTOR OIL

35c Per Quart... for All Grades Except Special Heavy and Extra Heavy

les of bridge and '42' were played. Nice girls were presented to the teachers by Mrs. C. E. Merritt. At the close of the evening punch and cake was served to a large number of people.—Reported

Special Opening Sale St. Clair's Variety Store

Special Sale opens at 8:00 o'clock Saturday morning, May 24, and will last through Monday and Tuesday, May 26th and 27th. We extend a cordial invitation to come and be with us for the opening sale.

- Ladies' Rayon Hose, 69c values, for... .50
Beautiful lace, 2 yds., for... .05
Turkish Towels, size 24 x 45 inches, regular price 35c, special... .21
Ladies' House Slippers, regular price 45c, special... .39
Brooms, 5 strand... .49
Buckets, galvanized, 8 qt., regular price 30c, special... .20
Waste Paper Baskets, regular 60c value, special... .50
Toilet Paper, regular price 10c per roll, special 4 rolls for... .24
New Green Glasses, each... .05
Large Goblets, regulr 90c set, special set for... .66

Don't Miss These Bargains Be Here Early

Cotton Seed

We now have a supply of Pure Half and Half Cotton Seed, sacked, for \$1.25 per bushel.

We can furnish you with any amount.

BAILEY COUNTY ELEVATOR CO.

Muleshoe, Texas

Plant the Best

Plant the best cotton seed obtainable, is the advice given farmers by agriculture experts. We have a limited supply of pedigreed long staple Half and Half Seed which we are selling at \$2.25.

We have some good home raised seed at \$1.25.

These seed are going fast so get your order in NOW.

Muleshoe Elevator Co. MULESHOE, TEXAS

Progress News Notes

The Union Missionary society met at the school house Monday with 16 present. Mrs. Snyder led in devotional, Romans 6. After a short business session the meeting was turned over to the leader. We had a very interesting program taken from Exodus.

NOTICE OF SHERIFF'S SALE

THE STATE OF TEXAS, COUNTY OF BAILEY. By virtue of an Order of Sale, issued out of the Honorable District Court of Bailey County, on the 6th day of May, A. D. 1930, by the Clerk thereof, in the case of E. G. Rall, et al, versus E. V. Crain No. 499, and to me, as Sheriff, directed and delivered, I will proceed to sell for cash, within the hours prescribed by law for Sheriff's sales, on the First Tuesday in June, A. D. 1930, it being the 3rd day of said month, before the Court House door of said Bailey county, in the town of Muleshoe, Texas, the following described property, to-wit:

it being the 3rd day of said month, before the Court House door of said Bailey County, in the town of Muleshoe, Texas, the following described property, to-wit: Being all that certain lot, tract or parcel of land lying and being situated in Bailey County, Texas, and being all of Labor No. Fourteen (14) in League No. Two Hundred Nine (209), Deaf Smith County School Land, and containing 177.136 acres of land in said County of Bailey and State of Texas; levied on the 7th day of May, 1930, as the property of W. G. Shumake to satisfy a judgement amounting to \$6,221.96 in favor of E. G. Rall and Tom B. Owens and costs of suit.

No. 175, the same being the southeast corner of Labor No. 11, League No. 171, Sutton County School Land. And we do hereby notify all persons whose land lies in connection with said road and any and all persons owning lands through which said road may run, that we will at the same time proceed to assess the damages incidental to the opening and establishment of said road, when they may, either in person or by agent or attorney, present to us a written statement of the amount of damages, if any, claimed by them.

BUSINESS AND PROFESSIONAL COLUMN

Bailey County Abstract Company
L. S. BARRON, Manager.
MULESHOE, TEXAS
(ESTABLISHED IN 1900)
Abstracts, Loans and Insurance
WE ARE BONDED FOR \$50,000.00 TO PROTECT OUR CLIENTS.

ROAD NOTICE TO NON-RESIDENT LAND OWNERS

THE STATE OF TEXAS, County of Bailey. We the undersigned Jury of Freeholders, citizens of said Bailey County, Texas, duly appointed by the Commissioners' Court of Bailey County, Texas, at its first April Term, 1930, to view and establish a 60 foot first class Road, and having been duly sworn as the law directs, hereby give notice that we will on the 14th day of June, 1930, assemble at a convenient place and thence proceed to survey, locate view, mark out and establish said road, beginning at the southwest corner of Labor No. 2, the same being the northwest corner of Labor No. 9, League No. 188, Ector County School Land thence west on the Labor line between Labors No. 3 and 4 and 7, 5 and 6, in League No. 188, Ector County School Land, and continuing west on the Labor line between Labors No. 1 and 10, 2 and 9, 3 and 4 and 7, 5 and 6, League No. 175, Sutton County School Land to the southwest corner of Labor No. 5, the same being the northwest corner of Labor No. 6, League No. 175, Sutton County School Land, thence south on the league line two Labors, between Leagues No. 175 and 171, to the southwest corner of Labor No. 15, League

LITTLEFIELD COLLEGE FILES PETITION IN BANKRUPTCY

A petition in voluntary bankruptcy was filed in the Federal Court, Dallas district, last Saturday by the Littlefield College, according to report received here this afternoon, George K. Holland being appointed receiver for the institution. About a week ago a petition was filed in the State courts by donors to the College fund when it was located here, asking for a receiver, and P. W. Walker was so appointed. It is understood that the Federal proceedings will take precedence over that of the state court. Holland, the receiver, is said to still have in his possession the books of the College, which will be duly surrendered to the proper authorities when called for and he has been released from his bond as receiver in the State court. An effort will be made by attorneys for the petitioners in the State case to have the new case transferred to Lubbock, as it is stated most of the College creditors reside in this section of the State.—Lamb County Leader.

BIG STATE Motor Oil
D. O. SMITH Distributor
Bailey, Lamb, Parmer, Castro and Deaf Smith counties

WHEN IN MULESHOE STOP AT The Elite Hotel
Cozy—Comfortable—Good Service
C. D. GUPTON, Proprietor
MULESHOE TEXAS

Dr. A. E. Lewis
DENTIST
Offices Hours: 9 a. m. to 12:30 p. m.; 1:30 p. m. to 5:30 p. m.
Office over McCarty Drug Store Phone 86 Muleshoe, Texas

PAT R. BOBO
PHONE 43
OFFICE IN COURT HOUSE
MULESHOE, TEXAS

Cecil H. Tate
Attorney-at-Law
Office in McCarty Building Phone 86 MULESHOE, TEXAS

A. R. Matthews, M. D.
Physician and Surgeon
MULESHOE, TEXAS

Dr. T. A. Moore
Physician and Surgeon
Special Attention to Obstetrics and Children
Muleshoe, Texas

Texas Utilities Co.
Appreciates the Business Received From Muleshoe

Lubbock Sanitarium and Clinic
Dr. J. T. Krueger Surgery and Consultations
Dr. J. T. Hutchison Eye, Ear, Nose and Throat
Dr. M. C. Overton Diseases of Children
Dr. J. P. Lattimore General Medicine
Dr. F. B. Malene Eye, Ear, Nose and Throat
Dr. J. H. Sillies Surgery and Physiotherapy
Dr. H. C. Maxwell General Medicine
Dr. R. L. Fowers Obstetrics and General Medicine
Dr. B. J. Roberts Urology and General Medicine
Dr. A. A. Bayle X-Ray and Laboratory
Dr. Y. W. Rogers Dentist
Dr. John Duggee Resident Physician
C. E. Hunt Business Manager
A chartered training school for nurses is conducted in connection with the sanitarium.

MICK The Auctioneer
Will cry your sales anywhere. References. Come and hear me. Phone thru Dimmitt. P. O. Muleshoe or Flag.

Matthews Sanitary Camp Cabins
Muleshoe, Texas

O. N. ROBISON
General Auctioneer
20 YEARS EXPERIENCE
Will Give My Services Free to Schools or Societies Giving Box Suppers.
Muleshoe, Texas. Route No. 1

Dr. H. W. Duke
PHYSICIAN AND SURGEON
Specializing on Diseases of the Chest
Phone 86
Muleshoe, Texas

Send Your Abstract Work
-To The-
Muleshoe Abstract Company
A. P. STONE, Prop.
MULESHOE, TEXAS
Agent for Warren Addition

STATED MEETING of Muleshoe Masonic Lodge, 2nd Tuesday night in each month. VISITORS WELCOME
CONNIE GUPTON, W. M.
J. B. ROBERTS, Sec.

BUILDING
IF YOU ARE THINKING OF BUILDING—SEE ME. SAVE THAT RENT MONEY—OWN YOUR OWN HOME.
W. C. GORDON
At Panhandle Lumber Company



Want more Tire Mileage?

Here's your proof that you can get it . . . with Silvertowns on your car!

HERE it is, tire buyers! Proof beyond all question! Proof based not on nice phrases . . . but actual, out-on-the-road, day-in-and-out tire service!

Here's an actual photograph of a standard 6-ply Silvertown that had traveled 19,846 punishing miles with the 1929 Silver Fleet . . . and was just getting settled down to the job.



ROSE AUTO AWNINGS
Roller type—easily put on—sun and rain proof—no flapping—3-way adjustment—low priced. Come in and see them.

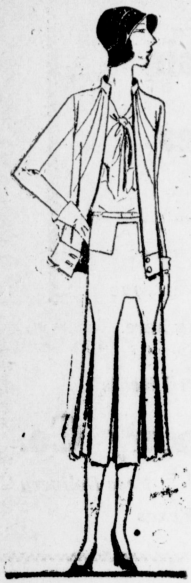
Goodrich Silvertowns
McCoy Service Station
Across the Street from Postoffice
Muleshoe, Texas

### The Very Latest

By MARY MARSHALL

Will pleated skirts be worn this summer? is a question that readers often ask, and it is a question that we ask ourselves when we take inventory of the clothes we have on hand.

The answer to the question is that pleated skirts will be worn, but there is a decided difference between the season before and those of today. The side pleated skirt set on deep yoke to be worn with long overblouses has little place in an up-to-date wardrobe because blouses of the new sort are



either worn tucked in or else they are so short as to extend only a little below a normal waistline.

The new pleated skirts are usually made with a smooth yoke and the pleating is wide and flaring. Sometimes the material of the skirt is set in fairly wide pleats which are stitched down to form a deep hip yoke, and the doubling of the material beneath the wide pleats is cut out at the under side so as to eliminate unnecessary bulkiness.

Some of the new box pleats are pressed in such a way that they stand out in a truly box-like manner.

An advantage of the wide box pleat over the narrow side pleat is that it may easily be re-pressed at home or by the tailor, without being sent to a professional pleater.

#### ROAD NOTICE TO NON-RESIDENT LAND OWNERS

THE STATE OF TEXAS, County of Bailey.

We the undersigned Jury of Freeholders, citizens of said Bailey County, Texas, duly appointed by the Commissioners' Court of Bailey County, Texas, at its second April Term, 1930, to view and establish a 60 foot first class Road, and having been duly sworn as the law directs, hereby give notice that we will on the 14th day of June, 1930, assemble at a place convenient to all and thence proceed to survey, locate view, mark out and establish said road, beginning at the Needmore Grocery store on the League line at the northeast corner of Block No. 20, Swisher County School Land, thence due south on the league line between League No. 186 Swisher County School Land, and 183 Foard County School Land, and continuing south on the league line between Leagues No. 185 Swisher County School Land, and 194 Foard County School Land, and 184 Swisher County School Land and 195 Foyd County School Land and 183 Foyd County School Land and 197 Lubbock County School Land, to the southeast corner of Labor No. 110, League No. 182 Foard County School Land, the same being the southwest corner of Labor No. 25, League No. 197, Lubbock County School Land.

And we do hereby notify all land owners and any and all persons owning lands through which said road may run, that we will at the same time proceed to assess the damages incidental to the opening and establishment of said road, when they may, either in person or by agent or attorney, present to us a written statement of the amount of damages, if any, claimed by them.

Witness our hands this 17th day of May, A. D. 1930.

W. C. COX  
L. D. FRENCH  
W. R. YOUNG  
LEE APPLIN  
Jurors of View

#### ROAD NOTICE TO NON-RESIDENT LAND OWNERS

THE STATE OF TEXAS, County of Bailey.

We the undersigned Jury of freeholders citizens of said Bailey County, Texas, duly appointed by the Commissioners' Court of Bailey County, Texas, at its second April Term, 1930, to view and establish a 60 foot, first class road, and having been duly sworn as the law directs, hereby give notice that we will on the 14th day of June, 1930, assemble at a place convenient to all and thence proceed to survey, locate view, mark out and establish said road, beginning at the northeast corner of Labor No. 25, the same being the northwest cor-

ner of Labor No. 22, League No. 177, thence south on the Labor lines between Leagues No. 23 and 22 of League No. 177, Labors No. 2 and 3, 8 and 9, 12 and 13, 18 and 19, 22 and 23 of League No. 178 and between Leagues Nos. 2 and 3, 8 and 9 of League No. 179, which is the north boundary of T. W. Hoffman's place, to the southwest corner of Labor No. 9, the same being the southeast corner of Labor No. 8, League No. 179.

And we do hereby notify all land owners and any and all persons owning lands through which said road may run, that we will at the same time proceed to assess the damages incidental to the opening and establishment of said road, when they may, either in person or by agent or attorney, present to us a written statement of the amount of damages, if any, claimed by them.

Witness our hands this 17th day of May, 1930.

W. E. COX  
L. D. FRENCH  
W. R. YOUNG  
LEE APPLIN  
Jurors of View

#### THE FAMILY DOCTOR

By John Joseph Gaines, M. D.

"Twilight Sleep"  
Sounds almost alluring, doesn't it? Gives one a sort of dreamy feeling just to think of it. Yet, as used in medicine, and quackery as well, it is one of the most deadly combinations of drugs we have at our command.

The originators of the formula known

as "H.M.C." claimed at first that a thigh might be amputated without pain under its influence. The attention of the medical world was attracted. That was a good many years ago; and the best surgeons of America are still using the safer method of aether anesthesia; "twilight sleep" dropped back to its very limited sphere and stayed there.

Hyoscin, Morphine and Cocaine are the ingredients of the compound; the first two are most powerful drugs, and the more so when used in combination; the latter has, if any effect at all, a very negligible one. My experience with "H.M.C." led me to abandon it early in its history as too dangerous to

tamper with.

For instance, a patient of mine, a inmate, was in delirium tremens—alcoholic mania; he had not slept for four days. Having tried everything else, in despair I gave him a dose of the new "twilight sleep." Well—it worked; within five minutes the man was snoring loudly, and almost blue from cyanosis; he breathed only six times per minute! I stayed at his bedside fourteen hours, until the poison wore away—never more anxious before or since. When he awoke he declared looking wildly about him, that he had been drugged!

I told him if he hadn't, then there never had been a man drugged. He im-

mediately ordered his belongings packed and left town and I didn't blame him. I blamed myself and the new "twilight sleep." Now I only use the stuff in eight-grain doses, to soften the terrible pains of childbirth.

### Let US Make Your Old Clothes Like New

Why spend a lot of money for new clothes when for a dollar or two we can clean your old clothes and make them look just like new.

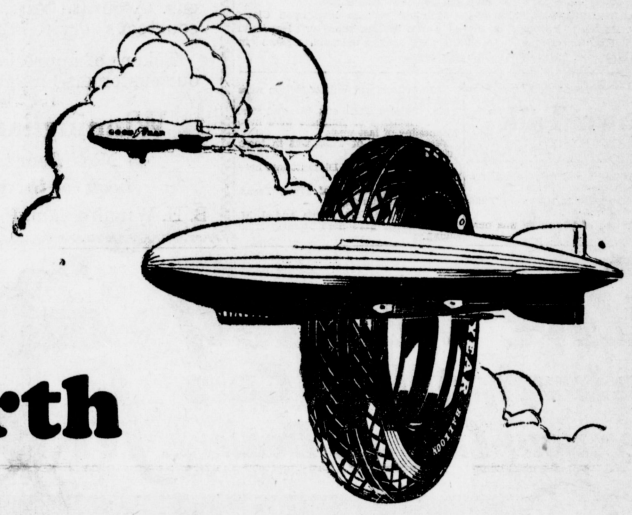
### MULESHOE TAILOR SHOP

## Real Estate

Population increases, Cities grow, but the amount of available real estate remains fixed.

**R. L. BROWN**  
The Land Man  
Muleshoe Texas

# No Less On Earth Than In The Air



No less in tires than in the great airships it is building now for the nation, does Good-year seek the *New, the needed, the advanced*. Because people find in Goodyear Tires values and benefits not to be found elsewhere, throughout the world "more people ride on Goodyear Tires than on any other kind." This fact alone—the greatest endorsement there could be behind a tire—ought to bring *you* to Goodyear Tires, particularly since they cost no more. If it has not, and if you have in mind any reason whatever why it does not, we should appreciate it sincerely if you would write and tell us what that reason is.

## VALLEY MOTOR CO.

CHEVROLET SALES AND SERVICE  
MULESHOE, TEXAS

**Heads Clovis Kiwanis Club**



CASH RAMEY

A fine representation of Clovis men, was organized in 1921 and has had headed by Cash Ramey were here 100 per cent attendance. for the charter banquet Thursday Muleshoe citizens look upon Clovis night. Mr. Ramey is President of the as a big brother more or less and Kiwanis Club of Clovis and is well they are always welcome visitors in known in Muleshoe. The Clovis Club our town.

**Town Talk**

S. E. Melton and Wilson Melton were here Friday.  
Mr. and Mrs. Ted Long, Mr. and Mrs. W. C. Clements of Amehrst were here Wednesday of last week.  
Terrell Braley of Tullia was in town Friday.  
Mrs. E. J. Vance of Dimmitt was here Wednesday.  
L. A. Shettlesworth of Frost, Texas, was in town Monday.  
J. E. Dryden, Zeb Payne and J. M. Shettlesworth were here Monday from Sudan.

R. J. Klump, Whit West and B. E. Chaney were in Amarillo Monday.  
M. J. Beard of Plainview was a business visitor in Muleshoe Tuesday.  
M. C. Butler of Lubbock was in town Monday.  
R. A. Sowder of Lubbock was here Tuesday.  
J. R. Stegall and E. L. Morgan of Amarillo were here Monday.  
Geo. E. Lockhart of Lubbock was here Monday.  
Owen McWhorter, L. H. Howard and W. D. Benson of Lubbock were in town Wednesday.  
L. S. Kinder and C. D. Russell of Plainview were in town Wednesday.  
A. P. Stone is in Temple this week visiting relatives.  
R. B. Canfield was over in Plainview Sunday.

C. S. Williams of Plainview was in town Wednesday.  
V. C. Nelson of Sudan was here Wednesday.

**NEW MEXICO FARM AND RANCH LAND**  
For sale in Quay and Harding Counties. Prices from \$4 to \$15. Write for prices and description.  
**JUMPER & CLEGG BOX 882, TUCUMCARI, NEW MEXICO**  
Buy where one crop pays for the land.

**Attention Farmers!**

We are operating an independent Produce House in Muleshoe, and will meet all competition.

We carry a complete line of Wonder Brand Feeds and are prepared to supply your wants at saving prices.

Bring us your Cream, Eggs and Chickens. Accurate tests, honest weights and courteous service is our rule.

Tokens of appreciation will be given to our customers on Saturday.

**Winningham Produce**

Next Door to Postoffice  
*Look for the Mistletoe Sign*  
B. H. Winningham, Prop. Elmo Head, Mgr

**High Grade GROCERIES at Bargain Prices**

Why buy your groceries elsewhere when you can save money trading here.

"Fresh and Cured Meats"

**Gupton Grocery Co.**

Phone No. 4 Free Delivery Muleshoe, Texas

**Save money in buying Used Cars**  
*See your Chevrolet Dealer... first~*

**USED CARS - WITH AN OK THAT COUNTS**

*for Economical Transportation*

Chevrolet dealers offer an exceptional used car purchase service because they work under a uniform factory plan that makes used cars as important a part of their business as new cars. The famous "OK that Counts" tag assures every buyer that each used car bearing it has been thoroughly reconditioned by expert mechanics to give thousands of miles of dependable, economical service.

The increased number and high quality of the trade-ins on 1930 Chevrolets enable us to offer a larger and finer selection of 4- and 6-cylinder used cars at low prices.

Join the thousands of experienced used car buyers who save money by seeing their Chevrolet dealer first. Read the amazing prices on the fine cars listed below. Buy within the next 3 days and profit.

**1929 Chevrolet Sedan**

The best buy in town—Good tires, good paint, motor in good shape—Terms, sure—

**Regular GMAC**

**SPECTACULAR VALUES 3 days ONLY!!**

**1929 Chevrolet Coupe ---and Trucks**

Just the car for you—Good rubber, motor in fine shape and upholstery great. GMAC Terms.

Sure we have them, and now is the time to be thinking about them—don't wait—come in and get a good choice truck—4's and 6's, Chevrolets and Fords

**Valley Motor Company**  
CHEVROLET SALES AND SERVICE  
Muleshoe, Texas

**WIDE SELECTION of POPULAR MAKES and MODELS**

*It is no disgrace to be poor. It does not attract that much attention.*

**COMPLETE Insurance Service**  
*with up-to-date records and old line connections*

**J. E. Aldridge Insurance Agency**  
Office at the Bank  
Muleshoe Texas

**Best Quality Ice Cream**

Try our Ice Cream and note the difference. It costs no more but it is so much better—Made from the very best ingredients.

Bring home a quart tonight for dessert.

**McCarty's Drug Store**  
Muleshoe, Texas