

# THE MULESHOE JOURNAL

VOLUME 7.

MULESHOE, BAILEY COUNTY, TEXAS, FRIDAY, JULY 26TH, 1929

NUMBER 24

## EXEMPTIONS FROM NEW GASOLINE TAX ALLOWED ON TRACTORS, ENGINES

### Claims For Exemption Must Be Filed With Comptroller By 25th of Month Following Purchase.

The State Comptroller's Department is now prepared to receive reports of exemption from the new four-cent occupation tax on the sale of gasoline, according to announcement by the State Comptroller of Public Accounts Sam Houston Terrell. Gasoline used for any other purpose than that of propelling vehicle on public roads, streets and highway of Texas is exempt from taxation. Fuel used in farm tractors, stationary engines, air craft and motor boats therefore is exempt.

However, the tax must be paid on ALL gasoline. Refunds will be made to those exempt. The tax is placed directly on wholesale distributors of gasoline at the rate of four cents per gallon, but the consumer eventually bears the burden of the tax. The new rate was in effect July 16th, having previously been two cents.

The new law does not make it easy for the consumer to secure refunds on exemptions. Comptroller Terrell has outlined the necessary procedure for the exempted consumer as follows:

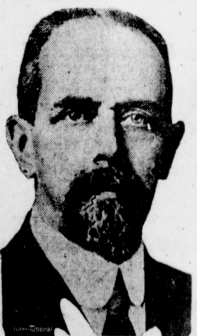
1. The purchaser must fill out an invoice, at the time of the purchase, giving amount, price, purpose, etc. The regular price paid for the gasoline will be supplied by dealers and filling stations.
2. Before the 25th of the month following the month of purchase, the buyer must report to the Comptroller the number of gallons bought and the amount of refunds expected. Claims reported later than the 25th of the following month will not be honored.
3. On receiving the report, the Comptroller's Department will mail the claimant an affidavit-account form, on which will be recorded information as to the amount and use of gasoline purchased. This information must be sworn to before a notary public, and filed with the Comptroller not later than two months from the date of purchase. This document must be accompanied with a filing fee of \$1.00, which must be paid each time that claim is filed. These fees will be used to enforce the law.
4. The claim will be investigated, and if considered valid, a State warrant will be issued for the refund. This warrant must be cashed within 60 days.
5. No refund will be made when gasoline is used later than six months from purchase. Persons believing themselves to be entitled to exemptions should write the Comptroller at Austin, Texas.

### NEW HIGH PRICE IS PAID ON HEREFORDS

A new high price for beef cattle was established on the market at East St. Louis, Ill., Tuesday when fifty head of Hereford steers sold for \$18.25 a hundred. The cattle averaged 1447 pounds, and the average price for each steer was \$235.

E. Pavlicek and family returned Tuesday from Rowena. Mr. Pavlicek's mother came back with them for a visit.

### RULES VATICAN CITY



Commendatore Serafini, first governor of the city of the Vatican that is practically a small self-governing nation created by treaty between Mussolini, representing the king of Italy, and Cardinal Gasparri, representing Pope Pius XI.

### BABY BEEF SHOW AND BALL AT STATE FAIR

Dallas, Texas. Creating a new market for the West Texas rancher, and encouraging the feeding of beef cattle on black land farms of Texas, the State Fair will hold its first "Feeder Show" and auction sale during the 1929 Exposition, it has been announced by the director in charge.

More than 1,000 prize calves from West Texas ranches will be shown at the State Fair and sold to black land farmers and others to be fed for market.

### NEXT SATURDAY WILL BE A LUCKY DAY FOR SOME FARMER IN THIS SECTION

Some farmer in the Muleshoe trade territory is going to win a \$165 registered Jersey heifer next Saturday, July 27th. The Merchants Luncheon Club is giving this heifer away as a part of the better dairy program sponsored by that organization. The animal was purchased at Plainview last Thursday, and brought here by truck. At 5:30 p. m. next Saturday, the person holding the winning ticket will receive this animal. Tickets are given away by merchants who are members of the Merchants Club. Everyone residing in the Muleshoe trade territory is eligible to call for tickets when making purchases.

### ASTER MAIL SERVICE FROM SOUTH AND EAST BY SUNSET BUS LINES

Aster time for first class mail points south and east is the result of utilization of the Sunset Bus Lines for this service. First class mail also goes south from Muleshoe at 8 p. m., the mail being made up 8 p. m. as for the trains. This schedule saves several hours for mail from Houston, Austin and Dallas.

Grand Mrs. Peter Kelsor of Corpus Christi visited in the home of the daughter, Mrs. Gus Priboth, in this community last week. Mr. Kelsor and C. W. Mick were callers at the Thurnauer office on Saturday.

Grand Mrs. W. A. Reed of Giddings, Texas, will spend the week-end with Mrs. G. C. Danner. Rev. Ed is pastor of the Baptist Church at Giddings, which was the home of Mr. and Mrs. Danner.

### Local Markets

The prices are furnished by the local dealers, and are for your convenience.

Malix	\$1.38
Kaffin	\$1.25
When	\$1.10
Corn, red	50c
Corn, yellow	77c
Sudan	\$2.75
Matzeads	\$12.00
Kaffins	\$12.00
Cane	\$1.15
Hogs	\$10.45
Retailers	
Cotton cake	2.75
Cotton meal	\$2.65
Bran	2.00
Shorts	2.50
Cow	\$3.00
Milk	\$2.75
Tankard	\$5.25
Seed	\$1.00 bu.
Produce	
Heavy	17c
Light	14c
Colored	22c
Leghorns	19c
Blacklegs	19c
Stags	10c
Cocks	10c
No. 1 T	97c
No. 2 T	6c
Hides	6c
Eggs	18c
Crean	36c
Capon, lb. and up	18c
Capon, under 8-lb.	18c
Ducks	10c
Green des	95c

(Price furnished by the Muleshoe Produce Co., subject to change without notice.)



### WARREN LANDS NOT TO BE TAKEN OFF MARKET, JOURNAL IS INFORMED

Information from reliable sources are to the effect that the famous Warren lands northeast of Muleshoe will not be taken off the market as rumored. A reorganization in the sales force to handle these lands was recently made, and it is predicted that it will practically all be sold to farmers by fall.

There still remains almost 16,000 acres of the most fertile land on the Plains of this tract, which is cut into 160 and 320 acre farms. It is understood that a few smaller tracts are to be sold and scores of prospectors are coming in with the intention of locating. These people are from Oklahoma, Kansas and North Central Texas and all express themselves as being well pleased with this section of the Plains. The fine crops now in growth, together with the large wheat yield speak for the richness of the soil in this section and as one Oklahoma prospector stated, "you can't go wrong here."

### SHOWER GIVEN IN HONOR OF MRS. JACK LAWLER LAST FRIDAY AFTERNOON

Last Friday afternoon at the home of Mrs. I. W. Hardin a shower was given in honor of Mrs. Jack Lawler. After a pleasant hour of social talks a contest was indulged in, Mrs. Lawler and Miss Iris Hardin being the contestants. Mrs. Lawler won in the contest and was presented with a small wagon loaded with many useful and attractive gifts. The gifts were passed around the circle and much comment was made on the necessity of the young housewife learning to cook. Delicious home made ice cream and cake were served to the following: Mesdames W. B. Hicks, B. W. Carles, A. McReynolds, Jerry Joslin, I. W. Haney, Nina Elrod, Delmer McCarty, J. F. Wallace, A. P. Stone, J. S. Glascock and I. W. Hardin; Misses Alva Douglass, Maudie Douglass, Murtis Burkhead, Mozell Alsop, Lela Glascock, Alice Ragsdale, Irene Carles, June Glascock, Margaret Hicks, Christine Hicks, Elizabeth Hardin, Iris Hardin, and the honoree.

A Guest.

### MULESHOE DEFEATS OLTON IN BEST GAME OF SEASON PLAYED HERE LAST SUNDAY

The fact that the Muleshoe baseball team has not had the practice between games that it should have had is largely responsible for the loss of a number of the games played this season. In anticipation of last Sunday's game, which was played with the Olton team on the local diamond, the home boys spent more or less time last week in working out and getting themselves in readiness for the contest. As a result, when the hour dawned for the game they "went forth to battle" with the full determination to win—and they did. The score was 5 to 2, and it is generally conceded that this was the best game of the season.

Muleshoe has won several games this year, but the percent of games won has been entirely too small for their satisfaction or for the satisfaction of the local fans. There are some good ball players on the team, and with the proper training there is no reason why they should not cope with any or all teams in this section.

A game is scheduled for next Sunday afternoon between the Muleshoe and Sudan teams, to be played at Sudan.

### Welcome, Clovis Boosters

We are glad to have you with us and hope that you will enjoy your visit through our territory. And please pardon us while we toot our own horn a toot or two:

The Muleshoe territory is one of the richest and most prosperous on the Texas Plains and as yet has only started to be developed. Last season's shipment of farm products from Muleshoe amounted to over two million dollars. It will be almost double this season.

The increase in rural population has been over 25 per cent in the past twelve months.

The unlimited supply of shallow water together with its rich soil makes this territory one of the most desirable sections in Texas for the farmer and rancher.

As a wheat section, this territory has proven its worth in the production of wheat that is above the average.

comes you to call

### MR. AND MRS. JOSLIN ENTERTAIN WITH MUSIC, "42" AND REFRESHMENTS

Mr. and Mrs. Jerry Joslin entertained a number of their friends at their home on Tuesday evening. All guests learned what a great musician Mr. Joslin is and expressed a desire to learn his art. Forty-two was played, Lemonade, ice cream and cake were served to Misses Lela Glascock, Iris Hardin and Mary Goodson; Mesdames Nina Elrod and Jerry Joslin; Messrs. Walter Foust, Wayne Wallis, Dave Black, Buster Ragsdale, Mills Barfield and Jerry Joslin.

W. M. U. MEETING

### ST. LOUIS PLANE PASSES 27TH HOUR IN THE AIR

The endurance plane, "St. Louis Robin" passed the 27th hour in the air Wednesday at 12:17 with no sign that the flyers were intending to land soon. At his time they had bettered the record by more than 22 hours. The plane is piloted by Dale Jackson and Forest O'Brien.

### COL. GOEBEL, FAMOUS AVIATOR, WILL VISIT MULESHOE AUGUST 2

Learning that Col. Goebel, internationally famous flyer, is to make a tour of this part of the country at an early date, the Chamber of Commerce of Muleshoe wired an invitation to the Colonel to pay this city a visit. Officials of the Phillips Petroleum Company are to accompany Mr. Goebel on the trip, and word was received here Tuesday that the visitors would be in Muleshoe on August 1 or 2, very likely the 2nd.

There will be three planes, one reaching here about one hour ahead of the historic plane with which Colonel Goebel flew to Honolulu in 1927, winning the \$25,000 prize, which was offered for the first flyer to cross the Pacific. It is likely that Mr. Frank Phillips, president of Phillips Petroleum Company, will be in the party, also Mr. A. M. Hughes, District Manager. It is understood that the party will spend an hour or two at this place.

### MORE AND BETTER FARM HOMES ARE BEING BUILT IN THIS PART OF PLAINS

One of the best indications of continued prosperity in this vicinity is the continued building of more and better farm homes and general farm improvements. Then, too, the farmers of this section are putting their operations on a more scientific basis than ever before. Labor saving machinery is taking the place of horses and mules and production at the least possible cost is the program of the day. New country homes started this week as reported by E. R. Hart Lumber Company is a six room brick veneer for A. C. Gaede and six room residence for O. M. Jennings. Both of these are to be modern in every respect.

### MANY MULESHOE PEOPLE MAKING SUMMER TRIPS TO NEW MEXICO

The call of the mountains, strong these days, and many shoe people are making excursions to New Mexico and Colorado. A few hours one may journey Muleshoe to the high country spruce and pine and cool, sparkling streams, fed by snow, great tracts of warmer climes. Those leaving here this week are Mrs. B. W. Carles, Misses Opal Morris, Irene Carles, Inez Farrell, Eula Nealey, Marie Pickard and Madeline Hibbard; Rev. J. C. Mardis and wife, Ivan Mardis and wife, Harold Weyer and wife, and Buddie Morris.

### DEFEAT OF TWO STATE AMENDMENTS PREDICTED

Although the returns will not be officially canvassed until August 26, it is predicted that the two State amendments which were voted upon July 16 will be defeated.

Chief Justice C. M. Cureton has expressed himself as doubtful as to the result of the election due to the measure vote cast. Two-to-one bets have been placed in Austin that when all returns are in the amendments will have been defeated.

### HELEN IN STOCKINGS



Helen Willis, wearing stockings, drew all the crowds that could pack the stands about the No. 1 Wimbledon court as she won her first round match in the British tennis championships from "Tommy" Tomblin, Queens club player, 6-0, 6-0.

### King Fuad Visits Von Hindenburg



King Fuad of Egypt (left) and President Von Hindenburg of Germany meeting in Berlin where the king visited for several days.

### The Muleshoe Journal

C. S. HOLLAND, Editor

Entered as second-class matter at the Muleshoe Postoffice under the act of Congress, March 3, 1879.

Resolutions, Cards of Thanks, etc., are charged for at the rate of 10 cents per line. Advertising Rates on application.

**SUBSCRIPTION RATES**  
In Bailey County, 1 Year .....\$1.50  
Outside of County.....\$2.00

Member, Texas Press Association  
Member National Editorial Association

#### A COSTLY GRAFT

Government reports show the Post-office Department deep in the hole for the last fiscal year, yet no one is surprised. As long as it is burdened with inconsistent rulings; as long as it engages in the printing business, furnishing printed envelopes below the cost of material, it will continue to lose money.

There's no more excuse for the government being in the job printing business; than there is for it being in the shoe business. Yet it prints, at a huge loss to the taxpayers of this country, millions of envelopes that should be turned out by job printing offices—a fine graft for the concern that has the printing contract, but a little rough on the public pocketbook.

Don't be surprised to hear that this department loses millions annually. The surprise is that we go right on electing men to congress who haven't the nerve to take this department out of the printing business and set it to doing what it was originally intended to do, and no more—handle the U. S. mail.—Lamb County Leader.

#### FARMERS ALREADY HELPED SAYS BALDWIN

Passage by Congress recently of farm relief legislation, in the opinion of L. W. Baldwin, president of the Missouri Pacific Railroad, has had a splendid psychological effect on the farmers of the country. He believes that the result of the legislation will be helpful as well as beneficial upon the farm situation.

Mr. Baldwin so expressed himself to President Hoover at a conference at the White House at which the farm situation, business conditions generally and conditions resulting from the Mississippi River flood of the spring of 1927 were discussed.

In an oral statement after the conference, Mr. Baldwin recalled that he had been associated with Mr. Hoover who, as Secretary of Commerce, had been head of a Cabinet committee which made a survey of conditions in the Mississippi Valley following the flood.

"Business conditions along the route served by the Missouri Pacific are excellent," said Mr. Baldwin. "In Texas we had a wonderful early vegetable crop which was very satisfactory from a financial standpoint to the farmers. The strawberry crop in Arkansas was good and prospects for a large production of cotton in the cotton area served by our road are good."

#### NOTICE

Saturday, August 3, the Trustees of the Watson School District will take bids on a tar and gravel roof to be put on the Watson school building.

W. J. Florence, Secretary.

22-35

### Produce Sam Says



### We Want Your

- POULTRY
- EGGS
- CREAM
- RIDES

### Honest Weight & Top Prices

The prices you get here will convince you of our value-giving policy.

#### PRODUCE SAM SAYS:

"We have a rest place for ladies. Why not make this your headquarters while in town?"

Muleshoe Pro  
ELMO HF

### PANAMA CANAL TOLLS

LARGEST OF RECORDS

Tolls collected on the Panama Canal in the fiscal year ended June 30, 1929, broke all previous records. It has just been announced by the office of the Panama Canal. During the year 6,413 commercial vessels paid tolls amounting to \$27,127,376.91.

Following has been received by the Secretary of War from the Governor of the Panama Canal:

"Traffic June, 503 commercial vessels, \$2,127,805.97 tolls, also 10 launches, \$45.87 tolls. Fiscal year, 6,413 commercial vessels, tolls \$27,127,376.91; 167 launches, tolls \$1,512.39."

The tolls collected during the fiscal year just closed are the biggest for any fiscal year since the opening of the canal, the previous record being \$29,944,499.77 for the fiscal year 1928. The number of transits during the fiscal year 1929 was slightly less than the fiscal year 1928, when 6,456 vessels passed through the canal.

#### Had Not Really Done

#### Much to Relieve Him

"Have you given him anything or done anything to relieve him?" asked the young doctor, who had fared far into the backwoods to see a patient in the dead of a stormy night.

"Well, no, doc—that is to say, nothing to speak of," said the wife of the patient. "I had him soak his feet in almost 'billin' water with a lot of mustard in it, an' I chapped a red-hot plaster on his back, an' another one on his chest, an' I've put a couple of blisters I had in the house under his arms, an' a bag o' cracked ice on the back of his neck, an' had him drink a pint o' ginger tea 'ee' as hot as he could swallow it, an' I folloed that with some yarb bitters one of the neighbors sent over, an' I had him take five or six pills out of a box I got one day from a man that come along with medicine to sell, an' he's had three or four spoons o' Quaker's pain-killer an' one o' these sidelix powders, but I didn't feel like as if I ort to give him much of anything, or try to do much for him, until you come an' see what you think."

## Muleshoe National Farm Loan Association

Over Half a Million Dollars Loaned Here

OFFICERS & DIRECTORS.  
I. W. Harden, President  
J. J. Lawler, Vice-President.  
L. S. Barron, Secretary-Treasurer.

LOAN COMMITTEE  
J. A. White  
M. F. Collins  
R. J. Klump

A Long Time Loan and Low Rate of Interest

## DRIVE IN And Gas With Us

Here is where you get the famous Phillips "66" and Magnolia Products.

Good Tires and Tubes Worth the Money

WE FIX FLATS

## Jones Service Station

"SERVICE WITH A SMILE"

Road Information Cozy Rest Rooms

The Journal Office for Commercial Printing

# Public Sale!

## TUESDAY, JULY 30th

Beginning at 10 o'clock, I will offer at my ranch, 5 miles West and 2 miles South of Flagg, 30 miles Southwest of Hereford, 20 miles Northeast of Muleshoe, 18 miles Southwest of Dimmitt and 2 miles North of Big Square, the following described property:

#### Horses and Mules

- 1 Mare mule, 4 yrs. old, broke, 1100 lbs.
- 1 Black horse mule, 3 yrs. old, broke, 950 lbs.
- 1 Bay horse, 6 yrs. old, 1200 lbs.
- 2 Saddle ponies, 3 yrs. old, 750 lbs.; 1 broke, 1 rode 3 times.

#### Cattle

- 1 Jersey cow, 6 yrs. old, 4 gal.
- 1 Jersey cow, 5 yrs. old, 5 gal. (with calf by side.)
- 1 Jersey cow, 4 yrs., fresh soon.
- 1 Jersey heifer, fresh soon.
- 1 Jersey heifer, with calf.
- 4 Half Jersey cows, all under 5 yrs; good milkers, fresh.
- 2 Jersey yearling heifers.
- 2 Jersey yearling steers.

#### Farm Implements

- 1 McCormick-Deering row binder, new.
- 1 McCormick-Deering mower, new.
- 1 Tandem disc harrow; John Deere, good.

#### Farm Implements

- 1 Olive 2-row lister, new.
- 1 Wag and frame.
- 2 Swing frames, new.
- 1 4-wht Trailer.
- 1 Hoop drill.
- 1 2 1/2-hp Engine and pump jackn truck.
- 1 2 1/2-hp Engine and pump jack.
- Windmills, pipe, tubes, etc.
- 2 Newed bunks.
- 1 feedinder.
- 1 1-r-Go-devil.
- 1 Gosaddle.
- 8 Stebarrels.
- 1 14x Cook shack, on slide.
- 1 8x Cook shack, on slide.
- Other articles, too numerous to mention.

#### Household Goods

- 1 Roak cook stove, in good shape.
- 1 G. German heater.
- 1 Hfer kitchen cabinet.
- 3 Beds, mattresses and sags.

TERMS—Cash. Free Lunch Will Be Served By the Ladies.

## HAM LAMBER Owner

MICK, The Auoneer

ER, Assistant. FIRSTIONAL BANK, Clerk.

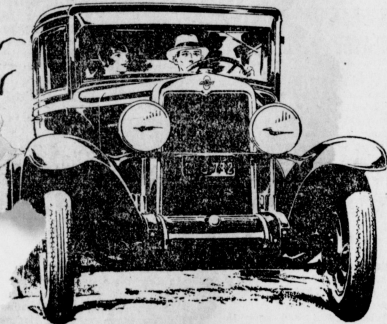
#### AIR MAIL INCREASES

June, with one day less than May and the added handicap of five Sundays, gained nearly 6,000 pounds over May in the transportation of mail by air, and set a new record, according to preliminary figures made public by Postmaster General Brown today.

The daily average for June was 19,775 pounds as compared with 18,950 pounds for May, an increase of 825 pounds daily. The total poundage for June was 593,471, an increase of 5,783 pounds.

The scheduled daily mileage increased from 36,336 in May to 38,889 in June as the result of additional trips on the route.

Economical Transportation



-a **SIX** in the price range of the four!

The Chevrolet Six is scoring a sensational nationwide success because it provides everything you want in a fine, sturdy automobile—yet it actually sells in the price range of the four.

for **\$595**

U. S. Factory Flint, Mich.

you can now buy in the **CHEVROLET SIX**

#### Six-Cylinder Smoothness

The inherent balance of six-cylinder, valve-in-head design assures the smooth, velvety flow of power that distinguishes the fine automobile.

#### Six-Cylinder Acceleration

A non-detonating, high-compression cylinder head and automatic acceleration pump give the new Chevrolet Six remarkable qualities of acceleration.

#### Better than 20 Miles to the Gallon

Chevrolet engineers spent years of research and development to perfect a six-cylinder motor that delivers better than twenty miles to the gallon.

#### Beautiful Fisher Bodies

Rare beauty, smartness and comfort are provided in the Bodies by Fisher. Hardwood and steel construction gives them unusual strength and safety.

#### Amazing Low Prices—Easy Terms

The Wheeler.....	\$525	The Convertible.....	\$725
The Woodruff.....	\$525	The Landa.....	\$595
The Princeton.....	\$595	The Sedan.....	\$595
The Coach.....	\$595	The Light Delivery Chassis.....	\$400
The Coupe.....	\$675	The 1 1/2 Ton Chassis.....	\$545
The Sedan.....	\$695	The 1 1/2 Ton Chassis With Cab.....	\$650
The Sport.....	\$695		
The Cabriolet.....	\$695		

All prices U. S. Factory, Flint, Michigan

**Bailey County Abstract Company**  
 L. S. BARRON, Manager. MULESHOE, TEXAS  
 (ESTABLISHED IN 1900)  
 Abstracts, Loans and Insurance  
 WE ARE BONDED FOR \$50,000.00 TO PROTECT OUR CLIENTS.  
 (Member Texas Abstracters Association; Also Member Association of Title Men)

**Wear Clean Clothes**  
 Without the Worry of "Wash Day"

In other words, send your clothes to us. The cost is not as great as the work and worry of washing them yourself.

*Courteous Service Always*

**The Muleshoe Laundry**  
 Muleshoe, Texas

**We Serve the Best COLD DRINKS**

—AND—

**Hot Lunches**  
 IN MULESHOE  
 Try Us and See for Yourself.

**We Serve Sunday Dinners**

**McCarty Drug Store**  
 Muleshoe, Texas

**WANTED!**

**To Contract Sudan**

**We Still Need About 500 Acres**

Our Mill is operated each Wednesday and Saturday. Bring us your corn and feed you want ground.

**The Best Feeds—Purina**  
 (In the Checkerboard Bags)

**Bailey County Elevator Company**

**Town Talk**

J. F. Vaughn was in Lubbock Saturday and Sunday.

A. J. Hicks and son, Jack, were in Lubbock Saturday.

A. P. Stone returned Monday from a business trip to Chicago.

Jack French of Clovis was in Muleshoe Sunday.

Mr. and Mrs. Forrest Squires visited friends in Sudan Sunday.

Judge J. E. Adams returned Tuesday from a visit to East Texas.

Howard Carlyle visited his wife and son in Clovis Saturday and Sunday.

A. J. Nordyke of Bula was a business visitor to Muleshoe Monday.

Francis Miller of Sudan was in Muleshoe Tuesday.

R. B. Dennis and wife were in Lubbock Friday.

Born to J. C. Buchanan and wife, a girl, July 5th.

Born to Howard Carlyle and wife, a boy, July 18th.

T. E. Arnold is attending to business interests in Sanhone, N. M. this week.

Keith Stegall of Goodland was in Muleshoe Wednesday.

Miss Elizabeth Hardin of Electra is visiting her parents, Mr. and Mrs. I. W. Hardin.

Miss Maxine Hibbard spent last week with Miss Beth Mardis at Canyon.

Miss Beth Mardis returned to Canyon Monday, after spending the week-end with homefolks.

Mose Glasscock, D. L. Kindrick, Ward Golden and Miss Lela Glasscock were in Sudan Sunday.

Mr. Wofford, who is in the employ of John S. McMurtry, is seriously ill in the Lubbock Sanitarium.

D. O. Smith is driving a new Chevrolet coach purchased from the Valley Motor Company.

Vic Nelson of Sudan was in Muleshoe Friday, looking after business matters.

Mr. and Mrs. Bigler and daughter attended the funeral services of a friend in Hale Center Wednesday.

Miss Virginia Ebert of Alamogordo, N. M., is visiting friends in Muleshoe this week.

J. S. McMurtry returned Saturday from the Dalhart country where he is pasturing his cattle.

Mrs. Albert Taylor of Lubbock is visiting her husband on their ranch near here this week.

Mrs. G. A. Anderson was in Lubbock Tuesday and Wednesday receiving medical treatment.

Rex Stegall of Amarillo, spent the week-end in Goodland with his brothers, Keith and Frank Stegall.

Mr. and Mrs. T. C. Gaddy and family of Goodland witnessed the baseball game between Oilton and Muleshoe here Sunday.

Quite a crowd of Muleshoe folks heard the colored folks' program rendered at Lazbuddy Sunday afternoon.

Miss Jereve McCandless of Benjamin spent the week-end in Muleshoe, the guest of her cousins, A. V. and Delmer McCarty.

Bill Elrod and Aubrey Thompson left Friday for a visit to the Carlsbad Cavern and other points of interest in New Mexico.

Miss Erna Alsop of Cleburne was the week-end guest of her brother, J. L. Alsop. Miss Alsop is attending West Texas State Teachers College at Canyon.

**NOTICE**

Saturday, August 3, at Baileyboro, Texas, the Trustees of the Baileyboro Independent School District, will sell at Public Auction, the building used last year as a Teacherage.

G. L. Blackshear, Secretary.

**NOTICE**

On the 27th day of July, A. D. 1929, at two o'clock the trustees of the West Camp Independent School District No. 4, will take sealed bids on two school truck routes consisting of about twenty miles each. The drivers must furnish comfortable truck bodies. The trustees reserve the right to reject any and all bids.

C. B. DOTSON, President.  
 T. H. ADAIR, Secretary.

21-46 West Camp School Board.

**Roughage Mills Favored for Cutting Bulky Feed**

The popularity of roughage mills for cutting up corn stalks, straw, hay and other coarse feeds for live stock is indicated by their use on 35 adjoining farms near State Center, Iowa. On each of the 35 live stock farms is a roughage mill and no farm within this huge block is without one.

These 35 Iowa farm operators and many others find that by chopping it up with a roughage mill they can save much feed that would ordinarily be wasted. Feeds are made more palatable in this way for all classes of live stock, including hay for poultry. Roughage may also be chopped by means of recutting attachments for ensilage cutters.

**Swedish Superstition**

One of the strangest superstitions is that believed by some in Sweden that when a man dies after having been a faithful husband his shirt goes to heaven with him. If the wife dies first and the widower is married again he must destroy his first shirt on the eve of his second wedding. Disregarding the assumption that there is no good reason why a shirt that has given long and faithful service should not be permitted to accompany its master to eternal reward, the origin of this superstition probably is to be found in the Viking burial custom that called for the warrior's incensement in his best battle clothes, for it was assumed that he would need them—even in Valhalla.

**His Pound of Flesh**

It was Thursday and Wilkins was "broke" and hungry. Halting outside a butcher's shop, he gazed wistfully at the display of chops and steaks in the window. Plucking up his courage, he entered.

"If I leave a security equal to what I take away, will you trust me till tomorrow?" he asked.

"Certainly," replied the butcher.

"Well, give me a couple of those joints and keep one of them till I come back."

**WANTED!**

**Boy to Wind Yo-Yo**

Apply at Thompson Dry Goods  
 (SEE MR. THOMPSON)

**WHOLESALE Phillips "66"**

Gasoline, Kerosene and Oils  
 Once Tried, Always Used

Insist on Phillips "66" Products

**Phillips Petroleum Company**  
 LEFTY HOLLINGSWORTH, Agent  
 Muleshoe, Texas

**Building Material-- Builders' Hardware**

*Complete Home Plans Furnished*

Let us furnish you an estimate when you are ready to build or remodel your home.

**House Furnishings**

We can furnish your home completely with the very best and most desirable household equipment to be found anywhere, and at reasonable prices.

**E. R. Hart Lumber Co.**  
 Coal, Hardware, Furniture.....McCormick-Deering Impleme



**You'll Have a Feeling of Security and Confidence When You Drive THE NEW FORD**

The new Ford is a great car to drive because of the way it holds the road even at high speeds.

This roadability is due to the low center of gravity, the semi-elliptic transverse springs, the Houdaille hydraulic two-way shock absorbers and the low ratio of unsprung weight to sprung weight.

Come in and arrange for a demonstration. You'll find this roadability feature of the new Ford as outstanding as its beauty, speed, comfort, safety, reliability and economy.

Perfect balance is a great thing in a motor car.

**Muleshoe Motor Co.**

We Do Not Talk Price Range. We Demonstrate Quality, Performance and Service



To See-Well---See Wor-rell  
EXCLUSIVE

Eyeglass Specialist  
1/2 Block Off Main, East of  
Barry Hardware Company  
CLOVIS NEW MEXICO

**PAT R. BOBO**  
ATTORNEY-AT-LAW  
Practice in All Courts.  
MULESHOE, TEXAS

**Lubbock Sanitarium**  
(A Modern Fireproof Building)  
and  
**Lubbock Sanitarium  
Clinic**  
DR. J. T. KRUEGER  
Surgery and Consultations  
DR. J. T. HUTCHINSON  
Eye, Ear, Nose and Throat  
DR. M. C. OVERTON  
Diseases of Children  
DR. J. P. LATTIMORE  
DR. F. B. MALONE  
General Medicine  
Eye, Ear, Nose and Throat  
DR. L. H. STILES  
DR. L. P. SMITH  
General Medicine  
General Medicine  
MISS MABEL McLENDON  
X-Ray and Laboratory  
C. E. HUNT  
Business Manager  
A chartered Training School for  
Nurses is conducted in connection  
with the Sanitarium. Young women  
who desire to enter training  
may address the Lubbock Sanitarium.

**Want Ads**  
FOR SALE—Good Saddle. See J. M. McAdams. The Shoe & Harness Man.  
1927 MODEL Ford roadster in good condition. to trade for young milk cows. E. H. Wood. 24-2tc  
FOR SALE—1927 Chevrolet Coupe. Will sell right. FOR information, see Will sell right. For information, see ley Motor Company.

**A. R. Matthews, M. D.**  
Physician  
and  
Surgeon  
MULESHOE, TEXAS

**DR. GREEN**  
DENTIST  
False Teeth ..... \$17.50  
Gold Crowns ..... 5.00  
Bridgework ..... 5.00  
Silver Fillings ..... 1.00  
Extractions ..... 1.00  
Office No. 5, Velgel Bldg.  
722 1/2 Broadway St. Plainview, Texas

**Bleeding Gums Healed**  
The sight of sore gums is sickening. Reliable dentists often report the successful use of *Leto's Pyorrhea Remedy* on their very worst cases. If you will get a bottle and use as directed, druggists will return money if it fails.  
McCARTY DRUG STORE.

**BUILDING**  
IF YOU ARE THINKING OF BUILDING—SEE ME. SAVE THAT RENT MONEY—OWN YOUR OWN HOME.  
W. C. GORDON  
At Panhandle Lumber Company

**R. L. BROWN**  
The Land Man  
Lands, Oil Leases  
Royalties

**INCREASED OUTPUT OF CHEVROLET SIX RESULT OF INCREASED DEMAND**

Detroit, Mich.—Reflecting the ever-widening appeal of the low priced six cylinder automobile, the Chevrolet Motor Company, on July 1st, had produced 845,469 six cylinder cars. June was a heavy contributor to the achievement. Output for the month was 151,297 cars and trucks—nearly 20,000 units greater than the best previous June on record.  
Commenting on the succession of records that Chevrolet has been establishing since the introduction of the new six January 1st, W. S. Knudsen, president and general manager, explained that from a manufacturing standpoint Chevrolet was not constantly aiming at new records—that production is governed at all times by demand. "Record public acceptance of the new six," he said, "has made necessary record performance on the part of our sixteen factories. The automobile buying public has been the dictator of our manufacturing pace."  
"Naturally, we are gratified to see the steadily increasing demand for the product. It is a tribute to the vision of our engineering staff that worked for four years to design and perfect the new six cylinder valve-in-head motor.  
"Great credit is due the manufacturing division which has worked unceasingly to accommodate the demand and in so doing has been responsible for achievements that have made industrial history in the production of the new Chevrolet six.  
"This is all the more remarkable when it is considered that volume production on Chevrolet's scale must be accompanied by exact precision manufacturing so that waste will be eliminated and so that production lines will not be held up as a result of having to replace a part because of defective material or workmanship."  
Mr. Knudsen declared that the summer production level will be considerably higher than in former years. He called attention to the fact that in practically every section of the country dealers are still behind orders and that demand in other sections continues to absorb the dealer supply almost as rapidly as the cars are received from the factory.

**What's Doing In West Texas**

LAMPASAS is to have a fair again this summer, August 7, 8, and 9. It is the desire of those in charge that they have the best exhibit of farm, poultry and live stock that has ever been assembled in that part of the country.  
LAMESA will send several representatives on the All Texas Tour to Carlsbad, N. M., and El Paso, Texas. The tour is being sponsored by the Dal-Paso Cavern Highway Association, of which Wm. A. Wilson, secretary of the Lamesa Chamber of Commerce has been secretary for two years. The tour starts August 1, and there are no set expenses.  
The NACONA News has been sold to T. R. Stump and F. E. and P. L. Perry who are now in charge and will publish the paper and conduct the printing business under the firm name of Perry Bros. F. L. Perry was formerly with the Arlington Journal at Arlington and P. E. Perry was former president of the Baylor University Press.  
A. M. Botland, President of the WTCC took up his duties as manager of the regional organization Monday upon his return from the motorcade. H. J. Adair heads the publicity department and will have charge of the August issue of West Texas Today.

DIMMITT will have a new \$100,000 high school completed by December 1, as excavating work has already begun. The contract for plumbing and heating will include the installation of heating and plumbing in the old building. Supplies are being selected at this time.  
COMANCHE will be visited by representatives from Aransas Pass who are making arrangements to ship the Comanche County Carman grape crop. Growers are urged to inspect the method of grading and packing, and inform themselves as to what they will be expected to offer.

TURKEY'S Farmers & Merchants State Bank will be modern in every respect with new fixtures, Erick sand, gravel and other building material is being placed on the ground previous to the start of the construction work. The building is being erected on the property of the Security Investment Company.

ESTELLINE recently voted a \$6,000 bond issue for the erection of a city hall, fire station and jail. The issue will be used to purchase a site and erect a brick and tile building. It is the opinion of Estelline people that this building will serve to great advantage the needs of the community.

THE WEST TEXAS Chamber of Commerce motorcade disbanded at Vernon after ten days of intensive sightseeing over a 3000 mile tour. Carlsbad Cavern was the ultimate objective of the tour and one day was spent in exploring the underground caves. Two district conventions of the regional organization were held on the way.

SLATON reports that a new high record for the shipment of wheat from that section of the Panhandle is being recorded. Four hundred cars of wheat are being handled daily through the Santa Fe terminal and the peak has not been reached. A large volume of the crop will continue to move for the next 30 or 40 days.

**We Sell Groceries And Fresh Meats**

Fruits and vegetables, cured meats, Canned Goods, in fact everything that a modern grocery should handle, for those who know what is best and demand it.

We want to supply you with yours, and if Quality and Reasonable Prices will command your trade, we ought to have it.

HEADQUARTERS FOR EVERLITE FLOUR

**HENINGTON'S GROCERY And Market**



Winners of every National Championship Race for the past eight years. Holders of every track record for stock and racing cars.

On today's fast and powerful cars—in our heavy traffic, be safe—choose Firestone Tires.

**Firestone TIRES**

Muleshoe Motor Co.  
Muleshoe, Texas

**We Are Buying Grain**

every day now, and are paying highest market prices for at we buy. Don't fail to see before you sell your grain.

Merit Brand Feeds Are Better



Merit Baby Chick Grains	\$3.25
" Starting Mash	\$4.50
" Growing Mash	\$4.00
" Egg Mash	\$3.75
" Milk Maker	\$2.85
" Pig Feed	\$3.25
" Calf Meal	\$1.25

**Muleshoe Elevator Co.**  
MULESHOE, TEXAS

**SHERIFF'S SALE**

STATE OF TEXAS,  
BAILEY COUNTY.  
WHEREAS, by virtue of an alias execution issued out of the 72nd District Court of Lubbock County, Texas, a judgment rendered in said Court on the 27th day of February, 1929, for \$1275.34 and costs of suit, in favor of H. D. Chipley and J. H. Goodrich and against Frank L. Stegall, No. 3381 on the Docket of said Court, and to me, as Sheriff, directed and delivered, I did, on the 24th day of July, A. D. 1929, at one o'clock P. M., levy upon the following described property, to-wit, the North one-half (1/2) of Section Twenty-six (26), Block B, Melvin Blum and Blum, Grantee, situated in Bailey County, Texas, and belonging to Frank L. Stegall; and on the 3rd day of September, 1929, being the first Tuesday of said month, between the hours of 10 o'clock A. M. and four o'clock P. M. on said day, at the Court House door of Bailey County, Texas, in the town of Muleshoe, I will offer for sale and sell at public auction for cash, all the right, title and interest of the said Frank L. Stegall in and to said property.  
WITNESS my hand this the 24th day of July, 1929.  
A. DOUGLASS,  
Sheriff of Bailey County, Texas.

**Make Our Store Your Headquarters When You Come to MULESHOE**

We can always show you standard quality merchandise at prices that will save you money.

Always see that you get your tickets when trading at this store—and don't fail to be on hand with your tickets tomorrow, when the Registered Jersey Heifer will be given away.

**March Dry Goods Co.**  
"The Price is the Thing."  
Muleshoe Texas

# A Misstatement You Should Instantly CHALLENGE

**O**ne of the favorite resources of the tire dealer who has an inferior product to sell is the timeworn misstatement "All tires are about alike."

It is to his interest to have you believe that; otherwise he rarely could make a sale.

Is there, however, ANY truth in the claim? Has it EVER been true?

Well, perhaps the best evidence is that the tire industry itself has seemingly never believed anything of the kind.

**T**hus when Goodyear years ago introduced the straight-side type of tire, the industry promptly swung over to that pattern.

Thus when Goodyear introduced the multi-ply cord type of tire, the industry soon made that type its standard.

Thus when Goodyear pioneered the pneumatic truck tire, the industry immediately went heavy-duty also.

Thus when Goodyear devised a construction essential to the low pressure balloon type of tire, the industry once more followed suit.

Thus when Goodyear recently offered that matchless super-tire—the Double Eagle—the industry likewise startled the welkin with new tires with patrician names.



**I**t would be strange indeed—if, "all tires are about alike"—that one tire consistently should set the pace year after year for the march of the whole industry.

It would be even stranger—if "all tires are about alike"—that ONE tire against the vigorous competition of all others steadily should sweep into position of indubitable dominance.

It would be even yet more strange—if "all tires are about alike"—that ONE tire should so succeed to public confidence and favor that last year its percentage of gain in sales should be nearly THREE times the percentage of gain in sales recorded for the industry as a whole.

Yet ONE tire has done all these things—and that tire is the Goodyear Tire!

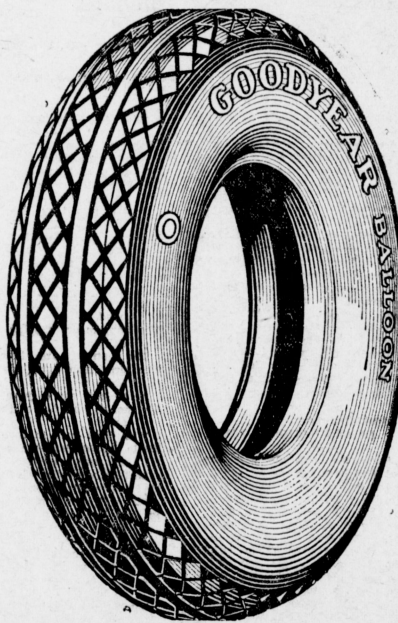
**T**hat is why Goodyear, a comparatively young enterprise, has grown to be the largest rubber company in the world.

That is why Goodyear is recognized all over the world as the greatest name in rubber.

That is why over all the earth it is true this year as for Fourteen years, "MORE PEOPLE RIDE ON GOODYEAR TIRES THAN ON ANY OTHER KIND."

**C**hallenge the dealer who seeks to get your good money on the specious plea that "all tires are about alike."

They may be priced about alike, but there the resemblance ends, as any Goodyear user can tell you from his own superb experience.



# GOODYEAR

THE GREATEST NAME IN RUBBER

Tread and carcass: these are the two main parts of a tire. There is greater traction in the Goodyear All-Weather Tread. There is greater vitality in the Goodyear Supertwist carcass. Evidence? Any Goodyear dealer will demonstrate. Proof? "More people ride on Goodyear Tires than on any other kind!"

## Valley Motor Company

MULESHOE

TEXAS

SAY! LET WEAVER DO YOUR TIRE AND TUBE WORK Muleshoe, Texas

Send Your  
**Abstract Work**  
—To The—  
**Muleshoe Abstract Company**  
A. P. STONE, Prop.  
MOLESHOE, TEXAS  
Agent for Warren Addition

**WEATHER REPORTS ON AIRWAYS BROADCAST EVERY THREE HOURS**

An important new intensive weather reporting and forecasting service for aviators was started on July 1 by the Weather Bureau of the United States Department of Agriculture along the New York-Chicago-San Francisco-Los Angeles airways. This service, which was made possible by a Congressional appropriation of \$350,000, will have a system of reports broadcast every three hours by voice from four collecting centers where there are powerful radio broadcasting stations of the Department of Commerce. These stations, located at Cleveland, Omaha, Salt Lake City and San Francisco, will receive telegraphic reports every three hours, day and night, from about 60 selected reporting stations situated on both sides of the airways, and about 100 to 200 miles from the route taken by fliers.

**URGES UNIFORM AIR LAWS**

Uniform air legislation by the States is the chief requirement to the successful development of aviation, it was asserted a few days ago by Colonel Harry H. Blee, Chief of the Division of Airports, Department of Commerce, in an address before the Governors of 11 western states attending an air commerce conference at Boise, Idaho. The states, Colonel Blee said, can aid materially in the advancement of aeronautics by enacting laws to assure airworthy craft, competent pilots, suitably equipped airways and standard air traffic regulations.

**BIGGER CROPS ARE PREDICTED THIS YEAR**

Crop estimates of the Department of Agriculture on acreage and conditions as of July 1, made public by the Crop Reporting Board, indicate increases in the acreage of wheat, barley, flaxseed, cotton, hay, sweet potatoes, tobacco, beans, peanuts, soybeans and sugar beets, and decreases in the acreage of corn, rice, potatoes and cowpeas.

Allowing for some late crops still to be planted and for usual loss of acreage from drought, flood and other causes, the total crop acreage harvested this season seems likely to be about the same as that harvested last season.

The summary of the report as issued by the Department follows:

"Corn.—Acreage, 98,333,000 acres; condition, 77.8 percent of normal; indicated production, 2,862,050,000 bushels.

"Wheat.—Acreage remaining for harvest, 39,845,000 acres; condition, 75.9 percent of normal; indicated production, 582,492,000 bushels.

"Durum wheat, four states.—Acreage, 5,357,000 acres; condition, 67.5 percent of normal; indicated production, 52,278,000 bushels.

"Other spring wheat, United States.—Acreage, 15,514,000 acres; condition, 74.4 percent of normal; indicated production, 193,990,000 bushels.

"All wheat.—Acreage, 60,756,000 acres; condition, 74.9 percent of normal; indicated production, 883,869,000 bushels; stocks on farms, 4.96 percent of last year's crop; stocks on farms, 44,741,000 bushels.

"Oats.—Acreage, 40,222,000 acres; condition, 78 percent of normal; indicated production, 1,247,147,000 bushels."

**WORLD SURVEY OF MINERALS IS MADE**

The dependence of nations on one another for minerals and the international commerce which has been developed as a consequence is shown in a survey of world mineral resources and trade made by Dr. J. W. Furness, Chief of the Mineral Division of the Bureau of Foreign and Domestic Commerce, and L. M. Jones of the Bureau of Mines.

The United States, according to the announcement of the completion of the survey made public by the Department of Commerce, is the largest consumer of mineral raw materials and is the largest producer, but no country has a well-balanced supply of minerals.

As an importer of minerals, the United States is the vital factor in international trade and the condition of world trade in minerals is largely dependent upon the business conditions in the United States, the investigator concluded.

The 28 minerals discussed it is pointed out, constitute more than 70 percent of the gross value of mineral raw materials of commerce.

Eighty percent of the world's total mineral output, the survey shows, is consumed by eight countries and these together exercise almost complete control over the commerce and exploitation of the world's mineral wealth. The leading countries are United States, Germany, Japan, Belgium, Italy and Spain.

**NEW ADDITION TO LASSEN NATIONAL PARK**

An interesting museum and 40 acres of land have just been added to the Lassen Volcanic National Park through the action of the Secretary of the Interior in accepting a deed proffered by B. F. Loomis of Anderson, Calif. The land was situated in a section that was added to the park through the passage of the act extending its boundaries through the addition of approximately 24,280 acres containing interesting scenic spectacles associated with the volcanic phenomena of the region.

**FARM STORAGE OF WHEAT URGED**

A nation-wide program in which wheat growers are being urged to increase their facilities for storing grain on farms in order to distribute marketings throughout the season to prevent gluts and to secure the premiums for high protein content is being launched by the Bureau of Agricultural Economics, United States Department of Agriculture.

**Signal Hill, Calif., Claims Title as Richest City**

Long Beach, Calif.—The richest city in the world is Signal Hill. That is, for its size it is the richest.

The title was claimed in a report filed by the captain of its fire department. According to his statement, each of the 1,375 acres of producing oil land included within the city's boundaries bears an average assessed valuation of \$19,500, or a total of \$29,707,500 for the entire city.

The same report placed the per capita wealth at \$6,820. Signal Hill has existed as a corporate city for a little more than five years. It withdrew from the jurisdiction of Long Beach as a result of the enormous oil activities then going on. It is this wealth of petroleum products that is held responsible for its financial position.

**WHEAT PRICE EXPECTED TO IMPROVE**

Possibility that the general wheat price situation this year may turn out somewhat better than was anticipated earlier in the season, due to the effect of bad weather on the size of the crop is indicated by the Bureau of Agricultural Economics, United States Department of Agriculture, in its July report on the farm situation.

**SUBSCRIBE FOR THE JOURNAL**

**We Give Careful Attention**

Some jobs are easy, some demand the utmost care. Any job we can do it. Our service is there. We tell you with all the force we can muster. That we do jobs surpassing in brilliance and luster. This is due to the plan we are pursuing. There's more to a job than the mere doing.

**Muleshoe Tailor Shop**

(CORN. J. T. HUNTER)

Your tongue tells when you need



Coated tongue, dry mouth, bad breath, muddy skin, groggy nerves and sour stomach suggest its use.

**Order Fall Chix Now**

Many customers have asked us if we intended to hatch Fall chicks, and in answer to this, will say it will depend upon the number of orders received by August 15th, on which date we will make our first set of orders justify Fall setting. We can afford to sell for less if we get orders early and know how to plan on operating expense, thus helping us in two ways. Another good reason why it is to your advantage to place your orders early is, you are assured of getting your chicks right when you want them, and we can fill your orders promptly.

Orders are now being booked. We are booking orders on Rocks, Reds, White Wyandottes at 14c each; Leghorns at 13c each. The amount of order must be paid in full when booked.

**Weimhold's Commercial Hatchery**

Sud-an Texas

**Smart Women Trade Here**

The smart woman knows that she can call up this grocery store, have her order courteously taken over the telephone, and receive her groceries without delay by messenger without the slightest error made in filling the order.

That is why so many smart women are patrons of this store. They also know that our prices are always rock-bottom and that the quality of the groceries we sell is unquestionable.

Phone Us Your Grocery Orders

**Gupton Grocery Co.**

Phone No. 4 Free Delivery

**Glad Colors in the home**

Brilliance! Gaiety! Delicate beauty! Furniture, floors and woodwork easily and inexpensively refinished by use of fast-drying

**WATER-SPAR LACQUER Varnish and Enamel**

The lacquer that "dries in no time"! The varnish that even hot water will not harm—the tough enamel for every use!

Call at our store for color cards! The store for quality and helpful service!

**Panhandle Lumber Co.**

Muleshoe, Texas

**A STRING AND A BLOCK OF WOOD**

They may boast of the games that are strenuous:

Of golf and tennis and such.

But give me the game—yo-yo is the name—

That is played by the poor and the rich.

It has swept the earth like a forest fire;

By storm it has taken the land.

On byroad and street everybody you meet

Have their yo-yos right out in their hand.

The flappers are flipping a foolish string.

The matrons are learning how.

The hired man works his yo-yo by jerks

As he goes out to juice the cow.

The women now fuss at the backyard fence

With their yo-yo in their fist;

While the kiddies at church give a roll and a lurch

As their yo-yo they wiggle and twist.

Dad can handle his yo-yo some.

While Cranny can do quite well.

Sis and her beau grab each others yo-yo

And they play them keen and swell.

But when it comes to yo-yoing RIGHT

Ma leaves us all at the post.

For oh, it is sweet all the neighbors to beat—

but she plays with dad's yo-yo the most.

We handle our yo-yo in ghoulish glee

And we're filled with a strange, sweet bliss.

In the annals of man since time began

There never was a game like this.

Our mind is a blank; yet we concentrate.

As cheerful idiots should;

And we chase dull care from here to there

With a string and a block of wood.

I dreamt that I stood at the Golden Gate

And I gazed on the Promised Land.

St. Peter was there with his long, white hair.

And a yo-yo in either hand.

I told him my tale and he said, "Pass in."

They'll measure you up for a crown—

What's that you say? A harp? Nay, nay!

For the yo-yo they have laid 'em down."

"Alas," cried I, "no music here? Now that seems hardly fair.

methinks I'll go to the realms below;

There's music and women there."

The Devil met me outside the gate

With his yo-yo going strong;

Said he, with a grin, "Good boy, come in—

IF YOU HAVE YOUR YOYO ALONG."

(From The Clovis News-Journal)

**"YO-YO"**

—THE—

**Hollywood Craze!**

Everybody's Doing It—Can You?

**FREE!**

Saturday Only—July 27th

With every purchase of 5 gallons of Conoco, Magnolia or Gulf gasoline or a "Goodyear" or "Pathfinder" Tire or Tube.

Something for the Kids, the young folks and the old folks—get a Yo-Yo Saturday and learn to master it.

"HAVE A LITTLE 'YO-YO' IN YOUR HOME!"

**Valley Motor Company**

Muleshoe Texas