

# THE MULESHOE JOURNAL

VOLUME 6

MULESHOE, BAILEY COUNTY, TEXAS, FRIDAY, JANUARY 18TH 1929

NO. 49

## GRADING OF HIGHWAY FROM MULESHOE TO LARIAT IS STARTED

New Eighty-Foot Grade Will Follow Railroad Entire Distance Between the Two Towns.

Grading started last week on the Highway between Muleshoe and Lariat which will follow the railroad and eliminate several turns. This will also shorten the route between this place and Clovis by something over two miles. This Highway is what is known as U. S. No. 79 or Lee Highway and is the Southern Transcontinental route. A fine grade is being put up and when finished will be one of the best improved dirt roads in West Texas. The road is eighty feet wide with a twenty-six foot crown. Efforts are now being made to have bonds voted by the state to pave Highway 79 through Texas. Oklahoma and New Mexico are also trying to raise funds for improvement of this road, as traffic has become so heavy in recent months that a hard surface road is almost a necessity, according to the Lee Highway Commission, which is sponsoring the move to have the bonds voted by the various states.

Mr. D. L. Butts, of Muleshoe, is road superintendent of this district, and states that all turns will be eliminated as far as possible.

### DEATH OF TOUPE BEAN

I noticed a short sketch of our friend Toupe in the paper of last week. Just called him Doc Indian and spoke of his wild days and it grieved my heart, for Doc was a friend to all cowboys. Doc had a heart as big as these prairies that we used to ride over. He was loyal to the man he served and a real friend to all he knew. As long as they treated Doc half way right he was a real friend. He was a friend to all women and little children. We all looked forward to having him call at our camps.

Doc was an Indian that was true but no white man was ever more faithful than Doc to his fellow man. He did unto others as he would have them do unto him, and that is one of our commandments. I know all the boys who knew him will mourn his loss, for as I have said, a real friend is gone.

Doc was always gay hearted and furnished plenty of fun for in all after the day's work was done. He may be gone on to his Happy Hunting Ground, I don't know about that. But I hope to meet him at the Round-Up with the last day and cross the Valley with him, where we will be at ease for ever more.

Written by a friend—A. W. Coker

### W. M. S. MEETING

The W. M. Ladies Aid Society met at the country home of Mrs. Nina Elrod Wednesday afternoon. There were eleven members present. The general order of business was taken care of then a splendid program was rendered, Mrs. W. B. Hicks having charge. The next meeting will be held at the home of Mrs. C. C. Mardis.

### LARGE PORTALES HATCHERY WILL BEGIN OPERATIONS 19TH

The large hatchery of Wicks and Son, of Clovis and Portales will begin operations Saturday, January 19. Wicks and Son have just completed the installing of another machine at Clovis which has a capacity of 32,000 eggs and with this machine and the one that has been used there in the past and the Portales plant, gives them a capacity of 149,000 eggs—Roosevelt County Herald.

### WILL REBUILD BAPTIST CHURCH, NORRIS STATES

Port Worth—Rev. J. Frank Norris, militant fundamentalist, whose church was destroyed by fire Saturday with an estimated loss of between \$250,000 and \$400,000, has told his congregation that a new church will be built as speedily as possible on the site of the old. He spoke in the church tabernacle, which is used for summer meetings.

"We do not know how the fire occurred. So far as we know it is an unexplained accident," Norris said. "We hope that it was and prefer to believe it until convinced otherwise."

### MULESHOE MOTOR CO. RECEIVES A SHIPMENT OF MODEL "A" FORDS

A shipment of the new model A Fords was received last week by Muleshoe Motor Company and deliveries are being made as fast as the cars can be serviced. In the shipment was a Taylor, Phaeton, Sport Roadster, Sport Roadster Pickup and a Sport Coupe. D. O. Smith has purchased one of the new trucks and J. S. Glasscock a Rose Bay Fordor.

### PAPER DETRICKS GAS LEAK TO AVOID ACCIDENTS

Testing house pipes and street mains for gas leaks is expected to be safer and more effective with the aid of a specially prepared, sensitive paper, says Popular Mechanics Magazine. It is of an absorbent variety like filter or litmus paper, and is chemically treated so that when a flow of gas comes in contact with it, its color is conspicuously changed.

M. T. Howard and son, of Earth, were in town Wednesday attending to business matters.

J. Leon Kropp has been confined to his bed this week with an attack of tonsillitis.

## Winter Sports



### NEW SETTLERS ARE IMPROVING FARMS IN MULESHOE VICINITY

Several new improvements are being started near Muleshoe this week, some of which are on the new farms out from the Warren Ranch lands northeast of town. The following have purchased bills of lumber since Monday from the E. R. Hart Lumber Company: Paul C. Schulze, farm home; Louis Harberger, house and barn; Paul Bros., general farm improvements; R. G. Jordan, house; A. L. Eaves, general farm improvements; L. O. Kimbrough and F. N. Wood also purchased new Farmalls and Mr. Paul Schulze a tractor and plows. E. R. Hart is improving his farm in Lonson Valley which will be worked by N. L. Tivis.

### TO OWNERS OF CARS AND TRUCKS

Get your 1929 license. Your old tags are out and you are subject to a fine if you try to get by on your old tags.

I set some cost on all lines and I need the money.

H. A. DOUGLASS, Sheriff.

### LAUGHS AS HE GOES TO THE ELECTRIC CHAIR

Huntsville, Texas, Jan. 11.—Floyd Newton Byrne, San Angelo chauffeur, axe-slayer of 12-year-old Myrna Juergens, her mother and grandmother, was executed in the electric chair at the state prison at Huntsville Friday. Indifferent to his fate, Byrne sat in his death cell reading humorous magazines until guards came to take him to the execution chamber. Still laughing over one of the humorous quips he had read, he was strapped in the chair at 12:23 a. m. and was pronounced dead at 12:31 a. m.

Byrne mystified jailers with his jocularity. Through the night he had insisted that they listen to his jokes. Even when word came that gubernatorial clemency had been denied, he passed it off as "another good joke."

He refused to allow his last meal to interfere with his reading. Jailers brought him pork chops, cream gravy, hot biscuits and coffee, but he read while he ate.

A strong Havana cigar, brought him by a guard, was savored until the last moments before the death march began. Byrne asked a guard to "tell me when it is about time, then I'll smoke."

"There's nothing much more to say," is there?" he remarked as he entered the chamber.

The chauffeur's only defense was that he had been intoxicated.

### PLANTS AND TREES TRIED OUT BY TECH

In an effort to determine what rare vegetation and plants may be adapted to the South Plains, the government has sent a collection of forty-eight rare plants and fruit trees to the horticulture department of Tech College. Students of this department will make experiments with the plants.

### MULESHOE CAGERS WIN ONE GAME, LOSE ONE, AT DIMMITT LAST FRIDAY

The Muleshoe cagers invaded the camp of the Dimmitt athletes last Friday evening and brought home one victory and left one for Dimmitt. The boys won by a 9-13 count in a fast game. They did some fine work in both defensive and offensive, breaking through the Dimmitt formation several times for a try at goal. Only once did the Dimmitt players break through the Muleshoe defense for a goal. They made one long shot, and got the ball on a toss up, making the basket for their only three field goals, the other three points being counted on free tosses.

The girls lost their game by a count of 25-25. This was a hard fought game from start to finish. It looked as though Dimmitt was going to walk away with an easy game in the first quarter, but soon the Muleshoe girls hit a natural and were steadily rolling up the score. At one time in the third period the game was in two points of a tie, but Dimmitt rallied and pushed the score up to a ten point lead in the fourth quarter.

The games were marked throughout by the highest type of sportsmanship. Muleshoe and Dimmitt have the reputation of being the best sports in the west. Lets hold that reputation. It was certainly upheld Friday night.

Reporter.

### W. M. U. MEETING

The W. M. U. of the Baptist church met at the home of Mrs. H. B. Strickland with Mrs. G. C. Danner as hostess. Eight members were present.

We had our regular monthly business meeting, and an unusually interesting one. Everyone should have been there. Mrs. Ray Griffiths, the historian for our Society, read the history from the beginning in 1923 to the present date. It was very interesting and brought back memories of old friends we had not thought of for a long time.

After our business session we adjourned to meet Tuesday afternoon in our regular monthly social and Mission program. Mrs. A. W. Coker will be leader and the meeting will be held at the home of Mrs. L. S. Barron with Mrs. John L. Alsup assisting her.

Reporter.

### PHOTOS SENT BY TELEGRAPH INCREASE SPEED IN BUSINESS

Transmission of photographs, drawings and other material by wire has become an important factor in business. Not long ago an engineering firm in New York wanted to send a set of complicated mechanical drawings to a representative in San Francisco. They were sent by wire, as the ordinary methods were too slow, and arrived in time to enable the firm to complete a contract several days ahead of the specified time.

Joe Grimes of Amherst and Roy Foster of Stanton were weekend visitors in the Elmo Head home in this city.

E. M. Carter of Plainview was a business visitor to Muleshoe Tuesday.

### RUMELY SCHOOL TO BE HELD AT LONE STAR THEATRE JANUARY 31

A Rumely Power Farming demonstration and school will be held at the Lone Star Theatre January 31. A special picture is to be shown and lectures made which will be of much benefit to the farmers of this section. Mr. N. L. Tharp, Rumely dealer of Clovis, will have charge of the school. Three sessions will be held during the day, morning, afternoon and evening. We wish to call the attention of our readers to Mr. Tharp's ad, which appears in this issue of the Journal.

### LITERARY SOCIETY OFFICERS ON SIDE NO. 1 ARE APPOINTED

The members of the Literary Society on side No. 1 met January 11, 1929, and appointed officers, as follows:

Laurene Rice, President. Morris Douglas, Vice President. Alice Ragsdale, Secretary - Treasurer. Jane Buey, Damon Danner and Ira Myers, Program Committee.

The girls are to debate on "Should Capital Punishment be Changed from the Electric Chair to Life Sentences in Prison?" Affirmative, Alice Ragsdale and Lela Merle Strickland. The boys are to debate on "Which is More Useful, a Mule or a Cow?" Negatives (Mule): Damon Danner and Morris Douglas.

The members of the Literary Society on side No. 1 are as follows: Morris Douglas, Laurene Jones, Jelly Arnold, Roy Eckler, Alice Ragsdale, Laurene Rice, Joel Lee, Jane Buey, Neva Douglas, Lela Merle Strickland and Ira Myers.

Reporter.

### Local Markets

These prices are furnished by the local buyers, and are for your convenience.

Kaffir	\$1.10
Maine	\$1.20
Corn, shelled, per bu.	\$1.20
Corn, ear, per bu.	60c
Sudan	\$4.00
Maine heads	\$18.00
Kaffir heads	\$16.00
Cane seed, subject to change \$1.	
Retail Feeds	
Cotton seed cake	2.75
Cotton seed meal	2.75
Brant	2.00
Shorts	2.50
Cow Chow	\$3.00
Milk Maker	\$2.75
Produce	
Heavy Hens	18c
Light Hens and Leghorns	15c
Colored Springs	15c
Light Springs	12c
Stags	10c
Eggs	05c
Coops	25c
Cream	25c
Hides	90c

(Prices furnished by the Muleshoe Produce Co. subject to change without notice.)

### STREET IMPROVEMENT WILL BE SUBMITTED TO VOTERS FEB. 26

Notice of an election to be held on February 26th, whereby the voters will decide as to whether or not the City will carry out its plan for street improvement, appears in this issue of the Journal.

The plan is for the paving of six blocks in the business district. Engineers submitted plans to the City Commission at a meeting held last week which, as far as can be learned, met with the approval of practically all the property tax payers. Muleshoe has the reputation of being one of the most up-to-date little cities on the Plains, and as some of the citizens state, it is not going to fall behind in the work of civic development.

### BIRTHDAY PARTY

Miss Eula Neely was given a complete surprise Monday evening when friends gathered in the dining room of the McCarty Drug Store to celebrate her birthday.

Wayne Wallace and Temple Morrow took Miss Neely out for a short ride while the party gathered. The cake, by the way, was sent that she was wanted in the dining room. She opened the door to be greeted by shouts of "Happy Birthday," and then the fun began.

Progressive "42" was enjoyed until a late hour. The dining room was then darkened and the cake brought in with all the candles glowing. Around the edge of the cake were twenty small candles. These represented Eula's age—and in the center was an enormous candle—this was for all the years she has lived. The cake, by the way, was the last word in culinary art, and was produced by Mrs. Stidham, though Mac insists that he decorated it. Eula blew out all but five candles and was thus destined to five more years of spinsterhood. Each guest cut his or her own piece of cake and found some prize. Miss Woods found a pipe and Lela Glasscock the thimble. Strawberry ice cream was also served.

Just before refreshments were served Mr. Morrow, representing the entire crowd, presented the honoree with a lovely necklace. After the refreshment, "snap" was played by some, while others sat on a jug and attempted to write their names in Eula's autograph book. At a late hour the guests departed, wishing Eula many more such happy birthdays.

Among those present were Misses Eula Neely, the honoree, Leona Brown, Annie Woods, Opal Morris, Irene Carles, Lela Glasscock, Alice Ragsdale, Valena Menette; Messrs. Wayne Wallace, Temple Morrow, Sherman Vance, Buford Butts, David Anderson, Bill Garrett, Thomas Lynn, R. C. Greene, Maurice Glasscock, F. C. Boone, Walter Black, Mr. and Mrs. M. S. Stidham and Mr. and Mrs. A. V. McCarty, Jr., and children.

Reporter.

### EPWORTH LEAGUE PROGRAM

Subject: "The Christian Man in Business." Leader—Mills Barfield. 1. "Honesty, Kindness and Service"—Fred Boone. 2. "What are the Conditions?"—R. C. Greene. 3. "Business Man's Ten Commandments"—Jeff White. You will miss something worth while if you miss coming to League Sunday night. This means you.

Owen Head, manager of the Wilson Produce Company of Wilson, Texas, spent the week-end with his parents, Mr. and Mrs. Elmo Head, in Muleshoe.

V. D. Rockey and son, of Cyril, Oklahoma are visiting in Muleshoe this week.

### WEISSMULLER QUILTS



Johnny Weissmuller, proclaimed by many as the greatest swimmer of all time, has retired from amateur competition.

### YL News Items

Mrs. S. L. Boles returned last Friday from McKinney, Texas, where she has been visiting her mother, who has been ill for the past year.

Mr. Ramson Robison left New Years Day for Lubbock, where he will enter the Lubbock Business College.

Miss Dottie Wilterding returned last Thursday from Nebraska, where she had been visiting for the past three weeks.

The ninth and tenth grades have been studying Macbeth in English class the last two weeks. A trial was held in class Thursday and Friday for the purpose of seeing what part Macbeth played in the murder of Duncan. The jurors verdict was that Macbeth was guilty and he was given a life sentence. Maynard Hupp was State's attorney and Dale Buhrman was the defendant's lawyer.

Mr. and Mrs. Parsons and family, of Tulsa, moved into the YL community last week. They are occupying what is known as the old Lindsey place.

Last Friday morning the ninth and tenth grades entertained the rest of the school with a short chapel program. It consisted of special songs, a dialogue and a reading. Miss Oleta, Alice, Evelyn and Elmer Wilterding entered school here last Friday.

Gladys Buhrman was absent from school Friday on account of the illness of her mother.

A large crowd attended singing Sunday night. Several Labaduddy people were present.

Miss Lela Bickel visited her aunt in Plainview Saturday.

### Honor Roll

PRIMARY ROOM—Lola Hupp. INTERMEDIATE ROOM—Bobby Beller, Aileen Evans, Lela Mae Lovelady, Jean William.

HIGH SCHOOL—June Beller.

### AUSTRIA'S PRESIDENT



Wilhelm Miklas, who has succeeded Dr. Michael Hainisch as President of the republic of Austria. He is a member of the Clerical party and formerly was a school teacher.



# Dr. Worrell In New Offices

[CLOVIS, NEW MEXICO]

EAST FOURTH STREET

(AROUND THE CORNER FROM BARRY HARDWARE)

HALF BLOCK OFF MAIN

### TAX THE LOAFER

Theoretically the perfect tax would be on inaction. The proper man to tax would be the loafer, not the worker; idle land, not used land; inactive capital, not enterprise.

Such a tax would not be practical, but it would be a just tax.

Our present taxes are based on an opposite theory.

We tax thrift, action, capital, enterprise.

We levy taxes in proportion to ability to pay, which means that the harder a man works the more efficient he grows, the more we knock him down.

If a man saves his money and buys a house, he is taxed; if he wastes his

money in extravagant living, he is not taxed.

None of our taxes encourage production, by the simple process of discouraging idleness, shiftlessness and inefficiency.

The devil himself could not do a neater job of hobbling the race.—Exchange.

See Mr. Keeney brave great dangers to gain the hand of one he loves in "A Poor Married Man."

Commercial hatcheries thrived in Egypt 2000 years ago. The last 30 years has seen a decided increase of them in the United States. It is now one of the large agricultural industries.

### RESOLUTION

WHEREAS, the City Commission of the City of Muleshoe, Texas, deems it advisable to order special election for the adoption or rejection of the benefits and terms of the General Paving Law, formerly shown as Chapter 11, Title 22 of the Revised Civil Statutes of Texas of 1911, now being Articles 1083 to 1096, both inclusive, and Articles 1104 and 1105 of the Revised Civil Statutes of Texas of 1925, with reference to the construction of permanent street improvements.

THEREFORE, BE IT RESOLVED BY THE CITY COMMISSION OF MULESHOE, TEXAS: That it is hereby ordered that an election be held on the 28th day of February, A. D. 1929, at which election the adoption or rejection by the City of Muleshoe, Texas, of the benefits and terms of the General Paving Law, formerly shown as Chapter 11, Title 22 of the Revised Civil Statutes of Texas of 1911, now being Articles 1083 to 1096, both inclusive, and Articles 1104 and 1105 of the Revised Civil Statutes of Texas of 1925, shall be submitted.

Said election shall be held at the City Hall in the City of Muleshoe, Texas, and the following officers are hereby appointed to hold same:— Presiding Judge—A. V. McCarty, Jr. Assistant Judge—J. L. Taylor and the said presiding Judge shall appoint two clerks to assist in holding said election as prescribed by law. The polls at said election shall be kept open from 8 A. M. to 7 P. M., and at said election only resident property tax payers of the City of Muleshoe, Texas, who are qualified voters, shall be allowed to vote. Voting shall be by official ballot as required by law and numbered as required by law in the following form, to-wit:—

#### OFFICIAL BALLOT

For the adoption of the General Paving Law, formerly shown as Chapter 11, Title 22 of the Revised Civil Statutes of Texas of 1911, now being Articles 1083 to 1096, both inclusive, and Articles 1104 and 1105 of the Revised Civil Statutes of Texas of 1925, with reference to the construction of Permanent Street Improvements.

Against the adoption of the General Paving Law, formerly shown as Chapter 11, Title 22 of the Revised Civil Statutes of Texas of 1911, now being Articles 1083 to 1096, both inclusive, and Articles 1104 and 1105 of the Revised Civil Statutes of Texas of 1925, with reference to the construction of Permanent Street Improvements.

The manner of holding said special election shall be governed by the laws of the State of Texas, regulating regular elections in the City of Muleshoe, Texas.

A copy of this resolution signed by the Mayor of the City of Muleshoe, Texas, shall serve as proper notice of said election and the said Mayor is directed to cause same to be posted at three public places in said City, one of which places is the voting place, and to cause the same to be published in the City of Muleshoe, Texas for thirty (30) days prior to the time of said election.

The above resolution having been discussed and put to a vote, was carried by the following vote, to-wit:—

AYE: Connie D. Gupton, Commissioner  
NAYES: None  
PASSED AND APPROVED, this the 15th day of January, A. D. 1929.

L. S. BARROW, Mayor, City of Muleshoe, Texas.  
ATTEST: IVAN B. MARDIS, City Secretary.

### GRAND CANYON BRIDGE HIGHEST IN WORLD

Flagstaff, Arizona.—Grand Canyon bridge believed to be the highest in the world, was crossed by vehicle Friday for the first time. The bridge spans the Colorado river at Marble Canyon, six miles south of Lee's ferry. It is 550 feet above the water line of the stream. The bridge which provides a shorter route between Arizona and Utah will be dedicated in June. The bridge is 834 feet long and cost approximately \$300,000.

Full application of lime means better crops in 1929 than if delayed until Spring.

### West Camp News

Mr. B. Waller and family spent the Holidays with relatives at Wellington and Fort Sumner.

Mr. J. B. Thornton and family spent Christmas at Miami, Texas.

Mr. Everett Smith was taken to Clovis last week for medical treatment.

Mr. and Mrs. John Huber, from Ballinger, Texas, visiting relatives at West Camp last week.

Mr. Claude Husband, of the Rio Grande Valley, is visiting relatives here.

Margaret Dotson and Marie Smith are absent from school this week on account of sickness.

Ruby Adair has returned from Dallas, where she has been receiving treatment.

Mr. and Mrs. Holland Harris of Melrose, N. M., have been visiting Mr. and Mrs. Taylor at the VVN ranch.

Mr. A. C. Haley is in Mexico this week on business.

### NON-STOP FLIGHT PLANNED FOR ARMY ENDURANCE PLANE

Plans have been made for a non-stop refueling flight by the Question Mark, Army endurance plane, from San Diego, Calif., to Washington, D. C., as soon as Captain Ira C. Eaker, chief pilot of the plane during its recent record breaking flight, can return to San Diego from San Angelo, where he was called Sunday by the illness of his mother. His father was taken to a San Angelo hospital Monday for an operation.

As a corn borer control measure, plowing must be clean, and the trash must be buried in such a way that none of it will appear or reappear on the surface.

The Journal Office for Commercial Printing

## Home Economics CHOWDER

The kind of feed necessary to put your hens on a paying basis. More eggs for home consumption and some for the market will help materially in solving the problem of home economics.

## MEAT SALT

Of course you will want to kill hogs before the cold weather is over, and we have just what you will need for curing your meat economically and safely—both MEAT SALT and PORK SUGAR CURE. We also handle Kansas and Michigan Meat.

Bring Us Your Grain and Feed and get the very best prices that the market affords.

## Bailey County Elevator Company



### Have It in Your Cabinet

You can never tell when you may need any one of several first aid remedies, so the safe way is to have them in your medicine cabinet.

### We Serve Sunday Dinners

## McCarty Drug Store

### White Front Garage

If your car needs working on, see us for prices.

We can save you 25 to 50 per cent on all mechanical work and guarantee our work to give satisfaction. We also fix flats. Call us.

A. W. COKER

PHONE 7

### Road Information Cozy Rest Rooms

## You Need Our Service We Want Your Trade

### LET'S CO-OPERATE

Here is where you get the famous Continental Oil Products

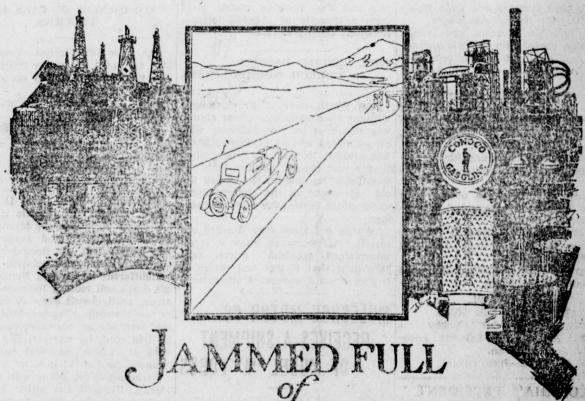
Good Tires and Tubes Worth the Money

### WE FIX FLATS

## Jones Service Station

"SERVICE WITH A SMILE"

—“There is no Substitute for Experience”—



## JAMMED FULL of START and PULL

The shortest road to motoring satisfaction is the road that leads to the Conoco Pump.

Careful selection of crude petroleum to which the latest manufacturing methods are applied explains Conoco's leadership—in quality and results.

Fill at the sign of the Continental Soldier. Then step on it—and go!



1 Starting  
2 Acceleration  
3 Power and Mileage



## What's Doing In West Texas

A deal whereby \$14,400 was the price for a five year lease on the building at the corner of Eighth street and Hutchinson Avenue in Ballinger was paid recently by G. A. Ladig. Mr. Ladig intends to make big improvements in the inside of the building.

A recently discovered area of pure sand and gravel near Hamlin will be the incentive for the building of ten mile lines to it from the Abilene & Southern, the Orient and the M. K. & T. Railroads. The sand and gravel area is about three miles square and 100 cars of sand a day for several years can be shipped from it.

For the second time in one year the postoffice at Albany has had to be enlarged. Each time one hundred and fifty boxes were added. Albany citizens consider this a good sign of progress. The total number of boxes is now 1366.

A contract has been let for the building in Coleman of a 50x120 foot brick building to house the Whippet-Willey-Knight agency under the direction of W. A. Forsey. A fifty foot space next to this building will be used by Mr. Forsey also.

The Midland courthouse was re-modeled this week to handle the vastly increased land and lease sales in Midland and the Midland oil field area. The new abstract offices and chambers for J. M. Gilmore, corporation Judge, were created.

Farm demonstration week in Wheeler County during 1928 resulted in a profit saving of \$10,320.90 on dairy cattle, swine and poultry, according to T. R. Brown, county agent. He reports that 318 farms adopted improved practices in poultry alone.

The nail picking machine which is the property of the Highway Department, has been moved from Muleshoe to Oton. The machine is used in this territory exclusively, and is worked on the principal of a huge magnet which gathers metal off the highway so it can be placed where it is harmless.

An up-to-date hatchery for O'Donnell is practically assured, according to H. H. Williams, who intends to install an 18,000 egg capacity Peterman Electric incubator by the 20th of the month. Custom hatching will be done, and a complete line of chicken feed will be handled.

A bond issue of \$150,000 for street improvement was carried at Graham recently. Work is expected to start on the streets as soon as the bonds are sold and include paving, and the hardsurfacing of the highways leading into the town.

Twenty carloads of Kimball County pecans have been shipped by the Schringer-Hodges Company from Junction lately. The last two cars had 33,000 pounds each. The firm has shipped about six hundred fifty thousand pounds and large quantities are being received daily.

Citizens in the fast building resident section in the South part of Big Spring are launching a movement to bring about a sidewalk building program so that free delivery of mail may be extended to that portion of the city. The service will be extended as soon as the property owners meet requirements.

Archer City is experiencing an improvement boom. A new Baptist Church costing \$25,000 is being built, and \$50,000 worth of water and sewer extensions are being installed. Work is under way on the new City Hall and Masonic Temple, to cost some \$20,000.

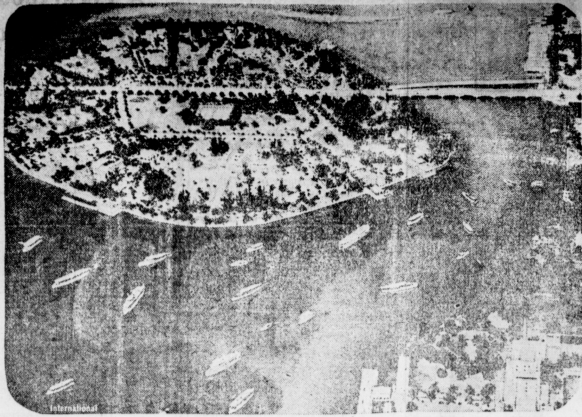
A building of buff brick, concrete and steel, 75x140 feet, is the home of the Ford Motor Company in Plainview. The building has 10,500 feet of floor space which has been utilized for the best possible service to patrons. The office is easily accessible, conveniently arranged and entirely modern.

### TALKING MOVIES FOR HOME LATEST ENTERTAINMENT

Synchronized sound and moving pictures are now available for the home as well as the theatre in a simple outfit recently introduced, says Popular Mechanics Magazine. It consists of a small projector, geared to a turntable with long-arm and electric pick-up which connects the sound from a radio loud speaker. Special films and records are provided each month for a fresh supply of entertainment. The unit is operated by an electric current from a lighting socket. Films or records may be run separately if desired.

Fair treatment of customers and better quality chicks from profit-producing flocks are the objects of a recently formed hatchery organization. Its members are identified by the slogan, "Hatchery Chicks for Greater Profits."

## Air View of Herbert Hoover's Resting Place



View of Belle Isle, at Miami Beach, Fla., on which is the beautiful J. C. Penney home selected by President-elect Hoover as his residence during much of the time preceding his inauguration.

See! Mr. Connie Gupton, as the blackface comedian, "Jupiter." "Well, I'll be dog-gone!"

### MICK The Auctioneer

Will cry your sales anywhere. References. Come and hear me. Phone thru Dimmitt. P. O., Muleshoe or Flagg.

### O. N. ROBISON General Auctioneer

20 YEARS EXPERIENCE  
Will Give My Services Free to Schools or Societies Giving Box Suppers.  
Muleshoe, Texas. Route No. 1

### PUBLIC DRAY

Let Me Do Your  
HAULING  
Careful Attention  
and Your Business  
Appreciated  
C. C. RAGSDALE  
CALL CITY HALL

Any mother-in-law wishing advice as to managing the sons-in-law should see Mrs. Giddam in "A Poor Married Man."

### Lubbock Sanitarium (A Modern Fireproof Building) and Lubbock Sanitarium Clinic

DR. J. T. KRUEGER  
Surgery and Consultations  
DR. J. T. HUTCHINSON  
Eye, Ear, Nose and Throat  
DR. M. C. OVERTON  
Diseases of Children  
DR. J. P. LATTIMORE  
DR. F. B. MALONE  
General Medicine  
Eye, Ear, Nose and Throat  
DR. J. H. STILES  
DR. L. P. SMITH  
General Medicine  
MISS MABEL McCLENDON  
X-Ray and Laboratory  
C. E. HUNT  
Business Manager  
A chartered Training School for Nurses is conducted in connection with the Sanitarium. Young women who desire to enter training may address the Lubbock Sanitarium.

## WE INTRODUCE

# Phillips

# '66'

TO YOU



PHILLIPS '66' has the speed, power, pep and mileage that only a gasoline of Controlled Volatility can give you. Starts right now and keeps on working 100%. She's a fast number and certainly cuts down road hours.

Phillips '66' is one of the Phillips family of better motor fuels and lubricants we're introducing to you. They'll take you many a long but easy mile and keep you smiling with their super performance.

*N. B. Get acquainted with the boys listed below. Any or all of them are good fellows and will be more than happy to supply you with Phillips products. They cost no more.*

## PHILLIPS PETROLEUM COMPANY

### F. HOLLINGSWORTH, Local Agent



**The Muleshoe Journal**  
C. S. HOLLAND, Editor

Entered as second-class matter at the Muleshoe Postoffice under the act of Congress, March 3, 1879.

Resolutions, Cards of Thanks, etc. are charged for at the rate of 10 cents per line.  
Advertising Rates on application.

**SUBSCRIPTION RATES**  
In Bailey County, 1 Year .....\$1.50  
Outside of County.....\$2.00

**WITCHCRAFT IN 1929**

Recent reports of "witchcraft murders" in Pennsylvania and Virginia in which the victims were killed because they were supposed to be exerting evil influences upon their neighbors, have again brought to light the unbelievable prevalence of superstition in this land of boasted civilization.

Investigations pursued in consequence of these killings have revealed that in certain sections the belief in witchcraft and magic is as common as that which prevailed during medieval times in Europe, or among African natives of the present.

One of the murders recently reported was committed in order to obtain possession of a "magic book," in which was printed: "Whoever carries this book is safe from all enemies; can not die, nor be drowned in any water, nor burn up in any fire," and so on.

It is estimated that in the United States not less than 20,000 professional "priests and priestesses" of voodooism, fortune-telling, and other chicanery make a living by playing upon the ignorance and credulity of superstitious people. They even number among their dupes many persons of wealth, education and social prestige. There is no accounting for how they get that way.

But, the fact remains that in this good year 1929 America is a land of automobiles, airplanes, radio—and belief in witchcraft.—Cleviss Journal.

**DENTAL NOTICE**

Dr. Frost, Dentist of Amarillo, will be in Muleshoe again Monday, Feb. 4th, for one week. Moderate prices, all work guaranteed.

Mrs. Harold Wyrer is the "College Reporter" and will keep you posted on "A Poor Married Man."

If the hens on your farm are not producing profits, the stock is likely at fault. Sell the poor layers and replace with good stock.

**THEME OF CONTRASTING MATERIALS EXPLOITED IN MIDSEASON MODES**



Frocks made of contrasting materials are rated among those most fashionable. The contrast is not always in color, but the very nature of the fabrics strike a widely different note.

Many of the most successful modes combine velvet with chiffon. In most instances the velvet and the sheer fabric are of identical color. The contrast is nevertheless striking because of the materials differing so completely.

Satin with velvet is also proving a very happy combination. The gown in the picture allies silver gray rayon satin with black transparent velvet. Not only in this instance is color contrasted, but materials as well.

An unusual sheer treatment marks the styling of this dress. While it is extreme it bespeaks a trend which is observed, though not always to such a striking degree, in the fashioning of spring modes. That is, entire sections of contrasting fabrics are seamed together in novel ways, giving a half-half effect.

The idea works out pleasingly with yokes, which are often very deep and

are seamed to a fabric of a different sort. This Vogue especially manifests itself in evening and dinner gowns of velvet, the upper blouse portion being either of self-color all-over lace or of flesh-tinted chiffon when transparency is wanted.

There is considerable practicality in the idea of using two materials together, especially if one makes over one's dresses. It is possible at this time of the year to pick up handsome remnants at greatly reduced prices. The thought that there may not be enough for a blouse or frock need not enter into the case, since fashion so enthusiastically encourages the working of two or more materials together.

The plan of using contrasting materials is also manifesting itself in regard to washable fabrics. The advance spring styles as indicated even now among northern winter resort modes advocate the use of sheer handkerchief linen with linen of a heavier weave. Many gay ginghams, too, are collared and cuffed and otherwise trimmed with either pique or organdy.

JULIA BOTTOMLEY  
(© 1929, Western Newspaper Union)

**Vigilant Law Officer Had Seen 'Em Doing It**

Speeding across the country from Los Angeles to New York by motor, two motion-picture celebrities were held up by the constable in a small town and, as usual, the officer had all the advantage on his side. He refused to give them a ticket and finally compromised by taking them directly before the judge.

The constable was very hot under the collar and declared he would make it hot for them, but the couple were hardly prepared for the outraged officer's charge in court.

"Your honor," he announced pompously, "this is a couple of motion-picture people and the charge I'm preferring against them is arson."

"Arson?" roared one of the accused. "What do you mean? We were not out of our car till you flagged us!"

"You was burnin' up the road, an' I'm preferin' the charge of arson against you," insisted the constable, and even the court had to laugh as he let them off with a five dollar fine.

**Historians Unable to Place Queen of Sheba**

The nationality of the queen of Sheba, mentioned in the Bible in connection with a visit to King Solomon, is unknown for certain. It is supposed, however, that "Sabea" is merely a variation of the word "Saba," which was the name of a country on the Red sea in southwestern Arabia. This region is now known as Yemen. The Sabeans were dark-complexioned white people and belonged to the same general family of mankind as the Hebrews. They had extensive colonies in Africa, where they mixed with the Ethiopians, with whom they are sometimes confused. The Abyssinians have a tradition that the queen of Sheba was King Solomon's daughter. She was said herself famous by her spectacular visit to King Solomon was very likely the same person known in history as Queen Bakiis of the Sabbeans.—Pathfinder Magazine.

**Wild**

Dave and a group of other country lads were spending the afternoon trying to yoke up a couple of calves. Try as they would, they could make only one call, so Dave volunteered to be yoked up with it. The frightened animal immediately bolted, as soon as he was yoked, and the boys who were yoked and helpless Dave along with it. Away they went, careering into trees and banging against fences, snapping and bawling. A crowd of the other boys could recover a little from their gales of laughter, they set out to capture the assorted pair, and were advancing toward them when the human half, in a warlike tone, begged "Come up easy, boys! We're wild as heck!"

**Animal Weather Prophets**

The cat always has been regarded by observant people as a reliable weather prophet. When kitty ruffles around with her caudal appendage high in the air, they say "pussy has wind in her tail, it's going to blow." Fishermen declare that the cat and wireless as a weather prophet cannot compare with pigs. A pig jet in the seafishing bank several forecast storms in the Far North with such accuracy, they assert, that it saved the lives of all on board three times. Hours in advance of a storm, the pig would run to and fro on deck squealing and leaping sideways. The fishermen made their preparations accordingly, and on each occasion the storm failed to take them unawares.

**Wayside Inn**

There are a number of reasons why Americans have a special sentiment for the Wayside Inn, a tavern at whose doors many notable visitors have asked hospitality—George Washington, Marquis de Lafayette, Daniel Webster. It was so well known for its good service and good cheer that Longfellow chose it as the meeting place of the friends that recounted the rhymed narratives called "Tales of a Wayside Inn." Longfellow used occasionally to go there to spend the night and to enjoy the companionship of Landlord Howe.

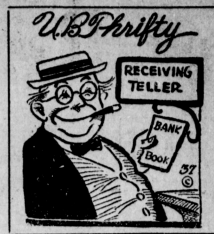
**Active Centenarian**

Although just one hundred five, Daniel Robinson of Mahogany, Ireland, is still busy fishing. He seldom misses a day with hook and line, and when out fishing with his grandson recently caught twenty-two fish. Robinson lives with his son who is seventy-five, and both draw old-age pensions. In the house next to him are his grandchildren and baby great-grandson. The aged man declares that he has never been sick a day in his life. He does not smoke, drinks very little and prefers butter milk to porter.

**Wed to Get Clean Shirts**

In the course of a trial in Brighton, England, a police court judge asked a man if he never loved his wife who he married him. The accused husband's answer was, "To get clean shirts." The astounded magistrate sentenced him to do the household washing for one year, and told the aggrieved wife he could go to him if the man didn't do a good job. The magistrate's parting remark was: "Now you will have clean shirts."

**A Pocketbook Is Strong---But A Bank Account Is Stronger**



**FIND THE WAY EARLY**

Every boy should find the way to the Bank patronized by his father.

And his father should find the way to show his son the tremendous importance of saving early in life. It is the stepladder to success.

Open a Bank Account for your boy and see that he wears a path to the Receiving Teller's window!

For it is likewise the pathway to Influence and Success.

**Blackwater Valley State Bank**

MULESHOE, TEXAS

"There is No Substitute for Safety."

**Your Insurance Business Appreciated**

All Kinds Written, Old Line Connections

**J. E. ALDRIDGE**

Office at the Blackwater Valley State Bank

**Treat Your Suit Right**

And never again let it look like a fright. It is time to feel as you go down the street. That your newly cleaned suit looks so neat; And you sort of feel that you did your suit wrong. By letting it go uncleaned so long. And you resolve that you'll treat that suit right.

**Muleshoe Tailor Shop**

(COR. J. H. HUNTER)

**If You Want GROCERIES**

You can do no better than trade with us. Here you get the best quality and our prices are right.

PHONE US YOUR ORDERS



**Gupton Grocery Co.**

Phone No. 4

Free Delivery

**DURABILITY THAT'S FIRESTONE**

Add to this, COMFORT and Mileage and you have the three reasons why car owners prefer Firestone Tires.

**The Special Gum-Dipped Process**

which goes into the making of Firestones gives you sure traction and skid protection at all speeds. Ask the Racing Drivers---they know.

**OUR CLEAN, FRESH STOCK OF TIRES**

assures you of the very best at all times. Order a set TODAY.

**FIRESTONE**

"Most Miles per Dollar"

**Muleshoe Motor Company**

CARS TRUCKS



SAY! LET WEAVER DO YOUR TIRE AND TUBE WORK Muleshoe, Texas

# Just Received!

## LADIES' SPRING COATS DRESSES AND HATS

They Are New & They Are Snappy  
They Are Reasonably Priced

# THOMPSON'S

PAY THE CASH—AND PAY LESS

MULESHOE

TEXAS

The Journal Office for Commercial Printing

## Calling Your Attention....

To the fact that we are in position to pay you more money for your COTTON SEED.

We are now buying Remnants and it will pay you to see us before selling. . . . .

MULESHOE GIN COMPANY

## Merit Brand Feeds

You are losing money every day you fail to feed your hens the wholesome, egg-producing food that they need. Merit Brand Feeds have the proper ration for your hens. Try a sack of it and see for yourself.

## We Pay the Best Market Prices for Grain and Feed

And are glad to co-operate with the farmers at all times in the marketing of their crops and in every way possible for their better welfare.

We can still supply you with Wright's Smoke Salt and Meat Cure, and Lilly Brand Table Salt.

Muleshoe Elevator Co.  
MULESHOE, TEXAS

## WEST TEXAS HIGH SCHOOL GIRLS TOURNAMENT TO BE AT SNYDER, FEB. 14, 15, 16

The Muleshoe High School basketball team has been officially invited to attend the West Texas Girls High School Basketball Tournament that will be held at Snyder February 14, 15 and 16 under the sponsorship of the Snyder Lions Club. Plans are being laid to entertain more than fifty girls teams during the three days.

R. H. Schulze, Dallas, southern commissioner for the A. A. U., was in Snyder recently to complete preliminary plans and expressed satisfaction for the fine basketball floor and gymnasium that will be provided during the visit in Snyder of West Texas girls teams.

Six huge loving cups of solid gold and silver, one of which is the actual size of a basketball made of gold is first prize; a silver ball of the same dimensions is second prize, and the four other major prizes are huge loving cups standing waist high. In addition there are three sets of small gold and silver basketballs.

Visitors to Snyder will be privileged to visit the new \$10,000 athletic stadium only recently dedicated by Snyder High School which is said to be the finest outside of college fields in the State of Texas.

Snyder is located in Scurry County on the main line of the Santa Fe railroad and on State Highways Nos. 83, 7, and 101. Teams coming over the Broadway of America should turn off at either Colorado, Roscoe or Sweetwater. Snyder is easily accessible from all points in West Texas.

Arrangements for the entertainment of teams and visitors will be in charge of a committee of the Federated Clubs and Parent-Teachers Association, backed by the entire citizenship of Snyder.

Housing for anywhere between five and eight hundred girls with their coaches and escorts will be completed by a special committee whose headquarters will be with the Scurry County Chamber of Commerce.

Officials for the games which will start in early Thursday morning, continuing game after game into the night, will be entirely picked and selected by state officials of the A. A. U.

The coming Snyder tournament will be the largest, attended athletic event of more than one day's duration ever handled in West Texas, and it is Snyder's aim to have every detail worked out to clocklike precision that visitors may enjoy every moment of their stay.

Joining in the welcome to all West Texas is included City Supt. C. Wedgeworth, president Lions Club; County Supt. A. A. Bullock, general chairman of the tournament and president of the Scurry County Chamber of Commerce, together with every civic, fraternal and social organization of the city and county, who are lending their influence and invitation to the teams and visitors to West Texas to come to Snyder February 14, 15 and 16.

### SOAP FROM WASTE FRUIT

Avocado, not up to market standard, contain oil that can successfully utilized in the manufacture of hard soap, chemists of the department of agriculture have discovered, says have shown that the oil does not become rancid even after a year's storage under ordinary conditions.

See Mrs. Krenney as the "ideal" housewife—so modest, kind and affectionate to the Poor Married Man.



# Shop Here and Save!

In addition to getting groceries of the first quality when you shop here, you enjoy the added advantage of buying them for less money. Plan to shop here for a month and see what you save.

## OUR SUPPLY OF Fruits and Vegetables

IS COMPLETE

and we utilize the proper methods for preserving their purity and freshness and for keeping their edible qualities always at the best.

HEADQUARTERS FOR EVERLITE FLOUR

Henington's Cash Grocery

MULESHOE, TEXAS

### DO YOU WANT TO ATTEND A BUSINESS COLLEGE

Realizing that a great number of young people are deprived of an opportunity of attending a business college because of the lack of money, our STUDENT LOAN FUND ASSOCIATION was created for the express purpose of furnishing the necessary help to worthy boys and girls.

We have selected the Tyler Commercial College of Tyler, Texas, as the college we can most consistently recommend. This is one of the oldest business schools as well as one of the most widely known for its thorough work and its successful graduates out in the world of business.

We have made arrangements with the Tyler Commercial College by means of which we can take care of a limited number of young people through our loan fund.

If you are in good standing in your community and can furnish the best of references, we shall be glad to help you. We have helped a number of deserving young people in the past who are now independent wage earners and enthusiastic boosters for our Association.

We are especially interested in helping young men and young women who have been forced on account of financial reasons to drop out of high school or college.

In order to receive help from this Association it is only necessary to clip the coupon attached and mail it to us or to the Tyler Commercial College. We can then work out a plan whereby you will be enabled to enter the College even though your funds are limited.

Clip out the coupon and mail it today either to Tyler Commercial College, Tyler, Texas, or to

THE STUDENT LOAN FUND ASSOCIATION, Box 826, Tyler, Texas.

Name.....  
Address.....

### DENTAL NOTICE

Dr. Frost, Dentist of Amarillo, will be in Muleshoe again Monday, Feb. 4th, for one week. Moderate prices, all work guaranteed.

Mr. and Mrs. H. C. Edmonds spent Tuesday in Lubbock.

Miss Saunders spent the week-end in Clovis with home folks.

Curtis Taylor was attending to business affairs in the city to first of the week.

Mrs. James Smock and grandson Billie, of Clovis, spent Monday with her daughter, Miss Saunders.

Could you imagine Mr. Aldridge as a poor country doctor? He only has a small practice in "A Poor Married Man."

### DENTAL NOTICE

Dr. Frost, Dentist of Amarillo, will be in Muleshoe again Monday, Feb. 4th, for one week. Moderate prices, all work guaranteed.



## The Lumber For the New Home You Are Planning

When it comes to selecting the lumber for your new home, you need not even think about it—just tell us what you would like and leave the selection up to us. We will guarantee you satisfaction with the results.

E. R. Hart Lumber Co.

Coal, Hardware, Furniture..... McCormick-Deering Implements



**TEXAS AND TEXANS**

By Will H. Hayes, Austin, Texas

**Busy Times Ahead**

It is evident that the present session of the Legislature will be a most busy one if the legislators attend closely to the business that will be before them. The University oil lease matter will have to be ironed out, and whatever final disposition may be made of it there is sure to be some dissatisfaction.

West Texas is not the only part of the State that is concerned about water rights legislation. It is very evident that the people of Texas want a law that will clearly give domestic consumers and irrigators their rights over power users, and they are sure to be insistent on a bill without any jokers in it.

Austin is crowded with people interested in legislative matters and every one is doing his best to create the impression on legislators that his particular measure is the one of greatest importance to the State. The job of the representative who is conscientiously trying to do the best for the State is by no means an easy one.

**Railroad Expenditures**

Texas railroads are spending a great deal of money now on the improvement of their lines throughout the State. They are having to keep a sawtooth uneven pace with the development of public highways. The Cotton Belt has had to create last year more than \$2,000,000 on its line from Tyler to Mount Pleasant and announces that it will spend about \$3,000,000 more this year in rebuilding its tracks. Other roads are busily improving their lines and all of them are expecting an increased Texas business in 1929.

**Helpful Moisture**

Mother Nature has started in the New Year by being kind to Texas by providing an abundance of snow and rain in most parts of the State and distributing it in a way to do the most good. Copious slow rains have fallen in most parts of Texas, starting the grain crops off well in their growth and enabling the farmers to do their winter plowing to best advantage. Every indication is that 1929 is to be the "best yet" for Texas.

**Showing Trade Growth**

The San Antonio Chamber of Commerce has been keeping data on the mileage traveled by retail buyers who go to San Antonio to buy their stocks, and finds that it is increasing. In 1923 the average distance traveled was 87 miles, while in 1928 it had increased to 220 miles. These figures show that the people travel far to trade in San Antonio. Perhaps every progressive city and town in Texas could make a like showing. People now go long distances to get to trade with merchants who show that they are anxious to extend their trade. It's the non-progressive, self-satisfied, non-advertising burr that is passed up by the thousands who go out bargain seeking with those who let them know they are offering inducements to broaden their business.

**Ablene Wants Airport**

San Angelo having formally dedicated an airport, Abilene is now proposing a \$100,000 bond issue that it may build a municipal airport. The increased interest in flying will soon require every place to have suitable landing fields. It is freely predicted that Texas towns of 10,000 and more population will soon have air mail service, provided they arrange for municipal landing fields. Notwithstanding the fact that Austin had two private airports, that city was required to acquire a field of its own as a condition to air mail service. The reduction of air mail postage to 5 cents is rapidly increasing the air mail business everywhere.

**Onion Crop Increased**

The Texas Burmuda onion crop has been increased 15 percent this season or to nearly 20,000 acres. The crop is in fine condition and gives promise of an unusual yield. In the last ten years onion growing in Texas has become an important branch of stock farming, experimenters growing having started about ten years ago near Laredo.

**Texas Needs Industries**

Nearly every chamber of commerce in Texas has made a public statement that the greatest need of its community for 1929 is more industries. It is recognized that for a place to prosper its industries must keep pace with farming development, yet there are but few Texas localities where this has been accomplished. Officials of the chambers of commerce should look about to find just what special industries can be best developed in their immediate sections and then set about vigilantly to promote them. The trouble is that there is too much "top-shooting" in the matter of securing industries, the result being that little or nothing is accomplished.

**Cheese Factories**

The two Texas towns that were first to secure cheese factories last year showed how to go about getting in-

dustry. The places were Round Rock and Buda, only five villages near Austin. Cheese factories do not require much initial outlay—\$18,000 or \$20,000—but they stimulate dairying and scatter money throughout the community. These small towns built these factories because they were able to build the business of washing their efforts on industries that cost a half to a million dollars and which went beyond their means. Round Rock and Buda will be ready to undertake something else worth while in early summer than they were in early spring.

**Kerens Gets Gas**

Kerens is among the smaller cities that announces that it will soon be supplied with natural gas. There is such an abundant supply of gas in Texas and natural gas gives such an ideal heat, that it seems every town would buy itself in securing this great convenience and comfort to modern life.

**Paper Waste**

School children at Cisco will collect all the old papers and magazines in that city and sell them to get money to assist them in building a school gymnasium. The paper brings about \$2000 a carton. There is hardly a town in the country in which a cartload of paper could not be gathered almost any time by systematic effort. Schools everywhere would profit by having an annual or semi-annual paper gathering and at the same time would help housewives to keep their places cleaner. The needless paper waste of the country runs into millions of dollars.

**Useful Man Gone**

When A. B. Spencer died Texas lost a useful man. His father was a railroad man who had suffered financial losses. Young Spencer was trained to the railroad business and coming to Texas in early life he became a station agent at Childress. Later he was the leading factor in the building of the Lubbock and Crosbyton railroad, now a part of the Santa Fe. He served as president of the West Texas Chamber of Commerce. He gave of his time, his intellect, his strength to the building of Texas and did his work unselfishly. Such men are few.

**Save the Painted Rocks**

The town of Paint Rock, near which are more than 1500 rocks painted in pictographs by early Indians, is taking steps to save the paintings from destruction at the hands of thoughtless persons who scratch and otherwise deface the pictures. These pictographs are a part of Texas history that should be preserved.

**HOOVER NOT WITHOUT PRACTICAL FARMING EXPERIENCE**

Herbert Hoover, President-elect of the United States, will not be without practical farming experience when he comes to work out farm relief measures during his term of office. Although little was said about it during the recent campaign, he has owned a 1212 acre farm in California since 1920 and he has operated it not only as a business enterprise, but also as a base for practical agricultural experiments. Diversified farming is a fundamental part of the Hoover program. Here is how the Hoover farm operations are divided:

- Vineyards, 433 acres producing 10 varieties of table grapes with a yearly output of about 600,000 pounds; between 60 and 320 acres of cotton; 300 acres in alfalfa, yielding seven tons to the acre, and cut seven times a year; 150 acres in potatoes; 130 acres in peaches producing 16,000 pounds to the acre; 80 to 120 acres in corn; 20 or more acres in watermelons and muskmelons; 90 acres in Spanish onions; 40 to 60 acres in spinach producing about 960,000 pounds a season; 40 to 60 acres in sweet potatoes; 70 acres in apricots.

In addition there are about 2500 laying hens, 200 sows and 150 cows. As many as 300 employees are at work during peak harvesting seasons, and the annual payroll is about \$75,000.

Considerable experimental work, is done on the farm, and a good part of this has been in connection with poultry work, in accordance with the most modern farm poultry methods and in the interests of economy and profits. The Hoover stock is replenished each year with baby chicks secured from hatcheries. Eggs are marketed regularly, the income from this source proving considerable, since only the best of high egg-laying stock is used to make up the laying flock. The usual culling and marketing of broilers adds another source of profit, and removes the "loafers" from the flock, thus giving increased egg production at less feed cost.

Most recent experimenting on the Hoover farm has to do with the hog-raising industry, the present herd of 200 sows being the nucleus for further expansion and experimental work.

President-elect Hoover owns this farm jointly with Ralph Merritt. The farm is located about 280 miles south of San Francisco and 150 miles north of Los Angeles, on the main line of the Santa Fe Railway. It is three miles south of the little town of Wasco, and is one of the largest cultivated ranches in that vicinity.

Have you heard about the Poor Married Man?

**EARLY CHICKS NET MOST PROFIT, EXPERTS DECLARE**

The farmers on poultry raising who do not obtain chicks early in the year, thinking to obtain reduced prices on chicks in May or June, is practicing false economy, and is actually losing money out of his own pocket. In the opinion of market students and poultry experts familiar with the egg and poultry market. In addition to taking certain loss in profits, he has no assurance that chick prices will be lower in early summer than they were in early spring.

Change in market conditions during the past few years has made October and November the high-priced egg months, study of figure shows. This came about because more and more folks have learned how to produce winter eggs. The great majority, however, have not yet learned how to take care of their pullets through the summer and early fall to bring them to laying age in time for the October and November markets which are now the peak markets of the entire year.

If the poultry raiser holds off on purchase of chicks until summer, he forfeits any chance of having his pullets in laying condition in time to take advantage of the high egg prices prevailing in the Fall and Winter.

Those who raise Leghorns, and depend upon their egg production to build up the family bank account, should have their baby chicks under the cover not later than the first week in April. The heavier breeds, such as Rocks, Rhode Island Reds, and similar breeds should be started at least a month earlier. When this plan is followed, and the chicks have a nice grassy range plenty of good feed, and a liberal supply of milk, the flock owner can generally depend on having his houses full of laying pullets in early October, in time to take advantage of the high Fall prices.

How would you like to see Rev. Mr. Hicks as a "hen-pecked" husband? Then see "A Poor Married Man," at the Auditorium Thursday, day, Jan. 24th.

**BASEBALL SEASON AT TEXAS U OPENS MARCH 6**

Austin, Texas. — Opening with the New York Giants on March 6, the University of Texas baseball team will play the New York Yanks, the Osaaka team from Japan, teams from the Middle West and possibly one or two Texas League teams before the practice schedule is completed. Negotiations are in progress with Notre Dame, Illinois, Michigan and the University of Chicago in an effort to bring them to Austin for a series.

The schedule as it now stands is as follows: New York Giants in Austin, March 6; New York Yanks in Austin, March 12; T. C. U. in Austin, March 27-28; S. M. U. in Austin, April 5-9; Rice in Houston, April 5-6; A. & M. in Austin, April 12-13; Baylor in Waco, April 17-18; Baylor in Austin, April 23-27; Osaaka in Austin, April 29-30; T. C. U. in Fort Worth, May 3-4; Rice in Austin, May 15-16; A. & M. in College Station, May 20-21.

**TEXAS TECH COLLEGE ENROLLMENT REACHES 1994**

Lubbock, Texas. — The enrollment for the year at Texas Technological College has reached 1994, and the registrar has received credits already from mid-year high school graduates to run the enrollment above the 2000 mark. The Advance-Journal Publishing Company has agreed to pay the fees of the two-thousandth student.

The Order of the Eastern Star presents "A Poor Married Man" at the High School Auditorium on Thursday, January 24th. This brings to your minds the hardships of a newly married man who has to contend with an overbearing "mother-in-law." Don't fail to see this, as it portrays home life by home talent.

Select corn at husking time, if it was not selected from the standing plants. The poorest place to select seed corn is from the crib at planting time.

Send Your Abstract Work  
To The  
**Muleshoe Abstract Company**  
A. P. STONE, Prop.  
MULESHOE, TEXAS  
Agent for Warren Addition

**E. L. Menefee, M. D.**  
PHYSICIAN and SURGEON  
MULESHOE, TEXAS

**R. L. BROWN**  
The Land Man  
Lands, Oil Leases  
Royalties

**Bailey County Abstract Company**  
L. S. BARRON, Manager. MULESHOE, TEXAS  
(ESTABLISHED IN 1900)  
Abstracts, Loans, all kinds of Insurance and Conveyancing. All matters pertaining to land titles given prompt attention.  
(Member Texas Abstractors Association; Also Member Association of Title Men)

**A. R. Matthews, M. D.**  
Physician and Surgeon  
MULESHOE, TEXAS

STATED MEETING OF Muleshoe Masonic Lodge, 2nd Tuesday night in each month. VISITORS WELCOME  
W. T. BLACK, W. M.  
J. B. ROBERTS, Sec.

**Muleshoe Nat. Farm Loan Association**  
—No. 3943—  
L. S. BARRON, Secy-Treas.  
I. W. HARBEN, President  
J. J. LAWLER, Vice-President  
Loan Committee  
T. L. SNYDER  
W. G. KENNEDY  
S. E. MORRIS

**Farm and Ranch Loans**  
5 per cent interest—36 Years Time  
A Mortgage that never comes due.  
SEE US FOR LOANS



**More TIRE Miles FOR LESS TIRE MONEY**

Goodyear All-Weathers if you want the best. Goodyear Pathfinders if you want maximum quality for minimum cost. Goodyear Regular, Heavy Tourist and Pathfinder Tubes to match them all. We're stocking them. Servicing them. And selling lots of them to Muleshoe motorists who check tire costs carefully.

More people ride on **GOODYEAR TIRES** than on any other kind

**VALLEY MOTOR COMPANY**  
MULESHOE, TEXAS





**How to Grow More and Better Cotton**

**PREPARE FINE, FIRM SEED-BED: FERTILIZE ACCORDING TO LOCAL NEEDS**



**USE WELL-BRED, ADAPTED VARIETIES AND TEST FOR GERMINATION. PLANT WHEN GROUND IS WARM, USING AMPLE SEED**



**HARROW BEFORE COTTON IS UP, AND CULTIVATE FREQUENTLY TO NEARLY PICKING TIME**



**DUST WITH CALCIUM ARSENATE WHEN 10 PER CENT OF SQUARES ARE PUNCTURED**



SEARS-ROEBUCK AGRICULTURAL FOUNDATION

Cotton farming experts agree that more and better cotton on fewer acres is one of the best ways to increase the profit in growing this crop, says the Sears-Roebuck Agricultural Foundation. Yield and production costs are like a teter-board. As the yield goes up, the cost comes down.

First, firm seed bed is a first essential for a large yield per acre. Using land in sweet clover, or second or third year alfalfa, or some other legume, plowing early and deep, and thorough working to pulverize and settle the ground complete the initial step.

Fertilizer must be applied according to local needs. Many successful growers use 500 to 500 pounds per acre of a complete fertilizer and later a side dressing of 100 to 200 pounds of nitrate of soda to speed growth and put the plant in the lead in the race with the weevil. Free application of barnyard manure to land intended for cotton will help.

Using well-bred, adapted seed that has been tested for germination, and planting an ample amount as soon as the ground has become warm are necessary requirements for a full stand and a large yield. A bushel or more of seed per acre should be used to give the young plants enough push to break through the ground and to leave a full number of strong, vigorous plants after the weak ones have perished. The seed should be planted deep enough so it will come up without rain, but not be sealed in the ground by a beating shower. "Slips" make no cotton themselves and do not help adjoining plants to make more.

Harrowing the ground before the crop is up, frequent cultivation until it is nearly ready to pick, and removal of all weeds will enable the plant to make the most of its opportunity during the growing season. Every small weed will take away enough plant food to make a boll.

Dusting for weevils with calcium arsenate should be started as soon as 10 per cent of the squares have been punctured. Owing to the cost, it will not pay to start sooner. Repeat the dusting twice at intervals of four days to bring the weevils under control, and dust again when they seem to be getting numerous once more.

No royal road to the production of a high yield of cotton per acre has yet been mapped, the Foundation adds. While extra effort is required at every stage, it is sure to bring a proportionate reward. Farmers who have succeeded in growing from one to three bales of cotton per acre have reduced their production costs to 5 to 10 cents a pound compared with an average cost of 15 to 25 cents a pound for the entire belt.

**Cattus are like human babies. Some are so husky no abuse could kill them, while others must be handled like soft-shelled eggs.**

A good time to live the soil that needs it is when preparing for the corn crop. Plow down the clover and before dusting, spread the lime.

**Tribute to Labor**

Labor is life: from the inmost heart of the worker rises his God-given force, the sacred celestial life-essence breathed into him by Al mighty God; from his inmost heart awakens him to all nobleness—to all knowledge, self-knowledge and much else, so soon as work fifty begins.—Carver.

**Want Ads**

**FOR SALE**

Cheap for cash, or terms. Section 42, Block 2, Halsell sub-division, Lamb County; well on the land; about 12 miles from Muleshoe. One-third Oil, Gas and other Minerals reserved. Write J. D. Hammett, Huntsville, Mo.

**FOR SALE**—Fifty or sixty White Wyandotte hens, also White Leghorn pullets.—W. C. Hopke, 9 1/2 miles northeast of Muleshoe.

**FOR SALE** — American Mammoth Incubator, 1200-egg capacity. Bargain if sold by February 15th.—W. C. Hopke, 9 1/2 miles northeast of Muleshoe.

**NOTICE**

The Commissioner's Court of Bailey County will take sealed bids for the County depository of county funds and for the County Depository of school funds at its regular meeting, February 11, 1929.

J. E. ADAMS, County Judge  
Ex-Officio School Superintendent. 49-3tc

**NOTICE**

The Commissioners of Bailey County have authorized me to advertise and sell at public auction, one Eclipse Windmill, one 4 inch pump and one storage tank. The sale will be at the American Legion Hall in Muleshoe, Saturday, February 9th.

J. E. ADAMS, County Judge.

**CHICAGO PLANNING WORLD FAIR ON 100TH BIRTHDAY**

Washington, D. C.—Participation of other nations in the Chicago world's fair in 1933, to celebrate the 100th anniversary of Chicago's incorporation as a municipality, is proposed, subject to the raising of \$3,000,000 by the centennial corporation, in a resolution, which the Ways and Means Committee has just reported to the House.

The resolution, which was introduced by the chairman of the Ways and Means Committee, Representative Hawley (Rep.) of Salem, Oregon, stipulates that the President, when satisfied that not less than \$3,000,000 has been raised and is available to the Chicago World's Fair Centennial Celebration Corporation, is authorized to invite the nations of the world to participate in the celebration.

Protect trees from rabbits and mice with wire or tar paper guards.



**The Outstanding Chevrolet of Chevrolet History**

*- a Six in the price range of the four!*

represents **4** years of Development and over a Million miles of Testing

Years ago, the Chevrolet Motor Company designed and built its first experimental six-cylinder motor. This far-sighted step was taken because Chevrolet engineers knew that the six-cylinder motor is inherently the most perfectly balanced motor—the ideal power plant to meet the growing public demand for greater reserve power, faster get-a-way and, above all—smooth, quiet performance.

Day and night, through winter's cold and summer's heat, the incessant testing went on—until the present motor was developed and finally pronounced correct.

At the same time other Chevrolet engineers were perfecting other parts of the chassis. And another great automotive organization—the Fisher Body Corporation—was devoting its gigantic resources to the creation of the finest, sturdiest and most beautiful bodies ever offered on a low-priced automobile.

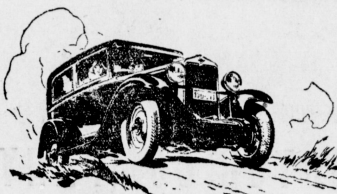
As a result, the Outstanding Chevrolet offers an

order of well-balanced excellence—a combination of performance, comfort, beauty and handling ease that is truly remarkable—with a fuel-economy of better than 20 miles to the gallon of gasoline.

You owe it to yourself to see and inspect this remarkable car. Come in today!

The COACH	\$595
The Roadster	\$525
The Phaeton	\$525
The Coupe	\$595
The Sedan	\$675
The Sport	\$695
The Cambridge	\$725
The Light Delivery	\$595
The Chassis	\$400
The Tax Chassis	\$545
115 Ton Chassis with Cab	\$650

All prices f. o. b. Flint, Michigan



**Valley Motor Company**

QUALITY AT LOW COST

**January Sales That Mark a New Era in Value Giving in This Store**

*Super Values in Men's and Boy's*

**Suits and Overcoats**

The choice of the season's offerings is to be found in this unusual showing of winter weight suits and overcoats for men and young men. New fabrics, superior tailoring, the season's favored colors and patterns—at prices which make them the super value offering of the year.

**Suits . . . . . \$12.95 to \$23.35**  
**Overcoats . . \$9.95 to \$16.35**

**COATS**

Never before, and perhaps never again will you see any better and probably not near the equal of the coats we now offer at the prices listed below. Well made from fine fabrics, trimmed with furs seasonably popular.

\$6.95 to \$15.95



**A Tremendous Sale of**

**SHIRTS**

They are shirts that you will be proud to wear anywhere for the quality of the material and the making is of the best. You may buy them at these low prices.

**98c to \$2.69**

**HOSIERY**

Wool and Silk hosiery at prices so low you will want to buy at least a box of them.

**25 to 59c**

**UNDERWEAR**

A plentiful assortment of heavy underwear from which you may choose at sale prices.

**98c to \$1.29**



**BLANKETS, COMFORTERS AND BEDDING**

The time of times to buy a supply of bedding, for we are offering our entire stock at prices very close to cost. Check up your needs and take advantage of this offering.

**Blankets**  
**\$1.59 to \$8.95**

**Sheets**  
**\$1.45**

**A Big Price Cut on Dress Goods**

Dress Goods that will make just the dresses you need for the balance of the winter and they are priced so low that every thrifty woman will buy at least enough for a number of dresses.

**19c to \$2.29**

**Gardner Dry Goods Company**

*"The Price is the Thing."*

MULESHOE

TEXAS



# THE MULESHOE JOURNAL

VOLUME 6

MULESHOE, BAILEY COUNTY, TEXAS, FRIDAY, JANUARY 15TH 1929

NO. 42

## GRADING OF HIGHWAY FROM MULESHOE TO LARIAT IS STARTED

New Eighty-Foot Grade Will Follow Railroad Entire Distance Between the Two Towns.

Grading started last week on the Highway between Muleshoe and Lariat which will follow the railroad and eliminate several turns. This will also shorten the route between this place and Clovis by something over two miles. This Highway is what is known as U. S. No. 70 or Lee Highway and is the Southern Transcontinental route. A fine grade is being put up and when finished will be one of the best improved dirt roads in West Texas.

The road is eighty feet wide with a twenty-six foot crown. Efforts are now being made to have bonds voted by the state to pave Highway 70 through Texas. Oklahoma and New Mexico are also trying to raise funds for improvement of this road, as traffic has become so heavy and in recent months that a hard surface road is almost a necessity, according to the Lee Highway Commission, which is sponsoring the move to have the bonds voted by the various states.

Mr. D. L. Butts, of Muleshoe, is road superintendent of this district, and states that all turns will be eliminated as far as possible.

### DEATH OF TOUIE BEAN

I noticed a short sketch of our friend Touie in the paper of last week. Just called him Doc Indian and spoke of his wild days and it grieved my heart, for Doc was a friend to all cowboys. Doc had a heart as big as these prairies that we used to ride over. He was loyal to the man he served and a real friend to all he knew. As long as they treated Doc half way right he was a real friend. He was a friend to all women and little children. We all looked forward to having him call at our camps.

Doc was an Indian that was true but no white man was ever more faithful than Doc to his fellow man. He did unto others as he would have them do unto him, and that is one of our commandments. I know all the boys who knew him will mourn his loss, for as I have said, a real friend is gone.

Doc was always gay hearted and furnished plenty of fun for us all after the day's work was done. He may be gone on to his Happy Hunting Ground, I don't know about that. But I hope to meet him at the Round-Up at the last day and cross the Valley with him, where we will be at ease for ever more.

Written by a friend—A. W. Coker.

### W. M. S. MEETING

The M. E. Ladies Aid Society met at the country home of Mrs. Nina Elrod Wednesday afternoon.

There were eleven members present. The general order of business was taken care of, then a splendid program was rendered. Mrs. W. B. Hicks having charge. The next meeting will be held at the home of Mrs. C. C. Mardis.

### LARGE PORTALES HATCHERY WILL BEGIN OPERATIONS 19TH

The large hatchery of Wicks and Son, of Clovis and Portales will begin operations Saturday, January 19.

Wicks and Son have just completed the installing of another machine at Clovis which has a capacity of 32,000 eggs and with this machine and the one that has been used there in the past and the Portales plant, gives them a capacity of 149,000 eggs.—Roosevelt County Herald.

### WILL REBUILD BAPTIST CHURCH, NORRIS STATES

Fort Worth—Rev. J. Frank Norris, militant fundamentalist, whose church was destroyed by fire Saturday with an estimated loss of between \$250,000 and \$400,000, has told his congregation that a new church will be built as speedily as possible on the site of the old. He spoke in the church tabernacle, which is used for summer meetings.

"We do not know how the fire occurred. So far as we know it is an unexplained accident," Norris said. "We hope that it will and prefer to believe it until convinced otherwise."

### MULESHOE MOTOR CO. RECEIVES A SHIPMENT OF MODEL 'A' FORDS

A shipment of the new model A Fords was received last week by Muleshoe Motor Company and deliveries are being made as fast as the cars can be serviced. In the shipment was a Tudor, Phaeton, Sport Roadster, Sport Roadster Pickup and a Sport Coupe. D. O. Smith has purchased one of the new trucks and J. S. Glascock a Rose Bay Ford.

### PAPER DETECTS GAS LEAK TO AVOID ACCIDENTS

Testing house pipes and street mains for gas leaks is expected to be safer and more effective with the aid of a specially prepared, sensitive paper, says Popular Mechanics Magazine. It is of an absorbent variety like filter or litmus paper, and is chemically treated so that when a flow of gas comes in contact with it, its color is conspicuously changed.

M. T. Howard and son, of Earth, were in town Wednesday attending to business matters.

J. Leon Kropf has been confined to his bed this week with an attack of tonsillitis.

## Winter Sports



### NEW SETTLERS ARE IMPROVING FARMS IN MULESHOE VICINITY

Several new improvements are being started near Muleshoe this week. Some of which are on the new farms out from the Warren Ranch lands northeast of town. The following have purchased bits of lumber since Monday from the E. R. Hart Lumber Company:

Paul C. Schulte, farm home; Louis Harisberger, horse and barn; Paul Bros., general farm improvements; R. G. Jordan, black; A. L. Eaves, general farm improvements; O. Kimbrough and F. N. Wood also purchased new Farmalls and Mr. Paul Schulte a tractor and plow. E. R. Hart is improving his farm in Lonesome Valley which will be worked by N. L. Tivis.

### TO OWNERS OF CARS AND TRUCKS

Get your 1929 license. Your old tags are out and you are subject to a fine if you try to get by on your old tags.

I get some cost on all fines and I need the money.

H. A. DOUGLASS, Sheriff.

### LAUGHS AS HE GOES TO THE ELECTRIC CHAIR

Huntsville, Texas, Jan. 11.—Floyd Newton Byrne, San Angelo chauffeur, axe-slayer of 12-year-old Myrna Juergens, her mother and grandmother, was executed in the electric chair at the state prison at Huntsville, Friday.

Indifferent to his fate, Byrne sat in his death cell reading humorous magazines until guards came to take him to the execution chamber. Still laughing over one of the humorous quips he had read, he was strapped in the chair at 12:23 a. m.

Byrne mystified jailers with his jocular, "Through the night he had insisted that they listen to his jokes. Even when word came that gubernatorial clemency had been denied, he passed it off as "another good joke."

He refused to allow his last meal to interfere with his reading. Jailers brought him pork chops, cream gravy, hot biscuits and coffee, but he read while he ate.

A strong Havana cigar, brought him by a guard, was saved until the last moment before the death march began. Byrne asked a guard to "tell me when it is about time, then I'll smoke."

"There's nothing much more to say, is there?" he remarked as he entered the chamber.

The chauffeur's only defense was that he had been intoxicated.

### PLANTS AND TREES TRIED OUT BY TECH

In an effort to determine what rare vegetation and plants may be adapted to the South Plains, the government has sent a collection of forty-eight rare plants and fruit trees to the horticulture department of Tech College. Students of this department will make experiments with the plants.

### MULESHOE GAGERS WIN ONE GAME, LOSE ONE, AT DIMMITT LAST FRIDAY

The Muleshoe gaggers invaded the camp of the Dimmitt athletes last Friday evening and brought home one victory and left one for Dimmitt.

The boys won by a 9-13 count in a fast game. They did some fine work in both defensive and offensive, breaking through the Dimmitt formation several times for a try at goal. Only once did the Dimmitt players break through the Muleshoe defense for a goal. They made one long shot, and got the ball on a toss up, making the basket for their only three field goals, the other three points being counted on free tosses.

The girls lost their game by a count of 25-35. This was a hard fought game from start to finish. It looked as though Dimmitt was going to walk away with an easy game in the first quarter, but soon the Muleshoe girls hit a natural and were shortly rolling up the score. At one time in the third quarter they were up two points of a tie, but Dimmitt rallied and pushed the score up to a ten point lead in the fourth quarter.

The games were marked throughout by the highest type of sportsmanship. Muleshoe and Dimmitt have the reputation of being the best sports in the west. Lets hold that reputation. It was certainly upheld Friday night.

Reporter.

### W. M. U. MEETING

The W. M. U. of the Baptist church met at the home of Mrs. H. E. Strickland, with Mrs. G. C. Danner as hostess. Eight members were present.

We had our regular monthly business meeting, and an unusually interesting one. Everyone should have been there. Mrs. Ray Griffiths, the historian for our Society, read the history from the beginning in 1923 to the present date. It was very interesting and brought back memories of old friends we had not thought of for a long time.

After our business session we adjourned to meet Tuesday afternoon for our regular monthly social and Mission program. Mrs. A. W. Coker will be leader and the meeting will be held at the home of Mrs. L. S. Barron with Mrs. John L. Alsup assisting her.

Reporter.

### PHOTOS SENT BY TELEGRAPH INCREASE SPEED IN BUSINESS

Transmission of photographs, drawings and other material by wire has become an important factor in business. Not long ago an engineering firm in New York wanted to send a set of complicated mechanical drawings to a representative in San Francisco. They were sent by wire, as the ordinary methods were too slow, and arrived in time to enable the firm to complete a contract several days ahead of the specified time.

Joe Grimes of Amberst and Roy Foster of Slaton, were week-end visitors in the Elmo Head home in this city.

E. M. Carter of Plainview was a business visitor to Muleshoe Tuesday.

### RUMELY SCHOOL TO BE HELD AT LONE STAR THEATRE JANUARY 31

A Rumely Power Farming demonstration and school will be held at the Lone Star Theatre January 31. A special picture is to be shown and lectures made which will be of much benefit to the farmers of this section. Mr. N. L. Tharp, Rumely dealer of Clovis, will have charge of the school. Three sessions will be held during the day, morning, afternoon and evening. We wish to call the attention of our readers to Mr. Tharp's ad which appears in this issue of the Journal.

### LITERARY SOCIETY OFFICERS ON SIDE NO. 1 ARE APPOINTED

The members of the Literary Society on side No. 1 met January 11, 1929, and appointed officers, as follows:

Laurene Rice, President.  
Morris Douglas, Vice President.  
Alice Ragsdale, Secretary - Treasurer.  
Jane Bucy, Reporter.

Jane Bucy, Damon Danner and Ira Myers, Program Committee.

The girls are to debate on "Should Capital Punishment be Changed from the Electric Chair to Life Sentences in Prison?" Affirmative, Alice Ragsdale and Lela Merle Strickland.

The boys are to debate on "Which is More Useful, a Mule or a Cow?" Negative (Mule): Damon Danner and Morris Douglas.

The members of the Literary Society on side No. 1 are as follows: Morris Douglas, Laurene Rice, Jolly Arns, Susan Roy, Roker, Alice Ragsdale, Laurene Rice, Joel Lee, Jane Bucy, Nova Douglas, Lela Merle Strickland and Ira Myers.

Reporter.

### Local Markets

These prices are furnished by the local buyers, and are for your convenience.

Kaffir	\$1.10
Maize	\$1.20
Corn, shelled, per bu.	80c
Corn, ear, per bu.	90c
Sudan	\$4.00
Maize heads	\$18.00
Kaffir heads	\$16.00
Cash seed, subject to change	\$.1

Retail Feeds

Cotton seed cake	2.75
Cotton seed meal	2.75
Bran	2.50
Shorts	2.50
Cow Chow	\$3.00
Milk Maker	\$2.75

Produce

Heavy Hens	18c
Light Hens and Leghorns	15c
Colored Springs	15c
Light Springs	13c
Slugs	10c
Cocks	65c
Eggs	25c
Cream	38c
Hides	98c

(Prices furnished by the Muleshoe Produce Co. subject to change without notice.)

### STREET IMPROVEMENT WILL BE SUBMITTED TO VOTERS FEB. 26

Notice of an election to be held on February 26th, whereby, the voters will decide as to whether or not the City will carry out its plan for street improvement, appears in this issue of The Journal.

The plan is for the paving of six blocks in the business district. Engineers submitted plans to the City Commission at a meeting held last week which, as far as can be learned, met with the approval of practically all the property tax payers. Muleshoe has the reputation of being one of the most up-to-date little cities on the Plains, and as some of the citizens state, it is not going to fall behind in the work of civic development.

### BIRTHDAY PARTY

Miss Eula Neely was given a complete surprise Monday evening when friends gathered in the dining room of the McCarty Drug Store to celebrate her birthday.

Wayne Wallace and Temple Morrow took Miss Neely out for a short ride while the crowd gathered. Then word was sent that she was wanted in the dining room. She opened the door to be greeted by shouts of "Happy Birthday," and then the fun began.

Progressive "42" was enjoyed until a late hour. The dining room was then darkened and the cake brought in with all the candles glowing. Around the edge of the cake were twenty small candles. These represented Eula's age—and in the center was an enormous candle—this was for all the years to come. The cake, by the way, was the last word in culinary art, and was produced by Mrs. Sidham, though Mac insists that he decorated it. Eula blew out all but five candles and was thus destined to five more years of spinsterhood. Each guest cut his or her own piece of cake and found some prize. Miss Woods found a pine and Lela Glascock the thimble. Strawberry ice cream was also served.

Just before refreshments were served Mr. Morrow, representing the entire crowd, presented the honoree with a lovely necklace. After the refreshments "42" was played by some, while others sat on a rug and attempted to write their names in Eula's autograph book. At a late hour the guests departed, wishing Eula many more such happy birthdays.

Among those present were Misses Eula Neely, the honoree, Leona Brown, Annie Woods, Opal Morris, Irene Carles, Lela Glascock, Alice Ragsdale, Valena Menefer; Messrs. Wayne Wallace, Temple Morrow, Sherman Vance, Buford Butts, David Anderson, Bill Garrett, Thomas Lynn, R. C. Greene, Maurice Glascock, F. G. Boone, Walter Black, Mr. and Mrs. M. S. Sidham and Mr. and Mrs. A. V. McCarty, Jr., and children.

Reporter.

### EPWORTH LEAGUE PROGRAM

Subject: "The Christian Man in Business."  
Scripture: Rom. 12:11; Cor. 12-17. Leader—Mills Barfield.

1. "Honesty, Kindness and Service"—Fred Boone.  
2. "What are the Conditions?"—R. C. Greene.  
3. "Business Man's Ten Commandments"—Jeff White.  
4. "You will miss something while you miss coming to League Sunday night. This means you."

Owen Head, manager of the Wilson Produce Company of Wilson, Texas, spent the week-end with his parents, Mr. and Mrs. Elmo Head, in Muleshoe.

### WEISSMULLER QUITS

Johnny Weissmuller, proclaimed by many as the greatest swimmer of all time, has retired from amateur competition.

### YL News Items

Mrs. S. L. Boles returned last Friday from McKinney, Texas, where she has been visiting her mother, who has been ill for the past year.

Mr. Ramson Robison left New Years Day for Lubbock, where he will enter the Lubbock Business College.

Miss Dottie Witterding returned last Thursday from Nebraska, where she had been visiting for the past three weeks.

The ninth and tenth grades have been studying Masebeth in English class the past two weeks. A trial was held in class Thursday and Friday for the purpose of seeing what part Masebeth played in the murder of Duncan. The Jurors' verdict was that Masebeth was guilty and he was given a life sentence. Maynard Hupp was State's attorney and Dale Buhman was the defendant's lawyer.

Mr. and Mrs. Parsons and family, of Tulla, moved into the YL community last week. They are occupying what is known as the old Lindsey place.

Last Friday morning the ninth and tenth grades entertained the rest of the school with a short chapel program. It consisted of special songs, a dialogue and a reading.

Oleta, Alice, Evelyn and Elmer Witterding entered school here last Friday.

Glady Buhman was absent from school Friday on account of the illness of her mother.

A large crowd attended singing Sunday night. Several Lazbuddy people were present.

Miss Lela Bickel visited her aunt in Plainview Saturday.

### Honor Roll

PRIMARY ROOM—Lola Hupp.  
INTERMEDIATE ROOM—Bobby Beller, Aleene Evans, Lela Mae Lovelady, Jenn Willman.  
HIGH SCHOOL—June Belter.

### AUSTRIA'S PRESIDENT



Wilhelm Miklas, who has succeeded Dr. Michael Hainisch as President of the republic of Austria. He is a member of the Clerical party and formerly was a school teacher.



# Dr. Wortell In New Offices

[CLOVIS, NEW MEXICO]

EAST FOURTH STREET

(AROUND THE CORNER FROM BARRY HARDWARE)

HALF BLOCK OFF MAIN

### TAX THE LOAFER

Theoretically the perfect tax would be on inaction. The proper man to tax would be the loafer, not the worker; idle land, not used land; inactive capital, not enterprise.

Such a tax would not be practical, but it would be a just tax.

Our present taxes are based on an opposite theory.

We tax thrift, action, capital, enterprise.

We levy taxes in proportion to ability to pay, which means that the harder a man works the more efficient he grows, the more we knock him down.

If a man saves his money and buys a house, he is taxed; if he wastes his

money in extravagant living, he is not taxed.

None of our taxes encourage production, by the simple process of discouraging idleness, shiftlessness and inefficiency.

The devil himself could not do a neater job of hobbling the race.—Exchange.

See Mr. Keeney brave great dangers to gain the hand of one he loves in "A Poor Married Man."

Commercial hatcheries thrived in Egypt 2000 years ago. The last 30 years has seen a decided increase of them in the United States. It is now one of the large agricultural industries.

### RESOLUTION

WHEREAS, the City Commission of the City of Muleshoe, Texas, deems it advisable to order special election for the adoption or rejection of the benefits and terms of the General Paving Law, formerly shown as Chapter 11, Title 22 of the Revised Civil Statutes of Texas of 1911, now being Articles 1086 to 1096, both inclusive, and Articles 1104 and 1105 of the Revised Civil Statutes of Texas of 1925, with reference to the construction of permanent street improvements;

THEREFORE, BE IT RESOLVED BY THE CITY COMMISSION OF MULESHOE, TEXAS:

That it is hereby ordered that an election be held on the 28th day of February, A. D. 1929, at which election the adoption or rejection by the City of Muleshoe, Texas, of the benefits and terms of the General Paving Law, formerly shown as Chapter 11, Title 22 of the Revised Civil Statutes of Texas of 1911, now being Articles 1086 to 1096, both inclusive, and Articles 1104 and 1105 of the Revised Civil Statutes of Texas of 1925, shall be submitted.

Said election shall be held at the City Hall in the City of Muleshoe, Texas, and the following officers are hereby appointed to hold same:—  
Presiding Judge—A. V. McCarty, Jr.  
Assistant Judge—J. L. Taylor

and the said presiding judge shall appoint two clerks to assist in holding said election as prescribed by law. The polls at said election shall be kept open from 3 A. M. to 7 P. M., and at said election only resident property tax payers of the City of Muleshoe, Texas, who are qualified voters, shall be allowed to vote. Voting shall be by official ballot as required by law and numbered as required by law in the following form, to-wit:—

#### "OFFICIAL BALLOT"

"For the adoption of the General Paving Law, formerly shown as Chapter 11, Title 22 of the Revised Civil Statutes of Texas of 1911, now being Articles 1086 to 1096, both inclusive, and Articles 1104 and 1105 of the Revised Civil Statutes of Texas of 1925, with reference to the construction of Permanent Street Improvements."

"Against the adoption of the General Paving Law, formerly shown as Chapter 11, Title 22 of the Revised Civil Statutes of Texas of 1911, now being Articles 1086 to 1096, both inclusive, and Articles 1104 and 1105 of the Revised Civil Statutes of Texas of 1925, with reference to the construction of Permanent Street Improvements."

The manner of holding said special election shall be governed by the laws of the State of Texas, regulating regular elections in the City of Muleshoe, Texas.

A copy of this resolution stened by the Mayor of the City of Muleshoe, Texas, shall serve as proper notice of said election and the said Mayor is directed to cause same to be posted at three public places in said City, one of which places is the voting place, and to cause the same to be published in the City of Muleshoe, Texas, for thirty (30) days prior to the time of said election.

The above resolution having been discussed and put to a vote, was carried by the following vote, to-wit:

AYE: Connie D. Gupta, Commissioner

None

PASSED AND APPROVED, this 15th day of January, A. D. 1929.

L. S. BARFON, Mayor, City of Muleshoe, Texas.

ATTEST: IVAN B. MARDIS, City Secretary.

### GRAND CANYON BRIDGE HIGHEST IN WORLD

Flagstaff, Arizona.—Grand Canyon bridge believed to be the highest in the world, was crossed by vehicle Friday for the first time. The bridge spans the Colorado river at Marble Canyon, 4 1/2 miles south of Lee's ferry. It is 450 feet above the water line of the stream. The bridge which provides a shorter route between Arizona and Utah will be dedicated in June. The bridge is 634 feet long and cost approximately \$200,000.

Full application of lime means better crops in 1929 than if delayed until Spring.

### West Camp News

Mr. B. Waller and family spent the holidays with relatives at Wellington and Fort Sumner.

Mr. J. R. Thornton and family spent Christmas at Miami, Texas.

Mr. Everett Smith was taken to Clovis last week for medical treatment.

Mr. and Mrs. John Huber, from Balinger, Texas, visited relatives at West Camp last week.

Mr. Claude Husband, of the Rio Grande Valley, is visiting relatives here.

Margaret Dotson and Marie Smith are absent from school this week on account of sickness.

Ruby Adair has returned from Dallas, where she has been receiving treatment.

Mr. and Mrs. Holland Harris of Melrose, N. M., have been visiting Mr. and Mrs. Haley at the VVN ranch.

Mr. A. C. Haley is in Mexico this week on business.

### NON-STOP FLIGHT PLANNED FOR ARMY ENDURANCE PLANE

Plans have been made for a non-stop refueling flight by the Question Mark Army endurance plane, from San Diego, Calif., to Washington, D. C., as soon as Captain Ira C. Eaker, chief pilot of the plane during its recent record breaking flight, can return to San Diego from San Angelo, where he was called Sunday by the illness of his mother. His father was taken to a San Angelo hospital Monday for an operation.

As a corn borer control measure, plowing must be clean, and the trash must be buried in such a way that none of it will appear or reappear on the surface.

The Journal Office for Commercial Printing

## Home Economics CHOWDER

The kind of feed necessary to put your hens on a paying basis. More eggs for home consumption and some for the market will help materially in solving the problem of home economics.

## MEAT SALT

Of course you will want to kill hogs before the cold weather is over, and we have just what you will need for curing your meat economically and safely—both MEAT SALT and PORK SUGAR CURE. We also handle Kansas and Michigan Meat.

Bring Us Your Grain and Feed and get the very best prices that the market affords.

Bailey County Elevator Company



## Have It in Your Cabinet

You can never tell when you may need any one of several first aid remedies, so the safe way is to have them in your medicine cabinet.

We Serve Sunday Dinners

McCarty Drug Store

## White Front Garage

If your car needs working on, see us for prices.

We can save you 25 to 50 per cent on all mechanical work and guarantee our work to give satisfaction. We also fix flats. Call us.

A. W. COKER

PHONE 7

Road Information Cozy Rest Rooms

You Need Our Service We Want Your Trade

LET'S CO-OPERATE

Here is where you get the famous Continental Oil Products

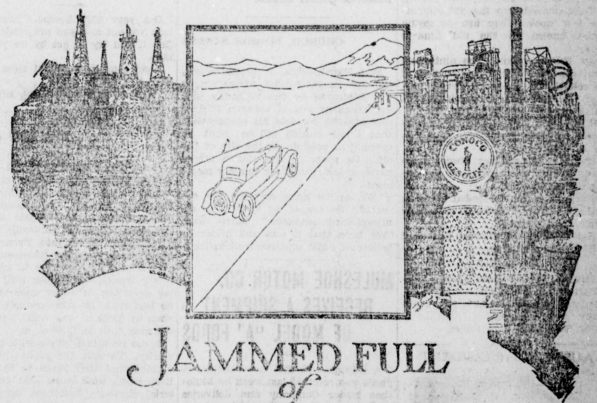
Good Tires and Tubes Worth the Money

WE FIX FLATS

Jones Service Station

"SERVICE WITH A SMILE"

—“There is no Substitute for Experience”—



## JAMMED FULL of START and PULL

The shortest road to motoring satisfaction is the road that leads to the Conoco Pump. Careful selection of crude petroleum to which the latest manufacturing methods are applied explains Conoco's leadership—in quality and results.

Fill at the sign of the Continental Soldier. Then step on it—and go!



1 Starting  
2 Acceleration  
3 Power and Mileage



### What's Doing In West Texas

A deal whereby \$14,400 was the price for a five year lease on the building at the corner of Eighth Street and Hutchinson Avenue in Dalhart was paid recently by G. A. Ladig. Mr. Ladig intends to make big improvements in the inside of the building.

A recently discovered area of pure sand and gravel near Hamlin will be the incentive for the building of ten mile lines to it from the Abilene & Southern, the Orient and the M. K. & T. Railroads. The sand and gravel area is about three miles square and 100 cars of sand a day for several years can be shipped from it.

For the second time in one year the postoffice at Albany has had to be enlarged. Each time one hundred and fifty boxes were added. Albany citizens consider this a good sign of progress. The total number of boxes is now 1356.

A contract has been let for the building in Cleman of a 56x120 foot brick building to house the Whippet-Willys-Knight agency under the direction of W. A. Forgey. A fifty foot space next to this building will be used by Mr. Forgey also.

The Midland courthouse was remodeled this week to handle the vastly increased land and lease sales in Midland and the Midland oil field area. The new abstract offices and chambers for J. M. Gilmore, corporation judge, were created.

Farm demonstration week in Wheeler County during 1928 resulted in a profit saving of \$10,320.90 on dairy cattle, swine and poultry, according to T. R. Brown, county agent. He reports that 518 farms adopted improved practices in poultry alone.

The nail picking machine which is the property of the Highway Department, has been moved from Muleshoe to Otton. The machine is used in this territory exclusively, and is worked on the principal of a huge magnet which gathers metal off the highway so it can be placed where it is harmless.

An up-to-date hatchery for O'Donnell is practically assured, according to H. H. Williams, who intends to install an 18,000 egg capacity Peterman Electric incubator by the 20th of the month. Custom hatching will be done, and a complete line of chicken feed will be handled.

A bond issue of \$150,000 for street improvement was carried at Graham recently. Work is expected to start on the streets as soon as the bonds are sold and include paving, and the hardsurfacing of the highways leading into the town.

Twenty carloads of Kimball County pecans have been shipped by the Schringer-Hodges Company from Junction lately. The last two cars had 33,000 pounds each. The firm has shipped about six hundred fifty thousand pounds and large quantities are being received daily.

Citizens in the fast building resident section in the South part of Big Spring are launching a movement to bring about a sidewalk building program so that free delivery of mail may be extended to that portion of the city. The service will be extended as soon as the property owners meet requirements.

Archer City is experiencing an improvement boom. A new Baptist Church costing \$25,000 is being built, and \$50,000 worth of water and sewer extensions are being installed. Work is under way on the new City Hall and Masonic Temple, to cost some \$20,000.

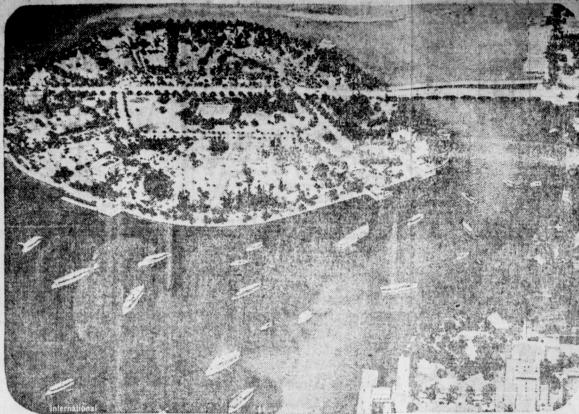
A building of buff brick, concrete and steel, 75x140 feet, is the home of the Ford Motor Company in Plainview. The building has 10,500 feet of floor space which has been utilized for the best possible service to patrons. The office is easily accessible, conveniently arranged and entirely modern.

#### TALKING MOVIES FOR HOME LATEST ENTERTAINMENT.

Synchronized sound and moving pictures are now available for the home as well as the theatre in a simple outfit recently introduced, says Popular Mechanics Magazine. It consists of a small projector, geared to a turntable with tone-arm and electric pick-up which connects the sound from a radio out speaker. Special films and records are provided each month for a fresh supply of entertainment. The unit is operated by an electric current from a lighting socket. Films or records may be run separately if desired.

Fair treatment of customers and better quality chicks from profit-producing stock are the objects of a recently formed hatchery organization. Its members are identified by the slogan, "Hatchery Chicks for Greater Profits."

### Air View of Herbert Hoover's Resting Place



View of Belle Isle, at Miami Beach, Fla., on which is the beautiful J. C. Donny home selected by President Elect Hoover as his residence during much of the time preceding his inauguration.

See! Mr. Coin's Oubton, at the blackface comedian, "Jupiter." Well, I'll be dog-zoned!

**MICK**  
**The Auctioneer**  
Will cry your sales anywhere. References. Come and hear me. Phone thru Dimmitt, P. O. Muleshoe or Flagg.

**O. N. ROBISON**  
**General Auctioneer**  
20 YEARS EXPERIENCE  
Will Give My Services Free to Schools or Societies Giving Box Suppers.  
Muleshoe, Texas. Route No.1

**PUBLIC DRAV**  
**Let Me Do Your HAULING**  
Careful Attention and Your Business Appreciated  
**C. C. RAGSDALE**  
CALL CITY HALL

Any mother-in-law wishing advice as to managing the sons-in-law should see Mrs. Stigham in "A Poor Married Man."

**Lubbock Sanitarium**  
(A Modern Fireproof Building) and  
**Lubbock Sanitarium Clinic**

**DR. J. T. KRUEGER**  
Surgery and Consultations  
**DR. J. T. HUTCHINSON**  
Eye, Ear, Nose and Throat  
**DR. M. C. OVERTON**  
Diseases of Children  
**DR. J. P. LATTIMORE**  
**DR. F. B. MALONE**  
General Medicine  
Eye, Ear, Nose and Throat  
**DR. J. H. STILES**  
**DR. L. P. SMITH**  
General Medicine  
**MES MABEL McCLENDON**  
X-Ray and Laboratory  
**C. E. HUNT**  
Business Manager  
A chartered Training School for Nurses is conducted in connection with the Sanitarium. Young women who desire to enter training may address the Lubbock Sanitarium.

## WE INTRODUCE

# Phillips

# '66'

## TO YOU



**P**HILLIPS '66' has the speed, power, pep and mileage that only a gasoline of Controlled Volatility can give you: Starts right now and keeps on working 100%. She's a fast number and certainly cuts down road hours.

Phillips '66' is one of the Phillips family of better motor fuels and lubricants we're introducing to you. They'll take you many a long but easy mile and keep you smiling with their super performance.

*N. B. Get acquainted with the boys listed below. Any or all of them are good fellows and will be more than happy to supply you with Phillips products. They cost no more.*

## PHILLIPS PETROLEUM COMPANY

### F. HOLLINGSWORTH, Local Agent

**The Muleshoe Journal**  
C. S. HOLLAND, Editor

Entered as second-class matter at the Muleshoe Postoffice under the act of Congress, March 3, 1879.

Resolutions, Cards of Thanks, etc., are charged for at the rate of 10 cents per line.  
Advertising Rates on application.

**SUBSCRIPTION RATES**  
In Bailey County, 1 Year ----- \$1.50  
Outside of County ----- \$2.00

**WITCHCRAFT IN 1929**

Recent reports of "witchcraft murders" in Pennsylvania and Virginia in which the victims were killed because they were supposed to be exerting evil influences upon their neighbors, have again brought to light the unbelievable prevalence of superstition in this land of boasted civilization.

Investigations pursued in consequence of these killings have revealed that in certain sections the belief in "witchcraft and magic" is as common as that which prevailed during medieval times in Europe, or among African natives of the present.

One of the murders recently reported was committed in order to obtain possession of a "magic book," in which was printed: "Whoever carries this book is safe from all enemies; can not die, nor be drowned in any water, nor burn up in any fire," and so on.

It is estimated that in the United States not less than 20,000 professional "priests and priestesses" of voodooism, fortune-telling, and other charlatanism make a living by playing upon the ignorance and credulity of superstitious people. They even number among their dupes many persons of wealth, education and social prestige. There is no accounting for how they get that way.

But, the fact remains that in this good year 1929 America is a land of automobiles, airplanes, radio—and belief in witchcraft.—Cloviss Journal.

**DENTAL NOTICE**

Dr. Frost, Dentist of Amarillo, will be in Muleshoe again Monday, Feb. 4th, for one week. Moderate prices, all work guaranteed.

Mrs. Harold Weyer is the "College Reporter" and will keep you posted on "A Poor Married Man."

If the hens on your farm are not producing profits, the stock is likely at fault. Sell the poor layers and replace with good stock.

**THEME OF CONTRASTING MATERIALS EXPLOITED IN MIDSEASON MODES**



Frocks made of contrasting materials are rated among those most fashionable. The contrast is not always in color, but the very nature of the fabrics strike a widely different note.

Many of the most successful modes combine velvet with chiffon. In most instances the velvet and the sheer fabric are of identical color. The contrast is nevertheless striking because of the materials differing so completely.

Satin with velvet is also proving a very happy combination. The gown in the picture allies silver gray rayon satin with black transparent velvet. Not only in this instance is color contrasted, but materials as well.

An unusual sheer treatment marks the styling of this dress. While it is observed it bespeaks a trend which is extreme, though not always to such a striking degree, in the fashioning of spring modes. That is, entire sections of contrasting fabrics are seamed together in novel ways, giving a half-half effect.

The idea works out pleasingly with yokes, which are often very deep and

are seamed to a fabric of a different sort. This vogue especially manifests itself in evening and dinner gowns of velvet, the upper blouse portion being either of silk or all-over lace or of flesh-tinted chiffon when transparency is wanted.

There is considerable practicality in the idea of using two materials together, especially if one makes over one's dresses, it is possible at this time of the year to pick up handsome remnants at greatly reduced prices. The thought that there may not be enough for a blouse or frock need not enter into the case, since fashion so enthusiastically encourages the working of two or more materials together.

The plan of using contrasting materials is also manifesting itself in regard to washable fabrics. The advance spring styles as indicated even now among northern winter resort modes advocate the use of sheer handkerchief linen with linen of a heavier weave. Many gay ginghams, too, are collared and cuffed and otherwise trimmed with either plique or organdy.

JULIA BOYD TOMBLEY.  
(©, 1929, Western Newspaper Union.)

**Vigilant Law Officer Had Seen 'Em Doing It**

Spreading across the country from Los Angeles to New York by motion, two motion-picture celebrities were held up by the constable in a small town and, as usual, the officer had all the advantage on his side. He refused to give them a ticket and finally compromised by taking them directly before the judge.

The constable was very hot under the collar and declared he would make it hot for them, but the couple were hardly prepared for the outraged officer's charge in court.

"Your honor," he announced pompously, "this is a couple of motion-picture people and the charge I'm preferential against them is arson."

"Arson?" roared on of the accused. "What do you mean? We were never out of our car till you fagged us."

"You was burnin' up the road, an' I'm preferin' the charge of arson against you," insisted the constable, and even the court had to laugh at he let them off with a five dollar fine.

**Historians Unable to Place Queen of Sheba**

The nationality of the queen of Sheba, mentioned in the Bible in connection with a visit to King Solomon, is unknown for certain. It is supposed, however, that "Sheba," is merely a variation of the word "Saba," which was the name of a country on the Red sea in southwestern Arabia. This region is now known as Yemen. The Sabaeans were dark-complexioned white people and belonged to the same general family of mankind as the Hebrews. They had extensive colonies in Africa, where they mingled with the Ethiopians, with whom they are sometimes confused. The Sabaeans have a tradition that the queen of Sheba who visited Solomon was a monarch of their country and their royal family claims descent from Menesek, an alleged son of the queen of Sheba by King Solomon. The queen who made herself famous by her spectacular visit to King Solomon was very likely the same person known in history as Queen Balkis of the Sabaeans.—Pathfinder Magazine.

**Wild**

Dave and a group of other country lads were spending the afternoon trying to yoke up a couple of calves. Try as they would, they could catch only one calf, so Dave volunteered to be the yoker up with it. The frightened animal immediately bolted, as soon as the straps were tightened, taking the yoked and helpless Dave along with him. They went crashing into trees and banging against fences, bumping and thumping. As soon as the other boys could recover a little from their roles of laughter, they set out to capture the assorted pair, and were advancing toward them, when the human half, in a warning tone, roared: "Come up easy, boys! We're wild as heck!"

**Animal Weather Prophets**

The cat always has been regarded by observant people as a reliable weather prophet. When kitty ruses around with her ears, curving high in the air, they say "pussy has wind in her tail, it's going to blow." Fishermen declare that the cat and seafish as a weather prophet, cannot compare with pigs. A pig pig in the goddishing bark Seawell foretold storms in the Far North with such accuracy, they assert, that he saved the lives of all on board three times. Hours in advance of a storm, the pig would run to and fro on deck squealing and leaping sideways. The fishermen made their preparations accordingly, and on each occasion, the storm failed to take them unawares.

**Wayside Inn**

There are a number of reasons why Americans have a special sentiment for the Wayside Inn, a tavern at whose doors many notable visitors have asked hospitality—George Washington, Marquis de Lafayette, Daniel Webster. It was so well known for its good service and good cheer that Longfellow chose it as the meeting place of the friends that recounted the rhymed narratives called "Tales of a Wayside Inn." Longfellow used occasionally to go there to spend the night and to enjoy the companionship of Landlord Howe.

**Active Centenarian**

Although just one hundred five, Daniel Robinson of Maghera, Ireland, is still busy fishing. He seldom misses a day with hook and line, and when out fishing with his grandson recently caught twenty pike. Robinson lives with his son who is seventy-five, and both draw obituary pensions. In the house next to him are his granddaughters and baby great-grandson. The aged man declares that he has never been sick a day in his life. He does not smoke, drinks very little and prefers butter-milk to porter.

**Wid to Get Clean Shirts**

In the course of a trial in Brighton, England, a police court judge asked a man if he never loved his wife who he married her. The accused has heard his head's answer was, "To get a clean shirt." The astonished magistrate requested him to do the household washing for one year, and told the aggrieved wife to report to him if the man didn't do a good job. The magistrate's parting remark was, "Now you will have clean shirts."

**A Pocketbook Is Strong---But A Bank Account Is Stronger**



**FIND THE WAY EARLY**

Every boy should find the way to the Bank patronized by his father. And his father should find the way to show his son the tremendous importance of saving early in life. It is the stepladder to success.

Open a Bank Account for your boy and see that he wears a path to the Receiving Teller's window!

For it is likewise the pathway to Influence and Success.

**Blackwater Valley State Bank**  
MULESHOE, TEXAS  
"There is No Substitute for Safety."

**Your Insurance Business Appreciated**

All Kinds Written, Old Line Connections

**J. E. ALDRIDGE**

Office at the Blackwater Valley State Bank

**Treat Your Suit Right**

And never again let it look like a fright. It is fine to feel as you go down the street. That your newly cleaned suit looks so neat. And you sort of feel that you did your suit wrong. By letting it go uncleaned so long. And you resolve that you'll treat that suit right.

**Muleshoe Tailor Shop**

**If You Want GROCERIES**

You can do no better than trade with us. Here you get the best quality and our prices are right.

**PHONE US YOUR ORDERS**



**Gupton Grocery Co.**  
Phone No. 4 Free Delivery

**DURABILITY THAT'S FIRESTONE**

Add to this, COMFORT and Mileage and you have the three reasons why car owners prefer Firestone Tires.

**The Special Gum-Dipped Process**

which goes into the making of Firestones gives you sure traction and skid protection at all speeds. Ask the Racing Drivers---they know.

**OUR CLEAN, FRESH STOCK OF TIRES**

assures you of the very best at all times. Order a set TODAY.

**FIRESTONE**  
"Most Miles per Dollar"

**Muleshoe Motor Company**

CARS TRUCKS



SAY! LET WEAVER DO YOUR TIRE AND TUBE WORK Muleshoe, Texas

# Just Received!

## LADIES' SPRING COATS

## DRESSES AND HATS

They Are New & They Are Snappy  
They Are Reasonably Priced

# THOMPSON'S

PAY THE CASH—AND PAY LESS

MULESHOE

TEXAS

The Journal Office for Commercial Printing

## Calling Your Attention....

To the fact that we are in position to pay you more money for your COTTON SEED.

We are now buying Remnants and it will pay you to see us before selling. . . . .

MULESHOE GIN COMPANY

## Merit Brand Feeds

You are losing money every day you fail to feed your hens the wholesome, egg-producing food that they need. Merit Brand Feeds have the proper ration for your hens. Try a sack of it and see for yourself.

We Pay the Best Market Prices for Grain and Feed

And are glad to co-operate with the farmers at all times in the marketing of their crops and in every way possible for their better welfare.

We can still supply you with Wright's Smoke Salt and Meat Cure, and Lilly Brand Table Salt.

Muleshoe Elevator Co.  
MULESHOE, TEXAS

## WEST TEXAS HIGH SCHOOL GIRLS TOURNAMENT TO BE AT SNYDER, FEB. 14, 15, 16

The Muleshoe Girls High School basketball team has been officially invited to attend the West Texas Girls High School Basketball Tournament that will be held at Snyder February 14, 15 and 16 under the sponsorship of the Snyder Lions Club. Plans are being laid to entertain more than fifty girls teams during the three days.

R. H. Schulze, Dallas, southern commissioner for the A. A. U., was in Snyder recently to complete preliminary plans and expressed satisfaction for the fine basketball floor and gymnasium that will be provided during the visit in Snyder of West Texas girls teams.

Six huge loving cups of solid gold and silver, one of which is the actual size of a basketball made of gold is first prize; a silver ball of the same dimensions is second prize, and the four other major prizes are huge loving cups standing waist high. In addition there are three sets of small gold and silver basketballs.

Visitors to Snyder will be privileged to visit the new \$10,000 athletic stadium only recently dedicated by Snyder High School which is said to be the finest outside of college fields in the State of Texas.

Snyder is located in Scurry County on the main line of the Santa Fe railroad and on State Highways Nos. 83, 7, and 101. Teams coming over the Broadway of America should turn off at either Colorado, Roscoe or Sweetwater. Snyder is easily accessible from all points in West Texas.

Arrangements for the entertainment of teams and visitors will be in charge of a committee of the Federated Clubs and Parent-Teachers Association backed by the entire citizenship of Snyder.

Housing for anywhere between five and eight hundred girls with their coaches and escorts will be completed by a special committee whose headquarters will be with the Scurry County Chamber of Commerce.

Officials for the games which will start in early Thursday morning, continuing game after game into the night, will be entirely picked and selected by state officials of the A. A. U.

The coming Snyder tournament will be the largest attended athletic event of more than one day's duration ever handled in West Texas, and it is Snyder's aim to have every detail-worked out to electric precision that visitors may enjoy every moment of their stay.

Joining in the welcome to all West Texas is included City Supt. C. Wedgeworth, president Lions Club; County Supt. A. A. Bullock, general chairman of the tournament and president of the Scurry County Chamber of Commerce, together with every civic, fraternal and social organization of the city and county, who are lending their influence and invitation to the teams and visitors from West Texas to come to Snyder February 14, 15 and 16.

### SOAP FROM WASTE FRUIT

Avocado, not up to market standard, contain oil that can be successfully utilized in the manufacture of hard soap, chemists of the department of agriculture have discovered, says have shown that the oil does not become rancid even after a year's storage under ordinary conditions.

See Mrs. Keeney as the "ideal" housewife—so modest, kind and affectionate to the Poor Married Man.



# Shop Here and Save!

In addition to getting groceries of the first quality when you shop here, you enjoy the added advantage of buying them for less money. Plan to shop here for a month and see what you save.

## OUR SUPPLY OF Fruits and Vegetables IS COMPLETE

and we utilize the proper methods for preserving their purity and freshness and for keeping their edible qualities always at the best.

HEADQUARTERS FOR EVERLITE FLOUR

## Henington's Cash Grocery

MULESHOE, TEXAS

### DO YOU WANT TO ATTEND A BUSINESS COLLEGE

Realizing that a great number of young people are deprived of an opportunity of attending a business college because of the lack of money, our STUDENT LOAN FUND ASSOCIATION was created for the express purpose of furnishing the necessary help to worthy boys and girls.

We have selected the Tyler Commercial College of Tyler, Texas, as the college we can most consistently recommend. This is one of the oldest business schools as well as one of the most widely known for its thorough work and its successful graduates out in the world of business.

We have made arrangements with the Tyler Commercial College by means of which we can take care of a limited number of young people through our loan fund.

If you are in good standing in your community and can furnish the best of references, we shall be glad to help you. We have helped a number of deserving young people in the past who are now independent wage earners and enthusiastic boosters for our Association.

We are especially interested in helping young men and young women who have been forced on account of financial reasons to drop out of high school or college.

In order to receive help from this Association it is only necessary to clip the coupon attached and mail it to us or to the Tyler Commercial College. We can then work out a plan whereby you will be enabled to enter the College even though your funds are limited.

Clip out the coupon and mail it today either to Tyler Commercial College, Tyler, Texas, or to:

THE STUDENT LOAN FUND ASSOCIATION, Box 826, Tyler, Texas.

Name.....

Address.....

### DENTAL NOTICE

Dr. Frost, Dentist of Amarillo, will be in Muleshoe again Monday, Feb. 4th, for one week. Moderate prices, all work guaranteed.

Mr. and Mrs. H. C. Edmonds spent Tuesday in Lubbock.

Miss Saunders spent the week-end in Clovis with home folks.

Curtis Taylor was attending to business affairs in the city toe first of the week.

Mrs. James Smock and grandson Billie, of Clovis spent Monday with her daughter, Miss Saunders.

Could you imagine Mr. Aldridge as a poor country doctor? He only had a small practice in "A Poor Married Man."

### DENTAL NOTICE

Dr. Frost, Dentist of Amarillo, will be in Muleshoe again Monday, Feb. 4th, for one week. Moderate prices, all work guaranteed.



## The Lumber For the New Home You Are Planning

When it comes to selecting the lumber for your new home, you need not even think about it—just tell us what you would like and leave the selection up to us. We will guarantee you satisfaction with the results.

E. R. Hart Lumber Co.  
Coal, Hardware, Furniture.....McCormick-Deering Implements

**TEXAS AND TEXANS**

By Will H. Hayes, Austin, Texas.

**Busy Times Ahead**

It is evident that the present session of the Legislature will be a most busy one if the legislators attend closely to the business that will be before them. The University oil lease matter will have to be ironed out, and whatever final disposition may be made of it there is sure to be some dissatisfaction.

West Texas is not the only part of the State that is concerned about water rights legislation. It is very evident that the people of Texas want a law that will clearly give domestic consumers and irrigators their rights over power users, and they are going to be insistent on a bill without any fakers in it.

Austin is crowded with people interested in legislative matters and every one is doing his best to create the impression on legislators that his particular measure is the one of greatest importance to the State. The lot of the representative who is conscientiously trying to serve the people of the State is by no means an easy one.

**Railroad Expenditures**

Texas railroads are spending a great deal of money now on the improvement of their lines throughout the State. They are having to keep a somewhat uneven pace with the development of public highways. The Cotton Belt has been authorized to spend more than \$2,000,000 on its line from Tyler to Mount Pleasant and announces that it will spend about \$5,000,000 more this year in rebuilding its tracks. Other roads are busily improving their lines and all of them are expecting an increased Texas business in 1926.

**Helpful Moisture**

Mother Nature has started in the New Year by being good to Texas by providing an abundance of snow and rain in most parts of the State and distributing it in a way to do the most good. Copious snow rains have fallen in most parts of Texas, starting the grain crops off well in their growth and enabling the farmers to do their winter plowing to best advantage. Every indication is that 1926 is to be the "best yet" for Texas.

**Showing Trade Growth**

The San Antonio Chamber of Commerce has been keeping data on the mileage traveled by retail buyers who go to San Antonio to buy their stocks, and finds that it is increasing. In 1923 the average distance traveled was only 87 miles, while in 1924 it had increased to 220 miles. These figures show that the people travel far to trade in San Antonio. Perhaps every progressive city and town in Texas could make a like showing. People now go long distances to get to trade with merchants who show that they are anxious to extend their trade. It's the non-progressive, self-satisfied, non-advertising burg that is passed up by the thousands who go out bargain seeking with those who let them know they are offering inducements to broaden their business.

**Ahlens Wants Airport**

San Angelo having formerly dedicated an airport, Ahlens is now proposing a \$100,000 bond issue that may build a municipal airport. The increased interest in flying will soon require every place to have suitable landing fields. It is truly predicted that Texas towns of 10,000 and more population will soon have air mail service, provided they arrange for municipal landing fields. Notwithstanding the fact that Austin had two private airports, that city was required to acquire a field of its own as a condition to air mail service. The reduction of air mail postage to 5 cents is rapidly increasing the air mail business everywhere.

**Onion Crop Increased**

The Texas Burmuda onion crop has been increased 15 percent this season or to nearly 20,000 acres. The crop is in fine condition and gives promise of an unusual yield. In the last ten years onion growing in Texas has become an important branch of truck farming, experimental growing having started about ten years ago near Laredo.

**Texas Needs Industries**

Nearly every chamber of commerce in Texas has made a public statement that the greatest need of its community for 1926 is more industries. It is recognized that for a place to prosper its industries must keep pace with farming development, yet there are but few Texas localities where this has been accomplished. Officials of the chambers of commerce should endeavor to find just what special industries can be best developed in their immediate sections and then set about vigilantly to promote them. The trouble is that there is too much "pistol-shooting" in the matter of securing industries, the result being that little or nothing is accomplished.

**Cheese Factories**

The two Texas towns that were first to secure cheese factories. Last year showed how to go about getting in-

tries. The places were Round Rock and Buda, both near villages near Austin. Cheese factories do not require much initial capital—\$10,000 or \$20,000—but they stimulate dairying and that scatters money throughout the community. These small towns suit these factories because they were able to handle the business of vasting their efforts on industries that cost a half to a million dollars and which were beyond their means. Round Rock and Buda will be ready to undertake something else worth while this year, having succeeded with their cheese plants.

**Kerens Gets Gas**

Kerens is among the smaller cities that announce that it will soon be supplied with natural gas. There is such an abundant supply of gas in Texas and natural gas gives such an ideal heat that it seems every town would busy itself in securing this great convenience and comfort to modern life.

**Paper Waste**

School children at Cisco will collect all the old papers and magazines in that city and sell them to get money to assist them in building a school gymnasium. The paper brings about \$2000 a carton. There is hardly a town in the country in which a carload of paper could not be gathered almost any time by systematic effort. Schools everywhere would profit by having an annual or semi-annual paper gathering and at the same time would help housewives to keep their places cleaner. The needless paper waste of the country runs into millions of dollars.

**Useful Man Gone**

When A. B. Spencer died Texas lost a useful man. His father was a railroad man who had suffered financial reverses. Young Spencer was trained to the railroad business and coming to Texas in early life he became a station agent at Childress. Later he was the leading factor in the building of the Lubbock and Crosbyton railroad, now a part of the Santa Fe. He served as president of the West Texas Chamber of Commerce. He gave of his time, his intellect, his strength to the building of Texas and did his work unselfishly. Such men are few.

**Save the Painted Rocks**

The town of Paint Rock, near which are more than 1,000 rocks painted in pictographs by early Indians, is taking steps to save the paintings from destruction at the hands of thoughtless persons who scratch and otherwise deface the pictures. These pictographs are a part of Texas history that should be preserved.

**HOOVER NOT WITHOUT PRACTICAL FARMING EXPERIENCE**

Herbert Hoover, President-elect of the United States, will not be without practical farming experience when he comes to work out farm relief measures during his term of office. Although little was said about it during the recent campaign, he has owned a 133 acre farm in California since 1920 and he has operated it not only as a business enterprise, but also as a base for practical agricultural experiments. Diversified farming is a fundamental part of the Hoover program. Here is how the Hoover farm operations are divided: Vineyards, 438 acres producing 10 varieties of table grapes with a yearly output of about 600,000 pounds; between 60 and 320 acres of cotton; 300 acres in alfalfa, yielding seven tons to the acre, and cut seven times a year; 150 acres in potatoes; 130 acres in peaches producing 16,000 pounds to the acre; 80 to 120 acres in corn; 60 or more acres in watermelons and muskmelons; 90 acres in Spanish onions; 40 to 60 acres in spinach producing about 900,000 pounds a season; 40 to 60 acres in sweet potatoes; 70 acres in apricots.

In addition there are about 2500 laying hens, 200 sows and 150 cows. As many as 200 employees are at work during peak harvesting seasons, and the annual payroll is about \$75,000. Considerable experimental work is done on the farm, and a good part of this has been in connection with poultry work. In accordance with the most modern farm poultry methods and in the interests of economy and profits, the Hoover stock is replenished each year with baby chicks secured from hatcheries. Eggs are marketed regularly, the income from this source proving considerable, since only the best of high egg-laying stock is used to make up the laying flock. The usual culling and marketing of broilers adds another source of profit, and removes the "loafers" from the flock, thus giving increased egg production at less feed cost. Most recent experimenting on the Hoover farm has to do with the hog-raising industry, the present herd of 300 sows being the nucleus for further expansion and experimental work.

President-elect Hoover owns this farm jointly with Ralph Merritt. The farm is located about 100 miles south of San Francisco and 150 miles north of Los Angeles, on the main line of the Santa Fe Railway. It is three miles south of the little town of Wasco, and is one of the largest cultivated ranches in that vicinity.

Have you heard about the Poor Married Man?

**EARLY CHICKS NET MOST PROFIT, EXPERTS DECLARE**

The farmer or poultry raiser who does not obtain chicks early in the year, thinking to obtain reduced prices on chicks in May or June, is practicing false economy, and is actually taking money out of his own pocket. In the opinion of market students and poultry experts familiar with the egg and poultry market. In addition to taking certain loss in profits, he has no assurance that chick prices will be lower in early summer than they were in early spring.

Change in market conditions during the past few years has made October and November the high-priced egg months, study of figures shows. This came about because more and more folks have learned how to produce winter eggs. The great majority, however, have not yet learned how to take care of their pullets through the summer and early fall to bring them to laying age in time for the October and November markets, which are now the peak markets of the entire year.

If the poultry raiser holds off on purchase of chicks until summer he forfeits any chance of having his pullets in laying condition in time to take advantage of the high egg prices prevailing in the Fall and Winter. Those who raise Leshorns, and depend upon their egg production to build up the family bank account, should have their baby chicks under the hovey not later than the first week in April. The heavier breeds, such as Rocks, Rhode Island Reds, and similar breeds should be started at least a month earlier. When this plan is followed, and the chicks have a nice grassy range, plenty of good feed, and a liberal supply of milk, the flock owner can generally depend on having his houses full of laying pullets in early October, in time to take advantage of the high Fall prices.

How would you like to see Rev. Mr. Hicks as a "hen-pecked" husband? Then see "A Poor Married Man," at the Auditorium Thursday, day, Jan. 24th.

**BASEBALL SEASON AT TEXAS U OPENS MARCH 6**

Austin, Texas. — Opening with the New York Giants on March 6, the University of Texas baseball team will play the New York Yanks, the Oskans team from Japan, teams from the Middle West and possibly one or two Texas League teams before the practice schedule is completed. Negotiations are in progress with Notre-Dame, Illinois, Michigan and the University of Chicago in an effort to bring them to Austin for a series. The schedule as it now stands is as follows: New York Giants in Austin, March 6; T. C. U. in Austin, March 27-28; S. M. U. in Austin, April 8-9; Rice in Houston, April 5-7; A. & M. in Austin, April 12-13; Baylor in Waco, April 17-18; Baylor in Austin, April 20-27; Oskans in Austin, April 29-30; T. C. U. in Fort Worth, May 3-4; Rice in Austin, May 15-16; A. & M. in College Station, May 20-21.

**TEXAS TECH COLLEGE ENROLLMENT REACHES 1994**

Lubbock, Texas. — The enrollment for the year at Texas Technological College has reached 1994, and the registrar has received credits already from mid-year high school graduates to run the enrollment above the 2000 mark. The Avalanche-Journal Publishing Company has agreed to pay the fees of the two-thousandth student.

The Order of the Eastern Star presents "A Poor Married Man" at the High School Auditorium on Thursday, January 24th. This brings to your minds the hardships of a newly married man who has to contend with an overbearing "mother-in-law." Don't fail to see this as it portrays home life by home talent.

Select corn at husking time, if it was not selected from the standing plants. The poorest place to select seed corn is from the crib at planting time.

Send Your Abstract Work  
—To The—  
**Muleshoe Abstract Company**  
A. P. STONE, Prop.  
MULESHOE, TEXAS  
Agent for Warren Addition

**E. L. Menefee, M. D.**  
PHYSICIAN and SURGEON  
MULESHOE, TEXAS

**R. L. BROWN**  
The Land Man  
Lands, Oil Leases  
Royalties

**Bailey County Abstract Company**  
L. S. BARRON, Manager.  
(ESTABLISHED IN 1900)  
Abstracts, Loans, all kinds of Insurance and Conveyancing. All matters pertaining to land titles given prompt attention.  
(Member Texas Abstracters Association; Also Member Association of Title Men)

**A. R. Matthews, M. D.**  
Physician and Surgeon  
MULESHOE, TEXAS  
STATED MEETING of Muleshoe Masonic Lodge, 2nd Tuesday night in each month. VISITORS WELCOME  
W. T. BLACK, W. M.  
J. B. ROBERTS, Sec.

**Muleshoe Nat. Farm Loan Association**  
—No. 3943—  
L. S. BARRON, Secy.-Treas.  
I. W. HARDEN, President  
J. J. LAWLER, Vice-President  
Loan Committee  
T. L. SNYDER  
W. G. KENNEDY  
S. E. MORRIS

**Farm and Ranch Loans**  
5 per cent Interest—36 Years Term  
A Mortgage that never comes due.  
SEE US FOR LOANS



**More TIRE Miles FOR LESS TIRE MONEY**

Goodyear All-Weathers if you want the best. Goodyear Pathfinders if you want maximum quality for minimum cost. Goodyear Regular, Heavy Tourist and Pathfinder Tubes to match them all. We're stocking them. Servicing them. And selling lots of them to Muleshoe motorists who check tire costs carefully.

More people ride on **GOODYEAR TIRES** than on any other kind

**VALLEY MOTOR COMPANY**  
MULESHOE, TEXAS



# DON'T BE MISLED!

We are delighted to quote the following prices on the NEW CHEVROLET "6", fully equipped (bumpers, moto-meter, spare tire) and full of gasoline and oil, ready to go.

- Coupe . . . \$740.00
- Coach . . . \$740.00
- Sedan . . . \$820.00
- Cabriolet . . . \$840.00
- Landau . . . \$870.00
- Roadster . . . \$670.00
- Phaeton . . . \$670.00
- Truck-Cab . . . \$755.00
- Sedan Delivery . . . \$740.00

## What a Whale of a Difference A Few Dollars Will Make!

We are delivering these new cars NOW. Get your order in early for immediate delivery.

For Economical Transportation



"A SIX IN THE PRICE RANGE OF THE FOUR"

## VALLEY MOTOR COMPANY

MULESHOE, TEXAS

### Make Cotton Meet the Mill Demand

STAPLE LENGTH IN INCHES	PER CENT OF TOTAL
1 1/4	2.50
1 1/2	10.00
1 3/4	25.00
2	57.50
2 1/4	4.00
2 1/2	2.50
2 3/4	1.00
3	0.50
3 1/4	0.50
3 1/2	0.50
3 3/4	0.50
4	0.50
4 1/4	0.50
4 1/2	0.50
4 3/4	0.50
5	0.50
5 1/4	0.50
5 1/2	0.50
5 3/4	0.50
6	0.50
6 1/4	0.50
6 1/2	0.50
6 3/4	0.50
7	0.50
7 1/4	0.50
7 1/2	0.50
7 3/4	0.50
8	0.50
8 1/4	0.50
8 1/2	0.50
8 3/4	0.50
9	0.50
9 1/4	0.50
9 1/2	0.50
9 3/4	0.50
10	0.50
10 1/4	0.50
10 1/2	0.50
10 3/4	0.50
11	0.50
11 1/4	0.50
11 1/2	0.50
11 3/4	0.50
12	0.50
12 1/4	0.50
12 1/2	0.50
12 3/4	0.50
13	0.50
13 1/4	0.50
13 1/2	0.50
13 3/4	0.50
14	0.50
14 1/4	0.50
14 1/2	0.50
14 3/4	0.50
15	0.50
15 1/4	0.50
15 1/2	0.50
15 3/4	0.50
16	0.50
16 1/4	0.50
16 1/2	0.50
16 3/4	0.50
17	0.50
17 1/4	0.50
17 1/2	0.50
17 3/4	0.50
18	0.50
18 1/4	0.50
18 1/2	0.50
18 3/4	0.50
19	0.50
19 1/4	0.50
19 1/2	0.50
19 3/4	0.50
20	0.50
20 1/4	0.50
20 1/2	0.50
20 3/4	0.50
21	0.50
21 1/4	0.50
21 1/2	0.50
21 3/4	0.50
22	0.50
22 1/4	0.50
22 1/2	0.50
22 3/4	0.50
23	0.50
23 1/4	0.50
23 1/2	0.50
23 3/4	0.50
24	0.50
24 1/4	0.50
24 1/2	0.50
24 3/4	0.50
25	0.50
25 1/4	0.50
25 1/2	0.50
25 3/4	0.50
26	0.50
26 1/4	0.50
26 1/2	0.50
26 3/4	0.50
27	0.50
27 1/4	0.50
27 1/2	0.50
27 3/4	0.50
28	0.50
28 1/4	0.50
28 1/2	0.50
28 3/4	0.50
29	0.50
29 1/4	0.50
29 1/2	0.50
29 3/4	0.50
30	0.50
30 1/4	0.50
30 1/2	0.50
30 3/4	0.50
31	0.50
31 1/4	0.50
31 1/2	0.50
31 3/4	0.50
32	0.50
32 1/4	0.50
32 1/2	0.50
32 3/4	0.50
33	0.50
33 1/4	0.50
33 1/2	0.50
33 3/4	0.50
34	0.50
34 1/4	0.50
34 1/2	0.50
34 3/4	0.50
35	0.50
35 1/4	0.50
35 1/2	0.50
35 3/4	0.50
36	0.50
36 1/4	0.50
36 1/2	0.50
36 3/4	0.50
37	0.50
37 1/4	0.50
37 1/2	0.50
37 3/4	0.50
38	0.50
38 1/4	0.50
38 1/2	0.50
38 3/4	0.50
39	0.50
39 1/4	0.50
39 1/2	0.50
39 3/4	0.50
40	0.50
40 1/4	0.50
40 1/2	0.50
40 3/4	0.50
41	0.50
41 1/4	0.50
41 1/2	0.50
41 3/4	0.50
42	0.50
42 1/4	0.50
42 1/2	0.50
42 3/4	0.50
43	0.50
43 1/4	0.50
43 1/2	0.50
43 3/4	0.50
44	0.50
44 1/4	0.50
44 1/2	0.50
44 3/4	0.50
45	0.50
45 1/4	0.50
45 1/2	0.50
45 3/4	0.50
46	0.50
46 1/4	0.50
46 1/2	0.50
46 3/4	0.50
47	0.50
47 1/4	0.50
47 1/2	0.50
47 3/4	0.50
48	0.50
48 1/4	0.50
48 1/2	0.50
48 3/4	0.50
49	0.50
49 1/4	0.50
49 1/2	0.50
49 3/4	0.50
50	0.50

Cotton farmers could add appreciably to their income from this crop by producing the types of cotton spinners want, and marketing it on a quality basis, states the Sears-Roebuck Agricultural Foundation. The evidence shows that American mills use better cotton than the average of the grades and staples produced in the United States and the mill demand for higher quality lint is increasing. Premiums paid by spinners for high quality cotton range up to 8 to 8 cents for strict middling 1 1/2 inch staple over the price paid for middling 3/4 inch cotton.

Of the 6,519,865 bales of upland cotton consumed by mills in the United States in the year ending July 23, 1928, \$16 per cent were from 3/4 to 1 1/2 inch in length, according to the United States Department of Agriculture. Cotton measuring 1 inch or more made up 14 per cent of the total, while only 1.4 per cent was under 3/4 inch. In grade, \$2.4 per cent of the consumption ranged from strict low middling to good middling.

No equally comprehensive record of the crop grown in Australia is available as yet, but partial reports and the comments of mills show that growers are producing much more cotton 3/4 inch or less in length than mills need. This short cotton is largely exported and must sell abroad in competition with cheap cottons from China and India, produced by low-paid labor.

Georgia mills consume about as much cotton as is grown in the state, but only about 25 per cent of the cotton used is 3/4 inch or under while about 80 per cent of the crop grown is 3/4 inch or under. Hence, it becomes necessary for the mills to go outside the state for the bulk of their requirements, adding materially to freight costs. In representative Texas counties, 14.7 per cent of the staples of part of the 1927 crop were found to be under 3/4 inch while such cotton made up only 1.4 per cent of the national consumption, and 28 per cent of ginnings were 3/4 inch cotton against consumption of 25.8 per cent of that length.

Usually varieties of cotton 1 1/2 to 1 3/4 inch in length yield more per acre than the longer staple varieties or those under 3/4 inch. This lower yield must be considered in determining how far growers can go in trying to raise the longer staple. In general it is suggested that varieties ranging to 1 1/2 inch staple should be more widely used.

In good seasons, they may produce 1 to 1 1/2 inch staple, but in poor years they may drop to 1 1/2 inch. Varieties of upland cotton producing above 1 1/2 inch staple frequently fall so far in yield that the increase in price is more than even offset, giving a lower value per acre.

Unfortunately, much of the cotton crop is sold in local markets at a "hog-round" basis of middling cotton of 3/4 inch staple. In such markets, growers who have produced cotton of superior quality and length do not get the benefit of the premium which spinners pay for such cotton. This method, coupled with the higher yield of shorter cotton, discourages improvement. Cotton sold through co-operative associations is sold on a graded basis and it is probable that the tendency to sell a premium for superior cotton in local markets is increasing.

The Foundation adds that to make the movement to improve the quality of cotton wholly successful it will be necessary to develop varieties of 1 1/2 inch or longer staple that will permit the shorter cotton in yield and the practice of paying each grower for the kind of cotton he delivers must be more generally used.



### Just Phone

IT IS NECESSARY FOR YOU TO STEP OUTSIDE OF YOUR HOME WHEN YOU DESIRE LAUNDRY SERVICE.

### Phone Us

AND LET US DO YOUR LAUNDRY WORK FOR A FEW WEEKS. THEN YOU WILL KNOW THE ECONOMY OF OUR PLAN.

## Muleshoe Laundry

## PURITY SEED FARM

W. M. Pool & Son

11 MILES SOUTH OF MULESHOE

We have the following Seeds for you, which are pure, and have been inspected and certified, also State tested:

Hegari, Sumac Red Top Cane Dwarf Yellow Milo, Black Hull Kaffir.

\$3.00 Per Hundred, thresher run.

\$3.50 Re-cleaned

\$4.00 Re-cleaned and treated for smut.

Sur Cropper Corn, \$2.00 a bu. All seeds sacked. Don't wait until it is too late. Buy your planting seed now.

## TO THE FARMERS OF MULESHOE TERRITORY

The Muleshoe Produce is now under new and efficient management. You will find a clean and sanitary house and you will receive courteous and instant service. A good Produce House is a necessity and a convenience for farmers, the value of which, to the community, is hard to estimate. Bring us your cream and we guarantee an honest test and full weight. We also want your Hides, Chickens and Eggs.

## MULESHOE PRODUCE CO.

Elmo Head, Mgr.

## We're Still On the Job

Paying the Best Prices  
for your

Kaffir, Maize, Sudan and Corn

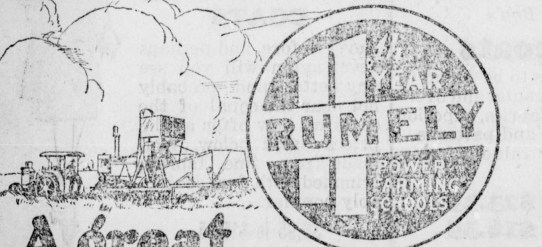
We are prepared to handle your grain economically and efficiently. Don't fail to get our prices before you sell.

## LARIAT GRAIN CO.

L. SIKES, Mgr.

Thrilling! Interesting!  
Instructive! FREE!

Don't miss it!



A great day for farmers

AT MULESHOE JANUARY 31st, AT LONE STAR THEATRE

You are living in an age of power farming. It's up to you to "Know your power farming machinery!" Come and get a wonderful short course in the operating, adjusting, repairing, design and construction of power farming machinery. Miles of thrilling, interesting movie film, synchronized with lectures, clearly explain to you every inside working part; tell you how to diagnose trouble and correct it; how to eliminate delays, avoid costly mistakes and produce bigger and better crops at less cost. Interesting movies, taken in your own locality, will tell their own story. Come and see how your neighbors farm with power. Sponsored by Rumely at huge cost, yet coming free to farmers of this community, these schools will prove a memorable event. National in scope. Eleventh successful year. We are indeed fortunate in securing this treat. Bring the boys and hired help, too. Come early; stay late!

Three sessions: Morning, afternoon and evening.

No Admission Charge--Seats For All

N. L. THARP, DEALER, CLOVIS, NEW MEXICO

### LURCOCK STANDS SIXTH IN BUILDING PERMITS

Dallas, Jan. 12.—Starting in where it left off in 1928, Houston forged ahead in value of building permits over during the past week and now sits well ahead of the principal cities of the state for the first two weeks of the new year. Dallas was second for the past week, with San Antonio third.

Figures for nine leading cities of the state follow: Houston, \$138,350, 880.5; Dallas, \$95,943, 252.698; San Antonio, \$187,724, 847.188; Fort Worth, \$12,627, 313.298; Corpus Christi, \$65,826, 313.000; Lubbock, \$54,000, 112.700; Beaumont, \$41,523, 845.488; San Angelo, \$25,280, 330.430; and Waco \$16,500, 835.000.

Can you imagine Mrs. March as a "Blushing Bride"? She finds she has made a great mistake in marriage and then—well, see "A Poor Married Man," Thursday, Jan. 24th.

### How to Grow More and Better Cotton

**PREPARE FINE, FIRM SEED-BED: FERTILIZE ACCORDING TO LOCAL NEEDS**

**USE WELL-BRED, ADAPTED VARIETIES AND TEST FOR GERMINATION. PLANT WHEN GROUND IS WARM, USING AMPLE SEED**

**NARROW BEFORE COTTON IS UP AND CULTIVATE FREQUENTLY TO NEARLY PICKING TIME**

**DUST WITH CALCIUM ARSENATE WHEN 10 PER CENT OF SQUARES ARE PUNCTURED**

**SEARS-ROEBUCK AGRICULTURAL FOUNDATION**

Cotton farming experts agree that more and better cotton on fewer acres is one of the best ways to increase the profit in growing this crop, says the Sears-Roebuck Agricultural Foundation. Yield and production costs are like a teeter-board. As the yield goes up, the cost comes down.

Fine, firm seed bed is a first essential for a large yield per acre. Using land in sweet clover, or second or third year alfalfa, or some other legume, plowing early and deep, and thorough working to pulverize and settle the ground complete the initial step.

Fertilizer must be applied according to local needs. Many successful growers use 100 to 300 pounds per acre of a complete fertilizer and later a side dressing of 100 to 200 pounds of nitrate of soda to speed growth and put the plant in the lead in the race with the weevil. Free application of barnyard manure to land intended for cotton will help.

Using well-bred, adapted seed that has been tested for germination, and planting an ample amount as soon as the ground has become warm are necessary requirements for a full stand and a large yield. A bushel or more of seed per acre should be used to give the young plants enough push to break through the ground and to leave a full number of strong, vigorous plants after the weak ones have perished. The seed should be planted deep enough so it will come up without rain, but not be sealed in the ground by a beating shower. "Shits" make no cotton themselves and do not help adjoining plants to make more.

Harrowing the ground before the crop is up, frequent cultivation until it is nearly ready to pick, and removal of all weeds will enable the plant to make the most of its opportunity during the growing season. Every small weed will take away enough plant food to make a hole.

Dusting for weevil with calcium arsenate should be started as soon as 10 per cent of the squares have been punctured. Owing to the cost, it will not pay to start sooner. Repeat the dusting twice at intervals of four days to bring the weevils under control, and dust again when they seem to be getting numerous once more.

No royal road to the production of a high yield of cotton per acre has yet been mapped, the Foundation adds. While extra effort is required at every stage, it is sure to bring a proportionate reward. Farmers who have succeeded in growing from one to three bales of cotton per acre have reduced their production costs to 5 to 10 cents a pound compared with an average cost of 15 to 20 cents a pound for the entire belt.

Calves are like human babies. Some are so husky no abuse could kill them, while others must be handled like soft-shelled eggs.

A good time to firm the soil that needs it is when preparing for the corn crop. Plow down the clover and before sowing spread the lime.

**Tribute to Labor**  
 Labor is life: from the inmost heart of the worker rises his God-given force, the sacred celestial life-essence breathed into him by Almighty God; from his inmost heart awakens him to all nobleness—to all knowledge, self-knowledge and much else, so soon as work fitly begins—  
 Carlyle

### Want Ads

**FOR SALE**  
 Cheap for cash, or terms. Section 42, Block 2, Hallsell sub-division, Lamb County; well on the land; about 12 miles from Muleshoe. One-third Oil, Gas and other Minerals reserved. Write J. D. Hammett, Huntsville, Mo. 46-4tc

**FOR SALE**—Fifty or sixty White Wyandotte hens, also White Leghorn pullets.—W. C. Hopke, 9½ miles northeast of Muleshoe.

**FOR SALE** — American Mammoth Incubator, 1200-egg capacity. Bargain if sold by February 15th.—W. C. Hopke, 9½ miles northeast of Muleshoe.

**NOTICE**  
 The Commissioner's Court of Bailey County will take sealed bids for the County depository of county funds and for the County Depository of school funds at its regular meeting, February 11, 1929.  
 J. E. ADAMS, County Judge and Ex-Officio School Superintendent. 49-3tc

**NOTICE**  
 The Commissioners of Bailey County have authorized me to advertise and sell at public auction, one Eclipse Windmill, one 4 inch pump and one storage tank. The sale will be at the American Legion Hall in Muleshoe, Saturday, February 9th.  
 J. E. ADAMS, County Judge.

**CHICAGO PLANNING WORLD FAIR ON 100TH BIRTHDAY**  
 Washington, D. C.—Participation of other nations in the Chicago world's fair in 1933, to celebrate the 100th anniversary of Chicago's incorporation as a municipality, is proposed, subject to the raising of \$5,000,000 by the centennial corporation, in a resolution, which the Ways and Means Committee has just reported to the House. The resolution, which was introduced by the chairman of the Ways and Means Committee, Representative Hawley (Rep.) of Salem, Oregon, stipulates that the President, when satisfied that not less than \$5,000,000 has been raised and is available to the Chicago World's Fair Centennial Celebration Corporation, is authorized to invite the nations of the world to participate in the celebration.  
 Protect trees from rabbits and mice with wire or tar paper guards.

An Essential Transportation

## CHEVROLET

### The Outstanding Chevrolet of Chevrolet History

- a Six in the price range of the four!

## represents 4 years of Development and over a Million miles of Testing

Years ago, the Chevrolet Motor Company designed and built its first experimental six-cylinder motor. This far-sighted step was taken because Chevrolet engineers knew that the six-cylinder motor is inherently the most perfectly balanced motor—the ideal power plant to meet the growing public demand for greater reserve power, faster get-away and, above all—smooth, quiet performance.

During the last four years, over a hundred six-cylinder motors were built by Chevrolet engineers and tested on the General Motors Proving Ground.

Day and night, through winter's cold and summer's heat, the incessant testing went on—until the present motor was developed and finally pronounced correct.

At the same time other Chevrolet engineers were perfecting other parts of the chassis. And another great automotive organization—the Fisher Body Corporation—was devoting its gigantic resources to the creation of the finest, sturdiest and most beautiful bodies ever offered on a low-priced automobile.

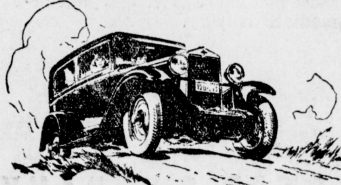
As a result, the Outstanding Chevrolet offers an

order of well-balanced excellence—a combination of performance, comfort, beauty and handling ease that is truly remarkable—with a fuel-economy of better than 20 miles to the gallon of gasoline.

You owe it to yourself to see and inspect this remarkable car. Come in today!

The COACH	\$595
The Roadster	\$525
The Phaeton	\$525
The Coupe	\$595
The Sedan	\$675
The Sport	\$695
The Landau	\$725
The Convertible	\$725
Sedan Delivery	\$595
Light Delivery	\$400
Classic	\$545
1½ Ton Chassis with Cab	\$650

All prices f.o.b. Plant, Michigan



## Valley Motor Company

QUALITY AT LOW COST

# January Sales That Mark a New Era in Value Giving in This Store

*Super Values in Men's and Boy's*

## Suits and Overcoats

The choice of the season's offerings is to be found in this unusual showing of winter weight suits and overcoats for men and young men. New fabrics, superior tailoring, the season's favored colors and patterns—at prices which make them the super value offering of the year.

**Suits . . . . . \$12.95 to \$23.35**  
**Overcoats . . \$9.95 to \$16.35**

## COATS

Never before, and perhaps never again will you see any better and probably not near the equal of the coats we now offer at the prices listed below. Well made from fine fabrics, trimmed with furs seasonably popular.

\$6.95 to \$15.95

---

A Tremendous Sale of

## SHIRTS

They are shirts that you will be proud to wear anywhere for the quality of the material and the making is of the best. You may buy them at these low prices.

**98c to \$2.69**

## BLANKETS, COMFORTERS AND BEDDING

The time of times to buy a supply of bedding, for we are offering our entire stock at prices very close to cost. Check up your needs and take advantage of this offering.

**Blankets** \$1.59 to \$8.95  
**Sheets** \$1.45

## HOSIERY

Wool and silk hosiery at prices so low you will want to buy in a box of them.

**25 to 59c**

---

## UNDERWEAR

A plentiful assortment of heavy underwear from which you may choose at sale prices.

**98c to \$1.29**

## A Big Price Cut on Dress Goods

Dress Goods that will make just the dresses you need for the balance of the winter and they are priced so low that every thrifty woman will buy at least enough for a number of dresses.

**19c to \$2.29**

# Gardner Dry Goods Company

"The Price is the Thing."

**MULESHOE** **TEXAS**