

# TEXAS THE SPUR

SERVING A RICH FARM CROP, STOCK AND POULTRY RAISING TERRITORY OF WEST TEXAS.

The Dickens Item and Dickens County Times Absorbed by Purchase

VOLUME 50

SPUR, DICKENS COUNTY, TEXAS

THURSDAY, DECEMBER 4, 1958

NUMBER 7

## Editor's Corner..

By Joe Harrison

Although the Spur football team sailed through their football season successfully, the same can't be said for some of the avid Spur football fans. For some fans, the season was a hectic one. Nerves were jangled... fans left the stadium limp with exhaustion. Tranquilizer sales must of doubled on the local drug market. Otherwise normal, everyday, average people turned into screaming, fighting creatures from a science fiction movie. During the course of the season, some thousands of gallons of coffee must have been spilled by nervous jittery hands.

Even the officials had a hectic year. In the Slaton game one official was chunked solidly by a pass thrown by a Slaton back. The Slaton coach was heard to comment, under his breath... "He didn't even feel it." At the Stamford game, Lyndal Womack became so demonstrative while giving a yell that he lost his watch. (He never did find it.)

During the Crane game, my wife lost her purse and all its contents when Spur scored its first touchdown. Later she recovered everything but her lipstick.

Even distinguished, relatively unexcitable, school officials fell victim to the fever. Superintendent of Schools B. G. Nunley became so excited at the Anson game, he was asked to leave the field. He had been watching the game from the players bench, as was his practice.

Nunley displayed the grace of a thoroughbred jumper as he cleared a wire fence surrounding the field. East Ward Principal H. M. Allison lost his wedding band at the Tahoka game, and then repeated the performance at the Crane game. He was lucky to find the ring both times.

Also at the Tahoka game, one of the Spur cheerleaders caused a momentary stir as her tights became unzipped. Another cheerleader got to a game only to discover she had left her tights at home.

Some of the more humorous incidents are connected with the School's Victory Bell and Johnny Scudder, local Texaco consignee.

At the Anson game Johnny got so excited while ringing the bell, that he fell off the stand and hurt himself. At the Tahoka game, several youths threatened to take the bell over to the Tahoka side of the field. Johnnie dispatched them with a 12-inch monkey wrench.

Several years ago, at a game with Crosbyton, some Crosbyton youths slipped up behind Johnnie and cut the rope that he was holding. When he started to ring the bell, he stumbled backward with a puzzled look on his face and a "word or two" of astonishment.

Year before last at the Post game in Post, Spencer Campbell and Jerry Ensey were vigorously ringing the bell while standing on top of the stands. The rope which was apparently rotten, broke, and both men went catapulting over the back of the stands.

Although it was a highly successful year for the team, a high per cent of the Spur football fans have expressed their delight that the season has come to an end.

And they have reason to give thanks... Some of them are lucky to be alive.

Spur Chief of Police Wayne Beadle reports that parking at the Spur Schools has shown a marked improvement over last year, and wishes to express his gratitude for the cooperation he has received in an effort to improve traffic safety during the noon and after school rush.

However, Beadle reports that a traffic hazard is being created by drivers who park incorrectly on the street beside

## Cotton Harvest Nears 27,000

With the bulk of the cotton crop in, ginnings for Dickens County and the area totaled 26,962 bales.

Local ginner say that with a few more days of pretty weather, the harvest will be complete. This will be the last week that The Texas Spur will carry the gin reports until next year.

The staff of the newspaper would like to extend their thanks and appreciation to the area ginner, who cooperated to the fullest extent in reporting the number of bales ginned each week.

### GIN REPORTS

McAdoo Co-Op Gin	5,642
Farmers Co-Op Gin	5,318
East Afton Gin	4,247
Afton Co-Op Gin	3,200
Kalgary Gin	2,862
Massey Gin Co.	2,388
Spur Gin Co.	2,130
Dickens Gin	1,175
Totals	26,962

## East Ward PTA Slates Pancake Feast, Open House

Members of the East Ward PTA will sponsor a Pancake Supper in the East Ward cafeteria on Tuesday night, from 5:30 to 7:30 p.m.

Persons attending the pancake supper are also invited to attend an Open House at the Primary and East Ward Schools, according to Principal H. M. Allison. The rooms will be decorated for Christmas.

Allison points out that the pancake supper will be over in time for people to see the senior play scheduled to start at 8 p.m. in the Primary Auditorium.

## Final Meeting Slated For Bulldog Boosters

The last meeting for the current year of the Bulldog Boosters Club will be held Monday night at the High School Gym at 7:30 p.m.

"This is a very important meeting," states club president Richard Walker. "Officers for next year will be elected," he said.

A film of the Stamford game will be shown.



**NEW SWITCHING SYSTEM**—Jack Keen, son of Mrs. J. C. Keen, Experiment Station Road, is pictured here with a new switchboard on display during the United States Independent Telephone Association convention in Chicago. Keen is an equipment engineer with the Andrews Telephone Co. More than 2500 attended the show.

## Honor Rolls For High School, Junior High, Are Announced

Officials of Spur Junior High and Spur High Schools have released the following honor rolls for the past six weeks period:

### Junior High

8th Grade — A — Priscilla Wood.

B—Cary Davis, Kathy Hurst, Carmen Starcher, Elaine Moore, B. W. Bilberry, Carolyn Adams, and Arlene Karr.

7th Grade — A — Patsy Bragg.

B—Jim Archer, Jo Ann Bateman, Betty Gregory, Teresa

Dean, Janice Dement, Sharlett Karr, Ray Hindman, Steve Ensey, Rudy Moreno and Jim White.

### High School

Seniors, A—Rozelle Marcy, Melvita Floyd, Aaron McNeese, Mike Swanson, Johnnie Ann Blakely, Rita Williams.

B—Robbie Jo Williams; Conrad Archer; Mary Ann Gregory; Paula Dean Foreman, Barbara Foreman.

Juniors, A—None.

B—Katrina Senn, Lester Pearl Surbeville, Delwin Whitmore and Don Williams.

Sophomores, A—Jane Fitzgerald and Anna Bob Williams.

B—Elaine Mahen, Dale Buzbee, Marilyn Hagins, Calvin Dozier, Susan Shugart and Lynda Hinson.

Freshmen, A—Nancy Swanson, Barlow Neaves, Johnnie Moas, Kathaleen Thomason.

B—Brent McCain, Sue Parker, Sandy Hunt, Ella Jo Powell, Richard McArthur, Vanita Clifton, Mickey Fugitt, Martha Thomason, Norma Goss, Richard Walker and Geraldine Howerton.

### CHURCH REPORTS

	1957	1958
Presbyterian	21	17
First Baptist	238	235
Mission Baptist	23	16
Church of Christ	172	160
Assembly of God	45	45
Foreman Chapel	22	31
First Methodist	109	149
Total	630	653

## Bulldogs End Season With 42-0 Defeat By Stamford

The Spur Bulldogs wrote a sad ending to their Cinderella story last week as the stage coach they rode into the State AA quarterfinals turned into a "pumpkin." The pumpkin was tacked on the scoreboard in the form of a zero as the Bulldogs bowed to a classy Stamford team, 42-0.

Early in the season, Spur was rated fourth in the district, just a notch above Post. But Spur fooled the experts; sputtered through some non-conference games, then bowled over their district opponents, with the exception of Floydada, by whopping scores.

They became the first team in Spur history to win a Bi-District game as they downed a speed Crane eleven, 30-8. Spur avenged a 20-8 loss to Abernathy as they won Regional, 32-8.

Six seniors, all of them either starters on offense or defense, closed out their careers in the Stamford game. They were: Spur Laundry and Cleaners. Beadle asks that drivers make a special effort to park their cars properly.

Center Don Kidd; Tackle Kenneth Gilcrease; Halfback Kenneth Sutt; Fullback Joe Copeland; End Ernest Wilson, and defensive ace, halfback Kent Morgan.

### Stamford 42, Spur 0

Although outclassed by the Stamford team, the Bulldogs from Spur let the "mighty" Stamford Bulldogs know they were in a ball game for the first two quarters.

The Spur team actually lead Stamford until mid-way of the second period when Stamford managed a penetration and a touchdown. Spur scored a penetration in the hard-fought first quarter when they reached the Stamford 12-yard line, but couldn't score.

The fired-up Spur team continued to rock the Stamford eleven as they recovered a fumbled punt return, and moments later, Don Kidd recovered a fumble to set up Spur's penetration.

Stamford scored as fullback Donald Davis crashed 24 yards for a touchdown. A pass from quarterback Fred Upshaw to End Daune Lindsey was com-

plete for the conversion.

An interception by Tom Lovvern set up Stamford's second score. Davis made it through tackle, from the five. Point after was good and Stamford led at the half, 15-0. First downs at the half were nearly even, Spur 5 and Stamford 6.

The second half was a different story as Stamford power began to take its toll as they racked up three touchdowns. Halfback Charlie Helmer scored on a one yard dive; PAT was good; End Ronnie Weeks scored when he caught a deflected jump pass. PAT was good; and Davis scored again as he romped 24 yards. PAT again was good. Stamford led 36-0 with the regulars playing most of the third period.

In the final quarter, Stamford reserves managed one touchdown as Fullback Mark Hinson scored on a one yard plunge. Final score, Stamford 42, Spur 0.

Linebacker Jim Gabriel played an outstanding game on defense as did both Don Kidd and Kenneth Gilcrease.

See BULLDOGS, P. 4

## Marketing Quora Vote Scheduled December 15

### City Of Spur Plans More Paving In '59

Residents of Spur who would like to have their streets paved next year should go by the City Office now and sign up.

In an announcement from the City Office this week, it was revealed that if enough interest is shown, a project similar to the one last year, that saw some eight blocks paved, may be carried out.

It was pointed out that no contract has been let at this time, but it is expected that the prices will be approximately the same as last year, \$1.35 per front foot for paving, and \$1.25 for curb and gutter.

### Senior Play Cast Announced

The senior class of Spur High School have announced the presentation date for three one act plays. The dates are December 15 and 16.

Curtain time is 7:30 p.m. on Monday and 8 p.m. on Tuesday.

The proceeds of the plays will be used to finance the senior trip to New Orleans. Sponsors are Miss Donovan, Mrs. Johnston and Tommy Kissinger.

The casts selected are:

"The Forgotten Man" Drama  
John Benson Mike Swanson  
Henry Lambert Guy Goen  
Mrs. Lambert Cookie Foregray  
Helen Paula Foreman  
Peter Tim Hurst  
Judith Johnnie Ann Blakely  
The Man Freddy Don Scott

"Sparkin'" Comedy  
Susan Judy Johnson  
Lessie Gerry Estep  
Granny Rita Williams  
Orry Kenneth Gilcrease

"Goody-Bye to the Clowns" (Comedy)  
Clown Conrad Archer  
Margaret Barbara Foreman  
Peggy Polly Pierce  
George Robert Rex Robinson  
Dr. Benson Marshall McCalliard  
Miss Erwin Omlee Garner

### Grandson Of Spur Couple Fatally Injured

Funeral services for Rock Mason, 18-month old grandson of Mr. and Mrs. Jack Rector, Spur, were held Wednesday afternoon in McCamey at 2 p.m. in the Methodist Church, Rev. Rex Kendall officiating.

He was the son of Mr. and Mrs. R. E. (Bud) Mason, McCamey, and the great grandson of J. B. Richbourg, Spur.

The infant was fatally injured when struck by a car that was backing out of a driveway. The accident occurred Monday afternoon.

Mrs. Robbie Williamson Puschel, returned from Colorado last week and will spend most of her time visiting her mother, Mrs. S. Williamson, Afton. Mrs. Puschel is a former Dickens County resident, and taught in the first school at Amity, in the Midway community.

### Lawmen Arrest Parole Violator; Negro Pleads Guilty; Fined \$100

Dickens County law officers apprehended a 50-year old Oklahoma parole violator who had been free and on the wanted list for 25 years.

The man, Frank Maddox, was caught on the main street of Spur, shortly before he was scheduled to leave for Arizona. He had already checked out of his hotel, and Dickens County Sheriff C. E. Rogers, who made the arrest, said if officers had been another hour later they would have been too late.

Maddox was sent to the Oklahoma State penitentiary for armed robbery on May 15, 1932. He received a 15-year sentence. On July 15, 1933, he was paroled. According to Oklahoma authorities, he never reported to his parole officer. Maddox claims he did.

### Services Held Thursday For L. A. Welborn

Funeral services are scheduled at 10 a.m. today, Thursday, for Lebecious A. Welborn, 73, at the First Baptist Church, the Rev. Riley Fugitt officiating. He will be assisted by the Rev. R. D. Hill.

Welborn died Tuesday.

Born in Moody, Texas, in 1885, Welborn came to Dickens County in 1921. He married the former Ethel Neister in 1930. He was a member of the Baptist Church.

Survivors include his wife, Mrs. Ethel Welborn; three daughters, Mrs. James Thomas, Brownfield; Mrs. Edward McCormick, Big Spring; and Mrs. Chester Burton, Waco; 2 step daughters, Mrs. Nell Scott, Spur; and Mrs. Grace King, San Antonio.

Also surviving are two sisters, Mrs. Jimmy Tosh, Moody, and Mrs. Seth Bostic, Moody; three brothers, Ed Welborn, Cobhatt, Ga.; Yancey Welborn, Cranfills Gap, Texas; George Welborn, Mart, Texas. Nine grandchildren also survive.

Interment will be in the Spur cemetery.

He had been in Spur about one month, selling color photographs.

Sheriff Rogers was aided in the arrest by Deputy D. D. Tullis.

Louis Lewis, a Spur Negro, pled guilty Wednesday to a charge of possession of wine for the purpose of sale and has been fined \$100 and costs in County Court.

### Santa Claus Will Be In Spur Saturday

Santa Claus will make his initial appearance in Spur on Saturday afternoon.

Santa will be here to supervise the "Spur Lucky Bucks" drawing and then will be available for all the kids to tell what they want for Christmas. One hundred and forty dollars will be given away at 3 p.m. Saturday.

Last weeks winners were: \$5—C. Parsons, Spur; \$5—Paul Martin, Gilpin; \$10—Mrs. B. Copeland, Dickens; \$10—Mrs. A. C. Martin, Dickens; \$15—Tommy Wilson, Jayton; \$20—C. E. Rogers, Dickens; \$25—Mrs. Connley Smith, Spur and \$50—Paul Martin, Gilpin.

In the Christmas Parade held Tuesday, The Wise Men, entered by the Foreman Chapel Church, won first place and \$10; No Room at the Inn, High School Ag. Department entry, won second and \$7; King Herod's Court, entered by the First Baptist Church, won third and \$5.

The parade included 5 other entries.

Business and Window Decoration and Home Decorations will be judged on Monday night, Dec. 22. If you desire to enter one of these contests, call Betty Kearney at the Spur Chamber of Commerce. Cash prizes will be awarded.

Farmers "eligible to vote" in the upcoming referendum on 1959-crop cotton marketing quotas has been defined by W. W. Gunn, local ASC office manager.

Polling places will be: ASC office, Spur; Gin office, Afton; Gin office, East Afton; Gin Office, Matador; and County Agent's office, Dickens.

"The general rule is that anyone who engaged in the production of upland cotton in 1958 is eligible to vote in the December 15 referendum," Gunn explained. "This group of course, would include all persons — whether owner, operator, tenant, or sharecropper — who had an interest in the 1958 upland cotton crop.

"However, under provisions of law now in effect, the term 'eligible voters' also include some other persons whose right to vote on cotton quotas may not be so well understood," Ferguson declared.

"For instance, any grower who had a 1958 cotton allotment for his farm but who produced no cotton this year is also eligible to cast a ballot on 1959-crop quotas.

"Likewise, a farmer who placed his 1958 cotton allotment in the Soil Bank is eligible to vote in the December 15 referendum.

"These are the principal classes of persons who are 'eligible,'" Gunn stated, "but persons may qualify to vote as a guardian, administrator, executor, or trustee for another person. In such case the person for whom he is acting may not also vote.

"Each individual's right to vote depends upon his or her own qualifications," Gunn concluded, "and this applies to husband's and wives, as well as minors, who were engaged in the production of cotton in 1958."

Where any person has a question about his eligibility to vote in the December 15 referendum on 1959 cotton marketing quotas, he is urged to get in touch with the local ASC office.

### BETHEL BAPTIST CHURCH TO HOLD SINGING SUNDAY

The second Sunday singing will be held Sunday, Dec. 14, at the Bethel Baptist Church at 2 p.m. Everyone is invited to attend.



**MYSTERY FARM NO. 21**—Here is Mystery Farm for this week. If you can identify this farm, come by the Texas Spur and register your guess. First person to correctly identify the Mystery Farm will be awarded a one year subscription to the Texas Spur. Second place winner will receive two free the atre passes, courtesy J. D. McCain, manager of the Palace Theatre. Owner of the farm will receive a glossy, framed picture.

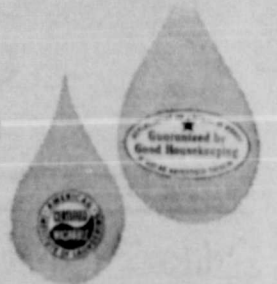


"A good father who finds his son on the wrong track will provide switching facilities."

**FIRE AT CHRISTMAS**

The home during the Christmas season is usually loaded with fire hazards and unless safety precautions are taken gaily can be charged to grief and sorrow in seconds, warns the Texas Farm and Ranch Safety Council.

End on end  
madras shirts  
that you can



wash · drip-dry · wear

Van Heusen  
Vantage

100% cotton



The no-iron miracle has come to

Van Heusen madras shirts. It's called

Vantage cotton. The same soft touch of

cotton is there, the same luxury

shirting. But now you just wash, drip-dry

and presto... they're ready to wear

right off the line. You'll see yourself

looking great in a mirror too,

because these shirts are

handsomer than ever.

All with sewn-in

Collarite stays

that can't get lost.

Come see 'em in

blue, tan, grey. \$5

Dacron Tie. \$2.50

Handkerchiefs

to match... 79c

from **VAN HEUSEN**



Gabriel's

**Social Security Office Flooded With Inquiries**

The social security district office has had far more inquiries than usual these past few weeks, John G. Hutton, manager reported today. A good many calls are from people who are receiving monthly retirement, disability or survivors checks now and who are concerned about getting the increase that was authorized by Congress and the President recently.

Hutton reminds all social security beneficiaries that the increase in monthly benefits will come to them automatically; they do not have to phone, write, or visit the social security office to request or file any kind of application for the increase.

The checks for January, 1959, which will be mailed out on the first of February, will include the full increase the law provides, an average jump of about seven per cent, he said. In dollars this means 65 year old workers will receive from \$3 to \$7.50 more, depending upon the amount of their personal benefit. Where total family payments reach \$254, individual benefits other than that paid to the worker may show a lesser percentage increase, Hutton concluded.

A representative of the Lubbock Social Security office will be in Spur on Dec. 17, 1958 at 9:30 a.m. at the Justice of the Peace office and will be glad to assist in all matters pertaining to Social Security.

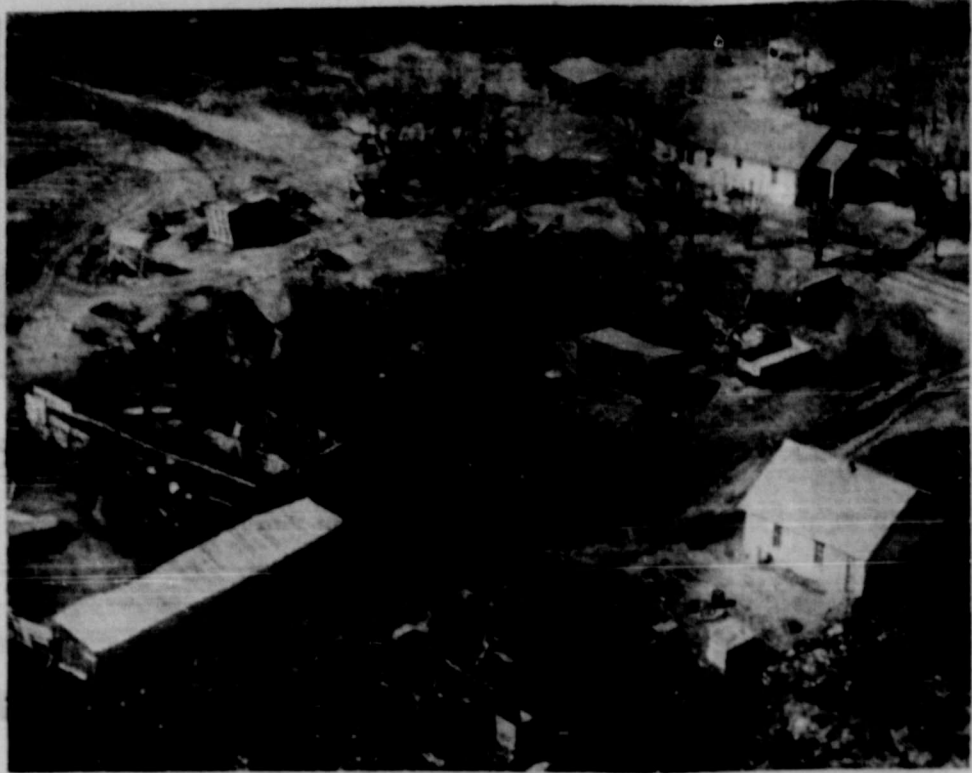
Rev. Hubert Holton of Abilene, preached last Sunday at the Dry Lake church and will be back next Sunday. Everyone is invited to hear him.

determined, except he be represented by competent counsel trained in law?

The practice of criminal law and the proper and able defense of those accused is a vital part of the great heritage of the legal profession. The public must understand the duty of the lawyer to society and to the people accused, sometimes unjustly, sometimes justly, of crime. Remember, even you may someday be unjustly accused of a crime.

When lawyers refuse, hesitate or fear to represent any person accused of any offense and the accused person is therefore unable to secure proper representation, then indeed is our entire judicial system in danger.

(This column, prepared by the accused person in theretofore to inform - not to advise. No person should ever apply or interpret any law without the aid of an attorney who is fully advised concerning the facts involved, because a slight variance in facts may change the application of the law.)



**A. J. Richey Farm, Croton, Is Mystery Farm 20**

Mr. and Mrs. A. J. Richey, Croton, are the owner of the Mystery Farm published in last week's Texas Spur.

First to correctly identify the farm, and winner of the year's subscription to the Texas Spur, was G. W. Bennett, Afton. Second place winner of two free show passes to the Palace Theatre, was Mrs. J. L. Williamson. Others to identify the farm were Mrs. John Quattlebaum, Charles Haney, John Quattlebaum and Mrs. Hawley.

Mr. and Mrs. Richey have lived on this farm for 44 years. It is located 10 miles northeast of Dickens.

res, 700 of which are in cultivation. Principal crops are cotton and wheat. The farm was first settled in about 1908. The Richey's bought it from S. H. Priddy. Two houses previously built by R. L. Collier, have burned.

Mr. and Mrs. Richey are members of the Church of Christ.

They are also members of the Dickens County Farm Bureau.

Mr. and Mrs. Richey have five daughters, all are teachers. One son is deceased. The daughters are: Mrs. George E. Parks, Pittsburgh, Pa.; Mrs. Edith Steele, Oakland, Calif.; Mrs.

Erie R. Graves, Richmond, Calif.; Mrs. Muri Trippe, Corckett, Calif.; and Mrs. Rhenn Graves, Fresno, Calif.



**IT'S THE LAW**  
in Texas

**DEFENSE FOR THE GUILTY**

How can a lawyer justify defending a guilty person?

The right of an accused to have counsel is one of the safeguards necessary to insure fundamental human rights of life and liberty. The Sixth Amendment to the U. S. Constitution (a part of our "Bill of Rights") provides:

"In all criminal prosecutions, the accused shall enjoy the right to a speedy and public trial - by jury - and to have the assistance of counsel for his defense."

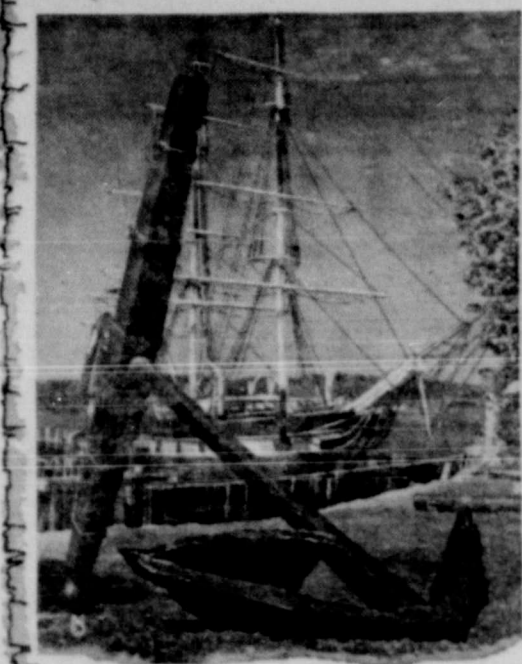
Amendment V to the Constitution provides:

"... no person is to be deprived of life, liberty or property without due process of law."

Whether by retainer or by appointment, with or without fee, a lawyer is duty-bound under his oath, to assert and wage a vigorous, honest, legal defense for his client, regardless of guilt.

Under law, every person accused of a criminal offense is established beyond reasonable doubt at a trial in open court. Guilt is not to be determined by public opinion or by lawyers, but by proper procedure under law in a trial or judicial inquiry.

How can a person accused be assured a fair trial regardless of guilt or innocence? How can a person so accused defend himself and enjoy his constitutional right to have his guilt legally



**This Anchor Holds Its Ship Steadfast In Every Weather . . .**

Just as the old anchor held its ship steadfast against surging tides, buffeting winds and turbulent waters, a growing savings account here can provide security against the shifting tides of your fortunes, help you to hold steadfast against adversities.

OPEN A SAVINGS ACCOUNT HERE TODAY.

**Spur Security Bank**

Member FDIC

**BIG VALUES**



We have a wide selection of Christmas Trees . . . Get Yours Now !!

WILSON'S CERTIFIED  
**BACON 2 lbs. 1.10**

BUDGET  
**FRANKS 2 lbs. 69c**

WRIGHT'S BOSS  
**BACON lb. 49c**

WRIGHT or PINKNEYS  
**SAUSAGE 2 lbs. 69c**

SANDY'S BLOCK  
**CHILI lb. 29c**

GOLDEN YELLOW  
**BANANAS lb. 12 1/2c**

WASHINGTON DELICIOUS  
**APPLES lb. 12 1/2c**

FIRM PINK  
**TOMATOES ctn. 19c**

JURCY TEXAS  
**ORANGES lb. 7 1/2c**

RED  
**GRAPEFRUIT lb. 7 1/2c**

ARMOUR'S  
**VIENNA SAUSAGE 2 for 39c**

**PLENTY OF CHRISTMAS CANDY AND NUTS**

NO. 2 1/2 CAN SPICED  
**PEACHES 4 for 1.00**

SHURFINE  
**Flour 5 lbs 39c 10 lbs. 75c**

PILLSBURY'S White—Yellow—Chocolate Fudge  
**CAKE MIX 29c**

DRIP or REGULAR FOLGERS  
**COFFEE 2 lb. can 1.49**

12 OZ. JAR BIG TOP  
**PEANUT BUTTER 39c**

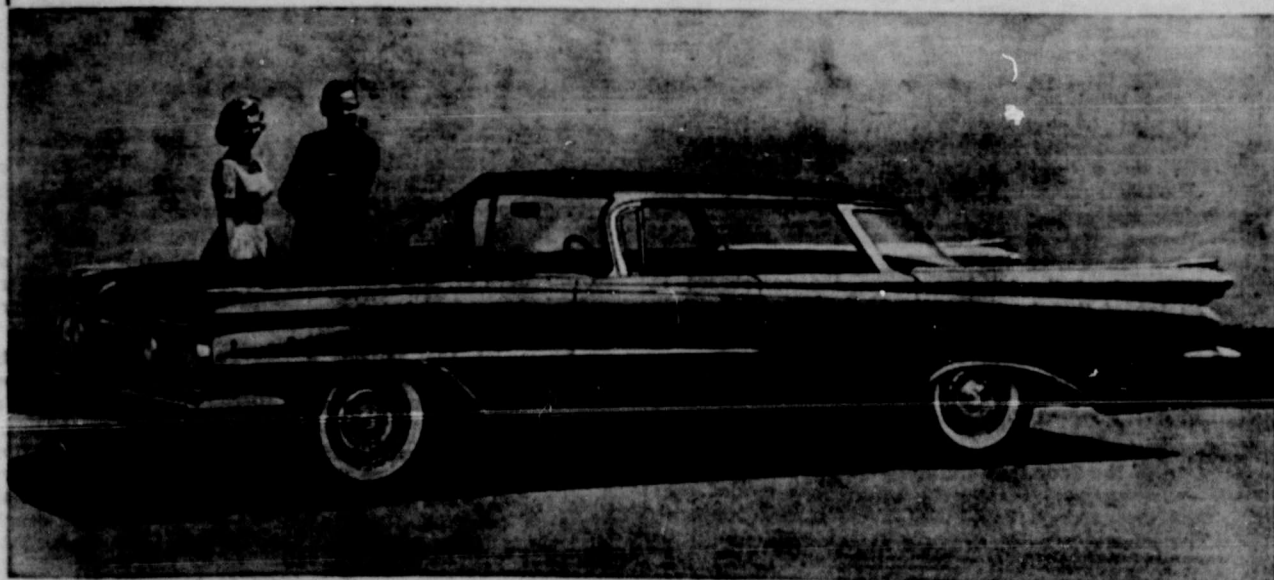
1 LB. BOX SUPREME  
**SALAD WAFERS 24c**

**Spur Super Mkt.**



DOUBLE SCOTTIE STAMPS ON TUESDAY

**News about the New Rockets!**



**1959 OLDSMOBILE DYNAMIC 88 HOLIDAY SPORTSEDAN**— This distinctive new Olds body style (available in all three series) is the hit of the new-car parade! Its sleek "Linear Look" is as tastefully elegant as anything you'll be seeing in 1959. And like every Olds for '59,

it has an all-new, thrifter version of the famous Rocket Engine, featuring an exclusive, two-stage automatic choke. With demand running high, you'll be smart to place your order early. Visit your local authorized Oldsmobile Quality Dealer, right away!

**Edwards-Kelley Impl. Co. 600 W. Hill**

**Kathleen Kelley Is Member Of ACC Choral Group**

Kathleen Kelley, Abilene Christian College senior from Spur, is a member of the 60 voice A Capella Chorus at ACC. Miss Kelley is the daughter of Mr. and Mrs. O. L. Kelley of 814 W. 3rd she is a 1955 graduate of Spur High School. Education is her major at ACC and

she is active in Future Teachers of America, W Club, women's honor organization; and student government. She was also named to Who's Who in America Universities and Colleges this year.

The chorus is under the direction of Vernon Moody, instructor of music at ACC, and the group takes annual tours which in the past have taken them throughout the Southwest.

**Lona Dell Arthur, Virgil Rogers, Feted With Pre-Wedding Party On Saturday**

A pre-wedding party was given in honor of Miss Lona Dell Arthur and Mr. Virgil Rogers in the home of Mr. and Mrs. O. L. DeWees, Dickens, Saturday evening, December 6, from 7:00 to 9:00.

Other host and hostesses were Mr. and Mrs. Robert Williams, Mr. and Mrs. Fred Arrington, Mr. and Mrs. Ben Overstreet, Mr. and Mrs. Guy Goen, Mr. and Mrs. Stuart Eriksen, Mr. and Mrs. Earl Murchison, Mr. and Mrs. Glenn Latham, Mr. and Mrs. O. L. Kelley, Mr. and Mrs. Cecil Meadors, Mr. and Mrs. E. B. Blumberg, Mr. and Mrs. W. H. Hindman, Mrs. Ava Johnson and Mrs. Margaret Smith.

Greeting the guests were Mr. and Mrs. O. L. DeWees, Mr. and Mrs. E. V. Arthur, parents of the bride, The Honorees, and Mrs. B. Rogers, the groom's mother from Lubbock. The bride-elect chose a beautiful autumn brown velvet dress with gold corsage.

Mrs. Stuart Eriksen and Mrs. Ava Johnson presided at the

Brides book of white with gold engraving where two hundred fifty couples were registered or sent gifts to the party.

Soft organ music played by Miss Myrna Bostic alternated by Mrs. J. E. Berry was enjoyed through out the evening.

After viewing the array of beautiful gifts the guests were directed to the living room where the table was laid with gold lace cloth from Italy. From a silver coffee service spiced tea and coffee were served with holiday cookies and mints. Mrs. E. B. Blumberg and Mrs. O. L. Kelley presided at the table. Centering the table was an arrangement of bronzed mums with gold and brown foliage flanked by gold candles. To further carry out the brides chosen colors of brown, gold and green the brown tea napkins were inscribed "Lona Dell" and "Virgil". Favors were of gold glittering bells tied with brown net carrying the date "December 28" denoting the wedding day.

Hostesses for the occasion were Mesdames M. H. Brannen, Bill Gregory, Adrain Rickels, L. D. Ratliff, Leon Reagan, G. W. Grimes, Lee and Campbell. Their gift was an automatic coffee maker.

Mrs. Billy McLaurey and Tracy Midland were week-end guests of the Dr. McLaureys.

**Mrs. Jim Hartman Complimented**

A bridal gift party complimenting Mrs. Jim Hartman, the former Sue King, was given at the Dyess Tea Room Friday November 28, from 7 to 9 p. m.

The honoree was joined by her mother, Mrs. Nina Mae King in receiving the guests. Mrs. Lewis Dee presided at the guest book. Pink net covered the tea table, while an arrangement of pink and white flowers, with double wedding rings was used as a center piece. Pink cake, decorated with deeper pink roses was served. Silver appointments were used. Presiding at the service was Mrs. Neitha Campbell.

Hostesses for the occasion were Mesdames M. H. Brannen, Bill Gregory, Adrain Rickels, L. D. Ratliff, Leon Reagan, G. W. Grimes, Lee and Campbell. Their gift was an automatic coffee maker.

Mrs. Billy McLaurey and Tracy Midland were week-end guests of the Dr. McLaureys.

**Harmony Club Has Annual Party**

The annual Christmas Party 9, 1958 at Dyess Hall. A mus of the Spur Harmony Club was held Tuesday night, December 9, 1958 at Dyess Hall. A musical toy gift was brought by each member to be distributed to needy children.

After a short business meeting, a trio consisting of Mrs. J. C. Reece, Mrs. Bill Hatchett, and Mrs. Joe Harrison sang "Sleep, Child Devine". A salad plate was served to the members after which a cantata practice was held at The First Methodist Church.

The annual Harmony Club Christmas Cantata will be held Sunday night, December 14, 1958 at 7:45 P. M. at the First Methodist Church. Everyone is invited to attend.

Mr. and Mrs. Wayne Wyatt and Lisa of Hereford spent the recent holidays visiting their parents, Mr. and Mrs. Jim Wyatt and Mr. and Mrs. Hugh Turner.



**MR. AND MRS. J. J. HICKMAN CELEBRATE 50TH ANNIVERSARY**

Friends of Mr. and Mrs. J. J. Hickman of McAdoo are invited to attend open house Sunday, December 14 from 2:30 to 5 P. M. in their home southeast of McAdoo in observance of their Golden Wedding anniversary.

Mr. and Mrs. Hickman were married in Henry County, Indiana, on December 15, in 1908. They spent their honeymoon in Dickens, Texas, and later, in 1911, they returned to Texas to make their home on a section of land Mr. Hickman had purchased when he was 18 years of age. They have lived on this same farm ever since. At the time of their marriage, they both were residents of Springport, Indiana. Mrs. Hickman is the former Lela May Powell. She was born February 26, 1886. Mr. Hickman was born March 28, 1864. He truly can be called an old-timer.

They have watched the progress of Dickens County through the years. In their earlier days both were active in community life. If anyone were

sick and needed help, Mrs. Hickman was on of the first to go and the last to leave. They have always been interested in anything that was for the betterment of the community. Mr. Hickman was active on the school board when the school was known as Prairie View. When there was a possibility of a railroad through McAdoo in 1923, no one worked harder for this than did Mr. and Mrs. Hickman.

Their children are Susan, Mrs. W. M. Clark, Plainview, Texas; Rosemary, Mrs. C. H. Patrick, Portales, New Mexico; and Lewis, who operates the farm for his father and mother at McAdoo. They have six grand-children and five great-grand-children.

**Girard HD Club Has Holiday Party**

Mrs. Fletch Rich entertained the Girard Home Demonstration Club in her home with a Christmas Party December 3, with thirteen members present.

Mrs. C. C. Kimmel called the meeting to order and Mrs. Woodrow Hodge led the group in prayer. Roll call was answered with "My Best Christmas." Mrs. Ethel Ballard told the story of the Christ Child, a reading was given by Cathy Swearingen and gifts were exchanged.

Since it was the last meeting for Mrs. Ballard, before moving to Rochester, going away gifts were presented to her.

The next meeting will be January 7, in the home of Mrs. D. J. Young.

**Jenny Sharp Feted On 4th Birthday**

Mrs. D. J. Dyess entertained her granddaughter, Jenny Ann Sharp, with a dinner party on her 4th birthday, December 3. Thirteen guests played games and sang "Happy Birthday" in a setting of lovely pink flowers and balloons. Those present were: Danny Harris, Connie Collett, Elizabeth Arnett, Jaminell Bridge, Cindy and Debby Williams, Linda Hagins, Rhea and Robert Waddell, Tim Ericson, DeLane and Dianne Bachman and Kimmy Simmons.

**TELEPHONE TALK**  
by Bill Baker, Manager

**HOLIDAY TIME**

There's a song that goes "Highways Are Happy Ways When They Lead the Way to Home."

But highways can be suicide ways - especially during the holiday season. People hurrying home or else-where during the holidays often make it - because they are hurrying.

So let me remind you now - slow down, drive carefully during the holidays. I'd hate to call the boss and tell him we lost some good customers this Christmas.

**HELPFUL HINTS FOR HUSBANDS**

If most of you husbands are like me, you fall into the same old trap every Christmas.

You go out and buy your wife that special something she wants, then sit back and relax, happy in the thought that you're going to please her. Suddenly, about a week before the big day, you realize all your eggs are in one basket. Mom will have one nice gift - - but that's all. Everyone else, meanwhile, will have several packages under the tree.

If this is about to happen at your house this year, here's an idea.

Give Mom a color extension telephone for Christmas. We'll give you a colorful gift wrapped miniature telephone to put under the tree with the other presents, then have the real one hooked up after Christmas.

Table phones now come in nine pretty colors. The new wall phones, so popular for kitchens, are available in seven colors. The cost is \$10 plus installation.

**HOLIDAY GREETINGS**

Before the holiday season is upon us, I'd like to wish everyone a "Merry Christmas" and "Happy New Year" from all of us here at the telephone company.

Call by number. It's twice as fast.  
**SOUTHWESTERN BELL TELEPHONE COMPANY**

**JENKINS MUSIC COMPANY**  
Will give six free lessons with the purchase of any new Hammond organ or Piano.  
See or Call  
**Mrs. J. E. Berry**  
Phone CR2-3116  
Our local representative and teacher

**Dunlap's CHRISTMAS SALE**



**WASH AND WEAR DRESS SHIRTS**

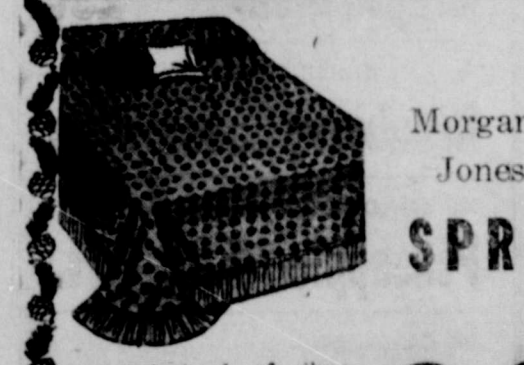
Every man enjoys a dress shirt for Christmas. This wash and wear dress shirt is the ultimate in fine wear. Wash and drip dry, requires little or no ironing.

FINE WHITE BROADCLOTH IN SIZES 14 TO 17 **2.99**

**LADIES GOWNS**

This gown is gay elegance in opaque nylon tricot by Lorraine - bewitching bodice of misty nylon sheer cleverly embroidered with dainty little flowers.

PINK, BLUE, OR SUNSET. SIZES - SMALL MEDIUM LARGE **5.95**



Morgan Jones

**SPREAD**

A touch of silver "Mylar Twinkle" added to a subtle stripe of hobs and braids makes this the bedspread beauty of the year. Round corners, fast colors, 5 decorator hues. So perfect for Christmas giving. **8.95**



**Stetson "Open Road"**

The Open Road is the wide brimmed hat for western gentlemen. Tan fur felt that men love and feel proud in. For his personal selection give him a Dunlaps Gift Certificate. **10.95**

Mans

**Robe**

This robe of imported cotton is expertly tailored of wash and wear fabric. Plaids, checks, foulards.

Year around weight for year around comfort. Sizes S-M-L. **5.99**



**GRIFFIN SHINEMASTER**

For the shine of shines, and the gift of gifts for home or office give him this Griffin Shinemaster for Christmas. Solid oak with a lacquer finish. Fitted with four colors of polish, two brushes, two daubers, and two shine cloths. **5.95**



**SEAMLESS HOSIERY**

Every woman would love beautiful seamless hosiery for Christmas. And we have a beautiful selection to choose from. In gorgeous shades to make her lovelier than ever. **\$1.**

**GIRLS DRESSES**

We have the newest dresses for holiday and spring wear. Washable cotton in plaids, checks, solids and combinations. Choose from our wide selection. by Kate Greenaway **2.98 to 10.95**





**QUEEN AND HER COURT**—Hardin Simmons University's Cowboys are gunning for the Border Conference basketball championship this year and they will have plenty of help from Queen of the Court, Miss Ann Reagan, daughter of Mr. and Mrs. Leon Reagan, Spur. Miss Reagan is a freshman. At left is Doyle Edmiston, 6-7 forward, and right, Carl Knight, 6-8 center. (Photo courtesy Abilene Reporter-News)

### VFW To Have Christmas Dinner

The local VFW Post will have their annual Christmas dinner Friday night at 8 P. M., Dec. 12 at the American Legion Hut. All members and their families are urged to attend. There are to be visitors from the District and the Department of Texas. District officers will be District Commander Bob Pool, of Post, and Auxiliary, Katie Conner of Lubbock, along with other elected and appointed officers.

The principal speaker of the evening will be Victor Affler-

bach, Jr-Vice Commander of the Department of Texas. Afflerbach has recently moved to Lubbock, from Victoria, Texas. He is now manager of Municipal Power and Light plant of Lubbock.

Post Commander J. C. Randall, ask that all members make reservations 24 hours in advance, by calling his home, CR 2-4190.

**USE THE CLASSIFIED ADS BUY, SELL, OR RENT!**

### FROM WHERE

I SIT . . .

By JOE HARRISON



The Spur Bulldogs have just completed the most successful gridiron campaign in the history of Spur High School.

Six seniors on the team will have something to tell their grandchildren, regardless of any future athletic feats. Six graduating seniors are linemen: Center Don Kidd, End Ernest Wilson and Tackle Kenneth Gilcrease; backs: Fullback Joe Copeland, Halfbacks Kenneth Sutt and Kent Morgan.

Prospects for a good 1959 Bulldog squad are bright, but these six men will be sorely missed.

Our congratulations to these men, and to the other members of the 1958 Bulldog team and the coaching staff.

You have made 1958 a year that Spur grid fans will not forget.

Best of luck.

Stamford officials literally clamored to play their quarterfinal game with Spur on their home site. Spur officials wanted to play the game on a neutral field. Stamford balked—a coin toss determined that Stamford would be the site. Where were those supporters of the "mighty" Stamford Bulldogs last Friday afternoon?

They didn't show up. Spur had more people there than Stamford did, and they came from all points.

It appeared that the Stamford fans thought the game was in the bag. To me, this was a bitter pill to swallow.

The Stamford football team proved convincingly to me that they had a fine team. They were polished and well balanced. The defeat by such a team was not near so hard to take as the insult of the Stamford fans.

The Stamford team showed a fine streak of cockiness also. However, the first quarter of play let some air out, and they realized they would have to play ball to win.

If the attitude of the Stamford fans, as displayed by their lack of attendance at the game

Friday, is what goes with a championship team . . . I'm glad Spur lost.

The Stamford team has learned their gridiron lessons well, but the fans, and the team, need to learn how to win.

Friday night in Abilene, Stamford will meet Terrell in the AA semi-finals. Some observers here in Spur hope the Stamford team wins . . . the editor is not one of these.

Notice in the Floydada paper that the Whirlwinds came out with a little over \$89 in the black.

With Spur moving to the quarterfinals and collecting approximately \$1,500 in each of their three post season tilts, the athletic fund here might also get into the black.

#### BULLDOGS, con'td from P. 1

Spur	Stamford
7	18
3	6
74	304
45	105
3 of 18	10 of 19
1	3
3 for 15	4 for 30

Spur	TC	YG	Avg.
Copeland	8	15	1.9
Sutt	17	49	2.9
Paronto	6	9	1.4
Morgan	2	3	1.4
Walker	1	2	2.0
Stamford	TC	YG	Avg.
Davis	19	125	6.7
Helmer	9	75	8.1
Mouky	3	43	14.1

#### FORMER SPUR MAN TAKES TEAM TO SEMI-FINALS

Joe Simpson, head coach at McKinney, son of Mr. and Mrs. Bill Simpson, Spur, has moved with his McKinney Lions into the State AAA semi-finals as his team upset Carthage last week on penetrations, 4-2.

The game ended as a 12-12 deadlock.

Bill Simpson owns and manages Simpson's Western Store in Spur, and also farms.

### PATTON SPRINGS . . .

## SCHOOL COMMUNITY NEWS

Supt. W. M. Hayman has just returned from an 8 day siege in the Crosbyton Hospital. He had to undergo a major operation, but came through with colors flying and is now back on the job at Patton Springs School.

Mr. John Jaskson of the Glenn Community was stricken with a heart attack on November 21. He has been in good hands at the Matador Stanley Hospital and seems to be recovering satisfactorily at the present time.

The Patton Springs School will be closed down for the Christmas Holidays from December 19 to December 29.

Ray Bateman, son of Mr. and Mrs. Ray Bateman, Sr. of Afton will be home for Christmas for two weeks. He is in the service of Uncle Sam at Ft. Hood, Texas.

#### FIRST & SECOND GRADES

The transient pupils are beginning to leave, now that most of the cotton has been gathered. The enrollment in this grade has dropped to 18.

The First Graders are making good progress in reading. Everyone has completed a book and had the fun of taking their first book home. (Isn't it too bad that this enthusiasm cannot last all the way through school?) They also made an Indian Head-dress obtaining all the new words they had learned from their book.

#### SECOND & THIRD GRADES

The Third grade pupils are making the change from manuscript to cursive writing in all of their work. It is a difficult change, but they are working hard and being careful about forming the letters and putting them together.

For Thanksgiving, each child made an original drawing, then was given the opportunity to tell about his drawing. It was fun!

Two poems have been learned recently — "Little Ducks" and "Whisky Frisky".

We are happy to be responsible for the new tether-ball in our department. It is a new and interesting game.

The Second Grade has just finished the first basal reader and are ready to start on their new supplementary reader. The pictures that are being drawn now by this group have to do with Santa Claus.

Senior Shirley Porter had an opportunity to teach our grade this past week for a half-day.

#### FOURTH GRADE

Eddie Kimmel spent the week-end in Spur with his cousin, Lindsey Ray Hoover.

John Stokes and David Hughes were deer-hunting in Mason County last week-end.

We are now working fractions, since the beginning of the 3rd six weeks.

We are writing letters in English classes.

Beverly Bridge's father, Dumont Bridge has been fishing recently at Lake Kemp.

Eddie Kimmel, Beverly Bridge, and Mike Haney are the spelling champions of the last two weeks.

#### FIFTH GRADE

Larry Lawson of this grade reports a wonderful weekend trip recently with his family in Palo Duro Canyon, Canyon, Texas.

#### SIXTH & SEVENTH GRADES

Mr. and Mrs. Maurice Clifton and children, Terecia and Mikey of Lubbock were visiting this past weekend in the homes of their parents, the Dempsey Clifton and Ira Sullivan families.

Children visiting in the Jeff Randolph home last weekend were Mr. and Mrs. Dave Thomas of Pecos and Mr. and Mrs. Jarrell Randolph and children of Lubbock.

#### SENIOR NOTES

The current annual staff has purchased a Polaroid Camera to help in making the pictures for the Year-book. It is to be a gift to the Patton Springs School from the Class of 1959.

The Senior Pictures are to be in the hands of the Class of '59 very soon, perhaps by December 16th.

For 12 years they have waited for these pictures that will be placed in the Big School Panel.

The first installment of the annual was sent off to the publishers this last week. The staff is working hard to meet the deadlines and are having a good time preparing the copy.

Pictures of the various groups and organizations were taken this last Wednesday.

#### ATHLETIC NOTES

Many Patton Springs students turned out last Friday to see the fighting Bulldogs of Spur play in the quarter-finals against Stamford.

Both the Patton Springs

Mrs. Bill R. Barrett and son Pat, and Mrs. R. L. Alexander, visited in Abilene Wednesday with Dr. and Mrs. Joe Alexander. They were accompanied by Mrs. R. B. Walsworth, who visited her daughter, Mr. and Mrs. Melvin Lindsey and Temple.

### HOSPITAL NOTES . . .

Mrs. E. H. Marshall, Roaring Springs; Mrs. I. D. Rodgers, Spur; Mrs. F. G. Shaw, Dickens; Mrs. Solomon Yanez, Spur; J. D. Hopkins, Spur; Isabell Ruiz, Hereford; Mrs. R. J. Bell, Spur; Mrs. J. W. Stephenson, Lubbock; Mrs. W. F. Neaves, Spur, (transferred to Lubbock) Ronald Williamson, Spur; Randolph McNeill, Spur; Mrs. Bill Vencil, Jayton; Mrs. W. R. McWilliams, McAdoo; Sam Cantu, Spur.

Mrs. E. H. Marshall, Mrs. I. D. Rodgers, J. D. Hopkins, Isabelle Ruiz, Ronald Williams, Mrs. W. W. Dozier, Dickens; Mrs. S. Williamson, Afton; Mrs. Jimmy Rainbolt, Mrs. Frank Cantu, N. J. Rogers, Dickens; George Neaves.

Up to 30 per cent can be added to the life of farm machinery by giving it proper winter care, points out W. L. Ulich, extension agricultural engineer. Too, he adds, time will be saved in getting the machinery back on the job.

**GO FURTHER WITH YOUR FOOD DOLLAR**

<b>BOSS BACON</b>	<b>2 lbs. 89c</b>
<b>ILEY'S or ARMOUR'S STAR FRESH FRYERS</b>	<b>lb. 39c</b>
<b>DELITE PURE PORK SAUSAGE</b>	<b>2 lb. bag 65c</b>
<b>FRESH PORK STEAK or ROAST</b>	<b>lb. 49c</b>
<b>BUDGET BACON</b>	<b>lb. 39c</b>
<b>KIMBELL'S WHOLE (No. 303)</b>	
<b>GREEN BEANS</b>	<b>5 for 1.00</b>
<small>25 LBS. KIMBELL'S</small> <b>FLOUR</b>	<b>1.79</b>
<small>3 LBS. KIMBELL'S</small> <b>Shortening</b>	<b>69c</b>
<small>KIMBELL'S</small> <b>OLEO</b>	<b>5 for \$1</b>
<small>KIMBELL'S</small> <b>Grape Juice</b>	<b>29c</b>
<small>FLAT CAN VAN CAMP'S</small> <b>TUNA</b>	<b>19c</b>
<small>303 CAN KIMBELL'S</small> <b>Cranberry Sauce</b>	<b>19c</b>
<small>PILLSBURY LAYER</small> <b>CAKES</b>	<b>2 for 25c</b>
<small>303 CAN DIAMOND</small> <b>CORN</b>	<b>7 for \$1.</b>
<small>303 CAN DIAMOND</small> <b>PEAS</b>	<b>7 for \$1.</b>
<b>GOLDEN BANANAS</b>	<b>lb. 12 1/2c</b>
<b>SUNKIST LEMONS</b>	<b>lb. 10c</b>
<b>TEXAS ORANGES</b>	<b>5 lb. bag 35c</b>
<b>RUSSET POTATOES</b>	<b>10 lbs. 35c</b>

## Stop & Shop Mkt.

**DOUBLE FRONTIER STAMPS TUESDAY!**  
**PLENTY FREE PARKING - USE REAR ENTRANCE**

1959 EDSEL

Edsel Ranger 2-door sedan

Makes history by making sense!

Check the new official price labels for Edsel's new, low prices

The new law says that every car must have a label showing the manufacturer's suggested retail price—and Edsel Dealers are even happier about it than the public! Because Edsel prices didn't go up this year—they went down! The 1959 Edsel is now priced with the most popular three—and the price labels prove it! Edsel's four new high-efficiency engines prove something else important—real gas economy. They include

a thrifty six with a great test-track record—and a new, economy V-8 that uses regular gasoline! Edsel's new size makes sense, too. Six-passenger room inside—less length outside. And less useless car weight. So it's much easier to handle than long, bulky cars. Try the car that's proud to wear its price—proud to prove it makes sense! See your Edsel Dealer!

EDSEL DIVISION • FORD MOTOR COMPANY

Now priced with the most popular three!

**Hoover Motor & Implement Co.**

200 Burlington Ave. Spur, Texas

# CLASSIFIED ADS

**FOR SALE:** Mustard Seed Oats, 80c bushel. Alton Delisle, Dickens Highway. AX6-2122. 52-ctfn-11

**JUST ARRIVED!** A new shipment of RCA Whirlpool home Freezers and Refrigerators. We have on display the famous RCA Refrigerator IceMaker. Also a new shipment of Whirlpool Automatic Washers. Edwards-Kelley Implement Co. 220 North Burlington. 7-ctfn-27

**COMPLETE floor covering** sales, service, installation. Carpeting, inlaid linoleum, plastics, tiles, etc. West Texas Furniture Co. 28-ctfn-16

**FOR SALE:** Beef and hogs for your locker or home freezer. We have all sizes available. Half or whole. Wholesale price. Leon Locker Plant. Ph. CR2-4371, Spur. 46-ctfn-27

**FOR SALE:** 120 acre farm 4 1/2 miles south of Spur. Contact Olney Walker, Spur. 34-ctfn-13

**FARM FOR SALE:** 6 miles Southwest of Girard. 101 and one-fourth acres, all in cultivation. 35 acres already sown to small grain. See Millard Smith, Girard, Texas. 8-ctfn-25

"We buy and sell good used farm equipment". A&B Tractor & Equipment Co., at Ken Bozeman's on Idalou Highway. Elmer H. Adams, Mgr. Ph. PO2-2510. Night, PO2-1866. Rt. 7, box 81, Lubbock, Texas. 44-ctfn-33

**FOR SALE:** 1952 Model Ford Tractor 2-row. \$650.00 with planter, lister, cultivator, Go-Devil. Mrs. Cecil Alexander, 606 Burlington. 47-24tp-20w

**FOR SALE:** 20 cu. ft. IH Home Freezer. Excellent condition. Guaranteed. Terms available. West Texas Furniture Co. Spur, Texas. 49-ctfn-20w

**FOR SALE:** Reo electric reel type lawn mower with 65 ft. cord. Less than 1 year old. Originally \$98.50 — \$50.00. Call CR2-4428. 29-ctfn-21w

## at West Texas Furniture Co.

**FREE!** World's Largest TOY-FILLED

**CHRISTMAS STOCKING**  
8 ft. HIGH! \$5000 worth of TOYS!



SEE IT ON DISPLAY!

**To the Lucky Winner FREE!**  
Just Come in... Register for Drawing!  
Nothing to Buy... No Obligation!  
Each Child must be accompanied by a Parent.

**25 Complete TOYS and GAMES in All**  
Here are just a few typical toys:

- Spinning Top • 7" Rubber Ball • 24" "Mama" Doll
- Gun and Holster Set • Ukulele • Bat and Ball Set
- Adventure Game • Golf Set • Go-Car • Motor Boat
- King Arthur and Knights Set • Space Game

and a host of other Valuable Toys.

**WEST TEXAS FURNITURE CO.**  
SPUR, TEXAS

## HOW BOUT THAT By RALPH TEE



**FOR MONUMENTS, Curbs, and Covers,** See J. E. Lee. 3-ctfn-9

**FOR SALE: Weining Pigs.** See Lester Ball. CR 2-3229 5-ctfn-8

**FOR SALE: Good used cookstoves.** \$5.00 to \$69.50. West Texas Furniture Co., Spur, Texas. 49-ctfn-14w

**FOR SALE: 2" and 1 1/4" used pipe.** See at Henry Simmons' welding shop. 16-ctfn-13

**FOR SALE: Nice Jersey Milk Cow,** calf by side. G. W. Bennett, Afton, Texas. 8-1tp-14

**FOR SALE: Brick Veneer business building,** 30 x 80. 2 rooms upstairs. Living quarters available in back of store. Grocery fixtures and counters for sale. Millard Smith, Girard, Texas. 8-ctfn-29

**FOR SALE: In field, between 5000 and 6000 bundles** of well headed, late Hegari. Special price if sold in large quantities. Mrs. H. D. Smith, one and one-half miles West of Girard. 8-2tp-30

**Home Freezer For Sale:** By Girard Ind. School Dist. 1952 model, 6 cu. ft. Maytag home freezer, to be sold by sealed bids Jan. 5, 1959. Send bids to: Orwin Stephens, Sec. of School Board, Girard, Texas. 8-2tp-37

**FOR SALE: Two bed-room house** and lot for sale. Low down payment. Call CR 2-3175 after 5 p. m. 8-ctfn-19

**FOR SALE: My houses in Spur,** located at 416 — 2nd St., and 416 3rd St., Jerry Willard 115 S. Adonis, Dallas 8, Texas. 8-4tc-23

**FOR SALE: 3 piece bed-room suite,** 2 wheel trailer, with bed. W. C. Ingle. 8-1tp-15

**FOR SALE: New Electric Admiral Sewing Machine.** \$65.00 Mrs. Evelyn Smelser, 423 N. Keeler. Ph. CR 2-4180. 8-2tc-15

**FOR SALE: Pedigreed Boxers and Pups.** Dam Susie Boe W73-1137. Fu Wh Wmkys - 4 years, 75.00. Sire, Tired Timber W 77-7571. Fu Blk Msk 2 1/2 years old 50.00. Pups, 35.00 each with papers. Will deliver Christmas week. Mrs. C. B. Fort, Box 3068 Ft. Worth 5, Texas, phone J. E. 67004. For information phone CR 2-3180. 8-2tp-53

**LET US Slaughter your beef or hog.** Modern, clean, sanitary facilities. Experienced staff. Leon Lee Co., Spur. 34-ctfn-

**FOR RENT: Small Apartment.** Call CR 2-3329 or see it at 608 1/2 Trumbull. 8-ctfn-12

**FOR RENT: Three room house and bath, furnished.** All bills paid. \$35.00 per month. See at 522 Trumbull or call CR 2-3725. Mrs. John K. Johnson. 8-ctfn-25

**BUYING A CAR? Come and look over the Pontiacs.** Compare before you buy. Compare Looks, Size, Comfort and Durability. Reagan Motor Co. 220 North Burlington. 7-ctfn-26

**FOR RENT: Furnished Apartments:** Three rooms, bath, clean, close in. Call CR2-4137 or CR2-4212. Allen Apartments. 4-ctfn-16

**FOR RENT: 24 x 100 brick building** with living quarters. Parking space in rear. Call or come by Morgan's Studio. CR2-3182. 4-ctfn-22

**FOR RENT: Furnished Apartment.** E. S. Lee. 2-ctfn-7w

**FOR RENT: 40' x 60' Sheet Metal Building.** Located east of Willson-Young Lumber Co. Call CR2-4271. 52-ctfn-15

**Miscellaneous**

**FOR EXPERT Piano Tuning and Repair** see or call John E. Berry Jr., 4307 - 46th St. Lubbock, Texas, Phone SW9-6852 or call CR2-3116. 50-ctfn-23w

**The Presbyterian Church** is open at all times for prayer and meditation. 702 N. Burlington. 46-16tp-

**FOUND: House Key,** may claim at Texas Spur by paying for this ad. 2-ctfn-13

**LOST: Two pigs-sow and boar** about six weeks old. Bob Cannon, AX6-2226. 4-ctfn-14

**LOST: Roan Milk Cow and yearling heifer.** 4 F connected brand. E. L. Maben, Star Rt. 2, Spur, Texas. 7-ctfn-19

**WANTED**

**WANTED: Grass Land,** Large or Small Acreage. Call CR 2-3788. 6-ctfn-9

**WANTED: Typing to do in my home.** Pick up and delivery service. 24 hour service. Mrs. Arlene Wyatt. AX 6-2223. 5etfn-19

**BUSINESS OPPORTUNITY MAN OR WOMAN**

Responsible person from this area to service and collect from cigarette dispensers. No selling. Car, reference, and \$592.50 to \$1975.00 investment necessary. 7 to 12 hours weekly nets up to \$327.50 monthly income. Possible full-time work. For local interview give phone and particulars. Write International Distributing Co., P. O. Box 865, Okla. City, Okla. 8-1tp-

**FOR SALE**

166 acre farm, three bed-room house. \$100 per acre. Close in.

4 acres land three Room house. Near Experiment Station. \$3,500.

2 bedroom home. Good location. \$3,500.

2 bedroom home near East Ward School. \$2,850.

Other Farms, Ranches and City Property for Sale.

**M. L. Crafton**

**REAL ESTATE**  
CR 2-4312 CR 2-4582  
Office Residence

**MORE PONTIACS** — rolling in every few days. The demand from the public for the '59 Pontiac has been so great this year, we have ordered a variety of all styles. Come in and pick out one at no higher price than last year. Reagan Motor Co. 220 North Burlington. 7-ctfn-49

**LEGAL NOTICE**

**ANNUAL STOCKHOLDERS MEETING**

**Notice is Hereby Given:** That the annual meeting of the stockholders of Spur Security Bank of Spur, Texas will be held at the office of said Bank on the 13th day of January 1959, at 10 o'clock A. M., for the election of Directors and the transaction of such other business as may properly come before the meeting.

Respectfully,  
E. S. Lee, Cashier. 8-4tc-52

Mr. and Mrs. Bill Owens of Kermit, Texas are visiting in the E. N. Gage home.

**IVE BETTER ELECTRICALLY**  
WITH A 1959 FRIGIDAIRE ELECTRIC RANGE  
WITH NEW PULL 'N CLEAN OVEN!

**Cooking Without Slaving!**  
No more down-on-knees oven scrubbin'! No more door dodging, stretching, bending! The Frigidaire oven actually pulls out — full length — so you can wipe it clean standing up! As easy as cleaning the top of your range.

**WONDERFUL "EXTRAS"**

- Porcelain enamel Roaster Pan — easy to clean!
- Automatic Cook-Master — lets you cook oven meals without watching.
- Full-width fluorescent worklight.
- 4 Radiantube Surface Units with removable drip bowls for at-sink cleaning.
- Plug-in automatic appliance outlet.
- Roomy storage drawer pulls all the way out for under-range cleaning.

**ONLY \$223 PER WEEK**  
after small down payment  
DELUXE MODEL RD-20-58

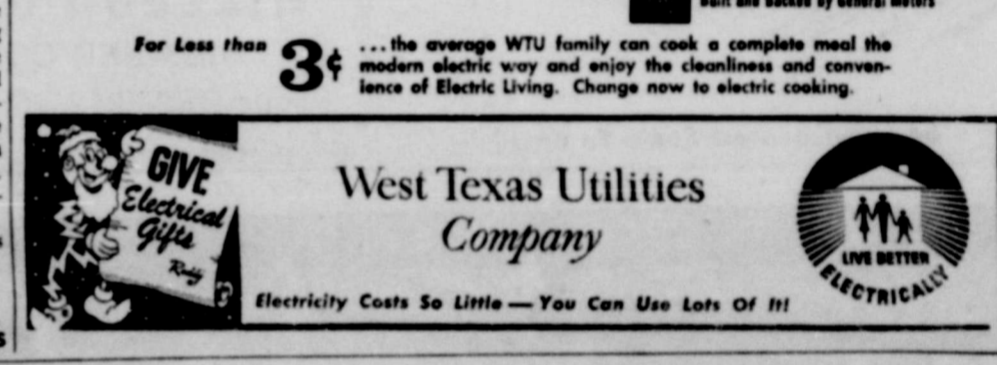
**Makes you feel like a Queen!**  
Cuts your cleaning time in half...



GM Built and Backed by General Motors

For Less than **3¢** ... the average WTU family can cook a complete meal the modern electric way and enjoy the cleanliness and convenience of Electric Living. Change now to electric cooking.

**West Texas Utilities Company**  
Electricity Costs So Little — You Can Use Lots Of It!



TOP TV—The Dinah Shore Chevy Show—Sunday—NBC-TV and the Pat Boone Chevy Showroom—weekly on ABC-TV.



Like all '59 Chevs, this Impala Sport Coupe is new right down to the tougher Tyrez cord tires it rolls on.

Walk around the car that's all-round new... then be our guest for a pleasure test—  
**DRIVE A '59 CHEVY TODAY!**

One look at this '59 Chevy tells you here's a car with a whole new slant on driving. You see the transformation in its low-set headlights, the overhead curve of its windshield, the sheen of its Magic-Mirror finish—a new acrylic lacquer that does away with waxing and polishing for up to three years.

But to discover all that's fresh and fine you must relax in Chevrolet's roomier Body by Fisher (up to 4.2 inches more room in front, 3.3 inches in back), feel the lounge-like comfort of Chevy's new interior, experience the hushed tranquility of its ride (choice of improved Full Coil or gentler-than-ever Level Air suspension\*). Once you're on the road you'll discover such basic benefits as bigger, better cooled brakes that give over 50% longer life, new easy-ratio steering and a Hi-Thrift 6 that gets up to 19 per cent more miles per gallon. And, of course, you find Safety Plate Glass all around in every Chevrolet. Stop by your dealer's and pleasure test the car that's shaped to the new American taste!

\*Optional at extra cost.

see your local authorized Chevrolet dealer

**RICKELS CHEVROLET COMPANY**  
207 N. BURLINGTON SPUR, TEXAS PHONE CR2-3371

John Ray Hunter of Lubbock, was a week end guest of his parents, Mr. and Mrs. S. D. Hunter.  
Mrs. N. M. Gray.  
Miss Lula and Mrs. Tom Swin shopped and visited in Vernon, Friday.  
Mr. and Mrs. Wesley Gray and Mrs. Hansel Pierce and

ROARING SPRINGS NEWS...

Mr. and Mrs. A. B. Nichols Celebrate 50th Anniversary

Mrs. L. E. Cooper  
Mr. and Mrs. A. B. Nichols, were honored by their children Sunday with a Golden Wedding celebration. The Nichols have lived in this vicinity for many years and all of their seven children graduated from Roaring Springs High school. Approximately one hundred registered in the guest book. Mrs. John Green of Spur is their daughter and Mrs. Velma Rogers of Spur is Mr. Nichols sister. Recent guests of Mr. and Mrs. S. B. Kirby, were their sons, Capt. and Mrs. Alton Kirby and children of Amarillo and Mr. and Mrs. Royal Kirby of Littlefield, also Fred Matney of El Centro, California.  
Mr. and Mrs. Gordon Jackson of Paradox, Colorado, visited here Tuesday with her father, J. C. Mitchell.  
Mrs. Grace Mullens and daughter, Mrs. Bud Roiler and son, Billy of Lubbock, looked after business and visited with Mr. and Mrs. L. A. Mullins, Wednesday and Thursday.

DRY LAKE NEWS

Mrs. E. J. Lasseter  
Rev. and Mrs. George Ellis will be at Foreman Chapel Sunday. Rev. Ellis will preach at both the morning and evening hour.  
We welcome Mr. and Mrs. J. P. Whitefield to our community, they have moved to the Henry Williams place.  
Mr. and Mrs. E. J. Lasseter were confined to the bed most of last week. They were taken to the Dr. Monday by Mr. and Mrs. Dick Wright.  
Mr. and Mrs. Bob Pickens visited his aunt, Mr. and Mrs. W. L. Boyd, in Hamlin, who were in a car wreck not long ago. They are both doing fine.  
Rev. and Mrs. George Ellis,

visited Mr. and Mrs. E. J. Lasseter for a while Sunday afternoon.  
Those attending Conference at Duck Creek, Sunday from Foreman Chapel were Mr. and Mrs. John Aston, Mr. and Mrs. Dick Wright and Barbara.

Dr. M. H. Brannon  
Dentist  
111 E. Harris Ph. CR2-3123  
SPUR, TEXAS

Tuesday Only  
DR. W. F. PATRICK  
Optometrist  
110 E. HARRIS, SPUR

Dr. W. C. Gruben  
OPTOMETRIST  
Ph. CR2-3753 Spur, Texas

Knights of Pythias  
Meets Every Monday Night  
Visitors Welcome

Dr. O. R. Cloude  
CHIROPRACTOR  
103 West Hill Street  
Spur, Texas



Ship and Travel Santa Fe

It's the only railroad under one management linking Chicago, California, Colorado, Texas and points in the busy southwest.

See your nearest Santa Fe agent

AUTUMN PAINT SALE

We are discontinuing handling Kem Glo Enamel and Super Kem Tone. We have a full range of colors. We are putting prices on this to clean our shelves.

	Regular	Sale Price
Super Kem Tone	6.25 Gal.	4.50
Super Kem Tone	2.00 Qt.	1.35
Kem Glo Enamel	9.25 Gal.	6.55
Kem Glo Enamel	2.75 Qt.	1.95
Kem Glo Enamel	1.50 Pint	1.10
Outside White Paint	5.95 Gal.	4.00
White Enamel, Best Grade	8.25 Gal.	5.99
Blue 150 White	7.50 Gal.	6.00
Weather Base Wall Paint	5.00 Gal.	3.59
22 Gallon Glass Lined Water Heater 10 yr.		69.95
32 Gallon Glass Lined Water Heater 10 yr.		75.50

WILLSON & YOUNG LUMBER COMPANY

Phone CR2-3212 Spur, Texas

Mrs. Sam Lesley returned to her home in Hereford Monday, after a visit here with her daughter and family, Mr. and Mrs. John Meason.  
Mr. and Mrs. George Yandell are visiting in Sacramento California with relatives.  
Mr. and Mrs. J. C. Smiley looked after business and shopped in Paducah, Saturday.  
Mr. and Mrs. Frank Ferguson looked after business in Floydada, Thursday.  
Mrs. W. C. King and Miss Gladys Peck attended a meeting of the Delta Kappa Gamma society, in Ralls, Saturday.  
Mrs. E. E. Moss of Lubbock, is guest of her sister and husband, Mr. and Mrs. Melton Thacker.  
Mr. and Mrs. Pool of Muleshoe, were guests of her sister and family, Mr. and Mrs. Will Smiley, last week end.  
Mr. and Mrs. Horace Gibson are visiting in Foreman, Arkansas with relatives.  
Mr. and Mrs. Clyde Clifton and sons, visited recently in Sunset with her father, Loyd Thomas and Mrs. Thomas and with a sister and family, Mr. and Mrs. Jim Wade.  
Mr. and Mrs. J. C. Neal of Spur, visited here recently with their daughter and family, Mr. and Mrs. L. J. Marshall.  
Mr. and Mrs. John McClesky and son of Arkansas, are visiting with his brother, Mr. and Mrs. Jimmy McClesky and family.

DAVIS AND RECTOR  
REAL ESTATE & GENERAL INSURANCE  
AUTO LOANS  
"Cash in 10 Minutes"  
Office Phone CR2-3591  
Residence Phone CR2-3257

FLOY WATSON AGENCY  
FARM BUREAU INSURANCE FOR MEMBERS ONLY  
Fire, Casualty, Automobile, Life etc. IT PAYS TO BELONG TO FARM BUREAU  
SEE US FOR CROP HAIL INSURANCE  
100 E. Harris St. Spur, Texas  
Office Phone CR2-3231-Res. Dry Lake 2181 P. O. Box 84

CONNER and WALKER  
ATTORNEYS AT LAW  
SPUR, TEXAS

O. L. KELLEY  
REAL ESTATE  
Farms, Ranches, City Property LISTING WANTED  
BOX 1093 SPUR, TEXAS  
PHONE CR2-3353

FLASH-O-GAS INC.  
BUTANE CARBURETION A SPECIALTY  
Phone CR2-4291 P. O. Box 1216  
SPUR, TEXAS  
ALWAYS PROMPT AND COURTEOUS SERVICE

MARKET POULTRY & EGG CO.  
BUY OR STORE GOVERNMENT STORAGE FOR MILK AND OTHER GRAINS  
F E E D  
(Grain, Pellets, Corn, Oats, Milo, Barley)  
SPUR, Phone CR2-3112 (1 Block West of Co-Op Gin). DICKENS Phone 3467

GIBSON  
INSURANCE AGENCY  
GENERAL INSURANCE  
PHONE CR2-4441

GARNER BROS.  
DRILLING COMPANY  
TEST HOLES  
DOMESTIC WELLS  
IRRIGATION WELLS  
A & C and LANE TURBINES  
REDA SUBMERGIBLES  
JETS  
PLASTIC PIPE  
CLEANOUTS  
PUMP REPAIR  
Free Estimates. We'll appreciate your calls  
RIP GARNER — Phone CR2-3242  
BUNK GARNER — Phone CR2-3188

"66" SERVICE STATION  
WHOLESALE and RETAIL  
OPEN 24 HOURS  
PHONE CR2-4141 SPUR

H. A. C. BRUMMETT  
ATTORNEY AT LAW  
DICKENS, TEXAS  
PHONE 2621

ALWAYS BOOSTING SPUR

TEXAS THE SPUR

OFFICIAL PUBLICATION FOR COUNTY OF DICKENS AND CITY OF SPUR  
DICKENS ITEM and DICKENS COUNTY TIMES Absorbed by Purchase  
Published weekly on Thursday at Spur, Dickens County, Texas. Office and Printing Plant located at 424 North Burlington Avenue. Office Telephone CR2-3283.  
JOE HARRISON, Editor and Publisher

NOTICE — Any erroneous reflection upon the character, standing or reputation of any individual, firm or corporation, which may appear in the columns of The Texas Spur will be gladly corrected upon its being brought to the attention of the publisher.

SUBSCRIPTION RATES  
Per Year in Advance  
in Dickens, Crosby, Motley, King, Starbuck, Cottle, East, Garza, Floyd counties \$2.00  
in Mail Zone Two \$3.00  
in All Other Zones \$4.00  
All subscriptions are removed from our mailing lists upon expiration. Renewals should reach us two weeks in advance of expiration date to avoid sending an issue. In giving address change, both old and new address should be given.

Entered as second class matter on the 12th day of November, 1908, at the Post Office at Spur, Texas, under the Act of Congress of March 3, 1879, and published continuously without recess.



BIGGEST

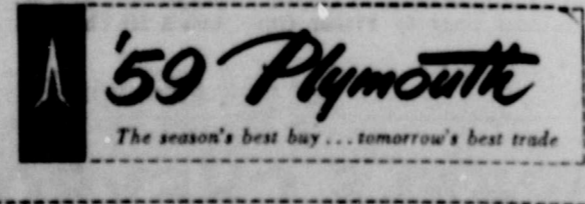
Perfect family present: one of Plymouth's 10 new station wagons. Just a few more Plymouth shopping days 'til Christmas!

'59 Plymouth Station Wagon...biggest holiday hauler in its class!

You can load this wagon with the tallest tree and all the Yuletide trimmings. For holiday hopping and shopping, Plymouth boasts the most cargo area of any wagon in its class, the popular rear-facing seat, a rear window that rolls right down, many other station wagon innovations. And this merry carrier is just as beautiful and glamorous as it is useful. (No wonder you spy so many Plymouth wagons on the road this year!) See your Plymouth dealer for the biggest station wagon in its class...and best wagon buy at any price... '59 Plymouth!

IF IT'S NEW, PLYMOUTH'S GOT IT! SEE THESE FEATURES TODAY!

1. PUSHBUTTONS control driving, heating, ventilating.
2. SWIVEL FRONT SEATS\* swing you easily in or out.
3. OBSERVATION CAR SEAT faces rear, holds three adults.
4. DISAPPEARING REAR WINDOW rolls right into lower section.
5. LOCKED LUGGAGE COMPARTMENT\* protects valuables.
6. MIRROR-MATIC REAR-VIEW MIRROR\* dims headlight glare. \*Optional, low extra cost.



Alvin Jones Motor Co. 128 E. Harris

REGISTER FOR  
**FREE  
GIFTS!!**

Christmas Gifts for you in appreciation of your patronage.  
No. 1 - Swing King Recliner  
No. 2 - RCA Radio  
No. 3 - GE Steam Travel Iron  
No. 4 - Pair Planter Lamps  
For The Kiddies - FREE - 8 ft. Stocking Full of Toys.  
SEE OUR AD ON PAGE 5



**IT'S CHRISTMAS SHOPPING WE GO...**  
AT WEST TEXAS FURNITURE'S BIG

**Christmas Furniture Sale**

**NOW IN FULL SWING!!**



**3 Pc. Bedroom Suites**

By McCoy Couch and Bassett



- CHARCOAL
- WALNUT
- OAK

Book Case Bed, Large Chest, Double Dresser

Regular 199.50

**CHRISTMAS BARGAIN**

**149.50**

WITH TRADE-IN

FURNITURE IS A PERMANENT GIFT

**5 Pc. Living Room Groups**

Beautiful Groups to Choose From, Patterns by A. Brandt and West Wood. Reg. to 229.50

- ROCKER
- SIDE CHAIR
- SOFA BED
- TWO SOLID OAK TABLES



**189.50**

WITH TRADE-IN

Other Living Room Suites from 99.50 up

ONE GROUP  
**PLATFORM ROCKERS**

Red, Green and Beige. Reg. to 42.50.  
Santa's Price ONLY-

**34.50**

FULL SIZE Reg. 219.50  
**HARDWICK RANGE**

With DeLuxe Back Panel, Electric Clock, Automatic Timer, Grill and 5th Burner Attachment. NOW !!

**169.50**

With Acceptable Trade-In

REGULAR LINE  
**DINETTS**

By Virtue and Ideal. Large 7-Piece Suites. Two Leaves. Reg. to 149.50 ..  
Going at

With Trade-In **99.50**



**Recliners**

By Kroehler & Swing King.

Reg. 79.50. Christmas Sale Price ...



**59.50**

Others with and without vibrators, up to 179.50)

ENTIRE STOCK  
**LAMPS & TABLES**

**One Third  
OFF**

ENTIRE STOCK  
**MATTRESSES &  
BOX SPRINGS**

**20%  
Off**

**DURING THIS BIG  
CHRISTMAS SALE ...**

We Offer Extra Long Trade-Ins for Good Used Furniture, Appliances and TV Sets.

LONGEST TRADES  
... EASIEST TERMS

**West Texas Furniture Company**

SPUR,  
TEXAS

**GIRARD NEWS . . .**

Mrs. H. A. Hollingshead, Mr. and Mrs. Luther Bowen have returned home after a three week's visit with their daughter, Mr. and Mrs. Tommy Roland of Bryant, Arkansas.

Mr. and Mrs. Bob Hamilton had part of their children home for Thanksgiving, Mr. and Mrs. Floyd Green of Spur, Mr. and Mrs. Raymond Patton of Seminole, and Mr. and Mrs. T. B. Hamilton and Dickey, also a friend of Paducah.

Mr. and Mrs. Lee Kidd of Spur visited her parents, Mr. and Mrs. Jesse Arnold Sunday, and another daughter of Jayton, Mr. and Mrs. Dugan Wilson spent several days at the Arnold's.

Mrs. L. L. Arnold had one of her granddaughters with her Sunday.

Mr. and Mrs. Richard Westfall attended a birthday dinner at the home of his parents Sunday.

Mr. and Mrs. Hamilton spent several days at Paducah visiting the Pattons last week.

Charlene Rudder has moved from Lubbock to Abilene where she is seeking employment, Rickey Luna, son of Mr. and Mrs. Bud Luna of Abilene accompanied her home for the week-end.

The new home of Mr. and Mrs. Jack Montgomery was the scene of a party in their honor Monday night, the occasion being a housewarming.

Last Wednesday Curtis Wilson and Curtis Lee Wilson of Lubbock were quail hunting and visiting Mr. Wilson's sister, Mr. and Mrs. D. R. Hooper.

Both of the new pastors in the community have begun visitation programs, and are getting around to see their members.

In Aspermont Friday on business were Mrs. Myrtle Bailey, Mrs. Dona Beaver, Mrs. Logan Williams, Mr. and Mrs. T. C. Sandlin, Mr. and Mrs. Bob Hamilton, and Mr. and Mrs. John Doland. The Sandlins also visited with his brother and their daughter, Mr. and Mrs. Bo Gosson and family.

Little Paula Woodrum is just recovering from chicken-pox and virus.

Mrs. Riddle of Abilene. They all attended church services at the Methodist Church in Spur.

Mr. and Mrs. Al Fincher and children spent the holidays in Hermleigh.

Mr. and Mrs. Lon McDonnell spent several days recently with their relatives at Merkel.

Mr. and Mrs. M. H. Galbreath attended several meetings of various kinds of teaching personnel during the recent holidays in Ft. Worth.

Mr. and Mrs. H. E. Witt and children, accompanied by Janice Hollingshead were in Lubbock Monday.

Mr. and Mrs. Lewis Williams and Elizabeth visited in Tahoka Thursday, Billie attended the Spur-Abernathy game in Plainview.

Mr. and Mrs. Norman Hahn spent the week end here with Mr. and Mrs. Earl Hahn.

Mr. and Mrs. B. C. Powell and children of Amarillo, visited with her parents, Mr. and Mrs. Logan Williams, recently.

Mrs. Louetta Gunn, spent Thanksgiving with her daughter and family, Mr. and Mrs. Doyle Mitchell, in Lubbock.

Mr. and Mrs. Glenn Spradling went to Vernon to witness the awarding of honors to several area students, including their son, Elvis.

Mr. and Mrs. Herm Gilbert were called to Abilene last week, where their son, Orvis, underwent surgery.

Mrs. S. E. Sherer was a patient in the Medical-Surgical Clinic, in Spur, Monday.

Mrs. Gip Mayfield from Arkansas, is visiting Mrs. Alma Goodal, this week.

**EAST TEXAS DAIRIES**

A study of East Texas dairies the last four years revealed that herds are getting larger, production is being increased and high milk production rather than butterfat production is being stressed. Counties represented were Nacogdoches, Smith, Upshur, Camp, Wood, Titus, Franklin and Hopkins.

Mr. and Mrs. Odell Littlefield of Abilene spent the weekend with Mr. and Mrs. Bill Offield and Judy.

**A Christmas Gift for Everybody!**  
FROM YOUR FRIENDLY  
**HOMETOWN MERCHANTS**  
**FREE MOVIES**  
GET YOUR FREE TICKETS FROM ANY OF THESE MERCHANTS

- |                           |                          |
|---------------------------|--------------------------|
| Buzbee Butane Service     | Gabriel's                |
| C. D. Foreman 66 Service  | G. F. Wacker Stores      |
| Mac's Food Market         | Gibson Insurance Agency  |
| Western Auto Store        | West Texas Furniture     |
| City Drug Company         | The Texas Spur           |
| Brashear Supply Co.       | Farmers Co-Op Gin        |
| Bell's Cafe               | Randy Clifton TV Center  |
| S & H Texaco Willis Smith | Massey Gin Company       |
| Spur Super Market         | Fay's Fashions           |
| Spur Security Bank        | Edwards-Kelley Impl. Co. |
| Red Front Drug            | B. B. Pierce Jewelry     |
| O. K. Rubber Welders      |                          |

**MERRY CHRISTMAS**

**Thursday Only December 18**

**PALACE**  
Spur, Texas

**THURSDAY**  
And  
**FRIDAY**  
**DECEMBER**  
**18 & 19**

**Friday Only December 19**

**MICKY & SON TOGETHER FOR THE FIRST TIME**  
**MICKY ROONEY**  
**ANDY HARDY COMES HOME**  
NEW FUN!

**FREE SHOWS** and **SPECIALS FOR SHOPPERS!**

**PALACE**

**SAT. - ONLY**  
TWIN SHOCK SHOW

**Franksteins Daughter**  
—And—  
**Adventure INTO THE UNKNOWN**

**Missle To The Moon**

**TUES. - WED.**  
**Jumbo Jackpot**  
ATTEND EITHER NIGHT  
**125**  
Reasons Why You Should Attend Either Day—  
—Showing—  
**APPOINTMENT WITH A SHADOW**  
GEORGE HADER • JOANNA MOORE  
BRIAN KEITH • VIRGINIA FIELD  
FRANK SIBRY • CHAS. SCOTT  
A UNIVERSAL-INTERNATIONAL PICTURE.

**BOX OFFICE OPENS:**  
Saturday & Sunday 1:15 p.m.  
Week Days 6:15 p.m.

**SUNDAY-MONDAY**

**REGULAR ADMISSION - Adults 60c - Kids 25c**

**THEY LOVED**  
**Brigitte IN**  
**ALBUQUERQUE**  
REVIEW FROM THE ALBUQUERQUE TRIBUNE

**AT THE MOVIES**

Brigitte Bardot made her long-awaited Albuquerque debut before a sell-out crowd at the Lobo Arts Theater last night in as cute and clever a comedy as you will see in a long time.

Miss Bardot, a French bundle of sex wrapped in a small and tight package, stars in the title role of "La Parisienne," a saucy tale of modern France which could have come straight out of "The Desperadoes."

The French movie is in color with an English language soundtrack.

MISS BARDOT stars as the earthy but unrepentant young daughter of a French prime minister who sets her sights on her father's handsome secretary, portrayed by Henri Vidal, a bachelor who prefers his mistresses a little more mature.

Through a hilarious mixup at a country estate, Brigitte is trapped in Henri's bedroom at midnight, and papa demands an immediate marriage.

When Brigitte learns that her husband is still keeping company with various married women, she tells him at a government reception that she is going to have an affair "with the first man who walks through that door." That man turns out to be a royal visitor, aging Prince Charles, portrayed by Charles Boyer.

PRINCE CHARLES borrows a jet plane and the two fly to the Riviera for an afternoon of swimming, giving us an opportunity to see Brigitte in a bikini bathing suit, which actually isn't much smaller than some of the dresses she wears.

At the Riviera the prince is mistaken for a notorious gangster, resulting in a slapstick action brawl.

The movie is filled with typical Gallic humor, riques but not vulgar, with the unexpected always happening.

In one of the funniest scenes, a waiter carrying six glasses of wine on a tray becomes distracted by Miss Bardot's figure, trips and falls to the floor, rolls over and gets back on his feet without spilling a single drop of wine.

Miss Bardot hasn't made her reputation on her acting ability, but she proves in "La Parisienne" that she is an excellent comedienne. If this is a true picture of French politics, it is little wonder that French governments rise and fall with the tides.—HOWARD BRYAN.

**Brigitte Bardot** *Here it is!*  
**La Parisienne**  
TECHNICOLOR

**CONTINUING OUR BIG CLOSE OUT SALE**

YOUR RESPONSE TO OUR SALE HAS BEEN TERRIFIC . . . BUT WE STILL HAVE LOTS OF GOOD MERCHANDISE LEFT. COME BY TODAY AND DO YOUR CHRISTMAS SHOPPING AT OUR EXPENSE.

SUNBEAM <b>IRONS</b> Reg. 10.15 <b>7.62</b>	UNIVERSAL ELECTRIC Coffeemaker Reg. 26.95 <b>19.95</b>	Mercomatic Electric <b>Perculators</b> Reg. 12.95 <b>9.69</b>	Mercomatic Pressure <b>Cooker</b> Reg. 14.95 <b>9.95</b>
MERCOMATIC <b>ELECTRIC FRY PANS</b> Regular 19.95    14.95		NO. 2 UNIVERSAL <b>FOOD CHOPPERS</b> Regular 5.50    Now 4.15	
1 GALLON DAZEY ELECTRIC <b>CHURNS</b> Reg. 26.50 <b>15.95</b>	COLEMAN <b>Lanterns</b> Reg. 13.65 <b>9.10</b>	EVEREADY MAGNET <b>LIGHT</b> (Less Batteries) Reg. 1.99 <b>1.49</b>	PLASTIC <b>Dish Pans</b> Reg. 1.98 <b>1.19</b>
RUBBER MAID (Regular 3.96) <b>Dish Drains</b> <b>2.69</b>	REGULAR 10.75 COSCO <b>Bath Stools</b> <b>7.43</b>		

**Chaistain Implement Co.**  
SPUR, TEXAS  
PHONE CR 2-4522

**NUT SHELLER 2.96**

**ALL PYREX GLASS WARE 25% OFF**

**ALL HAND TOOLS 25% OFF**

**Revereware 25% OFF**



BUY "SANTA APPROVED" CHRISTMAS GIFTS IN

# SPUR

AND ATTEND THE WEEKLY DRAWINGS TO RECEIVE HUNDREDS OF DOLLARS IN...

## "SPUR LUCKY BUCKS"

This Script Is Redeemable In Trade From Any Of The Spur Merchants Listed Below In Santa's Book Of Approved Businesses:

Drawings Will Be Held On

- December 6
- December 13
- December 20
- December 23

Extra Bonus Drawing For \$200 Grand Prize On December 23.



Shop These Spur Merchants and be Downtown on Drawing Days

- |                               |                             |                            |
|-------------------------------|-----------------------------|----------------------------|
| Dunlap's                      | Dyess Barber Shop           | J. D. Hopkins Station      |
| Spur Super Market             | Margies Beauty Shop         | O. K. Rubber Welders       |
| Spur Security Bank            | Garner Implement Co.        | Hairgrove Feed Store       |
| Holder's Ben Franklin         | Bell's Cafe                 | Star Feed Store            |
| City Drug Company             | Edwards-Kelley Impl. Co.    | Mac's Super Market         |
| Western Auto Supply           | Spur Barber Shop            | Simpson Western Store      |
| Campbell's Furniture          | Stop & Shop Market          | A & B Barber Shop          |
| Spur Milk and Ice Cream       | Reagan Motor Company        | Palace Theatre             |
| Jones Motor Company           | Smith Service Station       | Gruben's Jewelry           |
| Riter Hardware                | Hilltop Station             | West Texas Furniture Co.   |
| Buzbee Butane Service         | Brashear Supply Co.         | Texas Spur                 |
| Randy Clifton TV & Appliance  | Gabriel's Department Store  | Fay's Fashions             |
| Dickens County REA            | Spur Laundry & Cleaners     | Dealers Finance            |
| Stamford Production           | Red Front Drug Co.          | Farm Bureau                |
| Davis & Rector Insurance Co.  | Spur Boot Shop              | Proctor's Department Store |
| Phillips "66" Service Station | Cooper's Cafe               | Market Poultry & Egg       |
| Dixie Dog Drive-In            | G. F. Wackers Store         | Gulf Oil Products          |
| Patton Grocery                | Allen Auto Supply           | Snack Shack                |
| Quality Cleaners              | West Texas Utilities        | Spur Electronics           |
| Spur Mattress Company         | Clary Poultry & Egg Co.     | Hoover Motor Co.           |
| Gibson Insurance Agency       | Rickels Chevrolet-Buick Co. | Massey Gin Co.             |
| Leon Ice and Locker Co.       | Tri-County Lumber Co.       | Spur Gin Co.               |
| Brazelton Lumber Co.          | Godfrey Motor Company       | Farmers Co-Op Gin          |
| Rose's Cafe                   | City Cleaners               | Emma Lee, Florist          |
| Berclay & Hale Gulf Service   | C. P. "Johnny" Scudder      | Dr. W. K. Callan           |
| Flash-O-Gas                   | DeLuxe Beauty Shop          | B. B. Pierce Jewelry       |
| Cannon Boot & Saddle Shop     | Chastain Implement Co.      | Morgan Studio              |
|                               |                             | City Of Spur               |

### Highway Community Combines Thanksgiving-Christmas Feed

**Mrs. B. K. Putman**  
A Thanksgiving and Christmas dinner combined was held at the Community House, Monday night, December 1.  
The table was covered with a white cloth, with a Christmas basket filled with fresh fruit as a center piece. The menu consisted of chicken, dressing, giblet gravy, potato and vegetable salad, cranberry sauce, candied yams, green beans, black eyed peas, hot rolls, spiced cake, coffee and lemonade.  
After dinner the group presented gifts to Mr. and Mrs. Jerry Thomason, since the Thomason are moving to Ojai, California, December 15.  
Mrs. Jimmie Hahn, Mrs. Jerry Thomason and Mrs. Keley Putman cleaned the church and community house, Monday and Mrs. Thomason, Debra and Mrs. Putman had dinner with Mrs. Hahn.  
Mr. and Mrs. Bill Hahn and Family of Post, spent Sunday with Mr. and Mrs. Jimmy Hahn. Mr. and Mrs. Russell Wright, Spur were also present.  
Mr. and Mrs. Wilbur Stanley, Betty McKay, Mr. and Mrs. LeRoy Williams and Mary Lena, went to Lubbock Wednesday to do some Christmas shopping.  
Luther Smith, Amarillo and Johnny Dan Smith, Oregon were in the community Tuesday, visiting friends and relatives and hunting.  
Mr. and Mrs. Wilbur Stanley and Betty McKay, spent the afternoon, Friday with Mrs. Edna Hemphill and J. E. and listened to the Spur-Stamford ball game.  
Mrs. Edna Hemphill and J. E. drove to Hamlin Tuesday and had supper with Mr. and Mrs. Bill Hemphill.  
Mr. and Mrs. Clark Morgan, Bill, Shirley and Sharon drove from Odessa to Stamford to

see the Spur-Stamford ball game, then came to Spur and spent the night with Mr. and Mrs. Jimmie Hahn. Mr. and Mrs. Bill Sandlin of Jayton, joined the group at the Hahns and visited until bed time.  
Mr. and Mrs. Darrell Thomason and children, spent Saturday night with Mr. and Mrs. Jerry Thomason and Debra.  
Sunday dinner guests of Mr. and Mrs. Keley Putman and Lois were Mr. and Mrs. John Boothe, Spur and Mr. and Mrs. Darrell Thomason and children, Hereford.  
Mrs. Keley Putman and Lois and Mrs. Darrell Thomason and children, visited Mrs. Earl and Walter Thomason, in Spur Sunday.  
Mrs. Jerry Thomason, Debra Mrs. Lorell Hairgrove, Diane, Linda Daughtry and Wanda Thomason, went to Aspermont Saturday to attend a birthday party for Jamie Dean, daughter of Mr. and Mrs. James Daughtry.  
Mr. and Mrs. Earl Fry, Lubbock; Mr. and Mrs. Russell Wright, Spur and Mr. and Mrs. M. E. Tree, had dinner with Mrs. Jimmie Hahn, Sunday.  
Mr. and Mrs. Harry Martin and children of Hamlin and Mr. and Mrs. Carl Baker brought lunch to the Harry Martin farm Sunday and hunted. Mr. and Mrs. Harry Martin joined them at the house for lunch.  
Tom Williams helped Forrest Martin round up cattle for market, Monday.  
Bro C. V. Allen passed out lines to the members, Sunday for the study of future lessons. Mr. and Mrs. Earl Fry of Lubbock were the only visitors at church, Sunday.  
Mr. and Mrs. Bill Rucker visited in Aspermont with their daughter, Mr. and Mrs. Fred Dalby and children, Friday bef-

ore going to the ball game at Stamford.  
Ray Don Powell, student at West Texas State College, was home over the week end visiting his parents, Mr. and Mrs. Raymond Powell and his grand mother, Mrs. Lillie Foster in Spur.  
Mr. and Mrs. Preston Scott of Red Mud community, spent Sunday with Mr. and Mrs. Wilbur Stanley.

**CATTLEMAN'S GUIDE**  
The Texas Agricultural Experiment Station, in cooperation with USDA, has prepared a guide for cattlemen in the High Plains of use in determining whether feeding steers is a profitable alternative to the cash market for grain sorghum under various feed-live-stock, cost, price situations. It is available from the Agricultural Information Office, College Station, Texas. Ask for Miscellaneous Publication 295.

USE THE CLASSIFIED ADS

Patented

### PORTABLE DISC ROLLER

NOW AVAILABLE TO FARMERS OF THIS AREA!

Have your One-Ways and Tandems Sharpened in the Field Without Taking the Disc off the Plow! This Machine Does Not Take Away Costly Material!

SAVE TIME — COST — MATERIAL

— PRICE RANGE —

ONE-WAY, PER DISC	\$1.00
TANDEMS, PER DISC	.80
DISCS, OVER 24 INCH	1.25

CALL OR WRITE

### B. D. SHARP

(OPERATOR)

BOX 37 PHONE AX 6-2167  
DICKENS, TEXAS



Check all the 59 wagons and you'll agree...

WE'VE GOT THE WORLD'S MOST BEAUTIFULLY PROPORTIONED WAGONS NOW IN SPUR



For the first time... Hardtop Styling in the longest, lowest, roomiest wagons Ford has ever offered!

We feel certain you'll agree with us: you've never had it so new as our 1959 Ford wagons. For here are wagons with Ford's exclusive hardtop styling... with more glamour and glass area than ever before!  
The wheelbase is a full 2 inches longer. The wagons themselves are over 5 inches longer. There's a whopping 92 cubic feet of loadspace (that's about 17% more). The picture window up front is 20% larger, too. In fact, everything about these Ford wagons of

ours is new... right down to the new Shantung pattern upholstery... new cooler-running, longer-lasting Tyrex cord tires... and the Diamond Lustre Enamel that never needs waxing.  
NEW! A Limousine Ride... thanks to Ford's exclusive front and rear suspensions you ride "limousine level." There's less rock or roll, regardless of road or load. And all seats face forward. Come on in this week and let us prove it!

You never had it so New! 59 FORDS

GODFREY MOTOR CO.

## New Arrivals

Mr. and Mrs. E. H. Marshall of Roaring Springs, are the parents of a girl, born Dec. 5, at the Spur Memorial Hospital. She weighed 7 lbs. and 12 ozs. and was named Mable Viola.

Mr. and Mrs. Francisco Ruiz, Hereford, are the parents of a boy, born Dec. 7 at the Spur Memorial Hospital. He weighed 5 lbs. and 3 ozs. and has been named Francisco Jr.

Mr. and Mrs. Solomon Yanez of Spur, are the parents of a girl, born Dec. 7. She weighed 7 lbs. and has been named Leticia.

READ THE CLASSIFIED ADS

### W. L. Webb To Be Buried Today

Funeral services will be held today (Thursday) at 2:30 p.m. in the First Baptist Church for William Luther Webb, 80. The Rev. Riley Fugitt will officiate.

Born in Quitman, Texas in 1878, Webb first came to Spur in 1927. He married the former Roxie Lee in 1902. He was a member of the Baptist Church. He died Tuesday.

He is survived by his wife, Mrs. Roxie Webb; one daughter, Mrs. Grady Clover, Dickens; two sons, Noble E. Webb, Spur, and Edward Webb, Spur. Eight grandchildren and six great grandchildren survive.

Pallbearers will include Charlie Kimmel, John T. Kimmel, Seals Earnest, Estel Butler, Luther Spain and Lee Martin.

Interment will be in the Spur Cemetery, Campbell's Funeral

### Posse Convention To Be Held In Abilene In 1959

H. V. (Hap.) Hovencamp, Ft. Worth, has been elected president of the American Association of Sheriff's Posses and Riding Clubs. He succeeds O. R. Clarke, Rotan.

Other new officers include J. R. Thompson, Richland Hills Riding Club, Ft. Worth, secretary-treasurer, succeeding Dr. Ted Alexander, Wichita Falls; Bland Pritchard, Lubbock, vice president, succeeding Roven-camp.

The 1959 convention will be held at Abilene.

Attending the convention in Wichita Falls this past week, were Everett McArthur, Olney Walker and Thurmond Moore.

Home in charge of arrangements.

### Charles Lewis To Preach At Methodist Church

Charles Lewis, son of Mr. and Mrs. Hobert Lewis, and a former employee of the Spur Security Bank, will preach Sunday morning service at the First Methodist Church according to Rev. John Rakestraw, pastor.

Lewis has been attending the University of Denver, preparatory to entering Iliff School of Theology.

The evening services will begin at 7 p.m. The Harmony Club Christmas Cantata will follow.

#### GRANT-IN-AID

A grant-in-aid from the National Science Foundation to the Texas Agricultural Experiment Station for \$15,000 will be used to finance a three-

### My Neighbors



"Oh, just barely enough to pay my taxes... why?"

year intensive study of side-oats grama grass. Dr. Frank W. Gould, Department of Range and Forestry, Texas A&M College, will direct the studies.

## BIG SELECTIONS

FOR EVERY MEMBER OF THE FAMILY

WATCHES  
CUFF LINKS  
LIGHTERS

COSTUME JEWELRY  
STERLING SILVER  
BILLFOLDS  
PLANTERS  
BRONZE PLAQUES

CLOCKS  
ELECTRIC RAZORS  
JEWELRY BOXES  
DIAMONDS  
CHINA

Free Gift  
Wrapping

"Expert Watch Repair"

**B. B. PIERCE**  
JEWELRY

Phone CR 2-4221

Spur, Texas

NEW SUPPLY  
CHRISTMAS  
WRAPPING &  
DECORATING  
SUPPLIES



SAVE TIME



SAVE STEPS



SAVE MONEY

...FOOD-SHOP HERE!

## Christmas TREES

**Bacon** ARMOUR'S STAR Trapak LB. **59¢**

**Beef Ribs** LB. **39¢**

**Loin Steak** LB. **89¢**

**Roast** CHUCK LB. **59¢**

**PEACHES** FLINT RIVER "Delicious Ripe Elberta" **4** <sup>2 1/2</sup> CANS **1.00**

FOLGER'S **Coffee** LB. CAN **79¢**

GLADIOLA **Cake Mixes** 4 Boxes **98¢**

TEXO-MAID Strawberry or Peach **Preserves** 3 18 OZ. JAR **1.00**

CAMPFIRE **Marshmello Creme** 5 PINT JARS **1.00**

SHORTENING **Fluffo** 3 LBS. **79¢**

FOLGER'S INSTANT **Coffee** 6 OZ. JAR **98¢**

Ellis Shelled **PECANS** 12 oz. pkg. **95c**

Bardo **DATES** 8 oz. pkg. **19c**

Supreme **CRACKERS** 2 lb. box **49c**

303 Can Minot **CRANBERRY SAUCE** **19c**

**FLOUR** GLADIOLA 5 lbs. **45¢** 10 lbs. **85¢** 25 lbs. **1.89**

New **AVOCADOS** 2 for **25c**

Carton **TOMATOES** ctn. **15c**

**LETTUCE** lb. **10c**

**CARROTS** cello bag **9c**

Gladiola **ROLLS** 12 PAK. **15¢**

**Mac's Super Mkt.**



Booth **FISH STICK** 8 OZ. PKG. **25¢**

# TEXAS THE SPUR

SERVING A RICH FARM CROP, STOCK AND POULTRY RAISING TERRITORY OF WEST TEXAS.

The Dickens Item and Dickens County Times Absorbed by Purchase

VOLUME 50

SPUR, DICKENS COUNTY, TEXAS

THURSDAY, DECEMBER 4, 1958

SECTION II, PAGE ONE

## HOW BOUT THAT

By RALPH TEE



PINCHPENNY PEMBERTON HEARD IT WAS CHEAPER TO HAVE HIS CAR FIXED IN THE BIG TOWN

HA! ONLY \$850? WHY THOSE SHARPIES BACK HOME WANTED \$10 TO FIX IT!!!

OF COURSE WE MIGHT FIND SOMETHING ELSE WHEN WE TEAR IT DOWN

WHY THOSE CROOKED MECHANICS // THEY WOUND UP BY CHARGING ME \$33 AND NOW IT SOUNDS LIKE A CEMENT MIXER / FROM NOW ON I'LL HAVE MY CAR FIXED AT HOME IN SPUR

SO NOW IT'S FIXED AND ABOUT HALF WAY HOME

LOOKS LIKE THE 'SUPER-DUPER' MECHANICS OVERHAULED PEMBERTON'S WALLET, BUT FORGOT THE MOTOR.

## Gary Cooper Perfect In His Role In 'Man Of The West' At Palace

In the action-packed western drama which is slated to open Sunday at the Palace Theatre through United Artists release, Gary Cooper is starred in a role that fits him like a gun fits a holster. It is the title role in "Man of the West," in which he is starred with Julie London, Lee J. Cobb, Arthur O'Connell and Jack Lord.

"Man of the West," based upon Will C. Brown's novel, is a suspenseful story of powerful personalities—good and bad—

wherein Gary Cooper, as Link Jones, a reformed bandit and killer raised in the ways of western violence by his uncle (Lee J. Cobb), is tossed by circumstances back into the clutches of Cobb's gang several years after he left them to go straight.

Julie London, famous singer, is back to straight drama in her "Man of the West" role.

Arthur O'Connell, who portrays a card-sharp on the lam from the authorities, reached

recognition after 20 years of obscurity in show business, with his portrayal of the reluctant suitor in the Broadway production of "Picnic." Jack Lord plays the part of Coaley, a hulking brute, to whom Cooper administers a terrific beating after Coaley forces Julie London to strip at gunpoint.

"Man of the West" was filmed largely in California's magnificent Red Rock Canyon in the Mojave desert. Opening sequences wherein Cooper boards the train were filmed near Sonora and Jamestown in the heart of the '49 gold rush country along the 57-mile track of the Sierra Railroad. The ancient train is real—not studio constructed.

## Shift From Cotton To Cattle Can Be Profitable, Study Shows

The constant search for more farming profits has led to an experiment aimed at making a drastic switch from exclusive cotton production on a medium

sized farm to a small beef production center.

Agricultural research experts began with a 132-acre South Carolina cotton farm, studied all possibilities, and launched a five-year program to convert it to a 161-acre beef and small grain project. This basic change is predicted to increase annual cash receipts from \$3,400 annually to \$9,022 by the fifth year. The figures were projected on the basis of assumed prices and improved production practices.

The appraised value of the farm property, including land, buildings, livestock equipment and seed, was predicted to rise from about \$16,000 to nearly \$35,000 by the end of the 4th year, and would then decline with normal depreciation to about \$27,000 at the end of the 10th year.

To accomplish such a beneficial transformation, not only would the farmer have to engage in a new type of farming, but also would need to find new sources of credit to finance the change. The first and biggest problem is to acquire a beef herd. The study showed the value of cattle would have to rise from \$330 on the original farm to \$10,000 by new purchases and breeding during the first three years. The large initial investment would result from buying brood cows as soon as grazing could be assured by other changes in farm practice.

The plan calls for establishing a herd of 46 brood cows. Eight cows and three bred heifers would be bought the first year, five cows the second year, and 27 the third. These, together with replacement heifers raised would prove the herd needed in four years.

The major transition in farm activity should be made the first three years, with minor adjustments for seven more years. The first year would include bringing the cropland into production, substituting grain sorghum and clover for corn, increasing the acreage of wheat and oats, double-cropping the oats with lespedeza and top-seeding the pasture with crimson clover.

During the second year, 20



## Long Distance Call From Arlington, Texas Wins Show Passes In Texas Spur Mystery Farm Contest

Mystery Farm No. 19 has been identified as the Tallye Windham place, located east and north of Dickens in the Wichita community.

Last week's contest saw an identification called in from Arlington, Texas, near Ft. Worth. This marks the longest identification in the history of the current Mystery Farm series.

Others identifying the Farm were Charles Stoneman and H. O. Butler.

Each week the Texas Spur publishes a Mystery Farm of the week. First prize to the first person who correctly identifies the farm is a year's

subscription to The Texas Spur. Second prize is two free passes to the Palace Theater, courtesy J. D. McCain, manager.

Anyone is eligible to enter. Write or call your guess to the Texas Spur, CR2-8282.

ies. The call came from Mrs. T. J. Conoway, and lucky as she was, for she won the passes to the Palace Theater.

Mrs. Rex Robinson of Dickens was the first to identify the farm. She will receive a year's subscription to The Texas Spur. (Although she was first, Mrs. Robinson followed the perennial champion, Spur real estate man John L. Green, who has identified almost every one of the farms used in the Mystery Farm series.)

Others identifying the Farm were Charles Stoneman and H. O. Butler.

We're Backing  
SPUR  
All The Way...  
STARCHER  
Insurance Agency  
YEAH BULLDOGS!

When it comes to saving dollars... they're best yet of the best sellers!

## Chevrolet Task-Force 59



Here's the latest edition of the truck line that's famous for staying and saving on the job. Every model offers bright new ways to keep your costs down. Look over the new might, new models, new money-saving power in Task-Force 59!



CHASSIS WITH DOLLAR-SAVING DURABILITY

Tougher built components—bigger brakes, huskier clutches, more durable rear axles—trim your expense!



new 6 economy

Famous 6's pinch pennies with new camshaft design, new valve train durability!

NEW V8 EFFICIENCY

Chevy's dollar-saving V8's beat high costs with new durability, new thermostatic by-pass cooling!

BODIES WITH COST-CUTTING CAPACITY

Big new Chevy bodies take big high-profit loads! There's up to 75.6 cu. ft. of load space in pickups, up to 213 cu. ft. in panels, and up to 392 cu. ft. in Step-Vans!

Best way to save in every weight class!

See your local authorized Chevrolet dealer

RICKELS CHEVROLET COMPANY

287 N. BURLINGTON

SPUR, TEXAS

PHONE CR2-5571

## AUTUMN PAINT SALE

We are discontinuing handling Kem Glo Enamel and Super Kem Tone. We have a full range of colors. We are putting prices on this to clean our shelves.

	Regular	Sale Price
Super Kem Tone	6.25 Gal.	4.50
Super Kem Tone	2.00 Qt.	1.35
Kem Glo Enamel	9.29 Gal.	6.55
Kem Glo Enamel	2.75 Qt.	1.95
Kem Glo Enamel	1.50 Pint	1.10
Outside White Paint	5.95 Gal.	4.00
White Enamel, Best Grade	8.25 Gal.	5.90
Outside White	7.50 Gal.	6.00
Rubber Base Wall Paint	5.00 Gal.	3.50

20 Gallon Glass Lined Water Heater 10 yr.	69.95
30 Gallon Glass Lined Water Heater 10 yr.	75.50

WILLSON & YOUNG

LUMBER COMPANY

Phone CR2-3212

Spur, Texas



## WILLING HANDS CAN TURN WORK INTO PLAY

The autumn clean-up becomes a breeze when the whole family gets together on it. Same thing goes for saving. When everybody helps save for something that everybody wants, it's almost like a game. Especially when the savings go here.

OPEN A SAVINGS ACCOUNT HERE TODAY.

Spur Security Bank

Member FDIC

## Girard School Tax Office Will Close Saturdays 'Til January

Mrs. Lorene Hollingshead announced this week that she will no longer occupy the tax office at the school house on Saturdays until the second Saturday in January, but will be there on every school day as usual. Beginning again on the second Saturday of January, she will continue to hold office open on each successive Saturday of January.

Mr. and Mrs. Tommy Gallagher of Lubbock visited their

parents, Mr. and Mrs. Ted Gallagher and Mr. and Mrs. Edgar Hollingshead last Tuesday and Wednesday.

Bob Gallagher also of Lubbock, visited with his parents last week as he was enroute to Austin to take examinations for State Highway Patrol work.

Mr. and Mrs. C. D. Dickerson and boys were accompanied to Portales N.M. by Mrs. Mollie Fuqua and Mrs. Don Hill of Spur to visit with Mrs. Dickerson's brother and family, Mr. and Mrs. Dunk Fuqua, Thanksgiving.

Mrs. Fronia Bingham of Spur spent the Thanksgiving holiday with Mr. and Mrs. H. E. Witt and Saundra and Sammy Bingham.

Guests at the O. M. Beadle home Friday and Saturday were their son, Mr. and Mrs. Delmer Beadle, Hobbs, N.M.

Week-end visitors at the Henry Stiles' were their daughter, Mr. and Mrs. Chester Williams of Borger.

Darlene Hagar, daughter of Mr. and Mrs. Clyde Hagar, and Fred Randolph, Lubbock, were married on Nov. 22. The couple is living in Lubbock.

The entire family of Mr. and Mrs. Lonnie Williams spent Thanksgiving with Mr. and Mrs. Woody Wilson of Colorado City. Mrs. Wilson is the eldest daughter of the Williams.

L. J. Williams Jr., Lubbock, spent Saturday night in the Williams home.

Sunday night the H. A. Hollingsheads had all of their family at home, Mr. and Mrs. H. L. Clepper and children of Ennis, N.M.; Mr. and Mrs. E. J. Hodges and daughter and Mr. and Mrs. T. H. Hollingshead, all of Lubbock. Friday night guests were Mr. and Mrs. Charles Witt, Spur, and Mr. and Mrs. H. E. Witt.

Mr. and Mrs. J. W. Lankford were called to the bedside of her father at Sterling last week.

Mrs. Susie Barton left Monday morning for Ames, Iowa, to

visit with her son and family, Eugene. She will go by plane from Lubbock.

Visiting in the John Boland home during the weekend were Jimmie Lee Morrow and Mr. and Mrs. Lee Timson and two daughters of Corpus Christi.

Amos and Gerald Fincher were in Pecos Friday of last week on business.

The boys and girls teams of Roosevelt engaged the Girard teams in basketball Tuesday night in the local gymnasium.

School dismissed Wednesday until Monday in observance of Thanksgiving holiday. Several of the teachers had plans for attending various meetings during this time.

Mrs. Grath Gregory is developing a knowledge of cake decorating, a business of high skill and minor profit. Good luck Alta Jean.

Mr. and Mrs. R. Z. Chism and girls of Spur, visited her parents, Mr. and Mrs. F. O. Bural Sunday. The Bural's granddaughter, Deb Goodal was ill Sunday night.

Mr. and Mrs. Jimmy Bural and daughter spent Sunday with her parents, Mr. and Mrs. Webster of Polar.

Mrs. Maud Fuqua of Desdemona spent four days last week with her sister Mrs. Mollie Fuqua.

Visiting with the Will Gardner's over the week-end were two of Mr. Gardner's nieces, Christine Bower, Abilene and Mr. and Mrs. Ray Bowen of Rowden, also a son, William Gardner and family of McAdoo.

The 75th birthday of Miss Ada Mitchell was the occasion for a special dinner in the home of her niece, Mr. and Mrs. Richard Westfall. The Westfall family visited the Dozier family at Spur recently and spent last Friday night in the Ira Westfall home in Dickens community.

Mr. and Mrs. Yates Brewer were guests at the Fletcher Rich home last week end. The Brewers live at Shamrock. Mrs. Rich was hostess to the H.D. club members with a Christmas party Wednesday.

Visiting in the Jim Swaringen home Sunday were Mr. and Mrs. Ed Brown and Mr. and Mrs. J. Bigsby and children of McAdoo. Mrs. Swaringen has been on the sick list for the past several days.

The Ed Browns had for their guests Thanksgiving, Mrs. Joe Hicks and son of Albuquerque, Miss Essie Brown of Big Spring, and Mrs. Lula Brown of Jayton.

Bro. Hall, pastor at Steel Hill Baptist Church and wife visited in the S. C. Thomas home Sunday.

Mrs. Julia Keel and boys of Dallas were dinner guests at the home of her sister, Mr. and Mrs. O. C. Burrow Thanksgiving day.

Mr. and Mrs. Troy Hagar of Tahoka spent the holiday week-end with their parents, Mr. and Mrs. Cecil Hagar and Mrs. Lonnie Williams. Charlotte Hagar spent the week-end with Mary Jo Calvert, Mr. and Mrs. Willis Pearsons were visiting the Hagars Monday. Tuesday the Hagars were accompanied to Lubbock by Mrs. D. D. Thompson and Mrs. C. V. Hagar.

### COTTON ALLOTMENTS

Cotton growers will receive official notice of their 1959 farm acreage allotments for cotton in the next few days. Chairman Searcy M. Ferguson of the Texas Agricultural Stabilization and Conservation Committee urges all growers to study Choice A and Choice B and if more information is needed to ask the local ASC office for the details. Ferguson also urges all eligible cotton growers to vote in the December 15 referendum on marketing quotas.

USE THE CLASSIFIED ADS TO BUY SELL OR RENT.

**Dr. W. C. Gruben**  
OPTOMETRIST  
Ph. CR2-3763 Spur, Texas

**Dr. M. H. Brannon**  
Dentist  
111 E. Harris Ph. CR2-3122 SPUR, TEXAS

**Tuesday Only**  
DR. W. F. PATRICK  
Optometrist  
116 E. HARRIS, SPUR

**Knights of Pythias**  
Meets Every Monday Night  
Visitors Welcome

**Dr. O. R. Cloude**  
CHIROPRACTOR  
103 West Hill Street Spur, Texas

# BUSINESS & PROFESSIONAL DIRECTORY

SPUR, TEXAS

### DAVIS AND RECTOR

REAL ESTATE & GENERAL INSURANCE  
AUTO LOANS  
"Cash in 10 Minutes"  
Office Phone CR2-3391 Residence Phone CR2-3257

### CONNER and WALKER

ATTORNEYS AT LAW  
SPUR, TEXAS

### FLASH-O-GAS INC.

BUTANE CARBURATION A SPECIALTY  
Phone CR2-4291 P. O. Box 1216 SPUR, TEXAS  
ALWAYS PROMPT AND COURTEOUS SERVICE

### GIBSON

INSURANCE AGENCY  
GENERAL INSURANCE  
PHONE CR2-4441

### "66" SERVICE STATION

WHOLESALE and RETAIL  
OPEN 24 HOURS  
PHONE CR2-4141 SPUR

### FLOY WATSON AGENCY

FARM BUREAU INSURANCE FOR MEMBERS ONLY  
Fire, Casualty, Automobile, Life etc. IT PAYS TO BELONG TO FARM BUREAU SEE US FOR CROP HAIL INSURANCE  
108 E. Harris St. Spur, Texas  
Office Phone CR2-3231-Res. Dry Lake 2181 P. O. Box 84

### O. L. KELLEY

REAL ESTATE  
Farms, Ranches, City Property LISTING WANTED  
BOX 1093 SPUR, TEXAS  
PHONE CR2-3353

### MARKET POULTRY & EGG CO.

BUY OR STORE GOVERNMENT STORAGE FOR MILO AND OTHER GRAINS FEED  
(Grain, Pellets, Corn, Oats, Milo, Barley)  
SPUR, Phone CR2-3112 (1 Block West of Co-Op Gin). DICKENS Phone 2687

### GARNER BROS.

DRILLING COMPANY  
TEST HOLES DOMESTIC WELLS IRRIGATION WELLS A & C and LANE TURBINES REDA SUBMERGIBLES JETS PLASTIC PIPE CLEANOUTS PUMP REPAIR  
Free Estimates. We'll appreciate your calls  
RIP GARNER — Phone CR2-3242  
BUNK GARNER — Phone CR2-3188

### H. A. C. BRUMMETT

ATTORNEY AT LAW  
DICKENS, TEXAS  
PHONE 2621

## ALWAYS BOOSTING SPUR

# TEXAS THE SPUR

OFFICIAL PUBLICATION FOR COUNTY OF DICKENS AND CITY OF SPUR  
DICKENS ITEM and DICKENS COUNTY TIMES Absorbed by Purchase  
Published weekly on Thursday at Spur, Dickens County, Texas. Office and Printing Plant located at 424 North Burlington Avenue. Office Telephone CR2-3282.  
JOE HARRISON, Editor and Publisher

NOTICE — Any erroneous reflection upon the character, standing or reputation of any individual, firm or corporation, which may appear in the columns of The Texas Spur will be gladly corrected upon its being brought to the attention of the publisher.

SUBSCRIPTION RATES  
Per Year in Advance  
In Dickens, Crosby, Motley, King, Stonewall, Cottle, Kent, Garza, Floyd counties. \$2.50  
In Mail Zone Two . . . . . \$3.50  
In All Other Zones . . . . . \$5.00  
All subscriptions are removed from our mailing lists upon expiration. Renewals should reach us two weeks in advance of expiration date to avoid missing an issue. In giving address change, both old and new address should be given.

Entered as second class matter on the 12th day of November, 1906, at the Post Office at Spur, Texas, under the Act of Congress of March 3, 1879, and published continuously without recess.

Patented

## PORTABLE DISC ROLLER

NOW AVAILABLE TO FARMERS OF THIS AREA!

Have your One-Ways and Tandems Sharpened in the Field Without Taking the Disc off the Plow! This Machine Does Not Take Away Costly Material!

SAVE TIME — COST — MATERIAL

— PRICE RANGE —

ONE-WAY, PER DISC	\$1.00
TANDEMS, PER DISC	.80
DISCS, OVER 24 INCH	1.25

CALL OR WRITE

### B. D. SHARP

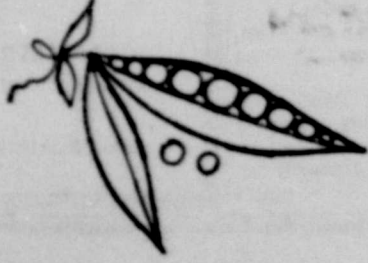
(OPERATOR)

BOX 37 DICKENS, TEXAS PHONE AX 4-2167

DON'T MISS THE FIRST SHOWING

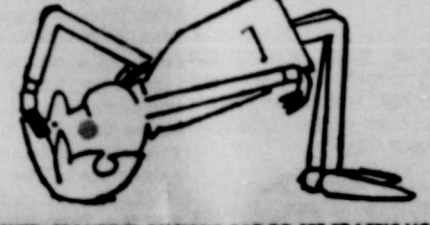


SOLVED: JACKKNIFE RIDE FOR "MAN IN THE MIDDLE." The hump in the floor has been whittled way down in the new Mercury to provide more foot room.



SOLVED: LOOK-ALIKE STYLING. Mercury is the only car in its field that doesn't share its styling with any other car...doesn't use a dressed-up body of a lower priced car.

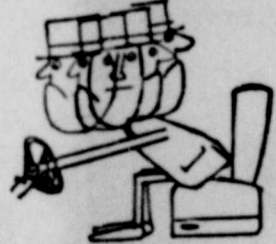
## MERCURY SOLVED THE PROBLEMS MANY '59 CARS FORGOT



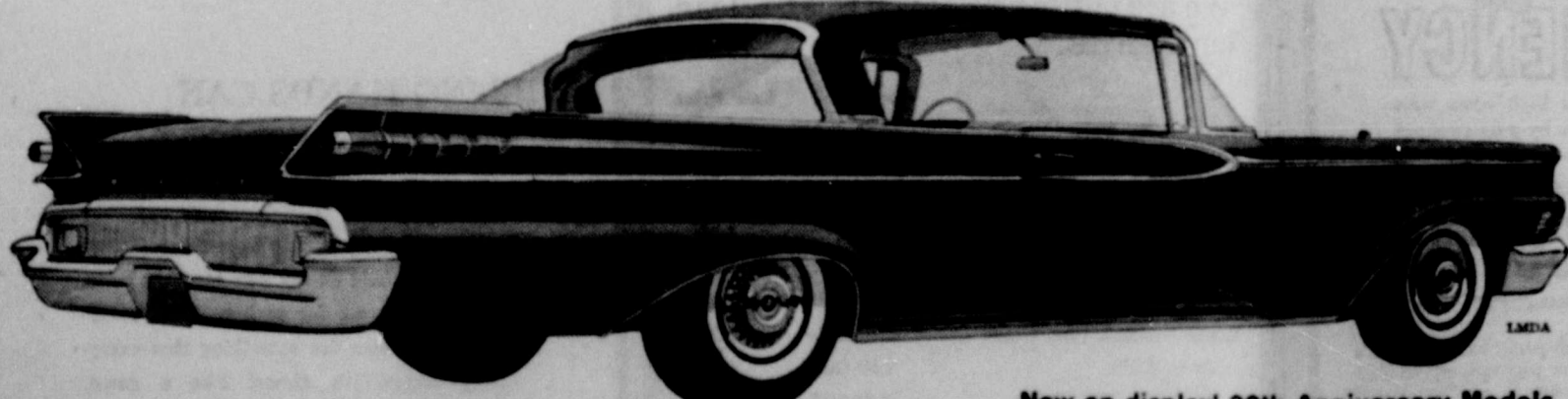
SOLVED: STANDING ON YOUR EAR TO SEE TRAFFIC LIGHTS. New windshield curves up into the roof, lets you see high traffic lights. New windshield wipers clear 42% larger area...including middle.



SOLVED: WHACKING YOUR KNEES GETTING IN OR OUT. Mercury's front doors are wider than those in the costliest cars. And the windshield post has been moved forward, out of the way.



SOLVED: TENSION WHEN PASSING. New Marauder engines react with split-second precision. You enjoy the difference between merely "enough power" and real peace of mind.



Now on display! 20th Anniversary Models

## '59 MERCURY shows you what new really means

### Hoover Motor & Impl. Co.

200 Burlington Ave.

Spur, Texas

BUY "SANTA APPROVED" CHRISTMAS GIFTS IN

# SPUR

AND ATTEND THE WEEKLY DRAWINGS TO RECEIVE HUNDREDS OF DOLLARS IN...

# "SPUR LUCKY BUCKS"

This Script Is Redeemable In Trade From Any Of The Spur Merchants Listed Below In Santa's Book Of Approved Businesses:

Drawings Will Be Held On

- December 6
- December 13
- December 20
- December 23

Extra Bonus Drawing For \$200 Grand Prize On December 23.



Shop These Spur Merchants and be Downtown on Drawing Days

- |                               |                             |                            |
|-------------------------------|-----------------------------|----------------------------|
| Dunlap's                      | Dyess Barber Shop           | J. D. Hopkins Station      |
| Spur Super Market             | Margies Beauty Shop         | O. K. Rubber Welders       |
| Spur Security Bank            | Garner Implement Co.        | Hairgrove Feed Store       |
| Holder's Ben Franklin         | Bell's Cafe                 | Star Feed Store            |
| City Drug Company             | Edwards-Kelley Impl. Co.    | Mac's Super Market         |
| Western Auto Supply           | Spur Barber Shop            | Simpson Western Store      |
| Campbell's Furniture          | Stop & Shop Market          | A & B Barber Shop          |
| Spur Milk and Ice Cream       | Reagan Motor Company        | Palace Theatre             |
| Jones Motor Company           | Smith Service Station       | Gruben's Jewelry           |
| Riter Hardware                | Hilltop Station             | West Texas Furniture Co.   |
| Buzbee Butane Service         | Brashear Supply Co.         | Texas Spur                 |
| Randy Clifton TV & Appliance  | Gabriel's Department Store  | Fay's Fashions             |
| Dickens County REA            | Spur Laundry & Cleaners     | Dealers Finance            |
| Stamford Production           | Red Front Drug Co.          | Farm Bureau                |
| Davis & Rector Insurance Co.  | Spur Boot Shop              | Proctor's Department Store |
| Phillips "66" Service Station | Cooper's Cafe               | Market Poultry & Egg       |
| Dixie Dog Drive-In            | G. F. Wackers Store         | Gulf Oil Products          |
| Patton Grocery                | Allen Auto Supply           | Snack Shack                |
| Quality Cleaners              | West Texas Utilities        | Spur Electronics           |
| Spur Mattress Company         | Clary Poultry & Egg Co.     | Hoover Motor Co.           |
| Gibson Insurance Agency       | Rickels Chevrolet-Buick Co. | Massey Gin Co.             |
| Leon Ice and Locker Co.       | Tri-County Lumber Co.       | Spur Gin Co.               |
| Brazelton Lumber Co.          | Godfrey Motor Company       | Farmers Co-Op Gin          |
| Rose's Cafe                   | City Cleaners               | Emma Lee, Florist          |
| Barclay & Hale Gulf Service   | C. P. "Johnny" Scudder      | Dr. W. K. Callan           |
| Flash-O-Gas                   | DeLuxe Beauty Shop          | B. B. Pierce Jewelry       |
| Cannon Boot & Saddle Shop     | Chastain Implement Co.      | Morgan Studio              |
|                               |                             | City Of Spur               |

## DRY LAKE NEWS...

### Second Quarterly Conference To Meet Sunday At Duck Creek

Mrs. E. J. Lassetter  
Second Quarterly Conference, will convene at Duck Creek, Sunday, December 7. Rev. Marvin L. Boyd, District Superintendent, will be present. The church ladies will serve dinner at the noon hour. Foreman Chapel Sunday School will start promptly at 10-15, for the convenience of those who wish to attend church at Duck Creek.

The Espuela Home Demonstration Club, will have their Annual Christmas party, Friday, December 19, at 7:30 p. m. in the home of Mr. and Mrs. Jim Price. There will be a Christmas program, gifts and refreshments.

Mr. and Mrs. Archer Powell and girls, attended the foot ball game at Plainview, last Thursday and visited Mr. and Mrs. Marshall Formby.

Mr. and Mrs. W. J. Hanie, Brownwood, spent part of last week with their daughter, Mr. and Mrs. Dick Wright and family.

Mr. and Mrs. Alton Delisle and son, Glen, Mrs. G. L. Delisle and Mr. and Mrs. Jeff Smith, visited Mr. and Mrs. Fred Delisle, in Lubbock, Thursday, Mr. and Mrs. Alton Delisle attended the foot ball game in Plainview.

Visitors in the Bob Pickens home for Thanksgiving, were their daughter, Mr. and Mrs. Lewis Hickman, Lela Beth and Bobbie Jo; Mr. and Mrs. Earnest Caplinger, Don and Gerry, all of Lubbock and Mr. and Mrs. Levis Pullen, Spur.

Mr. and Mrs. Cleston Pritchett of Denton and Miss Nancy Pritchett of Plainview, visited last week end in the home of their parents, Mr. and Mrs. Dan Pritchett.

Mr. and Mrs. S. L. Benefield of Cap Rock community, had Thanksgiving dinner with Mr. and Mrs. Ruben Waddell, Mr. and Mrs. Waddell bought the Benefield farm.

Mr. and Mrs. Coy McMahan of Levelland, visited her sister and brothers, Miss Mattie Sue, Henry and Carter Robinson, Sunday and attended the funeral of C. L. Lowe.

Mr. and Mrs. Coy Dopson went to Big Spring, Tuesday to visit Mrs. Velma Rogers, who is in the Cowler Hospital there, and with her daughter, Mrs. J. R. Cole.

Visiting over the week end with Mr. and Mrs. W. E. Ball, were her sisters, Mrs. J. M. Kerby and daughter, Sherman and Rev. and Mrs. H. T. Harris of Whiteflat.

Mr. and Mrs. Dan Pritchett and Mr. and Mrs. Willie Williams, drove to Plainview Thursday, had Thanksgiving dinner with Miss Nancy Pritchett and attended the foot ball game.

Mr. and Mrs. Paul Martin and her mother, Mrs. Orville Boothe, spent Sunday with Mr. and Mrs. Bob Dixon.

Mr. and Mrs. T. A. Johnson were guests of Mr. and Mrs. Ruben Waddell, for Thanksgiving dinner.

Valene Taylor, spent Tuesday night with Patsy Powell.

Mr. and Mrs. Coy Dopson attended a family dinner, Friday in the home of his sister, Mr.

and Mrs. Alvin Ryols, Ropesville. All six brothers and sisters were present.

Mrs. Bob Dixon visited Tuesday in the homes of Mrs. R. D. Hill and her mother, Mrs. Della Merriman and Mrs. R. F. Smith.

Mr. and Mrs. Willie Allen, visited Mr. and Mrs. Roma Barrett Monday. The Barretts have a new baby girl, named Brenda Sue.

Mr. and Mrs. T. A. Johnson, had Sunday dinner with his parents, Mr. and Mrs. John K. Johnson in Spur.

Mr. and Mrs. Ellis Draper and son, Jimmy of Seagraves, visited their daughter, Mr. and Mrs. Bill Saxon in Albuquerque, N. M. for Thanksgiving.

Visitors in the home of Mr. and Mrs. Coy Dopson, Sunday night, were his brothers, Ben and Alvin Ryols, Monday, they were joined by Ellis Draper, and went quail hunting.

Jane Powell had Sunday dinner with Patricia Foreman.

Mr. and Mrs. Ruben Waddell, visited her parents, Mr. and Mrs. Joe Kidd, Sunday night.

Mr. and Mrs. Jim Price, had their son, Ben of El Paso, home for Thanksgiving.

Misses Dorothy and Nancy Powell, spent the Thanksgiving holidays, with their parents, Mr. and Mrs. Archer Powell.

Mr. and Mrs. Dick Wright, Barbara and Mrs. Wright's parents, Mr. and Mrs. W. J. Hanie, visited with Mr. and Mrs. E. J. Lassetter, Friday afternoon.

Mr. and Mrs. Archer Powell had dinner Sunday, with her parents, Mr. and Mrs. Ivy McMahan.

Dana Beth Kidd, spent Saturday night with Rhea and Robert Waddell.

Mr. and Mrs. Norman Wilson, visited in the home of Mr. and Mrs. Archer Powell, Sunday.

Mr. and Mrs. Billy Hahn and family of Post, Mr. and Mrs. Jimmie Hahn of Highway community, visited their sister, Mr. and Mrs. Ellis Draper, Sunday night.

Mr. and Mrs. John Coursey and girls, visited for a while, Saturday night with Mr. and Mrs. E. J. Lassetter.

#### LAWN'S SUFFER

Brown patch, a rather common lawn disease, is especially active in the warmer sections of the State at the present time. Harlan Smith, extension plant pathologist, says that Terraclor (P.C.U.B. 75 percent wettable powder) used at the rate of one pound per 1,000 square feet of lawn will give excellent control. The material should be watered down immediately after it is applied. This may prevent possible leaf burning and will get the material down into the turf where it is most effective.

#### BROILER BOOM

If all of the broilers raised in the nation this year could be gathered into a single flock, the AMS estimates it would contain 1,600,000,000 birds. Ben Wormeli, extension poultry husbandman, says that Texas growers furnished more than 100 million of these birds, with a value of \$57 million.

### Dumont News

Mr. and Mrs. R. C. Smith visited his brother, Mr. and Mrs. Guy Smith of Wichita Falls.

Mr. and Mrs. Speck Green and three children of Guthrie, Mr. and Mrs. Kenneth Tippen and daughter, Paducah; Mr. and Mrs. Wayne Rogers and children, Amarillo; Mr. and Mrs. Jordan Rogers, Guylene and Claud Flippen, ate Thanksgiving dinner in the home of Mrs. Cliff Rogers.

Master Sgt. and Mrs. S. K. Woodward and sons, Abilene, Mr. and Mrs. Floyd Medders, Rocky, Okla., Mrs. Guy Stillman, Eldorado, Okla., C. V. Medders and daughters, Andrews, Mr. and Mrs. Ross West, Benjamin, Mr. and Mrs. Chan Smith, Sandra and Grover Criswell, ate Thanksgiving dinner in the home of Mr. and Mrs. Bob Allen.

Mrs. Anne Hand attended the dedication services at the First Baptist Church in Dickens, Sunday.

Mr. and Mrs. Louis Hollar spent Thanksgiving with their son, Louis Jr., and family in Big Spring.

Ten players played 42 at the school house Friday night. J. M. Park won high score and Mrs. Brady was the hostess. Refreshments were served.

Trudy Kelly and Bonny Hand, Roaring Springs, spent Thanksgiving with their grand parents, Mrs. Anne Hand and Mr. and Mrs. J. H. Gage.

Mr. and Mrs. W. D. Brady and Anita visited her parents, Mr. and Mrs. Jamison in Jacksboro, and had a family reunion during Thanksgiving.

Mr. and Mrs. Jim Gage spent Sunday with the Billy Hand family in Roaring Springs.

Mrs. Richard Burton and sons of Paducah, visited her grandmother, Mrs. Bertha Johnson last week.

#### SPUR SCHOOL MENU December 8-12

**MONDAY**  
Buttered potatoes, green beans, salmon salad, stewed fruit, lemon cookies, milk.

**TUESDAY**  
Baked Vienna and beans, crackers and cheese, cabbage and apple salad, corn bread, peanut butter cookies, milk.

**WEDNESDAY**  
Vegetable beef stew, English peas, sour pickles, bread, apple pie, milk.

**THURSDAY**  
Pinto beans and pork, seasoned spinach, sliced onions, corn bread and butter, fruit jello, milk.

**FRIDAY**  
Cheese and tuna sandwiches, blackeyed peas, sliced lettuce potato chips, cherry cobbler, milk.

#### WEATHER DATA

Information from 94 widely scattered weather stations in Texas was used to chart late spring and early fall low temperatures in the State and their a period of time. Copies of the probability of occurrence over new publication are available from: local county agents or the Agricultural Information Office, College Station, Texas. Ask for MP-298, Late Spring and Early Fall Temperatures in Texas.

Mr. and Mrs. Buster Wells, Dimmitt, visited Mr. and Mrs. Wilbur Stanley, last week end.

### PALACE

BOX OFFICE OPENS:  
Saturday & Sunday 1:15 p.m.  
Week Days 6:15 p.m.

FRI. - SAT.  
NEW AND SENSATIONAL  
**TARZAN'S FRONT FOR LIFE**  
IN COLOR  
GORDON SCOTT  
-TARZAN-

2ND FEATURE  
**RORY CALHOUN**  
THE SAGA OF HEMP BROWN  
COLOR  
BEVERLY BARLAND JOHN LARCHE BOBBIE BROWN  
A UNIVERSAL INTERNATIONAL PICTURE

Sun. - Mon. - Tues.  
Here is your Biggest Man—in a role that fits him like a gun fits a holster—

GARY COOPER  
As The  
**Man of the West**  
IN-COLOR  
Hear Julia London sing "Man of the West"

Wed. - Thurs. - Fri.  
ALL SEATS 60c

**ADULT ENTERTAINMENT**

Filed in the flesh and glorious Eastman Color, "Adam and Eve" is nothing less than the story of Creation and of the first man and the first woman and the original sin. The story is told with telling simplicity and sincerity, and is artistically treated with reverence and intelligence.

**ADAM AND EVE**  
TECHNICOLOR  
Starring  
**CHRISTIANE MARTEL**  
Former MISS UNIVERSE from France  
and **CARLOS BAENA**

### News about the New Rockets!



**1959 OLDSMOBILE DYNAMIC 88 2-DOOR SEDAN**—Here is Oldsmobile's breath-taking "Linear Look" beauty at its lowest price. The Dynamic 88 2-Door Sedan puts big-car comfort and new "Glide" Ride within easy reach of cost-conscious buyers. Best news of all: its spirited Rocket Engine is equipped with Econ-O-Way Carburetor and new 2-stage automatic choke for improved fuel economy! See your local authorized Oldsmobile quality dealer. He'll show you how easy it is to step up to an Olds Dynamic 88 2-Door Sedan—the Rocket that fits your pocket!

**Edwards-Kelley Implement Co. 600 W. Hill**

REGISTER FOR  
**FREE GIFTS!!**

Christmas Gifts for you in appreciation of your patronage.  
No. 1 - Swing King Recliner  
No. 2 - RCA Radio  
No. 3 - GE Steam Travel Iron  
No. 4 - Pair Planter Lamps  
For The Kiddies - FREE - 8 ft. Stocking full of toys. Watch our Store and Ads for date to start registering!



AT WEST TEXAS FURNITURE'S BIG  
**Christmas Furniture Sale**  
SALE BEGINS THURSDAY, DECEMBER 4!!

**3 Pc. Bedroom Suites**

By McCoy Couch and Bassett



- CHARCOAL
- WALNUT
- OAK

Book Case Bed, Large Chest, Double Dresser

Regular 199.50

**CHRISTMAS BARGAIN**

**149.50**

WITH TRADE-IN

FURNITURE IS A PERMANENT GIFT

**5 Pc. Living Room Groups**

Beautiful Groups to Choose From, Patterns by  
A. Brandt and West Wood. Reg. to 229.50

- ROCKER
- SIDE CHAIR
- SOFA BED
- TWO SOLID OAK TABLES



**189.50**

WITH TRADE-IN

Other Living Room Suites from 99.50 up

ONE GROUP  
**PLATFORM ROCKERS**

Red, Green and Beige. Reg. to 42.50.  
Santa's Price ONLY-

**34.50**

FULL SIZE Reg. 179.50  
**HARDWICK RANGE**

With DeLuxe Back Panel, Electric Clock, Automatic Timer. A fine Gift for the Home at ONLY . . .

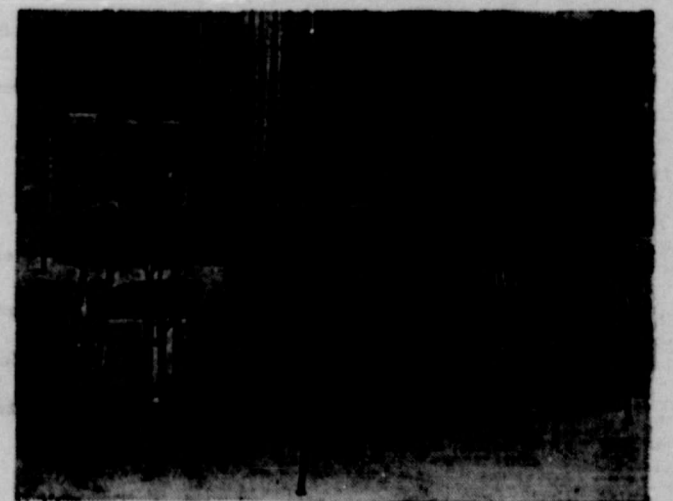
**129.50**

With Acceptable Trade-In

REGULAR LINE  
**DINETTS**

By Virtue and Ideal. Large 7-Piece Suites. Two Leaves. Reg. to 149.50 . . .  
Going at

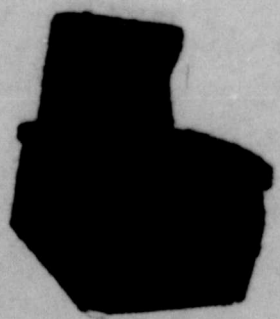
With Trade-In **99.50**



**Recliners**

By Kroehler & Swing King.

Reg. 79.50. Christmas Sale Price . . .



**59.50**

(Others with and without vibrators, up to 179.50)

ENTIRE STOCK  
**LAMPS & TABLES**

**One Third OFF**

ENTIRE STOCK  
**MATTRESSES & BOX SPRINGS**

**20% Off**

**DURING THIS BIG CHRISTMAS SALE . . .**

We Offer Extra Long Trade-Ins for Good Used Furniture, Appliances and TV Sets.

LONGEST TRADES . . . EASIEST TERMS

**West Texas Furniture Company**

SPUR, TEXAS