

THE TEXAS SPUR

SERVING A RICH FARM CROP, STOCK AND POULTRY RAISING TERRITORY OF WEST TEXAS.

The Dickens Item and Dickens County Times Absorbed by Purchase
SPUR, DICKENS COUNTY, TEXAS
THURSDAY, JANUARY 19, 1956

VOLUME 47

NUMBER 13

Bill Henry Gets Coach Job

The Spur Independent School District board of trustees elected Bill Henry as head coach of the Spur Bulldogs.

The action was taken by the board at the regular meeting Monday night.

Lloyd Hindman, president of the board, states that Coach Henry was considered for the position only after serious consideration of Coach Billy Hahn, assistant coach here for nine years.

Hindman states that the board as a whole felt that the system needed a new man for the job and that it would be best for the school and everyone concerned to take the action they took.

Hindman stated last night that the board holds no hard feelings or ill will toward Hahn.

Coach Henry served in the Spur system as junior high coach in 1952. He is 27 years old and has married since leaving Spur. From Spur he went to Magnolia, Texas, where he has served as assistant coach three years. He is a graduate of Howard Payne College and has a master's degree from Texas University.

Hindman states that although the board did not ask for or accept formal applications for the coaching position, there were inquiries from "12 or 15".

Banquet Set For Friday, March 23

By Jane R. Moore, Sec.

Plans for the Spur Chamber of Commerce banquet are going a long time. Friday, March 23 has been selected as the date for this annual event.

Rev. Dick O'Brien, pastor of the First Baptist Church of Big Spring, will be the principal speaker, and we hear that he is a very entertaining one.

Mark the 23rd of March on your calendar now and plan to attend the banquet.

Mahon Opposes 2 Changes In Cotton Parity Program

Rep. George Mahon has asked for a hearing before the Senate Committee on Agriculture to oppose the Administration's request that the standard grade for cotton for purposes of parity and price support be changed from 7/8 inch staple, which is the present law, to a general average of the cotton staple, which is approximately one inch.

According to Mahon, if this provision had been in operation in 1955 it would have cost the Texas farmers approximately \$12.50 per bale an average of 2 1/2 cents per pound, a loss to the Texas cotton farmers of about fifty million dollars. In other words, says Mahon, this portion of the Administration's proposal simply represents a gadget for reducing the income of the cotton farmers.

It also has asked to be heard in connection to a proposal which apparently has considerable support in the Senate, and which would grant a support price of 90% of parity on one-inch staple and a support price of less than 90% of parity on staples which are less than one inch.

A combination of these two proposals would bring about a very drastic reduction in the income of the cotton farmer generally, particularly the farmers of West Texas. It is not possible in West Texas to successfully produce long staple cotton on account of the short growing season. This is particularly true in the South Plains area," says Mahon.

The Congressman reports that 70% of the cotton produced last year of less than one-inch staple was produced in Texas, 11% in Oklahoma and 10% in the remaining portion of the nation.

Ordinance Passed On Parking Meters

The City Council of Spur passed an ordinance Tuesday evening to cover the installation and enforcement of parking meters in Spur.

(The ordinance appears in full within this issue.)

City Secretary W. W. Spray reports that the meters arrived in Spur Monday afternoon and that the parking meter company will be here next Monday to start installation.

"The Rainmaker" Opens Here Tonight

Tonight at 8 p. m. in the East Ward auditorium the curtain will rise on the Spur VFW production of "The Rainmaker."

The play is a three-act comedy and will be staged here both tonight and tomorrow night.

The cast includes E. B. Blumberg, Virgil Rogers, Bob Johnson, Glyndon Johnson, Jane Moore and Bill Starcher. Director is Mrs. Max Eckels.

Admission prices are 75c for adults and 50c for students. The proceeds will go to the Dickens County March of Dimes and the VFW building fund.

Mrs. Hale Buried Here Wednesday

Funeral services for Mrs. Bonnie Fyatt Hale were held Jan. 18, 1956, in the West Christian Church in Spur. Rev. John L. Floyd, pastor, conducted the services.

Mrs. Hale died Jan. 15 at the age of 70. She was born in Hunt County, Texas, on Aug. 18, 1886. In 1909 she and her husband, Dr. R. F. Hale, came to Dickens County after their marriage in 1904 in Greenville, Texas. To the couple were born two children, Helen Hale Taliaferro of Baltimore and Ben Murray Hale of San Francisco, Calif.

Survivors of Mrs. Hale are her husband and two children, one grandson, two brothers, Crawford Clark of Greenville, T. R. Clark of Dallas, and two sisters, Mary Mattor of Dallas, Play Van Clow, Maggie Howell, Beale Rogers, all of Greenville, and Lola Stopp of Lueders.

Burial was in the Spur Cemetery under the direction of Chandler's Funeral Home.

JAMES A. CRISWELL TO RECEIVE DEGREE IN MAY

James A. Criswell, senior student at Hardin-Simmons University, will be among the 200 students who will receive their degree in May.

James is the son of Mr. and Mrs. T. W. Criswell of Spur.

THE YEAR'S BIGGEST BARGAIN! A POLL TAX RECEIPT FOR 1.75

It's Bargain Day today and every day through Jan. 31 in Dickens County and throughout the State of Texas! The big sale is on a little bit of paper called a poll tax receipt and for it in 1956 the owner gets the hoopla of local and county elections, a state election that promises to be a hum-dinger, and the added attraction of a presidential contest. The price—\$1.75.

Sheriff Cleo Rogers reports

Sheriff C. Rogers Seeks Re-Election

Sheriff Cleo Rogers announced this week that he is a candidate for re-election as sheriff and tax assessor-collector of Dickens County. Locally, his announcement was preceded only by that of Moyné Kelly for representative.

Sheriff Rogers will be seeking his third term, having been unopposed in 1954.

He states that his formal announcement will be submitted for publication in the near future.

SCHOOL CENSUS

Enumeration of school-age children is now underway by the Spur school district, states Supt. B. G. Nusley.

Students presently enrolled in school will be enumerated, but those children reaching the age of six years on or before Sept. 1, 1956 need to be counted, says the superintendent. Parents of these children are urged to contact H. M. Allison, Guy Dickson, Lester Ball or C. L. Berry as soon as possible so their children may be placed on the census. All children born between Sept. 1, 1952 and Sept. 1, 1950 should be placed on the census roll.

that to date only 750 Dickens Countyans have paid their poll taxes. However, in view of the wide selections he gets for his money, a lot more folks are expected to come across with \$1.75 prior to Jan. 31.

On the city level, three aldermen are to be elected. Two Spur School District trustees' terms expire. On the county level, to be elected are a sheriff, two commissioners, a county attorney, a constable. It was erroneously reported last week that Justice of Peace J. E. Berry's term expires this year.

Although the wire was not missed before it was reported found, it is believed by W. W. Spray to have been stolen last Tuesday night.

The two rolls, together weighing approximately 500 pounds, are worth approximately \$200 as new wire.

Officers in Lubbock were reportedly still working on the case yesterday.

A clerk from the tax collector's office will be in Spur to collect poll taxes next Friday and Saturday, Jan. 27 and 28. They may be paid at any time now at the court house in Dickens.

Officers in Lubbock were reportedly still working on the case yesterday.

IF TODAY WAS ELECTION DAY—HOW WOULD YOU VOTE?

- | | |
|-----------------|--------------|
| For President — | For Governor |
| Eisenhower — R | Shivers |
| Nolan — R | Yarborough |
| Nixon — R | Daniel |
| Warren — R | Phillips |
| Stevenson — D | Senterfitt |
| Harriman — D | White |
| Kefauver — D | Sheppard |

MARK YOUR "STRAW VOTE" BALLOT AND MAIL OR BRING TO THE TEXAS SPUR.

Numerous Activities Boost Dickens Co. March of Dimes

WIRE STOLEN FROM CITY

Two rolls of new copper wire with City of Spur tags on them were found on a farm road near Lubbock last Friday morning.

Although the wire was not missed before it was reported found, it is believed by W. W. Spray to have been stolen last Tuesday night.

The two rolls, together weighing approximately 500 pounds, are worth approximately \$200 as new wire.

Officers in Lubbock were reportedly still working on the case yesterday.

Lions, Rotary, VFW, Legion Enter Local March of Dimes Tournament

Basketball Supreme is in store for local fans Monday and Thursday evenings of next week as four mighty teams take to the hardwood to vie for the Championship of the 1956 Dickens County March of Dimes.

In the opener the Spur Lions Club meets the Spur Rotary Club at 7 p. m. in the Spur High School gym.

Tangling in the second game of Monday's double-header will be the Spur VFW post versus the Spur American Legion Post.

And then next Thursday night at 7:30 the two winners will clash in the championship battle.

Admission will be by donations of any amount to the March of Dimes.

Other March of Dimes activities scheduled include the following: Thursday, Jan. 19—

Basketball game at McAdoe gym. Members of the McAdoe School Board will play their teams at 7:30 in the McAdoe gym. Thurs., Fri., Jan. 19, 20—

"The Rainmaker", a three-act comedy, will be presented by the Spur VFW post at the East Ward auditorium. Curtain time is 8 p. m. both nights. Twenty-five percent of the profit has been pledged to the March of Dimes.

Boy Scout road block at McAdoe for March of Dimes. Dickens County Federation Blue Grass Day in Spur. Booths on Burlington Ave. will give blue grass emblems to March of Dimes donors.

Monday, Jan. 23—

Spur girls basketball team versus men's faculty in Spur gym at 1 p. m.

comedy, will be presented by the Spur VFW post at the East Ward auditorium. Curtain time is 8 p. m. both nights. Twenty-five percent of the profit has been pledged to the March of Dimes.

Boy Scout road block at McAdoe for March of Dimes. Dickens County Federation Blue Grass Day in Spur. Booths on Burlington Ave. will give blue grass emblems to March of Dimes donors.

Monday, Jan. 23—

Spur girls basketball team versus men's faculty in Spur gym at 1 p. m.

Spur girls basketball team versus men's faculty in Spur gym at 1 p. m.

Council Hires City Policeman Tuesday

B. H. Connally was employed as city policeman for the City of Spur at the Tuesday night meeting of the city council.

Connally plans to assume his duties here on or before Feb. 1. He comes to Spur from Rotan where he has served the past five years as chief of police. Before that he served on the police department of Stamford for 15 years. From 1937-39 he and his family were residents of Spur.

He is 50 years old and is a member of the Texas Sheriff's Association, Texas Sheriff's posse Association, and the Caprock Post Officers Association.

Connally was employed as city policeman for the City of Spur at the Tuesday night meeting of the city council.

Connally plans to assume his duties here on or before Feb. 1. He comes to Spur from Rotan where he has served the past five years as chief of police. Before that he served on the police department of Stamford for 15 years. From 1937-39 he and his family were residents of Spur.

Farm Bureau Asks US Tax Exemption On Farm Gasoline

Farmers in Dickens County will receive refunds on the federal tax they pay for on farm-used gasoline if the Farm Bureau is successful in its efforts to secure gas tax-exemption legislation during this session of Congress.

G. B. Morris of McAdoe, president of the Dickens County Farm Bureau said the Farm Bureau is making every effort to obtain an exemption for farmers on gas tax-exemption legislation during this session of Congress.

Morris urges all farmers in the county to contact their U. S. Congressman by letter to give him their opinions on this matter.

The Texas Farm Bureau secured an exemption several years ago on the state tax of four cents on farm-used gasoline. Morris said it has defeated many attempts to take away this exemption, he added.

Last year the American Farm Bureau Federation recommended to Congress and the President that federal tax on farm-used gasoline be abolished. In his January message on agriculture, President Eisenhower urged Congress to pass legislation to relieve the farmer of the federal tax on purchases of gasoline used in the farm.

"The inclusion of this recommendation can be credited one hundred percent to Farm Bureau's action on this matter," Morris said.

The following reasons are listed by Morris why Farm Bureau is attempting to secure an exemption on the tax on gasoline used on the farm:

1. The tax on non-highway-used gasoline is inequitable and discriminatory.

2. The government does not tax power used by industry in the form of coal, oil, natural gas, electricity, etc., but it exacts taxes power when used on the farm in the form of gasoline.

3. The total consumption of gasoline in tractors and other farm machinery is estimated by the US DA at 3 billion gal. per year. This means that at the present, farmers are paying a tax of \$60,000,000 a year on gasoline used for farm production. If the tax is increased to 3 cents a gal, the amount of this tax will go to \$90,000,000 a year.

Teams Off To Tahoka For District Games Friday Night

SPUR AGAIN PLACES SECOND IN TOURNAMENT ACTIVITY

By Billy Eigham

Tomorrow night, Friday, Spur basketball teams will be in Tahoka to play teams of that city in what will be their third conference game of the season.

The girls teams meet at 7:15 and the boys at 8:30. At this writing it was not known whether the B teams will play or not. If so, they will start at 6 o'clock.

The Spur Bulldogs are leading the district with two wins out of two starts. They took Post 59-53 and Slaton 47-41. The Spur girls will have to pour on the coal if they expect to hold their district lead, as Tahoka has the team favored to win the championship of 5-AA.

They have one of the best players in West Texas in six-foot, six-inch Junior Fitts. However, these Spur Bulldogs can get up and go themselves as indicated by their season record of 13 wins and three losses.

We pick the Spur boys to upset Tahoka in a close game.

The Spur girls have won one an lost one in district play, but should beat Tahoka handily for their second conference victory. Their defeat was by the Slaton girls who have one of the best teams we've seen in a long time.

Spur Wins 2, Losses 1 at Slaton

Last Thursday night in the Slaton gym Spur's B team boys easily defeated Slaton B 38-23.

The Slaton girls beat the Spurettes 20 points but Spur made a good game of it until they lost five guards by the foul route.

The boys A teams had a tight game until the last two minutes when the Bulldogs cut loose with a flurry to come from behind and win 47-41.

Jr. Hl. Trips Jayton Twice

Thursday night the Spur Junior High played host to Jayton but were not very gracious.

Spur boys won handily over Jayton, led by Carlisle. The Spur girls also were victorious.

Bulldogs Second At Seagraves

The Bulldogs basketball team journeyed to Seagraves last Friday to participate in their third and final tournament of the season. They were accompanied by coaches Jim Eddins and Billy Hahn.

They played their first game against the host Seagraves Eagles and it was the thriller of the entire tournament. The packed gymnasium was all for Seagraves, yelling, whistling and applauding for their team, but the Bulldogs traded basket for basket with them.

With only five seconds left in the game and their team leading 50-48 Seagraves broke loose in the jubilant Seagraves stands. However, it was short-lived as Spur's Don Snodgrass calmly set himself and sank a beauty from the side line 25 feet out to tie the score 50-50 and force it into a two-minute overtime.

Spur got the tip, moved quickly down court and took a two-point lead on a long jump shot by Bobby Dyess. Spur drew a penalty and Seagraves tied it up again with the two charity shots.

The Bulldogs, not to be denied, again moved swiftly down court on with five seconds again on the clock. Dyess went high into the air at the circle and popped in the winning score as the game ended 54-52.

Saturday afternoon Spur defeated O'Donnell 57-43 to go into the finals Saturday night against Sundown for the championship.

In the finals Spur started like champions, playing smoothly and with confidence to take a 29-19 lead at half-time. In the second half, however, the Spur lads came out cold and could never get started again, making only 14 points in the last two quarters. Sundown came on fast to rack up 26 points and win 45-43.

The Bulldogs have now played in three tournaments and ended playing for the championship in each of them.

They yelled themselves hoarse throughout the game for the Bulldogs and soundly booed the referees for calling several questionable fouls against them. Two of the families that had housed the boys Friday night came to us with very complimentary remarks about the actions and manners of the Spur team.

The Seagraves girls even formed a pep squad for the Spur boys and also gave a party for them Friday night. All this was accomplished in one day and two nights. Diplomats, maybe.

New Football Coach

At last the Spur Bulldogs have a head coach. Last September at the start of the '55-'56 school year, head coach Sam Hawkes was hired as principal of Spur High School and his position as coach was never refilled. Actually, the team went through an entire season without an official head coach.

At a meeting of the school board Monday night it was decided to hire Bill Henry of Magnolia, Texas as new head coach. He is a graduate of Howard Payne College and served as junior high coach here in Spur four years ago.

Among the out-of-town survivors attending the funeral was Mrs. V. W. Stephenson, a sister-in-law, who is a former resident of McAdoe.

Among the out-of-town survivors attending the funeral was Mrs. V. W. Stephenson, a sister-in-law, who is a former resident of McAdoe.

Among the out-of-town survivors attending the funeral was Mrs. V. W. Stephenson, a sister-in-law, who is a former resident of McAdoe.

Among the out-of-town survivors attending the funeral was Mrs. V. W. Stephenson, a sister-in-law, who is a former resident of McAdoe.

Among the out-of-town survivors attending the funeral was Mrs. V. W. Stephenson, a sister-in-law, who is a former resident of McAdoe.

Among the out-of-town survivors attending the funeral was Mrs. V. W. Stephenson, a sister-in-law, who is a former resident of McAdoe.

Among the out-of-town survivors attending the funeral was Mrs. V. W. Stephenson, a sister-in-law, who is a former resident of McAdoe.

Among the out-of-town survivors attending the funeral was Mrs. V. W. Stephenson, a sister-in-law, who is a former resident of McAdoe.

Among the out-of-town survivors attending the funeral was Mrs. V. W. Stephenson, a sister-in-law, who is a former resident of McAdoe.

Among the out-of-town survivors attending the funeral was Mrs. V. W. Stephenson, a sister-in-law, who is a former resident of McAdoe.

Among the out-of-town survivors attending the funeral was Mrs. V. W. Stephenson, a sister-in-law, who is a former resident of McAdoe.

Among the out-of-town survivors attending the funeral was Mrs. V. W. Stephenson, a sister-in-law, who is a former resident of McAdoe.

Among the out-of-town survivors attending the funeral was Mrs. V. W. Stephenson, a sister-in-law, who is a former resident of McAdoe.

Among the out-of-town survivors attending the funeral was Mrs. V. W. Stephenson, a sister-in-law, who is a former resident of McAdoe.

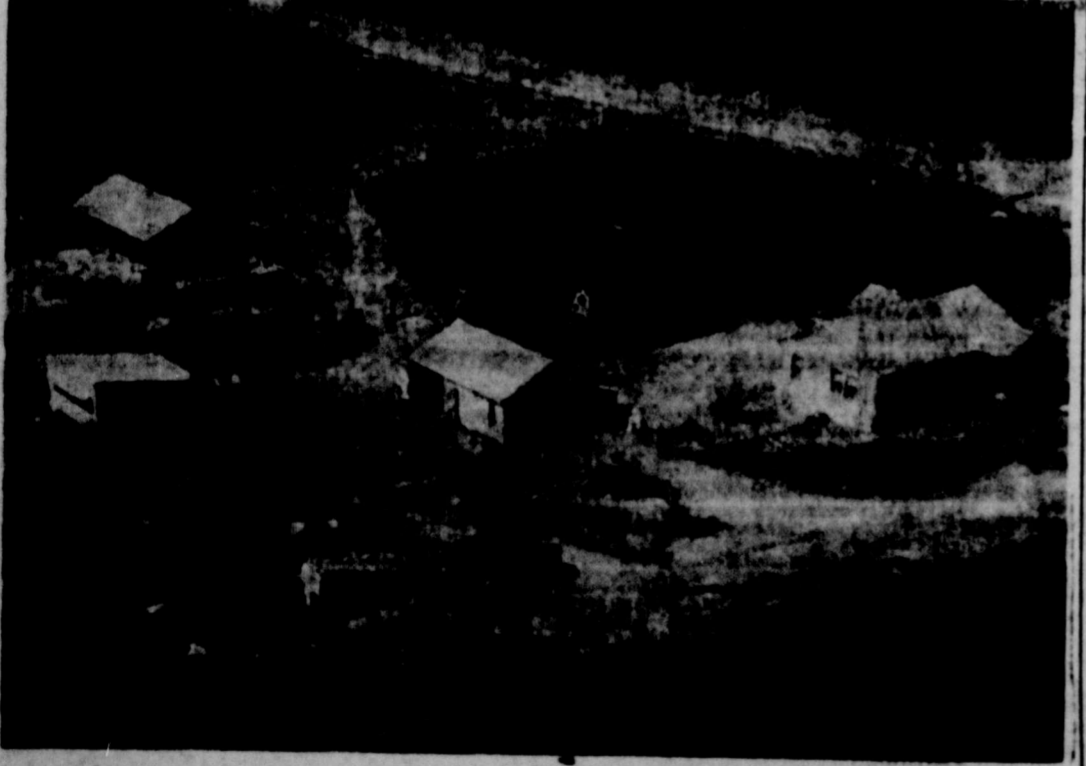
Among the out-of-town survivors attending the funeral was Mrs. V. W. Stephenson, a sister-in-law, who is a former resident of McAdoe.

Among the out-of-town survivors attending the funeral was Mrs. V. W. Stephenson, a sister-in-law, who is a former resident of McAdoe.

Among the out-of-town survivors attending the funeral was Mrs. V. W. Stephenson, a sister-in-law, who is a former resident of McAdoe.

Among the out-of-town survivors attending the funeral was Mrs. V. W. Stephenson, a sister-in-law, who is a former resident of McAdoe.

MRS. CLOWER AND SON OPERATE FARM SW DICKENS



The farm pictured above was published last week by the Rickels Chevrolet Company. The farm belongs to Mrs. Grace Clower and is located a mile and a half southwest of Dickens.

The place was accurately identified first by Miss Ella Draper who received a Spur's subscription to the Texas Spur and two passes to the Palace Theatre.

hand, I. S. Clower, bought the 200-acre farm in 1942 from Mrs. P. H. Miller of Spur. The farm was unimproved when purchased and the Clower family has effected all present improvements.

I. S. Clower died in 1949 and since his death Mrs. Clower and her son, I. S., Jr. have managed the farm. The boy was 11 years when his father died and is now a senior in Spur High School.

He and his mother have been successful in farming the place. They raise Durham cows, cotton, maize and wheat. The farm is terraced and the family cooperates with the Duck Creek soil conservation district. They are Farm Bureau members and belong to the Methodist Church at Dickens.

The Mystery Farm series is a tribute to the rural folks of the Spur area by Rickels Chevrolet.

PAY YOUR POLL TAX BY JANUARY 31

Gabriel's Store-wide January

Clearance

Men's Boys' Items

BOYS and MEN'S
PAJAMAS

Outing flannel. Reg. to 2.98
All sizes. CLEARANCE-

1.98

Men's Best Grade Dickie
ARMY CLOTH

Gabardine Pants

4.19

MATCHING

Shirt - 4.19

MEN'S COLORED
SWEAT SHIRTS

Val to 1.69. CLEARANCE

99c

ONE GROUP MEN'S
SPORT SHIRTS

Long sleeves, ass't pastel
colors. Reg. 2.98 SALE!

99c

SUIT SALE!

ANY ONE IN THE HOUSE
Value to 55.95

39.95

One Group \$25

ALL MEN'S

JACKETS

25% OFF!

MEN'S
SPORT SHIRTS

Flannel, wool jersey. Val. to
6.95. CLEARANCE!

1.98

ALL MEN'S
DRESS PANTS

Rayons, wools, etc. SALE-

25% OFF!

MEN'S
DRESS SHIRTS

1.98

One Group Men's
NYLON SOCKS

Reg. 1.00 pr. CLEARANCE

4 pr. 2.00

DICKIES, HAWKS, others
Gabardine Pants

Values to 3.98 SALE!

2.79

MATCHING

Shirt - 2.79

One group men's and boys'
JACKETS

Just 25, so hurry! Val to 6.95

1.98

ALL CHILDREN'S
JACKETS

Sizes 3 to 16. SALE!

25% OFF!

MEN'S

Corduroy Shirts

Sizes Med, Lrg, and X-Lrg.
Values to 6.95. SALE!

1.98

ENTIRE STOCK!

Western SHIRTS

Corduroys, gabardines,
Broadcloths. Values to 7.95

4.95

BOYS LONG SLEEVE

Boys Sport Shirts

reg. 1.98 - 1.49

reg. 2.98 1.98

MEN'S

Nylon SHORTS

Reg. to 2.50. Pancies and
solids. CLEARANCE!

99c

Men's Brief Style

KNIT SHORTS

Nylon reinforced. SALE-

49c

MEN'S Ribbed Cotton

UNDERSHIRTS

49c

Men's Dress and Western

FAMOUS BRANDS

FELT HATS

5.00 val. 3.49

10.00 val. 6.95

12.50 val. 7.95

\$20 val. 15.00

OUR BIGGEST STORE-WIDE SALE EVER!

EVERY ITEM DRASTICALLY CUT IN PRICE! WE'VE THROWN AWAY THE WHOLESALE COST TICKETS and MARKED EVERY ITEM AT ROCK BOTTOM! YOU'VE NEVER SEEN SUCH LOW, LOW PRICES ON QUALITY MERCHANDISE! YOU'LL SAVE ON EVERY ITEM IN EVERY DEPT. BECAUSE WE'VE GOT TO SELL IT TO MAKE ROOM FOR NEW SPRING MERCHANDISE!

SALE OPENS 8:30 A. M. WEDNESDAY, JAN. 18!

FREE MERCHANDISE

\$25.00

To be given away absolutely FREE at 3:00 p. m. Wed. Nothing to buy—just come in any time between 8:30 and 3:00 for your free ticket. BONUS TICKETS given first hour of SALE!

Shoes

Ladies' SHOES

Approx. 500 pr. Val. to 9.95.
Famous Brands

2.99

One Group

Men's LOAFERS

Values to 6.95. Brown only.
All sizes.

4.95

One group Florsheim and
Edwin Clapp

Men's SHOES

Values to 22.95. SALE!

14.95

One Group Men's

Cowboy BOOTS

Reg. to 29.95. Clearance!

14.95

One Group Men's

WORK SHOES

Values to 7.95

Sale! **4.95**

Opening Special! 8:30 - 9:30 Wed.

80 sq. PRINTS & Solid CHAMBRAY
for one hour only! 5 yards **1.00**

Hour Special! 10:00 - 11:00 Wed.

Heavy Unbleached DOMESTIC
for one hour only! 5 yards **1.00**
(Limit 10 yds. to Customer)

Hour Special! 8:30 - 9:30 Thursday

Ladies' Full Fashion
NYLON - HOSE

60 gauge 15 denier. Reg. 1.35 pr
for one hour only! 3 pr. **2.00**
(limit 3 pair to customer)

Household

FULL SIZE
Chenille Spreads

Val. to 7.95. Clearance!

4.95

LARGE SIZE
TOWELS

Double thread. Solid colors.
Reg. 1.49. CLEARANCE!

89c

Garza SHEETS

81x99 Snow White. SALE!

1.99

PART WOOL DOUBLE
BLANKETS

Size 70x80. CLEARANCE!

3.95

COTTON
BLANKETS

Size 60x76. 2.98 Val. Sale!

1.99

BED SPREADS

4.95 val. CLEARANCE!

2.98

All Sales Final - No Alterations - All Sales Cash - No Exchanges or refunds

MANY MORE ITEMS NOT LISTED - SHOP EARLY!

Gabriel's

SPUR,
TEXAS

(Closed Tues. to get ready for SALE)

Ladies' Lingerie

Ladies' BRAS

Hi-A and Perma-Lift. Val.
to 4.00. CLEARANCE!

49c

Ladies PANTIES

49c

LADIES'
Rayon GOWNS

Val. to 5.00. Clearance!

99c

LADIES'
Nylon Half-Slips

Val. to 8.95. Clearance!

4.95

LADIES'

NYLON SLIPS

Val to 7.95. SALE!

2.98

LADIES'

**Robes, Gowns
and Half-Slips**

Val to 2.98. CLEARANCE!

1.98

LADIES'

Nylon GOWNS

Val. to 12.95. SALE!

5.95

Ready-to-wear

ALL LADIES SHORT AND LONG
COATS 1/2 PRICE

Close Out Evening DRESSES
Values to 34.95 **1.98**

Lily Ann SUITS 1/2 Price

EVERY DRESS IN THE HOUSE
GOES AT 1/3 PRICE

Ship-Shore Blouses. val. to 4.95 **1.98**

Ladies SWEATERS Reduced to Sell

PIECE GOODS

ORLON JERSEY 3.49 val. **2.19**

WOOL FELTS 3.49 val. **2.79**

Woolen Material val. to 4.95 **1.98**

SEERSUCKER - 98c val **49c**

Or.--Ray. Suiting 1.98 val: **1.59**

GABARDINE val. to 1.98 **49c**

CORDUROY - 98c val. **79c**

Rayon Materials 1.29 val. **89c**

Commell Gingham 1.00 val. **79c**

One grp. Twistileen, Broadcloth,
Ginghams - val. to 98c **49c**

One group - while it lasts!
Satin Broadcloth. val. to 1.29 **29c**

AN ORDINANCE RELATING TO TRAFFIC AND REGULATING THE USE OF PUBLIC STREETS AND HIGHWAYS OF THE TOWN OF SPUR, DICKENS COUNTY, TEXAS; PROVIDING FOR THE INSTALLATION, REGULATION AND CONTROL OF THE USE OF PARKING METERS AND PARKING METER ZONES; DEFINING PARKING METER ZONES; AUTHORIZING A METHOD OF PAYMENT FOR PARKING TIME THROUGH THE USE OF PARKING METERS; PROVIDING FOR ENFORCEMENT AND PENALTY FOR VIOLATION THEREOF; PROVIDING FOR METHOD OF PAYING FINE AND COSTS WITHOUT APPEARING BEFORE MUNICIPAL COURT; PROVIDING THAT INVALIDITY OR PART SHALL NOT AFFECT THE VALIDITY OF REMAINDER; AND DECLARING AN EMERGENCY.

BE IT OBTAINED BY THE CITY COUNCIL OF THE TOWN OF SPUR, DICKENS COUNTY, TEXAS:

Section 1. The word "vehicle," as used herein shall mean any device by which any person or property may be transported upon a highway, except those operated upon rails or tracks.

Section 2. That the following described streets in the Town of Spur, Texas are hereby designated and established as parking meter zones, to-wit: (a) both sides of Burlington Avenue from Third Street to Sixth Street; (b) Harris Street on both sides, from Burlington Avenue to the first alley East of Burlington Avenue; and (c) Harris Street, on both sides, from Burlington Avenue to the first alley West of Burlington Avenue. And all parking limits and restrictions which apply to such zones as set forth in ordinances heretofore passed are hereby incorporated in this ordinance for all uses and

purpose applicable to the conditions, terms, and enforcement hereof.

Section 3. The Mayor and City Secretary shall provide for installation of parking meters, including curb and street marking lines, regulation and operation thereof, and shall cause said meters to be maintained in good workable condition; and they shall also provide for the installation of at least six yellow five boxes to be located on or near parking meter posts. Meters shall be placed upon the curb next to individual parking places which shall be marked and indicated by yellow marks or lines in accordance with this ordinance and other ordinances now effective, and meters shall be so constructed as to display a signal showing legal parking upon deposit therein of the proper coin or coins of the United States as indicated by instructions on said meter and for a period of time in accordance with the regulations and instructions contained in this ordinance, said signal to remain in evidence until expiration of said parking period so designated, at which time a change of signal or some other mechanical operation shall indicate expiration of said parking period. Such meters shall have an enforcement period of from 8 A. M. to 6 P. M. daily, with Sundays and Holidays excepted, and such meters shall be designed and set to operate on a coin combination of ten one cent coins of the United States, two five cent coins of the United States or one ten cent coin of the United States, and upon a time limit of two hours. The term "Holidays" as used herein means only the following days in a year, to-wit: Memorial Day, Independence Day (July 4th), Veterans Day (November 11), Thanksgiving Day, Christmas Day, and any other day properly proclaimed by the Mayor of the City of Spur, Texas. And each such parking meter shall be designed and set to allow and indicate a parking period for a vehicle parked in the space marked and designated to be covered by such meter of twelve minutes for each one cent coin of the United States deposited in such meter, of one hour for each five cent coin of the United States deposited in such meter and of two hours for each ten cent coin of the United

States deposited in such meter; but such meter shall never allow or indicate a parking period of more than two hours, regardless of the number of coins deposited therein.

Section 4. (a) When any vehicle shall be parked next to a parking meter the owner or operator of said vehicle shall park within the area designated by the curb or street lines as indicated for parallel or diagonal parking and upon entering said parking space shall immediately deposit in said meter one or more one cent coins of the United States, and/or one ten cent coin of the United States as indicated by instructions of said meter, unless a period of legal parking is still indicated on such meter. It shall be unlawful for any person to fail to park within said designated area, or fail or neglect to so deposit the proper coin, or coins.

(b) No person shall allow a vehicle to remain parked for any period of time within a parking area covered by a parking meter while such meter is displaying a signal showing illegal parking or indicating that a parking period has expired and unless such meter is displaying a signal showing a period of legal parking as provided for herein; provided, however, that when a vehicle is initially parked in an area covered by a parking meter which such meter is displaying a signal indicating that a parking period has expired or displaying a signal showing illegal parking, the driver or owner of the vehicle shall have time to forthwith deposit in said meter one or more of the coins of the United States herein mentioned so as to purchase a legal parking period as herein provided.

Section 5. (a) It shall be unlawful for any person to cause or permit any vehicle registered in his name to be unlawfully parked as set out in this ordinance.

(b) Proof of registration of a motor vehicle and proof of a violation of this ordinance shall be construed as prima facie proof that the registered owner of such vehicle was the user or operator thereof at the time of the violation charged.

(c) The City Secretary is hereby authorized and directed to supply City Policemen, the City Marshall and other policemen and peace officers in Spur, Texas with citation tags or notices for the purpose of giving notice to persons violating any provision of this ordinance. Such tag or notice may be given by delivering such tag or notices to the violator or by affixing it to the vehicle by means of which the violation occurred. Such citation tag or notice shall direct the violator to appear and to present such tag or notice at a designated place before the Municipal Court of the City of Spur, Texas on or before a date and hour specified thereon. Nothing in this section shall be construed to abridge the power of a police officer to arrest any violator and take him into custody.

(d) Whenever any motor vehicle without a driver is found parked or stopped in violation of any of the restrictions imposed by this ordinance, the officer finding such vehicle shall take its registration number and not post any other information displayed on the vehicle which may identify its user, and shall conspicuously affix to such vehicle a notice in writing on a form provided by the City for the driver to answer to the charge against him within five days and at the time and before the Municipal Court of said City at the place specified in the notice.

(e) Any police officer of the City of Spur may impound any motor vehicle parked at a place where parking is prohibited by this ordinance, or which has been parked for more than one hour in excess of the time allowed for parking in any place, or which has been involved in two or more violations of this ordinance, for which citation tags or notices have been issued and not presented as required herein. Any person desiring to redeem such impounded vehicle shall first pay such fine or fines as may be assessed by the Judge of the Municipal Court for the violation or violations for which such motor vehicle was impounded, provided that such fine or fines shall not exceed \$19.00 and \$1.00 costs for each offense.

Section 6. It shall be unlawful for any person to deposit or cause to be deposited in a parking meter one or more of the coins of the United States herein mentioned for the purpose of extending the parking time beyond the maximum legal parking time allowed under this ordinance to be registered and shown by such meter; provided, however, that periods of legal parking time or parts thereof may be renewed from time to time by depositing a coin or coins in such meter as herein provided, and a vehicle may remain in an area covered by a parking meter during all or any part of the whole enforcement period as long as sufficient coins are deposited in such meter so that such meter shall at all times indicate a period of legal parking.

Section 7. It shall be unlawful to deposit or cause to be deposited in any parking meter any steel, bronze or metallic substitute for a coin of the United States.

Section 8. It shall be unlawful for any person to tamper with, open, willfully break or destroy any parking meter.

Section 9. It shall be the duty of City Policemen, City Marshall and other police officers and peace officers as instructed to take the parking meter number and the state vehicle tag number of all persons violating the provisions of this ordinance and make complaint therefor in the Municipal

Court of the City of Spur, Texas.

Section 10. (a) Any person, firm, or corporation who shall violate or permit to be violated Section Four or Section Five or Section Six of this ordinance shall upon conviction be fined not more than \$19.00 and costs.

(b) Any person who shall violate or assist in violation of Section Seven or Section Eight of this ordinance shall upon conviction be fined not more than \$200.00 and costs.

(c) Whenever the driver or user of a vehicle is charged by an officer with parking or stopping such vehicle in violation of any of the restrictions imposed by this ordinance, such alleged violator, may in his sole discretion, elect to plead guilty to the charge set forth in the tag or notice without appearing before the Municipal Court, and to authorize the City Secretary to plead him guilty before such court and to pay a total fine and costs of \$0.25 for such violation if paid in the manner hereinafter set forth within twenty-four hours from the time of such violation as shown on said tag or notice or to pay a total fine and costs of \$1.00 for such violation if paid in the manner hereinafter set forth after twenty-four hours but within Seventy-Two hours from the time of such violation as shown on said tag or notice. And in the event such election is made by such alleged violator, he shall sign a statement to that effect which shall be entered on said notice or tag and placed such notice or tag with the sum of \$0.25 or \$1.00, as the case may be, in an envelope and deposit the sealed envelope in one of the City's yellow five boxes located on or near parking meter posts in the City of Spur; and in said statement such violator shall state the date and time that such envelope is deposited in a fine box.

Section 11. The fee required to be deposited in said meters is hereby levied as a police regulation and inspection fee to cover the cost of providing parking spaces, parking meters and installation and maintenance thereof, the cost of regulation and inspection operation, control and use of the parking meter spaces and zones created herein and hereunder for the regulation and control of traffic moving in and out of, and marking in, said parking spaces and zones so created, and for the cost of any resultant traffic administration expense.

Section 12. All ordinances or parts of ordinances in conflict with this ordinance are hereby expressly repealed. And if any part or parts of this ordinance shall be held to be unconstitutional, such unconstitutionality shall not affect the validity of the remaining parts of this ordinance, and said City Council hereby declares that it would have passed the remaining

parts of this ordinance if it had known that such part or parts thereof would have been or would be declared unconstitutional.

Section 13. It is deemed by said City Council that an emergency exists, and this ordinance shall go into effect immediately upon its passage and publication according to law.

PASSED AND APPROVED by the affirmative vote of all of the members of the CITY COUNCIL OF SPUR, DICKENS COUNTY, TEXAS present at a regular meeting of said Council held on the 17th day of January, 1956, with five members present at said meeting:

APPROVED:
WALTER GRUBEN
Mayor, City of Spur, Texas.

ATTEST:
W. W. SPRAY
City Secretary, City of Spur, Texas.

Extension Range Specialists estimate that Texas ranchmen added almost \$3 million to their income last year from changes made in management plans as a result of range improvement demonstrations.

THESE WOMEN! By G. Alamo



THE BRIDE

"Not another word! This is your birthday and I'll get my own breakfast this morning!"

TAKE OUT YOUR

BLUE CROSS INSURANCE NOW

Or Before Feb. 15. It Will Go Into Effect on April 1 Instead of the Usual 6-Months or Longer Waiting Period.

FOR FURTHER INFORMATION COME TO THE

DICKENS COUNTY FARM BUREAU OFFICE
SPUR, TEXAS

Farmall Bulletin

PLENTY OF IRRIGATION PIPE & FITTINGS

A FEW NEW REFRIGERATORS LEFT! TO GO AT ROCK-BOTTOM PRICES

USED 7-ft. FREEZER	\$125.00
1952 FORD Pickup Good Condition	\$650.00
1950 FORD Pickup	\$249.00
1954 INTERNATIONAL Pickup	\$990.00
1948 HUDSON. One Owner. Excellent Condition	\$395.00
1951 FORD 2-Door	\$450.00

NEW "88" OLDSMOBILE Holiday Coupe Needs A Home! See Us Before You Trade-

ONE NEW 1955 INTERNATIONAL Pickup We Need to Move It!

USED FARMALL "M" TRACTOR With 4-Row Tool Bar and Planter and New 4-Row Cultivator \$1990.00

17 NEW FARMALL TRACTORS With Equipment Just Itching To Go To Work For Some Good Farmers!

USED 8-DISC ONE-WAY \$65.00

WHEN YOU'VE GOT A MINUTE VISIT THE FARMALL HOUSE WHERE THERE'S ALWAYS FRIENDLY CONVERSATION AND LOTS OF ACTIVITY. WE APPRECIATE YOUR VISITS WHETHER YOU BUY ANYTHING OR NOT - WE'VE ALWAYS GOT THE STOVES LIT AND THE COFFEE POT HOT -

EDWARDS - KELLEY IMPL. CO.
Telephone 58 Spur, Texas Box 1093

Read the Want Ads

Section 11. The fee required to be deposited in said meters is hereby levied as a police regulation and inspection fee to cover the cost of providing parking spaces, parking meters and installation and maintenance thereof, the cost of regulation and inspection operation, control and use of the parking meter spaces and zones created herein and hereunder for the regulation and control of traffic moving in and out of, and marking in, said parking spaces and zones so created, and for the cost of any resultant traffic administration expense.

Section 12. All ordinances or parts of ordinances in conflict with this ordinance are hereby expressly repealed. And if any part or parts of this ordinance shall be held to be unconstitutional, such unconstitutionality shall not affect the validity of the remaining parts of this ordinance, and said City Council hereby declares that it would have passed the remaining



The Texan DODGE

SEE IT TODAY AT YOUR NEARBY DODGE DEALER'S

Food Specials

FOR THE THRIFTY HOMEMAKER

WINNERS THIS WEEK: Horace Hyatt \$2.50, Mrs. Bert Hash \$5.00

WRIGHT'S COOKED READY-TO-EAT

Picnic Hams Lb. 27c	RUSSETT POTATOES 10 Lbs. 38c
DELIT PURE PORK SAUSAGE 3 lbs. 55c	TEXAS ORANGES 5 lbs. 28c
SMOKED Bacon Squares lb. 17c	Crisp Firm Heads LETTUCE lb. 8c
BOLOGNA lb. 19c	RED EMPEROR GRAPES Lb. 10c
HAMBURGER lb. 29c	COLORADO PINTO BEANS 10 Lbs. 79c
KIMBELL'S - In Tomato & Cheese Sauce SPAGHETTI 9 303 Cans 1.00	46 Oz. TEXSUN GRAPEFRUIT JUICE 4 Cans 1.00
ALL BRANDS CANNED BISCUITS 8 Cans 1.00	46 Oz. CAN HI-C ORANGE DRINK 4 Cans 1.00
CHUCK WAGON BEANS 10 303 Cans 1.00	
KIMBELL'S PORK & BEANS 12 No. 1 Cans 1.00	
KIMBELL'S TOMATOES 12 No. 1 Cans 1.00	
DIAMOND HOMINY 14 No. 1 Cans 1.00	

STOP & SHOP MKT.

PLENTY OF PARKING SPACE IN REAR: USE OUR REAR ENTRANCE

Steel Hill H D Club Studies Family Health

The Steel Hill Home Demonstration Club met in the home of Mrs. Jess Powell, Tuesday, January 17.

The program topic for the day was "Family Health". Following the program, a gift was presented to Mrs. Roy Nance, who is moving to Girard soon and

will resign from her present club. Refreshments were served to Meses. E. D. Butler, G. W. Justice, Roy Nance, Howard Thomas, Clomer Randall, Norman Wilson, the hostess and one visitor, Mrs. Jackson Powell.

Rev. and Mrs. C. R. Mathis visited and looked after business in Lubbock, Monday.

Dry Lake W M U Meets Monday

The Dry Lake W.M.U. met in the home of Mrs. Ellis Draper, Monday, January 16 at 2:30 p. m. The lesson, "Malmesim World", was presented by Mrs. Bernice Bilberry.

The four members present were Meses. Bernice Bilberry, Lon Bass, Raymond Smith, and the hostess. The next meeting will be in the home of Mrs. Bernice Bilberry.

HOSPITAL NOTES

June Lackey was admitted for medical treatment January 3 and was discharged the following day.

Receiving treatment beginning January 4th was Mrs. N. J. Dean. She, also, was discharged the following day.

Three patients, Brady Walker, Don Weaver and Mrs. L. R. Baker, were admitted on the 5th and all have been dismissed.

Entering on January 6 were Bernice Fincher and Nina Mac King. They were discharged January 8th and 9th respectively.

Jean Atkinson, who was admitted on January 7, is still undergoing medical treatment.

Mrs. K. S. Atkinson was admitted on the 7th and dismissed two days later.

Mrs. Murray Lea, Mrs. Buck Scott and O. V. Alexander are still receiving medical treatment after being admitted recently.

The landscaping of the hospital grounds is rapidly progressing. No shrubs have been set yet but the ditches are ready. Come out and see what vast improvement the landscaping will have toward the beauty of the hospital.

NEW ARRIVAL

Born to Mr. and Mrs. Coffin Reese was a son named Faron Ray. He was born January 6 and weighed six pounds and seven ounces.

Dry Lake H D Club Begins New Year

The Dry Lake Home Demonstration Club met in the home of Mrs. Buck Ballard, Wednesday, January 11, at 2:30 p. m. for the first meeting of the new year.

The new yearbooks were issued to each member and programs were planned.

The president, Mrs. Ballard, appointed the following club committee chairmen: Health and Safety, Mrs. E. J. Lassetter; Education, Mrs. Billy Bingham; and Recreation, Mrs. Archer Powell. Clothing demonstrators will be Mrs. Lassetter and Mrs. I. J. McMahan and Mrs. Bernice Bilberry and Mrs. J. B. Karr were appointed as food demonstrators.

Those attending were Meses. Billy Bingham, Archer Powell, I. J. McMahan, Bernice Bilberry, Bob Pickens, E. J. Lassetter, and the hostess.

Mrs. Bernice Bilberry will be hostess to the club members Wednesday, January 25 at 2:30 p. m. The program will be "Family Health", with Mrs. Lassetter and Mrs. Bilberry in charge.

Bagby Circle Has Missionary Study

Mrs. W. M. Hazel was hostess to the members of the Bagby Circle when they met in her home Monday evening, January 16, for a missionary lesson.

Mrs. John Adams presided during the short business session.

The program was presented in five parts by Meses. Morris Neaves, Dobbins, Adams and Hazelwood. The opening prayer was given by Mrs. Neaves, and the closing prayer by Mrs. Claude. Refreshments were served to nine members and two visitors, Meses. O. R. Claude and E. F. Shugart.

Busy-B Club Meets In McGaughey Home

The Busy-B Quilting Club met recently in the home of Mrs. Sam McGaughey, for a covered dish luncheon. Following the luncheon members played 42 and quilted.

Those attending were Meses. Del Merriman, Ella Halle, Lola Drennon, Grandmother Fry, Madeline Meadows, Thelma Rogers, Jesse Morris, Usery, and Lula Westerman.

Visitors were Flora Nalley, Ada Mitchell and Granny McDaniel.

B. Britton Presented In Private Recital

Bob Britton was presented recently by his teacher, Mrs. W. W. Gunn, in a private vocal recital held in the Roundup at the Methodist Church. Accompanying him was Miss Sandra Karr.

Bob rendered seven selections to the group, which consisted of his family and closest friends. A social hour followed the recital.

This was the final recital Bob will be participating in for some time in Spur, as he will soon leave for Rowell, New Mexico where he will attend a military school.

Woonsman-Condron I Engagement Told

Mr. and Mrs. Jim Woonsman of Dickens announced the engagement and approaching marriage of the daughter, Peace Beth, to Don Condron, son of Mr. and Mrs. W. H. Condron of Spur.

The double ring ceremony will be held in the bridegroom's home, twelve miles East of Dickens, on January 27, 1956, at 7 p. m.

Dry Lake Community News

The fellowship meeting will be held at Foreman Chapel Church, Friday, January 20 at 7:30 p. m. Don't miss this get-together. Each family is asked to bring cookies and punch. Rev. and Mrs. Charles Pickens will attend this meeting.

Billy Calvert and Charles Forbes made a business trip to Abilene, Sunday.

Mr. and Mrs. T. J. McMahan and daughter, Mrs. Archer Powell, visited Mrs. Emma McMahan in Abilene last Thursday.

Miss Paula Foreman attended the Rainbow meeting in Spur, Monday night.

Mr. and Mrs. Burford Johnston visited her dad, Mr. and Mrs. E. J. Lassetter, Sunday morning.

Mr. and Mrs. Clifford Smith of Lubbock visited her parents, Mr. and Mrs. Lon Bass, Saturday.

Charlotte Ramsey spent the week end with her grandparents, Mr. and Mrs. W. E. Ball, and attended church at Soldier Mound.

Miss Agatha Ellis was a week end visitor of Miss Nancy Powell. Mr. Spizera of Idalou visited Muri Foreman, Monday and they did some hunting.

Harmony Club Meets In Gabriel Home

The Spur Harmony Club held a regular meeting January 10, 1956, at 7:30 p. m. in the home of Mrs. George Gabriel, 601 N. Trumbull.

Mrs. W. F. Gilbert called the roll and each member answered with a New Year's Resolution.

Mrs. Bud Sims was leader for the program, "There's Work to Do". First on the program was a vocal solo by Bob Britton, accompanied at the piano by La Nell Marcy. Bob sang "Erie Canal". A sing-song was then led by Mrs. Bob Nunley. The group joined in singing "Cotton Needs Pickin'" and "I've Been Working on the Railroad". "Old Man River", a highlight of the night, was sung by Bob Britton.

A short business meeting, led by the president, Mrs. Bob Nunley, followed the program.

Those present were Meses. Joe Bell, J. E. Berry, Nell Davis, W. F. Gilbert, W. W. Gunn, Betty Henley, Ernest Johnson, Grady Lackey, Bob Nunley, J. C. Reese, Bud Sims, J. E. Swenson, Glyndon Johnson, Alfred Walker, Mira Marie Lewis, and the hostess.

Visitors for the occasion included La Nell Marcy, Bob Britton, and Mrs. Bynum Britton.

Mr. and Mrs. Sam Gannon visited his brother, Mr. and Mrs. Buck Gannon, in Seminole over the week end.

Rev. and Mrs. Raymond Smith were dinner guests Sunday of Mr. and Mrs. Ellis Draper.

Danny Williams of Spur spent Saturday night with Mr. and Mrs. Bob Dixon. His parents, Mr. and Mrs. Jack Williams, visited Sunday afternoon and Danny returned home with them.

Mr. and Mrs. G. W. Bennett of Midway visited Mr. and Mrs. I. J. McMahan, Sunday afternoon.

The young folks of Dry Lake Church met in the home of Mr. and Mrs. Ellis Draper, Sunday night after church for their fellowship hour.

Mrs. Bob Dixon visited Rev. and Mrs. R. D. Hill in Dickens, Monday.

Miss Barbara Wright spent Friday night with Miss Ann Kissinger.

Ohhh! WHAT A VALUE!

ROCKET POWER!
STARFIRE STYLING!
AT A PRICE YOU CAN AFFORD!

OLDSMOBILE
SEE YOUR NEAREST OLDSMOBILE DEALER

Read the Want Ads

HI-HO

SAT. - SUN.

From Alaska's First Violent Days of Gold! Rich Glory - Comes the Story of the Stranger with a Gun -

**JAMES STEWART
RUTH ROMAN
WALTER BRENNAN**

THE FAR COUNTRY

Color by TECHNICOLOR

PALACE THEATRE

FRI. - SAT.

No PLACE TO HIDE..

For this was Wes Stool, the gunfighter the whole town was hunting like an animal!

HIS BACK TO THE WALL AND A GUNPACK AT HIS BELT!

A MAN ALONE

RAY MILLAND
RAY BRIDGEMAN - WEND BRIDE

BOX OFFICE OPENS

Mon. - Thru Fri. 8:15
Sat. 11:45
Sun. 1:15
Adult 50c - Children 30c

WED. - THURS.

JUMBO JACKPOT

ATTEND EITHER DAY

Showing -

HEART-STOPPING Action!

Santa Fe Passage

TRUCOLOR by Technicolor

JOHN PAYNE
and
BONERGIE - CAMERON

SUN. - MON. - TUES.

HIS BIG NEW ROLE!

CINEMASCOPE

JACK WEBB
as **PETE KELLY**
in **PETE KELLY'S BLUES**

TECHNICOLOR

JANET LEIGH · EDMOND O'BRIEN
PEGGY LEE · ANNY BYRNE · LEE MARVIN · ILLA FITZGERALD

PROCTOR'S JANUARY CLEARANCE SALE

STILL IN PROGRESS!

BARGAINS IN EVERY DEPARTMENT!

Make PROCTOR'S Your First Stop for Rock-Bottom Clearance Prices on Quality Merchandise!

Proctor's

Food Values You'll Sing about

DOUBLE SCOTTIE STAMPS ON TUESDAY

GLADIOLA

FLOUR 5 lb. Bag 49c
10 lb. Bag 79c

ARMOUR'S VEGETOLE

Shortening 3 Lb. Can 65c

LARGE BOX

Tide or Cheer 29c

IN OUR MARKET ...

FIRM GREEN HEADS

LETTUCE lb. 9c

CARROTS lb. pkg. 9c

FRESH GREEN Bunch

Radishes or Onions 5c

BAG

ORANGES 5 lbs. 25c

RUSSETT

POTATOES

10 lb. Mesh Bag 35c

CHARMIN (Assorted Colors)

TISSUE 2 for 19c

KRAFT

CARAMELS 1 lb. 25c

KRAFT 5 oz. Glass

Cheese Spread 25c

KRAFT

DINNER 2 pkgs. 25c

KRAFT SALAD DRESSING pt. 29c

PARKAY

OLEO lb. 29c

Fruits & Vegetables ...

CHUCK or ARM ROAST lb. 33c

BUDGET TRAY PACK BACON lb. 21c

BUDGET FRANKS lb. 25c

PURE PORK (Delite Brand) SAUSAGE 2 lbs. 35c

RANCH STYLE BACON 2 Lbs. 59c

SPUR SUPER MARKET

THIS GOODS MUST BE SOLD - SALE ST

Dunlap's

WILL CLOSE

Men's Wear

THE MOST SENSATIONAL SALE EVER HELD IN THE SOUTHWEST. EVERY ITEM IN THIS GREAT STOCK (Except Restricted Lines) HAS BEEN REDUCED FOR IMMEDIATE SALE... AND AT LEAST HALF OF OUR INVENTORY MUST BE SOLD IN THE NEXT FEW DAYS. THIS STORE WIDE REDUCTION IS FROM WALL TO WALL.

Check These

CLOSE BARGAIN

ONE GROUP MEN'S LINED JACKETS & SURCOATS

Quilt lined for light-weight warmth. All nylon jackets, gabardine surecoats. Sizes 32 to 46. Reg. to 17.95

Close-out **9.97**

MEN'S SUITS

All wools, all dacron, dacron and rayon. Several dark coxes in winter and year-round weights. Dacron Completely Washable. Brown, Charcoal or Grey.
Regular to 55.00
Close-out 37.99
Regular to 37.95
Close-out 24.99
Regular to 34.95
Close-out 19.99

Western Shirts

Find your size and make this big saving.
Reg. 7.95
Close-out 4.99
Reg. 6.95
Close-out 3.99
Reg. 4.98
Close-out 2.49
Reg. 3.98
Close-out 1.99
Reg. 2.98
Close-out 1.49

BILLFOLDS

Fine Leather. Regular 7.50 and 10.00. **CLOSE-OUT 1/2 Price**

Dress Pants

All wool or wool-dacron blends, in flannels and gabardines. Sizes 29 to 40. SLASHED IN PRICE.
Reg. 16.95
Close-out 9.97
Reg. 14.95
Close-out 8.97
Reg. 12.95
Close-out 7.97

Wool Jackets

Dress flannel in check designs. Not too many left but they all go at this one low price. Regular 16.95
Close-out 8.99

Gabardine Jackets

Broken sizes, 35 to 46. Regular to 9.95
Close-out 5.00

ONE GROUP OF MEN'S SPORT SHIRTS

One big table full of all kinds in solid colors, fancy plaids and dressy design. Sizes S-M-L-XL. Reg. to 5.95

Close-out **1.99**

Men's Sweaters

Coat style and slipover. Reg. to 8.95
Close-out 4.49

DRESS SHIRTS

Famous brands in white, pink, tan, grey and blue. Most sizes. Regular to 4.50
Close-out 2.99
Regular to 3.95
Close-out 1.99

Sweat Shirts

For small men or big boys. Size 34, 36, 38 only. A few dozen and they all go. Regular 1.29
Close-out 87c

Men's Hats

Odda and ends in Stetson, Champ and others. Reg. to 10.00
Close-out 3.00

Men's Khakis

Pants and shirts in Sanforized Vat Dyed Tan Khaki. Pants size 28 to 34. Shirts 14 and 14 1/2.
SHIRTS Reg. 2.29
Close-out 1.50

Work Jackets

Blue denim with warm part-wool lining. Sizes 34 to 44. Reg. 4.98
Close-out 3.81

Men's Jewelry

Cuff links and tie bars. Reg. 2.50, 3.50 and 5.00. **Close-out 1/2 Price**

PANTS Reg. 2.98
Close-out 2.00

Shorts & Undershirts

Broadcloth in boxer or gripper. Sizes 30, 32, 36, 38, 44. Reg. to 6c.
Close-out 38c Each
Undershirts size 36 to 42.

SOME NATIONALLY ADVERTISED BRANDS ARE RESTRICTED.

Long Underwear

A few small sizes, 36 and 38. Regular to 4.75
Close-out 1.00

Piece Goods and Household Items

Down Comforts

Elegant satin covers in blue and Gold Down proof covers. Reg. 24.95
Close-out 12.99

Garment Bags

One Group of Fancy Quilted In pastel decorator colors of Mint, Blue and Pink. Reg. 5.95
Close-out 3.99

Garment Bags

Jumbo size zipper enclosure, moisture and dustproof. Made of sturdy vinyl plastic. Reg. to 1.98
Close-out 73c

Bedspreads

One group including fancy chenille, taffeta and chins. Double and twin size. Prices Slashed.
Regular 9.95
Close-out 5.87
Regular 10.95
Close-out 6.87
Regular 12.95
Close-out 7.87

Card Table Covers and Shoe Bags

Table covers quilted to fit and regulation size table. Shoe bags of sturdy reinforced plastic. Reg. 1.00
Close-out 73c

LINENS

Madera, dresser scarfs, table cloths, napkin sets, tea towels, and hot roll covers. Slashed for fast selling. Reg. to 1.49
Close-out 73c

TOWELS

Big fluffy towels by Cannon in pink, whisper, buttercup, turquoise, green mist, camellia rose, aqua tint and white. Reg. 98c
Close-out 68c yd.
Special **68c**

Electric Skillets

Automatic big 3 1/2 quart size. Frys anything. Reg. 14.95 value
Close-out 97c yd.
Special **9.98**

THROW RUGS

Big 27 x 50. Regular 2.98
Special **1.99**

FANCY COTTONS

Signature prints, gingham in 42 inch width, miracle blends, comal cottons. Beautiful patterns. Now slashed. Reg. to 1.98
Close-out 68c yd.

Pure Irish Linens

Black, Navy, Pink, Blue Red, and Brown. Make your own Skirts, Dresses and Easter Suits. Regular 1.98
Close-out 97c yd.

Cotton Materials

Broadcloth, Denims, Gingham, Plaids and Prints, Stripes and Solids. Several hundred yards. Regular values to 1.29
Close-out 48c yd.

EVERY ITEM IN HAS BEEN

* (EXCEPT RESTRICTED)

Table Cloths

Our entire stock of table linens. Most packed for ideal gifts or stock up for yourself. Nearly any size from 52 x 52 to 84 x 104. Damask, linen and permanent finish materials. Regular to 2.98
Reg. 2.98 **1.49**
Reg. 4.98 **1.99**
Reg. 9.95 **4.99**
Reg. 10.95 **5.99**
Reg. 14.95 **7.99**

1.49

SHOES FOR

EVERY PAIR OF DRESS SHOES

in the store on sale. One group slashed in price for this close-out sale. Over 100 pairs. Reg. to 13.95
Close-out 6.90

Women's SHOES

Our entire stock reduced plus these extra special close-out boys. One group of ladies loafers. Several colors in regular leather and suede. Sizes from 5 to 9AA. 6 1/2 to 9. Reg. 3.99
Close-out 2.91

STARTS WED., JAN. 18, 8 A. M.

OUT

\$35,000 STOCK OF FINE QUALITY MERCHANDISE

BUY NOW AND FOR THE MONTHS TO COME YOU CAN SAVE UP TO 50% AND EVEN MORE ON SOME ITEMS ON MANY THOUSAND OF DOLLARS WORTH OF FINE QUALITY MERCHANDISE. PLAN NOW TO ATTEND THE GREATEST SALE EVER HELD IN THE SOUTHWEST.

ese

OUT AINS

\$35,000 Stock of better Quality Merchandise Must be Sold during this Great Sale. Dozens of things are reduced that room would not permit listing here.

opies

All with

platais

il slashd

7.99

4.63

3.97

2.81

Jeweled Collars

One group of lovely stylish designs.

Regular 3.95

Close-out 2.27

Regular 2.95

Close-out 1.93

FLOWERS

One large group. Values to 1.98 All wool in a variety of colors.

Close-out 50c

Ladies Lingerie

Famous Name Brands Ladies

NYLON GOWNS & SLIPS

GOWNS

Assorted sizes and colors of White, Pink, Blue and Brown.

Reg. 11.95 **8.38**

Reg. 9.95 **6.94**

SLIPS

Reg. 6.95 **4.91**

Reg. 5.95 **4.37**

Reg. 3.95 **2.68**

Ladies Undergarments

One group of assorted sizes in Bras, Pantie Girdles, and Girdles. They all go.

Close-out 1/2 Price

FUR COLLARS

For girls and women. Dress up your sweaters and collarless blouses. Several colors. Reg. 1.00

Close-out **63c**

ONE GROUP OF LADIES NYLON GOWNS

In Red, Blue, Yellow, Mar. White and Pink. Most sizes still available.

Reg. 5.95 **3.84**

Reg. 4.49 **2.68**

LADIES

NYLON PANTIES

Hollywood style. White, Blue, Yellow and Pink. Sizes 5, 6, 7.

Close-out **54c Pr.**

Or 5 Pair **1.97**

LADIES

RAYON PANTIES

Hollywood style. Plain and Fancy in White, Yellow, Blue, Lilac, Mint and Pink. Sizes 5, 6, 7. Reg. to 44c

Closeout **33c each**

Or 7 Pair **1.97**

BIG

DRESS

CLOSE-OUT SALE

Dozens and dozens of our famous brand dresses. All to go for much less than wholesale cost. Save 50% or more. Sizes 9 to 15, 8 to 20 and some half sizes.

Reg. 8.95 **Close-Out 4.99**

Reg. 10.95 **Close-Out 5.49**

Reg. 12.95 **Close-Out 5.99**

Reg. 14.95 **Close-Out 6.99**

Reg. 16.95 **7.99**

Reg. 17.95 **Close-Out 8.99**

Reg. 19.95 **Close-Out 9.99**

Reg. 22.95 **Close-Out 10.99**

Reg. 24.95 **Close-Out 11.99**

Reg. 27.95 **Close-Out 12.99**

Reg. 34.95 **Close-Out 14.99**

Reg. 39.95 **Close-Out 19.99**

Reg. 44.95 **Close-Out 22.99**

Reg. 49.95 **Close-Out 24.99**

Reg. 54.95 **Close-Out 26.99**

LADIES READY-

TO-WEAR

ONE GROUP OF

LADIES SUITS

Famous brands in wonderful all wool fabrics. Sizes 8, 10, 12, 14, 20.

Reg. 17.95 **Close-Out 8.82**

Reg. 29.95 **Close-Out 14.31**

Reg. 39.95 **Close-Out 19.64**

Reg. 44.95 **Close-Out 21.97**

Reg. 69.95 **Close-Out 33.81**

Reg. 84.95 **Close-Out 41.74**

LADIES Ladies Long Coats

Fine woolen fabrics now slashed in price. Sizes 8, 10, 12, 14, 18

Reg. 39.95 **Close-Out 19.86**

Reg. 49.95 **Close-Out 24.67**

LADIES Sweaters & Blouses

In wool jersey, orlon, cotton and nylon. Sizes 34 to 40. Now slashed in price.

Reg. 2.98 **Close-Out 1.47**

Reg. 3.50 **Close-Out 1.74**

Reg. 3.98 **Close-Out 1.97**

Reg. 4.50 **Close-Out 2.24**

Reg. 4.95 **Close-Out 2.47**

Reg. 5.95 **Close-Out 2.97**

NYLON CAN-CAN SLIPS

Fancy with colored net ruffles. Size S-M-L. Reg. 4.95

Close-out

2.47

IN THIS STORE N REDUCED!

CEPT RESTRICTED LINES)

FOR THE FAMILY

ONES

ONE GROUP OF LADIES DRESS SHOES

Hi heels or medium heels. Very dressy styles. Reg. to 9.95

Close-out **3.00**

6.90

Children's Loafers

Grey Suede in most sizes, 8 1/4 to 3. Reg. 3.99

Close-out **2.94**

ONES

ONE GROUP OF BOY'S SHOES

Sizes 3 1/2 to 6. Loafers and oxfords. Black or Brown. Reg. 5.95

Close-out **4.21**

2.91

Men's Work Shoes

Every style reduced during this Close-out sale. Hi Tops and Driller Boots included. One group of shoes in broken sizes.

Close-out **3.99**

GIRL'S DRESS SHOES

Pretty with or without strap. Black Suede. Sizes 8 1/2 to 3.

Close-out **2.94**

ONE GROUP OF LADIES DRESS FLATS

Medium widths in Black, Tan, or Pink. Most sizes 6 to 9. Reg. 2.99

Close-out **1.99**

BOYS WEAR

BOYS

Jackets & Surcoats

Quilt lined in wool plaids or rayon gabardine. A few corduroy. Some with fur collars. Sizes 4 to 16.

Reg. 10.95 c-o **6.93**

Reg. 9.95 -c-o **6.27**

Reg. 8.95 c-o **5.64**

BOY'S ROBES

Plaid flannel in Red or Blue. Sizes 4 to 10. Just like men wear. Reg. 5.95

Close-out **1.99**

COWBOY BOOTS

Little Tot Sizes, Also.

Reg. to 5.95 **3.00**

Reg. to 9.95 **5.00**

Reg. to 14.95 **7.00**

One Group of Boy's

SPORT SHIRTS

A table full of corduroys, flannels, washable rayons, cotton plaid. Good selection in most size 6 to 18. Reg. to 3.98

Close-out **1.97**

BOYS AND MEN'S

Long Underwear

Sizes 10, 12, 16. Men's 36, 38. Reg. to 4.75 suit

Close-out **1.00**

One Group of Boy's

DRESS PANTS

Big Childrens Sizes 12 1/2 to 5. In gabardine, linen weave, nylon blend, dacron blends. Some washable. Sizes 6 to 12. Reg. to 4.99

Close-out **2.97**

GIRLS WEAR

Girl's Coats

Sizes 3 to 14. Solid colors, checks and plaids. First come first served. Regular 14.95

Close-out **7.91**

Regular 16.95

Close-out **8.73**

Regular 17.95

Close-out **9.21**

Popular 19.95

Close-out **9.97**

LITTLE TOTS SLEEPERS

Famous brand. Size 6 months to 4 years. Feet in. Reg. 2.50

Close-out **1.81**

Close-out **1.49**

ONE GROUP OF Girl's Dresses

A few Skirts also. Washable Cotton Prints. Some Kate Greenaways included. Sizes 3 to 12. Reg. 2.98

Close-out **1.67**

Reg. 3.98

Close-out **2.43**

Reg. 4.98

Close-out **3.21**

Reg. 5.95

Close-out **4.58**

Reg. 7.95

Close-out **5.09**

GIRL'S CHEST SWEATERS

Heavy wool knit just like women wear. Red, Navy, White, and Tangerine. Sizes 3 to 6x. Reg. 4.95

Close-Out **3.61**

Close-Out **4.41**

LADIES SKIRTS

Wool Tweed and Gabardines, Taffetas, Velvets, Orlons. Solid Colors, Plaids or Splash Weave. Size 22 to 30. Dozens to choose from. Don't wait.

Reg. 6.95 **Close-Out 3.91**

Reg. 7.95 **Close-Out 4.68**

Reg. 8.95 **Close-Out 5.27**

Reg. 9.95 **Close-Out 5.83**

Reg. 10.95 **Close-Out 6.38**

Reg. 12.95 **Close-Out 7.84**

Reg. 14.95 **Close-Out 8.93**

Ladies Sweaters

Beautiful Jeweled Orlon Cardigans in White, Pink, Blue, and Avocado. Reg. to 10.95

Close-out **4.99**

DUE TO THE OUTSTANDING VALUES OFFERED, IT WILL BE TO YOUR ADVANTAGE TO SHOP EARLY.

McAdoo News

Mr. and Mrs. M. C. Perry and Mrs. John Perry visited Sunday afternoon with Mr. and Mrs. Marshall Perry of Plainview.

Mr. and Mrs. Herman Armstrong, Mr. and Mrs. H. S. Armstrong and baby visited in Floydada, Sunday in the home of Mr. and Mrs. Floyd Lawson.

Mrs. G. B. Morris and Mrs. John Burrow visited in Lubbock, Friday with Mrs. Rod Parkinson.

Mrs. Dale Neff and children accompanied her mother, Mrs. O.

E. Lumsden, and Tommy to Bowie, Monday where they will visit her grandmother, Mrs. A. C. Harper.

Grandmother Williams was able to return home Friday after confinement in a Matamoros hospital.

Mrs. Willie Pitzer, Mrs. L. E. Bass and Mrs. T. J. Brantley were shopping in Spur, Saturday.

Supt. and Mrs. Henry Teague attended the annual Texas Administrators Mid-Winter Advisory Council on Education and attended to other school business in Austin, Wednesday to Friday last week.

Jimmy Don and Sharon Griffin of Lubbock are visiting the Leo and Jim Griffins.

Unmarketable honey, in feeding tests conducted by the Texas Agricultural Experiment Station, proved equal to blackstrap molasses in rations for fattening high quality steers.

Reports from 185 Texas counties covering the participation of dairymen in basic dairy practices indicate that milk producers can further improve their efficiency of operations. The basic practices studied included the keeping of private herd records; storing and feeding silage; utilizing summer and winter temporary pastures; feeding hay year-round and raising herd replacements.

CAN YOU IDENTIFY THIS MYSTERY FARM?



This aerial photo is another in a series taken of farms in the Spur area for Rickels Chevrolet Co.

Nobody knows whose farm the aerial photographer snapped... so it's up to the readers of this paper to identify the "Mystery Farm".

If you can identify the "Mystery Farm" (whether it's yours or not) please write, phone or come by Rickels Chevrolet Co. The first one to correctly identify the farm will receive, with our compliments, two passes to the Palace Theatre and a one year's subscription to the Texas Spur.

The owner of each week's "Mystery Farm" will receive absolutely free a beautiful mounted photo of his farm by calling at the Rickels Chevrolet Co.

We invite you to watch for our "Mystery Farm" each week. The operators of the "Mystery Farms" will be announced in the following edition of The Texas Spur.

RICKELS CHEVROLET CO
Spur, Texas
"WE SELL TO SELL AGAIN!"

**COMPETENT,
COURTEOUS,
BANKING SERVICE SINCE
1910**

Let us serve you . . .

**SPUR SECURITY
BANK**

Member FDIC, Federal Reserve System

Spur Texas

Bro. Glen Bassinger, Church of Christ pastor, was a Sunday dinner guest in the E. B. Buckner home.

Bro. J. E. Shewbert, Lubbock district Superintendent, visited the local pastor, Bro. and Mrs. J. C. Arnold, Monday p. m.

The Gideons International had charge of services at the local Methodist church, Sunday morning.

Mr. and Mrs. Floyd Rich of Lubbock visited his parents, Mr. E. Rich during the week end.

Mrs. J. F. Egger returned home from Crosbyton, Sunday after undergoing surgery.

Mrs. Lester Ball of Sour was transacting business in McAdoo, Friday.

Mr. and Mrs. T. M. Harvey attended funeral services in Odessa, Texas for their son-in-law, Roy McCandless, who passed away Sunday night.

Johnnie Shelton has returned to his home in Abilene after a visit with David McDonald.

Mr. and Mrs. M. C. Baum had a birthday dinner in Crosbyton, Wednesday in the S. J. Mason home. The dinner was honoring the Baum's grandson, Sanford, Jr. in celebration of his thirteenth birthday.

Mrs. Ida Bass and granddaughter, Donita, are visiting in Lubbock this week with Claude Mason.

G. W. Allen is visiting in Lub-

WELL SERVICE

Pumps Pulled & Reset
Clean Outs
Casing Pulling
Drilling Up To 6 Inch Hole

L. L. WHITEHURST
Call 2681 or 2321
Dickens, Texas

GOOD BYE MR. RAT!

If you want to rid your premises of Rats and Mice, get DURHAM'S RAT-KILL, Chemistry's new weapon to end the rat menace. Rats love it—but it kills them. Results Guaranteed and a big 1-lb. carton only 87c at

CITY DRUG CO.

TO RHIVE RHEUMATISM

Arthritis or Lumbago symptoms by DURHAM'S RUMA-RUB for wonderful relief. Pleasant to use with satisfactory results guaranteed. Only 75c and \$1.25 at

CITY DRUG CO.

Here's A brand-new FRIGIDAIRE

Automatic Washer designed for you!

The Startling New **Rapidry Spin**

Gets pounds more water out of clothes—slashes time and money spent in drying

Exclusive feature of the '56 Frigidaire Automatic Washer

You've always counted on Frigidaire for the most advanced thinking in homemaking convenience. Now they've done it again with this wonder-working Rapidry Spin. Come in, let us show you how it works. You'll agree, it's pure "engineering magic."

Trade-Ins

Other famous Frigidaire features:

- Live-Water Washing Action • Float-Over Washing and Rinsing • New Econo-Dial • Flexible Select-O-Dial • Lifetime Porcelain finish • Choice of 5 beautiful colors, all white, or two-toned.

Now Matching Filtra-Matic Dryer

You won't spend a penny for plumbing or venting

Gone—objectionable hot, moist air and lint, thanks to the exclusive Frigidaire Filtrator. No plumbing or venting needed. Clothes are dried soft, fluffy and sweet-smelling, with just the degree of dryness you want.

Trade-Ins

More Frigidaire Features:

- Variable Temperature Control • Dry-O-Matic Timer • Safety Door Switch • Radiant-tube Heating Element • Quartz "Sunshine" Lamp • Choice of colors.

West Texas Utilities Company

"I've got room for 9 of us"



Bel Air Beauville—4 Doors, 9 Passengers

Chevrolet offers 6 sprightly new Station Wagons—all with Body by Fisher—including two new 9-passenger models!

These Chevrolet station wagons can knuckle down and work as hard and as long as you like—and they've got the cargo space to prove it. Nearly 9 feet of it with the end gate down. But, let's face it, they'd much rather take off for a good time—and they've got the power and performance to prove that! A zippy, exciting kind of power that's fun to handle. And the closest thing to sports car performance you'll find in a full-size automobile. It's a real road car, and safer because of it! Come in for a ride and see.



"Two-Ten" Beauville—4 Doors, 9 Passengers
Section of middle seat folds for easy access to rear!



Bel Air Nomad—2 Doors, 6 Passengers
Rear seat back and cushion fold level with floor!



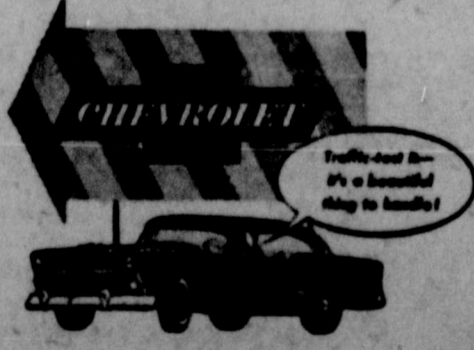
"Two-Ten" Townsman—4 Doors, 6 Passengers
Washable, all-vinyl interior lasts and lasts!



"Two-Ten" Handyman—2 Doors, 6 Passengers
New colors, new two-toning in all three colors!



"One-Fifty" Handyman—2 Doors, 6 Passengers
Choice of V8 or 6 and 3 drives in all models!



THE HOT ONE'S EVEN HOTTER

RICKELS CHEVROLET CO.

Roaring Springs

Mrs. Donna Payne is in Crane at the home of her daughter and son, Mr. and Mrs. Ray Carter, at the bedside of her grand-son, who is ill.

Mr. and Mrs. Ray Bailey and Mrs. of Ft. Worth visited here Saturday with his parents, Mr. and Mrs. Bill Bailey, and other relatives.

Trigger Dunlap of Muleshoe here Saturday looking after business and also visiting with his brother, J. M. Dunlap, in the Dunlap community.

Edwell Smith returned Monday from Detroit, Michigan with a car.

Mr. and Mrs. David F. Robinson of Afton were here Monday attending to business and shopping.

J. A. Goodwin of Lubbock was here Monday looking after business and visiting with relatives.

Mr. and Mrs. Corby Lee Marshall made a business trip to Colorado last week.

Mrs. Arthur Stearns of Plainview visited here Monday with Mr. and Mrs. Duff Green and Mrs. Minnie Smith.

Mrs. J. A. Goodwin of Lubbock and Mrs. J. P. Moss of Floydada were here Monday visiting with relatives.

B. F. Yeates of Plainview spent the week end here with his parents, Mr. and Mrs. Skinny Yeates.

Mrs. Ethel Brown looked after business in Plainview, Monday and Tuesday.

Mr. and Mrs. J. K. Campbell and Mrs. J. K. Campbell and Mrs. J. H. Williams were in Floydada recently.

Tom Yeates looked after business in Aan Antonio recently.

Mr. and Mrs. Ernest Maze and Mr. and Mrs. Cleveland Maze of Crosbyton visited here recently with their mother, Mrs. Ethel Maze, and other relatives.

Wesley Burt of Rankin spent the week end here with his wife, Ruby.

Mr. and Mrs. Bob Clem and Cathy spent the week end in Fortales, New Mexico as guests of her parents, Mr. and Mrs. Fred Taylor.

THESE WOMEN!



"Some press agent! Of all the people you have me secretly engaged to, you have to pick my fiancé!"

Lubbock visited here and at Crowell during the week end with relatives.

Mrs. A. A. Alsop of Matarador is a patient in Quannah Memorial Hospital. Her parents, Mr. and Mrs. C. E. Watson, local residents, who have been at her bedside, returned home Thursday with Mr. and Mrs. Eugene Watson, who had visited Mrs. Alsop.

Mrs. George Yandell visited in Lubbock recently with her brother and wife, Mr. and Mrs. Henry Martin.

Mr. and Mrs. O. A. Lefevre visited in Vernon and Crowell from Wednesday through Friday with relatives.

Daryl Spraberry of Muleshoe and Billy D. Dillard of Plainview are here visiting their grandparents, Mr. and Mrs. Ben Dillard.

Mr. and Mrs. J. M. Carpenter made a business trip to Paducah, Monday.

Mrs. Lois Smith entertained the Gleaner's Class of Baptist Sunday School with a party Monday evening. Fourteen guests were present. Mrs. H. T. Tooke was in charge of the games which were enjoyed by the group. A salad plate was served to the guests. Mrs. Hollis Gentry will entertain the class February 6.

Mr. and Mrs. H. W. Cargile of Snyder announce the engagement and approaching marriage of their daughter, Jinny Lind, to Claude Hicks, son of Mrs. Ethel Hicks of Plainview and formerly of King Springs.

Miss Cargile is a graduate of Hardin-Simmons and was a former employe of West Texas Utilities Co. in Abilene. Mr. Hicks is in the Army and stationed at San Francisco. His mother and late father are longtime residents of Roaring Springs.

LOOK NO FURTHER FOR A GOOD CAR

DODGE PICKUP—Motor, Good Tires, One Owner. Original Paint. \$395.00

'46 NASH 4-DOOR

'46 STUDEBAKER 4-Door

FOR YOUR REPAIR WORK SEE US — WE SERVICE CARS, TRUCKS AND TRACTORS

'46 CHEVROLET Pick-up Original Paint, heater. Local owner. Actually 33,000 miles. \$495.00

'51 FORD 4-Door, Fordomatic, Radio and Heater. Original Light Brown Paint. Good Tires. \$495.00

REAGAN MOTOR CO.

SPUR TEXAS

Mr. and Mrs. W. C. King visited Sunday in Bula with Mr. and Mrs. Claud Morrison.

Mrs. W. H. Rigsby is a patient in the Stanley hospital at Matarador.

Sunday guests of Mr. and Mrs. W. A. Lewis were his sister-in-law, Mrs. S. J. Lewis, and son, S. J. Jr., of Lockney.

Mr. and Mrs. Harold Jones and Mrs. K. Jones of Rotan were here Tuesday looking after business and visiting friends.

Mr. and Mrs. Baxter Gentry of

Go to Church Sunday

Pay Poll Tax BY JAN. 31

MARCH OF DIMES BASKETBALL

DOUBLEHEADER MON. JAN 23

FIRST GAME 7. P. M.
SPUR LIONS VS SPUR ROTARY

SECOND GAME
SPUR VFW VS SPUR AMERICAN LEGION

PLAYOFF THURS., JAN. 26 7:30 P. M.

ALL PROCEEDS GO TO
Dickens Co. March of Dimes

JACK WEBB SPEAKING:



More than a year ago— We began research on a movie to be called "Pete Kofey's Blues". On July 19th the Technicolor Lab delivered the final print. It was a busy thirteen months. The movie concerns a small jazz band which plays in a Kansas City speakeasy in 1927, so we had to look into 1927. We had to document the story with accounts of the Roaring Twenties: Prohibition, the Bootleg Wars, quick money and Jazz. We had to look around and find the right people to do the music. We managed to get half dozen of the best of the side-men in jazz and last February we got Mucky, Porgy Lee and Ella Fitzgerald signed on the same week.

We had two difficult parts to cast: Ivy Conrad, and overstimulated child of the Flapper Age and Fran McCarg, a brutal symbol of a brutal period. Janet Leigh fit the bill as Ivy and Eddie O'Brien, who had just won an Academy Award, agreed to take on McCarg. And finally, we had to photograph the movie. We had to use the CinemaScope lens in a way that would suggest the excitement, the restlessness, the supercharged gaiety of 1927. The movie is ready to be shown. I hope you'll see it— I hope you'll feel that we did a few of the things we set out to do. J. W.

HIGH SCHOOL MENU - MONDAY

French fries with catsup, black-eye peas, sweet relish, corn meal muffins, French omelette.

TUESDAY
Pinto beans, seasoned spinach, spaghetti and tomatoes, corn bread and onions, sliced peaches.

WEDNESDAY
Bar-B-Que winners, cream potatoes, green beans, fill pickles, iced cake squares.

THURSDAY
Steak and cream gravy, baked corn, green salad, gingerbread.

FRIDAY
Vegetable-beef soup, English peas, sliced cheese, blackberry cobbler.

EAST WARD MENU - MONDAY

Waffles and kraut, buttered potatoes, carne sticks, Ranger smokies, bread, milk.

TUESDAY

Highway Community News . .

There will be a business meeting at the Church of Christ, Thursday night. The men are urged to attend to plan the year's work. Johnny Rackley of Abilene was preaching at Hedley, Texas, trying for the position as preacher there, so Donnie Pace taught the lesson Sunday at the Church of Christ. Mr. and Mrs. M. E. Tree have returned from Bakersfield, California, where they spent a month visiting their daughter, Mrs. Leonard Blackman, and their son, Wilbur Tree. They arrived in Lubbock, Saturday night and Mr. and Mrs. Jimmie Hahn and Nelda met them there and spent Saturday night and Sunday with Mr. and Mrs. Larry Hahn. Mr. and Mrs. Brookie Martin of Lovington, New Mexico, were here on business Saturday. Nelda Nan Hahn entertained a group of girls in her class with a slumber party Friday night. Those attending were Patsy Smith, Charlotte Karr, Deannie Mobley, Shirley Gannon, Jean Bostic, and Charlene Simpson. Mr. and Mrs. James Daughtry and baby of Aspermont were here Sunday visiting her parents, Mr. and Mrs. Earl Thomason. Mr. and Mrs. Raymond Powell and children are attending most of the basketball games. Ray Don plays basketball on the B team. Wanda Thomason has returned from a visit in Hereford with her

brothers, Darrell Thomason and family and J. W. Thomason and family. Mr. and Mrs. Willie Smith and Weldon went to Snyder during the week end to visit their daughter, Mrs. Ray Fuller, and family. Little Larry Fuller came home with his grandparents, for a visit. Word was received that Mr. and Mrs. Ted Smith of Hereford have a new baby girl. Paternal grandparents are Mr. and Mrs. Willie Smith. Maternal grandparents are Mr. and Mrs. A. B. Hogan. Mr. and Mrs. Cecil Estep visited her parents, Mr. and Mrs. Forrest Martin, Sunday evening. Ted Walden of the L7 Ranch visited his niece, Mrs. Clarke Morgan, and family Sunday.

Mr. and Mrs. Roy George are driving a new car. Mrs. Buster Thomason of Hereford is visiting Mr. and Mrs. Earl Thomason while Buster is working on the plains. Oma Lee Garner and Norma Joe Hickem of Spur were week end guests of Gerylene Estep. Mr. and Mrs. Ray George went to McDonald, New Mexico, Saturday to see Leslie Estep.

Mr. and Mrs. Ellis Draper of Dry Lake visited Mr. and Mrs. Jimmie Hahn, Tuesday night. Kelly Putman and Willie Smith made a business trip to Lubbock, Sunday.

SHOP GABRIEL'S STORE-WIDE CLEARANCE SALE!
(SEE BIG AD ON PAGE 2)
HOUR SPECIALS

THURS. 3 - 4 P. M.
CURITY DIAPERS
Size 21 x 40. For One Hour!
2.98 DOZ.

DIAPERS
IDEAL BIRDSEYE
Heavy Material. For One Hour!
1.69 DOZ.

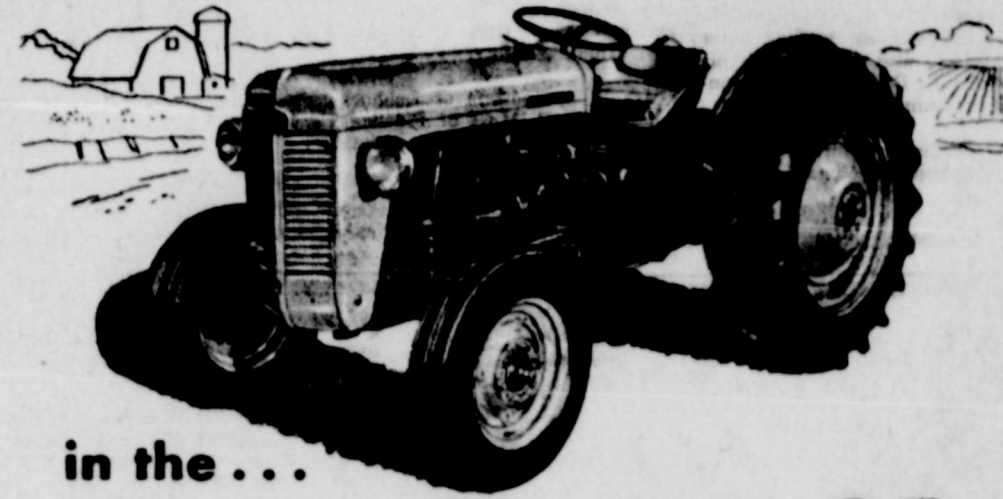
FRI. 9 - 10 A. M.
LADIES FULL FASHION - NYLON HOSE
60 - 15. Regular 1.35. Hour Special!
3 Pair 2.00
(Limit 3 Pair to Customer)

SAT. 9 - 10 A. M.
GARZA 81 x 108 COLORED SHEETS
FOR ONE HOUR!
1.98 Each

Gabriel's

SPUR, TEXAS

NOW.. A New High in CONTROL CONVENIENCE with 4-WAY WORK CONTROL



in the ... NEW FERGUSON 35

A GREAT ADVANCE IN MECHANIZED FARMING

Here you see the amazing benefits of 4-Way Work Control spelled out for you. But you'll also want to see the other benefits of the new Ferguson "35" . . . its High-Torque Engine, for example. And Recirculating Ball-Nut Steering. Also, Sight-Glance Tractormeter . . . and Compensating Overload Release. Plus always dependable Ferguson power. Put together in one unit—the Ferguson "35"—they give you new flexibility of operation . . . more selective, wide-range control. In short, the greatest all-around performance in tractor history!

ONE DEMONSTRATION IS ALL YOU NEED FOR PROOF IN THE FIELD



go years ahead / GO FERGUSON

GARNER IMP. CO.

Bargain Carnival

DECKER IOWANA FINEST CURED

Hams 1/2 or Whole Lb. **43c**

DECKER IOWANA PURE PORK

Sausage 1 Lb. Roll **25c**

ARMSTRONG PENNANT

Bacon Lb. **29c**

CHOICE QUALITY RUMP or PRIME RIB

Roast **39c**

SUNSHINE HYDROX

COOKIES Lb. Pkg. **37c**

KIMBELL'S DICED

TURNIPS 303 Can **5c**

SWIFT'S

MELLORINE 1/2 Gallon **49c**

ROSE DALE WHITE CREAM

CORN 2 303 Cans **25c**

ALL REGULAR

CIGARETTES Ctn. **2.17**

KIMBELL'S 12 Oz.

LUNCHEON MEAT **39c**

TABLE READY PRODUCE

POTATOES 10 Lb. Bag **33c**

FRESH FLORIDA CORN Ear **5c**

EXTRA FANCY DELICIOUS APPLES Lb. **12 1/2c**

EAST TEXAS YAMS Lb. **7 1/2c**

GREEN ONIONS bunch **5c**

CELLO CARROTS Bag **10c**

GRAPEFRUIT 5 Lb. Bag **29c**

NABISCO CRACKERS 1 lb. box **21c**

ASSORTED FLAVORS JELLO 2 Pkgs. **15c**

ARMOURS VEGETOL SHORTENING 3 Lb. Ctn **59c**

FRESH FROZEN FOODS!

BREADED SHRIMP 10 oz. pkg. **49c**

ARMOUR'S STAR VEAL CUTLETS 8 oz. pkg. **59c**

ASHLEY ENCHILADAS pkg. **39c**

PICTSWEET LEAF SPINACH 10 oz. pkg. **17c**

FRENCH FRIED POTATOES 9 oz. pkg. **15c**

LIBBY'S or HUNT'S TOMATO JUICE 46 oz. can **29c**

PILLSBURY'S FLOUR 10 lb. bag **69c**

BEST MAID SYRUP Full Quart **39c**

SERRA MISSION PEACHES 2 1/2 Can **29c**



GIANT 6 Oz. JAR
Only **1.39**

Newsom's FOOD CENTER



CLASSIFIED ADS

FOR SALE

FOR SALE: Poll Taxes will be on Sale in the Justice of Peace office in Spur on Friday and Saturday, January 27th and 28th, from 9 a. m. to 5 p. m. All are urged to pay their Poll Tax 12-2c

FOR SALE: 1956 Allis-Chalmers Tractor, model WD, serial No. WD13407, one point snap coupler, four-way lister and planter, and two one-way. Mrs. A. J. Slaton, phone 2121 Dry Lanes 13-ctfn

TAKE OUT your Blue Cross Now or before Feb. 15. It will go into effect April 1 instead of the usual 6 months, or longer waiting period. Come to Farm Bureau Office for further information. 13-4c

FOR SALE: 47-67. 50 Acre Farm 3 1/2 miles South of Afton. \$30,000 acre, half mineral rights. Raydell Mullins, Afton. 13-4tp

FOR SALE: '50 Ford Tractor, good condition. New equipment. Practically new 1 1/2hp Centrifugal pump mounted on wheels, gas or butane, 600 ft. Aluminum Pipe and Sprinklers. Call 432 E. Turner Hagins. 13-4c

FOR SALE or TRADE: One stock saddle in first class condition. Everett McArthur. 12-4tp

FOR SALE: International pickup and household goods; also a bath tub. J. P. Simmons. 12-ctfn

FOR SALE: The J. M. Hahn Estate, 375 acres 9 miles N. W. Spur. \$100 per acre, terms cash. See Mrs. Ellis Draper, Spur. 11-4tp

FOR SALE: 130-acre Farm Land, 124 acres in cultivation. S. L. Benefield. 10-1tp

FOR SALE: Bundle Feed at Se S. L. Benefield, Spur. 10-1tp

FOR SALE: Bargain - Clomont on house paint. \$2.49 gallon up while it lasts. England-Williams Grocery. 7-7tp

FOR SALE: Canaries, pure German Rollers or Calico Birds. Mrs. Virgil Wilson, phone 2172 Dry Lane. 7-9tp

SPECIAL SALE: Outside White Paint, Sewell's premium grade, \$1.50 gal. Wilson Young Lumber Co. 2-ctfn

QUALITY BEEF for your Locker or Home Freezer. Half or Whole. Everett McArthur. 3-20tp

LET US INSTALL your TV Antenna. Complete installation. Towers and poles. Western Auto Associate Store. 13-ctfn

BATTERIES \$25 exchange. Western Auto Assoc. Store, Sp. 13-ctfn

SEAT COVERS as low as 9.95 for sedans. Western Auto Assoc. Store. 13-ctfn

WANTED

WANTED: Used baby bed. Call 401. 13-2tp

WILL DO IRONING and house-cleaning Mrs. Jack Gordon, stucco house behind or East of the memorial hospital. 13-2tp

WOULD LIKE TO DO IRONING in my home, 281 Carroll, 75c hour or \$1.50 dozen. Mrs. W. A. Smallwood. 14-ctfn

WANTED: Housekeeping or odd work. Kathleen Nash, phone 358. 13-3tp

MAN WANTED: Are you dissatisfied with your work? Would you like a business of your own in Dickens County? If so see Mrs. W. H. Rogers, Matador, Texas today or write Rawleigh's Dept. TXL-410-GG, Memphis, Tenn. 10-4tp

WANTED: Farm Loans 4% interest payable off or before maturity. Spur National Farm Loan Assn. Spur, Texas. 27-ctfn

FOR RENT

FOR RENT: 4 rooms, lights, water and gas furnished. J. P. Simmons. 12-ctfn

FOR RENT: 3 room house, 601 W. Harris. 12-ctfn

YOU SATISFIED ? THEN PAY YOUR POLL TAX!

O. L. KELLEY
County Chairman
Dickens County
Democratic Committee

Miscellaneous

FOR THAT Individual Service see your LUZIER'S Cosmetic Consultant, Myrtle Whitwell, 410 W. Harris, phone 268. 11-4tp-c

CALL 2143 Dry Lanes for demonstration on the New Automatic NECCHI. Terms to suit your budget. 2-ctfn

LOST: Two Ramboulet Show Sheep. Danny Ryan, call 776. 6-ctfn

ATTENTION Home and Auto owners: Insure with State Farm and save. See R. A. Gierke, 807 Miller, Spur, Texas. Phone 127-11. 11-ctfn

DO YOU HAVE TROUBLES? Need a plumber? Phone 12 for prompt efficient service. Wallace Day, Wilson and Young Lumber Co. 11-ctfn

FOR your Beauty Counselor Cosmetics see Mrs. J. L. Williamson at 202 N. Carroll or phone 129. 6-ctfn

FOUND: Ladies Watch. Owner may claim by identifying at City Office. 9-nc

LOST: Dining table and three dining chairs. J. P. Simmons. 12-ctfn

NOTICE OF SALE: Sealed bids will be accepted from now until February 1st, 1956 at Gibson Insurance Agency for the frame school building in the Freeman Addition and lots 8, 9, 10, Block 12, Freeman Addition. Bids may be for the building and lots or on either, and 1/3 of the amount must be submitted with the bid.

The person submitting the highest bid will be notified, and he must make arrangements for the building to be moved within 60 days unless he buys the lots, too. The Trustees of the Spur Independent School District reserves the right to accept or reject any offer. 11-4c

COTTON PRODUCERS URGED TO USE OR RETURN ACREAGE ALLOTMENTS

Texas cotton farmers can plant more acres of cotton in 1956 than was harvested in 1955 if they make full use of the State's allocated acreage.

The Texas Stabilization and Conservation Committee points out that the 1956 cotton acreage allotted to Texas producers is 7,410,893 acres. Final figures released by the U. S. Department of Agriculture on the 1955 cotton crop shows that 6,860,000 acres were harvested in the state.

All farms in the state eligible for a cotton allotment have been assigned an acreage for 1956 plantings. The State committee urges

all producers who do not intend to plant their allotted acreage to contact the local ASC office and return to the county committee any cotton acreage not to be planted. It can then be reallocated to producers in the county who have asked for additional acres. A final date has been set in each county for turning in the acres which will not be planted.

If the intentions not to plant are not known and the acreage not reallocated, the county loses the acreage and the farm gets no credit on its historical base. Acreage can be returned on both a temporary and permanent basis. A full explanation, says the state committeeman, can be obtained from the local county committee or from officials in the county ASC office.

Rotarians Hear Co. Agent Thursday

The Spur Rotary Club met in regular session at noon Thursday, January 12 in Dyess Hall.

Program chairman was Bill Gregory, who also introduced the speaker, Bob Berry, Dickens Co. Agent. Bob gave a very interesting talk on "My Vacation", in which he gave the origin of the Texas A&M Extension Service and pointed out the requirements and duties of a county agent.

The Rotarians were hosts to three guests, Jane Brannen Moore, L. E. Lovelace of Stamford and G. C. McCreary of Post.

Go to Church Sunday

SHORTENING

Bakerite or Snowdrift 3 Lb. Can **69c**

WOLF CHILI No. 2 Can **43c** **SUPREME CRACKRES** lb. **23c**

WOLF TAMALES No. 1 1/2 Can **21c**

DOLE In Heavy Syrup

Fruit Cocktail

4 ³⁰³ Cans **89c**

JELLO
2 boxes **15c**

STA-PUF CO. WILL PAY YOU 50c TO TRY
STA-PUF RINSE quart **46c**

Save MONEY

OLEO Sun Spun lb. **17c**

GOLD MEDAL FLOUR

10 Lbs. **89c**
25 Lbs. **1.79**

HEP Safe-T-Spray BOMB
Oven Cleaner 6 oz. **98c**

HI-C
ORANGE ADE 46 oz. **25c**

WHITE SWAN
COFFEE 2 lb. can **1.72**

SUN SPUN PIE
CHERRIES 303 can **19c**

VAN CAMP'S
TUNA Can **20c**

GARDEN-FRESH FRUITS & VEGETABLES...

FRESH & TENDER
GREEN ONIONS OR **BUNCH RADISHES** ea. **5c**

TEXAS
GRAPEFRUIT 5 lb. Bag **29c**

LETTUCE lb. **10c**

RUSSETT
SPUDS 10 lb. bag **39c**

TEXAS
ORANGES 5 lb. bag **26c**

CELLO
CARROTS bag **10c**

RED EMPEROR
GRAPES lb. **12 1/2c**

OUR VALUE

Tomato Juice 46 Oz. Can **19c**

SWEET - PICKINS FROZEN FOODS

BROCCOLI 10 Oz. EACH **15c**

OR

CUT GREEN BEANS 10 Oz.

OR

SMALL GREEN LIMAS 10 Oz.

Quality Meats For Less

HORMEL'S DAIRY BRAND

Bacon POUND TRAPAK **49c**

FRESH and LEAN POUND
Pork Chops **35c**

FRESH POUND
Pork Liver **15c**

MISS WISCONSIN SHARP
Cheese 8 Oz. **39c**

WRIGHT'S POUND TRAPAK
Delite Bacon **39c**

U. S. CHOICE POUND
Roast **35c**

Mac's Super Market