

SAY! LET WEAVER DO YOUR TIRE AND TUBE WORK Muleshoe, Texas

Want Ads

LOST—Between West Camp and Muleshoe, a Persian Cat; color, tortoise. Finder please notify Mrs. Fred Rice. 2-20c

WELL DRILLING, windmill wrecking. Have been here about a year and intend to stay. Prices right. Will appreciate your trade.—J. B. Cunningham, Muleshoe.

March and April hatched pullets pay best. See us now for Purebred White Leghorn Eggs.—McAdams Poultry Farm.

LISTEN—We are always ready and waiting for harness and shoe work.—J. M. McAdams, the Harness and Shoe man.

WANTED—Parties with \$300 to represent Manufacturing Co. Something new. Bear investigation. Write Box 1262, Amarillo, Texas.

March and April hatched pullets pay best. See us now for Purebred White Leghorn Eggs.—McAdams Poultry Farm.

FOR SALE or Trade—One good "Old Trusty" incubator, size 150 egg. Just used two seasons. Will take half price or will trade for pigs or chickens. See Mrs. B. Walter, 15 miles West of Muleshoe. 2-1f

FOR TRADE—Desirable home in Dallas for Bailey County farm land. Will pay balance in cash. Address, T. M. Lawson, 5214 Garland Ave., Dallas, Texas.

FOR SALE—Used Delco light plant, in good condition. Inquire at Journal office.

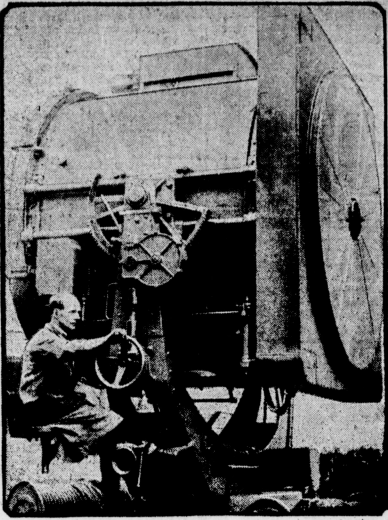
CALLED TO BEDSIDE OF MOTHER

L. E. and C. C. Ragsdale left Tuesday in response to a telegram saying that their mother, Mrs. W. E. Ragsdale, had taken ill suddenly. Mrs. Ragsdale, who lives in Dickens County, was visiting a daughter, Mrs. A. L. Fryar, of Matador, when she took sick. Word was received here Wednesday that she was resting easier and seemed somewhat better. The nature of her ailment has not yet been learned. The Journal joins with the many friends of these boys in wishing for their mother a speedy recovery.

LEAVE FOR CALIFORNIA

Mr. and Mrs. W. H. Kistler and daughter, Beulah, left Monday for Los Angeles, California, to make their future home. Mr. and Mrs. Kistler are among the oldest settlers of this section, and we regret to see them leave but trust they will find better health in their new location. They were accompanied by Miss Jane Bucy, who will make an extended visit with her aunt, Mrs. Harry Curtis, of Long Beach.

Largest Searchlight in World



This is the largest searchlight in the world, which has just been completed in London for fortress use. The light is nearly 7 feet in diameter and has a candle power of 3,500,000. A light such as is thrown by this searchlight could be visible for hundreds of miles if the limitations of the horizon could be overcome.

Born—to Mr. and Mrs. R. L. Tvis, February 8th, a ten pound boy.

Mrs. G. A. Anderson left Monday for Lubbock to receive medical attention.

Mr. and Mrs. Chas. White of Slinnet, Texas spent the week-end with relatives here.

Messrs. J. O. Jones and L. C. Jones were business visitors in Lubbock Tuesday.

ELECTRIC SHOCKS KEEP FISH FROM IRRIGATED CANAL

Electrified screens have been erected at the openings to irrigation canals in various parts of the West to keep fish from entering the channels, says Popular Mechanics Magazine. A low-frequency current is used and does not injure the fish, but gives them a distinct warning to keep away from the hedges.

NEW CRUISER BILL IS SIGNED BY PRESIDENT

Washington, D. C.—The last act necessary to the authorization for adding fifteen cruisers and one giant airplane carrier to the United States Navy, was consummated in Washington February 18th, when President Coolidge signed the cruiser bill.

This constituted the greatest single step that has been taken since the Washington arms conference to overcome British naval superiority. Even with these cruisers, however, the American navy will still lag behind the British navy in this class of vessel.

By Congressional direction, all of the ships must be laid down within three years. The program calls for beginning construction on five each year for the next three years. This time limitation was hotly fought in Congress and was opposed by President Coolidge. His opposition to this provision was based on the view that it called for expenditures at future dates with no advance knowledge as to the condition of the treasury when they would be made.

The presidential signature was not attached, however, until he had summoned Congressional leaders to the White House for a conference as to whether they could provide the fifty million dollars necessary to start the work. They all assured him that the money would be provided.

The ultimate cost of the cruiser program is estimated at about \$275,000,000, only about fifty million of which will be necessary, however, until the fiscal year of 1931.

CLOVIS NEWSPAPERS ARE SOLD TO KANSAS MAN

The Clovis News and Clovis Journal were purchased last week by Mack Stanton, of Kansas. The following is from this week's edition of the Journal:

Mack Stanton, who hails from Tennessee, with newspaper experience in Missouri, Kansas and Tennessee has closed a deal through which he has acquired The Clovis Journal and The Clovis News.

According to the new papers, for the time being, the Clovis owners are to be operated separately as they now are, each going to its own subscribers, but both to be published with the combined forces of both behind each newspaper. The outgrowth of the situation, according to Mr. Stanton, is the probable establishment of an evening daily newspaper for Clovis.

The Journal was owned by Capt. E. E. Hull and son, Jack Hull, while the News was formerly owned and edited by E. L. Manson. Jack Hull and E. L. Manson will remain with the new organization. Hull to remain as city editor of the proposed daily paper, and Manson to assume management of the printing plant that is to be operated as a separate unit of the Stanton interests.

In the event the daily is established soon, a fast newspaper press will be installed and the equipment otherwise whipped into shape for the stress of daily newspaper purposes.

VALENTINE PARTY

Members of the Baileyboro B. Y. P. U. met at the home of C. F. Garth last Thursday night for their Valentine party. Hearts and cupid were used the house. A number of Valentine by the social committee for decorating games and other games were enjoyed by all. Refreshments consisted of white cake and red lemonade, served at a table decorated in red and white.

Wun Lee, a Chinese sailor, married three white women in Liverpool and courted several others. He was ordered deported to China.

Cleaning Rids Suits of Germs

So much destruction of clothes is needless. Largely because of saving we're heedless. Many a suit needing cleaning is let go too long. Then, when it comes to pieces wonder what's wrong. Cleaning isn't just riding the suit of grease and dirt; it's partly to get rid of germs that will hurt.

Muleshoe Tailor Shop

(COPY, J. T. HUNTER)

The Muleshoe Produce Wants Your Business

We conduct a clean, honest Produce House, and ask for your patronage on a basis of quick, courteous service, with honest and fair treatment. We pay top market prices at all times. Heavy hens are higher now, so bring them in. Also your cream and eggs.

MULESHOE PRODUCE CO. Elmo Head, Mgr.

The Best Prices For Your Grain and Feed

And our heartiest co-operation in every way possible are assured you when you market your crops with us.

SEE US FOR MERIT BRAND FEEDS

We have just received a shipment of these feeds, including—
Milk Maker, Hog and Poultry Feed
They are the best on the market. If you have used them, you know.

Muleshoe Elevator Co. MULESHOE, TEXAS

SPRING COATS



Exquisitely Styled Coats as fresh as the season itself. They are made in the very new colors and trimming effects. To really appreciate the smartness and their value, you must see and try them on.

Stone's Special Price
\$10.00 to \$35.00

FAY FROCKS



Beautiful Dresses of georgette, crepes, and attractive prints in styles that are new and different.

Stone's Special Price
\$10.00 to \$35.00

ENSEMBLES

that range from
\$30.00 to \$45.00

EXTRA—EXTRA!

Tune in on KRLD at Dallas from 9:15 to 10:00 a. m. for the C. E. Stone Company program.

PURSES

that have just arrived to complete your outfit.

Fay Hats

In a bevy of beautiful advance styles, fabrics, colors, and fascinating trimmings. Small and large shapes of smartest design, every one as daring as can possibly be. The price is especially attractive.

\$5.00



Rubybell Hats

Just the kind of hats that smart women will wear will be found in this advance showing of Hats. Every hat delightfully trimmed and detailed. Sizes for Misses and Matron.

Stone's Special Price

\$6.00

Slippers—Pumps—Oxfords

In Styles That Are New and Different



A host of new toes and new trimmings with both high and low heels.

Stone's Special Price
\$5.00 \$6.00

Stone's Shoes combine Style, Comfort and Economy.

Silk Hose

Full fashioned and trim fitting ankles, silk from top to toe. SEMI-SERVICE WEIGHT IN THE NEW

Spring Shades that are most desired

STONE'S SPECIAL—

98c

ALL SILK CHIFFON HOSE.

Clear, Sheer, Lustrous, Alluring—

\$1.59



C. E. STONE COMPANY
CHAIN STORES CLOVIS, N. M.

Isolated Towns Are Short Of Food

Durango, Colo.—A snow storm in the Animas Canyon had caused suspension yesterday of the efforts of the section crews to cut through snow slides to the isolated towns whose inhabitants are suffering from a shortage of food. A telephone message from Silverton yesterday morning said Eureka's supply of meat, bread butter and eggs had been exhausted for two days and that other provisions were low. Silverton had very little meat and no butter and eggs. The workmen, who were forced to seek shelter from the storm last night had expected to clear the last of the slides from the tracks of the Denver and Rio Grande Western railroad by tomorrow so a supply train could be moved into Silverton from Durango.

THE EMPIRE CALLED TEXAS

The news that nearly all of the Santa Fe Railroad construction program for 1923 lies in Texas is significant of that State's status as the great railroad frontier of this day. Roads like the Santa Fe do not make hasty decisions to build new lines particularly in a day when motor bus and truck competition is becoming increasingly keen. Additions to the existing lines are constructed only when business promises profits. It is apparent that the Santa Fe sees profits in those sections of Texas—especially in the Panhandle—where the lines are to be laid.

The last twenty years have seen a tremendous agricultural, commercial and industrial development in Texas. In the Panhandle and "staked plains" country, once given over almost entirely to cattle, wheat and other crops on top of the soil and mineral products underneath are rapidly lessening the size of the old ranges. The State retains its supremacy as the premier producer of cotton in America, and in addition is achieving an industrial and commercial primacy. Second only to New York in merchandise exports, Texas not only has made use of its natural outlets to the sea, but has developed others, notably at Houston.

Standing fifth in population, with nearly 5½ millions within its borders, sprawling like a colossus over the South and Southwest, large enough for four or five good-sized states, Texas is just on the threshold of her real greatness. The West will watch with interest this development of an empire which is a striking hybrid of southern and western qualities.—Kansas City Star.

COOKE COUNTY FARMERS PROFIT WITH GRAPE CULTURE

Among the thirteen farmers in Cooke county who set out Carman grapes at the instance of county agent L. L. Johnson in 1923 is Will Austin whose one and one-half acres brought him \$450 last season. The vines cost \$34.80 and he has been to the expense of cultivating, manuring, and pruning but the 11,250 pounds of grapes cut from these vines last season represent a good profit on the investment. The vines averaged 25 pounds of grapes each. An effort was made to sell the grapes of these demonstrated by the car but this was finally abandoned in favor of local sales.

NEW GARDEN BULLETIN IS NOW AVAILABLE AT A. & M.

College Station, Texas.—Gardening as a science, an art and as a means to health is discussed in a recent bulletin published by the A. and M. College Extension Service and distributed free upon request under the name, "Gardening, B-70." It is the work of J. F. Rosborough, horticulturist in the extension service, and Frank S. Jamison assistant professor of horticulture in the School of Agriculture. It is the first complete garden bulletin issued by the Extension Service in a number of years and the only one available at present strictly applicable to Texas conditions.

HOME CANNING PUTS EXTRA DOLLARS IN BANK; BUYS HOME

Wellington, Texas.—Mrs. Tom Jones of Buck Creek Home Demonstration Club, who canned 1,000 quarts of products last year says "Some of everything from the garden and orchard goes into cans for winter use. I can with the idea of a whole-meal-unit in mind. I have no extra help in the house but by a well planned emergency shelf, I am able to leave my 12 year old daughter to prepare a canned-at-home dinner for the cotton pickers while I go to the field to act as book-keeper for my husband. We have paid for our home, improved it, added several valuable labor-saving devices, and put two boys through an affiliated high school by preserving all excess foods for home use according to a systematic whole meal plan."

HE DID IT

Teacher: "Norman, give me a sentence using the word, 'diadem.'
Pupil: "People who drive onto railroad crossings, diadem sight quicker than those who stop, look and listen."

INFORMATION PLEASE

"Take your hands off of me, you brute! What do you think I am?"
"Give me this girl. That's just what I was trying to find out."

FIRST!

We are to observe a national holiday dedicated to a man who was always "first."
It was said of him that he was "first in war, first in peace and first in the hearts of his countrymen."

Washington's Birthday! The day on which we pay tribute to one of the noblest spirits that ever breathed the air of America.
His achievements and ability are too well known even to be mentioned. What American has not thrilled to the story of his life! Important, however, is the necessity of learning from the example of Washington—let us each try in our own way to be "first" in whatever service we render or occupation we practice.

And Washington's career proves to us that to be "first" does not require questionable acts, indelicate aggressiveness, or disregard of the "other fellow."

Washington teaches us that to be "first" we must have high qualities of heart and mind; must strive to be honest and kind at all times; must apply ourselves thoroughly to whatever we wish to do well.

Washington rose to great esteem because of qualities that are worthy of emulation. He did not become "first" by pushing others to the rear. He became a leader both in war and peace through his intrinsic ability and intelligence.—Exchange.

BETTER FOODS IMPROVE HEALTH IN MOTLEY COUNTY

Matador, Texas.—A better foods program conducted in Motley county last year by Miss Norma Morrow, home demonstration agent, has resulted in 72 percent of home demonstration club women using more vegetables and cooking vegetables and meats better. Nearly every member has followed the practice of preserving foods for winter use and half of them have used the canning budget advocated by the Extension Service to insure a year-around supply of health giving foods for the family. Reports to Miss Morrow show that the general health conditions of the families who follow these practices have been improved, and the study of food in relation to health is becoming very popular in Motley county.

TERRACING LAND PAYS GOOD RETURNS TO BELTON MAN

Belton, Texas.—An extra bale of cotton for every ditch stopped-up is the boast of one farmer near here who terraced a badly eroded field last year. This was done as a part of the terracing program of J. M. Parks, county agent, who reports a total of 7,000 acres-terraced in 1922.

Yes, the 5-cent cigar is back. And the five cents are of rope, buggy whip, cabbage, grapevine and corn silk.—Exchange.

KIT CARSON, JR., BURIED BESIDE HIS FATHER AT TAOS

Kit Carson, Jr., son of the famous scout and frontiersman, was buried at Taos, N. M., on last Friday beside his father, who achieved notable distinction by his services in New Mexico as United States Indian agent.

After having served as a guide to Fremont from 1842 to 1847 and having accompanied him to California, Kit Carson settled in Taos in 1834 and was appointed Indian agent. The scout died in 1868.
The son who was born in Taos died at his home in La Junta, Colo., Saturday night, February 9th. He was 70 years old.

A SALARIED CAT

Tom, an ordinary brindled cat, is perhaps the only feline in the world in the employ of a railroad company. He regularly is entered on the books of the Kansas City Southern at Texarkana, Ark., to draw compensation of \$1.50 a month, which is used to buy his food. Damage to freight caused by rats was heavy last fall, and Tom was "hired" when his ability as an exterminator of rodents was proved in competition with a number of his kind. The Kansas City Southern had been spending \$10 to \$15 per month for poison, so Tom's salary check was approved. Tom observes regular hours and never worries concerning overtime.

A. R. Matthews, M. D.

Physician and Surgeon
MULESHOE, TEXAS

Jack Rowan

SUDAN, TEXAS
General Auctioneer
Farm and Stock Sales a Specialty
Dates Made at This Office

It Will Pay You
To See Us Before You Sell Your
Kaffir, Maize, Sudan and Corn

We pay the best market prices at all times and can assure you of our cooperation in the marketing of your crops. Don't fail to get our prices if you have any of these products to sell.

LARIAT GRAIN CO.
L. SIKES, Mgr.

JUST A MINUTE!

BEFORE YOU ORDER YOUR TIRES FROM A MAIL-ORDER CONCERN

Here's a Question for Every Tire Buyer

When the same arguments have been repeated by a dozen tire manufacturers to win your business—

When every sales scheme has been tried to make you think that you alone are the one that gets the big tire bargain—

When you have discovered by experience that the only test of a tire is its performance on the road—

—ask yourself this question:

WHY DO MORE PEOPLE BUY GOODYEAR TIRES THAN ANY OTHER KIND?

For Goodyear makes thousands more tires every year than any other manufacturer.

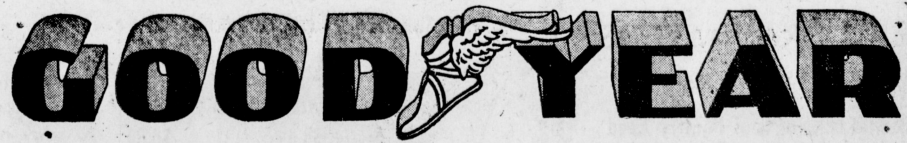
Goodyear supremacy has continued through ten years of unbroken leadership.

It is not boasting to say that more people buy Goodyear Tires because on the average they outperform any other tire upon the road. It is the truth.

True, because Goodyear does not cut quality to meet cut prices. Goodyear asks a fair price for a tire on which is concentrated all the skill of the world's greatest manufacturer of rubber.

Why has the largest group of car owners in the world bought more than a hundred and ten million Goodyear Tires?

IF YOU DON'T KNOW THE ANSWER, COME IN AND SEE THE NEW GOODYEARS. A SIZE TO MEET YOUR NEED.



VALLEY MOTOR COMPANY

MULESHOE, TEXAS

FINNEY OF THE FORCE

By F. O. Alexander
The Muleshoe Journal



Special Showing
all this Week

CHARMING NEW FROCKS

Interpreting the newest Paris Made in Peter Pan Fabrics

DONT fail to see these exceedingly smart creations. They are delightful, revealing expressions of the style trend in Paris. Each is the work of a distinguished Modiste. Each is fashioned in the latest of the ultra-chic Paris-designed Peter Pan Fabrics, so extraordinarily durable and so absolutely tubfast and fadeproof. The prices of Peter Pan Fabrics will amaze you—for they permit you to be smartly dressed, every day in the year, at a cost of 6 cents a day.

Peter Pan
GUARANTEED FAST COLOR WASH FABRICS

Showing New Spring Patterns
From February 24 to March 4th
SEE OUR WINDOWS

THOMPSON'S
MULESHOE TEXAS

Men Live After Deep Sea Experience

Key West, Fla.—Two fearless members of a submarine crew, who yesterday braved the sea at a depth of 120 feet clad only in bathing suits and equipped with oxygen-inflated lungs, were today none the worse for their experience.

Descending to that depth yesterday in the submarine S-4, Lieut. C. B. Momsen and Chief Torpedoman Edward Kalinowski left the submarine and came to the surface without outside aid. They were pronounced unharmed by a physician.

CITIZENS NEAR ROTAN HUNT LARGE PANTHER WHICH KILLS STOCK AT NIGHT

Rotan, Texas.—A full grown panther is said to be killing chickens and calves in a community 10 miles south of Rotan. Residents of that immediate section are now sleeping with doors and windows securely locked.

The animal was reported to have been seen three weeks ago, but the report was not given full credence at the time. Later many people have seen its tracks, and others have heard its cry as it foraged through the brush along a small creek. It has been seen at rather close quarters by a few people.

Dogs have been put on the trail of the animal, but so far the best dogs in the country have turned back when they closed in on the panther. Several hunting parties have tracked the animal without success, and have failed to make it leave its haunt in a small area of less than half dozen miles.

Police raided a fight in Dresden in which the combatants were two nude women, and more than 200 spectators were arrested.

Mechanical Man Is Aid To Air Pilots

Newark, N. J.—Mr. Televox, the mechanical man has become a friend of aviators by making dangerous landings unnecessary.

In obedience to the note of a siren on an approaching plane the mechanical man turned on the flood lights at the Newark airport last night without the aid of human hands.

Pete Bronson, airmail pilot, approached the field from various directions and at different altitudes in the tests, turning on a wind driven siren as he neared the field.

NEW PLAN OF FARM RELIEF

"Believing that much can be gained by developing concrete, workable and just proposals out of the general sentiment for national policies more favorable to agriculture," editors of 56 Minnesota rural newspapers have joined in sponsoring a program of relief.

These proposals included development of waterways, retention of the flexible features of the tariff, higher protection, scientific research, protection against Philippine, Hawaiian and Porto Rico competition, reversal of reclamation policy, efforts to reduce costs of production, a Federal farm board with advisory powers, improved credit facilities, encouragement of co-operative marketing, cheaper fertilizer. Higher tariffs are asked specifically on flax, vegetable oils, dairy products, meat and poultry, cereals and sugar.

There is nothing in this list of suggestions to which any reasonable person, interested in the betterment of farming, can take objection.—Harlowton, Mont. Times.

SUBSCRIBE FOR THE JOURNAL

FUR IS USED IN FLATTERING WAYS ON MIDSEASON CLOTH COATS



Time to abandon fur coats—and now what? Two very satisfactory answers are given in the picture. These modish midseason coats are peeped by two winsome screen lassies, Mirna Loy wearing a candy-striped sports coat and Doris Kenyon smiling her prettiest in a fur-cuffed kasha coat.

Sports cloaks are a joy to the eye this season. For spring the new weaves are going the limit in coloring and modernistic design, which makes them all the more fascinating. Border effects, ombre bleedings, startling geometric patternings flashing vivid splashes of color carry the gay spirit of outdoors.

Fabric manipulation adds yet another glory to these lively weaves. One of the clever "new stunts" is to make the selvedge edge serve as a finish and at the same time in a decorative way. Still another is the featuring of self-fringed edges, which is as smart a touch as a sports coat can carry this season. Many of the nov-

elty weavers are that toasty wovens they lend themselves admirably to self-fringing treatments.

On these coats of unusual weaves fur collars are developed in mostly fox or wolf for the long-haired type, and among that pelts the very smartest is eggshell caracul. This off-white thin curly fur is especially effective in the new spring tweeds. When textured the neckline is emphasized with cleverest of scarf and kerchief effects which reveal, often, in a very blaze of color.

The idea of fur for the wrists and self-fabric scarf for the neckline still maintains. The effect is most pleasing, as the coat to the right in the illustration confirms.

Long coat ensembles are definitely established on the program for spring. That is, women are going to be encouraged when they buy their new coats to purchase a matching skirt or a two-piece frock fashioned to complete the ensemble.

JULIA BOTTOMLEY
(© 1929, Western Newspaper Union)

ANNOUNCEMENT
Of Partnership Formed Between
Bobo & Campbell
ATTORNEYS-AT-LAW
MULESHOE TEXAS

Dr. CHESLEY E. WORRELL
EYESIGHT SPECIALIST
New Location: 1/2 Block Off Main, East of Barry Hardware Company Clovis, N. M.

Beautiful Homes BABY CHICKS Thrifty Farms

15 Varieties \$11.00 to \$13.00 hundred, delivered. State accredited and Standardized Quality Chicks. All kinds of plants for West Texas, \$1.00 thousand up. 500 Varieties Garden, Field and Flower Seeds. Poultry supplies of anything you want for poultry. Order anything you want for Garden, Orchard, Lawn, Field, Poultry and Stock.—We have it of Quality at right prices.

C. E. WHITE SEED CO. Plainview, Texas

Lower PRODUCTION COSTS

ON BEEF PORK MILK POULTRY

W-W HAMMER-TYPE FEED GRINDER

YOU can't regulate the market to insure higher prices for your dairy products, meat and poultry. But you can lower production costs with a W-W Feed Grinder. And that has the same effect on your net profits.

A third of your feed crop goes to waste when your feed is unground. Your W-W stops this waste by turning stems, stalks, leaves, husks and all—into nutritious mixed feed that goes a third further.

Powerful hammers that grind and mix everything from the ground up with lightning speed. No burrs, gears or knives to break or give trouble.

A W-W to fit every grinding need. Six sizes—blower, elevator or self-feeder. All equipped with Timken Tapered Bearings—Alumite-Zerk lubrication—Rockwood pulleys.

We will gladly demonstrate this wonderful grinder on your farm with your own feed and power.

THE W-W FEED GRINDER CO., Mpls., Wash., Kans.

E. R. Hart Lumber Co.

Bailey County Abstract Company
L. S. BARRON, Manager MULESHOE, TEXAS
(ESTABLISHED IN 1900)

Abstracts, Loans, all kinds of Insurance and Conveyancing. All matters pertaining to land titles given prompt attention.
(Member Texas Abstractors Association, Also Member Association of Title Men)

Let Us Be Your Grocer

The best is none too good for patrons of this store. High quality groceries are our stock in trade; reasonable prices our bid for your patronage.

Courteous Service Always

C. F. Moeller, Grocer
MULESHOE, TEXAS

Annual Auction of Dogs in Virginia Town



In Fredericksburg, Va., since 1928, dogs which fall into the hands of the law or are no longer desired by their owners may be auctioned off at the dog curb, which is an annual feature. Above is a general view of the auction.

The Muleshoe Journal
D. S. HOLLAND, Editor

Entered as second-class matter at the Muleshoe Postoffice under the Act of Congress, March 3, 1879.

Resolutions, Cards of Thanks, etc., are charged for at the rate of 10 cents per line.
Advertising Rates on application.

SUBSCRIPTION RATES

In Bailey County, 1 Year \$1.50
Outside of County \$2.00

PAVING HELPS TO MAKE A TOWN

Under the caption, "Paving Makes a Town," the Floyd County Hesperian very truly says: "That's a statement which is not altogether true, but it certainly is true that it helps a mighty lot. Of course, paving assessments are burdensome, but so are church and lodge dues, and school taxes and automobile license fees for that matter, and the grocery and dry goods bills. "One year's use of the paving will more than pay the bills, and property on the paved streets is going to show the result of this relatively light investment made by the owners in the improvements, by being in greater demand. Paving makes a town by making the paved areas more accessible by getting out of the mud. It is said of Dallas that the city had a terrific and prolonged campaign when the forward-looking citizens attempted to "hit Dallas out of the mud." Its tremendous growth began when its first large paving projects were finally put over."
What is true in the case of Floyd and other towns, with regard to the conditions and results of a paving campaign, is also true in Muleshoe.

DIMMITT TAKES TWO GAMES FROM MULESHOE

On last Friday the Dimmitt basketball teams invaded the yellow camp and carried away two victories. They did not win by an easy score, however, but they had enough lead and power to hold the lead and Muleshoe was unable to gain a substantial lead and hold it.

The girls' game was the hardest fought of the two, the score being very close most of the time. Muleshoe rallied in the last half of the game and it looked as though they were going to take off a victory, but our jumping center was put out on fouls and from that time on to the end of the game Dimmitt gradually pushed the score higher and higher. The game ended with Dimmitt in the lead by a 27 to 23 score. Elders of Dimmitt was high point with 22 points.

The boys' game was a little one-sided. The Muleshoe boys seemed to be dis-organized and unable to get into very good form. The game was a fast one, but the boys were un-lucky on hitting the hoop. The Dimmitt crew were rather good on getting the ball in the right place to make the hoop. Newton of the Dimmitt team was the high point man of the game, making a total of 10 points. The game ended with the score, Dimmitt 17, Muleshoe 9.

The officials for these games were: Newton of Sudan, referee for the girls; Lawler of Muleshoe, referee for the boys; Bragg of Spring Lake, umpire for both games.

RAILROADS PLAN EXPRESS CONTROL IN ONE COMPANY

Washington, D. C.—The Interstate Commerce Commission has fully approved the plans of railroads to consolidate the entire express business of the country in one corporation, the Railway Express Agency, Inc.

One thousand shares of capital stock and \$2,000,000 of five per cent bonds are to be issued by the Railway Express Agency, according to a contract which was approved by the Commission, and the corporation is to acquire all of the property of the American Express Company. Express service profits will be divided among railroads in proportion to the business which they contribute and the normal issue of capital will be divided among the 86 lines which are members of the association of railway executives.

All property acquisitions were made tentatively by the railroad representatives prior to submitting the issue to the Commission, and the new arrangement will take effect March 1.

The matter, with all facts pertaining thereto, were submitted to the Commission on February 6, and the program was approved February 11, without a dissenting vote. The Commission hurried its consideration of the project, owing to the early date for the establishment of the new system.

W. M. U. MEETING

The W. M. U. met Monday afternoon with Mrs. Byron Griffiths in regular business session. There were ten members present, with good reports from all chairmen of committees. We meet next Monday with Mrs. Coker, with the lesson in Missions and Social Meeting. All members are urged to be present. New members and visitors welcome.

Reporter

L. T. Hunt of Sudan was visiting in Muleshoe Tuesday.

You Will Never Be Upset If You Can Always Keep Your Bank Balance



CARING FOR CUSTOMERS

Anybody who trusts money to our Bank does so as an investment.

But such folks are entitled to something more than interest on such investment.

They are entitled to service, and they get it. It is our sincere desire to help everyone in solving financial and business problems. Call upon us.

Blackwater Valley State Bank
MULESHOE, TEXAS

"There is No Substitute for Safety."

ARE YOU PLANNING ON A HOME?

If so, let us supply the materials both for its construction and its furnishing. We have all that is required to build, paint, finish and furnish the kind of home you are planning for your family. Our Building Materials and our House Furnishings are of the highest quality, and our prices are reasonable.

E. R. Hart Lumber Co.

Coal, Hardware, Furniture.....McCormick-Deering Implements

Nearly Half the Cars in Texas

To Appreciate the Remarkable Performance of This Car You Must Drive One

Are Made by



We Will Be Pleased to Give Demonstration of the New Car Any Time

There Are Reasons For This Statewide Leadership



They will perform with any car on the road with perfect safety and comfort. Forty Horse Power Engine.

Remarkable Acceleration. New 6 Brake System. Hydraulic Shock Absorbers. Shatter Proof Windshield Glass.

IMMEDIATE DELIVERY PRACTICALLY ASSURED

Shipments Received Each Week

We operate a clean and most complete service department which compares favorably with the inbuilt quality of the New Ford.

Muleshoe Motor Company

MULESHOE, TEXAS

Have It in Your Cabinet

You can never tell when you may need any one of several first aid remedies, so the safe way is to have them in your medicine cabinet.



We Serve Sunday Dinners

McCarty Drug Store

SPECIAL WHILE THEY LAST

- 1 White King Washing Powder large size \$.50
- 3 Bars Toilet Soap25
- 1 Ironing Cushion Pad and Cover 1.50
- TOTAL \$2.25**
- All for **\$1.49**

Separator Oil in Bulk--Bring Your Can

- 1 quart 25c
- 1-2 gallon 45c
- 1 gallon 85c

Phone Us Your Grocery Orders

Gupton Grocery Co.

Phone No. 4

Free Delivery

THE MULESHOE JOURNAL

VOLUME 7.

MULESHOE, BAILEY COUNTY, TEXAS, FRIDAY, FEBRUARY 22ND, 1923.

NO. 1

INTERSCHOLASTIC LEAGUE MEET TO BE HELD IN THIS CITY MARCH 15 AND 16

According to information given by the State Department the following schools have paid their entrance fees and are eligible to participate in the interscholastic league contests to be held in Muleshoe on March 15 and 16: Baileyboro school; Bala school; and grade school; Fairview high school and grammar school; Goodland school; Liberty school; Longview school; Muleshoe high school and grammar school and West Camp high school and grammar school.

There is much interest being shown in the league work this year and we are looking forward to the best county meet that Bailey County has ever had. There will be more contestants and more competition in the contests than ever before.

The county voted to retain all the sub-junior contests this year. These contests count; nothing toward the county championship, as they are not provided for in the interscholastic league rulings, but they add much interest for the little folks. The county meet is not very crowded and these contests can be run off with the rest of the work, so they will be included. All coaches of all departments of work are urged to familiarize themselves with the work and have all contestants to come strictly under the rules. It is not fair to students to have them work on a contest and enter the meet only to be ruled out because they do not comply with the rules.

All names of contestants must be in the hands of the director-general ten days before the meet, which will be on March 8th. No contestant will be admitted whose name is not in on that date. It is up to the teachers to see to it that these names get in and their pupils are made eligible for the contests. Competent judges will be secured to judge in the meet and everyone will be given a fair show.

JOHN C. JENKINS, Director
General for Bailey County Interscholastic League.

HENINGTON INSTALLING MODERN MEAT MARKET IN ADDITION TO GROCERY

H. C. Henington, proprietor of Henington Cash Grocery, is installing fixtures for a modern meat market in connection with his grocery store this week. The fixtures include show cases, refrigerators and other equipment, representing a total cost of about \$3,500.

Mr. Henington informs us that he will use Fridgidaire in his market, which insures the best possible results in keeping the meats and vegetables he handles fresh and sanitary. These machines are being purchased from the Fridgidaire agency at Plainview.

Watch for opening announcement of the new market in the Journal next week.

BUYS AND IMPROVES FARM PROPERTY NEAR MULESHOE

Mr. T. E. Wymand of Memphis, Texas, has recently bought a 20 acre tract of land near town. J. J. Bell, also of Memphis, has moved here and will take care of the land this year. There is a small house on the tract and Mr. Wymand will make further improvements on the property at a later date. He will probably move to Muleshoe before the end of the year.

Miss Audrey Stoker returned to her home in Lubbock Saturday, after spending several days here with Miss Dorothy Wentland.

TRAINING FOR FIGHT



Armand Emanuel, Jewish heavy weight brawler, rowing a boat at Westlake park at Los Angeles, in preparation for his fight next week with Tommy Longbrax, world's 175-pound champ. The fight was won by Longbrax.

LAW PARTNERSHIP IS FORMED BETWEEN BOBO & CAMPBELL

A partnership was formed in Muleshoe last week between Attorney Pat R. Bobo of this place and Judge V. J. Campbell of Portales, N. M. Everyone in this vicinity knows Pat, as he has practiced law here for the past several years and is at present County Attorney of Bailey County. He has enjoyed a good practice and has proven his qualifications in this profession.

Judge Campbell is also known to many of our citizens, as he has practiced in the courts throughout this territory for a number of years. His knowledge of the law has been demonstrated in the numerous cases in which he has been employed as attorney here and elsewhere.

We are glad to welcome Judge Campbell to Muleshoe. He will move his family here at an early date from Portales where they have lived for a number of years.

At present the offices of the new firm are in the Court house.

NEW SCHOOL BUILDING FOR JESCO DISTRICT

Work started Tuesday on the new brick school building for Jesco school district. The new building is to cost \$10,000 and is to be thoroughly modern. Jesco is a progressive rural community and is to be congratulated upon its construction of their new school. The lumber and cement for the new structure is being furnished by Panhandle Lumber Company of Muleshoe, W. L. Come of Lubbock, is the contractor.

COMBINATION OF MAGIC, MELODY, MIRTH AND MYSTERY IS PROGRAM FOR FEBRUARY 23

Frye and Company will present an evening of magic, melody, mirth and mystery here on February 23rd at the School Auditorium.

This company is headed by Mr. William Eugene Frye, well known magician and illusionist who has been thrilling, mystifying and delighting audiences in all parts of the United States for the past ten years. Assisting Mr. Frye will be Miss Leah Miles, pianist, saxophonist and soprano.

The musical feature of the program is an attractive addition to the most unusual entertainment which is offered by Mr. Frye.

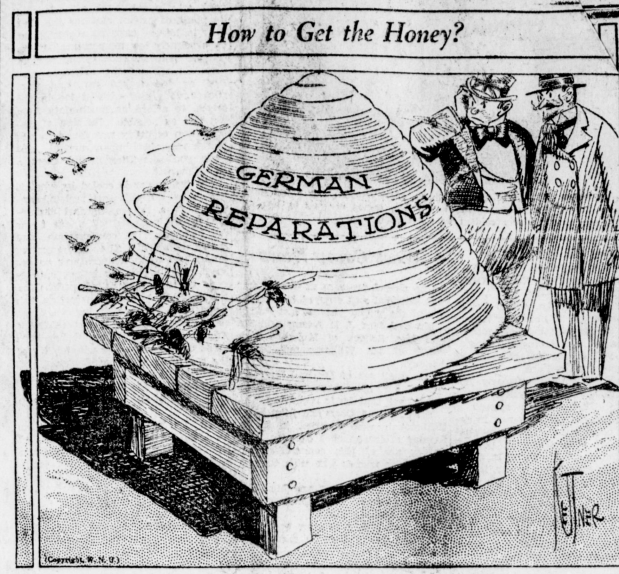
The program includes the most mystifying illusions of modern magic. Another interesting feature is Mr. Frye's expose of fraudulent mediums. The program of Frye and Company is something different than you have ever seen before.

Local Markets

These prices are furnished by the local buyers, and are for your convenience.

Katfih	\$1.05
Maize	1.10
Corn, oat	.90c
Corn, shelled	1.10
Sudan	\$2.50
Maize heads	\$18.00
Katfih heads	\$14.00
Cine Seed	\$1.50
Retail Feeds	
Cotton seed cake	2.75
Cotton seed meal	2.75
Bran	2.00
Shorts	2.50
Cow Chow	\$3.00
Milk Maker	\$2.75
Tankage	\$5.25
Seed oat	\$1.00 bu.
Produce	
Heavy Hens	20c
Light Hens and Lethorns	17c
Colored Springs	15c
Light Springs	13c
Slags	10c
Cocks	05c
Eggs	27c
Cream	41c
Hides	6c
Capons, 8-lb. and up	25c
Capons, under 8-lb.	18c

(Prices furnished by the Muleshoe Produce Co., subject to change without notice.)



MULESHOE TENNIS CLUB BUILDING NEW COURT

The members of the Muleshoe Tennis Club have been busy this week making a new court on the lot just back of Henington Cash Grocery. The new court will be the last word in up-to-dateness and adds much to the sporting world of this little city.

SCHOOLS WILL OBSERVE WASHINGTON'S BIRTHDAY

The Muleshoe schools will observe Washington's birthday and no classes will be held tomorrow (Friday). As far as can be learned, there is no special program of any kind. Some of the students will spend the day preparing for the interscholastic meet.

PANHANDLE LUMBER CO. MAKING IMPROVEMENTS IN THEIR LOCAL YARD

The Panhandle Lumber Company began the work of enlarging their lumber sheds here this week. The old buildings are being rearranged and additional sheds will be built as well as a new office. Mr. Dunigan of Littlefield, began the work of removing the old sheds that are to be replaced by new ones and making preparations for the remodeling of the others on Tuesday of this week. A new and larger stock of the very best grades of lumber will be carried as soon as the remodeling work is completed.

Enlargement of the yard is deemed necessary in order to take care of the steadily increasing business. The Panhandle Lumber Company realizes the fact that Muleshoe and the surrounding territory are forcing to the front and that much building is now in progress with prospects very favorable for even a greater building campaign in this vicinity at an early date.

Shall We Go Backward, Forward Or Remain "Where We're At"?

Next Thursday, February 28th, is the date for the election to determine the plan of improvement for the city of Muleshoe in the matter of street paving. Or in other words, at that time we will say by our votes whether or not an improvement plan will be approved. If you desire to see Muleshoe keep pace with other towns over the country, and hold her own in a business way, now is the opportune time for you to express your desire to that effect.

On the other hand, if you want the city to remain in the mud and be passed up by the progressive element of citizens, you may exercise your right in the forthcoming election by voting against the improvement plan.

The day has dawned when to be non-progressive means failure, both for the individual and the community. You may be progressive so far as your individual business is concerned, and may have the progressive spirit in most respects, but feel that certain undertakings on the part of the community are a little in advance of the general conditions.

There have been communities that were held back by such feelings on the part of a majority of the citizens and other communities have taken advantage of opportunities which resulted in success and the upbuilding of their resources.

It is known that the very best of paving will cost no more than \$200 per lot payable one-sixth, or about \$35 within thirty days after the work has been completed, and the balance at \$35 per year for five years. If we are fortunate enough to secure aid from any source, then the above figures will be reduced to the extent of the aid obtained. However, the election next Thursday is not a bond election. The law requires us to adopt an improvement plan before bonds are voted. Go to the polls and help decide the question. ARE WE TO HAVE A BETTER TOWN, OR STAND WHERE WE ARE?

SENATE BILL NO. 85 REMOVES TWO COUNTIES FROM THIS DISTRICT

A re-districting bill, known as Senate Bill No. 85, passed by the State at its last session removes El and Briscoe Counties from this district. The bill went into effect on the 11th. This change increases Muleshoe District Court held in June. The first will be held for this year, the second in May 8th. Hereafter, the term will open in December.

The provisions of the bill as to the terms of the bill as to the are as follows: in Bailey County on the fifth Monday after the second Monday in January, and first Monday in August after the term in session three, and may continue the usual provisions. As validating writs and processes, as well as jury panels, making them valid and jury respectively term of this court created under the act making the law a law.

LIST OF FIELD EVENTS INTERSCHOLASTIC LEAGUE MEET MARCH 15 AND 16

The following is the list of events for the interscholastic league meet which will be held in Muleshoe on March 15 and 16:

- Senior Boys—Track**
- 150 yard high hurdles.
 - 100 yard dash.
 - 350 yard run.
 - 220 yard low hurdles.
 - 440 yard dash.
 - 220 yard dash.
 - 1-Mile run.
 - 1-Mile relay.
- Field Events**
- Pole vault; running broad jump; discus throw; running high jump; 12-pound shot put; javelin throw.
- Junior and Sub-Junior Boys and Girls**
- 90-Yard dash; 100-yard dash; 440-yard relay; Churning bar; running high jump; running broad jump.
- Ground ball for both junior boys and girls.**
- Volley ball for senior girls.**
- Tennis for senior boys and girls.**
- Both doubles and singles.**

FARMALL TRACTORS ARE PROVING POPULAR IN THE VICINITY OF MULESHOE

Along with other modern ideas and equipment for successful farming, the Farmall tractor is proving of great value to the farmers of the Muleshoe section. A large number of these tractors have been sold to farmers in this vicinity during the past year. E. R. Hart Lumber Company, local dealers for the Farmall, report the sale of Farmalls and tractors during the past month to the following farmers of this and adjoining communities:

- M. F. Collins, F. L. Winner, D. V. Osborne, Walter Haman, A. S. Miss, W. H. Gemmon, Gordon Duncan, C. C. Burman, J. L. Harrington, Muri Stiles, R. B. Whitford, W. H. Vinsant, W. H. Pugh, A. W. Early, W. G. Kennedy, C. P. Johnson, Edgin Fowler, and Paul Shultz.

Temple Morrow, who has been employed at the Hart Lumber Company, left Sunday for Fort Worth.

BEAUTY SHOW HOSTESS



Miss Stuart, Broadway address, has been chosen from over one hundred candidates as hostess of the National Beauty show which will be held at the Grand Central Palace, New York, from March 27 to April 5. Miss Stuart is a petite, vivacious brunette with large blue eyes.

LITERARY EVENTS FOR PENDING SESSION OF THE INTERSCHOLASTIC LEAGUE

The following is the literary events for the interscholastic league meet: Debate for senior boys and girls.

Declamation—senior, junior and sub-junior boys and girls.

Extemporaneous speech—One and two minutes from each school, boy or girl.

Spelling—A team of two from each school, boy or girl, for senior, junior or sub-junior.

Music Memory—One team from each school.

Arithmetic—One team from each school chosen from 5th, 6th or 7th grade.

Three R Contest. For one and two teacher rural schools. One entry for each school.

A new entry has been made this year in the form of a school exhibit. This includes anything that is made by the pupils under the direction of the teacher, either at home or at school. Work may be entered in this department from any pupil in school. The entire exhibit will be thrown together for the schools and no individual prizes will be offered for individual work.

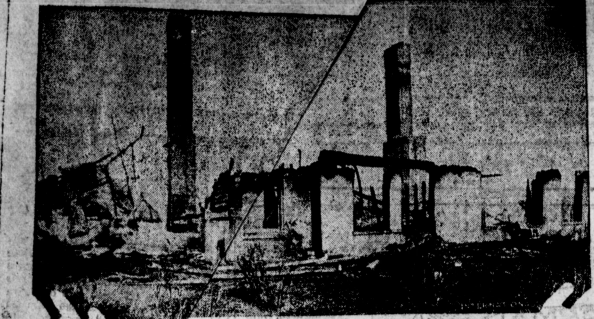
H. STERLING SUFFERS STROKE OF PARALYSIS

Word was received here yesterday that Mr. H. Sterling of the Longview community suffered a stroke of paralysis about 8 o'clock Tuesday evening. He had been hauling feed to Muleshoe that day, and was sitting by the fire at his home when he was stricken. His left side becoming entirely paralyzed. His condition was serious at last report.

Mr. and Mrs. H. C. Henington and Mr. and Mrs. J. M. March took supper Sunday evening with the Waggon Family near Lasbuddy.

SUBSCRIBE FOR THE JOURNAL

Fire Ruins the Lawrence School



The well-known Lawrence school at Lawrenceville, N. J., was wrecked by an early morning fire a few days ago. The photograph shows the remains of the building, a dormitory from which fifty pupils escaped by leaping from windows. Among them was Dana Davies, son of the vice president of the United States.

E. L. Menefee, D.
PHYSICIAN and GYNEC
MULESHOE, TEXAS

R. L. BROWN
The Land Man
Lands, Oil Leases
Royalties

PUBLIC DRAY
Let Me Do Your
HAULING
Careful Attention
and Your Business
Appreciated
C. C. RAGSDALE
CALL CITY HALL

Send Your
Abstract Work
—To The—
**Muleshoe Abstract
Company**
A. P. STONE, Prop.
MULESHOE, TEXAS
Agent for Warren Addition

**Muleshoe Nat. Farm
Loan Association**
—No. 3943—
L. S. BARRON, Secy.-Treas.
I. W. HARDEN, President
J. J. LAWLER, Vice-President
Loan Committee
T. L. SNYDER
W. G. KENNEDY
S. E. MORRIS

Lubbock Sanitarium
(A Modern Physiotherapeutic
and
**Lubbock Sanitarium
Clinic**
DR. J. T. KRUEGER
Surgery and Condiations
DR. J. T. HUTCHINSON
Eye, Ear, Nose and Throat
DR. M. C. OVERTON
Diseases of Children
DR. J. P. LATTIMORE
DR. F. B. MALONE
General Medicine
DR. J. H. STILES
DR. L. P. SMITH
General Medicine
General Medicine
MISS MABEL MCLENDON
X-Ray and Laboratory
C. E. HUNT
Business Manager
A characterful, efficient school for
Nurses is conducted in connection
with the Sanitarium. Young women
who desire to enter training may
address the Lubbock Sanitarium

**SIMPLICITY OF DESIGN OF
MODEL T FORD IS EQUALLY
NOTICEABLE IN NEW MODEL**
Simplicity of design, which helps
make the Model T Ford car famous
all over the world for its dependable
performance and economical main-
tenance cost, is equally characteristic
in the new Model A Ford.
This simplicity is particularly no-
ticeable in the ignition system of the
new car. This ignition system is
standard, but the units are new in de-
sign and construction and somewhat
revolutionary, but there is nothing
complicated about it. Being in effect
the very life stream of the car, it was
designed by Henry Ford and his asso-
ciates to give a maximum amount of
service with a minimum amount of
trouble and the thousands of Model A
Fords which already have been hard
service under all sorts of conditions
have vindicated the judgment of the
designers.

One of the unique features of this
new system is the elimination of high
tension cables from the distributor to
the spark plugs. Thin bronze springs,
short, sturdy and easily kept in place,
are used for the connections between
spark plugs and distributor.
There is but one high tension cable
and this connects the coil placed on
the dash, with the distributor which is
on the right and at the top of the
engine cylinder head. The one pri-
mary wire from the switch to the
distributor passes through the dash in
a steel conduit which eliminates wear
and danger from possible short cir-
cuits and which makes it impossible
for any blief to cut the wires at the
ignition lock and wire around it, so
as to start the car without a key.
Ignition troubles, with this design,
are rare and those few which may
occur can easily be detected and read-
ily remedied. For example, if the
condenser which is a part of the igni-
tion system should fail it is so de-
signed that it can be replaced in two
minutes. Likewise the breaker arm
can be removed and replaced without
the assistance of any tools whatever
in less than a minute's time.

LET GOOD OUTWEIGH EVIL.
The true rule, in determining to em-
brace or reject anything, is not
whether it have more of evil than of
good. Almost everything, especially
of government policy, is an insepar-
able compound of the two, so that our
best judgment of the preponderance
between them is continually demand-
ed.—Abraham Lincoln.

IT'S THE TRUTH
No business man in any town
should allow a newspaper published in
his town to go without his name and
business mentioned somewhere in its
columns. This applies to all kinds of
business—general stores, dry goods,
groceries, furniture dealers, automo-
bile dealers, manufacturing establish-
ments, mechanics, professional men,
druggists, and in fact all classes of
business men. This does not mean
that you should have a whole or half,
or even a quarter page ad in each
issue of the paper, but your name and
business should be mentioned, if you
do not use more than a two line
space. A stranger picking up a news-
paper should be able to tell what busi-
ness is represented in the town by
looking at the business mentioned in
the paper. This is the best possible
advertisement. The man who does
not advertise his business does an in-
justice to himself and the town. The
man who is sharing the business that
comes to town but refuses to adver-
tise his own is not a valuable addition
to any town. The life and snap of
the town depends upon the wide-
awake liberal advertising men.—Amer-
ican Bankers' Magazine.

BUILDING
IF YOU ARE THINKING OF BUILD-
ING—SEE ME. SAY THAT
RENT MONEY—OWN YOUR
OWN HOME.
W. C. GORDON
At Panhandle Lumber Company

West Camp News

The chapel program at West Camp
was attended and enjoyed by a num-
ber of the pupils' parents last Friday.
Mr. and Mrs. J. E. Adams and Mr.
and Mrs. Sollock of Muleshoe were
guests of Mr. Williams and family
Sunday.

The small son of Mr. and Mrs. By-
ron Waller has pneumonia. Latest
reports are that he is improving.
Mr. Raymond Cook and Miss Mary
Yarborough were married in Clovis
Sunday afternoon at 1 o'clock. Both
parties are of this community and
have many friends who wish them a
life of happiness.
Mr. Howard McClaris and Miss Sus-
sie Bell Vaughan attended singing at
Fairfield Sunday night.

Mr. and Mrs. Thornton and Mrs.
Vaughan were visitors in school last
week.

Mr. Bob Hampton and son, Boyd,
arrived from Comanche, Oklahoma,
Friday, February 15th, to visit rela-
tives here.

A Valentine party was given Thurs-
day night, February 14th, at the home
of Mr. Rice. A large crowd was
present and all reported a fine time.
At 12 o'clock the most enjoyable fea-
ture of the evening took place—re-
freshments were served.

Mr. and Mrs. J. L. Elliott of Mel-
rose, N. M., spent the week-end with
Mr. J. M. Gibbs and family.

Miss Radie Williams, accompanied
by Misses Vera and Virginia Adair
and Reeta Maye Goodwin, attended the
basketball tournament at Muleshoe
Saturday afternoon.

Mrs. Fred Rice and daughters,
Lawrence and Dorothy visited in the
home of Mrs. Byron Waller Sunday
evening.

KNOW TEXAS
The original extent of the virgin
pine forests in Texas was about 14-
000,000 acres. The present area is
about 1,000,000 acres.

Rubber is made from the quayule
plant which grows in the Trans-
Pecos section of Texas, particularly in
Brewster and Presidio Counties. A
rubber manufacturing plant is locat-
ed at Marathon.

Texas as a republic and as a state
has had eight capitals—Washington
(on the Brazos), Harrisburg, Galves-
ton, Velasco, Quintana, Columbia and
Houston. Galveston, Velasco and
Quintana were the capitals for brief
periods during the approach of Santa
Ana's army.

The total volume of water flowing
into the gulf from Texas streams is
approximately 28,913,000 acre-feet a
year.

**DON'T NEGLECT THE
HOME TOWN PAPER**

The value of printer's ink in its re-
lation to the practical exploiting of a
community cannot be over estimated.
The home town newspaper is without
doubt the greatest asset both to the
individual and to the area in which he
lives and transacts his business. It is
as important a part of the business
man's breakfast as the bacon and eggs
or the cream and sugar for his coffee.
When he has absorbed and fully di-
gested either of them—or both of
them—he is better equipped to face
his own problems and those that con-
front him as an important wheel in
the community's machinery of pro-
gress.—West Texas Today.

**LOOKOUT ON TOWER
FISHES WITH TELEPHONE**

Near a small village on the Mediter-
ranean coast is an odd-looking steel
framework, supported by braces and
leaning far over the water. At the
upper end, in a small cage, stands
a man with a telephone at his side.
He is a watcher, on the alert for
schools of fish that can be seen at
some distance from his lofty eleva-
tion. When a school of fish is sighted,
he telephones to the village and the
men hurry to their nets and boats.

Herbert Kenner of Chicago landed
in jail for stealing a wedding ring for
his intended bride.

WHOLESALE IMPROVEMENT OF REFRIGERATION TRANSPORTATION MAY SOON MATERIALIZE

That refrigeration transportation is
likely to undergo wholesale improve-
ment during the next few years is in-
dicated by results of a test recently
conducted with one of the new iceless
refrigerator cars run from Mercedes,
Texas, to New York City. Loaded
with Rio Grande Valley vegetables, the
car left Mercedes January 8th, arriv-
ing at New York on the 15th, being
open exactly one week after leaving
its point of origin, and for the first
time in history carrying vegetables at
an absolutely low temperature. Beets,
carrots, parsley, cabbage, anise and
broccoli made up the shipment car-
ried by the iceless car and were
packed with and without ice in the
crates, to afford as much data from
the test as possible. No sign of dis-
coloration or decay was found in any
of the vegetables upon arrival, and
their good condition found them a
ready market.

The iceless car is cooled by what is
known as the silica-gel system, con-
sisting of a non-mechanical circula-
tory device actuated by a gas flame
and effecting a condensation and
evaporation of the refrigerating
liquid, producing temperatures as de-
sired. While the car is not entirely
new to the shippers of perishables,
having been in use transporting fish
about the country during the past
year or two, the test just completed is
the first time any attempt has been
made to determine the adaptability of
the car for carrying vegetables.

AIRPORTS AND THE PRODUCTION OF BUTTER

The Graham Leader, commenting
on a \$50,000 airport to be established
in a certain West Texas city and also
on a news item announcing that a
lady in the county in which the air-
port is to be built had sold more
than a ton of butter during the
past year from an average of six
cows, summarizes as follows:
"An airport is a fine thing, and all
live towns are going to have one of
some sort, but the item that struck us
as far more important than all the
airports that could be crowded in the
State was that one of the little lady
who sold over a ton of butter. A
few ladies like that over that county,
or any other man's county, would be
worth more than a whole flock of
airports."

Mrs. Bernice Raynor of Leith, Scot-
land, who has celebrated her 100th
birthday, was christened on the day
of her birth because physicians said
she could not be reared.

SUBSCRIBE FOR THE JOURNAL

**Your Insurance Business
Appreciated**
—
All Kinds Written, Old Line Connections
—
J. E. ALDRIDGE
Office at the Blackwater Valley State Bank

Staple and Fancy Groceries
Highest Quality—Reasonable Prices

Yes, we have a complete stock of
the best groceries you can buy, and
our prices are no higher--in some
instances they are lower--than the
prices you would have to pay else-
where. We appreciate your trade
and will treat you right.

HEADQUARTERS FOR EVERLITE FLOUR

Henington's Cash Grocery
MULESHOE, TEXAS

After Sale Bargains

**SEVERAL GROUPS OF QUALITY MERCHANDISE
IN BROKEN SIZES AND REMNANTS AT UN-
PROFITABLE LOW PRICES.**

ONE TABLE OF Women's Shoes Your Choice \$2.95	ONE GROUP Women's Purses Chic and Servicable at One-half price
ONE GROUP Men's Shirts All \$2.00 Values \$1.23	ONE TABLE OF REMNANTS Prints, Crepes and Silks One-half price
Two Groups	
WOMEN'S DRESSES	
GROUP ONE Dresses to \$24.50 Values \$10.85	GROUP TWO Dresses to \$12.50 Values \$6.95
WINTER COATS For Women and Misses CONTINUING FOR A FEW DAYS AT One-Half Price	
Joyce-Fruit Company Clovis "The Store of Courtesy." New Mexico	

Goodland News Items

A short program followed by a Valentine box was enjoyed by the pupils of the Goodland school Thursday afternoon.

On Friday night a short play, followed by a party, was given at the Goodland school house.

The Weaver family, the Holloway family, the Locke family, the Beatty family, the Hanover family, Mr. and Mrs. Sheppard, the Sanderson family, Robert Sanders, La Verne Robinson, Thelma, Otis and Melvin Bybee, Ferris and Cecil Stokes, Laura, Holland and Floyd Green, Mary and R. B. Grimes, the Holt family, the Anderson family, Ernest Stevens and Faye Kemp.

NEW CHEVROLET SIX VIEWED BY MILLIONS OF PEOPLE

Among other distinctions, the new Chevrolet six, now on display by Valley Motor Company, is the first to hold the record of having been viewed by more people than ever before saw a new automobile between the time of its announcement and the time the first deliveries were made.

Between the mid-November announcement of the new Chevrolet 1929 line and the time of the first deliveries January 1, it is estimated that over 10,000,000 persons paid it the tribute of personal inspection.

HOUSE REJECTS STATE SCHOOL SCHEME BY 86 TO 41 VOTE

Austin, Texas.—Pleas that education should be removed from politics by providing that the Superintendent of Public Instruction be appointed by a State Board of Education went unheeded Tuesday when the House voted 86 to 41 to strike out a section of the Shaver bill which would have eliminated the superintendent from the list of elective officers.

Further action on the bill, which would establish a board of nine members, was deferred in order that the House might turn to special business set for the day.

Representative Charles N. Shaver of Huntsville, author of the bill, said the House seriously interfered with the original purpose of the bill.

A change in the Constitution allowing an appointive educational board was authorized by the voters at an election last fall.

The Shaver measure provides also that the board shall assume duties now devolving by law on the State Textbook Commission, that it shall prepare a financial report of the needs of educational institutions to be submitted to the Legislature and that it shall make recommendations concerning proposed establishment of new schools.

FENCES OFF FIELD FOR TURKEYS WITH PROFIT

Dublin, Texas.—Separating turkeys from chickens is quite necessary in black head country and has been followed out with good results on seven farms in Erath county this year. E. W. Bradley varied the usual procedure of penning chickens and allowing turkeys to range by fencing off about 12 acres in a corner of a field nearest the farmstead and in this enclosure planted milo, corn and peas.

FLORESVILLE MAN WINS PROSPERITY ON SANDY FARM

Floresville, Texas.—Three years ago a farmer near here found that his small blackland farm was paying him, his wife and children a combined salary of fifty cents per day growing cotton. He traded it off for a larger worn-out sandy land farm and from it has earned a new house, new barn, new chickens and chicken house, cows and a big car. "It came about," says E. D. Beck, county agent, "because Mr. Uhlmann paid back to the soil his just share of the profits. Here is his method: Peas in corn, followed by oats; peas for hay and peas for green manure; terraces to maintain the soil and conserve the water; each year grazed by cows at some time during the year, and all lot manure hauled to the land. He also uses all his neighbor's available manure. Hens and cane are raised after peas have been plowed under, thus supplying roughage to supplement oat pasture in winter and sudan pasture in summer."

TWO IN ONE

"It's no good of you doctor, to have come this far to see my husband." "Not at all, madam, not at all. I have a patient in my door and I beg your pardon to attend with one alone."

TECH RESERVE OFFICERS TRAINING CORPS GRANTED AID BY THE GOVERNMENT

The application of the Texas Technological College to the federal government for Reserve Officers Training Corps aid under section 460 National Defense Act has been approved by the War Department, according to a letter received at the College by lieutenant H. E. Killin, commandant of the present military corps at the College.

With the enrollment of 300 cadets in the work at the College, a senior R. O. T. C. unit may be secured which will provide full equipment and officers together with regular pay of 70 cents per day to all juniors and seniors taking the work.

W. M. S. MEETING

The Ladies' Missionary Society of the Methodist Church met at the home of Mrs. Clyde Holland. The meeting opened by singing "Savior, More Than Life to Me." The business of the organization was attended to. The meeting was closed by repeating the Lord's prayer. The next meeting will be at the home of Mrs. C. R. Farrett, in the city.

SUBSCRIBE FOR THE JOURNAL

AMUSEMENT WANES AS HE FINDS JOKE IS ON HIMSELF

J. A. Graves, a machinist of Luling, Texas, watched a comely maiden seat herself in his parked car and drive off last Saturday, smiling as he pictured her embarrassment when she discovered her mistake and returned with the car. But he had room for doubts as to his amusement at her embarrassment Saturday night, as the young lady had not been seen after she entered the highway at the edge of town and headed toward Houston.

OLD FIDDLERS' CONTEST

Parmer County is to have another Old Fiddlers' Contest on Wednesday night, February 27, at the Friona High School auditorium. The object of this contest is to select the best fiddler from Parmer County to represent the county at the Tri-State contest to be held in Amarillo at a later date.

The county contest is being sponsored or managed by O. F. Lange, chairman of the entertainment committee of the Friona Chamber of Commerce—Friona Star.

On complaint of her son-in-law, Mrs. Elizabeth Colver was ordered by court to quit his home and leave London forever.

STATED MEETING of Mule-shoe Masons Lodge, 2nd, Tuesday night in each month.

VISITORS WELCOME

W. T. BLACK, W. M. J. B. ROBERTS, Sec.

MICK

The Auctioneer

Will cry your sales anywhere. References. Come and hear me. Phone thru Dimmitt, P. O., Muleshoe or Flag.

O. N. ROBISON

General Auctioneer

30 YEARS EXPERIENCE Will Give My Services Free to Schools or Societies Giving Box Suppers. Muleshoe, Texas. Route No. 1

Advertisement for Chevrolet Heater. Includes image of the heater, text: 'The New Improved Chevrolet Heater', 'Price \$7.00 Plus cost of installation', 'Designed by Chevrolet Engineers to Fit the Chevrolet Car', 'You Can Now Save \$2.00 On the New Chevrolet Heater', 'and enjoy warmth and comfort during cold weather.', 'Former Price—\$9.75, Installed Reduced Price—\$7.75, Installed', 'We have only a limited supply at this reduced price.', 'VALLEY MOTOR COMPANY'

Advertisement for Jones Service Station. Text: 'Road Information Cozy Rest Rooms', 'You Need Our Service We Want Your Trade LET'S CO-OPERATE', 'Here is where you get the famous Phillips "66" and Magnolia Products.', 'Good Tires and Tubes Worth the Money WE FIX FLATS Jones Service Station "SERVICE WITH A SMILE"'

FURNITURE

Advertisement for Clovis Furniture Co. Text: 'DIRECT TO CONSUMER CLOVIS FURNITURE COMPANY', 'Cash Plan', 'Credit Plan', 'We Have a Buying Plan That Will Suit the Financial Convenience of Every Buyer', 'We have an insurance plan which provides that the death of the supporting head of the family automatically cancels any balance which you may owe us on your account. Think of what this means in time of need.', 'Clovis Furniture Co.', 'Associated With THE AMARILLO FURNITURE CO.', 'First Door South of the Post Office CLOVIS, NEW MEXICO'

YL News Items

**Fuel system of the new Ford
has been
designed for reliability
and long service**



The practical value of Ford simplicity of design is especially apparent in the fuel system.

The gasoline tank is built integral with the cowl and is unusually sturdy because it is made of heavy sheet steel, tinned plated to prevent rust or corrosion. An additional factor of strength is the fact that it is composed of only two pieces, instead of three or four, and is electrically welded—not soldered.

Because of the location of the tank, the entire flow of gasoline is an even, natural flow—following the natural law of gravity. This is the simplest and most direct way of supplying gasoline to the carburetor without variations in pressure. The gasoline feed pipe of the new Ford is only 18 inches long and is easily accessible all the way.

The gasoline passes from the tank to the carburetor through a filter or sediment bulb mounted on the steel dash which separates the gasoline tank from the engine.

The carburetor is specially designed and has been built to deliver many thousands of miles of good service.

Since all adjustments are fixed except the needle valve and idler, there is practically nothing to get out of order.

The choke rod on the dash acts as a primer and also as a regulator of your gasoline mixture. The new hot spot manifold insures complete vaporization of the gasoline before it enters the combustion chamber of the engine.

As a matter of fact, the fuel system of the new Ford is so simple in design and so carefully made that it requires very little service attention.

The filter or sediment bulb should be cleaned at regular intervals and the carburetor screen removed and washed in gasoline. Occasionally the drain plug at the bottom of the carburetor should be removed and the carburetor drained for a few seconds.

Have your Ford dealer look after these important little details for you when you have the car oiled and greased. A thorough, periodic checking-up costs little, but it has a great deal to do with long life and continuously good performance.



FORD MOTOR COMPANY

A CORRECTION

In last week's issue, the Journal carried a news item to the effect that F. L. Gaede was visiting his brother, A. C. Gaede. Mr. A. C. Gaede claims no relation to F. L. Gaede and we are glad to correct the mistake.

Mrs. Jimmie Smoek of Clovis, spent Wednesday with her daughter, Miss Sis Saunders.

Mrs. H. C. Edmonds has been on the sick list the past week, but is slightly improved at this time.

Why Not The Best?

NOW IS THE TIME TO BEGIN PREPARATION FOR THOSE EARLY PULLETS. MARCH AND APRIL HATCHED PULLETS ARE THE ONES THAT PAY. WE HAVE PURE BRED WHITE LEGHORN EGGS FOR SALE.

McAdams Poultry Farm

MRS. W. B. McADAMS, Prop.

Start Those Hens Laying Today

Put them on a paying basis. The way to do this is to feed them the proper rations. We have an ideal poultry feed

CHOWDER

Get a supply of it and prove to yourself that your hens can be made to pay dividends. They are not a profitable investment if they fail to do this.

We will pay you the Best Prices for your grain and lend any assistance we can in marketing your crop.

Bailey County Elevator Company

County Basketball Tournament Held at Muleshoe Saturday

The County basketball tournament, under the auspices of the Interscholastic League, was held at Muleshoe last Saturday at the High School gymnasium. There were not very many teams represented at the tournament this year, there being only three boys' teams and two girls' teams. The boys' teams entered were Bula, YL and Muleshoe. Muleshoe won first place and Bula won second.

The girls' teams represented were Muleshoe and YL. Muleshoe won first place in the girls' game.

The officials for the tournament were Newton and Brown of Sudan. Newton calling the girls' game and Brown calling the boys game. These men were excellent officials and gave good satisfaction to all concerned.

If the plans of Coach Kendrick mature, he will take the boys to Lubbock for the district meet which will be held next Friday and Saturday at Texas Technological College.

Helene Head was a dinner guest at Zora Mae Shofner's last Sunday.

Miss Luey Robison spent Sunday with Miss Bertha Lee Bales.

Misses Kathleen Wilman and Vera June Beller visited Miss Gladys Buhman Sunday.

Progress school put on a play entitled "A Fortunate Calamity" at the YL school house Thursday evening. It was well received.

Evelyn Wilterding spent Sunday with Almyne Evans.

Miss Leslie Head returned to Louisiana last Sunday from a visit with home folks.

Mrs. J. J. Head returned home from Snyder last Saturday evening where she has been visiting relatives.

Mr. and Mrs. O. N. Robison left Thursday week for Windsor, Illinois, where they were called on account of the death of Mrs. Robison's brother-in-law.

Mr. and Mrs. J. S. Horsley and daughter, Miss Arlie Vera, visited Mr. and Mrs. R. L. Kimbrough this last week-end. Miss Johnie Horsley, who has been visiting Mr. and Mrs. Kimbrough, returned home with them.

Mr. L. O. Kimbrough and son, Carlisle, returned from Brownsville, Texas, Sunday. They will visit Mr. Kimbrough's daughter, Mrs. A. B. Weeks.

Mr. and Mrs. Vern Bearden visited his sister, Mrs. H. E. Wilterding, last Thursday evening.

Mr. and Mrs. S. E. Morris, Jr., visited Mr. and Mrs. R. L. Kimbrough Sunday.

In the regular meeting of the Civil Government Club, which met Friday, the class divided into 4 House of Representatives and Senate and appointed a governor. Several bills were passed, some of which were vetoed by the governor, but were passed over his veto.

After this program, the officers for this month were elected as follows: J. T. Shofner, President; Alice Wilterding, Vice-Pres.; Edwina Buhman, Sec.-Treas.; Albert Traueek, Reporter. Francis Evans was absent from school Monday.

Mr. and Mrs. Ryan and children, Mr. and Mrs. E. C. Priboth and sons, and Mrs. Guss Priboth motored to Clovis Sunday afternoon.

WHITE-FOSTER

Mr. Charles White and Miss Mary Belle Foster were married at Stinnett, Texas, last Saturday. Mr. White is a son of Mr. and Mrs. J. A. White of the Progress community, in this county, and the bride's parents live at Stinnett. Charles and his brother are engaged in business at Stinnett, where he and Mrs. White will make their home. We join their friends here in wishing for them a long and happy married life.

Mr. and Mrs. E. L. Gardner of Hollis, Oklahoma, arrived Sunday to look after business interests here and spend a few days with their daughter, Mrs. J. M. March and family.

Mr. and Mrs. Tobe Wagon returned the latter part of last week from a trip through New Mexico. While there Mr. and Mrs. Wagon visited the Carlsbad Caverns.

NOTICE OF SALE

STATE OF TEXAS, COUNTY OF BAILEY. NOTICE IS HEREBY GIVEN That by virtue of a certain Order of Sale issued out of the Honorable District Court of Bailey County, of the 29th day of January, 1929, by J. L. Alsop, Clerk of said Court for the sum of Fifty six hundred thirty-five and 78/100 (\$5633.78) Dollars and costs of suit under a judgment in favor of W. B. Newsome, et al in a certain cause in said Court, No. 266 and styled W. B. Newsome, et al vs. Sam Hoffman et al, placed in my hands for service, I, H. A. Douglas, Sheriff of Bailey County, Texas, did, on the 29th day of January, 1929, levy on certain Real Estate, situated in Bailey County, Texas, described as follows, to wit:

Situated in Bailey County, Texas; and being labor No. 5 in League No. 111 of the Crosby County School lands, containing 17.1 acres, and being the land described in the deed from W. B. Newsome and Tom W. Newsome to Sam Hoffman, dated October the 12th, 1925 and recorded in Book 14, Page 225 of the Bailey County Deed Records.

The said judgment and foreclosure being against the defendant, Sam Hoffman, the defendant, Security State Bank of Westaco, a corporation, and the defendant, Panhandle Lumber Company, a corporation, and levied upon as the property of Sam Hoffman et al, and that on the first Tuesday in March, 1929, the same being the 5th day of said month, at the Court House door, of Bailey County, in the town of Muleshoe, Texas, between the hours of 10 A. M. and 4 P. M., by virtue of said levy and order of sale I will sell said above described Real Estate at public vendue, for cash, to the highest bidder, as the property of said Sam Hoffman et al.

And in compliance with law, I give this notice by publication, in the English language, once a week for three consecutive weeks, immediately preceding said day of sale, in the Muleshoe Journal, a newspaper published in Bailey County.

Witness my hand, this 6th day of February, 1929.

H. A. DOUGLASS, Sheriff of Bailey County, Texas.

NOTICE TO THE PUBLIC!

We are equipped with Electric Machinery and experienced workmen. We use the best Oak Tanned Leather and we strive to please all who do business with us on a money back guarantee. We have on hand a supply of No. 1 Needs Foot Harness Oil so bring in those old dry harness and let us give them an oil bath. We repair harness, make new car tops and curtains or repair your old ones. Your business appreciated. Where service counts, we win.

Service Shoe Shop

I. H. ROBINSON, Prop.

Next Door to Old Gupion Hotel

**PIECE GOODS
For Your Spring Dresses**

We have a splendid assortment of Spring Dress Goods materials in Silks, Prints and Percaloes, which can be made into lovely dresses that will be appropriate for all occasions. Also a nice line of Gingham and other materials for house dresses, aprons, etc. Let us show you our line of piece goods and quote you our prices—both the quality and price will please you.

Gardner Dry Goods Company

"The Price is the Thing."

An Economical Transportation

National Demonstration Week!

Drive the Chevrolet Six

No matter how closely you inspect The Outstanding Chevrolet of Chevrolet History—you will never appreciate what a wonderful achievement it is until you sit at the wheel and drive. So this week has been set aside as National Demonstration Week, and you are cordially invited to come in and drive this sensational automobile.

Not only is the new six-cylinder valve-in-head motor 32% more powerful, with correspondingly higher speed and faster acceleration . . . not only does it provide a fuel-economy of better than twenty miles to the gallon—but it operates with such marvelous six-cylinder smoothness that you almost forget there is a motor under the hood!

Regardless of the car you may now be driving—come drive this new Chevrolet Six. Come in today!

-a Six in the price range of the four!

The COACH \$595	
The Roadster . . . 525	The Custom . . . 725
The Sedan . . . 525	Light Delivery . . . 400
The Coupe . . . 595	Light Delivery . . . 545
The Sedan . . . 675	Light Delivery . . . 650
The Sport . . . 695	Light Delivery . . . 650
All prices f. o. b. factory, Flint, Mich.	

Valley Motor Company
MULESHOE, TEXAS

QUALITY AT LOW COST

THE MULESHOE JOURNAL

VOLUME 7.

MULESHOE, BAILEY COUNTY, TEXAS, FRIDAY, FEBRUARY 22ND, 1923.

NO. 2

INTERSCHOLASTIC LEAGUE MEET TO BE HELD IN THIS CITY MARCH 15 AND 16

According to information given by the State Department, the following schools have paid their entrance fees and are eligible to participate in the Interscholastic League contests to be held in Muleshoe on March 15 and 16: Baileyboro school; Bula school and grade school; Fairview high school and grammar school; Goodland school; Liberty school; Longview school; Muleshoe high school and grammar school and West Camp high school and grammar school.

There is much interest being shown in the league work this year and we are looking forward to the best county meet that Bailey County has ever had. There will be more contestants and more competition in the contests than ever before.

The county voted to retain all the sub-junior contests this year. These contests count nothing toward the county championship, as they are not provided for in the Interscholastic League rules, but they add much interest for the little folks. The county meet is not very crowded and the contests can be run off with the rest of the work, so they will be included.

All coaches of all departments of work are urged to familiarize themselves with the work and have all contestants to come strictly under their work. It is not fair to students to have them work on a contest and enter the meet only to be ruled out because they do not comply with the rules.

All names of contestants must be in the hands of the director-general ten days before the meet, which will be on March 15th. No contestant will be admitted whose name is not in on that date. It is up to the teachers to see to it that these names get in and their pupils are made eligible for the contests. Competent judges will be secured to judge in the meet and everyone will be given a fair show.

JOHN G. HENKINS, Director-General for Bailey County Interscholastic League.

HENINGTON INSTALLING MODERN MEAT MARKET IN ADDITION TO GROCERY

H. C. Henington, proprietor of Henington Cash Grocery, is installing fixtures for a modern meat market in connection with his grocery store this week. The fixtures include show cases, refrigerators and other equipment, representing a total cost of about \$3,500.

Mr. Henington informs us that he will use Frigidaires in his market, which insure the best possible results in keeping the meats and vegetables he handles fresh and sanitary. These machines are being purchased from the Frigidaire agency at Plainview.

BUYS AND IMPROVES FARM PROPERTY NEAR MULESHOE

Mr. T. E. Wynand of Memphis, Texas, has recently bought a 20 acre tract of land near town. J. J. Bell, also of Memphis, has moved here and will take care of the land this year. There is a small house on the tract and Mr. Wynand will make further improvements on the property at a later date. He will probably move to Muleshoe before the end of the year.

MISS AUDREY STOKER RETURNED TO HER HOME IN LUBBOCK SATURDAY, AFTER SPENDING SEVERAL DAYS HERE WITH MISS DOROTHY WENZLAND.

Armand Emanuel, Jewish heavyweight fighter, rowing a boat at Westlake park at Los Angeles, in preparation for his recent bout with Tommy Loughran, world's 175-pound champion. The fight was won by Loughran.

LAW PARTNERSHIP IS FORMED BETWEEN BOBO & CAMPBELL

A partnership was formed in Muleshoe last week between Attorney Pat R. Bobo, of this place and Judge V. J. Campbell of Portales, N. M. Everyone in this vicinity knows Pat, as he has practiced law here for the past several years and is at present County Attorney of Bailey County. He has enjoyed a good practice and has proven his qualifications in this profession.

Judge Campbell is also known to many of our citizens, as he has practiced in the courts throughout this territory for a number of years. His knowledge of the law has been demonstrated in the numerous cases in which he has been employed as attorney here and elsewhere.

We are glad to welcome Judge Campbell to Muleshoe. He will move his family here at an early date from Portales where they have lived for a number of years.

At present the offices of the new firm are in the Court house.

NEW SCHOOL BUILDING FOR JESCO DISTRICT

Work started Tuesday on the new brick school building for Jesco school district. The new building is to cost \$10,000 and is to be thoroughly modern. Jesco is a progressive rural community and is to be congratulated upon the construction of their new school. The lumber and cement for the new structure is being furnished by Panhandle Lumber Company of Muleshoe. W. L. Cone of Lubbock is the contractor.

COMBINATION OF MAGIC, MELODY, MYSTERY AND MYSTERY IS PROGRAM FOR FEBRUARY 23

Frye and Company will present an evening of magic, melody, mirth and mystery here on February 23rd at the School Auditorium. This company is headed by Mr. William Eugene Frye, well known magician and illusionist, who has been thrilling, mystifying and delighting audiences in all parts of the United States for the past ten years. Assisting Mr. Frye will be Miss Leah Miles, pianist, saxophonist and soprano. The musical feature of the program is an attractive addition to the most unusual entertainment which is offered by Mr. Frye.

The program includes the most mystifying illusions of modern magic. Another interesting feature is Mr. Frye's expose of fraudulent mediums. The program of Frye and Company is something different than you have ever seen before.

County Attorney Pat R. Bobo attended court in Plainview Tuesday.

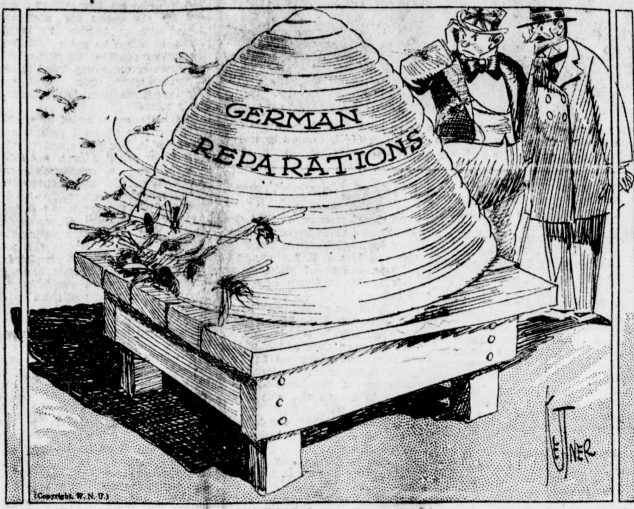
Local Markets

These prices are furnished by the local buyers, and are for your convenience.

Kaffir	\$1.05
Maize	1.10
Corn, ear	.58c bu.
Corn, shelled	.80c
Sudan	\$3.50
Beans	\$5.25
Kaffir heads	\$14.00
Cane Seed	\$1.00
Retail Feeds	
Cotton seed cake	2.75
Cotton seed meal	2.75
Brass	2.50
Shorts	2.50
Cow Chow	\$3.00
Milk Maker	\$2.75
Range	\$5.25
Seed oat	\$1.00 bu.
Produce	
Heavy Hens	20c
Light Hens and Leghorns	17c
Colored Springs	15c
Light Springs	13c
Stags	10c
Cocks	.05c
Eggs	.27c
Cream	.11c
Hides	.6c
Capons, 8-lb. and up	.25c
Capons, under 8-lb.	.18c

(Prices furnished by the Muleshoe Produce Co., subject to change without notice.)

How to Get the Honey?



MULESHOE TENNIS CLUB BUILDING NEW COURT

The members of the Muleshoe Tennis Club have been busy this week making a new court on the lot just back of Henington Cash Grocery. The new court will be the last word in up-to-dateness and adds much to the sporting world of this little city.

SCHOOLS WILL OBSERVE WASHINGTON'S BIRTHDAY

The Muleshoe schools will observe Washington's birthday and no classes will be held tomorrow (Friday). As far as can be learned, there is no special program of any kind. Some of the students will spend the day preparing for the Interscholastic meet.

PANHANDLE LUMBER CO. MAKING IMPROVEMENTS IN THEIR LOCAL YARD

The Panhandle Lumber Company began the work of enlarging their lumber sheds here this week. The old buildings are being rearranged and additional sheds will be built as well as a new office. Mr. Dunigan of Littlefield, began the work of removing the old sheds that are to be replaced by new ones and making preparations for the remodeling of the others on Tuesday of this week. A new and larger stock of the very best grades of lumber will be carried as soon as the remodeling work is completed.

Enlargement of the yard is deemed necessary in order to take care of the steadily increasing business. The Panhandle Lumber Company realizes the fact that Muleshoe and the surrounding territory are forging to the front and that much building is now in progress with prospects very favorable for even a greater building campaign in this vicinity at an early date.

Shall We Go Backward, Forward Or Remain "Where We're At"?

Next Thursday, February 28th, is the date for the election to determine the plan of improvement for the city of Muleshoe in the matter of street paving. Or in other words, at that time we will say by our votes whether or not an improvement plan will be approved. If you desire to see Muleshoe keep pace with other towns over the country, and hold her own in a business way, now is the opportune time for you to express your desire to that effect.

On the other hand, if you want the city to remain in the mud and be passed up by the progressive element of citizens, you may exercise your right in the forthcoming election by voting against the improvement plan.

The day has dawned when to be non-progressive means failure, both for the individual and the community. You may be progressive so far as your individual business is concerned, and may have the progressive spirit in most respects, but feel that certain undertakings on the part of the community are a little in advance of the general conditions.

There have been communities that were held back by such feelings on the part of a majority of the citizens and other communities have taken advantage of opportunities which resulted in success and the upbuilding of their resources.

It is known that the very best of paving will cost no more than \$200 per lot payable one-sixth, or about \$35 within thirty days after the work has been completed, and the balance at \$35 per year for five years. If we are fortunate enough to secure aid from any source, then the above figures will be reduced to the extent of the aid obtained. However, the election next Thursday is not a bond election. The law requires us to adopt an improvement plan before bonds are voted. Go to the polls and help decide the question. ARE WE TO HAVE A BETTER TOWN, OR STAND WHERE WE ARE?

SENATE BILL NO. 85 REMOVES TWO COUNTIES FROM THIS DISTRICT

A re-districting bill, known as Senate Bill No. 85, passed by the State Senate at its last session removes Floyd and Briscoe Counties from this district. The bill went into effect on February 11th. This change increases the terms of District Court held in Muleshoe from four to six weeks. The first term to be held for this year will convene on May 6th. Hereafter, the first term has opened in June. The second term will open in December.

The provisions of the bill as to the terms of the court in Bailey County are as follows: "In the County of Bailey on the sixteenth Monday after the second Monday in January and on the fifteenth Monday after the first Monday in August, and may convene in session three weeks." It carries the usual provisions validating writs and processes, juries and jury panels, making them returnable to the respective term of this court as created under the act making the bill a law.

LIST OF FIELD EVENTS INTERSCHOLASTIC LEAGUE MEET MARCH 15 AND 16

- The following is the list of events for the Interscholastic League Meet which will be held in Muleshoe on March 15 and 16:
- Senior Boys—Track
 - 120 yard high hurdles.
 - 100 yard dash
 - 800 yard run.
 - 220 yard hurdles.
 - 440 yard run.
 - 220 yard dash.
 - 1-Mile run.
 - 1-Mile relay.
 - Field Events
 - Pole vault; running broad jump; discus throw; running high jump; 13-pound shot put; javelin throw.
 - Junior and Sub-Junior Boys and Girls
 - 50-Yard dash; 100-yard dash; 440-yard relay; Chinning bar; running high jump; running broad jump.
 - Ground ball for both junior boys and girls.
 - Volley ball for senior girls.
 - Tennis for senior boys and girls, both doubles and singles.

FARMAL TRACTORS ARE PROVING POPULAR IN THE VICINITY OF MULESHOE

Along with other modern ideas and equipment for successful farming, the Farmal tractor is proving of great value to the farmers of the Muleshoe section. A large number of these tractors have been sold to farmers in this vicinity during the past year. E. R. Hart Lumber Company, local dealers for the Farmal, reports the sale of Farmals and tractors during the past month to the following farmers of this and adjoining communities:

M. P. Collins, F. L. Winner, D. V. Osborne, Walter Ramm, A. S. Mize, W. H. Gammon, Gordon Duncan, C. C. Buhman, J. L. Harrington, Muri Stokes, R. B. Whitford, W. H. Vinsant, William Pack, A. W. Edly, W. G. Kennedy, C. P. Johnson, Erwin Fowler, and Paul Shultz.

Temple Morrow, who has been employed at the Hart Lumber Company, left Sunday for Fort Worth.

LITERARY EVENTS FOR PENDING SESSION OF THE INTERSCHOLASTIC LEAGUE

The following is the literary events for the Interscholastic League meet: Debate for senior boys and girls. Declaration—senior, junior and sub-junior boys and girls. Extemporaneous speech—One representative from each school, boy or girl. Spelling—A team of two from each school, boy or girl, for senior, junior or sub-junior. Music Memory—One team from each school. Arithmetic—One team from each school chosen from 5th, 6th or 7th grade. Three R Contest. For one and two teacher rural schools. One entry for each school.

A new entry has been made this year in the form of a school exhibit. This includes anything that is made by the pupils under the direction of the teacher, either at home or at school. Work may be entered in this department from any pupil in school. The entire exhibit will be thrown together for the schools and no individual prizes will be offered for individual work.

H. STERLING SUFFERS STROKE OF PARALYSIS

Word was received here yesterday that Mr. H. Sterling of the Longview community suffered a stroke of paralysis about 8 o'clock Tuesday evening. He had been hauling feed to Muleshoe that day, and was sitting by the fire at his home when he was stricken, his left side becoming entirely paralyzed. His condition was serious at last report.

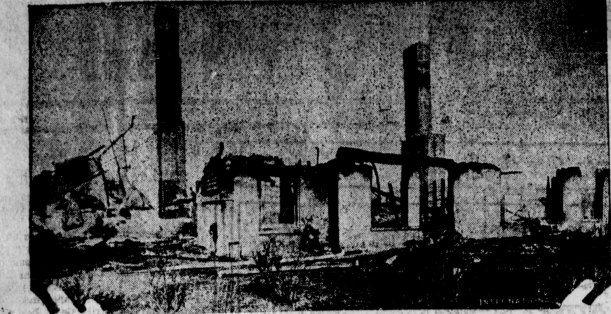
Mr. and Mrs. H. C. Henington and Mr. and Mrs. J. M. March took supper Sunday evening with the Wagon Family near Lazbuddy.

Subscribe for the Journal



Miriam Stuart, Broadway actress, has been chosen from over one hundred candidates as hostess of the National Beauty show which will be held at the Grand Central palace, New York, from March 27 to April 6. Miss Stuart is a petite, ravishing brunette with large blue eyes.

Fire Ruins the Lawrenceville School



The well-known Lawrenceville school at Lawrenceville, N. J., was wrecked by an early morning fire a few days ago. The photograph shows the ruins of the Davies house, a dormitory from which fifty pupils escaped by leaping from windows. Among them was Dana Davies, son of the vice president of the United States.

E. L. Menefee, M. D.
PHYSICIAN AND SURGEON
MULESHOE, TEXAS

R. L. BROWN
The Land Man
Lands, Oil Leases
Royalties

PUBLIC DRAY
Let Me Do Your
HAULING
Careful Attention
and Your Business
Appreciated
C. C. RAGSDALE
CALL CITY HALL

Send Your
Abstract Work
—To The—
**Muleshoe Abstract
Company**
A. P. STONE, Prop.
MULESHOE, TEXAS
Agent for Warren Addition

**Muleshoe Nat. Farm
Loan Association**
—No. 3943—
I. S. BARRON, Secy.-Treas.
I. W. HARDEN, President
J. J. LAWLER, Vice-President
Loan Committee
T. L. SNYDER
W. G. KENNEDY
S. E. MORRIS

**Farm and Ranch
Loans**
5 per cent Interest—36 Years Time
A Mortgage that never comes due
SEE US FOR LOANS

Lubbock Sanitarium
(A Modern Five-story Building,
and)
**Lubbock Sanitarium
Clinic**
DR. J. T. KRUEGER
Surgery and Consultations
DR. J. T. HUTCHINSON
Eye, Ear, Nose and Throat
DR. M. C. OVERTON
Diseases of Children
DR. J. P. LATTIMORE
DR. F. B. MALONE
General Medicine
Eye, Ear, Nose and Throat
DR. J. H. STILES
DR. L. P. SMITH
General Medicine
General Medicine
MISS MABEL McCLENDON
X-Ray and Laboratory
C. E. HUNT
Business Manager
A chartered training school for
Nurses is conducted in connection
with the Sanitarium. Young women
who desire to enter training
may address the Lubbock Sanitarium

**SIMPLICITY OF DESIGN OF
MODEL T FORD IS EQUALLY
NOTICEABLE IN NEW MODEL**

Simplicity of design, which helped make the Model T Ford car famous all over the world for its dependable performance and economical maintenance cost, is equally characteristic in the new Model A Ford. This simplicity is particularly noticeable in the ignition system of the new car. This ignition system is standard, but the units are new in design and construction, and somewhat revolutionary, but there is nothing complicated about it. Being in effect the very life stream of the car, it was designed by Henry Ford and his associates to give a maximum amount of service with a minimum amount of trouble and the thousands of Model A Fords which already have seen hard service under all sorts of conditions have vindicated the judgment of the designers.

One of the unique features of this new system is the elimination of high tension cables from the distributor to the spark plugs. Thin bronze springs, short, sturdy and easily kept in place, are used for the connections between spark plugs and distributor. The one primary wire from the switch to the distributor passes through the dash in a steel conduit which eliminates wear and danger from possible short circuits and which makes it impossible for any thief to cut the wires at the ignition lock and wire around it, so as to start the car without a key.

Ignition troubles, with this design, are rare and those few which may occur can easily be detected and readily remedied. For example, if the condenser which is a part of the ignition system should fail, it is so designed that it can be replaced in two minutes. Likewise the breaker arm can be removed and replaced without the assistance of any tools whatever in less than a minute's time.

LET GOOD OUTWEIGH EVIL

The true rule, in determining to embrace or reject anything, is not whether it have any evil in it, but whether it have more of evil than of good. Almost everything, especially government policy, is an inseparable compound of the two, so that our best judgment of the preponderance between them is continually demanded.—Abraham Lincoln.

IT'S THE TRUTH

No business man in any town should allow a newspaper published in his town to go without his name and business mentioned somewhere in its columns. This applies to all kinds of business—general stores, dry goods, groceries, furniture dealers, automobile dealers, manufacturing establishments, mechanics, professional men, druggists, and in fact all classes of business men. This does not mean that you should have a whole or half, or even a quarter page ad in each issue of the paper, but your name and business should be mentioned, if you do not use more than a two line space. A stranger picking up a newspaper should be able to tell, so that business is represented in the town by looking at the business mentioned in the paper. This is the best possible town advertisement. The man who does not advertise his business does an injustice to himself and the town. The man who is sharing the business that comes to town but refuses to advertise his own is not a valuable addition to any town. The life and snap of the town depends upon the wide-awake liberal advertising men—American Bankers' Magazine.

BUILDING

IF YOU ARE THINKING OF BUILDING—SEE ME. SAVE THAT RENT MONEY—OWN YOUR OWN HOME.
W. C. GORDON
At Panhandle Lumber Company.

West Camp News

The chapel program at West Camp was attended and enjoyed by a number of the pupils' parents last Friday. Mr. and Mrs. J. E. Adams and Mr. and Mrs. Sallock of Muleshoe were guests of Mr. Williams and family Sunday.

The small son of Mr. and Mrs. Byron Waller has pneumonia. Latest reports are that he is improving. Mr. Raymond Cook and Miss Mary Yarborough were married in Clary Sunday afternoon at 1 o'clock. Both parties are of this community and have many friends who wish them a life of happiness.

Mr. Howard McClaris and Miss Susie Bell Vaughan attended singing at Fieldfield Sunday night. Mr. and Mrs. Thornton and Mrs. Vaughan were visitors in school last week.

Mr. Bob Hampton and son, Boyd, arrived from Comanche, Oklahoma, Friday, February 18th, to visit relatives here.

A Valentine party was given Thursday night, February 14th, at the home of Mr. Rice. A large crowd was present and all reported a fine time. At 12 o'clock the most enjoyable feature of the evening took place—refreshments were served. Mr. and Mrs. J. L. Elliott of Melrose, N. M., spent the week-end with Mr. J. M. Gibbs and family. Miss Radie Williams, accompanied by Miss Vera and Virgie Adair and Retha Maye Goodwin, attended the basketball tournament at Muleshoe Saturday afternoon.

Mrs. Fred Rice and daughters, Lovell and Dorothy, visited in the home of Mrs. Byron Waller Sunday evening.

KNOW TEXAS

The original extent of the virgin pine forests in Texas was about 14,000,000 acres. The present area is about 1,000,000 acres.

Rubber is made from the quayule plant which grows in the Trans-Pecos section of Texas, particularly in Brewster and Presidio Counties. A rubber manufacturing plant is located at Marathon.

Texas as a republic and as a state has had eight capitals—Washington (on the Brazos), Harrisburg, Galveston, Velasco, Quintana, Columbia and Houston. Galveston, Velasco and Quintana were the capitals for brief periods during the approach of Santa Anna's army.

The total volume of water flowing into the gulf from Texas streams is approximately 26,913,000 acre-feet a year.

DON'T NEGLECT THE HOME TOWN PAPER

The value of printer's ink in its relation to the practical exploiting of a community cannot be over estimated. The home town newspaper is without doubt the greatest asset both to the individual and to the area in which he lives and transacts his business. It is an important part of the business man's breakfast as the bacon and eggs or the cream and sugar for his coffee. When he has absorbed and fully digested either of them—both for that matter—he is better equipped to face his own problems and those that confront him as an important wheel in the community's machinery of progress.—West Texas Today.

LOOKOUT ON TOWER FISHES WITH TELEPHONE

Near a small village on the Mediterranean coast is an odd-looking steel framework, supported by braces and leaning far out over the water. At the upper end, in a small cage, stands a man with a telephone at his side. He is a watcher, on the alert for schools of fish that can be seen at some distance from his lofty elevation. When a school of fish is sighted he telephones to the village and the men hurry to their nets and boats.

Herman Keener of Chicago landed it well for sending a wedding ring for his intended bride.

WHOLESALE IMPROVEMENT OF REFRIGERATION TRANSPORTATION MAY SOON MATERIALIZE

That refrigeration transportation is likely to undergo wholesale improvement during the next few years is indicated by results of a test recently conducted with one of the new iceless refrigerator cars run from Mercedes, Texas, to New York City. Loaded with Rio Grande Valley vegetables, the car left Mercedes January 8th, arriving at New York on the 15th, being open exactly one week after leaving its point of origin, and for the first time in history carrying vegetables at an absolutely low temperature. Beets, carrots, parsley, cabbage, araise and broccoli made up the shipment carried by the iceless car, and were packed with and without ice in the crates to afford as much data from the test as possible. No sign of discoloration or decay was found in any of the vegetables upon arrival, and their good condition found them a ready market.

The iceless car is cooled by what is known as the silica-gel system, consisting of a non-mechanical circulatory device actuated by a gas flame and effecting a condensation and evaporation of the refrigerating liquid, producing temperatures as desired. While the car is not entirely new to the shippers of perishables, having been in use transporting fish about the country during the past year or two, the test just completed is the first time any attempt has been made to determine the adaptability of the car for carrying vegetables.

AIRPORTS AND THE PRODUCTION OF BUTTER

The Graham Leader, commenting on a \$50,000 airport to be established in a certain West Texas city and also on a news item announcing that a lady in the county in which the airport is to be built had moulted and sold more than a ton of butter during the past year from an average of six cows, summarizes as follows: "An airport is a fine thing, and all live towns are going to have one of some sort, but the item that struck us as far more important than all the airports that could be crowded in the State was that one of the little lady who sold over a ton of butter. A few ladies like that over that county, or other man's county, would be worth more than a whole flock of airports."

Mrs. Bernice Raynor of Leith, Scotland, who has celebrated her 100th birthday, was christened on the day of her birth because physicians said she could not be reared.

SUBSCRIBE FOR THE JOURNAL

Your Insurance Business Appreciated
All Kinds Written, Old Line Connections
J. E. ALDRIDGE
Office at the Blackwater Valley State Bank

Staple and Fancy Groceries
Highest Quality—Reasonable Prices
Yes, we have a complete stock of the best groceries you can buy, and our prices are no higher--in some instances they are lower--than the prices you would have to pay elsewhere. We appreciate your trade and will treat you right.

HEADQUARTERS FOR EVERLITE FLOUR

Henington's Cash Grocery
MULESHOE, TEXAS

After Sale Bargains

SEVERAL GROUPS OF QUALITY MERCHANDISE IN BROKEN SIZES AND REMNANTS AT UNPROFITABLE LOW PRICES.

ONE TABLE OF Women's Shoes
Your Choice
\$2.95

ONE GROUP Women's Purses
Chic and Serviceable at
One-half price

ONE GROUP Men's Shirts
All \$2.00 Values
\$1.23

ONE TABLE OF REMNANTS
Prints, Crepes and Silks
One-half price

Two Groups

WOMEN'S DRESSES
GROUP ONE
Dresses to \$24.50 Values
\$10.85

GROUP TWO
Dresses to \$12.50 Values
\$6.95

WINTER COATS
For Women and Misses
CONTINUING FOR A FEW DAYS AT
One-Half Price

Joyce-Pruit Company

Clovis "The Store of Courtesy." New Mexico

FINNEY OF THE FORCE

By F. O. Alexander



Snoops in Her Glory



Special Showing
all this Week

CHARMING NEW FROCKS

Interpreting the newest Paris Made in Peter Pan Fabrics

DON'T fail to see these exceedingly smart creations. They are delightful, revealing expressions of the style trend in Paris. Each is the work of a distinguished Modiste. Each is fashioned in the latest of the ultra-chic Paris-designed Peter Pan Fabrics, so extraordinarily durable and so absolutely tubfast and fadeproof. The prices of Peter Pan Fabrics will amaze you—for they permit you to be smartly dressed, every day in the year, at a cost of 6 cents a day.

Peter Pan
Guaranteed Wash Fabrics
Fast Color

Showing New Spring Patterns
From February 24 to March 4th
SEE OUR WINDOWS

THOMPSON'S
MULESHOE TEXAS

Men Live After Deep Sea Experience

Key West, Fla.—Two fearless members of a submarine crew, who yesterday braved the sea at a depth of 120 feet clad only in bathing suits and equipped with oxygen-inflated lungs, were today none the worse for their experience.

Descending to that depth yesterday in the submarine S-4, Lieut. C. B. Mommson and Chief Torpedoman Edward Kalinowski left the submarine and came to the surface without outside aid. They were pronounced unharmed by a physician.

CITIZENS NEAR ROTAN HUNT LARGE PANTHER WHICH KILLS STOCK AT NIGHT

Rotan, Texas.—A full grown panther is said to be killing chickens and calves in a community 10 miles south of Rotan. Residents of that immediate section are now sleeping with doors and windows securely locked.

The animal was reported to have been seen three weeks ago, but the report was not given full credence at the time. Later many people have seen its tracks, and others have heard its cry as it foraged through the brush along a small creek. It has been seen at rather close quarters by a few people.

Dogs have been put on the trail of the animal, but so far the best dogs in the country have turned back when they closed in on the panther. Several hunting parties have trailed the animal without success, and have failed to make it leave its haunt in a small area of less than half dozen miles.

Police raised a fight in Dresden in which the combatants were two nude women, and more than 200 spectators were arrested.

Mechanical Man Is Aid To Air Pilots

Newark, N. J.—Mr. Televox, the mechanical man has become a friend of aviators by making dangerous landings unnecessary.

In obedience to the note of a siren on an approaching plane the mechanical man turned on the flood lights at the Newark airport last night without the aid of human hands.

Pete Bronson, airmail pilot, approached the field from various directions and at different altitudes in the tests, turning on a wind driven siren as he neared the field.

NEW PLAN OF FARM RELIEF

"Believing that much can be gained by developing concrete, workable and just proposals out of the general sentiment for national policies more favorable to agriculture," editors of 56 Minnesota rural newspapers have joined in sponsoring a program of relief.

These proposals included development of waterways, retention of the flexible features of the tariff, higher protection, scientific research, protection against Philippine, Hawaiian and Porto Rico competition, reversal of reclamation policy, efforts to reduce costs of production, a Federal farm board with advisory powers, improved credit facilities, encouragement of co-operative marketing, cheaper fertilizer. Higher tariffs are asked, specifically on flax, vegetable oils, dairy products, meat and poultry, cereals and sugar.

There is nothing in this list of suggestions to which any reasonable person, interested in the betterment of farming, can take objection.—Harlowton, Mont. Times.

SUBSCRIBE FOR THE JOURNAL

FUR IS USED IN FLATTERING WAYS ON MIDSEASON CLOTH COATS



Time to abandon fur coats—and now what? Two very satisfactory answers are given in the picture. These modish midseason coats are posed by two winsome screen lassies.

Myrna Loy wearing a candy-striped sports coat and Doris Kenyon smiling her prettiest in a fur-trimmed kasha coat.

Sports clonking is a joy to the eye this season. For spring the new weaves are going the limit in coloring and moderate design, which makes them all the more fascinating. Border effects, onyx blanding, startling geometric patternings flashing vivid splashes of color carry the gay spirit of outdoors.

Fabric manipulation adds yet another glory to the lively weaves. One of the clever "new stunts" is to make the selvedge edge serve as a finish and at the same time in a decorative way. Still another is the fasturing of self-fringed edges, which is as smart a touch as a sports coat can carry this season. Many of the novelty weavers are that loosely woven they lend themselves admirably to self-fringing effects.

On these coats of unusual weaves fur collars are developed in mostly fox or wolf for the long-haired type, and among flat pelts the very smartest is eggshell caracul. This off-white thin curly fur is especially effective in the new spring tweeds. When unfurred the neckline is emphasized with cleverest of scarf and kerchief effects which reveal, often, in a very blaze of color.

The idea of fur for the wrists and self-fabric scarf for the neckline still remains. The effect is most pleasing, as the coat to the right in the illustration confirms.

Long coat ensembles are definitely established on the program for spring. That is, women are going to be encouraged when they buy their new coats to purchase a matching skirt or a two-piece frock fashioned to complete the ensemble.

JULIA BOTTOMLEY.
(© 1929, Western Newspaper Union.)

ANNOUNCEMENT
Of Partnership Formed Between

Bobo & Campbell
ATTORNEYS-AT-LAW

MULESHOE TEXAS

Dr. CHESLEY E. WORRELL
EYESIGHT SPECIALIST

New Location: 1/2 Block Off Main, East of Barry Hardware Company
Glovis, N. M.

Beauty Homes BABY CHICKS Thrifty Farms

15 Varieties \$11.00 to \$13.00 hundred, delivered. State accredited and Standardized Quality Chicks. All kinds of plants for West Texas. \$1.00 thousand up. 500 Varieties Garden, Field and Flower Seeds. Poultry supplies of anything you want for poultry. Order anything you want for Garden, Orchard, Lawn, Field, Poultry and Stock—We have it of Quality at right prices.

C. E. WHITE SEED CO. Plainview, Texas

Lower PRODUCTION COSTS

ON BEEF PORK MILK POULTRY

W-W
HAMMER-TYPE
FEED GRINDER

YOU can't regulate the market to insure higher prices for your dairy products, meat and poultry. But you can lower production costs with a W-W Feed Grinder. And that has the same effect on your net profits.

A third of your feed crop goes to waste when your feed is unground. Your W-W stops this waste by turning stems, stalks, leaves, husks and all—into nutritious mixed feed that goes a third further.

Powerful hammers that grind and mix everything from the ground up with lightning speed. No burrs, gears or knives to break or give trouble.

A W-W to fit every grinding need. Six sizes—blower, elevator or self-feeder. All equipped with Timken Tapered Bearings—Alemite-Zerk lubrication—Rockwood pulleys.

We will gladly demonstrate this wonderful grinder on your farm with your own feed and power.

THE W-W FEED GRINDER CO., Mfgs., Wichita, Kansas.

E. R. Hart Lumber Co.

Bailey County Abstract Company
I. S. BARRON, Manager. MULESHOE, TEXAS
(ESTABLISHED IN 1900)

Abstracts, Loans, all kinds of Insurance and Conveyancing. All matters pertaining to land titles given prompt attention.

(Member Texas Abstractors Association; Also Member Association of Title Men)

Let Us Be Your Grocer

The best is none too good for patrons of this store. High quality groceries are our stock in trade; reasonable prices our bid for your patronage.

Courteous Service Always

C. F. Moeller, Grocer
MULESHOE, TEXAS

Annual Auction of Dogs in Virginia Town



In Frederickburg, Va., since 1838, dogs which fall into the hands of the law or are no longer desired by their owners may be auctioned off at the dog curb, which is an annual feature. Above is a general view of the auction.

ARE YOU PLANNING ON A HOME?

If so, let us supply the materials both for its construction and its furnishing. We have all that is required to build, paint, finish and furnish the kind of home you are planning for your family. Our Building Materials and our House Furnishings are of the highest quality, and our prices are reasonable.

E. R. Hart Lumber Co.

Coal, Hardware, Furniture.....McCormick-Deering Implements

Nearly Half the Cars in Texas

To Appreciate the Remarkable Performance of This Car You Must Drive One	Are Made by	We Will Be Pleased to Give Demonstration of the New Car Any Time

There Are Reasons For This Statewide Leadership



They will perform with any car on the road with perfect safety and comfort. Forty Horse Power Engine.	Remarkable Acceleration. New 6 Brake System. Hydraulic Shock Absorbers. Shatter Proof Windshield Glass.
---	---

IMMEDIATE DELIVERY PRACTICALLY ASSURED
Shipments Received Each Week

We operate a clean and most complete service department which compares favorably with the inbuilt quality of the New Ford.

Muleshoe Motor Company

MULESHOE, TEXAS

The Muleshoe Journal
C. S. HOLLAND, Editor

Entered as second-class matter at the Muleshoe Postoffice under the act of Congress, March 3, 1879.

Resolutions, Cards of Thanks, etc., are charged for at the rate of 10 cents per line. Advertising Rates on application.

SUBSCRIPTION RATES
in Bailey County, 1 Year\$1.50
Outside of County.....\$2.00

PAVING HELPS TO MAKE A TOWN

Under the caption, "Paving Makes a Town," the Floyd County Hesperian very truly says: "That's a statement which is not altogether true, but it certainly is true that it helps a mighty lot. Of course, paving assessments are burdensome, but so are church and lodge dues, and school taxes and automobile license fees for that matter, and the grocery and dry goods bills."

"One year's use of the paving will more than pay the bills, and property on the paved streets is going to show the result of this relatively light investment made by the owners in the improvements, by being in greater demand. Paving makes a town by making the paved areas more accessible—by getting out of the mud. It is said of Dallas that the city had a terrific and prolonged campaign when the forward-looking citizens attempted to "lift Dallas out of the mud." Its tremendous growth began when its first large paving projects were finally put over."

What is true in the case of Floydada and other towns, with regard to the conditions and results of a paving campaign, is also true in Muleshoe.

DIMMITT TAKES TWO GAMES FROM MULESHOE

On last Friday the Dimmitt basketball teams invaded the yellow camp and carried away two victories. They did not win by an easy score, however, but they had enough lead and power to hold the lead and Muleshoe was unable to gain a substantial lead and hold it.

The girls' game was the hardest fought of the two, the score being very close most of the time. Muleshoe rallied in the last half of the game and it looked as though they were going to take off a victory, but our jumping center was put out on fouls and from that time on to the end of the game Dimmitt gradually pushed their score higher and higher. The game ended with Dimmitt in the lead by a 27 to 28 score. Elders of Dimmitt was high point with 32 points.

The boys' game was a little more one-sided. The Muleshoe boys seemed to be dis-organized and unable to get into very good form. The game was a fast one, but the boys were unlucky on hitting the loop. The Dimmitt crew were rather cool on getting the ball in the right place to make the loop. Newton of the Dimmitt team was the high point man of the crew, making a total of 10 points. The game ended with the score, Dimmitt 17, Muleshoe 9.

The officials for these games were: Newton of Sudan, referee for the Muleshoe; Lecker of Muleshoe, referee for the boys; Brags of Spring Lake, umpire for both games.

RAILROADS PLAN EXPRESS CONTROL IN ONE COMPANY

Washington, D. C.—The Interstate Commerce Commission has fully approved the plans of railroads to consolidate the entire express business of the country in one corporation, the Railway Express Agency, Inc.

One thousand shares of capital stock and \$32,000,000 of five per cent bonds are to be issued by the Railway Express Agency, according to a contract which was approved by the Commission, and the corporation is to acquire all of the property of the American Express Company. Express service profits will be divided among railroads in proportion to the business which they contribute and the normal issue of capital will be divided among the 88 lines which are members of the association of railway executives.

All property acquisitions were made tentatively by the railroad representatives prior to submitting the issue to the Commission, and the new arrangement will take effect March 1.

The matter, with all facts pertaining thereto, were submitted to the Commission on February 8, and the program was approved February 11, without a dissenting vote. The Commission hurried its consideration of the project, owing to the early date for the establishment of the new system.

W. M. U. MEETING

The W. M. U. met Monday afternoon with Mrs. Byron Griffiths in regular business session. There were ten members present with good reports from all chairmen of committees. We meet next Monday with Mrs. Cooker, with the lesson in Missions and Social Meeting. All members are urged to be present. New members and visitors welcome.

Reporter

L. T. Hunt of Sudan was visiting in Muleshoe Tuesday.

You Will Never Be Upset If You Can Always Keep Your Bank Balance



CARING FOR CUSTOMERS

Anybody who intrusts money to our Bank does so as an investment.

But such folks are entitled to something more than interest on such investment.

They are entitled to service, and they get it. It is our sincere desire to help everyone in solving financial and business problems. Call upon us.

Blackwater Valley State Bank

MULESHOE, TEXAS

"There is No Substitute for Safety."



Have It in Your Cabinet

You can never tell when you may need any one of several first aid remedies, so the safe way is to have them in your medicine cabinet.

We Serve Sunday Dinners

McCarty Drug Store

SPECIAL WHILE THEY LAST

1 White King Washing Powder large size	\$.50
3 Bars Toilet Soap	.25
1 Ironing Cushion Pad and Cover	1.50
TOTAL	\$2.25
All for	\$1.49

Separator Oil in Bulk--Bring Your Can

1 quart	25c
1-2 gallon	45c
1 gallon	85c

Phone Us Your Grocery Orders

Gupton Grocery Co.

Phone No. 4

Free Delivery

SAY! LET WEAVER DO YOUR TIRE AND TUBE WORK Muleshoe, Texas

Want Ads

LOST—Between West Camp and Muleshoe, a Persian Cat; color, tortoise. Finder please notify Mrs. Fred Rice. 2-2tc

WELL DRILLING, windmill wrecking. Have been here about a year and intend to stay. Prices right. Will appreciate your trade.—J. B. Cunningham, Muleshoe. 2-4tp

March and April hatched pullets pay best. See us now for Purebred White Leghorn Eggs.—McAdams Poultry Farm.

LISTEN—We are always ready and waiting for harness and shoe work. J. M. McAdams, the Harness and Shoe man.

WANTED—Parties with \$300 to represent Manufacturing Co. Something new. Bear investigation. Write Box 1262, Amarillo, Texas.

March and April hatched pullets pay best. See us now for Purebred White Leghorn Eggs.—McAdams Poultry Farm.

FOR SALE or Trade—One good "Old Trusty" incubator, size 150 egg. Just used two seasons. Will take half price or will trade for pigs or chickens. See Mrs. E. Waller, 15 miles West of Muleshoe. 2-ft

FOR TRADE—Desirable home in Dallas for Bailey County farm land. Will pay balance in cash. Address, T. M. Lawson, 5214 Garland Ave., Dallas, Texas.

FOR SALE—Used Deleo light plant, in good condition. Inquire at Journal office.

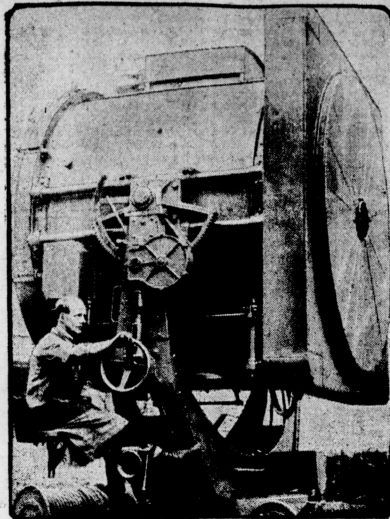
CALLED TO BEDSIDE OF MOTHER

L. E. and C. C. Raggsdale left Tuesday in response to a telegram saying that their mother, Mrs. W. E. Raggsdale, had taken ill suddenly. Mrs. Raggsdale, who lives in Dickens County, was visiting a daughter, Mrs. A. L. Fryar, of Matador, when she took sick. Word was received here Wednesday that she was resting easier and seemed somewhat better. The nature of her ailment has not yet been learned. The Journal joins with the many friends of these boys in wishing for their mother a speedy recovery.

LEAVE FOR CALIFORNIA

Mr. and Mrs. W. H. Kistler and daughter, Beulah, left Monday for Los Angeles, California, to make their future home. Mr. and Mrs. Kistler are among the oldest settlers of this section, and we regret to see them leave but trust they will find better health in their new location. They were accompanied by Miss Jane Buey, who will make an extended visit with her aunt, Mrs. Harry Curtis, of Long Beach.

Largest Searchlight in World



This is the largest searchlight in the world, which has just been completed in London for fortress use. The light is nearly 7 feet in diameter and has a candle power of \$300,000. A light such as this by this searchlight could be visible for hundreds of miles if the limitations of the horizon could be overcome.

Born—To Mr. and Mrs. R. L. Tivis, February 8th, a ten pound boy.

Mrs. G. A. Anderson left Monday for Lubbock to receive medical attention.

Mr. and Mrs. Chas. White of Stinnett, Texas spent the week-end with relatives here.

Messrs. J. O. Jones and L. C. Jones were business visitors in Lubbock Tuesday.

ELECTRIC SHOCKS KEEP FISH FROM IRRIGATED CANAL

Electrified screens have been erected at the openings to irrigation canals in various parts of the West to keep fish from entering the channels, says Popular Mechanics Magazine. A low-frequency current is used and does not injure the fish, but gives them a distinct warning to keep away from the headgates.

NEW CRUISER BILL IS SIGNED BY PRESIDENT

Washington, D. C.—The last act necessary to the authorization for adding fifteen cruisers and one giant airplane carrier to the United States Navy, was consummated in Washington February 18th, when President Coolidge signed the cruiser bill.

This constituted the greatest single step that has been taken since the Washington arms conference to overcome British naval superiority. Even with these cruisers, however, the American navy will still lag behind the British navy in this class of vessel.

By Congressional direction, all of the ships must be laid down within three years. The program calls for beginning construction on five each year for the next three years. This time limitation was hotly fought in Congress and was opposed by President Coolidge. His opposition to this provision was based on the view that it called for expenditures at future dates with no advance knowledge as to the condition of the treasury when they would be made.

The presidential signature was not attached, however, until he had summoned Congressional leaders to the White House for a conference as to whether they could provide the fifty million dollars necessary to start the work. They all assured him that the money would be provided.

The ultimate cost of the cruiser program is estimated at about \$275,000,000, only about fifty million of which will be necessary, however, until the fiscal year of 1931.

CLOVIS NEWSPAPERS ARE SOLD TO KANSAS MAN

The Clovis News and Clovis Journal were purchased last week by Mack Stanton, of Kansas. The following is from this week's edition of the Journal:

Mack Stanton, who hails from Tennessee, with newspaper experience in Missouri, Kansas and Tennessee has closed a deal through which he has acquired The Clovis Journal and The Clovis News.

According to the new owner, for the time being, the Clovis papers are to be operated separately as they now are, each going to its own subscribers, but both to be published with the combined forces of both behind each newspaper. The outgrowth of the situation according to Mr. Stanton, is the probable establishment of an evening daily newspaper for Clovis.

The Journal was owned by Capt. E. E. Hull and son, Jack Hull, while the News was formerly owned and edited by E. L. Manson. Jack Hull and E. L. Manson will remain with the new organization. Hull to remain as city editor of the proposed daily paper, and Manson to assume management of the printing plant that is to be operated as a separate unit of the Stanton interests.

In the event the daily is established soon, a fast newspaper press will be installed and the equipment otherwise whittled into shape for the stress of daily newspaper purposes.

VALENTINE PARTY

Members of the Baileyboro B. Y. P. U. met at the home of C. F. Garth last Thursday night for their Valentine party. Hearts and cupid were used by the house. A number of Valentine by the social committee for decorating games and other games were enjoyed by all. Refreshments consisted of white cake and red lemonade, served at a table decorated in red and white.

Wm Lee, a Chinese sailor, married three white women in Liverpool and courted several others. He was ordered deported to China.

Cleaning Rids Suits of Germs

So much destruction of clothes is needless. Largely because of saving, we're heedless. Many a suit needing cleaning is let go too long. Then, when it comes to pieces wonder what's wrong. Cleaning isn't just riding the suit of grease and dirt; it's partly to get rid of germs that will hurt.

Muleshoe Tailor Shop

OPPOSITE THE BANK

The Muleshoe Produce Wants Your Business

We conduct a clean, honest Produce House, and ask for your patronage on a basis of quick, courteous service, with honest and fair treatment. We pay top market prices at all times. Heavy hens are higher now, so bring them in. Also your cream and eggs.

MULESHOE PRODUCE CO. Elmo Head, Mgr.

The Best Prices For Your Grain and Feed

And our heartiest co-operation in every way possible are assured you when you market your crops with us.

SEE US FOR

MERIT BRAND FEEDS

We have just received a shipment of these feeds, including—

Milk Maker, Hog and Poultry Feed

They are the best on the market. If you have used them, you know.

Muleshoe Elevator Co. MULESHOE, TEXAS

SPRING COATS



Exquisitely Styled Coats as fresh as the season itself. They are made in the very new colors and trimming effects. To really appreciate the smartness and their value, you must see and try them on.

Stone's Special Price

\$10.00 to \$35.00

EXTRA-EXTRA!

Tune in on KRLD at Dallas from 9:15 to 10:00 a. m. for the C. E. Stone Company program.

FAY FROCKS

Beautiful Dresses of georgette, crepes, and attractive prints in styles that are new and different.

Stone's Special Price

\$10.00 to \$35.00

ENSEMBLES

that range from \$30.00 to \$45.00



PURSES

that have just arrived to complete your outfit.

Fay Hats

In a bevy of beautiful advance styles, fabrics, colors, and fascinating trimmings. Small and large shapes of smartest design, every one as daring as can possibly be. The price is especially attractive.

\$5.00



Rubybell Hats

Just the kind of hats that smart women will wear will be found in this advance showing of Hats. Every hat delightfully trimmed and detailed. Sizes for Misses and Matron.

Stone's Special Price

\$6.00

Slippers—Pumps—Oxfords

In Styles That Are New and Different



A host of new toes and new trimmings with both high and box needs.

Stone's Special Price

\$5.00 \$6.00

Stone's Shoes combine Style, Comfort and Economy.

Silk Hose

Full fashioned and trim fitting ankles, silk from top to toe. SEMI-SERVICE WEIGHT IN THE NEW

Spring Shades that are most desired

STONE'S SPECIAL—

98c

ALL SILK CHIFFON HOSE.

Clear, Sheer, Lustrous, Alluring

\$1.59



C. E. STONE COMPANY

CHAIN STORES CLOVIS, N. M.

Isolated Towns Are Short Of Food

Durango, Colo.—A snow storm in the Animas Canyon had caused suspension yesterday of the efforts of the section crews to cut through snow slides to the isolated towns whose inhabitants are suffering from a shortage of food.

A telephone message from Silverton yesterday morning said Durango's supply of meat, bread, butter and eggs had been exhausted for two days and that other provisions were low. Silverton had very little meat and no butter and eggs.

The workmen, who were forced to seek shelter from the storm last night, had expected to clear the last of the slides from the tracks of the Denver and Rio Grande Western railroad by tomorrow so a supply train could be moved into Silverton from Durango.

THE EMPIRE CALLED TEXAS

The news that nearly all of the Santa Fe Railway's new construction program for 1929 lies in Texas is significant of that State's status as the great railroad frontier of this day. Roads like the Santa Fe do not make hasty decisions to build new lines, particularly in a day when motor bus and truck competition is becoming increasingly keen. Additions to the existing lines are constructed only when future business promises profits. It is apparent that the Santa Fe sees profits in those sections of Texas especially in the Panhandle—where the lines are to be laid.

The last twenty years have seen a tremendous agricultural, commercial and industrial development in Texas. In the Panhandle and "staked plains" country, once given over almost entirely to cattle, wheat and other crops on top of the soil and mineral products underneath are rapidly lessening the size of the old ranges. The State retains its supremacy as the premier producer of cotton in America, and in addition is achieving an industrial 2nd commercial primacy. Second only to New York in merchandise exports, Texas, not only has made use of its natural outlets to the sea, but has developed others, notably at Houston.

Standing fifth in population, with nearly 5 1/2 millions within its borders, sprawling like a colossus over the South and Southwest, large enough for four or five good-sized states, Texas is just on the threshold of her real greatness. The West will watch with interest this development of an empire which is a striking hybrid of southern and western qualities.—Kansas City Star.

COOKE COUNTY FARMERS PROFIT WITH GRAPE CULTURE

Among the thirteen farmers in Cooke county who set out Carman grapes at the instance of county agent L. L. Johnson in 1925 is Will Austin whose one and one-half acres brought him \$450 last season. The vines cost \$34.80 and he has been to the expense of cultivating, manuring, and pruning but the 11,250 pounds of grapes cut from these vines last season represent a good profit on the investment. The vines averaged 25 pounds of grapes each. An effort was made to sell the grapes of these demonstrators by the car but this was finally abandoned in favor of local sales.

NEW GARDEN BULLETIN IS NOW AVAILABLE AT A. & M.

College Station, Texas—Gardening as a science, an art and as a means to health is discussed in a recent bulletin published by the A. and M. College Extension Service and distributed free upon request under the name, "Gardening, B-70" at the work of J. F. Rosborough, horticulturist in the extension service, and Frank S. Jamison assistant professor of horticulture in the School of Agriculture. It is the first complete garden bulletin issued by the Extension Service in a number of years and the only one available at present strictly applicable to Texas conditions.

HOME CANNING PUTS EXTRA DOLLARS IN BANK; BUYS HOME

Wellington, Texas.—Mrs. Tom Jones of Buck Creek Home Demonstration Club, who canned 1,000 quarts of products last year says "Some of everything from the garden and orchard goes into cans for winter use. I can with the idea of a whole-meal-unit in mind. I have no extra help in the house but by a well planned emergency shelf, I am able to leave my 12 year old daughter to prepare a canned-at-home dinner for the cotton pickers while I go to the fields to act as book-keeper for my husband. We have paid for our home, improved it, added several valuable labor-saving devices, and put two boys through an affiliated high school by preserving all excess foods for home use according to a systematic whole meal plan."

HE DID IT

Teacher: "Norman, give me a sentence using the word, 'diadem'."
Pupil: "People who drive onto railroad crossings, diadem sight quicker than those who stop, look and listen."

INFORMATION PLEASE

"Take your hands off of me, you brude!" What do you think and "Give me time, girls. That's just what I was trying to find out."

FIRST!

We are to observe a national holiday dedicated to a man who was always "First."

It was said of him that he was "first in war, first in peace and first in the hearts of his countrymen."

Washington's Birthday! The day on which we pay tribute to one of the noblest spirits that ever breathed the air of America.

His achievements and ability are too well known even to be mentioned. What American has not thrilled to the story of his life! Important, however, is the necessity of learning from the example of Washington—let us each try in our own way to be "first" in whatever service we render or occupation we practice.

And Washington's career proves to us that to be "first" does not require questionable acts, indelicate aggressiveness, or disregard of the "other fellow."

Washington teaches us that to be "first" we must have high qualities of heart and mind; must strive to be honest and kind at all times; must apply ourselves thoroughly to whatever we wish to do well.

Washington rose to great esteem because of qualities that are worthy of emulation. He did not become "first" by pushing others to the rear. He became a leader both in war and peace through his intrinsic ability and intelligence.—Exchange.

BETTER FOODS IMPROVE HEALTH IN MOTLEY COUNTY

Matador, Texas.—A better foods program conducted in Motley county last year by Miss Norma Morrow, home demonstration agent, has resulted in 75 percent of home demonstration club women using more new fruits and vegetables and cooking vegetables and meats better. Nearly every member has followed the practice of preserving foods for winter use and half of them have used the canning budget advocated by the Extension Service to insure a year-around supply of health giving foods for the family. Reports to Miss Morrow show that the general health conditions of the families who follow these practices have been improved, and the study of food in relation to health is becoming very popular in Motley county.

TERRACING LAND PAYS GOOD RETURNS TO BELTON MAN

Belton, Texas.—An extra bale of cotton for every ditch stoppered up is the boon of one farmer near here who terraced a badly eroded field last year. This was done as a part of the terracing program of J. M. Parks, county agent, who reports a total of 7,000 acres terraced in 1928.

Yes, the 5-cent cigar is back. And the five cents are of rope, burs, whip, cabbage, grapevine and corn silk.—Exchange.

KIT CARSON, JR. BURIED BESIDE HIS FATHER AT TAOS

Kit Carson, Jr., son of the famous scout and frontiersman, was buried at Taos, N. M., on last Friday beside his father, who achieved notable distinction by his services in New Mexico as United States Indian agent.

After having served as a guide to Fremont from 1842 to 1847 and having accompanied him to California, Kit Carson settled in Taos in 1854 and was appointed Indian agent. The scout died in 1868.

The son who was born in Taos died at his home in La Junta, Colo., Saturday night, February 9th. He was 70 years old.

A SALARIED CAT

Tom, an ordinary brindled cat, is perhaps the only feline in the world in the employ of a railroad company. He regularly is entered on the books of the Kansas City Southern at Texarkana, Ark., to draw compensation of \$1.50 a month, which is used to buy his food. Damage to freight caused by rats was heavy last fall, and Tom was "hired" when his ability as an exterminator of rodents was proved in competition with a number of his kind. The Kansas City Southern had been spending \$10 to \$15 per month for poison, so Tom's salary check was approved. Tom observes regular hours and never worries concerning overtime.

A. R. Matthews, M. D.

Physician and Surgeon
MULESHOE, TEXAS

Jack Rowan

SUDAN, TEXAS
General Auctioneer
Farm and Stock Sales a Specialty
Dates Made at This Office

It Will Pay You
To See Us Before You Sell Your
Kaffir, Maize, Sudan and Corn

We pay the best market prices at all times and can assure you of our co-operation in the marketing of your crops. Don't fail to get our prices if you have any of these products to sell.

LARIAT GRAIN CO.
L. SIKES, Mgr.

JUST A MINUTE!

BEFORE YOU ORDER YOUR TIRES FROM A MAIL-ORDER CONCERN

Here's a Question for Every Tire Buyer

When the same arguments have been repeated by a dozen tire manufacturers to win your business—

When every sales scheme has been tried to make you think that you alone are the one that gets the big tire bargain—

When you have discovered by experience that the only test of a tire is its performance on the road—

—ask yourself this question:

WHY DO MORE PEOPLE BUY GOODYEAR TIRES THAN ANY OTHER KIND?

For Goodyear makes thousands more tires every year than any other manufacturer.

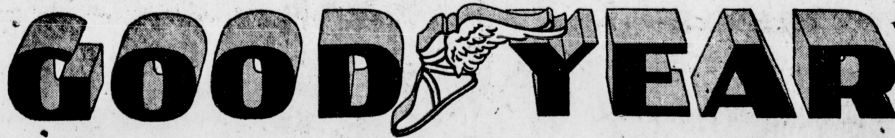
Goodyear supremacy has continued through ten years of unbroken leadership.

It is not boasting to say that more people buy Goodyear Tires because on the average they outperform any other tire upon the road. It is the truth.

True, because Goodyear does not cut quality to meet cut prices. Goodyear asks a fair price for a tire on which is concentrated all the skill of the world's greatest manufacturer of rubber.

Why has the largest group of car owners in the world bought more than a hundred and ten million Goodyear Tires?

IF YOU DON'T KNOW THE ANSWER, COME IN AND SEE THE NEW GOODYEARS. A SIZE TO MEET YOUR NEED.



VALLEY MOTOR COMPANY

MULESHOE, TEXAS

Goodland News Items

A short program followed by a Valentine box was enjoyed by the pupils of the Goodland school Thursday afternoon.

On Friday night a short play, followed by a party, was given at the Goodland school house. Many interesting games were played, after which hot chocolate and heart shaped cakes were served to the following:

The Weaver family, the Holloway family, the Locke family, the Beatty family, the Hanover family, Mrs. and Mrs. Sheppard, the Sanderson family, Robert Sanders, La Verne Robinson, Thelma, Otis and Melvin Bybee, Ferris and Cecil Stokes, Laura, Holland and Floyd Green, Mary and R. B. Crimes, the Holt family, the Anderson family, Ernest Stevens and Faye Kemp.

The W. M. U. met at Goodland Saturday afternoon. A very interesting program was given. Those taking part in the program were: Katherine Hanover, Rosemary Hanover, Faye Kemp, Mrs. Hanover, Mrs. Stokes, Mrs. Holloway, and Mrs. Sheppard.

NEW CHEVROLET SIX VIEWED BY MILLIONS OF PEOPLE

Among other things, the new Chevrolet six, now on display by Valley Motor Company, of Muleshoe, holds the record of having been viewed by more people than ever before saw a new automobile between the time of its announcement and the time the first deliveries were made.

Between the mid-November announcement of the new Chevrolet 1929 line and the time of the first delivery, January 1, it is estimated that over 10,000,000 persons paid it the tribute of personal inspection. As great as was the enthusiasm of Chevrolet officials for the new product, none of them foresaw the overwhelming public interest that was to rebound to the new Chevrolet line.

HOUSE REJECTS STATE SCHOOL SCHEME BY 86 TO 41 VOTE

Austin, Texas.—Pleas that education should be removed from politics by providing that the Superintendent of Public Instruction be appointed by a State Board of Education went unheeded Tuesday when the House voted 86 to 41, to strike out a section of the Shaver bill which would have eliminated the superintendent from the list of elective officers.

Further action on the bill, which would establish a board of nine members, was deferred in order that the House might turn to special business set for the day.

Representative Charles N. Shaver of Huntsville, author, said that action of the House seriously interfered with the original purpose of the bill.

A change in the Constitution allocating an appointive educational board was authorized by the voters at an election last fall.

The Shaver measure provides also that the board shall assume duties now devolving by law on the State Textbook Commission, that it shall prepare a financial report of the needs of educational institutions to be submitted to the Legislature and that it shall make recommendations concerning proposed establishment of new schools.

FENCES OFF FIELD FOR TURKEYS WITH PROFIT

Dublin, Texas.—Separating turkeys from chickens is quite necessary in black head control and has been followed out with good results on seven farms in Erath county this year. E. W. Bradley varied the usual procedure of penning chickens and allowing turkeys to range by fencing off about 12 acres in a corner of a field nearest the farmstead and in this enclosure planted milo, corn and peas. The turkeys were turned in here and in the late summer and fall a litter of pigs and several calves as well. According to his statement to Mark Bradley, Erath county agent, this patch brought the largest return for the least labor of any part of the farm.

FLORESVILLE MAN WINS PROSPERITY ON SANDY FARM

Floresville, Texas.—Three years ago a farmer near here found that his small blackland farm was paying him, his wife and children a combined salary of fifty cents per day growing cotton. He traded it off for a larger worn-out sandy land farm and from it has earned a new house, new barns, chickens and chicken houses, cows and a big car. "It came about," says E. D. Beck, county agent, "because Mr. Chihmann paid back to the soil its just share of the profits. Here is his method: Peas in corn, followed by oats; peas for hay and pellets for green manure; terraces to maintain the soil and conserve the water; every acre grazed by cows at some time during the year, and all lot manure hauled to the land. He also uses all his neighbor's stubble manure. Heart and cane are raised after peas have been plowed under, thus supplying roughage to supplement oat pasture in winter and sudan pasture in summer."

TWO IN ONE

"It's so good of you doctor, to have come this far to see my husband."

TECH. RESERVE OFFICERS TRAINING CORPS GRANTED AID BY THE GOVERNMENT

The application of Texas Technological College to the federal government for Reserve Officers Training Corps aid under section 550 National Defense Act has been approved by the War Department, according to a letter received at the College by Lieutenant H. E. Killin, commandant of the present military corps at the College.

With the enrollment of 300 cadets in the work at the College, a senior R. O. T. C. unit may be secured which will provide full equipment and officers together with regular pay of 70 cents per day to all juniors and seniors taking the work.

W. M. S. MEETING

The Ladies' Missionary Society of the Methodist Church met at the home of Mrs. Clyde Holland. The meeting opened by singing "Savior, More Than Life to Me." The business of the organization was attended to. The meeting was closed by repeating the Lord's prayer. The next meeting will be at the home of Mrs. C. R. Parrett, in the country.

SUBSCRIBE FOR THE JOURNAL

AMUSEMENT WAKES AS HE FINDS JOKE IS ON HIMSELF

J. A. Graves, a machinist of Luling, Texas, watched a comely maiden seat herself in his parked car and drive off last Saturday, smiling as he pictured her embarrassment when she discovered her mistake and returned with the car. But he had room for doubt as to his amusement at her embarrassment Saturday night, as the young lady had not been seen after she entered the highway at the edge of town and headed toward Houston.

OLD FIDDLERS' CONTEST

Parmer County is to have another Old Fiddlers' Contest on Wednesday night, February 27, at the Friona High School auditorium. The object of this contest is to select the best fiddler from Parmer County to represent the county at the Tri-State contest to be held in Amarillo at a later date.

The county contest is being sponsored or managed by O. F. Lange, chairman of the entertainment committee of the Friona Chamber of Commerce.—Friona Star.

On complaint of her son-in-law, Mrs. Elizabeth Colver was ordered by court to quit his home and leave London forever.

STATED MEETING OF Muleshoe Masonic Lodge, 2nd Tuesday night in each month.

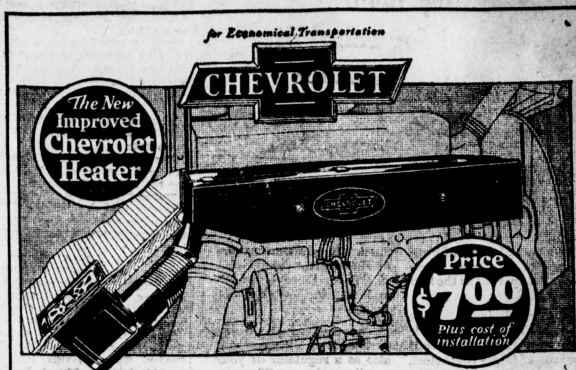
VISITORS WELCOME
W. T. BLACK, W. M.
J. B. ROBERTS, Sec.

MICK The Auctioneer

Will cry your Poles anywhere. References. Come and hear me. Phone thru Dimmitt. P. O. Muleshoe or Frigg.

O. N. ROBISON General Auctioneer

20 YEARS EXPERIENCE Will Give My Services Free to Schools or Societies Giving Box Suppers. Muleshoe, Texas. Route No. 1



Designed by Chevrolet Engineers to Fit the Chevrolet Car
You Can Now Save \$2.00 On the New Chevrolet Heater
and enjoy warmth and comfort during cold weather.
Former Price—\$9.75, Installed
Reduced Price—\$7.75, Installed
We have only a limited supply at this reduced price.
VALLEY MOTOR COMPANY

Road Information Cozy Rest Rooms
You Need Our Service
We Want Your Trade
LET'S CO-OPERATE
Here is where you get the famous Phillips "66" and Magnolia Products.
Good Tires and Tubes Worth the Money
WE FIX FLATS
Jones Service Station
"SERVICE WITH A SMILE"

FURNITURE

DIRECT TO CONSUMER
CLOVIS FURNITURE COMPANY

Cash Plan
Money is a medium of exchange by which we determine values—value is the result of proper expenditure of money—thus exterminating waste and extravagance. Extravagance is reckoning values that do not exist. Time is money but do you know its value. What is its worth? Yours? Help yourself—save money at the Clovis Furniture Company's store. In buying your furniture demand cash prices—credit terms have nothing to do with furniture values. Credit is one thing—furniture is another—buy your furniture from Clovis Furniture Company's store at its lowest cash value. Buy direct.—No middleman's Profit.
WE WILL APPRECIATE A VISIT

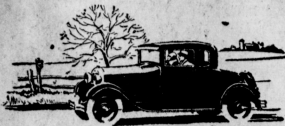
DIRECT TO CONSUMER
CLOVIS FURNITURE COMPANY

Credit Plan
Credit is a fundamental of business by which 'money' or its equivalent is sold at a profit, and for which payment is to be made upon a fixed date or over an extended period of time. Time is the ingredient by which profit should be regulated. A regulated profit is a fixed amount agreed to by and between the parties concerned. Credit is an essential thing—if you use it—know its cost. Help yourself save money at this store. Don't buy credit at just any old price, but buy your furniture first at its lowest cash value—at Clovis Furniture Company's store. Buy all the terms you need. Pay 1 per cent per month.
OUR STOCK IS COMPLETE

We Have a Buying Plan That Will Suit the Financial Convenience of Every Buyer
We have an insurance plan which provides that the death of the supporting head of the family automatically cancels any balance which you may owe us on your account.
Think of what this means in time of need.

Clovis Furniture Co.
Associated With THE AMARILLO FURNITURE CO.
First Door South of the Post Office CLOVIS, NEW MEXICO

Fuel system of the new Ford has been designed for reliability and long service



The practical value of Ford simplicity of design is especially apparent in the fuel system.

The gasoline tank is built integral with the cowl and is unusually sturdy because it is made of heavy sheet steel, tinned plate to prevent rust or corrosion. An additional factor of strength is the fact that it is composed of only two pieces, instead of three or four, and is electrically welded—not soldered.

Because of the location of the tank, the entire flow of gasoline is an even, natural flow—following the natural law of gravity. This is the simplest and most direct way of supplying gasoline to the carburetor without variations in pressure. The gasoline feed pipe of the new Ford is only 18 inches long and is easily accessible all the way.

The gasoline passes from the tank to the carburetor through a filter or sediment bulb mounted on the steel dash which separates the gasoline tank from the engine.

The carburetor is specially designed and has been built to deliver many thousands of miles of good service.

Since all adjustments are fixed except the needle valve and idler, there is practically nothing to get out of order.

The choke rod on the dash acts as a primer and also as a regulator of your gasoline mixture. The new hot spot manifold insures complete vaporization of the gasoline before it enters the combustion chamber of the engine.

As a matter of fact, the fuel system of the new Ford is so simple in design and so carefully made that it requires very little service attention.

The filter or sediment bulb should be cleaned at regular intervals and the carburetor screen removed, and washed in gasoline. Occasionally the drain plug at the bottom of the carburetor should be removed and the carburetor drained for a few seconds.

Have your Ford dealer look after these important little details for you when you have the car oiled and greased. A thorough, periodic check-up costs little, but it has a great deal to do with long life and continuously good performance.

FORD MOTOR COMPANY

A CORRECTION

In last week's issue, the Journal carried a news item to the effect that F. L. Gaede was visiting his brother, A. C. Gaede. Mr. A. C. Gaede claims no relation to F. L. Gaede and we are glad to correct the mistake.

Mrs. Jimmie Smock of Clovis, spent Wednesday with her daughter, Miss Sis Saunders.

Mrs. H. C. Edmonds has been on the sick list the past week, but is slightly improved at this time.

Why Not The Best?

NOW IS THE TIME TO BEGIN PREPARATION FOR THOSE EARLY PULLETS, MARCH AND APRIL HATCHED PULLETS ARE THE ONES THAT PAY. WE HAVE PURE BRED WHITE LEGHORN EGGS FOR SALE.

McAdams Poultry Farm

MRS. W. B. McADAMS, Prop.

Start Those Hens Laying Today

Put them on a paying basis. The way to do this is to feed them the proper rations. We have an ideal poultry feed

CHOWDER

Get a supply of it and prove to yourself that your hens can be made to pay dividends. They are not a profitable investment if they fail to do this.

We will pay you the Best Prices for your grain and lend any assistance we can in marketing your crop.

Bailey County Elevator Company

YL News Items

Helenie Head was a dinner guest at Zorn Mae Sheffer's last Sunday. Miss Lucy Robison spent Sunday with Miss Bertha Lee Bales. Misses Kathleen Willman and Vera June Beller visited Miss Gladys Burman Sunday.

Progress school put on a play entitled "A Fortunate Calamity" at the YL school house Thursday evening. It was well received.

Evelyn Wilterding spent Sunday with Alymne Evans. Miss Leslie Head returned to Louisiana last Sunday from a visit with home folks.

Mrs. J. J. Head returned home from Snyder last Saturday evening where she has been visiting relatives.

Mr. and Mrs. O. N. Robison left Thursday week for Windsor, Illinois, where they were called on account of the death of Mrs. Robison's brother-in-law.

Mr. and Mrs. J. S. Horsley and daughter, Miss Artie Vera, visited Mr. and Mrs. R. L. Kimbrough this last week-end. Miss Edwina Horsley, who has been visiting Mr. and Mrs. Kimbrough, returned home with them.

Mr. L. O. Kimbrough and son, Carlos, left for Brownfield, Texas, Sunday. They will visit Mr. Kimbrough's daughter, Mrs. A. B. Weeks.

Mr. and Mrs. Vern Bearden visited his sister, Mrs. H. E. Wilterding, last Thursday evening.

Mr. and Mrs. S. E. Morris, Jr., visited Mr. and Mrs. R. L. Kimbrough Sunday.

In the regular meeting of the Civil Government Club, which met Friday, the class divided into a House of Representatives and Senate and appointed a governor. Several bills were passed, some of which were vetoed by the governor, but were passed over his veto.

After this program, the officers for this month were elected as follows:

J. T. Shofer, President; Alice Wilterding, Vice-Pres.; Edwina Burman, Sec.-Treas.; Albert Trawek, Reporter.

Francis Evans was absent from school Monday.

Mr. and Mrs. Ryan and children, Mr. and Mrs. E. C. Priboth and sons, and Mrs. Guss Priboth motored to Clovis Sunday afternoon.

Reporter

WHITE-FOSTER

Mr. Charles White and Miss Mary Belle Foster were married at Simitet, Texas, last Saturday. Mr. White is a son of Mr. and Mrs. J. A. White of the Progress community, in this county, and the bride's parents live at Simitet. Charles and his brother are engaged in business at Simitet, where he and Mrs. White will make their home. We join their friends here in wishing for them a long and happy married life.

Mr. and Mrs. E. L. Gardner of Hollis, Oklahoma, arrived Sunday to look after business interests here and spend a few days with their daughter, Mrs. J. M. March and family.

Mr. and Mrs. Tobe Wagon returned the latter part of last week from a trip through New Mexico. While there Mr. and Mrs. Wagon visited the Carlsbad Caverns.

NOTICE OF SALE

STATE OF TEXAS.

COUNTY OF BAILEY.

NOTICE IS HEREBY GIVEN That by virtue of a certain Order of Sale issued out of the Honorable District Court of Bailey County, of the 29th day of January, 1929, by J. L. Alsup, Clerk of said Court for the sum of fifty six hundred thirty-five and 78/100 (\$5635.78) Dollars and costs of suit, under a Judgment, in favor of W. B. Newsome, et al in a certain cause in said Court, No. 296 and styled W. B. Newsome, et al vs. Sam Hoffman et al, placed in my hands for service.

H. A. Douglas, as Sheriff of Bailey County, Texas, did, on the 29th day of January, 1929, levy on certain Real Estate, situated in Bailey County, Texas, described as follows, to wit:

Situated in Bailey County, Texas; and being labor No. 5 in League No. 111 of the Crosby County School lands, containing 172.1 acres, and being the land described in the deed from W. B. Newsome and Tom W. Newsome to Sam Hoffman, dated October the 12th, 1925 and recorded in Book 14, Page 225 of the Bailey County Deed Records.

The said judgment and foreclosure being against the defendant, Sam Hoffman, the defendant, Security State Bank of Wetmore, a corporation, and the defendant, Parham Lumber Company, a corporation, and levied upon as the property of Sam Hoffman et al, and that on the first Tuesday in March, 1929, the same being the 6th day of said month, at the Court House door, of Bailey County, in the town of Muleshoe, Texas, between the hours of 10 A. M. and 4 P. M., by virtue of said levy and order of sale I will sell said above described Real Estate at public vendue, for cash, to the highest bidder, as the property of said Sam Hoffman, et al.

And in compliance with law, I give this notice by publication, in the English language, once a week for three consecutive weeks, immediately preceding said day of sale, in the Muleshoe Journal, a newspaper published in Bailey County.

Witness my hand, this 6th day of February, 1929.

H. A. DOUGLASS, Sheriff of Bailey County, Texas.

COUNTY BASKETBALL TOURNAMENT HELD AT MULESHOE SATURDAY

The County basketball tournament, under the auspices of the Interscholastic League, was held at Muleshoe last Saturday at the High School gymnasium. There were not very many teams represented at the tournament this year, there being only three boys' teams and two girls' teams. The boys' teams entered were Bula, YL and Muleshoe. Muleshoe won first place and Bula won second.

The girls' teams represented were Muleshoe and YL. Muleshoe won first place in the girls' game.

The officials for the tournament were Newton and Brown of Sudan, Newton calling the girls' game and Brown calling the boys game. These men were excellent officials and gave good satisfaction to all concerned.

If the plans of Coach Kendrick mature, he will take the boys to Lubbock for the district meet which will be held next Friday and Saturday at Texas Technological College.

NOTICE TO THE PUBLIC!

We are equipped with Electric Machinery and experienced workmen. We use the best Oak Tanned Leather and we strive to please all we do business with on a money back guarantee. We have on hand a supply of No. 1 Neels Foot Harness Oil so bring in those old dry harness and let us give them an oil bath. We repair harness, make new car tops and curtains or repair your old ones. Your business appreciated. Where service counts, we win.

Service Shoe Shop

I. H. ROBINSON, Prop.
Next Door to Old Gupton Hotel


PIECE GOODS For Your Spring Dresses

We have a splendid assortment of Spring Dress Goods materials in Silks, Prints and Percales, which can be made into lovely dresses that will be appropriate for all occasions. Also a nice line of Ginghams and other materials for house dresses, aprons, etc. Let us show you our line of piece goods and quote you our prices—both the quality and price will please you.

Gardner Dry Goods Company

"The Price is the Thing."

for Economical Transportation



National Demonstration Week!

Drive the Chevrolet Six

No matter how closely you inspect The Outstanding Chevrolet of Chevrolet History—you will never appreciate what a wonderful achievement it is until you sit at the wheel and drive. So this week has been set aside as National Demonstration Week, and you are cordially invited to come in and drive this sensational automobile.

Not only is the new six-cylinder valve-in-head motor 32% more powerful, with correspondingly higher speed and faster acceleration . . . not only does it provide a fuel-economy of better than twenty miles to the gallon—but it operates with such marvelous six-cylinder smoothness that you almost forget there is a motor under the hood!

Regardless of the car you may now be driving—come drive this new Chevrolet Six. Come in today!

-a Six in the price range of the four!

The COACH \$595	
The Tourer . . . \$525	The Coach . . . \$725
The Sedan . . . \$525	The Sedan . . . \$595
The Light Duty . . . \$505	The Light Duty . . . \$400
The 1 1/2 Ton . . . \$675	The 1 1/2 Ton . . . \$545
The Sport . . . \$695	The Sport . . . \$650

All prices f. o. b. factory, Flint, Mich.

Valley Motor Company

MULESHOE, TEXAS

QUALITY AT LOW COST