

WASHINGTON AND
"SMALL BUSINESS"
By C. WILSON HARDER

Despite the humid heat of summertime Washington, a chill wind blows off the Potomac into OPS, the Office of Price Stabilization, better known as the Office Plenty Screw.

In closing up business for the session, Congress handed the Office Plenty Screw a \$43 million cut in its budget. \$103 million was requested.

More than half of the 17,000 people employed, and it is to be noted the word "employed" is used instead of "working" in the process of dismissal, it is announced.

But apparently none of the geniuses that have sparked the Office Plenty Screw to the heights of ridiculousness will walk the plank.

A curious situation, but with a cut in funds of 40%, approximately 55% of the OPS employees will be dismissed.

Simple arithmetic indicates dismissals will be among the lower paid clerical workers, leaving intact in seats of upholstered leather chairs, the high paid brains of the Office Plenty Screw.

U. S. taxpayers will still pay plenty to keep over-stuffed chairs in top OPS offices filled.

Consider 95,000 American families with three children and annual incomes of \$5,000 each. Each of those families have income for deductions of \$632 per year. Thus all income tax paid by 95,000 families will just pay for the Office Plenty Screw.

In the meantime, MSA, Marshall Plan successors continues

to shovel out American taxes at an unprecedented rate. In three consecutive days, covered by MSA Bulletin Nos. 123, 124 and 125, a total of \$22,972,000 was given away, or an average of \$7,624,000 per day, about the daily average so far this year.

Every day a whole year's income tax from 12,000 families with three children and incomes of \$5,000 are given away.

The excuse given is defense.

Yet just one item was \$500,000 worth of high priced coffee given to Greece.

The blue print of the job needed from individual citizens to prevent national bankruptcy was fairly well revealed in Chicago. The democratic party is committed to continuance of futile giveaway programs, and the GOP platform also calls for the continuance of "foreign aid" which covers such items as coffee and tobacco.

Here is the crux of the entire situation. A large share of the billions given away are in the form of manufactured goods, produced by just a handful of huge U. S. corporations.

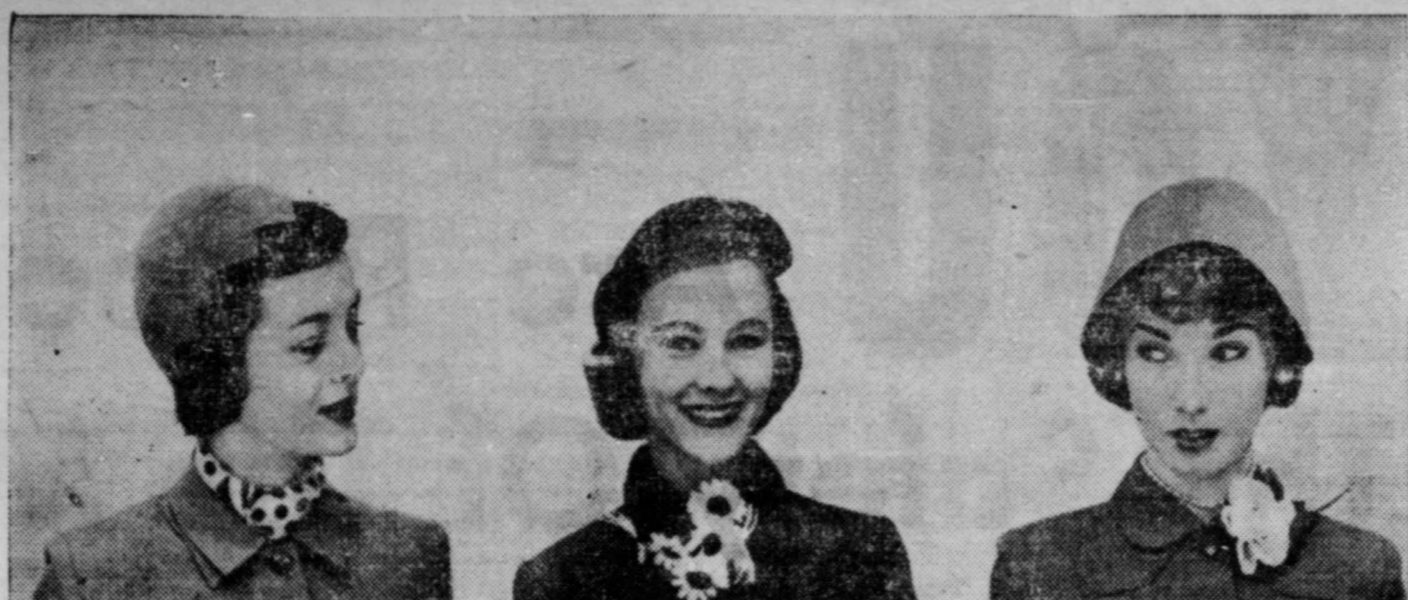
Their "sales" abroad are paid for by every independent businessman, and salaried person in the nation.

So far the only prominent voice heard condemning this waste of U. S. taxes is that of Herbert Hoover. Little, if any, heed is paid to his warnings, in either party.

Thus it becomes apparent that if the American people are to get out of the mire of waste and inflation, they must pull themselves up by the bootstraps.

It does not appear that the leaders of either political party are going to tackle the job.

for a "Headstart" on Autumn



Hats—an important item in your fall wardrobe. A saw-toothed brimmed cloche, featured in Cosmopolitan magazine, comes in all the autumn colors. About \$12. By Madcaps.

This velvet profile model, a Cosmopolitan magazine choice, is available in black, blue, or brown. About \$9. By Madcaps.

A deep felt cloche that fits snugly. As featured in Cosmopolitan magazine, it's made in a variety of fall shades. About \$11. By Madcaps.

Proper Egg Handling Means More Profit

COLLEGE STATION, Aug. 7.—The egg is a perishable product. It cannot stand rough treatment nor maintain the high quality and grade it possessed when laid if given improper care. The use of good management practices in and around the laying house by the flock owner, says F. Z. Beanblossom, poultry marketing specialist for the Texas Agricultural Extension Service, will increase the income from eggs when sold on grade.

Produce clean eggs. The hens will do their part of the job but it's up to the flock owner to provide the surroundings that make clean egg production possible. First, there must be plenty of nesting space—a nest for each four to five hens; keep plenty of clean absorbent material in the nests, such as straw, peanut hulls or shavings. Keep the floor of the laying house dry and be sure there is plenty of ventilation. If the hens are on range, be sure, says the specialist, they don't play in a mudhole—they'll track mud into the nests and such holes are trouble breeders.

Gather eggs at least three times, and preferably five times per day, says Beanblossom. Then get the

animal heat out of the eggs as soon as possible; ease the eggs after the animal heat is removed and always place the little end of the egg down in the case and go to market twice per week unless cooling facilities are available on the farm. If eggs are held on the farm, the holding temperature should be kept below 68 degrees F., says the specialist.

If eggs must be cleaned, don't wash them. Use an abrasive such as emery cloth or a buffer. Rub only the soiled spot. Doing the little things that are often overlooked in giving the egg proper environment, says Beanblossom, is good management and a sure way to improve egg quality and income.

Hot Summer Months Hard On Young Pigs

COLLEGE STATION, Aug. 7.—Neglecting the pig crop now can cause trouble this fall. Growing pigs need attention during the hot summer months if they are to be ready for the early fall market, says E. M. Regenbrecht, swine husbandman for the Texas Agricultural Extension Service.

Plenty of shade, water and a balanced diet are musts for growing pigs in the summer time. But because of the rush of farm work and shortage of labor, the pigs are often not provided with even the essentials for proper growth. If shade is not available in the hog pasture in the form of trees, then it should be provided. A brush arbor type structure, provided it is large enough, is entirely satisfactory, says Regenbrecht or an upright frame covered with a thick layer of hay makes a good shade.

Regenbrecht recommends running the pigs on a legume pasture if possible. If legumes are not available, he likes sudan. Pigs on good pasture are not likely to become infested with worms and will be healthy. Protein requirements, too, can be cut in half by using pasture.

The easiest and surest way to have water in the hog lot at all times is with an automatic watering system. Pigs need much more water during the summer months and unless plenty of good, clean and preferably cool water is available at all times, they will not do good.

The use of self-feeders will save time, feed and labor and will insure that the pigs get their feed when they need it. The feeders can be filled during slack

times or between other farm jobs. Growing pigs also need a supplement along with the grain. This can be fed free-choice or mixed with the grain as can minerals if needed.

birthday with a party at the home of her parents, Mr. and Mrs. Logan Singleton, 311 W. Harris, Friday afternoon, August 1.

The refreshment table was laid with a white cloth and centered with a birthday cake decorated with yellow and green frosting and five candles. The guests were served refreshments of ice cream, cake and punch. Napkins inscribed with "Happy Birthday" and candles were used, with plate favors of bubble gum and candy.

The honoree opened her gifts after which games were played during the afternoon.

Attending the party were Sheryl Hart, Pam Allen, Billy Fitzgerald, Lee Stanford, Sue Stanford, Alice Ruth Hagins, Marvin Moffett, Adell Allen, Elaine Singleton, Mrs. Geo. Stanford, and the honoree, Norma Kay.

Sending gifts were Mr. and Mrs. Roscoe McCombs, Mrs. Ben Hagin, and Mrs. N. C. Moffett.

Norma Singleton Is Honored On Fifth Birthday at Party

Little Miss Norma Kay Singleton was honored on her fifth

TB and the X-Ray Bus

Time was when the TB victim innocently walked the streets of his town undetected—and undetectable.

For who had the millionaire's pocketbook to pay for examining a whole town of a thousand people to sieve out one possible victim?

Now comes the x-ray bus, able to be TB detective for whole cities, for a few pennies a person. Millions of people now have their TB worries erased when the doctor says "Okay."

How long did it take to get the x-ray bus? Well, for its part, General Electric had been working on x rays for 57 years. Costs of diagnosis have come down by better and better equipment. No year passes without some new development. So this was another big chapter in a long book of events.

Notice the nice way these buses get into service. They are usually purchased by voluntary contributions of plain people trying to get a job done.

It is always hard to write a definition of the "American Way." But this hand-in-hand achievement of state and national health associations, General Electric, and the local communities comes close to being a perfect example.

You can put your confidence in—

GENERAL ELECTRIC

MASONIC LODGE No. 1023 Regular Meeting Thursday, August 28, 1952

Dr. W. F. Patrick OPTOMETRIST 112 E. Harris Phone 499

IT'S DUNLAP'S FOR FALL CLASSICS BY Swansdown

Visit our Ladies' Ready-to-wear Department for beautiful, ever-new, ever-smart early fall suits and coats by SWANSDOWN.

In Angelo's pure wool yarn-dye Cambridge fabric. Sizes 8 to 18. 64.95

As seen in CHARM

The little well-mannered suit that changes personality with a change of accessories. Timely, timeless. In Juilliard's pure worsted sheen. Sizes 10 to 20. 54.95

as seen in MADEMOISELLE

New town suit in twin fabrics: the jacket, an exclusive boucle plaid worsted by Miron; the skirt in fine solid worsted. Sizes 10 to 20. 64.95

Dunlap's SPUR, TEXAS

New For Fall... MEN'S Freeman Shoes

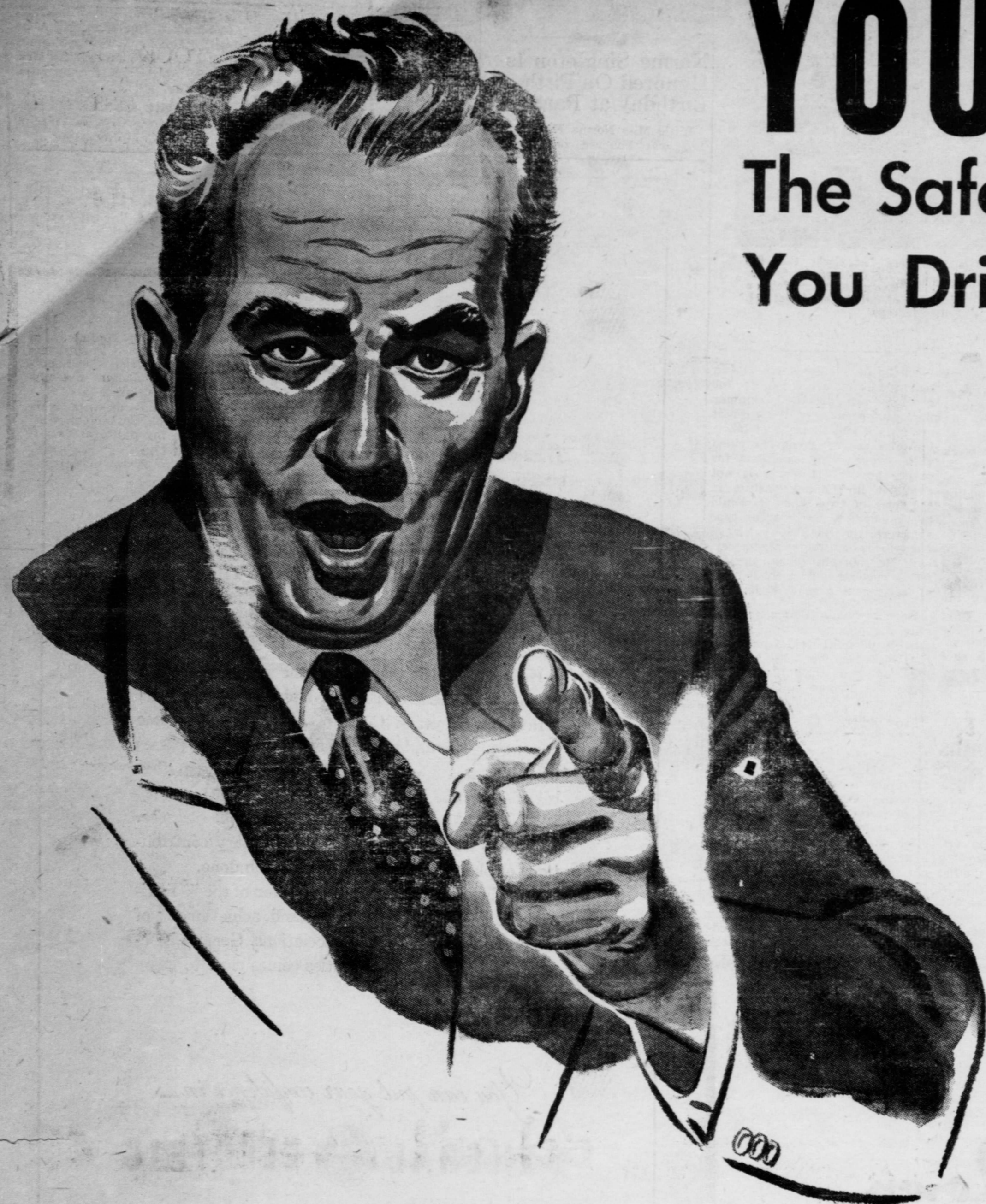
DRESS SHOES

U-wings, wing tips, cap toes. All the latest styles in the best shoe for the money... 12.95

SPORT SHOES

Compo. and leather soles. Leather and rubber heels. All sturdily built for rugged wear, yet smartly styled for dressy wear... 9.95

Dunlap's SPUR, TEXAS



YOU Are Responsible For The Safety Of The Motor Vehicle You Drive!

TO INSURE THE SAFETY OF YOUR FAMILY
YOUR NEIGHBORS AND YOURSELF —AND—
COMPLY WITH THE NEW STATE MOTOR
VEHICLE INSPECTION LAW • •

Have Your Car Inspected Now!

NO. VEHICLES REGISTERED IN COUNTY	2840
NO. VEHICLES INSPECTED TO DATE	1151
NO. YET TO BE INSPECTED	1689

DEAD LINE: SEPTEMBER 6!

**Act Now! Avoid
The Rush!**

WHAT CONSTITUTES A SAFE DRIVER . . .

No matter what types of tests you may have passed in order to drive your car — are YOU really a SAFE DRIVER? Do you drive your car day in and day out passing the vital tests of conscientiousness . . . carefulness and alertness? Do you keep your mind strictly on the business of driving safely? Do you extend courtesies of the road to fellow motorists? Do you ALWAYS keep your car in perfect mechanical condition? Do you give proper hand signals? Do you observe the traffic signals without cheating? Do you drive without excessive speed. IF YOU DO—then you may count yourself as a "good" driver . . . fully aware of the responsibility of Safe Driving!

DON'T BE BLIND TO THESE FACTS

Motorists . . . your individual and collective help is needed to assist in the curtailment of automobile accidents and resulting deaths throughout the entire United States YOU are the dominant factor in whether our automotive death rate will increase or decrease in coming months. Remember, too, with school opening 'round the corner, more children will be on the streets! watch for them! obey school-zone warnings! Be on your guard constantly to drive safely and carefully. Remember — drive safely . . . life saving . . . common courtesy—are the traffic signals every driver must obey . . . and it's squarely up to you.



THIS ADVERTISEMENT IS SPONSORED BY THE FOLLOWING
BUSINESS FIRMS WHICH ARE OFFICIAL INSPECTION STATIONS IN SPUR

**Hoover - McAteer
Jones Motor Co.
Spur Motor Co.**

**Spur Auto Co.
Rickels Motor Co.
Godfrey & Smart**

Your Greatest Contribution To Highway Safety Is Courtesy!

• GIVE PROPER HAND SIGNALS • DIM HEADLIGHTS • DO NOT SPEED • PROTECT PEDESTRIANS • DRIVE SAFELY

Hints For Homemakers

By Harlene North
Electrification Adviser
Dickens County Electric
Co-op, Inc.

Beef stew is always a specialty in restaurants that cater to men. Why not make it a specialty at home, adding a cover of flaky biscuit?

COTTON QUIZ
WHAT IS SWABURG?

A COARSE COTTON CLOTH USED FOR GRAIN AND CEMENT SACKS AND UPHOLSTERING. IT WAS NAMED FOR THE TOWN IN GERMANY WHERE IT WAS FIRST MADE.

Nancy Holmes SUGGESTS

A SIMPLE snack tray is a gracious gesture of hospitality which makes any visitor feel especially welcome. In summer, refreshments that are dainty and create an appearance of coolness are most enticing.

This tempting tray offers small Date-Nut Sandwiches, Ham Pinwheels and Cheese-Frosted Ginger Snaps. The sandwiches, in addition to being mighty tasty, have the added appeal that the fillings can be made and stored in the refrigerator for at least two weeks. To this attractive snack tray, Nancy Holmes of the Best Foods consumer test kitchen suggests you add your favorite ice-cold beverage.

Date-Nut Filling
Mix $\frac{1}{2}$ cup finely chopped dates, $\frac{1}{2}$ cup chopped nuts and $\frac{1}{2}$ cup real mayonnaise. Moisten with a few drops of lemon juice. Keeps two weeks in the refrigerator.

Ham Filling
Blend 1 cup ground cooked ham with $\frac{1}{4}$ cup real mayonnaise and 1 tablespoon orange marmalade mixed with $\frac{1}{2}$ teaspoon dry mustard. Keeps two weeks in the refrigerator.

To make pinwheels: Trim crusts from a loaf of (day old) unsliced bread and cut in four thin lengthwise slices. Spread slices with desired filling and roll like a jelly roll. Wrap in waxed paper, cover with a damp towel and chill thoroughly. Slice just before serving.

Cheese-Ginger Snaps
Blend one 3-ounce package cream cheese with $\frac{1}{4}$ cup real mayonnaise. Season with salt and a few drops of Tobasco sauce. Decorate ginger snaps with cream cheese forced through a pastry tube.

Four people can eat heartily of Vegetable Beef Pie for as little as thirty cents a serving. It's a wonderful way to get essential food values, since enriched biscuit has protein, B-vitamins and food iron to add to those of the meat.

Accompany Vegetable Beef Pie with a tossed green salad garnished with tomato wedges, and a glass of cold milk. The main part of your meal is complete. For dessert, plan on fresh sliced peaches with whipped cream.

VEGETABLE BEEF PIE
3 tablespoons fat or suet
1 pound boneless beef stew (cut in $\frac{1}{2}$ inch cubes)
1 cup water
1 cup sliced carrots (6 med.)
 $\frac{1}{4}$ cup flour
 $\frac{1}{2}$ teaspoon salt
1-8 teaspoon pepper
2 cups vegetable liquid and water
1 teaspoon Worcestershire sauce
1 cup cooked peas

Melt fat or suet in stewing kettle. Brown beef well. Add water, cover and simmer one hour. Add carrots, cover and simmer one half hour longer. Mix together flour, salt and pepper and make into paste with a little of the vegetable liquid and water. Stir into kettle. Add remaining liquid and Worcestershire sauce and cook until thickened, stirring constantly. Add peas. Pour into ungreased baking dish, 8 x 8 x 2 inches.

Roll out rich biscuit topping into 8 inch square, one-half inch thick. With finger press three parallel lines in dough in each direction, making sixteen small squares. Prick along dividing lines with a fork. Place on top of meat mixture. Bake in moderately hot oven 400 degrees Fahrenheit for thirty minutes.

Mrs. Johnnie Weaver Explains Increase in Old Age Grants

All persons receiving Old Age Assistance and Aid to the Blind will get a \$5.00 increase in their grants beginning in October, according to Mrs. Johnnie Weaver, Area Supervisor for the State Department of Public Welfare. Exceptions will be those who are receiving both Old Age Assistance and Old Age and Survivors Insurance, since the automatic increase will be received by them through Social Security. A lesser increase will be available for youngsters who are receiving Aid to Dependent Children.

MAKE Sensational NO-RISK REDUCING TEST

All you do is eat Winley Wafers when you crave food.

Watch before you eat — then eat one wafer. You'll be amazed at the difference in your weight. If not completely satisfied with results, return wafer to package in new wrapper and he will refund full purchase price.

Be Slender the Winley Way

Ask your Druggist about Winley Products

BURT DRUG

By way of illustration, Supervisor Weaver explained that an aged person who is not receiving Old Age and Survivors Insurance and has been getting, for example, \$34.00 Old Age Assistance will receive \$39.00 beginning in October.

Spur Ranch Records Included In Tech's Southwest Valuables

LUBBOCK, Aug. 7.—A Model-T truck did the hauling for the three most valuable items in Texas Tech's Southwest Collection. These treasures, the complete and original record of the Espuela Land and Cattle Co., the Matador Land and Cattle Co., and the C. W. Post Colonization Projects, are considered priceless by Dr. William C. Holden, head of the department of history, sociology, and anthropology at Tech. Dr. Holden, who is also director of The Museum, started gathering the material 20 years ago in his Model-T.

"Chance enabled us to have the Matador records, the most complete of their kind in existence," Dr. Holden said. "I drove out one day in 1933 to see what could be done about the material for Tech's collection. I met the Matador manager about two miles from the ranch. When I left, I had them in my truck. The back end of the Model-T was resting on the axle."

The Espuela, or Spur, ranch records were acquired in 1932, after Dr. Clifford B. Jones, now president emeritus of Tech, had been manager of the Spur properties. Dr. Jones and A. S. Gaylord, Jr. former Tech Librarian, are part of a trio who originated the Southwest Collection.

The Post Papers were obtained in 1936. These include not only the Double U records, but also the Curry-Comb Ranch records. The latter was the name of the ranch before C. W. Post bought it in 1906. Post brought 800 colonists into the area of Post, Texas. This venture was operated by a board of directors who kept a modern system of bookkeeping and accounting.

The records have been used as source material for graduate students of Texas Tech and the University of Texas.

Go to Church Sunday

SUGAR AT ITS BEST!
PURE HAWAIIAN CANE
CH cane sugar

LET US WORRY ABOUT YOUR COTTON INSECTS.

See us before buying for all kinds of insecticides and weed killers.

DALTON LEHEW & WENDELL NEWMAN
111 West 5th Phone 133

Supervisor Weaver explained that since these increases are to be automatically taken care of in Austin, it will not be necessary to get in touch with the local

Office Phone 201
Res. Phone 9003F3
Spur, Texas

Liberal Trade-ins Easy Terms
On Many Items!
Every Department Included!

POLIO INSURANCE

PAYS UP TO \$5,000.00

Costs only \$5.00 per person or \$10.00 for the entire family.

We also write Fire, Hail, Tornado, Automobile, Bonds, Compensation and Life Insurance.

WE PROMISE BETTER SERVICE

See Us For Insurance Needs

H. S. HOLLY AGENCY
Office Phone 201
Res. Phone 9003F3
Spur, Texas

OUR BIG MID-SUMMER CLEARANCE SALE CONTINUES!

SHOP AND SAVE!
ALL MERCHANDISE MARKED TO CLEAR NOW!

SAVE \$60.00!
G. E. Radio - Phonograph Combination
Reg. 289.95. 10 Tube FM-AM. Beautiful Mahogany Finish. Tone Control. Now ONLY **229⁹⁵**

SAVE \$50.00
8 cu. Ft. G. E. Refrigerator
Reg. 249.95. Buy Now and Save! During Clearance Sale Only. **199⁹⁵**

SAVE \$60.00!
Deluxe 8 cu. ft. Refrigerator
Reg. 279.95 G. E. Deluxe Model. During Sale only **219⁹⁵**

SAVE 10%
Pressure Cookers
Presto and Mirro-Matic Cookers, and all other Cooking Utensils

10% OFF!

SAVE \$143.45!
Hotpoint Electric Dishwasher
Biggest Bargain of the Year! SELLS REG. FOR \$39.95!
196⁵⁰

SAVE \$22.55!
Nesco Automatic Roaster
With Timer Reg. 62.50 Value During Sale **39⁹⁵**

SAVE ONE HALF!
Chenille Rugs

4 ft. by 6 ft. Reg. 19.95 SALE 9.98
34 in. by 36 in. Reg. 10.95 SALE 5.48

Lawn Mowers
Full 16 in. CUT BALL BEARING
Reg. 19.95 Sale Price! **\$15.95**

Other Models 20% Reduction

All Auto Parts
For 1940 Models and Older

1/3 PRICE

Air Conditioners Reduced
ENTIRE STOCK! VALUES FROM 39.95 to 159.95
Reduced 20%

Black & Decker Electric Saws
6 inch SAW Reg. 56.50 **\$48.00**
6 inch SAW Reg. 79.95 **\$68.00**
8 inch SAW Reg. 92.50 **\$78.65**

ALL 78 RPM Record Albums 1/3 Price
One Lot **RECORDS**
CLOSE OUT PRICE **25c ea.**

SAVE \$40.00!
4 pc. Bedroom Suite
Beautiful Grey Hand-Rubbed Laquer Finish. Reg. 229.95 SALE!
189⁹⁵

SAVE ONE THIRD!
Print Linoleum
6 ft. Width Reg. 65c SALE 42c
9 ft. Width Reg. 98c SALE 66c

12 INCH OSCILLATING Electric Fans
Sealed in Oil Reg. 34.95 SALE PRICE **\$29.95**

2 pc. Living Room Sutes
By SEALY. SPECIAL PURCHASE FOR THIS BIG CLEARANCE EVENT!
\$99.95
ALL OTHER LIVING **10% OFF!**

Kitchen Stools
Chrome Plated. Plastic Upholstered. Popular Colors. Reg. 9.95 SALE PRICE **\$7.95**

It's a Buy!

FORD TRACTORS
are real bargains because...

- FIRST COST IS Low
- UPKEEP IS Little
- PERFORMANCE IS Big
- RESALE VALUE IS High

FREE Demonstration on your Farm... You be the Judge

You owe it to yourself to see a Ford Tractor perform. We will arrange that performance for you; you name the spot and we will put the Ford Tractor through its paces. What's more we will let you operate it yourself. There will be no charge and no obligation for this demonstration.

Ask for a Free Demonstration on Your Farm

HOOVER-McATEER

BRASHEAR SUPPLY
SPUR, TEXAS

5 PC. CHROME DINETTES
4 Sturdy Chairs and Full Size Dinette Table. Assorted Colors SPECIAL **\$49.95**

Car Seat Covers
Quilted Plastic. Rayon Skirting. Sizes for Most Cars Reg. 27.95 SALE PRICE **\$19.95**

PAINTS
ONE TABLE OF ODD COLORS
1/2 PRICE

AUGUST SALE

AIR CONDITIONERS REDUCED!

• CLOSE OUT! • OVER STOCKED! • BIG SAVINGS!

ESSICK COOLERS B 3600. Reg. 161.35 \$129.50	ARTIC CIRCLE COOLERS B 3516. Reg. 153.25 \$119.50	1 USED WRIGHT COOLER 2500 CFM. ONLY \$90.00
ESSICK COOLERS B. 2200 Reg. 121.50 \$106.50	ARTIC CIRCLE COOLERS B. 4516 Reg. 173.75 \$149.50	1 ARTIC CIRCLE FAN TYPE COOLER 1500 CFM Reg. 39.50 \$25.00

• ALL SALES CASH! • NO TRADE-INS • INSTALLATION EXTRA

GOOD USED SERVELS
At Bargain Prices!
Ideal for Your Cotton Pickers Houses. See us Before You Buy!

NEW AND USED RANGES
• ROYAL ROSE • CALORIC
• TAPPAN • CROWN
Gas and Electric
Rock bottom Prices!

Buzbee & North Butane Service

Phone 444

Next Door To Post Office

Spur, Texas

Thailand Fights Malaria With U.N. Help



Three years ago 60 to 70 per cent of the population of Chiangmai, in Northern Thailand, was affected by malaria. Since then, with the help of the U.N. World Health Organization (WHO), and the U.N. International Children's Emergency Fund (UNICEF), Thailand has largely succeeded in eliminating the "slow killer" in many parts of the country. Above, a Thai doctor uses a borrowed table from a nearby temple to examine a group of children of that region.

Snake Identification Important To Folks Of West Texas Area

COLLEGE STATION, Aug. 7.—Someday your life may depend upon how quickly and accurately you identify a snake. Only four of the 103 species of snakes known in Texas are considered dangerously poisonous, says R. E. Callender, specialist in wildlife conservation for the Texas Agricultural Extension Service. He urges Texans to become familiar with these poisonous snakes so that positive identification can be made quickly in case a member of the family is bitten.

The four species of snakes that are poisonous are the rattlesnakes, copperheads, cottonmouth moccasin and the deadly little coral snake. Rattlesnakes are easily identified by their rattles; the copperhead by its chestnut-brown hour glass markings over light brown or brownish gray background color; the cottonmouth moccasin is a dirty brown in color and is usually found around water—on old logs or driftwood and they can bite under water. The coral snake is the beauty of the group, but adds Callender, it's also the most deadly. Don't, says the specialist, confuse it with the more commonly found king snake because the mistake could be fatal. The color rings of the coral snake are red, yellow and black and completely circle the body and if the ring touches the yellow, you've found a coral snake. Treat him with care.

Fangs for ejecting the poison are common to all poisonous snakes. The marks left by the fangs are a sure identification sign. The venom injected by the

rattlers, copperheads and water moccasin is known as hemotoxic venom because it effects the blood cells. The coral snake, on the other hand, injects a neurotoxic venom and it effects the nervous system. Antivenins, which are available at most drug stores, are ineffective for treating the bite of the coral snake.

Snakes can be discouraged from moving in on the home lot, says Callender, by keeping the place clean. Rubbish should not be allowed to accumulate and trash should be removed for such debris about the place is usually inhabited by rats and mice. These rodents are favorite food for snakes and unless kept under control, snakes will move in to clean them up.

Here's a word of advice from Callender on what to do in case a person is bitten by a poisonous snake. Keep the victim quiet; don't let them walk, become over-heated or take alcoholic stimulants. Don't cauterize the wound with strong acids nor inject potassium permanganate. Get the victim to a doctor as soon as possible but first aid measures will help. Apply a tourniquet above the bit and make cross-

cut incisions at bite and on to the advancing edges of the swelling. Apply suction with the mouth or a suction cup but release the tourniquet every 15 minutes to keep up circulation. Inject antivenin, if available, as soon as possible. After the injection, release the tourniquet and continue the suction. In the meantime have the patient on the way to a doctor or the doctor on the way to the patient.

Callenders warns that hunters and campers should never go to the woods without a snake

bite kit. He urges home owners to keep their premises clean and to be on the look out at all times for the poisonous snakes. All except the rattler strike without warning—and the rattler some times does his biting before sounding off—so the safe thing to do is stay out of the way of all snakes and discourage them to stay out of your way.

Want Ads get results

So many good things go with Coca-Cola

Thoughtfulness makes for hospitality. Be sure to think of Coca-Cola when you shop. It's sure to get a welcome.



BOTTLED UNDER AUTHORITY OF THE COCA-COLA COMPANY BY TEXAS COCA-COLA BOTTLING COMPANY

"Coke" is a registered trade-mark. © 1952, THE COCA-COLA COMPANY

BUSINESS & PROFESSIONAL DIRECTORY SPUR, TEXAS

H. S. Holly Agency

GENERAL INSURANCE
AUTO LOANS
"Cash in 10 Minutes"
Office Phone 201 Res. Phone 158
Spur, Texas

NICKELS BUTANE

Call us any time for courteous service and Quality Products.
Phone 95
McAdoo Phone 6

Chandler Funeral Home

Burial Insurance Plan That Anyone Can Afford
Ambulance Service
Phone 248 Spur, Texas

Gibson

INSURANCE AGENCY
• GENERAL INSURANCE •
Day Phone 40 — Night Phone 153

DE LUXE BEAUTY SHOP

Open from 8 a. m. to 6 p. m.
HAIR SHAPING \$1.00
ALL TYPES OF BEAUTY SERVICE
PHONE 17 SPUR, TEXAS

WATTS ELECTRIC

Commercial & Domestic Wiring
Appliances and Air Conditioner Repair Service
Phone 686 Spur, Tex.

B. J. WHITENER

Cement & Stucco Contrator
Phone 206-W Spur, Texas

66 Service Station

WHOLESALE & RETAIL
Open 24 Hours
Phone 20 Spur

South Panhandle Land Title Company

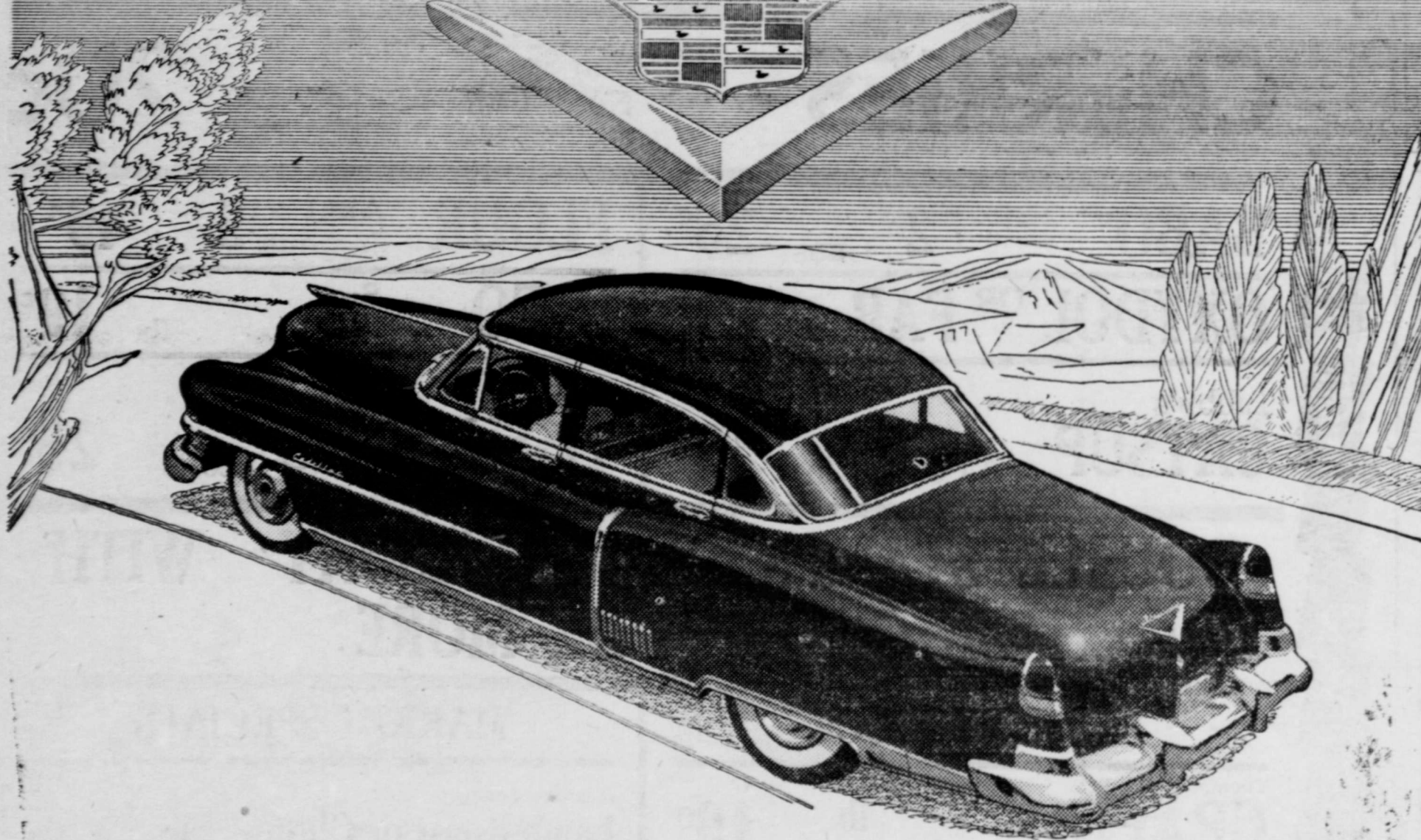
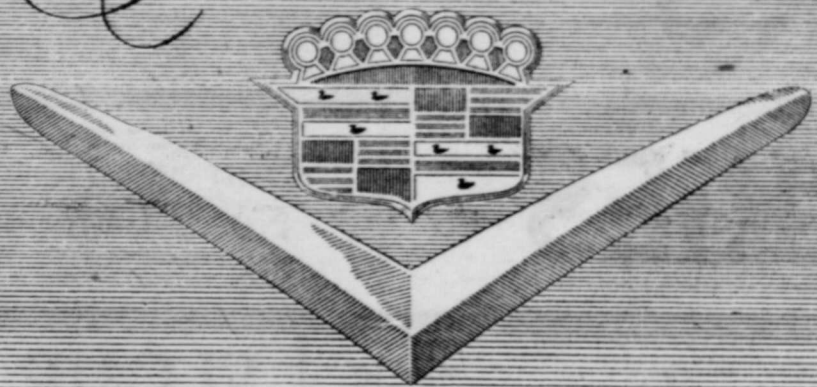
Abstracts of Titles Dickens, Texas
Office Phone 2931 — Residence Phone 2667
Established 1917
Complete Set of Abstract Records to all Land Titles in Dickens County, Texas.
HOME OWNED AND OPERATED

Jack Rector Insurance Agency

Insurance of all types
Fire—Automobile—Casualty
Public Liability, Etc.
Phones Office 43, Res. 42-W Box 1455 Spur, Texas

"ALWAYS BOOSTING SPUR"

Cadillac



You Can Whisper - and Be Heard!

We should like to have you come in for a ride in a Golden Anniversary Cadillac. And when you do, we hope you will just sit back and relax . . . and listen!

And what will you hear?
Well, you'll hear the soft sound of the wind as it slips past the streamlined body . . . and, possibly, the quiet ticking of the electric clock.

But aside from these—you'll hear almost nothing. In fact, you'll find you can actually whisper—and be heard by your fellow-passengers!

We want you to experience this because *nothing* speaks more eloquently or more convincingly of motor car quality than—*silence!*

It tells you, first of all, that here is automotive engineering at its superlative best. For such silence of

operation can *only* come when every phase of the car's performance is in perfect harmony.

It speaks of *precision*—for only the greatest accuracy in design and construction can result in such remarkable freedom from vibration.

It is a testimonial to fine craftsmanship—to quality materials—and to scientific styling.

And, of course, this marvelous quiet foretells many of the pleasures and satisfactions you would enjoy as the car's owner. It promises rest—and relaxation—and peace of mind . . . and a minimum of upkeep expense.

So why not take our suggestion—and come in and drive this beautiful Golden Anniversary creation? Let it tell you its own wonderful story through *the things you cannot hear!*

REAGAN MOTOR COMPANY

Dr. W. K. Callan

DENTIST
804 N. WILLARD Phone 97

Dr. M. H. Brannen

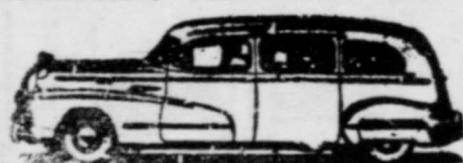
Dentist
111 E. Harris Phone 95
SPUR, TEXAS

A. M. Le Croix

Attorney At Law
Spur, Texas

Knights of Pythias

Meet each Mon
Visitors Welcome



AMBULANCE SERVICE
4hr Conditioned Coach
CAMPBELL'S

Ratliff, Conner and Walker

Attorneys at Law
Spur, Texas

Dr. O. R. Cloude

Chiropractor
106 West 2nd Street
Spur " " Texas

Dr. W. C. Gabben

OPTOMETRIST
Phone 177 Spur, Texas

