

MEMO To Mrs. Housewife
 NATIONAL PRESS BUILDING WASHINGTON, D. C.
 By Anne Good

Do you know how to "frost" a molded salad? Blend three 3-ounce packages cream cheese with 6 tablespoons real mayonnaise and spread like icing on a cake. For a blander frosting, dissolve 1 teaspoon gelatin in a cup of cold water and fold into 1 cup real mayonnaise.

A blouse and skirt become a more integrated ensemble when finished off with a belt. Invest in one that's made of good leather and keep it scratch-resistant with a protective coat of the ol' shynola.

Ever wonder what causes that unsightly discoloration on the inside of some tin cans? It's sulphur from the canned food. It discolors tin just as sulphur in cooked egg discolors silver. Perfectly harmless!

Hosiery colors are lighter than ever this Spring. So if your gaskins are a little on the dark side, use a good color remover and retint them a more fashionable shade with all purpose dye.

In accordance with the rule, "Never handle pastry dough too much," you shouldn't roll up left-over pieces of pastry into a ball. Pick up the strips, place them one on top of the other and then roll them out.

New Metal Aids In Detecting Cancer

A Navy doctor says gallium, a metal used in making high-temperature thermometers, offers possibilities of detecting certain bone cancer before they become apparent in X-ray studies.

Cmdr. H. C. Dudley told naval medical center scientists recently the metal offers promise of hastening the diagnosis of a cancer developing in the bone after spreading from another part of the body.

When gallium is introduced into the body, Dudley said, it has a tendency to become deposited in bone—and it has a special affinity for bone tumor tissue.

By using a radioactive, or ray-emitting, form of the metal, he added, its progress can be traced through the body with a geiger counted picking up strongest signals in the area of a bone tumor.

Dudley told of employment of the technique in a number of human cases where bone tumors were known to be present. In all cases, he said, the gallium "localized" at the site of the bone cancer.

In some instances it was possible to identify the early stages of bone cancer which had spread from another part of the body before such changes could be identified by X-ray film study.

THE MIDDLES By Bob Karp



Go to church Sunday

Dickens County Baptist Association
Brotherhood Meeting
 Steel Hill Baptist Church
 April 2, 1951
 7:30 P. M.

Scripture and Prayer — Earl Robertson
 Laymen's Talk — W. B. Francis
 Business
 Announcements
 Film

Fertilized Pasture Doubles Production

More than twice as much weaned calf weight was produced on a 640-acre pasture on the King Ranch which was fertilized with 200 pounds of triple superphosphate per acre as was produced on a 650-acre unfertilized pasture. During the six-year period,

1941-1947, an average calf crop of 98 percent was obtained from 62 cows on the fertilized pasture, while 42 cows on the unfertilized pasture produced a calf crop of only 69 percent. The 229 calves produced on the fertilized pasture averaged 551 pounds at weaning time, compared with an average of 489 pounds for the 116 calves produced on the unfertilized pasture. Applying phosphates to range

land on the King Ranch increased the average yield of pasture forage from 35 percent to 84 percent. The phosphoric acid content of the grasses also was increased greatly, in some cases as much as three-fold. Grasses fertilized with 200 pounds of triple superphosphate per acre supplied enough phosphorus for range cattle except during periods of severe drought. One application of 200 pounds

of triple superphosphate was effective for five or six years. A summary of this study is given in Texas Agricultural Experiment Station Progress Report 1341. Can't Afford Bugs.—Cotton farmers this year simply cannot afford to let insects cause any appreciable reduction in yield.

Ivan J. Campbell, Editor, "The Cotton Gin & Oil Mill Press."
 Cotton - Cattle Work Well.—"Cattle fit into diversified farming with cotton as one of the major products. There's no conflict between cattle and cotton."—P. O. Davis, Alabama Extension Director.

Announcing . . .
BUDDY HOOVER & DAVID McATEER
 HAVE PURCHASED AND ASSUMED
 THE MANAGEMENT OF THE
McGEE CAR & TRACTOR COMPANY
 THE FIRM IS NOW KNOWN AS
Hoover - McAteer
 WATCH FOR OUR BIG OPEN HOUSE
 AND SHOW — SOON!
Hoover - McAteer
 MERCURY
 Spur, Texas
 FORD TRACTORS
 DEARBORN IMPLEMENTS

Spring
DOLLAR DAYS at GABRIEL'S
 Shop These and Many other
 Spring Dollar Day Values In Our Every Department
 Friday, Saturday and Monday, March 30, 31, April 2

<p>DOMESTIC Langtry LL Heavy unbleached Domestic. 44¢ Per Yard Value Dollar Days Special 3 YDS. \$1.00</p>	<p>MEN'S Garbardine PANTS All sizes \$2.50</p>	<p>SHEETS Garza Sheets, size 81x99. Limit 2 to customer. Dollar Days Special ONLY \$2.75</p>
<p>MEN'S DRESS SOCKS Banner Wrap Dress socks in a wide assortment. Regular 33¢ Value Dollar Days Special 4 PR. \$1.00</p>	<p>MEN'S SHIRTS To Match \$2.50</p>	<p>PIECE GOODS Slightly damaged Gabardines and crepes. Value to \$1.98 Yard Dollar Days Special 4 YDS. \$1.00</p>
	<p>MEN'S FELT HATS \$5.00 Value \$2.98</p>	

Gabriel's

MERCURY WINS AGAIN IN MOBILGAS ECONOMY RUN!

1951 MERCURY WITH OVERDRIVE IS DECLARED "ECONOMY CAR OF ITS CLASS"

New 1951 MERCURY
 Nothing like it on the road!
Hoover - McAteer
 Spur, Texas

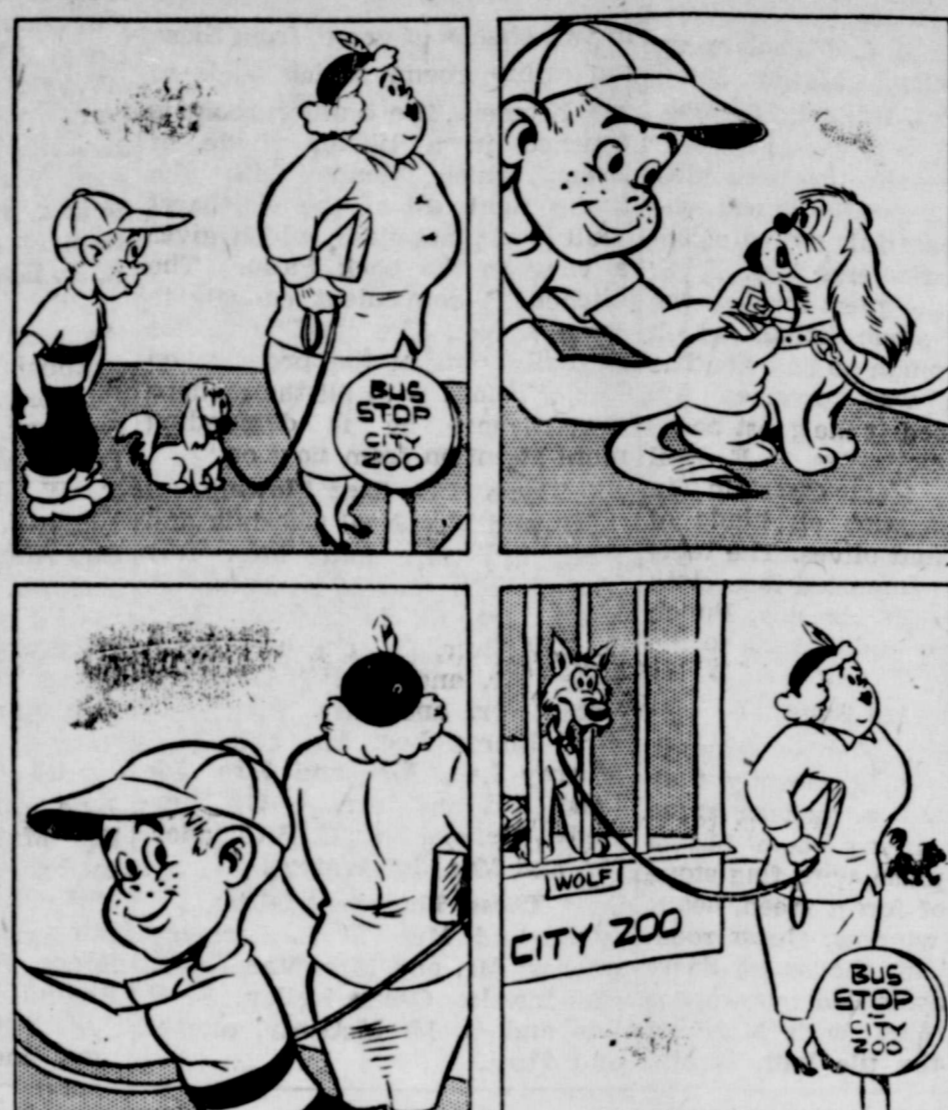
MERCURY with Touch-O-Matic Overdrive again takes first prize in Class "C" in the Mobilgas Economy Run! Proving its pound-for-pound gasoline economy, this sleek Mercury scored amazing 59.868 ton-mile performance over a grueling 840-mile course staked out by the American Automobile Association. Virtually every kind of weather and road condition—7,000-foot ice-ridden mountain passes . . . sweltering, sand-swept roads of Death Valley—put the car to the test. But still, the new 1951 Mercury delivered the best ton-mile gasoline economy of any car in its class. That's something to think about when you buy a 1951 car. It's good to know that the new 1951 Mercury can save you money for years to come, no matter where you drive! As if this amazing economy weren't enough, Mercury also offers new styling that's more than just skin deep. New riding comfort that's designed to give you a smoother ride longer. New value that can't be surpassed by any car on the road today! Once again the facts have proved it—the new 1951 Mercury is "the buy of your life!" See it today in our showroom. *For "the drive of your life," Mercury offers you a triple choice in transmissions. Merc-O-Matic Drive, the new, simpler, smoother, more efficient automatic transmission—or thrifty Touch-O-Matic Overdrive are optional at extra cost. There's also silent-cam synchronized standard transmission.

"Suffered 7 years then I found Pazo brings amazing relief!"
 says Mrs. M. W., Los Angeles, Calif.
 Speed amazing relief from misery of simple piles, with soothing Pazo! Acts to relieve pain, itching instantly—soothes inflamed tissues—lubricates dry, hardened parts—helps prevent cracking, soreness—reduce swelling. You get real comforting help. Don't suffer needless torture from simple piles. Get Pazo for fast, wonderful relief. Ask your doctor about it. Supplementary form—also tubes with perforated pile pipe for easy application.
 *Pazo Ointment and Suppositories

BIGGEST SHAVING BARGAIN EVER!
Buy Gillette
 SUPER-SPEED ONE-SHAVE RAZOR
 and 10-blade Gillette Shaver
 \$1.50 VALUE... \$1.00

Mahon Supports Bill For Mexican Labor
 Congressman George Mahon reports from Washington that on Monday of last week he introduced a bill which would permit Mexican families and their children to assist in the cotton harvest this fall. The 81st Congress, through an amendment to a labor bill, added in the Senate, had approved legislation prohibiting labor by children under 16 years of age in agriculture during school hours.

THE MIDDLES By Bob Karp



Arthritis Pain
 For quick, delightfully comforting help for aches and pains of Rheumatism, Arthritis, Neuritis, Lumbago, Sciatica, or Neuralgia try Pazo. Works through the blood. Pazo does usually start alleviating pain so you can rest, enjoy life and sleep more comfortably. Get Pazo at drug stores today. Quick, complete satisfaction or money back guaranteed.

BACKACHE
 For quick comforting help for Backache, Rheumatic Pains, Getting Up Rigids, strong cloudy urine, irritating passages, Leg Pains, circles under eyes, and swollen ankles, due to non-organic and non-systemic Kidney and Bladder troubles, try Cystex. Quick, complete satisfaction or money back guaranteed. Ask your druggist for Cystex today.

ASTHMA
 Don't let coughing, wheezing, recurring attacks of Bronchial Asthma ruin sleep and energy without trying Pazo. This alleviates coughing and aids freer breathing and better sleep. Get MEDACO from druggist. Satisfaction or money back guaranteed.

HEART ATTACK OR INDIGESTION?
 THANK HEAVENS! Most attacks are just acid indigestion. When it strikes, take Bell-and-tablets. They contain the fastest-acting medicines known to doctors for the relief of heartburn, gas and similar distress. 25¢.

Vic Vet says
 HOMETOWN MEDICAL CARE IS AVAILABLE AT U.S. EXPENSE TO VETERANS WITH SERVICE-CONNECTED DISABILITIES UNDER CERTAIN CONDITIONS, BUT ALL SUCH CASES MUST BE APPROVED BY VA FIRST



JOLLY TIME POP CORN
 BEST POP CORN YOU EVER EAT

Dogwood Trees Have Unusual Bloom

Dogwood trees will soon be bearing their unusual blossoms in a number of Texas localities, especially in the East Texas woodlands. The flower itself is inconspicuous, but the pink-to-white flower bracts add to the interest of the flower. Flowers appear before leaves, greenish-yellow, arranged in heads. Cornus (florida) is the botanical name of this tree which flourishes in many parts of the country. The hard, heavy strong wood is brown to red in color, similar to that of the persimmon. To many, the dogwood is our most ornamental native tree, because of its masses of early spring flowers, its bright red berries and autumn foliage. Although it grows best in East Texas, it can grow in the central and northeast sections, if given proper soil, shade and water. In fact, the tree grows in the valley and along bluffs of Red River, the Sabine, the Nueces and the Trinity. Fruits are relished by birds and squirrels.

Ellen Schulz, in her book, "Texas Wild Flowers," gives the following interesting legend about the tree, giving its Bible significance, appropriate for Easter and springtime:
 The tree was the favorite tree

of Adam in the Garden of Eden. Because of its eternal beauty, the devil wanted to destroy it. He climbed a tall, straight tree outside the garden walls, and clutched at the bracts. His reach was limited, due to the fact that

each flower resembled a cross, and because of this he could only tear out the side of a bract. Since that day the bracts of the tree have had a ragged, soiled look, due to this episode.

"We've driven our 5 Dodge cars over a million miles"



Says GEORGE GILL, Taxicab Fleet Operator, Red Bank, New Jersey
 "When five standard Dodge sedans cover a million miles you realize what Dodge dependability means. All those miles were safe, dependable, comfortable miles for our passengers—amazingly economical and trouble-free miles for us."



Depend on it! This great new Dodge will see you thru the long pull ahead!

IN TIMES like these, it pays to own a car you know is engineered through and through to stand up better, serve you longer at lower cost. That's why we suggest you drive the car whose reputation for long life, ruggedness and stamina is recognized the world over.

Spent 5 Minutes With Us. Come in today. Five minutes is all it takes to check and compare... to learn how much more Dodge dependability can mean to you. Learn how you could pay up to \$1,000



1951 Dependable
DODGE

SMOOTHER RIDE... longer car life. New Oriflow Shock Absorber system gives a truly new kind of ride... "floats" you over roads that stop other cars. Reduces wear on vital chassis parts. Adds miles to car life.

Jones Motor Co.
 Spur, Texas

Here's one of the greatest iron tonics you can buy to **BUILD UP RED BLOOD** to GET MORE STRENGTH if you have **SIMPLE ANEMIA**

You girls and women who suffer so from simple anemia that you're pale, weak, "dragged out"—did you ever stop to think this condition may be due to lack of blood-iron? Then do try Lydia E. Pinkham's TABLETS.

Pinkham's Tablets are one of the very best home ways to help build up red blood to get more strength and energy—in such cases. Without a doubt they are one of the greatest blood-iron tonics you can buy today. See if you, too, don't remarkably benefit!

Pinkham's Tablets are also a very pleasant stomachic tonic! All drugstores.

Lydia E. Pinkham's TABLETS

Dunlaps Dollar Days, Mar. 30, 31, Apr. 2

<p>Ready to Wear DRastically REDUCED LADIES' Spring Toppers This is a group of very fine sport coats that you'll enjoy selecting from.</p> <table border="1"> <tr><th>Values</th><th>Dollar Days</th></tr> <tr><td>\$29.95 to \$37.00</td><td>\$25.99</td></tr> <tr><td>\$49.95</td><td>\$34.99</td></tr> <tr><td>\$59.95 & \$64.95</td><td>\$44.99</td></tr> </table>	Values	Dollar Days	\$29.95 to \$37.00	\$25.99	\$49.95	\$34.99	\$59.95 & \$64.95	\$44.99	<p>Revolving Cruet Sets Stainless Steel base. Were \$1.98 SALE PRICE \$1.00</p>	<p>Lazy Susans 14 in. size, with ball bearing base Regularly \$1.49 SALE PRICE \$1.00</p>	<p>CANNON Towels 20x40 in. size of a thirsty terry in color of blue, rose and green. Regularly 50c SALE PRICE \$1.00</p>	<p>Plastic Hangers In beautiful colors of pink, blue, wine and white. Set of seven. Regularly \$1.49 SALE PRICE \$1.00</p>	<p>Slightly Irregular CANNON Sheets At least 130 threads to the square inch Sizes 81x99 and 72x108 SALE PRICE \$2.98 Cases to Match 69c</p>	<p>26 In. Denim In beautiful shade of brown, maize, green, blue and rose Regularly 89c SALE PRICE 69c yd.</p>		
Values	Dollar Days															
\$29.95 to \$37.00	\$25.99															
\$49.95	\$34.99															
\$59.95 & \$64.95	\$44.99															
<p>LADIES' Spring Suits These are our finest 100% wool suits, all in spring weights and shades.</p> <table border="1"> <tr><th>Values</th><th>Dollar Days</th></tr> <tr><td>\$59.95</td><td>\$40.89</td></tr> <tr><td>\$69.95</td><td>\$48.89</td></tr> <tr><td>\$79.95</td><td>\$57.89</td></tr> <tr><td>\$98.00</td><td>\$73.89</td></tr> </table>	Values	Dollar Days	\$59.95	\$40.89	\$69.95	\$48.89	\$79.95	\$57.89	\$98.00	\$73.89	<p>GROUP ONE LADIES' SHOES This is broken lots of dress and casual shoes. Good styles and colors VALUES TO \$9.95 \$3.99</p>	<p>GROUP TWO LADIES' SHOES This is a group of casual and semi-dress shoes VALUES TO \$5.95 \$2.79</p>	<p>MENS DRESS SOCKS A genuine rayon wrap in colors of brown, green, blue, maroon and grey. Sizes 10 to 12. Regularly 49c. DOLLAR DAYS 3 Pair For \$1.00</p>	<p>MENS WHITE Handkerchiefs Size 16 x 16 Regularly 15c DOLLAR DAYS 9 FOR \$1.00</p>	<p>LADIES RAYON PANTIES Hollywood brief style, elastic leg and waistband, colors of pink, blue and white. Sizes S., M. and L. Regularly 49c SALE PRICE 3 FOR \$1.00</p>	<p>MENS Khaki's Full cut & sanforized. Pant Sizes 28 to 42 Shirt Sizes 14 to 17. Regular price of Suit \$6.27 DOLLAR DAYS SPECIAL ONLY \$5.50</p>
Values	Dollar Days															
\$59.95	\$40.89															
\$69.95	\$48.89															
\$79.95	\$57.89															
\$98.00	\$73.89															
<p>LARGE GROUP Ladie's Dresses Including - wash rayon and finer quality cottons with the daintiest of embroidery trim VALUES TO \$19.95 DOLLAR DAYS \$5.00</p>	<p>CHILDRENS SOCKS Of soft cotton "Southern Bell" reinforced heel and toe. Sizes 7 to 10. PACKAGE OF FOUR \$1.00</p>	<p>ONE GROUP LADIES' HAND BAGS Of colorful multi color woven straw. Assorted novelty shapes. Regularly \$2.98 SALE PRICE \$1.00</p>	<p>ONE SPECIAL GROUP LADIES' SLIPS Fine quality rayon with beautiful nylon and rayon trim. Colors of white, pink and blue. Sizes 32 to 38 Regularly \$3.98 and \$4.95 SALE PRICE \$3.00</p>	<p>LADIES RAYON GOWNS Rayon crepe with wide lace trim. Colors of white, pink, blue and light green. Sizes 34 to 40 Regularly \$3.95 SALE PRICE \$2.99</p>	<p>Jewel Colored Tall Tumblers Practically indestructible. Set of Eight Regularly \$6.95 SALE PRICE \$5.89</p>	<p>Plastic Cord Table Covers Easy-fit quilted plastic water repellent, stain proof. Colors of rose, green and blue. Regularly \$1.49 SALE PRICE \$1.00</p>										
<p>30 In. Cotton CREPE Solid & Fancy All pastel shades Regularly 50c 2 Yards For \$1.00</p>	<p>LADIES NYLON HOSE 51 gauge 15 denier all summer shades Sizes 8 1/2 to 10 1/2 Regularly \$1.65 SALE PRICE \$1.39</p>	<p>Mens Baseball CAPS Constructed of a good wool felt with green shade visor in colors of blue, green and red, all sizes. ONLY \$1.00</p>	<p>MENS ZELON HATS Weather Sealed Sizes 6 3/4 to 7 3/4 Regularly \$1.49 SALE PRICE \$1.00</p>	<p>MENS FANCY TEE Shirts A heavy porous knit in beautiful harmonizing stripes. Sizes Small, Medium & Large Regularly to \$1.98 SALE PRICE \$1.48</p>												

Dunlap's

Society-Club News

McMillian-Varner Vows Read March 17 In Lovington, N. M.

Wedding vows were exchanged by Eva Pearl Varner and Herma Lee McMillian in a single ring

ceremony in Lovington, New Mexico on March 17, 1951. The bride is the daughter of Mr. and Mrs. A. N. Varner of Crosbyton and the groom is the son of Mr. and Mrs. O. M. McMillian of Spur. For the ceremony the bride chose an aqua suit. Mrs. Loyd

Arnold served as her matron of honor and Mr. Arnold was best man. Following the ceremony the couple took a brief honeymoon trip to the Carlsbad Caverns. The couple plan to make their home in Spur.

Leon Huffs Honored With Steak Super

A going-away party was held for Mr. and Mrs. Leon Huff Monday night, March 26, in the home of Mr. and Mrs. Grady Lackey. The Huffs will leave Spur this week end for Abilene where he will take a position as assistant manager of the Abilene Chamber of Commerce.

A steak dinner was served buffet style to the honorees and their friends. The serving table was covered with a chocolate linen table cloth with a daffodil center piece. Napkins were inscribed "So long, Leon and Viralyn." The menu included T-Bone steaks, baked potato halves garnished with cheese, english peas, tossed salad, hot rolls, angel food cake and coffee. Following the meal, the Huffs were presented a place setting and large pitcher for their pottery dinner ware. Present were Messrs. and Mmes. Leon Huff Bill Glenn, Alfred Walker, Billie Powell, Malcolm Edwards, Jesse Morrison, Edge Caudle, W. F. Patrick, and Grady Lackey.

Dr And Mrs. Nichols Hold Open House For Friends In New Home Sunday

Dr. and Mrs. P. C. Nichols were at home Sunday, March 25th., East Hill Street, to many of their friends.

Dr. and Mrs. Nichols extended their welcome as the guest entered the beautiful living room decked with flowers. Mrs. E. S. Lee escorted the guest through the modern new stone home, which made each woman oo and ah. The dining room was presided by: Mrs. James Reed at the guest book; Mrs. Roy Stovall, Mrs. B. F. Hall assisted Mrs. Neal Chastain in serving punch with all kinds of cookies, nuts and olives. The table was laid with imported lace cloth with Jonquils to the side. Punch of lime frosted added color to the setting.

Came to Spur
Dr. and Mrs. Nichols came to Spur in 1917, just recently they have completed a modern stone home. Their living room has a spacious fire place, with flag stone floors, walls of forest green, beautiful picture window. Guest room and bath is in shades of dusty rose. The Master Bed room opens onto the carport with Motif of alic green, the tile bath is also

in two shades of green, from there the utility room, which leads to the Kitchen. The dining room is finished in a lighter shade of Green which blends with the living room, all of the Northeast Wall is of plate glass, which gives a view to the back Patio. The kitchen is convenient enough to serve as you like it—The Doctor is really putting the pressure on Mrs. Nichols, with all the modern conveniences he is demanding more attention from now on.

Those Who Sent Flowers
Mr. and Mrs. Neal Chastain and Neal, Jr., Mr. and Mrs. Roy Stovall, Mr. and Mrs. James B. Reed, Mrs. R. E. Dickson, Mrs. O. C. Arthur, Dr. and Mrs. B. F. Hale, Mr. and Mrs. M. D. Ivey, Rotan; Dr. and Mrs. Blackwell, Mrs. Emma Lee, Mr. and Mrs. Murray Lee, Mr. and Mrs. Joe Long, Mr. and Mrs. A. G. Dunwoody, Mr. and Mrs. C. P. Scudder, Mr. and Mrs. Joe Watson.

Those That Sent Gifts:
Mr. and Mrs. E. L. Caraway, pitcher; Mr. and Mrs. Van North, Cup-towels; Oscar Kelley, E. S. Lee and O. M. McGinty, pitcher and Tray.

Guest
Messrs. and Mesdames W. T. Andrews, D. J. Dyess, Tom Kizer, Guy Karr, J. B. Johnston, Ned Hogan, Tim Stovall, G. W. Grimes, W. F. Godfrey, Thomas P. Johnston, W. R. Weaver, Everett McArthur, E. D. Engleman, Alfred Walker, E. S. Lee, G. H. Snider, Jack Rector, R. F. Decker, Raul English, J. Malcolm Edwards, R. K. Blackshear, Robert McAteer, Walter Labay, Will Eldrege, Spencer Campbell, C. Melvin Rathcal, Lester English, R. A. Connor, Adrain Rickels, Paige E. Gollihar, W. F. Gilbert, Jerry Ensey, Martin Pope, Paul Marion, F. W. Jennings; Drs. and Mesdames J. F. Hughes, W. K. Callan, Bob Alexander, Messrs Randolph McNeill, Joe Kenneth Watson, Neal Chastain, Mesdames Nell J. Davis, Cliff Bird, Mim Reed Baker, James Sharp, T. H. Blackwell, Ann Marsh, James H. Cowan, Nona Starcher, Eric Foster, Nelitha Campbell, Oattie Maud Albin, Jane Anne Albin, Judy Seitz, E. D. Mateer, Malcom Brannen, Evalene Holly, Pattie Albin, J. G. McNeill, Minnie Lewis; Misses Doris Arthur, Nina Grice, Frances Roper, Jean Arthur, Lois Roberts, Regina Lee, Margaret, Elliot, Julia May Hickman, Julie Hickman, and Lillian Rape.

QUOTES ON COTTON
Cotton is Versatile.—"Any evaluation of cotton should include its importance as a source of food,

feed and fertilizer. Cottonseed can contribute richly to the expansion of livestock production."—Fred P. Johnson, North Carolina Dept. of Agriculture.

Rexall SHAVERS' SPECIAL

3 1/4-ounce tube of Coated **stag SHAVE CREAM** and pkg. of 5 Double-Edge **stag RAZOR BLADES**

64¢ value BOTH FOR



49¢

CITY DRUG COMPANY

Spring Food Buys

BANANAS
Central American
2 Lbs. 25c

FRUITS and VEGETABLES
FRESH and WELCOME AS Spring

FANCY WINESAP APPLES, Lb. 12c | YELLOW SQUASH, Lb. 12c

STRAWBERRIES 33¢
FRESH La. Pt. Box

FLORIDA GRAPEFRUIT Lb. 7c	WHITE OR RED ONION SETS Lb. 13c
WHITE OR RED, CERT. SEED POTATOES Lb. 6c	MUSTARD OR COLLARDS 2 Bunches 25c

Cherries Brach's Chocolate Covered. 1 Lb. 39c

VANILLA WAFERS COOKIES 14 Oz. Cello 21c	BALDRIDGE'S FRENCH STIX 2 Per Pkg. 24c
---	--

Pineapple El Morro No. 2 Can, Sliced 19¢

YACHT CLUB, For Pies No. 2 Can 25c	NIBLET'S Whole Kernel CORN 12 oz. Can 18c
HEART'S DELIGHT, Halves No. 2 1/2 Can 33c	SOONER'S FINE GARDEN PEAS 303 Can 18c
PRIMROSE Wt. Cr. Style No. 2 Can 17c	Heart's Delight, Solid Pack Fancy No. 2 1/2 TOMATOES 31c

SPINACH Hunt's Calif. No. 2 1/2 Can 19¢

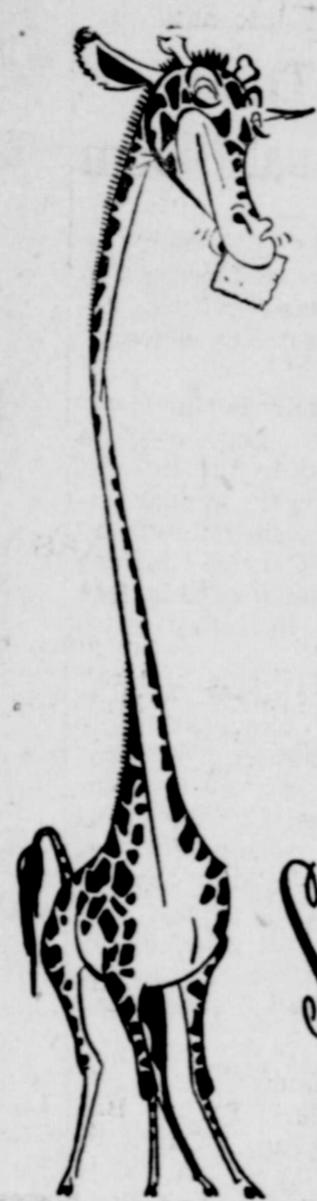
OLEO Sun Valley Colored Qtrs., Lb. 35¢

MILK Tennessee Homo Gal. Ctn. 50¢

FOR LAUNDRY FAB Reg. Box 33¢	For Laundry Cheer Reg. Box 31c
BEAUTY BAR FACIAL SOAP VEL 23¢	

CHUCK STEAK Lb. 73c	PURE PORK, Country Style SAUSAGE Lb. 39c
KORN KING, Sliced BACON Lb. 53c	LEAN FRESH GROUND MEAT Lb. 59c

C & S Super Market



they're extra thin ...

SUPREME BAKERS
Supreme Flavor has made Supreme Salad Wafers the outstanding quality crackers of the West.
Now packed in the new 4-Pack—Salad Wafers are extra thin, and extra good.
Four individual packs for...
FLAVOR • FRESHNESS • CRISPNESS • FLAKINESS



Supreme IN FLAVOR!
BY Supreme BAKERS
BOWMAN BISCUIT CO.

ANOTHER OUTSTANDING CRACKER BY SUPREME BAKERS
TOWN HOUSE CRACKERS
...dainty, oval-shaped crackers "just right for two bites."
Supreme Town House Crackers are Supreme in Flavor!

You Are Invited To Attend A GOSPEL MEETING AT THE SPUR CHURCH OF CHRIST NOW IN PROGRESS THROUGH APRIL 4, 1951

The Gospel In Sermon



Yater Tant

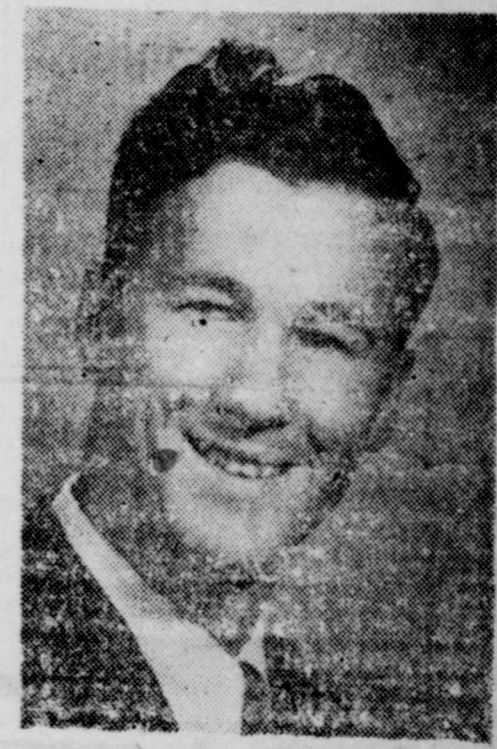
SERVICES DAILY

10:00 A. M. 7:45 A. M.

YATER TANT
Of Abilene, Texas
PREACHER

GERALD HALLFORD
Of Abilene, Texas
SONG DIRECTOR

The Gospel In Song



Gerald Hallford

"A Welcome Awaits You"

Spur Church of Christ

WILLIS G. JERNIGAN, MINISTER

They're Here!

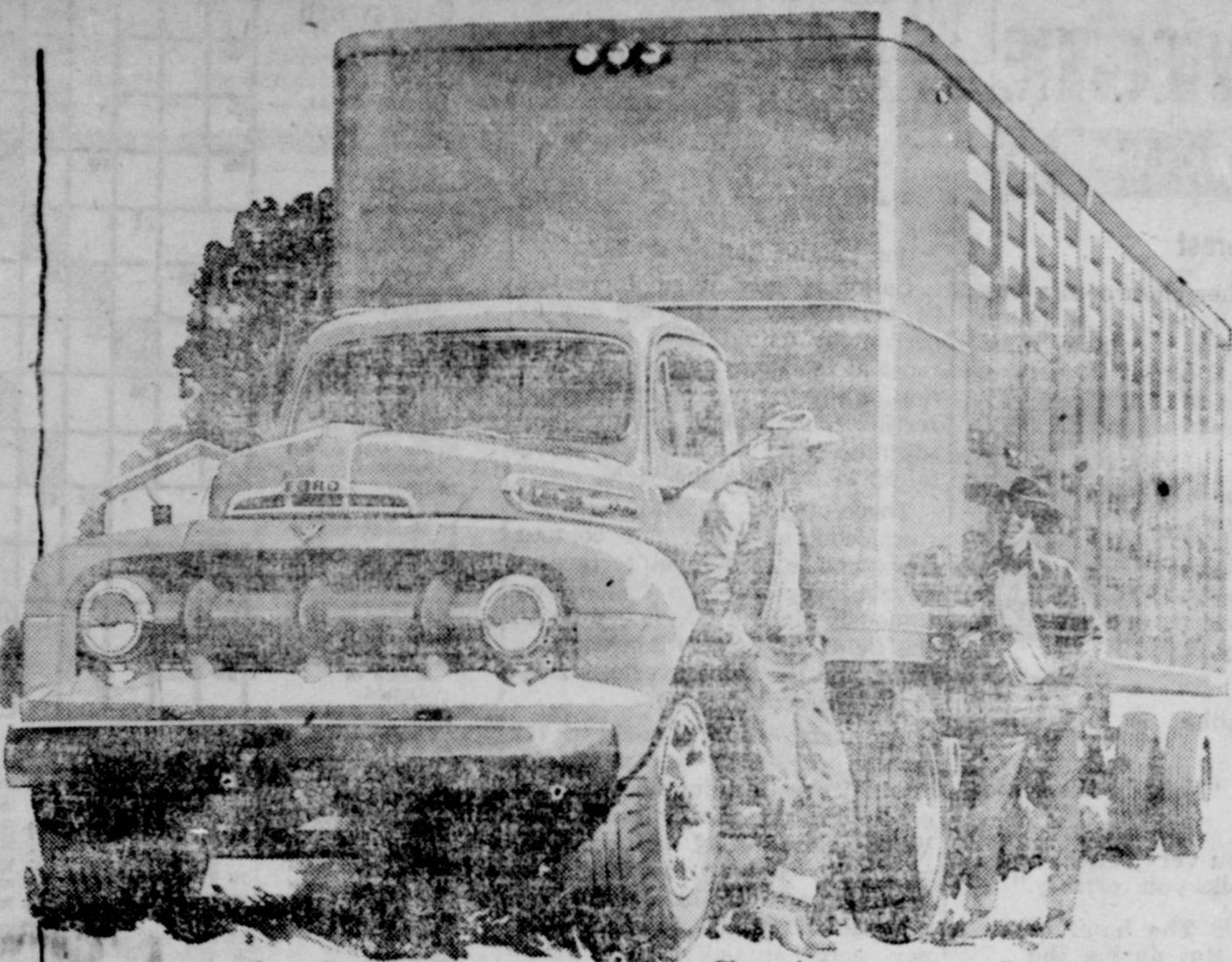
Ford makes the truck news of the year! SEE, TRY the new Ford Trucks for '51, and you will find a wealth of step-ahead engineering advancements. BETTER LOOKS with modern, new front end and exterior styling. A still wider choice, over 150 models for any kind of job. MORE DRIVING EASE for the man behind the wheel, in the new 5-STAR Cabs.

They're New!

*NEW HALF-TONNEES have easy new steering column gearshift. *NEW WIDER VISION in all cabs, 50% more rear view. *FOUR-SPEED SYNCHRO-SILENT TRANSMISSION available at extra cost in Series F-4, F-5 and F-6. *NEW CHROME-PLATED TOP PISTON RINGS now standard in all four Ford Truck engines.

They're Thrifty!

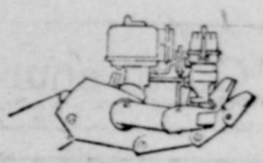
Everybody knows Ford Trucks last longer, which means economy for years ahead. Everybody knows Ford power can pack more ton-miles into a working day, on good roads or bad. Now Ford step-ahead engineering gives you more strength reserves, more time on the job, less time in the shop.



Choose from over 150 new Ford Truck models, from 95-h.p. Pickups to 175-h.p. BIG JOBS like this. You can choose a V-8 or Six.

FORD TRUCKS for '51

feature **POWER PILOT ECONOMY**



The Ford Truck Power Pilot is a simpler, fully-proven way of getting the most power from the least gas. The Power Pilot automatically meters and fires the right amount of gas, at precisely the right instant, to match constantly changing speed, load and power requirements.

Unlike conventional systems, the Power Pilot uses only one control instead of two, yet is designed to

synchronize firing twice as accurately. You can use regular gas . . . you get no-knock performance. Only Ford in the low-price field gives you Power Pilot Economy!

Ford Trucks cut your expenses through low initial cost, low fuel consumption, minimum maintenance, longer life.

Come in today to get ALL the facts on the Economy Leaders for 1951.



Using latest registration data on 6,592,000 trucks, life insurance experts prove Ford Trucks last longer!

Ford Trucking Costs Less because—

FORD TRUCKS LAST LONGER

GODFREY & SMART

Spur, Texas

National Guild To Open Auditions Soon

April 17 marks the first day of hearings of the piano geniuses and ordinary garden variety of keyboard executors of Spur, Texas, when Leota Stillwell of Houston, Texas opens the 1951 adjudications of pupils of the National Guild of Piano Teachers. Mrs. J. E. Berry is chairman for this center. If you have a yen to find out how good you are in the piano world—if you want to know how you rate as a beginner or a colligate, and if you are good enough to become a local, district, state or national member of the National Fraternity of Student Musicians, auditioning by an outside judge is the way the Guild has set up for you to find out.

Pupils from five to fifty go in, sometimes trembling, always serious. But if they have adhered to the repertoire plan outlined by the National Guild and have practiced faithfully, they come out wreathed in smiles. In the waiting room little seven-year-olds prate about Bach and Schumann, and juniors try their cadence-chords in the air, but High School seniors are very quiet, for they are apt to have much at stake. For them, superior rating sometimes brings a college scholarship with it, opens the door to national recognition and cash prizes.

Possession of the Student Musician Fraternity pin and certificate of rating are won only by training and persistence. The little fellow you give a lift to today may be the Paderewsky of the future, or he may just be a better neighbor for studying piano.

Teachers who enter pupils must have dues in by the first week in April, according to Mrs. Berry.

Program On Texas In Hinson Home

"My birth place" was given by each guest during roll call at the March 21 meeting of Afton Home Demonstration Club.

Mrs. Vurl Hinson was hostess in her home.

A program on Texas was given, with Mrs. A. C. Martin discussing "Texas Music." Members described scenic spots in Texas which they had visited.

Mrs. Bill Ligon directed a recreation period, which included a quiz on Texas.

Refreshments were served to Mmes. Clark Forbis, Bill Ligon, W. A. Avara, Curtis Goodwin, Eyrone Haney, A. C. Martin, Dumont Bridge and the hostess.

The group will be guests of the Espuela H. D. Club on April 5, and a book review will be presented.

MRS CARPENTER HOST TO JUDSON CIRCLE MONDAY

Judson circle of First Baptist WMS met in the home of Mrs. E. H. Carpenter Monday afternoon. The hostess, chairman of the group, presided over a business

ed the mission program. Assisting her were Mmes. C. M. Ratheal, C. P. Scudder and S. W. Flournoy. Secret-pals were revealed and gifts exchanged. Orange sherbet and cupcakes were served to Mmes. A. D. Hord, N. C. Moffet,

Logan Singleton, Flournoy, Ratheal, Hagins, Scudder and the hostess.

Used Typewriter For Sale, Texas Spur Office

OUR BIG GOING - OUT - OF - BUSINESS

SALE continues!

HERE ARE A FEW OF THE OUTSTANDING VALUES FROM OUR STORE-WIDE SALE . . .

LADIES' WINTER COATS
Half Price

CROCHET THREAD
\$2.50 per Doz.

PRINTS
Fruit-of-the-Loom
39c Yd.

LADIES' SPRING COATS
One Third Off

SEWING THREAD
50c Per Doz.

ORGANDY
Eyelet Embroidery
\$1.25 Yd.

LADIES' AND MISSES SKIRTS
Regular \$4.95 Value Now
\$2.95

GIRLS' PANTIES
Sizes 6-14
29c

SWISS
Eyelet Embroidery
\$1.49 Yd.

CHILDREN'S DRESSES
Regular \$2.98 Value. Now
\$1.49

A FEW BOYS' JEAN JACKETS
Sizes 6-8
Regular \$2.29 Value. Now
\$1.59

ALL MEN'S HATS
HATS
Reg. Price Sale Price
\$12.50 \$6.50
\$10.00 \$6.10
\$ 7.50 \$4.60
\$ 5.00 \$3.10
\$ 3.98 \$2.10

STRAPLESS BRAS
Regular \$1.00 Value. Now
49c

OUTING
Light and Dark, Floral and Stripes
35c Yard
3 Yards, \$1.00

Star Pearl Embroidery
THREAD
1c Per Skein

HOME DEPARTMENT STORE

"Shop At Home And Save"

GLASSWARE 25c Each To 98c. Closeout! And Pottery. Odd lots. Values	SLEEPS \$1.00 Each Odd lots, broken sizes.	PERMANENT KITS \$1.50 Toni home permanent kits. Reg. \$2.50 Val. Limit one to customer. (Tax included)	GLASS WARE 10c Each Odd lots, clear and fancy. Values to 29c. Your choice	GOWNS 89c Ladies' Flannel Formerly \$2.79 Close out Special!	MIXING BOWLS \$1.49 5 pc. set stoneware Regular \$1.98 Value	DRAPES 50c Pair Paper decorations Regular 89c Value
OILCLOTH 55c Per Yard 54" width. Regular 79c per yard	OILCLOTH 2 Yards \$1.00 46" width. Regular 69c per yard	CANDIES 20c Lb. Value up to 80c Lb. Entire stock of chocolate candies. Close Out!	ALARM CLOCKS \$1.98 Regular \$2.98 Value (tax included)	JACK ROBINSON (Signed) Come in and Get Acquainted—offer 10% Discount to all churches, schools and civic organizations. We pass on to you these money saving Values as an introductory offer. We are proud to be New Manager of your Wacker's Store in Spur, I am proud to	DOLLAR DAYS Combined With SALE New Management WACKER'S	
GARBAGE CANS \$2.69 20 gal. galvanized with lid. Regular \$3.49 Value	PERCUSSOR \$1.00 EACH 6-cup white enamel.	DISHES \$3.98 32 pc. set white dishes. Regular \$5.75 Value	DISHES \$4.95 32 pc. set. Gold band pattern. Regular \$6.98 Value			
DISHES \$4.49 32 pc. Set Golden Cameo pattern. Regular \$5.95 Value	PANTIES 2 For \$1.00 Ladies' Rayon	DISHES \$4.95 32 pc. Set. Barbara pattern. Regular \$7.75 Value	CANDY 29c Marshmallow Circus Peanuts Full Pound			
DISHES \$5.95 32 pc. Set. Milled pattern. Regular \$7.95 Value	Clothespins 3 Dozen 29c Strong 7 Coil Springs	Handkerchiefs 10 For \$1.00 Men's White	DIAPERS \$2.89 Dozen 27 x 27 Birdye			
BLANKETS 3 For \$1.00 Regular 59c Value	TOWELS 3 For \$1.00 20x40 Regular 59c Value	PANTIES 4 For \$1.00 Children's Rayon	TOWELS 2 For \$1.00 20x40 Regular 79c Value			

OFFICIAL PUBLICATION FOR COUNTY OF DICKENS AND CITY OF SPUR

TEXAS THE SPUR

Dickens Item and Dickens County Times Absorbed by Purchase Published Weekly at Spur, Dickens County, Texas. Offices and Printing Plant Located at 424 North Burlington Avenue, Opposite the U. S. Post Office. TELEPHONE 128

H. G. Lackey Jr. Editor-Manager



ADVERTISING INFORMATION N.A.A. CHICAGO SEATTLE NEW YORK SAN FRANCISCO

NOTICE—Any erroneous reflection upon the character, standing or reputation of any individual, firm or corporation, which may appear in the columns of The Texas Spur will gladly be corrected upon its being brought to the attention of the publisher.

Entered as second class mail matter on the 12th day of November, 1900, at the Post Office at Spur, Texas, under the Act of Congress of March 3, 1879, and published continuously without recess.

SUBSCRIPTION RATES Per Year in Advance In Dickens, Crosby, Motley, King, Stonewall, Cottle, Kent, Garza, Floyd Counties. \$2.00 In Mail Zone Three. \$2.50 In All Other Zones. \$3.00



Austin, Tex., March 29.—Most of us try to figure out how much money we are going to have coming in, and adjust our expenses accordingly.

The Legislature works just the opposite way.

It decides how much money it is going to appropriate for state spending for the forthcoming two years. Then it sets about raising that much cash.

Right now the Legislature is working on its appropriations bills. The Senate has passed one that provides \$169,068,723 for state operations. The House bill calls for expenditure of about \$163,000,000.

When the two houses get together and the appropriations are finally set, the Comptroller is going to say that there isn't that much money in the state treasury. So the Legislature will have to tax somebody to make up the difference.

That's because Texas is on a cash basis. We can't spend more than we have.

Estimates at the capitol are that the need will be for about 106

million of new revenue. Where is the money coming from? That's the biggest problem the Legislature will have to answer.

You see, the Senators and Representatives get pulled and hauled in two directions.

First, there are the people who want the state to spend more money for a long list of things: roads, schools, public welfare, increased salaries for state workers, etc.

Then, there are the people who don't want their taxes increased—and nearly everybody is included in that list.

But it necessarily follows that if you hike spending, then you've got to increase taxes correspondingly if you're going to stay on a cash basis.

So you see that a Legislator has his problems.

A lot of Texans think that there ought to be some change in the state's election laws. You remember the controversy over Jim Wells County vote when Lyndon B. Johnson defeated Coke Stevenson for the U. S. Senate.

That incident was quoted by Henry Zweifel of Fort Worth, national Republican committee-man for Texas, who expressed himself as being in favor of a change in the law.

J. E. Wheat of Woodville, state Democratic executive committee chairman, agreed that a higher authority should have the power to investigate when the local officials fail to act.

So the two parties—or their spokesmen—are agreed.

There is a bill in the House that would give the state attorney general authority to investigate suspected fraud cases and to prosecute if proof of fraud is found.

Two years ago, the Legislature appropriated \$5 million for soil conservation. Warrants have now been issued for the expenditure of all this money.

The program will continue, however, and there is an item in the present appropriation bills for \$126,580 for the Soil Conservation Board.

This Board will supervise the soil conservation program and direct the use of equipment which was purchased with part of the original appropriation.

Efforts are being made to compromise and settle without a public fight the controversy over state hospitals and public schools that I reported to you last week.

Plant Right.—If there is any chance that you will harvest cotton mechanically next fall, plant it right this spring. Fields must be prepared carefully to get best results with mechanical harvesters.—Farm and Ranch—Southern Agriculturist.

Widening Usage.—The scientist and King Cotton are working together to adapt nature's nearly perfect fiber to steadily widening usage.—Advertisement By Anderson, Clayton & Co.

DALE CARNEGIE

AUTHOR OF "HOW TO STOP WORRYING AND START LIVING"

Help Others By Showing Interest

LUCILE NELSON, Atlanta, Georgia, had in her classroom a boy named Owen who openly and avowedly hated school, hated to come among his contemporaries.



Carnegie

Lucile considered him the most important pupil there; he needed her the most. She accepted as a challenge the opportunity to change his point of view.

Not looking at her he replied sullenly, "Nobody likes me; nobody plays with me."

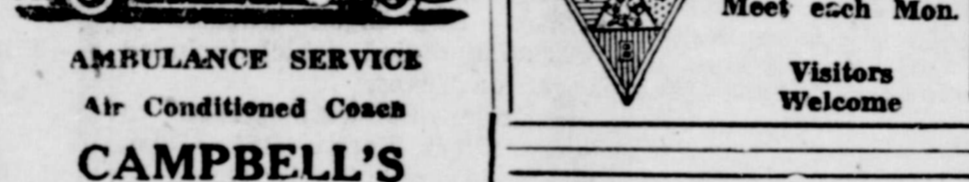
"I like you," answered Lucile, "I like you very much, and I am very hurt on the days you stay away. I miss you terribly."

Owen unbent a little; not too much. The habit of many months wasn't too easily broken. But during the rest of the day, he seemed less sullen, less obstinate.

That afternoon, Lucile went home with Owen. She talked to him about everything else than school work, learned his interests. Gradually he unbent, like a flower opening to the sun.

By and by, the principal said, "Since you came, Owen's attendance has been better than it was for two years." That would have been reward enough, but it was a bigger reward to see Owen's happy young face.

Dr. O. R. Cloude Chiropractor 108 West Hill Street Spur, Texas



AMBULANCE SERVICE Air Conditioned Coach CAMPBELL'S

Dr. M. H. Brannen Dentist 111 E. Harris Spur, Texas

Knights of Pythias Meet each Mon. Visitors Welcome

Dr. W. C. Gruben OPTOMETRIST Phone 177 Spur, Texas

A. M. Le Croix Attorney At Law Spur, Texas

MASONIC LODGE No. 1023 Regular Meeting SPUR APRIL 19, 1951

NOW you can BUY your complete HOME REPAIRS on a Easy-Pay Budget Plan New "Home-Fix-Up Dept.

You can buy both the Labor and Lumber and Pay by the Month.

10% DOWN UP TO 30 MONTHS TO PAY! NO JOB TOO SMALL OR TOO LARGE! ANY WORK FROM THE ROOF DOWN!

FROM THE CELLAR UP! FIX UP! You can pay as little as \$5.00 per month for complete installations

If you want to do the job yourself, you can buy the materials and pay as you can on our EASY-PAY Budget plan.

Let Us Give You A FREE ESTIMATE No obligation to buy anything WHAT WORK DO YOU WANT DONE?

- Check these necessary improvements: Attics, Additions, Bathrooms, Club Cellars, Doors & Windows, Floors, Garages, Insulation, Kitchens, Picket Fences, Porches, Remodeling, Roofing, Shelving, Siding, Storm Sash, Etc.

Willson-Young Lumber Co. Ph. 12 Spur, Texas

Water Conservation Aids Cotton Yield On South Plains

Water appears to be the limiting factor in the production of cotton on the Rolling Plains.

Cotton yields were increased 24 percent by contouring and 37 percent by using closed level terraces at the Spur Experiment Station.

Three fields—with straight rows, contour rows, and contour rows and closed level terraces—have been planted to cotton continuously since 1927.

An average annual yield of 122 pounds of lint per acre for straight row farming was increased to 151 pounds by contouring.

Progress Report 1340, which gives a summary of 24 years of water conservation tests at Spur, is available from the Publications Office, Texas Agricultural Experiment Station, College Station, Texas.

Crossword Puzzle

Grid for crossword puzzle with clues for horizontal and vertical words.

Answers to puzzle No. 127 and 126, including words like 'Fertile spot', 'Edible rootstalk', and 'Deer's horn'.

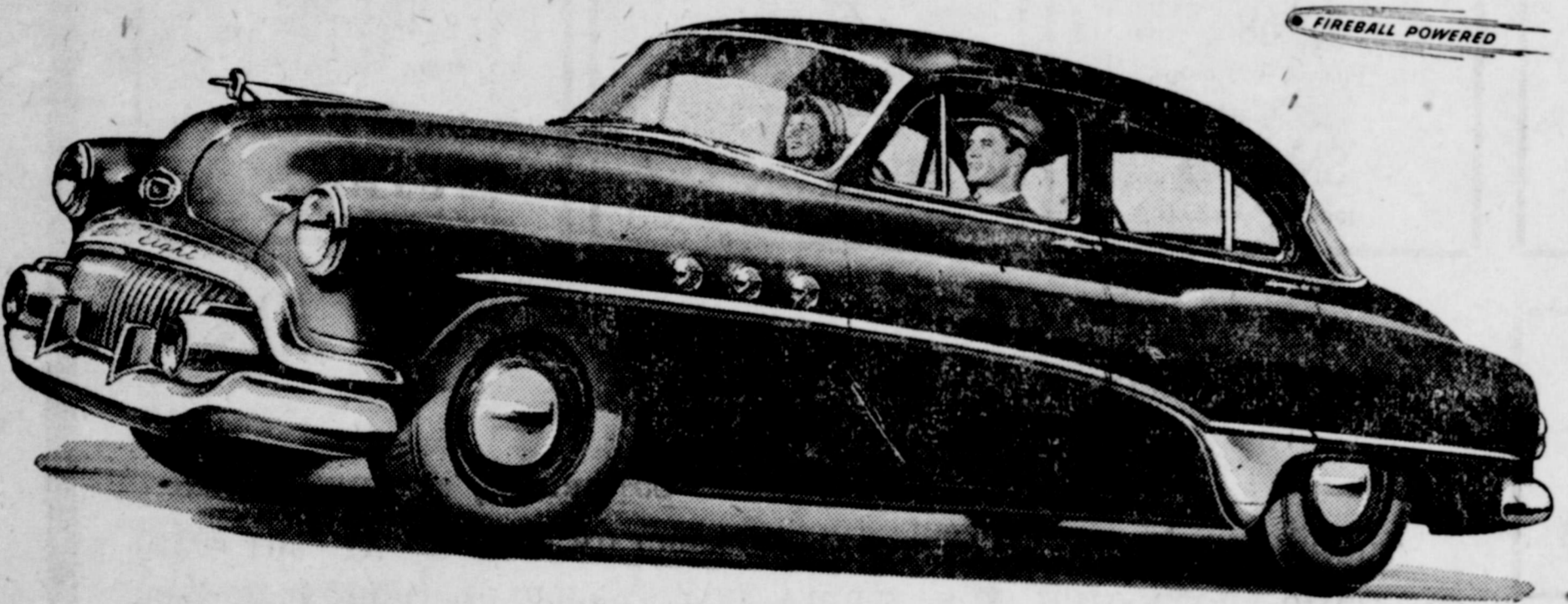
Read the Want Ads section featuring Ratliff, Conner and Walker; Dr. W. C. Gruben; A. M. Le Croix; Dr. M. H. Brannen; and Glenn Jones General Plumbing.

BUSINESS & PROFESSIONAL DIRECTORY SPUR, TEXAS

List of local businesses including NICKELS BUTANE, SPUR CAFE, STAR FEED STORE, HATCHERY, We Buy Produce, 66 Service Station, South Panhandle Land Title Company, B. & H. STUDIO, and HILL TOP CAFE.

Always Boosting Spur

Big step up



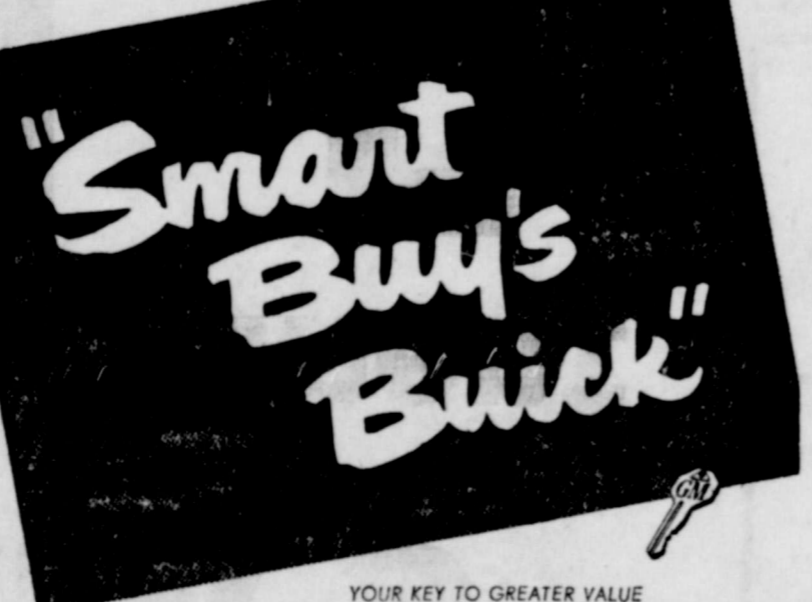
that's easy to take!

YOU have to hand it to Buick engineers. What they've done to this 1951 SPECIAL is nothing short of a minor miracle.

new clarity of white-glow instrument markings more easily read at night. They've stepped up the power to the highest ratings in SPECIAL history—120 horsepower with Synchro-Mesh transmission, 128 with Dynaflo Drive.

No other car provides all this:

- DIYNALFLOW DRIVE—saves strain on driver and car FIREBALL POWER—high-compression, valve-in-head engine gets more good from every drop of fuel PUSH-BAR FOREFRONT—combines smart style and unsurpassed protection WHITE-GLOW INSTRUMENTS—greater clarity at night TORQUE-TUBE DRIVE—steadies ride, improves driving control 4-WHEEL COIL SPRINGING—cushions ride, saves servicing costs



SPUR AUTO CO. Spur, Texas

CARD OF THANKS
We wish to express our sincere appreciation for the many acts of kindness and helpfulness and

words of sympathy extended by our neighbors and friends during the recent illness and death of our loved one. Special thanks for the good dinners served in the homes

of Rev. and Mrs. Luther Bilberry and Miss Bertie James. May God bless each of you.
S. B. Goodrich and family
Sallie Goodrich and family

Tested Seed Are Good Insurance

Commissioner of Agriculture John C. White expressed alarm over cotton planting seed in Texas and urged farmers to exercise ex-

this week's patterns..
BY AUDREY LANE

2412
SIZES 12-42

2291
SIZES & MOS. 1, 2, 3, YRS.

No. 2412 is cut in sizes 12-20, 24-42. Size 18, 5 yds. 20-in.
No. 2291 is cut in sizes 4 shoes, 1, 2. Size 2, with pants, 1 7/8 yds. 36-in. yd. contrast.
Send 25c for EACH pattern with name, address, style number and size to AUDREY LANE BUREAU, Box 359, Madison Square Station, New York, N.Y. The new SPRING AND SUMMER FASHION BOOK shows 135 other styles. 50c extra.



AT HOUSTON'S SHAMROCK—That's where the 1951 state FFA Convention will be held July 11-13, says Walter Jefferson, right, host-area vice-president from Jasper, to Jerry Snell, left, president of the Jasper FFA chapter. More than 3000 Future Farmers from all over the state are expected to attend the annual convention. Forming a welcoming committee and in charge of convention entertainment will be leading officials of the Houston Farm and Ranch Club, Houston Fat Stock Show, and Agriculture Committee of the Houston Chamber of Commerce. Information about the convention may be secured by writing FFA Convention Committee, 8th Floor Commerce Bldg., P. O. Box 2371, Houston, Texas.

treme precaution when making purchases. "It has been known for some time that a shortage of cotton seed existed for the 1951 goal of 11,000,000 acres," Commissioner White stated. "Quality seed were booked early and supplies completely exhausted. Texas seed stocks were supplemented by what amounts could be purchased from other states and much of this seed has come in labeled below standard for germination or ap-

proximately 60%." "Additional seed stocks needed for this year's acreage in Texas will come from seed at gins, oil mills and from farmers themselves," White explained. "It is this seed about which I am alarmed and concerned since we have in our two state seed testing laboratories that samples submitted from these sources run as low as 3% germination." The Commissioner reminded seed purchasers that every sack of seed offered or exposed for sale in Texas is required by law to have a tag attached showing germination percentage. "In the case of bulk seed," the Commissioner added, "the seller is required to furnish one tag for each one hundred pounds of the seed sold." "I urge all purchasers of cotton seed to exercise every precaution and care. The facilities of our laboratories are available to all Texas farmers. A little discretion at this time in demanding to know the germination percentage of the seed will eliminate disappointment in stands as well as time, money and possible loss of crops," Commissioner White said.



SHIFTS IS GONE... When manager of the Indians, Lou Boudreau (right) devised the "Boudreau shift" against Ted Williams (left) of the Red Sox. Now they are on the same team—the Red Sox. They are at the team camp in Sarasota, Fla.

LAFF OF THE WEEK



"What About Retirement Benefits?"
bish," warns Dr. Geo. W. Cox, State Health Officer. "Since garbage, rubbish and other types of refuse are of no value to the producer, by the same token they are of no value to a neighbor. Everyone is responsible for the waste materials which he produces and is under obligation to collect, store and dispose of these materials in a sanitary manner. The officials of every municipality or other political subdivision encounter the problem of collecting and disposal of waste materials discarded by their residents. "Improper disposal of refuse presents definite hazards to public health for such material creates breeding places for rats, flies and other vectors of disease transmission. Odors, smoke and disagreeable appearance are other important considerations. "The State Health Department and County Health Units are vitally interested in proper storage, collection and disposal of refuse and stand ready to aid towns or individuals in solving their problem. Receptacles for storage should be of water tight metal with lids that fit. Final disposal is a serious and difficult problem which individuals and communities must solve according to local conditions. Waste materials should never be dumped on property belonging to another person or organization."

South Side Service
Now Under New Management
B. J. STARK, Mgr.
Special Get Acquainted Offer!
Wash & Grease 2.00
WITH THIS NOTICE
Bring This Notice With You! It's Worth A Buck On A Wash and Grease Job!
COME IN AND GET ACQUAINTED
South Side Service
201 Burlington Phone 95

CLOSE OUT SALE
ENDS 9:00 P. M. MARCH 31, 1951
ALL ELECTRICAL EQUIPMENT MUST GO!
AT
GREAT REDUCTION!
Here Are a Few of the Items That Must be Sold

Thor Ironers and Washers	Pin Up Lamps
Westinghouse Refrigerator	Light Fixtures & Bulbs
Westinghouse Stove	Westinghouse Radios
Portable Sewing Machine	Electric Irons & Parts
Sewing Accessories	Electric Toasters, Clocks
Deepfreeze	Kitchenaid Mixer
Vacuum Cleaners	Westinghouse Menu Master
Laundromat Parts	Electric Comforts, Blankets, & Sheets.
Motors	Christmas Decorations
Ironing Board	Ironing Board Covers
Hot Water Heater	Reel tite Clothes Lines
Welcome Mats	

Any Type Electric Wiring Equipment, Display Tables, Ladders, Typewriter, Electric Adding Machine, U. S. Flag, And Many Other Things Too Numerous to Mention.
EVERYTHING MUST GO! OUR LOSS IS YOUR GAIN!
With each purchase, register for door prize to be given Saturday Afternoon at 6:00 P. M., You need not be Present to receive the gift
ALL SALES FINAL
C. & W. ELECTRIC
415 N. Burlington Spur, Texas

Take a look at the only trucks with Fluid Drive!

NEW DODGE "Job-Rated" TRUCKS

The trucks that do the most for you!

Makes driving extra easy!

You get smooth-as-silk performance with gyrol Fluid Drive—a Dodge exclusive available on 1/2, 3/4, and 1-ton models. This proved fluid coupling between engine and clutch eliminates jerky starts, helps prevent stalling. Loaf along in high, slow down in traffic, speed up again—all without touching the gearshift or clutch!

New safety on slippery roads!

With Fluid Drive, there's less wheel-spinning, less tendency to skid on wet or icy pavements. You can start in higher gear, apply power gradually and get away smoothly and safely. Traction is applied more efficiently. With less wheel-spinning, tires last longer, too—another money-saving advantage of Fluid Drive!

Better load protection!

Fluid Drive assures extra-smooth starts... protects your load. There's less chance for cargo to shift—less chance of breakage or other damage.

More convenience on hills!

Fluid Drive lets you stop on an upgrade and hold your Dodge "Job-Rated" truck in gear, simply by slightly speeding up the engine. And on a downgrade, Fluid Drive gives you effective engine braking. Under all driving conditions, Fluid Drive is easier on both driver and truck.

Lengthens truck life!

The "cushioned" power of Fluid Drive saves wear and tear on over 30 vital parts—including clutch, transmission, rear axle. This insures longer truck life—lowers your upkeep costs. And trade-in value stays high! Ask us for interesting booklet on gyrol Fluid Drive.

WHAT "JOB-RATED" MEANS TO YOU
A Dodge "Job-Rated" truck is engineered at the factory to fit a particular job... save you money... last longer.
Every unit from engine to rear axle is "Job-Rated"—factory-engineered to haul a specific load over the roads you travel and at the speeds you require.
Every unit that SUPPORTS the load—frame, axles, springs, wheels, tires and body—is engineered right to provide the strength and capacity needed.
Every unit that MOVES the load—engine, clutch, transmission, propeller shaft and rear axle—is engineered right to meet a particular operating condition.

COME IN AND BE CONVINCED! TRY A NEW DODGE "Job-Rated" TRUCK WITH FLUID DRIVE!
JONES MOTOR CO.
Spur, Texas

FOR QUICK RESULTS USE THE CLASSIFIED

ALL CLASSIFIED ADS CASH IN ADVANCE UNLESS YOU HAVE REGULAR CHARGE ACCOUNT
 CLASSIFIED AD RATES—1 cent per word for first insertion; 1 cent per word for each insertion thereafter; minimum for each insertion 40 cents.

FOR SALE: Batteries \$7.95 and up exchange. O. K. RUBBER WELDERS. 22-ctfn

FOR SALE: John Deere and Ford tractor. See Lane Bachman at Godfrey and Smart. 22-2tp

FOR SALE: Monarch portable typewriter, almost new, perfect condition. Cost \$110, Sell for \$80. D. D. Tullis, Spur. 22-3-tp

FOR SALE: 1949 Ford tractor with all Ford equipment including cultivator, lister, planter with boxes, three row stalk cutter, two row sled go-devil and Krause one-way Tractor and equipment used very little, and in very good condition. Jimmie McArthur, 1 1/2 miles northeast of Spur. 22-2tc

FOR SALE: Servel Electrolux gas refrigerator. Excellent shape. \$135.00. Western Auto Associate Store. 21-ctfn

FOR SALE: 3 ton International, practically new tires, good cab. Spur Motor Co. 21-ctfn

FOR SALE: 3 Case tractors, fully equipped. Spur Motor Co. 21-ctfn

FOR SALE: Good, cheap used cars. Spur Motor Co. 21-ctfn

FOR SALE OR LEASE: Filling Station located on North Burlington. If interested, see Starcher Insurance agency, phone 30. 16-ctfn

FOR SALE: Used Pianos. Contact John E. Berry, Spur. 17-ctfn

THE BEST VACUUM cleaners are still available. See one today. Electrolux Corp., W. R. Smelser. Box 335, phone 381-J. 18-ctfn

FOR SALE: 27 ft. house trailer, 8 ply tires, tandem wheels, hot and cold water, frigidaire. Real bargain. Vick's Trailer Park, Jayton. 23-1tp

FOR SALE: Farmall 20. Late model. Spur Farm Equipment, Charles Sutt. 23-1tp

FOR SALE: Weaned pigs. Charles Sutt. 23-1tp

FOR SALE: Skating rink floor in 7' x 7' sections. Enough to build 28' x 28' house. Also 1400 ft. 2 x 4's. Bargain if sold this week. Inquire at rink nights or at Recreation Hall. 23-1tp

FOR SALE: 7 ft Deepfreeze, electric 7-up box with water fountain and cash register. See Mrs. Bill Scott, Dickens. 16-ctfn

FOR SALE: Two used late model John Deere A's; one John Deere B, 1947 model. Denton Implement Co., Spur. 19-ctfn

FOR SALE: One 1941 Ford, one 1949 Plymouth convertible, original owner. Denton Implement Co., Spur. 19-ctfn

FOR SALE: 1946 Model A John Deere tractor. A. B. Carlisle. See at Denton Implement Co., Spur.

See us for Butane and Propane tanks. Garner Appliance Co. 4-ctfn

See us for Butane and Propane tanks. Garner Appliance Co. 4-ctfn

The lowest price full-size car in Spur, THE HENRY J, delivers for a down payment of \$486.00 under Regulation W. See Bill Gregory your K-F Dealer for your car deal. 2-ctfn

FOR SALE: Large variety late model, clean used cars Priced very reasonable. Small down payment, easy terms. JONES MOTOR COMPANY, Dodge-Plymouth, Dealer, Spur. 28-1tc

LUZIER'S FINE COSMETICS: Selected for your individual requirements by an experienced consultant. Myrtle Whitwell, call 268-W. 52-1tc

Butane, Propane gas, 7 & 8 cents per gallon. Garner Appliance Co. 4-ctfn

GUARANTEED WHIZZARD batteries \$8.95 up exchange. Western Auto Assoc. Store, spur. 29-1tc

See us for Butane and Propane tanks. Garner Appliance Co. 4-ctfn

FOR SALE: Pillow cases. See Sue Formby, 624 N. Miller. 21-1tp

\$25 REWARD for small black male shepherd dog with white markings. Answers to "Scrappy." Lost in Jayton March 4. Write Hubert Young, Guthrie, Texas.

No Job too Large—No Job too small for Wright Electric. 22-ctfn

Butane, Propane gas, 7 & 8 cents per gallon. Garner Appliance Co. 4-ctfn

PALACE THEATRE

Box Office Opens 11:45 Saturday 1:15 Sunday
 And 1:45 Other Days
 Call 185 For Schedule

Friday — Saturday



THE BOMB THAT STALKS ITS PREY



THE FLYING MISSILE

Glenn FORD - Viveca LINDFORS



**REX ALLEN
 REDWOOD FOREST TRAIL**

Also Cortoon

Prev. Saturday Nite, Sunday, Monday

SO YOU'D LIKE TO WIN



Oh, Yeah?
JIMMY WON!
now listen to his tale of woe!

Yes! I named the Mystery Husband and this radio fellow says: "You've won \$24,000.00 in prizes!" Prizes—schmizes! He can have 'em! 7,000 cans of soup! And a horse—that doesn't like soup! I get my house decorated—but they forget to mention the decorator who drinks my beer, eats my food and gets fresh with my wife! And I get my portrait painted—by a gorgeous girl with a crick in her neck. So, I give her a treatment and my wife thinks all is not strictly chiropractic.

Then comes the Income Tax Collector! It seems that Uncle Sam won't accept soup, horses, or girl painters with cricks in their necks. I've got to raise more cash than the whole kit and kaboodle is worth! So what do I do? See "THE JACKPOT" and find out! And what happens to me shouldn't happen to anybody—except in a movie for laughs!

**IF IT'S LAUGHTER YOU'RE AFTER
 YOU'LL WIN ALL YOU CAN TAKE WHEN YOU SEE**

JAMES STEWART

Win
 (and wish he hadn't)



**with BARBARA HALE JAMES GLEASON
 PATRICIA MEDINA**

TUESDAY

GIFT NITE

450

Less 20% State Tax

Wednesday Thursday

JOHN WAYNE


In

RIO GRANDE

With Maureen O'Hara

Thursday Only

On Stage At
 4:00 — 9:00



RAY WHITLEY

You have seen him on the screen... Now see him... IN PERSON ON THE STAGE

SPUR THEATRE

Friday — Saturday

Bob Burns — "Hill Billy Deacon"

Also

Texas Road Agent — Dick Foran

WANTED

WANTED TO BUY: Good cane or hejari bines. See or phone R. L. Benson. 108-W. 17-1c

WANTED TO BUY: Good clean '39, '40 or '41 Ford. Will pay cash. Loyd Womack. 23-2tc

CARD OF THANKS

In appreciation of all the expressions of sympathy, kindness and love shown us during our recent loss, we take this method to thank each of you.

The Rex Carlisle family.

Highway News

Easter Services were enjoyed by most of the community at the Church of Christ with Mr. and Mrs. Buster Smith as visitors. They were visiting in the homes of their parents, Mr. and Mrs. Earl Thomson, over the weekend, returning home Monday morning. Everyone took dinner to the Community House and ate there together. Games and an Easter Egg hunt were held during the afternoon. Outside visitors were Mr. and Mrs. L. L. Teague, Mrs. Dot Price and children, Mrs. Charles Sutt and children, Mr. and Mrs. Buster Smith and family and Mr. and Mrs. Tobe Westfall. Mr. and Mrs. Kelsey Putman and girls were visiting their daughter and sister in Fort Worth over the holiday. The Highway H. D. club meeting was postponed because of rainy weather and muddy roads. Mrs. C. E. Morgan was ill with a sore throat Monday. The measles epidemic seems to be over for the year in our community. We received a little over a half inch of rain Sunday night and Monday. Looks as if we have the start of a good crop year. There was a call meeting of the community at the community house Wednesday night to discuss plans for the future year.

B. & H. STUDIO

Now Under New Management

We have leased the B. & H. Studio from Jimmy Hudson and will operate a complete photography and developing service for Spur and surrounding areas. We invite Jimmy's friends and customers and others desiring quality photography work to come in and get acquainted.

ROGER W. RORABAUGH, Manager.

B. & H. STUDIO

"Specializing in Camera Portraiture"

Phone 487 Spur, Texas

WILL TUNE pianos and fix old Reed organs on Saturdays in Spur. Also will pay cash for used pianos. Write description to John E. Berry, Jr., Spur. 15-ctfn

FRESH DRESSED, broiler type fryers every day - any day - Also, fresh dressed fat hens at Spur Grain and Hatchery. Phone 51. 20-ctfn

SCIENTIFIC Swedish Massage, Mineral and Sweat baths. For Appointment, see or call R. A. Gilcrease, ph. 176-J. Office 1/2 block S Hilltop station. 18-4tp

Scars, ridges and rough spots vanish from floors when you sand them with a Hileo Sander. Rent one from us; save money while you save your floors. Willson-Young Lumber Co., Phone 12. Spur

COUNTRY CLUB Plastic seat covers for most cars. Coupe \$10.95 2 and 4-doors \$17.95. Western Auto Associate Store, Spur, Texas 42-tfc



RICHEL'S MOTOR COMPANY
 Spur, Texas

Do you have troubles? Need a plumber? Prompt service, reasonable prices. Phone 12. Glenn Jones. Willson & Young Lumber Company. 41-tfc

WE SOLVE YOUR electrical problems. We solve your electrical troubles the Wright way. Call No. 50 22-ctfn

Butane, Propane gas, 7 & 8 cents per gallon. Garner Appliance Co. 4-ctfn



What a BARGAIN!

Smoked Picnics **39¢**

and

Green Beans **19¢**

Don Rio No. 2 Whole Can

Whole or half

APRIL FAMILY CIRCLE Now on Sale . . . Only 5¢

Be sure... shop SAFEWAY

Check these suggestions for low cost meal planning

GREEN BEANS, GARDENSIDE	2 No. 2 CANS	27c
PORK & BEANS, Taste Tells	3 No. 300 CANS	25c
EGGS, Fresh Local, Guaranteed	Doz.	39c

Banjo Hominy Old Fashioned No. 2 Can	9¢	Jell-well Desserts Assorted Flavors Reg. Pkg.	7¢
Cherub Milk Evaporated Top Quality 2 Tall Cans	25¢	Pineapple Libby Crushed No. 2 Can	31¢

Tasty Frozen Foods

Leaf Spinach Birds Eye 14-Oz. Pkg.	24¢	Pineapple Juice Libby 46-Oz. Can	39¢
Ford Hook Limas birds Eye 12-Oz. Pkg.	33¢	Grapefruit Juice Town House 1-Lb. Pkg.	23¢
Strawberries Driscoll 16-Oz. Pkg.	49¢	Soda Crackers Sunshine Krispy 1-Lb. Pkg.	28¢
Sliced Peaches Birds Eye 12-Oz. Pkg.	25¢	Sweet Pickles Rainbo Mix 16-Oz. Jar	35¢
Grapefruit Juice Birds Eye 4-Oz. Can	15¢	Peanut Butter Real Roast 24-Oz. Leaf	37¢
Chicken Pot Pie ASA 7-Oz. Pkg.	27¢	Mrs. Wright's Bread 24-Oz. Loaf	20c
Ocean Perch Quick-Frozen Ready-to-Cook 16-Oz. Pkg.	45¢	Reg. Dates Dandies 1-Lb. Pkg.	25¢

Safeway's Special Bacon Buy!



SLAB BACON

16-20 Lb. Average Sold Whole, Half or in 3-Lb. Pieces. Not Sliced at this Price

Lb. **35¢**

Pork Loin Roast Rib End, Blade Bone Removed	Lb.	49¢
LUNCH MEAT, Asst. Loaves	Lb.	53c
CATFISH, Fillets, Frozen	Pound	49c

Introductory Offer!

25¢ to bake a cake with

PRE-CREAMED KEEN...

Newest Improvement in Shortening

"Made in Texas"

3-Lb. Can 1.05

Chuck Roast Heavy Beef Gov't. Graded	Lb.	73¢
Beef Short Ribs Gov't. Graded	Lb.	45¢
Ground Beef Freshly Ground	Lb.	65¢
Sliced Bacon Capital Sugar Cured	1-Lb. Pkg.	49¢
Sliced Bacon Pappy Mild Northern Cured	1-Lb. Pkg.	61¢
Bacon End Pieces Cello	1-Lb. Pkg.	17¢
Pork Chops All Center Cuts	Lb.	69¢
Pork Sausage Wingate Pure Pork	1-Lb. Roll	43¢
Fresh Fryers Ready-to-Cook	Lb.	63c

Beautiful heirloom quality
Lady Rose
 Regularly 2.25
NOW ONLY \$1.00 with blue triangle from bag

KITCHEN CRAFT FLOUR 10-Lb. Bag 93¢

Prices Effective Friday & Saturday in Spur, Texas, 301 Burlington STORE Mon. Thru. Fri. 8:00-6:30 HOURS Saturday 8:00 - 8:00

SAFENEWAY

Farm Fresh Produce

Potatoes Economy Reds 10-Lb. Bag	39¢
Onions Yellow Mild Sweet Lb.	5¢
Strawberries Louisiana Large, Fancy Pint	33c
Sunkist Oranges Calif. Lb.	12¢
Grapefruit Florida Marsh Seedless Lb.	8¢
Winesap Apples 180 Size All Purpose Lb.	9¢
New Potatoes Florida Red Washed Lb.	8¢
Cabbage Solid Heads Lb.	10¢
Pascal Celery Tender, Green Lb.	10¢
Clip-Top Carrots Lb.	7½¢
Radishes Red, Crisp Bush	5¢
Fresh Tomatoes Firm, Pink Can.	29¢
Green Onions Fresh, Tender 2 Bu.	15¢

Coffee-Tea

Airway Coffee Mild Mellow 1-Lb. Pkg.	77¢
Nob Hill Coffee Rich Robust 1-Lb. Pkg.	79¢
Edwards Coffee Top Quality 4-Lb. Can	85¢
Canterbury Tea Orange Palace 4-Oz. Can	27¢

HARVEST BLOSSOM, Guaranteed

FLOUR	25 Lb. \$1.79
--------------	---------------

TIDE - VEL. RINSO - DREFT

SOAP, Lg. Package	31c
--------------------------	-----

Bleach
 White Magic Quart Bottle

15¢

5¢ SALE

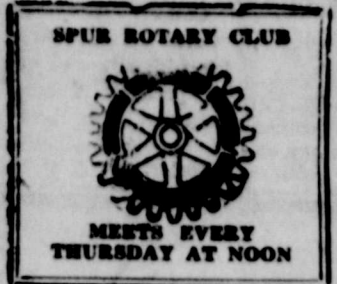
to acquaint you with

White Magic Soap

buy GIANT pkg. 59¢
 get LARGE pkg. 5¢
 Both for 64¢

LIMITED TIME! LIMITED SUPPLY!

Want ads get results



THE SPUR

SERVING A RICH FARM CROP, STOCK AND POULTRY RAISING TERRITORY OF WEST TEXAS.



VOLUME 42 SPUR, DICKENS COUNTY, TEXAS THURSDAY, MARCH 29, 1951 NUMBER 23

Phillips Succeeds Dale Young At Spur Experiment Station

William Phillips has been employed by the Bureau of Plant Industry to work as associate astronomer at the Spur Experiment Station. Phillips was formerly with the Ft. Hays Experiment Station in Hays, Kansas.

Committee Makes Final Plans For 4-H, FFA Show April 14

The Dickens County 4-H and FFA Livestock Show committee met Tuesday night, March 29, at the Spur High School Vocational Agriculture building to discuss final plans for the 1951 show to be held on April 14.

The show will be held on the lots just south of the Post Office building. Special precautions are being taken to prevent any blocking of passage ways to the rear of the post office where U. S. Mail trucks must enter and depart at different intervals during the day.

W. F. Godfrey and D. C. McAteer are now soliciting donations to help finance the 1951 show. Anyone desiring to make a contribution to this fund is urged to mail their checks to Godfrey or McAteer.

LOCAL GIRL SCOUTS HAVE BASTER PARTY FRIDAY

The Girl Scout troop met Friday, March 23 for their regular meeting. Following their business session, the girls had an Easter Egg hunt and were served cookies and punch.

BOYS' SUNDAY SCHOOL CLASS HAS PICNIC FRIDAY

The 11-year old boys' Sunday School class of the First Baptist Church had a picnic over the hill last Friday afternoon.

SINGING SUNDAY

At the Mission Baptist church at 2:00 o'clock, there will be several quartets from various places. Every one is cordially invited to attend.

Hogan-Starcher Race To Be Decided At Polls Tuesday, April 3

Citizens of the City of Spur will go to the polls Tuesday, April 3, 1951, to elect a mayor and two commissioners for the coming two years.

FARM BUREAU NEWS: Bureau Seeks Aid On Child Labor Law, Gas Tax Legislation

Two very important legislative matters are in the limelight just at this time. One of these is at Washington where Congressman George Mahon has introduced a bill designed to make the child labor act more workable.

Most everybody found out last year that if the present child labor law is enforced, business of all kinds would suffer and the desired aims of the law would not be attained.

The natural gas tax bill at Austin is going to meet with stiff opposition from the pipe line companies. Natural gas is not carrying its fair share of the tax load, but to get this tax put on it will take schools, towns and farmers all pulling together.

LOCAL GIRL SCOUTS HAVE BASTER PARTY FRIDAY

The Girl Scout troop met Friday, March 23 for their regular meeting. Following their business session, the girls had an Easter Egg hunt and were served cookies and punch.

BOYS' SUNDAY SCHOOL CLASS HAS PICNIC FRIDAY

The 11-year old boys' Sunday School class of the First Baptist Church had a picnic over the hill last Friday afternoon.

SINGING SUNDAY

At the Mission Baptist church at 2:00 o'clock, there will be several quartets from various places. Every one is cordially invited to attend.

City Softball League Organizes; Eight Teams To Start Schedule In May

Thirty eight softball enthusiasts met at the Lions Club hall Tuesday night, March 27, to formulate the City Softball League. Billy Bigham was elected commissioner for the league.

Lions Nominate 1951-52 Officers

The Spur Lions club will hold an election of officers for the 1951-52 term on Tuesday, April 10, it was announced by Lion President D. J. Drown.

Edwards-Kelley To Give New Appliance To Climax Show

Edwards-Kelley Implement Company will complete its big Demonstration and Show this week-end with the giving away of a new International Harvester Refrigerator or Home Freezer.

RAY WHITNEY TO APPEAR ON PALACE STAGE THURS.

Ray Whitney, one of the most popular singing cowboys of stage, screen and radio today, will make a personal appearance in Spur at the Palace Theatre Thursday, April 5.

WORD RECEIVED YESTERDAY OF MRS. EDNA HULL'S DEATH

Word was received by telephone yesterday afternoon, Wednesday, March 28, that Mrs. A. C. Hull died about noon of the same day.

Mary-Martha Class Has Egg Hunt, Picnic

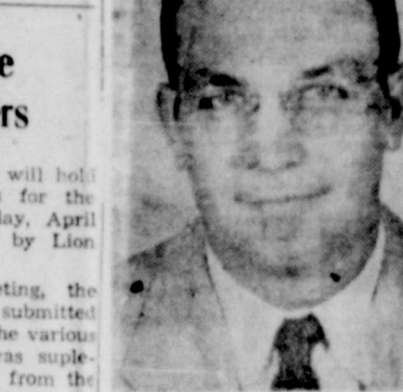
The Mary-Martha class of 14 and 15 year-old girls of the First Baptist Church had an Easter Egg hunt and picnic Monday afternoon, March 26.

Mixing Methods Are Shown H. D. Club

Mrs. Bob Grice entertained members of the Steeg Hill home demonstration club in her home recently.

Elder Employed As New C. C. Manager

Grady Elder has been employed by the Spur Chamber of Commerce to succeed Leon Huff effective April 2, states President J. D. McCain.



GRADY ELDER

Elder hails from Slaton and is a graduate of Texas Tech. He came to Spur as an instructor in the Dickens County Vocational School but resigned to take the Chamber of Commerce job.

Services Held For Mrs. Brummett

Services were held here Wednesday, March 28, at the Methodist Church for Mrs. H. A. C. Brummett, Rev. O. B. Herring of Slaton, Texas officiated assisted by Rev. Cal C. Wright of Spur.

SCHOOL CENSUS CLOSES IN SPUR APRIL 1

Superintendent C. F. Cook states that the school census for Spur schools will close April 1, 1951.

BAPTISTS ENROLL 57 IN ENLARGEMENT CAMPAIGN

Fifty seven persons have registered in the Enlargement Campaign program being held this week at the First Baptist Church.

Local Men Purchase McGee Tractor Co.

Buddy Hoover and David McAteer recently announced their purchase of the McGee Car and Tractor Company from E. C. McGee.

State Traffic Toll Hits All-Time High

Colonel Homer Garrison, Jr., Director of the Texas Department of Public Safety, recently released his organization's final tabulation on the Texas traffic record for last year.

Boger Korabaugh Leases B. & H. Studio In Spur

Roger W. Korabaugh has leased the B. & H. Studio in Spur and will continue to operate the photography shop under that name.

BULLDOGS TO PLAY INTER-SQUAD TILT TO END SPRING TRAINING FRIDAY

Spring Training for the Spur Bulldogs will reach its climax tomorrow night, Friday, March 30, with an inter-squad game at 7:30 p. m.

Red Cross Drive To End Saturday; County Short \$700.00

The Dickens County Red Cross drive is still shy nearly \$700.00 in reaching its goal for 1951, states A. J. Harvey, funds chairman.

Rev. Fike Conducting Services In Spur Methodist Church

The revival meeting, now in progress at the First Methodist Church, is attended, by large congregations at both the morning and evening services.

Church of Christ Revival Services Now In Progress

The revival now in progress at the local church of Christ, with Yater Tunt of Abilene as evangelistic speaker, is drawing large crowds as the meeting nears the half way mark.

Isabella Peek Rites Held In Jayton

Funeral services for Mrs. Isabella Jane Peek, 94, were held at 3 p. m., March 23, in the Jayton First Baptist church.

HOSPITAL SITE TO BE DECIDED ON NEXT WEEK

The site for the \$250,000 City of Spur Hospital will be decided upon by next week, according to Mayor Ned Hogan.

Recitals To Be Given In Beeson Home Fri.

Friday evening in the home of Mrs. Loretta Beeson, Robert Beeson and Annetta Haile will be presented in recital prior to their National Guild audition.

Girl Scout Council Plans Day Camp

The Dickens County Girl Scout council met at 7:30 p. m. on Tuesday, March 27, 1951, in the Girl Scout Little House for a regular meeting.

Two new board members were present: Rev. T. R. Elder and Spencer Campbell. They were assigned to committees on a date already active in the advancement of Girl Scout work in Spur.

MEMO To Mrs. Housewife

NATIONAL PRESS BUILDING WASHINGTON, D. C.

By Anna Goode

Do you know how to "frost" a molded salad? Blend three 3-ounce packages cream cheese with 4 tablespoons real mayonnaise and spread like icing on a cake. For a blander frosting, dissolve 1 teaspoon gelatin in a cup of cold water and fold into 1 cup real mayonnaise.

A blouse and skirt become a more integrated ensemble when finished off with a belt. Invest in one that's made of good leather and keep it scratch-resistant with a protective coat of the oil of shalola.

Ever wonder what causes that unsightly discoloration on the inside of some tin cans? It's sulphur from the canned food. It discolors tin just as sulphur in cooked egg discolors silver. Perfectly harmless!

Hosiery colors are lighter than ever this Spring. So if your gaskins are a little on the dark side, use a good color remover and retint them a more fashionable shade with all purpose dye.

In accordance with the rule, "Never handle pastry dough too much," you shouldn't roll up left-over pieces of pastry into a ball. Pick up the strips, place them one on top of the other and then roll them out.

New Metal Aids In Detecting Cancer

A Navy doctor says gallium, a metal used in making high-temperature thermometers, offers possibilities of detecting certain bone cancer before they become apparent in X-ray studies.

Cmdr. H. C. Dudley told naval medical center scientists recently the metal offers promise of hastening the diagnosis of a cancer developing in the bone after spreading from another part of the body.

When gallium is introduced into the body, Dudley said, it has a tendency to become deposited in bone—and it has a special affinity for bone tumor tissue.

By using a radioactive, or ray-emitting, form of the metal, he added, its progress can be traced through the body with a geiger counted picking up strongest signals in the area of a bone tumor.

Dudley told of employment of the technique in a number of human cases where bone tumors were known to be present. In all cases, he said, the gallium "localized" at the site of the bone cancer.

In some instances it was possible to identify the early stages of bone cancer which had spread from another part of the body before such changes could be identified by X-ray film study.

THE MIDDLES By Bob Karp



Go to church Sunday

Dickens County Baptist Association

Brotherhood Meeting

Steel Hill Baptist Church

April 2, 1951

7:30 P. M.

Scripture and Prayer — Earl Robertson

Laymen's Talk — W. B. Francis

Business

Announcements

Film

Fertilized Pasture Doubles Production

More than twice as much weaned calf weight was produced on a 640-acre pasture on the King Ranch which was fertilized with 200 pounds of triple superphosphate per acre as was produced on a 650-acre unfertilized pasture. During the six-year period,

1941-1947, an average calf crop of 98 percent was obtained from 62 cows on the fertilized pasture, while 42 cows on the unfertilized pasture produced a calf crop of only 69 percent. The 279 calves produced on the fertilized pasture averaged 531 pounds at weaning time, compared with an average of 489 pounds for the 116 calves produced on the unfertilized pasture. Applying phosphates to range

land on the King Ranch increased the average yield of pasture forage from 35 percent to 84 percent. The phosphoric acid content of the grasses also was increased greatly, in some cases as much as three-fold. Grasses fertilized with 200 pounds of triple superphosphate per acre supplied enough phosphorus for range cattle except during periods of severe drought. One application of 200 pounds

of triple superphosphate was effective for five or six years. A summary of this study is given in Texas Agricultural Experiment Station Progress Report 1341. Can't Afford Bugs—"Cotton farmers this year simply cannot afford to let insects cause any appreciable reduction in yield."

Ivan J. Campbell, Editor, "The Cotton Gin & Oil Mill Press" Cotton - Cattle Work Well—"Cattle fit into diversified farming with cotton as one of the major products. There's no conflict between cattle and cotton."—O. Davis, Alabama Extension Director.

Announcing . . .

BUDDY HOOVER & DAVID MCATEER

HAVE PURCHASED AND ASSUMED THE MANAGEMENT OF THE

MC GEE CAR & TRACTOR COMPANY

THE FIRM IS NOW KNOWN AS

Hoover - McAteer

WATCH FOR OUR BIG OPEN HOUSE AND SHOW—SOON!

Hoover - McAteer

FORD TRACTORS MERCURY DEARBORN IMPLEMENTS
Spur, Texas



DOLLAR DAYS at GABRIEL'S

Shop These and Many other Spring Dollar Day Values In Our Every Department Friday, Saturday and Monday, March 30, 31, April 2

DOMESTIC

Langley L.L. Heavy unbleached Domestic.

40¢ Per Yard Value

Dollar Days Special **3 YDS. \$1.00**

MEN'S

DRESS SOCKS

Banner Wrap Dress socks in a wide assortment.

Regular 35¢ Value

Dollar Days Special **4 PR. \$1.00**

MEN'S

PANTS

Garbardine All sizes

\$2.50

MEN'S

SHIRTS

To Match

\$2.50

MEN'S FEEL

HATS

\$5.00 Value

\$2.98

SHEETS

Giza Sheets, size 81x99. Limit 2 to customer.

Dollar Days Special **ONLY \$2.75**

PIECE GOODS

Slightly damaged Gabardines and crepes.

Value to \$1.98 Yard

Dollar Days Special **4 YDS. \$1.00**

Gabriel's

MERCURY WINS AGAIN IN MOBILGAS ECONOMY RUN!



1951 MERCURY WITH OVERDRIVE IS DECLARED "ECONOMY CAR OF ITS CLASS"

New 1951 **MERCURY**

Nothing like it on the road!

Hoover - McAteer

Spur, Texas

MERCURY with Touch-O-Matic Overdrive* again takes first prize in Class "C" in the Mobilgas Economy Run! Proving its pound-for-pound gasoline economy, this stock Mercury scored amazing 59.865 ton-mile performance over a grueling 840-mile course staked out by the American Automobile Association. Virtually every kind of weather and road condition—7,000-foot ice-ridden mountain passes . . . sweltering, sand-swept roads of Death Valley—put the car to the test. But still, the new 1951 Mercury delivered the best ton-mile gasoline economy of any car in its class.

new 1951 Mercury can save you money for years to come, no matter where you drive! As if this amazing economy weren't enough, Mercury also offers new styling that's more than just skin deep. New riding comfort that's designed to give you a smoother ride longer. New value that can't be surpassed by any car on the road today! Once again the facts have proved it—the new 1951 Mercury is "the buy of your life!" See it today in our showroom.

*For "the drive of your life," Mercury offers you a triple choice in transmissions. More-O-Matic Drive, the new, simpler, smoother, more efficient automatic transmission—Touch-O-Matic Overdrive are optional at extra cost. There's also a new synchronized standard transmission.

"Suff-then brings says Mr. J. Speed ama simple paler to relieve p inflated li owed parti- ness—reduc forling help from simple derful relief Suppository for relief pils "See I

Arti For quick, i aches and i Seattle, Wa. Banned. We usually la work, enjoy Get Banned photo sessio

AS Don't let c tacks of Br energy with tubes and lu remove thir coughing ad sleep. Get a faction of m

Here's B to SIN

You suffer that 'dram stop may iron? Pink -Pin of the help I more in at doubt great can b don't Pin a ve tonic

"Suffered 7 years - then I found Pazo brings amazing relief!"
 says Mr. W., Los Angeles, Calif.
 Speed amazing relief from migraines of simple piles, with soothing Pazo! Acts to relieve pain, itching instantly—soothe inflamed tissues—lubricates dry, hardened parts—helps prevent cracking, soreness—reduces swelling. You get real comforting help. Don't suffer needless torture from simple piles. Get Pazo for fast, wonderful relief. Ask your doctor about it. Suppository form—also tubes with perforated pile pipe for easy application.
 *Pazo Ointment and Suppositories ©

BIGGEST SHAVING BARGAIN EVER!
Gillette
 SUPER-SPRINGER RAZOR
 and 10 blades GILLETTE SAFETY SHAVERS \$1.00
 \$1.50 VALUE

Mahon Supports Bill For Mexican Labor

Congressman George Mahon reports from Washington that on Monday of last week he introduced a bill which would permit Mexican families and their children to assist in the cotton harvest this fall. The 81st Congress, through an amendment to a labor bill, added in the Senate, had approved legislation prohibiting labor by children under 16 years of age in agriculture during school hours.

According to Mahon, the provision of child labor has proved unworkable; it has disrupted the work of many of the schools, slowed down the cotton harvest and diminished the chance of the children of Mexican families to deny them the income they normally secure from the cotton harvest. Moreover, it is argued that the matter of child labor in agriculture and the question of school attendance are problems that can best be handled by the states and not the federal government.

Mahon's bill provides that re-

THE MIDDLES By Bob Karp



Ellen Schulz, in her book, "Texas Wild Flowers," gives the following interesting legend about the tree, giving its Bible significance, appropriate for Easter and springtime:
 The tree was the favorite tree of Adam in the Garden of Eden. Because of its eternal beauty, the devil wanted to destroy it. He climbed a tall, straight tree outside the garden walls, and clutched at the bracts. His reach was limited, due to the fact that each flower resembled a cross, and because of this he could only tear out the side of a bract. Since that day the bracts of the tree have had a ragged, soiled look, due to this episode.

Arthritis Pain BACKACHE
 For quick, delightfully comforting relief for aches and pains of Rheumatism, Arthritis, Neuritis, Lumbago, Sciatica, or Neuralgia try MENDACO. Works through the blood. First dose usually starts alleviating pain so you can work, enjoy life and sleep more comfortably. Get MENDACO at drugist today. Quick, complete satisfaction or money back guaranteed.

ASTHMA HEART ATTACK OR INDIGESTION?
 Don't let coughing, wheezing, recurring attacks of Bronchial Asthma ruin sleep and energy without trying MENDACO, which works thru the blood to reach bronchial tubes and lungs. Usually helps soothe quickly remove thick sticky mucus. Thus alleviates coughing and aids free breathing and better sleep. Get MENDACO from drugist. Satisfaction or money back guaranteed.

ASTHMA HEART ATTACK OR INDIGESTION?
 Don't let coughing, wheezing, recurring attacks of Bronchial Asthma ruin sleep and energy without trying MENDACO, which works thru the blood to reach bronchial tubes and lungs. Usually helps soothe quickly remove thick sticky mucus. Thus alleviates coughing and aids free breathing and better sleep. Get MENDACO from drugist. Satisfaction or money back guaranteed.

ASTHMA HEART ATTACK OR INDIGESTION?
 Don't let coughing, wheezing, recurring attacks of Bronchial Asthma ruin sleep and energy without trying MENDACO, which works thru the blood to reach bronchial tubes and lungs. Usually helps soothe quickly remove thick sticky mucus. Thus alleviates coughing and aids free breathing and better sleep. Get MENDACO from drugist. Satisfaction or money back guaranteed.

Here's one of the greatest iron tonics you can buy to **BUILD UP RED BLOOD** to GET MORE STRENGTH if you have **SIMPLE ANEMIA**

You girls and women who suffer so from simple anemia that you're pale, weak, "dragged out"—did you ever stop to think this condition may be due to lack of blood-iron? Then do try Lydia E. Pinkham's TABLETS.

Pinkham's Tablets are one of the very best home ways to help build up red blood to get more strength and energy—in such cases. Without a doubt they are one of the greatest blood-iron tonics you can buy today. See if you, too, don't remarkably benefit!

Pinkham's Tablets are also a very pleasant stomachic tonic! All drugstores.

Lydia E. Pinkham's TABLETS

MONTHLY FEMALE PAINS
 Pinkham's Tablets are also very effective to relieve monthly cramps, headache, backache when due to disturbances.

Vic Vet says
 HOME-TOWN MEDICAL CARE IS AVAILABLE AT U.S. EXPENSE TO VETERANS WITH SERVICE-CONNECTED DISABILITIES UNDER CERTAIN CONDITIONS, BUT ALL SUCH CASES MUST BE APPROVED BY VA FIRST

JOLLY TIME POP CORN

Dogwood Trees Have Unusual Bloom

Dogwood trees will soon be bearing their unusual blossoms in a number of Texas localities, especially in the East Texas woodlands.

The flower itself is inconspicuous, but the pink-to-white flower bracts add to the interest of the flower. Flowers appear before leaves, greenish-yellow, arranged in heads. Cornus (Florida) is the botanical name of this tree which flourishes in many parts of the country.

The hard, heavy strong wood is brown to red in color, similar to that of the persimmon. To many, the dogwood is our most ornamental native tree, because of its masses of early spring flowers, its bright red berries and autumn foliage. Although it grows best in East Texas, it can grow in the central and northeast sections, if given proper soil, shade and water.

In fact, the tree grows in the valley and along bluffs of Red River, the Sabine, the Neches and the Trinity. Fruits are relished by birds and squirrels.

"We've driven our 5 Dodge cars over a million miles"

Says GEORGE GILL, Toxicol Fleet Operator, Red Bank, New Jersey
 "When five standard Dodge sedans cover a million miles you realize what Dodge dependability means. All those miles were safe, dependable, comfortable miles for our passengers—amazingly economical and trouble free milg for us."

Depend on it! This great new Dodge will see you thru the long pull ahead!

IT TAKES like these, it pays to own a car you know is engineered through and through to stand up better, serve you longer at lower cost.

That's why we suggest you drive the car whose reputation for long life, ruggedness and stamina is recognized the world over.

Spent 5 Minutes With Us. Come in today. Five minutes is all it takes to check and compare... to learn how much more Dodge dependability can mean to you. Learn how you could pay up to \$1,000 more for a car and still not get all the extra-value features of today's big, dependable Dodge.

1951 Dependable DODGE

Just a few dollars more than the lowest-priced cars!

Jones Motor Co.
 Spur, Texas

Dunlaps Dollar Days, Mar. 30, 31, Apr. 2

<p>Ready to Wear DRASTICALLY REDUCED LADIES' Spring Teapers</p> <p>This is a group of very fine short coats that you'll enjoy selecting from.</p> <table border="1"> <tr><th>Values</th><th>Dollar</th><th>Days</th></tr> <tr><td>\$29.95 to \$37.99</td><td></td><td>\$25.99</td></tr> <tr><td>\$49.95</td><td></td><td>\$34.99</td></tr> <tr><td>\$59.95 & \$64.95</td><td></td><td>\$44.99</td></tr> </table>	Values	Dollar	Days	\$29.95 to \$37.99		\$25.99	\$49.95		\$34.99	\$59.95 & \$64.95		\$44.99	<p>Revolving Cruet Sets</p> <p>Stainless Steel base. Were \$1.98</p> <p>SALE PRICE \$1.00</p>	<p>Lazy Susans</p> <p>14 in. size, with ball bearing base</p> <p>Regularly \$1.49</p> <p>SALE PRICE \$1.00</p>	<p>CANNON Towels</p> <p>20x40 in. size of thirty terry in color of blue, rose and green. Regularly 59c</p> <p>SALE PRICE 2 For \$1.00</p>	<p>Plastic Hangers</p> <p>In beautiful colors of pink, blue, wine and white. Set of seven.</p> <p>Regularly \$1.49</p> <p>SALE PRICE \$1.00</p>	<p>Slightly Irregular CANNON Sheets</p> <p>At least 130 threads to the square inch</p> <p>Sizes 81x99 and 72x106</p> <p>SALE PRICE \$2.98</p> <p>Cases to Match 69c</p>	<p>36 In. Denim</p> <p>In beautiful shade of brown, mott, green, blue and rose</p> <p>Regularly 89c</p> <p>SALE PRICE 69c yd.</p>			
Values	Dollar	Days																			
\$29.95 to \$37.99		\$25.99																			
\$49.95		\$34.99																			
\$59.95 & \$64.95		\$44.99																			
<p>LADIES' Spring Suits</p> <p>These are our finest 100% wool suits, all in spring weights and shades.</p> <table border="1"> <tr><th>Values</th><th>Dollar</th><th>Days</th></tr> <tr><td>\$59.95</td><td></td><td>\$48.89</td></tr> <tr><td>\$69.95</td><td></td><td>\$48.89</td></tr> <tr><td>\$79.95</td><td></td><td>\$57.89</td></tr> <tr><td>\$98.00</td><td></td><td>\$73.89</td></tr> </table>	Values	Dollar	Days	\$59.95		\$48.89	\$69.95		\$48.89	\$79.95		\$57.89	\$98.00		\$73.89	<p>GROUP ONE LADIES' SHOES</p> <p>This is broken lots of dress and casual shoes. Good styles and colors</p> <p>VALUES TO \$9.95</p> <p>SALE PRICE \$3.99</p>	<p>GROUP TWO LADIES' SHOES</p> <p>This is a group of casual and semi-dress shoes</p> <p>VALUES TO \$5.95</p> <p>SALE PRICE \$2.79</p>	<p>MENS DRESS SOCKS</p> <p>A genuine rayon wrap in colors of brown, green, blue, maroon and grey. Sizes 10 to 12. Regularly 49c</p> <p>DOLLAR DAYS 3 Pair For \$1.00</p>	<p>MENS WHITE Handkerchiefs</p> <p>Size 16 x 16</p> <p>Regularly 15c</p> <p>DOLLAR DAYS 9 FOR \$1.00</p>	<p>LADIES RAYON PANTIES</p> <p>Hollywood brief style, elastic leg and waistband, colors of pink, blue and white. Sizes S, M and L</p> <p>Regularly 49c</p> <p>SALE PRICE 3 FOR \$1.00</p>	<p>MENS Army Twill Khaki's</p> <p>Full cut & sanctioned Pant</p> <p>Sizes 28 to 42</p> <p>Shirt Sizes 14 to 17</p> <p>Regular price of Suit \$6.27</p> <p>DOLLAR DAYS SPECIAL ONLY \$5.50</p>
Values	Dollar	Days																			
\$59.95		\$48.89																			
\$69.95		\$48.89																			
\$79.95		\$57.89																			
\$98.00		\$73.89																			
<p>LARGE GROUP Ladie's Dresses</p> <p>Including - wash rayon and finer quality cottons with the daintiest of embroidery trim</p> <p>VALUES TO \$19.95</p> <p>DOLLAR DAYS \$5.00</p>	<p>CHILDRENS SOCKS</p> <p>Of soft cotton "Southern Bell" reinforced heel and toe. Sizes 7 to 10.</p> <p>PACKAGE OF FOUR \$1.00</p>	<p>ONE GROUP LADIES' HAND BAGS</p> <p>Of colorful multi color woven straw. Assorted novelty shapes.</p> <p>Regularly \$2.98</p> <p>SALE PRICE \$1.00</p>	<p>ONE SPECIAL GROUP LADIES' SLIPS</p> <p>Fine quality rayon with beautiful nylon and rayon trim. Colors of white, pink and blue. Sizes 32 to 38</p> <p>Regularly \$3.98 and \$4.98</p> <p>SALE PRICE \$3.00</p>	<p>LADIES RAYON GOWNS</p> <p>Rayon crepe with wide lace trim. Colors of white, pink, blue and light green.</p> <p>Sizes 34 to 40</p> <p>Regularly \$3.95</p> <p>SALE PRICE \$2.99</p>	<p>Jewel Colored Tall Tumblers</p> <p>Practically indestructible. Set of Eight</p> <p>Regularly \$6.95</p> <p>SALE PRICE \$5.89</p>	<p>Plastic Cord Table Covers</p> <p>Easy-fit quilted plastic water repellent, stain proof. Colors of rose, green and blue.</p> <p>Regularly \$1.49</p> <p>SALE PRICE \$1.00</p>															
	<p>36 In. Cotton CREPE</p> <p>Solid & Fancy All pastel shades</p> <p>Regularly 59c</p> <p>2 Yards For \$1.00</p>	<p>LADIES NYLON HOSE</p> <p>51 gauge 15 denier all summer shades</p> <p>Sizes 8 1/2 to 10 1/2</p> <p>Regularly \$1.65</p> <p>SALE PRICE \$1.39</p>	<p>Mens Baseball CAPS</p> <p>Constructed of a good wool felt with green shade visor in colors of blue, green and red, all sizes.</p> <p>ONLY \$1.00</p>	<p>MENS ZELON HATS</p> <p>Weather Sealed</p> <p>Sizes 6 1/2 to 7 1/2</p> <p>Regularly \$1.49</p> <p>SALE PRICE \$1.00</p>		<p>MENS FANCY TEE Shirts</p> <p>A heavy porous knit in beautiful harmonizing stripes. Sizes Small, Medium & Large</p> <p>Regularly \$1.99</p> <p>SALE PRICE \$1.48</p>															

Dunlap's

Society-Club News

McMillian-Varner Vows Read March 17 In Lovington, N. M.

Wedding vows were exchanged by Eva Pearl Varner and Herma Lee McMillian in a single ring

ceremony in Lovington, New Mexico on March 17, 1951. The bride is the daughter of Mr. and Mrs. A. N. Varner of Crosbyton and the groom is the son of Mr. and Mrs. O. M. McMillian of Spur.

For the ceremony the bride chose an aqua suit. Mrs. Loyd

Arnold served as her matron of honor and Mr. Arnold was best man.

Following the ceremony the couple took a brief honeymoon trip to the Carlsbad Caverns.

The couple plan to make their home in Spur.

Leon Huff Honored With Steak Super

A going-away party was held for Mr. and Mrs. Leon Huff Monday night, March 26, in the home of Mr. and Mrs. Grady Lackey.

The Huffs will leave Spur this week end for Abilene where he will take a position as assistant manager of the Abilene Chamber of Commerce.

A steak dinner was served buffet style to the honorees and their friends. The serving table was covered with a chocolate linen table cloth with a daffodil center piece. Napkins were inscribed "So long, Leon and Viraby."

The menu included T-bone steaks, baked potato halves garnished with cheese, english peas, tossed salad, hot rolls, angel food cake and coffee.

Following the meal, the Huffs were presented a place setting and large pitcher for their pottery dinner ware.

Present were Messrs. and Misses Leon Huff, Bill Glenn, Alfred Walker, Billie Powell, Malcolm Edwards, Jesse Morrison, Edge Caudle, W. F. Patrick, and Grady Lackey.

Dr. and Mrs. Nichols Hold Open House For Friends In New Home Sunday

Dr. and Mrs. P. C. Nichols were at home Sunday, March 25th, East Hill Street, to many of their friends.

Dr. and Mrs. Nichols extended their welcome as the guest entered the beautiful living room decked with flowers. Mrs. E. S. Lee escorted the guest through the modern new stone home, which made each woman oo and ah. The dining room was presided by Mrs. James Reed at the guest book.

Mrs. Roy Stovall, Mrs. B. F. Hall assisted Mrs. Neal Chastain in serving punch with all kinds of cookies, nuts and olives. The table was laid with imported lace cloth with Jonquils to the side. Punch of lime frosted added color to the setting.

Came to Spur

Dr. and Mrs. Nichols came to Spur in 1917, just recently they have completed a modern stone home. Their living room has a spacious fire place, with flag stone floors, walls of forest green, beautiful picture window. Guest room and bath is in shades of dusty rose. The Master Bed room opens onto the carpet with Motif of alic green, the tile bath is also

in two shades of green, from there the utility room, which leads to the Kitchen. The dining room is finished in a lighter shade of green which blends with the living room, all of the Northeast Wall is of plate glass, which gives a view to the back patio. The kitchen is convenient enough to serve as you like it—The Doctor is really putting the pressure on Mrs. Nichols, with all the modern conveniences he is demanding more attention from now on.

Those Who Sent Flowers

Mr. and Mrs. Neal Chastain and Neal, Jr., Mr. and Mrs. Roy Stovall, Mr. and Mrs. James B. Reed, Mrs. R. E. Dickson, Mrs. O. C. Arthur, Dr. and Mrs. B. F. Hale, Mr. and Mrs. M. D. Ivey, Rolan, Dr. and Mrs. Blackwell, Mrs. Emma Lee, Mr. and Mrs. Murray Lee, Mr. and Mrs. Joe Long, Mr. and Mrs. A. G. Dunwoody, Mr. and Mrs. C. P. Scudder, Mr. and Mrs. Joe Watson.

Those That Sent Gifts:

Mr. and Mrs. E. L. Caraway, pitcher; Mr. and Mrs. Van North, Cup-towels; Oscar Kelley, E. S. Lee and O. M. McGinty, pitcher and Tray.

Guest
Messrs. and Mesdames W. T. Andrews, D. J. Dyess, Tom Kizer, Guy Karr, J. B. Johnston, Ned Hogan, Tim Stovall, G. W. Grimes, W. F. Godfrey, Thomas P. Johnston, W. R. Weaver, Everett McArthur, E. D. Engleman, Alfred Walker, E. S. Lee, G. H. Snider, Jack Rector, R. F. Decker, Raul English, J. Malcolm Edwards, R. K. Blackshear, Robert McAteer, Walter Labay, Will Eldrege, Spencer Campbell, C. Melvin Rathel, Lester English, R. A. Connor, W. F. Gilbert, Jerry Ensey, Martin Pope, Paul Marlon, F. W. Jennings, Drs. and Mesdames J. F. Hughes, W. K. Callan, Bob Alexander, Messrs Randolph McNeill, Joe Kenneth Watson, Neal Chastain, Mesdames Nell J. Davis, Cliff Bird, Mim Reed Baker, James Sharp, T. H. Blackwell, Ann Marsh, James H. Cowan, Tom Blackler, Eric Foster, Nelson Campbell, Ollie Maud Albin, Jane Anne Albin, Judy Seitz, E. D. Mateer, Malcom Brannen, Evalene Holly, Pattie Albin, J. G. McNeill, Minnie Lewis; Misses Doris Arthur, Nina Grice, Frances Roper, Jean Arthur, Lois Roberts, Regina Lee, Margaret, Elliot, Julia May Hickman, Julie Hickman, and Lillian Rape.

QUOTES ON COTTON
Cotton is Versatile.—"Any evaluation of cotton should include its importance as a source of food, feed and fertilizer. Cottonseed can contribute richly to the expansion of livestock production."—Fred P. Johnson, North Carolina Dept. of Agriculture.

feed and fertilizer. Cottonseed can contribute richly to the expansion of livestock production."—Fred P. Johnson, North Carolina Dept. of Agriculture.

We Are SUBJECT TO CALL

When you have plumbing of any kind to do . . .

When you need installation or adjustment of any appliance.

Our Services are courteously rendered at all times with satisfaction guaranteed.

McCLAIN APPLIANCE COMPANY
Phone 169 112 Burlington

REXALL SHAVERS' SPECIAL

3 1/2-ounce tube of Coated **stag** SHAVE CREAM and pkg. of 5 Double-Edge **stag** RAZOR BLADES

64¢ value BOTH FOR **49¢**

CITY DRUG COMPANY

Spring Food Buys

BANANAS
Central American
2 Lbs.
25c

FRUITS and VEGETABLES
FRESH and WELCOME AS Spring
FANCY WINESAP APPLES, Lb. 12c
YELLOW SQUASH, Lb. 12c

STRAWBERRIES 33¢
FRESH Lb. Pt. Box

FLORIDA GRAPEFRUIT Lb. 7c	WHITE OR RED ONION SETS Lb. 13c
WHITE OR RED, CERT. SEED POTATOES Lb. 6c	MUSTARD OR COLLARDS 2 Bunches GREENS 25c

Cherries 39¢
Brach's Chocolate Covered, 1 Lb.

VANILLA WAFERS COOKIES 14 Oz. Cello 21c	BALDRIDGE'S FRENCH STIX 2 Per Pkg. 24c
---	--

Pineapple 19¢
El Morro No. 2 Can, Sliced

YACHT CLUB, For Pies No. 2 Can 25c	NIBLET'S Whole Kernel CORN 12 oz. Can 18c
HEART'S DELIGHT, Halves No. 2 1/2 Can 33c	SOONER'S FINE GARDEN PEAS 303 Can 18c
PRIMROSE Wt. Cr. Style CORN No. 2 Can 17c	Heart's Delight, Solid Pack Fancy No. 2 1/2 TOMATOES 31c

SPINACH 19¢
Hunt's Calif. No. 2 1/2 Can

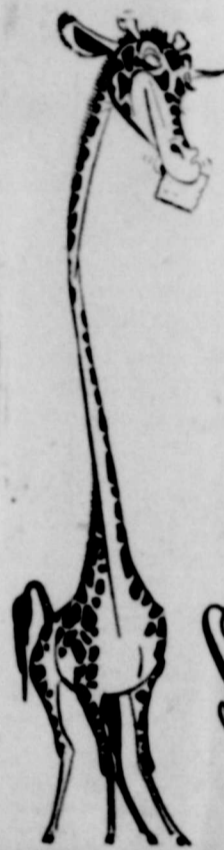
OLEO 35¢
Sun Valley Colored Qtrs., Lb.

MILK 50¢
Tennessee Homo Gal. Ctn.

FOR LAUNDRY FAB Reg. Box 33¢	For Laundry Cheer Reg. Box 31c
BEAUTY BAR FACIAL SOAP VEL 23¢	

CHUCK STEAK Lb. 73c	PURE PORK, Country Style SAUSAGE Lb. 39c
KORN KING, Sliced BACON Lb. 53c	LEAN FRESH GROUND MEAT Lb. 59c

C & S Super Market



they're extra thin ...



Supreme Flavor has made Supreme Salad Wafers the outstanding quality crackers of the West.

Now packed in the new 4-Pack—Salad Wafers are extra thin, and extra good.

Four individual packs for...
FLAVOR • FRESHNESS • CRISPNESS • FLAKINESS



Supreme IN FLAVOR!
BY Supreme BAKERS
BOWMAN BISCUIT CO.

ANOTHER OUTSTANDING CRACKER BY SUPREME BAKERS
TOWN HOUSE CRACKERS

...dainty, oval-shaped crackers "just right for two bites."
Supreme Town House Crackers are Supreme in Flavor!

You Are Invited To Attend A GOSPEL MEETING

AT THE SPUR CHURCH OF CHRIST

NOW IN PROGRESS THROUGH APRIL 4, 1951

The Gospel in Sermon

SERVICES DAILY

The Gospel In Song

10:00 A. M. 7:45 A. M.

YATER TANT

Of Abilene, Texas
PREACHER

GERALD HALLFORD

Of Abilene, Texas
SONG DIRECTOR



Gerald Hallford

"A Welcome Awaits You"

Spur Church of Christ

WILLIS G. JERNIGAN, MINISTER

They're Here!

Ford makes the truck news of the year! See, try the new Ford Trucks for '51, and you will find a wealth of step-ahead engineering advancements. HINTER LOOKS with modern, new front end and exterior styling. A still wider CHOICE, over 180 models for any kind of job. MORE DRIVING EASE for the man behind the wheel, in the new 5-STAR Cabs.

They're New!

*NEW HALF-TONNEER have easy new steering column gearshift. *NEW WIDER VISION in all cabs, 60" more rear view. *FOUR-GEAR SYNCHRO-SILENT TRANSMISSION available at extra cost in Series F-4, F-5 and F-6. *NEW CHROME-PLATED TOP PISTON RINGS now standard in all four Ford Truck engines.

They're Thrifty!

Everybody knows Ford Trucks last longer, which means economy for years ahead. Everybody knows Ford power can pack more ton-miles into a working day, on good roads or bad. Now Ford step-ahead engineering gives you more strength, more torque, more time on the job, less time in the shop.



Choose from over 180 new Ford Truck models, from 500-lb. Pickups to 10,000-lb. F100 JOBS like this. You can choose a V-8 or Six.

FORD TRUCKS for '51

feature **POWER PILOT ECONOMY**

The Ford Truck Power Pilot is a simpler, fully-proven way of getting the most power from the least gas. The Power Pilot automatically meters and fires the right amount of gas, at precisely the right instant, to match constantly changing speed, load and power requirements.

Unlike conventional systems, the Power Pilot uses only one control instead of two, yet is designed to

synchronize firing twice as accurately. You can use regular gas... you get no-knock performance. Only Ford in the low-price field gives you Power Pilot Economy!

Ford Trucks cut your expenses through low initial cost, low fuel consumption, minimum maintenance, longer life.

Come in today to get ALL the facts on the Economy Leaders for 1951.



Using latest registration data on 6,572,000 trucks, life insurance experts prove Ford Trucks last longer!

Ford Trucking Costs Less because—

FORD TRUCKS LAST LONGER

National Guild To Open Auditions Soon

April 17 marks the first day of hearings of the piano geniuses and ordinary garden variety of keyboard executants of Spur, Texas, when Leota Stillwell of Houston, Texas opens the 1951 adjudications of pupils of the National Guild of Piano Teachers.

Mrs. J. E. Berry is chairman for this center. If you have a yen to find out how good you are in the piano world—if you want to know how you rate as a beginner or a colligate, and if you are good enough to become a local, district, state or national member of the National Fraternity of Student Musicians, auditioning by an outside judge is the way the Guild has set up for you to find out.

Pupils from five to fifty go in, sometimes trembling, always serious. But if they have adhered to the repertoire plan outlined by the National Guild and have practiced faithfully, they come out wreathed in smiles. In the waiting room little seven-year-olds prate about Bach and Schumann, and juniors try their cadence-chords in the air, but High School seniors are very quiet for they are apt to have much at stake. For them, superior rating sometimes brings a college scholarship with it, opens the door to national recognition and cash prizes.

Possession of the Student Musician Fraternity pin and certificate of rating are won only by training and persistence. The little fellow you give a lift to today may be the Paderewsky of the future, or he may just be a better neighbor for studying piano.

Teachers who enter pupils must have done in by the first week in April, according to Mrs. Berry.

Program On Texas In Hinson Home

"My birth place" was given by each guest during roll call at the March 21 meeting of Afton Home Demonstration Club.

Mrs. Vuri Hinson was hostess in her home.

A program on Texas was given, with Mrs. A. C. Martin discussing "Texas Music." Members described scenic spots in Texas which they had visited.

Mrs. Bill Ligon directed a recreation period, which included a quiz on Texas.

Refreshments were served to Mrs. Clark Forbis, Bill Ligon, W. A. Avara, Curtis Goodwin, Byron Haney, A. C. Martin, Dumont Bridge and the hostess.

The group will be guests of the Espula H. D. Club on April 5, and a book review will be presented.

MRS CARPENTER HOST TO JUDSON CIRCLE MONDAY

Judson circle of First Baptist WMS met in the home of Mrs. E. H. Carpenter Monday afternoon. The hostess, chairman of the group, presided over a business

ed the mission program. Assistants were Mrs. C. M. Rathcal, C. P. Scudder and S. W. Flournoy. Secret pals were revealed and gifts exchanged. Orange sherbet and cupcakes were served to Mrs. A. D. Hord, N. C. Moffet,

Logan, Singleton, Flournoy, Rathcal, Hagins, Scudder and the hostess. Used Typewriter For Sale, Texas Spur Office

OUR BIG GOING - OUT - OF - BUSINESS

SALE continues!

HERE ARE A FEW OF THE OUTSTANDING VALUES FROM OUR STORE-WIDE SALE...

LADIES' WINTER COATS Half Price	CROCHET THREAD \$2.50 per Doz.	PRINTS Fruit-of-the-Loom 39c Yd.
LADIES' SPRING COATS One Third Off	SEWING THREAD 50c Per Doz.	ORGANDY Eyelet Embroidery \$1.25 Yd.
LADIES' AND MISSES' SKIRTS Regular \$4.95 Value Now \$2.95	GIRLS' PANTIES Sizes 6-14 29c	SWISS Eyelet Embroidery \$1.49 Yd.
CHILDREN'S DRESSES Regular \$2.98 Value Now \$1.49	A FEW BOYS' JEAN JACKETS Sizes 6-8 Regular \$2.29 Value Now \$1.59	ALL MEN'S HATS HATS Reg. Price Sale Price \$12.50 \$6.50 \$16.00 \$6.10 \$ 7.50 \$4.60 \$ 3.00 \$2.10 \$ 3.98 - \$2.10
STRAPLESS BRAS Regular \$1.00 Value Now 49c	OUTING Light and Dark, Floral and Stripes 35c Yard 3 Yards. \$1.00	Star Pearl Embroidery THREAD 1c Per Skein

HOME DEPARTMENT STORE

"Shop At Home And Save"

GODFREY & SMART

Spur, Texas

GLASSWARE 25c Each To 98c. Closeout! And Pottery, Odd lots, Values	LADIES' SLIPS \$1.00 Each Odd lots, broken sizes.	PERMANENT KITS \$1.50 (Tax included) Toni home permanent kits Reg. \$2.50 val. limit one to customer	GLASS WARE 10c Each to 29c. Your choice Odd lots, clear and fancy. Values	LADIES' FANNEL GOWNS 89c Formerly \$2.79 Close out Special!	MIXING BOWLS \$1.49 5 pc. set stoneware Regular \$1.98 Value	DRAPE 50c Pair Regular 89c Value Paper drapes with floral decorations
OILCLOTH 55c Per Yard 48" width. Regular 79c per yard	OILCLOTH 2 Yards \$1.00 48" width. Regular 69c per yard	CANDIES 20c Lb. Value up to 80c Lb. Close Out! Entire stock of scheduled candies.	ALARM CLOCKS \$1.98 (tax included) Regular \$2.98 Value	(Signed) JACK ROBINSON Come in and Get Acquainted— offer 10% Discount to all churches, schools and civic organizations. pass on to you these money saving Values as an introductory offer. We As New Manager of your Wacker's Store in Spur, I am proud to As New Manager of your Wacker's Store in Spur, I am proud to	DISHES \$4.95 Regular \$6.98 Value 12 pc. set Gold band pattern.	DISHES \$3.98 Regular \$5.75 Value 12 pc. set white dishes.
GARBAGE CANS \$2.69 Regular \$3.49 Value 20 gal. galvanized with lid.	PERCUATOR \$1.00 EACH 6-cup white enamel	DISHES \$4.95 Regular \$7.75 Value 12 pc. Set Barbara pattern	DISHES 29c Full Pound Marshmallow Circus Peanuts	DISHES \$4.49 Regular \$5.95 Value 12 pc. Set Golden Cameo pattern.	PANTIES 2 For \$1.00 Ladies' Rayon	CANDY 29c Full Pound Marshmallow Circus Peanuts
DISHES \$5.95 Regular \$7.95 Value 12 pc. Set Mildred pattern.	Clothespins 3 Dozen 29c Strong 7 Coil Springs	DISHES \$4.95 Regular \$7.75 Value 12 pc. Set Barbara pattern	DIAPERS \$2.89 Dozen 27 x 27 Birds	DISHES \$4.49 Regular \$5.95 Value 12 pc. Set Golden Cameo pattern.	PANTIES 2 For \$1.00 Ladies' Rayon	DIAPERS \$2.89 Dozen 27 x 27 Birds
BLANKETS 3 For \$1.00 Regular 98c Value Baby	TOWELS 3 For \$1.00 20x40 Regular 58c Value	PANTIES 4 For \$1.00 Children's Rayon	TOWELS 2 For \$1.00 20x40 Regular 79c Value Cannon Brand	DISHES \$2.69 Regular \$3.49 Value 20 gal. galvanized with lid.	PANTIES 2 For \$1.00 Ladies' Rayon	DIAPERS \$2.89 Dozen 27 x 27 Birds

WACKER'S New Management SALE Combined With DOLLAR DAYS

OFFICIAL PUBLICATION FOR COUNTY OF DICKENS AND CITY OF SPUR

TEXAS SPUR

Dickens Item and Dickens County Times Absorbed by Purchase Published Weekly on Thursday at Spur, Dickens County, Texas. Offices and Printing Plant Located at 424 North Burlington Avenue, Opposite the U. S. Post Office. TELEPHONE 128

H. G. Lackey Jr. Editor-Manager

NOTICE—Any erroneous reflection upon the character, standing or reputation of any individual, firm or corporation, which may appear in the columns of The Texas Spur will gladly be corrected upon its being brought to the attention of the publisher.

Entered as second class mail matter on the 12th day of November, 1908, at the Post Office at Spur, Texas, under the Act of Congress of March 3, 1879, and published continuously without recess.



DALE CARNEGIE
Help Others By Showing Interest
LUCILE NELSON, Atlanta, Georgia, had in her classroom a boy named Owen who openly and avowedly hated school, hated to come among his contemporaries, Lucile was the new third grade teacher who arrived in the middle of the term. She found that Owen stayed home one or two days out of every week. He was eight years old.

Water Conservation Aids Cotton Yield On South Plains

Water appears to be the limiting factor in the production of cotton on the Rolling Plains. Cotton yields were increased 24 percent by contouring and 37 percent by using closed level terraces at the Spur Experiment Station, while the use of commercial fertilizer, barnyard manure and sorghum litter on small test plots failed to increase the yield.

Three fields — with straight rows, contour rows, and contour rows and closed level terraces — have been planted to cotton continuously since 1927. The soils on the fields are largely Abilene clay loam, and the slope averages five-tenths percent (0.5%). An average annual yield of 122 pounds of lint per acre for straight row farming was increased to 151 pounds by contouring. Where closed level terraces were used with contour rows, the yield was increased to 192 pounds, an average of 70 pounds more lint per acre annually than from straight rows.

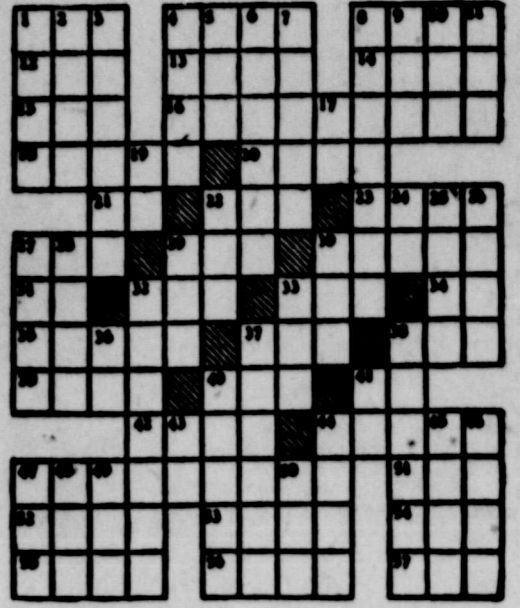
Average annual runoff was reduced from 2.75 inches to 1.95 inches by using contour rows. There was no runoff from the area with closed level terraces. Progress Report 1940, which gives a summary of 24 years of water conservation tests at Spur, is available from the Publications Office, Texas Agricultural Experiment Station, College Station, Texas.

Water Conservation Aids Cotton Yield On South Plains

Water appears to be the limiting factor in the production of cotton on the Rolling Plains. Cotton yields were increased 24 percent by contouring and 37 percent by using closed level terraces at the Spur Experiment Station, while the use of commercial fertilizer, barnyard manure and sorghum litter on small test plots failed to increase the yield.

Crossword Puzzle

HORIZONTAL
1 Unit of energy
4 British street car
8 Rabbit
12 Nothing
13 Japanese aborigine
14 Dry indigo
15 Hologram
16 City in Holland
18 Impenetrable
20 Forty-day fast
21 Accomplish
22 To rest on for support
23 South American mineral
27 Things in law
29 Perfect score in golf
30 To trap
31 Land measure
32 To declare
33 A pig
34 Maritime province of Canada
35 A kind of hemp
37 Rejected by blood
38 Girl's name
39 Title
40 Cereal grain
41 Hawaiian bird
42 Fun
43 Birds on
47 Leaving
51 New Guinea city
52 To wither
53 Wife of a
54 Man's name
55 A small oak
56 Observes
57 Hornless cow
58 Rap
VERTICAL
1 Wife of a
2 Ceremony
3 Body (pl)
4 Spanish for river
5 Deer's horn
6 Allowed
7 N. Y. Giants pitcher
8 A connective
9 Narrow inlet
11 A tree
12 Printer's measure
13 Therefore
14 Honored's sound
15 Sun god
16 Wild buffalo of India
17 Bacterium
18 Gilt's wife
19 Headstrong
20 American Indian
21 Chum
22 To sweep
23 Members of a military engineering unit
24 Successful
25 Symbol for sunbeam
26 Irony
27 Glacier shaft into which stream of water pours



ANSWER TO PUZZLE No. 127
60 Fertile spot in desert (pl.)
41 River in Russia
43 Electricity unit
44 Matures
45 Edible
46 Koutaluk
47 To inquire
48 To observe
49 To sink in middle
50 Compass point
ANSWER TO PUZZLE No. 126
100 100 100 100
100 100 100 100
100 100 100 100
100 100 100 100
100 100 100 100
100 100 100 100
100 100 100 100
100 100 100 100
100 100 100 100
100 100 100 100



million of new revenue. Where is the money coming from? That's the biggest problem the Legislature will have to answer. You see, the Senators and Representatives get pulled and hauled in two directions. First, there are the people who want the state to spend more money for a long list of things: roads, schools, public welfare, increased salaries for state workers, etc. Then, there are the people who don't want their taxes increased—and nearly everybody is included in that list. But it necessarily follows that if you hike spending, then you've got to increase taxes correspondingly if you're going to stay on a cash basis. So you see that a Legislator has his problems. A lot of Texans think that there ought to be some change in the state's election laws. You remember the controversy over Jim Wells County vote when Lyndon B. Johnson defeated Coke Stevenson for the U. S. Senate. That incident was quoted by Henry Zweifel of Fort Worth, national Republican committee man for Texas, who expressed himself as being in favor of a change in the law. J. E. Wheat of Woodville, state Democratic executive committee chairman, agreed that a higher authority should have the power to investigate when the local officials fail to act.

So the two parties—or their spokesmen—are agreed. There is a bill in the House that would give the state attorney general authority to investigate suspected fraud cases and to prosecute if proof of fraud is found. Two years ago, the Legislature appropriated \$5 million for soil conservation. Warrants have now been issued for the expenditure of all this money. The program will continue, however, and there is an item in the present appropriation bills for \$126,580 for the Soil Conservation Board. This Board will supervise the soil conservation program and direct the use of equipment which was purchased with part of the original appropriation. Efforts are being made to compromise and settle without a public fight the controversy over state hospitals and public schools that I reported to you last week. Plant Right—"If there is any chance that you will harvest cotton mechanically next fall, plant it right this spring. Fields must be prepared carefully to get best results with mechanical harvesters."—"Farm and Ranch-Southern Agriculturist." Widening Usage—"The scientist and King Cotton are working together to adapt nature's nearly perfect fiber to steadily widening usage."—Advertisement by Anderson, Clayton & Co.

Dr. G. R. Claude
Chiropractor
108 West 2nd Street
Spur, Texas



AMBULANCE SERVICE
Air Conditioned Coaches
CAMPBELL'S

MASONIC LODGE
No. 1023
Regular Meeting
SPUR
APRIL 19, 1951

Knights of Pythias
Meet each Mon.
Visitors Welcome

Dr. M. H. Brannen
Dentist
124 E. Harris
SPUR, TEXAS

Read the Want Ads

Ratliff, Conner and Walker
Attorneys at Law
Spur, Texas
Dr. W. C. Gruben
OPTOMETRIST
Phone 177 Spur, Texas
A. M. Le Croix
Attorney At Law
Spur, Texas

Go to church Sunday
GLENN JONES
GENERAL PLUMBING
All work done in a workmanlike manner and guaranteed to give satisfaction.
Headquarters
WILLSON & YOUNG LUMBER CO.
PHONE 12
Spur, Texas
Phone 480
Eyes Examined
Optometrist
DR. W. F. PATRICK
112 E. Harris
Hours: 9 am. to 5 p.m.

Big step up

that's easy to take!

You have to hand it to Buick engineers. What they've done to this 1951 SPECIAL is nothing short of a minor miracle. They've stepped up its style with a brand-new body, an eager new thrust-ahead look, a gleaming new push-bar forefront that's as ruggedly protective as it is stunning to see. They've stepped up the smartness of its interiors with the smartest fabrics that ever graced the interior of this Buick Series. They've stepped up the safety, by the sharp new clarity of white-glow instrument markings more easily read at night. They've stepped up the power to the highest ratings in SPECIAL history—120 horsepower with Synchro-Mesh transmission, 128 with Dynaflow Drive. They've come up with a car that's new in everything from the ground up—and a price that's the best news of all. So, if you've been toying with thoughts of buying a lesser car—better come in and see how easy it is to step up to this thrifty marvel.

No other car provides all this:

- DYNAFLOW DRIVE—saves strain on driver and car
- FIREBALL POWER—high compression, valve-in-head engine gets more good from every drop of fuel
- PUSH-BAR FOREFRONT—combines smart style and unsurpassed protection
- WHITE-GLOW INSTRUMENTS—greater clarity at night
- FORWARD-THRU DRIVE—steady ride, improves driving control
- 6-WHEEL COIL SPRINGING—cushions ride, saves servicing costs
- DUAL VENTILATION—outside air fed separately to right or left of front compartment
- SELF-IGNIZING BRAKES—hydraulic multiply pedal pressure five times of brake drum
- DREAMLINE STYLING—tapered, car-length fenders, gleaming sweepers on most models
- Plus: Self-latching luggage lid, Step-On parking brake, two-way ignition lock, Safety-Ride rims, Hi-Polite, engine mounting, Body by Fisher

"Smart Buys Buick"

WHEN BETTER AUTOMOBILES ARE BUILT BUICK WILL BUILD THEM

Tune in HENRY A. TAYLOR, ABC Network, every Monday evening.

SPUR AUTO CO.

Spur, Texas

NOW you can BUY your complete HOME REPAIRS

on a Easy-Pay Budget Plan New "Home-Fix-Up Dept."

You can buy both the Labor and Lumber and Pay by the Month.

10% DOWN

UP TO 36 MONTHS TO PAY!
NO JOB TOO SMALL OR TOO LARGE!
ANY WORK FROM THE ROOF DOWN!

FROM THE CELLAR UP:
FIX UP!

You can pay as little as \$5.00 per month for complete installations or

If you want to do the job yourself, you can buy the materials and pay as you go on our EASY-PAY Budget plan. Either way you save time, worry and money by getting top quality materials and skilled workmanship.

Let Us Give You A **FREE ESTIMATE**
No obligation to buy anything **WHAT WORK DO YOU WANT DONE?**

Check these necessary improvements:
Attics
Bathrooms
Club Cellars
Doors & Windows
Floors
Garages
Insulation
Kitchens
Porches
Remodeling
Roofing
Shedding
Siding
Storm Sash, Etc.

Willson-Young Lumber Co.
Ph. 12 Spur, Texas

BUSINESS & PROFESSIONAL DIRECTORY SPUR, TEXAS

NICKELS BUTANE
Call us any time for courteous service and Quality Products.
Day Ph. 95 Nite Ph. 276-J
McAdoo Phone 6

H. S. Holly Agency
GENERAL INSURANCE
AUTO LOANS
"Cash in 10 Minutes"
Office Phone 201 Res. Phone 166
Spur, Texas

Chandler Funeral Home
Funeral Insurance Plan That Anyone Can Afford
Ambulance Service
Phone 248 Spur, Texas

Gibson
INSURANCE AGENCY
GENERAL INSURANCE
Day Phone 46 — Night Phone 153

HILL TOP CAFE
—OPEN ALL NIGHT—
Serving the Best in Foods
Good Coffee — Tobaccos
Cold Drinks
Mr. and Mrs. Joe Jeffers

SPUR CAFE
Mr. and Mrs. Geo. Lisenby, Owners
PLATE LUNCHEONS — SHORT ORDERS
SANDWICHES
GOOD COFFEE — COLD DRINKS

STAR FEED STORE and HATCHERY
—ALL KINDS FEED—
—BREEDING SERVICE—
We Buy Produce
PHONE 32

66 Service Station
WHOLESALE & RETAIL
Open 24 Hours
Phone 20 Spur

South Panhandle Land Title Company
Abstracts of Titles
Established 1917
Phones 21 or 55
Dickens, Texas

B. & H. STUDIO
Spur, Texas
QUALITY PORTRAITS
COMMERCIAL PHOTOS
KODAK FINISHING
All Modern Finishing Equipment

Always Boosting Spur

CARD OF THANKS
We wish to express our sincere appreciation for the many acts of kindness and helpfulness and

words of sympathy extended by our neighbors and friends during the recent illness and death of our loved one. Special thanks for the good dinners served in the homes

of Rev. and Mrs. Luther Bilberry and Miss Bertie James. May God bless each of you.
S. B. Goodrich and family
Sallie Goodrich and family

Tested Seed Are Good Insurance

Commissioner of Agriculture John C. White expressed alarm over cotton planting seed in Texas and urged farmers to exercise extreme precaution when making purchases.



AT HOUSTON'S SHAMROCK—That's where the 1951 state FFA Convention will be held July 11-13, says Walter Jefferson, right, head-atom vice-president from Jasper, to Jerry Small, left, president of the Jasper FFA chapter. More than 3000 Future Farmers from all over the state are expected to attend the annual convention. Forming a welcoming committee and in charge of convention entertainment will be leading officials of the Houston Farm and Ranch Club, Houston Fat Stock Show, and Agriculture Committee of the Houston Chamber of Commerce. Information about the convention may be secured by writing FFA Convention Committee, 6th Floor Commerce Bldg., P. O. Box 2371, Houston, Texas.

"It has been known for some time that a shortage of cotton seed existed for the 1951 goal of 11,000,000 acres," Commissioner White stated. "Quality seed were looked early and supplies completely exhausted. Texas seed stocks were supplemented by what amounts could be purchased from other states and much of this seed has come in labeled below standard for germination or approximately 60%."

"Additional seed stocks needed for this year's acreage in Texas will come from seed at gins, oil mills and from farmers themselves," White explained. "It is this seed about which I am alarmed and concerned since we have in our two state seed testing laboratories that samples submitted from these sources run as low as 35% germination."

The Commissioner restated seed purchasers that every sack of seed offered or exposed for sale in Texas is required by law to have a tag attached showing germination percentage. "In the case of bulk seed," the Commissioner added, "the seller is required to furnish one tag for each one hundred pounds of the seed sold."

"I urge all purchasers of cotton seed to exercise every precaution and care. The facilities of our laboratories are available to all Texas farmers. A little discretion at this time in demanding to know the germination percentage of the seed will eliminate disappointment in stands as well as time, money and possible loss of crops," Commissioner White said.

Citizens Aid With Disposal of Garbage

"All citizens must cooperate with their neighbors and local authorities if Texas' towns and countryside are to be kept free of unsightly and health-menacing accumulations of garbage and rubbish," warns Dr. Geo. W. Cox, State Health Officer.

"Improper disposal of refuse presents definite hazards to public health for such material creates breeding places for rats, flies and other vectors of disease transmission. Odors, smoke and disagreeable appearance are other important considerations."

"The State Health Department and County Health Units are vitally interested in proper storage, collection and disposal of refuse and stand ready to aid towns or individuals in solving their problem. Receptacles for storage should be of water tight metal with lids that fit. Final disposal is a serious and difficult problem which individuals and communities must solve according to local conditions. Waste materials should never be dumped on property belonging to another person or organization."

LAFF OF THE WEEK



"What About Retirement Benefits?"

CARD OF THANKS
To our many friends and relatives, we want to say thank you so much for every kindness shown us during the illness and death of our daddy. Your kind words, beautiful flowers and good food was deeply appreciated. May God bless and be very near each of you.
The children of W. D. York.

All in the Game:

BASEBALL COMMISSIONER
Happy Chandler, after getting four bad pitches, took a walk... Middleweight champ Sugar Ray Robinson won the Nicker-pro-athlete-of-the-year poll... Kentucky finished on top of the basketball heap in both the U.P. and A.P. polls... Vanderbilt this year ended Kentucky's seven year reign as the S.E.C. tournament champion... Wall Masterson, Boston Red Sox hurler, is believed due for big things this year—he's been in the business for 10 years... The Chicago White Sox are looking for another starting pitcher—and are looking straight at Hewie Judson... Young Cleveland left-hander Dick Rozek is a protégé of Bob Feller... Howie Fox, Cincinnati flinger, won his last eight starts last year... According to Jack Dempsey and Gene Tunney, Max Laysa deserves a chance to fight heavyweight champ Ezz Charles... Moscow does not recognize any world heavyweight champion or any professional boxing.

GULF
South Side Service

Now Under New Management

B. J. STARK, Mgr.

Special Get Acquainted Offer!

Wash & Grease 2.00

WITH THIS NOTICE

Bring This Notice With You! It's Worth

A Buck On A Wash and Grease Job!

COME IN AND GET ACQUAINTED

South Side Service

201 Burlington

Phone 95

this week's patterns



No. 2412 is cut in sizes 12-14, 16-18. Size 2, with pants, 17 1/2 yds. 35-in. yd. contrast.
Send 25c for EACH pattern with name, address, size number and size to AUDREY LANE BUREAU, Box 302 Madison Square Station, New York 17, N. Y. The NEW SPRING AND SUMMER FASHION BOOK shows 128 other styles, the extra.

CLOSE OUT SALE
ENDS 9:00 P. M. MARCH 31, 1951
ALL ELECTRICAL EQUIPMENT MUST GO!
AT GREAT REDUCTION!

Here Are a Few of the Items That Must be Sold

- Thor Ironers and Washers
- Westinghouse Refrigerator
- Westinghouse Stove
- Portable Sewing Machine
- Sewing Accessories
- Deepfreeze
- Vacuum Cleaners
- Laundromat Parts
- Motors
- Ironing Board
- Hot Water Heater
- Welcome Mats

- Pin Up Lamps
- Light Fixtures & Bulbs
- Westinghouse Radios
- Electric Irons & Parts
- Electric Toasters, Clocks
- Kitchenaid Mixer
- Westinghouse Menu Master
- Electric Comforts, Blankets, & Sheets.
- Christmas Decorations
- Ironing Board Covers
- Reel tite Clothes Lines

Any Type Electric Wiring Equipment, Display Tables, Ladders, Typewriter, Electric Adding Machine, U. S. Flag, And Many Other Things Too Numerous to Mention.

EVERYTHING MUST GO! OUR LOSS IS YOUR GAIN!

With each purchase, register for door prize to be given Saturday Afternoon at 6:00 P. M., You need not be Present to receive the gift

ALL SALES FINAL

C. & W. ELECTRIC

415 N. Burlington

Spur, Texas

Take a look at the only trucks with Fluid Drive!
NEW DODGE
"Job-Rated" TRUCKS



Makes driving extra easy! You get smooth-as-silk performance with great Fluid Drive—a Dodge exclusive available on 1/2-, 3/4-, and 1-ton models. This proved fluid coupling between engine and clutch eliminates jerky starts, helps prevent stalling. Leaf along in high, slow down in traffic, speed up again—all without touching the gearshift or clutch!

New safety on slippery roads! With Fluid Drive, there's less wheel-spinning, less tendency to skid on wet or icy pavements. You can start in higher gear, apply power gradually and get away smoothly and safely. Traction is applied more efficiently. With less wheel-spinning, tires last longer, too—another money-saving advantage of Fluid Drive!

Better load protection! Fluid Drive assures extra-smooth starts... protects your load. There's less chance for cargo to shift—less chance of breakage or other damage.

More convenience on hills! Every unit from engine to rear axle is "Job-Rated"—factory-engineered to haul a specific load over the roads you travel and at the speeds you require.

Lengthens truck life! The "cushioned" power of Fluid Drive saves wear and tear on over 80 vital parts—including clutch, transmission, rear axle. This insures longer truck life—lowers your upkeep costs. And trade-in value stays high! Ask us for interesting booklet on Fluid Drive.

WHAT "JOB-RATED" MEANS TO YOU
A Dodge "Job-Rated" truck is engineered at the factory to fit a particular job... save you money... last longer.
Every unit from engine to rear axle is "Job-Rated"—factory-engineered to haul a specific load over the roads you travel and at the speeds you require.
Every unit that SUPPORTS the load—frame, axles, springs, wheels, tires and body—is engineered right to provide the strength and capacity needed.
Every unit that MOVES the load—engine, clutch, transmission, propeller shaft and rear axle—is engineered right to meet a particular operating condition.

COME IN AND BE CONVINCED! TRY A NEW DODGE "Job-Rated" TRUCK WITH FLUID DRIVE!

JONES MOTOR CO.
Spur, Texas

FOR QUICK RESULTS USE THE CLASSIFIED

ALL CLASSIFIED ADS CASH IN ADVANCE UNLESS YOU HAVE REGULAR CHARGE ACCOUNT
 CLASSIFIED AD RATES—4 cents per word for first insertion; 1 cent per word for each insertion thereafter; minimum for each insertion 40 cents.

FOR SALE: Batteries, \$7.95 and up exchange. O. K. RUBBER WELDERS. 22-ctfn

FOR SALE: John Deere and Ford tractor. See Lane Bachman at Godfrey and Smart. 22-2tp

FOR SALE: Monarch portable typewriter, almost new, perfect condition. Cost \$110. Sell for \$60. D. D. Tullis, Spur. 22-3-tp

FOR SALE: Batteries, \$7.95 and up exchange. O. K. RUBBER WELDERS. 22-ctfn

FOR SALE: Milk cows, fresh and heavy springers. Plenty to choose from. E. S. and Everett McArthur, phone 127-J, Spur. 20-10tp

FOR SALE: 30 x 50 ft. brick building with grocery stock and fixtures. 5 room house, 6 lots. Price \$20,000. Gross income last year, \$65,000. We have farms, ranches and city property. Crafton and Gilcrease Realtors, Spur. 21-2tp

FOR SALE: 3 ton International, practically new tires, good cab. Spur Motor Co. 21--ctfn

FOR SALE: 1 Case tractors, fully equipped Spur Motor Co. 21-ctfn

FOR SALE: Good, cheap used cars. Spur Motor Co. 21-ctfn

FOR SALE OR LEASE: Pilling Station located on North Burlington. If interested, see Starcher Insurance agency, phone 30. 16-ctfn

FOR SALE: Used Pianos. Contact John E. Berry, Spur. 17-ctfn

THE BEST VACUUM cleaners are still available. See one today. Electrolux Corp., W. R. Smelser, Box 335, phone 381-J. 18-ctfn

FOR SALE: 2 1/2 house trailer, 8 ply tires, tandem wheels, hot and cold water, frigidaire. Real bargain. Vack's Trailer Park, Jayton. 23-1tp

FOR SALE: Farmall 20. Late model. Spur Farm Equipment, Charles Sutt. 23-1tp

FOR SALE: Weaned pigs. Charles Sutt. 23-1tp

FOR SALE: Skating rink floor in 7 x 7 sections. Enough to build 28' x 28' house. Also 1400 ft. 2 x 4's. Bargain if sold this week. Inquire at rink nights or at Recreation Hall. 23-1tp

FOR SALE: 1 1/2 Deepfreeze, electric 7-Up box with water fountain and cash register. See Mrs. Bill Scott, Dickens. 16-ctfn

FOR SALE: Two used late model John Deere A's; one John Deere B, 1947 model. Denton Implement Co., Spur. 19-ctfn

FOR SALE: One 1941 Ford, one 1949 Plymouth convertible, original owner. Denton Implement Co., Spur. 19-ctfn

FOR SALE: 1946 Model A John Deere tractor. A. B. Carlisle. See at Denton Implement Co., Spur.

THEATRE

Box Office Opens 11:45 Saturday 1:15 Sunday
 And 1:45 Other Days
 Call 155 For Schedule

Friday - Saturday

The Bomb that Stalks its Prey

THE FLYING MISSILE
 Glenn Ford - Viveca Lindfors

REX ALLEN
 REDWOOD FOREST TRAIL

Also Cartoon

Prev. Saturday Nite, Sunday, Monday

SO YOU'D LIKE TO WIN

The Jackpot

Oh, Yeah? JIMMY WON! Now, listen to his tale of woe!

Yep! I named the Mystery Husband and this radio fellow says: "You've won \$24,000.00 in prizes!" Prizes—schmizes! He can have 'em! 7,000 cans of soup! And a horse—that doesn't like soup! I get my house decorated—but they forget to mention the decorator who drinks my beer, eats my food and gets fresh with my wife! And I get my portrait painted—by a gorgeous girl with a crick in her neck. So, I give her a treatment and my wife thinks all is not strictly chiropractic.

Then comes the Income Tax Collector! It seems that Uncle Sam won't accept soup, horses, or girl painters with cricks in their necks. I've got to raise more cash than the whole kit and kaboodle is worth! So what do I do? See "THE JACKPOT" and find out! And what happens to me shouldn't happen to anybody—except in a movie for laughs!

IF IT'S LAUGHTER YOU'RE AFTER YOU'LL WIN ALL YOU CAN TAKE WHEN YOU SEE

JAMES STEWART win **The Jackpot**

(and wish he hadn't)

with **BARBARA HALE** **JAMES GLEASON** **PATRICIA MEDINA**

TUESDAY

GIFT NITE
450
 Less 20% State Tax

EMERGENCY WEDDING

Wednesday Thursday

Thursday Only
 On Stage At
 4:00 - 9:00

JOHN WAYNE

In

RIO GRANDE

With Maureen O'Hara

RAY WHITLEY
 You have seen him on the screen... Now he's here...
PERSON ON THE STAGE

SPUR THEATRE

Friday - Saturday
Bob Burns - "Hill Billy Deacon"
 Also
 Texas Road Agent - Dick Foran

WANTED

WANTED TO BUY: Good cane or hogasi bines. See or phone R. L. Benson, 108-W. 17-1c

WANTED TO BUY: Good clean '39, '40 or '41 Ford. Will pay cash. Loyd Womack. 23-2tc

CARD OF THANKS

In appreciation of all the expressions of sympathy, kindness and love shown us during our recent loss, we take this method to thank each of you.

The Rex Carlisle family.

Highway News

Easter Services were enjoyed by most of the community at the Church of Christ with Mr. and Mrs. Buster Smith as visitors. They were visiting in the homes of their parents, Mr. and Mrs. Willie Smith and Mr. and Mrs. Earl Thomas, over the weekend, returning home Monday morning.

Everyone took dinner to the Community House and ate there together. Games and an Easter Egg hunt were held during the afternoon.

Outside visitors were Mr. and Mrs. L. L. Teague, Mrs. Dot Price and children, Mrs. Charles Sutt and children, Mr. and Mrs. Buster Smith and family and Mr. and Mrs. Tobie Westfall.

Mr. and Mrs. Kelsey Putman and girls were visiting their daughter and sister in Fort Worth over the holiday.

The Highway H. D. club meeting was postponed because of rainy weather and muddy roads. Mrs. C. E. Morgan was ill with a sore throat Monday.

The measles epidemic seems to be over for the year in our community.

We received a little over a half inch of rain Sunday night and Monday. Looks as if we have the start of a good crop year.

There was a call meeting of the community at the community house Wednesday night to discuss plans for the future year.



RICKEL'S MOTOR COMPANY
 Spur, Texas

Do you have troubles? Need a lumber? Prompt service, reasonable prices. Phone 12. Glenn Jones, Wilson & Young Lumber Company. 41-1c

WE SOLVE YOUR electrical problems the Wright way. Call No. 28. 22-ctfn

Butane, Propane gas 7 & 8 cents per gallon. Garner Appliance Co. 4-ctfn

What a BARGAIN!

Whole or half

Smoked Picnics 39¢

and

Green Beans 19¢

Don Rio No. 2 Whole Can

Be sure... shop SAFEWAY

APRIL FAMILY CIRCLE Now on Sale... Only 5¢

Check these suggestions for low cost meal planning

GREEN BEANS, GARDENSIDE	2 No. 2 CANS	27c
PORK & BEANS, TasteTells	3 No. 300 CANS	25c
EGGS, Fresh Local, Guaranteed	Doz.	39c
Banjo Hominy Old Fashioned	No. 7 Can	9¢
Cherub Milk Sterilized Top Quality	2 Gallons	25¢
Tasty Frozen Foods		
Leaf Spinach	14-Oz. Pkg.	24¢
Ford Hook Limes	12-Oz. Pkg.	33¢
Strawberries	12-Oz. Pkg.	49¢
Sliced Peaches	12-Oz. Pkg.	25¢
Grapefruit Juice	4-Oz. Can	15¢
Chicken Pot Pie	7-Oz. Can	27¢
Ocean Perch	14-Oz. Pkg.	45¢
Jell-well Desserts Assorted Flavors	8-Oz. Pkg.	7¢
Pineapple Libby's Crushed	No. 7 Can	31¢
Pineapple Juice Libby's	46-Oz. Can	39¢
Grapefruit Juice Libby's	46-Oz. Can	23¢
Soda Crackers Sunshine Krieger	1-lb. Pkg.	28¢
Sweet Pickles Rainbo Mix	16-Oz. Jar	35¢
Peanut Butter Seal Brand	16-Oz. Jar	37¢
Mrs. Wright's Bread	24-Oz. Loaf	20c
Mayonnaise No. 1 Made in Texas	8-Oz. Jar	29¢
Reg. Dates Dandies	1-lb. Pkg.	25¢

Safeway's Special Bacon Buy!

SLAB BACON

16-20 Lb. Average Sold Whole, Half or in 3-Lb. Pieces. Not Sliced at this Price

Lb. 35¢

Pork Loin Roast Rib End, Bone Removed **Lb. 49¢**

LUNCH MEAT, Asst. Loaves **Lb. 53c**

CATFISH, Fillets, Frozen **Pound 49c**

Introductory Offer!

25¢ to bake a cake with **PRE-CREAMED KEEN...**

PRE-CREAMED KEEN...
 Newest improvement in Shortening
 "Made in Texas"
 2-lb. Can 1.05

Crisco Shortening All-Vegetable	2-lb. Can	1.05
Margarine Made in Texas	1-lb. Pkg.	37¢
Allsweet Margarine Colored	1-lb. Pkg.	37¢
Fresh Eggs	Doz.	54¢

5¢ SALE

to acquaint you with **White Magic Soap**

buy GIANT pkg 5¢ get LARGE pkg 3¢ Both for 6¢.

SAF EWAY

Special Introductory Friday & Saturday in Spur, Texas, 201 Burlington STORE Mon. Thru. Fri. 8:00-8:30 HOURS Saturday 8:00 - 8:00

Beautiful hair-loss quality **Lady Rose** **MISTRESS TRAY** Regularly 2.25 NOW ONLY \$1.00 with blue triangle from bag

KITCHEN CRAFT FLOUR 93¢

Want ads get results