


SPUR ROTARY CLUB



MEETS EVERY THURSDAY AT NOON

THE SPUR

SPUR LIONS CLUB



MEETS EVERY TUESDAY AT NOON

SERVING A RICH FARM CROP, STOCK AND POULTRY RAISING TERRITORY OF WEST TEXAS.

The Dickens Item and Dickens County Times Absorbed by Purchase
SPUR, DICKENS COUNTY, TEXAS THURSDAY, MARCH 15, 1951

Chamber of Commerce Doings: Chamber Expecting 250 at Annual Banquet, Membership Meeting Monday Night

250 CITIZENS ARE EXPECTED FOR SPUR C. OF C. BANQUET:
Approximately 250 citizens of Spur and about 40 out-of-town guests are expected for the Annual banquet and membership meeting of the Spur Chamber of Commerce. Tickets for the occasion are being handled by the Spur Chapter of the Future Farmers of America and the Banquet Committee of the Spur Chamber. Everyone is invited and asked to bring a friend to this banquet to hear Leon Hill of Amarillo. The meeting will be held at the Spur High School gym, 7:30 P. M., March 19.

C. of C. to Cooperate with Office of Price Stabilization:

All merchants are urged to contact the local Chamber of Commerce office regarding any information on OPS maximum price regulation No. 7. The Office of Price Stabilization has issued ceiling prices effective February 27, effecting retailers handling certain consumers goods. By March 29 each retailer covered by the regulation must file a pricing chart with his OPS office, showing percentage mark-ups he has calculated under its provisions for determination of ceiling prices.

The Spur Chamber of Commerce has available mimeographed forms and pricing charts and additional copies of regulation 7 for all merchants and members of the Chamber of Commerce. Any merchant interested in securing the necessary charts and reporting forms should contact the Chamber office, phone 488 and order the number of forms for his business.

West Texas C. of C. to Assist Spur Chamber in Mail Delivery:

Due to many recent complaints filed by local individuals the Spur Chamber of Commerce is studying the possibility of securing mobile post offices from Abilene to Spur. Since the loss of the railway passenger service in Spur the substitution of mail delivery by truck has been found to be unsatisfactory with local business men.

In a recent study of the postal service in Waco, it was found that mobile post office service has proven very encouraging and satisfactory. L. M. Huff manager of the Spur Chamber and Fred Husbands, General Manager of the W. T. C. C. will begin negotiations with federal officials concerning the poor postal service received by Spur. Husbands, formally manager of the Waco Chamber, was successful in securing the mobile service for Waco and is expected to assist the Spur Chamber in its project.

Welcome New Members:

The following business firms have expressed their desire to help Spur grow and have joined the Chamber of Commerce.
El Patton Motel on highway 70, owner Gail A. Smith; Denton Implement Company, next to Bryant Ling; Dickens County R. E. A.; Liberty Cafe, owner Hershel McAlpin; W. P. Shugart, Spur; Cooper Cafe, Spur; and Elton W. Garner, Spur.

McAdoo P-T-A. to Present 3-Act Play

"The Whole Truth," a farce in three acts, will be presented at 8 p. m., March 20, in the McAdoo High school auditorium, states a report this week. The event is sponsored by the McAdoo P-T-A. The play is expected to present two hours of laughter from the antics of Mrs. Joseph Martin who makes her family and servants promise to tell nothing but the truth.

Easter Seal Sale Opens In County

Easter seal campaigns for crippled children opened Monday in 10 South Plains counties and will run until Easter Sunday. Contributions should be sent to the South Plains Society for Crippled Children, box 1121, Lubbock, as early as possible.

Legionnaires Have Birthday Celebration

Members of the Williams-Puckett American Legion post and Women's Auxiliary will hold a joint birthday party tomorrow in celebration of the 32nd birthday of the American Legion organization in America.

Hamilton Speaks To Lions on D.P.W. Aid

L. P. Hamilton state Department of Public Welfare employee in Spur presented an address concerning the Community and D. P. W. at the noon meeting of the Spur Lions club Tuesday, March 13.

Hamilton explained to the Lions that the department is set up by law to render financial assistance to the needy aged, the needy blind and the needy children under 14 years of age who are deprived of parental support by reason of death, desertion, physical or mental incapacity of one or both parents.

An additional service of the department, stated Hamilton, is that of offering guidance and counseling in all situations involving children.

In Dickens county, according to Hamilton, there are 221 persons receiving monthly grants totaling approximately \$7600. Over the state there are approximately 250,000 persons receiving aid. The state average assistance is \$32.59 while the county's average is \$32.72.

Huff Resigns As Chamber Mgr.; Takes Abilene Job

Leon M. Huff, Jr. has resigned as manager of the Spur Chamber of Commerce effective March 31 to take a job as Assistant General Manager of the Abilene Chamber of Commerce.

His resignation was accepted by the board of directors at their regular Wednesday morning meeting yesterday.

Huff came to Spur in January of 1949, an employee of the State Board of Education as an instructor in the Dickens County Vocational School. He resigned this position to accept the secretary-manager job with the local chamber of commerce on June 1, 1950.

As the first manager since re-organization, Huff has played an outstanding and major role in the development of the complete program the local chamber is now pursuing.

During his short year with the Spur chamber, Huff has worked in close harmony with chamber members, directors and city officials to do much toward the betterment of the city of Spur.

Outstanding accomplishments of the chamber while Huff was in office include:

The extension of the city limits to include two entire additions and provide sewage, water and fire protection to approximately 840 people.

The promotion of new vapor street lights for Burlington avenue and the business district.

The promotion of the new \$250,000 city hospital in Spur.

The promotion of a Post-to-Spur highway, linking Spur with Post as a part of the Broadway to Big Bend Highway.

And aid in securing a new legislative district for Dickens county giving Dickens county a much smaller district in the Senatorial Districting.

In his letter of resignation to J. D. McCain, president of the chamber, Huff stated "One of the hardest jobs that I have had to undertake since living in Spur is to write this letter of resignation. I say this because of the friendly spirit and fine cooperation that I have received from you and the people of Spur during my administration as manager of your Chamber of Commerce."

"... This position is a promotion for me and my family, not only in salary, but in my profession."

Huff is a graduate of Texas Tech in Lubbock. In Spur, he is secretary of the Rotary club, a member of the Knights of Pythias lodge, the American Legion and the First Baptist Church. He is a director of the State Soil and Pasture Conservation Program.

He will assume his duties with the Abilene Chamber of Commerce on April 2.

McCain states that at present the board of directors has made no definite steps toward securing a successor for Huff, but that applications for the position will be accepted and that the board hopes to hire a new manager prior to Huff's leaving.

New Arrivals

Mr. and Mrs. Graden Bass announce the birth of a son, Ronnie Graden, on March 12 in the Crosbyton hospital. The baby weighed 7 pounds 2 ounces. Grandparents are Mr. and Mrs. Ollie Hindman and Mr. and Mrs. L. G. Bass of Spur.

A daughter, Jacqueline Renee, was born to Mr. and Mrs. Charles Forbes in the Crosbyton hospital on March 3. Mrs. Forbes is the former Nelda Jean Calvert of Spur.

Mr. and Mrs. Thomas E. Bingham announce the birth of a son, Thomas Richard on March 6 in the Crosbyton hospital. The baby weighed 8 pounds 7 ounces.

SWENSON NAMED COUNTY CHAIRMAN OF OIL GROUP

DALLAS, Texas, March 15.—J. E. (Eric) Swenson, Spur, has been named County Chairman for Dickens County in the Texas Mid-Continent Oil & Gas Association's statewide organization, Charles E. Simons, Association General Manager, announced today.

Mr. Swenson will serve in the district organization headed by H. E. Chiles Jr., Midland, Association vice-president for the Basin District.

The Texas Mid-Continent is composed of oil and gas operators, royalty owners, land owners, and other interests associated with the state's petroleum industry.

J. E. Hemphill of Pampa visited in the home of his parents, Mr. and Mrs. J. H. Hemphill of the Highway community last weekend.

R. J. Bell will be guest speaker at the Sunday morning service in Foreman Chapel. The public is extended a cordial welcome.

Abilene Firm Named Hospital Architects

David S. Castle company, Abilene architectural firm, was chosen from a field of five to draw plans for the proposed City Hospital at a city commission meeting Tuesday night.

Other structures which the Abilene firm has drawn plans for include Spur High school in 1939; Midland Memorial hospital, 1 1/4 million dollar project; Olney's Hamilton hospital and the Abilene State hospital, Abilene. They are architects of a 14-story office building now under construction in Midland.

Farm Ownership Is Profitable Venture as Cited by FHA Head

Dickens and Kent County farmers who had Farm Ownership loans during 1950 had an average gross income of \$6679 with net income of \$2934. These prosperity-indicating figures were revealed this week by Howard C. Warner, FHA County Supervisor, following the annual Farm Ownership meeting held February 28 at the Spur Experiment Station.

A further breakdown of the gross income reveals the average family spent \$1345 on capital goods, \$2430 on farm operating expenses, and \$1341 on family living expenses. The average farm in these counties contains 20 acres, with a required annual payment of \$451. However, the repayments made during 1950 more than doubled that, being \$1006. In addition to these figures the average net gain of all FO borrowers was \$2525. The FO annual meeting is one of FHA's methods of grouping supervision, and supplements the individual assistance given on borrowers farms. The meetings are educational in nature, with the major portion of time being spent on analysis of record books, and borrower discussion of improved agricultural practices as recommended by the Experiment Station.

Speakers on the program were Paul Marion and Dale Young of the Experiment Station; Charles Taylor, County Agent of Dickens County; and Mrs. Mary A. Moore, assistant management specialist with the FHA district office.

Guests invited to the program were families who in 1950 paid their farm loans in full thirty or more years ahead of schedule. They are Emmitt E. Phifer, McAdoo; L. D. Norris and Ethel Young McCarty, Afton; Ellis H. Draper, Spur; Frank H. Bostick, Dickens; Claude A. Neaves, Clyde; H. Long and Elvis G. Spradling, Girard; and Roy R. Chisum of Jayton. Earl C. Hahn, Kent County FHA Committeeman was also a guest. The families brought lunch and spread it picnic style for themselves and their guests.

Other FHA loans are made to improve and develop farms, to build or repair houses and out-buildings, and for development of water supplies. These loans are based on a repayment schedule of 5 to 25 years as compared to 40 years for FO loans.

Dickens County Red Cross Drive Seeks \$2500 Goal

Bulldog Team Taking Form As Spring Training Hits Half Way Mark

Hawkes Receives Bid From Seminole Board

With a good display of talent and enthusiasm at every position, Coach Sam Hawkes states that he is well pleased with the daily workouts of the 1951 Spur Bulldogs.

"It's been several years since we've had the depth at key positions that we have on this club," states Hawkes. "They're attitude is about the best I've ever been privileged to observe, and I feel sure they'll play football of the brand that we'll all be proud of."

Working at the end positions are Charles Watson, Dean King, Orville Claude and Fred Wyatt. At tackles are Hershel Wade, Chester Lindsey, Ralph Gibson, Fred Price, Toby Williams, John Rankin and Wayne Bishop.

Among the guards are two boys who will probably be two of the best linemen in our district. They are Harley Bingham and Larry Smith. Other guards are Don Wilson, Tommy Bass, Charles Smith and Steve Dobbs. At center Joe Bell with a couple of tackles and larger understudy him.

The backfield is led by last year's all district quarterback, Charles Grimland. Lindsey, probably a first string tackle, is second string quarterback understood by LaVance Cook. Left halfbacks are Bobby George, Gordon Simmons, and Tommy Hightower. Right halfback are Jackie Claude and Curtis Blair. Fullbacks are Paul Simmons and Franklin Gabriel.

The Spring Training activities will be completed and climaxed with an inter-squad game on March 30. The public is invited to attend.

Coach Hawkes, states Foster Cook, turned down a coaching job in Seminole this week to remain with the Spur Bulldogs.

Seminole is in one of the toughest AA districts in the State and has fine prospects for the coming year. Although tempted by the larger school and larger salary, Coach Hawkes states that after giving the proposition deep consideration he and his family chose to remain in Spur.

"We're happy in Spur and are well pleased with the boys and school authorities we're working with. It's just more than we want to leave," stated Hawkes.

"Our school has been blessed with a bunch of good boys since we've been in Spur. The games and championships we've won are to be accredited to them more than to their coach. It's not very often that a team of high school boys is out-coached," he added.

Superintendent Cook, speaking for the large group of Bulldog followers states that he appreciates Coach Hawkes work with the boys of Spur—not only in developing football players, but in developing men for a place in society. "We appreciate Sam's attitude toward our school and town and are proud that he has chosen to remain with us," Cook concluded.

Antelope Singing to Be Sunday, March 18

A gospel singing featuring quartets from every section of West Texas will be held at 2 p. m. Sunday, in the Antelope church, according to announcements this week.

Singers are requested to bring books, and the public is given a cordial invitation to attend.

Farm Bureau Continues Fight To Maintain Farm-to-Market Road Appropriations

The Graham roads bill which was vigorously opposed by the county judges, commissioners, and farm bureau and which was killed in the highway and roads committee four weeks ago came up Monday night in the state affairs committee and was passed.

The next morning, farmers and farm bureau friends succeeded in having the bill referred back to the agriculture committee.

So at this writing (Wednesday morning) the bill is asleep again in committee. We hope that it stays asleep but for fear that it might awake, the Farm Bureau is still keeping a watchful eye in Austin.

A number of people still want to know what it would do if it became law. It would raise the farmers' taxes in Dickens county and every county that has any dirt roads.

Here is how it would do it. The Graham bill would do away with the present farm-to-market road appropriations. It would take the money the counties are now getting from gasoline tax and put into the highway funds and authorize the highway department to build farm-to-market roads with the money. Mind you, this is paved roads and not our county dirt roads of which we have many, and will have for a long time to come. So this would take all our funds away that are now used for grading and maintaining. The only way left for us would be to raise our county ad valorem tax enough to take care of our dirt roads. When Mr. Graham was approached about the county road matter he admitted that each county would have to raise its ad valorem tax.

Our representative, Sterling Williams, has voted against the measure at every turn, and we are grateful. We feel that the farmers here are due him a word of congratulation. Send him a card or letter at Austin. Also Senator Kilmer Corbin has been strongly for us on this road matter.

The large number of letters and telegrams sent to Austin by farmers in Dickens County has had a direct bearing on the defeat of this proposed legislation thus far, state our representatives in Austin.

Gridders Receive Co-Champion Award

The co-championship district trophy awarded the 1950 Spur Bulldogs arrived this week as the latest addition to Spur High schools already filled chest of valuable trophies and awards.

Two gold footballs flank a football player standing ready to throw a pass. Engraved on the trophy is "District 3-A Co-Champions, 1950."

Names of the players and their coaches also engraved are Dick Gibson and Vernell McAlpin, captains; Don Hindman, Beryl Durham, Joe James, Charles Byrd, Herbert Roberson, Dean Watson, Charles Grimland Ronald Connor, Don Hill, Paul Simmons, Billy Hoover, Robert Stewart, Orville Claude, Troy Smith, and Billy Hahn and Sam Hawkes, coaches.

Baptist Youth Meet Held At Dry Lake

Bro. J. C. Koen, Afton minister, addressed the Baptist Young People's association meeting in the Dry Lake church Monday night.

A group of 79 attended, representing eight churches throughout the county. Members were present from Afton, Duncan Flat, Dry Lake, Midway, Soldier Mound, and the Bethel, Mission and First Baptist churches of Spur.

Billie Boykin, president of the group, directed the program and introduced the speaker. Ralph Gibson was elected song leader and Miss Faye Middlebrook was appointed pianist. Vernon Lee Cates of Afton gave the devotional. Special music was by Carolyn Hicks.

The First Baptist church, Spur, will be host to the group's next meeting on the second Monday in April.

Spur Flowers Will Hold Open House

Spur Flowers announces its formal opening from 3 until 9 o'clock on Monday, March 19, at the corner of Carroll and Hill streets.

The public is invited to attend and view a complete line of Easter cut-flowers, pot plants and display of gifts for all occasions.

Free flowers will be given to all who attend. Mr. and Mrs. Roy G. Anderson and Mr. and Mrs. Fred Bennett are managers of the shop.

Members of the Dickens County Red Cross Funds Committee opened the 1951 drive for funds this morning toward a \$2,500 goal for the county.

Committeemen are contacting businesses and professional men today, states Fund chairman A. J. Harvey, and the concentrated campaign will be continued through Saturday, March 17.

As the county's part of the national goal of \$85,000,000, the local goal is higher than any year since the war. The increase has been necessitated by the increased demands on the local chapter for civilian relief, veterans' work and aid for servicemen.

Local ladies' clubs have been contacted and will maintain stands on Burlington Ave. Saturday, states Harvey. Plans are at present for four such stands to be set up for the convenience of persons wishing to donate to this cause.

Young People of Spur to Present Easter Sunrise Service

For the first time in several years, the churches of Spur will combine their

The young people of the churches of Spur will present a Sunrise Easter Service on Easter morning, according to Malcolm Edwards.

The first service of its type in many years in the City of Spur, the program will include young people from nearly every church in Spur. The program will be held in Jones Stadium.

Varied musical presentations and brief talks will be included on the program. Plans are being made to have the complete program published before Easter. Persons interested in helping with or participating in the program are urged to contact Edwards at the First Baptist Church.

In other communities throughout the county, committeemen have been appointed to aid in the drive. These committeemen include: Joe Kidd and Archer Powell in Dry Lake; Harold Karr in Espuela; Sam Porter and Burnett Haney in Afton; R. J. Bell and W. W. Beedle in Gilpin; Dalton Lehigh and G. L. DeLisle in Soldier Mound;

Homer Miller in Croton; C. R. Cooper and Riley Wooten in McAdoo; Joe Rose in Glenn; Charles Taylor, Fred Arrington and Mrs. T. H. Blackwell in Dickens.

Following the initial drive today, E. S. Lee A. J. Harvey and Prof. G. W. Kerr will be in charge of collection in Spur.

Goals for each community have been set up from \$25 for smaller communities to \$1500 for Spur.

General Red Cross Chairman George S. Link, Jr. states that the local chapter is being called on to aid far more needy civilians, veterans and servicemen than the local fund will care for. When the goal is reached, approximately \$800 of the fund will remain in the local chapter for local work.

However, states Link, when and if a disaster strikes, the national organization is ready to help and supplement the local efforts to the fullest. Link recalls the 1945 tornado disaster in Dickens county when the national Red Cross spent over \$16,000 for food, clothing and reconstruction work in the county. "It will take us a long time to pay back for the excellent work done by the Red Cross during this time of need in our county," states Link.

Although the local campaign for funds has been set up for three days, the national drive is for the entire month of March. If Dickens county is short of its goal after the three days, the drive will be extended until the goal is reached.

Draftees Leave For Physicals In Abilene

Pre-induction examinations were ordered yesterday in Abilene for 19 draftees from the Dickens-Kent-Stonewall county area served by Selective Service Board 80 in Jayton.

The group traveled by chartered bus and were accompanied by six boys from this tri-county area who reported to Abilene for induction into the United States Army.

Among those taking pre-induction physicals were Hugh Kissick, Marvin Laughlin, Clifford B. Smith, Eugene John Valenkamp, LeRon Harold Smith, Samuel Melton Weaver, Antonio L. Rosa, Thomas Dick Hart, J. A. Bush, Morris Doll Thompson, Marvin Ray Craft, Charles Luther McDowell, Donald Hoyt Cage, Billy Charles London, John Alvin Hinson, Homer Foy Teague, Catarion Luna, Junior R. Fletcher and James Marvin Petty.

Inductees were Henry D. Taylor, Jr., Charles Nelson Copeland, Travis Lewis Hight, William J. Massey, Billie Dewayne Hull and Malcolm Marshall Rollins.

School Census Will Close Here April 1

"It is necessary that we have the help of every parent friend and neighbor within the next two weeks in order to complete our school census by April 1," stated C. F. Cook, school superintendent, today.

Children who are six years old and who did not attend school last year must be counted, he said. Census taking in Dickens county opened March 1, with school officials Bruce Browning, Dean Duffie, Wayne McDaniel, Joe Grimland and Cook assigned as enumerators.

Parents are requested to contact any one of these officials at the earliest possible date, added Cook.

Duck Creek Soil Conservation District News Notes

O. M. McGinty, Chairman
Giles McCrary
J. B. Montgomery, Secretary
Clark Forbis
Chas. Witt

George Gabriel has developed a conservation plan for a farm recently purchased in Carr group. The plans include the construction of a stock tank, seeding back to grass some steep land that is now in cultivation and the construction of end fills on old terraces to carry excess water onto pasture.

Mrs. White Moore has completed a 4000 yard tank dam on her ranch in North Red Mud group. J. B. Greenwood Jr. and C. C. Halle are making plans for seeding some grass this spring. Greenwood plans to make a planting of King Ranch Bluestem and Halle is planting about 15 acres to Blue Panic.

The office of the Soil Conservation Service in Spur is now on Saturday morning to moderate farmers in the Creek district who can't town on week days.

David McAteer has new terraces on a 40 acre field in Soldier's Mound group. This completes the terracing of all cultivated land on McAteer's farm.

Guy Goen and J. R. Cole have set out some Bicolor Lespedeza shrub in idle areas on their farms. Bicolor Lespedeza is a legume shrub that provides shelter and forage for Quail and other wildlife.

Mac Brannen, University of Texas Student from Spur has been placed on the all-instrumental water polo second team as a guard, it was announced this week. Mac is a junior pre-medical student, and the son of Dr. and Mrs. M. H. Brannen.

Mac Brannen, University of Texas Student from Spur has been placed on the all-instrumental water polo second team as a guard, it was announced this week. Mac is a junior pre-medical student, and the son of Dr. and Mrs. M. H. Brannen.

Mac Brannen, University of Texas Student from Spur has been placed on the all-instrumental water polo second team as a guard, it was announced this week. Mac is a junior pre-medical student, and the son of Dr. and Mrs. M. H. Brannen.

Mac Brannen, University of Texas Student from Spur has been placed on the all-instrumental water polo second team as a guard, it was announced this week. Mac is a junior pre-medical student, and the son of Dr. and Mrs. M. H. Brannen.

Mac Brannen, University of Texas Student from Spur has been placed on the all-instrumental water polo second team as a guard, it was announced this week. Mac is a junior pre-medical student, and the son of Dr. and Mrs. M. H. Brannen.

Mac Brannen, University of Texas Student from Spur has been placed on the all-instrumental water polo second team as a guard, it was announced this week. Mac is a junior pre-medical student, and the son of Dr. and Mrs. M. H. Brannen.

JOIN THE RED CROSS!

JOIN THE RED CROSS!

JOIN THE RED CROSS!

JOIN THE RED CROSS!

OFFICIAL PUBLICATION FOR COUNTY OF DICKENS AND CITY OF SPUR

TEXAS SPUR

Dickens Item and Dickens County Times Absorbed by Purchase
Published Weekly on Thursday at Spur, Dickens County, Texas. Offices and
Printing Plant Located at 424 North Burlington Avenue, Opposite the U. S.
Post Office. TELEPHONE 128

H. G. Lackey Jr. Editor-Manager



ADVERTISING
N. A. S.
CHICAGO SEATTLE NEW YORK
SAN FRANCISCO

NOTICE—Any erroneous reflection upon the character, standing or reputation of any individual, firm or corporation, which may appear in the columns of The Texas Spur will gladly be corrected upon its being brought to the attention of the publisher.

Entered as second class mail matter on the 12th day of November, 1906, at the Post Office at Spur, Texas, under the Act of Congress of March 3, 1879, and published continuously without recess.

SUBSCRIPTION RATES
Per Year in Advance
In Dickens, Crosby, Motley, King, Stonewall, Cottle, Kent, Garza, Floyd Counties \$2.00
In Mail Zone Three \$2.50
In All Other Zones \$3.00
All subscriptions are removed from our mailing lists upon expiration. Renewals should reach us two weeks in advance of expiration date to avoid missing an issue. In giving address changes, both old and new addresser should be given.

FREE SECURITY A MYTH

By George Peck

The search for "security without struggle" seems to be the number one phobia of the world today. This world-wide disease is now particularly epidemic in America. This "will o' the wisp" quest is very much like a puppy chasing its tail. It is a vain attempt to circumvent reality. It is tantamount to burying one's head in the sand in emulation of the ostrich, for it disregards all the teachings of history.

The "Ham-and-Eggs" or the "\$30-Every-Thursdays" schemes, the various socialistic proposals of the Fake Deal, the false belief held by many of our citizens that a nation can spend its way to solvency, and the hundred and one other Utopian pipe-dreams, too numerous to mention, are symptoms of the old-of-disproved theory that: YOU CAN GET SOMETHING FOR NOTHING.

The modern version of this "Something-For-Nothing" hallucination originated in Italy, Germany and France. It gave birth to Fascism in Italy, Nazism in Germany and the "Two-Hour-Fer-Lunch" idea in France. The Italians and Germans surrendered their freedom for promised and imaginary security, sold to them by those master salesmen, Mussolini and Hitler. The Italian people soon learned that they had "sold their birthright for a mess of pottage," and Hitler plunged the German people into a war that culminated in disastrous defeat. The French woke up to find that the Germans had moved in while they were "out to lunch."

Have the fall of Mussolini and the humiliation that befell Italy; has the defeat of Hitler with the same deplorable fate for Germany; has the easy capitulation of socialistically-softened-up France—have these things convinced us here in America that a like fate awaits any people foolish enough to surrender their individual freedom for government

hand-outs?

This seems to be a time for us to re-read the Declaration of Independence, the Constitution and Lincoln's Gettysburg address: to re-examine the fundamentals of our American Capitalistic System, with its impelling forces of opportunity, initiative and competition—the system that has accomplished more for mankind in 175 years than have all other systems combined over thousands of years.

Most certainly this "American Way" of ours must be constantly watched and inspected. We must ever be on the alert to detect flaws as they appear and ever be repairing those defects. But just as when an automobile develops a dirty spark-plug, we clean or replace it, rather than throw the car away, we must make repairs and improvements in our American System—clean or repair the dirty spark-plugs, rather than relegate the whole system to the scrap-heap.

The one outstanding lesson to be learned about our American System by one who takes the trouble to study it, is that it holds forth promise of reward to any individual who makes a contribution to the welfare of society. It has proven beyond dispute that the promise and ultimate payment of such reward for individual performance is the keynote of all progress.

All of the "Cradle-To-The-Grave" security schemes would remove that stimulation, that incentive to struggle for reward, which have made America the most prosperous nation in world history. The adoption of any of these idealistic but impractical proposals would not elevate the so-called "underprivileged," but eventually would drag the so-called "privileged" down to a level far below that now occupied by the former. There never has been a time when you could get something for nothing—there is not now—there never will be. Security must be earned. FREE SECURITY IS A MYTH.

Mr. and Mrs. Johnnie Hamilton and family and Mrs. C. A. McAlpin visited with Pvt. J. D. Hamilton and Pvt. Bill McAlpin in San Antonio the past weekend. The boys are stationed at Lackland Air Force base.

Charlie Powell, resident of San Angelo and former Spurite, was a visitor in Spur Saturday.

Mrs. F. A. Wilhoit of Slaton was a visitor in Spur last week. She is a sister of Mrs. R. T. Anglin and Mrs. J. B. Britton, and a former resident of Spur.

Garden Grooming Is Landscape Aid

Flowers are loved and desired by almost everyone and they can add to the landscaping of your home if they are chosen carefully and their location wisely selected. Sadie Hatfield specialist in home-stead improvement with the A. & M. College Extension Service, says that good grooming on the lawn and in the flower garden is just as necessary as it is for the person.

Perennials are recommended by

the specialist because they have been tested and proved reliable and hearty. Plants giving a long season of bloom are preferred, but the specialist warns against growing plants that will turn into a pest. For instance, hollyhock seeds are scattered about sometimes and they take up a lot of space that could be used for other plants.

Perennials grow in beds, rock gardens, in front of shrubs, along walls, or in the vegetable garden. Miss Hatfield suggests that plenty of room for each plant and variety be allowed. If perennials are grown with a hedge background they should have three to five feet

'51 CHRYSLER WINS SPEED TITLE AT 100 MPH



PHOTO BY JIMMY ROBERTS

Tom McCahill, featured automotive writer for "Mechanic Illustrated" (center), receives trophy emblematic of the 1951 official unmodified stock-car record from Bill France, President of the National Association for Stock Car Auto Racing. The record of

100.13 miles per hour was made at Daytona Beach, Fla., in a Chrysler New Yorker four-door sedan, powered by the new 180-horsepower V-8 FirePower engine. McCahill entered the trials on the spur of the moment with a car

that had been driven only 400 miles and that had been given no special tune-up. W. Brewster Shaw, Jr., Chrysler dealer in Daytona Beach, shown standing at the right, loaned him the vehicle, taking it off the showroom floor.

Internee Claims Are Filed For Payment

Claims amounting to \$2,148,000 for 3,107 veterans and civilian war internees from Texas were paid by the U. S. War Claims Commission, states a recent report.

Only those claims post-marked before March 1 were valid.

F. Byrne Austin, executive director of the commission, said that according to its best estimate, the commission is still about 20,000 claims "short." Veterans who were prisoners of war are entitled to \$1 per day for the time that they had to do without adequate food, as required under the Geneva Convention. So are a considerable number of American civilians who were interned abroad when the United States went to war.

In the event that claimants have died their dependents are in many instances eligible for payments.

By the law of averages, Austin said, at least 1,500 of the missing claims may be from Texas.

A total of 44,160 claims amounting to \$25,969,000 have been paid out thus far. Claimants still waiting payments are advised that the commission will be working during March on those claims numbered 46,000 to 50,000, and will continue working until all the estimated 125,000 claims have been investigated and paid.

of space between them and the hedge.

Annual flower perennials, the specialist says, belong in the service area or private area just as much as they belong in the front yard, which is generally considered more of a public area. To insure neatness she suggests making a plan on paper so each variety will be placed properly.

Some of the perennials which thrive in almost all parts of Texas and require relatively little water



Radio Singer Will Be Guest At Dance

Hank Thompson, popular radio singer of western tunes, will appear in person as guest star at a dance in the Dickens Roller rink on March 22.

The dance will begin at 8:30 p. m., according to announcement made this week. Admission has been set at \$1.20 per person.

An improved Texas safety program for 1951 is expected to aid greatly in cutting down the thousands of fatal and near fatal accidents which occur annually on farms.

Home-grown grain and forage can usually be marketed very profitably through cattle.

are the Aster, Crysanthemum, Dianthus barbatus, Linum, Galardia, Grape Hyacinths, Gypsophila, Helianthus, Hollyhock, Hemerocallis, Iris-bearded, and Sedum spectabile, and the Yucca. These plants may be left in the ground during the winter months.

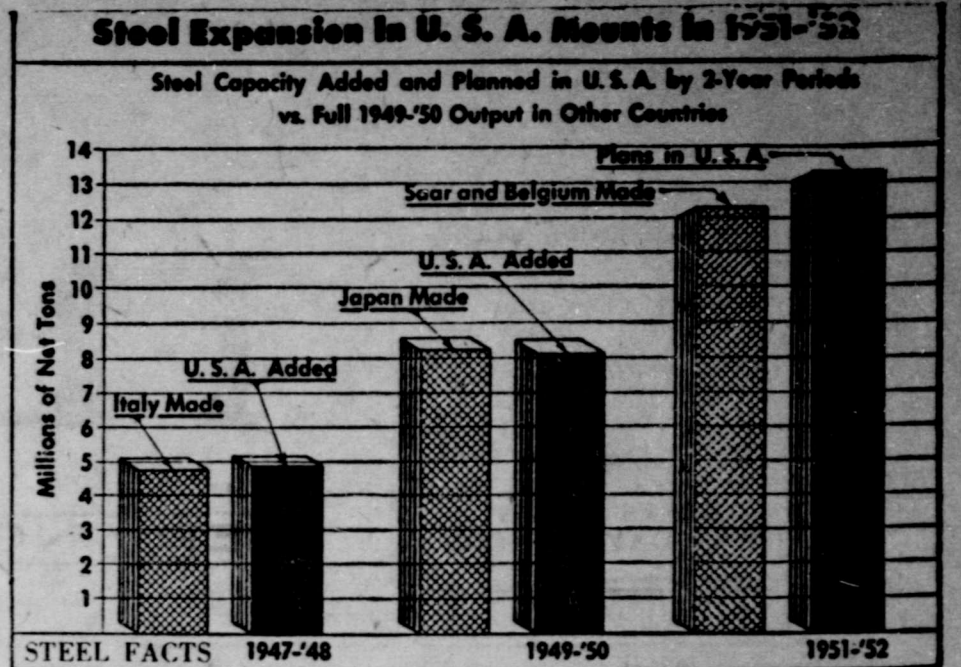
NOTE OF THANKS

We wish to thank each and everyone who helped in any way during the illness of our daughter, Mrs. R. D. Cox, and who made it possible for her to stay in the hospital and for her ambulance trip to the Tyler hospital. May God's richest blessings rest on each who lent a helping hand. Mr. and Mrs. J. W. Owen and

A. M. Le Croix
Attorney At Law
Spur, Texas

Dr. W. C. Gruben
OPTOMETRIST
Phone 177 Spur, Texas

MASONIC LODGE
No. 1023
Regular Meeting
SPUR
MARCH 22, 1951



The world's largest steel industry, in the United States, is rapidly growing larger. American Iron and Steel Institute says steel companies will expand their total annual capacity to 117.5 million tons in 23 months, from 104 million tons at start of 1951. This may cost them more than \$2.5 billion. Last year the U. S. A. made about half the world's steel.

children
Mr. and Mrs. Clyde Wilson
Mr. and Mrs. H. J. Morgan
Mr. and Mrs. Ed Brown.

CARD OF THANKS

Though this means we wish to extend our heartfelt thanks to those friends who gave their com-

forts and words of sympathy, flowers and food and other kindnesses during our sad hour. Your expressions of sympathy were sincerely appreciated. May God bless each of you.

The Young Family.



AMBULANCE SERVICE
Air Conditioned Coaches
CAMPBELL'S

Ratliff, Conner
and Walker
Attorneys at Law
Spur, Texas

Dr. O. R. Cloude
Chiropractor
103 West Hill Street
Spur, Texas

GLENN JONES
GENERAL PLUMBING
All work done in a workmanlike manner and guaranteed to give satisfaction.
Headquarters
WILLSON & YOUNG LUMBER CO.
PHONE 12

Phone 499 Spur, Texas
Eyes Examined
Optometrist
DR. W. F. PATRICK
112 E. Harris Hours: 9 am. to 5 p.m.

BUSINESS & PROFESSIONAL DIRECTORY SPUR, TEXAS

NICKELS BUTANE

Call us any time for courteous service and Quality Products.

Day Ph. 95 Nite Ph. 276-J
McAdoo Phone 6

H. S. Holly Agency

GENERAL INSURANCE
AUTO LOANS
"Cash in 10 Minutes"

Office Phone 201 Res. Phone 158
Spur, Texas

Chandler Funeral Home

Burial Insurance Plan
That Anyone Can Afford

Ambulance Service
Phone 248 Spur, Texas

Gibson

INSURANCE AGENCY
• GENERAL INSURANCE •
Day Phone 40 — Night Phone 152

HILL TOP CAFE

—OPEN ALL NIGHT—
Serving the Best in Foods
Good Coffee — Tobaccos
Cold Drinks

Mr. and Mrs. Joe Jeffers

SPUR CAFE

Mr. and Mrs. Geo. Lisenby, Owners
PLATE LUNCHES — SHORT ORDERS
SANDWICHES
GOOD COFFEE — COLD DRINKS

STAR FEED STORE and HATCHERY

—ALL KINDS FEED—
GRINDING SERVICE

We Buy Produce
PHONE 32

66 Service Station

WHOLESALE & RETAIL
Open 24 Hours
Phone 20 Spu

South Panhandle
Land Title Company
Abstracts of Titles
Established 1917
Phones 21 or 55
Dickens, Texas

B. & H. STUDIO
Spur, Texas
QUALITY PORTRAITS
COMMERCIAL PHOTOS
KODAK FINISHING
All Modern Finishing Equipment

What a buy! Here's why—

1. Longer Life

Your new Mercury's life history should be a long and happy one. For this automobile investment is deliberately designed to pay you dividends in extra years of dependable service. Every part is built with tomorrow in mind. Yes, it's your car for as long as you care to drive it!

2. Kind to budgets

For the new car buyer who wants a big dollar's worth for every dollar invested, the great new 1951 Mercury is just the ticket. The down-to-earth first price is a pleasant surprise—and the records for lasting service and low-cost upkeep are amazing! Want proof? Ask any Mercury owner.

3. Keeps its value

The 1951 Mercury is built to last and last, to stay in style—to be worth more at trade-in time. Check the facts—you'll find Mercury gives you more for your money in more ways than one. Talk it over with your Mercury dealer, and try a few miles behind the wheel of a 1951 Mercury today!



Standard equipment, accessories, and trim illustrated are subject to change without notice.

3-WAY CHOICE!

For "the drive of your life" Mercury now proudly makes available a triple choice in transmissions. Merc-O-Matic Drive, the new simpler, smoother, more efficient automatic transmission—or thrifty Touch-O-Matic Overdrive are optional at extra cost. There's also Steel-Base standard transmission.

1951 MERCURY

For "the buy of your life"!

McGEE CAR & TRACTOR CO.

Spur, Texas

Always Boosting Spur

Seeing is Believing

THE HORNE LIZARD, WHEN FRIGHTENED OR ANNOYED, SQUIRTS THIN JETS OF BLOOD FROM THE CORNERS OF ITS EYES.



There are no short cuts... IT TAKES THE EXACTITUDE OF MODERN SCIENTIFIC EQUIPMENT PLUS THE EXPERIENCED JUDGEMENT OF A VISUAL SPECIALIST TO PERFORM A TRUSTWORTHY EYESIGHT EXAMINATION.

Did you know? SINCE 1939 PRICES HAVE RISEN—

- 267% FOR BEEF CATTLE
- 158% FOR HOGS
- 135% FOR WHEAT
- 109% FOR CORN
- 28% FOR EYE-CARE

DANGER AT LARGE...
ONLY 3 STATES— ARIZONA, CONNECTICUT, AND MISSISSIPPI—HAVE A STANDARD PRACTICE OF GIVING NIGHT-VISION TESTS TO APPLICANTS FOR DRIVERS' LICENSES, NOTES THE BETTER VISION INSTITUTE.

Explorer Gives Natives "Wonder Drug"



Captain Hassoldt Davis, famed explorer and author, proved on a recent expedition to the Ivory Coast of French West Africa that natives think highly of the white man's "magic" which he works with aureomycin and other drugs. Davis is shown above administering vitamin pills to an exhausted witch doctor. The native "doctor" recovered so rapidly that he wanted the white man to stay and be his partner. At another village, Davis found a native woman near death from mixed infection following childbirth, complicated by pneumonia. After penicillin injections failed, he gave her aureomycin capsules. The woman fully recovered. When his pet chimpanzee showed symptoms of having pneumonia, Davis gave it the same "wonder drug," which the chimp ate like candy. Within a week the animal was as lively as ever. The explorer is now writing a book and editing a film on the expedition. Mrs. Davis, a daring woman, indeed, was official photographer for the safari. She will accompany her husband on a trek this summer into the wilds of Morocco.

Resource Crisis Faced By Nation

Four billion tons of United States are being washed away each year. Fifty per cent of the trees cut in U. S. forests are not being replaced by new plantings. Pollution of the rivers and lakes of America is on an increase.

Those and other drains on natural resources will be spotlighted in the forthcoming national wildlife restoration week, beginning March 18.

Sponsored annually by the National Wildlife Federation since 1938, the seven-day period is used to point up the necessity of conserving, protecting and restoring fast diminishing stores of national resources. This year the federation is emphasizing the need for a planned program even more strongly in view of the national emergency.

Education Important

The group is aiming at the sensible management of wildlife chiefly through conservation education. Publishing pamphlets, producing films and maintaining a staff of conservation experts throughout the country makes it a year-around job.

Besides furnishing conservation data to schools and libraries, the federation maintains a teachers' training program to aid inclusion of the resources problem into the classroom; finances migration research; publishes reports on congressional action on conservation issues, and supplies material and funds to affiliate groups in 40 states.

The affiliates, in turn, maintain their own programs. Some sponsor youth conservation camps. Others grant teachers scholarships and furnish state legislature reports. All provide studies of local conservation problems.

Financed By Stamps

The entire program of the federation is financed by the yearly sale of wildlife conservation stamps. This year's sales are expected to be boosted by the appointment of William Boyd as honorary chairman of the week's

World's Smallest Field Produces Oil and Fun

What is possibly the world's smallest oil field is being operated in Kansas. There, three wells produce a total of four barrels daily. The deepest well goes down only 11 feet. Reservoir energy is believed to be supplied by water drive, since the wells produce only when it rains. The wells were drilled with a post hole digger, and their producing equipment consists of two-inch water pumps powered by washing-machine engines. Exact source of the oil is a mystery. Three nearby crude oil pipe lines were checked and showed no leaks. The owner, a drilling contractor, reports little profit but a lot of fun.

"Light Up" With LPG

A new desk size cigarette lighter which operates on liquefied petroleum gas is said to give service for six months without a refill. Butane gas cartridges which fuel the lighter are replaceable.



LUSCIOUS fruit salads are appealing treats any time. But somehow they seem extra special in the Spring because of the fillip they give our tired winter appetites. For a real taste of sunshine, Nancy Holmes of the Best Foods consumer kitchens suggests this Amber Fruit Salad, which is just as pretty as it is palatable.

Amber Fruit Salad

- 2 packages lemon flavored gelatin
- 1 cup real mayonnaise
- 1 cup boiling water
- 1 tablespoon orange marmalade
- 2 oranges
- 2 bananas
- 1/2 cup real mayonnaise
- 1 cup boiling water
- 1 tablespoon orange marmalade
- 2 oranges
- lettuce

Dissolve gelatin in boiling water. Pour a thin layer of gelatin in bottom of a rinsed but not dried 9 1/2 x 5 1/2 x 2 3/4 inch loaf pan. Refrigerate until stiff, then cut half of an apple in thin wedges and lay overlapping on gelatin. Peel remaining half and whole apple, cut in chunks and place over apple wedges. Pour one-third of gelatin over apples and allow to set. When stiff, peel and section one orange. Lay sections along outside of mold. Dice remaining orange and place in center of mold. Pour over 2nd third of gelatin. Allow to thicken. When stiff, slice bananas and place slices standing up around edge of mold. Place remaining slices in center. Pour remaining gelatin over bananas and allow to stiffen. Unmold on a bed of lettuce. Combine real mayonnaise and orange marmalade and serve with salad. Serves 6 to 8.

drive. Better known as Hopalong Cassidy, he is seen and heard by millions of American youngsters on radio, television and theater screens.

Mr. and Mrs. M. P. Smith of Clairmont shopped and visited friends in Spur Saturday. Mrs. Smith was recently released from a Rotan hospital where she received treatment for a broken leg and burns in a fire at their home.

BARGAIN PRICES

ON

- 3 Reconditioned Pianos
- 1 Wire Recorder
- 1 Reed Organ
- 1 Violin

See

John E. Berry

SPUR PHONE 216

Redbud Trees Are Texas Favorite

Annually, thousands of redbud trees are planted in Texas writes a Star Telegram garden columnist. Peculiar weather conditions have brought the trees into bloom much earlier than usual.

There is still time to plant redbuds, a native tree of almost every part of the state of Texas,

she writes.

Leaves are heart-shaped, wide and glossy-green, turning in late fall into a golden yellow. Flowers are purplish red and pea-shaped, forming in clusters along the twigs and small branches in early spring, usually before the leaves appear.

Almost as decorative as the bright flowers are the seed pods, two to four inches long, and flat, a peculiar reddish brown in summer, often hanging on the tree

throughout the winter.

The Chinese redbud is a beautiful garden tree, forming interesting shapes with its twigs and branches. The flowers are fuller, and much more profuse than our native, and they appear more generously along the tree's branches and trunk.

The genus of the redbud is Cercis, family Leguminosae, the family characteristics being quite noticeable in the small bonnet-shaped flowers. Cercis canadensis is the East Texas variety, and Cercis reniformis, the West and Central Texas variety. A white-flowering form has recently been brought into cultivation.

The common name is Judas Tree, ancients giving rise to the story that this was the tree upon which Judas hanged himself. Likely this is only legend, because of the fact that the tree does not grow to a very great height and its branches are rather low-hanging.

PRE EASTER

88c DAYS AT DUNLAP'S

Friday, Saturday and Monday, March 16, 17 & 19

BOYS BLUE JEANS

Made of a durable 8 oz. Sanforized white back duck. Sizes 6 to 16

FOR THIS EVENT

ONLY \$1.98

SPECIAL PURCHASE BOYS DRESS PANTS

A dress-up rayon gabardine, pleated front and zipper fly. Colors of Brown, Grey, Teal and Medium Blue. Sizes 6, to 16.

FOR THIS EVENT

ONLY \$3.48

BOYS KNIT BRIEFS

A sturdy cotton knit with all-round elastic waist-band. Sizes, Small, Medium and Large

FOR THIS EVENT ONLY

2 For 58c

BOYS TEE SHIRTS

A good knit cotton in white only -- Sportknit. Sizes Small, Medium and Large

FOR THIS EVENT ONLY

2 For 68c

MENS TEE SHIRTS

White only in a durable light weight cotton knit. Sizes 34 to 42

FOR THIS EVENT ONLY

2 For 88c

MENS KNIT BRIEFS

A durable cotton knit with taped seams and wide elastic waistband. Sizes Small, Medium and Large

FOR THIS EVENT ONLY

2 For 88c

SPECIAL TABLE

Mens and Boys Clothing, a large group of Merchandise in broken sizes, any item on this table

1/2 PRICE

MENS DRESS SHIRTS

Fine quality broadcloth in solid colors of Blue, Tan, Grey and Light Green. French Cuff and Plain Cuff

VALUES TO \$3.95

ONLY \$2.79

ONE GROUP MENS FANCY TEE SHIRTS

A porous knit, broad striped pattern tee shirt. Sizes Small Medium and Large.

VALUES TO \$1.98

ONLY \$1.48

SIX IN ONE WIRE HANGERS

- For Skirt and Trousers
- Heavy gauge wire
- Swivel hooks
- Holds 12 Skirts or Trousers
- Folds compact for storage.

SPECIAL 68c



JUNIOR BUTCHER LINEN

40 inch wide in beautiful spring shades of Navy, Rose, Light Blue, Green, Maize, Tan, Pink, Black and White.

Special 57c Yd.

SPECIAL GROUP SHEER FABRICS

All washable Fabrics Demity and Batiste. Good color selection

REGULARLY 59c

ONLY 43c

PLASTIC SHOE BAGS

A durable quilted plastic bag that hangs on the inside of your closet door. 6 Pair of shoes capacity.

ONLY 98c

LADIES HOUSE COATS

A washable cotton fabric, large floral patterns. Sizes 12 to 20.

REGULARLY \$4.95

ONLY \$3.88

CHILDRENS SUN DRESSES

Beautiful sheer fabrics with dainty trimming. Sizes 2 to 6x.

REGULARLY \$1.79

ONLY \$1.00

STRAPLESS BRASSIERES

A sturdy bra with dainty lace trim. White only. Sizes 34 to 38-B

REGULARLY \$1.49

ONLY 88c

In every single state...
First in demand...
First in value...
First in sales!



ADVANCE-DESIGN TRUCKS

Coast to Coast and Border to Border

MORE CHEVROLET TRUCKS IN USE THAN ANY OTHER MAKE!

In 1950, truck buyers in every one of the 48 states chose Chevrolet over any other make. Nationally, Chevrolet has outsold any other truck for the last nine truck production years. That's because Chevrolet trucks do the job better... stay on the job longer. When you choose a Chevrolet truck, you get the right engine—92-h.p. Thriftmaster or extra-powerful 105-h.p. Loadmaster. You get a chassis that fits your job. You get a truck built to move your loads at lowest cost. Come see the new 1951 Advance-Design Chevrolet trucks.

SPUR MOTOR COMPANY
E. L. CARAWAY, OWNER
SPUR, TEXAS TELEPHONE 37

Dunlap's

Society-Club News

Jo Ann Smith And Airman Repeat Vows

Mr. and Mrs. M. P. Smith of Clairmont announce the marriage of their daughter, Miss Jo Ann Smith of Fort Worth, to S-Sgt. Donald R. Hite of Carswell Air Base, Fort Worth.

The wedding vows were read at 8:30 p. m., March 2, in the base chapel.

The bride wore a navy suit with pink and navy accessories.

The couple will live at 800-B Lilac Street in Fort Worth while S-Sgt. Hite is stationed as an air force photographer at the base.

Mrs. Hite is a former student of Spur High school, and for the past several years has been employed with the Greyhound Bus company in Fort Worth. Her parents are former residents of near Spur.

JOIN THE RED CROSS!

Home Nursing Is Studied By Club

Features of home nursing and first aid were presented by Mrs. A. M. Stoy and Mrs. F. R. Blair, registered nurses, before a meeting of the 1931 Study club on March 6.

Mrs. Ferrel Albin was hostess. Mrs. W. L. Kizer presided during a business meeting.

Refreshments of homemade ice cream with strawberries and cookies were served of Mmes. Dupree Allen, Spenced Campbell, Bill Gregory, Sam Hawkes, Evalene Holley, Kizer, Stoy and Blair.

Near East Study Is WSCS Program

"Near East Panorama," new mission study, was begun at the Monday meeting of the First Methodist Women's Society of Christian Service.

NOW OPEN!

CONOCO SERVICE STATION

A Complete Line of Conoco Products

We Will Appreciate Your

Patronage

JESS FLETCHER, Mgr.

Mrs. W. F. Gilbert acted as leader of the program, with Mrs. J. C. Payne and Mrs. Erie Foster assisting. Mrs. Tom Johnston gave the devotional.

Plans were made for the Lenten season Day--A-Part service to be held on March 21.

Attending were Mmes. Dee Hairgrove, Lela Evans, Cal Wright, P. E. Gollihar, Gilbert, Foster, Payne and Johnston.

THIS TASTES GOOD IN TEXAS

Recipe of the Week Shrimp Supper Mold

2 envelopes gelatine
 3/4 cup cold water
 3 cups tomato juice
 1 teaspoon salt
 1 teaspoon onion juice
 1/4 cup vinegar
 1 1/2 cups shrimp; fresh or canned
 1/2 cup mayonnaise
 1/2 cup chopped celery
 1/2 cup chopped green pepper
 Soften gelatine in cold water. Place tomato juice, salt, onion juice and vinegar in sauce pan, and bring to boil. Remove from heat; add softened gelatine; stir until dissolved. Chill until slightly thickened. Place 3/4 cup thickened mixture in loaf pan. Arrange eight whole shrimp in this layer. Chill thoroughly. Blend remaining mixture and mayonnaise with rotary beater. Fold in celery, green pepper and shrimp, and fill mold. Chill until firm. Unmold on crisp salad greens. Serve with Herb Mayonnaise. Makes 8 servings.

COMPLETE

Shrimp Supper Mold
 Potato Chips — Olives
 Cheese Biscuits
 Fruit Cup
 Coffee
 Timely Tips

Extension Foods and Nutrition Specialists Texas A. & M. College

1. In hot weather or if salad is wanted in a hurry, use more gelatine than the recipe calls for. Remember—gelatine salads should not be rubbery or too set.

2. All ingredients for a salad should be chilled unless it is to be a hot salad.

3. Vegetables added to salads should be crisp and dry.

4. Assemble just before serving unless it is a congealed salad.

5. Add dressing just before serving or serve separately.

6. Meats for salads are usually marinated and then should be drained well before mixing with other ingredients.

JOIN THE RED CROSS!

Afton Club Makes Quick Loaf Bread

Methods for making quick loaf breads were shown members of Afton Home Demonstration club on March 7. Mrs. Clark Forbis was hostess for the meeting.

"My family's favorite bread" was given by each member at roll call. Orange nut and oatmeal breads were made by the hostess.

A canasta party has been planned, and the group also discussed sponsorship of a Stanley party.

Pineapple salad was served with oatmeal and orange nut breads and coffee to Mmes. Bill Ligon, A. C. Martin, E. L. Turbeville, Dumont Bridge, W. A. Avara, Vurl Hinson, Curtis Goodwin, Eva Braddock, a guest, Robert McAttee, Miss Collier and the hostess.

Hostess for the next meeting on March 21, will be Mrs. Hinson, when a program on Texas will be presented.

Welfare Worker Is Guest of Study Club

Miss Eudora Hawkins, welfare service department employee of West Texas Utilities company, was guest speaker at a joint meeting Tuesday of the senior and daughter members of the 1933 Study club.

Mrs. C. H. McCully was hostess in her home, 613 North Willard. Mrs. W. F. Patrick introduced the speaker who discussed important and scenic parts of Texas.

Sandwiches, olives, cookies, punch and coffee were served to approximately 20 guests.

Barbara Sharp will entertain the Daughters of 1933 Study club in her home at 4:30 p. m., March 21.

Past Matrons Hold Election of Officers

Election of officers was completed in a March 8 meeting of the Past Matrons club of Spur held in the home of Mrs. Nellie Davis, outgoing president.

Mrs. Fannie McNeill was elected president for the coming year. Others selected and their offices are Mrs. Lela Evans, vice-president Mrs. A. G. Dunwoody, secretary-treasurer, and Mrs. David McAttee, reporter.

Plans for the club work in 1951 were discussed.

Cake and coffee were served to Mmes. George Link, Fannie Faubus, Walter Carlisle, McNeill, Evans, Dunwoody and the hostess.

JOIN THE RED CROSS!

T. F. W. C. Head To Speak



Mrs. James A. Allen of Child-Lee, president of the Texas Federation of Women's Clubs, will be guest of Legion hut. Mrs. J. M. Crews, all women's federated clubs in trustee of the Headquarters Library, will accompany the speaker.

Luncheon Honors District P. T. A. Head In Gabriel Home On Tuesday

As a courtesy to Mrs. M. C. Butler, district P.-T. A. president who addressed the Spur P.-T. A. in the afternoon, and local P.-T. A. officers, Mrs. George Gabriel entertained with a spring luncheon in her home Tuesday noon. Mrs. Gabriel is president of the Spur organization and her versatility as a leader and hostess was well displayed.

Individual tables for four were covered with Madeira cloths and centered with a single pink carnation. Guests were served buffet style from a large table laid with a canary yellow damask cloth.

An arrangement of soft pink carnations was flanked on either side by white tapers. Other floral decor was pink carnations placed at vantage points throughout the dining room.

Guests were Mrs. Butler, Mrs. Paul Marion and Mrs. R. A. Connor, executive committee members; C. F. Cook, school superintendent; Bruce Browning, principal of East Ward; Robert Williams, county school superintendent and chairman of the P.-T. A. goals and projects committee; Miss Faye Middlebrook, leader of East Ward

chorus; Melvin King, band director, and Mrs. Coy McMahan, leader of the afternoon program.

Declares Unity

"The school, church and community must be brought closer together in every part of the country if we as parents, teachers and leaders seek to instruct our children accordingly," declared Mrs. Butler before an assembly of parents and teachers at the afternoon session.

"Do you ever invite the teachers of your children into your home?" she queried, adding that "unity and cooperation are absolute necessities."

Also on the program were the East Ward chorus led by Miss Middlebrook, the East Ward band directed by Melvin King, and Rev. T. R. Elder, who gave the meditation. Mrs. McMahan was program leader.

Plans were made to attend the P.-T. A. conference on April 11-12 in Leckney. Parent-Teacher organizations from Jayton, Girard, McAdoo and Dickens were represented.

Coke Party Honors Margaret Wood

A surprise coke party complimented Margaret Wood on her seventeenth birthday Tuesday evening in the home of Annette Lee.

Guests presented gifts to the honoree and were served birthday cake and cokes. Attending were Jimmie Neil Bowman, Myra Ratliff, Carolyn Kelley, Ginger Walker, Emma Lena Simpson, Annette and Margaret.

Presbyterian News

New additions and improvements have been made during the past six months at the Presbyterian church in Spur. A beautiful lighting system has been installed in the Sanctuary. Plans are being made for the Easter service to be held at 11 a. m., March 25 in the church.

Communicant classes for boys and girls who plan to come into the church on Easter Day are being conducted by the pastor, Rev. T. R. Elder. A number of new faces are appearing at the worship service and a friendly atmosphere helpful to worship is to be enjoyed at all times. In January the church added to its leadership four new elders and four new deacons. The church is cooperating in the Easter Sunrise service for all churches to be held in the high school stadium. We most heartily welcome everyone to the services of our church.

Algerian Work Is Guild Study Topic

Missionary progress in Algeria was discussed by Mrs. J. W. Henry before members of the Wesleyan Guild of First Methodist church on Monday night.

Hostesses for the evening were Mrs. Marion Hurst and Mrs. Henry in the basement of the church.

Canapes, angel food cake and punch were served to Mmes. Cal Wright, Raymond Higginbotham, Lewis Lee, Vivian Gibson, J. C. Sprouls, C. O. Fox, Nina King, Henry and Hurst.

Heart Disease Is Composite Ailment

Too prevalent today is the belief that heart disease is the spell of doom and that one must cease all work and activity. Modern medical knowledge easily disproves this notion and thousands of case histories bear witness to its falsity.

Heart disease, medical science now knows, is not a single ailment. Many troubles can afflict the heart—some less serious than others. While some restrictions are necessary, it is now generally true that patients with any form of heart trouble should be active within the limits of their capacity.

Not all persons with heart ailments can continue working at their same pace. Obviously there are those who require bed rest and often a very strict limitation of physical and mental activity. But there are many who can continue working, performing some type of useful or productive activity, without fear that their hearts will suddenly give out.

A person with a mild heart disorder can in most instances perform any kind of job for which his skills qualify him.

No individual with a heart condition, it should be cautioned, should determine for himself whether he is able to work or not and how much work he can do.

Just as there are many who become cardiac invalids because of fear, there are those at the opposite extreme who ignore proper medical advice and subject their hearts to unnecessary strain and abuse by overactivity. Only a competent physician is qualified to say what are the limits of an impaired heart.

come everyone to the services of our church.

CLOSE OUT SALE

NOW IN PROGRESS! THRU MARCH 31

ALL ELECTRICAL EQUIPMENT MUST GO!

AT GREAT REDUCTION!

HERE ARE A FEW OF THE HARD-TO-GET ITEMS WHICH MUST BE SOLD:

Westinghouse Refrigerators
 Westinghouse Portable And Cabinet Sewing Machines & Accessories
 Deepfreezes
 Several Brands Vacuum Cleaners
 New And Used
 Westinghouse Electric Stove
 Used Laundromats & Parts

Magic Chef Gas Stove (Used)
 Beautiful Light Fixtures And Light Bulbs
 Westinghouse Radios
 All Types Irons And Parts
 Electric Toasters, Roasters, Clocks, Coffee Makers, Mixers
 Electric Comforts & Blankets

ANY TYPE ELECTRIC WIRING EQUIPMENT
 Display Tables, Ladders, Typewriter, Electric Adding Machine, Cash Drawer — And Many Other Things too Numerous to Mention.

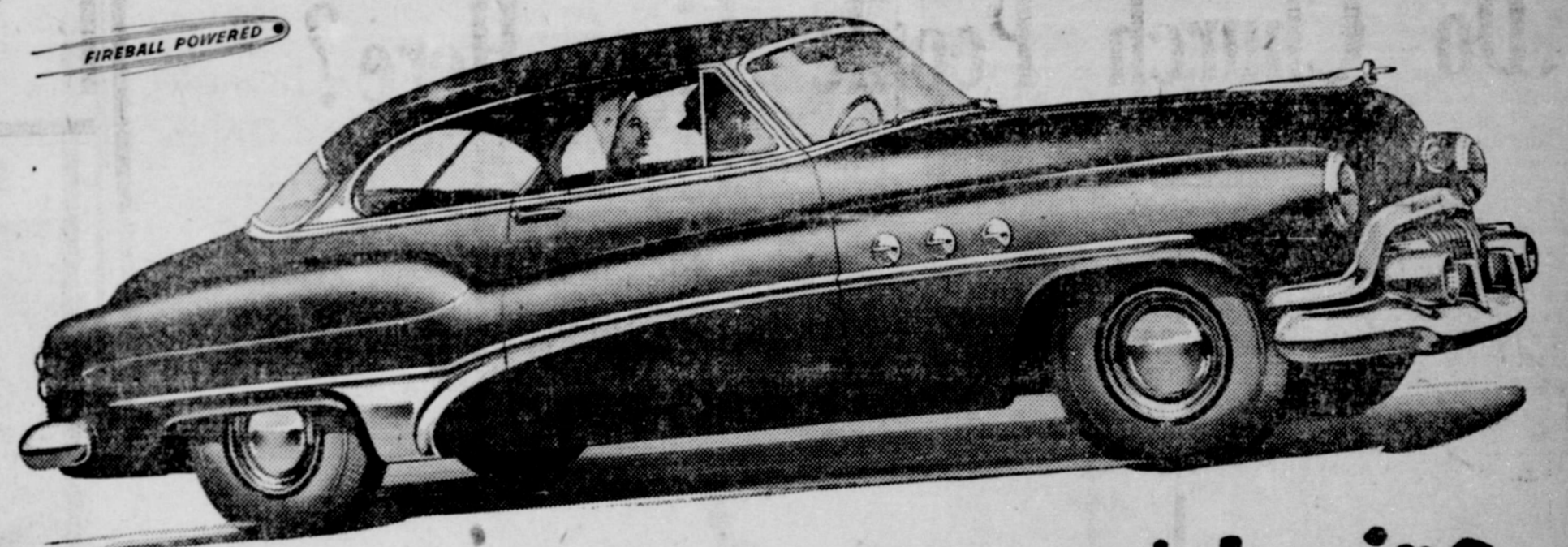
Every Thing Must Go!
 Our Loss Is Your Gain!

ALL SALES FINAL

C. & W. ELECTRIC

415 N. Burlington

Spur, Texas



Look what the Smart Money's buying

No other car provides all this!

DYNAFLOW DRIVE — saves strain on driver and car
FIREBALL POWER — high-compression, valve-in-head engine gets more good from every drop of fuel
PUSH-BAR FOREFRONT — combines smart style and unsurpassed protection
WHITE-GLOW INSTRUMENTS — greater clarity at night
4-WHEEL COIL SPRINGING — cushions ride, saves servicing cost
TORQUE-TUBE DRIVE — steadies ride, improves driving control
DUAL VENTILATION — outside air led separately to right or left of front compartment
SELF-ENERGIZING BRAKES — hydraulic—multiply pedal pressure five times at brake drum
DREAMLINE STYLING — tapered, car-length fenders, gleaming sweepers on most models
Plus: Self-locking luggage lid, Step-On parking brake, two-way ignition lock, Safety-Ride rims, Hi-Poised engine mounting, Body by Fisher

Now that the 1951 offerings of the motorcar industry have had a chance to strut their stuff, we ask you—can there be any doubt which is the really smart buy?

If you want a "new look"—Buick has it. That sturdy push-bar forefront says "1951" to all who see it—and provides unsurpassed front-end protection to boot.

If you want power that you can live with through many moons to come—Buick has that too. Years of expert engineering have made Buick's thrill-packed Fireball engine just about as dependable as a power plant can be.

If you want features that combine present pleasure with long-time durability, consider this:

Buick's level-going ride stems from coil springs on all four wheels which are virtually break-proof and never need servicing.

Buick's Dynaflo Drive* takes the strain out of every mile of driving—and pays off by eliminating any need for friction clutch repairs and replacements, by reducing engine and transmission upkeep, and lengthening life of tires.

*Standard on ROADMASTER, optional at extra cost on other Series.

If you want room and comfort and handling that make any trip a breeze—there's no simpler way to find them than to take over a '51 Buick SPECIAL, SUPER or ROADMASTER—relax and enjoy yourself.

And if you want all this at a minimum outlay of dollars—one look at Buick prices will settle this point.

So the smartest thing you can do is get in touch with your Buick dealer. How about doing that right now?

Your Key to Greater Value

"Smart Buys Buick"

Phone Your Buick Dealer for a demonstration Right Now!

SPUR AUTO CO.

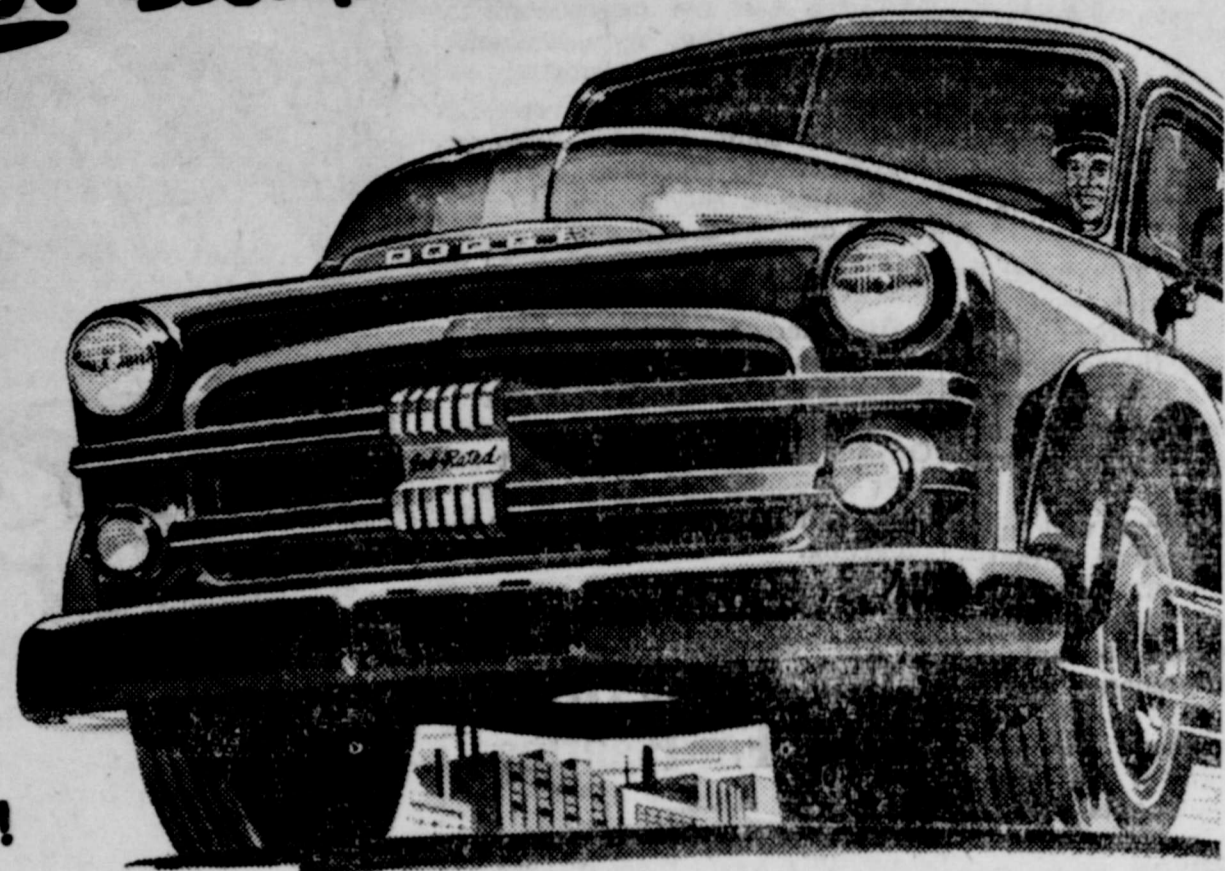
Phone 8

Spur, Texas

For the best that's new...

SEE THE NEW
DODGE
"Job-Rated"
TRUCKS

The trucks that do
the most for you!



NEW! More Power

Power increases as high as 20%
Eight high-efficiency truck
engines—94 to 154 horsepower.
The most powerful Dodge "Job-
Rated" trucks ever built provide
dependable power for your job!

NEW! Better Economy

Higher compression ratio
(7.0 to 1) on models through 1 ton,
for top efficiency with flashing
power. Here's real economy with
outstanding performance—more
power from every drop of fuel.

NEW! Easier Handling

Shorter turning diameters
than ever—and extra-easy steer-
ing with new worm-and-roller
gears. Short wheelbase, cross-
steering and wide front tread
assure easier maneuvering.

NEW! Greater Safety

Molded Cyclebond brake linings
on hydraulic-brake models 1 1/4-ton
and up. Brand-new! Extra-quiet!
Other safety features include new,
improved independent hand brake,
extra-big windshield.

NEW! Bigger Payloads

Increased Gross Vehicle Weights
and Gross Combination Weights
on many models—made possible
by increased rear axle capacity and
"Job-Rated" weight distribution.
Help cut your trucking costs!

NEW! Better Comfort

"Oriflow" shock absorbers,
standard on 1/2-, 3/4-, and 1-ton
models. New! Revolutionary! Self-
adjusting! New seat design, new
steering wheel angle—plus lower
hood line for improved visibility.

Exclusive! glycol Fluid Drive... Available
on 1/2-, 3/4-, and 1-ton models. Provides marvel-
ously smooth performance with cushioned power.

PLUS all these time-proved features
Dodge trucks have had for years...

Steering column gearshift standard on 1/2-,
3/4- and 1-ton models with 3-speed trans-
mission. Chrome-plated top piston ring for
longer ring life, better sealing. Synchro-
shift transmissions (3-speed, 4-speed, or
5-speed) rugged, silent, precision engi-
neered. DeLuxe and Custom cabs (with rear
quarter windows) available on all models.
And many other dependability features!

What "Job-Rated" means to you

A Dodge "Job-Rated" truck is engineered
at the factory to fit a specific job... save
you money... last longer.

Every unit from engine to rear axle is
"Job-Rated"—factory-engineered to haul
a specific load over the roads you travel
and at the speeds you require.

Every unit that **SUPPORTS** the load—
frame, axles, springs, wheels, tires and
body—is engineered right to provide the
strength and capacity needed.

Every unit that **MOVES** the load—engine,
clutch, transmission, propeller shaft and
rear axle—is engineered right to meet
a particular operating condition.

**NOW you can
BUY your complete
HOME REPAIRS**

on a Easy-Pay Budget Plan
New "Home-Fix-Up
Dept.

You can buy both the Labor
and Lumber and Pay by the
Month.

10% DOWN

UP TO 30 MONTHS
TO PAY!
NO JOB TOO
SMALL OR TOO
LARGE!
ANY WORK FROM THE
ROOF DOWN!



FROM THE CELLAR UP!

FIX UP!

You can pay as little as \$5.00
per month for complete instal-
lations

or

If you want to do the job your-
self, you can buy the materials
and pay as you can on our
EASY-PAY Budget plan.
Either way you save time,
worry and money by getting
top quality materials and
skilled workmanship.

Let Us Give You A

FREE ESTIMATE

No obligation to buy anything
**WHAT WORK DO YOU
WANT DONE?**

- Check these necessary im-
provements
- Attics
 - Additions
 - Bathrooms
 - Club Cellars
 - Doors & Windows
 - Floors
 - Garages
 - Insulation
 - Kitchens
 - Picket Fences
 - Porches
 - Remodeling
 - Roofing
 - Shelving
 - Siding
 - Storm Sash, Etc.

**Willson-Young
Lumber Co.**

Ph. 12 Spur, Texas

Read the Want Ads

**Dr. M. H. Brannen
Dentist**

111 E. Harris Phone 99
SPUR, TEXAS

Knights of Pythias

Meet each Mon.
Visitors
Welcome

NOTICE TO BIDDERS

The school building and teach-
erage at Croton, Dickens county
Texas will be sold at public auc-
tion on the Croton school site
Saturday morning, April 14, at
10:30 o'clock.

The Patton Springs School
Board reserves the right to reject
any and all bids.
Patton Springs School Board
21-5tc

Next to feed, labor costs are
said to be the largest expense
item connected with the produc-
tion of milk.

Inchoosing a coffee pot, special-
ists advise looking for one con-
venient to use and the right size
for the family, using a larger one
or making twice when company is
present.

The most dangerous hours of
the day for young children are
laundrytime and mealtime, when
they are most likely to be burned
or scalded.

The best way to remove guess-
ing from application of plant foods
to soil is to have the soil tested,
and supplying the needy soil with
fertilizers or legumes.

100,000 MILES FROM NOW

you'll still say

"Can't beat Dodge
for dependability!"



NEW engineering advancements make traditional Dodge dependability

GREATER VALUE THAN EVER

THE DODGE reputation for dependability
and long car life is a matter of record...
a record of thirty-seven years... a record no
other car can match.

And with the many new advancements en-
gineered into the great '51 Dodge, this famous
dependability makes Dodge an even bigger
value, an even bigger dollar buy.

Yes, everything about this great new Dodge
—the way it looks, rides and handles—tells you
that here's a car built to deliver years and
miles of dependable, low-cost service.

5 minutes tells why. Give us just five
minutes. Let us show you how you could
pay up to \$1,000 more and still not get all
the extra room, handling ease and rugged
dependability of this great new 1951 Dodge

1951 Dependability

DODGE

Just a few dollars more than the lowest-priced cars!

Jones Motor Co.

Come in for a good deal on a truck that fits your job... a **DODGE TRUCK**

JONES MOTOR CO.

SPUR, TEXAS

Yields of 100 or more bushels of corn per acre are becoming increasingly more common in the corn producing areas of Texas, with the added benefit of stover, cobs, root and stubble besides the shelled corn. The equivalent of eight sacks of 20 per cent nitrogen fertilizer, four and one-half sacks of 20 per cent superphosphate and two and one-half sacks of 60 per cent muriate of potash are required for the production of 100 bushels of corn.

**Edwards Kelley Imp. Co. Presents
Two Big Days Of
DEMONSTRATION & SHOW**

FRIDAY AND SATURDAY, MARCH 23 AND 24

See

The International Harvester Complete Line
of New 1951

**REFRIGERATORS
HOME FREEZERS**

THEY'RE NEW! THEY'RE YEARS
AHEAD! Yes, the new International Har-
vester Refrigerators and Home Freezers for
1951 are as new as tomorrow!

SEE the most exciting new creation in
Refrigerator and Home Freezer history with
a host of amazing and exclusive features —
On display during our Big Show!

SEE!

Our big International Harvester Refrig-
erator advertisement on opposite page for
more details of these "Femineered" Beauties.

See

The BRAND NEW Addition to the Beauti-
ful OLDSMOBILE fleet of fine Automobiles

THE SUPER '88'

BE SURE TO REGISTER!

Each person visiting our show room be-
tween 8:00 a. m. Friday, March 23, and noon,
Saturday, March 31, are urged to register for
our big wonderful

DOOR PRIZE

Absolutely FREE! Nothing to buy!

YOUR CHOICE OF

7.4 cu. ft. International Harvester

REFRIGERATOR

— OR —

7 cu. ft. International Harvester

HOME FREEZER

IF YOU'RE THE LUCKY ONE!

Drawing at 2:00 p. m., Saturday, March 31

See

Along with a complete line of INTERNA-
TIONAL HARVESTER and FARMALL
Tractors and Implements the New

FARMALL 'C' TRACTOR

With touch control for:

1. Two bottom mold board
2. Two row cultivator and planter
3. Two disk deep breaking plow
4. Mower
5. Grader blade

SEE!

Our new No. 250 CULTIVATOR for
Farmall "H" tractor.

SEE!

The Barrett Plow Co. demonstrate the
new Reversible Deep Breaking Disk Plow for
Farmall "H" and other makes of
tractors.

EDWARDS - KELLEY IMP. CO.

Phone 53

"The Farmall House"

Texas

ELECTRICAL TIPS FOR THE HOME
If You Intend to Redecorate or Remodel This Fall . . .



DON'T let ugly, makeshift electrical extensions spoil the looks of a newly-decorated room. They're not only unsightly, but they're also unsafe.

DO provide enough convenience outlets for all your lamps and appliances. Space them every 12 feet along the wall and in smaller areas of 3 feet or more.

Sheath Suit



Here's the all-important dress-jacket costume, in rayon and wool faille, meant to function as a sheath or suit. The dress has a square neck and is sleeveless. The waist-length jacket buttons from the throat to the waist and has a pique string tie at the collar. Featured in the March issue of Cosmopolitan, it comes in black and navy and retails for about \$50.



By Hugh Williamson

Austin, Tex., March 15.—How do you like your roads? Are you interested in good country roads, or super highways, or both, Would you prefer that your county officials have charge of farm-to-market road building, or do you think that the State Highway Department should have that duty?

Everybody wants goods roads. How to get them is a problem that is fretting the Legislature right now. There is likely to be a lot of wrangling before the question is finally settled.

There are several bills under consideration—all giving different solutions to the problems. Here is the present situation:

Everytime you buy a gallon of gasoline you pay four pennies, as tax, to the State. One penny goes to the schools, two pennies go to the Highway Department to build and repair roads, and one penny goes to the "road bond assumption fund." And what is that fund?

A long time ago, many counties issued bonds (which means that

they borrowed money' to build roads.

When some of those roads became a part of the State Highway System, the state agreed to pay off its proportionate part of the counties' bonds.

The one cent of the gasoline tax that goes to the "road bond assumption fund" is to take care of these payments.

But a lot of the debt has been wiped out, over the years, so that there is now a surplus in the road bond assumption fund. In a few years, when all the bonds are retired, the one cent of gasoline tax would be sufficient to do as much rural road building as the state is now doing.

Meanwhile, there is a lot of quibbling in the Legislature as to

what should be done with the surplus, part of which now goes to the counties and part to the highway department.

Two new bills, dealing with the road problem, have drawn attention and you'll be reading that the Legislature is debating about them.

One of these bills, by Representative Max Triplett of Hillsboro, increases the state gasoline tax from four cents to five cents a gallon. The extra penny would be divided up this way:

One-fourth would go to the schools, one-half to the State Highway Department for the construction of farm-to-market roads, and one-fourth to the State Highway Department for the construction and maintenance of streets

incorporated cities and towns.

For a long time, cities have been trying to get some state money to help build streets, particularly those which are part of the State Highway System. The Triplett bill would provide about \$5,000,000 for city street construction and maintenance.

Last year, the gasoline tax of four cents per gallon brought in more than \$87,000,000 for highway and school purposes. The Triplett measure would increase that to something more than \$100,000,000.

Another new bill, by Representative D. B. Hardeman of Denison, would put a tax of two cents per bottle on beer, the money going for rural road building.

PALACE THEATRE

Box Office Opens 11:45 Saturday 1:15 Sunday
And 1:45 Other Days
Call 185 For Schedule

FRI. - SAT.

Rustlers on Horseback
ALAN LANE RUSTLERS ON HORSEBACK
Also Cartoon

BLUE BLOOD IN CINECOLOR
BILL WILLIAMS JANE NIGH
Racing Thrills — Excitement From Beginning to End

SUN. - MON.
PREV. - SAT. NITE 11:00

RIB-RIPPING RIOT!
Bob HOPE - Lucille BALL
"FANCY PANTS"
A PARODY ON "THE GREAT ESCAPE"
TECHNICOLOR
TOM & JERRY CARTOON — NEWS REEL

TUESDAY

TUESDAY Gift Nite
400
Less 20% state tax

Together again . . . In the Wonderful sequel to Mrs. Miniver
GREER CARSON
WALTER PIDGEON
The Miniver Story

WED. - THURS.

COSMOPOLITAN MAGAZINE says . . .
"IT'S STRONG MEAT!"

UNDER THEIR HOODED ROBES SMOLDERED PERSONAL HATES, GREED AND BESTIAL LUSTS! THEY WERE NO LONGER THE CRUSADING KLANSMEN OF EARLY LEGEND . . . NOW, THEY WERE MEN BENT UPON MURDER AND CRIMINAL ATTACK!

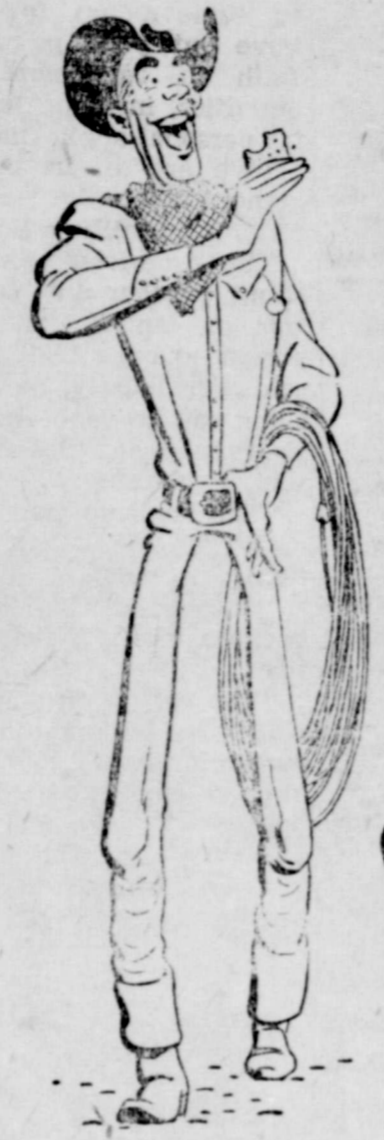
"The Klan's got ways of making you friendly Babe..and the law can't touch me, either!"

"STORM WARNING"

WITH THIS Great Cast OF STARS . . .
GINGER ROGERS • DORIS DAY
RONALD REAGAN • STEVE COCHRAN
DEFINITELY NOT FOR SMALL CHILDREN!

SPUR THEATRE
FRI. - SAT.

John Wayne -- Gail Russell
—IN—
ANGEL & THE BADMAN
ALSO FOR YOUR ADDED ENJOYMENT
LITTLE TOUGH GUYS
STARRING THE DEAD END KIDS



they're extra thin . . .



Westerners know their brands and when it comes to crackers Supreme Salad Wafers are always first choice!

Supreme Flavor has made Supreme Salad Wafers the outstanding quality crackers of the West.

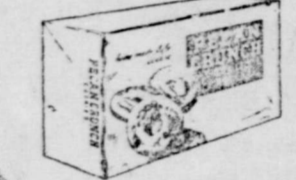
Buy these thin saltines in the new 4-Pack for . . .

FLAVOR • FRESHNESS • CRISPNESS • FLAKINESS



Supreme IN FLAVOR!
BY Supreme BAKERS
BOWMAN BISCUIT CO.

AN OUTSTANDING COOKIE BY SUPREME BAKERS



PECAN CRUNCH
an old-fashioned type cookie, made with pure butter and pecans . . . Supreme in Flavor!

Go to church Sunday

SEE DURING EDWARDS-KELLEY DEMONSTRATION AND SHOW SAT. MARCH 23

Pantry-Dor and Much More!

INTERNATIONAL HARVESTER
1951 REFRIGERATORS

they're *femineered!*
NEW...and YEARS AHEAD

See these features for your future in the spacious 9.2 cu. ft. size Model HA-92 . . . designed for you . . . with

- Pantry-Dor • Butter-Keeper • Stainless Steel Shelves
- Two Coldstream Crispers • Big Meat Storage Drawer
- Full-width 50-lb. Freezer • Built-in Magnetic Bottle Opener
- Acid Resisting Porcelain Enamel liner • Shadowline Styling
- Cold to the Floor



Color-Keyed

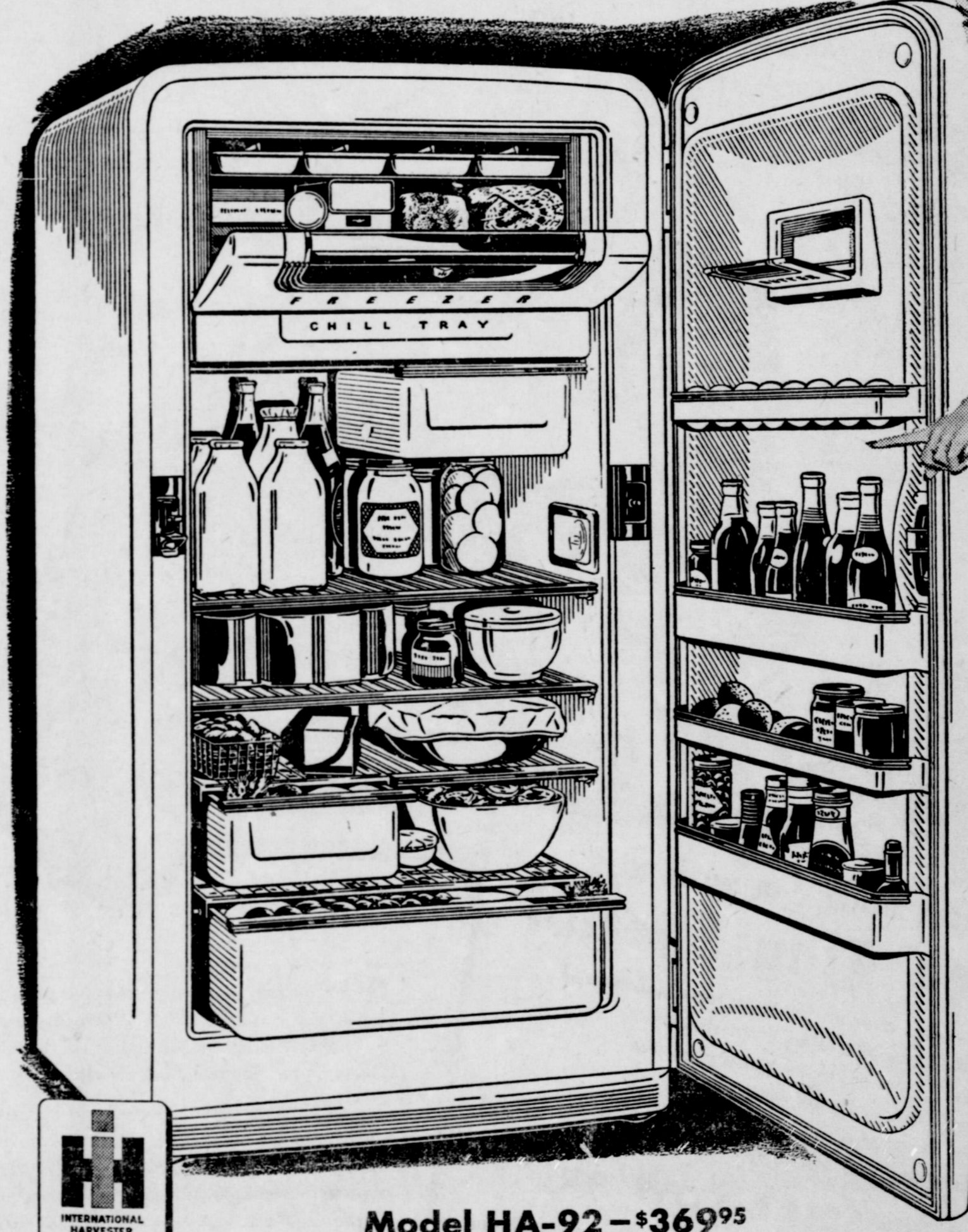
TO YOUR KITCHEN

. . . to give you a new note in kitchen decoration! Your choice of 10 beautiful colors in gleaming plastic plaques may be set in the rich chromium door handle. Color plaques interchange — to keep pace with your kitchen color scheme!

. . . powered by the thrifty "Tight-Wad" refrigerating mechanism that is protected by its own 5-Year warranty which is stamped into a metal plate and permanently attached to the cabinet.

SEE THE COMPLETE LINE!

7 MODELS
7 SIZES
7 PRICES
\$21995
STARTING AT



Model HA-92 — \$36995

SEE THEM AT YOUR NEAREST NEIGHBORHOOD DEALER!

Edwards-Kelley Imp. Co

PHONE 53

SPUR, TEXAS

FOR QUICK RESULTS USE THE CLASSIFIED

ALL CLASSIFIED ADS CASH IN ADVANCE UNLESS YOU HAVE REGULAR CHARGE ACCOUNT CLASSIFIED AD RATES—4 cents per word for first insertion; 1 cent per word for each insertion thereafter; minimum for each insertion 40 cents.

FOR SALE

FOR SALE: Farmall H tractor. 1950 model, fully equipped. Plowed less than 600 acres. \$1750. Son leaving for Army. See J. H. Hemphill, Highway community. 21-2tp

FOR SALE: 60 acre farm 5 miles south of Memphis, Texas. Mrs. Kate Parks. 21-2tp

FOR SALE: Apartment Size Butane Gas Stove \$25. See Seger Jenkins, or call 141-J

FOR SALE: 4 room house with bath and garage. Near East Ward school. Call 241-J

FOR SALE: John Deere chisel plow with rubber tires, power-lift, \$195; John Deere 2-bottom moleboard plow, \$115; Direct connected 12-disc Krause plow for Farmall H or M, \$199; late model 1950 '88' Oldsmobile with all extras, \$1995. Edwards-Kelley Implement Co. 21-1tc

FOR SALE: G. E. Frigidaire, bed mattress, table, 4 chairs, radio, bookcase, Roper gas range, living room suite automatic washer, chest of drawers. See Dale Young, call 359-W. 21-1tc

FOR SALE: 30 x 80 ft. brick building with grocery stock and fixtures, 5 room house, 6 lots. Price \$26,000. Gross income last year, \$65,000. We have farms, ranches and city property. Crafton and Gilcrease Realtors, Spur. 21-2tp

FOR SALE: Servel Electrolux gas refrigerator. Excellent shape. \$135.00. Western Auto Associate Store. 21-ctfn

FOR SALE: 1940 tudor Ford sedan, new upholstery, new paint. Will trade or sell \$295. Byron Jenkins at Barber shop. 21-2tc

FOR SALE: Property of R. B. Stanley in 309 block on corner of West Fifth and Parker streets. See B. W. or O. D. Stanley. 21-2tp

FOR SALE: 3 ton International, practically new tires, good cab. Spur Motor Co. 21-ctfn

FOR SALE: 3 Case tractors, fully equipped. Spur Motor Co. 21-ctfn

FOR SALE: Good, cheap used cars. Spur Motor Co. 21-ctfn

FOR SALE OR LEASE: Filling Station located on North Burlington. If interested, see Starcher Insurance agency, phone 30. 16-ctfn

FOR SALE: Used Pianos. Contact John E. Berry, Spur. 17-ctfn

FOR SALE: 7 ft Deepfreeze, elec- tric 7-Up box with water fountain and cash register. See Mrs. Bill Scott, Dickens. 16-ctfn

FOR SALE: Batteries \$9.65. Ex- change. O. K. RUBBER WELDERS. 19-1tc

FOR SALE: Two used late model John Deere A's; one John Deere B, 1947 model. Denton Implement Co., Spur. 19-ctfn

FOR SALE: One 1941 Ford, one 1949 Plymouth convertible, original owner. Denton Implement Co., Spur. 19-ctfn

FOR SALE: 1946 Model A John Deere tractor. A. B. Carlisle. See at Denton Implement Co., Spur.

See us for Butane and Propane tanks. Garner Appliance Co. 4-ctfn

FOR SALE: Batteries \$9.65. Ex- change. O. K. RUBBER WELDERS. 29-1tc

See us for Butane and Propane tanks. Garner Appliance Co. 4-ctfn

The lowest price full-size car in Spur, THE HENRY J., delivers for a down payment of \$486.00 under Regulation W. See Bill Gregory your K-F Dealer for your car deal. 2-ctfn

FOR SALE: Large variety late model, clean used cars. Priced very reasonable. Small down payment, easy terms. JONES MOTOR COMPANY, Dodge-Plymouth, Dealer, Spur. 28-1tc

LUZIER'S FINE COSMETICS: Selected for your individual requirements by an experienced consultant. Myrtle Whitwell, call 268-W. 52-1tc

Butane, Propane gas, 7 & 8 cents per gallon. Garner Appliance Co. 4-ctfn

GUARANTEED WHIZARD bat- teries \$8.95 up exchange. Western Auto Assoc. Store, Spur. 29-1tc

See us for Butane and Propane tanks. Garner Appliance Co. 4-ctfn

FOR SALE: Pillow cases. See Sue Formby, 624 N. Miller. 21-1tp

\$25 REWARD for small black male shepherd dog with white markings. Answers to "Scrappy." Lost in Jayton March 4. Write Hubert Young, Guthrie, Texas. 21-1tp

FOR SALE: Sows with pigs. Piggy sows, also weaning pigs. See A. M. Madden, 7 1/2 miles E. Spur, Highway 70 and 1/2 mile North. 21-1tp

Butane, Propane gas, 7 & 8 cents per gallon. Garner Appliance Co. 4-ctfn

FOR RENT

FOR RENT: 4 room house, bath and cellar. 617 N. Parker. Immediate possession. Apply Ray Caplinger. 1/2 miles west Soldier Mound church. 4-ctfn

FOR RENT: 4 room modern house in Gabriel addition. See W. P. Qualls; call 596-J. 21-2tp

Miscellaneous

FOR SALE: Good Quality Blue Panicum grass seed, \$1.50 Lb. Matador Hardware and Furniture Co., Matador. 19-4tc

Invest a little time and money and enjoy new floors in your home. Resand those floors yourself with our HILCO Rental Sander and then refinish with our better finishes. Wilson-Young Lumber Company, Phone 12 Spur. 15-ctfn

CONSULT J. C. Moore at Bryant- Link Co. for your plumbing jobs. Efficient, Reasonable. Call 33. 17-ctfn

WILL TUNE pianos and fix old Reed organs on Saturdays in Spur. Also will pay cash for used pianos. Write description to John E. Berry, Jr., Spur. 15-ctfn

FRESH DRESSED, broiler type fryers every day - any day. Also, fresh dressed fat hens at Spur Grain and Hatchery. Phone 51. 20-ctfn

SCIENTIFIC Swedish Massage, Mineral and Sweat baths. For Appointment, see or call R. A. Gilcrease, ph. 176-J. Office 1/2 block S Hilltop station. 18-4tp

No dust and no risk when you sand floors with a famous HILCO SANDER. Rent this speedy, smooth machine from us and do your own job easily and cheaply. WILLSON-YOUNG LUMBER Co. Phone 12, Spur, Texas

COUNTRY CLUB Plastic seat covers for most cars. Coupe \$10.95 2 and 4-doors \$17.95. Western Auto Associate Store, Spur, Texas. 42-1tc

Butane, Propane gas, 7 & 8 cents per gallon. Garner Appliance Co. 4-ctfn

See us for Butane and Propane tanks. Garner Appliance Co. 4-ctfn

JOIN THE RED CROSS!



RICKEL'S MOTOR COMPANY
Spur, Texas

Do you have troubles? Need a lumber? Prompt service, reasonable prices. Phone 12. Glenn Jones, Willson & Young Lumber Company. 41-1tc

Butane, Propane gas, 7 & 8 cents per gallon. Garner Appliance Co. 4-ctfn

THE BEST VACUUM cleaners are still available. See one today. Electrolux Corp., W. R. Smelser. Box 335, phone 381-J. 18-ctfn

LOST

STRAYED: 3 black Hampshire pigs from my farm 1 mile N. Dry Lake school. Ivy J. McMahan. 21-1tp

WANTED

WANTED TO BUY: Good cane or hezari bines. See or phone R. L. Benson. 108-W. 17-1tc

WANTED: Ironing to do at my home one block east, 1/2 block south of East Ward school. Ruth Patterson, call 596-N. 21-2tp

WANTED: Man to do farm work. Prefer man and wife. W. H. George, 11 miles NW Spur. 21-2tp

ELECTION NOTICE

There will be an election of trustees for the Spur Independent School District board to serve a term of three years, on Saturday, April 7, 1951, at the Spur City Hall.

The following members have permitted their names to be placed on the ballot for re-election:

- O. M. McGinty
- Dr. W. K. Callan
- D. J. Dyess

If any person or groups of persons desire to submit further candidates they may do so pursuing the proper procedure through Mrs. Vivian Gibson not later than March 29, 1951.

Cecil Godfrey, President
Spur Independent School Dist.
Board of Trustees. 21-3tc

Want ads get results

Shivers Calls Hard Fight of Inflation

Inflation is everybody's business Governor Allan Shivers declared Tuesday in an address before the Dallas convention of the Texas & Southwestern Cattle Raisers Association.

"Inflation is adding something everyday to your Federal, state and local tax bill," the Governor pointed out. "Inflation makes it more expensive to build roads, to run schools and universities, to buy office supplies, to safeguard the public health and safety, to make even the most modest provisions for civil defense—in short, to carry on every phase of your state and local government."

"To all of you who have saved up some money for old age, or have put your money and your faith in retirement policies or annuities, inflation has a particular personal application."

"We are all in this thing together. When the little man suffers, eventually all suffer."

The American economy cannot stand another big dose of inflation on top of that already experienced since 1939, Gov. Shivers said. Fortunately, he added something that can be done about inflation. Everybody can do something, he said, explaining:

"The laboring man can help by increasing his individual production."

"The banker can help by going back to conservative credit practices."

"The cattleman and the farmer can help by making more food available."

"Just any citizen can help by doing without the things he doesn't really need."

"The businessman can help by playing the game fair and square,

both with the government and with his customers.

"The Federal Reserve Bank can help a great deal by asserting its authority and its duty to protect the dollar from excessive and progressive devaluation."

"We can all help by being willing to sacrifice a little for the good of all."

The Governor warned that Stalin's great hope is that the United States will undergo an internal economic collapse as a result of runaway inflation.

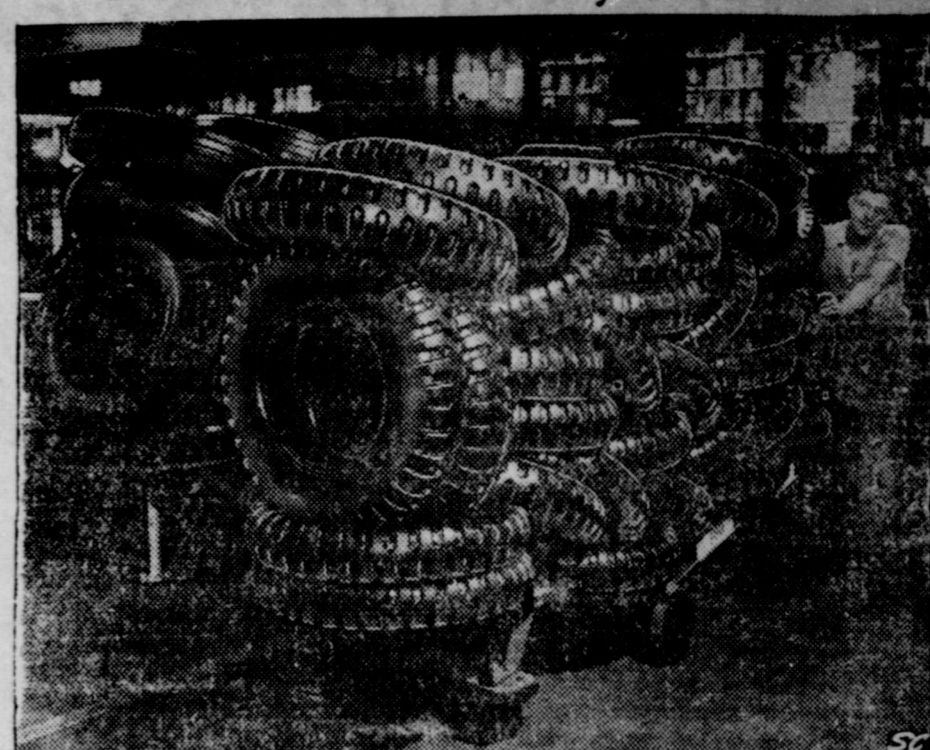
"But the cause is not hopeless," he declared. "The weapons are at hand with which to beat this insidious enemy."

Farmers Get Set For Record Yield In Corn Production

Corn planting time is here or even past in some sections of Texas and many farmers have their sights set on producing yields of 100 bushels or more per acre. Such yields are becoming quite common in the corn producing areas of the state but there is more involved than what meets the eye says M. K. Thornton, extension agricultural chemist of Texas A. & M. College.

He says many different plant food elements are required by the growing corn plant before it can be expected to produce a hundred or more bushels per acre. An acre of corn producing at the rate of 100 bushels, represents the following: 4,000 pounds of stover; 1,400 pounds of cobs; 5,600 pounds of shelled corn and 5,200 pounds of root and stubble. This make a

New Tire For Military Vehicles



AKRON—Here's what the well-dressed military vehicle will wear this year. These new "high flotation" tires, among the first to roll off B. F. Goodrich production lines here, are designed to help keep military vehicles from bogging down in mud or sand.

Features are low pressure operation and a special tread, outgrowth of wartime experience with tires designed for desert service. With air pressure lowered, the high flotation tire presents a broader base at ground contact than does the conventional military truck tire. When air pressure is increased to normal the tire performs on paved roads like conventional military tires.

total of 16,200 pounds of air-dry matter and excluding all water, amounts to about 14,200 pounds of moisture-free dry matter. That kind of production points out Thornton, means the soil must be fertile and much of the plant food must through necessity be added in the form of fertilizers.

Here, according to Thornton, is what research has found it takes to produce this enormous amount of dry matter on one acre of land. From 4.3 to 5.5 million pounds of water or 19 to 24 inches of rainfall; 6,800 pounds of oxygen (air is 20 per cent oxygen); 5,200 pounds of carbon or 19,000

pounds of carbon dioxide which is equal to the amount of carbon in four tons of coal; 160 pounds of nitrogen or eight 100 pound bags of 20 per cent nitrogen fertilizer; 40 pounds of phosphorus or its equivalent 450 pounds of 20 per cent superphosphate; 125 pounds of potassium or the amount in 250 pounds of 60 per cent muriate of potash; 75 pounds of yellow sulphur; 50 pounds of magnesium, the amount found in 500 pounds of limestone; two pounds of iron; three-tenths of a pound of manganese; six hundredths of a pound of boron and traces of chlorine, iodine, zinc, and copper.

Enjoy Really Fresh COFFEE ... save money too!

Edwards No finer coffee packed. Rich, full-bodied. If you prefer coffee vacuum-packed in tin, Edwards is your buy.

Nob Hill Gives you vacuum-pack quality with paper bag thrift. Rich, hearty flavor. Ground fresh to order when you buy.

Airway If you like a mild, mellow coffee—try Airway. Flavor is locked in the whole bean 'til coffee is ground when you buy.

Be sure... shop SAFEWAY

For that truly rich flavor that only fully fresh Coffee has, select your coffee from Safeway. You'll find your favorite kind here.

1-Lb. Can **85¢** **Admiration Coffee**

1-Lb. Pkg. **79¢**

1-Lb. Pkg. **77¢**

1-Lb. Can **87¢** • **Folgers Coffee**

1-Lb. Can **87¢**

FROZEN FOODS

Leaf Spinach Birds Eye 14-Oz. Pkg. 24¢

Ford Hook Limas Birds Eye 12-Oz. Pkg. 33¢

Strawberries Birds Eye 12-Oz. Pkg. 43¢

GUARANTEED EGGS

Breakfast Gems Grade A Large, White, Clean Doz. 63c

Morning Star Large Size Mixed Colors Doz. 54c

CHECK THESE VALUES

Mrs. Wright's Bread 24-Oz. Loaf 20c

Cheddar Cheese Mild 1/2-Lb. Wedges Lb. 55¢

Sliced Cheese Kraft's American 1/2-Lb. Pkg. 35¢

Breeze Cheese Food 2-Lb. Pkg. 89¢

SPECIAL CANDY VALUE!
\$1.20 CARTON FOR ONLY 79¢

Candy Bars Suchard Almond or Milk Choc. 24 5c Bars Ctn. **79¢**

Cigarettes Popular Brands 2 Pkgs. for 39c Carton **\$1.89**

Grapefruit Juice Town House No. 2 Can **10¢**

Orange Juice House of George 46-Oz. Can 27¢

Baby Food Gerbers Strained or Chopped 4 1/2-Lb. Cans 35¢

Baby Food Heinz Strained 4 1/2-Lb. Cans 35¢

Gerber's Meats Baby Food 3 1/2-Oz. Cans 21¢

Pablum Baby Food 8-Oz. Pkg. 21¢

Cherub Milk Top Quality 2 Tall Cans 25¢

Salmon Doming's Tom-O-Lets No. 1/2 Can 37¢

Tuna Fish Torpedo Grated No. 1/2 Can 27¢

Lim Beans Baby Limas Cello Pack 1-Lb. Pkg. 16¢

Pinto Beans Cello Pack 2-Lb. Pkg. 27¢

White Beans Small Size Cello Pack 1-Lb. Pkg. 19¢

Macaroni Gooch's 1 or Spaghetti 16-Oz. Pkg. 18¢

Shortening Royal Satin Made in Texas 2-Lb. Can 99¢

Soda Crackers Sunshine Krippy 1-Lb. Pkg. 28¢

Margarine Sunbys Colored Made in Texas 1-Lb. Pkg. 37¢

Sandwich Spread Lunch Box Made in Texas Jar 40¢

SMOKED PICNICS

Sold Half or Whole Short Shanks... Lb. **45¢**

Beef Short Ribs Gov't. Graded Lb. **45¢**

Pork Loin Roast Rib End, Blade Bone Removed Lb. **49¢**

Pork Chops All Center Cuts Lb. 69¢

Pork Spare ribs Lean, Meaty Lb. 49¢

Pork Sausage Wingo's Pure Pork 1-Lb. Roll 43¢

Round Steak Heavy Beef Gov't. Graded Lb. \$1.14

Sirloin Steak Heavy Beef Gov't. Graded Lb. \$1.09

Chuck Roast Heavy Beef Gov't. Graded Lb. 73¢

Sliced Bacon Capital Sugar Cured 1-Lb. Pkg. 49¢

Bacon End Pieces Cello Lb. 17¢

Dry Salt Bacon Fine for Seasoning Lb. 33¢

Fresh Fryers Head-to-Cook Lb. 61¢

CELERY

Pascal Celery Tender, Green, Crisp Stalks Lb. **8¢**

Green Beans Florida Valentine Lb. **19¢**

Yellow Onions Mild, Sweet Lb. **5¢**

GOLD MEDAL 25 Lb. Gag FLOUR **\$1.93**

LOCAL EGGS, Guaranteed Doz. 45c

Sunkist Oranges Calif. Lb. 12¢

Florida Oranges Juicy 8-Lb. Bag 63¢

Grapefruit Florida Marsh Seedless All-Purpose 8-Lb. Bag 12¢

Winesap Apples Wash. State 10-Lb. Bag 43¢

Russet Potatoes Economy Pack 10-Lb. Bag 8¢

New Potatoes Florida Lb. 12¢

Iceberg Lettuce Crisp, Firm Lb. 9¢

Clip-Top Carrots Lb. 10c

Yellow Squash Firm, Tender Lb. 19¢

Bell Peppers 1-ree. Green Lb. 10¢

Green Onions Fresh, Tender Doz. 10¢

SAFEWAY

Prices Effective Friday and Saturday in Spur, Texas

301 Burlington Street
STORE Monday Thru Friday 8:00 - 6:30
HOURS Saturday 8:00 - 8:00

25¢ to bake a cake with Keen

PRE-CREAMED KEEN...
Newest Improvement in Shortening
Details at Display
3-Lb. Can **\$1.05**

There's a future in your present Ford, too!

PROTECT YOUR CAR WITH THIS Piston Ring Special

- We clean carbon from pistons and heads
- Install new Genuine Ford rings
- Install new cylinder head gaskets
- Clean and adjust spark plugs
- Inspect and adjust carburetor
- Road test car for proper operation

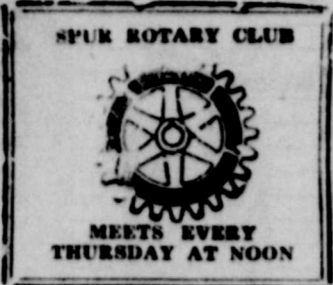
AT A SPECIAL LOW PRICE

No matter how new or how old your present car is, you can keep it feeling new for years to come. The secret, of course, is driving "back home" for real Ford Service.

For only at your Ford Dealer's do you get the combined advantages of Ford-trained Mechanics, Genuine Ford Parts, Factory-approved Methods and special equipment for Fords. Because we know your Ford like a book, we can give it many extra miles of safe and pleasant driving.

Ford Dealers Know Fords Best!

GODFREY & SMART



THE SPUR

SERVING A RICH FARM CROP, STOCK AND POULTRY RAISING TERRITORY OF WEST TEXAS.



VOLUME 42

The Dickens Item and Dickens County Times Absorbed by Purchase
SPUR, DICKENS COUNTY, TEXAS THURSDAY, MARCH 15, 1951

NUMBER 21

Chamber of Commerce Doing: Chamber Expecting 250 at Annual Banquet, Membership Meeting Monday Night

250 CITIZENS ARE EXPECTED FOR SPUR C. OF C. BANQUET

Approximately 250 citizens of Spur and about 40 out-of-town guests are expected for the Annual banquet and membership meeting of the Spur Chamber of Commerce. Tickets for the occasion are being handled by the Spur Chapter of the Future Farmers of America and the Banquet Committee of the Spur Chamber. Everyone is invited and asked to bring a friend to this banquet to hear Lon Hill of Amarillo. The meeting will be held at the Spur High School gym, 7:30 P. M., March 19.

C. of C. to Cooperate with Office of Price Stabilization

All merchants are urged to contact the local Chamber of Commerce office regarding any information on OPS maximum price regulation No. 7. The Office of Price Stabilization has issued ceiling prices effective February 27, effecting retailers handling certain consumer goods. By March 29, each retailer covered by the regulation must file a pricing chart with his OPS office, showing percentage mark-ups he has calculated under its provisions for determination of ceiling prices.

The Spur Chamber of Commerce has available mimeographed forms and pricing charts and additional copies of regulation 7 for all merchants and members of the Chamber of Commerce. Any merchant interested in securing the necessary charts and reporting forms should contact the Chamber office, phone 488 and order the number of forms for his business.

West Texas C. of C. to Assist Spur Chamber in Mail Delivery

Due to many recent complaints filed by local individuals the Spur Chamber of Commerce is studying the possibility of securing mobile post offices from Abilene to Spur. Since the loss of the railway passenger service in Spur the substitution of mail delivery by truck has been found to be unsatisfactory with local business men.

In a recent study of the postal service in Waco, it was found that mobile post office service has proven very encouraging and satisfactory. L. M. Huff manager of the Spur Chamber and Fred Husbands, General Manager of the W. T. C. will begin negotiations with federal officials concerning the poor postal service received by Spur. Husbands, formally manager of the Waco Chamber, was successful in securing the mobile service for Waco and is expected to assist the Spur Chamber in its project.

Welcome New Members

The following business firms have expressed their desire to help Spur grow and have joined the Chamber of Commerce.

El Patton Motel on highway 79, owner Gail A. Smith; Denton Implement Company, next to Bryant Lingo; Dickens County R. E. A.; Liberty Cafe, owner Hershel McAlpin; W. P. Shugart, Spur; Cooper Cafe, Spur; and Elton W. Garner, Spur.

McAdoo P.-T. A. to Present 3-Act Play

"The Whole Truth," a farce in three acts, will be presented at 8 p. m., March 20, in the McAdoo High school auditorium, states a report this week. The event is sponsored by the McAdoo P.-T. A. The play is expected to present two hours of laughter from the antics of Mrs. Joseph Martin who makes her family and servants promise to tell nothing but the truth.

Casts in the play are James Patterson, Joseph Martin, Colerby, Mrs. Mildred Martin; Clayton Baum, Johnny Martin; Jean Williams, Elizabeth Martin; Venice McDonald; John Forney; The Rev. Jacob Tessie; Henry Harris G. Whitford Mundorf; Boush Nickels, Aunt Mat Worth; Forest Keith, Tom De North; Jane Largent, Lucille Armitage; Eldon Williams, Johnson Smith; and Doris Van Meter, Harriet Jones.

An invitation is extended the public to attend.

Legionnaires Have Birthday Celebration

Members of the Williams-Puckett American Legion post and Women's Auxiliary will hold a joint birthday party tomorrow in celebration of the 32nd birthday of the American Legion organization in America. The local groups will sponsor a birthday dinner at 8 p. m., with auxiliary members preparing and serving the dinner. Legionnaires will direct entertainment during the evening. Members are urged to be present.

Hamilton Speaks To Lions on D.P.W. Aid

L. P. Hamilton, state Department of Public Welfare employee in Spur presented an address concerning the Community and D. P. W. at the noon meeting of the Spur Lions club Tuesday, March 13.

Hamilton explained to the Lions that the department is set up by law to render financial assistance to the needy aged, the needy blind and the needy children under 14 years of age who are deprived of parental support by reason of death, desertion, physical or mental incapacity of one or both parents.

An additional service of the department, stated Hamilton, is that of offering guidance and counseling in all situations involving children.

In Dickens county, according to Hamilton, there are 221 persons receiving monthly grants totaling approximately \$7600. Over the 250,000 there are approximately 250,000 persons receiving aid. The state average assistance is \$32.59 while the county's average is \$32.72.

He stressed the point that almost the entire amount is spent in the county each month for food, clothing, shelter, etc. Although this seems like a small amount per person, Hamilton stated that the amount to be granted is regulated by the State and only the State can raise the amount available for the D. P. W.'s work.

During his talk, Hamilton explained the work of the individual worker, his territory and responsibilities.

In conclusion Hamilton stated "The State Department of Public Welfare stands ready to serve with the aim that assistance be given any problem pertaining to the welfare of the individual, at the same time, allowing him to retain his integrity, initiative, and ability to self-direction. In Texas, we believe in leaving that with a man always."

JOIN THE RED CROSS!

Rotary Gift Given For FFA Clubwork

A gift of \$25 was presented by Spur Rotary club to the Patton Springs FFA club as part of the organization's rural relations project recently.

The occasion was a program and dinner held in the Patton Springs school gym. The money was for the purpose of purchasing needed equipment which the boys use in club work.

Easter Seal Sale Opens In County

Easter seal campaigns for crippled children opened Monday in 10 South Plains counties and will run until Easter Sunday.

Contributions should be sent to the South Plains Society for Crippled Children, box 1121, Lubbock, as early as possible.

This year the fame of the society was changed from Lubbock Crippled Children's society to the South Plains Crippled Children's society. It serves a 10-county area, and the seal sale will be conducted in all those counties this year.

V. C. Smart and W. H. Hindman have been named directors of the society in Dickens county.

"It is the privilege of healthy, able-bodied persons to give to this most worthy cause, and to aid those children who are increasingly needy of help," stated Smart. Money received from the campaign will go to buy braces, wheel chairs and treatment for crippled children of this area.

Other counties participating in the South Plains area are Lubbock, Crosby, Bailey, Lamb, Hale, Floyd, Motley, Cochran and Hockley.

L. A. Grantham is at home after three weeks in a hospital receiving treatment for injuries he received in a tractor accident.

Huff Resigns As Chamber Mgr.; Takes Abilene Job

Leon M. Huff, Jr. has resigned as manager of the Spur Chamber of Commerce effective March 31 to take a job as Assistant General Manager of the Abilene Chamber of Commerce.

His resignation was accepted by the board of directors at their regular Wednesday morning meeting yesterday.

Huff came to Spur in January of 1949, an employee of the State Board of Education as an instructor in the Dickens County Vocational School. He resigned this position to accept the secretary-manager job with the local chamber of commerce on June 1, 1950.

As the first manager since re-organization, Huff has played an outstanding and major role in the development of the complete program the local chamber is now pursuing.

During his short year with the Spur chamber, Huff has worked in close harmony with chamber members, directors and city officials to do much toward the betterment of the city of Spur.

Outstanding accomplishments of the chamber while Huff was in office include:

The extension of the city limits to include two entire additions and provide sewage, water and fire protection to approximately 840 people.

The promotion of new vapor street lights for Burlington avenue and the business district.

The promotion of the new \$250,000 city hospital in Spur.

The promotion of a Post-to-Spur highway, linking Spur with Post as a part of the Broadway to Big Bend Highway.

And aid in securing a new legislative district for Dickens county giving Dickens county a much smaller district in the Senatorial Districting.

In his letter of resignation to the chamber, Huff stated "One of the hardest jobs that I have had to undertake since living in Spur is to write this letter of resignation. I say this because of the friendly spirit and fine cooperation that I have received from you and the people of Spur during my administration as manager of your Chamber of Commerce."

"This position is a promotion for me and my family, not only in salary, but in my profession."

Huff is a graduate of Texas Tech in Lubbock. In Spur, he is secretary of the Rotary club, a member of the Knights of Pythias lodge, the American Legion and the First Baptist Church. He is a director of the State Soil and Pasture Conservation Program.

He will assume his duties with the Abilene Chamber of Commerce on April 2.

McCaig states that at present the board of directors has made no definite steps toward securing a successor for Huff, but that applications for the position will be accepted and that the board hopes to hire a new manager prior to Huff's leaving.

New Arrivals

Mr. and Mrs. Graden Bass announce the birth of a son, Ronnie Graden, on March 12 in the Crosbyton hospital. The baby weighed 7 pounds 2 ounces. Grandparents are Mr. and Mrs. Ollie Hindman and Mr. and Mrs. L. G. Bass of Spur.

A daughter, Jacqueline Renee, was born to Mr. and Mrs. Charles Forbes in the Crosbyton hospital on March 3. Mrs. Forbes is the former Nelda Jean Calvert of Spur.

Mr. and Mrs. Thomas E. Bingham announce the birth of a son, Thomas Richard on March 6 in the Crosbyton hospital. The baby weighed 8 pounds 7 ounces.

SWENSON NAMED COUNTY CHAIRMAN OF OIL GROUP

DALLAS, Texas, March 15.—J. E. (Eric) Swenson, Spur, has been named County Chairman for Dickens County in the Texas Mid-Continent Oil & Gas Association's statewide organization, Charles E. Simons, Association General Manager, announced today.

Mr. Swenson will serve in the district organization headed by H. E. Chiles Jr., Midland, Association vice-president for the Basin District.

The Texas Mid-Continent is composed of oil and gas operators, royalty owners, land owners, and other interest associated with the state's petroleum industry.

J. E. Hemphill of Pampa visited in the home of his parents, Mr. and Mrs. J. H. Hemphill of the Highway community last weekend.

R. J. Bell will be guest speaker at the Sunday morning service in Foreman Chapel. The public is extended a cordial welcome.

JOIN THE RED CROSS!

Dickens County Red Cross Drive Seeks \$2500 Goal

Bulldog Team Taking Form As Spring Training Hits Half Way Mark

With a good display of talent and enthusiasm at every position, Coach Sam Hawkes states that he is well pleased with the daily workouts of the 1951 Spur Bulldogs.

"It's been several years since we've had the depth at key positions that we have on this club," states Hawkes. "The attitude is about the best I've ever been privileged to observe, and I feel sure they'll play football of the brand that we'll all be proud of."

Working at the end positions are Charles Watson, Dean King, Orville Claude and Fred Wyatt. At tackle are Hershell Waite, Chester Lindsey, Ralph Gibson, Fred Frigg, Toby Williams, John Rankin and Wayne Bishop.

Among the guards are two boys who will probably be two of the best linemen in our district. They are Harley Bingham and Larry Smith. Other guards are Don Wilson, Tommy Bass, Charles Smith and Steve Dotts. At center is Joe Bell with a couple of tackles and guards understudying him.

The backfield is led by last year's all district quarterback, Charles Grimland, Lindsey, probably a first string tackle, in second string quarterback understood by Lawrence Cook. Left halfbacks are Bobby George, Gordon Simmons, and Tommy Hig-tower. Right halfback are Jackie Claude and Curtis Blair. Fullbacks are Paul Simmons and Franklin Gabriel.

The Spring Training activities will be completed and climaxed with an inter-squad game on March 30. The public is invited to attend.

Coach Hawkes, states Foster Cook, turned down a coaching job in Terrell this week to remain with the Spur Bulldogs. Seminole is in one of the toughest AA districts in the State and has fine prospects for the coming year. Although tempted by the larger school and larger salary, Coach Hawkes states that after giving the proposition deep consideration, he and his family chose to remain in Spur.

"We're happy in Spur and are well pleased with the boys and school authorities we're working with."

Gridders Receive Co-Champion Award

The co-championship district trophy awarded the 1950 Spur Bulldogs arrived this week as the latest addition to Spur High schools already filled chest of valuable trophies and awards.

Two gold footballs flanking a football player standing ready to throw a pass. Engraved on the trophy is "District 3-A Co-Champions, 1950."

Names of the players and their coaches also engraved are Dick Durham, Joe James, Charles Beryl, Herbert Roberson, Dean Watson, Charles Grimland, Ronald Comer, Don Hill, Paul Simmons, Billy Hoover, Robert Stewart, Orville Claude, Troy Smith, and Billy Hahn and Sam Hawkes, coaches.

Other FHA loans are made to improve and develop farms, to build or repair houses and out-buildings, and for development of water supplies. These loans are based on a repayment schedule of 3 to 25 years as compared to 40 years for FO loans.

Baptist Youth Meet Held At Dry Lake

Bro. J. C. Koen, Afton minister, addressed the Baptist Young People's association meeting in the Dry Lake church Monday night.

A group of 79 attended, representing eight churches throughout the county. Members were present from Afton, Duncan Flat, Dry Lake, Midway, Soldier Mound, and the Bethel, Mission and First Baptist churches of Spur.

Billie Boykin, president of the group, directed the program and introduced the speaker, Ralph Gibson was elected song leader and Miss Faye Middlebrook was appointed pianist. Vernon Lee Cates of Afton gave the devotional. Special music was by Carolyn Hicks.

Spur Flowers Will Hold Open House

Spur Flowers announces its formal opening from 3 until 9 o'clock on Monday, March 19, at the corner of Carroll and Hill streets.

The public is invited to attend and view a complete line of Easter cut flowers, pot plants and displays of gifts for all occasions.

Free flowers will be given to all who attend. Mr. and Mrs. Roy G. Anderson and Mr. and Mrs. Fred Bennett are managers of the shop.

Mac Brannen, University of Texas Student from Spur has been placed on the all-instrumental water polo second team as a guard. It was announced this week. Mac is a junior pre-medical student, and the son of Dr. and Mrs. M. H. Brannen.

The First Baptist church, Spur, will be host to the group's next meeting on the second Monday in April.

JOIN THE RED CROSS!

Members of the Dickens County Red Cross Funds Committee opened the 1951 drive for funds this morning toward a \$2,500 goal for the county.

Committeemen are contacting businesses and professional men today, states Fund chairman A. J. Harvey, and the concentrated campaign will be continued through Saturday, March 17.

As the county's part of the national goal of \$85,000,000, the local goal is higher than any year since the war. The increase has been necessitated by the increased demands on the local chapter for civilian relief, veterans' work and aid for servicemen.

Local ladies' clubs have been contacted and will maintain stands on Burlington Ave. Saturday, states Harvey. Plans are at present for four such stands to be set up for the convenience of persons wishing to donate to this cause.

In other communities throughout the county, committeemen have been appointed to aid in the drive. These committeemen include: Joe Kidd and Archer Powell in Dry Lake; Harold Karr in Epuela; Sam Porter and Burnett Haney in Afton; R. J. Bell and W. W. Beedle in Gilpin; Dalton Kew and G. L. Delisle in Soldier Mound.

Homer Miller in Croton; C. R. Cooper and Riley Wooten in McAdoo; Joe Rose in Glenn; Charles Taylor, Fred Arrington and Mrs. T. H. Blackwell in Dickens.

Following the initial drive today, E. S. Lee A. J. Harvey and Prof. G. W. Kerr will be in charge of collection in Spur.

Goals for each community have been set up from \$25 for smaller communities to \$1500 for Spur.

General Red Cross Chairman George S. Link, Jr. states that the local chapter is being called on to aid far more needy civilians, veterans and servicemen than the local fund will care for. When the goal is reached, approximately \$800 of the fund will remain in the local chapter for local work.

However, states Link, when and if a disaster strikes, the national organization is ready to help and supplement the local efforts to the fullest. Link recalls the 1949 corned-beef famine in Dickens county when the national Red Cross spent over \$16,000 for food, clothing and reconstruction work in the county. "It will take us a long time to pay back for the excellent work done by the Red Cross during this time of need in our county," states Link.

Although the local campaign for funds has been set up for three days, the national drive is for the entire month of March. If Dickens county is short of its goal after the three days, the drive will be extended until the goal is reached.

Pre-induction examinations were ordered yesterday in Abilene for 19 draftees from the Dickens-Kent-Stonewall county area served by Selective Service Board 80 in Jayton.

The group traveled by chartered bus and were accompanied by six boys from this tri-county area who reported to Abilene for induction into the United States Army.

Among those taking pre-induction physicals were Hugh Kissick, Marvin Laughlin, Clifford B. Smith, Eugene John Vahtenkamp, Leon Harold Smith, Samuel Melton Weaver, Antonio L. Roa, Thomas Dick Hart, J. A. Bush, Morris Doll Thompson, Marvin Ray Craft, Charles Luther McDowell, Donald Hoyt Cagle, Billy Charles London, John Alvin Hinson, Homer Foy Teague, Catarion Luna, Junior R. Fletcher and James Marvin Petty.

Inductees were Henry D. Taylor, Jr., Charles Nelson Copeland, Travis Lewis Hill, William J. Massey, Billie Dewayne Hull and Malcolm Marshall Rollins.

Parents are requested to contact one of these officials at the earliest possible date, added Cook.

School Census Will Close Here April 1

"It is necessary that we have the help of every parent friend and neighbor within the next two weeks in order to complete our school census by April 1," stated C. F. Cook, school superintendent, today.

Children who are six years old and who did not attend school last year must be counted, he said. Census taking in Dickens county opened March 1, with school officials Bruce Browning, Dean Duffile, Wayne McDaniel, Joe Grimland and Cook assigned as enumerators.

Parents are requested to contact one of these officials at the earliest possible date, added Cook.

Duck Creek Soil Conservation District News Notes

O. M. McGlity, Chairman J. B. Montgomery, Secretary
Giles McCraty Clark Forbis Chas. Witt

George Gabriel has developed a conservation plan for a farm he recently purchased in Carr group. The plans include the construction of a stock tank, seeding back to grass some steep land that is now in cultivation and the construction of end fills on old terraces to carry excess water onto pasture.

Mrs. White Moore has completed a 4000 yard tank dam on her ranch in North Red Mud group. J. B. Greenwood Jr. and C. C. Halle are making plans for seeding some grass this spring. Greenwood plans to make a planting of King Ranch Bluestem and Halle is planting about 15 acres to Blue Panic.

The office of the Soil Conservation Service in Spur is now open on Saturday morning to accommodate farmers in the Duck Creek district who can't get into town on week days.

Mac Brannen, University of Texas Student from Spur has been placed on the all-instrumental water polo second team as a guard. It was announced this week. Mac is a junior pre-medical student, and the son of Dr. and Mrs. M. H. Brannen.

JOIN THE RED CROSS!

Seeing is Believing

THE HORNED LIZARD, WHEN FRIGHTENED OR ANNOYED, SQUIRTS THIN JETS OF BLOOD FROM THE CORNERS OF ITS EYES.



There are no short cuts... IT TAKES THE EXACTITUDE OF MODERN SCIENTIFIC EQUIPMENT PLUS THE EXPERIENCED JUDGEMENT OF A VISUAL SPECIALIST TO PERFORM A TRUSTWORTHY EYESIGHT EXAMINATION.

Did you know? SINCE 1939 PRICES HAVE RISEN—

- 267% FOR BEEF CATTLE
- 158% FOR HOGS
- 135% FOR WHEAT
- 109% FOR CORN
- 28% FOR EYE-CARE

DANGER AT LARGE... ONLY 3 STATES— ARIZONA, CONNECTICUT, AND MISSISSIPPI— HAVE A STANDARD PRACTICE OF GIVING NIGHT-VISION TESTS TO APPLICANTS FOR DRIVERS LICENSES. NOTES THE BETTER VISION INSTITUTE.

Explorer Gives Natives "Wonder Drug"



Captain Hassoldt Davis, famed explorer and author, proved on a recent expedition to the Ivory Coast of French West Africa that natives think highly of the white man's "magic" which he works with aureomycin and other drugs. Davis is shown above administering vitamin pills to an exhausted witch doctor. The native "doctor" recovered so rapidly that he wanted the white man to stay and be his partner. At another village, Davis found a native woman near death from mixed infection following childbirth, complicated by pneumonia. After penicillin injections failed, he gave her aureomycin capsules. The woman fully recovered. When his pet chimpanzee showed symptoms of having pneumonia, Davis gave it the same "wonder" drug, which the chimp ate like candy. Within a week the animal was as lively as ever. The explorer is now writing a book and editing a film on the expedition. Mrs. Davis, a daring woman, indeed, was official photographer for the safari. She will accompany her husband on a trek this summer into the wilds of Morocco.

Resource Crisis Faced By Nation

Four billion tons of United States are being washed away each year. Fifty per cent of the trees cut in U. S. forests are not being replaced by new plantings. Pollution of the rivers and lakes of America is on an increase. Those and other drains on natural resources will be spotlighted in the forthcoming national wildlife restoration week, beginning March 18.

Sponsored annually by the National Wildlife Federation since 1938, the seven-day period is used to point up the necessity of conserving, protecting and restoring fast diminishing stores of national resources. This year the federation is emphasizing the need for a planned program even more strongly in view of the national emergency.

Education Important

The group is aiming at the sensible management of wildlife, chiefly through conservation education. Publishing pamphlets, producing films and maintaining a staff of conservation experts throughout the country makes it a year-around job.

Besides furnishing conservation data to schools and libraries, the federation maintains a teachers' training program to aid inclusion of the resources problem into the classroom; finances migration research; publishes reports on congressional action on conservation issues, and supplies material and funds to affiliate groups in 40 states.

The affiliates, in turn, maintain their own programs. Some sponsor youth conservation camps. Others grant teachers scholarships and furnish state legislature reports. All provide studies of local conservation problems.

Financed By Stamps

The entire program of the federation is financed by the yearly sale of wildlife conservation stamps. This year's sales are expected to be boosted by the appointment of William Boyd as honorary chairman of the week's



LUSCIOUS fruit salads are appetizing treats any time. But somehow they seem extra special in the Spring because of the flip they give our tired winter appetites. For a real taste of sunshine, Nancy Holmes of the Best Foods consumer kitchens suggests this Amber Fruit Salad, which is just as pretty as it is palatable.

- Amber Fruit Salad**
- 2 packages lemon flavored gelatin
 - 1 1/2 cup real mayonnaise
 - 1 tablespoon orange marmalade
 - 2 oranges
 - 2 bananas
 - 1/2 cup real mayonnaise
 - 1 tablespoon orange marmalade
 - lettuce

1. Dissolve gelatin in boiling water. Pour a thin layer of gelatin in bottom of a rinsed but not dried 9 1/2 x 5 1/2 x 2 1/2 inch loaf pan. Refrigerate until stiff, then cut half of an apple in thin wedges and lay overlapping on gelatin. Peel remaining half and whole apple, cut in chunks and place over apple wedges. Pour one-third of gelatin over apples and allow to set. When still, peel and section one orange. Lay sections along outside of mold. Dice remaining orange and place in center of mold. Pour over 2nd third of gelatin. Allow to thicken. When still, slice bananas and place slices standing up around edge of mold. Place remaining gelatin over bananas and allow to stiffen. Unmold on a bed of lettuce. Combine real mayonnaise and orange marmalade and serve with salad. Serves 6 to 8.

Drive Better known as Hopalong Cassidy, he is seen and heard by millions of American youngsters on radio, television and theater screens.

Mr. and Mrs. M. P. Smith of Clarendon shopped and visited friends in Spur Saturday. Mrs. Smith was recently released from a Rotan hospital where she received treatment for a broken leg and burns in a fire at her home.

World's Smallest Field Produces Oil and Fun

What is possibly the world's smallest oil field is being operated in Kansas. There, three wells produce a total of four barrels daily. The deepest well goes down only 11 feet. Reservoir energy is believed to be supplied by water drive, since the wells produce only when it rains. The wells were drilled with a post hole digger, and their producing equipment consists of two-inch water pumps powered by washing-machine engines. Exact source of the oil is a mystery. Three nearby crude oil pipe lines were checked and showed no leaks. The owner, a drilling contractor, reports little profit but a lot of fun.

"Light UP" With LPG

A new desk size cigarette lighter which operates on liquefied petroleum gas is said to give service for six months without a refill. Butane gas cartridges which fuel the lighter are replaceable.

BARGAIN PRICES

- ON
 - 3 Reconditioned Pianos
 - 1 Wire Recorder
 - 1 Reed Organ
 - 1 Violin
 - See John E. Berry
- SPUR PHONE 216

Redbud Trees Are Texas Favorite

Annually, thousands of redbud trees are planted in Texas writes a Star Telegram garden columnist. Peculiar weather conditions have brought the trees into bloom much earlier than usual.

There is still time to plant redbuds, a native tree of almost every part of the state of Texas,

she writes. Leaves are heart-shaped, wide and glossy-green, turning in late fall into a golden yellow. Flowers are purplish red and pea-shaped, forming in clusters along the twigs and small branches in early spring, usually before the leaves appear.

Almost as decorative as the bright flowers are the seed pods, two to four inches long, and flat, a peculiar reddish brown in summer, often hanging on the tree

throughout the winter. The Chinese redbud is a beautiful garden tree, forming interesting shapes with its twigs and branches. The flowers are fuller, and much more profuse than our native, and they appear more generously along the tree's branches and trunk.

The genus of the redbud is Cercis, family Leguminosae, the family characteristic being quite noticeable in the small bonnet-shaped flowers. Cercis canadensis is the East Texas variety, and Cercis reniformis, the West and Central Texas variety. A white-flowering form has recently been brought into cultivation.

The common name is Judas Tree, ancient giving rise to the story that this was the tree upon which Judas hanged himself. Likely this is only legend, because of the fact that the tree does not grow to a very great height and its branches are rather low-hanging.

PRE EASTER

88c DAYS AT DUNLAP'S

Friday, Saturday and Monday, March 16, 17 & 19

BOYS BLUE JEANS

Made of a durable 8 oz. Sanforized white back duck. Sizes 6 to 16

FOR THIS EVENT ONLY **\$1.98**

SPECIAL PURCHASE BOYS DRESS PANTS

A dress-up rayon gabardine, pleated front and zipper fly. Colors of Brown, Grey, Teal and Medium Blue. Sizes 6 to 16.

FOR THIS EVENT ONLY **\$3.48**

BOYS KNIT BRIEFS

A sturdy cotton knit with all-round elastic waist-band. Sizes Small, Medium and Large

FOR THIS EVENT ONLY 2 For **58c**

BOYS TEE SHIRTS

A good knit cotton in white only -- Sporty. Sizes Small, Medium and Large

FOR THIS EVENT ONLY 2 For **68c**

MENS TEE SHIRTS

White only in a durable light weight cotton knit. Sizes 34 to 42

FOR THIS EVENT ONLY 2 For **88c**

MENS KNIT BRIEFS

A durable cotton knit with taped seams and wide elastic waistband. Sizes Small, Medium and Large

FOR THIS EVENT ONLY 2 For **88c**

SPECIAL TABLE

Men and Boys Clothing, a large group of Merchandise in broken sizes, any item on this table

1/2 PRICE

MENS DRESS SHIRTS

Fine quality broadcloth in solid colors of Blue, Tan, Grey and Light Green. French Cuff and Plain Cuff

VALUES TO \$3.98 ONLY **\$2.79**

ONE GROUP MENS FANCY TEE SHIRTS

A party knit, broad striped pattern tee shirt. Sizes Small Medium and Large

VALUES TO \$1.98 ONLY **\$1.48**

LADIES Quilted Slippers

A good quality quilted plastic that's washable. Sizes Small Medium and Large

ONLY **47c Pr.**

SIX IN ONE WIRE HANGERS

- For Skirt and Trousers
- Heavy gauge wire
- Swivel hooks
- Holds 12 Skirts or Trousers
- Folds compact for storage

SPECIAL **68c**



LADIES RAYON PANTIES

By Milson Two bar Tricot Fabric in White, Blue and Pink. Sizes 5, 6, and 7

REGULARLY 68c ONLY 2 For **98c**

JUNIOR BUTCHER LINEN

48 inch wide in beautiful spring shades of Navy, Rose, Light Blue, Green, Maize, Tan, Pink, Black and White.

Special **57c Yd.**

SPECIAL GROUP SHEER FABRICS

All washable Fabrics Density and Batiste. Good color selection

REGULARLY 59c ONLY **43c**

PLASTIC SHOE BAGS

A durable quilted plastic bag that hangs on the inside of your closet door. 6 Pair of shoes capacity.

ONLY **98c**

LADIES HOUSE COATS

A washable cotton fabric, large floral patterns. Sizes 12 to 20

REGULARLY \$4.95 ONLY **\$3.88**

CHILDRENS SUN DRESSES

Beautiful sheer fabrics with dainty trimming. Sizes 2 to 6x.

REGULARLY \$1.79 ONLY **\$1.00**

STRAPLESS BRASSIERES

A sturdy bra with dainty lace trim. White only. Sizes 34 to 38-B

REGULARLY \$1.49 ONLY **88c**

In every single state...
First in demand... First in value... First in sales!



CHEVROLET
ADVANCE-DESIGN TRUCKS

Coast to Coast and Border to Border MORE CHEVROLET TRUCKS IN USE THAN ANY OTHER MAKE!

In 1950, truck buyers in every one of the 48 states chose Chevrolet over any other make. Nationally, Chevrolet has outsold any other truck for the last nine truck production years. That's because Chevrolet trucks do the job better... stay on the job longer. When you

choose a Chevrolet truck, you get the right engine — 92-h.p. Thriftmaster or extra-powerful 105-h.p. Loadmaster. You get a chassis that fits your job. You get a truck built to move your loads at lowest cost. Come see the new 1951 Advance-Design Chevrolet trucks.

SPUR MOTOR COMPANY
E. L. CARAWAY, OWNER
SPUR, TEXAS TELEPHONE 37

Dunlap's

Society-Club News

Jo Ann Smith And Airman Repeat Vows

Mr. and Mrs. M. P. Smith of Claremont announce the marriage of their daughter, Miss Jo Ann Smith of Fort Worth, to S-Sgt. Donald R. Hite of Carswell Air Base, Fort Worth.

The wedding vows were read at 8:30 p. m., March 2, in the base chapel.

The bride wore a navy suit with pink and navy accessories.

The couple will live at 800-B Lilac Street in Fort Worth while S-Sgt. Hite is stationed as an air force photographer at the base.

Mrs. Hite is a former student of Spur High school, and for the past several years has been employed with the Greyhound Bus company in Fort Worth. Her parents are former residents of near Spur.

JOIN THE RED CROSS!

Home Nursing Is Studied By Club

Features of home nursing and first aid were presented by Mrs. A. M. Stoy and Mrs. F. R. Blair, registered nurses, before a meeting of the 1931 Study club on March 6.

Mrs. Ferrel Albin was hostess. Mrs. W. L. Kizer presided during a business meeting. Refreshments of homemade ice cream with strawberries and cookies were served of Mmes. Dupree Allen, Spenced Campbell, Bill Gregory, Sam Hawkes, Evalene Holley, Kizer, Stoy and Blair.

Near East Study Is WSCS Program

"Near East Panorama," new mission study, was begun at the Monday meeting of the First Methodist Women's Society of Christian Service.

Mrs. W. F. Gilbert acted as leader of the program, with Mrs. J. C. Payne and Mrs. E. Foster assisting. Mrs. Tom Johnston gave the devotional.

Plans were made for the Lenten season Day--A-Part service to be held on March 21. Attending were Mmes. Dee Hairgrove, Lela Evans, Cal Wright, P. E. Gollihar, Gilbert, Foster, Payne and Johnston.

THIS TASTES GOOD IN TEXAS

Recipe of the Week Shrimp Supper Mold

2 envelopes gelatine
 1/2 cup cold water
 3 cups tomato juice
 1 teaspoon salt
 1 teaspoon onion juice
 1/4 cup vinegar
 1 1/2 cups shrimp; fresh or canned
 1/2 cup mayonnaise
 1/2 cup chopped celery
 1/4 cup chopped green pepper
 Soften gelatine in cold water. Place tomato juice, salt, onion juice and vinegar in sauce pan, and bring to boil. Remove from heat; add softened gelatine; stir until dissolved. Chill until slightly thickened. Place 3/4 cup thickened mixture in loaf pan. Arrange eight whole shrimp in this layer. Chill thoroughly. Blend remaining mixture and mayonnaise with rotary beater. Fold in celery, green pepper and shrimp, and fill mold. Chill until firm. Unmold on crisp salad greens. Serve with Herb Mayonnaise. Makes 8 servings.

COMPLETE

Shrimp Supper Mold
 Potato Chips — Olives
 Cheese Biscuits
 Fruit Cup
 Coffee
 Timely Tips

Extension Foods and Nutrition Specialists Texas A. & M. College
 1. In hot weather or if salad is wanted in a hurry, use more gelatine than the recipe calls for. Remember—gelatine salads should not be rubbery or too set.
 2. All ingredients for a salad should be chilled unless it is to be a hot salad.
 3. Vegetables added to salads should be crisp and dry.
 4. Assemble just before serving unless it is a congealed salad.
 5. Add dressing just before serving or serve separately.
 6. Meats for salads are usually marinated and then should be drained well before mixing with other ingredients.

JOIN THE RED CROSS!

Afton Club Makes Quick Loaf Bread

Methods for making quick loaf breads were shown members of Afton Home Demonstration club on March 7. Mrs. Clark Forbis was hostess for the meeting.

"My family's favorite bread" was given by each member at roll call. Orange nut and oat breads were made by the hostess.

A canasta party has been planned, and the group also discussed sponsorship of a Stanley party. Pineapple salad was served with oat and orange nut breads and coffee to Mmes. Bill Ligon, A. C. Martin, E. L. Turbeville, Dumont Bridge, W. A. Avara, Vurlinson, Curtis Goodwin, Eva Bradlock, a guest, Robert McAtter, Miss Collier and the hostess. Hostess for the next meeting on March 21, will be Mrs. Hinson, when program on Texas will be presented.

Welfare Worker Is Guest of Study Club

Miss Eudora Hawkins, welfare service department employee of West Texas Utilities company, was guest speaker at a joint meeting Tuesday of the senior and daughter members of the 1933 Study clubs.

Mrs. C. H. McCully was hostess in her home, 613 North Willard. Mrs. W. F. Patrick introduced the speaker who discussed important and scenic parts of Texas. Sandwiches, olives, cookies, punch and coffee were served to approximately 20 guests.

Barbara Sharp will entertain the Daughters of 1933 Study club in her home at 4:30 p. m., March 21.

Past Matrons Hold Election of Officers

Election of officers was completed in a March 8 meeting of the Past Matrons club of Spur held in the home of Mrs. Nellie Davis, outgoing president. Mrs. Fannie McNeill was elected president for the coming year. Others selected and their offices are Mrs. Lela Evans, vice-president; Mrs. A. G. Dunwoody, secretary-treasurer; and Mrs. David McAtter, reporter.

Plans for the club work in 1951 were discussed. Cake and coffee were served to Mmes. George Link, Fannie Faubus, Walter Carlisle, McNeill, Evans, Dunwoody and the hostess.

T. F. W. C. Head To Speak



Mrs. James A. Allen of Childress, president of the seventh district of Texas Federation of Women's Clubs, will be guest of honor at the P-T. A. meeting in her home at 4:30 p. m., Tuesday, in the American Women's Clubs, will be guest of honor at the Headquarters Library, will accompany the speaker.

Luncheon Honors District P. T. A. Head In Gabriel Home On Tuesday

As a courtesy to Mrs. M. C. Butler, district P-T. A. president who addressed the Spur P-T. A. in the afternoon, and local P-T. A. officers, Mrs. George Gabriel entertained with a spring luncheon in her home Tuesday noon. Mrs. Gabriel's president of the Spur organization and her versatility as a leader and hostess was well displayed.

Individual tables for four were covered with Madeira cloths and centered with a single pink carnation. Guests were served buffet style from a large table laid with

chorus; Melvin King, band director, and Mrs. Coy McMahan, leader of the afternoon program.

"The school, church and community must be brought closer together in every part of the country if we as parents, teachers and leaders seek to instruct our children accordingly," declared Mrs. Butler before an assembly of parents and teachers at the afternoon session.

"Do you ever invite the teachers of your children into your home?" she queried, adding that "unity and cooperation are absolute necessities."

Also on the program were the East Ward chorus led by Miss Middlebrook, the East Ward band directed by Melvin King, and Rev. T. R. Elder, who gave the meditation. Mrs. McMahan was program leader.

Plans were made to attend the P-T. A. conference on April 11-12 in Lockney. Parent-Teacher organizations from Jayton, Girard, McAdoo and Dickens were represented.

Coke Party Honors Margaret Wood

A surprise coke party complimented Margaret Wood on her seventeenth birthday Tuesday evening in the home of Annette Lee.

Guests presented gifts to the honoree and were served birthday cake and cokes. Attending were Jimmie Nell Bowman, Myra Raliff, Carolyn Kelley, Ginger Walker, Emma Lena Simpson, Annette and Margaret.

Presbyterian News

New additions and improvements have been made during the past six months at the Presbyterian church in Spur. A beautiful lighting system has been installed in the Sanctuary. Plans are being made for the Easter service to be held at 11 a. m., March 25 in the church. Communicant classes for boys and girls who plan to come into the church on Easter Day are being conducted by the pastor, Rev. T. R. Elder.

A number of new faces are appearing at the worship service and a friendly atmosphere helpful to worship is to be enjoyed at all times. In January the church added to its leadership four new elders and four new deacons. The church is cooperating in the Easter Sunrise service for all churches to be held in the high school stadium. We most heartily welcome everyone to the services of our church.

Algerian Work Is Guild Study Topic

Missionary progress in Algeria was discussed by Mrs. J. W. Henry before members of the Wesleyan Guild of First Methodist church on Monday night.

Hostesses for the evening were Mrs. Marion Hurst and Mrs. Henry in the basement of the church.

Canapes, angel food cake and punch were served to Mmes. Cal Wright, Raymond Higginbotham, Lawis Lee, Vivian Gibson, J. C. Sprouls, C. O. Fox, Nina King, Henry and Hurst.

Heart Disease Is Composite Ailment

Too prevalent today is the belief that heart disease is the spell of doom and that one must cease all work and activity. Modern medical knowledge easily disproves this notion and thousands of case histories bear witness to its fallacy. Heart disease, medical science now knows, is not a single ailment. Many troubles can afflict the heart—some less serious than others. While some restrictions are necessary, it is now generally true that patients with any form of heart trouble should be active within the limits of their capacity.

Not all persons with heart ailments can continue working at their same pace. Obviously there are those who require bed rest and often a very strict limitation of physical and mental activity. But there are many who can continue working, performing some type of useful or productive activity, without fear that their hearts will suddenly give out.

A person with a mild heart disorder can in most instances perform any kind of job for which his skills qualify him.

No individual with a heart condition, it should be cautioned, should determine for himself whether he is able to work or not and how much work he can do.

Just as there are many who become cardiac invalids because of fear, there are those at the opposite extreme who ignore proper medical advice and subject their hearts to unnecessary strain and abuse by overactivity. Only a competent physician is qualified to say what are the limits of an impaired heart.

come everyone to the services of our church.

NOW OPEN!

CONOCO SERVICE STATION

A Complete Line of Conoco Products

We Will Appreciate Your

Patronage

JESS FLETCHER, Mgr.

CLOSE OUT SALE

NOW IN PROGRESS! THRU MARCH 31

ALL ELECTRICAL EQUIPMENT MUST GO!

AT GREAT REDUCTION!

HERE ARE A FEW OF THE HARD-TO-GET ITEMS WHICH MUST BE SOLD:

Westinghouse Refrigerators
 Westinghouse Portable And Cabinet Sewing Machines & Accessories
 Deepfreezes
 Several Brands Vacuum Cleaners New And Used
 Westinghouse Electric Stove
 Used Laundromats & Parts

Magic Chef Gas Stove (Used)
 Beautiful Light Fixtures And Light Bulbs
 Westinghouse Radios
 All Types Irons And Parts
 Electric Toasters, Roasters, Clocks, Coffee Makers, Mixers
 Electric Comforts & Blankets

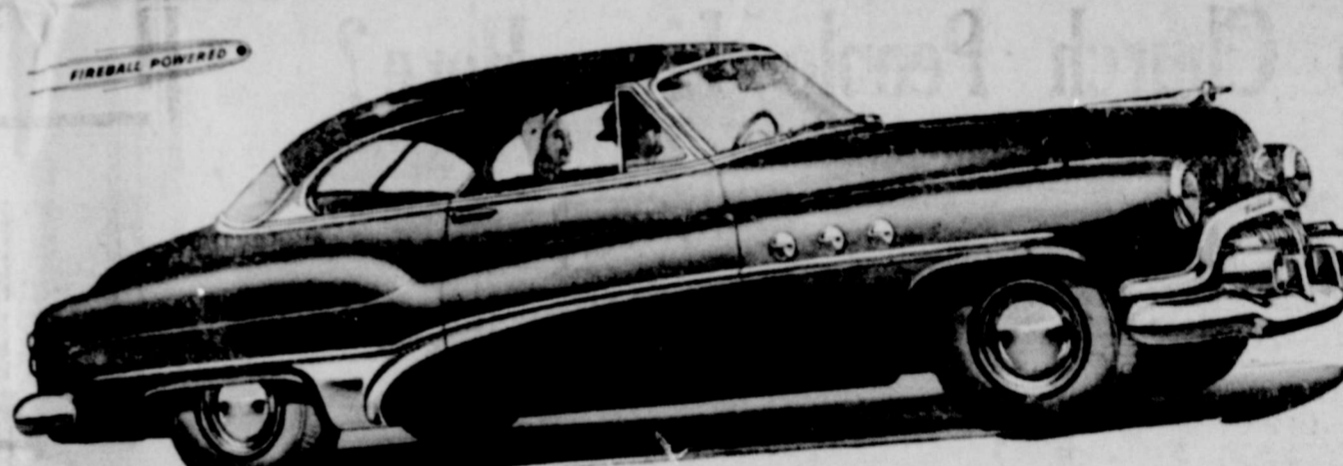
ANY TYPE ELECTRIC WIRING EQUIPMENT
 Display Tables, Ladders, Typewriter, Electric Adding Machine, Cash Drawer — And Many Other Things too Numerous to Mention.

Every Thing Must Go!
 Our Loss Is Your Gain!
 ALL SALES FINAL

C. & W. ELECTRIC

415 N. Burlington

Spur, Texas



Look what the Smart Money's buying

No other car provides all this!

DYNALOW DRIVE — saves strain on driver and car
FIREBALL POWER — high compression, valve-in-head engine gets more good from every drop of fuel
PUSH-BAR FOREFRONT — combines smart style and unsurpassed protection
WHITE-GLOW INSTRUMENTS — greater clarity at night
4-WHEEL COIL SPRINGING — cushions 840 saves servicing cost
TORQUE-TUBE DRIVE — studies WHEN BETTER AUTOMOBILES ARE BUILT BUICK WILL BUILD THEM

Now that the 1951 offerings of the motorcar industry have had a chance to strut their stuff, we ask you—can there be any doubt which is the really smart buy?

If you want a "new look"—Buick has it. That sturdy push-bar forefront says "1951" to all who see it—and provides unsurpassed front-end protection to boot.

If you want power that you can live with through many moons to come—Buick has that too. Years of expert engineering have made Buick's thrill-packed Fireball engine just about as dependable as a power plant can be.

If you want features that combine present pleasure with long-time durability, consider this:

Buick's level-going ride stems from coil springs on all four wheels which are virtually break-proof and never need servicing.

Buick's Dynalow Drive* takes the strain out of every mile of driving—and pays off by eliminating any need for friction clutch repairs and replacements, by reducing engine and transmission upkeep, and lengthening life of tires.

*Standard on ROADMASTER, optional on other Buick models.

If you want room and comfort and handling that make any trip a breeze—there's no simpler way to find them than to take over a '51 Buick SPECIAL, SUPER or ROADMASTER—relax and enjoy yourself.

And if you want all this at a minimum outlay of dollars—one look at Buick prices will settle this point.

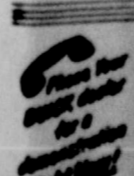
So the smartest thing you can do is get in touch with your Buick dealer. How about doing that right now?

Equipment, accessories, trim and models are subject to change without notice.

Your Key to Greater Value

"Smart Buick Buick"

See the NEW J. TAYLOR ABC Network, every Monday evening.



SPUR AUTO CO.

Phone 8

Spur, Texas

Controls Will Bring Fewer Feeder Cattle

A spokesman for southwestern cattlemen said recently that meat prices will go up if the present

uncertainty over price controls on livestock continues. Joe Montague, Fort Worth attorney for the Texas and Southwestern Cattle Raisers association was in Washington recently to talk with various federal offi-

cials about what the future holds for industry. Contending that there is no need for fixing ceilings on cattle, Montague said: "Right now the price of cattle is down 2c or 3c a pound simply

because it got pretty high and housewives quit buying so heavily. "However, that law of supply and demand is being threatened by the fear of cattlemen that unwieldy and unneeded price controls may be slapped on them.

"If the fear continues, you will see fewer and fewer cattle going to the feed lots, and ultimately that will be reflected in higher prices with a shorter supply of beef."

Montague said experience has shown "the impracticability of imposing price controls on live cattle."

He said that near the end of World War II such controls were imposed, and that as an enforcement procedure packing plants were liable to loss of subsidy payments if they were found to have paid cattlemen over the ceiling price.

"If you remember," Montague added, "the result was a wide spread black market."

He is seeking assurance that no such price controls are contemplated.

Texas Quota Set For 931 Officers In Active Army Duty

Texas has been assigned a quota of 931 officers in the fourth program ordering civilian component company grade officers to active duty.

The Texas quota, announced by Texas Military district headquarters, includes 727 lieutenants and 202 captains. This figure includes all the basic arms and services, as well as five lieutenants and one captain of the Woman's Army corps.

The combat branches will furnish the largest number. Infantry requirements are 187 lieutenants and 42 captains; field artillery, 154 lieutenants and 25 captains; armored, 53 lieutenants and 11 captains.

Among the services, the corps of engineers requires the largest number, 89 lieutenants and 18 captains.

Volunteers will be given first priority, and every effort will be made to fill as much of the quota as possible from this source.

Priority in which non-volunteers will be ordered to active duty is:

1. Members of the Active Reserve only of the Organized Reserve corps commissioned from the ROTC who were deferred from Selective Service under an ROTC deferment agreement, and who have had less than two years' prior active federal service as officers.
2. Members of the Active Reserve only of the Organized Reserve corps commissioned from the ROTC who did not execute an ROTC deferment agreement and who have had less than two years' prior active federal service as officers, warrant officers or enlist-

ed men.

3. Members of the Volunteer Reserve.

Officers with four or more dependents will not be ordered to active duty if they request exemption because of hardship.

Under this program, veterans who have completed the advanced course ROTC and who are now completing a college course will not be ordered to active duty prior to graduation or withdrawal from college.

All orders to active duty will be for 21 consecutive months, or such other period as may be authorized by law, unless sooner relieved.

Officers will be given at least 30 days in which to attend to personal and business affairs prior to reporting.

Rose Bushes Are Ready For Planting

Roses in bloom will be more scarce this year than in recent years, writes Mary Daggett Lake in her Star Telegram garden column. The strange weather is responsible for the situation, she adds.

Good rose bushes are available now, field grown, freshly dug and unafflicted by the freeze. It is urgent that gardeners get the bushes into the ground as soon as possible in order for the new growth to get started.

Another interesting point is that a rose will bloom quickly. If your surviving rose bushes have not yet been pruned, cut them back immediately to where green wood starts.

There are a number of different rose bushes available. For the pergola or summer house, the following will give big re-

THE AMERICAN WAY



Keeping The Powder Wet

turns: Paul's Scarlet, Kaiserin Augusta Victoria, Pink Radiance and Talisman.

Good old standbys are the Red and Pink Radiance rose. One of the loveliest and most admired roses the Botanic Garden has had is the multi-colored Condesa de Sastago. Others available this year in this class are Talisman (another good old standby) and President Hoover.

Steel Output Is Raised; Supply Lean

For the first time in history the American steel industry is turning out more than two million tons a week, stated a report recently.

A handful of skeptics may wonder if all this steel is going into current use—wonder if some well heeled companies aren't building up steel inventories against lean days ahead.

Most steel users insist their production lines are being held back by steel shortages. And many expect their plight to get worse in

spite of a steel industry program that grows almost every week.

What the actual users of steel think about the present tight supply is taken up in a survey by "Modern Industry," a magazine.

Shortage Is Noted

The 210 ton management men polled all use steel although none makes it. Six out of seven say their production rate has been held back by a shortage of steel.

The industry's own expansion goals are adequate for peace needs, in the opinion of four out of them think the steel mill building program is too small to meet the demands of a warm war; and three out of four say the plans are too skimpy for the nation's needs in a full-scale war.

Only half think the industry's allocation system is fair, although nine out of ten say present steel prices are fair. To get more equitable distribution some urge: "stop the practice of favoring large buyers," "discourage the making of luxury and non-essential items," and "have the mills keep steel out of the gray and black markets."

The industry itself insists it polices the market and refuses to sell any more to a firm found passing steel on to the gray market.

MY, HOW I'VE GROWN!

REDDY KILOWATT POWER

WORLD WAR II

Reddy for ANYTHING!

YOU, Mr. and Mrs. America, have the biggest supply of electricity on hand you've ever had! In fact, Reddy Kilowatt Power in the U. S. has doubled in only 10 years. Businessmen with "know-how" have been building a bigger and better America for you!

Since World War II your West Texas Utilities Company has increased its generating capacity by 64,000 horsepower to provide you with more and more electric power... and by the end of 1953 two more plant units of 88,000 horsepower capacity will be installed ready for service.

The business-managed electric industry is the one industry that has doubled its capacity with more than double the investment and maintained the low price through efficiency.

West Texas Utilities Company

Tell Your Congressman and Senators.

Taxes for national security, yes... but no tax money for unnecessary, non-defense, duplicating programs for bureaucratic handouts.

HELP CRIPPLED CHILDREN

1951

PLEASE!

Thousands and thousands of crippled children look to you for help at Easter time. The proper care now will help them stand on their own and grow up strong. So lend a hand, won't you? Give now, during the 12th Annual Easter Seal Appeal.

GIVE NOW!

POPS BETTER MORE TENDER AND NO HULLS!

POP SOME TONITE!

HOLY HILLY!

\$2.00

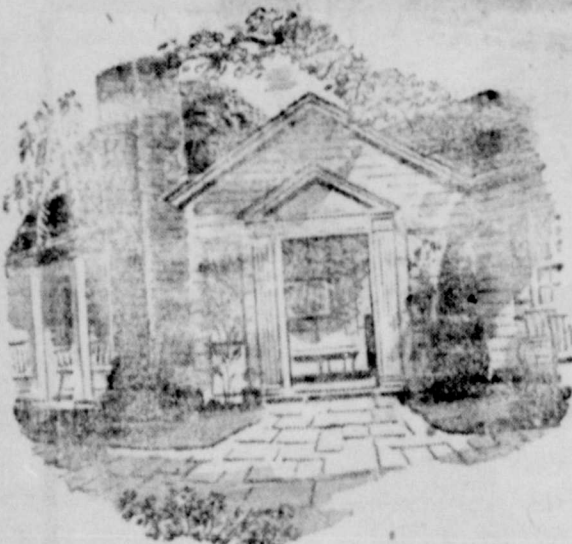
Will Still Bring

THE TEXAS SPUR

Into Your Home

For 52 Issues

Do Church People Live Here?



When we view this beautiful little home with its elegant architectural lines, situated in such lovely surroundings - we are compelled to wonder whose home it is.

It has been well said, "It takes a heap of living in a house to make it home." WE MIGHT ADD THAT GOD IS ONLY INTERESTED IN THE KIND OF LIVING IT SHELTERS... WHOLE-SOME LIVING IF YOU PLEASE. Our Heavenly Father wants all houses to be a shelter in the time of storm - a haven of happiness and a peace where His will is supreme... where love abounds and greedy selfishness is not known.



Architects design houses, Builders put them together. **But Only the Church of the Living God Builds Homes.** Reflecting the wisdom of God in revealing His will the church challenges humanity to drink of the **Waters of Life** and live... live the wholesome kind of living which only is pleasing in the sight of God.

What the church does in your community. The church pictures to humanity the world's greatest designer of living... Jesus Christ, the Son of God. Said the writer of the Psalms, "Except the Lord build the house, they labor in vain that build it." Psalms 127:1. Home implies affection, gentleness, meekness, refinement, and a genuine forbearance.

Are your children being trained for their own home building in their tomorrows by being sent to Bible School on the Lord's Day? Are you as parents attending Bible Courses on the Lord's Day for the better building of your own home? This congregation provides facilities and God fearing teachers for all ages. You are welcome!

CHURCH OF CHRIST

WILLIS G. JERNIGAN, Minister

"Spring Gospel Meeting Coming Soon - March 25 Through April 4."

Watch for Complete announcement

OLDSMOBILE'S NEW GAS-SAVING "ROCKET!"

Power Sensation of the past two years... it's better than ever for '51!

"ROCKET!" - "ROCKET!" - "ROCKET!" Today, Oldsmobile's famous "Rocket" Engine is more than ever the high-compression leader—in popularity and public acclaim! Today, there are over 600,000 "Rockets" on the road, far more than any other 100% high-compression engine!

Famed far and wide for its brilliant response, the "Rocket" now has a brand new combustion chamber for greater fuel efficiency! Yes, now you get all the "Rocket's" phenomenal flash and dash plus brand new gasoline savings!

Oldsmobile engineers have built many more improvements into the great new "Rocket" Engine for 1951! That's why Oldsmobile's brilliant new "Rocket 88" and "98" models are more popular than ever!

See your Oldsmobile dealer and drive one of these great new "Rocket" Engine cars!

SEE YOUR NEAREST OLDSMOBILE DEALER

Edwards - Kelley Imp. Co.

For the best that's new...

SEE THE NEW
DODGE
"Job-Rated"
TRUCKS

The trucks that do
the most for you!



NEW! More Power

Power increases as high as 20%. Eight high-efficiency truck engines—94 to 154 horsepower. The most powerful Dodge "Job-Rated" trucks ever built provide dependable power for your job!

NEW! Better Economy

Higher compression ratio (7.0 to 1) on models through 1 ton, for top efficiency with flashing power. Here's real economy with outstanding performance—more power from every drop of fuel.

NEW! Easier Handling

Shorter turning diameters than ever—and extra-easy steering with new worm-and-rack gears. Short wheelbase, cross-steering and wide front track assure easier maneuvering.

NEW! Greater Safety

Molded Cyclebond brake linings on hydraulic-brake models 1 1/2-ton and up. Brand-new! Extra-quiet! Other safety features include new, improved independent hand brake, extra-big windshield.

NEW! Bigger Payloads

Increased Gross Vehicle Weights and Gross Combination Weights on many models—made possible by increased rear axle capacity and "Job-Rated" weight distribution. Help cut your trucking costs!

NEW! Better Comfort

"Oriflow" shock absorbers, standard on 1/2-, 3/4-, and 1-ton models. New! Revolutionary! Self-adjusting! New seat design, new steering wheel angle—plus lower hood line for improved visibility.

Exclusive! gyrol Fluid Drive... Available on 1/2-, 3/4-, and 1-ton models. Provides marvelously smooth performance with cushioned power.

PLUS all these time-proved features Dodge trucks have had for years...

Steering column gearshift standard on 1/2-, 3/4-, and 1-ton models with 3-speed transmission. Chrome-plated top piston ring for longer ring life, better sealing. Synchromesh transmissions (3-speed, 4-speed, or 5-speed) rugged, silent, precision engineered. Deluxe and Custom cabs with rear quarter windows available on all models. And many other dependability features!

What "Job-Rated" means to you

A Dodge "Job-Rated" truck is engineered at the factory to fit a specific job... save you money... last longer. Every unit from engine to rear axle is "Job-Rated"—factory-engineered to haul a specific load over the roads you travel and at the speeds you require. Every unit that **SUPPORTS** the load—frame, axles, springs, wheels, tires and body—is engineered right to provide the strength and capacity needed. Every unit that **MOVES** the load—engine, clutch, transmission, propeller shaft and rear axle—is engineered right to meet a particular operating condition.

Come in for a good deal on a truck that fits your job... a **DODGE TRUCK**

JONES MOTOR CO.

SPUR, TEXAS

Yields of 100 or more bushels of corn per acre are becoming increasingly more common in the corn producing areas of Texas, with the added benefit of stover, color, root and stubble besides the shelled corn. The equivalent of eight sacks of 20 per cent nitrogen fertilizer, four and one-half sacks of 20 per cent superphosphate and two and one-half sacks of 60 per cent muriate of potash are required for the production of 100 bushels of corn.

NOW you can BUY your complete HOME REPAIRS

on a Easy-Pay Budget Plan New "Home-Fix-Up Dept.

You can buy both the Labor and Lumber and Pay by the Month.

10% DOWN

UP TO 36 MONTHS TO PAY! NO JOB TOO SMALL OR TOO LARGE! ANY WORK FROM THE ROOF DOWN!



FROM THE CELLAR UP!

FIX UP!

You can pay as little as \$5.00 per month for complete installations

or If you want to do the job yourself, you can buy the materials and pay as you can on our EASY-PAY Budget plan. Either way you save time, worry and money by getting top quality materials and skilled workmanship.

Let Us Give You A

FREE ESTIMATE.

No obligation to buy anything. **WHAT WORK DO YOU WANT DONE?**

- Check these necessary improvements:
 - Attics
 - Additions
 - Bathrooms
 - Club Cellars
 - Doors & Windows
 - Floors
 - Garages
 - Insulation
 - Kitchens
 - Picket Fences
 - Porches
 - Remodeling
 - Roofing
 - Shelving
 - Siding
 - Storm Sash, Etc.

Willson-Young Lumber Co.

Ph. 12 Spur, Texas

Read the Want Ads

Dr. M. H. Brannen Dentist

111 E. Harris Phone 93 SPUR, TEXAS

Knights of Pythias

Meet each Mon. Visitors Welcome

NOTICE TO BIDDERS

The school building and teacherage at Croton, Dickens county Texas will be sold at public auction on the Croton school site Saturday morning, April 14, at 10:30 o'clock.

The Patton Springs School Board reserves the right to reject any and all bids.

Patton Springs School Board 21-5c

Next to feed, labor costs are said to be the largest expense item connected with the production of milk.

Inchoosing a coffee pot, specialists advise looking for one convenient to use and the right size for the family, using a larger one or making twice when company is present.

The most dangerous hours of the day for young children are laundrytime and mealtime, when they are most likely to be burned or scalded.

The best way to remove guessing from application of plant foods to soil is to have the soil tested, and supplying the needy soil with fertilizers or legumes.

100,000 MILES FROM NOW

you'll still say

"Can't beat Dodge for dependability!"



NEW engineering advancements make traditional Dodge dependability

GREATER VALUE THAN EVER

The Dodge reputation for dependability and long car life is a matter of record... a record of thirty-seven years... a record no other car can match.

And with the many new advancements engineered into the great '51 Dodge, this famous dependability makes Dodge an even bigger value, an even bigger dollar buy.

Yes, everything about this great new Dodge—the way it looks, rides and handles—tells you that here's a car built to deliver years and miles of dependable, low-cost service.

5 minutes tells why. Give us just five minutes. Let us show you how you could pay up to \$1,000 more and still not get all the extra room, handling ease and rugged dependability of this great new 1951 Dodge

1951 Dependability

DODGE

Just a few dollars more than the lowest-priced cars!

Jones Motor Co.

Edwards Kelley Imp. Co. Presents Two Big Days Of DEMONSTRATION & SHOW

FRIDAY AND SATURDAY, MARCH 23 AND 24

See

The International Harvester Complete Line of New 1951

REFRIGERATORS HOME FREEZERS

THEY'RE NEW! THEY'RE YEARS AHEAD! Yes, the new International Harvester Refrigerators and Home Freezers for 1951 are as new as tomorrow!

SEE the most exciting new creation in Refrigerator and Home Freezer history with a host of amazing and exclusive features — On display during our Big Show!

SEE!

Our big International Harvester Refrigerator advertisement on opposite page for more details of these "Femineered" Beauties.

See

The BRAND NEW Addition to the Beautiful OLDSMOBILE fleet of fine Automobiles

THE SUPER '88'

BE SURE TO REGISTER!

Each person visiting our show room between 8:00 a. m. Friday, March 23, and noon, Saturday, March 31, are urged to register for our big wonderful

DOOR PRIZE

Absolutely FREE! Nothing to buy!

YOUR CHOICE OF 7.4 cu. ft. International Harvester **REFRIGERATOR**

OR

7 cu. ft. International Harvester **HOME FREEZER**

IF YOU'RE THE LUCKY ONE! Drawing at 2:00 p. m., Saturday, March 31

See

Along with a complete line of INTERNATIONAL HARVESTER and FARMALL Tractors and Implements the New

FARMALL 'C' TRACTOR

With touch control for:

1. Two bottom mold board
2. Two row cultivator and planter
3. Two disk deep breaking plow
4. Mower
5. Grader blade

SEE!

Our new No. 250 CULTIVATOR for Farmall "H" tractor.

SEE!

The Barrett Plow Co. demonstrate the new Reversible Deep Breaking Disk Plow for Farmall "H" and "M" and other makes of tractors.

EDWARDS - KELLEY IMP. CO.

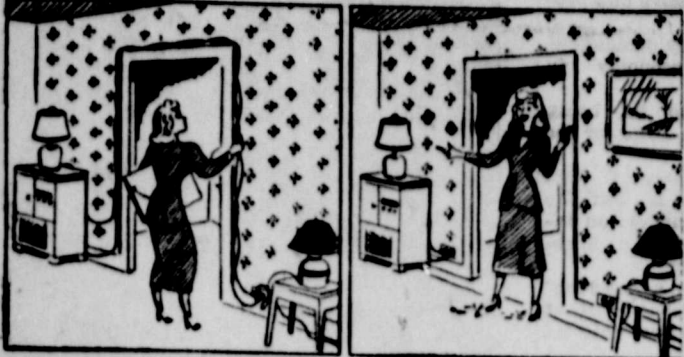
Phone 53

"The Farmall House"

Spur, Texas

ELECTRICAL TIPS FOR THE HOME

If You Intend to Redecorate or Remodel This Fall . . .



DON'T let ugly, makeshift electrical extensions spoil the looks of a newly-decorated room. They're not only unsightly, but they're also unsafe.

DO provide enough convenience outlets for all your lamps and appliances. Space them every 12 feet along the wall and in smaller areas of 3 feet or more.

Sheath Suit



Here's the all-important dress-jacket costume, in rayon and wool fabric, meant to function as a sheath or suit. The dress has a square neck and is sleeveless. The waist-length jacket buttons from the throat to the waist and has a plique string tie at the collar. Featured in the March issue of Cosmopolitan, it comes in black and navy and retails for about \$50.



By Hugh Williamson

Austin, Tex., March 15.—How do you like your roads? Are you interested in good country roads, or super highways, or both. Would you prefer that your county officials have charge of farm-to-market road building, or do you think that the State Highway Department should have that duty?

Everybody wants goods roads. How to get them is a problem that is fretting the Legislature right now. There is likely to be a lot of wrangling before the question is finally settled. There are several bills under consideration—all giving different solutions to the problems. Here is the present situation: Everytime you buy a gallon of gasoline you pay four pennies, as tax, to the State. One penny goes to the schools, two pennies go to the Highway Department to build and repair roads, and one penny goes to the "road bond assumption fund." And what is that fund? A long time ago, many counties issued bonds (which means that

they borrowed money) to build roads. When some of those roads became a part of the State Highway System, the state agreed to pay off its proportionate part of the counties' bonds. The one cent of the gasoline tax that goes to the "road bond assumption fund" is to take care of these payments. But a lot of the debt has been wiped out, over the years, so that there is now a surplus in the road bond assumption fund. In a few years, when all the bonds are retired, the one cent of gasoline tax would be sufficient to do as much rural road building as the state is now doing. Meanwhile, there is a lot of quibbling in the Legislature as to

what should be done with the surplus, part of which now goes to the counties and part to the highway department. Two new bills, dealing with the road problem, have drawn attention and you'll be reading that the Legislature is debating about them. One of these bills, by Representative Max Triplett of Hillsboro, increases the state gasoline tax from four cents to five cents a gallon. The extra penny would be divided up this way: One-fourth would go to the schools, one-half to the State Highway Department for the construction of farm-to-market roads, and one-fourth to the State Highway Department for the construction and maintenance of streets

incorporated cities and towns. For a long time, cities have been trying to get some state money to help build streets, particularly those which are part of the State Highway System. The Triplett bill would provide about \$5,000,000 for city street construction and maintenance. Last year, the gasoline tax of four cents per gallon brought in more than \$87,000,000 for highway and school purposes. The Triplett measure would increase that to something more than \$100,000,000. Another new bill, by Representative D. B. Hardeman of Denison, would put a tax of two cents per bottle on beer, the money going for rural road building.

PALACE THEATRE

Box Office Opens 11:45 Saturday 1:15 Sunday And 1:45 Other Days Call 185 For Schedule

FRI. - SAT.

Raiders on Horseback
LANE IN CINECOLOR
BLUE BLOOD WILLIAMS JANE NIGH
Racing Thrills — Excitement From Beginning to End

SUN. - MON.

PREV. - SAT. NITE 11:00

RIB-RIPPING RIOT!
Bob HOPE • Lucille BALL
FANCY PARTS IN TECHNICOLOR
TOM & JERRY CARTOON — NEWS REEL

TUESDAY

TUESDAY Gift Nite

400

Less 20% state tax

Together again . . . In the Wonderful sequel to Mrs. Miniver
GREER GARSON
WALTER PIDGEON
The Miniver Story

WED. - THURS.

COSMOPOLITAN MAGAZINE says
"IT'S STRONG MEAT!"
UNDER THEIR HOODED ROBES SMOLDERING PERSONAL HATES, GREED AND BESTIAL LUSTS! THEY WERE NO LONGER THE CRUSADING KLANSMEN OF EARLY LEGEND . . . NOW, THEY WERE MEN BENT UPON MURDER AND CRIMINAL ATTACK!
"The Klan's got ways of making you friendly Babe, and the law can't touch me, either!"
"STORM WARNING"
GINGER ROGERS • DORIS DAY
WITH THIS Great Cast OF STARS . . .
RONALD REAGAN • STEVE COCHRAN
DEFINITELY NOT FOR SMALL CHILDREN!

SPUR THEATRE

FRI. - SAT.

John Wayne — Gail Russell

—IN—
ANGEL & THE BADMAN

ALSO FOR YOUR ADDED ENJOYMENT
LITTLE TOUGH GUYS
STARRING THE DEAD END KIDS



they're extra thin . . .



Westerners know their brands and when it comes to crackers Supreme Salad Wafers are always first choice!

Supreme Flavor has made Supreme Salad Wafers the outstanding quality crackers of the West.

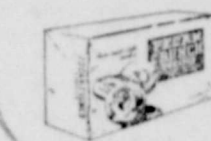
Buy these thin saltines in the new 4-Pack for . . .

FLAVOR • FRESHNESS • CRISPNESS • FLAKINESS

Supreme IN FLAVOR!
BY Supreme BAKERS
BOWMAN BISCUIT CO.



AN OUTSTANDING COOKIE BY SUPREME BAKERS



PECAN CRUNCH
an old-fashioned type cookie, made with pure butter and pecans . . . Supreme in Flavor!

Go to church Sunday

SEE DURING EDWARDS-KELLEY DEMONSTRATION AND SHOW SAT. MARCH 23

Pantry-Dor and Much More!

INTERNATIONAL HARVESTER 1951 REFRIGERATORS

they're *femineered!*
NEW...and YEARS AHEAD

See these features for your future in the spacious 9.2 cu. ft. size Model HA-92 . . . designed for you . . . with

- Pantry-Dor • Butter-Keeper • Stainless Steel Shelves
- Two Coldstream Crispers • Big Meat Storage Drawer
- Full-width 50-lb. Freezer • Built-in Magnetic Bottle Opener
- Acid Resisting Porcelain Enamel liner • Shadowline Styling
- Cold to the Floor



Color-Keyed

TO YOUR KITCHEN

. . . to give you a new note in kitchen decoration! Your choice of 10 beautiful colors in gleaming plastic plaques may be set in the rich chromium door handle. Color plaques interchangeable — to keep pace with your kitchen color scheme!

. . . powered by the thrifty "Tight-Wad" refrigerating mechanism that is protected by its own 5-Year warranty which is stamped into a metal plate and permanently attached to the cabinet.

SEE THE COMPLETE LINE!

7 MODELS
7 SIZES
7 PRICES
\$21995
STARTING AT



Model HA-92 — \$36995

SEE THEM AT YOUR NEAREST NEIGHBORHOOD DEALER!

Edwards-Kelley Imp. Co

PHONE 53

SPUR, TEXAS

FOR QUICK RESULTS USE THE CLASSIFIED

ALL CLASSIFIED ADS CASH IN ADVANCE UNLESS YOU HAVE REGULAR CHARGE ACCOUNT CLASSIFIED AD RATES—1 cent per word for first insertion, 1 cent per word for each insertion thereafter, minimum for each insertion 40 cents.

FOR SALE: 7 ft Deepfreeze, electric 7-Up box with water fountain and cash register. See Mrs. Bill Scott, Dickens. 16-ctfn

FOR SALE: Farmall H tractor. 1950 model, fully equipped. Plowed less than 600 acres. \$1750. Son leaving for Army see J. H. Hemphill, Highway community. 21-2tp

FOR SALE: 60 acre farm 5 miles south of Memphis, Texas. Mrs. Kate Parks. 21-2tp

FOR SALE: Apartment Size Butane Gas Stove #25. See Seger Jenkins, or call 141-J. 19-ctfn

FOR SALE: 4 room house with bath and garage. Near East Ward school. Call 241-J. 21-3tc

FOR SALE: John Deere chisel plow with rubber tires, power-lift, \$195; John Deere 2-bottom moleboard plow, \$115; Direct connected 12-disc Krause plow for Farmall H or M, \$199; late model 1950 '88 Oldsmobile with all extras, \$1995. Edwards-Kelley Implement Co. 21-1tp

FOR SALE: G. E. Frigidaire, bed mattress, table, 4 chairs, radio, bookcase, toper gas range, living room suite automatic washer, chest of drawers. See Dale Young, call 359-W. 21-1tp

FOR SALE: 20 x 80 ft brick building with inventory stock and fixtures, 2 room house, 6 lots. Price \$75,000. Gross income last year, \$65,000. We have farms, ranches and city property. Crafts and Gilcrease Realtors, Spur. 21-2tp

FOR SALE: Servel Electrolux gas refrigerator. Excellent shape. \$135.00. Western Auto Associate Store. 21-ctfn

FOR SALE: 1940 tudor Ford sedan, new upholstery, new paint. Will trade or sell. \$295. Byron Jenkins at Barber shop. 21-2tp

FOR SALE: Property of R. B. Stanley in 300 block on corner of West Fifth and Parker streets. See H. W. or O. D. Stanley. 21-2tp

FOR SALE: 1 tan International, practically new tires, good cab. Spur Motor Co. 21-ctfn

FOR SALE: Case tractors, fully equipped. Spur Motor Co. 21-ctfn

FOR SALE: Good cheap used cars. Spur Motor Co. 21-ctfn

FOR SALE or LEASE: Filling Station located on North Burlington. If interested, see Starcher Insurance agency, phone 39. 16-ctfn

FOR SALE: Used Pianos. Contact John E. Berry, Spur. 17-ctfn

FOR SALE: 7 ft Deepfreeze, electric 7-Up box with water fountain and cash register. See Mrs. Bill Scott, Dickens. 16-ctfn

FOR SALE: Batteries \$9.65. Exchange O. K. RUBBER WELDERS. 19-ctfn

FOR SALE: Two used late model John Deere A's; one John Deere B, 1947 model. Denton Implement Co., Spur. 19-ctfn

FOR SALE: One 1941 Ford, one 1949 Plymouth convertible, original owner. Denton Implement Co., Spur. 19-ctfn

FOR SALE: 1946 Model A John Deere tractor. A. B. Carlisle. See at Denton Implement Co., Spur. See us for Butane and Propane tanks. Garner Appliance Co. 4-ctfn

FOR SALE: Batteries \$9.65. Exchange O. K. RUBBER WELDERS. 19-ctfn

FOR SALE: See us for Butane and Propane tanks. Garner Appliance Co. 4-ctfn

The lowest price full-size car in Spur, THE HENRY J. delivers for a down payment of \$486.00 under Regulation W. See Bill Gregory your K-F Dealer for your car deal. 2-ctfn

FOR SALE: Large variety late model, clean used cars. Priced very reasonable. Small down payment, easy terms. JONES MOTOR COMPANY, Dodge-Plymouth Dealer, Spur. 28-ctfn

LUZIER'S FINE COSMETICS: Selected for your individual requirements by an experienced consultant. Myrtle Whitwell, call 268-W. 32-ctfn

Butane, Propane gas, 7 & 8 cents per gallon. Garner Appliance Co. 4-ctfn

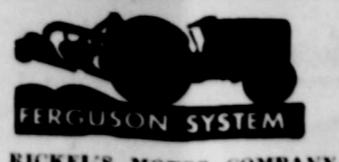
GUARANTEED WHIZARD batteries \$8.95 up exchange. Western Auto Assoc. Store, Spur. 29-ctfn

See us for Butane and Propane tanks. Garner Appliance Co. 4-ctfn

FOR SALE: Pillow cases. See Sue Frenkel, 231 N. Miller. 21-1tp

\$25 REWARD for small black male shepherd dog with white markings. Answers to "Scrappy." Lost in Jayton March 4. Write Hubert Young, Guthrie, Texas.

FOR SALE: Sows with pigs. Piggy sows, also weaning pigs. See A. M. Madden, 7 1/2 miles E. Spur, Highway 70 and 1/2 mile North. 21-1tp



RICKEL'S MOTOR COMPANY
SPUR, TEXAS

Do you have troubles? Need a lumber? Prompt service, reasonable prices. Phone 12. Glenn Jones. Willson & Young Lumber Company. 41-1tr

Butane, Propane gas 7 & 8 cents per gallon. Garner Appliance Co. 4-ctfn

THE BEST VACUUM cleaners are still available. See one today. Electrolux Corp., W. R. Smelser, Box 335, phone 381-J. 18-ctfn

LOST

STRAYED: 3 black Hampshire pigs from my farm 1 mile N. Dry Lake school. Ivy J. McMahan. 21-1tp

WANTED

WANTED TO BUY: Good cane or beghari bines. See or phone R. L. Benson. 108-W. 17-ctfn

WANTED: Ironing to do at my home one block east, 1/2 block south of East Ward school. Ruth Patterson, call 596-N. 21-2tp

WANTED: Man to do farm work. Prefer man and wife. W. H. George, 11 miles NW Spur. 21-2tp

ELECTION NOTICE

There will be an election of trustees for the Spur Independent School District board to serve a term of three years, on Saturday, April 7, 1951, at the Spur City Hall.

The following members have permitted their names to be placed on the ballot for re-election:

O. M. McInty
Dr. W. K. Callan
D. J. Dyess

If any person or groups of persons desire to submit further candidates they may do so pursuing the proper procedure through Mrs. Vivian Gibson not later than March 29, 1951.

Cecil Godfrey, President
Spur Independent School Dist.
Board of Trustees. 21-3tc

JOIN THE RED CROSS!

Want ads get results

Shivers Calls Hard Fight of Inflation

Inflation is everybody's business Governor Allan Shivers declared Tuesday in an address before the Dallas convention of the Texas & Southwestern Cattle Raisers Association.

"Inflation is adding something everyday to your Federal, state and local tax bill," the Governor pointed out. "Inflation makes it more expensive to build roads, to run schools and universities, to buy office supplies, to safeguard the public health and safety, to make even the most modest provisions for civil defense—in short, to carry on every phase of your state and local government."

"To all of you who have saved up some money for old age, or have put your money and your faith in retirement policies or annuities, inflation has a particular personal application."

"We are all in this thing together. When the little man suffers, eventually all suffer."

"The American economy cannot stand another big dose of inflation on top of that already experienced since 1939, Gov. Shivers said. Fortunately, he added something that can be done about inflation. Everybody can do something, he said, explaining:

"The laboring man can help by increasing his individual production."

"The banker can help by going back to conservative credit practices."

"The cattleman and the farmer can help by making more food available."

"Just any citizen can help by doing without the things he doesn't really need."

"The businessman can help by playing the game fair and square,

New Tire For Military Vehicles

AKRON—Here's what the well-dressed military vehicle will wear this year. These new "high flotation" tires, among the first to roll off B. F. Goodrich production lines here, are designed to help keep military vehicles from bogging down in mud or sand.

Features are low pressure operation and a special tread, outgrowth of wartime experience with tires designed for desert service. With air pressure lowered, the high flotation tire presents a broader base at ground contact than does the conventional military truck tire. When air pressure is increased to normal the tire performs on paved roads like conventional military tires.

total of 16,200 pounds of air-dry matter and excluding all water, amounts to about 14,200 pounds of moisture-free dry matter. That kind of production points out Thornton, means the soil must be fertile and much of the plant food must through necessity be added in the form of fertilizers.

Here, according to Thornton, is what research has found it takes to produce this enormous amount of dry matter on one acre of land. From 4.3 to 5.3 million pounds of water or 19 to 24 inches of rainfall; 6,800 pounds of oxygen (air is 20 per cent oxygen); 5,200 pounds of carbon or 19,000



pounds of carbon dioxide which is equal to the amount of carbide in four tons of coal; 160 pounds of nitrogen or eight 100 pound bags of 50 per cent nitrogen fertilizer; 40 pounds of phosphorus or 10 equivalent 450 pounds of 20 per cent superphosphate; 125 pounds of potassium or the amount of 250 pounds of 60 per cent muriate of potash; 75 pounds of yellow sulphur; 50 pounds of magnesium the amount found in 500 pounds of limestone; two pounds of iron three-tenths of a pound of manganese; six hundredths of a pound of boron and traces of chlorine, iodine, zinc, and copper.

Farmers Get Set For Record Yield In Corn Production

Corn planting time is here or even past in some sections of Texas and many farmers have their sights set on producing yields of 100 bushels or more per acre. Such yields are becoming quite common in the corn producing areas of the state but there is more involved than what meets the eye says M. K. Thornton, extension agricultural chemist of Texas A. & M. College.

He says many different plant food elements are required by the growing corn plant before it can be expected to produce a hundred or more bushels per acre. An acre of corn producing at the rate of 100 bushels, represents the following: 4,000 pounds of stover; 1,400 pounds of cobs; 5,600 pounds of shelled corn and 5,200 pounds of root and stubble. This make a

of 16,200 pounds of air-dry matter and excluding all water, amounts to about 14,200 pounds of moisture-free dry matter. That kind of production points out Thornton, means the soil must be fertile and much of the plant food must through necessity be added in the form of fertilizers.

Here, according to Thornton, is what research has found it takes to produce this enormous amount of dry matter on one acre of land. From 4.3 to 5.3 million pounds of water or 19 to 24 inches of rainfall; 6,800 pounds of oxygen (air is 20 per cent oxygen); 5,200 pounds of carbon or 19,000

Enjoy Really Fresh COFFEE ... save money too!

Edwards No finer coffee packed. Rich, full-bodied, fragrant. If you prefer coffee vacuum-packed in tin, Edwards is your buy.	Nob Hill Gives you vacuum-pink quality with paper bag thrift. Rich, hearty flavor. Ground fresh to order when you buy.	Airway If you like a mild, mellow coffee—try Airway. Flavor is locked in the whole bean 'til coffee is ground when you buy.
1-Lb. Can 85¢ Admiration Coffee	1-Lb. Pkg. 79¢ Folgers Coffee	1-Lb. 77¢ Can 87¢

Be sure... shop **SAFeway**

For that full, rich flavor that only truly fresh coffee has, select your coffee from Safeway. You'll find your favorite kind here.

SPECIAL CANDY VALUE!

\$1.20 CARTON FOR ONLY 79¢

Candy Bars Suchard Almond or Milk Choc. 24 Sc Bars Ctn. 79¢	Cigarettes Popular Brands 2 Pkgs. for 39¢ Carton \$1.89	Grapefruit Juice Town House No. 2 Can 10¢
Orange Juice House of George 46-Oz. Can 27¢	Baby Food Gerbers Strained or Chopped 4 Oz. Can 35¢	Lima Beans Baby Lima Cello Pack 1-Lb. Pkg. 16¢
Baby Food Heins Strained 4 Oz. Can 35¢	Gerber's Meats Baby Food 3 1/2-Oz. Pkg. 21¢	Pinto Beans Cello Pack 1-Lb. Pkg. 27¢
Pablum Baby Food 2-Oz. Pkg. 21¢	Cherub Milk Top Quality 2 Gall. Can 25¢	White Beans Small Size Cello Pack 1-Lb. Pkg. 19¢
Salmon Deming's 10-Oz. Can 37¢	Tuna Fish Large Size Grated 10-Oz. Can 27¢	Macaroni or Spaghetti 1-Gal. Can 18¢
		Shortening Royal Satin Made in Texas 1-Lb. Can 9¢
		Soda Crackers Sunshine 1-Lb. Pkg. 28¢
		Margarine Sunbeam Colored Made in Texas 1-Lb. Pkg. 37¢
		Sandwich Spread Lunch Box Made in Texas 16-Oz. Jar 40¢

SMOKED PICNICS

Sold Half or Whole Short Shanks . . . Lb. **45¢**

Beef Short Ribs Gov't. Graded Lb. **45¢**

Pork Loin Roast Rib End, Blade Bone Removed Lb. **49¢**

Pork Chops All Center Cuts Lb. **69¢**

Pork Spareribs Loin, Meaty Lb. **49¢**

Pork Sausage Wingside Pure Pork 1-Lb. Roll **43¢**

Round Steak Heavy Beef Gov't. Graded Lb. **\$1.14**

Sirloin Steak Heavy Beef Gov't. Graded Lb. **\$1.09**

Chuck Roast Heavy Beef Gov't. Graded Lb. **73¢**

Sliced Bacon Capital Super Cured 1-Lb. Pkg. **49¢**

Bacon End Pieces Cello Lb. **17¢**

Dry Salt Bacon Fine for Sausaging Lb. **33¢**

Fresh Fryers Good to Cook Lb. **61¢**

GOLD MEDAL FLOUR 25 Lb. Bag **\$1.93**

LOCAL EGGS, Guaranteed Doz. **45c**

CELERY

Pascal Celery Tender, Green, Crisp Stalks Lb. **8¢**

Green Beans Florida Valentine Lb. **19¢**

Yellow Onions Mild, Sweet Lb. **5¢**

Prices Effective Friday and Saturday in Spur, Texas

301 Burlington Street
STORE Monday Thru Friday 8:00 - 6:30
HOURS Saturday 8:00 - 5:00

25¢ to bake a cake with **KEEN** PRE-CREAMED KEEN . . .
Newest improvement in Shortening
Details at Display 3-Lb. Can **\$1.05**

SAFeway

Sunkist Oranges Calif. Sweet, Juicy 8-Lb. Bag 63¢	Grapefruit Florida Marsh Seedless All-Purpose 10-Lb. Bag 43¢	Russet Potatoes Economy 10-Lb. Bag 43¢	New Potatoes Florida 10-Lb. Bag 43¢
Iceberg Lettuce Crisp, Firm 1-Lb. 15¢	Clip-Top Carrots 1-Lb. 15¢	Yellow Squash Firm, Tender 1-Lb. 10¢	Bell Peppers Green 1-Lb. 10¢
Green Onions Fresh, Tender 1-Lb. 10¢			

There's a future in your present Ford, too!

PROTECT YOUR CAR WITH THIS Piston Ring Special

- We clean carbon from pistons and heads
- Install new Genuine Ford rings
- Install new cylinder head gaskets
- Clean and adjust spark plugs
- Clean and adjust carburetor
- Road test car for proper operation

AT A SPECIAL LOW PRICE

No matter how new or how old your present car is, you can keep it *riding* new for years to come. The secret, of course, is driving "back home" for real Ford Service.

For only at your Ford Dealer's do you get the combined advantages of Ford-trained Mechanics, Genuine Ford Parts, Factory-approved Methods and special equipment for Fords. Because we know your Ford like a book, we can give it many extra miles of safe and pleasant driving.

Ford Dealers Know Fords Best!
GODFREY & SMART