

Rig Locations as of January 13, 2006

RIGDATA
A Rig Location & Drilling Service

Sutton
 Dominion; 9550' Ray Ranch - B - #1142, Patterson Drilling.
 New Dominion; 9500' LR Valliant #26, Patterson Drilling.
 New Dominion; 8950' Mayer - 21 - #16, Patterson Drilling.
 Dominion; 8950' Mayer - 4 - LTD - #1, Patterson Drilling.
 New Dominion; 8900' Whitehead - 1 - #2, Patterson Drilling.
 Dominion; 8875' Mayer - 3B - #10, Patterson Drilling.
 Dominion; 8400' Shannon - 52 - #16, Patterson Drilling.
 New Dominion; 8350' Edwin S Mayer Jr. - C - #103, Patterson Drilling.
 New Mariner Energy; 8200' Mayer #5A, Lariat Services.
 Dominion; 7850' Mack Cauthorn - 130 - #8, Patterson Drilling.
 New KCS Resources; 7850' Sawyer - 129 - #15, Patterson Drilling.
 New Dominion; 7650' Mack Cauthorn - 130 - #9, Patterson Drilling.
 New Dominion; 7150' Sawyer - 128 - #19, Patterson Drilling.
 New Dominion; 7000' Kelly - 125 - #26, Patterson Drilling.
 New Dominion; 7000' Kelly - 125 - #23, Patterson Drilling.
 New Dominion; 6850' Canyon Ranch #126-9S, Patterson Drilling.
 Dominion; 6750' Canyon Ranch #115 - #18S, Patterson Drilling.
 New Dominion; 5600' Canyon Ranch -126- #10S, Patterson Drilling.

Crockett
 Pioneer Natural; 9950' Read - 28 - #2 Patterson Drilling.
 New Harrison Interests; 9700' Joe Tom Davidson Jr - A - #45, Patterson Drilling.
 Approach Operating; 9000' Bailey #412, Nabors Drilling.
 Approach Operating; 9000' Addie Clayton #808, Nabors Drilling.
 Approach Operating; 9000' Childress #1607, Nabors Drilling.
 New Anadarko E&P; 8000' Laura Hoover Estate - 7C - #10, Patterson Drilling.
 Bluegrass Energy Inc.; 7000' Simpson Canyon - 4027 - Unit #1, Adobe Drilling.

EOG Resources; 5275' Shannon Hospital - 4 - #11W, Adobe Drilling.

Schleicher
 Approach Operating; 9000' Rousselot, Nabors Drilling.
 New Approach Operating; 9000' Rousselot #4608, Nabors Drilling.
 Dominion; 8650' Edwin S Mayer Jr. - H - #5, Patterson Drilling.
 COG Operating; 7800' Brunton - 27 - #1, Patterson Drilling.
 Discovery Operating; 6900' BR #1 - A - #2, Heart Land Drilling.

Terrell
 Newfield Exploration; 15000' Poulter #3402, Patterson Drilling.
 ConocoPhillips; 12000' Creek Ranch - 15 - #3R, Patterson UTI.
 Exxonmobil Dev. Co; 11600' Banner Estate #4, Helmerich & Payne.
 PXP Texas, Inc.; 8500' Mitchell - 11 - #7, Nabors Drilling.
 Fasken Oil & Ranch; 7500' Brown SE - 212 - #30, Patterson Drilling.
 Fasken Oil & Ranch; 7500' Brown NE - 211 - #35, Patterson Drilling.

Val Verde
 Devon; 16000' Jarrett - Farmer - 4 - #1, Nabors Drilling.
 Grub Petroleum; 15500' Phillip Arledge #10, Grey Wolf Drilling.
 Patterson Petrol; 15000' Redd State #1, Patterson Drilling.

Edwards
 New Newfield; 14000' Whitehead #7402, Patterson Drilling.
 New Dominion; 8750' Cloudt - 68 - #1, Patterson Drilling.

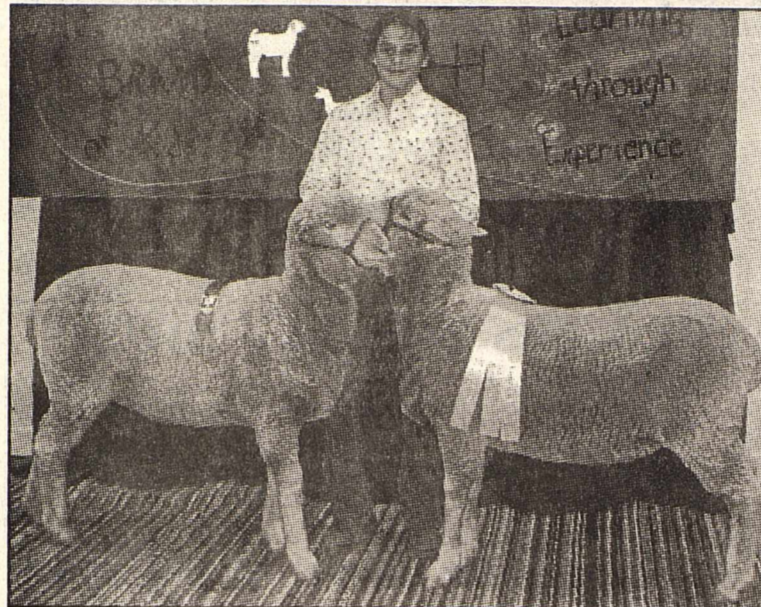
For more rig locations call 1-800-627-9785 or go online to www.rigdata.com.



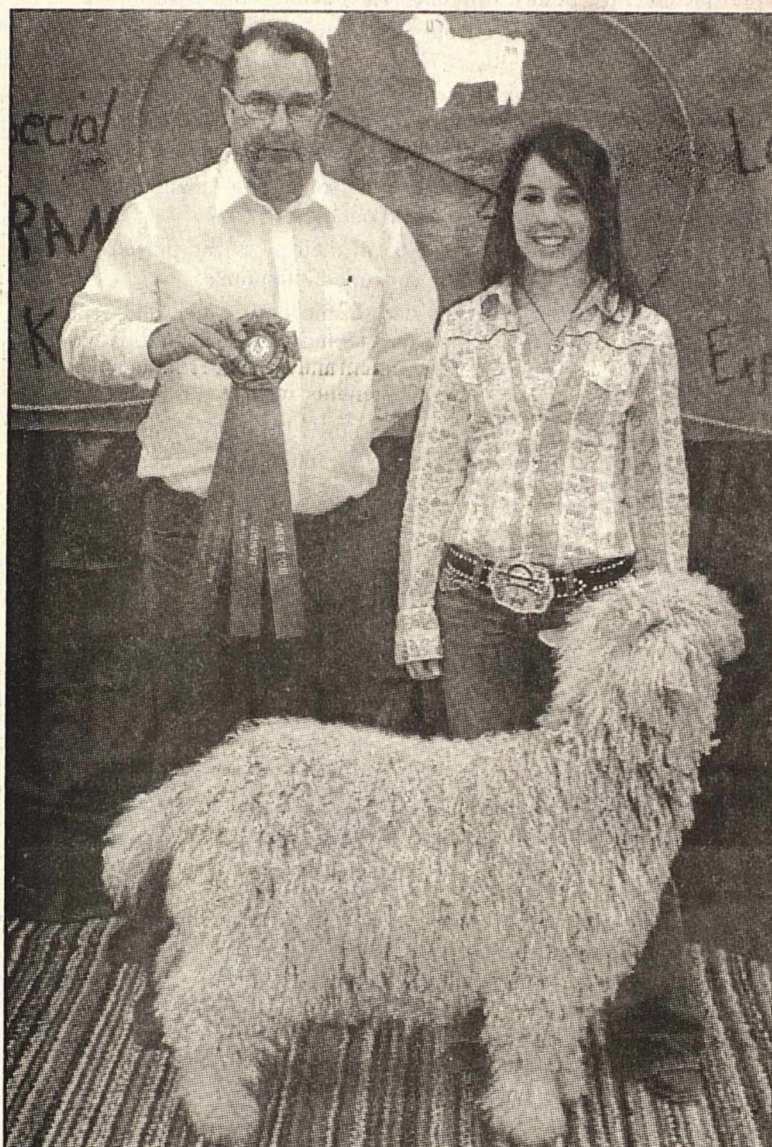
Oil & Agribusiness



Grand Champion Ewe Lamb Futurity - Bailey Joe Pennington
Sponsored by Mr. & Mrs. Armer Earwood



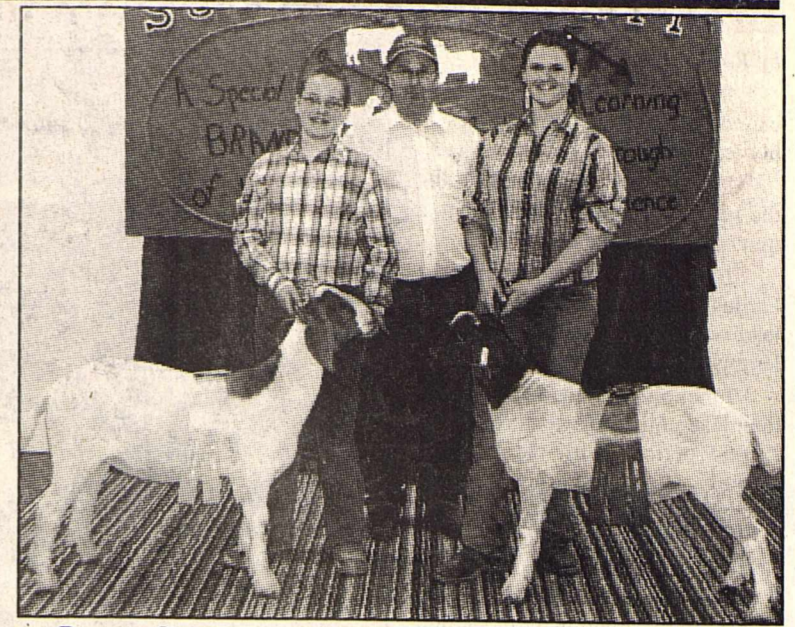
Reserve Grand Champion Ewe Lamb Futurity shown by Chelsey Lou Campbell
Sponsored by Mr. & Mrs. Armer Earwood



Grand Champion Commercial Angora Goat - shown by Kelsey Watkins
sponsored by The Bank & Trust



Grand Champion Swine, shown by Sidney Dermody
sponsored by Top Notch Trophies & Awards



Reserve Grand Champion and Grand Champion Meat Goats shown by Stella Ingham (Reserve) & Brandy Neff (Grand)
sponsored by Sutton County Show Goat Producers Association



Grand Champion Angora Goat - shown by Laura Martin
sponsored by The Bank & Trust



Reserve Grand Champion Angora Goat - shown by Meredith Earwood, sponsored by The Bank & Trust



Reserve Grand Champion Swine, shown by Garrett Sharp,
sponsored by Top Notch Trophies & Awards

Sonora Chemical & Supply, Inc.

Air & Fluid Drilling Chemicals
Sales • Service • Delivery

Marty Lipham 325-277-4397 • 278-1290 • 387-3423
Clifton Lipham 325-277-3926 • 278-1292 • 387-2354
CC Lipham 325-277-5261 • 278-1294 • 387-3050
Curtis Lipham 325-280-5545 • 823-2110
Fred Lipham 325-206-1392 • 944-4043



661 CR 104

(325) 387-6023 • FAX 387-2237 • 1-877-533-5500 Toll Free

Glyn Hutto Livestock

All Classes of Sheep & Goats
Bought - Sold

5 Miles West of Eldorado on CR 412

Certified Scales

(325) 853-2717 or (325) 669-2010

CACTUS CONTROL

SHAWN TAYLOR
325-853-2465
PO Box 575
Eldorado, TX 76936

LINDA SCROGGINS
325-853-2244
PO Box 1317
Sonora, TX 76950



TORRES TREE SERVICES

- Topping
- Pruning
- Trimming
- Shaping
- Thinning
- Tree Removal
- Stump Grinding
- Fertilization
- Tree Planting
- Sales

Fully Insured
10 years experience

We have the right equipment to do the job..
Just call 387-6022 or 206-0774

