

## PAGE ONE

### A QUICK READ OF THE NEWS

#### Judo students take charge

If there was a "Bad Career Move Award" for car thieves, police in Los Angeles say they have a candidate -- a man who tried to steal a minivan with a judo team inside.

The co-ed team from Florida International University of Miami was in town to teach a self-defense course and was taking a tour of Hollywood before heading to the airport.

The team crossed paths with the carjacker at a gas station about six blocks from where he had carjacked a Nissan minutes earlier.

In that incident, police said, the carjacker punched the Nissan's driver, pulled him out of the car and drove away with the female passenger.

The carjacker pushed the woman out of the car after trying to steal her purse, police said.

The suspect apparently was trying to ditch the first vehicle and steal another when he approached one of the students, police said. He demanded money and got into a scuffle with judo student Nester Bustillo.

"We get into a little bit of a struggle and he eventually winds up jumping into, trying to take our car," Bustillo told a local TV station.

The other students piled on and subdued the suspect in a body hold until police arrived.

"They hit him a couple of times and brought him to ground," Los Angeles Police Department Officer Jack Richter said.

"Our department does not condone or recommend that people do that in a carjacking because you never know if the carjacker is armed," Richter added.

Police identified the suspect as Tyrone Jermaine Hogan, 20, who was held in lieu of \$1.2 million bail.



Drawing date: Saturday, August 24  
Winning numbers: 3-17-21-23-28-49  
Estimated jackpot: \$12 million  
Winners: 0  
Next drawing: Wednesday, August 28  
Estimated jackpot: \$15 million

#### On this date in history

Sept. 1 — Texans on board the merchant ships *San Felipe* and *Laura* seize the *Correo de Mejico* (1835).

Sept. 2 — Anson Jones is elected as the last president of the Republic of Texas (1844).

#### LOCAL WEATHER

Tuesday's forecast from the National Weather Service included a 30 percent chance of isolated thunderstorms on Friday and Saturday. Otherwise, expect partly cloudy skies and a slight chance of rain. Temperatures should be moderate, with highs in the mid- to lower 90s and morning lows close to 60.

Editor Ronn Smith can be reached at 272-4536 or ctyankee@fivearea.com

Missed your paper? Call carrier Yolanda Martinez at 272-4536 during business hours, 8:30 a.m.-5 p.m.

## School officials cautious on enrollment hike

JOURNAL STAFF REPORT

Enrollment is looking exceptionally good for Muleshoe schools this fall, but school officials aren't dancing a jig just yet.

Superintendent Gene Sheets said Monday that enrollment that enrollment was 53 students above the figure at the same point last year, with 23 or 24 of those at Dillman Elementary School.

If this figure holds, it could mean a considerable jump in state funding for the

district.

Sheets said, however, that there could be factors — such as fewer students enrolling later — that might make the increase less remarkable by the time official enrollment figures are turned in to the state.

During discussion at Monday night's school board meeting, Magann Rennels asked from the audience whether Sheets knew of other area school districts that

were experiencing enrollment increases. He replied that some districts of similar size are dealing with decreases of 50 or even 100 students, but he hadn't heard of any others with such a big increase.

He said the situation could result in the addition of a teacher at Dillman.

The board approved a tax rate of \$1.40 per \$100 assessed evaluation, as discussed at the previous meeting, and also approved a balanced budget for the 2002-2003 school year.

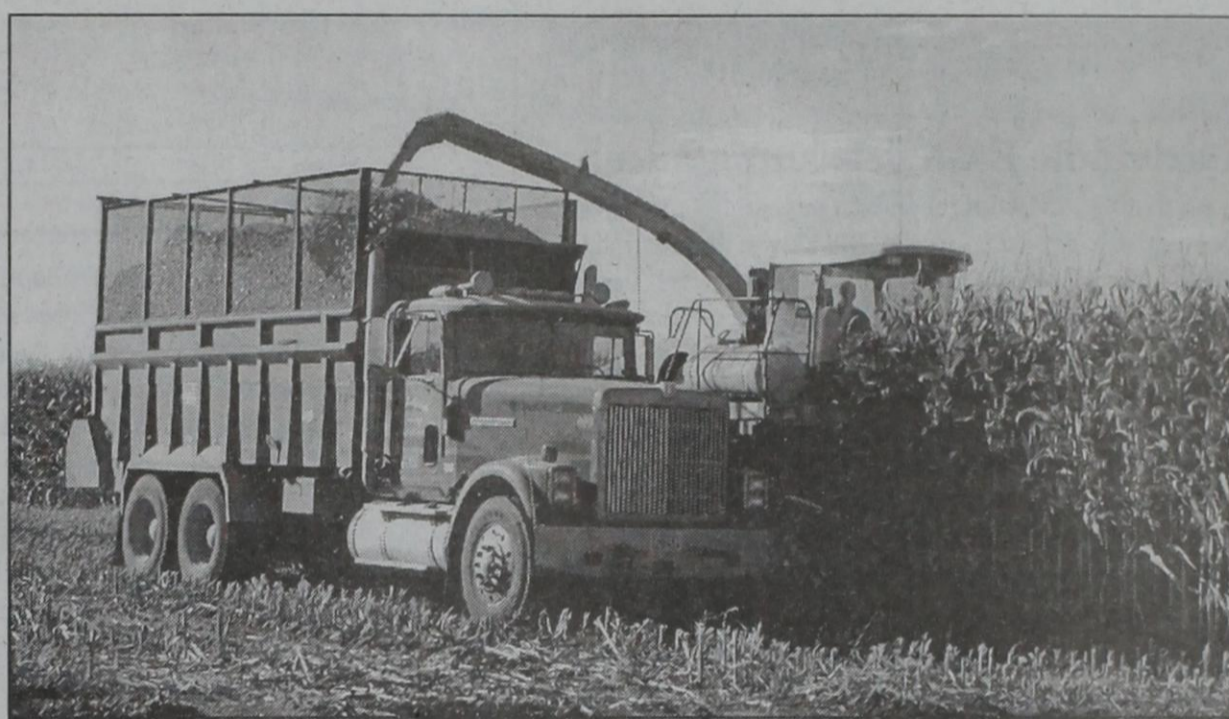
## Journal to be single issue per week now

JOURNAL STAFF REPORT

Beginning immediately, the Muleshoe Journal will be published only once a week, on Thursdays

Subscribers will have their remaining paid subscription time extended by 50 percent, and advertisers should remember that the sole advertising deadline for the week is now 5 p.m. Monday for classifieds and noon Tuesday for display ads.

Declining advertising revenues made the change necessary.



Journal photo: Beatrice Morin

#### Corn being cut

A crew was busy Tuesday cutting corn for silage on the Tim Black farm, north of Muleshoe on Farm-to-Market 2079.

## Mules ready to open fire against Seminole

By DELTON WILHITE  
Journal sportswriter

After two scrimmages, the Mules kick off their 2002 football season at 8 p.m. Friday in Seminole against the Indians.

This is the first year for the Mules to open their season during zero week and have an open date before district play begins.

"We are starting a week early this year, and the first scrimmage (with New Deal) replaced our inter-squad scrimmage," Muleshoe coach David Wood said this week. "In Idalou, we were doing what we normally do during our first scrimmage."

"We were looking at individual personnel and tried to put them in different situa-

tions to see how they would react," he said.

"We learned that we need to be more perimeter-oriented in our offense and that our defense is going to have to get into different fronts to confuse people and not just stay in our base formation."

Two pleasant surprises for the Mules have been Kyle Yell and Valentine Colunga. Because of early injuries, Yell has already got to show he can catch the ball at tight end and has turned into a force as a linebacker on defense.

Colunga is not very big but has quickness and can catch the ball as a wide receiver.

According to Wood, "Kyle has really grown up and could be a two-way starter

for us this season. Valentine uses his quickness as a receiver and hangs onto the ball really well."

Seminole scrimmaged Shallowater last week and — much like the Mules — stuck to their basics. Wood expects both teams to open up their offenses and defenses more Friday night.

The Indians have a sophomore running back, Jeremy Hill, who stands 6 feet, 3 inches tall and is listed at 190 pounds.

Against Shallowater, Hill made things happen for the Indians but since he is a sophomore, he may not start against the Mules. He can be expected to get in the

see MULES on page 2

## Amanda Bailey wins upper-level national title

JOURNAL STAFF REPORT

A six-member tumbling and trampoline team from Muleshoe Sports Academy recently competed in the Junior Olympic National Championships in Indianapolis, doing especially well in women's double mini.

Amanda Bailey won a national title in Level 10 double mini, Amber Cowart won the silver medal in senior double mini and the team won the national team title in both women's double mini and women's trampoline.

Bailey also won eighth in senior trampoline, while Cowart took 12th in the same event.

These contests were held the first three days of the

weeklong competition, while younger athletes (levels five through seven) competed the final two days.

"We were really proud of the upper-level athletes," said Will Green, director of the academy. "They really set the tone for the rest of the competition."

Other Muleshoe athletes competing were Madison Chester, national title in Level 5 trampoline, silver in double mini; Kaylie Miller, silvers in double mini and tumbling, bronze in trampoline; Keela Chester, national title in trampoline, silver in double mini and bronze in tumbling; and Jake Chester, fourth in trampoline and double mini, fourth in tumbling.



Courtesy photo

Amanda Bailey, Keela Chester, Jake Chester, Madison Chester, Kaylie Miller and coach Will Green pause during the Junior Olympic National Championships in Indianapolis.

## Outlook optimistic for school district's food service

JOURNAL STAFF REPORT

After registering a huge loss for the 2000-2001 school year, Aramark's food-service operation in the Muleshoe School District has reported a much smaller loss for the year just ending and projects operations in the black for the coming year.

Robin Thacker, now Aramark's local manager, inherited a situation that had been bleak by the time it was discovered last year, but had seen some improvement.

She reported Monday that the operation had managed to cut its losses from tens of thousands to possibly \$8,000 for the year. (Bills are still being paid, so a firm figure is not yet available.)

Thacker's projected budget for next year shows a surplus of more than \$1,800 that could be plowed back into improvements.

Board member Cindy Purdy asked Thacker at Monday night's board meeting what profit Aramark showed in Muleshoe

for the just-finished year, and Thacker said she didn't know but would find out.

Asked if new offerings are being considered for the school cafeterias, Thacker replied, "I've been trying to see what the kids are bringing from outside the cafeteria, to see what they want."

Purdy also asked if Aramark intends to cover the deficit. Superintendent Gene Sheets said there had been no discussion about which side would cover it.

# AROUND MULESHOE

## Covenant honors local four

Four Muleshoe Area Hospital District employees were among those honored Monday at a Values in Action Luncheon at Covenant Medical Center in Lubbock.

The Covenant system uses these luncheons to honor outstanding employees in four areas, with the honorees then being eligible to compete at a higher level.

Honored this time were Margaret Heathington, director of nursing, for dignity; Sandy Buenrostro, laboratory technician, for justice; Shirley James, ward clerk, for excellence; and Brenda Stuart, office assistant at the Farwell clinic, for service.

## Fund-raiser planned at Lazbuddie

The Lazbuddie High School FCCLA has scheduled a luncheon fund-raiser for 11:30 a.m. to 1 p.m. Sept. 8 in the school cafeteria.

The menu will include enchiladas, beans, rice, salad and desserts.

Money raised will help pay for the applied technology team's trip to Minnesota last month. The team won second.

## Lazbuddie EMS gets ambulance

Lazbuddie EMS has received a new ambulance, made possible by grants from the Meadows Foundation of Dallas, the Texas Department of Health and Parmer County Commissioner Raymond McGehee.

The new vehicle includes four-wheel drive and air suspension, and will carry a new defibrillator.

The EMS and fire department also have a new building to house the ambulance.

Service is provided free to the public, with funding coming from Parmer County, the Friona Hospital District and donations, which may be sent to P.O. Box 125, Lazbuddie 79053.

## Cooperative plans annual meeting

The Bailey County Electric Cooperative has scheduled its annual membership meeting for Tuesday at the Bailey County Coliseum.

Registration and a free meal (barbecue, chicken and fish) begin at 6 p.m., followed by the business meeting and awarding of door prizes at 7 p.m. and a performance by Ruidoso's Flying J Wranglers at 8 p.m.

Muleshoe EMS will be giving free screenings for blood pressure, pulse and oxygen levels.

## School news

Parents and others interested in activities in the Muleshoe Independent School District can learn about changes in the current week's activities by calling 272-7669. The information line is also updated for changes in the school schedule due to bad weather.

## Public calendar

**Aug. 30** — Texas Cooperative Extension's Parmer/Bailey County Field Day. Registration 8:15 a.m. to 8:45 a.m. at Muleshoe Co-op Gin. Includes visits to James Brown and Sean Mason farms.

**Sept. 9** — 7 p.m. Muleshoe School Board, in the board room of the administration office, 514 W. Avenue G.

**Sept. 26** — 7 p.m. Muleshoe Area Hospital District Board, in the cafeteria at Muleshoe Area Medical Center.

**Oct. 9** — 9:15 a.m. to 10:45 a.m. Social Security representative scheduled to be at the Bailey County courthouse.

## MULES

from page 1

game early, though.

Indian coach Army Salinas has 13 returning starters from last year's 2-8 team. Austin McBee returns at quarterback, and Clay Daniel is his go-to guy at wide receiver. The tandem had success against the Mules last season.

The Indians have good size on both sides of their

line and are anchored by senior two-way starter Lance Lehnert at tight end and defensive end.

The team that avoids drive-breaking penalties can be expected to have the advantage Friday night.

Amarillo Caprock visits Benny Douglas Stadium on Sept. 6 for the Mules' first home contest.

## Girl Scouts plan Mule-Putt sign-up party

Local Girl Scouts are planning a sign-up party for Sept. 10 that includes free Mule-Putt Miniature Golf for girls attending.

Hot dogs will be served. Additionally, anyone interested in volunteering for Girl Scouts is invited to attend. Men as well as women

are accepted as volunteers, and they do not have to have a daughter. Recent high school graduates and college students are welcome.

Training is provided for volunteers, and pre-planned programs are available for troop meetings.

More information is available by calling Nelda Merriott at 272-4071 or Liz Butler at (806) 296-2309.

MULESHOE MULES Freshman football		
Sept. 6 6 p.m.	Levelland	Here
Sept. 12 5:30 p.m.	Shallowater	Here
Sept. 19 5:30 p.m.	Friona	There
Sept. 26 5:30 p.m.	Lubbock Roosevelt	Here
Oct. 3	Open	
Oct. 10 5:30 p.m.	Littlefield*	There
Oct. 17 5:30 p.m.	Brownfield*	There
Oct. 24 5:30 p.m.	Dimmitt*	Here
Oct. 31 5:30 p.m.	Lubbock Cooper*	There
Nov. 7 5:30 p.m.	Slaton*	Here

\* Denotes district game

## OBITUARY

### JIM CLAUNCH

Services are scheduled for 10:30 a.m. Aug. 29 in the First United Methodist Church of Littlefield for Jim Claunch, 93, of Bula. The Rev. George C. Price officiated, assisted by the Rev. Brad Reeves. Burial was in Littlefield Memorial Park.

Hammons Funeral Home of Littlefield handled arrangements.

Mr. Claunch was born Oct. 11, 1908, at Wellington, Texas. He died Monday at Lamb Healthcare Center after a traffic accident in southeast Littlefield.

He married Cordie Farmer on Dec. 24, 1927, at Hedley, Texas. She died Sept. 30, 1998.

They moved to the Bula area in 1936 and he began farming there.

He served on the Federal Land Bank Board for 26 years, the Bula School Board for several terms and the Bailey County ASCS Board for several years. He was the song leader at Bula Methodist Church for 48 years and was a member of First United Methodist Church of Littlefield.

Mr. Claunch is survived by three sons, Robert, Bennie and Jim Pat Claunch, all of Bula; a daughter, Lennell Powell of Early, Texas; nine grandchildren; 13 great-grandchildren; and four great-great-grandchildren.

Pallbearers will be Rodney Claunch, Shane Claunch, Jacen Claunch, Bart Powell, Butch Davis and Michael Kopp.

The family suggests memorials to First United Methodist Church of Littlefield, Park View Healthcare Center of Muleshoe, or a favorite charity.

## Christopher F. Anderson, DDS, MSD

Practice Limited To Orthodontics  
Special Interest In Orofacial Pain & TMJ Disorders

Is pleased to announce that he will be seeing patients by appointment on a limited basis in the offices previously occupied by Dr. Parker at 320 East 8th St., Littlefield, TX.

**(806) 792-5111**

## KIRBY SALES & SERVICE

Joe Ennis, Distributor  
Same Location, New Phone Number

**505-763-9749**

207 W. 7th - Clovis, NM

ATTENTION!



AND COUNTRY JUNCTION  
**1-800-658-6378**  
Open: Mon.-Fri. 9-6, Sat. 9-7 MDT

What's Going On At Your  
Headquarters For The  
Western Lifestyle...

**2600 Mabry Drive  
Clovis, NM**

Join us for the 10th Annual  
**WORLD CHAMPIONSHIP GOAT TEAM ROPING**  
**Saturday August 31**

**PRELIMINARY ROPING 9-4 PM (MDT)**

- FREE! FREE! FREE!
- On foot, No Horse Needed
- Prizes Awarded in 8 Age Divisions (6-under, 7-9, 10-13, 14-16, 17-19, 20-29, 30-49, 50-Over)
- Joe's Boot Shop 10X Straw Hats and FREE Shootout Positions to 1st and 2nd in Every Age Division

**WORLD CHAMPIONSHIP SHOOTOUT 4 PM (MDT)**

- \$500 Added
  - \$10/Team-Entry Fees Go to Shootout Pot
  - Enter 3 times
- Anyone may enter the Shootout up to three times, including any free shootout positions earned in the preliminary roping. All Shootout runs must be with different partners and no up & back runs will be allowed in the Shootout. Shootout will be a one-header. Fastest time, based on handicap, will win world championship buckles and cash.
- Guaranteed to Pay Through 10 Places!
  - Shootout Will Be Handicapped Based On Times From Preliminary Roping
  - Floyd Mosier Handmade World Championship Buckles to Shootout Winners!

For Info., Contact Scot or Lavon  
**1-800-658-6378**

## Summer Specials

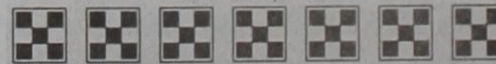
### FROM THE FEED STORE

- Wheat Pasture
- Mineral w/Rumensin (50 lb.) ..... \$9.65
- 12:12 Horse Mineral (25 lb.) ..... \$8.98
- 12:12 Cattle Complete (50 lb.) ..... \$11.70

### JOIN JOE'S KENNEL CLUB!

Buy 6 bags of PMI or Exclusive Dog or Cat Food and Joe's will give you the 7th bag Free!

No time limit on purchases!



### FROM COUNTRY JUNCTION

Large Selection of  
**Rustic Furniture 25% Off**  
• Beds • Entertainment Centers  
• Dining Tables • Much More!

### FROM THE BOOT SHOP

- Ariat Ropers ..... \$20 Off
- Justin & Ariat Work Boots ..... \$20 Off
- Straw Hats ..... 20% Off
- Joe's Boot Shop Private Label 10X Straw Hats ..... \$45



2233



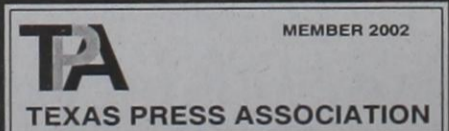
**The Fair Store**  
120 Main 272-3500

## Muleshoe Journal USPS 367820

Established February 23, 1924. Published by Triple S Publishing, Inc. Every Thursday at 304 W. Second, P.O. Box 449, Muleshoe, TX 79347. Periodicals Postage paid at Muleshoe, TX. POSTMASTER: Send address changes to the Bailey County Journal, P.O. Box 449, Muleshoe, TX 79347. We are qualified members of: Panhandle Press Association, National Newspaper Association, West Texas Press Association and Texas Press Association.

WEST TEXAS PRESS ASSOCIATION

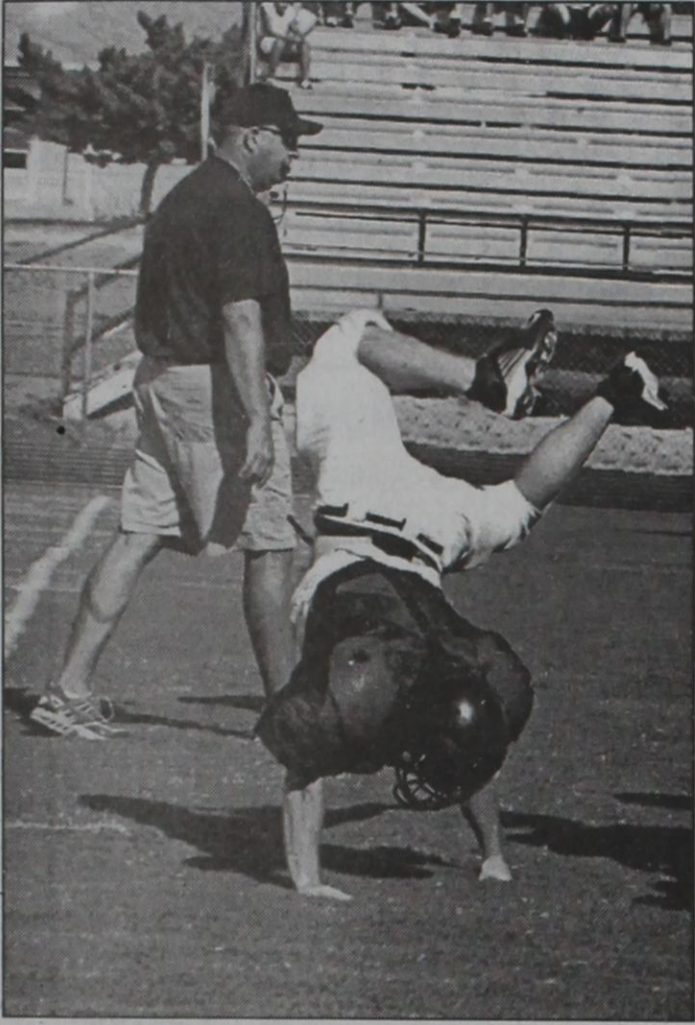
PPA Panhandle Press Association



Scot Stinnett, Publisher  
Lisa Stinnett, Vice-President/Comptroller  
Ronn Smith, Editor  
Beatrice Morin, Classifieds  
Leah Bell, Advertising  
© 1990 Yolanda Martinez, Office Assistant

SUBSCRIPTIONS: Muleshoe Journal and Bailey County Journal By Carrier Yearly - \$22.00 Bailey County — by mail - \$24.00 Elsewhere - \$26.00 Advertising Rate Cards on Application

\*Advertisers should check their ad the first day of insertion. The Journals will not be liable for failure to publish an ad or for a typographical error or errors in publications except to the extent of the cost of the ad for the first day of insertion. Adjustment for errors will be limited to the cost of that portion of the ad where the error occurred.\*



Journal photo: Mike Hahn

### Grandstander

Muleshoe's Joel Cowart burns off a little excess energy during the Mules' Aug. 17 scrimmage against New Deal. The varsity season starts for real at 8 p.m. Aug. 30 in Seminole.

## Extension plans producer education course

SPECIAL TO THE JOURNAL COLLEGE STATION — Texas Cooperative Extension is planning a comprehensive educational course for those new to production agriculture.

"Tomorrow's Top Agricultural Producer Program" is a four-part program separated into four-day sessions spread over a two-year period.

Dates and locations for this year include

Nov. 11-14 in Amarillo.

Meetings and topics include:

- Session 1: basics of good business management;
- Session 2: sound business and financial planning;
- Session 3: marketing and risk management, and
- Session 4: personnel management, legal and liability issues, and the complete business

## SCHOOL MENUS

### MULESHOE JR./SR. HIGH

September 2

No school.

September 3

**Breakfast** — Breakfast pizza, doughnut, assorted cereal with toast and jelly, assorted juice and milk.

**Lunch** — Soft beef tacos, hamburger, pepperoni pizza, tossed salad, hamburger fixing, taco fixings, oven fries, Spanish rice, assorted chilled fresh fruit, Blue Bell mini ice cream sandwich and milk.

September 4

**Breakfast** — French-toast sticks, breakfast burrito, assorted cereal with toast and jelly, assorted juice and milk.

**Lunch** — Szechwan chicken, hamburger, pepperoni pizza, tossed salad, hamburger fixings, oven fries, egg roll, seasoned carrots, assorted chilled fresh fruit, chocolate cake with vanilla glaze and milk.

September 5

**Breakfast** — Cinnamon rolls, pancake and sausage, assorted cereal with toast and jelly, assorted juice and milk.

**Lunch** — Corn dog, super sack lunch, pepperoni pizza, potato rounds, tossed salad, vegetable soup, assorted chilled fresh fruit, Rice Krispie treat and milk.

September 6

**Breakfast** — Biscuit and sausage, cream gravy, Texas cinnamon toast, assorted cereal with toast and jelly, cheese toast, assorted juice and milk.

**Lunch** — Quesadilla, hamburger, pepperoni pizza, tossed salad, hamburger fixings, oven fries, campfire beans, assorted chilled fresh fruit, brownie and milk.

MULESHOE

ELEMENTARIES

September 2

No school.

September 3

**Breakfast** — Doughnut and cinnamon glaze, assorted cereal with toast and jelly, assorted juice and milk.

**Lunch** — Corn dog, hamburger with lettuce and pickle, oven fries, seasoned corn, peaches and milk.

September 4

**Breakfast** — Cinnamon toast, assorted cereal, with toast and jelly, assorted juice and milk.

**Lunch** — Chicken nuggets, roll and gravy, pizza, mashed potatoes, celery sticks, fruited gelatin and milk.

September 5

**Breakfast** — Breakfast burrito, assorted cereal with toast and jelly, assorted juice and milk.

**Lunch** — Steak fingers with toast and gravy, hamburger, lettuce and pick-

les, potato rounds, seasoned green beans, peaches and milk.

September 6

**Breakfast** — Scrambled eggs with toast and jelly, assorted cereal with toast and jelly, assorted juice and milk.

**Lunch** — Baked potato, pizza, tossed salad, pears, oatmeal cookies and milk.

LAZBUDDIE

September 2

**Lunch** — Salisbury steak, pizza (PK-1), subs, noodles, green beans, carrots, applesauce, salad, Jell-O, cottage cheese, yogurt and milk.

September 3

**Lunch** — Teriyaki chicken, corn dogs (PK-1), tuna sandwiches, rice pilaf, green peas, squash, pears, salad, Jell-O, cottage cheese, yogurt and milk.

September 4

**Lunch** — Stromboli, hamburgers (PK-1), baked beans, onion rings, spinach, pineapple, salad, Jell-O, cottage cheese, yogurt and milk.

September 5

**Lunch** — Chicken pot pie, tacos (PK-1), egg rolls, corn, scalloped potatoes, peaches, salad, Jell-O, cottage cheese, yogurt and milk.

September 6

**Lunch** — Manager's choice.

### LAZBUDDIE LONGHORNS Junior Varsity Football

Aug. 31	5 p.m.	Follett	at Groom
Sept. 5	6:30 p.m.	Silverton	There
Sept. 12	6:30 p.m.	Floyd, N.M.	Here
Sept. 19	6:30 p.m.	Meadow	There
Sept. 26	6:30 p.m.	Happy	Here
Oct. 4	6 p.m.	Patton Springs	Here
Oct. 10			Open
Oct. 17	6:30 p.m.	Amherst*	at Cotton Center
Oct. 24	6:30 p.m.	Valley*	There
Oct. 31	6:30 p.m.	Whitharral*	There
Nov. 7	6:30 p.m.	Amherst*	Here

\* Denotes district game.

## HONORS

### ELDER

Leigh Melissa Elder, a spring graduate of Sudan High School, has been awarded a scholarship by the Texas Interscholastic League Foundation.

Elder received an Abell-Hanger Foundation Scholarship in the amount of \$6,000, payable at \$1,500 each semester for the first two years she attends college.

The foundation awarded 88 scholarships to students who had participated in the University Interscholastic League state meet and who compiled a record of both academic and extracurricular achievement.

Elder competed in science at the 2001 and 2002 state meets.

She is attending South Plains College to major in chemistry.

\$1,000 per operation, but the fee pays only a small part of the cost, said Jason Johnson, program coordinator.

Registration deadline is Oct. 1. More information or a registration packet can be obtained from Stan Bevers at s-bevers@tamu.edu or (940) 552-9941.

### Family Hair Salon

is pleased to welcome  
**Emily Bomer Townsen**  
to our salon family!

Emily graduated from Odessa College in 1996 and has seven years experience in Lubbock salons.

**Call 272-5987 to make an appointment or come by and see us at 213 E. Ave B in Muleshoe.**

### SERVING OUR BAILEY COUNTY CUSTOMERS FOR OVER 45 YEARS

- CERTIFIED BY ALL MAJOR INSURANCE COMPANIES
  - CERTIFIED TECHNICIANS
  - QUALITY WORKMANSHIP
  - LIFETIME GUARANTEE
  - 24 HR. WRECKER SERVICE
  - RENTAL CAR AVAILABILITY
  - FREE LOAN CARS
  - FREE PICKUP & DELIVERY
  - FREE DETAIL SERVICE
- DEDUCTIBLE PAYOUT PLANS AVAILABLE

**GRIMES BODY SHOP IS THE ONE TRUE LEADER WHERE YOUR CONCERNS ARE OUR PRIORITY. FOR AUTOBODY REPAIRS & ASSISTANCE ON INSURANCE CLAIMS CALL: 806-272-3939**

LEGEND HAS IT: IT TAKES LESS TIME TO DO A THING RIGHT THAN TO EXPLAIN WHY YOU DID IT WRONG!

Thanks for reading the Journal!

## ANNUAL MEMBERSHIP MEETING

### BAILEY COUNTY ELECTRIC COOPERATIVE ASSOCIATION

to be held in the  
BAILEY COUNTY COLISEUM  
2206 W. AMERICAN BLVD.  
MULESHOE, TEXAS

**TUESDAY  
SEPTEMBER 3, 2002**

Registration	6:00 P.M.
Free Meal (Bar-B-Q, Chicken, and Fish)	6:00 P.M.
Short Business Meeting/Door Prizes	7:00 P.M.
Special Entertainment:	
Flying J Wranglers from Ruidoso	8:00 P.M.

Muleshoe EMS will be giving free health screenings using the ZOLL Monitor. This will include blood pressure, pulse and oxygen levels.

For your convenience there will be a representative to answer any questions you might have concerning the Long Term Care Insurance again this year.

There will be Door Prizes for everyone and drawings for some great gifts.

# BAILEY COUNTY DEVOTIONAL PAGE

**SERVING INDIVIDUAL INVESTORS SINCE 1871**

- Stocks
- Mutual Funds
- Bonds • CDs • IRAs
- Government securities
- Money Market funds
- Tax-Free bonds
- and much more.

**Edward Jones**  
Locally, talk with  
**KATHERINE SCHRAEDER**  
220 S. Main St. - Muleshoe  
806-272-4102 Member SIPC

**Muleshoe Country Club**

Hwy. 84  
Muleshoe, TX  
272-4203

**AGRILIANCE**  
Manager  
Bruce Bruns

**RONNIE HOLT INSURANCE AGENCY**  
Specializing in Crop Insurance  
218 Main, Muleshoe TX 272-4271

**MAPLE COOP GIN**  
927-5501  
Maple, Texas

**Lowe's MARKETPLACE**  
401 W. American Blvd. • Muleshoe • 272-4585

**minsa corporation**  
P.O. Box 484 272-5545  
Muleshoe, TX  
FAX (806) 272-5135 (800) 852-8291

**MULESHOE PEA & BEAN, INC.**  
1680 CR 1044 272-5589  
Muleshoe, TX

**SAIN IRRIGATION & MACHINES**  
Complete Pump Service  
W. American Blvd. 272-4397  
Walt Sain Muleshoe, TX 272-4148

**J&S Dairy**  
West of Muleshoe  
272-7706 Muleshoe, TX

**FARMERS INSURANCE GROUP**  
INSURANCE GROUP  
AUTO • HOME • LIFE • BUSINESS • HEALTH  
104 W. 12th Street • 272-7548  
Laurie Winchell, Insurance Agent Muleshoe, Texas

**VIOLA'S**  
Mexican Food Restaurant  
Open Tues-Sat. till 8:30 pm; Sun. till 2 pm; Closed Monday  
2002 W. American Blvd. • Muleshoe • 272-3838

**RTM DAIRY**  
Hwy. 84 & Airport Rd. • 965-3000  
Muleshoe, Texas

**WES-TEX FEED YARDS, INC.**  
Custom Cattle Feeding  
272-7555 Muleshoe, TX

**WESTERN DRUG**  
& Something Special Gifts  
1411 W. American Blvd. 272-3106 Muleshoe

**FARMERS CO-OP ASS'N**  
of ENOCHS  
"Your Farmers Owned Gin"  
Chemicals • Seed • Fuel • Oil • Fertilizer  
806-927-5511 Wade Baker, Mgr.

**MULESHOE LIVESTOCK AUCTION**  
Muleshoe, TX • Sale Every Saturday  
Clayton, C.L. & Thurman Myers • 272-4201

**BLACKWATER AGRI ASSN. INC.**  
West Hwy. 84  
Muleshoe, Texas  
272-4962

**Lal's** 107 E. Ash  
Muleshoe, TX  
Tortilla Factory, Inc. 272-5772

**MULESHOE VALLEY INC.**  
2601 W. American Blvd.  
P.O. Box 631  
Muleshoe, Texas  
(806) 272-4266  
Mobile (806) 946-8763  
mviinc@fivearea.com

318 *Facts About The* **BIBLE** *BY JOHN LEHTI*

This is a dramatized version of facts taken from the book of Genesis intending to show some of the customs of these ancient and traditional times

**A BRIDE FOR ISAAC**  
ELIEZER, ABRAHAM'S STEWARD, HAS JOURNIED TO MESOPOTAMIA, THE LAND OF ABRAHAM'S BIRTH, TO FIND A MAIDEN TO BE THE WIFE OF ISAAC, ABRAHAM'S SON...

...NOW HE WAITS IN THE EVENING, AT THE WELL OUTSIDE NAHOR, FOR THE MAIDENS TO COME AND DRAW WATER...

IF THE LORD SENDS ME A SIGN, THEN ONE OF THE MAIDENS WILL GIVE ME A CAMEL, AND MY CAMELS, ALSO!

AND NOW THE MAIDENS OF NAHOR HAVE ARRIVED AT THE WELL TO DRAW THE EVENING WATER, WHILE ELIEZER PATIENTLY WATCHES...

...AND ONE OF THEM SEEMS TO SHOW AN INTEREST IN THE STRANGER, AS SHE FILLS HER WATER JUG....

I PRAY THEE, GIVE ME TO DRINK!

...AND AFTER SHE COMES UP FROM THE WELL, ELIEZER STOPS HER WITH A REQUEST!

Next Week THE ANSWER!

SAVE THIS FOR YOUR SUNDAY SCHOOL SCRAPBOOK

But ye shall receive power, after that the Holy Ghost is come upon you; and ye shall be witnesses unto me both in Jerusalem, and in all Judaea, and in Samaria, and unto the uttermost part of the earth.  
-Acts 1:8

**Antiques & Fine Things**  
of Muleshoe  
2104 W. American Blvd. • 272-4217

**FIRST AG CREDIT** Muleshoe  
FARM CREDIT SERVICES  
272-3010 • Fax 272-5388  
1601 W. American Blvd. • P.O. Box 424 • Muleshoe, TX

**THE CONNECTION WAREHOUSE**  
RadioShack 272-5532  
AND THE RENTAL PLACE - 272-4037  
117 Main • Muleshoe, Texas

**Little Real Estate & Appraisal Services**  
Residential • Commercial • Farm & Ranch  
272-4805  
MOBILE: 946-7965 Muleshoe FAX: 272-3729

**IRRIGATION PUMPS & POWER**  
ZIMMATIC CENTER-PIVOTS  
W. Hwy. 84 272-4483

1315 W. American Blvd.  
272-3333  
Muleshoe, TX  
Now open at 5:30 a.m. every day!

**United Supermarkets**

**New Tex Truck Parts & Service**  
107 E. 5th St. • Muleshoe  
272-4106 or 800-918-9048  
4200 Mabry Drive • Clovis, NM  
(505) 762-7186 or (877) 762-9112

**MULESHOE MOTOR CO.**  
1125 W. American Blvd. 272-4251

**Decorators Floral & Gifts**  
616 South First 272-4340  
Muleshoe, TX

**Boehning Dairy**  
DRINK MORE MILK.  
Brian & Tiffany Boehning Earth, Texas

**Henry Insurance Agency**  
"Serving You Since 1964"  
111 West Avenue B 272-4581  
Muleshoe, TX

**Jarman Seed**  
801 W. American Blvd.  
Muleshoe, TX • 272-5985

**JAMES CRANE TIRE CO., INC.**  
107 Main 272-4594  
Muleshoe, TX  
Mike Hahn

**PACO FEED YARD, LTD.**  
Commercial Cattle Feeders  
P.O. Box 956 265-3281  
Friona, TX  
Feller Hughs-Mgr

**McCormick Seeds, Inc.**  
400 East Ash • Muleshoe  
272-3156  
Tim McCormick Roland McCormick

**AG AVIATION**  
2 1/2 miles North on HWY 214  
272-3066 FAX 272-8981  
P.O. Box 68 • Muleshoe, TX

**Muleshoe Feed Barn**  
311 W. American Blvd. HI-PRO  
Muleshoe, TX  
272-5626

**WEST CAMP GIN, INC.**  
Better Ginning & Courteous Service  
James & Phyllis Rt. 2 Box 1000 • 925-6681  
Shepard Muleshoe, TX

This devotional & directory is made possible by these businesses who encourage all of us to attend worship services.

- ASSEMBLY OF GOD**  
FIRST ASSEMBLY OF GOD  
521 South First Street • 272-3017  
Jack Stone, Min. • 272-3984  
S.S. 9:45 am, W.S. 11 am & 6:30 pm,  
Wed. 7:30 pm
- EL BUEN PASTOR**  
415 E. Ave. F • Pastor Felix Cadena  
S.S. 9:45 am, W.S. 11 am & 6 pm; Wed. 7 pm
- BAPTIST**  
CALVARY BAPTIST  
1733 W. Ave. C. Rev. Jeff Coffman
- CIRCLE BACK BAPTIST**  
Intersection FM 3397 & FM 298  
Circle Back • 946-3676
- FIRST BAPTIST**  
220 West Ave. E., Dr. Stacy Conner
- FIRST BAPTIST**  
Lazbuddie • 965-2126
- PRIMERA IGLESIA BAUTISTA**  
223 E. Ave. E., Rev. Greg Guzman
- PRIMITIVE BAPTIST**  
621 South First,  
Elder Cleveland Bass, Min.
- PROGRESS BAPTIST**  
Progress, TX
- PROGRESS SECOND BAPTIST**  
Arthur Hays, Min.  
1st & 3rd Sundays
- RICHLAND HILLS BAPTIST**  
17th & West Ave. D, Jason Schwoppe, Pastor
- ST. MATTHEWS BAPTIST**  
Corner of W. Boston & W. Birch  
Floyd R. Monroe, Min.
- THREE WAY BAPTIST**  
927-5467
- TRINITY BAPTIST**  
314 E. Ave. B, Benny Wright, Min.
- CATHOLIC**  
IMMACULATE CONCEPTION  
CATHOLIC CHURCH  
805 E. Hickory, Joseph Augustine, Min.
- CHARISMATIC EPISCOPAL**  
ST. CLEMENTS  
1536 W. American Blvd. • 272-5954  
Father Sergio Leal  
Sun. W.S. 10:30 am
- CHRISTIAN**  
TRINITY CHRISTIAN CENTER  
1723 W. American Blvd. • 272-3877  
Reydon Stanford, Min.
- CHURCH OF CHRIST**  
LARIAT CHURCH OF CHRIST  
Sam Billingsley, Min.  
S.S. 10 a.m.; W.S. 11 a.m. & 6 p.m., Wed. 7 p.m.
- LAZBUDDIE CHURCH OF CHRIST**  
Nathan Crawford, Min.  
S.S. 9:30 am; W.S. 10:20 am & 5 pm; Wed. 7 pm
- MULESHOE CHURCH OF CHRIST**  
22nd & W. American Blvd.  
Harry Riggs, Min.  
S.S. 9:30 am; W.S. 10:20 am & 6 pm; Wed. 7:30 pm
- 16th & AVE. D CHURCH OF CHRIST**  
Curtis Shelburne, Min. • 272-4619  
S.S. 9:30 am; W.S. 10:30 am;  
Growth Gr. 1:30 pm; Wed. 7:00 pm
- LUTHERAN**  
ST. JOHN LUTHERAN  
Lariat, TX-David Symm, Min.  
S.S. 10:30 am; W.S. 9:30 am
- METHODIST**  
FIRST UNITED METHODIST  
HISPANIC MINISTRIES  
E. 5th and E. Ave. D  
Pastor Benito Cavazos  
FIRST UNITED METHODIST  
507 W. 2nd St.  
Pastor Brad Reeves
- LAZBUDDIE METHODIST**  
S.S. 9:30 am; W.S. 10:30 am  
Rev. Randy Thomas • 965-2121
- EL DIVINO SALVADOR U.M.C.**  
619 E. 5th Street & Ave. G, Muleshoe  
Javier Rodriguez, Pastor  
272-6888
- NAZARENE**  
NEW VISION CHURCH OF  
THE NAZARENE  
814 W. Ave. C • 272-3622  
Vance Roberts, Pastor-S.S. 10 & 11 am; W.S. 7 pm
- PENTECOSTAL**  
UNITED PENTECOSTAL LIGHTHOUSE  
207 East Ave. G • 1-800-454-6051  
S.S. 10 am; Thursday, Bible Study 7 pm
- INTER DENOMINATIONAL**  
NEW COVENANT  
Plainview Hwy.  
Steve Claybrook, Pastor  
W.S. 10 am; Wed. 7 pm

**1ST BANK** MEMBER FDIC  
202 South First 272-4515

**BAILEY COUNTY ELECTRIC COOPERATIVE ASSN.**  
Muleshoe - 272-4504 Morton - 266-8600

"THE FIVE AREA TELEPHONE COOPERATIVE, INC."  
West Plains Telecommunications, Inc.  
Five Area Systems, Inc., Plateau Wireless  
Five Area Long Distance - Five Area Internet  
302 Uvalde Muleshoe, USA (806) 272-5533

**TEXAS FARM BUREAU INSURANCE CO.**  
1612 W. American Blvd. • 272-4567 • Muleshoe

**MULESHOE ANIMAL CLINIC**  
GENERAL PRACTICE  
MULESHOE VET SUPPLY  
1430 US Hwy. 84 • Muleshoe Office: 272-3061

**CENTRAL COMPRESS & WAREHOUSE**  
SUDAN, TEXAS

**WINKLES TRUCKS, INC.**  
Box 757 (806) 247-2724  
Friona, TX

- Two locations to serve you -  
1900 W. American Blvd. 272-5337  
107 E. American Blvd. 272-3978

**AG AVIATION**  
2 1/2 miles North on HWY 214  
272-3066 FAX 272-8981  
P.O. Box 68 • Muleshoe, TX

**Muleshoe Feed Barn**  
311 W. American Blvd. HI-PRO  
Muleshoe, TX  
272-5626

**WEST CAMP GIN, INC.**  
Better Ginning & Courteous Service  
James & Phyllis Rt. 2 Box 1000 • 925-6681  
Shepard Muleshoe, TX

# Sunflower acreage down; Production outdoing last year's

**SPECIAL TO THE JOURNAL COLLEGE STATION** — Although planted sunflower acreage is significantly down this year, production is looking similar to 2001, Texas Cooperative Extension reports.

"A surge of new growers were disappointed last year when near-record temperatures and a lack of rainfall caused sunflower destruction throughout the state," said Calvin Trostle, Extension agronomist in Lubbock.

"For those who were first-time growers last year, I think it cut down considerably on the renewal rate or people who grow the

second year," he added. Although fewer acres have been planted this year, temperatures have been a little cooler, and overall weather conditions have been better since planting, he said.

Sunflowers are planted for food and oil, and fields provide environments for dove hunting.

"There are two main market types of sunflowers," Trostle said. "The first is the confectionary type; these are used for food — such as the seeds one may see at the checkout stand of a convenience store."

For confectionary markets, "If we plant poor qual-

ity seed, it becomes quite expensive," Trostle said. "As far as the crop, because of the nature of the insect, the sunflower head moth, it is best that a grower do what he can to get a uniform stand."

The oil-seed sunflower is crushed for oil. Many of last year's new planters had hoped to tap into this market, but a proposed oil-seed crushing market in Lubbock never materialized.

"So there were some acres that were planted with the intent that they would come to Lubbock for crushing on the oil-seed sunflower, but then that company decided not to crush

after a lot of sunflowers had been planted," Trostle said.

"The irony there is the prices have rocketed up since a lot of sunflowers were planted. We're looking at \$12 per hundred-weight in some oil-seed circumstances, and last year we were looking at \$8.50 per hundred pounds."

Most of sunflower production in Texas is in the High Plains. Centers include Lubbock, Plainview, Floydada, Pampa and around Dumas and Stratford.

"There's a processor for confectionary in Lubbock, so that makes delivery easier and there's not a lot

of trucking involved," Trostle said.

"A lot of the market in the Panhandle, north of Amarillo, is a combination. You have confectionary, and those guys are close enough to the market in western Kansas that you'll see more oil-seed acres up there.

"The nearest market this year would be in Goodland, Kan., and that is about 450 miles north of Lubbock. We estimate that the freight up to Goodland and back would run about \$1.50 per hundred pounds of sunflowers.

"We were going to have two (oil-seed) markets in Lubbock, but one of them

did not develop," he added.

The other market is associated with Red River Commodities in Lubbock.

The company primarily processes confectionary sunflowers, but also opened a bird-food plant last fall. So some oil-seed sunflowers are taken in Lubbock — for bird food rather than for crushing, he said.

"But most people in the South Plains region, if they're going to grow oil-seed, they are looking at the Red River market in Lubbock unless prices are really strong and then they'd be looking at shipping to Goodland."

ENTER MULESHOE JOURNAL'S NEW & IMPROVED FOOTBALL CONTEST!

## UP TO \$150 DOLLARS WILL BE AWARDED EACH WEEK

1st Place-\$25 2nd Place-\$15 3rd Place-\$10

NEW! PERFECT GAME BONUS \$100

### • RULES •

- Circle your choice as the winning team in each of the 17 games below.
- The entry with the most correct selections will win. In the event of a tie, the entry which picks the closest to the actual tie breaker score will win.
- Entries may be mailed to Muleshoe Journal, P.O. Box 449, Muleshoe, TX 79347 or dropped off at the office during business hours (8:30-5:00). Please mark the envelope FOOTBALL CONTEST.
- Entries for this week's contest must be received at the office or post-marked by **5 P.M. MONDAY, SEPT. 2, 2002.**
- Muleshoe Journal employees are not eligible to win the contest.
- Decision of the judges will be final.

### PERFECT GAME BONUS

If you can choose every game correctly and be within 10 points of the tiebreaker score, we'll throw in a \$100 bonus! Turn your entries in early because only the first perfect entry (if any) from each week is eligible for the \$100 bonus!

### GAMES OF SEPT. 6-9, 2002

You must fill in every blank!

Name: \_\_\_\_\_  
 Address: \_\_\_\_\_  
 Phone: (\_\_\_\_\_) \_\_\_\_\_  
 Date turned in: \_\_\_\_\_ Hour: \_\_\_\_\_

### TIE BREAKER



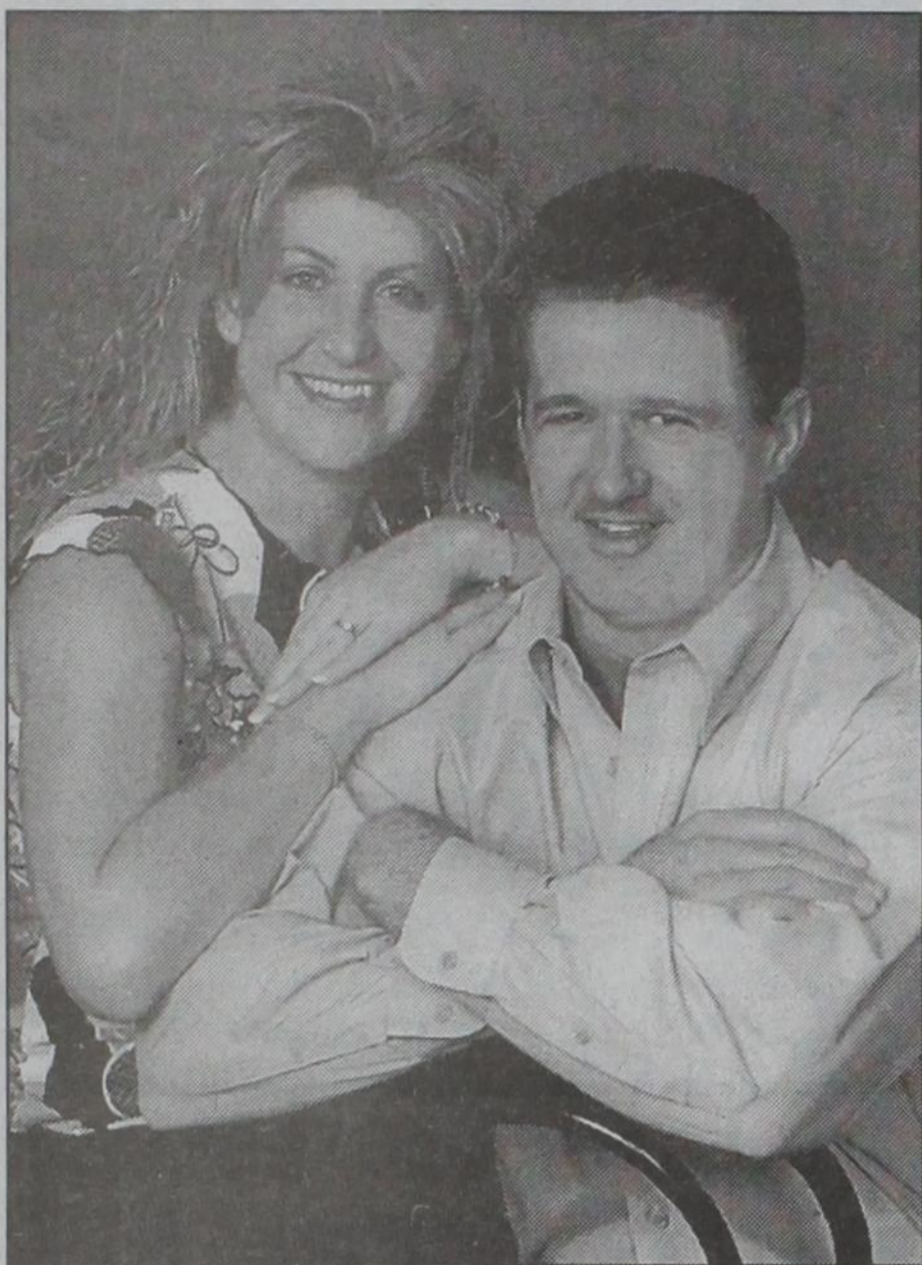
**IRA AT WHITHARRAL**

Combined Total of Both Teams: \_\_\_\_\_



 <b>Wilson Drilling Co.</b> W. Hwy. 84 • 272-5521 <b>VALLEY AT ASPERMONT</b>	 <b>Dale Oil Co., Inc.</b> 413 W. American • 272-5576 <b>SUNDOWN AT SPRINGLAKE-EARTH</b>
 <b>Leal's RESTAURANT</b> 1010 W. American • 272-3294 <b>SWEETWATER AT GRAHAM</b>	 <b>MULESHOE MOTOR CO.</b> 1225 W. American • 272-4251 <b>LUBBOCK COOPER AT LAMESA</b>
 <b>James Crane Tire Co.</b> 107 Main St. • 272-4594 <b>FRENSHIP AT PALO DURO</b>	 <b>West Camp Gin, Inc.</b> West Camp • 925-6681 <b>LORENZO AT BOVINA</b>
 <b>Bailey County Farm Bureau</b> 1612 W. American • 272-4567 <b>ABILENE AT LUBBOCK MONTEREY</b>	 <b>Maple Coop Gin</b> Maple • 927-5501 <b>ROTAN AT THROCKMORTON</b>
 <b>Decorators Floral &amp; Gifts</b> 616 S. 1st • 272-4340 <b>CAPROCK AT MULESHOE</b>	 <b>Muleshoe Journal</b> 272-4536 <b>BORDEN CO. AT MEADOW</b>
 <b>McDonald's of Muleshoe</b> 1315 W. American • 272-3333 <b>COLORADO STATE AT UCLA</b>	 <b>Five Area Telephone West Plains Telecommunications</b> 302 Uvalde • 272-5533 <b>TULANE AT HOUSTON</b>
 <b>McCormick Seeds, Inc.</b> 400 E. Ash • 272-3156 <b>TX A&amp;M-KINGSVILLE AT SW TEXAS STATE</b>	 <b>Dent &amp; Co.</b> 2800 W. American • 272-4286 <b>DAWSON AT SOUTHLAND</b>
 <b>AZTECA MILLING LP</b> E. Hwy. 84 • 272-6701 <b>EAST CAROLINA AT WAKE FOREST</b>	 <b>M-PYRE AUTO SALES, INC.</b> 1112 W. American • 272-7777 <b>BALL STATE AT MISSOURI</b>
 <b>Muleshoe Co-Op Gin</b> Darwin Robertson • 272-4794 <b>MEMPHIS AT OLE MISS</b>	

# ENGAGEMENT



## UNDERWOOD-DANIEL

Jim and Lorraine Sandoval of Hereford announce the approaching marriage of their daughter, Kara Underwood of Plainview, to Todd Daniel of Lubbock, son of Jim and Paula Daniel of Lazbuddie. The bride-elect is a graduate of the Texas Tech Health Sciences Center School of Nursing. She is a surgical nurse at Covenant Hospital in Plainview. The prospective groom is a graduate of Amarillo College and is a sales associate at Zimmer-Baker Associates Inc. The wedding is scheduled for Oct. 12 at St. Paul Historical Church in Lubbock, with a reception following the ceremony. Invitations have been sent.

## Men also get eating disorders

HOUSTON — Females are not the only ones falling victim to obsessive pursuits of "the perfect body." About 10 percent of patients diagnosed with an eating disorder are male.

"Typically, males who develop an eating disorder start off with a weight problem," said Dr. Jana Rosenbaum of the Baylor College of Medicine eating disorders program in Houston. "They try to diet; it doesn't work, and they restrict their food even more," she added.

About 45 percent of binge eaters are men, Eating they consume large amounts of food in short periods of time, feel out of control, and often feel ashamed. Bulimics also consume large amounts of food, followed by purging. Unlike female bulimics, who often turn to self-induced vomiting or laxatives, males often purge through excessive exercise. Anorexia, or self-starvation, is the least diagnosed disorder. Signs to look for include extreme weight loss, social isolation, avoiding situations where food is the focus and visits to the bathroom after meals.

# TODAY'S RECIPE

## YUKKAI JANG KUK (Korean Hot Chili, Beef and Onion Soup)

- 1 lb. braising beef
- 8 cups water
- 1 1/2 Tbsp. hot chili powder
- 2 Tbsp. sesame oil
- 12 green onions
- 2 tsp. crushed garlic

- 1 Tbsp. white sesame seeds, toasted and ground
  - 1 tsp. sugar
  - 1/2 tsp. white pepper
  - 1 1/2 Tbsp. dark soy sauce
- Cut the beef into cubes and place in a saucepan with the water. Bring to a boil, then reduce the heat and simmer gently for

1 1/2 to 2 hours, until the meat is falling apart. Mix the chili powder with the sesame oil. Trim and shred the green onions. Heat the chili powder and sesame oil in a pan and fry the green onions with the garlic for two minutes. Add the sesame seeds, sugar,

pepper and soy sauce; fry for two to three minutes over medium heat. Lift out the meat, drain well and toss in the pan for a few minutes. Return the contents of the pan to the stock and bring to a boil, simmering until the soup is well-flavored. Serves 6

# DOWN THE STREET

By LEAH BELL  
Journal writer

Walker Aufdenkamp was visited recently by his father, Kevin, who lives in Nebraska but wanted to see Walker off to school. Walker's mom is Lisa Aufdenkamp.

Terral King of The Connection Warehouse on Main Street recently got back from a RadioShack convention in Nashville. He saw a lot of new merchandise and had a lot of fun but said he is glad to be back home with his wife, Amy, and their two sons, Terran and Cambry.

He said 6-month-old Cambry is doing "fantastic" after having surgery July 22 to correct craniosynostosis (lack of a soft spot on the skull).

Mary Jane De Hoyos says she and her husband, Mario, received a call Aug. 13 from Mario's son, Rocky. He's been stationed in Kuwait since Aug. 3. The De Hoyoses had called Rocky earlier to let him know about the disappearance of his sisters, Erin and Veronica (a story that had a happy ending); his call was to let them know he had received their message.

Shortly after high school graduation, Rocky enlisted in the Army for a two-year stint. During the call, he told his parents "don't worry about me."

His stepmother says he hasn't seen any action since he enlisted Feb. 14. He has seen some of America, though—basic training was in Kentucky and then he was stationed in Georgia in July before leaving for Kuwait.

She added that he should be back in Georgia by late September.

Wanda Hooten has a "good neighbor" report about Kevin Smith (manager of the Bailey

County Coliseum).

She said she and her husband, Lary, had taken a short trip recently and she accidentally left their garage door wide open (yes, she admitted it!).

Smith noticed the oversight and called Lary Hooten's sister, Gayla Gear, who rushed over and shut the door before crisis could strike.

The guilty party said she thought this is just the most "neighborly" and nice thing for the two of them to do.

Hooten also said Mike Richards is working with newly elected Rotary President Mike Cleavinger on a Rotary grant to buy camping equipment for the Muleshoe Boy and Cub Scouts. If the grant is approved, it could mean significant money for the Scouts.

Steve Black and Steve Gartin are two fathers who have just sent their kids to West Texas A&M in Canyon.

Gartin said his daughter, Britni, is rooming with Rendi Hodge (also from Muleshoe) and is thinking about becoming a coach.

Clint Black has just moved into his first apartment in Canyon and is excited to get back to classes. His father said Clint, along with TJ Hutto and James Barrett, spent the summer spraying potatoes for Springlake Potatoes and Barrett Farms.

Hutto is back at Baylor and Barrett has returned to Texas A&M in College Station for the semester. One result, Steve Black said, is that "Kuka's is going to miss the tater boys!"

Go Mules!

Kickoff The Season In Style!

Williams Athletics

1405 W. American Blvd. • Muleshoe • 272-6853

We'll Bend Over Backwards To Make Sure You Have Fun!

## MULESHOE SPORTS ACADEMY

2309 W. American Blvd.

Now Enrolling Fall Classes

Tumbling  
Trampoline  
Gymnastics

- Fun learning environment for all ages
- 400 sq. ft. free foam pit
- Builds self-esteem and skills for all sports

USA Gymnastics Safety Certified Staff

Call Now To Enroll!

(806) 891-1762 or (806) 227-2234

## JUST FOR FUN

1	2	3	4	5	6	7	8	9	10	11	12	13
14				15					16			
17				18					19			
20			21						22			
23		24				25	26					
		27				28			29	30	31	
32	33	34			35						36	
37				38							39	
40			41						42			
43		44					45					
		46				47			48	49	50	
51	52	53				54					55	
56				57	58						59	
60				61							62	
63				64							65	

Clues ACROSS

1. Chemical
5. Small herring
10. Paddles
14. Count on
15. Run
16. Gusto (Italian)
17. Joyous
18. Superior
19. Dungaree
20. United States
21. Made cooler
22. Prestiges
23. Anagram of tsipyss
25. Alligator
27. Undivided
28. Crushing
32. Discharge
35. Subarctic forests
36. Express pleasure
37. Depression
38. Roman general
39. Giant
40. Poorly
41. Sound

Clues DOWN

1. Giant
2. Little
3. Stay
4. A shag rug made in Sweden
5. Coinage
6. Sustains
7. Incursion
8. Official document
9. One and only
10. Grammatical constituent
11. Structure
12. Monetary unit
13. Male offsprings
21. Anagram of istrn
22. Seat
24. Make up
25. Change state
26. Indian music
28. Dish
29. Anagram of ogai
30. Informer (British)
31. Butter used in Indian cookery
32. Dark
33. Wind
34. Wings
35. Sets
38. Make smooth
39. Stew with chickpeas
41. Overlay with wood
42. Curved shape
44. Abilities
45. Filled
47. Terminate
48. Glossy
49. Evolve
50. Anagram of ablna
51. From a distance
52. Not one
53. Amorphous shape
54. Think
57. Figure
58. Adult female bird
59. Watering place

Crossword Answers

N	B	O	V		O	S	S	O	N	S		B	O	S	
V	O	I		E	R	N	S	O		T	I	N	V		
	P	L	S		O	V	E	H	V		L	O	O	F	
V	O	I		T	V	E	L			T	I	A	N	V	
T	E	N	O		L	O				B	O	I	X		
E	X	O	T												
H	E	D	O												
H	E	Y													
D	N	T	I												
S	T	V	E	S											
O	I	N													
B	R	V	O												

## Muleshoe Cattle Market

SATURDAY, AUG. 24, 2002

### REPRESENTATIVE SALES

1535 head of cattle, 137 hogs and 323 sheep and goats for a total of 1,995 animals were sold at the August 24th sale. Market steady on almost all classes of cattle.

The Muleshoe Cattle Market is brought to you each week by Muleshoe Livestock Auction, located east of Muleshoe on U.S. 84. Muleshoe Livestock conducts sales every Saturday, beginning with hogs, sheep and goats at 10 a.m. and cattle following at approximately noon.

#### FOR INFORMATION ON SALES OR TO CONSIGN CATTLE, CALL (806) 272-4201

Seller, City	#	Type	Wt.	CWT or PH
Jill McCain, Portales, NM	17	Hol. Bulls	154 lbs.	at \$120.00
Buddy Rysasey, Hartley	11	Hol. Bulls	171 lbs.	at \$118.00
Mario Melendez, Causey, NM	37	Hol. Bulls	195 lbs.	at \$118.00
Schaap Dairy, Portales, NM	23	Hol. Bulls	250 lbs.	at \$111.00
Jay Brandenburg, Portales, NM	5	Hol. Strs	257 lbs.	at \$106.00
J-H Dairy, Texico, NM	47	Hol. Strs	309 lbs.	at \$93.00
Douglas Floyd, Seagraves	4	Red Bulls	331 lbs.	at \$115.00
Max Davis, Portales, NM	7	Mxd. Strs	332 lbs.	at \$117.00
Max Davis, Portales, NM	7	Char/Blk. Bulls	432 lbs.	at \$95.00
Buddy Moore, Vega	3	Char. Strs	382 lbs.	at \$107.00
ADN Livestock, Hereford	5	Mxd. Strs	431 lbs.	at \$97.50
Ginger Byrum, Plains	4	Mxd. Bulls	431 lbs.	at \$93.00
FM Farms, Brownfield	4	Char. Strs	540 lbs.	at \$88.50
Mike Cleavinger, Muleshoe	12	Mxd. Strs	632 lbs.	at \$81.00
Douglas Floyd, Seagraves	5	Mxd. Bulls	605 lbs.	at \$74.50
Douglas Floyd, Seagraves	9	Mxd. Hfrs	348 lbs.	at \$86.50
Douglas Floyd, Seagraves	7	Mxd. Hfrs	461 lbs.	at \$81.00
Roman Randon, Crosbyton	4	Blk. Hfrs	215 lbs.	at \$230.00
Ginger Byrum, Plains	5	Char. Hfrs	235 lbs.	at \$86.00
Max Davis, Portales, NM	5	Mxd. Hfrs	352 lbs.	at \$91.00
Max Davis, Portales, NM	3	Blk. Hfrs	455 lbs.	at \$87.50
Jim Lawson, Olton	8	Mxd. Hfrs	616 lbs.	at \$73.00
Barbara Mutschler, Muleshoe		Red Pair P		\$760.00
Israel Azua, Sudan		Red Pair		\$750.00
Israel Azua, Sudan		Char. Cow P6		\$550.00
7C Cattle, Bovina	2	Char. Cows P		\$600.00
R.D. Jones, Brownfield	3	Blk. Cows P		\$610.00
R.D. Jones, Brownfield		Blk. Cow	1430 lbs.	at \$38.00
Jerry Geisbrecht, Muleshoe	2	Char. Cows	1065 lbs.	at \$37.25
Israel Azua, Sudan		Char. Cow	1330 lbs.	at \$37.50
Douglas Floyd, Seagraves	2	Blk. Cows	1315 lbs.	at \$37.50
Douglas Floyd, Seagraves		Red Bull	1795 lbs.	at \$49.50
Buck Gossett Jr., Anton		Red Bull	1935 lbs.	at \$49.75



Courtesy photo

### Business of the month

Gathered recently to honor Nieman Realty as the Mulshoe Chamber of Commerce business of the month for August are (from left) Diane Nieman, George Nieman, Chamber President Mike Holt and Chamber Manager Jan Thompson.

## State floats 39-day pintail season

SPECIAL TO THE JOURNAL

AUSTIN — When it comes to managing waterfowl, a natural resource that covers a lot of ground as it cycles across North America annually, the basic philosophy for hunting is "don't take more than you can make."

The bottom line this year: Most ducks — except for canvasbacks and pintails — are holding their own.

Waterfowl hunting-season guidelines are set at the federal level each summer based on duck breeding populations and habitat conditions.

For ducks, the U.S. Fish and Wildlife Service uses mallard populations as the benchmark for the general framework and individual states are given flexibility within those parameters.

The good news is that mallard breeding population estimates remained unchanged from last year at 8.52 million birds, which means hunters can look to another 74-day duck season and a six-bird daily bag limit.

Aside from mallards, however, six of the remaining nine duck species that comprise the breeding population survey index remain below the long-term numbers the service established as target goals within the North American Waterfowl Management Plan.

This doesn't mean they are not plentiful, because most are, however, waterfowl managers are concerned because of declines in pintail and canvasback populations.

Pintail breeding population estimates this year are at their lowest on record and as a result, the service has restricted hunting to 39 days.

"We are guided by the reality that it is so hard to 'stockpile' ducks when habitat is bad — and yet when it gets good again, they can recover fairly quickly," said Vernon Bevill, Texas Parks and Wildlife Department game bird program director.

"That is, except pintails, which breed in the mostly heavily farmed areas of Canada above Montana. They have not established a strong recovery during the wet years because they didn't adapt and because their primary breeding area didn't recover as well as the others areas did," he said.

As a result of the reduced season length, Parks and Wildlife will recommend a season structure that will run the last 39 days in each split.

This will allow for the taking of pintails when they are at the height of plumage and more readily identifiable.

The same can be said of canvasbacks.

Last year, as a result of habitat concerns, the service cut canvasback hunting to 25 days, and the resulting reduction in harvest levels fell within acceptable limits.

But because canvasback numbers still dipped below the breeding population threshold allowed by the service for hunting harvest, the season for this species was closed altogether for the first time since 1993.

"Canvasback harvest dropped to just over 36,000 for the entire nation with the season-within-a-season approach last year," Bevill said. "However, the service noted that the breeding population was 487,000 and below the population goal of 500,000."

The problem with the current management approach to canvasbacks, Bevill said, is that the waterfowl management plan's population goal for this species is only 560,000 — about 12 percent above the threshold for hunting.

"The Central Flyway Council is recommending to the service that the hunting season threshold be revised to 400,000, which is more realistic. We've hunted canvasbacks below 400,000 in the past," he added. "Hopefully, that's something that can be worked out next year."

But, for this year, the service did grant a petition from the National Central Flyway Council to extend the duck season to the last Sunday in January.

After analyzing hunter preferences from a recent mail survey, Parks and Wildlife officials are proposing the later closure in the North Zone only.

If adopted by the agency at its Aug. 29 Commission meeting, the North Zone season would run Nov. 9-10, close for five days, then reopen Nov. 16 through Jan. 26.

Hunting for pintails in the North Zone is being proposed for Dec. 19 through Jan. 26. The youth-only season in the North Zone is proposed for Oct. 26-27.

"Hunters in the north told us they need the later closure, the service gave us this opportunity and we are amenable to it," Bevill said. "However, in my view it will take a very special set of severely cold and snowy

weather conditions in Kansas and Oklahoma for our hunters to really take more ducks with the extra week at the end. And this is weather we haven't been seeing in recent years."

Conversely, the survey showed a higher preference for more hunting opportunity in December in the South Zone, according to Bevill.

States cannot open the liberal conservation season for light geese until all other migratory seasons are closed.

By ending the South Zone duck season on Jan. 19, the conservation season can begin the next day.

"We believe losing that additional week of harvest opportunity for light geese is not an equitable tradeoff," Bevill said.

As proposed, the South Zone would open Nov. 2 through Dec. 1, close for five days, then reopen Dec. 7 through Jan. 19. Pintail hunting would be allowed Dec. 12 through Jan. 19. The youth-only season would run Oct. 26-27.

In the High Plains Mallard Management Unit, which comprises most of the Panhandle, the proposed dates for duck season are Oct. 12-14 and Oct. 19 through Jan. 19. Pintail hunting in this area would be Dec. 12 through Jan. 19. The youth-only season would run Oct. 5-6.

The daily bag limit for ducks is six and can include no more than five mallards or Mexican mallards, only two of which may be hens; three scaup (lesser scaup and greater scaup in the aggregate); two wood ducks; two redheads; one mottled duck and one pintail (during the open season for pintails).

The possession limit is twice the daily bag.

"Habitat problems, species declines, late frameworks and other variables have combined this year to make the final season regulations a bit more complicated than they have been for the past five or six years," said Dave Morrison, Parks and Wildlife waterfowl program leader.

"The late framework makes coordination of the sandhill crane and goose seasons difficult and could make things complicated for hunters," he added.

Hunters in the Eastern Goose Zone may need to carry a day planner with them afield this year.

Because the eastern goose boundaries cross both duck zones, there is a patchwork

## RETIRED TEACHERS

Lucy Faye Smith and Mary Nell Bleeker recently attended the executive meeting of the District 17 retired teachers in Lubbock.

President Buddy Sexton announced that the two district meetings are scheduled for Sept. 23 and May 9. All members are encouraged to attend.

The Texas Retired Teachers Conference will be April 23-26 in Wichita Falls. This will mark the 50th anniversary of the organization. Plans report-

edly are being made for a great celebration.

The local meeting is planned as a Sept. 20 noon luncheon in the 16th and D Church of Christ fellowship hall.

At that time, Sexton will bring members up to date.

Regular meetings are held the third Friday of the month at 16th and D; anyone interested is invited.

**MULESHOE MOTOR CO.**

1225 W. American Blvd. • 272-4251 • 1-800-432-7617

**We Flip For The Mules!**

**GREAT PRICES ON 2002 EXCURSIONS WITH A \$5000 FORD REBATE OR 0% APR FOR 60 MONTHS!**

**Come See Us Mule Fans!**

Take Advantage of Our **FULL OF MULE PRIDE DEAL** Good on Every Preowned Vehicle

**For every touchdown the Mules score against Seminole this Friday, you'll get an extra \$100 off our already low used vehicle prices!** (Offer good until next Friday's game with Caprock!)

### "60 Minutes" Discovers the Worst Problem with Movies

One of the small advantages (and I think there are also some large ones) of our church's early afternoon group meetings (instead of a second service) is that occasionally I get to watch CBS's "60 Minutes." I don't always agree with it (who does?), but I get to watch it, and I enjoy the format. The producers usually do at least a credible job of taking a stab at reporting real news, digging into what rational people might consider to be real issues, whether you agree with their slant (decidedly to the left) or not.

But listening to a Lesley Stahl piece dealing with the evils of

Kids don't need to start.

But I do not understand why, in the moral sewer of our time, smoking is the primary piece of flotsam folks like Lesley Stahl seem to be able to spot. She whines, "As far as we can tell there seems to be more smoking than ever in the movies and on TV."

She browbeats a movie director into confessing in low tones, "I think it's wrong." This new convert, by the way, is exactly the same sort of fellow who would almost move you to tears with a rousing defence of any other obnoxious, indecent, and distasteful act: "My movies just reflect society as it is. To refuse to show the truth would violate my artistic trust." So has society quit smoking yet?

And another movie mogul says of tobacco-puffing actors and actresses that what they do in their own lives is totally their own business, but that they have a responsibility to be positive role models on camera.

Excuse me while I throw up.

Yes, this is a serious public health issue, Stahl snivels. So, it's not a public health issue when character after character plays musical beds with anyone they like and alcohol flows like the Nile? When body parts are blown all the way from first flicker to the end credit? When the garbage we cable into our homes stinks worse than the waste that leaves in our sewers?

Anyone who can view most modern films and find smoke the most morally offensive and dangerous influence there is the sort of nincompoop who could view a Nazi concentration camp and come away mainly concerned that the inmates don't have access to dental floss.

Curtis Shelburne is minister of the 16th & D Church of Christ in Mulshoe.

**Focus On Faith**

Curtis Shelburne

smoking on the silver screen, I almost reached for a cigarette. Actually, I almost spontaneously combusted without any help from tobacco at all.

Now, may I be clear. I don't like smoking, and I don't like to be around smoking. The sooner it is banned completely in restaurants, the happier I'll be.

But Stahl was, in deadly serious tones, sniffing about Hollywood's irresponsible portrayal of many characters as smokers, as if that was Hollywood's worst disservice to us.

Do I want young people to be encouraged to smoke? Of course not! It's an obnoxious, unhealthy, expensive [please supply your own negative adjectives] habit that 9 out of 10 smokers would give their eye teeth to be rid of! (And most smokers will be amen-ing now more loudly than non-smokers.)

**You can't predict the future, but you can plan for it now.**

*Ask about Long Term Care Insurance the State Farm Way*

- flexible • affordable
- backed by good neighbor service

Like a good neighbor, State Farm is there.®

**statefarm.com**

State Farm Mutual Automobile Insurance Company  
Home Office: Bloomington, Illinois

Call for details on coverage, costs, restrictions and renewability

P-98409 12/00

**Call State Farm Agent:**

**Mark Morton**  
101 Main Street  
Mulshoe, TX  
806-272-7519

**Mulshoe Independent School District**

**Special Education Department**

Serving the Needs of Our Community

Do you know a child who shows signs of developmental delay, on-going learning problems, behavioral or medical problems that interfere with learning?

**Let us help. Call Mulshoe ISD, Special Education Office for more information at 272-7323.**

**Distrito Independiente Escolar de Mulshoe ISD**

**Educación Especial**

Serviendo las necesidades de nuestra comunidad

¿Conoce usted a alguien que muestra las señas de desarrollo retrasado, problemas con el aprendizaje, problemas de comportamiento (conducta) o problemas médicos que intervienen en el aprendizaje?

**Permítanos ayudar. Llame Mulshoe ISD, Oficina de Educación Especial para más información llame a su distrito escolar o a 272-7323.**

# Herpes increasing rapidly in adolescents

SPECIAL TO THE JOURNAL  
HOUSTON — During a period of increased attention on HIV/AIDS, genital herpes has quietly gained momentum. "Most people who have genital herpes don't even realize it," said Dr. David Twardy, professor of medicine-infectious diseases at Baylor College of Medicine. "This is because they have never had symptoms of the disease or may not have noticed symptoms they've had."

More than 67 million Americans — about one in every five — now have genital herpes, according to the National Institute of Allergy and Infectious Diseases. The disease, even with the insistent call for safe sex from health-care professionals, has exploded since the 1970s.

When there are symptoms, they can be different in each person.

Most often, when a person becomes infected with herpes for the first time, the symptoms will appear within two to 10 days. These first episodes of symptoms usually last two to three weeks.

Early indications of the disease include itching or a burning feeling

in the genital or anal area, pain in the legs, buttocks or genital area, discharge of fluid from the vagina or feeling of pressure in the abdomen.

Anglo adolescents have seen the quickest increases. White youths between the ages of 12 and 19 are five times more likely to have herpes today than were their counterparts 30

years ago.

An individual catches the disease by having unprotected sex with an infected partner during an outbreak (a time in which the disease is active and there are sores on the genitals).

Future outbreaks may only happen two or three more times within a patient's lifetime, or they may be as frequent as every month,

Twardy said.

Although there is no cure for genital herpes, there are several medications a physician can prescribe to treat it.

"The threat of catching herpes is very real, and should be taken seriously," he said. "As with most other sexually transmitted diseases, use of a condom can help protect someone from catching herpes."

## LETTER TO THE EDITOR

Dear Editor,

Once again, the Muleshoe community has come together in a spirit of generosity and service in carrying out its third annual community-wide information, screening and referral health fair.

And once again, I am inspired by the awesome staff of your local health and service agencies, hospital, nonprofits and individuals who work so hard to put it all together.

From the gentlemen who put up the tents and jump station, the gentlemen from Sudan with the great music, the dancers who give of their talent, the ladies serving snacks and juice, KMUL, the sponsors, service agencies from Lubbock, all proof positive of dedication to the well-being of a community.


I have so enjoyed working in your community and

the great response to the task of getting service information out to those in need of services; that we are able to also provide prizes, music and entertainment is icing on the cake.

My gratitude to all and congratulations for a job well-done.

**SOILA REYES**  
Catholic Family Services  
Plainview

Happy  
**1st**  
Birthday  
Ethan!



Love always,  
Grandma Pat  
Mee Mar  
Aunt Tisha  
& Uncle Jeff



**LET'S TWIST AGAIN!**  
**TWISTY BEADS ARE BACK!**  
Mingle Your Beads, Coral and Turquoise Jewelry for Today's Hottest Look!

**Antiques & Fine Things**  
2104 West American Blvd.  
272-4217

# "THE GRAY PAGES" BUSINESS DIRECTORY

## AUTO BODY REPAIR/PAINT



**BURRIS COLLISION CENTER**  
Jackey W. Burris, Owner  
402 North First-Muleshoe  
272-3031 or 946-8655

Free Estimates  
Come see us for all your auto body repair and glass needs!  
Experienced Technician  
I-Car Certified • PPG Certified  
Auto Glass Repair & Replacement



**SHIPMAN'S BODY SHOP, INC.**  
410 North First  
MULESHOE, TEXAS  
272-4408 Night: 272-3318

## AUTO REPAIR

• All Phase General Mechanical  
• Electrical • A/C • Front-End • Brakes

**HI-TEK AUTOMOTIVE**  
Complete Diagnostic & Repair Center  
Foreign & Domestic  
322 N. 1st • 272-3480  
Joe Flores & Shawn Rajno, Owners

## CONSTRUCTION

**TAPIDERO CONSTRUCTION**

Dirt Work • Concrete  
Backhoe Service  
(505) 273-4376

P.O. BOX 42 • CAUSEY, NM • FAX (505) 356-1706

Rent this spot for only  
**\$15.17 a month!**

6 month commitment  
Call 272-4536 for details.

## COSMETICS

**MARY KAY®**  
**Barbara Justiss**  
Independent Beauty Consultant

1818 W. Avenue D  
Muleshoe, Texas 79347  
Home: 806-272-5419  
Mobile: 806-683-6386  
Web page: www.marykay.com/bjustiss  
e-mail: bjustiss@fivearea.com

## CUSTOM FARMING/HARVESTING



**Albo's Custom Harvesting**

NEWEST, MOST COST EFFICIENT EQUIPMENT for combining Black-Eye Peas, Milo, Etc. Also, Wheat Planting (One No Till Drill, One Regular) & Shredding

272-5385 or 946-8841

## ELECTRONICS

**THE CONNECTION WAREHOUSE**

RadioShack Dealer

Catch the Digital Wave!  
• Digital Satellites • Digital Cell Phones  
• Digital Cameras • DVD • Music  
• Computer Access • And More!

117 Main • 272-5532 • Muleshoe  
Don't forget our Appliances & Free Delivery!

## FINANCIAL SERVICES

Serving Individual Investors Since 1871

Stocks	CDs
Mutual funds	Money market funds
Bonds	IRAs
Government securities	Tax-free bonds

...and much more.

**Edward Jones**  
Locally, talk with  
**KATHERINE SCHRAEDER**  
220 S. Main St. - Muleshoe  
806-272-4102

## FUELS

**West Texas Gas, Inc. and GASCARD®**

- 24 Hour Gasoline & Diesel
- Propane
- Dripoil
- L.P.G. Motor Fuel
- BBQ & RV Bottles & Parts
- Holland BBQ Grills

Open: M-F 7:30 to 5:30; Sat. 7:30 to Noon  
**North 1st St., Muleshoe TX**  
(806) 272-3157

## HANDY MAN

They Call Me...  
**MR. FIX IT!**

ALL TYPES OF REPAIRS & SERVICES

Stephen L. Phillips  
(806) 946-9069

"You name it, I can fix it!"  
• Residential • Agricultural • Ace Pump  
Repair • Service Calls on Sprinklers • Etc.

## INSURANCE

**Laurie Winchell**  
Insurance Agent

**FARMERS**

Call for a Free Quote.

• HEALTH • AUTO • LIFE  
• HOME • BUSINESS

1602 W. American Blvd., Muleshoe  
272-7548 • FAX 272-4756

## IRRIGATION

**LAWN SPRINKLER Repair & Installation**

Muleshoe Lic. # 9617 Backflow Lic. # 496129967

**MULESHOE SOD FARMS**  
PH: 965-2310 FAX: 965-2662  
Email: mslarms@fivearea.com  
ROGER & REGINA CLARKSON  
"20th year serving Muleshoe"

## LANDSCAPE

**MULESHOE SOD FARMS**  
COMPLETE LANDSCAPING SERVICE

TURF • FLOWERBEDS • TREES  
PONDS • HARD SCAPING

We have bedding plants & Trees!

806-965-2310  
FAX 965-2662 mslarms@fivearea.com  
"20th year serving Muleshoe & the surrounding area" Roger & Regina Clarkson

## LAWN CARE

**MULESHOE SOD FARMS**

"Serving this area for 20 years."

Lawn Mowing  
Lawn Spraying  
Hedge Trimming  
Flowerbed Maintenance  
Chemical Lic. # 314852

806-965-2310  
FAX 806-965-2662  
Email: mslarms@fivearea.com  
Roger & Regina Clarkson

## LONG TERM CARE FACILITY

Muleshoe Area Healthcare Center

**Park View**  
1100 W. AVE. J • MULESHOE, TX 79347

- Long Term Care
- Respite Care
- Special Care Unit for victims of Alzheimers & related dementias

For Info. Contact Ruth Kitchens  
(806) 272-7578  
www.mahdservices.org

## OFFICE SUPPLIES

**Williams Brothers Office Supply**

FAX Service  
Computer Supplies  
Printer Paper  
Computer Stationery  
Complete Line of Office Supplies

Roger & Dawn Williams

1405 W. American Blvd.  
Muleshoe • 272-3113

## PEST CONTROL

**PHILLIPS PEST CONTROL**

- Serving ALL ornamental lawn, turf care & pest needs
- Fertilizers • Free Estimates
- We carry **Termitone** products.
- Over 25 years of experience!

272-5760 TX Lic. #314908

CALL 272-4536 TO ADVERTISE!

## PLUMBING

**RUBEN LEAL'S PLUMBING**  
Lic. #J-14510

Residential & Commercial Full Service Plumbing

- Gas Lines • Water Heaters
- Sewer Lines • Faucets/Disposals
- Water Lines • Toilets
- Slab Leaks • House Repipes
- Drains • Bathtubs

FREE ESTIMATES - ALL WORK GUARANTEED  
307 E. Dallas - Muleshoe  
272-3588

## RENTALS

**THE RENTAL PLACE**

Furniture, Appliances, TVs, Electronics, Etc.  
FREE DELIVERY

103 MAIN ST.  
272-4037 • Muleshoe

## RESTAURANTS

**Tammy's Kitchen**

Sandwiches • Fountain Drinks  
Homemade Pies  
Carry-Out Available

Open: 7:00 AM - 2:00 PM Mon.-Fri.  
Owned by Tammy Luera

308 Main Street - 272-4701  
Muleshoe, Texas

## TIRES

**GOODYEAR JAMES CRANE TIRE CO., INC.**

107 Main Street  
(806) 272-4594  
Mike Hahn, Owner

## TORTILLERIA

Los invitamos a que vicite  
**LA TORTILLERIA SAN FRANCISCO**

Los martes y los jueves para que lleve sus tortillas calientitas  
De las 6 de la mañana hasta las 10.  
De la mañana sabados y domingos venga para que sabore el rico menuudo y la rica barbaco de cabeza para comer aqui o para llevar.  
Tambien, tenemos un gran surtido de llerbas medicinales. ¡Los esperamos!

403 MAIN • MULESHOE  
272-3502 • Sr. y Sra. Aurelio Cuevas

## VEHICLE ACCESSORIES

**KC MUFFLER & MFG., INC.**

- ♦ 4" Exhaust for Diesel Pickups
- ♦ High Performance K&N Air Filters
- ♦ Performance Exhaust Systems
- ♦ Pickup & Car Accessories
- ♦ Chrome Tips

"Serving this area since 1979"  
425 N. 1st-Muleshoe-272-5333

ADVERTISING PAYS!  
**272-4536**

## VIDEO RENTAL

MOVIES FOR RENT OR SALE  
ENGLISH & SPANISH TITLES

If we don't have it, we'll get it for you!

**Estrada's Video**  
303 W. 15th St. • 272-5433  
10 am-10 pm DAILY Jose & Virginia Estrada, Owners



# Journal Classifieds

## STOP & SHOP

Deadlines are 5 p.m. Monday and Thursday

Call 272-4536

Page 9, August 29, 2002

### LEGAL NOTICE

#### NOTICE OF CONCENTRATED ANIMAL FEEDING OPERATION APPLICATION

TPDES Registration No. WQ0004510-000 APPLICATION. RICHARD CLAY BIRDWELL, Route 5, Box 73, Hereford, Texas, 79045 has applied to the Texas Natural Resource Conservation Commission (TNRCC) for a new TPDES Registration No. WQ0004510-000 to authorize the applicant to operate a dairy operation at 4,000 total head of which 3,000 are milking head in Bailey County, Texas. The application was received by TNRCC on May 31, 2002. No discharge of pollutants into the waters in the state is authorized by this registration except under chronic or catastrophic rainfall conditions. All waste and wastewater will be beneficially used on agricultural land.

The proposed facility will be located on the west side of County Road 103, at the intersection of County Road 103 and Farm to Market Road 746, and this intersection is approximately 7.5 miles west of the intersection of Farm-to-Market Road 746 and State Highway 214 in Bailey County, Texas. The facility will be located in the drainage area of the Double Mountain Fork Brazos River in Segment No. 1241 in the Brazos River Basin.

The application is available for inspection by the public during normal business hours at the USDA Service Center/NRCS Office, 105 East Avenue D,

#### NOTICE OF PUBLIC HEARING

The Commissioner's Court of Bailey County will conduct a public hearing on Monday, September 9, 2002, at 1:00 p.m. in the Commissioner's Courtroom of the Bailey County Courthouse, 300 First Street, Muleshoe, Texas. The purpose of said hearing is to take public comments concerning the proposed designation of the unincorporated area of Bailey County, Texas as a "Reinvestment Zone," a prerequisite to granting tax abatements. The Commissioner's Court will reconvene immediately following the public hearing. All interested citizens are encouraged to attend this public hearing. Published in the Muleshoe Journal, Thursday, August 29, 2002.

Written public comments should be submitted to the Office of the Chief Clerk, MC 105, TNRCC, P.O. Box 13087, Austin, TX 78711-3087. For additional information, about the application or the procedure for public participation in the registration process, individual member of the general public may contact the Office of Public Assistance at 1-800-687-4040. General information regarding the TNRCC can be found at our web site [www.tnrcc.state.tx.us](http://www.tnrcc.state.tx.us). Issued: July 17, 2002.

Signed: LaDonna Castañuela, Chief Clerk, Texas Natural Resource Conservation Commission. Published in the Muleshoe Journal, August 29, 2002.

### LEGAL NOTICE

#### NOTICE OF PUBLIC HEARING

The Commissioner's Court of Bailey County will conduct a public hearing on Monday, September 9, 2002, at 1:00 p.m. in the Commissioner's Courtroom of the Bailey County Courthouse, 300 First Street, Muleshoe, Texas. The purpose of said hearing is to take public comments concerning the proposed designation of the unincorporated area of Bailey County, Texas as a "Reinvestment Zone," a prerequisite to granting tax abatements. The Commissioner's Court will reconvene immediately following the public hearing. All interested citizens are encouraged to attend this public hearing. Published in the Muleshoe Journal, Thursday, August 29, 2002.

Written public comments should be submitted to the Office of the Chief Clerk, MC 105, TNRCC, P.O. Box 13087, Austin, TX 78711-3087. For additional information, about the application or the procedure for public participation in the registration process, individual member of the general public may contact the Office of Public Assistance at 1-800-687-4040. General information regarding the TNRCC can be found at our web site [www.tnrcc.state.tx.us](http://www.tnrcc.state.tx.us). Issued: July 17, 2002.

Signed: LaDonna Castañuela, Chief Clerk, Texas Natural Resource Conservation Commission. Published in the Muleshoe Journal, August 29, 2002.

### PUBLIC NOTICE

#### NOTICE OF SALE

The Bailey County Commissioners Court will offer for sale to the highest bidder various items of surplus and salvage property. All bids must be in writing and must refer to the item number being bid on. Bids must be placed in locked metal box on site items, at 400 S. First, Muleshoe, TX, Sparkles Self Storage No. 37.

All items will be sold "AS IS". The Court reserves the right to accept or reject any or all bids.

A complete listing of all items to be sold may be picked up at and all items can be inspected at the Sparkles Self Storage No. 37, at 400 S. First, Muleshoe, TX, from 9:00 A.M. till noon, September 9th through 11th. Bids will be opened at 9:00 A.M., September 12, 2002, at the Courthouse. Published in the Muleshoe Journal, Thursday, August 29, 2002.

### HELP WANTED

#### JOB OPPORTUNITY

The Bailey County Office of Texas Cooperative Extension is now accepting applications for the positions of secretary. Applications will be accepted until September 6, 2002. Forms are available at the Extension Office, 306 West 2nd Street, Muleshoe. Qualifications include computer skills, telephone and general office skills. Testing for the position will be administered. For further information or to pick up an application form, please come to the Extension Office. Texas Cooperative Extension is an Equal Opportunity Employer.

ATTENTION: WORK FROM HOME. \$500-\$2,000/mo. PT. \$3,000-\$7,000/mo. FT. Free booklet [www.Hand2HandInHealth.com](http://www.Hand2HandInHealth.com) Ph. #1 (800) 891-1585.

**MANAGER TRAINEE**  
\$525/wk avg.  
Call 766-7175

**1000 CUSTOMERS NEEDED!!**  
**LOANS, LOANS!**  
\$100-\$495  
CALL 272-3673  
**CONTINENTAL CREDIT**

#### NOW HIRING

**minsa** Minsa has several positions available in our Production facility. We are looking for hard-working individuals to fill these positions. If interested, please come to the main office at Minsa 1 1/2 mile east and fill out an application. EOE

Newspaper Carrier needed in Muleshoe for the Lubbock Avalanche Journal. Great part time \$\$ for someone willing to get up early. Looking for honest dependable person with good transportation. Call Customer Service at (806)762-8855.

**WANTED:** Experienced drivers for small trucking company. Must be at least 25 yrs. old and have 5+ yrs. of experience. For more information, please call **SIMNACHER TRUCKING at 800-578-4614.**

**Yard Maintenance** person wanted. You must know how to weld. Apply in person. Located 1 1/2 miles South of Farwell on State Line Road.

**Seeking Office Assistant** with experience in Microsoft Word and Excel. Ideal candidate will be a detail oriented self-starter who is at ease using computer-based applications. Send resumes to: Personnel, P.O. Box 564, Muleshoe, Texas 79347.

**LEAL'S** Now taking applications for waiters and waitresses. Please apply in person between 10:00 am and 11:30 am, Monday - Friday.

**Owner Finance.** 2 bdrm, 2 bath, 1 car attached garage. Fresh paint, new carpet, new wood floor in kitchen. Very nice inside and ready to move in. Large workshop. Call **Marty at 1-806-778-3788 or 1-806-385-1617.**

Sonic Drive-In is now accepting applications for dependable, mature, enthusiastic, friendly crewmembers for all positions. Apply in person at 1633 W. American Blvd. EOE

Cattle crew position in commercial feedyard. Individual with horse and cattle doctoring experience a plus. Excellent Health insurance and 401k retirement plan. For more info Call Darren (806)225-4400 ex 23 or come by Caprock 5 Bovina, TX

Production position available. Now accepting applications for production position at Hi-Pro Feeds. Company insurance, 401k, paid holidays. Must pass drug screen. Apply in person at Hi-Pro Feed in Friona.

**Covenant Home Health Care Littlefield** is actively recruiting a full time RN, and a full time RN or LVN for our energetic hometown office! We offer excellent rates and a sign on bonus! Please contact Scott Myers at 806-385-3255 or come by 311 W. 4th in Littlefield for more details on how to join our team!

Need RN to work Saturday-Sunday, 6 a.m. to 2 p.m. or 2 p.m. to 10 p.m. \$25/hour and benefits, long-term care experience preferred. Apply in person at 1241 W. Marshall Howard Blvd., Littlefield. Knight's Nursing Home.

**FOR LEASE**  
House for Lease. 3 bdrms., 2 bath, 8 miles north of Muleshoe on 214, 1 mile east. For applications, call (806) 965-2721, 788-1849 or 438-2900.

### REAL ESTATE

**11,766 ACRES (+/-), HOCKLEY COUNTY, TX.**  
To be sold in 25 tracts ranging from 177 to 1642 acres (+/-), with CRP payments from \$33 to \$41/acre. For more information check us out on the web [www.texpanland.com](http://www.texpanland.com) or call us at 1-800-959-9856.



For Sale - 3 bedroom, 1 bath. 510 W. 2nd. (915)573-6137 ask for Margie Lopez.

640 acres - Lazbuddie. Full allotments, good establish yields, good water, 4 sprinklers, 4 wells, improvements. Call 806-965-2895, mobile 806-946-9413

40 ACRE TRACTS: 2 1/2 Mi. N. of city limits on Hwy 214 & 1/2 Mi. E. to SW corner. \$600/A Fieldton - 800 gpm & circles 2 Farms - Earth. 1 1/2 E. of Whiteface 257 A. Irr. \$700/A. **LOTS MORE FARMS!** Farrar & Associates 806-894-4386

House for rent or sale. 505 E. Chicago Contact Pat Chisholm (806) 934-7801 work (806) 934-3755 home (806) 681-1008 cell

### Vic Coker Land Co. Agricultural Real Estate

- Approx. 5.6 acres, 2 miles from town, 3-2-2, brick home, Central air and heat, large master bedroom, large den with fireplace, approx. 2647 square feet of living space, outbuildings. Nice home and nice location.
- 40 Acres near Muleshoe, irrigated farm with side-roll sprinkler, nice barn, pens, outbuildings, 3 bedroom, 2 bath, all electric manufactured home. Nice operation.
- 307 Acres North of Muleshoe. 2 sprinklers, three wells, very good water. On pavement
- 132 Acres - Non-irrigated near Muleshoe, Allotted, Lays good.
- 160 Acres of dryland Northeast of Muleshoe. Lays Good. Has Allotments.
- 2-160 Acre tracts - North and Northwest of Muleshoe. Both have sprinklers, will divide. Very reasonably priced.
- 774 Acres of Native grass and 90 Acres Cultivated. Coyote Lake Area, Bailey County.
- 1800 Acres in Bailey County, 6 oversized sprinklers, 21 wells, 470 acres in C.R.P. Possible to divide.
- Great Home in Muleshoe, 4-3-3, brick, Cent. A&H, fireplace, built-ins, living areas, large kitchen, dishwasher, double oven, large refrigerator, lots of storage, tile roof, outdoor barbecue, sprinkler system front and back.
- Country Living with horse barn and roping Arena, 3-2-2, large kitchen, 2 living areas, basement, above ground pool, Muleshoe Area.
- Bailey County - Nice Brick Home on 320 Acres, Large Barn, 2 Sprinklers.
- West Camp Area - 480 Acres, 2 Brick Homes, 3 Center Pivot Sprinklers, Fenced. A Nice Operation.
- 320 Acres, Parmer County. 2 sprinklers, good water, excellent soil, on pavement
- Earth-Springlake Area - 160 Acres, Good Water, 1 Well, Center Pivot. Immediate Possession Possible.
- Northwest of Earth - 160 Acres. Lays Good. Light Water, Good Soil.
- Earth, 3-2-2, brick, Cent. A&H, fireplace, fans, self-cleaning oven, dishwasher, garbage disposal, nice carpets, 2 living areas, large fenced yard, separate guest room, metal storage building, extra insulation in ceiling, GREAT BUY at \$50,000.00

316 Main Street • Muleshoe, Texas  
Office 806-272-3100 Home 806-965-2468

### Subscribe Today!

Muleshoe and Bailey County Journal,

52 weeks a year, 1 issue per week!

\$22 Carrier (year),  
\$24 in-county (mail-year),  
\$26 out-of-county (mail-year),  
College Students \$22

Send Check to:  
Muleshoe Journal,  
P O Box 449,  
Muleshoe, TX 79347

We're striving to be your local news source!

### CHILD CARE

Will babysit, all day or by the hour. For more information call 272-3940.

### FOR SALE

FOR SALE  
1994 KAWASAKI VULCAN 500. 2,600 MILES. CALL 965-2411.

USED APPLIANCES FOR SALE  
WASHERS, DRYERS, FREEZERS, REFRIGERATORS. CALL 272-3091

High Definition - Big Screen TV for sale. Take on small payments. 1-800-398-3970.

Horizontal heater 120,000 BTU. Asking \$300. To see, contact Bill Bruce at 272-5114 or call 806-771-1406

2-McDon 9300 1-273 Hours; 1-245 Hours. 972 Harvest Headers. Call 806-249-8155 or 806-333-2037.

4 Cemetery Lots For Sale at Muleshoe Memorial Park. Call 806-659-3608.

### FREE PETS

FREE PUPPIES! Will be medium-size. Call Peggy at 272-7799

TO GIVE AWAY 7-month-old wormed, spayed, all shots, black and tan mix (small to medium size). Great with kids; crate-trained. Good temperament. 272-6715

### GARAGE SALE

Saturday Only! 9 a.m. to ? Moving sale with household items. miscellaneous. 1616 W. Avenue C.

### FARM PROPERTY FOR SALE

#### USDA-FSA FARM SERVICE AGENCY FARM PROPERTY FOR SALE

PROPERTY LOCATION: APPROXIMATELY 5 1/2 MILES SOUTHWEST OF MULESHOE.

LEGAL DESCRIPTION: 179.6 ACRES OF LAND, THE NORTHWEST PART OF SEC. NUMBER (7) IN BLK "Y" W.D. & F.W. JOHNSON SUBDIVISION, BAILEY COUNTY, TEXAS

FSA'S MINIMUM BID IS: \$45,618.00

TIME: 10:00 O'CLOCK A.M. (OR WITHIN 3 HOURS THEREAFTER)

DATE: SEPTEMBER 3, 2002

PLACE: MAIN FRONT AREA OF THE EASTERLY COURTHOUSE DOOR (BEING THE DOOR FACING STATE HIGHWAY 214) IN MULESHOE, BAILEY COUNTY, TEXAS

FOR SPECIFIC INFORMATION CONTACT THE FSA FARM LOAN MANAGER, JOYCE M. THOMPSON, 111 E. AVE. D. MULESHOE, TX 79347, (806)272-4538.

### ADOPTION

Note: It is illegal to be paid for anything beyond medical and legal expenses in Texas adoption.

A BABY DESIRED. Your child will thrive in our loving home. We're an active, outdoorsy couple with a wonderful home near lakes, parks and a great fishing spot. Your child will always know of your courage and love. We'd love to talk. Christine & Paul, 1-866-324-5078 (toll free).

### ADOPTION

ANSWER TO OUR PRAYERS! We long to love a baby and can't wait to become a family. Call Pam/Tom anytime. Medical/Legal expenses paid. 1-800-875-4606.

### AUTOMOBILES

1-800-CHARITY! DONATE YOUR vehicle directly to the original, nationally acclaimed Charity Cars. 100% charity - not used car dealer/ fundraiser. 1-800-CHARITY (1-800-

### AUTOMOBILES

242-7489), [www.800charitycars.org](http://www.800charitycars.org)

### BUSINESS OPPORTUNITIES

ABSOLUTELY A MUST call! Hate your job? Want more out of life? \$2K a week potential. Local Candle Route. No selling. Work 4-6 hours/week. \$0 down, O.A.C. Candles of America, 1-800-813-7405, 24 hours.

Advertising pays! Deadline for Thursday's issue will be Monday 5 PM.

## Nieman Realty

116 E. Ave. C • George Nieman, Broker • 272-5285 or 272-5286

### RICHLAND HILLS - PARKRIDGE AREA

• NICE LOTS AVAILABLE, CALL FOR DETAILS!!!  
• VERY NICE 3-2-1 Brick, Elec. Heat Pump, built-ins, nice carpet, 1680' lv. area, fenced yd., MORE!! \$60K!! RH-2

### HIGHLAND AREA

• VERY NICE 2-3-2 Home, Central A&H, built-ins, FP, sprinkler, much more!! \$59K!! HL-1

### LENAU - COUNTRY CLUB AREA

• 3-2-1 carport Home, Brick, Cent. A&H, built-ins, FP, 1,880' Lv. area, fenced yd., MORE!! \$47,500!! LC-1

• VERY NICE 2-1-1-1 Carport Brick Home, Cent. A&H, stove, nice, carpet, covered patio, fenced yd., MORE!! \$41,900!!

### HIGH SCHOOL AREA

• 3-2 Home, corner lot, fl. furn. heat, fenced yd. \$25K!! HS-10

• 3-1 Home, Fl. furnace, fans, storage & 2 apartments, corner lot!!! PRICE REDUCED!! \$30K HS-3

• NICE 3-2-2 carport, Home, Cent. A&H, built-ins, guest cottage, workshop, storage, MORE!! \$48K!! HS-4

• 2-1 Home, corner lot, stove, refrig., fans, workshop & storage, fenced yd.!! PRICED REDUCED!! \$20K!! HS-8

• 3-1 1/2 carport Home, wall furn, heat, oven, brook, basement, shop/ storage!! "AS IS"!! \$19,900!!

• EARTH - 4-2-2 carport home, Heat Pump, fans, storage-workshop!! \$35K

• VERY NICE 2-2-2 carport Mobile Home, Cent. A&H, built-ins, utility, deck w/ hot tub, storage/workshop, fenced yd., MORE!! \$28,500!! HS-9

### COMMERCIAL

• EXCELLENT BUSINESS LOCATION - Approximately 6,550 sq. ft. building, high traffic area!! \$115K!!!

• NICE six unit office complex, Cent. A&H, restroom facilities, and also has a nice one bedroom and two bedroom rental units. \$39.5K!!

• HWY. 84-150' frontage, office, warehouse, truck dock, railroad spur access, with or without fuel storage tanks!! \$30K!!!

• GOOD INCOME PROPERTY - approx. 3490' bldg., paved parking, good net lease!! PRICED TO SELL!!

• VERY NICE 2300' bldg., Cent. A&H, 175' frontage on Hwy 84 & 70!! MUCH MORE!!

• 140'X100' tract on Hwy. 84 & 70, 1760' bldg., 1500' storage, 2400' cov. area, paved parking!! \$49.5K!!!

• RANCH HOUSE CLUB/RESTAURANT!! \$70K!!!

• Approximately 2,000' shop plus 450' office, cent. heat, evap. air, 250' x 100' tract on Hwy 84!! \$35K!!!

### RURAL

• EXCELLENT DAIRY LOCATION - 1120 ac., 7 circles, 20 wells, very nice 3-2-3 Home w/ basement, 40' x 60' barn w/ 30' x 40' shed, 3 mil. lb. grain facility, add. 3 bdrms. home, 2 mobile homes, on pavement convenient to Muleshoe, Clovis, Portales, & 5K head permit. Could be split if needed!!

• W. of SUDAN-NICE 3-3-2 Brick Home, 5 acre tract on Hwy. 298, Cent. Air & Heat, built-ins, large Quonset Barn, MORE!!!! \$95K!!!

• PRICE REDUCED - 108 acres or 7 acre tract on Hwy. 70, approx. 2100' office area, 16,900' commercial bldg. w/ loading dock, 3,400' warehouse, new well, 2,800' runway!!!

• STEGALL AREA - GOOD 80 acre farm!! PRICE TO SELL!!



# Lowe's Marketplace

401 W. American Blvd. Muleshoe, Texas 272-4585

WE RESERVE THE RIGHT TO LIMIT QUANTITIES IN TEXAS

WESTERN UNION MONEY TRANSFER<sup>SM</sup>  
"The fastest way to send money"

AFFILIATED FOODS INC.  
MEMBER STORE AT PARTICIPATING STORES



WEEKLY PRICES EFFECTIVE AUG. 28-SEPT. 3, 2002

## MEAT

- X-TRA SAVINGS PAK BEEF BONELESS RIB-EYE STEAKS ..... LB **\$3.97**
- X-TRA SAVINGS PAK COUNTRY STYLE BONE-IN PORK RIBS ..... LB **97¢**
- 10 LB. BAG-LIMIT 2 (ADDTL. PURCHASES 27¢/LB. OR \$2.70 A BAG) CHICKEN LEG QUARTERS ..... LB **17¢**
- ASSTD. BAR S SMOKED SAUSAGE ..... 12 OZ. PKG **97¢**
- DECKER-LIMIT 3 (ADDTL. PURCHASES 2/\$1) MEAT FRANKS ..... 12 OZ. PKGS **3/99¢**
- H&B BRAND HOT LINKS ..... 1 LB. PKG **\$1.39**
- BAR S JUMBO MEAT FRANKS .... 1 LB. PKG **69¢**

## PRODUCE

- NEW MEXICO LONG GREEN CHILES ..... LBS **3/\$1**
- NEW MEXICO LONG GREEN CHILES ..... 30 LB. BAG **\$8.99**
- WHERE AVAILABLE ROASTED CHILES ..... BAG **\$10.99**
- LARGE GREEN OR RED BELL PEPPERS ..... **2/\$1**
- FARM FRESH CORN ..... EARS **3/\$1**
- LARGE RED RIPE TOMATOES ..... LB **89¢**
- GARDEN FRESH GREEN ONIONS ..... BUNCHES **2/\$1**
- CELLO MINI PEELED CARROTS ..... 16 OZ. **99¢**
- CALIFORNIA PREMIUM WRAPPED LETTUCE ..... EACH **89¢**
- DOLE CLASSIC ICEBERG SALAD OR COLE SLAW... 16 OZ. PKG **99¢**
- RED OR WHITE SEEDLESS GRAPES ..... LB **87¢**
- GRANNY SMITH APPLES ..... LBS **2/\$1**
- SWEET AND JUICY RED OR BLACK PLUMS..... LB **79¢**
- RED RIPE WATERMELONS ..... EACH **\$2.99**
- TANGY AND JUICY LIMES ..... **10/\$1**
- LARGE CANTALOUPE ..... EACH **99¢**
- RED RIPE STRAWBERRIES..... 16 OZ. PKGS **2/\$5**

## FROZEN & DAIRY

- ASSTD. SHURFINE ICE CREAM..... 1/2 GAL. RND. **2/\$4**
- ASSTD. SHURFINE DIP ..... 8 OZ. TUB **77¢**
- ASSTD. CACHE VALLEY SHREDDED CHEESE ..... 8 OZ. PKGS **2/\$4**
- ASSTD. ORIGINAL 12 INCH TOMBSTONE PIZZA ..... 13-22 OZ. **2/\$6**
- SELECT VARIETIES VALUE MENU OR SELECT MENU BANQUET DINNERS.... 6.7-30 OZ. PKG **99¢**
- ASSTD. BANQUET POT PIES ..... 7 OZ. PKGS **2/\$1**

## HEALTH & BEAUTY

- 1 CT. OR 6 OZ. TUBE SELECT GROUP COLGATE TOOTHPASTE OR TOOTHBRUSH.... EA. **\$1.97**
- VALUE STAR FOAM PLATES ..... 40 CT. PKG **99¢**
- SHURFINE CHARCOAL LIGHTER FLUID..... 32 OZ. BTLS **4/\$5**
- SHURFINE REG. (COUPON IN CIRCULAR)(\$4.99 W/O COUPON) CHARCOAL ..... 20 LB. W/COUPON **\$3.99**
- LARGE OR SMALL PATRIOTIC COOLER..... **\$25 or \$15**
- SHURFINE HEAVY DUTY FORKS, SPOONS OR COMBO ... 24 CT. PKGS **2/\$1**
- HAMBURGER OR CONEY LOWE'S BUNS ..... 8 CT. PKGS **2/\$1**
- SHURFINE SQUEEZABLE KETCHUP ..... 24 OZ. BTL **77¢**
- SHURFINE HAMBURGER SLICES DILL PICKLES ..... 32 OZ. JAR **88¢**
- CASA DE LOWE'S HOMESTYLE OR BURRITO SIZE FLOUR TORTILLAS ..... 10 CT. PKG **89¢**
- LAY'S® PRE-PRICED \$2.99 POTATO CHIPS ..... 12.25 OZ. PKGS **3/\$5**
- DORITOS® PRE-PRICED \$3.29 TORTILLA CHIPS ..... 13.5 OZ. PKGS **2/\$4**
- SHURFINE SQUEEZABLE MUSTARD ..... 16 OZ. BTLS **2/\$1**
- NABISCO FRUIT NEWTONS OR NILLA WAFERS ... 11-12 OZ. PKGS **2/\$5**
- FAM. SIZE LIPTON ORIGINAL OR COLD BREW ICED TEA BAGS ..... 24 CT. PKGS **2/\$4**
- ASSTD. BUSH'S BAKED BEANS ..... 28 OZ. CANS **2/\$3**
- SELECT GROUP NESTLE CANDY ..... SINGLE BARS **3/99¢**
- ASSTD. LOWE'S SOFT DRINKS ..... 24 PK. CANS **2/\$7**
- ASSTD. LOWE'S SOFT DRINKS ..... 6 PK.-12 OZ. CANS **88¢**
- ASSTD. VARIETIES COKE, SPRITE, DR. PEPPER OR DASANI WATER.... 6 PK.-1/2 LITER BTLS **2/\$4**
- ASSTD. VARIETIES COKE, SPRITE OR DR. PEPPER..... 6 PK.-12 OZ. CANS **4/\$5**



ASSTD. 10 CT., 6.4 OZ. DRINKS .....  
1 LB. ROLL ASSTD. VARIETIES OWENS.....

**JUICY JUICE  
BREAKFAST  
SAUSAGE**

6 CT. PKG. JELLO.....

**PUDDING OR  
GELATIN CUPS**

DEL MONTE 4 CT., 5 OZ. FRUIT TO GO.....

**FRUIT CUPS**

ASSTD. 1/2 GALLON ROUND BLUE BELL.....

**ICE CREAM**

5 LB. BAG RED DELICIOUS.....

**APPLES**

ALL VARIETIES, GAL. JUG LOWE'S OR SHURFINE.....

**MILK**



**1¢**  
EACH WITH ONE REWARD COUPON

**X-TRA SAVINGS PRICING GOOD THRU SEPT. 3, 2002**

## Use Your Reward Coupons To Save Big!

### Here's How It Works!

Lowe's is giving you deep discounts on many of the items you purchase everyday! For each dollar you spend at Lowe's, we will give you a point. After 50 points (or \$50), you will receive a Lowe's X-tra Savings Reward Coupon. This coupon can then be redeemed for deep discounts on selected items. Each month, Lowe's will select from our most popular items in the store and deeply discount them for our X-tra Savings Reward Coupon holders. Present your coupon and receive incredible savings on selected items.

### X-tra Savings Reward Program

- Each Dollar You Spend Is Worth ONE (1) Point.
- After you earn 50 points, you will receive a Lowe's X-tra Savings Reward Coupon
- Use your Lowe's X-tra Savings Reward Coupon to get deep discounts on one of the selected items.
- Only ONE (1) item can be purchased with each Reward Coupon. • Items will be changed monthly.

- 12 ct. Rolling-Pin Premium **GLAZED DONUTS**
- 22 oz. pkg. Sara Lee Frozen **LAYER CAKES**
- 13-15 oz. Quaker Select Group **BAGGED CEREAL**
- 6 ct.-12 oz. Owens Snackwiches **SAUSAGE BISCUITS**
- 20 oz. Loaf **FRONTIER BREAD**
- 10 oz. pkg. **HEALTHY CHOICE SLICED MEATS**
- 6 pack, 12 oz. btls. **POWERADE DRINKS**
- 4 Roll pkg. Charmin **BATH TISSUE**
- 7 lb. **BAG OF ICE**
- 6 pack, 1/2 liter btls. **AQUAFINA WATER**
- 50 oz. box SunLight Auto **DISHWASHING DETERGENT**
- 6 ct., 4 oz. Lucky Leaf **APPLE SAUCE**
- Pre-Priced \$1.99 Frito Lay® **SANDWICH CRACKERS**
- XTRA DETERGENT
- 5 lb. bag All Purpose **GOLD MEDAL FLOUR**
- 96 oz. jug Original or Scented **CLOROX ULTRA BLEACH**
- 4 lb. bag C&H **PURE CANE SUGAR**
- Asstd. Oscar Mayer 16-19 oz. **MEGA LUNCHABLES**
- 6.4 oz. tube **CREST TOOTHPASTE**
- Asstd. 9 oz. pkg. **HOT OR LEAN POCKETS**
- Bounty Big Roll **PAPER TOWELS**
- KID'S LUNCH BOX**
- Golden Hawaiian Fresh **PINEAPPLE**
- 8 ct. pkg. Crayola **WASHABLE MARKERS**
- 2 lb. bag Dole **CLASSIC SALAD**
- 18 oz. bag Dole **CLASSIC COLE SLAW**
- Sno-White **CAULIFLOWER**
- Large California **CANTALOUPE**
- 11-13 oz. Asstd. Grinds (Excl. Decaf) **HILLS BROS. COFFEE**
- 64 oz. ctn. Florida's Natural **ORANGE JUICE**
- 48 oz. tub **IMPERIAL SPREAD**



THE X-TRA SAVINGS REWARD PROGRAM GOOD AT LOWE'S MULESHOE, CANYON AND TUCUMCARI STORES ONLY!  
Points are not transferable between stores. No substitutions please on X-tra Savings Reward Items. Only one item may be purchased at the special deep discount per Reward Coupon.