



# BAILEY COUNTY JOURNAL

'The Community of Opportunity-Where Water Makes the Difference'

## Weather

	HIGH	LOW
Nov. 30	36	14
Nov. 29	43	21
Nov. 28	57	23

Rainfall to date: 13.20

Vol. 11 No. 48

14 PAGES

Published Every Sunday at Muleshoe, Bailey County, Texas 79347

10 CENTS

Sunday, December 1, 1974

# Timely Cotton Harvesting Important

## Mrs. Watson Nominated For Award

Muleshoe teachers have nominated Elizabeth McCrea Watson, curriculum director for the Muleshoe Independent School District, for a Texas Classroom



MRS. ELIZABETH WATSON

around muleshoe with the journal staff

Mrs. May McKee from Pittsburg Kansas to visit her son, Frank McKee; her nephew, Fred Smith; and relatives, Nelly and Emmitt Dean. She also commented that she had never seen cotton before she came to Muleshoe.

Mr. and Mrs. James Wedel and Jimmy spent last weekend in El Paso visiting Mr. and Mrs. Bryon Jennings. Mrs. Jennings is the former Wanda Wedel.

One West Texas State University junior from Muleshoe was part of the 112 initiated into Alpha Chi, the National College Honor Scholarship Society.

The initiate from Muleshoe is John A. Hayes, son of Mr. and Mrs. John A. Hayes of 306 Cedar.

Alpha Chi is a coeducational society whose purpose is to promote academic excellence and exemplary character and to honor those achieving such distinction.

Its name derives from the initial letters of the Greek words "Altheia" and "Charakter" which means truth and character. The basis of this society is accomplishment rather than participation, and it admits students from all academic disciplines.

The WTSU chapter sponsor, Dr. Wendall Cain, professor of speech, is a member of the Alpha Chi National Council.

Teachers Association Administrator of the Year Award.

The Muleshoe Classroom Teachers Association has nominated Watson to compete with other administrators from all areas of the state who also have been nominated by their local classroom teachers associations.

TCTA will present three Administrator of the Year Awards at its annual state convention February 20-22 in Fort Worth. The awards are made in three categories according to the scholastic population of the district. Muleshoe, with 1,889 students, falls into the first category for districts with fewer than 4,000 students.

Through the awards program TCTA seeks not only to honor outstanding administrators, but also to project a clear picture of what classroom teachers feel typifies a good administrator. This will be the fifth year that TCTA will present the awards. Muleshoe teachers already have nominated a previous winner of the state award, Supt. Neal Dillman won a 1974 Administrator of the Year Award.

Watson has been an educator for 31 years, serving the past 11 years as curriculum director for Muleshoe schools. She has been employed with the Muleshoe district her entire career.

Active in community affairs, Watson is a member of Friends of the Library, the advisory board of the Mental Health and Retardation Center, and she is involved in public education for Region II of the Heart Association. She is a member of the First Baptist Church.

Elizabeth Watson is the wife of John W. Watson.

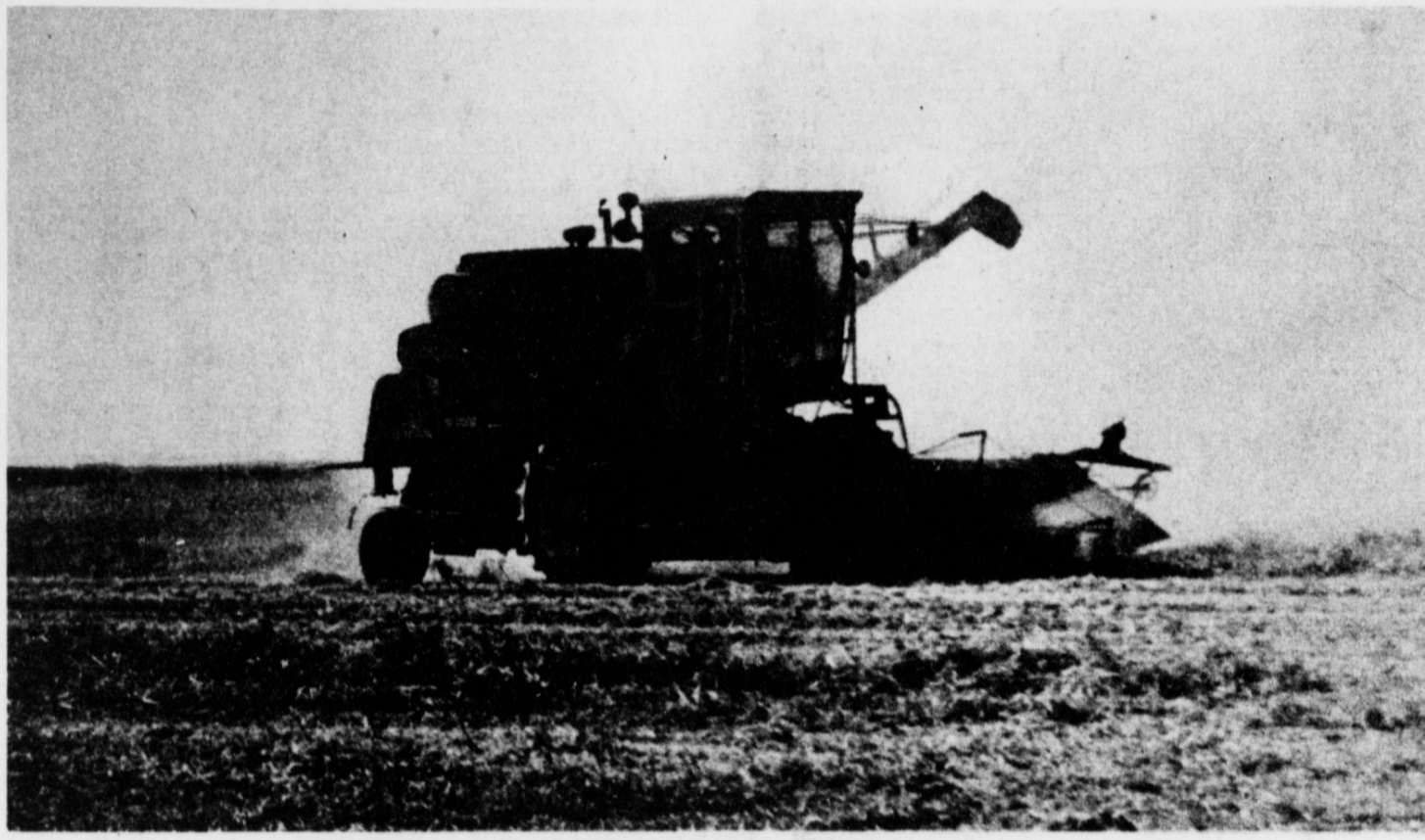
## New 4-H Club To Be Organized

There will be an organizational meeting of a new 4-H club in the city of Muleshoe. This meeting is scheduled for Monday night, December 2nd, at 7:30 p.m., in the Production Credit Building, 312 South 2nd Street.

Any boy or girl between the ages of 9 and 19 is eligible for membership regardless of race, color, creed, or National origin. Leaders request that parents accompany their children to this meeting. The purpose is to enroll new members and to explain how 4-H club work is carried on.

Projects to be offered are: Veterinary Science, Dog Care and Training, Electricity, Child

Cont. on Page 3, col. 1



HARVESTING BEANS. Several farmers in Bailey County are harvesting small Navy beans this week. Bill Wimberly of Texas Sesame reports that over 4,000 acres in the county were planted in Navy beans this year. These beans are contracted to Stokley-Van Camp where the beans will be used for pork and beans.

Wimberly stated that the yields on the beans have been reduced somewhat this year due to the wet weather but the yields are still impressive. This combine is shown harvesting beans in a field belonging to Jeff Smith.

## Autograph Party Will Be Held In Lazbuddie

Two members of the Parmer County Historical Society will be at the Trieder Electric Store in Lazbuddie, on Tuesday December 3, 1974 for an autograph signing party of the book

'A History of Parmer County Texas', from two to four o'clock. Hugh Mosely of Farwell, chairman of the Parmer County Historical Society, and Nelson Lewis of Friona, member and author of the book will be present to sign your copies and visit with the people of the Lazbuddie Communities.

Lazbuddie was very much a part of Parmer County in the beginning and those who remember the days before the year 1930 will certainly want to obtain one of these books, as a record for their families to have. The Parmer County story, from its organization in 1907, to the year 1930 is a true saga of westward expansion. This volume attempts to describe the land, the weather, the economic conditions and the myriad problems that confronted the first ornament residents of this area. In this book the formation and organization is explained and the first quarter century of history is explored.

The histories of incorporated towns and rural communities constitute a major portion of with the world famous XIT ranch, "the man for whom the county was named, and articles concerning the business and social life of those who settled before 1930. An entire section is devoted to family histories and is arranged alphabetically for the convenience of the readers.

While Nelson Lewis was assigned the major task of authoring the book, this History of Parmer County is a joint effort of not only the members of the Parmer County Historical Society and its president Hugh Mosely, but hundreds of Parmer County residents, who painstakingly collected material for this first volume.

These books will make a wonderful Christmas Gift for most any one on a list, and is certainly one that people will want to be a part of their library in their home. Everyone is urged to come out and have coffee and donuts that afternoon and meet the author, Nelson Lewis, whose

Cont. on Page 3, col. 2

## Cowbelles Have Meeting On Tuesday

The Bailey County Cowbelles met Tuesday, November 26, at 8 p.m. in the First National Bank Community room. Election of officers was held. Elected as officers were: Mrs. Wayne Tunnel, President; Mrs. Gene McGlaun, first Vice-President; Mrs. Robert Clark, second Vice-President; Mrs. Jim Colburn, Secretary; Treasurer; and Mrs. Jerry Gleason as Beef Promotion Chairman.

It was decided to make up beef gift packets and present to all newlyweds in Bailey County, enter a float in Christmas Parade and call on all business about giving Beef Gift Certificates to people on their gift list.

The Cowbelles will meet at 9 a.m. Monday, December 2, at the Corral Restaurant and

Cont. on Page 3, col. 2

## Cowbelles Sponsoring Beef Certificates

The local Bailey County Cowbelles are sponsoring a Beef Gift Certificate Plan for Muleshoe.

The Texas Cowbelles are making it's unique Beef Gift Certificates more readily available to the public through the cooperation of the Cowbelles in Texas.

Both Muleshoe State Bank and First National Bank will have these certificates available.

These certificates will be available for year around gift giving with an extra push from the Cowbelles during holidays such as Mother's Day, Father's Day, Thanksgiving and Christmas.

Although no profit is realized by either Cowbelles or bankers, this beef promotion project should prove to be of great value in aiding and assisting the morale and finances

of the American Beef Industry and the American Cattlemen.

Cont. on Page 3, col. 1

## Area Farmers Harvest Over 20% Of Cotton

Bailey County farmers have been flocking to the fields this week during the warm, sunny weather to harvest cotton crops. Over 20 per cent of the 1974 cotton harvest is out of the fields in Bailey County now. Cotton growers on the high plains risk losing up to 15 percent of their crop yield if they wait too long to harvest, not to mention suffering economic losses from lower field grades. Profits also can be hurt if cotton is harvested before it's ready.

These findings in a study by two research scientists here emphasize the need for a producer to weigh his cotton harvesting options carefully.

The men are Dr. Levon Ray, cotton geneticist with the Texas Agricultural Experiment Station, and Dr. Earl Minton, plant pathologist with the Agricultural Research Service, USDA. Both researchers are based at the Texas A&M University Agricultural Research and Extension Center in Lubbock.

Yield losses are surprisingly large in the early part of the weathering period.

Tests conducted at the Texas A&M University Agricultural Research and Extension Center at Lubbock were based on cotton left in the field one to 12 weeks after the crop was ready for harvest.

"For a 600 pound per acre yield, the average loss was 18 pounds per acre the first week, 48 pounds after four weeks, and 72 pounds after 12 weeks.

"This does not include ground loss which might be very large under certain conditions with

Cont. on Page 3, col. 3

## Christmas Parade Set December 7

The annual Christmas Parade will be held in Muleshoe next Saturday, December 7, beginning at 2:30 p.m.

The parade will begin at the Boy Scout grounds on South Main, continue up Main Street and back down First Street.

Parade Marshall this year will be Roger Albertson. The theme of this year's parade will be "Christmas Is".

Entries in the parade at this time include float from the ESA Sorority, the Progress 4-H Horse Club, the mayor will ride in a car. Other entries are expected this week.

The Llano Estacado Civic Club are in charge of the parade again this year. Anyone wishing to enter a float in the parade may call Mrs. Odell Rasco at Cobb's or Mrs. Ruyce Harris at Western Auto.

First place prize this year will be \$100; second place will be \$75; third, \$50; and fourth, \$25.

The deadline for entering the parade will be Friday, December 6.

## Debate Squad Wins WTSU Tournament

Muleshoe High School's debate squad competed in the West Texas State University Championship Tournament this past weekend.

Jana Oyler and John Dean won the tournament with seven wins and no losses. After the four preliminary rounds, the two had accumulated the best win-loss and speaker points record to be placed as the number one team to throughout the final three rounds.

In the Quarter-final round, Jana and John defeated Estacado of Lubbock 3-0 in the

Cont. on Page 3, col. 1

## First Santa Letters Received This Week

Soon after Thanksgiving, children begin thinking of Christmas. This week the Journal received the first three Santa letters this year.

The Muleshoe and Bailey County Journals will print all Santa letters in the paper and will forward all letters to the North Pole. Letters are brought by the Journal office or mailed to Santa Claus, Box 449, Muleshoe, Texas 79347.

The following are the first Santa letters:

Dear Santa Claus, I have been a good girl this year. I have made good grades this year also. I would like these gifts for Christmas.

1. Babby alive,
2. NIT magic
3. umbrella
4. watch
5. a big Barbby Head

I love you, Kristi Heathington

Dear Santa, Please bring me a push-button Sesame Street and a Weeble

Marina and a Baby Alive.

My name is Joey Heathington and I am five years old. I will quit sucking my thumb if you will bring me these presents. I have been a good girl this year.

I love you, Joey

Dear Santa Claus,

My name is Rick. I am three years old. For Christmas I want a motorcycle, a car that the doors really opens and the back really opens, and the front really opens. I want a motorcycle like Brent's that runs on batteries. I want Batman, Superman, Shazam and Lone Ranger costumes. I want a play like Helpaso. I want a play like Brent's with a little thing on it that you see your eye through.

Please remember to come see Brent, Grandma, Mama Toots, Papa G, Michael, Neel, Josh, Sherri, Tonya, Kevin and Mommie and Daddy.

Patrick Howard.



HOSPITAL RECEIVES DONATION. Rev. H. D. Hunter of Muleshoe is shown receiving a check from Mrs. Robert Hooten and Mrs. J. E. McViker of Muleshoe. The check in the amount of \$1750.00 was the proceeds from the Harvest Bazaar held November 7 in Muleshoe. The bazaar is an annual event sponsored by the First United Methodist Church of Muleshoe. All proceeds were donated to the Muleshoe Hospital Action Fund.



Mr. Gracer. This certificate is the equivalent of a check drawn by the Texas Cowbelles on the First State Bank of Happy, Texas.

No 001

## BEEF GIFT CERTIFICATE

PAY TO

SAMPLE

DATE

19

PURCHASE OF BEEF ONLY TEXAS COWBELLES BEEF CERTIFICATE ACCOUNT

\$

NAME OF YOUR ACCOUNT

1234 Your Street ANYWHERE, TEXAS 12345

MAGNETIC BANK NO. HERE

ACCOUNT NO. HERE

# Texas Farm Bureau Convention Set Dec. 1

DALLAS— Appearances by Governor Dolph Briscoe and singer Anita Bryant will highlight the 41st annual convention of the Texas Farm Bureau to be held here December 1-4. Voting delegates from the 210 organized counties will adopt policies to guide the organization in 1975.

Some 1,500 delegates and members are expected to attend the meeting which culminates "a very successful year" for the state's largest farm organization, according to J.T. (Red) Woodson, president. Theme for this year's convention is "Strength in Unity".

Most sessions of the meeting will be held in the Dallas Convention Center.

The convention will get underway with registration beginning at 2 p.m., Sunday, December 1, in the Convention Center Theater lobby.

The Vesper Service which traditionally opens the TFB annual meeting will be held at 6 p.m., featuring the Garland High School A Capella Choir and an address by Minister Jack C. Hunnicutt of the First Presbyterian Church at Junction. He was recently named Texas' 1974 "Rural Minister of the Year."

Six young farmers and ranchers will participate in the Discussion Meet to be held at 7:15 p.m. Sunday. One will be selected to represent Texas at the annual convention of the American Farm Bureau Federation in January in New Orleans.

The annual TFB Talent Find, which will be held immediately following the Discussion Meet, will feature ten talented performers. One of these will also be selected to participate in the national-level Talent Find at the AFBF annual meeting.

The general session on Monday, December 2, will feature an address by Briscoe and the annual TFB President's Message by Woodson.

A presentation of the importance of cotton in fashions and a style show featuring natural fiber apparel will be presented at the Ladies Luncheon at

noon Monday. Special Conferences on Community Services, Dairy, Wheat and Feed Grains, Rice, Cotton, and Young Farmers and Ranchers Activities will be held Monday afternoon. These will be followed by district caucuses.

Finals in the annual TFB Queen Contest will be held at 7 Center Theater, Millard Shivers, director of rural development for Blue Cross/Blue Shield of Texas, will be master of ceremonies.

The annual Voting Delegates Breakfast will be held at 7 a.m., Tuesday in the Grand Ballroom of the Adolphus Hotel.

The program will consist of the Financial Report by Bill Reid of Lamesa, TFB secretary-treasurer and director for District 6; and the Administrative Report by Warren Newberry of

Waco, TFB executive director. Special Conferences on Research and Education, Livestock and Animal Health, Farm Labor, Farm Bureau Services, Poultry, Natural Resources, and Field Crops will be held beginning at 9 a.m., Tuesday.

The convention business session gets underway at 1:30 p.m., Tuesday in the Convention Center Parquet Ballroom. Official voting delegates from county Farm Bureaus will deliberate on hundreds of recommendations on scores of subjects coming out of county FB annual conventions.

Approved resolutions dealing with state matters will become TFB's official policy position for 1975. Those on national and international issues will be recommendations to voting delegates at the AFBF annual convention.

The Annual Awards and Recognition Program, with Anita Bryant as guest performer, will be held at 6:30 p.m., Tuesday. Miss Bryant will be accompanied by the Chuck Bird Orchestra. At intervals during the program, county Farm Bureaus will be honored for accomplishments in membership acquisition, public relations, safety and servicing of the prepaid hospital care program.

The annual dance, with Adolph Hofner and the Pearl Wranglers from San Antonio, will be held at 9 p.m., Tuesday.

The business session will continue all day Wednesday, with election of six directors and a president being held immediately following disposition of all resolutions.

The convention will adjourn sometime late Wednesday.

## Automatic Or Manual Defrost Freezers

COLLEGE STATION--With ever-increasing utility bills a major concern today, many consumers are asking how much more energy an automatic-defrost freezer uses than a manual-defrost model.

"Several sources report that for the same usable freezer

space in cubic feet, the automatic freezer costs about 30-45 per cent more to operate," Lynn Bourland, family resource management specialist with the Texas Agricultural Extension Service, The Texas A&M University System, said this week.

But she pointed out that one

advantage of an automatic-defrost model is that 100 per cent of the available storage space is more easily maintained at zero degrees, compared to only about 80 percent for manual-defrost models.

"When this factor is considered in a comparison of operating costs, estimates indicate that automatic-defrost freezers cost only about 15 per cent more," she said.

This difference in cooling power is caused by the placement of the refrigerated coils. Those in a manual-defrost freezer are located in the shelves and at the top of the box.

"But they are outside the food storage area in an automatic-defrost model. A fan circulates air over the cooling coils and throughout the freezer compartment to keep temperature within the box constant.

"Foods must be placed carefully in an automatic-defrost freezer to allow free circulation of cold air," she noted. Miss Bourland said that these facts may provide consumers a cost benefit comparison for making a choice to meet the family's particular needs.

## White Warns Of Food Deficit

Calling the United States "one gigantic food production machine," Agriculture Commissioner John C. White recently warned that food shortages similar to the oil shortage can develop if farmers are unable to produce it at a reasonable profit.

"If we run our own producers out of business, we are going to become more dependent on imports for food," White stated in remarks to a state meeting of Texas Soil and Water Conservation District officials in San Antonio.

White said between 1972-73 imports increased 29 percent to a record \$5.52 billion, lowering wholesale prices of Amer-

ican-grown products without comparable decreases to consumers.

In 1974 imports rose another 30 percent to 9.5 billion. "Meat and dairy products are especially hard hit at present," White said.

The commissioner cautioned that a faltering agricultural machine will lose the country its position of leadership of the world.

"When our food supplies become a tool of foreign political units, we can have a disaster that will make the fuel shortage look minor," he said. "We are setting our feet on that very same road in food production that we did in oil."

## Nursing Home News

by Myrtle Guinn

Mrs. Dean, who has been living here a few weeks went to her home on Monday.

Men from Lubbock are here putting a sprinkler water works in the ceiling of the nursing home so in case of a fire we will have protection.

Vicky Lynn and Kelly, Granddaughters of Mrs. Kaltwasser visited her on Tuesday.

Mrs. Maltby was taken to the hospital, Tuesday. She is very ill.

Mrs. Hall and a friend, Mrs. Veach went to the Pentacostal Church on Sunday. They go to Texico Church to worship every Sunday.

Mr. and Mrs. Leon Lewis visited Mrs. Lewis on Monday, and Dr. McDaniels came to see Mrs. McDaniels every day. Mrs. McDaniels is gradually improving.

Mrs. Timmons and Mrs. Martin came to see their mother, Mrs. Perry every day and Mrs. Vivian White visits her mother, Mrs. Harris every day.

Mrs. Guinn spent Sunday at Allen and Pauline Guinn's home. They had their four Smith grandchildren and also Mrs. Glana Gregory and little boy, Shannon.

Mrs. Magam Reynolds brought her aunt, Miss Lamb to see the nursing home and visited a few minutes with Mrs. Hall and me.

Mrs. Boone visited Mrs. Boone, her mother-in-law on Friday after Thanksgiving. Joe and Cecil Duke came Thanksgiving Day to see their Grandmother Duke.

This is Thanksgiving week and we do have so very much to be thankful for, in these uncertain times, I read the following item in the Amarillo Newspaper today and think we should all read and abide by it. "Freedom has to be worked for and for the opportunity to work for it, let us give thanks." This is so true and

we should be glad to follow it daily. Happy Thanksgiving to each of you. I would also like to add this thought which I read recently, "For we must share if we would keep that blessing from above; ceasing to give, we cease to have such is the law of love."

## Give The Young Lady Something Special For Christmas



Rhonda Stevenson is shown here in the Young Sophisticated Look by wearing a two piece suit of 100% cotton denim, of blue and white embroidery down the back, with sleeves and collar. These pant suits will take you anywhere in graceful style....day or evening. The suit is of the new sun bright colors with a colorful contrasting embroidery and beading. The suit is by Dottie West.

Come by St. Clair's and let us fit you in this new look of fashion for the Holiday season ahead.

Rhonda is Worthy Associate Advisor of the Muleshoe Rainbow group.

# St. Clair's

Muleshoe

272-4453

YOUR ONE STOP SHOPPING CENTER



### Your Can-O-Cash Christmas gift will become a traditional favorite!

We'll seal money or any small gift you desire to give in this brightly labeled Christmas Can-O-Cash. The only way to get the gift out of the can is with a can opener. It's a unique... and really fun gift. And, Can-O-Cash converts into a year-round savings bank with its own slotted plastic lid.

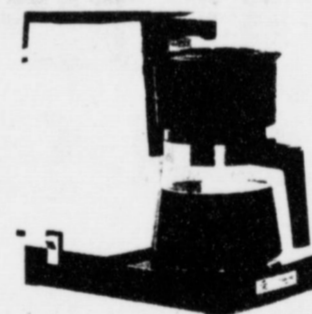
Can-O-Cash is our way of helping you with your Christmas shopping... and offering you a very happy holiday. Available exclusively at:

## Muleshoe State Bank

MEMBER FDIC

101 American Blvd.

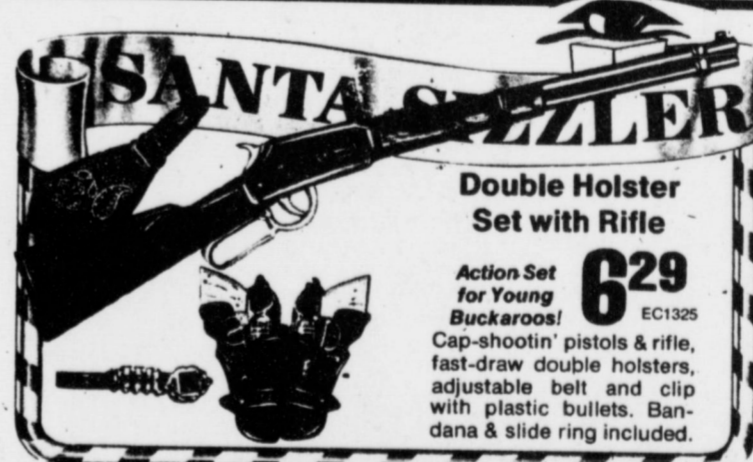
Muleshoe



SAVE 10.07! 8-Cup Drip Coffee Maker Reg. 37.95 **27.88** Brews in just 60 seconds! Just \$1 Holds Flavorful!



Just \$6 Holds **6.89** Soft body with skin-like vinyl covering. Lace & satin gown.



Double Holster Set with Rifle Action Set for Young Buckaroos! **6.29** Cap-shootin' pistols & rifle, fast-draw double holsters, adjustable belt and clip with plastic bullets. Bandana & slide ring included.



EC2803 Fun! 10-in-1 Busy Box **6.99**



Knit Magic—the new way to knit! **13.99**



Enjoy Stereo in Your Car With 8-Track Tape Player **39.88**



HO Scale Figure 8 Racing Set **13.79**

# WESTERN AUTO

Also Many Games And Crafts And Other Gifts For The Entire Family

320 MAIN

272-3112

### The Sandhills Philosopher



Dear Editor:  
A friend asked me the other day why I didn't think up something that's turn this crazy economy around. You know, auto companies can't sell their cars so they raise the price, sugar gone out of sight, unemployment rising as fast as inflation, college costs going up and kids getting no better educated than they were when it costs only half as much, cattle prices down to nearly nothing and meat prices about as high as ever. Things like that.

I'll tell you, if he's looking to me for the answer he's looking in the wrong direction, but I did come up with one partial suggestion that might help. What Washington needs more than anything else right now is a horse-trader.

Take the grain deal with Russia last year. Here we were short on oil and long on grain, and there was Russia long on oil and short on grain. So what do we do? We sell Russia a fourth of our total supply of grain at half-price and on top of that we lend her the money to buy it with.

Why in thunderation couldn't we have swapped grain for oil? No. We turn our big deals over to people who wouldn't know a slew-footed, smooth-mouthed mare from a two-year-old sound plow horse and we wind up with a spavined mule. Probably mortgaged.

And it's still going on. Just last night I read that we have now made a deal with Syria. We are selling her 22 million dollars worth of grain, to be

### Debate...

Cont. from Page 1  
seim-final round they defeated Turner of Dallas, 3-0; and in the finals they defeated Lee of Midland 3-0.

John Dean was named as the tournament's "Most Outstanding Debater" and Jana Oylar was runner-up to him. Sixty-two teams competed in the two day meet.

Other members of the MHS debate squad to attend the tournament were Lisa Mason, Lashelle Lewis, Royce Clay, David Gutierrez, Zeb Payne and Mark Lovelady.

### 4-H...

Cont. from Page 1  
Care, Clothing, Foods, Livestock, Bicycle Care and Safety, Arts and Crafts, Woodwork and any other project that there is enough interest in.

If you would like additional information please contact the County Extension Agents' office by coming by the courthouse or calling 272-3913, or contact Mrs. Jerry Gleason, 272-3069.

### Players...

Cont. from Page 1  
The experience and leadership Ricky and George provide will be invaluable to us in '75. Both Ricky and George are fine young men and possess all the traits we look for in college football players," reports Coach Sewall.

paid for over the next 20 years at 3 per cent interest, with no payments or interest due the first two years, I guess as an inducement to sign the contract. With an inducement like that I'd sign nearly anything. No mention of oil, and nothing said about what happens if about 10 years from now a new government of Syria says we can't pay you back and we done ate the grain.

You reckon it's help if we called in the professors who're doing our negotiating around the world, put them back to trading in rare books and put the hard work into the hands of some good horse-traders?

Yours faithfully,  
J.A.

### Cowbelles...

Cont. from Page 1  
leave from there to call on the different business places.

The next regular meeting of the cowbelles will be January 28, 1975, at the First National Bank.

### WASHINGTON NOTES

**ON VETERANS PENSION**  
The Senate has passed legislation increasing by 12 per cent pension payments for veterans and their survivors. Also it raises by \$400 the annual income limitations, \$3,000 for single pensioners and \$4,200 for those with dependents.

**ON STEEL PRICES**  
Edgar B. Speer, chairman of U.S. Steel Corp., indicated that the steel industry can get by without further big price increases if costs are held down in other sectors of the economy.

**ON ABORTIONS COSTS**  
A Department of Health, Education and Welfare memorandum discloses that Medicaid, using federal and state funds, is paying up to \$50 million each year to finance more than 220,000 abortions.

**FORD'S VETO**  
President Ford has vetoed a measure to cut off U.S. arms aid to Turkey, declaring the ban would dash hopes for a Cyprus peace settlement.

**Bailey County Journal**  
March 21, 1974  
Published by Melrose Publishing Co., Inc.  
Printed at 304 W. Second, Box 440  
Melrose, Texas 75847  
Second class postage paid at Melrose, Texas, 75847.

**TEXAS PRESS ASSOCIATION**  
Member 1974

L. H. Hall, President  
Jessica P. Hall, Sec.-Treas.  
L. B. Hall - Managing Editor  
Katie Buckel-News Reporter  
Dorothy Kery, Society Reporter  
Polly Owell, Office  
Sherril Russell-Advertising

Subscription Rates:  
The Melrose Journal and Bailey County Journal \$8.50  
The Melrose Journal and Bailey County Journal \$10.00  
The Melrose Journal and Bailey County Journal \$11.50  
Outside of Texas \$18.00  
Yearly by carrier \$25.00  
Monthly, by carrier \$2.00  
Advertising rates card on application.

### Cotton...

Cont. from Page 1  
non-stormproof varieties." Field weathering decreases staple length 1/32 of an inch in about six weeks.

Average grade equivalents were middling for the first three harvest dates, dropping to strict low middling for the fourth through the eighth week and to low middling for the last four weeks.

'In other words, the crop was reduced approximately one grade each month it remained in the field'.

Weather patterns tend to vary from year to year, the grade loss will be greater in some years than in others.

Contrary to general belief, no reduction in mike (micronaire value) due to weathering was found, the two men report.

'It is true that cotton harvested earlier,' they admit. 'But, factors other than direct

effects of field weathering reasonably explain a seasonal drop in mike.

One factor is that the earlier maturing fields which produce the higher mikes are usually harvested first. Second, in the early season harvests, immature bolls are separated eliminating cotton with finer fibers. Late in the season, these bolls cannot be separated and they go into the harvested cotton and may reduce the mike substantially.'

According to the scientists,

field weathering is generally recognized as a major factor in reducing planting seed quality. Germination, under both standard conditions and constant 65 degree Fahrenheit (a low temperature test), is also decreased with field weathering. The lower germination will be reflected in poorer performance of the planting seed in the field.

'Timely harvest is very important in producing good quality planting seed,' the researchers stress. 'Harvesting too early can be just as cost-

ly as leaving it in the field too long.

'Once the optimum date for harvesting is reached, the crop should be taken out of the field as soon as possible. A delay of only one week in harvesting an average crop of irrigated cotton could cause a loss of income, through reduced yields and quality, amounting to \$10 to \$15 per acre.'

Leaving the cotton in the field could easily cost the grower more than the total cost of

harvesting the crop itself, say the researchers.

**PESTICIDES BANNED**  
Russell E. Train, administrator of the Environmental Agency, has ordered an immediate ban on the production of two widely used pesticides, aldrin and dieldrin, to avoid "unreasonable human health risks."

# It all Adds-Up to

## A BIG MEAT SALE

### Round Steak 1<sup>09</sup> LB.

**FRESH DRESSED FRYERS 49¢ LB.**

**STEAK for man-pleasing meals**

**SHORT RIBS 39¢ LB.**

**SIRLOIN STEAK 98¢ LB.**

**T-BONE STEAK 98¢ LB.**

**CLUB STEAK 95¢ LB.**

**RIB STEAK 89¢ LB.**

**RANCH STYLE STEAK 95¢ LB.**

**LEAN GROUND BEEF 69¢ LB.**

**EXTRA LEAN GROUND BEEF 98¢ LB.**

**ARM ROAST 89¢ LB.**

**7-BONE CHUCK ROAST 89¢ LB.**

**CHUCK ROAST 69¢ LB.**

**PRODUCE**

**CALIFORNIA SUNKIST ORANGES 19¢ LB.**

**GOLDEN RIPE BANANAS 10¢ LB.**

**AVOCADOS 19¢ EACH.**

**RED GRAPES 29¢ LB.**

**EXTRA LEAN BONELESS STEW MEAT 98¢ LB.**

**SPECIALS GOOD DEC. 1 - 7**

**SILVER OR GOLD GARLAND TINSEL 50 FT LONG ONLY 97¢**

**25 LITE OUTDOOR LIGHT SET \$2.97**

**2 FOOT CHRISTMAS TREE 99¢ & \$1.99**

**CHRISTMAS CARDS \$1.00**

**GIFT WRAP 5 ROLL BOX 99¢**

**RASCO THE FAMILY STORE**

303 MAIN MULESHOE

**Pay-n-Save**

QUALITY AND SERVICE

WE GIVE GUNN BROS STAMPS

DOUBLE STAMPS / WEDNESDAY WITH \$2.50 OR MORE PURCHASE

WE REDEEM AND GIVE STAMPS ON FOOD STAMPS

WE SELL TRAVELERS EXPRESS MONEY ORDERS, PAYROLL CHECKS CASHER

515 W. AMERICAN OPEN 8A.M. TILL 10pm

201 S. FIRST 8 A.M. TILL 10 P.M. 7 DAYS

**SERVICE**

**WASHINGTON RED DELICIOUS APPLES 29¢ LB.**

**ICE-BERG LETTUCE 25¢ LB.**

**VINE RIPE TOMATOES 29¢ LB.**

**FOOD STAMPS Welcome**



MRS. SAMUEL GORDON HARLAN

# Miss Speed, Harlan Exchange Vows

Miss Jean Ellen Speed and Samuel Gordon Harlan were united in marriage Saturday, November 30, at 2:00 p.m. in the Baptist Temple. Rev. J.V. Helms officiated in the double ring ceremony.

Miss Speed is the daughter of Mr. and Mrs. Grady W. Speed of Victoria, Texas. The groom is the son of Mr. and Mrs. William G. Harlan of Muleshoe. Musical selections of the theme from "Romeo and Juliet", "Love Story" and the traditional processional and recessional were presented by Mrs. H.D. Cole, organist. Mrs. Michael Hummel sang "Wedding Song" and "Lord's Prayer".

Escorted and given in marriage by her father, the bride wore a Juliet styled gown of angle-light violet sculptured in white. The fitted bodice and fitted waistband was accented by heavy Algonca lace and a neckline. The full sleeves were gathered into long wristbands of Algonca lace and were fastened by self-covered buttons. The floor length skirt was accented by a wide ruffle and a smaller ruffle at the hemline. To accent her gown the bride wore a short candle-light illusion veil which fell from a head dress of Algonca lace and German statts. The bride carried a cascade of white Butterfly roses and German statts. The bride also wore a gold and pearl necklace which was a gift from the groom and an antique gold bracelet which was a gift from her late paternal grandmother.

Mrs. Harry Bruton III, sister of the bride, served the bride as matron of honor and Karen Darter served as maid of honor. The bridesmaids were Mrs. Hubert T. Odom, Jr., sister of the bride and Gail VanCleave. The attendants wore floorlength blue-grey quanta jersey gowns styled with a high shaped neckline and full long sleeves. Small self-covered buttons complimented the pin-tucked bodice and fitted waistband from which fell a gored flared skirt. They carried colonial bouquets of mixed flowers.

Mike Moeck served the groom as best man. Groomsman were Bill Snyder, Dennis Olsen and Ranny Kenmore, brother-in-law of the groom. Ushers were Harry Bruton III, brother-in-law of the bride, Michael A. Bruton III, brother of the bride and Hubert T. Odom, Jr., brother-in-law of the bride.

The mother of the bride wore a dressmaker suit of caramel sharkskin with a floral print blouse. Her accessories were bone and she wore a corsage of white Jack Frost roses. The mother of the bridegroom wore a two piece suit of light blue

and gold accented by a chiffon scarf. Her corsage was of white Jack Frost roses.

Melanie Bruton and Chadna Bruton neices of the bride registered guests.

A reception was held in the Baptist Temple Fellowship Hall. Members of the house party were Mrs. Lon Drushel, Miss Becky Fuchs, Miss Kay Reichardt, Mrs. Paul Cain, Mrs. Keith Sanders, Mrs. Michael Speed, Mrs. R.H. Gattis, Miss Lee Ann Harlan, Mrs. Ronnie Kenmore, Miss Debbie Seale, Mrs. J.P. Hammonds, Mrs. E.B. Hollan, Mrs. R.L. Jones and Miss Billye Jones, Trey Odom and Lance Odom, nephews of the bride handed out rice bags.

For a wedding trip to New Orleans, La. the bride wore an off white, three piece pantsuit with navy accessories and

accented with a Cymbidium Orchid.

Out of town guests were Mr. and Mrs. Ronnie Kenmore of Dimmitt; Miss Lee Ann Harlan, Mr. and Mrs. R.L. Jones and Miss Billye Jones all of Muleshoe and Mr. and Mrs. R.H. Gattis of Tesuque, N.M.

A rehearsal dinner was hosted by the groom's parents Mr. and Mrs. William G. Harlan at Nolan's Restaurant.

The bride is a 1970 graduate of Victoria High School. The groom is a 1966 graduate of Lazbuddie High School and a 1970 graduate of Texas Tech with a B.S. degree. He is employed as a District Engineer for Halliburton in Corpus Christi.

The couple will be at home after December 8 at 5901 Weber Rd., Apt. 1608 in Corpus Christi, Texas.

## Market Report

COLLEGE STATION--Lower turkey prices and higher vegetable prices than last year is the Christmas menu forecast, one observer said this week.

She's Mrs. Gwendolyn Clyatte, consumer marketing information specialist with the Texas Agricultural Extension Service, The Texas A&M University System.

"Vegetable prices will be higher for the rest of the year because acreage is off eight per cent.

"Also, some higher retail prices on vegetables are the result of wider price margins," the specialist explained.

Best vegetable choices for the holidays are sweet potatoes, broccoli, dry onions, potatoes, cabbage and carrots, Mrs. Clyatte said.

Also, cauliflower, rutabagas and hard shell squash. "On the other hand, dry beans, dry peas

and rice are abundant and economical, so they could serve as nutritious holiday budget stretchers," the specialist added.

Holiday fruits now in season include cranberries, grapefruit, oranges, tangerines, tangelos, bananas, pears and grapes.

"Avocados are more abundant this year after several years of short supply, and all the new-crop nuts are available. This is also persimmon and pomegranate season," Mrs. Clyatte noted.

Since peanuts are also plentiful, prices on peanut butter may decline, she predicted.

At meat counters, turkeys will sell for considerably less than they did last year, the specialist said.

"Beef supplies are plentiful, and pork supplies are adequate," she added.

"Beef production is moderately higher than last year with record supplies now coming to market. Grass fed beef accounts for most of the increase," Mrs. Clyatte pointed out.

Features on beef include chuck cuts, ground beef, stew meat and liver--along with scattered values on sirloin steak and sirloin tip roasts.

Best pork values are Boston butt roasts, quarter-loins cut into chops and loin roasts.

"Ham is costing more, as it's being stockpiled for the holidays, but bacon prices have lowered in the past few weeks," the specialist said.

CONSUMER WATCHWORDS: Dairy features are numerous this week.

Check for specials on sour cream, whipping cream and a variety of cheese products.

Check for specials on sour cream, whipping cream and a variety of cheese products.

Check for specials on sour cream, whipping cream and a variety of cheese products.

Check for specials on sour cream, whipping cream and a variety of cheese products.

Check for specials on sour cream, whipping cream and a variety of cheese products.

Check for specials on sour cream, whipping cream and a variety of cheese products.

Check for specials on sour cream, whipping cream and a variety of cheese products.

Check for specials on sour cream, whipping cream and a variety of cheese products.

Check for specials on sour cream, whipping cream and a variety of cheese products.

Check for specials on sour cream, whipping cream and a variety of cheese products.

Check for specials on sour cream, whipping cream and a variety of cheese products.

Check for specials on sour cream, whipping cream and a variety of cheese products.

Check for specials on sour cream, whipping cream and a variety of cheese products.

Check for specials on sour cream, whipping cream and a variety of cheese products.

Check for specials on sour cream, whipping cream and a variety of cheese products.

Check for specials on sour cream, whipping cream and a variety of cheese products.

Check for specials on sour cream, whipping cream and a variety of cheese products.

Check for specials on sour cream, whipping cream and a variety of cheese products.

Check for specials on sour cream, whipping cream and a variety of cheese products.

Check for specials on sour cream, whipping cream and a variety of cheese products.

Check for specials on sour cream, whipping cream and a variety of cheese products.

Check for specials on sour cream, whipping cream and a variety of cheese products.

Check for specials on sour cream, whipping cream and a variety of cheese products.

Check for specials on sour cream, whipping cream and a variety of cheese products.

Check for specials on sour cream, whipping cream and a variety of cheese products.

Check for specials on sour cream, whipping cream and a variety of cheese products.

Check for specials on sour cream, whipping cream and a variety of cheese products.

Check for specials on sour cream, whipping cream and a variety of cheese products.

Check for specials on sour cream, whipping cream and a variety of cheese products.

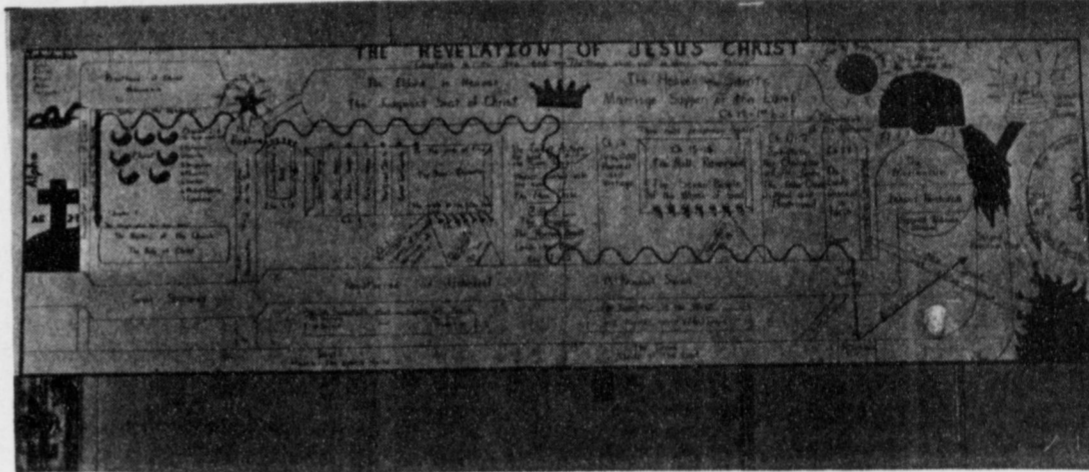
Check for specials on sour cream, whipping cream and a variety of cheese products.

Check for specials on sour cream, whipping cream and a variety of cheese products.

Check for specials on sour cream, whipping cream and a variety of cheese products.

Check for specials on sour cream, whipping cream and a variety of cheese products.

Check for specials on sour cream, whipping cream and a variety of cheese products.



REVELATION OF JESUS CHRIST. . . Mrs. Charles Harvey drew this drawing which portrays the Book of Revelation. This Book is being studied by the Calvary Baptist Church.

## Revelation's Studied By Calvary Baptist Church

Assisting in the study of the book of the Revelation in Calvary Baptist Church, 18th and Ave. C in the city of Muleshoe is a sixteen foot chart. This chart is a reproduction of a smaller chart printed for Dr. Luther C. Peak, Professor of the Arlington Baptist College, Mrs. Darlene Harvey, wife of Pastor Charles Harvey of Calvary Baptist Church increased the dimensions of this smaller chart from one inch to one foot.

The Book of the Revelation has been termed: "The most difficult to understand Book of the Bible". Contrary to the normal concept of this book being hard to understand, Pastor Charles Harvey is setting forth to the folks who attend the study time on Sunday evenings at 6:30 p.m., a book that is not only easy to understand but is a blessing to all who apply themselves to study the book of Revelation. The giant chart is a great help in showing

the viewer the progression of the book.

The book of Revelation is the only book of the Bible that promises the reader a blessing who will read it. (Rev. 1:3 and 22:7) The simple definition of the "revelation" is "the veil rolled aside." The simple outline for the book of Revelation is: PAST, PRESENT AND FUTURE. Chapter 1 is Past, Chapter 2 and 3 are Present, Chapter 4 through 22 we have Future events. A quick glance at the huge chart that Mrs. Harvey had reproduced will show the viewer that the

majority of the book of Revelation is Future.

All are urged to stop by the Calvary Baptist Church, at their

convenience and view this remarkable piece of work to assist the student of the Bible to understand a very delightful book from God's Holy Word!

1924 1974

You are cordially invited to attend a reception honoring Clara and Claud Coffman on the occasion of their 50th Wedding Anniversary on Saturday, the seventh of December from two until five o'clock Community Room Muleshoe State Bank Muleshoe, Texas

No gifts, please.

You are cordially invited to attend a

to attend a

Come and Go Reception

honoring

BERNIS CAMP

30 years of service to A.S.C.S.

20½ years in Bailey County

Sunday, December 8, 1974

from 3:00 to 5:00 p.m.

Tri-County Savings & Loan

Community Room

Muleshoe, Texas

Mr. and Mrs. J. W. Roberts Mr. and Mrs. Jack Young  
Mr. and Mrs. Howard Watson Mr. and Mrs. Beryl Wingo  
Mr. and Mrs. Monty Dollar Mr. and Mrs. Bill Taylor  
Mr. and Mrs. Charles D. Ball Mr. and Mrs. Sam Hopper  
Mr. and Mrs. Bobby Nickels Mr. and Mrs. Henry Stoneham

### CHUCK WAGON BAKED BEANS

1 lb. dried navy beans  
1 tart apple, chopped  
1 small onion, chopped  
¼ lb. sliced salt pork  
½ cup strained honey  
½ cup barbecue sauce  
½ tsp. dry mustard  
1 tsp. chili powder  
½ tsp. garlic salt  
½ cup butter

Wash beans, cover with water and soak overnight. Cook slowly in salted water about 30 minutes, drain, saving cooking liquid. Put apple and onion in 2-quart bean pot; add half the beans and top with half salt pork. Add remaining beans. Mix honey, barbecue sauce, mustard, chili powder, garlic salt and butter with 2½ cups cooking liquid; pour over beans. Top with remaining salt pork; cover. Bake in 375-degree oven 1 hour. Reduce heat to 275 and continue baking 5 hours. Add more bean liquid or hot water. During last half hour uncover. Yield: 6-8 servings.



We Have Our Christmas Stock In Now.

Cobbs Department Store Is Your No. 1 Headquarters For All Your Holiday Shopping Needs.

Come In And Let Us Help You Find That Special Gift For Any Member Of Your Family.



# Cobb's

218 Main

Muleshoe



### SCHEDULE OF EVENTS

MONDAY, DECEMBER 2  
12 noon: Jaycees-XIT

TUESDAY, DECEMBER 3  
7:30 p.m.: Rebekahs Oddfellows Lodge Hall  
7:30 p.m.: OES, Masonic Hall  
8:30 a.m.: City Council, City Hall

WEDNESDAY, DECEMBER 4  
7:30 p.m.: DeMolay, Masonic Hall

THURSDAY, DECEMBER 5

FRIDAY, DECEMBER 6

SATURDAY, DECEMBER 7  
9:00 Dance, "York Avenue"  
9:00 till 12:00, Youth Center

MULESHOE STATE BANK  
Member FDIC

<b>YARN</b> WOOL OR SAYELLE REG \$1.39 \$1.69 <b>99¢</b>	<b>MENS FLANNEL SHIRTS</b> 100% COTTON PERMANENT PRESS REG \$5.99 <b>\$4.44</b>
<b>100% COTTON CORDURORY</b> 45" WIDE REG \$1.39 YD <b>88¢</b> YD	<b>SWEET SANDI BRIDE DOLL</b> REG \$8.47 <b>\$6.88</b>
<b>BOXED CHRISTMAS CARDS</b> 59¢ to <b>\$1.66</b>	<b>FLAG &amp; SAIL AFTER SHAVE &amp; COLOGNE</b> REG \$1.29 <b>\$1.00</b>
<b>ARTIFICIAL CHRISTMAS TREES</b> 7 FT FIR BALSAM- <b>\$24.88</b> 6 FT SCOTCH PINE- <b>\$14.88</b> 4 FT SCOTCH PINE- <b>\$8.88</b> 2 FT SCOTCH PINE- <b>\$2.99</b>	<b>JUST ARRIVED PET SUPPLIES</b> COMPLETE AQUARIUMS AND AQUARIUM SUPPLIES FISH FOOD FISH REMEDIES DOG CHEW TOYS DOG COLLARS BIRD SEED CHOKE CHAINS
<b>DOLLAR DAY SPECIALS</b> OPEN TILL 8 PM EACH NIGHT	
<b>perry's</b> 128 MAIN MULESHOE	



**PILGRIMS FIRST THANKSGIVING.** . . Pack 622, Den Five gave a skit at their meeting Tuesday night, November 26. Left to right are Tommy Carlson, Jessie Guana, Craig Hunt, Roby Wilson, Trent Hysinger, Cheyenne Bickel, Thurman Coleman, Chad Williams are shown in Pilgrim outfits.

## Thanksgiving Program Given By Pack 622

Cub Master Jack Hysinger called Pack 622 meeting to order Tuesday night, November 26 in the Boy Scout Hut.

Webelos den conducted the flag ceremony and presented the flag. All present joined in the Pledge of Allegiance.

Den Five of Pack 622 presented the program "Pilgrims First Thanksgiving". The boys wore the traditional pilgrim hats and collars they had made at their den meeting. Narrator, Chad Williams; turkey, Thurman Coleman; Pilgrims, Tommy Carlson, Trent Hysinger, Jessie Guana, Craig Hunt, Roby Wilson, Cheyenne Bickel, Den Five leaders are Ineynell Carlson and Helen Bickel.

Awards for ten Bobcat Pin and Badge were earned by Tracy Tunnell, Derick Magby, Chris Hopkins, Tommy Reio, Greg Reed, Mitch Black, Chad Williams, Trent Hysinger.

The Bear Pin and Badge was earned by Perry Flowers.

Silver Arrow points were earned by Craig Hunt, two points; Cheyenne Bickel, Thomas Carlson, three points.

Gold Arrow Points was earned by Thomas Carlson.

A patch for signing up a new scout was presented to Lance Free. In Webelos dinner braid was advanced to Troy Ellison,

assistant dinner, Keith Smith, Den one dinner Michael Isaac, assistant dinner Terry Baker.

For selling ten tickets to Scout-O-Rama a patch was presented to Thurman Coleman and Thomas Carlson. These awards were presented by Advancement Chairman, John Stevens.

Den mother coach, Helen Bickel presented an appreciation plaque to retiring den mother, Chris Seales. Then the boys of her den presented her with the scout charm bracelet as a token of their appreciation. Den 3 leader, Carla Reed won the traveling trophy having the most parents and boys present.

Closing prayer was read by Terry Baker, of Den One, Cub Master, Jack Hysinger adjourned the meeting and refreshments were served.

## West Plains Hospital Hospital Briefs

**ADMITTANCE:**  
November 25: Mrs. Martha Williams, Mrs. Alton Bruton and Mrs. W. W. Mullins.  
November 26: Sollo Fabelo, Sr. and Regina Vevers.  
November 27: L. E. Bratcher and M. E. Lee.

**DISMISSALS:**  
November 25: Glenn McGeath.  
November 26: Mrs. Cecil Osborne.

November 27: Will Graif, Mrs. Beulah Gatewood, Mrs. Martha Williams and Mrs. Ruth Terrell.  
November 28: Mrs. W. W. Mullins, Lynn Bratcher and M. E. Lee.

**TRANSFERRED:**  
November 26: Buck Wood to Dimmitt.



**APPRECIATION PLACQUE.** . . Pack 622, Den Mother Coach, Mrs. Bennie Bickel presents plaque of appreciation to retiring Den Mother, Mrs. Billy Seales.

**The Shin Code**

Mrs. Smith (at bridge table) -- Before we start playing, do you mind if I consult my husband on a point I am not quite certain about?

Hostess--No, certainly not, my dear.

Mrs. Smith--Well, George, did you say two kicks or three for no trumps?

**Not A Chance**

A girl was asked if she had proposed to any man during Leap Year.

"No fear," she said. "I do not fool enough to propose to any man who'd be foolish enough to marry me and I do no use proposing to the others."

## Burris' Have Family Reunion

A reunion was held for the Burris family Sunday, November 24, at the Oklahoma Lane Community Center. There were 92 kinfolks present.

Guests of honor were Mr. and Mrs. Z.N. Burris of Springdale, Arkansa, Mrs. Orean Burris of Muleshoe and S.F. Crow of St. Urain, N.M.

Also attending were Mr. and Mrs. Bobby Burris and Orvis, Mr. and Mrs. Sonny Burris and family, Mr. and Mrs. Jackey Burris and family, Mr. and Mrs. James Kemp and Lena, Mrs. Jack Kemp, Mrs. George Whately and Kasey, Mr. and Mrs. Larry Kemp and Keisha, Mr. and Mrs. Terry Kemp and Chanda, Darla and Debbie Hunter, Donna Burris, Tommy Burris, Mr. and Mrs. Gaylon Black

and sons, Mr. and Mrs. Randy Burris, Mr. and Mrs. Wayne Copley and Tina, Mr. and Mrs. L.A. Harper, Mrs. Herb Nash and Treina, all of Muleshoe; Mr. and Mrs. Shorty Ivy and family, Mr. and Mrs. Terry Ott of Lazbuddie. Out of town guests were Mr. and Mrs. Verl Burris and girls of Forney, Texas; Tommy Crow and Carol Ann of Santa Rosa, N.M.; Mr. and Mrs. Bill Burris and sons of Wellma, Texas; Mr. and Mrs. David Shrum and sons of Siminole, Texas; Hugh and Alta Gore of Sudan; Mr. and Mrs. Wade Burris and daughter of Amarillo; Mr. and Mrs. Donnie Nash and family of Lubbock; Mr. and Mrs. Lafayette Parker and sons, Mrs. Mike Gray and girls of Clovis, N.M.; Mr. and Mrs.

Darrel Embry of Levelland, also present were Bobby Lindsay, Larry Washington, Danny Boaz and Leonard Hawkins all of the Lubbock State School.

Turkey and dressing and all the trimmings was served for the noon meal. The afternoon was filled by music and singing by all, and lots of family "tales" were exchanged.

## Progressive Home Club Has Thanksgiving Party

The Progressive Home Club met Wednesday, November 27 in the home of the C. D. Hoyer's for their Annual Thanksgiving Dinner and 42 Party.

Before the festivities the ladies held a short meeting called to order by the President, Mrs. M. J. Gibson, who also read a poem entitled "Rules." Minutes of the last meeting were read and approved. Treasurer report was heard. The ladies then discussed plans for the Christmas gifts to be sent to Great Plains Boys Ranch at Pettit, Texas. Mrs. W. F. Harper and Mrs. Vera Engelking was appointed to make the purchases.

Mrs. R. L. Roubinek drew

hostess gift. Ladies receiving gifts from secret pals for November birthdays were Mrs. W. F. Harper and Mrs. R. L. Roubinek.

Next meeting will be December 18 in the home of Mrs. M. J. Gibson for the Christmas Party.

Members and guests present were Mr. and Mrs. R.L. Roubinek and Kim, Mr. and Mrs. W. F. Harper, Mr. and Mrs. C. R. Black, Mrs. Minnie Dunn, Mrs. Vera Engelking and hostesses, Mr. and Mrs. C.D. Hoover.

## Cassie Precure Sweetheart Of 40th Squadron

Cassie Precure the daughter of Mr. and Mrs. Kenneth Precure of Muleshoe has been selected Sweetheart of the 40th Squadron of the United States Air Force Academy of Colorado Springs, Colorado.

She will be featured in the 1974-75 Academy Year Book "The Polaris".

Larry Shafer is a 3rd Classman at the Academy and the member of the 40th Squadron who entered Miss Precure in the sweetheart contest.

A Sweetheart for each of the 40th Squadron are selected from approximately 900 contestants from all over the world.



CASSIE PRECURE

The older woman say in-set chiffon sleeves in that formal she loves.

"THE DEALER WHO CARES" Sooner or later you'll buy a New or Used car FROM D. B. MULLEY



**Hagelgantz**  
2400 MARY DRIVE  
CLOVIS, NEW MEXICO

**OVERWEIGHT**

No Drugs No Exercises  
No Starvation No Hunger Pains  
Diets

Provides most needed daily nutrients  
Helps tighten skin  
Promotes better nerve condition  
Helps increase energy  
Exclusive and guaranteed  
If I am not in on your first call, please try again.

**GET SLIM INC.**  
POLLY OTWELL  
Ph- 272-3163

Let Mrs. Huston show you how to spend more time with your family - LESS TIME IN THE KITCHEN!

**See a Litton Microwave Cooking demonstration**

10:00-3:00 - Tuesday, Dec. 3

**Treider Electric**

BOX 62 - LAZBUDDIE, TEXAS 79053

PHONES (806) 965-2191 - BUS. (965) 2434 - MOBILE (965) 2172 - HOME

**LITTON**  
Microwave Cooking

\$219.00 to \$389.00  
(5 different models on display)

**Litton means microwave cooking.**

**The energy saver for the busy woman whose family eats in shifts.**

Save your energy and conserve on your electric bill. With the Minutemaster® "403" countertop microwave oven you can automatically thaw and cook frozen food in minutes. Grill, brown and sear meats to order on the Litton Micro-Browner™ grill, and clean up with just a wipe of a damp cloth.

And while you're saving your energy you're also using less of the electric company's energy. (Up to 75% less than with an electric range.)

- New 60-minute Micro-Timer™ digital control for more accurate cooking, lets you set cooking time in 1-second increments.
- 1.2 cu. ft. cooking capacity - room enough to cook a 20-lb. turkey. • Automatic defroster. • Easy clean oven interior.
- Cook on paper, plastic or glass. • Meets all safety standards set by U.S. Dept. of Health, Education and Welfare.
- Beautiful Rosewood styling.

## Myasthenia Gravis Clinic To Be Held

The Northwest Texas Chapter of the Myasthenia Gravis Foundation is announcing plans for an all day patient clinic, to be held at the High Plains Hospital, Hale Center Texas, December 6, 1974 beginning at 8 o'clock in the morning.

Dr. Bernard M. Patten, Assistant Professor, Department of Neurology, Baylor College of Medicine, Houston, will be present to conduct the clinic for Myasthenia patients. Dr. Patten graduated summa cum laude from Columbia College, New York in 1962, and from Columbia University, College of Physicians and Surgeons, New York in 1966. He is a Diplomate of the American Board of Psychiatry and Neurology, and holds memberships in numerous professional societies. He has participated as an invited guest speaker at various Myasthenia Gravis Chapter meetings all over the United States.

Myasthenia Gravis is a neuromuscular disease characterized by varying weakness of the voluntary muscles of the body. This weakness is abnormally increased by continued or repeated use of the muscles at any one time or partially relieved by a short period of rest or inactivity of the muscles. In the beginning, the symptoms often come and go, making early recognition difficult at times. The symptoms may be any of the following, alone or in combination:

drooping of one or both eyelids, blurred vision, double vision, loss of facial expression, difficulty in chewing or swallowing, and easily fatigued slurred voice, difficulty in breathing, difficulty in raising the arms overhead, weakness in arms and hands, difficulty in extending the fingers, weakness in flexing the thighs at the hips, weakness in lower limbs especially when trying to walk on heels.

J. E. McVicker, Chairman, states that the Northwest Texas Chapter is honored to have Dr. Patten coming for this all day patient clinic and urges all myasthenia gravis sufferers and their families to plan to attend. All the expenses for the clinic are being financed by the Chapter, with the exception of an extra tests such as x-ray.

**Could Be True**  
"How'd you come out in that fight with your wife the other night?"  
"Aw, she came crawling to me on her hands and knees."  
"What did she say?"  
"Come out from under that bed you coward."  
Chrysler offering improved warranty on cars.

**GIFTS THAT KEEP ON GIVING**

**LAWN-GLO**  
Black or White

**\$79.50**  
Plus Tax  
Installed

**A READY-LITE KNOWS DAY FROM NIGHT, AUTOMATICALLY**

**Patio Cart or Patio Stand \$112.50**  
Plus Tax

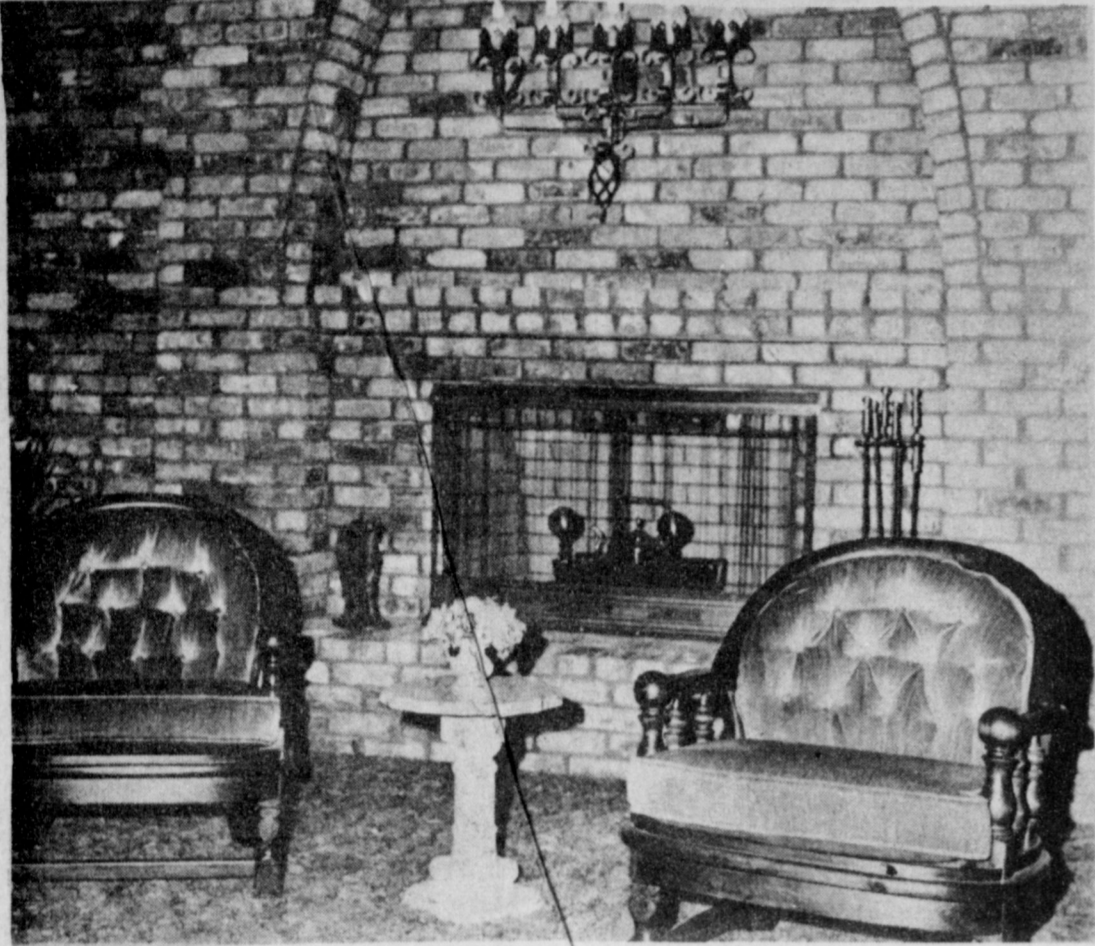
There are two Electro-Grills . . . and each is three cookers in one! Flame barbecue with hood up, roaster or smoker with hood closed. Whether you choose the patio stand model or the patio cart model, you get a large stainless steel cooking grill with bun warming section and storage shelf to keep cooked foods hot. And either model moves easily so there's no need to change your plans to cook out just because the weather changes.

See Electro-Grill at The Electric Company office . . . and put it on your electric bill!

**ELECTRICITY IT DOES SO MUCH GOOD**

**The Electric Company**  
FOR SO MANY PEOPLE

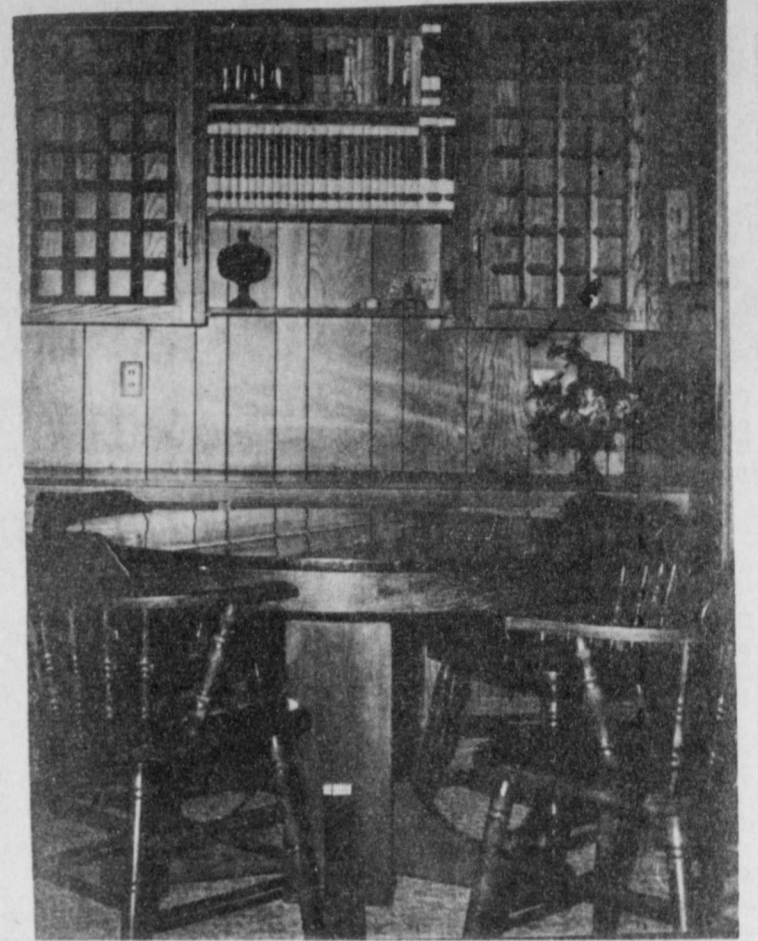
# XI Omicron XI Schedules Christmas Parade Of Homes



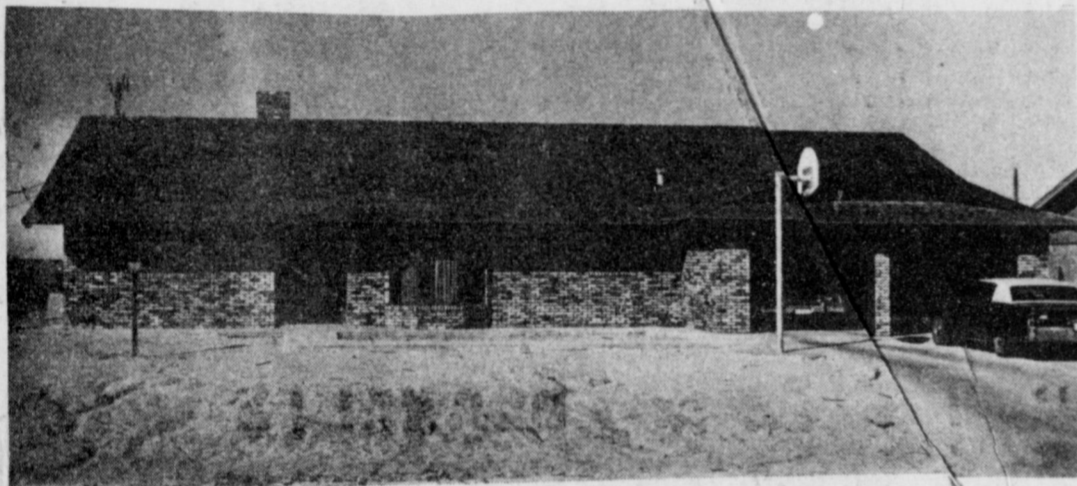
Nothing is cozier than a warm fireplace during the holidays. His and her chairs are placed in front of that impressive fireplace in the home of Mr. and Mrs. Charles Isaac.



Angela Peden, daughter of Mr. and Mrs. Clem Peden seems to know just where Santa Claus will come down the chimney Christmas morning. The Spanish decor of the ornate fireplace makes a perfect setting for Santa.



Dining area of the Kenneth Henry Home located at 1901 West Avenue G., is only one of the living areas of the five Muleshoe homes that will be featured in the Christmas Parade of homes next Sunday.



One of the many new homes in Muleshoe that local citizens can tour on the Parade of Homes will be the spacious home of Mr. and Mrs. Charles Isaac. This home is located at 706 West 2nd Street.

Members of XI Omicron Chapter of Beta Sigma Phi have been busy making plans for their Christmas Parade of Homes. The tour is scheduled for Sunday, December 8, from 1:30 to 4:30 p.m.

Five homes will be shown. The tour will begin at the home of Mr. and Mrs. Jim Young, 1891 W. Avenue I. Refreshments will be served at the Charles Isaac home, 706 W. 20th. XI Omicron XI members are preparing their favorite recipes of Christmas goodies.

Other homes included on the tour are the homes of Mr. and Mrs. Lee Kimbrough, 1815 W. Avenue I; Mr. and Mrs. Kenneth Henry, 1901 W. Avenue G; and Mr. and Mrs. Clem Peden, 1914 W. Avenue G.

The homes will be beautifully decorated for the holiday season by Muleshoe Floral.

The home of Mr. and Mrs. Jim Young will feature a lighted mantelpiece made around a haywreath. It is fashioned of gold cordon puffs, dried cedar, eucalyptus, and dried magnolia leaves. The focal point is a corn shuck nativity scene accented with orange velvet and orange checked ribbon. There is a matching wallpiece.

Mr. and Mrs. Lee Kimbrough's home will have a three-piece lighted mantle arrangement done in red and green with red Christmas apples and red velvet bows. The large arrangement features Santa Claus, and the smaller arrangements are Santa's helpers. These are joined with red velvet braid. There is a matching centerpiece arranged with red candles.

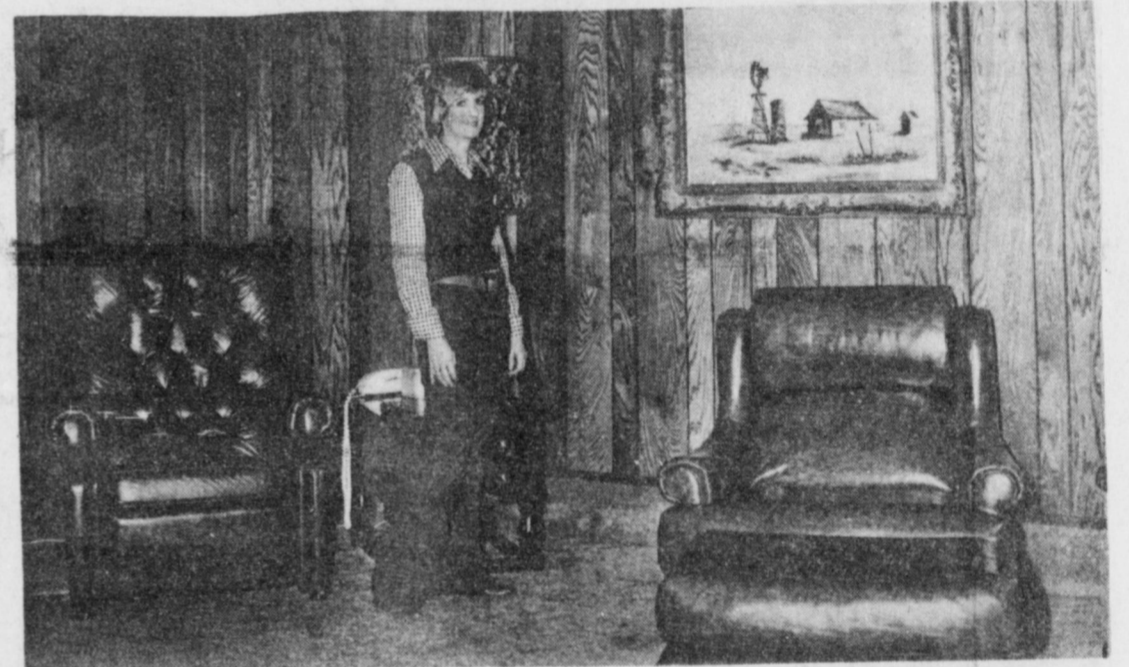
Muleshoe Floral has done the home of Mr. and Mrs. Kenneth Henry in the traditional Christmas decor. There will be a hearthside basket of fruits and pine cones accented with red velvet ribbon. The mantelpiece also features fruits and pine cones with red candles.

A lighted mantelpiece of dark blue cordon puffs, blue Christmas ornaments, and blue velvet ribbon with a deer head as a focal point and accented in white has been created for the den of Mr. and Mrs. Clem Peden. The living room fireplace will have a brass candlestick with a traditional red and green arrangement featuring a tall green candle.

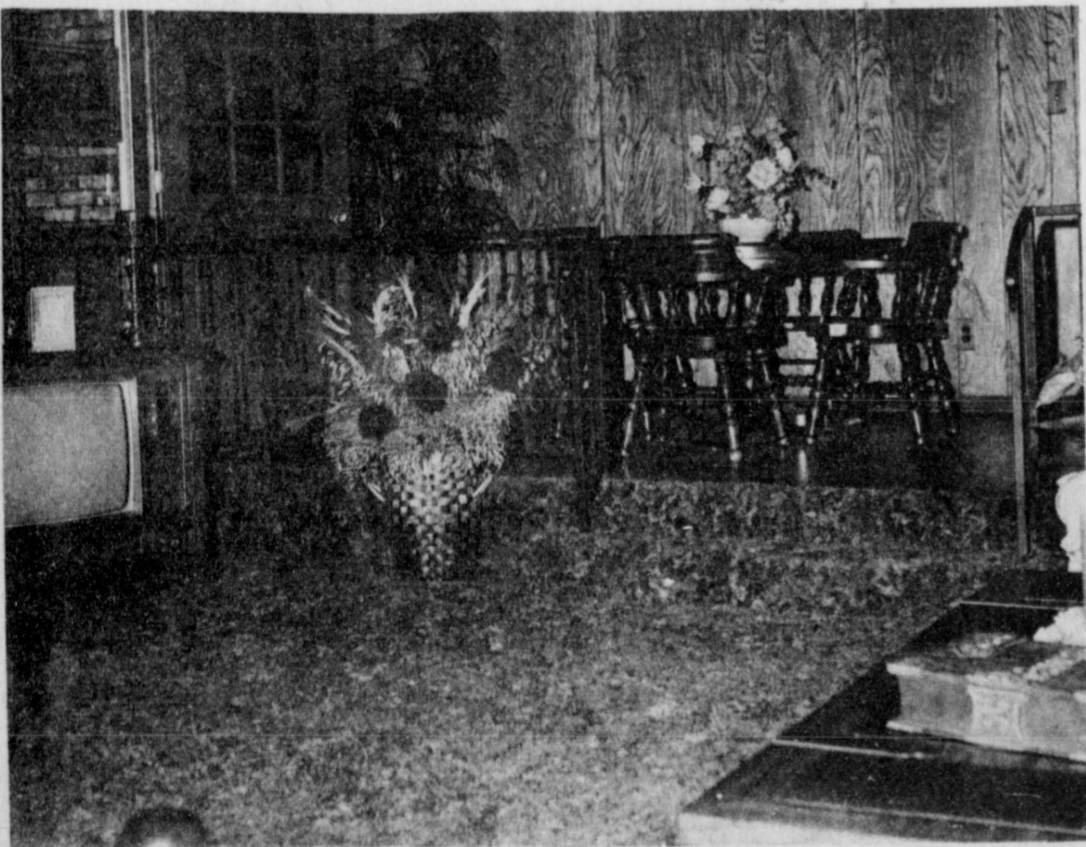
The home of Mr. and Mrs. Charles Isaac will be beautifully decorated. There will be a doorpiece featuring three large gold bells suspended from a traditional red and green wreath and accented with red and gold ribbon. In the front bay window, there will be a large brass compote arranged with greenery, votive candles, grass, holly, Christmas ornaments, and green velvet and green checked ribbon.

A beautiful Christmas arrangement from Muleshoe Floral will be given as a door prize.

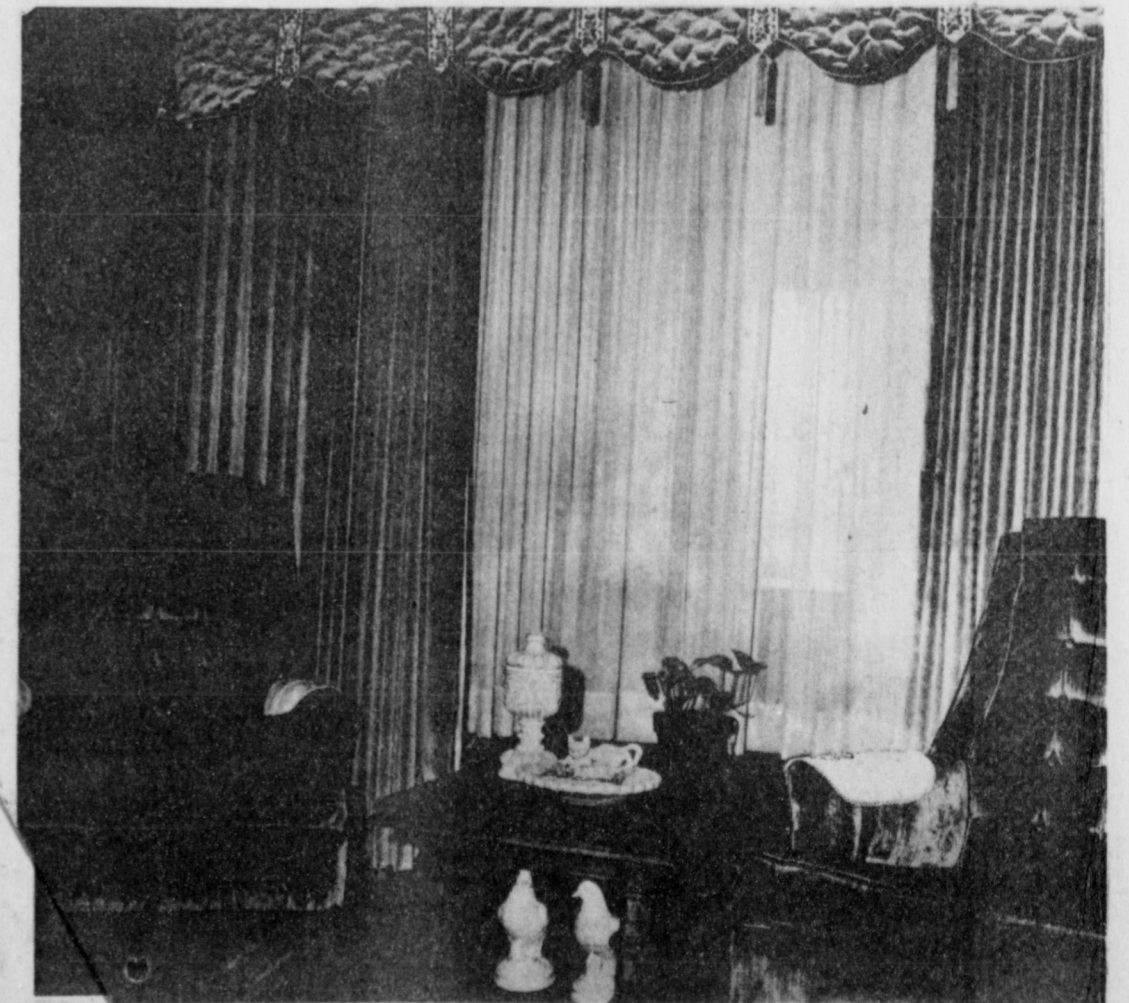
Co-chairmen of the tour are Mrs. Doyce Turner and Mrs. Max King. All members of XI Omicron XI Chapter of Beta Sigma Phi have tickets for the Christmas Parade of Homes. You may contact any member or call Mrs. Turner, 272-2642, or Mrs. King, 272-3918, for tickets.



A western painting typical of our West Texas area sets off the informal living area of the Lee Kimbrough located at 1815 West Avenue I. Mrs. Lee Kimbrough, pictured will act as hostess show guests on the tour through her home.



An elevated dining area complements the Charles Isaac home. During the Christmas Parade of homes, refreshments will be served here to all those touring the five homes.



For formal entertaining and family living the beautifully draped windows provide a rich background for twin velvet chairs in the living room of Mr. and Mrs. Charles Isaac.

## John Tower United States Senate

Congress has returned this week after a months recess for the November elections. This unusual post-election session was originally called by the Congressional leadership in an effort to move swiftly against inflation. However, several issues will be facing this lam-duck session of Congress and I want to discuss a few of them with you today.

The most visible issue facing Congress is the confirmation of Nelson Rockefeller for Vice-President. Almost three months have passed since his nomination. I personally think that Nelson Rockefeller is well qualified for the office of Vice-President because of his years of experience and his capacity for leadership. I think that he will be confirmed by Congress, but I feel strongly that the matter should be dealt with expeditiously so that we can move on to other important matters.

An issue that is most important to Texas is the announced intent of some in Congress to phase out the oil depletion allowance. Presently, oil men are allowed to deduct 22 percent of their gross income from a producing oil and gas well up to a limit of 50 percent of the net taxable income from the property. This permits a recovery of capital, like depreciation of a capital asset, and also helps to underwrite the risks of drilling. Oil companies may drill 50 exploratory

wells to find one that will produce enough to pay for itself. This country is still facing an energy shortage. In my estimation, we cannot take badly needed capital away from those companies, primarily independent operators, who are trying to find and develop new sources of energy. The opponents of the depletion allowance state that the major oil companies are making too much money at the expense of the consumer and that the depletion allowance is an outdated tax loophole that should be closed. The irony of this reasoning is that while the major companies may be able to absorb the loss of this capital, the independent producers will be the hardest hit and many may be forced out of business. Independent operators drill 80 percent of all domestic wells. If too many producers are forced out by loss of capital, exploration as well as competition would be drastically reduced.

Additionally, since the depletion allowance represents the recovery of a real economic cost through the tax system, elimination of the allowance would result in a shifting of that cost to consumers of natural gas and petroleum products. The depletion allowance is really a consumer subsidy that I believe should not be dropped in this time of rising prices. Therefore, I assure you that I will do all in my

power to block any effort to repeal the percentage depletion.

The number one concern of most Texans is inflation. President Ford has presented Congress with a comprehensive package to curb inflation. One of the most important aspects of that package is the request for cuts in federal spending. While it would be a deception to state that a balanced federal budget alone will eliminate inflation, I strongly feel that we must begin to move in that direction. Government spending increases consumption, not investment, and government competition for capital, coupled with

increases in the money supply, drives interest rates up.

The President already has deferred budget items totaling more than \$23 billion and has requested rescissions of more than \$975 million and more requests will be coming soon. I am generally in agreement with the President on these attempts to cut back federal spending and I hope Congress will take corresponding action.

During the past few years, mass transit has become a vital issue in Texas. I have always supported good highways and freeways for Texas. However, our metropolitan areas are becoming clogged with heavy traffic and increased air pollution. Mass transit systems should be developed as a suitable alternative. At the same time, we should make certain that senior citizens and low income families will continue to have available efficient and low cost public transportation.

Recently I served as a Senate conferee on the Senate-House conferee committee that considered the National Mass Transportation Assistance Act of 1974. The bill which emerged from the conferee has received widespread support and I believe it represents the lowest cost and most responsible approach to the problems of mass transit. The bill has passed the Senate; I expect it to pass the House and be signed by President Ford before the year is out.

With only four short working weeks left before the 93rd Congress adjourns, it is not possible to accomplish everything we want. We need comprehensive trade reform and we need to act on the President's entire inflation program. But these programs require extensive hearings and careful deliberation. A new Congress will convene in January and we will then move quickly to deal with those items not considered during this brief, month-long session.

Autumn means pear time—succulent sweet pears have a place at almost any fall meal. There are many ways to serve pears.

## The Consumer Alert

By John L. Hill Attorney General

AUSTIN-- Habla espanol? Thousands of Texans do. And for many of these citizens, Spanish is the language preferred for use in business dealings. So it's especially unfortunate, but true, that some merchants use their own facility in Spanish, or the fact that some consumers are less comfortable speaking, reading, or writing in English to operate unscrupulously.

Recently, the Attorney General's Consumer Protection Division, in cooperation with a West Texas district attorney, obtained a court judgment against a real estate firm that was attracting customers with advertisements in Spanish-language newspapers. When contacted by an interested party, however, the firm refused or was unable to sell at the advertised price and terms.

In addition, representatives of the firm failed to deposit earnest money at title companies or banks as they represented to customers they would, and failed to return the money or apply it to real estate purchases.

The firm's representatives also advertised their services as "notarios publicos" and accepted deposits from Mexican aliens to begin processing U.S. immigration papers. Our attorneys took the position that this was a deceptive trade practice, since in Mexico, as in many Spanish-speaking countries, a "notario publico" is an attorney or a person specially trained in legal matters.

Although the persons were notaries public, we discovered they were not attorneys or otherwise qualified to practice immigration law in the U.S. and, therefore, they could not obtain the necessary papers for their customers.

In another case, a firm operating primarily in the Valley and directing much of their sales efforts toward Spanish-

speaking migrant workers, has been permanently enjoined from representing their services. The firm was selling door-to-door what it described as "aseguranzas, or insurance, which salesmen assured prospective customers would cover costs involved if they had an automobile wreck in any state in the country."

In reality, what consumers were sold amounted to membership in an automobile club, for which they were charged high fees.

Since they sold their services in home solicitations, the company by law should have informed purchasers of their right to cancel any contract for more than \$25 within three days by notifying the firm or its salesman in writing.

And, since their sales pitches were usually made in Spanish, any contract or receipt of sale should have included this information in Spanish. The law says contracts or receipts must be in the same language used in the transaction.

My Consumer Protection Division reports that other states have experienced the problem of magazine sales crews descending on barrios and using hard sell appeals in Spanish to obtain subscriptions.

And instances have occurred in other states where publishers of so-called "minority" or "ethnic" magazines or newspapers have used long distance appeals to businessmen in other states for advertising.

The Attorney General's Consumer Protection staff has taken several steps to assure that our Spanish-speaking citizens will be able to get consumer protection assistance and information in whichever language they prefer.

First and most important, our five regional offices in San Antonio, El Paso, Lubbock, Houston, and Dallas make our

consumer protection services available on a more localized level. And in these offices, as in our main office in Austin, we have bilingual staff members or attorneys who can help with consumer problems.

In addition, we provide bilingual consumer complaint forms in all of our offices, and we have recently translated our "Practical Primer for Texas Consumers," a brochure describing common consumer frauds, into Spanish.

So, for assistance with a consumer complaint, in English or Spanish, consult the Attorney General's Consumer Protection Division.

No Time To Grow  
Mrs. Noowed--Aren't these eggs rather small today?  
Grocer--Yes'm, but the farmer who sells me my eggs had to start to town early this morning and took them out of the nest too soon.

Location: 2 Miles West and 2 Miles North of Earth, Texas

### ESTATE PUBLIC LAND AUCTION LAMB COUNTY REAL ESTATE TUESDAY NOVEMBER 19, 1974 - 2 P.M. TO SETTLE THE ESTATE OF SARAH CLARK

#### GEORGE WESLEY CLARK, Executor

THIS CHOICE 160 ACRE IRRIGATED FARM WILL BE OFFERED TO THE BEST AND HIGHEST BIDDER, THE FARM HAS A FOUR ROOM STUCCO HOUSE, TWO BOX CARS FOR STORAGE, 8 INCH IRRIGATION WELL, A GOOD DOMESTIC WELL, THE FARM HAS A GRADUAL SLOPE TO THE EAST ALL ROW IRRIGATION, THIS BEAUTIFUL FARM, ONE THAT HAS BEEN IN THE FAMILY OVER 40 YEARS PRESENT GROWING CROPS ARE CORN AND COTTON, THE FARM HAS A GOOD COTTON AND FEED BASE, 39.9 COTTON 475# 56.5 GRAIN BASE 133 BALANCE.

IN THE EVENT OF BAD WEATHER THE SALE WILL BE HELD IN THE COMMUNITY BUILDING IN EARTH, TEXAS. ALL ANNOUNCEMENTS MADE ON THE DAY OF THE SALE SUPERCEDES ALL OTHERS.

10 PER CENT DOWN TO BE PLACED IN ESCROW THE DAY OF SALE, BALANCE WITHIN 30 DAYS OF ESCROW. FARM HAS NO PRESENT LOAN, CHECK WITH YOUR LOAN COMPANY.

PERSONAL PROPERTY  
**L.D. HENDERSON**  
PHONE 805-965-2443 - BOX 125 - EARTH, TEXAS

**DEMO SALE**  
3 WITH FACTORY WARRANTY  
2, 1974 MODELS  
1, 1975 MODEL

**CROW**   
Muleshoe

### Lazbuddie School Menu

- December 2-6  
MONDAY  
Western Burgers  
Sweet Relish  
Hominy  
Blackeye peas  
Chocolate Pudding  
1/2 pt. Milk
- TUESDAY  
Chicken Taco Pie  
Buttered Corn  
Orange Pineapple Jell-o Salad  
English Peas  
Yeast Biscuits  
Butter-Jelly  
1/2 pt. Milk
- WEDNESDAY  
Beef Burritos with Hot Sauce  
Pinto Beans  
Green Salad  
Buttered Rice  
Sliced Peaches  
Cornbread-Butter  
1/2 pt. Milk
- THURSDAY  
Hamburgers and Sloppy Joes  
French Fries  
Pickles-Lettuce  
Applesauce Cake  
1/2 pt. Milk
- FRIDAY  
Barbecued Pork  
Baked Potatoes  
Green Beans  
Sliced Apples  
Hot Rolls  
Butter-Jelly  
1/2 pt. Milk  
1/2 oz. peanut butter served with each lunch.
- Menu subject to change.

OPEN DAILY 9am to 9pm CLOSED SUNDAY

**GIBSON'S DISCOUNT CENTER**  
WHERE YOU ALWAYS BUY THE BEST FOR LESS.  
1723 W AMERICAN BLVD.

BREATH OF SPRING AIR FRESHENER

7 OZ OUR REG 39¢

**29¢**

GAME WATER WORKS

**\$2.88**

OUR REG \$3.39

BY PARKER BROS

CHILDRENS BUFFERIN

36 CT ORANGE FLAVORED OUR REG 67¢

**56¢**

SUSAN AND HER STROLLER

GOLDBERGER DOLL COMPANY #1606 OUR REG \$8.99

**\$6.99**

ONLY 20 SHOPPING DAYS TILL CHRISTMAS

BOYS FLAIR BOTTOM JEANS

BY ELY 75% POLYESTER 25% RAYON REG \$4.97

3 PAIR **\$10**

NORTHERN AUTOMATIC BLANKETS

SINGLE CONTROL FULL SIZE REG \$19.97 **\$13.88**

TWIN SIZE REG \$18.97 **\$12.88**

HAPPY HOLIDAYS CHRISTMAS WREATH

BEAUTIFUL GREENERY ACCENTED BY BRIGHT RED BERRIES REG \$4.49

**\$3.33**

LARGE ASSORTMENT OF MIRRORS

SELECTION INCLUDES HAND, DRESSER, MAKE-UP, PURSE, AND WALL MIRRORS SEVERAL COLORS AND SIZES

**1/3 OFF OUR REG PRICE**

SUNBEAM POWER PLUS 900

900 WATT HAIR DRYER AND STYLER REG \$21.39

**\$16.97**

BEAUTIFUL CONTINENTAL WALL MIRRORS

2 STYLES FRENCH OVAL AND EUROPEAN STYLING REG \$4.69

**\$3.66**

SANYO PORTABLE STEREO RADIO

# RP 9210 OUR REG \$24.97


**\$19.88**

JOHN DEERE MOTOR GRADER

# 504 OUR REG \$9.39

**\$7.88**

LAY-A-WAY



OR CASH

# STATE CAPITAL Highlights AND Sidelights

by Lyndell Williams  
TEXAS PRESS ASSOCIATION

AUSTIN, Tex.—Texas delegates will be heading for Kansas City, Mo., this week for a new kind of Democratic national convention.

Most of them are just as glad there has never been one like it before and hope that there will never be another.

The "mini-convention" or 1974 Conference on Demo-

cratic Policy and Organization was mandated by the 1972 Democratic National Convention.

Its job is to produce the first national charter or constitution in history for a major American political party.

It will also serve as a forum for discussion of national issues. Four panels will meet December 6 to discuss four general areas, in identifying the issues of greatest concern to the Democratic party.

The party charter will be adopted after debate by 2,038 delegates December 7, and issue panel moderators will make their reports and addresses December 8.

Gov. Dolph Briscoe is chairman of the Texas delegation, which includes as ex-officio members all members of the Democratic congressional delegation.

Texas liberals, unhappy with selection of Briscoe in a telephone poll, named Ms. Billie Carr of Houston, a national Democratic committee member, their chairwoman.

Prospective candidates for the Democratic presidential nomination in 1976—including U.S. Sen. Lloyd Bentsen of Texas—are expected to make strong bids for attention at the Kansas City sessions.

**VOTES CANVASSED**—Canvass of the statewide general election vote reconfirmed Atty. Gen. John Hill as the top vote-getting incumbent. He polled 1,170,253 votes to win over Republican Tom Cole, with 379,108 and the Socialist Workers Party nominee, with 30,577.

Land Commissioner Bob Armstrong came in second in the canvass with 1,136,321,

and Agriculture Commissioner John C. White third, with 1,125,577.

All the incumbents scored more than a million votes.

High Republican vote-getter in the canvass was treasurer candidate Robert G. Holt, with 559,402.

Votes for governor and lieutenant governor will not be canvassed until the legislature convenes in January. The House of Representatives takes care of that. The Board of Canvassers canvasses the other races, including legislative, congressional and judicial.

**COURTS BUSY**—During January-June, 1,716,697 cases were filed in or appealed to county, justice of the peace and municipal courts of the state, according to Texas Civil Judicial Council.

Fifty-three per cent of the county court criminal cases and 38 per cent of the civil cases were dismissed or settled before trial.

Justice of the peace and municipal courts received \$26.4 million in revenue during the six-month reporting period.

The council reported 184

of the 254 constitutional county courts have judges who are not attorneys. Only six per cent of 934 justices of the peace are attorneys, and about 65 per cent of the 215 municipal courts (in cities over 5,000) are licensed lawyers.

**RATE HIKES OPPOSED**—A group backing utility regulation asked Attorney General Hill to investigate allegations of irregularities in rate practices by Southwestern Bell Telephone Company.

At the same time, the chairman of the Texas Coalition for Utility Regulation said no city council should grant phone rate increases while questions raised in a suit at San Antonio against Southwestern Bell are pending.

The \$29.6 million damage suit by a fired Bell executive and the family of a deceased executive alleges the company kept a separate set of books for use in getting rate increases and indirectly channeled money into political campaigns.

State Rep. Roy Blake of Nacogdoches also advised city councils to refrain from

rate increases until the charges have been proved or disproved.

**NEW INDUSTRIES MULTIPLY**—Twenty-six new industries which may have a \$121 million annual impact on the economy located in Texas during October.

About 2,800 jobs will be generated, and another 2,259 indirectly created. The industries will produce \$7.4 million in federal taxes a year, \$445,734 in state taxes and \$537,287 in local taxes, according to Texas Industrial Commission projections.

Plants are planned in Palestine, Bryan, Columbus, Morton, Summerfield, Ranger, Longview, Freepport, Marshall, Donna, Waco, New London, Tenaha, Brackensville, Clear Lake City, Houston, Corpus Christi, Austin and Fort Worth.

**VETS DAY CHANGE BACKED**—Veterans Day would be returned to November 11, under legislation backed by Governor Briscoe and sponsored by Rep. Lindon Williams of Houston.

Forty-two other states already have enacted similar bills. Federal legislation changed the date from November 11 to the last Monday in October.

**NEW APPROACH BACKED**—Governor Briscoe is backing the so-called "weighted pupil approach" to determine spending for public schools.

The formula would take the place of a specific allocation of dollars per classroom teacher unit. Money would be divided among schools in line with time of pupils spent in different types of classes.

More "weight"—and more money—would go to the executive types of instruction. Briscoe announced 60 meetings will be conducted over the state December 2-19 to detail tentative proposals developed for restructuring state school finance systems in 1975.

Meetings are slated in Edinburg, Corpus Christi, Kilgore, Amarillo, Victoria, Houston, Huntville, Mt. Pleasant, Lubbock, Austin, Fort Worth, Waco, Abilene, Beaumont, Richardson, San Angelo, Midland-Odessa, San

Antonio, Wichita Falls and El Paso.

### SHORT SNORTS

Bert L. Handcox, an Austin city councilman, will become director of the Governor's Office of Equal Employment Opportunity January 7.

The Governor announced he will ask the legislature to double the state share of cost of instructional television in the classroom to a maximum of \$1.50 per child for the school year.

Attorney General Hill held a university may delay furnishing names of its seniors to a citizen for a month while its code file is being used for registration and reports to state agencies.

U.S. Civil Service Commission is helping develop a proposed centralized personnel policy for Texas.

Add Limestone, Nolan and Upton counties to those requested for disaster area designation due to drought and other adverse weather.

### ONE MINUTE SPORTS QUIZ

1. Name the winner of the Little League World Series.
2. Who was the winner of the Westchester Golf Classic?
3. The Yankee 400-mile stock car race was won by whom?
4. Who won the LPGA National Jewish Hospital golf tournament?
5. John Hiller is a relief pitcher for what team?

### Answers to Sports Quiz

1. Taiwan for the fourth straight year.
2. Johnny Miller.
3. David Pearson.
4. Sandra Haynie.
5. Detroit Tigers.

Very Considerate  
"How did you get that black eye?"  
"I was protecting a little boy."  
"That's noble; who was he?"  
"Me."

**TELEX** Hearing Aids  
**Clovis Hearing Aid Center**  
Batteries & Molds. Free Tests.  
Service All Makes.  
416 Mitchell Phone 763-6900  
Clovis, N.M.

**Singleton-Ellis Funeral Home**  
24 Hour Ambulance Service  
Ph. 272-4574 Muleshoe

An investment in Your Future  
**ATTEND CHURCH**  
"For where your treasure is, there will your heart be also"

- SPANISH BAPTIST MISSION  
E. 3rd and Ave. E  
John Jaquez, Pastor
- PROGRESS SECOND BAPTIST CHURCH  
Arthur Hayes, Pastor  
1st and 3rd Sundays
- MULESHOE BAPTIST CHURCH  
8th Street & Ave. G  
Rev. Bob Deed, Pastor
- ST. JOHN LUTHERAN  
Larist, Texas  
Rev. Martin M. Platzer, Pastor
- FIRST BAPTIST CHURCH  
220 W. Ave. E  
Douglas DuBose, Pastor
- SPANISH ASSEMBLY OF GOD  
East 6th and Ave. F  
Rev. Hipolito Pecina
- ST. MATTHEW BAPTIST CHURCH  
W. Third  
E. McFrazier, Pastor
- NORTHSIDE CHURCH OF CHRIST  
117 E. Birch Street
- PROGRESS BAPTIST CHURCH  
Progress, Texas  
Murrell Johns, Pastor
- SIXTEENTH & D CHURCH OF CHRIST  
Sunday - 10:30 a.m.  
Evening - 6 p.m.  
Wednesday - 8 p.m.  
Ivan Woodard, Minister
- IMMACULATE CONCEPTION CATHOLIC CHURCH  
Father Timothy Schwertner  
Northeast of City in Morrison Edition
- MULESHOE CHURCH OF CHRIST  
Clovis Highway  
Royce Clay, Minister

## LAND OF PLENTY



**★ THANKSGIVING FOR . . .**

- PROSPEROUS NATION
- FOOD
- A STRONG NATION
- FREEDOM OF WORSHIP

Pages could be filled with ways that God has blessed us, and we should be continually thankful for God's goodness. At this time, however, we should pause from our daily workday habits and in unison, give special thanks to God, that we still have freedom of worship.

The Church is God's appointed agency in this world for spreading the knowledge of His love for man and of His demand for man to respond to that love by loving his neighbor. Without this grounding in the love of God, no government or society or way of life will long persevere and the freedoms which we hold so dear will inevitably perish. Therefore, even from a selfish point of view, one should support the Church for the sake of the welfare of himself and his family. Beyond that, however, every person should uphold and participate in the Church because it tells the truth about man's life, death and destiny; the truth which alone will set him free to live as a child of God.

**EVERYONE IN THE CHURCH  
THE CHURCH IN EVERYONE**

Coleman Adv. Serv.

- FIRST UNITED METHODIST CHURCH  
MULESHOE-YL PARISH  
C.B. Mellon - Pastor  
Russell Byard - Minister & Training  
Y.L. Route 1, Muleshoe  
507 West Second, Muleshoe
- ZION LUTHERAN PRIMITIVE BAPTIST CHURCH  
207 E. Ave. G  
Glen Williams, Elder
- PRIMITIVE BAPTIST CHURCH  
621 S. First  
Afton Richards, Elder
- FIRST CHRISTIAN CHURCH  
130 W. Ave. G  
Rev. Walter Bartholf  
Sunday School 9:45  
Worship 11:00
- LATIN AMERICAN METHODIST MISSION  
Ave. D & 5th Street  
Esteban Lara, Pastor
- FIRST PRESBYTERIAN  
Morton Highway  
Edwin L. Manning, Pastor  
Sunday Morning Service
- CHURCH OF THE NAZARENE  
Ninth & Ave. C
- CALVARY BAPTIST CHURCH  
1733 W. Ave. C  
Charles Kenneth Harvey, Pastor
- TRINITY BAPTIST CHURCH  
314 E. Ave. B  
V.L. Huggins, Pastor
- MULESHOE ASSEMBLY OF GOD  
517 S. First  
H.D. Hunter, Pastor
- JEHOVAH'S WITNESSES  
Frisco Highway  
Boyd Lowery, Minister
- RICHLAND HILLS BAPTIST CHURCH  
17th & West Ave. D  
Gerald Pepper, Pastor

- St. Clair's**  
110 Main
- Western Drug**  
114 Main
- Dari-Delite Drive-In**  
210 N. First  
Take-Out Orders 272-4482
- Bratcher Motor Supply**  
107 E. Avenue B  
272-4288
- Beavers Flowerland**  
"Flowers for all Occasions"  
272-3116 or 272-3024
- Toro Grain**  
Olton, Texas  
Division of Olton Feed Yards Inc.
- GIBSON'S DISCOUNT CENTER**  
1723 West American Blvd.  
272-4306

- San Francisco Cafe**  
"Tortilla Factory"  
121 Main Street 272-3502
- Howard I. Watson**  
Alfalfa - Hay  
272-3552 272-4038
- Black Insurance Agency**  
105 West Avenue D  
272-3292
- Art Craft Printing Co.**  
105 E. Avenue "D"
- White's Cashway Grocery**  
"Where friends meet and prices talk"  
402 Main
- Bailey County Memorial Park**  
"Every Service a Sacred Trust"

- Dairy Queen**  
Margie Hawkins  
272-3412
- West Planes Repair**  
Benger Air Park—Frisco  
247-3101
- Muleshoe Co-Op Gins**
- Lambert Cleaners**  
Steam Carpet Cleaning  
Drapery Cleaning  
123 Main Street 272-4726
- Bob's Safety Center**  
Wheel Atigning, Brakework & Automotive Air Conditioning  
272-3044
- Whitt-Watts & Rempe Implement Co.**  
"John Deere Dealers"  
Muleshoe, Texas 272-4297

## WADE'S SCORE WITH SPORTSMEN

SPORTS—WOMEN & KIDS TOO

**Fashions By:** Aspen, Red Eye, White Stag, Allison's Closet, Canadian-American Leather Coats, Etc. . . .

Complete Line Of **TROPHIES, PLAQUES & PEWTER MUGS**

Fast Service On All Your Engraving Needs

**UNDECIDED—GIVE A GIFT CERTIFICATE FROM WADE'S SPORTING GOODS**

**TABLE TENNIS TABLES**  
Regulation Table Fun \$75.59

**BACKBOARDS & GOALS**  
Complete w. Hardware & Net \$29.95

**A.M.F. 'TRAMPOLINES'**  
Fun . . . For The Whole Family \$375.00

**BE FIT**  
+ Exer-Gyms  
+ Barbells  
+ Jr. Barbells  
+ Chest Pumps  
+ Handy Grips  
+ Jogging Suits  
+ Jump Ropes  
+ Press Benches  
+ Slant Boards

**FOOTBALLS & BASKETBALLS**  
By Wilson & Rawlings

**Special Holiday Gifts**  
Insulated Underwear, Ski Gloves, Hunting Gloves, Thermal Socks, Ski Masks, Lined Nylon Jackets, Bush Knives, Guns by Browning Remington & Winchester.

**GOLF!**  
WE HAVE THE GREATEST BUYS.  
+ Golf Shoes  
+ Golf Bags  
+ Golf Clubs  
+ Golf Balls  
+ Golf Carts  
+ Head Covers

**TENNIS**  
Rackets, Shoes, Bags, Balls, Socks, Ladies & Men's Clothes, Warm-up Suits . . .

**BOXING EQUIPMENT (Excellent Sel.)**

# WADE'S

SPORTING GOODS & LADIES' SPORTSWEAR  
120 Main CLOVIS



# WANTED ADS

**OPEN RATES**  
 1st insertion, per word - 9¢  
 2nd and add., per word - 6¢  
**NATIONAL RATES**  
 1st insertion, per word - 11¢  
 2nd and add., per word - 7¢  
 Minimum Charge - 50¢  
**CARD OF THANKS** - \$3.00  
 Classified Display \$1.25  
 per column inch.  
 Double Rate for Blind Ads -  
**DEADLINE FOR INSERTION**  
 Noon Tuesday for Thursday  
 Noon Friday for Sunday  
**WE RESERVE THE**  
 Right to classify, revise or  
 reject any ad.  
**NOT RESPONSIBLE**  
 For any error after ad has  
 run once.

**PERSONALS**  
**FOR YOUR Stanley Home Products,**  
 Jewel Broyles, call  
 965-2481.  
 1-16t-tfc

\$100 reward offered for information leading to conviction of anyone damaging Journal news stands.  
 21s-1-tfp

**3.HELP WANTED**

**ACCEPTING Applications for R.N.**  
 at Plains Memorial Hospital at Dimmitt, Texas. Call 647-2191 and ask for Verle West, Administrator or A'Llan Bradley, Shift preference will be considered.  
 3-25s-tfc

**WANTED: 2 mechanics.** Excellent opportunity and working conditions. Apply in person, Town & Country Auto Inc, Clovis Highway.  
 3-32t-tfc

**WANTED: Still taking applications** for workers at Allsup's 7-11.  
 3-46s-tfc

**BUSINESS OPPORTUNITIES:** WE ARE GOING TO PUT A LOCAL MAN IN BUSINESS for himself. Must be ambitious family man, willing to work, who wants to earn \$15,000-\$20,000 or more a year in the near future. College graduate preferred. Contact Ron Donelson, 6413 University, Lubbock, 79413, Phone 797-1024 or 792-8274.  
 All inquiries will be kept confidential.  
 3-47s-tfc

**4.HOUSES FOR RENT**

**FOR RENT: 3 bedroom country home.** Small families only. Call 806-272-3819  
 4-46s-tfc

**5. APARTMENTS FOR RENT**

**FRIONA APTS.** now have available 1,2, and 3 bedroom. \$145.00. Call 247-3666 or come by 1300 Walnut Street, Friona. Sorry no pets.  
 5-24s-tfc

**FOR RENT: 2 bedroom unfurnished apartment.** Phone 272-4838. Smallwood Real Estate.  
 5-47s-tfc

**7.WANTED TO RENT**

Would like to lease wheat pasture and stalks for 1,000 head of cattle. Call Randy Johnson, 806-272-3056 or 806-965-2224.  
 7-41s-tfc

**8. REAL ESTATE FOR SALE**

**WANTED TO RENT or lease irrigated land.** Call 806-965-2160. John Mitchell.  
 7-38s-tfc

**FOR SALE: Small Central Texas Ranch;** located on Hwy 580, near Bend, Texas. Approx. 1/4 mile of Colorado River Frontage; underground sprinkling system; excellent fences and improvements; 3 bedroom. House with natural gas. Call 806-946-2648.  
 8-47s-tfc

**PRICED FOR QUICK SALE:** 3 bedroom home, carpeted, built-ins & paneling. Phone 806-272-4411 or 806-272-3795.  
 8-46t-6tp

**FOR SALE OR RENT: 3 bedroom, 1 bath, garage, large backyard, 2 storage buildings, patio with gas grill.** 225 Elm. Call 806-272-3749 after 6 p.m. or 505-356-3944.  
 8-45t-tfc

**FOR SALE BY OWNER: 216 acres** 4 miles E. 1 North, 1/4 E. of Muleshoe. See Harlan Reese, 806-965-2760, or Morris McKillip 806-965-2675  
 8-43t-11tp

**FOR SALE: 3 bedroom, 1 3/4 bath,** brick home with fenced backyard, located in Richland Hills near school. Call 806-272-4375.  
 8-42t-tfc

**FOR SALE: 80 acres; Lamb County;** Call 965-2470.  
 8-47s-3tp

**9.AUTOMOBILES FOR SALE**

**FOR SALE: 1965 Chevrolet;** 6 cylinder, 4 speed pick-up. Good condition. Call 806-925-3510.  
 9-36t-tfc

**FOR SALE: 420' of 16" well casing.** Contact T. L. Glasscock, 806-272-3527 or come by 1625 W. Ave. C.  
 10-47s-5tp

**FOR SALE: Bailing wire.** \$33.50 per roll. 16" well casing, 1/4 wall, new. 212-50 per foot. Farwell Pipe & Iron, Farwell, Texas. Phone 806-481-3287.  
 10-46t-tfc

**FOR SALE: 3/4" through 10" PVC plastic pipe & fittings.** State Line Irrigation. 806-272-3450.  
 10-47t-tfc

**FOR SALE OR TRADE: Layne Apartments.** See Mrs. Layne at 524 S. 1st Street.  
 11-25s-tfc

**12.HOUSEHOLD GOODS**

Pianos, organs, band instruments, new and used. Professional repairs, sheet music, rentals, terms. Phillips House of Music 118 Main, Clovis, N.M. Phone 505-763-5041  
 12-34s-tfc

**13.MISCELLANEOUS**

**FOR SALE: Mobile office.** 12X44 air-conditioned. Call 806-272-3288.  
 15-47s-4tp

**WANTED: Someone to piece quilts** on the halves. Call 806-272-4358  
 15-47t-4tp

**FOR SALE: Male, red miniature Dachshund,** 10 weeks old. Shots & wormed by vet. Call 806-272-4037.  
 15-48t-tfc

**FOR SALE: Belt Vibrator.** Call 806-272-3120.  
 15-48s-2tc

**FOR SALE: Honda 450 Scrambler,** 1970, bright red. Electric starter, signal lights, twin mirrors. Contact Barney Scheller, Phone 806-306-2023. 2 mi E, 1 3/4 N. Springlake, Texas.  
 15-47t-tfc

**FOR SALE: Mesquite firewood.** Phone 806-272-4842  
 15-43t-tfc

**FOR SALE: 1967, 2 bedroom, 12X65 Broadmore Mobile Home.** All electric, dishwasher & disposal, central heating & air conditioned, fully carpeted. Call 806-925-3436,  
 15-46t-6tc

**FOR SALE OR TRADE: 1969 3 bedroom mobile home.** Built-in, carpet, nice. Phone 806-272-4411 or 806-272-3795.  
 15-46t-6tp

**WANTED: Custom cotton strip-pers,** 500 acres irrigated cotton to harvest. Call Bamort: 806-272-4787.  
 15-48t-tfc

**LAND FOR SALE: Approx. 320 acres,** 11 1/2 miles west, 2 wells ready for circle sprinklers.  
 Approx. 277 acres 6 miles west, 2 wells and one circle sprinkler. C:op ready to graze now.  
 Approx. 191 acres, 2 wells, 4 side roll sprinklers. Crop ready to graze now. Call Harold or Max King 806-272-4411, 8-10s-tfc

**FOR SALE: Aforable game pooodle puppy,** AKC, \$35.00. Call 806-946-2148  
 15-43s-2tc

**PRE CHRISTMAS SPECIAL**  
**Indian Jewelry**  
**25% DISCOUNT**  
**JUNE WAGNON**  
**272-3722**

**CORN FARMERS**  
 We just received an extra allotment of VALLEY Sprinklers with corn extensions for the taller varieties of corn. These are available for Nov. & Dec. delivery. Check our lease plan out. Call:  
**AVI INC**  
**272-3565**  
 Muleshoe, Texas

**Cess Pool Cleaning**  
 Cesspools pumped with a MUD-PUMP & treated with bacteria & enzymes to liquify solids & loosen sides for better drainage. Dipping vats drained and liquids hauled to your disposal pit. Grease pits drained & treated. Mollasses pits drained.  
 Phone 272-3677 or 272-3467  
**ELMER DAVIS**

**VALLEY SELF-PROPELLED Sprinklers,** Available for delivery NOW  
**AVI INC.**  
 Clovis Hwy West  
 272-3565  
 Muleshoe Texas

**D-L PLUMBING**  
 920 HICKORY  
 272-4769

**\*Expert and Colorful Weddings**  
**\*Family Groups**  
 Anywhere Anytime  
**PHOTOGRAPHY**  
 by Oecia  
 CALL 385-6083  
 Littlefield 409 W. 2nd

**FOR SALE: Honda XL100 '73** model. \$375.00. Call 806-965-2773.  
 15-36t-11tc

**16.LIVESTOCK**  
 Calves 7 to 14 days old, Healthy and started on bottle. Free delivery of 10 or more. Call 214-223-5171 after 7 p.m.  
 16-28s-24tc

**Glen's BACKHOE SERVICE**  
 806/272-4843  
 GLEN WATKINS

**THANKSGIVING BARGAINS**

1973 Ford 1/2 T. Ranger XLT  
 Extra Sharp  
 ????  
 1973 Chev Imp 4 dr Loaded  
 Extra Sharp \$2995  
 1972 Ford 4dr H.T. Loaded  
 Extra Sharp \$2195  
 1970 Impala Spt Cpe Loaded  
 Extra Sharp \$1499  
 1968 Toronado Loaded  
 Good Buy \$899

Lots Of Other Nice Cars To Choose From At Bargain Prices

**CROW CHEVROLET**  
 MULESHOE, TEXAS

**All type roofing & building repair.**  
**FREE ESTIMATES**  
**Phone 806-272-3756**  
**DON'S ROOFING CO.**  
 15-32s-tfc

**WANTED, SAW FILING:** Call or see Morris Nowlin or Buck Creamer, or leave saws at Lenau Lumber Co., Higginbotham Lumber Co., or Heathington Lumber Co. I will pick them up there, sharpen & return them.  
 Buck Creamer, phone 806-272-3265.  
 15-48s-45tp

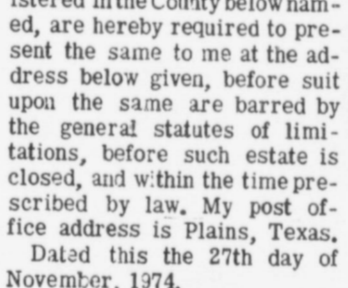
**FOR SALE: 320 A dryland,** lays nearly perfect, beautiful wheat, N. W. of Bovina; 160 A irrigated, 5 miles N. W. of Sudan, 2 wells; 160 A irrigated, 3 miles S. E. of Farwell; 180 A touches Bovina city limits, 2 6' wells; 640 A 3 3' well, W. of Friona, 280 A farmland, balance in grassland; 320 A 3 wells, 5 miles S. E. of Farwell; 280 A, 5 wells, Well improved on highway, 5 miles W. of Muleshoe; 640 A, 4 wells, Carroll & feeding equipment, house & barn, near Friona, 170 A, 1 well, nearly perfect, near Bovina; 160 A irrigated, well improved, near Muleshoe; 726 A, 5 wells, 2 houses, 2 quonsets, Rhea Community; 245 A, 2 wells, sprinklers, W. of Muleshoe; 200 A irrigated, lays good, alfalfa & sprinklers, touches Farwell city limits.  
 Call 806-481-3288 or 505-763-5575, unit 5408.  
 8-48s-tfc

**Public Notice**  
 NOTICE TO ALL PERSONS HAVING CLAIMS AGAINST THE ESTATE OF HENRY GREEN HARVEY, DECEASED. Notice is hereby given that original letters testamentary upon the Estate of Henry Green Harvey, Deceased, were issued to me, the undersigned, on the 27th day of November, 1974, in the proceeding indicated below by signature hereto, which is still pending, and that I now hold such letters. All persons having claims against said estate, which is being administered in the County below named, are hereby required to present the same to me at the address below given, before suit upon the same are barred by the general statutes of limitations, before such estate is closed, and within the time prescribed by law. My post office address is Plains, Texas. Dated this 27th day of November, 1974.  
 s/ Roger Green Harvey, Executor of the Estate of Henry Green Harvey, Deceased, No. 1094, in the County Court of Bailey County, Texas.  
 15-48s-1tp

Several good tracts of land for sale. Some at 29% down. Good water.  
 8-37s-tfc

**POOL REAL ESTATE**  
 214 E. AMERICAN BLVD  
 PHONE 806-272-4716

**REAL ESTATE TOONS**  
 BY K.K. KREBS



Call Us Up  
 Give Us A TRY  
 We Have People  
 Eager To BUY.

**FOR SALE: 320 acres red dryland.** \$150. an acre. Good terms.  
 Service Beyond The Contract  
 Phone 272-3191  
 210 So. 1st Muleshoe

**On Wall Street**  
 By Bob Hill  
**Lentz, Newton & Co.**

**OIL EQUIPMENT BOOM**  
 Manufacturers of drilling rigs, mud pumps and industrial motors are so covered up with orders from oil drilling contractors. They are now quoting a delivery time of two to three years. Back in 1973 such equipment was available on 30 to 150 days notice. The oil equipment industry is expanding plant as fast as possible, as much as 50% overall, in order to handle the stepped up pace of worldwide drilling activity. But, now politics and inflation rear their ugly heads. If the oil depletion allowance is ended and an excess profits tax is heaped on the oil producers, drilling activity could go down hill very quickly. So, long range planning for the oil equipment manufacturer is almost impossible these days.  
 Soaring material costs are pushing through price increases almost daily. Hughes Tool raised its rock bit prices 28% in 24 months. Just getting a price increase into effect takes as long as six months. But, as costs keep soaring, the industry's profits (up sharply) may turn around dramatically within a year. A big question is how high costs can go before drilling becomes unprofitable for U.S. oil and gas producers. The cost of drilling has already doubled in the past two years to about \$6 per ft. for wells in the 8,000-ft. range. Many drillers are so concerned about future drilling demand,

they are not taking on any additional headaches by expanding their fleet of drilling rigs. There is a lesson for the future from the recent past. After a drilling boom in 1955 and 1956, the industry expanded capacity only to face 15 years of declining drilling activity. The number of working rigs dropped from more than 2,600 to as low as 970. 'Who knows?' says one bank lending specialist. 'This is a commodity business. The boom is not going to last forever.'

**BIBLE VERSE**  
 "And whatever you do or say, let it be as representative of the Lord Jesus, and come with him into the presence of God the Father to give him your thanks."  
 1. Who is the author of this advice?  
 2. To whom was he writing?  
 3. Upon what occasion?  
 4. Where may this verse be found?  
 1. Paul the Apostle.  
 2. The Christians in the church at Colosse.  
 3. To counteract the influence of false leaders in the church.  
 4. Colossians 3:17 (The Living Bible).

**CHRISTMAS SPECIAL**  
 20% OFF ON ALL SITTINGS FROM NOW UNTIL DECEMBER 15, 1974  
 COMMERCIAL PHOTOGRAPHY FRAMES  
 PORTRAITS WEDDINGS  
 CREATIVE PORTRAITS BY  
**Pats Photo** PAT SHAFER  
 218 W. SECOND MULESHOE, TEXAS  
 PHONE 806/272-3487

**Welcome To Muleshoe**

MR. AND MRS. GLEN MORRIS

We would like to welcome to Muleshoe Mr. and Mrs. Glen Morris who are originally from Lazbuddie where they both attended Lazbuddie High School. They both enjoy hunting and fishing and are presently taking up a hobby of refinishing furniture. Shown with them are their pets who are Conrac and Simon. She is a beauty operator at Muleshoe Beauty Salon and he is presently employed by the General Telephone company. Their church preference is Church of Christ.

THE FOLLOWING FIRMS WELCOME THE NEWCOMER TO MULESHOE

<b>James Crane Tire Co.</b> GOODYEAR	<b>MULESHOE STATE BANK</b> MEMBER FDIC
<b>DAMRON DRUG CO.</b> REXALL 308 MAIN	<b>HENRY INS. AGENCY</b> 111 W. AVE. B.

**WE Will CUSTOM PROCESS YOUR BEEF TO YOUR SPECIFICATIONS**

**CALL OR COME IN TODAY!**  
**CROW MEAT CO.**  
 So. Hwy. 214 Friona, Texas Phone 247-3333

# Heart Association Lists Memorials

A total of \$393.00 has been contributed to the Heart Fund in the form of memorial gifts for the fiscal year ending June 30. This compares with a total of \$371.00 contributed for the full year of June 30, 1973 to June 30th, 1974, it was announced today by Dean Spraberry, Memorial Chairman of the

American Heart Association, Bailey County Division.

"It is gratifying to find so many Bailey County residents using Heart Fund Memorials as a way of paying respect to relatives, friends and associates who have passed away, and giving hope to the living by supporting projects designed to help reduce the toll of death and disability resulting from the various forms of heart and circulatory diseases," Mrs. Spraberry said. "Memorial funds received throughout the year are added to funds contributed during the annual Heart Fund Campaign to be used in the Association's programs of Research, Public and Professional Education and Community Service." Mrs. Spraberry said that many people are beginning to make donations into the Memorial Fund to honor happier events such as birthdays and anniversaries, as well as to donate in

memory of some loved one who has died.

Every memorial gift is acknowledged with a dignified white card naming the person in whose honor the gift is made and the donor. It is sent to the person designated by the donor. The amount of the gift is not stated. Memorials should be sent to American Heart Association, Bailey County Division, Dean Spraberry, Memorial Chairman. Information can be obtained by phoning 272-4515.

Recent memorials given, in memory of Bill Tanner: are Mr. and Mrs. R. G. Wilson, Mr. and Mrs. Darrell Wilson, Lindell and Preston, Bill and Ruth Wimberly, Billy Wimberly and Glen Elder, Mr. and Mrs. Gary Glover, Mr. and Mrs. Pat Bobo, First National Bank, Muleshoe, The Irvin St. Clairs, Mr. and Mrs. George Cabrera, Mr. and Mrs. R.W. Williams,

Mr. and Mrs. John Blackwell, Melaine and McRera, Dean Spraberry and Cheryl, Sandy Bass and Chris Hopkins, Mr. and Mrs. C. H. Millsap, Mr. and Mrs. Sam Blackwell, Mr. and Mrs. Jimmy Johnson, Mr. and Mrs. A. T. Henderson and David, Mr. and Mrs. D.L. Redwine, Mr. and Mrs. M. H. Laney, Mr. and Mrs. Darrell Mason and Boys, Mr. and Mrs. Clarence Mason, James Crane Tire Co., and Employees, Mr. and Mrs. W.M. Pool, II, Mr. and Mrs. L. B. Hall, Perry and Larry, Mr. and Mrs. A. H. Morris, Mr. and Mrs. W. T. Watson and Boys, Mrs. Sherman Sweatman, Mr. and Mrs. Jimmy Presley and Family, Millie and Don May, The Bill Jim St. Clairs, Mr. and Mrs. R. C. Wrigley, Mr. and Mrs. Elmer Downing, Riverland Hills First Grade Teachers, Mr. and Mrs. E. W. Locker,

Mrs. A. M. Bradley, Mr. and Mrs. Tim Campbell and Robert L. Jones, Jr.

Also given in Memory of Mrs. Myrtle Freeman from Mr. and Mrs. Jim Clements.

Given in Memory of H. G. Harvey from Mr. and Mrs. Jim Clements and First National Bank, Muleshoe, Texas. Given in Memory of Joe Smith from The Horace Huttons.

Buying for cash is the best way to keep your debts paid.

Those attending the Baptist Convention in Amarillo the first of last week were Mrs. W. B. Peterson, Mrs. Dale Nichols, Mrs. Harold Layton, Mrs. H. B. King and Bro. and Mrs. Charlie Shaw.

Bula Jr. High basketball teams played Bledsoe on Bula court October 28, at 5:30 p.m. both Bula boys and girls won with the boys score, 46-29 and girls 43-40.

## Bula News Mrs John Blackman

Mr. and Mrs. Rufus Jones of Quail visited first of the week in the Cecil Jones home.

Tommie Kirk accompanied his mother, Mrs. Lola Kirk of Littlefield to Rochester Monday, for the funeral of Mrs. Kirk's brother, Brant Willis, Willis passed away in California.

Mr. and Mrs. Gene Bryan attended the funeral Saturday afternoon in Crosbyton, for his cousin, Ruby Smith.


Mr. and Mrs. John McCormack and children, Heather and Cornell spent the weekend visiting with relatives and friends in Lubbock. Her sister and family Mr. and Mrs. Ken Gray and friends, Mr. and Mrs. Bob Jones and also Miss Bonnie Elkins, student at Lubbock Christian College.

**ATTENTION MULESHOE AREA CATTLEMEN**

.....In regard to dead stock removal.....  
If you have had a problem with service.....  
whether in the feed yard or on the farm.....  
Please give US a chance! Thank you.....

**Your local used cow dealer is muleshoe-bi-products**  
Phone-965-2903 Mobil Phone 965-2429

**DEMO SALE**  
3 WITH FACTORY WARRANTY  
2, 1974 MODELS  
1, 1975 MODEL

**CROW Muleshoe** 

# PIGGLY WIGGLY


# NEW PRICING POLICY

We Will Not Increase the Price of Food Once Placed on our Shelves for Sale

When we are forced to increase a price, items on our shelves marked at the lower price will be sold at the lower price.

Whip Inflation Now

**WIN**



USDA Choice, Heavy Aged Beef Full Cut Bone In

**Round Steak \$1 19**

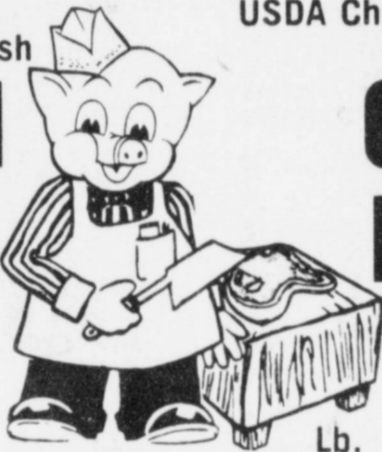
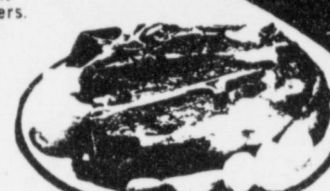
Lb.




3-Lbs. Or More, Fresh

**Ground Beef 79¢**

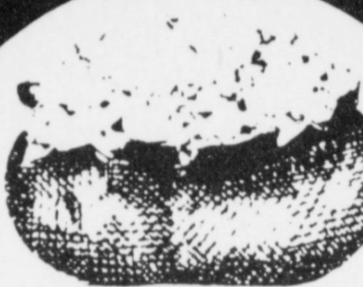
Lb.

USDA Choice, Heavy Aged Beef Blade Cut

**Chuck Roast 79¢**

Lb.



Nutritious

**Russet Potatoes 79¢**

10 Lb. Bag

USDA Choice, heavy Aged Beef Full Cut

Boneless Round Steak Lb. \$1 29

USDA Choice Heavy Aged Beef, Bone less Rump Roast Lb. \$1 49

Lean

**Ground Beef 99¢** Lb.

4 Varieties, Frozen

**Patio Dinners 39¢** 12-oz. Pkg.

Aunt Jemima, Frozen

Blueberry Waffles 10-oz. Pkg. 67¢

Morton's, Frozen

Glazed Donuts 10-oz. Pkg. 79¢

Minute Maid 100% Pure Florida Frozen Orange Juice 12-oz. Can 67¢

Pepper Pine, Frozen, French Fry

**Shoestring Potatoes 4 \$1** 20-oz. Pkgs.

New!!

**Aim Toothpaste 19¢** 1.4 oz. Tube

**43¢** 2.7 oz. Tube

**59¢** 4.6 oz. Tube

**79¢** 6.4 oz. Tube

Halls Decongestant Cough Formula

**Mentho-Lyptus 99¢** 3-oz. Btl.

Gillette Deodorant

**Right Guard 89¢** 4-oz. Bronze Can

Your Choice!! Shampoo

**Head & Shoulders 79¢** 2.5-oz. Tube

**79¢** 4-oz. Lotion

Farmer Jones (2-Lb. Bag \$1.95)

**Sausage 98¢** 1-Lb. Bag

Made From Beef

**Breakfast Sausage 97¢** 2-Lb. Bag

Farmer Jones

**Sliced Bologna 79¢** 12-oz. Pkg.

Farmer Jones Tender And

**Juicy Franks 79¢** 12-oz. Pkg.

Decker

**Jumbo Franks \$1 19** 1-Lb. Pkg.

Quarter Pork Loin, Sliced Into 9 To 11 Chops

**Pork Chops 98¢** Lb.

Boneless

**Stewing Beef \$1 29** Lb.

USDA Choice, Heavy Aged Beef

**Chuck Steak 98¢** Lb.

Lean Beef

**Short Ribs 49¢** Lb.

Boneless Boston Butt

**Pork Roast 89¢** Lb.

Boston Butt Fresh

**Pork Steak 98¢** Lb.

Fresh, Boston Butt

**Pork Roast 79¢** Lb.

For Munching Raw

**Nutritious Carrots 29¢** Lb. Cello Bag

Good Raw Or Cooked

**Turnips 29¢** Lb.

Great For Stews

**Yellow Onions 10¢** Lb.

Delicate Flavor, Yellow Or

**Italian Squash 49¢** Lb.

Bountiful

**Red Cabbage 27¢** Lb.

**Grapefruit 79¢** 5 Lb. Bag

Red Ripe

**Tomatoes 59¢** Lb.

**Cabbage 15¢** Lb.



**Jewel Shortening \$1 49** 42-oz. Can



**Carol Ann Salad Dressing 69¢** Qt. Jar

Red

**Delicious Apples 79¢** 3 Lb. Bag

Refreshing

**Tangerines 39¢** Lb.

Tangy Sweet

**Pineapple 69¢** Each

Healthful, Texas

**Juice Oranges 69¢** 5-Lb. Bag

Halls Decongestant Cough Formula

**Mentho-Lyptus 99¢** 3-oz. Btl.

Gillette Deodorant

**Right Guard 89¢** 4-oz. Bronze Can

Your Choice!! Shampoo

**Head & Shoulders 79¢** 2.5-oz. Tube

**79¢** 4-oz. Lotion

Piggy Wiggly Non-Dairy

**Coffee Lightener 96¢** 11-oz. Jar

Piggy Wiggly

**Toaster Pastries 53¢** 11-oz. Pkg.

Del Monte Whole Or Kosher Halves

**Dill Pickles 49¢** 22-oz. Jar

Piggy Wiggly Sweetmilk Or

**Buttermilk Biscuits 10/\$1** 8-oz. Can

Piggy Wiggly

**Low Fat Milk 93¢** 1/2-Gal. Ctn.

Piggy Wiggly

**Tortilla Chips 59¢** 8-oz. Pkg.

Dixie White, 9 inch

**Paper Plates 89¢** 100-Cl. Pkg.

Chunk Style

**Del Monte Tuna 89¢** 2 6 1/2-oz. Cans

Lady Alice 1/2-Gal. Ctn.

**All Flavors Mallorine 69¢** First Label 1/2-Gal. Ctn.

**Delicious Sherbert \$1 45**

**Folger's Coffee 3 \$3 49** 3 Lb. Can

**STORE HOURS**

8-10 Daily  
9-5 Sunday

**We Welcome Federal Food Stamp Customers**