

ALLEGED LETTER IS TO FIGURE IN TRIAL OF DAVE SODERMAN

EXPECTED TO BE BASIS FOR DEFENSE IN DALLAS COURT.

CHARGES THAT POWERS BROKE UP THE HOME

Wife of Defendant is Expected to Be Star Witness in the Case.

By United Press. DALLAS, TEXAS, May 20.—An alleged "death letter," written a few days before Dave Soderman shot and killed Jay Clay Powers, playwright, and prominent Kentuckian, is expected to be the basis upon which Soderman will build his defense when the trial starts here Monday.



Lady Margaret Scott, daughter of the Duke of Buccleuch, is the latest bride of the Prince of Wales.

Byers News

BYERS, TEXAS, May 20.—The Byers high school faculty entertained the senior class Thursday evening. The following were served refreshments: Arza Cummings, Rugby Norman, Ted Adams, Fred Smyers, John Dunn, Superintendent G. C. Boswell, Mrs. G. O. Boswell, Miss Madge Nixon, Mrs. Caffee, Miss Hodge, Mrs. Huggins, Miss Mason, Mrs. Cumming, Mr. L. A. Wilson.

FIREMEN AGREE ON SCALE OF SALARIES FOR THE OFFICIALS

VOTE TO CONTRIBUTE \$1,000 TO THE TOM MOONEY DEFENSE FUND.

MAKE CONTRIBUTION TO TEXAS FLOOD SUFFERERS

Saturday's Session is Enlivened by Heated Debate on Salary Question.

By Associated Press. HOUSTON, May 20.—The convention of the International Brotherhood of Locomotive Firemen and Enginemen voted the existing scale of salaries to the executive officers of the brotherhood with only one exception following heated debate and many proposals this afternoon to both decrease and increase the compensation of the officers.

CHATS WITH REX BEACH About the Great Out-of-Doors



By MORRIS ACKERMAN. "Everyone who hunts the feathered migrants knows what complete effectiveness the treaty with Canada has saved our migratory waterfowl," says Rex Beach. "While the treaty and federal law has done its wonderful part, still, in my opinion, the discontinuance of market hunting along the Canadian coast has been equally an effective measure."

PURSUDE THREE MEN WANTED FOR FRISCO HOLDUP ON MONDAY

SPRINGFIELD, MO., May 20.—After playing a game of hide and seek with South Missouri posse since last Monday, three men sought for complicity in the \$50,000 Frisco payroll robbery here last Monday, tonight are again closely pursued in the hills of Dallas county.

METHODIST WIND UP IMPORTANT BUSINESS OF THE CONFERENCE

HOT SPRINGS, ARK., May 20.—The 19th general conference of the Methodist Episcopal church, south, tonight wound up the important features of its business program and recessed until tomorrow, at which time the five newly elected bishops will be consecrated and memorial services will be held for deceased bishops. A few less important matters of business went over and they will be disposed of on Monday morning, the time set for formal adjournment of the conference.

AWAIT ACTION OF PLAN FOR CLOSER RELATIONS

CHARLESTON, W. VA., May 20.—Commissioners and ruling elders of the Southern Presbyterian church were awaiting with interest word from reformed churches and the Northern Presbyterian churches regarding the action today of the general assembly in adopting a resolution proposing closer relations with reformed churches.

RAILWAY SCHEDULE

Table with columns for destination, arrival, and departure times for various rail lines including Wichita Valley, Byers Branch, Missouri Kansas & Texas, Fort Worth & Denvers, and Wichita Falls & North-Western.

FUNERAL SERVICES FOR MRS. HINKLEY MONDAY MORNING

Funeral services for Mrs. W. W. Hinkley, who died Friday night in a Fort Worth hospital, will be held Monday morning from the First Methodist church, south, Tenth and Lamar. Burial will be in Riverside.

Advertisement for Harry's Cut-Price Shoe Store. Text: "Just Arrived - 14 latest style strap slippers. Brocaded Satin, Patent Kid, White Kid or Fabrics, also the two-color effects in black and white, sand and black, Elk and Black and many other classy styles. WITHOUT A DOUBT the classiest line of new styles to be had in Wichita Falls, and we have them to fit any foot AAA to D. See them in our windows today. We will be pleased to show you these beautiful patterns whether you buy or not. Come in at any time and look us over. We have the right styles at the right prices. The Busiest Little Store in Town. HARRY'S CUT-PRICE SHOE STORE. Basement Morgan Building."

Advertisement for Noble-Little Hardware. Text: "ONLY ONE MORE DAY! - Big Baseball Sale. Baseball Goods So Cheap You Can't Resist Buying. Our regular price has been from 15 to 20 per cent under factory list. Now we are offering you another 20 per cent. -Monday Last Day Don't Miss It. 'WE'LL SATISFY' Noble-Little Hardware 611 Seventh Street Phone 5364"

Advertisement for Chandler Six Royal Dispatch. Text: "Instant Hit For New CHANDLER SIX ROYAL DISPATCH. NEWEST of the Chandler Six models, the Royal Dispatch, just announced, is the embodiment of smartness and individuality. Nothing like it has ever been shown except in the highest priced and custom-built cars. It embodies: Six wire wheels (leather spars on each side), Gleaming alcohol resistant, lamp and windshield, Windshield side wings, Aluminum steps, Individual fenders with leather splashes, Solid Aluminum trunk rack and bars to protect body, Finish in Twilight gray or Chandler maroon. Powered for fleetness with the marvelous Chandler motor it rides buoyantly upon the new, low under-slung springs. This latest addition to the Chandler family of new and distinguished models is phenomenally low in price. \$1795. WILHELM-MOULDER AUTOMOBILE CO. 608 Indiana Ave. Phone 2427. THE CHANDLER MOTOR CAR CO. Price F. O. B. Factory CLEVELAND AND"

Advertisement for White Trucks. Text: "White Trucks. Fifteen owners alone have invested more than \$20,000,000 in White Trucks. 5-ton \$4,500, 3 1/2-ton 4,200, 2-ton 3,250, 1 1/2-ton 2,400. F. O. B. Factory. The White Company, Cleveland. OVERLAND MOTORS CO. Ninth and Travis Wichita Falls. 21 YEARS OF KNOWING HOW"

Advertisement for Hotpoint Electric Iron. Text: "Hotpoint. The most celebrated Iron in the world. MANY a woman can still remember the thrill that came over her when she first handled a Hotpoint Electric Iron. Not that she had never seen or heard of electric irons before. There were already several irons on the market. But here was an electric iron made for ironing. Not a device or novelty to be bought and laid aside - but a housekeeping tool to use. The first electric iron with a point even hotter than the rest of the iron. Three More Notable Features of the Hotpoint Iron. The Hinged Floor Guard Protector. The strength-saving Cushion Handle. The Attached Stand. \$6.75. Small Monthly Payments on Your Light Bill 'Your Electric Servant' WICHITA FALLS ELECTRIC CO."

Fragmentary text from the right edge of the page, including "SEYMOUR 3000 METRE RECEIVING", "NEW YORK", "AGGREGATE RESERVE", "WASHINGTON", "D. Ken", "Sto", "The", "This", "serv", "Call", "D", "Ken", "The", "Fifth at", "P. MAR"

MONDAY SPECIALS

AT Howell Store

EXTRA SPECIAL

Will Buy a Ladies' Pretty Dress Monday—**\$1.00**
These dresses are on display today and Monday in Scott Avenue window. Be sure to see them.
One Dress Only to Each Customer.

We Only Have a Limited Number of These Dresses—
Regret We Could Not Get More—Come Early

One Hour Only, 10 a. m. to 11 a. m.

GINGHAM DRESSES
Sizes 16 to 40. Made of Imported Gingham by America's foremost manufacturers. These garments should sell for \$5.00 and \$6.00 each. They were bought by special arrangement, enabling us to offer them at.....**\$2.95**

LADIES' SILK SWEATERS **\$4.95**
One special group Fibre Silk Sweaters in the very best patterns and in stock in all the wanted colors and styles.....
Others Up to \$25.00 Each

JERSEY SILK PETTICOATS—All colors.....**\$1.95**

CREPE DE CHINE TEDDIES—Colors, flesh, peach, orchid and white. All sizes.....**\$1.95**

LADIES' SHOE DEPARTMENT
We still have left about 200 pairs of the finest quality Ladies' Pumps and Oxfords in French heels. We are offering these until they are gone at.....**95c**

Men's Department

Men's Silk Mohair and Genuine Palm Beach Suits **\$12.50**
Good assortment of colors. Large selection of stouts, shorts and slims. Sizes 34 to 48.....

MEN'S SILK MOHAIR PANTS.....**\$4.95**

STRAW HATS
Hundreds of new Straw Hats, best braids, splendid workmanship and all the latest shapes. Priced in special groups at—
\$1.75—\$2.25—\$2.95
\$3.50—\$3.95

MEN'S SHIRTS
One lot good quality Madras Shirts, well made. Sizes 14 1/2 to 16 1/2. Price.....**\$1.00**

SPECIAL ITEM IN HOSIERY
One lot Men's Hosiery, including fancy silk numbers originally selling as high as \$2.50. Per pair, Monday.....**25c**

BOYS' BLOUSES
Wonderful assortment fine quality Boys' Blouses. Special for Monday at.....**45c**

Howell Store

SEYMOUR TO HAVE 3000 METER RADIO RECEIVING OUTFIT

SEYMOUR, TEXAS, May 20.—Plans were perfected here today for the immediate installation of a 3,000 meter radio receiving set the primary purpose of which is to secure the Texas radio news market service as well as the entertainment features which will result from the connection. The instrument will be installed in the quarters of the Seymour chamber of commerce, where a bulletin board service will be maintained in order to record the daily market quotations which are broadcast at certain periods of the day. It has also been planned to combine with the service to be secured occasional open air entertainments in front of the chamber of commerce quarters, made possible by the attachment of the magnetic vacuum amplifier. The radio will also be used for special evening entertainments during the pure food and textile show to be held here June 2, 3 and 10.

REPORT ON CONDITION OF CLEARING HOUSE BANKS

NEW YORK, May 20.—The actual condition of the clearing house banks and trust companies for the week shows that they held \$5,831,416 in excess of legal requirements. This is a decrease of \$1,254,830 from last week.

The statement follows:
Actual condition:
Loans, discounts, etc. \$4,884,241.75, increase \$97,334,000.
Cash in own vaults, members' federal reserve banks \$50,343,000, decrease \$2,224,000.
Reserve in federal reserve bank, member banks \$24,552,000, decrease \$2,554,000.
Reserve in own vaults state banks and trust companies \$7,778,000, increase \$23,000.
Reserve in depositaries, state banks and trust companies \$10,451,000, decrease \$97,000.
Net clearing deposits \$1,287,071.75, increase \$4,154,000.
Time deposits \$215,053,000, increase \$4,224,000.
Circulation \$124,714,000, increase \$4,466,000.
U. S. deposits deducted, \$41,508,000.
Aggregate reserve \$561,787,000.
Excess reserve \$5,831,416; decrease \$1,254,830.

AVIS IS RENOMINATED BY PRESIDENT HARDING

WASHINGTON, May 20.—Delight Davis of Missouri was renomiated today by President Harding as a director of the war finance corporation. He previously was appointed to fill out an unexpired term.

WEIGHT MACHINES FOUND INACCURATE BY STATE OFFICIAL

Eleven "ponny scales" in the business section of the city, those which, for the trifling sum of one cent, give "accurate" weight, were condemned by State Weights and Measures Inspector Cam H. Murray Saturday morning. Only eleven were tested and not a single one survived the inspection.

Mr. Murray returned to the city Friday night after having been called away unexpectedly a week ago in the midst of an inspection campaign that was producing gratifying results. He will be in this territory for some time making tests in small communities near Wichita Falls.

WILFORD HARRISON IS RE-ELECTED PRESIDENT STATE PHARMACY BOARD

Wilford Harrison of this city was unanimously reelected president of the state board of pharmacy at its latest meeting in Houston. W. H. Cousins of Dallas, formerly of this city, was reelected secretary. Other members of the board are J. C. Williams of Amarillo, W. H. Wiseman of San Antonio, Miss Adelaide Richardson of Denison and C. A. Hillard of Munday.

The board examined 120 applicants for pharmacist licenses at its recent meeting. Within the last 12 months less than 20 per cent of the applicants for licenses have been successful, owing to the strict policy of the board which has been the subject of much favorable comment.

The next meeting of the board will be held at Fort Worth this September.

CHIEF CLERK TO KIRBY DIES RESULT INJURIES

HOUSTON, TEXAS, May 20.—F. C. Reimann, 40-year-old, died at a local hospital late today as a result of injuries received when the automobile, in which he was riding, was wrecked by a motorist who found the wrecked automobile with Reimann's body pinned underneath. It was not known how the accident occurred, as Reimann was alone in the car.

WOMAN FACES TERM IN THE LANSING PRISON

LOLA KAN, May 20.—Miss Birdie LaBarre, 19 years old, of Fort Worth, Texas, today was facing a term in the women's prison at Lansing following her conviction by a jury in the district court here on the charge of defrauding a bank.

HOUSTON MAN IS DEAD AND NEIGHBOR HELD FOR MURDER

HOUSTON, TEXAS, May 20.—George L. Emory, 38, was shot and killed here tonight, while he was walking in front of the home of J. R. McGowan, a neighbor. A charge of murder was filed against McGowan before Justice J. M. Ray. The fatal shots were fired from inside the McGowan home, officers said the condition of a screen brought to police headquarters showed.

Emory and McGowan had considerable trouble over chickens belonging to both, neighbors told officers. A complaint, charging assault and battery, is pending in a local court against Mrs. McGowan. It was said. The complaint was filed by Mrs. Emory.

Financial Strength

Quality of service and policy of management—these factors govern your decision when you select your banking home.


The City National Bank of Commerce has

CAPITAL AND SURPLUS OF 2 MILLION DOLLARS

Operates under United States Government supervision and belongs to the Federal Reserve System. Steady increase in the number of its customers indicates the satisfactory nature of its service and public confidence in its policy and methods.

CITY NATIONAL BANK of COMMERCE

EIGHTH & SCOTT WICHITA FALLS, TEXAS



TANGERINE

The greatest sensation in the ice cream trade since Eskimo Pie.

This delicious confection will be served at our drug stores today.

Call for it.

SMITH DRUG STORES

Kemp Hotel 720 Ohio Ave.

Storage for Furs

In the new addition to our plant at the south end of Ohio street, we have had one storage room especially constructed for the storage of furs and other valuable articles.

Every precaution will be used in the care of these garments. The room will be kept thoroughly sanitary and the temperature will be watched every day.

The storage of furs protects them from the ravages of moths and other vermin, and every fur or valuable article left with us will be amply protected by fire and theft insurance.

The Peoples Ice Co.

Fifth at Indiana South End of Ohio St.
M. A. MARCUS, Pres.
P. MARCUS, Vice Pres. A. MARCUS, Sec.-Treas.
5081—Phone—5259

The PEOPLES STORE

602 Seventh Street

SPECIAL SALE

Monday, Tuesday and Wednesday

Just Received Big Line of Ladies Dotted Swiss, Gingham and Organdy Dresses, ALL TO GO IN THIS SALE; COME EARLY

| | |
|--|--|
| Dotted Swiss and Gingham Dresses..... \$4.95 | Organdy Dresses..... \$7.95 |
| Gingham and Organdy Aprons, beautifully trimmed, choice..... \$1.50 | |
| New line of ladies Tricolette Waists all colors and sizes, special..... \$1.45 | They are worth more. |
| Bathing Suits for the whole family, priced from \$1.00 to..... \$2.45 | |
| Ladies' real Silk Hose, all colors, special, pair..... 7c | |
| Big line of Tissue Gingham, all shades, plaids and stripes, yard 6c | |
| New line Percales, yard..... 10c | Apron Gingham, yard..... 8c |
| Hope Domestic, yard..... 12c | |
| Ladies' white low cut Shoes, all sizes, styles and buckles, priced from \$1.95 to..... \$3.45 | Patent Flippers in button and buckles, \$1.95 to..... \$2.95 |
| Big line of Children's Shoes and low cuts, priced from \$1.25, \$1.45 to..... \$2.95 | Baby Shoes and slippers size to \$1.45 |
| New assortment of Ladies' Trimmed Hats in mohair, moline and taffeta trimmed..... \$4.95 | |
| Men's Genuine Panama and Bankok Straw Hats, all colors, priced from \$1.75 to..... \$2.75 | |
| Full line of men's and boy's Palm Beach Pants, just received. | |
| Men's Silk Hose, 2 pair for..... \$1.00 | Men's Knit Ties, 4 for..... \$1.00 |
| Pretty line of the new Beach Cloth, just the thing for your summer frocks, all colors, yard..... 25c | Organdies, all colors, yard..... 25c |
| Curtain Strips in plaids and flowers, yard..... 15c | |

The PEOPLES STORE

602 Seventh Street

"We Sell For Less"—Phone 2052

Howell Store

PART ONE

AWFUL MEAN FIGHT FOR SHRINE RING IN PROSPECT HERE

NORRIS EWING AND SAUL LEBENSON ANNOUNCE AT DALLAS.

ONE IS FOR KU KLUX AND OTHER ONE AINT

Cullen Thomas Actively Supporting Both Entries—Challenge To Joint Discussion.

DALLAS, May 20.—Prospects for a bitter contest in Wichita Falls next week loomed large here today with the simultaneous announcements of Norris Ewing and Saul Levenson of their respective candidacies for the Shrine ring at the approaching ceremonial.

Interest in the outcome was intensified by the statement that Cullen Thomas, candidate for the United States senate, had emphatically indicated both candidates and declared his intention of supporting both to the limit.

Earle B. Mayfield, another candidate for the senate, whose endorsement was eagerly sought by both campaign committees, said: "I must decline to be drawn into the controversy. Neither of the candidates are friends of mine."

Judge M. M. Crane of Dallas announced his unswerving support of Saul Levenson in the contest; this is attributed to the first plank in Saul's platform.

Announcement of Norris Ewing's candidacy and platform was made by his campaign committee, consisting of J. W. Akin, chairman, W. Y. Hammack, John Bland and A. H. Carrigan, as follows:

I am against the Ku Klux. I deplore this orgy of waste and extravagance now being inaugurated by the school board of Wichita Falls.

I am for a wide open town. In this connection I fearlessly denounce Police Judge Chaucery and all of his villainous undertakings. If elected I will immediately revoke his and every decreed order and mandate of this high handed apostle of iniquity and oppression made during his tenure of office.

I am against irrigation, education and normalcy.

NORRIS EWING.

I am for a wide open town. In this connection I fearlessly denounce Police Judge Chaucery and all of his villainous undertakings. If elected I will immediately revoke his and every decreed order and mandate of this high handed apostle of iniquity and oppression made during his tenure of office.

I am against irrigation, education and normalcy.

NORRIS EWING.

I am for a wide open town. In this connection I fearlessly denounce Police Judge Chaucery and all of his villainous undertakings. If elected I will immediately revoke his and every decreed order and mandate of this high handed apostle of iniquity and oppression made during his tenure of office.

I am against irrigation, education and normalcy.

NORRIS EWING.

A STUDY IN STILL LIFE SNAPPED IN CONSTABLE MORGAN'S OFFICE RECENTLY

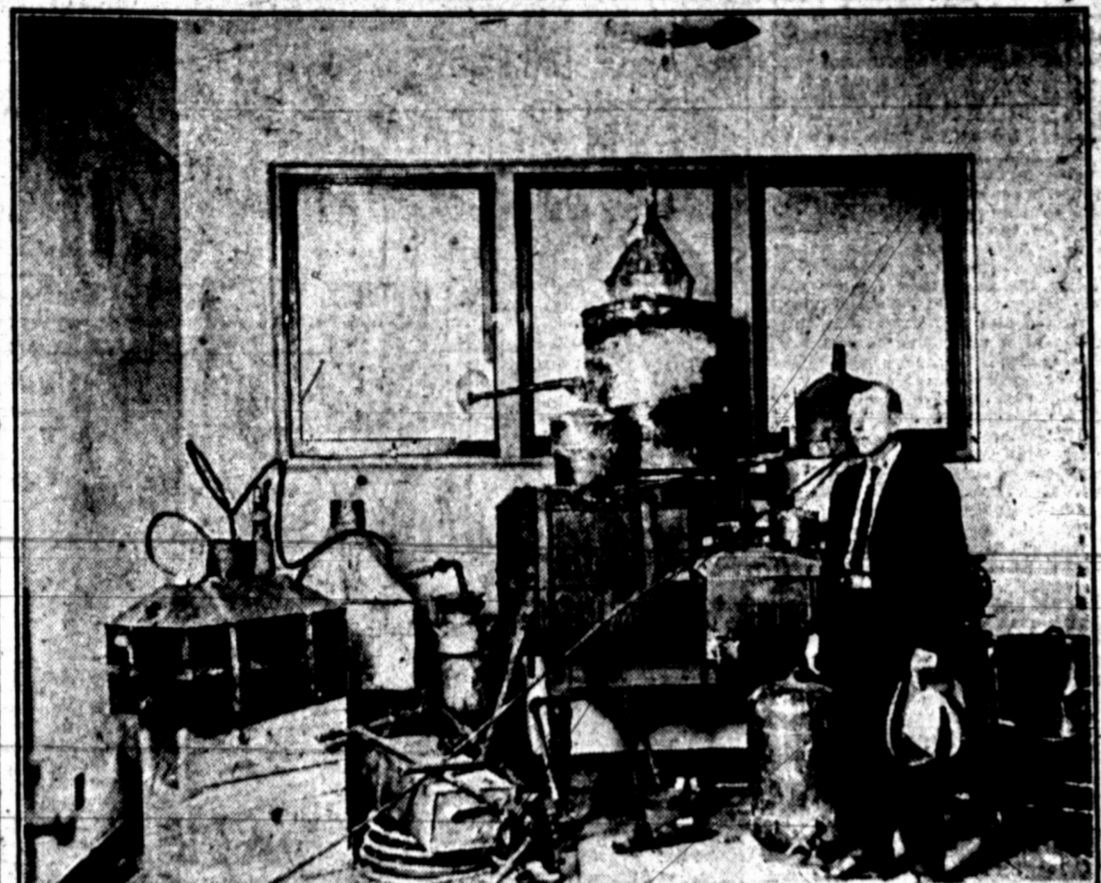


Photo by Mullin. The percentage of "good" bootleggers, who manufacture their own stuff in Wichita county runs high. If the above reproduction of Constable Frank Morgan's office is a criterion, only one out of every nine bootleggers in the county is selling "stuff" that might have the final kick in it.

side thereon as my friends may decide most expedient, regardless of principle, public welfare and the inalienable rights of the human race.

Mr. Levenson's campaign committee, which consists of Dave Paul, chairman, Rhea Howard, Luther Hoffman and A. H. Britain, gave out his platform, as follows:

Plank No. 1.—I am a Ku Kluxer and am proud of it. Upon subpoena by anybody, legal or otherwise, Catholic, Jew or Gentile, I will disclose the obligation, grand halling sign of threat, grips, passwords, political secrets and the name and postoffice address of every officer and member of the local, state and national organizations. (I am selling masks and robes complete at 50c each, C. O. B. Saul's store.)

Plank No. 2.—I denounce the demagoguery of one Norris Ewing in his forum on every issue, taking such

Eight of the stills that have fallen prey to Constable Morgan were made out of copper, while the ninth one was a tin milk-can. That one, however, was owned and operated by a negro and perhaps his customers were able to withstand the additional kick.

Constable Morgan captured the

above nine stills during the past seven months. Before he started saving this collection he had gathered another bunch of them but they were hacked to pieces and thrown out to make room for more. This is what is about to happen to the collection now on hand.

MISS JUSTIN MARRIED TO MR. E. B. LEMON NOCONA, TEXAS, May 20.—Mr. R. B. LEMON was married to Miss Annie Justin, at the Central Christian church Thursday afternoon, Rev. Jack performing the ceremony. It was a beautiful wedding and many presents were given by admirers to the young couple.

"BILLY" BRYAN LEAVES FOR CHATTANOOGA, TENN. Deputy Sheriff "Billy" Bryan left Saturday for Chattanooga, Tenn. to bring back C. H. Johnson, taken into custody there Friday evening upon information received from the local sheriff's office. Johnson has been turned over by his bondsman on a federal charge.

JACKSON REPLIES TO STATEMENTS IN BUSINESS COUNCIL

Commissioner J. F. Jackson of the Wichita Falls precinct has the following to say about the Business Council vs. Commissioners Court.

"It occurs to me that members of the business council should inform themselves more thoroughly before condemning the commissioners court and having this condemnation printed. I take this as a personal attack on myself, as I am the only member of the court in Wichita Falls precinct.

"I felt that the council was familiar with the work that I had done during the past year. I had heard of no complaint outside of a few personal interest remarks. It appears now that it is all personal.

"In the first place the court has nothing to do with the purchasing of court house supplies in the way of books and blank forms. Mr. Murphy, the county auditor, is purchasing agent for all supplies and has been since he has held this position. He has been instructed to buy where he can get the best for the money and as far as I am concerned I would like to buy all of this material in this city.

"If we have houses here who can in any way bear compete with outside houses, and having them having all the business.

"As far as road and bridge contracts are concerned, they are advertised for and outside and home contractors have the same chance. We always insist on contractors employing our home people.

"As far as anyone being insulted is concerned, I don't remember but one instance and that I took on myself. I did not know that anyone was insulted. I refer to the paving of Ohio avenue at the north end. I fought for it to the last but failed. Now if my failure to overpower the balance of the court insulted anyone, I am very sorry."

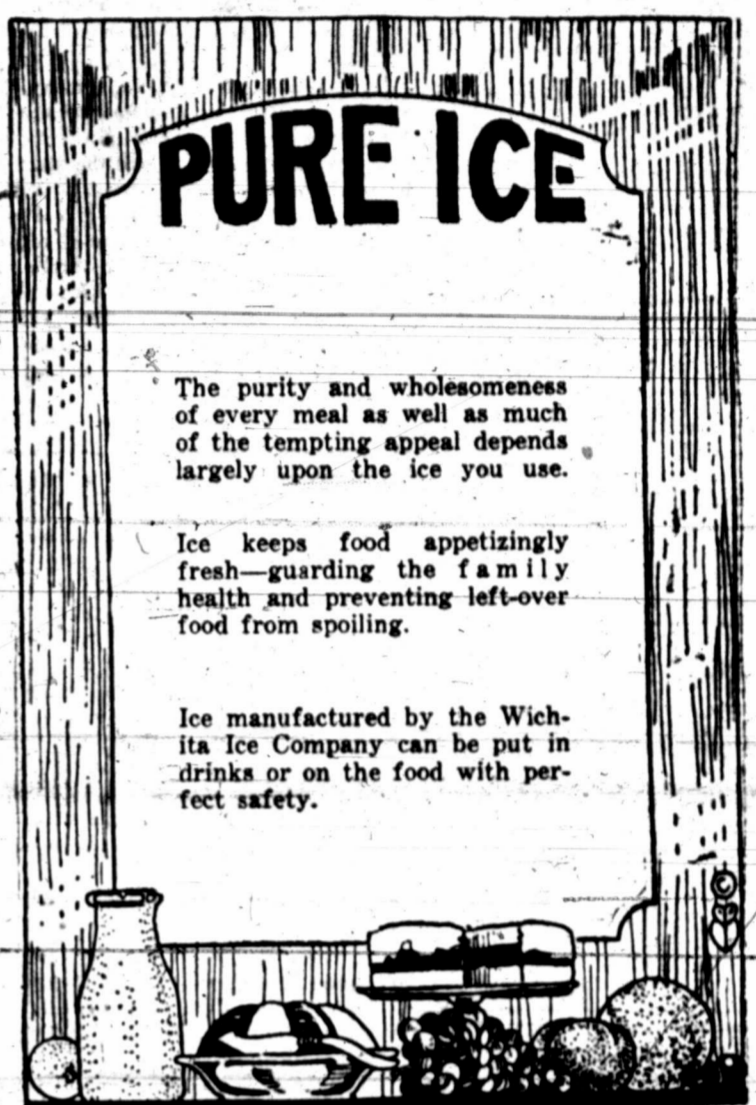
CHARGE IN FEDERAL COURT WITH POSSESSION Mrs. E. Taylor, W. R. Bratcher and F. G. Bemson, who were arrested Saturday morning by Sheriff Fred K. Smith and Special Officer George Hawkins were turned over to federal authorities and charges of possession were lodged against them. Later charges of selling were also preferred. On the first charge preliminary bonds of \$100 were sent by U. S. Commissioner Lantz in each case.

Diploma frames at Decorators.

The Salvation Army Special services—Saturday night and Sunday. Commandant J. Morrison, in charge of the social and industrial work of Fort Worth, will have charge of the meetings. Commandant Morrison has been in Salvation Army service 23 years, and has held important positions in the western New England states, also on the Pacific coast. Services at the citadel, 218 Seventh, Saturday night 8:00, Sunday 11:00 a. m. and 8:00 p. m.

First Christian Church J. Lem Keevil, minister, Tenth and Travis streets. Bible school 9:30; lesson, Acts 1. Morning worship with sermon 10:30. Y. P. S. C. E. 6:30. Evening worship with sermon 7:15. The minister, J. Lem Keevil, will speak at both services. Special music by our choir. All members are urged to be present. A cordial invitation is extended to all visitors in our city to worship with us.

Windsfields at Decorators. T-16



WHITE CARDS RED LETTERS WHITE WAGONS RED LETTERS

Wichita Ice Co. "SAVE IT WITH ICE" East End of Ninth Street WICHITA FALLS, TEXAS Telephone 3101

SAUL'S—AN INSTITUTION DEDICATED TO THE PROPOSITION OF SERVING THE PEOPLE WITH DEPENDABLE MERCHANDISE AT LOWEST POSSIBLE PRICES

SAUL'S MONDAY SPECIALS MAIN FLOOR Cotton Ratine That Sells Regularly for 79c 49c THE YARD SAUL'S MONDAY SPECIALS MAIN FLOOR Sports Silks in Best \$2.98 and \$3.50 Qualities \$2.48 THE YARD SAUL'S MONDAY SPECIALS MAIN FLOOR \$1.25 Dress Crepe Black and Colors 98c THE YARD

SAUL'S BARGAIN ANNEX One-Day Sale Thousands of REMNANTS GINGHAMS PERCALES POPLINS SHIRTINGS SUITINGS ETC. 9c THE YARD CREPES PIQUES CRETONNES SCRIMS VOILES ETC. SAUL'S BALCONY SHOWING SCORES OF BECOMING TRIMMED HATS AT CHOICE \$5.00

SAUL'S SUITS Clothes Satisfaction at Lowest Cost Men's Genuine Palm Beach Suits \$12.85 Silk Mohair Suits \$14.85 Men's Brown Calf Semi-English Oxfords, special \$4.85 John C. Roberts Semi-English Black Calfskin Oxfords \$5.95

SAUL'S CORSET DEPARTMENT ALL THE WEEK We Will Have With Us in This Department Mrs. Anna Miller OF NEW YORK Expert Corsetiere and Special Representative of "BEIN JOLIE" CORSETS AND BRASSIERES On request Mrs. Miller will assist you in selecting your Corset, fitting it to you and showing you just how it should be worn.

SAUL'S SHOE DEPT. For Good Dependable Footwear at Lowest Prices Newest Novelty Footwear for Women Johansen Brothers' one-strap perforated Patent Pumps, with low heel. Special \$5.95 the pair. Johansen Brothers' Black Satin cut-out two-strap low heel Pumps. Special, the \$7.85 pair. Smart cut-out one-strap Pumps in patent and grey suede combination. Special \$8.45 the pair.

U. S. POSTOFFICE SUB-STATION SAUL'S STORE Wichita Falls' Foremost Cash Department Store

Another Treat to Good Housekeepers on ALUMINUM WARE! Our last aluminum sale was such a big success that we are going to put on a special sale on real good useful articles such as large water buckets, dish pans, roasters, percolators, stew kettles, etc. \$3.00 values for \$1.25 \$2.50 values for 99c 75c values for 49c 25c values for 1c We will have 500 pieces on sale at these prices Monday. First here, first served. Cash and carry. WICHITA HARDWARE 804-06 Ohio

NORTH MONTAGUE COUNTY SHOWING GREATER ACTIVITY

NOCONA, TEXAS, May 20.—Real activity has commenced in development in north Montague county. The Texas Company has staked a location 200 feet north and a little west of the Williams well at Eagle Point, six miles northeast of Nocona, and material for the derrick, and also casing is being laid on the ground.

The Williams test had several showings of oil and gas and was lost because of salt water. The oil property is banking high on the Texas Company getting a good producer.

The Wichita Falls promoters have also made their location on the John Maddox farm, a short distance north of the Texas Company location and have already erected the derrick, and drilled the water well, and are rapidly working arrangements to commence drilling at the earliest hour.

Acres has been pooled to drill in the Mackbee community, north of Nocona, and three miles west of the Williams well. It is expected for this well will be let next week.

S. L. Fowler, who brought in the discovery well at Burk Burnett, is one of the more active and enterprising producers who is now interested in active development in north Montague county. He owns a ranch of several hundred acres southwest of Nocona and has already let the contract for drilling a test well. This well will be spudded in within a few days.

Nocona is putting on the appearance of a real oil town. New people are coming in daily. Everything points to the fact that before the summer months are over north Montague county will be heralded as the new oil field.

OUTDOOR THEATRICALS MAY BE COMMUNITY THEATRE'S NEXT UNDERTAKING HERE

Widespread interest is being shown in the forthcoming presentation of "Midsummer Night's Dream" at the Wichita Falls Community Theatre under the direction of Mrs. E. L. Fulton. This ambitious plan of the local organization and the unusual progress of the Community Theatre here have so impressed the Drama League that it now seems likely that prominent representatives of the league may be in Wichita Falls especially for the Shakespearean performance.

Inquiries have also been received as to whether the performance to be given at the Wichita Falls Community Theatre will be in some park or some spacious lawn or in some park after the manner of the famous Ben Greet players, to give certain motion picture companies opportunity to take pictures of the performance to appear in weekly news reels throughout the country. Inasmuch as "Midsummer Night's Dream" is impressive and spectacular from a pageantry standpoint, the stage performance may be repeated as an outdoor performance, since the publicity which would be gained for Wichita Falls by the motion picture of the event through the news reels is greatly to be desired.

The performance of the Shakespearean play company is said to be the most elaborate undertaking attempted by any Community theatre in the country during the entire season. An outdoor performance, as the note Greenwich Valley players, whose offerings have made their organization famous. The Wichita Falls members of the Community Theatre have been working ardently and are giving unstintingly of their time to practice and rehearse for the performance. The cast will be recognized as the principals and in lesser parts the leading dramatic talent of the city, ably supported by the beauty and talent of scores of children from many Wichita Falls homes who will give the performance beautiful settings and colorful background in the choruses and tableaux which Shakespeare students will remember as important features of "Midsummer Night's Dream."

The study clubs of the city are to be especially invited to have their members witness the Shakespearean play, and to view it from the standpoint of drama, music, art and historic connection, and in the light of any other phase of their study as it has related to the Shakespeare period during the past year.

Of unusual significance in connection with the presentation of "Midsummer Night's Dream" is the fact that Wichita Falls is now the home of an internationally recognized authority on Shakespeare, Dr. Charles William Wallace, whose lectures and writings on Shakespearean subjects have won for him widespread fame. The presence of Dr. Wallace at the Community Theatre program should add interest to the event. An effort will be made to have Dr. Wallace arrange his engagements that he may be present at one of the two performances.

The proper presentation of "Midsummer Night's Dream" calls for the best in dramatic talent, classic and interpretative dancing and the proper rendition of a difficult incidental musical program. The offering at the Wichita Falls theater on June 1 and 2, and the great interest it bids fair to create will be an appropriate close to the work of the Community theatre and fitting recognition to Mrs. E. L. Fulton, whose personal direction has been largely responsible for the success of the local community theatre movement, and whose ability in dramatic work, dancing and undertaking of music is being demonstrated in the building up of a splendid and complete Shakespearean presentation by her among Wichita Falls talent, including many of her students. Mrs. Fulton is of the Curry school, whose work she has supplemented with several post-graduate seasons under noted masters of dramatic art, including leading Shakespearean exponents.

Emil Hermann, who is in charge of the artistic work for the play, has announced that special hangings and scenes are in course of preparation which are expected to add materially to the attractiveness and interest of the performance. He is working in connection with the stage manager, Mr. George Hodgins, who has vast experience and unusual ability in this line. Tickets will be on sale for the two performances this week.

International Bible Students
Class will meet Sunday evening at 8:00 o'clock at Labor Temple auditorium, its regular meeting place, to consider Ezekiel's Temple as it relates to the activities of Christ, the church and the world during the millennium, or fifth universal empire of earth. This temple shows in detail by its construction, elevation and measurements the wonderful outcome of Christ's reign over mankind. The scriptures show that everlasting peace on earth, after a very few short years of fiery experiences, will come in like a great tidal wave. Two Hebrew Bible studies will be held in the morning at 10:00 and 11:00 o'clock. Truth hungry individuals who desire to reason for themselves and reach proper scriptural conclusions are cordially invited to be present. Seats free, no collection.

COUNCIL TO MAKE DECISION MONDAY ON TOURIST PARK

A decision on the tourist park matter is expected to be made by the city council Monday night, in view of the increasing need for such a place here.

The tract on Jalonie street, originally acquired for a tourist park, will require considerable improvement before it can be used as such, members of the park board claim. The estimated cost of installing the lacking facilities being \$18,000.

The park board has a ruling from the city attorney that to use foot-

School-Free Boys Seek Vacation Jobs Without Success

"Mister, want a real live boy to help you 'round the store?" "Say, my paw said for me to see if you'd give me a job?" These and similar verbal applications for work were received Saturday by numerous business men who were the objectives in a new and tremendous "unemployment drive" staged by youngsters who freed from school cares and duties for a few months, are willing to afford low merchants and others to avail themselves of the opportunities thus afforded.

There are not many openings just now for such work as school boys can do, and most of the applicants Saturday were unsuccessful. None of them seemed broken-hearted, however.

Pastor Extends Special Invitation To Pessimists Here

In announcing the Sunday services at the First Baptist church, Rev. O. L. Powers says: "Every pessimist in Wichita Falls is cordially invited to attend the evening service Sunday. While I shall have something of interest for those who are inclined to be optimistic, yet the pessimist will have special reason to hear the sermon preached from the subject, 'Things Not Shaken.' 'Tis true that many organizations, industries, institutions and world wide movements have been dealt death blows by after-war conditions, yet there are things not shaken—in fact, made stronger."

"At the morning hour, I shall preach from the subject, 'The Day With a Small String of Fish.' Special music for the morning includes a solo, 'Teach Me to Pray,' sung by Mrs. E. M. Wilhite, and an anthem, 'The Lord is Exalted,' sung by the choir.

In the evening service, which begins at 8 o'clock, Messrs. Vaughn Ray and William Young will sing a duet.

Picture frames at Decorators.

KIWANIANS WILL TELL LIFE STORIES AT MONDAY'S LUNCH

Some amazing histories will be unfolded Monday noon when members of the local Kiwanis club, in response to a decree issued last week by Prexy Ben Neal, arise and tell the world their names, ages, legal and culpable business, place of birth, public and private hobby and some personal experience transpiring between the date of birth and Monday's meeting.

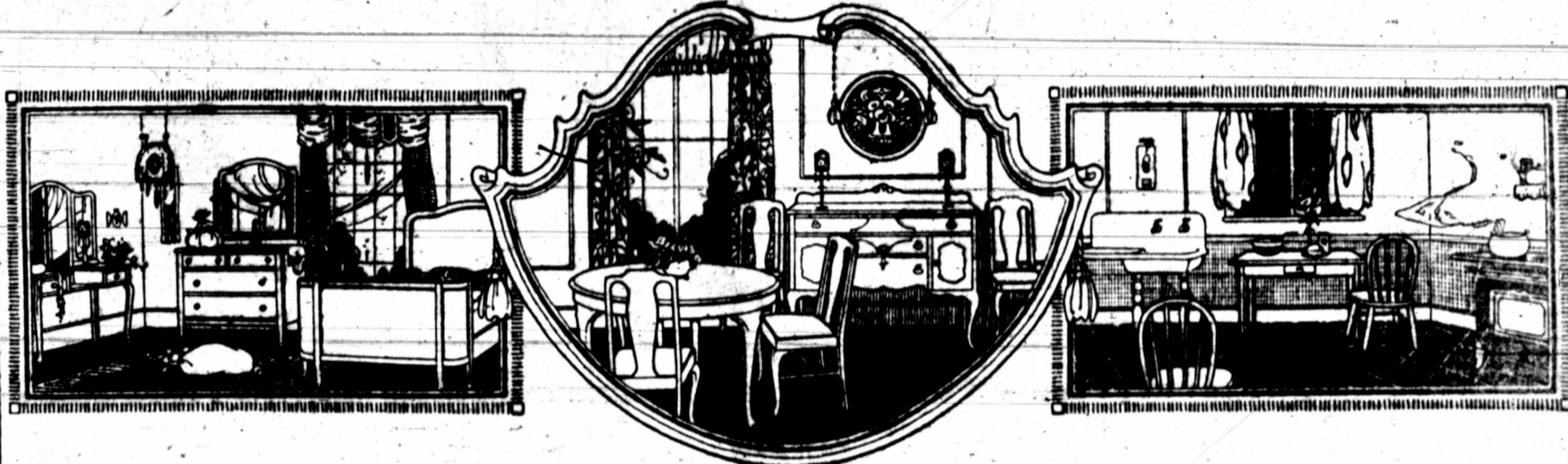
In other words, individual biographies are to be laid out for inspection by the club, and those whose past iniquities are of such character as to warrant penance will be given opportunity to voice their hopes for the future.

The meeting is designed as a "get together" and "get acquainted" affair, with the rather doubtful privilege of enumerating life's history as a medium for establishing more intimate relations between members.

E. Remrod will give the silent boasts and Shelly Owens is to furnish the attendance prize.

Superbly satisfactory spectacle service supplied by Fred Gosa, optometrist, with Kruger Jewelry Co., Wichita Falls, Texas.

Waxing brushes at Decorators.



Furnish Your Home Now

CAN you think of any expenditure which yields greater returns in real satisfaction than money invested in good furniture. There is every reason why you should buy now—prices at bed-rock and designs and finishes were never more attractive. Visit our store and see the new Spring patterns. Our Drapery Department is also ready to serve you promptly and satisfactorily.

Living Room Suits

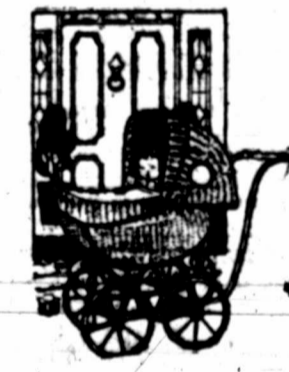
3-Piece Suits of Fibre, Reed, Cane-Insert and Overstuffed. Made by Karpen, Kroehler and Kaltex. Our 3-Piece Brown-Fibre Suit at \$95.00 is a great value. See it and many others as good.

Dining Room Suits

In Walnut, Mahogany and Oak in many period designs. Be sure and see the new Italian Renaissance Suits of Walnut now on display in our windows.

BED ROOM SUITS

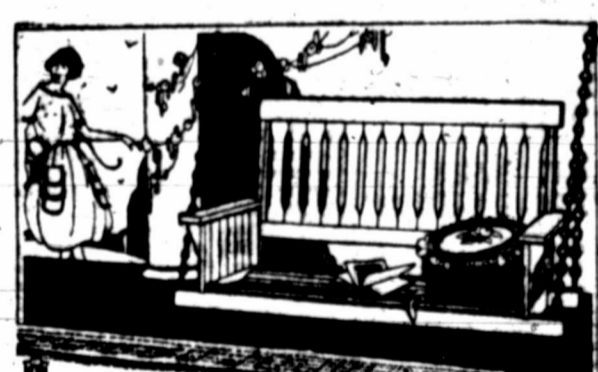
Hand-decorated suits of various color combinations compete for popular favor with the standard Walnut, Maple and Mahogany finishes. Visit this department while our offerings are complete.



WICKER GO-CARTS
\$31.50 to \$52.50
Some new two-tone finishes being shown will appeal to you we are sure.



WICKER SULKIES
In gray and ivory. Some excellent types at—
\$15.00 to \$17.00



WOOD SLAT PORCH SWINGS
You should have one now for your porch. Our special at \$3.95 is a wonderful value. Other types \$5.75 to \$11.50. Phone in your order if not convenient to call.



STEAMER CHAIRS
Sturdy and comfortable, can be folded and carried anywhere. Good for yard, porch or camping trips—
Price, \$1.75



CANOPY SWINGS
(As Shown Above)
\$52.50
Same type without canopy or steel standards, to be used on your porch, at \$29.50
Attractive and Comfortable

A-B GAS RANGES
14 types and sizes to select from at prices \$26.50 to \$175. Every A-B is absolutely guaranteed satisfactory. Ask your neighbor who is using one.

LEONARD REFRIGERATORS
\$15.75 to \$106.50
They give you the best satisfaction by real service. Side icers, top icers and ice boxes in 19 sizes and types.

FIBRE PORCH FURNITURE
In brown, rust and green. Three-Piece Suits from \$34.50 to \$52.50. Swings and tables to match if desired. See them in our windows.

Wood Slat Porch Furniture
Some attractive 4-piece sets of rocker, chair, swing and settee at \$23.75. Black and orange finish.

KROEHLER NUOFOLDS
\$46.50 to \$52.50
Golden and fumed upholstered in good quality imitation brown leather.

KEMP HOTEL
Thursday, May 25th
BENEFIT OF OUR OWN DAY NURSERY
The Women of the Church of the Good Shepherd Will Conduct the Hotel on Above Date
Proceeds for the Benefit of the Building Fund of Day Nursery
Help this great work—something doing all day long. Arrange to have your lunch here. Bring the family to dinner.
Live in the Hotel This Day—Help the Day Nursery

Music While You Dine
WE HAVE MADE SPECIAL ARRANGEMENTS WITH THE
BILLY BUZZARDS Orchestra
To Play in Our Dining Room Each Evening From 6 to 8 o'clock
Table d'Hote Dinner.....\$1.00
Special Sunday Dinner.....\$1.25
Kemp Hotel
DINING ROOM

W. A. Freear Furniture Co.
Phone 5136
"Convenient Credit Terms"
N. E. Cor. Ninth and Scott Sts.

TIMES DAILY MARKETS

COTTON MARKET.

New York Cotton.
NEW YORK, May 20.—The cotton market was easier today under scattering liquidation over the week end. Local selling was better weather reports or talk of better end May condition figures than expected. October contracts sold off from 19.38 to 19.75; closing at 19.71 with the general market closing may net unchanged to 10 points lower. May was relatively quiet and steady; being net unchanged at the close.

The market opened barely steady at a decline of 1 to 17 points under renewed selling or liquidation. Offerings were pretty well taken around the initial figures by covering and trade buying with prices showing rallies before the end of the first hour, which carried July up to 26.17 and December to 19.53, or back to about yesterday's closing quotations.

Offerings increased on the advance and the market turned easier following rumors that preliminary returns to a southern authority pointed to a crop condition of 1.24 or within 10 points of the ten year average. This led to increased liquidation of scattering contracts which sent July contracts off to 19.37 and December to 19.72, or about 35 to 32 points lower. July contracts were quickly recovered when a little buying developed toward the close of the day. Months closed within a point or two of the low. Local brokers were selling late in the morning. Fall river sales of cotton were estimated at 175,000 pieces and curtailment of mill production at 75,000.

New Orleans Cotton.
NEW ORLEANS, May 20.—Active trading and rather sharp fluctuations within moderate lines featured the trading in cotton today. Liquidation from the long side, typical of the week end, following a report that the crop was much in evidence and was the main depressing influence but a continued good spot demand plus support of importance and in addition to this, there was a private bureau report placing the condition of the crop at 1.23 per cent of normal and the increase in acreage at only 46 per cent. The circulation of these figures caused the sharpest upturn of the day but liquidation soon filled up the demand and on the close prices were 12 to 15 points net lower, July closing at 19.75.

In the early trading prices were 11 to 13 points up on claims that sales were made on the spot after hours in this market yesterday and on telegrams from Texas spot markets that while the demand was good factors and spot firms were unable to meet it because of their small supplies. Liquidation met the advance and selling increased after the posting of the weather map, indicating very light rain over the greater part of the cotton region. A heavy break occurred at 22 points under yesterday's close resulted in carrying July off to 19.70.

Recoveries of about 15 points followed the private bureau figures but the upward movement was not prolonged.

Texas Spot Cotton.
DALLAS, May 20.—Cotton trading 19.25; steady. Houston, 19.61; steady. Galveston, 19.10; steady.

GRAIN AND PRODUCE
CHICAGO, May 20.—Evening up for the week-end caused wheat prices here to break sharply during the last hour of trading today, the May delivery leading the decline although reports from the southwest telling of unfavorable conditions for the new crop gave the market

A rather bullish construction in the early dealings. The finish was unsettled with values showing a net loss of 8 to 40c. May 1.55 to 1.59 and July 1.53 to 1.57; corn from 89 to 90c and oats ranged from 35c lower to 10c higher. Provisions ranged from five lower to 10c advance.

Receipts of wheat were 125 cars and deliveries of May contracts this morning were 420,000 bushels.

Corn and oats, while acting rather firm early reacted from the high point in sympathy with what but there was no material pressure and the selling was mainly of a local character until near the close when export interests became heavy buyers of July corn.

Provisions averaged lower with a rather light trade. It took but little selling to make the lower range despite the strength in hogs.

WHEAT:
May 1.55 1.59 1.53 1.57
July 1.53 1.57 1.51 1.55
Sept. 1.51 1.55 1.49 1.53

CORN:
May .81 .85 .79 .83
July .80 .84 .78 .82
Sept. .78 .82 .76 .80

OATS:
May .37 .41 .35 .39
July .36 .40 .34 .38
Sept. .34 .38 .32 .36

MEAT:
LARD
May 11.50 11.90 11.45 11.85
July 11.70 12.10 11.65 12.05
Sept. 11.90 12.30 11.85 12.25

POULTRY:
Kansas City Cash Grain
KANSAS CITY, May 20.—Cash: Wheat, No. 2 hard 1.20@1.45; No. 3 red 1.25@1.57.
Corn, No. 2 white 87c; No. 2 yellow 89.
Oats, No. 2 white 40c; No. 2 mixed 39c.

Chicago Producers.
CHICAGO, May 20.—Butter lower; creamery extras 41. Eggs higher; receipts 33,114 cases, firms 34@41; poultry 11.75; hogs, fowls 14c; broilers 40@44; roasters 14c.

Coffee Market.
NEW YORK, May 20.—The market for coffee futures was lower today. The general market opened at a decline of 2 to 3 points and closed 2 to 11 points net lower. Sales estimated at 45,000 bags. Closing quotations: May 19.37; July 18.17; September 18.44; October 18.32; December 18.22; January 18.24; March 18.12.

Spot coffee dull. Rio to 10c; Santos 4s 14c to 14c.

Port Worth Livestock.
PORT WORTH, May 20.—Cattle, receipts 700. Steers 1.00@1.15; stockers 1.00@1.15; cows 1.00@1.15; calves 1.00@1.15; hogs 1.00@1.15; sheep 1.00@1.15; feeder lambs 1.00@1.15.

Hog—Receipts 100; light 10.33@14.40; medium 10.15@10.25; heavy 10.00@10.15; mixed 9.90@10.25; common 9.80@10.15; rough heavy 1.00@1.20; rough 1.00@1.20; pigs 1.00@1.20.

Sheep, receipts 700. Lambs 5.00@12.00; yearlings 7.00@9.00; ewes 4.00@5.00; culls 1.00@2.00; stocker sheep 1.00@1.00; feeder lambs 1.00@1.00.

Kansas City Livestock.
KANSAS CITY, May 20.—Cattle, receipts 150; for week; Beef steers 10@10c lower; top 1.50; she stock weak to 50c lower; canners and bulls steady; calves mostly steady; stock calves mostly 25@30c lower; stock steers 25@31c lower.
Poultry, receipts 1,000; active. 50c higher; mixed 10.45@10.55; bulk 10.45@10.75; top 10.75; sows 9.25@9.50.

NEW YORK STOCKS

NEW YORK, May 20.—The week-end session of the stock market witnessed a moderate recovery, with a net active upward trend, with rails, oils and sugars at the most conspicuous features.

Gains of one to three points among coals, notably Delaware, Lockhaven and Western, Reading and Erie, were supplemented by the strength of Canadian Pacific. Steel common and preferred, Rock Island and New Haven, the latter rising to its best mark in two years at 75.

Coppers lost some of their recent prominence and another hitch in the proposed merger of the independent steel companies caused unsettledness among those issues. Republic iron forfeited its better part of the previous day's gain and Vanadium displayed moderate heaviness, but U. S. steel exceeded the high record of recent years, made yesterday a large turnover.

General Asphalt, Producers and Refiners, Standard Oil of California, Sinclair and Texas Gulf Sulphur also making substantial contributions to the buying of these stocks.

General Motors again dominated the motor division on further optimistic absorption and rubber subsidiaries responded to trade reports of an increased demand for automobile accessories but sugars came from their best on profit taking.

The clearing house statement reflected revival activity in the stock market, actual loans and discounts increasing by about \$7,500,000 and expanding that account to the largest total of the year. Actual cash holdings decreased almost \$1,400,000, leaving excess reserves at barely more than \$5,500,000.

New York Stock List.
Allied Chemical & Dye 50
Allis-Chalmers 48
American Beet Sugar 44
American Can 48
American Car & Foundry 112
American Hide & Leather 71
American International Corp. 40
American Locomotive 110
American Smelting & Refg. 68
American Sugar 75
American T. & T. 120
American Tobacco 141
American Woolen 52
Anacosta Copper 24
Atchafalpa 10
Atl. Gulf & W. Indes. 27
Baldwin Locomotive 117
Baltimore & Ohio 48

RADIO

Apparatus and Supplies of All Description on Hand for Immediate Delivery

W. S. Radio Supply Co.

711 Tenth Street Phone 3088

Mail Orders Promptly Filled

SPECIAL ALUMINUM SALE

Beginning Monday morning at 8 o'clock and continuing all day Monday and Tuesday. This aluminum ware is good for 20 years' service if handled with proper care. Come early and make your selection while the sale is on.



This 1-Quart Double Boiler, special **98c**



This 10-Inch Round Roaster or Double Bake Pan. **98c**



These three Sauce Pans; 1-quart, 1 1/4-quarts, and 2-quart; all for **98c**



This 1-quart Percolator, special **98c**

MAXWELL HARDWARE

WHOLESALE AND RETAIL

812-814 Ohio
Phone 5327

FOR THE SHRINE RING

SAUL'S WINNING PLATFORM

PLANK NO. 1—I am a Ku Kluxer and am proud of it. Upon subpoena of anybody, legal or otherwise, Catholic, Jew or Gentile, I will disclose the obligation, GRAND HAILING SIGN OF THIRST, grips, passwords, official secrets, and the names and post-office address of every officer and member of the local, state and national organizations. **SELLING MASKS AND ROBES COMPLETE AT 98c EACH, F. O. B. SAUL'S STORE.**

PLANK NO. 2—I denounce the demagoguery of one Norris Ewing in his opposition to my organization. We kicked him out for refusing to give the secrets of our great order to a recent body organized for the express purpose of spreading the Ku Klux gospel to the unwashed.

PLANK NO. 3—I deplore the unjustified and scurrilous attack made by my chief opponent upon the integrity and character of our beloved Police Judge, who was placed in power because of his declared adherence to the Ku Klux principles above set out.

PLANK NO. 4—I hereby challenge Norris Ewing to a joint debate of the real issue in this campaign: i. e. the Ku Klux question, such debate to be held in the Kemp Hotel, Tuesday morning at 10:30.

SAUL.

P. S.—Saul's Store carries a complete line of cheap goods within reach of our most wealthy people. (Liberal discount Tuesday for all votes)

CAMPAIGN COMMITTEE **DAVE PAUL, Chairman** **RHEA HOWARD,** **LUTHER HOFFMAN,** **ALEX BRITAIN.**

FOR THE CONVENIENCE OF CLASSIFIED AD. PATRONS... An accommodation account will be carried for those who telephone their ads in.

4392 Under this heading will be published the names of candidates for public office.

Political Announcements Under this heading will be published the names of candidates for public office.

County Judge—J. W. MEADORS; County Clerk—J. W. MEADORS; County Treasurer—J. W. MEADORS.

LODGE DIRECTORY

Knights of Frisban Lodge No. 1330... Knights of Frisban Lodge No. 1330... Knights of Frisban Lodge No. 1330...

AGENTS WANTED MAKE 1500 to 1800 per month... SPECIAL NOTICES L. A. Childs—The Gas Man... PLUMBING The satisfactory kind of work...

APARTMENTS FOR RENT—Nicely furnished two room apartment... BUSINESS OPPORTUNITIES FOR SALE—Kool Beer Barrel, complete...

IMPROVED CITY PROPERTY 175 FIVE ROOMS AND BATH... AUTO AND ACCESSORIES AUTO and accessories for sale...

THE HOUSE OF OVERLAND OFFERS DIXON'S USED CARS 1921 Buick roadster... 1920 touring... 1919 seven-passenger...

HOUSEHOLD GOODS FOR SALE BURGER oven, table, chairs, bed, etc... FURNITURE MUST sell four rooms of furniture...

REMOVAL ANNOUNCEMENT On or about Thursday, May 25, Micks Furniture Co. will move their store...

IMPROVED CITY PROPERTY LOT AT 1505 West 5th... FINE alfalfa farm... OIL LEASE...

PART ONE
PROPERTY.
LOT 56 by 210...
FOR SALE—Beautiful east front lot on Monroe-st. by 150. Close to high school and Junior college site. Cheap and easy terms. Apply 2 p. m. days. 4-11p

PART ONE
IMPROVED CITY PROPERTY.
LOT AT 1502 Twenty-first-st. clear and taxes paid with gas on same. Will trade for good Ford roadster, touring or tool bus, or no junk. See Schmidt, 1427 Indiana. 4-11p

LEGAL NOTICE
NOTICE is hereby given that before June 1, 1933, all persons operating open tolls in the city limits will be required to take out permit for same as required by Ordinance No. 10 on June 1 a permit will be issued for the month of June at a cost of fifty cents. Hereafter we have sent a collector to each person but this will be discontinued. A complaint will be filed against each and every one who fails to get a permit. Geo. W. Thornburn, City Clerk. 7-11c



VERNON SOCIETY NEWS.
VERNON, TEXAS, May 20.—Miss Melba Ruth Pickens, daughter of Mr. and Mrs. Matt Pickens of Vernon, and a student at Texas Woman's college; was awarded an honor at that institution recently by being named as one of two heraldees to the queen's line. May 20, 1933. The school, Miss Pickens and her companion crowned the royal pageants—were themselves adorned in special costumes. The entire Nona club was entertained at bridge Friday night at the home of Miss Ruth and Thelma Batchelor on West Texas street. Mrs. Everett Williams won high score for guests and Miss Heulah Ledt for members. Bestman—Mrs. E. Pace, Everett Williams, Ed Lismann, Tom Lisman, Bass Osborn, Mrs. V. V. McCurdy and Miss Lucile Holt were special guests.

LEGAL NOTICE
Pursuant to an order to be issued out of the United States district court, for the northern district of Texas, I, the undersigned trustee of the estate of Chas. S. Richardson, bankrupt, will offer for sale at public outcry at 3:30 o'clock in the afternoon, May 21, 1933, in Archer City, Texas, the following assets: Stock of merchandise, including \$1,281.12; furniture and fixtures, including \$1,545.54; equity in 28 acres of land. All sales will be made for cash and subject to the approval of the above named court. Right will be reserved to reject any or all bids. M. E. Stevens, trustee. 8-11c

STATE OF TEXAS, county of Wichita: Whereas, on the first day of November, A. D. 1921, R. W. Patterson purchased from the undersigned one 1921 Buick automobile, license No. 477583, state license No. 419402, engine No. 81145, and to secure the payment of the balance of the purchase price executed notes aggregating six hundred (600) dollars secured by mortgage, and Whereas, said mortgage provides that on default of the payment of said notes mortgagee is authorized at his option to declare all said notes due and to take actual possession of the property and to sell same at public auction for cash at the court house door in Wichita county, Texas, with or without having said property present at said sale after giving notice as for sales of property under execution. Now herefore notice is hereby given that I shall sell at public auction for cash at the court house door in Wichita county, Texas, between the hours of 10 a. m. and 2 p. m. on the 2nd day of June, 1933, the above described property, the property of R. W. Patterson, to satisfy said notes. M. M. Walker, sheriff. May 11 and 28

KAY-BAC
Most men like KAY-BAC for its snug, trim lines—and the fabrics in which it is developed. This season and at this particular time of the year, we are in a position to show you hundreds of wonderful Tropical Worsteds. A most practical material for the hot Summer days. These patterns come in plain colors, as well as the hair-line stripes, interestingly priced at from—
\$17.50 to \$40.00
W. B. McClurkan & Co.
Ohio at Seventh

WOMAN IS KILLED AT HILLSBORO AND MAN SURRENDERS
HILLSBORO, TEXAS, May 20.—Mrs. Ross Wade, living about 11 miles west of Hillsboro, was shot and instantly killed here this afternoon. Her brother-in-law, Lynn Wade, walked into the sheriff's office immediately following the killing, bringing with him a double-barrel shotgun, and telling the officers he wanted to surrender, as he had just killed a woman. The shooting occurred as Mrs. Wade was entering the court house yard and as the usual Saturday crowd was on the Hillsboro public square. Lynn Wade and his brother, Robert, were sitting in a buggy near the entrance to the court house yard. Some witnesses say he opened fire while sitting in the buggy, while other say he alighted before the shot was fired. "Trouble of several months' standing is said to have existed. Lynn Wade was indicted by the Hill county grand jury, and he held his sister-in-law responsible for the incident. In a previous difficulty Wade was shot in the arm by the woman he killed today. 7-11c

FOR SALE!
150 acres, one mile southeast of Iowa Park, in the valley, under the ditch; underpriced at \$75.00.
Stelick & Baber
Phone 2331 309 Cheasnut Bldg.

I Sell the W-K Spark Plug
Also some other accessories for automobiles, including gasoline.
A. L. WARREN
612 Indiana Avenue
Phone 6818
Open All Night

Faith BATTERY
The Auto Kids Recommend Its Use
An automobile storage battery built on principles that stand the test of time.
A Wichita Falls product, manufactured, guaranteed and serviced in "The City That Faith Built."
Randle Auto Supply
906 Scott Phone 6989

BICYCLES at COST
20 Bicycles to Select From
QUITTING BICYCLE DEPARTMENT
W. S. Auto Supply Co.
711 Tenth Street Phone 3088

Oil and Gas Leases
For sale, direct owner to producer, oil and gas lease properties centrally located in the well-known Electra field, offset locations at reasonable prices to responsible operators.
L. P. DOUGLAS
P. O. Box 85 Electra, Texas

Since the Junior College
has been authorized we have a new educational savings plan for children. If you have a boy or girl some nine or ten or eleven years old and will deposit in this institution each month the small sum of \$10.00, by the time the student has graduated from Wichita Falls Junior College the account will amount to more than \$2,000.00. This provides ample cash to complete the other two years at any of the better colleges of America. This institution will have paid you more than \$800.00 of interest in order to get you to save \$1,200.00 for your boy or girl's complete education.
Write, call or telephone us today for our special booklet explaining the educational plan.
Wichita Falls Building & Loan Association Inc.
Ground Floor Morgan Bldg. Phone Fifty-Fifty

Wichita Falls Building & Loan Association Inc.
Ground Floor Morgan Bldg. Phone Fifty-Fifty

COMUS CRYSTAL BALL A BEAUTIFUL AFFAIR AT LAKE FRIDAY EVE

The Comus crystal ball at Lake Wichita Friday evening was one of the most originally attractive and enjoyable entertainments the members have ever given their young women friends...

MRS. E. W. NICHOLSON IS HOSTESS TO S. S. CLASS

Mrs. E. W. Nicholson was hostess to the Fowler Bible class of the First Presbyterian church Thursday at her home on Tenth street...

CYPHER CLUB INFORMAL DANCE THURSDAY NIGHT

The Cypher club informal dance at the Wichita club Thursday evening was enjoyed by about 15 young people and excellent music was furnished by the Saxi-Holtzworth Harmonium...

LOCAL MERCHANTS GOING TO FORT WORTH MEETING, INVITE IT HERE IN 1923

Several local merchants expected to go to Fort Worth this week to attend the annual meeting of the Texas Retail Merchants' association...

SAN JACINTO SCHOOL WON GARDEN CONTEST

School children planted 161 gardens and captured Civic League Football Prize...

COMMENCEMENT EXERCISES NOCONA SCHOOL EAST WEEK

NOCONA, TEXAS, May 20.—Commencement exercises of the Nocona high school have been in progress this week...

GIRLS! LEMONS BLEACH THE SKIN

Squeeze the juice of two lemons into a bottle containing three ounces of Orchard White, which any drug store will supply for a few cents...

MISS INGHAM'S SHOP

Miss Ingham's Shop - 1409 Tenth - Everything Made - Dressmaking, Remodeling, Millinery, Hemstitching, Accordion, etc.

ELLERIE DINGEL 1920 TENTH STREET

ELLERIE DINGEL 1920 TENTH STREET - SEE OUR COMPLETE LINE OF BONCILLA TOILET GOODS

MISS SAMMONS' PUPILS IN RECITAL WEDNESDAY

Miss Florence Sammons will present her music pupils in recital Wednesday afternoon, May 23, at 8 o'clock at the M. Sammons home...

MRS. MARY HINCKLEY DIES EARLY SATURDAY; FUNERAL HERE MONDAY

Mrs. Mary Hinckley, formerly of this city, now of Fort Worth, died at Fort Worth Saturday morning, according to word reaching this city...

MRS. HANNUM

Supervision of "Home Patterns" from New York City will be in our store on Monday and Tuesday. Let Mrs. Hannum help plan your Summer Dresses...

W. B. M'CLURKAN & COMPANY

Ohio at Seventh Street

SPORTS WEAR FOR SUMMER

In Dresses, Suits and Separate Skirt with Blouse or Sweater

W. B. M'CLURKAN & COMPANY

Ohio at Seventh Street

FIRST BAPTIST AUXILIARY MEETING MONDAY AFTERNOON

First Baptist church meetings of the Women's Auxiliary will be held Monday afternoon, as follows: Circle one, with Mrs. S. J. Ashmore...

HOME JOURNAL PATTERN NO. 3531

LET us suggest that you make this simple frock from the new printed voile. Such delightfully quaint designs are displayed in these new prints.

THE BRIDE CAN MAKE IT HERSELF

THIS wedding gown of creamy satin, beaded with seed pearls, any bride can plan stitch-by-stitch.

SAUL'S STORE

Wichita Falls' Foremost Cash Department Store

KIMBECLIN'S

INDIANA AVENUE AT TENTH STREET

MRS. WITCZER ENTERTAINS FIDELITY AT WICHITA CLUB

Mrs. W. C. Witczer entertained the Fidelity Bridge club in a most attractively planned hospitality at the Wichita club rooms Friday afternoon...

THE BRIDE CAN MAKE IT HERSELF

THIS wedding gown of creamy satin, beaded with seed pearls, any bride can plan stitch-by-stitch.

SAUL'S STORE

Wichita Falls' Foremost Cash Department Store

KIMBECLIN'S

INDIANA AVENUE AT TENTH STREET

MRS. WITCZER ENTERTAINS FIDELITY AT WICHITA CLUB

Mrs. W. C. Witczer entertained the Fidelity Bridge club in a most attractively planned hospitality at the Wichita club rooms Friday afternoon...

THE BRIDE CAN MAKE IT HERSELF

THIS wedding gown of creamy satin, beaded with seed pearls, any bride can plan stitch-by-stitch.

SAUL'S STORE

Wichita Falls' Foremost Cash Department Store

KIMBECLIN'S

INDIANA AVENUE AT TENTH STREET

MRS. WITCZER ENTERTAINS FIDELITY AT WICHITA CLUB

Mrs. W. C. Witczer entertained the Fidelity Bridge club in a most attractively planned hospitality at the Wichita club rooms Friday afternoon...

THE BRIDE CAN MAKE IT HERSELF

THIS wedding gown of creamy satin, beaded with seed pearls, any bride can plan stitch-by-stitch.

SAUL'S STORE

Wichita Falls' Foremost Cash Department Store

KIMBECLIN'S

INDIANA AVENUE AT TENTH STREET

MRS. WITCZER ENTERTAINS FIDELITY AT WICHITA CLUB

Mrs. W. C. Witczer entertained the Fidelity Bridge club in a most attractively planned hospitality at the Wichita club rooms Friday afternoon...

THE BRIDE CAN MAKE IT HERSELF

THIS wedding gown of creamy satin, beaded with seed pearls, any bride can plan stitch-by-stitch.

SAUL'S STORE

Wichita Falls' Foremost Cash Department Store

KIMBECLIN'S

INDIANA AVENUE AT TENTH STREET

MRS. WITCZER ENTERTAINS FIDELITY AT WICHITA CLUB

Mrs. W. C. Witczer entertained the Fidelity Bridge club in a most attractively planned hospitality at the Wichita club rooms Friday afternoon...

THE BRIDE CAN MAKE IT HERSELF

THIS wedding gown of creamy satin, beaded with seed pearls, any bride can plan stitch-by-stitch.

SAUL'S STORE

Wichita Falls' Foremost Cash Department Store

KIMBECLIN'S

INDIANA AVENUE AT TENTH STREET



Who Wouldn't Love a Crisp New Organdie Frock

Women are always ready to add new frocks to their wardrobe, but these Organdies, Voiles and Swisses seem unusually tempting, and isn't it splendid that they arrived just in time for these pretty, warm days...

Little Girls Look So Pretty in White Frocks



Little girls look so sweet in spic span White Frocks that most mothers hesitate a good while before putting them into colors. Of course, white soils too quickly to be practical...

GRACEFUL HATS FOR MAYTIME WEAR



Gloriously Summery Hats for the warming days, in large and small shapes, as each individual face and figure may require. Each touched with a bit of flowers or ribbons with a wizardry of art that can be seen but never quite understood...

Short Sleeves Have Made This a Season for White Silk Gloves

There's a particular pleasure in always having a fresh pair of White Gloves ready when you want them. To be sure it does mean having a quantity, but it's quite easy to buy several pairs during May...



THE COURTEOUS SERVICE STORE

Haskell

Mr. and Mrs. W. H. Murchison are visiting relatives in Beatrice. Mrs. Deo Scott is visiting her daughters, Abnetta and Leticia, in Colorado.

Electra News

Senior Play. The senior play of the high school was given Monday night. A large crowd was in attendance and the play was a success.

Proposal Is Made To Investigate the High Cost of Dying

CHICAGO, May 20.—The high cost of living having come in for its share of abuse and injury the high cost of dying is now to be investigated in Chicago.

HON. GUINN WILLIAMS LEAVES FOR WASHINGTON

Special to The Times. DECATUR, May 20.—Hundreds of the citizens of this community, including 400 school children accompanied Congressman-elect Guinn Williams to the station, Friday.

MOTHER!

Clean Baby's Bowels with "California Fig Syrup"



Millions of mothers depend upon genuine California fig syrup to clean and freshen baby's stomach and bowels.

Have You Stomach Trouble?

Start on the Road to Wellville By Following This Advice. Wickliffe, La.—For several years I suffered with attacks of indigestion.

Spent Fortune in Search

I spent \$1,500 in 7 years treating with physicians, specialists, costing me \$10 a visit, only to at last say that nothing could be done for me.

ONE MORE WEEK OF THE GREAT SACRIFICE

Dissolution Sale of the United Bargain Basement

Table listing items for sale: 1,000 BLOUSES Up to \$2.00, Sale 85c; 1,000 APRONS \$1.00 to \$1.50, Sale 59c; 1,000 WASH DRESSES Up to \$5.00, Sale \$1.95; 1,000 BRASSIERES Up to 75c, Sale 39c.



Table listing items for sale: SILK DRESSES \$15.00 Up to \$35.00, on Sale \$6.85 to \$9.85; SUITS AND CAPES \$15.00 to \$39.75, Sale \$9.75 to \$13.75; Extra Good Bleach Domestic, 16c Sale 10c; \$1.00 Grade Dotted Swiss All Colors 59c; Silk Pongee Blouses Up to \$5.00 Values \$2.65; Silk Sweaters \$5.00 Selling \$3.10.

ABSOLUTE REAL GENUINE BONA FIDE SALE BARGAINS

UNITED BARGAIN BASEMENT

The One Cent to One Hundred Dollar Store LADIES AND CHILDREN'S SHOP 10th & INDIANA UNDER KIMBERLIN'S

Mrs. Charles Conner hosts. Mrs. Charles Conner gave a lovely dinner party Friday evening.

Public Library. It has been the aim of the club women of Haskell for 22 years to have a public library in Haskell.

Presbyterian Christian Endeavor. Minnie Lee was director of the lesson on "How Can We Help Our Church and Our Country?"

Personal and Briefs. Mrs. Dolph Keeton and three children are the guests of the letter's parents.

Young Girls Need Care. FROM the age of twelve a girl needs all the care the thoughtful mother can give.

NO BUST PADS NOW. Use the National. The National is the special Bust Developer.

ONLY REAL BUST DEVELOPER. The National is the special Bust Developer Dr. C. K. Carter, formerly recommended in the Physical Culture Magazine.

Advertisement for Lydia E. Pinkham's Vegetable Compound, featuring an illustration of a woman and child, and text describing the benefits for young girls and women.

McCconnell Brothers

Ladies Attention!

YOU ARE CORDIALLY INVITED TO ATTEND A SPECIAL DEMONSTRATION OF THE 'White' Rotary Sewing Machine AT THIS STORE

Has been tested and approved by the Good Housekeeping Institute, conducted by the "Good Housekeeping Magazine," and awarded the official approval of the Institute June 1, 1920.

A REAL JOY—It's a real joy to sew on the WHITE. No tiring illeffects from a few hours' sewing. You get up from your work without a tired feeling in your back.

WHITE SUPERIORITY—There are many features distinctively "WHITE" that make it superior to other Rotary sewing machines. Here are a few:

TERMS TO SUIT YOUR CONVENIENCE. McCconnell Brothers 821-823 Indiana Ave. "HOME FURNISHERS" Phone 5723

Vertical text on the right edge of the page, including "PART TWO", "OLYMP OF M FOR", "The Blain Wom", "The imp American", "Ince's enth", "which is", "the first", "the Olymp", "Call", "a Pi", "ince's enth", "day and", "the best", "theatre has", "Hall the", "two girls", "on the qui", "guided and", "hypocrite a", "day and", "and avoided", "tion is sta", "Ince himse", "glean pol", "James Mac", "J. Brady a", "The story", "Ewart's no", "Its local", "tern above", "for federal", "Hement.", "Superly", "service sup", "tributari", "Wichita", "CO", "K", "The gives", "for Stratford", "G", "MONDAY", "TUESDA", "WEDNES", "THURSD", "FRIDAY", "SATURD", "FOI", "ADAM", "1920 Mon", "TH", "No 1", "it to", "tari", "veni", "Don't", "be rei", "Col. I", "way, a", "come", "soms", "Mari", "Come", "For f"

AMUSEMENTS

OLYMPIC HAS PAIR OF MASTERPIECES FOR SCREEN SHOW

"The Silent Call" and "Hall, the Woman" Scheduled For Presentation.

The inspired story of modern American womanhood is told in a deeply emotional and dramatic vein in "Hall, the Woman." Thomas H. Ince's enthralling transcript of his which is to be the feature picture of the first three days of the week at the Olympic theatre. "The Silent Call," a First National attraction, comes to the Olympic the last three days and helps to round out one of the best picture programs that the theatre has presented in months.

VIOLA DANA AND BETTY BLYTHE WILL APPEAR AT STRAND

Viola Dana, popular Metro star, proves herself a worthy champion of the much maligned flapper in "The Fourteenth Lover," the main movie attraction to be featured at the Strand theatre the first three days of this week.

The story is one of rapid moving action, plenty of comedy and not a few thrills. It was adapted for the screen by Edith Kennedy. Jack Mulhall, heads the very capable supporting cast, which includes Albert Lee and Frederick Vroom.

Big Feature at the Strand Theatre Three Days This Week



VIOLA DANA in a Scene from "THE FOURTEENTH LOVER"

"FOUR HORSEMEN" COME BACK TO THE MAJESTIC THEATER

The Four Horsemen of the Apocalypse, one of the greatest film productions of the year and one which has scored a tremendous success throughout the country, comes to the Majestic theatre four days this week as the feature film attraction.

The last two days bring to the Majestic a George Cheevers picture "Love of Service," which is said to be unusually good.

Strand to Show Big Pictures of United Artists Film Stars

Announcements were made by Strand theatre managers last week that they had secured the exclusive rights through the United Artists corporation to show in Wichita Falls all the screen releases of George Arliss, Lillian and Dorothy Gish, Charles Chaplin, Nazimova, Douglas Fairbanks, Mary Pickford, Betty Blythe, Charles Ray and all D. W. Griffith's productions.

THEATRES

Olympic. Monday to Wednesday: All star cast in "Hall the Woman." Thursday to Saturday: All star cast in "The Silent Call." Strand. Monday to Wednesday: Viola Dana in "The Fourteenth Lover." Thursday to Saturday: Betty Blythe in "Fair Lady." Majestic. Monday to Thursday: "The Four Horsemen of the Apocalypse." Friday and Saturday: Special George Cheevers feature. Gem. Monday: Metro special feature, "The Last Card." Tuesday: Western feature "Ann of Little Smoky." Wednesday: Big Boy Williams in "The Cowboy King." Thursday: Dustin Farnum in "Iron to Gold." Friday: Special feature "The Family Closet." Saturday: William Desmond in "Fighting Mad."

SUGGESTS A THOUSAND U. S. TROOPS OF RHINE COBLENTZ, May 20.—Representative J. Q. Tilson of Connecticut, who is here with Major General Harbord investigating the desirability of building a small American force in the Rhineland, said he believed 1,000 men would be left so that the United States would continue to be represented with the allies in the occupied area.

PARK INN

IOWA PARK
Rooms \$1, \$1.50, \$2
Special Chicken Lunch and Dinner Thursday and Sunday of Each Week
The best the market affords. Please phone in your reservations.
D. M. HERRICK, Mgr.

CONSULT MEXAN KEYS



Superbly satisfactory spectacle service supplied by Fred Goan, optometrist, with Kruger Jewelry Co., Wichita Falls, Texas. (G)

CLARENDON CAMP GROUND NOW READY FOR TOURISTS

CLARENDON, TEXAS, May 20.—The camp ground located on the main highway in the city limits is now open for the tourists. This camp ground is equipped with electric lights, water, oven and other conveniences, and also a cottage to take care of the tourists during the rain. The cottage recently added to the camp ground is furnished by the chamber of commerce of this city.

Superbly satisfactory spectacle service supplied by Fred Goan, optometrist, with Kruger Jewelry Co., Wichita Falls, Texas. (G)

SPECIAL FEATURE WEEK

Gem Theatre

MONDAY—Special Metro Feature with May Allison in "THE LAST CARD."
TUESDAY—Western Special, "ANNE OF LITTLE SMOKY." Also Fox News.
WEDNESDAY—Big Boy Williams (son of Congressman-Elect Gulian Williams of 12th district in "IRON TO GOLD").
THURSDAY—Dustin Farnum in "IRON TO GOLD."
FRIDAY—"THE FAMILY CLOSET" from Saturday Evening Post story "Black Sheep."
SATURDAY—William Desmond in "FIGHTING MAD." Also Harold Lloyd Comedy.
ENTIRE CHANGE OF PROGRAM DAILY

FOR YOUR HEALTH'S SAKE

WE HAVE
THREE KINDS OF PURE DRINKING WATER

1. Adams' Ale—A Pure Distilled Water.
2. Pure Electrified City Water.
3. Pure Electrified Well Water.

THEY ARE ALL ABSOLUTELY PURE
LET YOUR TASTE DECIDE YOUR CHOICE

Plenty Bottles, Cysters and Filters
DON'T DELAY—PHONE TODAY!

ADAMS ELECTRIFIED AND DISTILLED WATER COMPANY

4000 Holliday Street Phone 2911-2922

Marlin, Texas

THE HEALTH RESORT OF THE SOUTH

No matter what your trouble is, bring it to Marlin, where modern hotels, sanitariums and bath houses and other conveniences await you.

Don't delay your trip to Marlin, but come now and be relieved of your suffering.

Col. E. H. R. Green, President of the Midland Railway, has just left Marlin sound and well, having come here a few weeks ago on a wheel chair. He says:

"Marlin is the greatest health resort in America." Come to Marlin and see for yourself.

For further information, address
CHAMBER OF COMMERCE

OLYMPIC

PARAMOUNT AND REALART PICTURES

MEN AND THEIR SONS FIRST!

—and the daughter of one who threw a bomb into this age-old tradition!

FLORENCE VIDOR THEODORE ROBERTS MARGE BELLAMY LLOYD HUGHES

Thos. H. Ince HAIL THE WOMAN

EXTRAS: PATHE NEWS, TOPICS OF THE DAY (SUBJECT TO CHANGE)
SPECIAL WEDNESDAY NIGHT ONLY CHARLES ANGLE SINGS "A DREAM"

COMING STRAND THEATRE

A WICHITA FALLS INSTITUTION
ONE WEEK STARTING MAY 29

ONE OF THE BEAUTIFUL FETE SCENES from
D. W. GRIFFITH'S "ORPHANS OF THE STORM"

PRICES: Matinee, 50c-25c, including Tax; Night, 80c-50c-25c, including Tax; All Seats Reserved; Seats on Sale Tomorrow

EMPRESS

MONDAY-TUESDAY

Pauline Stark

—in—

Salvation-Nell

The story of a girl who made a god of a man—asking no more, looking no higher, seeking no further.

Surely That Is the Greatest of All Drama

Mrs. Fiske made it a wonderful thing on the stage. It came to the screen five years ago, and now Whitman Bennett has recreated it—made it finer—a masterpiece.

You'll ever remember Pauline Starke as Salvation Nell

You'll remember, too, the splendid players who support her.

And you'll never forget the humanity that has streamed from the East Side to live for all the life that is its own.

MAJESTIC 4 DAYS STARTING MONDAY

—Now You Can See It Cheap—
—Bargain Prices 25c and 50c—

Continuous Show Starting 1 P. M.

AN ASTOUNDING WORK OF GENIUS!

SINCE VICTOR HUGO, there has been no more striking literary figure than Vicente Blasco Ibañez, whose famous book has reached its 161st edition here. The multifarious thrills, the perfection of this masterpiece, have been presented masterfully in

METRO'S PICTURIZATION OF

The FOUR HORSEMEN of the APOCALYPSE

By VICENTE BLASCO IBAÑEZ
A REX INGRAM PRODUCTION

Translated to the screen from the internationally famous novel that has been read by ten million persons in the United States alone. Interpreted by a cast of 50 principals and an ensemble of 12,500. Produced at a cost of A MILLION DOLLARS, it is the greatest feat ever performed by makers of motion pictures.

Adapted by JUNE MATHIS
Photographed by JOHN F. SEITZ

This colossal spectacle-drama has turned thousands away from the doors of every theatre in which it is shown.

RECENT PRIMARIES BRING ABOUT DESIRE ON PART OF REPUBLICANS FOR THE OLD CONVENTION PLAN

By MARK SULLIVAN, National Political Correspondent of the New York Evening Post and Wichita Daily Times.

WASHINGTON, May 20.—There is no current political tendency more obvious than the disposition to get away from the direct primary and back to the party convention as a means of nominating candidates for office.

Some variation of what has been done in these states is in process of being done, or is contemplated, in all other states. The direct primary generally is in process of re-evaluation or modification.

meet and name candidates for office. Subsequently there is a party primary, at which the candidates previously endorsed have the first place on the ticket and are formally described on the ticket with the words, "endorsed by the party convention." In these primaries, anyone can enter, and they afford an opportunity for those party voters who are dissatisfied by what the convention did, to give expression to their dissent.

One disadvantage of the primary is that in most cases it makes necessary for a candidate for office to go through two complete campaigns. This is a real disadvantage.

ing two complete campaigns. In Indiana, for example, Senator Beveridge devoted practically all his time for five months to making the primary campaign which ended recently, having done this Mr. Beveridge has only gone half way toward success.

The sacrifice involved in doing this is, in the case of a man like Mr. Beveridge, unreasonably. It was a fine thing for him to make this sacrifice. He only did it after prolonged urging from persons in Indiana and throughout the country, who were eager to achieve that strengthening of the intellectual quality of the senate which his presence would give to that body.

On the other hand, in this particular case, it must be admitted that if there had been no system of party primaries in Indiana, there would have been practically no possibility of getting Mr. Beveridge into the United States senate.

Mr. Harding's party has a great majority in the house and senate, but is unable to put the party platform through because he has nothing to say to the voters who choose to defy Mr. Harding and the party leaders.

Another objection made to the direct primary is that it has the effect of destroying party organization, making party discipline impossible, and therefore is subversive of the whole theory of government through political parties.

The chief of the indictments made against the direct primary is that the house and senate, and the other miscellaneous public officials who have come into office as a result of it, are of a lower caliber of intellect and forcefulness than those who composed the same bodies under the old convention system.

Mr. Harding's party has a great majority in the house and senate, but is unable to put the party platform through because he has nothing to say to the voters who choose to defy Mr. Harding and the party leaders.

Another objection made to the direct primary is that it has the effect of destroying party organization, making party discipline impossible, and therefore is subversive of the whole theory of government through political parties.

The chief of the indictments made against the direct primary is that the house and senate, and the other miscellaneous public officials who have come into office as a result of it, are of a lower caliber of intellect and forcefulness than those who composed the same bodies under the old convention system.

Mr. Harding's party has a great majority in the house and senate, but is unable to put the party platform through because he has nothing to say to the voters who choose to defy Mr. Harding and the party leaders.

Another objection made to the direct primary is that it has the effect of destroying party organization, making party discipline impossible, and therefore is subversive of the whole theory of government through political parties.

The chief of the indictments made against the direct primary is that the house and senate, and the other miscellaneous public officials who have come into office as a result of it, are of a lower caliber of intellect and forcefulness than those who composed the same bodies under the old convention system.

Mr. Harding's party has a great majority in the house and senate, but is unable to put the party platform through because he has nothing to say to the voters who choose to defy Mr. Harding and the party leaders.

Another objection made to the direct primary is that it has the effect of destroying party organization, making party discipline impossible, and therefore is subversive of the whole theory of government through political parties.

The chief of the indictments made against the direct primary is that the house and senate, and the other miscellaneous public officials who have come into office as a result of it, are of a lower caliber of intellect and forcefulness than those who composed the same bodies under the old convention system.

alone here set down do not by any means exhaust the possibilities. Persons who have no preoccupations one way or the other but whose chief interest lies in making the machinery of democracy work as well as possible, will need to study the subject carefully to find the middle course which, in this as in most cases, is the surer ground.

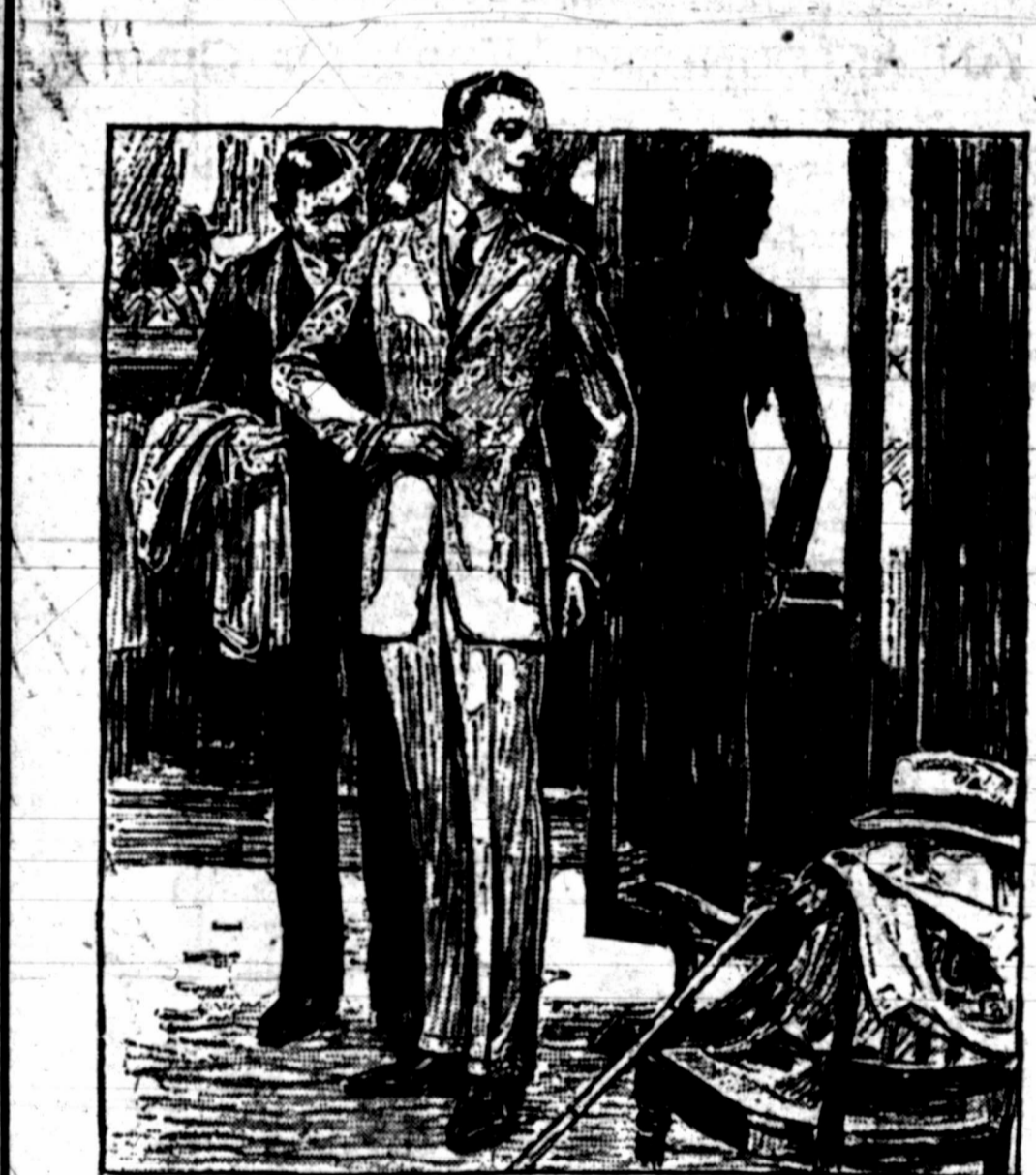
CORNS Lift Off with Fingers



Doesn't hurt a bit! Drop a little "Freese's" on an aching corn, instantly that corn stops hurting. Then shortly, you lift it right off with fingers. Truly! Your druggist sells a tiny bottle of "Freese's" for a few cents, sufficient to remove every hard corn, soft corn or corn between the toes, and the calluses, without soreness or irritation.—(adv.)

Stocks Are Now Complete With New Summer Merchandise. Anderson's WICHITA FALLS QUALITY STORE. We Bid for Your Trade With Style, Quality and Lower Prices.

Department Managers' Sale



Men's Lisle Hose, 4 Pair for \$1.00. Men's Union Suits, \$1.00. Men's Bathing Suits, \$5.00. Men's Pure Silk Knit Ties, \$1.00.

Splendid Values Men's Suits \$25.00. \$5.00 Hat Free With Suits. Tropical Worsted and Mohair Suits are now in stock and are real Summer Suits.

\$5.00 Straw Hat Free With These Palm Beach Suits, \$17.50. A delightful range of patterns and genuine Palm Beach Suits made by better makers of fine clothing.

Men's New Straw Hats, \$3.45. Split Straw in fine weaves, Sennets in the new rough weaves and Panama Hats in regular \$5.00 values are placed on sale for this event.

New Summer Caps. Buy a new cap for auto, golf or sports wear. We have a dandy line of new Miller Caps in the new shapes and patterns for Summer wear.

Boys' Suits, \$7.95. League Baseball Free. Palm Beach and Tropical Worsted Suits in splendid patterns and made of good quality of material and now priced.

Ladies' Suits One-Half Price. For traveling or trips to the mountains, suits are very necessary. We have about 50 new Spring Suits that we now place on sale for exactly one-half of the regular price.

Blouse Sale, \$5.95. \$7.50 to \$8.50 values in new Crepe de Chine Blouses in the accepted sports shades for the season, as well as navy and white.

Chamoisette Gloves, \$1.00. Beaver and mode shade with dark brown trimming in 8-button length. A splendid seller for this time of year, as these gloves are desirable for all out-of-door wear.

New Swisses and Organdy. Genuine Imported Dotted Swisses in ten different shades of the best colors. Priced, per yard.

Sale of Buster Brown Slippers. We now offer any pair in our complete stock of Buster Brown Slippers at reduced prices. We carry at all times all accepted new styles in children's footwear and this special sale affords a splendid opportunity for buying the children's shoes now.

Beautiful Dresses on Sale. Our entire stock of Dresses now offered at special reduced prices. New shipments of Organdy, Swiss, Canton Crepe and Sports Dresses are now in stock and this makes a beautiful showing of dresses.

Ladies' Hat Sale, \$5.00. Values to \$10.00. About 100 Hats in new Spring and Summer styles from our regular stocks that have been selling in a regular way to \$10.00.

La Porte Woolen Skirtings, \$2.89. 54-Inch All-Wool Skirtings in checks, stripes and plaids. Very special.

Genuine Imported Jap Pongee, 98c. We offer a limited quantity of genuine imported Jap Pongee in natural color for 98c.

White Goods Specials. English Nainsook, 15c-36-Inch White English Nainsook in soft quality. Very special, per yard.

Perkins Timberlake Co

Ninth and Indiana

Ninth and Indiana

every woman



Four Windows on Indiana Avenue Have Been Devoted to These Wonderful Hats

in these times **read this**

no woman wants to indulge extravagances. It is her duty to be careful! But Style is not extravagance—it is good judgment.

Women of Wichita Falls

Your opportunity is here! Beginning Monday, the

Most Sensational Millinery Sale

in your city's history will give you the chance to secure the latest Summer styles at practically YOUR OWN PRICE!

EVERYWOMAN'S SALE — we call it! For it brings to every woman the hat she wants at the price she wants to pay. Thousands of dollars worth of fashionable millinery have been specially purchased for this great semi-annual event—offering values only made possible by our great buying power! Values that are unbelievable! Values that are a revelation! 50% is the LEAST saving you can make on any hat in the sale!

Sale Begins When Store Opens Monday Morning

Positively No Exchanges or Returns Every Sale FINAL

Up to \$10 Trimmed, Ready-to-Wear, and Sports Hats \$2.85

THIS is the greatest Sport Hat season we've ever known. These are the greatest Sports Hat Values we've ever seen! Hats for every type of woman and miss, for every purpose and occasion of the summer sports season! The trimmed hats are also very exceptional!

\$750 to \$1250 Smart Trimmed Summery Hats \$4.45

YOU'VE never seen hats like these at anywhere near this price! Advance ideas—in all the colors and styles that will be worn this Summer. Included are the latest modes favored by fashion — large graceful hats in new straws and fabrics — flower and feather trims, tailleur effects!

\$10 to \$15 Lovely Dress Hats \$6.65

IN limited space it is impossible to do justice to the high-grade dress hats in this group,—modes for Summer's social whirl that will lend effectiveness and chic to every costume.

Positively Amazing! Up to \$5.00 Modish Sports Hats \$1

STYLES that are all the rage for women of all ages. Becoming effects developed in a myriad of charming colors and popular "Collegiate" effects.

\$15 to \$25 Exclusive Models

from well known Fifth Ave. makers

THE cream of the best—high-grade stylish modes that you would ordinarily pay twice to three times this price to wear! Exquisite hats that reveal to the world what's what in fashion for who's who in style—that transform the fad for the few to the fashion for the many.

\$8.85

\$25 to \$35 Pattern Hats

from Famous CREATORS

HATS from such incomparable artists as Belnord, Clarisse, Bruck-Weiss, Rawak & Schwalbe are in the sale at \$11.85, each with its maker's signature in the lining! Milliners are glad to pay large sums for the privilege of copying such hats from these makers.

\$11.85



Perkins Timberlake Co

Telephone 4343

Perkins Timberlake Co

HASKELL COUNTY IS IN SPLENDID SHAPE; FARMER OPTIMISTIC

HASKELL, May 20.—The sky has cleared away to beautiful sunshine and the ground has dried sufficiently for the farmers to plant the remainder of their crops of cotton and maize. And this is one time that all energy is being put forth by the farmers in all lines of farm work throughout the county. The streets of Haskell look almost deserted because the farmers are sticking so close to the fields these days.

The farmers are delighted with the excellent season and they are hopeful of conditions for the row crops of Haskell county. The acreage of cotton this year will be greater than in the two last years because of the short grain crop caused by the drought of the fall and early spring months of this year. But they are mindful of the fact that feed is essential to the welfare of the country and a large feed crop is being planted to take care of all needs and to grow a surplus for market.

Ranchmen report cattle in the best of condition in many years and the grass was never better at this time of the year. The dry, warm winter following a seasonable year, with plenty of dry grass on the range, kept the cattle in fine condition and their losses were very light and the feeding of the cattle was a very smart cost.

There are more hogs in the country around Haskell than in many years because of the several years of good feed crops, and the farmers are catering to the independence of growing their living at home and marketing the surplus.

The poultry industry is becoming greater year by year. The poultry men over the county report good hatches and very little disease, and the losses among the young chicks is very light. The move to raise better poultry is spreading by leaps and bounds and very few of the fowls are being bred scrub poultry.

The poultry receipts of Haskell county show it to be among the leading industries and the farmers are realizing what poultry means to the farmer as a side line. Haskell holds an annual poultry show on the first Friday and Saturday in December which is the first and second of the month this year. There is much interest manifested in the show and it is hoped that something of which to be proud, for it took a good bird to win.

TAX EQUALIZATION BOARD TO CONSIDER NO MATTER MONDAY

The county board of equalization will meet Monday as required by law but will immediately adjourn and meet at some later date to be decided upon. The board will not consider any questions at the first session it being merely a matter of form.

CRIMINAL CASES TO BE TRIED IN 89TH STARTING TUESDAY

Beginning next Tuesday morning criminal cases will be tried in the 89th district court. A large number of cases have been set for Tuesday morning and it is hoped that several will be ready for trial as a determined effort is being made to reduce the size of the criminal docket before the grand jury of the 89th district court convenes the latter part of June.

Judge P. A. Martin of the 89th district court, who has been attending the Methodist general conference in Hot Springs will return Sunday and will again occupy the bench beginning Monday morning.

A jury panel has been ordered and all witnesses in the criminal cases have been ordered to be on hand.



REO SPEED WAGON WINS TRANSVAAL MOTOR TRUCK COMPETITION IN AFRICA

Carrying a net load of 3,140 pounds, maintaining an average speed of over 18 miles an hour for four hundred and ten miles, and showing a gasoline consumption of 14.2 miles per gallon, a Reo Speed Wagon was awarded first place in the T. A. C. commercial vehicle trials held recently in South Africa, according to Mr. D. L. Fritz, of the Fritz Motor company.

The route was from Johannesburg to Durban, and called for a non-stop run. Although the T. A. C. set a maximum speed of 15 miles per hour, on the assumption that this was enough to expect from vehicles drawing large loads over hilly country and exceptionally bad roads, the Speed Wagon averaged over 18 miles an hour.

The Speed Wagon won the contest with an economy performance of 19.22 per 10 miles per hour, as against the next best record of 13.64, and a total of 186.78 marks against 168.97.

The formula employed gave the performance of transporting a net load carried by vehicles in cost per ton of 2,000 pounds per mile per hour. No allowances were made for depreciation, but vehicles were carefully examined for stress of journey and penalties inflicted against reliability marks. The consumption of water and general running performance were also considered.

Except for the first hundred miles, the entire run was through mountainous country, which makes the Speed Wagon economy performance very marked.

The management of the City National Bank of Commerce is in the hands of experienced, successful bankers and business men who make the bank's service satisfactory just as they make its safety complete.

Supreme Quality house paint at Decorators Co. The best money can buy.

CHANDLER PUTS OUT NEW SPORT MODEL

Shown above is the new Royal Dispatch, the latest model car turned out from the Chandler factory.

The machine is a four passenger sport model, smartly appointed throughout and equipped with five wire wheels, rear trunk rack, beveled glass wind wings on each side, nicked radiator shell, motorometer and barrel-type head and park lamps. Power is provided with the standard six-cylinder Chandler motor.

The Wilhelm-Moulder Auto company of this city distributes the Chandler and Cleveland cars throughout this territory.

FORM A NEW NATIONAL AUTOMOBILE ASSOCIATION

ST. LOUIS, May 20.—Formation of a new national automobile association was under way here today by state automobile clubs of Illinois, Ohio, Kentucky, Texas and Indiana following the breaking up of the annual convention of the American Automobile association last night over a parliamentary technicality when the organizations withdrew from the national body.

Disruption of the association resulted from a dispute between the Ohio and Chicago clubs which challenged the seating of each other's delegations.

The Chicago Motor club and the Missouri Automobile club with other state bodies remained in the American Automobile association.

GENOA IS RAPIDLY BEING DESERTED BY CONFERENCE GROUPS

By Associated Press.

GENOA, May 20.—Genoa today was rapidly being deserted by the delegates who for six weeks have been participating in the discussions of the economic conference which adjourned yesterday after having provided for the continuation of the League next month of its efforts to put European reconstruction on a more solid basis.

Prime Minister Lloyd-George of Great Britain hurried away to London last night, expressing optimism over the future, even though the Genoa gathering had not accomplished everything he had hoped for.

The German and French delegations were the principal departures this morning.

The Germans left first from one station.

SALES MAN SAM SAYS

By being careless we shorten the life of everything. This rule applies to automobile tires as well. The secret of long mileage in automobile tires depends on how near you keep them to the proper inflation.

Stop at our service station. This service is free and you can increase your tire mileage without cost.

DR. J. W. DU VAL Eye, Ear, Nose, Throat

Testing Eyes for Glasses a Specialty
American National Bank Bldg.
Superbly satisfactory spectacle service supplied by Fred Goss, optometrist, with Kruger Jewelry Co., Wichita Falls, Texas. (7)

Just Arrived

A New and Complete Stock of
Cylinder Head Gaskets, Piston Pins and Piston Pin Bushings

S. Bemrod Auto & Supply Co.
712-14 Eighth St. Phone 2551

Wichita Storage Battery

Priced Lower But No Sacrifice of Quality

| | List Price | Exchange Price |
|-------------------------------|------------|----------------|
| 611 for Ford, Chandler, etc. | \$19.00 | \$17.50 |
| 613 for Buick, Maxwell, etc. | \$24.00 | \$22.50 |
| 127 for Dodge, Franklin, etc. | \$34.00 | \$32.50 |

PLUS EXCISE TAX
Rubber Case, 25.00 Additional

We Have a Most Attractive Proposition to Submit to Dealers
SPECIAL HIGH AMPERAGE BATTERIES FOR RADIO WORK

MANUFACTURED BY
S. BEMROD AUTO & SUPPLY CO.
WILLS ST. CLAIRE, MAXWELL AND CHALMERS DISTRIBUTORS
712-14 Eighth Street

Which Is Most Important To You What Goes into a Can of Paint or What Comes Out of It?

A long time ago, Lowe Brothers found out that six different ingredients had to be used in making High Standard Paint, if their customers were to get the satisfaction and lastingness out of every can that they had a right to expect.

They found out, also, that a different mixing and grinding process had to be employed.

You're not particularly interested in the manufacturing details, but you do want satisfaction and lastingness in paint.

That is what Lowe Brothers put into every can of High Standard. It is what you always get out of every can. Come in and ask for free literature.

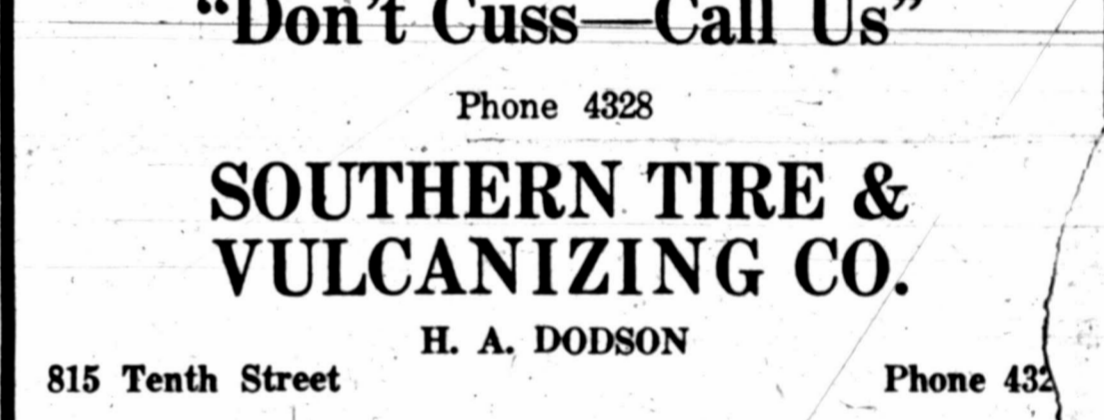
CHAS. E. WATSON PAINT CO.
Wall Paper, Paints and Glass
807 Indiana



INVESTIGATE THE MILLER DIAMOND and STAR TIRES

They Are Good Tires at Reasonable Prices

SOUTHERN TIRE & VULCANIZING CO.
H. A. DODSON
815 Tenth Street Phone 432



The Special 6-55 Sport-Touring

A patrician motor car with every appointment found in the finest automobile—

And, with all this—the certainty of Buick performance, Buick sturdiness and Buick power.

The Special Sport-Touring is built in response to the demand of the motorist who seeks Buick's kind of motoring with the intimate comfort and refinement of the sport design.

Nominally four passengers are accommodated in the roomy body but five can ride.

The Special Sport-Touring is finished in dark Buick maroon with wheels to match—which with the beautiful trimming, binding and finish give this special model its tailored appearance.

The demand for this handsome model at the remarkably low price will tax factory production to the limit. See us immediately for detail specifications and delivery dates.

Additional Equipment of the Special Sport-Touring

Shield top and adjustable sunshade; windshield wiper; microscope; glass-covered instrumenting gasoline gauges on dash; clock, cigar lighter; handsome nickel-bound luggage trunk mounted on permanent base; Buick design drum-type head and most latest front members; carpets in both front and rear compartments; walnut steering wheel; heavily nickeled radiator, step plates, guard rails and all other fittings; Tuxedo steel wheels built to Buick specifications are optional equipment at an added cost of \$50.00 if installed at the factory; extra tires or the covers not included.

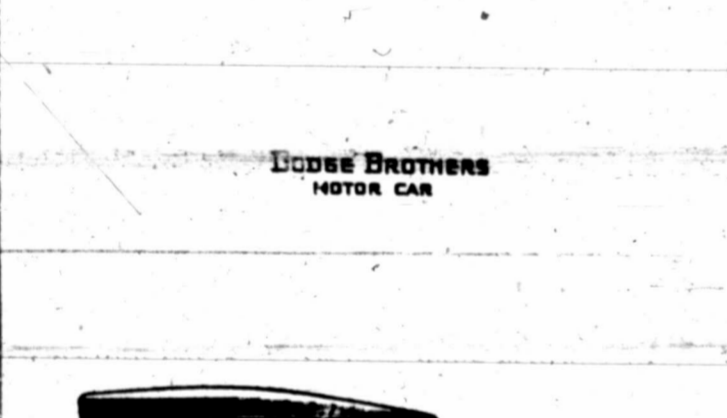
C-43

DIXON MOTOR COMPANY
810 Scott Ave. Phone 4111

When better automobiles are built, Buick will build them

Dependable

DODGE BROTHERS MOTOR CAR



McFall Brothers
219 Ohio Ave. Telephone 4144

McFall Brothers
219 Ohio Ave. Telephone 4144

HAVE YOU SEEN THE NEW CLEVELAND

The sensation of the light car field. A smart, luxurious, comfortable, powerful automobile for only

\$1390.00

Delivered Here

Wilhelm-Moulder Auto Co.
608 Indiana Phone 2427

Pierre Rauppi Hudson Died a F

While the St. brought under the French ero present area of if offshoot and French explore achievements in of North America for him builder, his fam oblation by the men of another Spirit: Hudson's tale in the west both were dau in the face of Lancere and he ambitious. Many thousand and water that seen before. T by political Intr and English, n plies as a tr assemblies success splendid record. tures. To La I fame as a chain of a vast new r tor in the dove world.

Hudson was France, in 1495 age of sixteen Canada, going the north bank an outpost of the in quins. Mohawk dian nation age of seven adventures ha when he was a quils while he courage that saved his life. escape he killed flew. He was cruelly and his bravery and adopted into 4 years of nomads he mana down the Hudsoo dian passage f age advanced 1 print and a I soon returned Three Rivers.

First Whi His life an wacted his lo to, had learn age and ma wonderful kno which stood hi in the years 11 son, with a 1 to be gained. termined to a explorer. In c Chouart Gross

EYE

BY I

DO I NEED GLASSE

Our patro appreciate our service obta appreciate our

If you can't see the service obta appreciate our

If you can't see the service obta appreciate our

FRI

Registe

With R: 000 1

Wichit

The Girl and the Buried Treasure



O. W. Johnston, Sea Captain, Who Is Now Planning to Retrieve Treasure Lost in a Wreck Off the Texan Coast.

Jane Sands Tells How Her Expedition to Cocos Island Expects to Find the \$200,000,000 Buried There by Captain Morgan 100 Years Ago!

ONCE MORE it's "Ho for Cocos Island!" Once more the treasure-laden reef of the South Pacific becomes the objective of ardent seekers after buried millions. Once more the clank of spade and pick will break the silence of those haunted palm groves as these newest Argonauts seek to retrieve the jeweled chests of Capt. Morgan.

This time the expedition is headed by a woman, Jane Sands, who has just obtained permission from the Costa Rican government to conduct operations on the island. That she is following in the footsteps of buccaneers, murderers, gamblers and adventurers of a dozen dubious types means nothing to her. That the records of Cocos Island searches are stained with blood has but fanned her romantic enthusiasm.

Miss Sands takes with her not only all the available data on the possible burial place of the Morgan treasure, but the machinery necessary to turn up every square foot of the island. One of her sailors is a Cuban who claims to have seen the original map made by the mutineer Thompson, the member of Morgan's crew who first tried to seize the treasure. This Cuban has made a map himself.

According to Miss Sands, the value of the treasure is estimated variously at from \$100,000,000 to \$200,000,000. It is composed of gold and silver bullion and coins, jewels of all descriptions, and sacred ornaments taken from churches.

The records of the Peruvian Government show the treasure was sunk on Cocos Island in the year 1820," said Miss Sands in speaking of the expedition. "Bitter enmity existed at that time between Peru and Chile, and Chilean armies had invaded the country.

"When it was learned that the Chileans were about to march upon Callao, then the principal city of Peru and one of the richest of the Southern continent, its inhabitants were thrown into a panic. They expected that the city would be put to the torch, that its public buildings would be despoiled, and its women carried off.

"Accordingly, the heads of the Government commissioned a certain Capt. Morgan, an English adventurer who had sold his services to Peru, to take all

available government funds and the church treasures on board a ship and put out to sea, remaining out of danger until the Chileans had retired or a peace had been patched up. The banks and many of the richest citizens added their riches to the cargo. Several of the old Peruvian grandees sent along their daughters. Capt. Morgan, when he finally set sail, carried the whole wealth of the city and its choicest maidens as well.

"But ill luck befell his ship. A storm broke. He finally was forced to land.

"This he did, and the treasure was buried on Cocos Island, off Panama. When he was on his way back to Peru, however, a mutiny, led by Mate Thompson, broke out. All the officers were put to death, the women passengers were locked below decks, the mutineers took charge of the ship and put about. They again landed on Cocos Island, where Thompson distributed the women among his crew."

Miss Sands went on to say that partly

Scene on Cocos Island—Hidden in Some Such Spot Is \$200,000,000 Treasure Miss Sands Seeks.



through cupidity and partly because of wrangles among the men over these terror-stricken women, bloody quarrels broke out among the mutineers. All but Thompson and two others were killed, whereupon Thompson, in an access of rage, had all the women murdered.

Leaving the treasure, with only the two sailors to help him, he put to sea, but was finally forced to ask help of a passing merchantman.

The captain of this ship recognized the vessel and arrested Thompson and his two henchmen. Thompson made his escape.

After that he led two unsuccessful attempts to reach the island.

Politeness DOES Pay—You May Receive a Fortune Too

It Isn't Always Just Luck—As Witness the Case of the

Actress Willed \$100,000 by a Teacher She Befriended; the Waitress Who Got a \$10,000 Tip, and the Manufacturer Who Remembered the "Cop" Who Staked Him.



Marie Shotwell, Whose Solitude for a Lonely Old Woman's Welfare and Happiness Has Brought Her a Rich Legacy.



Elizabeth Hill, Iowa Waitress, Refused Tips from an Ethical Standpoint—and Got a Fortune from a Rich Patron.



"The Plainly Dressed Teacher Is Often in the Lavishly Appointed Apartment of the Actress."

Patrolman Francis E. Caddell of New York City, Made Rich by a Man He Befriended in His Youth.

PERHAPS Grimm, the fairy tale manufacturer, was right, after all. Maybe there are good-hearted fairies who reward those who have done unto others as they would be done by. Perhaps some guiding spirit directs those grateful souls who, years after a kind act, return to reward the benefactor who may long since have forgotten his benefaction.

The news columns during the past few weeks have recited remarkable instances of rewards for kindness, showing that the age of chivalry and decency toward one's fellowmen is by no means dead.

EPISODE 1

Passaic, N. J.—George Conroy, Erie conductor, on the main line, about to raise his hand to start the train out of Passaic, N. J. He sees an elderly man hastening down the street. He waits. The man makes the train. The train pulls out. "Mighty decent of you," the man gasps. "You seem to make a habit of being decent, anyway."

"It's all in the day's work," laughs Conroy. "I know, Mr. Adams, that a man of your years wouldn't be running for a train unless he had a good reason to catch it. Anyway, I like to treat people the way I like to be treated."

"Yes, a big reason," replies J. J. Adams, rich shoe manufacturer. "If I had missed it I might have lost several thousand dollars on a big deal."

Conroy, as Mr. Adams observed, is known for his kindness to commuters. He is a cheerful fellow, too, with a sympathetic word for people in trouble. Years later, Conroy breaks the news that J. J. Adams has died and left him a fortune of \$15,000. Every commuter rejoices and says he is sorry he can't do as much himself.

EPISODE 2

New York City, Evening, Oct. 12, 1912.—Miss

Marie Shotwell, actress, is walking along Fifth avenue. She is in rather a bad frame of mind. A dinner engagement which promises a pleasant evening has been broken. At Thirty-ninth street she stops and listens to a woman spellbinder talking politics. Absorbed by the theories of the speaker, she does not notice that a woman, dressed in sombre fashion, has edged close to her until she becomes aware that the stranger is actually leaning against her for support.

Conversation opens. The woman in the drab raiment confides to the actress that she is Mary Pierson, a school teacher. She says it in a voice of utter hopelessness, as if teaching New York school children were a sad and depressing task. But when the actress introduces herself, the tired look goes out of the eyes of the teacher and she exclaims:

"Oh, I just love all your kind!" Friendship is established between the actress and the teacher. The actress takes the teacher for frequent visits into her sphere—into the world of high-priced dinners, and brilliant settings and merry living.



"They Leave the Place and Kidd Convinces Her That Decency Is the Only Safe Course."

The school teacher gives to the actress the soft speech of refinement and education and astonishes her by the brilliancy of her conversation. The plainly-dressed teacher is often in the lavishly-appointed apartment of the actress.

Ten years pass. Mary Pierson, the school teacher, dies. Miss Shotwell finds herself sole beneficiary and executrix under the will of her friend, the drab, little old school teacher. Mary Pierson, whom she believed to be poor, leaves her a fortune in real estate appraised at \$100,000.

EPISODE 3

Council Bluffs, Ia.—Elizabeth Hill, waitress, 24 years old, and pretty, is attending to her duties in the quick-lunch establishment in the railroad station. A stream of men pours in and out. Most of them are on the way to the Chicago stockyards. They've come from long distances. But she knows nearly every one. Seldom does a face elude her.

An old man enters, one of those old men whose age is as a lusty winter, frosty but kindly. He gets a bite to eat. He nods to the girl. She smiles recognition. He is "Old Man Dexter." Everyone knows the 78-year-old traveler. He's on the way to Chicago to sell cattle. His bite finished, his check presented, the old man takes from a slim roll of bills a new dollar and proffers it to the girl.

"No! You know I never take a tip," she says. "Tips are not fair. Some day I might take a tip from a man who needed the money for a wife, children or mother. I get my meagre here and a salary and that is enough."

"The same old story. You've told me that many times," laughs the old man. "And you also returned that check for \$100 I sent you. Well, I'll get you to take something yet."

Old Man Dexter boards his train. A month later, the waitress receives a bulky letter, registered mail. She opens it. A note reads:

"You deserve a better fate than working behind a restaurant counter. You are a real American and the only person who ever refused my tips. In the hills of Devonshire I have a wife and daughter buried. In memory of them and with my best wishes for the future I beg you to accept this remembrance."

Attached is a certified check for \$10,000 and the deed to 1000 acres of Nebraska grazing land.

Old Man Dexter returns to England, leaving no address. After finding this out, Elizabeth Hill accepts the gift.

EPISODE 4

Toronto, Canada—One of those places where the ceiling is low, the cigarette smoke is thick, and the women come to one's table at a wink or a nod. David S. Kidd, a tea salesman, slumming it. A girl with the face of an angel, a girl whose life has not yet blotted out refinement and the earmarks of gentle rearing, comes to his table.

"I Like to Treat People the Way I Like to Be Treated," George F. Conroy, Erie Conductor, Often Said. He Was Left a Bequest.

Kidd looks at her face, then at the hard faces of the other women.

"I want you," he says to the girl.

She throws her arms about his neck. But she is a neophyte at this game.

They leave the place—forever. Outside Kidd convinces her that decency is the only safe course and he stakes her to enough to make another try.

Fifteen years pass. W. G. Byrnes, father of Lucy Byrnes, whom Kidd rescued and reformed, dies in Chicago and leaves Kidd \$425,000.

Kidd changes his name to Byrnes and becomes an itinerant preacher.

EPISODE 5

The entrance to the Brooklyn Bridge, New York City. Rush hour. Thousands and thousands pushing, slipping, laughing, swearing their way toward home. An automobile stops right at the entrance to the driveway and a man in a bedgown to Policeman Francis E. Caddell, 34 years on the force, the human encyclopedia of the New York Police Department.

"Well?" asks Caddell.

"Listen, friend," said the man. "Twenty years ago you met a boy who was broke and down on his luck. You took him down to Barney Flynn's saloon on Pell street and bought him a meal. Then you fitted him out with clothing from head to foot. And now that very boy is here before you, Caddell, and I want to know if you will come out with me to California where I now own a canning factory. I'll give you an easy job at \$10,000."

When he recovers from his surprise Caddell agrees to go. Today he is out there with his friend. He keeps the identity of the man he benefited a secret.



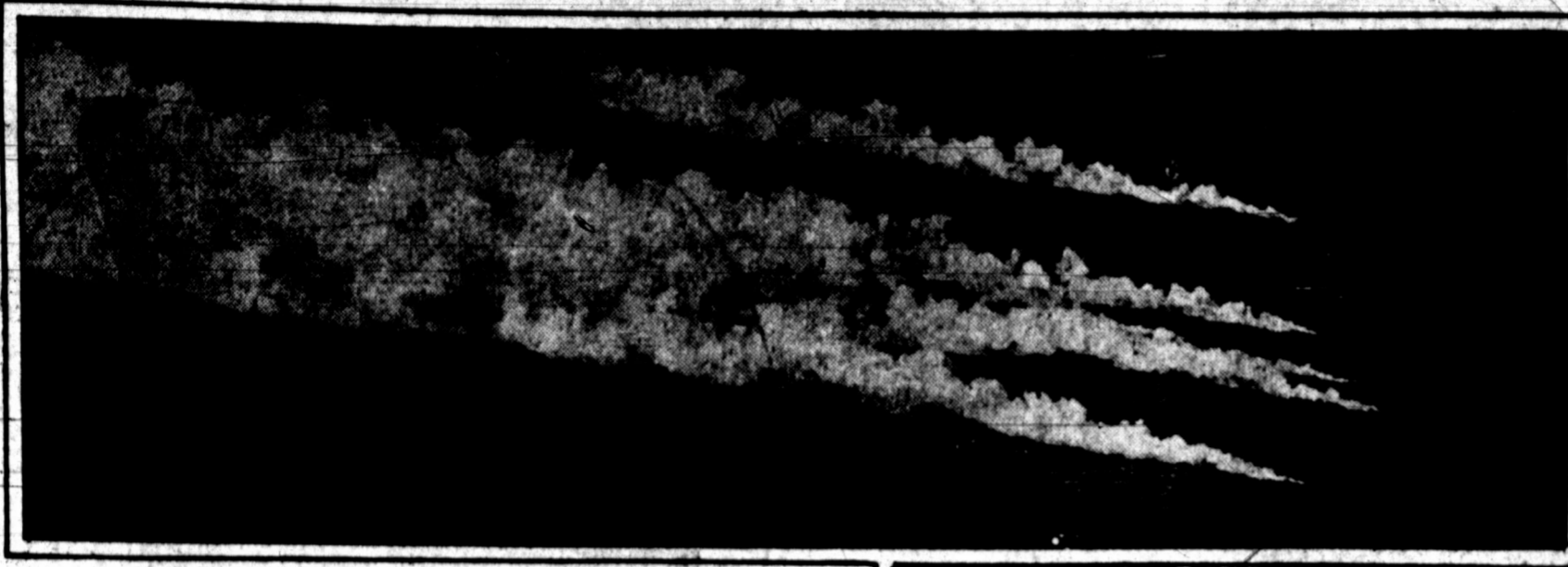
"No! I Never Take a Tip! Tips Are Not Fair!"

SCIENCE TELLS US

By René Bache



Copyright, 1923, by Public Ledger Company



Phosphorus smoke screen blanketing a warship

What Has Recently Been Learned About Protecting Ships From Aircraft

WHILE we are struggling to maintain equality with England in warship strength, that country is with all its might developing an auxiliary air navy which is expected to play a large part in the future of holding her supremacy of the seas. The big doubtful factor in future warfare is the efficiency of the battleship as opposed to the airplane. Many authorities are of the opinion that the most formidable dreadnoughts will be helpless to defend themselves from attack by flying machines dropping bombs that carry half a ton or more of high explosive.

The anti-aircraft gun is a good weapon of defense, and airplanes are easily crippled. But how far can it be expected to prove effective against a flock of planes attacking simultaneously? It is argued that, to find safety from the gun's projectiles, the winged attackers would have to fly so high that their aim could not be accurate. But they would not seek safety. Their tactical method would be one of reckless dash, the sacrifice of a dozen planes being of no importance if a single big demolition bomb could be successfully delivered. One such hit would be likely to put a battleship out of action.

It was to try out this very problem that the old battleship Alabama was recently subjected to an order of experimental bombing which terminated only when, smashed literally to pieces, she sank beneath the waves. The most interesting, and perhaps the most important, part of the performance, however, was not noted in the newspapers. It was a test of the efficiency of phosphorus bombs for creating a smoke screen.

The use of a smoke screen for the protection of fighting ships is by no means a new idea. It is the ancient device of the cuttlefish for hiding applied to modern maritime warfare. But in this case the experiments had relation to the employment of a smoke screen by attacking airplanes, to render themselves invisible. If flying machines can accomplish this purpose successfully, while holding in view the ships they are attacking, it will scarcely be possible to hit them, and their advantage in the combat will be enormous.

Phosphorus smoke was used extensively during the Great War as a means of hiding from submarines. A vessel, pursued by one of those terrors of the sea, would let loose a white cloud which, somewhat resembling a bank of thick fog and impenetrable to the eye, afforded an admirable concealment, giving her a chance to steal away and escape.

The method adopted by airplanes, for their own concealment, is to drop phosphorus bombs into the sea, to windward of the enemy warships. They are made in part of wood, so as to float, and carry a small bursting charge which is set off by a fuse. On exploding, they liberate clouds of dense white smoke which floats over the enemy ships, so blanketing them that the pointers of the anti-aircraft guns can see nothing of what is going on overhead. The smoke, however, is nearly as heavy as air, so that,

hanging at a low level, it does not trouble the airmen far aloft.

This part of the work, in an actual attack, would be done by light, fast-flying planes. When they had smothered the enemy ships with a phosphorus cloud, a flock of heavy bombing planes would appear on the scene and drop huge demolition bombs upon the vessels. It is claimed that warships would have small chance in a combat of this sort, where invisible foes would rush upon them from all sides at once.

The phosphorus bombs are fish-shaped, with a tail-vane to guide them straight through the air. The front half is of wood; the rear half of metal. Those used in the recent trials were of twenty-five pound, fifty pound and one hundred pound weight. One, of the largest size, struck the forward military top of the poor old Alabama and literally deluged the ship with a cataract of flame.

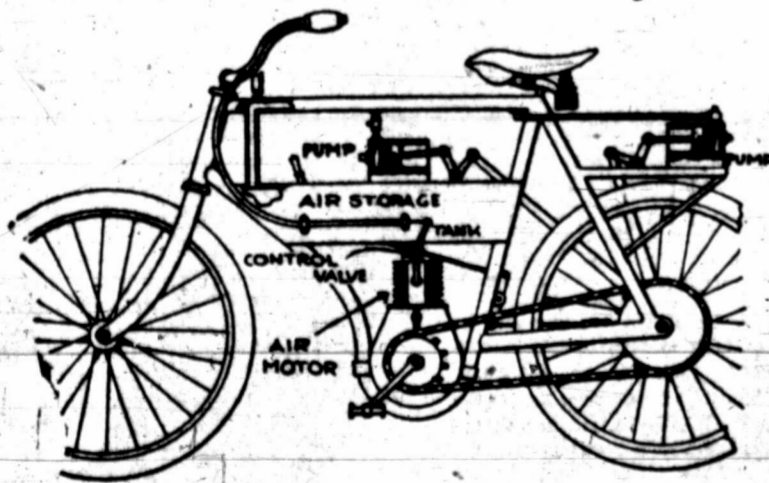
Harnessing Water

THE great problem of the near future in this country is power—its conservation and economical utilization. In recognition of this fact, we are setting about the business of turning to useful account the energy derivable from falling water. Surveys made by the Government have divided up the rivers into sections, and the amount of power each section is capable of delivering has been computed. To develop this available energy, or the bulk of it, for industrial and other employment, is a gigantic job. But we are going at it. Already we have made a pretty fair start; for there are now in the United States 3116 waterpower plants of 100 or more horsepower, with a total capacity of 7,832,948 horsepower.

Equatorial Hooch

THE second highest mountain in Africa, Mount Kenia, towers to an elevation of nearly three and a half miles. Its western slopes are 125 miles east of the great Victoria Nyansa Lake. Though it straddles the Equator, its summits are clad in everlasting snow; and, in climbing from bottom to top, one passes through all the climatic zones from the torrid tropics to the Arctic. Thus the black people of that region can choose their own climate when selecting a spot in which to dwell. They have also a cooling luxury which we have not. It is unlimited beer. The Negroes of the Mount Kenia region are great beer-drinkers, and their method of limbing the beverage is particularly sociable. A number of them gather in squatting posture about a great bowl of it, each of them provided with a long "straw," which is the hollow stem of a vine native to the country. By this means they suck from the common receptacle in a true spirit of conviviality.

Air-Driven Motor Bicycle



A BICYCLE, driven by compressed air, is the newly patented invention of John Labak, of Canton, Ohio. It is not supposed to owe its propulsion entirely to that means, but is helped thereby, particularly when going uphill.

The machine, in the main elements of its construction, is such like an ordinary bicycle. But at the bottom of its frame is an air-motor, which is connected by a short valve-controlled pipe to an air-storage tank above. On top of the storage tank, and beneath the upper bar of the frame, is an air-pump whose piston is connected with an eccentric on the rear axle. A second air-pump, connected with a second eccentric on the same axle, is supported at the rear of the frame, above the hind-wheel.

When pedaling in the ordinary way, the rider actuates the pumps through the medium of the rear-wheel connection described. And when he coasts downhill, with the pedals held stationary, the pumps are similarly driven. In either case the sprocket of the hind wheel operates the pumps and stores air under pressure in the tank.

It is so much power in reserve for driving the bicycle. Whenever the rider may choose to allow air to escape from the tank, it escapes may be controlled by a valve in a short pipe that connects the tank with the air-motor. A movable grip on the handle-bar governs this valve. The power thus rendered available is utilized to best advantage for climbing hills or in heavy, muddy roads.

To the casual eye it looks like an ordinary table. But the top—barring the extreme ends thereof, which are fixed—revolves on two pivots, and, when turned over, it assumes the appearance of a pool table, covered with green billiard cloth and with the usual cushions. There are six holes in the table top—one at each corner and one in the middle of each side—for pockets. Each pocket is a net bag with a round plug at one end and a spring band at the other. When the table is just a plain table, the plugs fit into the holes, making the polished surface uniform. When the top is turned over, the plugs are removed, and the spring band is fitted into each hole, the plug making the bottom of the pocket. The bands not only hold the pockets in place, but keep them expanded.

Thus the pool table is made complete, with the six pockets pendant from the cor-



Bombs making a white smoke screen



Two twenty-five pound phosphorus bombs strike the Alabama at once

The Marine Blanket

Forage in Brick Form

THE Air Service of the War Department is seriously considering a plan for supplying mounted troops with compressed brick forage for the horses in cases where such troops may happen to be beleaguered. In this shape it could be forwarded by airplanes. It is believed that if feed of the kind could have been delivered by aerial transport to the advance columns of Pershing's command in Mexico in 1916 the capture of Villa would have been a certainty.

During the great war we used for military purposes nearly a quarter of a million horses. The exact number was 245,125. Of these 68,662, or 28 per cent, perished. Some were killed, some succumbed to disease, but most of them died of starvation.

In war the fighting men must be fed; consideration of the animals in this regard, however important, is necessarily secondary. This was illustrated by the case of one artillery brigade in France, which during a considerable period obtained 90 per cent of the regular rations for its men, but could procure only 20 per cent of the requisite provender for its horses.

The difficulty was one of transport. It commonly happened that feed in sufficient quantity could not be got up to the front, and so the horses died of hunger. In some instances they actually ate the spokes out of the wagon wheels. Every horse we used in France cost the Government over \$500; but surely the money loss was less to be regretted than the cruelty involved.

If this thing could have been prevented, it was a crime. And it could have been prevented, in large measure at least, by the use of a compressed war ration for horses which would have reduced by one-half the bulk of the feed required, thereby doubling the quantity transportable.

Such a ration was available in 1914, long before we went into the war. But the conservatism of the War Department prevented its adoption. The British Government, more alert, tried in February, 1917, to conduct with a big cereal manufacturing concern in this country for 1,800,000 tons of this very ration (a mixture of oats and molasses pressed into bricks), to be delivered at the rate of 150,000 tons a month. But the American concern was unable to undertake the job for lack of ready machinery.

The main substance of the ration is good oats, crushed and thoroughly dried by roasting, this process reducing volume and weight and killing all germs contained in the grain. The other ingredient, pure cane molasses, is cooked at 200 degrees, whereby its sugar is concentrated, its moisture eliminated, and its weight reduced. The mixture is 13 per cent by weight of molasses, and 87 per cent of dried oats. This is packed, under a pressure of 3300 pounds to the square inch, into bricks twelve inches long, six inches wide and seven-eighths inch thick. They weigh a three pounds apiece and one of them is equal in food value to four quarts of oats. The molasses, serving to hold the oats as a binder, is a pure form of carbon, an energy producer, and assimilable almost without digestion. If properly stored—i. e., as oats should be stored—the bricks will keep indefinitely, undergoing no deterioration. When wanted for use as forage they are broken up by hand. They save half the bulk of a horse's feed and 25 per cent of the weight.

Much of the oats and hay supplied for the horses with our armies in France went to waste through careless storage. Three million pounds of oats, found to be moldy, were condemned in one batch and destroyed.

The needs of a field ration for horses is one that problem to be solved in time of peace. Its importance from a military standpoint is enormous. During the Boer War Great Britain lost 325,000 horses, 51,000 mules and 180,000 oxen. Most of them died of starvation.

The failure of Napoleon's Russian campaign was due more to loss of horses than to climatic severities of any other cause. More than 92,000 of his horses succumbed on the road to Moscow, before the first snow fell, nearly all of them perishing of starvation. As Napoleon himself said, his cavalry was "unhorsed." It was a military misfortune and had much to do with determining the subsequent history of Europe.

Ventilating Your Hat

THE theory that bald heads are due to the habit of wearing hats gains no confirmation from observation of busts and statues of ancient Greeks and Romans. Although they wore no hats, many of them were bald. Nevertheless, the notion is rather generally accepted, and an English electrician, William Ziegler, has invented, as a preventive of baldness, a contrivance which is guaranteed to keep the scalp thoroughly ventilated in all weathers. It is designed for use in hats of the "stovepipe" variety, which are still fashionable in England. The upper part of the hat contains a



small electric fan driven by a motor which is energized by a little storage battery. Five holes in the top of the hat provide for the ingress and egress of fresh air. A switch concealed by the curl of the brim enables the wearer to start the fan, or stop it by a touch of his finger. It will run seven hours, and to recharge the battery costs 12 cents. The whole contrivance weighs only a few ounces.

Sending Power by Radio

THE greatest power plant we know is the sun. What we call sunlight, or daylight, is an effect produced upon the retina of the eye by electro-magnetic waves of exceedingly high frequency. The heat of the sun is likewise transmitted to us by waves of enormous frequencies.

This affords an interesting object lesson. We perceive that nature uses enormous frequencies in transmitting energy by electro-magnetic waves. Is it possible for us, by employing very high frequencies, to send power to a distance through the ether?

Here we have the most interesting question that has to do with the future development of radio. So far as we can now see, the hope of transmitting energy in this way lies in what is called "wired wireless." There are two ways of doing it. The energy must be guided, and the only means we know of whereby it might be guided is a wire. Wired wireless serves the purpose of the

radio phone (enabling many conversations to be carried on simultaneously along one wire) because the wire serves as a guide for electro-magnetic waves in the ether surrounding the wire. If these waves can be made to carry power the energy thus transmitted can be "steered" by the wire to a distant point where it is wanted for use.

When power is transmitted through a wire, much of it is lost, and the distance over which it can be economically sent is limited. If it were carried by the ether, there would be no loss of energy, and no limit to the amount of power that could be guided and conveyed to a point hundreds or thousands of miles away.

If this problem can be solved energy derived from falling water, or from the burning of coal at nine months, can be delivered with utmost imaginable economy to great industrial centers, where it will be applied for every kind of mechanical purpose.

Brings the Pool Parlor Home

SURELY a long-felt want is met by a parlor table which is convertible into a pool table by the simple operation of turning its top upside down. It is the invention of James D. Davis, of Los Angeles, Calif.

To the casual eye it looks like an ordinary table. But the top—barring the extreme ends thereof, which are fixed—revolves on two pivots, and, when turned over, it assumes the appearance of a pool table, covered with green billiard cloth and with the usual cushions. There are six holes in the table top—one at each corner and one in the middle of each side—for pockets. Each pocket is a net bag with a round plug at one end and a spring band at the other. When the table is just a plain table, the plugs fit into the holes, making the polished surface uniform. When the top is turned over, the plugs are removed, and the spring band is fitted into each hole, the plug making the bottom of the pocket. The bands not only hold the pockets in place, but keep them expanded.

Thus the pool table is made complete, with the six pockets pendant from the cor-

ners and the middle of each side. The top, whichever side is turned up, is rendered fixed and secure by three pegs inserted at each end.

Electric Flypaper

THE struggles of a fly caught on a sheet of tanglefoot paper are painful to witness. Perhaps, however, the insect undergoes no worse sufferings than when poisoned.

Why not kill the flies by electricity? John H. Turpin, of Brentwood, Wash., has invented a simple little machine for the purpose. You hang it on the wall and it does the rest. Bait, of any kind suitable, attracts the insects to a slot through which it is exposed to view and smell. The slot is a narrow elongated opening between two metal plates. When a fly crawls across from one of the plates to the other, it is instantly killed and falls into a little trough beneath. This happens because the plates are attached by binding posts to a couple of copper wires which pass through an electric cord connected to an ordinary plug, which is inserted in an electric socket.

Smallpox Vanishing

MUCH less than two centuries ago smallpox was more prevalent than is measles today. In Europe those who escaped it were a minority. George Washington caught it when seventeen years old, in Barbados, and bore the marks of it through life. Of all the great epidemic diseases, smallpox was the most terrible enemy of mankind. Coppenot of it may be regarded as one of the most remarkable of human achievements. Vaccination, supplemented by the practice of isolating sufferers, has wiped it out so thoroughly in this country that since 1904 (according to a newly published statement of the Public Health Service) deaths from smallpox have been less than one in 100,000 of our population per annum.

The Fashion Forecast

Taffeta frocks are smart when thick cording gives them buoyancy.

Frances

10 West Fifty-Sixth Street,
New York.

June's Bride Must Have Tea Gown and Negligee

One of the Most Charming
of Tea Gowns—Green
Chiffon Brocaded
with Gold.



The New Note in a Negligee for Idle Hours—A
Coat of Flesh Crepe de Chine and Trousers
of Flesh and Silver Lace.

By Mme. Frances
The Famous Creator of Fashions

WHEN one sees a beautiful woman dowdily dressed, there is little doubt about the truth of the adage, "Clothes make the woman." Of course there are some few women whose fresh beauty is almost satisfying without considering the added interest of costume. But take the same woman and dress her in something essentially created to enhance her charm. The answer is easy, for her beauty, which before was simply fresh and lovely, becomes ravishing. No garment can possess so much innate charm as one which is made to wear at home, when a woman appears at her best in a setting which is essentially her own. Therefore the tea-gown or negligee which can be as colorful, as filmy, as essentially feminine as the wearer wishes, must be one which expresses personality.

Bewitching in the different types which they personally are the models I am showing on this page. From the piquant pajama creation with its eiderdown edging to the stately tea-gown of oriental inspiration, the feeling expressed is entirely different.

Garments such as these, though the sketches reveal their charm of line, are bound to lose on a printed page the individuality which they express in their coloring.

The color effects I have achieved this year are beautiful in the extreme because this is the first season in several when the designer has had full sway to exercise her love of colors, and because the new tints are perhaps the loveliest any season has offered. There are as many variations of each color as there are delightful ways in which these variations can be combined.

Take the gown, second from left. The blending of turquoise, gold, sapphire and purple cannot be justified in description—one must see the garment. Turquoise blue chiffon draped in green and gold net is posed over the flesh foundation. Sapphire chiffon with silver and blue lace forms the coat which is narrowly bound in purple and floats out in a train behind. Other touches, such as the tiny purple tassels which swing from blue ribbons, and the mauve and apple-green tints of the pastel girdle, make the gown a thing of ravishing beauty. The blue tint is further carried out in chiffon which binds the wearer's hair and floats in a long streamer to the floor.

Fashion Fancies the Spectrum

Lemon, pale orange and peach chiffon alternate their lovely tints in the gown at the right of this. Lemon covers the flesh skirt foundation, pale orange forms the coat and from its shoulders two slender peach panels trail off along the floor behind. The braid uses contrasts of lemon, red and silver.

At the right above is a negligee which poses a flesh charmous coat banded in eiderdown over pajamas of flesh and silver lace. The garment is charming, effecting as it does a more naive type than the more flowing chiffon creations. This

lounging costume was made for one of the most popular musical comedy stars of the day, and her slender figure and blonde beauty offset it to perfection.

The other model combines plain jade chiffon with gold-brocaded, apple-green. Fresh spring colors, one can see, are easily given preference and no others could be more calculated to give color to the tea hour than jade and apple-green, peach and turquoise blue.

With these, plain satin slippers, to match one of the costume colors, are very smart. The most favored ones show a fancy strap treatment, either an ankle strap intersected by another which runs down the centre of the instep, or an ankle strap which meets several radiating ones at either side. Vari-colored brocade slippers express another new note. They are very smart for evening wear and equally smart for wear with the vari-colored tea-gown.

With colored satin slippers, stockings to match are most effective. This holds true for the tea-gown as well as for dinner and dance wear. Amber-colored stockings, too, are very smart. They are striking with slippers of vari-colored brocade.

In considering dainty negligees and tea-gowns for the bride, one naturally thinks of trousseau undergarments. The shops are showing very lovely things for the June bride, and all are featuring sets consisting of vest, gown and step-ins. The daintiest possible trimming treatments, often sparingly used, combined with the most exquisite workmanship, are outstanding points of these showings.

One dainty set uses white crepe de chine, finely pleated, with tiny scalloped edges and inset squares of net. This one shows vest, gown and both combination and step-ins. The latter two are made especially attractive by the pleating, which introduces three narrow knife-pleats, then a space and three more. The step-ins are held at the top by elastic. The combination uses elastic to confine its waist fulness and white straps at the shoulders. Across the top and at the hem

Chiffon of Sapphire and Turquoise Blue Gives the Impression of a Sea Wave Shot by Sunlight.

appear the dainty scallops, flanked by the square insets of finest net.

Gowns are most often made of crepe-back satin or crepe de chine, with real fllet about an inch wide edging the armholes and bateau neckline. For finishing touches, there are white ribbons and sprays of lilies-of-the-valley.

One crepe-back satin set was noted with pale and deep pink two-toned ribbon, rather an attractive relief from all-white. In this set the gown if made in strap fashion, with the strap built out until it has a regular shoulder.

Simplicity in Lingerie

The newer gown neckline of the season is more rounded, the present version of the bateau. A crepe de chine version of this has the fllet neck edging piped in silk, which adds an attractive, rather tailored finish, and at the same time keeps the lacy effect. Where brocaded crepe de chine is used, the garments are usually developed with simplicity.

Never before have undergarments been so utterly simple and yet so attractive. The woman who does not like to sew, or who has very little time for it because of social or other duties, can hardly resist a bit of pick-up work when things are so dainty and so attractive to do. And the gracious hostess often finds it diverting when someone stops in for an afternoon chat, to pick up her work-basket and find a pleasant bit of work there, whether it be a pocket handkerchief or dainty night-gown.

Gowns which are perhaps easiest to make and most effective are those little batiste affairs with a "V" neckline and cut-out armhole. Tiny edging is rolled and whipped at neck, armholes and hem, and the garment is completed. If one likes colors there are so many lovely ones to be had in this sheer material—blue, green, orchid, peach,

rose, yellow and dozens of others.

Pajamas are almost as easily made; though there is a trifle more work involved. Most women prefer these of silk or crepe de chine, and after the trouser seams are sewed the rest is comparatively easy. For the jacket may be simply an oblong fold, with the side seams left open at the top for armholes, and a square, round or "V" neck. A tiny pocket gives a smart finish. Flat silk band facing is a favorite finish for the sleeves and neck, and this is very effective when a contrasting color is used.

Dainty shirts of batiste or silk, too, are easily made by the woman who likes to use her needle or the girl who is assembling a trousseau. Perfectly straight slips, with a ribbon to draw them in at the top, are preferred by some. These are worn with or without straps. Others like to have them fit perfectly plain about the top, so they are cut to fit the bust measure here, and flare out to make room for the hips. Hemstitching, net casings, crochet and fllet offer variety of finish.

To Effect Proper Shade
in Two Peach Colored
Trains on This Gown
I Ran the Scale from
Lemon to Pale
Orange.