

THE WEATHER West Texas: Sunday and Monday generally cloudy, somewhat colder in north portion Monday.

FOREIGN HONORS FIGURED IN THE NAVAL DISPUTE Wide Difference of Opinion Between Secretary Daniels and Admiral Sims

LATTER FOR ACCEPTANCE WHILE SECRETARY OPPOSED Admiral Will Again be Before the Senate Sub-Committee On Tuesday

WASHINGTON, Feb. 7.—Concluding his testimony today before the senate sub-committee, investigating the award of naval decorations, Secretary Daniels disclosed the fact that a wide difference of opinion existed between himself and Rear Admiral Sims during the war on the question of the acceptance of foreign honors and decorations by American naval officers.

Mr. Daniels said he had waived regulations requiring officers to submit articles to the department before publication because he "wished to show Admiral Sims every consideration and courtesy" and expected the articles to be considered by the American navy participation in the war.

Senator Pittman, Democrat, Nevada, protested against the introduction of the Osage case as not pertinent but Chairman Hale replied that Ambassador Daniels would be given an opportunity to defend himself if he desired.

Secretary Daniels said that someone had to justify and standardize the award of medals and that he set himself with the aid of the Knight board.

Ten Are Believed to Have Lost Lives When Boat Wrecks

ROCKLAND, ME., Feb. 7.—The first mate, an engineer and eight seamen of the stranded steamer Polaris, who left the wreck in a boat last night, are believed to have lost their lives. The crew of the Burnt Island coast guard station upon their return today from the steamer expressed the opinion that the lifeboat was swamped in the heavy seas. Three life preservers, an oar and a boat hook were picked up on Monhegan Island.

CHARGE HOUSER PROFITS FROM POSITION HELD Able to Manipulate and Operate Grain Companies to an Advantage

SPOKANE, WASH., Feb. 7.—Belief that H. H. Houser of Portland, Ore., by reason of his connection with the United States grain corporation, has been able to manipulate and operate grain companies which he formerly owned "to an immense profit to himself and associates," is expressed in the findings of a United States grand jury returned here today.

FT. WORTH SPEAKER VOICES RECOGNITION PERSHING CANDIDACY

TAKING TESTIMONY IN I. W. W. CASES BEGINS ON MONDAY

FALLING TIMBERS KILL TWO MINERS BICKNELL, IND., Feb. 7.—Falling timbers and slabs crushed two men to death, fatally injured another and severely hurt three others in American mine No. 1. A collision of motors in the mine last night tore out the shaft track.

GUARANTEE FOR THE RAILROADS FOR TWO YEARS

Government Stands Sponsor for Return of Five and One Half Per Cent

WASHINGTON, Feb. 7.—A return of 5 1/2 per cent on the aggregate value of the railroads would be guaranteed by the government for a period of two years under an agreement reached today by the senate and house conferees on the railroad bill.

AGREEMENT ANNOUNCED BY CHAIRMAN CUMMINS Percentage After Two Years to be Fixed by the Interstate Commerce Commission

ORDERS ARE GIVEN TO SECURE RELEASE OF JOS. E. ASKEW

D'ANNUNZIO SEIZES VESSEL, ALSO A TRAIN LOAD OF FOODSTUFFS

TRISTE, Feb. 7.—The forces of Gabriele D'Annunzio, Italian insurgent leader at Fiume, have seized the destroyer Carlo Alberto Raccchia. The destroyer was on the way from Brindisi to Pola when seized.

Americans Killed By Turk Brigands Y. M. C. A. Workers

WASHINGTON, D. C., Feb. 7.—James Perry and Frank Johnson, representatives of the Y. M. C. A., were the Americans killed in the recently reported attacks by Turkish brigands on a convoy of American relief supplies near Aintab, in Syria, the state department was advised today.

AMERICANS HAD BEEN WARNED OF COLUMBUS RAID

EL PASO, TEXAS, Feb. 7.—Repeated warnings that Mexicans had planned to raid Columbus, N. M., received so little credence by the commanding officer there that when the attack was made on March 9, 1916, no unusual precautions to prevent a surprise had been taken, witnesses told the senate sub-committee investigation of the Mexican situation.

HOOPER HOLDS LEAD IN VOTES FOR PRESIDENT

McAdoo Continues Close Second in Total of Times' Preferential Ballot

HOOPER HOLDS LEAD IN VOTES FOR PRESIDENT

AWAIT REPLY OF PRESIDENT TO SALVADOR

Latin-American Countries Interested in Definition of the Monroe Doctrine.

AFFECTS ATTITUDE AS TO LEAGUE OF NATIONS

RESOLVE PASSENGERS AND PART OF CREW OF PRINCESS ANNE

NEW YORK, Feb. 7.—All of her 32 passengers and 23 members of the crew having been brought ashore by the police boat patrol today, an effort will be made tomorrow to float the Old Dominion liner Princess Anne which is stranded on a sand bar off Rockaway Point.

CORRECTED FIGURES GIVE CASUALTY LIST TOTAL AT 302,612

WASHINGTON, Feb. 7.—Corrected figures on casualties in the A. E. F. published today by the war department brought the total to 302,612, instead of 293,061, as shown in figures compiled from weekly reports furnished to the press. The corrected total was compiled by the adjutant general after comparing his records with those from France.

Villa Rebels Take Suburbs of Torreon; Release Prisoners

EL PASO, TEX., Feb. 7.—Villa rebels recently occupied Gomez Palacio and Lerdo, suburbs of Torreon, Coahuila, and held them for six hours, looting stores and homes, and releasing 57 prisoners in the jails, according to unofficial reports received here. It was after this raid that the rebels were built a hat captured Joseph Askew, an American, who is said to be held by Francisco Villa for \$20,000 ransom.

NEW DEMAND WOULD ADMIT NEGOTIATIONS

BERLIN, Friday, Feb. 6.—The Vossische Zeitung reports that note accompanying the list of names of the Germans accused by the allies of war crimes will be delivered tomorrow by the French charge d'affaires, M. de Marcell, according to the newspaper, it is reported in diplomatic circles that the note maintains the principle of punishment of the guilty but is so drafted as to admit of the possibility of negotiations.

TWO ARE WOUNDED RESULT OF ATTEMPTED HOLDUP BY BANDITS

TRINIDAD, Colo., Feb. 7.—Jake Dakovitz, bandit, was shot and seriously wounded and Albert Tyler, a deputy sheriff and marshal at Forbes was shot in the head this afternoon when three masked bandits attempted to hold up Tyler and two other men in an automobile carrying \$5,000 in payroll to the Forbes mine of the Rocky Mountain Fuel Company.

ALEXANDER M. DOCKERY REPORTED SERIOUSLY ILL

IEWS DIFFER AS TO LETTER OF PRESIDENT

Renews His Objection to Some Features of Peace Treaty Reservations

CONFERENCE IS HELD BY DEMOCRATIC SENATORS

WASHINGTON, Feb. 7.—A letter from President Wilson renewing his objection to some features of the peace treaty reservations framed by the Republican majority of the Senate, furnished the basis of an earnest discussion today in a conference of Democratic senators called to consider what course the treaty's friends should pursue when it again comes before the Senate next week.

LOONEY IS CHAIRMAN OF LOUISIANA COMMITTEE

NEW ORLEANS, Feb. 7.—Frank J. Looney of Shreveport was elected chairman of the state central democratic committee here today. The committee will meet at Baton Rouge, June 3 to select delegates to the national convention.

Who's Your Choice For President. Within a few months nominations of presidential candidates are to be made. Many men have been mentioned for the nomination in each party and there are a number of avowed candidates. So far there has been no decided sentiment for any man whose name has been mentioned. In the opinion of The Times a referendum of the sentiment in this section will be interesting and may have influence in the nomination.

PRESIDENT ACCEPTS RESIGNATION OF LANE EFFECTIVE MARCH 1

WASHINGTON, Feb. 7.—President Wilson today accepted, effective March 1, the resignation of Franklin K. Lane, for nearly seven years secretary of the interior department. The president said, after 21 years of public life he must "now think of other duties" was the reason assigned by Mr. Lane for his withdrawal from the cabinet, and in reply, which Mr. Wilson wrote his hope "that your future career will be as full of honorable success as your past."

Mr. Lane's resignation was submitted last Thursday, his letter shows, but it has been known for many weeks that he intended this action as soon as President Wilson could spare him from the cabinet. In discussion today of his probable successor, the name of Alexander T. Vogelsang, also of California, was mentioned by Secretary Lane, in his letter, said Secretary's letter.

The program of administration and legislation looking to the development of our resources, which I have suggested from time to time, is now in large part in effect or soon will come into effect through the action of congress.

"I trust that you may be soon so completely restored to health that the country and the world may have the benefit of the full measure of your strength in the leadership of their affairs. The discouragements of the present are, I believe, only temporary. The country knows that for America to stand outside the league of nations will bring neither pride to us nor confidence to the world."

In reply the president wrote: President's Reply, Feb. 7, 1920.

"My dear secretary: I need not tell you with what regret I accept your resignation as secretary of the interior, as our association has been very delightful. I have admired the spirit in which you devoted yourself to the duties of your department, as I am sure that all attentive observers have, but the reasons you give for your retirement leave me no choice but to acquiesce, and I, of course, accept your suggestion that the resignation take effect on the first of March, since that will serve your convenience. "May I not add how sincerely I hope that your future career will be as full of honorable success as your past. My best wishes will follow you throughout all the years that apparently must now separate us and I beg to subscribe myself, cordially and sincerely your friend. (Signed) Woodrow Wilson."

CURTIS MOUND TEST IS SHOWING OIL IN CONSIDERABLE QUANTITY; RED RIVER ALSO SWABBING OIL

Oil is being bailed in considerable quantities from the Curtis Mound test in section 14-4-14, according to a statement issued Saturday by O. E. Mapel, Grandfield banker, who is one of the principal owners of the lease. "We are very highly pleased with the showing being made by our test," said Mr. Mapel. There was also a considerable gas showing in increased quantities at each trip of the bailer.

The sand was picked up in this test several weeks ago, but delay in securing proper casing, one shipment proving faulty and having to be re-ordered, but delayed the testing of the sand to this time.

Saturday night reports from the Red River Development Co.'s test in the southeast quarter of section 5-3-15, were also of an encouraging nature, the swab having been run several times in this test and bringing up oil with each trip. The presence of oil in the slush pit at this test was corroborated by several visitors to this location. Drilling activities at

the test of the Fisher-Whealey Oil Co. midway between the other tests, in section 22-4-14, have taken on additional speed, the test being reported Saturday as below 1400 feet. This test is being made with cable tools, and progress is necessarily somewhat slower than in the other tests.

Fly with Hall today. Call Field. 253-117

WATCHMAN KILLED BY FIVE BANDITS

CHICAGO, Feb. 7.—Thomas O'Donnell, 65, a watchman, was killed in a fight with five bandits here today. O'Donnell discovered the gang attempting to open the safe of the Western Clothing company. The thieves escaped.

SPECIAL PRICES FOR MONDAY, TUESDAY AND WEDNESDAY

- 12 cans Carnation Milk, 95c
- 3 large cans Wilson's Certified Milk for 50c
- 24-lb sack Belle of Wichita Flour \$1.95
- Best Country Eggs, 65c a dozen
- 5 lbs. best cane Sugar for \$1.00
- Best Skinned Hams, 25c a lb.
- 2 large cans best Tomatoes 45c
- 1 lb. bucket Crisco \$2.25
- 2 cans good fancy Corn 50c
- Best 30c corn for 25c a can
- 10 lbs. best Spuds for 65c
- 3 cans best American Sardines for 25c
- 30c carton pure Clover Comb Honey for 40c
- Best Asparagus Tips for 30c, 40c, 45c, 50c a can
- Best Fancy Bottle Olives 20c, 40c, 60c, \$1.00 a bottle
- Big line Fancy Pickles 15c, 40c, 55c a bottle
- 12 cans Van Camps Pork and Beans for \$1.25
- 54-lb. box Saltine Crackers \$1.45 box
- 1 doz. Fancy Oranges 40c
- Apples, per box, \$2.25
- Grapes for \$1.00 can
- \$1.25 cans of Peaches, Apricots and Cherries for \$1.00
- \$2.50 cans Red Pitted Cherries for \$2
- \$1.00 jar Heinz Pure Apple Butter for 75c
- 5 bars Ivory or Fancy Soap for 50c
- Half gallon of pure Plantation Ribbon Cane Syrup 50c
- Plenty seed Potatoes, Garden Seed and Onion Sets for sale.
- We roast fresh Coffee every day.
- We can save 10 and 15 per cent on your Coffee. We have a big line of Wash Tubs, Wash Boards, Clothes Lines and Clothes Pins to sell cheap.
- We have 1,000 rolls of best tissue toilet paper to close out at a bargain.

DELIVER \$6.00 ORDERS FREE

McCARTY & McCARTY

THE BIG CASH GROCERY STORE

PHONE 80 — 716 INDIANA

J. C. PENNEY COMPANY—A NATION WIDE INSTITUTION

Shoes For the Family



The ever increasing demand for dependable wearing shoes is getting more urgent as the cost of living advances. We are in a position to answer this important question.

Our immense buying power for 197 stores enables us to buy direct from the manufacturer. We buy for cash, and sell for cash. We do not deliver. This enables us to sell at a lower per cent.

THE FOLLOWING ARE A FEW OF OUR EXCEPTIONAL VALUES:

- Men's Dress Shoes**
 - Bro-Kid Bal-Blanket last \$12.50
 - Black Kid Bal, English last \$12.50
 - Brown Kid Bal, nature last, at only \$12.50
 - Blk. Kid Blucher \$9.99
 - Two-tone English Bro-Kid Vamp, tan upper \$13.50
 - Black Kid Blucher, rubber heel, frog last \$9.99
 - Black Kid Blucher, bunton last, soft cap \$5.00
- LADIES' SHOES**
 - Black Kid Lace, French heel, lmt. tip \$11.99
 - Black Kid Lace, French heel, lmt. tip \$9.99
- Boys' Shoes, Sizes 2 1/2 to 5 1/2**
 - Black Kid English \$6.50
 - Black Gun Metal Button \$4.98
 - Brown Calf, Blu. \$5.50
 - Brown Calf, Eng. \$6.50
 - Black Kid Blu. \$4.98
 - Brown Outing Shoes \$3.50
- Misses', Sizes 12 1/2 to 2**
 - Black Kid lace, high top \$5.25
 - Black kid Butt., foot form \$3.98
 - Brown Calf Butt., foot form \$3.49
 - Gun Met. Butt., foot form \$4.98
 - Brown Eng. Lace \$4.90
- Men's Work Shoe**
 - Brown Army, full sole, soft cap \$7.90
 - Brown Blu, "Honesty" \$5.90
 - Brown Outing Bal. \$3.98
- Men's Lace Boot**
 - 16-inch Top
 - Brown Golden Kip \$14.75
 - Grey Elk, double vamp \$14.75

Every dollar you spend with us you will receive \$1.00 worth in merchandise.

We have a complete line of Baby and Children's Shoes at exceptional values, that we haven't room to list. Also a complete list of Mens', Ladies' and Children's Rubbers. "See us and be convinced." One price to every one.

J. C. Penney Co.

Incorporated

197 BUSY STORES

J. C. PENNEY COMPANY—A NATION WIDE INSTITUTION

MAY BE ICED FROM BACK PORCH

SEE THE NEW WATER COOLER ATTACHMENT

HERRICK

DRY AIR SYSTEM REFRIGERATOR

OUR TENTH SEASON'S ADVANCE SHOWING OF THE FAMOUS

Herrick Refrigerators

For ten successive seasons we have sold HERRICK REFRIGERATORS. The opening of the 1920 season finds us more convinced than ever before of the superior merit of the HERRICK.

"The Proof of the Pudding is in the Eating"

Most good houses in Wichita Falls contain a HERRICK REFRIGERATOR.

- PERFECT INSULATION
- PERFECT CIRCULATION
- PERFECT WORKMANSHIP
- PERFECT APPEARANCE

Every HERRICK bears positive guarantee or Money Back

You can buy a Herrick to fit any home or need. The back icing feature will appeal to many who are building new homes.

WE ARE SHOWING HERRICKS WHITE ENAMELED IN ALL SIZES

North Texas Furniture Co.

COMPLETE HOME FURNISHERS

OIL LAND SCHEDULED AT AUCTION

The case of the agalust J. L. Scholtzen, J. J. S. ningham, E. L. L. ker, United Sout the Sky Line Oil vania Oil Compa other oil men is before Judge Geo district court of as, next Monday. The title to 54 ac end of the W. F. Northwest oil The state claims cant strip of 10 more acres lying man survey and which later sury bed and is invol of Oklahoma and ante Schnackeb the 54 acres and sion of same for other defendants are lessees of sa land.

This case was and resulted in a jury awarding fo only one juror h ing in a mistrial. The plaintiffs, and John T. Smit from the state, the attorney get ants as well as of this city. Fraces and the resented by Niel Judge Drew Pru

A growth in National Bank o joyed since estal tained only by every customer vides unquestio posts and is equ modern banking: Fly with Hall

OIL LAND CASE IS SCHEDULED FOR TRIAL AT AUSTIN MONDAY

The case of the State of Texas against J. L. Schnackenberg, G. P. Holtzen, J. J. Sallaska, E. H. Cunningham, E. L. Lancaster, B. W. Parker, United Southern Oil Company, the Sky Line Oil Company, Pennsylvania Oil Company and numerous other oil men is set down for trial before Judge George Calhoun in the district court of Travis county, Texas, next Monday. This suit involves the title to 54 acres off of the north end of the W. F. Huseman survey in the Northwest oil field of this county. The state claims that there is a vacant strip of land containing 54 or more acres lying between the Huseman survey and the Purdee survey, which later survey lies in the river bed and is involved in the litigation of Oklahoma and Texas. The defendants, Schnackenberg and Holtzen own the 54 acres and have been in possession of same for about 20 years; the other defendants numbering about 25 are lessees of said owners of the land.

This case was tried last November and resulted in a hung jury. It of the jury members for the defendants and only one juror hung the case, resulting in a mistrial.

The plaintiffs, the State of Texas and John T. Smith, lessee of said land from the state, are represented by the attorney general and his assistants as well as the well known firm of this city, Weeks-Morrow-Weeks-Frances and the defendants are represented by Nicholson & Elder and Judge Drew Pruitt, also of this city.

A growth in deposits such as the National Bank of Commerce has enjoyed since establishment can be attained only by a bank which gives every customer a square deal, provides unquestioned protection for deposits and is equipped to render every modern banking service.

Fly with Hall today. Call Field, 253-11p.

NOVEL AND DISTINCTIVE PROGRAM IS PROMISED

Five different entertainment appeals, all of them novel and distinctive, are contained in the Pentagon program, which opens the week at Wichita Theater, according to the advance notices.

K. T. Kuma and company present a Japanese illusionist act, which includes all the color and mysticism of the orient. There are four in the act, two men and two girls, all orients.

Moros, French comedian, and Jeanette, a sparkling comedienne, have an act entitled "Mon Chapeau," speedy and peppy, which is said to be one of the laughing successes of the season.

To make this a well rounded program there must be a dance act, and Wolfe and Patterson have an original dance conception. The introduction is clever, that of an artist's dream, after he has finished the painting of a beautiful girl. He falls in love with his work of art and sings to it, falling in love, and in his dream the picture comes to life and dances.

There must be a singing act, to make up a sure nuff vaudeville bill and this Louise Gilbert supplies. Her act is billed, "Songs and Smiles," holding out a promise.

The fifth act is a remarkable ventriloquist act, presented by W. E. Whittle and a number of dummies. Whittle appears in the role of a policeman, trying to keep order in a park. The act is one of the cleverest of the sort on the circuit, according to the advance booking.

CAPTAIN DETZER IS FOUND NOT GUILTY BY COURT MARTIAL

NEW YORK, Feb. 7.—Acquitted by court martial of charges of cruelty to American soldiers at LeMans, France, Captain Karl W. Detzer today declared his intention of going immediately to his home at Ft. Wayne, Ind. He has received a short leave of absence and hopes also to visit St. Louis, Indianapolis and Chicago.

Official notice of his exoneration of all charges made against him was received in a letter from Gen. Robert L. Bullard, commander of the department of the east.

The general court martial has been hearing testimony in the Detzer trial since December 10 at Governor's Island. Detzer was in charge of the department of criminal investigation at LeMans. The 25 specific charges against him included striking prisoners, extortion of false confessions and mistreatment of military prisoners. Hundreds of witnesses from all part of the country testified in the case, which opened before a court of seven colonels and majors.

The court deliberated less than 10 minutes, bringing in a verdict of "not guilty" on all the charges and specifications. The finding of the court was withheld until yesterday, in order that Gen. Bullard could review this case.

been ordered, according to the report made at the Friday meeting. The stereopticon with 600 slides for school room use was reported in the building, ready for use as soon as the electrical wiring is completed. The playground committee reported some assistance in clearing up the grounds from the school boys, and a committee was appointed to ask the help of the city in moving the dirt left from excavations and to level up the grounds.

Mrs. J. W. Culbertson, the president, was in the chair for the meeting. Special music was furnished by Dale Haven.

Floral Heights Baptist Church, Corner of Tenth street and Kemp boulevard.—Bible school at 9:15 a. m., led by Charles Snoot, general superintendent. Preaching at 11 a. m. by the pastor, topic, "God Working in the Dark." Night service at 7:30 o'clock on "The Seasonal Man." Junior B. Y. P. U. at 4:50 p. m.; Senior B. Y. P. U. at 6:30.

The city B. Y. P. U. will meet at the Floral Heights church Tuesday evening at 8 o'clock. Let all young people from other churches take notice as refreshments will be served. The ladies of the church will meet Tuesday at 2:30 p. m. Rev. Mr. Title of the Floral Heights Methodist church will lead the prayer meeting service Wednesday evening at 7:30 p. m. R. W. McCann, Pastor.

The National Bank of Commerce is able, because of its ample resources and liberal policy, to extend to customers every accommodation in the matters of loans that safe banking methods will permit. The bank welcomes small as well as large accounts.

The National Bank of Commerce has closely identified itself with the all-important industry of this district—oil—and furnishes to oil men banking service based upon a complete knowledge of the business and a keen understanding of their problems and needs.

PHONE 178

WESTERN GLASS & PAINT CO.

Wholesale and Retail
All Kinds Glass, Paint, Wall Paper and Picture Frames
WE INSTALL GLASS

713 NINTH STREET

WE ARE MOVING

TO OUR NEW QUARTERS AT
820 Scott Ave., next to Telephone Building and expect to be ready to greet our friends, both old and new by Wednesday, Feb. 11th.

In addition to a General Line of Hardware we will specialize on Builders' Hardware and tools. Our stock will be second to none in the city, our prices reasonable, our service prompt and courteous. In fact, our aim is to please you. Thanking you for past patronage and asking a continuation of same, we are, your truly.

LEWIS-JONES HARDWARE COMPANY

820 Scott Avenue Phone 1468

CITY JAIL IS RECEIVING A THOROUGH OVERHAULING

The city jail is undergoing a complete repainting and renovation. White is the color scheme that is being used in all of the rooms, including the "ladies side" and when the work is completed, the city police claim, it will be one of the most modern, sanitary and best appointed rest rooms for the weary in the South west.

So far the city has refused to act on the suggestion made several days ago in these columns to bang some flowered curtains in the ladies quarters—but it is believed the remaining of the living quarters of the "Hotel de Goodfellow" is an indication of still further improvement in the city lodgings.

ALAMO CLUB TO HAVE HONORARY MEMBERSHIPS

Honorary memberships in the Alamo Home and School club were created at the meeting held Friday afternoon, and a contest is in for these associate memberships. Any man or woman interested in the work of the school invited to join at \$1 or more, as they see fit to give and the funds thus secured will be used in carrying out the plans for the year in the equipment of the grounds with permanent apparatus. A prize of a \$5 picture will be given to the room in the school which secures the largest per cent of new members in this drive.

Five hundred dollars worth of permanent playground equipment has

EDUCATION

Is not gained in a day. It is the accumulation of a number of well-learned lessons.

WEALTH

Likewise is not acquired at a single leap. It is built on thrift—the habit of saving systematically a portion of all earnings.

One Dollar Will Start You.

City National Bank of Wichita Falls

Capital, Surplus and Profits over one Million Dollars

OFFICERS— J. A. Kemp, President F. P. Langford, Vice President C. W. Snider, Vice President W. E. Robertson, Vice President J. T. Hartzell, Vice President C. H. Clark, Asst. President R. O. Harvey, Vice President W. Newton Marr, Vice President R. E. Shepherd, Cashier N. M. Clifford, Asst. Cashier O. A. Jones, Asst. Cashier J. C. Penrod, Asst. Cashier	DIRECTORS— T. P. Adams O. T. Bacon Orville Buntington N. B. Chisholm C. H. Clark J. W. Culbertson J. A. Elder W. J. Grubb W. B. Hamilton J. T. Hartzell C. E. Hartman R. O. Harvey Roy B. Jones J. A. Kemp F. P. Langford W. Newton Marr N. H. Martin J. J. Perkins T. T. Reese W. L. Robertson M. D. Ross H. E. Shepherd W. W. Skid C. W. Snider C. B. Woods
-------------------------------------------------------------------------------------------------------------------------------------------------------------------------------------------------------------------------------------------------------------------------------------------------------------------------------------------------------------------------------------------------------------	-------------------------------------------------------------------------------------------------------------------------------------------------------------------------------------------------------------------------------------------------------------------------------------------------------------------------------------------------------------------------------------------------------------------------------------------------

Our Resources

Since its establishment six years ago The National Bank of Commerce has enjoyed a remarkable growth. The people of Wichita Falls and vicinity have been quick to realize that its facilities were unexcelled and that its conservative management assured unquestioned safety for the transaction of all financial affairs.

This institution now has resources amounting to \$5,602,752.59. This is composed of the funds of firms, organizations and individuals.

Our patrons make The National Bank of Commerce their permanent depository because we pay them liberal interest on their savings, always make their interests a matter of first consideration and afford them every up-to-date banking service consistent with safe methods.

National Bank of Commerce
Wichita Falls, Texas

FURNITURE FOR EVERY ROOM AT PRICES YOU CAN AFFORD TO PAY



GARLAND GAS RANGES

are guaranteed satisfactory in every way. Call and let us show you these ranges.

Do you know that it isn't what you spend that makes your home comfortable and complete. At RILEY'S you do not have to spend lavishly to have harmonious and durable furnishings. We have carefully selected each piece. Thus we are enabled to offer you only such articles, that will fit harmoniously in your home, whether it be a mansion or cottage and will give lasting satisfaction.

SPECIAL SALE—BED SPREADS
MONDAY ONLY

\$3.00 Bed Spreads \$1.75

These Spreads are Offered at Less Than Present Factory Price.



Big Discount on all **GARLAND HEATERS**

You can save money if you buy your heater NOW.

CLOSING OUT OFFICE FURNITURE

As we are closing out our office furniture department we are offering:

Roll Top, Flat Top, and Typewriter Desks at 33 1-3% Discount FOR CASH ONLY

LIVING ROOM FURNITURE

We have just received several shipments of Living Room Suites, in brown Mahogany, with cane back and ends, upholstered in high quality silk velours and over good quality, hand tied, tempered coil springs. Furniture is advancing in price daily, and it is getting harder to obtain. If contemplating the purchase of furnishings in the future you will not only save money by buying now but the assortment is larger. We will store it free for you until you are ready for it.

Three piece Suites
\$300 TO \$750

DINING ROOM FURNITURE

An unusually large showing of walnut and mahogany dining room furniture, complete suites or by the piece. Prices low, quality considered.

BEDROOM FURNITURE

Have you seen those beautiful bedroom suites that we are offering in Walnut, Mahogany and Ivory, also a large stock of odd pieces to match those you already have. Do not fail to see that **FOUR PIECE GENUINE AMERICAN WALNUT Queen Anne Design Bedroom Suite at**
\$350

CASH or CREDIT **E. F. RILEY FURNITURE COMPANY** CASH or CREDIT
816-818 Ohio

SHOULD NOT RESULT IN GENERAL LOWERING OF PRICE SAYS KELL

Removal of the government guarantee on the price of wheat should not result in general lowering of the price of wheat, according to the view expressed by Frank Kell Saturday...

CLEAN-UP CAMPAIGN OF THE CIVIC LEAGUE WILL BEGIN MONDAY

Monday the Civic League Clean-up Campaign begins in Wichita Falls, to continue until the committees in each of the districts into which the city has been divided have finished their work...

INTERNAL REVENUE OFFICE AT WICHITA FALLS TO BE HEADQUARTERS FOR WEST

The Wichita Falls internal revenue office will be the headquarters for this entire district, it was announced Saturday with the appointment of A. F. Bowden...

Special for Monday and Tuesday

- 8 lbs. Swift Jewel lard... \$2.45
4 lbs. Swift Jewel Lard... \$1.25
6 lbs. Crisco lard... \$2.15
3 lbs. Crisco lard... \$1.10
No. 2 Tomatoes, can... .15c
No. 2 Corn, can... .15c
Campbell's pork and beans 15c
15 lbs. Irish potatoes... \$1.00
48-lb. Bell Wichita Flour \$3.65
5-lb bucket Koo Koo syrup 50c
10-lb. bucket Koo Koo syrup \$1
3 bars Swift white soap... 20c
3 bars Joy soap... 20c
3-lb. bucket white Swan coffee... \$2.00
12 cans small Pet milk... \$1.00
2 cans large Pet milk... .35c

R. T. HOLMAN Cash Grocery 510 Lee Street Phone 2178

LABOR NEWS

ORGANIZED LABOR INAUGURATES PLAN FOR OPEN FORUM

The Central Trades Council by resolution unanimously adopted at last Friday evening's meeting in the labor Temple decided to take its legitimate share in the discussion of municipal, state and national questions...

Whitey Hofling, business agent of the Wichita Falls union of waiters' union and organizer for the American Federation of Labor, left Saturday night for Abilene where he will assist in the organization of a waiters' union there...

CEMENT ARRIVES FOR COMPLETION OF TEMPLE

With the arrival of a large shipment of cement, work is progressing rapidly upon the new labor temple. Concrete steps to the building are being rushed and the walls are being plastered.

FIRST ANNUAL MEETING OF Y. W. C. A. BOARD TUESDAY, FEBRUARY 12

Thursday morning, February 12, at 9:30, the first annual business meeting of the Young Women's Christian Association's executive board will be held at the Kemp Public Library.

STUDENTS ARE EXAMINED IN NUMBER OF SCHOOLS BY THE HEALTH OFFICER

Examination of the students in the Travis, San Jacinto, Fannin and Alamo school was completed this past week by Dr. West, Wichita county's whole time health officer, who has been devoting both morning and afternoon to the examination...

DRUGGISTS IN 'FLU' DISTRICTS ARE ASKED TO BE CONSERVATIVE

Although the Orgetone laboratories have been working at top speed for five-grain tablets just as fast as possible and we suggest that the druggists over the country order same in smaller quantities than usual...

HOFLING TO ORGANIZE IN THE NEARBY TOWNS

Whitey Hofling, business agent of the Wichita Falls union of waiters' union and organizer for the American Federation of Labor, left Saturday night for Abilene where he will assist in the organization of a waiters' union there.

SALE OF FIFTEEN ACRES ADJOINING GOLF CLUB; CONSIDERATION \$22,000

The sale of 15 acres adjoining the Golf Club on the east by Paul Neuge to W. R. McConnell and J. R. Jordan for a consideration of \$22,000, was announced Saturday.

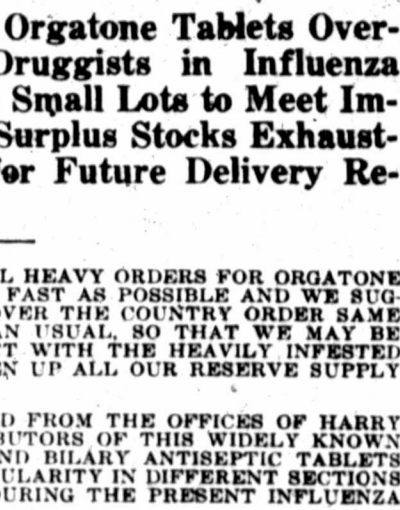
LABORATORIES PRODUCING ORGETONE TABLETS OVERSOLD—REQUESTING DRUGGISTS IN INFLUENZA DISTRICTS TO ORDER IN SMALL LOTS TO MEET IMMEDIATE DEMANDS—SURPLUS STOCKS EXHAUSTED—LARGE ORDERS FOR FUTURE DELIVERY REFUSED.

Medical authorities agree that those who are weak and run-down, and with improper bowel action are the easiest victims of the influenza epidemic. If one finds themselves tired, weak and losing flesh, or if your bowel action is improper and you are in a generally run-down condition, or if you catch cold easily, this warning should be heeded promptly.

DRINK ADAM'S ALE

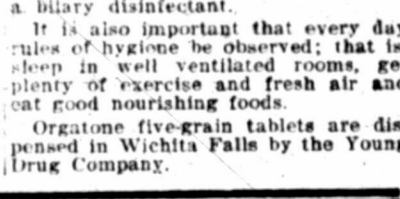
The pure revitalized distilled drinking water and save a doctor's bill. Call 1620 and have a bottle delivered at your door.

MEN'S Brogues, Shoes and Oxfords



OF THE TOPMOST GRADE SCIENTIFICALLY CONSTRUCTED LASTS. THOROUGHLY TESTED FITTERS, THE VERY HIGHEST GRADE WORKMANSHIP LADIES' FOOTWEAR OF DISTINCTION Individual Designs of Practical Merit

Don't Miss Our Bargain Tables



A FEW SHORT DAYS REMAIN THEN WE WILL BE FORCED TO VACATE

Our time limit is drawing near. In a few short days we will be forced to vacate our present location. There is nothing left for us to do but to sell our big stock of wearing apparel for men at a price which will move it.

A SPLENDID LINE OF MEN'S CLOTHING AT BIG REDUCTIONS

- MEN'S OVERCOATS AT \$12.95
You will pay \$40.00 for these same coats next fall. Why not buy them now and save the difference, besides having a nice coat for the balance of the winter?
ENTIRE LOT OF MEN'S PACKARD SHOES TO BE SACRIFICED
LOT NO. 1: \$12 and \$10 values, all leathers and newest styles. Forced-to-Vacate Sale price \$7.45
LOT NO. 2: \$14 and \$12.50 values, all leathers, in latest styles. Forced-to-Vacate Sale price \$8.45
LOT NO. 3: \$16 and \$14.50 values, all leathers in newest styles. Forced-to-Vacate Sale price \$9.45

The SMITH CO. 'Everything For Men' 705 INDIANA AVENUE LOOK FOR SIGN.

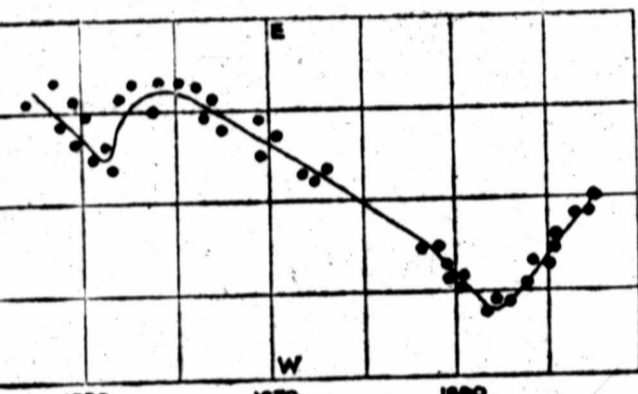
Advertisement for Druggists in 'Flu' districts, including text about Orgetone tablets and a list of products like Brogues, Shoes, and Oxfords.

Advertisement for The Smith Co. featuring a large headline 'A FEW SHORT DAYS REMAIN' and details about men's clothing and shoes.

Vertical text on the far right edge of the page, partially cut off, containing various words and phrases.

THE STARRY SKIES IN FEBRUARY

PROFESSOR DOOLITTLE of the University of Pennsylvania.



Orion, Gemini and the Dog Stars in the south, and the brilliant Leo, the last of the winter groups, high in the heavens in the east, the whole southern sky now presents a magnificent sight. These are the mid-winter stars, seen when our nights are long and the known to us, however, no glances upward now on a clear, moonless night can fail to be struck by the brilliance of this part of the heavens.

In the east the observer still now sees the two most bright and interesting planets, Jupiter and Saturn; the former shining with its steady, golden radiance nearly midway between Cancer and Leo, and the latter almost in the center of Leo, a little below Regulus. Jupiter is at present retrograding, or moving westward among the stars, and this retrograde motion will continue until April 3. It will then begin to run rapidly eastward again and will thus approach Saturn; the two objects will shine as a beautiful star figure in our western skies throughout the summer, not finally withdrawing until the end of August.

The February Stars.
The observer, especially if he possesses a small telescope, will find very many regions which will well repay exploration among these bright winter groups of stars. This is the best month of the year, for example, to trace the full outlines of Canis Major—the Larger Dog—for during February this constellation is exactly on the meridian in the early evening.

This group is of great antiquity. In the remains from temples and mounds of Euphratean astronomy, the figure is that of a dog springing after a hare (the constellation Leo), and it is Orion, just as we see it on our star charts today. Its brightest star, Sirius, the brightest star of the entire heavens, is known to nearly everyone, but the rest of the constellation is much less familiar. Its outlines can doubtless be easily traced out from Figure 1, the faint group stretching exactly across the Milky Way.

The star of the Greater Dog at B is a double easily resolved with a pair of opera glasses, while the two stars marked C are a difficult double stars. The star at B is an irregular variable, as is also that at A. The latter almost entirely disappeared in the year 1870, while two centuries ago it was more than twice as bright as it is now. In the position D, almost due south of Sirius, there is a beautiful cluster, visible in a very small telescope, while nearly midway between the stars A and E, and a little to the left of the double at C, there is another cluster, but a much fainter one.

Near the center of the former cluster there is a deep red star; its stars are arranged in long, streaming rows.

In the winter skies are the four quite bright show objects, the Praesepe, at F, the double cluster in Perseus, at G, the nebula in Andromeda, at H, and the Great Nebula in Orion, at K. The first three are visible to the naked eye on a dark night, and all.

The Planets in February.
Venus is a morning star, rising two and one-half hours before sunrise on Feb. 1, but this time is diminished to two hours by Feb. 29. It bears a beautiful and conspicuous object in the southern morning sky. The narrow crescent of the old moon, which passed so very close to Venus on Jan. 17, will again pass the planet on Feb. 16, but the observer will notice that the approach is not nearly so close as a month ago. In fact, the moon's passage will be nearly four times as far away from the planet as at the former one. Nevertheless, the two objects will form a beautiful sky figure just before dawn.

Miller is a beautiful object for in a small telescope. There are many eclipses, transits and occultations of its moons during the month; an unusual number occur on the nights of Feb. 3, 5, 7, 11, 15, 26.

Return for the first time this year among the stars of our evening map, where it is seen moving northward and westward, at the exact center of the constellation Leo. This is now a beautiful object in the telescope. The rings, however, now seen nearly edge, so that they appear very narrow. They will widen a very little until Feb. 17, when they will be seen to grow rapidly until they completely appear in moderate sized telescope in November. We are now seeing on their southern surface; in November until the end of the year the earth will be above the plane of the rings, and will then view their northern surface.

Ultra-Neptunian Planet.
It was in the year 1846 that the existence of a new planet was announced by the mathematician Le Verrier. This has ever been justly regarded as a great triumph in Celestial Mechanics. As nearly everyone knows, at that time there was a great disturbance in an orbit far greater than that of Uranus, was rendered certain by a study of the latter body along its path. The mathematician analysis of this has ever been justly regarded as a great triumph in Celestial Mechanics. As nearly everyone knows, at that time there was a great disturbance in an orbit far greater than that of Uranus, was rendered certain by a study of the latter body along its path. The mathematician analysis of this has ever been justly regarded as a great triumph in Celestial Mechanics.

MAYOR INFORMS GAS COMPANY PEOPLE WILL NOT STAND FOR AN INCREASE FOR PRESENT SERVICE

Declaring that the North Texas Gas Co. is now "charging the utmost the public will stand for," and characterizing the service given by the company to Wichita Falls patrons as "rotten," Mayor J. B. Marlow made public Saturday his reply to President C. B. McKinney's request for permission to increase the gas rates in this city. In his letter to the president of the North Texas corporation, a letter featured by the mayor's flat refusal to consent to any increase during his administration, Mayor J. B. Marlow states his belief that there is not a single member of the Wichita Falls City Council willing to support the gas company.

The letter, copies of which were mailed to Mayor Wozencraft, of Dallas, and Mayor Davis, of Fort Worth, follows:

"I am in receipt of yours of the 4th inst. and want to state briefly that it is my opinion that under no consideration would the City Council of the people of Wichita Falls, Texas, grant you an increase in the price of gas for said city.

"I stated to your manager, F. M. Kinney, yesterday that even though the City Council should favor such an increase, (and I do not believe there is one member who will), and I feel as I do in the matter, I certainly would veto their recommendation. As Mr. Weidon has resigned and no other able, because of its ample resources and liberal policy, to extend to customers every accommodation in the matters of loans that safe banking methods will permit. The bank welcomes small as well as large accounts. It.

"Fly with Hall today. Call Field. 253-117

BEAUTIFUL MODELS EXCLUSIVE DESIGNS

Shown at this shop, all hats so different and prices very moderate

Colonna Toggery
707 Indiana Avenue

BEAUTIFUL MODELS EXCLUSIVE DESIGNS

Shown at this shop, all hats so different and prices very moderate

Colonna Toggery
707 Indiana Avenue

ing the positions of some 340,000 stars, but these only extend to the 9.5 magnitude. Even in the course of the next half century, when the great Astrographic catalogue may be completed, this will only show stars in general down to the twelfth magnitude or even not quite so faint.

Therefore, the only method of search is to take long-exposure photographs of the region of the sky in which the new planet is expected to be found; and then, after a suitable interval, probably of a few weeks, to photograph the region again. By comparing the very faintest points of light on similar plates it can then be determined whether one of these has moved slightly. If so, the moving body cannot be a star, and may be the new planet. Anyone who has seen a long-exposed photographic plate of this region, which is in the Milky Way, with hundreds of thousands of stars on it, can imagine how laborious the search will be, even by photography. Visually, it would be practically impossible. Yet on any day the announcement of the new discovery may be made, and the limits of our solar system greatly extended.

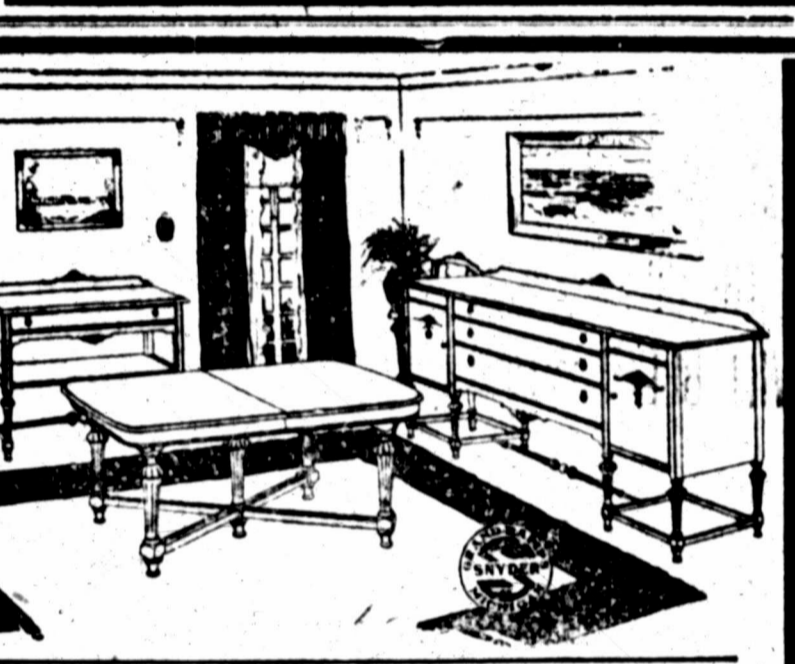
—Eric Doolittle.

The heavens in February. With Capella nearly overhead.

Fly with Hall today. Call Field. 253-117

THE PERMANENT WAVE SHOP
Have your hair curled to stay.
1203 Taylor Street.

W. A. Freear Furniture Co.
Phone 136 N. E. Corner 9th and Scott



W. A. Freear Furniture Co.
Phone 136 N. E. Corner 9th and Scott

Announcing Our Informal Exhibition of New Fashions For SPRING & SUMMER 1920



The knack of knowing how to dress lies in merely knowing where to buy.

We don't pretend to have a monopoly on all the good things in outer wear, but our specialization in correct and becoming fashions naturally offers those who seek distinction in dress, unusual opportunity to express their fastidious taste.

We are particularly proud of our showing for the coming Spring and Summer. We will be honored to have you call and see it regardless of whether you are a-buying or not.

Kimbeclin's
CORRECT WEAR FOR WOMEN
INDIANA AVENUE AT TENTH STREET.

Should you require a high-grade dining room suite in walnut or mahogany we can fill your requirements in Louis XVI Chippendale and Queen Anne Periods. Call and see them. We can please you.

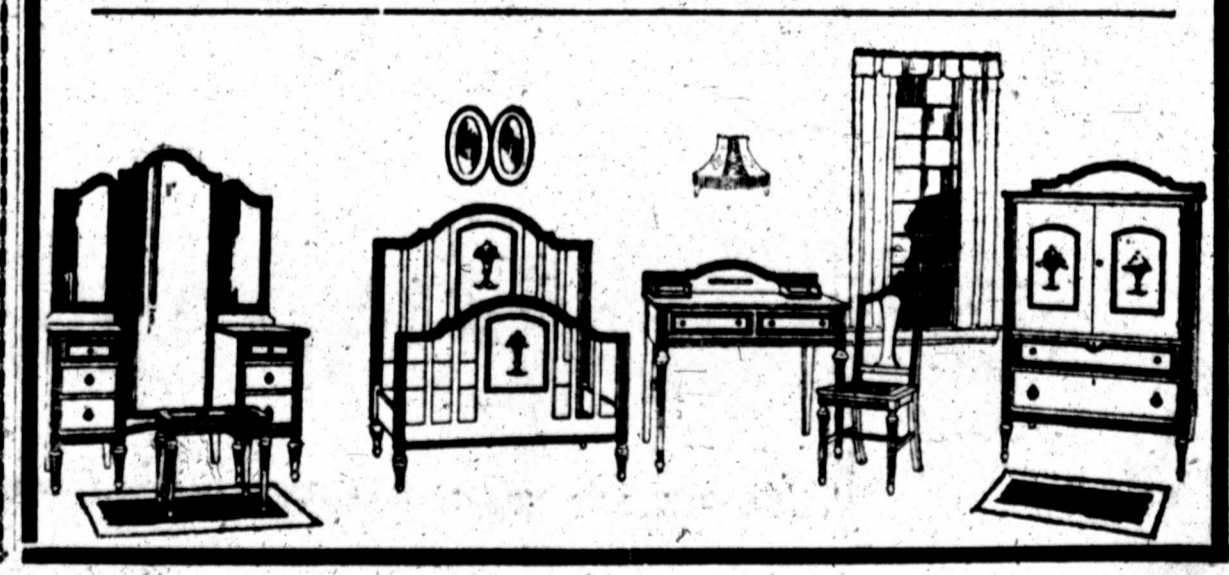
We have just received a fine line of picture and mirror cords in all colors. Call and get yours.

Buy a Hoosier Cabinet and save hours of worry and labor

WILTON RUGS
All sizes. Call and see them. We have a wonderful line at this time.

Our line of bedroom furniture is very complete at this time. Many matched suits in old ivory, American walnut, brown mahogany, French gray and birdseye maple. Let us show you. There will be no difficulty in making a selection.

W. A. Freear Furniture Co.
Phone 136 We Furnish the Office and the Home N. E. Cor. 9th and Scott



THE WICHITA DAILY TIMES

THE TIMES PUBLISHING COMPANY

Published every week-day afternoon and on Sunday mornings

Subscription rates: Single copy 10c; Six months \$5.00; One year \$9.00

Business Office: 501 North Main Street; Editorial Room: 501 North Main Street

Special Representative: The E. Katz Special Advertising Agency

Member of Associated Press, Member of United Press, Member American Newspaper Publishers Association

SUNDAY, FEBRUARY 8, 1920.

REDISTRICTING WEST TEXAS.

The West Texas Chamber of Commerce has no ulterior motive in taking part in political affairs, and we presume it is not going to interfere in the personalities of candidates for any kind of office...

According to Henry Barret Chamberlain, director of the Chicago Crime Commission, to which has been delegated the task of ridding the western metropolises of its professional criminal elements...

Under this rule they who mold public opinion should be tolerant. It is a promising planetary government for ministers.

Editors and publishers have the best sort of prognostication for the year, which will bring to the front many new writers.

Again the stars seem to have a sinister forecast that threatens the fortunes of soldiers. Disappointment is repeatedly read in the heavens.

Persons whose birthdate it is have the augury of more or less stress and strain. Business affairs may be very exacting.

Children born on this day may be clever, intelligent and amusing, but rather rash and careless.

Wood alcohol continues to claim its victims. It is just as lethal in its tonic and face lotions as it is in bootleg whiskey.

We were not inclined to take the Hoover boom seriously until Jim Reed denounced it and Mr. Bryan frowned at it.

Just folks. Mr. Kinney, manager of the North Texas Gas company, the concern which is supposed to supply gas to Wichita Falls and a number of other cities in North Texas...

Little Benny's Note Book. The Park Ave. Neks Weather Longites. Sprints. A guessing contest was held in front of Puds Simkins house...

Anniversary of the Boy Scout Movement to be observed here. Today, February 8, is Boy Scout Anniversary Sunday, and as such will be observed by the local Scout service...

Horoscope. The stars incline, but do not control. Copyright, 1919, by the McClure Newspaper Syndicate.

Hambone's Meditations. Dis day en time, wen folks talks bout dey fall cleanin' you don know ef dey means house-work er dey las' wintuh's clothes!

Handbone's Meditations. Dis day en time, wen folks talks bout dey fall cleanin' you don know ef dey means house-work er dey las' wintuh's clothes!

Handbone's Meditations. Dis day en time, wen folks talks bout dey fall cleanin' you don know ef dey means house-work er dey las' wintuh's clothes!

Handbone's Meditations. Dis day en time, wen folks talks bout dey fall cleanin' you don know ef dey means house-work er dey las' wintuh's clothes!

Handbone's Meditations. Dis day en time, wen folks talks bout dey fall cleanin' you don know ef dey means house-work er dey las' wintuh's clothes!

Side Talks. Why She Wasn't Envious. On a wonderful evening last summer I sat with an older woman on the seashore...

Rippling Rhymes. On the Job. It is a pleasant thing to find the man who knows his trade; he ornaments the human kind...

The Men's Shop. 704-B Ninth Street. PREWETT & BEALS. We have just received some more of those good Western made Flannel Shirts in olive drab color...

Works and Hicks and Texas Bankers Nearing Sand Depth. The Works & Hicks, No. 1 Hoge block 38, south of the Kemp-Munger-Allen discovery well, was drilling Saturday around 1700 feet...

Spain has agreed to defer payment. PARIS, Feb. 7. (Havas).—Spain has agreed to defer for one year the payment of the French debt of 450,000,000 pesetas now due her...

Dr. Heyer forwards resignation to board. DALLAS, TEX., Feb. 7.—Dr. R. S. Heyer, president of the Southern Methodist university here, announced today that he had forwarded his resignation to the trustees.

WORKS AND HICKS AND TEXAS BANKERS NEARING SAND DEPTH. The Works & Hicks, No. 1 Hoge block 38, south of the Kemp-Munger-Allen discovery well, was drilling Saturday around 1700 feet...

SPAIN HAS AGREED TO DEFER PAYMENT. PARIS, Feb. 7. (Havas).—Spain has agreed to defer for one year the payment of the French debt of 450,000,000 pesetas now due her...

DR. HEYER FORWARDS RESIGNATION TO BOARD. DALLAS, TEX., Feb. 7.—Dr. R. S. Heyer, president of the Southern Methodist university here, announced today that he had forwarded his resignation to the trustees.

Advertisement for Derden Oil Co. featuring a detailed map of the 120-acre site and a circular logo with text: CAPITAL STOCK \$120,000, 120 SHARES \$1000 EACH.

Derden Oil Co. 120 Acres—\$120,000 Capitalization. Shares \$10 each, Fully Paid and Nonassessable. THERE ISN'T ANY ARGUMENT. About the merits of our stock. One glance at our map will convince you that we are right...

**MATE THIRD OF
PULATION OF CITY
NOT ENUMERATED**

**ATION IS BROUGHT OUT BY
LUNTEER CHECKERS ON
SATURDAY.**

HECK EFFORTS CONTINUE

**of Co-Operation and Congested
ditions Largely Blamed For
The Situation.**

At least one-third of the population of Wichita Falls has been missed in the federal census, on a very conservative estimate, it is indicated by experience of the various volunteer checkers who worked various districts of the city Saturday, and who will continue their efforts Sunday. Estimates from various checkers indicate that the proportion of those missed by them who had not been enumerated varied from over a third early in the morning, with a considerable portion remaining who were unaccounted for to their having been counted.

Although the miscouint may in some measure be corrected by the checkers, it is asserted in several quarters that an entire recount of the city of Wichita Falls will be necessary if the city is not to receive a new eye through the census figures in ten years to come. There is an abnormally congested condition in the city, where many families are crowded into a single small residence building and many more in the tents on vacant lots, has operated as a great handicap to an accurate count, and one of the reasons assigned for so many people having been missed. Another reason lies in the fact that of many families not a single member could be reached at home in the day, and, as the census enumerators receive a compensation of only four dollars per name, after three or four attempts to reach a house without the aid of a member of the family at home, enumerators passed them up.

Lack of co-operation on the part of citizenship, which has seemingly been apathetic toward the showing of data Falls is to make in this nationwide count is another of the principal reasons assigned for the missing of such a large proportion of the population of the city—people who have been missed in the count, in spite of continued appeals, refusing to bother themselves to the small extent necessary to notify the office of the assistant supervisor at the Chamber of Commerce offices.

The findings of the checkers to the effect that at least a third of the population of the city has been missed supported in every check which census officials have made on the count as it now stands—school population, telephones, light, water and meters, and the various other means customarily employed to verify such counts. In fact, such means checking the figures are considered of even more significance in Wichita Falls where there is a congestion which is hardly to be met with except in a place where boom conditions similar to those here are prevailing. The census districts, and the volun-

teer captains who are responsible for the check therein, are as follows:
Districts and Captains.
District No. 1, southeast of tracks—M. A. Marcus.
District No. 2, east of tracks—J. B. Marlow, captain; Myles O'Reilly and Don Williams, vice captains.
District No. 3, north of river and east of tracks—V. C. Guinn.
District No. 4, Scotland addition—A. B. Manross.
District No. 5, north of Ninth between Travis and Michigan—W. F. Weeks, captain; T. B. Noble and E. A. Vanden Brock, vice-captains.
District No. 6, south of Ninth between Travis and tracks—Jerome Stone.
District No. 7, Jalonic addition and vicinity—E. G. Sharpe.
District No. 8, between Travis and Grace from Fourteenth to Valley—Orton McDowell.
District No. 9, bounded by Travis, Grace, Ninth and Fourteenth—M. J. Gardner.
District No. 10, bounded by Grace, Travis, Ninth and river—T. B. Noble, Jr.
District No. 11, bounded by Brook, Polk, Ninth and river—Fred Couper.
District No. 12, bounded by Grace, Denver, Ninth and Valley—N. O. Monroe.
District No. 13, Denver to Monroe, Ninth to Valley—B. F. Johnson.
District No. 14, Monroe to Kemp, Ninth to Valley—John W. Thomas.
District No. 15, north of Ninth and west of Polk—J. M. Bland.
District No. 16, Kemp and Avenue K to Valley—Otto Stehlik and J. M. Baber.
District No. 17, south of Valley—T. B. Smock and J. G. Culbertson.
District No. 18, south of valley—F. N. Lawton.

**PLAN FOR PLACING
SANITARY WORK ON
AN EFFICIENT BASIS**

Plans for putting sanitation work in Wichita Falls on a permanently efficient basis were discussed Saturday night at a meeting of representatives of civic organizations with S. A. Greeley of Chicago, sanitation engineer. Mr. Greeley came to Wichita Falls from Oklahoma City and made a brief survey of the local situation, leaving Saturday night for Chicago. Saturday night he attended a conference of representatives of the Chamber of Commerce, Business Council, Rotary Club, Wichita Club, city government and civic bureau, at which it was decided to ask the charter commission to insert effective provisions for sanitary work here. The conference discussed the question of employing Mr. Greeley to make an extensive survey of local sanitation problems, but delayed any definite recommendation until after the adoption of the new charter when the work, it is expected, can be provided for financially. The question of employing an outside engineer came up here several months ago, it being decided at that time not to undertake it. Since then, the Chamber of Commerce has been in correspondence with Mr. Greeley with a view to having him here later.



**"Who's Who" in
Spring Hats**

Brown is a favorite in Spring hats. So we have lots of browns. Green is another popular color. So greens are here a plenty. All the way down the line, whatever styles and colors men and young men want, we've hats to correspond. Mighty good hats, too.

The narrow brims will probably strike your fancy. They're really new and very snappy.

**Stetson and Mallorys
at the right prices**



**REASONABLE RELIABLE
QUISENBERRY'S
CLOTHES FOR WOMEN AND GIRLS
SYNDICATE STORES**



**Early Spring
Styles**

THE TAILORED SUIT—SMARTEST THINGS FOR SPRING

A Fashion Authority says: "America turns out the finest tailored garments in the world," and the spring suits go a long way toward proving that fact. Most of them are developed of navy blue tricotine, with smart lines, perfect finish, elaborate trimming. There is the high-waisted model, the eton, the ripple flare and straight effect. Jackets are handsomely lined, skirts a trifle wider than last season; some plain and some trimmed. Silk and soutache braids, embroidery and attractive buttons form the jacket trimmings. Suits are priced from \$37.50 to \$275.00.

A LATE FASHION DECREE

SPRING AND FASHION DEMAND

**Polo Sport Coats
of Spring**

**Taffeta Frocks
of Navy Blue**

This store is now featuring the latest spring models of Polo Cloth, Camels Hair and Worumbo. Some lined throughout with silk, and beautifully trimmed. Some are plain, half lined and many unlined. Shown with belts of leather and self material. All the leading shades, workmanship the very best. Specially priced at from \$25.00 to \$125.

It is surprising how much individuality is shown in this particular group of spring dresses. Developed in navy blue, brown, taupe and grey, all charmingly different in style. Many clever trimmings of ruffles, pleating, beads and embroidery. Priced from \$35.00 to \$125.00.



New Spring Blouses

Smart blouses from the simple tailored blouse of voile to the daintiest of Georgettes and nets, in hand-embroidered and batik patterns. All are typical of the trend of the new spring fashions that are being received daily in our blouse section.



**Early Spring
Hats**

Wichita Falls' largest selection of smart popular priced hats, clever styles in a wonderful variety. Here will be found Glossy Straws, Milan Hems, Fancy Braids, combined with Georgette, Draped Batavia, Satin and Straw and Matrons' Hats. Priced from \$3.75 to \$40.00.



New Children's Garments

Good materials, charming styles and excellent workmanship are the characteristics of the garments in our February showing of children's garments. These garments come in sizes from 18 months to 6 years for the small folks and from 8 to 15 years for the older girls. Gingham are shown in plain, plaid and checked. We call your attention at this time to our Betty Rompers and Flossie Frocks. Here you will find the most complete and up-to-date line of these goods in the city.



First Showin' Spring Skirts

Just received a shipment of women's smart stylish Skirts for spring. In the showing will be found the latest in combination colors and the newest and latest materials. We are also showing stylish wool Plaid Skirts in box platted effects, set in pockets, button trimmed, every one a neat stylish and desirable skirt. Don't fail to see these Skirts which are priced from \$12.50 to \$50.00.

WE ARE ALWAYS SHOWING SOMETHING NEW

**Again Spring Is
Knocking at Your Door**

Therefore, we must begin making preparations for spring shopping.

We invite you to call and see our lovely line of spring merchandise. The store with remarkable values at unusual prices.

If it is a dress, coat or suit, we have them at prices that will astonish you.

**In Our Line of Spring Dresses From
\$17.85 to \$43.85**

Satins, Taffetas, Jerseys, Messaline, Charmeuse, Foulard and Georgette. Some are plaid and embroidery trimmed, in tunic and ripple models, showing the new sleeveless styles.



**In Our Line of Spring Suits From
\$22.85 to \$49.85**

Tricotine, Serge, Poplin and Jerseys, all in designs that bring new ideas.

**In Our Line of Spring Coats From
\$22.85 to \$34.95**

We have many different kind of materials and beautiful models that stand for style, at little cost. We also have a small line of winter wearing apparel both for ladies and children at a sacrifice discount.

**RICHARDSON'S
BARGAIN BASEMENT**
—The Ladies and Childrens Shop—

Carpentier Coming to Feature in the "Movies"

WILLIAMS WINS IN THE "TEXAS SPECIAL" CONTEST FOR TURKEY

Influenza has improved the eyesight of L. E. Mankin, Dallas trapshooting enthusiast...

Table with columns for Regular and Special prizes. Includes names like Mankin, L. S., Deatheridge, A. G., Sheldon, C. P., etc.

LOCAL GUN CLUB IS GROWING IN NUMBER AND IN THE INTEREST

When the annual shoot for the trapshooting championship of Texas is held in Wichita Falls next May...

NEW PICTURE OF FIGHTING FRENCHMAN



Here is the latest picture of Georges Carpentier, the famous French star who will be Jack Dempsey's next opponent.

WANT MORRIS FOR PRESIDENT OF THE OIL BELT LEAGUE

FORT WORTH, Feb. 7.—The nomination of J. Walter Morris of Fort Worth, who is president of the Texas League...

MANY SOUNDS EMANATE FROM LINKS OF GOLF CLUB DURING FRIDAY AFTERNOON

Sounds of many kinds came from the links of the Wichita Falls Golf club on Friday. The sound of wood and steel meeting golf balls...

CAMEL SOCIAL AND ATHLETIC CLUB WILL BE OPENED FEB. 16

With arrangements completed for the holding of boxing, wrestling, dancing and gymnasium classes for members of the Camel Social and Athletic Club...

GOLF TOURNAMENT AT HOUSTON FEB. 22-23

HOUSTON, TEX., Feb. 7.—Several hundred dollars in cash will be distributed at the close of a two-day professional golf meet to be conducted at the Houston country club Feb. 22 and 23...

GAINESVILLE HIGH FIVE DEFEATS LOCAL HIGH IN GAME OF BASKETBALL

The Wichita Falls high school goal takers gave way before the visiting Gainesville high five, taking the small end of a 21 to 21 score in a fast and well played basket ball game...

It is announced by the promoters of the club Saturday that the club's gymnasium and hall at Fifth and Ohio will be open to the use of Pat Carrigan's box...

CLAIM DIFFERENT VIEW ON EXCERPT OF LETTER WRITTEN BY JOHNSON

ST. LOUIS, MO., Feb. 7.—President Phil Hall of the St. Louis American League, allowed a letter from President of the American League to be made public here today...

Georges Carpentier Signs Contract to Appear in Movies

LOS ANGELES, CALIF., Feb. 7.—Georges Carpentier, French heavy-weight boxer, signed a contract in Paris today, according to a telegram received here...

A SPORT EDITORIAL

The Chamber of Commerce, we understand, has given its "moral support" to the holding of a rodeo in Wichita Falls this spring...

A. & M. COLLEGE CLINCHES BASKETBALL CHAMPIONSHIP

AUSTIN, TEXAS, Feb. 7.—A. & M. college clinched the Texas inter-collegiate basketball championship by defeating Texas University 15 to 8 here tonight.

RED SMITH GOES TO NEW YORK YANKEES

BOSTON, Feb. 7.—The sale of "Red" Smith, a National League veteran of many years' standing, to the New York Yankees, was announced by the Boston Nationals today.

RAY SCHALK SIGNS CONTRACT FOR 1920

CHICAGO, Feb. 7.—Ray Schalk, premier catcher of the American League, today signed his contract with the Chicago Americans, Harry Grabner, secretary of the league champions, announced.

LOWIE AMUSEMENT PARK IS NEARING COMPLETION

LOWIE, TEX., Feb. 7.—Messrs. W. T. Bick and M. L. Farmer have well under construction a 160-acre amusement park located one mile south of Bowie on the Meridian Highway.

AD THACHER HAS SIGNED AGREEMENT WITH WILDE FOR A 12-ROUND BOUT

TOLEDO, O., Feb. 7.—Ad Thacher has signed articles of agreement with Jimmy Wilde, English flyweight champion, and his manager, Dave Hughs, for a 12-round bout here this first week in March with Frankie Mason, the American flyweight champion...

Advertisement for Wichita Music Co. featuring various instruments like pianos, phonographs, and musical hits. Includes contact information for C. G. Conn Band Instruments and latest popular music hits.

Large advertisement for Kemp-Munger-Dome Oil Company. Promotes 3 new wells near three of their tracts. Includes details about acreage (10, 42, 40, 10, 10, 200 acres), drilling contracts, and stock offerings. Mentions J. O. Fox as a licensed broker and fiscal agent.

The First
ary will mee
day afternoo
clic hostesse
lows:
Circle No.
906 Bluff
Circle No.
Twelfth stre
Circle No.
Burnett.
Circle No.
1607 Tenth s
Circle No.
Tenth street.
Circle No.
1718 Huff.
Circle No.
2414 Ninth s
Circle No.
1104 Taylor.

TOWER-WH

The anno
ment of Rod
Fayne Whit
New York cl
Whitney, Mr
Whitney, is
ita Falls, sin
tioned as a f
of months at
ular sociall
magne "Towe
for Asia. At
Harvard gra
eral occasio
the Call Flie
which was d
Sunday in th
JUNIOR HI

Tuesday
Junior High
in regular se
members wil
Items of inte
Mrs. Fred W
on "America
Mrs. Pounds
The School
Cloud, the J
Junior High
members are

WOODMEN MEET

An Inter
was held Fr
No. 1447, S
ented for
praise was
of the drill
Wallace as
wire" contes
Wife and 3
captains.
The next
day, Feb. 1
urged to be

FLORAL MEET

The Flor
class will m
rio, 1112 E
ernoon at 2
urged to be

FLORAL MEET

Mrs. W. T
the Flor
Friday aft
ant meetin
as usual pr
the hostess
course late
present wa
lea, Leon
A. McCarty
week and
goner was
entertained
Mrs. F. M.
Apartments,
ment 9.

SAM HOUB

The Pare
the Sam H
afternoon
president,
the first bu
a president.
Mallory wa
financial re
last meetin
through sec
tions and
the use to
put was dis
appointed
ratus and
and plans
the school
for "Pie Da
the pie w
children at
from this s
school imp
also planne
next meeti

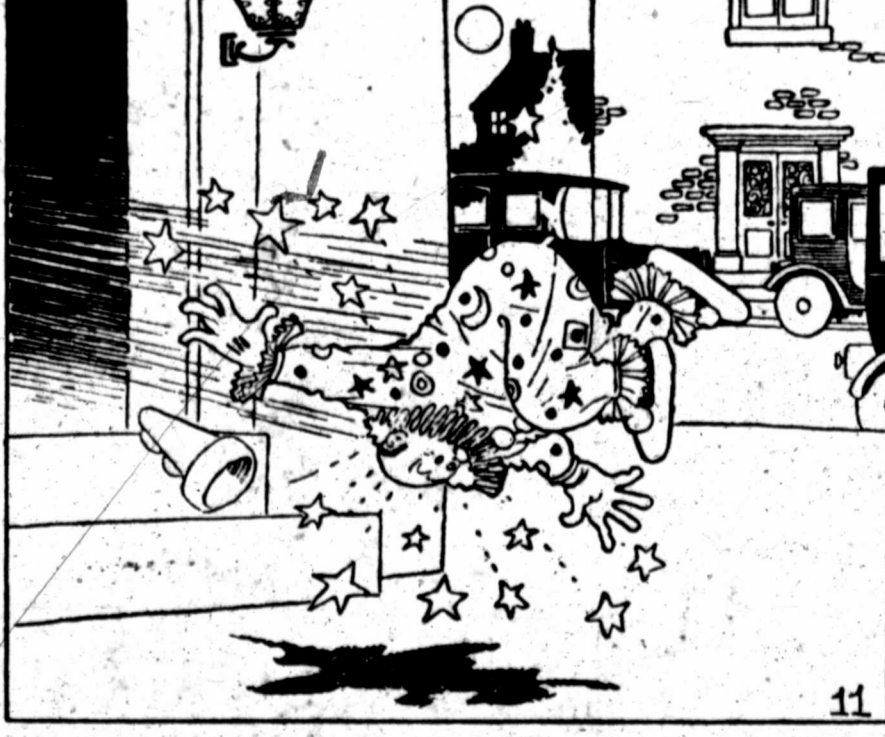
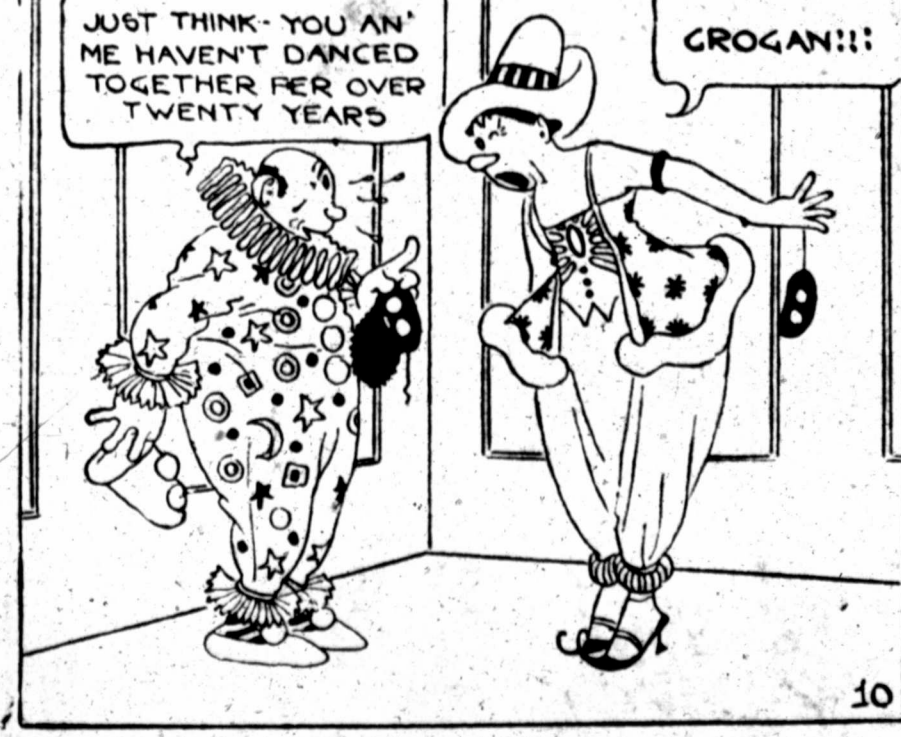
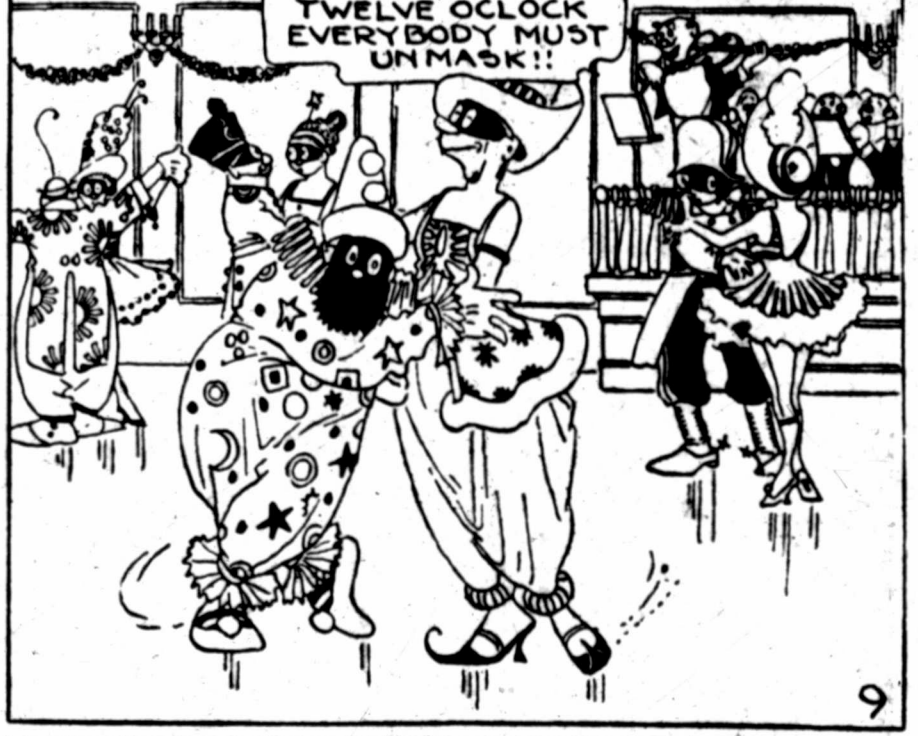
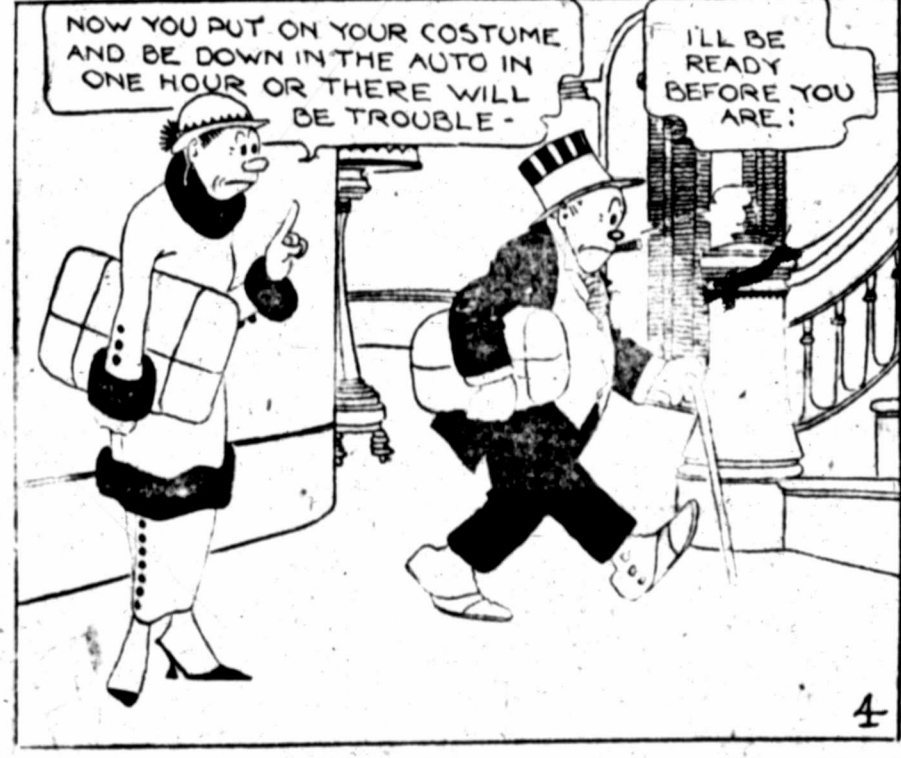
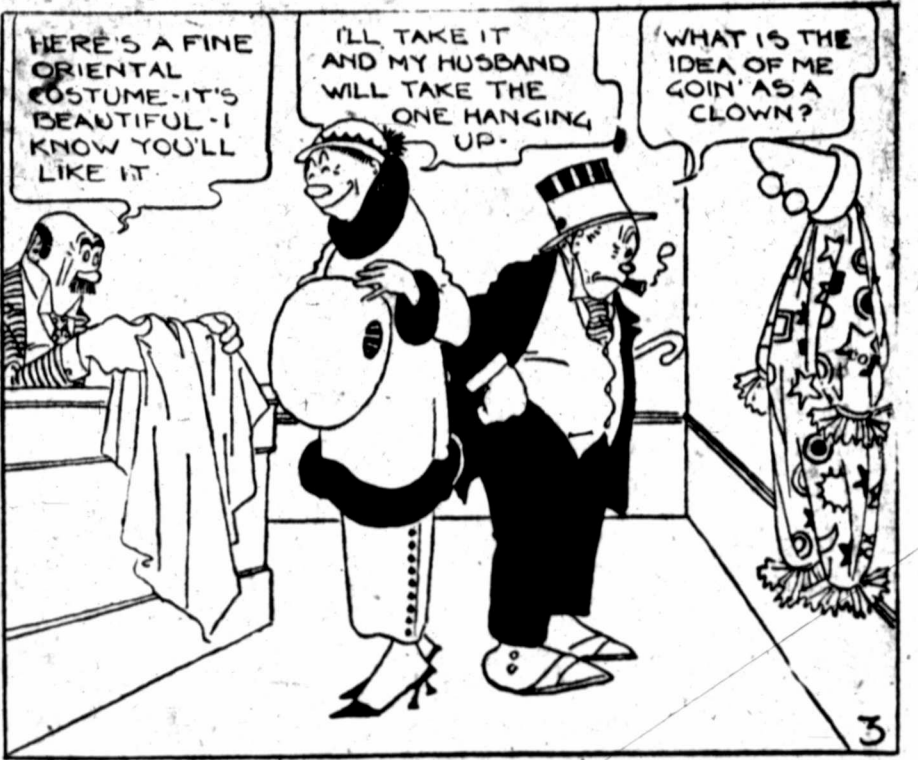
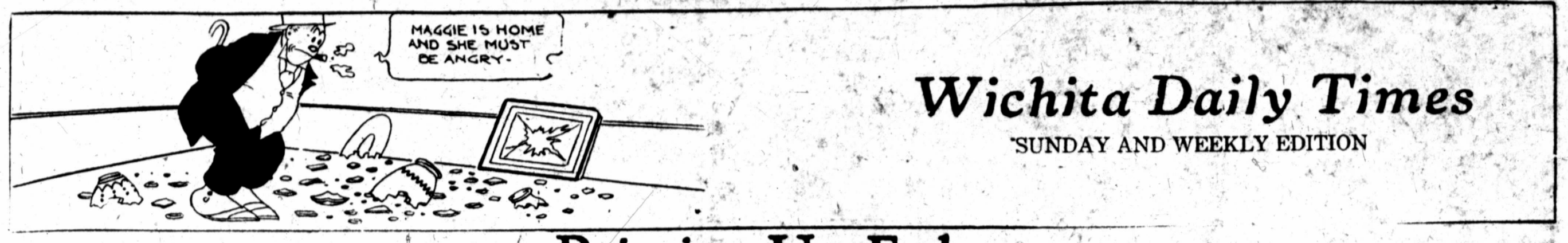
TRAVEL C

The Tra
session Fr
library, th
ence of M
member w
tion, and
and instr
zanship."
lows: Sub
Ben G. O
Cause, R
Mal-Adjus
land; "Ste
Poverty."
Mrs. Ber
pin, also
club, now
present at

Wichita Daily Times

SUNDAY AND WEEKLY EDITION

Bringing Up Father



RAILROAD BILL TO STIMULATE BUILDING SAYS FRANK KELL

Passage of the railroad bill as agreed upon the other day by the congressional committee will in my opinion, do more than any other one thing to stimulate railroad activity in the Southwest," said Frank Kell Saturday morning. "For one thing, I believe it will assure the carrying out of the several projected railroad building enterprises of vital interest to Wichita Falls, most of which to considerable extent were dependent on the passage by congress of some legislation which would allow the railroads of the country operation on a living basis. "The bill, as agreed upon, is not all that the railroads of the country need, but it is a distinct step in the right direction. "This legislation, together with a requirement for the respecting of shipper routing will, in my opinion, completely correct the present railroad situation, will improve the railroad service, and will also protect the short lines, and encourage the building of short lines in places where they are so badly needed."

HOUSING CORPORATION HAS INCREASED CAPITAL

Increase in capitalization of the Wichita Falls Housing corporation from \$45,000 to \$100,000 has been approved by the board of directors of the organization, according to the announcement of B. F. Johnson, vice president and general manager, Saturday. Mr. Johnson's report, showing that 20 homes had been built by the corporation with a capitalization of \$45,000, during the 10 months of operation, and that the corporation during the 10 months of its existence had earned in excess of \$2 per cent, was submitted and approved by the directors.

CHARGE THEFT OF PROPERTY VALUED AT OVER \$60

John Condon and J. D. Rysinger, Newtown oil field workers, are charged with complaint with the theft of property valued at over \$60. The complaint was filed Saturday in Justice C. J. Arrington's court. Condon made a written statement to Assistant County Attorney John M. Martin, in which he pleaded guilty to stealing a suit case containing a German Luger revolver and several other valuables from another oil field worker. Rysinger denied that he had anything to do with the transaction. Rysinger is a former service man and appeared at the preliminary hearing in an overseas uniform.

Rare Works of Art Are Located in Very Unpretentious Home

CHICAGO, ILLS., Feb. 7.—Rare works of art ranking with the most famous of America's collections in private homes were found by authorities here today in the home of Evalina M. Kimball, widow of the founder of the Kimball Piano Company. Mrs. Kimball was recently declared feeble-minded and an inventory of her estate was ordered by probate court on petition of her brother, Irving H. Cope, of Los Angeles. Court officials found the art treasures, valued at more than \$1,000,000 in Mrs. Kimball's unpretentious home here. Precious paintings line the walls and priceless antique furniture is scattered all over the room. A collection of jades and porcelains was described by art critics as "the most wonderful in America."

Notice. To the shareholders of the Cank Oil and Gas company: We advertised in three issues of the Wichita Times that there was a well producing 1,000,000 feet of gas on the 15-acre lease of Block 27, Parker county school land in Clay county. Since such advertisement we have discovered that we were deceived in this matter. Parties from whom we bought this lease told us the well was producing this gas and showed us the gas. As a matter of fact this gas was not coming from the well but from the Texas pipe line. We desire to correct this error, any person buying shares since said publicity and acting on the belief that such well was in fact on this lease, desiring to return their shares, their money will be refunded. J. L. Powell, Room 15, Hines Bldg. 253-11p.

Slinker Bros. Service Cars

One or four-passenger, any part of city. 11.00. Short trips 50c. Phone #11.

OIL MEN LOOK

My Moving Pictures of Texas oil fields can't be equalled, especially this field here. Pictures cover entire fields from Fowler No. 1 to Kemp-Munger. Allen, \$250.00 per 1,000-foot reels. Special stuff made to order quick. D. F. E. M. A. P. 400 Baymour St., Wichita Falls, Texas.

Cottage Cheese

We make Cottage Cheese fresh daily—try a carton.

Pure Milk Products Company

706 TENTH STREET

RANDLETT PLANNING TO WAGE CAMPAIGN TO DEVELOP SECTION

F. E. Nolte of Randlett was here Saturday in the interest of the Randlett Chamber of Commerce, which is raising a fund to advertise the resources and possibilities of the Randlett section. "Randlett lies between the Burk Burnett and the Walters Oil field. There has never been a thorough test for oil in our section," said Mr. Nolte. "We believe that if our section were well tested another oil pool would be discovered. This would be a great thing for Wichita Falls. We plan to have maps showing the location of Randlett with reference to the Burk Burnett and Walters pools and we believe the campaign we are planning will result in developments in our section." Mr. Nolte said that a fund of about \$2,000 was needed for the campaign. He secured several contributions from Wichita Falls citizens. He asks any who desire to help to mail their subscriptions to the Randlett Chamber of Commerce promising that the money will be expended to the best advantage.

LOCAL COURTS

Fifteen civil cases were filed in the district courts Saturday, most of which were divorce proceedings. Criminal matters were disposed of in the 30th district court, while Judge Edgar Scurry was again busy Saturday hearing the trial damage suit. No cases were on trial in the county court.

Suits Filed in District Courts. (A. F. Kerr, District Clerk.) W. L. Mann et al. vs. Morris Gilbert et al., suit on contract. Wichita Sales and Supply company vs. A. R. Morbury, debt. Cook vs. J. P. Pe. debt. F. S. Rigby vs. Olive R. Rigby, divorce. J. C. Preston vs. Eddie Preston, divorce. W. W. Butts vs. Robert A. Smith, debt. J. C. Allen vs. G. Cleveland, debt. R. M. Waggoner vs. Southern Oil company, injunction. Minnie Nettie vs. W. A. Nettie, divorce. Mrs. Ada Burrell vs. L. A. Burrell, divorce. Jennie Jones vs. Charlie Jones, divorce. C. C. Maddox vs. B. D. Sartin, injunction.

78th District Court. (Judge Edgar Scurry, Presiding.) W. L. Mann et al. vs. the Texas company, damages, on trial.

30th District Court. (Judge H. F. Weldon, Presiding.) State vs. Harry Young, forgery, entered plea of guilty and given two-year penitentiary sentence; suspended. State vs. V. M. Cook, forgery, plea of guilty entered and given two-year sentence; suspended.

Justice Court No. 2. (Justice C. J. Arrington, Presiding.) State vs. J. D. Flynn, rape; waived examining hearing and bond fixed at \$2,500. State vs. Albert McIntyre, theft of property valued at over \$50; waived examining hearing and bond fixed at \$750. State vs. John Condon and J. D. Rysinger, theft of property valued at over \$50; filed.

NOTICE. Knights Templar. Wichita Falls Commandery will confer the orders on several companions Tuesday, Feb. 10, commencing at 3 o'clock p. m. All Sir Knights are requested to be present on time. Installation of officers at that time. Retirements.—E. V. FRIBERG, Commander.

NEARLY HALF A MILLION STATE AND COUNTY TAXES HAVE BEEN PAID TO DATE

Property taxes for the year 1919 received by Tax Collector Tittle total \$119,652.51. It was announced Saturday. The heaviest taxpayer was the Magnolia Petroleum company, whose property taxes aggregate a total of \$49,900. The Fort Worth and Denver City railway company paid taxes totaling \$19,000. The total number of poll taxes paid was given at 8,729. County Tax Collector Tittle is examining the records to see how many women have qualified to vote and this information will be ready the end of next week.

JAKEHAMON CITIZENS ARRANGE TO ESTABLISH SYSTEM OF SCHOOLS

JAKEHAMON, TEX., Feb. 7.—Forty members of the Jakehamon Chamber of Commerce have outlined a publicity campaign and took preliminary steps toward establishing public schools in this place. The chamber is anticipating a rapid growth of the town from this date forward due primarily to the approaching completion of the Wichita Falls, Ranger and Fort Worth railroad into Jakehamon and south to Dublin. Robert Byrnes has been made a deputy sheriff at Jakehamon and will be the chief peace officer for the town pending the organization of a city form of government. Constructive activity in Jakehamon has begun again following the improvement of highways in the vicinity, but there is not expected to be any great amount of building here until the railroad shall be in operation to carry the materials. Fly with Hall today. Call Field. 253-11p.

The Specialty Shop

Balcony Kimberlin's Store
Corner Tenth and Indiana

Outfitters to children. A complete line of children's play garments, Betsy, Punch and Judy rompers, wash togs for little girls and boys. "Flossy Frocks" and silk dresses.

Philippine embroidered infant's and children's wear. A beautiful line of "Le Merite" stamped goods. Hand embroidered linens and lingerie.

"We Please You On Every Purchase."

DON'T FAIL TO SEE THE BLACK BIRD



This stylish oxford is made of suede—as fine and black as silk. It has blind eyelets, high, graceful arches, and clings close and comfortable around the ankles.

Another style in spring footwear you should see is our exclusive satin ankle tie, with the graceful swing of its high arch, the neatness of its plain, stylish toe, and in combining style and beauty with refinement, it is the aristocrat of spring shoes.

We cordially invite you to see these and all of our many other Spring models. Step in and let us fit you in the shoe you should wear; it will not obligate you to buy.

THE PLEASE YOU

SALMAN & NUTT
Corner Indiana and Tenth

Andersons

Installing Our New Fixtures

BUT—
We are not neglecting our customers. You will be served quickly—and well.

We will certainly appreciate your business—appreciate your putting up with the few slight inconveniences while we are getting in shape to serve you better than ever.

Our buyers have returned from New York and pretty New Spring merchandise is rolling in. The big second floor of "Beautiful Wearables" is radiant in its gladsome Spring attire.

Andersons

WICHITA FALLS STYLE & QUALITY STORE

any great amount of building here until the railroad shall be in operation to carry the materials. Fly with Hall today. Call Field. 253-11p.





THE NEWEST MILLINERY IS ON DISPLAY HERE

FASHION'S NEWEST MODELS ARE SHOWN HERE at their prettiest. Straw and fancy braids combined with different fabrics are featured in a variety of fashionable shapes. Many other combinations that are equally attractive are on display here.

CHARMING TURBANS AND HATS THAT TURN FROM THE FACE; LARGE DROOPING SHAPES AND SMALL HATS PREDOMINATE THIS GROUP.

Ornaments, flowers, ribbons, embroideries, and fancy pins are the trimmings. You may choose from all the season's most popular colors. THEY ARE MODERATELY PRICED.

FREEMAN-BLACK & CO.

Seventh at Indiana



"The whole prospects and beauty of a girl's life may depend upon a becoming gown."
—Smith.

Spring and Summer Showing of Ladies' Ready-to-Wear Apparel

Every woman cannot be beautiful, but fortunately there are many virtues which far outweigh beauty. Be that as it may, every woman may make herself attractive and pleasing. This in itself is a charm of no small importance.

Our modest part in the world's work is to inspire and suggest distinction in dress.

The Upstairs

SMART WEAR FOR LADIES

Style Without Extravagance. Over Woolworth's On Indiana.

Save by climbing the stairs to buy

SUNDAY, F. A. H. BRIT... REMOVAL... THE ON... FORMER MAYO... ING AT M... NES... MEETING HEL... By-Laws Are... of Paving in D... It is my belief... study that... res made tow... tion of the pav... ness district un... taken up and th... others that the... could be repair... factory condit... that the city... in for a nu... making this pay... constantly grow... The adoption... sition of paving... of the council F... After the ad... reports from the... at the meeting... gate the paving... for. H. B. Voel... mate of the app... ing brick in th... block paving. I... 47,000 yards of... ing in the busin... cost about \$3.25... the blocks with... asphalt base, m... cost of the wor... that brick could... crete base bloc... blocks. If asph... of brick, it wou... a heavier concre... Chairman Joh... been the purpo... committee to be... had not been d... section. Mr. F... tor said that t... blocks signed t... city. He told o... delays in shipm... material. He s... capital to buy a... it and to keep... to look after s... be would be abi... Wichita Falls... tam, another p... ing many effe... and how these... of traffic and o... City Engineer... some shipments... satisfactory que... from Seymour... prospects of ob... from that place... The damage... chains and lug... tors was discus... practice of mo... streets without... the rollers. A... Messrs. Britain... die was named... of the ch... The attention

PANTAGES VAUDEVILLE

Amusement Calendar for Coming Week

MOTION PICTURES

COMING OF GUY BATES POST EVENT OF THEATRICAL YEAR

The international pre-eminence of Guy Bates Post makes his engagement at the Wichita Theater Feb. 16 the most important event of the theatrical year.

With that Post virile temperament every element of the human soul is brought into play, every gift given by nature singly or most actors, has been bestowed on Post, artistically.

"THE COUNTRY COUSIN" AT THE PLAZA MONDAY Scheduled for a two-day presentation at the Plaza theater, beginning next Monday, the new Selznick picture, "The Country Cousin," in which beautiful Elaine Hammerstein is starred, is said to carry over a deeper appeal than did the stage play which earned not only the lasting appreciation of the general public, but also brought forth words of praise from President Wilson and the late Theodore Roosevelt.

"HIS WIFE'S FRIEND" AT THE EMPRESS ON MONDAY The latest Dorothy Dalton picture, "His Wife's Friend," will be the attraction at the Empress theater for two days, beginning Monday.

"HIS WIFE'S FRIEND" AT THE EMPRESS ON MONDAY The latest Dorothy Dalton picture, "His Wife's Friend," will be the attraction at the Empress theater for two days, beginning Monday.

MAJESTIC THEATRE MONDAY ALICE JOYCE "The Vengeance of Durand" Adapted from the powerful story by Rex Beach that reveals the social capital of the world—Paris at its best. TUESDAY Monroe Salisbury "The Phantom Melody"

PLAZA THEATRE MONDAY "The Hawaiian Butterfly Co." Change of Program Daily PICTURE PROGRAM Elaine Hammerstein "Country Cousin" A magnificent adaptation of the world-famed stage success by Booth Tarkington and Julian Street.



Guy Bates Post as Chilcote, the "Drug Addict," in his phenomenal success, "The Masquerader," coming to the Wichita theater, matinee and night, Monday, Feb. 15.

youngful wife of Sir Robert, the baronet is found drowned in a lake on a neighboring estate. The action thereafter leads to India during the uprising of the natives and back again to England, where the mystery of the nobleman's death is startlingly cleared up.

In its filming as a Selznick picture, the famous play of Booth Tarkington and Julian Street has received some sympathetic and colorfully dramatic treatment to enhance its worth as an interest-holding story typical of American life today.

tures may be gained from the statement that it cost more than \$650,000 to produce, is presented by a company totaling 125,000 men and women, and has 7,500 horses taking part in the great chariot races and pageants attending the Feast of Belshazzar. The great walls of Babylon, with their giant height of 300 feet and the spacious boulevards built upon their tops; the wonderful halls in the Temple of Belshazzar, half a mile in length, with giant elephants of alabaster rising up along their sides; the vari-colored lights that play and glow upon the fountains of perfume and wine; the dancing girls, the High Priestess, and all the mimicry and splendor of those ancient days—these are but the outstanding features of Griffith's "The Fall of Babylon."

VAUDEVILLE OPERA HOUSE PANTAGES—5 ACTS—THIS WEEK MONDAY—TUESDAY—WEDNESDAY W. E. WHITTLE Comedy Ventriloquist LOUISE GILBERT In songs and smiles WOLFE & PATTERSON In an artistic melange of everything in song and dance. AMOROS & JEANETTE In their comedy ditty entitled "Mon Chapeau." K. T. KUMA AND COMPANY Oriental Wonder Workers, Conjurers of the Far East COMPLETE CHANGE OF BILL THURSDAY THURSDAY, FRIDAY AND SATURDAY Two shows daily: 7:00 and 9:00. Matinees: Wednesday and Saturday, 2:30. Night prices: 30c, 55c, \$1.00, war tax included. Children half price at matinees.

WICHITA THEATRE CO. CHAS. KIRKPATRICK, Mgr.

Gottschalk adds to the further enjoyment of the spectacle, and the photography by G. W. Bitzer is of the same artistic standard reached in "Hearts of the World" and other Griffith features. MAJESTIC CALENDAR. Monday—Alice Joyce in "Vengeance of Durand," from the novel of Rex Beach. Tuesday—Monroe Salisbury in "The Phantom Melody." Wednesday—D. W. Griffith's mammoth production, "The Fall of Babylon." Friday and Saturday—Florence Reed in "Other Men's Wives." PLAZA CALENDAR. All week—"Hawaiian Butterflies," tabloid musical comedy. Monday and Tuesday: Elaine Hammerstein in "Country Cousin." Wednesday: Sessue Hayakawa in "The Man Beneath." Thursday: George Walsh in "The Winning Stroke." Friday: Jason Film Co. presents "Brand's Daughter." Saturday: "Vampire Ambrose," comedy.

MONDAY TUESDAY DOROTHY DALTON "HIS WIFE'S FRIEND" ADDED ATTRACTION A MACK SENNET COMEDY "HIS LAST FALSE STEP" EMPRESS MONDAY TUESDAY

EMPRESS CALENDAR. Monday and Tuesday: Dorothy Dalton in "His Wife's Friend," a Paramount-Artcraft picture; also a Mack Sennett comedy, "His Last False Step." Wednesday: Billie Burke in "Sadie Lane," a Paramount-Artcraft picture. Thursday: Elnid Bennett in "What Every Woman Learns," a Paramount-Artcraft picture. Wallace Reid in his latest Paramount-Artcraft picture, "Double Speed"; also a Mutt & Jeff comedy.

MONDAY TUESDAY DOROTHY DALTON "HIS WIFE'S FRIEND" ADDED ATTRACTION A MACK SENNET COMEDY "HIS LAST FALSE STEP" EMPRESS MONDAY TUESDAY

JOHN DODGE LEAVES SON ONLY \$150 PER MONTH DETROIT, MICH., Feb. 7.—The will of the late John F. Dodge, filed for probate court, out of John Duval Dodge, a son, with only a monthly allowance of \$150. The son was said to have disclaimed his father by his manner of living. Construction of the palatial home Dodge started at Grosse Point, was ordered by the trustee, subject to the will of Mrs. Dodge.

THROBBING with the precious ferment of love, devotion, loyalty, adoration, heroism and sacrifice. IMPERIAL in its mighty imperial splendor, its royal luxury, its lavish beauty and magnificent pomp & ceremony. PRODIGIOUS in its picturesque multitudes, its gorgeous galleries teeming with the bizarre life of the ancients. ENLIGHTENING with its vivid truths, the thundering assemblage of historic fact, the knowledge of another day. MAJESTIC in its massive grandeur, its colossal theme, its inspiring romance and sumptuous settings. TEEMING with laughter and love, with feasting and wine, with romance and madness with charm and beauty. ENORMOUS in the cyclonic fray of ambition, jealousy, intrigue, greed, treachery, craftiness and deceit.

D.W. GRIFFITH SPECIAL PRODUCTION THE FALL OF BABYLON 50,000 PLAYERS TAKE PART. FOUR THOUSAND DANCING GIRLS 10,500 HORSES and WILD BEASTS. The Remarkable Cast Includes: Constance Talmadge, Midred Harris, Chaplin, Tully Marshall, George Fawcett, Seena Owen, Elmer Clifton, Alfred Paget, George Siegmann, Kate Bruce, Elmo Lincoln, Carl Stockdale, Alna Rubens, Ruth Darling, Pauline Stark, Winifred Westover and others. MAJESTIC Wednesday Thursday Admission....50c and 25

A WORD OF WARNING A WORD OF THANKS SEATS NOW ON SALE The importance of the coming of Guy Bates Post to Wichita Falls, Monday Matinee and night, Feb. 16, has made itself felt throughout the entire section adjacent to this city and mail orders have been received as never before in the history of amusements in this section. For this reason we earnestly suggest to all who have not yet secured their seats MAKE YOUR RESERVATIONS AT THE EARLIEST POSSIBLE MOMENT or you will certainly be denied choice of location for the most important amusement that has ever visited our city. THERE STILL REMAINS GOOD SEATS—AT ANY OF THE VARIOUS PRICES—BUT THE NUMBER IS LIMITED AND THE LATE COMERS WILL BE SORRY AT HAVING DELAYED. WE DESIRE TO TAKE THIS OPPORTUNITY TO THANK THE HUNDREDS who have so generously sanctioned the bringing of America's LEADING ACTOR TO WICHITA FALLS by their ready response in the purchase of seats. It means the bringing of other high-class and exclusive amusements to this city and proves this city will readily respond to the appeal of "the best" the same as has Dallas, Kansas City, St. Louis and all cities where MR. POST'S appearance was greeted with caparity audiences. PLEASE REMEMBER SEATS ARE NOW ON SALE. Respectfully, WICHITA THEATRE CO. IMPORTANT—Please be in your seats promptly at 2:30 for the matinee and 8 o'clock for the night performance as no one will be seated during the prologue.

UNDAY, FEBRUARY 8, 1920 Rates for Class in the WICHITA DAILY Times... POLITICAL AND NEWS... REMOVAL... LOST...

IMPROVED CITY PROPERTY

1417 Broadway on street, bathroom... 231-110

IMPROVED CITY PROPERTY

W. C. LITTLE COMPANY... 231-110

IMPROVED CITY PROPERTY

6 rooms not quite completed... 231-110

REAL ESTATE—MISCELLANEOUS

FOR SALE—Construction office... 231-110

LIVESTOCK

FOR SALE—One good team of work... 231-110

LEGAL NOTICES

Herein full set, but before said court... 231-110

LEGAL NOTICES

THE STATE OF TEXAS... 231-110

IMPROVED CITY PROPERTY

5 rooms, new and modern... 231-110

IMPROVED CITY PROPERTY

Five rooms, new and modern... 231-110

IMPROVED CITY PROPERTY

Five rooms, new and modern... 231-110

REAL ESTATE—MISCELLANEOUS

FOR SALE—Large corrugated iron... 231-110

LIVESTOCK

FOR SALE—Large corrugated iron... 231-110

LEGAL NOTICES

THE STATE OF TEXAS... 231-110

LEGAL NOTICES

THE STATE OF TEXAS... 231-110

IMPROVED CITY PROPERTY

Five rooms, new and modern... 231-110

IMPROVED CITY PROPERTY

Five rooms, new and modern... 231-110

IMPROVED CITY PROPERTY

Five rooms, new and modern... 231-110

REAL ESTATE—MISCELLANEOUS

FOR SALE—Large corrugated iron... 231-110

LIVESTOCK

FOR SALE—Large corrugated iron... 231-110

LEGAL NOTICES

THE STATE OF TEXAS... 231-110

LEGAL NOTICES

THE STATE OF TEXAS... 231-110

IMPROVED CITY PROPERTY

Five rooms, new and modern... 231-110

IMPROVED CITY PROPERTY

Five rooms, new and modern... 231-110

IMPROVED CITY PROPERTY

Five rooms, new and modern... 231-110

REAL ESTATE—MISCELLANEOUS

FOR SALE—Large corrugated iron... 231-110

LIVESTOCK

FOR SALE—Large corrugated iron... 231-110

LEGAL NOTICES

THE STATE OF TEXAS... 231-110

LEGAL NOTICES

THE STATE OF TEXAS... 231-110

IMPROVED CITY PROPERTY

Five rooms, new and modern... 231-110

IMPROVED CITY PROPERTY

Five rooms, new and modern... 231-110

IMPROVED CITY PROPERTY

Five rooms, new and modern... 231-110

REAL ESTATE—MISCELLANEOUS

FOR SALE—Large corrugated iron... 231-110

LIVESTOCK

FOR SALE—Large corrugated iron... 231-110

LEGAL NOTICES

THE STATE OF TEXAS... 231-110

LEGAL NOTICES

THE STATE OF TEXAS... 231-110

For Quick Sale 50-acre lease offsetting Gilliland well, K. M. A. district. Priced right. Phone 1191. 716 Wall St., Booth 2. J. J. MATHIS, Owner. L. E. COWLING Real Estate and Investments Phone 2644. DOAK-PEELER REALTY CO. Phone 725 Argonne Hotel Bldg., Corner Tenth and Indiana. BOBBY BURNS Real Estate Office 224 First National Bank Phone 1599. TAYLOR HUFF NEWLAND REALTY CO. Office Hearn Hotel Phone 1837.

THE HOME SATISFIERS LISTINGS Just Off Tenth Eight-room, two-story home, two baths, modern, double garage and two-room servant house...

LOUIS A. ROBINSON & CO. Ohio Avenue In the heart of the business district, one-story brick business building, 50x150 feet, now renting at \$150 per month...

MODERN CITY INVESTMENT CO. 822 Ohio—Phone 2254 ASK FOR WILLIAMS HOTELS AND ROOMING HOUSES 40-room Hotel, running water in all rooms, connecting baths, new furniture...

HIGH-CLASS BUSINESS AND RESIDENCE PROPERTY Tenth Street 10-room house, modern, with big garage, corner lot, 100x162 1/2 feet. Price \$28,000.

RANCHES AND FARM LANDS FOR SALE 5666 Acres Running within 1/4 of a mile of Gore, Knox county, 98 per cent available. This ranch is well watered...

MEDIUM PRICED RESIDENCE PROPERTY Austin Street An east front 70x150 foot lot with a 6-room modern home, has garage and servant house...

STEHLIK & BABER 720 Tenth Street Phone 2331

TIMES DAILY MARKETS

New York Stocks, Grain and Provisions, Cotton and Livestock.

COTTON MARKET.

NEW YORK, Feb. 7.—There was a renewal of the covering movement in the cotton market today and after selling at 22.25 during the early trading, May advanced to 22.70. May closed at 22.65 with the general net closing firm at an advance of 22 to 25 points.

Table with columns for various cotton grades (No. 1, No. 2, No. 3) and their corresponding prices in cents per pound.

NEW ORLEANS, La., Feb. 7.—After a period of inactivity the cotton market firmed up today and rose for material gains, the motive for the advance being the London report of a contemplated revision of the economic provisions of the peace treaty and the large export movement for the day.

Table with columns for various grain types (Wheat, Corn, Oats) and their corresponding prices.

NEW YORK STOCKS.

NEW YORK, Feb. 7.—Continued movement marked the final session of a memorable week on the stock exchange, but the tone at the end was firm and stronger.

LIVE STOCK.

Table with columns for various livestock types (Cattle, Hogs, Sheep) and their corresponding prices.

Market Review

Grain and Provisions.—CHICAGO, Feb. 7.—All grain and provisions have shown a decline in value this week, chiefly as a result of the European exchange.

accommodations, were the central features of this week's turbulent and reactionary stock market.

INTERNAL REVENUE REPORT FORMS ARE AVAILABLE AT LOCAL REVENUE OFFICE

"All necessary forms for the preparation of internal revenue reports for the calendar year of fiscal year 1919 are now available at the local internal revenue office, which is located in room 226 Post office building."

LEE PRESCOTT CANDIDATE COUNTY COMMISSIONER

The announcement of Lee Prescott as a candidate for county commissioner in Precinct No. 2 appears in today's Times.

MORTUARY.

Raymond H. Dow, 25, died at a local hotel Saturday evening of pneumonia. He was attended at his death by his mother.

Mrs. John A. Watkins, 57 years old, died at her home, 1811 Burnett street, Saturday morning of pneumonia.

Chester G. Terrell, 1-month-old son of Mr. and Mrs. W. N. Terrell, died at the home of his parents, 259 1/2 Holiday street, Friday night of pneumonia.

Beatrice Bascup, daughter of Mr. and Mrs. B. J. Bascup, died at her home, 1714 Eighth street, Friday of pneumonia.

PARTY AT CHARLOTTE KEMP HALL WEDNESDAY

Wednesday evening the Charlotte Kemp Hall was the scene of an enjoyable party, the young men friends of the "family" being guests of honor.

IMPORTANT MEETING OF LEGION IS SCHEDULED TO BE HELD TUESDAY NIGHT

Plans for a general membership campaign, the election of permanent officers and the discussion of plans for permanent quarters, is part of the program before the next meeting of the Pat Carrigan post of the American Legion, scheduled for Tuesday night.

An intensive membership campaign of probably one week's duration will probably precede the selection of permanent officers, it being the desire of the present members that many of the former service men in Wichita Falls entitled to membership have an opportunity to take part in this election as possible.

GRADUATE NURSES TO MEET NEXT TUESDAY

The Wichita county graduate nurses will meet in business session Tuesday afternoon at 1 o'clock at the Wichita General hospital. All members requested to be in attendance.

The National Bank of Commerce welcomes the household or personal checking accounts of women and extends to them every courtesy and attention in the handling of their financial matters.

MISS BAZE IS DIETICIAN FOR CALL FIELD HOSPITAL

Miss Mamie Baze, assistant manager of the Young Women's Christian Association cafeteria, has accepted the position of dietitian for the Call Field hospital. Miss Webster, the superintendent of the hospital, announces that Miss Baze will assume her new duties with the opening of the hospital, which is scheduled for Feb. 15.

The Y. W. C. A. board has released Miss Baze with a great deal of reluctance, she having proven exceptionally efficient and capable in the several months she has been Miss Dillon's assistant in the cafeteria management.

Advertisement for F. P. AVIS, Real Estate Agent. Text: "The next oil sensation will be in Montague county. We are putting several blocks of acreage on the market, direct from owners. Now is the time to get in while prices are right. For information and prices see F. P. AVIS. Res. Phone 1144. Business Phone 255-710 1/2 Indiana"

Large advertisement for Montague County oil field. Text: "Montague County—Next Big Oil Field. We own 2,000 acres of various, well selected leases near the Nocona well. Montague County is going to prove a BIG SENSATION. BUY NOW DELAY WILL PROVE COSTLY. Kemp-Munger-A 'em. There is now intense activity in this field. See us today in regards to the following leases: 10 acres, west side block 31. 20 acres, Patience Castleman survey. 15 acres, block 39. 20 acres, J. E. Putnam survey, east of K. M. A. well. 800 acres adjoining 1,000 Acre Oil Co.'s lease, Archer county. We have several choice leases near East Wichita, Erickson-Grisdale and Surrien Wells. Immediate action. We Deliver. LYONS & KLEINMAN, Owners Telephone 2451 703 1-2 Seventh Street WICHITA FALLS, TEXAS"

BANK STOCK WANTED

We are in the market for stock in Wichita Falls banks. If you want to sell see or write us.

THE BOBO-HEFLIN CO.

BANK STOCK AND LIBERTY BOND BUYERS Office with Cravens & Co. Insurance Agency 606 Eight St., K. & K. Bldg.

One of the best restaurants in the city for sale Located right and good lease. If interested call 2027 and ask for Mr. Jackson

STATE TRUST COMPANY 706 Eighth Street Act as Executor, Trustee, Agent Pays 4% Interest on Deposits We Can Wait on You Promptly

ARCHER COUNTY LEASES between K. M. A. and Archer City, 7 or 8 miles northwest Archer City drilling wells in all directions. We are subdividing one thousand acres into forties, eighties and one hundred sixty-acre tracts; will sell for next few days at twenty-five to thirty dollars per acre.

McADAMS AND LUSE 615 Seventh Street; next door St. James Hotel

GRAIN AND PRODUCE

CHICAGO, Feb. 7.—Big receipts looked for next week as a result of emergency railroad orders to hasten the crop movement did a good deal today to weaken the corn market. Prices closed heavy, 1 1/2c to 2 1/2c net lower with May 81 1/2c, July 81 1/2c and July 81 1/2c to 81 1/2c. Oats finished 1 1/2c to 1 1/2c and provisions off 2 1/2c to 3c.

SPECIAL IN HILLMAN COUNTY 8-acre commercial lease in SW 1/4 30-4-14, right in line. Consult your map. Snap at \$400. See us. MONTGOMERY INVESTMENT CO. 822 Ohio Ave. "Other Good Investments"

STREET CAR EXTENSION! HIGHLAND HEIGHTS We are authorized to announce that if property owners in Highland Addition will agree to pay One Hundred Dollars per lot, payable when the track is finished, that the Street Car line will be extended through the addition. Advance in Price All Lots Were Advanced \$200 Each Yesterday Morning Sewer and Water Now Being Laid The ditching machine is now at work on the addition. A lot in Highland Heights is the best investment to be had. Over one hundred investors have seized this unprecedented opportunity during the last week. Will you select your lot NOW—no regret it later? CURLEE & JOHNSON Phone 1821 REAL ESTATE Exclusive Agents

Automobile News

CAPITAL STOCK WICHITA MOTOR CO. INCREASED ANOTHER MILLION; HAS A SPLENDID DEVELOPMENT RECORD

The capital stock of the Wichita Motors company has been increased another million dollars. This means that it is now \$1,500,000. Nor does this sum represent all the assets of this company, not by a large amount. In fact at this time its assets aggregate about \$2,200,000. And the most valuable asset of the company is not included in this amount. The very name Wichita in itself on the open market would bring in cash almost as much, if indeed not more, than the entire capital stock of the company.

None of the additional stock is being offered to the public. It is not being asked about by hally-ho men who would reap the attractive percent on the sales made. It has all been taken and issued to those who were the stockholders of the company prior to the increase in the capitalization.

The story of the Wichita Motors company reads like a volume written by dreamers. Its success smacks of the tales brought back to civilization by those who had sailed afar over the seven seas in the days when man's vision beyond the ocean's horizon was one of wonderment, but not knowledge. It has passed over the high ways of hard knocks and it has reached the macadam thoroughfares where the tides of commerce travel with the least resistance.

Organize in 1910.—For dreamers indeed were they—conceived the idea of building motor trucks in the southwest that would bear the burdens of industry in this section. At that time they had no charted course to follow, for the motor truck industry in those days was an unexplored field and one filled with snags and pitfalls. It took stout hearts to give the courage to sustain the hope born of enthusiasm in those days, for it should be remembered that 10 years ago a dollar was worth a full 100 cents and to those who sought it, it ever commanded a premium. Then, as now, motor trucks were not sold for a song. In fact, then, as now, motor trucks were not made for rhapsodies, but for the grinding sounds which float away as the music of commerce.

It was in the spring, the very early spring, of 1911 that the first Wichita truck was made. In looks it was about as attractive as a new born colt. But it could go under its own power and could sustain the weight it was designed to carry and those who had designed it and those who had fabricated it knew that it was good. So, great was the joy of the moment and potential were the prospects of the day.

Pity the Salesmen.—But the people of the southwest did not wax warm and take the new Wichita truck to their bosoms. In fact, they heard the appeals of the salesmen to purchase Wichita trucks with

sympathy, and pity is the cheapest form of sympathy. Suppose Wichita trucks were made right at home, pray what that it is how \$1,500,000. Nor does this sum represent all the assets of this company, not by a large amount. In fact at this time its assets aggregate about \$2,200,000. And the most valuable asset of the company is not included in this amount. The very name Wichita in itself on the open market would bring in cash almost as much, if indeed not more, than the entire capital stock of the company.

None of the additional stock is being offered to the public. It is not being asked about by hally-ho men who would reap the attractive percent on the sales made. It has all been taken and issued to those who were the stockholders of the company prior to the increase in the capitalization.

The story of the Wichita Motors company reads like a volume written by dreamers. Its success smacks of the tales brought back to civilization by those who had sailed afar over the seven seas in the days when man's vision beyond the ocean's horizon was one of wonderment, but not knowledge. It has passed over the high ways of hard knocks and it has reached the macadam thoroughfares where the tides of commerce travel with the least resistance.

Organize in 1910.—For dreamers indeed were they—conceived the idea of building motor trucks in the southwest that would bear the burdens of industry in this section. At that time they had no charted course to follow, for the motor truck industry in those days was an unexplored field and one filled with snags and pitfalls. It took stout hearts to give the courage to sustain the hope born of enthusiasm in those days, for it should be remembered that 10 years ago a dollar was worth a full 100 cents and to those who sought it, it ever commanded a premium. Then, as now, motor trucks were not sold for a song. In fact, then, as now, motor trucks were not made for rhapsodies, but for the grinding sounds which float away as the music of commerce.

It was in the spring, the very early spring, of 1911 that the first Wichita truck was made. In looks it was about as attractive as a new born colt. But it could go under its own power and could sustain the weight it was designed to carry and those who had designed it and those who had fabricated it knew that it was good. So, great was the joy of the moment and potential were the prospects of the day.

Pity the Salesmen.—But the people of the southwest did not wax warm and take the new Wichita truck to their bosoms. In fact, they heard the appeals of the salesmen to purchase Wichita trucks with

America and the islands of the seven seas are all using Wichita trucks now and are ordering more Wichita trucks for future deliveries.

Sold in 75 Countries.—At this time only about 75 countries outside the United States are using Wichita trucks. When there are more countries it is well within the limits of hope to believe that more countries will then be using Wichita trucks. No other make of trucks is anywhere near so widely distributed.

When the foreign trade placed the Wichita Motor Co. on a firm financial foundation, the domestic business began to receive attention. The people of the southwest began to awaken to the fact that the truck made at home was the truck that could be counted on for good service. And Wichita trucks, like all other makes of trucks require occasional replacements of worn or broken parts to insure operation continuous and at the least possible cost.

This domestic demand became so insistent and strong that the factory at Wichita Falls was unable to secure output in large enough volume to meet it. So the Wichita Motor Co. acquired the modern plant it now operates at Oklahoma City. This plant No. 2 is operated under the same conditions that prevail at the home office.

Kemp First President.—And all this growth and all this healthy expansion has taken place without any financial reorganization. Joseph A. Kemp, who was the first president of the Wichita Motor Co. is still with the company and today is the chairman of the board of directors. J. G. Culbertson has worked up with the company to be president and general manager and the other officers and practically all the stockholders are those who have been with the organization since it first started.

The trade-name Wichita is protected in every civilized country on earth. It is one of the most valuable assets owned by the Wichita Motor Co. But

It does not figure on the books of the company as an asset and never has been capitalized. Of all the companies making motor trucks that were in operation when the Wichita Motor Co. was organized, a scant 20 are still going concerns. Almost a thousand motor truck factories have been organized and have passed into the oblivion of things since the Wichita Motor Co. made its first Wichita truck.

SMITH AUTO SALES CO. REPORTS GOOD BUSINESS

The Smith Auto Sales Company reports the best month they have had since they have been in business, with the following sales to attest their claim:

Oscar Williams, Packard touring; Peoples Ice Co., four three and one-half ton Packard trucks; Swainburn Geo. Packard truck; C. B. Waldon, Packard truck; L. J. Peeler Realty Co., Columbia Special Sport; O. W. Prechel, Columbia roadster; Zeb Nixon, Columbia roadster; Walter Sloan, Lexington touring; G. D. Anderson, Lexington sedan; Goodwin Wholesale Grocery Co., Packard truck; Robt. Elliot, Columbia roadster; V. W. Whitehead, Packard touring; W. W. Paine, Columbia Special Sport; W. R. Culburn, Lexington touring; Ross Gillman, Columbia Sport; Homer Ellinger, three and one-half ton Packard truck; F. C. Johnson, Lexington touring; C. W. Smith, Lexington touring.

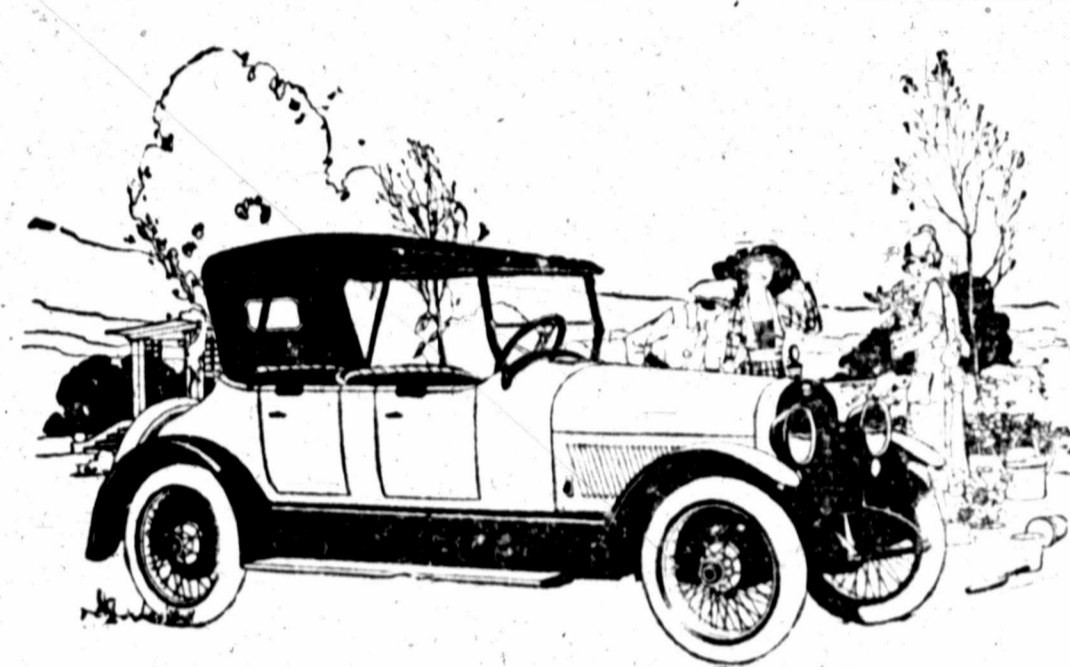
The sales have been so heavy and the outlook for future business is so strong that it has been necessary to increase their sales force.

ESSEX ROADSTER MAKES A HIT WITH THE SPORTSMEN

"When I wanted to purchase a roadster recently, I looked over every one on the market," said the latest owner of an Essex roadster. "The

out the running boards being encumbered with the usual camping impediments, I became convinced that the Essex roadster was attractively different from those I had formerly inspected. That feature together with its sturdy construction, its power and its entire camping outfit in that compartment and make my trips with

were the strongest arguments in my mind in buying an Essex. Since I have driven my car, my first impressions are fully sustained and suggesting to all my friends, especially those that camp and hunt, that the Essex is exactly the car for that sort of sport.



There is a touch of superiority in every feature of

Haynes Character Cars

We have them for immediate delivery

NOLEN-STRINGER COMPANY

Tenth at Scott Phone 1409
Wichita Falls, Texas

Bargains in Used Cars

- 2 HUPMOBILES
- 1 CASE, 7-PASSENGER
- 1 NEW FORD COUPE
- 1 DODGE
- 1 OAKLAND ROADSTER

NOLEN-STRINGER COMPANY
Phone 1409 715 Tenth St.



CHEVROLET

HAS MOVED TO

608-10 Indiana Avenue

Next Door to the Ford People

WE WILL APPRECIATE YOUR VISIT

Cochran Motor Co.

608-10 Indiana Ave.

SALES AND SERVICE



Packard

SAFE, DEPENDABLE AND LUXURIOUS

is the history of all Packard cars, and the PACKARD MOTOR CAR CO. have lived up to their past reputation in building their 1920 models.

We have some touring models for IMMEDIATE DELIVERY. Call and let us demonstrate their qualities to you.

SMITH AUTO SALES CO.

1002 Scott Phone 1333

Before the first Brunswick Tire was ever built, we analyzed and tested over 200 tires.

Since 1845 the name of Brunswick has stood for superlative values and fair-dealing.



Tires Differ As Policies Differ

Some Remarkable Facts About Brunswicks

THERE is nothing to prevent any maker from producing a super-tire. All formulas, all methods are well known in the industry. A perfect tire is simply a question of care and skill and cost. These facts can be verified by testing 200 types of high-grade tires and analyzing their materials and construction—as the Brunswick laboratories have done.

In a super-tire, such as The Brunswick, there can be nothing exclusive. Because such a tire must be a composite of all that is best. No one feature must overshadow others.

In Brunswick Tires, for instance, we have included that familiar formula, long in use, which makes the best tire tread that's known.

And there's a certain type of fabric which, by test, is stronger than all others. Naturally it is in The Brunswick.

To attain the utmost in tire mileage there are certain reinforcements—certain extras. We have adopted all.

To combat the commonest tire troubles, we have adopted the approved side-wall construction, long tested.

In other words, The Brunswick brings you a combination of superlatives, such as were never possible before.

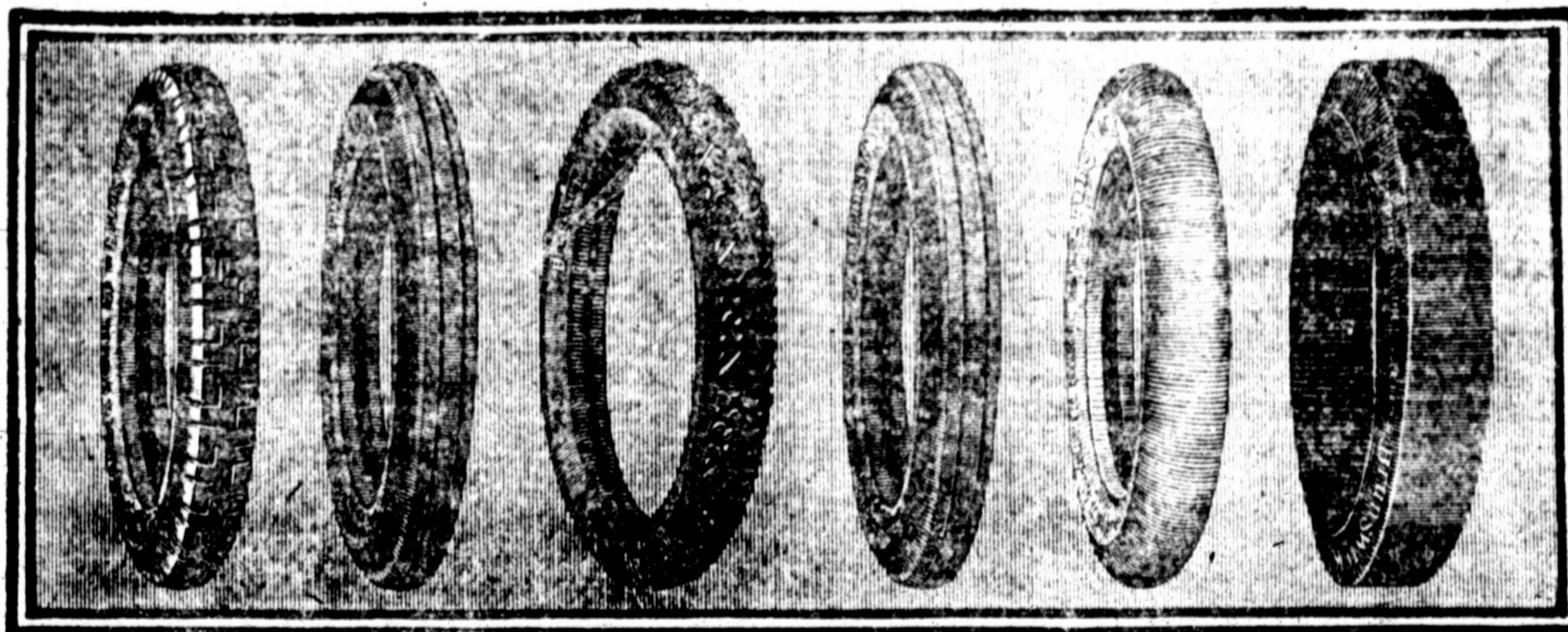
In attaining a tire worthy of the name of Brunswick we were convinced that it depended chiefly on policies and standards, on prejudices and knowledge. Brunswick Standards are known the world around. For 74 years the House of Brunswick has made only products of the highest grade.

Every Brunswick product has attained and held supremacy. The name always insures superlative values. To build a mediocre tire would be unthinkable for such a concern, jealous of its long-standing reputation.

BRUNSWICK

TIRES AND TUBES

Sold On An Unlimited Mileage Guarantee Basis



Cord Tires with "Driving" and "Swastika" Skid-Not Treads—Fabric Tires in "Plain," "Ribbed" and "BBC" Skid-Not Treads
Solid Truck Tires in all sizes authorized by the Society of Automotive Engineers

The Brunswick idea is to give all that is possible, all that anyone can give—all that any factory cost can buy.

The result is a tire that is winning friends the nation over. In The Brunswick motorists expect the utmost—and get it. Never has a tire had greater appeal to the man who appreciates real merit.

Try one Brunswick. See if you agree with others that here is more for your money. One Brunswick, we are certain, will convince you that you'll never be satisfied until you have all Brunswicks.

The Brunswick-Balke-Collender Co., Dallas Headquarters: 611 Main St.

APPERSON MOTOR SALES CO.

615 Tenth Street

Phone 2439

MUCH ENTHUSED RESULT OF VISIT TO FACTORY AND THE CHICAGO AUTO SHOW

The recent trip to the north including a visit to the Chicago Automobile show and a trip to the Haynes factory served to increase the enthusiasm of C. W. Nolan, of Nolan-Stringer Co., for the "first car in America." According to Mr. Nolan the Haynes car was one of the sensations of the show, especially the Surburban and Brougham bodies and the popularity of this car in the high class market in the north is a matter of great gratification to the local dealers.

NO DOPE CUPS FOUND ON THE CLEVELAND SIX

"How much work is it to oil and grease the car? Is the inquiry of many visitors at the display rooms of A. L. Zeckendorf Company, 'Cleveland Six' distributors at Detroit, Mich.

The sales manager, W. C. Loud answers the above inquiries with the following: "The development along this line has been very marked. The automobile manufacturer does not consider the automobile owner lazy, but the manufacturer has come to realize that the owner appreciates that type of car which takes the smallest amount of his time to oil and dope."

COCHRAN MOTOR COMPANY MOVES TO NEW BUILDING

The growth and importance of the automobile business in Wichita Falls is again demonstrated in the move made by the Cochran Motor company from their old quarters at 1106 Seventh to a new two-story building at 608-10 Indiana. This building was built to accommodate the Cochran Motor company. The ground floor is 50 by 150 feet and consists of offices, sales room, wash room and storage. The second floor is also 50 by 150 feet and is arranged for a modern shop and parts department.

JUDGE BONNER BUYS HIS FOURTH CHANDLER CAR

The Wilhelm-Moulder Motor company delivered during the past week to Judge W. M. Bonner his fourth Chandler car. This time it was one of the new 1920 "Dispatch" models finished in dark blue. Mr. Moulder is very proud of the sale, as he believes it is a great boost for the car he sells.

NEW TIRES FOR OLD DISCUSSED BY MOTOR

Under the title "New Tires for Old," Alexander Johnson in the February issue of Motor, discusses on the present condition of the tire retreading business. The outcome of it all is the succinct advice to car owners who contemplate having old casings retreaded, that they should be quite sure that they are dealing with an honest workman before they trust their tires to him.

NEW SERIES MARMON 34 IS EXPECTED TO ATTRACT GREAT DEAL OF ATTENTION

The new series Marmon 34, with the greatly improved aviation type motor is expected to create a sensation in this city as soon as the Excelsior Motor company is able to get enough cars rolling from the factory to fill the orders. "The old Marmons were some fast wagons," Mr. Fant, the owner of the agency, declares, "but when the new 1920 cars are given a trial it will be found they will outclass anything on the road for power, speed and general worth and good looks."

DEALER HAS FAITH IN PERFORMANCE OF NEW "LIBERTY" AUTOMOBILE

"I can't say what the Liberty car has done in the local oil fields," says Mr. Harley, local distributor, "on account of the fact that there have been few used for oil field use, due to the only recent introduction of this line into the city, but I do know what this sturdy automobile is doing in other oil fields under conditions more trying than exist even in the wilds of Newtown."

FOR SALE AT A BARGAIN

- 1 1/2 M. C. 5-ton truck \$275.00
1 1/2 M. C. 5-ton truck \$275.00
1 1/2 M. C. 5-ton truck \$275.00
1 1/2 M. C. 5-ton truck \$275.00
1 1/2 M. C. 5-ton truck \$275.00
1 1/2 M. C. 5-ton truck \$275.00
1 1/2 M. C. 5-ton truck \$275.00
1 1/2 M. C. 5-ton truck \$275.00
1 1/2 M. C. 5-ton truck \$275.00
1 1/2 M. C. 5-ton truck \$275.00

BANK BROKERAGE COMPANY

adverse tropical weather of Venezuela and the impassable waxy terrain around the oil district of Columbia. The almost impossible feats of endurance and dependability that have been

accomplished, according to reports of Liberty distributors in the oil districts of South America, dispel all doubts but that this car is a record breaker for strength and power.

"But let's come closer to home," said Mr. Harley with a smile. "I could go all day without going anywhere if I failed to make the local application. The unsolicited testimonials from

is a success there; if such is the case who would doubt but that under much less trying conditions and a climate less exacting on the cooling system of a car, the car would not stand up."

APPERSON

ACE

A Two-Passenger Roadster

On Display At

Apperson Motor Sales Company

615 Tenth St. Phone 2439

Master Trucks MIAMI TRAILERS CARRY HALF THE LOAD Made to Fit any Truck. Immediate Delivery Eckman & VonAllmen HUPMOBILE THE CAR THAT HAS A DEMAND \$1,450 TOURING OR ROADSTER POWER, COMFORT, ECONOMY HAVE MADE THIS SO ECKMAN & VON ALLMEN PEERLESS. HUPMOBILE. WESTCOTT OUR SERVICE MOST EFFICIENT

LOCOMOBILE The efforts of a very large organization,—The Locomobile Company of America,—are concentrated, year after on a limited production of the finest motor equipage, which by name include Cabriolets, Limousines, Landaulets, Sedans, Roadsters, Coupes, Touring Cars, Broughams, Runabouts Coupe-Limousines, Dorsay Landaulets Types-Sportif, Salamanca Cabriolets, Victorias, Wagonettes, Berlinses, Touring Limousines, Canoe Roadsters, —Collapsible Cabriolets, Gunboat Roadsters, Coupe-Landaulet. LOCOMOBILE-COLE COMPANY 805-7 SCOTT PHONE 1815

Born of the War

The New Marmon

With High Efficiency Motor

UNDER the stress and strain of the necessities of war, the scientist, the engineer and the manufacturer were compelled to win victories of mental and productive effort to adequately back up the great men on the fighting fronts.

The battles of the laboratory and factory were as insistent and tremendous in their way as the operations on the battle-fields of France.

Keyed to this tremendous mental pressure, men did the impossible as a routine of the day's work. Under these conditions the new Marmon high efficiency motor was born.

...

IT was freely predicted that the world's truly great motor car would eventually be made by one of those few motor car manufacturers who were honored by being called to Washington in 1917 to devote their factories, their capital and their brains to the building of aircraft motors. Because they, and they only, learned the mighty lessons which mean much to you, a lesson of heretofore unknown production difficulties overcome, heretofore unknown engineering feats accomplished. It is from the accumulated knowledge of this experience prefaced by sixty-seven years of successful manufacturing experience that we present the new Marmon.

We have added new meaning to motor car "performance," as shown by the attached table. Those familiar with the exceptional performance of past Marmon models will appreciate the

full significance of this statement. There is a new sweetness of running, a new freedom from the unpleasant vibrations and motor disturbances of the past, a new result which only a demonstration will really disclose.

These results were accomplished by no mysterious alchemy, but by a practical application of the great lessons we learned in building aircraft motors.

Of all motor car manufacturers, only this organization had the experience of building two separate and distinct types of aircraft motors during the war, thus giving us a broader and unparalleled experience.

We adapted a previously undeveloped machine shop accuracy—new methods of heat treatment—new possibilities of close fits and tolerances and new applications of metallurgy. All of these things were known before only in a laboratory or experimental way. All were used in building fine hand made racing cars, but they were never in the realm of practical production methods until today, and it was only in war-time that we learned these lessons.

It was under these conditions the new Marmon high efficiency motor was built.

The net result is that we are enabled to present to you a motor car built to the most exacting standards of fine workmanship that will bear the same relation to the finest hand-fitted cars that the American aircraft motor—which was admitted generally to be the best in the world—bore to the hand-fitted, hand-made motors of our allies.

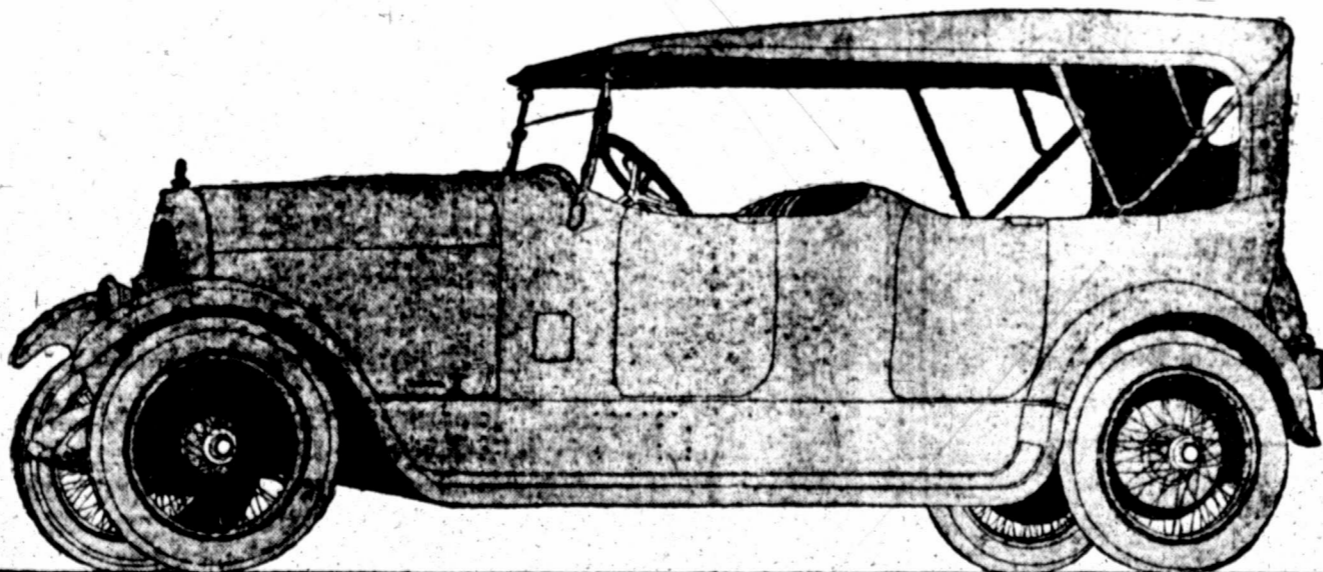
We are now demonstrating the new series Marmon 34

"PERFORMANCE"

These tests were made on the Indianapolis Motor Speedway, and over ordinary country roads, with a standard 7-passenger touring car, fully equipped ready for the road, standard 4 to 1 gear ratio, two persons in the car, witnessed and checked by Messrs. J. Edward Schipper, technical editor, Automotive Industries, and Chester S. Richer, M. E., technical automobile writer.

Car with standard 4 to 1 gear ratio

Acceleration 10 to 50 m.p.h. in high gear, 15.8 seconds. Half mile at average speed of 65.7 m.p.h. Timed with a stop watch. Run in high gear at walking speed for about 100 yards. Hill climbing in high gear, starting 5 m.p.h. at bottom; speed at 1000 ft. (8.16% grade) 27 m.p.h.; speed at 1775 ft. (6.14% grade) 43 m.p.h. Starting 10 m.p.h. at bottom; speed at 1000 ft. (8.16% grade) 30 m.p.h.; speed at 1775 ft. (6.14% grade) 47 m.p.h.



Pennant Awarded to Nordyke & Marmon Company, November 1, 1918, by United States Government, Bureau of Aircraft Production, for October Competition, Permanently Awarded Nov. 16, 1918.

MARMON — 34

EXCELSIOR MOTO COMPANY

C. W. FANT, Proprietor

605-11 Scott Phone 2860

CENTER OF WEEK-END INTEREST IS LARGELY IN TESTS DRILLING IN KEMP-MUNGER-ALLEN FIELD

With several tests going neck and neck below 1600 feet after the Kemp-Munger-Allen sand on the Mungler brothers ranch, and nearby, there are indications that Iowa Park will furnish the developments next week...

The Kemp-Munger-Allen No. 2 Munger, 500 feet to the west of the first well, is drilling around 1475 feet, and is about half way to the sand...

New developments in the northeast part of the district are not numerous, though operations are continuing at a fairly good rate in the new pool around the General well, the Green and Waggoner making a very good producer...

lot 21 Speck (Colon), drilling around 1380 feet. Lewis and Milton, No. 1 State Lands, drilling around 800 feet...

Another new test, in Block 819, on the J. L. Schnakenberg land, is the United Southern Oil Company No. 2 No. 1 Schnakenberg, which is drilling around 300 feet...

In the Allen and Roberts tract, the new pool, there is considerable drilling activity, while in the Waggoner the wells are being completed as rapidly as possible...

ASK YOUR DEALER FOR SANWALD AND TUCKER'S EXTRACTS, BRANDED CANDLES and CHOCOLATES "Made in Wichita" 305 Mill Street

SUSPENDED SENTENCE WITH CONTRIBUTION AND PLACE TO WORK

Harry Young, world war veteran, will not go to prison. He pleaded guilty before Judge H. F. Weldon in the 30th district court Saturday to a charge of forgery...

For Successful Rotary Drilling Use the Adams-Akin Drilling Co.

We have just finished a well and are ready to start another. If you have any drilling to be done, do not fail to see us at once.

streets hungry and cold. He at last attempted to pass a bad check but his forgery was detected at the bank teller's window and Harry went to jail.

Oil Leases in New Mexico. Anybody wishing to buy placer claims in New Mexico will profit by buying from the New Mexico Oil and Leasing Co. as the government land they stake for their clients are believed to be on structures and in the most likely part for oil in eastern New Mexico.

Edwin-Clapp Shoes

—Are more than just good-looking shoes. —they have the backing of an organization that have made fine shoes



SINCE 1853 Priced \$17.50 to \$19.00 WALKER SHOES PRICED \$13.50 to \$17.50 Richardson THE HABERDASHER 8th at Scott Ave. Times Want Ads Get Results. Try Them!

Splash! Bang! THE BOOM IS ON—ORDERS ARE COMING IN FOR BIG 1000 ACRE OIL COMPANY'S STOCK FROM ALL OVER THE COUNTRY

The "CATERPILLAR" Tractor is a Cross-Country Locomotive. Continued heavy rains have turned the whole country into a vast quagmire. Roads have ceased to exist. Neither teams nor trucks can operate; traffic is completely tied up, except 'Caterpillar' outfits are hauling continuously.

SUNDAY FEBRUARY 8, 1920. TO B... ANTI... Sunday, in Wichita... League's... enforcement... Anti-Slavery... average m... relates to... active wor... names that... engage de... leggers. T... They belie... of the stat... of the tax... der him s... erment... money und... ng to An... ment alwa... of the law... is heartily... boogies re... sending hi... wholesome... it is surfa... Anti-Slavery... abiding re... accomplish... Their edu... The purpo... services lo... sentiment... enforcement... for carrying... The legu... are (the m... moon leagu... edition of... at and sta... distribution... apportion... as to how... The leagu... enforcement... quarters at... enforcement... Its services... request fr... or officers... their assist... In addition... league has... educating c... zens not n... policy, to... preclude th... cooperate... will be one... or work. T... campaign a... the evils o... standpoint... the pain t... It becomes... day is not... body of ch... thoroughly... loy, and t... oughly era... A Hom... In some... custom... over to th... guests ser...

FEBRUARY FIFTEENTH TO BE FIELD DAY FOR ANTI-SALOON LEAGUE

Sunday, Feb. 15, will be field day in Wichita Falls for the Anti-Saloon league's campaign for law enforcement. Dr. Louis Albert Banks will address a joint meeting of the congregations of all the churches at the First M. E. Church south, corner Tenth and Lamar streets at 2 p. m.

The following statement has been issued concerning the work of the league. An enthusiastic campaign for law enforcement is being conducted by the Anti-Saloon league of Texas. To the average mind law enforcement as it relates to the liquor traffic means detective work and the average man presumes that when the state takes the taxpayers' money and fails to render him service in giving good government, the state has taken the money under false pretenses.

According to American ideals good government of the law. The Anti-Saloon league is heartily in favor of catching the bootlegger and prosecuting him and sending him to the penitentiary. It is wholesome work, but at the same time it is surface work. The plans of the Anti-Saloon league look to far more abiding results, and they propose to accomplish this through education. Their educational plans are varied. The purpose of these varied public services looks towards creating public sentiment that will insist upon law enforcement, and also to provide funds for carrying on other lines of activities. These other lines of activities are its most expensive. The Anti-Saloon league of Texas has prepared an edition of 10,000 copies of both national and state prohibition laws for free distribution. This edition will contain annotations of the laws, and explain as to how the laws are to be enforced. The league will also develop a law enforcement department, with headquarters at Dallas, to assist in the enforcement of law throughout the state. Its services will be free, but only upon request from representative citizens, or officers in any locality desiring their assistance.

In addition to these duties the league has mapped out broad plans for educating certain elements of our citizens not now in harmony with the dry policy, to the point that they will appreciate the value of prohibition and cooperate in its enforcement. This will be one of its most expensive lines of work. They also plan an educational campaign among the rising youth as to the evils of liquor from a scientific standpoint. To one who will take the pains to study this plan in detail it becomes easy to believe that if a day is not far distant when the great body of citizens of America will be thoroughly committed to the dry policy, and the love of booze be thoroughly eradicated from our country.

A Homely Wedding Ceremony. In some parts of Scotland it is the custom to break the wedding cake over the head of the bride and the guests scramble for pieces of it.

Grandfield News

GRANDFIELD, OKLA., Feb. 7.—On account of the great increase of the postoffice work, acting Postmaster W. H. Whiddon has asked for relief in the way of more clerks. The department is now only allowing pay for one clerk and the work at the postoffice could easily keep six clerks busy from 7 in the morning until 8 at night.

The depot at the M. & T. railroad is to be enlarged immediately. A few months ago 100 feet were added to the freight room west on the west end of the depot, but the waiting room is now to be enlarged. There is often no standing room in the present waiting room and the cars and bunnies of the weary waiting passengers are often trampled on until a stampede almost takes place.

John G. Farmer, general passenger agent, and Fred D. Lyon, travelling passenger agent, who have headquarters at Fort Worth, were in the city this week looking after the Rock Island extension now being made from Manhattan to Grandfield.

Miss Ruth Lamb has resigned her place as a grade teacher in the local school because of throat trouble and has gone to her home at Tulsa.

A. A. Hodges was called to Shamrock, Tex., the first of the week by a message stating that his brother, J. D. Hodges, had died of pneumonia. A few hours after Mr. Hodges had left for Shamrock to be present at the funeral of his brother, another message came to him here stating that another brother, Nolan Hodges of Hastings, Okla., also had died of pneumonia. A regular "bus" line is now running between Grandfield and the new oil field south of town, making daily schedule time.

ROTARIANS PLANNING TRIP TO LAWTON, OKLA. TO SEE GEN. PERSHING

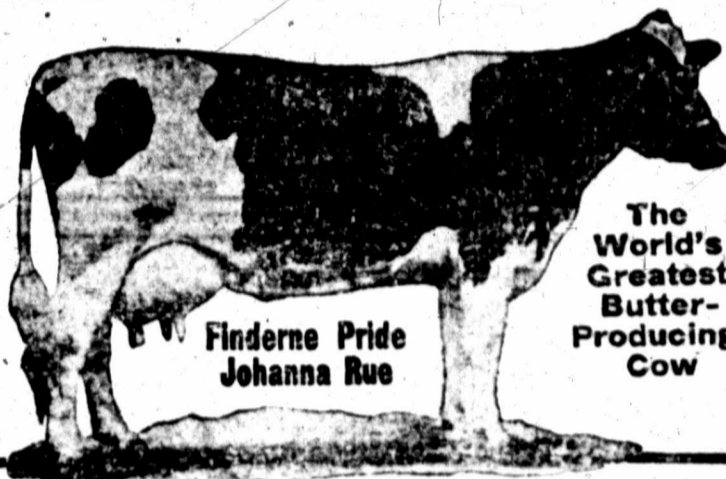
A number of Wichita Falls' Rotarians are planning to go to Lawton Monday to be the guests of the Lawton Rotary club when General Pershing will speak at a Rotary luncheon. General Pershing, who is a Rotarian, will be in Lawton Monday for an inspection of Fort Sill.

Among those who will make the trip are Morris Marcus, W. N. Bonner, R. H. Collier and Ira Brown.

UNITED CHIEF AND BURK KEY

FOR SALE—Lease on 10 to 100 acres around the above wells at a good price. 100 acres in one piece. Phone 163.

TAYLOR HUDSON



The World's Greatest Butter-Producing Cow

Funderne Pride Johanna Rue

THIS wonderful cow produced 28403.7 lbs. of milk and 1470.5 lbs. of butter in 365 days—a record unsurpassed by any living cow. Read what her owner, Bernhard Meyer of Funderne Stock Farm, Funderne, N. J., has to say about her:

"We have made another world record with our Holstein Cow, Funderne Pride Johanna Rue. I am glad to report that during her test she was fed only on your SCHUMACHER FEED, which in my estimation is a very valuable feed for dairy purposes."

Mr. Meyer, as well as other "top notchers" in the dairy industry, discovered long ago that

SCHUMACHER FEED

the old reliable standby that helps them to increase the production of their herds is the feed of World's Champions because it helps to make world Champions.

You may not expect to make any world's records, but if you follow the example of the most successful dairyman, whether fitting and feeding for records or for maximum dairy production day in and year out, SCHUMACHER FEED will more than make good for you.

It will prove that it is indeed the world's greatest maintenance dairy feed. Try it and be convinced. Come in and let us tell what other customers say about it.

J. G. Jones Grain Company Telephone 57 514 Sixth Street

THE ROBBINS COMPANY

SPECIAL ATTENTION PAID

Automobile and Compensation Insurance

"PHONE US AND WE WILL COME TO YOU."

809 Scott Ave.

Phone 2101

\$5 PER ACRE IN FEE

Let us submit to you, in detail, a proposition regarding 10,000 to 50,000 acres of cut-over, hardwood and pine timber land situated in Pulaski county, Arkansas, starting at a point only 15 miles from Little Rock, running north, with a narrow gauge railroad through the center. This is a clean-cut proposition, and we represent the owners, who are directors in one of Little Rock's largest banks. The price is only \$5 per acre, and the land is not "scenery" but available for a number of purposes, principally stock raising. A safe investment; sure for a large profit. See Mr. Cockrill with—

CURLEE & JOHNSON

Phone 1821

MEMORIAL

I carry a large stock of Marble, Granite, Stone Curbing and everything in cemetery works and can supply your demand, whether it be large or small.

M. G. Catter Marble and Granite Works Corner Ohio Avenue and Third Street



The best industrial site in the city of Wichita Falls, 150 feet on track in the heart of the city. Call Mr. Johnson, with CURLEE & JOHNSON Phone 1821

MEMORIAL EMOTION

Life is full of many complex emotions, some good and some bad. We wander down life's pathway and find them stealing into our hearts at every turn. Think how sweet and tender the one that prompts us to care for and remember the one that is dead. We can help in a most pleasing way.

WICHITA MARBLE AND GRANITE WORKS
A. G. DEATHERAGE, Prop. Phone 410
606 Seventh Street

SCULPTURE

A Difficult Spot Beautified

NOT infrequently, home owners instinctively feel that something is wrong with the appearance of their garden or estate but what are unable to tell what it is.

To attract attention without the knowledge of what is really needed to improve the garden or estate, is to attract attention without the purpose in mind and also to entail unnecessary loss.

Sometimes the difficulty is due to the whole or an expense of ground. A single garden with a fountain may be just the thing to break the monotony.

Our intimate knowledge of how to overcome garden defects will prove of an inestimable value to you. Our carefully illustrated booklets will be of much interest to you.

THE TEXAS NURSERY COMPANY
SHERMAN, TEXAS

INCREASE PRODUCTION BY IMPROVING WICHITA FALLS' TELEPHONE SERVICE

ANY YOUNG WOMAN, NOT NOW EMPLOYED IN A USEFUL OCCUPATION, WILL SERVE WICHITA FALLS AND HERSELF BY TAKING UP THIS ESSENTIAL PUBLIC UTILITY WORK

- She will be well paid.
- She will have more than ordinary opportunity for advancement.
- She will be under the personal direction of female executives who understand women and their needs.
- She will be protected from discrimination or favoritism by a carefully guarded routine of individual supervision.
- She will be protected in health and comfort by the constant diligence of qualified health experts.

Our Employment Department is located at corner 9th and Scott streets. There an applicant will be cheerfully told all about the work and full details of all employment conditions. There applicants will be carefully and most considerately examined to determine whether or not they be physically and mentally fitted to perform this service. The requirements are simple and reasonable, as is also our insistence upon satisfactory local personal references. This department is open to receive applicants every weekday from 8 a. m. to 6 p. m.

Wichita Falls Telephone Operators are faithful and industrious. They are conscientiously serving you with their best efforts. Patrons are invited to visit our Telephone Exchange, inspect the work and to refer to our Employment Department those whom they think would take up this eminently desirable occupation.

The Southwestern Telegraph and Telephone Company

OIL MEN ACTIVE IN YOUNG COUNTY WITH IMPROVED WEATHER

GRAHAM, TEX., Feb. 7.—With the disappearance of bad weather oil men have become very active here. Heavily laden trucks with tools constantly go rumbling by; abstract companies are compelled to work overtime recording leases. A Young county lease or royalty is becoming a valuable possession and it is believed before spring gives way to summer Graham will be headquarters for one of Texas' great oil fields. The following is the Young county drilling report: Texas Co., Hollis D. League survey, drilling, 90 feet.

The Roxana well, W. E. Donnell No. 1, 11 miles southwest from Graham, 1377 feet, 75 barrels daily. Mattie Gervis Oil Co., Steen No. 1, survey 1896, eight miles north of Graham, drilling at 2600 feet. The Morrill Oil and Gas Co., Hunt No. 1, on T. E. & L. survey, 3736 shut down at 1725 feet, waiting on crew. Dallas-Young, Stewart No. 1, on David Dawson survey, drilling at 1625 feet. Coeden, Timmons No. 1, John L. Lane survey, six miles southwest of Graham, drilling at 3726 feet. Southwestern Miami Oil Co., McKee No. 1, seven miles southwest from Graham, Wm. Fullerton survey, 1250 feet. Southwestern Petroleum Co., Scott No. 1, on Rudiso Irrigation Co. survey, 620 feet. Sun Co., Donnell No. 1, on T. E. & L. Co. survey 1315, 2360 feet. Langford, Staley & Chenault, Donnell No. 1, three miles north of Ellasville, on W. J. Donnell survey 1726, drilling at 1478 feet. Snowden & McKeen, B. F. Lindsey survey, drilling at 1900 feet. Humble Oil Co., Marshall No. 1, T. E. L. survey 3409, under-reaming at 2310 feet. Texas Co., Graham No. 1, 3860 feet, producing 50 barrels, setting tubing. Texas Co., Arnold No. 1, on the J. S. Lee survey 173, 4700 feet, 6,000-barrel tank erected, producing 125 barrels, setting tubing. Texas Co., Norris No. 1, 2711 feet, waiting on tools. Texas Co., Blair-Hughes No. 1, on S. A. & M. G. Ry. Co. survey 262, waiting on tools. Manhattan Petroleum Co., Johnson No. 1, 2400 feet, shut down. Arkansas Oil and Gas Co., Jeffery No. 1, T. E. & L. Co. survey 350, drilling at 1150 feet. Texas Ajax Oil Co., Benson tract, five miles east of Olney, T. E. & L. Co. survey 1451, drilling at 350 feet. Union Oil Co., Whittenburg No. 1, 19 miles south of Graham, drilling at 3510 feet.

New Locations. Panhandle Refining Co. of Wichita Falls erecting derrick on McCluskey north 100-acre tract, survey 3415, 600 feet east of river and 500 feet north of their line. Material is on ground for well on Pink Brooks' land, seven and one-half miles west of Graham, west end of survey 248, to be drilled by Texas Co. Texas Co. made location on T. E. & L. survey 1202, 13 miles southwest of Graham. Location has been made on Walter Corbett land, Ruthey Campbell survey. Texas Holding Co. made location on Peter Wicks survey, northwest from Graham, Art Ernest of Dallas land. Denny et al is to drill on the James Tobin survey, block 43, as shown on Stovall map, 10 miles southwest. Texas Co., Arnold No. 2, survey 15, rigging up to drill. Roxana, L. M. Pratt survey 1110, 500 feet east of Donnell No. 1, building rig. Ray Colcord, location on Wm. Johnson survey, South Bend. Rigging up on Texas Co., location, Hunt land, abstract 1496, nine miles west of Graham.

BANK CLEARINGS OF WEEK SHOW GAIN OF NEARLY A MILLION

An increase of nearly a million dollars, \$91,785.05 being the exact figures over last week, is shown in the bank clearings of the week ending Saturday. For several weeks the clearings have registered slight losses but the gain of this week is very gratifying. The total for this week comes to \$5,793,901.93, distributed over the week as follows: Monday \$1,279,722.78 Tuesday 983,337.18 Wednesday 847,272.27 Thursday 914,117.22 Friday 992,235.78 Saturday 786,291.70 Total \$5,793,901.93

Can Man Consume \$100,000 Worth of Booze in Lifetime?

CLEVELAND, O., Feb. 7.—Can one man of mature age, consume \$100,000 worth of whiskey, gin, wines and other intoxicating liquors in the balance of his lifetime? J. B. Rose will try to prove that it can be done. Federal agents backed up four huge mail trucks to his cafe here last night and loaded them to capacity with Rose's cellar stock. Rose insists the liquor is his private stock, cached to relieve the ever-increasing dryness of the days to come; that he intended it for his own personal consumption, and will endeavor to show the courts that one man, with reasonable application can drink up \$100,000 worth of liquors in about half of the Biblically allotted life-time.

MODERN WOODMEN TO HAVE BANQUET THURSDAY NIGHT; SUPREME ORGANIZER COMING



RALPH E. JOHNSON, Lincoln, Neb., Supreme Organizer Modern Woodmen of America.

The stage is set for the large class initiation and banquet to be held Thursday, Feb. 12, when Supreme Organizer Ralph E. Johnson and State Deputy John E. Swanger of the Modern Woodmen of America will be guests of the local camp. A large number of applications were presented at the meeting Thursday night, and the class of candidates for this rally will be the largest ever shown through the forest at one time in the history of Wichita Falls camp. The local members are congratulating themselves over having secured the services of Special Deputy Bert Oakman for this drive, and have laid their plans for a monstrous celebration. Those in charge of this work have arranged so that any members who have not earned free ticket to the banquet can purchase them at the office of the clerk up to Tuesday evening, Feb. 10. Members can also secure tickets for their ladies, and the banquet is to be a real family affair, to be served by the ladies of the First Methodist church, Seventh and Lamar streets.

TEN FEET OF SAND IS MAKING GOOD SHOWING IN KEEN-WOLF WELL

Ten feet of oil sand, making a highly favorable showing has been drilled in the Keen-Woolf test, 700 feet south of the Kemp-Munger-Allen, according to advices from the field Saturday morning. A smaller string of casing, 4 1/2 inch, is now being set in order to shut off the salt water in the upper sand. Confidence that a producer will be made of the test is expressed by operators who have visited the test. The Wilder Jones test in block 30, north of the Kemp-Munger-Allen, is reported below 1600 feet, and is expected to reach sand depth early in next week.

ELECTRIC FLOOR SURFACING

Old and New Floors Surfaced and Finished. SHANNON BROS. PHONE 2172

Phone 602
GET IT HERE
IF IT'S OFFICE SUPPLIES OUR STOCK IS GROWING
COURTESY ALWAYS
MIDWEST PRINTING COMPANY
Printers. Office Supplies
610 Ninth Street

Times Want Ads Are Winners—Ask Anyone Who Uses Them!

CLOSE IN TRACKAGE

On a corner, 140x150, \$15,000, also 140 feet on pavement and both car lines; certain to increase in value in the immediate future. \$10,000 cash will handle. See Mr. Cockrill with

CURLEE & JOHNSON

Phone 1821

The Musical Treat of the Year

Royal Belgian Concert Trio

AT FIRST M. E. CHURCH, SOUTH Tenth and Lamar Streets
THURSDAY, FEB. 12th at 8:15 p. m.
Tickets \$2.00. For sale by all Rotarians and Miller Drug Store; Richardson, the Haberdasher
NOTED ARTISTS AUSPICES ROTARY CLUB
Entire Proceeds Benefit Belgian Babies

Authoritative Spring Clothes For Men



The Newest Style-Features
The Freshest Fabrics
Truly Fine Workmanship
Are Characteristic of Our Clothes

In the past few days we have received some beautiful clothing. Models and fabrics that instantly appeal to the man who demands style along with quality. This store since its debut has always sold nothing but the best, and an "all wool" policy will be maintained in our clothing department at all times.

SATISFACTION OR-YOUR MONEY REFUNDED on any article that comes from this store.

Visit our store Monday and see the new spring Manhattan shirts, Stetson hats, Edwin Clapp shoes.

"The DISTINCTIVE CLOTHIER"

Richardson

THE HABERDASHER

Eighth and Scott Avenue

WILL LET

50-50 Drilling Contract

or would consider a sale of all or an interest in 5 acres

Wells just struck on three sides, one making better than 1200 barrels within 450 feet.

Also 10 acres within 1300 feet of 1200-barrel well and about 900 feet from another good well. Both tracts considered absolutely proven for gusher production.

Address Owner, box 32, Care of Times

SUNDAY, FEB
BRYAN
TO STA
OF GO
Criticism Smit
For Positio
tion.
MIAMI, FLA.
Governor Alfred
Tork, and Gove
wards, of New
entered upon the
Democratic part
the saloon." Wi
statement to the
answered the
speeches made
National Democr
mings in New Y
Hoyden, Bryan
ment, Bryan sa
"Who will pay
injustice to Mr.
no interest in
His chief busine
as a sounding b
pions of the liq
official sanction
gram of a crim
has been outlaw
of the nation.
Gov. Edward
both of whom o
lawless business
against public n
upon the task c
eratic party in
loon, if their f
individual mer
if the brewers
it, the pre-con
make the Newb
like a Sunday s
"It is fortun
that Edwards a
the black flag
will be wear
Edwards and S
Republican candi
only one to be c
Gov. Smith, w
sent a telegr
which he chari
tion, amendin
against persona
sia in her p
dreamed of."
REPORT ON C
NEW YORK.
federal bank, a
the following cl
surplus incre
Leah's decrea
Cash in or
22,577,000
Revenue in f
increased \$3,151
It serves in or
\$765,000
Reserve in de
600
Net demand
\$1,075,000
Time deposits
Circulation, it
Aggregate res
Excess reserv
CURRENT FR
MASSAGE
CAUSE
OKLAHOMA
"An electric r
which the body
found late yest
the police to ha
which caused d
82 YEARS OLD
GOOD
"Seven or ei
a very sick ma
trouble of stomi
the liver i
than a year I w
not. Upon the
tried Mayr's W
although 82 ye
good as a youn
harmless prep
the catarrhal n
al tract and a
which causes p
liver and intest
ing appendicit
vince or money
lor and drugg
What I
Sufferers Sh
It is a B
Doubtless i
you have offer
question, whi
main answer
Science has
medium is ca
year blood, a
reach it is b
eliminates an
the pain dem
AV
It is natural
over-abund
assure not c
those subst
SCO
is daily h
and girls t
Y
EM
LA

NUMBER OF WELLS DRILLING IN HALL; LEASING IS ACTIVE

Special to The Times.
VERNON, TEX., Feb. 7.—The following is a drilling report of Hall county Texas, furnished by R. S. Dunbar of Memphis, Tex.

Home Peoples Oil company: The recent showing of oil has been tested and found to be a seepage, this showing has been ceased off, and drilling resumed around 1,545 feet in lime supposed to be cap rock.

Coble Petroleum O. & C. company: Boiler trouble, drilling 970 feet.

Virginia-Texas O. & G. company: G. D. Kluge and Sam Aston of Virginia, and G. E. K. Hixon, resident trustee, derrick now being built. Their holdings consist of a large tract owned by Lewis and Letts, known as Ox Bow ranch, south of Red river, location Section 53, Block 1, J. Potevant survey, using Standard California rig. No stock or acreage for sale.

Crayola O. & G. company: Spudding. Buck Creek O. & G. company, drilling at 1,000 feet in blue shale.

Burke-Harlen-Hilton O. & G. company, Section 28, Block 1, E. P. R. F., drilling around 150 feet; 3,000 acres under lease.

Giant Oil company, derrick.

Leasing in Hall county is gradually on the incline, and with the showing of oil in the Lella Lake well, excitement is running high around Memphis. Buck Creek O. & G. company own 400 acres near this well, and stock in both companies is advancing.

DRIVING A TWO-FISTED CAR WITH ONE HAND

A big touring car, dusty and travel-stained, rolled into the Apperson garage. The license plate showed a state 400 miles away, but a woman was driving the car, with one hand.

L. L. Wilson, local Apperson dealer, was speaking of the occurrence. "Many women drive the Apperson Eight, but I never realized before that the car is so perfectly balanced and steers so readily that a woman could drive it with one hand. But this woman had, as she told me, driven it many times that way without any trouble.

As a matter of fact, the Apperson

TRY US—ALL WE ASK IS A TEST!

If you have any doubt about our ability to serve you better than the average druggist—we ask for the privilege of convincing you.

PRESCRIPTIONS: Try us on prescriptions. We have a complete stock of pure, fresh prescription drugs and employ experienced pharmacists only—therefore we fill all prescriptions as your physician directs.

SICK-ROOM NEEDS: Try us when you need any time-tested contrivance for comforting the sick or aiding the attendant. Our lines of such goods is complete and we invite inspection.

TOILET GOODS: Try us on toilet goods, especially the things which you see advertised. We have a most complete stock of high-grade Perfumes, Powders, Creams, Lotions, etc.—goods of known quality.

Special Attention
Given Our
Prescription Dept.

"CONNECT YOUR HOME WITH A FIRST CLASS DRUG STORE"

Palace Drug Store

PHONE 341-340 ONLY THE BEST FREE DELIVERY

First Attention
to All Orders
For the Sick

Eight is so perfectly balanced that it will swing into the straight away of itself after rounding a curve. It tends to run straight of itself. A light touch on the wheel, scarcely a perceptible effort, sends the car in the right direction, responsive to the driver's will.

"In fact, the way the car acts some times you'd swear it's a mind reader."

The National Bank of Commerce has closely identified itself with the all-important industry of this district—oil—and furnishes to oil men banking service based upon a complete knowledge of the business and a keen understanding of their problems and needs.

City Markets of the United States. Of the 227 cities in this country having an estimated population of 30,000 more than half of them had municipal markets in 1918.

Young men and new enterprises as well as those firmly established in the community are welcomed as customers of the National Bank of Commerce and receive the fullest measure of cooperation in making the most of their opportunities.

LARGE BAKING PLANT TO BEGIN OPERATIONS FEBRUARY FIFTEENTH

The largest and most modernly equipped baking plant in the state of Texas will open in Wichita Falls on February 15 when the Wichita Falls Baking Company at 1007 Travis street will begin operations.

The plant occupies a building with a floor space of 70x150 and is equipped by the most modern baking equip-

ment made. The plant is owned by Max Weitzman, who came to Wichita Falls from Tulsa where he was formerly engaged in the baking business. Mr. Weitzman is thoroughly experienced in the baking business. He states that the plant will have a capacity of 50,000 loaves per day.

The company will engage in both the wholesale and retail business in Wichita Falls and is planning an extensive basket wholesale business throughout Northwest Texas and Southwestern Oklahoma. "Clean Made" will be the trade name for the bread baked in this plant.

Notice to My Customers. All who have left old hats with me must get them before Monday, as I need room for the spring stock. There can be no exceptions to this rule. Josa Dickson. 251-31p

Phone 2432 1210 Filmore St.
Miss Ruth Robertson
Remodeling a Specialty.
Parlor Millinery.

HOLLINGER & YAUGER TYPEWRITERS

807 NINTH STREET PHONE 1358
"WE FIX ALL MAKES" "PROMPT SERVICE"

THE STORE OF QUALITY FOR MEN

Featuring Hickey Freeman and Stratford Clothes
First showing of Spring Hats
KAUFMAN & LEVIN
717 Eighth Street
The Store that Makes You Feel at Home

Films Developed

Rolls, Any Size, 15c
Packs, Any Size, 15c
PRINTS
1 1/2x4 1/2 or smaller, 5c.
1 1/2x2 1/2 and up to 4x5 Post Cards, 6c each.
We do not sacrifice quality for speed. Let our film expert give you better results.
REXALL DRUG STORE
710 Indiana Avenue



We are authorized dealers for
"Eastman Kodaks"

Wilford Harrison Drug Co.
SUCCESSORS TO MORRIS DRUG STORE
PHONE NO. 9 WICHITA FALLS, TEXAS
704 Indiana Avenue

HEALTH APPLIANCES

The application of heat to the body when needed and internal bathing under your doctor's orders are two means of keeping yourself free from sickness. We carry a complete line of
FOUNTAIN SYRINGES AND HOT WATER BOTTLES

The Miller Drug Store
WE SELL *Orgatone* H.T. THORNBERRY PROPRIETOR.
Phone 193 or 194 Ohio at Eighth Free Delivery

Courtesy as Applied To Our Banking Service

Courtesy, next to character and honesty, is one of the first demands this institution makes of its officers and employees. To be courteous, to be kind, showing care and consideration in the handling of small accounts, as well as the largest accounts, this is one of the chief aims of this bank and we invite your connection here with such Courtesy-Service in view.

American National Bank

Wichita Falls, Texas

OFFICERS:

Rhea S. Nixon, President.

- F. L. McCoy, Active V. Pres.
- Wm. N. Bonner, V. Pres.
- A. C. Parker, V. Pres.
- R. M. Waggoner, V. Pres.
- H. S. Griffin, V. Pres.
- H. G. Burlew, Cashier.
- C. C. Crowell, Ass't. Cashier.
- R. D. Shirley, Auditor.

"HERE SINCE 1884"

If you think you would like to come with us, we shall be glad to talk things over with you.

Capital, Surplus, Profits . . . \$ 1,298,812.93
Deposits 14,237,303.81
Resources 16,063,664.21
Cash on Hand 5,152,822.76

FIRST NATIONAL BANK

Indiana at Eighth
Street



LET THE FIGURES TALK

Did you notice in the article published recently under the heading: "December Bank Deposits Show Gain of More Than a Million Over November," that the gain of the Wichita State alone was over Half a Million?

We gratefully acknowledge this expression of increased confidence in us and wish to express our appreciation. It is our constant aim to render such service as will merit every trust and confidence reposed in us.

WICHITA STATE BANK & TRUST CO.
Guaranty Fund Bank
WICHITA FALLS, TEXAS

Protect Your Eyes

Ask yourself the question, "Are my eyes normal and in good condition?" You can truthfully answer this in your own mind. Then if you feel that they need attention do not wait but act at once and come to see our graduate optician for examination.

Art Jewelry Co.
Optical Parlor

The Agency of Specialists

Reports of adjusters disclose great disappointment among assureds who have suffered recent losses when they realize they have been carrying about one-half enough insurance to replace their loss. Your property has doubled in value the past four years. Have you doubted your insurance?

The best time to think of a loss is before it happens

LOWRY-FINCH & COMPANY
Successors to Patterson-Reese & Prothro
"ESTABLISHED SINCE 1883"
616 Eighth Street Phone 87

- Automobile.
- Workmen's Compensation.
- Public Liability.
- Plate Glass.
- Residence Burglary.
- Personal Accident and Health.
- Bonds of Every Description.

"A PROPHET IS NOT WITHOUT HONOR SAVE IN HIS OWN COUNTRY"

This is often so but we don't feel that it applies in our case, as our coffees are widely used and highly praised in Wichita Falls—However there are some people who seem to think that their home town cannot produce a first-class article. Some merchants are included in this class. We know of nothing in the climate or environment of Wichita Falls that would be any handicap to industry and intelligence applied to the production of a good article. We do know that we have devoted as many years in a careful, painstaking effort to develop superior cup quality in our coffees as most any one in America. Our coffees are roasted fresh daily. If your grocer don't handle them ask him why. If he tries to sell you something else ask him why again. I thank you.

BERT BEAN COFFEE COMPANY Telephone 35
Ohio at Sixth