

PIPE LINE MEASURES PASSED IN THE HOUSE AND GOES TO SENATE

By Associated Press. AUSTIN, TEX., Jan. 22.—The bill granting of pipe lines right of eminent domain passed finally in the House today. Bills upon first reading provide as follows: Making theft of cotton a felony; licensing garages and automobile mechanics with examination of mechanics; licensing of commission merchants; making void clauses in bills to prevent contests; interdictory judgments in divorce cases and forbidding marriage for one year after first judgment.

TRANSPORT BRINGS A TOTAL OF 4,557 AMERICAN TROOPS

By Associated Press. NEW YORK, Jan. 22.—The transport Manchuria arrived here today from France with the 116th and 117th field artillery, headquarters 56th artillery brigade, headquarters 119th ammunition train, training cadres from the 21st division and 966 sick and wounded.

ADDITIONAL UNITS ARE ASSIGNED FOR RETURN

By Associated Press. WASHINGTON, Jan. 22.—Additional units assigned to early convoy home, comprising 270 officers and 4,927 men, were announced today by the war department. Included in the list are the 58th regiment coast artillery, less third battalion, base hospital number 15; 90th and 14th squadrons, 39th company transportation corps; 1st and second companies, 2nd and 6th, 17th and 18th balloon companies; 109th field signal battalion; 464th position train; 407th telegraph battalion; base hospital number 2; and the following tanks corps units: 332nd battalion, 367th, 377th, 378th, 379th, 380th, 391st, 197th; 31st replacement and salvage companies; 504th, 325th, 336th and 337th battalions, casual companies A, B and C, October automatic replacement draft.

Ask for Doctor And Nurses for Town of Odessa

By Associated Press. FORT WORTH, TEX., Jan. 22.—The commissioners court of Tarrant county telegraphed to Fort Worth this morning for at least one physician, two nurses and a pharmacist, offering all expenses and fees. Odessa is the county seat. Every doctor and nurse in the county is ill with influenza. The largest town in Odessa, has a population of 300 and of this number 100 were in bed with influenza. Nurses have been sent from here.

Society Involved In Packers Inquiry

By Associated Press. WASHINGTON, Jan. 22.—Examination of Thomas F. Logan, Washington representative of Swift & Company and other corporations regarding his social relations with congressmen and executive officials, continued today before the senate agricultural committee considering legislation to regulate the meat industry.

STANDARDIZATION AND UNIFICATION OF THE RAILROADS

THESE AND OTHER PLANS ARE DISCUSSED BEFORE SENATE COMMITTEE.

KRUTTSCHNITT OPPOSES RAIN MARS PROGRAM

Chairman of Southern Pacific Says Suggestions Are Not Practical Solution of Problem.

By Associated Press. WASHINGTON, Jan. 22.—Use of water routes to relieve crowded railroad lines, consolidation of ticket offices, unification of terminals and pooling of repair shops among the war time reforms instituted by the railroad administration endorsed as worthy of continuation by Julius Kruttschnitt, chairman of the Southern Pacific testimony today before the Senate interstate commerce committee. Mr. Kruttschnitt appeared in support of the railroad legislation proposed by the association of Railway executives and was first of several railroad officials who the committee plans to hear.

Admits Bolshevik Propaganda Spread In Germany

By Associated Press. STOCKHOLM, Tuesday, Jan. 21.—Maxim Litvoff, former bolsheviki ambassador in London, in a statement to the Associated Press today admitted that bolsheviki propaganda had been carried on in Germany but denied any such activity in neutral or belligerent countries.

OFFICERS DETECT SUPPLY OF BOOZE FOR OIL FIELDS

By Associated Press. FORT WORTH, TEX., Jan. 22.—C. F. Holt, who later be present in Kansas City bartender, was arrested here last night following the seizure of 52 pints of liquor bound to the oil fields. Colonel W. R. Houston, Indian agent, detected the odor of liquor when he entered the depot here, followed the smell to its source and discovered the liquor in trunks and suitcases. Several of the bottles had been broken.

RAILROAD STRIKE IN CUBA COMES TO END

By Associated Press. HAVANA, Jan. 21.—The strike of employees of the United Western Railway in Cuba at an end and traffic is expected to resumed at once.

BOSTON EXTENDS TROOPS A ROUSING WELCOME

By Associated Press. BOSTON, Jan. 22.—Returning troops and hospital units on the troop ship Melita found a rousing welcome awaiting them today when the transport made her way to Commonwealth Pier after being anchored in mid-stream over night. The majority of the 1600 officers and men aboard are from the southwest and include contingents from Missouri. The men board trains for Camp Devens.

DALLAS MEN TO NUMBER OF 185 GUESTS OF CITY

ARE ENTERTAINED AT LUNCHEON AT WICHITA CLUB BY CHAMBER OF COMMERCE.

SENATOR KENDRICK SAYS PACKERS ARE CONTROLLING PRICE

CHARGES THEY HAVE POWER TO COMMIT ALL ABUSES OF WHICH CHARGED.

SPEAKS TO ASSOCIATION

By Associated Press. DALLAS, TEX., Jan. 22.—The five big meat packing firms of the United States were declared by Senator Kendrick of Wyoming here today to have such a control over both the producing and the distributing markets that they have the power to commit all the abuses of which they are charged, and that regardless of whether there is an actual combination in that their representatives meet regular to agree on prices.

RAIN MARS PROGRAM

Prevents Automobile Ride Over City As Planned by the Entertainment Committee.

OUTLINE PLAN FOR ORGANIZATION OF IRISH PARLIAMENT

By Associated Press. NEW YORK, Jan. 22.—According to the provisional constitution of the Irish republic now being formed legislative powers are to be vested in deputies elected from existing parliaments. The ministry will consist of a president and four executive officers—secretaries of finance, home affairs, foreign affairs and national education. The constitution will be based on the vote of the "Dail Eireann". The constitution may be altered upon seven days notice. Count Plunkett, Prof. Edward De Valera and Arthur Griffith probably be appointed Irish delegates to the peace congress today.

CITY OF BREMEN NOW IN HANDS OF THE WORKING MEN

By Associated Press. AMSTERDAM, Jan. 22.—The city of Bremen is virtually in the hands of the working men, according to reports from Berlin. The German government, according to a dispatch from Berlin, says the request to refrain from provocation can only be attributed to the fact that the German government has not adequately informed of events in the east.

OGDEN ARMOUR IS AGAIN BEFORE HOUSE COMMITTEE

By Associated Press. WASHINGTON, Jan. 22.—J. Ogden Armour was questioned again today by members of the House interstate commerce committee who are conducting a hearing in connection with a bill proposing government control of packing industry.

WOMEN WANT PEACE ON THE LEAGUE OF NATIONS

By Associated Press. PARIS, Tuesday, Jan. 21.—A claim that women be given a place in whatever bodies may be created for putting into effect the ideas of a league of nations is made in a resolution presented to the peace conference by an organization of French women under the presidency of Madame Juliette Adam. This resolution accompanied that passed by the organization in which the demand was made that those responsible for atrocities during the war be punished as criminals.

AGREEMENT IS REACHED AS TO THE DISPOSITION OF RUSSIAN QUESTION

ROB PHYSICIAN OF FINAL AUTHORITY IN VENERAL CASES

By Associated Press. LONDON, Jan. 22.—The five great powers, Great Britain, Italy, France, the United States and Japan, have reached definite agreement regarding Russia, according to a Paris dispatch to the Central News today.

GERMANY'S REPLY TO BRITISH NOTE BLAMES POLAND

By Associated Press. AMSTERDAM, Jan. 22.—In reply to a British note requesting the German government to refrain from further provocation of the Polish population in East Prussia, Poland and Silesia, the German government, according to a dispatch from Berlin, says the request to refrain from provocation can only be attributed to the fact that the German government has not adequately informed of events in the east.

GENERAL WOOD IS DOUBTFUL ABOUT PERMANENT PEACE

By Associated Press. TOPEKA, KANS., Jan. 22.—Calmly referring to "the next war," Major General Leonard Wood made a strong appeal before a joint session of the Kansas legislature for a system of universal training for national defense.

NO RAISE IN TAX ON AMUSEMENT ADMISSION

By Associated Press. WASHINGTON, Jan. 22.—Taxes on amusement admission will not be increased by the war revenue bill. The conference agreed today to rescind their previous decision to increase the rate from 10 to 20 per cent.

Industrial Unrest Grows in England

By Associated Press. LONDON, Jan. 22.—Industrial unrest throughout the United Kingdom is on the increase. In addition to the threat of a railway strike, the whole Yorkshire coal field probably will be shut down, involving 150,000 men out of employment, while preparations are being made in Scotland for a general strike for a 40 hour week.

FORMER U. S. SENATOR GEORGE T. OLIVER DIES

By Associated Press. PITTSBURGH, PA., Jan. 22.—Former U. S. Senator George T. Oliver died at his home here today.

### PORTER C. WHALEY NEW SECRETARY OF COMMERCIAL BODY

Porter C. Whaley, one of the most prominent commercial secretaries of the state, and at present managing the preliminary organization campaign for the West Texas Chamber of Commerce, is the new Wichita Falls Chamber of Commerce secretary. Arrangements to employ him in this capacity to succeed B. F. Johnson, who has resigned to enter the oil and real estate business, were concluded at a special meeting held in Frank Kell's office Tuesday afternoon. Mr. Whaley will assume his new duties on February 4, according to the present plans.

### Trying To Secure Release of Baseball Players From Army

WASHINGTON, Jan. 22.—Ban Johnson, president of the American league, called at the war department in connection with his efforts to get baseball players out of the army in time for spring training. He submitted a list of players and war department officials undertook to locate them for him in order that the clubs may arrange to have them file applications for discharge.

### Tarrant County To Receive State Aid for Highways

AUSTIN, TEX., Jan. 22.—State aid of \$139,148.55 and federal aid of \$209,000 conditioned upon congress making available further federal aid, was granted to Tarrant county by the state highway commission today. A previous grant of \$46,851 has been made. The new grants are in consideration of the fact that Tarrant county has just voted a road bond issued of \$1,500,000.

### MEETING TONIGHT TO DISCUSS ROAD TO BURKBURNETT

A meeting of truck men, automobile men, oil men and all persons interested, will be held tonight at the county court room for the purpose of considering the matter of making repairs on the road between Wichita Falls and Burkburnett, according to announcement made today. The Times has been asked to request all truck, automobile and oil men, to attend the meeting, which will begin at 8 o'clock.

### Police Court Has A Better Business During the Month

One defendant whose case was continued from yesterday, was fined \$10 in police court this morning on a charge of affray. Two others were fined \$5 each on a same charge. One speeder was fined \$10. The receipts of fines in police court will reach a high mark this month as is evidenced by the fact that up to the present over \$500 in fines has been paid, which is equal to the records of the past month. Chief of Police Fred Smith said this morning that he expects the total to run between \$700 and \$800 for the month.

### WANTS TO ABOLISH THE AGRICULTURAL DEPARTMENT

AUSTIN, TEX., Jan. 22.—The fight to abolish the State Department of Agriculture began when Thompson of Hunt introduced in the Legislature a bill to repeal the statutes providing for the election of a commissioner of agriculture. The bill provides that the duties now performed by the commissioner of agriculture shall be, as far as practicable, and necessary, carried out by Texas Agricultural and Mechanical College.

### COURT RECORD

Marriage License.  
R. B. Reynolds and Miss Tennie Hearrell.  
D. T. Davis and Miss Minnie Lee.  
James E. Leucy and Miss Maud Adair.

Real Estate Transfers.  
Ross Corlett to J. N. Pearson, lot 6, block 3, Floral Heights addition, \$2,400.  
W. W. Swarts to C. A. Jacks, lots 21 and 22, block 127, Wichita Falls townsite, \$3,500.

Articles of Association.  
The Texas and Park Oil Co., capitalization \$99,000. Shares par value \$1. Harry Van Ness, H. S. Patterson and Robert Timmons.

For choice close up leases out of block 102, Vanclave lands, see W. M. Priddy, 408 Kemp & Kell. Phone 71. Residence phone 1756. 216-tfc

### CASUALTY LIST

**SECTION ONE.**  
The following casualties are reported by the Commanding General of the American Expeditionary Forces: Killed in action, 69; died of wounds, 43; died of accident and other causes, 20; missing in action, 20. Total, 152.

**SOUTHERNERS.**  
Killed in Action.  
Pvt. Robt. M. Pate, Woodville, Texas.  
Pvt. Chas. M. Urban, Giddings, Texas.

**SECTION TWO.**  
The following casualties are reported by the Commanding General of the American Expeditionary Forces: Died in airplane accident, 3; died of disease, 97; wounded severely, 117. Total, 217.

**SOUTHERNERS.**  
Died of Disease.  
Pvt. Chas. L. Bagdale, Hollis, Okla.  
Pvt. Jerry Ross, Coleman, Okla.  
Pvt. Jos. A. Skoda, Waukomis, Okla.

**Wounded Severely.**  
Sgt. Wm. C. Shelton, Murchison, Tex.  
Corpl. Chas. V. Fagg, Childress, Texas.  
Pvt. Bob Coker, Louisville, Texas.  
Pvt. Benj. F. Hurt, Seagrave, Texas.  
Pvt. Jas. V. Nelson, Mathis, Texas.

**CORRECTIONS.**  
Wounded Slightly.  
Previously reported missing in action: Pvt. Louis A. Raines, Llano, Texas.

Wounded, Degree Undetermined.  
Previously reported missing in action: Privates—Lloyd Bennett, Sulphur Springs, Okla.

Orvil O. Baylock, Tamaqua, Okla.  
Charles S. Cain, Ferris, Texas.  
Roderick G. Daniel, Ennis, Texas.  
Julius H. Kidd, New Caney, Texas.  
Jesse Schultz, Shamrock, Okla.  
Frank B. Shivel, McAlester, Okla.  
Ed White, Cason, Texas.

**Sick in Hospital.**  
Previously reported missing in action: Pvt. Arthur A. Brebend, McDale, Tex.

**Returned to Duty.**  
Previously reported missing in action: Pvt. Felix Sheppard, Point, Texas.

**Erroneously Reported Missing in Action.**  
Corpl. Eeri Adkins, Mt. Pleasant, Tex.

**Vanclave Farm Leases For Sale.**  
Seven two-acre, three 2 1/2, three 5-acre tracts out of block 102 Vanclave lands, south of road, offsetting Horne and Marine wells. Stay up close and get good wells. For prices and terms call W. M. Priddy, Room 408, Kemp & Kell office, Phone 71. Residence phone 1756. 216-tfc

Suits cleaned and pressed, \$1.00. All work guaranteed. Phone 2540. 212-6tp

### REVOLUTION PLAN WITHOUT SUPPORT OF KING MANUEL

LONDON, Jan. 22.—Portugal's monarchial revolution is begun and is being carried on without the support of former King Manuel, according to Marquis De Soveral, former Portuguese minister to Great Britain. In an interview with the Mail the marquis says: "Manuel has done nothing to support or encourage the monarchist movement in Portugal. Throughout the war he has abstained entirely from politics and has asked all his followers to support whatever government was in power in Portugal."

### No Going Through Cemetery Even For Much Prized Dog

It is a well known fact that "colored folks" are superstitious of a cemetery. That fact was evidenced this morning when a negro woman called at the police station in search of a dog that had been missing since the day before. After describing the pet animal she was "assured" by Chief Smith that the dog was in the city pound, and furthermore faced death if not called for in three days after being found on the streets without the proper tag, showing that the tax had been paid, which is required by the city. The woman grew almost hysterical, declaring that her dog "must not be killed," and at the same time inquiring where the city pound was located, saying that she would go after "Casser" immediately. Chief Smith quietly explained that the pound was located just beyond the cemetery, and that she would have to go directly through the cemetery to get there. "No, Sir," she would not go through the cemetery if she "never did get that dog."

She departed rejoicing after being told that her dog would not be killed. For choice close up leases out of block 102, Vanclave lands, see W. M. Priddy, 408 Kemp & Kell. Phone 71. Residence phone 1756. 216-tfc

For choice close up leases out of block 102, Vanclave lands, see W. M. Priddy, 408 Kemp & Kell. Phone 71. Residence phone 1756. 216-tfc

### R. D. KENNEDY LEAVES FOR EASTERN MARKETS

R. D. Kennedy, manager of the Perkins-Timberlake Co., left this morning for New York where he goes in the interest of spring buying there. Mrs. Kennedy accompanied her husband to Ardmore, Okla., where she will visit relatives and friends until Mr. Kennedy returns from the eastern markets.

### THE LILLY OIL CO.

Made a Remarkable Record in the Sale of Stock.

The Lilly Oil Company, an organization composed of the very best and most reliable citizens of this city, offering its stock for sale for the first time in yesterday's Times, made a most remarkable record in the sale of said stock. Although upon the market only for a period of 24 hours, \$5,000 worth of shares have already been subscribed for. The principal reason this stock is in demand is because the people of Wichita Falls are personally acquainted with the officers of this company, and know them to be men of sterling worth and fixed integrity, whom they can depend upon absolutely. These men are investing their hard-earned cash in the company, firmly believing the revenue derived will be enormous. There isn't any inflation about the capital stock, same being exceedingly small considering the very valuable lease, which is getting higher in price each day. This company's officers are men who have resided in this city many years, who have always conducted their affairs upon an absolutely sound, honest, business basis. Every person associated with this company in any manner whatsoever either as a stockholder or salesman of salesmen, will be persons of unquestionable character as to honesty and veracity. adv.

# Notice!

Owing to the delay in remodeling our building, due to sickness and slow deliveries of material, we are forced to postpone our opening a few days. Watch for the opening announcement. It pays to wait for a good thing. The best of everything for men.

## Richardson

THE HABERDASHER

618 8th Street  
Next to Anderson & Patterson

### Payments on the Fourth Liberty Loan

will be due on or before Jan. 16. Please call and make your payment.

## First National Bank

**OFFICERS**  
R. E. Huff, President  
W. M. McGregor, Active Vice Pres.  
F. M. Gates, Vice President  
C. E. McCutchen, Active Vice Pres.  
L. R. Buchanan, Cashier  
J. R. Hyatt, Asst. Cashier  
Wm. E. Huff, Asst. Cashier  
Carter McGregor, Asst. Cashier

## NATIONAL BANK OF COMMERCE

WICHITA FALLS, TEXAS

Capital and Surplus  
A QUARTER OF A MILLION DOLLARS

### FLEXIBILITY OF SERVICE

The unusual conditions of industrial readjustment and credit reconstruction which are now prevailing emphasize the necessity of banking service which is flexible enough to meet changing requirements.

The National Bank of Commerce furnishes this class of service and is therefore a most desirable banking home for those whose business interests are affected by new conditions.

Our Officers will be glad to explain our facilities in a personal interview. Come in and talk it over with them.

**"Our Service makes Friends and Keeps them"**

## Campbell, Anderson & Co.

WICHITA FALLS STYLE & QUALITY STORE

### Ladies' Dresses, Coats and Coat Suits at HALF PRICE

We will continue for this week to sell the remaining stock of our Fall and Winter Coats, Coat Suits and Dresses at ..... **HALF PRICE**

We have some beautiful garments left in this assortment, being in the new materials and colors. Values up to \$100.00, ..... **HALF PRICE**

We also have a large assortment of Children's and Misses' Coats that are excellent values, from \$6.00 to \$25.00 ..... **HALF PRICE**

We will continue for this week our special sale on one lot of Men's Suits, values up to \$25.00 ..... **\$13.95**

One lot of Shoes, values to \$7.00 at ..... **\$2.95**

One lot of heavy Sweaters, values \$2.50, at ..... **\$1.65**

Only One Kind of **POST TOASTIES** — says Bobby. BEST CORN FLAKES MADE.

## Baum & Gardner

EXCLUSIVE STYLES

HOME OF

### Hart Schaffner & Marx

Good Clothes  
NETTLETON SHOES  
BORSALINO HATS

## Announcing

the comp of the

### Krizan Oil Co.

organization.

### 100 Acres

### Capitalization \$70,000

Location 5 miles southeast of Burkburnett, out of the Salinas Survey. Production on two sides.

Trustees:—C. R. Krizan, W. J. Nowlen, J. L. LaCroix  
710 1/2 Indiana Ave. Phone 338

**A FEW SALESMEN WANTED**

# AMUSEMENT

## "THE STRANGE WOMAN" AT EMPRESS THEATER TODAY

"The Strange Woman" the William Fox photoplay in which Miss Gladys Brockwell plays Inez de Pierrefond, and which will be shown at the Empress theater today, is bound to cause much discussion among those who see it. It is based on the question of whether it is fair to bind a woman by marriage ties to a man who neglects her for his gay friends.

In the play, after Inez's husband dies, she declares she never again will be manacled by marriage to a man. Then a young American architect comes into her life, but despite his apparent sincerity Inez refuses to take a chance.

He takes her from Paris to his home at Delphi, Iowa. There the women learn that Inez has written a book on free love and they plan to disgrace her. The plan doesn't work out because the mother of her American sweetheart cannot be won over.

## "TOO FAT TO FIGHT" IS PRODUCT OF REX BEACH

Nation wide and international is the popularity of Rex Beach. With each succeeding picture of his famous stories he becomes not better known, but more beloved by the red-blooded races of the world. His "Too Fat to Fight," produced by Goldwyn and featuring Frank McIntyre, at the Majestic Thursday, promises all that the Rex Beach pictures have offered in the past, with the addition of a distinct surprise.

"Too Fat to Fight" is a patriotic drama with a purpose and a big punch. It is unlike anything with which screen devotees have ever associated the name of Rex Beach yet it embodies all the vigor, imagination and frank openheartedness of the great dramas of the American author.

Rex Beach's choice of Frank McIntyre to play the featured role in his new play will be hailed with delight by all who know this actor and the screen. Star of the stage and of the screen, Frank McIntyre is as well known on Broadway as he is in vaudeville throughout the union. He is a favorite of the people and his work in "Too Fat to Fight," rich with opportunities for funmaking and appealing paths, promises once again to emphasize the importance of Rex Beach's supervision in producing his pictures.

## HART IS ATTRACTION AT THE GEM THURSDAY

Sorely spent after crossing the desert, Jim Alton, "The Grouch" portrayed by Wm. S. Hart in "The Desert Man" at the Gem Thursday, stumbles across a woman who has fled from her brutal husband in "Broken Hope," who is known as Razor Joe. Dying, she leaves her child in his care. He carries in his journey toward "Broken Hope."

He reaches the first of the dilapidated wooden buildings of this community and learns that this town was known at one time as "Golden Hope," but hopes of striking pay dirt had died out and the citizens in bitter irony had re-named the community, "Broken Hope."

"The Grouch" enjoys the hospitality of a dying miner, Burns, and his beautiful daughter, Jennie. Razor Joe attempts to bully him and "The Grouch" runs him out of town and takes possession of his liquor emporium and barber shop.

Jennie's dying father arouses the commiseration of "The Grouch," who fetches Doctor Howard from a nearby town to cure him. The doctor lures Jennie away after her father dies, leaving "The Grouch," a broken-hearted man with only the child to care for. The doctor attempts to persuade Jennie to lead a life of shame but she breaks with him and goes to work.

In the meantime "The Grouch" has been inspiring the people of Broken Hope with faith in the future of the town. A great strike of tungsten is made and the town booms.

"The Grouch" has driven the undesirable element out of the community and laid down the law that no saloon

shall be located within one mile of "Broken Hope."

Razor Joe kidnaps his child, Joey from "The Grouch" and sends word to him that if he wants the boy he should come to One Mile and get him. Knowing that it will mean a fight with a gang of the most dangerous cutthroats in the west, "The Grouch" sweeps down on One Mile, kills Razor Joe, rescues Jennie from the hands of the evil element and marries her.

## FARNUM HERE THURSDAY IN "THE RAINBOW TRAIL"

A program that will be difficult to match is to be given at the Empress theatre when William Farnum in his latest photoplay, "The Rainbow Trail," will be shown.

Whenever Mr. Farnum's name is presented outside the theatre, those who visit it are certain of their money's worth. In the case of "The Rainbow Trail," they can be doubly certain, as this latest release is considered one of the best pieces of work that the famous star has yet accomplished.

The story centers about the wilderness of Arizona and dates back to the period of the cliff dwellers and to the day when the easiest way to settle arguments was with a six-shooter. Mr. Farnum is given ample opportunity to display his great versatility as he portrays a dual role throughout the picture.

## SOCIETY

**WOMAN'S BIBLE CLASS WILL MEET THURSDAY**

The Women's Bible class of the First Baptist church will meet with Mrs. W. L. Ponder, 1315 Twelfth street, Thursday afternoon at three o'clock.

## RED CROSS WORKERS REQUESTED TO MEET

Red Cross workers of the Christian church are requested to be at the church to work Friday. On account of the weather the work was not finished today and a large number is needed Friday.

## MARRIAGE LICENSE LIST FOR MONTH

Thirty-six marriage licenses have been issued by County Clerk this month, while the file dockets of the district court shows that 13 divorce suits have been entered. In other words the number of divorce cases filed equals more than one-third of the marriage licenses.

The number of divorce suits here is always high, as the court records will disclose and the record made so far this month is not considered above the average.

## French Soldiers Lead In World's Sacrifice

At the outbreak of the war the population of France was 36 millions and on these 6 millions have been offered on the altar of freedom, thereby leading every other nation. We of America must be very grateful for this and also for an invaluable remedy for stomach, liver and intestinal ailments discovered by the peasants of France, which it is reported has saved many lives in America, prevented thousands of surgical operations and relieved incalculable suffering among its people.

Geo. H. Mayr, for many years a prominent Chicago chemist, imports the ingredients and sells this remedy under the name of Mayr's Wonderful Remedy. It is a simple, harmless preparation that removes the catarrhal mucus from the intestinal tract and allays the inflammation which causes practically all stomach, liver and intestinal ailments, including appendicitis. One dose will convince or money refunded.

## MISSION AT CHURCH OF GOOD SHEPHERD CONVENES TODAY

Rev. J. G. Larsen, rector of the Church of the Good Shepherd, makes the following announcement:

The Special Mission services at the church of the Good Shepherd (Episcopal) opened this morning with a celebration of the Holy Communion at 10 a. m.

The Rt. Rev. H. T. Moore, D. D., Bishop Co-adjutor of the Diocese of Dallas, arrived at noon and will be the special preacher at this series of services. The subject of his sermons during these services are as follows:

Wednesday evening at 8 p. m., "Consecration." "Seek ye first the Kingdom of God." "Growth." "By the Grace of God I am what I am." "Friday evening, "Conscious of Need."

"What lack I yet?"

Sunday morning at 11 a. m., "The Great Offering." They presented unto Him gold, frankincense and myrrh.

Sunday evening at 7:30 p. m., "The Authority of the Church," Genesis XXVII: 29-22.

We are especially fortunate in being able to secure Bishop Moore as the Missioner. He is coming to us at an inconvenience to his many duties in the Diocese and we ought to appreciate his kindness in coming to us at this time in spite of the weather by greeting him with good congregations.

These services are not being held with the intention of adding membership to the Episcopal church, to assist in deepening the spiritual lives of the members of the community. Let us grasp these special opportunities when they come to us.

## HOW DOCTORS TREAT COLDS AND GRIPPE

Ask any physician or druggist and he will tell you that the best and only effective remedy for a bad cold, sore throat, influenza or la grippe is what he calls "a brisk calomel purge," which means a big dose of calomel at bed time. But as the old style calomel has some very unpleasant and dangerous qualities physicians and druggists are now recommending the improved nausealess calomel, called "Calobal," which is purified and refined from the sickening and dangerous effects and whose medicinal virtues are vastly improved.

One Calobal on the tongue at bed time with a swallow of water—that's all. No salts, no nausea nor the slightest interference with your diet, pleasures or work. Next morning your cold has vanished and your entire system is purified and refreshed.

Calobals are sold only in original sealed packages, price thirty-five cents. Your druggist guarantees Calobals by refunding the price if you are not delighted.

## ONLY 1218 HAVE PAID A POLL TAX FOR YEAR 1918

A greater rush in the payment of poll taxes is expected during the last days of the month, which is always the case, but indications now point to a low mark for this year. Up to last night 1218 receipts had been issued by County Tax Collector M. L. Tittle. This number included the taxes paid by women also. It was not known just how many women of the county had paid a poll tax up to last night but it is believed that the number will not reach very high.

Fewer poll taxes are naturally expected to be paid this year, as it is termed "an off year," owing to the fact that no general election will be held, but unless a rapid increase is made in the payments during the remainder of the month, the combined total of both men and women, will not equal the record of last year.

## Plan Campaign of Organization For The Labor Problem

As a result of a conference held at San Antonio Sunday, of special representatives of the U. S. Department of Labor and examiners from a number of districts over the state, a campaign of organization will be made by G. W. Minton, examiner of the local employment office, over the Wichita Falls district, in order that the question of employment for demobilized troops can be successfully handled. Mr. Minton was called to San Antonio Saturday to attend the conference, together with other examiners who act as special representatives at the different army camps throughout the state.

Will Report Needs.

A plan has been decided upon whereby a committee in each town in the different counties comprising a district, will make a special report of the needs of that particular community insofar as labor is concerned. The reports are to be made weekly, or oftener if necessary, and will give an estimate of the different kinds of laborers that can be used in the county at that time. With these reports made by a representative or committee in each county in the district, it is believed that employment can be

furnished all men as they are demobilized and that no community will be overstocked with labor or another suffer from a shortage.

Will Visit Other Towns.

Mr. Minton will visit Vernon, Quanah, Childress and the other towns in the northern portion of his district, this week, and hold meetings with the county agricultural agents, war labor community boards and other war work organizations in order that the committee to handle the reports can be selected. Next week he will visit the towns in the southern part of the district and make like arrangements.

H. W. Lewis, federal state director for the U. S. Employment service, together with M. Casey, of the Department of Labor, will visit Wichita Falls office within a few days. Mr. Minton announced today. They are making a tour over the state visiting all offices with a view of eliminating the ones that can now be dispensed with and not hamper the work. Already five offices that were opened shortly before the armistice were signed, have been closed.

DILLMAN & RANDALL, Civil Engineers, All kinds of surveys and map work. Office: 807 Ohio Avenue, Phone 2811.

You had better secure your stock in the Lilly Oil Company at once, while you can get same at par, for when we start on our first of five wells you will have to give a premium to obtain same. Only \$10.00 per share. Lilly Oil Company, Room 202, First National Bank Building, Phone 195. 216-416



**KINGSWAY**

THE CORRECT CUTAWAY STYLE

**Lion Collars**

OLDEST BRAND IN AMERICA

UNITED SHIRT & COLLAR CO. TROY, N. Y.

# EMPRESS

TODAY



## Gladys Brockwell in "The Strange Woman"

William J. Hurlbut's Sensational Dramatic Triumph. Ran one year in New York, one year in London and five months in Chicago.

Excerpts from Criticisms by New York's Famous Critics:

"The Strange Woman is positively brilliant all the way through!"—Morning Telegraph.

"Mr. Hurlbut has succeeded in writing a play that contains much pleasant enjoyment!"—N. Y. Press.

"A Big Hit!"—Evening Journal.

"An Immediate Success!"—Evening Telegram.

"The Strange Woman, also a strange play."—New York World.

"A joy long to be cherished in the memory."—New York Sun.

"Received with many demonstrations of approval."—Evening Post.

"An interesting play of harassed womanhood."—New York Herald.

Adults 15c, Children 12 and over, 10c; Under 12, 5c.

# EMPRESS

THURSDAY AND FRIDAY

William Farnum in "The Rainbow Trail"



## William Farnum in "The Rainbow Trail"

A sequel to "Riders of the Purple Sage." "The Rainbow Trail," takes up the fortunes of Lassiter, Jane Withersteen and the girl, Fay Larkin, years after they have been locked up in a lost canyon. Not only does Mr. Farnum again portray the role of Lassiter, the two-gun man and terror of the Utah border, but he also takes the part of Sheffer, a two-fisted fighting man who goes to the rescue of these imprisoned people. This dual role gives Mr. Farnum some of the most splendid opportunities of his screen career, and he rises to his opportunities like the sterling actor that he is.

Adults 25c, Children 12 and over, 15c; Under 12, 10c.

**MEMORIAL**

**WANTED**

A man with good team and wagon to do hauling by the day.

**Wichita Marble & Granite Works**

406 7th St. A. G. DEATHERAGE, Prop. Phone 440

**SCULPTURE**

**MAJESTIC**

TODAY YOU'LL LOVE

**Constance Talmadge**

In the fascinating delightful and humorous comedy

**A LADY'S NAME**

Written by Cyril Harcourt who wrote "A Pair of Silk Stockings" and is one of the cleverest, cleanest, most fascinating bits of comedy ever written.

CHANGE IN VAUDEVILLE

30c 20c 10c

Matinee 2:30—Night 6:30-8:30

TOMORROW

**REX BEACHS**

Patriotic drama

**TOO FAT TO FIGHT**

with FRANK MCINTIRE as the three hundred pound patriot—he started a war of his own and finished it.

CHANGE IN VAUDEVILLE BILL

30c 20c 10c

# Value Giving Event

2 DAYS—FRIDAY AND SATURDAY IN OUR READY-TO-WEAR DEPARTMENT

We have selected about 300 garments for this special value-giving event, and you will find in this assortment of Suits, Coats, Dresses and Blouses all that is new in material and colors.

**Smart Dresses**

A selection of 100 beautiful dresses that formerly sold at \$15, \$20, \$30 and up to \$75.

For Friday and Saturday only your choice at

**EXACTLY HALF PRICE**

Extraordinary values in

**SHIRT WAISTS**

There is just about 50 of these beautiful fall and winter Shirt Waists, they have been priced at \$3.50, up to \$12.50

Friday and Saturday only

**HALF PRICE**

**Attractive Winter Suits**

Bischof Suits, about 100 in all. These suits are of Duvetine, Tricotine, Gaberdine, Poplin, Serge and Veilour, formerly sold at \$30, \$40, \$60 and up to \$85.

For Friday and Saturday only your choice at

**EXACTLY HALF PRICE**

Serviceable Fall and Winter

**COATS**

About 50 in all, most of which are the famous Bischof make, these coats formerly sold at \$18 and up to \$60 but

Friday and Saturday only they go at

**HALF PRICE**

709-732 Ohio Ave. **W.B.M. Curkhan & Co.** Telephone 375

EVERYTHING TO WEAR

THE WICHITA DAILY TIMES

WICHITA PUBLISHING COMPANY (Printers and Publishers) Published every week-day afternoon (except Saturday) and on Sunday mornings...

BLUE JOHN PATRIOTISM

Pretended patriotism has been made the vehicle for a great deal of advertising during the war. Men have bought large amounts in Liberty bonds and have immediately put them on an overloaded market...

Another method by which pretended patriots advertised themselves has just been revealed in a statement issued by Charles H. Huddleston, assistant postmaster at Austin, Texas...

"These redeemed war savings certificates," says Mr. Huddleston in a statement, "gathered from every corner of Texas bear the name of some of the really wealthy men of the state..."

"It has come to our knowledge that some men who made large pledges have filed notices with their postmaster before the stamps were really bought that on a certain day they would have a certain number of stamps to be redeemed..."

"This is what I call 'blue John' patriotism. The cream is gone. I am glad to say that there is not quite as much in evidence in Travis county as in some other counties, although we have a few here..."

ONE OF THE COMPENSATIONS OF THE WAR. The city of Houston is making plans to carry on the sanitary work that has been conducted by the government in the military zone of which that city was a part...

were before the army camps were established there. What is true of Houston is true of practically every city near which military camps have been located...

What the military camps have done for cities service in the army in a much larger way has done for the endurance. The men have been taught and have had drilled into them fundamental rules of health...

Thirty-One Tax Term Examination Music Department

Yesterday the term examinations in music were finished at the high school, thirty-one taking the examinations in the three different branches. The music department is a comparatively new feature in Wichita Falls schools...

You had better secure your stock in the Lilly Oil Company at once while you can get same at par, for when we start on our first five wells you will have to give a premium to obtain same...

Vanclave Farm Leases For Sale. Seven two-acre, three 2-1/2, three 5-acre tracts out of block 102 Vanclave lands, south of road, offsetting Horne and Marine wells...

Wanted—First class oil stock sales-people—either sex. Must be well recommended. Otherwise don't apply. Lilly Oil Company, Room 202, First National Bank Building, Phone 195.

IMPLY? WELL, DON'T BELIEVE IT. 'People Notice It. Drive Them Off with Dr. Edwards' Olive Tablets. A pimply face will not embarrass you much longer if you get a package of Dr. Edwards' Olive Tablets...

A LOOK AT YOURSELF in the mirror after we have fitted you with eye glasses will show that we have paid as much attention to making the glasses becoming as we have been careful to make them accurately fitted for your sight needs...

Bedtime Stories

(By Howard R. Garis)

Uncle Wiggily's Turnip Pie. "Another long day without Nurse Jane," said Uncle Wiggily, the bunny rabbit gentleman as he awakened in his hollow stump bungalow one morning after his muskrat lady-housekeeper had gone to visit Mrs. Wibbly...

Nurse Jane had left plenty of good things to eat in the bungalow before she went away, and after Uncle Wiggily had taken some roasted corn coffee and eaten a few oatmeal cakes he looked out of the window and saw the sun shining on the snow, like diamonds...

After he had the crust made Uncle Wiggily put some turnips between the upper and lower pieces, just as baby is put to bed between the crib covers, and then into the oven he popped the pie and waited for it to bake. Pretty soon he thought it was done, so he took it out, using the end of his coat tail as a holder, for the pie was very hot...

FOR SALE—Up-to-date two-story, ten-room house, two bathrooms, excellent location, 50x165 foot lot, garage and barn; can give quick possession. Phone 382. Fred T. Cooper, Room 205, First National Bank Building.

Oil Leases for Sale Our Salesmen Know The Business. 164 acres, 5 miles north of Iowa Park, will lease half of it at \$30.00 per acre, with six months drilling clause.

Miller & Webb Room 3 McClurken Bldg., Wichita Falls. Phone No. 605

43 Acres In South Edge of Burkburnett. This lease is within 300 or 400 yards of well just drilled in sand. Will lease 5 or 10 acres of this to enable me to drill on other part of same. Phone 1000 before 8 a. m. or after 6:30 p. m. and ask for H. F. HANES

Five Youths Are Convicted During Court This Week

Five boys, under the penitentiary age, have been convicted in the 30th district court this week and all are now being held awaiting sentences to the reformatory school by county probation officer, C. C. Sheiton. This is a record for juvenile cases in one term of court, county officials say.

Have us clean and press your suit or dress, \$1.00. White & Pruett, Phone 2540.

Lodge Directory

Local 681, International Brotherhood of Electrical Workers. Meets Wednesday nights at Labor Temple. The Brotherhood of American Yeomen meets every second and fourth Tuesday nights of each month at New Odd Fellows hall, 708 1/2 Seventh—E. L. Richardson, Cor.

Wichita Falls Lodge No. 635 A. F. & A. M. stated meetings first and third Friday nights in each month. C. M. CROWELL, W. M. C. M. DODGEN, Sec.

Wichita Falls Chapter No. 202, R. A. M. stated convocations second Friday nights in each month. M. M. COOKE, H. P. C. M. CLIFFORD, E. C. J. W. WALKUP, Sec.

Wichita Falls Lodge B. P. O. E. ELKS. Meets first and third Monday nights of each month at Elks' Hall. J. W. COLLEY, Sec.

KNIGHTS OF COLUMBUS. Wichita Falls Council No. 1473, Knights of Columbus, meets every second and fourth Tuesday at 8 o'clock, Harrison-Everson Hall. Visiting Knights welcome.

MACK TAYLOR'S CUT PRICES

- Linseed Oil, selling the world over for \$2.75, our cut price per gal. \$2.35 Denatured Alcohol, per gal. \$1.50 \$5.00 Gillette Safety Razors, our price \$4.75 Woodbury's Soap, 25c size, our price 20c Resinol Soap, 35c size, our price 25c Cuticure Soap, 35c size, our price 25c Hind Honey and Almond Cream, 60c size 50c Oriental Cream, \$1.50 size, our price \$1.35 Colgate Tooth Paste, 25c size, our price 20c Colgate Tooth Paste, medium size, our price 10c Pebecco Tooth Paste, 60c size, our price 45c Pepsodent Tooth Paste, 60c size, our price 45c Wine of Cardui, \$1.00 size, our price 85c Mentholatum 25c size, our price 20c Mentholatum, 50c size, our price 40c Mentholatum, \$1.00 size, our price 80c O' Cedar Oil, 25c size, our price 20c O' Cedar Oil, 50c size, our price 40c O' Cedar Oil, \$1.00 size, our price 80c O' Cedar Oil, \$1.50 size, our price \$1.20 O' Cedar Oil, \$2.50 size, our price \$2.10 O' Cedar Mops, \$1.00 size, our price 80c O' Cedar Mops, 75c size, our price 58c Horlicks Malted Milk, 50c size, our price 45c Horlicks Malted Milk, Hospital size, \$3.75, \$3.40 California Syrup Figs, 60c size, our price 50c Maudeen Hair Tonic, \$1.00 size, our price 85c Dr. Caldwell's Syrup Pepsin, 50c size, our price 45c Dr. Caldwell's Syrup Pepsin, \$1.00 size, price 90c Dodson Liver Tonic, 60c size, our price 50c Bromo Quinine Tablets, 30c size, our price 25c Nujol American Mineral Oil, 75c size, price 65c Sal Hepatica, 30c, our price 25c Sal Hepatica, 60c, our price 50c Sal Hepatica \$1.20 size, our price \$1.00 Pinex Cough Syrup, 60c size, our price 50c Hygeia Nursing Bottle, with nipple complete, 30c Dr. Robertson's Famous Grippe Capsules, 50c Swamp Root, \$1.15 size, our price \$1.00 Swamp Root, 60c size, our price 50c Your credit is good for an Edison or Victrola—

Seven Thousand Records to Select from. It will be a pleasure to play any Victor or Edison record you may wish to hear.

Mack Taylor Drug Co.

Electric Fixtures. If you are building a new home or remodeling we want you to know that our stock of Electric Fixtures is complete. We carry in our showrooms in addition to the standard fixtures for cottages and small houses a complete assortment of the finer fixtures, including all the newer designs in candle fixtures, indirect and semi-indirect fixtures. Our line of bowls is exceptionally good at this time. Let Us Figure on Your Fixture Bill. Nunn Electric Co. 816 Indiana Telephone 837

OL LETTER FROM... Inquiries age out of Excess Land Burnett field of Red River from Sam & claim on Texas for Texas and some Oklahoma some Oklahoma Austin and Mr. Sparks Falls man, acreage and filed on with federal land state to be to the normal flow of the river in the State of Texas will be the streets of... Other Wick in the place the river land to the morning starting of camp Sparks, and making arrangements several well time. The temporary State of Texas has been prepared to be held on a time prepared by the drilling of... Burk-Ci Orga... With the ing in from the northwest interest is a Lease has prices and being organi is the Burk-acres out of north of the two in the H-rine wells. The Burk-\$5,000. Hat of the comp secretary. W. Dr. F. A. B James Calve Mosars. In associated in Big Seven G brought in a Burnett town with phing Co. in d and location very extendi of the Bur through his that the loc Harvey. In so the county stock very many warm to go in wit ALI Pub Legal matter DR. Phone: Dr. D. Consu Practice Lim tation, X WICHITA WICHITA E. S. Whitel Wh Real Est 605 Day Phone 3

**OIL DEVELOPMENT**

**LETTER RECEIVED FROM SPARKS ON RIVER QUESTION**

Inquiries from purchasers of acreage out of what is known as "Poe's Excess Land Survey," adjoining Burk Burnett field, along and in the bed of Red River, has brought a letter from Sam Sparks, who with Poe filed claim on the land with the state of Texas for right to prospect for minerals and petroleum, to the effect that some Oklahomans who have been claiming the land, have been in Austin and asked for a compromise.

Mr. Sparks wrote to a Wichita Falls man, who bought some of the acreage under dispute, as having been filed on with the state and under the federal government placer mining act, stating in part:

**Spark's Statement.**  
"Oklahomans who have been here all week have admitted to the attorney general, and to Robertson (attorney for Sparks) that they have no claim on the valley lands. However they do claim that the line of Texas extends only to the south bank of Red river and they admit further that the bank of the river is the bank at its normal flow. They would be willing to compromise with the state if the state would permit the line of Texas to be located at the south bank at the normal flow. But of course Texas will contend for the middle of the stream."

**Burk-Cinch Co. Organized To Drill On Vaughn Tract**

With the favorable reports coming in from the Hammond-Art well to the northwest of Burk Burnett, added interest is shown in the district. Leases have taken another jump in price and several new companies are being organized. Among the latest is the Burk-Cinch Oil Co. with five acres out of the Vaughn tract, just north of the Humble well, and between the Hammond-Art and the Marine wells.

The Burk-Cinch is capitalized at \$65,000. Harvey Harris is president of the company and B. M. Bullard is secretary. With these are associated Dr. F. A. Black, H. C. Hassler and James Calvert.

Messrs. Bullard and Calvert were associated in the promotion of the Big Seven Oil Co. which has just brought in a splendid well in the Burk Burnett townsite. Mr. Hassler has been with the Humble Oil and Refining Co. in the capacity of geologist and location man, and has made a very extensive study of the formation of the Burk Burnett field. It was through his knowledge of the field that the location was chosen.

Harvey Harris, former county judge, is so well known throughout the county as to make the sales of stock very easy, and Dr. Black has many warm friends who will be glad to go in with him on the proposition.

**ALICE WHITFIELD**  
Public Stenographer  
Legal matters a specialty. Westland hotel.

**DR. WHITE**  
Phone: Office 124; Res. 2698.

**Dr. Duane Meredith**  
Consulting Pathologist  
Practice Limited to Diagnosis, Consultation, X-Ray and Bacteriology.  
WICHITA GENERAL HOSPITAL  
WICHITA FALLS, TEXAS.  
E. S. Whitelaw M. A. Phillips  
T. W. Walker  
**Whitelaw & Co.**  
Real Estate and Oil Leases  
605 Seventh Street.  
Day Phone 2286 Night Phone 2834

**OIL STOCK QUOTATIONS**

(Wichita Falls Oil & Gas Exchange)

	Ask.	Bid.
Apex	115	
Alday	130	120
Amalgamated		175
Block 39	170	137.50
Block 20	290	255
Brown	340	325
Burk-Bridge	245	242.50
Block 6	335	250
Big Three	275	250
Big Foot	425	375
Bishop-Evans	300	275
Big Hit	250	225
Big Jumbo	200	185
Bank	330	275
Brundage-Hancock	220	215
Bear Man	245	210
Burk Star	225	140
Big Chief	185	160
Burknt-Home No. 2	120	100
Burk-Vernon	247.50	226
*Burknt-Mann	140	140
Big Burk	170	110
Cald-Cotton	115	97.50
Columbia		475
Dallas	300	210
Donohoe	230	200
East Side	135	100
Sagle	380	335
Electra-Burk		110
Fisher-Parker	265	200
Four Brothers	160	135
Green River	225	180
Ginsite	382.50	382.50
Gobblers	300	295
Harvester Syndicate	250	150
Hearne	280	265
*Harvester	257.50	257.50
Hising-Worth	275	200
*Great Dome	205	205
K. A. P.	275	250
Larue	95	97.50
Lucky Seven		105
Lone Star	170	150
Minchew		210
Mann-Power	115	70
Mann-McPhail	140	110
Mann-Hood	115	90
Matador Floydada	245	180
Monarch Petroleum	120	105
Monarch-Scott		90
Nickles		230
*Middle Buster	152.50	152.50
Old Hickory	105	100
Over the Top	185	130
*O'Boy	182	182
Ozark Trail	172.50	150
McAdoo	135	115
Mogul	175	100
*Purcell	130	130
Peebles	140	100
*Russell-Frank	105	105
Russell-Sanderson	425	275
Sentinel	195	155
*School House	450	450
*Spencer	160	160
Scruggs-Ardis		200
S. A. M.	400	280
Staley-Mashburn	300	220
Stibb-Taylor	300	245
Thrift	275	255
Thompson	130	100
Vernon	200	185
*Valley View	170	170
Victory Petroleum	275	150
West Texas	155	137.50
Wichita Southern	700	390
Wichita Petroleum	210	195
Wichita West	165	105
Wewona	900	700
*West Pool	75	75

Dr. R. E. Huff Jr., Dentist, Graduate Northwestern University, Chicago. 410 First National Bank Bldg. 177 st.

**CONSTIPATION**

**And Sour Stomach Caused This Lady Much Suffering - Black-Draught R. od.**

Meadowville, Ky.—Mrs. Pearl Patrick, of this place, writes: "I was very constipated. I had sour stomach and was so uncomfortable. I went to the doctor. He gave me some pills. They weakened me and seemed to tear up my digestion. They would grip me and afterwards it seemed I was more constipated than before. I heard of Black-Draught and decided to try it. I found it just what I needed. It was an easy laxative, and not bad to swallow. My digestion soon improved. I got well of the sour stomach, my bowels soon seemed normal, no more griping, and I would take a dose now and then, and was in good shape."

I cannot say too much for Black-Draught for it is the finest laxative one can use. Theodor's Black-Draught has for many years been found of great value in the treatment of stomach, liver and bowel troubles. Easy to take, gentle and reliable in its action, leaving no bad after-effects, it has won the praise of thousands of people who have used it. NO-128



**Drillers & Producers Oil Co.**

**Capitalization \$95,000, Par Value \$1.00 Fully Paid and Non-Assessable.**

Tomorrow, Thursday, January 23, 12 (midnight) is absolutely your last chance to get Drillers & Producers shares at \$1.00. Out of town people will be given until Monday 12 (midnight) to get their checks, money orders into our office. We have already sold several thousand shares over our \$15,000 block on time payments. Only 30 days time will be given on purchases made hereafter and not 60 days.

**OUR RIG IS BEING MOVED TO THE PROPERTY TODAY!**

The holdings of the company consist of an oil and gas lease—hold estate in and to seventy-five acres of land described as beginning at a point four thousand and two feet east from the southwest corner of the S. A. & M. G. R. Co., Survey No. 1 in Wichita County, Texas, thence north two thousand four hundred and sixty-one feet, thence east thirteen hundred twenty-seven feet, thence south two thousand four hundred and sixty-one feet, thence west to the point of beginning.

This property is located in the Burk Burnett Field, three miles southwest of the city, one-half mile from the Big Allies' wells, and a little over a mile from the famous Surine wells—the largest in Northwest Texas.

STOP A MINUTE and figure. Our neighbors have brought in big wells of 1000 and 1200 bbls. flow, by going to the deep sand, WHERE WE ARE GOING. Why shouldn't we do the same, drilling within less than a half mile on the same strata and same formation?

**WE WANT TO PAY YOU DIVIDENDS!**

**We Want Dividends on Our Money That's Why We Are Going After the Deep Wells—Big Production.**

We don't want to fool ourselves, nor you, by bothering with shallow wells. We intend to thoroughly develop this property, by placing 15 deep wells on the 75 acres. We will take care of shallow wells, if they produce better than 35 to 50 barrels per day, but if not, we will not waste our time on them.

The first \$100,000 that is taken in from production, net, will be set aside for dividends in order that you might receive all your money back and have a profit. 50% of the net production after that will go into the dividend fund, and 50% for future developments.

We expect to own and have in operation at least six drill rigs, by June 1st. If we never get any oil out of our wells when drilled, you can figure how easily we can make money to pay big dividends, drilling wells for the other fellow. That is why we are going to own our own rigs, to guard against the most remote conditions. We have already secured a contract for 12 deep wells. Our material is being rushed as fast as possible, and with the continuance of favorable weather, we should be drilling before February 1st, for we have one of our rigs now standing in the yard at Wichita Falls, ready to be delivered, and other equipments ordered.

Read a few facts and figures that will give you some conception of how we can pay you handsome dividends. As we forestate we are going after large production by drilling deep wells. We are told that the price of oil in this particular part of the field is now \$2.45 per bbl. We will figure off the 45 cents for one-eighth Royalties and expenses, and figure \$2.00 per bbl, net to the company. At the rate of a 1000 bbl. well per day at \$2.00 per bbl. net would be \$60,000 per month, and \$120,000 in two months. With 60,000 to 70,000 shares of our stock sold—Par value \$1.00, you can see that with a two months run, we could pay you almost \$200.00 for each \$100.00 invested and still leave you retaining your valuable interest in the company, as a part owner in every asset. We'll cut the 1000 bbl. well into and make it 500 bbls. per day, which figured on the same basis would be \$30,000 per month and four months will give you the \$120,000 to be divided among the few share holders. We will figure even lower than that, a 300 bbl. well, or \$700 per day which is \$21,000 per month, run would figure over an 80% return on the number of shares we intend to sell. And after all, we rob no man—only pierce MOTHER EARTH.

**CAN A BLACKSMITH SUCCESSFULLY RUN A DRUG STORE AND FILL PRESCRIPTIONS?**

The oil business is like all other business. It calls for experience. With sane and sound management such as we have, being well experienced in the oil business, and able to take advantage of every opportunity, we believe we can make this company one, among the biggest payers that has ever been launched in any field—especially with the high price of oil.

The above data will give you an idea of the reason Mr. L. Johns, President of our company, personally guarantees to refund every dollar that anyone puts in to this company, on their demand within 30 days of purchase date and pay interest at 10%. If you are not satisfied after thoroughly investigating. Remember that this does not mean that I will return your money after drilling for 3 or 4 months. It is the conclusive guarantee that the company will stand the most rigid investigation.

There is not a share of promotion stock in this company, and it is co-operative all the way through. Why is it that the salesmen pay for this ad—in a co-operative Company? Because the newspaper brings the customer to him and brings him ten where he could otherwise locate one!

Only until Thursday, January 23 (12 midnight) left to obtain shares at \$1—avail yourself! The same stock will go to \$2.50 per share on or before February 1st.

Make all checks or money orders payable to **L. JOHNS, Trustee**  
Telephone 2671, Wichita Falls, Tex. 707 Ohio St.

Read why we call this a co-operative company. Every salesman must be a stockholder. Every Driller or other employee company must own stock in the Company.

This ad is of no cost to the Drillers & Producers Oil Co., as the cost of same is deducted from salesmen's commissions.

Children's Rubbers, a Pair

**45c**

Any Ladies' Coat in store

**\$10**

Any Misses' Coat in stock

**\$5**

**Saul's Saul's**

### LARGE INDUSTRY ACROSS THE RIVER WILL BE LOCATED

North Wichita is to be the home of another important industry. The new industry is the North Side Lumber and Building company, which was organized Tuesday with a capital of \$60,000.

The company will handle lumber and building materials, and will build dwellings for working men which it will sell on easy payments. Its yards and warehouses will be located two blocks north of the Big Wichita bridge. More than thirty local business men are interested in the new enterprise. Officers have been elected as follows: W. Lee Moore, president; J. W. Richolt and R. H. Collier vice presidents; C. C. Tevis, secretary and general manager; C. W. Reid, treasurer. The company will be incorporated under the laws of Texas and a charter has already been applied for.

Over fifty carloads of lumber have been purchased and are now in transit. The yards have been staked out and work on the buildings will start as soon as the weather will permit.

### Mrs. Curtis Urges Women of Texas To Pay Poll Tax

Mrs. Nannie Webb Curtis has issued a call to the women of Texas to pay their poll taxes, reminding them that only ten more days remain in which to pay poll taxes. The two important amendments which will come up for a vote this summer, the prohibition and woman's suffrage amendment, make it imperative, Mrs. Curtis points out that all women pay their poll tax and vote in the primaries on the very important measures.

If there were no important measures to be voted on, she adds, every woman should pay her poll tax and show her interest in her enfranchisement. "It is a woman's duty as a citizen to pay her poll tax, just as well as it is a man's," Mrs. Curtis says, and adds that payment will help the school fund.

### Why Druggists Recommend Swamp-Root

For many years druggists have watched with much interest the remarkable record maintained by Dr. Kilmer's Swamp-Root, the great kidney, liver and bladder medicine.

It is a physician's prescription. Swamp-Root is a strengthening medicine. It helps the kidneys, liver and bladder do the work nature intended they should do.

Swamp-Root has stood the test of years. It is sold by all druggists on its merit and it should help you. No other kidney medicine has so many friends.

Be sure to get Swamp-Root and start treatment at once.

However, if you wish first to test this great preparation send ten cents to Dr. Kilmer & Co., Binghamton, N. Y., for a sample bottle. When writing, be sure and mention the Wichita Falls Daily Times.

### Too Late For Regular Classified Page

OKLAHOMA oil leases, east one-half of the S. W. 1-4 Sec. 20 48-12 W. 30 acres. Also 40 acres 1-2 1-2 the N. W. 1-4 Section 14-48-12. 5 acres S. W. of Burkburnett 3-4 mile, 25 acres S. W. of Burkburnett, 1-1/2 miles, north 25 acres of the S. E. 1-4 of section 9-4-12 W.—W. A. Askew, Room 3, McClurkan Bldg. 217-11p

WE ARE in the market for a well-improved ten acre tract of land near the city. Phone 2644. 217-31c

IF YOU want immediate possession of a home see us. Cowling. Phone 2644. 217-31c

IF WE haven't what you want we will get it. Cowling. Phone 2644. 217-31c

WANTED—Stock saleman; holdings in three fields, proven territory, a clear proposition, good commission if you are a producer call Room 210, Westland Hotel. B. E. Porter. 217-21p

IF WE haven't what you want we will get it. Cowling. Phone 2644. 217-31c

FREIGHTING—Two 2 ton trucks, ready to go. Box 111, care Times. 217-21p

IF WE haven't what you want we will get it. Cowling. Phone 2644. 217-31c

FOR SALE—Corner lot Hilland addition. Phone 467. 217-61c

IF WE haven't what you want we will get it. Cowling. Phone 2644. 217-31c

WATKINS WELL lease for sale, 15 acres near Watkins well in block 48, for sale. This is a bargain. J. E. Beal, Phone 1015. 217-41c

IF WE haven't what you want we will get it. Cowling. Phone 2644. 217-31c

IF WE haven't what you want we will get it. Cowling. Phone 2644. 217-31c

TENTH STREET, choice location, 1708 and 1710 Tenth street, for sale. Best location on Tenth. J. E. Beal, Phone 1015 and 503. 217-41c

No. 696, in Re-Guardianship of the Estate of Joe Truett Majors, minor, in the County Court of Wichita County, Texas. Notice is hereby given that I, M. W. Majors, guardian of the estate of Joe Truett Majors, a minor, have this day filed my application in the above entitled and numbered cause for an order of the county judge of Wichita county, Texas, authorizing me as guardian of the estate of said ward to ratify and confirm a certain mineral lease upon the terms, conditions and covenants thereof affecting the undivided one-half interest of said minor in and to Lots 11 and 12 in block No. 4 of the original town of Burkburnett, in Wichita county, Texas, which lease is of record in the Deed Records of said Wichita county, Texas, in Vol. 106, Pages 41, 42 and 43, reference to which is here made. Said application will be heard by the county judge at the court house in the city of Wichita Falls, Texas, on the 25th day of January, A. D. 1919.—M. W. MAJORS, Guardian of the Estate of Joe Truett Majors, a Minor.

### DAILY PRODUCTION OF RANGER FIELD IS 45,000 BARRELS

FORT WORTH, TEX., Jan. 22—The daily production of the Ranger oil pool is now approximately 45,000 barrels, according to the latest pipe line runs. (The biggest well in the district is the Emma Terrell No. 1 of the Prairie Oil and Gas Co., making in the neighborhood of 7,500 barrels daily. This is followed by the Taylor No. 2 of the Gulf Production Co., with a flow of about 4,500 barrels.)

So far there is only one pipe line into the field, that of the Texas Company to Fort Worth, that is carrying oil to capacity and much of the production is in storage in the field. The Prairie pipe line from Ranger to Cushing is expected to be carrying oil soon to its full capacity.

### CIVIC LEAGUE SOCIAL MEETING IS POSTPONED

The social meeting of the Civic League, which was announced for Friday night at the home of Mr. and Mrs. J. K. Kemp, has been postponed because of illness in the Kemp family.

### IS THIS YOUR EXPERIENCE?

Many Wichita Falls People Are Afflicted With Annoying Kidney Trouble.

Are you bothered with too frequent action of the kidneys? Are the secretions highly colored—do they contain sediment—burn and scald in voiding? These are all signs of kidney sickness and should not be neglected. Wichita Falls people recommend Doan's Kidney Pills. If your back aches and your kidneys are weak you will find no better recommended remedy.

H. L. Suydam, 504 Lee St., Wichita Falls, says: "I had spells with my back and kidneys when I could hardly go. There was a continuous dull ache across my kidney which kept me in misery. My kidneys didn't act as they should and the secretions contained sediment. I used different kidney remedies but none gave me the results that Doan's Kidney Pills did. Doan's quickly relieved these sufferings. My back felt easier and my kidneys would act properly. I have used several boxes of Doan's and will use them again should I need them." Price 60c, at all dealers. Don't simply ask for a kidney remedy—get Doan's Kidney Pills—the same that Mrs. Suydam had. Foster-Milburn Co., Mfgs., Buffalo, N. Y.

### Wanted To Rent

Six or seven room furnished house—good location, will pay good price, address H. S. P. care Times

### PERFECTING PLANS FOR OIL EXCHANGE OFFICE BUILDING

The Oil Exchange Building was the name selected for the six-story oil man's office building, at a meeting of the stockholders, held Tuesday afternoon in the offices of Colonel C. C. Wood. The building committee was selected and empowered to employ an architect, and to let the contract so that construction will be started immediately. The building committee named at Tuesday's meeting includes: W. Newton Maer, who organized the building company and secured the subscriptions; Col. Wood, W. D. Cline, W. W. Silk, W. S. Curlee and J. A. Fisher. The architect is to be named in a few days. Mr. Maer stated this morning. The initial payment of subscribers to the building fund of \$250,000 is being collected today.

### Senator Testerman Of Oklahoma Here On Oil Business

Senator Tom Testerman, prominent member of the state legislative body of Oklahoma, is in Wichita Falls with the Westland Hotel as headquarters while attending to his oil interests.

Senator Testerman is interested in land in the bed of Red River, which has been filed on as a placer mining claim by himself and other Oklahomans and has just returned from a hearing in Cotton county, before Judge Jones of the district court, against various people of Oilton, Oklahoma, to prevent them from operations preparatory to drilling for oil on land that is alleged to have been filed upon first by the senator and his associates. The hearing for a permanent injunction will be held next Monday morning. Senator Testerman is interested to a large extent in oil operations in the Wichita Falls district, like many other prominent Oklahomans, and is spending a large part of his time in Wichita Falls attending to these interests.

Times Want Ads One Cent a Word Each Insertion.

### Big Seven Puts Over Above the Derrick Tuesday

The well of the Big Seven Oil Company, on Block 7, Wigham addition, is reported to have thrown oil over the top of the derrick yesterday, while it was being swabbed. The flow today is estimated at more than fifty barrels an hour.

### Lone Wolf Well Near the Watkins Ready To Drill In

The Lone Wolf Oil Company, J. I. Harvey et al, No. 1 on the Ferguson, in the Watkins district, is preparing to drill in having set casing yesterday at 635 feet. The well struck three sands before reaching this Watkins sand. Mr. Harvey stated, one at 33 feet, the second at 140 and the third at 525 feet. The 525 foot sand was good for only about six barrels, it is stated. The Lone Wolf company has its own rig, Mr. Harvey stated, and will start another well, as soon as it moves off No. 1. The company is planning a deep test also.

### Canada Oil Co. Declares Hundred Per Cent Dividend

The Canada Oil Company, which has a well on the Kasper tract, in the west part of the Burkburnett townsite pool, has declared a 100 per cent dividend, to be paid on or before February 10. John Canada is secretary and treasurer of this company, which is the twenty-second Burkburnett company recorded as declaring a dividend.

### LUCKY ELEVEN CONTRACTS FOR DRILLING FIRST WELL

The Lucky Eleven Oil Company has closed the contract for drilling the first well on its 11 acres, adjoining the Burk Bridge well, now reported bearing the Fowler sand depth. Eddie Musick, one of the successful drillers of the field, will have charge of the operations. It is stated, by Lucky Eleven officials.

An agreeable surprise for members of W. O. W. who attend Camp 456 Friday night. Come, see and taste. Nut sed. Geo. W. Eagle, Clerk. 217-21c

WANTED—Salesman to travel out of Wichita Falls. Short trip. Company furnishing car. Must live in Wichita Falls. Give age and experience. Address X care this paper.

### IOWA PARK LEASES

50 acres 3 miles directly west of Iowa Park, \$60 per acre.  
50 acres 2 1/2 miles south of Serrein wells, \$100 per acre.  
25 acres 1 mile southeast Watkins well, \$450 per acre.

I can deliver these  
WILLIAM J. GOODWIN  
612 7th Phone 2669

### Wanted To Buy Second-Hand Furniture and Stoves McLaughlin Furniture Co. Phone 510

## Callie-Frances Oil Co.

Capitalized at \$15,000  
Shares at Par \$25.00

# 20 Acres

1/2 mile of the Famous Zink wells, 1 1/2 south of Iowa Park—not a one well proposition, but one well and lease goes to stockholders. Call or phone us and meet us face to face. If we show you a fair, square proposition, invest with us. If not, don't invest. Isn't this fair?

Fred Carter and Ed Suddith, Promoters and Trustees  
Phone 75 Office 712 Ohio

## Big Values Tomorrow!

# 15 Men's Overcoats

Been lost in shipment, just received, to sell this season, we will offer at

# \$12.50

Values \$18.50 and \$20.00



See them in-side window tonight.

If you have any good oil leases for sale then write me about them, and I will give them my prompt attention.

THE BUERGER OIL EXCHANGE  
Worth Hotel Lobby, Fort Worth, Texas  
Tel. Lamar 4350 P. O. Box 675

BUY NOW!

## Burk-Progressive Oil Company

25 ACRES

in Burkburnett field, surrounded by PRODUCTION

Drilling well and new locations.  
BURK-PROGRESSIVE OIL CO.  
707 Ohio Ave.—Phone 2671

## One Thousand People

in Wichita Falls, are wondering tonight, just which company they can invest in, to the greatest advantage.

I am a Salesman

My income depends upon the number of sales I make—the number of sales I make depends largely upon just how good the proposition is I have to offer—its location, capitalization acreage and the reliability of its management.

Naturally I pick the best. To the hundreds of people whom I sold Park Pool I now recommend Jerome-Van Cleave—in the heart of Burkburnett, within 200 feet of the Marine at

\$10.00 Per Share

## C. C. Everett

7th and Ohio Sts.  
Office in the New Oil Exchange  
C. W. Reid, Trustee, Pres. Natl. Bank of Com.

# VanCleave Lands Produce the Grease

HERE IS A COMPANY THAT HAS GOT TO GET OIL TO MAKE MONEY. FOR THAT REASON WE WENT TO THE VAN CLEAVE.

## THE BURK-BARWISE OIL COMPANY

Is composed of Wichita Falls citizens of long standing in the community, and favorable repute. We own a mineral lease on five acres out of block 103 of the Van Cleave lands, and while we do not guarantee oil, we believe the proposition is as sure and safe as any oil proposition can be, and if oil be found we guarantee to give every stockholder a fair dividend of the income. Our lease is directly east of the Helen-Elizabeth development. WE BELIEVE THE STOCK WILL BE EQUAL TO THAT OF ANY SIMILAR COMPANY IN THE GREAT BURKBURNETT POOL.

**Capital \$65,000      Shares \$50 Par Value**

We invite your inspection of our holdings, and investigation of the reputation of the men who are at the head of the company. If you are satisfied to take a chance with us, we shall endeavor in every way to conduct the company to the best interest of all of our stockholders.

**WORK WILL COMMENCE AT ONCE**

We have already provided for derrick lumber, and are negotiating with one of the best drillers in the field. We expect the stock to be sold in ten days, and the drilling to be started in fifteen days, if the weather permits.

## BURK-BARWISE OIL COMPANY

M. H. BARWISE—H. E. CRAIN—ED. HOWARD—B. D. DONNELL—T. H. COOK, Directors.  
J. T. GIBSON, Secretary.

B. M. BULLARD, JAMES CALVERT, RHEA HOWARD, Fiscal Agents.

OFFICE 808½ OHIO AVE. OR TIMES OFFICE.

PHONES 39 OR 167

WANTED—A Few Live Wire Salesmen.

# Market Report

## Cotton Market

By Associated Press. NEW YORK, Jan. 22.—The cotton market showed renewed nervousness and irregularity during today's early trading but there was considerable covering with scattered buying which gave prices a steady undertone. The opening was 30 points higher to 16 points lower with January showing the maximum advance and selling at 25.40. There were further notices estimated at 500 bales, however, and the near months soon eased off under scattering liquidation, selling at 26.05 or five points net lower. Later months were influenced by relatively firm cables and Liverpool buying with March selling up to 24.00 and May at 22.72 shortly after the call, or about 25 points net higher. There were reports of a better spot demand from southern mills but local sentiment was still unsettled, owing partly to disturbed labor conditions.

After working up to 24.10 for March and 22.80 for May, or about 35 to 42 points net higher, the market weakened during the middle of the morning under active Liverpool selling and a renewal of scattering pressure which was probably encouraged by reports that southern mills were reducing wages and running hours. March broke to 23.47 and May to 22.25 or about 20 to 25 points net lower. The market quickly weakened in consequence with March selling off to 23.30 and May to 22.12 toward 2 o'clock or about 35 to 45 points net lower. January was particularly weak, selling at 24.30 or 30 points net lower.

Cotton closed very steady.

## New Orleans Cotton.

By Associated Press. NEW ORLEANS, Jan. 22.—Large exports caused a good demand in the cotton market today and a rise of 27 to 34 points in the first half hour of business. New Orleans reported clearances of 25,667 bales for England and France before the session was very old, making it certain that this would be one of the most important weeks of the season on the score of foreign shipments.

The advance was widened to 44 to 56 points before selling of consequence was met. From the middle of the morning on much selling came from the short side and toward noon the active months were five points higher to 15 points lower than the closing prices of yesterday.

Selling pressure continued and at 1 o'clock quotations were 56 points under yesterday's close.

Cotton closed steady 15 points up to 28 points down net.

## Liverpool Cotton.

LIVERPOOL, Jan. 22.—Cotton spot quiet; prices steadier. Good middling 18.63; middling 18.00; low middling 16.85; good ordinary 15.43; ordinary 14.90.

Sales 1,000 bales, including 600 American.

Receipts 1700 bales, including 13,400 American.

Futures closed steady: January 17.92; February 16.47; March 15.24; April 13.91.

## Grain Market

By Associated Press. CHICAGO, Jan. 22.—Corn developed fresh strength today in the assumption that present hog prices would be maintained in February. Opening prices which ranged from 1/8 to 1 3/8 higher with February \$1.32 1/2 to \$1.33 and May \$1.27 1/2 to \$1.28 1/2 were followed by a slight reaction.

Oats hardened with corn. After opening a shade off to 1/2 up, with May 67 1/2 to 67 3/4, the market held at a little above yesterday's finish.

Decline in hog prices weakened provisions.

Subsequently reports that vessel charters had been taken for 1,000,000 bushels Argentine corn to come to the United States led to a sharp break in prices. The close was unsettled, half cent to 3/4 net lower with February \$1.28 1/2 to \$1.29 1/2 and May \$1.23 to \$1.23 1/2.

Weakness increased later in the provisions notwithstanding reports that packers had been asked to en-

## Large their offerings to the government.

CORN	High	Low	Close
Jan.	1.36	1.36	1.31 1/2
Feb.	1.32 1/2	1.33	1.27 1/2
March	1.30 1/2	1.31 1/2	1.26 1/2
May	1.27 1/2	1.27 1/2	1.22 1/2
July	1.24 1/2	1.25	1.19 1/2

## OPEN HIGH LOW CLOSE

WHEAT	High	Low	Close
Jan.	65 1/2	65 1/2	62 3/4
Feb.	66 1/2	66 1/2	63 3/4
March	67 1/2	67 1/2	64 3/4
May	67 1/2	67 1/2	63 3/4
July	65 1/2	65 1/2	61 1/2

## NEW YORK STOCKS

By Associated Press. NEW YORK, Jan. 22.—Stocks were stimulated at the opening of today's trading, Baltimore and Ohio rising two points on announcement of the declaration of a two per cent dividend. Other rails, especially Union Pacific and Texas and Pacific, made substantial recoveries from yesterday's general heaviness and specialties, notably oil, gained one to almost two points. Shipments strengthened with equipments, motors and subsidiaries of the latter group. Backward shares include hide and leather preferred and local tractions.

The setbacks at mid-day spread from shippings and specialties to coppers and rails at reactions of one to 2 1/2 points. U. S. Steel yielded much of its gain and St. Paul common and preferred approximated their recent low quotations but oil rallied. Mexican Petroleum, Hide and Leather preferred, Marine preferred and Studebaker was under further

## Chicago Produce.

CHICAGO, Jan. 22.—Butter: lower; creamery 54@57 1/2.

Eggs: lower; receipts 2.726 cases; first 56 1/2; ordinary firsts 54 1/2@57 1/2; at mark cases included 57@58.

## Kansas City Cash Grain.

KANSAS CITY, Jan. 22.—Wheat: No. 1 hard \$2.28@2.31; No. 2 hard \$2.23@2.26; No. 1 red \$2.32@2.34; No. 2 red \$2.28@2.31.

Corn: No. 2 mixed \$1.41@1.43; No. 2 white \$1.42@1.44; No. 2 yellow \$1.43@1.45.

Oats: No. 2 white 70 1/2; No. 2 mixed 69 1/2.

## Kansas City Livestock.

Fort Worth Livestock. FORT WORTH, TEX., Jan. 22.—Cattle: receipts 4,500; steady. Beeves \$8.50@15.00; stockers \$7.50@11.50; cows \$6.00@9.50; heifers \$7.00@10.50; bulls \$6.00@7.75; calves \$6.00@12.50. Hogs: receipts 5,200; unchanged.

Heavy \$17.00@17.35; medium \$16.50@17.00; light \$16.25@16.75; mixed \$15.50@16.50; common \$14.50@15.50; pigs \$10.00@12.00.

Sheep: receipts none; unchanged. Lambs \$12.50@15.50; yearlings \$11.50@12.50; wethers \$9.50@11.50; ewes \$8.50@10.50; culls \$7.00@9.00; goats \$5.00@7.00.

Dressed beef steers \$12.00@20.00; southern steers \$7.00@13.00; cows \$7.00@13.50; stockers \$7.00@13.00; calves \$7.00@14.25.

Sheep: receipts 3,400; strong. Lambs \$15.00@16.50; yearlings \$10.00@14.50; wethers \$9.00@11.50; ewes \$8.00@10.50; stockers \$8.00@16.00.

Poultry: receipts 35 cars; unchanged. Poultry: alive; unchanged.

## Kansas City Livestock.

KANSAS CITY, MO., Hogs: receipts 19,000; steady. Bulk \$17.10@17.40; heavy \$17.25@17.65; light \$17.00@17.40; pigs \$12.00@15.00.

Cattle: receipts 12,000; no south-erns; strong. Prime fed steers \$18.00@20.00.

## Coffee Market.

NEW YORK, Jan. 22.—Coffee: No. 7 Rio 14 1/2; futures firm; May 13.68; July 13.48.

## Pressure in the last hour but rails hardened.

The closing was irregular. Final prices on Liberty bonds were: 3 1/2's 98.80; first convertible 4's 93.82; second 4's 93.50; first convertible 4 1/2's 96.00; second convertible 4 1/2's 94.88; third 4 1/2's 94.84; fourth 4 1/2's 94.88.

## Livestock

Fort Worth Livestock. FORT WORTH, TEX., Jan. 22.—Cattle: receipts 4,500; steady. Beeves \$8.50@15.00; stockers \$7.50@11.50; cows \$6.00@9.50; heifers \$7.00@10.50; bulls \$6.00@7.75; calves \$6.00@12.50. Hogs: receipts 5,200; unchanged.

## Kansas City Livestock.

KANSAS CITY, MO., Hogs: receipts 19,000; steady. Bulk \$17.10@17.40; heavy \$17.25@17.65; light \$17.00@17.40; pigs \$12.00@15.00.

Cattle: receipts 12,000; no south-erns; strong. Prime fed steers \$18.00@20.00.

## Coffee Market.

NEW YORK, Jan. 22.—Coffee: No. 7 Rio 14 1/2; futures firm; May 13.68; July 13.48.

# L. & S. OIL CO.

Capital \$18,000.00. Shares \$10.00 each

Now offered to the public at par—15 acres about 1/2 mile south of Watkins well in block 49—drilling to commence as soon as possible after stock is sold.

L. H. LAWLER, Pres. C. P. SHELDON, Gen. Mgr. and Treas. Office 211, First National Bank Wichita Falls, Texas

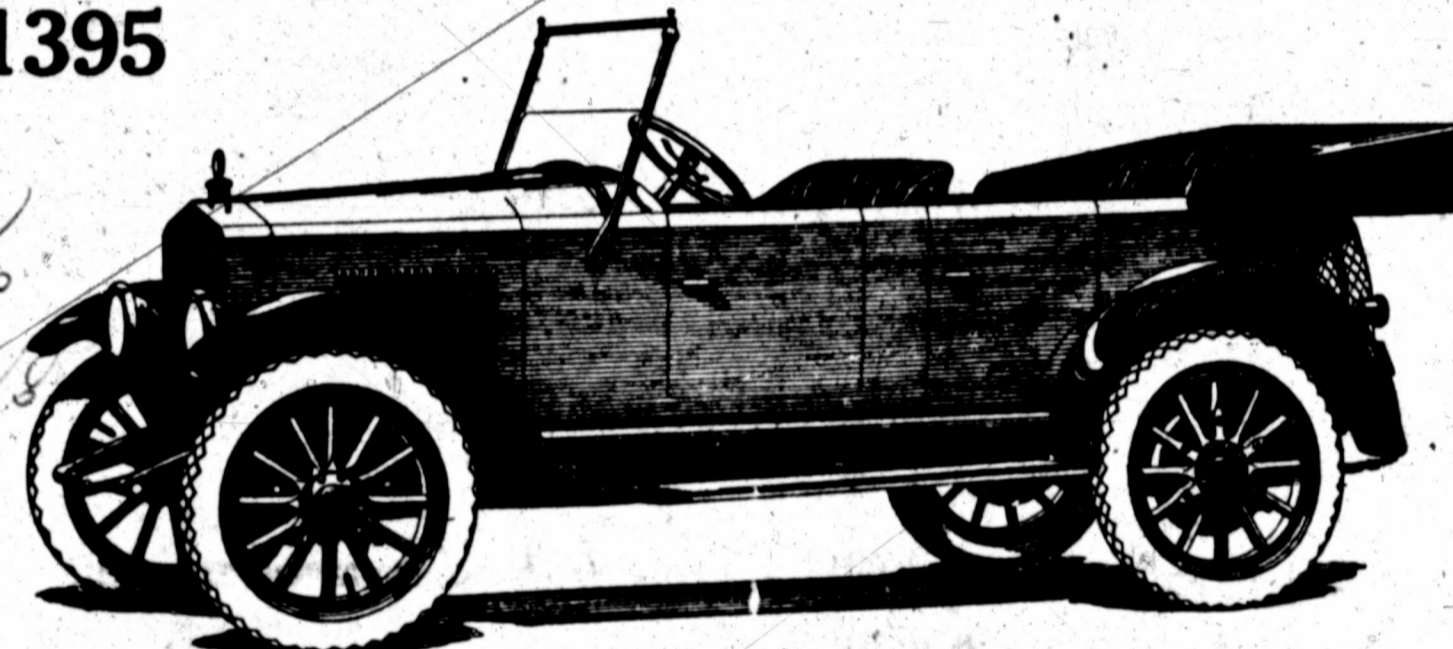
## We want to buy some nice lots in Southland or Floral Heights Addition.

We want listings on anything you have to sell. We want to sell a five room bungalow on 11th St., a six room bungalow on Broad St. A five room modern house on Elizabeth—all good buys. JOHNSON-BAILEY CO. Room 14 Ward Bldg. Phone 396

## VEEDOL OIL

The highest grade Pennsylvania oil obtainable. Insist upon VEEDOL, at your dealers. If he can't supply you, give us his name and we will see that he supplies you. Western Auto Supply Co. DISTRIBUTORS. Phone 219 718 Indiana Ave.

\$1395



## Come Ride in the Essex

Its First Showing—A Light Weight Quality Car

## We Want Your Opinion of It

All motordom has waited a year for the Essex. Dealers have ventured all sorts of descriptions for it. But today it is having its premier showing in hundreds of cities and towns throughout America. For months the trade papers have given first prominence to whatever news they could get of its details. Their interest was awakened because it combines the advantages of the light low priced car, and its economy, with the performance, sturdiness and beauty of the large and costly car. One leading writer proclaimed the Essex a new development in motor car transportation.

Don't you want to be among the first in this locality to see the car that has awakened this interest? We wish you would come and ride in it for the men who are building it. But knowing them as we do and knowing the quality of cars they build, our faith and curiosity were aroused.

What a Ride Proved to Us Our first experience was a ride over a road so rough that you would willingly go miles out of the way to avoid if you were in the average light car. We took it at high speed, but the effect in both the front and rear seats was more in keeping with what you might expect in riding over a smooth pavement. Then we drove into soft sand where the wheels sunk in below the felloes, going through as though it were thin mud. Every test that reveals performance was shown us. There were no squeaks. The motor did not labor. The car had been in similar service for months and still retained its appearance of newness. These are things we want to show you. A demonstration like that which surprised us is ready for you if you will come to our store.

The Essex is Built To Endure Every part that wears is adjustable. Hard service can not loosen the body nor twist the radiator. It is so sturdily built that the frame remains solid and rigid over the roughest roads and through the hardest service. The motor is practically free from vibration. If you were blindfolded and placed in the Essex without having seen it and then were given such a ride as we want you to take with us, you would likely say you were in a large and costly car. After you have ridden in the Essex we will tell you all about it. Then, we think you will be so enthusiastic you will tell everyone you know that you have ridden in the most surprising car you have ever seen.

## You Are To Do Its Advertising

We have long wanted to reveal the details of the Essex. But the manufacturers said they wanted the car to speak for itself. They said no description that could be applied to it would create as favorable an impression as would result from a ride in the car. Even now we hesitate to praise the Essex since we can say nothing that has not already been claimed in praise for some other car. So the endorsement it is to receive is such as you and other thousands of motorists volunteer to give. All we ask is that you come and see and ride in it.

## We Were Surprised—Let Us Surprise You

When we went to the factory to see the Essex we wanted to know in advance something of its detail. But we were told that was for us to discover as we inspected and rode in the car. Perhaps we would have been skeptical and have concluded there was nothing unusual about the Essex if we had not known



LLOYD WEAVER AUTOMOBILE CO. 7th and Scott—Phone 740

20 Acres in Burkburnett Field 2 miles east of town in Oklahoma in S. E. Quarter of Sec 14-5-13 near Burkbridge—See me on the ground or wire me Burkburnett. HARRY E. JORDAN

## PROFESSIONAL CARDS

- ATTORNEYS**
- ROBERT E. HUFF Attorney-at-Law Prompt attention to all civil business. Notary in office. Rear First National Bank
- John C. Kay J. W. Akin H. F. Weldon KAY, AKIN & WELDON Attorneys-at-Law Office: 416 First National Bank Building
- W. F. Weeks Harry C. Weeks WEEKS & WEEKS Attorneys-at-Law 615 First National Bank Building
- S. M. BLANKENSHIP Lawyer Civil and Criminal Law Office Phone 1821. 207 E. & K. Bldg.
- T. F. HUNTER Attorney-at-Law Suite 204-206 First Nat'l Bank Building Phone 681
- B. W. Nicholson C. D. Falder NICHOLSON & FALDER Attorneys-at-Law Office: 416 First National Bank Building
- W. E. Fitzgerald H. F. Weldon FITZGERALD & WELDON Attorneys-at-Law Office: 504 5th First Nat'l Bank Building Phone 117. Notary in Office
- MARTIN, BULLINGTON, BOONS & HUMPHREY Attorneys-at-Law Rooms: 511-13-15 E. & K. Building
- Jouette M. Bonner JOUETTE M. BONNER Attorney-at-Law Phone 121 Ward Building Wichita Falls
- Bernard Martin B. O. O'Neal MARTIN & O'NEAL Attorneys-at-Law Office: Room 200 E. & K. Building
- SMOOT & SMOOT Attorneys Office in Friberg Building
- WALTER B. JONES District Attorney Phone No. 515 E. & K. Bldg.
- CARRIGAN, BRITAIN & HOBGAN Attorneys Room 136 First National Bank Building
- RALPH F. MATRIS Lawyer Room 302 First National Bank Bldg. Phone 719
- DENTISTS**
- Residence 658 Office 288 DR. JAMES A. STEVENS Dentist 318 First National Bank Building
- ARCHITECTS AND CIVIL ENGINEERS**
- BANQUINNEY, STAAVS & PATR ARCHITECTS 607 E. & K. Bldg. Wichita Falls, Tex.
- C. FON KNIGHT Architect Room 13 Northwestern Bldg. Phone 671
- ISBELL & MUYALFE Civil Engineers and Surveyors Rooms 4 and 5, over National Bank of Commerce. Office Phone 702; Rec. 870
- GUARANTEE ABSTRACT AND TITLE COMPANY**
- W. F. Tamm Manager 702 Seventh St. Office Phone 681 Courthouse Phone 1881



# WELCOME DALLAS MEN

**B**Y the time your eyes will rest upon this page, men of Dallas, you will have seen Burkburnett, the City of Derricks, and Wichita Falls, the growing city of North Texas, around which center so many stories of romance, stranger than fiction.

You will be filled with wonder and inspiration at the memory of what you have seen and heard this day. When telling your friends in Dallas about it you no doubt will exclaim as did the Queen of Sheba, after visiting ancient Jerusalem and seeing the wonders thereof: "It was a true report that I heard. Howbeit I believed not the words until I came and mine own eyes had seen it: and behold the half was not told me."

Then, Men of Dallas, when realizing the limitations of spoken language, if you wish some help to tell of the wonders, the romance and money making possibilities of the oil fields surrounding Wichita Falls by means of circulars or booklets, or by newspaper and magazine advertising—

**REMEMBER THE  
WICHITA FALLS ADVERTISING AGENCY**

A. G. FEGERT, Manager

Room Five, National Bank of Commerce Building.

Wichita Falls, Texas.

### PEASANTS HIDING SUPPLY OF GRAIN FROM BOLSHEVIKI

BURY IT IN LARGE PITS IN THE SOIL AFTER CLAY IS DRIED WITH FIRE.

### FOOD IS SKY HIGH

Almost Impossible to Obtain Clothing and Many Are Robbed of Their Shoes on Streets.

By Associated Press. WARSAW, Monday, Jan. 20.—Ukrainian peasants are hiding grain from the bolsheviks by burying it in large pits dug in the clay soil. Before the grain is placed in hiding the peasants dry the pits by building large fires in them.

It is reported that large numbers of Germans remain in Kiev and other Ukrainian towns. They have, it is said, no intention to leave and it is reported they have been offered large sums to fight in Petlura's army in the ranks of the bolsheviks.

Common soldiers are said to be getting thirty rubles and officers from 100 to 200 rubles per day for service.

Order Natives to Leave. Kiev is being deserted by all foreigners, who are, for the most part, headed for Kovel, Cracow and Warsaw. German diplomatic agents have issued warnings for all who are not natives to leave the country. There are a few American refugees from Kiev who have reached Moscow but are unable to leave there because they have no funds.

The cost of food at Kiev is almost as great as at Moscow. Bread being sold is bad, butter costs 75 rubles a pound and eggs three rubles apiece. Clothing is so scarce that it is a common sight to see people robbed of their shoes on the street.

Rob Germans of Clothing. Many German officers have been stripped stark naked by bands of street prowlers.

Petlura, the peasant leader, is a bolshevik, but one who wishes to rule independent of Moscow. With the end of the war, the return of many soldiers from the front and the evacuation of Ukraine by the Germans, Petlura revived his propaganda resulting in many alleged outrages throughout the country. Palaces and private homes are said to have been destroyed, art works and valuable book collections have been carried away and it is said that many murders have been committed by his followers.

Vancleave Farm Leases For Sale. Seven two-acre, three 2 1/2, three 5-acre tracts out of block 102 Vancleave lands, south of road, offsetting Horne and Marine wells, any up close and get good wells. For prices and terms call W. M. Priddy, Room 408, Kemp & Kell office. Phone 71. Residence phone 1758. 2164fc

### Approve Plan For Commissions To Distribute Foods

By Associated Press. PARIS, Jan. 22.—Proposals for the establishment of re-constituting commissions at Trieste, Bucharest, Constantinople and in Poland were approved at yesterday's meeting of the Inter-Allied supreme council of food supply at which Herbert C. Hoover presided. Countries which can be reached from the Adriatic will be served from Trieste.

After receiving reports showing the situation to be critical in Poland the council sent a letter to Marshal Poch making him to take immediate measures in accordance with the armistice to ensure the transport of foodstuffs to suffering populations by the way of Tenzig. Steps were taken to supply food to Finland and to make certain that Germany carries on her undertaking to feed Russian prisoners of war.

### "HEALTH SUNDAY" DATE HAS BEEN POSTPONED

By Associated Press. WASHINGTON, Jan. 21.—Postponement of "Health Sunday" from February 9 to February 22, so as not to conflict with the Theodore Roosevelt Memorial services, arranged for the former date was announced today by Surgeon General Hime of the United States public health service.

You will have to hurry if you want stock in Burk Vancleave Oil Co. Shares \$100.00 each. Phone 777, or wire F. E. Knotts, 202 Kemp & Kell Bldg., Wichita Falls, Texas 214-316

### PREPARATION FOR ENFORCEMENT OF PROHIBITION LAW

By Associated Press. WASHINGTON, Jan. 22.—Means of enforcing prohibition after July 1, are under consideration by officials of the department of justice and the internal revenue bureau but steps to create a special enforcement agency will not be taken until congress has had time to act on pending legislation giving this function to the revenue bureau.

This bureau now has about 500 agents who could be assigned to liquor violation detection, including 300 now engaged partially in running down illicit liquor distillers. Officials believe, however, that this force would have to be enlarged by several times to effectually enforce nationwide prohibition. The department also stands ready to assign many of its secret agents to prohibition enforcement, if this is deemed necessary.

Even with an augmented government force devoting its entire efforts to preventing manufacture and sale of liquor, however, officials declare the bulk of enforcement work would fall on state and local police authorities, especially in dealing with bootlegging. Revenue agents say

there are already indications of preparations for approach of the dry era among those who propose to manufacture liquor illegally after July 1. Not only in the southern mountains, the principal operating region of moonshiners but in large cities of the east and middle west, small stills have been found recently. Owners of some of these are said to have admitted their intention of putting them in operation after prohibition becomes effective.

You had better secure your stock in the Lilly Oil Company at once, while you can get same at par for when we start on our first five wells you will have to give a premium to obtain same. Only \$10.00 per share. Lilly Oil Company, Room 202, First National Bank Building, Phone 195. 2164fc



BELL-ANS FOR INDIGESTION

### BUY IT NOW!

Dr. W. W. Cox, Messrs. Claud Miller, B. E. Davis, H. H. Haynes and Claud A. Smith, all oil men. The total capitalization is \$450,000.00 on 100 acres, equivalent to \$45,000 on each 10-acre. Each stockholder participates in the 100 acres.

## Big 10 Oil Company

### 10 Wells in the Famous Burkburnett Oil Field One Share \$10 Gives You Ten Chances to One YOU SHARE IN ALL THE WELLS

JUST ORGANIZED: 100 acre lease in the FAMOUS BURKBURNETT OIL FIELD, on C. Birk tract adjoining the Fisher-Gilliland lease which in the 1600 foot sand is producing thousands of barrels monthly and from which they supply their refinery—said to be the only individually owned refinery in the country. Also 1/4 to 3/4 miles from the well known Allies Lease on B. Evans tract which other holdings is capitalized at One Million Dollars. We see no reason why there are not just as great possibilities to our lease. It is the opinion of an experienced oil man that our stock will go 2 to 1 as soon as we start drilling for deep oil.

Each 10 acres is capitalized at the low price of \$45,000. There's room for 4 wells to each 10 acres. We are approximately 1100 feet from a well which according to reliable information came in flowing 800 to 1000 barrels. If we strike deep oil our stock will go up by leaps and we have a liveonest set of Wichita County Citizens back of this company who will see that you get a square deal and every dollar in dividend that the company earns.

We have 5 shallow wells and operations for deep wells will begin soon, and as many thereafter as the stockholders may direct. Shares are \$10 par value. Enclose money order or Cashier's Check and tell us how many shares you want. On receipt of money your Stock Certificate will be issued direct to you. Don't write letters, we haven't time to answer them. Liberty Bonds accepted at par. Send money to BIG TEN OIL COMPANY, Dr. W. W. Cox, President, 721 Ohio Ave., Wichita Falls, Texas.

## Burk-Cook Oil Co.

### Capital \$60,000 Par \$100

5 acre track on old homesite of the Van Cleave farm, 2500 ft. Helen-Elizabeth, 1200 feet of Marine.

This is an especially selected location, in the very heart of proven field.

If you want in where there is comparatively NO risk you should give the Burk-Cook Oil Co. your attention NOW.

Look at the men at the head of the Burk-Cook Oil Co. and judge for yourself if you think you will get a square deal.

We will have material on drilling sight this week and

### Drilling Will Start Immediately

after rig is built.

BURK-COOK OIL CO. OFFICERS ARE:

J. K. FAUNTLEROY, Pres.	R. W. COOK, Sec. and Treas.
J. F. HUND, Vice-Pres.	M. P. KELLY, Mgr.
E. KILANDER, Trustee.	H. D. JONES, Asst. Mgr.

Buy shares today. You might regret putting off until tomorrow what should be done today.

Address all mail 612 7th St., Wichita Falls, Texas

## Oil Leases for Sale

NEAR CHARLIE where 6 or 8 deep wells are to be drilled at once. I own some attractive leases in this vicinity and will sell you for less than others have been paying. I also have some 5-acre tracts near Burkburnett.

See J. M. Bland today.

THOMAS & BLAND  
Phone 99

# SAFE BET OIL COMPANY

Capital \$35,000      25 ACRES      \$25.00 Par Value

## Don't Take A Chance in An Unproven Field

Get in where you are sure of oil, where one well is already down on our tract to oil sand. The oil is standing in casing, five feet above ground level!

Come out to our property and see for yourself. We guarantee to put another well down to Zink sand as soon as sufficient stock is sold.

Our holdings are 308 yards south of the famous Zink wells and in a line between the Zink and Watkins wells.

Deep test wells are being sunk north and south of us which are expected to strike Ranger sand. Our holdings will soar in value if these tests prove successful.

Get an interest in Iowa Park holdings while you can at a moderate price. Don't wait for them to get beyond your reach! Iowa Park is predicted by many to be a second Burkburnett. It is in the same state of development that Burkburnett was six months ago.

The oil produced on our tract is of the highest value selling at \$3.40 a barrel and testing 42 degrees Baumé.

Don't let this opportunity pass you. We expect this stock to sell very rapidly. Every oil man agrees that it is a good proposition.

Why speculate when here is a proven investment. We are not wild-catting. We are only developing an oil field which is a proven certainty.

We guarantee dividends thirty days after actual production is begun. We will not keep you waiting. ACT NOW! If stock is oversubscribed we reserve the right to return checks to those who subscribe late.

Fill Out Application at Once and Mail to the

# Safe Bet Oil Co.

Metropolitan Hotel, Fort Worth, Texas

SAEE BET OIL CO.  
Metropolitan Hotel, Ft. Worth, Texas  
Gentlemen:  
I enclose herewith \$..... in full payment for ..... shares of Safe Bet Oil Co. (Fully Paid).  
Please mail shares to me.  
Name: .....  
Address: .....  
We reserve the right to return your remittance in case stock is over subscribed.  
Make all Checks Payable to  
SAFE BET OIL COMPANY.

LIEUTENANT SPI...

Special to The Times... AUSTIN, TEXAS, who was governor Tiesdman. That is specially in this has a newsworthy another in the ler, a fourth as ing and insuranc and oyster con The new li proud of the fi the fourth esta a fifty paper o meet influence among the new the editor ther sent member s sation for m the vice presi tion.

In politics he of the country as a man conv of the entire t that for eight in the senate, 45 counties. man to do that handle countie sed state any as.

That he rep tested by the f ery one of the race for lieute Mr. Johnson's ty Herald and pils. His son the regular ed the senate. T quite proud of that he has raf efficiency.

A daughter and Mrs. Johns hand fit for his ing after his.

The lieutenan lyman and b tention of th through the fa prohibitionist a suffrage who vert.

Mr. Johnson olution which and impeachm son as govern has lately tak self and seildor out reference Johnson.

That of cou the distaste of County Herald some warm re ing his dista ernor, and wh ther remarks time.

It would app the lieutenant better position

7  
Kell f  
5  
veys,  
acre.  
3  
lying  
\$25.0  
2  
produ  
1  
mark

OIL  
Ranch

OFFI

ac  
SO

## LIEUTENANT GOVERNOR JOHNSON HAS SPLENDID RECORD AS A LAW MAKER

Special to The Times.  
AUSTIN, TEX., Jan. 22.—W. A. Johnson, who was inaugurated lieutenant governor Tuesday, is also a newspaper man. That is not to his discredit, especially in this administration, which has a newspaper man for governor, another in the office of the comptroller, a fourth as commissioner of banking and insurance and a fifth as fish and oyster commissioner.

The new lieutenant governor is proud of the fact that he belongs to the fourth estate and claims to have a nifty paper of wide circulation and much influence. It is well known among the newspaper fraternity and the editor thereof has been a prominent member of the Texas Press Association for many years and is now the vice president of that organization.

In politics he has shown the ability of the country editor as a "mixer" and as a man conversant with the affairs of the entire state; with the result that for eight years he represented in the senate a district comprising 45 counties. It takes a newspaper man to do that; for 45 of those Panhandle counties would make a good-sized state anywhere except in Texas.

That he represented them was attested by the fact that he carried every one of them when he made his race for lieutenant governor.

Mr. Johnson's paper is the Hall County Herald and it is published at Memphis. His son is in charge of it while the regular editor is presiding over the senate. The editor in chief is quite proud of that son and testifies that he has raised him on the plan of efficiency.

A daughter is in school in Austin and Mrs. Johnson is keeping her husband fit for his official duties by looking after his material wants.

The lieutenant governor is a family man and believes in the full protection of the interests of Texas through the family. He is a staunch prohibitionist and an advocate of equal suffrage who is not a recent convert.

Mr. Johnson was author of the resolution which finally led to the trial and impeachment of James E. Ferguson as governor. The deposed official has lately taken to a newspaper himself and seldom misses an issue without reference to his dislike for Mr. Johnson.

That, of course, is not especially to the distaste of the editor of the Hall County Herald who has handed out some warm remarks himself concerning his distaste for the former governor, and who is likely to have further remarks to make from time to time.

It would appear on the surface that the lieutenant governor is rather in a better position to give pointed effect



W. A. JOHNSON,  
Lieutenant-Governor of Texas.

to those remarks and to be able to put more heat into the warmth.

Mr. Johnson has served as regent of the University of Texas and a member of the local school board; that is an evidence that he is thoroughly in touch with educational matters and that he is a partisan of the rank and file when the matter of education is under discussion. He has consistently supported every proposition having for its object the encouragement of education in Texas, whether it was for the common school or for the colleges and the university.

Widely traveled and familiar with conditions over a large section of Texas as he has a broad vision of the requirements of the state. He has seen the Panhandle develop from a long-horn free grass proposition to a well settled farming country with white faces replacing the old dodges. And he has seen the state develop with that progress which is characteristic of Texas; and he is convinced that we are entering upon such an era as will send the state into a position as advantageous in commercial and farming as it has become in democratic politics of recent years.

He is favorable to a constitutional convention that a new organic law may be framed along the lines of 1919 instead of those of 1876, when the problems ahead of Texas were very different from those which now cause the legislators who have the interests of the state at heart to

ponder long before they write their bills.

The lieutenant governor is a careful man and believes he is right before he talks. Then he is willing to stick by what he says. He has made careful study of the state's institutions and departments and knows the ins and outs of them. He will have nothing to do with new legislation; but he will bring to his task of presiding officer an experience which has been possessed by few of his predecessors, and he realizes to the fullest that this is to be a constructive administration.

Conservation and efficiency are his standards and he will make every endeavor to do his full part in what there is to be done to bring Texas into her destiny.

### PLANNING TO PERMIT THE SOLDIERS TO VOTE

By Associated Press.  
AUSTIN, TEX., Jan. 22.—An honorable discharge from the military service of the United States will be considered the same as a pool tax receipt, as far as voting is concerned, during the year which it was issued, if bill No. 7, introduced by Popo de Nueces becomes a law.

Wanted.—First class oil stock salespeople—either sex. Must come well recommended. Otherwise don't apply. Lilly-Oil Company, Room 202, First National Bank Building, Phone 195, 216-1c

of Holbrook, Arizona, Tribune; read about the coming oil boom and land of opportunities. Address: Thomas, Globe, 215-2tp

## ST. LOUIS PLANS FOR AIR TRAVEL AT EARLY DATE

By Associated Press.  
ST. LOUIS, Jan. 21.—Looking forward to future air travel, St. Louis is preparing a landing field in Forest Park, primarily for government mail planes, but intended also for sportsmen-aviators.

Mayor Kiel announced that funds for grading has been provided and that the field would be ready April 1. Expense of preparing the field will approximate \$25,000.

"I am sure that the landing field will not be used exclusively for mail airplanes," said Mayor Kiel. "Flying has been developed immensely by the war and a host of aviators have been perfectly trained. The tremendous impetus given to aviation will find expression to a larger extent than we ever dreamed of in flying for pleasure, sport and commerce."

Aviators flying from Detroit or Chicago or Kansas City, knowing that St. Louis has a fully equipped landing field, will come here. St. Louis will become a sort of transcontinental airplane terminus.

### WANT AGRICULTURE TAUGHT IN SCHOOLS

By Associated Press.

AUSTIN, TEX., Jan. 21.—The second bill to be introduced in the Thirty-Sixth Legislature would provide for the teaching of scientific agriculture, horticulture, stock raising, mechanics and home economics in all the public schools of the state.

The bill also proposes that male labor necessary to conducting students may be required to furnish school farms, and female students may be required to keep the domestic science plants in operation. The planting of pecan and other nut and fruit trees along every road in the state by the school children, and the care of trees and gathering of their produce is also

suggested in the bill. All monies derived from products raised by schools would go to the districts producing them.

**Well Drilling  
Machinery  
CABLE,  
Tools, Belting, Packing  
Hose, Cypress Tanks**

**FORT WORTH WELL  
MACHINERY SUPPLY  
CO., INC.  
W. B. Brown  
Room 134 Hearn Hotel**

## NOTICE!

This space has been reserved for advertising for year 1919.

### OIL LEASES

The following choice acreage owned by Kemp & Kell for lease direct by owners of fee:

530 acres Jno. W. Gresham & Jno. W. Massie Surveys, just east of the famous Zink wells, at \$30.00 per acre.

320 acres S. P. R. R. Survey No. 2, Archer county, lying midway between Watkins well and Panther Pool, \$25.00 per acre.

Also, several tracts in Iowa Park field adjacent to production at \$25,000 to \$100,000 per acre.

Prices subject to change and withdrawal from market without notice.

**C. Y. TULLY**

Care Kemp & Kell Bldg.  
Wichita Falls, Texas.

## W. E. OLIVER

**OIL LEASES; STOCKS BOUGHT AND SOLD.**

Ranches and colonization tracts in Texas, Oklahoma and New Mexico.

A Tip Worth Taking—

**BUY FARM LANDS**

OFFICES—Parlor Hearn Hotel, Wichita Falls, Texas;  
Elk Hotel, Amarillo, Texas;  
1st National Bank Bldg., Clayton, New Mex.

Have sixteen five acre tracts to sell in Section Twenty-Nine just across the river from Burkburnett.

These tracts are close to test well which is to be drilled by one of the best drillers in the Burkburnett field. If you want good acreage to combine with close-in stuff this is absolutely the best buy in the field.

If you are looking for a good legitimate deal, think I have it.

**Mrs. Grace M. Higgins**

513 Kemp & Kell Bldg.

PHONES: Office 734;

Res. 2157.

## Figure for Your Self!

If we haven't the best proposition in the field don't buy

# 50 Acres

\$15,000 CAPITAL

# \$50 SHARES \$50

20 acres joining our lease on the north, sold Wednesday of last week for \$300 per acre.

Act quick if you want to get in on the ground floor for this stock is practically all sold.

## Wichita Park Oil Company

Make all checks payable to W. A. BABER, Trustee.  
Phone 1396

## The Southwestern Telegraph & Telephone Company

## New Telephone Toll Rates

**Effective January 21, 1919**

In accordance with the order of the Postmaster General, dated December 13, 1918, new schedules of rates for telephone toll calls (to points outside the local service area) under which all toll calls throughout the United States are placed on a uniform basis, become effective 12:01 a. m., January 21, 1919.

Under these new schedules the "station to station" rate is the base upon which all rates for the various classes of service offered, are computed. This rate is determined by the air line distance between toll points and is computed, for the initial period, on the basis of 5c for each 6 miles up to 24 miles and 5c for each 8 miles beyond that distance.

For toll calls where the calling party does not specify a particular person to be reached at the called telephone, the "station to station" rate is charged. This method provides the cheapest and quickest form of toll service.

"Station to station" calls must be made as far as possible by giving the telephone number of the called telephone. Where the number is not known and telephone directory information is not available, the number should be obtained from "Information," or if the called telephone is at a distant point, the name and address of the called subscriber should be given to the toll operator.

For toll calls where the calling party specifies a particular person to be reached at the called telephone and the connection is established and conversation held with that person, the "person to person" rate is charged. As this service requires a greater amount of operating effort, the rate for such calls is about one-fourth greater than the "station to station" rate. (Minimum "person to person" rate 20c.)

For toll calls on a "person to person" basis, where the calling party, in placing the call, designates a definite time at which he will talk and the conversation is held, the "appointment" rate is charged. As this service involves the making of the appointment in addition to the operating effort necessary for a "person to person" call, the "appointment" rate is about one-half greater than the "station to station" rate. (Minimum "appointment" rate 25c.)

For toll calls made on a "person to person" basis where messenger service is required to secure attendance of the designated person at the called telephone, the "messenger call" rate applies. This rate is the same as the "appointment" rate, plus any necessary charge for messenger service. (Minimum "messenger call" rate 25c.)

In connection with all toll calls other than those made on a "station to station" basis where the called station is reached but the conversation is not held, because of any reason beyond the control of the telephone company a "report charge" is made equivalent to about one-fourth of the "station to station" rate. (Minimum "report charge" 10c, maximum \$2.00.)

Reduced rates, applying only to calls made on a "station to station" basis are quoted for toll service between the hours of 8:30 p. m. and 4:30 a. m. The rate between 8:30 p. m. and 12 midnight is about one-half the "station to station" day rate, and between 12 midnight and 4:30 a. m. about one-fourth the "station to station" day rate. The minimum night rate is 25c. Where the "station to station" day rate is 25c or less no reduction is made for night service.

For the purpose of applying reduced rates, for evening and night "station to station" service, the time of day at the calling point is used. Day rates apply on all calls other than those made on a "station to station" basis, whether they are made during the day, evening or night.





LABOR CONDITIONS WILL NOT BECOME NORMAL IN 1919

SUCH IS CONCLUSION OF U. S. DEPARTMENT OF AGRICULTURE.

PLAN FOR CONDITIONS

Department Will Maintain Its Organization That Aided in Supplying Demand in 1918.

WASHINGTON, D. C., Jan. 26.—Even if peace treaties should be formally executed before the next harvest season, farm labor conditions in the United States will not automatically return in 1919 to pre-war conditions. Therefore, the United States Department of Agriculture is planning farm labor activities for 1919.

Officials of the department suggest that the farm labor situation in 1919 may be quite as serious as that of 1918. A large part of our army may remain in Europe throughout the year.

What Wheat Acreage Means. The area of winter wheat sown in the fall of 1918 is estimated by the Department of Agriculture at 49,027,000 acres, which is 15.9 per cent more than the revised estimated area sown in the fall of 1917.

The winter wheat acreage speaks a volume in regard to the need for farm help. Three or four men will be needed to harvest what one man has planted—and there has been no claim that there was a surplus of labor for the planting operations.

Permanent Labor Advocated. The Department of Agriculture plans to maintain its organization that aided in supplying farm labor in 1918. It will aim to tap every source of emergency help—men, women and the children from the Boys' Working Reserve, and other organizations of that sort.

The main effort of the department, however, is to be centered on placing men permanently as helpers on the farms. Permanent labor, employed the year around under good living conditions and at fair wages is believed to be one of the prime needs on literally millions of American farms.

Will Return To Farms. Many soldiers and men who have left the farms for war industries—and figures show that war industries took more men from the farms than were given to the army—are expected to return to the farms if they are offered permanent and profitable employment.

What is the farmer's part in making farm labor permanent? In the first place, department officials believe, every farm that has an idle period during a part of the year should so plan its operations that there will be work through every season. Crops can be rotated, live stock fed, dairying pursued and poultry produced.

These activities, when carried on in many sections, it is believed, will solve the problem in many sections. It is believed.

Homes For Hired Men. Large numbers of married men should be working on the farms, it is stated. To get them, better tenant houses are needed in many cases and

DR. J. W. DU VAL Eye, Ear, Nose, Throat. Glasses Fitted.

For City Loans, Farm or Ranch Loans—For Fire and Tornado Insurance see FRED T. COUPER 205 First National Bank Bldg. Phone 382

American Dry Cleaners We Clean Everything But a Reputation Telephone 101 813 Tenth St.

METAL WEATHER STRIPS SAVE FUEL—SAVE LABOR Have us install the Athey Metal Weather Strip in your Residence. Wichita Builder's Supply Co. Phone 465—501 Kemp & Kell Bldg. An Investment—Not an Expense

On Guard The man with a savings account is prepared for a financial emergency—his bank book is on guard to protect him in investments he has made, and there to make it possible for him to take advantage of opportunities. A savings account is any man's greatest asset—without it no one is standing on a firm foundation. \$1.00 IS ALL THAT IS REQUIRED TO START AN ACCOUNT Begin now to save a share of your income each week. CITY NATIONAL BANK J. A. KEMP, President C. W. SNIDER, Cashier W. L. ROBERTSON, Asst. Cashier. P. F. LANGFORD, Vice-Pres. O. D. HARTY, Vice-Pres. R. E. SHEPHERD, Asst. Cashier N. M. CLIFFORD, Asst. Cashier O. A. JONES, Asst. Cashier

The Present Day Standard of Prescription Service

The standard of prescription compounding is constantly improving. Scientific methods and equipment make it possible. Your medicines will always be right if you bring your prescriptions to us. Our prescription department is so organized and conducted that it supplements the efforts of the physician.

An up-to-date equipment, the use of assayed drugs and the employment of experienced, graduate pharmacists insure perfect service.

So we guarantee purity, accuracy and reasonable prices when your prescriptions are compounded at

First Attention to All Orders for the Sick. Palace Drug Store Special Attention Given Our Prescription Dept. Phone 341-340

TYPEWRITERS We now have a large stock of second hand machines of all makes and in good condition. Wilson & Woods OFFICE SUPPLIES AND SPORTING GOODS 704 Ohio Phone 10

Lloyd George Has Different Idea On Russian Situation

LONDON, Tuesday, Jan. 21.—Premier Lloyd George's attitude regarding Russia and the peace congress is explained, according to Reuters, as quite different from the general understanding of the situation. It is said that Mr. Lloyd George did not suggest that Nikolai Lenin or Leon Trotsky should be invited to sit at the peace congress. He did not propose that representatives of Russia comprising all sections of Russian political life should go to Paris in order to give the most reliable information concerning the situation in that country.

IMPORTANT LINKS Hygiene, rest, pure air, sunshine and a well-balanced diet, plus SCOTT'S EMULSION to improve the blood-quality, increase body-weight and build up resistance, are important links in the logical treatment of incipient pulmonary affections. To a child or adult with a tendency to weak lungs or tender throat, Scott's brings a wealth of rich tonic-nourishment. A little of Scott's Emulsion today may do you a world of good tomorrow. Scott & Bowne, Bloomfield, N. J. 18-18

DR. J. W. DU VAL Eye, Ear, Nose, Throat. Glasses Fitted.

For City Loans, Farm or Ranch Loans—For Fire and Tornado Insurance see FRED T. COUPER 205 First National Bank Bldg. Phone 382

American Dry Cleaners We Clean Everything But a Reputation Telephone 101 813 Tenth St.

On Guard The man with a savings account is prepared for a financial emergency—his bank book is on guard to protect him in investments he has made, and there to make it possible for him to take advantage of opportunities. A savings account is any man's greatest asset—without it no one is standing on a firm foundation. \$1.00 IS ALL THAT IS REQUIRED TO START AN ACCOUNT Begin now to save a share of your income each week. CITY NATIONAL BANK J. A. KEMP, President C. W. SNIDER, Cashier W. L. ROBERTSON, Asst. Cashier. P. F. LANGFORD, Vice-Pres. O. D. HARTY, Vice-Pres. R. E. SHEPHERD, Asst. Cashier N. M. CLIFFORD, Asst. Cashier O. A. JONES, Asst. Cashier

Improvement of Brazos Santiago Harbor Planned

BROWNSVILLE, TEX., Jan. 22.—The improvement of Brazos Santiago harbor off Point Isabel, the future water gateway of Brownsville, a matter of vast importance to this city and to the entire lower Rio Grande Valley, now appears to be definitely assured, according to David O'Brien who has just returned from Washington where he spent the past several weeks in the interest of the project.

EDMONTON, ALBERTA, Jan. 22.—There will be no premature peace celebration at Fort McPherson, Canada, 70 miles south of the Arctic ocean, for Fort McPherson will not know that the war is over until January 26 or thereafter.

When Neuralgia Attacks Nerves Sloan's Liniment scatters the congestion and relieves pain. A little, applied without rubbing, will penetrate, immediately and rest and soothe the nerves.

THOSE SHOE BILLS! —KEEP THEM DOWN Mr. John Held, merchant of Salt Lake City, keeps an exact record of the shoes he wears. He writes, "Two pairs of Neolin Soles have worn for me 19 months and I am on my feet ninety per cent of the time."

Neolin Soles Get Neolin-soled shoes at almost any good shoe store. Get them for your whole family in the styles you prefer. And have these cost-saving soles put on your worn shoes. They are very comfortable and waterproof as well as durable.

Something About Your Eyes M. L. CLOPTON in charge. Art Jewelry Co.'s Optical Parlor Kahn Building.

THE NAME—BURROUGHS On an adding machine is like STERLING ON SILVER Priced as low as \$125.00 BURROUGHS ADDING MACHINE CO. Phone 941 or 213—825 Indiana

OFFICE SUPPLIES Desk Tables, Chairs and Rugs. We are now showing on our floors and are prepared to supply promptly any grade of office furniture you may desire. Martin's Book Store Free Delivery in Business District Only 609-11 Eighth St. Phones 96 and 2139

When You Think of Typewriters We now have three expert mechanics on our staff. WICHITA TYPEWRITER EXCHANGE 707 Eighth St. R. H. HOLLINGER, Mgr. Phone 2222

The Clothes We Clean, Press and Repair Speak for themselves. Our service is at your command. Phone us Wichita Cleaning and Dye Works 1102 Scott BETTER SERVICE Phone 670

MEMORIAL I carry a large stock of Marble, Granite, Stone Curbing and everything in Cemetery works and can supply your demand, whether it be large or small. M. G. Catter Marble and Granite Works Corner Ohio Avenue and 3rd Street Phone 2200

Stevens-Talbert Co. Insurance of All Kinds. The Agency of Service. First National Bank Building. 708 Eighth Street. Telephone 201.

ANDERSON, PATTERSON & REESE Insurance of all kinds—Loans, Real Estate and Rentals—616 Eighth

L. H. ROBERTS CEMENT WORK GENERAL CONTRACTOR Walks, Curbing, Steps, Cement, Work, Floors, Foundations, Street Crossings Telephone 504

Truck for Sale One-ton Wichita truck in good condition. \$800.00 cash. Huggins-Andrews Co., Childress, Texas.

E. G. HILL UNDERTAKER Prompt Ambulance Service Phone 225 Office and Parlors 900 Scott Avenue.

THE MILLER DRUG STORE H. T. THORNBERRY, Prop. Phone 193 8th and Ohio Free Delivery

Don't Get All Het Up BECAUSE COFFEE IS UP A FEW CENTS THE POUND All through the War—Coffee has been the only article of human consumption that has not advanced in price until now—and its still cheap. You can produce a cup of good coffee for one and a half cents. You used to pay a nickle for a glass of beer and fifteen for a drink of booze. BERT BEAN COFFEE HOUSE Telephone 35 824 Indiana Ave.