



CATTLE DECLINE; HOGS ARE ACTIVE AT FORT WORTH

Fort Worth, Tex., Sept. 29.—CATTLE—Receipts 3,800; lower. Beefers \$6.50@10.25; stockers \$6.50@8.75; hogs \$6.00@9.00; cows \$4.25@8.25; bulls \$5.00@8.25; calves \$6.00@9.00.

HOGS—Receipts 1,000 active and steady. Heavy \$19.25@19.75; light \$19.00@19.25; medium \$18.75@19.00; mixed \$18.50@18.75; common \$17.00@18.25; pigs \$12.50@13.50.

ST. LOUIS LIVE STOCK. St. Louis, Sept. 29.—HOGS: Receipts 2,200 steady. Light \$18.50@19.25; pigs \$16.00@18.25; mixed and butchers \$18.50@19.50; good heavy \$19.40@19.50; bulk \$18.85@19.50.

EARLY STRENGTH SHOWN BY CORN; CLOSE IRREGULAR

Chicago, Sept. 29.—CORN developed strength today, influenced by liberal purchasing that was attributed to investment based on the feeding value of corn as compared with prices for live stock. Unexpectedly cooler weather together with frost indications tended also to harden values.

Provisions weakened from lack of support. Buyers appeared to have withdrawn temporarily from the market owing to recent sharp upturns in prices. Week-end evening up of trades prevented any important reaction. The close was unsettled 3/4c to 1 1/2c higher at \$1.18 1/2c @ \$1.18 3/4c % Dec. and \$1.15c @ \$1.15 1/2c % May.

New York, Sept. 29.—Business in percales were active today at the new price. Cotton goods generally were steady and yards in better demand. Linens were firm. Burlaps were firm but quiet. Wool goods were firm.

CHICAGO LIVE STOCK

Chicago, Sept. 29.—HOGS: Receipts 3,000 weak to five cents lower; bulk \$18.75@19.45; light \$18.40@19.50; mixed \$18.30@19.50; heavy \$18.30@19.50; rough \$18.30@19.50; pigs \$14.50@18.20.

CATTLE—Receipts 2,000; weak. Native beef cattle \$7.25@17.75; western steers \$6.40@15.25; stockers \$6.25@11.25; cows and heifers \$5.00@12.50; calves \$10.00@12.75.

ST. LOUIS CASH GRAIN. St. Louis, Sept. 29.—Cash corn higher. No. 2 white \$2.10 @ \$2.12; No. 2 white 59 1/2c @ 62c.

THE SONORA is the World's GREATEST PHONOGRAPH

DON'T MAKE A MISTAKE IN YOUR PURCHASE OF A PHONOGRAPH. Remember, the SONORA, in competition with all known Phonographs, at the great Panama-Pacific Exposition WAS THE ONLY TALKING MACHINE THAT WAS GIVEN ANYTHING FOR TONE QUALITY. The Jury of Awards gave the SONORA 100% PERFECT.

Remember, the SONORA, in competition with all known Phonographs, at the great Panama-Pacific Exposition WAS THE ONLY TALKING MACHINE THAT WAS GIVEN ANYTHING FOR TONE QUALITY. The Jury of Awards gave the SONORA 100% PERFECT.

Remember, the SONORA, in competition with all known Phonographs, at the great Panama-Pacific Exposition WAS THE ONLY TALKING MACHINE THAT WAS GIVEN ANYTHING FOR TONE QUALITY. The Jury of Awards gave the SONORA 100% PERFECT.

Remember, the SONORA, in competition with all known Phonographs, at the great Panama-Pacific Exposition WAS THE ONLY TALKING MACHINE THAT WAS GIVEN ANYTHING FOR TONE QUALITY.

Remember, the SONORA, in competition with all known Phonographs, at the great Panama-Pacific Exposition WAS THE ONLY TALKING MACHINE THAT WAS GIVEN ANYTHING FOR TONE QUALITY. The Jury of Awards gave the SONORA 100% PERFECT.

Remember, the SONORA, in competition with all known Phonographs, at the great Panama-Pacific Exposition WAS THE ONLY TALKING MACHINE THAT WAS GIVEN ANYTHING FOR TONE QUALITY. The Jury of Awards gave the SONORA 100% PERFECT.

Remember, the SONORA, in competition with all known Phonographs, at the great Panama-Pacific Exposition WAS THE ONLY TALKING MACHINE THAT WAS GIVEN ANYTHING FOR TONE QUALITY. The Jury of Awards gave the SONORA 100% PERFECT.

Richardson-Taylor Drug Co. "The Store of Better Service" Ohio and Seventh. Sold on easy payments. Don't make a mistake in your purchase of a phonograph.

Report of Condition of the First National Bank. Assets: Foreign bills of exchange, \$1,804,110.94; U. S. bonds, \$200,000.00; U. S. deposits, \$1,000.00; Total assets, \$3,004,110.94.

Anderson & Patterson Insurance of all kinds—Loans, Real Estate and Rentals. 616 Eighth.

Saul's Bargain Balcony. I am shipping the Bargains from New York as fast as I get 'em. You will find something New in my store every day.

CORN—Open High Low Close. Dec. 1.17 1/2 1.19 1/4 1.17 1/2 1.18 3/4; Jan. 1.14 1/4 1.15 1/4 1.14 1/4 1.14 3/4.

COTTON NERVOUS ON UNCERTAINTY AS TO HURRICANE. The market opened steady at an advance of one point to a decline of 1/2 points, practically all the more active months being lower.

New Orleans Cotton. New Orleans, Sept. 29.—The feature of the cotton market here today was the strength of October, which closed at a net advance of 15 points as against a net decline on other active months of 9 to 13 points.

Galveston Cotton. Galveston, Texas, Sept. 29.—Midling 24.40; receipts 12,388; exports 29,682; sales 603; stocks 151,373.

Chicago Produce. Chicago, Sept. 29.—BUTTER: Unchanged. EGGS—Lower. Receipts 9,963 cases; firsts \$7.27 1/2c; ordinary firsts \$6.75c; at mark cases included 35c @ 37c.

DR. J. D. PROCTOR PAINLESS DENTIST. Office over Morris Drug Store 502 1/2 Indiana Ave. Phone: Office 1415; Residence 245.

Elgin Butter. Elgin, Ill., Sept. 29.—Butter 43c bid. No sales; no offerings.

Wichita Falls Produce Market. Hens 16 cents; springs 17 cents; eggs 35 cents; butter 30 cents.

Chicago Cash Grain. Chicago, Sept. 29.—CORN: No. 2 yellow \$2.01 @ \$2.02; No. 2 white \$2.07 @ \$2.09.

St. Louis Cash Grain. St. Louis, Sept. 29.—Cash corn higher. No. 2 white \$2.10 @ \$2.12; No. 2 white 59 1/2c @ 62c.

Local Brevities. Dr. Du Vall Eye, Ear, Nose, Throat. Glasses fitted. First Nat'l Bank Bldg.—22 tlc.

Personal Mention. United States Commissioner J. A. Jant is spending Sunday with friends and relatives at Dallas.

ANNOUNCEMENT. In order to keep our high standard work of Cleaning and Pressing, we are compelled to make a small advance in price, owing to the continued advance of raw materials, gasoline and labor.

Lone Star Taxi Co. Phone 432. Anywhere in city limits, 25 cents per passenger; Factory, 50 cents; Stock Yards, 50 cents; Aviation Camp, \$1.00; Lake, \$1.50; Refinery, 50 cents; Brick Yard, 50 cents; over Kemp Boulevard, 50 cents.

NOTICE! Beginning October 1st, we will be compelled to make a slight advance in a few of our prices, owing to the continued advance of gasoline and all chemicals used.

THE HOME TAILORING CO. Cleaners, Dyers and Hatters. Phone 1231. 709 Seventh St.

Teachers' Reception To Be Held Tuesday. The annual reception in honor of the teachers of all the Wichita Falls schools will be held Tuesday evening, October 2, at 8 o'clock at the high school building.

FOR SALE—Nice four room house and out buildings. Reasonable. New Ford considered as part pay. at 111 San Antonio street. 120 tlp.

# Now Is the Time to Think of the New Things for Fall

The best dry goods markets have been ransacked in the successful endeavor to prepare a showing of the best only at prices that are often changed for inferior goods. Whether you wish to buy now or later, you really cannot afford not to see this showing of all that is to be desired for the Fall season.



## READY-TO-WEAR YOU WILL ENJOY SEEING

Coat Suits, long model, belt with large buckle; button trimmed, with large fur collar, made of imported Broadcloth, in beet-root, bottle green and coffee brown. The special price is **\$39.50**

A wonder in military effect; braid and button trimmed, belt effect, in navy, black or maroon. **\$32.50**

Green "Boucle" trimmed in military braid—long model; a nifty number **\$29.50**

An all-wool Serge, large collar, plain model; good lining. In brown, blue or black **\$15.00**

About 35 other models of all colors. The price range is **\$15.00 \$18.75 \$23.50 \$27.75**

## BEAUTIFUL FURS FOR FALL

Muffs, collars and stoles—the prices are so reasonable **\$7.50, \$9.98, \$12.75, \$19.75, \$24.50 to \$45.00**

## COATS THAT HAVE REAL CLASS

Saltz Sealettes, Plushes, Pom-Poms, Velours and Broadcloths **\$8.75, \$12.98, \$14.50, \$19.98, to \$75.00**

## SKIRTS OF CHARMING MAKES

Plain Serges, Plaids and Blacks **\$3.98 to \$17.50**

# JONES KENNEDY Co.

"The Busy Corner"  
Seventh and Indiana

## SMOKING TOBACCO FUND IS GROWING IN WICHITA FALLS

TEN MORE SOLDIERS WILL RECEIVE WEEKS' WORTH OF RESULTS LATE DONATIONS

### "BEATS SOCKS" SAYS ONE

One Commander Writes That His Men Are Made More Cheerful by Receipt of Packages

### CONTENTS OF KIT THAT YOU MAY SEND.

- ◆ The Times tobacco boxes, to be sent to the American soldiers in France will contain forty cents' worth of tobacco, but will be supplied to The Times Tobacco Fund for 25 cents.
- ◆ They will contain:
  - ◆ Two packages of Lucky Strike cigarettes.
  - ◆ Three packages of Bull Durham Smoking Tobacco.
  - ◆ Three packages of Bull Durham cigarette papers.
  - ◆ One tin of Tuxedo smoking tobacco.
  - ◆ Four books of Tuxedo cigarette papers.

Ten more soldiers will receive a week's supply of smoking tobacco as the result of the generosity of Wichitans whose contributions are reported in today's Times. A good many of the contributors to the fund have been non-smokers, a number have been women and some of them have strong objections to smoking, but they recognize that there is a certain solace and comfort in tobacco that is especially needed in army life. They know that tobacco can be used by the soldier without impairing his fighting qualities. The same argument against intoxicants in the army will not apply to the use of tobacco.

**Cigarettes Beat Socks.**  
A private soldier the other day, says a writer in the New York Sun in thanking a friend for sending him cigarettes, wrote he would "a darn sight rather have them than socks." In many cases, he goes on to say, there can be no doubt that it calms the nerves, gives peace and content to a mind shaken by emotion and strength to a worn body.

Such is the experience indicated in the lives of soldiers who are in the soul racking environment of the trench and the dugout. The load uproar of battle, the discharge of the heavy guns, the bursting of enormous shells, and the charge of yelling battalions are enough to send the average man to the insane ward.

On the firing line it has been found that tobacco is almost a necessity. A whiff of a pipe, a puff or so of a cigarette, and what matter hunger and mud and slime? Ask a soldier deep in the shell torn ditch whether he would rather have a square meal or a pack of cigarettes and nine times out of ten he will decide in favor of cigarettes.

"My men," wrote an officer the other day, "will bear any dirt or discomfort so long as they are well supplied with smokes."

**Makes Men Cheerful.**  
Another, in acknowledging the receipt of a consignment of tobacco sent word: "Your smokes have arrived. My men are once more cheerful."

The packets of tobacco sent to fighting men at the front stand for far more than so many ounces of dried leaves. They mean a call that somewhere there is a man, woman or child who is in sympathy with the boys "out there."

The Times Tobacco Fund offers an opportunity for the expression of this sympathy. In each kit of tobacco sent to France there will be a post card bearing the address of the donor. You can rest assured that the soldier who receives the kit will be appreciative enough to write his thanks.

Contributions received since the last report follow:

J. J. Prudhoe	\$ 1.00
J. C. Mytiner	1.00
Mrs. Harry O. Cravens	.50

## CIVIC LEAGUE IS TO LAY ITS PLANS FOR WINTER WORK

Discussion of a proposition for the League to take up extension work in co-operation with the state extension department—plans for—city surveys, and selection of a secretary will be some of the important matters to come before the Civic League Tuesday afternoon, when they will meet at the First Methodist Church, corner of Seventh and Lamar, at 3 o'clock. This will be the first meeting after the summer adjournment and as the plans for winter work will be formulated it is imperative that all members attend.

The Civic League has been asked to take in charge some extension work for this section by the state headquarters and the outlines of the work to be done if this is undertaken will be given at the meeting. Mrs. T. B. Smock, the president, has a plan for a general survey of the city along several phases and will present this for the consideration of the members. There will doubtless be other matters of like importance to come up, and before the winter work can progress very far a new secretary must be found to fill the unexpired term of Mrs. J. T. Traylor, the very faithful and efficient secretary who was forced to resign through leaving town. The call for a full attendance is stressed.

## British Casualties Total 104,598 Men During September

By Associated Press.  
London, Sept. 29.—British casualties reported during the month of September total 104,598 divided as follows:  
Officers killed and died of wounds, 629; men 18,202.  
Officers wounded or missing, 2,151; men 83,509.

The Official Condensed Statement of Condition of First National Bank, Wichita Falls, Texas.

As made to the Comptroller of Currency at Washington, D. C., at the close of Business September 11, 1917.

RESOURCES	
Loans and Discount	\$1,505,509.79
U. S. Bonds and Certificates	291,000.00
U. S. Liberty Loan Bonds	69,102.97
Other Stocks and Bonds	69,838.69
Stock in Federal Reserve Bank	13,500.00
Furniture and Fixtures	20,000.00
Real Estate	11,690.00
CASH IN BANK	\$184,609.87
CASH WITH U. S. TREASURER	12,500.00
CASH WITH OTHER BANKS	\$29,038.19
Total	\$3,386,790.51
LIABILITIES	
Capital Stock	\$250,000.00
Surplus and Profits	219,398.03
Currency in Circulation	238,400.00
DEPOSITS	2,677,992.48
Total	\$3,386,790.51

## FIRST NATIONAL BANK

Indiana at Eighth Street.

## THE CARPENTERS WILL BE BUSY REMODLING OUR STORE

ALL THIS WEEK

But we will be in a position to serve you, and will offer

## Every Article in the Store at a Big Discount

Hawkes Cut Glass, Sterling Silver, Silver Plated Ware, Solid Gold Jewelry, French Ivory Goods, Mantle and Wall Clocks, and a complete line of Jewelry Novelties will be on sale at greatly reduced prices.

## KRUGER'S

725 Ohio Avenue

## For Fifteen Years

the J. C. PENNEY COMPANY has been selling merchandise direct from the factories, eliminating the expense of middlemen, credit systems, delivery, etc., giving you every advantage of this highly efficient organization, the growth of which has been rapid, because of its ability to give you more for your dollar than can possibly be done under the old retail system.

### CROWN CORSETS

—the demand for this popular brand steadily increases; every pair guaranteed rust proof—

An excellent wearing Corset here at only **98c**

No. 1008, Batiste, elastic waist top, long hip, four supporters—pink **98c**

Other good numbers at **\$1.49, \$1.69, \$1.98 and \$2.98**

### MEN'S HOSE

Men's Dress Hose, in black, white and tan **15c**  
Lisle and Fibre Silk, at **25c**  
Pure Silk, plain and fancy, at **49c**  
Heavy Work Socks at—  
3 pairs, **25c, 10c** and 2 pairs **25c**  
Black or Tan, white heel and toe, 2 pair **25c**

### WOMEN'S AND CHILDREN'S HOSIERY

Women's Pure Silk Hosiery, at **98c and \$1.25**  
Women's Fibre Silk Boot Hose, at **49c and 69c**  
Women's Silk and Lisle Hose—3 pairs for **\$1.00**  
Women's Cotton Hose—**15c and 25c**  
Infants' Hose **10c and 15c**  
Misses' Hose **15c and 25c**  
Boys' and Girls' School Hose **20c and 30c**

### MEN'S GOWNS

Muslin or Outing Gowns at **98c**  
Outing Gowns and Pajamas at **\$1.49**

*J. C. Penney Co.*  
Incorporated  
**175 BUSY STORES**  
713—Eighth St.—715

Naval Stores. Savannah, Ga. Sept. 29.—Turpentine K 83.75, M 65.50, N 75.50, W G 75.50, W W 77.50.  
firm 45; sales 119; receipts 257; shipments 119; stock 22,146.  
Hosin steady; sales none; receipts New Orleans Sept. 29.—Rough and clean rice continued strong and active 647; shipments 716; stock 85,848.

Quote: B D E F 610; H 615; L 620; K 625; M 630; N 735; W G 755; W W 775.  
Quote: Rough Carolina \$7.60; Japan \$7.90; Blue Rose \$7.90; \$7.85; clean Honduras 7 and 8 1/2; Japan 6 1/2 7 1/2; others unchanged.



# FINE FURNITURE—

The consolidation of the Robertson stock with our own certainly gives us a fine line to offer our patrons, and with prices below the possibility of competition, is building us a trade far beyond our most sanguine expectations.



To those who cannot pay all cash we offer the most liberal terms

OUR STOCK EMBRACES BEAUTIFUL PATTERNS IN



Dining Room Suites  
Bed Room Suites

Parlor Suites and Single Pieces  
Kitchen Cabinets and Furniture  
—and a good stock of Office Furniture.

Living Room Furniture  
Stoves, Floor Coverings

712-714 Ninth St.  
819-821 Indiana Ave.

## McCONNELL BROS.

### Herndon-Anchor Oil Opens Office Here And Will Drill Well

The Herndon-Anchor Oil Co. has opened an office in the St. James

hotel building, in charge of S. B. Herndon, president and general manager of the company. The company has large tracts under lease in Montague county, and has just let the contract for drilling a well. The contract stipulates for a depth of 2500 feet, and to finish with a six inch casing. This means that a twenty inch casing will

be used at the start. The well is now down about 150 feet. The company is capitalized for \$100,000, under the Texas state laws, with all of the required capital paid in.  
J. Bennett Smith, 2617 Tenth street, left Saturday on a business trip to Davenport, Iowa, and Chicago. He will be gone about ten days.

### COLLIER BUILDING BRINGS \$100,000; MARKET IS ACTIVE

W. W. SILK AND M. J. BASHARA  
BUY EIGHTH AND INDIANA  
STRUCTURE

### NUMEROUS DEALS CLOSED

Several Farms Are Also Disposed of  
Through Local Real Estate Men  
During Week

That the market for Wichita Falls business property is active and that values are being maintained in transfers is again indicated, this time by announcement of the sale of the Frank Collier building, corner of Eighth and Indiana, for which W. W. Silk and M. J. Bashara paid \$100,000.  
The structure, which is of two stories, fronts 50 feet on Indiana, and is 150 feet in length on Eighth. It is of brick construction, the first floor being occupied by the Morris drug store, the corner, and Collier and Hendricks, clothing, next door, the second story being devoted entirely to offices.  
Property in this immediate vicinity is considered by business men to be the key to values in the downtown district.

**Many Other Deals.**  
A number of real estate deals were reported, the most of them being in residential property, both houses and lots. The demand for houses, both by purchasers and renters continues to be strong and the supply is slow to increase, due in large measure to difficulty of the contractors in obtaining workers and materials.  
N. O. Monroe consummated six sales, the highest consideration of them being \$4,700, the price paid by J. S. Anderson for a house at 2207 Tenth. Other sales made by Monroe were to Miss Marion Crabtree and mother, the house at 2119 Ninth; the house at 1609 Bluff to J. W. Tanner; to D. L. Scott the house at 1515 Fourteenth and at 1108 Monroe street to F. G. Baldwin, the considerations ranging from \$2,500 upward to \$2,900. Three lots in block 5 of the Floral Heights addition were sold to N. H. Martin for \$21,500.

**Twelfth Street Home Sold.**  
J. J. Moran reported the sale of a five room house at 1215 Twelfth to M. O. Turner of Bartlesville, Texas, for a consideration of \$4,000. The place formerly belonged to Mrs. M. M. Adkins and W. M. Fridley.  
J. L. Jackson made two sales in the rural districts, one a 188 acre place to E. C. Reins of Big Springs, consideration \$10,340. This farm is located near Charley, Clay county. The other sale was made to F. C. Carpenter, a 160-acre farm located near Iowa Park, consideration \$8,000.

**Austin school for a consideration of \$2,250 to J. L. Eggleston through H. H. Chancellor & Co.** Two other transfers were also handled by this firm: H. L. Parrish to G. B. Isler, a house in the 1400 block on Fourteenth street for \$2,200, and J. W. Duncan to A. Drake a home on Lamar for \$2,700.  
Stevens and Tallent report the sale of two lots on Eleventh, one to Ben J. Ouel and one to L. C. Tanner, both for a consideration of \$515.

**Notice to Patrons.**  
Because of the large number of our own cars now in use, hereafter we will not do any repair work in our shop except on Packard, Hudson and Chevrolet cars. We desire here to express our thanks for the many customers who have favored us with their business, regretting exceedingly that we cannot continue to handle it. But as our first duty is to the purchasers of the cars we sell, we can best meet that duty by confining our efforts entirely to these three makes of cars.  
LLOYD WEAVER MOTOR CO.  
—120 11c

Bank Recommending  
Trading Old Bonds  
For Newest Issue

In view of the fact that the new

government bond issue will bear four per cent interest and that the first issue of Liberty Bonds which bear three and a half per cent are convertible to bonds bearing the higher rate of interest, the First National Bank of this city is recommending to its patrons that they wait and make the exchange.  
The following statement has been authorized by the bank:  
To our friends who subscribed for Liberty Loan Bonds:  
"We will soon be prepared to deliver bonds to all who subscribed for less than one thousand dollars. However, the government is getting ready new bonds which will bear 4 per cent instead of 3 1/2 per cent, and we advise our friends to wait a little longer and make the exchange rather than take the bonds at present. Please advise us of your wishes at once."  
"FIRST NATIONAL BANK"

### WICHITA MILL CO.'S NEW PLANT

Work has begun on the new mill of the Wichita Mill and Elevator Company adjoining the elevators in the south part of town. A large quantity of lumber has already been unloaded and some concrete has been poured. The Burrell Construction Company of Chicago has the contract.

### LOCAL BUYER LEAVES FOR NEW YORK MARKETS

Mrs. Louise Salm, buyer and head of the ready to wear department of the Baumgardner store, left on Friday for the New York markets, where she will lay in her supply of winter goods.

### COME TO McCARTY'S

BIG CASH STORE MONDAY AND TUESDAY AND SEE HOW MANY BARGAINS YOU CAN BUY

18 lbs. best pure soft wheat Flour	Two Packages Post Toasties	25c
for \$2.95	6 bars White Labor Soap	25c
48 lb sack High Patent Flour	6 bars Rub-No-More Soap	25c
24 lb sack High Patent Flour	1 bar Ivory or Fairy Soap	25c
48 lb sack Belle of Wichita Flour	25c can No. 2 California Peaches	15c
24 lb sack Belle of Wichita Flour	2 cans No. 1 best Bartlett Peaches	25c
11 lbs. best Eagle brand Cane Sugar	2 cans best No. 1 Sliced Peaches	25c
\$1.00	1 25c can best Hunt's Pineapple	20c
10 lb. bucket Compound Lard	1 25c can best Asparagus Tips	25c
\$1.90	2 cans best East Texas Blackberries	25c
Medium bucket Compound Lard	for	25c
\$1.65	2 cans best Chile	25c
Medium size bucket Crisco	2 cans No. 1 Pork and Beans	25c
90c	1 can Early June Peas	10c
Large rolls Toilet paper	20c can White House Coffee	40c
25c	1 lb. tin Richman Coffee	30c to 40c
2 cans best Apple Sauce	15c bottle best Extract	10c
33c	Best Spuds, per peck	50c
Best Armour and Plover Sugar cured	5 lbs. best Cabbage	25c
30c	6 lbs. best Onions	25c
10c	Peas, per bushel	\$1.25
10c	Big line Shot Gun Shells	80 and 90c
15c	per box	

### McCARTY & McCARTY

FREE DELIVERY BOTH STORES  
716 Indiana Avenue  
Phone 80  
These prices also good at Floral Heights Store—Phone 1020.

### Notice to Customers—

On October 1st we will be compelled to go on a CASH BASIS. No laundry will be left by our drivers unless the bundle is paid for.  
UNION LAUNDRY, Phone 1506



## Monday Special \$7.85

## \$15—Values—\$15

Monday only we offer for sale choice of six styles in the latest styles of Ladies Kid Boots, which are as follows:

- All our Cream 9-inch Kid Boots
- All our Ivory 9-inch Kid Boots
- All our Steel Gray 9-inch Boots
- All our Dark Gray 9-inch Boots
- All our Dark Brown 9-inch Boots
- and here is a dandy style:

Gray or Ivory vamp, with Brocaded tops. These are Blumenthal's washable kid leathers with full L. V. heels; are perfect fitters, and we have them in all sizes from 2 to 8, and AAA to D widths—

They are Worth \$15.00 a Pair  
MONDAY, ONLY \$7.85

### Harry's Sample Shoe Store

BASEMENT KEMP & KELL BUILDING  
Wichita Falls, Texas Phone 1535

## Our Hudsons Are About All Gone

Number of Super-Sixes at present prices limited. Practically all makers have already increased prices.

We now see the last of the Hudson Super-Six cars we will be able to sell at present prices. The factory has given us definite allotments. On at least two models they have notified us that final shipments will be completed within two weeks.

When those cars are sold it means that the last Hudson Super-Six to be had at the present base price of \$1,650 for the seven-passenger phaeton has gone. Then a new price will become effective. That price will be based upon material costs that are much higher than were those of the present production.

As a single example of the greater cost of an automobile today as compared to the cost of a year ago consider the item of iron. Its low price for the years of 1915-1917 was \$12.27 a ton. Today it sells at \$52.90 a ton. Iron is used in making the finest steels, the frame, the motor, the body, etc. Its use in a fine automobile constitutes a large item. You can get from this some idea of the tremendous need for automobile price increases.

Then when you think of the number of cars that have gone up in price in the last few months you get a further understanding of the great opportunity you have in buying a Hudson Super-Six

now. More than fifty makers have advanced prices within the past two months. Cars which formerly sold at \$1,200 and \$1,300 now cost about as much as a Super-Six. There was no question as to which was the preferred car then, though because of the lower price many cars were sold. Now that there is no price advantage, Hudson sales are at their highest. People realize more than ever before that a Hudson offers the greatest value on the market. They are taking advantage of the opportunity that the present market condition offers. You, too, can save as they are saving if you act promptly. We know how many cars we are to get, but we do not know how much longer we can accept orders at present prices.

Be guided by the experience of the past as it affects the Super-Six. Buy now. It is like buying any other staple on which you have positive knowledge that there is soon to be a price increase.

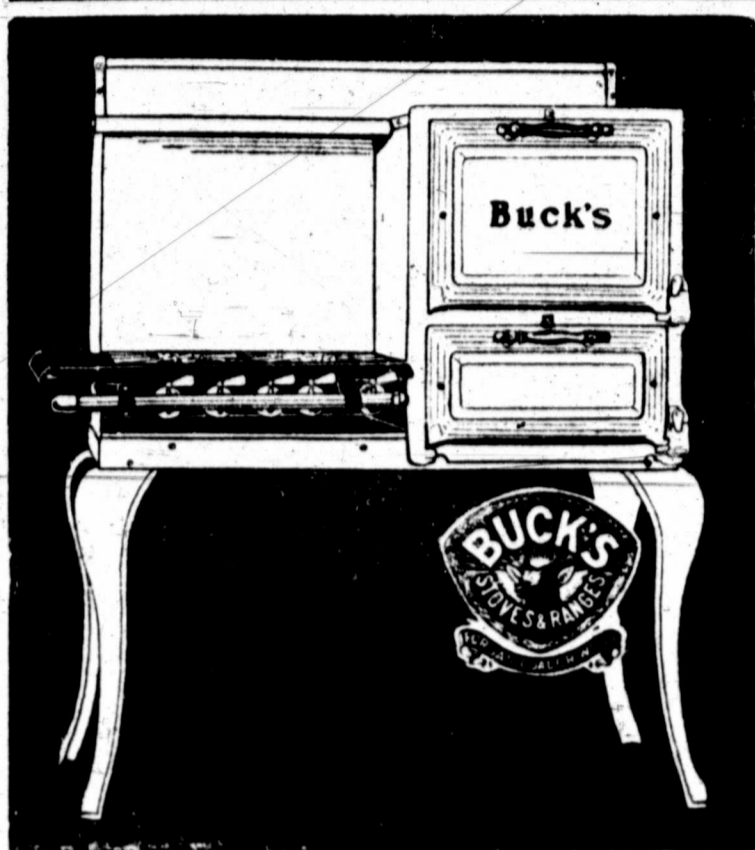
Surely there need be nothing said in this connection to persuade you to a Super-Six. It has already established its reputation on every speedway, in every endurance test, in the most difficult mountain climbs, in the most arduous road trips, and most of all in the minds of more than forty thousand users.

## Lloyd Weaver Motor Co

Phone 740  
Seventh and Scott

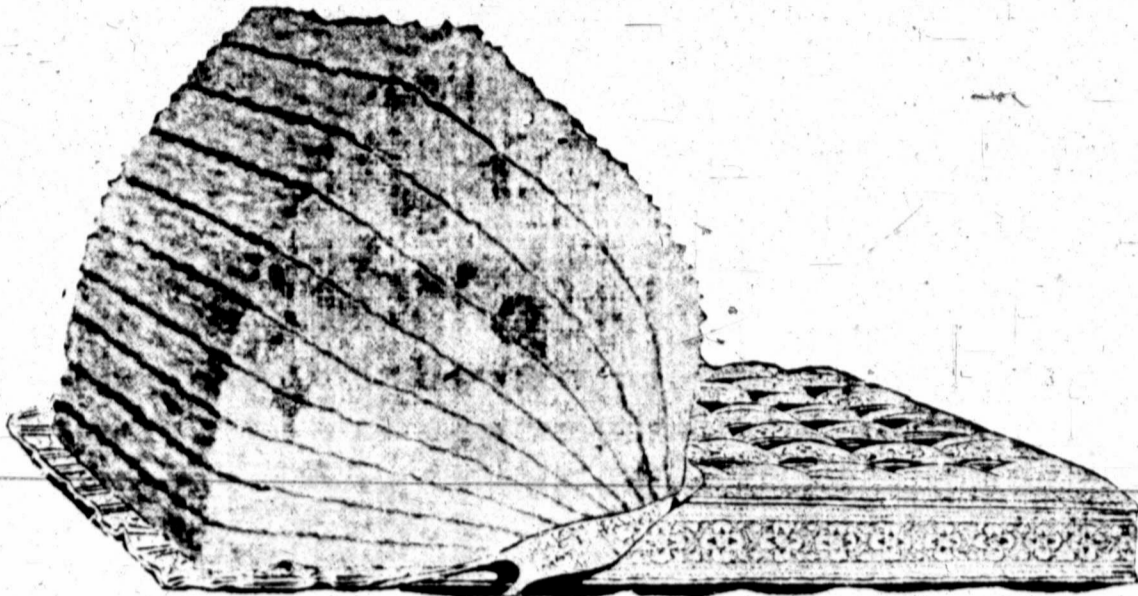
# MAKE YOUR HOME COMFORTABLE

You will be more cheerful and the whole family will be happier if you spend a reasonable amount on winter comforts. Let us help you.



BUCK'S GAS STOVES

have stood the test of time. We are showing them in prices from—  
**\$18.50 to \$70.00**



## BRADLEY'S WONDER MATTRESS

With or without tufts, 50 lbs. of genuine comfort, guaranteed not to hump or break. This is the greatest mattress we have ever offered for the money.

Price \$18.50 Each.

NEW CURTAINS—You will enjoy looking over the new things in curtain materials which are are showing.



McDOUGALL KITCHEN CABINETS

The world's most perfect cabinet—

**\$27.50 to \$50.00**

GOODS SOLD ON EASY PAYMENTS

# North Texas Furniture Co.

COMPLETE HOME FURNISHERS

GOODS SOLD ON EASY PAYMENTS

## OVERLAND DEALERS OF THIS DISTRICT ENJOY STAY HERE

CONTEST IS ARRANGED AMONG SALESMEN FOR \$100 PRIZE.

## LAY PLANS FOR WINTER

Banquet is Provided and Visitors Are Taken Out to Inspect the Aviation Camp.

The event of the week in automobile circles was the meeting of the Overland Dealers. These commenced arriving from all of the eighteen counties which comprise the district, about 2 o'clock on Friday afternoon. Later a large party visited the aviation camp at Call Field, and a very enjoyable banquet was held at the St. James Hotel in the evening.

Newton Maer, president of the Overland Sales Co., of Wichita Falls, gave the dealers a concise outline of the plans for the coming winter as laid down by the factory, and H. F. Johnson, secretary of the Chamber of Commerce, made an exceptionally good talk on "Better Salesmanship."

W. J. Daugherty, wholesale manager, announced the coming contest among the salesmen, with \$100 prize. Fifty dollars of this will go to the man making the highest number of points on the sale of cars from the floor of the local headquarters, thirty-five to the one scoring highest on the sale of cars whether from headquarters or of those he may have on hand, and fifteen as second prize for the latter classification.

The Optimist will come out Monday. This is the third issue of this bright little paper devoted to Overland news, distributed to the trade-dealers of the district. It is found to be getting results already, and it has come to stay.

**Few Retail Sales.**  
Comparatively few retail sales have been made this week by the majority of dealers, though the total is large, for all classes of sales. But for the sale of twenty-seven Ford cars by the Motor Supply Co., the retail sales would be negligible, as the total of retail sales by all dealers is only 45—leaving but eighteen distributed among the remaining dealers. This is the smallest total for several months, but it is partially accounted for by the fact that many dealers are short of cars. Second hand sales seem to be on the rise, eleven having been reported for the week. Besides the foregoing, there have been seven wholesale deals, all of them by the Overland Sales Co.

**Motor Supply Co.**  
The Motor Supply Co. reports fifty sales to J. D. Zihlman, H. C. Hassler, County of Wichita (two cars) H. B. Hatton (truck), Ross Hanks, H. A. Clark, George H. Herron, J. H. Osburn, and C. F. Prieve; in Burkburnett, J. M. Murray, W. T. Willis, J. A. Staley, W. L. Hawkins, E. A. Danna, A. B. Lipscomb, and L. M. Stinson; in Electra, T. M. Smith, C. W. Coffey, R. M. Carroll, I. G. Whitney, Gilbert Brown, J. H. Harris, and the National Supply Co., in Iowa Park, Ed Black and R. H. Freeze, and in Dundee, J. M. Mathews. This house reports that it has over four times as many orders on the waiting list, which will be filled as soon as the cars arrive.

**Excelsior Motor Co.**  
The Excelsior Motor Co. sold a

Cadillac to P. Warren, an Oldsmobile to R. T. Campbell at Olney, and a Graham Bros. truck to J. W. Stinson. Lloyd Weaver sold a Chevrolet car to Mrs. Mary Bartsch.

E. E. Sanders sold Franklin cars to Oscar Williams and James Odens, city. Mr. Sanders went to Dallas Saturday night to drive up a Franklin, and is expecting a carload this week.

The S. Beunrod Auto and Supply Co. report the sale of a Chalmers to W. N. Noe, and the arrival of a carload of these cars this week.

**Moon Auto Co.**  
The Moon Auto Co. made sales of Moon cars to John Mingwanson, Electra, J. M. Underwood, Verdon, and G. W. Hanchaling, city, and a DeSoto truck to George Sonricker, Iowa Park.

**McFall and Orth.**  
McFall and Orth report sales to Frank R. Keim, Mrs. C. B. Montgomery, J. W. Gage and Homer Humphris, and W. W. Gage, city.

The McMullen Auto Co., sold a Maxwell car to E. P. Parke of Burkburnett, and two second hand cars. This house has a carload of trucks en route.

The Staley Motor and Supply Co. made sales to Mrs. M. M. Adickes, and W. C. Eubanks; and four second hand deals.

Chenault and Wheat report two second hand deals, and the Peter Car Co. three. Chenault and Wheat have two carloads of trucks, and one of Kissel cars en route.

## Bank Clearings Show Continued Increase For Wichita Falls

Bank clearings for the week were \$724,923.94, showing an increase of \$192,599.76 over the previous week, which was \$532,324.18. This is the fifth week in succession that there has been an increase, this week's being the largest recorded for many months.

## AMONG FOLKS OF AFFAIRS

The Western Auto Supply Co. has arranged to lay in a large stock of airplane supplies, to supplement those that will be kept on hand at Call Field. DeWitt C. Wood, manager of the company, says that he believes there will be many occasions when the supply at the camp will be short on some particular part which they are in need of, and he proposes to be able to let them have it, if possible. These supplies will extend to certain tools, many parts, and anything that is likely to be useful to the men at the camp in the way of parts for their machines. Mr. Wood had some doubts as to when he would be able to obtain the supplies, as it is becoming increasingly difficult to get anything on which the government has first call. All orders are being side-tracked at present to make way for government requisitions.

**In the P. B. M. Stock.**  
The shoe department at the P. B. M. store is to have a new head. W. H. Richardson, who has been for a number of years with the company, is leaving. Roy Breazeale, one of the ground floor employees of the store will take his place. Mr. Breazeale has been with C. J. Barnard for seven years, and has been in the shoe department for the last five years. He will be succeeded by G. W. Flint, of Waxahatchie, who will go on duty Monday morning.

**At the Kress Store.**  
The Kress Co.'s store has been rearranged so as to give more selling space. All the counters at the rear of the store have been recently moved in to different locations, and it is believed that the large fall business which the store is expecting will be better taken care of by this means.

## LOCAL FANS ARE READY TO LEAVE FOR BALL GAME

Preparations for the trip to Chicago and New York to witness the coming world's series baseball games have just about been completed by the 21 local fans who are to charter a special Pullman car for the purpose. The party will leave Wichita Falls the afternoon of October 4th over the Katy, via Deulson, arriving in Chicago Friday, the 5th. Three days will be spent in Chicago, after which part of the bunch will go to New York via Niagara Falls to attend the games at present on tour.

Returning the trip will be routed through Pittsburgh and Washington. Four others have decided to go since the last report, making 21 in all. They are G. C. Woods, Walter Cline, W. S. Kirby and C. B. Farquharson. Those who have previously announced their intentions of going are: Monte Stanforth, W. J. McAllister, J. W. Farabee, Dr. E. F. Brown, Linn A. Boyd, Dr. L. Mackelimey, J. L. Art, C. E. Rodgers, W. E. Norton, L. E. Stone, Lamar Fain, Walker Hendricks, L. C. Heydrick, R. O. Harvey, W. M. Little, T. P. Adams, and J. F. O'Donohoe.

**MEETS FORMER SCHOOLMATES THEY PASS THROUGH CITY**  
Miss Theresa Veale, of the Wichita Falls College of Music, had the opportunity of seeing, between trains, two of her former schoolmates who passed through here on Friday. They were Miss Pattie Rude, and Miss Alexa Whitmore, of the Radcliffe Lyceum Bureau, Washington, D. C., who are at present on tour.

# NOTICE

## Natural Gas Consumers

On account of changes in the field lines gas will be shut off the city at 12:30 p. m. Sunday 30th, (today) and remain off about four hours. Please arrange your cooking accordingly and see that all valves are securely closed when gas come on again.

# North Texas Gas Co. Wichita Falls Gas Co.

## Baum & Gardner

EXCLUSIVE STYLES

THE SPECIALTY SHOP OF ORIGINATIONS

### Featuring a Collection of Autumn and Winter Apparel

Presenting the latest changes in Fashions as shown at the recent New York Openings. American Fashions in tailored Suits, Coats and Dresses, shown exclusively by BAUM & GARDNER.

#### Women's Distinctive Autumn Coats

All the suggestions of Paris in the treatment of collar, flare or silhouette are clearly shown, with rich fur trimmings predominating.

**\$25.00 \$29.75 \$35.00 \$47.50 \$65.00, up**

#### Women's Smart Cloth Dresses

A comprehensive assortment of tailored dresses of serge, jersey cloth and combinations, showing delightful touches of embroidery and beading.

**\$19.75 \$29.75 \$39.75 \$48.00 and up**

**SPECIAL VALUE—Women's Street Dresses of serge or jersey cloth, with silk and wool embroidery; satin combination and silk embroidery; pleated, belted and coat models. \$19.75**

#### Women's Exclusive Afternoon Frocks

An exceptional collection of Paris reproductions in charmeuse, satin, crepe meteor, Georgette crepe and various silks in smart combinations.

**\$25.00 \$29.75 \$35.00 \$45.00 \$59.75, up**

**SPECIAL VALUE—Afternoon Dress of Superior Georgette crepe combined with satin in taupe, navy, brown, black, plum or Belgium; self-colored bead trimming. \$25.00**

#### Women's Distinctive Millinery

Chic turbans, side rolls, Directoire crown, roll sailors and curved brims are a few of the many models now being shown in harmonious colors and materials.

**\$5 \$6.50 \$8.50 \$10 \$15 \$25 and up**

### Dainty Blouses

are shown in an infinite variety of new, becoming models, embodying all the latest whimsies in collars, cuffs, and decorative touches. All the most beautiful materials, all the loveliest color tones, have been impressed into service in the fashioning of these charming essentials of the feminine costume. In stock at the quoted prices are:

### Special—Monday Only

Ladies' Silk and Serge Dresses, values to \$25.00 and \$30.00; all this season's styles **\$19.75**

Crepe de Chine Camisoles, values to \$1.50. Monday only. **98c**

## Baum & Gardner

EXCLUSIVE STYLES

The home of Hart Schaffner & Marx clothes

### SOCIETY

\*\*\*\*\*  
**THE COMING WEEK'S SOCIAL CALENDAR**  
 \*\*\*\*\*  
**MONDAY**—Meeting of various church societies as announced elsewhere in these columns.  
**TUESDAY**—Annual reception for teachers at high school. Parent-Teachers Association to entertain. All day quilting at Floral Heights Presbyterian church. The Civic League will meet in business session. The Wesley Girls will meet with Mrs. John R. Chambers. The L. A. to B. H. T. will hold their regular session at 2:30 in the Labor Hall, initiations will feature the meeting, a full attendance of members urged.  
**WEDNESDAY**—Mrs. M. E. Carey will be hostess to the New Idea Club. The Monroe Club will meet with Mrs. W. B. Chauncey.  
**THURSDAY**—Royal Neighbors will meet in regular session, all members and especially the degree team urged to be present at 2 o'clock. Mrs. G. C. Raley will be hostess to the Merry Matrons.  
**FRIDAY**—The J. J. A. S. will meet with Miss Laura Marlow. Mrs. Gus Byman will be hostess to the Congenial Croquet Club. Mrs. Herbert Brown, 1418 Thirtieth street will be hostess to the U. C. T. Club.  
**SATURDAY**—Mrs. J. L. Jackson will be hostess to the opening meeting of the Daughters of the American Revolution.  
 \*\*\*\*\*

#### SENIORS ENTERTAIN FOR HIGH SCHOOL FACULTY

The opening social event in the high school was the Senior reception in honor of the faculty, old and new members, held Friday night at the home of Miss Laura Hall, one of the members of the class of 1916. The guests and their entertainers spent the evening pleasantly with conversation, various games and enjoyed music by Miss Blanche Clark, Paul Pond, Paul Rutledge, Edwin Bell. Refreshments of ice cream and cake were served at a late hour. There were about sixty students and instructors present.

#### SOCIAL MEETING OF LEAGUE IS HELD AT BACHMAN HOME

Mr. and Mrs. H. E. Bachman entertained with lawn social for the members of the Intermediate League of the First Methodist church and their friends Friday evening at their home 1204 Broad. Various games were played until a late hour when a delightful luncheon was served. There were about forty young people who enjoyed the hospitality of Mr. and Mrs. Bachman.

#### FORMER WICHITANS MARRY IN NEW ORLEANS

On last Saturday, P. O. Settle, who was formerly principal of the Alamo school here and Miss Helen Hetzler, who was also teacher in the Austin school at the same time, were married in New Orleans. Miss Hetzler's home was in Dayton, Ohio, and Mr. Settle is connected with one of the large firms in Houston. The many friends of the young people here will be much interested to hear of this event. Mr. and Mrs. Settle will make their home in Houston.

#### LOCAL D. A. R.'s TO HOLD FIRST MEETING SATURDAY

The Major Francis Grace chapter of the Daughters of the American Revolution will hold their first meeting of the season next Saturday, October 6, Mrs. J. L. Jackson to be hostess. According to the chapter plans for economy and donations to the Red Cross there will be no year books printed this year. Instead The Times' society page is put at their disposal and the program of each month's meeting is published today. Members are asked to clip the programs for future reference.

The eight programs which make up the year's study follow:

**October 6th.**  
 Hostess, Mrs. J. L. Jackson; leader, Mrs. C. W. Beavers; roll call, current events; paper, "The Summer of 1917 in History"; Mrs. J. R. Hyatt; music, "Newbie Jig."

**November 3rd.**  
 Hostess, Mrs. Lee Clark; leader, Mrs. R. P. Watts; roll call, "A Living Rule"; paper, "Governments, Ancient and Modern"; Mrs. D. G. Whitney; music, Mrs. Roy Artley.

**December 1st.**  
 Hostess, Mrs. S. F. Ferguson; leader, Mrs. R. Miller; roll call, war news; debate, "Resolved, that Woman Can Show Her Patriotism Better By Conserving than Serving"; Miss Young; Mrs. D. G. Whitney for the affirmative; Mrs. C. W. Beavers, Mrs. W. L. Robertson for the negative.

**January 5, 1918.**  
 Hostess, Mrs. W. M. Priddy; leader, Mrs. S. H. Burnside; roll call, "An Indian Legend"; paper, "Alaska—Its History and Peoples"; Miss Bossie Lee Bartlett; music, Mrs. Lee Clark.

**February 2, 1918.**  
 Hostess, Mrs. Roy S. Artley; leader, Mrs. D. G. Whitney; roll call, "Natural Resources of Alaska"; Mrs. S. Y. Ferguson; music, the Chapter.

**March 3, 1918.**  
 Hostess, Mrs. L. Robertson; leader, Mrs. J. R. Hyatt; roll call, "A West Indian Legend"; paper, "Porto Rico and the Danish West Indies"; Mrs. J. L. Jackson; music, Mrs. W. M. Priddy.

**April 6, 1918.**  
 Hostess, Miss Bossie Lee Bartlett; leader, Mrs. Carter McGregor; roll call, current events; paper, "The Panama Canal Zone"; Mrs. C. W. Beavers; music, the chapter.

**May 5, 1918.**  
 Hostess, Miss Alice Burnside; leader, Mrs. W. M. McGregor; roll call, "An Incident of the Spanish American War"; paper, "American Possessions in the Pacific"; Mrs. W. M. Priddy; music, Mrs. Roy S. Artley.

**June 14, 1918.**  
 "Flag Day"

#### M. E. SOUTH SOCIAL DELIGHTFUL AFFAIR

A large crowd attended the social given by the members of the Methodist Church, South, Friday night. M. P. Kelly's Sunday school class acted as the reception committee and served the guests with punch and wafers

as they arrived. An impromptu program was rendered. Miss Gladys Heron played several selections on the piano. Pierce Langford, Adna Orine Barnes, Virginia Herron and Miss Ruth Nolan read selections to the enjoyment of all. Mrs. Wolf sang two well selected numbers, and one of the most pleasing features of the evening was the piano solo by Velma Halton

one of the oldest members of the church. W. W. Silk, and Jeff Wagner, accompanied on the piano by D. M. Bullard, sang a duet, which is said to have been heart rendering. Several old familiar choruses were sung after which all joined hands and sang "Blest Be the Tie That Binds." The pastor, Rev. S. A. Barnes led the closing prayer of the service.

**YOUNG VIOLINIST MAKES DEBUT FRIDAY NIGHT**  
 The violin recital by Elizabeth Brown last night at the First Presbyterian Church, was as much of a surprise as a pleasure. It was a surprise that an eleven-year old child should be able to do the things she did; and

## Real Art in Jewelry

If you have an eye for the beautiful, you will take pleasure in looking over our new collection of Jewelry Merchandise--

- DIAMONDS
- CUT GLASS, IVORY
- STERLING SILVERWARE
- SHEFFIELD PLATED WARE
- WATCHES OF ALL MAKES
- MANTLE AND CHIME CLOCKS
- RINGS, LAVALLIERES, BROOCHES
- CHAINS AND FOBS, ETC.

Everything that could be desired or anticipated to give our customers the best

## Art Jewelry Co.

"AT THE SIGN OF THE DIAMOND RING"

Indiana and Eighth

### THE UPSTAIRS GARMENT SHOP

## Special Shipment of Dresses



On Sale Monday **\$15** On Sale Monday

Our new York buyer made another lucky purchase when he bought us fifty dresses in Serge, Satin and Taffetas; all good-looking styles and worth up to \$27.50. Priced for tomorrow's selling--

**\$15.00 \$16.90 \$19.75**

#### Chanut Gloves

Ladies' Kid Gloves, all sizes and every wanted shade. The name Chanut on every pair is a guarantee of perfect workmanship and best quality. Prices—**\$1.75 to \$3.00**

#### Kayser and Onyx Hosiery

The Hosiery with the fit, style and wear, in plain or fancy colors. Prices—**\$1.50 to \$2.50**  
 New Mesh Bags and Patent Leather Purses.....**\$1.50 to \$6.50**

Every express brings us new Suits, Coats, Skirts or Dresses—all correct styles, for less money.

**The Upstairs GARMENT SHOP** KAHN BUILDING OVER WOOLWORTH'S Phone 2734 **The Upstairs GARMENT SHOP** SMART WEAR FOR LADIES

It was a genuine pleasure that she did them so well. Elizabeth has studied with Ramon F. Adams for about nine months, and she has had about two months work before going to Mr. Adams. Yet her program would have taxed the ability of the average student of three or four years. Every number showed accurate instruction and careful study, both from the standpoint of musical understanding and technical proficiency.

The playing was characterized throughout by a complete rhythmic...

young lady's work is that she plays in tune. In this she has built solidly upon the very foundation of violin playing. Her technical work—staccato to bowing, left hand pizzicato, double stopping—and her tone, especially in the long bowing, is nothing short of extraordinary in so young a student. Yet Mr. Adams did not once make the mistake—so easy with a talented pupil—of giving her more than she could do.

The playing was characterized throughout by a complete rhythmic...

understanding. And without this music is meaningless. Tone, technique, and temperament produce nothing but incoherence, unless there is a well defined rhythmic structure to build on. This rhythmic grasp was put to some severe tests, by many changes of tempo and accent; but it was never lost sight of, and was especially noticeable in the lift of the 6-8 movement of the concerto.

Mr. Adams is to be congratulated upon having secured an unusually talented and hard-working student, who can go to the top of the tree if she will continue her work; and Elizabeth Brown on a debut secured a victory thoroughly equipped to take her as far as she wishes to go.

Miss Kathleen Stonecipher played the violin accompaniment, and it may be said to begin with that it is infinitely more difficult to accompany a student than a mature artist, spectally at a debut. The accompaniments were exceedingly well done in every number. Miss Stonecipher achieved that very difficult combination of giving at all times adequate support, but never crowding the soloist.

Miss Theresa Veale, of the vocal department of the College of Music, shows a very strong character in her recital seventh in "My Heart at Thy Sweet Voice" being taken without suggestion of change of register, and at ways in tone. Miss Veale is, furthermore, an individual thinker in the matter of interpretation. "At Dawn" received a most unusual—though quite logical—interpretation, instead of the usual languorous, over-lorn yearning with which this song is usually treated. Miss Veale sang it with the strong suggestion of the early morning. "The Fairy Pipers" by Brewer, was delightfully happy, graceful, and dainty, and quite captivated the audience.

In this song, Miss Sammons, the accompanist, was at her best, showing a much greater rhythmic precision than in the other numbers.

Miss Emil B. Foster, of the Expression Department, did some good work in "The Very Lilac One"—a clever comedy with a most ingenious plot. She handled the character well, and never "lost" the particular individual she was impersonating.

At the close of the recital, Mr. T. L. Krebs, president of the college, announced the formation in the near future of a Parent-Teachers Association. Mr. Krebs said that he hoped that this association would lead to a close co-operation between the parents and the teachers. "The parents," he said, "are often able to give us very valuable suggestions. At some times even the teachers can do the same."

Mr. Krebs further announced that Miss Foster was now organizing classes in Physical Culture, both for men and women aged from five to seventy-five. These classes will be held in the evening. It is hoped that those who are unable to come during the day.

W. L. Gibbons of Clarksville, was in the city yesterday.

F. W. Bridge is able to be up again, after being confined to his room for the past three weeks with a fever.

J. Y. A's. MEET FRIDAY WITH MISS LOIS FITZGERALD

The J. Y. A's. resumed social meetings for the winter Friday afternoon with Miss Lois Fitzgerald being hostess. The usual game of 42 was played in high score going to Misses Lou Martin and Grayce D. Shamburger. The hostess served delicious fruit punch and cake for Misses Dolores Maxwell, Frances Gillon, Tillie Mae Shaffer and Florence Morse, visitors; Misses Lulu Martin, Annie Dell Bradshaw, Lois Fitzgerald, Cecelia Roth and Grayce D. Shamburger.

MERRY MATRONS MEET WITH MRS. R. R. PROTHRO

The organization meeting of the Merry Matrons was held Thursday afternoon at the home of Mrs. A. R. Prothro. The club is to serve for the Red Cross at its meeting this winter and plans for meetings were made accordingly. Mrs. J. H. Sides was elected president and Mrs. D. K. Hinkle, press reporter. At the close of the meeting Mrs. Prothro served a light refreshment course to the following: Mesdames Hill, C. C. Lakey, H. P. Hodge, Sides and Pritchard.

WITH THE WOMEN OF THE CHURCHES

The Ladies Aid of the First Presbyterian Church will meet at the church Monday afternoon.

The Baptist Women's Alliance will meet Monday afternoon at 3 o'clock at the church. Rev. O. L. Powers will lead the Bible study. The Girls Auxiliary, both circles, will meet at 4 o'clock at the church.

The Home Missionary Society of the M. E. Church, South, will meet Monday in all day session at the church. The society will serve for the Red Cross, so all members are asked to come with their tins ready, supplies to be sent from the work room. A basket lunch will be served at noon. Tuesday the Ladies Aid of the Floral Heights Presbyterian Church will meet in all day session for a quilting luncheon served at the church. Business meeting of the Ladies Aid of the First Methodist Church Monday afternoon at the church.

The Christian Women's Board of Missions will meet Monday afternoon at 3 o'clock at the church. Mrs. J. M. Allen's division will conduct the program.

The Altar Society of the Catholic Church will meet Monday at 2:30 in the Knights of Columbus Hall for the first business meeting of the fall. Mrs. Wade Walker and Mrs. R. L. Hargrave hostesses.

The Guild of the Good Shepherd will meet at 3 o'clock Monday afternoon at the Episcopal Chapel. The Central Presbyterian Ladies Aid will meet Monday afternoon at 4 o'clock with Mrs. W. C. Berry, 1201 Lamar, for the Bible study.

CENTRAL PRESBYTERIAN SOCIAL FRIDAY NIGHT

Friday evening an enjoyable social meeting of the congregation of the Central Presbyterian Church was held at the home of Mr. and Mrs. H. E. E. The home was prettily decorated with golden glow and roses. A musical program was provided by Misses Adelaide Carlisle and Gladys Wilson and was much enjoyed by the guests. Refreshments of pineapple sherbet and cake were served. The attendance was good.

NEW CENTURY CLUB TO RESUME MEETINGS WEDNESDAY

Wednesday afternoon, October 3, the New Century Club will meet with Mrs. T. P. Adams for the initial meeting of the year. The program for the coming year will be discussed and the new officers installed.

First Baptist Church, Sunday school at 10 o'clock. Rally Day services, Preaching at 11 a. m. and 7:45 p. m. by Rev. O. L. Powers, the pastor. Morning subject, "The Downfall of a Duke." Evening subject, "The Downfall of a Duke." B. U. at 8:45. All are cordially invited.

# The Gift Store Supreme

Announces a larger and finer selection of wedding gifts than ever. In silver and cut glass we have most everything you can think of; all new designs and many new creations. We are receiving shipments of goods daily and are constantly adding to our already large stock of diamonds and gold jewelry.

Remember our four-store buying power enables us to buy for less and sell for less.

We do the very finest engraving and repairing. Our watchmakers and engravers are among the most skilled workmen in the State.

Yours for service,  
"THE STORE OF VALUE"

**Haltom & Friedly**  
Jewelers and Diamond Merchants

614 Eighth St.—Phone 575



Society Brand Clothes

## FOR ALL MEN

A store for men of all proportions; for young men and men who stay young; for informal styles and conservative models—the home of Society Brand Clothes.

The new Fall suits and overcoats are here. Also shirts, neckwear, hats and other fittings. ALL MEN are invited to see them.



STYLE HEADQUARTERS  
The Store that Sells Society Brand Clothes

# Wonderful Suits and Coats

Have reached us in a tremendous assortment. They Portray the newest features of Paris and American fashions



\$20

Lovely Suits, in Taupe or Burgundy ..... **\$75.00 and \$80.00**

Beautiful Suits of Broadcloth, Oxfordcloth, Gaberdines, Serges and Silvertone, quite a good range of prices—\$22.50 upward to. **\$85.00**

**WOMEN'S FALL COATS, IN ALL SIZES, COLORS AND ALL NEW MODELS**

Coats of Velour, Pom-Pom, Bureilla, in the smart belted models; large convertible collars, buttoning close to neck. You can have a wide choice ..... **\$18.50 to \$95.00**

**WOMEN'S STREET AND AFTERNOON DRESSES**

Cleverly tailored Dresses in Tricotine, Jersey and Serge—straight-line models with side draperies or over-tunics, with unusually attractive combination frocks, tastefully embellished— **\$12.50 to \$42.50**

New modes in Misses' Serge and Taffeta Frocks—beautiful combination, at— **\$9.50 to \$32.50**

Adorable Blouses in all new Suit shades. .... **\$5.95 to \$25.00**

Beautiful line of new Pattern and Tailored Hats—Turbans, Sailors, Military shapes and large Hats ..... **\$4.50 to \$27.50**

Our Shoe Department is brim full of new Fall Boots in all leading shades— **\$5.00, \$6.50, \$10.00 to \$13.50**

Our Line of Children's Shoes is the best **Be Fitted By Experts.**

Our line of Woolens and Silks are the largest in several seasons, and we've always been strong in this department.



ever this season; a very pretty line for dress up, besides regular school line.

Boys' Shoes, Too—Just like Pa wears—all widths.

### Austin Mothers' Club Begins Year's Work At Meeting Friday

New playground equipment and a flag for each room was ordered by the Austin Mothers' Club, meeting Friday afternoon for the first session of the new term. There was much business to attend to and the meeting proved interesting for the good representation of members in attendance. Mrs. J. W. Culbertson the president was in charge of the meeting and Mrs. E. W. Carter conducted the devotion. There was no unfinished business to attend to, the treasury was reported in splendid condition and the above mentioned equipment ordered purchased. Mrs. Bernard Martin was elected treasurer to fill the unexpired term of Mrs. C. W. Silder, who had transferred her membership to the Austin school as her daughter had been transferred to that school. Under the head of new business plans for the new year were discussed and it was decided to take some course of study. Much interest was manifested in the club by both members and teachers and a year of accomplishment is forecast.

Wichita Falls, Texas, Sept. 28, 1917. To Wichita Falls Commandery.

We, your committee beg to submit the following resolution on the death of our beloved Sir Knight L. C. Hinkley.

Be it resolved, That in the death of Sir Knight L. C. Hinkley, we have sustained a great and irreparable loss. He was known and always recognized by us as a man in every way above reproach, whose aims and ideals were of the very highest type, constantly faithful and devoted worker in his seniority; in the church, and who consecrated himself to well-doing in every lay affairs of his life as well.

The following sentiments seem appropriate:

"The loved and loving husband, father, friend, died where manhood's morning almost touches noon, and while the shadows still were falling towards the West, while yet in love with life, enraptured with the world, he passed to silence and pathetic dust. He added to the sum of human joy, and were every one for whom he did some loving service to bring a blossom to his grave, he would sleep to-night beneath a wilderness of flowers."

Be it further resolved, That in token of the affection and esteem in which we hold our departed Sir Knight, that this resolution be spread upon the minutes of this Commandery and that a copy hereof, be transmitted to the family of the deceased together with expressions of our sincere sympathy.

R. C. SMITH,  
J. A. RICHOLT,  
J. H. ROBERTS,  
Committee.

### NUMBER WILL ATTEND EASTERN STAR CONVENTION

Among Wichitans who will attend the annual convention of the Order of the Eastern Star to be held in San Antonio, October 10, 11 and 12, are Mrs. V. E. Stampfl, Mrs. T. E. Dobson, Mr. and Mrs. John Carlth, and Mrs. Grover Habern, who will go in the Stampfl automobile. Others who will probably attend are Mr. and Mrs. I. H. Roberts, Mrs. H. S. Ziskind and Mrs. E. L. Richardson.

# DODGE BROTHERS MOTOR CAR

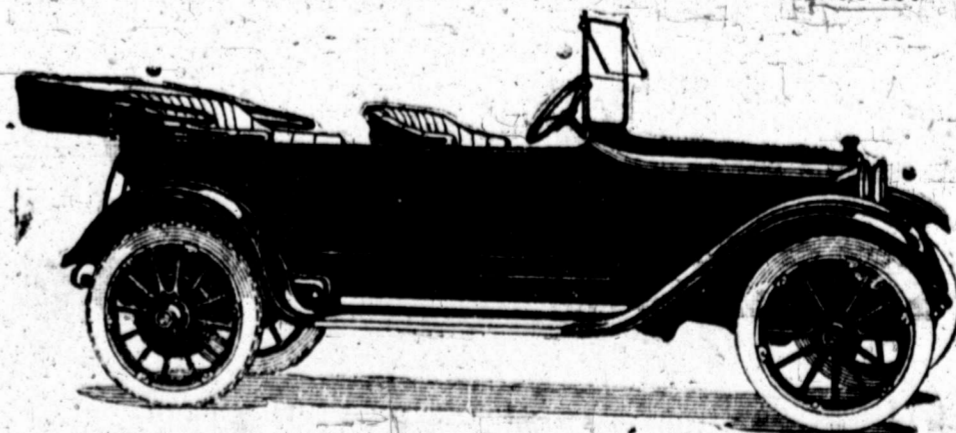
More and more the public realizes that the principles of the manufacturer are the things that count.

The car is right, down to the smallest detail, because Dodge Brothers manufacturing principles are right and sound.

Touring Car or Roadster, \$325. In Canada, \$415. Sedan or Coupe, \$295. In Canada, \$380. All prices f. o. b. Detroit.

DODGE BROTHERS, Detroit  
McFALL & ORTH, Dealers  
DODGE BROTHERS' MOTOR CARS.

819 Ohio Wichita Falls, Texas. Phone 444.



### CAMP TR CONTIN AM

Camp Travis, long train, stream comes to a stop; his brow and says, of the coaches file the youth of Texas "Line up, four comes a crisp coat takes his place, line and it march rain and gray-cold the several hundred illan days are over engaged in this irregular from which the untitled divi army.

It was raining, four days that, tingent disentraine and the aspect of t have seemed particu der any circumsta the boys themselves but cheerful. But sign of anything but antipathies; they ally as the "vetera and answered the you from" some h

### Get the

For your old Three Hags—Brass, Copp Aluminum, Zinc, Metal and Rubber. Write us for price have in Junk. Country shipment.

### WICHITA

Wichita Falls 311 Indiana Ave.

### Why

EAT CO... PI... Sure they and we wi the Shred nut, at b war price

### KING'S

721 SEVENT... Phone DELIV Morning—8-9 Evening—3-5

### Qua

Buy l new, way. —Ou live hal —We app Pir you —We sto —If ho

### Ho



# CAMP TRAVIS RECEIVES SECOND CONTINGENT OF NEW ARMY; MANY AMUSING INCIDENTS RELATED

By J. G. Camp Travis, Texas, Sept.—The long train, streamer and flagdecked, comes to a stop; the conductor mops his brow and says, "Thank God!" out of the coaches file a thousand or so of the youth of Texas or Oklahoma. "Line up, four abreast, lively!" comes a crisp command. A soldier takes his place at the head of the line and it marches off through the rain and gray-colored mud to one of the several hundred big barracks. Civilian days are over as the trainload is equaled in this great, wonderful meeting-point from which is to be molded the ninetieth division of America's army.

"Berling bound," read the banners on the coaches. "Going after the Kaiser," "To Berlin via San Antonio," and "Liberty Boys of 1917" are among the legends on the cars.

**Rain Most of Time.**

It was raining during most of the four days that the second draft contingent disentrained at Camp Travis and the aspect of the camp would not have seemed particularly cheerful under any circumstances, probably for the boys themselves, it was anything but cheerful. But there was little sign of anything but good nature and anticipation; they cheered back lustily as the "veterans" greeted them, and answered the question "Where you from?" some hundreds of times.

They went first to a receiving station, where they were counted and checked. Then came the "dousing" process, from which they emerged looking very uncomfortable and anti-septic. But it wasn't as bad as it to their quarters, issued straw matresses, blankets, etc., and before many hours they were introduced to the rudiments of drill.

Typhoid prophylaxis, change of food and climate, the first letters home and other things, combined to cause some severe cases of homesickness during the first few days, but it soon passed.

One youth had such a serious attack that he decided to end it all, and swallowed a mild dose of poison which he had brought with him. Regrets followed quickly and he made his condition known.

"If my mother were here she'd know what to do for me," he said, after he had taken him to the hospital.

"Never mind," replied the doctor, as he poured out a liberal dose of a well known emetic. "We know what to do for you all right."

**Get the Money**

For your old Tires and Tubes, Sacks, Rags, Brass, Copper, Lead, Tin, Foli, Aluminum, Zinc, Bones, all kinds of Metal and Rubber. We are in the market for several cars of iron.

Write us for prices on anything you have in Junk.

Country shipments solicited.

**WICHITA JUNK CO.**

Wichita Falls, Texas.  
311 Indiana Ave. Phone 2244

**Why Not**

EAT COCOANUT PIES?

Sure they are good, and we will sell you the Shredded Cocoa-nut at before the war prices.

**KING'S Grocery**  
721 SEVENTH STREET  
Phone 604  
DELIVERIES  
Morning—8-9-11 o'clock  
Evening—3-5 o'clock.

**Quality Ice Cream**

Buy it made in Wichita Falls, in our new, up-to-date factory, in a sanitary way. "Eat a dish every day."

- Our cream is well-packed, and delivered in any quantity from one-half gallon up, to your door.
- We have Vanilla, Strawberry, Pineapple, Cherry, and Caramel Nut, Pineapple and Cherry Sherbet, for your dinner today.
- We carry pink and white bricks in stock.
- If there is an empty packer at your house please phone us.

**Holliday Creamery Co.**  
PHONE 830

**Wichitans Arrive.**

The Wichitans arrived late on a rainy evening and practically all were assigned to the depot brigade. Some of them, when they arrived, greeted a certain busy young lieutenant with "Hello, Johnny," their familiarity bordering closely upon disrespect. Two Wichitans, Jno. W. Thomas and Wasec Yeager, have been assigned to the division headquarters troop, which is no mean distinction; several others are in brigade and regimental headquarters companies, and doubtless in line for non-commissioned offices. The majority are still in the back private class, as would be expected. They are all in good enough humor, but they stated unofficially that they hoped they wouldn't be given any more cabbage for breakfast.

**Meeting The Trains.**

The work of meeting the innumerable trains that steamed into Camp Travis at all hours of the day and night was not exactly restful, but it had its compensations. Half a dozen officers and a score of enlisted men acted as reception committee. It was the duty of some of the enlisted men to go through each train before it pulled out, to make sure that no one was left and incidentally to collect the fruit, lunches, candy, tobacco, canned goods and other edibles that were left behind. The reception committee lived high while it lasted, though the writer does not intend ever again to make his breakfast of chocolate fudge and watermelon.

The trainmen had an idea that the supplies belonged to them but their protests went unheeded; one of them disputed the matter just a trifle too vigorously one day. He is getting along as well as could be expected.

From all appearances, most of the drafted men had been well treated by homesfolks, not only as to entables, but in the supplying of comfort bags, Bibles and pets. One Oklahoma delegation had a young pig, while dogs, cats and chickens were numerous.

**Sent From Hospital.**

Exemption boards that had more energy than judgment sent along some men that could just as well have stayed at home. One Oklahoma county sent a youth who showed up with most of one foot gone, the result of an accident since he registered; the exemption board, taking its orders literally and ranked him out of the hospital and sent him along.

In another Oklahoma contingent was the sheriff of the county, who said "Didn't you claim exemption?" he was asked.

"Yes, but that's all the good it did me," he said, "this man here's one of my deputies. I wish they'd let me bring my other two deputies; then we'd end this damn war in 30 days and go home."

**All Sorts Are on Hand.**

All sizes, sorts and descriptions of men are in evidence. Many college graduates are here, marching side by side with boys who never saw the Fourth Reader. Mexicans, Indians and a few Chinamen mingle with the thousands of Americans.

Many of the better educated drafted men have hopes for commissions and are already planning to get into the third training camp at Leon Springs. Undoubtedly there is some splendid officer material among them; the writer, however, cannot refrain from giving a bit of advice, that is, not to seek a commission because of the financial advantages accruing, because there aren't any such. A second lieutenant may be better off in many ways than a non-commissioned officer, getting \$10 to \$20, with no expenses, is apt to have much more change in his pocket at the end of the month than his shaver-tail superior who has to buy food, clothes, equipment, etc., at San Antonio prices, out of his \$141.67.

**As to Smoking Tobacco.**

Without any desire whatsoever to engage in any controversy, I want to take issue with the lady who urged against sending tobacco to the soldiers. When she put tobacco and drink in the same family, she conferred upon booze a respectability that it doesn't deserve. There is no booze for the soldiers, and I've heard anybody question the wisdom of that; but there is going to be tobacco, and plenty of it. A modest order for 5,000,000 cigarettes of one brand alone has already been placed for Camp Travis. Somehow, soldering demands nicotine, and many men who were injured by smoking while leading sedentary lives at home, take very kindly to it when they get into camp. That fact The Times is raising ought to be ten times as big as it is. Per-sonally, the writer doesn't fear tobacco because he can quit whenever he wants to; in fact, he's quit twice already this week.

**Early Bunch Gets Busy.**

The five per cent contingent that reported early this month now seems like a veteran organization; many excellent corporals and sergeants have been developed from among those early arrivals, and they are busy now putting the "rookies" as they superiorly call them, through the ropes.

One big factor in the training of the

recruits is the detachment of sergeants and corporals that came from the regular army. Kipling, writing of the British Tommies, cast no asparagus upon the commissioned officers, but was loudest in his praise of "Sergeant Whats-His-Name." It takes an old drill sergeant, with the wisdom of many years in the ranks, to start a rookie on the right path; he knows things that an officer never could learn and lucky is the enlisted man whom one of these three-cornered three-chevrons-veterans takes under his wing.

Not the least of the charms of these veterans is their ability to make conversation. One of them was talking to some recruits the other evening, and the talk drifted, as talk will do, the subject of weather. Following is an expurgated edition of the sergeant's remarks:

"Cold ———— it never gets sure nough cold here. You oughta been with me in North Dakota one winter. The ———— bugler would get up at 3:30 and blow reveille and then put his bugle on the radiator; two hours later it would go off."

Lots of strange things happen in the army.

**McCall Will Become Governor's Secretary; Quits Senate Post**

By Associated Press.

Austin, Texas, Sept. 29.—John D. McCall, for the past four years secretary of the Senate today announced he had accepted the appointment tendered him by Governor Hobby as private secretary to the Governor. Mr. McCall said he will assume his new duties on Monday. For the past several months Mr. McCall has been an attorney in the federal land bank at Houston.

**Special Attention Given to Five gallon orders.** Rural phone 9901. Rm 14

**ICE CREAM**  
"Quality Kind"  
GET A BOX TODAY  
We Deliver—Phone 47  
Shaw-Williams  
Drug Co.

# Announcing The Introduction of the Stearns Motor Car to Wichita Falls

We are here to establish a permanent Service Station and give the discriminating motor car buyer the opportunity of purchasing a custom finished car without having to go east to buy it.

We do not accept used cars in part payment and our prices range from \$1885.00 to \$5500.00 according to the type and finish desired.

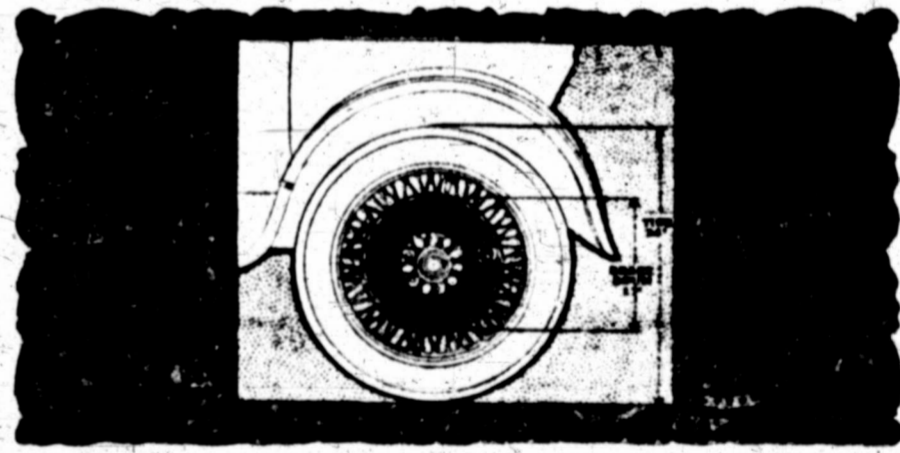
The car embodies the famous Stearns chassis combined with the Knights type of motor, all being entirely built in the Stearns factory at Cleveland.

We are appealing only to people of individual tastes and who are desirous of purchasing a quality motor car.

For further information call Mr. Taylor at the St. James Hotel.

BOTH FOUR-CYLINDER AND EIGHT CYLINDER MODELS

# MARMON 34



## You Can Trust Your Life To Marmon Brakes

Safety often depends on the efficiency of a motor car's brakes, and ease with which the driver can apply them. At a critical moment no feature is more important.

Marmon engineers have developed a braking system with a greater margin of safety than is the rule in cars of any class, regard- less of price.

Consider first the Marmon's emergency brake—always conveniently within reach of the driver's right hand. As you sit at the wheel, no movement of the body is required to apply it.

This hand-brake operates a set of two internal brakes on the rear wheels. The foot pedal operates a set of two external brakes.

Their combined braking area is 100 square inches—10 square inches for every

hundred pounds of weight—extraordinary brake capacity.

Marmon brake permits you to retard your car smoothly, though quickly, or bring it to an abrupt halt.

Light cars do not require brakes so large as heavy cars. Yet notwithstanding the Marmon's 1100 pounds lighter weight, the diameter of brake drums is half the diameter of the wheels, with tires mounted.

Let a demonstration prove to you that the Marmon with its extraordinary braking efficiency requires only a minimum of effort in handling.

**STALEY MOTOR & SUPPLY CO.**  
Dealers in Marmon, Buick and Oakland Cars.  
Phone 991 908 Ohio Ave.

LAST CONTINGENT IS ANNOUNCED BY LOCAL BOARD

MEN ORDERED TO REPORT TO HEADQUARTERS HERE TUESDAY AFTERNOON.

SOME HAVE MADE APPEAL

All Are Expected to Leave for Camp Travis Wednesday, Except Those Awaiting District Board's Reply.

Wichita county's third and last contingent of men of the first call of the National Army has been ordered to report to local exemption board in G. C. Wood's office, Tuesday, October 2, at 2 p. m.

Table with columns: Order No., Name, Red Ink No. List of names and numbers.

B. F. JOHNSON IS ASKED TO ASSIST U. S. GOVERNMENT

MAY AID IN HOOVER CONSERVATION CAMPAIGN IN THE STATE

DIRECTORS ARE TO ACT

Work Will be Under General Supervision of J. R. Babcock, Secretary of Dallas Chamber

B. F. Johnson, secretary of the Chamber of Commerce, is one of a committee of four who have been asked to assist H. C. Hoover in the work of conservation of food in the northern half of Texas...

Headquarters at Dallas. A huge office force will be assembled in the headquarters at Dallas, composed of competent men whose services will be lent to the government but whose salaries will be paid by the various firms by whom they are employed...

AVIATORS WILL LIKELY BE HERE BY NOVEMBER

WORK TO PRESENT IS DECLARED TO BE UP TO SCHEDULE SET BY GOVERNMENT

HANGARS NEARLY READY

Numerous Confectionery And Soft Drink Stalls Just Off Government Reservation

Present indications are that flying squadrons will be in camp at Call Field the first of November, when the hangars will be practically if not entirely completed.

Paint and Gravel. Paint and gravel have arrived in large quantities, and road builders and painters are in demand.

Hangars Strike Eye. The hangars strike the eye, and long before one has passed the succession of guards, satisfying each one that there is neither camera nor dynamite gun nor rifle on the horizon...

Advertisement for W.B. McClurkhan & Co. featuring fashion illustrations and text: 'The Charm of the Exclusive, the Fashionable, the Very New. Are exhibited in the McClurkhan Suits, Coats and Gowns FOR FALL and WINTER'

Advertisement for Belle of Wichita Flour: 'Muffins for Breakfast. Vary the monotony of your breakfast bill of fare by having muffins occasionally instead of bread or toast.'

Advertisement for Maxwell Hardware Co.: 'Everything for the Farmer, Mechanic, Builder and Housewife.'

Advertisement for Texas Tire & Supply Co.: 'NEW SEVEN-PASSENGER HUDSON SUPER-SIX Fully equipped, for sale at a discount'

Advertisement for Wichita Hardware Co.: 'Complete line of Shelf and Heavy Hardware. 804—Ohio Avenue—806'

Advertisement for Cream Bakery: 'CASH BASIS AFTER OCTOBER 1st. On account of the continued increase in the cost of everything that goes into the manufacture of our products, we shall sell goods for cash only'

Advertisement for C. D. Shamberger: 'WE SELL LUMBER On the INSTALLMENT Plan'

Advertisement for Red Cross Week: 'RED CROSS WEEK TO BE OBSERVED IN WICHITA FALLS. HIGH SCHOOL STUDENTS ARE TO AID IN TWO DAYS CAMPAIGN HERE. ASK THOUSAND A MONTH'

Vertical column of small advertisements on the far right edge of the page.



PERSONALS

Mrs. Jack Shelton and son, Robert, left Saturday for Fort Worth to spend the week end with Sergeant Shelton of the supply company of the former Seventh Texas at Camp Bowie.

METALIC MIRRORS FOR TRAVELLERS, SOLDIERS, WORKING MAN-

An unbreakable, high-reflection, metal mirror; fits right into the vest pocket—something to be used all the time. You cannot break it if you try.

SHAVING DEMANDS RAZORS, SOAPS, TALCUM, LOTION

We sell Safety Razors in all popular makes—single, simple razors, up to complete travelling combination sets.

First Attention to All Orders For The Sick Palace Drug Store Special Attention Given Our Prescription Dept.

DR. J. W. DU VAL

Eye, Ear, Nose, Throat.

GLASSES FITTED

First National Bank Building

NEARBY BANKERS ASKED TO HELP SUPPORT AGENTS

EXPENSE OF KEEPING EXPERTS ON AGRICULTURE HEAVY FOR THIS CITY

Banks at Burkburnett, Electra, and Iowa Park are being asked by the Chamber of Commerce to contribute something towards the expenses of the two agricultural agents maintained for the services of the county by the Chamber.

asked, however, in connection with the proposed trip to Dallas of the boys and girls of the various farm products clubs.

PHYSICAL CULTURE CLUB TO BE STARTED SOON

An evening physical culture class for the benefit of those busy during the day, is to be instituted within a short time by Miss Emily B. Foster, instructor in expression at the College of Music.

After October 1st GASOLINE FOR CASH

or cash coupons, only. Coupon books will be on sale at all stations at the usual discount.

J. L. MEARS OIL CO.

Foot Ball Goods

A Complete Line of Spalding's



OFFICE SUPPLIES AND SPORTING GOODS

PLAZA AIRDOME

WEEK, COMMENCING MONDAY AL SHAFFER MUSICAL COMEDY COMPANY

—FEATURING— 10—Big Vaudeville Headline Features—10

HEAR THE ORIGINAL "JAZ" QUARTETTE

RAILROAD TIME TABLE

Table with columns for Missouri, Kansas & Texas, At, and Lr. listing various routes and times.

Miller Drug Store logo and text: A complete stock of KODAKS and Supplies. Phone 193

WE wish to announce that we are now showing one of the most complete lines of beautiful Engraved Christmas Greeting Cards it is possible to obtain.

Everyone wishing to see our line should phone 2186 and our solicitor will be pleased to call at either office or residence.

We wish to impress upon everyone the necessity of placing your orders early. We are dealing with one of the largest engraving companies of the South, and can guarantee prompt delivery.

Phone 2186—Any Time

Stationery Supply & Engraving Co. Phone 2186 Ninth and Indiana

As the price of all materials in the cleaning business has more than doubled in the past year, we will, after October 1st, raise our prices on cleaning and dyeing.

Wichita Cleaning and Dye Works 1102 Scott H. R. HANKS, Mgr. Phone 620

"FOLLOW ME" "WHAT DO YOU WANT MAKE THOSE EYES AT ME FOR"—Tenor Solo, Sung By Samuel Ash

Shaw-Williams Drug Co. Phone 47

The Eyes of the World Will Be Upon You—

—because you are in some special sense the soldiers of freedom. Let it be your pride, therefore, to show all men, everywhere, not only what good soldiers you are, but also what good men you are, keeping yourselves fit and straight in everything and pure and clean through and through.

My affectionate confidence goes with you in every battle and every test. God keep and guide you.

PRESIDENT WOODROW WILSON

To the Soldiers of the National Army.

Victrolas, Edisons, Five Thousand Victor Records, Trunks, Bags, Suit Cases, Cedar Chests, Violins, Ukuleles, Tennis Goods, Golf Goods—YOUR CREDIT IS GOOD FOR A VICTROLA

MACK TAYLOR DRUG COMPANY

WHOLESALE and RETAIL School Books and Supplies 812-814 Ohio Ave

OWING TO THE INCREASE OF PRICES IN CLEANING MATERIALS and LABOR our prices will slightly advance, on and after the first of October.

Mount Tailoring Co 704 Seventh St. Phone 1067

The BEST Feed is the cheapest feed. When you pay the present high prices for feed you want to be sure you are getting quality.

Maricle Coal & Feed Co. 707 Tenth Street

STALE COFFEE Stale coffee bears the same relationship to Fresh Roasted Coffee that a cold storage egg does to one fresh from the nest. We Roast Coffee Every Day BERT BEAN COFFEE HOUSE 824 Indiana Ave. Telephone 35

READ EVERY WORD IN THIS MAMMOTH ADVERTISEMENT

Vertical text on the right edge of the page.

# TWENTY-FIVE ASSOCIATED STORES IN TEXAS-OKLAHOMA

## STORES AT

Childress, Texas  
Lone Oak, Texas  
Decatur, Texas  
Jacksboro, Texas  
Vernon, Texas  
Bowling, Texas

Electra, Texas  
Paris, Texas  
Denison, Texas  
Greenville, Texas  
Longview, Texas  
Marshall, Texas

# Perkins-Timberlake & Co.

ASSOCIATED STORES

HEADQUARTERS: WICHITA FALLS, TEXAS

## STORES AT

Quanah, Texas  
Chillicothe, Texas  
Sulphur Springs, Tex.  
Kaufman, Texas  
Commerce, Texas  
Athens, Texas

Gilmer, Texas  
Winnboro, Texas  
Jefferson, Texas  
Altus, Okla.  
Frederick, Okla.  
Durant, Okla.

## With Every Department Filled to Overflowing

### With New Fall Goods, the Big New Store of Perkins-Timberlake Company Announces Its Complete Readiness to Serve You

### FULL and COMPLETE LINE of LADIES' UNDERWEAR, SWEATERS and BLOUSES

Women's Blouses, in Voiles, Organzas, Silks, Crepe-de-Chine and Georges, \$1.00 to \$12.50  
Women's Union Suits, medium weight, fleece-lined, 75c  
Women's Union Suits, fine ribbed, sleeveless, short length, light weight, at each \$1.00  
Excellent Union Suits for women, ribbed in medium weights, each \$1.25  
Extra quality fleece ribbed Union Suits, full length, each \$1.50  
Children's Union Suits, silk finished, double thread, covered seams; sizes 2 to 16. Priced 75c  
Boys' Union Suits, heavy; fleece ribbed; 6 to 10 years 75c  
Women's heavy ribbed Vests, fleece, each 75c  
Women's Vests, medium ribbed, each 50c  
Women's Jersey ribbed pants, silk finished, pair 50c and 75c  
Misses' Union Suits, medium weight, good quality 50c  
Children's E-Z Union Suits, 2 to 13. Each 75c  
Ladies' Sweaters, assorted colors, \$2.50, \$3.50, \$5.00, \$6.00, \$8.50 and \$8.50  
Misses' Silk Sweaters, beautiful colors \$3.95  
Misses' Sweaters, assorted colors, \$1.00, \$2.50 and \$3.50  
Juvenile Sweaters, \$1.00 to \$2.95  
Full line of Women's and Children's Knitted Caps—50c, 75c, \$1.00 and \$1.25  
Skating Sets in Wool—\$1.00 to \$3.50  
Children's Knitted Suits—red and white \$2.50  
One special line of fancy Waists, in pretty Voiles, nicely trimmed—all sizes, Each \$1.00  
Middles, in good grade Galatea Cloth, nicely trimmed, each \$1.00

### FULL LINE MUSLIN UNDERWEAR—ALL PRICES

House Dresses and Aprons, made of good grade Ginghams—priced at \$1.25 to \$2.50  
GOSSARD'S CELEBRATED FRONT LACE COSETS—newest fall models—\$12.50 and down to \$2.00

### WOMEN'S, MISSES' AND CHILDREN'S HOSIERY

Children's Black Ribbed Hose, good quality, pair 10c  
Children's black ribbed Hose, better grades—15c and 19c  
Boys' Cadet Hose, 35c, 3 pairs for \$1.00  
Good Grade Misses' Hose, white and black, pair 25c  
Ladies' Cadet Hose, black and white—price 35c  
Ladies' Hose, good grade black and white 25c  
Ladies' Silk Lisle Hose, black and white, pair 65c  
Phoeniax Hose, in Silk, all colors, Price \$1.00, \$1.25 and \$1.55

NEVER BEFORE in the history of Wichita Falls has there been a more complete stock of merchandise in any store in the city. Our immense corps of buyers have recently returned from New York and other Eastern markets, where, by constant and renewed efforts, they have procured many interesting values for every department of this great store. This is, indeed, the most strenuous season for many years—merchandise as a rule hard to get—and prices continually soaring skyward. Our buyers were very lucky in getting their orders placed early, thereby preparing us to protect our customers. Many lines have advanced from 25 to 50 per cent since we placed our orders, but we are determined that our customers shall share our good fortune.

## REMEMBER—we buy merchandise for 25 stores

Therefore it is reasonable that our enormous discounts will enable us to secure merchandise at a much less price than our competitors. This buying power, coupled with our efficient selling service, offers you opportunities seldom found in stores throughout North Texas.

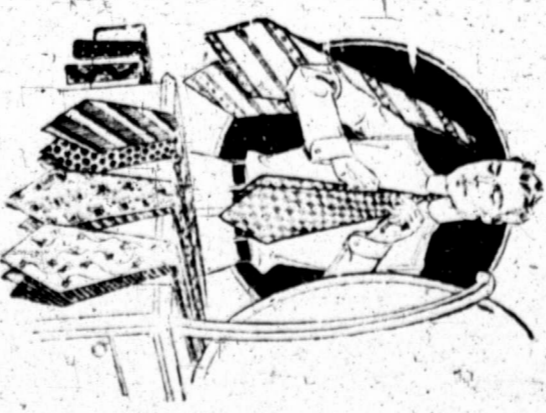
BE SURE TO HEED THE PRICES QUOTED IN THIS ADVERTISEMENT—THEY WILL SAVE YOU MONEY.

Don't Miss An Item—**READ IT ALL!**



### Extraordinary Values in Men's Furnishings

Good Shirts, without collars—stripes or blue and lavender, all sizes \$1.00  
Shirts with French cuffs, pretty stripes—\$1.50 and \$1.00  
Extra quality Shirts, fancy patterns—14 to 17 \$1.75  
Pretty Silk Shirts, exquisite patterns, each \$5.00  
Soft Shirts, collars attached, plain white and fancy stripes \$1.00  
One line Men's Soft Shirts, collar attached 75c  
Chalmers & Wright's Union Suits, \$2.50, \$2.00 and \$1.50  
Extra good quality Men's ribbed Union Suits, at old price \$1.00  
Men's Shirts and Drawers, ribbed garment 50c  
Men's extra heavy fleeced Shirts and Drawers—garment 75c  
Beautiful Ties, in excellent colors—25c, 50c, 75c and \$1.00  
Men's all-leather Gauntlet Gloves, \$1.00 to \$2.25  
Men's Dress Gloves—\$1.50 to \$2.00  
Automobile Gloves—\$2.50 to \$6.00  
Men's Socks, in black, tan and fancy colors—1pc, 2 for 25c  
Exclusive agents Phoeniax and Cadet Hose—35c to \$1.25  
Men's Handkerchiefs—10c and 5c  
Pure Linen Handkerchiefs, each 25c  
Best grade Union Made Overalls—garment \$1.00  
Blue Work Shirts—75c and 50c



### HAND BAGS AND SUIT CASES, VERY BEST GRADES—PRICED WONDERFULLY LOW

Trunks priced—\$3.95, \$4.50, \$5.95, \$7.50, \$10.00, \$12.50 and \$15.00

### MEN'S AND BOYS' SWEATERS

Men's and Boys' Sweaters; colors, maroon, navy, Copenhagen and Cardinal. Priced \$1.00, \$1.50, \$2.00, \$2.50, \$3.50 and up to \$12.50

READ EVERY WORD IN THIS MAMMOTH ADVERTISEMENT

AT THE CHURCHES

First Methodist Episcopal Church - (Corner Seventh and Lamar.) Regular services: 9:45 a. m. Special Rally day program in the Sunday school...

Church of The Good Shepherd - Announcement of services at Church of The Good Shepherd (Episcopal), corner Tenth and Burnett streets, Sunday, September 30th.

tor Subject: "Christian Giving." There will be no public offering. The choir will sing "Awake, Thou That Sleepest" from the Daughters of Jarius...



Clothes You'll Like Living With

Here is apparel to make you doubly comfortable—at ease about them—the price is so reasonable; and at ease in them—they fit so well.

You'll scarcely find their equal for individuality of fabrics, for smart styling, or for fine tailoring.

In fact, the finest hand-tailoring that it is possible to make, in suits made to sell at \$30.00, \$40.00, ad up to \$48.50. Our price—

\$20.00 \$22.50 \$25.00 One special offering of two and three piece Suits, all new styles and a variety of patterns and colors, made to sell up to \$22.50 to \$35.00. Your choice, only—

\$14.95 RIGGS MISFIT PARLOR 816 Indiana Ave.



There's no "buyer's risk" at this store. You will realize this any time you buy merchandise in these stores. It's the basic principle of our business.

"Attention--right dress!"

Those are about the first two commands you learn in the army.

We're using them here to call your attention to the new military sport suits by Hart Schaffner & Marx; they're the "right dress" for men and young men; for outdoor sports or business.

Notice the patch pockets and the all-around belt; the back has plaits. Many other variations for you to choose from.

- BORSALINO HATS -NETTLETON SHOES -BION F. REYNOLDS SHOES -METRIC SHIRTS -INTERWOVEN HOSE -NEW NECKWEAR

Baum & Gardner EXCLUSIVE STYLES

Home of Hart Schaffner & Marx "Good Clothes"

First Evangelist Church - (Corner 15th and Broad.) Sunday school, 9:45 a. m. Albert Laubach, superintendent.

Floral Heights Presbyterian - (Corner Ave. G and Kemp Blvd.) Services tomorrow at the usual hours. Subject of sermon for Junior Congregation: "Useless Sowing."

First Presbyterian Church - Rev. H. P. Evans will deliver his closing address Sunday morning. At night the pastor will preach the second sermon of the series on the "Mystery of the Holy Writ."

ABOUT THOSE SMOKES. Editor Times: As your gentle-lady correspondent has seen fit to associate my initials with some very noted authorities...

ODD FELLOWS TO CONFER - INITIATION DEGREE MONDAY - The Odd Fellows will confer the Initiatory Degree on candidate at their hall tomorrow night...

drinker to quarrel and fight with his friends, beat his wife and children, while I smoke the pipe of peace with my companions...

Sanitary progress would devote some time and effort at cleaning the interior of professed Christians, the exterior would take care of itself. There are those who could find use for "Conscience Soap," "Purify Heart Powder," and "Liberal Brain Salve."

Irish Tillage Plan Proves Big Success States Department - Associated Press Mail Correspondence. Dublin.—That the tillage plan introduced at the beginning of the year has been an unqualified success is indicated by the annual Agricultural Statistics which the Irish Department of Agriculture has just issued.

Oil Leases Recorded. R. S. Allen to Panhandle Refining Co., 1,246.76 acres being parts of the S. A. & M. G. Ry Co., survey No. 1, and all of section 2 of the H. & T. H. Ry. survey, Consideration \$124,676.00.



New Millinery Velom, Felt and Velvet Hats just received from GAGES, ACH and other of the leading style makes. For real style and quality see our line. OLIVE A. CHILDS 805 Indiana.

LIBERTY LOAN SIGN IS RECEIVED IN THIS CITY - The Chamber of Commerce has received from the Federal Reserve Bank at Dallas the thirty-foot canvas sign advertising the second Liberty Loan campaign.

Real Estate transfers Recorded. Ernest Voght and wife to C. O. Grove and wife, part of lot 3, block 246 of the city of Wichita Falls. Consideration \$1,800.

Special SHOWING OF NEW FALL Suits, Coats, Dresses Petticoats, Skirts Waists, Corsets and Hats TOMORROW AND THIS WEEK 50 Suits to select from, in all the new shades and styles, tomorrow's selling only \$24.75

### RUSSIA'S VAST TERRITORY OFFERS MANY PROBLEMS

Washington, D. C., Sept. 28.—The vastness of the problem which Russia has to face in maintaining herself on the side of her allies in the great world war is nowhere better exemplified than in the story of the Trans-Siberian railroad. When it is remembered that in normal times, it takes a mail train thirteen days to make the run from Vladivostok to Moscow, and that the total distance between the two cities is 5,391 miles, it will be seen what a tremendous haul is required for a very large percentage of the munitions which Russia must have to wage her war. In this connection, the following bulletin, just issued by the National Geographic Society from its headquarters in Washington, is of interest.

**Few Know Difficulties.**—Few people realize how great some of the difficulties are which the Russian government has to face in keeping its armies in the field, provisioned and munitioned. These difficulties

are strikingly exemplified by the story of the Trans-Siberian railroad. The distance from the Pacific terminus at Vladivostok to Moscow is 5,391 miles and to Petrograd 7,000. In the days before the war, when the line was well equipped and not unduly burdened with traffic, the fastest express train required nine days to make the run, while ordinary mail trains, which probably made better time than the best freight time now can be, took 12 days. The first class passenger train on the Trans-Siberian between Moscow and Vladivostok was approximately \$100,000.

Much of the Trans-Siberian road is still single track, and it is undoubtedly heavy traffic at the past three years has levied a heavy toll on both equipment and roadbed, with the result that it is reported to be in far from prime condition. While in the main grades are fair, yet it is not to be expected that on a road of such length these could be compared to the grades obtaining on our own principal lines. The result is comparatively short trains, many engines, and slow progress.

**Transportation Problem.**—So difficult, indeed has been the task of transporting to the front an adequate supply of munitions, that all through the war fleets of ships have sailed from England and America, through the ice of the Arctic Ocean to the mouths of the Yenisei and Obi rivers, there discharging their cargoes into river boats which have carried the freight up the rivers to the points where the railroad crosses them, to be transhipped there and hauled to the front. Even from the Obi River to Moscow is almost as far as from Denver to New York, while the distance from the Yenisei to Moscow equals that from our Atlantic to our Pacific Coast.

Few people realize the magnificent distances that obtain in Siberia. Stretching from the Ural Mountains to the Pacific Ocean, it is one and a half times as large as the United States and forty times as large as the United Kingdom of Great Britain and Ireland. If all of our own country east of the Mississippi river were added to Europe, that continent would still be smaller by some hundred thousand square miles than Siberia alone. When it is remembered that for the major portion of the year Russia's foreign supply of munitions must cross Siberia, either from the Arctic Ocean or the Sea of Okhotsk, it will become plain why Russia has faced problems of supply such as no other country on either side engaged in the war has encountered.

**Trans-Siberian Road.**—On leaving Moscow, the Trans-Siberian road runs through about 300 miles of the great western plain of European Russia to the city of Ufa at the foot of the Ural Mountains, some 200 miles east of Moscow. It is a pyramid on the one side of which is inscribed the word "Europe," and on the opposite the word "Asia." This pyramid stands on the very apex of the Ural. The railroad at this point is 1850 feet above sea level. Between Ufa and Tchelyabinsk the road rises from 310 feet elevation to 1850 feet and drops back again to 760 feet. At the latter place are huge wooden bar racks where immigrants entering Siberia are quartered in peace times, waiting for transportation. In 1913 more than a quarter of a million Russians reversed our own "going East" of a generation ago, and went "East" into Siberia.

**Through Interesting Country.**—Across the vast stretches of western Siberia the Trans-Siberian railroad passes through grassy steppes inhabited by horse-breeding kirghizes, through long reaches of virgin forest, and through many important agricultural regions. Crossing out of the Tomsk government into that of Yeniseisk, the road shortly reaches Atchinsk, the northernmost town on the railroad. Its latitude is the same as that of the middle coast of Labrador. Indeed, at no time after it leaves Moscow until it enters Manchuria does the Trans-Siberian ever touch further south than the northern coast of Newfoundland. By the time it reaches Lake Balkash, it has climbed again to 1500 feet, and in climbing that body of water has to pass through forty tunnels, through conditions giant cuts and over many bridges. It continues to climb until it reaches Sokhondo, 2100 feet where it penetrates a tunnel bearing on its western entrance the inscription "To the Great Ocean," and on its eastern entrance the inscription "To the Atlantic Ocean." After passing the junction of the road to Malden, the Trans-Siberian drops down to 700 feet, then climbs again to 2100, and thence back to sea level at Vladivostok.

From this it will be seen that whether viewed from the standpoint of distance, which is one and one half times that across the American continent by some of the longer routes from seaboard to seaboard, whether from that of latitude and climate, which places it at 7000 miles north of the coast of Newfoundland and gives it at some points an average temperature in January of five degrees below zero, whether from that of elevation, which gives it three mountain ranges to cross, or whether from that of trackage facilities and rolling stock supply, no nation has ever had such a railroad problem to deal with in a time of great crisis as Russia has in connection with the operation of the Trans-Siberian line.



**SMOKE HECTOR HAVANA CIGARS**  
5 cents each  
MILD AND FRAGRANT

WATCH THIS SPACE FOR BARGAINS

**Chandler**  
1917 model, 6-cylinder Chandler, price new, \$1675.00; can be bought for **\$1000.00**  
TERMS TO SUIT

**Lloyd Weaver Auto Co.**



**Bargain in Willys-Knight**  
—run less than 5000 miles.  
Terms to suit, or will trade for Wichita, Falls property.

EXCELSIOR MOTOR CO.  
612 Ohio avenue. Phone 1081

**NATIONAL BANK OF COMMERCE**  
Wichita Falls, Tex

**SAFETY NOW AND ALWAYS**  
By placing your important papers—Liberty Bonds, Insurance Policies, Notes, Deeds, Mortgages, Contracts, Will etc.—in a

**Safe Deposit Box**  
in our modern fire-proof vault you make absolutely certain of unimpaired protection for your valuables whether you leave them there one week or ten years.

Our Safe Deposit Boxes are in the most up-to-date construction and hand made—rental rates and rental fees are low—\$1.50 and \$3.00 per year according to size.

Come in and inspect them.

**C. W. Reid, President**

CAPITAL, PROFITS & STOCKHOLDERS' RESPONSIBILITY OVER \$215,000.00

**Physicians and Nurses For Child Welfare Work Will Leave For France**

Washington, Sept. 29.—In response to urgent appeals from Major Grayson M. P. Murphy, head of the American Red Cross Commission to France, a third detachment of child welfare workers and nurses will sail for France before the end of this month.

Physicians and child specialists to be included in the party are Dr. J. H. Mason Knox Jr., of Baltimore; Dr. John E. Manning, of Seattle; Dr. Frances Chapman Child, of Philadelphia; Dr. Edmund J. Labbe, of Portland, Ore.; Professor of Pediatrics at the University of Oregon; Dr. Ethel Lyon Heard of Galveston, Texas; Dr. Helen H. Woodruff, of Ocean Park, Cal.; Dr. Dorothy Child, of Philadelphia; Dr. O. H. Sellmeyer, of Columbus, Ohio; and Dr. Hugh Hester, of Houston, Tex.

There will be also nine or ten Red Cross nurses.

"The demand for children's social work," Major Murphy has just cabled, "exceeds expectations. The original unit is now serving three different localities to meet the urgent demands for help. These calls come from the devastated area and elsewhere in France."

San Angelo, Texas, Sept. 29.—The juvenile law of Texas was declared unconstitutional today by Judge Chase E. Inhouse, of the Fifty-first District Court. Decision was rendered in the case against D. P. Thomason charged with theft. The opinion was rendered when motion to dismiss the case, and transfer it to Texas, by Helen, one 17 years of age, was overruled.



**Kirschbaum Clothes**  
ALL-WOOL—100 PER CENT AND NO COMPROMISE

**BELTED SUITS FOR YOUNG MEN**

THERE is in these smart belted jackets just a suggestion of an army officer's grooming . . . the snug fit at the waist, the flare at the bottom which so well become a young man's carriage. Tailored from all-wool fabrics in a notable series of models—single or double breasted—one, two or three buttons—plain, pleated or yoke back—a wide variety to choose from at \$20, \$25 and \$30

**COLLIER-HENDRICKS CO.**  
802 INDIANA AVENUE

**"Fair List Prices" and "Fair Treatment"**

**Texas Farm Products are Worth a Billion Dollars a Year**

YOUR cotton crop alone, the largest in the world, brings you \$800,000,000; live stock \$313,164,000; corn an even \$100,000,000; and other grains \$50,000,000.

Small wonder thousands of you Texans buy automobiles. Despite your wealth, you must not, in these days of sane economy, overlook the easy economy possible in tires. Above all, you can not afford not to know by actual use, the economy of Goodrich Tires.

**GOODRICH BLACK SAFETY TREADS**

Are tires which embody the BEST in tires—The Best that has stood the Test of Goodrich's Test Car Fleets. That Best is the Goodrich CLOSE-CLUTCH, CROSS-BARRED tread, a practical non-skid, not a novelty design; and the Goodrich *Unk-Mold, Unbroken-Cure*, the most lasting fabric tire body. You can get this best only in "America's Tested Tires."

**THE B. F. GOODRICH COMPANY**  
THE CITY OF GOODRICH, AKRON, OHIO  
Makers also of the Famous Silvertown Cord Tire

**"Best in the Long Run"**

FEATURE FILMS OF WEEK

As an entertainment feature this coming week Al Shaffer's Musical Comedy company coming to the Plaza...

ed in "Sailor's Rest" when Roger Curwell rooled into the place one afternoon and ridiculed a work of "art" that hung behind the bar.

SCORES FOR MONTH, SHOW HIGH AVERAGE FOR LOCAL STORES

MRS. T. B. SMOCK DOES DOUBLE DUTY SINCE DR. TRAYLOR ENTERED ARMY

Double duty was done by Mrs. T. B. Smock, city sanitary inspector, in the September scorings of the grocery, markets, bakeries and cafes.

Table with columns for store names and scores. Includes Bakeries, Fountains, Meat Markets, Grocery Stores, etc.

WE TAKE GREAT PRIDE In making our customers feel that we are in business to serve them...

MAJESTIC THEATRE MONDAY LOUISE GLAUM "A STRANGE TRANGRESSOR" TUESDAY "HELL MORGAN'S GIRL"

ELSIE FERGUSON AT EMPRESS MONDAY AND TUESDAY

In keeping with the progressive policy of his theatre, Manager Wilke of the Empress announces one of his greatest coup in the history of his playhouse in popular Elsie Ferguson's first motion picture, "Barbary Sheep" Monday and Tuesday.

GALA Wednesday, 17 Only Big Show CIRCUS DAY OCTOBER 17

RINGLING BROS WORLD'S GREATEST SHOWS AND MAGNIFICENT \$1,000,000 FAIRYLAND SPECTACLE CINDERELLA

LOUISE GLAUM AT THE MAJESTIC MONDAY Louise Glaum as Lola Montrose in the Triangle play "A Strange Transgressor"...

AL SHAFER AT THE PLAZA THIS WEEK "Count Dinkenspiel in Paris" is the title of the opening Musical Comedy...

I. H. ROBERTS CEMENT WORK GENERAL CONTRACTOR

We Serve Holidy Creamery Company's PURE FOOD ICE CREAM

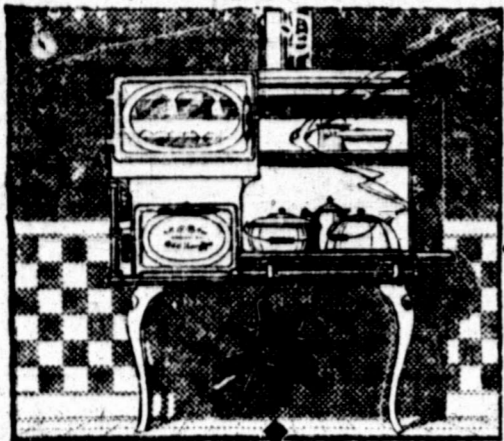
THURS., OCT. 4th AL BARNES BIG 4-RING WILD ANIMAL CIRCUS THE SHOW THAT'S DIFFERENT

AUTO SOAP (Buckeye Cleanser) KEEPS THE NEW CAR NEW MAKES THE OLD CAR LOOK NEW

PROFESSIONAL CARDS ATTORNEYS ROBERT E. HUFF Attorney-at-Law

Vertical text on the far right edge of the page, including "The Grand Old Day" and "MCF".





**The Burner Spells Economy in the A-B Gas Range**

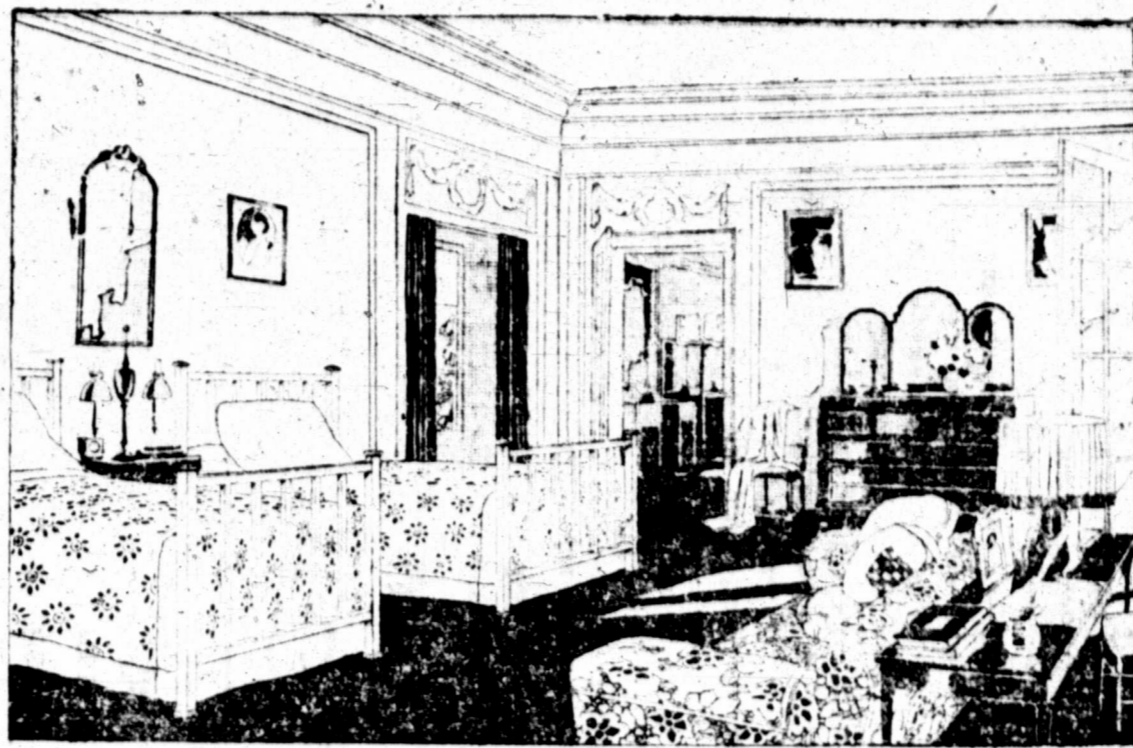
The improper mixing of air and gas means more gas consumption. In the modern A-B Gas Ranges the air and gas are mixed just right—the flame does not "float"—it can be as quick or slow as desired, and at the end of each month you will find a decided reduction in gas bills. In fact the gas saving will go a long way toward paying for the range, or stove. You should see the demonstration of the A-B burners, and also see the many other late improvements.

In every A-B Gas Range, the burner is either blue enamel or aluminized.

*It's a pleasure to show you just the range to meet your needs. We have it in our salesroom.*

17 models to choose from—each one absolutely guaranteed. Prices—

**\$14.50 to \$65.00**



See Our Exhibit of **SIMMONS Beds**  
*Now is a fine time to buy furniture*

Right now, just at the time when so many people are changing homes, is the time to get that new furniture you have needed so long.

Our stocks are particularly well-filled and varied.

Our prices are low—the values great.

If you are going to move, see us first.

Let us show you how economically you can furnish one or two of the new rooms.

If you are staying where you are, seize this unusual opportunity to get a

few new things that will fit in just right with the old.

From the lines of the best manufacturers we have chosen a wide range of designs for living-room, bed-room and dining-room, which will suit your tastes and your pocketbook.

In the famous Simmons Beds, for instance, we can offer you more for the money than you can possibly find elsewhere. And the same is true throughout the store.



**GLOBE-WERNICKE SECTIONAL BOOKCASES**

Have a beauty which comes of fine cabinet work and lasting stability. Their utility comes from sectional construction, which adapts them to spaces of all sizes; permits the classification of books, and allows your book case to grow with your library, section by section. We have any standard finish in stock to match your furniture. Call and see them at your convenience.

Be sure and see our new window displays of fine furniture and pretty draperies. Have you seen our pretty Fibre display? Let us show you.

**REMEMBER**—When those cold days come, that we have a big line of Comforts and Blankets in all grades; also, heating stoves. We invite your personal inspection or phone for information.

We Sell on Cash or Credit Terms—Let us Furnish Your Home

**W. A. Freear Furniture Co.**  
The Home of Quality Furniture

Phone 136

"At the Sign of the Arrow"  
816-818 Ohio Avenue

**COPPER COINS BEING HOARDED BY MANY CONCERNS IN FRANCE**

Associated Press Staff Correspondence.  
Paris.—Traffic in copper coins which frequently has been denounced during the past two years is still going on in France. In a great many stores, tobacco shops, groceries, bakeries, and meat markets, at ticket offices of transportation lines and places of amusement, sous and double sous are taken in all through the day and evening and non-given out if it can be avoided. Subway and tramway employees have even refused to sell tickets unless the passengers offered the exact change. Theaters and moving picture box offices are also collectors of coppers.

M. Hudelo, the new prefect of police, made a round of Paris in the subway the other day. He was required to furnish coppers for his tickets after offering a franc silver piece. At one station the ticket seller refused in his presence to make change for a wounded soldier who offered a two-franc piece. M. Hudelo passed in his card and ordered that the ticket be delivered, whereupon both the ticket and the change were forthcoming.

"So you had the change. Now you may go to the office and get your pay," you are discharged," said M. Hudelo, whose authority extends to all employees of public service.

The prefect was called upon to make his own change at the ticket offices of moving picture shows also, but a little talk with the manager in each case developed the fact that change was not lacking in the cash drawers.

The result of his investigation was a circular to commissaires of police, calling upon them to enforce the regulations and prosecute every person speculating in copper money, and to send to police headquarters the names of every employee of any public service refusing to make change without a plausible reason.

There has been a regular market for coppers at the Place Gambetta where subway employees and other collectors bring sous and double sous in rolls and dispose of them at a bonus of 100 percent. The buyers get back the premium they pay for this small change and make an additional profit of 15 percent, through illicit extortion to Switzerland. Though French paper and silver money is at a discount there, copper money, curiously enough passes at par, which has provoked the systematic traffic that the police propose to stop.

frequently noticeable at rural stations, where platforms of the type most suitable for military use have replaced the old suburban platforms. and given a military air to the otherwise peaceable countryside.

The proper platform for entraining troops is a wide one running the whole length of the longest train. From such a platform troop trains can be loaded at the rate of one an hour, and this rate can be improved upon with practiced troops. Where a railway station possessed the most up-to-date platform facilities, such as all British

stations will have by the time the war is over, it is possible to load two trains simultaneously, and such a station is called in military parlance a "half-hour station." At an ordinary old-fashioned wadsie station it is often necessary to allow two hours.

Entraining is the ruling factor in calculating troop movement since despatching does not take quite so long.

**Maximum Capacity.**  
The maximum normal capacity of a double-tracked line of railway in England is figured by the military specialists at six trains per hour each way.

In the early days of the war, the trains containing the British Expeditionary force were run into the docks at intervals of twelve minutes or at "half-hour stations." On a single-track line, three trains per hour can be worked each way.

The principle adopted in moving troops by train is that each train load should be a complete subdivision of a military unit. The size of such a train load is definitely limited by the number of coaches of which a train can be made up with safety. An ordinary infantry battalion makes about

two train loads.

During five days when the first British expeditionary force was being moved to France, 300 trains were run loaded with troops and as many as 300 trains empty, giving an average of 300 trains a day employed in the movement of troops alone. In the first year of war, moves were made overseas of 300,000 officers, 2,580,000 other ranks and 32,000 horses. These figures include cross-Channel traffic and all other moves made by sea. Figures for later years, presumably larger, are not at present available.

**THREE AUTOMOBILES COLLIDE, BUT NO SERIOUS DAMAGE DONE**

Three automobiles, a Dodge, Studebaker and a Ford, collided at the intersection of Ninth and Indiana Friday night at 8 o'clock. One of the cars was knocked upon the sidewalk, and another suffered a broken lamp. Other than that no damage was done. No one was hurt.

Car flowers and floral designs a specialty. Donnelly Floral Co. Phone 257.

Most people have found out that glasses to be comfortable and give perfect vision, have to be ground to fit each eye. We maintain a grinding plant for the sole purpose of furnishing the proper lens for your eyes. We want you to come in and talk to us about your eyes. If you need that attention of a doctor we will tell you.

**Fonville Optical Co.**  
Exclusive Mfg. Opticians  
231 Eighth Street Phone 2181

**TRANSPORTATION PROBLEM SOLVED BY BRITISH ARMY**

Associated Press Staff Correspondence.  
London, Sept. 2.—One of the greatest of British war efforts has been in the department of railway transport, both at home and abroad. Very little has been said about this work, perhaps because it has gone on steadily, silently and unobserved. Some time ago Arthur Brind, then Premier of France, visited a great railway workshop behind the British lines in France. "The great fault I have to find with you English," he said upon that occasion, "is that you do enormous things, but nobody has any idea of what you are doing."

At home, war has put a tremendous strain on the railways. It was an instance of Britain's military unpreparedness that military and strategic considerations found no place before the war in her railway systems and management. The railways lacked uniformity. For example, there were three different types of airbrake in use, so that rolling stock of different companies often could not be made to run on one train. The width of carriage and the clearance space between tracks varied considerably. Very few stations had adequate platform accommodation for rapidly entraining troops.

**Progress is Made.**  
During the three years of war, much progress has been made under government control of the railways, toward standardization and such reconstruction as was feasible to remedy the most serious shortcomings. This is

**WORRIES LOSS DISTRESS**

The cut rate, cheap, poorly equipped transfer service causes worry, distressful delays and very often, loss thru injury to delicate furniture and bric-a-brac. Our Moving Service is one that is made up of splendid equipment, skilled courteous men and exacting supervision. Quality of service considered ours in the cheapest.

**McFall Transfer & Storage Co.**  
Office 217 Ohio Ave  
Phone 44 and 11

**It has come to our knowledge that a certain Doctor says he will see to it that we are put behind the bars--WHY?**

It is claimed that we practice medicine without a license, and for that reason should go to jail. Now, practicing medicine, either with or without a license is the last thing we would expect to do—

**WE MAINTAIN THAT THE SPINE IS THE INDEX TO HEALTH.**

It is the main shaft of the human body and when in perfect alignment there is HEALTH. When one or more of the vertebrae are displaced (subluxated) the result is DISEASE.

As the foundation of the entire skeletal frame the spine is subject to every jar or strain, and any violent contraction of the muscles is immediately concentrated upon the spine and may, by wrenching some of the ligaments which bind the vertebrae together, displace one or more of these bones.

The brain is the dynamo of the human body where all nerve force is generated. Leading down from the base of the brain is the spinal cord, which passes through the spine. Branching from the spinal cord are 31 pairs of nerves, which contain thousands of separate nerves which radiate to every part of the body. These branches pass between the movable vertebrae and are subject to pressure from the vertebrae if a displacement exists.

**The work of the Chiropractor is to adjust the spine into perfect alignment, without the use of "dope" or a knife.**

**The Name of Your Disease Not Important**

People are constantly asking: Do you treat rheumatism, neuralgia, heart disease, bronchitis, measles, diphtheria, dyspepsia, constipation, Bright's disease, infirmity, barrenness, female disease? etc. Our answer to these questions is that we do not treat any disease, but we remove the cause of all disease and abnormal functions.

**The Most Exalted of all Mechanical Sciences**

Chiropractic is the most exalted of all mechanical sciences, since "The greatest study of mankind is man," and let it be understood once for all that it is purely a mechanical science; its entire purpose and object is accomplished when the displaced elements are put in place, the obstructions removed from nerves, and the stimulus has had time to restore normal power to muscles, ligaments and other tissue to maintain normal position. Incidentally, when this condition has been attained, no sickness, disease or pain can exist.

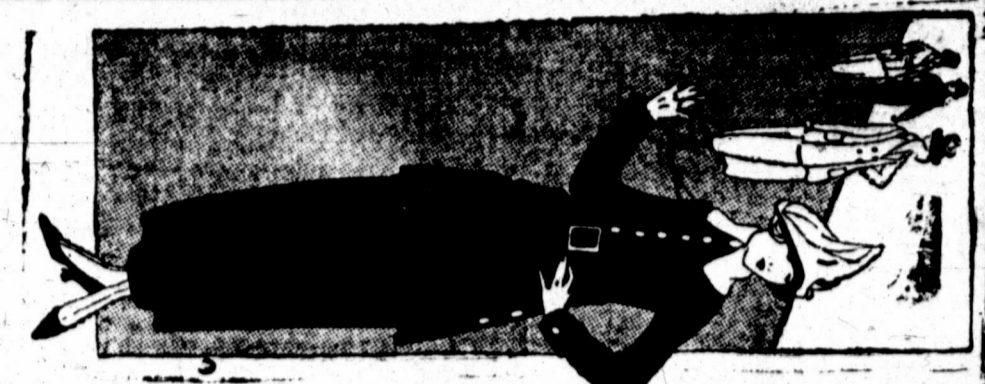
**F. A. BLACK, D. C.**  
Member U. C. A. Graduate P. S. C.  
**CHIROPRACTOR**  
Consultation and Analysis Free  
LADY ATTENDANT  
Office Over Rexall Drug Store—702 Indiana  
Office Hours: 9 to 12—1:30 to 3—7 to 8  
Phone 2599

NORMAL SPINE

SUBLUXATED SPINE

**Beautiful Coats, Suits and Dresses  
Featured in Our Ready-to-Wear Section**

You will indeed profit by careful investigation of the many wonderful values offered by us this season. In this department the strength of our buying power is much in evidence. We maintain an office in New York throughout the year, and our Eastern buyer is always on the alert for values.



- TAILORED SUITS**  
Modeled from the season's most popular fabrics. Priced \$19.50, \$27.50, \$34.50, \$39.50 and \$42.50
- COATS FOR WOMEN**  
Good warm stylish garments, modeled from all leading materials, some with large fur collars and fancy trimmings. Priced \$19.50 and up to \$59.50
- COATS FOR MISSES AND CHILDREN**  
Showing a wonderful collection, made of the same beautiful fabrics as the grown-ups—all prices.
- WOMEN'S DRESSES**  
Mammoth assortment of Dresses in Silk, Serge and combinations of Georgette and Charmeuse, in all the leading shades. Priced \$19.50 to \$42.50
- Children's Gingham Dresses, priced  
Women's Petticoats, priced  
Women's Raincoats, priced  
Women's Kimonas, priced

**In the Dry Goods  
Section**

Extraordinary bargains from which you can easily supply your wants.

- Fancy Silks, 36 inches wide, combination stripes and plaids—\$1.85 to \$3.00
- Dress Satins, 36 inches wide, \$1.50, \$1.56 and \$2.00
- 44-inch Satin Charmeuse, in shades of green, gray, blue, plum and brown, per yard \$2.00
- 64-inch all-Wool Serge, all colors. Yard \$1.50, \$1.75, and \$2.00
- 36-inch Serge, all colors—65c, 75c, 95c and \$1.00
- 54-inch Broadcloth, green, brown, black and blue. Yard to \$3.00
- Imported Tricots, in blue, brown, green and black, yard \$1.50
- Madras Shirtings, stripes and figures—19c to 35c
- 27-inch Cotton Challie, flowered designs—yard 29c
- Percales, stripes and figures, light and dark—yard 10c 13c and 15c
- Extra good Dress Gingham, yard 15c
- Curtain Serims, bordered and plain—13c to 35c
- Extra good Outings, stripes and plain colors, yard 15c
- Kimona Flannellette, pretty floral designs. Yard 25c
- Good Turkish Towels, 18x34. Pair 29c
- Large Turkish Towels, 20x37 per pair 39c
- 60-inch Table Damask, good grade 39c
- 64-inch Table Damask, Fleur-de-Lis pattern, per yard 50c
- 72-inch Table Damask, Tulip design, per yard 75c
- 72-inch Irish Damask, American Beauty design, yard \$1.00
- 72-inch plain Linen Damask, per yard \$2.00
- Good Pearl Buttons, 2 dozen for 5c
- Better grade Pearl Buttons, dozen 5c
- Extra good Pearl Buttons, per dozen 10c
- Brass Pins, paper 10c
- Steel Pins, paper 5c
- Hooks and eyes, paper 5c
- Safety Pins, paper—10c and 10c

**Blankets and Comforts**

- Medium size Comforts, made of pretty flowered goods, Each \$1.50
- Good grade Comforts, flowered goods, with red piping, Each \$4.75
- Good grade Silkline Comforts, filled with carded cotton; \$1.75
- Extra heavy Comforts, made of flowered material on both sides—large size \$2.25
- Good grade Comforts, made of flowered Silkline, lined with red, filled with new corded cotton. Each \$2.25



- Comforts in green, rose and blue, beautiful border—\$3.00 at each
- Fine Silkline Comforts, blue and pink, soft corded cotton; \$4.95
- Each \$4.95
- Fine Silk Comforts, up to \$15.00
- One line Baby Blankets, 30x40, pink and blue. 65c
- Gray Cotton Blankets, blue and pink border, 64x76. \$2.25
- White Cotton Blankets, pink and blue border, 64x76. \$2.25
- Tan and white Blankets, 72x84, pair \$3.50
- Good heavy Blankets, dark plaids, pair \$3.95
- Gray Wool Blankets, per pair \$7.95
- Fine Wool Blankets, white and plaids, up to \$15.00

**MAIL ORDERS SOLICITED**  
We ask that you select from this mammoth advertisement any article that you may want; write or phone us, and we will gladly fill your order and ship, parcel post prepaid, right to your very door. Order will be filled by expert shippers same day received, and in this way you are assured of quick and prompt service.

**DeWitt's**  
ASSOCIATED STORES  
WICHITA FALLS, TEXAS

**IN OUR CLOTHING DEPARTMENT  
YOU CAN FIND REAL VALUES**

We have looked well to our Clothing Section this season, and now it is stocked with garments worthy of your inspection. Our Immense purchases, due to the fact that we buy for 25 stores enable us to command discounts unlike ordinary merchants. All we ask is a chance to show you.

- Wonderful assortment of Blue Serge Suits, made in the very latest styles—\$12.50, \$15.00, \$17.50, \$20.00 and \$22.50
- Men's Suits, made of excellent grade Worsteds in the season's latest models—\$12.50 to \$30.00
- One excellent model of Brown Scotch Cheviot, made with Belled Coat \$17.50
- MEN'S AND BOYS RAINCOATS**  
Made of the season's best fabrics—\$7.50, \$10.00, \$12.50, \$2.95, \$3.50, \$5.00, \$6.50, \$7.50, \$8.50, \$10.00, \$12.50
- MEN'S OVERCOATS**  
Your special attention is directed to our wonderful showing of Men's Suits at this price. Suits of Serge, Worsteds and Cashmeres, all made up in the best of styles. Just think of buying a new Fall Suit at the extremely low price of \$15.00



**Our Boys' Dept. Is Complete**  
Mothers—You should Outfit the Boy at these Prices

Boys' Blue Serge Suits, made in the best Norfolk styles—\$14.95, \$16.95, and \$17.50

Novelty Worsteds, excellent values—\$3.95 to \$10.00

Fancy Cashmeres, made in newest styles; re-lined trousers—\$3.50 to \$5.00

Novelty Shirtings, sizes up to 16—\$5.00 to \$15.00

Boys' Blouses, good colors, in stripes and plain. Each 50c and 65c

Boys' Fine Ribbed Union Suits, sizes up to 34, at each 75c

Boys' Hats, in latest shapes—25c to \$1.00

**Extra Good Line of Boys' Overcoats and Mackinaws**  
Boys' Caps in latest styles—50c and 75c

**MEN'S HATS and CAPS**  
One line Men's Hats, good colors and shapes. \$1.95

Excellent grade Hats, in black and colors, new fall shapes, \$2.95 and \$2.50

Knox and Stetson Hats, in newest colors and shapes including the new Velours so popular this fall—\$3.50 and up to \$7.50

Men's Caps, in fancy and plain materials—50c, 75c, \$1.00, \$1.25, \$1.50 and \$2.00

Be sure to read every line in this advertisement—it will be to your interest.

**WOMEN'S SHOES**

- LOT 8851—Kid Button, Patent tip, medium heels, sizes 2 1/2 to 7. Priced \$2.50
- LOT 6047—Kid Lace, low rubber heels, cap toe, extra wide, price per pair \$3.00
- LOT 5857—Kid Button, low heels, patent tip; sizes 2 1/2 to 7. Priced \$3.50
- LOT 6042—Old Ladies' Comforts, rubber heels \$3.00
- LOT 8848—Old Ladies' Comforts, good grade \$2.00
- LOT 9321—Gun Metal Lace, 2 1/2 to 7, extra heavy, low heels. Priced \$2.50
- LOT 6056—Kid Button, medium heel, plain toe; sizes 2 1/2 to 7. Price \$3.00
- LOT 5851—Kid Lace, patent tip, sizes 2 1/2 to 7. Price \$3.50
- LOT 6065—Kid Button, patent tip, medium heel; sizes 2 1/2 to 7. Price \$3.00
- LOT 5453—Kid Button, plain toe, medium heels; sizes 2 1/2 to 8. Price \$4.00
- LOT 6043—Kid Button, patent tip, medium heel; sizes 2 1/2 to 7. Price \$3.00
- WOMEN'S FINE DUTTENHOFFER BOOTS—newest lasts and leathers. \$8.00 to \$13.50
- EXCLUSIVE AGENTS FOR J. & T. COUSINS' SHOES FOR WOMEN. Priced up to \$15.00
- FOR GROWING GIRLS—Foot Culture, Gun Metal and Patent—\$6.00
- Girls' Sport Shoes—2 1/2 to 7, \$3.00 and \$4.00
- Sport Shoes, cloth tops \$4.00
- Girls' Gun Metal English Shoes, pair \$3.85
- MEN'S DRESS AND WORK SHOES IN ALL STYLES, LEATHERS AND PRICES**



**IT WILL PAY YOU**  
—no matter where you live, to do your trading at this store. The main advantage is that you are dealing with reliable people, who will gladly adjust any error and who absolutely guarantee satisfaction of every purchase, however small.