

BIG SPRING HERALD

COPYRIGHT 2003

We're Always There

50 CENTS DAILY/\$1.25 SUNDAY

WEDNESDAY

January 22, 2003

WEATHER

Tonight:



PARTLY CLOUDY

TONIGHT 22°-24° TOMORROW 35°-37°

INSIDE

SUPER CHICKEN

Members of the Garden City High School "Project Graduation" are taking orders for their annual Super Bowl Sunday barbecue chicken dinners. You can also purchase slaw and beans for a real *super* meal.

Page 5



CHAMBER SALUTE

What is the Big Spring Area Chamber of Commerce? How does it operate? Who makes up the board of directors? What services does it provide for our community? Find out the answers to these questions and more in the *Herald's* annual salute to the Chamber of Commerce.

COMING

SUNDAY

CELL PHONE CONTROVERSY

You see it all the time. People driving around town our out on the highway with one hand on the steering wheel and the other holding a cell phone to an ear.

This Sunday, the *Herald* explores the use of cell phones in vehicles. Is it safe? Should there be laws regulating it? Read what legislators, law enforcement officers and others have to say about this controversial subject.

INDEX

Classified	8-9
Comics	10
Features	5
Local	3
Obituaries	2
Opinion	4
Sports	6

Vol. 99A, No. 66

Find us online at:
www.bigspringherald.com

To reach us, please call 263-7331. Office hours are 7:30 a.m. to 5 p.m. Monday through Friday. If you miss your paper, please call 263-7335 before 7 p.m. on weekdays and 11 a.m. on Sunday.

Hawks climb to No. 2 in NJCAA poll

By TOMMY WELLS

Sports Editor

Life just keeps getting better for the Howard College Hawks.

Fresh off a nail-biting 72-71 win over rival Midland College that came in front of the largest crowd to see a game in five years, the Hawks garnered another high Tuesday when they moved up a notch in the national junior college rankings.

The Hawks, courtesy of

Jared Fear's last-second free throw Monday night and a stunning loss by No. 1-ranked Okaloosa-Walton Community College, climbed one spot, to No. 2 overall in the latest National Junior College Athletic Association poll. The Hawks had entered the week ranked third — their highest ranking in more than 12 years.

Howard College, under former coach Steve Green, was ranked No. 1

"In my career as a Division I coach, I could count on one hand the number of bigger crowds I've seen."

Chris Jans, Hawks coach



in 1990-1991 — the same season the team won a school-record 20 straight games.

Southeastern Community College, which had been ranked No. 2 prior to Okaloosa-Walton's loss, moved into the top spot in this week's poll. Southeastern, 21-0, received eight of the 16 first-place ballots cast and racked up 133 points. Howard College received two first-place votes and

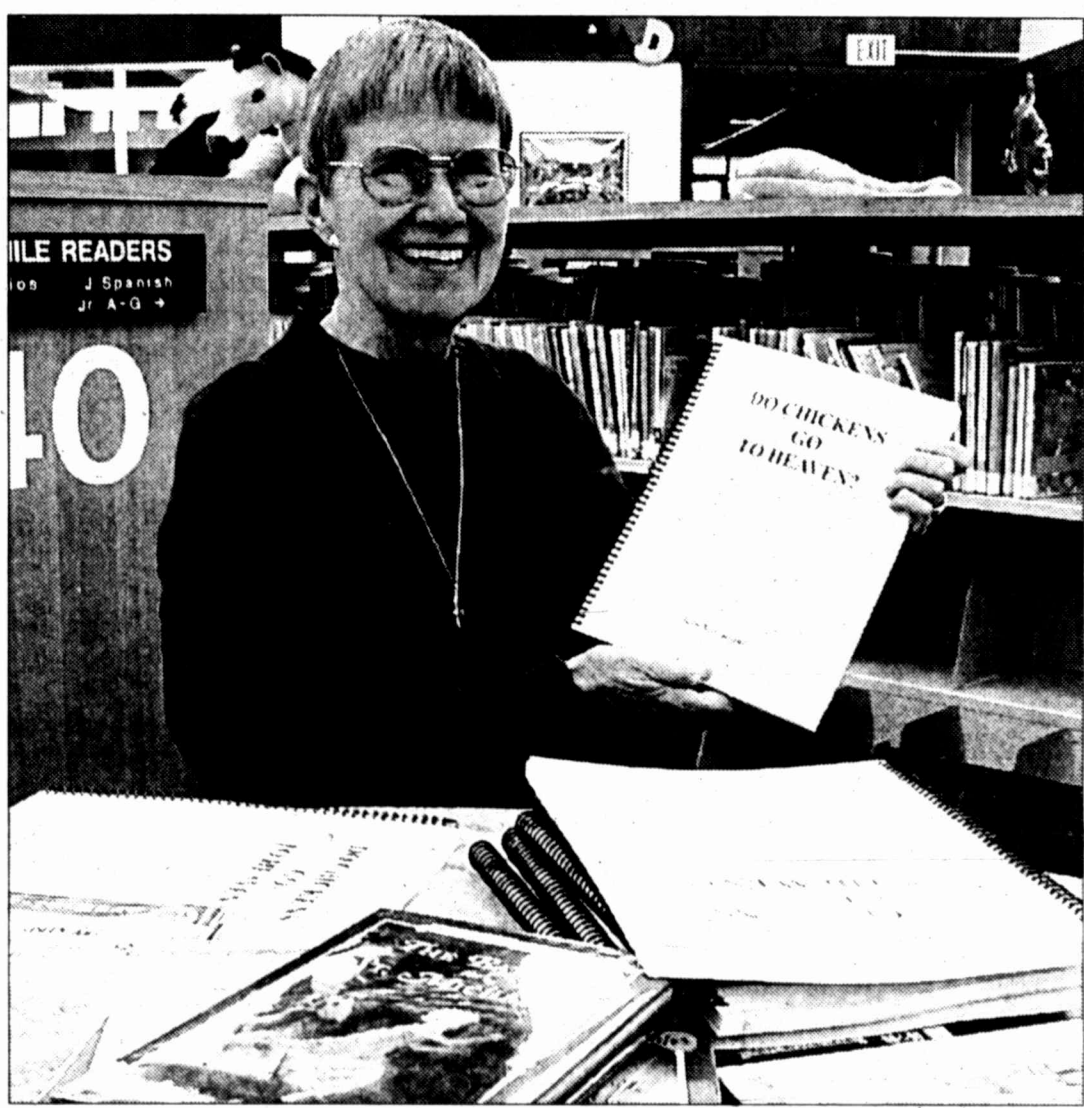
finished just 32 points behind.

Okaloosa-Walton slipped to No. 3 despite receiving four first-place votes. Southeastern Illinois and Seward Co. Community College, in Liberal, Kan., rounded out the NJCAA Top 5.

Currently, Howard College and Southeastern Community College, which is based in West Burlington, Iowa, are the

See **HAWKS**, Page 3

"Do Chickens Go to Heaven?"



HERALD photo/Lyndel Moody

Big Spring author Bebe McCasland will sign copies of her newly published book "Do Chickens Go to Heaven?" from 4 p.m. to 5:30 p.m. Thursday in the children's section of the Howard County Library, 500 S. Main. The book is a collection of poems, stories, pictures and McCasland's own memories of 40 years at St. Mary's Episcopal School. Copies of the book are \$16 and can be purchased at the library.

Moore committee mulls funding some 4B projects, seeking ideas from public

By ROGER CLINE

Staff Writer

A committee of Moore Development for Big Spring is looking for innovative ideas to boost Big Spring's economy and improve the town's natural assets as well.

At its meeting Tuesday, the Moore Board's 4B Projects Committee discussed the possibility of using some of the corporation's 4A economic development funds — earmarked to provide economic incentives to attract and retain businesses and industries to the area — for 4B projects.

4B projects run the gamut of recreational, tourist and park facilities, infrastructure, affordable housing, water facilities and water conservation programs.

Some possibilities include stadiums, ball parks, auditoriums, amphitheaters, concert halls, learning centers,

"While we're sitting here waiting for somebody

to knock on our door, let's look at our own house and get it in order."

Tommy Churchwell



parks and park facilities and related roads, streets and water improvements that enhance any of the other items.

State law allows money from a 4A corporation like Moore Development to be spent on 4B projects, but requires that such projects be approved by popular vote.

The full Moore Development Board will hear a report from the

See **MOORE**, Page 3

Tickets still available for Thursday's Chamber banquet

By ROGER CLINE

Staff Writer

Tickets are still available for Thursday evening's Big Spring Area Chamber of Commerce Banquet.

The annual banquet is planned for 6:15 p.m.

"It's at the Dorothy Garrett Coliseum, on the floor," said Chamber Executive Director Debbye ValVerde. "Use

the east ramp to get in. Tickets are \$20. They're still available. We'll have a few available at the door, but it's good to come by and pick them up at the chamber in advance. It just makes the line go quicker."

"Together Moving Forward" is the theme this year.

Former area state legislators Rep. David Counts and Sen. Robert Duncan

"This is not just for chamber members. This is for the entire community"



Debbye ValVerde, Chamber executive director

as well as those who have recently started representing the area. Rep. Pete Laney and Sen. Teel Bivins, will all speak at the banquet, she added.

"We're wanting to thank Counts and Duncan for all they've done for our community and we want to welcome Bivins and Laney," she said.

The event will also provide an opportunity for

local businesses to promote themselves.

"We have 35 chamber members that have decorated a table in order to promote themselves,"

ValVerde said. "The businesses that have decorated a table, they are not going to sit at their table because they are promoting their business."

See **BANQUET**, Page 3

Superintendent search

Big Spring ISD trustees will meet Thursday to map out a game plan

By LYNDEL MOODY

Staff Writer

Big Spring Independent School District trustees will discuss how to fill the superintendent's position during a specially called meeting Thursday.

"There are several ways to go about this process," said Frank Long, board president. "We will discuss two or three options."

"The Texas Association of School Boards has a search committee who goes out and brings in all the applications. We will be looking at options like that and other options like posting

locally and through Region 18," Long added.

The meeting follows the unexpected announcement by Superintendent Murray Murphy on Jan. 14 that he will retire at the end of the school year.

Serving for two years as superintendent, Murphy's tenure has been fraught with a divided board as well as several controversial issues. Murphy cited discord among the board as his motivation for leaving the position.

Trustees will meet at 3 p.m. in the high school board room, 707 11th Place.

Contact Staff Writer Lyndel Moody at 263-7331, ext. 234, or by e-mail at newsdesk@crcom.net



LONG

Workshop set to address concerns of retiring public school employees

By LYNDEL MOODY

Staff Writer

All area school employees considering retirement in the near future are encouraged to attend a free pre-retirement workshop.

"This involves different ways to decide how your annuity will be allocated from the Texas Retirement System," said Big Spring resident Janice Bond, Texas Retired Teachers Association District 18 second vice-president.

The workshop is geared toward addressing questions and concerns of teachers, bus drivers, cafeteria workers, staff members or anyone involved with the TRS system.

"People who plan to retire in the near future should come hear what the TRS representative has to say about the benefits available and how different

INFORMATION

What: Texas Retirement System workshop.

Where: Center for Energy and Economic Diversification Building, Midland.

When: 8:30 a.m. to noon, Saturday, Feb. 8.

To register: Call Martha Kallus at (915) 682-2846 or by e-mail at mdkallus@nwol.net no later than Friday.

aspects of the plan can be affected by the individual choices that you make about them," said Martha Kallus, TRTA District 18 president.

Participants will also have an opportunity to question resource specialists about other aspects of

See **TRS**, Page 3

J
A
N
2
2
2
0
0
3

TRS

Continued from Page 1

retirement issues and learn about possible upcoming legislation that may impact TRS benefits.

Anyone planning to attend must register for the workshop by Friday. To register, call Kallus at (915) 682-2846 or by e-mail at mdkallus@nvol.net

The workshop will be held on Saturday, Feb. 8, from 8:30 a.m. to noon at the Center for Energy and Economic Diversification Building. The building is located at Highway 191 and FM 1788, north of Midland International Airport.

Contact Staff Writer Lyndel Moody at 263-7331, ext. 234, or by e-mail at newsdesk@crcom.net

HAWKS

Continued from Page 1

only two remaining ranked unbeaten teams in the NJCAA. Only Southeastern and No. 10-ranked Dixie State College (20-2) have more wins.

The Hawks' climb up the polls — and mounting wins — have helped boost the team's fan appeal to local residents. Despite not having any hometown players, the Hawks drew more than 2,000 fans to Monday's game with rival Midland. Howard officials are expecting crowds to again be large next week when the team hosts Frank Phillips and South Plains.

"It's been a long time coming," said HC Sports Information Director Stan Feaster. "It's nice to see that many people coming out. I think it's only going to get bigger and bigger as we go along."

The support didn't go unnoticed by the team. Howard College head coach Chris Jans, a former Division I coach at Idaho, said the crowd was one of the largest and most vocal he had seen in his career.

"The fans were incredible. They were very loud and supportive," he said. "I told the team in the locker room to look around and appreciate everyone. In my career as a Division I coach, I could count on one hand the number of bigger crowds I've seen."

The fans should be out in full force at Dorothy Garrett Coliseum on Monday. The team, assuming it can fend off New Mexico in Hobbs on Thursday, could be gunning for its school-record 21st straight win. The following Thursday will also be big for the Hawks as South Plains, which is coached by Green, comes calling. The Texans are ranked No. 15 in the nation and could be the Hawks' biggest rival for the Western Junior College Athletic Conference title.

BANQUET

Continued from Page 1

Anybody will sit anywhere they want."

Man and Woman of the Year will be announced during the evening. Great Western Dining

will provide catering for the event; dinner will include carved roast beef, roasted chicken breast, green beans and wild rice.

ValVerde emphasized that the banquet is a community event.

"This is not just for chamber members," she said. "This is for the entire community. You do not have to be a chamber member to attend our banquet."

For more information call the chamber at 263-7641.

Contact Staff Writer Roger Cline at 263-7331 ext. 232 or by e-mail at newsdesk@crcom.net

MOORE

Continued from Page 1

committee at its meeting at 6:15 p.m. today.

The board meets at the corporation's offices, 215 W. Third St.

In addition, the directors will consider December 2002 financials and investment reports.

On Tuesday, several members of the committee expressed a desire to proceed cautiously so as not to curtail the Moore Board's 4A economic development projects.

"We threw out all the ideas to the committee on what we can do, which is pretty broad with a 4B corporation," said committee chairman Tim Blackshear. "But at the same meeting we threw out the idea that there's only about a half-million dollars that we can use for any type of project. If you start splitting that in half, you basically cut your ability for economic development in half."

The committee is seeking input about what types of 4B projects the people of Big Spring would like to see. Blackshear added,

"The committee will be talking with people and people will need to get hold of some of the members of that committee if they have some ideas for projects they want to see done," he said. "Of course it will have to go through the committee to the full Moore Development Board before it can go to the City Council."

After the meeting, the committee opened up the floor to comments from the public.

Moore Development member Tommy Churchwell spoke in favor of letting the public vote on 4B projects.

"Let's don't say 'no' to change before we even know what the change possibly might be and what the outcome and enhancements might bring to Big Spring," he said. "Let's keep an open mind. Let's ask the public to bring forward some projects that would create economic development."

The point of 4B projects

is to improve the economy, he said.

"Let's not lose sight that we're looking for a return on assets," he said.

"We're looking to make money here, not just to be pretty. We've got some unique situations at the park and we think that some of those could be enhanced and people would want to come here and bring some money in to town to spend. That's just another way to build economic development."

4A projects have had a chance, and don't seem to be working, he said.

"We're not taking anything away from 4A, but if you look at the economy and you look at businesses, I don't see a lot of expansion going on," he said. "While we're sitting here waiting for somebody to knock on our door, let's look at our own house and get it in order."

Duane Thomas, also a Moore board member, had a bit more conservative approach.

"I'm totally open to 4B projects, in conjunction perhaps with some other entities participating," he said. "My biggest fear is that we'll exhaust all our

tax dollars on 4B projects and don't have the ability to get invited to the party on the 4A economic development playing field. If you do that we're going to be at a huge disadvantage at not only maintaining our existing business but expanding and creating new jobs and new businesses coming into town."

Thomas said Big Spring has a real problem retaining young people after graduation, and creation of jobs through 4A projects will encourage more of Big Spring's young people to stay in town.

"One of the biggest fears that I have is that we have a big problem in retaining the high school and the college-age kids and young people that are graduating," he said. "The only way that we're going to retain those kids, in my opinion, is to create the jobs that come about through 4A projects. I want my 15-year-old to have the ability to come back to Big Spring and make a good living and raise a family here. The only way we're going to

be able to do that is through 4A tax dollars."

The 4B Projects Committee includes Blackshear, the chairman, as well as John Currie, Lee George, Katie Grimes, Liz Lowery, Mark Morgan, Drew Mouton, Jimmy Newsom, Mike Niklasch and

Richard Steel. For more information or to suggest a 4B project, call Moore Development for Big Spring Inc. at 264-6032.

Contact Staff Writer Roger Cline at 263-7331 ext. 232 or by e-mail at newsdesk@crcom.net

Due To Unfortunate Circumstances
Spring City Auction
will not hold an auction
Thursday, January 23, 2003
Will resume auctions on
Thursday, January 30, 2003

Great Selection of
Sterling Silver Rings
25% Off
Koshmoore Kasuals
700 N. Lancaster 267-3727

A. G. Edwards & Sons, Inc.
Investments Since 1887
Certificates of Deposit • IRA's
Stocks • Bonds • Mutual Funds
Serving All Your Investment Needs
508 W. Wall Street, Suite 725, Midland
684-7335 • 1-800-759-4629
www.agedwards.com
Member SIPC IM-137-1103-EMX

ALLAN'S FURNITURE
Best Prices In West Texas
202 Scurry PH. 267-6278
Big Spring, Texas

DUNLAPS
Your Fashion Headquarters
111 E. Marcy 267-8283

Follow Cupid's arrow to
Carriage Inn
and enjoy Retirement Living at it's finest!
During our Valentine Special you get
half off your first month's rent!
501 West 17th Street
Big Spring, Texas 79726
(915) 267-1353
Call or come by today for
lunch and a tour!

Come In & Browse
Throughout Our Store!
75% off
Selected Bath & Bridal Items
Hoffmann's Creations
1900 S. Gregg
263-4949

HOSPICE VOLUNTEERS NEEDED
ODYSSEY COMMUNITY CARE HOSPICE
1510 S. Gregg • Big Spring
Volunteer Training
In Big Spring
Jan. 23, 30th & Feb. 4th
9:00 am-1:00 pm
In Snyder at
1st Presbyterian Church
Feb. 6th, 12th & 13th
9:00 am-1:00 pm
CALL the Big Spring Office
for details and ask for Lupita or Judy
1-877-200-1410 • 1-888-881-0238
915-263-5999
Register now!

Before we invest your money, we invest our time
At Edward Jones, we do more than build portfolios. We build lasting relationships.
The way we see it, helping you plan your future is never just about recommending investments. It's about knowing you and understanding your dreams.
Al Valdes, Jr.
219 Main St.
Big Spring, TX 79720
267-2501
www.edwardjones.com
Edward Jones
Serving Individual Investors Since 1871

Leukemia (AML)
ATTENTION
Refinery Workers • Industrial Painters • Chemical Plant Workers
If you have been diagnosed with:
• Acute Myelogenous Leukemia • Chronic Myelogenous Leukemia • Aplastic Anemia
• Myelodysplastic Syndrome • Acute Granulocytic Leukemia • Non-Hodgkin's Lymphoma
• Chronic Lymphocytic Leukemia • Multiple Myeloma • Acute Lymphocytic Leukemia
Your illness may be related to exposure to solvents containing Benzene
Please Call Blumenthal & Gruber, L.L.P. toll-free at 1-800-523-0031
For a Free Consultation and to learn about your legal rights
Also handling other SERIOUS INJURY and DEATH cases
Certain legal limitations may apply. Cases are likely to be referred to another law firm. Office in Dallas, TX. Not Certified by the Texas Board of Legal Specialization

Big Spring Herald
ISSN 0746-6811
USPS 0055-940
Daily except Saturday.
BY THE MONTH HOME DELIVERY:
Evenings and Sunday, \$8.65
monthly; \$93.42 yearly (includes
10% discount for yearly).
MAIL SUBSCRIPTIONS:
\$12.50 monthly Howard & Martin
Counties, \$13.25 elsewhere.
The Herald is a member of the
Associated Press, Audit Bureau of
Circulation, American Newspaper
Association and West Texas Press.
Periodicals postage paid at Big
Spring, Texas, 79720-9998.
POSTMASTER: Send change of
address to: Big Spring Herald, P.O.
Box 1431, Big Spring, Texas,
79720.

Scenic Mountain
Medical Center
1601 W. 11th Place
263-1211

Pizza Inn.
Kids Eat Free
Wednesday Night
With Adult Purchase
Call For Details
1702 GREGG
263-1381

J
A
N
2
2
2
0
0
3

What's new at the library... with Hollis Mc Cright

While wandering the stacks last week, I found a "new" mystery author, Veronica Black. She writes the "Sister Joan" series. Joan became to be a nun rather late in life (28 years old) comparatively speaking and so she has a different perspective of life in the cloister. Activity centers upon the convent located in the county of Surrey in England. Somehow, Sister Joan gets involved in murder and mayhem and it is a struggle between her spiritual responsibilities and the secular life. The Library has all but two of the series (we lack the first and last volume). So, if you enjoy English mysteries, check these out. All volumes begin with "A Vow of..." and the ones that we do have can be found under the author's name, Veronica Black, in the Mystery Section.



HOLLIS McCRIGHT

Have you recently had a baby and are struggling with losing those extra pounds? From Debra Waterhouse, author of the "Outsmarting" series

and a registered dietician, comes a wry and lucid explanation of just why it's so hard to lose those "pesky, persnickety, postpartum pounds." Noting that it is counter-productive even to try to lose that baby bonus around your middle and thighs for the first few months after delivery, she advises how to achieve a slow, steady, and long-lasting reversal of the weight gain without frustration. This book will be useful for new mothers, those still struggling even as their "baby" enters school, and surprise! perimenopausal women, who face much the same problems as postpartum women. Her newest book is "Outsmarting the Female Fat Cell-After Pregnancy" and it can be found on the New Book Shelf.

It seems like we still are getting books about the events of Sept. 11, 2001. One of the latest offerings is "Men of Steel: The Story of the Family That Built the World Trade Center," by Karl Koch III with Richard Firstman. "I knew almost immediately why the towers collapsed the way they did. And I sat there and cried. I wept for the thousands I knew must have died. And I wept because we built the damn things." Like millions of people around the world, Karl Koch III watched in dis-

belief as the World Trade Center collapsed right before his eyes on the morning of Sept. 11, 2001. But the sadness that tormented him in the days and weeks that followed was fueled not only by the compassion and anger that most of us felt but also by his intimate connection with every beam and column in the Twin Towers. This is the story of Karl Koch III's family company, the Karl Koch Erecting Company, which built the towers of the World Trade Center. The initial bid (in 1966) on the World Trade Center, Bob Koch effectively won the biggest steel job in history. Read his story. Look on the New Book Shelf for this one.

Harold Robbins has been around almost 50 years in some form or another! The latest offering is "Sin City." Robbins' death in 1997 hasn't kept him from publishing, as many of the works-in-progress he left behind have been completed by author or authors unknown. In the latest, the overblown machismo has been toned down, but the style is still Robbins' and the story is still populated with the usual Robbins characters: wealthy, beautiful people; sexy but submissive women; and the hero, a handsome, poor, tough guy who makes it big. Jack

"Lucky" Riordan is the illegitimate and unwanted son of millionaire Howard Hughes. The tale begins in the 1960s when an adult Riordan returns to Vegas, seeking his fortune in the gaming industry. His street smarts stand him in good stead as he shrewdly acquires wealth and power. As usual, the plot is spiced up with loads of sex and women, but with the addition of Mob entanglements adds a twist to the story.

Fans of Margaret Truman will enjoy her latest Capital Crimes Novel. The case of Chandra Levy is in the background of your mind in "Murder at Ford's Theater." The body of congressional intern Nadia Zarinski turns up outside the stage door of Ford's Theatre, D.C. Nadia worked in the office of Senator Bruce Lerner, ex-husband of Clarise Emerson, head of Ford's Theatre and nominee for chair of the National Endowment for the Arts. When Clarise determines that her son, Jeremiah, was the last to see Nadia alive, an appeal is made to former attorney Mackenzie "Mac" Smith to represent him. However, there are other suspects as well: Theater controller Bernard Crowley; aging, past-his-prime British actor and artistic director Sydney Bancroft; and

Senator Lerner himself. As usual, the location takes center stage, and the fun lies in seeing how the Lincoln theme pulls the plot threads together and brings weight to the proceedings. Fans of Truman will enjoy reading her latest offering.

Howard County is

open from 9 to 6, Monday to Friday and 9 until 4 on Saturday. The Internet/Video room closes 1/2 hour before closing. The Library is located at 500 Main St. Our phone number is 264-2260. Web site is www.howard-county.lib.tx.us; our e-mail address is howardcounty@hotmail.com.

COMMIT TO HEALTH IN 2003
at
Dora Roberts Wellness Center
A wellness membership includes:

- An assessment by a Physical Therapist
- Individual strength training program
- Personal cardiovascular program
- Body fat analysis

\$45 initial/\$30 thereafter
or you may choose Fitness Classes*

• Water-Aerobics • Aquatic Arthritis • Spinning • Step Aerobics

306 W. 3rd 267-3806

Flo-Lite Screen Print 56th ANNIVERSARY

SPECIALS Jan. 16th - Jan. 24th

- Embroidered Golf Shirts \$14.00 (12 pc. Mn)
- Embroidered Caps \$6.29 (36 pc. Mn)
- FREE \$50.00 Digitizing Fee

Embroidery Specials include up to 6,000 Stitches

819 W. 3rd St. 267-7961

Project Graduation cooking up Super Bowl feast

By **LYNDEL MOODY**

Staff Writer
St. LAWRENCE — Members of the Garden City High School "Project Graduation" are now taking orders for their annual Super Bowl Sunday barbecue chicken dinners.

"Last count I heard we have ordered 560 chickens," said Martha Schwartz, prize committee member. "We're going to be sick of chickens."

The annual fund-raiser offers barbecue chickens for \$6 apiece, plus pints of cole slaw and barbecue sauce and quarts of pinto beans for \$2 apiece.

"We'll also have a bake

What: Barbecue chicken dinners to go.
When: 11 a.m. Sunday.
Where: St. Lawrence Catholic Church.
Cost: \$6 per dinner; \$2 each for pints of slaw and quarts of beans.
For: Fund-raiser benefitting Garden City High School Project Graduation.

sale," Schwartz added. "These dinners offers football fans a way to enjoy Super Bowl parties without the stress of cooking and at the same time contribute to a good cause," Schwartz said.

Volunteers will begin barbecuing the chickens during the early morning

hours Sunday at the St. Lawrence Catholic Church Hall in St. Lawrence.

"They'll start about 3 or 4 in the morning," Schwartz said. "The chickens will be ready to be picked up about 11

a.m." Glasscock County and Midkiff residents can pick up their orders at the St. Lawrence Catholic Church Hall.

The seventh annual "Project Graduation" funds an all-night chemical free graduation party held on the school grounds.

To pre-order a dinner, contact Schwartz at 397-2268 or Rose Pelzel at 397-2224 or 397-2762.

Contact Staff Writer Lyndel Moody at 263-7331, ext. 234, or by e-mail at newsdesk@crcom.net

SCHOLARSHIP FUNDS AVAILABLE

ELIGIBILITY — Those eligible to apply for a Sid Richardson Memorial Fund scholarship are direct descendants (children or grandchildren) of persons who qualified for Early Retirement, Normal Retirement, Disability Retirement, or Death Benefits from The Retirement Plan For Employees of Bass Enterprises Production Co.; or persons presently employed for three or more years by one of the following employers: Barbnet Investment Co., Perry R. Bass, Inc., Bass Enterprises Production Company, Richardson Energy Marketing Services, Sid Richardson Carbon Company, Sid Richardson Energy Services, Sid Richardson Energy Services - JAL, Sid W. Richardson Foundation, SRCG Aviation, Inc., or San Jose Cattle Company.

Limited funds are available to assist in defraying the cost of college education or of vocational training. These scholarships are awarded on a competitive basis according to academic achievement and financial need. Eligible persons applying for aid for the academic year beginning June 1, 2003, must file application forms prior to May 31, 2003.

Direct inquiries to Jo Helen Rosacker, Sid Richardson Memorial Fund, 309 Main Street, Fort Worth, Texas 76102, and include qualifying employee's name, Social Security number, company, and dates of employment.

WIN A NEW 2003 CAR
Call for Details

INCOME TAX REFUND REFUND LOANS
most in 1 DAY

✓ Tax preparation available
✓ Open year round
✓ No cash needed

✓ 10 yrs in the Electronic Tax Filing Business
✓ Certified Tax Specialist

TEXAS FINANCE
1011 Gregg St. • Big Spring, TX
263-6914

Big Spring Health Food Store
1305 Scurry 267-6524
Mindy Sedberry Mon.-Fri. 9:00-6:00 • Sat. 10:00-5:00
-- Manager --

Bring This Coupon In & Receive
10% off
Your Purchase Of Supplements

"Thank You" for your patience during the day we closed for remodeling.

Cash In On The New Year!
\$30-\$100 Mail-In Rebates
Jan. 9-Feb. 1, 2003
On Select Appliances

Whirlpool® Calypso® Washers
Whirlpool® Senseon® Dryers
Whirlpool® Tall Tub Dishwashers

Ramage Appliance
Sales & Service for 40 years
728-3373
168 E. 2nd Colorado City, TX

BARGAIN MART
Discount Foods
403 Rannels, Big Spring, Tx.
Open Mon.-Sat. 9-6:30

ALL FROZEN FOODS & MEATS
(EXCEPT FOR SPECIALS)
BUY 2 GET 1 FREE

CHILIS FLOUR TORTILLAS 3/\$1.00
20-CT.

MARIE COLLANDER CHOCOLATE \$1.49
SILK PIE - 31-OZ.

PORK SHOULDER BUTTS LB. 49¢

CARNATION SHOESTRING 2/\$1.00
POTATOES - 5-LB. BAG

WRIGHT'S HALF HAMS
SMOKED BONELESS 99¢ LB.

NEW YORK GOURMET CHICKEN FAJATAS LB. 79¢

CLEAR CREEK CHICKEN TENDERS \$1.19
2-LB. BAG

LYSOL CLEANER REFILL BOTTLE \$1.49
52-OZ.

YOPLAIT YOGURT (ALL FLAVORS) 6/\$1.00
8-OZ.

SNICKER MUNCH BARS 1.42 OZ.
8/\$1.00

Accepting Checks, Food Stamps &

J
A
N
2
2
2
0
0
3

Horoscope

BY JACQUELINE BIGAR
HAPPY BIRTHDAY
Wednesday, Jan. 22, 2003:
Know what is important to you, then follow through. Often you could be distracted by friends and loved ones. Make decisions for yourself and not the majority. You often hear a different tune from a boss or loved one. Confirm facts. Gain through networking and allowing more socializing in your life. Still, remain your own person. If you are single, you will have an entourage of admirers. You might not be ready to settle down until after August. You might encounter someone quite significant. If you're attached, your relationship will flourish, though your biggest issue will be establishing boundaries. LIBRA helps you sort out problems.

The Stars Show the Kind of Day You'll Have: 5-Dynamic; 4-Positive; 3-Average; 2-So-so; 1-Difficult

ARIES (March 21-April 19) **** You get to clear out what has been a long, nagging problem. The planet Mercury goes direct, creating a window for conversations. Don't feel as if you need to negotiate or start up talks. Trust. Others will be

seeking you out. All you need to do is respond. Tonight: Play the night away.

TAURUS (April 20-May 20) **** Realize what makes a child or loved one tick. You might feel badly that you cannot always say "yes." You do have several choices, but the best approach for now is to do nothing. Concentrate on your work and getting the job done. You accomplish a lot with the help of a key associate. Tonight: Run errands on the way home.

GEMINI (May 21-June 20) **** You might wonder what to do with a friend or loved one who might be attempting to make inroads into your life right now. The real problem has yet to be discussed. Discussions will be forthcoming in the next few weeks. Please be as open as possible. Tonight: Put on your dancing shoes.

CANCER (June 21-July 22) **** Speak your mind, though your message might take more than one attempt to sink in. Realize more of what you need through a discussion with a family member. Sometimes you sell yourself short, perhaps undermining yourself. Take a suggestion. Tonight:

Happy at home.

LEO (July 23-Aug. 22) *** Handle your finances with kid gloves. Sometimes you might not be dealing with all the facts. Ask questions until you feel satisfied. You really don't need to walk on eggshells with others. You can only creatively problem-solve if you get the needed information. Tonight: Out and about.

VIRGO (Aug. 23-Sept. 22) **** Your smile, though intended to help someone close relax, actually might add an element of tension to a professional situation. You cannot read into someone's actions. Your strong drive mixed with the willingness to work long and hard hours adds to your success. Tonight: Balance your budget.

LIBRA (Sept. 23-Oct. 22) *** Lay back this morning. Consider what someone might not be disclosing. You actually do need all the facts if you're to succeed. Review a personal matter carefully, especially if you want to instrument change. You need to open up a conversation, letting others know where you're coming from. Tonight: As you like it.

SCORPIO (Oct. 23-Nov. 21) *** Use the early hours

to forge ahead with a key project. You might not be comfortable with all that you hear. A partner's reversal could be disconcerting, but you won't change this person. Slow down later in the day and take your time with work and another touchy matter. Tonight: Head on home. Get some extra zzz's.

SAGITTARIUS (Nov. 22-Dec. 21) **** Deal with bosses, parents and authority figures first thing in the morning. Don't put off these matters if you want to maximize your success. A partner might finally be ready to clear the air. You still might need to make the first move. Do just that. Tonight: Find your pals.

CAPRICORN (Dec. 22-Jan. 19) **** Reach out for those at a distance. You might not be totally comfortable with another's work or attitude. Do you really think you can change this person? Events will have an interesting way of clearing the air. Trust yourself on a money matter. Tonight: Work late.

AQUARIUS (Jan. 20-Feb. 18) **** Others knock on your door looking for answers ASAP. You might not want to reveal all that is on your mind right now. By

holding back, you create an aura of suspicion. Later on, as a result, you opt to play your cards straight. Others will respond. Tonight: Find your friends.

PISCES (Feb. 19-March 20) **** Deal with others as they drop requests in your lap. You might feel a bit overwhelmed, though you have a lot of turf to cover. Carefully realize your limits with a boss. You cannot push someone. You know

better. Listen to that little voice in your head. Tonight: Dinner for two.

BORN TODAY
Editor and poet Howard Moss (1922), "The Galloping Gourmet" Graham Kerr (1934), writer, philosopher Francis Bacon (1561)
Jacqueline Bigar is on the Internet at <http://www.jacquelinebigar.com>.

(c) 2003 by King Features Syndicate Inc.

Clean Sweep Sidewalk Sale
Sale January 23-25
Nike, Adidas, Ascis, 1 Athletic Shoes, Reebok And New Balance.
Up To **60% off**

T-Shirts, Sweatshirts
And More **50% off**

Athletic Supply
Big Spring Mall
267-1649
Open Mon.-Sat. 10 am-7 pm
Credit Cards Welcome

Annie's Mailbox: Advice for those in need

Dear Annie: I was recently married. Eight months before the wedding, my fiancé and I discussed the cost of the ceremony and reception with my father and stepmother (whom I love dearly). I was concerned we wouldn't be able to invite all the people we wanted, but Dad reassured me, saying, "Don't worry about it." My mother and her husband offered to pay for the photographer, plus \$1,000, which was all they could afford after paying for their airline tickets and hotel room.



Annie's Mailbox

We invited 150 guests and had a beautiful wedding. At the end of the reception, my father paid the bar tab and gave us \$1,000. I don't mean to sound ungrateful, but Dad gave me the distinct impression that he was going to take care of the cost of the reception. During the festivities, he behaved as if he were the host. Most of the guests, including my sister, assumed from his actions and words that Dad was footing the whole bill.

I am hurt and confused. When Dad said, "Don't worry about it," I guess what he really meant was, "Don't worry — you'll find a way to pay the bills." I never expected my father to throw some lavish affair for me, but had we known he didn't intend to finance the wedding, we would have made different choices.

I don't know what happened. Maybe Dad found out how much my mother gave us and decided not to spend more than she did. In any event, my husband and I were left with a hefty bill, and we are living paycheck to paycheck until it's paid off.

I love my father, but is there a diplomatic way to tell him how hurt we are? — Daddy's Little Girl Left Holding the Bill

Dear Little Girl: It sounds as if there has been a huge misunderstanding. Daddy may be unaware that you

expected him to contribute more, and let's face it, he never promised to do so. His behavior was misleading, but it is doubtful he meant to hurt you or put you into debt. Nonetheless, it might be helpful to clear the air. Talk to Dad alone, and tell him you apparently misread the signals he was sending and you don't want there to be any lingering ill-will. He needs to understand what happened so he doesn't make the same mistake.

Dear Annie: I have been dating "Rob" for several months. His wife died two years ago. Rob is a wonderful man, and I love him dearly, but whenever we are with someone else, he starts every conversation by saying, "I lost my wife two years ago." He goes on and on about places they visited, the traveling they did, and his wife's many accomplishments. Of course, while he goes on about her, I am totally ignored.

Not once has Rob acknowledged my presence or made any comment about the importance of our relationship. This happens almost every week. I am ready to put my boots on and walk. Is there any hope for me? — Heartsick in Virginia

Dear Heartsick: Rob is still grieving over his late wife and is not yet capable of moving on. If you still

want to hang around, it's possible things will change, but it will take some time. Only you can decide if he's worth the wait.

Dear Annie: I just read the letter about the mother who ate with her mouth open. It reminded me of a similar situation in my family. We solved it by videotaping our holiday meals. When Mom saw the tapes, she cringed. She is now trying hard to get rid of those bad habits. — Appreciate It in Ohio

Dear Ohio: There is nothing so painful as watching your faults on camera. Some folks, because of illness or age, cannot help the way they chew. Kudos to Mom for her willingness to work on the problem.

To find out more about Annie's Mailbox, and read features by other Creators Syndicate writers and cartoonists, visit the Creators Syndicate Web page at www.creators.com.
COPYRIGHT 2003 CREATORS SYNDICATE, INC.

EARN 4.5%
Our Current Annuity interest rate

Guaranteed for one year upon issue, subject to change on policy anniversary dates. The guaranteed rate is 2.5% for the life of your Annuity.

Southern Farm Bureau Life Insurance Company offers a Flexible Premium Deferred Annuity designed for periodic as well as single premiums. Your contributions, less any applicable maintenance fees and state taxes, accumulate wealth for the future. Surrender charges apply only during the first policy years.

Call Richard Atkins or Brandon Luce Today!
FARM BUREAU INSURANCE SERVICES
1205 E. 11th Place • 267-7466
www.sfbli.com

FARM BUREAU INSURANCE

Texas Farm Bureau Mutual Insurance Co
Texas Farm Bureau Underwriters
Southern Farm Bureau Casualty Insurance Co
Southern Farm Bureau Life Insurance Co

In Sunday's Big Spring Herald

American Profile

The Spirit of Nicodemus

A town of the free

At the end of the Civil War, 350 freed slaves journeyed from Kentucky to Kansas to establish the town of their dreams. Today, Nicodemus is the last remaining western town founded by African-Americans. Plus, tropical snapper and how to avoid taking a tumble.

American Profile
Celebrating Hometown Life

Higginbotham Bartlett Building Center

Spectracide
Grass & Weed Killer
\$13.99

Spectracide
Home Insect Control
\$13.99

1900 FM 700 - Big Spring - 263-7441
www.higginbothams.com

JIMMY HOPPER AUTO SALES
Financing Available

2001 Daewoo Leganze 4-DR. - 20,000 Miles. Power Locks/Windows. Cruise/Tilt. CD Player. Great Family Car. **\$9,450**

1999 Chevy Malibu 4-DR. - 58,000 Miles. Power Locks/Windows. Cruise/Tilt. AM/FM Cass.. Good Clean Car. **\$7,550**

1999 Ford Escort SE 4-DR. - 47,000 Miles. Power Locks/Windows. AM/FM Cass.. Excellent Gas Mileage. **\$5,950**

1998 Chevy Cavalier 2-DR. - Automatic. 73,000 Miles. Power Sunroof. AM/FM Cass.. Tint Glass. Good Gas Mileage. **\$4,550**

1999 Nissan Altima GXE 4-DR. - 56,000 Miles. Power Locks/Windows. Cruise/Tilt. Excellent Gas Mileage. **\$7,250**

1999 Mercury Cougar 2-DR. - 63,000 Miles. Power Locks/Windows. Cruise/Tilt. CD Player. Tint Glass. **\$7,950**

1998 Buick Regal GS 4-DR. - Power Locks/Windows. Cruise/Tilt. CD Player. Alum. Wheels. Leather Seats. Power/Seat. Great Family Car. **\$7,250**

1999 Ford Explorer Sport 2-DR. - Power Locks/Windows. AM/FM Cass.. Alum. Wheels. Priced To Sell. **\$8,995**

1995 Ford Explorer 4-DR. - Power Locks/Windows. Cruise/Tilt. Power/Seats. AM/FM Cass.. Alum. Wheels. **\$5,995**

1999 GMC Sierra Ext. Cab 3-DR. - 69,000 Miles. Power Locks/Windows. Cruise/Tilt. Power/Seats. CD Player. **\$14,950**

1997 Ford F150 Supercab 4X4 - Power Locks/Windows. Cruise/Tilt. Power/Seat. Leather Seats. Priced To Sell! **\$11,450**

1999 Dodge Ram 1500 - Low Miles. 37,000. Tint Glass. Alum/Wheels. **\$9,950**

1998 Chevy S-10 Ext. Cab - 4-cyl., 5 speed, AM/FM Cass., Tint Glass. **\$6,950**

More To Choose From - Come See Our Entire Lot!

Come By And Make Your Deal!
Financing Available
In House Financing
267-5588
1607 E FM 700 Big Spring

You don't need Fortune
to begin investing with Edward Jones

Securing your financial future should not compromise your current financial situation. At Edward Jones, we offer alternatives that get you started for as little as \$100.

Call or stop by today for a free evaluation of the investment options that best meet your needs.

Jimmy Newsom
708 Main
Big Spring, TX 79720
268-8814
www.edwardjones.com
Member SIPC

Edward Jones
Serving Individual Investors Since 1871

J
A
N
2
2
2
0
0
3

Need To Sell a Car?
Having a Garage Sale?
Have Pet's That Need Good Homes?
Big Spring Herald Classified Works!

We Can Do The Job For You

263-7331

We're Always There

MOBILE HOMES
14x60 222 Mobile home. Excellent condition. Set up in country club mobile home park. Many extras. 263-6856

1997 Home 3/2 great condition, \$18,500 cash takes this home. Call 915-563-9002

Trailer house for sale. 267-2976 To be moved. 2 bdr., 2 bath, clean, new h/w heater, new furnace, all new pvc pipes, electric stove, refrigerator, ref. air, clean carpets, new linoleum, plumbed for w/dryer. Can be seen at 4307 Wasson Rd.

Herald Classified ads work. Call us to place your ad at 263-7331.

MOBILE HOMES
ATTENTION
\$125,000 IN LOANS FOR FIRST TIME BUYERS. ALL APPLICATIONS ACCEPTED. 800-698-8003

DOUBLE YOUR TAX REFUND
And get into the house of your dreams. Call Now 800-698-8003

FURNISHED & READY TO MOVE IN.
3 bedroom/2 bath home in Great community. Call 915-563-9000

ONLY \$500 DOWN, \$300/MO FOR 15 YEARS!! Must see this great deal. New carpet, 3 or 4 bedroom/2 bath. Call 915-563-9000 5.99% APR, w.a.c.

UNFURNISHED APTS.
\$50 MOVE-IN SPECIAL
One and Two Bedroom Apartment home available. Starting from \$335.00 per month

***FREE CABLE**
*On site Laundry Facilities
*Covered Picnic area with BBQ Grills
*Playground for the Kids
*Central Air & Heat

SUNSET RIDGE APTS
2911 W. HWY 80
915-263-2292

UNFURNISHED APTS.
3 Bdrm 1 bath
Appliances included No HUD accepted \$365-\$385 Mo.
900 Scurry 517-0536
(Local Number)

ONE BEDROOM SPECIAL
New residents who qualify for a minimum six month lease of a one-bedroom apartment home (subject to availability) will rent for **ONLY \$339 per month.** Enjoy the SPACE, SUPERB LOCATION and other attractions of these lovely homes. Lease or short-term, furnished or unfurnished.

"Remember... You Deserve The Best"
Coronado Hills Apartments
801 W. Marcy Drive
267-6500

UNFUR. HOUSES FOR RENT
1510 Nolan
2 Bedroom 1 Bath
267-3841 or 517-0642

3 bdr., 1 bath, 1321 Harding. No inside pets. References required. \$350/mo \$150/dep. 267-6667

3 bdr., CHA, fenced yard. No Pets. \$500. mon. \$225. dep. 263-5818

407 1/2 E. 8th
1 Bdrm Apartments
Stove & Refrigerator
\$225 + Dep. NO HUD
You Pay Bills.
267-2296

6304 Walter Rd.
2 Bedroom 1 Bath
Mobile home in Sand Springs
267-3841 or 517-0642

703 Aylesford. 3 BR, 1 bath. Newly remodeled \$400/mo. \$300/dep. Call 267-4090

Nice large 1 bedroom. Good location. Call 268-1888 after 6 p.m. & weekends.

Rent to Own
4/2 fenced. \$300/15 yrs. M.H. fenced \$200/10 yrs. 2BR neat \$220/10 yrs. 4/2 fixer \$150/10 yrs. 264-0510

TOO LATES
Roofing Helpers-Palacios Roofing and Home Improvements-6 temporary openings for 03-01-03 to 12-15-03. 8:00 am to 5:00 pm. \$6.50/hr. Overtime \$9.75/hr. To lift, carry and hold building materials, tools and supplies, clean tools, equipment, material and work areas. Will train. Must be authorized to work legally in the U.S. Apply at the Texas Workforce Commission, Big Spring, TX or send resume to 1117 Trinity, room 424T, Austin, TX 78701. JO#TX1404579. Ad paid by an equal opportunity employer.

Country Home.
1600 sq. ft on 3 1/2 acres. N. FM 700. needs work. \$30,000. Call 263-1393

Liquor Store for sale, \$75,000.
Well stocked
Big Lake, TX
915884-2216

Private Piano Lessons.
Beginners through Advance Years of teaching experience. 2607 Rebecca Call 263-3367

3 BDRM 2 bath. Washer/ Dryer connections \$450/mo + deposit 803 E. 20th Call 272-5763 for appt.

107 Jefferson. Thurs & Fri 9-7 TV, beds, dressers, washer/dryer, camper shell, bikes, receiver hitch & household items

1977 Holiday Rambler Motor home. Excellent condition \$5500. 1997 Kawasaki Vulcan 800 w/extras \$4500 267-5462

ATTENTION - THE BIG SPRING HERALD APPRECIATES YOUR BUSINESS
Here are some helpful tips and information that will help you when placing your ad. After your ad has been published the first day we suggest you check the ad for mistakes and if errors have been made we will gladly correct the ad and run it again for you at no additional charge. If your ad is advertently not printed your advance payment will cheerfully be refunded and the newspaper's liability will be for only the amount actually received for publication of the advertisement. We reserve the right to edit or reject any ad for publication that does not meet our standards of acceptance.

Good Neighborhood
2Bdrm 1 bath. Fenced yard. \$350/mo \$150 deposit. Call 264-6569 or 556-9191

Newly Rmdl 2BR office, CH/A, fenced backyard. Perfect for single/couple, no children. References. \$350/mo, dpst. 2004 Scurry. 267-5629

1613 Jennings
2 Bdrm - 1 bath CH/A \$325/mo. \$150/dep. 263-1792 or 270-5874

Barcelona Apartments
"Call For Move-In Specials"
All Bills Paid
538 Westover Rd. 263-1292

BEAUTIFUL GARDEN COURTYARD
•Swimming Pool
•Private Patios
•Carports
•Appliances
•Most Utilities Paid
•Senior Citizens Discount
•1 & 2 Bedroom Unfurnished PARKHILL TERRACE
APARTMENTS
800 W. Marcy Drive
263-1393

UNFUR. HOUSES FOR RENT
1001 Howell
3BR, 1 bath, garage. CH/A \$435/mo \$295/dep NO HUD. Call 263-3689

1810 S. Monticello
2 Bdrm - 1 bath \$300/mo \$150/dep Stove & Ref. 263-1792 or 270-5874

2 BR New central air. Bill paid HUD accepted. References required \$530/mo. 263-2382

2/1 Split-Level Rustic Ranch hse near G Course. Work shop. CH/A. No Smoke or pets. \$385 McDonald. 263-7616

1200 E. 16th
2 BR 1 bath Fenced yard \$265/mo \$150 dep. 263-1792 or 270-5874

1305 Mt. Vernon
2 bdr CH/A new carpet, fenced back yard. Call 264-6931 or leave message

1407 Oriole
Extra clean 3BR, 1 bath CH/A Stove & refrigerator furnished. \$325/mo \$150/dep No HUD. Sorry, no pets. 263-4922

1613 Jennings
2 Bdrm - 1 bath CH/A \$325/mo. \$150/dep. 263-1792 or 270-5874

WILD-CARD COUPONS

We've stacked the deck in your favor with a full house of values. Clip these winning coupons and save!

E-Z Cash/Rentals
Quickest Cash In Town
\$100-\$1,000
Disc., Rent To Own Furn., Appliances, TV's, Computers & Electronics
1702 E. Marcy 263-4304

Sweet Repeats \$5.00 off
With coupon and purchase of \$10.00 or more.
1103 E. 11th Pl. 263-4969
May not combine offers. One Coupon Per Customer
Expires 2-14-03

Ritz FREE Admission
Buy one ticket receive the second ticket with equal or lesser value.
Valid Mon. thru Thurs. Only
401 Main St. 263-2479
Expires 4-30-03

Big Dipper \$1.00 off
A Dozen Donuts
With coupon and purchase. May not combine offers.
608 Lamesa Hwy. 264-6012
One coupon per customer
Expires 1-31-03

FREE The Works Car Wash
With 8 gal. gas or more with coupon.
Parks Convenience 311 Gregg St. Kate's Fina 1100 Lamesa Hwy. Expires 2-14-03

GET ONE MONTH FREE
Subscribe to The Big Spring Herald for 3 months and get the 4th month free
We're Always There
710 Scurry 267-7331 Expires 2-14-03

Gale's Sweet Shoppe
"Home of over 350 Cookie Jars"
6 FREE Cookies
With purchase of any sandwich
1706 E. FM 700 263-2253
One coupon per customer
Expires 2-14-03

Wasson Rd. Chevron
Free Mounting Balancing - Road Hazard Warranty
\$40.00 Value
With coupon and purchase of tires
2509 Wasson Dr. 268-9069 Expires 2-14-03

FREE Family Size Side Order
WITH THE PURCHASE OF 15 PIECE ORDER (BIG SPRING LOCATION ONLY)
GILL'S GOLD 'N' CRISP FRIED CHICKEN 1101 GREGG 263-4391 Expires 2-14-03

\$5.00 OFF Classified Line Ad
Of 5 lines or more running 7 days or more. Private party only. Garage sales excluded. Not good with any other offer.
We're Always There
710 Scurry 267-7331 Expires 2-14-03

FREE Admission First United Methodist Church
Sunday Worship 8:30 am-10:50 am
Wednesday Bible Study 12:00 pm
400 Scurry 267-6394
Open Doors Open Hearts Open Minds

New Floors for The New Year
Berber Carpet Only \$6.99 sq. yd. Cash & Carry
Commercial Carpet Just \$4.99 sq. yd. Cash & Carry
H & H Carpets 310 S. Benton 267-2849 Expires 2-14-03

SUBWAY FREE 6" Sub*
With the purchase of a Regular 6" Sub and medium drink
*Of same or lesser price
1000 Gregg only 267-7827 Expires 2-14-03

PRINTED TEE SHIRTS
Fun and Unique
\$4.95
Koshmoore Kasuals 700 N. Lancaster 267-3727

SONIC America's Drive-In.
Breakfast Is Almost Ready!!
FREE CUP OF COFFEE with breakfast order Expires 2-14-03

20% OFF WESTERN DECORATIONS IN THE GIFT SHOP
Heritage Museum 510 Scurry 267-8255 Expires 2-14-03

GARAGE SALES
Hidden treasures? Junk? Recycle your unwanted items! Call 263-7331 today.
A friendly Classified Consultant will help you create an ad that gets results!

We're Always There

JAN 22 2003

WEDNESDAY											JAN. 22										
	2	3	5	6	7	8	9	11	13	14	15	16	20	22	24	25	26	28	31		
	Midland	KPEJ	KERA	FAM	KOSA	WFAA	KWES	WTBS	UNI	DISN	NASH	TMC	SHOW	HBO	KMLM	A&E	DISC	TNT	TLC		
	Odessa	Odessa	Dallas	Dallas	Odessa	Dallas	Midland	Atlanta	Spanish	Premium	Nashville	Premium	Premium	Premium	Odessa	New York	Discovery	Atlanta	Las Vegas Ch.		
6:30	News Fortune	King of the Hill Raymond	Cyberchase Zoboaloo	7th Heaven (CC)	News Ent. Tonight	News (L) Fortune	News Seinfeld (CC)	Friends (CC) Seinfeld (CC)	Gata Salvaje	Sister, Sister Lizzie	Taboo Blind Date	Movie: Falling in Love (CC)	(CC)	(GC)	Update With John Hagege	American Justice (CC)	Mafia Women (CC)	Law & Order (CC)	Bounty Hunters		
7:30	My Wife-Kids Bachelorette	70s Show American Idol	Prairie View A&M Story	Movie: Sabrina, Down Under	Star Search (CC)	My Wife-Kids Bachelorette	Ed (CC)	Seinfeld (CC)	Las Vias del Amor	Movie: Rock/Man	Star Trek: Next Gener.	Movie: Lara Croft: Tomb Raider (CC)	Red Door (CC)	(CC)	Van Impe Dr. Massey	Biography (CC)	Miracle at the Mine	The Perfect Storm (CC)	Submarines (CC)		
8:30	(CC)	(CC)	P.O.V. (CC)	60 Minutes II (CC)	(CC)	(CC)	West Wing (CC)	Ripley's Believe It or Not!	Entre el Amor y el Odio	(CC)	Friday the 13th Part VIII	Movie: Lara Croft: Tomb Raider (CC)	Red Shoe (CC)	(CC)	Light of the Southwest	American Justice (CC)	Unsolved History	(CC)	Junkyard Wars		
9:30	Celebrity Mole Hawaii (CC)	70s Show Dharma-Greg	Cemetery	Life-Sitcom Whose Line? Presidio Med (CC)	Celebrity Mole Hawaii (CC)	Law & Order (CC)	Law & Order (CC)	Movie: Uncle Buck (CC)	Don Francisco Presenta	Sister, Sister Lizzie	Jason Takes Manhattan	Raiders (CC)	Soul Food (CC)	Taxicab Confessions 2003	City Confidential (CC)	Skip Tracers: Real Life	(45) Law & Order (CC)	(45) X-Files (CC)	Escape-Island		
10:30	News Nightline	Raymond	News-Lehrer	700 Club (CC)	News (35) Late	News (CC) Nightline	News (35) Tonight	(CC)	P. Impacto Noticiero Univ.	Even Stevens Boy World	Star Trek: Next Gener.	The Russia House	Red Shoe (45) Movie: Power and Beauty (CC)	Movie: Men of Honor (CC)	Hour of Healing	Miracle at the Mine	Order (CC) (45) X-Files (CC)	Submarines (CC)			
11:30	Up Close Hollywood Sq	Spea City (CC) Blind Date	Nova (CC) (DVS)	Caroline Rhea Show (CC) (37) Late Late	Show (CC) (37) Late Late	Ent. Tonight Up Close	Show (CC) (37) Late	Worst-Case Scenario	En las Mejores Familias	Boy World Smart Guy	Blind Date Blind Date	(CC)	Power and Beauty (CC)	(CC)	Faye Hardin Church	Unsolved History	(45) X-Files (CC)	Junkyard Wars			
12:30	Paid Program (35) To Be Beyond	Beyond Beyond	Nova (CC) (DVS)	Guthy-Renker Paid Program	Show (CC) Street Smarts	(12:06) Oprah Winfrey (CC)	Night (CC) Frasier	Ripley's Believe It or Not!	Tu y Yo	Sister, Sister Even Stevens	Real TV (CC) Real TV (CC)	Movie: The Sky Is Falling	Movie: Doc	(12:15) Movie: Exit	Update With Promise	American Justice (CC)	Skip Tracers: Real Life	(45) Movie: Escape-Island			

DENNIS THE MENACE

YOU WERE RIGHT, MR. WILSON. THESE OLD BLACK-AND-WHITE SHOWS ARE LOTS FUNNIER THAN THE NEW COLOR ONES.

THE FAMILY CIRCUS

"Maybe your thumb would be safer in your mouth."

HAGAR

MY GIRLFRIEND AND HER PARENTS ARRANGED A SURPRISE PARTY FOR ME LAST WEEK!

WHAT WAS IT FOR?

OUR MARRIAGE!

BLONDIE

WHAT'S THE CATCH OF THE DAY?

I'M NOT SURE

I'LL GO ASK THE COOK

I DON'T KNOW, HE HASN'T COME BACK YET

BC

WHAT DOES PHOTOGENIC MEAN?

IT MEANS EVERYBODY HAS A GOOD SIDE AND A BAD SIDE.

EVERYBODY EXCEPT CLUMSY CARP.

WIZARD OF ID

WHAT DO YOU WANT TO BE WHEN YOU GROW UP?

A DOCTOR AND A LAWYER

THAT'S A WEIRD COMBINATION

I LIKE TO THINK OF IT AS MALPRACTICE INSURANCE

People In the News

By the Associated Press

LOS ANGELES — The head of Paramount Pictures Corp.'s home entertainment division resigned abruptly and will be replaced by a veteran video executive from Warner Bros.

Eric Doctorow, who spent 20 years at Paramount's video unit, stepped down Thursday. Paramount would only say that Doctorow left to "pursue other interests and to seek new challenges."

He was credited with helping push the direct sale of videocassettes in the late 1980s and was responsible for the launch of "Titanic" on video and DVD.

He'll be replaced by Tom Lesinski, who aggressively marketed DVDs to consumers while he was at Warner Bros.

Doctorow is the third top home video chief to leave a studio in the last month. Patricia Wyatt left 20th

Newsday Crossword

IN CHARGE by Gail Grabowski
Edited by Stanley Newman

ACROSS

1 Higher than socialites

6 Wide smile

10 Yearn

14 Andrea

15 Gimmick

16 Pigeonhole

17 Radio studio sign

18 On naval duty

19 Acapulco abode

20 In charge

23 Curved letter

24 Before, to Longfellow

25 Casey's clubs

26 Hubbub

27 Willie of baseball

29 Talk, slangily

32 Celebrity

35 Courts

37 Screen symbols

39 In charge

42 Synthetic fabric

43 Hera's mother

44 Forget to include

45 Make lace

46 Opponents

48 Uncooked

50 Pirate's loot

52 Memo-directing abbr.

53 PC screen

56 In charge

60 Actress Moore

61 Scaloppine meat

62 Suspect's out

DOWN

11 Teacher's domain

12 Letterman or Leno

13 Airport info: Abbr.

21 Fully mature

22 Haven

26 He sang about Alice

27 Mature caterpillars

28 Tennis great

30 Tensayer

31 "Hey, you!"

32 Glasgow guy

33 Skater

34 Clumsy

36 Fairy tale fiend

38 Chicken ___ mein

40 As a joke

41 Topsoil

47 Actress de Havilland

49 "Relax, soldier!"

51 Licorice flavoring

52 Mythical lifter

53 Spicy dish

54 Lost in Space character

55 Some siblings

56 Lively dance

57 Dweeb

58 Jaws, e.g.

59 Shut forcefully

60 JFK preceder

GEECH

ARE THESE SHIRTS TAPERED?

YES, SIR, BUT ONLY SLIGHTLY

DO YOU HAVE ANY SHIRTS THAT FLARE OUT?

BUT MORE THAN SLIGHTLY?

HI AND LOIS

MOM AND DAD DID A GOOD JOB ARRANGING THOSE PICTURES!

BUT IT WILL ALL HAVE TO BE DONE AGAIN...

AFTER CHIP'S BAND FINISHES JAMMING.

THMPA THUNKA THUNK

GASOLINE ALLEY

You need proof I'm an angel! OK! I was with Daniel in the lion's den!

Man! All those hungry cats stompin' around! What a crazy place!

You're crazy!

SNUFFY SMITH

DELICIOUS SOUP, LO!! CAN I HAVE TH' RECIPE?!!

NO!!

I PROMISED GRAMMA, UM... CAMPBELL I'D KEEP IT IN TH' FAMILY!!

BEEBLE BAILEY

YOU CAN'T GO OUT IN THAT WRINKLED SWEATER, SIR!

HERE I HAVE SOME FABRIC RELAXER

SPRAY SPRAY

I GUESS WE SHOULD HAVE TAKEN THE SWEATER OFF

Answer to previous puzzle

JIBE ALA DIRT
GROVEL GEE ROAR
LAYERS ENTRANCE
ORR GAYNINETIES
WAIF IDEAS CDS
DUSTPAN
SIESTAS TANGER
ARRAAR REPLIAN
DESERTS REAPER
RESTLE
SIS AARON ECHO
CHEERLEADER LAW
REVENGES RETURN
OREL ATT ADOBES
DENS ESS SONS

CREATORS SYNDICATE © 2003 STANLEY NEWMAN 1/22/03

FAM Findi

Having heal an adult is d part to havi feet as a chi should look f fit, and be aw cal shoe featu to address th needs of kid growing feet.

"Ideally we walk on soft sand, but sinc possible, a chil ing foot struct be protecte damaging forc made surface: Jeffrey S. Bro and ankle sur ticing in St. L

"The feature: Payless' Smadren's footwe protect agai forces by proo proper suppor dren's feet so correctly and ing the body v balance," said

"Although problems tha specialized me tion, many m hood issues li pain, night p pain — as we problems li bunions, ham arch strain pain, can be with a good p beginning at one."

Payless' SmartFit line, in partnership Brooks, add critical need: growing feet, high-quality fe as proper arc advanced hee- lation, enhanc ity, flexibility, toe room begin

•520 Dual-Gu
•Wire Guage
•Flex-Net Insu

Elr
BIG SPR
2309 SCUR

HOWARD COUNTY BUYERS' GUIDE



We're Always There

JANUARY 22, 2003

Bulk Rate
U.S. Postage
PAID
Permit #30
Big Spring, TX 79720

CR-Rt. Sort
Postal
Patron

FAMILY SAFETY/HEALTH

Finding a proper fit now can prevent foot problems later

Having healthy feet as an adult is due in large part to having healthy feet as a child. Parents should look for a proper fit, and be aware of critical shoe features designed to address the unique needs of kids' rapidly growing feet.

"Ideally we all should walk on soft ground or sand, but since that's not possible, a child's developing foot structure needs to be protected against the damaging forces of man-made surfaces," said Dr. Jeffrey S. Brooks, a foot and ankle surgeon practicing in St. Louis.

"The features offered by Payless' SmartFit children's footwear line help protect against these forces by providing the proper support for children's feet so they develop correctly and by providing the body with needed balance," said Dr. Brooks.

"Although there are problems that require specialized medical attention, many minor childhood issues like growing pain, night pain or heel pain — as well as adult problems like flatfoot, bunions, hammer toe and arch strain — even back pain, can be prevented with a good pair of shoes beginning at about age one."

Payless' patented SmartFit line, engineered in partnership with Dr. Brooks, addresses the critical needs of kids' growing feet. It offers high-quality features such as proper arch support, advanced heel-toe cushioning, enhanced durability, flexibility, and extra toe room beginning at just



\$9.99.

According to Dr. Brooks, parents should check for the following important features in a children's shoe before making a purchase:

- Arch support and heel-toe cushioning — run a finger along the inside sole to ensure that the footbed is cushioned and has a good arch support.

- Flexibility — bend the shoe to ensure that it easily flexes at the ball of the foot, the widest part of the shoe.

- Extra toe room — look closely at the toe box construction to ensure ample room for children to wiggle toes.

- Durability — feel the material and look for a well-constructed shoe. Shoes made of quality materials hold their shape well. Shy away from flimsy or too soft materials.

Payless is doing its part

to help ensure kids get shoes that fit the bill — and the foot — with its industry-recognized Children's Footwear Program. The program is a four-cornerstone approach to purchasing shoes for kids: superior technology, flawless fit, popular styling and selection, and great value — all of which are important to helping ensure that both parents and kids leave its stores satisfied, happy and healthy.

Growing Smart Ensures the Shoes Fit Growing Smart is Payless' recently introduced shoe fitting service, designed to help parents keep pace with the rapid growth of kids' feet.

"There are two facts of life when it comes to kids," said John Haugh, chief marketing officer and senior vice president of business development

for Payless, "They grow like weeds, and they never stop moving. Both factors make quality, properly fitting shoes a must."

Because children's feet grow so rapidly — often as much as two to three sizes in a year — the med-

ical community recommends shoe fittings for children every three months, beginning at about 12 months of age.

"We give parents a Growing Smart fitting card that lets them easily track their child's shoe size. Equally important,

our sales associates are trained to measure the child's foot with a certified Brannock Device and to put the child in the shoes to check key areas — such as the toe box — for a proper fit."

See SHOES, Page 2

Scenic Mountain Medical Center



CEO report to the community

By:
Timothy E. Schmidt
Chief Executive Officer
Scenic Mountain Medical Center

As CEO of Scenic Mountain Medical Center, I want to take this opportunity to let you know about our achievements in 2002 and what we are planning for 2003. During the course of the year, I plan to write a series of articles in order to give you an overview for Scenic Mountain Medical Center, the many issues facing health care providers and introducing you to various members of our Medical Staff and our outstanding employees. Today's article will focus on 2002 accomplishments and 2003 opportunities.

Significant Accomplishments in 2002

Joint Commission of Accreditation of Health Care Organizations (JCAHO) Survey
JCAHO is the nation's predominate accrediting body for healthcare providers. JCAHO is an independent, not-for-profit organization and has helped develop state-of-the-art, professionally based standards used to evaluate hospitals. In January 2002, Scenic Mountain's Laboratory was surveyed by the JCAHO and received a score of 97. Scenic Mountain Medical Center was surveyed in June 2002 and received a score of 94. Both of these scores are well above the national median score.

Emergency Department Expansion

In January 2002, we began construction and renovation of our emergency department in order to better serve our community. We moved into a temporary emergency room and promptly treated the highest patient volume we had ever experienced in any month. In August 2002, we moved into our new emergency department. The new \$1.6 million emergency department has a dedicated trauma room, seven private exam rooms, a triage room, a new waiting area and registration area. In December 2002 a new group of physicians began providing 24-hour/day coverage for emergency care.

Retention of Hospital Staff

In 2000 our turnover rate was 54%. In 2002 our turnover rate decreased to just under 20%. Nationally, the turnover rate is 22-25%. This represents a significant improvement in our ability to provide quality care to you our customers. We are able to now focus more dollars on training rather than recruitment.

Physician Recruitment

Three physicians joined our medical staff in 2002. Alan Abel, M.D., Susan Roberts, D.O. and Cynthia Rutledge, D.O. Dr. Abel is Board Certified General in Surgery. Dr. Roberts and Dr. Rutledge are both Board Certified in Family Practice. All three physicians are very excited about being in Big Spring, TX. These physicians not only increased the access to healthcare locally, but contributed to the overall Big Spring economy.

Charitable, Gratis and Tax Contribution

In 2002, Scenic Mountain Medical Center provided over \$6.1 million in charitable and gratis care. We also paid over \$500,000 in property taxes. Furthermore, the hospital was very active in community activities such as Rotary, Kiwanis, Relay for Life, American Heart Association, United Way, and sponsoring of our local youth activities.

Patient Satisfaction Scores

Our Patient Satisfaction scores continue to improve each quarter. We continue to receive positive feedback from the community concerning the quality of our services. Yes, we still receive feedback from customers whom we did not meet their expectations. And we are glad that they do take the time to voice their concerns, as this gives us an opportunity to improve our services.

Opportunities for 2003

Improving Access to Care

In 2002, we secured the commitment of six (6) additional physicians who plan to move to Big Spring and open a practice:

- Donald Ferguson, MD Internal Medicine
- Lorna Ferguson, MD, Internal Medicine
- Keith Ledford, MD, Obstetrics and Gynecology
- Fahkar Ijaz, MD, Internal Medicine
- Juan Carlos Gonzalez, MD, Internal Medicine
- Alfonso Preciado, MD, General Surgeon

The success of these physicians and other members of our medical staff depends upon our community's willingness to trust their health care needs to these professionals.

Construction of a Medical Office Building

We will soon begin construction of a 30,000 square foot Medical Office Building on the campus of Scenic Mountain Medical Center. We expect occupancy in the fall of 2003. The building will house 12-15 physicians, outpatient radiology and laboratory.

Medical Staff Development

In 2003, we will continue to recruit physicians in the following specialties:

- Cardiology
- Ear, Nose and Throat
- Orthopedic Surgery
- Anesthesia Provider

As a business, Scenic Mountain Medical Center is a major employer in the Big Spring area. In 2002, we paid over \$10.5 million in salaries and wages while providing over 300 individuals employment. According to economist, salary dollars turnover in the local economy 4-5 times. Thus, the impact to the local economy for Scenic Mountain is \$40 million to \$50 million. In addition, we treated over 14,000 people in the Emergency Department, admitted over 3,600 inpatients and performed 1,800 surgical procedures. We also invested in new modern diagnostic equipment and invested in the training of our staff.

I thank you for taking the time to read this article. If you have suggestions or questions that would be appropriate for future articles, please write or call me at Scenic Mountain Medical Center.



Scenic Mountain
Medical Center

1601 W. 11th Pl.

263-1211

ANY SIZE, ONE
PRICE EACH PIECE!

KING KOIL

Spinal Contour
Blossom Plush

- 520 Dual-Gauge, Three Contour Zone Unit
- Wire Gauge 14 / 14 1/2 / 14
- Flex-Net Insulator

- Poly Foam Comfort Layer
- Knit Fabric Quilted to Poly Foam
- Stability Flex Box Spring

\$139⁰⁰
 EACH PIECE

10 YEAR WARRANTY

FREE DELIVERY
 and removal
 of your
 old bedding.

**ELROD'S...
 QUALITY
 SERVICE**

Sold In
 Sets Only!

Elrod's Furniture

BIG SPRING'S OLDEST, LARGEST, FINEST FURNITURE STORE

2309 SCURRY



267-8491

J
A
N
2
2
2
0
0
3

Family fitness can turn out to be fun for all ages

Between parents' demanding work schedules and kids' school and activities, it can be next to impossible to fit in family time. Busy schedules also make it difficult to fit exercise into your life. Shape Up America, a non-profit, national initiative to promote healthy weight and increased physical activity, suggests families make fitness a group activity. Combining family time with fitness sets a good example for children, letting them know that a healthy lifestyle is important.

To build a personalized family fitness plan, Shape Up America suggests:

- Schedule a regular time throughout the week for physical activity.
- Take turns selecting an activity for the family to do as a group each week.
- Start a log of daily fitness activities for each family member.
- Help everyone find something active that makes him or her feel successful.

An easy way to tackle these goals and achieve success is to join a health and fitness center. Life Time Fitness, with locations in Minnesota, Michigan, Ohio, Virginia, Illinois, Indiana and soon, Arizona and Texas, offers the widest range of programs and activities for the whole family.

With more than 110,000 square feet of space, a 1+ acre workout area including more than 400 pieces of cardiovascular, resistance and free weight equipment, multiple group fitness studios offering hundreds of classes per week, a wide range of athletic leagues, rock climbing walls, kid's camps, and much, much more, Life Time Fitness



offers something for everyone. The entire family also can enjoy indoor and outdoor aquatic centers which feature multiple water slides, children's play areas, lap pools, relaxing whirlpools, and complimentary towel services, along with swimming, diving, scuba and kayaking lessons for all ages and skill levels.

Have young kids? Life Time Fitness' large childcare centers offer a safe, fun environment for kids from three months to 12 years old. Facilities include a playmaze, children's theater, gym and computer center, and a dedicated area for infants.

Better still, childcare is free to members.

"Since inception, Life Time Fitness has placed a unique emphasis on serving families," says Mike Brown, senior vice president of operations. "Serving families with kids is a priority, not an afterthought. Each of our centers is founded upon providing an unparalleled

set of services and amenities that meet the health and fitness needs of the entire family."

Life Time Fitness also recognizes that mental well-being is just as important as physical well-being and offers a full range of pampering services at its LifeSpas. While kids play in the child center, adults can

indulge in a massage, haircut, manicure, pedicures and more—without ever leaving the center.

Hungry? Life Time Fitness thought of that, too. Families can also share a healthy meal at LifeCafe, which features

fresh gourmet sandwiches, energy bars, fruit smoothies, power shakes and a full line of nutritional products.

For more information about Life Time Fitness, visit www.lifetimefitness.com, or call (800) 430-5433.

SCHOLARSHIP FUNDS AVAILABLE

ELIGIBILITY — Those eligible to apply for a Sid Richardson Memorial Fund scholarship are direct descendants (children or grandchildren) of persons who qualified for Early Retirement, Normal Retirement, Disability Retirement, or Death Benefits from The Retirement Plan For Employees of Bass Enterprises Production Co.; or persons presently employed for three or more years by one of the following employers: Barbn Investment Co., Perry R. Bass, Inc., Bass Enterprises Production Company, Richardson Energy Marketing Services, Sid Richardson Carbon Company, Sid Richardson Energy Services, Sid Richardson Energy Services - JAL, Sid W. Richardson Foundation, SRCG Aviation, Inc., or San Jose Cattle Company.

Limited funds are available to assist in defraying the cost of college education or of vocational training. These scholarships are awarded on a competitive basis according to academic achievement and financial need. Eligible persons applying for aid for the academic year beginning June 1, 2003, must file application forms prior to May 31, 2003.

Direct inquiries to Jo Helen Rosacker, Sid Richardson Memorial Fund, 309 Main Street, Fort Worth, Texas 76102, and include qualifying employee's name, Social Security number, company, and dates of employment.

ANNUAL CAMP MEETING GOSPEL TABERNACLE

1907 Scurry Street

January 31 thru February 2nd
Nightly at 7:00 pm
10 am Saturday & Sunday

COME, LET US GO INTO THE
HOUSE OF THE LORD.

Psalms 122:1

Body ministry, music and spiritual singing. Hear about the Kingdom of God.

Growing up in the fullness of Christ - Eph. 4:13
The unveiling of the Sons of God - Rom. 8:19

Ministers from Canada and several USA States will minister the word of God.

Everyone is welcome.

Food and fellowship will follow the meetings.
Church phone 263-2053 or 267-8542

Kisiah Imports

THIS WEEK
20% OFF
All Chimineas

700 N. Lamesa Hwy.

Clean Sweep Sidewalk Sale

Sale January 23-25
Nike, Adidas, Ascis, 1 Athletic
Shoes, Reebok And New
Balance.

Up To **60% Off**

T-Shirts, Sweatshirts
And More **50% off**

Athletic Supply

Big Spring Mall
267-1649
Open Mon.-Sat. 10 am-7 pm
Credit Cards Welcome

do they
really
"go to
school"
before
joining the
church?



As much as anything else, the Confirmation (or inquirers') Classes are for the "seeker's" own protection, so that he knows exactly what he's getting into. This simple, interesting set of instructions from the minister assures complete understanding of the church's tenets. Attendance at these classes carries no obligation to become a member. Episcopalians don't discount the sudden revelation of God's presence. They do, however, believe that a more deliberate initiation into church membership may be less likely to wear thin in subsequent years.

They have some pretty good reasons for believing the Christian faith involves both the heart and the head. They don't mind being joshed about their "thinking-man's religion." Christ, they say, demanded simple faith - but not blind faith.

Inquirers' Classes Begin Wednesday, January 22nd, at 6:30 PM
Everyone is Welcome

St. Mary's Episcopal Church
10th and Goliad, 267-8201
Sunday Service 10:30 AM
www.stmarysbst.org

There is a place for you at St. Mary's.

SHOES

Continued from Page 1

Haugh also noted that Payless' SmartFit line offers a full range of popular styles, including one of the industry's widest selections of shoes featuring cartoon characters kids love like Spider-Man, Nickelodeon's Dora the Explorer, Disney's Winnie the Pooh, and The Powerpuff Girls. The company recently announced the exclusive availability of the actual

footwear worn by the actors in the new Spy Kids 2 movie sequel, available while supplies last.

Payless ShoeSource, Inc. is North America's largest family footwear retailer. The company operates a total of 4,952 stores offering quality footwear and accessories at affordable prices. In addition, customers can buy shoes over the Internet by visiting www.payless.com.

HOSPICE VOLUNTEERS NEEDED

ODYSSEY COMMUNITY CARE HOSPICE
1510 S. Gregg • Big Spring



Volunteer Training

In Big Spring
Jan. 23, 30th & Feb. 4th
9:00 am-1:00 pm

In Snyder at
1st Presbyterian Church
Feb. 6th, 12th & 13th
9:00 am-1:00 pm

CALL the Big Spring Office
for details and ask for Lupita or Judy
1-877-200-1410 • 1-888-881-0238
915-263-5999

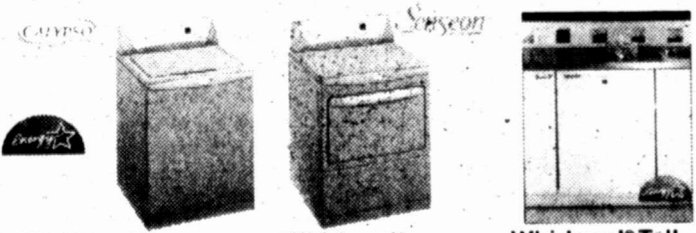
Register now!

Cash In On The New Year!

\$30-\$100 Mail-In Rebates

Jan. 9-Feb. 1, 2003

On Select Appliances



Whirlpool® Calypso® Washers: Whirlpool® Senseon® Dryers: Whirlpool® Tall Tub Dishwashers:

Ramage Appliance

Sales & Service for 40 years
728-3373

168 E. 2nd • Colorado City, TX

How safe?

More than 63 million child safety seats are in use. Most parents are ignorant, they are unable to easily find seats in the car.

According to the National SAFE Campaign, on most difficult parents to do is the seat belt that their child's seat. "Historically, a seat belt tight size, strength degree in m engineering," says Keller, president of Sunshine Kids Products.

Keller's company has an innovative called "Mighty Tite" seat belt device that helps get a secure fit types of safety. The seat belt it just a few clicks handle, any more the biggest by hand. Say "We've basically ed the need for and body size to safety seat tight. But, when you ing with the safe dren, it is essential to prov claims, so

Franco BURRI

• Potatoes



1604 E. 4th

- Tires • Wheel
- Spray In Bl
- Truck Acc
- Brakes • Sh
- 60 Days • C
- or Rent To
- Super Chip (Ford, G

2114 W. 3rd
Used Furniture
Porcelain D
Fashion Jew
Collectibles

Heaven

• Bod



B & M B



204 Runnel
Big Spring

A-1

• Com

24 Hours

How to improve child seat safety inside your vehicle

More than 63 percent of all child safety seats are improperly installed. Yet most parents are not negligent, they are simply unable to easily adjust the seats in the car.

According to the National SAFE KIDS Campaign, one of the most difficult things for parents to do is to tighten the seat belt that secures their child's safety seat. "Historically, getting the seat belt tight required size, strength and a degree in mechanical engineering," says Brad Keller, president of Sunshine Kids Juvenile Products.



seat, it helps to even further reduce this potential injury by a significant amount. Tighter is better.

"We have found that because Mighty-Tite is so easy to use, parents become much more proactive about making sure the seat is tightly secured, because it's now something they know they can do well," said Keller.

This isn't the only testing that Mighty-Tite has been through. The seat belt tightening device has also been extensively tested using a variety of safety seats. The bottom line result is that Mighty-Tite holds the safety seat tight and secure during the entire crash test scenario and meets all injury criteria of the National Highway Transportation Safety Association's FMVSS213.

Mighty-Tite has seals of approval from organizations throughout the United States and Europe. But most importantly, Mighty-Tite has been successfully and safely used by hundreds of thousands of parents and their children around the world.

Sunshine Kids Juvenile Products specializes in safety products for travel. For more information go to www.mighty-tite.com.

Keller's company makes an innovative solution called "Mighty-Tite," a seat belt tightening device that helps parents get a secure fit with all types of safety seats. Mighty-Tite is an easy-to-use ratchet that slips onto the seat belt itself. With just a few clicks of the handle, any mom can get the seat belt much tighter than the biggest man can by hand. Says Keller, "We've basically eliminated the need for strength and body size to install a safety seat tightly."

But, when you are dealing with the safety of children, it is essential to be able to prove safety claims, so Keller

arranged a series of crash tests comparing car seats tightened with Mighty-Tite to car seats tightened only by hand. An independent quality assurance consultant designed and executed the laboratory testing at one of the foremost certified automobile testing labs in the country.

The test results showed that when safety seats are properly installed (with less than 1 inch of wiggle room or side-to-side movement), there is a reduction in the potential injury to a child in an automobile crash. These results also showed that when the Mighty-Tite is used to install the safety

Pierce GM Country Says: You Can't Go Lower Than

0!

0% APR For 60 Mos or \$3000 Rebates

BUICK CENTURY
BUICK REGAL
BUICK LESABRE
BUICK PARK AVE

BUICK ULTRA
BUICK RENDEZVOUS
PONTIAC SUNFIRE
PONTIAC GR AM

PONTIAC GR PRIX
PONTIAC BONNEVILLE
PONTIAC AZTEK
PONTIAC MONTANA
GMC SONOMA

0% APR For 60 Mos or \$2000 Rebates

GMC ENVOY XL

0%-36 MOS. 1.9%-48 MOS. 2.9%-60 MOS.

OR \$2000 REBATES

GMC SIERRA PICKUPS (ALL)
GMC ENVOY
GMC YUKON

GMC YUKON XL
GMC DENALI
GMC DENLI XL

SAVE THOUSANDS ON INTEREST

HERE ARE JUST A FEW OF THE GREAT DEALS AT PIERCE GM COUNTRY

Stk# 3017
2003 Pontiac GR AM SE Sedan
0 Down 60@ 0%
MSRP - 18,885
PGM Disc. - 1,109
GM Rebate - 3,000
\$296 OR **\$14,776**
SALE PRICE



Stk# 3013
2003 BUICK LESABRE CUSTOM
0 Down 60@ 0%
MSRP - 25,730
PGM Disc. - 1,732
GM Rebate - 3,000
\$399 OR **\$20,998**
SALE PRICE



Stk# 7049
2003 ENVOY XL SLE
0 Down 60@ 0% OR
MSRP - 31,145
PGM Disc. - 1,657
GM Rebate - 2,000
\$491 OR **\$27,488**
SALE PRICE



GREAT SELECTION OF GM CERTIFIED PRE-OWNED VEHICLES

5.9% APR ON ALL GM CERTIFIED VEHICLES FOR UP TO 60 MOS. (WAC)

CARS	USED TRUCKS SUV's VANS
02 Pontiac Sunfire 2 in stock.....\$9,988	00 Ford Windstar.....\$13,987
02 Olds Alero 2 in stock.....\$11,967	01 PT Cruiser.....\$15,488
02 Chevy Malibu V6, auto.....\$11,985	02 Olds Silhouette 4-DR.....\$16,927
..... GR AM's 2 in stock.....\$11,996	98 GMC Yukon 4X4 Leather.....\$15,926
02 Pontiac GR Prix.....\$13,927	01 GMC 1500 Ext. Cab Z71.....\$19,650
02 Chevy Impala.....\$14,967	02 GMC Yukon XL Red, nice.....\$24,956
03 Pontiac Vibe 8,000 miles.....\$15,765	02 GMC Yukon Blk., 17K.....\$27,920
02 Buick LeSabre's 2 in stock.....\$16,974	02 Cadillac Escalade Blk.....\$38,765
02 Cadillac Seville SLS.....\$27,496	

Prices Good Thru 1-31-03



Pierce "GM Country"

GMC • CADILLAC • BUICK • PONTIAC

806-872-2144 OR 800-530-4544

202 S. 3rd

Lamesa, Texas 79331

Franco's Catering & Fine Mexican Food!

BURRITOS - Best Burrito You Ever Put In Your Mouth!

• Potato, Meat & Cheese • Ground Beef & Jalapenos • Brisket

• Egg & Chorizo • Steak, Potato & Cheese

AND THAT'S NOT ALL!

• Tamales • Tortillas

ALL FOOD GUARANTEED FRESH

Free Delivery - \$10.00 Min. Order

1604 E. 4th

915-270-2542

TIRE TIME RENTAL

- Tires • Wheels • Custom Exhaust
- Spray In Bed Liners
- Truck Accessories & Glass Packs
- Brakes • Shocks
- 60 Days • Cash Price • Lease Purchase or Rent To Own
- Super Chips Programmers (Ford, GMC, Gasoline & Diesel)

PAINT BALLS

- Paint Ball Guns
- Paint Balls
- Accessories • Barrels
- Tanks
- Mask • Body Armour
- Co2 Fill Station

511 Gregg 263-8473
Big Spring, TX

*** Get It! ***

at

The Gettin Place

2114 W. 3rd

267-6477

Used Furniture
Porcelain Dolls
Fashion Jewelry
Collectibles

Household Items
Bedding
Bargains
New Gift Items

10% Off Anything
w/coupon

Heavenly Scent - The Dungeon

• Body Piercing & Tattoos • 20+ Years Experience

State License • Gift Shop



"When

2404 SCURRY

263-2960



B & M BAIL BOND CO. 24 Hour Service

When You're Looking Out, We're Looking In.



"JASON SEAY"

267-3261

WE MAKE BONDS ANYWHERE IN TEXAS!

204 Rannels 915-268-3692
Big Spring, Texas 79721

A-1 Lock & Key Shop

"SECURITY Is Peace of Mind"

• Business • Home • Auto

• Combinations Changed • Largest Key Stock

915-263-3409

Dennis Burns • Bonded Locksmith

24 Hours

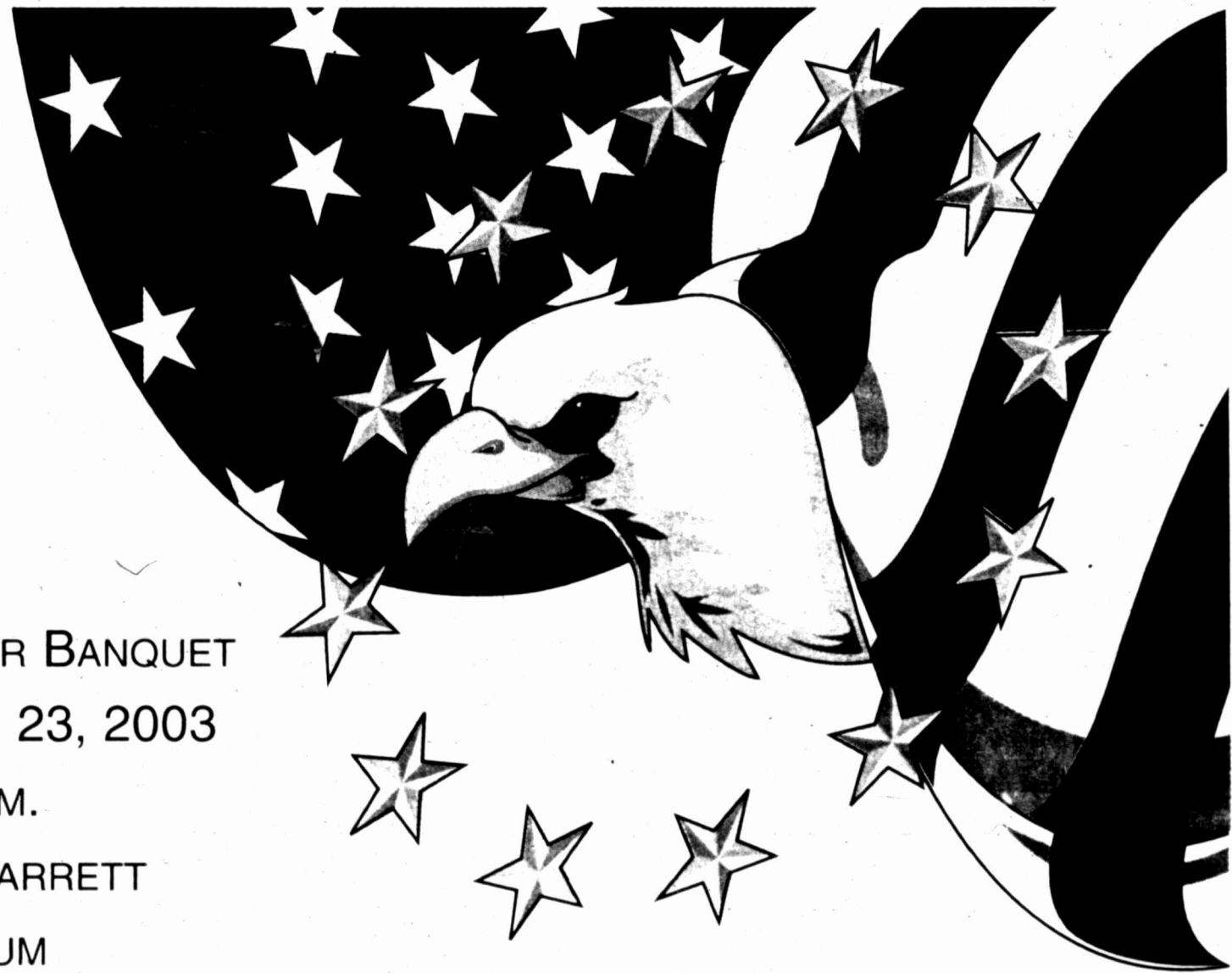
812 W. 3rd

Big Spring, TX



J
A
N
2
2
2
0
0
3

Moving Forward — Together



ANNUAL CHAMBER BANQUET
THURSDAY, JAN. 23, 2003
6:30 P.M.
DOROTHY GARRETT
COLISEUM

The Big Spring Area Chamber of Commerce 2003



Area Chamber of Commerce

A special supplement to the Big Spring Herald,
Wednesday, Jan. 22, 2003

Promoting the Big Spring area

Community development — that's what the Big Spring Area Chamber of Commerce is all about.

Understanding that it is difficult for any one business or individual to make a significant difference, members of the chamber realize the importance of pooling their resources.

"We are members of the Chamber because we feel the Chamber is good for

Big Spring," said Richard Steel, senior vice president at State National Bank. "It promotes a positive image of the city, provides networking opportunities within Big Spring and Howard County and does a good job of promoting local business."

Through its various programs and resources, the chamber helps insure a better quality of life for

everyone. It focuses on improving the business climate as well as promoting the community through specific events such as Pops in the Park, the West Texas Ag Expo and Luncheon, Health Fair, Big Spring Day in Austin and numerous others.

"I have nothing but praise for the Chamber of Commerce," said Howard Walker, owner of the Harley-Davidson Shop. "I think those folks are doing a real good job. You get a lot of coverage from tourists and people moving into town. They'll give them brochures of what businesses are in town. It's good for business people."

"I have nothing but praise for the chamber of commerce. I think those folks are doing a real good job."

Howard Walker
Harley-Davidson Shop



In addition to promoting Big Spring to the surrounding area, the chamber introduces local businesses professionals to allow them to interact with one another.

"We belong to the Chamber of Commerce to be supportive of economic development in Big Spring and to be aware of the issues effecting the economy of Big Spring and Howard County," said

Marcie Lykken, insurance coordinator with Warren Chiropractic Center.

It takes many active members to make the Chamber of Commerce strong — one reason an emphasis is being placed on adding more businesses to the membership list in 2003.

A stronger community through the Big Spring Area Chamber of Commerce.



"It promotes a positive image of the city, provides networking opportunities within Big Spring and Howard County and does a good job of promoting local business."

Richard Steel
State National Bank

53rd Anniversary

Since 1950

WARD'S
BOOT, SADDLE & WESTERN WEAR
BIG SPRING, TEXAS

Everything for the Horse or Horseman

Shane Ward
Phone 267-8512

212 Runnels
Big Spring, Tx. 79720

ARRIS LUMBER & HARDWARE, INC.
LUMBER • HARDWARE • BUILDING SUPPLIES • APPLIANCES • ELECTRONICS

gaze crystal kitchen

CHINA • HOUSEWARES • FLATWARE • CRYSTAL • GIFTS

1515 E. FM 700 (915) 267-8206
BIG SPRING, TEXAS 79720

Halfmann's Creations

- Circle E, Old Virginia & Yankee Candles
- Burt's Bees • Gourmet Coffee, Teas & Chocolates
- Fredricksberg Jams & Jellies • Gift Baskets
- Bath Soaps • Balloons

Delivery Available

1900 S. Gregg • 263-4949

CELLULARONE®

Call On Someone You Know

Simplicity • Choice • Value

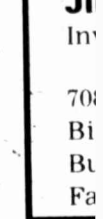
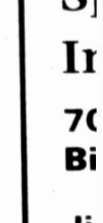
2101 Gregg 264-0003



Cheri F.
Past Pr



Virginia
Govern



**EXECUTIVE
BOARD**



Terry McDaniel
President



John Weeks
President Elect



Cheri Freeman
Past President



Mark Morgan
Treasurer



Liz Lowery
First VP



Allan Johnson
Business Dev.



Virginia Belew
Governmental



Joe Conciene
Membership



Raul Marquez
Cultural Dev.



Barbara Brumley
Community Dev.

Together we can achieve success

Challenges are what make a person, a business and a community strong. If you are not able to overcome your challenges, the growing process comes to a halt.

Big Spring faced many challenges in 2002, which in turn made the community grow stronger as a whole. For the betterment of our community, the Chamber, *together* with the city, county, Big Spring ISD, Howard College, Moore Development and the Heritage Museum, started work on updating our City Master Plan. *Together*, we will continue to move for-

ward in the updating process; continue to help each other through the challenges and celebrate each other's successes.

A special thank you to Cheri Sparks, outgoing president, for her guidance and inspiration in my first tenure. To our members who continue to give me their support and encouragement, thank you. The Chamber is a people who realize that they can accomplish collectively what none of them can do individually. The strength of the Chamber lies in attracting the greatest number of participants and creating a pool of resources from which to draw ideas, energy and finances.

I look forward to working with incoming president Terry McDaniel and

the entire Board of Directors in 2003. This year we will be focusing on membership — is this a challenge? Yes. Will we see this challenge through? Yes, we will - *Together*.

Let's Move Forward — Together — As a community.

DEBBYE VALVERDE
EXECUTIVE DIRECTOR



Debbye Valverde
Executive Dir.

STAFF



Candy Parrish
DRCC manager



Liz Adamson
Sec./Bookkeeper

**Big Spring
Printing**

112 W. SECOND, P.O. BOX 29
BIG SPRING, TEXAS 79721
(915) 263-76744

**CALL
US
FOR
ALL
Your
Printing
Needs!**



your friend come hail or high water

**Sherry Wegner
Agency**

*Specializing in Crop
Insurance*

• Crop Hail • Multi-Peril • Life-Health • Homeowners
• Prepaid Legal

Bus. 267-2555 • Res. 399-4526 • Fax 263-0609

**We're
Specialist
In Investing**

**708 Main Downtown
Big Spring**

Jimmy Newsom
Investment Representative

708 Main
Big Spring, TX 79720
Bus. 915-268-8814
Fax 877-877-2410

Edward Jones

Serving Individual Investors Since 1871



**HILLSIDE
PROPERTIES**



"Brick Homes" with stove, refrigerator, central heat/air, ceiling fan, fenced yards, covered carports, and patios.

☆☆ **24/7 Emergency Service** ☆☆

Rent, Buy, or Lease with Option to Buy
2 - 3 - 4 & 5 Bedrooms

Swimming Pool • Recreational Area • Basketball & Volleyball Courts
We will sell and finance with small down payment

2501 Fairchild

263-3461

CHAMBER DIRECTORS

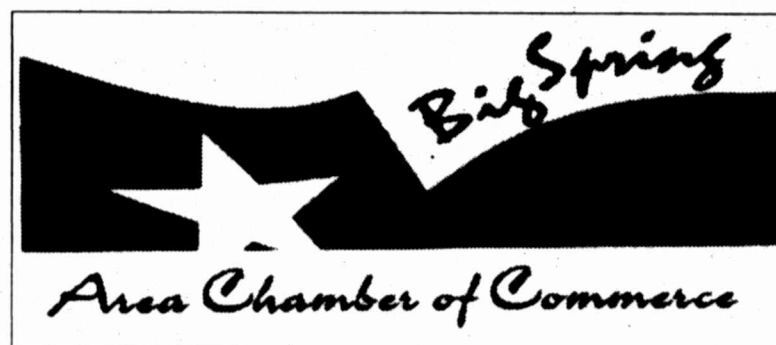
Linda Elrod
2001-2003Terry Wegman
2001-2003Tommy Welch
2001-2003John Grant
2002-2004Roger Huff
2002-2004Angela Parks
2002-2004Hank Bond
2003-2005Calistro Carrillo Jr.
2003-2005Melissa Halfmann
2003-2005Hilda Lara
2003-2005Kathy Lusk
2003-2005Gloria McDonald
2003-2005

Democratic process drives chamber

The Big Spring Area Chamber of Commerce works on a democratic system, with board of directors members selected for three-year terms.

President-elect is selected by the current and past president. That recommendation is presented to the board of directors, who then vote on approval of the incoming president.

Officers for each division of the chamber are selected by the president and incoming president, who



make their recommendations to the executive committee.

An affirmative vote brings the recommendations to the board of directors, who then also vote

their approval of the officers.

Each year, new members are selected through a nominating process that

see **PROCESS**, Page 14

EX
OFFICIOBen
LockhartMurray
MurphyJan
ForesythGary
FuquaKent
Sharp

ACROSS TEXAS APPRAISALS

P.O. Box 987
Big Spring, Texas 79721

Terry O. McDaniel

Cell 556-1134

Office (915) 267-1345

Email terrym@acrosstexasappraisals.com Fax (915) 267-1331

Nalley-Pickle & Welch
FUNERAL HOME

Trinity Memorial Park
and Crematory

"A Tradition of Service,
Quality and Strength"

906 Gregg Street

267-6331

FIRST

Bank of West Texas

Member F.D.I.C.



Member FDIC
Equal Credit
Opportunity Lender

"A FUTURE TO BANK ON"

Coahoma
500 W. Broadway
391-4256

Big Spring
1810 FM 700
267-1113

Lorraine
Main & Pacific
737-2211

A Locally Owned Service For West Texans And Their Loved Ones

 Home Hospice

- ♥ Professionally-trained RN's ♥ Social Worker
- ♥ Certified Nurse's Aides ♥ Chaplain
- ♥ Volunteers ♥ Bereavement Care
- ♥ Medical Director ♥ Financial Assistance

600 S. Gregg

264-7599

Chamber takes active role in promoting health services

The Big Spring Area Chamber of Commerce takes an active role in promoting health services and products by sponsoring the annual Big Spring Health Fair.

More than 2,500 people attended last year's five-hour event at Dorothy Garrett Coliseum. They took advantage of free health screenings for prostate cancer, depression, bone density, skin cancer, body composition, stroke risk, blood sugar and more.

Exhibitors often come from local medical clinics, equipment sales and rental businesses, doctor's offices and other health-related services.

Information is available on such topics as Alzheimer's disease, rehabilitation programs, the rabies outbreak and safe use of prescription drugs.

Fitness programs have conducted demonstrations in the

Health Fair 2003
is planned for
March 29

past, while free ultrasound tests and glaucoma screenings were popular offerings.

In recent years, senior citizens have been encouraged to take advantage of the File of Life, which keeps health information available in case of an emergency.

Related activities have occurred in conjunction with, or on the same day, as the fair. They include the "Master the Mountain" Fun Run/Walk at Big Spring State Park, and a bicycle rodeo, promoting safety for youngsters.



Each year, the Chamber of Commerce puts on the Big Spring Health Fair, allowing local and area residents a chance to receive free screenings and health care information.



Additions
Remodeling
Refinishing
Kitchens
Baths
Doors

**Bob's
Custom
Woodwork**
267-5811

THE COMPANY STORE

PAINT HARDWARE TOOLS
CARPET VINYL TILE
ENTRY & GARAGE DOOR OPENERS

409 E. 3RD

Nothing helps a community like teamwork.

When the people around here work together, there's nothing we can't accomplish.
We're proud to be part of the local team.



Wells Fargo Bank Texas, N.A. • Big Spring, Texas • 400 Main Street • 915-267-5513

Blum's One beautiful place
Jewelers

*Serving the Big Spring
Community for over 41 years.*

Big Spring Mall **267-6335**

DUNLAPS

Timely Gifts For Valentine's Day

Ladies and Men's Watches
Ladies Quality Jewelry, Lingerie
Namebrand Perfumes, Colognes -
Estee Lauder® Clinique®



We Do
Gift Wrapping

Credit
Cards Welcome



111 E. Marcy

Hrs. 10-6 Mon.-Sat.

267-8283

Chamber promotes area businesses in a variety of ways

Promoting area business, the Big Spring Area Chamber of Commerce offers a number of annual events for its members.

Business After Hours is an opportunity for one business member to host a reception and visit with members of the community.

"Business after Hours allows businesses to network together and get to know each other," said Debbie ValVerde, Chamber executive director. "Any chamber member can host the event which is open to all businesses, chamber member or not."

The host usually sends invitations to its clientele while the Chamber sends invitations to its members.

Every new member of the chamber has a ribbon cutting ceremony, which is attended by members of the Big Spring Ambassadors and photographs are taken.

"We want to let members know that they are important to us, but we also want our members to get involved to help us make a better community."

Debbie ValVerde,
Chamber executive director

During the holiday season, residents and business are encouraged to light up the town for the annual lighting contest sponsored by the chamber.

"We want to encourage everyone in the community to light up for the Christmas holiday," ValVerde said. "We want Big Spring to look good."

See **BUSINESSES**, Page 7



Ribbon cuttings are one of the many functions of the Big Spring Area Chamber of Commerce and Ambassadors.



FISH OPHTHALMOLOGY CLINIC, P.A.

JOHN R. FISH, M.D.

Diseases and Surgery of the Eye

Now from Fish Ophthalmology Clinic, the new Collamer implant lens for small incision cataract surgery. Call for appointment today.

207 E. 7th

Big Spring, TX

267-3649

Ponderosa Apartments

A Nice Place For Nice People

•All Utilities Paid

- One Bedroom - 820 sq. ft.*
- Two Bedroom One Bath - 1080 sq. ft.*
- Two Bedroom Two Bath - 1280 sq. ft.*
- Three Bedroom Two Bath - 1800 sq. ft.*

Furnished & Unfurnished

1425 E. 6th • 263-6319

GILL'S

GOLD 'n' CRISP FRIED CHICKEN

Call In's Welcome!!

HOURS:

Sunday-Thursday - 11:00 am - 10:00 pm

Friday-Saturday - 11:00 am - 11:00 pm

1101 S. Gregg • 263-4391

San Marcus • Sweetwater • Snyder

J. PHILLIP FURQUERON, ARCHITECT

500 JOHNSON STREET BIG SPRING, TEXAS
915-267-3794 79720

BUSINESSES

Continued from Page 6

The chamber also sponsors a number of large events in the community including the Taste of Home Cooking School, Ag-Expo, community luncheons, Pops-In-The-Park, the Health Fair and Big Spring Day in Austin.

Currently the chamber has close to 400 members and conducts membership drives throughout the year.

The Chamber allows mem-

bers to post flyers of any events at the Chamber office.

"If we receive a phone call for information, we refer the person to a chamber member first," said ValVerde.

Membership involvement is important, ValVerde said.

"We want to let members know that they are important to us, but we also want our members to get involved to help us make a better community," ValVerde said.

Legislators to be special guests at annual banquet

Redistricting has lead to changes in the men who are entrusted with representing Howard County in the state legislature.

During Thursday's 6:30 p.m. banquet at the Dorothy Garrett Coliseum, the county's past representatives, Sen. Robert Duncan

and former Rep. David Counts, will be honored along with its new repre-

sentatives, Sen. Teel Bivins and Rep. Pete Laney. Tickets to the

banquet are \$20 each and may be reserved by calling 263-7641



Counts



Duncan



Bivins



Laney

Louis Stallings Agency Inc.

1606 1/2 S. Gregg
263-7161

Mill's Optical Company

610 Johnson
267-5151

Downtown Car Wash

Chuck Chrane
Bill Chrane

1301 East 4th
263-0844

Johansen Landscape AND Nursery

700 Johansen Rd.
267-5275

Howard County Abstract Company, Inc.

106 West 3rd
263-1782

CORONADO HILLS APARTMENTS



Big Spring's Premier Residential Complex

- 1, 2 or 3 Bedroom Apartments
- Attached Carports
- Furnished or Unfurnished
- Lease or Short Term Rentals

REMEMBER: "YOU DESERVE THE BEST!"

801 W. MARCY
267-6500

coronadohillsapts.com



K - C Steak & Seafood

Steaks • Seafood • Drinks

Valentine's Day will soon be here!

Make your reservations now!

5:00 P.M. to 10:00 P.M.

N. Service Road I-20 W • 263-1651

Mouton, Mouton and Myers

Attorneys at Law

Investing? Think

Edward Jones

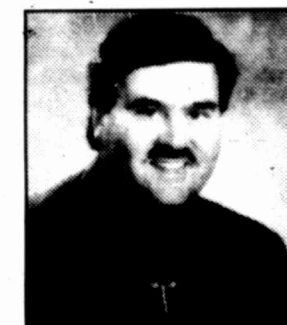
Serving Individual Investors Since 1871

Al Valdes, Jr.
Investment Representative

219 Main St.
Big Spring, TX 79720
Bus. 915-267-2501 Fax 888-638-1707
Hm. 915-263-6810 800-658-6217

www.edwardjones.com

Serving Individual Investors Since 1871



CHAMBER
PRESIDENTS

1919 John E. Mundell
1923 W.W. Rox
1924 M.H. Morrison
1925 R.L. Price
1926 B. Reagan
1927 S.R. Weaver
1928 Shine-Philips
1929 Edwin A. Kelly
1930 Dr. E.O. Ellington
1931 Joe Edwards
1932 T.W. Ashley
1933 Wendell Bedichek

1934 D.W. Webber
1935 George White
1936 G.C. Dunham
1937 R.F. Schermerhorn
1938 Dr. P.W. Malone
1939 Calvin Boykin
1940 Ted O. Grobel
1941 R.W. Whipkey
1942 B.L. LeFever
1943 Willard Sullivan
1944 A.S. Darby
1945 R.T. Piner
1946 Joe Pickle
1947 K.H. McGibbon
1948 Elmo Wasson
1949 Douglas Orme
1950 Adolf Swartz
1951 Dr. M.H. Bennett

1952 Truman Jones
1953 Dr. R.B.G. Cowper
1954 Champ Rainwater
1955 Marvin Miller
1956 Ira L. Thurman
1957 Jimmie Beale
1958 Dr. J.E. Hogan
1959 Clyde McMahon Sr.
1960 Cliff Fisher
1961 Horace Garrett
1962 Roy B. Reeder
1963 Dr. Carl Marcum
1964 John L. Taylor
1965 Ike Robb
1966 John A. Currie
1967 Dr. Lee Rogers
1968 Dr. M.W. Talbort Jr.
1969 M.R. Koger

1970 Paul Meek
1971 Paul Meek
1972 R.H. Weaver
1973 George McAlister
1974 Ralph McLaughlin
1975 Ken Perry
1976 J.D. Nelson
1977 Roger D. Brown
1978 Ray Don Williams
1979 Johnnie Lou Avery
1980 Jimmy Taylor
1981 Winston Wrinkle
1982 Sidney T. Clark
1983 Bill E. Read
1984 Paul L. Shaffer
1985 Granville Hahn
1986 John Arrick
1987 Troy Fraser

1988 Clyde McMahon Jr.
1989 Hooper Sanders
1990 Don Reynolds
1991 Steve Fraser
1992 James Welch
1993 Ben Bancroft
1994 Jeff Morris
1995 Jim Weaver
1996 Frances Wheat
1997 Curt Millins
1998 Ray Kennedy
1999 Chuck Williams
2000 Jim Purcell
2001 John Freeman
2002 Cheri Sparks
2003 Terry McDaniel

**Bogies
Boot
And
Shoe
Repair**

604 E. 3rd
267-1955

**American
Limestone
Company**

2515 Apron Dr.
267-3907

**DELL'S
CAFE**

1608 East 4th
267-9323

**Choate
Well Service, Inc.
Serving
West Texas
Since 1957**

393-5231

**Head
Hunter
Beauty
Salon**

1310 Austin
267-1861

Pamela J. Pope

CPA

506 E. 4th Street
Big Spring, Texas
Ph. 267-8636

C. E. "Mike" Thomas, III

Attorney at Law

The Big Spring Herald


We're Always There

BIG SPRING
Bowl-A-Rama
AND GRILL



**Come Out To Where The Fun
Times Roll!**

OPEN 7 DAYS A WEEK
East I-20 Service Rd
267-7484

Ag Expo and luncheon say 'hats off' to producers

Each year the Chamber of Commerce takes time to thank the farmers, ranchers and all the agriculture community for their continuing role in the local community.

In a few months, it will be time for the annual West Texas Ag Expo and the Ag Appreciation Luncheon, honoring farm-

**This year's Expo is
scheduled for March 20.**

ers and ranchers in the community.

"Agriculture is a part of the Big Spring Area," said Debbye ValVerde,

See **EXPO**, Page 10



In addition to naming a producer and agri-business of the year, the West Texas Ag Expo and Ag Appreciation Luncheon feature top speakers. Recent guests have included Texas Ag Commissioner Susan Combs and, pictured here with chamber board member Roger Huff, right, U.S. Rep. Charles Stenholm.

**Graumann's
Pump and
Engine
Repair**

304 Austin
267-1626

**Big Spring
Auto Glass**

1500 E. FM 700
267-5247

**Dakota's
Flowers
AND
GIFTS**

1110 E. 11th Place
263-8323

**Christene's
Cafe**

204 NW Broadway
Coahoma
394-4584

**Cosden
Federal
Credit
Union**

400 E. Marcy
264-2600



From employing more than 1,900 people across twelve states, to leading the way in regional economic development, Atmos believes in the Spirit of Progress.

**ATMOS
energy**

THE SPIRIT OF SERVICE
atmosenergy.com
©Atmos Energy 2003

OUR BUSINESS IS EARTH MOVING



P.O. Box 2319
Big Spring, TX
800-375-8456

Office: 263-8456
Shop: 263-3859
Night: 263-7961

Sid Richardson Carbon Company

Proud to be a working part of
Howard County

*Did you know you could live
like this in Big Spring?*

- Covered Parking
- Sparkling Swimming Pool
- Beautifully Landscaped
- Private Balconies/Patios
- Wood burning Fireplaces
- Washer/Dryer Connections
- Built-in Microwaves
- Self-cleaning ovens
- Ceiling Fans
- Spacious Walk-in Closets
- Pets are Welcome
- Management and Maintenance On-Site
- Walking Distance to Shopping and Dining Centers



1 Courtney Place, Big Spring
915-267-1621 • FAX 915-263-0041
www.mcdougal.com

EXPO

Continued from Page 9

Chamber of Commerce executive director. "We host the luncheon because we want to thank the area farmers for doing their business in Big Spring. All the contributions come from area businesses because those businesses want to thank the farmers for doing business with them and in Big Spring."

Each year, tickets to the appreciation lunch are free to local farmers and ranchers. The lunch is also open to the public for a nominal fee and the event draws from 400 to 500 people.

Usually taking place at the Dorothy Garrett Coliseum, the Expo often features exhibits, seminars, food and the highlight-naming of the producer and agri-business year.

"The Expo allows differ-

ent entities and business in Big Spring who would like to see farmers as potential customers to set up booths," said ValVerde.

Some of the seminar topics from past Expos included row spacing, boll weevil management, drip irrigation and worker protection standards, farm chemicals, laws relating to agriculture and even improving the home landscape.

Civic center popular spot for many activities

Offering a view overlooking the Comanche Trail Park Lake, the Dora Roberts Civic Center continues to be a popular place for weddings, meetings, reunions and other community events.

"Generally it is booked solid in the summer and spring time with weddings,

graduations and other events," Candy Parrish, Dora Roberts Civic Center manager.

Managed by the Big Spring Area Chamber of Commerce, the center is owned by the city. Parrish runs the day-to-day opera-

See DRCC, Page 11

**Neighbor's
Auto
Sales**
1300 East 4th
263-0822

**Quality
Fence Co.**
Jimmy
Marquez
Owner
267-5714

**Sierra
Mercantile**
East Interstate 20
263-1460

**Cline's
Building
Maintenance**
263-0999

**COLDWELL
BANKER**
ELLEN PHILLIPS
REALTORS
406 East Marcy
267-3061

great
water can be so easy.

Culligan
is Water™



- Service, Rental & Sales
- Salt Delivery Service
- Bottled Water
- Water Conditioners
- Drinking Water Systems
- Expert Repair Service, All Makes

263-8781 or 1-800-69-8781



COWBOYS



STEAKHOUSE RESTAURANT

Steaks • Seafood • Chicken

The finest cuts of meats cooked to perfection

Daily Lunch Buffet 11 AM - 2 PM

Open Sunday thru Saturday 11 AM - 9 PM

263-0181

404 E FM 700

Carryouts Welcome

Dora Roberts Rehabilitation Center

Serving Big Spring Since 1961

- Physical Therapy
- Work Hardening
- Cardiac Rehabilitation
- Audiology
- Spring Camp
- Wellness Program
- Occupational Therapy
- Yoga • Step Aerobics
- Water Aerobics
- Boot Camp

306 W. 3rd St.

267-3806

**FARM
BUREAU
INSURANCE**

HELPING

YOU

is what we do best

Brandon Luce - Manager

1205 E. 11th Place

267-7466

DRCC

Continued from Page 10

tions, including bookings and arrangements for a variety of events.

The building offers a number of amenities, Parrish said.

"We have two different types of rooms," she said. "We have a large ball room that can seat up to 350 people and is used for events such as large weddings, receptions, dinners, meetings. We also have a second more cozy room."

The smaller room dubbed the lake room is a very popular place for

baby showers, smaller wedding receptions and board meetings. One side of the room is constructed of glass walls that overlook the lake.

The pavilion constructed behind the building, on the shore of Comanche Lake, has become a popular place for seasonal weddings.

The ball room contains a sound system and stage and the kitchen area is close by for those having banquets.

For more information about the Dora Roberts Civic Center, contact Parrish at 254-9134 or page her at 268-2049.



Dora Roberts Civic Center is used for numerous activities. Above, noted strategist Carolyn Corbin, right, visits after a seminar at the center.

**AAA
Mini
Storage**

3301 E. FM 700
263-0732

**A.J.
Pirkle, Jr.
Agency**

505 Scurry
267-5053

Pizza Inn.

Proudly supports
our
Chamber of
Commerce
1702 Gregg
263-1381

**Ray Tech
Internet**

Your Hometown
Internet Service

706 Main St.
263-3976

**Comet
Cleaners**

1500 E. FM 700
267-2584

The Big Spring Herald



We're Always There

**Big Spring Independent
School District**

*Proud of our affiliations
with the Big Spring Community*

Western Container
Corporation



**Western
Container**

Big Spring Plant

Support Your Local Merchants



**Big
Spring
Mall**

Shop Big Spring First

FM 700

267-3853

Leadership Big Spring great introductory tool

Leadership Big Spring, now into its 21st year, is a Big Spring Area Chamber of Commerce program that allows members of the community to have a first-hand look at all the businesses and services available locally.

The leadership class See **LEADERS**, Page 13

meets once a month for 10 months. This year, the group began meeting in January and will break for the summer months, then resume in the fall.

While involved in the class, the group tours vari-



Leadership Big Spring, now into its 21st year, is a Big Spring Area Chamber of Commerce program that allows members of the community to have a first-hand look at all the businesses and services available locally. At right, graduation ceremonies for the Senior Leadership course are held.

C Bar G

Western Wear

1600 Gregg St.

264-7596

Faye's Flowers

1013 Gregg

267-2571

Kisiah Imports

700 North
Lamesa Hwy.



Domino's Pizza

- Carry Out or Delivery -

2111 Gregg

267-4111



CORNELL

CORNELL CORRECTIONS

Cornell Companies, Inc.
People Changing People

1701 Apron Dr.

Big Spring, TX

City of Big Spring

Proudly supports our local
Chamber of Commerce

BASIN 2 WAY

Your Telecommunications Source

BROADBAND WIRELESS INTERNET ACCESS

- Radio Communication Equipment & Systems
- Paging Signaling Service & Repair
- Computer Networking Sales & Service

"THE FUTURE IN TELECOMMUNICATION IS HERE!"

1808 SCURRY
BIG SPRING, TX.

www.basin2way.com

915-264-7034
800-258-3757

BIG SPRING FARM SUPPLY

Ronnie and Diane Wood-Owners

*PROUDLY SERVING THE
AGRI-BUSINESS NEEDS
OF THE CROSSROADS*

North Hwy. 87

263-3382

LEADERS

Continued from Page 12

ous businesses and industries within the community, attends board meetings of various entities and generally gets a broad overview of everything Big Spring has to offer.

Leadership Big Spring classes also offer workshops on leadership, an

additional bonus for those enrolled. Other areas of interest that the class tours are agriculture, utilities, communication and law enforcement.

Participants are required to attend three board meetings of a local government entity, ride in a patrol car with a Big Spring police officer and must also take

part in a community project.

The Chamber also offers a senior course of Leadership Big Spring. The course, a less intense version of the original, gives seniors an opportunity to learn more about also visiting business and entities in the community.

The course lasts about 12

weeks and participants meet once every two week during the mornings. It is offered free to seniors.

In addition to the Leadership Big Spring program, the chamber also offers a junior leadership program.

Big Spring Junior Leadership is available to high school juniors and is

actually conducted by the Howard County Extension Agency.

The program lasts for one semester. Faculty in area high schools recommend students for the program.



Lamun - Lusk - Sanchez Texas State Veterans Home In Big Spring, Texas

A Place To Call Home

Clean and comfortable surroundings,
enjoyable activities • tasty food • amenities that go
beyond the expected.

Medicare - Medicaid - Certified

1809 N. Hwy. 87 www.glo.state.tx.us/vlb 268-8387 (vets)

The Big Spring Herald



We're Always There

THE BIG SPRING GIN

"PLEASING YOU PLEASES US"

LAMESA HWY.
263-3701

CHURCHWELL INSURANCE AGENCY



PROUDLY SUPPORTING THE BIG SPRING
AREA CHAMBER OF COMMERCE

2303 GOLIAD

267-3857

ALL AMERICAN CABINETS & DESIGN

LET US HELP YOU WITH YOUR NEW KITCHEN
COMPUTER DESIGN
FREE ESTIMATES

263-6061

263-0436

EZELL-KEY FEED & GRAIN

FEED-SEED-LAWN-GARDEN
PET SUPPLIES

**"IF IT GROWS - WE HAVE
SOMETHING FOR IT"**

98 LANCASTER

267-8112



Last year's Man and Woman of the Year were Robert (Bobby) Hill and Jane Stripling Jones.

PROCESS

Continued from Page 4

allows the general membership population to submit nominations.

These nominations are then voted on by all chamber members, and new members are selected.

Annually, five new board members are placed on the chamber board and five members retire.

Once a vice president has been selected, it is that officer's respon-

sibility to form a committee comprised of chamber members.

The chamber of commerce leadership structure is divided into officers, vice presidents, retiring directors, ex-officio directors and directors who are grouped into three-year increments.

Vice presidents are responsible for such programs as business development, governmental affairs, membership development, cultural development and community development.

THE HERITAGE MUSEUM

"PROUDLY DISPLAYING OUR HISTORY"

510 SCURRY

267-8255

Gale's Sweet Shoppe & Garden Room

"Home Of Over 375 Cookie Jars"



Daily Lunch Specials

• Light Entrees • Soup • Salad • Sandwiches

Baked Goodies

• Cakes • Cookies • Brownies & More

1712 E FM 700

263-2253

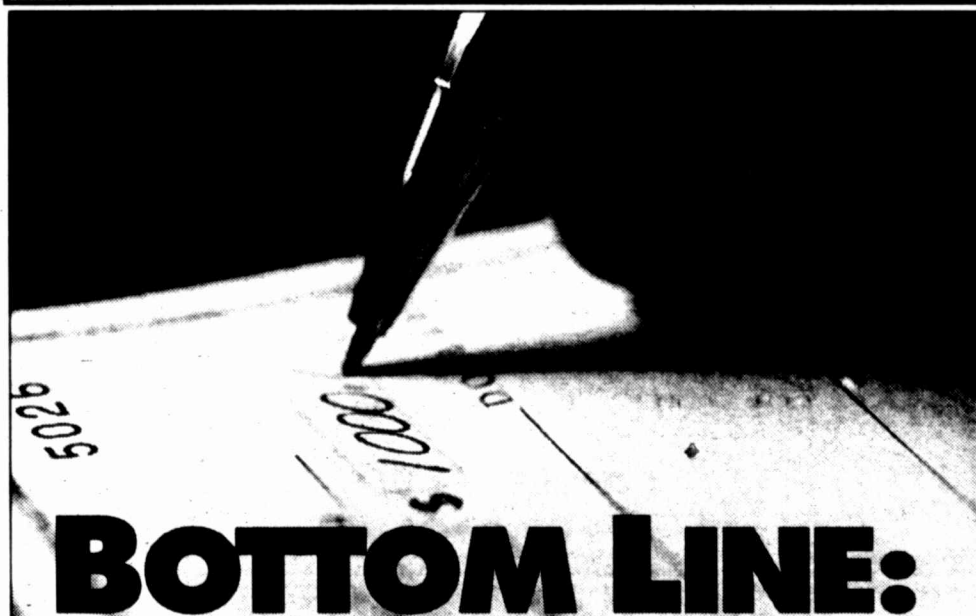
H&R BLOCK®

tax, mortgage and financial services

1512 S. Gregg
Big Spring, TX 79720

Tel 915-263-1931 Fax 915-263-1402

JRichmond@hrblock.com www.hrblock.com



BOTTOM LINE:

We're in business to help your business.

We provide a variety of commercial banking products and services, so you can focus on your bottom line. Our comprehensive selection of loan programs can give you the financial advantage you need.

In Big Spring, we're in business to help your business.



**BIG SPRING
BANKING CENTER**

STATE NATIONAL BANK OF WEST TEXAS

The new state of banking

www.statenationalbank.com

267-1651 • 1500 S. Gregg Street
24-hour XPress Phone Banking: 1 888 977-8900

Abilene • Azle • Big Spring • El Paso • Lubbock
Odessa • Plainview • San Angelo • Stamford • Winters

Member FDIC
Equal Credit
Opportunity Lender



What is a chamber of commerce?

Your chamber of commerce is a voluntary organization of citizens who are investing their time and money in a community development program — working together to improve the economic, civic and cultural well-being of the area.

There are two primary functions of a chamber of commerce: 1) it acts as a spokesman for the business and professional community and translates into action the group thinking of its members; and 2) it renders specific services of a type that can be most effectively rendered by a community organization both to its members and to the area as a whole.

How does it function?

Your chamber functions through the working committees of the organization. Money, planning, inspiration and guidance are useless unless the members work vigorously on the committee of their choice.

The goal of the program of work is always to create more dollars for more people and to improve the economic welfare of the community.

Every member has a voice in determining the policies and projects and every member is needed to work on active committees to get the job done.

Who is the chamber?

Members — Businesses, organizations, professionals and individuals working together for the betterment of the community.

Board of directors — Elected by the membership, these individuals are charged with determining the policies which direct the affairs of the chamber. Directors do not implement policy; they employ an administrator to carry out board decisions.

Officers — The executive committee ordinarily includes the president of the board, president elect, one or more vice presidents, treasurer and past president. The officers provide direction and leadership to the board.

Staff — The executive vice president is hired by the board to be responsible for the daily management of the chamber and for employing and managing the staff.

Committees — The organization's objectives are best achieved by small groups of the membership engaged in common effort.

What are the benefits?

- Refers businesses to visitors and callers,
- Helps promote a business of the chamber,
- Maintains awareness of key issues at the local, state and federal level by coordinating with the Texas Chamber and U.S. Chamber,
- Provides businesses with education through seminars and increases awareness of

the importance of buying locally,

— Hosts quarterly luncheons, Ag Expo and Health Fair to provide programs, business information and networking,

— Offers support and awareness of all areas of art,

— Works to increase growth of tourism in Howard County and support local attractions and events,

— Advertises businesses in the membership directory,

— Works with city, county, Moore Development and other entities for the betterment of the community,

— Publishes a monthly newsletter to keep the community aware of happenings,

— Offers promotion and links to business through a Web site.

Membership investment

Membership investment for small businesses is \$200 per year.

For more information

The chamber office is located at 215 W. Third. Or, to learn more about the Big Spring Area Chamber of Commerce, contact Debbye ValVerde at (915) 263-7641 or write P.O. Box 1319.

ALONUSA

The Big Spring Refinery



United Way

The United Way
of Big Spring
and Howard County

Phone: (915) 267-5201
Fax: (915) 267-7961

808 Scurry
P.O. Box 24
Big Spring, TX 79721-0024

uway@apex2000.net



American State Bank
is proud to support our
Big Spring
Chamber of Commerce

**American
State Bank**

"Right Size To Be Friendly"

1411 Gregg Street

Member FDIC

...ttee com-
...ers.
...er lead-
...ded into
...retiring
...ctors and
...ped into
...ponsible
...business
...rnmental
...elopment,
...l commu-

RY"

3255



FER
TEXAS

FDIC
credit
under
LENDER

EQUAL HOUSING LENDER



TOGETHER - MOVING FORWARD

**BIG
SPRING
AREA**

USA

TEXAS



Howard College Proudly Supports

The Big Spring Area Chamber of Commerce

HOWARD COLLEGE

**EDUCATION...FOR LEARNING,
FOR EARNING, FOR LIFE!**



264-5000

**Continuing
Education**

264-5131

1001 Birdwell Lane

www.hc.cc.tx.us

or

www.howardcollege.ed

Student

Assistance Center

264-5083

