

GOOD LUCK!!

COAHOMA BULLDOGETTES



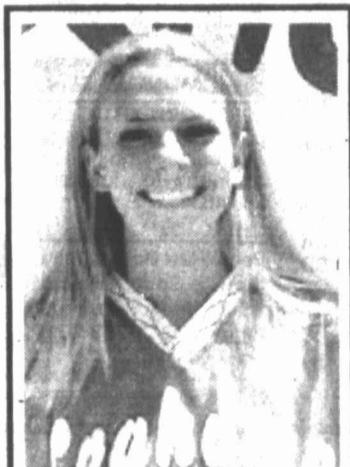
Elisha Teeler
LAKEMAN
Convenience Store
Int. 20 & Moss Lake Rd.
Sand Springs, TX
393-5266
Open Daily 6 am-10 pm
Sunday 7 am -9 pm
Gas - Groceries - Snacks
Coffee - Burritos



Tera Dickenson
Christene's Cafe
- Home Cooking -
204 NW Broadway
Coahoma
394-4584



Taylor Sheppard
Navajo



Karen Sterling
Coahoma
Athletic Boosters
P.O. Box 813
Coahoma, TX. 79511



Megan Young
L'il Sooper Market
101 S. First
Coahoma, Texas
394-4437

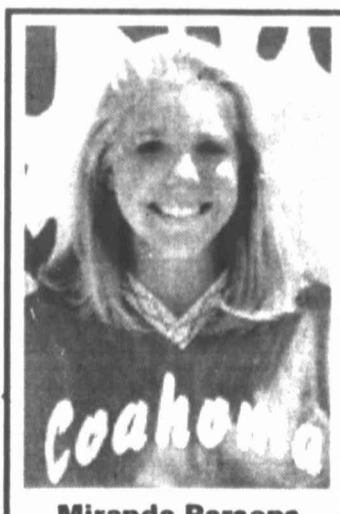


Tawna Jacobs
Vista Propane
Rodney: 557-8514
Gery: 264-8041



Andrea Amaro
DOYLE FOWLER INSURANCE AGENCY
108 S. Salem Rd.
393-5712

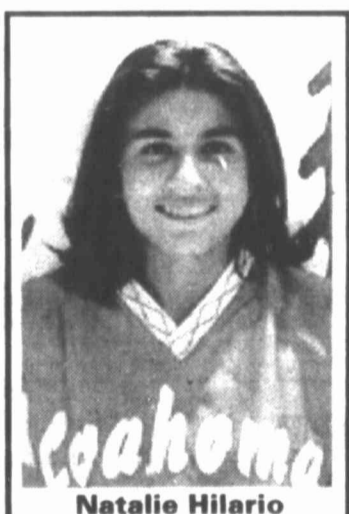
Region 1 Championship Game
Coahoma Bulldogettes vs. Comanche's Lady Indians
Friday, May 24, 7:00 p.m.
Abilene Christian University Wells Field
Abilene, Texas



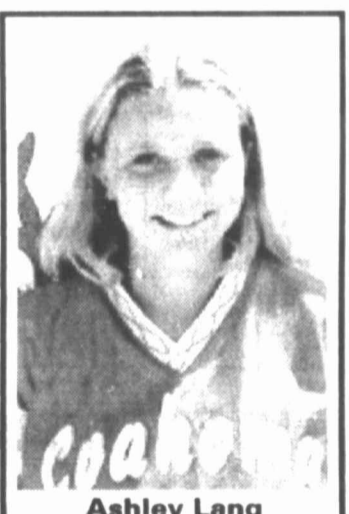
Miranda Parsons
C & M Garage
Certified Air Conditioning Specialist
Foreign • Domestic
3301 W. Hwy. 80
263-0021



Erin Stovall
Comet
CLEANERS AND LAUNDRY SERVICE
1500 E FM 700 • 267-2584
Open: 7 am-6 pm M-F
7 am-5 pm Sat.



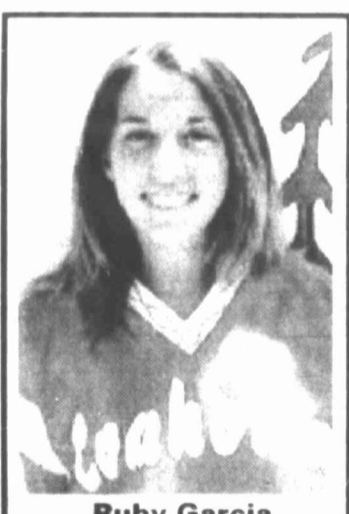
Natalie Hilario
FIRST
Bank of West Texas
Member F.D.I.C.
"A FUTURE TO BANK ON"
Big Spring 1610 FM 700 267-1113
Coahoma 500 W. Broadway 394-4256



Ashley Lang
FARM BUREAU INSURANCE
1205 E. 11th
267-7466



Michelle Walker
Western Container Corporation
Big Spring Plant



Ruby Garcia
Rip Griffins
1-20 & Hwy. 87
264-4444

Big Spring Farm Supply
Lamesa Hwy.
263-3382

Good Luck To All Of You!
First Baptist Church
915-394-4056
P.O. Box 376 - Coahoma, Tx. 79511

M
A
Y
2
3
2
0
0
2

THURSDAY

MAY 23

TV schedule grid with columns for station (e.g., KMID, KPEJ, KERA) and time slots (6 PM, 7 PM, etc.).

DENNIS THE MENACE



"JUGGLIN' IS A WHOLE LOT EASIER WITH JUST ONE BALL, JOEY."

FAMILY CIRCUS

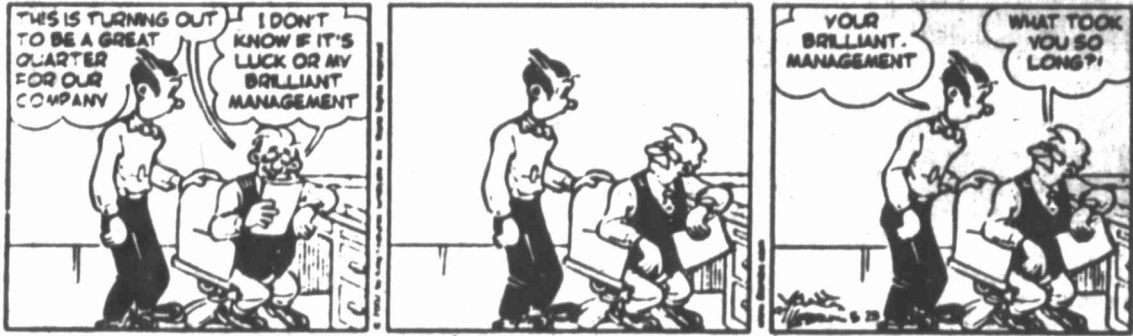


"Okay, P.J., here's a story — one time when I was little ..."

HAGAR



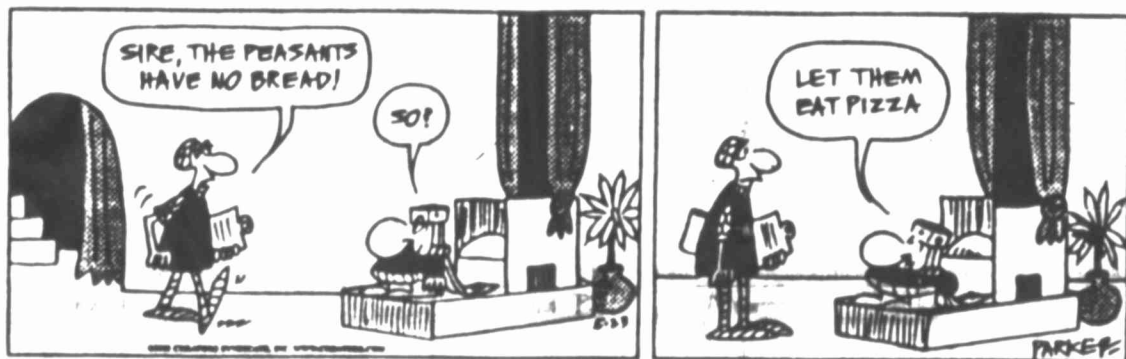
BLONDIE



B.C.



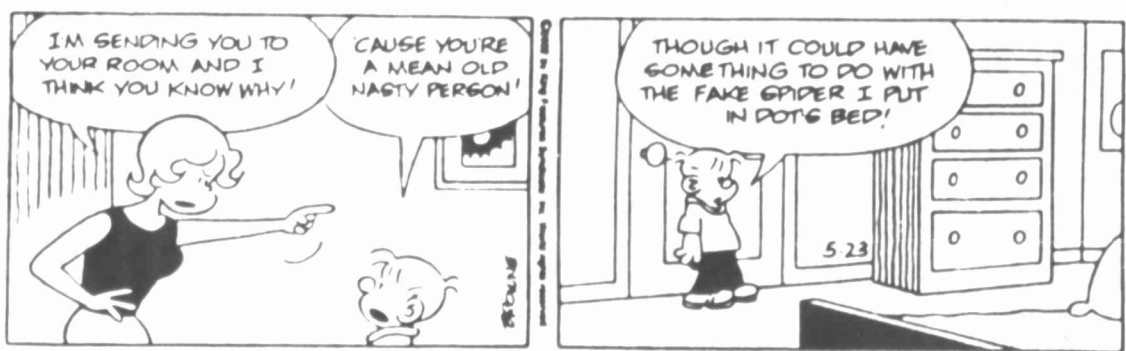
WIZARD OF ID



GEECH



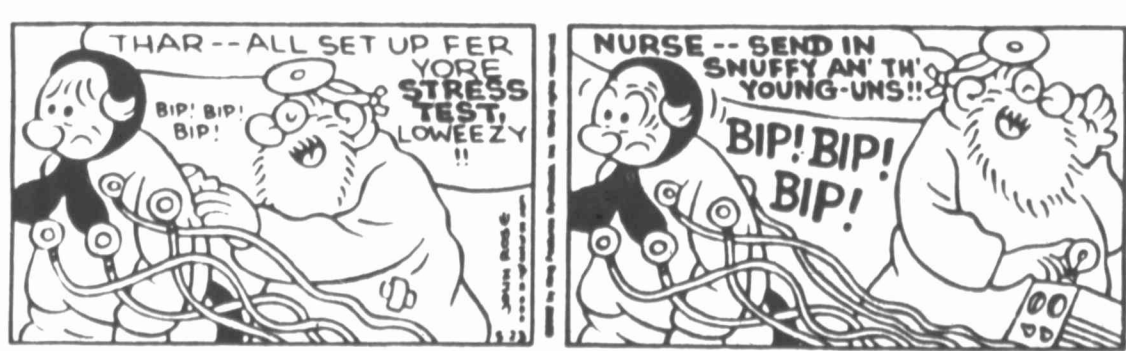
HI AND LOIS



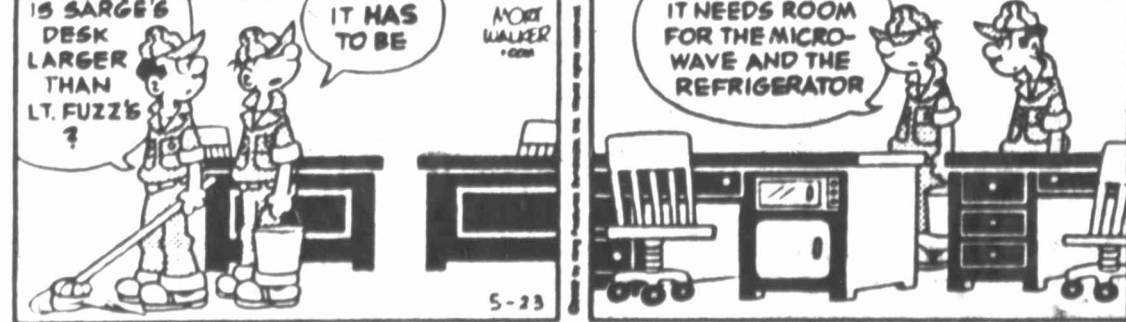
GASOLINE ALLEY



SNUFFY SMITH



BEETLE BAILEY



THIS DATE IN HISTORY

The ASSOCIATED PRESS

Today is Thursday, May 23, the 143rd day of 2002. There are 222 days left in the year. Today's Highlight in History: On May 23, 1960, Israel announced it had captured former Nazi official Adolf Eichmann in Argentina.

In 1915, Italy declared war on Austria-Hungary in World War I. In 1934, bank robbers Bonnie Parker and Clyde Barrow were shot to death in a police ambush in Bienville Parish, La.

START missile-reduction treaty that had been agreed to by the Soviet Union prior to its dissolution. Today's Birthdays: Bandleader Artie Shaw is 92. Actress Betty Garrett is 83.

Answer to previous puzzle grid with words like EMBAR, FLOG, SAGE, LOIRE, RARE, KNOT, SHOOFLYPIE, IDLE, ASSURE, POSITRON, SEAL LETTERS, APSES, ABE, SEW, LAH, HANA, PARSIS, ATOP, RATSU, SHMO, SHEENS, OPIE, UMA, SRI, DRU, SHEEP, ARTICLE, NAPA, SERGEANT, AORTAS, IDIE, MOOSHUPORK, DYNE, ATMO, SENNA, EEGS, REED, ERGOT.

Newsday Crossword MUSICAL QUESTIONS by Sally R. Stein Edited by Stanley Newman

Crossword puzzle grid with clues for Across and Down, including musical terms like Pygmalion playwright, Poitier, In the Heat of the Night, etc.