

ROOSEVELT WINS HIS LIBEL SUIT

(Continued from Page 1)

Roosevelt's candidacy for the position he then sought. In this publication, I acted in entire good faith, believing that the facts stated were true and believing that as a publisher I owed the duty to my readers to make that statement. After this article was published last October, neither the plaintiff nor any one in his behalf notified me that he claimed the charges so made were unfounded, nor did they request me to make correction of the same. On the contrary, the service of papers constituted the first intimation I received that the article was complained of.

"After the commencement of the suit, there was nothing for me to do but to prepare to defend it and I did so to the best of my ability. Both my attorneys and myself went forward with the investigation of all this with great thoroughness and in numerous places in various parts of the country, we found reputable witnesses who were willing to swear that from observation during addresses and public appearances of Mr. Roosevelt they believed he was intoxicated when they saw him. We have been unable, however, to locate or produce witnesses who will swear that they have actually seen Mr. Roosevelt drink to excess.

"Upon this phase of the case, when the statements attributed to such persons were sifted, it was found in each instance that the witness did not himself know that Mr. Roosevelt had drunk to excess, or that if he had made such claim, he was not willing to testify.

"It is fair to the plaintiff to state that I have been unable to find in any section of the country an individual witness who was willing to say he had personally seen Mr. Roosevelt drink to excess. "I have taken the testimony in the form of depositions of more than forty reputable witnesses who have expressed the opinion that on those occasions to which they testified he was intoxicated. I believe all these witnesses were honest in making their statements. I have relied upon those witnesses who have recognized the lesser opportunities they have had to observe the plaintiff and his habits. I have been profoundly impressed during the progress of this trial by the nature and extent of the evidence produced by the plaintiff that he did not use liquor to excess on any occasion. I am unwilling to believe that these eminent men would purposely misstate the facts, or that under the circumstances related by them and their intimate acquaintance with the plaintiff for so many years, they could be mistaken as to his habits.

"I have therefore been forced to believe that those who have given depositions and made the statement that in their opinion on occasion to which they refer, Mr. Roosevelt was

intoxicated, had insufficient means and opportunity of correctly observing him and were mistaken. I am unwilling to continue to assert that Mr. Roosevelt actually and in fact drank to excess.

The colonel broke into a grin when Mr. Newett said with reference to the mass of testimony adduced by Mr. Roosevelt, "I am forced to the conclusion that I was mistaken. After leaving the stand, Mr. Newett looked in the direction of Col. Roosevelt but the latter was whispering with his counsel.

Judge Flanagan in his charge to the jury, said of Col. Roosevelt, "Certainly he has convinced the court not only that he never was drunk but that he is now and always has been a temperate and abstemious man." As soon as the foreman, W. H. Matthews, a miner, 31 years old, reported the verdict as directed, court adjourned and Col. Roosevelt stepped forward and shook the hand of each juror. He said, "I thank you, gentlemen, each and everyone of you; it was splendid, perfectly splendid."

The scene in the little mahogany furnished court room in the county building on a hill overlooking Lake Superior never for a moment during all the trial lost its dramatic interest. Hour after hour, Mr. Newett although suffering from a serious malady and with pain always visible in his face, sat listening to testimony given against him from former members of Col. Roosevelt's cabinet, literary men, doctors, naturalists and others of national reputation. The first witness was Col. Roosevelt and last for the plaintiff was Admiral George Dewey whose testimony was introduced by deposition.

While Col. Roosevelt was smiling delightedly after the verdict and was chatting with various persons, Mr. Newett was speaking with friends in the room and everybody else was watching to see if the two principals to the suit would get together. Mr. Newett was the first to leave the court room but although frequently halted by persons who wished to express their admiration of the manner in which he had acknowledged himself in the wrong he was on his way to his home in Ishpeming before the colonel left the building.



The HUB

The Store of Values—705 Indiana

The finest line of neckwear, such as the latest in Bulgarian four-in-hand, bows, string, club. Everything imaginable in neckwear. Why buy cotton collars and pay linen collar prices when I sell you a genuine linen collar, warranted stamped inside the collar? Warranted linen, two for 25c

The HUB

The Store of Values—705 Indiana

On Sultry Summer Nights

you can avoid hours of tiresome tossing and wakefulness by using a General Electric Fan in your bed-room.

You can regulate the "breeze" to suit your own desire. Train the Fan on your bed, set the switch, and a cool gentle breeze will lull you into a long sweet sleep—the kind that fits you perfectly for the duties of the following day.

You can operate a General Electric Fan for less than one cent an hour—a cost too trivial to consider.

A commonsense regard for your comfort and efficiency demands the use of a General Electric Fan—the Fan that combines elegance, utility and durability.

The eight inch type is the ideal size for the home. It weighs only five pounds, and can be easily transferred to any part of the house where there is an ordinary lighting socket.

We have a complete line of General Electric Fans displayed in our show room, or we will gladly have a representative call on you.



The Carpenter Electric Company

Phone 525 800 Ohio Avenue, Corner Eighth Street

25,000 BARRELS, FIELD ESTIMATE

BELIEVED JUNE 1 FINDS PRODUCTION AT THAT FIGURE

LATE BIG COMPLETIONS

Producers Get Three Nice Ones—Head and Langford Get Well on Borcheldt

With eleven producing completions last week, added to 2450 barrels new production up to the first of the week, the month of May has broken all records for new production with a total of 6550 barrels new production. June starts with an estimated daily production of above 25,000 barrels, making due allowance for falling off in old production.

The big completions the past week were Producers No. 36 Waggoner, 1500 barrels; Producers No. 37 Waggoner, 1000 barrels; Producers No. 17, second Bywaters, 700 barrels. There were several smaller wells brought in. The three big wells were all in the 1900 foot sand, which is now furnishing the biggest pay.

J. E. Head and P. P. Langford yesterday drilled in their well on the Borcheldt at 1399 feet, with the screw eight feet in the sand. It is estimated at from 100 to 150 barrels and is unquestionably a good well for the Burk Burnett field. It is about 500 feet north of Clint Wood's Borcheldt well.

Another completion at Burk Burnett last week was Corsicans No. 1 Herlacher, good for probably fifty barrels.

South of town, the K. & K. well on the Ayres is 1150 feet, the Producers on the Duckett is about 1890 and Hivick on the Manger is in the neighborhood of 800 feet.

The Burk Burnett Oil Company will probably not pump its shallow completion at present but will try to get more production. It has moved the star rig 200 feet north and drilling will start soon. Allen and Fisher have started their No. 2 George, a shallow test, 200 feet south of No. 1; No. 3 will be a deep test, located fifty feet west of No. 1.

The Florence Oil Company (Bob Cook et al) is drilling at 1200 feet on the Ayres south of Electra.

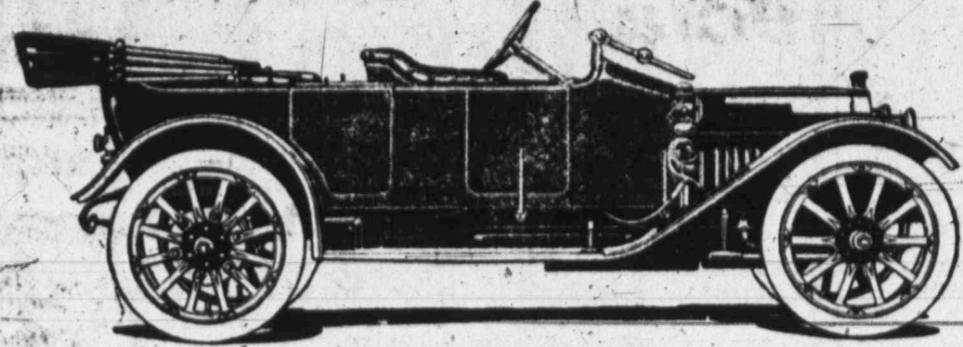
BURKBURNETT TO MEET CLERKS THIS AFTERNOON

For the fourth time this season Burk Burnett and the Wichita Falls clerks will meet on the diamond this afternoon and local fans who go to the City Park at 3:30 may expect a very interesting game. Out of the three games so far this season, Burk Burnett has won two and the locals hope to be able to even things up today.

After last Sunday's contest, when the Denver Colts from Fort Worth won a one to nothing game, some classy ball may be anticipated today.

CUTS OAT, CROP HIMSELF AND SELLS IT IN SALES.

Jim Billings, who lives south of town, discovered that he had in a few acres of oats that he couldn't get threshed, as no machine would cross the creek for such a small job. He cut his oats green, baled them and has sold most of his crop at fifty cents per bale. As his oats yielded about fifty bales to the acre, he has realized \$25 per acre in spite of the threshing handicap.



"THIRTY-SIX" \$1950—(Fully equipped f. o. b. Detroit). Self-starter, electric lights, four-forward speed transmission, Turkish cushions, carburetor, dash adjustment, demountable rims, power inflator.

Chalmers Cars are Setting New Sales Records AS USUAL

The 1913 season will be the biggest in the history of the Chalmers Motor Company—which covers five years of records in the selling of medium-priced cars.

At the New York Show our metropolitan dealer sold 54 Chalmers cars at retail.

Some thirty dealers from outside New York met prospective buyers from their territories at the show, sold twice as many more.

In one day of the week following the New York Show 32 retail orders were taken in New York alone.

For five years Chalmers cars have out-sold all other cars at their price or above in New York—the most critical market in the country.

At the Chicago Show 36 new Chalmers cars were sold at retail during the week by the Chicago dealer. Dealers from other middle western territories also many cars at Chicago.

In addition to these retail sales, we signed contracts with nearly 50 new Chalmers dealers during the Chicago Show. These men are in the automobile business to make money. They want cars that are easy to sell and that stay sold. They selected the Chalmers because of its reputation for satisfactory service in the hands of more than 35,000 owners.

In California, also, this season Chalmers cars hold the leadership in sales over all other medium-priced cars.

California now has one motor car to every 28 of the entire population. Californians know automobiles pretty well from experience. Their approval of the Chalmers is significant.

In Texas the Chalmers cars have this year gained the ascendancy over all other cars in their price classes. Of many other sections the same story could be told.

As a result of this rapid sale of Chalmers cars in all parts of the country, the Chalmers Motor Company had by March first shipped two-thirds of its entire 1913 production. And the best selling season of the entire year—the spring—is yet to come.

Chalmers dealers are asking for added allotments. For instance, the Chalmers dealer in Waterloo, Iowa, in a recent wire ordering 13 cars for immediate shipment says, "May we increase our allotment?" Carl H. Page & Co., New York distributors, have already ordered 150 more cars than they originally contracted for. The Chalmers dealers in Los Angeles, Calif., has delivered more than his original allotment for the entire season.

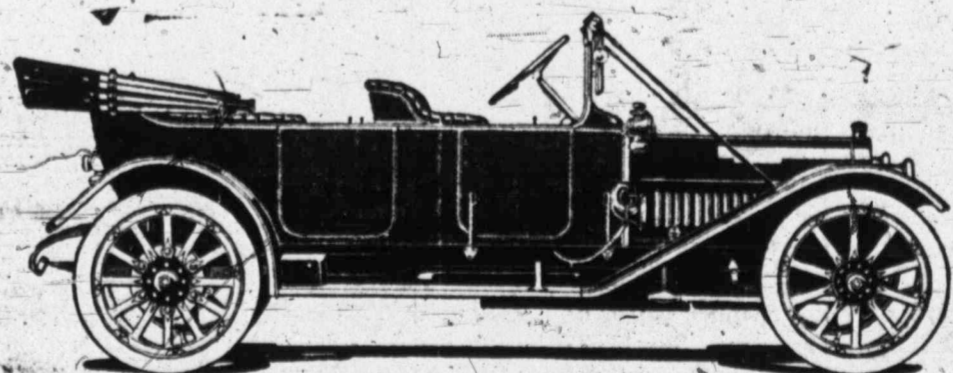
Philadelphia, Chicago, Des Moines, San Antonio, Pittsburgh, Portland, Ore., Denver, Colo., Baltimore, Detroit, Buffalo, Cleveland and many other cities are setting Chalmers sales records.

Chalmers salesmen, all over the country, are now engaged in a selling contest for five valuable prizes offered by the Chalmers Company.

Chalmers salesmen are working as never before for the honor of winning these prizes. They are establishing new Chalmers sales records.

This is just one more reason for believing that Chalmers cars will be "sold out" early this year.

Chalmers Motor Company, Detroit



"SIX" \$2400—Fully equipped f. o. b. Detroit). Long stroke motor, 4 1-4 inch bore by 5 1-4 inch stroke; wheel base, 130 inches; tires 36x4 1-2 inches; four-forward speed transmission; nickel steel axles; extra large brakes.

Exclusive dealers in UNITED STATES TIRES. Chalmers cars and all high grade cars are equipped with United States Tires. We have the largest and most complete stock of auto tires and inner tubes in this section. Our United States "Red Special" Inner Tube is the heaviest and longest lived tube on the market. Try a set.

800 Ohio The Carpenter Electric Company Phone 525



NEW TWO STRAP TIP PUMPS

Style No. K2091 Women's patent oxf., two strap, tip pump.

Style No. K2092 As above in gun metal.

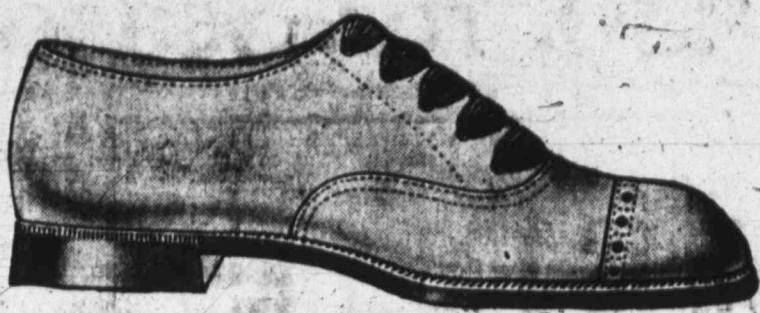
Style No. K2093 As above in black suede.



ENGLISH MODEL

Style No. R857 Women's tan calf English last lace oxf.

Style No. 856 As above in gun metal.



SELZ WAUKENPHAST MODEL

The latest, newest, smartest style is the Selz Waukenphast; a model that brings comfort

Style No. B794 Royal Blue tan Russia calf oxford.

Style B790 Royal Blue tan vici blucher oxford.

Style No. B495 Royal Blue gun metal calf blucher oxford.

This is the shoe we specially recommend.

Selz on the Sole Means Good as a Whole

Handling Selz Famous Shoes exclusively and giving the people the best of store service at the least selling cost is rapidly making this the most popular store in Wichita Falls. You will find it a treat to come in and make your footwear selections from the big variety of new things we are showing in Selz low cut spring models. No one ever need have unsatisfactory shoes if they will see that the shoes they purchase are Selz shoes. These famous shoes are guaranteed to give the wearer satisfaction. They are not only the most stylish and the best wearing shoes, but they are also the most comfortable you can buy. Selz low cut models fit perfectly around the top; they don't gape at the sides. It will pay you to buy your Selz shoes now—there's nothing to be gained by delay.

There'd be but one Shoe if everybody knew--Selz

Ralph Hines' "Selz Royal Blue" Store

515 Eighth Street



WOMEN'S PUMPS

Style No. K1881 Women's patent oxf., turn pump.

Style No. K1882 As above in dull kid.

Style No. K1850 Women's gun metal welt pump.

Style No. 1851 As above in patent oxf.

Style No. 1852 As above in Russia calf.



SELZ RITE-O MODEL

Style No. B494 Royal Blue gun metal calf button oxford.

Style No. B493 Royal Blue gun metal calf blucher oxford.

Style No. B792 Royal Blue tan Russia calf button oxford.

Style No. B793 Royal Blue tan Russia calf blucher oxford.

Terrier model.

Style No. B753 Royal Blue patent oxf blucher oxford.



SELZ WAUKENPHAST MODEL

Style No. B496 Royal Blue gun metal calf blucher; half double sole.

Style No. B491 Royal Blue gun metal calf bl.; single sole.

Style No. B 187 Royal Blue tan Russia calf blucher; half double sole.

This is the shoe we specially recommend

AIRSHIPS FAST MONEY LOSERS

GERMAN AIRSHIP COMPANY LOSES HALF CAPITAL STOCK IN ONE YEAR

AN AERIAL WAR COSTLY

This is a Feature That is Receiving Attention From German Military Experts

By Associated Press
 Berlin, May 31.—About the quickest possible way to lose money in Germany is to buy a Zeppelin, according to the annual report of the German Airship Company just made public. Exactly fifty per cent. of the \$750,000 invested by the company took wings with its three big airships in 1912. The loss of the Schwaben covers most of the big deficit; a backward spring and a rainy midsummer are held culpable for another large sum; the unwillingness of the public to travel by way of the clouds is blamed not at all, for 3000 passengers paid their way on the aircraft and, in addition, unnumbered

hundreds of army officers were carried gratis.

The report of the company's loss reads not unlike the resume of a lean year on the farm. April and May, banner months for sky pilots, brought little sunshine and much cold weather. Fickle winds blew about the sheds and for many days none of the big ships stirred from its aerial moorings. June and July were fair—and the Schwaben was destroyed. For forty days during the height of the best season factories worked day and night to replace her. When the Hansa was finally "launched" the best of the flying weather had passed. However, the Schwaben and the Hansa made 173 trips between them from April to December and the Victoria Louise, third and last of the air fleet, made thirty per cent. more trips than both of them combined, or 225 in all, before she was placed out of commission in November.

Some New Ideas.

The winds will be shorn of their terrors in the future, however, by revolving airships which can be so manipulated as to bring out a ship in the teeth of any air current of moderate velocity. The high military value of the Zeppelins, more than anything else, perhaps, is responsible for the innovation, as the army demands air vessels that may be used under all atmospheric conditions.

What the Zeppelins will cost in the event of a big war, rather than the benefits they will accomplish, is an item in the latest estimate of the cost of Germany's next war. Captain Henke, of the general staff has been studying the financial end of such a war, and has made public his deductions. With 3,000,000 men in the field, he estimates that the Fatherland would spend \$2,600,000,000 a year—more than twice the present national debt. This stupendous figure represents nearly 27 per cent. of the earning capacity of the entire nation on a peace footing, Captain Henke estimates.

This conclusion is reached by comparing the costs of the Franco-Prussian and Russo-Japanese wars. In the Franco-Prussian war if cost Germany \$1.43 a man a day to keep his forces in the field; Russia paid \$2.39 a man a day during the Manchurian campaign. Germany would spend as much as Russia, Captain Henke reckons, but would be able to afford it. The earnings of the German people, Captain Henke places at \$7,140,000,000. This is in times of peace. What they would be with 3,000,000 men taken from the workshops to the field he does not estimate.

Emigration from Hamburg and Bremen is heavier than it has been in years. During April more than 42,000 persons left for the United States from these two ports alone. This war

nearly double the number that left in April, 1912—seventy-six per cent more, to be exact. Not since the tidal wave of emigration in 1907 has the exodus been so great.

Two causes are assigned for the active emigration. First, political uncertainty and rumblings of war from the Balkans (echoed throughout Eastern Europe for months) have caused the less warlike to long for homes where peace appears to be more stable. The volume of emigration swelled from Russia and Austria, too, in the face of every discouragement the governments could place in the way of their subjects. Many persons were called to take up arms temporarily in both countries, and in Russia direct obstacles were placed in the path of would-be emigrants.

The second cause is the prevailing low storage rate to Canada. This is the outgrowth of a rate war among several steamship companies. The fare has been shaved to less than \$20, thus making it possible for anybody to go.

Fighting Tuberculosis

From Prussia come statistics to gladden the hearts of the forces engaged in world-wide battle with tuberculosis. Not only has the onward march of the white plague been checked in the section of the empire, but its ravages have even been lessened. The death rate there dropped from 10.19 per 10,000 in 1896 to 8.64 in 1912. Significant was the report that deaths in hospitals and institutions rose from 49 per cent

of the whole in 1896 to nearly 56 per cent in 1912. Germany is beginning to rid itself of its ancient horror of hospitals.

During the year ending January 1 last, the report of the Central Committee recites, there were 147 cantariums and hospitals throughout the empire for the treatment of adults suffering from pulmonary tuberculosis, and 27 such institutions where children were treated. Within their walls where 16,778 beds for tuberculosis sufferers. In addition there were many other institutions where other forms of the disease were treated.

Charges for Courtesy

Here was created the other day another way of making a living. A well-dressed young man, keen of wit but short of funds and wholly without work, took his seat dejectedly in a street car. Bye and bye a woman, laden with many bundles, got on and swung to a stop in front of him. The young man, not-up and gave her his seat. Also, he had an idea.

He bought a monthly ticket that entitles him to ride continuously on certain lines. Selecting stout women, package-laden women and girls, scholars with arms full of books and other persons who would rather sit than stand, he made them his customers. To these, as the car filled, he surrendered his seat, plainly stating that he expected a tip in return. He generally got it; and has been able, he says, to make a fair living.

My motto: Miller sells it for less.

BISHOP LYNCH TO VISIT THIS CITY

WILL CONFIRM CLASS OF EIGHTY-FIVE HERE NEXT SUNDAY

TO SPEAK TO GRADUATES

Right Reverend J. P. Lynch, Bishop of Dallas, will make his first official visit to the Wichita Falls parish next Sunday, June 8, at which time he will confirm a class numbering eighty-five. A large number of clergy men from neighboring towns will be in attendance.

A procession of the entire parish, and in which all societies will participate, will march from the Academy to the church. Bishop Lynch will deliver an address later in the day.

While here Bishop Lynch will be entertained at the rectory. A six o'clock dinner will be served at the Academy on Sunday at which Bishop Lynch will be the guest of honor. A reception will be tendered by the ladies of the parish in the parlors of

the Academy, following the dinner on Monday, June 9. Bishop Lynch will deliver the commencement address to the graduates.

MANY BINDERS WILL BE IN OPERATION SUNDAY

In many wheat and oat fields in this section, the state laws governing Sabbath observance will be temporarily suspended by the farmers and the harvest will proceed. With the present warm, dry weather grain is ripening fast, and to avoid the possibility of loss some of the farmers have decided to leave the church pew vacant for one day and go to church twice in one day at some later date to make up for it.

Not only is the present weather very favorable for harvest, but the possibility of delay and loss from wet weather, should rain come, will make an added incentive to the wheat grower to utilize every bit of time and energy right now.

Important Notice

My representative will call on you within the next few days to explain my extraordinary offer. Take advantage of this while you can, as I can do this only once. Respectfully,
 J. HADDIX, Photographer
 12 61c 710 1-2 Ohio Aven.

ICE! This weather suggests its use. Have you begun having the wagon stop at your home? Phone now. Let us send our delivery department to you.

Our wagon men have instructions to please you. There is quality in our ice--frozen just right; clear as a crystal; absolutely pure. The sanitary conditions of our plant can't be improved upon. Your health is looked after in our product.

PEOPLE'S ICE CO. Phones 81 and 909

ACADEMY TERM WILL SOON CLOSE

COMMENCEMENT EXERCISES ON MONDAY, JUNE 9 AT THE MAJESTIC

ALUMNAE PLAN REUNION

Class Day Exercises Will Also Be Held--Bishop Lynch of Dallas Coming

Commencement exercises of the Academy of Mary Immaculate will be held at the Majestic Theatre on Monday, June 9.

of the prominent members present. Miss Jennie Huggins is president of the Alumnae Association.

Moon Moths--Pianos Misses L. Gilbert, R. Grogan, R. Watson, D. Robinson; organ, Miss I. Cramer; first violins Miss B. Jackson and Master C. Emmert; second violins Miss C. Carter and Master C. Kerwin.

DISTRICT COURT TO OPEN MONDAY

HEAVY APPEARANCE DOCKET OF CIVIL CASES IS AWAITING ATTENTION

IN MIDST OF HARVESTING

Term At Inconvenient Time For Farmers--Grand Jury To Convene Tomorrow

With a heavy appearance docket of civil cases and a large number of misdemeanor and minor felony cases awaiting investigation by the grand jury the June term of the Wichita county district court will open Monday morning in the midst of a very busy time for farmers and others summoned for jurors and witnesses.

WHY live through another hot summer without a good Modern Fireless Cooker--The Perfection Fireless Cooker meets all requirements. Demonstration at our store beginning Monday, June 9th. Ending Thursday, June 12th



Ten Reasons

Why I think the Perfection Fireless Cooker the best.

- 1. It saves fuel.
2. It saves time.
3. It saves space.
4. It saves labor.
5. It saves money.
6. It saves health.
7. It saves nerves.
8. It saves peace.
9. It saves happiness.
10. It saves everything.

Wichita Hardware Co. 804-806 Ohio

CANTELOPES WILL NOT BE PLENTIFUL THIS YEAR

Wichita County's Crop Will Be Far Below That of 1912, According To Reports

Wichita county's cotton crop will be much smaller than last year, M. L. Thompson who is considered an authority on the local cantelope situation, told a Times reporter yesterday.

CITY NATIONAL TEAM WINS FROM POSTOFFICE

The City National Bank team defeated the postoffice nine, 30 to 12, at the City Park Friday afternoon. The feature of the game was the number of runs, hits and errors made by each side.

FAILS TO RECOVER VALUE OF SEIZED KEG OF BEER

(Frederick Enterprise)

The case of Peter Meinger against the American Express Company, for \$4.95, the value of a keg of beer, was decided Saturday by Justice J. L. Davis in favor of the defendant.

MULE POPULATION OF THIS COUNTY IS 3,400

The Texas mule is gaining in prominence every day in the year, and the raising of these animals is becoming an important industry in Wichita county. It is estimated that 29 per cent of the mules that are being used in the building of the Papalia canal were bred in Texas, and in selecting material for his cavalry Uncle Sam favors the Texas mule.

Grandfield Merchant Stabbed

George Schiek, a Grandfield hardware merchant, was stabbed below the heart Saturday and S. B. Dunbar, a farmer residing in the Loveland community, is under arrest charged with the commission of the deed. The wound is a serious one, but is not considered dangerous.

UNUSUAL VALUES

In blue and gray serge for medium wear, for

\$15

UNION MADE

Drop in and let us show you that we are giving you for \$15 what you will go elsewhere and pay more money for

Stimson & Anderson

800 Ohio--Phone 1010

GO OUT TODAY AND LOOK OVER Highland Addition

You will find it the best real estate proposition on the market, and with its natural advantages and many improvements it offers an exceptional opportunity for increase in values, for both the home builder and the speculator.

The prices now are \$200 to \$350

The demand, however, is bound to make the prices higher by fall. Buy now and get all the margin.

J. B. STOKES, Owner

501 Kemp & Kell Building Phone No. 110

STREET CAR ACCIDENT VICTIM NOT BADLY HURT

Dr. A. I. Layne who is attending W. Mooney who was injured in a street car accident Friday, reports that Mooney is suffering from a badly wrenched back and some bruises, but says that Mr. Mooney is not seriously injured.

GREENVILLE--THE RUNNING OF THE FIRST CAR FROM WESTMINSTER TO ANNA OVER THE ANNA-BLUE RIDGE INTERURBAN WAS CELEBRATED WITH A BIG BARBECUE AT WESTMINSTER, WHICH WAS ATTENDED BY MANY PEOPLE FROM GREENVILLE. THE LINE IS EXPECTED TO REACH THIS PLACE BY THE EARLY PART OF FALL.

Greenville--The running of the first car from Westminster to Anna over the Anna-Blue Ridge Interurban was celebrated with a big barbecue at Westminster, which was attended by many people from Greenville. The line is expected to reach this place by the early part of fall.

THE BIG WHITE STORE

We offer this week \$15.00 Box Spring Mattress for only \$7.50

Don't overlook our cost sale on Mantels and Grates

The Store With the Goods

Freear Furniture Co.

The Store With the Prices

Packing and Crating

We wish to impress the public with the fact that we make a specialty of packing and crating Furniture, Fixtures, China, Glass Ware, Cut Glass, Fine Paintings, Piano Boxes and anything that is to be packed is not new to us. "We know our business" and we never take a packing job that we do not guarantee to prepare goods in first-class shipping order.

When you contemplate shipping, call us to send to you "free" instruction on preparing goods for shipping even if we do not do your packing. We have secured the best obtainable packers, and ask you to let us give you a figure on your packing.

Telephones 444 and 14

McFall Transfer & Storage Company

J. M. McFALL, Prop.

"We Sell Goods and Packing Boxes"

J. A. KAVANAGH

PLUMBING, GAS FITTING

Steam and Hot Water Heating

2008 Ohio Avenue

Phone 1142

Wades' Electric Studio, open day and night, portrait work of all kinds and amateur kodak finishing.

Corner Tenth and Scott

Try a TIMES Want Ad

AT THE CHURCHES

First M. E. Church, South (Corner Tenth and Lamar)

Preaching at 11 a. m.; by Dr. J. L. McKee and at 8:30 p. m., by Dr. T. H. Morris, the presiding elder of the district. Dr. Morris will hold the third quarterly conference for the current year, on Monday evening at 8:30. All the official members are urged to be on time. The conference will be open to the public. The Sunday school opens as usual at 9:30 a. m., and the Epworth League at 7:30 p. m. The union prayer-meeting of the Methodists and Presbyterians will be held on Wednesday evening at 8:30. At the opening of the service Sunday morning, an opportunity will be given persons who desire to unite with either the Methodist or the Presbyterian church. At the same time all persons having children to baptize will present them. The Sacrament of the Lord's Supper will be celebrated at the close of the morning sermon.

J. W. HILL, Pastor.

Lutheran Trinity Church (Corner Bluff and Eleventh)

Our new church building will be dedicated to the service of the Triune God on this Sunday. Special services to be held at 10 a. m., 3 p. m., and 8 p. m. Arrangements for the occasion. The congregation will assemble at the entrance of the new church at 10 a. m., and the local pastor shall dedicate the house of God according to the ritual of the Lutheran church. Rev. Dr. O. W. Hartmann of San Antonio will preach the dedicatory sermon. In the afternoon Dr. Hartmann will deliver a sermon on "Lutheran Education," and the pastor of the congregation will speak on "The Confessional Standard, Life and Work of a True Lutheran Congregation." The evening service shall be conducted in the English language. Dr. Hartmann will preach the sermon. The local pastor shall lecture on "The History of Lutheranism in America." The public is cordially invited to attend these services, especially the evening service.

F. A. BRACHER, Pastor.

First Baptist Church (Corner Tenth and Austin)

Preaching by the pastor at 11 a. m. and 8 p. m. Sunday school at 9:30 a. m. W. L. Robertson, superintendent, Y. P. U. division (a) at 7. Welch Morgan, president. B. Y. P. U. division (b) at 7. Miss Thora Fire president. Volunteers at 6:30. Mrs. Mary Brown, leader. Strangers and friends are cordially invited to worship with us.

JOSEPH P. BODNE, Pastor.

The Free Methodist Church (Corner 5th and Adams)

Sunday school at 9:45 a. m. Preaching at 11 a. m. and 7:45 p. m. Everybody cordially invited to come. The working people, the railroad men and their families are invited to come to these meetings and get blessed.

J. A. RAWLES, Pastor.

Central (Southern) Presbyterian (Corner Bluff and Eleventh) Morning Worship—Sunday school 9:30, preaching 10:00. Evening Worship—C. E. Society 7:00, preaching 8:00. Prayer-meeting Wednesday 8:00 p. m. We invite you to worship with us. Strangers will always find a welcome.

FRED L. McFADDEN, Pastor.

Lutheran Church (Mo. Synod) (Corner Eleventh and Holliday)

Sunday school (German and English classes at 9:00 a. m.) Bible class at 9:45 a. m. German morning worship at 10:30 a. m. English services at 8:00 p. m. Choir meeting at 2:00 p. m. Ladies Aid at 2:30 p. m. A cordial welcome extended to everyone to worship with us.

C. M. BEYER, Pastor.

First Presbyterian Church (Corner Tenth and Lamar)

First Presbyterian Church worships with the members of the M. E. Church, South, at Tenth and Lamar Services at 11 a. m., and 8:30 p. m. The public is cordially invited. Union prayer-meeting Wednesday at 8:30 p. m., conducted by Dr. Hill. Presbyterian Sunday school meets at 9:30 a. m., in the Y. M. C. A. building. The Ladies Aid Society will meet with Mrs. A. H. Carrigan Monday at 3 p. m.

J. L. McKEE, Minister.

First Church Evangelical Association (Corner Fifteenth and Broad)

Sunday school at 9:45 a. m. German preaching service at 11 a. m. Y. P. A. meeting at 7:30 p. m. English preaching services at 8:15 p. m. Prayer-meeting Thursday night at 8 o'clock. All are cordially invited to worship with us.

C. ERMER, Pastor.

Pentecostal Church of Nazarene (Corner Bluff and Eleventh)

Sunday school at 9:30. Preaching at 11 a. m., and 8 p. m. Located at Fifth and Bluff. Everybody invited to come.

REV. B. I. GOLITELY.

Christian Science (Corner Bluff and Eleventh)

Services will be held in room 9, over old postoffice building, as follows: Lesson sermon at 11 a. m., subject, "Ancient and Modern Necromancy, alias Mesmerism and Hypnotism, Denounced." Sunday school at 9:45 a. m. Testimonies, readings, Wednesday at 7:35 p. m. The reading room at the same address is open daily except Sunday from 2 to 5 p. m. Here authorized literature on Christian Science may be read or purchased. The public is cordially invited to attend the services and visit the reading room.

First Methodist Episcopal Church (Corner Seventh and Lamar)

Sunday school at 9:45. Morning worship at 11 o'clock. Epworth League at 7. Evening worship at 8 o'clock. Ladies Aid Society Monday afternoon in church parlor. Prayer-meeting Wednesday night at 8 o'clock. Mission church prayer-meeting Thursday night in the chapel. Choir practice Saturday night.

JOSEPH S. COE, Pastor.

DRUNK IS DRUNK, NO MATTER HOW

CHLOROFORM JAGS \$10 EACH IN CITY COURT, SAME AS OTHERS.

MAN IS ORDERED STRIPPED

Is Examined in Court For Numerous Injuries Which Doctors Fail To Locate

Doubtless there is a distinction between intoxication from cocaine and chloroform and spirits ferment, but Judge Rye in the city court did not recognize a difference so far as the legal aspect of a case was concerned. Officer Humphries had arrested a man whom he found sitting on the sidewalk in the downtown district. The man was in the act of putting a "shot" with a needle into his leg. The man was placed in jail and a charge of intoxication filed against him. When he was brought before Judge Rye in the city court, he admitted that he might have appeared a little drowsy and might have staggered a little but declared that this was an effect of the injection and was not caused by liquor. Judge Rye overruled this argument and the defendant then set up the plea that his hips were crushed, his ankles broken, that he was ruptured and paralyzed and suffering from other ailments which made the use of narcotics a necessity. Judge Rye called in City Health Officer Moore who caused the man to be stripped and a careful examination made of his physical condition in which he failed to find the injuries and physical disabilities complained of. He was given ten days with the street gang. When arrested the man had in his possession a full hypodermic needle outfit and a bottle of liquid.

Nothing Better

If you have indigestion, no matter how bad, the Robatsch mineral water will cure you. Remember when we deliver water to you, you get a clean vessel that has been scalded, and thoroughly cleaned. We use all precaution against the spread of noxious diseases. Our cork seal is to prevent others from slobbering or drinking out of the vessel before it has been delivered to you. Remember we have a good clean trade and we are improving our plant to take care of our customers. If you want the best for health we have it. G. J. Robatsch, Prop. Phone 1901. Ring 24.



Why Blue Serge?

Blue serge has such a swell bred air that men fall back on it with a sense of relief when not quite sure of the degree of dress the occasion calls for. Two and three button sack, suits, alpaca and serged lined

\$15.00, \$20.00

\$22.50, \$25.00



Clothiers and Furnishers for Young Men and Who Stay Young

Ohio Ave., Corner Eighth

Take No Ones Say So Look for Yourself

Compare qualities, compare varieties, compare methods, compare service, compare prices. This business isn't growing by chance; the goods and prices are doing it. Every hour of every business day further strengthens this store's claim to the title of being pre-eminently the house of bargains. We know your patronage hangs by a single thread; that thread is your satisfaction. We treat you honestly, give you good service and low prices. That thread becomes a cable. A wise plan for your economy is to tie to us. We are frank to confess we want your business and want it badly. We are not independent here, for without your trade we would be out of business. Note a few prices below

We Make a Special Effort to Care for Wants of Children in Every Department....

It is our pride that we use the same painstaking effort in purchasing for our juvenile department that is required in other sections of our store. In buying goods for children we constantly keep in mind the necessity of combining service in high degree with satisfactory appearance, and in this we have had the hearty assistance of our manufacturers. This policy has made our store a popular place to buy children's goods.

Umbrella Insurance is Part of Our Business

We buy our stock with such extreme care as to every detail that our patrons can rely on every umbrella sold by this store. Look at this price **\$1 50**
For a first class, serviceable umbrella, well covered, with fine handle for either ladies or gentlemen. Look over our stock.

Fancy Ribbons, Big Bargains

Prints, greens, blue and reds in a great variety of shades and tints. There are heliotropes, old roses, cerises, and other of the ultra-modish colors so sought by the modistes of the great fashion centers. From an extensive showing can be secured the ribbons which are used with such fascinating effect on light gowns and lingerie. We have many widths, weaves and designs, priced at the yard **29c**

Wash Neckties

The products of the most artistic workmen. Our ties come from makers who control exclusive designs. We have a fine seasonal display of four-in-hands, the modish bows, string ties and made-up ties for those who prefer that style. All are priced at figures which will move them **25c**

Our Great Leader in Shirts 50 Cents

Made from fine madras and percales. Attached cuffs. Modish patterns, usually found only in much higher priced garments. Carefully made in every respect, and particularly stylish for those who want a dressy garment full of service. We have a splendid line of shirts at various prices, and we quote this item as evidence of our ability to sell for less.

Henrietta Crosman the celebrated actress

WRITES:
La Resista Corset Co.,
21 West 34th Street, New York City

Gentlemen:
You are to be complimented on your corset. For many years I have had my corset made at very fancy prices, but did not get the satisfaction and comfort I expected—one trial of the La Resista opened my eyes. Today I enjoy perfect comfort and my gowns show to better advantage.

Yours truly,
(Signed) HENRIETTA CROSMAN

**La Resista
CORSETS**

are the ideal corsets because they insure perfect freedom of action and graceful, unrestricted movement. **Spirabone Stays**—the most ingenious corset invention ever known—are used only in La Resista Corsets. Beware of imitations. *Styles for every Figure.*



Extraordinary Values in Men's Balgriggan Underwear Per Garment 25c

The biggest value offered anywhere. Made of selected combed cotton, fine pearl buttons. Best workmanship throughout, good medium weight. Drawers have suspender loops outside band, honestly made in every respect. Garments cream color.

Fine Bleached Half Linen Table Napkins, Dozen \$1.00

From the best manufacturer in the country, selected for texture and service. Can be depended on as the highest quality that can be had anywhere for the money. Every detail of the making has been arranged with that end in view. A piece of goods that will appeal to the critical buyer and grace any table. A pretty selection of patterns. Average size 22x22.

Perfection in Glove Making

Is exemplified in our glove section, which displays a fascinating array of the various lengths and designs in the modish colors which now are in vogue in the largest fashion centers in the world. They come in dressed and undressed kids, and all other popular glove materials. None but the best and most reliable makers are represented in our glove stock, despite the fact that we could increase our profits by buying untried and unknown brands. Fine kid, 2-button clasp .. **\$1 00**

Women's White Waists

Sheer lawns and muslins from the best looms. We have a fine stock direct from the makers, all modish styles, trimmed with lace embroidery, with sleeves in fashionable elbow and full length. Our stock will appeal to the most fastidious tastes, and at the same time embodies the most practical styles and fabrics. An illustration of the values we are offering is found in a pretty white sheer lawn waist, with embroidery, lace and fine tucks, at each **98c**

Visit our store and you will find a line of seasonable styles that will gratify you. All our goods can be depended on for exclusive designs, snappy and stylish. It's a pleasure to show you our goods. The best in all this season's offerings.

Three Unusual Values for Monday By a fortunate purchase and by having the cash we bought three great bargains--

Ladies' Hand Bags and Music Rolls—Almost any kind you can think of in purses, hand bags and music rolls, priced at about half their value. 49c to \$2.98. See them.

About 100 dresses in fine white lawns, mulls, voiles and colored tissues. Values up to \$7.50. Monday at \$3.98

About 50 fine dresses bought special, only fine, high-class dresses. These are wonders. Priced Monday at \$6.98

The Busy
Corner Seventh
and Indiana



Jones Kennedy Co
WICHITA FALLS LIVEST STORE

The Busy
Corner Seventh
and Indiana

Financial Statement Wichita Falls, Texas, Year April 1, 1912-March 31, 1913

OBJECTS TO BE REVERED

Arlington National Cemetery Contains Many Things of Interest Unseen by Casual Visitor.

There are many objects of reverent interest in Arlington national cemetery that the casual visitor sees. Among these are the graves of George Washington Parke Custis and his wife, born Mary Lee Fitzhugh. They lie in a thick oak grove spot, densely shaded in summer, by the edge of a shadowy ravine, in the midst of the private section, and southwest of the tomb of the unknown. Few persons ever stray that way. The graves are marked by two white marble monuments, the taller of which is inscribed:

George Washington Parke Custis, Born April 30, 1781, Died October 10, 1857. Blessed Are the Merciful, for They Shall Obtain Mercy. The shorter monument is inscribed: Mary L. Custis, Born April 22, 1783, Died April 22, 1854. Blessed Are the Pure in Heart, for They Shall See God.

At the base of the tombs grow lilies and myrtle, culled from the gardens of old Arlington, and, no doubt, planted at these graves by Mary Ann Randolph Custis, a daughter of Mr. and Mrs. Custis, and the wife of Gen. Robert E. Lee. The man whose bones rest under the taller monument was the builder of Arlington mansion. His father was John Parke Custis, son of Daniel Parke Custis of White House, Va., and his mother was Eleanor Calvert of Mount Airy, Prince Georges county, Md. His paternal grandmother was Mrs. George Washington of Mount Vernon, and he was the adopted son of George Washington.

Soon after the marriage of John Parke Custis and Nellis Calvert, Mr. Custis bought from Gerald Alexander a tract of land opposite Georgetown. The only house on the property was one owned by the Alexander family, and in which it is believed Gerald Alexander lived. Its site is covered by the experiment gardens of the department of agriculture, and a few bricks found in the site were put in the wall of one of the government buildings in the experiment grounds.

NOT CROWDED WITH PEOPLE

One Corner in Washington That is Piled Up With Appurtenances of Civilization.

The northeast corner of First and B streets northeast, opposite the southeast angle of the senate office building, is a busy one. It is not that so many cars or that so many persons pass that way, but standing there through the long day, and the long night, is a crowd of the appurtenances of civilization. And close together they stand near the north curb. In the parking there grows a small tree dressed in a slatted tree box. Close in under its branches is a big, gaping, open-mouthed box of sheet metal painted brilliant red and in tall white letters labeled "Waste Paper." Close by this is a green painted letterbox, not clamped to a lamppost, but slumped to one of those short letter-box posts which one may see at intervals around the city. Close to the letterbox is a big cavernous, looking metal box. It, too, is a mail box, but its special duty is to receive and to give up to the postman, papers and parcels that will not pass the mouth of the letter box. Close by this group of utilities is a fire hydrant.

Standing at the corner was an old Washingtonian, who said: "The authorities don't seem to have quite finished up this corner. They might have put up in connection with these things, a sort of keep them company, a lamppost with a red light and a fire alarm box, a police telephone and a patrol box and a drinking fountain. While they were at it they might also have put in an electric signal switch over and a weather bureau kiosk."

Simplified "Spelling" Debate.

Can it be possible that there is anything in the advocacy of spelling "reform" that is detrimental to the logical faculty and the sense of humor? Here is W. W. Skeat, who not only asks me whether I think that Tennyson would have objected to "simplified spelling," but solemnly challenges me to "produce my evidence." It may be that I shall best convey to Mr. Skeat an idea of what he must really forgive my calling the absurdity of his challenge by asking him, by way of an "Irish" reply, whether he thinks that Beethoven would have objected to "ragtime," and by requesting him to produce his evidence for his opinion on that point. Happily for the author of "In Memoriam," he lived and died before any "Bossett" had been called into existence for the purpose of defacing the orthography of his mother tongue, and if Mr. Skeat chooses to think that he would have referred to spell wild "wield," sky "scie," and so forth, my only "evidence" to the contrary is the simple fact that he did not do so.—The Book-eller.

Willing to Please.

"I want some oysters." "Very well, madame." "Very fresh." "Oh, yes, madame." "Not too large." "Yes, madame." "Nor too little." "All right." "Above all, not fat." The Dealer (getting impatient)—I shall attend to it, but you have forgotten to say, madame, whether you wish them with or without pearls.—Le Rire, Paris.

Wichita Falls, Texas, May 21, 1913. The Honorable Mayor and Board of Councilmen of the City of Wichita Falls, Texas, Gentlemen:— Pursuant to the instructions of your Finance Committee, composed of Messrs. M. J. Gardner, J. F. Reed and J. T. Young, I have made a complete audit of the financial affairs of your city for a period beginning April 1, 1912, and ending March 31, 1913, as evidenced by all records, receipts, warrants and other data on file or otherwise obtainable. Before taking up the cash receipts and disbursements of the various funds I beg to state that I found it necessary to make numerous changes in the various funds owing to the fact that some receipts had been erroneously credited and numbers of warrants incorrectly charged to the several funds. I beg to file herewith a statement of the cross charges and credits necessary to correct the fund accounts now shown on your Treasurer's books so that same will be correct as of April 1, 1913, and as they appear in my report. I desire to call your especial attention to the matter of your various interest and sinking funds. Heretofore your books have shown only one general account for this purpose, while you have outstanding eleven bond issues, exclusive of the last one for \$22,000, which was uncollected April 1, 1913, for each of which there should be a separate account. To the end that this, the most important of all city accounts, may be correctly and legally handled in the future, I have separated the interest and sinking fund as now shown on your books into individual funds for each bond issue, allotting to each its pro rata part of the taxes collected in accord with the assessments made for this purpose and charging each with the expenditures made for it. Included in my report you will find a statement of the basis on which this distribution is made and if these accounts are properly kept in the future you will be able to make satisfactory reports to your state department relative to same. I would advise that your City Treasurer be instructed to enter these corrected interest and sinking funds upon his books just as though no such fund had ever been carried thereon and eliminate the old account. I file herewith a statement showing the necessary entries to make for this purpose. In making the above distribution I charged to those funds whose cash balances were of sufficient size such purchases of city bonds as have been made by the General Interest and Sinking Fund. With reference to this I wish to say that a careful investigation of the law, I think, convinces you that under no circumstances are you permitted to use money belonging to any interest and sinking fund for any purpose other than paying the interest on its own bonds or in redeeming same, except that you may invest its surplus in good securities which will mature not later than its own bonds, which condition does not now exist in the bonds held by your several interest and sinking funds. The manner of accounting now used by your City Treasurer does not permit you to know the condition of your finances other than is shown by his monthly reports, and in order that you may have a record which will enable you to ascertain any day the condition of any one or all of your various funds I suggest the installation of a Cash Book similar to the one now used by the County Treasurer, sample sheets of which are herewith attached. All monies received by the city during the year covered by the audit have been fully accounted for with the exception of \$2.00 pound fees and \$25.00 fines collected, which amounts are not shown in my report and were, through error, unreported by the receivers of the same, who will, however, file with your Treasurer's receipts covering these amounts. I now beg to file the following as a true and correct statement of all receipts and disbursements by the City of Wichita Falls, Texas, for the period beginning April 2, 1912, and ending March 31, 1913. Respectfully submitted, A. E. MYLES, Auditor.

Table with columns: Receipts, Disbursements, Balance on hand April 2, 1912. Includes items like Chemical tank sold, Engine, use of, Fines collected, etc.

Table with columns: Receipts, Disbursements, Balance on hand April 2, 1912. Includes items like Sanitary work, Sewer rents collected, Sundry (Dr. Reed), etc.

Table with columns: Receipts, Disbursements, Balance on hand April 2, 1912. Includes items like Culvert paid for, Labor paid for, Lights sold, etc.

Table with columns: Receipts, Disbursements, Balance on hand April 2, 1912. Includes items like Painting at City Hall, Partition for police court room, etc.

Table with columns: Receipts, Disbursements, Balance on hand April 2, 1912. Includes items like Paving, Repairs, Erroneously charged to "Street", etc.

Table with columns: Year, Total, Refunding, City Hall, Sewer, Street Paving, St. Improve. Includes data for years 1904-1913.

Table with columns: Receipts, Disbursements, Balance on hand April 2, 1912. Includes items like Warrants issued prior to April 2, 1912, Advertising and printing, Auditing books, etc.

Table with columns: Receipts, Disbursements, Balance on hand April 2, 1912. Includes items like Overdraft April 2, 1912, Warrants prior to April 2, 1912, Extension of sewers, etc.

Table with columns: Receipts, Disbursements, Balance on hand April 2, 1912. Includes items like Warrants issued prior to April 2, 1912, Blocks for repairing street, Build and paint shed at barn, etc.

Table with columns: Receipts, Disbursements, Balance on hand April 2, 1912. Includes items like Painting at City Hall, Partition for police court room, Partition for collector's office, etc.

Table with columns: Receipts, Disbursements, Balance on hand April 2, 1912. Includes items like Paving, Repairs, Erroneously charged to "Street", etc.

Table with columns: Year, Total, Refunding, City Hall, Sewer, Street Paving, St. Improve. Includes data for years 1904-1913.

Table with columns: Receipts, Disbursements, Balance on hand April 2, 1912. Includes items like 1904 balance in Interest Fund, 1904 Ad valorem tax, pro rata, etc.

Table with columns: Receipts, Disbursements, Balance on hand April 2, 1912. Includes items like 1906 Ad valorem tax, 1907 Ad valorem tax, 1909 Ad valorem tax, etc.

Table with columns: Receipts, Disbursements, Balance on hand April 2, 1912. Includes items like 1908 Ad valorem tax, 1909 Ad valorem tax, 1910 Ad valorem tax, etc.

Table with columns: Receipts, Disbursements, Balance on hand April 2, 1912. Includes items like 1909 Ad valorem taxes, 1910 Ad valorem taxes, 1911 Ad valorem taxes, etc.

Table with columns: Receipts, Disbursements, Balance on hand April 2, 1912. Includes items like 1909 Ad valorem taxes, 1910 Ad valorem taxes, 1911 Ad valorem taxes, etc.

Table with columns: Receipts, Disbursements, Balance on hand April 2, 1912. Includes items like 1911 Ad valorem taxes, 1912 Ad valorem taxes, 1913 Ad valorem taxes, etc.

Table with columns: Receipts, Disbursements, Balance on hand April 2, 1912. Includes items like 1904 balance in Interest Fund, 1904 Ad valorem tax, pro rata, etc.

Table with columns: Receipts, Disbursements, Balance on hand April 2, 1912. Includes items like 1906 Ad valorem tax, 1907 Ad valorem tax, 1909 Ad valorem tax, etc.

Table with columns: Receipts, Disbursements, Balance on hand April 2, 1912. Includes items like 1908 Ad valorem tax, 1909 Ad valorem tax, 1910 Ad valorem tax, etc.

Table with columns: Receipts, Disbursements, Balance on hand April 2, 1912. Includes items like 1909 Ad valorem taxes, 1910 Ad valorem taxes, 1911 Ad valorem taxes, etc.

Table with columns: Receipts, Disbursements, Balance on hand April 2, 1912. Includes items like 1909 Ad valorem taxes, 1910 Ad valorem taxes, 1911 Ad valorem taxes, etc.

Table with columns: Receipts, Disbursements, Balance on hand April 2, 1912. Includes items like 1911 Ad valorem taxes, 1912 Ad valorem taxes, 1913 Ad valorem taxes, etc.

Table with columns: Receipts, Disbursements, Paving No. 2 - \$17,500. Includes items like 1911 Ad valorem taxes, 1912 Ad valorem taxes, and interest on three paving nos.

Table with columns: Receipts, Disbursements, Street Improvement - \$25,000. Includes items like 1912 Ad valorem taxes, 1913 Ad valorem taxes, and interest from paving no. 1.

Table with columns: DR., CR. RECAPITULATION. Summary of receipts and disbursements from various funds including General Fund, Street Improvement Fund, and Sewer Fund.

Table with columns: Name of Issue, Date of Issue, No. Bonds, Denom., Total Issue, Int. Rate, Annual Int. Summary of Bonded Indebtedness of Wichita Falls, Texas, Apr 1, 1913.

STATE OF TEXAS City of Wichita Falls J. W. W. Gardner, Cashier of the Wichita State Bank, do certify that on March 31, 1913, J. W. Walkup, City Treasurer, had a cash balance on our books of \$27,070.65.

Pagants and Parades To Feature Frisco Exposition

San Francisco, May 31 - A carefully planned program of spectacles and events to extend throughout the period of the Panama-Pacific International Exposition will be among the most interesting phases of the coming celebration.

Plans for Motor Boat Races From Chicago, Through the Drainage Canal to the Mississippi River and Thence Through the Panama Canal to the Golden Gate

Plans for motor boat races from Chicago, through the drainage canal to the Mississippi river and thence through the Panama canal to the Golden Gate are being consummated.

EMPIRE EXPRESS TO OPEN OFFICE

Officers Declare Railroad Has No Right Under Law to Make Exclusive Express Contract. R. D. Horth is here from Dallas to open an office for the Empire Express Company.

...Professional Cards...

Professional cards for various practitioners including Attorneys (Robert E. Huff, W. E. Fitzgerald), Physicians and Surgeons (Bernard Martin, DRS. COONS & BENNETT), Dentists (DR. W. H. Felder), Real Estate (E. B. Gorsline), Veterinarians (J. T. Traylor), Photographers (Haddix Studio), and Notaries Public (M. D. Walker).

CONTINUED USE OF POISON FOR GRASSHOPPERS.

Reports of considerable damage from grasshopper continue to be brought in by farmers and it is being realized that if the cotton and corn are to be saved from the ravages of the insects a determined fight must be made.

Still on Seventh Street

Anxious to sell you something good to eat King's Grocery 721 Seventh. Just two doors west of old place. Same Phone 261.

GROCERIES FOR LESS

- Month end special for this week only. 12 lb Bermuda onions .25c, Crate Bermuda onions .80c, 8 lb new potatoes .25c, Peck new potatoes .45c, Bushel new potatoes \$1.40, Old spuds, bushel only .85c, Green beans, per lb .10c, 8 lb Carrots for only .10c, White Swan syrup gal. .65c, 18 lb best navy beans \$1.00, 25 lb Mexican speckled beans for \$1.00, 14 lb fancy head rice \$1.00, 15c cans sweet potatoes 10c, 35c bottle lemon or vanilla extract .20c, 25c bottle strawberry jam for only .15c, 7 packages Sea foam Washing powder only .25c, 7 bars Silk or Clarlett soap for .25c, 7 bars Bob White soap .25c, 3 lb dry peaches .25c, 2 lb dry grapes .15c, Dry apricots lb .95c, 12 cans best pink salmon .85c, Hominy, dozen .25c, Good country butter, lb .25c, Oreo Margarine, lb .25c, Swift Premium Oleo .25c, 48 lb best bread flour \$1.35, 10 lb Swift Premium lard for only \$1.60, 16 lb lard .84c, 10 lb Compound lard \$1.00, 10 lb Cottofine .83c, 5 gallon cooking oil \$3.35.

I have just the cut of steak and pork you want. Roast that would please anybody.

I claim the distinction of having the most complete stock of groceries and meats in town. My motto is dry cash and pay less. No dry goods to get back at you on.

THREATENS TO FILE SUIT. Officers Declare Railroad Has No Right Under Law to Make Exclusive Express Contract.

One Suit Already Filed. It is contended that the Katy refused to take horses, safes and possibly other pieces of express in Dallas Friday for transportation to the town where the new company intends to open offices next Monday.

L. W. NEWTON. Telephone 902 - 616 9th.

CEMENT WORK. I. H. Roberts GENERAL CONTRACTOR. Walks, Curbing, Steps, Foundation Work, Floors, Foundations, Street Crossings.

Telephone 504.

Still on Seventh Street. Anxious to sell you something good to eat.

King's Grocery 721 Seventh. Just two doors west of old place. Same Phone 261.

Just two doors west of old place. Same Phone 261.

Same Phone 261.

Just two doors west of old place. Same Phone 261.

Same Phone 261.

Just two doors west of old place. Same Phone 261.

"Silent Servant" Kitchen Cabinets

We have just unloaded a car of them, and never have we been able to offer such values in Kitchen Cabinets as we are now showing. Every "Silent Servant" Cabinet is guaranteed, for they are built on honor down to the last item.

A Modern Kitchen Cabinet

Is more essential today in the up-to-date home than perhaps any other one piece of furniture. It is the most convenient, space-economizing, step saving article about the house.



\$27.50

Superior Features of the "Silent Servant"

All Oak Cases
Waterproof Finish
White Enamle Interior
Sliding Nickleoid Tops
Double Wire Racks
Glass Sugar Bin

Copper Trimmings
Metal Bread Box
Art Glass Doors
Glass Spice Set
Tilting Flour Bin
Best Workmanship



\$22.50

See our \$10.00 Cabinet—It's the best you ever saw for \$10.00.

NORTH TEXAS FURNITURE CO.

"The Store Dependable"

YOUR EYES

Cause you a great deal of trouble and if your glasses don't fit you, you have still more trouble.

We make it our business to make you see good and at the same time relieve your eye aches, headaches and that constant eye strain. We are specialists in fitting of glasses and we grind our own lenses saving time and money.

A. S.

FONVILLE

Manufacturing
Optician---706
Ohio Avenue

Phone 31

WICHITA FALLS GAS CO.

Office 210 Kemp & Kell Bldg.

THE NEW COMPANY

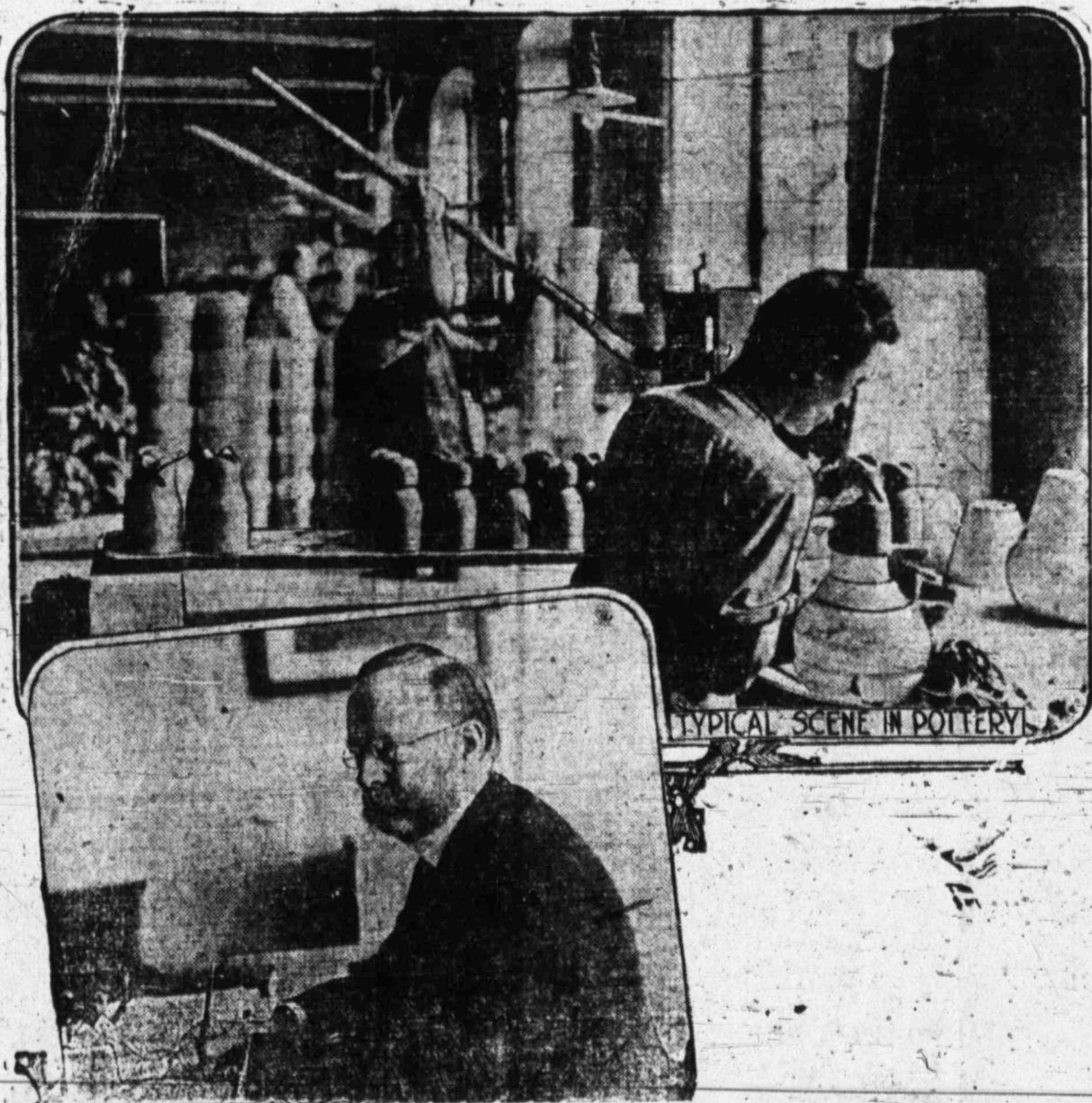
For Cheap Fuel, Good Service and Courteous Treatment

Phone 198

LITTEKEN BROS.

GENERAL CONTRACTORS
of all kinds of
Cement Work Phone 889
Corner Third and Seymour
Streets

Plan Federal Inquiry Into all Industries Where Wages are Cut Because of Proposed New Tariff



Washington, May 24.—The announcement by Secretary of Commerce William C. Redfield that his department would investigate all industries in which wages were cut following the passage of the Underwood tariff bill has caused a big stir among manufacturers throughout the country, judging from protests received here. The pottery industry will be the first to be investigated by Secretary Redfield because of the threatened reduction in wages due to the promised new tariff rates. Speaking before the National Association of Employing Lithographers, Mr. Redfield stated plainly that the investigation will be extended to all industries in which wages were cut. Mr. Redfield read from a circular sent out by the lithographers in which they said the reduction of tariff on their articles of manufacture would be followed by reduction of wages and idleness for many of their workmen. Mr. Redfield told them that such a course would be likely to lead to an investigation. Mr. Redfield said he would not regard the American manufacturer as worsted in competition with the world until the efficiency of American mills was raised to the highest possible standard. "If I grasp the public mind at all clearly," he said, "it holds unfavorable views toward reduction of wages except under the direct necessity. As, therefore, the reduction of wages has direct social effects and as the public has the right to efficiency in the factory service, the department has undertaken to find out whether the facts do or do not justify the threatened reduction. Observe that in saying the 'facts' one does not merely mean the facts as they are but also the facts as they ought to be. Operating with bad equipment, with unscientific treatment of material, with antiquated methods, in poor locations, with in-

sufficient capital and generally ineffective management, will not be esteemed a satisfactory reason for reducing wages." The government's investigation, the secretary assured his hearers, would not be carried on in a "trust busting" spirit, but rather with the idea of aiding any industry that had dropped into a rut. He said few persons realized how efficient was the investigation machinery of the department of commerce. He described ramifications of the bureau of standards, the bureau of foreign and domestic commerce, the bureau of corporations and the bureau of labor statistics. He added that the department of labor, which would work in harmony in any such investigation, also had many agencies to set in motion.

"LIKE MAGIC"

New Food Makes Wonderful Changes

When a man has suffered from dyspepsia so many years that he can't remember when he had a natural appetite, and then hits on a way out of trouble he may be excused for saying "it acts like magic."

When it is a simple, wholesome food instead of any one of a large number of so-called remedies in the form of drugs, he is more than ever likely to feel as though a sort of miracle has been performed.

A Chicago man, in the delight of restored digestion, puts it in this way:

Like magic, fittingly describes the manner in which Grape-Nuts relieved me of poor digestion, coated tongue and loss of appetite, of many years standing.

"I tried about every medicine that was recommended to me, without relief. Then I tried Grape-Nuts on the suggestion of a friend. By the time I had finished the fourth package, my stomach was all right and for the past two months, I have been eating with a relish, anything set before me. That is something I had been unable to do previously for years.

"I am stronger than ever and I consider the effects of Grape-Nuts on a weak stomach as something really wonderful. It builds up the entire body as well as the brain and nerves." Name given by the Postum Co., Battle Creek, Mich.

"There's a reason" and it is explained in the little book, "The Road to Wellville," in pkgs.

Ever read the above letter? A new one appears from time to time. They are genuine, true, and full of human interest.

(Advertisement)

Rosebud—Seven new substantial brick business houses are now in course of construction here and a great deal of improvement is noted in the residence district. The campaign for better sidewalks is resulting in several miles of new walk of cement construction being laid in many parts of town.

Everything in vegetables and meats for your Sunday dinner—Bachman & Sons, 906 1-2 Indian. Phone 910.

First National Bank

of Wichita Falls, Texas

UNITED STATES DEPOSITORY

Capital	\$100,000.00
Surplus	125,000.00
Undivided Profits	14,271.00

The man identified with a bank as a depositor is better prepared to seize business opportunities presented than one who has no banking credit established.

Please bear in mind we want your business.

Reasons for Saving

COURAGE—A Bank Account eliminates fear. Gives you peace of mind, confidence in yourself and courage. You can take a chance when legitimate investment opportunity knocks, having backing capital. The first step in the solution of the bread and butter problem is to get away from it—by means of a Bank Account gradually and patiently built up.

LOSS—Money in the Bank prevents loss through carelessness, pickpockets, fire or robbers.

We Buy Approved Real Estate Paper

First State Bank & Trust Co.