



### Keaton's confession

Entertainment, Page 4



### French cuisine

Business, Page 6



### New leader in Masters

Sports, Page 8

# Big Spring Herald Saturday

'The Crossroads of West Texas'

BIG SPRING (TEXAS) SATURDAY, APRIL 12, 1986

Price 25c

VOL. 58 NO. 316

10 PAGES 1 SECTION

Price 25c

## Spring Board

### How's that? IRS troubles

**Q.** Where can someone go to redress a wrong committed against him by the IRS?

**A.** There are several courses to pursue, said Marlene Gaysek, public affairs officer at the IRS Dallas headquarters. You can write to the IRS at 1100 Commerce, Dallas 75242, or call 1-800-424-1040. You can contact the problem resolution officer, who serves as a watchdog for the taxpayer and deals with taxpayer problems, at the same address, adding "mail code 1005" to the envelope, she said. You also are entitled to take your complaint to court. A lawyer or the problem resolution officer could advise you on that.

### Calendar Symphony

**TODAY**

- The Big Spring Symphony will perform "A Gershwin Evening" at 8 p.m. in the Municipal Auditorium. Tickets are \$7.50 for adults and \$4 for students and senior citizens. They are available at the Chamber of Commerce or the Municipal Theater box office.
- "On Golden Pond" will be presented at the Colorado City Playhouse at 8 p.m. Tickets are \$5 and may be reserved by calling 728-3491.
- Cleanup of the spring for which Big Spring was named will be from 8 a.m. to noon. Volunteers should meet at the spring in Comanche Trail Park.
- The Howard County Sheriff's Posse will sponsor the West Texas Barrel Racers meet and team roping at the Sheriff's Posse arena on Andrews Highway, starting at 11 a.m. Saturday and Sunday, and running all day. Spectators are welcome.
- An orientation for Humane Society volunteers will be held at 10 a.m. at the animal shelter on Midway Road, across from Cameo Homes.
- The Potton House will be open Saturday and Sunday from 1 to 4 p.m.

**SUNDAY**

- The Howard County Jaycees will have a garage sale to benefit Multiple Sclerosis at 2 p.m. at Players' parking lot.
- The Western Sportsman Gun Club will have a big bore pistol match at 1 p.m. nine miles west on Andrews Highway. The match is open to the public.
- The Stanton Parade of Homes and Historical Places will take place from 2 to 4 p.m. Tickets are \$2 and are available at the old convent in Stanton.

### Outside

#### Sunny

Skies today are sunny with a high in the mid 80s and southwest winds at 10 to 20 miles per hour. Tonight and Sunday, skies will be partly cloudy with a low tonight in the mid 50s, a high Sunday in the lower 80s and a slight chance of rain Sunday.

### Index

Business.....	6A
Comics.....	7A
Entertainment.....	4-5
Obituaries.....	2A
Sports.....	8A
Weather.....	2A

## State Hospital to hire staff

The Big Spring State Hospital plans to hire 44 additional direct-care workers to comply with staff-to-patient ratios ordered by federal court, Superintendent A.K. Smith said Friday.

The hospital has set targeted starting dates of May 1 and May 19,

he said. The staggered dates are necessary to accommodate required new training procedures.

Most of the new employees will come from the Big Spring area, said Kathy Viccinelli, hospital public information officer.

The additions will bring the

hospital's full-time positions to 799, improving services to patients, Smith said.

The hospital received \$182,000 in additional funds from the Texas Department of Mental Health and Mental Retardation to hire the new employees, he said. "Many months

ago an initial distribution of such funds was made by the department, and Big Spring was inadvertently short," he said. "We are deeply gratified that this has been corrected."

The staff increase comes after a similar increase last summer, in

which the hospital added 47 workers to its staff to comply with the court order. The increase also comes in the face of orders from Gov. Mark White for state agencies to trim 13 percent from their

HOSPITAL page 2A

## Suspect arrested in man's murder

By HANK MURPHY  
Staff Writer

A 23-year-old Big Spring man was arrested late Friday morning in connection with the Thursday afternoon shooting death of Disidora Canales Jr., 24, of 800 Willia St.

Ricky Ornelas of 508 N.E. 10th St. was apprehended by a patrol officer in the area of E. Sixth and State Street at 11:49 a.m., said Detective Bill King.

Ornelas has been charged with murder and was being held in city jail Friday afternoon, King said.

Canales was shot a number of

times in the chest with what police believe was a small-caliber handgun. King said no murder weapon has been recovered, and police still don't have a motive for the shooting.

However, both witnesses and police said Canales and a man were arguing outside a house at 408 S. Benton St. shortly before the killing, which occurred at about 4:30 p.m.

Witnesses reported that a young Hispanic man fled the scene on foot with a gun and wearing a white shirt that appeared to have been ripped apart.

## Signatories seek liquor referendum

As of Thursday, 1,771 valid petition signatures had been collected in an effort to call a city-wide referendum on the sale of liquor by the drink, said attorney Ben Bancroft.

The petitioners have until April 21 to obtain an additional 650 valid signatures still needed to meet the 2,421 names required by law.

The petition drive, the third effort in two years, is "a little further

along" than was the other at the same point last year, Bancroft said.

The last petition drive died at the office of County Tax Assessor-Collector Dorothy Moore, who last year ruled hundreds of signatures invalid because they did not conform to the signature on the signer's voter registration card.

Drive activists are addressing LIQUOR page 2A

## Shootout kills FBI agents, suspects

MIAMI (AP) — A blazing gun-battle erupted when the FBI closed in on heavily armed suspected bank robbers Friday, leaving two agents and two suspects dead, five agents wounded and battered cars and spent ammunition littering a busy suburban intersection.

The hail of bullets and shotgun

blasts went "on and on and on," said one witness in Kendall, an unincorporated area south of Miami that is home to more than 100,000 people.

"I thought it was a drug deal that went bad, because that's what everyone does down here," said SHOOTOUT page 2A



People from all parts of India que up before the Peoples Bureau of Libya (embassy) in New Delhi Thursday for recruitment as military volunteers for the Libyan army. A Libyan embassy spokesman said more than 6,000 people have signed up and given their moral support for the confrontation with the U.S. Khadafy was quoted as saying Friday that Libya was ready to attack southern Europe in response to a threat from the NATO.

## Libya ready for showdown

TRIPOLI, Libya (AP) — Col. Moammar Khadafy said Friday that Libya was ready to attack southern Europe in response to a threat from NATO, the official news agency JANA reported.

The dispatch did not specify what threat Khadafy referred to.

JANA quoted Khadafy as saying the North Atlantic Treaty Organization was threatening civilian targets in his North African country.

"Since the threat this time came from the whole of NATO, the whole of southern Europe is today included in the Libyan counterattack plan, without any discrimination," Khadafy was quoted as saying.

Khadafy has said he will strike NATO bases in Italy and Spain and other countries that provide support for the U.S. 6th Fleet if the United States attacks Libya.

Khadafy said Libya rejects "unjust and insolent military threats which do not scare it at all," according to JANA.

Earlier this week, Reagan administration sources said the president had embraced the notion of a military strike if it is proven Khadafy was involved in the bombings of a TWA jetliner and a West Berlin discotheque.

Four Americans were killed in the April 2 bombing of a TWA jetliner over Greece, and a U.S. Army sergeant and a Turkish

woman died in the April 5 discotheque bombing.

Sources in Washington have said two American aircraft carriers in the Mediterranean are awaiting Reagan's final decision on whether to attack.

NATO commander Bernard W. Rogers said Wednesday there was "indisputable evidence" Khadafy was behind the disco bombing, and other U.S. officials have said Khadafy is a suspect in the plane bombing.

In another dispatch, JANA said Libya had asked the Arab League to "inform the Arab nation that NATO, Israel and the

KHADAFY page 2A

## Mariah mixes work with fun

By SPENCER SANDOW  
Staff Writer

They were dressed as cowboys in 10-gallon hats and fringed western shirts, pioneer women in blue skirts with pink aprons and demure ruffled tops, and saloon girls with racy black satin gowns bedecked with sparkling magenta sequins.

They are members of Mariah color guard, composed of area high school and college students, who won seventh place last week in the national color guard finalist contest in Dayton, Ohio. Mariah has won first place in every competition it's been in until the nationals, said instructor Tracy Burch.

Being in the color guard is "a lot of work, but it's a lot of fun," said member Amy Cox, a junior at Big Spring High School.

Although the shows last only 4½ to 7 minutes, the group practices constantly, sometimes as many as 30 hours per week during camp, polishing its routine to perfection.

The performing season is from November to April, with camp during April, Burch said.

"You start to dream color guard," said member Connie Fritzier, a freshman at Howard College.

Members make time for practice from a busy high school or college schedule, but "school has to come first," Cox said, "no pass, no march."

But the work pays off in the end, members said — winning is fun.

Members learn the marching routine, put the equipment with it, then body movements, and finally it is honed down and refined. After each show, the group is judged and receives suggestions from the judge about how to further perfect the routine, Burch said.

Different themes are carried out in the performances in each. Last year's theme was classical, and previous years the group has performed to jazz and rock music.

This year's show is designed with

a Sesquicentennial theme. The "cowboys" work with rifles, the "saloon girls" with swing flags and the "pioneer women" with tall flags, Burch said. Music is from "The Cowboys" and "Silverado."

Next year's theme will be an expanded western motif, adding sabers, which are thin swords the dancers twirl, she said.

Most of the 22 members have about a year's experience with flags in high school bands, and the rest they learn as they go along, Burch said.

Mariah started as the Big Spring Color Guard at the high school in 1978 and became Mariah around 1981, affiliated with Howard College. Burch became Mariah instructor in 1981, after 10 years experience in drum and bugle guards around the nation. Now the color guard has 22 members from Snyder and Texas Tech as well as Big Spring High School and Howard College. Victor Mellinger is also an instructor.



Several Mariah members show the costumes they wore when they won seventh place in the national finals competition in Dayton, Ohio, recently. Pictured are, top from left, Amy Carroll, Joby Hinton, Deanna Spilman, Arnold Solis, Connie Fritzier, Junior Calvia, Kim Whitaker and Tim Carroll. Bottom from left are Rachel Tedesco, Trisha Murley, Robin Butler and Amy Cox.





# Entertainment

## Keaton admits he's a producer's pain

**By BOB THOMAS**  
Associated Press Writer  
LOS ANGELES (AP) — Actor Michael Keaton readily admits that he can sometimes be a pain on a movie set.

"I get excited and I express myself," he said. "That can cause problems, but that's a risk you have to take. You gotta look after yourself. After all, it's your face that's up there on the screen. You're the one who's going to take the knocks if the picture fails."

"I read about Dustin Hoffman being nuts or a pain on his movies. I can understand why he stands up for what he believes in, though I admit there are different ways of doing it."

On his first starring movie, "Mr. Mom," the story of a husband who stays home with the children while his wife (Teri Garr) pursues a career, Keaton gained a reputation for being assertive, and he doesn't deny that he had been a bit of a problem for producers Aaron Spelling and David Begelman.

"They were making one of those cute 1964 movies with the house and the picket fence, a slice of Americana," said the actor. "I hated what I was doing after the first four or five days, and I started speaking up. It was a fight, man, but it was the best thing I could have done."

He next filmed the gangster spoof, "Johnny Dangerously." "I should have been more assertive, but I decided to take a rest," he said in an interview. "Mr. Mom" was a box-office

smash, "Johnny Dangerously" bombed.

Keaton's latest movie is "Gung Ho," Paramount's timely comedy about the takeover of an American auto plant by a Japanese company. The director is Ron Howard, who launched Keaton's movie career with "Night Shift."

"Ron and I complement each other," Keaton said. "We're alike in some ways, not in others. But we're enough alike to be compatible. There's a lot of trust between us; Ron is secure enough that he is not threatened by what I say and do, as some directors are."

That doesn't mean that Keaton was a pussycat on "Gung Ho." Along with Howard and producer Tony Ganz, the actor argued for a Tokyo location to open the movie. Paramount finally agreed to the extra expense.

"It didn't cost much," said Keaton. "We shot it like a student film, with a small crew, grabbing shots, improvising scenes, me talking to passers-by on the street. It was important to the picture. With comedies you gotta get out of the box fast and down to first base like a shot. You can't let the audience sit there and say, 'OK, make me laugh.'"

Michael Keaton, a fast talker with a broad Irish face, thinning brown hair and darting eyes, seems to have been off and running since his childhood in a Pittsburgh suburb.

A born actor, he studied speech for two years at Kent State University in Ohio, arriv-

ing a year after the 1970 National Guard slaying of four students.

"Kent State was a very political place in those years, a real hotbed," he recalled. "I saw everybody speak on the campus, and if you had an eye for drama, you could find plenty. I was very active politically, but I also observed, studying all kinds of people."

He returned to Pittsburgh, where he drove a cab by day and acted in plays at night. When he moved to Los Angeles, he tended bar and parked cars and performed his own routines at the Comedy Store.

His first acting job came on "Maude," then he joined the 1977 sitcom, "All's Fair," starring Richard Crenna and Bernadette Peters. On "The Mary Tyler Moore Show," Keaton met his wife, actress Caroline McWilliams.

Keaton starred as a parole officer in a short-run series, "Report to Murphy," then won the "Night Shift" role as Billy Blaze, the hustler who turned a morgue into a call girl operation.

"I came along just at the time when the changeover from television to film actors was becoming possible," he said. "Tom Hanks and other guys followed me. Until that time, the studios believed that the only good comedy actors were in movies."

"Most sitcoms are stupid, and it's real difficult to be good in that form. But the good ones can be great."



Associated Press photo

Actor Michael Keaton, a self-admitted "problem for producers," finds himself enjoying his work in the new film "Gung Ho," about a Japanese firm that takes control of an auto plant. The movie is currently showing at Big Spring's Ritz Theater.

## Getaway

**MOVIES**

• The Cinema in College Park Shopping Center is showing "Crossroads" at 7:15 p.m. and 9:15 p.m. nightly with Saturday and Sunday matinee performances at 2 p.m.

Ralph Macchio stars as Eugene Martone, a gifted young guitarist, on the trail of a legendary blues song that he feels will propel him to stardom. Rated R.

The Cinema also is presenting "The Hitcher" starring C. Thomas Howell and Rutger Hauer at 7:10 p.m. and 9:10 p.m. nightly with Saturday and Sunday matinee performances at 2 p.m.

A young man on a lonely drive through Texas picks up a hitchhiker and is suddenly thrust into a nightmare world with a killer who chooses the young man to

thwart his murderous impulses. Rated R.

• The Ritz Theater on 401 Main is showing a film about cute, little critters who descend to this world from outer space and Ron Howard's semi-topical movie comedy about a U.S. automobile plant that shuts down.

The theater is presenting "Critters," at 1:15, 3:15, 5:15, 7:15 and 9:15 p.m.

The Ritz is also showing "Gung-Ho" at 1:10, 3:10, 5:10, 7:10 and 9:10.

"He-Man: Secret of the Sword" is the featured kiddie's show show at 10 a.m. Saturday.

**NIGHTCLUBS**

• Clark County Express, a country western band from Colfax, La., is scheduled to perform tonight and

Danny & Benny, a country western duo from Mississippi will perform Monday through Saturday from 9 p.m. to 2 a.m. at the Lamplighter Club in the Homestead Inn.

Admission is \$2 for non-members.

• The Larry Hamilton Band from Santa Fe, N.M. will play country and western tunes tonight at Players, 3202 E. Interstate 20.

The Heart of Texas Band is scheduled to perform Wednesday through Saturday next week. Performance times are 9 p.m. to 1:30 a.m. Admission is \$2 for non-members.

**CONCERTS**

St. Mary's Episcopal Church Guild will host jazz pianist Eric Barnes who will perform an evening of George Gershwin music at 8

p.m. tonight at the Municipal Auditorium.

Tickets will be available at the door at a cost of \$7.50 for adults and \$4 for students and senior citizens.

Everyone is invited to a reception following the performance at the Parish Hall of St. Mary's at the corner of 10th and Goliad.

**THEATRE**

The Cultural Affairs Council of the Big Spring Area Chamber of Commerce will present "The Oldest Living Graduate," a play written by Preston Jones that had a previous run on Broadway.

The one-night performance will begin at 8 p.m. APRIL 21 in the Municipal Auditorium with a special party afterwards for \$20-ticketholders. Refreshments will be available in addition to an

opportunity to meet famed director Paul Baker.

Tickets may be purchased by phone and charged to Visa or MasterCard. Discounts are available to students and senior citizens. Call 263-7641 for additional information.

## New books

The following are new acquisitions by the Howard County Library, located at Fourth and Scurry.

**NEW ADULT BOOKS**

AIDS In The Mind of America by Dennis Altman.

This analysis of how the AIDS epidemic is greatly altering our attitudes toward sex, disease, death, medicine and politics is the result of exhaustive research and countless interviews. Altman examines the reaction to AIDS: how mistakenly it has come to be seen as solely a gay "plague"; the often exploitive media coverage; the ambiguous response of the government and health-care industry; and the mobilization of the gay community. The ramifications are brought into focus, including the use of AIDS by such groups as the Moral Majority to attack homosexuality and promiscuity.

The Birth of a Father by Martin Greenberg, M.D.

The author, a trained psychiatrist, takes you behind the scenes as his baby is born and becomes a toddler. He opens his heart and reveals his thoughts and feelings as he experiences "the birth of a father." While filled with practical tips, the principal goal of the book is to help and encourage fathers to become engrossed with their babies. A special chapter is included for mothers to help the father "hook up" and enjoy this experience to the fullest.

Going For It! How To Succeed As An Entrepreneur by Victor Klam

Victor Klam is known to millions of television viewers as "the man who bought the company" in the Remington ads. Klam recites streetwise insights, practical suggestions and explains that entrepreneurs

are those who understand there is little difference between obstacles and opportunities. This is a how-to-do-it manual for those who want to improve their products and successfully market their ideas.

The Iowa Baseball Confederacy by W.P. Kinsella

Gideon Clarke is out to prove to the world that the world-champion Chicago Cubs traveled to Onamat, Iowa, in the summer of 1906 for an exhibition game against all-stars from the Iowa Baseball Confederacy, an amateur league. The game unexpectedly turned into a titanic battle of over two thousand innings, played mostly in the pouring rain. Gideon follows an old train roadbed, the Baseball spur, to find his game and then has to decide as the game slogs on, whether to remain or return to the present.

The Devil Went Down To Georgia by Charlie Daniels

Raised in a family of storytellers, Daniels' heritage provided him with material and experience to produce songs filled with hypnotic lyrics. In his first collection of short stories, this gift has been applied to his fiction. These stories about memorable characters are funny, wise and very entertaining.

Grania She-King of the Irish Seas by Morgan Llywelyn

A novel about real-life chieftan, Grace O. Malley, this is the story of a magnificent sixteenth-century heroine who rises as her clan's unofficial head to enter a lifelong struggle against the forces of Queen Elizabeth. The story of her life is the story of Ireland's fight for solidarity and survival — but it's also the story of Grania's (Gaelic for Grace) growing ability to love and be strong at the same time.

## Top 10 videocassettes

- By The Associated Press
- The following are the most popular video cassettes as they appear in next week's issue of Billboard magazine. Copyright 1986, Billboard Publications, Inc. Reprinted with permission.
- VIDEOCASSETTE SALES**
1. "Jane Fonda's New Workout" (Karl-Lorimar)
  2. "Return of the Jedi" (CBS-Fox)
  3. "Beverly Hills Cop" (Paramount)
  4. "Jane Fonda's Workout" (Karl-Lorimar)
  5. "Pinochio" (Disney)
  6. "Rambo: First Blood Part II" (Thorn-EMI)
  7. "Silverado" (RCA-Columbia)
  8. "The Goonies" (Warner)
  9. "The Best of John Belushi" (Warner)
  10. "Prime Time" (Karl-Lorimar)
- VIDEOCASSETTE RENTALS**
1. "Return of the Jedi" (CBS-Fox)
  2. "Prizzi's Honor" (Vestron)
  3. "Silverado" (RCA-Columbia)
  4. "Rambo: First Blood Part II" (Thorn-EMI)
  5. "Pee-Wee's Big Adventure" (Warner)
  6. "Mask" (MCA)
  7. "National Lampoon's European Vacation" (Warner)
  8. "The Goonies" (Warner)
  9. "St. Elmo's Fire" (RCA-Columbia)
  10. "Weird Science" (MCA)

### The New Ritz Theatre

—PG—

**"GUNG-HO"**  
MICHAEL KEATON  
7:10-9:10  
SAT. & SUN.  
1:10-3:10-5:10-7:10-9:10

**CRITTERS**  
7:15-9:15  
SAT. & SUN.  
1:15-3:15-5:15-7:15-9:15

401 MAIN      MOVIE HOTLINE  
ESCAPE TO THE RITZ!      265-HOWS

### SAVE ON ENERGY SUMMER AFTER SUMMER WITH AN ELITE AIR CONDITIONER.

Service ALL makes & models Full Line Sheet Metal Shop

Why suffer through another summer's high energy bills? The Trane Elite air conditioner delivers energy-saving super high-efficiency summer after summer. Call us today!

**Gartman Refrigeration**  
3206 E. FM 700  
Ph. 263-1902

**TRANE**  
30 million people take comfort in it.

### Try A New Recipe! Read Herald Recipe Exchange every Wednesday

**What do you do?**

- Yard work
- House painting
- Hauling
- Handyman
- Roofing
- Moving
- Carpentry
- Cleaning
- Alterations
- Repair work

Find customers through **WHO'S WHO FOR SERVICE**  
15 word minimum one month \$31.80  
Run in Window Shopper for \$66 extra and reach 8,800 more readers!

**CLASSified 263-7331**

**Big Spring Herald**

## ATTENTION ADVERTISERS

# The best shoppers are newspaper readers.

The Texas Poll research data confirm once again a basic fact of marketing life:

**Newspapers provide the most efficient means of reaching the best prospects in Texas.**

Daily and Sunday newspaper readership is strong. The majority of adults in Texas read a daily newspaper everyday of the week; two thirds read every Sunday. In terms of where Texans get most of their shopping information, newspaper leads mail by more than 2 to 1 and TV by almost 3 to 1.

**More good news**—readership is even stronger among upscale demographic groups. The highest income, occupation, and education groups are the strongest newspaper readership groups.

For more information on The Texas Poll findings or on the effective use of newspapers to communicate with your best prospects call the Advertising Director at this newspaper.

**CINEMA I**

**THE HITCHER**  
(R)  
C. THOMAS HOWELL  
RATGER HAUER

On a lonely highway in Texas a young man stops and picks up a hitchhiker and there his nightmare begins.

Ph. 263-1417

**CINEMA II**

**CROSSROADS**  
Ralph Macchio  
(R) 7:15-9:15

Crossroads, where young musicians go to sell their souls for blues, fame and fortune.

College Park Shopping Center  
Mon. is Bargain Nite

Bar

CYPRESS metal music tagrams, h lyrics about devil's band young souls. Christian r image, too: at cookie-an who seemed any kind of t In Southe heaven and up, a quart put a Christi promising h Stryper's delights you conservative sells records That Makes as One" and version of "The Republic." Stryper c bombs, flash amplified m crowds into Many reach Testament v singer Mich them. There's n band's ap Members s make-up an neck chain trademark striped Spai wears gives of a swarm Protester outside their what they se Christian w "We've go ing 'How through the Sweet, 24, band and ol The group's lead guitar

Ack

LOS ANGE facts, ma'an Dan Aykr laconic Sgt. edy film ve television sh "Dragnet" ten, with A writers, for Universal P will direct w

'Hit

By RI Harte-H "The Hit highway t Spielberg's terrifying m But be wa brutal film ty. It is a chi mance in su And just v go any furth C. Thoma Halsey, a nic from Chicag inside West chiker war rain. The gu but Jim is d needs comp cher a ride.

Arou

• The Cir Shopping "Crossroads p.m. nightl Sunday mati p.m. Ralph Ma Martone, a j on the trail song that he stardom. Ra The Ciner "The Hitchc Howell and p.m. and 9 Saturday an formance a A young r through Te chiker and a nightmar who choose thwart his Rated R. • The Rit is showing a critters who from oute Howard's se edy about a that shuts d The theat ters," at 1: 9:15 p.m. The Ritz i Ho" at 1:1 9:10. "He-Man is the featu at 10 a.m. S • Clark C



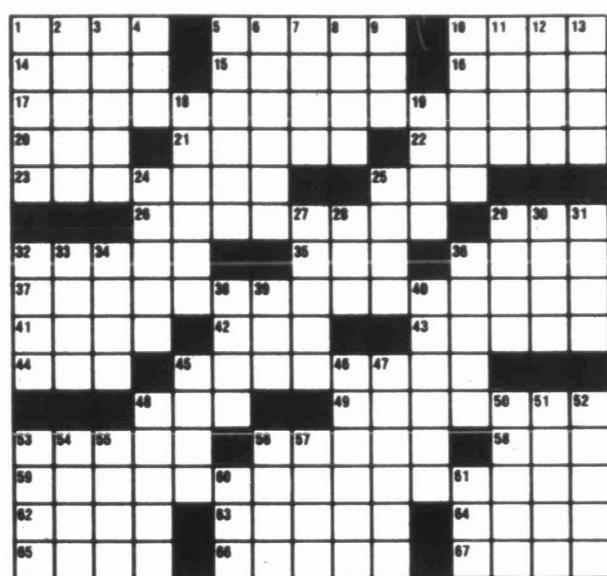


# COMICS Page

## THE Daily Crossword by Samuel K. Flegner

**ACROSS**  
 1 Run swiftly  
 5 Exceedingly  
 10 Computer input  
 14 — so (nevertheless)  
 15 Author Bret  
 16 — go brag  
 17 Token of appreciation  
 20 Ibsen character  
 21 Make tardy  
 22 "R.U.R." unit  
 23 Witchcraft  
 25 Utter  
 26 Charm  
 29 Attribute  
 32 Curved inward  
 35 Cote sound  
 36 Entrance  
 37 Annual offering  
 41 Trademark  
 42 Goddess of plenty  
 43 Custom  
 44 Before  
 45 Wise up  
 46 Mongrel  
 49 Gospel spreader  
 53 One of the senses  
 56 Dismantle  
 58 Mortar tray  
 59 Warning of worse things  
 62 Song  
 64 "Hail Britannia" composer  
 65 Bear  
 66 Bristly  
 67 Musical instrument

**DOWN**  
 1 Painter of ballet dancers  
 2 Dispatch boat  
 3 Pertain  
 4 Explosive  
 5 Have — (be lenient)  
 6 Joan of Arc for one



©1986 Tribune Media Services, Inc. All Rights Reserved. 4/12/86

### Yesterday's Puzzle Solved:

7 Comic Johnson  
 8 Rub — (gloat)  
 9 Shipshaped clock  
 10 Lure  
 11 Part of UAR  
 12 Joelp Broz  
 13 Dill herb  
 18 Make a fist  
 19 Dies —  
 24 Literary work  
 25 Wound mark  
 27 Chasm  
 28 Pile  
 29 Gr. theaters  
 30 Army section  
 31 Cigar end  
 32 Competent  
 33 Couturier  
 34 Hankering  
 36 Jr. execs  
 38 Man of action  
 39 Becoming  
 40 Where the Alps are  
 45 See 27 D  
 46 Boat basin

47 Of the summit  
 48 Cape  
 50 Volial  
 51 Ponderosa's  
 52 Just beat out  
 53 Brief attempt

54 Painter Joan  
 55 Saga  
 56 Oxford  
 57 Encampment  
 58 Item  
 60 Grid scores  
 61 Exclude

## DENNIS THE MENACE



"YOU LISTEN TO THINGS THROUGH THEM... THAT'S WHY THEY'RE CALLED HEARS!"

## Your Daily HOROSCOPE

from the CARROLL RIGHTER INSTITUTE

**FORECAST FOR SUNDAY, APRIL 13, 1986**  
**GENERAL TENDENCIES:** You are nervous and restless today and want new scenes, new working materials and new surroundings about you, however, now is not the time for it.  
**ARIES (Mar. 21 to Apr. 19)** You would get little satisfaction from getting into one activity and leaving it for another without purpose.  
**TAURUS (Apr. 20 to May 20)** You jump from one method of making money to another, so don't commit yourself to anything definite.  
**GEMINI (May 21 to June 21)** Avoid outsiders today who could easily break any promises that might be made. This is a fine day for taking health treatments.  
**MOON CHILDREN (June 22 to Jul. 21)** Keep silent about any problems you may have otherwise you could lose good friends and be more optimistic.  
**LEO (Jul. 22 to Aug. 21)** Forget the social side of life today, since everyone is in a sort of selfish mood, so get busy sprucing up your home and wardrobe.  
**VIRGO (Aug. 22 to Sept. 22)** Keep neutral if an argument starts between an associate and a stranger, and it will soon blow over.  
**LIBRA (Sept. 23 to Oct. 22)** Avoid entertainment that is far beyond your means and enjoy the less costly kind. Your mate and a friend should be kept apart.  
**SCORPIO (Oct. 23 to Nov. 21)** You want to take some big risk today but it would be most unwise since the influences are all against you.  
**SAGITTARIUS (Nov. 22 to Dec. 21)** Do not get embroiled between an associate and a family tie or there can be much discord.  
**CAPRICORN (Dec. 22 to Jan. 20)** An assistant could get angry if you leave him or her to do most of the work. Be fair and apply yourself seriously.  
**AQUARIUS (Jan. 21 to Feb. 19)** Handle creative matters early and then go on to the practical. Schedule your time so that you can also consult an expert.  
**PISCES (Feb. 20 to Mar. 20)** Your ideas may differ from those of family, but please them in the morning, and then do whatever you may like to do.  
**IF YOUR CHILD IS BORN TODAY...**...he or she is always ready to express his or her own view concerning anything and everything, so teach to keep silent and retain own wisdom or it could easily get lost to others. A fine academic education is important here since the mind is quick.  
 \*\*\*  
 "The Stars impel, they do not compel." What you make of your life is largely up to you!

**FORECAST FOR MONDAY, APRIL 14, 1986**  
**GENERAL TENDENCIES:** The early part of the day finds everyone with whom you come in contact alert to what is going on about them and you can take advantage of this mental acuity.  
**ARIES (Mar. 21 to Apr. 19)** In the morning, you can get your ideas to the attention of others successfully, but after lunch a worrisome matter crops up.  
**TAURUS (Apr. 20 to May 20)** Quietly make arrangements for increasing abundance in the near future in the morning, but later avoid one who is pessimistic.  
**GEMINI (May 21 to June 21)** You can come out of a ticklish situation through the auspices of a good friend today, then join a humanitarian social group.  
**MOON CHILDREN (June 22 to Jul. 21)** Avoid a new contact who wants to use your sympathy. Get ideas from a prominent person how to gain your goals.  
**LEO (Jul. 22 to Aug. 21)** Join a friend at some new place where you can garner advanced data and use it cleverly, but later avoid an argument over a bill.  
**VIRGO (Aug. 22 to Sept. 22)** Plan how to get greater expertise at your work as the week opens and make the future brighter.  
**LIBRA (Sept. 23 to Oct. 22)** Please a new contact with your fine sense of humor and improve the relationship. Don't let a whining fellow worker disturb you.  
**SCORPIO (Oct. 23 to Nov. 21)** You are able to gain more profits from the activities you engage in today, so pursue them.  
**SAGITTARIUS (Nov. 22 to Dec. 21)** Take a partner out to lunch and discuss some project that is of mutual importance. Be clever.  
**CAPRICORN (Dec. 22 to Jan. 20)** Take more time to make your home look more charming in the morning, and then be sure to drive carefully.  
**AQUARIUS (Jan. 21 to Feb. 19)** Arrange a meeting with one you enjoy very much, but take care you do not overstep later.  
**PISCES (Feb. 20 to Mar. 20)** Talk over monetary affairs with family in the morning, and come to a fine agreement. Rest up this evening.  
**IF YOUR CHILD IS BORN TODAY...**...he or she will be very ingenious and inventive and can work well with both the mind and hands, so be sure to give a good combined course of education so that the best use will be made of the natural talents. Let the career start early as desired, since the mind will turn to hobbies.  
 \*\*\*  
 "The Stars impel, they do not compel." What you make of your life is largely up to you!

## THE FAMILY CIRCUS



4-12

## GEECH



B.C.



## ANDY CAPP



## HI & LOIS



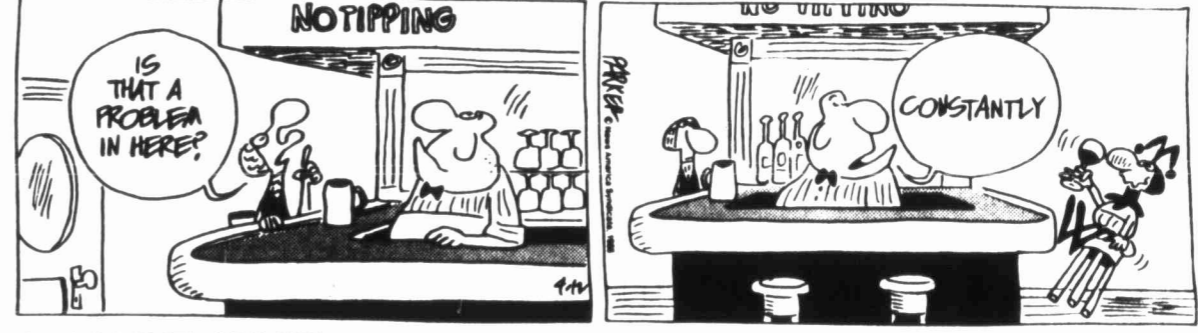
## BUZ SAWYER



## SNUFFY SMITH



## WIZARD OF ID



## GASOLINE ALLEY



## BEEBLE BAILEY



## PEANUTS



## DICK TRACY



## BLONDIE











570  
perfect condi  
s, adult ridden.

PAIRS Ace  
k. Cheap. Also  
263-6110.

573  
ycle in the  
Call 263-7331

577  
se neck, com  
le. Call 915-263  
00 p.m.

trailer, ramps  
small tractor.

er with 8' bed,  
ense. 267-5138.

580  
-THRU boat.  
on motor, drive  
sacrifice. Call

ottom boat. 177  
motor and Little  
condition. Call

Smoker Craft  
oe. Call 915-353

at and motor,  
1234 between 9

Ski Boat, 140  
r, stereo and  
263-4057.

581  
ssembly, less  
pletely rebuilt,  
263-0693.

583  
kinds of auto  
the best price  
Salvage, North

nt 585  
DE for sale or  
915-453-2936 or

587  
: One 228 Par  
g unit with 74"  
0 h.p. electric  
arranty. 1-57  
th 48" stroke,  
of weights and  
anty if within 50  
ing. Good as  
of beam and  
1.

**DOLLARS  
ECIALS**

HEATER, ther  
eed. \$50.00, 267

like new. \$50.  
11 267-3259.

OR Unit, cools  
Call 267-3259.

air conditioner.  
3259.

achine. Used  
8639.

Husky. Seven  
entle. \$99.99.

ce, blue chiffon,  
ks old. Will be

wdog pup. Call  
45.

or house -1 plus

ange, \$80. Call

size five. Call

x-springs, mat  
5. 267-7003, 263

600

ONS installs and  
acks, and sets.  
illard and Julia

**DDY  
DR IT**

al Assaults  
312  
s/Big Spring

**BIG  
IGS**

d

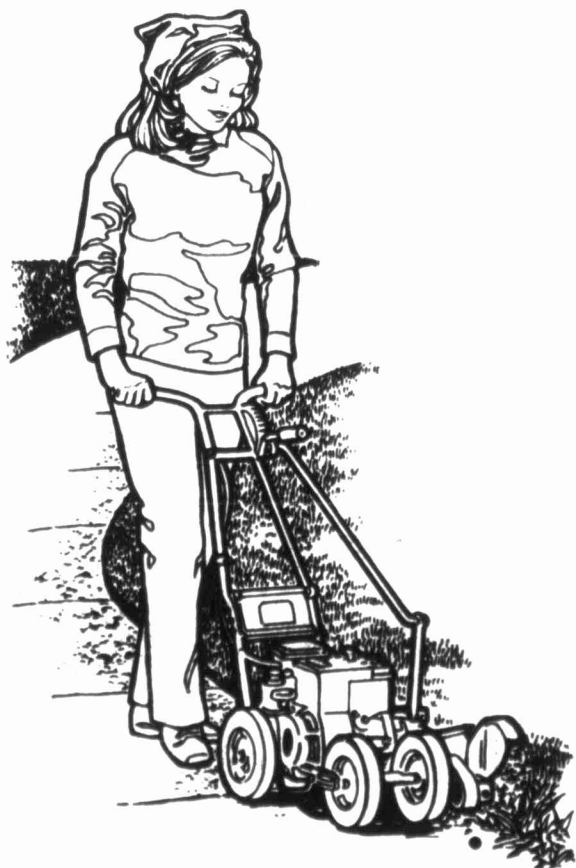
or earned  
up within 7  
at a rate of  
ch.  
n the  
Herald  
263-7331



### ADVERTISERS

Miller's Crown Decorating  
Sears  
Jay's Farm & Ranch  
Rockwell Bros.  
Squeaky Thompson  
Texas Electric  
Saunders  
Higginbotham-Bartlett  
Golden Gate  
A-1 Southwestern Pest  
K-mart  
Johansen Nursery  
Ralph Segars  
Aero Cool  
Hall Air Cooled Engine  
Bowlin  
Culligan  
American Video  
Elrods  
Dolphin Pools  
Feagins  
Mr. G's  
Bob's Custom Woodwork  
Wal Mart  
Citizens Credit Union

**Lawn  
and Garden  
Time**



BIG SPRING (TEXAS) HERALD

SATURDAY, APRIL 12, 1986

# Spring is time for lawn improvement

By TINA M. STEFFEN  
Staff Writer

The roar of a lawn mower, the whir of a fertilizer spreader and the light taps of sprinkled water hitting the earth, all are sounds of spring.

Families working on lawns are a common site this time of the year as the yards, trees and bushes awaken from winter's sleep. With a little extra care, your yard will look attractive and healthy throughout the summer and winter months.

"The main thing to think about now is planting trees, shrubs, blooming plants and gardens," says Terri Johansen of Johansen's Landscaping and Nursery. "First, plan where you're going to plant. Second, plant."

"In planning, take into account windows around the house, walkways and recreational areas, and use a pleasing design," she says. "A knowledgeable nursery person can tell you what to plant where, what size the plant will be at maturity."

In planting, make sure the soil is prepared properly. "To do this add some organic matter — peat moss, soil conditioner, mulch or compost," she says. "Mix organic matter on a 1 to 1 ratio with the soil. That is half and half. If you do this it helps maintain moisture in the soil, the soil is looser for roots to find water and nutrients, and you can probably water less often."

After preparing the soil, plant. Take care not to take all the soil off the roots that you plant. Make sure the plant is spaced properly and use a starter solution on them (root stimulator), then water.

Blooming plants are available



READY TO WORK — Terri Johansen and Wanda Petty are ready to work in their yards. They've selected new plants and have gathered their lawn care equipment.

for sunny and shady places in your landscape; however, you must make the proper selection. "To do that, talk to someone that is knowledgeable about the plants — a nursery person," Johansen said. "Keep everything watered real

well," she said. "which means that you may have to water daily in the beginning and through the hot summer." First check the soil by feeling with your finger or a stick to see how damp the soil is a few inches down where the root system

is. "Trees and shrubs are an asset to your property value. It pays to keep them healthy, and it makes you feel good to see it looking nice," she said. "It's important to keep trees and shrubs watered, even established ones. You have to replenish the soil moisture that was there because the trees will wilt and dry if it gets dry enough."

Use a sprinkler around the dripline of the tree when watering it. The dripline is the outward most edges of the tree's canopy.

It is important to water the yard weekly to a depth of at least one inch of wet soil. "Make sure that you water very well. If we have a dry summer and you do not water well, then the plant will be weak. If we have a hard winter, then we'll lose them, and they will be damaged more next winter. Fertilizers will also make them winter healthy." According to Johansen, insects tend to stay away from healthy plants, bushes, and trees.

"Fertilize once a month on blooming and garden plants," she says. However, she doesn't recommend fertilizing new trees and shrubs during the first year. "If you over fertilize during the first year, it will cause the roots to burn and stunt growth or kill the plant. Use root stimulator. That will make them more hardy for winter and summer."

On pre-existing yards, "it's a good idea to put pre-emergent weed killer down (now before the weeds come up)." It helps prevent weeds before they germinate, and is good for grassburrs and grassy weeds. However, it kills any seed. The grass must be seeded before putting on the weed killer, not

after. The product lasts 60 to 90 days and will be effective on any seed for that length of time, she said.

For weeds already up, use post-emergent spray on them. Two types are available: one for grassy weeds and another for broadleaf weeds. "Make sure the chemical used is suitable for your type of grass," Johansen said. "Some grass is sensitive to the sprays. Look on the bottle for that information."

She suggests talking to a plant professional about what product to use so it won't harm your type of grass.

Spring also is the time to fertilize. Johansen recommends the following schedule, which tends to coincide with summertime holidays: early spring (up to April 1), again Memorial Day, July 4th, and Labor Day. Use fertilizer recommended for this area. It should contain nitrogen,

phosphorous and pot ash, as well as sulphur, iron and zinc. "Those trace elements will insure a healthy yard and keep it from looking anemic. Sulphur helps make the soil more acid so fertilizers are more available to the plant," she says.

To kill insects, treat your yard for what insects you have. Diazonon kills fleas, ticks and some beetles. Diazonon granules will stay around longer and hold their strength longer, Johansen said. An easy way to apply the granules would be to put it down with the fertilizer using a fertilizer spreader.

Sevin dust works well for vegetable gardens and flowering plants. Oftanol or Diazonon will kill white grubworms. Johansen advises home gardeners to be alert to grubworms and more insects this year. "We didn't have enough cold this winter."

**NO BODY ASKS FOR IT**  
Help STOP Sexual Assaults  
Rape Crisis Services/Big Spring call 263-3312

## 21-inch Mowers, 2- and 4-cycle



John Deere premium quality at very competitive prices. In your choice of ten 21-inch deluxe models. 3 1/2- or 4-hp, 2- or 4-cycle engines. Electric or recoil start. Push-type or variable-speed self-propelled. Blade or engine safety stop. Adjustable cutting height, 1 to 3 1/2 inches. On-handle controls. Rear bagger available.

## BOWLIN

### Tractor & Implement

Hwy. 87 N. Big Spring, Texas 263-8344

## SEARS 100TH ANNIVERSARY SEARS DAYS SALE



Kenmore® extra-capacity laundry pair  
Electric dryer. 2 temperatures. Wrinkle Guard 1. White.  
Washer. 2 speeds, 8 cycles. Dual Action® agitator. White.

<b>SAVE \$</b> 1.10 HP VCR 4.3 peak HP canister vacuum AP25430 <b>22999</b>	<b>SAVE \$</b> 3-stage memory 8 cu. ft. microwave AP87762 <b>18999</b>	<b>SAVE \$</b> 2-stage memory 1.4 cu. ft. microwave MR88661 <b>21999</b>
<b>SAVE \$</b> 13-in. color TV with 5-button remote MR4056 <b>22999</b> <small>13-in. diag. mag. picture</small>	<b>SAVE \$</b> Stereo VHS VCR with remote AP5335 <b>36999</b>	<b>VALUE</b> Dual cassette compact rack stereo AP91881 Reg. price <b>17999</b>

**WE SERVICE WHAT WE SELL**  
Each of these advertised items is readily available for sale as advertised. Kenmore dryers require connectors not included in prices shown. Many Kenmore models come in colors at additional cost. Prices are catalog prices now available in our MR and AP sale catalogs. Shipping, installation extra. Ask about Sears credit plans.

403 RUNNELS ST. 267-5522 FREE PARKING  
Phone 267-5522 Most merchandise available for pick up within a few days Satisfaction guaranteed or your money back  
Celebrating Our New Century Sears, Roebuck and Co., 1986

## Fabric influences interiors' appearance

Fabric is just as important as style when it comes to buying new furniture or reupholstering old pieces, according to fabric designer Lee Mills.

"While you may not have the extra money to alter your home's size or layout, you can change its looks drastically by selecting the right fabrics and colors," says Mills, who is director of design for Naugahyde brand fabric.

"Fabric is a powerful design expression. With a splash of sizzling color or an accent of soft tones, you can light up or soothe, shape or define a room."

When selecting fabric, Mills advises, ask yourself what makes you feel good.

"How a fabric feels is just as important as how it looks," he explains, citing the natural coarseness of wool, the luxury feel

of silk and the free-and-easy mood of cotton. Chintz, he adds, is a surprisingly tough fabric that's enjoying renewed popularity.

While all these fabrics are classics, leather is unquestionably this decade's most important look, evoking richness and prestige, luxury and sensuality, says Mills. He points out that a high price tag can discourage some buyers, however. Mills says Naugahyde can be a

good substitute for leather which can "duplicate the texture and color variations of fine leather so precisely that even experts can't tell the two apart."

The main difference, he says, is a price that allows a greater number of people to enjoy the leather look — "with improved performance, including a built-in spot and stain resistant surface that leather doesn't have."

(LAND)  
**AUCTION**  
THURSDAY — APRIL 17 — 11 AM  
3840 ACRES (SURFACE RIGHTS)  
UPTON & REAGAN COUNTIES, TEXAS  
TO BE OFFERED IN 4 TRACTS AND/OR AS A WHOLE  
SALE TO BE HELD ON THE PREMISES (SECTION 3)  
\*DIRECTIONS TO PROPERTY  
From Midland, go South on Hwy 349 approx. 45 miles, then east on FM RD 1555 9 miles, then north on FM RD 2594 1 mile. Property begins on east side of road.  
Improvements consists of brick home, 4 frame houses, 4 silos, Smith-Harvestore Systems, small feed lot, equipment shed, metal barn, fences, 42 irrigation wells, 10 miles underground p.v.c. pipe, 2 sections (1280 ac.) ranch land, 4 sections (2560 ac) farm land.  
SALE FOR BENEFIT OF SECURED PARTIES  
TERMS AVAILABLE. 10% bid deposit day of sale.  
TITLE POLICY TO BE FURNISHED.  
AUCTIONEER WILL BE ON PROPERTY 2 DAYS PRIOR TO SALE.  
For brochure with plat and other information, contact  
**COL. RALPH SEGARS & ASSOCIATES**  
5924 ROYAL LANE #155  
DALLAS, TEXAS 75230  
(214) 349-8252  
Permit #TX5-017-0018

**it's Green Thumb Time!**

**FRESH** Shipment of Shrubs  
**FRESH** California Rose Bushes  
**FRESH** Flowering Bedding Plants  
**FRESH** Vegetable Plant

- We Specialize in Personal Service
- Landscape Design & Installation
- Sprinkler & Drip Irrigation Systems

**JOHANSEN'S**  
LANDSCAPE AND NURSERY  
Open Mon.-Fri. 9:30-5:30, Sat. 8:30-5:30, Sun. 1-4:30  
Highway 87 & Country Club Road Dial 267-5275

**SOUTHWESTERN AIR PEST CONTROL**

Call us for all types of tree, lawn & ornamental spraying.  
We also carry a complete line of Fertilizers, Insecticides & Herbicides including Fertilome, Hi-Yield & Ciba Giegy  
**YOUR PEST CONTROL SPECIALISTS**  
263-6514 or 267-8190 2008 Birdwell Lane

**VCR**

**HEADQUARTERS**

**14 DAY-4 EVENT TIMER**

- Front Loading
- 110 Channel
- Auto Playback
- 13 Function Wireless Remote
- Built-in Multi Channel TV Sound

**ONLY \$29900**

4 Head-Stereo Rec./Playback \$499<sup>95</sup>

**FREE MOVIE RENTAL**  
With the Purchase of a VCR  
Limit 3 Movies

263-0407  
OPEN MON.-SAT. 9 TO 9  
SUNDAY 1-8 P.M.  
1009 S. Gregg

WARMTH  
Tip  
The f...  
preparin...  
a paint d...  
"You c...  
and star...  
E.G. M...  
Decorati...  
prepare...  
Walls...  
detergen...  
and gri...  
then allo...  
said.  
Inside...  
often ha...  
should...  
specially...  
he said...  
primer-s...  
the stain...  
The se...  
and lipst...  
said. "I...  
through...  
times."  
Nail b...  
with a s...  
walls sh...  
hard an...  
solution...  
gallon of...  
hard.  
On es...  
scrape t...  
plying n...  
"The s...  
try mak...  
burst th...  
Locate...  
that cau...  
Determi...  
caulked...  
off and...  
sanding...  
a wood...  
Chalki...  
washing...  
should b...  
then rei...  
area wil...  
bleach i...  
Allow...  
few min...  
water. Y...  
gloves w...  
wash ar...  
the solu...  
bleach v...  
vapor is...  
If the...  
ed, then...  
The...  
depends...  
A pure-h...  
used wi...  
nylon an...  
be used...  
Miller s...  
If you...  
two, b...  
because...  
long in...  
sugges...  
areas, s...  
roller ar...  
brush.  
Airl...  
Su...  
Siz...  
Anot...  
York...  
syste...  
decis...  
• High...  
SEEF...  
• All c...  
tubir...  
• Adai...  
furni...  
394...  
A...  
Heat...

# Plants warm home's interior

By TINA M. STEFFEN  
Staff Writer

Plants create a warm atmosphere in a home where they are used, especially if used as part of the decoration. They are living, easy to decorate with, and often provide a sense of joy to people as a hobby or symbol of a memory or friendship. Plants also have healthful benefits by giving off oxygen.

"Everyone can enjoy houseplants whether they live in an apartment or have country gardens," says Debra Lusk of Green Acres Nursery. "Choosing the right plant for a particular situation should give lots of enjoyment."

"Build a collection of plants with a plan in mind," she says. "Decide if it's just for fun or for decoration." "The fascination of gardening is the constant challenge of growing plants. But nothing dampens enthusiasm faster than tricky plants," she says. "Use the advice of a nursery person in selecting based on your home situation or level of experience."

According to Lusk, the most difficult interior situation is a dark corner. That situation needs a plant requiring low light, such as Spathiphyllum (Peace Lily), Dracena (Corn Plant), Aglaonema (Silver Queen), and Pothos Ivy. Another situation is the sunny

area of an interior. Floor plants, hanging baskets with blooming or green plants, or collections or groupings of plants look good in these areas.

If the area tends to be rather hot, such as a west window, use Ficus, Norfolk Pine Trees or certain types of Dracenas. If the leaves touch the window, the window's heat will cook them. They should be pulled away from the window a few inches to prevent this.

"Ficus are good for sunny spots," says Linda De Waters, also of Green Acres Nursery. "They can be taken outdoors for the summer and then brought back indoors for the winter."

"A lot of (people) like to take plants outside to get fresh air. Ficus grows three times faster outside than in the house," she said.

People who use plants for decoration have a choice of pots that add to the decorative effect of plants. Pots come in baskets, brass, terra cotta, pottery, ceramic and plastic and in all colors and designs.

"A lot of people buy plants to fill a void, like a hanging basket," De Waters said. "They don't have to buy furniture to fill that void." This is especially true of people on a budget or decorating a new home or apartment.

"Taking care of plants gives people a sense of responsibility — like giving one to a child," she said.

An important factor to remember in plant care is that "every plant needs food just like humans," De Waters said. It's best to buy plant food you mix with water to feed them every time you water, she added.

The frequency of watering depends on the environment. Some people have hot homes, others

don't. Before watering, check for moisture by sticking a finger down into the soil near the plant about two inches. If it feels dry, water. If it doesn't feel dry, don't water but check again a day or so later. The top soil may look dry, but that doesn't mean the soil underneath is dry. Overwatering can cause root rot.



WARMTH — As Linda De Waters knows, houseplants can provide warmth and cheer to a home's interior.

## Tips prove helpful for painting home

The first step in painting is preparing the surface, according to a paint dealer in Big Spring.

"You don't just pick up a brush and start slapping on paint," said E.G. Miller of Miller's Crown Decorating Center. "You have to prepare the surface."

Walls should be washed with a detergent to remove stains, dirt and grime before painting, and then allowed to dry thoroughly, he said.

Inside bathrooms, where walls often have water stains, painters should treat the stains with a specially prepared type of shellac, he said, or with Kilz, a sealer-primer-stain killer. "If you don't, the stain will blend right in."

The same goes for crayon, ink and lipstick marks on walls, Miller said. "Lipstick will still come through even if you paint over it 10 times."

Nail holes need to be plugged up with a spackling paste. Plastered walls should be dry, cured and hard and should be treated with a solution of one pint vinegar with a gallon of water until the surface is hard.

On exterior walls, sand and scrape the old paint off before applying new coats. "The sun in this part of the country makes paint chip, flake and burst the bubbles," Miller said.

Locate the source of the moisture that causes the flaking and peeling. Determine whether it should be caulked, and then scrape the paint off and sand to fresh wood. After sanding, prime the bare wood with a wood primer.

Chalking can be removed by washing the area. Mildew stains should be washed, and the mildew then removed by scrubbing the area with a mixture of household bleach in three quarts of water.

Allow the bleach to remain for a few minutes, then rinse with clear water. You should wear waterproof gloves when doing this, and quickly wash any skin area that touches the solution. Do not mix household bleach with ammonia, because the vapor is harmful.

If the plywood is severely cracked, then plywood should replace it. The types of brushes used depends on the type of paint used. A pure-hair bristle brush should be used with oil-based paints, while nylon and polyester brushes should be used with flat latex paints, Miller said.

If you are doing only a room or two, buy throwaway rollers, because they probably will not last long in storage, he said. He also suggested that when doing large areas, smooth the paint on with a roller and then spread it out with a brush.

Airless sprayers also can be used

to speed up the painting, especially when large areas must be painted.

Always paint the walls first, then the trim. Use tape to mark the edge of an area to be painted so it

doesn't overrun.

To figure out how much paint you need, determine the area of the walls by multiplying height times width, and subtract the area of the

trim and windows.

Divide the total by 400 square feet — the area that a one-gallon

Painting page 3

**HOME IMPROVEMENT TIME**  
Old Fashion Service  
Guaranteed  
The General Contractor  
Additions — Remodeling — Repairs  
Cabinets — Countertop, Built-in  
Furniture Doctor  
Siding — Scaffolding — Remodeling  
Unusual Hardware  
**BOB'S CUSTOM WOODWORK**  
13 N. Warehouse Road 267-5811

**Every farmer can keep one busy!**  
234, 18 engine hp  
244, 21 engine hp  
254, 24 engine hp

**International 200 Series Tractors**  
They're compact, but surprisingly powerful to save you a lot of back-breaking work. Husky, 3-cylinder diesel engines give you the power and economy you need around the farmyard or in the city, to do all types of jobs.

These are true farm-style tractors with 3-point hitch, smooth shifting transmissions, hand and foot throttles, plus complete lighting and instrumentation packages.

The 540 RPM PTO is standard on all three models. The 244 and 254 also have an optional 1250 RPM front PTO. For extra power and flotation, Mechanical Front Drive (MFD) gives you full all-wheel power for greater traction.

**A fresh team for today's farmer**  
**CASE IH**

See us for 200 Series tractors, plus a full line of matching equipment!

**FEAGINS IMPLEMENT**  
Highway 87 North  
Big Spring, Texas  
915-263-8348

Open Mon.-Sat. 9 to 9 Sun. 12-6 Prices Good April 11, 12, 13  
**Kmart**  
YOU CAN'T DO BETTER THAN  
*The Saving Place*

**LAWN & GARDEN DISCOUNTS**  
Styles and Mtg. May Vary On All Items

<b>DOORBUSTER</b>  2.97 Blue Rug Juniper. A favorite quick growing shrub used for ground covering. 1 gal.	<b>DOORBUSTER</b>  10.97 Assorted 5 Gal. Trees. Choose from favorite shade, fruit or ornamental trees.	<b>DOORBUSTER</b>  2.97 Burford Holly. Gallon hardy evergreen with glossy leaves to accent your lawn.	
 2.97 Pt. Broadleaf Weed Killer. Super K-gro kills weeds, dandelions and others.	 2.57 Bark Mulch. 2 cu. ft. decorative, helps control weeds, regains moisture.	 5.97 Flat Bedding Plants. Choose from your favorite of beautiful colorful annuals or vegetables.	 4.97 2-Gal. Potted Rosebush. #1 grade, leaf and bud rosebush. Colors.
 4.57 Pint Diazinon Spray. Controls insects on lawns, flowers, shrubs, vegetables and fruits.	 4.97 Lawn Garden Edging. Black 4 x 1/2 x 20' roll with solid bead and two connectors for yard.	 1.27 20 Qt. Potting Soil. All purpose. Ideal for indoor, outdoor plants.	 5.97 Kmart 27-3-3. Develops thick green lawns and provides vigorous continuous growth 18-lb.
 13.97 Garden Wheelbarrow. 3 cu. ft. heavy duty design for many lawn, garden uses.	 6.97 40 Lb. Ammonium Nitrate 33.5-0-0	 129.97 27" Lawn Mower. Push type 3 1/2 HP B&S engine, adjustable wheels, side discharge.	 11.88 Gallon Tank Sprayer. Handy for spraying trees, translucent. 30' hose adjustable nozzle.

1701 EAST FM 700, BIG SPRING

**Summer Sizzler Sale.**  
Another reason the York<sup>®</sup> air conditioning system is the right decision.

- High Efficiency — (Minimum 9.0 SEER with many models above 10.0)
- All coils have quality copper tubing
- Adaptable to gas, oil or electric furnaces

**The right decision.**  
**YORK**  
Heating and Air Conditioning  
**AERO-COOL**  
Heating & Air Conditioning  
ENERGY EFFICIENT  
TECHNOLOGICAL SPECIALISTS

394-4876  
New Century and Co., 1986

nt  
ot ash, as well as  
i zinc. "Those  
will insure a  
eep it from look-  
ur helps make  
so fertilizers are  
the plant," she  
treat your yard  
ts you have.  
eas, ticks and  
azonon granules  
onger and hold  
nger, Johansen  
y to apply the  
to put it down  
using a fertilizer  
orks well for  
and flowering  
iazonon will kill  
Johansen ad-  
ers to be alert to  
ore insects this  
ave enough cold  
call 263-3312  
2-  
cle  
t very  
choice of  
3 1/2- or 4-  
s. Electric  
pe or  
propelled.  
ty stop.  
ing height,  
es. On-  
ols. Rear  
ble.  
ent  
263-8344  
ct at reduced prices.  
LE  
0  
99  
air  
ES  
ge memory  
ft. microwave  
21999  
LUE

# Custom kitchen meets needs

By TINA M. STEFFEN  
Staff Writer

When beginning a kitchen remodeling project, Bob Noyes of Bob's Custom Woodwork thinks of how he can get the most counter and cabinet space in the smallest area and what the "work triangle" will be like.

Noyes doesn't look at existing doorways, windows or other openings in the walls, which can be changed to suit the needs of the design. Instead, he looks at the possibilities within the walls' confines.

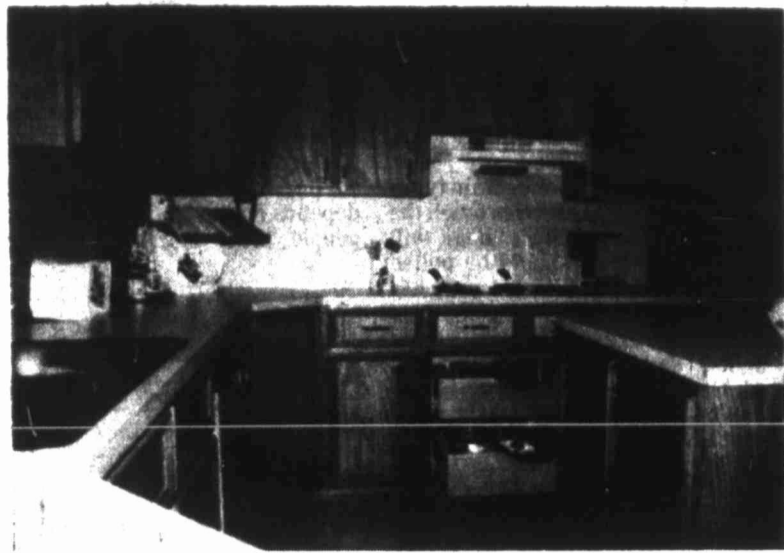
Sometimes he will close up doors and other openings to form a wall and make new openings in order to achieve a better workplace for the family in the kitchen. "The custom kitchen is designed around the individuals in the home and their needs," he says.

Several steps are involved in remodeling a kitchen. The first thing Noyes does with his clients is discuss their needs and desires for the kitchen. Then he develops an idea of how to meet those needs around the available floor space within the confines of the room and the homeowner's pocketbook.

Next, plans are drawn and designed on paper to scale. Noyes discusses with his clients the location of everything in the room and the layout of the work triangle. The work triangle is the space enclosed within a triangle connecting the sink, refrigerator and stove. All details and changes are worked out on paper before the actual remodeling begins.

Next, the cabinets are custom built. Then the room is prepared. This step includes plumbing, electrical and wall work that must be done before the cabinets can be installed. After this, the new cabinets are installed.

In a custom kitchen, Noyes and his crew install counter tops on the cabinets after they are placed in the kitchen, not before, for a minimum of seams. The last step is



REMODELED KITCHEN — Jane and Wallace Gill's recently remodeled kitchen features custom cabinetry with roll-out shelves.

the installation of the appliances, plumbing fixtures, lighting, new floor covering, painting, paneling and wall papering.

A homeowner can choose from ready-built kitchen cabinets or custom cabinetry when remodeling a kitchen. Whichever she chooses, the cabinets should be installed by someone skilled in remodeling and cabinet installation. Most homeowners are not skilled in this work. If they do try to do it themselves, they often end up with a costly mess they can't remedy without outside professional help, Noyes says.

The decision of whether to have custom-built or ready-built cabinets depends on how much the homeowner is willing to spend and the type of quality he wants in the kitchen.

According to Noyes, it initially appears to cost more for a custom kitchen; however, in the long run it isn't higher in cost.

For the do-it-yourselfer who, Noyes stresses, has the ability to redo the kitchen and install his own

cabinets, he can come out with less expense with ready-built cabinets if he installs them himself. If a homeowner has to hire somebody to install ready-built cabinets, then it can be equally as expensive as the custom built, he says.

A ready-built cabinet comes in pre-sized units and may not fit the exact dimensions needed for a particular area. The homeowner then has to make a few sacrifices, Noyes says. In a custom-built cabinet, all space is designed for use, and cabinets are built for the specific need.

In ready-built cabinets, you get what was made. The cabinets usually have one shelf and are made of a thinner grade of masonite or presswood with vinyl, depending on the manufacturer, Noyes says. In recent years, ready-built cabinets have had nice looking fronts of wood, but the bodies remain masonite or presswood.

In a custom kitchen, Noyes says, "we put in shelves to suit needs of the individuals, whether it's a deep shelf to hold pots, pans and pit-

chers or three shelves for smaller items." Counters and cabinets can be made any size. They aren't pre-sized. In special areas, cabinets can be tailored in height, width and depth. They don't have to be an upper and lower cabinet, but can be full-length like pantries and closets.

Custom cabinets also can have special features built in, such as roll-out shelves, Noyes says. The cabinets are usually of a better quality than ready-built because they are made of plywood or lumber instead of presswood or masonite.

A small custom-designed efficiency kitchen can start as low as \$2,000 without new appliances, Noyes says. With most custom kitchens, the price averages from \$6,000 to \$8,000 without new appliances.

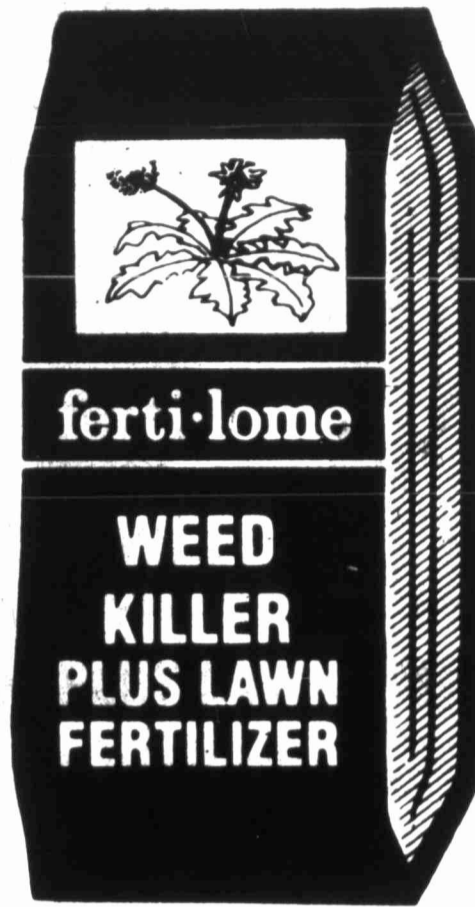
A few things must be taken into consideration when determining the cost: do you plan to move the plumbing? do you have major electrical work? floor work? ceiling work? wall work? new appliances? "We are not talking just about putting cabinets in," he said.

If someone is remodeling his kitchen, Noyes believes he should hire a contractor to custom build it. "A contractor specializes in the area the homeowner is asking to have work done. He has the knowledge to make better use of space and provide and use modern up-to-date materials and products, Noyes says.

"Most people don't have the foggiest idea of the variations of products. (A contractor) knows the product, its quality and what its best uses are. Contractors design with better efficiency and provide the proper product for the job," he says.

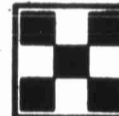
"Sadly, the average consumer is more concerned about the cost instead of what they are buying. It's not how much it costs, but what I got for what I spent."

## Time To Use



Kills Weeds & Feeds Your Lawn

Serving Big Spring Since 1969



Jay's Farm & Ranch  
Service Center

600 E. 3rd Jay Cunningham 263-1383

# ferti·lome®

## Painting

Continued from page 1  
can of paint will cover — to determine how many cans of paint to buy. Buy drop cloths to prevent furniture and floors from being splattered with paint.

Most walls are covered with flat latex paint and trim with satin paint, which gives paint a shinier surface. On interior walls in areas where walls will be scrubbed a lot, such as kitchens and bathrooms, use satin paints, Miller said.

On exterior walls, latex paints are longer lasting and are more resistant to chalking, peeling and blistering. Oil paints, however, are least affected by temperature extremes and adheres best to chalking surfaces.

Stop painting for the day at the end of a wall or in a corner. Never start a new can of paint in the middle of a wall.

Tips for exterior walls:  
• Paint the underside of siding first, then the surface; always apply from an unpainted area back into the last wet paint to avoid "lap" marks.

• On porches, start at the back, farthest from the steps or

entrance.  
• On steps, paint the underside of the step extension first, then the back panel. Finish with the horizontal surface.

• On windows, raise the inside sash and lower the outside sash. Paint the outside sash, first the crossbars then the frame. Don't paint the bottom of the outside sash; use that to move the frame. Then paint the inside sash — crossbars, then frame — but don't paint the top edge.

Move the sashes back to one inch of their closed positions. Paint the parts of the inside sash that were obstructed and the bottom edge of the outside sash. Then, paint the window casing and then the sill.

When the paint is dry, move both sashes down as far as they will go, and paint the upper part of the check rails. When the paint is thoroughly dry, raise both sashes and paint the lower check rails.

• On casements windows, open them and paint the top, side and bottom edges first, then paint the crossbars, frames, casings and sills.

• On doors, paint the molding

edges of top panels first, then the remaining panel area by brushing across then up and down. After all panels are completed, paint the remaining area and finish with the door edges. If the door swings out, paint the lock-side edge with exterior paint. If it swings in, paint the hinged edge with exterior paint.

• Paint flush doors like you would walls. Paint the edges first and then fill in the large area. Then do the door frame and jambs.

• When finished painting wipe excess paint from tools and clean with paint thinner, if an oil paint was used, or water if using a latex paint.

If you have leftover paint, place a thin sheet of plastic wrap or other light plastic under the can lid before closing the lid. This will prevent skinning. Pound the lid down tightly.

• When using a roller, roll slowly into the well or lower end of the tray. Roll back and forth until the roller is well covered. Roll back onto ridges in upper portion to

remove excess paint.  
Cover about four square feet by rolling out the letter "N": up, then diagonal, then up. Then cross roll to spread paint and finish with light strokes in one direction, but at a right angle to the cross roll.

## Pleated fabric shades are new look

Among the newest looks in this year's window fashions are pleated fabric shades, which feature clean horizontal lines, a soft designer look and a wide range of colors, prints and textures.

Some pleated fabrics are metallized, such as the ones bond-

ed with an ultra-thin layer of aluminum for energy efficiency. Since they are anti-static, cleaning is rarely necessary.

The metallized shades cut glare and reduce directly-transmitted solar energy by up to 80 percent but are so light you can see through

them. Thus they provide protection against summer's direct sunlight, while in cold temperatures give the insulating value of a storm window.

For more privacy, heavier density material is available.

COME SEE **SAUNDERS**

**TAPPAN**

**APPLIANCE DISPLAY**

**DREAM KITCHENS WITHIN YOUR BUDGET**

**WIDE SELECTION**

**SAUNDERS**

**3200 E. I-20**

263-6411  
Texas Watts 800-662-4311

Warehouse City Center 9-5 M-F Sat. 9-1  
Show room 9-4 Weekdays Sat. 9-1

**Sensational Spring Savings...**

Elrod's has just received the latest coordinated fabrics from Norman's of Salisbury. Collection of solids and prints can be combined for draperies, specialty window designs, high loft comforters, and bedspreads.

**15% off all**  
DRAPERIES — BEDCOVERINGS  
SPECIALTY DESIGNS, APRIL 16-May 6  
Come see or call 267-8491 today. We'll make an impression on you.

# ELROD'S

Big Spring's Oldest Furniture Store Established 1926

806 E. 3rd Open Mon.-Sat. 9-5:30 Ph. 267-8491

**WE URGE YOU TO COMPARE OUR PRICES WITH ANY REGULAR OR "SALE" PRICE IN TOWN**

# Patio can be a good project

By TINA M. STEFFEN  
Staff Writer

Patios are ideal places to entertain, have outdoor barbecues and relax. A patio also can be a relatively easy home improvement project the do-it-yourselfer can create.

When planning a patio area, shade is essential in this part of the country to get maximum benefit from the patio, says Bill Crooker of Mr. G's Garden Center. "There's a lot of heat on patios. It is reflected from the house, which is another reason for shade."

If there are no shady areas already available in a good location for a patio, temporary shade can be created using a shade cloth tailored to the size of the patio. A homeowner also can construct rafters and have a covering of honeysuckle or Wisteria, which eventually forms a canopy for shade. Many people extend a roof from the house over the patio to create shade.

Other factors to consider when planning the location of a patio are wind and accessibility from the home's doorways.

Wind can be a problem when it gets gusty. Some patios may not have much problem with wind, but others might due to their location, Crooker said. Are there any barriers to help block some of the wind? Barriers can be created if there are none available.

The patio's foundation can be of concrete, brick, brick laid in sand, cross ties or wood laid in the ground. A brick foundation would be easier for a do-it-yourselfer to

handle than concrete, Crooker said, especially since he wouldn't have to complete the foundation all in one day.

"Brick is pretty," he said. "It has a warm and more natural appearance." The do-it-yourselfer can create patterns with brick, which would add interest as well as color. "If the brick isn't level, it still looks nice."

Brick also is more flexible than concrete in terms of usage and is easier to use in making steps, Crooker said. Bricks also can be used in making paths around the patio. "It's simpler than we think," he said. The material costs for a brick patio and a concrete patio are very close, he added.

Brick is available in Midland. Concrete can be purchased locally. Now that the patio is built, it's time to decorate.

A nice point of interest would be a self-contained water fountain, Crooker suggested. The fountain should be placed near an electrical outlet for its circulating pump. Add water to the fountain as it evaporates.

Since wind was considered as a possible problem, certain shrubs can help reduce the wind if planted in the appropriate locations. However, "it may take five to six years before they could become effective wind screens or barriers," Crooker said. In the meantime, they provide color and beauty. The do-it-yourselfer also can try to reduce wind with solid panels or screens.

The simplest way of providing

color and greenery is to use large clay pots or large redwood containers with plants, Crooker said. He suggested Geraniums, Petunias, Spanish Moss, and any hardy plant that is easy to grow in pots. "Be generous with soil conditioner or peat moss," he said. "It will hold the moisture, and you won't have to water as often."

The patio is an ideal place for hanging baskets, he said. Asparagus Fern is an excellent plant for baskets. It can take sun and heat. Periwinkle and Spanish Moss also are good choices, he said.

"In the shaded parts of the patio, you can put indoor plants on the patio. They will really thrive in the summertime. Most of the time here they can remain on the patio well into October," he said.

Container roses add color. Place them in large pots and on the patio's sunnier areas. They will bloom all summer but need to be indoors during the winter.

Hibiscus is a nice patio plant, Crooker said. It needs partial shade. It can take five to six hours of sun but needs shade the rest of the time. Petunias, Geraniums and Dianthus also need partial shade. Periwinkle, Portulaca, Spanish Moss and Purslane all take the hot sun and add color.

For flower beds, the amount of light dictates what plants would do well, he said. Bark chips make a decorative ground cover and help retain moisture.

Now that your patio area is built and decorated with colorful plants, show it off by inviting friends over for a barbecue.



PLACE TO RELAX — Outdoor furniture, fountains, blooming plants and colorful pots make a simple patio area look divine.

Big Spring Herald  
710 Scurry  
263-7331

## John Deere Compact Diesels



John Deere compact diesels come in five models — 17- to 37-hp — so you can match horsepower to your needs. All are packed with big-tractor performance features that make them small giants on any big job. 8-speed transmission, 540-rpm rear PTO, Category 1 three-point hitch, differential lock. More than 50 capacity-matched attachments to keep the tractor you buy busy year-round. See us for a test drive soon.



## BOWLIN Tractor & Implement

Hwy. 87 N. Big Spring, Texas 263-8344



For a greener lawn

ferti-lome



Now Open Sunday 1-5  
Monday thru Saturday  
9 a.m. to 5:30 p.m.  
263-2633

#10 Highland Mall

## Greenhouse brings outdoor living indoors

By The Associated Press

When it comes to expanding their homes through room additions, many people are choosing greenhouses, according to a greenhouse manufacturer and installer.

"Most of our customers are interested in changing their existing home, office or restaurant rather than building a new one," says Christopher Esposito, president of the Four Seasons Greenhouse franchise network, based in Farmingdale, N.Y. "The greenhouse structure is most popular because we are selling the feel of outdoor

living and bringing it indoors." Four Season Greenhouses offers customers prefabricated kits for do-it-yourself installation and partial or complete dealer installation.

Its design uses a built-in shading system and special glass that reflects heat, but not light, away in summer and reflects heat back inside in winter, while remaining visibly clear.

Other features include a weathertight cooling system and tempered curved glass.

A typical 10-foot-by-16-foot greenhouse addition costs \$10,000 to \$15,000, fully installed.



Our service continues after you leave our store. We gladly help with any home improvements.

carpet • floor covering • wallpaper  
Cooks Paints & Varnishes • Formica and Ceramic Tile

1510 South Gregg

263-0411

Miller's Crown Decorating Center

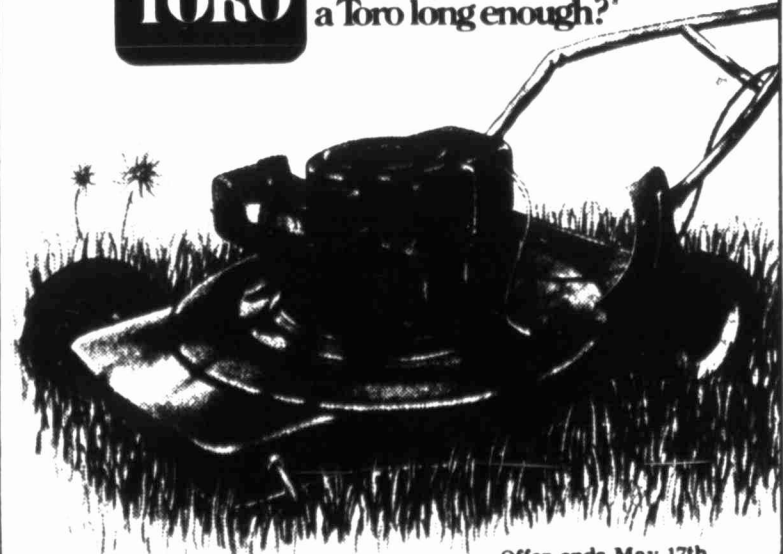
## We'll give you \$50 to put your old mower out to pasture.

If your old mower has seen better days, bring it in to the Toro Trade-In. No matter what shape it's in, no matter what brand it is, we'll give you a maximum of \$50 towards the purchase of a new Toro mower. Choose from a variety of models—there's one that's right for you. And put your old mower to rest once and for all.

**Two-Year Limited Warranty.** You may never use it because of Toro's quality and durability. But here it is just in case.

**Instant Credit. No money down, low monthly payments.** Available to qualified buyers on Toro's revolving charge plan. Ask for details.

**TORO** Haven't you done without a Toro long enough?



Offer ends May 17th

**HALL AIRCOOLED ENGINE**

LAWN EQUIPMENT SALES & SERVICE SMALL ENGINES

508 Gregg St.

Big Spring, Texas

267-8250

## If you want to save energy, you need to take control.



Over the years, the electric company has helped you conserve energy in lots of ways. We've helped with tips on things you could do yourself — all the way from caulking and weatherstripping, to installing just the right amount of insulation for your home.

Now you can take even more control.

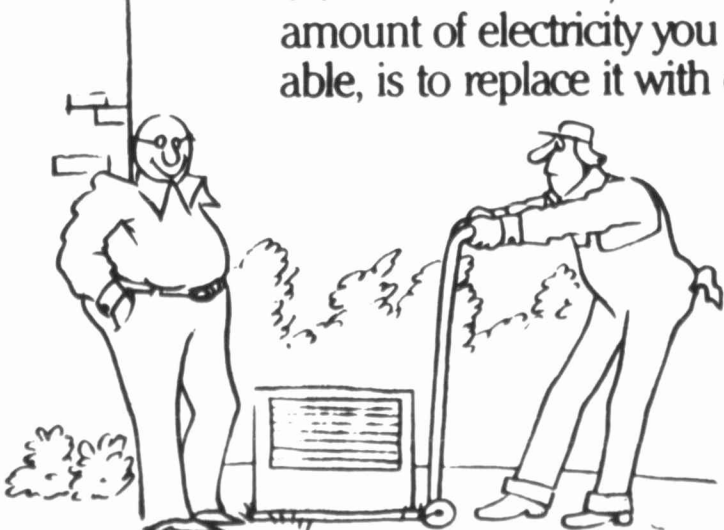
The electric company has information

that shows you the cost of operating your electric appliances. And knowing what electricity costs makes it easy for you to decide how much to use. There are also tips on many other ways to use energy wisely, like maintaining the most economical setting for your thermostat.



And remember, when it comes time to replace your old air conditioner, one of the best ways to control the amount of electricity you use, and still stay cool and comfortable, is to replace it with one that's more energy efficient.

Your electric company has lots of helpful information available. Take control and get things running your way.



A Division of Texas Utilities Electric Company

# Swimming pool is investment in property

By **TINA M. STEFFEN**  
Staff Writer

A swimming pool is "one of those items that most people have desired to have, and like a dishwasher, once they've had one they can't live without it," says Johnny Rutherford of Dolphin Pools.

"They have an image of what it would be like to have a body of water they can cool off in."

Swimming pools offer recreation, a reason to keep children close to home, and a place to relax and get a tan. Today's consumers purchasing pools are no longer trying to keep up with the Joneses, Rutherford says. They are more rational about what they want in a pool and look for one that is in their income range.

In the past, pool sales were mostly to upper income families. Now many sales are to middle income families. "We do sell some who buy them to use as an aesthetic thing in their yard," Rutherford said. They use the pool as a focal point in their yard and to beef up their landscaping.

Three swimming pools are on the market today: vinyl, gunite (blown concrete), and fiberglass. Pools are no longer rectangular, today they come in all shapes and sizes.

Purchasing an in-ground pool is an investment in the homeowner's property, says Rutherford. Price wise, if a person bought a quality above-ground pool and dressed it up, for another 20 to 30 percent he could have purchased an installed in-ground pool and have an investment in his property. Or if the above-ground pool was big and the in-ground pool was smaller, the price would be comparable. "Big isn't always better when you think of day-to-day costs (of upkeep)," Rutherford said.

In-ground pools have evolved through the years to become more maintenance free, thus making them more advantageous to own, he said. Today's pools have a more non-porous surface than their predecessors. This offers several advantages: it helps prevent leakage totally; algae is unable to cling to it; and chemicals can't be absorbed by it resulting in less pitting.

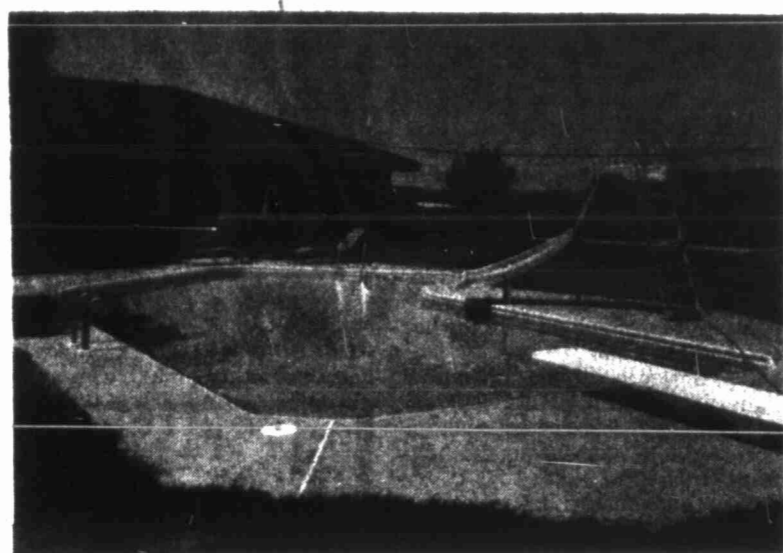
Vinyl has the longest longevity of any water repellent type of material, Rutherford said. Vinyl sheets can be vacuum formed to line any pool surface.

Today's pools range from "inexpensive and cheap to expensive and worth it," he said. Vinyl was the key to stabilizing swimming pool prices as it cut 1/3 off the cost of renovating a pool's interior finish. All pools have to be refurbished on the inside at some point in the future, he said.

Fiberglass (pools) are the same thing people see in spas and boat hulls, he said. It's the reverse process of a boat hull, gel coat on the inside and fiberglass on the outside.

The limitations of a fiberglass pool are the size of the pool, potential blistering and crazing (cracking) of the surface, and fading.

Cracking also is a problem with concrete pools, but not with vinyl pools, he said. Vinyl has a concrete



**REFRESHING** — A swimming pool not only provides entertainment, it also adds a refreshing focal point to a home's landscape.

bottom, and if it cracks the vinyl just moves to it.

Gone are the days when pools required extensive upkeep. The state-of-the-art pools are virtually maintenance free. They have automatic chlorinators, automatic pool sweeps, proper size pump filtration and circulation systems.

Not all customers get these things, however. When buying a pool, it's important to get the proper size pump filtration circulation system, he said. And in West Texas, it's important to have an operating main drain. It draws the

sand that gets into the pool.

Depending on the time of year and the type of pool, the pool owner will spend 10 to 15 minutes a day if pool maintenance is done on a daily basis or 1 hour if done on a weekly basis. Maintenance involves sweeping trash from the pool, adding chemicals to the water, testing the chemicals, and monitoring the filtration system.

The cost of chemicals and maintenance are two factors to determining the type and size of pool to buy. Vinyl and fiberglass pools will save about 1/2 the cost of

chemicals and maintenance time as a concrete pool.

Today's pools offer many options: inflatable domes, heaters, solar blankets and water slides. Solar blankets are an important energy feature. They capture the sun's heat for use in heating the pool. A pool owner can realize a 10 degree rise over his neighbor's pool if that pool owner is not using a solar blanket on his pool, Rutherford said. It can cut about 60 per-

cent of the energy loss from gas heaters, too, if used as a retention blanket.

Swimming pools can save a home's air conditioning costs, because wet people do not want to walk into a cold home, he said. They will tend to raise the thermometer about eight degrees.

The price of a small in-ground patio pool (play pool) starts around \$7,000 depending on what is

selected amenities wise, Rutherford said. "From \$7,000 to \$15,000 buys a nice pool." The price rises when features are added in and around the pool, such as patios, water displays, cabanas, and landscaping.

Early spring is the best time of the year to have a pool installed, Rutherford says. That way a pool owner has the full season to enjoy his investment.

bottom, and if it cracks the vinyl just moves to it. Gone are the days when pools required extensive upkeep. The state-of-the-art pools are virtually maintenance free. They have automatic chlorinators, automatic pool sweeps, proper size pump filtration and circulation systems. Not all customers get these things, however. When buying a pool, it's important to get the proper size pump filtration circulation system, he said. And in West Texas, it's important to have an operating main drain. It draws the sand that gets into the pool. Depending on the time of year and the type of pool, the pool owner will spend 10 to 15 minutes a day if pool maintenance is done on a daily basis or 1 hour if done on a weekly basis. Maintenance involves sweeping trash from the pool, adding chemicals to the water, testing the chemicals, and monitoring the filtration system. The cost of chemicals and maintenance are two factors to determining the type and size of pool to buy. Vinyl and fiberglass pools will save about 1/2 the cost of

**Call Tom at 267-7011 for free estimates. No obligations.**



**We make home improvements so easy.**

**We Will Help You:**

- Plan
- Arrange Financing
- Arrange For Builders

**"CALL US TODAY!"**

**ROCKWELL BROS. & CO. OF BIG SPRING**

— LUMBER AND BUILDING MATERIALS —

2nd St. & Gregg 267-7011

WAL-MART

Lawn & Garden

Sale

 <p style="font-weight: bold; font-size: 1.5em;">3.96 <small>Reg. 4.24</small></p> <p><b>Perennial Ryegrass</b> • 5 Pound bag grass seed • 800 sq. ft. coverage</p>	 <p style="font-weight: bold; font-size: 1.5em;">2 For 3.00</p> <p><b>Ruffies Trash Bags</b> • 30 Gallon • 25 count • No. RL 104 • Reg. 1.97</p>
 <p style="font-weight: bold; font-size: 1.5em;">148.00 <small>Reg. 19.96</small></p> <p><b>Murray Push Mower</b> • 3 1/2 Horse power • 20 Inch cut • Manual restart • 7 inch tires • Fully baffled • No. 4-20121X92</p>	 <p style="font-weight: bold; font-size: 1.5em;">3.46 <small>Reg. 3.96</small></p> <p><b>Keller Leaf Rake</b> • 18 inch span • 22 tires of spring steel • 48 inch Wood handle • No. 122</p>
 <p style="font-weight: bold; font-size: 1.5em;">9.84 <small>Reg. 10.97</small></p> <p><b>32 Gal. Galvanized Garbage Can</b> • Strong corrugated galvanized steel • Welded side handles • No. 90001</p>	 <p style="font-weight: bold; font-size: 1.5em;">4.00</p> <p><b>2 Gal. Rose Bushes</b> • 2 year old field grown • Hardy select plants • Bloom this year • Reg. 4.97</p>

**WAL-MART ADVERTISED MERCHANDISE POLICY**—It is our intention to have every advertised item in stock. However, if due to any unforeseen reason an advertised item is not available for purchase, Wal-Mart will assure a Plan Check on request for the merchandise to be purchased at the sale price whenever available or will sell you a similar item at a comparable reduction in price. We reserve the right to limit quantities. Limitations void in New Mexico.

Sale Date: Fri. 4-11 thru Sun. 4-13  
Location: 2600 South Gregg  
Store Hours: 9-9 Mon.-Sat.  
12:30 to 5:30 Sunday


WAL-MART

## IF ONLY MARGE HAD SENT POOR ALICE TO HER CULLIGAN DEALER INSTEAD.

Marge and the other TV laundry experts always had the answer for wash-day woes: another New Improved detergent. But the secret to brighter cleaner softer clothes isn't necessarily in choosing the right detergent. It's having the right water.

263-8781  
503 E. 6 St.

get automatically with a Culligan brand water conditioning system. The water factor. Over half of all American homes have hard water — water containing invisible particles of calcium and magnesium. When hard water mixes with laundry soap, it can form

a dulling film that clings to clothes even after rinsing. Hard water can also significantly reduce the cleaning power of synthetic detergents.

**Culligan conditioned water works for you.**

A Culligan system actually eliminates hardness-causing minerals from your water supply. So synthetic detergents and laundry soaps work at full strength and rinse away completely, leaving clothes fresher and brighter. Laundry products will work more efficiently, too.

Culligan conditioned water in your dishwasher helps tableware dry virtually spot-free without expensive rinse additives. And in the bath and shower, Culligan makes your skin and hair feel cleaner and softer than ever before.

Don't just turn on the water. Turn on the Culligan. More and more people are saying goodbye to hard water problems with Culligan. Call your local Culligan dealer today for a basic water analysis.

THE FUTURE CALLS FOR  
**Culligan.**

Accepted



# Air conditioners need quarterly check

By TINA M. STEFFEN  
Staff Writer

Dirty filters, lack of routine maintenance and an incorrect understanding and operation of the thermostat are problems people have with air conditioning units, says Carol Hollingsworth of Hester and Robertson Mechanical Contractors.

Filters, she said, should be checked at least quarterly. "But in this area where we have so much dust, people should service them more often."

Lack of routine maintenance would include checking filters, Freon, oil, blowers and motors. In regards to the third problem, the thermostat won't last long when people keep changing them constantly. She describes the office situation where people are either cold or hot natured and can't agree on the proper room temperature.

These problems usually can be prevented easily; but if a person is unsure how to remedy air conditioning problems, he should con-

tact a serviceman. Hollingsworth advises getting a qualified service company with servicemen who are trained and kept up-to-date on the latest changes in products to help with problems.

To prepare air conditioners for the hot summer months ahead, make sure the filters are serviced, replaced or cleaned, she said. A clogged filter makes the unit work harder. Also check the Freon to make sure it isn't leaking, and the motors and blower. Oil it if necessary. "Some motors are non-oilable."

Using an air conditioner doesn't mean your summer utility bill has to be sky high if you use it efficiently, she said. Operate the unit only at times when the family is at home. Hollingsworth advises setting the thermostat a few degrees higher than you normally would, such as at 76 or 78 degrees if you usually set it at 72.

Two inexpensive ways to control temperature are the time clock set-up and a night set-back thermostat.

These can be installed to automatically control the times the air conditioner unit turns on and off. It can be set to come on at 4 p.m., and the house will be cool when the family arrives at 5 p.m. It also can affect the temperature at night while the family is sleeping.

If you have an old worn out unit, Hollingsworth suggests replacing it with a high efficiency unit, one with a high SEER (Seasonal Energy Efficiency Rating). High efficiency units use electricity more efficiently, she said.

"Texas Electric has really expanded their rebate program for high-efficiency air conditioner installations," she said. Residential rebates can be obtained when the installer meets Texas Electric requirements.

In choosing a new air conditioner, refrigerated air is best for a dry climate, she said. "It's more

comfortable." When it gets to 90 to 100 degrees, evaporative coolers don't cool quite as well, she said. On the other hand, evaporative coolers are less expensive in their initial cost and to operate.

When shopping for an air conditioner, look for the SEER rating. Price also is important in the selection, as well as available financing from the company, a reputable name brand, dealer and manufacturer warranties on parts and labor, and qualified installing contractors.



SERVICING — Carrol Cone services a refrigerated air conditioning unit for a customer.

## Time for a Credit Union Home Improvement Loan?



HOUSE NEED PAINTING? PLUMBING NEED REPAIRING? MAYBE IT'S TIME FOR A HOME IMPROVEMENT LOAN FROM CITIZENS FEDERAL CREDIT UNION.

YOUR CREDIT UNION OFFERS FEDERAL HOUSING ADMINISTRATION HOME IMPROVEMENT LOANS FOR MOST OF THE IMPROVEMENT YOU NEED.

FHA TITLE I HOME IMPROVEMENT LOANS ARE AVAILABLE UP TO \$15,000.00.

AND YOU CAN HAVE UP TO SEVEN YEARS TO REPAY THE LOAN.

**CITIZENS FEDERAL CREDIT UNION**  
P. O. BOX 425 • 701 EAST FM 700  
BIG SPRING, TEXAS 79721-0425  
Phone (915) 267-6373

See your CFCU loan officer today...  
Office Hours: Mon.-Fri. 10:00 a.m.-4:00 p.m.  
Drive In Window: Mon.-Fri. 9:00 a.m.-6:00 p.m.  
Sat.: 10:00 a.m.-1:00 p.m.



NOW our Bigelow carpets are on SALE at prices that will floor you!

Now you can find the colors and the textures of beautiful Bigelow carpet that are just right for any room in your home at fantastic savings. Our big variety of fine quality carpet is marked way down. And our selection of fashionable colors will delight even the most discriminating decorator.

PLUS - Bigelow carpet with soil resistant ANSO IV nylon will keep its bright new look under the toughest conditions.

**Anso IV Bigelow**

"Squeaky" Thompson Furniture & Carpet Co.

401 East 2nd

Phone 267-5931

## Mr. G's Special Sale

# GERANIUMS

## 2.79 EACH

Regular \$3.29 in 5 Inch Pots

### New Shipment Welby Gardens BEDDING PLANTS

- Purslane •Moss Rose •Snapdragon
- Periwinkle •Verbena •Phlox
- Celosia •Shasta Daisy •Carnation •Mums

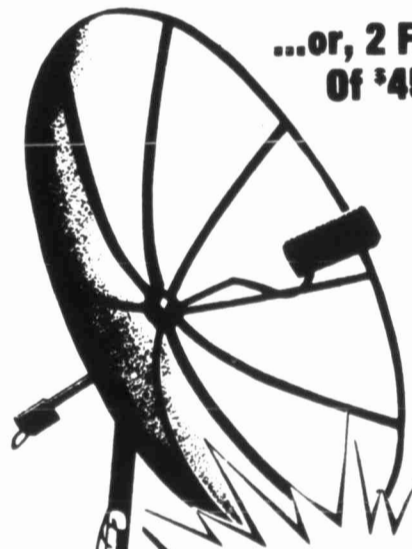
4 Plants Per Pkg. **1 29 & 1 49**



Now Open  
Sundays 1 to 5  
Monday thru Saturday  
9:00 a.m. to 5:30 p.m.  
263-2633

# We'll Give You A 4 ft. Satellite Dish Free!

...or, 2 FREE Storm Doors...or 6-inch Blown In Insulation...or Evaporative Cooler.\*With The Completion Of Any Work Of \$4500 or More. A Great Deal For You...For Your Home!



**FREE\***  
4-Ft. Satellite Antenna

### 100% FINANCING AVAILABLE

- Room Additions
- All Brands Carpet
- Garage Doors
- USS Steel Siding
- Steel Roofing
- Insulation
- Quality Storm Windows
- Patio Covers
- Glass & Mirrors
- Car Ports
- ★ Lifetime Guarantee
- ★ No More Painting
- ★ Cut Heating and Cooling Costs

Over 900 Jobs in the Big Spring Area



A LIMITED WARRANTY TO CONSUMERS  
**Good Housekeeping**  
PROMISES  
REPLACEMENT OR REFUND IF DEFECTIVE

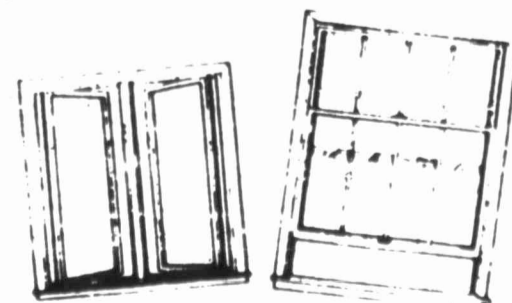
THIS SEAL APPLIES TO  
**Alside** SIDING ONLY

No Payments for 60 Days After Work Completed

**30% OFF**  
ALL  
**CARPET**  
100% Financing  
Free Estimates

### STORM DOORS & WINDOWS

**30% OFF**  
100% Financing



**30% OFF**  
ASK FOR THE NAMES OF OUR SATISFIED CUSTOMERS

**FREE Camera...**with each home demonstration of our quality carpet...Free Estimates



### GOLDEN GATE HOME IMPROVEMENTS

NO PAYMENT FOR 60 DAYS AFTER JOB IS COMPLETE  
Locally Owned & Operated

**OUT OF TOWN, CALL COLLECT 394-4812**



RENOVATION — Steel siding is often used as an attractive exterior for homes being renovated. This is the home of the W. Jones family.

## Steel siding is good alternative for home's exterior

By TINA M. STEFFEN  
Staff Writer

If you're tired of painting your home's exterior or are renovating an older home, steel siding is a good alternative.

Steel siding is almost maintenance free and guaranteed not to fade, crack, peel, discolor or rust, says Mike Arnett of Golden Gate Home Improvement. Its purpose is to insulate and beautify the home, as well as eliminate painting and look new. The only maintenance it requires is an occasional washing with a water hose.

Similar types of siding include vinyl or aluminum; however, Arnett doesn't recommend either type for this area because of the extreme heat and cold, hail, dryness and wind.

For most siding installation jobs, a professional contractor must do the work. Most do-it-yourselfers are not knowledgeable enough to handle the task when it comes to problems, Arnett says. The settling of a home, for example, affects the way siding is placed on the home. Also, a metal brake is used to tailor the siding to the home's features.

If a true professional installs the siding, Arnett says, he can make the home look more attractive and make the siding have a tighter fit for less air filtration.

"Siding has had a bad name from bad installers," Arnett says. "The important thing is whatever kind it is, it should be installed properly."

There are no disadvantages to having steel siding in this area, unless it would be not getting it properly installed, he says. The advantages include: only home exterior product that carries a warranty; no painting; insulation; easy to clean; and hail resistant. If siding does experience hail damage, it will be replaced by the manufacturer.

Warranties, references, the company and its location are things to consider when making a siding choice. In a recent survey, Arnett said, 15 percent of siding customers bought their siding because of what it was made of. Another 15 percent bought based on the financing available. However, 50 percent made their purchase based on the installing company's past history.

Many siding brands are on the market with prorated warranties. Should something go wrong after four or five years, the homeowner must pay most of the replacement costs. Arnett suggests shopping for a siding that carries a non-prorated lifetime warranty that is transferable and a 50 year non-prorated hail warranty.

When shopping for a siding company and contractor, look for someone who's business is within at least a 100-mile radius of your hometown, Arnett says. Should problems occur, many companies based further than 100 miles cannot feasibly return to repair a strip of siding after the job is completed. A local contractor can return to handle repairs. It also keeps the money at home, Arnett says.

Arnett also recommends asking the contractor for references before making a selection. "This is the main thing to ask for and check," he said. Also look at how long the company has been in business.

The homeowner also should find out whether the contractor wants cash or is willing to finance. If cash, Arnett says, the homeowner should pay at the most \$200 to \$300 down and no more until the job is completed and he is satisfied with it.

"Don't let the contractor talk you into paying \$4,000 to \$5,000 down so he can buy his materials," Arnett said. "If he doesn't have the money for his materials, what type of business is he in?"

If the contractor agrees to financing, he doesn't get paid for the siding job until it's completed,

# Carpet covers the fifth 'wall'

By The Associated Press  
Some interior decorators think of each room in a house as having five walls — with the fifth "wall" being the floor.

For many homeowners, the floor acts as a background for a room's textures, colors and furnishings.

Carpeting is one of the most versatile and dramatic ways to cover a floor, according to the Du Pont "Antron" Home Decorating Guide, which says carpets can pull together and unify all of a room's decorating components.

A major household investment, carpeting requires care in matching its selection to each room's function with the carpet's fiber, performance features, texture and color.

Once the fiber has been determined, the next step is to select the carpet texture. Varying textures and patterns adds spice to a room and can help to define its style, the guide says.

Textures can be rough to the touch, as in tweed, Berber or level-loop, or it can be smooth, (like plush velvet or Saxony). Patterns can range from a tiny pin-dot print to a bold, abstract geometric.

Mixing a rough Berber carpet with soft suede furniture and the polished look of glass results in a sophisticated, contemporary look. Another option is blending a patterned carpet with another pattern used in the drapes or upholstery. Patterns blend together well when

they are color and design related.

An elegant velvet plush or Saxony carpet with a cut-pile pattern helps give a formal dining room or living room a rich, luxurious look.

A family room, children's bedroom or multipurpose room that takes a lot of wear-and-tear should be carpeted with a densely constructed carpet like a loop-pile or low cut-pile.

Choosing a color scheme includes decisions on color groups — warm colors, such as reds, yellow,

browns and oranges, or cool colors like blues, greens or grays — and on color intensities.

Furniture should be selected with room size and function in mind. Whether it's early American, post-modern or traditional, the proportions of the furnishings should be compatible with

the room size.

In decorating a living room, choose comfortable furnishings and arrange them in groups that encourage conversation. If it's a bedroom, consider creating an office in a corner or an entertainment center along a wall to extend the room's livability.

PRINTING AT ITS BEST CHEAPER, TOO. Big Spring Herald 710 Scurry 263-7331

## THE WORLD'S MOST REMARKABLY EFFECTIVE SKIN CARE TREATMENT IS NOW AT YOUR CULLIGAN DEALER.

It's water. The water you get with a conditioning system from Culligan. Why water makes a difference: Over half of all American homes have hard water, which contains invisible particles of calcium and magnesium. These particles mix with soap to form a dull film that can make your skin red, itchy, and dry even after rinsing. Moisturizers and skin creams can relieve hard water dryness temporarily. But a Culligan water conditioner actually eliminates hardness-causing minerals from your water supply.

That means no more soap film — and skin that feels completely clean and very soft. Cleaner laundry and dishes, too. A Culligan conditioning system also puts conditioned water in your dishwasher and washing machine. Tableware will dry virtually free of spots. Clothes will come out brighter and softer. Conditioned water saves money. With Culligan, you won't have to buy expensive fabric softeners, and other products to compensate for water hardness. And you can use up to 55 percent less soap and detergent than you do now.

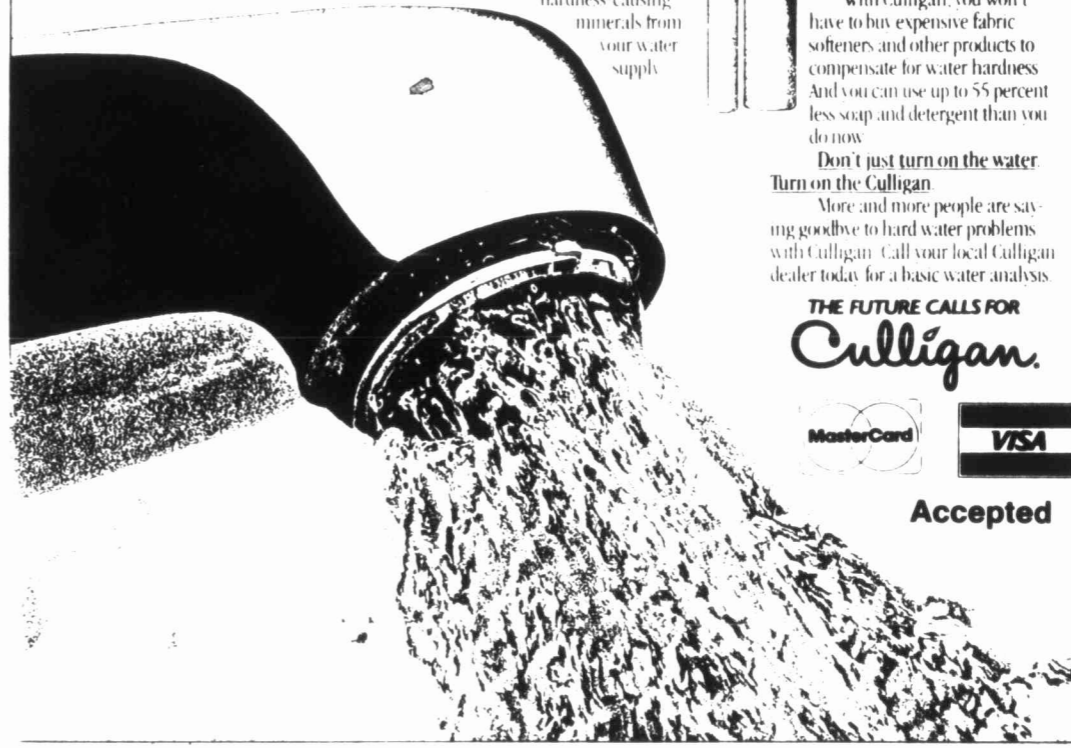
Don't just turn on the water. Turn on the Culligan. More and more people are saying goodbye to hard water problems with Culligan. Call your local Culligan dealer today for a basic water analysis.

263-8781  
503 E. 6 St.

THE FUTURE CALLS FOR Culligan.



Accepted





**We're the Problem Solvers  
Serving Southwest  
Big Spring.**

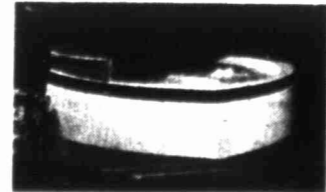
**INDUSTRIAL PARK HARDWARE  
AND  
LUMBER STORE**

613 N. Warehouse Road Dial 267-5811

### HOT SPRING SPA, EXPERIENCE THE BEST FOR LESS \$3000 OFF



At the end of the day you deserve the dependable pleasure of the HOT SPRING SPA Experience. Just step in, lie back, and let swirling jets of hot water massage away your tensions. You'll relax knowing your handsome, HOT SPRING SPA is engineered to give you years of problem-free, low maintenance operation. Costs less than \$20.00 a month to operate, we guarantee it! And it's portable. We'll install in hours! Phone now to begin your HOT SPRING SPA Experience.

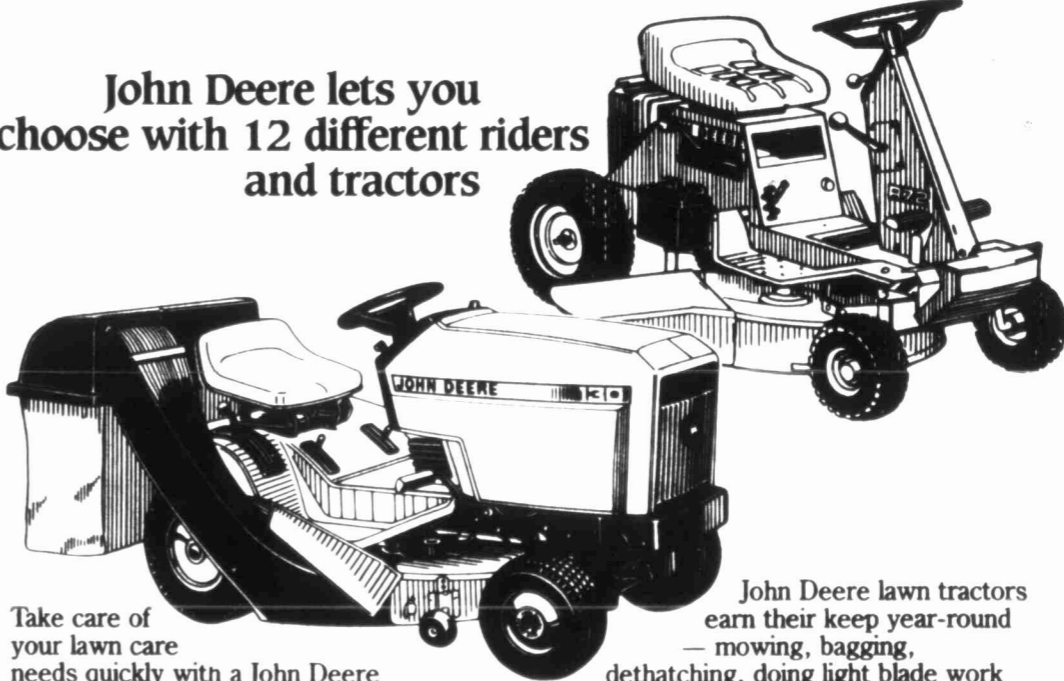


**WEST TEXAS  
DOLPHIN POOLS**

1001 E. 3rd Big Spring 267-8426

## Power up front or out back

John Deere lets you choose with 12 different riders and tractors



Take care of your lawn care needs quickly with a John Deere rear-engine rider or a versatile front-engine lawn tractor.

Riders come in five models. The "R" Series offers John Deere quality at virtually unheard-of prices. The R70 and electric-start R92 have 8-hp engines. The electric-start R92 has an 11-hp engine. All have a new 30-inch high-performance mower for superb cutting and bagging.

The "S" Series are deluxe riders with looks, comfort and performance that's hard to beat. The S82 has 8-hp engine and 30-inch high-performance mower, the S92 has 11-hp engine and 38-inch mower.

John Deere lawn tractors earn their keep year-round — mowing, bagging, dethatching, doing light blade work and removing snow. Seven new 100 Series models, at value prices. Choose 5-speed gear drive or one-lever hydrostatic drive... 30-, 38-, or 46-inch cut... 9-, 12 1/2-, or 17-hp.

Features common to all riders and tractors are: in-line shift pattern for on-the-go shifting; cushioned, adjustable seat; full-length steel frame; sector-and-pinion steering; deep, contoured mowing deck; and triple-safety starting.

Get power where you want it. See us soon for a rear-engine rider or front-engine lawn tractor.

Nothing Runs Like a Deere®



# BOWLIN

## Tractor & implement

Highway 87 North Big Spring, Texas 263-8344