

<p>590 for Poly sales and 31 or 393</p> <p>599 OH/SPDH inspiration condition. after 4:00</p> <p>LABS TALS</p> <p>um tennis</p> <p>d dopl \$10.</p> <p>se seat. 585.</p> <p>paint gun.</p> <p>a top. Size</p> <p>ome minor 44-1/2x 60".</p> <p>ign. Size</p> <p>es 775-14.</p> <p>less tires.</p> <p>guaranteed.</p> <p>\$2 each.</p> <p>Ann chair.</p> <p>m to large 443.</p> <p>male, four 5879.</p> <p>tered, four 5879.</p> <p>nt months. 79.</p> <p>for range. 79.</p> <p>0. Call 263-</p> <p>50. 267-1828.</p> <p>se dog, 1-1/2 1228.</p> <p>703.</p> <p>267-6703.</p> <p>703.</p> <p>267-6703.</p>	<p>GAMES LETHAL?</p> <p>All's fair in science Story, Page 2A</p>	 <p>Girl golfers finish 5th Sports, Section B</p>	 <p>A boy and his steer Lifestyle, Section C</p>
--	--	--	---

Big Spring Herald

Sunday

'The Crossroads of West Texas'

BIG SPRING (TEXAS) SUNDAY, FEBRUARY 24, 1985

VOL. 57 NO. 267 60 PAGES 5 SECTIONS Price 75¢

Spring Board

How's that?
Old settlement

Q. What is the oldest settlement in America?
A. According to the "Texas Almanac," the oldest settlement is Yaleta, a suburb of El Paso.

Calendar Sale

TODAY

- Vietnam War veterans will be honored at reception from 2:30 p.m. to 5 p.m. at the Veterans of Foreign Wars post home on Country Club Road.
- The awards ceremony for the Permian Basin Regional Science Fair will begin at 1:30 p.m. at the Dorothy Garrett Coliseum. Exhibits will be on public display.
- Final competition in the United Way Volleyball You-All tournament begins at 1 p.m. at the federal prison camp gym.
- The Pottion House will be opened from 2 p.m. to 5 p.m.
- The Big Spring Symphony Guild will meet at 2:30 p.m. at 608 W. 15th.

Outside Cool

A 20 percent chance of rain or snow is in this morning's forecast. Things should warm up by this afternoon when highs reach the lower 60s. Wind will be northerly, 10 to 15 miles per hour. Tonight, look for clouds and lows in the low 30s. On Monday, the high should reach the mid 60s.

Tops on TV Evergreen

NBC airs part one of the miniseries, "Evergreen," at 8 p.m. NBC locally is aired on channel 13.

Off the wall

Space toys

EAST AURORA, N.Y. (AP) — Fisher-Price Toys Inc. says it feels sorry for Sen. Jake Garn, R-Utah, who won't have his own toys to play with when he blasts into orbit aboard the space shuttle Challenger next month.

The National Aeronautics and Space Administration rejected Fisher-Price's last-minute offer on Friday to donate three of its "classic" toys to Garn.

All five U.S. astronauts on the Challenger will experiment in weightlessness with toys like yo-yos, tops, marbles and Slinkies that were purchased at a Houston department store.

If Garn wants to play, though, he will have to borrow.

NASA decided there was too little time before the scheduled March 4 lift-off of Challenger to conduct safety tests on the "Chatter Telephone," "Rock-a-Stack" and "Activity Center."

Compromise reached on farm credit

WASHINGTON (AP) — Senate negotiators broke past their bitter rhetoric Saturday to end a four-day filibuster over the plight of farmers and clear the way for confirmation of Edwin Meese III as attorney general.

The filibuster ended with a compromise, negotiated during hours of acrimonious floor debate, that permits both parties to offer farm aid amendments Monday to a bill providing money for Ethiopian famine relief.

Republican Senate leaders had been determined to bring the Meese confirmation to a vote before taking up farm problems, while farm-state Democrats were equally determined to delay the Meese nomination until the farmers' troubles had been addressed.

In a sense, both sides won. Republicans achieved Meese's confirmation, although it came three days later than expected. And Democrats were able to dramatize their concern over farm finances.

Those who had pressed the filibuster said they would offer amendments this week to provide increased credit aid to farmers caught in a financial bind and unable to obtain loans to plant their spring crops.

The amendments could be similar to a bill now working its way through the Democrat-controlled House, said Sen. J. James Exon, D-Neb., one of the filibuster leaders. While the exact nature of the amendments had not been decided, the measures could include advances on crop loan money, ways to buy down interest rates for farmers and further ease credit restrictions, he said.

President Reagan, meanwhile, making his strongest statement to date on the subject during his weekly radio address, said only a "minority" of farmers are in severe financial distress and that "American taxpayers must not be asked to bail out every farmer hopelessly in debt." Reagan defended an administration credit-help program already in place as adequate to take care of farm lending needs.

When the filibuster ended, the Senate voted 91-0 to approve a non-binding "sense of the Senate" resolution that outlined earlier agreements the negotiators had reached to slightly liberalize the administration credit-aid program.

The filibuster, rare this early in a new Congress, brought out unusually intense political rancor which some senators attributed to early jitters over the 1986 elections, when Republicans are at risk of losing their slim Senate majority.

"I've never seen it like this," Sen. Edward Zorinsky, D-Neb., said as the filibuster dragged on Saturday morning. "Nobody (among Republicans) will talk to you, even when you walk by your closest friends. There's a feeling of coldness."

"Things are getting testy around here," Sen. John Chaffee, R-R.I., commented on the Senate floor amid sparring over whether Democrats were trying to wrest away the Republican majority's power to set the body's agenda and embarrass the majority leader, Robert Dole of Kansas, in his first serious floor fight.

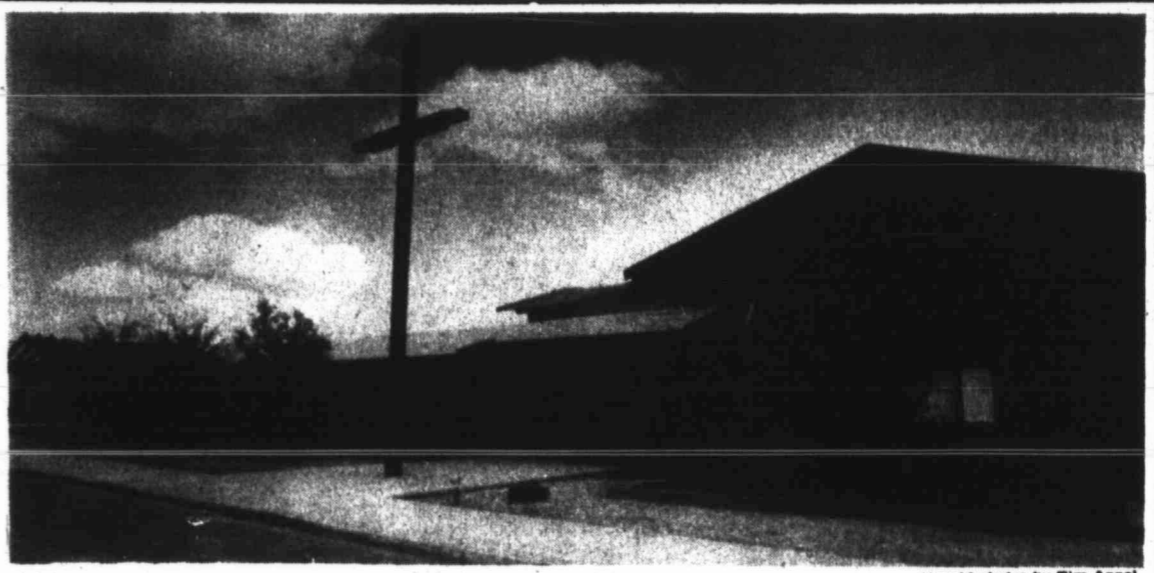
But after agreement was reached allowing votes on farm-credit amendments during debate on the famine bill Monday, Dole appeared buoyed.

"We came out of it in good shape," he said, acknowledging that the four-day filibuster reminded him of the snarls through which former Majority Leader Howard Baker, his predecessor, had suffered.

"I could remember the problems, but I couldn't remember the solutions," Dole quipped.

But Dole also said the bitter battle was "a preliminary bout. We haven't got to the main event yet." That will come in efforts to trim the federal budget and reduce deficits, he said.

The Democrats who pressed the filibuster claimed victory but cautioned that farmers will not get



St. Mary's Episcopal Church

The mark of Harwell

By SCOTT FITZGERALD
Staff Writer

Three Big Spring structures are part of an impressive design collection from a man currently being honored at the University of Texas School of Architecture in Austin.

UT honors architect of Big Spring structures

Friday night the university's Architecture and Planning Library unveiled drawings and pictures from Harwell Hamilton Harris' life work as an architect. The exhibition continues through May 31.

Harris served as dean at the university's architecture school from 1951 to 1955 after moving to Texas from California. He opened offices in Dallas and Ft.

best ideas of his work," Ms. Germany said.

Those ideas stem from the modernist school of naturalism, a design philosophy that believes form should evolve according to the way people live. Architects like Harris, a colleague of Frank Lloyd Wright, observed patterns of people's lives.

Their works are "called organic because they're so natural," Ms. Germany said.

"The houses from the outside look very modest and unpretentious," Ms. Germany said about the Big Spring homes. "But he (Harris) was much more in-

Worth after leaving the university and remained in Texas until 1962.

Today, at the age of 81, he continues an architectural consulting practice in Raleigh, N.C.

Harwell designed homes for Jack Woodall at 806 W. 14th in 1958 and Milton Talbot at 1508 Dayton in 1959. Bob and Susan Lewis now own the home on Dayton. Harwell also designed St. Mary's Episcopal Church at 1001 Goliad in 1956.

Paul Lamb, a faculty member at the University of Texas architecture school, said that Harris also planned two other Big Spring projects that were never constructed.

"There must have been a connection in Big Spring that I'm not aware of," Lamb said about Harris being hired by local residents.

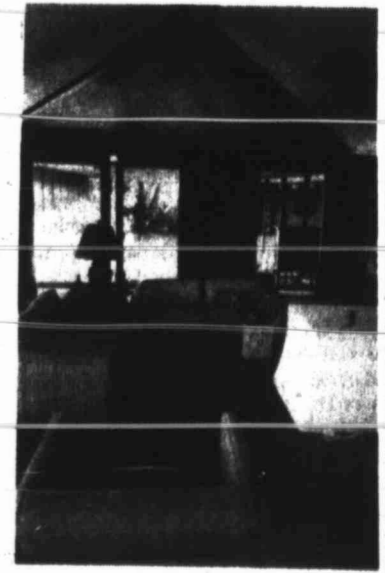
Lamb said he didn't know why the other projects were never completed.

"The Big Spring houses are very fine houses and he (Harris) is very proud of them," said Lisa Germany, a free-lance writer from Austin who wrote an article about Harris for *Texas Monthly's* March edition.

"They (houses) represent the



Woodall house



Lewis house

Compromise page 2-A

Index

Crossword 5C
Dear Abby 5C
Dr. Donohue 5C
Lifestyle 1-4C
Opinion 3A
Sports 1, 2, 4B
Weather 2A



Marianna Gabbi gestures as she talks about the upcoming Big Spring Symphony performance March 9.

Battle of the baton

Everyone discouraged me. They said 'Women don't conduct'...I had to be pushed to the podium...Gender doesn't affect you at all.

Marianna Gabbi

Symphony conductor fought her way to top

By CAROL BALDWIN
Staff Writer

Twenty years ago Marianna Gabbi was told that conducting an orchestra was a job best left to a man. Today people are telling Ms. Gabbi that she is doing that job very well.

Ms. Gabbi is the director of the Big Spring Symphony. A resident of New Mexico, she was in town this weekend to attend a party honoring her and supporters of the local symphony.

Ms. Gabbi will conduct the Big Spring Symphony for the second time March 9 at 8 p.m. in the Howard College auditorium. She will conduct a third time on May 4. She conducted the symphony in its "inaugural" performance last April.

Before she became a conductor she was twice discouraged by professors and peers. Few women conduct symphony orchestras and Ms. Gabbi took the advice to heart and put her dream of conducting an orchestra aside.

As a teen-ager she studied at the Settlement School of Music and at the Philadelphia Musical Academy. She is a native Philadelphian.

In school, "I had the opportunity to conduct several rehearsals. The people in the orchestra thought I was gifted, and I felt it was wonderful to mold this music in one's own way."

But that was the late 1940s. The idea of a woman conducting an orchestra "wasn't popular," Ms. Gabbi said. "Everyone discouraged me. They said 'Women don't conduct.'"

She began concentrating on the violin. Her studies took her to the Ecole Normale de Musique in Paris. There, she again had the opportunity to direct an orchestra.

Her professor "was appealing me," she says now with a smile. She found that the musicians "didn't like it. Especially the women. So I gave it up for the second time."

She returned to the United States in 1970. The Dallas Independent School District "called and asked if I could conduct an orchestra." She needed the job and seized the opportunity.

It was while living there that she completed her master's in conducting at Southern Methodist University and her doctorate from North Texas State University.

Conductor page 2-A

SAFEWAY



Over 1200 Prices Reduced

We reduced over 1200 prices throughout the store with hundreds of new specials being added each week. Just Look for the special yellow stickers throughout the store for greater savings than ever before.

NEW SPECIAL THIS WEEK

NEW SPECIAL THIS WEEK

NEW SPECIAL THIS WEEK

HUNDREDS OF NEW SPECIALS EVERY WEEK AT SAFEWAY!

Town House CANE SUGAR
Safeway Special!

5 \$1.49
-lb. Bag

Limit 1 with \$10.00 or more Additional Purchase. Additional Quantities \$1.59.

Lucerne LARGE 'AA' EGGS
Safeway Special!

58¢
Dozen Carton

Limit 2 with \$10.00 or more Additional Purchase. Additional Quantities 69¢.

Regular. Any Size Pkg. GROUND BEEF
100% Beef Ground Beef

Safeway Special! **98¢**
-Lb. (Regular Ground Beef Patties -Lb. \$1.00)

Farmland Pork and Bacon SAUSAGE LINKS
Safeway Special!

98¢
12-oz. Pkg.

Assorted Varieties DR PEPPER
Safeway Special!

99¢
2-ltr. Btl.

Lower Prices than ever before!

Sea Trader. Light Meat CHUNK TUNA Safeway Special! 58¢ 6.5-oz. Can	Scotch Buy BATH TISSUE Safeway Special! 69¢ 4-roll Pkg.
--	---

Safeway Famous Quality Meats

Safeway SLAB SLICED BACON •Regular or •Tray Pack \$1.48 -Lb.	Safeway PORK SAUSAGE •Regular or •Hot \$1.48 1-lb. Pkg. (2-lb. Pkg. \$2.95)
---	--

Whole Boneless. Safeway Trim BEEF BRISKET
Safeway Special!

\$1.88
-Lb.

Betty Crocker Cake Mixes Safeway Special! 69¢ 18.25-oz. Box	Assorted Elastic Legs Safeway Special! \$4.99 Each Pkg.
---	---

Smok-A-Roma Whole. Water Added Boneless Ham Safeway Special! \$1.68 -Lb.	Smok-A-Roma • Meat of Beef Franks Safeway Special! \$1.38 1-lb. Pkg.
--	--

Safeway Halfmoon Cheddar
Longhorn Cheese
Safeway Special!
\$1.49
10-oz. Pkg.

Fresh 60/70 Count
Frozen Shrimp
Safeway Special!
\$3.98
-Lb.

and... nobody does it

FRESHER
than SAFEWAY!

SEEDLESS GRAPES
• RED FLAME or • THOMPSON
Safeway Special!
99¢
-Lb.

PLANTATION RIPE PINEAPPLES
Safeway Special!
29¢
-Lb.

FRESH CANTALOUPE
Safeway Special!
69¢
-Lb.

KIWI FRUIT Different and delicious! Safeway Special! Each **39¢**

ORANGES Imported Jaffa Safeway Special! -Lb. **59¢**

MUSHROOMS Del Valley Safeway Special! 8-oz. Box **\$1.29**

30¢ Off Label FLEX SHAMPOO
or Conditioner
• Normal • Extra Body
• Oily • or • Dry

\$1.59
15-oz. Btl.

NEW!! Clairol. Condition **MOUSSE**

When you buy two 6-oz. cans of Clairol •Normal or •Extra Control Condition Mousse at regular price, get the third FREE by Mail. (See Store for Details) Safeway Special!

BUY 2, GET 1 FREE!

One Stop Shopping Values!

NEW! Maybelline EXPERT TOUCH •Lip Liner or •Lip Mend \$2.19 Each (Shadow Base \$2.99)	STA-SOF FRO Your Choice ••oz. Extra Dry Comb Out ••oz. Worlds of Curts Comb Out Regular ••oz. Worlds of Curts Gel Activator ••oz. Care Free Curl Moisturizer ••oz. Long-Hold Curl Gel Activator 2 \$5 FOR
---	--

NEW!! •Regular or •Gel **CHECK-UP** Toothpaste

\$1.09
3-oz. Tube Safeway Special!

SCOTCH TAPE
BUY 2 ROLLS, TRY 1 FREE!
When you buy the special 3-ct. pkg. of Scotch Brand Transparent Tape at the 2 roll price, you get 2 rolls (1/2" x 500") of tape and the third roll (1/2" x 250") FREE! Get 35¢ in coupons on this value pack too!

Prices effective Sunday, February 24 and Monday, February 25, 1985 in Big Spring. Sales in retail quantities only.

Miller Lite Beer
12-oz. Cans
Available in stores with beer display. S&P Beverage Co. Grapevine, Texas.
12 \$5.18
PACK (CASE \$10.36)

Money Orders
Any Amount up to \$300.00
50¢
NOW ONLY EACH

SAFEWAY

West Texas town to close school

REDFORD (AP) — The 37 students and four staff members of the school in this West Texas town of about 100 people are facing a big adjustment next fall. The school is closing, partly because of the school reform bill passed last year.

"There are a lot of compliances we must meet," Marfa Independent School District Superintendent Carl Robinson said. "To meet the requirements in Chapter 75 of House Bill 72, we thought it would be in the best interest of the students to move them to Marfa."

The 37 students who attend Redford Elementary School will go to school 75 miles

away at Marfa Elementary, which has an enrollment of 340.

Three of the four employees at Redford Elementary School will probably lose their jobs, Robinson said. Redford School currently has two teachers and two aides.

Robinson said the closing of the Redford school was prompted in part by the school reform bill passed in the 1984 special session of the Legislature.

Among the bill's requirements is a "one room, one teacher" stipulation for students from kindergarten through eighth grade. If the district were to try to implement the

changes within the Redford School, it would mean the district would have to hire six more teachers, Robinson said.

Robinson said several adjustments will be necessary for Redford students.

"They'll have to adjust to the time requirements for riding here and riding home," he said. "There will also be the adjustment of new surroundings."

The 13 high school students from Redford also will be changing schools.

Robinson said that Redford high school students had gone to Marfa schools four or five years ago.

Fort Stockton rallies to aid sick 2-year-old

FORT STOCKTON (AP) — Residents of this West Texas town of 8,600 have raised \$30,000 to try to help save the life of a 2-year-old boy suffering from a liver ailment, but they say they are still less than halfway to their goal.

Luis Levario, the 2-year-old Fort Stockton boy suffering from biliary atresia, needs about \$70,000 for a liver transplant if a donor is found.

"The entire town has contributed. It seems like every organization has gone out of its way to have special things just for him, and I continue to get deposits every day from individuals. I just got a single deposit for \$3,000 the other day from someone, but it wasn't signed," said Judy Leverett, vice president and cashier of Pecos County State Bank, told the San Angelo Standard Times. "I think most everybody can relate to a child who is not going to live without this. Money seems so unimportant when you compare it to a life."

The fund for Luis, who will be 3 years old on Tuesday, was begun in

January. If enough money is raised and a liver compatible with Luis' blood type and body size becomes available, the boy will enter Children's Medical Center in Dallas for the operation.

Luis' disease destroys the duct system draining bile from the liver into the intestine. The toxic waste slowly poisons the liver, hampering and ultimately halting its production of needed elements such as blood-clotting proteins.

For Luis to become a candidate for the transplant, the hospital requires a guarantee that someone would pay for the transplant. Luis' mother, Esther Levario, is unemployed.

Kate Petrik, clinical social worker at the Children's Medical Center, said Friday the average hospital cost for a transplant operation is \$80,000, and estimated the total bill could run about \$100,000. The average length of stay is 51 days, she said.

If Luis were to lose Medicaid eligibility, he would lose about \$45,000.

By LILA ESTES

Q: We've heard that interest rates will probably be going down eventually. Our problem is we've found the home we want... for sale, now. The seller isn't going to wait. Should we "take the plunge" now or watch someone else move into our "dream home"?

A: You may be able to move into your dream home now AND realize the possibility of lower interest rates three years from now. What sounds too good to be true may be reality in a variable rate mortgage which many savings and loan associations are offering. Rather than a fixed-rate 30-year mortgage, the variable-rate mortgage is tied to an index of the lender's cost of money. If that index declines, so does the interest rate on your mortgage.

Prime PROPERTY ERA REEDER REALTORS

«ARIS» ISOTONER



Special **1650**
Reg. \$22.00

32 Pcs. Only.
Camel, black, brown/camel, cordovan.

DUNLAPS
Highland Center

Spring Fashion Sale



25% off
All shirts and jeans for misses, petites' and women's sizes

Misses', petites', women's sizes... choose your Spring shirts and jeans while they're all on sale at 25% off. Here's a sampling.

Sale 11.99
Reg. \$16. Misses' Cobble Lane® fashion-update oversized shirt. Polyester/cotton broadcloth in solids and white. Sizes 6 to 18. Petites' in sizes 6 to 16. Reg. \$18 Sale 13.50 Women's in sizes 38 to 44. Reg. \$18 Sale 13.50

Sale 17.99
Reg. \$24. Misses' newsy drop-yoke jeans with upfront pleats. Solid color or striped navy cotton denim. Sizes 8 to 18.

Sale 18.75
Reg. \$25. Petites' cropped jeans with envelope pockets. In rainbow-striped or solid color cotton denim. Sizes 4 to 14.

Sale 22.50
Reg. \$30. Women's pleat-front jeans with drop-yoke styling. Prewashed cotton canvas in soft solids. Waist sizes 32 to 38.

BREAKFAST SPECIAL
Two eggs any style, two bacon or sausage, 2 pancakes or toast.
\$1.98
Served 6 a.m.-11 a.m. We also have waffles!

LUNCH SPECIAL **EVENING SPECIAL**
Entree, two vegetables, hot rolls, corn bread, dessert, coffee or tea. Thursday, Friday, Saturday
\$3.25 **\$3.95**
Catfish

Prices good thru Feb. 28th
New Owner & Operator — Travis Mauldin

CROSSROADS RESTAURANT
1810 Gregg 267-9453

NEW ARRIVALS

Seth Thomas Grandfather's Clocks
\$799⁰⁰ to \$1795⁰⁰

Silk Ficus Trees — 6 ft. tall
\$11900

Game Sets — (Universal)
\$499⁰⁰ to \$799⁰⁰

Carolina Mirrors
\$59⁰⁰ to \$249⁰⁰

We bought 100 heart shaped solid brass trays for Valentine's Day — (Guess what? They were late!) You can buy one for next year or for yourself while they last. **\$299**

Dixie & Broyhill Bedroom

New Solid Brass Items
Example — 21" Wind Chimes **\$399**

Maddox Sectional
\$1299⁰⁰

20% off
Smooth Expressions® Ultra elegance in underfashions.
Sale 9.60 to 13.60

Experience body-beautiful beginnings with Smooth Expressions® lingerie. A camisole, half slip and full slip. Looking and feeling so luxurious in sensuous satiny tricot of Antron® III nylon. And further enhanced with exquisite touches of lace.

Camisole and full slip in sizes 32 to 36. Half slip in sizes S,M,L.

	Reg.	Sale
Camisole	12.00	9.60
Half slip	11.50	9.20
Full slip	17.00	13.60

Save 20%
Delightful dream themes for Spring
Sale 17.60 and 23.20

Pick a flower-print gown of rayon/polyester. And a coordinating sky blue robe of cotton/polyester. Put them together for one of the freshest sleep-time sets of the season. Both in comfortable dress length. Both in sizes XS,S,M,L.

	Reg.	Sale
Slip-over gown	\$22	17.60
Snap-front robe	\$29	23.20
Not shown:		
Fitted long gown	\$26	20.80
Full long gown	\$24	19.20
Long wrap robe	\$39	31.20
Baby doll set	\$22	17.60

ELROD'S
Big Spring's Oldest Furniture Store Established 1926
806 E. 3rd Open Mon.-Sat. 9-5:30 Ph. 267-8491
WE URGE YOU TO COMPARE OUR PRICES WITH ANY REGULAR OR "SALE" PRICE IN TOWN.

JCPenney
Charge it at JCPenney, 1705 E. Marcy in Big Spring Mall. Open Mon.-Sat. 10 a.m.-9 p.m. 267-3811
Shop JCPenney Catalog: Phone 263-0221

Spring Sale Catalog
Shop for a house-full of values. Including dinette sets, microwave ovens, draperies and much more.

The JCPenney Catalog

St. Jol
WASH
D
lc
If th
Adonis
gals to
womer
would
Howan
sonnel.
Diane
posting
for co
Hawk-
To la
Portlar
an inju
blon
along
talent,
some g
The
were a
out of
School
Steven
looking
Arans
about
sleepe
Portlar
in Clas
mile
the gir
"I ha
and af
Diane
Howar
with p
knew
funden
height
work w
La
The
Steers
over A
to tak
the 8th
vitiatio
Cent
petitio
High's
tourne
Amari
The
by jun
of 184,
tourne
Miche
two go
the La
Ho
It v
Don
Colle
they
night
Colisu
The
place
needs
over
gain
playo
advan

Unfurnished Houses 061
NICE TWO Bedroom with appliances. Garage fenced yard. Mature adults only. No children or pets. References required. \$350 and deposit. 263-6944-263-2341.

Office Space 071
FOR LEASE: car lot with two refrigerated air offices, paved, good location. Call WestTex Auto Parts. 267-1666.

Lost & Found 105
LOST TWO Labrador Retrievers, one yellow male, one black female, near Signal Peak. Call collect 697-3034 (Midland).

Business Opportunities 150
SOLAR DEALERSHIPS
If you're interested in:
*excellent income potential
*limited competition in the area
*becoming a local dealer for the nation's number one rated air panel manufacturer

Jobs Wanted 299
HOME REPAIR, painting, dry wall, stucco, window blind and curtain. Free estimates. Call 263-0374.

Pet Grooming 515
THE DOG HOUSE, 422 Ridgeway Drive. All breeds pet grooming. Free estimates. 267-1571.

Business Buildings 070
OFFICE OR retail space for lease. Will lease entire building or either side. Located at 106 Marcy Drive. If interested please phone 267-3857.

Announcements 100
RENT VIDEO Movies-35 cents each. Why pay more? For more details call 267-3360.

Personal 110
YOUR BIORHYTHM for one year. Send name, birthdate, birthplace and \$7.50 to D.A.L., Biograph Associates, P.O. Box 2072, Big Spring, Texas 79721.

Oil & Gas Leases 199
WANTED: PRODUCING Royalty interests, will pay top dollar for established income. Contact: Ed Matteson, Co. Bettis, Boyle and Stovall, P.O. Box 1240, Graham, TX 76046, (817)549-0780.

FINANCIAL 300
Loans 325
SIGNATURE LOANS up to \$246. CIC Finance, 406 Runnels, 263-7338. Subject to approval.

Piano Tuning 527
PIANO TUNING and repair. Prompt service. Free estimates. Don Toile Music, 263-8193.

Office Space 071
CHOICE DOWNTOWN OFFICE SPACE
Competitive rates, variety of features and services. Call 263-1457 Permian Building

Special Notices 102
POSTED NO TRESPASSING VIOLATORS WILL BE PROSECUTED CHALK RANCH

The family of Othel Jackson would like to express our thanks to our family and friends during our time of bereavement.

EMPLOYMENT 250
Help Wanted 270
KIDS IN SCHOOL. What to do? Sell Avon! Earn up to 50%. Call Sue Ward for details. 263-6695.

WOMAN'S COLUMN 350
Child Care 375
MIDWAY DAY Care Center openings available, 7:00 a.m. - 6:00 p.m. 263-8700.

Musical Instruments 530
DON'T BUY a new or used organ or piano until you check with Les White for the best buy on Baldwin Pianos and Organs.

GREAT POTENTIAL Snack Routes
Name brand products such as: M&M's, Heath Bars, Mars Bars, Snickers & etc. Delivery & Collecting A Fun Business

GOT A COMPUTER???
SUPPLIES & ACCESSORIES IN STOCK
For APPLE, IBM, COMMODORE, RADIO SHACK, and many other brands of computers.

BIG SPRING EMPLOYMENT AGENCY
Coronado Plaza 267-2535
SECRETARY - Word processor, good typist, experience. Open.

HOUSECLEANING 390
THOROUGH and dependable cleaning for offices and homes. Call 267-5944.

HOUSEHOLD GOODS 531
LOOKING FOR good used TV's and appliances? Try Big Spring Hardware first, 117 Main, 267-3265.

WHO'S WHO FOR SERVICE
To List Your Service In Who's Who Call 263-7331
Appliance Rep. 707
Insulation 711
Boot & Shoe Repair 714
Carpentry 716
Cabs 717
Carpet Service 719
Chimney Cleaning 720
Concrete Work 722
Dirt Contractor 728
Fences 731
Home Improvement 738
Interior Design 740

Card of Thanks 115
We wish to thank all of our kind friends and neighbors for their many kind expressions of sympathy and condolences during our recent bereavement.

Business Opportunities 150
EXTRA NICE retail clothing store for sale. Inventory and fixtures. Cash discount or owner will carry papers with 1/2 down. Send reply to: Store, P.O. Box 1742, Big Spring, Texas 79721.

Antiques 503
ANTIQUE SECRETARY - good condition. 263-2256.

Classified Crafts
PLANS AND PATTERNS
FLYING MACHINES
1-2-3, contact Full-size, iron-on patterns and complete step-by-step assembly instructions for three old-time airplanes.

OWN YOUR OWN VENDING BUSINESS
No selling or experience necessary. Our company sets everything up. You collect the money. 12 hours per month provides excellent income. This is not blue sky or a get rich quick scheme. This is a sound business requiring \$6,490.

CUSTOMER SERVICE REPRESENTATIVE
To work with telephone and walk-in customers:
* Desire to work with public.
* Friendly, courteous.
* Good telephone personality.
* 10 Key, light typing.
* Prefer non-smoker.

Extra Specials
2x4 - 92% Pre Cut Studs Econo 99¢ each.
1x12 Shelving White Pine 49¢ ft.
1x4 6' Pointed Spruce Pickets 59¢ Wheelbarrow 4 1/2 Cubic Ft. Contractor Type Reg. \$103.00 \$59.95 boxed

AGR
1980 Case 1978 Case 2670 Case 1370 1979 AC Case 1570 IHC 1486 IHC 1086 Case 1170 1974 MF Case 1038 IHC B Fa IHC H Fa JD 4400 4 JD F935H M&M 8 b Speed Ki Hutchma Baker HI Caldwell Gyro 160 Baltz Hou JD 3800 4 24' cotton Crustbus

ACT TODAY BY CALLING TOLL FREE 1-800-835-7427 ext. 354
The Frost Corporation
WELL ESTABLISHED wrecker service in Lubbock seeks full charge working partner. Small investment required. Phone 1-800-872-4007.

Jobs Wanted 299
EXPERIENCED TREE Pruning. Removal of dead work, etc. For free estimates call 267-0317.

Dogs, Pets, Etc. 513
BETTY'S ANIMAL HOUSE - Pet boarding, cats welcome. Large indoor kennels, outdoor exercise. Flea and tick baths. 267-1115.

Classified Crafts
Dept. C (79720) Box 157 Bixby, OK 74008
CANADIAN RESIDENTS: Please add \$1.00 for postage.

ACT TODAY BY CALLING TOLL FREE 1-800-835-7427 ext. 354
The Frost Corporation
WELL ESTABLISHED wrecker service in Lubbock seeks full charge working partner. Small investment required. Phone 1-800-872-4007.

Just Two Left! Border Collie Puppies
One male, 13 weeks, One male, 14 weeks, 570¢ each.
Tom Crossler (915) 394-4320

Just Two Left! Border Collie Puppies
One male, 13 weeks, One male, 14 weeks, 570¢ each.
Tom Crossler (915) 394-4320

Classified Crafts
Dept. C (79720) Box 157 Bixby, OK 74008
CANADIAN RESIDENTS: Please add \$1.00 for postage.

Garage Sale
GARAGE SALE 263-8196. Furn tools, clothes, Friday.
BABY CLOSET partially tr North on Birch only.
RETIREMENT trailer, 1195. refrigerator, electric heat, closed two wheel, gold, pool new tires and Catalina, two tires and bal Firm. Cash. 21 DRYER, Di typewriter, di Third.
MOVING SALE miscellaneous DATSUN 210, immaculate \$2500. Call 267-2000.
TWO FAMILIAR systems, baby thing, sizes 5 Sunday 9 a.m.
Miscella
BRING US Y (that's about Weaker and to sell a single Your ad appe - 2 days, 2 i p.m. Thursday item, call us I Special free or we will run SAUNDERS 3 to fix 'em. 320
191 CORO Autom
FM 700 I
197 Coupe, air.
REF Buy, Living Dining
CATFISH Si eat. Include Friday, Satu CONCRETE birdbaths, c and carts at and Montgor
1980 Case 1978 Case 2670 Case 1370 1979 AC Case 1570 IHC 1486 IHC 1086 Case 1170 1974 MF Case 1038 IHC B Fa IHC H Fa JD 4400 4 JD F935H M&M 8 b Speed Ki Hutchma Baker HI Caldwell Gyro 160 Baltz Hou JD 3800 4 24' cotton Crustbus
1980 Cas 1978 Cas 1982 Cas 1981 For 1979 Cas Case 580 Case W1 Michigai IHC TDI Vermei
HWY 1 915-263-

Weddings

Holmes-McNallen

A. Denise Holmes and Randall M. McNallen of San Antonio were united in marriage during a Feb. 18 wedding ceremony at College Baptist Church. The Rev. Clayton Hicks officiated at the 6 p.m. rite before an archway and two candelabra decorated in the colors of white and heather rose.

The bride is the daughter of Mr. and Mrs. Dennis Holmes, Gail Rt. The bridegroom is the son of Mrs. Shirley Cross, San Antonio, and T.R. McNallen, 2600 Crestline.

Malinda Crocker, organist, and Barney Perucca, vocalist and uncle of the bride, performed music for the ceremony. The bride was given in marriage by her father.

The bride wore a traditional white gown fashioned with schiffli embroidery and pearls on the bodice, Juliet sleeves, skirt and chapel-length train. To complete her ensemble, she wore an Edwardian cap and veil of illusion applied with schiffli embroidery and pearls. She carried a bouquet of white carnations and heather rose-colored roses.

Paula Harrison was maid of honor. Dani Holmes, sister of the bride, was bridesmaid.

Tom Semelsberger of San Antonio was best man. Chuck Andrews was groomsmen. Ushers were Jimmy Cross of San Antonio, cousin of the bridegroom, and Timmy McNallen, brother of the bridegroom. Eric Perucca, cousin of the bride, was candlelighter.

Following the ceremony, the couple was honored at a reception at the Homestead Inn. The bride's table was draped with a white lace cloth and featured a three-tiered wedding cake. The cake was decorated with a stairway of heather rose roses and candles.

The bride graduated from Monterey High School in Lubbock and Texas Tech University in Lubbock. She is a teacher in San Antonio. The bridegroom graduated from Big Spring High School and University of Texas. He is employed by Frost Bank in San Antonio.

The couple will live in San Antonio.



MR. AND MRS. RANDALL MCNALLEN
...were wed Feb. 18

ple was honored at a reception at the Homestead Inn. The bride's table was draped with a white lace cloth and featured a three-tiered wedding cake. The cake was decorated with a stairway of heather rose roses and candles.

The bride graduated from Monterey High School in Lubbock and Texas Tech University in Lubbock. She is a teacher in San Antonio. The bridegroom graduated from Big Spring High School and University of Texas. He is employed by Frost Bank in San Antonio.

The couple will live in San Antonio.

Darden-Thomas

Wedding vows of Brenda Darden and Duane Thomas were solemnized Feb. 15 during a ceremony at the Howard County Courthouse. Justice of the Peace China Long officiated at the 4 p.m. rite.

The bride is the daughter of Ginger Davis of Blanket and Aubrey Ray Darden of Big Spring. The bridegroom is the son of Mr. and Mrs. Jackie Thomas of Richardson.

The bride wore a beige strapless tea-length gown adorned with a sheer lace jacket. She carried a nosegay of lilac and yellow mums, accented with beige streamers.

Terrie Simpson of Blanket served as matron of honor. Craig Dunnam was best man.

The couple is living in Big Spring.



MR. AND MRS. DUANE THOMAS
...wed in courthouse ceremony

People who have chronic nightmares artistic, creative

MEDFORD, Mass. (AP) — Researchers at Tufts University say studies indicate that people who suffer from chronic nightmares are prone to mental illness and also tend to be artistic and creative.

The tendency toward mental illness is often what leads nightmare sufferers to the creative arts, where they can utilize their sensitivity.

GO CLASSIFIED!
263-7331

BUY A **LENNOX** Power Saver TODAY AND DON'T PAY A SINGLE CENT UNTIL SUMMER WEATHER ARRIVES.

Using our no down payment, 3 months delayed financing plan, we can install a high efficiency Lennox 2 speed power saver, right now, but you won't pay anything until it's time to turn it on.

With quality comfort equipment, our service reputation and competitive financing, you can't afford to own less than a Lennox. For complete details and a 25% discount on your next service call, call us, your independent Lennox dealer.

JETER SHEET METAL

LENNOX AIR COND. & HEATING
813 E. 3RD 263-6701

High Fashion Tri-Color Jewelry
SAVE 25%



Enhance the special occasion with 14 Kt. Gold tri-color rings, earrings, necklaces, or bracelets. Credit Options to Fit Any Budget.

Gordon's JEWELERS

BIG SPRING MALL

- A. Reg. 150. Now 112.
- B. Reg. 195. Now 146.
- C. Reg. 850. Now 268.
- D. Reg. 295. Now 221.
- E. Reg. 695. Now 521.
- F. Reg. 175. Now 131.
- G. Reg. 150. Now 112.
- H. Reg. 175. Now 131.
- I. Reg. 145. Now 108.
- J. Reg. 495. Now 371.

Cafeteria menus

BIG SPRING SCHOOLS BREAKFAST
MONDAY — Frost Loops; banana and milk.
TUESDAY — Apple cinnamon muffin; fruit punch and milk.
WEDNESDAY — Doughnut; orange juice and milk.
THURSDAY — Waffle; honey & butter; apple wedge and milk.
FRIDAY — Apple pop tart; orange wedge and milk.

LUNCH ELEMENTARY
MONDAY — Hamburger steak; gravy; scalloped potatoes; green lima beans; hot rolls; coconut pudding and milk.
TUESDAY — Pizza; buttered corn; spinach; hot rolls; lemon pie/whipped topping and milk.
WEDNESDAY — Meat loaf; buttered steamed rice; cut green beans; hot rolls; apple cobbler and milk.
THURSDAY — Fried chicken; whipped potatoes; English peas; hot rolls; peanut butter cookie and milk.
FRIDAY — Hamburger; French fries; catsup; pinto beans; pineapple shortcake and milk.

SECONDARY
MONDAY — Hamburger steak; gravy or chili mac & cheese; scalloped potatoes; green lima beans; chilled pear half; hot rolls; coconut pudding and milk.
TUESDAY — Pizza or stew; buttered corn; spinach; carrot sticks; hot rolls; lemon pie/whipped topping and milk.
WEDNESDAY — Meat loaf or roast beef; gravy; buttered steamed rice; cut green beans; cole slaw; hot rolls; apple cobbler and milk.
THURSDAY — Fried chicken or stuffed pepper; whipped potatoes; English peas; gelatin salad; hot rolls; peanut butter cookie and milk.
FRIDAY — Hamburger or tuna salad; French fries; catsup; pinto beans; lettuce & tomato salad; cornbread; pineapple shortcake and milk.

STANTON BREAKFAST
MONDAY — Cinnamon toast; juice and milk.
TUESDAY — Buttered oats; toast; juice and milk.
WEDNESDAY — Scrambled eggs; tortillas; juice and milk.
THURSDAY — Biscuits; honey butter; juice and milk.
FRIDAY — Cereal; fruit and milk.

LUNCH
MONDAY — Corn dogs, mustard; oven fried potatoes; pork & beans; chocolate cake and milk.
TUESDAY — Bean chulapas; vegetable salad; Fried olives; butter cookies and milk.
WEDNESDAY — Steak fingers, gravy; creamed potatoes; greenbeans; applesauce; hot rolls and milk.
THURSDAY — Hamburgers; hamburger salad; French fries; fruit cobbler and milk.
FRIDAY — Tuna casserole; English peas; buttered carrots; jello; hot rolls and milk.

COAHOMA BREAKFAST
MONDAY — Cap'n Crunch Berrie cereal; banana and milk.
TUESDAY — Doughnuts; juice and milk.
WEDNESDAY — Pancakes; syrup; butter; applesauce and milk.
THURSDAY — Cinnamon rolls; juice-fruit and milk.
FRIDAY — HOLIDAY.

LUNCH
MONDAY — Italian spaghetti & meat; black-eyed peas; tossed salad; spice cake; cornbread; butter and milk.
TUESDAY — Barbecue chicken portions; creamed potatoes; honey glazed carrots; strawberry gelatin; pull-apart bread; butter and milk.
WEDNESDAY — Toasted ham & cheese sandwich; French fries; lettuce & tomato salad; cinnamon rolls and milk.
THURSDAY — Hamburger steak with gravy; buttered corn; steamed rice; cup hot rolls; butter and milk.
FRIDAY — HOLIDAY.

WESTBROOK BREAKFAST
MONDAY — Rice crisp bar; orange juice and milk.

LUNCH
MONDAY — Rolled wheat muffins; orange juice and milk.
TUESDAY — Cinnamon rolls; orange juice and milk.
WEDNESDAY — Cereal; orange juice and milk.
THURSDAY — Bacon; biscuits; butter; syrup; honey; orange juice and milk.

LUNCH
MONDAY — Fish sticks; tartar sauce; macaroni cheese; black-eyed peas; applesauce; sliced bread and milk.
TUESDAY — Hot dogs; chili; lettuce wedge; baked potato; fruit cup and milk.
WEDNESDAY — Tacos; taco sauce; lettuce; cheese; tomatoes; pinto beans; corn bread; peach cobbler and milk.
THURSDAY — Fried chicken; gravy; creamed potatoes or steamed rice; green beans; biscuits; butter; syrup; honey and milk.
FRIDAY — Beef stew with vegetables; peanut butter or pimento cheese sandwiches; carrot sticks; ginger bread with whipped topping and milk.

SANDS BREAKFAST
MONDAY — Doughnut; juice and milk.
TUESDAY — Muffins; applesauce and milk.
WEDNESDAY — Cereal; juice and milk.
THURSDAY — Jelly doughnuts; juice and milk.

FRIDAY — Cinnamon rolls; juice and milk.

LUNCH
MONDAY — Sloppy Joes; French fries; sweet relish; Ranch style beans and fruit.
TUESDAY — Beef ravioli; sliced potatoes; black-eyed peas; hot rolls and pudding.
WEDNESDAY — Beef tacos w/cheese; pinto beans; salad; cornbread and cobbler.
THURSDAY — Chicken fried steak; mashed potatoes; gravy; green beans; hot rolls and jello.
FRIDAY — Spaghetti w/meat sauce; cheese; buttered corn; spinach; butter bread and fruit salad.

BIG SPRING SENIOR CITIZENS
MONDAY — Burrito w/chili hominy; later tols; lettuce & tomato; cornbread; cake and milk.
TUESDAY — Chicken patties; zucchini & tomato; corn; cheese and macaroni salad; rolls; cookies and milk.
WEDNESDAY — Beef-a-roni; turnip greens; cheese sticks; carrot, raisin salad; cornbread; cake and milk.
THURSDAY — Salisbury steak; mash potatoes; spinach; tossed salad; rice pudding; rolls and milk.
FRIDAY — Fish; potatoes; peas & carrots; whole tomatoes; cornbread; spice cake and milk.

Green Acres Nursery

700 E. 17th 267-8932
Trees — Shrubs — Landscape — Tree Trimming
Lawn Maintenance and Special Occasion Delivery

SUMMER SHAPE UP

at The Dance Gallery & Fitness Center

Summer is just around the corner. It's time to tone up, tan up ... look & feel terrific!

Aqua-Aerobics		Aerobics	
MWF	MTTH	MWF	MTTH
9:00 a.m.	8:15 a.m.	8:30 a.m.	10:00 a.m.
5:30 p.m.	10:00 a.m.	10:00 a.m. (beg.)	5:30 p.m.
	4:30 p.m.	4:30 p.m.	7:00 p.m.
	6:00 p.m.	6:15 p.m. (beg.)	7:00 p.m. (men)

Classes begin March 4th

Childcare Available

★ Try Our New Wolf Suntan System ★

The Dance Gallery

2303 Goliad *IDEA & Fitness Center AFAA 267-3977

"LOOKING GOOD FEELING GREAT!"
THE NUTRI-SYSTEM WAY



Nutri System Owner Roxie Forrest with Odessa Attorneys: Jim Jordan and Jim Bobo



111 Pounds Lost And Feeling Great



1/3 OFF REGULAR PRICE MEN ONLY Expires Feb. 28, 1985

nutri/system weight loss centers

ODESSA 368-4081 2101 N. Grandview
MIDLAND 697-3088 1028 H. Andrews Hwy
BIG SPRING 263-0217 1510 Scotty

Tidbits

Navarrete named to 'Who's Who'



By **TINA STEFFEN**
Lifestyle Editor

MR. AND MRS. LAWRENCE OLIVER are proud parents. Their daughter, **DIANE NAVARRETE**, has been presented in the book *The Women of '85*, a "Who's Who" and "What's What" for by and about women of the Dallas/Fort Worth metroplex.

Diane is program development specialist for SER-Jobs for Progress, Inc. at its national office. She provides training and technical assistance to local SER affiliates. She also has served as the local coordinator for Texas Women for the Eighties, coordinating and organizing volunteers to register women to vote in Dallas County. The focus of this effort is on low-income and minority women. She was formerly public affairs producer for KERA-TV and WFAA-TV and has been active in many professional, political and community organizations.

The **CAPROCK CHAPTER OF THE MARCH OF DIMES** and **HELEN'S** worked together to present a fashion show at Big Spring Mall, Feb. 16, that netted the charity about \$150 in donations.

Models wore fashions from Helen's in a choreographed presentation staged at the former Sancho's Restaurant. The area was decorated with a wall of colorful helium balloons, posters of popular music stars and Esprit posters. Models danced to tunes

choreographed by Jazzercise instructor and March of Dimes volunteer **ROBYN DRAKE**.

HELEN VAUGHN coordinated the event with the assistance of Mrs. Drake and drama instructor **TIM HAYNES**. Haynes was the emcee. Special guests were singers Miss Howard County **RHONDA FOWLER** and **MARCY WEAVER**.

The **PAT PORTER** family went on a business trip cruise with Star Com dealers Feb. 3-10. The cruise took them to Cozumel, Mexico, Georgetown, Grand Cayman

Island, Ocho Rios, Jamaica.

MARY AND RICK KENNY will make their home in Salt Lake City, Utah in mid March, where Rick will be the Union Carbide plant manager in Salt Lake City. The two have been jetting around the country lately, mostly back and forth from Salt Lake City and Big Spring to look for a new home and take care of business.

MR. AND MRS. ANDRE AR-CAND have guests this week. **MR. AND MRS. EL ECKART**, who live in Monkton, Md.



DIANA NAVARRETE
...listed in book

Do you have rent or royalty income?

H&R Block can make the new tax laws work for you.

OPEN 9-9 MON-FRI
9-5 SAT.
1-5 SUN.

H&R BLOCK
THE INCOME TAX PEOPLE

APPOINTMENTS AVAILABLE

1512 GREGG — 263-1931



WE GLADLY REDEEM YOUR U.S.D.A. FOOD STAMPS. RIGHTS RESERVED TO LIMIT QUANTITIES. NO SALES TO DEALERS. COPYRIGHT 1985 WINN-DIXIE STORES.

Town & Country COLLECTION STONEWARE
GENUINE, IMPORTED STONEWARE



4-Pc. Place Setting*

FREE

With 40 Bonus Certificates (One Filled Card)

ONLY \$249 WITH 30 BONUS CERTIFICATES	ONLY \$499 WITH 20 BONUS CERTIFICATES	ONLY \$749 WITH 10 BONUS CERTIFICATES	ONLY \$999 WITH 5 BONUS CERTIFICATES
---------------------------------------	---------------------------------------	---------------------------------------	--------------------------------------

*4-pc. set includes: Dinner Plate, Cup, Saucer, Dessert Dish.

ALSO ON SALE: BREAD & BUTTER PLATES ONLY 79¢. FOUR BEAUTIFUL PATTERNS TO CHOOSE FROM. See Store Display For Details.

Prices Good Sun., Feb. 24 thru Tues., Feb. 26, 1985

More than birth certificate needed for identification

WASHINGTON (AP) — It takes more than a birth certificate to establish your identity at the Social Security Administration. To prevent fraud, a second form of identification is required, such as a vaccination certificate, insurance policy or driver's license.

NOTICE

An error was made on page 2 of this week's sale circular. Ladies' Fashion Sport Socks are \$1 per pair. We apologize for any inconvenience this may have caused.



On Turning Heads

by Gary Don



MOUSSES, GELS AND STYLING LOTIONS

Mousses, gels and styling lotions all use a polymer base, a substance that dries as a film to support the hair. The differences between these three styling preparations lie in the types and concentrations of polymers used. Setting/styling lotions have a fairly high concentration to give a stronger hold with a crisp curl. Mousses tend to have the lowest concentration because they are not formulated for curl but for body and support. Gels are in between and are used to mold hair into specific styles. Coarse hair may require the extra body of a gel for hold, while a mousse will work well with most other types of hair. Setting/styling lotions will give molding power to fine hair.

Let the professionals at LA CONTESA tend to your hair care needs. We will provide you with the finest in professional hair care treatment. We are open to serve you Tues.-Sat. We can be reached at 267-2187 to set up an appointment. You will find our salon conveniently located at 1508 Marcy. We look forward to serving you soon.

HINT

Both gels and mousses are best used with a blowdryer on shorter hair.

Pinky Pig Whole Pork Loin Sliced Free
99¢
Lb.

- Pinky Pig Rib Half (Sliced Free) \$1.19
- Pork Loin \$1.29
- W-D Brand USDA Choice Grain Fed Boneless Chuck Steak \$1.79
- Pinky Pig 1/2 (Sliced for Chops) \$1.39

Kountry Fresh Prestige All Flavors Ice Cream
\$1.99
Half Gal.

- Green Giant Lasagne \$1.99
- Swanson Fish N' Chips (6-Oz.) \$1.29
- Fried Chicken \$1.29
- Superbrand Tuna Pkg or Fudge Bars \$1.19
- Chc. Treat (Mini) Orange-Yan. \$1.39
- Weight Watchers \$1.39

Superbrand American Cheese Slices
\$1.19
12-oz. Pkg.

- Superbrand Margarine Spread \$1.00
- Superbrand Sour Cream \$1.00
- Superbrand Swiss Style Asst. Yogurt \$1.00
- Each Deluxe American Cheese Slices \$2.09

Pepsi-Cola
2-ltr. Btl.
99¢

- Assorted Flavors Chek Drinks \$1.69
- Van Camp's Pork & Beans \$1.00
- Thriftly Maid Pork & Beans \$1.00
- Thriftly Maid Pink Grapefruit Juice \$1.79

W-D Brand USDA Choice Grain Fed Boneless Chuck Roast
\$1.59
Lb.

- Hickory Sweet (2-lb. 1/2") Sliced Bacon \$1.49
- W-D Brand Whole Hog (2-lb. 1/2") Sausage \$1.49
- Holly Farms Fryer Drumsticks or Fryer Thighs \$1.99
- Holly Farms Fryer Wings \$1.69

Harvest Fresh Large Slicing Tomatoes
2 \$1
Lbs.

- Superbrand Orange Juice \$3.49
- Harvest Fresh Carrots \$1.00
- Harvest Fresh Celery \$1.59
- Harvest Fresh Mushrooms \$1.00
- Harvest Fresh California Avocados \$3.00

Pillsbury Asst. Layer Cake Mix
69¢
18 1/2-oz. Box

- San Ball White or Yellow Paper Towels \$1.00
- Thriftly Maid Taco Shells \$1.00
- Crackin' Good Asst. Saltine Crackers \$1.00
- Crackin' Good Asst. Toasted Pastries \$1.00

Wolf Plain Chili
99¢
19-oz. Can

- Eggs Reinforced Athlete Knee Highs \$2.99
- Cold Tablets \$1.99
- Triaminic \$2.49
- Bufferin \$3.99
- Toothpaste \$3.99

DELI-BAKERY
Virginia Baked Ham
\$2.49
Lb.

- Del. Combination of Pepperoni Fresh Pizzas \$1.99
- All Natural Two Layer 8" Red Velvet Cakes \$3.99

Red or Golden Del. Apples
\$1.99
14-ct. Vexor Bag

- Harvest Fresh Russet Potatoes \$3.00
- Harvest Fresh Yellow Onions \$4.00

Superbrand Cinnamon Rolls
89¢
9 1/2-oz. Pkg.

- Orange Juice \$8.99

SAVE \$1.59 ON REFUND BY MAIL
ban ROLL-ON
1.5¢ only
SALE PRICE \$1.59
LESS MFR. REFUND \$1.59
Your Cost \$0.00

To receive your \$1.59 Refund on your purchase of BAN Roll-On send the original carbon back (keep the BAN Roll-On 1.5¢) and the cash register receipt with the purchase price (check) full in your name and address below and mail to the address on this form.

MAIL TO: **BAN** Roll-On \$1.59 Refund Offer
P.O. Box 14136 Baltimore, MD 21268

Please Print Name _____
Address _____
City _____
State _____ Zip _____

LIMITED OFFER (Offer good only in U.S.A. Offer requires pre-approval. This offer must be completely returned and made payable to the manufacturer. Allow 4-6 weeks for receipt of refund. No group or organization requests and no home delivery. Void where prohibited. Taxes or other charges may apply. Offer ends 6/30/85.

2602 South Gregg

Sunday's puzzle

Puzzle solution p. 6-C

ACROSS

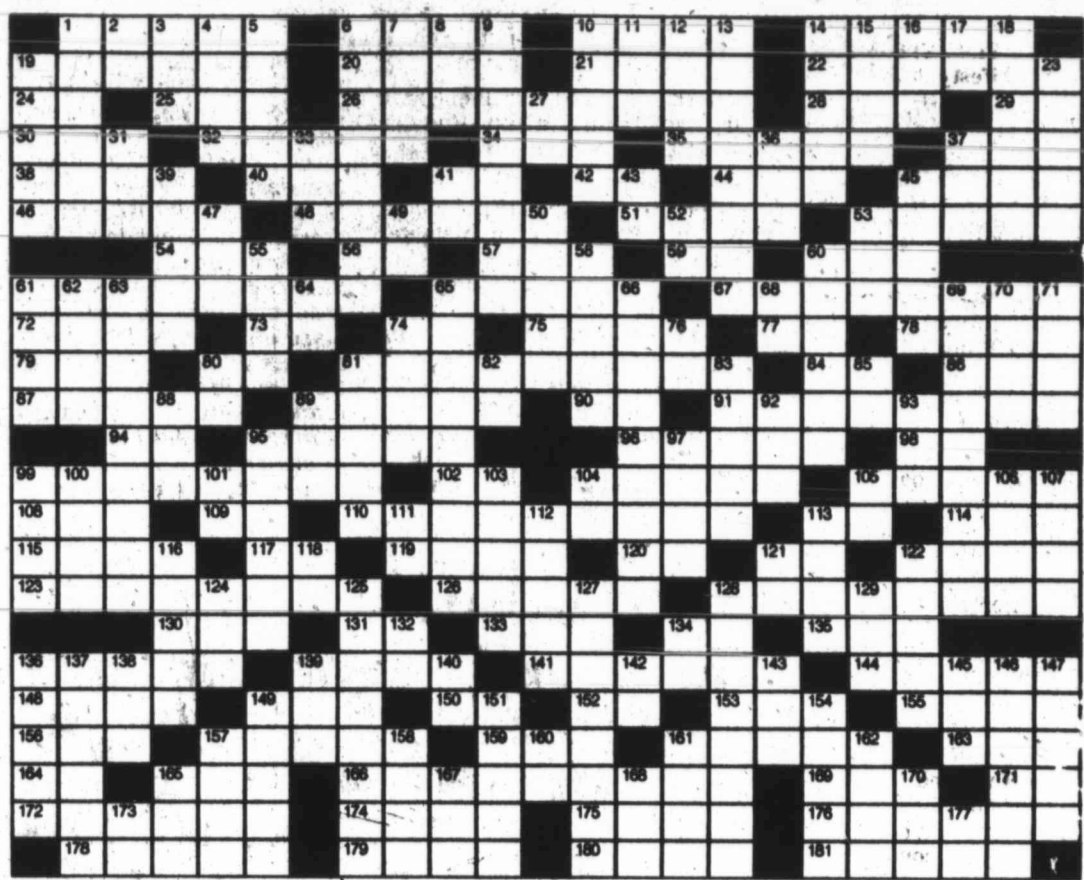
- 1 Factory
- 6 Concert member
- 10 Noun ending
- 14 Pincerlike claw
- 19 Skin decoration
- 20 Threesome
- 21 Platonic ideas
- 22 Trustworthy
- 24 Correlative
- 25 Street surface
- 26 Post-Leiten gift: 2 wds.
- 28 Cotton State: abbr.
- 29 Presidential monogram
- 30 European sea gull
- 32 Anglican instruments
- 34 Work unit
- 35 Very tasty
- 37 Heavy swell
- 38 Son of Seth
- 40 Chinese weight
- 41 Jewish month
- 42 And: Lat.
- 44 Racing circuit
- 45 Wood measure
- 46 Water vapor
- 48 Implant firmly
- 51 Rip ascender
- 53 European river
- 54 Author Fleming
- 56 Hawaiian hawk
- 57 Carp
- 59 Height: abbr.
- 60 French coin
- 61 Exact: 2 wds.
- 65 Shining
- 67 Rate
- 72 Component
- 73 Ear: comb. form
- 74 Naval vessel: abbr.
- 75 Old Irish garment
- 77 Chief Moab city
- 78 Hunted animal
- 79 German physicist

- 80 Doctor's assistant
- 81 Travel permits
- 84 Three-toed sloth
- 86 Spelling contest
- 87 Vestige
- 89 District
- 90 Township: abbr.
- 91 Floating bridge supports
- 94 Rope fiber
- 95 Eliot character
- 96 Scottish landowner
- 98 Physician: abbr.
- 99 Dagger
- 102 As far as
- 104 Briny
- 105 Music hall
- 108 Churn
- 109 Gravity: abbr.
- 110 Adornments
- 113 Verb form
- 114 Cape Horn native
- 115 Is ill
- 117 Daybreak: pref.
- 119 Arrow poison
- 120 Digraph
- 121 Polynesian lily
- 122 Wardrobe item
- 123 Increase rapidly
- 126 Mine cars
- 128 Orthodontists
- 130 Prepare for war
- 131 Beast of burden
- 133 Hungarian liquid measure
- 134 Twice: pref.
- 135 Spanish aunt
- 136 Wireless
- 139 Cut quickly
- 141 Emphasize
- 144 Small drink
- 148 Soter disc
- 149 Humorous
- 150 Continent: abbr.
- 152 Concerning
- 153 Dip (for gold)
- 155 Cogwheel
- 156 Show a profit of

- 157 Lifting device
- 159 And not
- 161 Lone performer
- 163 Pigeon
- 164 Gallium symbol
- 165 Small dog
- 166 Dupes
- 169 — the mark: obey
- 171 Edicts
- 172 Flee
- 174 Amorous look
- 175 Silk: Fr.
- 176 Straying
- 178 Fluorescent dye
- 179 Little fellows
- 180 Cargo units
- 181 Smart

- 41 Assam language
- 43 Size of shot
- 45 Gullible person
- 47 Furious
- 49 Right-hand page
- 50 Spring flower
- 52 What?
- 53 French king
- 55 Middy
- 58 Cautioning command
- 60 Abandon
- 61 Blemish
- 62 Himalayan wild goat
- 63 Burrowing mammal
- 64 Guido's note
- 65 Aide
- 66 General Doolittle's vehicles
- 68 Egyptian god
- 69 Full of trees
- 70 —age
- 71 Potato buds
- 74 Tibetan monk
- 76 Football position: abbr.
- 80 Conceiving
- 81 Aviator
- 82 Thoroughfare: abbr.
- 83 Skewers
- 85 Neuter pronoun
- 88 Presidential sobriquet
- 89 Illuminated
- 92 Containing payday
- 93 Unusual
- 95 River
- 97 Seaweed
- 99 Health resorts
- 100 Tin plate
- 101 For example: abbr.
- 103 "Met" event
- 104 Silicon symbol
- 105 Hindu mantra
- 106 Complete section

- 107 Gym pads
- 111 Japanese measure
- 112 Pointed summit
- 113 Stagny expression
- 116 Lover
- 118 Chemical ending
- 121 — Deum
- 122 Chinese river
- 124 Family member: abbr.
- 125 Unlikely winner: 2 wds.
- 127 Auto driver
- 128 Settles affairs
- 129 Poetic contraction
- 132 Nero's eleven
- 134 Take place
- 136 Stove
- 137 Resting: 2 wds.
- 138 Speck
- 139 Capuchin monkey
- 140 Letter addition
- 142 Baseball position: abbr.
- 143 Chemical salt
- 145 Islands
- 146 Ranking
- 147 Secret meeting
- 149 Female
- 151 S. American mountains
- 154 Jottings
- 157 Pueblo Indian
- 158 Roman robe
- 160 Cry of pain
- 161 Rind
- 162 Classify
- 165 Dance step
- 167 Ancient
- 168 Now: Scot.
- 170 Silkworm
- 173 Cobalt symbol
- 177 One or any



Dr. Donohue

Kind of weight is most important

DEAR DR. DONOHUE: I am a 29-year-old female, small framed and weighing 185 pounds — or I did weigh that until a year ago. Then I started lifting weights three times a week to keep fit. I did ten exercises listed in a book each time. I worked up to ten repetitions for each exercise and used two four-and-a-half pound weights plus the bar. Now, even though I still wear size three, I now weigh 110-112 pounds. Have I been deceiving myself? Or is it normal to gain weight while lifting weights? I count my calories and don't eat after 5 p.m., but I am discouraged about the weight gain. I would very much appreciate your comment

and advice. — S.B.
My comment is that you're doing fine. You have no worries. You are doing things perfectly. Your only mistake is in how you gauge your success. For you, the scale is not a good measurement. You don't need it. All you have to do is look in the mirror.
I know I have written about this before, but I don't think I have made an important point effectively. Your letter is great because it makes that point clearly: it is not the total number of pounds that's important, it's what makes up that total.
You can weigh 120 pounds and be in terrible shape if, for a woman,

more than 25 percent of the weight is fat. But if most of one's "extra" weight is muscle, then you are in great shape. Muscle is active tissue and it helps burn calories. Fat is inert. It just sits around looking ugly. Your mirror should be telling you more than your scale. Believe it.
There's an old saying — if your feet hurt, you hurt all over. Dr. Donohue's booklet, "Relief and Care of Your Feet," shows you how to avoid and take care of foot problems. To get your copy, write to Dr. Donohue, P.O. Box 11210, Chicago, IL, 60611, enclosing a long, self-addressed, stamped envelope and \$1.



Dear Abby

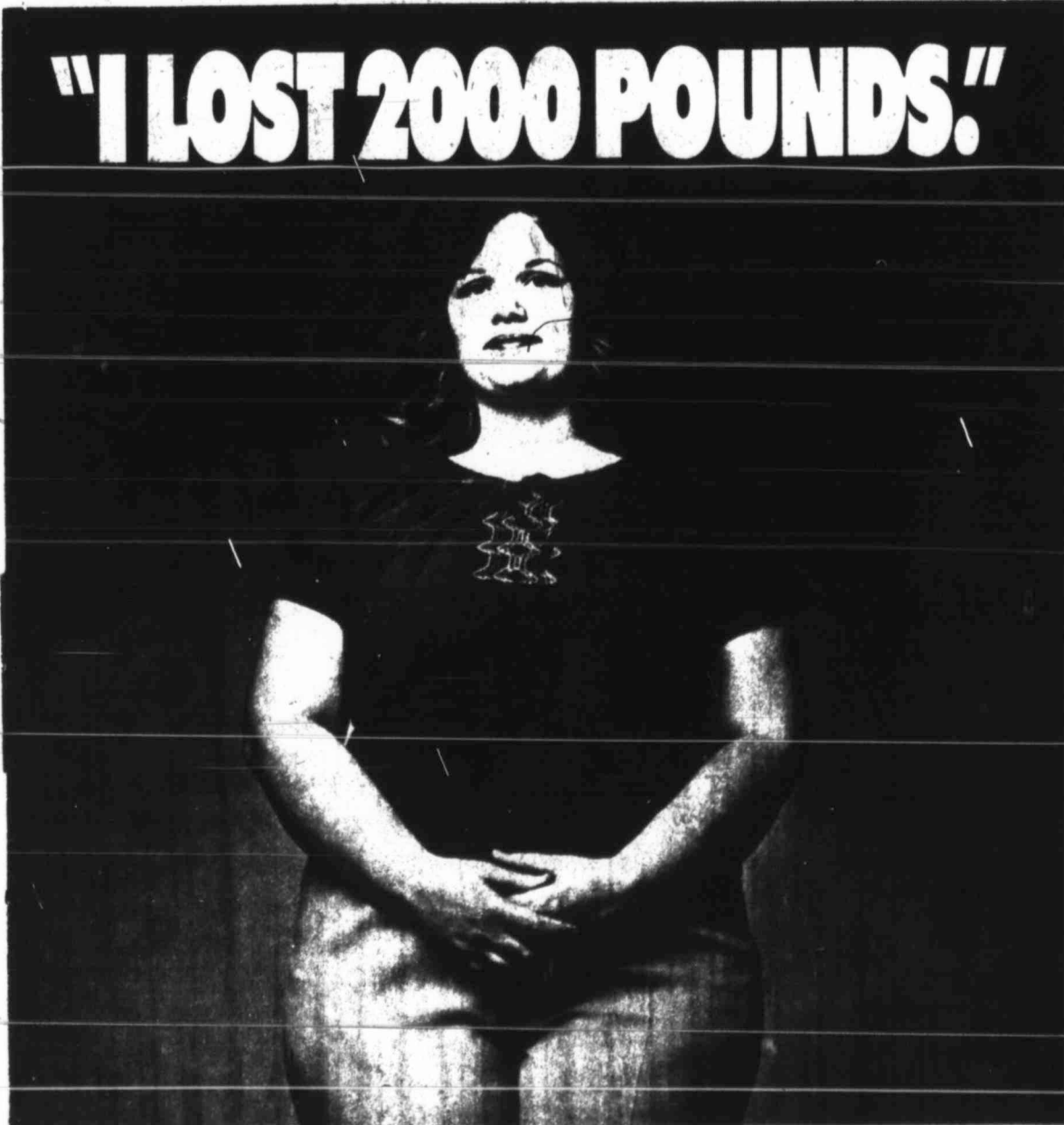
Stomach story has familiar refrain

DEAR ABBY: I do believe you've been had.
Your column in the San Francisco Chronicle ran a letter from a man who signed himself "Noisemaker." Seems he had a noisy stomach problem every time he kissed his girlfriend.
When I read the column, as I always do, that particular letter seemed very familiar to me. I had heard it before. Let me quote to you the third stanza of the song "Dear Abby," by John Prine:
"Dear Abby, Dear Abby...
"You won't believe this
"But my stomach makes noises
"Whenever I kiss.
"My girlfriend tells me
"It's all in my head

"But my stomach tells me
"To write you instead.
"Signed Noisemaker."
I thought for sure that you would have heard the song as, after all, it is about you. However, your reply to "Noisemaker" was a serious one. Were you really had, Abby, or is the joke on us? Sign me...
PRINE (AND ABBY)
FAN IN PALO ALTO
DEAR FAN: I was had. And if there's a joke here, it's on me. I heard the song "Dear Abby" when it first came out about 12 years ago, but I was not familiar with the lyrics.
Thank you, and the hundreds of other Prine (and Abby) fans who

wrote to call this to my attention. I also received about 50 cassettes of that catchy song that caught me with my guard down.

(Do you hate to write letters because you don't know what to say? Thank-you notes, sympathy letters, congratulations, how to decline and accept invitations and how to write an interesting letter are included in Abby's booklet, "How to Write Letters for All Occasions." Send your name and address clearly printed with a check or money order for \$2.50 (this includes postage) to: Dear Abby, Letter Booklet, P.O. Box 3882, Hollywood, Calif. 90038.)



Over a lifetime, a person can lose thousands of pounds just dieting a few times a year. Now there's a proven technique for breaking the diet/weight loss cycle. The Be Trim weight control program. Offered only through hospitals, Be Trim teaches you not only how to lose weight, but how to keep it off once you've lost it.
In just six weeks, this course will help you get in control of your eating habits for the rest of your life. To help you get started, we're offering the first session free. Simply drop by either date listed below.
And get started on the last diet of your life.
Malone & Hogan Hospital
1601 West 11th Place
Department of Wellness
Dial 263-1211, Ext. 223

FREE INTRODUCTORY SESSION.

Monday, February 25
5:30-7:00 PM
7:30-9:00 PM
First Floor Classroom

Tuesday, February 26
5:30-7:00 PM
7:30-9:00 PM
First Floor Classroom

The National La-Z-Boy Recliners Sale

Starts Monday!

Now you'll save on La-Z-Boy chairs, famous for super comfort. These handsome styles rock and recline, so you can relax two great ways! Quality crafted to enjoy for years.

euostyle collection

SALE \$299 "Danbury" Reclina-Rocker recliner Handsome tufted chair is a traditional favorite.	SALE \$299 "Athenian" Reclina-Rocker recliner This classic is the most popular seat in the house!	SALE \$379 "The Dreamer" Reclina-Rocker recliner European inspired design is plush and up-to-date.	SALE \$379 "The Avenger" Reclina-Rocker recliner Modern excitement, with a pampering pillow back.

WHEAT FURNITURE AND APPLIANCES
115 E. 2nd 267-5722

Storkclub

COWPER HOSPITAL
Born to Mr. and Mrs. Heinrich Z. Enns, Lamesa, a daughter, Kornelius Loepky, at 6:45 a.m. Feb. 1, weighing 7 pounds 11 1/2 ounces.

HALL-BENNETT HOSPITAL
Born to Mr. and Mrs. Jack Jones, 1602 Donley, a son, Jacoby Jones, at 3:26 a.m. Feb. 9, weighing 7 pounds 4 1/2 ounces.

MALONE-HOGAN HOSPITAL
Born to Mr. and Mrs. Randy Reavis, Sterling City Route, a daughter, Kelli Renee, at 6:40 p.m. Feb. 7, weighing 7 pounds 12 ounces.

Born to Mr. and Mrs. Jessie Rivera, Colorado City, a daughter, Melissa Ann, at 8:05 a.m. Feb. 15, weighing 4 pounds 13 1/2 ounces.

Born to Mr. and Mrs. Clyde Clark, 608 Bell, a daughter, Scefenia Keshawn, at 9:20 a.m. Feb. 15, weighing 8 pounds 7 ounces.

Born to Mr. and Mrs. Joe Rodriguez, Coahoma, a daughter, Rachel Marie, at 6:30 p.m. Feb. 15, weighing 6 pounds 10 1/2 ounces.

Born to Mr. and Mrs. Dan Bennett, Snyder, a son, Dustin Coby, at 4:14 a.m. Feb. 15, weighing 8 pounds 8 ounces.

Born to Mr. and Mrs. Andy Rodriguez, 1224 E. 12th, a son, Andy Carlos, at 5:31 p.m. Feb. 16, weighing 7 pounds 8 ounces.

Born to Mr. and Mrs. Guillermo Medel, 1000 W. 6th, a daughter, Gracy, at 1:16 p.m. Feb. 17, weighing 6 pounds 8 ounces.

Born to Mr. and Mrs. Ismel Palomino Sr., 2603 Langley, a son, Isme Mesa Jr., at 5:21 a.m. Feb. 17, weighing 7 pounds 12 ounces.

Born to Mr. and Mrs. Ricky James, Sterling City Route, a son, Chad Allen, at 9:50 p.m. Feb. 17, weighing 8 pounds 8 ounces.

Born to Mr. and Mrs. Ben Garcia Jr., 1201 Lamar, a son, Rudy, at 5:25 a.m. Feb. 20, weighing 9 pounds 6 ounces.

Born to Mr. and Mrs. Douglas Warren, 1207 Mesa, a daughter, Jala Ann, at 1:59 a.m. Feb. 21, weighing 6 pounds 15 1/2 ounces.

Born to Mr. and Mrs. Joseph Parnell, 1604 B. Lincoln, a son, Robert Keith, at 1:45 a.m. Feb. 21, weighing 8 pounds 11 1/2 ounces.

ELSEWHERE
Born to Mr. and Mrs. Larry Don Stephens, 200 Brown, a daughter, Lauren Ashley Victoria Christian, at 2:53 a.m. Feb. 19, by midwife Faye Wilson, weighing 5 pounds 8 ounces.

Local hospitals supply information for Storkclub. If a child is born elsewhere in the newspaper's circulation area, or is born to out-of-town parents with local or area grandparents, please contact the Herald Lifestyle Department with Storkclub information.

Information needed for Storkclub is: newborn's name, sex, time and date of birth, weight, place of birth, parents' name and address. If the baby is born outside the circulation area but has local grandparents, please include their name and address. The local grandparents serve as the area connection for the information.

Solution

P	L	A	N	T	S	O	N	G	S	T	E	R	C	H	E	L	A						
T	A	T	T	O	O	T	R	I	O	E	I	D	E	H	O	N	E	S	T				
O	R	T	A	R	E	A	S	T	E	R	E	G	G	A	L	A	T	R					
M	E	W	H	A	R	P	S	E	R	G	Y	U	M	M	S	E	A						
E	N	O	S	H	A	O	A	B	E	T	L	A	P	C	O	R	D						
S	T	E	A	M	E	N	R	O	O	T	T	E	A	R	R	H	O	N	E				
I	A	N	I	O	R	U	D	H	T	S	O												
S	T	A	N	D	O	U	T	A	G	L	O	W	E	S	T	I	M	A	T	E			
P	A	R	T	O	T	L	S	I	N	A	R	U	R	P	R	E							
O	H	M	R	N	P	A	S	S	P	O	R	T	S	A	I	B	E	E					
T	R	A	C	E	L	I	M	I	T	T	P	O	N	T	O	O	N	S					
D	A	S	I	L	A	S					L	A	I	R	D	D	R						
S	T	I	L	E	T	T	O	T	O	S	A	L	T	O	D	E	U	M					
P	A	L	G	R	T	R	A	P	P	I	N	G	S	A	M	O	N	A					
A	I	L	S	E	O	I	N	E	E	A	T	I	S	U	I	T							
S	N	O	W	B	A	L	L				T	R	A	M	S	D	E	N	T	I	S	T	S
A	R	M	O	X	A	K	O	B	I	T	I	A											
R	A	D	I	O	S	N	I	P	S	T	R	E	S	S		S	N	O	R	T			
A	T	O	N	W	A	G	S	A	O	F	P	A	N	G	E	A	R						
N	E	T	H	O	I	S	T	N	O	R	S	O	L	O	S		S	T					
G	A	P	O	M	H	O	O	D	W	I	N	K	S	T	O	E	I	S					
E	S	C	A	P	E		O	G	L	E	S	O	I	E		E	R	R	A	N	T		
E	O	S	I	N		T	A	D	S		T	O	N	S		S	T	I	N	G			

Carol Mathis presented infant seat at shower

Carol Mathis was honored with a baby shower Feb. 16 in the home of Vickie Smith.

Hosting the event were Mrs. Smith and Debra Alexander. They presented the honoree with an infant seat. Packages made of baby booties also were presented to the honoree and her mother, Blanche Becker.

The table was covered with a pastel green cloth and centered with a cake welcoming the baby. Baby Mathis is due March 20.

Can't find what you need when you need it? Check your Herald Classified, 263-7331

SENIOR CITIZENS DISCOUNT COUPON

Because we care, we want to make life easier.

LEXINGTON HOTEL SUITES

First Month's Special: Bring this coupon in for a special \$60.00 discount off the first month's rent. No deposit with senior citizen I.D. card.

LEXINGTON
1003 S. Midkiff
Midland, Texas
(915) 697-3155

LEXINGTON HOTEL SUITES

AN OPEN LETTER TO ALL SENIOR CITIZENS

DEAR SENIORS:

BECAUSE WE CARE ABOUT YOU, WE HAVE DESIGNATED A SPECIAL AREA STRICTLY FOR SENIOR CITIZENS.

WE ARE OFFERING ONE AND TWO BEDROOM SUITES, FURNISHED OR UNFURNISHED, COMPLETE WITH FULL KITCHEN, WEEKLY MAID SERVICE, WEEKLY LINEN SERVICE, TV RENTAL, ALL UTILITIES PAID, TWO MEALS A DAY PLUS MUCH MORE, ALL AT AN AFFORDABLE PRICE.

IN THESE ECONOMIC TIMES WE WANT TO DO OUR PART IN MAKING LIFE EASIER FOR OUR MOST IMPORTANT CITIZENS.

WE WOULD LOVE TO SHARE OUR FACILITY WITH ACTIVE, HEALTHY SENIORS SUCH AS YOURSELF. PLEASE GIVE US A CALL AND LET US PROVIDE YOU WITH ADDITIONAL INFORMATION.

THE LEXINGTON MANAGEMENT

1003 S. Midkiff
Midland, Texas 79701
(915) 697-3155

— Paid Advertisement —



APRIL RITE — Mr. and Mrs. Billy G. Sipes, Midway Mobile Home Park, announce the engagement of their daughter, Diane, to Richard Daniels. Daniels is the son of Mr. and Mrs. Preston L. Daniels of Todd Road. The couple will wed April 6 in the home of the bridegroom with the Rev. Jack Clinkscales officiating.

NEED HELP? Crisis Hot Line 7-4111
8:00 p.m. to Midnight
Wednesday-Friday-Saturday

Retired and veteran railway workers have pot luck supper

The National Association of Retired and Veteran Railway Employees Thursday held a pot luck supper and meeting at Kentwood Center. The 50th anniversary of the Railroad Retirement Board will be observed Aug. 19. It was signed in to law as part of the New Deal legislation. New members of the club are Mr. and Mrs. M.L. Torres of Coahoma. Visiting was Laura Carlton. The next meeting will be March 21 with a pot luck supper at 6:30 p.m. to be followed by a meeting at 7:30 p.m.

SALESPERSONS WANTED

Are you an aggressive self starter? Do you like to communicate with people? Do you like new automobiles? A career selling America's #1 new cars and trucks might be right down your alley!

No Experience Necessary — We Will Train.
Some College Desired.
Demonstrator and other company benefits.

CONTACT: MAT CAPERTON
POLLARD CHEVROLET COMPANY
1501 E. 4th 267-7421

WAL-MART

SPRING FABRIC SALE

Save 21% Dress and Blouse Prints
•50% Polyester, 50% cotton and 50% polyester, 50% rayon
•45 inches wide •Pastel and spring colors in small prints •Machine wash, tumble dry
•Reg. 1.57 yard
1.24 Yd.

Save 20% Weavers Cloth Solids
•55% Fortrel® polyester, 45% cotton •45 inches wide •Ideal for skirts, pants, sportswear separates •Wide selection of colors to choose from
•Machine wash warm, tumble dry •Reg. 2.44 yd.
1.94 Yd.
Fortrel® is a trademark of Celanese Corporation

Save 16% "Misty" Floral Prints
•50% Fortrel® polyester, 50% rayon •45 inches wide •Soft pastels
•Machine wash warm, perma press cycle, tumble dry •Reg. 2.67 yard
2.24 Yd.
Fortrel® is a trademark of Celanese Corporation

Save 18% Springtime Shining Stripes
•50% Fortrel® polyester, 50% rayon •45 inches wide •Select from a rainbow of fashion stripes
•Machine wash warm, tumble dry
•Reg. 2.27 yard
1.84 Yd.
Fortrel® is a trademark of Celanese Corporation

Save 15% Marigold II Flocked Dotted Swiss
•50% Fortrel® polyester, 50% cotton •45 inches wide •Basic and spring colored dots
•Reg. 1.97 yard
1.67 Yd.
Fortrel® is a trademark of Celanese Corporation

Save 25% Embroidered Pastel Eyelets
•65% Polyester, 35% cotton •45 inches wide
•For dresses, blouses, home decor •Pastel colors •Machine wash, tumble dry
•Reg. 3.24 yard
2.43 Yd.

11x14 Inch Mesh Canvas
•7 Mesh •For yarn & craft projects
33¢

Coats and Clarks Embroidery Floss
•9 Yard skeins
•J & P Coats deluxe 6 strand •Assorted colors
•No. C11
16¢

Pattern Box
•Corrugated cardboard box with lid
•Holds up to 24 patterns
63¢

Create A Craft
Assorted Jingle Bells
•Gold & silver •Assorted sizes to choose from
•Reg. 44¢
38¢

Sale Date: Mon. Feb. 25-Wed. Feb. 27
Store Hours: 9 a.m. to 9 p.m.
Monday thru Saturday

WAL-MART'S ADVERTISED MERCHANDISE POLICY—It is our intention to have every advertised item in stock. However, if due to any unforeseen reason, an advertised item is not available for purchase, Wal-Mart will issue a Rain Check on request, for the merchandise to be purchased at the same price whenever available, or will send you a similar item at a comparable reduction in price. We reserve the right to limit quantities. Limitations void in New Mexico.