

# APPRAISAL OF SCHOOLS IN TERRY STARTED

By CHARLIE MAPLE  
NEWS Staff Writer  
A "grass roots" study of the four school systems in Terry County—with an eye to possible improvements in each—got under way here this week. The appraisal was initiated Tuesday, when 29 officials, parents and administrators met in Brownfield High School.

The group comprises the county steering committee of the Hale-Aiken Committee, a 24-man body empowered by the last Legislature to examine the whole educational system in Texas. H. L. (Hub) King of 404 East Repetto was elected Tuesday to head the Terry group during its study. Its vice chair-

man is Lee Bartlett of Meador, and secretary-treasurer, Mrs. George Weiss of 502 East Buckley. All Counties Organize Said Delwin Webb, curriculum coordinator in Brownfield schools: "The lay study which this group is undertaking is comparable to that of 1949 as a prelude to adoption by the Leg-

islature of the now-famous Gilmer-Aiken School Assistance Bill." Similar groups are being organized in every county in Texas, noted Webb. "Their findings will be forwarded to the Hale-Aiken Committee," he said. "The committee then will compile the final report prior to the Legislature ses-

sion next January." Included in the four-month study will be subject offerings, school standards, services offered, special programs, finance, teacher supply and school construction. Webb noted that the county committee is given a free hand in the study to determine school short-comings as possi-

ble methods of improvement. "Though school officials will be on hand to aid the committee, primarily it will be conducted by the lay persons of the county," he said. "We hope to include as many Terry residents in the group as possible," added Webb. "The more who participate, the more we can accomplish. If 500

persons join this study, we can dig deeper into the problem than with only the present 29." L. DeWitt Hale of the Texas House of Representatives and A. M. Aiken Jr. of the Senate are sponsors of the statewide study of Texas schools. The committee was set up by the last session of the Legislature in HCR 105.

**Members Are Listed**  
Members of the Terry committee are E. G. Brownlee, Terry school superintendent; M. G. Gary, G. C. Shultz, Carl Cornett, Mrs. Beulah Herring and Robert Luckner, all of Union; Mrs. J. M. Burleson, J. L. Carroll, Bartlett, J. T. Fullford and Clois Sharp, all of See No. 1 Page 3

## Brownfield News

And Terry County Herald... Terry County's Oldest Business Institution

VOLUME 21 TEN CENTS 14 Pages BROWNFIELD, TERRY COUNTY, TEXAS, SUNDAY, JANUARY 12, 1958 NUMBER 4

### Easily Digested!

A potpourri of tidbits, gleanings, thoughts, shorts, round-ups, digests, anecdotes, sayings, riddles, post-mortems, reflections, news, quotations, quotes, etc., etc., about things and people in our town, and of our county, state, nation and wide world!

Ever been to Zabcikville? It's near Belton in Bell County.

What! Can anything be better than the NEWS?

Four County Agriculture Committee has 7 a.m. meeting, Tuesday in Melody.

March of Dimes coin cards distributed to all stores by BHS Choral Club.

Muscular Dystrophy coin containers—they're full, most of them, and await some guiding hand to collect them. Money probably could be used now.

Little Miss 1958—her parents are Mr. and Mrs. D. R. Ingram, and not Mr. and Mrs. E. R. Ingram. Little Miss 1958 was first baby of New Year in county. Name: Rhonda Gail.

County Supt. Elmer Brownlee will seek re-election this year.

Today is 12 of this year, with 353 days left.

One-, three-ounce bottles of Gebhardt's chili powder may contain glass. Careful, when using.

The Charlie Prices, (Western Auto) in Dallas for Western Auto Merchandise Show.

Today, Monday at Regal: "My Man Godfrey."

Santa Fe's Amarillo-Lubbock run changed to 10:35 a.m.

Women checkers at Brownfield Furr's eligible for that chain's "Checker of the Year" award. Hawaii trip in offing.

Terry farmers next year to pay more for contracting Mexican nationals.

Ben Christophers of Magnolia Camp transferred to See No. 2 Page 3

### Musings—

What I hesitate to say, some screwball will, and thereby be remembered while I am forgotten.—Anon.

### JOSH BILLINGS Sex...



Marbles and diamonds are the two strong suits for a woman to hold—clubs and spades for a man.

### Elmer G. Brownlee Seeking Re-Election For County Office

Elmer G. Brownlee, present county superintendent, announced Wednesday that he would be a candidate for re-election, subject to the Democratic primary in July.

Said Brownlee: "I wish to



ELMER G. BROWNLEE

take this means of announcing my candidacy for re-election to the office of county superintendent.

"It has been a pleasure serving you in the past, and I wish to solicit your support and vote again in the coming elections."

Brownlee continued: "I came to Terry County in 1935 and taught two years in the Happy Community. In 1937, I began teaching in the Brownfield schools, where I remained until 1950. Those were happy years, and I enjoyed thoroughly every day that I taught school."

**Gets Master's Degree**  
"I have tried to keep up with the trends of the times. I have a bachelor of science degree, and since I've been in office I have acquired my master's degree from Texas Tech, and I am still learning."

"I attend most of the conferences for administrators and county superintendents to keep abreast of modern ideas."

Brownlee concluded: "I want to thank you again for your past support and kindnesses"

### DETERMINATION IS RENEWED

## Record Number Attend Highway 51 Meet Here

## March Of Dimes Is On Move

Plans for the 1958 Terry-Yoakum March of Dimes campaign neared completion here this week when dates were set on four major activities, according to Postmaster Joe Shelton, director of the Brownfield drive.

"The BHS Choral Club, directed by A. V. Wall, distributed coin cards and posters to business houses here," said Shelton. "They also will collect them after Jan. 31, the final day of the campaign."

The director noted that the Choral Club also will be in charge of MOD collections at Brownfield theatres next Sunday.

"Beta Theta Chapter of Epsilon Sigma Alpha will be in charge of the annual Mother's March, starting at 7:30 p.m. Jan. 20," said Shelton.

**The following Saturday, high school students will man blockades at six downtown intersections. The Brownfield National Guard unit will assist in direction of traffic.** Blockades will be set up at Fifth and Hill, Third and Hill, Fourth and Main, Fourth and Broadway, Seventh and Broadway, and Fifth and Tate, revealed Shelton.

The annual President's Ball, sponsored by Howard-Henson American Legion Post 269, tentatively has been scheduled for Jan. 30. Johnny Weiland will be in charge of the MOD event.

A March of Dimes bingo party will wind up the 1958 campaign. Hand-Bros. Post 6794 will co-sponsor the yearly event with Delphian Study

"Where do we go from here?" Officials of International Park Highway Association asked themselves the foregoing question when they met here Thursday for their first session of 1958.

Answer: Full speed ahead to gain state and federal designation of Highway 51, extending from Regina, Canada, to Old Mexico.

Top association officers here were Harley Rhodes of Burlington, Colo., president; Joe Satterwhite of Brownfield, vice president; Fred Thompson of Sydney, Neb., executive secretary, and J. W. Backlund of Burlington, treasurer.

Others were Joe Beyer of Crane, president of the IPHA Texas division; Charles Lawrence, county judge of Gaines.

**Some 75 members and guests were feted for the occasion at a barbecue luncheon in the Hitch 'n' Post by Terry County Commissioners Court.**

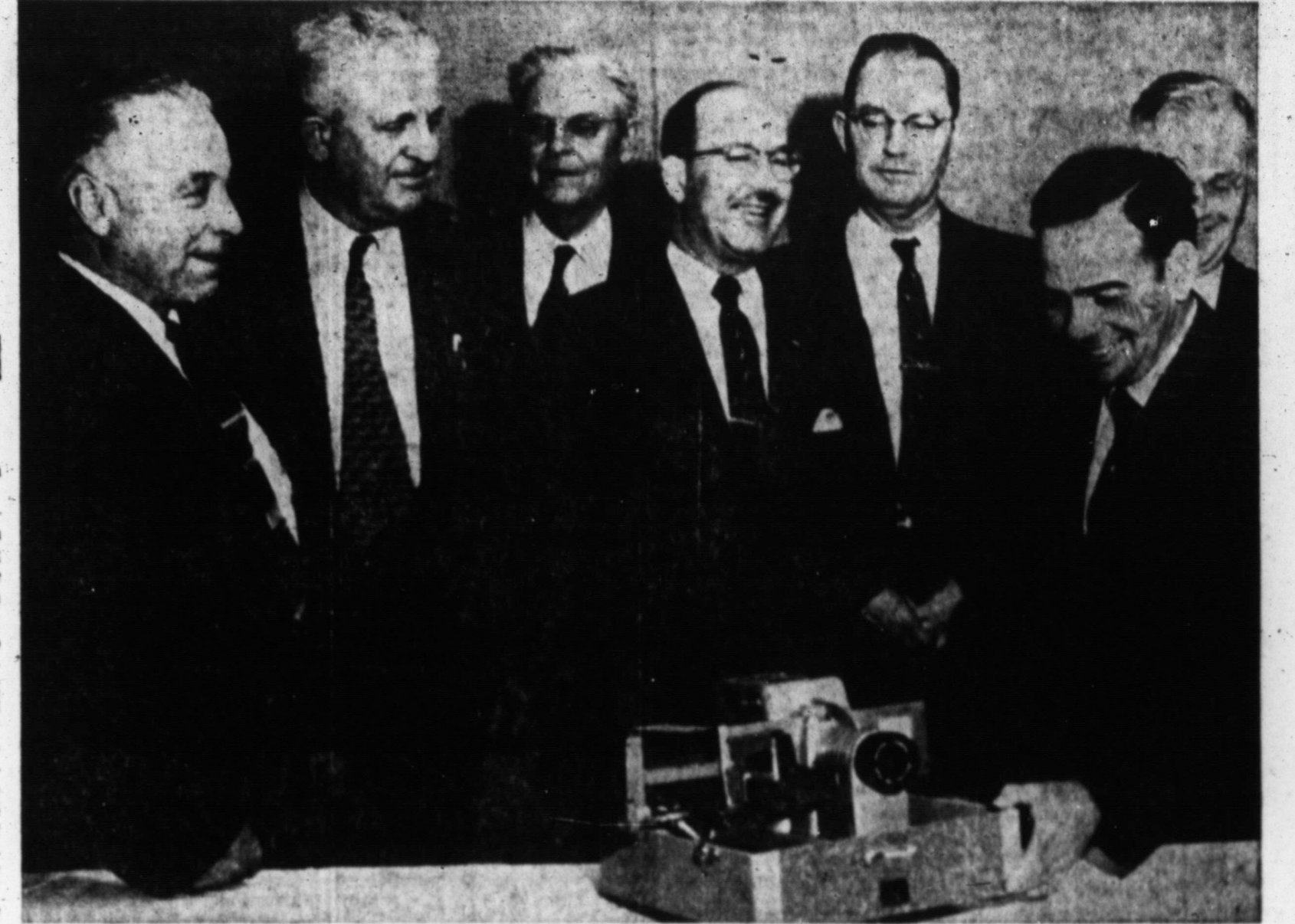
Representation included 1 from Lubbock, 23 from Brownfield, 5 from Crane, 7 from Dimmitt, 3 from Odessa, 4 from Seminole, 1 from Marathon and 2 from Levelland.

Because of car trouble in Oklahoma, Rhodes, Thompson and Backlund failed to arrive in time for the luncheon. However, they did take part in the executive session, presenting the annual report.

It was decided during the one-day meeting that a one-way drive for members (\$10 each annually) all along the line would be undertaken.

Full approval also was given for the printing of 10,000 color-ful brochures by Thompson, who prepared the item after an automobile trip along the entire route.

Beyer, who also is county judge of Crane, announced that the international's convention would be held June 6-7-8 in Hot Springs, S. D. Next session of the Texas division



**WANT FEDERAL DESIGNATION**—Group pictured above took part Thursday in the session here of International Park Highway Association's first '58 meeting. They seek international designation (numbering) of the main highway extending from Regina, Canada, to Old Mexico. From left: Harley Rhodes of Burlington, Colo., president of the association; Judge Joe Beyer of Crane, president of the Texas division; Joe Satterwhite of Brownfield, vice president of the international; Fred Thompson of Sydney, Neb., executive secretary; Terry County Judge Herb Chesher; Elton Singer of Dimmitt. Behind Singer stands J. W. Backlund of Burlington, international's treasurer. (NEWSfoto)

### Warning Is Issued That Glass May Be in Gebhardt Bottles

A warning that one-ounce and three-ounce bottles of Gebhardt Eagle Chili Powder may contain glass fragments has been issued jointly by the U.S. Food and Drug Administration and the manufacturer. The firm has recalled lots of one-ounce bottles in possession of warehouses and wholesalers. Since their three-ounce bottles containing glass have been located by FDA.

The product may be in homes which cannot be reached by the recall, and some stocks still may be on the retail market, officials explained.

Consumers are warned that use of this chili powder

### Terry Farmers Will Feel Impact Of Increased Fees For Bracero Labor

The U.S. Labor Department this week announced that fees charged agricultural employers of Mexican farm workers entering the United States under the Migrant Labor Pact with Mexico have been increased.

Effective Jan. 1, the department increased the fee to \$10 per worker for contracting and \$5 per worker for re-contracting. The fee prior to the first was \$7 and \$4.

Oliver Grote, labor manager for Terry Farm Bureau, said the increase will be felt here. "We have been operating on the exact cost under the old fee," he reported. "So we won't be able to absorb any of the extra cost announced by the Labor Department."

William J. T. Robertson, district supervisor for the Labor Department's Bureau of Employment Security in Big Spring, said the increases, announced in Washington, had just been relayed to him by Regional Director Ed McDonald of Dallas.

The Labor Department said increases were ordered to bring fee collections more closely in line with actual transportation and subsistence costs incurred by the United States in bringing in Mexican

See No. 8 Page 4

### Telephone Number Set Up For NEWS Patrons

New circulation manager of Brownfield NEWS is Joe Broun of 309 North G.

A new telephone number (3225) has been established by Broun for convenience of patrons who fail to receive their NEWS twice weekly.

Said Broun: "If your carrier boy fails to leave the NEWS in your front yard by 7 a.m., each Thursday, please telephone 3225, and it will be delivered before 9 a.m."

"If your NEWS is not delivered by 8 a.m., each Sunday, please telephone 3225 and the paper will be taken to you by 10 a.m."

### Delphian-VFW Bingo Party Is Scheduled For March of Dimes

Delphian Study Club this week began advance ticket sales for the annual March of Dimes bingo party slated for 7:30 p.m. Jan. 31, at Veterans Hall, reports Jack Aaldrup, commander of Hand Bros. Post 6794, VFW.

The event, sponsored jointly by the VFW post and Delphians, will offer more than \$1,000 worth of prizes donated by Brownfield merchants.

The \$2 ticket price includes a card for 20 games of bingo and free coffee and cookies. In addition, ticket-holders will be eligible for a portable television set to be given as a door prize, revealed Aaldrup.

The commander said bingo prizes will go on display

See No. 7 Page 3

### Mrs. Dora Smith Dies Here Friday

Funeral services for Mrs. A. R. (Dora) Smith, 73, were conducted at 2 p.m. Saturday in the Crescent Hill Church of Christ.

Palbearers were J. W. ed. Mrs. Smith died at 1:10 a.m. Friday in Treadaway Daniell Hospital following a lengthy illness.

She came to Terry County in 1902 and was married to A. R. Smith in Brownfield on Dec. 6, 1924. Mr. Smith died on Sept. 14, 1954.

Survivors include a sister, Mrs. W. G. Hardin of 404 West Buckley.

Elder Joe Chisholm officiated. Burial was in the cemetery. Mrs. Smith was a member of the church. (NEWSfoto)

### Brownfield Trio Injured In Accident

Three Brownfield youths were injured, one critically, Thursday in a car-pickup collision 3.5 miles west of Lubbock.

Injured in the mishap were Glen and Rodger Pendley, sons of R. G. Pendley of 914 East Lake, and Marvin Lee Brown, son of Mrs. Katie Brown of Lubbock. Glen Pendley, 20, and Brown, See No. 9 Page 4



**DESK & DERRICK**—Officers for 1958 of Brownfield Desk Derrick Club were installed Friday night in The Party House. They are pictured above. From left: Sue Williams of Pan American, president; Darlene Turner of Magnolia, vice president; Jayne Loftis of Shell, secretary and treasurer; Jo Landusky of Velma Petroleum Corp. of Hobbs, Region V director who installed the Brownfield officers; Betty Britton of Pan American, editor of Brownfield club's "D&D Bulletin"; Rita Homesley of Pan American, membership chairman, and Mary James of Magnolia, immediate past president; The club members, all secretaries associated with various oil industry firms here, also named their "boss of the month." He was Roy Williams, petroleum engineer for Pan American. The H-Tones, Brownfield singing group, presented selections under the direction of Fred Smith, BHS band director. (NEWSfoto)



**ASSOCIATION GUIDES** — A record number of members took part Thursday in the meeting here of International Park Highway Association, held in the Hitch 'n' Post. Top officers of the group are pictured above. At right is Pres. Harley Rhodes of Burlington, Colo. With him is Joe Satterwhite of Brownfield, vice president. Together, they look at a slide film projector, used to publicize the highway. (NEWSfoto)

**MRS. FARRAR VICE PRESIDENT**

**'Joy of Color in Our Garden' Is Topic Of Brownfield Garden Club Discussion**

Mrs. Virgie Travis led the program on "The Joy of Color in Our Gardens" when Brownfield Garden Club met Wednesday afternoon in Seleta Jane Brownfield Clubhouse.

Mrs. Eulice Farrar was elected first vice president for the coming year to be the only new officer taking office in

May. All other officers elected were those serving for the past year. They were Mmes. Ernest Latham, president; H. B. Thompson, second vice president; Fred Turner, recording secretary; Bob Spear, corresponding secretary, and James King, treasurer.

Mrs. Joe Satterwhite gave a

**Social Calendar**

**MONDAY**

Masons, 7:30 p.m., Masonic Temple.  
 Junior Women's Study Club, 3:30 p.m., Seleta Jane Brownfield Clubhouse.  
 Jessie G. Randal PTA, 7:30 p.m., school cafeteria.  
 Dale Carnegie Class No. 1, 6:30 p.m., The Party House.  
 Brownfield Jaycees, 12 a.m., The Party House.  
 Tau Phi Chapter of Beta Sigma Phi Sorority, 8 p.m., Nancy King, 315 Buckley.

**TUESDAY**

Terry County Volunteer Fire Department, 7:30 p.m., Fire Department.  
 Junior High 4-H, 7:30 p.m., The Party House.  
 Alpha Omega Study Club, 4 p.m., Seleta Jane Brownfield Clubhouse.  
 Tuesday Night Bridge Club, 7:30 p.m., Robert Browning, 401 South Third.  
 HD Council, 2 p.m., The Party House.  
 Order of Eastern Star, 7:30 p.m., Masonic Temple.

**WEDNESDAY**

Wesleyan Service Guild, 7:30 p.m., Methodist Church.  
 Brownfield Lions Club, 12 a.m., The Party House.  
 Delphian Study Club, 4 p.m., Seleta Jane Brownfield Clubhouse.  
 Calvary Baptist Church WMU, 9:45 a.m., circles: Helen Stuart, Mrs. Ralph Murry, 1012 East Oak; Helen Tisdale, Mrs. J. B. Marsh, 619 North A; Darlene Sears, Mrs. Jack Barr, 150 East Reppto, and Everly Hayes, Mrs. T. F. Shipman, 120 West Ross.

**THURSDAY**

Junior High PTA, 4 p.m., talk on "Color in Contemporary Landscape Design." Mrs. Travis spoke on "Colorful Gardens Through Photographer's Lens."  
 Mrs. Truman Dubose of 1316 East Lons was accepted into the club as a member.  
 The hostesses, Mmes. J. R. Hissom and Spear, served refreshments of cookies, coffee and spiced punch to Mmes. R. W. Baumgardner, Bill Blackstock, Farrar, Joe Jackson, Joe W. Johnson, King, John B. King, Latham, Jess McWhorter, J. C. Rhodes, Satterwhite, Thompson, Travis, Fred Turner, Dubose and C. E. Ross.

**Ballet Russe Slated In Lubbock Jan. 23**

Lubbock Auditorium has announced that tickets are on sale now for the one-night engagement of the Ballet Russe de Monte Carlo on Jan. 23. This will be their first appearance in the beautiful new Auditorium.

Three major works will be presented by this outstanding company. For classical fans, "Swan Lake," the most performed of the "white ballets," will open the evening. This will be followed by something for the younger followers of ballet. It is the ever-popular "The Nutcracker." The program will be closed with "Scheherazade."

The company of 55 is headed this season by Nina Novak and George Zoritch. Miss Novak has been a star of the Ballet Russe de Monte Carlo for several years and has proven that she is one of the country's most outstanding dance stars. Zoritch was with the Ballet company when it was organized some 15 years ago. However, this is his first assignment with the company in several years after tours in Europe and South America.

Other featured performers are Irina Borowska, Eugene Slavin, Gertrude Tyven and Kenneth Gillespie.  
 The Ballet Russe de Monte Carlo offers the largest cast of any attraction to be presented at the Lubbock Auditorium since it opened in 1956. It also promises to be one of the most exciting.

**auditorium.**

Dale Carnegie Class No. 2, 6:30 p.m., high school cafeteria.

**FRIDAY**

Brownfield Kiwanis Club, 6:30 p.m., Melody Restaurant.  
 AAUW, 7:30 p.m., Seleta Jane Brownfield Clubhouse.

**SATURDAY**

Century Club, 9 p.m., Country Club.

Buying at home is a good way to make Brownfield more prosperous, whether you believe it or not.

Trading in Brownfield often shows your good business judgment.

**WEEKLY TV LOG**  
**KCBD-TV • CHANNEL 11**

**Sunday, January 12**

12:00 Wizard  
 12:30 Catholic Hour  
 1:00 Gipsy Story  
 1:30 Network Film  
 3:00 Pro Bowl Football  
 6:00 Dee Weaver Show  
 6:30 Sally  
 7:00 Shirley Temple  
 8:00 Dinah Shore—color  
 9:00 Loretta Young  
 9:30 Highway Patrol  
 10:00 Broken Arrow  
 10:30 News  
 10:40 Weather  
 10:45 Sports  
 10:50 Channel 11 Theater  
 5:30 Zorro

**Monday, January 13**

7:00 Today  
 9:00 Arlene Francis Show  
 9:30 Treasure Hunt  
 10:00 The Price is Right  
 10:30 Truth or Consequences  
 11:00 Tic Tac Dough  
 11:30 It Could Be You  
 12:00 Tex and Jinx  
 12:30 Club 60—color  
 1:15 NBC Hot News  
 1:30 Kitty Foyle  
 2:00 Matinee—color  
 3:00 Queen for a Day  
 3:45 Channel 11 Matinee  
 5:15 Hospitality Time  
 5:30 Trouble with Father  
 6:00 News  
 6:10 Weather  
 6:15 Here's Howell  
 6:30 Life of Riley  
 7:00 Omnibus—color  
 8:00 Meet McGraw  
 8:30 Sugarfoot  
 9:30 Bob Cummings Show  
 10:00 Real McCoy's  
 10:30 News  
 10:40 Weather  
 10:45 Sports  
 10:50 MGM Show

**Tuesday, January 14**

7:00 Today  
 9:00 Arlene Francis Show  
 9:30 Treasure Hunt  
 10:00 The Price is Right  
 10:30 Truth or Consequences  
 11:00 Tic Tac Dough  
 11:30 It Could Be You  
 12:00 Tex and Jinx  
 12:30 Club 60—color  
 1:30 Kitty Foyle  
 2:00 Matinee—color  
 3:00 Queen for a Day  
 3:45 Channel 11 Matinee  
 5:15 Hospitality Time  
 5:30 Last of Mohicans  
 6:00 News  
 6:10 Weather  
 6:15 Here's Howell  
 6:30 Life of Riley  
 7:00 Omnibus—color  
 8:00 Meet McGraw  
 8:30 Sugarfoot  
 9:30 Bob Cummings Show  
 10:00 Real McCoy's  
 10:30 News  
 10:40 Weather  
 10:45 Sports  
 10:50 MGM Show

**Wednesday, January 15**

7:00 Today  
 9:00 Arlene Francis Show  
 9:30 Treasure Hunt  
 10:00 The Price is Right  
 10:30 Truth or Consequences  
 11:00 Tic Tac Dough  
 11:30 It Could Be You  
 12:00 Tex and Jinx  
 12:30 Club 60—color  
 1:30 Kitty Foyle  
 2:00 Matinee—color  
 3:00 Queen for a Day  
 3:45 Channel 11 Matinee  
 5:15 Hospitality Time  
 5:30 Last of Mohicans  
 6:00 News  
 6:10 Weather  
 6:15 Here's Howell  
 6:30 Life of Riley  
 7:00 Omnibus—color  
 8:00 Meet McGraw  
 8:30 Sugarfoot  
 9:30 Bob Cummings Show  
 10:00 Real McCoy's  
 10:30 News  
 10:40 Weather  
 10:45 Sports  
 10:50 MGM Show

**Thursday, January 16**

7:00 Today  
 9:00 Arlene Francis Show  
 9:30 Treasure Hunt  
 10:00 The Price is Right  
 10:30 Truth or Consequences  
 11:00 Tic Tac Dough  
 11:30 It Could Be You  
 12:00 Tex and Jinx  
 12:30 Club 60—color  
 1:30 Kitty Foyle  
 2:00 Matinee—color  
 3:00 Queen for a Day  
 3:45 Channel 11 Matinee  
 5:15 Hospitality Time  
 5:30 Last of Mohicans  
 6:00 News  
 6:10 Weather  
 6:15 Here's Howell  
 6:30 Life of Riley  
 7:00 Omnibus—color  
 8:00 Meet McGraw  
 8:30 Sugarfoot  
 9:30 Bob Cummings Show  
 10:00 Real McCoy's  
 10:30 News  
 10:40 Weather  
 10:45 Sports  
 10:50 MGM Show

**Friday, January 17**

7:00 Today  
 9:00 Arlene Francis Show  
 9:30 Treasure Hunt  
 10:00 The Price is Right  
 10:30 Truth or Consequences  
 11:00 Tic Tac Dough  
 11:30 It Could Be You  
 12:00 Tex and Jinx  
 12:30 Club 60—color  
 1:30 Kitty Foyle  
 2:00 Matinee—color  
 3:00 Queen for a Day  
 3:45 Channel 11 Matinee  
 5:15 Hospitality Time  
 5:30 Last of Mohicans  
 6:00 News  
 6:10 Weather  
 6:15 Here's Howell  
 6:30 Life of Riley  
 7:00 Omnibus—color  
 8:00 Meet McGraw  
 8:30 Sugarfoot  
 9:30 Bob Cummings Show  
 10:00 Real McCoy's  
 10:30 News  
 10:40 Weather  
 10:45 Sports  
 10:50 MGM Show

**Saturday, January 18**

8:00 Roy Rogers  
 9:00 Howdy Doody  
 9:30 Ruff and Reddy  
 10:00 Fury  
 10:30 Space Ranger  
 11:00 My Life as Margie  
 11:30 Detective's Diary  
 12:00 MGM Movie  
 1:00 Pro Basketball  
 3:30 Racing from Hialeah  
 4:00 MGM Show  
 5:30 Lone Ranger  
 6:00 Navy Log  
 6:30 People Are Funny  
 7:00 Perry Como  
 8:00 Polly Bergen  
 8:30 Gisele Mackenzie  
 9:00 End of Rainbow  
 9:30 Your Hit Parade  
 10:00 Californians  
 10:30 News  
 10:40 Weather  
 10:45 Sports  
 10:50 MGM Show

**Friday, January 17**

7:00 Today  
 9:00 Arlene Francis Show  
 9:30 Treasure Hunt  
 10:00 The Price is Right  
 10:30 Truth or Consequences  
 11:00 Tic Tac Dough  
 11:30 It Could Be You  
 12:00 Tex and Jinx  
 12:30 Club 60—color  
 1:15 NBC Hot News  
 1:30 Kitty Foyle  
 2:00 Matinee—color  
 3:00 Queen for a Day  
 3:45 Channel 11 Matinee  
 5:15 Hospitality Time  
 5:30 Last of Mohicans  
 6:00 News  
 6:10 Weather  
 6:15 Here's Howell  
 6:30 Life of Riley  
 7:00 Omnibus—color  
 8:00 Meet McGraw  
 8:30 Sugarfoot  
 9:30 Bob Cummings Show  
 10:00 Real McCoy's  
 10:30 News  
 10:40 Weather  
 10:45 Sports  
 10:50 MGM Show

**Saturday, January 18**

8:00 Roy Rogers  
 9:00 Howdy Doody  
 9:30 Ruff and Reddy  
 10:00 Fury  
 10:30 Space Ranger  
 11:00 My Life as Margie  
 11:30 Detective's Diary  
 12:00 MGM Movie  
 1:00 Pro Basketball  
 3:30 Racing from Hialeah  
 4:00 MGM Show  
 5:30 Lone Ranger  
 6:00 Navy Log  
 6:30 People Are Funny  
 7:00 Perry Como  
 8:00 Polly Bergen  
 8:30 Gisele Mackenzie  
 9:00 End of Rainbow  
 9:30 Your Hit Parade  
 10:00 Californians  
 10:30 News  
 10:40 Weather  
 10:45 Sports  
 10:50 MGM Show

**Ray's Cleaners**  
 619 West Main  
 Telephone 2565  
 "Soiled garments are not becoming to you. They should be coming to us."

**PRESCRIPTION SERVICE**  
  
**Wilgus PHARMACY**  
 Phone 2575

**RADIO-TV SERVICE**  
 BY  
**FERRELL DANIEL**  
**FRANK DANIEL FURNITURE**  
 Phone 4664

**KDUB-TV • CHANNEL 13**

**Sunday, January 12**

10:50 First Methodist Church  
 12:00 The Christophers  
 12:30 This is the Life  
 1:00 Sunday Matinee  
 2:30 The Last Word  
 3:00 Pace the Nation  
 3:30 World News Roundup  
 4:00 As We See It  
 4:30 Bing Crosby Golf  
 6:00 Lassie  
 6:30 Benny  
 7:00 Ed Sullivan  
 8:00 G. E. Theatre  
 8:30 Alfred Hitchcock  
 9:00 \$64,000 Challenge  
 9:30 Reader's Digest  
 10:00 What's My Line  
 10:30 Final Edition  
 10:45 20th Century Fox Show

**Monday, January 13**

7:55 News  
 8:00 Captain Kangaroo  
 8:45 Network News  
 8:55 Local News  
 9:00 Garry Moore Show  
 9:30 Arthur Godfrey Time  
 10:00 Dotto  
 11:00 Hotel Cosmopolitan  
 11:15 Love of Life  
 11:30 Search For Tomorrow  
 12:15 Noon News  
 12:25 Waiter Cronkite News  
 12:30 As The World Turns  
 1:00 Beat The Clock  
 1:30 Houseparty  
 1:45 Houseparty  
 2:00 The Big Payoff  
 2:30 The Verdict Is Yours  
 3:00 The Brighter Day  
 3:15 The Secret Storm  
 3:30 The Edge of Night  
 4:00 Home Fair  
 4:30 Susie  
 5:00 Looney Tunes & Bugs B.  
 6:00 News, Weather, Feature Section

**Tuesday, January 14**

7:55 News  
 8:00 Captain Kangaroo  
 8:45 Network News  
 8:55 Local News  
 9:00 Garry Moore Show  
 9:30 Arthur Godfrey Time  
 10:00 Dotto  
 11:00 Hotel Cosmopolitan  
 11:15 Love of Life  
 11:30 Search For Tomorrow  
 12:15 Noon News  
 12:25 Waiter Cronkite News  
 12:30 As The World Turns  
 1:00 Beat The Clock  
 1:30 Houseparty  
 1:45 Houseparty  
 2:00 The Big Payoff  
 2:30 The Verdict Is Yours  
 3:00 The Brighter Day  
 3:15 The Secret Storm  
 3:30 The Edge of Night  
 4:00 Home Fair  
 4:30 Susie  
 5:00 Looney Tunes  
 5:30 Looney Tunes  
 5:45 Looney Tunes  
 6:00 News, Weather, Feature Section  
 6:15 Doug Edwards  
 6:30 I Love Lucy

**Wednesday, January 15**

7:55 News  
 8:00 Captain Kangaroo  
 8:45 Network News  
 8:55 Local News  
 9:00 Garry Moore Show  
 9:30 Arthur Godfrey Time  
 10:00 Dotto  
 11:00 Hotel Cosmopolitan  
 11:15 Love of Life  
 11:30 Search For Tomorrow  
 12:15 Noon News  
 12:25 Waiter Cronkite News  
 12:30 As The World Turns  
 1:00 Beat The Clock  
 1:30 Club Day  
 1:45 Houseparty  
 2:00 The Big Payoff  
 2:30 The Verdict Is Yours  
 3:00 The Brighter Day  
 3:15 The Secret Storm  
 3:30 The Edge of Night  
 4:00 Home Fair  
 4:30 Susie  
 5:00 Looney Tunes  
 5:30 Looney Tunes  
 5:45 Looney Tunes  
 6:00 News, Weather, Feature Section  
 6:15 Doug Edwards  
 6:30 I Love Lucy

**Thursday, January 16**

7:55 News  
 8:00 Captain Kangaroo  
 8:45 Network News  
 8:55 Local News  
 9:00 Garry Moore Show  
 9:30 Arthur Godfrey Time  
 10:00 Dotto  
 11:00 Hotel Cosmopolitan  
 11:15 Love of Life  
 11:30 Search For Tomorrow  
 12:15 Noon News  
 12:25 Waiter Cronkite News  
 12:30 As The World Turns  
 1:00 Beat The Clock  
 1:30 Club Day  
 1:45 Houseparty  
 2:00 The Big Payoff  
 2:30 The Verdict Is Yours  
 3:00 The Brighter Day  
 3:15 The Secret Storm  
 3:30 The Edge of Night  
 4:00 Home Fair  
 4:30 Susie  
 5:00 Looney Tunes  
 5:30 Looney Tunes  
 5:45 Looney Tunes  
 6:00 News, Weather, Feature Section  
 6:15 Doug Edwards  
 6:30 I Love Lucy

**Friday, January 17**

7:55 News  
 8:00 Captain Kangaroo  
 8:45 Network News  
 8:55 Local News  
 9:00 Garry Moore Show  
 9:30 Arthur Godfrey Time  
 10:00 Dotto  
 11:00 Hotel Cosmopolitan  
 11:15 Love of Life  
 11:30 Search For Tomorrow  
 12:15 Noon News  
 12:25 Waiter Cronkite News  
 12:30 As The World Turns  
 1:00 Beat The Clock  
 1:30 Club Day  
 1:45 Houseparty  
 2:00 The Big Payoff  
 2:30 The Verdict Is Yours  
 3:00 The Brighter Day  
 3:15 The Secret Storm  
 3:30 The Edge of Night  
 4:00 Home Fair  
 4:30 Susie  
 5:00 Looney Tunes  
 5:30 Looney Tunes  
 5:45 Looney Tunes  
 6:00 News, Weather, Feature Section  
 6:15 Doug Edwards  
 6:30 I Love Lucy

**Saturday, January 18**

8:30 Captain Kangaroo  
 9:30 Mighty Mouse  
 10:00 Susan's Show  
 10:30 Saturday Playhouse  
 11:00 Jimmy Dean Show  
 12:00 Let's Take A Trip  
 12:30 Big Picture  
 1:00 Professional Hockey  
 3:30 Championship Bowling  
 4:30 Frontier Theatre  
 5:30 To Be Announced  
 5:45 Kingdom of the Sea  
 6:00 Sgt. Preston  
 6:30 Perry Mason Show  
 7:30 26 Men  
 8:00 Oh, Susanna  
 8:30 Have Gun, Will Travel  
 9:00 Gunsmoke  
 9:30 Colt 45  
 10:00 Paramount Showcase  
 11:00 Premiere Performance

**Lowe's Studio**  
 Picture of the Week

Grady Cox holds his 1-year-old sister, Diane. He's 11 years old, and they're the children of Mr. and Mrs. G. G. Cox of 212 East Hill.

**FOR PICTURES OF YOUR CHILDREN. COMMERCIAL, PORTRAIT, OR KODAKS—PHONE 4211 — 604 WEST MAIN**

**BANK NOTES** . . . . . by Malcolm

**DID YOU KNOW...**

IN 1650, CHARLES I UNWITTINGLY FACILITATED THE RENAISSANCE OF ENGLISH BANKING BY THE POWER OF LONDON LISTING INDIVIDUALS AS A RECEIVERSHIP OF GOLD WHEN HE SEIZED 10,000 POUNDS BELONGING TO LOCAL MERCHANTS.

A CALIFORNIA STUDENT OF ENTOMOLOGY GOT THE IDEA OF STARTING A BUSINESS OF COLLECTING AND MOUNTING BEES FOR SCHOOLS AND COLLEGS. WITH A LOAN FROM A LOCAL BANK HE BECAME SO SUCCESSFUL HE MADE OVER \$10,000 IN SALES DURING THE FIRST TEN MONTHS.

**CARS OF THE ROARING 20'S**

"CARS OF THE ROARING 20'S" IS THE THEME OF A FINANCIAL SEMINAR OWNED BY A SAN FRANCISCO BANK. FIRST IN US TO ESTABLISH A SPECIAL DEPARTMENT FOR FINANCING AUTOS.

**BOB'S SEMI-ANNUAL CLEARANCE**  
**FINAL 3 DAY'S**

|  |   |  |
|--|---|--|
| <p>GROUP I<br/>LADIES SHOES<br/>170 Pairs Left</p> <p><b>\$4</b></p> <ul style="list-style-type: none"> <li>• High Heels</li> <li>• Wedges</li> <li>• Casuals</li> </ul> | <p>GROUP II<br/>Girl's Dress &amp; School<br/>Sizes 5½ - to 3</p> <p><b>\$3</b></p> | <p>GROUP III<br/>Girl's and Ladies'<br/>HOUSE SLIPPERS</p> <p><b>\$1</b></p> |
|--|---|--|

**BOB'S SHOE STORE**

**WE SPECIALIZE IN . . .**

**ORDERS TO GO** PHONE 3911

**Boston's Super Dog STAND**

- NO WAITING
- YOUR ORDER WILL BE READY

**WE NEED YOUR HEAD**  
 In Our Business  
**MAIN STREET BARBER SHOP**  
 414 W. Main Dial 3177



"BOSS OF THE MONTH"—So named was Roy Williams during installation of Brownfield Desk & Derrick Club officers Friday night. Williams is petroleum engineer for Pan American Petroleum Corporation. Presenting him with an appropriate gift is Rita Homesley of Pan American, new membership chairman of the club. Event was held in The Party House.



**EVEN OBTAINS SPACE TRAVELERS**

**Newspaper Ads Prove Their Power**

By WELDON CALLAWAY

If and when Uncle Sam decides to launch a space craft, he will have no problem in recruiting a crew to man the ship. Newspaper advertising can do the recruiting job.

In fact, such an advertisement has been run in one newspaper. It brought a flock of responses from prospective space travelers.

Last spring Farr Tours, a travel agency, published an ad in a Florida newspaper with the headline, "Space Available Now! New Deluxe Ion Rocket Ship To The Moon." The advertising was a gimmick intending to show what the agency's offerings might be in 1957.

When the travel agency received 150 requests for reservations, the copy writer who prepared the advertisement concluded that newspaper advertising could sell anything. "It proves that people read newspaper advertising and act on it," he said.

Many newspapermen carry dozens of similar stories. Our favorite concerns a slick operator in California who collected over a hundred dollars from a want ad which read in full: "Last chance! Send your dollar today. Address, 1021 E. Westfall Avenue." We understand the gentleman was doing fine until he discovered that the police also read newspaper advertising.

Although these amusing stories do dramatize the power of newspaper advertising, it is really not necessary to use

gimmicks to obtain such proof. Any regular advertiser should have convincing evidence of the power of advertising in his sales records.

For the best way to learn how many people read and act on newspaper advertising is to offer a good product for sale at the right time.

More money for farmers means more money for the banker, the merchants, the manufacturer and, incidentally for us.

SOCIETY? CALL 2188  
CLASSIFIED? CALL 2188

**PUT YOUR  
PRESCRIPTION  
IN OUR HANDS**



When your health is at stake, there must be no mistake! You can depend upon us for absolute accuracy. Our registered pharmacists double-check each and every prescription to guard your health.

**MEDICINE CABINET AND FIRST-AID SUPPLIES ARE AVAILABLE!**

Ask Your Doctor . . . .  
to Call 2212!  
And Compare Our Prices

**Primm Drug**

"Where Most People Trade"

**No. 1—**

Meadow; and P. J. O'Connell, H. E. Stephens, G. I. Sims, Alton Loe, Carl Golden and Mrs. M. R. Paddock, all of Wellman; and Lee Brownfield, Robert L. Bowers, King, John J. Kendrick, A. M. Muldrow, Mrs. V. L. Patterson, Mrs. Roy Timmons, Mrs. J. M. Teague, Webb, Mrs. Weiss, T. A. Hicks and O. R. Douglas, all of Brownfield.

**No. 2—**

Beaumont. "Joy in Our Gardens" presented Wednesday by Mrs. Virgle Travis for her group, Brownfield Garden Club.

Primm Druggers to play their home games this year at Wellman. They're part of TAAF basketball league.

Want news of Future Farmer activities at BHS? Read Herbie Pickett's NEWS column, "Brownfield FFA Survey."

No NEWS? Call Joe Brown at 3225. He'll get one to you on the double, double.

Mrs. Jerry Kirschner new prexy of Brownfield Country Club Auxiliary.

Rep. Robert Bowers will talk to American Association of University Women, 7:30 p.m., Thursday.

Famed Ballet Russe at Lubbock Auditorium, Jan. 23.

Oddity department: West Ward Principal Ves Hicks got absolutely last ticket to Tech-SMU thriller Friday night.

Army Pvt. Gene Hough of Seagraves now in Germany.

Brownfield group to be among 8,000 Monday at Dallas for annual Texas Baptist Evangelistic Conference.

Five pharmacies in Brownfield: Gosdin Drug, Wilgus, Coats, Primm Drug, Nelson.

Ira Inscore of 907 South Second leaving Monday for hitch in Navy.

Meaning-of-names department: Abigail — my father is joy.

Much snow left, fields too wet to plow, dirt roads becoming passable.

**No. 3**

which you have given me, and I sincerely solicit your vote and support in July. If elected, I will serve you the best I can. "May the coming year bring prosperity and success to all of you."

**This Week's School Menu**

Following is the menu for all Brownfield school cafeterias the week of Jan. 13-17.

**MONDAY**

Frito pie, pinto beans, carrot sticks, spinach, cornbread, butter, peach halves and milk.

**TUESDAY**

Beef stew, cheese toast, waldoef salad, crackers, plum cobbler and milk.

**WEDNESDAY**

Salisbury steak, creamed potatoes, English peas, jelled carrot and pineapple salad banana pudding, hot rolls, butter and milk.

**THURSDAY**

Chicken spaghetti, green beans, cabbage slaw, fruit Jel-lo, yellow cake, buttered French bread and milk.

**FRIDAY**

Cheeseburgers, lettuce and tomatoes, pickle and onion relish, French fries, buttered beans, cookies, ice cream and milk.

**Brownie Troop 147 Has First Meeting**

Brownie Troop 147 had their first meeting of the year Thursday afternoon in The Scout House.

Snow was shoveled from the sidewalks before the business meeting. Janice Shewmake, recently from Levelland, is a new member of the club.

Those attending were Linda Mackey, Susie Farrar, Kay Fincannon, Marcia Adams, Cherry Timmons, Marsha Cramer, Janice Shewmake, Shirley Farrar, Mrs. J. L. Fincannon, leader, and Mrs. Paul Farrar, assistant leader.

**No. 4**

Club, beginning at 7:30 p.m. Jan. 31 in Veterans Hall.

A series of coffee parties also will be held during the campaign, added Shelton.

**No. 5**

will be hosted by Seminole, in April.

**Election in June**

Election of officers will be held during the Hot Springs session, and a nominating committee was appointed Thursday by Judge Beyer: Judge Herb Chesshir of Terry County, Glen Youts of Dimmitt and Tom Yarbrough of Marathon.

Said Judge Beyer during the luncheon: "We firmly believe that Hwy. 51 will be designated an international highway soon." Beyer also called for approval of an association resolution honoring the late T. A. Singer of Dimmitt, "father of Hwy. 51 association." The resolution was approved.

Present Thursday was Singer's son, Elton Singer, also of Dimmitt.

Judge Chesshir introduced guests Thursday, and Lawrence said an invocation.

**No. 6**

may cause internal injuries, and that they should destroy any bottles in their possession or return them to the stores where they were purchased.

So far, according to FDA, glass fragments have been found in the one-ounce and three-ounce bottles, but not in the large container used commercially.

The manufacturer has explained that steps have been taken to insure that future production will be free from contamination.

**No. 7**

next week in the former Gore Fashion Shop at 403 West Main.

"We hope to surpass last year's \$626 contribution," said Aaldrup. "All proceeds from the party will go to the March of Dimes."

Aaldrup explained that purchase of a ticket makes the holder eligible for the door prize whether he attends or not. "A baby sitter will be present throughout the event," he added.

**KYLE'S GROCERY**

**SPECIALS!**

For Monday and Tuesday

**NAPKINS** Northern 30 Count **12 1/2¢**

**OLEO** Shurfine Lb. **19¢**

**JUICE** Hunt's Tomato 46 Oz. Can **25¢**

**KOTEX** Box of 12 **33¢**

**CHEER** GIANT SIZE **69¢** | **CRISCO** 5 LB. CAN **89¢**

**CATSUP** DEL MONTE 14 OZ. BOTTLE **19¢**

**PRODUCE Buys**

**Lettuce** Lb. **10¢**

**Lemons** Lb. **10¢**

**Celery** HEARTS PKG. **19¢**

**Bananas** Lb. **12 1/2¢**

**selected MEATS**

**BISCUITS** CAN **10¢**

**BACON** SLAB Lb. **59¢**

**MORRELL PRIDE SAUSAGE**

Hot or Mild 1 Lb. Roll **39¢**

**BARGAIN SCOOP!**

**DOG FOOD** 3 CANS **23¢**

**SAUSAGE** **10¢**

**SYRUP** **23¢**

**TUNA** **29¢**

**COCOA** **29¢**

**JELLY** **29¢**

**Is Your No. Listed in the . . . Party Line? LOOK . . .**

"Hello — Is this 3780, Mrs. Dean Murphy? If you will come by Kyle Grocery before Thursday, January 16, we have a gift for you. While here, you are invited to look over the many food values you'll find in our store."

**FOR BROWNFIELD'S LARGEST ARRAY OF GIFT ITEMS SHOP KYLE'S REDEMPTION CENTER, YOU'LL SAVE MORE**



Buying Selling Renting Services Employment  
**For Best Results**  
**READ AND USE THE WANT ADS**

**Meadow News**

Jerry Edwards of Clovis, N. M. spent last week in the home of his aunt, Mrs. Ruby Dalton and family.

Mr. and Mrs. J. M. Burleson and Mrs. Burleson's mother, Mrs. J. A. Miller, visited his mother in Anson last week.

Meadow girls basketball team won first place in the Ropesville Tournament last week. The boys lost to Leveland.

Little Randy Gober, son of Mr. and Mrs. Roy Gober, has been sick for several days but is improving.

Jimmy Castleberry of Lubbock was in Ropesville Saturday night for the tournament. Meadow and Ropesville girls played for first place.

There was a big crowd from Meadow in Ropesville Saturday night for the tournament and some had a hard time getting home through the snow.

Mr. and Mrs. Joe Edwards and Jerry of Clovis, N.M. visited in the home of her sister, Mrs. Ruby Dalton, and family Friday night. They were enroute to Tahoka to attend a family reunion of the Edwards family.

Mr. and Mrs. Dale Fulford and daughter visited Mr. and Mrs. Ray Gober last Thursday night.

Mr. and Mrs. Leon Safell and children spent last week end in Ruidoso, N.M.

Mr. and Mrs. Carl Pritchard Jr. of Carlsbad, N.M. have been visiting his parents.

Our sympathy goes to the family of Lee Walker, who died of a heart attack Monday in Spur. Several out of town people were here Wednesday for the funeral. Walker had lived in and around Meadow for several years before moving to Spur. Funeral services were conducted Wednesday at 3 p.m. in Church of Christ.

The Harvest Festival Program was held at the Methodist Church Wednesday night. Supper was served, preceding the sermon.

**No. 8**

under the act should reimburse the United States Government for essential expenses, not including salaries or expenses of regular department or agency personnel, incurred for the transportation and subsistence of Mexican workers to and from the United States. The act set \$15 as the maximum fee which could be charged employers for this purpose.

The United States Government draws upon the revolving fund to pay transportation and subsistence costs incurred in bringing in the workers, maintaining them at reception centers until they are contracted for, and then returning them to Mexico at the expiration of their work contracts.

The contracting fees charged agricultural employers have ranged from \$3 to \$15 depending upon the size of the balance in the revolving funds. In recent years the fees have been set below actual transportation and subsistence in order to reduce a substantial fund surplus. As this surplus has now been reduced, the fees have been increased, the Labor Department said.

Under the law and Migrant Labor Pact, Mexican workers may be brought into the United States for farm work when domestic farm labor is not available to perform the work for which Mexican nationals are to be employed.

**Brownfield Baptists Are Going To Dallas**

Four ministers and six laymen of Brownfield will be among 8,000 attending the annual Texas Baptist Evangelistic Conference, Monday through Wednesday in Dallas.

They are the Rev. Warren Stowe of Calvary Baptist, the Rev. Boyd Pearce of Immanuel Baptist, the Rev. Lazaro Hernandez of First Mexican Baptist and Dr. Jones W. Weathers of First Baptist.

Others to attend from here are Ike Bailey, C. E. Ross, Arlie Lowmire and Beryl Lovelace of First Baptist, and Joe Garcia and Felix Ruiz of First Mexican.



ANN O'CONNELL



ANN BAKER

**"Down Wellman Way"**

Hi there!

Well, it's test time again at Wellman High! But this time, thanks to the snow, we had an extra day to study and so maybe we'll be better prepared this time. Our goal—to see at least twice as many names on the honor roll.

We're glad to see Mr. Green, our typing teacher, back at WHS. He has just recovered from his second case of pneumonia.

Nearly all the students have themes and hope to meet the Feb. 1 deadline.

The sophomore class has just started to work on their first play of the year. It is a one act comedy entitled "Coming Round the Mountain". We are all looking forward to seeing it when it will be presented in February.

The FFA boys have nearly completed the FFA monument of brick tile. On it will be inscribed the words "Welcome to Wellman" and the FFA emblem. It will be placed near Wellman on the Lubbock highway.

**ELEMENTARY**

Rene Smith, a second grader, and her father, H. L. Smith, are in the hospital with pneumonia. Dean Hohenberger's father, Lamar, Stunkard is also in the hospital recovering from a heart attack. We

wish them a speedy recovery!

Mr. and Mrs. E. M. Goins of McAlester, Oklahoma and Mr. and Mrs. C. E. Motley of Monahans, spent Christmas holidays with Mr. and Mrs. J. L. Lyoris.

**Blondie and Dagwood**

Martha Goza and Lummie Porter, Peggy Burnett and Lewis Hare, Tootsie Hawkins and Ldean Hughlett, Trucene Crowder and Kenneth Taylor, Pat Bottoms and Lewayne Rowder, Sammie Adair and Kenneth Hancock, Anne Lee Morloh and Larry Sims, Barbara Bishop and David Cabel, The Marlan and John Sellers, Ann Baker and Bobby Whitney, Mary Hohenberger and ????. See you next week!

The Anns

**Finisher Wanted**  
**Broadway Cleaners**  
 407 W. Broadway

**ARE YOU INTERESTED IN YOUR FUTURE?**

**SERVICE ROUTE**  
 of  
**CIGARETTE MACHINES**

Men or Women  
 Full or Part Time

**ROUTE ESTABLISHED**  
 No Selling or Soliciting  
**INCOME STARTS**  
**\$1095.00 to \$2190.00 CASH**  
**REQUIRED**

Please don't waste our time unless you have the necessary capital and are sincerely interested in expanding — We finance expansion — If fully qualified and able to take over at once, write briefly about yourself and include phone number for personal interview.

**ALLIED**  
**MERCHANDISING, INC.**  
 7307 Olive Street Road  
 University City 5, Mo.

**No. 9**

21, were transferred to Lubbock Methodist Hospital Friday following treatment at Treadaway-Daniell Hospital here. Attendants listed Pendley's condition as "fair" and Brown's as "critical."

Rodger Pendley, 18, was treated for bruises and head lacerations and released Thursday night. Lubbock Methodist Hospital authorities said the older Pendley youth suffered a broken leg and that Brown has severe head injuries.

Investigating officers said the car driven by Brown was going east of Farm to Market Road 396 at 4:45 p.m. Thursday when the mishap occurred.

The car glanced off the left rear of a pickup driven by Henry Rushing of Tokio, officers said. The vehicle went off the left side of the road, then careened back to the right, hitting a utility line pole and rolling some 500 feet before coming to rest in a cotton field, they added.

Rushing was not injured in the collision.

**POLITICAL ANNOUNCEMENT**

Justice of Peace:  
**LONNIE RHYNE**

Commissioner Prec. 2:  
**WAYNE MULLINS**  
**FRED FINLEY**  
**CARL STEPHENSON**

Commissioner Prec. 4:  
**R. L. (Bob) BURNETT**

County Treasurer:  
**MRS. O. L. JONES**

County Tax Assessor and Collector:  
**J. D. (Jot) AKERS**

County Superintendent  
**ELMER G. BROWNLEE**

106th District Judge  
**TRUETT SMITH**

**Brownfield News**  
 409 West Hill Brownfield, Texas

CURTIS J. STERLING Publisher  
 DON BYNUM Editor  
 WELDON CALLAWAY Advertising Manager  
 M. D. FAIRBAIRN Mechanical Superintendent

Published Every Thursday And Sunday  
 Entered as second class matter at Post Office in Brownfield, Texas under the Act of March 3, 1879.

Subscription rates: Terry, Yoakum, and Gaines County — \$5.00 per Year. Carrier boy delivery in City — \$6.00 per year, Elsewhere — \$7.00 per year.

**Order By Mail**  
 As an added convenience to area customers we are initiating a "WANT-AD-BY-MAIL" service

**RATES**

| Number of Words      | 1 Day  | 2 Days |
|----------------------|--------|--------|
| 20 or less           | \$1.00 | \$2.00 |
| Each additional word | 5c     | 4c     |

**The Brownfield News Want-Ads**  
 reach over 10,000 area readers.  
 Classified Display rates furnished on request.

In order to help you determine which edition of The News you want your classified ad started in, the following schedule will be observed: Ads for the Thursday edition will be scheduled for that edition if they arrive in our office Friday afternoon, Saturday, Monday and until 12:00 noon Tuesday. Classified ads will be scheduled for the Sunday issue if they arrive in our office Tuesday afternoon, Wednesday and until 10:00 A.M. Friday.

**USE THE HANDY ORDER FORM**

**BROWNFIELD NEWS**  
 Classified-Department  
 Box 1186  
 Brownfield, Texas (Write Your Ad Below)

Name \_\_\_\_\_  
 Address \_\_\_\_\_  
 City \_\_\_\_\_ State \_\_\_\_\_  
 Number of days \_\_\_\_\_ Cash ( ) Charge ( )

Classified Advertising Rates: 5 cents per word first insertion; 4 cents per word each time thereafter—minimum charge of \$1.00 per insertion. Classified Ad deadline for Thursday is 10:00 a.m. Tuesday and for the Sunday paper, 10:00 a.m. Friday.

**REAL ESTATE FOR SALE**

**FOR SALE OR TRADE:** Grocery store & filling station — 1/2 acre, living quarters & garage repair shop, 6 room house with garage — 1/2 acre, Seagraves Road — S. H. Depoyster Phone 2338. 81-tfc

**FOR SALE — 320 A. farm.** 300 A. in cultivation in water belt. 100 A. cotton allotment. Known as the Old Road farm 6 mi. east 1 mi. south of Bld. 61-tfc

**FOR SALE — 2 bedroom house.** 713 Magnolia. Phone 2278. 42-tfc

**FOR SALE — 320 acres land** — well improved. \$75.00 per acre. 1 section land for rent with sale of farming equipment. 1-1949 GMC 1 1/2 ton truck. 1-1946 Ford 1 1/2 ton truck. 1-1948 Dodge 1 1/2 ton truck. All have 2 speed axles and grain beds. One 1949 Ford pickup 1/2 ton. One 1948 Chrysler 4 door. Also other farm equipment and tractors. 15,000 Atlas Sargo bundles. Two miles west and 3 1/2 south of Tokio. Phone Wheatley 3169. 2-tfc

**FOR SALE: 480 Acres** Gaines County, \$125.00 per acre. 63 acres cotton allotment, one 10' well with 8" pump and motor, double sprinkler line, 320 acres in cultivation, well on natural gas, on pavement, 3 miles from Denver City. Has \$27,000.00 loan. Will take some cash and trade for revenue property. 160 acres Gaines County Has 6" well, pump, motor and sprinkler system, complete, new. Fair cotton allotment, \$100.00 per acre. It has an \$8,000.00 loan. The Pemberton Agency 210 S. 5th Ph. 4119

**FOR SALE — Low equity in 3** bed room house, garage, fenced back yard, air conditioner on top. G. I. loan of only 4 1/2% interest. Phone 3555. 3-2c

**FOR SALE TO GIs — 80 acres** land. Pump, motor, sprinkler, butane tank. 4 miles north town. George Hadspeth. 4-1p

**FOR SALE — 40 acre farm** with 5 room modern home. Located 7 miles out of DeQueen, Ark. Reasonably priced. See owner at Dairy Mart. Wonderful fishing nearby. 3-4p

**FOR SALE — have two 2 bed-** room homes low equity; also have nice 3 bedroom and den well located. DAVID NICHOLSON AGENCY phone 3603-3740. 56-tfc

**FOR SALE — 2 year old — 2 bed-** room home at 1419 E. Cardwell. No telephone calls please. Will sell for my equity down. 2-tfc

**MISCELLANEOUS**

**TV NOTICE — Service call \$2.50.** Work part time at Brownfield. Experienced in color and black & white TV. Work guaranteed 90 days. Contact at 301 N. 5th St. 4-2p

**FATHER'S lounge chair** a bit dingy? Clean it with the new Blue Lustre. Copeland Hardware. 4-1c

**LOST — Black cocker spaniel.** Has all tags. About 10' tall. Answers to the name of Sissy. Finder please call 3064 or 2188 for reward. Sandra Bevers, 211 E. Tate. 4-tfc

**A dream come true, no waxing to do.** Use Glaxo plastic type linoleum coating. Copeland Hardware. 4-1c

**LOST — Mouton coat, lost at Le-** gion Hall Saturday, December 28. Finder call 3765 for reward Pat Rinehard. 4-1t

**NOTICE TO my customers: House-** trailer moving — tractor and truck repair. Mustang Tractor Service, 207 Seagraves Rd. Dial 2628. 84-8c

**YGU CAN Have "unwanted hair"** removed permanently from any part of your body. Beauty A/C Clinic, phone 4605. 78-tfc

**FOUR classified advertisements** on this page can convert items you no longer use into cash — which is useful practically any time. Our courteous classified department will help you word your advertisement. It's easy — just dial 2188. 60-52tc

**FINISH HIGH SCHOOL or grade** school at home in spare time. Books furnished. Diploma awarded. Start where you left school. Write Columbia School, Box 5061, Lubbock, or Phone SW9-0651.

**WANTED — All type of interior** or exterior painting, papering and decorating. For free estimate call 1707 or 2559. Terms if desired Pete Merritt, 210 N. D. 39-tfc

**REDUCE AT home, men or women.** Niblack Home Pony reducing unit, for rent or sale. Beauty Aid Clinic. Phone 4506. 1-1t

**CARPET CLEANING — Shampoo-** ing done right on the floor in your home. Carpets ready for use the same day. Call City Carpet Cleaners, Ph. 2024.

**IF YOU are planning a new home** or remodeling your present home, or free estimates, call or write Knox and Galey Building Contractors. Phone PO 3-7840 or write 2303 2nd St., Lubbock, 4-8p

**FOR SALE**

**USED TRACTORS**  
 See Us Before Buying. We May Have Exactly What You Want in the Way of Used Equipment.  
**KERSH IMPLEMENT CO.**  
 "Your John Deere Dealer"  
 Seagraves Road

**FOR SALE OR TRADE — My** equity in '57 Oldsmobile for older car. Contact Edward Holloway at phone 2188. 86-tf

**FOR SALE OR LEASE — Lucky** Stop — originally Lee's Drive-In Cafe — on Seagraves Highway. Phone 3477. 1-tfc

**HELP WANTED**

**WANTED: Resourceful efficient** men to sell well known product. Opportunities unlimited, with good income. Phone 2379 after 6:00 p.m. only, for appointment. 81-tfc

**FOR SALE — 30 head young** cows and 13 calves. See or call Loyd Sever, 1004 E. Broadway, Hobbs, New Mexico. Phone Express 3-2212. 2-4c

**FOR SALE — Well grained hy-** dra-bundles, \$20.00 per ton. See Lloyd Franklin, 4 miles west and 1/2 mile south of Brownfield. 3-2p

**FOR SALE — Lease house 1 room** modern near Levelland, Texas, to be removed from premises, offered on bid basis. For information contact M. I. McIntire, Revenue Oil Co., Phone TWilght 4-2012, Levelland, Texas. 3-2c

**FOR SALE: Highest Quality** Fences at Lowest Prices. All Types Materials for all Purposes. No Down Payment and 36 Months For Free Estimates Call 4204 R. T. Wilson, Agent; Curtis Fence Co. 78-tfc

**FOR SALE OR TRADE — for** arm equipment. 1 frame stucco building, 28 ft. by 36 ft. Sheetrock and finished nicely inside. Also complete equipment for cafe. Located at Tokio, Texas. D. E. Green, 1101 E. Buckley, Brownfield, Texas, Phone 2797. 4-2p

**REAL ESTATE FOR SALE**

**FOR SALE: House by owner,** 3 year old, 3 bedroom, living room and dining room carpeted, \$8,000. Phone 4756. 77-tfc

**FOR SALE — 2 bedroom home** — completely carpeted, fenced back yard, choice location, near school. Phone 3759. 3-2tc

**REAL ESTATE**

25 acres 8 miles of Brownfield. Pavement, REA. Good improvements. \$7,000. Terms. **FEW TRACTS FOR VETERANS** 80 to 112 acres

**RAY CHRISTOPHER**  
 Real Estate  
 410 W. Broadway  
 Phone 2268 or 2064

**FOR RENT**

**RENT A HOME — In the** Brownfield Manor, beautiful brick apartment house, 900 East Repplo, with ice box and stove furnished, 1 or 2 bedrooms, air bills paid. See David Nicholson Agency, 418 West Main or call 3603 or 3740. 12-tfc

**FOR RENT: Bachelors apartment.** Bills paid except lights — 903 East Hester. 84-tfc

**FOR RENT — Nice furnished bed-** room with private bath, private entrance and garage. 708 E. Buckley. Phone 3245. 1-tfc

**FOR RENT — Ready for your** move. Cultivated land and grass and with good modern house. Northeast of Brownfield. Contact Marvin McNutt at the McNutt Courts in Brownfield, Texas. Phone 2146, Brownfield. 3-3c

**FOR RENT — 2 bedroom furni-** shed house, 209 E. Tate. Phone 3742 or see Mrs. Romans at 221 So. B. 3-2c

**FOR RENT — 4 room unfurnished** house at 610 N. Bell. Mrs. Briscoe. 4-tfc

**SEE US FOR . . .**

• INSURANCE  
 • BONDS  
 • REAL ESTATE

Phone 2272  
**A. W. TURNER**  
 Agency  
 407 W. Main

**22 YEARS HANDLING REAL** ESTATE IN BROWNFIELD. After this long span I know your needs and the value of property better than in 1935. If you have property for sale and willing to price it fairly I invite your listing and for interested buyers I invite you to see or write me what you need as nearly all property sold by me during this time has doubled in value. **A HAPPY AND PROSPEROUS NEW YEAR** for both buyers and sellers.

**D. P. CARTER**  
 Brownfield Hotel

**REAL ESTATE**

**LOANS**

• Repair & Improvement  
 • House Loans  
 • Irrigation Loans  
 (No Minerals Required)  
**The Pemberton Agency**  
 210 S. 5th Ph. 4119

**See Us For You —**

• REAL ESTATE  
 • FARM & RANCH LOANS  
 • IRRIGATION LOANS  
 • OIL PROPERTIES

**JOE W. JOHNSON**  
 406 West Broadway  
 Phone 4443

**TO SELL OR BUY**

**CLASSIFY**

**Phone 2188**



**THE LOOT** — Officer Clarence Walsler plays the load of liquor and beer found in a Lubbock woman's car Friday. A traffic violation brought the woman to Chief James Tippet's attention, leading to the liquor discovery. (NEWSfoto)



**FOUND IT HERE** — J. W. Chidester, Brownfield policeman, shows where a Lubbock couple was hiding part of a large load of liquor and beer when arrested Friday. Secret compartments were found behind the rear seat. (NEWSfoto)

**Imbibing Friend, Traffic Light Trip Up Fast-Moving Duo**

A traffic light and an imbibing companion combined to trip up a Lubbock woman here Friday when Police Chief James Tippet stopped her car, finding a large quantity of liquor and beer.

Tippet said the woman, Minnie Lee Williams, 27, was stopped shortly before noon when she ran a red light at First and Broadway. Further investigation of the car uncovered a false back in the trunk.

Officers Clarence Walsler and J. W. Chidester were called to the scene. Investigation revealed secret compartments under the rear and front floorboards, under the hood of the car and one between the back seat and trunk.

Tippet said the woman has been charged with illegal transportation of liquor and her companion, Freeman Williams, 55, with drunk in a car and illegal possession. Both pleaded not guilty before County Judge Herbert Chesshir Saturday morning.

Tippet revealed investigating officers uncovered 71 bottles of wine, 8 bottles of whiskey, 2 bottles of gin (1 about two-thirds empty), and 60 bottles of beer.

**STARTS AT REGAL TUESDAY Unusual Tale Of The Sea Is Brought To The Screen by War Epic, 'Sea Wife'**

"Sea Wife," starring John Collins Richard Burton, Basil Sydney and introducing Cy Grant, emerges Tuesday on the CinemaScope screen of the Regal Theatre as a motion picture challenging, beautiful and sweepingly powerful as the sea itself.

Directed by Bob McNaught and produced by Andre Hakim, the Twentieth Century-Fox production erupts with a violent and vivid panorama of war-punctuated Singapore harbor.

The CinemaScope cameras narrow suddenly to a submarine attack on a small boat crammed with a thousand refugees. The ship explodes, and from that perilous moment, the movie-goer is almost literally swept up and carried along on the dramatic, desperate voyage of four of the ship's survivors—three men and a beautiful young nun.

They endure 14 weeks adrift in an open boat, pitted against the shark-studded waters of the Indian Ocean and sometimes with even deadlier effect—a giant.

The four passengers — Miss Collins, Burton, Basil Sydney and Cy Grant — are all strangers, leary of any emotional alliances past the primary goal of safe harbor.

They decide, through nicknames, never to reveal their true identities. Thus Burton, a young RAF flyer in charge of the limited rations, is called "Biscuits." Miss Collins, the nun, becomes "Sea Wife," because she swims with the skill of a mermaid.

Sydney, an aggressive and determined business man, is aptly dubbed "Bulldog" and Cy Grant, a Negro purser, is called "Number Four," because he is the fourth man pulled onto the raft. Only he, "Number Four," knows of "Sea Wife's" vocation and she, fearing any special consideration, swears him to silence.

As the raft drifts aimlessly across the bright-blue canvas of the Indian Ocean, director Bob McNaught, here entrusted with his first major assignment, handles all the varied reactions of his four, very different people to thirst and exposure and the blazing, unblinking sun with insight and surehandedness.

The men quarrel and are held together only by the grace and uncomplaining courage of the woman. Biscuits begins to fall in love with her, and, as the days pass, he cannot understand her taciturn but firm refusals to respond.

The picture builds rapidly, relentlessly, past a meeting with a Japanese submarine commander, who, recognizing something extraordinary in the face of Sea Wife, gives them water and food and some Eastern advice.

"Empty your minds," he tells them gravely. "You must learn to eat time." Finally, they reach the temporary shelter of a deserted island where Number Four, tricked by the now almost insane Bulldog, slips to his death in the shark-ridden sea.

It would be unfair to reveal anymore of the ironic, completely surprising climax of "Sea Wife," except to say, that like most true works of art once seeing it, you will not soon forget it.

The acting can nowhere be faulted. Joan Collins, usually associated with less secular types, is no pale and boneless cinema saint, but a woman of flesh and fire and deep humanity, who can love nothing so much as she does her God.

It is a very moving performance. Her co-star, Richard Burton, is superb as "Biscuits," a handsome, articulate and baffled young man for the first time in his life in love with someone he can never have. Basil Sydney, an honored veteran of stage and screen, and Cy Grant, in his film debut, both carve strong portrayals.

Two universal themes—men against an angry sea and the devotion of the religious life—have been mounted by Producer Andre Hakim with majesty and reverence. "Sea Wife" is a picture to be seen and treasured for the moment when great films are nominated.

**AAUW TO HEAR BOWERS**

R. L. Bowers of 406 East Tate, state representative, will speak on "News From the State Capitol" when American Association of University Women meets at 7:30 p.m. Thursday in Seleta Jane Brownfield Clubhouse.

CLASSIFIED? CALL 2188

**Advance Planning For Machinery Can Save Sudden Costs**

Keeping a farm properly mechanized is a major job; requiring sound advance planning to insure replacement of needed equipment, advises C. A. Parker, extension farm management specialist.

Analyzing current equipment inventory carefully, as a basis for future buying, will help farmers avoid the financial hardship that may be caused by an unexpected need to replace an expensive machine, says Parker.

Most machinery must be replaced eventually and waiting until it wears out or breaks down before making plans for replacement is poor business. Instead, farmers are advised to put on paper a long-range replacement program aimed at meeting equipment needs as they arise.

Financing new machines is easier when it is spread over a period of years, reminds the specialist. The farmer should anticipate his needs for replacements and, so far as possible, provide for them in advance.

His plans should be flexible, to meet fluctuations in his income or emergency expenses, and he should be ready to take advantage of equipment bargains. If he finds that his spending for equipment is less than estimated, he should set aside the difference as a reserve fund, Parker advises.

**AT REGAL TODAY 'My Man Godfrey' Served With Large Portions Of Laughter And Enjoyment**

That deep-down enjoyment that laughter can bring is served up in delightful king-sized portions in Universal-International's "My Man Godfrey," a brilliantly-executed parcel of nonsensical fun that opened today at the Regal Theatre.

For sheer merriment, the artistry of this comedy's stars, June Allyson and David Niven, could hardly be surpassed. As a result, "My Man Godfrey" zips across the screen in color and CinemaScope with the friskiness of a young colt and the unpredictable antics of an uninhibited puppy.

Producer Ross Hunter and Director Henry Kostler used the touch of genius in surrounding Miss Allyson and Niven with a superlative cast of co-stars. Jessie Royce Landis, Robert Keith, Eva Gabor, Jay Robinson, Jeff Donnell and Martha Hyer give stand-out performances and to say that this talented gathering proved successful is the understatement of the century.

"Godfrey," he it known, is a handsome gentleman of fine breeding who takes a job as butler for the wackiest family in New York society circles.

Niven, as the butler, is devastating as he endures the family's way of life, slowly teaching them the foolishness of their manners.

June Allyson, the lovesick daughter, displays a brilliant aptitude for comedy that stamps "My Man Godfrey" as the finest performance she has ever given on the screen.

Jessie Royce Landis, the birdlike mother, is just wonderful as is Robert Keith who plays her defeated husband with an air of hopelessness, frustration and anger.

Eva Gabor, seen as a Continental lady of affairs, matches her beauty with the expertise of her characterization. Jay Robinson gives a classic interpretation of the untalented family leech, and Jeff Donnell, sacrificing her glamor for the very funny portrayal of the lazybones maid, makes her role both hilarious and unforgettable.

Special acclaim must be granted the excellence of Martha Hyer's characterization of the arrogant, haughty sister who opposes June Allyson. The fine work of this beautiful and competent Miss is further assurance that she is destined to become one of the screen's great stars of the future.

Photography for "My Man Godfrey" wins praise for William Daniels, A.S.C. and his crew also must be bestowed on scenarists Everett Freeman, Peter Bernies and William Bowers who based their script on the novel by Eric Hatch and screenplay by Morrie Ryskind and Hatch.

In times like these, "My Man Godfrey" is a happy escape from the doldrums of everyday living. Everyone who sees it is bound to feel better.

**BCC Auxiliary Has New Officer Group**

Officers for the coming year were elected when Brownfield Country Club Ladies' Auxiliary met Wednesday for a covered dish luncheon.

Mrs. Jerry Kirschner was elected president and those serving with her are to be Mrs. Murphy May, vice president, Cotty Campbell, secretary, Charlie Price, treasurer, and Ted Hardy, reporter.

Officers are to be installed at a joint meeting of both men's and women's organizations of the Brownfield Country Club. The meeting will be in February.

Mrs. John L. Cruse took high in bridge and the two bingos went to Mrs. J. L. Kemper and Hardy.

Hostesses were Mrs. Bruce Zorns, Jack Bailey, Jerry Bailey, Dlp Pemberton and J. T. Bowman.

**Furr's Checkers in National Contest**

The girl who has put many cans of pineapple into your grocery bag may get a chance to see that tropical fruit in its homeland — Hawaii. And your vote may help her to an all-expenses-paid vacation.

Furr's Super Markets has entered all its checker-cashiers in the 1956 Checker of the Year Award, sponsored by Super Market Institute and National Cash Register Company.

First they'll select a company winner, and the votes of customers will count heavily. Ballot boxes will be in the vote may help her to an all-expenses-paid vacation.

Furr's Super Markets have entered all its checker-cashiers in the 1956 Checker of the Year Award, sponsored by Super Market Institute and National Cash Register Company.

First they'll select a company winner, and the votes of customers will count heavily. Ballot boxes will be in the vote may help her to an all-expenses-paid vacation.

Furr's Super Markets have entered all its checker-cashiers in the 1956 Checker of the Year Award, sponsored by Super Market Institute and National Cash Register Company.

First they'll select a company winner, and the votes of customers will count heavily. Ballot boxes will be in the vote may help her to an all-expenses-paid vacation.

**Big Dollar Day Winner 's Mrs. E. C. Pool**

Following are names of persons who won merchandise certificates during last Dollar Day here:

Mrs. E. C. Pool of 1003 East Buckley, \$10 from Cobb's, Bayless Jewelry, Brownfield Bargain Center, Collins and Furr's.

These persons won \$10 certificates from these stores:

T. J. Littlefield of Ropesville, Dunlap's, and Jewel Sparkman of Route 4, the Fair Store.

**USED OK CARS CHEVROLET**

**Jack Bailey**

**1955 DODGE 1/2 Ton PICKUP**

New paint. Excellent paint and mechanical condition. **\$750**

**ONLY**

**1954 CHEVROLET 1/2 Ton PICKUP**

This is ideal for irrigation and all farm use. **\$395**

**ONLY**

**1953 FOORD 4-Door**

Radio and heater, white wall tires. New seat covers. **\$650**

**ONLY**

**1956 CHEVROLET 4 DOOR V8**

- Standard Transmission
- Overdrive
- R & H
- Tinted Glass
- White Walls

**\$1495**

**Jack Bailey Chevrolet**

• Dial . . . 3515 •

Note to graduates: Life is too short for a complete education. Spend less than you earn, and you can have social security of your own.

**JONES THEATRES**  
"MOVIES ARE YOUR BEST ENTERTAINMENT"

**REGAL**  
DIAL 3614

Sunday & Monday—January 12 & 13

**JUNE ALLYSON**  
**DAVID NIVEN**  
**MY MAN GODFREY**

**GUY MADISON**  
**THE HARD MAN**

Tuesday and Wednesday January 14 and 15

**SEA WIFE**  
CINEMASCOPE

**GIANT**  
DIAL 2239

Thurs., Fri. & Sat. January 16, 17 & 18

Sunday—Monday—Tuesday January 12-13-14

Sometimes... any man can be a giant...

**GIANT**  
A GEORGE STEVENS PRODUCTION

**AS BICK BENEDETT**

**AS LESLIE LYNDON**

**AS JETT HINES**

FROM THE NOVEL BY EDNA FERBER STARRING ELIZABETH TAYLOR ROCK HUDSON JAMES DEAN

Wednesday & Thursday—January 15 & 16

—DOUBLE FEATURE—

—they traded slugs for a club with the G-MEN!

**BARNEY ROSS**  
**Monkey On My Back**  
—With—  
**CAMERON MITCHELL**  
**DIANNE FOSTER**

**GUNS DON'T ARGUE!**

Tues., Wed. & Thurs. January 14, 15 & 16

SCHOOL TEACHER TANGLES WITH MONSTERS!

**JEAN SIMMONS**  
**PAUL DOUGLAS**  
**ANTHONY FRANCOISA**  
**THIS COULD BE THE NIGHT!**

**WALK INTO HELL**

LAST FRONTIER OF THE REAL WITCH DOCTOR!

**EASTMAN COLOR**

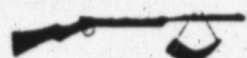
### THE Sportsmen's Corner

TIPS FROM SPORTS AFIELD MAGAZINE  
FISHING AND HUNTING AUTHORITY

Hunting the end of the season is a great way to fine-tune your hunting technique. Studies show that there's plenty of crafty game left that can be outsmarted—but not without a good tussle.

Two new gasolines, designed to meet the power needs of the newest, highest-compression cars, have been introduced by Sinclair Refining Co. New Sinclair Power-X is a super high-test gasoline with no price penalty. New H-C offers high-test quality at regular prices. . . The only two fully ball bearing operated spinning reels on the market are Continental's Alcedo 2 C/S and the tiny Micron. . . One of the important extras you get in the Ruger "Single-Six" Revolver is that the internal mechanism has been developed to completely eliminate all possibility of breakage in the working parts.

Some species of Alaskan fish can be frozen solid in ice for a long time and survive.



Strange as it may seem, pipes were known even before tobacco. The ancient Celts, for instance, smoked aromatic herbs. But that's probably because they didn't have the pleasure of trying MODEL or OLD BRIAR. . . Benjamin Air

Rifle, famous for fine workmanship, offers sportsmen "Adjustable Power" in both air guns and CO2 gas guns. . . U. S. Molded Shapes is offering molded plywood boat hulls with lap strake exteriors in 12' 6" to 16' 6" lengths for finishing into clinker type runabouts.

When you put your boat trailer up for the winter it's a good idea to repack the wheels with lubricant.



Did you know that the State of Alabama has 200,000 acres of great freshwater lakes with unlimited opportunities for fishermen—at reasonable rates? . . . Style, safety, and economy—they're all packed into the Sea Nymph aluminum runabout Model 14 RR. Only 240 lbs., and designed for motors to 40 H.P. . . Kasco Dog Food has opened a quarter-million dollar research kennel near Waverly, New York. It's a great place to visit. Bring the kids.

The world's largest perch is the Nile perch of Africa which reaches at least 580 pounds.



Don't forget to read 1956 Indianapolis Race winner Pat Flaherty's story "My Closest

Shave" in the February issue of Sports Afield. The ad was prepared by Colgate Instant Shave, which specializes in giving men close shaves. . . Designed for comfort and convenience is Ripon's new Cody Mitt of fine deerskin, completely lined with 50% wool, 50% Dacron. One hand is mitten, the other has the trigger finger. . . Better protection for sportsmen is the key-note of Seal-Dri Sportswear. Adjustable closure on their new parka hood and at the wrists seals out rain, wind and spray. See their coveralls and waders, too. . . For the first time Wage-maker is offering the boating public the advantages of Lapstrake Construction and Molded Plywood all in one boat. . . Ideal for upland hunting is Bass' new 7" Field Trial boot style 2642. Made of oil-treated leather with brown Hack Riddle Soles.

How does a grizzly bear kill an armed, experienced hunter? You'll know after you read "The Bear That Killed Ken Scott" in the January issue of Sports Afield. It's not "pretty" reading, but it will fascinate you. Copies on your newsstand now.

For further information on all products and services reviewed in this column, consult your local sporting goods dealer, the classified telephone directory or write Sports Afield, Dept. AA, 959 Eighth Avenue, New York 19, N. Y.

## ROBERTA PETERS Top Singer In Lubbock

The Lubbock Auditorium will take on the air of glamor and glitter Wednesday when world-famous singer Roberta Peters will be seen for one night in a special concert engagement.

The singer, who is regarded as one of the outstanding singers in the world today, is making her first appearance in West Texas, and the concert promises to be the outstanding musical event of the year on the South Plains.

The beautiful blue-eyed star was an overnight success, and made world headlines in 1950 when she stepped before a sold-out house in the Metropolitan Opera House in New York as an unknown replacement for an ailing opera singer.

The next morning, the entertainment world had found a great new star. Here was a singer who could act, who looked beautiful and one born and reared in this country. Roberta Peters has captured every field of the huge entertainment world.

In musical comedy, she played the title role in "The Bohemian Girl," on tv, she has been featured on Ed Sullivan's and Person to Person; in radio, she has been starred on "Voice of Firestone;" in motion pictures, she played the lead in "Tonight We Sing;" on recordings, she has made four albums for RCA Victor and on the concert stage, she has played to outstanding records of persons in seven cross-country tours.

Her concert in Lubbock will feature songs from opera, from sacred music, art songs, folk songs and lighter melodies also. Of special interest is the "Shadow Song" from "Dinorah." This is the difficult and seldom heard aria, which is only tried by expert musicians — something that Miss Peters has proved herself.

On the personal side, the lovely soprano is always listed on the "best-dressed" women in show business lists, is rated as one of the most charming and beautiful singers of all

nematodes, including serious pests of virtually every major crop grown in this country, said Fuller.

Most of the plant material intercepted was taken from passengers' baggage and much of it was brought in by people who were not aware that there were any restrictions on its entry. It is primarily at this group that the educational program is aimed, concludes Fuller.

There has been a steady increase in foreign travel and commerce, making the danger of new plant-pest introductions greater today than at any time since the passage of the Plant Quarantine Act of 1912.

Last year plant quarantine inspectors at ports of entry intercepted 300,000 lots of unauthorized fruits, plants and other agricultural material. This material harbored many of the world's most destructive insects, plant diseases, and

## TO MISSILE AND SPUTNIK PROBLEMS WTCC President Says Defense Budget Boost Is Not the Answer

ABILENE—"A huge defense budget and a resultant huge Federal budget will not necessarily be the answer to America's missile and Sputnik problems," the president of West Texas Chamber of Commerce said today.

B. E. Godfrey of Fort Worth stated that a study just completed by the research staff of the Council of State Chambers of Commerce for WTCC reveals there has been no lack of adequate funds for development of satellites and missiles.

The CSCC report, which is substantiated by statements of President Eisenhower, former Deputy of Defense Reuben B. Robertson and testimony of missile experts who appeared before the Senate Preparedness Subcommittee, reveals the lag in missile development is due to "unsatisfactory organization of the research and development program, absence of overall planning, interservice rivalry, and the failure to make decisions."

Noting that economy in the last session of Congress is being blamed for "our obvious lag in satellite development and the apparent lag in our missile program," the study charged:

"Once economy began to get the blame, the special interest spending lobbies and advocates of big Federal spending generally saw a golden opportunity.

"They recognized in Sputniks a vehicle for preventing in 1958 another nationwide economy wave like that in 1957. These promoters of new and expanded Federal spending were well aware last year the economy wave was largely responsible for such frustrations as they met.

"Now they think they see the opening to put through much that they could not get across last year."

Eugene F. Rinta, research director for the Council of State Chambers, an organization of State and Regional Chambers, commented:

"The lag in getting an earth satellite out in space is blamed by the experts on a decision to give the effort second-class priority to the long-range missile program, not to insufficient money.

"As for the guided missiles program, there is real doubt in the minds of these experts whether we are much, if at all,

time, and in addition is happily married and has one child.

behind the Russians. The extent to which we are behind a desirable state of readiness in missiles is laid to several basic factors, but money is not one of them."

Rinta called for a re-examination of priorities in expenditures both for defense and civil activities.

"Rapid technological changes and the very vastness of the defense establishment of themselves account for the provision in the defense budget of equipment and activities which range in priority all the way from critical need to be obsolescent and wasteful," he said.

"If the costs of essentials in the coming missiles age are not paid for in large measure through elimination of the obsolescent and wasteful, rising expenditures for defense will alone preclude . . . tax relief for years to come."

Rinta also held that application of priorities to the civil programs in the budget "is every bit as important as its use in controlling the defense budget."

He added that an examination of the priority values of the civil activities of any Federal budget "will show a range from those which are desirable and essential to those which are of highly questionable desirability or need."

The study showed that a comparison of expenditures for six groups of civil programs showed a rise of \$5.6 billion in the last four years.

The increases include \$2,469 million for agricultural aids, \$1,354 million for commerce and housing, \$884 million for labor and welfare, \$726 million for veterans, \$70 million for natural resources and \$121 million for general government activities.

### Cotton Quiz

HOW DID "BERMUDA" SHORTS ORIGINATE?

BERMUDA LAW FORBADE SHORTS HIGHER THAN 2 INCHES ABOVE THE KNEE. HENCE THIS ATTRACTIVE COTTON COSTUME WAS DEvised.

A "good" preacher to some people is one who tells them what they want to hear.

## OF COLONIAL PTA SESSION Parents, Youth As Partners Is Topic

Mrs. J. M. Teague spoke on "Parents and Youth Can Be Partners" when Colonial Heights Elementary School PTA met Thursday night in the school cafeteria.

Mrs. L. C. Webster brought the devotional. In her talk, Mrs. Teague, asked the question: "Are our children spoiled?" She gave point-

ers on the rearing of children from the cradle through teenage.

Mrs. William Mayo and Miss Creola Moore's rooms tied for first place room count with Miss Icela Crouch's room winning second place.

About 55 attended the meeting.

## Council Delegate, Other Officers Are Named by HD Club

Turner HD Club of Tokio met Wednesday afternoon with Mrs. Fred Fuller for a study on food using the Texas Food Standard Plan.

Miss Myrna Marshall, Yorkum County HD agent, gave the study. Mrs. B. Forehand was elected council delegate to take Mrs. D. H. Hughes' place, who is moving. Recommendations for 1958 were read and voted on.

Mrs. Allen Rollins was appointed clothing demonstrator with Mmes. Homer Suddarth and Troy Farquhar leaders. Mrs. Carl was named home-steading demonstrator with Mmes. Reg Martin and C. A. Pippin leaders. Mrs. L. W. Yowell is to be food demonstrator.

Secret pal names and gifts were exchanged. Commissioner's banquet will be Feb. 7 in Plains School Cafeteria.

## Mrs. Hoy Hostess For Amigas Bridge Players

Las Amigas Bridge Club met with Mrs. J. T. Hoy of 1206 East Caldwell Wednesday afternoon.

High score prize went to Mrs. Grady Goodpasture and second high to Mrs. Orb Stice. Mmes. Burton Hackney and

## Randal PTA Slates Meeting on Monday

Jessie G. Randal PTA will meet Monday at 7:30 p.m. in the school cafeteria, with Mrs. George Hudspeth leading the program on "Parents and Youth Can Be Partners."

The devotional will be brought by four students of the school. Miss Margaret Bell will speak on "Teacher-Parent Viewpoint" and William Nunn will talk on "Parent-Child Working With the Teacher."

## Mrs. Ben Christopher Farewell Coffee Guest

The home of Mrs. A. W. Butler of Magnolia Camp was the scene of a farewell coffee for Mrs. B. C. Christopher Thursday morning with Mmes. Butler and J. H. Bounds as hostesses.

Mrs. Christopher will be moving to Beaumont where her husband is being transferred by Magnolia Oil Company.

A Madeira cloth covered the table with a centerpiece arrangement of pink azaleas and tapers. About 25 guests attended.

Kenneth Watkins took bingo prizes.

Refreshments were served to Mmes. Hackney, Al Muldrow, Wilson Collins, Watkins, Stice, Goodpasture, Clovis Kendrick, and Tom Harris.

## Foreign Insects Are Threat To Domestic Agriculture Crops

The Plant Quarantine, Division of the U.S. Department of Agriculture is continuing and expanding its all-out effort to enlist the cooperation of American travelers and foreign visitors in keeping destructive foreign insects and plant diseases out of this country.

Through the various media of public education, USDA is endeavoring to let the public know the seriousness of the threat from foreign plant pests and how travelers can help in combating that threat, says F. M. Fuller, extension entomologist.

This re-emphasis, according to Fuller, is necessary since the international spread of plant pests is closely associated with the movement of people and goods about the world.

There has been a steady increase in foreign travel and commerce, making the danger of new plant-pest introductions greater today than at any time since the passage of the Plant Quarantine Act of 1912.

Last year plant quarantine inspectors at ports of entry intercepted 300,000 lots of unauthorized fruits, plants and other agricultural material. This material harbored many of the world's most destructive insects, plant diseases, and

PASS THE LEFT-HANDED MONKEY WRENCH, JOE...

Yes sir, if our mechanics needed left-handed monkey wrenches to do a good job of servicing your John Deere Farm Equipment, they'd have them! We're convinced that only by having the proper tools and precision equipment in our shop can our trained mechanics give your equipment the kind of service you want and need.

But having the proper tools isn't enough. Our men are skilled mechanics, who are

thoroughly schooled in servicing methods recommended by John Deere. They use only genuine John Deere Parts as replacement parts. Thus, you're assured of reconditioning work well done.

Stop in and see for yourself why our mechanics are able to give you the quickest, most efficient, most economical service for your John Deere Equipment. Come in soon.

## Kresh Implement Co.

SEAGRAVES ROAD

BUY ONLY GENUINE JOHN DEERE PARTS - THEY FIT AND WEAR LIKE THE ORIGINALS!

## Your Hometown Newspaper is his first taste of independence

From the moment a child first begins to enjoy the "funnies," the hometown newspaper is an important part of his life. But even more important is the opportunity it gives the young boy to find out what it means to earn money for himself. The responsible job of being a "paperboy" gives thousands of youngsters their first independence. An irreplaceable source of information and enjoyment, your hometown newspaper is even more—it is an integral part of your community—a business employing your townspeople, an organization interested in the welfare of the community.

SUPPORT YOUR HOMETOWN NEWSPAPER - IT IS AN IMPORTANT PART OF YOUR COMMUNITY!

TEXAS PRESS ASSOCIATION  
1716 SAN ANTONIO STREET AUSTIN, TEXAS

### Seagraves Soldier Now Is In Germany

Army Pvt. Gene P. Hough, whose wife, Lawana, and parents, Mr. and Mrs. Claude I. Hough, live in Seagraves, recently arrived in Germany and is now a member of the 8th Infantry Division.

son's second Artillery, entered the Army in May, 1957 and received basic training at Fort Riley, Kan.

The 23-year-old soldier formerly was a salesman with Higginbotham-Bartlett Co. A 1952 graduate of Seagraves High School, he attended Garden City (Kan.) Junior College for one year.

Hough, a truck driver in Service Battery of the divi-

SOCIETY? CALL 2188

### Key Leads Union Wildcats To Upset Victory Over Powerful Plains, 51-43

Out-scoring the powerful Plains Cowboys in the first, third and fourth quarters, the Union Wildcats went on to spring an upset, 51-43, on the host team Friday night.

Wylie Kay singled the nets for 22 points to lead the 'Cats to the win. Alfred Newsom tallied 14 points to take runner-up honors in the tilt.

The 'Cats jumped to a 12-7 lead in the initial frame, only to see it melt to a two-point margin at half-time. Union

clamped down on Cowboy scoring in the third period, allowing only eight points and went on to take the victory with a six-point margin the final 16 minutes.

Cordell Huddleston led Cowboy scorers with 13 points.

Plains took a split on the two contests by winning the B game, 56-36, on the strength of Claude Lee's 27 points. Weldon Bell hit 14 for the visitors.

**THE BOX SCORE**

| Union         | fg        | ft        | pf        | tp        |
|---------------|-----------|-----------|-----------|-----------|
| Kay           | 10        | 2         | 4         | 22        |
| Newsom        | 5         | 4         | 3         | 14        |
| Sargent       | 3         | 2         | 3         | 8         |
| Cabe          | 3         | 0         | 2         | 6         |
| Howell        | 0         | 1         | 1         | 1         |
| Herring       | 0         | 0         | 2         | 0         |
| Foster        | 0         | 0         | 3         | 0         |
| <b>Totals</b> | <b>21</b> | <b>9</b>  | <b>18</b> | <b>51</b> |
| Plains        | fg        | ft        | pf        | tp        |
| Williams      | 4         | 3         | 0         | 11        |
| Rowland       | 4         | 1         | 2         | 9         |
| Holbert       | 1         | 2         | 0         | 4         |
| Huddleston    | 4         | 5         | 5         | 13        |
| Robertson     | 1         | 0         | 3         | 2         |
| Meixner       | 2         | 0         | 5         | 4         |
| <b>Totals</b> | <b>16</b> | <b>11</b> | <b>15</b> | <b>43</b> |

**SCORE BY QUARTERS**

| Plains | 7  | 13 | 8  | 15 | 43 |
|--------|----|----|----|----|----|
| Union  | 12 | 10 | 12 | 17 | 51 |

### The 4-H Picture

Terry County Home Demonstration Council already is busy at work this year, with chairmen and members of standing committees meeting Jan. 3 in The Party House to make their annual recommendations.

The committee proposals will be presented for approval by the council when its sits in regular session again on Tuesday.

TCHDC committee chairmen for this year are Mrs. W. O. Miller, citizenship; Mrs. Joe Dale Doak, civil defense; Mrs. Delton Tatum, education; Mrs. Wayne Cadenhead, exhibitions; Mrs. A. J. Bell, finance; Mrs. Rufus Dill, 4-H; Mrs. Mancel Hinson, health and safety; Mrs. Doyle Johnson, recreation and Mrs. Shafter Bailey, yearbook.

We have met with Union, Pleasant Valley and Willow Wells HD clubs this year, with "Principles and Points of Landscaping" the program of study for the month.

We have not been able to meet with any of the 4-H clubs in the county, but will be busy with their meetings the next three weeks. The clubs have scheduled "Healthful Sleep" as their study for the month.

4-H Clubs meeting this week are Randal on Monday; Brownfield Junior High at 7:30 p.m. Tuesday in The Party House, and Union Club on Wednesday.

Awards program is another item on schedule for the 4-H-ers. The 1957 awards winners will be presented their medals at 7:30 p.m., Jan. 21 in The Party House. We urge you to plan now to attend the event.

### KNOW YOUR NAVY

**Builder**

THE BUILDER CONSTRUCTS THE MANY BUILDINGS, DOCKS, BRIDGES, TRUSTLES AND SIMILAR PROJECTS NEEDED OVERSEAS BY THE NAVY. HE CAN ERECT ANY STRUCTURE, OPERATE SAW MILLS, PERFORM LOGGING OPERATIONS, DO FINISHED CARPENTRY, CABINET MAKING, USE AND CARE FOR ANY TOOL, READ AND WORK FROM BLUEPRINTS AND MAKE ESTIMATES AND SPECIFICATIONS FOR MATERIALS NEEDED.

### Your Invitation:

#### Southside Church of Christ

701 Old Lamesa Road  
Ira A. Wolfe, Minister  
Sunday Services: Bible Study 9:45 a.m.  
Worship 10:45 a.m.  
Evening Worship 6:00 p.m.  
Wednesday Bible Study 6:30 p.m.

**NOW AT**

### FRANK DANIEL FURNITURE

The Ultimate in Custom-Assembled HIGH-FIDELITY

**MOTOROLA Masterpiece**

ULTIMATE IN SINGLE UNIT CONSOLE TONE QUALITY HAS 30-WATT AMPLIFIER AND 8-TUBE AM-FM TUNER! Amazing fidelity from 15" woofer and three 5 1/2" tweeters. Automatic 4-speed changer. Color-calibrated tone controls. Solid wood styled in Imperial Mahogany, Swedish Oak or Cherry finish.

**Hi-Fi Sets As Low As 129.95**

### NEW ENERGY

FOR WEAK, LONG DISTANCE TELECASTS!

## MOTOROLA TV

ALTERNATE HEADING FOR MNT-1662

New circuits eliminate all man-made interference in sound system. Improved tuner pinpoints any signal in the air. Superb chassis changes weak signals into strong, clear pictures! It's the best in sight!

**PLUS! EASY TERMS PLUS! FREE DELIVERY PLUS! LIBERAL TRADE-IN DEALS**

21-INCH OVER-ALL DIAGONAL 263 SQ. IN. VIEWABLE AREA

BEAUTIFUL LOW PRICE FOR A BEAUTIFUL, ALL-NEW, QUALITY CONSOLE. JUST LOOK AT THE FEATURES!

Amazing what's here for so small a price! Tube Sentry, Signal Master, Right-up-front controls, Pushbutton On-off, new Golden M chassis. There's more, too! Mahogany or Blond finish. Model 21K73.

**279.95**

LESS YOUR TRADE

Prices incl. Fed. Tax and one-year warranty on picture tube.

### FRANK DANIEL Furniture & Electric

410 West Main Phone 4664

### YOUR TELEPHONE HAS COLORFUL PAST... and FUTURE!

CAN YOU HEAR IT?

LARGEST EXPERIMENTS INCLUDED TELEPHONE'S OVER A HALF CENTURY OF LIFE. IF CONDITIONS WERE FAVORABLE, YOU COULD HEAR "HELLO THERE" TO SOME FEEDING "MACHINE" (MAYBE 100 WARDS OR MORE!).

THE FIRST TELEPHONE EXCHANGE IN THE WORLD WAS PUT INTO OPERATION MAY 17, 1877 IN BOSTON WITH SIX SUBSCRIBERS.

NUMBER PLEASE?

THIS PYRAMID SWITCHBOARD CREA. IN 1890, WAS CONSIDERED THE ULTIMATE IN DESIGN AND SERVICE.

THE FIRST AUTOMATIC DIAL TELEPHONE EXCHANGE (AREA 1) WAS INVENTED BY ALMON B. STROWER. AUTOMATIC ELECTRIC COMPANY, WHICH GAVE OUR OF BROWNFIELD'S FIRM IS NOW PART OF GENERAL TELEPHONE, LARGEST INDEPENDENT TELEPHONE SYSTEM.

BOOK PROFILE EVERYWHERE WILL BE USE TO OAL. NAMES IN CIRCULAR CITIES AS EASY AS THEY NOW TO LOCAL NUMBERS. LONG DISTANCE CALLING WITH AUTOMATIC TOLL CHARGES WAS ALSO PIONEERED AND DEVELOPED BY GENERAL TELEPHONE.

### Last Second Shot Gives Eagles Win

A last second crisp shot gave the Seagraves Eagles a resounding 50-48 upset victory over the Meadow Broncos at Seagraves Friday night.

Dennis Grimes drove in for the victory margin just before the final buzzer to give the Eagles revenge for a 63-44 defeat at the hands of the visitors earlier this season.

Accuracy at the free throw line provided the actual margin as the Eagles hit 18 of 23 attempts against 10 of 21 for Meadow. The Broncos held the edge from the floor, hitting 38 points to 32 for the hosts.

After trailing 24-23 at the half, the Eagles jumped to a 39-36 lead at the three-quarter mark on the strength of a 10 point spurge by Jack Prestidge.

Harold Hinson, returning from the ailing list, tallied 15 points to take high point honors and lead the Broncos. Jim Hamilton led Seagraves with 14 points, two more than Grimes posted.

Seagraves also took the B game, 32-18. Bobby Bullock led the winners' attack with 11 points.

### Former Residents Are Parents of Daughter

Mr. and Mrs. Tommy Winn of Plains have a daughter, Rhonda Jean, born Tuesday in a Lubbock hospital and weighing 6 pounds 2 ounces. Mrs. Winn is the former Miss Maurine Webb.

The baby's grandparents are Mr. and Mrs. Alton Webb of 1115 Tahoka Road and Mr. and Mrs. Foster Winn of Johnson Community. Great grandmothers are Mrs. R. L. Cornelius of 222 North Second and Mrs. W. D. Winn of 1015 East Oak.

SOCIETY? CALL 2188

### BHS News

By Patti Wilder



An unexpected, but welcome holiday, was enjoyed by our badly overworked student body, last Monday. The snow was pretty, as well as serving a very useful purpose.

We extend our sympathy to Mrs. Virginia Miller, our well-liked ex-school office secretary, now of Houston, who was called to Brownfield due to the death of her mother.

Last week's class election to name favorite and outstanding students. Results of the elections are as follows: senior favorites, Doris Ratliff and Larry Meeks; junior outstanding, Mary Ruth Venable and David Ivey; junior favorites, Dovie Adams and Charles Lee; junior outstanding, Rita Lou Goodpasture and John Eldon Jones.

Sophomore favorites, Leenell Chesshir and Kim Williams; sophomore outstanding, Judy Teague and Larry Jackson; freshmen favorites, Donna Puckett and Reggie Tankersley; freshmen outstanding, Janice Henson and Jimmy Street.

Those nominated for all-school favorite were: Bettie Ann Davis, Donna Sue Nelson, Killer Travis, and Michael Browning, senior class; and Carol Ann Mayfield, Pat Runnels, Jackie Whitaker, and Bob Cloe, Junior class. Carol Ann Mayfield and Michael Browning were elected by the student body.

"Dead week" is upon us, as semester tests are next Tuesday and Wednesday—we're now half-way through. Everyone is missing Mrs. Carr, who is ill and in the hospital. We wish you a speedy recovery!

Wednesday noon, the Aca-pella Choir furnished the program for the Lion's Club.

Congratulations to Kenneth Cary and Kenneth Cason, both seniors, who made the All-Tournament Team, which was announced last Saturday night at the close of the Brownfield Tournament.

Last Friday night, the Cubs traveled to Pecos for their first conference game.

Mr. Little, official photographer for the annual was busy "snapping the camera" for all school organizations, Thursday.

LeNora Turner, Sue Dell Jones, Bobbie Nell Richardson, and Neisha Frymire were nominated for FTA Sweetheart.

### PRIMM DRUG

"Where Most People Trade"

### 1/2 PRICE

new...Tussy Wind and Weather Lotion

Reg. \$2 size NOW \$1  
Reg. \$2 size NOW \$1

Now... it works 5 ways!

- Heals! Contains Allantoin to help heal chapped, dry skin.
- Protects! Contains silicones to fight off effects of harsh soaps and detergents.
- Softens! Contains emollients to help soften your skin.
- Fights infection! Contains Hexachlorophene to reduce risk of infection.
- Stops Odor! Your skin is protected against food odors.
- Limited time... save 50%
- Prices plus tax.

## TUSSY

### OPENING SOON

## Westinghouse Laundromat

NEW IN BROWNFIELD

### An Authorized Westinghouse Coin Operated Laundromat

First and Ross Streets  
1/2-Hour Laundry—20¢ Per Washer  
Dry 2 Loads of Clothes for 25¢  
Will Be Open 24 Hours A Day — 7 Days A Week

Quiz DA SHORTS  
ADE SHORTS  
er to some tells them hear.  
opic  
g of child-  
le through  
Mayo and  
re's rooms  
lace room  
s Icela  
inning sec-  
ded the  
kes  
nd  
ce  
PTION  
BY  
144  
led"  
lamps



## The Farmer's Wife

By ROSE JEAN HENSON

"Happy is the human who lives near the pavement." The roads are a mess. Had I thought of it in time, I would have buzzed our county commissioner, Carl Stephenson and

suggested that the snow be bladed from the heavier-traveled, unpaved roads before it began melting. It works on the pavement and I see no reason why it wouldn't greatly benefit on the unpaved ones.

Come, the next heavy snow, how about giving it a try — huh, county commissioners? It's downright aggravating for the women folk to be penned inside more than two days at a time, and these roads are in such a bad condition that most women would not tackle a trip alone.

Mrs. Francis Gage, employee at Collins Dry Goods, and an admirer of this column, called my attention to the fact that both the Lubbock and Brownfield papers were delivered as per usual Sunday morning. Hats off to these small gents who braved the weather to see that you got proper service. They could have stayed in bed late the same as you and I. I also might mention that our rural carrier, Tiny Nelson, has not missed one day—and driving on those roads! Hats off!

Because of the weather, probably more than the usual

amount of people heard the President's State of the Union message Thursday. Although I am a Democrat and hold to party loyalty, which is sometimes hard to do, especially where Mr. Eisenhower is concerned, I nevertheless have never voted for him. I believe however, that he is a man with integrity, eager to do the right thing toward God and for his country.

I believe he is honest with himself and with the people, to the point of stepping on the toes of the "big bad wolves" crouching outside his door. I speak of the greedy and unholly politicians who no doubt are pushed by bigger bad wolves, unseen except occasionally by the front page headlines.

They are interested in one thing and one only, and for the answer, I quote a scripture: "The LOVE of money is the root of ALL evil" — not part but all evil. Oh yes, we hiss and howl about corruption in high places, not because our freedom — our own security might be jeopardized — but because we see the tax money we unwillingly pay being spent unwisely. But let some government program come along whereby we ourselves might grab a few pennies and what happens? Every Tom, Dick and Harry seeks a way legally — and if the program isn't too air-tight, unlegally — to get a handout for one thing and one only: money.

We must not be fooled by so-called government aid, disguised by this or that program. For each dollar accepted from Uncle Sam, we eventually give him back two to replace it—so actually we ain't gained 'nuttin' except a tax burden.

The general attitude seems to be: "Better get it while the getting is good and besides what can I do to stop unwise legislation? A voice crying in the wilderness makes strange sounds these days and who wants to cry alone? Now that I've led you to a deadend, let's get back to the President's message.

Actually, it was a report to Congress and to the people on the conditions of the Union. Confidence was noted throughout the speech—confident that the American people could and would take the "bull by the horns" and get down to business—the business of promoting peace.

The President placed no specific blame on anybody for losing the scientific race with Russia, but if a hint to the wise is sufficient then the Joint Chiefs of Staff will do well to take inventory of their past conduct, which smells of greed and self-gain, and resolve to get down to the business at hand, that of saving each other rather than "dog eat dog" as they have demonstrated in the past.

He emphasized the importance of all service branches, but in view of the forced challenge facing the nation, he made it clear that no continued "child play" would be tolerated among the Army, Navy and Air Force.

He outlined a 14-point program and spoke only briefly on various points. Other congressional messages dealing specifically with the different programs will come later, such as the budget message next week.

He spoke positively when he said the United States must maintain friendly relations with our allies, regardless of expense. Mr. Eisenhower also said we must revitalize our present educational exchange system. We must share our scientific health advancements such as heart, cancer, polio and malaria. Sick and hungry bodies can understand only one thing—relief.

In short, I interpreted the entire message in one word — GIVE. Give until it hurts, and you and I know where it hurts us the most. Yep — that's right — the hip pocket. I have a feeling that it will be a long while before a "balanced budget" will be mentioned again. Not even in the next presidential election.

### Open House Scheduled At The Carl Heckers

Mr. and Mrs. Carl G. Hecker will greet their friends from 2 to 5 p.m. today in their new brick home at 1218 East Buckley.

The house recently was purchased by Crescent Hill Church of Christ congregation for the Heckers, one of their preacher evangelists.

## Landscaping Study By Pleasant Valley

Pleasant Valley HD Club met Tuesday afternoon with Mrs. Leonard Willis of 711 Tahoka Road.

Mrs. Delton Tatum, newly elected president, conducted the business session. Committees for the year were appointed and a financial report was given by Mrs. Adrian Hinson, secretary and treasurer. Miss Betty Hillis, county HD agent, presented a program and film on "Landscaping."

Refreshments were served to Miss Hillis and the nine members present.

The individual who looks ahead and plans ahead will be the one who gets ahead.

CLASSIFIED? CALL 2188

## MICROPHONE HEADACHES

Texas Tech basketball games may cause broadcasters, p.a. men, and the general public some headaches because of these sound-alikes: the Raiders' Gerald Meyers of Borger, Texas' Gary Meyer of Luling, and A&M's Sammy Meyers of Beaumont; Tech's Wade Wolfe

of Lubbock and SMU's Jerry Wolff of Webster Groves, Mo.; Tech's Leon Hill of Sudan and Rice's King Hill of Freeport.

Prosperity cannot abound in an area populated by people who have low incomes.

SOCIETY? CALL 2188

# TO STEP SMARTLY INTO SPRING!

join  
*Shelton's*

# FASHION

# PARADE

more style and  
more value for fewer  
fashion dollars ...



during this advance-season  
spring wardrobe showing of coats,  
suits, and dresses, with a  
marvelous new approach to  
softer detailing, stunning  
colors and gentle fabrics. Come  
in and let us show them all to you.



*Paula Brooks*

**SPRING SUITS**  
We have a wonderful group of suits — you can wear now and into spring — wide selection of colors and materials that are sure to please.

**TRANS-SEASON DRESSES**  
Nattily nautical . . . the two-piece slim skirt and middie blouson with striped ribbon trim, banded at the waist . . . new way of sheathing you for town. Linen-like cotton and rayon, sizes 8-18. Beige, black, navy.

**SPRING COATS**  
Trans-season silhouette. Here you will find the one coat to complete your spring ensemble . . . and now is the time to buy for many happy hours of luxurious wear.



**SPRING HATS FOR MILADY**  
Your wardrobe will not be complete without one of our beautiful new hats . . . all sizes, shapes and textures — plus a wide array of spring colors.

*bettiejean*

*Shelton's*  
Quality Apparel  
"Only the Look Is Expensive"

## TRUE SAGAS OF THE OLD WEST

### BILLY THE KID



Once the most feared name in our Southwest, William H. Bonney, better known as Billy the Kid, had beaten several men to the draw before he was 16!

At 19, he was the youngest cattle rustler in U.S. history. At this time, he killed a sheriff. Soon, every law man in the West had his orders: "Get Bonney!"

Captured in 1880, Billy the Kid was tried and sentenced to death. He escaped but was later trapped and shot by Sheriff Pat F. Garrett. Only 22, he had more than a score of matches on his gun.

For authentic adventures that depict varied facets of frontier life, watch as Host Dick Powell introduces weekly stories on Dick Powell's Zane Grey Theatre over CBS-TV. See your local paper for time and channel!

## CANIPE'S FASHION FABRICS

NEXT DOOR TO THE FIRST NATIONAL BANK

Let Canipe's  
make your drapes  
to your measure . . .  
**SAVE MORE!**

Add to your savings on beautiful fabrics at Canipe's . . . let Canipe's custom-tailor them for you into professionally made drapes, pinch-pleated at the top, beautifully hemmed on all sides. Here's all you do:

Take these window measurements . . . bring them to Canipe's



Here's what your drapes will cost . . . COMPARE!

**Homemaker's Special!**  
45-Inch  
Drapery Material  
NOW ONLY **\$1.00**

Made By The Most  
Skilled Workmanship  
**2.00 PER FABRIC WIDTH**  
Use Our Easy Lay-A-Way Plan





# 6 BIG DAYS LEFT CLEARANCE SALE! JANUARY Annual Store-Wide Event ... at Knight Furniture



DUBIOUS

If in Doubt About the Many Bargains  
You Will Find Here ... Take a Look at This!

BEAUTIFUL 8-PIECE

Dining Room Suite

By DREXEL  
Knotty Pine—  
Delicate Hand Carved  
Design—Reg. 798.00

**399<sup>50</sup>**

STRATO-RESTER

**CHAIRS**

Reg. 89.50  
SALE PRICE **69<sup>90</sup>**

**A Word About  
DELIVERY**

We expect to do a month's business in a few days. Naturally our Free Delivery facilities will be taxed to the limit—confusion will be everywhere. WE MUST INSIST and ask—PLEASE be patient. Deliveries will be made as fast as humanly possible. However, WE CANNOT PROMISE what day—what time— or when. We will do our level best to render our usual service.

"Here's A Bright Idea ... Come on Down  
to Knight Furniture — Where Your Credit Is  
Good ... Buy Now and Save \$\$"

**RANGES AND REFRIGERATORS**



|   |        |
|---|--------|
| Reg. 419.95 14 cu. ft. Kelvinator Refrigerator Freezer<br>Combination, deluxe model | 349.50 |
| Reg. 289.50 11 cu. ft. Kelvinator Refrigerator                                      | 229.00 |
| Reg. 239.00 8 cu. ft. Kelvinator Refrigerator                                       | 209.00 |
| Reg. 99.50 Hardwick Apt. Size Gas Range   | 87.50  |
| Reg. 239.00 Kelvinator Electric Range   | 189.00 |
| Reg. 299.00 Tappan Electric Range   | 199.00 |
| Reg. 399.00 Tappan Gas Range  | 249.00 |
| Reg. 309.00 Tappan Electric Range   | 249.50 |
| Reg. 299.00 Tappan Gas Range  | 229.00 |



EXHUBERANT

You'll Be Amazed at  
Many Outstanding  
Values You Will Find All Over  
The Store ... Don't Walk — Run!

**BEDROOM SUITE CLEARANCE**

|  |        |
|--|--------|
| One group Cherry Italian Provincial Fine Quality<br>Reg. 282.00 70" Triple Dresser | 225.60 |
| Reg. 250.00 42" Triple Dresser<br>and Mirror                                       | 199.90 |
| Reg. 219.00 56" Double Dresser<br>and Mirror                                       | 175.20 |
| Reg. 119.00 Bookcase Bed   | 95.20  |
| Reg. 57.20 Night Stand   | 45.60  |
| Reg. 39.50 Panel Bed   | 71.60  |
| One Group Open Stock Fruitwood Provincial<br>Reg. 269.00 72" Triple Dresser        | 211.20 |
| Reg. 229.00 59" Triple Dresser   | 183.20 |
| Reg. 186.00 55" Double Dresser   | 129.10 |
| Reg. 129.00 5-drawer Chest   | 103.10 |

|  |        |
|--|--------|
| Reg. 109.00 Bookcase Headboard<br>Bar Bed  | 87.20  |
| Reg. 79.00 Panel Bed   | 63.20  |
| Reg. 112.99 6-6 Headboard  | 89.60  |
| Reg. 59.00 Night Stands, step-type   | 47.90  |
| One Group McCoy-Couch Fine Bedroom Furn.<br>3-pc Suite Bar Bed, Night Stand,<br>Double Dresser | 209.50 |
| Reg. 249.00 3-pc. Lined Oak, Double Dresser,<br>Bar Bed, Chest                                 | 199.00 |
| Many Other Groups to Choose From   |        |
| Reg. 119.00 2-pc. Bed, Double Dresser  | 99.50  |
| Reg. 149.50 2-pc. Bed and Triple Dresser   | 119.50 |

— All Merchandise Subject to Prior Sale!

## J. B. KNIGHT COMPANY

**FREE DELIVERY** **FURNITURE** **FREE DELIVERY**  
"Home Of Quality Furniture"  
BROWNFIELD, TEXAS

IN TAAF

### Druggers Open Play

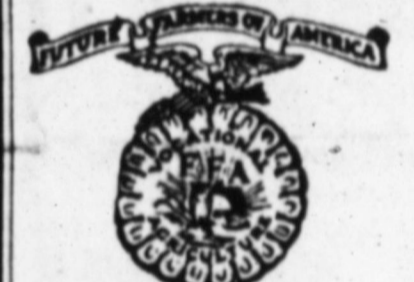
The Primm Druggers, who opened the 1958 TAAF basketball season Saturday, will play all home games at Wellman this year, according to A. R. Isaacs, manager.

The Druggers will compete in a seven-team district comprised of Seagraves Independent, Columbia Carbon of Seagraves, Whiteface, Morton, Muleshoe and Three-Way in addition to the local group.

The group will compete Monday and Saturday nights. Schedule for the first month is:  
Jan. 11 Whiteface  
13 At Columbia Carbon  
18 At Three-Way  
20 At Morton  
25 open  
27 Seagraves Ind.  
Feb. 1 Muleshoe

"If I could only  
feed myself"

Survival is not enough!  
Join  
THE  
**MARCH  
OF DIMES**



**BROWNFIELD  
FFA  
SURVEY**

By HERBIE PICKETT

Snow Slows Projects

This week's snow storm made it difficult for FFA members to work with their livestock projects. All of the livestock seems to have come through without any sickness. Many of the vocational agriculture students are feeding antibiotics in their livestock rations to prevent start of diseases.

Anyone experienced in livestock feeding has noticed that cold weather does not particularly hurt livestock as long as plenty of feed is available. The most difficult time is experienced during the warmup period after the cold wave. It seems that during this period swine and calves are particularly susceptible to colds and pneumonia.

**FFA Calendars**  
This year the First National Bank of Brownfield is sponsoring the official FFA Calendar again for all FFA members in Terry County.

This calendar is filled with colored pictures of FFA activities over the United States and also has room for additional record keeping and information which the FFA member is interested in keeping.

Future Farmers of Terry County appreciate the interest of The First National Bank and Mr. Dennis Lilly in making this calendar available.

**In The Movies**  
This week the Venard Organization, a leading producer of motion pictures in the field of Vocational Agriculture and Farming, notified the Brownfield FFA Chapter that it is releasing a film entitled "Here And There With The Area."

This film deals with 6 or 7 of the outstanding FFA chapters in the United States and attempts to show all phases of the Vocational Agriculture Program in these schools.

The Brownfield portion deals with community activities and

SECTION TWO

## Brownfield News

And Terry County Herald ... Terry County's Oldest Business Institution

Vol. 21 Brownfield News-Herald, Sunday, Jan. 12, 1958 No. 4

### Governor Daniel, Alarmed by Death Rate, To Call Boating, Firearms Meet Soon

Governor Price Daniel and spokesmen for Sportsmen's Clubs of Texas (SCOT) agreed today to proceed with plans for a Governor's Conference on Boating and Firearms Safety to be held in the spring at a date to be decided later.

A SCOT group composed of Hayden Head of Corpus Christi, Toddie Leg Wynne of Dallas, Wilson Southwell and O. R. Mitchell of San Antonio, and SCOT Executive Secretary Cecil Reid asked Daniel to appoint an organizational committee for the conference, which will be called by the Governor.

Daniel designated Reid as chairman of the committee, which will include George Christian, the Governor's Administrative Assistant. Other State agencies such as the Game and Fish Department, Department of Public Safety and Health Department will be asked to have representatives on the committee.

Plans also were made to request representation from such groups as the National Rifle Association, Outboard Boating Club, Red Cross, Boy Scouts, FFA, 4-H Club and veteran's organizations.

Daniel, citing figures showing 329 water fatalities and 169 firearms accident fatalities in Texas during 1956, praised SCOT for taking the lead in promoting greater safety.

SCOT officials said similar plans have been successful in other States. They pointed out that safety is of growing concern in Texas because of the rapid increase in the number of hunters, fishermen and private boaters, the increase in available water facilities, and the tremendous increase of interest in water sports.

Water and firearms fatalities in Texas in 1956 amounted to 20 per cent of the number killed in traffic accidents.

His Broncos suffered their first loss of the season to Texas Tech as Borger graduate Gerald Myers poured in 29 points.

The next night West Texas State edged Santa Clara in an overtime on a basket by Max Miller, another of Coach Tex Hanna's Borger products.

**Ex-Borger Cagers  
Stun Santa Clara**

Don't be surprised if Santa Clara Bob Feerick visits Borger during his recruiting this spring.

**Raider's Wade Wolfe  
Ranks Fifth in Nation**

Even after sinking six of seven free throws against Rice, Texas Tech's Wade Wolfe had a better accuracy figure from the floor than he did from the free throw line. Last week his .569 accuracy on field goals was the nation's fifth best; and, he claims, his .467 free shot percentage was probably the nation's worst.

Assistant coach Gene Gibson, still hasn't got over those twins of his born last summer.

Undoubtedly Polk Robison is proud of his Texas Tech basketball, but they're not the main reason his vest buttons are popping. Polk has proof — in the person of 6 pound 2½ ounce Thomas Wayne Robison — that Beattie Feathers isn't the only Texas Tech athletic staff member who can be a grandfather. The boy was born in Lubbock last week to Mr. and Mrs. Bill Robison.

**Polk Claims Second  
Tech 'Gramps' Title**

Outside of maybe 75 BHS students and another 30-40 adults, the major portion of the crowd was made up of students and fans rooting for visiting teams.

We grant that Saturday was a bad night, but not so on Friday. We wonder why???

**DISTRICT PLAY:** Brownfield opened their 2-AAA cage schedule Friday at Pecos. Meadow's Broncos begin their slate Thursday at Smyer and Union will travel to Wellman Friday night.

After the preliminaries of the past month and one-half, things get down to the blue chips now.

Of the four county teams competing for the roses, only Meadow appears to be able to cop a championship. Even then, the Broncos chances seem to hinge on whether Harold Hinson, their high pointer, is able to recover from a sprained ankle.

The Bronc quintet looked unbeatable, to a degree, until Hinson was injured in the first game of the Ropes Tourney last week. Without Hinson, the team was quickly eliminated.

The other trio likely will spring a few surprises before the cage season is over, but it looks like a case of too little height to be title contenders.

**CLOSING CLIPS:** Primm Drug opened their TAAF district schedule last night against Whiteface ... The Druggers will play their home games at Wellman this year ... The battle rages across the state now that mythical All-State

See No. 1 Page 2



**SNOW-BOUND** — The Looe Miller home on Old Lamesa Road presented a picture from a winter post card Sunday after some 12½ inches of snow fell here. The sudden deluge of white stuff kept most residents indoors Sunday — some not by choice. Freezing night-time temperatures and the possibility of more snow this weekend was forecast for the area. (NEWS-foto)

## Industrial Development Conclave Set at Abilene

ABILENE—A five-point program on how to obtain new industries is expected to attract a crowd of more than 200 West Texans to Abilene Jan. 23 for the fifth annual West Texas Industrial Development Conference.

E. L. Buelow of Abilene, chairman of the industrial development committee of the West Texas Chamber of Commerce, which sponsors the conference, said the conference program will provide members of local chamber of commerce industrial committees with a better working knowledge of the procedures involved in obtaining new industries.

Included on the program will be discussions on industrial foundations, garment industries, mineral resources, processing agricultural products and a study of West Texas in the era of missiles and satellites.

Buelow said the organization and use of industrial foundations will be discussed by John W. Tippitt, assistant research economist of the Texas Engineering Experiment Station. Tippitt is author of "The Organization and Operation of Industrial Foundations in Texas."

West Texas mineral resources, known locations of mineral deposits and their commercial uses and how to launch exploration for others will be discussed by Dr. John T. Lonsdale of Austin, Director of the Bureau of Economic Geology, the WTCC official stated.

A panel discussion on the processing of agricultural products and considerations of feasibility of increasing the value of locally produced crops through canning, packing, mixing, shelling, etc., is also featured on the program Buelow said.

Scheduled to take part in the panel will be J. C. Porter of Wichita Falls, chairman of the WTCC's agriculture and livestock committee and assistant vice-president of the First National Bank of Wichita Falls. C. B. Senter of Van, agricultural agent for the Texas and Pacific Railway Co., and Jess Ward of Ft. Worth, agricultural engineer of the Texas electric Service Co.

West Texas in the space age — potentials in scientific and economic discovery and development for the region through research — will be presented by Dr. Sylvan J. Kaplan of Lubbock, coordinator of research at Texas Technological College, Buelow stated.

Fifth topic on the program according to Buelow, will be an appraisal by Scott Metcalf, manager of the manufacturers agency in Dallas of Singer Sewing Machine Co., on "A Garment Industry for Our Town?"

Buelow stated that no registration fee or other costs will be assessed to those attending the conference.

The conference will begin about 9 a.m., Jan. 23, in the Wooten Hotel in Abilene.

## Schedule Changed For 'Frisco Chief'

Effective Sunday Santa Fe's "San Francisco Chief" will operate one hour later than its present Schedule Westbound.

This means the train will leave Chicago at 5 p.m. daily instead of 4 p.m. There will be no change in the Eastbound schedule of the "Chief."

The Amarillo-Lubbock streamliner connection with the "San Francisco Chief" also will be changed, leaving Amarillo at 10:35 a.m. and reaching Lubbock at 12:59 p.m.

These changes do not affect the connecting service from Texas into the Westbound "San Francisco Chief" at Clovis except that the departure time will be moved back one hour from its present schedule.

### SIGN DALLAS TRIO

DeWitt Weaver and Bud Herrod took time out long enough from the Cotton Bowl Texas Hall of Fame activities to sign three Crozier Tech mid-year graduates—guard James Penn, tackle Gerald Spraggins, and halfback Jimmy Hill.

## PCG, Congressman Mahon Working On Wasty and Barky Cotton Program

W. O. Fortenberry, president of Plains Cotton Growers, Inc., announced this week that the organization is working with Cong. George Mahon and U.S. Department of Agriculture officials on the wasty and barky cotton situation existing on the plains this year.

Fortenberry said weather conditions—a late planting, fall rains and an early frost—made a disaster condition beyond the cotton producers' control and in view of this situation, PCG is asking commodity credit Corporation to allow wasty and barky cotton to be allowed to enter the government cotton loan.

"This cotton would enter the loan at a discount of around 200 to 300 points below the established loan value. For example, low middling spotted cotton of 7/8 inch staple has a loan value of 18.83 cents. If this bale was classed wasty, it would go in the loan say at 300 points off the loan price, or at 15.83 cents," explained Fortenberry.

The CCC would catalogue this cotton separately for future sales and clearly identify it to the trade, he added.

It has been estimated there are more than 100,000 bales of wasty and barky cotton on the plains this year and since such cotton is ineligible for the government loan, and there is very little or no immediate market for such cotton, it is working a hardship on many farmers, he explained.

In addition to Cong. Mahon, other representatives including Cong. Walter Rogers ofampa, Senators Lyndon Johnson and Ralph Yarborough are being acquainted with the situation.

### Charlie Price's Attend Western Auto Market

Mr. and Mrs. Charlie Price of 301 South Fourth, are in Dallas today to attend the Western Auto merchandise show.

Price, owner of the Western Auto store here, said, "We are looking forward to seeing new power mowers, lawn and garden equipment, air conditions, appliances and outfitting equipment plus thousands of other items."

This is the eighth show the couple have attended.

Statistics suggest that corporate enterprises, by and large, have done very well for themselves in the past few years.

The man or woman who is able to control desires and restrain appetites will not need old age pensions in later life.

## Recreation Bulletin Offered For Homes

Recreation can add a great deal to the happiness, healthfulness, and relaxation of the family — and one of the best places to get this recreation is right in your own home or back yard.

The Texas Agricultural Extension Service has just released a bulletin entitled "Homemade Games — How to Play." This bulletin includes games and equipment that have proved interesting to children and adults in family and community recreation training schools.

Merely being an observer of recreation usually results in boredom, tension and fatigue, according to the bulletin authors, Lucille Moore and Mrs. Eloise Johnson. People are learning that active participation in recreation brings pleasure, satisfaction and relaxation, they say.

Making equipment for games serves two purposes—it offers an opportunity for an individual, family, or a community group to have the satisfaction of creating something and it enables them to have games and play equipment which will add to their enjoyment for much less money.

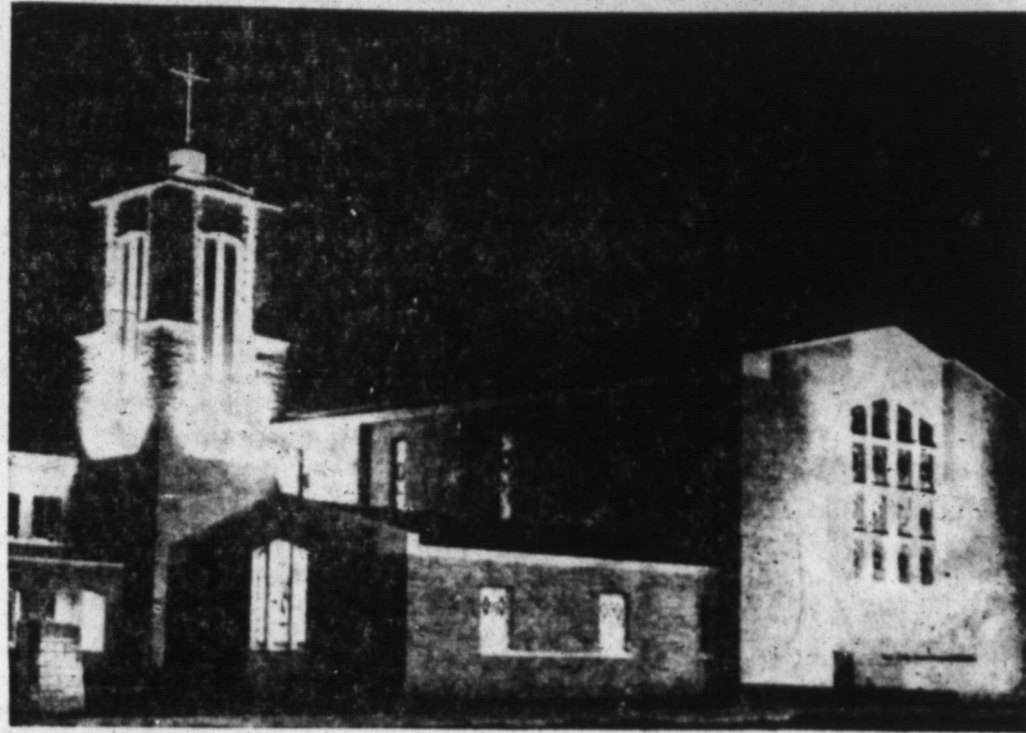
The classification of homemade games in this bulletin may help in planning for the recreational and developmental needs of all age groups. These games provide for quiet and active play, for individual and group participation and for indoor and outdoor activity.

A balanced life includes work, recreation, meditation and study.

| REPORT OF CONDITION OF THE   |  |
|--|--|
| <b>Brownfield State Bank &amp; Trust Co.</b>   |  |
| BROWNFIELD, TERRY COUNTY, TEXAS  |  |
| AT THE CLOSE OF BUSINESS DECEMBER 31, 1957, A STATE BANKING INSTITUTION ORGANIZED AND OPERATING UNDER THE BANKING LAWS OF THIS STATE AND A MEMBER OF THE FEDERAL RESERVE SYSTEM. PUBLISHED IN ACCORDANCE WITH A CALL MADE BY THE STATE BANKING AUTHORITIES AND BY THE FEDERAL RESERVE BANK OF THIS DISTRICT. |  |
| ASSETS   |  |
| Cash, balances with other banks, including reserve balance, and cash items in process of collection  | 3,390,836.91   |
| United States Government obligations, direct and guaranteed  | 1,393,960.94   |
| Obligations of States and political subdivisions   | 673,175.74   |
| Corporate stocks (including \$15,000.00 stock of Federal Reserve bank)   | 5,172,744.58   |
| Loans and discounts (including \$12,682.05 overdrafts) Reserve bank)   | 15,000.00  |
| Bank premises \$150,000.00, furniture and fixtures \$40,000.00.  | 190,000.00   |
| (Bank premises owned are subject to \$73,468.33 liens not assumed by bank)   |  |
| Real estate owned other than bank premises   | 5,511.06   |
| Other assets   | 6,056.31   |
| <b>TOTAL ASSETS</b>  | <b>10,847,285.54</b>                                     |
| LIABILITIES  |  |
| Demand deposits of individuals, partnerships, and corporations   | 7,518,275.85   |
| Time deposits of individuals, partnerships, and corporations   | 550,239.49   |
| Deposits of United States Government (including postal savings)  | 124,760.25   |
| Deposits of States and political subdivisions  | 1,140,164.76   |
| Deposits of banks  | 505,926.39   |
| Other deposits (certified and officer's checks, etc.)  | 300,143.22   |
| <b>TOTAL DEPOSITS</b>  | <b>\$10,139,509.96</b>                                   |
| Other liabilities  | 28,358.71  |
| <b>TOTAL LIABILITIES</b>   | <b>\$10,167,868.67</b>                                   |
| CAPITAL ACCOUNTS   |  |
| Capital*   | 250,000.00   |
| Surplus  | 250,000.00   |
| Undivided profits  | 179,416.87   |
| <b>TOTAL CAPITAL ACCOUNTS</b>  | <b>679,416.87</b>  |
| <b>TOTAL LIABILITIES AND CAPITAL ACCOUNTS</b>  | <b>\$10,847,285.54</b>                                   |
| *This bank's capital consists of:<br>Common stock with total par value of \$250,000.00   |  |
| MEMORANDA  |  |
| Assets pledged or assigned to secure liabilities and for other purposes  | 1,646,500.00   |
| Loans as shown above are after deduction of reserves of  | 28,741.36  |
| I, R. V. MOREMAN, Cashier of the above-named bank, hereby certify that the above statement is true to the best of my knowledge and belief.   |  |
| Correct-Attest:  | J. O. GILLHAM<br>LEO HOLMES<br>BRUCE ZORNIS<br>Directors |
| STATE OF TEXAS, COUNTY OF TERRY ss:<br>Sworn to and subscribed before me this 7th day of January, 1958.  |  |
| (Notary's Seal)  | JEAN SEATON, Notary Public                               |

| REPORT OF CONDITION OF   |  |
|--|--|
| <b>THE FIRST NATIONAL BANK</b>   |  |
| OF BROWNFIELD  |  |
| IN THE STATE OF TEXAS, AT THE CLOSE OF BUSINESS ON DECEMBER 31, 1957 PUBLISHED IN RESPONSE TO CALL MADE BY COMPTROLLER OF THE CURRENCY, UNDER SECTION 5214, U. S. REVISED STATUTES   |  |
| ASSETS   |  |
| Cash, balances with other banks, including reserve balance, and cash items in process of collection  | 1,564,036.07   |
| United States Government obligations, direct and guaranteed  | 976,062.50   |
| Obligations of States and political subdivisions   | 359,159.52   |
| Corporate stocks (including \$13,500.00 stock of Federal Reserve bank)   | 13,500.00  |
| Loans and discounts (including \$18,473.91 overdrafts)   | 4,507,684.92   |
| Bank premises owned \$30,000.00, furniture and fixtures \$35,000.00  | 65,000.00  |
| Other assets   | 4,465.39   |
| <b>TOTAL ASSETS</b>  | <b>7,490,708.40</b>  |
| LIABILITIES  |  |
| Demand deposits of individuals, partnerships, and corporations   | 4,896,268.61   |
| Time deposits of individuals, partnerships, and corporations   | 609,613.76   |
| Deposits of United States Government (including postal savings)  | 9,770.29   |
| Deposits of States and political subdivisions  | 1,214,846.84   |
| Deposits of Banks  | 68,072.79  |
| Investments and other assets indirectly representing bank premises or other real estate  | 800.00   |
| Other deposits (certified and cashier's checks, etc.)  | 122,220.24   |
| <b>TOTAL DEPOSITS</b>  | <b>\$6,920,792.52</b>  |
| <b>TOTAL LIABILITIES</b>   | <b>6,920,792.53</b>  |
| CAPITAL ACCOUNTS   |  |
| Capital Stock:<br>(c) Common stock, total par \$250,000.00   | \$ 250,000.00  |
| Surplus  | 225,000.00   |
| Undivided profits  | 94,915.87  |
| <b>TOTAL CAPITAL ACCOUNTS</b>  | <b>569,915.87</b>  |
| <b>TOTAL LIABILITIES AND CAPITAL ACCOUNTS</b>  | <b>\$7,490,708.40</b>  |
| MEMORANDA  |  |
| Assets pledged or assigned to secure liabilities and for other purposes  | 876,062.50   |
| Total amount of loans, certificates of interest and obligations, or portions thereof, which are fully backed or insured by agencies of the United States Government (other than "United States Government obligations, direct and guaranteed")                         | 2,457,497.64   |
| I, L. J. Richardson, Jr. Vice-President & Cashier of the above-named bank, do solemnly swear that the above statement is true to the best of my knowledge and belief.  |  |
| Correct-Attest:  | L. J. RICHARDSON, JR.<br>C. K. KENDRICK<br>W. B. TUDOR<br>FRANK BALLARD<br>Directors |
| STATE OF TEXAS, COUNTY OF TERRY, ss:<br>Sworn to and subscribed before me this 7th day of January, 1958, and I hereby certify that I am not an officer or director of this bank.<br>(Notary's Seal) WANDA PARRISH, Notary Public<br>My commission expires June 1, 1959 |  |

# Our Places of Worship Here...



**FIRST METHODIST CHURCH** — Pictured are First Methodist Church and its pastor, the Rev. James E. Tidwell. The church is located at 1010 East Broadway and the parsonage at 402 East Tate. Sunday schedule: 9:45 a.m., Sunday school; 10:55 a.m. worship; 6 p.m., fellowship meetings, and 7 p.m., worship. WSCS meets at 2:30 p.m., on first, third and fourth Mondays. On second Mondays they meet in circles at different times and places. Wesleyan Service Guild meets each third Wednesday at 7:30 p.m. in the church parlor. Choir meets at 7 p.m. each Wednesday. Meeting of the various commissions and boards called for 7:30 p.m., on Tuesdays and Wednesdays. The church has a membership of 800 with average attendance at Sunday school about 300.

★ ★ ★

## A NEWS EDITORIAL

### Value of Universal Church Doubtful

Time and again we hear of the proposal for the establishment of a "universal" church, where theists, humanists, Christians, Jews and all religious truth-seekers might meet.

While the proposal naturally arouses considerable thought, we do not believe it will get far in this country, or anywhere else. Neither Christians, Jews nor members of other religious organizations are ready to subordinate the principal tenets of their faith to a generalized expression of religious truth.

While we are of the opinion that no particular religious faith possesses all virtue and all truth, we see no great merit in the proposal.

The troubles of humanity, which some believe can be solved exclusively by religion, are not insoluble because of the professed religious beliefs of the world.

They multiply, rather, because of the failure of the individuals of the world to live according to the best teachings of their par-

ticular religion.

It is natural for human beings, at the present stage of their development, to believe implicitly in the religion they happen to espouse. This includes, of course, the rejection of the beliefs of those who champion other religious views.

Such beliefs, if sincerely held by individuals, on the basis of their experience and intelligence, can direct and influence the lives of honest and conscientious believers. It is right and proper that they should.

Do not get the idea that the money we spend to help other peoples will guarantee that they will help us.

Real service to your community requires more time than money, which you probably haven't got.



By VERN SANFORD  
Texas Press Association  
AUSTIN—January is poll tax month.

Officially, poll tax sales begin in October. But nobody pays too much attention.

However, after the first of the year, organized drives get under way, in a deadline-month appeal to induce citizens to protect their right to vote by payment of the poll tax.

But a good percentage of potential voters ignore it all. Many, jolted at the last minute, flood into courthouses after knocking off work Jan. 31. Penalty for the putter-offers is usually a long wait in line.

Many more never get there at all. Texas Almanac reports show that in past non-presidential election years, less than half the potential voters paid poll taxes or secured exemptions.

Poll tax costs \$1.75 and usually may be secured at several different places in every community. No charge for 21-year-olds getting their first vote and those 60 years and over, but an exemption certificate must be obtained. (Persons living outside cities of 10,000 or more may vote on affidavit without an exemption certificate.)

Deadline for poll tax payment is midnight, Jan. 31.

**SAFETY PROGRAM PAYS OFF**—Texas traffic deaths fell below the Department of Public Safety prediction for the Christmas-New Year holiday period, as a result of the concerted efforts of the Governor's Safety Program.

DPS predicted that 113 persons would die on Texas highways. Final number probably will be 103.

Both Governor Daniel and DPS Director Homer Garrison Jr. had high praise for Texas citizens, law enforcement officers and news media, for the success of the program. "Much

of the credit should go to the newspapers, radio and TV which played a major role in aiding law enforcement and focusing public attention on the increased driving hazards of the holiday season," Garrison stated.

And Governor Daniel stressed that one of the chief aims of his administration during 1958 will be "to reduce our traffic deaths and injuries even farther below the 1956 record. It can be done... this is best illustrated by the results of our efforts during the past holiday season when the nation's death total increased but the Texas total decreased."

If the DPS figure of 103 proves accurate, it will be the lowest since 1952 when 98 persons were killed in the holiday traffic crush.

**TWICE AS MUCH WATER**—New State Water Development Board has set up shop with the aim of doubling Texas' water storage space. Board members predict the program will bring the state an additional \$600,000,000 in conservation projects — without cost to state tax payers.

Board is authorized to raise \$100,000,000 by selling bonds at four per cent interest — and another \$100,000,000 later, on say-so of Legislature. This money can be lent at five per cent interest to help pay up to one-third of cost of local conservation projects.

"I firmly believe the program will be self-liquidating," said Board Vice-Chairman, W. E. (Buck) Tinsley of Austin.

Board hired Joe Carter as its \$10,000-a-year executive secretary. Carter was legal counsel to the State Board of Water Engineers until animosity from two board members forced his resignation last spring.

After that, Carter served on Gov. Price Daniel's staff, assisting with water legislation drafting. He is a former state

senator from Sherman.  
**BREATHING FOR SCHOOLS** — Some 600 still-segregated school districts in Texas are more relaxed now. Many had feared that court-enforced integration in Texas would begin this winter in Dallas.

Federal Judge A. T. Atwell of Dallas ruled last year that Dallas schools must integrate at mid-term (January, 1958). But a higher court (U.S. Fifth Circuit Court of Appeals in New Orleans) overruled. It said Dallas school officials should be given "a reasonable further opportunity" to plan for integration.

Decision leaves intact, for the time being, a state law passed last spring designed to delay desegregation. It prohibits school districts from integrating unless instructed, to do so in a local election. Integration without a voter mandate would bring loss of state aid.

For Dallas, this would have meant \$1,500,000 a year.  
**UNWANTED "EGGS"** — Estate Life Insurance Co. of Amarillo is asking the state to take back some "rotten eggs" it bought at a bankruptcy sale.

Last summer Estate took over some \$11,000,000 worth of policies that had belonged to Physicians Life Insurance Co. and its affairs were being settled by the state liquidator.

Estate's attorney charged at an Insurance Board hearing that the contract arranged by State Liquidator J. D. Wheeler was unfair. To Estate. Same batch of business (mostly burial policies on older people) has passed through three companies — Southern Bankers, American Atlas and Physicians. It bankrupted all three.  
See No. 3 Page 6

## Business and Professional

### DIRECTORY

**Dr. J. U. Borum Jr.**  
OPTOMETRIST  
207 S. Fifth St.  
Phone 3172

**Dr. James E. Finley**  
—DENTIST—  
Office 308 West Main  
PHONE 4884

**Hickney & Crawford**  
—Attorneys—  
Brownfield, Texas

**FUNERAL HOME**  
BROWNFIELD  
Modern Ambulance Service  
Roy B. Collier, Owner  
Dial 2525

**McGOWAN & McGOWAN**  
—Attorneys—  
Brownfield, Texas

**Morgan L. Copeland**  
Attorney at Law  
Civil Practice  
Courthouse  
Dial 3121

## Pipe for Domestic and Irrigation Wells

|  |      |
|--|------|
| 6 1/4" Used T. & C.                                  | 1.15 |
| 6 1/4" New P. E.—Limited Service                     | 1.05 |
| 8 5/8" O. D. 3/16 Wall New P. E. Limited Service     | 1.35 |
| 10 1/4" O. D. 1/4 Wall New P. E. Limited Service     | 2.35 |
| 12 1/4" O. D. 3/16 Wall New P. E. Limited Service    | 2.35 |
| 12 1/4" O. D. 1/4" Wall New P. E. Limited Service    | 2.55 |
| 14" O. D. 3/16 Wall New P. E. Shop Rolled            | 2.95 |
| 16" O. D. 1/4 Wall New P. E. Limited Service Special | 2.75 |

These prices will prevail as long as the supply lasts.

### HILTON SUPPLY COMPANY

1819 East Broadway Phone PORTER 2-3041  
Lubbock, Texas

# DRIVE THE YEAR'S BEST DEAL-1958 EDSEL

NEWEST CAR IN THE WORLD—YET PRICED BELOW 32 V-8 MODELS OF THE "LOW-PRICED THREE!"



New way to drive! Exclusive Teletouch puts the buttons where they belong. You shift with both hands safely at the wheel.

Exclusive Teletouch Drive Economical 303 and 345 horsepower Big, safe, self-adjusting brakes Single-dial heating and ventilating Luxurious contour seats



GET THIS AUTHENTIC SCALE MODEL EDSSEL—FREE!



Take this certificate to your Edsel Dealer. Take the test drive of your lifetime in a 1958 Edsel. He'll give you this 8-inch, precision-made plastic model as a gift for your child.

**CERTIFICATE**  
In return for a demonstration drive, I have received a scale model Edsel as a gift.

Name \_\_\_\_\_  
Address \_\_\_\_\_  
Make of Present Car \_\_\_\_\_ Year \_\_\_\_\_  
Dealer's Firm Name \_\_\_\_\_  
Dealer's Address \_\_\_\_\_  
P. A. No. \_\_\_\_\_ BNH-2

GET TODAY'S DRIVE-IT-HOME PRICE ON THE WORLD'S NEWEST CAR! SEE YOUR EDSSEL DEALER NOW!  
Don't miss the big television hit, "The Ed Eullivan Show," Sunday evening, 7:00 to

## BROWNFIELD MOTOR CO.

202 West Broadway

Phone 2026

In Other Areas See Your Local Edsel Dealer



- OFFICERS**  
J. D. GILLHAM  
PRESIDENT  
LED HOLMES  
VICE-PRESIDENT  
BRUCE ZORNIS  
VICE-PRESIDENT  
NEWELL A. REED  
ACTIVE VICE-PRESIDENT  
BID A. LOWERY, JR.  
SECRETARY
- DIRECTORS**  
J. D. GILLHAM  
BRADY GOODPASTURE  
LED HOLMES  
J. B. KNIGHT  
JOE J. MCGOWAN  
WM. J. MCGOWAN  
A. M. MULROW  
C. E. BRIMM  
NEWELL A. REED  
J. M. TEAGUE, JR.  
BRUCE ZORNIS
- COUNSEL**  
MCGOWAN & MCGOWAN



### PUT GIFT MONEY TO WORK!

Put the \$\$\$ you received for Christmas into a profitable Savings Program at BROWNFIELD SAVINGS & LOAN. Your \$\$\$ will earn more \$\$\$, our healthy 3 1/2 % Dividends.

SAVE THE EASY WAY... SAVE BY MAIL.

**Brownfield Savings & Loan Association**  
BROWNFIELD, TEXAS

# If You Don't Support Your Church Weekly—Your Church Will Be Weakly Supported

**CHURCH OF THE NAZARENE**  
 Rev. Howard Smith, Pastor  
 9:45 a.m.—Sunday School  
 9:45 a.m.—Sunday School  
 9:45 a.m.—Morning Worship  
 7:30 p.m.—Church Service

**ST. ANTHONY'S CATHOLIC CHURCH**  
 Levee Road Highway  
 Rev. Paul H. Land, Pastor  
 8:30 a.m. & 10:30 a.m. Masses  
 —Sundays  
 7:30 p.m. First Fridays  
 Confessions: Before all Masses

**ORIENT HILL CHURCH OF CHRIST**  
 John McCoy, Minister  
 9:45 a.m.—Sunday School  
 10:45 a.m.—Morning Worship  
 6:30 p.m.—Evening Worship

**IMMANUEL BAPTIST CHURCH**  
 10:00 a.m.—Sunday School  
 11:00 a.m.—Morning Worship  
 8:00 p.m.—Evening Worship

**FIRST METHODIST CHURCH**  
 Rev. James Tidwell, Pastor  
 9:45 a.m.—Sunday School  
 10:50 a.m.—Morning Worship  
 7:00 p.m.—Evening Worship

**FOUR SQUARE GOSPEL CHURCH**  
 Rev. H. B. Harris, Pastor  
 10:00 a.m.—Sunday School  
 11:00 a.m.—Morning Worship  
 8:00 p.m.—Evening Worship

**SOUTH SIDE CHURCH OF CHRIST**  
 Ira A. Wolfe, Minister  
 9:45 a.m.—Sunday Bible Study  
 10:45 a.m.—Morning Worship  
 6:00 p.m.—Evening Worship  
 7:00 p.m. Wednesday Evening Worship

**FIRST PRESBYTERIAN CHURCH**  
 Rev. Ralph O'Dell, Pastor  
 9:45 a.m.—Sunday School  
 11:00 a.m.—Morning Worship  
 6:00 p.m.—Westminster  
 7:30 p.m., Wed.—Prayer Meeting

**FIRST CHRISTIAN CHURCH**  
 Rev. Marlon Nilson, Pastor  
 9:45 a.m.—Sunday School  
 11:00 a.m.—Morning Worship  
 6:30 p.m.—Youth Program

**JOHNSON BAPTIST CHURCH**  
 Rev. H. H. Gray, Pastor  
 10:00 a.m.—Sunday School  
 11:00 a.m.—Morning Worship  
 7:30 p.m.—Training Union  
 8:30 p.m.—Evening Worship

**FRIENDSHIP BAPTIST CHURCH**  
 Elder C. A. Seay, Pastor  
 Meet 1st and 3rd Sundays  
 11:00 a.m.—Morning Worship  
 7:30 p.m.—Evening Worship

**CHURCH OF GOD**  
 Rev. W. E. Mitchell, Pastor  
 10:00 a.m.—Sunday School  
 8:00 p.m.—Evangelistic Service  
 11:00 a.m.—Morning Worship

**GRACE LUTHERAN CHURCH**  
 R. L. Young, Pastor  
 1:00 p.m.—Sunday School  
 8:00 p.m.—Divine Worship

**CHALLIS BAPTIST CHURCH**  
 Frankie Rainey, Pastor  
 10:00 a.m.—Sunday School  
 11:00 a.m.—Worship Service  
 7:00 p.m.—Evening Service

**FIRST ASSEMBLY OF GOD CHURCH**  
 Rev. J. R. Brashee, Pastor  
 10:00 a.m.—Sunday School  
 11:00 a.m.—Morning Worship  
 7:30 p.m.—Evangelistic Service  
 7:30 p.m.—Wednesday  
 Worship Service  
 8:00 p.m.—Friday  
 Young People Service

**THE CHURCH OF THE LIVING GOD**  
 South end of 9th Street  
 C. F. Neighbors, Minister  
 Sunday Services 10:30 A.M. & 7:30 P.M.

**UNION BAPTIST CHURCH**  
 Bro. Cletus Caswell  
 10:00 a.m. Church School  
 11:00 a.m. Worship Service  
 6:30 p.m. Evening Worship



This little fellow is learning one of life's important lessons very early; after a messy bout with a jelly sandwich, he's getting off to a clean start. While we're babes it's pretty easy to go to the land of beginning again, but even by our teens, it is very hard. Yet, how many of us would like to make a clean start.

God's good news is that He will do just that with us. He will give us a clean start—wipe away our past and let us be free for the future. Want to learn how? Then go to Church this week and listen to the Gospel—the good news of a loving God.



Is something wrong with your life—  
 an inner restless dissatisfaction?  
 The answer to every human problem  
 comes only from God our  
 Maker. He alone can forgive  
 and reassure.  
 Through the church God has  
 committed the provision and  
 proclamation of His forgiveness and  
 redeeming love. Without a church  
 relation no one is securely related  
 to God. Everyone should be in  
 the Church and the Church should  
 be in everyone!

© 1958, Coleman Adv. Serv. P. O. Box 4887, Dallas, Texas

**BROWNFIELD PRIMITIVE BAPTIST CHURCH**  
 J. W. Garforth, Pastor  
 Meets each second Sunday at 10:30 a.m.  
 Also Elmo Edward, each fourth Sunday at 10:30 a.m.

**WESTSIDE BAPTIST CHURCH**  
 Rev. S. R. Respass, Pastor  
 10:00 a.m.—Sunday School  
 11:00 a.m.—Morning Worship  
 7:30 p.m.—Evening Worship

**NORTHSIDE BAPTIST CHURCH (Fundamentalists)**  
 Rev. A. J. Franks, Pastor  
 10:00 a.m.—Sunday School  
 11:00 a.m.—Morning Worship  
 8:00 p.m.—Evening Worship

**EPISCOPAL CHURCH**  
 Of The Good Shepherd  
 Rev. Rex C. Simms, Vicar  
 8:45 a.m.—Morning Prayer and Sermon  
 9:45 a.m. Sunday School  
 Holy Communion 2nd and 4th Sundays.

**CALVAARY BAPTIST CHURCH**  
 Rev. Warren Stowe, Pastor  
 9:45 a.m.—Sunday School  
 11:00 a.m.—Morning Worship  
 7:30 p.m.—Evening Service

**CHURCH OF CHRIST**  
 Wellman, Texas  
 9:00 a.m.—Study Period  
 10:00 a.m.—Preaching Service  
 8:00 p.m.—Preaching Service

**FIRST BAPTIST CHURCH**  
 Rev. Jones W. Westers, Pastor  
 9:45 a.m.—Sunday School  
 10:50 a.m.—Morning Worship  
 7:30 p.m.—Evening Service

**EVANGELICAL METHODIST CHURCH**  
 William Mayo, Pastor  
 10:00 a.m.—Morning Worship  
 11:00 a.m.—Morning Worship  
 7:00 p.m.—Evening Worship

**FIRST BAPTIST CHURCH**  
 Meadow, Texas  
 9:45 a.m.—Sunday School  
 11:00 a.m.—Morning Worship  
 7:30 p.m.—Evening Services

**FIRST METHODIST CHURCH**  
 Meadow, Texas  
 9:45 a.m.—Sunday School  
 10:00 a.m.—Morning Worship  
 7:30 p.m.—Evening Worship

**UNITED PENTECOSTAL CHURCH**  
 Rev. J. M. Allen, Pastor  
 9:45 a.m.—Sunday School  
 11:00 a.m.—Morning Worship  
 7:30 p.m.—Evening Worship  
 8:00 p.m. Friday—Young People's Meeting

**NORTH SECOND STREET CHURCH OF CHRIST**  
 10:30 a.m.—Sunday Morning Services  
 7:30 p.m.—Evening Services

**BETHEL TEMPLE ASSEMBLY OF GOD CHURCH**  
 Rev. B. Z. Curtis, Pastor  
 10:00 a.m.—Sunday School  
 8:00 p.m.—Evangelistic Service  
 8:00 p.m.—Wednesday Prayer Meeting  
 8:00 p.m.—Friday Young People's Service

**PARKVIEW METHODIST CHURCH**  
 Rev. Ray Elmore, Pastor  
 10:00 a.m.—Church School  
 11:00 a.m.—Worship  
 8:00 p.m.—Evening Worship

**SEVENTH-DAY ADVENTIST**  
 R. E. Cash, Pastor  
 Meeting in Primitive Baptist Church Each Saturday  
 2:30 p.m.—Sabbath School  
 3:30 p.m.—Preaching

**FIRST MEXICAN BAPTIST CHURCH**  
 Rev. Lazaro Hernandez, Pastor  
 10:00 a.m. Sunday School  
 11:00 a.m. Worship Service  
 7:00 p.m. Training Union

Harris Flying Service  
 Aero Crop Dusting & Spraying

Tim's Service & Safety Lane  
 Bear Wheel Alignment—Brake Repair  
 —Safety Inspection—

Brownfield Ditching Service  
 Dick Chisholm

Terry County Lumber Co.  
 Square Deal For A Round Dollar

Merritt Grocery  
 Your Best Food Buy

Farmer's Cooperative Society  
 No. 1 Gin  
 Leonard White, Mgr.

Herman's Gin  
 Plains Highway

Frank Daniel Electric & Furniture  
 If It's Westinghouse It's The Best

First National Bank  
 Complete Banking Service

Cobb's Department Store

Al's Motor Company  
 For Good Used Cars—See Us  
 318 S. 1st

Brownfield Glass & Mirror Co.  
 Glass For Every Purpose  
 Store Fronts & Remodeling

Furr's Super Market  
 Brownfield, Texas

Jones Theaters  
 Regal-Rialto-Rio—Rustic and Rig Drive-Ins

Modern Steam Laundry  
 905 Lubbock Road

Gaasch Construction Co.  
 Of Brownfield

Higginbotham-Bartlett Lbr. Co.  
 Complete Line For Building

Kyle Grocery  
 Home of K&S Blue Stamps

Cicero Smith Lumber Co.  
 Quality Building Materials

Newton & Webb Implement Co.  
 Your Case Implement Dealer

Fair Department Store  
 Quality Merchandise

Portwood Motor Co.  
 Your Authorized Dealer  
 4th and Hill Streets.

Goodpasture Grain And Milling Co., Inc.  
 401 West Broadway



Ross Drilling Company  
 Mac Ross

J. B. Knight Company  
 902 West Broadway

Jack Bailey Chevrolet Co.  
 401 West Broadway

Glenwood Homes, Inc.  
 Quality Homes

South Plains Ready Mix, Inc.

Robert L. Noble  
 Insurance & Real Estate

P. R. Cates  
 Residential Building

Loyd Moore  
 Building Contractor

Brownfield Motor's, Inc.  
 Mercury Sales & Service

Terry County Farm Bureau  
 Why Settle For Less  
 Buy The Best

Pemberton Insurance Agency  
 210 S. 5th—Phone 4119

S. B. (Shorty) Collier Gulf Service  
 501 S. 1st—Phone 4303

Brownfield Magneto & Electric Co.  
 Complete Automotive & Industrial,  
 Electrical Service—Phone 4588

Newsom Gin at Gomez  
 J. L. Newsom, Owner

South Gin, Inc.  
 With Our Compliments  
 Phone 2601

McIntyre Electric Service  
 Radio and TV Repair  
 Phone 4320

Brownfield News-Herald  
 Working For A Better Brownfield

Jack's Texaco Service  
 Open 24 Hours A Day  
 322 S. 1st—Phone 3659

H. C. Denson  
 Oil and Water Hauling  
 406 S. 14th—Phone 4646

Beetle Bailey By Mort Walker



JOINS NAVY—Ira Lester Inscore, son of Mr. and Mrs. C. H. Mabry of 907 South Second, will leave Monday to enter the Navy at Albuquerque, N.M. The youth attended Brownfield High School before his recent enlistment.



By VERN SANFORD  
Ever build a brush cover in your favorite fishing lake? Right now is just about the best time of the year to do it. If you like crappie or bream fishing, then a brush cover has a great deal to offer. Biologists are agreed that a good brush cover offers a definite advantage in catching fish. And a good one can be built in a couple of hours. It is hard work, however, especially if you are a desk man.

Generally brush covers don't work too well in a running stream. They must be firmly anchored. In relatively still lakes they can be tied down with heavy rocks. However, if they can be built around an old tree trunk it is even better. To build a brush shelter you will need a sharp axe, a pair of pliers, and plenty of bailing wire. A good tow-rope will be helpful too. It is best to work with two boats, or a boat and some type of barge or raft. **Simple To Build** The process of building the shelter is in itself relatively simple. Cut an armful of brush, such as willow, tie it together, and attach a stone so that it will sink to the bottom of the lake. Select a suitable spot where the shelter will not be a hazard to navigation, or get

in the way of deep trollers. It doesn't have to be too far from shore. At least a dozen large bundles of brush should be transported to the spot. Some of it should consist of fair-sized brush, such as mesquite trees.

In lowering the brush into the water, it is well that the brush be stacked, so that it will be in a pile at the bottom of the lake. A brush shelter a dozen feet around and some five or six feet through is ideal.

Some builders find it profitable also to anchor a bale of alfalfa hay in the center of the pipe.

To be most effective the brush should not be matted together. Fish must be able to swim around freely among the branches. At the same time, some shelter builders prefer a brush pile that big fish cannot get into... one that furnishes a refuge for smaller fish.

When big fish chase the little ones into the brush pile, they'll hang around nearby. That's a pretty good time to lower a minnow in the vicinity. For that reason the perimeter should be well marked. Plenty of hooks can be lost fishing in brush shelters, if its bounds are not known.

Some fishermen use poultry netting to hold the brush together. In that event the entire project must be completed on land and then towed to its resting place.

We once heard of a fisherman who made an unusual, yet ideal, shelter in a lake that had just been lowered. He found a couple of old outhouses, filled them with heavy brush, then hauled them to a spot that would be just the right depth when the lake was re-filled. There he anchored them down to stay. They were left flat on their sides, with the door open.

Needless to say, he had an ideal cover for fishing and caught more than his share of crappie and bream.

Another good plan is to build the shelter directly under the end of the boat dock or pier. In this instance it is necessary to use heavy wire to keep the brush from washing out, and to keep hooks from snagging.

Anyway, now is a good time to build your brush shelter. Just be careful where you cut your brush and where you put it: Do the job right and you'll have a good fishing spot.

**Man Overboard?** Ever so often I wonder just what I'd do if a sudden and wholly unexpected need for a life preserver existed. This thought hits me whether I'm just plain fishing or pleasure-boating. And I'm not afraid of the water either.

Fact of the matter is, my concern is over what I'd be able to do to help someone else. Chances are I'd be paralyzed with fear. Apparently that's why I always carry a surplus of buoyant cushions, in addition to the familiar old-style, round shaped life preserver, with a long rope attached.

In my book you can't overdo

the safety angle. The law requires one approved life preserver for every passenger in your boat. Don't forget it! Better yet, see to it that your guests wear life preservers. Insist that children do. The wise outdoorsman will never take a chance, especially on or near rough waters.

Speaking of life preservers, now comes the Muter Company of Chicago with a Res-Q-Pak that's an easy addition to any safety kit. This inflatable emergency life preserver comes in a pocket-sized package, no larger than a pack of cigarettes. Should be a part of every tackle box.

Res-Q-Pak inflates instantly. A gentle squeeze on the package... and presto, you have a two-foot float, shaped very much like the old-style water wings. Manufacturers say it will support a 250-pound man for hours in the water.

**Learning to Cast** To spin cast or bait cast with accuracy takes practice.

An old-timer's method of mastering the trick is to place an empty beer can under the casting arm, then practice casting without dropping the can. This makes it necessary to use only the wrist for action which is the secret of successful casting.

And, by the way — if you have trouble dis-assembling your casting rod, at the end of a day of fishing, here's an idea. Next time you get ready to put your gear together, wipe the male ferrule against your nose a few times, rolling the ferrule over and over as you rub. That will put a base of oil from your skin onto the ferrule and make the connection easy to assemble, and most important of all, easy to dis-assemble. Slick-trick. And it works!

**Caught Wife's Eye** Finally got the wife interested in fishing: Actually, South Bend's color ful, green Spin Cast 2320 Rod

and matching "77" reel did the trick. Cooperation on the part of some nice black bass clinched the deal. Now we got a fishing partner — partner — anytime, anywhere. Free advice, regardless of its origin, is almost worthless.



FILLING PRESCRIPTIONS IS A MATTER OF PRECISION!

The exact ingredients, the precise amount, not a gram more or less, the patient compounding by a Registered Pharmacist—all these result in following out the Doctor's orders with precision, whatever it may be, given the same clinical care expected from a hospital laboratory.

COATS PHARMACY PHONE 2622 210 South 6th

E. O. Nelson, D.O.

General Practice Glasses Fitted

220 S. Third

Phone 3331

THE LINE THAT'S GREAT FOR '58!



FORD TRACTORS

... now more powerful than ever

New Powermaster

4-Plow power for low cost, big capacity performance. These new, more powerful Ford Tractors can handle 4-bottom plows, and other comparable work loads in many soils. All-purpose, row crop and special utility models.

New Workmaster

2-3 Plow tractors that are unusually versatile... well suited for a wide variety of light to medium power requirements. All-purpose, row crop and special utility models.

Yes, Ford has a great new line of tractors for '58 — and they're here! Available in new, improved models, they're the finest and most powerful in Ford's history. If you're interested in getting more work done—easier and at lower cost—stop in and see these new tractors. Let us demonstrate the model of your choice, on your own farm. Drive it a few rounds and see for yourself how its performance can bring new speed and efficiency to your farm operation. Easy credit terms available.

Before you buy... See us and compare!

Brownfield Tractor Co.

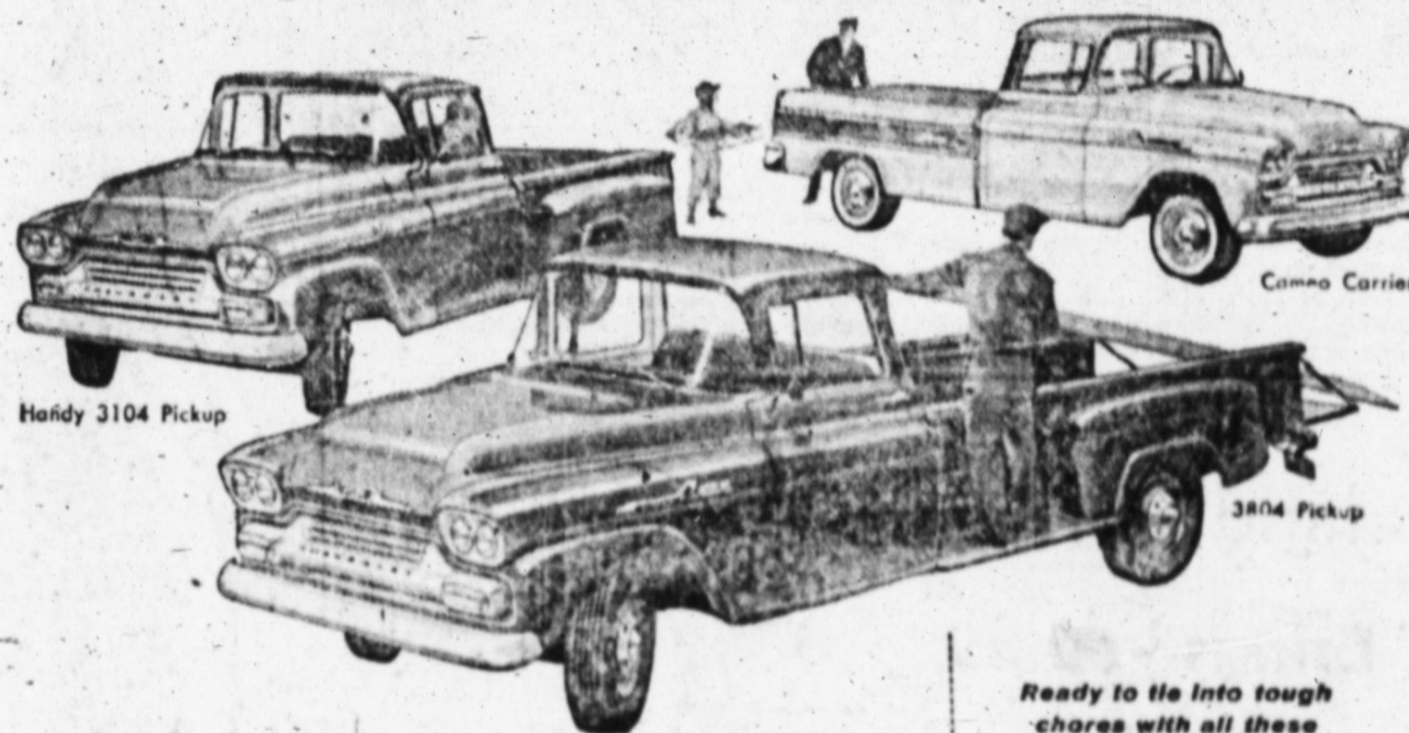


"Ford Tractor Sales & Service"

304 Tahoka Road

Phone 2636

HANDIEST, HANDSOMEST PICKUPS THAT EVER HUSTLED A LOAD!



Here's new hustle, new muscle and new style! Chevrolet's '58 pickup fleet brings you a new high in efficiency with more powerful high-compression V8 and 6-cylinder engines! Chevrolet's hustling '1958' pickup fleet can handle tougher jobs fast and at lower-than-ever costs!

You'll find improved fuel-saving 145-hp. Thriftmaster 6's, or new 283-cu.-in. 160-hp. Trademaster V8's (optional at extra cost). And built-in muscle with new extra-rigid front end sheet metal and hefty frames! New style fenders, grille and cab interiors combine good looks with cantake-it durability. Visit your Chevrolet dealer soon.

Ready to tie into tough chores with all these work-whipping features!

PICKUP BOXES UP TO 9 FEET IN LENGTH Take your choice of 78", 98" or 108" pickup boxes. Each offers a full-width grain-tight tailgate, more load space (no inboard wheelhousing).

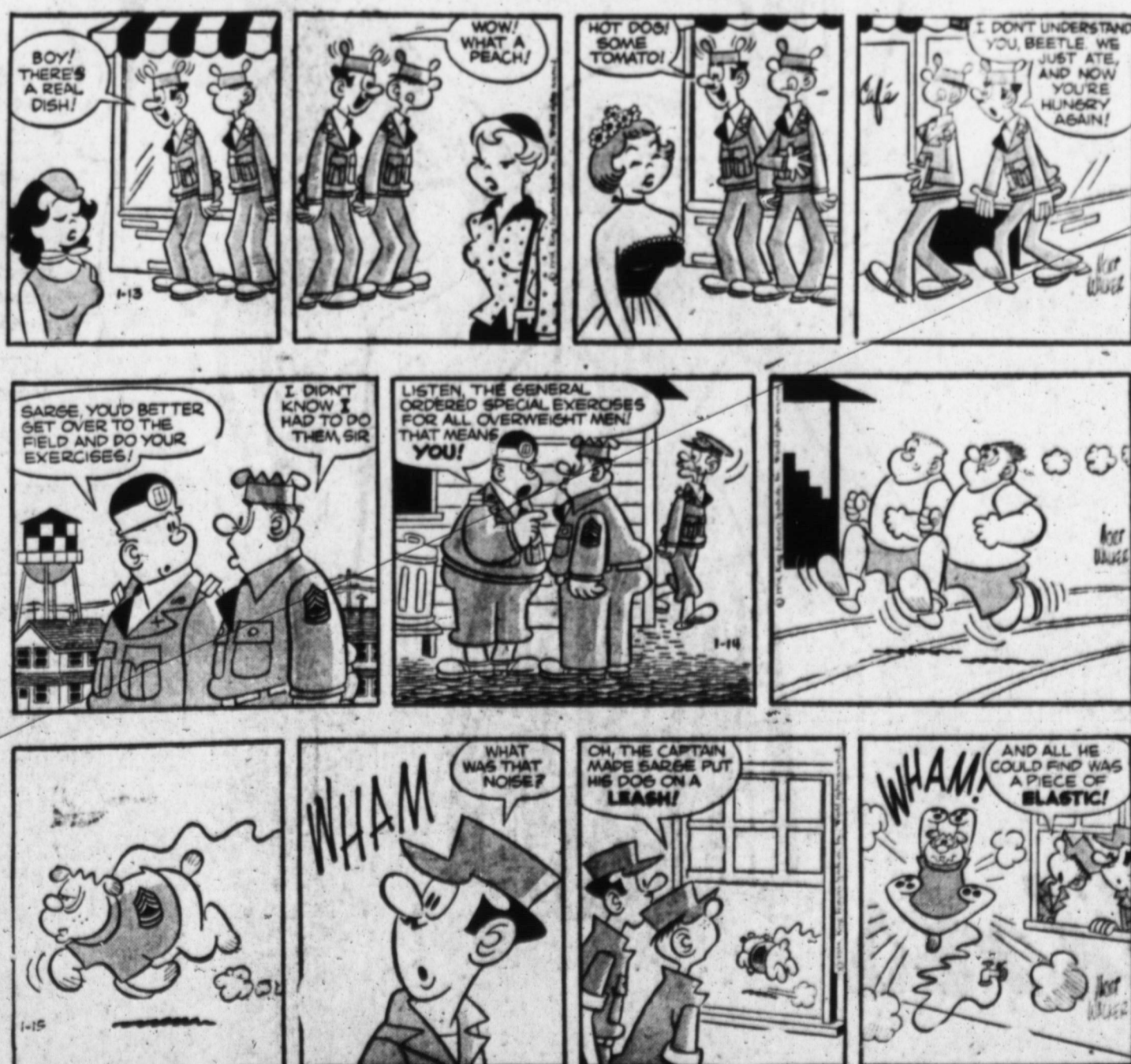
HARDWOOD FLOORS, FLUSH TYPE SKID STRIPS Sturdy pickup floors are constructed of resilient seasoned hardwood. Skid strips, recessed nearly flush, give platform long life.

NEW HUSTLE... NEW MUSCLE... NEW STYLE

NEW CHEVROLET TASK-FORCE 58

Only franchised Chevrolet dealers display this famous trademark. See Your Local Authorized Chevrolet Dealer

By Mort Walker  
By Frank Robbins  
By Johnny Hazard  
Beetle Bailey



By Frank Robbins  
By Johnny Hazard



# If You Don't Support Your Church Weekly—Your Church Will Be Weakly Supported

**CHURCH OF THE NAZARENE**  
Rev. Howard Smith, Pastor  
9:45 a.m.—Sunday School  
9:45 a.m.—Sunday School  
9:45 a.m.—Morning Worship  
7:30 p.m.—Church Service

**ST. ANTHONY'S CATHOLIC CHURCH**  
Loveland Highway  
Rev. Paul H. Land, Pastor  
8:30 a.m. & 10:30 a.m. Masses  
—Sundays  
7:30 p.m. First Fridays  
Confessions: Before all Masses

**CRESENT HILL CHURCH OF CHRIST**  
John McCoy, Minister  
9:45 a.m.—Sunday School  
10:45 a.m.—Morning Worship  
6:30 p.m.—Evening Worship

**IMMANUEL BAPTIST CHURCH**  
10:00 a.m.—Sunday School  
11:00 a.m.—Morning Worship  
8:00 p.m.—Evening Worship

**FIRST METHODIST CHURCH**  
Rev. James Tidwell, Pastor  
9:45 a.m.—Sunday School  
10:30 a.m.—Morning Worship  
7:00 p.m.—Evening Worship

**FOURSQUARE GOSPEL CHURCH**  
Rev. H. B. Harris, Pastor  
10:00 a.m.—Sunday School  
11:00 a.m.—Morning Worship  
8:00 p.m.—Evening Worship

**SOUTH SIDE CHURCH OF CHRIST**  
Ira A. Wolfe, Minister  
9:45 a.m.—Sunday Bible Study  
10:45 a.m.—Morning Worship  
8:00 p.m.—Evening Worship  
7:00 p.m.—Wednesday Evening Worship

**FIRST PRESBYTERIAN CHURCH**  
Rev. Ralph O'Dell, Pastor  
9:45 a.m.—Sunday School  
11:00 a.m.—Morning Worship  
6:00 p.m.—Westminster  
7:30 p.m.—Wed.—Prayer Meeting

**FIRST CHRISTIAN CHURCH**  
Rev. Marion Nilson, Pastor  
9:45 a.m.—Sunday School  
11:00 a.m.—Morning Worship  
6:30 p.m.—Youth Program

**JOHNSON BAPTIST CHURCH**  
Rev. H. H. Gray, Pastor  
10:00 a.m.—Sunday School  
11:00 a.m.—Morning Worship  
7:30 p.m.—Training Union  
8:30 p.m.—Evening Worship

**FRIENDSHIP BAPTIST CHURCH**  
Elder C. A. Sney, Pastor  
Meet 1st and 3rd Sundays  
11:00 a.m.—Morning Worship  
7:30 p.m.—Evening Worship

**CHURCH OF GOD**  
Rev. W. E. Mitchell, Pastor  
10:00 a.m.—Sunday School  
8:00 p.m.—Evangelistic Service  
11:00 a.m.—Morning Worship

**GRACE LUTHERAN CHURCH**  
E. L. Young, Pastor  
1:00 p.m.—Sunday School  
8:00 p.m.—Divine Worship

**CHALLIS BAPTIST CHURCH**  
Frankie Rainey, Pastor  
10:00 a.m.—Sunday School  
11:00 a.m.—Worship Service  
7:00 p.m.—Evening Service

**FIRST ASSEMBLY OF GOD CHURCH**  
Rev. J. K. Brashee, Pastor  
10:00 a.m.—Sunday School  
11:00 a.m.—Morning Worship  
7:30 p.m.—Evangelistic Service  
7:30 p.m.—Wednesday  
Worship Service  
8:00 p.m.—Friday  
Young People Service

**THE CHURCH OF THE LIVING GOD**  
South end of 9th Street  
C. E. Neighbors, Minister  
Sunday Services 10:30 A.M. & 7:30 P.M.

**UNION BAPTIST CHURCH**  
Bro. Clotus Caswell  
10:00 a.m. Church School  
11:00 a.m. Worship Service  
6:30 p.m. Evening Worship



## A CLEAN START

This little fellow is learning one of life's important lessons very early; after a messy bout with a jelly sandwich, he's getting off to a clean start. While we're babes it's pretty easy to go to the land of beginning again, but even by our teens, it is very hard. Yet, how many of us would like to make a clean start.

God's good news is that He will do just that with us. He will give us a clean start—wipe away our past and let us be free for the future. Want to learn how? Then go to Church this week and listen to the Gospel—the good news of a loving God.



Is something wrong with your life — an inner restless dissatisfaction? The answer to every human problem comes only from God our Maker. He alone can forgive and reassure. Through the church God has committed the provision and proclamation of His forgiveness and redeeming love. Without a church relation no one is securely related to God. Everyone should be in the Church and the Church should be in everyone!

© 1958, Columbia Adv. Serv. P. O. Box 4887, Dallas, Texas

**BROWNFIELD PRIMITIVE BAPTIST CHURCH**  
J. W. Garforth, Pastor  
Meets each second Sunday at 10:30 a.m.  
Also Elmo Edward, each fourth Sunday at 10:30 a.m.

**WESTSIDE BAPTIST CHURCH**  
Rev. S. R. Respass, Pastor  
10:00 a.m.—Sunday School  
11:00 a.m.—Morning Worship  
7:30 p.m.—Evening Worship

**NORTHSIDE BAPTIST CHURCH (Fundamentalists)**  
Rev. A. J. Franka, Pastor  
10:00 a.m.—Sunday School  
11:00 a.m.—Morning Worship  
8:00 p.m.—Evening Worship

**EPISCOPAL CHURCH Of The Good Shepherd**  
Rev. Rex C. Simms, Vicar  
8:45 a.m.—Morning Prayer and Sermon  
9:45 a.m. Sunday School  
Holy Communion 2nd and 4th Sundays.

**CALVARY BAPTIST CHURCH**  
Rev. Warren Stoves, Pastor  
9:45 a.m.—Sunday School  
11:00 a.m.—Morning Worship  
7:30 p.m.—Evening Service

**CHURCH OF CHRIST**  
Wellman, Texas  
9:00 a.m.—Study Period  
10:00 a.m.—Preaching Service  
8:00 p.m.—Preaching Service

**FIRST BAPTIST CHURCH**  
Rev. James W. Westera, Pastor  
9:45 a.m.—Sunday School  
10:30 a.m.—Morning Worship  
7:30 p.m.—Evening Service

**EVANGELICAL METHODIST CHURCH**  
William Mayo, Pastor  
10:00 a.m.—Morning Worship  
11:00 a.m.—Morning Worship  
7:00 p.m.—Evening Worship

**FIRST BAPTIST CHURCH**  
Meadow, Texas  
9:45 a.m.—Sunday School  
11:00 a.m.—Morning Worship  
7:30 p.m.—Evening Services

**FIRST METHODIST CHURCH**  
Meadow, Texas  
9:45 a.m.—Sunday School  
10:00 a.m.—Morning Worship  
7:30 p.m.—Evening Worship

**UNITED PENTECOSTAL CHURCH**  
Rev. J. M. Allen, Pastor  
9:45 a.m.—Sunday School  
11:00 a.m.—Morning Worship  
7:30 p.m.—Evening Worship  
8:00 p.m. Friday—Young People's Meeting

**NORTH SECOND STREET CHURCH OF CHRIST**  
1:30 a.m.—Sunday Morning Services  
7:30 p.m.—Evening Services

**BETHEL TEMPLE ASSEMBLY OF GOD CHURCH**  
Rev. B. Z. Curtis, Pastor  
10:00 a.m.—Sunday School  
8:00 p.m.—Evangelistic Service  
8:00 p.m.—Wednesday Prayer Meeting  
8:00 p.m.—Friday Young People's Service

**FARVIEW METHODIST CHURCH**  
Rev. Ray Emory, Pastor  
10:00 a.m.—Church School  
11:00 a.m.—Worship  
8:00 p.m.—Evening Worship

**SEVENTH-DAY ADVENTIST**  
R. E. Cash, Pastor  
Meeting in Primitive Baptist Church Each Saturday  
2:30 p.m.—Sabbath School  
3:30 p.m.—Preaching

**FIRST MEXICAN BAPTIST CHURCH**  
Rev. Lazaro Hernandez, Pastor  
10:00 a.m. Sunday School  
11:00 a.m. Worship Service  
7:00 p.m. Training Union

- Harris Flying Service  
Aero Crop Dusting & Spraying
- Tim's Service & Safety Lane  
Bear Wheel Alignment—Brake Repair  
—Safety Inspection—
- Brownfield Ditching Service  
Dick Chisholm
- Terry County Lumber Co.  
Square Deal For A Round Dollar
- Merritt Grocery  
Your Best Food Buy
- Farmer's Cooperative Society  
No. 1 Gin  
Leonard White, Mgr.
- Herman's Gin  
Plains Highway
- Frank Daniel Electric & Furniture  
If It's Westinghouse It's The Best
- First National Bank  
Complete Banking Service
- Cobb's Department Store

- Al's Motor Company  
For Good Used Cars—See Us  
318 S. 1st
- Brownfield Glass & Mirror Co.  
Glass For Every Purpose  
Store Fronts & Remodeling
- Furr's Super Market  
Brownfield, Texas
- Jones Theaters  
Regal-Rialto-Rio—Rustic and Rig Drive-Ins
- Modern Steam Laundry  
905 Lubbock Road
- Gaasch Construction Co.  
Of Brownfield
- Higginbotham-Bartlett Lbr. Co.  
Complete Line For Building
- Kyle Grocery  
Home of K&S Blue Stamps
- Cicero Smith Lumber Co.  
Quality Building Materials
- Newton & Webb Implement Co.  
Your Case Implement Dealer
- Fair Department Store  
Quality Merchandise
- Portwood Motor Co.  
Your Authorized Dealer  
4th and Hill Streets.

- Goodpasture Grain And Milling Co., Inc.  
401 West Broadway
- Guggs & Goble
- Ross Drilling Company  
Mac Ross
- J. B. Knight Company  
902 West Broadway
- Jack Bailey Chevrolet Co.  
401 West Broadway
- Glenwood Homes, Inc.  
Quality Homes
- South Plains Ready Mix, Inc.
- Robert L. Noble  
Insurance & Real Estate
- P. R. Cates  
Residential Building
- Loyd Moore  
Building Contractor
- Brownfield Motor's, Inc.  
Mercury Sales & Service
- Terry County Farm Bureau  
Why Settle For Less  
Buy The Best

- Pemberton Insurance Agency  
210 S. 5th—Phone 4119
- S. B. (Shorty) Collier Gulf Service  
501 S. 1st—Phone 4303
- Brownfield Magneto & Electric Co.  
Complete Automotive & Industrial,  
Electrical Service—Phone 4588
- Newsom Gin at Gomez  
J. L. Newsom, Owner
- South Gin, Inc.  
With Our Compliments  
Phone 2601
- McIntyre Electric Service  
Radio and TV Repair  
Phone 4320
- Brownfield News-Herald  
Working For A Better Brownfield
- Jack's Texaco Service  
Open 24 Hours A Day  
322 S. 1st—Phone 3659
- H. C. Denson  
Oil and Water Hauling  
406 S. 14th—Phone 4646

Beetle Bailey By Mort Walker



**JOINS NAVY**—Ira Lester Inscore, son of Mr. and Mrs. C. H. Mabry of 907 South Second, will leave Monday to enter the Navy at Albuquerque, N.M. The youth attended Brownfield High School before his recent enlistment.



**OUTDOORS IN TEXAS**  
By VERN SANFORD  
Ever build a brush cover in your favorite fishing lake? Right now is just about the best time of the year to do it. If you like crappie or bream fishing, then a brush cover has a great deal to offer. Biologists are agreed that a good brush cover offers a definite advantage in catching fish. And a good one can be built in a couple of hours. It is hard work, however, especially if you are a desk man. Generally brush covers don't work too well in a running stream. They must be firmly anchored. In relatively still lakes they can be tied down with heavy rocks. However, if they can be built around an old tree trunk it is even better. To build a brush shelter you will need a sharp axe, a pair of pliers, and plenty of bailing wire. A good tow-rope will be helpful too. It is best to work with two boats, or a boat and some type of barge or raft. **Simple To Build** The process of building the shelter is in itself relatively simple. Cut an armful of brush, such as willow, tie it together, and attach a stone so that it will sink to the bottom of the lake. Select a suitable spot where the shelter will not be a hazard to navigation, or get

in the way of deep trollers. It doesn't have to be too far from shore. At least a dozen large bundles of brush should be transported to the spot. Some of it should consist of fair-sized brush, such as mesquite trees. In lowering the brush into the water, it is well that the brush be stacked, so that it will be in a pile at the bottom of the lake. A brush shelter a dozen feet around and some five or six feet through is ideal. Some builders find it profitable also to anchor a bale of alfalfa hay in the center of the pipe. To be most effective the brush should not be matted together. Fish must be able to swim around freely among the branches. At the same time, some shelter builders prefer a brush pile that big fish cannot get into... one that furnishes a refuge for smaller fish. When big fish chase the little ones into the brush pile, they'll hang around nearby. That's a pretty good time to lower a minnow in the vicinity. For that reason the perimeter should be well marked. Plenty of hooks can be lost fishing in brush shelters, if its bounds are not known. Some fishermen use poultry netting to hold the brush together. In that event the entire project must be completed on land and then towed to its resting place. We once heard of a fisherman who made an unusual, yet ideal, shelter in a lake that had just been lowered. He found a couple of old outhouses, filled them with heavy brush, then hauled them to a spot that would be just the 'right depth when the lake was re-filled. There he anchored them down to stay. They were left flat on their sides, with the door open. Needless to say, he had an ideal cover for fishing and caught more than his share of crappie and bream. Another good plan is to build the shelter directly under the end of the boat dock or pier. In this instance it is necessary to use heavy wire to keep the brush from washing out, and to keep hooks from snagging. Anyway, now is a good time to build you a brush shelter. Just be careful where you cut your brush and where you put it. Do the job right and you'll have a good fishing spot. **Man Overboard?** Ever so often I wonder just what I'd do if a sudden and wholly unexpected need for a life preserver existed. This thought hits me whether I'm just plain fishing or pleasure-boating. And I'm not afraid of the water either. Fact of the matter is, my concern is over what I'd be able to do to help someone else. Chances are I'd be paralyzed with fear. Apparently that's why I always carry a surplus of buoyant cushions, in addition to the familiar old style, round shaped life preserver, with a long rope attached. In my book you can't overdo

the safety angle. The law requires one approved life preserver for every passenger in your boat. Don't forget it! Better yet, see to it that your guests wear life preservers. In-fair-children do. The wise outdoorsman will never take a chance, especially on or near rough waters. Speaking of life preservers, now comes the Muter Company of Chicago with a Res-Q-Pak that's an easy addition to any safety kit. This inflatable emergency life preserver comes in a pocket-sized package, no larger than a pack of cigarettes. Should be a part of every tackle box. Res-Q-Pak inflates instantly. A gentle squeeze on the package... and presto, you have a two-foot float, shaped very much like the old-style water wings. Manufacturers say it will support a 250-pound man for hours in the water. **Learning to Cast** To spin cast or bait cast with accuracy takes practice. An old-timer's method of mastering the trick is to place an empty beer can under the casting arm, then practice casting without dropping the can. This makes it necessary to use only the wrist for action which is the secret of successful casting. And, by the way — if you have trouble dis-assembling your casting rod, at the end of a day of fishing, here's an idea. Next time you get ready to put your gear together, wipe the male ferrule against your nose a few times, rolling the ferrule over and over as you rub. That will put a base of oil from your skin onto the ferrule and make the connection easy to assemble, and most important of all, easy to dis-assemble. Slick trick. And it works!

**Caught Wife's Eye**  
Finally got the wife interested in fishing. Actually, South Bend's colorful, green Spin Cast 2320 Rod

and matching "77" reel did the trick. Cooperation on the part of some nice black bass clinched the deal. Now we got a fishing partner — pardner — anytime, anywhere. Free advice, regardless of its origin, is almost worthless.

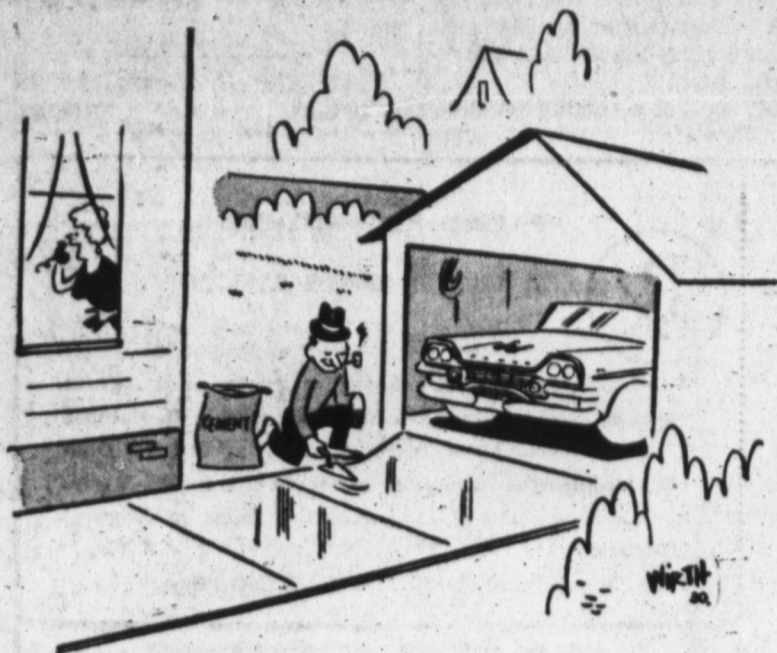
**FILLING PRESCRIPTIONS IS A MATTER OF PRECISION!**  
The exact ingredients, the precise amount, not a gram more or less, the patient compounding by a Registered Pharmacist—all these result in following out the Doctor's orders with precision, whatever it may be, in giving the same clinical care expected from a hospital laboratory.  
—USE OUR DRIVE-IN WINDOW—  
**COATS PHARMACY**  
PHONE 2622 210 South 6th

**E. O. Nelson, D.O.**  
General Practice  
Glasses Fitted  
220 S. Third Phone 3331

**THE LINE THAT'S GREAT FOR '58!**  
  
**FORD TRACTORS**  
... now more powerful than ever  
**New Powermaster**  
4-Plow power for low cost, big capacity performance. These new, more powerful Ford Tractors can handle 4-bottom plows, and other comparable work loads in many soils. All-purpose, row crop and special utility models.  
**New Workmaster**  
2-3 Plow tractors that are unusually versatile... well suited for a wide variety of light to medium power requirements. All-purpose, row crop and special utility models.  
Yes, Ford has a great new line of tractors for '58 —and they're here! Available in new, improved models, they're the finest and most powerful in Ford's history. If you're interested in getting more work done—easier and at lower cost—stop in and see these new tractors. Let us demonstrate the model of your choice, on your own farm. Drive it a few rounds and see for yourself how its performance can bring new speed and efficiency to your farm operation. Easy credit terms available.  
**Before you buy... See us and compare!**  
**Brownfield Tractor Co.**  
"Ford Tractor Sales & Service"  
304 Tahoka Road Phone 2636

**HANDIEST, HANDSOMEST PICKUPS THAT EVER HUSTLED A LOAD!**  
  
**Here's new hustle, new muscle and new style!** Chevrolet's '58 pickup fleet brings you a new high in efficiency with more powerful high-compression V8 and 6-cylinder engines! Chevrolet's hustling 1958 pickup fleet can handle tough jobs fast and at lower-than-ever costs!  
You'll find improved fuel-saving 145-h.p. Thriftmaster 6's, or new 283-cu.-in. 160-h.p. Trademaster V8's (optional at extra cost). And built-in muscle with new extra-rigid front end sheet metal and hefty frames! New style fenders, grille and cab interiors combine good looks with take-it durability. Visit your Chevrolet dealer soon.  
**Ready to tie into tough chores with all these work-whipping features!**  
PICKUP BOXES UP TO 9 FEET IN LENGTH Take your choice of 78", 98" or 108" pickup boxes. Each offers a full-width grain-tight tailgate, more load space (no inboard wheelhousing).  
HARDWOOD FLOORS, MUSH TYPE SKID STRIPS Sturdy pickup floors are constructed of resilient seasoned hardwood. Skid strips, recessed nearly flush, give platform longer life.  
**NEW HUSTLE... NEW MUSCLE... NEW STYLE**  
**NEW CHEVROLET TASK-FORCE 58**  
Only franchised Chevrolet dealers display this famous trademark. See Your Local Authorized Chevrolet Dealer

**By Mort Walker**  
**By Frank Robbins**  
**By Johnny Hazard**  
**Beetle Bailey**  
  
BOY! THERE'S A BEA DISH!  
WOW! WHAT A PEACH!  
HOT DOGS! SOME TOMATO!  
I DON'T UNDERSTAND YOU BEETLE WE JUST ATE, AND NOW YOU'RE HUNGRY AGAIN!  
GOSH, SNAP, I FEEL AWFULLY GUILTY ABOUT BREAKING UP LIKE THAT! IT'S AS THOUGH WE WERE PERSONALLY RESPONSIBLE!  
WE ARE! BUT, KNOWING JOHNNY, I THINK HE'D RATHER SHE WERE ALIVE AND LONELY... THAN WITH HIM AND... WHO KNOWS?  
SO... THAT'S THAT! MAYBE I SHOULD HAVE TRY THINKING SHE'LL FLAMME FOR CRACKS... LETTING A GIRL LIKE KITTY GET AWAY FROM ME...  
BUT NOW... I'VE GOT SOME IMPORTANT WORK TO DO!  
SARGE YOU'D BETTER SET OVER TO THE FIELD AND DO YOUR EXERCISES!  
I DIDN'T KNOW I HAD TO DO THEM, SIR  
LISTEN THE GENERAL ORDERED SPECIAL EXERCISES FOR ALL OVERWEIGHT MEN! THAT MEANS YOU!  
WHAM  
OH, THE CAPTAIN MADE SARGE PUT HIS DOGS ON A LEASH!  
WHAM  
AND ALL HE COULD FIND WAS A PIECE OF BLASTIC!  
WHEN WILL THIS CABLE ARRIVE IN CALCUTTA?  
TOMORROW MORNING, SIR! IT SHOULD BE PHONED IN TO THE RECEIVING PARTY BEFORE NOON!  
NEXT MORNING, AT THE SEUL AIRPORT...  
I THOUGHT WE WERE GETTING OUR OWN PLANE, JOHNNY... WHY THE FLIGHT TICKETS?  
WE'LL MAKE THE LONG RUN COMMERCIAL, SINGER... THAT WAY WE CAN USE A SMALL PLANE FOR THE FINAL LEG INTO NEPSTAN!  
THAT FIGURES! WHY WASH OUT A BIG EXPENSIVE JOB FOR A ONE-WAY FLIGHT, JOHNNY?  
CHECK, SNAP! SO I'VE WREK A PARTIME BUDDY OF MINE WHO RUNS A SMALL FREIGHT SERVICE IN CALCUTTA... HE'LL HAVE A BEAT-UP OLD PLANE READY FOR US WHEN WE ARRIVE.  
... THAT BIT OF TRUTH IS SOING TO PROVE VERY COSTLY!



"George will be happy to drive down to the station and pick you up, Mother!"

### No. 3

said the Estate attorney, who called the business "a bunch of rotten eggs."

State Insurance Department officials charge that Estate presented a false statement of assets when it entered into the contract. Insurance Board forced the resignation of Estate's president, John L. McCarty, after it was revealed McCarty had given a State Insurance Department employee \$2,000.

**SHORT SNORTS** — Creation of an administrative office for the state's judicial system is urged by State Supreme Court Associate Justice Ruel Walker. An administrative director, he says, could help in more efficient assigning of pending court business and equalizing

of trial loads . . . Texas Rangers are now under the direct authority of Public Safety Director Homer Garrison Jr. Transfer from regional commanders was announced by the Public Safety Commission. Change to a single command was said essential to efficiency . . . Present state land office employees will keep their jobs under new Land Commissioner Bill Allcorn when he takes office Feb. 1, he has announced. Allcorn said he will move his family to Austin but would not say whether he will run for election to the post. He was named by Governor Daniel to succeed Earl Rudder who has resigned to take an administrative job at Texas AM.

What you put off doing today, you will probably put off tomorrow.

### Tests Conducted On Male-Sterile Cotton For Hybrid Strains

The discovery of a new technique for making some strains of cotton male-sterile may offer the first practical means yet found for producing hybrid cottons, reports the U.S. Department of Agriculture.

Recent field trials by USDA and other cooperating scientists demonstrated that certain chemicals will prevent pollen from developing in some varieties of cotton. The result is a no-pollen, male-sterile plant — one which cannot fertilize itself.

If another variety of cotton is planted close by—a variety that is either not affected by the chemical spray, or is not sprayed to begin with — it can provide pollen to fertilize the male-sterile plants, and a cross can be obtained.

Hybrid cottons themselves are not new, for plant breeders have produced many crosses that show outstanding yield and equality characteristics. But these crosses have been obtained by hand-pollination in carefully controlled experiments. The problem has been to find a practical way to produce these hybrids in large quantities.

Although the discovery of this new technique is a step in the right direction, it must be remembered that the whole problem still hasn't been solved. Even after one variety in the field is made male-sterile and another variety unaffected, the pollen still must be transferred.

Unlike corn and other plants where it is windblown, the pol-

len in cotton must be carried by bees and other insects.

In experiments, from 62 to 88 per cent of the seed from treated rows were successfully crossed. But this was in relatively small plots with lots of bees — quite different from a large field on a practical basis.

So, since varieties of cotton do differ in their male-sterility response to spraying, field-wide use of these chemicals, called selective gametocides, has practical possibilities, say the scientists.

By planting two types of cotton a whole field could be sprayed leaving one variety male-sterile and the other unaffected. Then seed from the male-sterile plant would produce hybrid cotton.

The man, or woman, who learns to laugh, at himself or herself, even privately, is making some progress.

The individual with an idea is very often a nuisance to his friends.

### Tax Man Sam Sez:

Most folks don't worry about how much income tax they owe until it's too late to do something about it. Cash basis farmers, businessmen, and even individuals can affect the amount of tax they pay during the year on a small scale the same as a lot of big corporations do.

The corporations simply plan their business to make a sale during this year or next,

or on the other hand, to incur an expense for this tax year or the next.

Since most taxpayers are on a cash basis, it may not cost you very much to pay the preacher a lot more for the rest of the year than you ordinarily would if you have a lot of income or are going to itemize your tax deductions for the year.

On the other hand, you may want to wait until January 1 and just give the preacher enough to get by on

until next year since you can better afford a tax contribution for the next tax year than you can for this one. It is certainly worth thinking about from not only paying the preacher angle, but from all income and expense angles. A study of your tax instructions may be advisable.

Unemployment looms as a specter before a prosperous nation. Some way must be found to provide work for all willing hands.

## Spring-spiced fashions - Nelly Don



See them now . . . wear them now! Nelly Don's wonderful new-year fashions, spiced with Spring-flavored colors, trends and fabrics that go smartly from one season to the next. Designed with Nelly Don quality, inside and out, from fit to finish!

- A. Town print on fine drip-dry cotton. Detachable collar tops V-neckline. Blue, brown or green. 10 to 20. 14.95
- B. City dot with snap-on pique. Crease-resistant rayon and silk in navy, brown or black. 12 to 40 and 12C to 22C. 17.95
- C. Fair Weather suit with easy, belted jacket. Rayon and acetate. Toast, pink, blue. 10 to 20 and 10C to 20C. 17.95
- D. North-South costume. Two-piecer, cotton-rayon blend. Navy with red, black with beige, brown with aqua. 8 to 20 and 10C to 20C. 22.95
- E. Boulevard check in blended rayon-acetate has wing sleeves, easy bloused back. Black, brown, navy. 10 to 20. 17.95
- F. Shadow-pleid shirtdress in easy-care Dacron and cotton. Sage green with beige, suntan with rose, red with grey. 8 to 18. 19.95

\*Custom sizes for the shorter-proportioned figure.

### Copeland Hardware

Brings you the

# RCA VICTOR "TV TRADE PARADE"

GET UP TO **\$80.00** FOR YOUR OLD SET ON TRADE DURING THIS SPECIAL SALE!

**TRADE IN AND SAVE \$80.00**

**TRADE IN AND SAVE \$60.00**

**TRADE IN AND SAVE \$50.00**

**TRADE IN AND SAVE \$50.00**

**TRADE IN AND SAVE \$25.00**

**LEAN, CLEAN, MIRROR-SHARP**

**COPELAND HARDWARE**  
501 West Main Phone 2620

# Collins

B  
ACC  
C  
O  
B  
B r  
ous g  
in the  
ment  
keep  
head  
Mrs  
office  
in 194  
staff,  
"Th  
handle  
includ  
only  
machi  
reveal  
ing a  
hand,"  
The  
quick  
Brown  
000 ut  
"We l  
as mi  
same  
said.  
"Op  
consid  
larges  
added  
Geron  
Mrs. l  
age n  
\$54,00  
ices."  
In a  
les an  
en in  
IT'S  
Mrs.  
ing b  
posti  
in bo  
PREP  
five  
utility  
all ci