



### Old Grads Who Paid \$300 for Year's Tuition in 1932 Now Find Same Costs \$900 at Columbia; Other Items Cost More, Too

By REYNOLDS KNIGHT  
Economic Analyst

NEW YORK—School and college reunion season is a time for reminiscing. The committee in charge of the 25th reunion of Columbia College's class of 1932 thought some comparisons based on business statistics would make an interesting perusal.

Old grads who had paid \$300 for a year's tuition 25 years ago were informed via a "Then-and-Now" page in the reunion brochure that the fee is now \$900. The deluxe model of America's lowest-priced car sold in 1932 for \$800. The same company's comparable model

today has a price tag of \$4,573. Missed Salary Guesses Standard & Poor's provided the reunion committee with some interesting comparisons of prices of leading stocks 25 years ago and now. DuPont sold for \$28.12 a share in May 1932; today it's around \$194. General Motors went from \$10.25 to \$42.87; General Electric from \$13.50 to \$63.75. And Standard & Poor's own industrial stock price index jumped from \$4.36 to \$49.19 over the 25-year span.

Depression-year 1932 failed to depress the optimism of Columbia's graduates, though. The reunion brochure reminded the

class members that a poll taken just before commencement opined the average salary five years after graduation would be \$11,352.18—a goal that eluded many for much longer than five years.

**PROFIT AND LOSS**—A high percentage of dinnerware breakage is adding to restaurants' cost of doing business. The Melamine Council surveyed 325 restaurant owners, equipment dealers, and distributors at the National Restaurant Show in Chicago to gauge the extent of the breakage problem. Over half of those interviewed estimated that between 10 and 20 per cent of their din-

nerware inventory has to be replaced every year because of breakage, chipping or cracking.

Thirty-four restaurateurs actually placed their breakage at more than 30 per cent—meaning that they replace their complete dinnerware inventory just about every three years.

In every case, those in the high-breakage category were using standard types of institutional china or earthenware dishes, and 65 per cent of them expressed interest in a switch to melamine, a virtually unbreakable material.

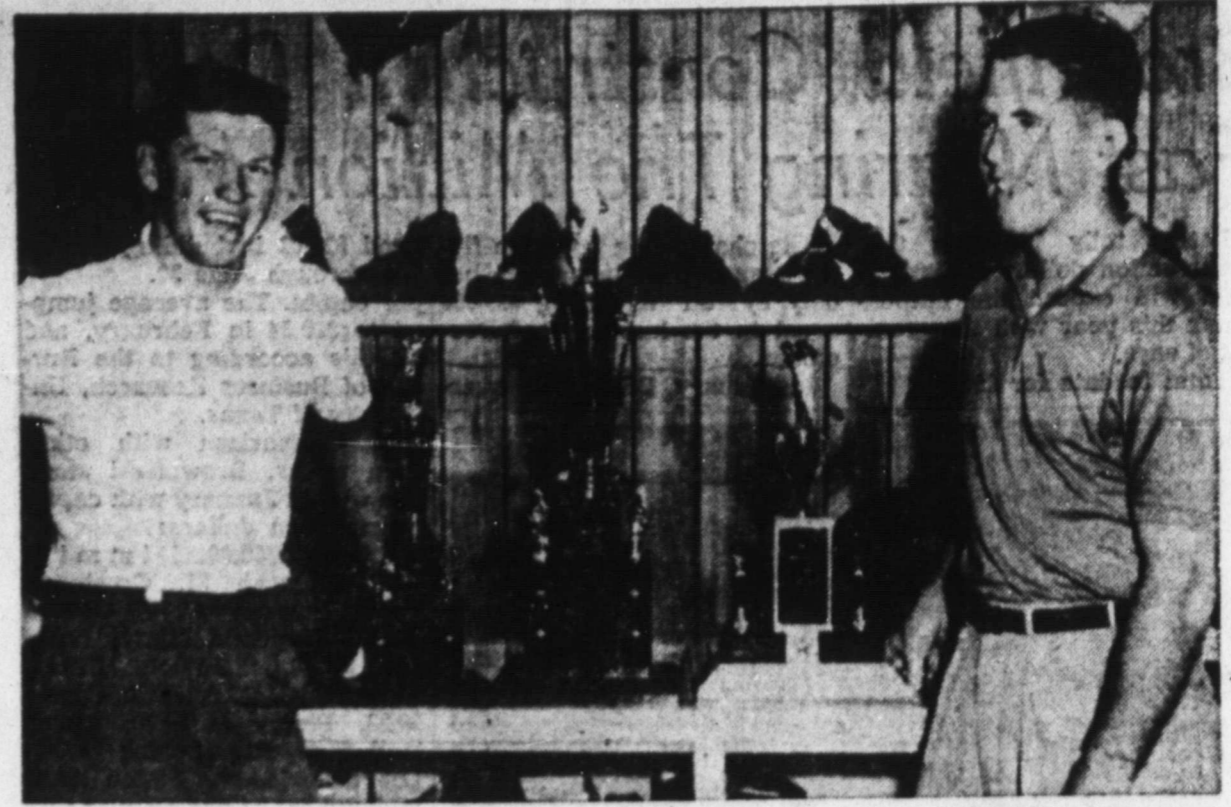
Lower breakage of melamine was cited by those polled as the primary reason for a change. Other reasons: lighter weight, quietness, and the extensive patterns.

range of designs, colors and The survey also revealed that 35 per cent of the restaurant owners interviewed now use melamine.

**THINGS TO COME**—Now you can have your own ski lift, and take it with you in search of your own private ski slope. An Austrian firm has developed an individual lift which when stored occupies a space no larger than a suitcase.

For motorists, a new plug-in type flashing light mounts securely on any flat, smooth surface by means of a suction cup and plugs into the dashboard cigarette lighter with a 10-foot cord. On the market is an adapter that permits you to plug your electric shaver into the car's cigarette lighter.

A new dacron-and-worsted suit for men weighs less than two pounds.



**CHAMPION CONTENDERS**—John Paul Cain, the Brownfield Invitational tournament. Both left, and Don Whorton, both of Sweetwater, golfers posted sub-par rounds to land in the were considered top-flight contenders for championship flight. (Staff Photo)

mal conditions, nobody cared whether they could write under water or in high-flying planes.

Ballpoints made a comeback in 1949. The new models featured fast starting, dry writing and convenient filling. However, many consumers objected to their smearing, leaking

and seeming to run dry before all the ink was used. The Sheaffer Pen Company claims to meet all those objections with its new sterling-silver-tipped ballpoint, first of its kind.

The pen company is so confident of the new ballpoint that its president, Walter A. Sheaf-

fer II, said it marks the company's "full-scale entry into the ballpoint market." The sterling silver walls of the unit in which the writing ball is mounted eliminate corrosion and prevent leakage around the ball.

Use A NEWS Want Ad

**SCOTT'S**

**Firestone**

**HOLIDAY SALE**

"Take A Holiday" From High Prices...  
Bargains in every department!

**MOTORIZED BARBECUE WAGON**

- Motor driven revolving spit
- Rustproof aluminum clad reflector hood
- Adjustable up-down grid
- Easy rolling 7" wheels
- Attractive Scotch plaid finish

**16<sup>95</sup>**

**OUTDOOR FURNITURE**

**ALUMINUM TABLE**

**\$1.00 Down**  
75c a Week

Regular 15.95  
**9<sup>99</sup>**

- Large 2 x 5 foot size—easily seats eight people
- Sturdy aluminum construction weighs just 14 lbs.
- Folds compactly to 30 x 24 inches—convenient carrying handle

**Clearance Priced Portables**

**PHILCO "Roving Reporter"**

All directional antenna. 14 inch screen. Weighs just 32 lbs.  
**149<sup>95</sup>**

**Firestone PORTABLE RADIO**

Personal size—powerful reception.  
Reg. 24.95  
**19<sup>95</sup>**

**CHAISE LOUNGE**

- Attractive turquoise and white plastic webbing
- Durable, lightweight aluminum frame
- Five position adjustable back

Reg. 19.95  
**12<sup>77</sup>**

FULL SIZE  
Folds easily and compactly to 25" x 37"

**PHILCO CLOCK RADIO**

Reg. 29.95  
**24<sup>99</sup>**

Features Telechron Clock and powerful radio. Finished in beautiful Artex Gold.

**Special! Breeze Silencer**

Eliminates annoying wind whistle—even at high speeds. Chrome plated.

**185** pair

**50-ft. HOSE**

Reg. 3.75  
**2<sup>66</sup>**

- Green vinyl plastic, guaranteed two full years

**SPORTING GOODS**

**Boys' or Girls' 26" Bikes**

- 100% American made
- Motorcycle tank
- "Jet plane" coaster brakes
- Double-braced fenders
- Texas steer handlebars
- Automobile enamel finish
- Full length chain guard
- Heavy duty luggage carrier
- Spring cushion saddle
- Super power rear reflector

Reg. 59.95  
**47<sup>95</sup>**

Pay Only 2.00 a Week

**FREE 64 Pg. Rand McNally Travelog**

Maps of all 48 States, Canada and Mexico. It's free—just come in and get it!

**COOL CUSHION**

Reg. \$2.87  
**1<sup>99</sup>**

- Tempered spring wire coils with open mesh cover for free air flow

**Make Scott's Firestone Your Sporting Goods Headquarters**

**SCOTT'S Firestone STORE**

"SUDDEN SERVICE"

413 West Main Phone 4411

By Mort Walker  
By Beetle Bailey  
By Frank Robbins  
By Johnny Hazard



• NO AP  
• NO EX  
• NO RET

Slip  
3.98 values  
4.95 values  
5.95 values  
7.95 values  
8.95 values  
10.95 values

3.98 values  
5.95 values  
6.95 values  
7.95 values  
8.95 values  
10.95 values  
12.95 values  
16.95 values  
39.95 — Rob

1.50 values  
2.50 values  
2.98 values  
3.95 values  
5.95 values  
8.95 values

PAN  
79c values  
1.35 values  
1.98 values  
2.50 values  
2.98 values

1.00 values  
1.35 values  
1.50 values  
1.65 values  
1.95 values

7.95 value  
10.95 value

LADIE  
2.98 values  
3.95 values  
5.95 values

3.95 value  
5.95 value  
10.95 value

One Group  
One Group  
One Group

OneGroup  
One Group  
5.95 value  
7.95 value  
8.95 value  
10.95 value  
12.95 value

CHILDRI  
1.98 values  
2.98 values  
3.98 values  
4.98 values











MRS. RICHARD MOLPUS HILL

## BY CANDLELIGHT

## Miss Stice Is Married

In a candlelight ceremony read at 8 p.m. Saturday in First Methodist Church, Miss Barbara Ann Stice, daughter of Mr. and Mrs. O. L. Stice, 808 East Tate, became the bride of Richard Molpus Hill, grandson of Mrs. Richard H. Molpus, 234 Beacon, Philadelphia, Miss.

The Rev. James E. Tidwell, pastor of the church, performed the double ring rites before an archway of candelabra burning pink tapers backed by greenery. Baskets of pink roses completed the setting, and the bridal aisle was marked with pink roses and pink satin bows.

Mrs. Pat Ramseur, organist, offered the traditional wedding music and accompanied Crawford Taylor and Miss Mary Kate Ramseur as they sang "If You Were the Only Girl", and Mr. Taylor as he sang "Because" and "The Wedding Prayer".

### Original Model Gown

The bride, given in marriage by her father, wore an original model gown of white imported Chantilly lace, all-over embroidered with iridescent sequins, and pleated tulle ruffles over net and taffeta. Designed with a vee-neckline framed with applied flowers embroidered with iridescent sequins and seed pearls, the fitted embroidered lace bodice had a sheer yoke outlined with embroidered applique, long sleeves ending in points over the hands, and terminating in a point at center front waistline. From this stemmed a magnificent skirt made of lace, all-over embroidered and fully shirred, with insets of full length ruffled panels of scalloped lace and pleated tulle.

The immense fullness of lace, tulle and taffeta swept into a long train and back and hoops and crinoline were worn underneath to emphasize fullness.

Her veil of silk illusion net was joined to a cap of lace outlined with tiny ruffles of pleated tulle and embroidered with iridescent sequins and seed pearls. She carried a white Bible topped with stephanotis and ivy strands.

### Sister is Attendant

Miss Patsy Stice attended her sister as maid of honor. Miss Janie Cross of Houston was bridesmaid and bridesmaids were Mrs. Paul Lassen of San Angelo and Mrs. Jimmy Billings of Brownfield.

They wore identical gowns of nylon chiffon over net and taffeta in a soft shade of pink. Designed with Sabrina necklines, framed with drapery of fabric extending into points at center back highlighted with full-length wings of chiffon, the fitted bodices were all-over shirred and ended with long torso waistlines. Joining these were immense full skirts of chiffon, fully shirred, with stiffened lower edges, enhanced with hoops underneath to emphasize fullness.

Their headresses were matching circular veils, held with bandeaux of velvet cord, and they carried cascade bouquets of pink roses and stephanotis tied with pink velvet tubing.

### Other Attendants Named

Richard H. Molpus of Philadelphia attended his nephew as best man. Candles were lighted by Kenneth Kendrick of Brownfield.

See No. 1 Page 6

## Baptist WMU Has Study on Prayers

The Women's Missionary Union of the First Baptist Church met at the church at 9:30 a.m. Wednesday for a business meeting.

Mrs. Myron Fenton, president, led the business discussion.

Mrs. Joe Jackson gave the Bible study lesson on "Prayers." Mrs. Fenton closed the meeting with a prayer.

The circles will meet in homes July 10 at 9:30 a.m. for visitation. Roberta Edwards circle will meet with Mrs. Jack Cleveland, 1111 East Cardwell; Lottie Moon with Mrs. Clevis Chambers, 1101 East Lons; Lucille Reagan meets with Mrs. H. E. Sherwin, 602 Cactus Lane; Janelle Doyle with Mrs. W. L. Bandy, 302 East Cardwell; Lois Glass with Mrs. R. R. Marsh, 802 East Buckley; and Blanche Grovers, Mrs. L. C. Health at 1218 East Hill.

## Mrs. Kennedy Is Hostess to Club

The Willow Wells Home Demonstration club met June 26 in the home of Mrs. O. D. Kennedy, 709 East Lake.

Miss Betty Kinney gave the devotional, with Mrs. Orville Williams leading the prayer. Mrs. Shafter Bailey was in charge of recreation.

Miss Jeanette Faulkenberry gave a demonstration on setting the table, informally and formally. Roll call was answered with "Why juvenile delinquency does not lie in the youth of today."

Refreshments were served to Mmes. Bailey, Buddy and Tanya, Shelby Baucum, W. C. Faulkenberry, E. G. Lamp, W. M. Nelson, Williams and Rita Kay, and Misses Faulkenberry and Kinney.

The next meeting will be held July 10 in the home of Mrs. Williams.

## Kappa Zetas Hear Formosan Visitor

Paul Chen of Formosa spoke to members of Kappa Zeta chapter of Epsilon Sigma Alpha when the group met at Fellowship Hall of the First Methodist Church Tuesday night.

Chen, who is chief of the ministry of communications of the Chinese Nationalist government on Formosa, spoke to the group on his native country and

## Outstanding Flower Exhibit To Show All Colors At Lubbock Next Week

One of the outstanding flower shows in the country and the largest show of its kind in the southwest will be held in Lubbock Saturday and Sunday, July 13th and 14th, when the West Texas Gladiolus Society presents its fourth annual gladiolus show in cooperation with the South Florist Association and the Lubbock Nurserymen's Association.

The show will be held in the showroom of the Ralph Penny Chevrolet Co. at 19th Street and Texas Avenue and is open to the public free of charge from noon until 10 p.m. Saturday and from 1 p.m. to 6 p.m. on Sunday.

On display will be every conceivable size, color, shape, and variety of gladioli. There are 18 classes of entries in the show including single spikes, three spikes, baskets, vases, table arrangements, and many arrangements using the theme of "Glads on Parade."

Anyone is eligible to compete for the beautiful array of gold trophies, rosettes, and other awards to be presented to the winners. There is no entry fee. Anyone having blooms is urged to bring them to the show before noon Saturday. Last year's show attracted entries from as far away as Alabama.

The North American Gladiolus Council sponsors a gold rosette and a bronze medal to be given as a major award at the show which commands national recognition. Furr Food Stores of West Texas are furnishing the other ribbons and rosettes.

Further information regarding the show may be obtained by contacting Amon Wade, 2822-56th Street, telephone SH-4-4040, show publicity chairman.

## 40 GUESTS ATTEND

## Barbara Russell, Bride-Elect, Honoree At Shower Held In Meadow June 28

Miss Barbara Russell, bride-elect of Hollis Lloyd of Big Spring, was honored with a shower in the home of Mrs. Carl Pritchard of Meadow on June 28.

About 40 guests were greeted

by Mrs. Pritchard from 3:30 to 5:30 and were registered by Mrs. Joe Burleson.

Misses Carlene Russell, sister of the bride-elect, and Shirley Ann Hall, a niece, alternated with Pat Joplin at the serving table which was covered with a white linen Dameraia Cutwork cloth over blue. An arrangement of white Shasta daisies centered the table.

Yellow fruit punch, highlighted by a blue floating gelatin wedding ring and dainty pecan cookies with blue centers were served from crystal appointments.

Garden flowers were used in the bedrooms where gifts were displayed by the hostesses, who were Mmes. Carl Pritchard, F. H. Sharp, Perry McCallister, J. M. Burleson, Clarence Hester, Homer Barron and Miss Pat Joplin.

Out-of-town guests registered from New Home, Lubbock, Morton, Big Spring, Carlsbad, N.M., and Brownfield.

## Georgia Smith New Beauty Shop Operator

Marjean's Beauty Shop, 310 West Tate, wishes to announce the association of Georgia Smith with the business.

Miss Smith was with the Scotland Beauty Salon in Wichita Falls before moving to Brownfield.

## 'We Have No Erosion, Our Land Is Level'



This Picture Was Taken In Terry County!

How often you've heard someone say that! It raises a question of who's kidding whom.

How about run-off? Put enough water on "level" land, and it will run somewhere. And when it runs, look out! Flatlands are not damageproof against moving water. (See picture.)

How about the effects of falling water? If a storm dumps an inch of rain on a piece of land, the water strikes with enough energy to plow the soil 10 times. This splash erosion dislodges (and more or less transports) tons of soil, if unprotected, even on level land.

How about soil structure? Beating rains

can destroy the desirable granular structure of a soil. They pack the soil — hard and tight.

How about puddling, flood water, or standing water? Too much water can be as bad as not enough, and surplus water usually finds its way down from the higher land — to the "flat" bottoms.

How about wind erosion? It's no respecter of level land either.

How about loss of seed, fertilizer, organic matter? Water can carry it away from level land, too.

No erosion on "level" land? Don't kid yourself! No matter what your topography may be, you must be constantly alert to the needs of soil maintenance.

## Plains Liquefied Gas, Inc.

# Double Stamp Day SPECIALS

FREE DELIVERY 10am-5pm DAILY

**COCA COLA** 12 BOTTLE CARTON (Plus Deposit) **39¢**

These Specials - Plus K and S Blue Stamps

(DOUBLE ON TUESDAY)

Plus the chance to Register for the Air Conditioned 1957 Plymouth to be Given Away July 20—Are Yours When you Shop at KYLE GROCERY

**CHARCOAL** 5-LB. BAG **49¢** | **SUGAR** IMPERIAL 5-LB. BAG **49¢**

**CHUCK ROAST** POUND **49¢**

**LIPTON TEA** 1/4-LB. PKG. **37¢**

**BANANAS** GOLDEN RIPE-LB. **12¢** | **POTATOES** 10-LB. BAG **49¢**

Specials From The Redemption Center—

Children's

Hand Crank Style

**CAN-CAN SLIPS**  
2 For Price Of One

**ICE CREAM FREEZER**  
6 Qt. Size  
Reg. 14.95 **11.95**

Plus the Savings  
of K and S Blue Stamps

Plus K & S Blue Stamps  
Double on Tuesday

K&S  
BLUE  
STAMPS

# KYLE GROCERY

K&S  
BLUE  
STAMPS





## Summer Session BHS News By Patti Wilder



We are pleased to see the boys who served their duty at Fort Hood home safely again. The Brownfield boys who went were: Bobby Moore, Don O'Neal, Mike Hamilton, Lavoy Briscoe, Chriss Addison, Johnny O'Neal, Wesley Britton, Clifford Tuttle, Junior Collis, Roy Snow, Ernest Hyman, Lewis Chambliss, Charles Kerth, Jerry Lemons, Norris Lewis, Robert Butler, Dale Travis, and Sid Sydloski.

Among other parties for Ann Lemley: Rita Lou Goodpasture, Delma Fox, Karen Foshee and Sheri Clements hosted a swimming-breakfast kitchen shower at Rita's home. The fun started at 8 p.m. July 2, and those attending were Jo Rita Fulford, Sue Dell Jones, Neisha Frymire, Jayne Fuller, Rosalene Barrett, Juanema Denson,

Carolyn Weathers, Patti Thomas, Doris Ratliff, Sherry Don Spears, Le Nora Turner, and I also enjoyed it.

Two deserving students of BHS, Mike Smith and Bill Walker, are attending daily classes at Texas Tech. They are enrolled in the Summer Program for Physics Students along with 26 other boys over the state.

Brenda Barnett and Brenda Weathers are attending Camp Shoshonie at Rollinsville, Colo. The two Brendas are the only Texas counselors there and will remain at camp until Aug. 16.

Our capable head majorette, Kay Kessinger, left Wednesday for Chicago. She will be gone for three weeks to the Chicago Land Festival.

The BHS cheerleaders, Bobbie Nell Richardson, Ruth

Glenn, Mary Joe Christian, Leenell Chesshir and Jesse George, have gone to cheerleading school at Wichita Falls. They will be there at Midwestern University for one week.

**SUMMER TOURISTS**  
Mary Ruth Venable returned June 28 from Pampa. She was there for a week visiting friends and relatives.

Doris Ratliff and Barbara Germany went to Ruidoso for the 4th. They will come home next week.

Joe Foshee is home on two weeks' leave from San Diego. He arrived July 2.

Buddy Cambell is here for the weekend. He now is stationed at Corpus Christi.

Gerald Jenkins is in Farmington, N.M., where he is working in the oil field.

Grace Grissom returned home from Amarillo June 28; where she visited her father for a week.

Ann Copeland came home from Edlia, N.M., Sunday while there she visited her grandmother for 10 days.

A former BHS student, Arilla Jones, visited here last week. Barbara Brown honored her with a swimming party.

Genie Christian has a visitor, Kathy Basse, a sophomore from Whittier, California. She will be here for two weeks.

**BELLES and BOWS**  
"Dan Cupid" was certainly busy the weekend of June 29 and 30. Priscilla Trim and Jack Purcell became engaged. They plan to be married sometime next summer.

Also this past weekend, Leenell Chesshir and Chriss Addison started going steady. Another couple to add to the steady list is Barbara Germany and Johnny Gaston.

Bettie Ann Davis-Jerry Don Kesse; Barbara Knox-Richard Baggett; Mary Ruth Venable-Tom Chisholm; LeNora Turner-Gerald Jenkins; Sherry Don Spears-Bobby Horton; Carolyn Weathers-Guy Hubbard; Sue Shewmake-Jerry Payne; Kay Kessinger-Jerry Don Huckabee; Doris Ratliff-Phil Addison; Patti Thomas-Carson Woodall;

Leenell Chesshir-Chriss Addison; Patti Wilder-George Fugitt; Allean Brown-Kenneth Cary; Mary Jo Christian-Mike Hamilton; Barbara Germany-Johnny Gaston; Jerre Sue Estes-Ernest Hyman; Jo Rita Fulford-Lee Dale Rowden; Grace Grissom-Buddy Cambell;

Rita Lou Goodpasture-Curtis Bryant; Linda Bost-Herbie Pickett; Karen Foshee-Joe Oswald; Shirley Wilkinson-Jerry Don Brown; Priscilla Trim-

## Miss Ann Lemley, Bride-Elect, Is Complimented With Shower Monday

Complimenting Miss Ann Lemley, bride elect of Johnny Cabbiness, a miscellaneous bridal shower was held in the home of Mrs. E. V. Riley, 907 East Oak, Monday from 5 to 7 p.m.

Hostesses with Mrs. Riley were Mes. Mancel Hinson, Joe Davis, E. L. Boots, John Cloud, Jess McWhorter, Leo Willis, Milton Addison, Leonard Willis, Delton Tatum, Claude Merritt, and Jake Geron and Miss Jane Jobe.

Mrs. Riley received guests

Among out of town guests for the Priest-Gunn wedding last weekend were the Nolan Tranthams and Dale Johnsons of Wolforth, Yung-Shiang Chen of Taiwan, Formosa, the Gerald Bettes and Alton Offills of San Angelo, the R. E. Saunders of Lamesa, Miss Lynn Gunn and the Charles Gunns of Amarillo, Mrs. Neal Jennings of Silverton and Mrs. J. B. Whitley of California.

Mr. and Mrs. Wade Pearce of 1309 East Broadway are vacationing in California.

and presented them to the honoree and her mother, Mrs. Noah Lemley, and to the mother of the prospective bridegroom, Mrs. Byron Cabbiness. Miss Betty Jobe registered guests.

The honoree's chosen colors of blue and white were carried out in decorations. An arrangement of daisies and white gladiolus, flanked with tapers, centered the serving table. Mrs. Davis and Mrs. Geron served punch and blue and white ribbon sandwiches.

Approximately 30 guests called during the afternoon.

## Mrs. Priest Attends Toastmistress Meet

Mr. and Mrs. Roy Priest of 1005 East Lake left Friday for Dallas where she will attend the International Toastmistress Club's convention at the Baker Hotel.

Mrs. Priest is enrolled in Toastmistress as a member-at-large in Brownfield. Her last local membership was with the Cavernettes in Carlsbad, N.M., where she was a charter member.



MISS ANN LEMLEY

# Here's Your Opportunity To Join In Our . . .



# JAMAICA JAMBOREE

WE NEED YOUR HELP TO WIN AN ALL-EXPENSE TRIP TO JAMAICA — YOUR PURCHASES OF GE APPLIANCES DURING JULY WILL ENABLE US TO MAKE THIS WONDERFUL TRIP . . . HERE ARE A FEW OF THE MANY VALUES BEING FEATURED!

No Down Payment During This Sale

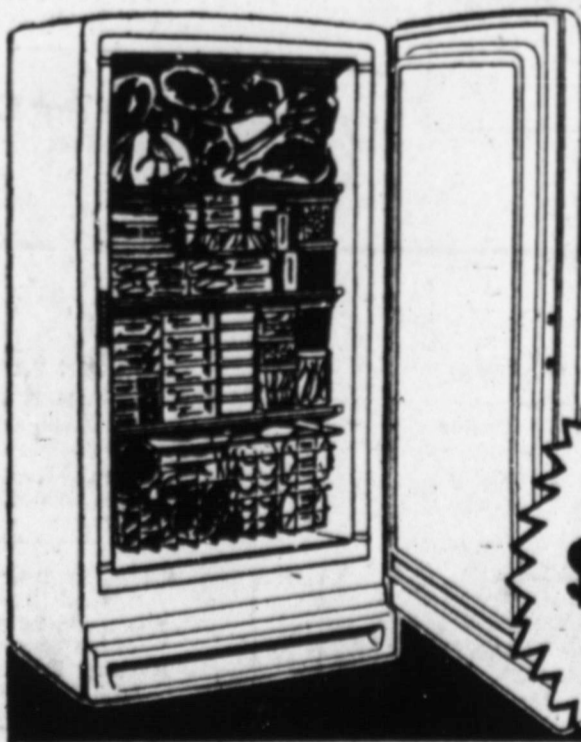
No Down Payment During This Sale

## SPECIAL **LIMITED TIME ONLY** SALE LOWEST PRICES EVER!



# FOOD FREEZERS

TWICE AS MUCH FOOD WITHIN EASY REACH



10 CU. FT.  
MODEL HUX10P  
UPRIGHT  
FREEZER

only  
**\$238<sup>88</sup>**

- BIG 357-LB. CAPACITY
- MAGNETIC SAFETY DOOR
- GLIDE-OUT BASKET



13 CU. FT.  
MODEL HUX13P  
UPRIGHT  
FREEZER

only  
**\$299<sup>95</sup>**

- 454-LB. CAPACITY
- HANDY DOOR SHELVES
- JUICE CAN DISPENSER
- ICE CREAM CONDITIONER



18 CU. FT.  
MODEL HUX18P  
FREEZER

only  
**\$399<sup>95</sup>**

- HUGE 640-LB. CAPACITY
- BOOK-SHELF STORAGE
- SHELVES ON DOOR
- JUICE CAN DISPENSER
- ICE CREAM CONDITIONER
- 8 FULLY REFRIGERATED SURFACES



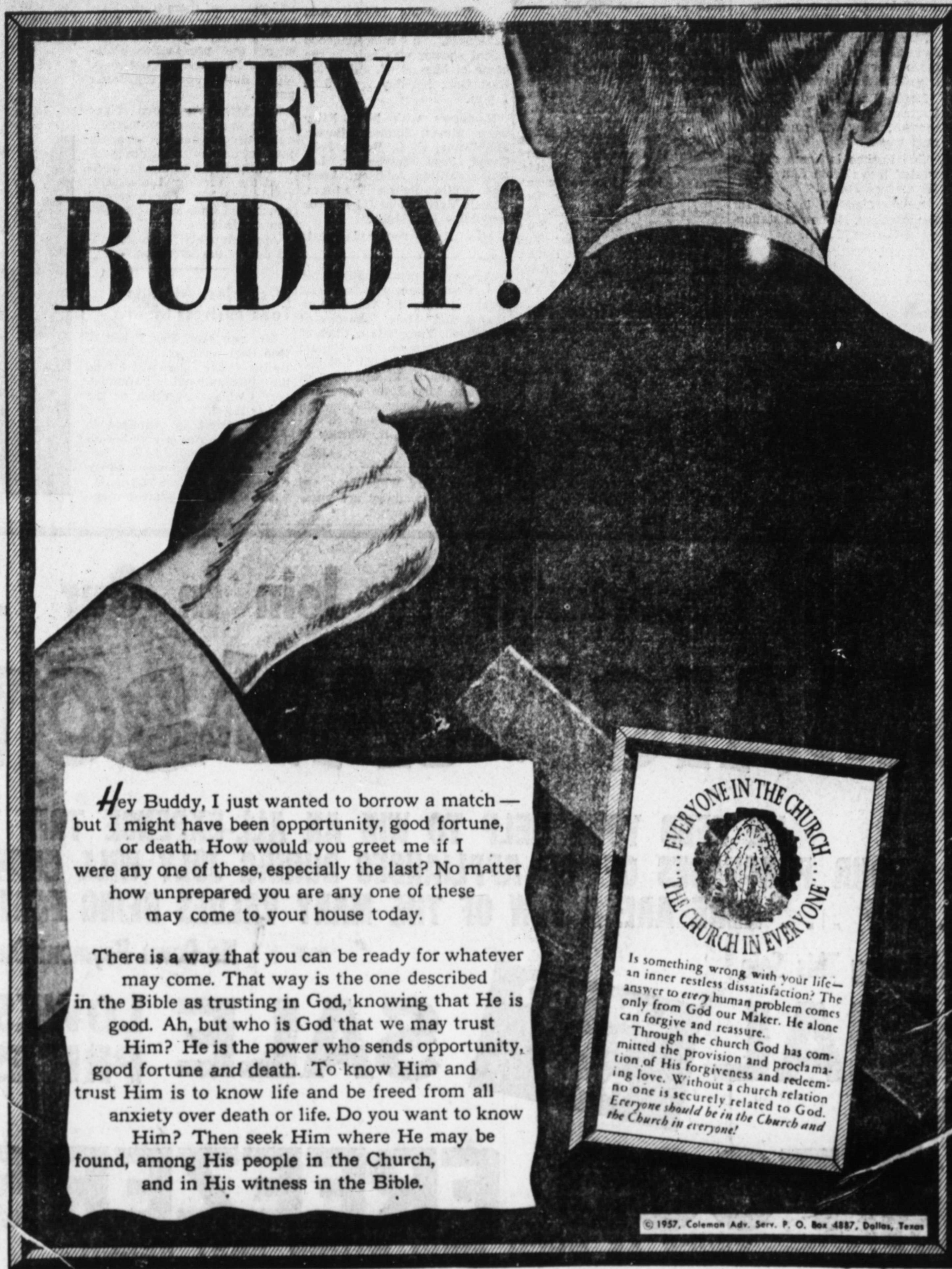
# Gene Gunn Tire Store

Your GE  
Appliance  
Dealer

409 West Main

Phone 3313

# A Family That Prays Together, Stays Together



## HEY BUDDY!

Hey Buddy, I just wanted to borrow a match — but I might have been opportunity, good fortune, or death. How would you greet me if I were any one of these, especially the last? No matter how unprepared you are any one of these may come to your house today.

There is a way that you can be ready for whatever may come. That way is the one described in the Bible as trusting in God, knowing that He is good. Ah, but who is God that we may trust Him? He is the power who sends opportunity, good fortune and death. To know Him and trust Him is to know life and be freed from all anxiety over death or life. Do you want to know Him? Then seek Him where He may be found, among His people in the Church, and in His witness in the Bible.



Is something wrong with your life — an inner restless dissatisfaction? The answer to every human problem comes only from God our Maker. He alone can forgive and reassure. Through the church God has committed the provision and proclaiming of His forgiveness and redeeming love. Without a church relation no one is securely related to God. Everyone should be in the Church and the Church in everyone!

© 1957, Coleman Adv. Serv. P. O. Box 4887, Dallas, Texas

These religious messages are made possible by the above individuals and business firms with the hope of creating a more sincere interest in our churches and a more church-minded community.

Herman's Gin  
Plains Highway

Jack Bailey Chevrolet Co.  
401 West Broadway

Glenwood Homes, Inc.  
Quality Homes

Star Tire Store

South Plains Ready Mix., Inc.

Robert L. Noble  
Insurance & Real Estate

P. R. Cates  
Residential Building

Loyd Moore  
Building Contractor

Harris Flying Service  
Aero Crop Dusting Service

Tim's Service & Safety Lane  
Bear Wheel Alignment—Brake Repair  
—Safety Inspection—

J. B. Knight Company  
Hardware-Furniture-Implements

Barnett Sheet Metal  
& Air Conditioning  
707 Lubbock Road

Crites Service Station  
Complete Service With a Smile

Compliments of A Sponsor Aware of the  
Value of These Important Religious Messages

Bob Graves Magnolia Station  
Bumber to Bumber Service

Tilson's Loans  
Farm & Ranch Loans

Dairy Mart  
James Smith

Brownfield Ditching Service  
Dick Chisholm

Terry County Lumber Co.  
Square Deal For A Round Dollar

Merritt Grocery  
Your Best Food Buy

Farmer's Cooperative Society  
No. 1 Gin  
Leonard White, Mgr.

First National Bank  
Complete Banking Service

Jones Theaters  
Regal-Rialto-Rio—Rustic and Rig Drive-Ins

Furr's Super Markets  
Brownfield, Texas

Modern Steam Laundry  
905 Lubbock Road

H. C. Denson  
Oil and Water Hauling

Gaasch Construction Co.  
Of Brownfield

Higginbotham-Bartlett Lbr. Co.  
Complete Line for Building

Kyle Grocery  
Home of K&S Blue Stamps

Cicero Smith Lumber Co.  
Quality Building Materials

Newton & Webb Implement Co.  
Your Case Implement Dealer

Fair Department Store  
Quality Merchandise

Portwood Motor Co.  
Your Authorized Ford Dealer  
4th and Hill Streets

Goodpasture Grain and  
Milling Co., Inc.  
902 West Broadway

Ross Drilling Co.  
Mac Ross

## Your Church Calendar

**ASSEMBLY OF GOD**  
Rev. Cameron B. Stanley  
10:00 a.m.—Sunday School  
11:00 a.m.—Morning Worship  
8:00 p.m.—Evening Worship

**CALVARY BAPTIST CHURCH**  
Rev. Warren Stowe, Pastor  
9:45 a.m.—Sunday School  
10:45 a.m.—Morning Worship  
7:30 p.m.—Evening Service

**FIRST METHODIST CHURCH**  
Meadow, Texas  
9:45 a.m.—Sunday School  
10:00 a.m.—Morning Worship  
7:30 p.m.—Evening Worship

**ST. ANTHONY'S CATHOLIC CHURCH**  
Rev. Paul H. Lund, Pastor  
9:00 a.m. and 11:00 a.m.—Masses  
8:30 p.m.—Holydays  
7:30 p.m.—First Fridays  
Confessions—Before all masses.  
Baptism—Sunday, after 11 mass  
Catechism—Sunday before masses

**FOURSQUARE GOSPEL CHURCH**  
Rev. R. J. Walls, Pastor  
10:00 a.m.—Sunday School  
11:00 a.m.—Morning Worship  
8:00 p.m.—Evening Worship

**JOHNSON BAPTIST CHURCH**  
Rev. H. H. Gray, Pastor  
10:00 a.m.—Sunday School  
11:00 a.m.—Morning Worship  
7:30 p.m.—Training Union  
8:30 p.m.—Evening Worship

**BROWNFIELD PRIMITIVE BAPTIST CHURCH**  
J. W. Garforth, Pastor  
Meets each second Sunday at 10:30 a.m.  
Also Elmo Edward, each fourth Sunday at 10:30 a.m.

**CHURCH OF CHRIST**  
Wellman, Texas  
9:00 a.m.—Study Period  
10:45 a.m.—Preaching Service  
8:00 p.m.—Preaching Service

**UNITED PENTECOSTAL CHURCH**  
Rev. J. M. Allen, Pastor  
9:45 a.m.—Sunday School  
11:00 a.m.—Morning Worship  
7:30 p.m.—Evening Worship  
8:00 p.m.—Friday—Young People's Meeting

**CRESCENT HILL CHURCH OF CHRIST**  
John McCoy, Minister  
9:45 a.m.—Sunday School  
10:45 a.m.—Morning Worship  
6:30 p.m.—Evening Worship

**SOUTH SIDE CHURCH OF CHRIST**  
Fred Davis, Minister  
9:45 a.m.—Sunday Bible Study  
10:45 a.m.—Morning Worship  
7:00 p.m.—Evening Worship

**CHALLIS BAPTIST CHURCH**  
Oscar Kinsey, Pastor  
Sunday School 10:00 a.m.  
Worship Service 11:00 a.m.  
Evening service 7:00 p.m.

**WESTSIDE BAPTIST CHURCH**  
Rev. S. R. Respass, Pastor  
10:00 a.m.—Sunday School  
11:00 a.m.—Morning Worship  
7:30 p.m.—Evening Worship

**FIRST BAPTIST CHURCH**  
Rev. Jones W. Weathers, Pastor  
9:45 a.m.—Sunday School  
10:50 a.m.—Morning Worship  
7:30 p.m.—Evening Service

**NORTH SECOND STREET CHURCH OF CHRIST**  
10:30 a.m.—Sunday Morning Services  
7:30 p.m.—Evening Services

**IMMANUEL BAPTIST CHURCH**  
10:00 a.m.—Sunday School  
11:00 a.m.—Morning Worship  
8:00 p.m.—Evening Worship

**FIRST PRESBYTERIAN CHURCH**  
Rev. Ralph O'Dell, Pastor  
9:45 a.m.—Sunday School  
11:00 a.m.—Morning Worship  
6:00 p.m.—Westminister Fellowship  
7:30 p.m., Wed.—Prayer Meeting

**FRIENDSHIP BAPTIST CHURCH**  
Elder C. A. Seay, Pastor  
Meet 1st and 3rd Sundays  
11:00 a.m.—Morning Worship  
7:30 p.m.—Evening Worship

**NORTHSIDE BAPTIST CHURCH**  
(Fundamentalists)  
Rev. A. J. Franks, Pastor  
10:00 a.m.—Sunday School  
11:00 a.m.—Morning Worship  
8:00 p.m.—Evening Worship

**CHURCH OF THE NAZARENE**  
Rev. Howard Smith, Pastor  
9:45 a.m.—Sunday School  
10:00 a.m.—Morning Worship  
7:30 p.m.—Church Service

**EVANGELICAL METHODIST CHURCH**  
William Mayo, Pastor  
10:00 a.m.—Sunday School  
11:00 a.m.—Morning Worship  
7:00 p.m.—Evening Worship

**FIRST METHODIST CHURCH**  
Rev. James Tidwell, Pastor  
9:45 a.m.—Sunday School  
10:30 a.m.—Morning Worship  
7:00 p.m.—Evening Worship

**FIRST CHRISTIAN CHURCH**  
Rev. Bill Spreen, Pastor  
9:45 a.m.—Sunday School  
11:00 a.m.—Morning Worship  
7:30 p.m.—Evening Worship

**CHURCH OF GOD**  
Rev. W. E. Mitchell, Pastor  
10:00 a.m.—Sunday School  
8:00 p.m.—Evangelistic Services  
11:00 a.m.—Morning Worship

**GRACE LUTHERAN CHURCH**  
R. L. Young, Pastor  
7:00 p.m.—Sunday School  
8:00 p.m.—Divine Worship

**FIRST BAPTIST CHURCH**  
Meadow, Texas  
9:45 a.m.—Sunday School  
11:00 a.m.—Morning Worship  
7:30 p.m.—Evening Services

**EPISCOPAL CHURCH**  
Of The Good Shepherd  
Rev. Rex C. Simms, Vicar  
8:45 a.m.—Morning Prayer and Sermon  
9:45 a.m.—Sunday School  
Holy Communion 2nd and 4th Sundays.



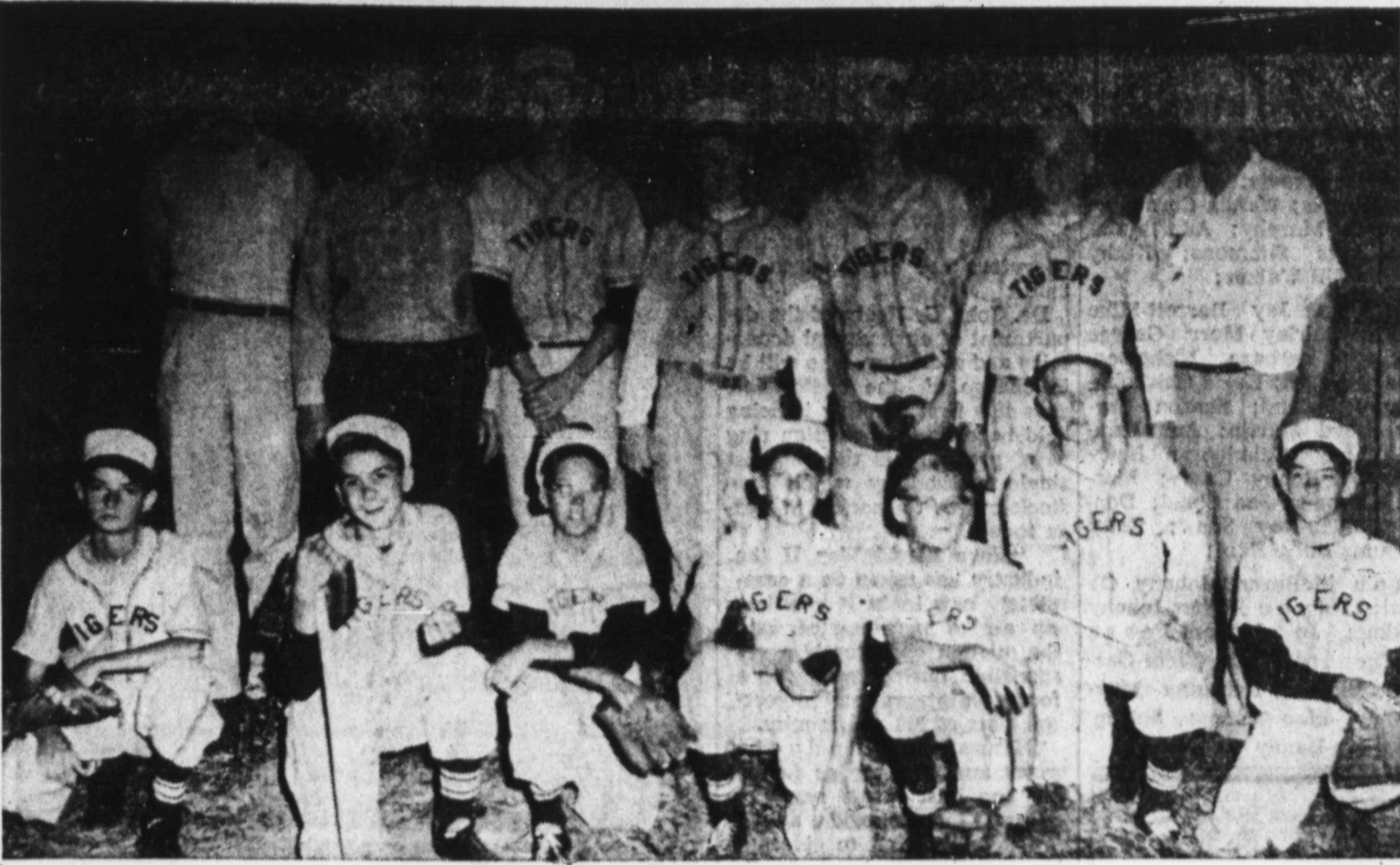
TIGERS—These Babe Ruth Lea first half. Me Roy Jones, Ge

### Accessori

A modern ca the highway a formance, car half of its rate speed in an er Petroleum Pr publication Part of the s p e n t opera More is used sion, rear axle and in overco ance. In a hypothe horsepower c the engine i muffler, air c ributor, all of sary, and an a for combustio sits over th

### Car A

The mo maximum 20 Gall Fiber G Autom 1 Year Look A



**TIGERS**—These youngsters were breathing down the neck of Babe Ruth League leaders as the season neared the end of the first half. Members are, from left front row: Paul Howard, Roy Jones, George Glenn, Jerry Bear, Donnie Raybon, Charles Cook and Don Simmonds. Second row from left: Darrell Lewis (manager), Joe Stevens (coach), Chuck Anderson, Jimmy Hackney, Doug Coppock, Duane Steen, B. M. Coppock (coach). (Staff Photo)

### Bill Walker Begins Special Study Project With Fort Worth Student At Texas Tech

When a son goes to college, he may get a letter from home asking how things are going or if he needs money.

But Jim Durham of Fort Worth got more than that in his first letter after coming to Texas Tech for summer study. His dad wanted to know what he thought about the practical possibilities of scientific phenomenon causing heating and cooling in metals.

For you see, Jim Durham is no ordinary student. He's one of 25 talented high schoolers who are studying physics at Tech in the summer between their junior and senior years.

Young Durham's father, R. D. Durham, is an administrative clerk with Pan American Oil and Gas Co. in Fort Worth. Many times the elder Durham had discussed the effect with James' uncle, James E. Archer, a Pittsburgh physicist and graduate of Tech and Massachusetts Institute of Technology.

But no practical use of the effect in the oil industry came from those talks.

Durham described the process in the letter to his son and ask him to investigate it while at Tech. Jimmy took the problem to J. W. Day, assistant professor of physics, who is in charge of the Tech summer program. Day immediately recognized it as the Peltier effect, a process whereby two unlike metals are joined. When the metals are charged with electricity, a heating and cooling process is effected.

Bill Walker, son of Mr. and Mrs. Guy Walker of 908 East Main, and Charles Bardwell of San Antonio, decided to join Durham in making the Peltier effect their special study project during the summer course.

### Johnson Pushes For More Texas Dams

Texas will not have any water by the year 2000 unless a far-reaching development and conservation project is pushed forward aggressively, Senator Lyndon B. Johnson declared this week.

"We must build more dams—many more dams—in Texas," Senator Johnson said. "We must hold onto our rainfall instead of allowing the water to run off into the Gulf. If we don't develop our water supply and conserve our water resources, the Texas economy will wither on the vine and our State will become a wasteland."

The Senator said he is urging the Senate Appropriation Committee to take action this week on many flood control and water conservation projects in Texas.

"I am pressing for favorable action on projects on the Colorado River," he said. "on the Brazos and Trinity Rivers, on Red River, on the Neches, the Guadalupe and the Sabine. These are projects that will pay for themselves and will return healthy dividends."

Senator Johnson said the 1958 Federal budget proposes a total of only 30 new and resumed water projects of all kinds in the entire country.

"We've got to do better than that," he asserted. "The problem is a giant and we are fighting it with a knitting needle."

Roy Keith Cato, 6-year-old son of Mr. and Mrs. Keith Cato of Meadow, underwent surgery July 1 in West Texas Hospital at Lubbock. He returned home Monday.

### Accessories Drain Half of Car's Power, Publication Reports

A modern car, purring along the highway at optimum performance, can draw on only half of its rated horsepower for speed in an emergency, reports Petroleum Processing, a new publication.

Part of the power has to be spent operating accessories. More is used in the transmission, rear axle, bearings, tires, and in overcoming wind resistance.

In a hypothetical modern 200-horsepower car, by the time the engine is installed, with muffler, air cleaner and distributor, all of which are necessary, and an allowance is made for combustion chamber deposits over the entire driving range, 16 per cent of the engine power has been taken up.

The first bite of the installed engine's power goes to the fan, the generator, and the power-steering pump. The first two have been required for years, and the third is becoming standard equipment because of customer demand.

The basic accessories, together with the installation requirements, use up more than 25 per cent of the hypothetical gross engine power.

In the speed range of the horsepower peak, the available horsepower has thus dropped from 200 to 145. Another seven per cent may be spent in air conditioning.

By subtracting all resistance, at 50 miles an hour, the driver has about 88 horsepower over and above that needed to maintain speed on a level road. He has the most surplus power in the 40-to-60-mile-per-hour range where it is most needed.

As the public currently is supporting the way horsepower is spent in today's cars, the trend will be toward showier cars, with more horsepower-eating devices installed for rider ease and comfort, the magazine predicts.

Dr. and Mrs. T. L. Treadaway and Jane of 602 East Tate are vacationing in California.

Mr. and Mrs. Lester Lockett, Annette and Precious, of Meadow visited their son Norman last weekend in Abilene. The two daughters remained there to spend a week. Norma is expected to bring them home Saturday.

Mr. and Mrs. D. R. Smith Jr., and daughter, Ruby Joyce, of Meadow returned home this week after spending three weeks in Cisco, where he was treated for a rheumatic ailment.

**BIG STEP TOWARD A SECURE FUTURE**

Call your SwL representative  
**W. Graham Smith**  
1202 E. Cardwell Phone 2056  
**Southwestern Life Insurance Company**

## Carload of Water Heaters Arrived This Week... Save at Lindsey's

**Pioneer Lifetime Glass WATER HEATERS**

*The Ultimate in Quality... Dependability... Performance... Economy!*

**A Lifetime of Service—With a 10-Year Warranty**

Leads all others with 3 outstanding improvements—

1. Lifetime Glass Lining — A miraculous new tank lining that is as rust and corrosion resistant as glass itself. Will not crack or chip, outlasts two or more ordinary heaters.
2. Super-Temp Thermostat — Provides super heated (180°) water needed for automatic washers and dishwashers.
3. Safti-Temp Safety Control — Prevents excessive overheating through triple safety control. Prevents boiling or scalding.

20 Gal. Glass Lined Tank	<b>69<sup>95</sup></b>	30 Gal. Glass Lined Tank	<b>79<sup>95</sup></b>
Guar. 10 Years		Guar. 10 Years	

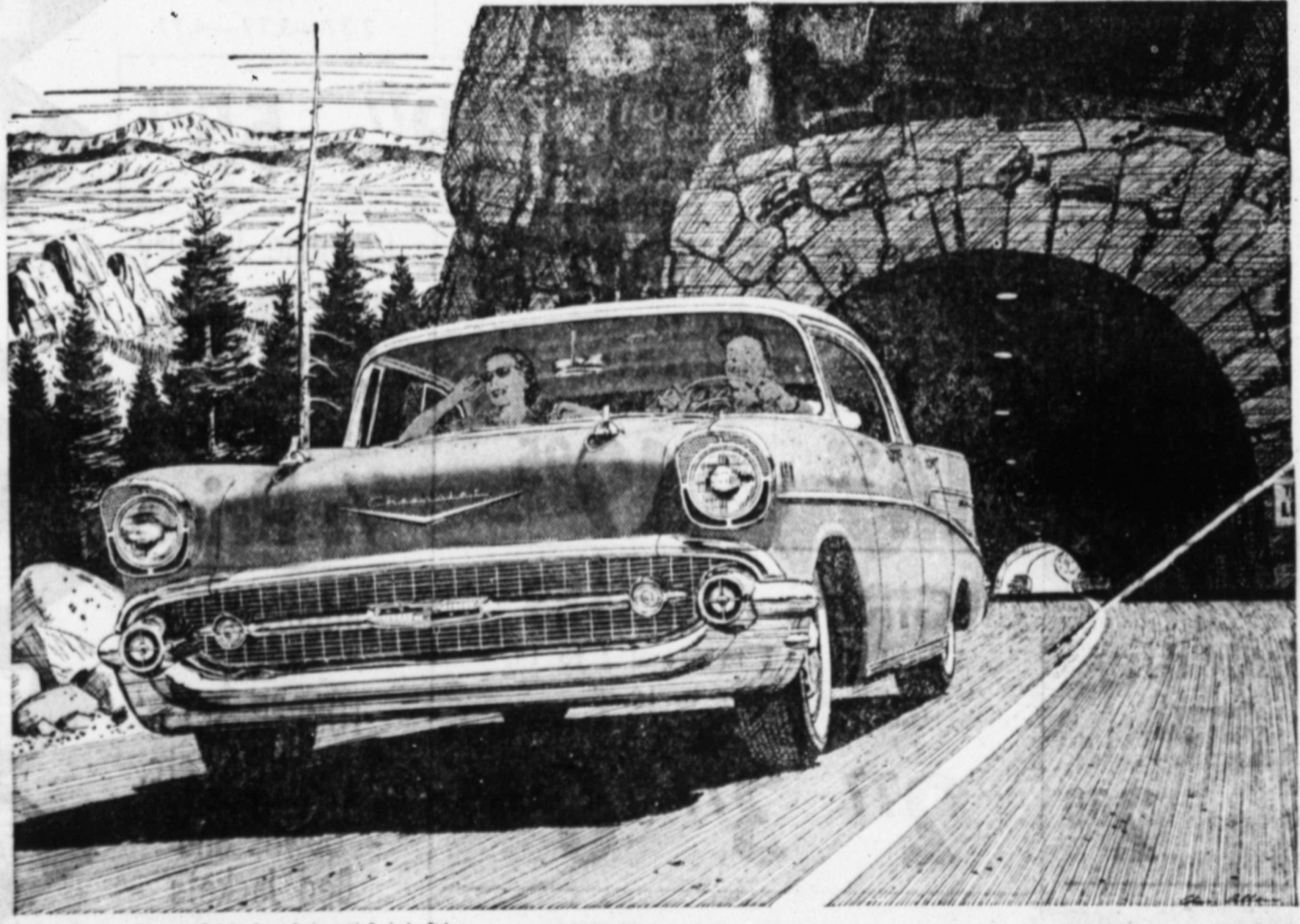
**PIONEER SPECIAL**

The most popular heater for low cost modernization replacement needs. Offers maximum value at low cost with Pioneer dependability and efficiency.

20 Gallon Galvanized Tank With Fiber Glass Insulation. Completely Automatic. AGA Approved. 1 Year Unconditional Warranty. Look At Lindsey's Low, Low Price

**49<sup>95</sup>**

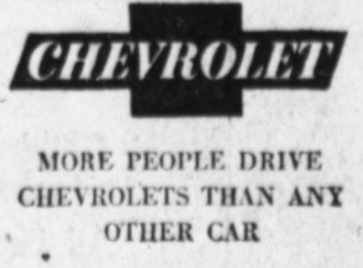
**LINDSEY'S**  
PAINT Auto Parts HARDWARE Sporting Goods



### Here's why Chevy's best showroom is the road!

Because Chevrolet's sleek good looks, its advanced features, are only part of the story. The big bonus is its remarkable *roadability*, the crisp precision handling that has posted an entirely new standard for cars in every price class. You can't read about that... but you can feel it in *one minute* on the road!

Good drivers know roadability is the single thing that means more driving satisfaction for more thousands of miles than anything else. More *safety*, too, for it grants greater stability on curves, greater traction on wet roads, better "bite" under hard braking, more accurate steering. There are reasons for all this, of course: Chevrolet's balanced weight distribution that takes excessive loads off the front wheels, the wide stance of outrigger rear springs, Ball-Race steering, spherical-joint front suspension. Sure, you can admire the sculptured lines in the showroom. But Chevy's a car specifically designed for beautiful motion—you have to *travel* in this one to know just how terrific it is. Try it, this week!



Only franchised Chevrolet dealers display this famous trademark.

See Your Local Authorized Chevrolet Dealer

