

STOCK CROWDER

COLORADO TEXAS

ARIZONA MEXICO NEW MEXICO

Live Stock, Feed Farming and Commerce.

Vol. IV. No. 8.

LAS VEGAS, NEW MEXICO, MAY 7, 1887.

Weekly, \$3 a Year

SOMETHING WORTH ATTENDING.

Grand Series of Public Stock Sales,

CONTINUING THROUGH ONE ENTIRE WEEK,

At the New City Stock Yards, Denver.

GEO. L. GOULDING & CO., Proprietors.

MAY 9TH TO 15TH, 1887.

PROGRAMME:

Fit This in Your Hat and then You Won't Lose the Hat.

- May 9th—Judge Rucker, of Denver, makes his first annual sale of trotting bred horses.
- May 10th—F. G. Babcock, of Hornellsville, N. Y., sells Angus and Galloway cattle from his Brookville, Kansas, ranch.
- May 11th—John DeLatush, of Downey, Iowa, sells Jersey thoroughbreds and grades.
- May 12th—John Borland, of Stratton, Nebraska, sells thoroughbred Herefords.
- May 13th and 14th—Fr. Rockefeller, of Cleveland, Ohio, sell thoroughbred Shorthorns from his Kansas ranch.

In presenting this series of sales to the public, the proprietors have first secured excellent stock, of the best breeding, and now feel that they are offering an attraction worth attending. To parties from a distance we will say that all necessary assistance in loading and shipping stock will be furnished, free of charge. Catalogues furnished on application.

COL. S. A. SAWYER, Auctioneer. **GEO. L. GOULDING & CO.**

"OUR OWN RAISING."



THE SHORTHORN CATTLE CO.

OFFERS FOR SALE, SPRING DELIVERY,

300 HEREFORD and SHORTHORN GRADE BULLS

Address R. J. BISHOP, LUNA, SOCORRO COUNTY, N. M., or
E. B. GODLEY, DALLAS, TEXAS.

MEXICAN LANDS

In large or small tracts.
For information and circular write to

MEXICO AND TEXAS LAND AND CATTLE CO.
EL PASO TEXAS.

TO EXCHANGE FOR LIVE STOCK.

A Large or Small Amount of Desirable Real Estate in the city of
SOCORRO, NEW MEXICO.

Population of Socorro 5,000. Railroad north and south, with branches east and west which are to be extended. County seat. Trading center for large area. Four flouring mills. Two smelters which are being enlarged. Two more smelters and sampling works projected. Schools. Churches. Hot springs, etc.

H. R. HARRIS, SOCORRO, N. M.

W. W. CRAPO,

FLINT, MICHIGAN.

HEREFORD CATTLE,

Of individual merit and excellent lineage; the oldest, largest and best herd in the state. The blood of Lord Wilton, Horace, The Grove, Ed. Hartington, Marquis, and others of equal note.

FOR SALE just now, about sixty grand young bulls, from fifteen to twenty-four months old, also a few very choice imported heifers, and about thirty ones and twos of my own breeding, all at rock bottom prices—in fact no fancy prices asked. Special inducements on car lots to ranchmen. Also a number of farms on easy terms. Address, JOHN W. FOSTER, Manager, Flint, Michigan.

HEADQUARTERS FOR STOCKMEN.

R. P. NEWBY.

ROBT. L. M. ROSS.

NEWBY & ROSS,

Live Stock Commission Merchants.

RANCHES AND REAL ESTATE.

CONTRACTS MADE FOR SPAYING AND LAND SURVEYING.

Representing WHITE & RIAL, Kansas City, Mo.

Over postoffice: EAST LAS VEGAS, N. M.

We deal in all classes of Live Stock. Correspondence solicited.

G. A. FOWLER, St. Mary's, Kan.

E. S. SHOCKEY, Managr., Lawrence, Kan.

EARLY DAWN HEREFORD HERD

CONSISTING OF

200 Head Thoroughbred Hereford Cattle, including the Imported Fowler herd and the well known Shockey & Gibb herd.

1,200 Head High Grade Hereford and Shorthorn Cattle.

FOR SALE.

- 35 Head yearling and two-year-old thoroughbred, imported and homebred Hereford bulls.
- 25 Head thoroughbred, imported and homebred Hereford cows and heifers.
- 300 Yearling grade Hereford bulls, out of grade Hereford and solid red Shorthorn cows.
- 50 Yearling grade Shorthorn bulls.
- 100 Yearling grade Hereford heifers.
- 50 Yearling grade Shorthorn heifers.
- 100 Two-year-old grade Shorthorn heifers, in calf to imported Hereford bulls.
- 75 Two-year-old grade Hereford heifers, in calf to imported Hereford bulls.
- 300 Young grade Hereford and grade Shorthorn cows, with calves at foot or in calf to imported Hereford bulls.

Excepting the imported Hereford Cattle all the cattle above offered are our own breeding.

Write for catalogue to E. S. SHOCKEY, Manager, Lawrence, Kansas.

VISIT THE New Manhattan Clothing Company

501 Main Street, Southeast corner Fifth street, KANSAS CITY, MO.

HARRY C. LEWIS, (formerly of the "Golden Rule," Las Vegas,) President and Manager.

Dealers in Fine Clothing, Hats, Caps and Gents' Furnishing Goods.

Prices The Lowest.

Call on us before buying; same will be to your interest and save you money. N. B. All street cars ^{PASSING} UNION DEPOT stop at our store.

MAIL ORDERS FROM THE SOUTHWEST SOLICITED AND PROMPTLY FILLED.

BANKERS,
 And those doing business with financial institutions, will find it to their advantage to consult this department in which all the leading banks of the southwest are represented.

For a copy of
First National Bank, Las Vegas.
First National Bank, Albuquerque.
First National Bank, El Paso.
 See last page of cover.

Maverick Nat'l Bank,

BOSTON MASS.

CAPITAL, \$400,000
SURPLUS, 600,000

Accounts of banks, bankers and corporations solicited.
 Our facilities for collections are excellent, and we re-discount for banks when balances warrant it.
 Boston is a reserve city, and balances with us from banks (not located in other reserve cities) count as a reserve.
 We draw our own exchange on London and the Continent, and make cable transfers and place money by telegraph throughout the United States and Canada.
 Government bonds bought and sold, and exchanges in Washington made for banks without extra charge.
 We have a market for prime first-class investment securities, and invite proposals from states, counties, and cities, when issuing bonds.
 We do a general banking business, and invite correspondence.
 ASA P. POTTER, President.
 JOS. W. WORE, Cashier.

The City Bank

OF LAS VEGAS.

JOSHUA S. RAYNOLDS, President.
ALPHEUS A. KEEN, Cashier.

CAPITAL, \$30,000.

Transacts a General Banking Business.

ALBUQUERQUE NATIONAL BANK!

Albuquerque, New Mexico.

CAPITAL STOCK PAID IN, \$100,000.

OFFICERS:
JOHN A. LEE, President.
S. M. FOLSON, Vice President.
W. S. STRICKLER, Cashier.

DIRECTORS:
JOHN A. LEE, S. M. FOLSON, E. D. BULLOCK,
W. P. METCALF, HENRY N. JAFFA, C. H. DARR,
M. S. OTTENO.

Does a General Banking Business.
 Interest Paid on Time Deposits.
 Gold dust purchased and advances made on shipments of cattle, gold and silver bullion, ores, etc. Superior facilities for making collections on accessible points at par for customers. Exchange on the principal cities of Europe for sale.
 Stockmen's business a specialty.

San Miguel Nat'l Bank

OF LAS VEGAS,

LAS VEGAS, - - N. M.

Authorized Capital.....\$200,000
 Paid-up Capital.....100,000
 Surplus Fund.....50,000

OFFICERS:
W. M. HADS, Pres. **J. GROSS, Vice Pres.**
D. T. HOSKINS, Cashier.

DIRECTORS:
COLUMBUS MOISE, JACOB GROSS, HENRY GORKE,
A. M. BLACKWELL, O. L. HOUGHTON,
E. C. HENRIQUSS, N. S. ROSENTHAL,
T. H. LAWRENCE, W. M. HADS.

Does a General Banking Business. Drafts for sale on the principal cities of Great Britain and the continent of Europe.

United States Depository.

First National Bank

OF SANTA FE.

Wm. W. GRIFFIN, Pres. **R. J. PALER, Cashier.**
PEDRO PERNA, Vice President.

LA MONTAGNE, CLARKE & CO.

Bankers and Brokers,

42 New St., New York.

E. LA MONTAGNE, JR., N. Y. Stock Exchange.
HENRY CLARKE,
WALLACE B. SMITH,

Refer by courtesy to
 Messrs. E. LA MONTAGNE & SOSS, New York.
 Union Broker Co., Buffalo and New York.
 THE STOCK GROWER, Las Vegas, N. M.

Deposits received subject to sight draft. Interest allowed on balances. All securities dealt in at the New York Stock Exchange bought and sold for investment, or on margin.

C. A. RATHBUN,

—Dealer in—

Boots, Shoes,

LEATHER AND FINDINGS.

Boots and Shoes to Order.

SOLE AGENT FOR M. D. WELLS & CO.

Stock Grower's Trade Solicited.

Bridge Street, West Las Vegas.

DICK DUTCH,

WITH

CLARK & CO.

Hatters,

524 Main Street,

KANSAS CITY, - - MISSOURI.

A complete line of *Stetson's Hats* for stockmen.

Send statement of size worn, and hat will be sent by express, subject to approval.

COOLEY & HUNTER,

Proprietors Livery, Feed and Sale

Stables,

CLOSED CARRIAGES, MOUNTAIN WAGONS,
OPEN CARRIAGES, AND SADDLE HORSES.

CHARGES REASONABLE.

Horses and wagons bought, sold or exchanged. All orders by telegraph promptly answered. We take great care to please owners who board their horses at our stables. Constantly on hand a number of well-bred cow ponies in good condition, and ready for use. They are offered for sale at reasonable prices.

O. L. HOUGHTON,

—Dealer in—

Hardware

Two Stores, East and West Side,

LAS VEGAS, NEW MEXICO.

Fence Wire in Car Lots.

THOMAS JONES,

BREEDER OF

Grade Hereford Cattle.

For sale, two car loads Grade Bulls, Yearlings and 2-year olds.

Farm 15 miles from Denver, on D. & R. G. railroad. P. O., Sedalia, Douglas county.
 Reference: J. A. Cooper, German National Bank, Denver.

EDGAR B. BRONSON, President.

WM. S. HILLS, Vice-President.

WM. H. AUSTIN, Cashier.

EL PASO NATIONAL BANK

OF TEXAS.

No 3608.

PAID IN CAPITAL,

\$150,000.00

STOCKHOLDERS:

CLARENCE KING, WM. H. AUSTIN, GEO. TEW,
JAMES D. HAGUE, GEORGE B. ZIMPELMAN, EDGAR B. BRONSON,
WM. S. HILLS, MARK MARK, W. COFFIN.

General business transacted; collections promptly made and remitted; foreign and domestic exchange bought and sold; special facilities offered on Mexican business. Customers are offered the convenience, free of cost, of our Herring's safety deposit boxes in fire-proof vault.

CORRESPONDENTS:

National Bank of the Republic, New York; Bank of California, San Francisco; Bank of Commerce, St. Louis; National Bank of Kansas City, Kansas City, Missouri.

HUNTER, EVANS & CO.

Live Stock Commission Merchants

NATIONAL STOCK YARDS, St. Clair Co., Ill.

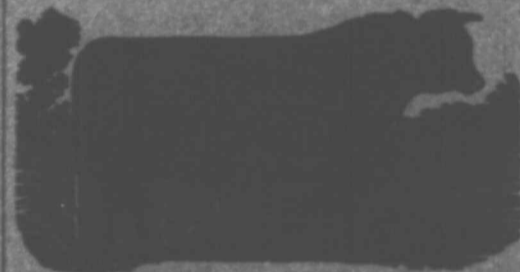
KANSAS CITY STOCK YARDS, Kansas City, Mo.

UNION STOCK YARDS, Chicago, Ill.

Fifteen years active experience in live stock commission business. Markets reports regular and special, and all other information incident to the business, will be furnished free by each house.

Parties having stock to market, in large or small numbers, will do well to confer with us before making arrangements.

Each office in charge of a member of the firm. Correspondence always has prompt attention.



WM. ROBERT

Will have for sale for

SPRING DELIVERY

A number of fine

GRADE SHORTHORN BULLS.

Raised on the Pecos river from the well improved and celebrated former "Chisum Herd." This stock is known to be first-class. Address

WM. ROBERT, ROSWELL, N. M.

A. D. HUDNALL,

West Las Animas, Colorado,

IMPORTER AND BREEDER OF

POLLED ANGUS

AND

Hereford Cattle.

Has sold in New Mexico during the past season over 1,000 head of grade and thoroughbred bulls, and would refer intending purchasers to any of my customers for the quality and condition of the cattle furnished.

I am prepared to furnish, at any time, thoroughbred or grade bulls, guaranteed of the best strains, and, being Colorado raised, ready for immediate service. The cattle from my herds, at the Albuquerque fair, won all first prizes. Correspondence solicited and inspection of herds invited. Full particulars and pedigrees furnished.

I will Contract now for Spring Delivery. Car-load Lots a Specialty.

J. C. LEARY & CO., Agents, Las Vegas.

PRINTING

The Stock Grower is headquarters for all kinds of Printing. A specialty is made of stationery for ranchmen. On receipt of \$5, we will send to any address, post-paid \$50 each of nicely printed letter heads and envelopes.

STOCK GROWER

COLORADO TEXAS
ARIZONA MEXICO NEW MEXICO

Live Stock, Feed Farming and Commerce.

Vol. IV. No. 8.

LAS VEGAS, NEW MEXICO, MAY 7, 1887.

Weekly, \$3 a Year

Contents.

Editorial Notes.....	1
Value of Ranges.....	2
The Burton Palace Cattle Car.....	2
The Firm of White & Rial.....	2
Kansas City Market.....	2
New Mexico Cattlemen.....	2
Frank Leslie's Cowboy.....	3
Effect of Loco on Horses.....	3
From All Points.....	4
A Big Four Iniquity.....	5
What a U. S. Patent Means.....	5
Confidence in Cattle.....	5
From the Northwest Territory.....	5
Southwest Stock Notes.....	5
Horse Notes.....	7
The Texan Horse.....	7
Cattle on Shares.....	7
Foreign Meat Market.....	8
Refrigerating and Shipping of Meat.....	8
Frozen Meat.....	8
Personal.....	9
Business Pointers.....	9

THE article in last week's issue of the STOCK GROWER entitled "Mr. Brooks' Plan," should have been credited to the Fort Worth Journal.

THE Chicago live stock anarchists may as well make up their minds to the fact that pleuro-pneumonia, which is raging among the cattle in Cook county, will be extirpated and by the most heroic methods, whether they wish it done or not.

THE agitation of pleuro-pneumonia matters has brought about a decided action by the authorities at Chicago. The disease will be extirpated there and the greatest center in America at the present time for bovine plague cleansed of the last vestige and germ of cattle evil.

GOVERNOR LESLIE, of Montana, has proclaimed quarantine against Texas cattle in Illinois, New Jersey, New York, Pennsylvania, Maryland, Delaware, District of Columbia, Virginia, Vermont and Texas. Texas will not protect herself therefore the world at large must keep an eye on the wanderings of the Texas cow.

Shippers of cattle to Kansas City are loud in their denunciations of the hay supplied at the feeding points by the A., T. & S. F. company. It is said to be so badly blue-moulded that stock are extremely unwilling to eat it. This is an evil which must be remedied at once in justice to shippers, and we take this opportunity of bringing the matter to the notice of the company.

AN eight page live stock paper called the *Cattle Grower and Flockmaster*, edited by D. E. Bentley, comes to the STOCK GROWER, from El Paso, Texas. Colonel Bentley gives his readers an excellent journal in the initial number. It is well edited, handsome in appearance and contains a liberal amount of advertising matter. The STOCK GROWER welcomes this vigorous ally to the range newspaper field and feels assured that its career will be a successful one so long as Colonel Bentley remains at the helm.

MR. JOHN W. POE, having resigned the office of cattle inspector, Mr. J. C. Lea, of Roswell, succeeds him, and W. M. Atkinson will be inspector for the point of entry at the place where the Pecos river crosses the south line of the territory. Persons in charge of cattle desiring to enter the territory at the aforementioned point will call on Mr. J. C. Lea or W. M. Atkinson, who will be at that point.

THE members of the Canadian River Live Stock association in their annual meeting, the proceedings of which will be found elsewhere in this issue, squarely met some of the evils connected with their business on the range, and in a series of resolutions adopted say just what will be done by the association to correct said evils. The resolutions cover the ground pretty fully, and there is but little doubt that the remedies proposed will be carried into effect. The stand taken by this association is an admirable one as related to the bull question, the carrying of fire-arms and the misuse of horse stock, and the unnecessary running of cattle, and it can profitably be adopted by cattlemen in all parts of the range. Progression for their business and the best business management seem to mark the work of the members of the Canadian River Live Stock association. In other words, these gentlemen propose to work the cattle industry for profit and not for buncombe.

THE Canadian River Live Stock association now stands in the front rank as one of the most efficient live stock organization in the southwest. It is showing by its work what a well equipped association of cattlemen can accomplish for the best interest of its membership and indirectly for the highest good of the cattle industry of the country. THE STOCK GROWER has watched the efforts of this association with considerable pride, for this paper has always maintained that an active, harmonious local association could do much to increase the value of its investments as well as afford nearly complete protection to the rights and property of those who run stock on the open range. In this connection, also we desire to speak of the faithful and intelligent work done for the association by the retiring president, Mr. S. K. Sydes. Mr. Sydes can feel that by his careful, conservative oversight of the affairs of the association, together with his zealous work, the association has been brought to its present excellent standing. Though he was urged to fill the position of president for the third time by the unanimous expression of the members, he felt that as he was not a believer in "third terms" he would lay down the duties of the office

and thereby impress some other gentleman of talent and capacity into service. The association therefore elected Judge S. E. Booth to the position, who is considered to be level-headed in all things and of fine executive ability. The Canadian River association is splendidly equipped in the officers elected and its executive committee for maintaining during the year the glory of a first class live stock association.

THE scheme for the better regulation of the cattle industry, which was outlined in THE STOCK GROWER of last week under the heading of "The American Cattle Trust," has been under contemplation by leading cattlemen of the country for some time. The necessity for some plan to be adopted whereby the control of the cattle business could be kept in the hands of the producers themselves has been apparent for some months. The feature of the plan which is meeting with considerable favor from practical stockmen is that relating to the throwing together of a number of ranges under one management and thus reducing the expense of individual management of the same. This part of the program was discussed as long ago as last fall, and a number of cattlemen in the north, headed by John Simpson, of the Continental Cattle company, decided to pool their herds this summer and form one of the most powerful cattle companies in America. The many good features of a pooling of interests of this nature are so clear THE STOCK GROWER will not take the space to enumerate them. It is considered, however, that by combining the ownership of the various ranges and the driving of the cattle to those sections best adapted to grazing in summer, and changing the grazing ground in winter to other localities without interfering with any other stockman's rights, the value of the range will increase twenty-five per cent., and that the entire business can be conducted in a more profitable manner than is possible under individual ownership.

AMERICA is simply driving out at one end of the pasture a single animal affected with pleuro-pneumonia, to be destroyed, while a half dozen brutes half dead with the plague, are being driven in at the other end, so long as the United States places no prohibition on the importation of foreign cattle to our shores. It is known the world over that the British Isles are rotten with pleuro-pneumonia. Yet the secretary of the treasury hesitates to do what the law distinctly says he must do, and what the almost unanimous voice of the cattle raising industry of America has asked him to do. Shut off all foreign importations until the disease is extir-

pated in America, then the process of "stamping out pleuro-pneumonia" can be carried on in this country with some assurance of success. This is not the time for the government to listen to the wail of traders and selfish journals like the *Breeders' Gazette* and a few others published in the interest of speculators and bull peddlers, and which denounce the honest efforts of western men and newspapers that are anxious to get at the bottom of the difficulty. The fight is on, and the enemies of the cattle industry who temporize with the great evil of modern times and refuse to aid in the proper and herculean endeavor to drive out pleuro-pneumonia from our herds must go to the wall.

VALUE OF RANGES.

THE hard times of the cattle business may be said to have struck bottom in 1886. Prices of cattle were last year lower than they had been for years, and the cry went up from the owners of cattle: "When will this thing end?" It is not foolish or untruthful to assert that the worst is now over, and that prices are on the upward road. This is proven by the slight advance in beef values in the markets of the country, which advance has steadily held its own since January 1.

THE cattlemen have nobody to thank for the slight advancement in prices. It is difficult to tell whether the beef prices of this fall will hold better than those of the same season of 1886. This, in a measure, depends on the cattlemen of the grass feeding area themselves. To avoid crowding the market is one good idea, and to get as many steers to feeders direct is another good point.

ONE cheering thought has helped much to keep up the spirits of the average range cattle owner during the past three years of adversity in the stock business and that is that his range and land property have been steadily increasing in value. This is particularly true in the southwest and applies to good, well located ranch properties. A poor ranch can never be worth much in any country. That ranch property has increased in value is shown by the great difference between prices asked now and three years ago, and by sales that have been made during the past year. It is true that there has not been the same demand for such properties as prevailed during the "booming period," which is but natural. The same demand will come again when "things come our way once more."

MANY events and changes go to show why land values are constantly advancing, to say nothing of the past year's boom in real estate throughout the United States which might reasonably be expected to

Increase the value of even ranch properties. The president's order removing cattlemen from the Indian Territory cut off a big slice of available range country and drove the herd owners from that section to seek grazing locations in Colorado, Wyoming, New Mexico, Arizona and Texas. The wonderful settling up of western Kansas by the farming element has caused many of the ranchmen of that part of the state to "pull up stakes and leave." Indeed, in that part of western Kansas two years ago where the cowboy and coyote, the cattle and horse alone populated the plains, to-day is covered with the long, straight furrow of the agriculturist and the numerous homes of the "men with hoes" and their families. Barbed wire fences now divide the country into one hundred and sixty acre patches and the range cattle breeder has gone west.

The same story may be told of a large part of western Texas. Not discouraged by the droughts and dryness the Texas "nester" has steadily pursued his course toward the Pacific, and with his family and dogs made things too crowded for the profitable breeding of range cattle. Into the Panhandle the nester is pushing, and the range grazing of the Lone Star state is constantly becoming more circumscribed.

All of these things go to prove that well watered ranch properties in New Mexico and Arizona are steadily advancing in value, even if buyers are not at present clamoring for the well watered tracts in these territories. The day will come, before THE STOCK GROWER has quite fulfilled its mission, when ranchmen will say: "I do believe that I have made as much money out of that land of mine as I did out of the cattle."

The Burton Palace Cattle Car.

A shipment of cattle from Engle, N. M. to Kansas City, was quite recently made in Burton cars, fourteen being used to accommodate the stock, eighteen steers being loaded to the car. The train pulled out of Engle at 7 p. m. on Friday, April 29th, and reached Las Vegas at 1 p. m. on Saturday. A short stop of two hours was made there to feed and water and then the cattle train chased up the eastern bound express.

On viewing the cattle at Las Vegas, your correspondent, who accompanied the train, was struck with the clean and quiet appearance and contented look borne by the animals, which contrasted very favorably over shipments made in the common, old-fashioned stock cars at present in use here. The justly claimed advantage of superiority for the Burton car lies in the fact that cattle can eat, drink, and rest to perfection while traveling at passenger speed.

Leaving Las Vegas at 3 p. m. we reached Coolidge, Kansas, at 10 a. m. on Sunday. After a stop of two hours to feed and water we pulled out, reaching Emporia at 4 a. m. Monday, whence, having fed 100 pounds of hay per car, we rolled into Kansas City at 10 a. m. The entire run including stops from Engle to Kansas City was made in sixty-one hours, a distance of 1,100 miles. The cattle came out of the cars at Kansas City in as good shape and as clean as when loaded at Engle. They were estimated by such experienced men as Harry Hill, J. W. Vergin, James Nabors and others, to weigh 950 pounds at the Engle stock yards, but the average weight on the stock yard scales at Kansas City was 956 pounds, showing by practical illustration that the Burton stock car will save all shrinkage. The cattle sold for 26 cents per 100 pounds more than if they had been shipped in the common stock car, thereby completely offsetting the extra charge for use of this car. Several feeders at the Kansas City stock yards expressed their decided preference for buying cattle that had been shipped in the Burton cars.

The extra charge from Engle was \$26 per car. Had the cattle been shipped in

JAMES H. CAMPBELL,
GEORGE W. CAMPBELL,
D. L. CAMPBELL,

JAMES H. CAMPBELL & CO.

LIVE STOCK COMMISSION MERCHANTS,

For the Purchase and Sale of Cattle, Hogs and Sheep.

ROOMS 23 and 24, EXCHANGE BUILDING, KANSAS CITY STOCK YARDS.

CONSIGNMENTS SOLICITED.

Correspondence Promptly Attended to, and Market Reports Furnished by Mail or Wire on Application.

box cars the shrinkage would not have been less than 100 pounds per steer, which, taken into consideration along with the abuse and fevered condition of the stock engendered by the use of common cars, would make a reduction in net value on the steer of \$6.43. This is proof positive of the utility and benefit rendered by the Burton car, to say nothing whatever of the time saved in the long haul.

NEW MEXICO CATTLEMEN.

Annual Meeting of the Canadian River Stock Association.

LIBERTY, N. M., May 2, 1887.

To The Stock Grower:

The adjourned annual meeting of the Canadian River Live Stock association convened at this place today at 10:30 a. m. with President S. K. Sydes in the chair.

The secretary, Mr. E. D. Bullard, being absent, Mr. L. S. Rogers was chosen to act in his place.

There were present the following named members, viz: S. K. Sydes, L. S. Rogers, S. E. Booth, K. Ritter, M. Slattery, G. O. McCrohan, H. Kohn, W. R. Chadbourne, F. Carpenter, J. D. Williams, R. Irminger, Juan Delgado, W. S. Lackey, D. G. Fritzen, J. E. Fritzen, Frank Dale, E. Deweese, J. McLeod, H. R. Trask and Jos. Waddingham.

The minutes of the previous meeting (April 1) were read, and with slight correction approved.

Messrs. John Arrington, N. L. Winston and Richard Steele applied for membership and were elected.

The secretary and treasurer's reports were read and approved; also report of the executive committee. These reports showed the finances of the association to be in a decidedly healthy condition, and that all expenses for the past year had been met by an assessment of one cent per head on the cattle and horses represented by the association.

The president made some remarks touching several interests of the organization, after which on motion of Mr. W. S. Lackey the following members were appointed as a committee to nominate officers for the ensuing year and instructed to report at the assembling of the meeting at 2 p. m., viz: Messrs. W. S. Lackey, M. Slattery, Frank Carpenter, J. E. Fritzen, Howard Kohn, W. R. Chadbourne and R. Irminger. On motion of K. Ritter a committee on resolutions, recommendations, etc., was appointed and instructed to report at the afternoon session. The chair appointed the following members to act on this committee, viz: Jos. Waddingham, Geoff. O. McCrohan, Jas. McLeod, S. E. Booth, J. D. Williams, E. Deweese and K. Ritter.

On motion of Judge Booth the meeting adjourned till 2 p. m.

AFTERNOON SESSION.

The meeting convened at 2 p. m. with the attendance about the same as the forenoon session.

Mr. J. D. Trusty applied for admission to membership in the association, and was duly elected.

The committee on nominations reported and seconded the following named persons for election as officers of the association for the year, viz:—

President, S. E. Booth; vice-president, L. S. Rogers; secretary and treasurer, E. D. Bullard.

Executive committee:—Jos. Waddingham, Geoff. O. McCrohan, J. E. Fritzen, K. Ritter, S. K. Sydes, John Arrington, Howard Kohn and J. D. Williams.

The report of the committee was received, and under a suspension of the rules the nominees were elected.

The committee on resolutions reported and the following among others were discussed and adopted by the meeting.

Resolved. That this association condemns the action of Governor Ross in pardoning notorious horse and cattle thieves after said parties had been fairly tried and duly convicted of their crimes at great expense to the territory and the various cattle associations within its borders.

Resolved. That the attention of members of this association is called to the question of bulls. It is known that a number of bulls have been turned upon the range which do not come up to the standard of quality aimed at by this association. It is also believed that a shortage of bulls exists on the ranges covered by this association; and all owners of cattle who are known to be remiss in furnishing their full quota, should be dealt with according to the laws governing such cases.

Resolved. That all parties turning loose cattle in this section should first own or legally control sufficient water for same.

Resolved. That we condemn the abuse of stock and recommend the captains of round-ups to see that the cattle are handled with all possible care in driving, working, etc.

Resolved. That in so far as the laws of the territory prohibit the carrying of firearms, the members of this association, as law abiding citizens, will assist to the extent of their ability in helping to carry out the same, and that we will not countenance or employ any persons who persist in carrying firearms contrary to the law, nor permit such to work with our wagons.

A permanent round up committee for the year consisting of Messrs. Waddingham, McCrohan, Carpenter, Sydes and George C. Chadbourne was elected, and it was recommended that the executive committee delegate its authority in the regulating of time and manner of range work, appointing round-up captains, etc., to this committee.

After transacting some minor items of business the meeting adjourned.

MEETING OF EXECUTIVE COMMITTEE.

A meeting of the executive committee was held immediately following the adjournment of the preceding meeting, the following members being present, viz: Messrs. Booth, McCrohan, Sydes, Arrington, Rogers, Ritter, Fritzen, Kohn and Waddingham.

S. K. Sydes was elected chairman of the executive committee for the year, and Mr. L. S. Rogers secretary pro tem.

Various bills were presented and ordered paid.

The secretary was instructed to notify certain members that in case their association dues, assessments, etc., were not paid within sixty days from date of such notice, their names would be dropped from list of membership.

The secretary was instructed to publish a standing reward of \$200 for the arrest and conviction of anyone stealing cattle or horses from members of this association.

The recommendation made at the association meeting that the executive committee delegate full authority to round-up committee to plan and govern all range work for the year was acted upon and power asked for granted.

A communication having been received from the Watrous association, evincing a desire to pool with the Canadian River association, in the appointment of inspector at Kansas City, the secretary was instructed to correspond with the proper officers of the Watrous association, and signify the willingness of the Canadian River association to agree to said proposition.

After some further discussion of association business the meeting adjourned.

NOTES.

The plan of general round up work of the Canadian River association, with date, etc., of same will be published in THE STOCK GROWER issues of May 13 and 20.

It is now the opinion of those having the matter in charge that the hunt will begin at Texas line working west about

Union Stock Yards, Chicago, Ill.
Kansas City Stock Yards, Kansas City, Mo.
National Stock Yards, East St. Louis, Ill.

June 1st, but for certain reasons it is not possible to advertise a fixed date.

Dave Fritzen of the Alamo Cattle pool, was thrown from his horse on Monday and received a painful fracture of his collar bone. He has been taken to Las Vegas for treatment.

The Firm of White & Rial.

White & Rial, a live stock commission firm in Kansas City, and represented in the southwest by Newby & Ross, of Las Vegas, are too well-known to the readers of this paper to require identification on our part. They are surely leading the way on top sales of New Mexico cattle this season, as a glance at our market columns will demonstrate. Their advice to their representatives point out a constantly increasing volume of business and along with it the satisfaction of having formed business relations with their patrons of a most agreeable nature, which proves that they are wholly trustworthy in handling all kinds of live stock. Always alive to the fact that true merit finds its own reward, they have built up a magnificent business and are recognized far and wide as true criterions of sterling integrity and honest worth.

R. C. White, a man "white in name and nature," is one of the patriarchs of the Kansas City stock yards, and his partner, Sam. T. Rial, a "real," ideal salesman. Taken as a firm, or individually, they constitute a pair of men hard to down on a knowledge of their business.

Kansas City Market.

A brief review of the week's market in Kansas City will show that New Mexico cattle have gone well to the front among sales of grass-fed stock. Half-breed steers, and also those not so highly graded, when fit for the block, have brought the exceedingly good prices of \$3.80 and \$3.90. 122 head of Alcock's cattle, sold by White & Rial, weighing 980 pounds, went at the former price and twenty-two head of Hyde's cattle, sold by the same house, brought \$3.90. The average weight of Hyde's whole bunch was 835 pounds, and average price \$3.45. The other part of Alcock's cattle, that were handled by the Fish & Keck Co., sold at \$3.60.

The report was in circulation last week that W. A. Stinson had been killed by Kiowa Indians in the territory. The *Stock Journal* declined to give currency to such a report without some confirmation, and now it is happy to announce to W. A.'s friends all over Texas that he is the liveliest man in the state.—*Fort Worth Journal*.

Theodore Baker, was hanged in the Las Vegas jail yard on Friday the 6th instant, a few minutes before 4 p. m. He was cheerful and game to the last and left the world with "Goodbye boys" and "Let her go," on his lips.

Prices of Cattle in Texas.

The following can be relied upon as very nearly correct:

Central Texas yearling heifers \$6 per head.
Central Texas yearling steers \$7 per head.
Central Texas two-year-old heifers \$10 per head.
Central Texas two-year-old steers \$11 per head.
West Texas yearling steers \$8.50 per head.
West Texas yearling heifers \$7.50 per head.
West Texas two-year-old heifers \$11.50 per head.
West Texas two-year-old steers \$12.50 per head.
Panhandle yearling steers \$10 to \$13, according to breeding.
Panhandle two-year-old steers \$15 to \$20, according to breeding.
Timber raised East Texas cattle not quotable; no demand whatever, but prairie-raised East Texas and Southern Texas raised yearlings, are selling at as good figures as those raised in Central Texas.—*Fort Worth Journal*.

To TA
In
paper
boy's
script
tende
its m
ern re
ment
sure.
We
Spre
board,
where
army
pare f
sists o
ranche
the rai
winter
snow l
ment
they fi
which
and di
their r
eyed a
found
erty of
they a
er's B
If
deck
ican
not
range
"Ran
ists e
Lesli
to giv
we to
he m
Qu
The
te wa
to tra
found
people
from t
was
time,
brand
they a
hate
terti
wade
than
in an
brand
deter
hows
sters
each
Th
don't
the a
heine
be fi
just
the ar
Ranc
ranch
own
Lesli
gath
there
Socie
while
are
let h
to av
Cr
note
of br
auth
end
of la
tion
slang
to i
hood
we s
the c
hond
hims
boys
rect
from
acce
more
jaqu
tion
the c
is co
betri
s the
bust
mecc
Th
The
days
sleep
night
stam
and a
types
The
bus e
dolla
dise c

Frank Leslie's Cowboy.

To The Stock Grower:

In Frank Leslie's *Illustrated Newspaper*, April 9th, under the caption "Cowboy's Work and Ways," is a distorted description of cowboy life as seen through tenderfoot spectacles. For the most part its many errors are amusing to the western reader, but some of its broad statements, not founded on fact, deserve censure.

We quote:

Spring on the plains is later than along the seaboard; but it is pretty well established everywhere by the 1st of May, and then the valiant army of cowboys, from Montana to Texas, prepare for the great annual round-up. This consists of herding together and bringing into the ranches the cattle which have been turned loose on the ranges to forage for themselves during the winter. The animals do well enough, until the snow buries the bunch-grass, and takes the nutriment out of the tall herbage of the prairie. Then they freeze and starve by hundreds, while those which survive to be "rounded-up" in the spring, and distributed to their proprietors, according to their respective brands, are "slab-sided," "hungry-eyed" and wild. Formerly, all unbranded cattle found wandering on the ranges became the property of the cowboy who brought them in. Now they are sold, and the money goes into the Rancher's Society.

If the writer would crawl the hurricane deck of a mustang and inspect New Mexican ranges (without spectacles), he would not find any "hungry-eyed, slab-sided" range cattle this spring, sure. As to the "Rancher's Society," no such society exists except in the prolific fancy of Mrs. Leslie's special pencil-shower, sent west to give the world an incorrect idea of western matters. We charitably suppose he means Stock Growers' association.

Quoting again:

There are thousands of head of unbranded cattle wandering on the range. If there were any way to trace the ownership of these strays it would be found that nearly all of them belonged to poor people. Nearly every settler coming in a wagon from the east brings with him from five to ten cows. The emigrant finds a locality that suits him, and stakes out his homestead. He doesn't brand his cattle, for the reason that unbranded cattle are worth \$3 more per head on account of the hide. They increase, and in a year or so the settler has quite a herd of unbranded cattle. They wander off, or get stampeded, and he cannot trace them. He couldn't claim them if he found them in any one's possession, because they bear no brand, consequently his little herd become wanderers, and are finally taken up by the cowboys. Every large cattle owner has his own registered brand, with which the calves are stamped each season.

This is rich. Poor little innocents, who don't brand cattle because unbranded cattle are worth \$2 more per head, how heinous the wrong that their cattle should be finally taken up by the cowboys! But just above it is stated that unbranded cattle are sold and "the money goes into the Rancher's Society." Now in cow countries rancher and granger are accepted as synonymous terms, so we will even let Mrs. Leslie's young man make the cowboys gather unbranded cattle and let the money therefor go to the Rancher's (grangers) Society. As to the registered brands with which the calves of large cattle owners are "stamped" each season, we will even let him "stamp" them and sacrifice truth to avoid iteration.

Criticising further we are pleased to note that he spells *bronco* properly instead of *bruncho* for which there is no dictionary authority. Speaking of the swivel on the end of a rope he calls it "houdoo" instead of *honda*. Houdoo is probably a corruption of hoodlum or voodoo and in cowboy slang means "to treat roughly, to swindle, to intimidate, anything outlandish, a hoodlum, a swindle, any lawless act." Now we submit that a man who does not know the difference between a houdoo and a honda, a swindle and a swivel, is a houdoo himself, utterly unfit to write up "Cowboy's Work and Ways." "Cuerto" is correct Mexican for quirt, and is derived from *cuerdo*, rawhide. "Hackamore" is accepted Americanism for what should more properly be written in Mexican, *jaquima*. Pinto is the accepted abbreviation of pintojo. "Riata," for a wonder, is the correct diminutive of *la riata*. "Haze" is correct cowboy slang. On "savvy" he betrays his ignorance of the Mexican *sabe*. "Lical" is good enough. "Bronco-buster" goes. On "macarte" he errs, it is *macarta*.

The following will pass:

The round-up keeps the men on the prairie for days and weeks together. They camp, eat and sleep under the open sky, watching their herds night and day, chasing stragglers, heading off stampedes, and experiencing all those hardships and adventures which develop some of the finest types of physical manhood in the world.

The cowboy is necessarily a hard worker, and his earnings do not average over thirty or forty dollars a month, with his "anding," during the five or six months of the year which give him em-

ployment at his regular occupation. His outfit is his pride, and makes a large gap in his season's earnings. As a general rule, the stock saddle, modified from the old style Texas tree, is used by the common riders, fancy men and "bronco-busters" preferring the California saddle, with only one cinch—a "centre-fire," as it is called. For heavy work the back cinch of the common saddle is useful, keeping the tree from working up on the horse's withers and giving the horse a better grip when he throws himself back on his haunches to stop a cow; but for riding the single cinch is more springy, and is for this reason infinitely preferable for riding pitching horses. It must not be supposed that because the cowboy is a rough-looking customer he has not his own ideas about elegance. He will spend a month's wages on a pair of silver-mounted spurs, give seventy dollars for a stamped leather saddle, any sum he pleases for a horse-hair bridle, if he is not an expert at working hair himself, and his *chapparajos*, or leather overalls, are often covered down the front with seal or some other costly skin. Bits, too, and silver *conchas*, or medallions, on the check-piece of his bridle and his spur leathers, absorb a "swell buckero's" wages.

There are both good and bad cowboys, and those of Montana differ in many respects from those of Texas; but the class as a whole has been grossly maligned. One reason for this is that the cowboy is a favorite dime novel hero; another is that he is not himself adverse to humoring the exaggerated notions of "tenderfoot" visitors from the east, and passing himself off as a desperado—what is called in the frontier vernacular "a cutter and a shooter from away back." In reality, as we have said, he is an honest, industrious, brave, whole-souled fellow, and probably has a little claim or farm of his own. Many of the cowboys are from eastern cities. There are rich men's sons and college graduates among them. A surprisingly large number of them are well-read and intelligent, while not a few can solve a mathematical problem or parse a Latin sentence with as much ease as they can throw a steer or punch a brand.

In the foregoing *chapparajos* should be *chapparejos* and buckero vaquero.

The article is illustrated. A couple of ponies rearing up and standing on their hind legs, the eastern reader is asked to accept as "pitching broncos." An overfed cook astraddle of a mild-looking dog yearling roped around horns and near hind foot is entitled "Cowboys Sports—Riding a Yearling." "A cowboy" is a very good portrait of Will Vischer, the erratic western bohemian, whether it really is Vischer or not. The cowboy is sitting on a stump; everybody knows how plentiful stumps are on the western plains where timber and firewood is so scarce that cow-chips is the main available fuel used in cooking. William wears his shooting iron well forward on the left portal of his stomach, everybody who ever saw an armed cowboy knows that cowboys carry their pistols well back on the right hip. The rest of the illustrations, photographed from life, will pass muster.

In conclusion permit me to explain that the animus for this screed is caused solely by the fact that cowboys are too largely misrepresented in print without the additional wrong of picturing them to the world as they are not. Anyone familiar with cowboys, coming daily in contact with them, will recognize at a glance how far from truth are both the descriptions and illustrations of "Cowboys' Work and Ways."

The inability of the writer to write up his subject acceptably is evidenced by the fact that he begins representing cowboys as stealing the poor farmer's unstamped cattle and concludes by deifying them into God-like heroes. We kick against being written up either as desperadoes or little he-angels.

We desire to pass for just what western people know us to be. PONY BILL.

Effect of Loco on Horses.

In the May number of the *Journal* of last year, I read with great interest Mr. George M. Frink's article on the loco weed in California, and a recent article in the weekly edition of the *Journal*, bearing on the same subject, brings vividly to my mind, my first actual experience with a locoed horse. The occurrence took place some six years ago, but is as fresh in my memory as if it had happened only yesterday. I had written some letters and desired to drop them in the postoffice at Pueblo, some twenty miles south of the ranch on which I was living; so after an early breakfast I sallied forth in quest of a horse that I had recently bought and turned into a pasture. He was not much for looks, but appeared tough, and let me say right now, he was tough. A mustang, true "son of the desert," with an eye like an eagle, quite blue in color, if not in blood, and with the B brand on his shoulder so large that it looked as though the animal was hiding behind it. I considered him a prize, but he was more; he was a surprise; let me not anticipate,

however. Having driven the bunch in to the corral, I roped my blue steed and let the others out, and at once proceeded to the business of putting on the saddle and bridle, no easy task, let me say, as he seriously objected to the indignity of a Mexican bit thrust into his mouth, and when it came to tightening the "cinch" he just rebelled, laid down, rolled over, got up, shook himself and proceeded to make things lively. The "quirt" vigorously applied temporarily subdued him, and leading him out of the corral, I mounted with more speed than ceremony and, strange to say, the beast stood not on the order of his going, but lit out at the top of his speed. We had thus proceeded for about three miles, when he suddenly swerved from his path and tried to climb up the bluff leading to the mesa or table land. A smart blow on the nose from the loaded end of the "quirt" brought him back to the road and we traveled a few miles further when he began a series of jumps that would outrival a professional dancing master, and all caused by the shadow of a cactus bush thrown across the road. Not until he began to make these furious leaps, did I come to understand that I was astride of a worthless locoed brute. These jumpings are characteristic of the disease, and are produced by any trifling thing, such as a shadow, the sight of water, or even a jack rabbit crossing the plane of his vision, and I truly believe he will jump without any provocation whatever. With a few such spells of playfulness, and occasional gleams of good horse sense my broncho carried me to town, and as I alighted at the postoffice, a friend of mine who saw me said: "So you ride a song and dance horse, do you?" I replied that I was, rather in doubt about the song part, but would vouch for the dance.

Our return home on the afternoon of the same day was very uneventful; my "lonny blue" was evidently weary, and had to be frequently urged forward. I sold him to a Mexican sheep herder, and I hope he killed him, that is—I mean—well, I don't care which was slain, for they were a well assorted pair, the "greaser" rider and the crazy horse. My aversion to the human being was called forth by finding that he had stolen a saddle blanket from me.

The loco weed, such as we have in Colorado and New Mexico is, I am certain, not the same as that described by your California correspondent, and I do not believe that horses or cattle either, wait until hunger drives them to eat. I am convinced they take it naturally, attracted to it perhaps by its bright pea green color and general freshness, which it maintains long after the gramma grass around it has cured in its natural process. I have gathered this loco at various times throughout the year, and never yet found any insect life upon it; no characteristic odor, but I did find that the soft, fluffy hairs or bloom with which the plant is covered, proves very irritating to any cut or sore spot with which it may come in contact, making difficult to heal the wound. What effect this pubescence would have upon the mucous lining of the stomach, I cannot say, for I never had the temerity to try the experiment upon myself, which would have been the proper test. I never knew a single instance of a horse recovering from loco entirely, though he might have lucid intervals, but trust him not, or you will regret it, as any little excitement will bring on a recurrence of the mania or spasm or whatever it may be called.—*Correspondence National Journal.*

St. Louis, Mo., April 29.—A local paper says the western railroads do not make any attempt at concealing their plans in regard to issuing passes to cattlemen. They contend that while men are engaged in the transportation of cattle they are as much employees of the road as though their names were on the pay roll, for otherwise substitutes would have to be paid by the road, and their expenses included in the shipping rate. The eastern roads, however, denied their patrons this privilege, with the result of driving from the market some of the leading buyers, who transferred their orders to Chicago, where they had the benefit of the Grand Trunk cut rate. In self-defense the Indianapolis & St. Louis returned to the pass system a week ago. The shipper and one man for every two cars are allowed transportation east in the caboose and return ticket by express.

G. L. BROOKS
MANAGER,
New Mexico Live Stock Company.



- No. 102. From 1890 to 1891 yearling heifers, in one mark and brand, Masador breeding, first-class, high grade Panhandle heifers, delivered at Fort Sumner, Albuquerque, Las Vegas or Socorro, at \$13 per head.
- No. 118. 30 yearling Hereford bulls, Colorado-raised, price \$22 to \$25 per head, delivered at La Junta, Colorado.
- TO TRADE. Thoroughbred registered Hereford bulls for yearling New Mexico-raised bulls, or for one, two and three-year-old steers.
- No. 120. Western Texas she cattle, raised north of the quarantine line, delivered at Seven Rivers, N. M. Yearling heifers, \$9; two-year-old heifers and dry cows, \$13; cows and calves, \$20.
- No. 123. A very choice lot of Herefords, very highly bred by one of the best Hereford breeders west of the Missouri river. Delivery, \$45; southern New Mexico, \$47.50; Arizona, \$50. Yearling heifers of the same grade \$7.50 to \$10 per head less. High grade two-year-old Short-horn heifers, in calf to imported Hereford bulls, at \$42.50, \$45 and \$47.50. High grade two-year-old Hereford heifers, in calf to imported Hereford bulls, \$10 additional. Young cows, high-grade Shorthorn and Hereford, with young calves at foot or in calf to imported Hereford bulls, at \$2.50 per head less than the two-year-old Hereford heifers. Fifty three-fourths-bred yearling Shorthorn bulls, price, \$30, \$32.50 and \$35. Northern New Mexico, southern New Mexico or Arizona delivery.
- No. 151. 2,000 three-year-old steers, Lubbock county, northwest Texas, one mark and brand; price, \$21.50 per head, Las Animas or Hugo, Colorado, delivery. 1,000 she cattle, western Texas-raised, good stock, classifying 600 cows, 200 two-year-old heifers and 200 yearling heifers; price \$13, Deming delivery, \$13.50, Las Vegas delivery. Offer open until May 1st only.
- No. 147. 1,000 western Texas yearling heifers, raised north of the quarantine line, delivered in July or August at Socorro, Albuquerque or Lamy at \$11 per head.
- No. 158. 800 two and three-year-old steers, about equally divided, Magdalena delivery, \$14.50 and \$18.50.
- No. 128. 250 yearling and fifty two-year-old Short-horn bulls, New Mexico-raised, delivered at Horse Springs, Socorro county, at \$7 per head.
- No. 113. 2,000 one and two-year-old steers, fairly graded, New Mexico-raised, delivered at Lamy or Albuquerque at \$12.50 and \$16.50. 1,000 yearling heifers or 1,000 two-year-old heifers, fairly graded, New Mexico-raised, one mark and brand, Albuquerque delivery, price \$13 and \$17.
- No. 157. 250 yearling steers; price, \$10.50. 150 two-year-old steers, price, \$14.50, and 250 yearling heifers, price, \$13; good grade, thrifty condition, New Mexico-raised, one mark and brand, Magdalena or Silver City delivery.
- No. 116. One car-load of yearlings and two car-loads of two-year-old seven-eighths to thirty-one-thirty-seconds Hereford bulls, Colorado-raised; price, \$45 for yearlings and \$55 for twos, delivered at Colorado Springs, Colorado.
- No. 129. Galloway bulls and heifers, New Mexico-raised from high-grade and full-blood Short-horn dams and imported sires. Prices, yearling bulls, \$40; two-year-olds, \$50; yearling heifers, \$35. Silver City delivery.
- No. 101. One or more car-loads of thoroughbred registered Hereford bulls one year past, Rudolph and Anxiety strains, on board the cars at Beecher, Illinois, price, \$125 per head.
- No. 98. One car-load of good Hereford yearling bulls, imported sires, on board the cars at Irving, Kansas, at \$30 per head.
- No. 96. Fifty-two two-year-old and sixty-three yearlings, very high-grade Shorthorn New Mexico-raised bulls. Price, \$50 and \$40.
- No. 89. One car load of good grade two-year-old Hereford bulls from imported sires. Price, \$38 on six months time at 10 per cent. interest.



1,500 Angora Goats, on range in Socorro county; one-half, three-fourths, seven-eighths and fifteen-sixteenths does. Thoroughbred bucks and does. Prices low. Descriptive circular sent on application.

Soldier's additional, Sioux half-bred, Valentine and Porterfield land scrip bought and sold. Descriptive circular and price list sent on application.

Large and small ranches, stocked and without stock. A limited number of shares well managed cattle companies for sale. Write for prices on Durango mares, broken and unbroken cow ponies, stallions and Rio Grande valley farming and alfalfa lands.

Address, Socorro, New Mexico.

FROM ALL POINTS.

Live Stock Notes Carefully Collected
From Every Source.

The movement in distillery-fed cattle is expected to be below the average in volume this season.

Theodore Roosevelt has shipped two large Irish wolf dogs to his Montana ranch, where they will be used in exterminating wolves, coyotes, etc. They are valued at \$500 per pair.

Exports of meats, etc., which were slightly heavier for a few days before the inter-state commerce law went into effect, are now exceedingly light. There is practically nothing doing in this line at Boston.

The Chicago, Burlington & Quincy, Chicago & Northwestern, Chicago & St. Paul, and Chicago, Rock Island & Pacific and other western roads, are now transporting live stock to Chicago at practically actual weight.

M. J. Fitzgerald, manager of the ranches of the Harlan Cattle company, is in the city from the Indian Territory. He reports a fine winter in the south. He will bring into Montana this year about 12,000 cattle, they will ship to Rapid City, and then drive.—*Miles City Journal*.

Russell Benedict, a pleasant gentleman of New York, is in Mobeetie. He is on business connected with the affairs of the Fracklyn Land and Cattle company. Mr. Benedict thinks the land holdings of the company will make good the entire shortage of the cattle department.—*The Texas Panhandle*.

Stockmen of perception and reliability say that the Panhandle calf crop of the present season will be the best since 1883. The exceptionally favorable winter and spring, together with generally Panhandle conditions throughout the past year, are the moving causes. It is well.—*The Texas Panhandle*.

While there is much inquiry for cattle, our live stock brokers one and all, say that it is impossible for buyers and sellers to agree upon prices, on account of the inability of parties to ascertain the exact status of the losses. This indecision continues and sales are not made, nor will transfers take place till the round-up puts things on a sure basis.—*Miles City Journal*.

Regarding horses purchased in Alberta, N. W. T., for the imperial service, Colonel Ravenhill has written to Canadian stockmen that they stood the ocean voyage better than horses from East Canada, felt well en route, arrived fat, and are the most tractable, easy trained horses ever accepted into the British service. Yet range-bred horses are slighted by the United States purchasing boards.

I see indications that Denver is to become a great market centre for cattle. A syndicate has been formed to handle the feeders—to buy here and sell to the feeders in Colorado, western Nebraska and Kansas. There will be sufficient capital in this organization to handle all of the cattle that may come. This will make a market place of Denver and will add largely to the business of the stock yards.—*J. A. Clough in Field and Farm*.

Maj. W. A. Towers, of the great firm of Towers & Gudgell, came up from the south in time to attend the association meeting. He reports that Texas ranges were greatly favored during the past winter, and he thinks the losses were not one-half of one per cent. Major Towers is one of the old time original cowmen, of indomitable courage and industry, and takes a cheerful view of the cowman's future.—*Montana Live Stock Journal*.

Each week adds to Kansas City's importance as a packing centre. Swift & Bro. have got fairly to work on their great cattle slaughtering establishment, and since our last issue Messrs. Kingan & Co., the great Indianapolis packers, have decided to open up here. They have bought ten acres of land on the Kaw river just west of the stock yards, and will at once proceed to put up a large packing house.—*Kansas City Record*.

At a meeting of the executive committee of the Montana Stock Growers' association held in Miles City, Montana, April 21, 1887, the following resolution was unanimously accepted: WHEREAS, The practice of selling beef cattle in the markets of St. Paul, St. Louis, Omaha and Kansas City for a fixed price per head is

considered by every member of this association to be unfair, unjust and against the best interests of the industry, especially with reference to range cattle. Therefore be it Resolved: That the commission salesmen of the above named cities be requested to remedy this great evil by changing the present methods of selling cattle at fifty cents per head, regardless of values, to one per cent, of the grass sales.

Early in June Texas will be full of beeves ready for the shambles. Cattle will fatten rapidly, and the question now uppermost in the minds of their owners is what market to seek. The *Cattle Grower* unhesitatingly advises them to patronize St. Louis and Kansas City. All things being equal, give Chicago the go-by. Get from under the domination of the Big Four as soon as possible.—*The Cattle Grower and Flockmaster*.

The weather since the first of March has been most favorable. We have had some few storms and quite a little snow, but no more than has been beneficial to the country. We have had an abundance of April rains lately and the grass crop has appeared in fine shape. The ground has been thoroughly dampened to a depth of some three and a half inches, and there is no reason, if we have a few rains at reasonable periods, why we should not this year have an abundance of grass for the feed of our herds.—*Miles City Journal*.

Our neighbors are indignant because of our new quarantine laws. States where there is no pleuro-pneumonia cannot see why they should be excluded. But the reason is simple, they have no laws and liable, at any moment, to receive infected cattle which will spread the disease and communicate it to other states which do not have restrictive laws. We commend the governor as highly for his actions in these matters as we condemned him for disregarding arbor day.—*Colorado Farmer*.

The commissioner of agriculture has appointed T. T. D. Andrews, of Fort Worth, Texas, to the position lately occupied by Col. S. D. Cunningham, representing the United States bureau of animal industry. We have met Mr. Andrews a number of times and have no doubt he will make a most acceptable officer to all range men, and a very serviceable man to the bureau. With Col. H. M. Taylor in the northwest, and Mr. Andrews in the south, we realize that the cattlemen have two indefatigable workers, both of whom will aim to do their whole duty.—*Journal of Agriculture*.

BRUSSELS, April 28.—The discussion of the cattle bill was continued in the house today. Mr. Dumont, author of the bill, altered his proposals so that duty would be reckoned according to weight instead of according to the number of head of cattle. Several free trade members contend that this change would be equivalent to an increase of 50 per cent duty. One free trader, Mr. Piermez, said: "You want to prevent the importation of American cattle. Well, the people cast hungry looks toward the fine and cheap American flocks of cattle. Let the latter be imported, if the masses profit by it." The debate was then adjourned until tomorrow.

WASHINGTON, April 26.—Upon application of the American Investment company, Acting Secretary Muddrow has decided that a mortgagee or assignee may be permitted to file, under oath, in the local land office, notice of his claim under any entry, in order that he may be advised of any adverse action upon said entry and to protect his rights in the premises. Mortgagees and assignees, however, will be required to state the character of such interest in each case. This reverses the decision of the commissioner of the general land office.

A stock company with a capital of \$100,000 has been formed in Fort Collins, Colorado, by S. B. Chaffee, C. L. Chaffee, W. H. Avery and Joseph Warren. Thirty-three thousand dollars of the capital stock has already been paid in. It is the intention of the company to engage in the stock business on an extensive scale. The mountain or summer ranch is located about three miles west of Livermore and has a range of over twenty miles, sufficient to accommodate about 2,500 head of cattle and horses. The company has 800 acres of land about five miles south of Fort Collins, all under water, 500 acres of which will be sown to alfalfa, the remaining 300 acres to be seeded to natural grass for meadow purposes. This ranch will

be used for feeding and fattening purposes during the winter season, upon which will be erected large sheds and feeding apparatus.—*Field and Farm*.

The entire west has been visited with those copious, refreshing rains that have been so much hoped for and so long needed. This means more to the section named than words can describe and the immediate result is that every legitimate business connected with the best prosperity starts vigorously off on the right foot with a renewed and enlarged life. Everyone with an interest here, big or little, no matter how highly appreciated before, now considers it worth from twenty five to one hundred per cent, more than at any previous time. A new era of substantial, healthy progress and prosperity has begun, and those who have survived the long period of declining values have now through careful management good prospect of smoother sailing and sunnier skies.—*Kansas City Live Stock Indicator*.

Some weeks ago Mr. Millett, who owns a large pasture some twenty miles or more from Cotulla, sent some hands to remove some cattle from near a lake that was about to go dry for fear they would bog in the mud in their efforts to get to the water. Upon investigation the hands found the lake dry at that time and no danger of cattle bogging and the idea of removing them was abandoned. A day or two later a slight rain fell, just enough to wet the mud thoroughly and put enough water in the middle of the lake to tempt the cattle. It was not thought at the time of the rain that it was sufficient to cause this, and no attention was paid to the place. Five days ago one of the men passing near the lake found 111 head of cattle bogged down, 109 of which were dead. Thus by not being careful of such places, Mr. Millett loses \$1,000 or \$1,500 worth of stock. Such a calamity is enough to make the average stock man sick.—*Cotulla (Tex.) Ledger*.

The Canadian authorities have enacted a quarantine law that practically amounts to an exclusion of all trail cattle from this side. The law forbids American cattle entrance to that country until they have been held in quarantine ninety days on the border. As three months are about the duration of the summer up there, cattle, to get into winter quarters, would have to reach the border by the time the grass begun to sprout in the spring, and then there is no desire to drive stock into a paradise of bank cashiers as there are more acceptable winter quarters on this side. Cattlemen of northern Montana can move young cattle from Texas one year and transfer them to British ranges the next. A northern stock paper says the only way Texas cattle can reach Canada in one season's journey will be over the Denver, Texas & Gulf railway, now building. Other ways there seem to be none.—*Dallas News*.

Bullard & Co. have now at both their houses at Liberty and Endee a full supply of what the stockman wants for his camp and the cowboy for his outfit.

S. L. LEON & CO.,

THE LEADING

Grocers, Bakers

OF LAS VEGAS.

We have also the Finest Line of Fancy and Imported Groceries in New Mexico.

Dealers in Queensware and Glassware.

Ranch Trade Solicited and Prompt Attention given all Mail Orders.

NORTHWEST CORNER OF PLAZA.

BROWNING, KING & CO.,

Manufacturers and Retailers of

FINE CLOTHING

AND

Gents' Furnishing Goods,

1101, 1103 & 1105 Main street, **Kansas City, Mo.**
Corner of Eleventh,

HENRY L. FITCHER, Manager.

FACTORY, 408, 410, 412 and 416 Broom street, NEW YORK.

STORES AT

Philadelphia, St. Louis, Cincinnati,

Chicago, Milwaukee and Kansas City.

GEO. R. BARSE & CO.,

Live Stock Commission Merchants

Room 27, Live Stock Exchange,

E. W. McIlhany,)

T. E. Ladd,)

Cattle Salesmen.

Kansas City, Mo.

CONSIGNMENTS SOLICITED.

A BIG FOUR INIQUITY.

Lying Pretenses of the Dressed Beef Syndicate.

Organs of the dressed beef ring have had a great deal to say about the rate on dressed beef having been advanced several months ago to seventy cents per hundred pounds from Chicago to New York. These papers have asserted that this increased rate was the prime cause of depressing the price of live cattle to the producer. The dressed beef ring has joined in the howling chorus and has even had the gall to ask cattlemen to protest against the advance in rates referred to. We have always maintained that the cry was the basest kind of a fraud, and now propose to show that all who have harbored the idea that the "Big Four" was being oppressed are victims of a confidence game, never before equalled in magnitude and in point of cold blooded villainy, surpassing the feats of "Canada Bill," the renowned three card monte thief.

The Swift-Armour ring does not, and never did, pay seventy cents per hundred on dressed beef from Chicago to the seaboard, nor any rate approaching that figure. They own the cars that their meat is transported in, and these cars are handled at the rate of seven cents per mile without regard to the weight of contents. The average is not less than thirty-five thousand pounds, and the distance being in round numbers nine hundred miles, the rate would be sixty-three dollars, or about eighteen cents per hundred pounds, instead of seventy cents, which would be two hundred and forty-five dollars. Of course the published rate being seventy cents per hundred that rate would be exacted from any other shipper, thus enabling Swift and his pals to lay down a car load of dressed beef in New York for one hundred and eighty dollars less than an individual could, a margin quite sufficient to bankrupt any person or corporation that should attempt to do business on the basis of a seventy cent rate. The cowman who has been led into expressions of sympathy for the Swift gang of pirates can now go out behind the corral and kick himself.

The Swift syndicate of blood suckers further claim that the inter-state commerce law cannot break up their bunko game for the reason that owning their own cars they have the right to make any terms they can with the railroads for hauling them. In one sense this may be true, but the law can compel the railroads to haul cars for anybody else for the same rate given to the Swift thieves, and this is where the picnic comes in.

We published some time ago an article showing where the Standard Oil company had compelled the railroads to give it a rate of ten cents per barrel, and at the same time to exact seventy cents from everybody else and then pay to the Oil company sixty cents for every barrel carried for the seventy cent rate. It is reasonably certain that the Swift-Armour gang of highwaymen are not behind any other outfit in modern refined robbery, and that it also exacts tribute enough from the public and railroads to not only wipe out the seven cents per mile rate, but pays a premium on every car shipped.

It is complimentary to the shrewdness of the Swift-Armour gang that they do not overlook the importance of posing before the cattlemen as persecuted martyrs, and it is possibly not surprising that occasionally is found an unsophisticated ranchman whose heart is made to bleed at every pore when listening to a recital of the wrongs the ring is compelled to endure, and the ranchman growing poorer and poorer every day, while the robbers are piling up millions, feels almost moved to pass the hat for the relief of the saints (?) who have him by the throat. We repeat what we have before said, that the cattle industry is being strangled by the Chicago robbers, and it will never again see the prosperity it once enjoyed until the power of the Swift-Armour ring is broken. Relief need not be looked for at Chicago or through the agency or assistance of any of the piratical crew that now controls the beef supply of the country. It cannot control the product if the cattlemen will that it shall not be so. The face of the

whole range country should be resolutely set against the Chicago thieves, and all the Judases that advocate their cause.—*The Range Journal.*

Confidence in Cattle.

Cattlemen are beginning to figure up their losses caused by the winter, and all of them are jubilant over the result. This rejoicing is universal, and from every cattle state in the country reports come to substantiate the belief that the past was the highest winter on the range for a good many years. From Texas to Manitoba the loss is less than one third of what it was last year, and the outlook this spring is very encouraging. Cattle are in better condition than they were a year ago, and better prices are anticipated, being in fact considerably increased already. A prominent cattleman informed the *News* man yesterday that the prognostications of the *News* at the time of the range conventions were being realized, and that if cattlemen would not push their stock on the market in their endeavors to force prices, that the business would be placed on a profitable basis within two years, and the effect of the depression caused by too many people embarking in the business, would not be felt in that time. Confidence cannot be restored in a few months, say all cattlemen, and it will require a close study of the condition of the industry and judgment in selling stock.

With the exception of one disastrously cold spell in northern Wyoming and Montana, all the cattle states had exceedingly mild winters. Texas, New Mexico, Kansas, Nebraska, Colorado, Missouri, Indian Territory, Arizona and Utah all had light winters and the cattle are coming in from the range in very good condition. The loss from cattle killed by the snow and winds was estimated by a cattleman yesterday to be about thirty per cent. less than 1886. The cattle as a rule are healthy and the splendid condition of grazing grounds will make them fat and ready for shipment by fall. In Wyoming and Montana the loss is said to equal the combined damage done to cattle in all of the other states named. In southern Wyoming and Montana the cattle wintered well and there was comparatively no loss. As a whole the season was a propitious one, and there is good grounds for general rejoicing.

The round ups, which will be over in about a month, will determine the real condition of the cattle, but cattlemen do not hesitate to say that the winter was not only a remarkably light one, but that the industry is stronger today than it ever was, and that if next winter is as favorable the business will be advanced to a position that a year ago seemed a long way in the future. The small dealers have been driven out of the market by the low prices and glut in the market, and the practice of trading and speculating on short margins has been effectually done away with. This leaves only big dealers, who have the general interest of the industry at stake, and therefore do all they can to elevate it. The organized system of protection has saved the cattlemen from considerable loss, and cattle thieves have been particularly scarce. Colorado cattle are bringing as good prices in the eastern market as those shipped from any other state, although local dealers say that they are holding back. This characterizes the business in other states, and altogether there is a feeling of relief and confidence that has not been entertained for a long time.—*Denver News.*

What a U. S. Patent Means.

The supreme court has surprised the country by sustaining the United States patent to the Baubien & Miranda (Maxwell) land grant, upon the ground that the case did not make out that the patent was obtained by fraud. Although the survey upon which the patent was granted was a monster fraud, yet not only could the court make no other decision on the case presented, but this decision is requisite to the honor of the government and justice to the present owners who have paid a large sum—probably a high price for the tract, trusting to the deed given by the United States. The commissioner of pub-

BLACK DIAMOND PREPARED ROOFING.



ADAPTED FOR EVERY CLIMATE AND ANY STYLE OF ROOF. IS ABSOLUTELY WATER-PROOF AND PRACTICALLY FIRE-PROOF. THE CONSUMER CAN LAY CORRECTLY FROM 6 TO 10 SQUARES PER DAY. IN USE 5 YEARS IN NEW MEXICO. HIGHEST REFERENCES. Send for prices and samples and call and examine goods. Mining and manufacturing men, stockmen, business men should try this ROOFING.

M. EHRET & CO.,
PHILADELPHIA,
ST. LOUIS,
and CHICAGO.

THE BROWNE & MANZANARES CO.
SOLE AGENTS FOR NEW MEXICO,
LAS VEGAS and SOCORRO, NEW MEXICO.

lic lands has expressed his opinion that the case for the United States was not pushed with energy. Probably not; but the sustaining of the patent was also the sustaining of the government.

It was time for the supreme court to give a judgment to show that a United States patent to land is a deed which binds the government, and which citizens may trust in. It is in all parts the act of the government. In case of the Spanish grants the examination of the grant is by the United States surveyor-general. After his approval it has to have confirmation by congress. Then the survey is by the United States surveyors, and then it has to be approved by the commissioner of public lands at Washington, and then the patent is signed by the president.

Every part of this is done by the government. If there is ignorance or fraud, it is by the government. When after all these proceedings it has given its fee-simple deed, that deed should be a finality. Citizens should be warranted in relying upon that deed. But the conduct has been as if the government were not responsible for its patents to lands; as if the government were separate from its agents and instrumentalities; as if its deeds to lands were things to be called in question by itself and repudiated. And it has had one set of agents tramping as detectives of other agents to cast suspicion on their acts, and to make such detective suspicion a cause for repudiating the government patents.

Under this degrading idea of separating the government from its instrumentalities of administration, it has not been conscious of dishonor or responsibility in bringing repudiating suits against its own patents, as in this case and that of the Canyon del Agua grant. In the latter case Attorney-General Brewster permitted the United States to be used in a suit against the patent in behalf of a banditti in mine prospecting tramps, played-out adventurers, greasers and law shysters who had seized by force a mine on that grant, and had destroyed a mining plant of a million of eastern capital, which now lies desolate, cutting off the payment of as much as \$20,000 a month for labor, which was as much to industry as all the rest of Santa Fe county.

It may be said of all the repudiating of government patents and of all the detective work of spotters of land entries, that besides the dishonor to the government it has promoted rather than corrected rascality. The new democratic land officers have aggravated this miserable work to make a show of dishonesty in their predecessors, to cover their own doings. So much has the government dishonored itself that citizens could place no dependence on an honest entry of their own nor on the United States patent. There was a need that the supreme court show that the government is responsible and that a United States patent means something.—Cincinnati Commercial-Gazette.

From the Northwest Territory.

The dreaded month of March has come and gone and with it the anxiety of the stockman. Reports from the range are very encouraging and the loss will not be

one-half what has been reported, and it is now thought that about twelve per cent. will cover the entire loss. In the Pincher creek district cattle are reported in good fix, beef cattle especially. The Cochrane ranch cattle are reported in better condition than they were this time last year. Mr. D. W. Marsh, who has been at Maple creek, think the loss in that district will amount to thirty per cent. Cattle around Mosquito creek have wintered well, an old cowman who has just ridden over that country tells us that in twenty-five miles he only counted fifteen dead cattle, and this in a district where there are from 15,000 to 20,000 head running. E. W. Murphy, of the Powder River Cattle company, thinks he will gather within five per cent. of the cattle he turned loose last year. F. S. Stimson, who has been riding the range gathering beef in the High River country, puts the loss at ten per cent. J. J. Barter estimates that fifteen per cent. will cover all losses. J. J. Sullivan thinks the loss in the immediate neighborhood of High river will not be more than five per cent., but is afraid that the loss among the cattle that have drifted to the Old Man River will bring the average up to fifteen per cent. B. Pruett reports a loss of about twenty per cent. but among those were a cow and four yearlings killed by coyotes. Soules & McInnes have had a count on their cattle and have lost thirty-one head out of 800, theirs were pilgrims and they have fed a large quantity of hay. Altogether we have every reason to be thankful for the manner in which we have pulled through the winter and with a good season in prospect the losses will soon be made up.—*Alberta Live Stock Journal.*

Enjoy Life.

What a truly beautiful world we live in! Nature gives us a grandeur of mountain, glens and oceans, and thousands of means of enjoyment. We can desire no better when in perfect health; but how often do the majority of people feel like giving it up disheartened, discouraged and worn out with disease, when there is no occasion for this feeling, as every sufferer can easily obtain satisfactory proof, that *Green's August Flower*, will make them free from disease, as when born. Dyspepsia and Liver Complaint are the direct causes of seventy-five per cent. of such maladies as Billousness, Indigestion, Sick Headache, Costiveness, Nervous Prostration, Dizziness of the Head, Palpitation of the Heart, and other distressing symptoms. Three doses of *August Flower* will prove its wonderful effect. Sample bottles, ten cents. Try it.

TO NORTHERN STOCKMEN.

Outfits expecting to send wagons to work in the Canadian river country during the coming season will find a large and varied stock of all supplies at low prices at Bulard & Co., of Liberty and Endee, and by purchasing there will save a long haul with loaded wagons.

enacted amounts from this an cattle they have days on re about ip there, rs, would time the ring, and ck into a are more this side. an move year and he next. only way one sea- Deaver, building. ie.—Dal.

th their d supply is camp

JO.,

ERS

and Im-

SSWARE.

Attention

PLAZA.

Mo.

YORK.

City.

nts

Mo.

THE STOCK GROWER.

ISSUED WEEKLY AT LAS VEGAS, NEW MEXICO. Office, Bridge Street, in Stock Grower Building.

The Subscription Price of The Stock Grower is \$3.00 a year, payment in advance. Single copies, ten cents.

The Stock Grower is sent to subscribers until an explicit order is received by the publishers for its discontinuance, and all payment of arrears is made, as required by law.

Discontinuance.—Remember that the publishers must be notified by letter when a subscriber wishes his paper stopped. All arrears must be paid.

Always give the name of the postoffice to which your paper is sent. Your name cannot be found on our books unless this is done.

The Courts have decided that all subscribers to newspapers are held responsible until arrears are paid, and their papers are ordered to be discontinued.

ADVERTISING RATES ON APPLICATION. Address all communications to THE STOCK GROWER, Las Vegas, New Mexico.

Only journal devoted exclusively to the stock growing, feed farming and commercial interests of the Southwest. We give the cattle news of the range country.

Endorsed by every cattle association and representative ranchman in the southwest.

Official Paper of the Pima County, Arizona, Ranchmen's Association. Official Paper of the Lincoln County Stock Association. Official Paper of the San Miguel County Stock Association.

Official Paper of the Dona Ana County Stock Association. Official Paper of the Central New Mexico Stock Growers' Association. Official Paper of the Canadian River Live Stock Association.

Copies of this paper for sale by S. B. WRIGHT, Denver, Colorado. WM. LONG, St. James Hotel, Kansas City. ASTOR HOUSE NEWS STAND, New York City. S. H. PARVIN & SON, Cincinnati, Ohio. OTIS TURNER, El Paso, Texas.

Copies of the Stock Grower are on file at the American Exchange 449 Strand, London, and American Exchange, 35 Boulevard des Capucines, Paris.

SATURDAY, JUNE 7, 1887.

SOUTHWEST STOCK NOTES.

Short Items Relative to Stock and Stockmen of the Southwest.

The top of the Carrizozo steers sold in Kansas City this week at an average of \$37.25.

The Gila Cattle company sent to market this week about 350 head of most excellent steers.

Wm. B. Leonard, a well known stock raiser of northern Arizona, died at St. Johns, Arizona, on April 22.

Loco poisoning of cattle and horses is reported from various sections of the New Mexico range this season.

The cattle inspection commissioners of Colorado, have appropriated \$6,500 for the inspection of Colorado cattle.

The Enterprise Cattle company, of Silver City, sold a lot of light weight steers in the Kansas City market last week at \$2.70.

The Sacramento Cattle company will have four hundred A 1 New Mexico steers at Engle about May 1st for sale or shipment.

The eastern live stock papers say that the season has arrived when heavy cattle are not in great demand, but light weight steers are taken at an advance.

Jerry Sullivan, the big beef shipper of Chino Valley, Arizona, will withhold all shipments of stock until June as he believes that higher prices will then prevail in the markets of slaughter.

The Tombstone Democrat reports stock in bad condition on the San Pedro there having been a great scarcity of rain there for the past four years.

Sparks was sustained by Secretary Lamar in his fiftieth decision. A lively earthquake at once tumbled up portions of New Mexico and most of Arizona.

Cattlemen in the Black range country, Col. Mothersill, of the Detroit and Rio Grande Cattle company, says, are preparing to make heavy shipments to the Kansas City market at the present time.

The round up that started at the Coronado ranch, Grant county, is but slowly attended, it being thought by most of the cattlemen in that district that it is too early in the season to work the cattle, the range being still quite dry in many many localities there.

Messrs. Alney & Stout, who have been ranching in Grant county, have sold their cattle and ranches in Jones county, Texas, and ranch privileges in New Mexico to John T. Baldwin, of Iowa.

M. B. Bowman, who ranges cattle east of Albuquerque, reports the cattle business in his section in fair condition this season. The crop of calves will be very large and a fine beef crop may be expected in the fall.

August Milstead, who was arrested along with John Milstead and Michael Millet, for the illegal killing of cattle belonging to ranchmen in the Santa Rita Valley, Arizona, and who was prosecuted by the Pima County Ranchmen's association, has been sentenced to three years in the penitentiary.

A band of rustlers, with headquarters on Canyon creek in the Mogollon mountains in Arizona, has been discovered. These erring knights of the range have driven over 300 head of horses away from the ranchmen of Apache county and distributed them by sale all the way from the Mogollon mountains to Sonora.

The Stockman thinks that C. B. Stone, of San Francisco, who took the contract to supply the Fort Apache Indian agency with 600 yearling heifers at \$13, is a fair example of tenderfoot innocence, as it doubts that yearling heifers can be purchased at so low a price in view of the hardening tendency in values of cattle.

Judge Porter in his instructions to the grand jury of Gila county told them not to consider offenses committed on the reservation by Indians, as such cases must go to the United States courts at Tucson or Phoenix; but offenses committed off the reservation and in Gila county should be taken cognizance of.—St. Johns Herald.

A sale is reported of three year old range raised horses in Arizona at \$105 per head. The southwest will make no mistake in paying attention to the horse raising industry in the future.

Mr. King, of Verde, states that heavy losses have been recently sustained by the stock men of that section through the agency of mountain lions, which have played terrible havoc with young stock, and in some cases have grown so bold as to attack and kill work horses which have been turned out on the range.—Hoof and Horn.

The cheerful news comes up from southern Arizona that the gang of rustlers who have been operating throughout Pima and Cochise counties, are at length in the custody of the law, except those who have taken a trip across the river Styx in charge of old Charon. Those in custody will, no doubt, soon pass to the beyond over the same ferry.

Mr. T. J. Payne, Manager of the Champion Cattle company, paid us a short call this week, and reports the affairs prospering. The last advice he had from the New Mexico and Arizona ranches reported that good rains had fallen, and that cattle in both places were doing nicely.

Sol Barth, of St. Johns, Arizona, was tried last week before Judge Wright in the district court, held at that place on the charge of forgery. The crime of which he was accused was raising the value of territorial warrants to a larger sum than they were assessed for. The jury brought in a verdict of guilty, and he was sentenced to ten years in the penitentiary. Flagstaff Champion.

Justus Clark, president of the New Mexico and Iowa Cattle company, of Socorro county, passed south on Thursday with twenty five head of Short-horn bulls for the ranch. It was a superior bunch of bulls, and when their produce goes back to the feeding farms of the company in Iowa and are matured the markets of the east will receive steers that will do credit to any section of the west.

We understand that Captain Lawton, the famed captor of Geronimo, has effected the purchase of some 15,000 acres of land in Sonora, near Naco, Sonora. The tract embraces some valuable mineral lands, and has few equals as a range. Extensive cattle purchases are being made in Texas for the purpose of stocking it. Every Arizona man will wish the gallant captain success.—Tombstone Democrat.

John Welty has disposed of his interest in the LS bunch of cattle to Alex Cameron, of Georgetown. Welty brothers have the cattle to run five years, three of which have expired for which they get one-half of the increase. The cattle are a well graded bunch and this year's branding will amount to 300 head. John Welty will squander his hard earned fortune in Washington Territory, while West will continue to slap the LS brand on the increase of the herd.—The Enterprise.

The Chiricahua company's train of cattle for San Diego did not get away from here until late Saturday evening last. After they were in the pens ready for loading, they took fright at a passing freight train and stampeded, carrying away a portion of the high strong fence as though it were made of straw. The cattle were stopped, however, before they had run far, and brought back and carried without further mishap.—The Stockman.

THE GRAND SALE OF THE SEASON

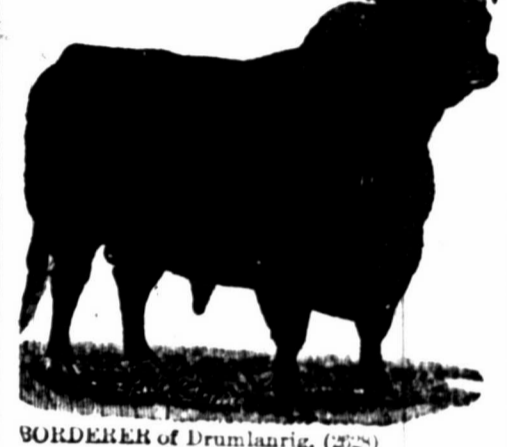
IMPORTED AND NATIVE BRED

GALLOWAY CATTLE,

On June 10th and 11th.

Geo. L. Goulding & Co.'s City Stock Yards

DENVER, COLORADO.



BORDERER of Drumlanrig. (222) Property of BUSH & MORSE

LEONARD BROS., Of Mount Leonard, Mo., AND BUSH & MORSE, Of the Windsor Farm, Denver, Colo.

Will Hold a Joint Public Sale

IMPORTED AND NATIVE BRED

Galloway Cattle.

The lot consists of 100 males and females of the choicest breeding and individuality, embracing selections from four different importations by the Leonards, who it is a well known fact brought over only the best that money could buy and careful judgment select.

Most of the cattle offered by Bush & Morse, of the Windsor Farm, are direct descendants of the stock imported by the Leonards, who in breeding the same, combined, some of the best strains of blood in their herd.

It is once in a life time that such an opportunity is offered to the public of purchasing such a splendid lot of cattle, and the undersigned feel no hesitancy in endorsing what is claimed for them, "that they are the finest lot ever offered at public sale in the world".

In the breeding are found such popular strains of blood as represented in the tribes of Drumlanrig, Semiramis, Lady Stanley, Forest Queen, etc., embracing such famous sires as Black Prince of Drumlanrig, Harden, Moss Trooper, Montague, Scottish Borderer, Pretender, Guardsman and others equally noted for their show yard careers and the grand quality of their get.

All necessary assistance will be furnished to buyers from a distance in loading and shipping their stock.

TERMS OF SALE: Cash, or four months approved paper bearing 8 per cent. interest. Catalogues furnished on application.

Col. J. H. SAWYER, Auctioneer. GEO. L. GOULDING & CO.

NOTE: During the sale there will be on exhibition some steers and bulls, bred from thoroughbred Galloway bulls and of Shorthorn cows. Cattlemen will be able to judge for themselves as to the result of the cross.

The cattlemen about Fort Davis, in Presidio county, Texas, have been up in arms over cases of brand burning and driving off of stock, both cattle and horses. Public meetings were held and action taken in the matter, which resulted in the finding of seventy head of stock on which the brands were burned and blotted, and the probable driving out of the country the miscreants who did it. It appears to be a case of the local cow boys starting herds of their own.

A Silver City paper says: The L. C. cattle sent from here could not be unloaded at Great Bend, Kansas, the home of the purchaser. It was a fact overlooked that Kansas quarantines against cattle from New Mexico, Arizona, Mexico and Texas, except for three months in the winter. So the cattle were taken to Kansas City and sold for \$3.00 per hundred, striking a bad market, which has been declining for three weeks. The purchaser had agreed to pay \$2.25 per head and pay the freight. The cattle weighed 800 pounds each on the average.

Thomas H. Graham, a stockman of Pleasant valley, arrived in this city on Wednesday evening having left his range on the 17th of the month. He says it had stormed six consecutive days and nights prior to his leaving and was still at it when he left. It was snow and rain about equally divided. The snow on top of the Mogollon mountains was from three to four feet deep and still accumulating. It is an unprecedented thing, he says to have so great a depth of snow at that altitude, so late in the season. It is his opinion there can be no lack of water in the Salt river this summer. Phoenix Gazette.

The new law regarding the shipment of cattle into the Nation went into effect on the 1st instant. All shipments of Texas cattle during the summer months into the Indian Territory are prohibited by the terms of the law. About a month ago an estimate was made that 30,000 cattle could be driven into the Territory by the 1st of May. This number has in fact been greatly exceeded, for at least 30,000 cattle have been brought in and put upon the ranges within the past thirty days. Upon this basis it is estimated that there are now fully 60,000 head of 2, 3, and 4 year olds upon the ranges of the five Nations. This estimate does not include the Cherokee strip where they have been brought in by the hundreds of thousands.

The Las Cruces Republican calls attention to a necessity of New Mexico when it asks for the establishment of a first class horse breeding farm. New Mexico is peculiarly fitted for the production of the finest horse stock in the world. Our soil and climate are unequalled for the production of the right kind of grasses to make bone and sinew, and the rare air will give that development of lung power, which fits the equine race for contests with the best of the world's produce. Fine horse stock is everywhere needed for general purposes in the southwest, and a horse farm will pay five to one over almost any other kind of stock.

An Arizona exchange tells how a large stream of water has been struck in Pima canyon in the south side of the Catalina mountains, six miles from Tucson. It says in describing it that Gregorio Bandurraga struck a great volume in a cut or tunnel he had been tunnelling in the base of the mountain following a very small stream which percolated through the seams of the rocks. It is said that when he struck the water it came out in such a great volume that he had to swim out of the cut or tunnel, and that the stream now flows almost down to the Killito river, and that there is sufficient water to supply a herd of 100,000 cattle.

Trail herds strike for Liberty or Endee, Bullard & Co. will replenish your "chuck wagons" at low prices. They keep a full assortment of all camp supplies.

HORSES STOLEN \$100 REWARD

One bay horse, pony built, eight or nine years old, about 14 hands high; has blazed face, branded V on left shoulder and with three other letters over it on left thigh. One light bay or brown horse, seven or eight years old, about 15 hands high, and branded on left shoulder with under same. I will pay a reward of \$50 for the said described horses delivered at Red Canyon ranch and \$100 for the arrest and conviction of the thief.

A. E. POWERS, Fort Stanton, N. M.

Horse Notes.

The Stock Grower draws liberally for the interesting items of this column from the "Breeder's" and the "Breeder and Sportsman."

Running-horse men are talking about the wonderful speed of a two-year-old colt by Troquois, the American horse that won the Epsom Derby, out of the fast mare Sabrette.

Oliver K. is going well in California, the latest report being that he had trotted a quarter in 31 1/2 seconds—a 2.06 gait. He will come east during May and be prepared in Chicago for the summer campaign.

Mr Robert Bonner has two mares that cost him \$40,000 each—Maud S. and Pocahontas. The last named has never produced a colt, but her owner hopes to have better luck with Maud S., who will be aged when her racing days are over.

The talk of the match between Majolica, 2:15, and J. Q., 2:17 1/2, both owned by residents of New York City, is still going on, but it is not likely that a race will be the result. The owner of Majolica issues several challenges in favor of Majolica every year, but somehow or other nothing comes of them.

J. B. Haggin, the California millionaire, has added one more to the already long list of stallions owned by him, the latest purchase being Joe Daniels, a son of Australian, that went to California several years ago and raced well. He is a sire of Hidalgo, a horse in the Haggin stable, which was probably the performer of the son that induced Mr. Haggin to buy Joe Daniels.

Lady Bunker, the dam of Guy Wilkes, 2:13 1/2, has been bred to General Hancock (son of George Wilkes). She is an exceptionally well bred mare, Mambrino Patch, sired out of a mare by Seely's American Star, that was also the dam of the gray gelding Joe Bunker, 2:19 1/2. The colt from this mare and by a son of George Wilkes should certainly be a good one.

Portland, that was the crack two-year-old of the Dwyer stable in 1885, has been sold for \$2,000 to a Wall street broker, who has turned him over to John Croker, the same that used to steer the trotter Gray Salem through the Central circuit, for training. Croker has driven so many winners that simply training them will be an easy task.

The roan mare, Libbie S., 2:22 1/2, arrived in Philadelphia last Saturday from Texas, and will take part in the early eastern meetings. That this mare could easily beat 2:20 last summer there is not the slightest doubt, but at the St. Louis fall meeting, where she was heavily backed by her owners, she was out of condition and made a poor showing. Gene Smith, 2:25 1/2, and the pacer, Buck Dickerson are in the same stable with Libbie S.

"Jack" Bowen, the well known driver of trotters, tells a good story on himself and a friend: "Three years ago this winter, while in Kentucky," said Bowen, "we started to buy Henry Wilkes and got within twenty miles of the place where he was kept, but some one told us that he had very bad feet forward, so we gave it up. When I got within that distance of another trotter I shall not be turned back, you can bet," remarked the veteran with emphasis. "We went to Nashville and offered \$4,000 for a fast brown horse, full brother to Don, 2:22 1/2, but did not get him. Don was as game a horse as ever looked through a bridle, and had he not met with an accident would have got a very low mark. He trotted 2:22 1/2 after his injury.

Withrow, the three-year-old colt that won the Pickwick stakes at New Orleans last week, running the mile in 1:43 1/2 with 112 pounds up, and subsequently captured the Cottrill stakes, a mile and a quarter, in 2:11 1/2, taking 117 pounds, is unquestionably the best colt of his age that has come out this spring. He is not particularly well bred, being by Longbow, a son of Longfellow; dam Linda Lewis. He is a full brother to Kiohba, a horse that was in John Campbell's stable last year, and that performed moderately well when not asked to go too far. As a two-year-old Withrow was not a success, and was sold for \$2,000 last fall to his present owner, J. B. Goodwin. He is a heavy-bodied colt, but his legs are so good that horsemen think the weight will not tell unfavorably on them.

The Texan Horse.

As Texan horses are becoming rapidly distributed over the country, and will, inevitably form a portion of the foundation for quite a share of what are usually known as the cheaper sort of horses, it will be well, in crossing upon them, to study their capabilities, and arrive at an intelligent opinion as to whether or not, as a rule, the Clyde or French draft will prove to be profitable crosses. There is clearly nothing in the make up of the Texas horse other than stock of very moderate size. While their origin may not be clearly and positively known, yet all the facts of history go to show that they are the descendants of the Spanish horse, an animal of moderate size at best. Some have supposed that they sprang from early importations made at the south. An importation was made by Cabaca de Vaca in 1527. These, forty-two in number, were landed in Florida, and were killed (we suppose, by the Indians) or were otherwise lost. It is believed by many that the Texas horse sprang from the horses believed to have been abandoned by De Soto in that expedition when he discovered the Mississippi river. History tells us that De Soto had a large force of cavalry, and after the chief's body was consigned to the waters of the great river, his men returned home in rough hewn vessels that they constructed upon the banks of the Mississippi, believed to have been barely sufficient to carry the men. Hence it is not probable that they did otherwise than abandon their horses. All male animals in the Spanish service were entire, hence it is believed that they were turned loose upon the west bank of the river, traveling thence westward into the rolling country where Texas now is, a region far more congenial to the horse than the low lands and swamps along the Mississippi river. The Texas horse carries to this day strongly marked characteristics of the Spanish race of horses. The stock brought over by De Soto, being made up of stallions and mares, it is easy to conceive how a rapid increase could be made, having their full liberty and an abundance of food.—National Live Stock Journal.

Cattle on Shares.

The Montrose Live Stock company, of Colorado, E. S. Land manager, has introduced a new plan for running cattle on shares. The following is the plan as it appears in their prospectus:

"For each and every cow turned over to us, or on the payment of twenty-five dollars, we issue a share of stock to the owner and invest his money in the cattle. These cattle we take care of at our own expense for five years, and at the end of that time we turn over to each and every shareholder five head of stock, agreeing thereby to make good the original purchase, insuring each year the actual product of every cow furnished, making over seventy five per cent to the investor, without any risk whatever, we taking the young increase for our care, trouble and expense of herding. At the end of each and every five years we agree to divide up the profits or turn over stock to each and every shareholder, buy it in or further invest in cattle for him on the above plan. After the five years, if any of the shareholders desire to withdraw from the company, their stock will be bought in at market value and a reasonable interest per annum allowed them on the actual cash they have invested."

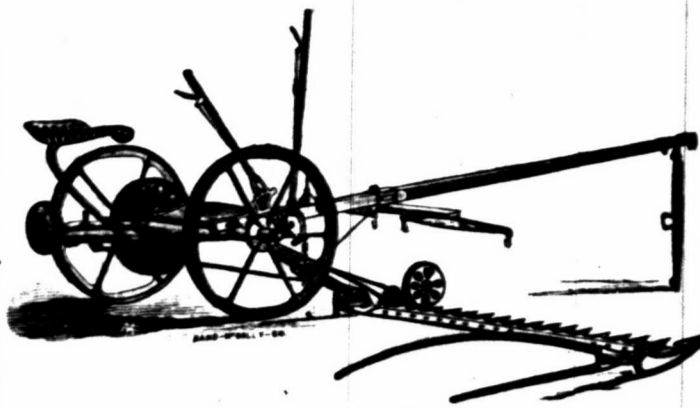
\$250 Reward.

OFFICE OF THE A & P CATTLE ASSOCIATION, GRANTS, NEW MEXICO.
A reward of \$250 will be paid for information that will lead to the arrest and conviction of any person unlawfully handling stock belonging to any member of this association, and \$100 for each additional person implicated in the same offense. Also a reward of \$100 for information that will lead to the arrest and conviction of any person or persons for killing cattle and not preserving the hides for inspection.
G. H. PRADT, President.
J. E. SAINT, Secretary.

CALF TALLY BOOK.

Leather bound, sent by mail on receipt of price, 75 cents. This book will be found convenient for use at the spring round-up.
THE STOCK GROWER,
Las Vegas, N. M.

THE NEW BUCKEYE LIGHT MOWER.
GUARANTEED TO BE THE BEST MOWER EVER MADE.



Its system of gearing has stood the test for 30 years. Don't buy a mower because it is cheap. It will not pay. The Buckeye will outlast any two of other makes of mowers. It will cost less for repairs, stand more grief, and do more work per year for ten years than any other mower for five. When its first set of knives are ground down to the back, the Buckeye will still be worth more than any one of the cheap mowers fresh from the shop. Examine the Buckeye, compare it with other machines, and you will be convinced of the truth of these statements.

For sale by O. L. HOUGHTON, Las Vegas; E. J. POST & CO., Albuquerque; E. J. POST, Trinidad; K. E. MESSENGER, Denver, and H. S. RHODES, Kansas City. For catalogue address, AULTMAN, MILLER & CO., AKRON, OHIO.

THE IRON TURBINE Wind Engine



AND BUCKEYE FORCE PUMP.

The Most Powerful and Durable combination for raising water in the world.

Requires less tower and will work with less wind than any other mill in the market and is especially adapted to the dry.

Climate and Strong Winds of the West.

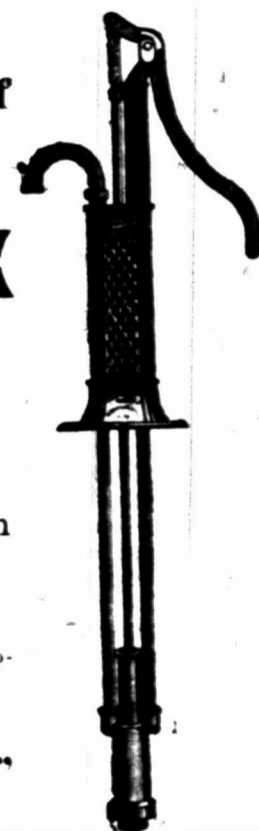
BUCKEYE FORCE PUMP

Works easy and throws a constant stream. Has porcelain lined or brass cylinders. Is easily set.

Is the Cheapest and Best Force Pump in the World for Deep or Shallow Wells.

Over 150,000 in use. Never freezes in winter. Send for descriptive catalogue.

P. P. MAST & CO., 1312 West 10th St., KANSAS CITY, MO.

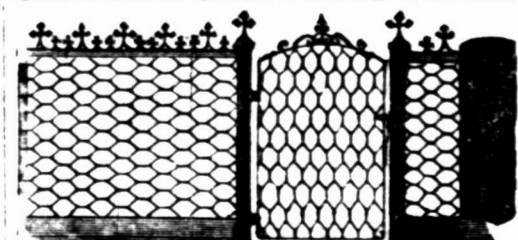


TO DROVERS.

For the benefit of those wishing copies of the New Mexico QUARANTINE LAW we have printed a cheap edition, which will be mailed to any address upon receipt of the price, 25 cents a copy.
THE STOCK GROWER,
Las Vegas, N. M.

TONY CAJAL,
The Palace Barber Shop,
Bridge street, near the Postoffice,
LAS VEGAS, NEW MEXICO.

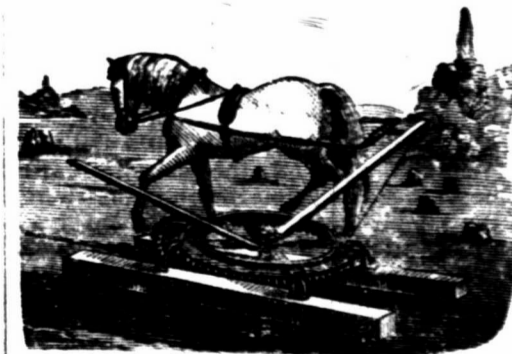
SEDGWICK STEEL WIRE FENCE.



The best Farm, Garden, Poultry Yard, Lawn, School Lot, Park and Cemetery Fences and Gates. Perfect Automatic Gate. Cheapest and Neatest Iron Fences. Iron and wire Summer Houses, Lawn Furniture, and other wire work. Best Wire Stretcher and Plier. Ask dealers in hardware, or address, SEDGWICK BROS., RICHMOND, IND.

Solon E. Rose & Bro.

MANUFACTURERS OF



RANGE Horse Powers

All sizes from one-half, or burro power, to six horse power.

Exclusive agents for Eclipse Windmills, Gould's Pumps, Deering Mowers and Reapers, St. Louis Artesian Well Tools, Knowles Steam Pumps and Boilers. Write for catalogue and prices.

S. E. ROSE & BRO., Albuquerque, N. M.

FOREIGN MEAT MARKET.

The Struggle to Monopolize the British and European Markets.

For the past three or four years there has been lively competition kept up between some of the leading grain producing countries for the grain trade of Great Britain and two or three other European countries, and now a fierce contest in the way of competition is just being opened for the supply of such fresh meat as these same countries may require from abroad to meet their wants from year to year.

John E. Bacon, United States Charge d'Affairs at Montevideo, Republic of Uruguay, in a lengthy report contained in the consular reports for January, treats at length the present condition and future prospects of the frozen meat trade between Uruguay and the Argentine Republic, and the consuming markets of Great Britain and such other European markets as have to depend to a greater or less extent on foreign supplies of meat.

In this report the following statement is made: "The great struggle now, as to what country shall monopolize this frozen meat trade seems to be between the United States, Australia, New Zealand, the Argentine Republic and Uruguay. The last named country has 8,000,000 cattle and 20,000,000 sheep, and is probably the finest grazing country in the world, just rolling enough to drain perfectly, having a rich soil and as fine a climate as can be found anywhere lying between 30 and 35 degrees south latitude. The government of Uruguay has taken hold of the frozen meat interest in real earnest, and by way of giving capitalists the strangest kind of inducement to engage in the trade with Great Britain, a law has been passed which authorizes the giving of a guarantee of 6 or 7 per cent. under certain sound restrictions upon capital that may be embarked in the frozen meat trade between Montevideo and the European markets. Of course the plants for carrying on this trade between the River Plate and the countries we have named will in all cases require a large amount of capital for establishing large slaughtering establishments, chillrooms, vessels provided with cold air machines for keeping meat in a frozen condition while in-transit, and chillrooms at its destination to keep its condition unchanged until sold. Voyages from Montevideo to Buenos Ayres take from twenty-five to thirty days, the vessels making them having to cross the equator, and a heavy part of the expense in making these shipments is in keeping up the necessary supply of cold air. It is reported that an effort has recently been made to bring into use certain improvements in the production of cold air with a view of making a material reduction in the cost, and which if successful would be sufficient to solve the whole problem as to the practicability of shipping frozen meat from the Plate River country to the markets named. In the Argentine Republic there are 16,000,000 sheep and cattle in proportion, and animals of these kinds are produced cheaper throughout the Plate River country than in any other portion of the world. So that the question as to the expense of marketing must be the sole point upon which the whole question of carrying off the lion's share in the way of supplying the European markets with beef and mutton must turn. Heretofore the main outlet for the cattle production of these countries has been through the making and shipping of jerked beef. Producers of cattle and the commercial men of the country have come to the conclusion that nothing short of the establishment of a permanent frozen meat trade will be able to dispose of the vast amount of surplus beef which the Plate River country is now producing, and besides it is all-important to open up a way for disposing of the enormous quantity of mutton that is being produced in that country. Such stock could never be shipped alive over such long voyages as have to be made for reaching the markets. Nothing in this connection now remains but for the people of these countries to perfect a system of frozen meat shipments that will bring the cost of transportation within reasonable limits. This accomplished, the meat trade between the Plate River and the European countries named will cut a most important figure in the world's great commercial field. It is claimed that mutton can be laid down in Liverpool from the Plate country at about three cents per pound, and beef at correspondingly low figures.

According to the best estimates South America has about 75,000,000 sheep and it is easy to see that with a correspondingly large number of cattle, that an enormous amount of frozen meat can at any time be added from this country to the world's supply, after a sound system for shipping and handling shall come to be established.

Refrigeration and Shipping of Meat.

Some shippers consider thirty-four degrees, Fahrenheit, the proper temperature for the refrigerator containing carcasses of beeves and sheep; this temperature does not freeze the meat solid, it only chills, and when meats preserved thus are exposed to the outside air, they do not sweat nearly so much as if the temperature of the refrigerator had been noticeably lower. Other acknowledged authorities on the subject contend that thirty degrees is the best temperature, but there is no doubt that this degree of cold causes, on exposure to common air, a heavier deposit of moisture on the surface of the meats thus treated. Meats have been held for eight weeks in perfect condition, and with very slight discoloration of the surface. The degree of discoloration in meats varies considerably, according as the animal has been fed during life. Still-fed cattle deteriorate more quickly, and far more seriously, than do beeves which have been grass-fed, and the flesh of corn-fed beeves remains in the refrigerating process longer, without deterioration, than either of the former.

The most frequent cause of injury to meats held in the cooling room, is allowing the temperature to vary. If by oversight, accident or neglect, the temperature has been allowed to vary considerably, irreparable injury is the result. The chilling and thawing, incident to frequent and sudden changes of temperature, destroys fruits and injures meats to such a degree, that their relative value as food is seriously decreased, the appearance damaged, the delicacy of the flavor lost, and much difficulty experienced in cooking.

The meats from Australia, which compete on the British markets with American meats, are less liked than ours, solely because they are frozen hard, and ours are preferred because they are only properly chilled. — *American Agriculturist.*

Frozen Meat.

In the last published reports of United States consuls, we find the following interesting matter from the U. S. consulate at Glasgow, Scotland.

To show how the importation of frozen mutton has affected the trade in sheep with the United States, it may be stated that for the year ending September 30, 1885, there were imported 925,282 pounds of mutton and 11,839 live sheep. For the year ending September 30, 1886, there were only 6,000 pounds of mutton and 1,193 live sheep. It was always a matter of difficulty to bring over sheep in good condition. They suffer from cold and motion and show the effects painfully.

For the year 1885 there were imported into Great Britain frozen carcasses of mutton from Australia in number, 95,051, equal to 2,679 tons (2,240 pounds); from New Zealand 492,269, equal to 14,145 tons; from the River Platte, 108,823, equal to 4,440 tons.

It is impossible for the United States to meet that competition, because frozen mutton preserves its flavor and looks, and loses only five per cent. of weight on the voyage. If it were in the same way with beef the cattle raisers of the United States would be in a dilemma; but fortunately for our country beef does not keep its quality, flavor, weight or nutriment when frozen, the loss being at least twenty-five per cent., and especially in the nutritious quality and flavor. The importations of frozen beef into Great Britain from those distant countries has not been remunerative.

Does the Rainfall Increase?

The great drouth in the central western part of Texas with but slight intermission, has lasted now for nearly two years, and settlers even in the older counties are leaving the country as rapidly as possible.

The loss of stock from lack of water and grass, which was very great last year, is again looming up into dangerous proportions, and where stock suffers for these two elements it can safely be said that the cultivation of the ground can not be made a profitable business.

It is not only the rather deficient and poorly distributed rainfall there so much as the intense heat and consequently great evaporating power of the air that steals the moisture away from the famishing crops almost as soon as the rain falls, that makes the cultivation of the land unprofitable.

A long wavering line of settlement has surged past the western boundaries of Kansas and Nebraska into the eastern counties of Colorado and Wyoming, and the homesteader's cabin occupies the lands lately ranged by the ranchman's herds. It is indeed claimed that the rainfall increases as the ground becomes broken up, trees planted and cultivation increases. Without doubt the retention of moisture by the pulverized soil has some effect on the climate, but there are substantial reasons for doubting that such climatic alterations would be marked enough to change a country with essentially arid features into a region of permanent agricultural worth.

Observations on the weather, when carried on sufficiently long to eliminate temporary variations, appear to conclusively establish the fact that no essential features of climate so far as an increase or decrease in the yearly amount of rain or the temperature is concerned, have taken place in historic times. It is, however, perfectly possible, by the planting and cultivation of the land, to preserve the rain that does fall, in the ground, for the demands of vegetation, instead of its being idly evaporated into the air by the absence of forest and vegetable growth, thereby permitting the strong winds and hot sun to have direct access to the earth. It is claimed that the annual amount of rainfall in the vicinity of the 100th meridian in Kansas and Nebraska, has very largely increased since the country has been settled and the ground brought into cultivation, and an examination of the appended table of rainfall gives a very substantial basis for that opinion; but as signal service observations are only available since 1871, it leaves grounds for the probability that the greater amount of rain since 1880 is traceable to periodic variations in rainfall common to semi-arid localities. Let us hope that this is not so, but that the increase is permanent in character.

As stock raising is not so dependent on a regular and abundant supply of moisture, it would be well, so far as possible, for the homesteader to place his main dependence on the former industry.

To show the marked increase in precipitation along the 100th meridian, the rainfall at Dodge City, Kansas, for the six years preceding 1880 averaged 17.29 inches per annum; from 1881 to 1886 the quantity rose to 21.35 inches, an increase of 4.06 inches per year. At North Platte, Nebraska, past which the frontier line of settlement has long since gone, a smaller increase has taken place. This increase does not seem to be so marked further westward of these points, for at Denver, Colorado, and Cheyenne, Wyoming, on the 105th and 104th meridians respectively, the increase has been but 1 and 1½ inches for the time named. — *St. Paul Farmer.*

SOUTHERN COLORADO.

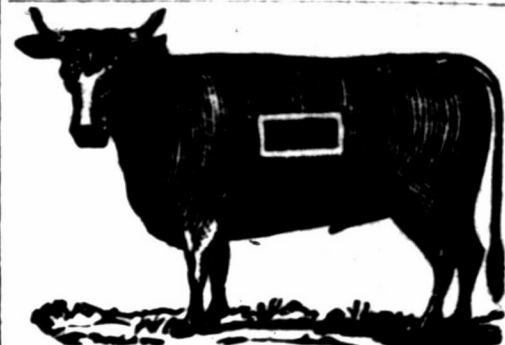
New Haven Cattle Company.
W. W. THOMPSON, Foreman.
F. T. Bradley and C. K. Dewell, Assistants.

Postoffice, Trinidad, Colorado.
Range, Lower Apishapa.
Brand as here given.
Ear marks, under half crop to left.
Horse brand same as cattle brand.

Lane & Murray.
P. O.: West Las Animas, Colorado.
Range, Fort Lyon to Mud creek, Colorado.
Ear marks, underslope and underbit each ear.

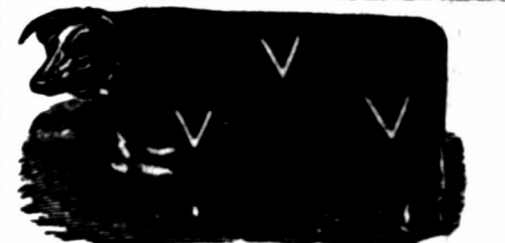
Additional Brands:
Triangle on jaw. W left loin. V right side.
Pd left side. FS left side. 22 left side.
Horse brand, HL (connected) on left shoulder.

SOUTHERN COLORADO.



George W. Thompson.
P. O. Address: Trinidad, Colorado.
Ranges in western portion of Las Animas county, Colorado, and eastern portion of Colfax county, N. M.
Some branded same as above on right side.
Some cattle in the following brands on either side or hip: **WI HH TI** Various ear marks.

Additional Brands:
N — N on right or left side. X on left side and hip. X on left jaw. N + N on right or left side with N on right or left hip.
Various ear marks.
Horse brands, N on left hip and N — on left hip.
Horses also branded same as on above cut, but smaller, on the left shoulder or left thigh.



A. D. HUDNALL.
Postoffice, West Las Animas, Colorado.
Breeder of Hereford cattle. North side Arkansas river, Bent county, Colorado.
Ear marked, swallow fork left ear.

Additional Brands:
□ left side, — left thigh; under hack in each ear.
V left shoulder, V left side, V left thigh.
VV left side. V left hip.

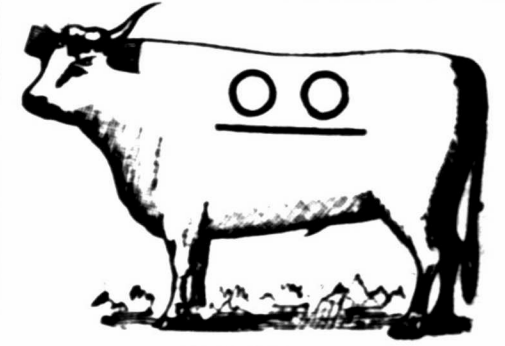
KANSAS.

Watson & Fullington.

P. O.: Greensburg, Edwards county, Kansas.
Ranch headquarter camp Willow Bar, on Cimarron river, Neutral Strip.
All increase branded as in cut.

Ear marks, upper and lower bit left ear.
Additional brands:
55 10 WK on the left hip.
Horses branded on the left hip.

NORTHWEST TEXAS.



O. J. Wiren.
Cattle Raiser and Dealer.
Postoffice, Colorado, Texas. Ranges in Fisher and Kent counties.
Horse brand, circle bar on left hip.

Fresnal & Mussey.

P. O.: Fort Stockton, Tex.
Range, Comanche creek and Pecos river, Texas.
Ear marks, sharpen left ear.
Horse brands on left hip.

Lee-Scott Cattle Co.

P. O.: Tascosa, Texas.
Range, Oldham and Hartley counties, Texas; and San Miguel county, N. M., on the Canadian river.
Horse brand: on the left hip.
LS, S or on the left hip.

Additional Brands:
LS both sides; marked, crop and split both ears.
left side; over both sides; crop and half crop, under split right and split the left.
both sides; split each Also, all on the left ear.
GM left side; marked, underslope each ear, all steers.

In addition to the reward offered by the association, we will pay a reward of one thousand dollars for the conviction of any one stealing, butchering or illegally branding any of our stock, or marking any of our calves.
LEE-SCOTT CATTLE CO.

THE STOCK GROWER.

LAS VEGAS, NEW MEXICO.

SATURDAY, MAY 7, 1887.

PERSONAL.

Items of Interest Relating to Stock Growing People.

Edwyn F. Upcher will return to New Mexico from England about June 1st.

John Swinburne, of Apache county, Arizona, has returned from a six months' visit in Scotland.

Montague F. Stevens is now on his way to England, to be absent from New Mexico for the summer months.

E. D. Ballard, of Liberty, has been looking after valuable mining property in the Magdalena district, Socorro county, the past week.

Will Chapman, a leading young business man of Socorro county and interested as well in the Illinois Cattle company there, was making friends in Las Vegas during the week.

Mr. J. O. Philippi has resigned as assistant general freight agent of the Atchison, Topeka & Santa Fe, and has accepted the presidency of the Topeka Land & Investment company.

William Mallard, cattleman of Fort Sumner, made a quick business trip to Las Vegas during the week and left for the ranch again on Thursday, accompanied by J. W. Leonard of La Cima.

Governor H. C. Moore, of Puerto de Luna, accompanied by his eldest son, a prominent and wealthy mining man of the northern country, paid THE STOCK GROWER an agreeable call on Thursday.

J. M. Kepple, of Kansas, is in Las Vegas looking for a small bunch of steers. The prime condition of the southwestern steer this spring makes him an animal much sought after by eastern feeders.

Arthur A. Mermod, of Mermod & Jaccard & Co., of St. Louis, and an extensive cattle grower of Colorado, has just returned from Old Mexico where he purchased an immense herd of cattle. He is at the Albany.—Denver Republican

D. N. Smith, of Smith & Holbrow, cattlemen of Socorro county, returned this week from a visit to England. Mr. Smith is contemplating going into the sheep raising business in the event that the firm disposes of the cattle now running on their Magdalena range.

C. O. Tiffany, son of Col. J. C. Tiffany, of the Bosque Bonito ranch, is now located in San Quintin, Lower California, and together with Paul Warren, son of H. L. Warren, Esq., has control of 1,200 acres of land in that fertile country.—San Marcial Reporter.

J. C. Duffee, well known in commercial circles in Las Vegas, is now managing the extensive merchandizing interests of E. D. Ballard at Liberty. Mr. Duffee ranks high as a business man and will take a leading position in his new field of labor where the cowmen most do congregate.

Major G. H. Sisson, formerly connected with Colonel J. C. Tiffany in the cattle business at San Marcial, has been visiting Colonel Tiffany at his Bosque Bonito ranch. Major Sisson is at the head of one of the extensive colonization companies that is doing so much at the present time to regenerate Mexico.

Colonel J. C. Tiffany, the fancy stock breeder, of San Marcial, and one of the most energetic business men of the southwest, paid THE STOCK GROWER an agreeable visit on Friday. Colonel Tiffany is an enthusiastic Holstein breeder. He is also paying considerable attention to the raising of horse stock, and all in all is doing a great deal to develop the live stock industry of the southwest.

R. B. Godley says that a cowboy will ride all day on a wet saddle, sleep on the frozen ground at night and never sneeze, much less take pneumonia; that a mustang pony will live all winter on mesquite beans and blue northern and shake his tail at glanders and farcy, and that an old Spanish cow won't take pleuro or anything else. He offers to furnish 100 head of cattle on the open range and introduce the worst case of pleuropneumonia from the Chicago pens.—Texas Farm Ranch.

Business Pointers.

Jno. A. Witter, of Denver, Colorado, has received another lot of Percheron stallions. See his ad. in this issue.

C. H. Ward, of Los Angeles, California, does not care to lose any cattle by straying so he puts his brand in THE STOCK GROWER along with something like 2,500 other brands.

The Armstrong Bros. have their brand in this issue of THE STOCK GROWER. This firm is composed of popular gentlemen who believe in letting the world know what they are doing.

Frank A. McCullough, of Colfax county, advertises his brand in this paper. He is only running steers at present and ranges on the head of the Palo Blanco. Owners from whom he bought last year are requested to look out for strays.

Jno. A. Witter, of Denver, Colorado, made the following sales of Percheron horses during the past ten days: One pair dappled-gray Percheron mares to Robt. Spotswood, Denver; one imported Percheron stallion to Alfred Hurst, Golden, Colorado; one high grade mare to H. G. Thornton, Manitou Park, Colorado; one pair high-grade mares to L. R. Rhodes, Denver; one imported Percheron stallion to Chas. Smith, Monument, Colorado; one imported Percheron stallion to Jas. Payne, Denver; one imported Percheron stallion to Sylvester Allen, Witmore, Colorado; five imported stallions and two high-grade mares to J. T. Bailey, of Utah; three mares to J. R. Horner, Denver.

The handsome advertisement of M. Ehret & Co., manufacturers of Black Diamond Prepared Roofing will be noticed this week on page 5. This is unquestionably one of the best and cheapest roofing materials ever invented, as the extraordinary sales of the article in all parts of the country testify. In the hot dry climate of the southwest where roofs are subjected to the severest tests, the Black Diamond roofing is found to be without an equal. The Browne & Manzanara Co., of

Las Vegas, agents for New Mexico, are handling large quantities of it in their extensive trade, for the Black Diamond roofing has the merit of cheapness, ease in handling and is absolutely water and fire proof and will outlast any other kind of roofing in existence. THE STOCK GROWER knows what it is talking about, and advises its readers when in need of a roof to send to the Browne & Manzanara company and get the Black Diamond Prepared Roofing.

THE STOCK GROWER this week presents to its readers a handsome advertisement of Aultman, Miller & Co., the manufacturers of the BUCKEYE mowers, reapers and binders. The BUCKEYE mowers are standard and this popular make of machine is as well known in the United States as the name of any staple necessity. This fact is due, not only to the extensive advertising of the manufacturers but to the high excellence of the machine. No mower has the popularity of the BUCKEYE in the southwest and all of our hay-makers indicate preference for that make. The time is near at hand when a vast number of mowing machines will be required by the great growing class of grass farmers of the southwest. In a country like this where forage is such a valuable crop and where hay is worth from \$15 to \$25 a ton it is well to get the best when buying a mower. The managers of the Phenix ranch, situated twenty miles north of Las Vegas, tell us of their experience with mowers last year. They had three Champions and a BUCKEYE. The work was in heavy alfalfa, cutting three tons to the acre. The Champion was of heavier draft than the BUCKEYE but could not handle the heavy crop which the BUCKEYE went through in splendid style, giving unqualified satisfaction. Such a fair test speaks more for the merit of a machine than pages of advertising. The BUCKEYE is simply constructed and easy to repair. Ranchmen can buy it on the recommendation of THE STOCK GROWER. The agents for the southwest are O. L. Houghton, Las Vegas, E. J. Post & Co., Albuquerque, E. J. Post, Trinidad, K. E. Messenger, Denver, and H. S. Rhodes, Kansas City, and catalogues can be obtained by addressing Aultman, Miller & Co., Akron, Ohio.

A Famous Galloway Sale.

A most notable event will take place at Denver on June 10th. Read the mammoth advertisement of Geo. L. Goulding & Co. on page 6 announcing it. When this firm says that a grand sale of Galloways will be made, our readers can depend on it that the sale will be all that the announcement implies. The Leonard Bros. and Bush & Morse will at that time offer 100 head of the choicest male and female Galloway cattle in America. Many of the offerings were selected by the Leonard Bros in person from the best herds in Scotland and combine in their individuality the finest strains of Galloway blood in the world. The Leonard Bros. stand among the foremost importers and breeders of fine cattle in the United States and their guarantee of an animal is never questioned. THE STOCK GROWER is happy to announce that this sale will be the grand event of the year in Galloway circles. Here will be found the descendants of British Hero 1887, and that equally famous bull Borderer of Drumlanrig 2678, and others with the strains on the female side of Semiramis, Lady Stanley and Forest Queen. The animals to be sold have not been handled for show purposes, but have been kept in that condition best suited for making them the best obtainable range animal or for the establishment of a dandy breeding herd. It will pay you to go to Denver and visit Goulding & Co.'s yards and there see from 300 to 500 head of thoroughbred and grade animals of all classes. It is the model establishment of the west, where you can buy all kinds of animals, and where especially is found horse and mule stock suited to the wants of the field, road or turf. It is a complete stock yard with no superior accommodations for the handling of business in the west, and where everything in the way of live stock, except swine, can be seen and purchased.

\$10 Reward.

Strayed, one black horse, both hind feet white, white strip on nose, branded (clover leaf) on left shoulder. Last seen near Puerto de Luna. Above reward paid for information. A. G. DUNCAN, Teagueville, N. M.

Round-Up Notice.

District No. 3 of the Sierra County Cattle and Horse Growers' association, will commence the general round-up at the lower end of the D D bar range on May 15th and work to the Adobe ranch. W. J. HILL, Secretary. JAS. MOORE, Captain.

Notice.

Trail running from back bone to point of shoulder, steers in the above brand are the property of the Chadbourne Bros., who drove this bunch of steers from Texas last year. Postoffice address, Endee, N. M.

San Miguel County Commissioners. OFFICE OF COUNTY COMMISSIONERS SAN MIGUEL COUNTY, N. M. APRIL 20, 1887.

The following accounts against the county of San Miguel were presented to the board of county commissioners during the March term, found correct, and warrants ordered drawn for the several amounts:

Table with 2 columns: Name and Amount. Includes John Hill, Gabriel Lucero, Manuel Cordova, etc.

Table with 2 columns: Name and Amount. Includes Vicente Salazar, Cristobal Beltram, Ricardo Urioste, etc.

Table with 2 columns: Name and Amount. Includes Picio Garcia, Crecensio Ortiz, Victor Lucero, etc.

NEW BRANDS

Advertisement for Frank A. McCullough, featuring a cow illustration and brand details.

NOTE—The animal cuts for the brands given below did not arrive in time for this issue. They will appear next week.

Advertisement for C. H. Ward, featuring a cow illustration and brand details.

Advertisement for Armstrong Bros., featuring a cow illustration and brand details.

Advertisement for Hunings & Cooley, featuring a cow illustration and brand details.

ARIZONA.

\$1,000

REWARD: I desire to call attention to my marks and brands for cattle, as shown in cut. I sell no stock cattle, and will pay \$1,000 reward for the arrest and conviction of any person or persons unlawfully handling cattle in the following brand and marks.



J. H. Hampson.

P. O.: El Paso, Texas. Ranch P. O.: Clifton, Arizona. Range, on Eagle creek, Graham county, Arizona. Ear marks, crop and split left, crop right. Horse brand, 4 on the left shoulder.



Smith, Carson & Co.

P. O.: Springville, Apache county, Arizona. Telegraph and express office, Navajo Springs, Atlantic and Pacific railroad. Ear marks: Crop off the left. Horses branded: [mark]



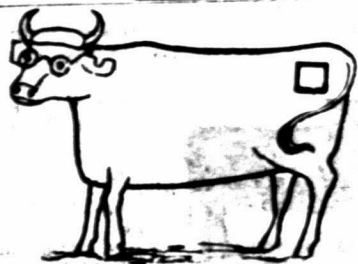
David Rope.

P. O.: Holbrook, Apache county, Arizona. Range, Rope's ranch, four miles west of Holbrook, south of the Little Colorado river. All cattle have two bars on left jaw, and are marked with a half under-crop in each ear. Horse brand, XV on the left hip.



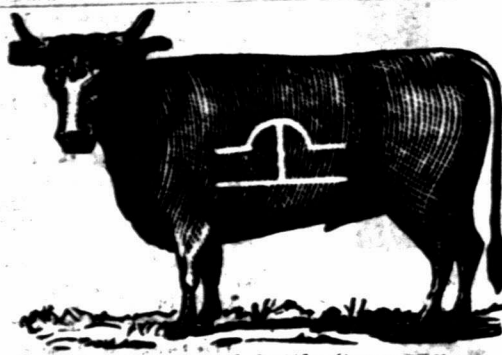
Maish & Driscoll.

Postoffice, Tucson, Arizona. Range, on Santa Cruz river, south of Tucson, Pima county. Horse brand, S on the left hip.



William Curtis.

WOODS & POTTER, Managers. Post Office, Woodruff, Apache County, A. T. Ear mark: crop right over bit left. Horse brands, [mark] on left thigh, [mark] on left hip, and [mark] on left hip.



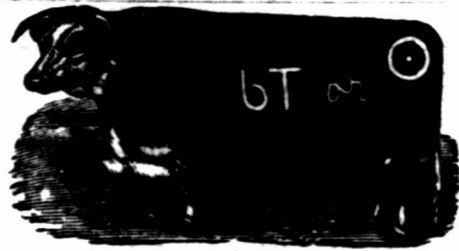
Aztec Land and Cattle Company. (Limited)

HENRY WARREN, General Manager. Post office address: Holbrook, Arizona. Range, Apache and Yavapai counties. All cattle branded same as cut on both sides. Horses: [mark] on right and some on [mark] left shoulder, also [mark] right flank.

ARIZONA.



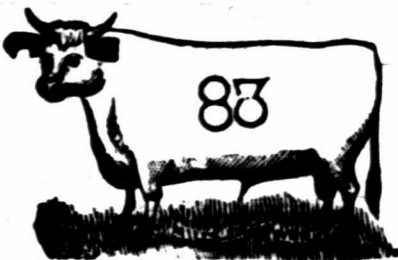
A. L. Morrison & Son. P. O.: Springville, Arizona. Home ranch, Mamie creek, near Escadilla Mts. Ear marks, underslope right, crop left. Horse brand, same as cattle, on right hip.



Cameron Bros.

Postoffice, Lochiel, Pima county, Arizona. Range, on the San Rafael de la Zanja Grant. Ear marks, right cropped, left slit. All cattle in the quarter circle U brand are marked underslope the right, swallowfork in left. Horse brand, like cut.

Also own the following brands, kept up:



Santa Rita Cattle Co.

ISAAC N. TOWN, Superintendent. Postoffice, Calabasas, Pima county, Arizona. Range, Santa Cruz river, Pima county, Arizona. Calves of 1886 and imported bulls are branded same as cut on left hip.



Collin Cameron.

P. O.: Lochiel, Ari. Range, valleys and slope of west Huachuca. Mark, swallowfork both ears. Horse brand, same as cut.



Gardiner, Gillies & Wilmerding.

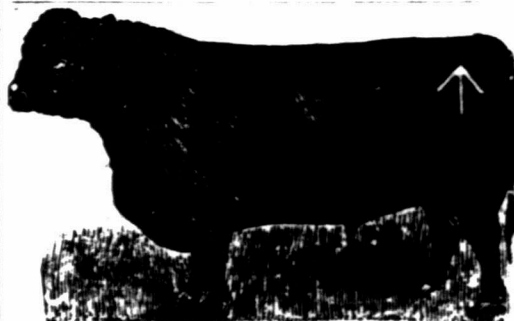
P. O.: Navajo Springs, Apache county, Arizona. Range, Deer and Cedro Springs, Apache county. Ear marks, right ear is grabbed.

All cattle in addition to above brand, have an X on the left jaw. Horses are all branded [mark] on right shoulder.

NEW MEXICO.

The Counties under this heading are all in the Territory of New Mexico.

RIO ARRIBA COUNTY.



Chama Cattle Company.

DERWENT H. SMITH, Manager. Postoffice, box 132, Santa Fe, N. M. Range, Canon le Chama grant. Horse brand, same as cattle only smaller. Ear marks: Hole with point of triangle cut out of ear shaped [mark] toward the end of ear.



T. D. Burns.

P. O.: Tierra Amarilla, N. M. Range, Canon Largo. Brand on either side.

BERNALILLO COUNTY.



Mariano Perea.

P. O. Bernalillo, N. M. Range, La Jara. Ear marks, swallow fork left.



Jacobo Yrisarri.

P. O. Albuquerque. Range, Trinchera mountains. Ear marks, swallow fork, over and under hawk in right ear. Other brands same as cut.

SANTA FE COUNTY.

Santa Fe Cattle Co. W. C. BISHOP, Manager, Santa Fe, N. M.



This brand kept up.



Additional brands: FW A 44

Ranch twenty miles west of Santa Fe, N. M.

SIERRA COUNTY.

Sierra Land and Cattle Company.

P. D. RIDENOUR, President, Kansas City, Mo. E. D. BRACKETT, Sec. and Treas., Kansas City, Mo. R. H. HOPPER, Vice-Prest. & Mgr., Kingston, N. M. S. S. JACKSON, Ranch Manager, Hillsborough, N. M.



Range, southeastern Sierra county.

All cattle branded as in the cut, and have two bars under the tail on both sides. Horses all branded SLC on the left hip, as in this cut.



Vermont & Rio Grande Cattle Co.

P. O.: San Marcial, N. M. Range, twenty miles south of San Marcial. Ear marks, underbit in each ear. Horse brands: C or TEL on left hip or thigh.

Detroit and Rio Grande Live Stock Co.

P. MOTHERSILL, Manager.



P. O.: Engle, N. M. Range, Jornada and Calballo mountains. Ear marks, under-half crop right; underbit left. Horse brand, [mark] left hip, [mark] left side, [mark] left hip.

Other brands: [mark] left side, [mark] left hip.



J. M. Blun.

P. O. Fairview, Sierra county, N. M. Range, adjoining the town of Fairview. BLUN, either side. Ear marks, underslope each ear, and split the left.



Horse brand, left side and hip.

Increase of horses, KY on left hip.



John McLeod.

P. O.: Rincon, Dona Ana county. Range, twelve miles north of Rincon on each side of Rio Grande, and in the Calbello mountains in southeastern portion of Sierra county. Horse brand, OM on the left shoulder.



Henry G. Toussaint.

P. O.: Lava, Range, near Engle, Sierra county, N. M. Horse brand, HGT left hip. Vent brand on horses, under original brand. Other brands on cattle and horses: [mark] [mark] [mark]. Vent brand on cattle, same as on cut, but inverted and run on neck.



C. Hearn.

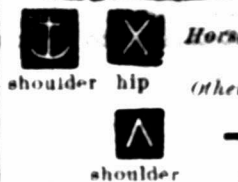
P. O. Fairview, N. M. Range, Pauvrecita creek and vicinity of Fairview. Ear marks, figure 7 underbit in each ear. Additional brand, G L on left hip. Horse brand, same as cattle on left thigh.

SIERRA COUNTY.



John B. Alley Cattle Company.

T. J. WRIGHT, Manager. P. O.: Lake Valley, N. M. Range, Lake Valley, Sierra Co., and Ojo Caliente, Socorro Co.



Horse Brands: [mark] [mark]

shoulder hip (Other Brands: shoulder hip)

[mark] [mark]

shoulder side hip



Grayson & Company.

P. O.: Los Palomas, Sierra county, N. M. Range, Animas ranch, Sierra county. Ear marks, under half crop each ear. Horse brand, same as cattle but on left shoulder.

Additional Brands:



on left hip



W O left side.

22 right hip.

22 right thigh.



left hip. Some have same on side.

22 right hip.

on the same animal.

GRANT COUNTY.

Haggin, Hurst & Head.

Address, A. E. HEAD, Deming; or JAMES VAN DYK, Whitewater, N. M.

This brand for all cattle on range at Apache Teju, Cow Springs and Warm Springs, Grant county.



Other brands: [mark] [mark] [mark]

old brand, right side.

Horse brand, [mark] on the left hip.



This brand kept up on all cattle on range in Animas valley, Grant county.

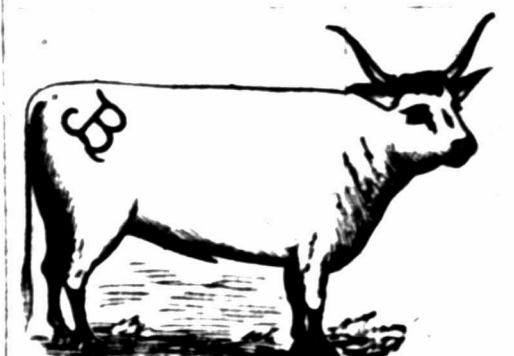
Other brands: [mark]

known as the Porter brand, with dewlap.

Horse brand, [mark] or [mark] on the left hip.



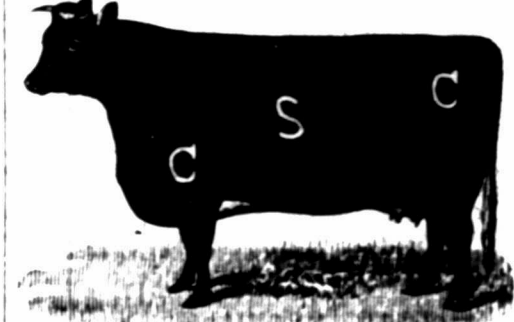
All cattle on both ranches marked with dewlap.



Old and New Mexico Ranch and Cattle Co.

LOV H. BROWN, Superintendent

Postoffice address: Hatchita, Grant county, N. M. Range, Alamo Hueco in southern end of Piyas valley, southwestern Grant county, New Mexico. (On the right shoulder. Also some horses branded same as the cattle, as in cut.



Carpenter-Stanley Cattle Co.

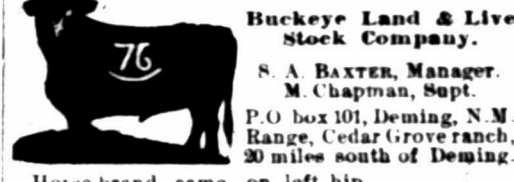
P. O.: Fort Cummings.

Range, east side of Cook's Peak, Grant county.

Other brands: [mark] [mark] [mark] [mark] [mark]

Horse brand: [mark] on left hip.

Ear marks: [mark] [mark] Also, two underbits in each ear; crop left underbit right; underbit left crop right.



Buckeye Land & Live Stock Company.

S. A. BAXTER, Manager.

M. Chapman, Supt.

P. O. box 101, Deming, N. M. Range, Cedar Grove ranch, 30 miles south of Deming. Horse brand, same, on left hip. Brand on left side. Marked, sharpen both ears.



Lindauer Cattle Co.

S. LINDAUER, Manager.

P. O.: Deming, N. M. Range, on McKnight's Chisaga, on Upper Mimbres. Horse brand, SL on the left shoulder.

GRANT COUNTY.

Mimbres River Cattle Company. E. E. BURDICK, President and Treasurer. F. WALTERS, Secretary and General Manager. C. A. BURDICK, Vice President. P. O.: Deming, N. M. Range, Rio Grande to the Mimbres river. Old brand, 6 on shoulder & on hip. Horse brand on the left thigh same as cattle. Ear marks, crop left, crop and split the right.

Lyons & Campbell. P. O.: Silver City, N. M. Range, Duck Creek, Mule Springs and Middle Gila, Grant county. Mark, crop and split left horse brand, LC anywhere on brand LC the left side.

Jornado Cattle Co. MAX GOLDENBERG, Mgr. P. O.: Organ, Dona Ana county, N. M. Range, on southeastern portion of the Jornado del Muerto, San Andreato and Oso Springs. Ear marks, hole in right, split in the left. Horse brand A on the left hip.

Hart Bros. Land and Cattle Co., Limited. P. O.: Lordsburg, Grant county, New Mexico. Range, Lower and Middle Gila, and west side Burro mountains. Ear marks, underslope left and crop and split the right ear. Other brands: 2 on side; 4 on left side; 2 on right thigh; when sold are vented on right shoulder.

HART side: 2 on side; 4 on left side; 2 on right thigh; when sold are vented on right shoulder.

John Brockman. Postoffice, Hudson, New Mexico. Range, Rio Mimbres, Grant county. Horse brand, same as cattle, on the left hip. Also owns all cattle branded B on the left side, A on the left hip. Ear mark, under half crop each ear. All parties are cautioned against purchasing cattle in the above additional brands except from myself, as I have purchased the brands and all cattle running in them. JOHN BROCKMAN.

Missouri-Florida Cattle Co. JOHN J. YEATER, Pres., Sedalia, Mo. JOHN M. WEIDERTER, Sec. and Treas., Clinton, Mo. JOHN T. SHY, Superintendent, Deming, N. M. P. O.: Deming, N. M. Range, east side Florida mountains. Horse brand, same as cattle on left hip.

Wm. Brahm. P. O.: Silver City, N. M. Range, White Water, Grant county, N. M. Additional brand, N on right hind leg. Horse brand, B on the left shoulder.

DONA ANA COUNTY.

S. B. Newcomb. P. O.: Las Cruces, N. M. Range, western part of Lincoln county, in the Rinconada. Horse brand, same as cattle on right shoulder.

Pedro Garcia y Perea. P. O.: Las Cruces. Range, east side of Rio Grande, south of Rincon. Cattle branded on either side.

Lynch Bros. P. O.: Colorado, N. M. Range, La Loma Parda, Sierra Co.; Las Uvas and Sance Springs, Dona Ana Co. Additional brands: Young stock, L on left side. All horses are branded LB on the left side.

DONA ANA COUNTY.

Horace Rapas. P. O.: El Paso, Texas. Range, Carizozo Springs and west side San Andres mountains. Horse brand, same as cut on left shoulder.

Mariano Barela. P. O.: Mesilla, N. M. Range, west of the Rio Grande, from Picacho mountain west of Mesilla south to the buttes west of La Mesa.

Williams Bros. P. O.: Las Cruces, N. M. Range, Sacramento river, Dona Ana county. Ear mark, jinglebob in each ear. Other brand, 4 on left hip.

Sacramento Cattle Co. P. O.: El Paso, Texas. Range, Sacramento Ranch, Sacramento mountains, Dona Ana county New Mexico. Also cattle branded 4 on left side of neck. Also horses branded H or H on left shoulder. Ear marks, crop right, swallowfork left. Old stock has H on left shoulder. Horses branded H on left thigh.

Barbero Lucero. P. O.: Las Cruces, N. M. Range, above San Diego, Dona Ana county. Horse brand, same as on cattle, left shoulder.

MORA COUNTY.

W. H. Wilcox. P. O.: Wagon Mound, Mora Co., N. M. Range, Mora county-west of Red River and east of Turkey mountains. Horse brand the same, on left hip. Some cattle of right side.

The Wendling Cattle and Land Co. OF COLORADO AND NEW MEXICO. New Mexico Division.—Breeding Ranch. TAYLOR MAULDING, Manager. Brands: "O. K." on all stock. Range in Mora county, New Mexico. No cattle vented. Office: 325 17TH ST., DENVER, COLO. S. S. SMYTHE, Secretary.

Price Lane. P. O.: Wagon Mound. Range, south of Wagon Mound. Horses branded L or right shoulder.

L. W. Leach. P. O.: Wagon Mound. Range, south of Wagon Mound.

La Cueva Ranch Co. D. C. DEUEL, Manager. P. O.: La Cueva, N. M. Range, Coyote and La Jara, Mora county. Horse brand, on the right shoulder.

S. B. Watrous & Son. P. O.: Watrous, N. M. Range, east of Watrous, north and south of Mora river. Horse brand, W on the left shoulder.

J. F. LaTourette. P. O.: Wagon Mound. Range, near Fort Union. Extra brand, L left shoulder, A left side. Ear marks, swallowfork right, crop and two splits in left. Horse brand, same as cattle, on left shoulder.

MORA COUNTY.

T. H. LAWRENCE, Manager, East Las Vegas. W. E. LAWRENCE, Range Supt., Tequisquite, Mora county, N. M.

Dubuque Cattle Co. P. O.: East Las Vegas. Range, Tequesquite, Ute creek and Tremperos, Colfax, Mora and San Miguel counties. Horse brands, X or MX or T left hip or shoulder. Other Brands: 00, H, 4, 3.

F. J. Maldaner. P. O.: Wagon Mound, N. M. Range, Vermejo and Tata Vega. Ear mark, crop left and split right. Other brand: 4.

William McCartney. P. O.: Los Angeles, Cal. Ranch P. O.: La Cinto, New Mexico. Range, Rincon and Arroyo de Los Alamocitas. Ear marks, crop right, underslope left. Horse brand, same as cut, on the shoulder.

Other brands: 5, 4, 6, 8. Horse brand, same as cattle, on left shoulder. All cattle in New Mexico in above brand are my property, and as I sell none all parties are cautioned against handling same illegally.

Also own all cattle branded and marked underbit the left, crop right. Range, on left side JS left, crop right, head of Canon Largo. This brand kept up. Horse brand, same on left shoulder.

Robison & Clark Cattle Company. W. D. CLARK, Manager. P. O.: Wagon Mound, N. M. Horse brand, T on the right shoulder. Other brands, H on right side and hip; also, T on right hip and J right side. 16 on the left side and hip. All increase branded as in cut.

Aaron Bales. P. O.: Watrous, N. M. Range, Petrosos canon and Cherry valley, Mora Co. All calves marked with overbit in left and two underbits in right.

Farr Bros. P. O.: Watrous, N. M. Range, Red River and Alamocitas. Horse brand, V on left shoulder. Other cattle, A on left brand, A on left side.

H. T. Sinclair. P. O.: Wagon Mound, Range, Vermejo and Tata Vega. All increase branded the same as old stock. Other brand, T on right shoulder, side and hip. Horse brand, HT on the left shoulder.

W. T. Marshall. P. O.: Wagon Mound. Range, Escondido, south of Wagon Mound. Horse brand, same on left hip. Ear marks, under half crop left, over half crop right. Also have some cattle branded S on right side. All increase branded as in cut.

Portsmouth Cattle Co. E. E. HOLMES, Manager. P. O.: Kansas City, Mo. H. G. HOWARD, Supt., P. O.: Springer. Range, Colfax and Mora counties, New Mexico. Horse brand: Same as on cattle, as in cut. Some horse branded B B.

S. H. Fairchild. P. O.: Wagon Mound, N. M. Range, in Wagon Mound district. Ear marks, split and underbit the left. Additional brand, Z on the left side. Horse brand, same as cattle, on left shoulder.

MORA COUNTY.

Shepard & Hall. P. O.: Tequisquite, N. M. Range, Alamocitas. Ear marks, crop and underbit crop right; crop and underbit left. Other brands: this brand kept up. right shoulder, side and hip. Horse brands: Y left hip; also 4 on right hip.

The Riverside Cattle Company. W. B. BRUNTON, Manager. P. O.: Shoemaker, Mora county, N. M. Range, Cherry valley, Pinos Altos and vicinity, Mora county, N. M. Other brands: N, X on right side, kept up. Horse brand, 2 on right shoulder.

A. L. Penhallow. P. O.: Tramperos, Mora county, N. M. Range, head of Tramperos, Mora Co. Other brands: both on the left side. All increase branded as in cut with - (bar) in addition on back of right leg. Horse brand, > or 3 on right shoulder.

Carl W. Wildenstern. P. O.: Watrous, N. M. Range, Pinos Altos and Piedoso Canon, Mora and San Miguel counties. Additional brands: Horse brand, same as on the cut, on the left hip or on the left shoulder.

Wagon Mound Cattle Company. GARTH & LEARY, Managers. P. O.: Wagon Mound, Mora county, N. M. Range, Vermejo. Horse brand, right shoulder.

Charles Sumner. P. O. Watrous, Mora Co. Range, south of Wagon Mound. Ear mark, two slits in left ear. Horse brand K left thigh.

M. Johnston. P. O.: Wagon Mound, N. M. Range, Vermejo. Horse brand, same on left hip. Ear marks, crop right and swallowfork left.

COLFAX COUNTY.

Urraca Hereford Ranch. FRANCIS CLUTTON. Postoffice, Cimarron, Colfax County, N. M.

Thoroughbred herd, 9 left side. Ear mark, underbit right and left. Horse brand, 5 on the left shoulder.

Palo Blanco Cattle Co. O. A. HADLEY, Manager. P. O.: Springer, N. M. Range, Chico, Retaplen, Holkio, Palo Blanco, Don Carlos and Ute creek. Ear mark, swallow fork the left. Horse brand, same as cattle, on left thigh. Also 4 left side, slash on left shoulder, own 4 left hip.


Henry K. T. Lyons. P. O.: Raton, N. M. Range, Sugarite and Red river. Ear mark, sharpen the right ear. Horse brand, same on right hip.

COLFAX COUNTY.


J. Linn Smythe.
P. O.: Raton, N. M. Range, Gates Canon, Colfax county.
Ear marks, split in the left and under hack right.



S. M. Folsom.
E. A. CAMOON, Foreman.
P. O.: Cimarron Range, Cerososo Canon, Colfax county.
Other brands on right shoulder and on left side, also on left hip.
Horse brand, on the left hip.




S. A. Kall.
P. O. Wagon Mound Range, Vermejo and Teta Yegue.
Cattle have various ear marks. All increase marked as in cut.
Horse brands: Same as cattle on right hip



Eagle Tail Cattle Co.
O. A. HADLEY, Manager.
P. O.: Raton, N. M. Range, Eagle Tail and Tenaja.
Horse brand, same as the cut, on the left shoulder.



Lake Ranch Cattle Co.
D. C. HOLCOMB, Manager.
P. J. TOWNER, Foreman.
P. O.: Chico Springs, N. M. Range, Ute creek, Tremperos, Alamocitas, and Carrizo, Mora county, New Mexico.
Horse brand, same as cut, on the left hip or shoulder.



S. W. Dorsey.
P. O.: Chico Springs, New Mexico.
Range—Currump, San Rafael, Cinnegulla, Perico, Carrizo, Pinipottus, and Sierra Grande, Colfax county.
Horse brand, same as above, on right shoulder.
Additional Cattle Brands:
left side and hip. left or right side. CS left hip or side. LRB on left side.



Miller & Harshman.
P. O.: Springer, N. M. Range, Ocate, Colfax Co
Ear mark, crop and underbit left.
Other brands on left side, shoulder and hip.
Horse brand on the right shoulder.




Western Land and Cattle Company (Limited.)
JAS. A. FORBES, Gen. Mgr
13 Delaware block, cor. of Seventh and Delaware Sts Kansas City, Mo.
Range, Cimarron river
P. O.: Madison, Colfax county, New Mexico.
Ear marks, grab the right ear.



Other prominent brands:
all on the right side, and right hip
Horse brands: right hip
right or left thigh. on the left shoulder or thigh.
on the right thigh.



Illinois Live Stock Co.
J. S. HOLLAND, Manager.
P. O. Tramperos, N. M. Range, Tramperos.
Some cattle are branded but all increase thus are branded as in cut.
Ear marks—Crop and underbit left, and under bit right.
Horse brand, same as cut, on left shoulder.



J. A. Judd & Co.
P. O.: Raton, Colfax Co. Range, Sugarite.
Horse brand, J left hip.
Also own all cattle branded thus:
Increase branded and marked as in cut.



PAINTER & HALE,

Live Stock Commission Merchants

KANSAS CITY, MO.

Consignments Solicited.

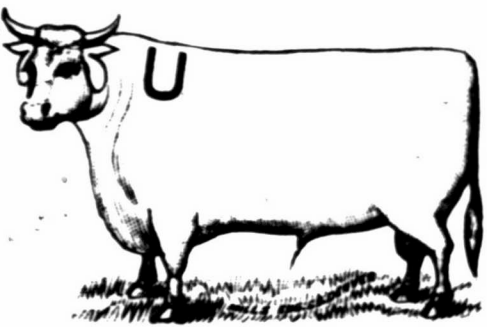
LINCOLN COUNTY

WM. ROBERT,

Postoffice, Roswell, Lincoln county, New Mexico.

Ranges.

Breeding range, on the Pecos river, New Mexico. Steer range, on the San Pedro river, in Cochise county, Arizona.



Horse Brand,

U on the left shoulder.

Ear Marks,

Jinglebob in both ears.

Same brand and marks kept up on both the steer and breeding ranges. All increase of following brands, which I own, marked and branded as in main cut.



Underslope each ear.



Overslope each ear



Crop left, under half crop right.



Crop and underbit left, some same mark right.



Crop and under half crop each ear



Crop right and under-slope left.



Swallow fork in either ear



Crop the left and under-half crop right.



Crop left, underslope right.



Crop the right.



THE ANGUS V V RANCH.

KIRBY & CREE.



Postoffice, Fort Stanton, Lincoln county, New Mexico.
Range, Rio Salado, Rio Bonito, Little creek, Eaglecreek, and Rio Ruidosa
Ear marks, underbit in each ear.
Horse brand, V on the left shoulder.
Additional Brands:
on right side, underbit both ears. on left side, or either side.
on either hip. on the left side.
on left shoulder, side and hip. Marked, crop right and underslope left.

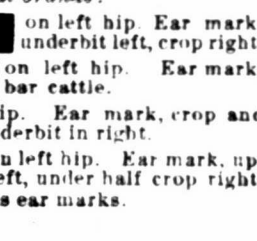
ANDERSON CATTLE COMPANY.

W. E. ANDERSON, Manager.

Postoffice, Roswell, Lincoln county, New Mexico. Range, On the Hondo river, Lincoln county, west of Roswell.



Additional brands:
on left side and upper half crop. on left hip. Ear mark, underbit left, crop right.
on left side, same as boot. on left hip. Ear mark, bar cattle.
on left side and hip. Ear mark, crop and split in left and underbit in right.
on left side. on left hip. Ear mark, upper half crop. on left side. Various ear marks.



MILNE & BUSH LAND AND CATTLE CO.

Postoffice, Roswell, Lincoln county, N. M. Range, on the Pecos and Berrendo rivers.



Main brand.



Grub Left.



Grub left and underslope right



Grub left and crop right.


O X O on left shoulder, side and hip. Different ear marks.

Additional Brands: I X on left side. Ear marks, crop left under half right.

Horse brand, V left thigh.

COLFAX COUNTY.

H. S. Gratz.
P. O.: Capulin, N. M. Range, Dry Cimarron, Colfax county.
Marks, slit in right ear.
Horse brand, same as cut on the left shoulder.
Other brands on the left. Marked, with a slit in the right ear and tin tag in the left ear.



The Akron Live Stock Company, Akron, Ohio. AUGUSTUS CURTISS, Manager. I. H. KINGMAN, Range Foreman. Postoffice, Springer, N. M.



Known as the "Stirrup" brand, formerly owned by Porter & Clouthier. Horse brand, same, on the left hip. Other brands and various other brands. Brand all calves with dart. Range, Ocate mesa and canon, Sweetwater and Cimarron river.

Ernst Winter.
P. O.: Raton, Colfax Co. Range, Sugarite and Red river, Colfax county.
Ear marks, split right, underbit left.
Other brands:
right side: swallowfork and under hack each ear. left side: left side and hip. left side and hip.
Horse brands left, or right side.



SAN MIGUEL COUNTY.



Frank Huntington. Postoffice, La Cinta, N. M. Range, Rincon La Cinta. Also own cattle in ZH on on left side. Horse brand, same as cut, on left thigh.

Howry Cattle Co.
S. K. SYDES, Manager.
P. O.: At Red River Springs, N. M. Range, on Red River.
Have purchased the interest of Mr. J. T. McNamara in the "anchor" herd and range. All "anchor" cattle belonging to this company are tally branded and all increase of 1894 is in the brand. All increase from branded as in cut, and marked crop and under half crop the left ear.
Horse brand, RY on the left hip. All increase marked crop and under half crop left.



E. K. Houghton.
P. O.: Liberty, N. M. Range, Monte Realto, San Miguel Co., N. M.
Horse brand, same as cut, on the left hip.



C. T. Degraffenreid.
P. O.: Fort Sumner, N. M. Range, Alamo Gordo, San Miguel county, N. M.



Sam Doss.
JOHN PAWLEY, Foreman.
Ranch P. O.: Fort Sumner. Address, 508 East 9th st., Kansas City, and Trinidad, Colo. Range, Pecos river, at Fort Sumner.




Additional Brands:
Cattle in DC brand have also following brands: Some D on left hip and left jaw; a few branded D on left hip, side and jaw.
Cattle in VQ brand have also following brands: Some U, right loin; some on right loin; some F right side. None of these brands are kept up. All increase is branded and marked as in cut.
All horses branded DC on right thigh.

SAN MIGUEL COUNTY.

A. Goldsmith.
 P. O.: Las Vegas, N. M. Range, Charco, San Miguel county, New Mexico. Horse brand, circle cross on the left shoulder. Underslope and underbit left, overslope and overbit right.





Howell & Gross, Blackwell & Co.
 J. B. HOWELL, Manager.
 P. O.: Lubbock, Texas Range, Spring Lake, on the Staked Plains. Cattle branded on either side. Ear mark, underslope right ear. Horse brand the same.





The Dutchess Cattle Co of New Mexico.
 TAYLOR MAULING, Manager, Postoffice, Wagon Mound. Ranch P. O.: Liberty, N. M. Range, Pajarito, San Miguel county. Other brands, HUT and 202 both on the left side. Horses branded same as above cut, on left hip.




Las Conchas Cattle Company.
 A. S. HALL, Manager.
 P. O.: Cabra Springs, Cariso and Largoita. Range, Las Conchas. Horses are branded: X and IV on the left shoulder. Ear mark, double jin-glebob left ear.

Juan De Dios Cattle Company.
 P. O.: Las Vegas, N. M. Range, Juan de Dios, San Miguel county. Horse brand, same as on cattle, on the left shoulder.


Stoneroad Brothers.
 P. O.: Cabra Springs, N. M. Range, the Beck Grant. Horse brand 2 on the left thigh.



Louis LeTestu.
 P. O.: Puerto de Luna, Range, Salado. Horse brand, on left shoulder. Ear marks, crop the right and jinglebob in the left.



Miguel Romero.
 P. O.: Las Vegas. The range, San Rafael springs, San Miguel county. Horses, same as cattle. Additional brands: AR and GR.



Hfeld & Lether.
 Postoffice, Las Vegas, N. M. Range, Alamosa. Also Chas. Hfeld, FE and 150. Horse brand, same as cattle.



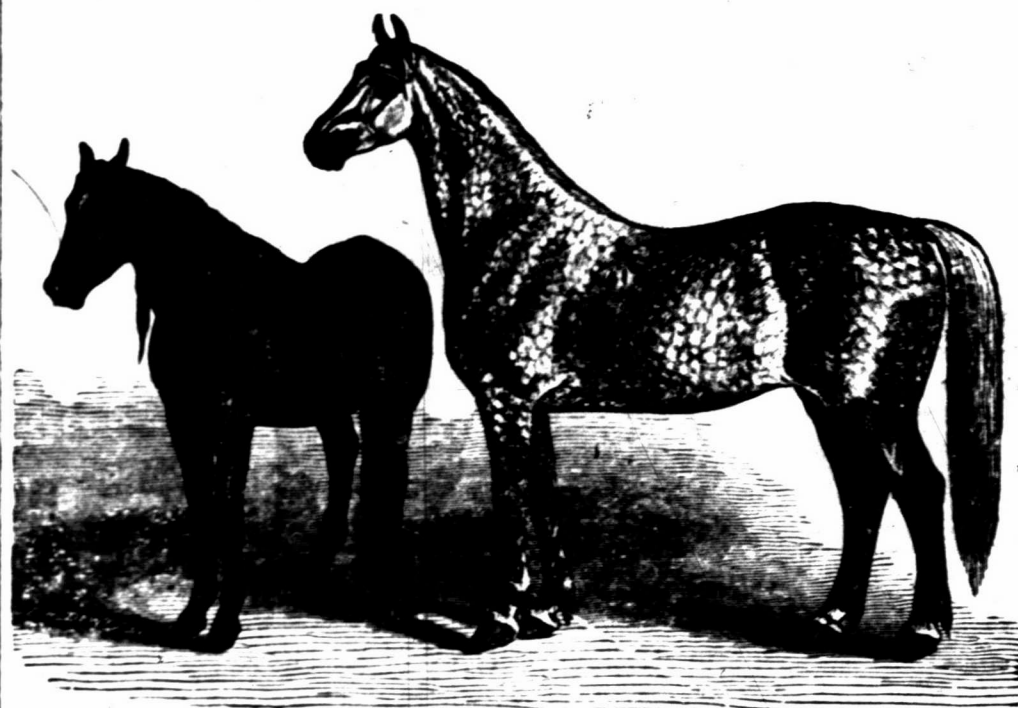
Clifton Davis.
 P. O.: Puerto de Luna, Range, Juan de Dios. Ear marks, crop left and crop and split right. Horse brand, IX on the left shoulder.



Las Vegas Land & Cattle Co.
 P. MILLHISER, Manager. P. O.: East Las Vegas. Range, Las Vegas grant. Ear mark on increase, swallow-fork each ear. Horse brand M on right hip.



Percheron Horses!



Pony mare and colt, by imported Success. Weight of mare, 750 lbs.; colt, 1,300 lbs.; sire, 1,700 lbs.

OVER ONE HUNDRED HEAD OF IMPORTED PERCHERON, FRENCH COACH AND GRADE STALLIONS AND MARES.
 The largest collection of draft and coach stallions in the west. My imported Percherons were selected from M. W. Dunham's latest importation, which arrived in August, and are all recorded in the stud books of both France and America.

THE FRENCH COACH HORSES
 Are fine styled, smooth formed and solid colored, combining size, action, beauty and endurance. Weight, 1,300 to 1,400 pounds. These horses are the get of some of the best coach stallions owned by the French government (some of the pedigrees tracing back more than one hundred years). The government certificate of breeding will be furnished with each horse.
 In making this selection it has been my aim to combine individual merit with the finest breeding, using my best efforts to procure the choicest specimens of draft and coach horses that could be obtained.
 I am prepared to make as low prices and as favorable terms as can be made on the same quality of stock from any other stud in America. Every horse guaranteed as represented, and a sure breeder. Special rates made on the shipment of horses for breeding purposes, to any point in Colorado or the south or west.
 Persons who desire to compare and examine these two great breed of horses, will here find an opportunity seldom offered, and are invited to come and see them. Correspondence solicited.

JNO. A. WITTER,
 DENVER, COLORADO.



MARRS, MIDDLETON & HUNTER, THE LEADING LIVE STOCK MERCHANTS OF DENVER, COLORADO.

LARGEST BUSINESS OF ANY FIRM IN THE CITY!

A big stock of all classes of cattle and horses always on hand.
 We defy competition in prices. Liberal advances made. Stable and yards: 1704 to 1728 Wazee street. Branch office, Union stock yards.

Shorthorn Bulls
 FOR SALE BY THE
LA CUEVA RANCH CO.
 LA CUEVA, MORA CO., N. M.
 These bulls have all been raised on the La Cueva ranch, and are out of high grade cows and by thoroughbred bulls. They are ready for immediate service.



W. H. SHUPP, Manufacturer of
A. McDONALD, WHOLESALE
Liquor Dealer
 GIVENS' BLOCK, BRIDGE ST., LAS VEGAS, NEW MEXICO.
 Special attention given to ranch trade. Mail orders for all classes of liquors and cigars carefully attended to.


Wagons And Carriages,
 Buckboards and Spring Wagons a Specialty.
 Keeps on hand the Cooper steel skein wagon, and an assortment of Buggies and Carriages. Makes Mess Boxes and Branding Irons. Horse Shoes fitted ready to nail on, and portable forges, with tools, for ranch use, always on hand.
 Agent for Osborne Mowers.
 LAS VEGAS, — — NEW MEXICO.

SAN MIGUEL COUNTY.


D. G. Fritelen.
 P. O.: Liberty, San Miguel Co., N. M. Range, Tierra Blanca. Ear marks, crop and slit twice the left ear. Horse brand, 77 on right hip.



Frank Carpenter.
 P. O.: Liberty, N. M. Range, Red River, twelve miles above Fort Bascom. Ear marks, crop the left and sharpen the right ear.




H. R. Trask.
 P. O.: Liberty, San Miguel county, N. M. Range with W. A. Burnett. Also own O L on left side with slash on hip and X on left side. All increase branded as in cut. Horses branded with teepee and as in cut on left hip, and O L on left shoulder. No stock cattle sold in these brands.




A. Straus, Manager.
 P. O.: Liberty, Range, tincon del Charco. Horse brand, same as on cattle, on right shoulder or left hip. All young stock is branded thus: KKK on left shoulder, side and hip. Other brands: T, C, globob left ear.



R. & L. Davidson.
 P. O.: Liberty, N. M. Range, Tierra Blanca, San Miguel county. Ear marks, overslope left. Horse brand, on the left shoulder thus: M, TV, on either hip, left side, right side. None of these brands kept up. XV on left shoulder and V on left hip. All increase branded XV on both sides.



S. Fred. Reuther.
 P. O.: La Cinta, N. M. An over half crop in each ear. Increase branded as in cut.



Reuther & Nahm.
 P. O.: La Cinta, N. M. Crop two splits left; half undercrop right. Increase branded as in cut. Horse brand on the left shoulder.




Fuller, Devine & Co.
 P. O.: Puerto de Luna, Range, Salado. Ear marks, crop and underbit in each ear. Horse brand, small T on left shoulder.




Brazil & Maxwell.
 P. O.: Las Vegas, Range, Fort Sumner. Range, Ta'an ranch, east of Fort Sumner. Horse brand, on left shoulder.



Fort Bascom Cattle Raising Co.
 STEPHEN E. BOOTH, Mgr. P. O.: Fort Bascom, San Miguel Co., New Mexico. Range, Baca Location, No. 2. Horses branded same as cattle on the left hip. After January 1, 1887, all increase branded as above. Old stock FxB. Ear mark, swallow fork each ear.



L. M. Pinnell.
 P. O.: Santa Rosa, N. M. Range, Los Tanos, Pecos river. Cattle branded on both sides. Ear marks, crop the left swallow fork the right.



SAN MIGUEL COUNTY.



Geo. W. Mayhan. P. O.: Watrous, N. M. Range, Tualosa Canon, Los Conchos. Ear marks, crop and two dits in left ear. Horse brand, C on left shoulder.

Some cattle branded as above, on the ribs. Beef brand A-K on left side, and bar across the loin, under the tail. Brand all increase as in cut.



Montezuma Cattle Co. J. I. Mosier, Manager. P. O.: Eden, N. M. Range, Los Tanos and on Pecos river. Horses branded same as cattle on the left shoulder or hip. Brand any place on animal.



Valley Ranching Co. P. O.: Glorieta N. M. Range, headwaters Pecos river. Shorthorns only. Young bulls for sale.



P. C. Pixlee. P. O.: Liberty, N. M. Range, Tierra Blanca and Pajarito creek, San Miguel county. Horse brand on the left shoulder. All horses are vented when sold.



James Conant. P. O.: Gallinas Springs. Range, Gallinas Springs and Ojo de Los Conchos. Other brand, on left side. Horse brand, same as cut, on the left hip.



Frank W. Dale. P. O.: Liberty, N. M. Range, on Red River, 12 miles above Fort Bascom. Ear mark, crop the right and sharpen the left ear.



Simon Frankenthal. P. O.: La Cinta. Range: La Cinta Creek. Horse brands: S F on left shoulder.



Lewis Walker and Mary Walker. P. O.: La Canon Largo. Range, Canon Bonito and Canon Largo. Horse brand, cross on the left hip. A few cattle branded in three crosses only.



P. O.: Canon Largo, N. M. Range, Canon Bonito and Canon Largo. Horse brand on left hip. Both brands kept up.



Myers Bros. & Livezey. Postoffice, Liberty, New Mexico. Horse brands, TTT on the left hip. Range, head of Arroyo Plaza Largo, and foot of Staked Plains, San Miguel county, New Mexico.



Nourse & Day Bros. P. O.: Liberty, N. M. Range, Trujillo. Old stock branded on the right hip; young stock as in cut, and also cut off end of tail. No ear marks.



Quincy & Las Vegas Cattle Co. W. S. Lyon, Manager. P. O.: Cabra Springs. Horse brand same on left shoulder. Ear marks, double jinglebob right; swallowfork left.



Lon Horn. P. O.: Trinidad, Colo., or 501 East Ninth St., Kansas City, Mo. Range, on Pecos river, old Fort Sumner reservation. Cattle also bear F left side, not kept up.

COLORADO AND NEW MEXICO.

THE HOLT LIVE STOCK COMPANY.

WILLIAM T. HOLT, President. MYRON W. JONES, Manager. Office, Opera House block, Denver, Colorado. P. O. box 2163.

A. TEMPLE THORN, Cashier and Accountant. L. WALLACE HOLT, 7 Rivers, N. M., Asst. Manager.



Breeding range, on the west side of Pecos river, Lincoln county, New Mexico. GEORGE WILCOX, foreman; P. O., Seven Rivers, N. M. Steer range, in Elbert and Bent counties, Colorado. W. A. WAGGONER, foreman; P. O., Hugo, Colorado.

Horse brands:

C on the left hip. H on the left hip, or thigh.

Thoroughbred Hereford and Polled Angus breeding farm, Horse Creek, O. Z. postoffice, Colorado.



Swallow fork in left, underslope in right.

On both sides. Underbit in left.

Swallowfork in left, underslope in right.

Crop in left and under-slope in right.

THE BLOOM CATTLE CO.

FRANK G. BLOOM, General Manager, Trinidad, Colorado.

Also own the following brands:

Half undercrop left, crop right. Swallowfork left, split right. Crop and two splits each. This mark and brand for all steers. Swallowfork left, crop and underbit right.



All increase branded same as cut and marked swallowfork right, and tin tag in the left. Horse and Steer range, Apishapa Temp creek, Bent and Lockwood canons, Colorado. W. F. BLOOM, Foreman, Postoffice, Thatcher, Colorado. Breeding ranch, Rio Hondo, Lincoln county, New Mexico. JOHN BURNS, Foreman, Postoffice, Lincoln, New Mexico, care Circle Diamond ranch.



Thoroughbred and High-Grade

NEW MEXICO RAISED

HEREFORD BULLS

FOR SALE BY

FRANCIS CLUTTON,

CIMARRON, - - - - NEW MEXICO.

I am prepared now to make contracts for spring delivery, and invite correspondence, or personal inspection, by intending purchasers.

E. G. MURPHEY & CO.,

THE PLAZA PHARMACY

BRIDGE STREET, LAS VEGAS, NEW MEXICO

Wholesale and Retail dealers in Drugs and Chemicals. Physicians' prescriptions a specialty. Country orders solicited and prompt attention given same.

TO THE STOCKMEN AND OTHERS, living at a distance: We will gladly fill any orders you may send for goods, whether in our line or not, and ship them as promptly as possible.

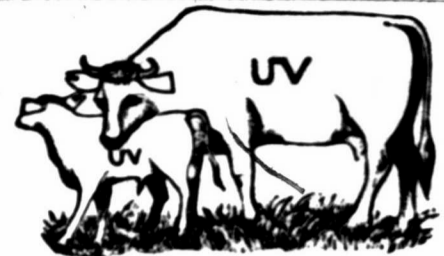
ST. NICHOLAS HOTEL, Sixth St. and Douglas ave., Las Vegas.

CATTLEMEN AND ALL WILL FIND HERE A PLEASANT STOPPING PLACE

Centrally Located. Reading Room Connected. American and European Plans.

MRS. M. A. HORNBERGER, Proprietor.

SAN MIGUEL COUNTY.



Trujillo Ranch Company. Of Las Vegas.

Office of Browns & Manzanares. C. W. BROWN, Manager.

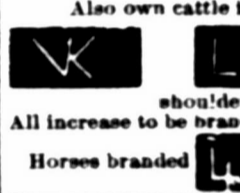
P. O.: Red River Springs, New Mexico. Range, on Trujillo creek, in Oldham county, Texas; and San Miguel county, New Mexico.



Additional Brands: All increase branded as in above cut. Horse brand, same as cut on the left shoulder. Some horses have Star C on the left hip.



Y. Kohn & Co. P. O.: La Cinta. Range, Arroyo de los Alamosas. New ear mark, half under crop each ear. Also on cattle either side. and marked double jinglebob in left ear.



Also own cattle in following brands: All increase to be branded and marked as in cut. Horses branded some on left shoulder and some on left leg.



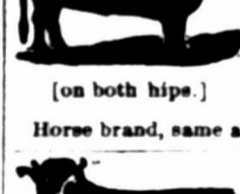
New England Live Stock Company. P. O.: Greeley, Colorado. Ranch P. O.: Fort Sumner, N. M. Range, the Pecos, at Fort Sumner. Additional brands, 102 DOS. Horses branded same as cattle on left side. Ear mark, crop and two splits in right ear. Cattle in brand of above cut branded both sides.



Waddingham Cattle Association. RAYMOND JENKINS, General Manager. P. O.: Fort Bascom, N. M. Range, Canadian river and Ute creek. Additional brands 4 on right and left hip, making 44 when seen from behind. Horse brand on shoulder.



W. H. McRoom. P. O.: Fort Sumner, N. M. Range, Canaditas. Ranch Foreman, Brown Harris. Additional brands X on left hip. [on both hips.] Various ear marks for these various brands. Horse brand, same as cut.



L. S. Rogers. P. O.: Liberty, N. M. Range, Monte Ruelto. Other brands, XLY on left shoulder, side and hip, respectively. Horse brand, same as cut, on the left hip.



Heckie & McDowell. P. O.: Las Vegas, N. M. Range, Sabinoso and Lagitijos arroyo. Some branded only with a W on either side and ear mark grub right or left. Horse brand, L on the right shoulder.



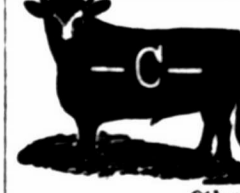
Also own all female cattle in following brands, which are not kept up: left side, left and thigh, left side, road brand, left shoulder. All increase branded as in cut.



W. A. Barnett, Trinidad, Colorado. J. D. WILLIAMS, Foreman. P. O.: Liberty, N. M. Range, Monte Ruelto, San Miguel county, New Mexico. Additional brands: left side, right side. T on left jaw and H on left side. Horse brand, H on left hip.



H. M. Coy. P. O.: Las Vegas, N. M. Range, Sandjulla creek, San Miguel county. All increase branded as in cut. Other Brands:



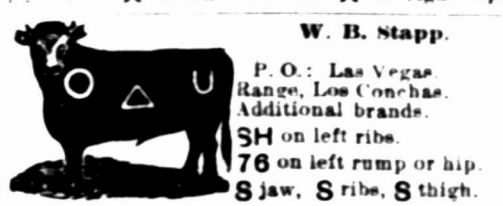
Other Brands: W, J, U, N, J, O, D, C, E

SAN MIGUEL COUNTY.

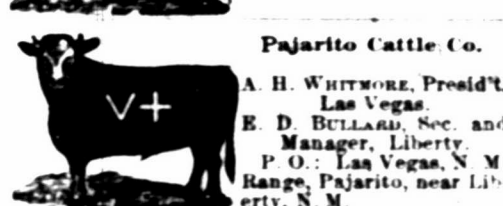


All increase branded on both sides. marks, crop left and crop and hole in right Stonewall Cattle Company. Nick L. Winston, Manager.

P. O.: Cabra Springs, San Miguel Co., N. M. head of the Juan de Dios, head of the Puerto Arroyo and Cuervito. Additional brands: X on right side and I on right hip. X on the left side. X on right side and X on right hip.



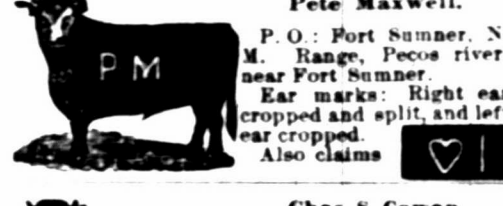
W. B. Stapp. P. O.: Las Vegas Range, Los Conchas. Additional brands. SH on left ribs. 76 on left rump or hip. S jaw, S ribs, S thigh.



Lorenzo Lopez. P. O.: Las Vegas Range, El Cuervo, San Miguel Co., New Mexico.



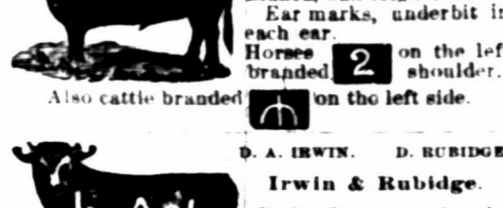
Pajarito Cattle Co. A. H. Whitmore, Presid't, Las Vegas. E. D. Bullard, Sec. and Manager, Liberty. P. O.: Las Vegas, N. M. Range, Pajarito, near Liberty, N. M. All increase branded on both sides. Ear marks, crop and two splits in each ear.



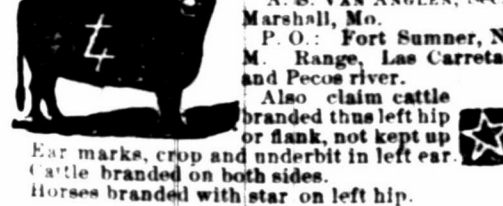
Hyde Park Cattle Co. P. O.: Hyde park, Ills. Range, El Salitre, San Miguel county. Horse brand, same as cut, on right hip. All young stock branded same as cut.



G. S. Long & Bro. P. O.: Cabra Springs, N. M. Range, La Garita and Los Conchas. Other brands: W H L on either side. Also, [arrow] or [arrow]. Increase branded as in cut. Horse brands, same as cut. Ear marks, slit right, overbit left.



Pete Maxwell. P. O.: Fort Sumner, N. M. Range, Pecos river, near Fort Sumner. Ear marks: Right ear cropped and split, and left ear cropped. Also claims [heart] [I].



Chas S. Cowan. P. O.: Pecos Town, N. M. Ranges, Rincon de las Trozas, Red River, and Cow Creek, Upper Pecos. Horse brand 7- on left shoulder. Ear mark, crop the left, and upper half crop right. Some cattle branded TA on left side. All increase branded as in cut.

SAN MIGUEL COUNTY.



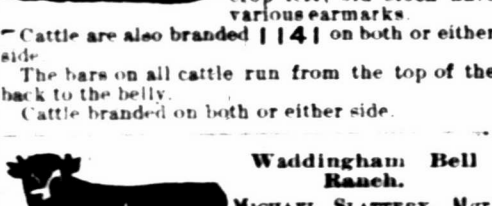
Fort Sumner Land and Cattle Co. DAN. L. TAYLOR, President and Manager, Fort Sumner, New Mexico. Range, Fort Sumner, N. M. P. O.: Fort Sumner. Ear marks, crop the left. Additional brands—All kept up. NO right side, W right hip, X right hip or hip. VO on right side or hip. Some horses are branded VO.



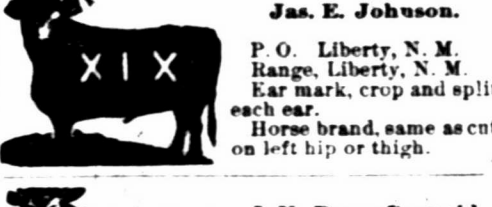
E. G. Austep. Postoffice, Watrous, N. M. Range, near Liberty, San Miguel county, N. M.



Barash & Bloch. P. O.: Las Vegas, N. M. Range, Los Conchas. Cattle branded either side. Horse brand, same as cut, on left shoulder. Ear marks, swallow fork each ear. Additional brand on left side. 2B. All increase branded as in cut.



Isidor Fellheimer, Of New York. R. Hirsch, Of Las Vegas, N. M. Fellheimer & Hirsch. Ranch P. O.: Liberty, New Mexico. Range, Pajarito and Tierra Blanca, San Miguel Co. Cattle branded on either side. Horse brand, 14 left hip. Ear marks, on increase crop left; old stock have various ear marks. Cattle are also branded [14] on both or either side. The bars on all cattle run from the top of the back to the belly. Cattle branded on both or either side.



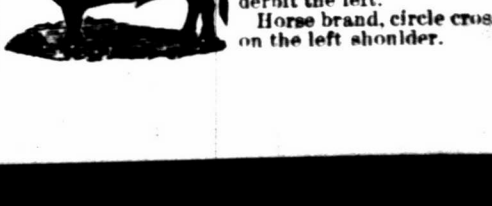
Waddingham Bell Ranch. MICHAEL SLATTERY, Mgr. P. O.: La Cinta, county of San Miguel, New Mexico. The range, Montoya Grant. All the horses on the ranch have the same bell brand on left shoulder.



Jas. E. Johnson. P. O.: Liberty, N. M. Range, Liberty, N. M. Ear mark, crop and split each ear. Horse brand, same as cut on left hip or thigh.



J. N. Degraffenreid & Sons. P. O.: Fort Sumner, N. M. Range, Alamo Gordo, Saddle. Horses branded SIX. Stock horses are branded O-O.



Kemary Ritter. P. O.: Liberty, N. M. Range, Canadian and Trujillo rivers. Ear marks crop left, allow fork, right. Also own all cattle in the C brand, formerly belonging to M. J. Coote. All horses branded [C].

LAND SCRIP FOR SALE

SURVEYED LAND SCRIP

Military Bounty Land Warrants.—In 40, 80, 120 and 160 acre pieces. Will commute homestead or pay for pre-emption. Additional Homestead Claims.—In 40, 80 and 120 acre pieces. Locatable on any lands subject to homestead and pre-emption entry. Large supply on hand; no delays in filling orders. I have a large supply of Fractional Additional Homestead Claims of from 3 to 19 acres, which, by rulings of the general land office, are locatable on fractional subdivisions of double their area, or less, the difference being paid for in cash, at \$1.25 or \$2.50 per acre, as the case may be. Send the area of the fractional tract you desire to locate, and I will send a piece of proper size. Porterfield Warrants.—In 40 acre pieces. Act of April 11, 1860. Locatable on any unappropriated public lands. The Supreme court has decided in Wilcox vs. Jackson, that the word unappropriated as applied to public lands, means "not legally disposed of." It will take lands in the corporate limits of a town. See Secretaries' decision in Reed vs. Digby, and Lewis et al. vs. Seattle. It will take occupied lands where there is no legal claim. See Bovard vs. Bunn. It will take withdrawn land when the withdrawal does not operate as a disposal of the land. See last case and the case of Wm. P. Brown.

SCRIP LOCATABLE ON UNSURVEYED LANDS. Sioux Half-Breed Scrip.—In 40, 80 and 160 acre pieces. Act of July 17, 1854. Locatable on any unsurveyed lands not mineral. California Scrip.—In 40 acre pieces. Act of April 3, 1872. Locatable on any unappropriated and unoccupied public lands not mineral, surveyed or unsurveyed.

In locating any of the above scrip no settlement or residence is required, and there is no limit to the quantity one person may use. The right attaches at once on filing the scrip, and transfers of title for town sites or other purposes may be made without any delay. Void entries, locations or selections will not prevent any of these rights from attaching. Address: T. B. MILLS, Real Estate Dealer, LAS VEGAS, N. M.

Notice for Publication.

(Homestead No. 2,721.)

LAND OFFICE AT SANTA FE, N. M., April 9, 1887.

Notice is hereby given that the following named settler has filed notice of his intention to make final proof in support of his claim, and that said proof will be made before Probate Judge of San Miguel county, at Las Vegas, N. M., on May 24, 1887, viz: James W. Hanson, of Las Vegas, New Mexico, for the S. 1/4 SE. 1/4 Sec. 6, SW. 1/4 SW. 1/4 Sec. 5, NE. 1/4 NE. 1/4 Sec. 7, Tp. 17 N., R. 14 E. He names the following witnesses to prove his continuous residence upon, and cultivation of, said land, viz: H. A. Harvey, J. B. Allen, John W. Hanson, and J. O. Wood, all of Las Vegas, N. M. CHARLES F. EASLEY, Register.

Preemption No. 237.

Notice for Publication.

LAND OFFICE AT SANTA FE, N. M., April 21, 1887.

Notice is hereby given that the following named settler has filed notice of his intention to make final proof in support of his claim, and that said proof will be made before the probate clerk of San Miguel county, at Las Vegas, N. M., on June 4, 1887, viz: Robert S. Nattinger, of San Miguel county, N. M., for the S. W. 1/4 sec. 17, T. 19 N., R. 14 east. He names the following witnesses to prove his continuous residence upon, and cultivation of, said land, viz: Cyrus Smith, John Snyder, John Martin, and John Wadleigh, of San Miguel county, N. M. CHARLES F. EASLEY, Register.

(Homestead No. 250.)

Notice for Publication.

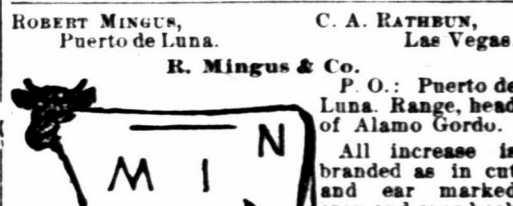
LAND OFFICE AT SANTA FE, N. M., April 22, 1887.

Notice is hereby given that the following named settler has filed notice of his intention to make final proof in support of his claim, and that said proof will be made before the probate judge of San Miguel county, Las Vegas, N. M., on June 3, 1887, viz: Aniceto Garcia, of San Miguel county, N. M., for the E. 1/2 S. W. 1/4, S. W. 1/4 S. E. 1/4, Sec. 2, N. E. 1/4 N. W. 1/4, Sec. 11, Twp. 16 N., R. 14 E. He names the following witnesses to prove his continuous residence upon, and cultivation of, said land, viz: Manuel Baca y Ortiz, Pedro Lesperance, Benito Crespin and Julian Maes, of Las Vegas, N. M. CHARLES F. EASLEY, Register.

SAN MIGUEL COUNTY.



Bullard & Co. P. O.: Liberty, N. M. Range: Tierra Blanca and Pajarito Creeks, San Miguel County. Other Brands: GBC also on right side; BB also on right side. Ear mark: Underslope both ears. All increase branded DID right side. Horse Brand: V on left hip or neck.



R. Mingus & Co. P. O.: Puerto de Luna, Range, head of Alamo Gordo. All increase is branded as in cut and ear marked crop and over hack left under hack in right. Other brands: For cattle put on both sides [plus] For cattle either side and horse [plus]. All horses tails bob.



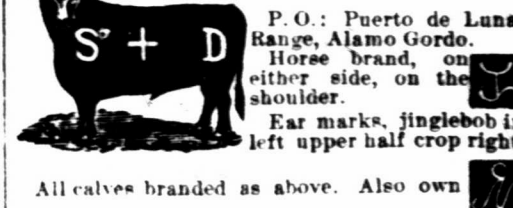
Circle Cattle Co. A. MORRIS, Manager. Post office, Teaguequite. Horse brand, O left hip. Other Brands: [circle] [circle] left hip. [1881] [L] [P] left side.



Governor C. H. Moore. P. O.: Puerto de Luna, Range, Upper Yesso. Various ear marks. Horses branded same on shoulder.



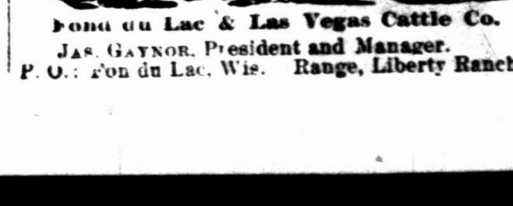
T. Romero, Bro. & Son. P. O.: La Cinta, Range, Atarque Canon and Montoya Grant. Horse brand, same as cattle, on the left thigh. Other cattle brands: [diamond] [circle]. All increase marked hole in left and split right.



R. G. & J. W. Carlisle. P. O.: Puerto de Luna, N. M., and Crested Butte, Colo. Range, Alamo Gordo and Juan de Dios. Horse brand, [plus] on left thigh, high up. Various ear marks for these brands.



Silva & Dodge. P. O.: Puerto de Luna, Range, Alamo Gordo. Horse brand, on either side, on the shoulder. Ear marks, jinglebob in left upper half crop right. All calves branded as above. Also own [plus].



Mariano Hinojos. P. O.: Puerto de Luna, Range, Carriso. Horses and steers are branded thus: [H]. FOND DU LAC & LAS VEGAS CATTLE CO. JAS. GAYNOR, President and Manager. P. O.: Fond du Lac, Wis. Range, Liberty Ranch.

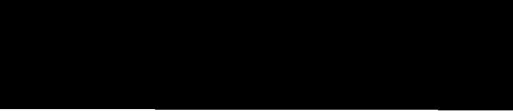
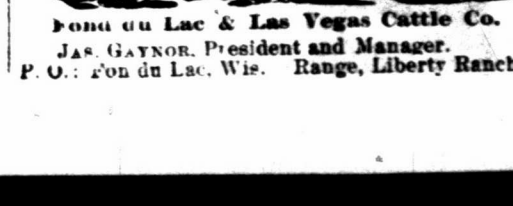
Stock Exchange Stables,

FEED AND SALE. Finest Livery in the City.

DON R. OAKLEY, Prop.

Good teams and careful drivers. Nice rigs for commercial men. Horses and mules bought and sold. Branch stable at the Hot Springs. Telephone No. 53.

Stables in rear of the St. Nicholas Hotel. LAS VEGAS, NEW MEXICO.



SAN MIGUEL COUNTY.



Chas. L. Kohn. P. O. La Cinta, N. M. Range, Arroya Las Conchas. Horse brand, 17 on left shoulder.



Calkins Cattle Company. O. L. HOUGHTON, Manager, Las Vegas. E. J. WILCOX, Range Supt., Fort Sumner Range, Pecos river, near Fort Sumner. Ear marks on increase, crop off left.

Other brands: OLH on the left shoulder, side and hip. T on the left side. C on side, IL on hip. Horse brand, IXI on the left hip.

LINCOLN COUNTY.



El Capitan Land and Cattle Company. P. O.: Fort Stanton, Lincoln county, New Mexico. Range, north of El Capitan mountains, Lincoln county.

Other brands: MEL left shoulder, side and hip. Ear marks slit and underbit in right. COM left shoulder, side and hip. Underslope. OWL on left side. Mark, ed crop right, underbit left. I on left side and hip. Ear marks, split hip both ears. Horse brand, on top of right thigh.

All increase marked as in cut and tails bobbed. When sold all horses are counterbranded with a small block on the left jaw.



S. S. Terrell. P. O. Fort Stanton, N. M. Range, Rio Bonito. Ear marks, crop left, split and underbit right. All cattle branded with "riding bar" across top of and extending down on both shoulders.

Also some cattle branded SS on right hip or thigh. Horse brand, SS on left thigh.



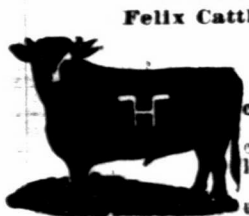
W. H. Fuqua. P. O. Fort Sumner, N. M. Range, Moro canon, Pecos river, 35 miles south of Fort Sumner. Ear marks, hole in left, finger left.

Old stock branded left side, increase both sides. Additional brands: A+ on left side, kept up on left side, Ear marks same as above. Ear marks, hole in left, quarter over and under crop right. Horse brand: A on left shoulder.



Eddy-Bissel Cattle Co. EDDY BROS., Managers. P. O.: Seven Rivers, N. M. Range, on the Pecos near Seven Rivers. Horse brand, on the left shoulder.

W. L. RYNERSON, Pres. J. A. LARUE, Vice Pres. J. J. DOLAN, Sec. and Gen'l Manager. N. REYMOND, Treas.



Felix Cattle Company. P. O.: Lincoln, N. M. Range, Rio Felix, Lincoln county. Horse brand, same as on cattle, but smaller, and on left shoulder. This brand will be kept up.

Additional Brands: EF FD on cattle. EF DD on horses.



John Shaw & Co. W. M. MAILAND, Supt. P. O.: Fort Sumner, N. M. Range, Yesso and Pecos river. Horse brand, X-X on the left shoulder. Increase brand both sides.

ATTORNEY'S CARDS.

A. C. VOORHEES, ATTORNEY AT LAW, RATON, NEW MEXICO.

Special attention given to the business of cattlemen and collecting.

JAMES H. PURDY, ATTORNEY AT LAW, SANTA FE, NEW MEXICO.

Specialty: Land Titles.

HIGH GRADE HEREFORD BULLS

Range Raised and Acclimated.

We have for sale fifty well grown two year old and yearling high grade Hereford bulls raised on our Colorado ranches. Also 100 Colorado cows in calf to registered Hereford bulls. The registered bulls in use are the get of such sires as "Assurance," "Tregshan," "Anxiety," "Archibald," "Bredwardine," "Earl Horace," "Lord Wilton," "The Grove," "Rudolph," "Surprise," "King of Hearts," "Winter de Cote," and other royal prize winners. Address,

The Del Monte Live Stock Co.,

Henry Van Kleeck, Manager. PONCHA SPRINGS, COLORADO.

A. H. MARTIN. P. J. MARTIN.

MARTIN BROTHERS,

AGENTS FOR THE BRUNSWICK AND BALKER COLLENDER CO.

Billiard Supplies, Etc.

Dealers in Kentucky Bourbon and Rye Whiskies and Distillers Agents.

CALIFORNIA WINES AND BRANDIES.

Martin Building, near the bridge.

LAS VEGAS, NEW MEXICO.



The BUYERS GUIDE is issued Sept. and March, each year. 48-312 pages, 8 1/2 x 11 1/2 inches, with over 3,500 illustrations - a whole picture gallery. GIVES Wholesale Prices.

Direct to consumers on all goods for personal or family use. Tells how to order, and gives exact cost of everything you use, eat, drink, wear, or have fun with. These INVALUABLE BOOKS contain information gleaned from the markets of the world. We will mail a copy FREE to any address upon receipt of 10 cts. to defray expense of mailing. Let us hear from you. Respectfully, MONTGOMERY WARD & CO. 227 & 229 Wabash Avenue, Chicago, Ill.

Saddles

WILLIAM MALBEUF'S.

LAS VEGAS, NEW MEXICO.

Having found out the wants of the people I deemed it wise to prepare for it. Consequently I procured the services of the best California saddlers, who can make saddles to suit anybody, and give satisfaction, as I use the best CALIFORNIA MATERIAL and first class workmanship. I also keep all kinds of horse equipments, at reasonable prices.

J. S. ELSTON,

Wholesale and Retail Dealer in

Wall Paper, Paints, Oils,

BRUSHES AND GLASS.

WINDOW SHADES AND FIXTURES

Also, House and Sign Painting, Paper Hanging. Country Orders Solicited.

Sixth St., opp. San Miguel National Bank, Las Vegas

Frank T. Robinson,

REPRESENTING

PETERS & TROUT,

Lancaster, Ohio.

Merchant Tailors

Has arrived in Las Vegas with the finest line of samples of men's wear ever seen in the west.

Headquarters at the Depot Hotel.

Refers to hundreds of stockmen customers as to prices, work and satisfaction.

LINCOLN COUNTY.



GEO. B. BARBER, S. E. BARBER, Lincoln, N. M. JOHN RUCK, EMIL DURR, Milwaukee, Wis. Three Rivers Land and Cattle Ranch Co. GEORGE B. BARBER, Manager.

P. O.: Lincoln, N. M. Range, Three Rivers, Lincoln county, N. M. Horse brand, one cross, same as cattle, on the left hip.



A. M. Rogers & Son. P. O. Independence, Mo. Range, Canaditas (with McBroom.) A few fine young bulls for sale. Parties in need of either high grade or thoroughbred bulls will please correspond with us.



L L Cattle Company. M. R. LEWIS, Range Mgr and Secretary. Postoffice, Fort Sumner, N. M. LEWIS LITZ, Treasurer, Las Vegas. Range, Pecos river, 40 miles south of Ft. Sumner.

Ear marks, underslope right, overslope left. Horse brands, L on shoulder, O on jaw, both on the right side.



R. P. Segrest. P. O.: Seven Rivers, N. M. Range, head of Seven Rivers, South Prong. Ear mark, underbit and overslope left ear, overbit right ear. Horse brand on left side.

Additional brands: RRS - Ear mark, overslope and underbit left, overbit right. OLE - Ear mark, overslope and underbit left, overslope right.

HUB - Ear mark, crop and under half crop left, crop right. On shoulder and hip. Ear mark, swallow fork and underbit left; swallow fork right.

J. & J. S. Reynolds. A. B. ALLEN, Foreman. P. O.: Fort Sumner, N. M. Range, 8 miles below Cedar Canon on the Pecos river. Horse brands J on left shoulder.



S. A. Hubbell. Post Office: Bernalillo, New Mexico. Range: Guadalupe Mountains.



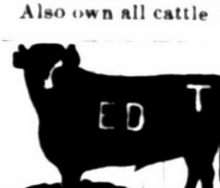
Sutherland & Farrell. P. O.: Roswell, N. M. Range, Rio Hondo, above Roswell. Other brands: All cattle have two bars across the butt.



George G. Gans. P. O.: South Fork, Lincoln county, N. M. Range, Pleasant valley, 9 miles north of Upper Penasco. Marked, crop both ears. Horses branded same as cattle, on left shoulder.



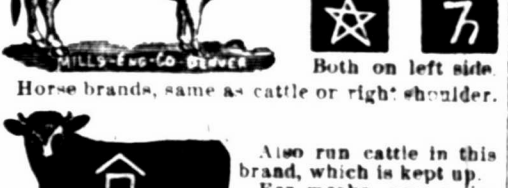
Also own all cattle branded G on both sides.



Edwin Terrell. P. O. Ruidoso, N. M. Range, Ruidoso river. Horse brand ED on left thigh.



L. M. Long. P. O.: Roswell, N. M. Range, Rio Hondo. Other brands: Both on left side.



Also run cattle in this brand, which is kept up. Ear marks, upper jinglebob in the right and lower jinglebob in the left.



Horse brands, same as cattle or right shoulder.

LINCOLN COUNTY.



Littlefield Cattle Company. J. P. WHITE, Manager. Postoffice, Roswell, N. M. Range, at Bosque Grande, Rio Pecos, and at Four Lakes, on the Staked Plains.

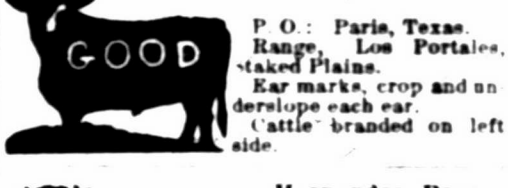
Also cattle in the following brands: on the side. L+ on the right side and on right hip. RS on the right side. F on the side.

LFW on hip, side and shoulder; 24 on the left hip. J-O on shoulder, side and hip. S+S on the shoulder, side and hip.

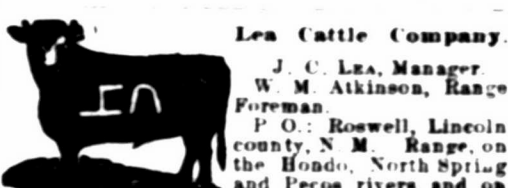
For these brands various earmarks. Horse brands: W - F - L+ on top of the right thigh.

Also own all cattle in the following brands: LOD left side; ear mark, swallow fork right overslope and underbit left; SSS left side, and S on hip; JEW left side; OVU left hip, side and shoulder.

Doak Good. P. O.: Paris, Texas. Range, Los Portales, Staked Plains. Ear marks, crop and underbit left. Cattle branded on left side.



Hernandez Bros. P. O.: Fort Sumner, N. M. The range, California Ranch, on Pecos river, and the San Juan. Horse brand, on left hip. Ear marks: Swallow fork in the ear.



Lea Cattle Company. J. C. LEA, Manager. W. M. ATKINSON, Range Foreman. P. O.: Roswell, Lincoln county, N. M. Range, on the Hondo, North Spring and Pecos rivers, and on the Aqua Azul, Blackwater and Baca Ranches, all in Lincoln Co.

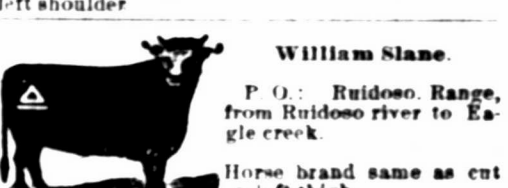
Ear marks, crop and split left, split right. Brand as in cut on left side, but sometimes on right side. Ear marks sometimes reversed.

Additional brands: E side, and also some on side and hip. W side. JB on hip or loin. LEA on side, or shoulder, side and hip. Cross on side and hip. And various other old brands and marks.

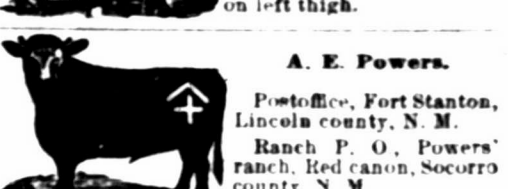
Horse brand: I on left shoulder and underbit right. Part brand ed only on left shoulder thus.



Carrizozo Cattle Ranch Co. (Limited). JAMES A. ALCOCK, Manager. P. O.: White Oaks, N. M. Range, Carrizozo. Horse brand, C with dot in center placed on left shoulder.



William Slane. P. O.: Ruidoso Range, from Ruidoso river to Eagle creek. Horse brand same as cut on left thigh.

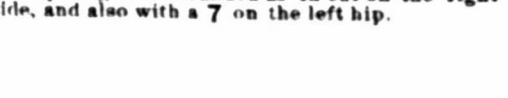


A. E. Powers. Postoffice, Fort Stanton, Lincoln county, N. M. Ranch P. O., Powers' ranch, Red Canon, Socorro county, N. M. Horse brand same as cattle, same place.

Other Brands: BUK Crop and under half crop left, crop right. EUK Crop and under half crop left, crop and underbit right. Both brands on both sides of animal.

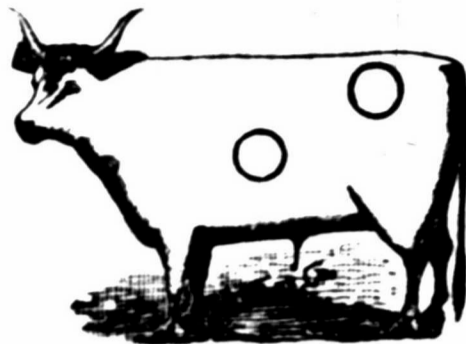
Cass Land and Cattle Company. W. G. URRON, Manager. GEO. R. URRON, Range Foreman.

P. O.: Fort Sumner, N. M. Range, on the Pecos river, at Cedar canon. Horse brand, same as in cut, only on right hip. All young stock branded as in cut on the right side, and also with a 7 on the left hip.



VALENCIA COUNTY.

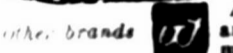
A. P. METCALF, Superintendent. JAR. A. STINSON, Ranch Manager. New Mexico Cattle Breeding Company.



P. O.: Chilili. Range, Estancia grant, Valencia county. Horse brand, circle on the left hip.



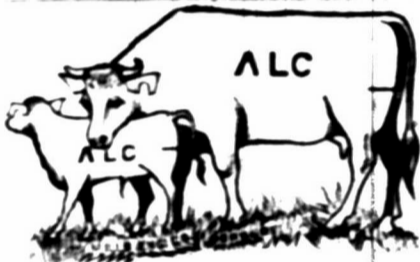
Dr. E. C. Henriques. P. O.: Beien and Las Vegas. Range, Estancia Springs, Valencia county.



All the increase of cattle and horses branded as in main cut.



J. A. Johnson & Co. P. O.: Albuquerque, N. M. Range, San Jose ranch, on A. & P. railroad, forty-seven miles from Albuquerque. Horse brand, J left hip. Various earmarks.



Acoma Land and Cattle Co. P. O.: DENVER, President, Kansas City. E. D. BRACKETT, Sec. and Treas., Kansas City. J. E. SAINT, Vice Pres. and Mgr., Grants, N. M. Range, the Acoma Grant, and territory adjoining west and north. Horse brand, ALC on the left hip.



Kennedy & Co. P. O.: Coolidge, N. M. Ranches in Valles de Las Tuces. Range, between Bluewater and Coolidge, along line of A. & P. R. R. All stock are branded on left side; since 1880, all branded as in cut. Ear marks, crop right, under half crop left. Horses branded on left shoulder.



Roman A. Baca, President, San Mateo, N. M. MAX FROST, Secretary, Santa Fe, N. M. San Mateo Cattle Co. Range, The Miguel and Chaves Grants, Valencia county, New Mexico.



L. P. BRADLEY, Pres. T. S. MUMFORD, Secy. Cebolla Cattle Co. P. O.: Santa Fe, N. M.; box 218. Range, Valencia county, near Fort Wingate. Horse brand, the same.



Davenport Live Stock Company. M. B. BOWMAN, Manager. P. O.: Chilili, N. M. Range, Buffalo Springs. Horse brand, same as cattle on left hip.

This company will pay a reward of \$300 for each and every conviction and sending to the penitentiary of any one illegally handling any stock in its brands.

SOCORRO COUNTY.

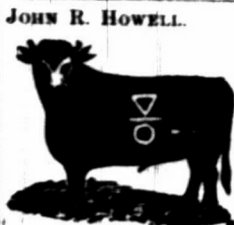


Black Range Land and Cattle Co. J. B. PETRIE, Manager. P. O.: Fairview, N. M. Range, on head of Gila, Socorro county, N. M. DD left side. Ear mark, crop the right. Horses branded on left hip.



Nigrita Cattle Co. JOHN BELL, Foreman. P. O.: Alma, Socorro Co., N. M. Range, South of Nigrita, Mogilons. Horses are branded the same as cattle but on the left hip.

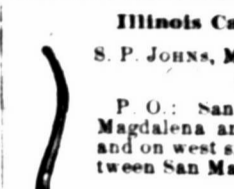
SOCORRO COUNTY.



JOHN R. HOWELL. HENRY B. READ. Howell & Read. P. O.: San Marcial, N. M. Range, Rio Grande river, San Juan springs, Cedar springs and Nogal creek, Socorro county, and Rio Grande river and Pecos springs, Sierra county, N. M. Ear marks, crop and split both ears. Horse brand, same as cattle, but on left hip.



Glorieta Cattle Co. HOWELL & READ, Mangrs. Pasture, with Howell & Read. Ear marks, under half crop both ears. Above brands, anywhere on left side of grown cattle. On increase, same as cut.



Illinois Cattle Company. S. P. JOHNS, Manager. JULIUS M. ESTIS, Foreman. P. O.: San Marcial. Range, between Magdalena and San Mateo mountains and on west side of Rio Grande river, between San Marcial and Cantaritas.



HORSE BRAND. Ear marks, crop the right and underslope the left. Other brand AC.



H. E. HOLBROW. D. M. SMITH. Postoffice, Magdalena, Socorro county, N. M. Range, west of San Mateo mountains and San Augustine Plains. Also own HD and AD.



JAMES D. REED, Pres. G. L. BROOKS, Sec'y. SAM N. DEDRICK, Manager. J. D. Reed Cattle Company. P. O.: Socorro, N. M. Range, western slope of the Magdalena mountains, Gallinas and Hierolosa mountains, and the Bear Springs, all in Socorro county, New Mexico. Bars across hips as in cut on both sides. Ear marks, half under crop left and crop right; sharpen the left and crop the right.

Other brands: COD, ED, CE, B4, left side, right side, F left side, CR left hip saddle horses, H right shoulder stock horses.

THE PRAIRIE CATTLE CO.

[LIMITED.] W. J. TOD, General Manager. MURDO MACKENZIE, Sec. and Cashier. Trinidad, Colorado.



ARKANSAS RIVER DIVISION. WM. WITHERS, Ranch Superintendent. Ranch postoffice, West Las Animas, Colo. Range, Bent and Las Animas Counties, Colorado. Other Prominent Brands: JJ, PJ, H, N, A, C. Horse Brands: P, J, K, A, JJ, S.



CIMARRON RIVER DIVISION. W. J. CARTWRIGHT, Ranch Superintendent. Ranch postoffice, Catalpa, Colfax county, N. M. Range, Colfax, Mora and San Miguel counties, New Mexico. Other Prominent Brands: t, 7, 7, J, J, L, T, T, T, I, X, F, H, H. Horse Brand, on the left shoulder or hip.



CANALIAN RIVER DIVISION. A. F. MITCHELL, Ranch Superintendent. Ranch postoffice, Tascosa, Oldham Co., Texas. Range, Oldham county, Texas. Other Prominent Brands: 7, U, L, X, A-L, X, III. Horse brand, same as cattle.

J. C. BERTRAM,

Breeder and Importer of

HEREFORD CATTLE

BRISTOL, ILLS.



Makes a specialty of importing representatives from best families and breeding only stock of superior excellence. Am prepared also to furnish ranchmen first-class grades, which I will guarantee to be of superior breeding, well marked, and sired by bulls of acknowledged merit. For quality of animals handled by me I refer all ranchmen to the Hereford bulls now on the ranch of Mr. William Robert, at Roswell. CORRESPONDENCE SOLICITED.

Herefords! Herefords!



John W. Prowers Jr. Owner and Breeder. Of the well-known herd of pure-bred Hereford cattle, of the late Hon. John W. Prowers. Young bulls and heifers for sale; also, twenty-five pure-bred and imported cows, ages ranging from three to six years old. Address all inquiries to A. D. HUDNALL, Manager For John W. Prowers, Jr., WEST LAS ANIMAS, COLO.

CHARLES BLANCHARD,

HEADQUARTERS FOR

Hardware, Machinery, Farming Implements,

As a protection to customers against worthless imitations, we publish a fac-simile of our TRADE MARK LABEL, which will be found on every package of H. W. JOHNS' LIQUID PAINTS.



These Paints are in every respect strictly first-class, being composed of the best and purest materials obtainable. They have a larger sale than any other paints made in this country or abroad, and, although they cost a trifle more per gallon than any others, owing their wonderful covering properties, they will do more and better work for the same amount of money, while their superior durability renders them the most economical paints in the world. Sample Cards and our Illustrated Pamphlet, "STRUCTURAL DECORATION," free by mail.

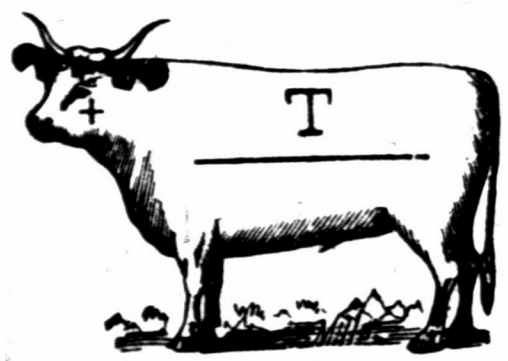
H. W. JOHNS MANUFACTURING CO.

Asbestos Roofing and Fire Proof Paints

REMINGTON MOWING MACHINES.

OPPOSITE FIRST NATIONAL BANK. LAS VEGAS, N. M.

SOCORRO COUNTY.



Trocke, Maunsell & Co.
P. O.: Patterson, Socorro Co. Range, eastern slope of the Mogollon mountains, between headwaters of the Nigrita and Gila rivers. Ear marks, underbit right and left ear.

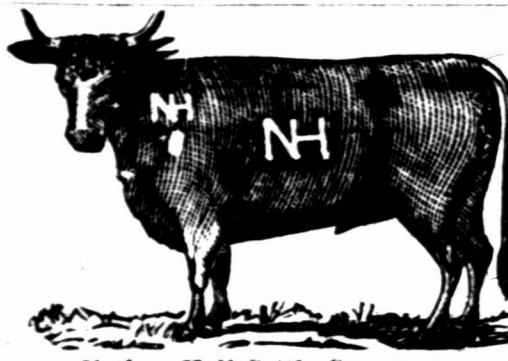
Other brands:
Horse brand on the left shoulder. **T** **A** **TM**
7 on left hip of cows and left side of calves.



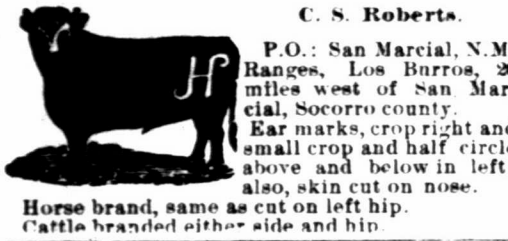
Bell & Taylor.
P. O.: Socorro, N. M. Range, Oscuras mountains, Socorro county. Horse brand, **XK** on left shoulder.



A. HARDCASTLE. **C. MITFORD.**
Hardcastle & Mitford.
ADOBE RANCH,
Range, on headwaters of the Upper Gila, Sierra county. P. O.: Grafton, N. M. Horse brand, **HM** (connected) on left hip or shoulder. Also **2** on the left hip.



Nathan Hall Cattle Company.
NATHAN HALL, Manager.
P. O. Magdalena, New Mexico.
Range, Apachita creek, Tulerosa creek and Gallo Springs, Socorro county.
Horse brand, **NH** connected, same as on cut, on the left hip.
Also have cattle branded **O** on left side and hip with ear mark crop and under hack left and jingle-bob right.
All increase branded as in cut.



C. S. Roberts.
P. O.: San Marcial, N. M. Ranges, Los Burros, 20 miles west of San Marcial, Socorro county.
Ear marks, crop right and small crop and half circle above and below in left; also, skin cut on nose.
Horse brand, same as cut on left hip.
Cattle branded either side and hip.

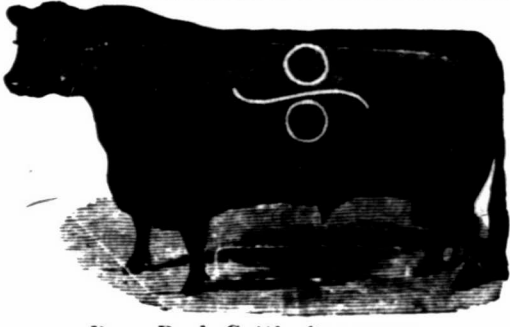


W S Ranch.
P. O.: Alma, Socorro county, New Mexico. Range, San Francisco river, Socorro Co. Horse brand, same as cattle, on left shoulder or thigh.



Curwen & Norris.
P. O.: Magdalena, Socorro Co., N. M. Range, north slope of San Mateo mountains and adjoining San Augustine plains.
In addition part of cattle branded **N** on right jaw, balance **C** on right jaw.
Ear mark, crop and two slits in each ear.
Horse brand, **C N** on right thigh.

SOCORRO COUNTY



Deer Park Cattle Company.
FRANK H. WINSTON, Manager.
P. O.: Fairview, N. M. Ranges, at Elk mountain, Socorro county.

Also own the following brands: **AHR** **LA** **AHR**
Horse brand, **O** on the left shoulder.

Iowa and New Mexico Ranch Company.
JUSTUS CLARK, President, Red Oak, Iowa. BENJ. B. CLARK, Vice Pres., Red Oak, Iowa. PAUL P. CLARK, Sec. and Treas., Red Oak, Iowa.



P. O. Magdalena, New Mexico.
Range, Socorro and Valencia counties.

Horse brand **L** on left calf, in cut, and marked crop right and underslope left.

AMERICAN VALLEY CO.
W. B. SLAUGHTER, President and Gen. Manager.
Postoffice address, Socorro, New Mexico.
Ranch, American Valley, Socorro county, N. M.

\$250 REWARD will be paid for the arrest and conviction of any person or persons illegally handling any stock in the following marks and brands:



Cattle brand kept up, **S** as in above cut, on both shoulders.
TS on the left hip of horses.

Other Brands:
ANA side, ∞ hip. Underslope each ear.
FCC side, ∞ hip. Crop and underbit left ear.
W on side and loin, or side and hip.
Cross ∞ on bought steers; used as a road brand.
V side, underslope each ear.
M side, various marks and other brands.
A side, various marks and other brands.
AP on side, underslope left, swallowfork right.



J. W. Crawford,
"CAPTAIN JACK"
P. O.: Fort Craig, New Mexico. Range, Fort Craig Military Reservation.
All increase branded and marked same as cut.
Horse brand, **NYC** on left shoulder.

Seven Rivers Cattle Co.
JOHN HARRIS, Manager.
P. O.: Colorado City, Texas. Range, east side of Fecos river, 35 miles above Pecos Station, Tex.
Horse brand, same as the cut on the left hip.



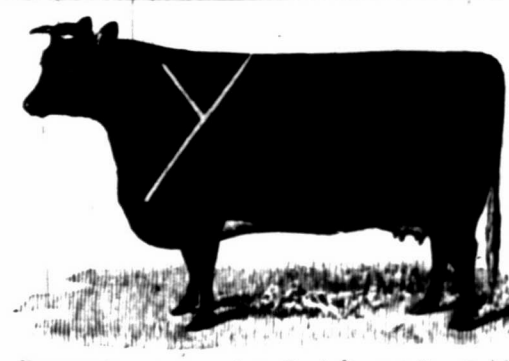
A REWARD of \$250 is offered for the arrest and conviction of all persons illegally handling any cattle in this brand.

SOCORRO COUNTY.



IRA E. LEONARD, President, Socorro, N. M. C. O. TIFFANY, Sec. & Treas., San Marcial. J. C. TIFFANY, Manager, San Marcial, N. M.

BOSQUE BONITA
Land & Cattle Company
SAN MARCIAL,
SOCORRO COUNTY, NEW MEXICO.

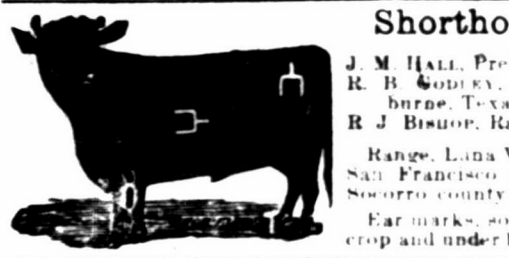


HURST, BLACK, KIEHNE & WILEY.

Postoffice, Patterson, Socorro county, New Mexico.
Range, southwestern part of the San Augustine plains, and Nigrita river, Socorro county, N. M.

Additional Brands, not kept up.
OCK **ZII** **COB** **...**

YEE **LANE** **...**
Ear marks, swallow fork the left, crop the right. Above band and ear mark kept up.
Horse brand **Y** on left hip.



Shorthorn Cattle Co.
J. M. HALL, President, Los Angeles, Cal. R. B. GODFREY, Secy and Treas., Cleburne, Texas. R. J. BISHOP, Ranch Manager, Socorro.

Range, Luna Valley, Rita Blanca and San Francisco Rivers, western end of Socorro county.
Ear marks, some underslope left, and crop and under half crop left, crop right.

UPCHER, STEVENS & BURR.

R. A. JONES, Range Superintendent.
Postoffice, Frisco, Socorro county, New Mexico.
Range, Tulerosa and San Francisco Rivers, and Johnson Basin, Socorro county, New Mexico.



We run two brands, **SU** and **M-F**. Ear mark, crop the right and split the left, for both brands.
Horse brand, **SU** on left thigh or left shoulder.

All increase of the following brands, also owned by us, is put in the above brands and marks.
MAY on side, **S** on hip. **BEL** on side, **S** on hip. **W** on side. **OWO** on side.
ALA on side, ∞ on hip. **U** on side. **O** on side. **...** on side. **MON** on side, **S** on hip.
... on side, **S** on hip. **A** on both sides.
Other horse brands, **US** and **JON S** on left hip. All brands on left side.



FLOYD JARRETT,
Postoffice, Datil, New Mexico.
Range, Alamogito Park and the Datil Mountains, Socorro County.

Ear marks for all cattle, underslope both ears.
Slash brand is the road brand to the original herd, not having ranch brand.
Ranch brand, cattle, horses. Road brand, cattle.

HENRY G. COORS **WILLIAM F. COORS**

COORS BROS.,
Successors to Lockhart & Co., Wholesale and Retail Dealers in
Furniture and Hardware

Tinware, Sporting Goods, Shotguns, Rifles, Pistols,
All Styles of Ranges, Cooking and Heating Stoves,
House Furnishing Goods of Every Description.
Lumber, Sash, Doors, Lath, Shingles and Blinds,
PAINTS, OILS AND GLASS.
All Orders by Mail Promptly Filled. Ranch Trade Especially Solicited.
LAS VEGAS, NEW MEXICO.

Browne & Manzanares Co.

LAS VEGAS AND SOCORRO, NEW MEXICO.



WHOLESALE GROCERS,

DEALERS IN
AGRICULTURAL IMPLEMENTS, RANCH AND MINING SUPPLIES.



LANDRETH'S GARDEN SEEDS

BEST IN THE WORLD.

Cremation System. New Seeds Only For Sale.

THE BEST MARKET FOR

WOOL, HIDES, PELTS, &C.

WILL AT ALL TIMES COMPETE WITH EASTERN PRICES.

ECLIPSE WINDMILLS

The Best and the Cheapest.

PUMPS, PIPES, AND FIXTURES.

Agents For



Cooper's Sheep Dipping Powder

A Cold Water Dip.

Sure cure for Scab. Best and cheapest dip in the world. Send for pamphlet, with plans for dipping.

Browne & Manzanares Co.



Mundy Bros

EL PASO, TEXAS.

Lands in Mexico

—And the—

Southwest.

—And—

Live Stock

Commission Merchants.

Have unequal facilities for the purchase and sale of Lands in Mexico, and for supplying any class of stock in quantities to suit purchasers.

Correspondence Solicited.

GRAZING LANDS A SPECIALTY

The Armijo House,

ALBUQUERQUE, N. M.

NEWLY FURNISHED THROUGHOUT.

Every modern convenience has been added, making it one of the best hotels in the southwest. Commercial travelers will find commodious sample rooms. The bar and billiard room are the finest in the territory. Its nearness to business, street car lines, opera house, depots, etc., make it desirable in every way. Requesting your patronage, respectfully,

W. E. TALBOTT, Proprietor.

CHAS. E. BONSALE, Manager.

We are in the Market this Spring

With the best lot of Thoroughbred and High Grade

Black Polled Bulls and Heifers

THAT WE EVER HANDLED.

Will sell singly in car load lots or by the hundred.

WE ALSO HAVE A FEW

Thoroughbred Shorthorn Bulls AND Cows

FOR SALE.

Those wishing to purchase, please call and examine our stock,

Near Mt. Leonard, - - Saline county, Missouri,

12 miles east of Kansas City, on the Chicago & Alton R. R. Trains to and from Mt. Leonard, east and west, morning and evening.

LEONARD BROS.

Gross, Blackwell & Co

LAS VEGAS, NEW MEXICO.

GROCERIES, DRY GOODS,

Boots, Shoes, Etc., Etc.

At all times on hand a full line of the Racine and Schuttler manufacture of Farm, Freight and Spring

WAGONS.

A Full Line of Stetson Hats, suitable for Ranchmen, always on hand, ranging in price from \$4 to \$15.

SPECIAL ATTENTION GIVEN TO RANCH TRADE.

Prices quoted when desired and special attention given to mail orders.

LIGHTNING HAY PRESS



Adapted to baling hay, wool, cotton, and other material. Full circle, most rapid, and easiest operated of any press in the market.

MANUFACTURED BY

Kansas City Hay Press Co.
9th and Mill Sts. Kansas City, Mo.

HEREFORDS!

REGISTERED BULLS AND HEIFERS.

Pure Bred and Shorthorn Crosses.

Range Cow Horses.

From English Thoroughbreds, Kentucky Saddlers and Tennessee Pacers.

Road Horses.

AMERICAN STANDARD BRED TROTTERS.

All stock branded & T or



CAMERON BROS., Managers,

San Rafael Cattle Company,

LOCHIEL, PIMA CO., ARIZ.



W. H. McBROOM,

Offers an Unusually Fine Lot of

HIGH GRADE

Shorthorn Bulls

To be Delivered in Spring.

Fine New Mexico Stock.

W. H. McBROOM,

Fort Sumner, N. M.

The First National Bank of Las Vegas, N. M.

Capital Stock, \$100,000.

Surplus Fund, \$30,000.

J. RAYNOLDS, President.

J. S. PISHON, Asst. Cashier.

JOSHUA S. RAYNOLDS, Cashier.

GEO. J. DINKEL, Vice-President.

The First National Bank of Albuquerque, N. M.

Capital Stock, \$100,000.00.

Surplus Fund, \$15,000.00.

J. RAYNOLDS, President.

M. W. FLOURNOY, Asst. Cashier.

JOSHUA S. RAYNOLDS, Vice-President.

The First National Bank of El Paso, Texas.

Capital Stock, \$100,000.00.

Surplus Fund, \$15,000.00.

J. RAYNOLDS, President.

JOHN W. ZOLLARS, Vice-President.

H. S. KAUFMAN, Cashier.

The above associated banks have the Largest Capital and most conservative management of any banking house west of the Missouri river, and largely control the banking business of New Mexico. A long residence in this territory familiarizes the management with the wants of customers. Business solicited.

**SIMON LEWIS' SONS,
Golden Rule Clothing Store**

WHOLESALE AND RETAIL DEALERS IN

Clothing, Hats, Boots and Shoes, and Gent's Furnishing Goods.

WE'VE GOT THE STOCKMEN'S TRADE

But want to hear from the few who have not yet bought from us. We can refer to any ranchman in Northern New Mexico as to our Low Prices and Fair Dealing.

OUR TAILORING DEPT

IS THE MOST COMPLETE IN THE WEST.

Boots and Shoes Made to order at Lowest Prices and in the Best Style.

Mail Orders Promptly Attended to. **LAS VEGAS, NEW MEXICO.**

R. B. GODLEY,
Sec'y and Treas. Shorthorn Cattle Co.

JOHN FLOOD,
Vice-Pres. Shorthorn Cattle Co.

**GODLEY & FLOOD,
Land and Cattle Commission Brokers,**

ST. GEORGE HOTEL, DALLAS, TEXAS.

Will examine and make detailed reports on ranches, and will render for taxation, pay taxes, and generally protect the interests of non-residents.
Will negotiate the purchase, sale or lease of agricultural and ranch lands in Texas, New Mexico and Arizona.
We make a specialty of contracting and delivering stock cattle and all kinds of steer cattle to purchasers in New Mexico, Arizona and the northwest. References given on demand.
Mr. Flood will give the ranch and cattle interests his exclusive attention, being a practical cattle and ranch man of twenty-five years' experience.



ESTABLISHED 1874.

S. D. IRWIN. L. A. ALLEN. J. N. IRWIN.

LIVE STOCK

Commission Merchants.

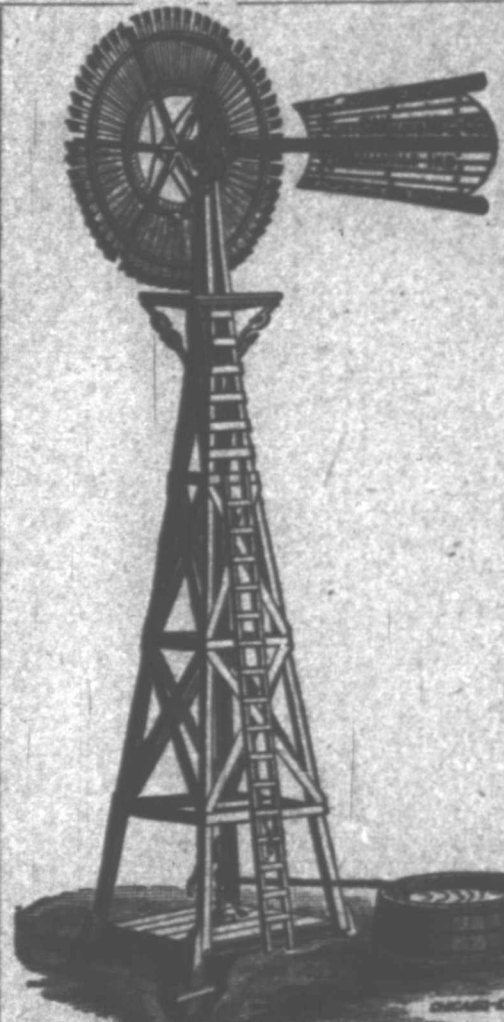
REFERENCES:

Bankers and Business Men of Kansas City and Stock Men Generally.

**J. C. LEARY & CO.,
Commission Merchants for the Sale of Live Stock and Ranches**

OFFICE IN STOCK GROWER BUILDING, LAS VEGAS, N. M.

Will contract to deliver at any point thoroughbred or grade animals of any breed, at lowest price. Contracts for surveying taken; maps, plans and estimates for railroad work, and surveys for irrigation schemes and water works carefully made.
We make a specialty of closing trades satisfactorily and promptly. We can find buyers for stock of all kinds, and give personal attention to all business which is entrusted to us. We have the best acquaintance in this section.
Correspondence solicited, and all inquiries will receive prompt attention.



ELDER BROS.,

Deep and Shallow

Well Contractors

AGENTS FOR

Flint & Walling Mfg. Co.'s Celebrated Star Wind Mill, General Water Supplies and Horse Powers.

St. Louis Vise and Artesian Well Tool Co.'s Well Machinery and Tools.

NATIONAL TUBE WORKS WELL CASING AND PIPE.

To the cattlemen we wish to say that we are now making

A Special Outfit for Ranches.

Contracts made for Wells with Mills or Horse Powers, Pumps, Tanks, Troughs, etc., complete.

Address for prices, particulars, etc.,

ELDER BROS.,

EAST LAS VEGAS, N. M.

We Take Contracts in New Mexico and Texas.

NOW

Is the time to buy

DRY GOODS CHEAP AT

Charles Lifeld

LAS VEGAS, ALSO

Carpets, Furniture and Ranch Supplies.

Call when in town, or order by mail.

BUSH & MORSE,

Windsor Farm, Denver, Colorado.

Breeders of Thoroughbred

Galloway Cattle



BONDEMER of Dramlarig. (2025)
Property of BUSH & MORSE.

Cattlemen and others invited to visit our farm, and appointments can be made at the Windsor hotel. Specimens of our herd can be seen at any time at Geo. L. Goulding & Co.'s City Stock Yards, Foot of Fifteenth street, who are agents for the sale of our cattle. Illustrated catalogs mailed on application.