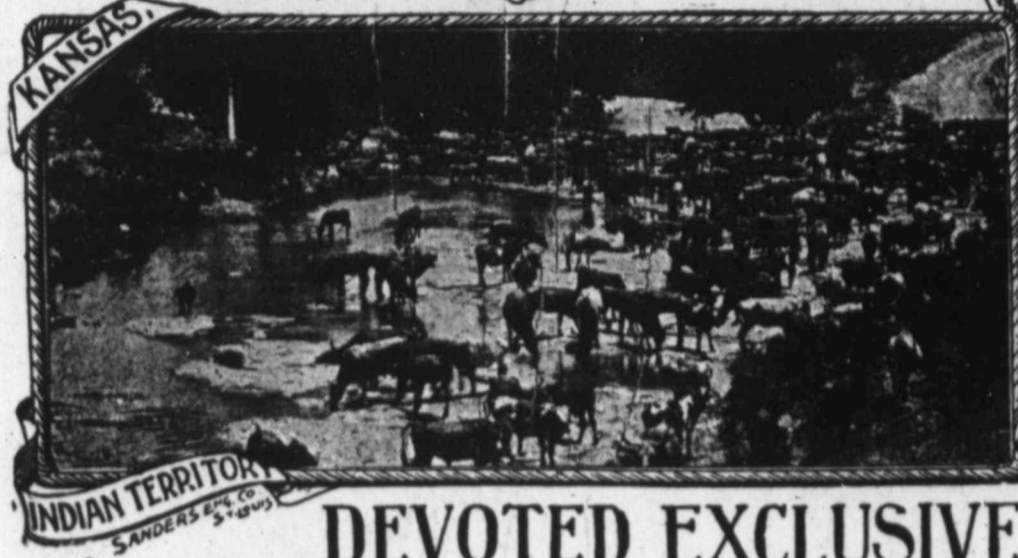


# The LIVESTOCK



# INSPECTOR

DEVOTED EXCLUSIVELY TO LIVE STOCK INTERESTS.

Twelfth Year.  
No. 27

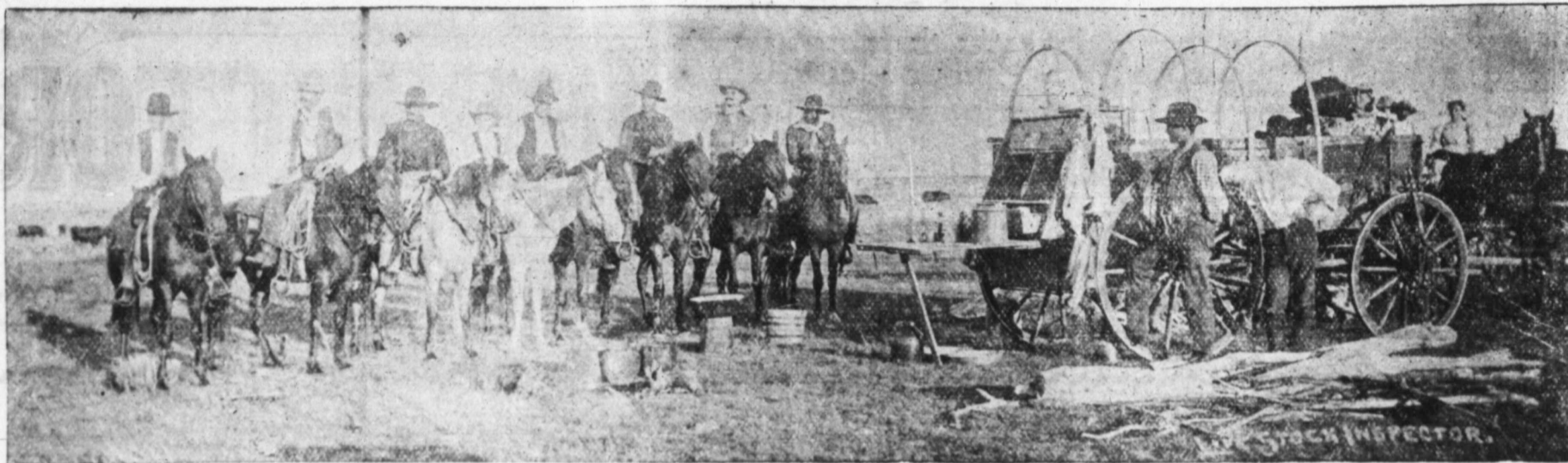
Woodward, Oklahoma, and Kansas City, Missouri, May 1, 1907.

\$1 Per Year



IN THE GOOD OLD SUMMER TIME—THIS SPRING.

**KANSAS CITY** continues to lead both in **PRICE** and in **RECEIPTS OF CATTLE**. As an evidence of the popularity of the **KANSAS CITY MARKET**, will say that we show an increase of 6;102 head of quarantine cattle for the first three months of this year as compared with the first three months of last year. Top steers in the quarantine division for



the month of April, \$6.50 per cwt; top steers in the quarantine division for the month of April, \$5.65 per cwt. If you want to get **GOOD** results, bill your cattle to the **FT. WORTH LIVE STOCK COMMISSION CO.**, at **KANSAS CITY, MO.** Market reports furnished free of charge. Complete line of salesmen and yard men in each department. Give us your next shipment.

## Fort Worth Live Stock Commission Company. Kansas City, Mo.

"NO SHIPMENT TOO LARGE FOR OUR CAPACITY NOR TOO SMALL FOR OUR ATTENTION"

**DIRECTORS.**  
C. C. Slaughter, W. B. Worsham,  
R. J. Klebers, S. B. Burnett,  
J. B. Wilson, A. L. Keechler,  
Sam Davidson, T. D. Bomar,  
W. T. Waggoner, M. Sansom,  
J. W. Kokernot, W. E. Halsell,  
J. F. Lyons.

### Cassidy Southwestern Commission Co.

M. SANSOM, President and General Manager.  
NORTH FORT WORTH, TEXAS.

**OFFICERS.**  
W. B. WORSHAM, } Vice-President.  
A. L. KETCHLER, }  
S. B. BURNETT, Treasurer.  
J. F. LYONS, Secretary.  
**SALESMEN.**  
Cattle, C. L. Brown, W. S. Vinson  
Hogs & Sheep, J. B. Mitchell  
Order Buyer, J. F. Drahn

## Fort Worth Stock Yards Co.

Horse and Mule Department.

**Capacity**  
4,000 Head Daily  
Facilities for handling  
Horses and Mules  
Unsurpassed.

Twelve Responsible  
Dealers and  
Commission Firms  
doing business  
in this department.

**Auction Sales**  
Every  
Monday in Each Month  
Commencing Second  
Monday in January

Carry 1000 to 1500 mules and 500 to 800 horses on hand at all times. Recent adjustment of freight rates makes this the most desirable market in the Southwest and Southeast. Correspondence with Fort Worth Horse and Mule Co., Cooke and Simmons, W. O. Rominger & Co., Edwards & Co., or any of the other dealers and commission firms will be promptly attended to. Mention this ad in your communications.

Read the Inspector.

## SHIP TO Hopkins, Kiely & Co. Kansas City Stock Yards

Write for free market reports and any other information desired.

G. W. Spencer of Woodward, Cattle Salesman

### WICHITA UNION STOCK YARDS CO.

WICHITA, KANS.

Cheaper Freight Rate.  
Shorter Haul.  
Less Expense.

**DAILY CAPACITY**  
3,000 Cattle,  
5,000 Hogs,  
3,000 Sheep.

Private Yards for Texans  
Perfect Sewerage and  
City Water.

**H. E. NEWLIN,**  
SUPERINTENDENT

# Live Stock Inspector.

## AND FARM NEWS FOR STOCK FARMING AND THE HOME.

VOL 12, No. 27.

WOODWARD, OKLA., MAY 1, 1907.

Subscription \$1.00.

### THE ROSWELL CONVENTION

#### A Splendid Tribute to the English and the French

Roswell, N. M., April 25.—The convention of the Live Stock Sanitary Commission of New Mexico, held at Roswell, N. M., April 25-28, was a most successful one. It was held in the Hotel Roswell, and was attended by 6-18 delegates from various parts of the state.

and it was a typical sun-browned plains crowd, the ranchmen from Texas greeting the cattlemen of New Mexico in a brotherly spirit of fraternal fellowship. The program was carried out in a most efficient and in many valuable ways. The reports were read by speakers of experience in the live stock world.

A number of new members were taken in and the reports of the officers proved that splendid work has been done the past year. All the officers were re-elected for the ensuing year.

A resolution asking congress that a portion of New Mexico be added to Texas was passed, but it is hardly likely that the promoters of the plan realize the magnitude of such an undertaking.

A report of the sale by the Western Stock Yards Co., of which Col. O. H. Nelson is President and Manager, was promised this paper, but up-to-date of going to press has not been received. Some very fine cattle were sold and the report of the sale will be published in next issue if report can be obtained.

It was in all a very successful meeting. Next convention will be held at Amarillo again.

### WANT NEW DIP FOR FEVER TICKS

#### Death Rate Higher When Crude Oil Is Used.

Guthrie Okla., April 6.—Because of the fact that the death rate is so high among cattle which have been dipped in crude oil, government and state cattle inspectors are still looking for some dip which will be as effective in killing the ticks, and at the same time not be so hard on the cattle. It has always been claimed by the authorities that most of the deaths of cattle after being dipped in the crude oil were due either to carelessness in the dipping or to the fact that cattle were so poor and weak that they were not able to stand the shock.

The latest substitute for the oil dip, which has received the approval of the Texas live stock sanitary commission, is an arsenical preparation, first proposed by Dr. N. S. Mayo, chief veterinarian of Cuba, and formerly an in-

structor in the Kansas State Agricultural College. Dr. Mayo's preparation is a dip which is made up of 8 parts of water to 1 part of dip. It is used by dipping the cattle in it for 24 hours. It is a most effective dip, and has been used by 500 ranchmen in the state. Dr. Mayo has used this dip as a standard dip, and has found it to be the most effective dip for ticks. It is a most effective dip, and has been used by 500 ranchmen in the state.

struction of the Texas sanitary authorities, who have given it their hearty endorsement. In regard to its use, Dr. J. H. Wilson, of Quanah, Tex., chairman of the Texas board, says: "The arsenic dip that we have recommended which is also recommended by the federal department, is providing an innovation to the cattlemen who have given it a trial, and the experiments have established the fact that this preparation, if used correctly will eradicate all ticks that infest cattle."

PREPARING THE DIP  
"Being desirous of striking upon the cheapest, safest and easiest plan, the board has about completed arrangements for the formula being prepared as one commodity, and all that the cattlemen will need to do will be to mix the preparation with water, according to instructions. If this plan goes through, practically all of the danger from individual preparation will be obviated and the cost will also be lessened."

The Oklahoma commission has not as yet tried the use of the new dip, but will probably do so as soon as the Texas experiments have placed it on a thoroughly practical basis. Some extensive reports on experiments with the new dip were given at the tick extermination conference at Nashville, Tenn., last December by Joseph W. Parker an inspector of the bureau of animal industry. He gave in detail the results of the experiments conducted in various parts of Texas by himself and Inspectors Jorden, Dennis and Lane, of the bureau force. These experiments were made both with the full Mayo dip, and without the soap, the latter solution seeming to furnish fully as satisfactory results as the other. The animals thus dipped are reported to be almost without exception in first class condition after the dipping, and none of them showed symptoms of arsenical poisoning.

#### VAT MUST BE CLEANED

Mr. Parker states that the dangers to be apprehended from the use of the arsenical dip are those resulting from careless preparation of the dip and from improper disposition of the residue in the vat when it becomes necessary to clean the vat. By making the dip in concentrated form, as the

method of dipping with water. Various experiments have been made in the past in Oklahoma, and the results have been most satisfactory. The preparation of the dip is a most important one, and the cattlemen should be careful to follow the instructions given by the authorities.

position together with oils from various fields. The Beaumont crude oil is the only one which has ever been efficiently recognized by the department for the dipping of cattle although some time ago D. Leslie J. Aiken, who is in charge of the inspection work of the bureau in Oklahoma, at the request of the department secured numerous samples of oils from the Kansas and Northern Oklahoma fields, and forwarded them to Washington to be tested.

Fence Order Dont Apply in Oklahoma.  
Governor Frantz having further taken up the matter of the anti-fencing order with Secretary Garfield of Interior Department, is to-day in receipt of a communication from the Honorable Secretary in which he holds that the law prohibiting fencing of public domain is construed by him to be applicable only to the fencing up of public lands that are unappropriated in any way and subject to homestead entry.

The Secretary states that he does not construe this law or the order calling for the enforcement of the law to apply to the lands granted to the State of Oklahoma by the Statehood Enabling Act, and that in a number of cases of alleged violation of the fencing law wherein the same have been referred to special agents for investigation, the agents found by examination of the records in the land offices in Oklahoma that the lands alleged to have been fenced up contrary to law were now all appropriated either through homestead entries or the entry made by the board for leasing school lands under authority of the Statehood Enabling Act, and the cases had all been ordered dismissed and stricken from the records.

This construction of the law by the Secretary means much to the educational institutions of Oklahoma, as the cattlemen and others having new college lands fenced within their pastures are ready and willing to pay rent to the colleges for the current year if allowed to keep their fences up. The School Land Department will at once arrange to lease all of

these lands for grazing purposes for the current year, the matter of permanent fencing being left to the discretion of the land department.

### FRUIT ORCHARDS Cold Storage Men Give Notice to Apple Raisers.

Guthrie, Okla.—A decided impetus to the growing of Oklahoma orchards will be given by the announcement of several local commission men that they will not buy any apples this year for cold storage purposes from orchards which have not been sprayed. Their experience with last year's crop was too disastrous to allow them to repeat the experiment. Practically all of the unsprayed apples placed in cold storage here were a total loss to the commission men. One firm lost 1,300 bushels of apples in that way.

That the growers are inclined to take the matter up is evident by the statements of hardware men that the demand for spraying machines is greater than ever before, and that they find difficulty in keeping up with their orders of that sort.

C. A. McNabb, secretary of the Oklahoma board of agriculture, who is himself a very successful fruit grower is urging all farmers and fruit growers to spray their trees if they desire to secure the best results.

"From the stand point of dollars and cents no fruit grower can afford to neglect this matter," he said. "It is always sure that the man who sprays his trees will get more for his fruit than the one who does not, and the difference in price will be much greater than the trouble and expense involved in the work of spraying."

No decent self respecting Republican can vote for the fake constitution prepared by the Democrats. And any Democrat who has ever read the opening clause of the Declaration of Independence, and who will note for this constitution, should he himself to the island of Zulu and there forever live in innocuous desuetude. The constitutional gerrymander is enough to cause any liberty loving voter to want it rejected.—Cordelia State Republican.

Persimmon, a pioneer post office of Woodward county has just been discontinued. Rural routes are disastrous to little towns and country post offices.

## Common Sense Talks to Farmers.

Series of Articles for the Information and Instruction of Raisers of Grain and Produce.

(Written for this Paper by John Leasure, Manager Clearing House, American Society of Equity, Woodward, Okla.)

### COMMON SENSE TALKS TO FARMERS. No. 3.

In this, our third article on this subject we had intended to explain how we run the Clearing House, but for certain reasons will not do so just yet. But rather do we want to impress on the minds of the farmers the urgent necessity of coming together on the proposition that is offered. We have tried to solve this problem, have given it a great deal of study, besides we have been up next to it by practical experience. We want to say right here that we used to think when the elevator people got to fighting us by paying more for wheat than it was worth that the farmer should let them have it. But now we are going to show by cold logic that this was a mistake. What does it profit you when you get perhaps one cent per bushel more for your wheat than it is worth one day or long enough to put your agent out of business and when he is out you get a cut of perhaps 5 cents a bushel? This clearing house can not live unless you support it. It only asks you for margin enough on your crops to cover cost of handling and it is certainly plain to you that the more stuff we handle the less in proportion will be the cost of handling. Therefore as long as you are forced to support it to protect yourself why not cut the cost of handling to a minimum. The only way you can do it is by combining and never be led astray by any special inducement to sell to some one else. We have lived long enough to know that any man that is in business for himself and offers you at any time more than you know your stuff is worth you will have to watch him or he will get it all back with interest at the very first opportunity. All successful business men study how to cut down expenses. All great corporations make money by doing a great amount of business and cutting down the cost of doing the business by reason of combining it under one head. If this is true why don't you do the same thing. Confine the marketing of your crops to your own head or agent and let alone the fellows that have always worked you all they could. It is folly to waste your time with them. They have always done you and will do it again if they get the chance. There is no neutral ground, you must take the matter in your own hand and turn down any overtures that are made you by the common enemy the men who have grown rich speculating off of your crops. Don't wait for your neighbors to stand off the brunt of this battle for your rights but get into the hatness and help to get them. Don't be ready to turn down your agent every time that you can get as much from the other fellow as your agent can pay to sell to him but remember

that your agent has made the price and you could not get it but for him. You know this is true. Then be honest to your agent and honest to your fellow farmer and don't try to profit by his efforts alone but lend a helping hand and be a co-worker to gain your rights.

### COMMON SENSE TALKS TO FARMERS. No. 4.

We take up our pen once more in behalf of the farmer and his interests. We do not wish to bore you with these talks but we do want you to see the error of your way if you don't come out and help yourself. We as farmers have indulged in too much talk in times past. We have no doubt been gulled by visionary schemes. But at present we are trying to bring about a straight business deal. We are trying to create a power that in the hands of the farmers themselves can be used to benefit them. We are not trying to upset all the business systems that exist but are only trying to get you, the farmers, to arrange your business under a system. You have never had any you have simply been fighting each other. You have never tried to do your business on a business basis.

Let me see what is your business anyway. You say farming.

What are you farming for? You say to make a living. So far so good, but say don't you know that your most important business is to market your crops on a business basis and get a profitable price for them. You will haggle with your storekeeper over five cents but you will sell a load of wheat to a man that is skinning you out of dollars and not say a word. How long are you going to stand in your own light? How long are you going to stand and grumble at other men because they do business on a profitable basis. Stop it. You have no kick coming if you have never tried to help yourself and as long as you let them do your business for you don't kick. We know that you don't get all that you should, but whose fault is it? Suppose some storekeeper said to the farmers, "Come in and get my goods and you pay me just what you want to." How long would he stay in business? You would say he is a fool and he would be. But you have been doing that same thing all the time. You let the grain speculators price your grain. You let some one else price all your crops and think you have to do it.

Whenever you pledge your crops to your own agent in a manner that he knows that he is going to direct the sale of it you have gone a long way towards getting a fair price for it. When there is no other place to get your wheat but from your agent the

millers must come to him and he working for your interest will be able to have some say about the price. You would not be paying big profits to a grain trust that has grown rich off of your labor. The plans that the Farmers' Clearing House is working under has proven a success. With the small patronage it has received from the farmers it has kept considerable money at home that would otherwise have gone into the hands of speculators and aliens. Every dollar we save to you helps you, helps the business men of our town and builds it up. How much more could it help you if you would all patronize it. Work for it and protect it from the assaults of the elevator people. You know that they only fight because it is hurting them and if it is hurting them it must be helping you.

Yours truly,  
JOHN LEASURE,  
Mgr. F. C. H.

### For U. S. Senator.

Hon. S. M. Rutherford, candidate for the United States senate on the Indian Territory side, appears to be easily leading his opponents and his election at this time seems very probable. The people of Indian Territory fully realize that with the ownership of most of their resources vested in the Indians, they need men in congress who are not only brilliant, capable, persevering and thoroughly familiar with local conditions, but men who are known to be incorruptible and whose honor has never been impugned. Mr. Rutherford is a lawyer of ability and a marked success in his profession. His long residence here and his intimate knowledge of local conditions make him the most available man for the place. It is known that he has never lobbied or grafted and his rugged honesty has made him the idol of the great mass of the people. He has the support of nearly every democratic paper in Indian Territory. The Sunday Ledger, published at Muskogee, where both Mr. Rutherford and his opponent Col. R. L. Owen reside, sums up the situation as follows:

The only candidate from Muskogee who has any show whatever to win is S. M. Rutherford for U. S. senator.

Mr. Owen is a brilliant man, but he has been so long out of politics of Indian Territory and been so mixed up with the different settlements between the tribes that he is not suited to represent the new state of Oklahoma as one of its U. S. senators.

On the other hand, S. M. Rutherford has remained at home and contended for the rights of the people and the better enforcement of the law, as well as Democratic supremacy.

Mr. Rutherford is a college graduate but a common farmer boy, who has built himself to the distinguished position he occupies.

Morton Rutherford is no demagogue nor is he a hypocrite. He carries on his sleeves any omission or commission that there might be charged against him, so that the most unsophisticated may not be deceived as to his intentions.

The Indian Territory side of the new state is really entitled to one senator and Morton Rutherford's chances are

far ahead of any candidate from this section.

He has the acquaintances.  
He has the loyal party support.  
He has the confidence of the people.  
He is thoroughly familiar with the conditions of affairs here.  
He is not a lobbyist.  
He is not a grafter.  
He is brave, true and incorruptible.

This kind of a senator will be a help to those honest and poor men who are in the U. S. senate battling for the rights of the people.

Rutherford never made a dishonest dollar.

He never turned down a friend.

He has always been loyal to his party and its nominees, and as evidence of of this fact, he quit his campaign and came to Muskogee and spoke and worked for the municipal Democratic ticket.

He did not take advantage of the situation to boost his own candidacy.

He did not have made appointments to speak wherein he could plot his own candidacy to detriment of the municipal ticket.

### G. A. R. Encampment.

The 17th annual Encampment of the Grand Army of the Republic, Department of Oklahoma, will convene at Enid May 22, and remain in session for three days inclusive. This will be the greatest turn out of Veterans of the Civil war that has ever been held in Oklahoma, and of the deepest interest to the Comrades. Arrangements are being made to make a great success in every respect. Enid is ambitious, as a town and community, to make the old boys feel that no mistake was made when the Encampment was located at this point. She is already putting on her best clothes for this occasion, and she proposes to give the boys the best time they ever had in their lives.

Enid is the easiest town in the State to get in and out of. Look at the map and she is growing to beat the band.

The local Post will leave no stone unturned to make their comrades feel glad for the balance of their days that they attended the 17th Encampment.

Eat, drink (water) and be merry as often as possible, and that won't be many more times.

Begin to figure on this now. It will be long enough before harvest, and the three or four days of rest and recreation will make everybody feel like going to work with a will when they get back home. No more propitious time will ever occur for the Comrades to get together, compare notes and talk matters over.

If William Jones can run a mile in four minutes, how long will it take his cousin on his wife's side to weed an onion patch 84x96 feet with a sink hole in the middle three feet deep and holding 41 gallons of water and a green frog weighing three quarters of a pound?—Alva Pioneer.

G. W. Spencer of Kansas City has been in Woodward the past week buying cattle.

# Farm AND Ranch NOTES.

Compiled by a Practical Farmer for this Paper.

Poor plan to yard sheep and cows together. Latter are apt to chase the former and may hurt them.

Remember it is easier to prevent disease than it is to cure it after it has gained a hold upon your stock.

The angry shout at the horse makes the man less a man, and the horse less responsive to the will of its master.

The chief difficulty of butter making in winter is that the cream is either too old or too cold to churn well.

Don't let exposure and insufficient food stunt the young stock. You will never be able to recover lost ground if you do.

If you have any pleasant talk give it to the home folks and not exclusively to the stranger you meet in town or on the highway.

It's the gun that isn't loaded that goes off, and it's the horse that never starts when left standing that bolts and smashes wagon or buggy.

A winter equation for the poultryman to consider is that cut-bone, green food (clover or roots) and exercise equal generous egg production.

The successful farmer has a mission to fill in the community in which he lives by stimulating and encouraging better methods among his neighbors.

A letter from you to the representatives of your district in state or national legislative body concerning any legislation in which you are specially interested will bear fruit.

The hogs like wood ashes, soft coal in small bits, mortar, rotten wood, etc. Such things are a help to digestion and good health. See that they get such things occasionally.

Ever try putting your tongue to a bit of cold iron these cold frosty mornings? Then think how it must feel to the horse to have the ice-cold bit thrust into his mouth.

The newly seeded area of winter wheat is estimated by the department of agriculture at 31,665,000 acres, an increase of 353,000 acres, or 1.1 per cent. over the acreage of 1905.

Prof. Henry, of Wisconsin, suggests that dairy communities keep one breed of cow, say either Jersey, Holstein, Guernsey or Ayrshire. He thinks it would tend to raise the grade of animals.

The brave man is the prudent man, especially when handling the bull. No matter what the disposition of the

bull is supposed to be he should always be handled with a staff attached to his nose ring.

Of all the diseases to cure the self-sucking cow the ring in the nose is the surest and best. If the one ring should fail to stop the practice, as in some cases it does, put a second ring into the first ring.

In summarizing experiments made at Montana station, Dr. Linfield states that beef steers with clover hay as the rough feed made the best gains on mixed grains crushed. Barley was second, wheat third and oats fourth. In all cases the grain was crushed or ground.

Have you started that set of books yet?

Get acquainted with your hens. It will pay you.

A cold, drafty stable never built up a farmer's bank account.

Success with the livestock is proportionate to the care given them.

Improve the mild days now by doing such pruning as may be necessary.

Let the sun and fresh air into the poultry house. It's the best kind of tonic.

The poultry business is easy to learn, but the expert is not made in one year.

Don't delay marketing the hogs after they have reached good selling condition.

May it not be concluded that the gray matter in the pessimist's head is a dark, dark blue?

The Mexican Agricultural society announces the discovery of a new kind of wheat grown for several years in the state of San Luis Potosi, which has proved to be immune from attacks of wheat rust.

The styles of harrows are legion and there is no doubt that some makes are better adapted to certain soils than others. The farmer would do well to study the different makes and get the one which will work best on his soil.

A new system of corn culture seeks to retard the over-production of stalk in the early history of the plant's growth and later when the plant is ready to ear stimulating the development of the ear by the use of fertilizers and cultivation.

It is estimated that one chickadee bird will destroy 5,500 cankerworm eggs in one day, or 138,750 eggs dur-

ing the 25 days it takes the moths to crawl up the trees in March. It will pay you to entice the little birds to your orchard by hanging suet or beef bones to the limbs of the trees.

Dairy stables should have plenty of windows, well distributed. Then from each window frame remove some of the small lights of glass and place over the opening a muslin curtain, stretched tightly. This will allow a free passage of fresh air without a draft, and will make the stable sweet and wholesome.

Examine all the farm tools now. If new parts are found to be needed you will have plenty of time to order them and get them in place, and if repairs you can make are needed you will have plenty of time to make them. And how glad you will be when the machine or tool is wanted that it is in working order.

"Cow clubs" are popular among farmers in England. It is a sort of an insurance association of cow owners. Each pays a stipulated yearly fee for each cow owned, and the fund thus raised is used in paying a veterinary to look after the cattle and in paying a fair price in case of death of a cow. Here is an idea quite adaptable to dairying communities in this country.

If there is no special work for the horses to do during the winter days there is temptation to let them stand in their stalls and get out of condition. Then when the spring work opens up it is a long tedious task getting them in working condition again. It is better to make work for the horses, if necessary, in order to exercise them. They will stand by you better in the spring if you do.

The cream separator can be run too fast and too slow. The first condition is too severe a strain on the machine, and the second results in imperfect separation of the cream from the milk and a consequent loss of butter fat. The number of revolutions a minute required by a machine is usually indicated on the machine or in the instruction book accompanying it and should be strictly observed.

It is generally one of two causes why the pump fails to work, either failure of a valve to operate or shortage of water. The difficulty with the valves may be detected by priming and noticing the action of the handle. If the check valve is not working the handle will fly up. If the plunger merely churns the water poured in without raising any it indicates that the plunger valve is at fault. And both valves may be faulty as shown by the priming water flowing down into the well.

Here is a plan followed by the dairymen of Denmark which suggests a practical method of which dairymen in American communities may weed out unprofitable cows and thus insure a larger net profit: Thirty or more owners of dairies employ an official tester whose duty it is to keep a record of each cow. His reports are made regularly and the owner of each herd knows exactly what each one of his cows is doing and is able intelligently to weed out the robber cows. As a result of the system in Denmark the producing value of dairy cows was increased in one year from \$13 to \$60 each.

Generally it is the farmhouse which which is the last to be modernized and improved. There is always some comfort and convenience which can

well be added, and many times not much expense is involved in the improvement. The United States department of agriculture has issued a bulletin on "Modern Conveniences for the Farmhouse," which readers of Meadowbrook Farm Notes would find extremely valuable to them. The object of the publication is to show how farmers can equip their homes with many of the conveniences now largely confined to city homes. Among the subjects treated are water supply, plumbing, bathrooms and closets, sewage disposal and heating. The farmer is shown how, at a comparatively small expense, he can supply his home with water by means of an elevated tank filled by a hydraulic ram, a windmill or a small engine. The best methods of disposing of the sewage are explained and illustrated. Suggestions are made regarding the laying out of home grounds, the location of buildings and the remodeling of homes already built, and these suggestions are accompanied by illustrations. The bulletin, which contains 48 pages, is for free distribution, and application may be made to the department of agriculture, Washington, D. C.

Where the farmer is so situated, enough ice may be put up in the winter time to pay for the putting in of the winter's supply of coal next summer.

If the housewife will keep the kerosene oil where it cannot become too chilled she will find that one fruitful source of disagreeable smell will be removed.

A piece of string and a knife in the pocket make useful companions when traveling over the farm. So many chances to use them where a stitch in time saves nine.

Try a good neighborly talk before you begin suit over that matter that is troubling you. Ten to one your neighbor is as anxious to have it settled as you are.

A poultryman suggests the unique cure for an egg eating hen of an exclusively egg diet for three days. Rather an expensive cure with eggs at 40 cents a dozen.

To the farmer who judges that a chicken is a chicken and they all look alike to him there is not apt to be much of a contribution to his bank account from his flock.

While you are cleaning off the snow from the corn shocks and hauling it in to feed the stock, make the resolve that another year will not find you without room to house all the fodder you will need.

After the thaws come look over the grape vineyard and be sure the trellis posts are secure, and that the wires are fastened and tightened. Generally there are some vines that need re-tying, too.

A good way to bring the cream up to the proper temperature for churning is to set the can in a bank of hot water and gently stir the cream until the thermometer tells you that it is ready for the churn.

Here are the deductions of a Wisconsin investigator which are strongly in favor of the silo on the dairy farm. Creamery patrons who fed ensilage averaged \$52.52 per cow; while those who did not feed ensilage received on an average of but \$34.00 per cow, a difference of \$18.52 in favor of the ensilage men.

Where Ideas Grow Large.

Hennessey, Okla., April 14.—Trust a new country, peopled by the most enterprising people in the world, to do things on a large scale. The towns are large, the farms are large, the ideas are large, and the people large in hospitality, enterprise, enthusiasm and optimism. Kansas has a great reputation for enterprise, but we can almost feel the difference when we cross the artificial line which separates the state of Kansas from the soon-to-be state of Oklahoma. There is no appreciable difference in topography, but there is a marked difference in something that is called "the change." And when we reach the first real town in Oklahoma, we know we have struck something new. It is not a hundred years ago that the scattered along the Oklahoma territory prepared to dash into the new territory in search of homes. Search the wide world as you will, you will never find another hundred thousand people who equal that land-seeking multitude in all the qualities and characteristics that go to make up a fine citizenship. It was not surprising that such a people have built so well. Evid is situated in the old "Cherokee Strip" and a few years ago was little more than an Indian settlement, with a few white people thrown in. Today Evid has 18,000 people, every one a hustler, and is paving miles of streets, putting in an electric street railway, building factories and putting on metropolitan airs. Evid people are awfully busy. Between jumps, however, Evidites will take time to tell you that their town is the second largest in the new state, and if they can make it the first they are going to do it.

From Evid on through the new state one finds big towns on every side. Kingfisher, El Reno, Chickasha, Oklahoma City, Guthrie, Okmulgee—O, what's the use? Every town in the new state is a good one, and each one is going to be better. But Oklahoma City is the wonder of them all. The chances are that the average easterner is of the opinion that Oklahoma is peopled largely by Indians, and that Oklahoma City consists of a lot of shacks, more Indian teepees and a big sprinkling of sod houses and dilapidated tents. The Wanderer who wrote these lines knew better than that, for he has lived in the west so many years he is afraid to recall his early recollections. But he was surprised when he saw Oklahoma City. That such a magnificent metropolis could have been built in such a short span of years astonished a man who has seen towns spring up in a night. Here is a city of 40,000 people, with magnificent business blocks, elegant residences, fine hotels, mammoth wholesale houses, miles of paved streets, electric car lines, both urban and interurban, every public utility, splendid schools, numerous fine churches—and a people who are as full of ginger as an egg is full of meat. And ten years ago Oklahoma City was a mere village in a country peopled by homesteaders, among whom were a lot of "sooners."

The Wanderer did not find any dis-

cession of the "social equality" question going on down here. The negroes are too busy making money to think about it, and the white people are the same way. As one negro farmer put it when questioned by The Wanderer: "Fertile quality is what I am most interested in."

The negroes have separate schools on the territory, and they are proud of them, as they have reason to be. They attend the white schools, and as a result of this teacher and school are better than in the old days.

Oklahoma is a great country. It is a land of opportunity. It is a land of hope. It is a land of promise. It is a land of the future.

Wanderer is going to accept the invitation. He is accustomed to the sight of fruit growing in crates and tasting like silver dollars. What he wants to see is thousands and thousands of fruit trees in full bearing and be able to reach up and pluck and eat without reaching down and "digging up." It will be a novel sensation.

About the middle of June the fruit season will begin, and from then until the first of October the Bumps farm will resemble a small city, and it will be like Creede was in the old days—

"Day all day in the daytime, And there ain't no night in Creede." First will come the blackberries, and thousands of crates will be picked and shipped. Then comes the early peaches and apples, the plums, cherries and other early varieties. Mr. Bumps will be the busiest man imaginable for the next three months, and the visitor will look on in astonishment and wonder if there are enough people in the whole world to consume all the fruit picked and shipped.

There is no between seasons on a big fruit farm like this. Just now spraying is in progress. Not one of your dinky little hand sprayers, but a big power machine that shoots the medicated liquid with the force of a fire steamer and searches out every microbe and bacillus that happens to be perched on tree, twig or leaf. Usually spraying is done three times, the last time after the fruit is well formed, as it is now. While this is going on men are at work raking out between the rows of trees and vines, wiring up grapes, cultivating and a thousand and one other things. If you visit the Bumps farm right now you will find it as neat and as trim as any housekeeper's kitchen—no weeds, no rank grass, no deformed trees, no straggling vines—everything trim, clean and inviting. There are 5,000 peach trees on this farm, most of them of the Alberta variety, noted for their size and quality. They are the best

shoppers in the whole peach family, which is as num round, almost as the Smith family. Then come 3,000 apple trees, and finally about 1,500 trees divided among the plum, the cherry, the nectarine, the prune and the nut tree. It takes lots of power to run such a large force of grapes and adequate trees for such a large orchard. Mr. Bumps has his own farm. One big goal of the farm is to produce a large amount of fruit for the market.

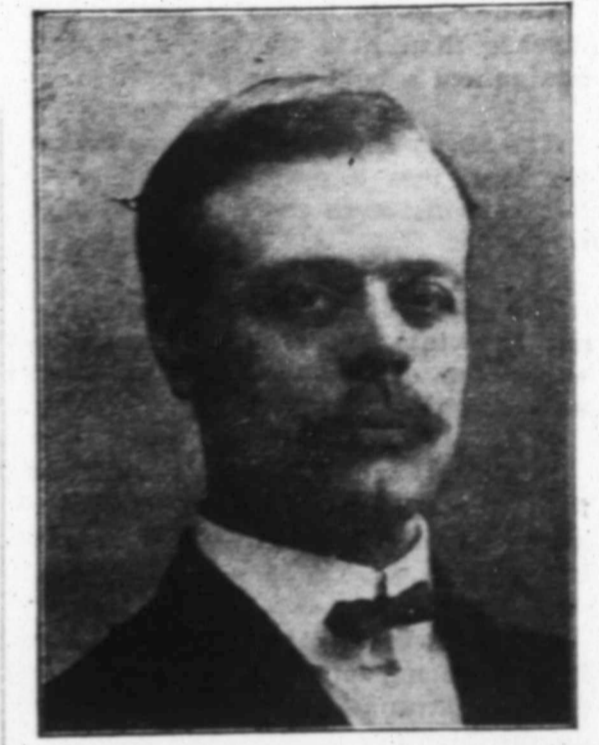
Six years ago Mr. Bumps bought the quarter section he now owns for \$4,000. It then contained but 4,000 fruit trees. He has added over 5,000 to the number, and set out the blackberry and grape fields. He would treat as a good joke an offer of \$20,000 for the place today. When The Wanderer left the fruit farm Mr. Bumps said: "Now be sure and come back when the fruit is ripe. We'll show you real fruit."

The Wanderer is going to accept the invitation. He is accustomed to the sight of fruit growing in crates and tasting like silver dollars. What he wants to see is thousands and thousands of fruit trees in full bearing and be able to reach up and pluck and eat without reaching down and "digging up." It will be a novel sensation.

the Double Eagle Mining Company will repurchase same from the purchaser and pay the purchaser ten percent or and above the price paid by the purchaser of the stock. This guarantee is something unusual all the men connected with the company are wealthy, there is no doubt but what the guarantee will be carried out to the letter. It is the policy of this paper not to accept objectionable advertisements. Before accepting the advertisement of this company which appears on page 14, the statements and claims were investigated and are said to be correct in every particular. Therefore this paper is willing to add its indorsement to the Double Eagle Mining Company's proposition and recommend it as a particularly worthy mining investment to the best of its knowledge and belief.

Contracts have been let by the management of the Santa Fe for a second tunnel through the Raton Mountains. It is expected that the work will be completed within twelve months. The tunnel will be about 3,000 feet long and will cost in the neighborhood of half million dollars. On completion of this tunnel the Santa Fe will be double-tracked between Trinidad, Colorado, and Raton, New Mexico.

Kansas City men who are well known and who are at the head of large establishments in this city. J. H. Harrington, of the Harrington-McCormick Commission Company, is one of them. Mr. W. H. Bump is another. The Double Eagle Mining Company is a company which appears on page 14, the statements and claims were investigated and are said to be correct in every particular. Therefore this paper is willing to add its indorsement to the Double Eagle Mining Company's proposition and recommend it as a particularly worthy mining investment to the best of its knowledge and belief.



A South Missouri editor has advertised the free distribution of a sack of garden seeds received from Washington. He says: "We're going to find out one of two things—whether the people give a cuss for free garden seeds, or whether it pays to advertise."

A company of Kansas City live stock and business men have become interested in a valuable mining property of Bridal Veil basin near the city of Telluride and right in the heart of the rich gold and silver mining district of San Miguel county Colorado. It consists of twelve claims and three mill sites. It is composed of 130 acres. The company already owns the property in fee simple with no incumbrance or indebtedness of any kind. Immediately surrounding are the famous Smuggler Union, Liberty Bell, Tomboy, Nellie and Camp Bird mines. These mines earned upward of \$4,500,000 last years. Mr. F. C. Vincent, the fiscal agent of the company, which is called the Double Eagle Gold Mining Co., says that property is more advantageously situated than the other companies and its ores assay far greater values than any of them. The property is already developed to handle ten tons of ore daily but it is desired to increase the milling capacity to 200 tons per day. To do this a stock company has been organized and a million shares of its treasury stock is placed on the market. Also the Double Eagle Mining Company has options on adjacent claims which are known to be very rich, which they wish to take up and consolidate with their company. For that reason they have decided to sell a small part of their stock. The company is owned by

See the tress which thin state ing: "Cizing the the hours unde sure the so th pow cons ness be e are and In rair tile tive and main the es. " mile sibler N two sess and a la yea mer will mer mil ten " Nel ms wit we wit Nel and is sha not will the has wil Nel and boc to the the sui thi " two thi: sio: a q ing to bet the to: tio: est sin and wit

**Two Cent Fare Law.**

Senator Smith of Kinsley discusses the two cent fare law in a plain business like way in the following article which ought to set the "knockers" to thinking more and talking less. He states facts that are well worth reading:

"The last legislature has been criticizing the senate for refusing to accept the two cent fare and insisting upon the mileage book proposition and the house for yielding to the senate. Fairly understood there is no ground for censure. The legislature first amended the existing railroad commission law, so that there is no doubt as to its power over passenger rates. It then considered two cent fares from a business standpoint. Two cent fares may be compensatory in Ohio where there are 80 people to the mile of railroad and not so in Kansas where there are 18. In Wisconsin the LaFollette board of railroad commissioners, distinctly hostile to the railroads, after an exhaustive investigation put in a rate of two and one half cents a mile on the three main lines through the state and left the fare at three cents on the branches.

"Wisconsin has 40 people to the mile of railroad, Kansas 18. Is it possible that Kansas is entitled to a lower rate than Wisconsin?

Nebraska and Missouri adopted a two cent fare law while we were in session. The rate will be enjoined and contested in both states involving a law suit that will run at least two years and possibly longer and in the meanwhile the citizens of those states will pay three cents a mile. In the meanwhile Kansas has two cents a mile on all roads for all who spend ten dollars a year for railroad fare.

"If the two cent rate is upheld in Nebraska our board of railroad commissioners will put in a two cent rate within thirty days. In the meantime we have practically a two cent rate, without expense, while Missouri and Nebraska will have a three cent rate and all the expense of litigation. This is assuming that the two cent fare shall be upheld in these states. If it is not, and every chance that the courts will hold this rate not compensatory, then certainly the Kansas Legislature has been wise. But in either event we will get the two cent rate as quickly as Nebraska or Missouri, without expense and in the meanwhile have our mileage books at a two cent rate.

"Now which was the better sense, to take this, and wait the event in these other states, letting them have the expense, or join them, have a law suit, and in the meantime pay flat three cents for two or three years?

"If it were a question between any two business men in Edwards county this settlement, these mutual concessions, rather than have a law suit over a question that other people are litigating without expense to us would appear to everyone, sane, reasonable and fair.

"Is it any less so because it is made between the state on the one hand and the railroad on the other?

"Is the clamor against the railroads to blind us to all business considerations, to our own profit and the interests of our people? Or are we to simply run amuck as the Populists did and come out after expensive litigation with nothing or worse?

"Something has been said about the mileage book being unenforceable. The writer believes that it is. But what does that matter when the railroads accept it and will put it into effect at once. We hold over them the club that the railroad board can at any time put in a two cent rate if experience shall justify it in Nebraska or if the railroads refuse to give us the mileage books as they have promised.

"The senate, mostly business men, looked at it from the standpoint of business, of obtaining results, of letting our neighbors fight it out as long as they are willing to, while we get something now, something sure without expense or risk. In the long run the people of Kansas will look at it the same way."—*Maize Globe.*

**TELEGRAPHY**

**The Greatest School of Telegraphy in The World—And Why.**

The only one enjoying the privilege of a main line train wire of one of our best railway systems; the only one being furnished with complete blanks and forms for telegraphy station and freight work of two trunk line roads; the only one being furnished with the blanks, record books and rate sheets of the Western Union Company; the only one with regular railway train service operating on an electric miniature railway, passing thru the different departments of our school with six regular terms each way per day. These trains are handled thru our different stations just the same as the trains on any well regulated railroad; the advanced students received regular messages from the Cotton Belt railroad train wire. This practically makes every operator on the Cotton Belt road an instructor for our students, and by the use of their blanks and our electric railway system, our work is made as practical as it could be in an office. Students are passing the regular railway examinations, and accepting operators positions without difficulty. We have never had one to try the examination and fail. The salaries paid to operators are from 50 to 90 per month; or operators and agents combined \$70 to \$150 per month, and we cannot near supply the demand.

Any young person enrolling with us is positively guaranteed that we will qualify them to hold a good position with any railroad, and guarantee the position as soon as they finish our course. It only takes four or five months to complete the course, and the cost for tuition is \$45.00-\$5 for books and material for the entire course; board and lodging \$10.00 to \$12.50 per month. Your first two months will pay back the entire cost of the course. You might look the world over and you could not find a profession or a business into which you could step with such a positive guarantee of so large and quick returns and so small an investment.

If further information is desired, write The Tyler Commercial College, Tyler, Texas, ask any questions you like. You will receive a prompt and courteous reply. Almost 200 telegraphy students are now enrolled, and others are entering daily.

**A PURITY PAINT**

**With a Hundred Dollar Guarantee That It Is Pure.**

O. L. Chase, the Paintman of St. Louis, Missouri, doesn't mince matters. When he wants to make a statement he comes right out bold face and puts up some money and says he'll take a loss if everything he says isn't true.

In the first place, when he commenced to make paint he said: "I'll let anybody try it that wants to—two full gallons of it—to prove that it is all right. If they don't like it after they've tried the two gallons, they can send back the rest of the paint and get their money back."

Now that so much agitation has come up on the question of pure paint in the different states, O. L. Chase comes on with a \$100.00 Gold Guarantee that his paint is pure—that it remains just what he says it does and nothing more—and he offers \$100 in gold to anybody who finds anything in his paint other than what he says.

O. L. Chase makes paint to order, makes it fresh for each individual customer—and ships it in separate cans the paint pigments in one can and the linseed oil in another, so there can't be any chemical action of the pigment to eat the life out of the oil and thus destroy a large percentage of the value of the paint on the buildings.

Mr. Chase issues complete paint book—the handsomest book of its kind that we have ever seen—and it tells all about Paint—how it should be made—and how it should be applied. With the book he sends a large sample color card to choose colors from. If you are thinking of buying paint this year, we suggest that before you buy from anyone you write for the Chase Book and read up on O. L. Chase Paint, and get the full particulars of the \$100.00 gold guarantee as to its absolute purity. Mr. Chase will send you one of these book free upon request. Just send a postal card for it and address O. L. Chase, The Paintman, D. P. 524, St. Louis, Missouri.

**The Cotton Acreage.**

The state of Oklahoma produced over 900,000 bales of cotton last year. That's too much. It is to be hoped that the cotton production of the state will always be kept within 1,000,000 bales but at the rate of increase of the past few years, that production will be passed next season.

More than the usual amount of cotton was unpicked last winter. This had been chopped down in preparation for planting again this year. It was not picked last winter because of inability to get pickers. Where are the pickers to come from next fall?

For the average Oklahoma farm, ten acres of cotton is enough. Well tended, it will bring in as much money as double this acreage does on the average. And the home working force can take care of it without every one working all the time at it.

Oklahoma should always grow cotton but it should never become a cotton state. It should be what its soil, climate make it, a state where diversified farming reaches its highest de-

velopment. Switching about from one crop to another will not make the farmers of the state prosperous. Those who grow but one crop to the exclusion of all others miss the advantages which come from farming where so many crops may be grown so successfully.

To try to grow all the crops that may be grown in Oklahoma is wrong. It fools away too much time. But there's a happy mean. Diversification, rotation, and specialization should be the system of Oklahoma farming. The rotation should be whatever is best adapted to local conditions and the speciality should be what the farmer is most interested in. But that speciality should look toward improvement and should not consist in growing some one crop by ordinary methods and with very ordinary results.

**Sore Eyes in Cattle**

Ophthalmia, or sore eyes, is quite general in the spring. It may be caused by the introduction of some foreign matter, such as chaff, weedseed, or dust, taken into the eyes while the animals are feeding at the straw heap. Exposure to cold or poisonous gasses which arise from foul stables may also be the means of bringing on an attack. The first symptoms are a profuse flowing of tears and the closing of the eyelids when exposed to the light. As the trouble progresses, there is a decided diminution in the flow of milk and many times the animal becomes entirely blind.

In treating the most important thing to do is to remove the foreign particles. This may be done by turning the lids of the eyes inside out and scraping with a clean, silver spoon. If the particles have not become attached to the membranes of the eyes, they may be washed out by syringing with warm water. After this is done, the eye should be washed once each day with a solution of twenty grains of boracic acid to an ounce of water. This can be injected into the eye with the syringe. Another excellent wash is five grains of acetate of zinc and twenty grains of laudanum to an ounce of water. This can be applied also with a syringe. Keep the animal in a dark place, so that the light will not hurt the eyes. The quarters should be free from filth.

**Post Cards and Postal Cards.**

An ominous warning has been issued by Postmaster J. H. Harris that the public must not mistake a postal for a post card. This is no idle tweedledum tweedledee business. A postal card is a postal card and a post card is a post card and both of them are a flat piece of cardboard going through the mails for 1 cent, there is a world of difference between them. The government prints the postal card, but anybody can print a post card. They need not go to the botner of printing it, but may make it, by means of a pen and scissors look like a post card, stick a 1 cent postage stamp on it, and mail it. Then they may write all over the back of it and over half of the front of it.—*K. C. Journal.*

This office does fine job printing. Try us.

## THE LIVE STOCK INSPECTOR

PUBLISHED SEMI-MONTHLY BY

W. E. BOLTON,

WOODWARD, OKLAHOMA. KANSAS CITY, MISSOURI.

Represented in Denver, Colo., by C. O. Sprenger, Times Building.

The only journal published in Oklahoma and the Indian Territory, devoted exclusively to live stock interests and stock farming.

Entered at the post-office at Woodward, Oklahoma, as second-class mail matter.

MAY 1, 1907.

## NOTICE TO SUBSCRIBERS

**REMITTANCES.** In sending money to the LIVE STOCK INSPECTOR please observe that the Clearing House will not accept private checks at par. Remit by postal or express orders, eastern bank exchange, registered letter or if by private check add twenty-five cents for collection. Amounts of less than \$1 can be paid in postage stamps.

**DISCONTINUANCES.** Subscribers wishing the LIVE STOCK INSPECTOR stopped at the expiration of their subscription must notify us in writing to that effect otherwise we shall consider it is their wish to have it continued and we will make collection for the same.

**CHANGES OF ADDRESS.** When a change of address is ordered, both the new and old address must be given and notice sent two weeks before the change is desired. We require this on account of our heavy mailing list.

Official Organ of the Oklahoma Live Stock Association

## Advertising Rates.

Display advertising 10 cents per line, agate fourteen lines to the inch.

Special reading notices 10 cents per line.

Business cards or miscellaneous advertisements will be received from reliable advertisers at the rate of \$1.50 per agate line for one year.

Annual cards in the Breeder's Directory, consisting of four lines or less for \$6.00 per year, including a copy of the Live Stock Inspector free.

Electrics should have metal base.

Objectionable advertisements or orders from unreliable advertisers, when such is known to be the case, will not be accepted at any price.

To insure prompt publication of an advertisement, send cash with the order; however, monthly or quarterly payments may be arranged by parties who are well known to the publishers, or when acceptable references are given.

All advertisements intended for the current issue should reach this office not later than the 10th or 25th of each month.

Every advertiser will receive a copy of the paper free during the publication of the advertisement.

Address all orders.

LIVE STOCK INSPECTOR, Woodward, Okla.

THE LIVE STOCK INSPECTOR exercises great care in admitting advertisements to its columns. If any of our readers wish information regarding any advertisement or advertiser we would be glad to give same. If you wish to buy anything that is not advertised in our columns, write us and we will refer you to the best place to buy.

A postal card, addressed to the Secretary of the Oklahoma Live Stock Association, Woodward, Okla., will bring by return mail a full set of blanks necessary for becoming a member of the Association, also full information pertaining to the same.

## Don't Worry.

McCall's Magazine.

Don't worry, dear, the bleakest years  
That clog the forward view,  
Each thins to nothing when in nears,  
And we may saunter through.  
And darkest moment never comes,  
It only looms before;  
The loss of hope is what benumbs,  
Not trouble at the door.

Don't worry, dear; the clouds are black,  
But with them comes the rain;  
And stifled souls that parch and crack  
May thrill with sap again.  
The burden, bear as best we can,  
And there'll be none to bear;  
Hard work has never killed a man,  
But worry did its share.

Don't worry, dear; don't shirk; don't yield,  
But dare the year to come;  
Nor give the enemy the field  
Because he beats his drum.  
Those little woes that hover near  
Are nothing, though they gail;  
We know life is love, my dear,  
And life and love is all.

The proposed constitution is rotten from stem to gudgeon; vote 'er down!

Advertising is merely a method of publicity. Any man with honest intent or goods to sell is not ashamed to ask your patronage by an advertisement.

"What's the matter with Oklahoma? Oh, jest nawthin at all, only if the derned constitution don't carry, we'll jest have to keep on havin' free schools here instead of savin' our money by not educatin' the white trash."—Cocklebur Bill to Blatherskite Haskell.

Many persons, who believed three weeks ago that the proposed state constitution for Oklahoma will be adopted August 6, are convinced that in the last eight or ten days there has been a marked growth of public sentiment dangerous to the safety of the constitution. Kill the constitution.—Curtis Courier

Mr. Farmer, take your little pencil and tablet and figure up how much your taxes will be increased by uniting yourselves as taxpayers with a people who do not pay taxes and then make up your mind to paste the constitution one vote for yourself and get as many of your neighbors to vote with you as you can.—Aline Chronoscope.

You farmer man, you who are saving every nickle and wearing old and sometimes ragged clothes in order to support home and

family, how do YOU like to be robbed by an army of grafters and compelled to pay out your earnings to support a hypocritical leech, for the sake of "party." That's what you are doing today, my friend. How do you like it?

Read the advertisements in this issue and save money by trading with those who advertise. They want your trade, they ask it in this manner and they will sell you more and better goods for less money than the parasites who wait in their dens to bleed you and are ashamed, or "too ornery," to invite your trade. Don't get skinned. Patronize our advertisers and save money.

No! If you want to know how we stand with respect to the ratification of the constitution, we shall vote No. Most of our readers, with whom we have talked, will vote the same way. We are not assuming this attitude because it was written by democrat or because we are a "carpet bagger," but for patriotic reasons, with which we will probably burden our readers in the future.—Fort Supply Republican.

And it now appears that the leaders of the con-con were in as much control of the peanut members as the owner of a house in charge of a basket of blind kittens. All the leaders had to do was to sort the kittens daily in separate baskets and if they "meauowed for milk" to feed them on some committee appointment and the trouble was fixed. The adoption of this constitution will bankrupt all western Oklahoma!

A campaign snorter in a public address here this week made the statement that were it not for the farmers the railroad rails would rust and rot. This is true enough, yet it is also true that if it were not for the railway there would be little or no farming in this country for any but home consumption and mighty little of that. It pays to be fair, but politicians and demagogues are usually shy on this quality. Any man who is so unfair in his statements deserves to be turned down by all sensible voters.

We have admired and commended Sturm's Statehood Magazine, but if God Almighty and the Supreme Ruler of the universe will forgive us, we'll never do it again soon. We admired

it as a state representative of the best commonwealth on earth, but when it prostitutes its noble purpose to a defense of the bull-con constitution and an apology for its make up, our hands go up and we withdraw all previously said in its favor. It has linked its destinies to a blot upon "square dealing" and hitched its mud-cart to the putrefaction of partisanship! Vale; Bre'r Sturm! Get thee into the bellies of thy chosen swine!

## Save the Money.

The school children of Oklahoma receive from the school lands about \$1.80 per capita. Divide that with Indian Territory, having an equal population and you are shv ninety cents, for the other fellow pays no taxes. How will you make even? Why raise your own taxes. That is the price you pay for the privileges and blessings of statehood. What is your remedy for the difficulty confronting you? Knock the constitution and take chances on statehood for yourselves, thus holding your forty million dollars worth of school land and preventing its dissipation by the monumental grafters who promulgated the constitution of iniquity they have the hardihood to ask you to vote for.—Aline Chronoscope.

Or, another way would be to let the fellows who vote in favor of the "bankruptcy constitution" be made to stand the losses incurred by their lack of sense!

## One or Two in Woodward

The following observation from an exchange exactly fits the case of one or two Woodward men:

"It does not pay to advertise, say some merchants who have done but little of it and that without keeping it up. The incident of the boy and the pump illustrates the matter very well. The boy was sent after a pail of water. He poured in the priming and poured out as much as he poured in. Then he stopped to rest and the priming ran down. After some time of alternate pumping and resting he concluded it did not pay to pump and quit in disgust. The merchant who does not believe in advertising does it like the boy did the pumping. He advertised a few weeks, then stopped a while and allowed the people to forget him and his business before he advertised again and then concluded advertising didn't pay."

William and Albert Shull, of Mulvane, Kan., stopped in this city, Tuesday evening, while on their way to New Mexico to take claims. They are nephews of the publisher.



Do you get Ft. Worth market reports? If not, write us.

SALES AGENTS PASTEUR BLACKLEG VACCINE.

**Ed. F. Smith Company,  
Successful Sellers of  
Cattle, Hogs and Sheep.**

Stock Yards.

FT. WORTH, TEXAS.

WE BUY STOCKERS AND FEEDERS.

**Will Vote No!**

**Reasons Given for Voting Down the  
"Bull-Con" Convention**

**EDITOR NEWS:**

I would like space in your worthy paper to say a few words in regard to our constitutional delegates and their constitution. Please note, I say THEIR constitution, for surely no plebian tax payer can point out a single clause if put in effect that would benefit him one iota, not withstanding that when in convention assembled and President Murray was placed in the chair to preside over that august body, he made the boastful declaration that they would make the best constitution that was ever written, which would mean to the hard working wealth producing tax payer, the greatest good to the greatest number of people. Now have they done that? Or, have they swerved the constitution to read the poor, hardworking farmer and all other sweating wealth producers down and out?

We think they have done the latter. A review of some of their great work will perhaps sharpen appetites to be satiated on election day. Now, they tell us they have given us referendum! So they have, with an appendix of five judges with power to knock it out for all time.

The constitution provides for the sale of school lands and the money, of course, will be loaned or given to the big corporations in order to strengthen their grip upon the poor and strangle the advance of intelligence through the lack of means for proper schooling.

It also provides the legislature with power to impose a property tax, poll tax and even an educational qualification as claims for suffrage.

It not only knocks out woman suffrage but even makes it unconstitutional.

It fails to provide free text books for the school.

Now the program of both old parties in presenting their candi-

dates for delegates to the constitutional convention published and pleaded for many good things I cannot now recall, if we would support their candidates. Well they were supported and we got a variety.

Their property tax would disfranchise one half the farmers and the laboring men in the state. Of course the well-to-do and high cockalorum would claim it was a grand national move and an advanced stride toward a higher plane of prosperity, for the poor disfranchised could stay at home on election days and work and raise taxes to pay off the \$200,000 squandered by the delegates in the convention.

Now I have neither the time nor space to mention all the beauties of that matchless document, but will say it seems a pity that the state did not contain sufficient territory for each delegate to mark himself out a county and be as precise in surveying as Williams was in laying out Harper county for it would have added sufficient merit to his character to send him to the legislature or a good county office with a name crowned with renown that would have followed his posterity for a hundred years. But alas, they could not do it.

Now in conclusion I will say that the territory could have picked up twelve old grangers in any settled township in the territory and sent them to Guthrie and in three weeks would have written a better constitution for the general public at a cost of not more than two or three thousand dollars and the \$198,000 that was squandered would have built forty bridges across the main streams in the territory and left money sufficient for the election.

I will vote no.

W. H. WHITE.

**"Kid" Yoakum Writes.**

Remy, I. T., Apr. 7, 1907.

**Woodward News:**

Please tell the Woodward county folks that the Kid and Miss Alice are near Ft. Smith, Ark.,

# Anarchy in Oklahoma

## ONCE IN OFFICE ALWAYS IN OFFICE.

### The Motto of the Bull-Con Convention.

### Adjournment Taken until After August 5, 1907.

Never in the history of America has more damnable outrage been perpetrated on all the people than the refusal of the present members of the constitutional convention to adjourn without date after completing that for which the enabling act created them.

Instead of obeying the mandate of the government, they have signed for submission to the people, a document purporting to be a "constitution," and then continued in session by adjournment until Aug. 5th 1907, the day preceeding the date set for the ratification or rejection of their work by the people.

They assume in so doing that they are greater than the people whom they were elected to serve.

They assume powers unwarranted by law.

They commit a crime in the name of government.

They challenge the warmest admiration of the most blatant anarchist in their assumption of Divine right of rule.

Congress should be petitioned to meet in special session to lop off the heads of these greedy avaricious shysters who openly flaunt their shame and insult the voters of Oklahoma.

If this action of the convention be not reason, we want a definition of the word!

in the Indian Territory with our youngest son, Henry. We were nineteen days on the road. Had a fine trip and am feeling fine. The trip has helped us both. We went fishing yesterday. If nothing happens we will go to Ft. Smith tomorrow. We found Henry and family all O. K. and crops coming up; some corn plowed over once and some cotton up, but most of the old timers say the early planting will have to be done over. We will drive on south for Texas in a few days. Tell all the boys to listen for that old cow's horn. We will be glad to get back after a good long rest and holler "Come in boys, dinner will be ready in a little bit." Bye! Bye! Love and good wishes to all.

"KID."

This office does fine job printing.

District Court brought the usual number of attendants this week, and an unusual number of foreign attorneys to town.

B. J. Hobbs shipped in a fine Poland China Boar to head his herd near Fargo. He paid \$150 for him and is from Corrector and Perfection 2nd strain.

The U. S. Land Office removed on April 24th to the rooms in rear of First National Bank where the officers will be found hereafter. We presume the same old gouge of two dollars extra for publication of final proofs will be continued and the homesteader will be bled as freely as at the old stand. The move of the office fixtures to a better building however, is highly commendable and Banker Stine should be given a vote of thanks for providing superior accomodations.

**Farming On Paper**

The farmer should spend a certain amount of time each week "farming on paper." Farming on paper is almost as essential to success as farming the soil. The farmer who does not read, or figure for the future, rarely makes a success, while the one who does rarely makes a failure.

Farming on paper may be laughed at by some, but it has been responsible more than anything else, for the rapid strides made in the last twenty-five years. A quarter of a century ago, there were but few really live agricultural papers in the nation and those which were published were not very generally circulated. Now each state has from three to a dozen and each has a large circulation. The farmers are greater readers now they were ever before and the result is that they have been improving their condition. The statement is current that no improvement has yet been made in the farmer's condition which was not first suggested by some practical farm paper. This may sound extravagant, but the more it is studied the more truth it will be found to contain. Farmers as a rule are slow to adopt new methods and the only medium through which a new idea can be presented to them is the farm paper.

The farmer who reads reliable agricultural papers sees these improved ideas in print for so long a time that he finally concludes to adopt them, with the result that he improves his condition.

But reading the farm paper is not all he should do. He should figure on the future. Every crop which is attempted should be considered. The cost of production must be taken into consideration, as well as the amount of fertility that crop will remove from the soil. The cost of raising every animal and the probable selling price when it is finished should have a part of his attention. Last but not least he should tell others the new methods he has found to be improvement. All this is what may be called farming on paper and it is very essential to successful farming.

**Ifs That Count.**

Durant, I. T. Statesman.

If you want to be taxed out of financial existence, vote for the constitution.

If you want to keep foreign capital out of Oklahoma vote for the constitution.

If you want your adopted state to be known as the anarchist state, vote for the constitution.

If you want to be classed as a moss-back of the twentieth century, vote for the constitution.

If you want every legitimate corporation, every moneyed company, every man with money, every representative of capital, to fight the growth of Oklahoma continually, vote for the constitution.

If you want to put an end to all railroad construction in every part of Oklahoma for the next ten years, vote for the constitution.

If you want to drive out all the capital now invested in Oklahoma, on ac-

count of the outrageous taxation, vote for the constitution.

If you want business men from the north and the east and from the south to skip Oklahoma and sidetrack for Kansas and Texas, vote for the constitution.

If you want to hand Oklahoma over to the hoodlums and political grafters for all time to come, vote for the constitution.

If you want the truth of these statements, sit down today and write to some intelligent man who lives in another state and who is not interested here; and see if his answer is not in full accord with the foregoing. Don't allow a candidate to persuade you to do wrong by the children yet unborn.

**Marking the Santa Fe Trail.**

For a number of years the men of the southwest have agreed that it would be a good thing to suitably mark the line of the old Santa Fe Trail all the way from its start, near Kansas City, in Missouri, to its finish at the old city of Santa Fe, in New Mexico. It has remained for the women of Kansas and Colorado to take the matter up in a practical way.

The Kansas branch of the Daughters of the American Revolution has raised a fund of several hundred dollars, which was supplemented in 1905 by a liberal legislative appropriation.

Seventy granite markers have already been purchased and will be put in place at points along the trail this year. The intention is ultimately to put these markers two miles apart all the way through Kansas. A few localities have purchased more expensive bronze tablets made from a Kansas City artist's design.

The Colorado branch D. A. R. is planning for a similar marking of the trail through that state. No doubt New Mexico will take it up in due course.

The Atchison, Topeka & Santa Fe Railway, whose steel rails follow for the most part the line of the old wagon trail, has decided to help the good work along beginning this summer in Kansas, by erecting special monuments at important points and by installing wayside signs which can be seen from the passing trains.

**Blackleg.**

With the coming of spring this disease is again making its appearance and the careful cattle-raiser is considering the advisability of vaccinating his stock so as to prevent the ravages of this disease. There is no longer any question but that Blackleg Vaccine will positively prevent the disease PROVIDED A RELIABLE VACCINE IS USED IN AMPLE TIME. It is therefore to the interest of our readers to be sure they have a reliable vaccine and not to neglect vaccinating too long. The loss of a single animal due to delay or faulty vaccine, will frequently amount to more than the cost of sufficient vaccine for the entire herd.

Save the calves—fresh Vaccine to prevent Blackleg, on sale at the NEWS office.

**ROYAL BAKING POWDER**

Imparts that peculiar lightness, sweetness, and flavor noticed in the finest cake, biscuit, rolls, crusts, etc., which expert pastry cooks declare is unobtainable by the use of any other leavening agent.

ROYAL BAKING POWDER CO., N. Y.

**A BIG GARDEN**  
The year of 1906 was one of prodigious plenty on our seed farms. Never before did vegetable and farm seeds return such enormous yields. Now we wish to gain 20,000 new customers this year and hence offer for 10c postpaid:

1 pkg. Garden City Beet	10c
1 " Earliest Ripe Cabbage	10c
1 " Earliest Emerald Cucumber	15c
1 " La Crosse Market Lettuce	15c
1 " 12 Day Radish	10c
1 " Blue Blood Tomato	15c
1 " July Turnip	10c
1000 kernels gloriously beautiful Sewer seeds	15c
<b>Total</b>	<b>\$1.00</b>

All for 10c postpaid in order to introduce our warranted seeds, and if you will send 15c we will add one package of Berliner Earliest Cauliflower, together with our mammoth plant, nursery stock, vegetable and farm seed and tool catalog. This catalog is mailed free to all intending purchasers. Write to-day.  
**JOHN A. SALZER SEED CO.,**  
La Crosse, Wis.

**Buy or Sell Real Estate**  
or anything else, Get Next to the **Free Advertising**

offer of THE INTERVIEW, the BEST medium on earth for bringing buyer and seller together, in this unique manner. If you don't want to advertise anything that might interest any number of a hundred thousand miscellaneous readers, you may like to act as our local representative on liberal terms. Write at once, enclosing copy of your ad., or let us know your desires. THE INTERVIEW is published monthly, 10c a copy, \$1 a year; and in its diversified field of "Free Lancing," whether commenting on Insurance, Real Estate, Finance, Commerce, Farming, Fraternal, Political or Domestic affairs, in any part of the country, it strives to merit its motto: "The Friend of Right and Justice; The Foe of Evil and Oppression." Address: INTERVIEW PUB. CO., 108 Fulton St., N. Y.

**EVERGREENS**  
AT BARGAIN PRICES  
For spring planting we offer the following choice varieties assorted as follows:—

100 Scotch Pine	2 Yrs. Old In. High	6	\$1.00
100 White Pine	"	4-6	1.00
100 Norway Spruce	"	4-6	1.00
100 White Spruce	"	4-6	1.00
100 Ponderosa Pine	"	4-6	1.00
100 Amer. Arbor Vitae	"	4-6	1.00

Bargain price \$1.00 per 100 or in 600 lots \$5.00 prepaid. These trees are suitable for wind-break purposes or ornamental planting. Also 50 other bargain lots at from \$1.50 to \$18.00 prepaid. Write for catalogs  
**D. HILL, Evergreen Specialist, Dundee, Ill.**

**\$10.00 Sweep Feed Grinder** | **\$14.00 Galvanized Steel Wind Mill.**  
We manufacture all sizes and styles. It will pay you to investigate. Write for catalog and price list.  
**CURRIE WIND MILL CO.,**  
Topeka, Kansas.

Price 25 Cents  
**TRAVELERS RAILWAY GUIDE**  
315 Dearborn St., Chicago.



**WANTED 2,000 Cattle-**

Men to know that Eagle Brand Live Stock Dip is the Best and Cheapest Dip available. Guaranteed to cure mange and all disease germs. Indorsed by all who have used it.

**Price in Barrels 60cts.**  
MINTER BROS. MFG. COMPANY.  
224 W. 3rd st. KANSAS CITY, MO.



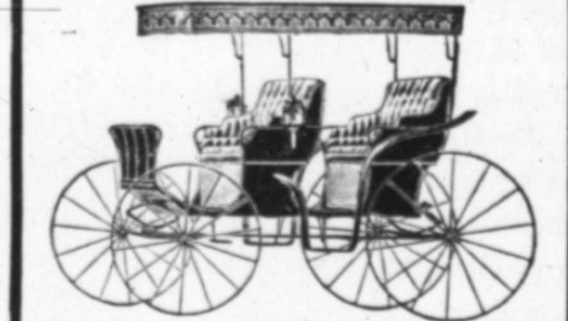
No. 681. Piano Body Top Buggy. Price complete \$45.00. As good as sells for \$55.00 more.

**34 Years Selling Direct**

Our vehicles and harness have been sold direct from our factory to user for a third of a century. We ship for examination and approval a guarantee safe delivery. You are out nothing if not satisfied as to style, quality and price.

**We Are The Largest Manufacturers In The World** selling to the consumer exclusively. We make 200 styles of Vehicles, 6 styles of Harness. Send for large, free catalogue.

**Elkhart Carriage & Harness Mfg. Co., Elkhart, Ind.**



No. 313. Canopy Top Surrey with Automobile Style seats. Price complete, \$73.50. As good as sells for \$85.00 more.

**Santa Fe Excursions**

Homeseekers' Excursion tickets on sale first and third Tuesdays of each month. Rate in many cases less than one fare, and limit twenty-one days or thirty days, according to destination.

Winter Tourist tickets on sale daily. Very low rate. Limit June 1st.

For further particulars apply to **E. S. GUNN, City Passenger Agent.**

**VARICOCELE**  
A Safe, Painless, Permanent Cure GUARANTEED. 30 years' experience. No money accepted until patient is well. CONSULTATION and valuable BOOK FREE, by mail or at office.  
**DR. C. M. COE, 915 Walnut St., Kansas City, Mo.**

Cutting Alfalfa

Are you waiting for that alfalfa you sowed last fall to get big enough to cut? If you wait to long you'll make certain that your stand is cut down and the...

When grass is gaining a hold in old alfalfa fields, disk them after the first cutting and follow with the harrow. Perfect stands of alfalfa on good soil do not need this but don't forget that when a stand of alfalfa begins to go back, you must help it out. It never recovers of itself. And the kind of medicine it needs is scratching.

Web worms often make trouble. When they appear and strip the plants of leaves, cut the crop. That's the best treatment and it is successful. The crop will be lost but the next one will likely be saved. And unless the stems are cut after the worms have taken the leaves off, there'll likely be no next crop and no alfalfa at all after a while.

Gophers in Alfalfa.

There is no need in letting the gophers destroy a stand of alfalfa. Poisoning them is entirely feasible and takes but little time if the work is done right and followed up.

Many Oklahoma alfalfa growers follow this plan: Have a long, straight fork handle shod heavily with iron with a long point. Get raisins or prunes, cut a little slit in each and insert a few crystals of strychnine. Stab around the new mound until the run is found, drop in a raisin, plug the hole with a corn cob, level off all mounds and go on to the next. Watch the field and repeat the dose whenever new mounds appear. Bananas cut in small chunks are used by some growers. A little strychnine is put into each piece.

Gophers don't get fewer in number unless some means is employed to kill them off. They seriously damage alfalfa fields if left alone. They make mowing hard on the man, team, and machine. It doesn't help the sickle to go through a lot of gopher mounds. Follow up the poisoning and whenever a mound shows up, go after the maker of it.

Catalo At The Grand Canyon.

C. J. Jones (popularly known as



O.L. Chase, St. Louis, Mo.

# I Am the Paint Man

## 2 Full Gallons Free to Try—6 Months Time to Pay

### I Guarantee Freight Charges.

I AM the paint man. I have a new way of manufacturing and selling paints. It's unique—it's better. It revolutionized the paint business of this country last year.

Before my plan was invented paint was sold in two ways—either ready-mixed or the ingredients were bought and mixed by the painter. A sediment at the bottom of the can. The chemical action in ready-mixed paint, when standing in oil, eats the life out of the oil. The oil is the very life of all paints.

Paint made by the painter cannot be properly made on account of lack of the heavy mixing machine.

My paint is unlike any other paint in the world. It is ready to use, but not ready-mixed.

My paint is made to order after each order is received, packed in hermetically sealed cans with the very day it is made stamped on each can by my factory inspector.

I ship my thick pigment, which is double strength, freshly ground, in separate cans, and in another can, I ship the pure, old process Linseed Oil—the kind you used to buy years ago. Any child can stir them together.

I sell my paint direct from my factory to user—you pay no dealer or middleman profits.

### My \$100.00 Cash Guarantee

I guarantee, under \$100 Cash Forfeit, that the paint I am offering you does not contain water, benzine, whitening, or barytes—and that my Oil is pure, old-fashioned linseed oil and contains absolutely no foreign substance whatever.

I guarantee the freight on six gallons or over. My paint is so good that I make this wonderfully fair test offer:

When you receive your shipment of paint, you can use two full gallons—that will cover 600 square feet of wall—two coats.

If, after you have used that much of my paint, you are not perfectly satisfied with it in

every detail, you can return the remainder of your order and the two gallons will not cost you one penny.

No other paint manufacturer ever made such a liberal offer.

It is because I manufacture the finest paint, put up in the best way, that I can make this offer.

I go even further. I sell all of my paint on six months' time, if desired.

This gives you an opportunity to paint your buildings when they need it, and pay for the paint at your convenience.

Back of my paint stands my Eight-Year officially signed, iron-clad Guarantee.

For further particulars regarding my plan of selling, and complete color card of all colors, send a postal to O. L. Chase, St. Louis, Mo. I will send my paint book—the most complete book of its kind ever published—absolutely free. Also my instruction book entitled "This Little Book Tells How to Paint" and copy of my 8-year guarantee.

**O. L. CHASE, The Paint Man.**  
Dept. 524 St. Louis, Mo.

NOTE—My 8 Year Guarantee Backed by \$50,000 Bond.



**R. T. Frazier,**  
Pueblo, Colorado.

Send for No. 8 Catalogue.

"Buffalo" Jones) was in town the other day wearing a catalo overcoat. This is something new in gent's furnishing goods. Mr. Jones is the friend of the great American bison. He has not only spent many years of his life and a small fortune in perpetuating the buffalo, but, with true Yankee ingenuity, has given to the world a new animal known as the catalo, which is a cross of the buffalo with blooded cattle.

He has a big ranch on the north rim of the Grand Canyon of Arizona, where experiments are being conducted under Government auspices. To make the place more accessible, a long steel cable has been stretched across the granite gorge of the Colorado river in the bottom of the Grand Canyon, passengers being carried over in an iron cage.

Mr. Jones is planning to keep open house there next summer, and has invited a big party of New York friends to visit him.

CAMPBELL'S SOIL CULTURE for the Semi Arid West. No irrigation, no crop failures, no gambling on the weather. A proven success in crop growing in the dry country. Results

A standard book written, printed and published by the United States Government and for the first time advertised for sale.

## For Farmers Stock Raisers Dairymen.

### Special Report on Diseases of Cattle and Cattle Feeding.

Printed by order of Congress. 496 pages (Cloth)

TAB E OF CONTENTS.  
Administration of Medicines—Diseases of the Digestive Organs—Poisons and Poisoning—Diseases of the Heart and Blood Vessels—Non-contagious Diseases of the Organs of Respiration—Diseases of the Nervous System—Diseases of the Urinary Organs—Diseases of the Generative Organs—Diseases following Parturition—Diseases of Young Calves—Bone-Diseases and Accidents—Surgical Operations—Tumors—Diseases of the Skin—Diseases of the Foot—Diseases of the Eye and its Appendages—Diseases of the Ear—Infectious Diseases of Cattle—The Feeding and Management of Cattle.

Fully illustrated with 44 full page engravings, 13 colored charts. Price 65c

This standard work is published by the U. S. Government.

The price at which this book is offered is just what it costs the government to print. It will be mailed prepaid to any address in the United States, Hawaiian Islands, Philippines and Porto Rico on receipt of price.

Remit by Post Office Money Order. Postage stamps and personal checks will not be accepted. Not more than one book to one purchaser.

Send for free list of Government books on special subjects.

Address Superintendent of Documents Sub Division 42, Government Printing Office, Washington, D. C.

of years of scientific experimentation and study at the disposal of every farmer. Indorsed by all scientific and practical farmers in the west. Crops sure despite drought and four times as big as by the old way. Circulars free, or 10 cts. for Campbell's 1907 Soil Culture Almanac.

PROF. H. W. CAMPBELL,  
Lincoln, Neb.

The new branch which leaves the main Pecos Valley line of the Santa Fe at Canyon City and runs south to Plainview, Texas, a distance of 58 miles, has been completed and turned over to the railroad company by the contractors. Regular train service has

## Excursions to California Daily



Low Rate.  
Long Limit.  
Liberal Stopover Privileges  
Diverse Routes.  
Tickets accepted on the California Limited and all other trains.

Side Rides to Grand Canyon of Arizona and Yosemite Valley for small additional sum.

### \$50

### April 28 to May 18

Let me send you—free—copies of

California Summer Outings.  
The Mystic Shrine.  
The German Baptist Brethren.

E. S. GUNN, Agent,  
The Atchison, Topeka & Santa Fe Ry. Co.  
Woodward, Okla.



been inaugurated. This line taps one of the most fertile sections of the famous Panhandle and will no doubt result in the rapid settlement of the country served.

The Santa Fe now has orders placed with manufacturers for over 8,000 new eight cars. One order for a thousand cars was placed last Spring and a positive promise given that the entire order would be delivered by September 30, 1906. Up to date not one car has been received, owing to inability of the factory to build cars fast enough.

## Murray County on The Rampage.

Alleging that the newly created Murray county will be pauperized from the very beginning, and asking that additional territory be given it, or if that cannot be done, the county be disorganized, and its territory be added to the adjoining counties which may be able to support county governments, the Murray County democratic executive committee has emphatically registered its protest against the action of the county seat and boundary speculators in the Constitutional Convention.

The democrats of this committee in special session openly declared their disapproval of the course pursued by "Railroad" Haskell and "Cocklebur Bill" Murray in reference to this poor little poverty stricken fourteen cornered county.

In their resolutions they emphasize the oft repeated statement that less than twenty five percent of the surface of the county is agricultural land, and that not more than two percent of this agricultural land is at present subject to taxation or will be in several years to come.

Sentiment among Democrats is overwhelmingly against the ratification of the constitution, and the advent of "Cocklebur Bill" Murray on a speech making tour of this section is looked forward to with a great deal of interest and several bushel baskets of rotten eggs.

The meeting of the committee was held primarily to settle a dispute which had arisen among the members as to the time for holding the democratic county primaries. At a meeting of the committee held in Sulphur about the middle of March, April 20 was named as the date of the county primary. Since then the State committee has named May 23 as the primary date.

The committee by a majority vote decided that the state committee did not have the right to dictate the date of its primaries, and the original date was finally agreed upon. This action made the Sulphur members of the committee sulphurous, and a row was precipitated, during which the country members introduced and had adopted the following resolution:

"Whereas; Murray County, as at present constituted, is too poor to support a county government, from the fact that less than twenty five percent of the surface of the county is agricultural land, and the balance being worthless and waste lands in the Arbuckle mountains; and that of the agricultural lands not more than two percent is now subject to taxation or will be for a number of years.

"And whereas; the rate of taxation on the little property subject to taxation, will amount to confiscation.

"Therefore; be it resolved; that it is the sense of the Democratic Executive Committee of Murray County, now in session, that the balance of Township one, north and one east, and all of Township One North and One West be added to this county.

"In the event the Constitutional Convention will not add said territory, we respectfully ask the Constitutional Convention to dissolve this county and add the territory to the adjoining counties that are able to support county government.

## The Green Bug

The green wheat louse has destroyed the wheat crop in several localities in Oklahoma. One of our friends asked the other day if we knew what he'd done that he should be punished in this way. More than likely, wheat has been grown too extensively on the same land. If one thing does not happen, something else does to remind the farmer that continuous growing of any one crop on the same soil is the wrong thing to do. The Hessian fly, the chinch bug, and the green bug are pretty forcible reminders when they get into action. What to do is the question. The damage can't be repaired. If there are a few bugs working on a small spot, straw piled on it and burned will fix them. But of ten there are too many spots and the bugs are too widely scattered for this to be feasible.

Some other crop must be planted. What shall it be?

If it's bottom land that ought to have been in alfalfa long ago, don't put any other crop on it this spring. Pasture it until in June, then plow it good and deep. Harrow it down and harrow from ten to fifteen times until you have a perfect seed bed, well settled and fine as a garden on top. Then whenever there's enough moisture in the soil after the 15th of August to germinate the seed and sustain the plants for thirty days without rain, sow not more than twenty pounds of good alfalfa seed to the acre. If you do this right, you'll get a good stand and next year will praise the green bugs for teaching you the lesson that land that will grow alfalfa well is worse than wasted when sown to wheat.

Some of the green bug land ought of course to be planted to bermuda.

Most of such land ought to be planted to cowpeas. The green bugs and the chinch bugs will not bother them and they will turn in more money than the biggest wheat crop you ever raised.

Then there's cotton; if you have help to chop and pick it. And corn, kafircorn, sorghum and millet if the chinch bugs aren't too numerous. Don't lie down and say "what's the use." But think the whole matter over and proceed after a definite plan. And see to it that the plan is good and leads to better methods of farming than you've been following. In the plan, include livestock, good hogs dairy cows, sheep, brood mares, poultry in plenty.—Oklahoma Farm Journal.

## B. Y. P. U. Will Meet at Spokane.

The Baptist Young People's Union of America will hold its sixteenth annual convention in the beautiful city of Spokane, Washington. The railroad companies have given a half-rate from Chicago and other points with full stopover privileges. Tickets will be on sale June 20th, and will be good until September 15th. Rates are made to other points to accommodate those attending the convention who wish to visit different localities.

We may be happy yet—if these glorious rains continue and the grafters are killed off!

# Go tourist to California

Only the Santa Fe offers you



All the Way

Fastest train —except Limited—  
to Los Angeles.

Middle route Scenic Old  
Santa Fe Trail.

One management All the  
way.

Fred Harvey meal  
service, and

Grand Canyon Stop-  
overs.

## Economy and comfort

You save in railroad and Pullman fares. You can join personally-conducted parties. You are carried in newest Pullman tourist sleepers. Block signals too.

Very Low Rates in March and April.

Ask E. S. Gunn, Agent A. T. & S. F. Ry.  
Woodward, Okla

## Bright Side Stock Farm

Thoroughbred Poland China Swine

AND PURE

Barred Plymouth Rock Chickens

I have quite a number of boars large enough for service, weighing from 75 to 125 pounds. Most of them are grandsons of U. S. Model and Perfect Sunshine and a few others of different breeding and all bred in the purple. In fact I have most everything in the swine line anyone would want and will have a number of bred gilts for spring and summer farrow. Boars large enough for service, \$20; extra grade \$25; younger boars or pigs, sows, \$12; boars; selected and bred gilts from \$20 to \$30.

EGGS FOR HATCHING IN SEASON. STOCK ALWAYS ON HAND  
WE INVITE INSPECTION

U. H. SHULL.

R. D. No. 2

MULVANE, KANSAS.

## Get All Your Wool Is Worth.

Wool Growers! Buyers in the country are trying to obtain your wool at a low price to make up for last year's losses.  
If you want the highest market price instead of the lowest

## Ship Your Wool To Us

We will get full value for you at once, and do it for one cent a pound commission.

Reference any bank anywhere. Write us today.

Silberman Brothers, 122, 124, 126, 128 Michigan St., Chicago, Ill.

READ THE INSPECTOR.

## The Elmhirst

F. HULETT, Prop.  
The Best Kept Hotel in the Panhandle.  
Fine Sample Rooms.  
Amarillo, Tex.

When visiting Kansas City, stop at the  
**BLOSSOM HOUSE,**  
Opposite Union Depot.

## THE STOCK HOTEL

Good Meals. Clean Beds.  
Prompt Service.  
One block from Live Stock  
Exchange Building at Stock  
Yards.  
Kansas City, Missouri

## Deleware Hotel

CATTLEMEN'S HEADQUARTERS.  
140 Rooms. 50 Rooms with Bath.  
Fort Worth, Texas.  
Long & Evans, Props.

## Carey Hotel

Wichita, Kan.



\$2.00 and \$3.00 per day

Headquarters for Commercial and  
Stockmen.  
HUMPHREYS & BAYFIELD, Props.

## 30 DAYS FREE TRIAL OLD HICKORY BUGGIES

We sell these splendid  
buggies direct to you, at  
lowest factory price.  
Saves you one-half.  
**GUARANTEED 2 YEARS**  
"Old Hickory" buggies  
have quality, have style,  
have finish, and that  
lasting quality that no  
other buggy can equal.  
You will be surprised at  
the low factory prices.  
Write for Catalog today.



**Kemper-Paxon Mercantile Co.** 1460 W. 9th St.  
Kansas City, Mo.

## CASH FOR YOUR FARM, HOME, BUSINESS OR OTHER PROPERTY.

We can sell it for you, no matter  
where it is or what it is worth. If you  
want to buy any kind of property anywhere send  
for our monthly. It is free and contains a large  
list of desirable properties in all parts of the  
country.

**C. A. WILSON, Real Estate Dealer.**  
415 Kansas ave. Topeka, Kan.

## UNEQUALLED.

The following guarantee should convince the most skeptical that you can depend upon the statements made in our advertising matter. never before read such an absolute guarantee. We will pay railroad fare both ways, if a prospective student upon arriving and entering our school for ten days does not find everything up to the standard advertised, and will make no charge for either books or tuition during the ten days, or if at any time during the course a student will hand into the office a written statement showing wherein we do not give entire satisfaction and make good every statement made in our advertising matter, we will refund every cent of tuition paid. **WHAT COULD BE FAIRER?** We make this guarantee knowing that a lot of so called commercial schools advertising a big capital stock are putting out a lot of statements that deceive the unsuspecting public. They even sell scholarship to many prospective students before they leave their home. Recently a man who purchased one of these scholarships came to our city and entered the school, found out he had been humbugged, and was so thoroughly disgusted that on the third day, he came to our school to see about enrolling with us. He also carried with him a \$12.00 draft which the school had sent out, stating that he would receive that amount as a discount, providing he would send cash for his scholarship before leaving home. It is pretty good evidence that there is something wrong some where when a school goes to sending out discount for cash enrollments before the student leaves his home. Look at the difference in the chances this young man took and the one who enroll with us. He paid for his scholarship before he left home, came to the school and was disappointed, but could not get a cent of his tuition back, while the one who enrolls with us can get his money back at any time, if our work is not what we claim. If the student doubts our sincerity in this car fare guarantee, we will deposit money in bank subject to his order before he leaves home.

Have you seen the pamphlet called the "Eye Opener" or the "White Feather", circulated by a competitor? If so, and you believe there is a true statement in them, write us.

If any young person interested in a commercial education realized the superiority of the Famous Byrne Simplified Shorthand and practical Bookkeeping and Business Training and our thorough, modern, progressive methods of teaching, they would not think of attending any other school, and judging from the number of students that are enrolling with us, one would think that most everyone was beginning to realize this fact. We place graduates in the very best positions free of charge. Write for catalogue, ask any questions you like. You may enter at any time.

Address Capital City Business College, Guthrie, Okla.

## A Common Sense View.

"Father, I would like to see you in

the library on a matter of business."

"Very well, Viola come along. Now then, what is it?"

"Father, you are aware that Harry Wilkins has been paying me his attentions the last year?"

"Yes, and I've felt like licking him! The idea of a Wilkins daring to aspire to the hand of a Grafton!"

"He asked me to be his wife."

"The scoundrel! Why, I'll—"

"And I've almost promised," she placidly continued.

"What! What! My daughter marry a Wilkins on \$25 a week? Never. Go to your room while I seek out this base adyen—"

"Father, I want to talk real business to you," she interrupted. "Have you seen the marriage statistics of London for the last year?"

"No of course not! The idea of Harry Wilkins skulking around after my—"

"Wait? According to the statistics, this city has 871,240 more females than males. There are 226,890 more marriageable girls than can find husbands, to say nothing of 183,321 widows, who are very anxious for a No. 2. The number of young men in London earning over \$15 a week, and in the market, is only 22,107. There are after these young men exactly 220,000 young women and 150,000 widows. Three out of every five children born are girls. Death removes two young men to one married man or old bachelor."

The old man turned pale and grasped a chair for support. After a pause she continued:

"From June to October over 80,000 marriageable young women visit fashionable watering places, and it is estimated that 31,442 of them catching husbands, thus further reducing the chances of a resident cockney. Father take this pencil and figure out your Viola's chances of catching another man if she lets Harry Wilkins enter away."

"Great Jimminy" he gasped figuring for a moment. "Why your chances are only one in 21,875,945."

"Just as I figured it out. What shall I say to him this evening?"

"Say! Say! Why, tell him you'll have him and be mighty glad of the chance, and dont let him draw a long breath before you add that the ceremony can take place right after breakfast tomorrow morning, and that I'm to give you a wedding present of \$500 in cash.—Tit-Bits.

## On Time.

A New Yorker who travels much in the South on business says that one day not long ago, while in a Virginia town, he was desirous of catching the 11:15 train for the North.

When he arrived at the station he was much surprised to find that the 11:15 started promptly on time. "Well" said he to the conductor, "they libel you up North, when they say your trains are never on time, either coming or going"

"The Northerners are right," was the unexpected response of the conductor. "We never get a train off on time in our lives."

"Why this train got off on time. It's the 11:15 isn't it?"

"Yes my friend, it's the 11:15, but it's last Tuesday's 11:15. Today's 11:15 wont start much befo' Monday, I reckon."

## WANT COLUMN.

### ONE CENT A WORD.

"For Sale," "Wanted," "For Exchange" and small advertisements for short time, we charge one cent a word for each insertion. Cash must accompany order.

WANTED: Men to learn barber trade. Moler System is short and practical. Tools given, positions waiting. Top wages paid. Establishes in 22 leading cities. Write nearest Branch. Moler Barber College. Kansas City, Mo., or Dallas, Texas. 2

## NO MORE BLIND HORSES.

For Specific Ophthalmia, Moon Blindness and other sore eyes, Barry Co., Iowa City, Ia., have a sure cure.



**Why Lose Calves from Blackleg?**  
They constitute the future herd.  
**VACCINATE NOW WITH THE ORIGINAL**  
PASTEUR (BLACKLEG) (Cord form)  
Vaccine Co. (Blackleg) (Pellet form)  
Vaccine Co. (Blackleg Vaccine) (Powder)  
Produced by the Discoverers: Profs. Arloing, Cornevin and Thomas.  
Successfully used on over 35,000,000 Head.  
**PASTEUR VACCINE CO., Ltd.**  
365 W. 11th St. 1 Rue Mayenne 40-5 Wabash Ave.  
NEW YORK PARIS CHICAGO  
Sole Concessionaires: Institut Pasteur, Paris, Biological Products  
Our Rat Virus is the only scientific non-poisonous rodent exterminator.

## \$1000 REWARD

FOR THEIR EQUAL.  
No slide head. Oil only twice a year. Ask about our two wheel power mills and our arm saver huskers. Get book \$2. It's free. Write for it today.  
**DOUBLE POWER MILL CO.**  
Appleton, Wis., U. S. A.

## I CAN SELL

### Your Real Estate or Business

**NO MATTER WHERE LOCATED**  
Properties and Business of all kinds sold quickly for cash in all parts of the United States. Don't wait. Write today describing what you have to sell and give cash price on same.

**If You Want to Buy**  
any kind of Business or Real Estate anywhere at any price write me your requirements. I can save you time and money.

**DAVID P. TAFF,**  
**The Land Man,**  
415 KANSAS AVE.  
TOPEKA, KANSAS.

## 5000 Telegraphers NEEDED

Annually, to fill the new positions created by Railroad and Telegraph Companies. We want **YOUNG MEN** and **LADIES** of good habits, to

## Learn Telegraphy AND R. R. ACCOUNTING.

We furnish 75 per cent of the Operators at 1 Station Agents in America. Our six schools are the largest exclusive Telegraph Schools in the **WORLD.** Established 20 years and endorsed by all leading Railway Officials.

We execute a \$250 Bond to every student that furnish him or her a position paying from forty to sixty dollars a month in States east of the Rock Mountains, or from seventy-five to one hundred dollars a month in States west of the Rockies, immediately upon graduation.

Students can enter at any time. No vacations. For full particulars regarding any of our Schools write direct to our executive office at Cincinnati, O. Catalogue free.

## THE Morse School of Telegraphy.

Cincinnati, O. Buffalo, N. Y.  
Atlanta, Ga. LaCrosse, Wis.  
Texarkana, Tex. San Francisco, Cal.  
314m

# Buy Double Eagle Now!

Just Think  
Of It!!!

## Our Guarantee

This is Important.

This Company guarantees to resell your stock for you at any time after one year from date of purchase of same, from the Fiscal Agent of this Company, provided you are dissatisfied and desire to sell same, in which event this Company agrees to deliver you 8 per cent over and above the price you paid for same, or any other amount over and above the foregoing, that this company may be able to obtain for said stock. This offer remains valid for six months after one year from date of purchase.

F. C. VINCENT, Fiscal Agent.

This protects your investment absolutely and the CONTINUED AND POSITIVE ADVANCE IN THE PRICE OF THE STOCK OF THIS COMPANY which is bound to go upwards by leaps and bounds, makes this possible, and guarantees the fulfillment of the foregoing agreement. This guarantee is backed by over \$200,000 assets.



IMPORTANT!!!

Do not invest with a Mining Company That Cannot Show Smelter Returns.

Smelter Returns on Double Eagle Show \$70 a Ton.

Smelter returns are the only absolutely reliable and unquestionable proof of a mine's productiveness, reliability and stability. A mining company that cannot show smelter returns is still a prospect. You can purchase stock in a fully developed and equipped mining property at the low rate of 15c per share. As says from \$44.20 to \$8,261. per ton and over \$3,000,000 worth of ore blocked out and lying on the ore dumps. The Famous Camp Bird, Liberty Bell, Tom Boy and Smuggler Union Mines are in the same district as The Double Eagle Mines. All have paid millions of dollars a year to their stockholders and none have stock for sale. The Double Eagle is as good if not better, than any of the aforementioned properties.

San Miguel County, in which The Double Eagle is situated, produced over \$4,000,000 in precious metals in 1906.

Write For High Art Prospectus Today!

## GOLD! - SILVER! -

### The Famous Double Eagle Gold Mining Co.

## In Great Abundance

THERE ARE A FEW GOOD MINING ENTERPRISES  
This is One. We Invite Your Investigation.

Read this advertisement very carefully. IT MAY MEAN FORTUNE TO YOU.

ANNOUNCEMENT EXTRAORDINARY.  
The Double Eagle Gold Mining Company, incorporated under the laws of Colorado for \$1,000,000 divided into 3,000,000 absolutely non assessable shares.

**PROPERTY**  
The property of the company is located in Bridal Veil Basin, near the city of Telluride, and right in the very heart of the rich gold and silver bearing district of San Miguel County, Col. It consists of twelve very rich claims and three mill sites, and comprises about 130 acres. The company owns this property in fee simple, and there is no incumbrance or indebtedness on same.

Immediately surrounding this company's property are the famous Smuggler Union, Liberty Bell, Tomboy, Nellie and Camp Bird mines.

These companies earned upwards of \$1,500,000 last year. The Double Eagle property is more advantageously situated, and its ore assays far greater values than any of the foregoing companies.

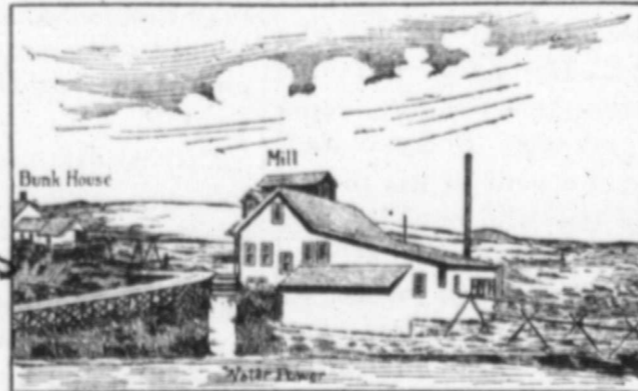
**PRESENT EQUIPMENT.**  
The company has erected on its property one fully equipped mill with a capacity of ten tons daily, a blacksmith shop, a machine shop, power house and dynamo room, a bunk house, assay office and laboratory and other minor buildings, all fully equipped. The machinery and buildings are in splendid condition, and as good as when installed.

**WATER POWER**  
Within 150 feet of the mill runs Bridal Veil Creek and this stream has been utilized by this Company to provide about 80 horse power. A turbine has been installed which gives sufficient power for all present needs. One hundred horsepower more can be generated on our water rights. We have no expensive fuel costs.

**DEVELOPMENT**  
The various claims of the Double Eagle Group have been opened up in eight different locations, and to date work has been done as a result of which there is now upward of 3,000 feet of tunneling, drifts, cross-cuts, winzes and adits. These cuttings, cross-cuts, and drift upon eight true fissure veins from four and a half to twelve feet wide.

**VALUE OF ORE DEPOSITS**  
Assays and smelter tests show that the average value of the Double Eagle ores are upwards of \$60 per ton. Assays show from \$44 to \$8,261 gold and silver values per ton. The Company has now over 150,000 tons of this high grade ore blocked out, and also about 140,000 tons of low grade ore, averaging about \$10 per ton, lying on the dumps, only waiting increased facilities to be turned into cash.

Over \$200,000 Already Expended in Equipment, Development and Purchase of this Property.



This Company owns its property on right. Not a prospect, but a thoroughly developed and equipped mine.

\$1,000 will do if invested in this stock.

**THE COMPANY'S OFFICERS.**  
Pres. J. H. HARRINGTON, of the Harrington-McCormick Com. Co., Kansas City, Mo.  
Vice-Pres. WM. PEKT, President of Peet Bros., Soap Co., Kansas City, Mo.  
Secy. and Treas., C. COURTNEY, State Agent of the Mutual Benefit Life Insurance Co., Kansas City, Mo.

**DIRECTORS**  
HARRY HALDEMAN, of the Sonora Chief Mining Co., Kansas City, Mo.  
J. T. GOODELL, of the Judah Packing Company, Kansas City, Mo.  
E. E. TOMLINSON, Traffic Manager, Swift & Co., Chicago, Ill.  
Z. F. CRIDE, of the Corder Bros. Com. Co., Kansas City, Mo.  
J. H. KENTNER, Prop. Hotel Washington, Kansas City, Mo.  
J. LINDERMAN, Farmer and Real Estate, Kansas City, Mo.

**REFERENCES**  
The foregoing gentlemen earnestly urge you to enquire of Any Bank in Kansas City, Mo., or any Mercantile Agency, as to their character and high standing. They are men of the very highest integrity and are trusted and respected business men of Kansas City.  
F. C. VINCENT, Fiscal Agent, 489 Gibraltar Bldg., KANSAS CITY, MO.

THIS STOCK WILL ADVANCE TO 25 CENTS PER SHARE SHORTLY.

The Double Eagle Co. has already spent over \$20,000 in Development and Equipment of its 12 Rich Claims.

If you Purchase Double Eagle Now you permanently increase your income. Bear in mind that this is a developed industry and not in any respect a prospect. It costs you nothing to enquire. Cut out the coupon, mail today.

### PRICE OF STOCK ON EASY MONTHLY PAYMENT PLAN.

\$	15 Buys	100 Shares.	\$	3 Down	\$	3 per month
50	"	200	"	6	"	6
45	"	300	"	9	"	9
75	"	500	"	15	"	15
105	"	700	"	21	"	21
315	"	2100	"	63	"	63
523	"	3500	"	105	"	105
1050	"	7000	"	210	"	210

We can positively convince the most skeptical that the Double Eagle's proposition is absolutely square, honest and above board. We most earnestly urge your careful investigation.

PLEASE WRITE PLAINLY  
Address F. C. Vincent, Fiscal Agent,  
DOUBLE EAGLE MINING CO.,  
489 Gibraltar Building, Kansas City Mo.

Please send me all information and High Art Prospectus of the Double Eagle Mining Co.

NAME .....

ADDRESS .....

NOTE: Be Sure to state how many shares you wish reserved in your letter  
WRITE TODAY.

# Don't Wait for the Wind!

## Pump when you want the water

THE days of sailing vessels are past.

Commerce is no longer dependent on the wind.

And the day of windmills for pumping water is about to go, too.

There's a better way, now. An easy, sure and cheap way to pump when you want the water.

That way is with a **Famous Pumping Engine** which will pump water for you at a cost of about 4c an hour. It is always ready. No trouble, no danger. Just close the little switch, open the fuel valve, and off it goes—pumping.

The engine and equipment together with gasoline tank are mounted on one base, which is provided with handles so that the entire outfit may be easily moved about from place to place. By detaching the walking beam from the pump, and using belt from fly-wheel pulley, the engine

may be used to run various small machines, such as cream separator, feedmill, fanning mill, churn, butter worker, grindstone, washing machine, etc., etc.

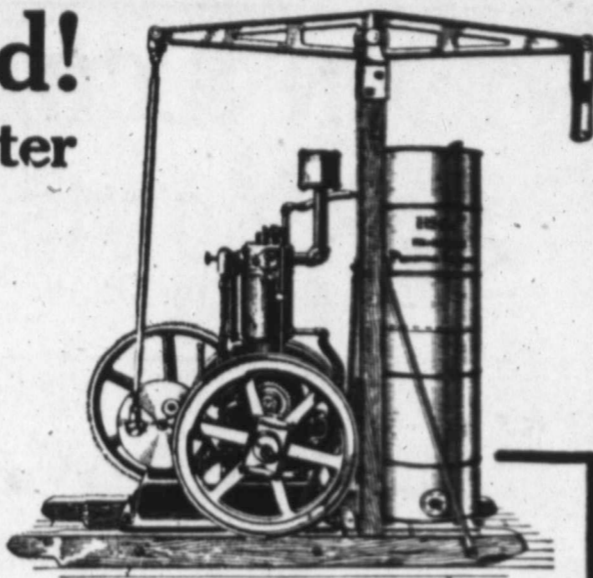
The walking beam can readily be attached to any pump of standard make.

The capacity of the engine is sufficient to insure a constant and abundant supply of water for live stock, house, and fire protection.

The **Famous Pumping Engine** will do all kinds of work, and do it well. Like all I. H. C. gasoline engines, it is simple in construction, economical in the use of fuel, easy to operate, strong and durable. Ordinary stove gasoline is used as fuel, thus providing a very economical power, and one which is always available.

I. H. C. gasoline engines are made in three styles and several sizes:

Vertical—2 and 3-horse power.



Horizontal, Portable and Stationary—4, 6, 8, 10, 12, 15 and 20-horse power.

If you are interested in a pumping engine or an engine of any kind as a source of farm power, it will pay you to investigate the I. H. C. line.

Call on the local agent and investigate these engines or write for catalogue.

**INTERNATIONAL HARVESTER COMPANY OF AMERICA, Chicago, U. S. A.**  
(INCORPORATED)

# CORNISH PIANOS AND ORGANS



LATEST STYLE UPRIGHT CONCERT GRAND.

**\$25 CASH DOWN.** LET us show you Balance on easy how easily you can place a high grade 25-year guaranteed Cornish Piano or Organ in your home. Sit down and send today for

1. The wonderful Cornish Album of Miniatures, describing choicest of fifty styles of Cornish instruments ranging in price from the least expensive to the finest ever built.

2. The names and addresses of 2,000 registered purchasers.

3. Our plan to give you a two years' musical education absolutely free. All these aids are free. We will send them to you all charges paid, and when you have selected the instrument you wish, we will send it to you, freight prepaid, on

**30 Days' Free Trial**

that you may compare it in your own home with other high class makes and prove for yourself that Cornish instruments are the most satisfactory instruments you can buy at any price. See for yourself the beautiful and artistic cases and test the wonderful Cornish tone, the most exquisite that ever delighted your ear. Then if you are not fully satisfied with the instrument after a month's trial in your own home, return it at our expense. Even if after a year's use the instrument is not satisfactory, we will refund your money with six per cent interest in addition, giving you **One Year's Free Trial.**

**Two Years' Credit If Needed**

**1907 MODELS NOW READY**

Cornish Pianos and Organs are famous for their durability. When you purchase a Cornish instrument, you buy for a lifetime. Only the finest material that money can buy is used in Cornish instruments and only the most skilled workmen are employed. They are sold to you direct from the factory at less than half what agents and dealers charge. You save all the agents' profit and pay at your own convenience, taking two years' credit if needed. Do not think of buying a Piano or an Organ without sending for the **Free Cornish Aids.** Sit down and write for them today.

**\$10** Cash Down. Balance on easy installment plan.

**CORNISH CO. Wash. D. C.**



**Joe P. Smith,**  
Cow and Heifer Salesman,  
FOR  
**Rice Brothers.**  
Kansas City Stock Yards.

We don't care what kind of stuff your ship to us. We have men who know how to sell all kinds—common to good—old skates or market toppers. Our staff of cattle sellers includes Bill Curtis, Joe Smith, Bob Yancey and George Rice. If you'll bill 'em to us we'll get all they're worth all the time and sometimes more.

**RICE BROTHERS.**  
KANSAS CITY STOCK YARDS.

INSTRUCTIVE. INTERESTING.

## "Correct English—How to Use It."

A MONTHLY MAGAZINE DEVOTED TO THE USE OF ENGLISH.

JOSEPHINE TURCK BAKER, Ed.

**Partial Contents.**  
Course in Grammar.  
How to Increase One's Vocabulary.  
The Art of Conversation.  
Shall and Will; Should and Would; How to Use Them.  
Pronunciations (Century Dictionary)  
Correct English in the Home.  
Correct English in the School.  
What to Say and What Not to Say.  
Course in Letter-Writing and Punctuation.  
Alphabetic list of Abbreviations.  
Business English for the Business Man  
Compound Words: How to Write Them.  
Studies in English Literature.

**AGENTS WANTED.**  
\$1 a Year. Send 10 cents for copy.  
**CORRECT ENGLISH.**  
Evanston, Ill.

### Many Weeds are Worth Money as Crude Drugs

Do you know that many of our common weeds are worth more money to the acre than corn, wheat or cotton, and that about \$15,000,000 worth of them are imported to this country from the old world every year. Such weeds as Jimson, mullein, the docks and many other can be collected and cured at a large profit.

Special Industries magazine tells all about what weeds to gather, when to gather, how to cure and where to sell them, also articles on the cultivation of Ginseng, Golden Seal, Senega and other special crops that are money makers for the grower. 25c a year sample copy 5c. L. E. Lindsay, Publisher, Joplin Missouri.

### WESTERN SEEDS For Western Planters

NEW CROPS, TESTED SEEDS, for Farm, Field and Garden. ALFALFA, CANE SEED, MILLET, KAFFIR CORN, POP CORN, ONION SETS, CLIPPER MILLS, ETC. Also FULL STOCKS GARDEN SEEDS. If you wish to buy or sell, write us for price lists before you buy.  
**THE BARTELEDES SEED COMPANY.**  
Lawrence, Kas., Denver Col., Oklahoma City, Ok

J. M. SCAMMAN, GEORGE HUNTER, J. W. BENNETT,  
President. Vice President. Sec. and Treas.

## Ship Your Stock to MISSOURI LIVE STOCK COMMISSION CO., So. St. Joseph, Mo.

Good Sales. Prompt Returns.

**SEEDS** Field, Garden, Flower EVERYTHING for the Farmer or Gardener  
Planet Jr. Garden Tools, Seed Sowers, Bale Ties, Onion Sets, Large Stock Clover, Timothy, Alfalfa, Millet, Cane, Kaffir Corn, Potatoes, Blue Grass, Orchard Grass. Write for FREE Catalogue.  
MISSOURI SEED CO., 1462 St. Louis Ave., KANSAS CITY, MO.

**GINSENG** Yields \$100 to the square rod, and you can grow it in your garden. Easy to grow. Write for our literature and get our plan and methods FREE. Gibertson Nursery Co., St. Ansgar, Iowa. Dert A. H.  
**Big Money in Poultry**  
Write for my poultry catalogue  
MRS B. F. Wilcoxon, Fort Des Moines, Ia

**Oats**  
Largest Growers of Oats, Farm and Vegetable Seeds in America.  
**FREE**  
Our mammoth 148-page Plant and Tool Catalogue is mailed free to all intending buyers, or send 6c. in stamps and receive free samples of new Two Foot Long Oats and other cereals and Big Seed Catalogue Free.  
JOHN A. SALZER SEED CO.  
La Crosse, Wis.

**LIFE BURGER,**  
Wellington, Kansas  
Headquarters Wellington National Bank. Have conducted and am now booked for some of the largest sales in America. Thorough acquaintance with pedigree and individual merit Extensive acquaintance with breeders. Write me before claiming dates.

# ALLEN, ROBERTSON & CO.

## Kansas City Stock Yards

Good People to Do Business With — 25 Years in the Trade.



FRANK WITHERSPOON, President.

FRANK WITHERSPOON, JR., Vice-President.

JAY. T. DONNOHUE, Secretary.

Write for Market Reports.

**FRANK WITHERSPOON,**  
Live Stock Commission Company.

Ship to them and Get Best Results.

KANSAS CITY STOCK YARDS.

KANSAS CITY, MISSOURI.

### FRIEND OR STRANGER

YOU are not taking any CHANCES when YOU do business with US.

**WELCH BROS.** Established in K. C. in 1883.

**Live Stock Commission Agents**  
KANSAS CITY, MO., U. S. A.

We refer to all honest folks who know us.

Write, phone or wire us for accurate market information.

HOME PHONE 439 MAIN

BELL PHONE 439 HICKORY.

BEN L. WELCH.

CHAS. A. WELCH.

## Cherry-Tilden Live Stock Com. Co.

### Kansas City.

The Farmer and Stockman's Favorite Company.

Twelve Experienced Salesmen and Employees.



Yours Truly, W. P. CHERRY, Mgr.

Give this company your next shipment. We want your business influence. 20 years in active business in Kansas City. Reference, any bank in Kansas City.

Write Us!

Wire Us!

Ship Us!

**THE GREATEST SUCCESS OF THE AGE** THE SIMPLEX HAY PRESS

POWER AND MACHINE COMBINED IN ONE. 3 FT. TRAVEL PRESSES A CHARGE. LARGE FEED HOLE. LIGHT WORK FOR ONE HORSE. MOUNTED ON SLED. SELF STANDING. ALWAYS READY FOR OPERATION. NO CASTINGS. ALL STEEL FORGINGS. SEASONED HARD WOOD ONLY. STRONGLY BOLTED.

LITTLE GIANT HAY PRESS CO. DALLAS, TEX. WRITE FOR CATALOGUE

**Seeds** 10 FULL SIZED Packages Garden Seeds and 300 Kinds of Flower Seeds for only 16 cents. Also one packet of Iowa Success Seed Corn.

We grew 1311 bushels of this corn on 10 acres of ground in 1906. We guarantee seed to grow 99 per cent strong.

Try It. Per pk 75c, 1-2 bushel \$1.25, 1 bushel \$2. Catalogue Free

ADDRESS TO

**F. C. Graves Seed Co.**

Dept. X.

Des Moines, Ia.

## FAIRVIEW STOCK FARM

FOUR MILES NORTH OF LEXINGTON, O. T.

SHORT HORN CATTLE  
POLAND-CHINA HOGS

Herd bulls Ravenwood Count 2nd 181,74, and Scotch Vincent 2nd 215,393; Scotch and Scotch Topped cows of elect breeding and individuality. The home of the Grand Champion Sweet Stakes bull and cow also first in herd at Oklahoma City Royal Feby., 23, 24 & 25. Herd Boar Axlines Perfection 32,695.

E. E. ALKIRE Proprietor

YOUNG STOCK FOR SALE

SUN	MON	TUE	WED	THU	FRI	SAT	DURING		SUN	MON	TUE	WED	THU	FRI	SAT
							AND								
2	3	4	5	6	7	8	AUGUST		13	14	15	16	17	18	19
9	10	11	12	13	14	15			20	21	22	23	24	25	26
16	17	18	19	20	21	22			27	28	29	30	31		
23	24	25	26	27	28	29									

THE DENVER ROAD

WILL CARRY THOUSANDS OF WISE ONES TO

## "COOL COLORADO"

WILL YOU BE AMONG THEM?  
IF NOT WHY NOT?  
**NOW'S THE TIME TO PLAN!**

TALK IT OVER WITH YOUR FRIENDS!  
A.A. GLISSON, G.P.A. FORT WORTH, TEXAS.