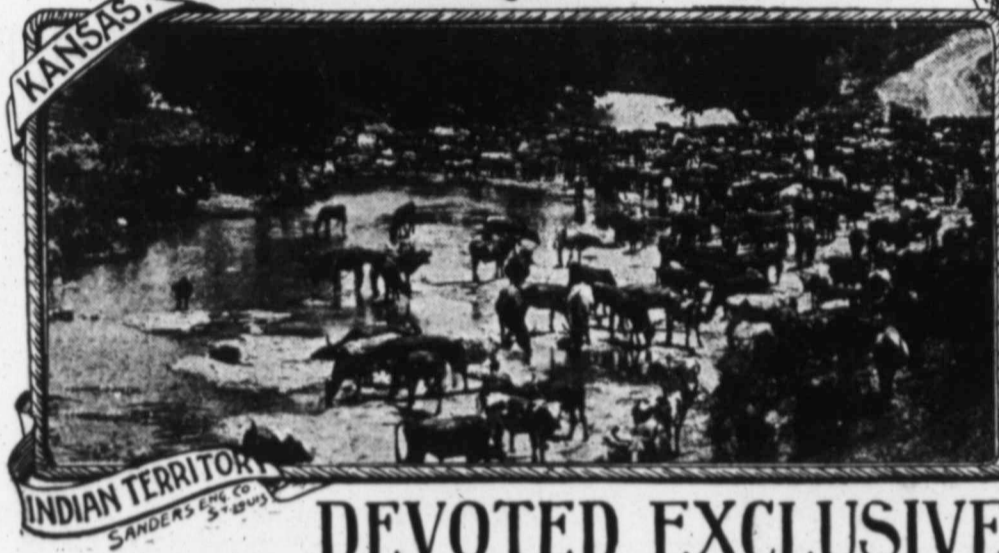


The LIVESTOCK



INSPECTOR

DEVOTED EXCLUSIVELY TO LIVE STOCK INTERESTS.

Fifth Year.
Number 13.

Woodward, Oklahoma, October 1, 1899.

Subscription { One Dollar per Year
Single Copy 5c.



TEXAS FARM & RANCH.

FALLS ON PALADURO CANYON, 12 MILES EAST OF CANYON CITY, TEXAS.—(SEE 9TH PAGE.)

Invitation Presented to Members of the Panhandle Association, at Miami, Texas, Sept. 28, 1899.

To Members of the Panhandle Stockmen's Association:

GENTLEMEN:--We, the undersigned, Executive Committee of the Oklahoma, Kansas and Texas Live Stock Association, and members thereof, respectfully represent our views herein and invite your full and deliberate consideration of them.

Believing as we do that two associations cannot exist in the same territory and range without great and needless expense, and that the ends to be secured by either organization can be obtained more quickly and at less cost by uniting them, we respectfully invite you to become members of our Association, which is now four years old, has a membership list of over 300, and is making rapid and substantial growth every day.

ARGUMENT:

1st. The service which costs the least and brings best results is the one you want.

2nd. The cost of the service depends upon the number of cattle rendered. There are not enough cattle in the Panhandle alone to make a good working organization. The same is true of western Oklahoma, and the same is true of southwestern Kansas. But if all three were united in one organization, the benefit to members would be the best at the least cost.

3d. The Texas Cattle Raisers' Association claims a list of over 2,000,000 cattle. The total number of cattle in all three of the above sections will not exceed one-fourth of that number. Therefore, no danger of one organization being too big for good service.

4th. With two organizations in this field, thieves will flourish and eat beef; united in one, thieves have less opportunity because the service is better.

5th. You want the best. You do not care to pay out money merely for show. You are raising cattle for profit. Unite the two organizations and you pay less and receive more benefit.

6th. The cost of maintaining two book-keepers where only one is necessary, is useless expense. Why keep two?

7th. An organization which covers the

HEREFORD GROVE STOCK FARM,

U. S. WEDDINGTON, Proprietor.

CHILDRESS, TEXAS.
Native bred Registered Hereford Cattle. Herd bred strongly with ANXIETY and LORD WILSON blood, and other famous families. A first class lot of young Bulls for sale. Inspection solicited. 12-6m

WIND MILLS Of any size or style, for pumping, irrigating or power purposes for Farm and Ranch.

Pumps, Tanks, Gasoline Engines, Grinders.
Challenge Wind Mill and Feed Mill Co., BATAVIA, ILLINOIS.

WRITE FOR CATALOGUE. Branch Houses--Dallas, Tex.; Kansas City, Mo.

48 HEAD REGISTERED HEREFORD CALVES 48

(27 Bulls and 21 Heifers)

For Sale at \$50 Each Less than the price will be next March.

These Calves are from the finest strains of Hereford blood, 24 of them being Corrector blood, the Sire of C. C. Slaughter's

\$5,000 BULL, SIR BREDWELL,

and 20 of them being Cherry Boy blood, a world renowned prize animal. These Calves are beauties in shape, size and colors. No such bargains have been offered this year.

LIGHTBURNE & Co.,

Breeders of Registered Hereford Cattle,

AMARILLO,

(12-12)

TEXAS.

PARTNER WANTED.

An ideal home of the cow 15 miles east of Tulia, Swisher county, Texas, containing 5120 acres in the heart of the world renowned JA pasture, in the center of which is the famous McKenzie battle ground (See description on 1st page of LIVE STOCK INSPECTOR of Sept. 1st) four sections of rolling, rich, grass covered soil, four sections of as well watered and fine grass land as a cow ever tracked, and a better summer shade, winter shelter and feed ground than money could build. Pasture in two divisions, good fence and nice residence. Ranch will yield over \$1500 for pasturage this winter. Everlasting water with rock bottom. Not a foot of waste land nor a bog hole on it. Fine business proposition to a congenial man who will put an equal amount with me, buy three to five adjoining sections and fully stock up. Five sections patented, title perfect, three school sections which I will prove up on and sell the entire ranch if parties desire. If you want to take advantage of a big business proposition write me, or better still come and see the ranch and talk it over. **Unlimited Free Grass.**

T. P. RUSH,
Tulia, Texas.

2t

YOU CAN PREVENT BLACKLEG

among your cattle by the use of Parke, Davis & Co's **BLACKLEG VACCINE**. Every lot is tested on cattle and found reliable before a single dose is put on the market. It will prevent **BLACKLEG** if fresh product is used, the same as vaccination prevents Smallpox in the human family. Operation simple, and easy to perform. Specify P., D. & Co.'s, and get the kind that is always reliable. For sale by all druggists. Write us for literature and full information, free on request.

PARKE, DAVIS & COMPANY, Detroit, Michigan.

BRANCHES: New York City, Kansas City, Mo., Baltimore, Md., New Orleans, La., Walkerville, Ont., and Montreal, Que.

Prevent Blackleg In Cattle

by using **Collier Williams Mixture**. Easily applied and a sure preventive of Blackleg in cattle. For full information, price, etc., call on or address

COLLIER WILLIAMS,
Woodward, Okla.

(Please mention this paper.)

ROOF YOUR CORN CRIB WITH Corrugated Iron.

Cheapest, Best, and Most Easily Applied.
The Kansas City Roofing & Corrugating Co.,
218 and 220 West Third St., KANSAS CITY, MO.

The Woodward Com. Co. has 500 calves for sale to be delivered May 15, 1900: Natives, good calves, reasonable cut-back. Also 64 native yearlings and 1500 3 and 4-year-olds, will average 1050. Price \$34.

The KANSAS CITY STOCK YARDS...

Finest Equipped, Most Modern and Best Facilities.

The Kansas City Market, owing to its central location, offers greater advantages than any other.

Twenty-two Railroads Center at These Yards.

The Largest Stocker and Feeder Market in the World.
Buyers from the

ARMOUR PACKING COMPANY,
SWIFT AND COMPANY,
SCHWARZSCHILD & SULZBERGER C.
JACOB DOLD PACKING COMPANY,
GEO. W. WELER, SON & CO., Ltd.,
CUDAHAY PACKING COMPANY.
And all Principal Buyers for Export and Domestic Markets are in Constant Attendance.

	Cattle and Calves.	Hogs.	Sheep.	Cars.
Official Receipts for 1898	1,846,233	3,672,909	980,303	
Sold in Kansas City, 1898	1,757,163	3,596,828	815,580	

C. F. MORSE, E. E. RICHARDSON, H. P. CHILD, EUGENE RUST.
Vice-Pres. & Gen. Man'gr. Secy. and Treas. Asst. Gen. Mgr. Traffic Mgr.

W. E. ELMORE.

FRANK COOPER.

ELMORE-COOPER COM. CO., Live Stock Commission Merchants, KANSAS CITY STOCK YARDS.

All trains or parts of same consigned to us are met at the Yards and cared for in best manner.

Money can be obtained at short notice on fat cattle. Buy and sell on order. Experienced salesmen. Best results obtained.

NICK HUDSON, Solicitor, Woodward, Oklahoma.

St. Louis Horse Market.

WESTERN SALE STABLES CO., COMMISSION MERCHANTS FOR THE SALE OF HORSES AND MULES.

St. Louis National Stock Yards. National Stock Yards, Ills.

Range Horses.

Range Horses.

We have probably handled more range horses than any firm in existence. The prospects for the present season are better than for years.

We will make weekly sales beginning June 27th, and closing Nov. 28th.

We sold 1208 head at one sale last season.

Mr. A. B. Clarke, Manager of this department will visit your ranch and advise with you if a large shipment is to be made.

Write us for further information.

5-6t

DR. CORN WALL, 215 W. Ninth St., Kansas City, Mo.

Oldest and Original. Most successful specialist. Established 1857.
NERVOUS DEBILITY. Lost Vitality Organic Weakness. Early Decay. Lack of Energy. Self Distrust. Weak Memory. Dyspepsia. Exhausting Losses. Pimples on Face. Aversion to society. Loss of Ambition. Unfitness to Marry. Stunted Development. Lost Manhood. Milky Urine. effects of abuse or excess **Cured to Stay Cured.** My life-long experience, special study of each case, pure medicines insure a REAL CURE. Question list No. 1, free in plain envelope. Charges Reasonable. Terms Easy. Call.

Blood and Skin Diseases. all forms Scrofula. Rheumatism. Catarrh. Eczema (itchy or scaly tetter), and all Blood Diseases, cured for life, safely and sure. Avoid patent medicines or inexperienced hands. Call or write for question list No. 2 on blood diseases.

Gonorrhoea. Gleet. Stricture, cured without instruments or pain. List No. 3 free. Medical Dictionary and Adviser free at my office, by mail 2c. Hours 9 to 4, Sunday 10-12.

GOODHUE ROTARY GRINDER

Operated by pumping Wind-mills. New principle, steady motion, speed 100 to 200 revolutions per minute; needs no attention after starting. B. A. Shafer, Sanborn, Ia. writes: "I feed 15 bushels of ground feed a day and could grind double this amount." Works well on 8 ft. or 10 ft. mills. It will double the value of your wind mill.

AGENTS WANTED. If not sold by your dealer write us for inside price on a sample. Satisfaction guaranteed or your money refunded. **GOODHUE ROTARY GRINDER CO.,** 31 Marine Bldg., Chicago.

Commencing June 1st and continuing to and including September 30, 1899, the Texas & Pacific Railway Company will sell round trip Summer Tourist Tickets to points in Alabama, Colorado, District of Columbia, Georgia, Maryland, Massachusetts, Michigan, Minnesota, Mississippi, New York, North Carolina, North Dakota, Ohio, Ontario, Pennsylvania, Quebec, South Carolina, Tennessee, Virginia, West Virginia, and Wisconsin, at a considerable reduction in rates.

most territory makes stealing more difficult. Two associations cannot accomplish the work of one, provided that ONE is not too large to handle the business in accordance with the wishes of its members.

8th. Our Association is not organized to boom towns, but for protection to its members. If this is your object, by joining together we can best get the value for our money in inspection service.

9th. Every part of the territory covered by our Association is represented on our Executive Committee and if you will come in with us you can have equal representation on this Committee.

10th. You need our help; we need your help. Let us act sensibly and unite our interests in one good, effective organization, instead of wasting time and money and effort in trying to maintain two organizations where only one should exist.

There are other reasons, but the above we believe to be sufficient in a statement of the object of this invitation. As the older organization we believe it to be our duty to present our views to you in this manner and invite you to join us in giving you better service at less cost than is otherwise possible.

Respectfully submitted, this 27th day of September, 1899,

SIGNED:

- A. T. WILSON, President.
- M. F. WORD, 1st Vice-President.
- G. A. MORROW, 2d Vice-Pres't.
- JNO. J. GERLACH, Treasurer.
- W. E. BOLTON, Secretary.
- L. B. WATKINS, Quanah, Tex.
- J. R. STINSON, Whitehead.
- JNO. W. HOLMAN, Woodward.
- GEO. CARR, Stone.
- IRA EDDLEMAN, May.

E. C. WHITFORD, Pres. JOE BAKER, V. Pres. T. F. McKEE, V. Pres.
C. D. ZOOK, Treasurer. E. S. BALLARD, Secretary.

McKee-Zook-Whitford Com. Co.,

Live Stock Commission Merchants.

STOCK YARDS: SOUTH ST. JOSEPH and KANSAS CITY.. H. S. STEPHENSON Solicitor, Elgin, Kan.



HEREFORD BEAUTIES NOW OWNED BY LIGHTBURNE & CO., Amarillo, and Green Valley Stock Farm, Canyon City, Tex.



HEREFORD HEIFER YEARLINGS.—Green Valley Stock Farm, Canyon City, Texas.



Jno. W. Hill
Lot 3. Sothams Sale 1898 Aggressor at 8 Mos

ONE OF MANY HUNDRED BULLS ON XIT RANCH.

The Hotel Central, First Class in Every Particular.
Woodward, Okla. Patronage of Cattlemen Solicite.

THE GREEN VALLEY LIVESTOCK COMPANY now has for sale Registered Hereford Cattle of the most famous family strains. Such as Correcter, Ancient Briton, Grove 3rd, etc.
WHITEMAN & EDWARDS,
Canyon City, Texas.

BEST
Passenger Service
IN TEXAS.

4 IMPORTANT GATEWAYS 4



"NO TROUBLE TO ANSWER QUESTIONS."

2-Fast Trains-2
DAILY

For St. Louis, Chicago
AND THE EAST.

Superb New Pullman Vestibuled
Buffer Sleepers, Handsome
New Chair Cars. (Seats Free.)

Only Line Running Through
Coaches and Sleepers to New
Orleans Without Change.

Direct Line to ...
Arizona,
New Mexico
and California

L. S. THORNE, E. P. TURNER,
V. P. & Gen. Mgr. G. P. & T. A.
1115 S. TEXAS.

**One Hour
Erased**

once more between
Fort Worth and Denver.

Beginning August 1st the New
Fast Train of Pullmans and
Cafe Cars will leave

Fort Worth

on "The Denver Road" as
heretofore at 9:45 A. M., but
arrive in

Denver

at 1 P. M. the next day—ONE
HOUR EARLIER! Passengers
reach Denver in time for lunch.

For full particulars address

A. A. GLISSON, G. A. P. D.,
D. B. KEELE, V. P. & T. M.,

The Fort Worth & Denver City R'y.
FORT WORTH, TEXAS.



Hundreds of open scales at less than wholesale prices. viz:
Sewing Machines, Bicycles, Organs, Pianos, Cider Mills,
Carriages, Carts, Buggies, Harrows, Saws, Bone Mills,
Letter Presses, Jack Screws, Trucks, Drills, Hay Cutters,
Presses, Feed Mills, Saws, Drills, Road Plows,
Lawn Mowers, Coffee Mills, Forges, Lathes, Jump Carts,
Corn Shellers, Hand Carts, Engines, Tools, Wire Fences,
Fanning Mills, Crow Bars, Bolers, Washers, Cloth'ng M.
Mays, Saws, Elevators, Railroad, Platform and Counter SCALES.
Send for free catalogue and see how to save money.
100 Jackson Boulevard, CHICAGO SCALE CO., Chicago. Ill.

THREE TIMES A WEEK. The Califor
nia Limited, via Santa Fe Route. Fi
ner and faster than ever.



TEXAS FARM & RANCH.

SCENE ON T ANCHOR RANCH, NEAR CANYON CITY, TEXAS.—(See 9th Page.)

WM. POWELL,
Breeder of
Registered Hereford Cattle.

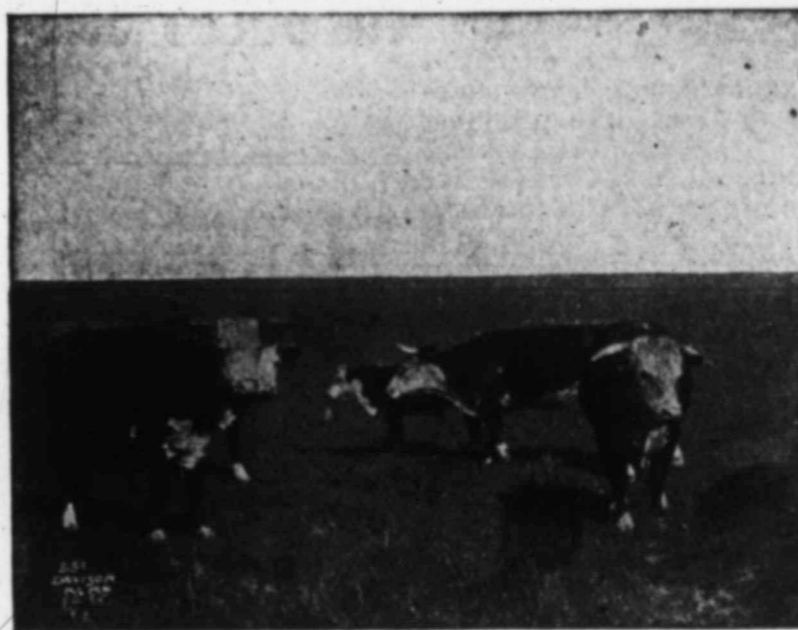
The Home of the Hereford. Established 1868.
Channing, Hartley Co., Texas.

My herd consists of 400 head of all the well known families of the breed. I have for sale at all times both Bulls and Heifers. Either singly or in car load lots. Correspondence solicited. R-1v

Ranch and Stock for sale.

Thirteen sections, all fenced, three miles north of Hereford, county seat of Deaf Smith county. Good 5-room house, barn, 200-ft. sheds, corals, fruit trees, etc. All improvements first class. 250 head of well graded cattle. 150 of them cows. 45 young horses and brood mares, all out of standard bred horses, some eligible to registry.

If you wish the best ranch in the Panhandle, write for descriptive circulars.
JOB VANDUSEN,
Hereford, Texas.



SCENE ON THE FAMOUS LS RANCH.

Aztec Calendar.

The Santa Fe route has just issued a handsome six months calendar, July to December, 1899, which contains six separate reproductions in color, 8x11 inches of E. A. Burbank's celebrated portraits of Pueblo Indians; one for each month.

There are the same reproductions used in "Brush and Pencil," and cannot be obtained separately for less than \$1.50. In fact, some of them already command a high premium. The Aztec Calendar also has an engraved cover containing a reproduction of the ancient Aztec Calendar stone.

Obtainable for 25 cents by applying to W. A. Black, general passenger agent A. T. & S. F. Ry., Topeka. May be ordered by mail.

FEED FOR SALE: 1,100 acres, four pastures adjoining. Timber shelter and living water.
RILEY LAKE,
Lake City Kansas.

GOODLOE & McCLELLAND
LIVE STOCK COMMISSION COMPANY.
KANSAS CITY STOCK YARDS.
TEL. 150 Hickory Lane, Kansas City, Mo.

OFFICERS:
H. B. Sanborn, President.
T. A. McClelland, Vice Pres.
J. Goodloe, Secretary.

SALESMEN:
T. A. McClelland, Cattle.
J. W. Goodloe, Hogs.
Wm. H. Leltch, Sheep.

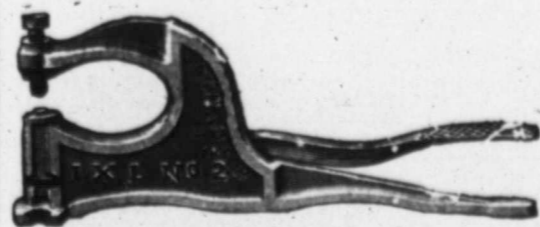
All business entrusted to our care will have our personal attention. We solicit a trial and will do our best to merit your continued patronage.

MONEY LOANED.

The Correct Shipping Address for Best Results:

GOODLOE & McCLELLAND,
Kansas City Stock Yards.

YOU WANT THIS.



The I. X. L. is positively the best Leather Riveting device on the market. The operator needs to apply but 25 pounds pressure on the lever to do perfect work, and every rivet is driven exactly the same.

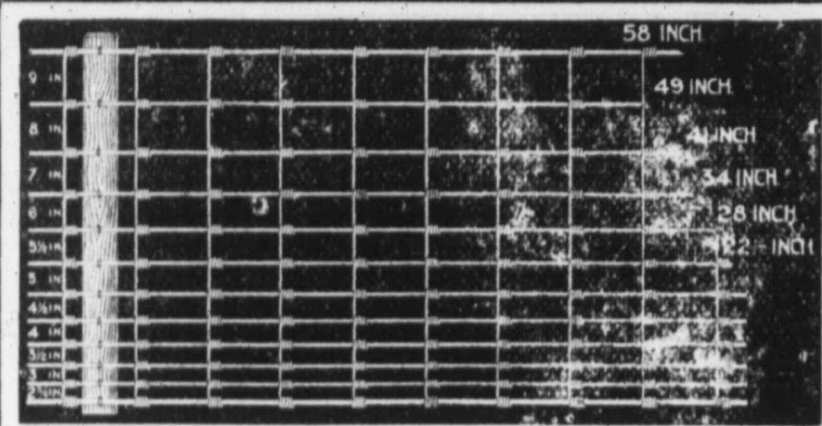
We have just completed arrangements whereby we are enabled to offer one of these useful machines to each person sending us a club of four cash subscriptions.

You want one—why not secure it now?
10-1f



TEXAS FARM AND RANCH.

CHERRY LASS AND CALF.—Green Valley Stock Farm, Canyon City, Tex.



THE STRONG FENCE

Made of large wires, best spring steel, heavily galvanized. Provision made for expansion and contraction, so it is proof against all animals and all changes of weather. As nearly everlasting as anything on earth can be.

AMERICAN FIELD AND HOG FENCE

Sold by our agents everywhere. If you cannot find an agent in your town write direct to
AMERICAN STEEL & WIRE CO., Chicago or New York.

FOUR DAYS OF SHORTHORNS.

The Greatest Shorthorn Sale of the Year, Aggregating 200 Head.—Cruickshank, Cruickshank Topped and Bates.

The most extensive public sale of registered Shorthorn cattle so far announced to take place this year in this country is that of the Messrs. Duncans, Bothwell, the Ragsdales and Burrus, all well known and successful Missouri breeders. If the reader will consult the announcement found elsewhere in this issue he will find that the offering will consist of Cruickshank, Cruickshank topped, up to five crosses on best of the standard American families. The Bates offerings in connection with the Cruickshanks will afford the prospective buyer an opportunity to select a draft equal, in both breeding and individuality, to the best known to the Shorthorn breeding fraternity. Not only this, but a draft of 200 head will doubtless have a tendency to keep prices within the reach of all. There are far too many to enter upon an extended description. Each one of the consignors are well known throughout the West, therefore do not need a further introduction—unless it be to state that all five have put in the best they have and hope to merit the attention of all Shorthorn breeders within traveling distance of Kansas City, where the sale will be held October 17, 18, 19 and 20. For further particulars consult the announcement elsewhere in this issue and send for copies of the catalogue which gives complete information.

W. P. B.

Packers Buying Ranches.

Kansas City Star:

To own the steer from the day he is born until the meat that grows on his bones reaches the consumer is the ambition of the big packers. G. F. Swift and Nelson Morris are already carrying into operation plans for getting the meat supply of the world into a few hands.

George F. Swift is in Kansas City to-day with attorneys examining the title to the Childress ranch in the Panhandle of Texas, which he contracted for two months ago. Only a few days ago he bought the O'Keefe ranch of 180,000 acres in Gaines county, Texas, but the abstracts are not finished. The Childress ranch has about 10,000 head of cattle grazing on it now. The later purchase and larger ranch has more, but they have never been counted.

The purchase price for the Childress ranch is said to be 1 million dollars and of the O'Keefe ranch, which is the larger of the two, \$175,000.

Mr. Swift refuses to talk about his ranches or even to say how many of them he owns. When asked about their number he answered: "According to the newspapers there are a good many."

"But how many are there?"
"I don't know. I won't talk for publication. I am only here now passing on the title of the one property and the purchase of that has already been announced."

MORRIS'S BIG TEXAS RANCH.

Swift and Morris are usually spoken

of together. Swift is the more daring operator, but the time was, not very long ago, when Morris was considered the richer in ready money. Their families intermarried and they have operated very close together ever since. Morris has been buying ranches, too, and owns one ranch at Midland, Tex., that covers more than 200,000 acres and is covered with cattle. Both men own other ranch properties and are said to have other deals under consideration.

A few years ago Swift and Morris saw good business in the management of stock yards. The twenty-five cents a head that farmers pay for holding their stock in pens for a few hours had made the Chicago stock yards owners rich. The Chicago men did not wish to sell, neither did the St. Louis stock yards owners, so Swift and Morris built up a stock yards business at East St. Louis. They have packing houses on the east side of the river and by shrewd management have made East St. Louis the principal St. Louis stock market except for horses. Next they tried St. Joseph and an old rundown stock yards was rebuilt under their control and cattle are marketed there. The stockman pays the same owners for yarding his stock as buy most of his cattle.

MAY MEAN TROUBLE FOR FARMERS.

The same people have different factories for using what was once the waste of cattle killing. They make pepsin and soap and like products from parts of the slaughtered animal not used for meat.

The invasion of packers in the field of cattle raising is not new, but it is rapidly developing proportions that are likely to be highly interesting to the men who raise and fatten cattle.

When the farmer asks more for his animals than the packer is willing to pay the packer can stay out of the market a few days and supply his meat trade from his own ranches. By that time the farmer will feel more like selling at the packer's price. So, too, when cattle bring a low price the packer may keep back his own stock and kill what the farmer must sell. The purchases of ranches made thus far may be only a drop in the bucket compared to all the cattle growing industry of the country, but shrewd men figure that the packers are getting ready to more effectually control the cattle market.

The men who are meeting with Mr. Swift at the Hotel Baltimore to-day are Charles Coffman and C. T. Hall of Kansas City, W. H. Jennings and C. C. Clamp of San Antonio and H. Jennings and R. L. Ellison of Fort Worth. W. H. Jennings is Mr. Swift's agent in the Panhandle. He knows all about ranches and cattle and looks after the cattle raising part of Mr. Swift's business.

We have 160 acres hay land with 500 acres pasture adjoining to sell you, five miles from Woodward. This is a bargain. Only \$1,000. Woodward Com. Co. J. M. DELISLE, Mgr. 2t

When visiting Kansas City, stop at the

BLOSSOM HOUSE,
Opposite Union Depot,

BREEDER'S DIRECTORY.



Shorthorn Bulls

We breed Shorthorn Bulls from deepest strains of Bates cattle, using sires from such famous old and tried families as Wild Eyes, Kirk-Levington, Barrington, Rose of Sharon, Hilpa, Liverpools and Craggs.

No bulls on earth have greater power of transmitting the qualities that have made the Short Horn the leading beef breed of cattle. Our bulls are bred on Buffalo grass, and are not weakened for range purposes by being pampered.

Our ranch is on the Staked Plains, seventeen miles from Panhandle, Tex. Come and see us.

H. T. GROOM Manager,
Panhandle, Texas.

(Please mention this paper.)

R. S. COOK, WICHITA, KAS.

BREEDER OF

Poland-China Swine



correspondence invited.

The prize-winning herd of the great west. Seven prizes at the World's Fair; eleven firsts at the Kansas District fair, 1896; twelve firsts at Kansas State fair, 1894; the first and seven second at Kansas State fair, 1893. The home of the greatest breeding and prize-winning boars in the West, such as Banner Boy 2841, Black Joe 2860, World Beater and King Hadley. For Sale, an extra choice lot of richly-bred, well-marked pigs by these noted sires and out of thirty-five extra large, richly bred sows. Inspection or

Recorded Hereford Bulls.



All BULLS Sold

FRED COWMAN,
Lost Springs, Marion Co., Kans.

Bulls! Bulls!

200 High Grade Hereford Yearlings, Out of High Grade Hereford Cows

By Registered Hereford Bulls.

Have been fed all winter, and are exceptionally well grown.

Address C. H. WITHINGTON,
Tascosa, Tex.

Manager of the L. S. Ranch.

(Please mention this paper.)

The Gerlach Bank.

Capital Stock \$25,000. Surplus \$1,500.
Woodward, Oklahoma.

SOLICITS YOUR BUSINESS.

Correspondence: National Park Bank, New York; National Bank of Commerce, Kansas City; Kansas National Bank, Wichita; Canadian Valley Bank, Canadian, Tex.

VARICOCELE

Permanently and speedily cured by a surgical operation. PAINLESS. FREE. Send for address.



Easily and thoroughly cured. New, common-sense method, not expensive. No cure, no pay. FREE. A practical, illustrated treatise on the absolute cure of Lump Jaw, free to readers of this paper. Fleming Bros., Chemists, Union Stock Yards, Chicago, Ill.

Grandview

Herefords!

Grandview Farm is devoted to the breeding of the most desirable strains of Herefords.

Over 100 choice registered coming yearling bulls, including several grandsons of Ancient Briton for sale.

C. G. COMSTOCK, Albany, Mo.

F. M. WOOD, Live Stock Auctioneer, LINCOLN, NEBRASKA.

Attends Stock Sales Anywhere in United States
TERMS REASONABLE.
(Please mention this paper.)

D. P. NORTON, Breeder of Registered Shorthorns DUNLAP, KANSAS.

Imp. Lord Lieutenant 120019 in service. Young stock for sale. Lord Lieutenant sired the second prize yearling bull at Texas State Fair, 1898, that also headed the second prize herd of bull and four females, any age, and first prize young herd of bull and four females. All stock vaccinated for Black-leg.

Sir Charles Corwin 14520 and

Graceful Chief Two of the greatest boars living head this herd. We have taken more premiums than any herd in the state in the last three years.

We keep our herd up to date in blood lines. Both sexes at all ages for sale at the very lowest prices. Write or come and see us. We will meet you at the train.

ELM BEACH FARM,
Wichita, Kas.

C. M. Irwin, Office Firebaugh Block.
S. C. Duncan, Supt.

For Sale

12 Head
Registered 2-yr-old
Hereford Bulls.

HILLSIDE RANCH, Woodward, Okla.

Fine Bulls for sale at all times. Singly or in Car Load lots

PATTON & MARUM.

PERSONAL POINTERS.

B. W. Key left with Will Evans for Galveston on the 21st.

H. C. Ollitt was here from Kansas City Stock Yards on the 27th.

J. M. DeLisle returned from Alva and Kansas City on the 27th.

Mrs. W. P. Wright and sister, Mrs. Biggers, went to Higgins the 17th.

A. W. Dunham attended the street fair and races at Oklahoma City last week.

Billy Quinan was here from his Waynoka ranch on the 25th to see the circus.

Roll Clark's family have moved back to town after spending the summer on their claim near Stone.

Doctor Croft, of Higgins, was in Woodward this week and tells us he expects to give a lecture here soon on "bugs."

Ernest Rose of Chicago was the guest of his personal friend, Joe Davis of the York-Key Mer. Co., several days this week.

Robert Moody came up from Canadian on the 21st to meet Mrs. Moody here and visit a day with their daughter, Mrs. Jno. Gerlach.

Eli Roberts, of Curtis, came in on the 27th, paid the necessary fee and became a member of the Oklahoma Live Stock Association.

Among others registered at the Central Hotel the 26th were Eugene Hall, of Supply, Jeff Chenoweth, of Camargo, and E. A. Smith, of Lenora.

Al Fosher, Henry Miller, Al Tift and W. R. DeMoss were in Woodward on the 25th from Beaver county. They were before the U. S. Land Office.

A. L. McPherson, of Woodward, renewed acquaintances here between stages Tuesday. He is the same old hearty and cheery Mr.—Arapahoe Bee, 15th.

Mrs. S. Wheeler and Miss Elinor left Tuesday for their future home in Kansas City. Mr. Wheeler will remain in Woodward for some weeks yet.

G. A. Smart and J. E. Dikes were in from Higgins on the 29th. The former owns a nice string of cattle in Day county, where he lives, and expects soon to join the association.

Mr. and Mrs. Mose Hayes and little daughter Florita Bonita, accompanied by Mrs. Frank Biggers, the Misses Grace Cornwall and Flora Patton, and the irrepressible Cap Mitchell, all of Higgins, were in Woodward on the 26th and remembered this office with a pleasant call.

Ed H. Brainerd was up from Canadian, Texas, the 21st, to take a look at the methods used by the Oklahoma Association and talk about the Panhandle end of the organization. Brainerd is worthy, energetic and wields a wide influence. And by the way, as a quiet tip to the ladies, he is handsome, wealthy and single, just the person to make happiness in a home.

The old-time cow hand who was so tough that he wouldn't spit on a board floor through fear of splitting the planks is no more. Most of them have scraped the hair off their teeth, and eliminated from their makeup all conspicuous marks of former days. Even the latter day fashion of carrying a toilet case in the upper left hand vest pocket—particularly a tooth brush with the brush end up—is going into disuse. Cow hands these days have to do all sorts of work and the fellow who won't do a "d—n thing but ride" is often out of employment.—Hardesty Herald.

CATTLE FOR SALE: I have for sale 125 head native yearling steers at \$20 and 600 native calves a \$15; also 100 cows at \$20. Will deliver at Higgins or Gage. M. F. WORD, 17 14 Grand, Okla., Sept. 6, 1899.

From Kansas City. Kansas City Live Stock Exchange, September 28, 1899.

Cattle receipts for the past seven days 70,000; for the corresponding period last year 57,000. There was very little change in conditions this week. Early in the week prices ruled steady but the continued heavy run caused a slight falling off in prices, the decline being most on knot head steers and canners, again demonstrating the fact that the producer in order to get satisfactory results must produce better quality.

Stock and feeding cattle continue very active, the shipments to the country the week amounting to 940 cars. Prices ruled steady all the week for the best grades of either native or branded steers, while common light weight grades were lower.

The supply in the Quarantine Division continues liberal, prices range from steady on good ones to 15% lower for canners, and while we show a slight decline, we are still outselling all competitive markets in this department.

Heavy native steers brought 5.65 to 6.25; light weight steers 5.25 to 6.10; stockers and feeders 3.75 to 5.25; butcher cows and heifers 3.10 to 5.15; canners 2.40 to 3.10; veal calves 5.00 to 6.00 cwt.; Western steers 3.00 to 5.95; Texans 3.00 to 4.30.

Hog receipts for the week 46,000; same week last year 43,000. The supply was liberal and the demand somewhat improved with the light butcher weights developing the most strength. Heavy hogs brought 4.40 to 4.55; mixed packers 4.40 to 4.57; light weights 4.45 to 4.70; pigs 4.10 to 4.55.

Sheep receipts for the week 23,000; for the corresponding week last year 30,000. The market was strong the first half of the week, but was slow and killing grades were a shade lower the past three days, the week closing with values 10 to 15% lower than the same day last week. Stock and feeding grades continue in strong demand, the most desirable classes selling a little stronger while common bunches ruled steady. Lambs sold at 4.50 to 5.25; yearlings 4.00 to 4.15; muttons 3.85 to 4.05; feeding lambs 3.50 to 4.60; feeding sheep 3.50 to 4.10; stock ewes 3.35 to 4.25; stock lambs and sheep 3.00 to 4.10; culls 2.00 to 3.00.

Denver Postscripts.

The full name of the Sultan of Sulu is Hadzi Mohammed Womoloi Kiran. Now do you wonder that he requires twelve wives to share it with him?

A glittering object was seen sailing high in the heavens over Chicago the other night. Perhaps it was the price of beef.

Scientists say that this giddy old earth of ours is 500,000,000 years old. She really doesn't look it.

A Colorado doctor carries a gun with him when he goes into the mountains to see a patient, but rarely has occasion to use it. The medicine usually does the work.

A New York man advertises for a lady stenographer: one with red hair preferred. That is probably the color of his wife's hair, and hairs will sometimes stick to masculine shoulders, you know.

It is said that in all Iceland there is not a single jail. The climatic conditions are such, perhaps, that manufactured coolers are not found necessary.

According to Professor Howard, the evil work ascribed to the alleged "kissing bug" was done either by the melgolestes picipes, the opsoeclestus personatus, the cannibal bug, the corsicus subcoloratus, the spotted corsair, the blood-sucking conenose or the rhasabus thoracicus, but the scientific head of this great Western newspaper yet holds to the opinion that it was the plain, unscientific, unassuming old bed-bug.

THE GREEN VALLEY LIVESTOCK COMPANY now has for sale Registered Hereford Cattle of the most famous family strains. Such as Correcter, Ancient Briton, Grove 3rd, etc. WHITE MAN & EDWARDS, Canyon City, Texas.

CONSIGN CATTLE, HOGS & SHEEP



Organized in TEXAS By Experienced GREAT SOUTHWEST. A competent force of men in every department. We have Experienced Salesmen in all Departments. Consign your stock to us. Write to us. Call and see us. Market reports furnished. Liberal advances on consignments. Loans made on marketable stock.

List Your Cattle for Sale WITH US! Can Furnish Buyers. Can Meet Every Requirement of Commission Company and all Honorable Competition. Best of Salesmen. Money Loaned. ZEB F. CRIDER COMMISSION COMPANY, KANSAS CITY, MO. AND SOUTH ST. JOSEPH, MO. Represented in Oklahoma by W. L. BYARS.

C. HOOD, President. L. A. ALLEN, Vice-President. T. J. EAMAN, Sec. & Treas. H. S. BOICE.

The Kansas City Live Stock Com. Co. is one of the Oldest and Best Companies in Kansas City. A good one to do business with. They have ample capital and are perfectly reliable. Twenty-five years in the trade.

Write to them for information and ship to them for good results. GEO. B. CAMPBELL, Cattle Salesman. L. A. ALLEN, CHAS. W. CAMPBELL, PEYTON MONTGOMERY, Cattle Salesmen. W. T. MCINTIRE, Sheep Salesmen. J. T. MCGREDDY, Hog Salesmen.

Fairbanks Morse Gasoline Engines! Cheapest and Best Power. No Engineer to Pay. Write for Prices.

Fairbanks Standard Scales FOR STOCK AND GRAIN. Thresher Belts and Pumps. Write for Catalogue. Fairbanks Morse Co. 1217-1219 Union Ave., KANSAS CITY, MO.

York-Key Mercantile Co. Dealers in all kinds of RANCHMEN'S GOODS. Woodward, O. T. Stores at Kiowa and Dodge City, Kas.

BUGGIES, HARNESS, SEWING MACHINES at wholesale prices. No agents, no middlemen, no money in advance, 40 per cent saved. Sent subject to examination. We discount prices of any other company. We also sell Plows, Cultivators, Harrows, Binding Twine, 1000 other things. Send for free catalog. HARGOOD FLOW CO., Box 424 Alton, Ill. P. S.—We are the only Flow Factory in the United States selling implements direct to the consumer.

THE LIVE STOCK INSPECTOR

PUBLISHED SEMI-MONTHLY BY W. E. BOLTON. WOODWARD, OKLAHOMA. Represented in Kansas City by E. F. Halstead. Represented in Texas by Don Biggers, Amarillo.

The only journal published in Oklahoma and the Indian Territory, devoted exclusively to live stock interests and stock farming.

Entered at the post-office at Woodward, Oklahoma, as second-class mail matter.

Subscription \$1 per Year in Advance.

OCTOBER 1, 1899.

NOTICE TO SUBSCRIBERS. REMITTANCES. In sending money to the LIVE STOCK INSPECTOR please observe that the Clearing House will not accept private checks at par. Remit by postal or express orders, eastern bank exchange, registered letter, or by private check add twenty-five cents for collection. Amounts of less than \$1 can be paid in postage stamps. DISCONTINUANCES. Subscribers wishing the LIVE STOCK INSPECTOR stopped at the expiration of their subscription must notify us in writing to that effect otherwise we shall consider it is their wish to have it continued and we will make collection for the same. CHANGES OF ADDRESS. When a change of address is ordered, both the new and old address must be given and notice sent two weeks before the change is desired. We require this on account of our heavy mailing list.

Official Organ of the Oklahoma Live Stock Association.

At News Depots, and On Trains.

Calendar for 1899 showing months from July to December with days of the week and dates.

KANSAS CITY—By W. A. Rode News Co., 535 Main St. WICHITA—By C. A. Tanner & Co., 122 North Main St. DENVER—By Hamilton & Sprick News, o., 17th and hamp. AMARILLO, Tex.—Morgan Bros. News o., For sale on all western Santa Fe trains, by Newsboys. For sale on U. P., Denver & Gulf trains, by Denver Ry. News o.'s agents. Sold on K. C. F. S. & M., Mo. Pacific and St. L. & F. trains by the agents of the Van Noy News Co.

OFFICERS OKLA. LIVE STOCK ASSOCIATION. President, ARNER T. WILSON 1st Vice-P., M. F. WORD 2nd " G. E. MORROW Secretary, W. E. BOLTON Treasurer, JOHN GERRIACH

EXECUTIVE COM. IRA EDDLEMAN, L. B. WATKINS, JNO. W. HOLMAN, GEO. W. CARR, B. MASTERSON, President and Sec'y, ex-officio

LIVE STOCK SANITARY COMMISSION OF OKLAHOMA. MEMBERS BOARD C. J. BENSON, Shawnee, J. C. TOUSLEY, Weatherford, J. P. GANDY, Alva, F. D. WIROPE, Stillwater, J. D. BALLARD, Weatherford, Secretary. GOVERNOR BARNES, Ex-officio.

TERRITORIAL QUARANTINE INSPECTORS. JOE SHERMAN, 1st Dist. EZRA MAPLE, 2d Dist. JAKE CASTLE, 3d.

OKLAHOMA POULTRY ASSOCIATION. J. J. WALLACE, Pres., Oklahoma City. L. F. LAVERETT, Sec'y, Guthrie. ROBT. MORRIS, Vice-Pres., Guthrie.

OKLAHOMA SWINE BREEDERS ASSOCIATION. A. J. HENTHORN, Pres., Oklahoma City. C. S. WILLIAMS, Sec'y, North Erid.

OKLAHOMA AGRICULTURAL, HORTICULTURAL AND IRRIGATION SOCIETY. E. E. BOGUE, Pres., Stillwater. C. A. McNABB, Sec'y., Oklahoma City.

NATIONAL LIVE STOCK ASSOCIATION DIRECTORY.

HEADQUARTERS, DENVER, COLO. HON. JOHN W. SPRINGER, President. JOHN M. HOLT, Vice President. GEORGE L. GOULDING, Treasurer. CHARLES F. MARTIN, Secretary, postoffice box 830, telephone 726.

EXECUTIVE COMMITTEE. Alabama—A E Caffee, Hayville. Arizona—Colin Cameron, Lochiel. Arkansas—G Fred Martin, Little Rock. California—H A Jastro, Bakersfield. Colorado—G F Patrick, Pueblo. Georgia—R E Park, Macon. Idaho—J E Woods, Boise City.

Illinois—C W Baker, Chicago. Indiana—Mortimer Levering, Lafayette. Indian Territory—E F Mitchell, Minco. Iowa—C S Barclay, West Liberty. Kansas—G W Melville, Topeka. Kentucky—Reuben Gentry, Danville. Michigan—H H Hinds, Stanton. Minnesota—Theodore L Schurmeier, St Paul. Missouri—J R Stoller, Kansas City. Montana—J M Holt, Miles City. Nebraska—Peter Jansen, Jansen. Nevada—John Sparks, Reno. New Mexico—W C McDonald, White Oaks. New York—Samuel Walter Taylor, New York. North Carolina—Frank E Emery, West Raleigh. Oklahoma—W E Bolton, Woodward. Oregon—R C Judson, Portland. Pennsylvania—Will B Powell, Shadeland. South Carolina—R A Love, Chester. South Dakota—Frank M Stewart, Buffalo Gap. Tennessee—Samuel N Warren, Spring Hill. Texas—A B Robertson, Colorado. Utah—E H Callister, Salt Lake City. Virginia—John T Cowan, Cowan's Mills. Washington—T S Blythe, Coulee City. Wyoming—D N Stickney, Laramie.

STANDING COMMITTEES. Finance—C W Baker, Peter Jansen, F M Stewart, John Sparks, D N Stickney. Transportation—A B Robertson, E H Callister, H A Jastro, G F Patrick, J D Wood, J R Stoller. Legislation—F M Stewart, W E Bolton, W C McDonald, G W Melville, Colon Cameron. Arbitration—C S Barclay, T S Blythe, Frank E Emery, G Fred Martin. Markets—J M Holt, Lamuel F Warren, Reuben Gentry, Mortimer Levering. Sanitary Measures—H A Jastro, G W Melville, H H Hinds. Consulting Members—Dr Charles Gresswell, Dr Victor A Norgaard, R J Kleberg, Dr W K Lewis. Cattle—J M Holt, C S Barclay, W E Bolton. Sheep—J D Wood, E H Callister, Peter Jansen. Horses—Colin Cameron, D N Stickney, W C McDonald. Hogs—Reuben Gentry, G W Melville, I H Stoller.

Chickens Come Home to Roost.

You may take the world as it comes and goes. And you will be sure to find That Fate will square the account she owes. Whoever comes out behind. And all things had that a man has done. By whatsoever induced. Return at last to him, one by one. As the chickens come home to roost. You may scrape and toil and pinch and save. While your hoarded wealth expands. Till the cold, dark shadow of the grave Is nearing your life's last strands. You will have your balance struck some night. And you'll find your board reduced. You'll view your life in another light. When the chickens come home to roost. Sow as you will, there's a time to reap. For the good and the bad as well. And conscience, whether we wake or sleep. Is either a heaven or a hell. And every wrong will find its place. And every passion loosed. Drifts back and meets you face to face As chickens come home to roost. Whether you're over or under the sod. The result will be the same. You cannot escape the hand of God. You must bear your sin and shame. No matter what's carved on marble slab. When the items are all produced. You'll find that St. Peter was keeping tab. And that chickens come home to roost. —Missouri Valley Farmer.

At the Gates of God.

"Vengeance is mine, saith the Lord, I will requite." With face upturned to Luzon's sky, with back to Luzon's sod. The body lay; the indignant soul knocked at the gates of God; And his prayer the Angel of Wrath upbore in haste to the throne of God. "Justice! Do justice, white man's God! They slay us in Thy name— Thy love-thyir cannons roar; Thy truth they speak with tongues of flame; And for light to read Christ's word aright our pagan rooftrees flame. "They came as friends from the Great White Chief and his people over the sea 'Spain fights for land and gold,' they said, 'we fight to make men free; And our deed is born of a nation's creed that God wills all men free.' "Then we clasped our hands with a traitor's hand, we had faith in a liar's faith. They have kept their word as white men do—they have made us free of death; And their deed is born of a nation's greed, and its pact with Hell and Death! All heaven stood silent. Each on each gazed with expectant eyes. Till the Angel of Pity bowed his head and a murmur swelled: "Arise!" And the shout from gates to throne rang out: "Lord, God of Vengeance, rise!" And forth of the host came Love and Truth and knelt before the throne. "Lord, for Thy name they take in vain, make Thou this cause Thine own." And the word from behind the veil was heard: "I make this cause mine own." But the Angel of Wrath, at that word appalled, fell prostrate in his place. And prayed: "Have mercy, God," and wept, as he lay upon his face— There is need of tears when Wrath must plead and Pity hide his face! Let men and angels weep hot tears; but not for the lifeless clod. And not for the soul untimely sent with a people's wrongs to God— Be their grief for the soul of the Great White Chief when he stands at the gates of God! —Baltimore Sun.

Our Lives.

Our lives are songs; God writes the words And we set them to music at pleasure; And the song grows glad, or sweet, or sad, As we choose to fashion the measure. We must write the music whatever the song, Whatever its rhyme or metre; And if it is sad, we can make it glad, Or if sweet, we can make it sweeter. —Selected.

Greer county is quarantined until November 1st.

Inquiries are being made for good yearling natives. Demand exceeds supply.

21,000 cattle at Kansas City on the 26th knocked the demand over the ropes.

The Mangum Monitor improves its appearance by change of form and coming out "all home print."

After all, a combination among cattlemen to prevent overloading the market might be a good thing!

Watch for prairie fires. Burn your guards with care. Winter grazing, even with plenty of feed, pays a big profit.

The Panhandle Stockmen's Association has been organized with a good list of members. Ed. Brainerd, Canadian, Texas, is the secretary.

There is a note of warning in this from the Belle Plaine News: "Something seems to be wrong with the way the big (?) corn crop is turning out."

The Globe Review is a neat publication issued by the Globe Commission Co. at Kansas City. Write a postal card, mention the LIVE STOCK INSPECTOR and ask them to send it to you, free.

The fake report of commission men losing \$90,000 by mortgages on a single herd of cattle is still going the rounds. The report is untrue. Commission men don't do business in that way.

The Kansas City, Fort Scott & Memphis has arranged stage line connections with the great zinc and lead mining district of Arkansas. Write to J. E. Lockwood, Kansas City, Mo., for particulars.

A matched race for a purse of \$250 will be pulled off in Woodward October 14 between Lee Moore's gray horse Pickpocket and a bay mare owned by Flood and Cole; \$150 forfeit money is held by Collier Williams.

The LIVE STOCK INSPECTOR is in receipt of the Catalogue of the Combination Sale of Herefords, Oct. 24 to 28 at Kansas City, as advertised elsewhere. The offerings will exceed anything yet made by members of the Hereford Association.

J. W. Holman returned from the yards at Kansas City on the 27th. He says everybody there is praising F. L. Campbell as an inspector, and he is pronounced the best brand man without exception ever sent to the Kansas City stock yards.

Seven new members joined the Oklahoma Live Stock Association during the last week in September, four of them coming in by mail. If you want your brands cut at Kansas City and other markets, send your name in to the secretary of the Association at Woodward.

Under the game law passed by the last Oklahoma legislature, hunters can use their firearms during the following seasons: Prairie chickens and wild turkeys between September 1st and January 1st; quail between October 1st and February 1st; plover and dove between Aug. 1st and Dec. 31st.

This number of the LIVE STOCK INSPECTOR contains a write-up and illustrations of Canyon City, Texas. It has been delayed since August 1st by the cuts not reaching us sooner. Canyon City is one of the principal towns on the P. V. Railway and has a bright future. The Stayer is an enterprising newspaper published there. Write them for further information in regard to the country.

Now is the time to subscribe for the INSPECTOR for winter reading.

Agricultural Advertising, a journal of national circulation and the only up-to-date publication in the interest of agricultural and live stock advertisers, has the following appreciated editorial note in its September number: "W. E. Bolton, editor of THE LIVE STOCK INSPECTOR, of Woodward, Okla., is interviewed in a booklet recently issued by the Santa Fe railroad, entitled, 'The Truth About Oklahoma.' Mr. Bolton's little talk on live stock in the territory is one of the best things in the book."

THE BRAZOS RIVER FLOOD.

Its Effects upon the Agriculture of the Submerged Region.

The report of E. S. Holmes, Jr., of the Division of Statistics of the U. S. Department of Agriculture, on the recent flood in Brazos River, Texas, is now in the hands of the public printer and will soon be issued by the department as circular No. 10, Division of Statistics, entitled "The Brazos River (Texas) Flood of June-July, 1899, and Its Effects upon the Agriculture of the Submerged Region."

Mr. Holmes visited all the principal points in the district, and in his report says there were two floods, the first reaching its maximum height June 29, and the other following after an interval of less than one day and attaining its highest point July 1, the two coming so nearly together as to be commonly known as one flood. There was a disincet interval, however, of almost a day between the two periods of high water, and during that time the river in the northern portion of the district sank nearly to its low water mark.

The report describes the sections where the greatest damage occurred, and gives an account of the character of the damages, showing that the cotton planters were the chief losers, as 67.4 per cent of the entire area under cultivation was planted in that staple. There were also large losses of corn, including a considerable amount of last year's crop which had been stored for food, sugar cane, live stock, houses, fences, etc. There was a great deal of suffering from hunger and exposure in the outlying districts, and the problem of making the flooded section self-sustaining until another crop can be produced is a difficult one. Steps are being taken however, to plant portions of the territory in food and forage crops which yield a quick return. This will serve to keep the land in good condition for next year's crop and may ultimately result in a greater diversification of crops, which cannot fail to benefit a district where an abundant yield is assured by a mere scratching of the earth and dropping of seed.

The report gives estimates of the area covered by the flood, the population, and losses in land, crops, improvements, live stock, etc.

No attempt has been made to fix the loss on any particular class of people, but a certain portion of the value of the crops in the flooded region would have gone to the land owners. The system of tenant farming is such that the landlord is practically compelled to furnish household supplies to his tenants in advance of the gathering of the crop. It is estimated that the landlord has already advanced on this year's crop \$756,000 to tenants in the devastated region, in addition to which the rent of his land would have yielded him \$1,759,000 had the crops matured, making a direct loss to the landlord of \$2,519,000, to which he has entirely given up his claim.

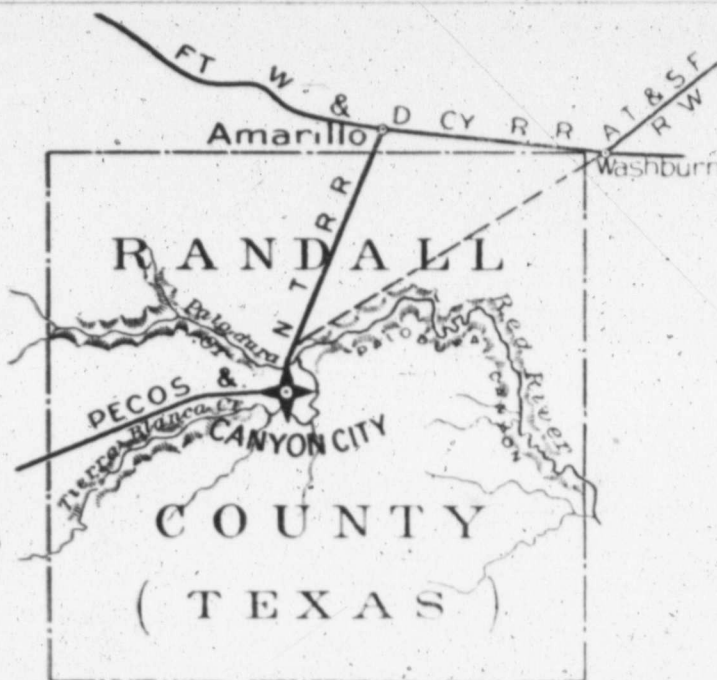
Not more than 50 per cent of the land will be replanted, and probably not more than 20 per cent of that in cotton; the remainder will be planted in quick yielding food and forage crops, which may result in a greater diversification of products and more scientific farming.

The report concludes with estimates of the value of the property and losses in the flooded territory, showing a total loss of \$7,412,583.

About 200 Indians were camped on the river several days about the 16th. They were Cheyennes and Utes, who met here to visit, exchange presents of ponies and hold a powwow.

Canyon City.

An Enterprising Town on the Pecos Valley Line.



Canyon City is a pretty, prosperous town on the Pecos & Northern Texas railroad, eighteen miles southwest of Amarillo. It is the county seat of Randall county and is situated between the Paladuro and Tierra Blanco creeks and about two miles from the head of the famous Paladuro canyon. The town, which is within one mile and a half of the geographical center of the county, was established in 1889, at which time the county was organized. Its growth has been steady and permanent and it is now one of the neatest, best built towns anywhere on the Pecos Valley system. It has an elegant school house which has cost about \$2000, a \$7500 hotel, a good court house and about twenty business firms representing every branch. Its business firms are recognized as being among the strongest in the west or Panhandle country, carrying very large stocks. It is a very heavy stock shipping point, and in this respect has quite an advantage, being conveniently located to the great cattle raising sections of the plain, and having direct connections with the principal cattle markets. It is the trading point for a section of country covering several counties south and west, and is immediately surrounded by a very fine country.

Aside from its business facilities and advantages it is the most picturesque town on the plains and has an abundance of excellent water, both in living streams and shallow wells, the finest of water being obtained at a depth of from thirty to fifty feet. The town certainly has a most promising future. Its resources are permanent and the people throughout the country are prosperous and independently situated. Farming in this country is altogether different from that in the cotton growing sections. Here the farmer has a nice bunch of cattle, raises his own feed, such as sorghum, cane, millet, kaffir corn, etc., and there has not been a forage crop failure in this section for seven years. He has no sickness to contend with and nowhere can one find a better class of people.

This is without doubt the finest stock raising country in the United States, and there is no estimate as to the wonderful possibilities which will doubtless be brought into reality during the next few years. The development of the country is certain and the improvement and continued growth of this beautiful little town will follow as a natural result. Fine stock farming land adjacent to the town and throughout the country tributary can be had very cheap and on the best of terms, the purchaser having his choice of school or railroad land. Considering the advantages of the town and the security of investments town property is very reasonable in price. The town has a population of about 600.

The Paloduro canyon, of which the INSPECTOR reproduces some excellent views, is a place much sought by pleasure seekers from all parts of the country. Fish are plentiful in both Tierra Blanco and Paloduro creeks and throughout the canyon. The canyon proper is about 150 miles long.

There are quite a number of nice young orchards near canyon which have demonstrated the adaptability of the country to fruit culture, one of

which belongs to Mr. W. F. Heller. The LIVE STOCK INSPECTOR is under many obligations to the Stayer of Canyon City, published by Mr. and Mrs. R. W. Morgan, for many favors.

Oklahoma Honey.

The experiment station for the past six months has been experimenting with bees in the hope of determining whether or not Oklahoma offers a promising field for this industry. During the season the bees have increased from three colonies to eight, all in good condition. The amount of honey which has been secured is very small, but is of an excellent quality. A pure, imported Carniolan queen was recently introduced into one colony, and another direct from the island of Cyprus is daily expected.

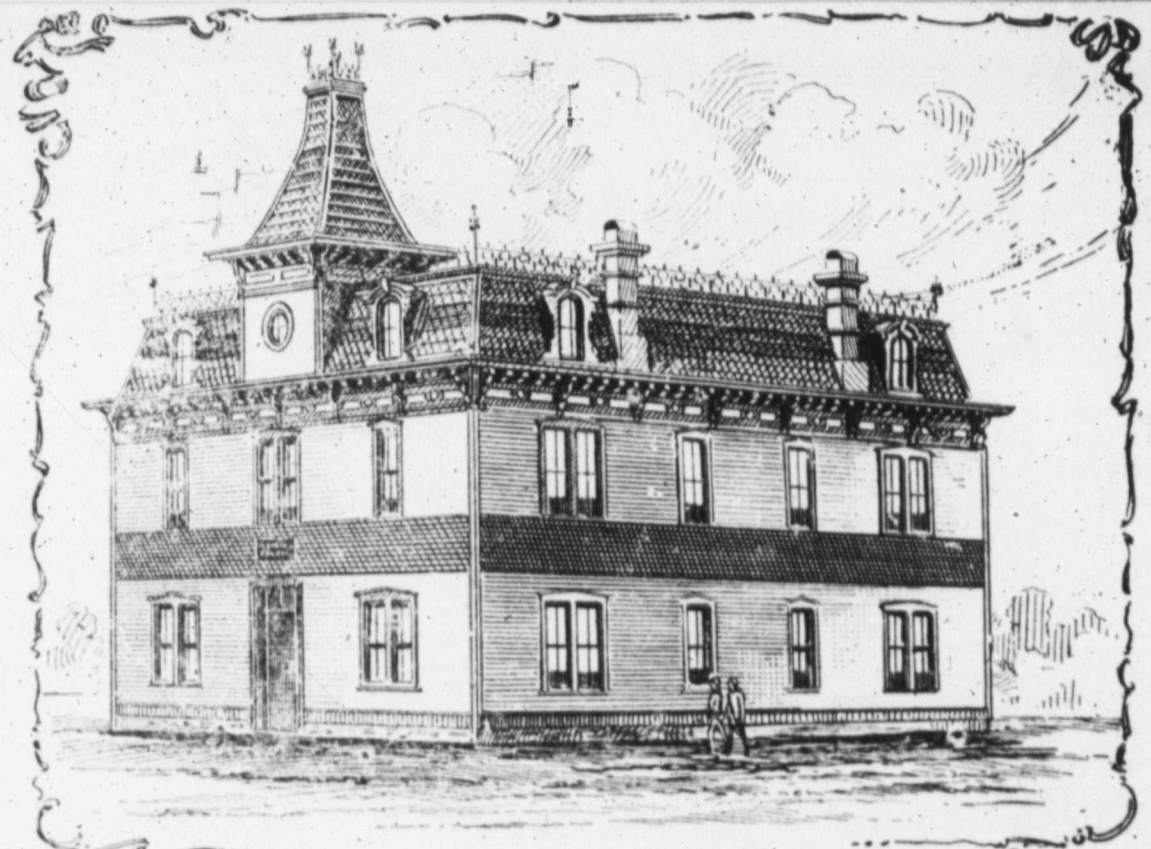
Kaffir Fodder.

There is quite a difference of opinion as to the best method of handling Kaffir fodder when it is planted thickly, and is to be used for feeding and wintering stock cattle. In general it is believed that the fodder should be cut and placed in small shocks when the grains have passed from the soft stage and become firm. The fodder will yet be green, and if put in large shocks will spoil, but will be excellent feed if properly shocked. In feeding it when prepared in this way the amount given should not be more than the cattle will eat up reasonably clean, if too much is given they will eat only the heads and waste a large portion of the fodder.

Grass for Lawns.

The experiment station receives numerous inquiries concerning grasses best suited for lawns. Numerous trials have been made with most every sort of grass, and the experiments of others have been carefully watched. Bermuda grass is perhaps the most likely of tame grasses. In general it will grow well from sods set out at any time from April to July. One strong root to each square foot will give a good sod in one season. The soil should be as free as possible from weeds and crab grass, and should be firm and solid. Loose soil does not seem to be desirable. While the last severe winter killed Bermuda grass to some extent it has stood the summer reasonably well and is perhaps the most valuable grass for a lawn, particularly where irrigation is not practicable. It has a slight tendency to get over into the adjoining property, but as it does not produce seed in this latitude it is easily controlled, and it WILL GROW.

The advertisement of A. C. Brosius, of Cochraneville, Pa., makes its first appearance in this issue of our paper for the new season's business. Our readers will remember this gentleman as being the manufacturer of the now famous dehorning knife which has been of such great value to stockmen everywhere. This is the dehorner which took the highest award at the World's Fair. It differs from all other devices of its class in the fact that it cuts evenly from four sides at once. This prevents all bruising and crushing of the horn and constitutes the most humane way of removing the horns. Then, too, it is such a quick and safe way for both man and animal. Write Mr. Brosius for circulars, prices, etc.



RANDALL COUNTY COURT HOUSE, CANYON CITY, TEXAS.

A Model Plains Ranch.

All over the Plains one now sees evidence of permanency and prosperity, the result of energy, good judgment and determination, for the most of the people have started with small means and have had to pass through many ordeals. One familiar with the Plains a few years ago can scarcely realize that this now prosperous and contentedly peopled country is the then vast waste of grass and loneliness.

Over in Deaf Smith, about 16 miles east of Hereford, is a model Plains ranch, the property of J. C. Coker, which may well illustrate the possibility of the Plains as a great stock farming country. True, Mr. Coker's ranch is above the average in this or any other country, but it is just what he has made it. All men may not accomplish as much, but all who follow his example can at least do well. Mr. Coker has a comfortable home conveniently surrounded. He now has under fence about seven sections of pasture land in two divisions, on which are two windmills with good watering facilities. On this range he now has about 275 head of high grade cattle, about 80 of them being one and two-year-old steers. Mr. Coker recently sold 85 cows and calves, a fine registered bull and a few heifer yearlings. This sale was made because he does not wish to crowd his range, but believes in having fewer and better and giving them proper attention.

His yearlings last year sold for \$28.25 per head. This is an unusually good lot of cattle, Mr. Coker having begun four years ago using the very best registered Hereford bulls to be had. He has given careful and tireless interest to his breeding ever since, has visited many of the great Hereford sales and breeding farms in different parts of the country, making some important purchases and studying the Hereford thoroughly. He now has on his ranch two of the most royally bred and best individual bulls in the country. Seminole 4th is by Don Carlos 33734 and out of Sermeramis, and is a grandson of the famous Anxiety 4th. Browning 71760 was calved May 9, 1897, is by

Lamplighter and a grandson of Don Carlos and a great grandson of the great Anxiety 4th. Both of these bulls were bred by Gudgell & Simpson. One thing about these bulls which makes other comment unnecessary, and that is the large bone, good form and color of their get.

Mr. Coker goes more extensively into the farming and feed raising business than any other man in this section of the country. He now has in cultivation something like 150 acres of land on which he is growing Milo maize, Kaffir corn, millet, sugar cane, Indian corn and wheat. He sows wheat each year for pasturage only, and now has a fine green winter pasture assured. This crop is very fine and one can easily imagine the care these cattle will receive this winter. Mr. Coker has always raised big feed crops, as a result of which his losses have been nominally nothing, in fact his cattle come out of the winter fat.

Cow feed isn't the only thing raised on this place. Garden stuff of all kinds pumpkins, kershaws, watermelons, turkeys, chickens, and in fact everything that goes to supply the real necessities and pleasant surroundings of home. After spending a few hours on this ranch and recalling the past history and condition of the Plains, one realizes the appropriateness of those lines:

Changing, changing, ever the ceaseless change,
The happy conditions at present
Make the past seem lonesome and strange.

Amarillo Items.

E. P. Powers, a prominent ranchman of Deaf Smith county, passed through Amarillo on the 22nd on his way home from Fort Worth. Mr. Powers has one of the best ranches and stocks of high grade Hereford and Durham cattle on the plains. He recently sold his yearlings to Mr. Davis, of Kiowa, Kan., for \$20 per head and his calves to C. A. Roberts, of Eureka, Kan., for \$16.

Pat Wolfarth, manager of the DZ ranch, passed through here on the 22nd on his way to Fort Worth.

Subscribe for the LIVE STOCK INSPECTOR—only \$1.00 per year.



VICTORIA HOTEL, CANYON CITY, TEXAS.—HEBERD SMITH, Manager.

Green Valley Stock Farm.

The Green Valley Stock Farm, 12 miles southerst of Canyon City, is one of the most extensively known Hereford breeding ranches in the Panhandle or Great Plains country. The ranch was established some years ago by Connally & Clements and was sold by them last March to the present owners, Whitman & Edwards. It was one of the first great Hereford herds ever introduced into this country, was originally known as the Faulkner & Tuggle herd and has changed owners for a higher price each time than was ever paid for a like number of cattle in this part of the country. To the original Faulkner & Tuggle herd, however, there have been added several of the finest animals to be found in the West.

Exemplar, one of the most famous and highest priced bulls in the country, is now head of the herd. Exemplar is a great individual and as a breed bull has done credit to his illustrious sire, the great Sotham bull, Corrector, Exemplar having sired the great calf Excellent, that swept the country last fall for championships and sweepstakes prizes at many of the leading fairs. Most of the calves on the ranch are of his get and out of royal blood cows of the finest individuality. For bone, size, form and color these calves have no superiors in any man's country. They are in fine flesh, too, and are in every sense a bunch of beauties.

There are several cows deserving especial mention, the first being Cherry Lass 54299, by Cherry Boy 26495, dam Madeline 33595. Cherry Lass has a very fine heifer calf by Elam 69186. Second, Britona 58542, sire the great bull Ancient Brittain, dam Nutty 50780. This cow has a heifer calf by Exemplar. Third, Lovely 7414, sire Corrector, dam Cherry Lass 54288. This cow has a fine bull calf by Elam. Fourth, Felta 55703, sire Peerless Wilton 12774, dam Flora 45615, has a heifer calf by Exemplar. Fifth, Formosa's Gift 56262, sire Sir Wilfred 14235, dam Formosa 13th 14232, has a fine bull calf by McKinley. Sixth, Jenny Lind 56266, sire the great bull Empire of Shadelaud, dam Jenny 45223, has an unusually good bull calf by Exemplar. In fact the entire herd might be individually mentioned with the same show of royal breeding.

Lord Britton 74143, by Exemplar and out of Brittona 58543, is one of the best young bulls that I have seen anywhere in the country. There are eight yearling bulls as follows: Schley 86711 by Operator 63954 and out of Miss Monde 51558; Hobson 86676 by Exemplar out of Butterfly 56253; Judge Cox 966249, by McKinley out of Pansy 59249; Sir Wilfred 2nd 96986 by McKinley out of Formosa's Gift; Sitting Bull 2nd 96688 by Elam out of Seraphine 61281; Rolly 96684 by Elam out of Cherry 59224; Roswell 96685 by McKinley out of Pauline 59250; Clarence 96675 by Exemplar out of Rosa 4th 56282; all of which are like the calves, exceptionally good.

Messrs Whitman & Edwards are well prepared to properly winter their cattle, having an abundance of feed such as millet, corn, Kaffir corn and three heavy crops of alfalfa from a 35-acre field, and sufficient barns, sheds, etc., to stall keep every animal they have during the entire winter if necessary. They will in a few weeks begin feeding their cows and calves, a very important and too seldom observed measure in the fine cattle breeding industry in this country.

These people have recently exchanged their present ranch property for a much larger body of land situated about ten miles east of their present location. They will winter their herd here, however, and will make no change until about the first of May. This change they are making in order to secure more range as they expect to increase their stock. They now have on the market quite a number of both heifer and bull calves for immediate or future delivery and prospective buyers will find it to their interest to inspect them.

For sale 200 extra good high grade steers five miles west of Hereford.
JOHN E. FERGUSON,
Hereford, Texas.

UNAUTHENTICATED REMARKS.**How Al Murchison Was Taken for a Bunco Steerer.****Jim Holland's Haystack — Carter Temple's Gentle Horse.**

Albert Murchison came down from Hereford last week and during his stay told one of his inimitable stories on himself. Someone had told of a poor man who had a hundred dollars, an innocent look and a large family; he met a bunco steerer and later committed suicide. "Yes, gentlemen," remarked Albert, "the bunco steerer is bad man and ought not to be allowed to roam around in the best social circles, but the bunco business can work both ways with disastrous results, and I think people can get too careful some times. Once I went to Chicago on priyage business and a passenger train. I was alone, business was pretty brisk and there were quite a lot of strangers in town, all of whom seemed desirous of running over somebody. Did you ever feel the melancholy pangs of being in a big city with no one to talk to? Well it's as far from pleasant as the Filipino war is from an end. I was feeling as though I would give a horse and saddle for a look at the photograph of a Texas convict, when I saw four men coming up the sidewalk. I didn't know their names nor faces but I knew they were from Texas. This fact was evident from their boot ties to the crown of their hats. My heart stamped with joy and I made a dash for that crowd. "Hello here! where you fellows goin'?" There was a leader in the crowd who did the talking act, who informed me during our brief conversation that he had been in Chicago before and had been mistaken for a sucker every time. "But I am just from Texas, boys, and you don't know how happy I was to see you fellows coming up the street." "Alright," replied the spokesman, "you can continue your great joy by standing here and watch us go down the street."

"Oh, you're going down the street. Good, I was going that way myself. Kinder lonesome here all alone. You see I'm just from Texas and—"

"And we're just from New York." "New York? How's crops there this year?"

"Suckers all dead; confidence men all in the pen."

"Then I tried to explain, but they wouldn't consent to be sociable. I had to apologize and let the procession file on. There I was snubbed by my own countrymen in the hour of my loneliness and misery. Since then I have gotten acquainted with nearly every one of them boys and they have all voluntarily agreed to not mention the fact that I used to be a Chicago bunco steerer."

CARTER TEMPLE'S GENTLE HORSE.

An old friend of Carter Temple arrived in town a few days ago and wished to go into the country. Carter generously offered him the use of his buggy horse to ride, assuring him that the beast was as gentle as a photograph. The horse was then hitched across the street and the stranger strolled out to see him. He returned presently and announced that he had decided to walk.

"For this reason, gentlemen, I used to know Carter up in New Mexico. He had a worthless kind of cuss working for him, but Carter never did have the hardness of heart to offend the fellow by firing him, but one day he got a joshy mood on and got the fellow on that horse. Well, a few days later the associate press dispatches announced that a two-legged meteor wearing striped pants had landed in the bay near Galveston. No, gentlemen, I had rather walk two miles than run the risk of getting thrown two hundred."

And somebody set 'em up.

JIM HOLLAND'S HAYSTACK.

Last summer Jim Holland was the proud possessor of the finest hay vega in the United Panhandle. It was a very large old lake covering several acres, and despite all the spring and summer rain, it held no water, but produced the finest crop of hay ever seen in this section. At the proper

time Jim carved the hay and stacked the same in the middle of the old lake, which had never been known to contain enough water to amount to anything. About this time Abe Mulkey appeared on the scene and began a series of sermons, and a few days later a two months' dry spell was broken by the heaviest rain ever known in this country. Now for the first time Jim's lake proceeded to hold water like unto a jug. No one is now able to estimate the depth of the water nor the distance across the lake, but one with a field glass can discern a dark object out beyond the breakers. This has been diagnosed as the submerged haystack, but this is not authentic.

NATIONAL HEREFORD SHOW.**The Greatest Event in American Hereford History. Visitors Coming from All Parts of the United States, Canada and Other Countries.**

At no time since the introduction of the Hereford breed of cattle, commonly known as "Whitefaces," into this country has there been the interest manifested nor their appreciation so highly esteemed as at the present time. At the annual meeting of the American Hereford Cattle Breeders' association held last November it was decided to hold a national show and sale at Kansas City under the auspices of the association. In order to bring out the better class of cattle and afford the entire Hereford fraternity an opportunity to present the merits of their favorites the association set aside the sum of \$5,000 as an inducement for members to make a successful exhibit. When it is considered that at the leading state fairs only about \$500 is hung up annually, the \$5,000 with the specials \$3,000 make the grand aggregate \$8,000. Such is the enthusiasm already developed that breeders, not only of the Whiteface, but of all beef grades, have announced that they will be present from nearly every state in the Union, from Canada, the Northwest British possessions and Mexico.

The most attractive feature of the sale is perhaps the fact that the animals in both the show and sale will be representatives from 60 established herds, extending from Virginia on the east to Nevada on the west, thus affording the visitor an opportunity to judge of the merits of all the prominent strains of blood known to the breed. It is conceded, too, that no class of beef cattle breeders have espoused their cause more deeply nor exercised a more thorough knowledge in the development of the better class of beef cattle than the Whiteface breeder, hence the visitor or prospective buyer will be afforded the opportunity of a lifetime to judge of the merits of the cattle as well as their future in the hands of an enterprising and intelligent breeder of beef cattle.

W. P. BRUSH.

From Greer County.

ALTUS, OKLA., Sept. 24, 1899.

Joe Baird bought 50 steer yearlings from Willoughby & Son, 25 from Joe McClarin, paying 20 dollars around.

Frank M. Trimble bought all the she cattle out of the HF stock, from yearlings up,—275 head,—paying \$22.50 around.

J. R. McMahon sold 70 steer yearlings to Dale at \$20 around.

J. N. Kimberlin bought all of J. D. Right's spring steer calves at \$15.

Blasengame Bros. bought of Abbet all his two-year-old steers at \$25.

Frank M. Trimble sold to W. R. Fox 100 stock cattle at \$20.

Frank M. Trimble bought two carloads of bulls at \$24. OLD TIMER.

Any of our readers who want a St. Bernard pup would do well to write to Sunflower State Kennels, of Woodston, Kan. They advertise some good ones and prices are low considering the high grade of stock offered. These kennels have shipped pups to nearly every state and have made themselves famous by refusing to send out any but first class stock.

The LIVE STOCK INSPECTOR is only \$1.00 per year. Subscribe now.

'FRISCO LINE.

THE FRISCO WANTS

THE BUSINESS

The St. Louis and San Francisco Railroad Co.

The great live stock route, reaching the three great live stock markets of the world, Chicago, St. Louis and Kansas City. The attention of shippers is particularly called to the fact that we now have the shortest line from points in Texas to Kansas City and St. Louis. We are also giving special attention to live stock shipments from the Panhandle of Texas to St. Louis, taking same from the A. T. & S. F. R'y at Cherryvale, Kansas. Stock loaded at Woodward and points in that vicinity in the evening reach St. Louis the second morning. Information gladly furnished on application to

ZACH MULLHALL,

G. L. S. Agent,

National Stock Yards, Ill.

or J. P. MOORE,

L. S. Agent, Ft. Worth, Texas.

THE MOST MODERN THING IN WRITING MACHINES IS

The OLIVER!

Its writing is visible without sacrificing any other features.

It has the only double type-bar in existence.

It will do ruling and colored work, and accomplish more than any other machine.

It has but one-third the number of parts in the Remington or Smith.

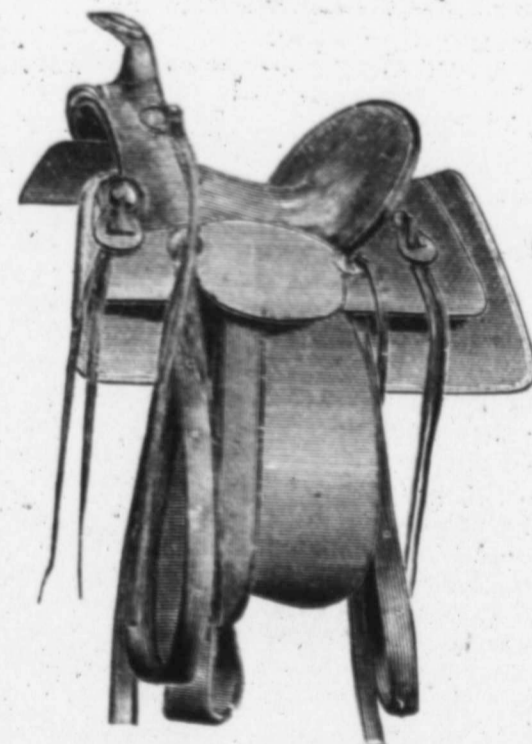
The Ill. Central Ry. use 10 Olivers
C. M. & St. Paul Ry. " 9 "
C. B. & Q. Ry. " 11 "
Chicago Title & Trust Co. use 14.
A. F. Sheldon & Co. use 17 Olivers.
Reid, Murdock & Co. " 13 "
Studebaker Bros. " 8 "
Nelson, Morris & Co. " 6 "
Deere & Co. " 6 "
Meyer Bros. Drug Co. " 22 "
U. S. Government over 200 "

VICTOR E. HUNTER, Dealer.

214 west Ninth street. KANSAS CITY, MO

R. T. FRAZIER

MAKER OF THE FAMOUS PUEBLO SADDLE.



I make High Grade Saddles of the best Oak Tan California Leather. All saddles made by hand use the famous Pueblo Tree or any tree desired. All saddles fully guaranteed. Send for catalogue.

R. T. FRAZIER,
Pueblo, Colo.

FOUR DAYS OF SHORTHORNS.

Five of Missouri's Most Successful Breeders Will Sell 200 Head, Bulls and Females.

The greatest combination sale of registered Shorthorn cattle so far announced to take place this year west of the Mississippi river is that of H. C. Duncan and Joe Duncan, of Osborn, Mo.; George Bothwell, of Nettleton, Mo.; Thomas W. Ragsdale & Son, of Paris, Mo., and John Burruss, Miami, Mo. All of the above named gentlemen have been more or less identified with the better class of Shorthorn cattle many years and practically need no introduction to the beef cattle growers throughout the great Middle West. H. C. Duncan will have 35 head, consisting of 4 Cruickshank bulls, all 4 belonging to the noted Violet family. There will be also four Cruickshank females, one Violet, two Orange Blossoms and one Athene; one 4-year-old cow and the balance young cows with calf at foot, 2-year old heifers and yearlings. All except those straight Cruickshanks aforementioned are Cruickshank topped, having from two to five top crosses. This part of the offering is best briefly described. "They are all extra good ones," which every visitor will verify on inspection.

Mr. Joe Duncan comes in with 25 head, among which will be a long yearling Secret bull, by Grand Victor, a pure Cruickshank. This young fellow is probably the plum of the bull division in the sale, and his being a full brother to Bothwell's bull, Grand Victor, for which \$1,000 has been refused, makes this youngster very desirable property. In the female division there will come a 2-year-old Violet heifer and three Baron Dudding heifers, all four extra good ones. There will be two Cruickshank topped bulls that show what can be done with choice females belonging to the Moss Rose, Ruby and Young Mary families. There will be a nice lot of cows with calves at foot.

Mr. Bothwell, the man of two years' decided success in the show ring, will offer sixteen bulls ranging 11 to 18 months of age, fourteen of which are sons of the bull aforementioned, Grand Victor. One youngster other than these, shows six Cruickshank top crosses. In his female division there will be 24 cows and heifers, 16 of which are safe in calf to either Imp. Nonpareil Victor or Grand Victor. Among the middle young females will be the show heifer, Victoria Sharon 9th, that won five first prizes at Missouri and Kansas fairs last year. The prospective buyer may expect to meet the right kind in the Bothwell offering.

Ragsdale & Son will have 40 head, ten bulls and 30 cows and heifers, 14 of which are 2-year-olds and by the Cruickshank bull, Crown King 111418. The other females are by such sires as Imp. Burgomaster and British Jubilee 96493. The females bred are to the credit of the Victoria Cruickshank bull, Victor M. 129028.

John Burruss will disperse his entire herd, consisting of 60 head, 10 bulls and 50 females. There will be cows with calves at foot, and 12 yearling heifers. The 2-year old bull, Sangamon Duke of Airdrie 125174, a pure Duke, will be sold. There will also be nine Rose of Sharons, seven Loudan Duchesses and a number of VanMeter and Hamilton Young Marys. The reader up in Shorthorn breeding will at once recognize the great strength of the offerings. There are none better bred, and it is doubtful if a better lot individually will be offered at public sale this year in this country. For further information consult the announcement elsewhere in this issue and write for a free copy of the sale catalogue that gives all desired information. W. P. BRUSH.

Annual Convention W. C. T. U., Seattle, Wash.

For this occasion the Santa Fe will sell round trip tickets at rate of one first-class fare. Tickets on sale Oct. 13, 14, 15, 16. Final limit for return Nov. 16. For further information call on, A. W. DUNHAM, Agt. 1813

POSTAL NOTE WANTS.

This department is conducted especially for LIVE STOCK INSPECTOR patrons, and only the small charge of one cent per word merely to cover cost is made for advertisements of cattle for sale or pasture, lands for lease or sale, feed for sale, etc.—in short any want felt about the rancho or farm. Enclose postal note for amount with order and if insertion is desired for more than single issue, remit to cover the amount. Address, Postal Card Wants, care LIVE STOCK INSPECTOR, Woodward, Okla.

PASTURAGE: I have pasturage for 400 head of cattle. Good grass and plenty of water. Address W. F. TAYLOR, Lehors, Tex.

TO TRADE FOR YOUNG CATTLE.—An elegant upright Eskey piano, walnut case, splendid tone, good as new. S. M. BARGER, Wichita, Kan.

WANTED—Cattle to pasture or take on the shares. Good pasture, lots of water, good location. Address FRAZEE BROS., Raymond, Okla.

GRASS! GRASS! GRASS! I have pasture for 1000 cattle. Will buy that number or take them to pasture for the season. Would want 3-year-old steers if I buy. Give price and location. Address J. W. HIATT, Grand Summit, Kan.

FOR SALE:—One of the choice quarter sections of land in Woodward county. All bottom land. Subirrigated. The finest of alfalfa land. Spring of soft water. One corner touches river. Frame house, well and small field in cultivation. Fine hay crop this year. Price \$600, on terms to suit. See or address Woodward Commission Co., J. M. DeLisle, Mgr.

ADDED THIS SEASON. Barber shop and ladies' observation car on the California Limited, via Santa Fe Route. Service is finer than ever before.

Stolen.

Stolen from my range in Woodward county, sometime during 1898, one dun saddle horse, about 15½ hands high, slightly thick winded and branded G on left shoulder. Two hundred dollars reward will be paid for conviction of thief. B. R. GRIMES, Ashland, Kas.

Do You Ship Cattle?

Very many readers of the LIVE STOCK INSPECTOR will soon begin shipping cattle to the markets at Kansas City, St. Joseph and St. Louis. For the benefit of those who may be undecided where to consign, the following list will be of value, representing as it does the leading and more progressive commission firms at the markets.

If you expect to get top sales for your stuff don't monkey with back number firms who are not alive to their business, who do not even solicit your patronage.

On the other hand, the firms and companies below named are up to date in method; they employ the very best salesman and buyers; they thoroughly understand their business and can give you the very best service at no higher rates than is charged you by others in the business who do not even seek your acquaintance.

In addition to all this these men aid you directly by assisting you to maintain an Association journal; they are interested in your success and invite your confidence. Consign to these people when you ship, no matter whether it be a single ear load or a hundred; no matter whether it be cattle, hogs or sheep, and you will not have cause to regret your action.

Here are the PROGRESSIVE COMMISSION FIRMS OF KANSAS CITY, ST. JOSEPH AND ST. LOUIS.

- The Globe Live Stock Com. Co.
- McKee-Zook-Whitford Com. Co.
- Lone Star Commission Co.
- Elmore & Cooper.
- Tamblyn & Tamblyn.
- Barse Commission Co.
- Kansas City Live Stock Com. Co.
- Southee & Kirk.
- Zeb F. Crider Commission Co.
- T. P. Gordon Commission Co.
- Paugh & Co., Wichita, Kan.
- Goodloe McClelland Com. Co.
- Rosenbaum Bros. & Co.

FOR SALE: One of the most desirable residences on Main street. Two blocks west of Cattle King. This is a bargain. See J. M. DeLisle, manager Woodward Commission company.

C. G. KNOX, Vice-President.

CHAS. T. JONES, Superintendent.

THE LIVE STOCK MARKET OF ST. LOUIS.

THE ST. LOUIS



National Stock Yards

Located at East St. Louis, Ill., directly opposite the city of St. Louis. Shippers should see that their stock is billed directly to the NATIONAL STOCK YARDS.

H. P. CHESLEY, General Manager.

GEO. R. BARSE, Pres.

J. H. WAITE, Sec. and Treas.

BARSE Live Stock Commission Co.,

Rooms 159-160, Live Stock Exchange.

KANSAS CITY, MO.

Established 1871.

Money to Loan on Cattle.

Experienced Salesmen.

Prompt Remittances.

Correspondence and

Consignments Solicited.

ROSENBAUM BROS. & CO.,

Live Stock Com. Merchants.

CHICAGO, KANSAS CITY, SOUTH OMAHA, ST. LOUIS, SO. ST. JOSEPH.

Solicit your patronage, and accord to shippers every accommodation which your business and responsibility warrants.

A. M. ALLEN, President.

W. H. AVERY, Vice President.

W. P. VOORHEES, 2d Vice Pres. & Mgr.

A. B. H. MCGEE, Jr., Sec'y-Treas.

GLOBE LIVE STOCK COMMISSION CO.

KANSAS CITY YARDS,

Correspondence Solicited.

Kansas City, Kansas

W. H. AVERY, Inspector Loans, Englewood, Kas.

B. B. HUCKELL, Inspector Loans, Alva, Oklahoma.

CHAS. BOYLE, CATTLE SALESMAN, Kansas City.

E. E. COFFEY, INSPECTOR LOANS, Woodward, Okla.

Wichita Union Stock Yards Co., WICHITA, KANSAS.

...Capacity 3,000 Cattle 5,000 Hogs
Private Yards for Texans. Perfect Sewerage and City Water. All Pens Covered....
W. R. ULANEY, Supt. of Stock Yards.

200 SHROPSHIRE RAMS.

100 EXTRA CHOICE RAMS for heading pure bred flocks. CHOICE RAMS, yearlings, in ear lots, for the Range trade. All at most favorable prices. Farm at Station 12 miles north Kansas City, on Mo. P. R'y.
KIRKPATRICK & SON, Connor, Wyandotte Co., Kansas.

Felix S. Franklin LIVE STOCK AGENT, Amarillo, Texas. Cattle of all classes for Sale.

I have a personal knowledge of almost every brand of cattle in western Texas. If you want to buy or sell I will be pleased to meet you in person or by letter. More buyers and sellers meet in Amarillo than in any town west of Fort Worth.

(Please mention this paper.)

LIVE STOCK NOTES.

Stockmen are requested to write postal card items for this column. The INSPECTOR desires to print live stock notes from everywhere. Send us a postal—push it along.

Dewey County Fair will be held at Taloga, Oct. 10, 11, and 12th. The exhibit promises to be far better than usual.

L. T. Clark came in from Kansas City on the 21st. He took up four loads of cattle which sold for \$1.55 and were not in prime condition.

A Woodward man has named his dog Cyrano Dreyfus. The last name is Shevuy an signifies "stayer," but the other part—Wat'lo—'til?

Eli Roberts, near Curtis, was in Woodward on the 27th and enrolled as a member of the Oklahoma Live Stock Association. He reports plenty of feed to carry his cattle through the winter.

A. N. Thornton of the Newlin neighborhood has sold his herd of stock cattle, consisting of 250 head, to Mr. Ben Sweatman of Corsicana. The price paid was \$17 around. Mr. Thornton also leased Mr. S. six sections of land for three years, at an annual rental of \$35.—Childress (Texas) Record.

W. E. Herring reports from A-liland that one Ernest Fox, on trial for stealing cattle, has made a confession implicating other parties and accompanied the sheriff of Clark county to an unused well in which ten or eleven dead cows were found, bearing various brands. The calves were first stolen and the cows killed and thrown into the well to avoid detection.

The largest shipment of cattle made at one time from this point this season went out on Monday. W. H. Kindall purchased 1200 head of 3-year-old steers for David Rankin of Tarkio, Mo. They were picked up from all over the country. G. W. Frisby, J. H. Gentry, Sam Stewart, Geo. Roth, Jas. Statler, G. W. Hendrickson and Mr. Frost are among those who sold.—Medicine Lodge Index, 20th

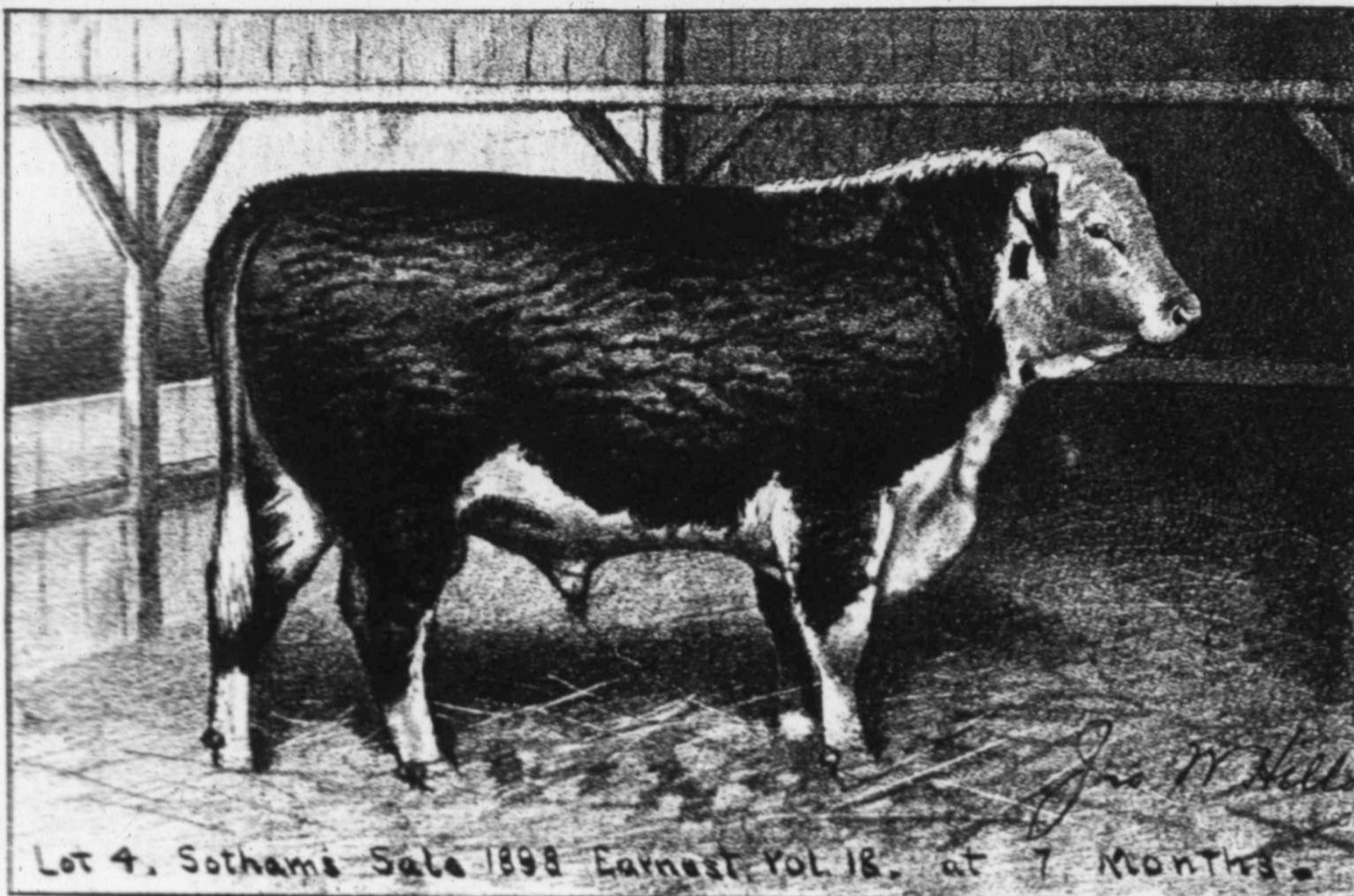
C. J. Jones, better known all over America as "Buffalo Jones" was in Woodward Sept. 19th and bought the fine buffalo belonging to the Bill Wright estate at \$200 each. He shipped the animals to Goodnight, Tex., where he will reship three of those purchased here and nine others bought from Goodnight and deliver them at New York City for shipment to Hamburg, Germany. They are to be placed in a park there.

One of the best coits in the county is owned by S. H. James. This coit was shown at the Woodward County Fair and was awarded first premium. It was sired by a Beaver county Percheron owned by Howe Bros., near Custer. The coit is a great grandson of Old Brilliant, who was sold to a former governor of Colorado for \$5,000. Such horses as the one owned by Howe Bros. add much to the strain and value of native bred stock.

The water buffalo, or Caribon cow, has supplied what milk has been used in the Philippine islands. Recently an Australian brought fifty cows from his own country to Manila and started a dairy. He has demand for more milk than he can supply at fifty cents, Mexican money, a quart. It is stated that the first reserve United States hospital pay him a milk bill of \$2000 a month.

A cow that had made a record of 977 pounds of milk and 38.98 pounds of butter in one month was taken in hand by an experiment station and fed according to scientific methods, and the next month she gave 1246 pounds of milk and 51.63 pounds of butter, a difference, without any additional cost for feed, of 269 pounds of milk and 12.65 pounds of butter.

Subscribe for the INSPECTOR.



Lot 4, Sothams Sale 1898 Earnest, Vol. 18, at 7 Months.

ONE OF MANY HUNDRED BULLS ON XIT RANCH.

Distillery Feeders Wanted.

M. B. Irwin, the bustling traffic manager of the St. Joseph stock yards, in a recent interview, says: "The unprecedented demand for stock cattle in South St. Joseph during the past month was increased by Nelson Morris & Co. putting in an order here for an almost unlimited number of feeders to be fed at the great distilleries in which the company is interested. The demand is for cattle weighing around 1,000 and 1,100 pounds, and furthermore, the order calls for feeding bulls and stags almost without number. M. B. Wenden, the buyer for Nelson Morris & Co., says they will compete in the open market with other buyers, thus insuring shippers as much for their offerings as they could hope to get at any other point."

RANCH FOR SALE: If you want a ranch, large or small, with or without stock, in the Panhandle of Texas, the best stock country on earth, or cheap land near the new road from Amarillo, Texas, to Roswell, N. M., write for particulars. JOHN H. WILLIS, 12-14 Amarillo, Tex.

FOR SALE—The best small ranch in Woodward county, one mile from Gage, 320 acres of deeded land, lease of school section, and six sections of range fenced, plenty of water and timber. Price \$4500. See Woodward Com. Co. J. M. DELISLE, Mgr. 27

Subscribe for the INSPECTOR.

It costs 20 cents a pound to put beef or mutton on the market at Dawson, the Alaska shipping point.

Kansas City Show Case Works.

Manufacturers of—
Show Cases and Commercial Furniture.
Office and Factory: 622-630 E. 34 corner Holmes
Phone 237. KANSAS CITY, MO.

Send for Free Illustrated Catalogue. (Please mention this paper)

E. J. HEALY & CO.,
LIVE STOCK COMMISSION MERCHANTS,
Union Stock Yards, Wichita, Kan.

Special inducement to feeders.
Markets furnished on application.
Phone 305.

When making up your list of periodicals for winter reading don't overlook the LIVE STOCK INSPECTOR.

KANSAS CITY LIVE STOCK MARKETS.

Monthly summary of receipts and prices of live stock at the Kansas City Stock Yards, compiled by the Kansas City Packer, and reproduced for the benefit of readers of THE LIVE STOCK INSPECTOR.

CATTLE

Day	Receipts	Shipments	Stocks	Price	Price	Price	Price
Saturday, Sept. 1	4,221	4,254	4,254	2.25-3.10	2.25-3.10	2.25-3.10	2.25-3.10
Monday, " 3	4,170	4,254	4,254	2.25-3.10	2.25-3.10	2.25-3.10	2.25-3.10
Tuesday, " 4	4,170	4,254	4,254	2.25-3.10	2.25-3.10	2.25-3.10	2.25-3.10
Wednesday, " 5	4,170	4,254	4,254	2.25-3.10	2.25-3.10	2.25-3.10	2.25-3.10
Thursday, " 6	4,170	4,254	4,254	2.25-3.10	2.25-3.10	2.25-3.10	2.25-3.10
Friday, " 7	4,170	4,254	4,254	2.25-3.10	2.25-3.10	2.25-3.10	2.25-3.10
Saturday, " 8	4,170	4,254	4,254	2.25-3.10	2.25-3.10	2.25-3.10	2.25-3.10
Monday, " 9	4,170	4,254	4,254	2.25-3.10	2.25-3.10	2.25-3.10	2.25-3.10
Tuesday, " 10	4,170	4,254	4,254	2.25-3.10	2.25-3.10	2.25-3.10	2.25-3.10
Wednesday, " 11	4,170	4,254	4,254	2.25-3.10	2.25-3.10	2.25-3.10	2.25-3.10
Thursday, " 12	4,170	4,254	4,254	2.25-3.10	2.25-3.10	2.25-3.10	2.25-3.10
Friday, " 13	4,170	4,254	4,254	2.25-3.10	2.25-3.10	2.25-3.10	2.25-3.10
Saturday, " 14	4,170	4,254	4,254	2.25-3.10	2.25-3.10	2.25-3.10	2.25-3.10
Monday, " 15	4,170	4,254	4,254	2.25-3.10	2.25-3.10	2.25-3.10	2.25-3.10
Tuesday, " 16	4,170	4,254	4,254	2.25-3.10	2.25-3.10	2.25-3.10	2.25-3.10
Wednesday, " 17	4,170	4,254	4,254	2.25-3.10	2.25-3.10	2.25-3.10	2.25-3.10
Thursday, " 18	4,170	4,254	4,254	2.25-3.10	2.25-3.10	2.25-3.10	2.25-3.10
Friday, " 19	4,170	4,254	4,254	2.25-3.10	2.25-3.10	2.25-3.10	2.25-3.10
Saturday, " 20	4,170	4,254	4,254	2.25-3.10	2.25-3.10	2.25-3.10	2.25-3.10
Monday, " 21	4,170	4,254	4,254	2.25-3.10	2.25-3.10	2.25-3.10	2.25-3.10
Tuesday, " 22	4,170	4,254	4,254	2.25-3.10	2.25-3.10	2.25-3.10	2.25-3.10
Wednesday, " 23	4,170	4,254	4,254	2.25-3.10	2.25-3.10	2.25-3.10	2.25-3.10
Thursday, " 24	4,170	4,254	4,254	2.25-3.10	2.25-3.10	2.25-3.10	2.25-3.10
Friday, " 25	4,170	4,254	4,254	2.25-3.10	2.25-3.10	2.25-3.10	2.25-3.10
Saturday, " 26	4,170	4,254	4,254	2.25-3.10	2.25-3.10	2.25-3.10	2.25-3.10
Monday, " 27	4,170	4,254	4,254	2.25-3.10	2.25-3.10	2.25-3.10	2.25-3.10
Tuesday, " 28	4,170	4,254	4,254	2.25-3.10	2.25-3.10	2.25-3.10	2.25-3.10
Wednesday, " 29	4,170	4,254	4,254	2.25-3.10	2.25-3.10	2.25-3.10	2.25-3.10
Thursday, " 30	4,170	4,254	4,254	2.25-3.10	2.25-3.10	2.25-3.10	2.25-3.10
Friday, " 1	4,170	4,254	4,254	2.25-3.10	2.25-3.10	2.25-3.10	2.25-3.10

'FRISCO LINE.

THE FRISCO WANTS THE BUSINESS

The St. Louis and San Francisco Railroad Co.

The great live stock route, reaching the three great live stock markets of the world, Chicago, St. Louis and Kansas City. The attention of shippers is particularly called to the fact that we now have the shortest line from points in Texas to Kansas City and St. Louis. We are also giving special attention to live stock shipments from the Panhandle of Texas to St. Louis, taking same from the A. T. & S. F. R'y at Cheryvale, Kansas. Stock loaded at Woodward and points in that vicinity in the evening reach St. Louis the second morning. Information gladly furnished on application to—
ZACH MULLHALL,
G. L. S. Agent,
National Stock Yards, Ill.
or J. P. MOORE,
L. S. Agent, Ft. Worth, Texas.

HOGS.

The market below is a representative basis of good hogs for packers' use.

Day	Receipts	Top Price	Bulk of Sales
Saturday, Sept. 1	3,972	4.60	4.25-4.45
Monday, " 3	4,116	4.45	4.25-4.30
Tuesday, " 4	2,156	4.45	4.25-4.35
Wednesday, " 5	2,759	4.50	4.30-4.40
Thursday, " 6	4,624	4.50	4.35-4.40
Friday, " 7	5,264	4.50	4.35-4.42
Saturday, " 8	2,911	4.50	4.35-4.40
Monday, " 9	2,483	4.45	4.35-4.40
Tuesday, " 10	10,273	4.40	4.30-4.35
Wednesday, " 11	10,294	4.40	4.30-4.35
Thursday, " 12	6,442	4.42	4.32-4.37
Friday, " 13	5,154	4.45	4.35-4.40
Saturday, " 14	2,642	4.45	4.35-4.40
Monday, " 15	3,137	4.42	4.35-4.40
Tuesday, " 16	9,694	4.47	4.35-4.45
Wednesday, " 17	10,053	4.30	4.30-4.40
Thursday, " 18	8,076	4.52	4.30-4.40
Friday, " 19	7,870	4.60	4.35-4.45
Saturday, Aug. 31	2,190	4.75	4.45-4.50
Monday, " 1	3,052	4.70	4.45-4.60
Tuesday, " 2	8,258	4.70	4.50-4.60
Wednesday, " 3	8,033	4.75	4.50-4.60
Thursday, " 4	5,114	4.72	4.55-4.65
Friday, " 5	6,926	4.75	4.55-4.60
Saturday, " 6	2,916	4.70	4.50-4.55
Monday, " 7	4,482	4.72	4.60-4.75
Tuesday, " 8	11,273	4.75	4.45-4.70
Wednesday, " 9	8,688	4.72	4.45-4.80
Thursday, " 10	5,482	4.65	4.30-4.45
Friday, " 11	5,069	4.55	4.30-4.50

RANGE NOTES

From Hale County, Texas.

PLAINVIEW, TEX., Sept. 20, 1899.
 Publisher Live Stock Inspector:

Horse buyers are plentiful now in this region and many of our horse owners are selling out their bunches. In most cases, however, the prices paid are small.

During the past ten days very fair rains have fallen in many parts of the Panhandle and our stockmen are wearing large smiles as a consequence. Cattle are in very fair condition for the winter.

Hardware dealers at Panhandle trading points say that the number of windmills and watering outfits sold this year is much larger than usual. This shows that our stockmen realize fully the need of having plenty of stock water.

The millet crop this year is excellent, especially in the Plains counties. Almost every farm has three, four or more large stacks in the feed lot. Millet is considered the very best forage here, so farmers are contented in this line.

Calf buyers are busy now. In some of the breaks counties they are selling as low as \$10 per head, but on the Plains the prices range from \$12.50 to \$15, and many are not willing to sell at these prices.

The Espuela Cattle Co. suffered considerably from prairie fires about Sept. 10, but as the territory burned off was not in an important part of the pasture the loss was not very heavy.

Plowing fire guards is a popular employment now. Last year the Plains country was swept by fires and much damage done, so this year people are taking warning.

The NUN ranch was recently sold—cattle, land and improvements. The exact price paid is not known, but the expense of delivering the stuff will amount to over \$5,000. This ranch is a large and prosperous one, lying in Terry county.

Ranchers are now rounding up their stuff and preparing for fall deliveries. Your correspondent has talked with several ranch bosses and they say that all their cattle are in better condition than usual.

Quite a number of our small ranches are now killing wolves with poison. Last year wolves destroyed a great many calves and people dread their ravages this winter.

People are "kicking high" about the price of wire now. Many need to have fencing done but at present prices it will cost too much to make the investment a paying one, and many are kept from going into the cattle business. Heavy railroad freights and still larger charges for hauling added to the high price of the wire at the markets make the figures too stiff for any but a wealthy man to touch.

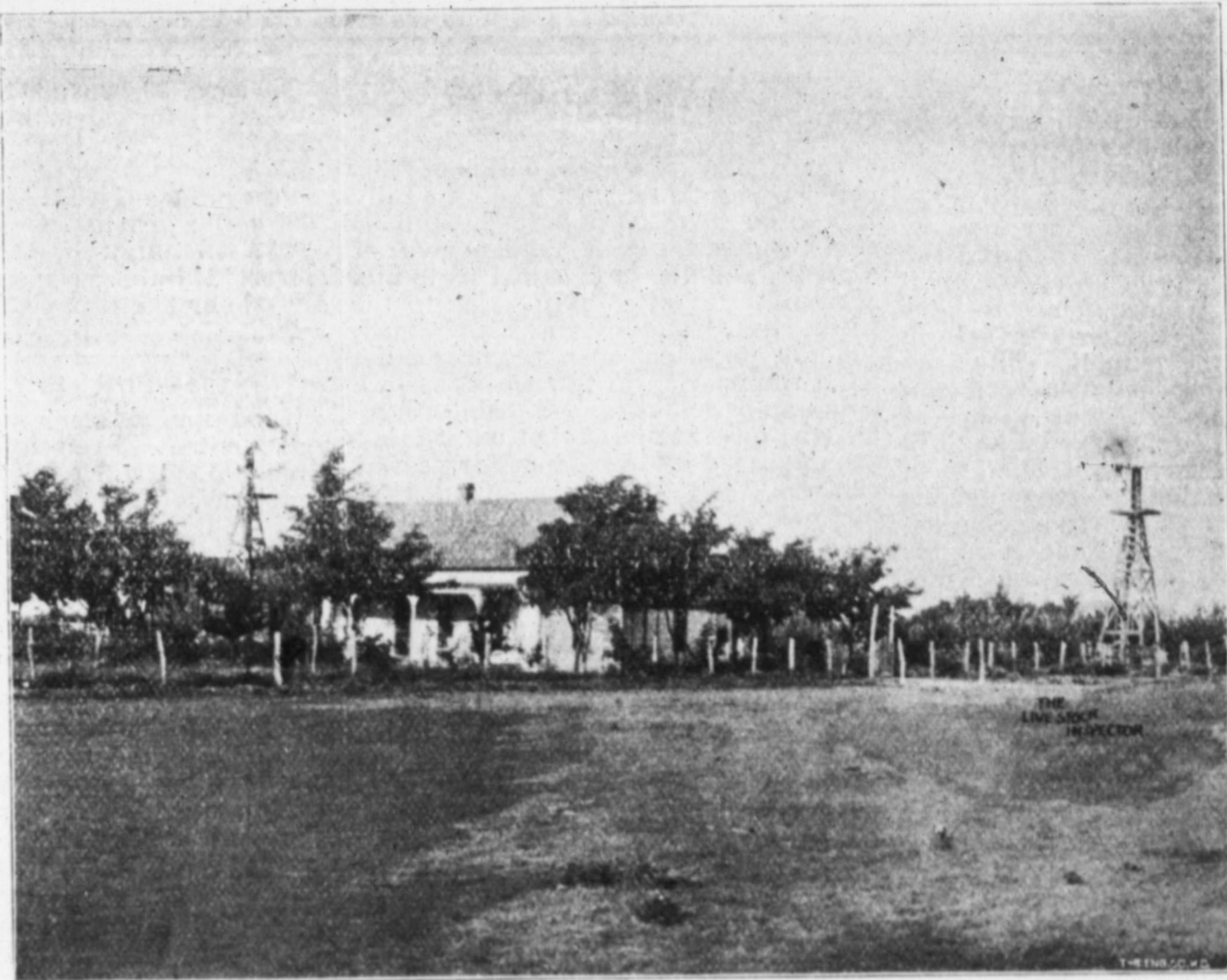
For the benefit of those who wish to know the price of stock feed here, I give the following figures:

Sorghum cane, \$3.50 per ton; millet, \$4.50 per ton; Milo maize heads, 60c per 100 lbs.; shelled corn, 60c per bu. Other prices in proportion.

The air is full of railroad news now, but no extension through the Central Plains country has yet been made. A railroad is badly needed here now, however, and we hope soon to see one come.

There has been an unusual amount of sickness among the people of the Panhandle this summer. Doctors generally pronounce it due to the very wet weather during the early summer months. Many deaths have occurred.

Since I have been at this place (Plainview) I have met several parties who were representing Eastern firms who wished to open ranches in northwest Texas. As a rule they like the country but are unable to find enough suitable territory in one body, as the country is settled all over to a considerable extent. There are not many openings now except for small ranches of from five to twenty-five square miles.



RESIDENCE OF DR. J. H. WAYLAND, PLAINVIEW, TEXAS.

The lack of water caused heavy losses in this country last winter. One man alone lost about 800 head of cattle, a large part of which was caused by insufficient water supply. This year the loss will be much less.

If our courts continue their present good work cattle stealing will soon be put to an end. Nearly every court held recently has sent up one or two men, either on old cases or on bills of indictment found recently. If this is kept up the moral condition of our country will soon be greatly improved, while the financial situation, also, will be much benefited.

Cattlemen here are unable to agree as to which is best, early or winter castration. Many claim that calves, should be castrated by the time they are ten days old, while others think it should be put off until cool weather begins. Early castration is safer, however, as the danger of loss is almost nothing, and is becoming general as the difference in price of the fall calves is considerable.

Quite a number of land contests are now being tried in our courts, between ranchers and settlers who have located in their pastures. So far the settlers seem to have the best of it.

Since Sept. 18 I have met several cowmen from New Mexico. They say the country is very dry and that unless they have rain right away cattle will winter badly. The range is only fair and water is very scarce.

Several of our western counties are preparing to send exhibits to the Dallas Fair. This should really be done by all of them, as there is no better way to advertise the capabilities of a county than through our State Fairs. Many settlers came here this year because they were attracted by exhibits made at the Exposition last year.

Cattlemen are now keeping a sharp lookout for disease among their stock. The hot weather in August and the first weeks of September has made cattle sluggish and some care will be needed to prevent loss.

H. B. MURRAY.

"If men are the salt of the earth, women are undoubtedly the sugar. Salt is necessary—sugar a luxury. Vicious men are saltpeter, stern men are rock salt, nice men are table salt. Old maids are brown sugar, good natured matrons the loaf sugar and pretty girls the fine pulverized sugar. Pass the pulverized sugar, please," says an exchange. But after all, the fact is conceded by everyone that brown sugar makes the best molasses. We'll take the brown sugar, please.

St. Joseph Stock Yards Company,
ST. JOSEPH, MO.

We are in the Market Every Day for Cattle, Hogs and Sheep.

We are especially bidding for range cattle and sheep, both for slaughter and feeding. Located on fourteen railroads, and in the center of the best corn and live stock district of the United States, we are prepared to furnish a good market for all kinds of live stock. Our charges for yardage and feed are—

YARDAGE:	
Cattle, per head	20c
Hogs, per head	6c
Horses, per head	20c
Sheep, per head	5c

FEED:	
Corn, per bushel,	60c
Hay, per hundred lbs	60c

Our packers furnish a daily market for all kinds of cattle ranging from canners to export cattle. Look up your railroad connections, and you will find them in our favor.

G. F. SWIFT, President, JNO. DONOVAN, Jr.,
 Vice Pres. and Gen. Mgr.
 M. B. IRWIN, Traffic Manager.

Campbell, Hunt & Adams,

Live Stock

Commission

Salesmen.

S. St. Joseph, Mo.

Kansas City, Mo.

National
 Stock Yards,
 Illinois.



\$3000 OUR PIASA BIRD SULKY

0-4 Reliable Gang #35.
 Disc Harrow #10.

16-in. Walking Plow \$9.50.



The only plow factory in the United States getting direct to the consumer.

We challenge any plow for good work, light draft, easy handling, we have thousands of testimonials from farmers.

Sent on trial, satisfaction guaranteed. Send for big free catalog and prices on buggies, harness, sewing machines & 1000 other things, delivered. Address, **Magwood Plow Co., Box 361, Alton, Ill.**

FLEMING'S

LUMP JAW CURE



Trade Mark.

LUMP JAW

Easily and thoroughly cured. New, common-sense method, not expensive. No cure, no pay. FREE. A practical, illustrated treatise on the absolute cure of Lump Jaw, free to readers of this paper. **Fleming Bros., chemists, Union Stock Yards, Chicago, Ill.**

Subscribe for the INSPECTOR.

Wichita Street Fair.

The following letter received by the publisher is intended as "personal" to all readers of this paper:

DEAR SIR: You are especially invited to visit our city during the week of October 16 to 21 inclusive, during the time of our big Street Fair, Carnival and Midway. We are going to have one of the biggest times ever held in this section of the country. The merchants and citizens have subscribed a fund of \$10,000 and in consequence of same we announce that "Wichita pays the bills." We have contracted for a big Midway, including Hagenback's animal show and will have balloon ascensions every day and some at night, besides many out-door attractions free. On Wednesday October 18, a big civic parade composed of 100 mounted horse men and city and county officials in carriages, a company of infantry and artillery of the K. N. G., also a company of infantry of the American-Spanish Volunteers, all Fraternal and Labor organizations will take part, also the Fire Department and a division of Sedgwick county farmer boys and girls on horseback, intermingled at different divisions of the parade will be over 50 beautifully decorated Merchants' Floats, five bands of music and a big Bicycle Procession, this day is known as "Oklahoma Day." On Thursday, the day of our big State Band Tournament, Governor Stanley and Governor Barnes with the state and federal officers are expected to be present, this day is known as Kansas Day. On Friday Oct. 20 is the day of our big Flower Parade, over 25 decorated carriages are already entered, 100 horsemen dressed in white duck, high silk hats and patent leather shoes will act as escorts, on Friday night we shall have a Mask Carnival and a general good time. Fireworks were purchased by the carnival committee for this occasion.

Arrangements are now being made for the blindfolding of the police, the jails are being handsomely decorated and the keys of the city have already been sent away. We invite you to come to Wichita on the evening of October 15 and stay the rest of your natural life. Our street fair will be the biggest, best and happiest time the "Peerless Princess" has ever offered, we will help you to find something to eat and a place to sleep, we will show you around and lose you in the mazes of the Midway attractions. You can have a good time and you can bet it will be a big one, the only orders that will be carried out by the police so far as we know, is that every person shall be subject to arrest who does not help to make the week one that will live long in the memory of those who visit our city that week.

Hoping to see you and shake you by the hand during the Fair I remain,
Yours very respectfully,
H. C. LOCKWOOD, Secy.

\$100 Reward \$100

The readers of this paper will be pleased to learn that there is at last one dreaded disease that science has been able to cure in all its stages, and that is Catarrh. Hall's Catarrh Cure is the only positive cure known to the medical fraternity. Catarrh being a constitutional disease requires a constitutional treatment. Hall's Catarrh Cure is taken internally, acting directly on the blood and mucous surfaces of the system, thereby destroying the foundation of the disease and giving the patient strength by building up the constitution and assisting nature in doing its work. The proprietors have so much faith in its curative powers that they offer One Hundred Dollars for any case that it fails to cure. Send for list of testimonials.
Address F. J. CHEENEY & CO., Toledo, O.
Sold by Druggists, 75c.
Hall's Family Pills are the best.

Sunflower State Kennels.

We have for sale a number of St. Bernard puppies, sired by three of the most famous dogs in America, viz: our big dog, Sunflower of Kansas, whose pups have been shipped to nearly every state in the Union, by Apels Rovena, of South Omaha, whose owner claims him to be the largest dog in the United States today, and by W. C. Freymuth's Aristocrat, Jr., the most famous and without doubt the best dog in the East. Pups are good ones. For price list, pedigree and any information address, Sunflower State Kennels, Woodston, Kan.

It's Up To You, Defibaugh!

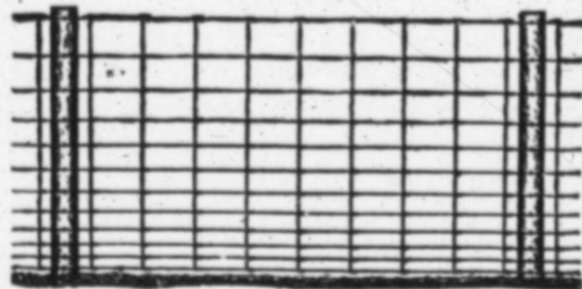
Hardesty Herald:

Years ago when the editor of this paper was a kid and worked for Billy Bolton he gave us lots of invaluable advice concerning the management of a paper, and one day called us to him and said: "Young man, stick to the truth, but," and after a pause added, "if the occasion ever requires a lie, tell a whopper." A few weeks ago we wrote an article of questionable veracity (the only article of that nature that has appeared in our paper for years,) and the "old-man" reprimanded us for making it so mild. He adds that in addition to sports of Greensburg dropping dollars into the big water works well, that in those days citizens of the town had to carry stove poker with hooks on them to rake off the five and ten-dollar bills that blew up and down main street thereby impeding progress. Gentle reader, if you desire the truth stretched mildly we'll do our best for you, but if you want the job artistically done, with all the embellishments of which an expert is capable, we refer you to our friend Bolton, or to Defibaugh of the Canadian Record.

American Field and Hog Fence.

The sales of American Field and Hog Fencing thus far in 1899 might be considered marvelous were it not for the intrinsic merits of the fence which are becoming more thoroughly demonstrated every season.

"The fence that fences" is what the manufacturers call them, and investigation of the records made by these fences where they have been properly put up on farms, pastures, fields, orchards, etc., shows ample proof of their efficiency and durability. Animals cannot break these fences; action of heat and cold has no effect upon them and they successfully resist efforts of all kinds to destroy them. One enthusiastic farmer in sending in a duplicate order not long ago related how his team, drawing a heavy farm wagon, ran away and finally landed pell mell in a section of the American fencing. The wagon tongue was broken, the entire wagon badly damaged and the horses stunned by the shock, but the fence was not even bent when the wreck was removed.



Every rod of the American fence is guaranteed by the manufacturers, the guarantee being based upon intimate and absolute knowledge of just what enters into its construction. The wires are specially made for this purpose of best spring steel and are very heavily galvanized. There is thus a wide difference between the quality of American fences and fences made of ordinary wire, while at the same time the American fences cost no more than cheaper imitations or attempted substitutes.

The American fences are sold by agents in nearly all towns throughout the United States and Canada, but should no agency have yet been placed in your town the reader of this who desires further information can secure it by addressing the manufacturers, American Steel and Wire Co., Chicago, or New York.

Young's Patent Dehorning and Branding Chute.

Look there! See how YOUNG'S NEW PERFECT HEAD HOLDER on his chute holds the head while being dehorned or branded.
I also handle four different makes of dehorning clippers. Write for circulars. It is something you should have.
W. S. YOUNG,
Lock Box 1122, (1912) McPherson, Kans.

Lock Box 1122, (1912) McPherson, Kans.

200 ones, 40 twos, 30 threes, good native steers for sale. R. H. NERTON, Hereford, Texas.

FOR SALE.—1400 high grade calves, 500 heifer yearlings, 100 two's, 1800 cows, 75 high-grade Durham and Hereford bulls. 50,000-acre pasture for sale or lease. C. T. WORD, Tulia, Texas.

300—FOR SALE—300.

Good native steer yearlings, from native cows—all raised in west part of Greer Co. I will take \$20 00 for this bunch of cattle delivered at Woodward or Gage by Sept. 1st.

OSCAR SMITH,
DUKE, O. T.

Are You Going East?

If so we would like to call your attention to the fact that the Frisco Line is now operating through Newton and St. Louis. Free reclining chair cars and drawing room sleepers through without change. Ask your local agent for ticket via that route. Bryan Snyder, G. P. A., St. Louis, Mo.

WANTED—1000 head of calves. We have customers wanting calves delivered any place in western Oklahoma. What have you to offer? tf

J. C. Casey. D. A. Garst.

Casey & Garst,

WHOLESALE,
WICHITA, KAN.

Sell Grocers' Sundries, Cigars, Tobacco, Candies and everything in our line. We can fit up country stores complete at low prices and low freight.

Goods well bought sell themselves at a profit. Write us for special prices and mention this paper.

CASEY & GARST,
Wichita, Kan.

Wholesale Merchants.

Paugh & Co.

Successors to McCoy & Underwood and Eldridge & Campbell.

Live Stock Commission Merchants,
UNION STOCK YARDS, WICHITA, KAN.

Correspondence solicited. Markets by Eagle and Drovers' News sent free. Make your consignments to us. Special inducements to feeders.

For Sale! VERY CHEAP.

2,000 TENTS!
Used a few days at G. A. R. Reunions, etc., every size and shape from a 10x12 wall tent to a 125x175 circus tent, including family compartment tents, refreshment tents, stable tents and preaching tents; also 800 canvas cots and 300 gasoline lamps; guaranteed in first class condition; 1,500 new bed blankets, 1,000 horse blankets; 2,000 ladies' and gents' mackintoshes, clearing sale. Write for prices.

C. J. BAKER,
104 W 3d st. Tel. 774 Kansas City, Mo.

Rates \$1 per day.

Everything New!
Bath Room,
Steam Heat,
Gas Light.

New Stock Hotel,

Headquarters for STOCKMEN.
J. E. LaHines, Proprietor.
One half block from cable line to all parts of the city.
1611 Genesee St.
KANSAS CITY, MO.



MISSOURI PACIFIC RAILWAY

THE GREAT SOUTHWEST SYSTEM.

Connecting the Great Commercial Centers and Rich Farms of

MISSOURI,
The Broad Corn and Wheat Fields and Thriving Cities of

KANSAS,
The Fertile River Valleys, Trade Centers and Rolling Prairies of

NEBRASKA,
The Grand, Picturesque and Enchanting Scenery and the Famous Mining Districts of

COLORADO,
The Agricultural, Fruit, Mineral and Timber Lands, and Famous Hot Springs of

ARKANSAS,
The Sugar Plantations and Immense Rice Fields of

LOUISIANA,
The Cotton and Grain Fields, the Cattle Ranges and Winter Resorts of

TEXAS,
Historical and Scenic

OLD AND NEW MEXICO,
And forms with its Connections the Popular Winter Route to

CALIFORNIA.

For descriptive and illustrated pamphlets of any of the above states, or Hot Springs, Ark., San Antonio, Tex., and Mexico, address Company's Agents, or

G. G. WARNER, W. E. DODDRIDGE,
Vice-President, General Manager,
E. C. TOWNSEND,
General Passenger and Ticket Agent,
ST. LOUIS, MO.

Stark Bros. Pay Cash

every week if you sell STARK TREES. Outfit Free. Stark Nursery, Louisiana, Mo. 8-16

FOR SALE. 1100 2 and 3-year-old steers, wintered in Woodward-county; good colors; a fine string of cattle. In bunches to suit. On time to responsible parties. Prices, \$26 and \$30 per head. See Woodward Commission Co., J. M. DeLisle, Mgr. 7-1f

ATTENTION!

Don't Trust Your Photos to gents. Deal direct with the Artists.

We will make to anyone sending us a photo a Life Size Oilette, Crayon or Pastel Portrait Free of charge to introduce our superior work. Exact likeness, highly artistic finish, and prompt return of small photo guaranteed. Send us your photo at once.

ARTISTS' UNION 293 Main st. Dallas, Tex.

VIRGINIA HOMES

You learn all about Virginia lands, soil, water, climate, resources, products, Fruit, mode of cultivation, price, etc., by reading the VIRGINIA FARMER. Send 10c for three months subscription to FARMER CO., Emporia, Va. (Please mention this paper.)

Don't Burn! For Chemical Fire Engines, Combination Hook and Ladder Trucks, all sorts of large and small apparatus, towns, cities or dwellings needing protection should write

R. A. McFARLAND,
Ashland, Kansas.

P. & B. Ruberoid Roofing.

Universally used and recommended by architects for general use because of its **Toughness, Strength, Flexibility and Durability** under all exposures of heat, cold, acid, alkali, coal smoke, rain, etc.; also the celebrated **P. & B. Sheathing Papers and P. & B. Paint**, both superior in their line to other kinds,—now sold by us as Southwestern Agents, at lowest market rates. Send for circular and prices on anything in the roofing line. **The Kansas City Roofing Co., KANSAS CITY, MO.**

John J. Gerlach. George Gerlach
GERLACH BROS.
MERCANTILE CO.

Dealers in General Merchandise and the largest outfitters in the Panhandle of Texas. Implements in carload lots. Gents' Furnishing Goods. Largest stock carried in the Panhandle of Texas. **Canadian, Tex.**

Dates Claimed for Public Sales.

Nov. 16, '99 W. P. Harned, Vermont, Mo.,
Shorthorns.
Dec. 6 & 7, '99 Armour-Funkhouser-Sparks
Herefords, Kansas City, Mo.

INSPECTOR CLUBBING LIST.

Send to the Live Stock Inspector to
Save Money on Periodicals.

Look over our clubbing list below and send in your clubbing list to us. If you want more than one periodical with the LIVE STOCK INSPECTOR, subtract fifty cents from all but one and add together, or write us for a special rate if you wish to subscribe for several publications.

Address all orders to the LIVE STOCK INSPECTOR
Woodward, Oklahoma.

American Gardening, New York	\$1.75
Arkansas Traveler, Chicago monthly	1.00
Atlantic Monthly, Boston m	4.00
Babyhood, New York m	1.60
Breeder's Gazette, Chicago w	1.80
Century Magazine, New York m	4.30
Cincinnati Enquirer, Cincinnati m	1.30
Cosmopolitan, New York m	1.40
Dallas News, Dallas daily	5.65
Dallas News, Dallas Sunday	2.85
Demorest's Magazine, New York m	1.60
Denver Daily Post, Denver Renewal	5.00
Denver Daily Post, Denver New	4.65
Fireside Companion (and 30 books) N.Y. w	3.05
Forum, New York m	3.35
Frank Leslie's Popular Monthly w	1.65
Guthrie State Capital w	1.15
Harper's Weekly, New York w	3.85
Hoard's Dairyman, Ft. Atkinson, Wis. w	1.60
Horseman, Chicago w	2.85
Independent, New York w	2.65
Judge, New York w	4.80
Kansas City Packer w	1.75
Ladies' World, New York m	1.45
Life, New York m	5.35
Metlure's Magazine, New York m	1.60
N.W. Time, Chicago m	1.55
New York Weekly, New York w	3.05
Outing, New York m	3.15
Puck, New York w	4.85
R. M.'s Horn, Chicago w	2.75
Republic, St. Louis s-w	1.85
Review of Reviews, New York m	2.60
Rocky Mountain News, Denver w	1.30
Scientific American, New York w	3.05
Swine Breeders' Journal, Indianapolis, Ind. s-m	1.16
Times, Kansas City w	1.35

The Choctaw Route

Train leaves Weatherford daily at 11:50 a. m. Connects at South McAlester with M. K. & T. R. R.

For KANSAS CITY,
ST. LOUIS,
ALL EASTERN POINTS,
ALSO TEXAS.

FAST STOCK TRAIN leaves Weatherford 1:00 a. m. every Tuesday, arrives at Kansas City early Thursday morning.

J. F. HOLDEN, Traffic Mgr.
SQ. M'ALESTER, I. T.

E. R. CLAUNCH.



P. O. address, Woodward, Ok.
Range: 12 miles north of Woodward on Bent canon.

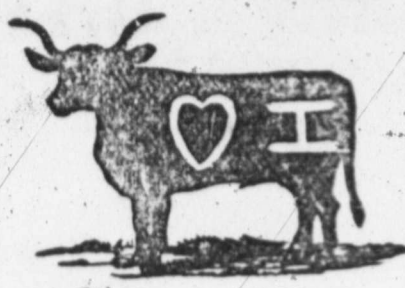
Ear mark: Swallow fork the right and underdlope the left.

- (On left side and hip. 77 on neck.)
- (On left side. 77 on neck.)
- (On side and hip and 77 on neck.)
- (On right side.)
- (On left side. 77 on neck.)
- (On left side. 77 on neck.)



Range, same as above.

S. B. JONES.



P. O. Address, Higgins Texas.
Range, in Texas and Oklahoma, near Higgins.

- Other are:
- On either side; also
 - On left shoulder and
 - On left side and
 - On left hip.



Range, same as above.



Brand of horses same on horses as above
Range, same as above

Feeders for Sale.
XIT RANCH IN PANHANDLE.

J. V. & C. B. FARWELL.
Ten thousand High Grade two-year-old Steers of the Hereford and Shorthorn breeding. 15,000 High Grade yearlings of the Aberdeen Angus, Hereford and Shorthorn breeding.
Will contract to deliver Steer Calves at weaning time next fall. Apply to
A. G. BOYCE,
Channing, Hartley Co., Tex.,
or
GEORGE FINLAY,
148 Market St., Chicago, Ill.

CHAS. HEWINS.
P. O. Address, Woodward, Okla.
Range: On North Canadian river, ten miles north of Woodward.



- OTHER BRANDS.
- On left shoulder.
 - On left shoulder.
- Horse brands same as cattle.

WHITE & SWEARINGEN.
P. O. Address: Woodward, Okla.
Range: On Sand creek, 5 miles north of Fort Supply.



- OTHER BRANDS.
- On right side, seven underbit each ear.
 - On both sides.
- HORSE BRANDS.
- On right shoulder.

J. A. STINE & SON.



P. O.—Alva, Okla.
Range—Woods Co.

Frying-Pan on right side.
Horses same as cattle.

- on left thigh.
- right hip.

M. A. NATIONS.
P. O.: Kansas City, Mo.
Range: 15 miles N. W. of Woodward on Beaver creek.



Horses branded plain N on left hip.

M. C. CAMPBELL.
Owner and Manager, Wichita, Kansas.
JOE STEINBACH, foreman, Ashland, Kansas.
Range on Cimarron, headquarters mouth of Snake creek, Clark county, Kansas.



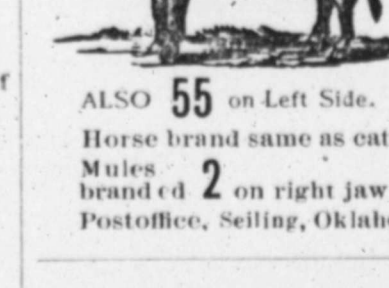
Other brands, on left shoulder of horses. Range same as cattle.

A. L. MCPHERSON & SONS.
P. O. Address, Woodward, Okla.
Range, Canadian river northward, including Cottonwood Springs.



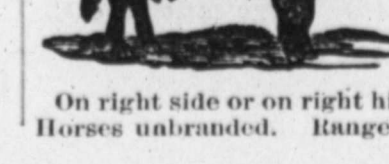
On left side or shoulder.
Horses branded same as cattle. Range same as above.

R. C. EDMISSON.
Range on North Canadian, 15 miles south east of Curtis.
Horse range same.



ALSO 55 on Left Side.
Horse brand same as cattle.
Mules branded 2 on right jaw.
Postoffice, Seiling, Oklahoma.

J. F. FULLER.
P. O. Woodward, Range, eight miles east of Woodward on the North Canadian.



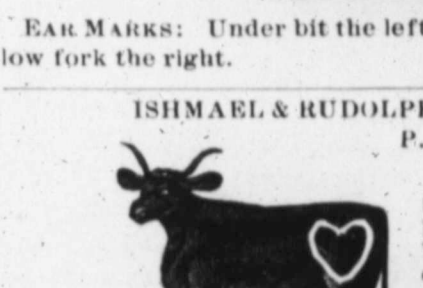
On right side or on right hip.
Horses unbranded. Range same as cattle.

O'BRYAN & HEWINS.



P. O. Address: Woodward, Okla.
Location of Range: Woodward county.

ROURKE & NELLIGAN.
P. O. Waynoka, Oklahoma. Range fifteen miles west of Waynoka, on White Horse Creek.



EAR MARKS: Under bit the left, and swallow fork the right.

ISHMAEL & RUDOLPH.
P. O. Kiowa, Kas.
Range on Buffalo, in Woodward county.



EARMARKS: crop and split left.
Horses: branded heart on left shoulder.

F. D. WEBSTER.
P. O. Address, Gage Oklahoma.
Range, on Little Wolf east and south of Gage.



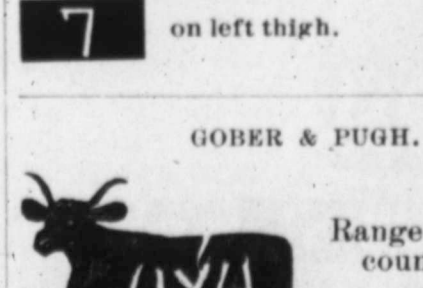
On left jaw of all young stock.

JAMES CUSHNY.
Post Office, Waynoka, Okla.
Range, 12 miles west, on Doe Creek.



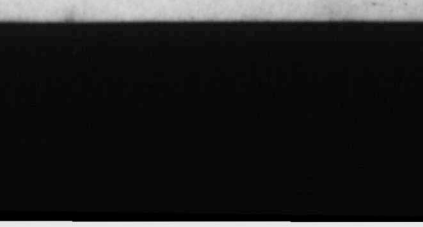
Some cattle are branded anchor on left hip.
Horses, range same as cattle.

J. S. SCOTT.
P. O. address, Gyp, Okla.
Location of Range, West Burnett Creek G county.



Horses are branded Star on either shoulder.
Range, same as cattle.

MILLARD WORD.
P. O. Address, Grand Day County, Oklahoma.
Range, on South Canadian, Red Bluff and Mosquito creeks, in Day county.
Ear mark: Crop the left and swallow-fork the right.



on left thigh.

GOBER & PUGH.
Range Woodward county, O. T.
P. O.—Woodward Oklahoma.



GREAT FOUR DAYS' PUBLIC SALE 200 REGISTERED SHORTHORN CATTLE 200

AT KANSAS CITY STOCK YARDS SALE PAVILION, OCT. 17, 18, 19 & 20, 1899.

H. C. AND JOE DUNCAN, OSBORN, MO., AND GEO. BOTHWELL, NETLETON, MO., OCTOBER 17 AND 18.

Will sell 100 HEAD, consisting of Cruickshank and Cruickshank Topped. Among them, 5 straight Cruickshank bulls and 15 others Cruickshank Topped. Also 15 straight Cruickshank cows and heifers. The balance Cruickshank Topped on the best American and English families by such bulls as **Imp. Grand Elector, Galahad, Grand Victor and Baron Dudding**. All cows of suitable age either bred or with calf at foot. We believe this to be the best offering we ever sold. Send for illustrated catalogue containing sixteen illustrations Duncan and Bothwell cattle to

H. C. DUNCAN, or
GEO. BOTHWELL.

SALE WILL OPEN AT 1 O'CLOCK P. M. EACH DAY.

THOS. W. RAGSDALE & SON, PARIS, MO., OCTOBER 19.

JOHN BURRIS, MIAMI, MO., OCTOBER 20.

The Ragsdales will sell 40 HEAD, 10 bulls and 30 cows and heifers. Among them will be 10 2-year-old heifers by the Cruickshank bull **Crown King 111418**. Other females by such bulls as **Imp. Burgomaster, British Jubilee 96493**. Heifers bred to Victoria Cruickshank bull **Victor II. 129028**. The offering will also include our entire show herd. John Burris will disperse his entire herd, consisting of 60 HEAD, 10 bulls and 50 cows and heifers. Among the offerings will be the pure Dude Bates herd bull **Sangamon, Duke of Airdrie 125174**. Nine straight Rose of Sharons. Also Loudan, Duchess, Van Meter and Hamilton Young Marys. For catalogues above write both

RAGSDALE and BURRIS.

COLS. JUDY, EDMONSON and SPARKS, Auctioneers.

STOCK BRANDS.

One cut, one year, \$10; each additional brand on cut, same owner, \$5 per year; each additional brand requiring engraved block, one year, \$2. These prices include copy of paper one year to any address. Strictly cash in advance.

HUDSON & TANDY.



P. O. Address, Woodward, Oklahoma.

Range, ten miles north and east of Woodward.



Other brands:



On side and short bar near it on thigh.



On left loin.



On left side.



On left hip and short bar on left thigh near it.



On the side and short bar near it on thigh.

HORSE BRANDS:

Bar Z on left shoulder, or N I K on right hip.

Range, same as above.

JACK LOVE.

P. O. address, Woodward, Okla. Range, 20 miles north of Woodward on Buffalo.



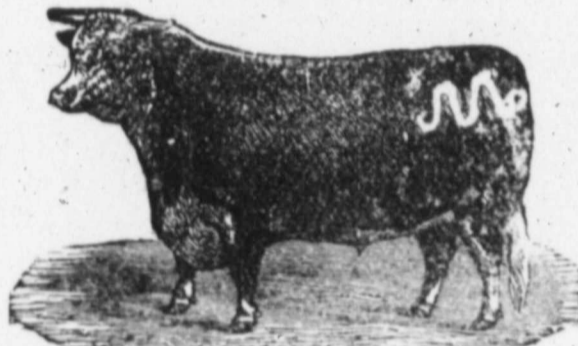
Other cattle are branded **L** on left hip.



Other brands are **L** on left shoulder **HP** on left shoulder.

Range: Same as cattle.

ZACK MULHALL.
Mulhall, Okla.



All Steers and Horses branded on right hip or loin same as above.

Location of Ranch: Joining Mulhall on Beaver and Cedar creeks.

S. C. WANE.



Post-office Address, Richmond, Oklahoma.

Mark, slit in left ear.

Range on Deep Creek.

Horse brand same as above, also same range.

J. P. CAMPBELL.

P. O. Address, Ashland, Kansas. Range, Northeast portion of Clark county.



Some cattle — on left side.

All cattle **C** on left thigh.

Horse brand J C left shoulder.

H. C. GREER.



P. O. address, Woodward, Okla. Range, 5 miles southwest of Woodward on head of Spring creek.

Some are branded same on left hip and back.

ZTV On right hip and side.

Horses are branded horizontal — on left thigh. Range same as cattle.

B. F. MAIN.

P. O. — Cline, Okla.

Range: On Beaver, eight miles east of Cline.



Also, some cattle are branded S I D. Horses unbranded. Range same as cattle.

NATIONAL HEREFORD EXHIBITION UNDER THE AUSPICES OF THE AMERICAN HEREFORD CATTLE BREEDERS ASSOCIATION.

KANSAS CITY, OCT. 23-25, 1899.

300 HEAD,

REPRESENTING ALL THE PROMINENT STRAINS OF THE BREED, WILL COMPETE FOR

\$8,000.00

IN PRIZES.



300 HEAD,

REPRESENTATIVES OF 60 DIFFERENT HERDS FROM ALL PARTS OF THE COUNTRY, WILL BE

SOLD

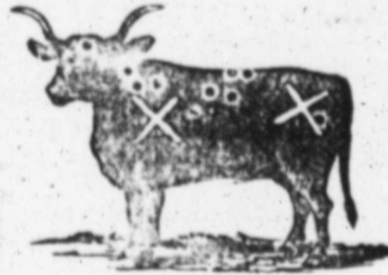
BY AUCTION.

Sale Catalogues, Premium Lists, Entry Blanks, etc., now ready. Address, C. R. THOMAS, Secretary, INDEPENDENCE, MO.

Kansas City Horse Show will be held same week.

T. C. SHOEMAKER.

CHAS. F. LUKENS, Foreman. P. O. Address, 146 Liwood Ave., Kansas City, Mo. Ranch address, Dorsey, New Mexico. Range, head of Beaver, in Beaver Co., Okla.



OTHER BRANDS:



10 on left side.

1B on left hip.



On left hip or shoulder.



On left hip.

HORSE BRANDS:



On left shoulder.

GEO. W. CARR.

P. O. Address, Stone, O. T. Location of range on Turkey Creek, in Day county.



BRAND OF CATTLE.

I On Left Hip.

7 On Left Hip.

All calves are branded same as cattle.

BRAND OF HORSES.

I On left thigh.

Location of range same as cattle.

W. B. GRIMES, JR.



Range in Clark, Meade and Comanche counties.

P. O. Address, Ashland, Kansas.

OTHER BRANDS:



On Right Hip.



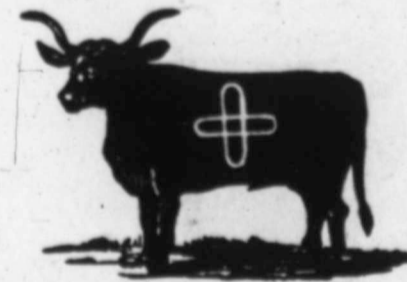
Horse Brand, Left Shoulder.



Horse range same as cattle.

W. M. BYRD.

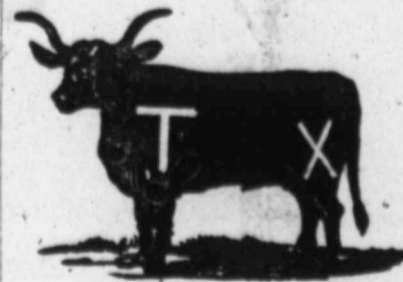
P. O. : Quanah, Tex. Foreman, W. C. Lyon, P. O., Mangum, Okla. Range on North Fork and Haystack, in Greer county.



Calves are branded **** on left side and **—** on left thigh. Ear Marks: Crop the right and over bit the left.

Horses: Range same as cattle.

E. M. HEWINS.



P. O. Address, Woodward, Okla.

Range, on North Canadian river, ten miles north of Woodward.

Other brands are: **X** on left side, and some are branded with a cross on right side.

HORSE BRAND:

Perpendicular bar on right shoulder of saddle horses. Stock horses are branded cross **H** on left shoulder. Range, same as described above.