

The LIVESTOCK



INSPECTOR

DEVOTED EXCLUSIVELY TO LIVE STOCK INTERESTS.

Fourth Year.
Number 20

Woodward, Oklahoma, Mar. 1, 1899.

Subscription { One Dollar per Year
Single Copy 5c.



tion at Kansas City during the past year. It is believed in this connection that if the inspection of brands of our association was done by a competent man in the direct employ of our board, that better results will be obtained. It is proposed that this plan shall be in operation during the coming year.

LEASED LANDS.

The interests of the members of the association have been carefully looked after by the executive committee through the secretary's office in regard to the rentals of leased lands. The matter of payment of school land leases has been adjusted individually with the territorial officers and the rents of the range have been secured to a great extent through the direct operations of the committee on this matter. The investigations made at two different periods by the general government in regard to the fenced lands has been successfully concluded without disturbance of same.

THE WOLF BOUNTY.

In regard to the practice or plan of paying bounty for the scalps of lobo wolves, the special committee has been continued in charge of same. At the last annual convention this matter was referred to a special committee consisting of pasture men who were members of this organization and who pay a direct tax of three cents per head into the treasury, said sum to be known as the wolf bounty fund, and which was to be applied to the payment of bounties on lobo scalps at the rate of \$20 per scalp, provided that the person claiming said bounty shall produce the necessary proof that the wolves from which said scalps were taken were killed on the range of any one of the subscribers to said special fund.

FINANCES.

The amount of money received by the secretary's office to date Feb. 1st is from all sources \$1619.54. The amount expended during the same period \$1483.36. Cash on hand Feb. 1, 1899, \$136.18.

The following estimate is approximately correct:

Total number cattle	70,000
" number members enrolled	276
" " " paid up	149
" " " in arrears	127

Owing to the fact that some of the members who are in arrears have not paid dues for one year past the status of membership cannot be fully determined until new annual rendition is taken in March.

The prospect for the future is more promising than ever in the past and with another year of growth like the past the Oklahoma Live Stock Association will stand second only in Amer-

FIFTH ANNUAL CONVENTION OF THE OKLAHOMA LIVE STOCK ASSOCIATION.

Full Report of the Proceedings---Attendance Larger than Ever Before---Phenomenal Growth of the Association.

WOODWARD, OKLA., Feb. 14, 1899.
Meeting called to order by President A. T. Wilson at 9:30 a. m.
The report of Secretary W. E. Bolton was submitted and approved.

SECRETARY'S REPORT.

To the Oklahoma Live Stock Association, Officers and Members. Gentlemen:—It is my pleasure to submit herewith annual report of the office of Secretary of the Oklahoma Live Stock

Association. The past year has witnessed the most phenomenal growth of the association in membership. A large number have added to the rolls, while very few have withdrawn. One more such year as this one just past will see this Association strong enough in every way to take care of the inspection at the markets for its members, as well as being productive of many other benefits to all who are listed on its rolls. The present year will see us strong enough to maintain an inspector of our own at the principal market, as well as maintain inspection on commissions at all other markets in the country. During the year we have inspected 7,384 cattle belonging to this Association, at the Kansas City markets, out of which number we have claimed seventeen head for this Association. These cattle have either been returned to their owners direct, or in some cases have been returned through the inspectors of the Cattle Raisers Association, who had also been given instructions by

the owners of said cattle to cut same for them. In each case the Oklahoma association has given way to the older and larger association by direction of the executive committee. Where a member belongs to both the associations, and the cattle are saved to him, the benefit derived is doubled, when it is taken into consideration that his cattle are looked at by the inspectors of both organizations and while this is true and it is of benefit to the owner of the cattle, the Oklahoma Association by this method has lost the revenue to which it is justly entitled. This matter is before you for your consideration. The practice of turning over cattle to one association or the other by the inspectors of either, is faulty, and it may be that you can suggest some method by which this business can be handled in a better manner. The inspection has been done by Mr. O. N. Myers, who was employed through the board of the New Mexico Association, to inspect the brands of the Oklahoma Associa-

sea in point of numerical strength and value to its membership.

Respectfully submitted,

W. E. BOLTON, Sec'y.

Upon motion by D. H. B. Crowell a committee on resolutions was appointed, consisting of T. P. Wilson, J. R. Stinson, Ira Eddleman, A. W. Howe and W. W. Farmer.

Moved by Eddleman that the President be instructed to appoint committees on Quarantine and on Legislation to formulate such measures and suggestions as the Association may desire. Carried.

On Quarantine, J. W. Holman, W. T. Judkins and J. M. Pugh were appointed. Committee on Legislation, J. E. Fritzen, Jeff Rawdon, W. W. Carter.

After some rambling discussion of the matter of inspection at the various markets, it was moved by Secretary Bolton that discussion of inspection be made a special order of business for 2 o'clock p. m. Wednesday. Carried.

Adjourned to 1:30 p. m.

AFTERNOON.

Convention met at 1:30 p. m. as per adjournment, and after some discussion of interest to the Association adjourned to 7:30 p. m.

The evening session began with an invocation by Rev. S. G. Porter.

Following is the address of welcome by Judge J. R. Dean, of Woodward:

"MR. PRESIDENT AND GENTLEMEN OF THE CONVENTION:—I greet you most fervently upon the present occasion, in behalf of the citizens of our primitive city and the citizens of the county of Woodward, which in bearing the stamp of nature's God indicates clearly that her rich valleys, her deep-wooded canyons, her level plateaus and her rolling sand hills, is but the natural home of the bovine and his boss.

"I greet you as the representatives from other lands where the cattle industry reigns supreme.

"I greet you as the devotees of agricultural pursuits. It is from your well filled granaries as an auxiliary force that the finishing touches are given to our beef steers and the multitudinous markets of the earth are made to smile with commercial recognition.

"I greet you as scholars and statesmen and hope you will lubricate the machinery of government with acts of doubly refined wisdom and pure patriotic devotion to the interest of the masses rather than the classes. Let scales be pivoted on equitable justice. Give unto Caesar only the things that are Caesar's."

I greet you most joyfully, Gentlemen. In this, the brightest era of the world's history, as the shadows of the 19th century are receding with all its mighty achievements, the dawning sunlight of the 20th is upon us with all its mighty possibilities. The time has come when every industrial interest has been pushed to its highest plain of development by the strong herculean arm of intelligence, skill and genius, vitalized by almost unlimited capitalistic power.

"Then we feel highly complimented by your presence and feel assured that your deliberations will be highly beneficial to the great cattle interests of our country. You will observe upon your program the subjects for discussion, which when thoroughly understood and practically applied can not fail to bring an abundant harvest.

"But we cannot depend entirely upon what we gather at our conventions. There are many journals devoted almost exclusively to the cattle industry, gleaming at great expense from every quarter of the globe, data and information which every man must have who has placed his money in cattle. To guard the dollars thus invested becomes an imperative duty. These journals should have your most hearty support. 'Cast your bread upon the waters,' is a scriptural admonition, and after a season it will return unto you."

Yes, gentlemen, we are living in an age the developments of which our ancestors dreamed not of; where the achievements of an American citizen while posing as a laborer, a mechanic, artisan, scientist, scholar, statesman,

soldier, humanitarian, cowman or commission man, makes the civilized world tremble.

"Then, gentlemen, in behalf of our citizens I bid you welcome."

Vice-President G. E. Morrow responded on behalf of the Association, and Judge Guthrie, of Atchison, Kas., responded on behalf of the guests.

Misses Lottie Smith, Lena Dean, Lillie Chandler and Fannie Geismar rendered a charming chorus.

Mrs. Wm. Wallace, of Wichita, Kas., displayed her well known ability in a recitation appropriate to the occasion, entitled "Laska."

Messrs. Moulton and Chapin, of Iowa, favored the assembly with some excellent guitar and mandolin music. Mr. Chapin last year won the pennant of Iowa for mandolin playing, and both selections rendered here were of his own composition.

The great feature of the evening was, of course, the able address of Hon. F. D. Coburn, Secretary of the Kansas State Board of Agriculture. His subject was "Some Oklahoma Possibilities." Mr. Coburn's speech will be given in full in the next issue of the INSPECTOR.

C. F. Roberts, of Chicago, delivered a live recitation and was enthusiastically encored.

S. M. Curtiss, instructor of the dramatic class and general all-round professional actor, entertained the crowd with several choice selections.

The evening session closed with music by Messrs. Chapin and Moulton.

WEDNESDAY.

Convention called to order at 9:30 a. m. by President Wilson, who invited Governor Barnes and Ex-Governor Seay to the platform.

Vice-President Morrow in a neat address introduced Governor Barnes, who spoke briefly, saying that he would talk at greater length in the afternoon.

Owing to the absence of Harold Sorby, of Chicago, who was to have lectured upon "Black Leg in Cattle and its Prevention," Dr. L. L. Lewis, Veterinarian for Oklahoma, was asked to talk upon this subject. Dr. Lewis had been given the subject "Post Mortems," but easily adapted his thoughts to the other subject. His lecture was analytical, scientific and practical.

By way of introduction he briefly reviewed the history of Dr. Pasteur and his methods, and mentioned some of the common outward signs of Black Leg.

He said that when the disease is once contracted there is almost a total lack of remedy—there being only one generally accepted remedy—and that is in the form of a preventive rather than a cure. Vaccination and measures of prevention are the only hope. There are two strengths of vaccine used, and no doubt better results are secured by inoculating twice with the weaker than only once with the stronger. But range cattle can hardly be handled, successfully twice. The breeder whose cattle are tame can use the two inoculations with comparative ease, while the ranchman must use the single inoculation. The cost is very little compared with the profit you expect to get from its use. There is a great lack of reliable statistics on the subject—but the magnitude of the losses would be surprising. He would not recommend any medical treatment by which there is any assurance of curing the animal already affected. Vaccination is the only remedy. There is no reason why each and every stockman should not use it for himself. Procrastination loses the cattle—there is absolutely no chance to treat the animal after manifestation of symptoms. Vaccination is in general use in Kansas and Texas and is being rapidly introduced in Oklahoma. Many diseases are common to cattle and men, and Black Leg is one of them. There is danger in handling cattle that have died of the disease. The infection produces in man what is known as "malignant pustules"—not necessarily fatal, but extremely loathsome and dangerous. The disease may be recognized in post mor-

tem examination of cattle by the local lesion, the skin being dry and parchment like, the tissue clotted with blood and a jelly-like exudation. In cattle that die of Southern Fever there is a thin watery condition of the blood; in Black Leg the blood is black and thick. In Black Leg the liver and spleen may both be natural; in fever the spleen is congested and liver abnormal. The treatment of the two diseases is altogether different—in fever you can quarantine and disinfect, but blackleg cattle should be moved out to new pastures, etc.

COL. ALBERT DEAN,

Secretary of the Bureau of Animal Industry of the United States, made an able address upon "Splenetic or Southern Fever."

He referred to the various names under which the same disease has been recognized in various localities: Acclimation fever, Bloody spleen, Tick fever, Southern fever and Texas fever. Col. Dean says that Splenetic or Southern fever is specially a blood disease, caused by a germ of the protozoa family with a very long Latin name.

The germ is not bacteria, or vegetable, but is an animal germ living in the red blood corpuscles. It is pear-shaped and enters directly into the blood corpuscles, where it finally splits in two parts thus breaking up and destroying the blood. The difficulty of excreting this broken up blood causes fever. The serum is the resisting principle of the blood, which covers bacteria with a coating after which they are expelled from the system. But the animal germ which causes Splenetic fever resists this principle of the blood. The broken up blood and dead germs accumulate as foreign matter which clogs and congests the liver and spleen in their effort to throw them off. The spleen, or melt, which has long been a scientific puzzle, is now recognized as the graveyard of dead disease germs. There is rarely ever a fatal case of fever in a calf that is still on milk; new blood being created faster than the germs can destroy it. Sometimes, however, a calf may die from actual loss of blood without manifesting any particular symptoms of the disease.

Texas fever cannot be conveyed by one animal coming into contact with another. The disease is transmitted only by inoculation. There is no medium known in which the fever germ will live for a minute. This germ is a living animal and will not live outside of the living blood. Vegetable germs will live almost anywhere. There is only one natural method by which the animal germ can be disseminated, and that is through the aid of another animal parasite, the so-called fever tick, "*Boophilus Bovis*."

"Everything, both animate and inanimate, must originate from mother earth. The origin of this germ is a conjecture—probably from stagnant ponds, lakes or marshes at some point below the frost line. We can find only two ways of communication, inoculative and parasitic. There are conditions of immunity in cattle, some natural and some acquired artificially. The animal born in fever districts becomes inoculated when a calf, is consequently better prepared to throw off the disease, and is said to be immune—but the animal carries the germ in its blood forever afterward."

Col. Dean emphatically refutes the assertion that the infection leaves the blood after the animal is removed from the infected area. Experiments conducted at Washington show that inoculation with the blood of an "immune" cow continues for years capable of killing healthy cattle which have been pastured with the same cow without any danger whatever. The germs remain in the system during their natural term of life, but the resisting principle of the blood keeps down the germ so that the disease does not develop. Because animals do not show any signs of disease the people are very slow to believe that their cattle can in any way transmit disease. Flies of all kinds absolutely fail to convey the disease. We can show why the tick will do so. Not

every tick will do it, and not every animal is susceptible. But if a transfusion of blood takes place the disease can be conveyed. It is the progeny ("seed tick") of the matured tick that conveys the disease. The tick after it has taken hold rarely leaves one animal for another. We cannot find the germ in the seed tick; we believe that it takes the form of a spore in the seed tick and develops into the germ.

"All that is necessary to prevent the spread of the disease is to take care of the infected locality. Under our laws congress has no power in regulating the local affairs of a state, consequently we must depend upon our local law makers to provide protection from our infected areas within the state lines. The Secretary of Agriculture is only authorized to place the quarantine line on the lines of states and territories, but the national board can recognize such local regulations and lines as your law makers may see fit to establish, provided of course that such regulations are reasonable and proper and afford the necessary protection.

"The tick appears to be gradually becoming acclimated and coming northward. It was once thought that frost would kill.

To the question, "Do you think the weather of the past two weeks would kill the ticks?" Col. Dean thought it would be a pretty tough tick that escaped. He says the ticks cling to the cattle in cold weather from one to two months. When the female tick falls off she may find a home for herself and family under a "cow chip" and there she obeys the Bible injunction to multiply and replenish the earth—each female producing 2000 young ones.

It is believed the Spanish introduced these ticks when they colonized the West Indies, carrying them from the islands to the continent of America.

"It has been proven that these ticks will mature on a dog or on a horse, but when so matured they will not transmit disease. They must originate from the cow to carry the infection.

Dipping, Col. Dean says, is so far a failure and has been partially abandoned. For the present it has been discontinued. He blamed the Standard Oil Co. for furnishing an inferior quality of oil which undoubtedly contributed to the failure.

As to the open season, he said there were more infected cattle from Oklahoma in the yards at Kansas City last year than ever before. The open season might be all right for Oklahoma on a winter like this, but she became infected last year largely on account of the open season.

Representative J. C. Wailes, of Norman, asked if the tick question was not "all a mere theory, like newspaper farming"—to which Col. Dean suggested that he should have paid closer attention to what he had been trying to explain, and stated emphatically that it had been conclusively demonstrated in Kansas, Virginia, Texas and other states that the tick theory was correct—that in fact it was accepted everywhere except Arkansas.

Senator Hutto asked if cattle were liable to infection from crossing a trail where infected cattle had passed. To this question Col. Dean replied that there was very little or no danger at all unless the trail were one so constantly used by such cattle as to be infested with the ticks which are the only natural medium for communicating the disease.

Wailes, of Norman, asked which was considered the most fatal, dipping or fever. Col. Dean replied that the losses from dipping had amounted to 12 1/2 per cent, and that it had been abandoned on account of this large percentage of loss. On the other hand the losses from fever amount to from 80 to 90 per cent where cattle are confined as on farms and by breeders—but not quite so bad on the range where cattle can scatter at will.

Col. Dean says that any treatment that will keep the bowels open will

lessen the danger of infection and death from fever.

RESOLUTIONS.

The following report of the committee on Quarantine was submitted:

WOODWARD, OKLA., Feb. 15, 1899.
We, your committee on quarantine, having had before us the representative of the Live Stock Sanitary Commission, and having examined copies of the rules and regulations and the orders thereof and the quarantine laws of the territory, beg leave to submit the following resolution and recommendation:

Be it resolved, That the attitude of Governor C. M. Barnes and the Live Stock Sanitary Commission, in the strict enforcement to the letter of the quarantine laws and the rules and regulations, is hereby heartily endorsed and that the action taken by them in prohibiting the importation of infested cattle at any season of the year, is especially endorsed and ratified, and that their efforts and labors, and that of the officers of the Agricultural and Mechanical College, in the direction of the discovery of the method for the destruction of the Texas fever agent and the prevention of the spread of that disease, meet with the approval of the representatives of this association and that it is the sense of this association that they be encouraged in further investigation in this line, and further; that the rules and regulations of the Bureau of Animal Industry of the Department of Agriculture and the work of the officers and agents thereof and especially the kindly interest and special efforts of Col. Albert Dean, for the protection and the betterment of the live stock industry of Oklahoma, are hereby commended and endorsed. Be it further

Resolved, That it be the recommendation of this Association to the Fifth Legislative Assembly now in session on behalf of the live stock industry of Oklahoma, that the following modifications of the present quarantine law be made:

That Section 3 be so modified, in accordance with the recommendation of Secretary Edwards in his report to the Governor, that the date of the quarantine regulations be subject to the order of the Live Stock Sanitary Commission, instead of the Secretary of Agriculture, as it now is.

That a Territorial Veterinarian be provided for by law to be under direction of the Live Stock Commission.

That no change be made in the quarantine line for the Territory as it now is and is defined by law.

That the powers and jurisdiction of the Sanitary Commission be extended, so as to include and control infectious and contagious diseases among hogs and sheep.

That a Live Stock Sanitary Commission to be separate and apart from the Board of Regents of A. & M. College, which shall consist of three members, be created.

That a sufficient appropriation be made to cover all expenses and salaries of the Commissioners and Inspectors in the enforcement of the laws and regulations, so that they will be able to respond to all requirements, and not be subjected to delay and embarrassment as experienced the last year by reason of the inadequacy of the appropriation made therefor, and that a deficiency appropriation be made so that expenses incurred in excess of the appropriation made for the year of 1898 may be honorably paid.

That copies of this resolution and recommendation be mailed by the secretary to the Governor, President of the Council and Speaker of the House of the present Legislative Assembly.

Respectfully submitted.

J. M. PUGH,
W. T. JUDKINS, } Com.
J. W. HOLMAN.

AFTERNOON SESSION.

E. F. Mitchell, of El Reno, proprietor of the National Cattle Register, talked upon the "Condition of the Range from the Lakes to the Gulf." Mr. Mitchell spends a great deal of time traveling attending all important gatherings of cattlemen from the lakes to the gulf, and professes to speak

with the authority of positive knowledge upon the conditions. He says the cattlemen of the northern states look upon us here only as raisers of cattle. They do not attempt to raise young cattle themselves, but expect to come here to buy such young cattle as they need for feeding and finishing. They look to us to furnish the steer for their finishing just as the commission men and packers look to them for the finished product for beef. The northern men are holding off in the hope that later they can buy our cattle cheaper. Until they met at the Denver convention and learned something of the true situation, they considered it a matter of speculation, and believed that these southern cattlemen being deeply in debt would soon be compelled to sell.

"I told them they were making the mistake of their lives in their waiting. If you buy these cattle and ship them north, you cannot expect to buy them at a price that does not pay a profit to the raisers. The markets have been going up, and men are making money on these cattle no matter where they feed them.

"Are they too high? The shortage at the four principal markets last year was 342,988 cattle. This is not all. I ask any man in the audience to question what I say if it is not true. I want to ask any ranchman or commission man if the majority of cattle put into the pens are not under three years old.

"No animal pays as well as the calf. The calf starves the hog that follows to death. The growth added to the fattening is what makes 'baby beef' profitable. The old system has gone with the buffalo. Under the old system young cattle were so small they had to be tied five in a bunch and sold like radishes. They were not considered beeves until 5 years old.

"Where can you now buy in a bunch 20,000 4-year-old yellow fellows. There is only a small bunch of two or three hundred of them here and there. They have passed away with the buffalo.

There are no states in the Union that have spent as much money in the last five years for fine stock as Texas and Oklahoma. You can find herds there that grade up with Herefords, Polled Angus, Shorthorn, Durham and all the standard breeds. You can now buy them for breeding or for beef right here in Oklahoma or in Texas, New Mexico or anywhere on the ranges. The northern buyers, some of them, think they must still buy the little yellow fellows. The facts are that they have no better cattle in Iowa, Missouri, Illinois or any other state than we have here.

Those people are a little better fixed for feeding than we, but we can and do raise cattle cheaper on the range than they can upon their high priced land. Our cattle when taken north make just as good beeves as anybody's cattle anywhere. The northern buyer is just beginning to realize this.

"Now, as to the idea that our people have all their cattle mortgaged and will soon be compelled to sell. First there is a shortage of nearly 400,000. Second, I appeal to any commission man to say if there was ever within the past five years as much she stuff marketed in any one year as was marketed in 1898. Was there ever a time when as many calves were put in the feed lots as now? If these things are true, together with increase of population, expansion, revived industries, etc., I want some one to show me why cattle will not be a better price in the next five years than ever before. We have got these people to feed, and if there was ever an overproduction it has been eaten up. You cannot show me anywhere, from Oregon to Texas, an overproduction of cattle. Everywhere there is a shortage, and the stuff sold has been all sold at a profit. We have from the lakes to the gulf a 20 per cent loss in the past five weeks—not so great here—but in some of the northwestern states from 35 to 50 per cent. Your cattle have gone through the storm, some of them just alive—March storms will kill some more—heel flies

will kill a few of these thin fellows. I do not believe it exaggeration to place the loss from the lakes to the gulf at 20 per cent. How are you to catch up in the next five years? You are short on she stuff to start with. Now is the very best time to start in the cattle business.

"There are a great many of you who have cattle paper out that is troubling you. I want to say that you can go home and go to sleep in peace if you have bought judiciously. There is a syndicate of packers now being formed with capital of \$10,000,000, to lend you money if you have a reasonable equity. You can get an extension through this medium.

"Look out for those northern buyers and feeders. They are coming. In the state of Texas banks have said don't sacrifice your cattle we'll advance you necessary money. Those northern men are coming down before the Fort Worth convention because they know that cattle will go up two or three dollars on the head after that convention. They do not attempt to raise cattle, hence must depend upon buying them where we make a business of raising them. There is no place on God's footstool that stands higher than Oklahoma for cattle raising. We have the climate, we have the range and we have the cattle.

"There is no sense in any fight between the breeders of Shorthorns, Herefords, Durhams, Polled Angus or any other standard breed of cattle. Who ever saw a herd of any of these breeds that were not good cattle? There is room for all of them. There is no surplus of any of these breeds. Cross with any of them and you cannot fail. Stick to the thoroughbreds. Cattlemen are all stuck on Whitefaces just now, which accounts for the high price. But this doesn't prove their superiority. Don't ever get it into your head that any one of these breeds is any better than the others as rustlers under the same conditions. They are all good."

Mr. Mitchell's talk was received with hearty applause.

GOVERNOR BARNES ADDRESS.

With a few explanatory remarks, the Governor suggested that Woodward had done her duty well in starting the Association and supporting its conventions up to the present time, but he thought the Association had now grown sufficiently to move out a little and take in other sections of the Territory. He said legislation was limited principally by lack of information, and that if this convention had been held in Guthrie its wishes might have been presented much more directly to the legislature. He said:

"We are pleased to be here today and to accept the warm welcome and hospitality of our friends and fellow citizens of the great western part of Oklahoma.

"We appreciate the cordial and friendly words with which you have greeted us, and I am sure I voice the sentiment of every visitor, whether of the executive or the legislative branch of our Territorial government, when I express to you our sincere gratitude and thanks for the kind and considerate reception accorded to us.

"We are not here, my friends, so much for the pleasure and enjoyment of your hospitable entertainment, as for the purpose of seeing for ourselves this great part of the future great state of Oklahoma, to meet the representatives of the material interests of one-third of the Territory and to inform ourselves of the conditions, laws, rules and customs prevailing which affect and govern the breeding, raising and shipment to market of the multiplied thousand head of cattle which feed and fatten upon the luxuriant grasses of your wide and boundless prairies. We want to know beyond the peradventure of doubt exactly what legislation is desired and is necessary to protect and encourage the great cattle interests of our Territory. Our laws must protect in every reasonable way the rights and privileges of the honest homesteader who has settled here under the laws of our country, and when these two interests are in conflict, as they sometimes are

The **HAPPY BUYER** OF 1899

HE BOUGHT A McCORMICK RIGHT HAND HARVESTER-BINDER

HE BOUGHT A McCORMICK NEW 4-MOWER

HE BOUGHT A McCORMICK DIG 4-MOWER

HE BOUGHT A McCORMICK ONE HORSE MOWER

HE BOUGHT A McCORMICK DAISY

HE BOUGHT A McCORMICK CORN HARVESTER

HE BOUGHT A McCORMICK CORN HUSKER AND FOODER SHREDDER

HE BOUGHT A McCORMICK HAYRAKE

The Greatest Output in the World is the Greatest Guarantee—
WE SOLD **189,760** machines in the season just past and shall sell more in 1899.
The name "McCormick" means greatest value every time for the Farmer's money.
McCormick Harvesting Machine Co., Chicago.

The name of the greatest oat is **"ILLINOIS"** yields over 100 bushels per acre, extremely early, finest quality, longest and strongest straw.

OATS

Send your name and address on a postal card and I will send you a sample, together with beautiful and instructive seed and plant book Free, if you write to-day and mention this paper.

H. W. BUCKBEE
ROCKFORD SEED FARMS,
Rockford, Ill.
P.O. Box 200

in this country, we must have an accurate and thorough knowledge of the situation and conditions that pertain to both, in order that we may legislate intelligently and carefully, guarding to the best of our ability the general welfare of the whole people. We will, I have no doubt, be criticised by some as coming out here on a junketing or picnic excursion, but in my judgment the time spent in the examination of these matters and gathering information upon which to form an intelligent judgment before making laws affecting such vast interests of our people, could not be more usefully spent nor be more valuable in its results to the best interests and welfare of all.

"You, gentlemen, represent the great interests which occupy about one-third of our great Territory. You are breeding, growing and raising the property upon which more than two-thirds of the taxes of this part of the Territory are levied to support county and territorial government. You are the principal renters of about 1,000,000 acres of school lands lying west of range 14 west and are paying into the school funds of our Territory over one-third of all the revenues collected from rentals of such land in the entire Territory. You paid into our school land department over \$33,000.00 for the support of public schools, colleges, university and for public buildings during the past year, and no candid and thoughtful citizen will upon reflection hesitate to commend the members of the legislature for visiting you at this time and accumulating a store of information touching the interests of the people of this locality which will guide them in the consideration of measures affecting such vast and valuable material interests.

"Free homes may be a fallacy. Statehood may be a dream which we will not realize upon for some time to come. But the great herds of cattle swarming our western prairies are an established fact, and the many questions touching the grazing and feeding, the driving and shipping, the buying and selling, the branding and herding, the quarantining and protection from contagion, are all subjects of rightful legislation and if neglected by our own legislative power, failure and disaster, loss and misfortune to owners are sure to follow, but upon the other hand, if intelligently protected and encouraged by law and if proper provision is made for efficient and adequate administration of the laws, that great industry will thrive and grow and your success and profit will ensue, thus advancing the welfare and best interest of all our citizens.

"I am not here to make a speech and only desire in responding to your generous welcome, to take advantage of the occasion to explain the value and benefit to the people of the Territory, of our visit here at this time, and I will also take occasion to remind you of one thing more which I think not inappropriate to mention here—we are all interested in it—whether legislators, cattlemen or agriculturist—and that is this. There are nearly 7,000,000 acres of government land lying west of range 14 west in Oklahoma subject under present laws to homestead entry only. Not much of any part of it is suitable for homesteads and ordinary farming purposes, but all of it, or nearly all of it, is the finest grazing land in the world. By earnest and intelligent effort upon the part of the right persons, a very large part of this land could be secured to the Territory for school and college and public building purposes, and the balance of it could be disposed of to purchasers under such conditions as to ownership etc., as would result in its bearing a fair share of the expense of government, and would be a blessing and happiness to our people. Seven million acres of land bringing no revenues to our county or territorial governments is a right smart lot of land, and it seems to me its disposition is entitled to claim the serious thought, reflection and action of the gentlemen elected to look after the interests of the people.

"Again, I thank you, gentlemen, for your kind and generous welcome and reception."

THE MATTER OF INSPECTION

having been previously made a special order of business for 2 o'clock p. m. the following resolution was presented to the Association and adopted unanimously:

"Resolved, That the Executive Committee of this Association is hereby directed and empowered to employ inspectors for same at the markets."

BERNARD W. SNOW,

of Chicago, who was to have led in the discussion of "Our Foreign Meat Trade," being unable to come in person sent an able paper to be read before the convention. Owing to lack of time, however, Mr. Snow's paper was not read.

"FEEDER MARKETS."

M. B. Irwin, General Traffic Manager of the St. Joseph Stock Yards, addressed the convention as follows upon the subject of "Feeder Markets:"

"MR. PRESIDENT, GENTLEMEN AND LADIES OF THIS CONVENTION:—I was sitting in my office one day last summer when the doorway was suddenly darkened, and on looking up beheld your worthy secretary standing seeking admission. I invited him in, and he introduced himself as 'W. E. Bolton of Woodward.' After the exchange of the usual courtesies when making a new introduction I took great pleasure in showing him around our yards and explaining to him their manner of construction, also their cost, and further showed him what it proposed to do in the way of improvements that other yards did not enjoy. He was naturally very much impressed with what he saw there and took it upon himself to give the St. Joseph Stock Yards Co. a nice little write-up, which I presume you all took pleasure in reading, as I take it for granted you all read his spicy paper. This was the last I heard from him until a few weeks ago when I received a letter from him, inviting us to be present at this, your fifth annual convention, and to bring as many of our commission men with us as possible. He further stated that he would like to have a speech from Mr. Donovan, our General Manager, or myself at this time. I replied that we would take pleasure in meeting you gentlemen here, but begged to be excused from making a speech.

The next I saw of him was at Denver at the National Live Stock Association meeting during the latter part of January. Among the many pleasures provided for the delegates to that convention was a masked ball, and the first man I beheld on entering the ball room was Bolton. He immediately took up the question of a speech, and I told him if he insisted on one I would try and talk on the good qualities of the St. Joseph stock yards. If, therefore, you feel that any portion of your valuable time has been encroached upon, you will have only him to blame.

"The first question a stockman would naturally ask would be what packing houses we have and what facilities we have for caring for stock. Answering the first question, would say we have five large packing houses in active operation, consisting of Swift & Co., Nelson Morris & Co., Hammond Packing Co., Henry Krug Packing Co. and Viles & Robbins. The first two houses named were each constructed at a cost of \$750,000.00 and are models of perfection. The entire plants are operated by electricity and every modern device was used in their construction. Hammond & Co. expect to break ground for an addition to their plant to cost about \$400,000, as soon as weather will permit. As to the construction of our yards would say they are undoubtedly the finest in existence. They are entirely paved with vitrified brick, and are always dry and in a good sanitary condition. The unloading chutes are built on masonry, and also paved with vitrified brick. Another important feature of the yards is the manner in which they are condensed, this with a view of driving stock as little as possible about the yards after unloading in order to pen them. We also have the finest

St. Joseph Stock Yards Company, ST. JOSEPH, MO.

We are in the Market Every Day for Cattle, Hogs and Sheep.

We are especially bidding for range cattle and sheep, both for slaughter and feeding. Located on fourteen railroads, and in the center of the best corn and live stock district of the United States, we are prepared to furnish a good market for all kinds of live stock. Our charges for yardage and feed are—

YARDAGE:

Cattle, per head	20c	Horses, per head	20c
Hogs, per head	6c	Sheep, per head	5c

FEED:

Corn, per bushel,	60c	Hay, per hundred lbs	60c
-------------------	-----	----------------------	-----

Our packers furnish a daily market for all kinds of cattle ranging from canners to export cattle. Look up your railroad connections, and you will find them in our favor.

G. F. SWIFT, President,

JNO. DONOVAN, Jr.,

Vice Pres. and Gen. Mgr.

M. B. IRWIN, Traffic Manager.

E. C. WHITFORD, Pres.

JOE BAKER, V. Pres.

T. F. MCKEE, V. Pres.

C. D. ZOOK, Treasurer.

E. S. BALLARD, Secretary.

McKee-Zook-Whitford Com Co., Live Stock Commission Merchants.

STOCK YARDS: SOUTH ST. JOSEPH
and KANSAS CITY..J. C. TROUTMAN, Solicitor,
Wellington, Kan.

National Cattle Register

SHORTEST ROUTE
FROM RANGE
TO MARKET

WANTED—All classes of stock and ranches registered with us. These registers are for the benefit of buyers, and are open free of charge to them at the following stock yards: Chicago, East St. Louis, Kansas City, South Omaha, St. Joseph, Denver. Stock Exchanges: Chickasha, I. T., and Woodward, O. T.; Hotel Worth rotunda, Fort Worth, Tex. Branch offices in all states and territories. Correspondence solicited.

E. F. MITCHELL & CO.
Proprietors.W. E. BOLTON,
Territorial Agents, Woodward, Oklahoma.

W. E. ELMORE.

FRANK COOPER.

ELMORE-COOPER COM. CO., Live Stock Commission Merchants, KANSAS CITY, STOCK YARDS.

All trains or parts of same consigned to us are met at the Yards and cared for in best manner.

Money can be obtained at short notice on fat cattle. Buy and sell on order. Experienced salesmen. Best results obtained.

NICK HUDSON, Solicitor, Woodward, Oklahoma.

Sorghum Seed, Kaffir Corn, Millet and Alfalfa Seed IN ANY QUANTITIES.

Also all kinds of Feed.
Write or wire for prices.

Clark Commission Co.,
WICHITA, KANSAS.

Felix S. Franklin

LIVE STOCK AGENT, Amarillo, Texas.
Cattle of all classes for Sale.

I have a personal knowledge of almost every brand of cattle in western Texas. If you want to buy or sell I will be pleased to meet you in person or by letter. More buyers and sellers meet in Amarillo than in any town west of Fort Worth.

(Please mention this paper.)

EVERGREENS
100, 6 to 8 in. \$1; 12 to 15 in. \$2.50.
100, 2 ft. \$10 prepaid. 100, 4 to 6 ft.
varieties, \$15. Choice Fruit trees, 30
varieties, \$10. Ornamental & Fruit
Trees. Catalogue and prices of 50
great bargain lots SENT FREE.
If Good Local Agents Wanted.
Evergreen Specialist, Dundee, Ill.



**LUMP JAW
NOW CURABLE.**
Surely, quickly and for good.
Fleming Bros., chemists, Union
Stock Yards, Chicago, have a remedy that quickly
cures the most obstinate
cases. Supplied by mail under
positive guarantee. Price
\$2.00. Valuable information
and full particulars FREE.

kind of artesian water, and on which cattle get a good fill, something which cannot be said of the water at other yards. Our yardage charges on cattle are only 20 cents per head, while all other yards charge you 25 cents per head, and which alone saves you about \$1.50 per car. Our charges for hay are only 60 cents per hundred, while other yards charge you 80 cents and \$1.00, which also makes quite a saving to you in shipping to the St. Joseph stock yards. Then again I think you will find prices at the St. Joseph stock yards are maintained nearer a Chicago basis than any other Missouri river yards. This fact is one well known to many of the stockmen here to-day who have patronized the St. Joseph stock yards during the past year, and who can verify my statements. The secret of this is that our yards are owned largely by the packers operating there, and they must get the stock there in order to secure an ample supply to keep their plants running. This we have succeeded most admirably in doing, as shown by our record for the year 1898, and by the following figures: During 1898 we handled 232,079 cattle against 49,143 in 1897. Calves handled in 1898 were 6,094 against 1,222 in 1897. Hogs handled in 1898 1,034,125 against 426,682 in 1897. Sheep handled in 1898 121,707 against 13,915 in 1897. These receipts show an increase of over 300 per cent during the year 1898. Take these same receipts and put them into cars, and it shows 9,089 cars cattle, 14,584 cars hogs, 539 cars sheep, or a total of 24,583 cars of cattle, calves, hogs, sheep and horses against 7756 cars received during 1897. Can any other yards show such a handsome increase? This percentage of increase is more than the increase shown by all the other yards combined, and for the present year we expect to be able to show still better results.

The average stockman is not in business for his health, they are generally pretty healthy people, and a word to the wise is sufficient.

Will also say one word in relation to our new Exchange Building, a cut of which appears on our badges which many of you are wearing here to-day. This is the handsomest Exchange building in the world, being four stories high, built of pressed brick, heated throughout by steam, electric lighted and elevator service, bath room and barber shop, and constructed at a cost of about \$125,000. This, together with the expenditure of about five or six million dollars during the last eighteen months, should convince you that we expect to build up and maintain a market at St. Joseph as good as or better than any of our competitors.

"I have shown you now the many advantages of our yards and the handsome business done during 1898, and will now endeavor to say a word or two in relation to the stocker and feeder trade at our young but husky market. St. Joseph lies in the center of the great corn belt of the United States and also the center of the largest feeder district in the world, and is the natural supply point for the progressive farmer and extensive feeder. They have long since found out that they can get just as good cattle and at as satisfactory prices at St. Joseph as at any other market. Consequently, the best class of farmers and feeders make their purchases on the St. Joseph yards, thus creating a staple market for the shippers of stock cattle from Oklahoma, the Indian Territory, Texas and the southwest states, also the vast west. Our market is yet young, and is not handicapped by the frequent gluts and sharp decline of values that mark the older yards and cause such severe losses to the shippers. I see in the audience Adams, Ballard, Troutman, Emmert, Bright. You will always find in St. Joseph as sharp, shrewd, honest and affable commission men and buyers as are in the trade anywhere, and I can assure you on behalf of the St. Joseph Stock Yards Co. that your stock will always receive the best of care and attention upon arrival. We are located on fourteen different railroads, and are nearer the feed lots in northwest Missouri,

southwest Iowa, southeast Nebraska and northeast Kansas than any other stock yards. It is not extravagant to say that South St. Joseph to-day offers as good, if not better, inducements to the owners and shippers of stock cattle than older and more pretentious markets.

"Our freight rates into St. Joseph from this territory and the entire south are the same as Kansas City, and to many points feeders can be shipped out for \$10 per car less than from any other yards, which is one of our strong points which makes St. Joseph the best market in the world for feeders as well as butcher stock.

"All of our commission men and banks stand ready to furnish the same financial aid to the feeder as any other yards will furnish to responsible parties, Gillett included. The nearness of our yards to the location of the feeder is such that very often they can load their cattle at home in the morning and be on our market by noon, which naturally saves them shrinkage and also enables them to ship their stuff when market is strong. If any of you are in doubt as to the best market to consign your stock, all we ask you to do is to give us a split shipment, and you will soon be convinced that St. Joseph is the place for the cattle men to patronize. Competition is what the average cattleman need and we have supplied that want and now ask you to send along your cattle and reap the benefits. It would be presumptuous in me to ask you for all of your consignments, but we do feel that it will be to your financial advantage to ship to St. Joseph, and trust that we will be favored with at least a portion of your shipments. Thanking you for your kind attention, and hoping to meet you all at some future day at our yards, I will close."

Col. L. A. Allen, of Kansas City, made a very brief talk upon "Where are We at in the Cattle Business," closing with the remark that we can tell better after the spring roundups.

Major Eugene Rust, superintendent of the Kansas City stock yards, spoke as follows, upon the

"RELATION OF COMMISSION MEN TO PRODUCERS."

"I wish to express the hearty thanks of the Kansas City delegation for the very cordial reception and courtesy extended by you and this very enterprising city. We are glad of the opportunity to meet with you, both in a business and social way, for we regard you as our friends and neighbors, and our interests are so closely allied that whatever meed of success or disaster comes to you comes also to us. We are here because we are deeply interested in your affairs, and because we like you, and while you can do us good we on the other hand are useful to you. The Kansas City market has proved by its works its friendship for you in the past, and today extends to you the warm hand of continued friendship.

"Markets are an absolute necessity. There must be some point where the producer and buyer can meet for barter and trade. Such a point must be located where the conditions are favorable to the transactions of both and are mutually advantageous to each. From the earliest times market towns have been the feature of civilization made necessary by the many wants of humanity. Such towns have gathered to themselves the infinite variety of food products and various articles necessary to supply the human race which are gathered from the four quarters of the earth. It would be manifestly impossible for the individual to do this, hence the necessity for the market towns where the producer can not only dispose of his products to the best advantage, but at the same time supply the necessities of life required by himself and family.

"Kansas City, by reason of its many advantages of location and the push and enterprise of its citizens, has become the natural market town of the Missouri valley and the southwest. Our live stock market has developed and grown to such proportions that no matter what amount of business is thrown upon it, it has sufficient capac-

CONSIGN CATTLE, HOGS & SHEEP TO



Organized in **TEXAS** By Experienced **GREATSOUTH WEST.**
Stockmen from the

A competent force of men in every department

We have Experienced Salesmen in all Departments.

Consign your stock to us. Write to us. Call and see us.

Market reports furnished. Liberal advances on consignments. Loans made on marketable stock

Campbell, Hunt & Adams



LIVE STOCK
Commission
Salesmen.
S. St Joseph, Mo.
Kansas City, Mo.
National
Stock Yards
Illinois.

JACOB DOLD PACKING CO.,
...PORK & PROVISION JOBBERS.

Purveyors to the People of Oklahoma, Kansas and Texas, by common consent.

OUR SPECIALTIES: "White Clover" Pure Fancy Leaf Lard. "Perfection" brand Fancy Mild Cured Hams, Breakfast Bacon

Our sausage department is given special attention. We produce highest grade only. We may ask you a fraction more than other makers, but you may be certain

"IF ITS DOLD'S ITS THE BEST."
Look for the Stamp "MADE IN WICHITA."

Packing Houses:
WICHITA, KANS.,
KANSAS CITY, MO.,
BUFFALO, N. Y.

Distributing Houses:
LIVERPOOL,
HARRISBURG,
OKLAHOMA CITY

Wichita Union Stock Yards Co.,
WICHITA, KANSAS.

...Capacity **3,000 Cattle**
5,000 Hogs

Private Yards for Texans.
Perfect Sewerage and City Water.
All Pens Covered....

W. R. DULANEY,
Supt. of Stock Yards.

DR. WHITTIER, SR., 215 W. Ninth St., Kansas City, Mo.
Oldest and Original. Most successful specialist. Established 1857.

NERVOUS DEBILITY. Lost Vitality Organic Weakness, Early Decay, Lack of Energy, Self Distrust, Weak Memory, Dyspepsia, Exhausting Losses, Pimples on Face, Aversion to society, Loss of Ambition, Unfitness to Marry, Stunted Development, Lost Manhood, Milky Urine, effects of abuse or excess **Cured to Stay Cured.** My life long experience, special study of each case, pure medicines insure a **REAL CURE.** Question list No. 1, free in plain envelope Charges Reasonable. Terms Easy. Call.
Blood and Skin Diseases. all forms Scrofula, Rheumatism, Catarrh, Eczema (itchy or scaly tetter), and all Blood Diseases, cured for life, safely and sure. Avoid patent medicines or inexperienced hands. Call or write for question list No. 2 on blood diseases.
Gonorrhoea, Gleet, Stricture, cured without instruments or pain. List No. 3 free.
Medical Dictionary and Adviser free at my office, by mail 2c. Hours 9 to 4, Sunday 10-12.

ity to absorb and turn into cash the offerings of all with the best net results to the shipper attainable.

"In the marketing of live stock it is essential that it should be placed before the buyer in the shortest possible time after leaving the range and feed lot, as otherwise serious loss results from shrinkage and injury which may represent the entire profits of the shipper. Not only is it necessary to place the stock on the market in the shortest possible time, but in the very best possible condition. When the buyer looks at a consignment he is very keen to note any indication of injury from bad shipping, and makes the price accordingly. The stock should never be overcrowded into the car, no matter what temptation there may be to do so, as it will surely result in greater loss than any apparent gain.

"The past year or two have been the most prosperous the cattleman has experienced in many years, and I am glad to congratulate you on the bright outlook at the present time. The improved industrial conditions of the country are beginning to tell in the increased demand for beef and pork products, which there is every reason to continue while our surplus is finding a ready market across the water. Another thing—the improvement in breeding has given our southern and western stock a much higher value for both feeding and beef purposes, which have resulted in better prices and more satisfactory returns and have enabled the markets to absorb and care for them as never before. It behooves you, gentlemen, to follow up this advantage, and your aim should be to make your herds just as good as it is possible to make them by improved stock.

"The new expansion policy of the Government will result in a larger field for the sale of your products, and indeed the effect of it is already being felt by the trade more than is generally supposed. Altogether we may congratulate ourselves that the dark clouds which hung for so many years over the cattle industry have rolled away, and that with proper economy and management we may reap the fruits of our labors.

"In conclusion, I wish to say that we regard Oklahoma as one of the brightest communities in all this fair land, and are very proud of the stand Kansas City has always taken of furthering and aiding in such way as we could the upbuilding of this great commonwealth which is sure to shine before very long as one of the greatest states in the American Union."

"RELATION OF COMMISSION MEN TO PRODUCERS"

was the subject assigned for five minute talks by a number of commission men from the various markets. The only responses, however, were from Zeb F. Crider, of Kansas City, and E. J. Healy, of Wichita, Kansas. Mr. Crider spoke as follows:

"Relation of Commission Men to Producers," the subject assigned to myself, is one upon which much could be said, and certainly more can be said than I ever will attempt to say.

"First there should exist a relation almost as confidential and as binding as between man and wife and as loverlike as lovers. In other words the commission man should be his very best friend, as it he who fights his battles in trying to secure a low rate of interest and for as long time as possible through the summer and winter months, in winter, through the cold and the blizzards, and in summer and fall, interesting the northern feeders who mature the cattle, who cannot compete with you gentlemen on agricultural farms, worth from \$20 to \$75 per acre, in raising cattle, to go out south and southwest to buy your feeders, and even still better buy your calves at weaning time. It is no wonder a breeder and producer legitimately should not be successful in the hands of commission men.

"First, be honest with your commission man. Tell him all. Never estimate the number of cattle you have; give the actual count. Classify them correctly as to number, size and age, also brands, marks, or colors; from

whom purchased, if you have not bred and raised them yourself. Give an absolute abstract of title. Do not try to handle too many cattle. Better have a margin, a 50 per cent of their actual value than only 10 per cent. Prepare abundance of feed. Make a reputation for yourself by looking after your cattle personally. Reputation for honesty, industry and good margin will restore confidence and a lower rate of interest.

"I feel proud of Oklahoma. I congratulate Oklahoma upon her fine showing the past year. I have not heard of a cattleman organizing a cowboy band. I have not heard of a special train, composed of commission men and bankers, en route to Oklahoma to take possession and ship out mortgaged cattle. I have not heard of any cattleman leaving the Territory short of cattle.

"Gentlemen, your battles have been many but your commission man has ought them to a standstill, and now as we are from Missouri they will have to show us where there is any dishonesty and anyone who has not failed to show up when they were asked to. Gentlemen, you can always depend on your commission man in aiding and assisting the producer to breed up and increase your herds. But be honest in your representations, as upon those representations we, the takers of your paper, deal."

E. J. Healy, of Wichita, said upon the same subject:

"Ladies and Gentlemen:—As you have so many able speakers here today I did not think I would be called upon to make a speech, and, knowing my inability as I do, I would not respond to the appreciated invitation were it not for being called as a spokesman from the peerless princess of the plains.

"In behalf of the live stock exchange of Wichita and her people I thank you for the kindness shown her people here to-day. Wichita has a very kind feeling for the people of Oklahoma. To-day I see a number of her former inhabitants who have cast their lot among you, and I think the energy of the people of Woodward, will be the means of making this a very fine city.

"Your farmers, who a few years ago built the small hut on the virgin prairie, are now living in good houses, and the men who came up to Wichita to get a live stock pass to go east with stock, as they had not the wherewith to pay the fare, are now taking a Pullman sleeper. I never saw so many fine looking children and handsome women as there are here in Woodward to-day. Long may they live to enjoy the healthy climate of Oklahoma, is the wish of Wichita.

The question upon which I am expected to speak is the relation between commission men and the producer, which in my opinion is like unto that of a lawyer and client. The commission man is expected to keep his customers posted on the markets; also on money matters, as the latter has much to do with the price of live stock. So much has been said on this question to-day that it is useless for me to occupy your time by saying more."

By request, the resolutions previously submitted by the committee on quarantine were re-read, and another vote taken, unanimously confirming the action of the morning session.

LEGISLATION.

The committee of legislation submitted the following resolutions:

In regard to some needed laws which will be of direct benefit to each member of this association, the committee has adopted the following resolutions:

Resolved, That we favor the enactment of a law compelling all who kill cattle to exhibit hide for ten days, or by the leaving hide attached to some part of beef until hide is inspected.

Resolved, That we favor a law providing a penalty for driving cattle a distance of ten miles or more from the pasture or range of owners of said cattle.

Resolved, That the matter of brand inspection by law is of no use or benefit to owners of cattle as same is

BREEDER'S DIRECTORY.



Shorthorn Bulls

We breed Short Horn Bulls from deepest strains of Bates cattle, using sires from such famous old and tried families as Wild Eyes, Kirk-Levington, Barrington, Rose of Sharon, Hilpa, Liverpools and Craggs.

No bulls on earth have greater power of transmitting the qualities that have made the Short Horn the leading beef breed of cattle. Our bulls are bred on Buffalo grass, and are not weakened for range purposes by being pampered.

Our ranch is on the Staked Plains, seventeen miles from Panhandle, Tex. Come and see us.

H. T. GROOM Manager,
Panhandle, Texas.

(Please mention this paper.)

R. S. COOK, WICHITA, KAS. BREEDER OF Poland-China Swine



corresponde invitedond.

The prize-winning herd of the great west. Seven prizes at the World's Fair; eleven firsts at the Kansas District fair, 1893; twelve firsts at Kansas State fair, 1894; ten first and seven second at Kansas State fair, 1895. The home of the greatest breeding and prize-winning boars in the West, such as Banner Boy 28441, Black Joe 28063, World Beater and King Hadley. For Sale, an extra choice lot of richly-bred, well-marked pigs by these noted sires and out of thirty-five extra large, richly bred sows. Inspection or

Recorded Hereford Bulls. Registered Bulls!



All BULLS Sold
FRED COWMAN,
Lost Springs, Marion Co., Kans.

Bulls! Bulls!

200 High Grade Hereford Yearlings, Out of High Grade Hereford Cows

By Registered Hereford Bulls. Have been fed all winter, and are exceptionally well grown.

Address C. H. WITHINGTON,
Tascosa, Tex.
Manager of the L. S. Ranch.

(Please mention this paper.)

Pure Bred Hereford Cattle.

HILLSIDE RANCH, Woodward, Okla.
Fine Bulls for sale at all times. Singly or in Car Load lots
PATTON & MARUM.

THE CONSUMERS' SUPPLY CO., whose general office is 608 Atwood Building, Chicago, is an honest mail order house and solicits your trade. They sell direct from manufacturer to consumer, general supplies of every description. Read their advertisement in this issue, as it contains something of direct interest to you. Read it, and see!

Registered Bulls!

JACOB MADDOX, Jr., of Calloway county, Mo., has fine Cherry Red Missouri bred Bulls on feed at Pond Creek, Okla. He can sell you anything you want in Short Horn, registered or unregistered. Also in car lots White-Faced bulls from half-blood to 15-16. He has a few registered Short Horn Heifers. If you want anything in good blood, no matter what blood, write him, or J. C. McCLELLAND, Pond Creek, Okla.

Grandview Herefords!

Grandview Farm is devoted to the breeding of the most desirable strains of Herefords. Over 100 choice registered coming yearling bulls, including several grandsons of Ancient Briton for sale.

C. G. COMSTOCK, Albany, Mo.

Registered Hereford Cattle For Sale.

50 COWS, 20 BULLS and 15 HEIFERS.
Car Load of High Grade Bulls.
THOMAS EVANS,
Hartford, Kan.

F. M. WOOD, Live Stock Auctioneer, LINCOLN, NEBRASKA.

Attends Stock Sales Anywhere in United States
TERMS REASONABLE.
(Please mention this paper.)

D. P. NORTON, Breeder of Register'd Shorthorns COUNCIL GROVE, KAN.

Imp. Lord Lieutenant 120019 in service. Young stock for sale Lord Lieutenant sired the second prize yearling bull at Texas State Fair, 1898, that also headed the second prize herd of bull and four females, any age, and first prize young herd of bull and four females. All stock vaccinated for black-leg.

clearly within the province of voluntary cattle associations who are better able to give attention to such inspection without inconveniencing shipments.

Resolved, That we favor a Territorial Brand Law providing for recording brands at some office designated as Brand Record Office, thus providing uniformity of brands, and that same be maintained by fee to be charged by the Brand Record Office for such services.

T. P. WILSON, Chairman.

The report of the committee on resolutions was read by Secretary Bolton, and adopted section by section:

RESOLUTIONS.

RESOLVED, That we appreciate the interest manifested in our live stock interests by the Governor and members of our Legislative Assembly which prompted them to accept our invitation to attend our annual meeting and become personally acquainted with the conditions and needs of this important industry; and, that we condemn, as untrue and uncalled for, the article appearing in the Kansas City Times, in its issue of Feb. 13th, impugning the members of the Legislature, the Governor and the Santa Fe R. R. Co. with improper motives in their effort to comply with our earnest invitation to come and get acquainted with our large and growing live stock interests; and in coming here they only followed the example of the 4th Legislative Assembly which was fully represented at our annual meeting in 1897.

Resolved, That the Executive Committee is fully authorized to arrange for inspection for the coming year.

Resolved, That the Secretary is instructed to collect all dues and assessments promptly, so that the Association can do the work for which it was organized, and to impress upon the members that unless dues are paid it will be impossible to give them the necessary protection.

Resolved, That this Association endorses and sustains the action of the Board of Education of Normal Schools for the Territory in erecting a commodious and substantial building for the use of the Northwestern Normal School, and urge upon the Fifth Legislative Assembly the propriety of properly caring for the needs of the youth of western Oklahoma in education.

Be it Resolved, That the thanks of this Association as an organization and of its individual members, individually and collectively, are hereby tendered to the Atchison, Topeka and Santa Fe Railway Co. for their assistance, both in the accommodations in the way of transportation and car service, as well by the personal attendance of their Divisional Superintendent, Mr. Dolan, who by his presence and personal assistance has added largely in the perfecting of the arrangements and fulfillment of the program, resulting in a feeling of good will and good fellowship among all. Be it further resolved, that the Association very much regrets the inability of Mr. Eli Titus, General Live Stock Agent, to attend this meeting, and offers to him the thanks and gratitude of its individual members for the kindly interest manifested by him toward this Association and for his favors and courtesies extended to the individual members which have forever won for him a warm place in the hearts of the members and people of Woodward and western Oklahoma.

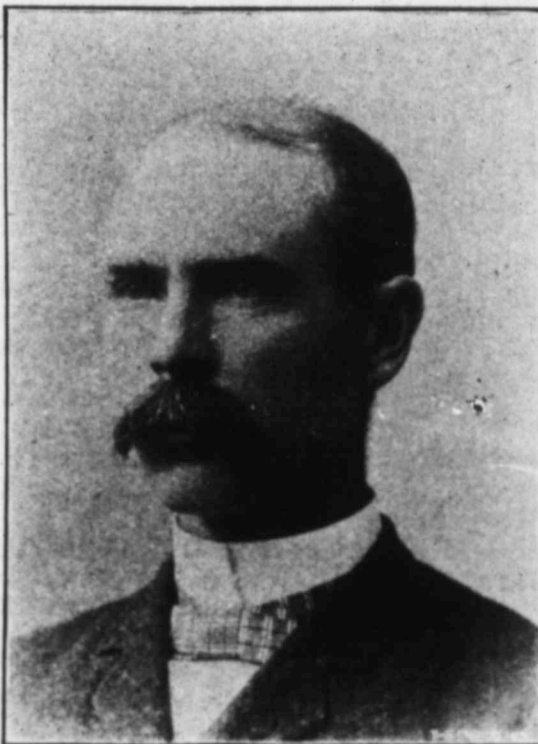
Be it Resolved, That the thanks of this Association be extended to the business men and citizens of Woodward and vicinity for their hospitable reception and entertainment of the members during this meeting of the Association, and that it is the spontaneous and unanimous opinion of each and every member that next to Billy Bolton, Woodward is the best thing on the map in western Oklahoma.

We endorse the recommendations made by Secretary Filson to the Governor for legislation regarding the leasing of Oklahoma school lands, and respectfully urge the legislative assembly to enact such legislation as

will give occupying lessees the right of renewal of leases.

T. P. WILSON,
IRA EDDLEMAN,
J. R. STINSON.

There was some discussion of the last resolution after it had been passed, Mr. Ward, of Gage, not clearly understanding its meaning and asking that it be reconsidered. No formal reconsideration was taken, but Hon. G. E. Morrow explained clearly the meaning of the resolution and the reasons for giving the present holders of leases the preference in reletting after the board of school land commissioners had fixed the prices. L. B. Watkins, of Quanah, Texas, D. P. Marum and Judge Dean, of Woodward, also took a hand in the discussion.



ABNER T. WILSON,
(Re-elected President of the Association.)

ELECTION OF OFFICERS.

The following officers were each elected by acclamation:

- President, A. T. Wilson, Kiowa, Kas.
- First Vice-President, M. F. Word, Grand, Day Co., Okla.
- Second Vice-President, G. E. Morrow, Stillwater, Okla.
- Secretary, W. E. Bolton, Woodward, Okla.
- Treasurer, John J. Gerlach, Woodward, Okla.

President Wilson appointed the following executive committee, which was approved by the members of the Association:

EXECUTIVE COMMITTEE.

- J. W. Holman, Curtis, Okla.
- Ira Eddleman, Woodward, Okla.
- J. R. Stinson, Whitehead, Okla.
- L. B. Watkins, Quanah, Tex.
- Geo. W. Carr, Stone, Okla.

On motion the secretary was instructed to prepare a resolution thanking Messrs. Faulkner and Tuggle, breeders of Jamesport, Mo., for the proceeds of sale of the convention bull, \$100.

E. F. Mitchell made a rousing short speech asking the Association to consider an invitation from the citizens and business men of the city of El Reno to hold their sixth annual session at El Reno.

Senator Gandy, of Alva, asked leave to read the following invitation from our neighboring city of Alva:

To the President, Officers and Members of the Oklahoma Live Stock Association, Woodward, O. T. Gentlemen:—The Commercial Club of this city, by unanimous vote of its members and in behalf of the city of Alva, hereby extend to you an invitation to hold your sixth annual convention in the city of Alva.

Yours most respectfully,

J. A. STINE,

Pres. Commercial Club.

Senator Marum on behalf of Woodward made a motion that the next convention of the Association be held in Woodward.

An invitation was presented from the Commercial Club of Amarillo,

Texas, asking that the next convention be held at Amarillo.

On motion it was decided to vote by ballot on the place of meeting, only members being allowed to vote.

While the ballots were being prepared the question of holding spring roundups was discussed, and the matter of fixing a date for same was referred to the executive committee with instructions to provide for same on the range.

The first ballot on place of meeting showed 1 vote for Amarillo, 18 for Alva, 19 for El Reno and 34 for Woodward. Necessary for a choice 37. Alva offered to withdraw in favor of Woodward before another ballot was taken.

El Reno lacked one vote of winning on the second ballot, the vote being a tie. It now being apparent that El Reno was bound to win the question of rates on the Rock Island railway bobbed up.

Pending the third ballot Vice President Morrow made a motion that the executive committee be empowered to locate the next convention in case satisfactory rates cannot be secured at least 90 days prior to date of annual meeting. Carried.

The third ballot resulted in 31 votes for Woodward and 39 votes for El Reno, which will be the next place of meeting, provided satisfactory rates are secured.

POSTAL CARD WANTS.

This department is conducted especially for LIVE STOCK INSPECTOR patrons, and only the small charge of one cent per word merely to cover cost is made for advertisements of cattle for sale or pasture, lands for lease or sale, feed for sale, etc.—in short any want felt about the rancho or farm. Enclose postal note for amount with order and if insertion is desired for more than single issue, remit to cover the amount. Address, Postal Card Wants, care LIVE STOCK INSPECTOR, Woodward, Okla.

TO TRADE FOR YOUNG CATTLE.—An elegant upright Estey piano, walnut case, splendid tone, good as new. S. M. HARRER, Wichita, Kan.

FOR SALE.—Twelve head of thoroughbred and high grade Shorthorn bulls ranging from one year to three in age, all red in color and in good flesh. J. R. WARD, Gage, O. T.

WANTED.—The name and address of parties handling the thoroughbred red Polled cattle either in Oklahoma, Kansas or Texas. Address SAMUEL FIFER, Arapahoe, O. T.

FOR SALE.—160 acres deeded land, clear. Three miles east of Gove City, Kas. Abundance of soft well water at 30 feet. The plow land went back to grass. First class land. Price \$500 cash. Address M. P. ROBERTS, N. Enid, Okla.

RANCHE FOR SALE, containing three quarters of land, taking in one and one-half miles of the Beaver river. Well improved; 200 acres of hay land. 35 miles from Liberal Kas. For particulars write to O. C. ARMSTRONG, Preston, O. T.

FEED FOR SALE.—For 3000 catt'e, consisting of corn in shock, cane in shock, millet in stack, Kafr corn in shock and standing; 5000 acre pasture, with one lot, and small pasture and abundance of outside grass with the other; abundance of water and good shelter. Anyone desiring feed I would gladly show what I have and make prices and terms. RILEY LAKE, Lake City, Kas.

MY RANCH AND STOCK FOR SALE.—Near Alva the county seat of Woods county, Okla. Alva is situated on the Santa Fe R. R. in the northern part of Woods county. It has about 2000 inhabitants. The Northwestern Normal School is located at Alva and has the finest school building in the west. Ranch is located 4 miles north of Alva and consists of 1100 acres of grass land, 120 acres of plow land and 60 acres in wheat, all well fenced and cross fenced, 3 and 4 wire, corrals, etc. Good 3-room house, good outbuildings of all descriptions, graneries, cribs, stables, etc. Good orchard of 800 trees, half bearing, 500 forest trees. Land—[section of homestead land, 1/2 can be deeded, 1/2 section of school land 4 years lease yet at \$35 per year, all land is joined, good running springs in south end, wind mill and inexhaustible water in north end. 450 head cattle, cows, calves, yearling steers and heifers. 30 head of horses consisting of mares and mule colts and saddle horses. Farming implements of every description. Will sell ranch or cattle separate or together. Time on part. Reason for selling, retiring from business. GEO. S. PARKER, Alva, Okla Box 189.

DO YOU EAT? Then read the advertisement of the Consumers' Supply Co., in this issue, and see what you get for your money. Everything just as represented. This firm is reliable. Tell them you saw it in the LIVE STOCK INSPECTOR.

J. C. Casey. D. A. Garst.

Casey & Garst,

WHOLESALE, WICHITA, KAN.

Sell Grocers' Sundries, Cigars, Tobacco, Candies and everything in our line. We can fit up country stores complete at low prices and low freight.

Goods well bought sell themselves at a profit. Write us for special prices and mention this paper.

CASEY & GARST, Wichita, Kan.

Wholesale Merchants.

THE MOST MODERN THING IN WRITING MACHINES IS

The OLIVER!

Its writing is visible without sacrificing any other features.

It has the only double type-bar in existence.

It will do ruling and colored work, and accomplish more than any other machine.

It has but one-third the number of parts in the Remington or Smith.

- The Ill. Central Ry. use 10 Oliver's.
- C. M. & St. Paul Ry. " 9 "
- C. B. & Q. Ry. " 11 "
- Chicago Title & Trust Co. use 14.
- A. F. Sheldon & Co. use 17 Oliver's.
- Reid, Murdock & Co. " 13 "
- Studebaker Bros. " 8 "
- Nelson, Morris & Co. " 6 "
- Deere & Co. " 6 "
- Meyer Bros. Drug Co. " 22 "
- U. S. Government over 200 "

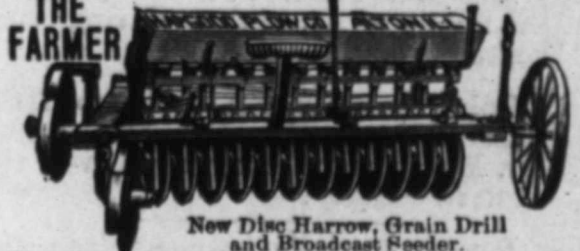
VICTOR E. HUNTER, Dealer.

214 west Ninth street, KANSAS CITY, MO.

GERLACH BROS. MERCANTILE CO.

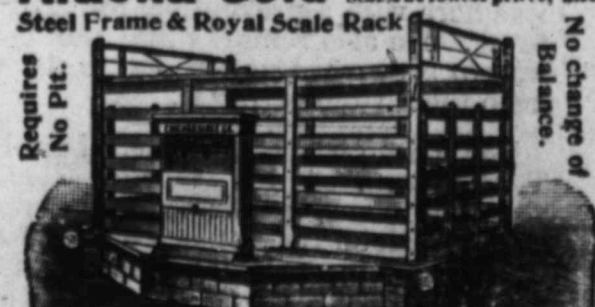
Dealers in General Merchandise and the largest outfitters in the Panhandle of Texas. Implements in carload lots. Gents' Furnishing Goods. Largest stock carried in the Panhandle of Texas. Canadian, Tex.

WE SELL DIRECT TO THE FARMER AT ONE-HALF DEALERS' PRICES.



Throwing the earth all one way. Revolutionizes the method of seeding, as the twin binder did the harvest. Discs 6 1/2 in. and 9 in. apart. Seed for circular. DEATH TO HIGH PRICES. 16-in. Sulky Plow, \$25. 18-in. S. B. Plow, \$30. Rolling Coupler, Extra \$1.50. 64-T. Lever Harrow, \$7.00. Mowers, \$29.40. Riding Gang Plow, \$35. 12-16 Disc Harrow, \$18. Hay Rakes, \$11.50. Wagons, Buggies, Harness, Sewing Machines, Cans and Alder Mills. Hay Tools and 1000 other things at one-half dealers' prices. Catalogue free. Harwood Plow Co., Box 206, Allen, Ill.

Alaska Gold



Is flooding the country and prices are going up, but we still sell the U. S. Standard Scales at lowest prices; also No change of Balance. Requires No Pit. Hundreds of specialties at less than wholesale prices, viz: Sewing Machines, Bicycles, Organs, Pianos, Clocks, Cigars, Canned Goods, Hardware, Saws, Bone Mills, Letter Presses, Jack Screws, Trucks, Anvils, Hay Cutters, Presses, Feed Mills, Stoves, Drills, Road Plows, Lawn Mowers, Coffee Mills, Forges, Lathes, Dump Carts, Corn Shellers, Hand Carts, Engines, Trucks, Wire Fence, Panning Mills, Crow Bars, Rollers, Washes, Clothing, etc. Hay, Stock, Elevator, Railroad, Platform and Counter SCALES. Send for free catalogue and see how to save money. 496 Jackson Boulevard, CHICAGO SCALE CO., Chicago, Ill.

THE LIVE STOCK INSPECTOR

PUBLISHED SEMI-MONTHLY BY

WILL E. BOLTON.

WOODWARD, OKLAHOMA

The only journal published in Oklahoma and the Indian Territory, devoted exclusively to live stock interests and stock farming.

Official Organ of the Oklahoma Live Stock Association.

1899						
January						
S	M	T	W	T	F	S
1	2	3	4	5	6	7
8	9	10	11	12	13	14
15	16	17	18	19	20	21
22	23	24	25	26	27	28
29	30	31				
February						
S	M	T	W	T	F	S
1	2	3	4	5	6	7
8	9	10	11	12	13	14
15	16	17	18	19	20	21
22	23	24	25	26	27	28
29	30					
March						
S	M	T	W	T	F	S
1	2	3	4	5	6	7
8	9	10	11	12	13	14
15	16	17	18	19	20	21
22	23	24	25	26	27	28
29	30	31				
April						
S	M	T	W	T	F	S
1	2	3	4	5	6	7
8	9	10	11	12	13	14
15	16	17	18	19	20	21
22	23	24	25	26	27	28
29	30					
May						
S	M	T	W	T	F	S
1	2	3	4	5	6	7
8	9	10	11	12	13	14
15	16	17	18	19	20	21
22	23	24	25	26	27	28
29	30	31				
June						
S	M	T	W	T	F	S
1	2	3	4	5	6	7
8	9	10	11	12	13	14
15	16	17	18	19	20	21
22	23	24	25	26	27	28
29	30					

At News Depots and On Trains.

KANSAS CITY—By W. A. Rode News Co., 535 Main St.
 WICHITA—By C. A. Tanner & Co., 122 North Main St.
 DENVER—By Hamilton & Kehrlick News Co., 17th and Champa.
 AMARILLO, Tex.—Morgan Bros. News Co.
 For sale on all western Santa Fe trains, by Newsboys.
 For sale on U. P., Denver & Gulf trains, by Denver Ry. News Co.'s agents.

OFFICERS OKLA. LIVE STOCK ASSOCIATION.

President... AHNRR T. WILSON
 1st Vice-P... JOSEPH WICKER
 2nd "..... G. E. MORROW
 Secretary..... W. E. BOLTON
 Treasurer..... JOHN GERLACH

EXECUTIVE COM.

IRA EDDLEMAN,
 W. E. HERRING,
 JNO. W. HOLMAN,
 GEO. W. CARR,
 B. MASTERSON.
 President and Sec'y, ex-officio

LIVE STOCK SANITARY COMMISSION OF OKLAHOMA. MEMBERS BOARD

C. J. BENSON, Shawnee,
 J. C. TOUNSLEY, El Reno,
 B. S. BARNES, Ponca City,
 F. D. WIKOFF, Stillwater,
 R. J. EDWARDS, Oklahoma City
 Secretary.
 GOVERNOR BARNES, Ex-officio.

TERRITORIAL QUARANTINE INSPECTORS.

CHAS. RICKEL, 1st Dist.
 SAN MATTHEWS, 2d Dist.
 JAKE CANTRELOU, 3d Dist.

Entered at the post-office at Woodward, Oklahoma, as second-class mail matter.

Subscription \$1 per Year in Advance.

MARCH 1, 1899.

We'll have to go after the convention next year—and get it again.

Miss Helen Black, of Ohio, visited the family of Dr. Patton during convention week.

Robt. Moody & Son were up from Canadian attending the convention. Mr. Moody is well known all over the western country.

Reports from the range place the losses far less than at first given. Loss will be less than three per cent on range in Oklahoma.

Gov. Barnes caught the Woodward people. One lady here declared her intention to Hobsonize him if she ever has the opportunity.

Dr. Eilert, of Whitewater, Kansas, was here with a preventive for Texas fever. He also remarks that the best way to prevent locc in cattle is to keep them from eating it.

The Frisco was represented here by T. B. Moore, of Ft. Worth, Texas, also, the following telegram, dated at Planters Hotel St. Louis, Feb. 14, was received by the Secretary and read to the convention:

ST. LOUIS MARCH 14th, 1899.
 SECRETARY CATTLE CONVENTION
 Serious illness has prevented me from attending your Convention. You hold my best wishes for success. Assuring you that the Frisco are your friends.
 ZACK MULHALL.

Amend House Bill No. 24.

Has our legislature devoted so much time to the "Public Buildings Act" that it has forgotten all else?

The State Capital of Feb. 25 reports House Bill No. 24 passed, as follows:

"House Bill No. 24: An act to amend an act amending section 5 of chapter 1 of the statutes of Oklahoma and authorizing the employment of a territorial veterinary surgeon by the Board of Regents or the Agricultural and Mechanical College of Oklahoma and creating a sanitary commission and prescribing the duties thereof, and repealing article 1 of chapter 2 of the statutes of Oklahoma, by Wailes, came up as above, was called on time and considered.

"After amending the bill so as to let Custer, Washita and Greer counties come within the provisions of the open season, and striking out the section providing for cattle inspection, the bill was ordered engrossed."

The above amendment practically opens wide the trail for infection and the result cannot be otherwise than the withdrawal of the Federal Quarantine line to the Kansas boundary.

The Federal line never intersects a state or territory except by request of said state or territory, and then only when said state or territory passes legislation protecting the line within its borders.

The Federal line, by proclamation of the secretary, has no open season. The amendment to the bill above quoted gives to Custer, Washita and Greer counties an open season from Oct. 15 to March 25, thereby annulling the Federal line. The result is obvious. The counties will be infested with the germ of splenic fever and the Federal line will be run around north of Oklahoma instead of as now, affording protection to the entire range country of the territory.

Whatever may be the object of the amendment, should the bill pass in its present form, it would damage Oklahoma not less than ten millions of dollars. The withdrawal of the Federal line would mean a loss of from three to five dollars per head on every hoof now above the line. This depreciation of values would cause ruin to many cattlemen and would result in calling in loans which are now amply secured.

Furthermore, this line once taken away would never be restored without supreme effort and then perhaps not for many years.

Gentlemen of the Council, if you wish to avoid needless loss to the taxable valuation of the territory, kill the amendment to this bill; if you wish to foster and develop the live stock interests, strike out this amendment to House Bill No. 24; and if you wish to act for the good of Oklahoma in general, which now bears such a good reputation as a grower of live stock and whose cattle command the highest values on every market, you will not permit this bill to become a law as it now stands.

The handsome half tone illustration on page 13 is a good view of the Sedgewick Nursery home, which is advertised on last page of this issue. Send to them and get western trees for western climate and soil and you will save money. Write them for catalog at once.

The annual convention of the Cattle Raisers of Texas will occur at Fort Worth on March 14, this year. All who can do so should attend from the range country. The reports of small pox in Fort Worth and Dallas are doubtless much overdrawn and should not prevent anyone from attending.

This office acknowledges with pleasure the calling of the following ladies and gentlemen in a body during convention date: Mrs. W. C. Douglass, Miss Anna McNeely, Miss Lulu Kan, Mrs. J. W. Maxey, T. J. Womack, C. E. Whitfield, all of Alva, and Mrs. M. F. Word, of Grand, Day county.

L. A. Seiling, of Chandler, Neb., who established the town of Seiling, 8 1/2 miles northwest of Taloga is down looking after his interests. He attended the convention, and says he might have been one of the big cowmen now if he had not blown in his money on townsites in '93 and '94 when he might have bought yearlings at \$5 a head.

The National Cattle Register is advertised in this issue. The branch office at Woodward invites registration. Come in and examine the merits of the Register and you will see the necessity of listing cattle you wish to sell. Buyers are going to this register everywhere, and when you go on one you are on all the registers. Cattle may be listed by mail. Give number, age and description, and send cash to amount of 2 cents per head on cattle you wish to list for register for sale.

Losses of Cattle in the Panhandle of Texas.

The losses of cattle in this famous grazing section of the Lone Star State are not as great as first reported, but they have been greater than for many years. The herds having access to running water and the protection offered by the breaks, which invariably surround the living streams, have suffered but little, but those on the Staked Plains, dependent on well water and no protection have met with very heavy losses.

The Staked Plains are admirably adapted for summer grazing, but as a permanent location, the extremes of temperature make them very treacherous for ranching purposes.

It is the losses from several ranches

on the plains that have given rise to the reported heavy losses in the Panhandle. The Staked Plains section it is true covers quite a large territory but not over one-fourth of the Panhandle can be included in the Staked Plains proper; therefore losses in the Panhandle must not be gauged by those of the Staked Plains which have no natural protection against the heavy storms, no living water and have an altitude of from 3500 to 3700 above sea level.

The heavy growth of natural grasses on these plains have been very attractive to ranchmen, but the experience of this winter has proved their unfitness as a winter range and how quickly the profits of years of hard work and self denial may be wiped away.

Our Next Issue.

As elsewhere explained, this issue does not contain convention cuts. The report of the convention is complete but lacks much that will follow in next issue giving names of attendants, convention notes, etc. These are not published this time simply because the many demands made on the Secretary's time in finishing up the work left by the convention, the new legislation requiring attention and the mass of accumulated correspondence due to preparation for weeks before the convention. Next issue will sail out bright and trim again for its cruise for the coming year.

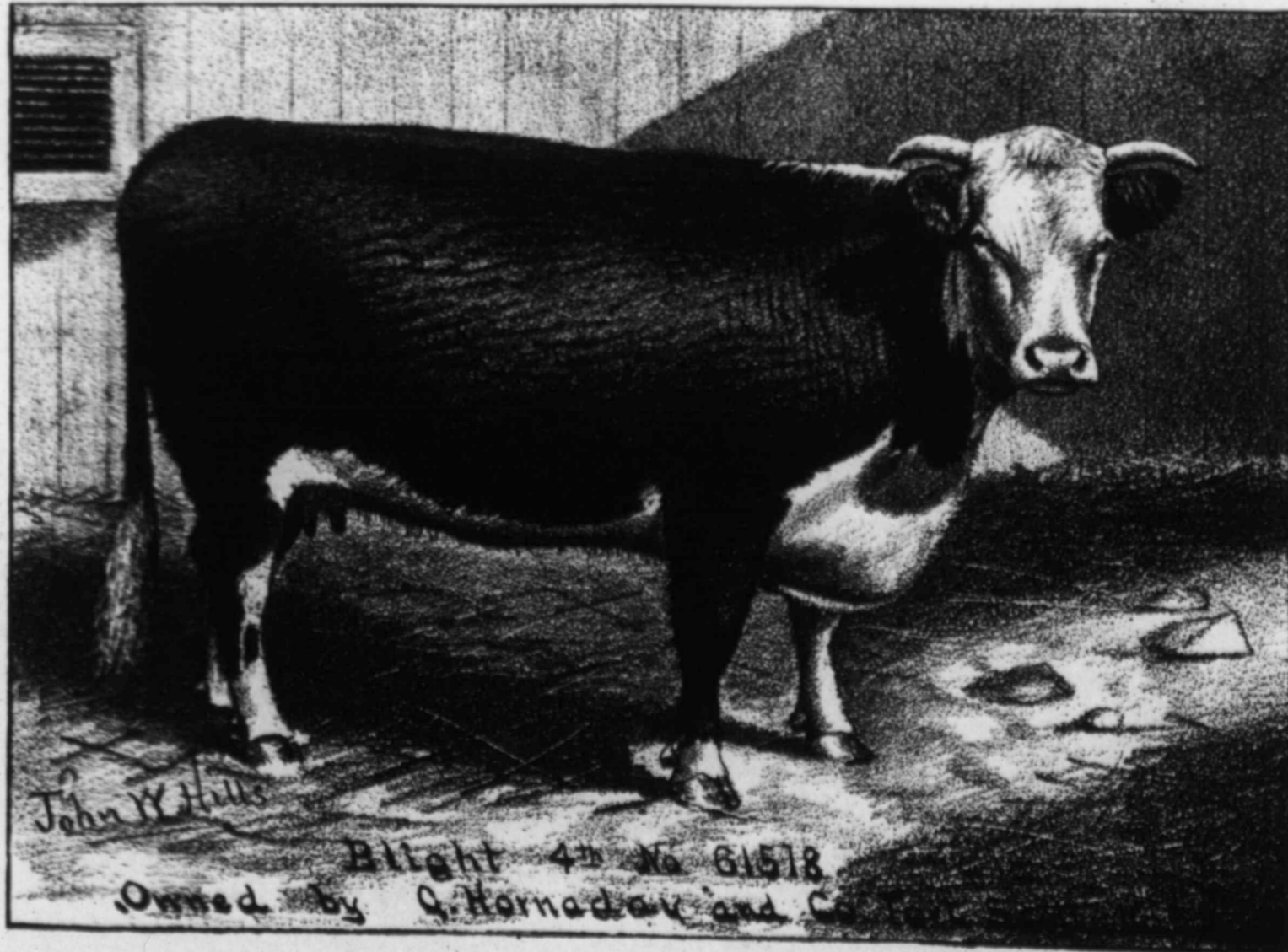
Concerning Convention Cuts.

The LIVE STOCK INSPECTOR placed an order for convention cuts with engravers the day following the convention. At the last moment before going to press, letter was received saying:

"We had hoped to have your work out complete in time specified but owing to some accidents find it impossible. We regret very much the disappointment to you."

Sorry, but it can't be helped! Therefore the cuts ordered do not appear in this issue.

Senator Marum and wife, of Woodward, entertained at dinner Wednesday night before their departure for home, Gov. C. M. Barnes, J. N. Hopkins, Superintendent Public Instruction; William Filson, Commissioner School Lands; Major Woodson, Indian Agent Cheyenne and Arapahoe, all of Oklahoma, F. T. Dolan, Supt. A. T. & S. F. R. R., and Wm. Penn Anderson, of the Railway Bureau of Live Stock Statistics, Union Stock Yards, Chicago.



John W. Hill
 Blight 4th No 61518
 Owned by G. Hornaday and Co.

Write to the Live Stock Inspector
For Particulars
In Regard to Our Premium Sewing Machine!

Stockmen at Woodward.

An Associated press telegram from Woodward, Okla., Feb. 14, says: "This town is crowded with stockmen attending the annual convention of the Oklahoma Live Stock Association, which convened this morning. There are prominent stockmen here from all parts of the territory and adjoining states, and they have been busy comparing notes as to the effects of last week's blizzard and cold wave on the cattle."

"It is generally conceded that first reports were largely exaggerated. While there have been reports of heavy loss in scattered herds, the majority of the cattlemen report losses ranging from one to five per cent, and on the whole it is not believed that losses will reach 10 per cent on the range. The heaviest losses seem to have occurred in herds of southern cattle moving through the territory. They were brought in late and in bad condition and in one instance a loss of 97 per cent is reported in a herd of 200 head, and the remainder will die. Such instances are rare, however, and the native and western cattle wintering in the breaks are coming through with much lighter loss than seemed possible last week with the thermometer was down to 30 degrees below zero and the wind blowing the snow over the prairies."

"The temperature to day is 65 degrees above. The weather is warm and bright and cowmen are confident. Governor Barnes and the territorial legislature came in on a special train from Guthrie this evening and will remain to visit with the stockmen tomorrow. The convention adjourns tomorrow night and promises to be the most successful ever held. Thus far there has been no trading in cattle. Buyers are here in numbers looking for frightened owners and expecting to buy remnants of herds at marked down prices, but owners are not scared badly enough to make any sacrifices on prices. The warm weather has given them courage, and offerings are held strong."

Some New Advertisements.

"Oh, the Studebaker wagon is just the thing to brag on," is advertised in this issue of the LIVE STOCK INSPECTOR. Throw away your old combination of loose tires and bent spokes and get something just right from Studebaker and keep a fat team. Write to them and get their low prices. This will only cost a postal card and will get you more information for a cent than you ever got in your life. And while you are at it don't forget to mention this paper.

See those shorthorn bulls advertised in the Breeders Directory.

You can get some good bargains in cattle from Felix S. Franklin. Read his ad in this paper.

Seeds, did you say? You can get them any kind or quantity, from the Clark Commission Co., at Wichita, Kas. The publisher of the LIVE STOCK INSPECTOR happens to know these people and recommends them to every reader. Write them and tell 'em where you saw it.

Say, people, you'll miss something if you fail to read the advertisement of the Sedgewick Nurseries on last page of this paper. Write them now. We will have more to say about these people next issue, but you had better write them now and get the best selection. Their stuff grows and don't you forget it.

Who don't like sweet potatoes? Those who do not should skip the ad of T. J. Skinner in this paper—but those who do should read it. There's money in it for you. Don't forget to mention the LIVE STOCK INSPECTOR when you write.

J. N. Webb returned yesterday evening from Woodward, where he had been attending the live stock convention. He says it is the biggest crowd Woodward has ever had and the greatest meeting the Association has ever had.—Canadian (Tex.) Record, Feb. 17.

Two Things
are Certain

**THESE
SEEDS
GROW**

AND PRODUCE SOMETHING
WORTH GROWING.



The Villager's and
FARMER'S BOX
OF CHOICE SEEDS
Especially Adapted to
EVERY HOME GARDEN.

LIST OF SEEDS IN EACH BOX.

EXTRA EARLY BEET. This is decidedly the best extra early beet in cultivation. Of fine shape, good size, and smooth. It is bright red, remarkably rich, tender and sweet. Very productive and easily grown. Pkt. 10c.

EVERGREEN CUCUMBER. New, and of great value. A very hardy strong grower, bearing prodigiously until frost. It is extra early, fruit very handsome, firm and crisp; unexcelled for pickling and slicing. 10c.

ROSY GEM RADISH. This new radish has won golden opinions everywhere. It is absolutely the earliest variety in cultivation; and is exceedingly tender, crisp and delicious. A great acquisition. 10c.

IGNOTUM TOMATO. A "priceless paragon" in the Tomato line; the earliest, most solid and valuable large Tomato ever introduced. It will wipe out fifty old sorts at a sweep. Way longer grow poor sorts? 10c.

PEERLESS WATER-MELON. The best variety for family use. Superior in every respect, and cannot be surpassed in exquisite flavor. Very early, of medium size, flesh rich scarlet; thin rind; very sweet. 5c.

EARLY PROLIFIC POLE BEAN. This remarkable bean is extremely productive, a continuous bearer the whole season; succeeds everywhere. The pods are borne in great clusters. Cook's tender and delicious. 10c.

EARLY PRIZE HEAD LETTUCE. It forms beautiful heads firm and compact. Is very rich, buttery, and of extra fine flavor. It remains crisp and tender for a long time. One of the very best ever grown. 5c.

MILLER'S CREAM MUSK-MELON. One of the grandest, sweetest and most delicious of all musk melons. Very early, hardy, and wonderfully prolific. Every one should grow a bountiful supply. 10c.

LARGE SUGAR PARSNIP. A greatly improved variety. The roots are long, very smooth; flesh fine grained, tender and the flavor delicious. It is a heavy cropper—a good seller and money maker. 5c.

VEGETABLE PEACH. A new and beautiful Garden Treasure—a vine fruit resembling oranges in color, shape and size. Flesh snow white, and mellow; very handsome, delicious preserves, pies, and sweet pickles. 10c.

MAMMOTH PUMPKIN. A grand, colossal variety astonishing everybody by its great size and heavy weight. It is a REAL "300 pounder," and always a prize-winner. Excellent for pies and a splendid keeper. 10c.

GIANT PANSIES. Fifty colors, shades and markings. Pansies are the loveliest of all flowers. They bloom very early and will continue the entire season, making a wondrous display of beautiful colors. 20c.

SWEET PEAS. Fashion's fragrant floral favorites. Over 50 varieties of incomparable beauty and exquisite perfume. Continuous bloomers; of the easiest culture; unrivalled for cutting; entrancingly fragrant. 10c.

PRIZE POPPIES. Forty superb varieties of marvelous beauty. There is nothing more gorgeous than the Double Poppies, bursting with fullness, glowing with colors, and like great peonies in size. 10c.

EVERBLOOMING PETUNIAS. 40 varieties and colors. A superb mixture of the "Peoples Flower." They will bloom in a month or so and continue to produce a cloud of brilliant blossoms until hard frost. 10c.

MIXED FLOWERS. Over 300 varieties in one large packet. A grand mixture that will both astonish and delight you with their dazzling brilliancy and beauty. Such a bed will be a continual pleasure. 15c.

ILLUSTRATION,
AND DIRECTIONS FOR
PLANTING ETC.,
ON EVERY PACKET.

Total, \$1.60.

— ADDRESS —

TESTED SEEDS.
**None Better
IN THE WORLD.**
SAFE ARRIVAL
GUARANTEED.

NOT "CHEAP JOHN"
SEEDS—BUT FINEST
SELECTED OF INTRINSIC
VALUE, OFFERED
SOLELY TO SECURE
NEW CUSTOMERS.



Special Offer...

From this date until March 31st THE LIVE STOCK INSPECTOR will give all of the above seeds FREE with each new yearly subscription at one dollar each. Fill out the blank below and mail with one dollar in stamps or money order to Publisher LIVE STOCK INSPECTOR:

1890.

Pub. Live Stock Inspector, Woodward, Okla.

SIR:—Enclosed find One Dollar, for which send me the paper one year from date, and send me at once packet of Garden and Flower seeds as per your special offer.

Name.....

P. O.

State.....

COMPLETION OF PECOS VALLEY.

Will Bring Kansas Much Closer to New Mexico Cattle Ranges.

Santa Fe, N. M., Feb. 16.—South-eastern New Mexico is on the boom, because of the railroads that are being now constructed through it, and the people of Pecos valley especially are having just occasion to rejoice. The last rail on the extension of the Pecos Valley line between Roswell and Amarillo, Texas, has been laid, and this week the road was opened for traffic. Chavez and Eddy county people go to Colorado direct via Amarillo, or to Kansas City over the Santa Fe from Amarillo Junction instead of away around by Fort Worth. Moreover, there is an immense amount of cattle range tributary to this line, and cattle instead of being shipped to Fort Worth, will be sent over this new line to the feeding grounds in southern Kansas. That this traffic is of large dimensions may be inferred from the fact that from points west of the quarantine line there were shipped last year over the Texas and Pacific 175,000 head, over the Southern Pacific 100,000 head, driven to Amarillo 152,000 head, to Panhandle City 45,000 head, to Giles City and other points 70,000 head, making a grand total of 542,000 head. All these shipments the Pecos Valley and Northeastern will receive hereafter.

The distance from Pecos City in Texas, the southern terminal at present, to Amarillo Junction, the northern terminal, is 372 miles. At Amarillo Junction not only is direct connection effected with the Southern Kansas line of the Santa Fe, but it is generally understood now that the Rock Island will build south about 150 miles from its Liberal, Kansas, terminal, to Amarillo Junction, effecting direct connection with Kansas City, and will make such arrangements with the Pecos company that the line from Amarillo to Roswell may be used as a joint track. The Rock Island's intention is to continue from Roswell to White Oaks on the line of the El Paso and Northeastern, whence trains can be run over the latter road into El Paso.

The principal stations on the Pecos Valley road are as follows: Amarillo, Canyon City, Hereford, Bovina, Guadalupe and Pecos, Texas; Portales, Kenna, Roswell, Hagerman, Eddy, Malaga, New Mexico.

Train No. 2, consisting of baggage and mail car, Pullman day coach and first-class sleeping car, leaves Amarillo daily at 5 a. m., arriving at Roswell at 1:30 p. m. and Pecos at 10 p. m., connecting with the Texas and Pacific trains east and west.

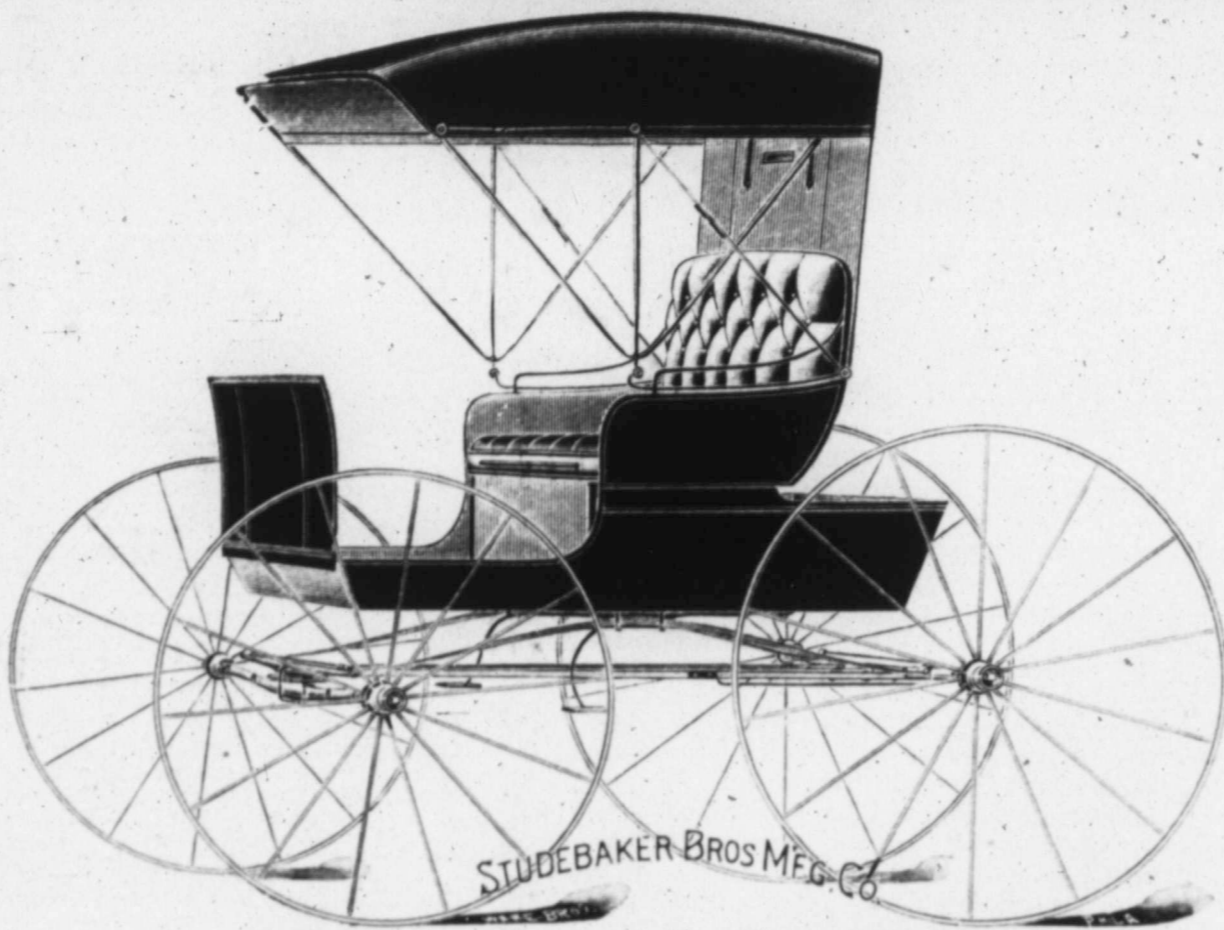
Train No. 1, equipped the same as No. 2, leaves Pecos at 4:30 a. m., breakfast at Eddy, leaving Roswell at 1:30 p. m. and arriving at Amarillo at 10 p. m., connecting with the Atchison, Topeka and Santa Fe and Fort Worth and Denver city.

Corrugated Iron Roofing

Is "going up" in more senses than one—it is going up on the roofs of every class of buildings because of its cheapness and durability and is going up in price because of the advance in cost of the raw material. While it will remain cheaper than shingles even after the anticipated advance it is desirable that the additional cost be saved by ordering promptly. Prices and all particulars free from the makers on request. Address the Kansas City Roofing and Corrugating Co., 416 Delaware St., Kansas City, Mo. Mention this paper.

Geo. D. Loving, of Ft. Worth, has closed a deal with D. Waggoner & Sons, of Decatur, for 20,000 head of one and two-year-old steers of the WK and KW brands, delivery to be made in April. Prices private but said to be in keeping with the prosperity of the cattle business.—Canadian Record,

Many Good Things ...are Overlooked!



STUDEBAKER BROS. MFG. CO.

(Please mention this paper.)

810 to 814 Walnut Street, KANSAS CITY, MO.

Proposals for Live Stock.

Cheyenne and Arapahoe Indian Ag'cy, Darlington, Okla., Feb. 14, 1899.

Proposals will be received until noon March 15, 1899, for delivery at this agency of—

1 pair geldings or mares, from four to six years old, 15 $\frac{1}{2}$ to 16 hands high; weight 1100 to 1200 pounds; sound and serviceable, gentle and well broken—for light or heavy driving.

1 pair mules, from four to six years old; 15 to 16 hands high; weight 1100 to 1200 pounds; sound and serviceable, gentle and well broken to harness.

4 good milch cows, from three to four years old; good milkers.

10 high grade shorthorn yearling heifers.

13 high grade Hereford yearling heifers.

1 full blood two-year-old Hereford bull.

1 full blood two-year-old shorthorn bull.

The heifers must be at least three-fourths full blood, and the bulls must be registered or eligible to registry.

These animals will be subject to inspection at the place where kept, and purchased after acceptance at the point of delivery.

Parties submitting bids should fully describe the condition and quality, and furnish satisfactory evidence of the breeding of the cattle they offer.

Bids on any part, or the whole, will be considered.

A. E. WOODSON, Major U. S. A.
Acting Indian Agent.

Pleased with Results.

WINTHROP, ME., April 5, 1898.

GENTLEMEN:—The Lump Jaw cure you sent me last January was used on a lump of six months' growth and the size of a man's fist, on the jaw of a fine Jersey cow. I am pleased with the result. The lump has been removed, leaving the jaw smooth and in good condition. Your preparation is a great success.

Very truly yours,

N. R. PIKE,

Sec. and Treas. Maine State Jersey Cattle Association.

It was a Great Convention.

Special to the Wichita Beacon:

Woodward, Okla., Feb. 15.—The legislature party reached here late last night and retired to the quarters which had been assigned to the members.

To-day they have visited the vario us places of interest and are enjoying the cattle men's great convention.

or lost of by some people in buying a vehicle, in not using care in selecting the best. We make a larger variety of Buggies, Carriages and Wagons than any factory in the world, and make them adapted to all countries, and for all kinds of use. This cut represents one of our

Ranchman's Buggies.

We build several styles and grades of these, all of which have a reputation for durability.

Write us
For Catalogue and
Price List...

WE HAVE NO AGENTS, but have sold to the user direct at factory prices for the past twenty-six years. We ship anywhere for examination. Everything Fully Warranted. We are the largest manufacturers of vehicles and harness in the world selling to the consumer exclusively. Our line consists of Rockaways, Surreys, Traps, Phaetons, Stanhopes, Driving Wagons, Top Buggies, Open and Top Road Wagons, Spring Wagons, Delivery Wagons, Milk Wagons, Wagonettes and all styles of Harness.

Send for Large Free Catalogue.

ELKHART
Carriage and Harness Manfg. Co.,
W. B. PRATT, Secy. ELKHART, INDIANA.

This Extension-Top Surrey with double fenders, complete with side curtains, aprons, lamps, and pole or shafts, for \$75.
Just as good as retails for \$110.

SEEDS ALFALFA SEED A SPECIALTY

Cane and Millet Seeds, Kaffir and Jerusalem Corn, etc. All crop of 1898. Write for our "How to Sow Alfalfa" and prices on seeds.

MCBETH & KINNISON, Garden City, Kansas.

The California Limited

Via Santa Fe Route. Is the best and speediest train to California. Woodward to Los Angeles in 21 days, three times a week.

Pullmans, dining car, buffet smoking car with barber shop, and observation car with spacious parlor for ladies and children, vestibule and electric lighted.

Address
A. T. & S. F. Railroad,
Woodward, Oklahoma.

Sweet Potatoes

Sent out to be sprouted on SHARES. No experience required. Directions for sprouting FREE with order. Also vineless sweet potatoes for sale and on shares.

T. J. SKINNER,
Columbus, Kas.

(Please mention this paper.)

SEEDS THAT GROW AT PRICES THAT TALK.

Agents wanted in every section. The best Seeds, Plants, Bulbs and Poultry Supplies. Cut this out and send with five 2c stamps for 5 large packages Garden Seeds and our beautifully illustrated Catalogue for 1899, FREE.

L. E. ARCHIAS & BRO., CARTHAGE, MISSOURI
(Please mention this paper.)

VIRGINIA HOMES

You learn all about Virginia lands, soil, water, climate, resources, products, mode of cultivation, price, etc., by reading the VIRGINIA FARMER. Send 10c for three months subscription to **FARMER CO., Emporia, Va.**

(Please mention this paper.)

Prevent Blackleg In Cattle

by using Collier Williams Mixture. Easily applied and a sure preventive of Blackleg in cattle. For full information, price, etc., call on or address

COLLIER WILLIAMS,
Woodward, Okla.

(Please mention this paper.)

SEED DUE BILL FREE

To get new customers to test my seed I will mail my handsome catalogue **Due Bill, free**, good for 10c worth of seeds for trial, absolutely free. It is full of bargains. All the Best Seeds, Bulbs, Plants, Roses, new Fruits, Farm Seeds, Potatoes, etc., at lowest prices. Ten Great Novelties offered without names. I will pay \$50, FOR A NAME for each. Don't buy your stock until you see this new catalogue. Several varieties shown in colors. Great inducements for orders this year. You will be surprised at my bargain offers. Send your address on Postal to-day. Tell your friends to send too. Old customers will receive a copy.

J. H. MILLS, Seedman, Box 115, Rose Hill, N. Y.

It Goes to El Reno.

The Fifth Annual Convention of the Oklahoma Live Stock Association is now a matter of history. The attendance approximately 1000 people and had it not been for the extreme cold weather of the two weeks immediately preceding convention dates, thus keeping many cattlemen at home, the attendance would easily have reached 1800.

The benefits of the convention are many. At least \$5000 was left in Woodward and many estimate it at a much greater sum. But by far the most important benefit to Woodward was the advertising which helped retain it on the map. Never has any convention of similar nature ever held in Oklahoma been advertised like this one. From Chicago to El Paso and from Denver to St. Louis it has been noted in the stock journals and as far east as Buffalo, N. Y., has the call been published. Almost every newspaper in Oklahoma and many in Kansas and Texas have contributed space and said many kind things of Woodward and the Fifth Annual Convention. The benefit of this lies in educating the stock growers of the country, until to-day Woodward is recognized as an important center of the live stock industry.

By ballot, three separate votes being necessary, the Association decided to meet next year at El Reno. The choice was hotly contested until it was finally decided. That it will broaden the membership of the organization goes without saying, and while the people of Woodward regret losing it, even for one year, they will cheerfully aid El Reno in making the next convention a huge success.

The people of Woodward are fully alive to the importance of securing it here again in 1901 and will leave nothing undone to accomplish that end. Therefore, arrangements will be made in ample time to take a special train from here to the convention next year.

The Oklahoma Live Stock Association has proven by this action that it is in no sense a local institution confined to the limits of Woodward county, but that it is built upon a broad enough basis to benefit every stockman in the southwest. The convention at El Reno next year will be one of the most important meetings held in Oklahoma during the year 1900.

SAVE MONEY!

Send to the Live Stock Inspector to Save Money on Periodicals.

Look over our clubbing list below and send in your clubbing list to us. If you want more than one periodical with the LIVE STOCK INSPECTOR, subtract the price of this paper (\$1.00) from all but one and add together, or write us for a special rate if you wish to subscribe for several publications.

Address all orders to the LIVE STOCK INSPECTOR Woodward, Oklahoma.

American Gardening, New York\$1.75
Arkansas Traveler, Chicagomonthly..... 1.10
Atlantic Monthly, Bostonm..... 4.05
Babyhood, New Yorkm..... 1.60
Breeder's Gazette, Chicagow..... 1.80
Century Magazine, New Yorkm..... 4.30
Cincinnati Enquirer, Cincinnatim..... 1.35
Cosmopolitan, New Yorkm..... 1.60
Dallas News, Dallasdaily..... 5.65
Dallas News, DallasSunday..... 2.85
Demorest's Magazine, New Yorkm..... 1.60
Denver Daily Post, DenverNew..... 4.05
.....Renewal..... 5.00	
Fireside Companion (and 30 books) N. Y.w..... 3.05
Forum, New Yorkm..... 3.35
Frank Leslie's Popular Monthlyw..... 1.65
Guthrie State Capitalw..... 1.15
Harper's Weekly, New Yorkw..... 3.85
Harard's Dairyman, Ft. Atkinson, Wis.w..... 1.60
Horseman, Chicagow..... 2.85
Independent, New Yorkw..... 2.65
Judge, New Yorkw..... 4.80
Kansas City Packerw..... 1.75
Ladies' World, New Yorkm..... 1.05
Life, New Yorkw..... 5.35
McClure's Magazine, New Yorkm..... 1.60
New Time, Chicagom..... 1.55
New York Weekly, New Yorkw..... 3.05
Outing, New Yorkm..... 3.05
Puck, New Yorkw..... 4.85
R. M.'s Horn, Chicagow..... 2.05
Republic, St. Louiss-w..... 1.55
Review of Reviews, New Yorkm..... 2.40
Rocky Mountain News, Denverw..... 1.65
Scientific American, New Yorkw..... 3.30
Swine Breeders' Journal, Indianapolis, Ind.s-m..... 1.10
Times, Kansas Cityw..... 1.55

Do You Ship Cattle?

Very many readers of the LIVE STOCK INSPECTOR will soon begin shipping cattle to the markets at Kansas City, St. Joseph and St. Louis. For the benefit of those who may be undecided where to consign, the following list will be of value, representing as it does the leading and more progressive commission firms at the markets.

If you expect to get top sales for your stuff don't monkey with back number firms who are not alive to their business, who do not even solicit your patronage.

On the other hand, the firms and companies below named are up to date in method; they employ the very best salesman and buyers; they thoroughly understand their business and can give you the very best service at no higher rates than is charged you by others in the business who do not even seek your acquaintance.

In addition to all this these men aid you directly by assisting you to maintain an Association journal; they are interested in your success and invite your confidence. Consign to these people when you ship, no matter whether it be a single car load or a hundred; no matter whether it be cattle, hogs or sheep, and you will not have cause to regret your action.

Here are the PROGRESSIVE COMMISSION FIRMS OF KANSAS CITY, ST. JOSEPH AND ST. LOUIS.

- McDonald-Crowley Farmer Co.
- Lone Star Commission Co.
- Campbell, Hunt & Adams.
- Elmore & Cooper.
- Tamblyn & Tamblyn.
- Barse Commission Co.
- Chicago Live Stock Com. Co.
- Kansas City Live Stock Com. Co.
- Southee & Kirk.
- Zeb F. Crider Commission Co.
- T. P. Gordon Commission Co.
- Paugh & Co., Wichita, Kan.

C. HOOD, President.
L. A. ALLEN, Vice-President.

T. J. EAMAN Sec. & Treas
H. S. BOICE.

The Kansas City Live Stock Com. Co.

Is one of the Oldest and Best companies in Kansas City.

A good one to do business with. They have ample capital and are perfectly reliable. Twenty-five years in the trade.

Write to them for information and ship to them for good results.

GEO. B. CAMPBELL, Cattle Salesman.
L. A. ALLEN, CHAS. W. CAMPBELL, PEYTON MONTGOMERY, Cattle Salesmen.
W. T. MCINTIRE, Sheep Salesmen.
J. T. MURPHY, Hog Salesmen.

GEO. R. BARSE, Pres. J. H. WAITE, Sec. and Treas.

BARSE Live Stock Commission Co.,

Rooms 159-160, Live Stock Exchange. KANSAS CITY, MO.
Established 1871.

Money to Loan on Cattle.

Experienced Salesmen. Prompt Remittances. Correspondence and Consignments Solicited.

B. T. McDONALD, Pres.
J. E. McNair, Vice Pres.
I. S. ALEXANDER, Sec. and Treas.

SALESMEN
JERRY CROWLEY, Cattle
J. L. BENNETT, Cattle.
J. B. CROWLEY, Hogs.

E. R. BOSWELL, Office.

THE McDONALD-CROWLEY-FARMER CO.,

LIVE STOCK COMMISSION MERCHANTS.
MARKET REPORTS FURNISHED FREE.

Correspondence promptly attended to. All consignments receive personal attention of members of the firm.

REFERENCES:—National Bank of Commerce, Kansas City; Pleasant Hill Banking Co., Pleasant Hill, Missouri. Telephone 2305.

ROOMS 232 AND 233 STOCK EXCHANGE, KANSAS CITY, MISSOURI.

The Hotel Central.

WOODWARD, O. T.

First Class in Every Particular. Patronage of Cattlemen Solicited.

York-Key Mercantile Co.

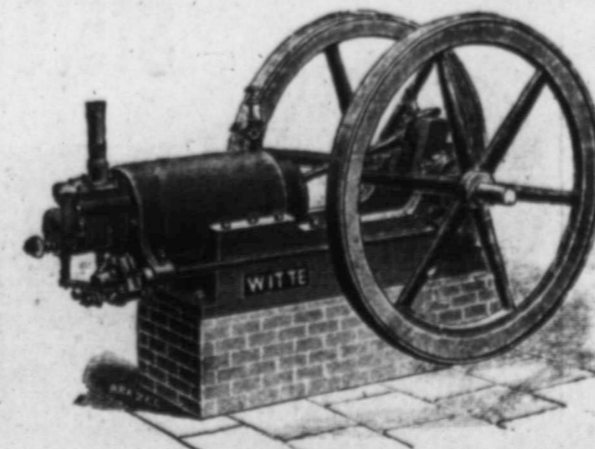
Woodward, O. T.
Stores at Kiowa and Dodge City, Kas.

Dealers in all kinds of RANCHMEN'S GOODS.

Established 1870.

Incorporated 1896

Ranch Gasoline Engines



Sold on a full Guarantee.
Sent on Trial if Necessary.
Made over Ten Years.
Thirty Years in Business.
No Further Experiments.
Hundreds in Use.

Will Pump Water Day and Night.

A Gallon of Gasoline will raise 15,000 gallons of Water a reasonable height.

WITTE IRON WORKS CO.,
1220 Walnut St., KANSAS CITY, MO.

Send for Catalog H.

(Please mention this paper.)

None More Popular!

No railroad in the great state of Texas more popular than

The Denver Road!

This popularity is not confined to one class of shippers. Every patron, when speaking of this deservedly popular line, says *Our Road*. The cattleman, stock farmer, grain shipper, merchant, tourist and everybody seems to have a personal interest in the welfare and prosperity of the road. The reason for this feeling is easily accounted for when a trip is made over the road.

Remember the DENVER ROAD can handle your Live Stock from the Panhandle and plains country to the market or ranges, or can take you to and through "America's Scenic Wonderland," Colorado.

Put on Your Own Roofs

on houses, barns and outbuildings. Corrugated iron roofing, steel roofing, metal shingles, felt roofing, building paper, etc. CHEAPER THAN SHINGLES, easier put on, last longer. How to order and how to use, estimates of cost, etc., contained in our catalogue No. 3, to all who enclose 2c for postage. Tells also about Donkey Paint, rust proof, for metal, wood or felt. Mention this paper. THE KANSAS CITY ROOFING & CORRUGATING CO., KANSAS CITY, MO.

BERTHS ARE ELECTRIC-LIGHTED. On the California Limited, Santa Fe Route. A new system, electricity generated by car axles; 5,000 candle-power.

RANGE NOTES

From Clark County Kansas

LOCUST GROVE RANCH FEB. 18, 1899.

PUB. LIVE STOCK INSPECTOR:—We are unable to give a full report on account of the terrible cold weather of the past three weeks. Those who thought themselves safe, suffered much. Lagrippe raging, good help hard to get, made it very hard to bear. H. Mull & Sons have the greatest number of cattle, but they are the best managers, their loss is slight, men and teams kept busy. The worst feature in the case was the freezing of tanks and pipes. Mull run short on water but the cattle did not worry much.

Zimmerman & Sons, holding 250 head, one windmill, the Aermoter, 1½ inch pipe, 40 foot well, got through by digging up the lead pipe and firing the trench. Ten inches of ice on reservoir with a constant stream of water flowing from the well. Loss, the oldest milch cow went to sleep in the barn, frozen next morning, all others took to the breaks, one broke its neck and three others frozen.

R. N. Molyneux comes next, fat cows well cared for, but dropping their calves dead. 15 dead thus far. Nelse was sick in bed, but he wiggled out. The sky cleared, wind from the north. He has fared well although the loss hurts, he spares neither pains nor expense which surely pays. We can not report as we wish, the truth must be told. Shame on the being not worthy of the name of man, who trusts to providence, foolish in speculation. Some have gone under, others are getting ready to. We say, "let them go. We who have our homes here are not going to fail. Clark county has a few sensible, God fearing men and women left. Yes, women; for we know a few that have better credit and are doing better than the men.

We are ready to fight "sore mouth,"

which always follows drinking ice water. Many have lost cattle not knowing what the matter is. We are also ready for Mr. Heel Fly. If we succeed in our experiment we will do more than any man has done for poor cattle in the spring. We have watched Mr. Fly, are pretty well acquainted with his ways and expect to see our poor cattle lie down and rest. The fat ones we are not at all particular about—it does them good to run. We will say more about heel flies later on. When this is all summed up we feel thankful for this winter. We learn so much from nature.

We expect cattle paper to go down until confidence is restored by the demand for beef.

Hope the convention was a success. We intended to drive down to your city this spring, but the cold weather kept us at home. We will still do what we can for the good cause as the weather grows warmer.

WEST SIDE.
P. S. The last INSPECTOR was the best we have seen. W. S.

From Western Kansas Range.

COOLIDGE KAS., Feb. 24, 1899.

PUB. LIVE STOCK INSPECTOR:—Replying to your request for a report of the loss on cattle in this section of country, will say it is almost impossible to give a correct statement of losses. I can speak for myself, I have not lost anything so far and my cattle are wintering remarkably well, however, I am feeding some of my thin stuff and calves. The Baldwin outfit, who was supposed to handle some 60,000 cattle, just west of me in Colorado and who had some 20,000 cattle left on his hands to winter, (I see from newspaper report.) His losses are estimated at 80 per cent, which, I think is a mistake. I am satisfied 20 per cent will cover his loss, from what I see, and I see a good many of his cattle. His losses will be much heavier by grass.

There are parties who have lost some 30 or 40 per cent up to the present time. This loss, however, being on southern cows, which was thin to

come in to winter. There are a great many cattle on feed along the Arkansas river trying to reach grass.

I think there will not be a ton of alfalfa or prairie hay left in this country when grass is sufficient to turn on in the spring.

You are already aware that the machine registered 30 below some two weeks ago. Was sorry I could not attend the Stock Meeting, the storm filled me with too much anxiety for stock to leave home.

With best wishes I am very truly,
P. L. HERRING.

Read

This!

It may be what you are looking for. The VAN VLECK MINTER COMPANY CHEMISTS have proved that the following diseases can be cured:

- STUNTED GROWTH,
- LOCOMOTOR ATAXIA,
- CRETINISM, GOITRE,
- NERVOUS PROSTRATION,
- SPINAL DISEASES,
- LOSS OF VITAL POWER,
- RHEUMATISM,
- FAT STARVATION,
- OBESITY and all
- NERVOUS DISEASES

peculiar to women caused by poor nutrition, by their wonderful remedies prepared from the glands and nerve centers of young healthy sheep. Write for their Blue Book NEW LIFE which will give you full information, sent free upon request. Address,

VAN VLECK MINTER CO.,
204-5-6 Nelson Bdg. Kansas City, Mo.
(Please mention this paper.)



MISSOURI
PACIFIC
RAILWAY

THE
GREAT
SOUTHWEST
SYSTEM.

Connecting the Great Commercial Centers and Rich Farms of

MISSOURI,
The Broad Corn and Wheat Fields and Thriving Cities of

KANSAS,
The Fertile River Valleys, Trade Centers and Rolling Prairies of

NEBRASKA,
The Grand, Picturesque and Enchanting Scenery, and the Famous Mining Districts of

COLORADO,
The Agricultural, Fruit, Mineral and Timber Lands, and Famous Hot Springs of

ARKANSAS,
The Sugar Plantations and immense Rice Fields of

LOUISIANA,
The Cotton and Grain Fields, the Cattle Ranges and Winter Resorts of

TEXAS,
Historical and Scenic

OLD AND NEW MEXICO,
And forms with its Connections the Popular Winter Route to

CALIFORNIA.

For descriptive and illustrated pamphlets of any of the above States, or Hot Springs, Ark., San Antonio, Tex., and Mexico, address Company's Agents, or

G. G. WARNER, Vice-President. W. B. DODDRIDGE, General Manager.

H. C. TOWNSEND, General Passenger and Ticket Agent,
ST. LOUIS, MO.



SEDGWICK NURSERIES, (Home Grounds.)

Full Text of Bill Granting Use of Fort Supply to Oklahoma.

[PUBLIC ACT NO. 38.]

An act authorizing the Secretary of the Interior to permit the use of the Fort Supply Military Reservation by Oklahoma Territory for an Insane Asylum.

Be it enacted by the Senate and House of Representatives of the United States of America in Congress Assembled, that the Secretary of the Interior is authorized, under rules and regulations to be provided by him, to permit the use of the buildings on the Fort Supply Military Reservation, and so much of the land as may be necessary for such use, by the Territory of Oklahoma for the purpose of an insane asylum for said Territory. Said authority may be revoked, at the discretion of the Secretary of the Interior.

Approved, February 8, 1899.
Department of the Interior
February 16, 1899.

The above is a true copy of the original as certified by the Department of State.

EDWARD M. DAWSON,
Chief Clerk.

Good News for All Our Readers.

By special arrangement A. T. Cook, the well known seedsman of Hyde Park, N. Y., will send a valuable book on "The Window Garden—How to grow plants and make them bloom"—free and postpaid to any reader who will send him 5 one cent stamps for his mammoth 15 cent collection of choice Mixed Flower Seeds—over 300 lovely varieties. We believe this to be the finest assortment of beautiful, easy growing flowers ever put up. They will make a brilliant display the whole season through. Thousands have praised them. This offer is made solely to introduce. His illustrated catalogue will accompany the seeds. Order AT ONCE and name this paper and he will add free a superb painting (suitable for framing) of his magnificent Giant Pansies.

For only 16 cts. additional, he will send the popular (50 cent) Farm Journal ONE WHOLE YEAR. This is a pure, clean Journal; practical, up-to-date, and of intense interest and value to every Farmer, Gardener and house-keeper. There is nothing like it. Its teachings will save you money. Do not miss the chance—and be SURE to mention this paper.

The great mistake of our cattle feeders is they are in too big a hurry to get cattle onto full feed. Expert feeders take at least a month, making the change so gradual that the digestive organs become adapted to it without in any way disordering the system. This is equally true of cattle brought from the range to be put on rough feed. Many cattle are killed by the rapid change from grass to Kaffir corn, cane, hay, cotton seed or chops. Ranchmen leave the cattle on the pasture until nearly starved and then wonder that they die with plenty of feed before them. If you would be successful make the change from grazing to the feed lots gradual. It will save both feed and cattle. Do not wait until the blizzard to feed. Feed to put your cattle in shape to stand the blizzard.

Paugh & Co.

Successors to McCoy & Underwood and Eldridge & Campbell.

Live Stock Commission Merchants,
UNION STOCK YARDS, WICHITA, KAS.

Correspondence solicited. Markets by Eagle and Drivers' News sent free. Make your consignments to us. Special inducements to feeders.

'FRISCO LINE. The KANSAS CITY STOCK YARDS...

THE FRISCO WANTS

THE BUSINESS

The St. Louis and San Francisco Railroad Co.

The great live stock route, reaching the three great live stock markets of the world, Chicago, St. Louis and Kansas City. The attention of shippers is particularly called to the fact that we now have the shortest line from points in Texas to Kansas City and St. Louis. We are also giving special attention to live stock shipments from the Panhandle of Texas to St. Louis, taking same from the A. T. & S. F. R'y at Cherryvale, Kansas. Stock loaded at Woodward and points in that vicinity in the evening reach St. Louis the second morning. Information gladly furnished on application to

ZACH MULLHALL,
G. L. S. Agent,
National Stock Yards, Ill.
or J. P. MOORE,
L. S. Agent, Ft. Worth, Texas.

TRANSIT HOUSE,
UNION STOCK YARDS,
CHICAGO, . . .

BOARD, WITH ROOM, \$2.00 PER DAY.
L. E. HOWARD, MANAGER.

ROOMS, 50c, 75c and \$1.00 per day.

Electric Cars pass the House on Halsted Street, without change direct to the Post-Office and City Hall, on Clark Street.

These Cars also go very near the Nickel Plate, Wisconsin Central, Polk Street and Lake Shore & Rock Island depots, and connects with cars for all other depots. Also go very near all the Principal Theatres.

Take Wallace and Halsted Street Cars.

Rates \$1 per day. Everything New. Bath Room. Steam Heat. Gas Light.

New Stock Hotel,
Headquarters for STOCKMEN.

J. E. LaHines, Proprietor.
One half block from cable line to all parts of the city.
....1611 Genesee St.
KANSAS CITY, MO.

The Gerlach Bank.

Capital Stock \$25,000. Surplus \$1,500.
Woodward, Oklahoma.

SOLICITS YOUR BUSINESS.
Correspondence: National Park Bank, New York; National Bank of Commerce, Kansas City; Kansas National Bank, Wichita; Canadian Valley Bank, Canadian, Tex.

Gerlach-Hopkins Merc. Co.

DEALERS IN
GENERAL MERCHANDISE
and OUTFITTING SUPPLIES
Woodward, - - Oklahoma.



R. T. FRAZIER,

Maker of the Famous Pueblo Saddle. I make High grade saddles of the best Oak Tan California Leather. All saddles made by hand use the Famous Pueblo Tree or any tree desired. All saddles fully guaranteed. Send for catalogue.

R. T. FRAZIER,
Pueblo, Co. O.

Finest Equipped,
Most Modern in Construction and
Afford the Best Facilities

For the handling of live stock of any in the world. The KANSAS CITY MARKET, owing to its central location, its immense railroad system and its financial resources, offers greater advantages than any other. It is

The Largest Stocker and Feeder Market in the World,

While buyers for the great packing houses and export trade make Kansas City a market second to no other for every class of live stock.

	Cattle and Calves.	Hogs.	Sheep.	Cows.
Official Receipts for 1898	1,846,233	3,672,909	980,303	
Sold in Kansas City, 1898	1,757,163	3,596,828	815,580	

C. F. MORSE, E. E. RICHARDSON, H. P. CHILD, EUGENE RUST,
Vice-Pres. & Gen. Man'gr. Secy. and Treas. Asst. Gen. Mgr. Traffic Mgr.

THOS. KELLY, President and General Manager. THOS. B. LEE, Vice President, Kansas City M'r'r. E. B. OVERSTREET, 2d Vice President, St. Louis M'r'r. JOHN E. WHITE, 3d Vice Pres'd't. CHAS. KELLY, Sec'y and Treas.

SELLERS OF LIVE STOCK



Exclusively on Commission.

Chicago
Live Stock
Commission Co.

INCORPORATED
1888.

Capital Stock and Surplus
\$150,000.00.

Annual Business
\$20,000,000.00

Chicago, St. Louis, Kansas City.

CHICAGO OFFICES: 39-41-43-45 Exchange Building. J. C. GILLILAND, Solicitor Chicago Office Mangum, Okla.

MONEY ADVANCED ON CATTLE.

List Your Cattle for Sale **WITH US!**

Can Furnish Buyers. Can Meet Every Requirement of Commission Company and all Honorable Competition.

Best of Salesmen.

Money Loaned.

ZEB F. CRIDER COMMISSION COMPANY,
KANSAS CITY, MO. AND SOUTH ST. JOSEPH, MO.

Represented in Oklahoma by J. L. BYARS.

J. K. SOUTHEE.

E. F. KIRK.

SOUTHEE & KIRK,
Live Stock Commission Merchants,
KANSAS CITY STOCK YARDS.

Liberal advances made to parties grazing stock, at lowest rate of interest. Our customers get all the benefits.

WRITE US! KNOW US! SHIP TO US!

C. G. KNOX, Vice-President.

CHAS. T. JONES, Superintendent.

THE LIVE STOCK MARKET OF ST. LOUIS.

THE ST. LOUIS



National Stock Yards

Located at East St. Louis, Ill., directly opposite the city of St. Louis. Shippers should see that their stock is billed directly to the NATIONAL STOCK YARDS.

H. P. CHESLEY, General Manager.

STOCK BRANDS.

One cut, one year, \$10; each additional brand on cut, same owner, \$5 per year; each additional brand requiring engraved block, one year, \$2. These prices include copy of paper one year to any address. Strictly cash in advance.

HUDSON & TANDY.



P. O. Address, Woodward, Oklahoma.

Range, ten miles north and east of Woodward.



Other brands:

- On side and short bar near it on thigh.
- On left loin.
- On left side.
- On left hip and short bar on left thigh near it.
- On the side and short bar near it on thigh.

HORSE BRANDS:

Bar Z on left shoulder, or N I K on right hip. Range, same as above.

E. R. CLAUNCH.



P. O. address, Woodward, Ok.

Range: 12 miles north of Woodward on Bent canon.

Ear mark: Swallow fork the right and underlope the left.

- (On left side and hip. 77 on neck.)
- (On left side. 77 on neck.)
- (On side and hip and 77 on neck.)
- (On right side.)
- (On left side. 77 on neck.)
- (On left side. 77 on neck.)



Range, same as above.

S. C. WANE.



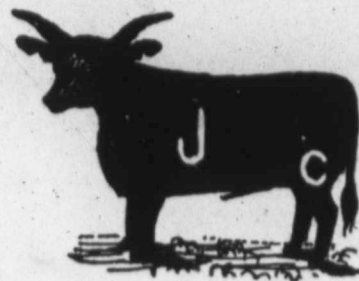
Post-office Address, Richmond, Oklahoma.

Mark, slit in left ear.

Range on Deep Creek.

Horse brand same as above, also same range.

J. P. CAMPBELL.
P. O. Address,—Ashland, Kansas.
Range.—Northeast portion of Clark county



Some cattle — on left side.

All cattle on left thigh.

Horse brand J C left shoulder.

H. C. GREER.



P. O. address, Woodward, Okla. Range, 5 miles southwest of Woodward on head of Spring creek.

Some are branded same on left hip and back.

On right hip and side.

Horses are branded horizontal—on left thigh. Range same as cattle.

E. M. HEWINS.



P. O. Address, Woodward, Okla.

Range, on North Canadian river, ten miles north of Woodward.

Other brands are: X on left side, and some are branded with a cross on right side.

HORSE BRAND:

Perpendicular bar on right shoulder of saddle horses. Stock horses are branded cross H on left shoulder. Range, same as described above.

B. F. MAIN.

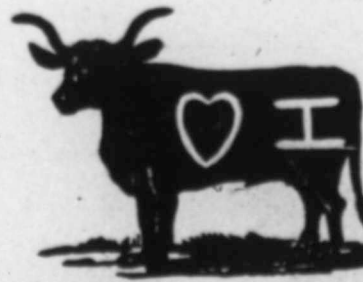


P. O.—Cline, Okla.

Range: On Beaver, eight miles east of Cline.

Also, some cattle are branded S I D. Horses unbranded. Range same as cattle.

S. B. JONES.



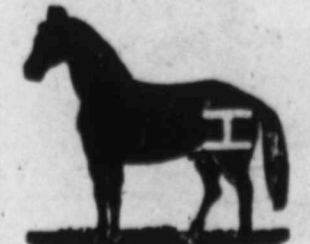
P. O. Address, Higgins, Texas.

Range, in Texas and Oklahoma, near Higgins.

Other are:

- On either side; also
- On left shoulder and
- On left side and
- On left hip.

HORSE BRANDS:



Also heart on left hip

Range, same as above.

OTHER BRANDS:



10 on left side.

18 on left hip.

On left hip or shoulder.

On left hip.

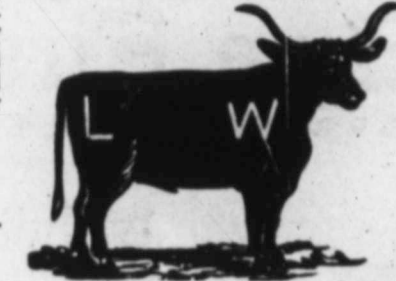
On left shoulder.

HORSE BRANDS:

On left shoulder.

JACK LOVE.

P. O. address, Woodward, Okla. Range, 20 miles north of Woodward on Buffalo.



Other cattle are branded on left hip.



Other brands are L on left shoulder on left shoulder;

Range: Same as cattle.

W. B. GRIMES, JR.



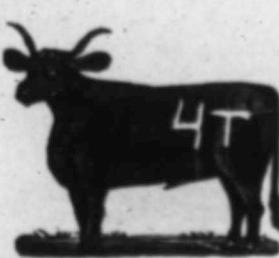
Range in Clark, Meade and Comanche counties.

P. O. Address, Ashland, Kansas.

OTHER BRANDS:

On Right Hip.

Horse Brand, Left Shoulder.



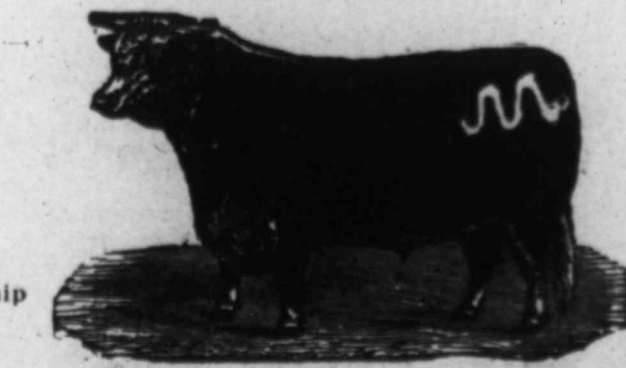
Horse range same as cattle.

T. C. SHOEMAKER.

CHAS. F. LUKENS, Foreman. P. O. Address, 1416 Linwood Ave., Kansas City, Mo. Ranch address, Dorsey, New Mexico. Range, head of Beaver, in Beaver Co., Okla.



ZACK MULHALL, Mulhall, Okla.



All Steers and Horses branded on right hip or loin same as above.

Location of Ranch: Joining Mulhall on Beaver and Cedar creeks.

O'BRYAN & HEWINS.



P. O. Address: Woodward, Okla. Location of Range: Woodward county.

ROURKE & NELLIGAN.

P. O. Waynoka, Okla. Range fifteen miles west of Waynoka, on White Horse Creek.



EAR MARKS: Under bit the left, and swallow fork the right.

ISHMAEL & RUDOLPH.

P. O. Kiowa, Kas.

Range on Buffalo, in Woodward county.



EAR MARKS: crop and split left. Horses: branded heart on left shoulder.

F. D. WEBSTER.



P. O. Address, Gage Oklahoma.

Range, on Little Wolf east and south of Gage.

On left jaw of all young stock.

JAMES CUSHNY.

Post Office, Waynoka, Okla. Range, 12 miles west, on Doe Creek.

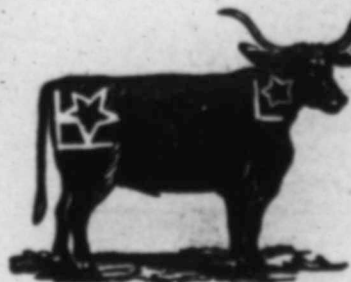


Some cattle are branded anchor on left hip. Horses, range same as cattle.

J. S. SCOTT.

P. O. address, Gyp, Okla.

Location of Range, West Burnett Creek G county.



Horses are branded Star on either shoulder. Range, same as cattle.

W. M. BYRD.

P. O.: Quanah, Tex. Foreman, W. C. Lyon, P. O. Mangana, Okla. Range on North Fork and Haystack, in Greer county.



Calves are branded \ on left side and — on left thigh. Ear Marks: Crop the right and over bit the left. Horses: Range same as cattle.

Are You Going East?

If so we would like to call your attention to the fact that the Frisco Line is now operating through Newton and St. Louis. Free reclining chair cars and drawing room sleepers through without change. Ask your local agent for ticket via that route. Bryan Snyder, G. P. A., St. Louis, Mo.

The SEDGWICK NURSERIES

Has on hand, ready for Spring Shipment of 1899, a Full and Complete Line of Apple, Crab, Peach, Plum, Standard and Dwarf Pear, Cherries, Quinces, Raspberries, Blackberries, Strawberries, Grapes, Gooseberries, Currants, Rhubarb; Asparagus, Ornamental Trees, Shrubs, Roses, Vines, Forest Tree Seedlings, Osage Hedge, California Privett---and, in fact, our stock consists of

Everything that is Grown
By a First Class NURSERY.

Send us a list of your wants before placing your order. We will please you in regard to quality of Stock. Satisfaction Guaranteed. Address all communications to the

SEDGWICK NURSERY CO.,
Sedgwick, Kansas

P. S.--Order early before any of the lines are broken.

(Please mention this paper)

CHAS. HEWINS.
P. O. Address, Woodward, Okla.
Range: On North Canadian river, ten miles north of Woodward.



OTHER BRANDS.

On left shoulder.

On left shoulder.

Horse brands same as cattle.

M. C. CAMPBELL.
Owner and Manager, Wichita, Kansas.
JOE STEINBACH, foreman, Ashland, Kansas.
Range on Cimmaron, headquarters mouth of Snake creek, Clark county, Kansas.



Other brands, on left shoulder of horses. Range same as cattle.

A. H. TANDY.

P. O. Address, Haskell City, Texas.

Range, ten miles north and east of Woodward.



Brand of horses same on horses as above. Range, same as above.

A. L. McPHERSON & SONS.

P. O. Address, Woodward, Okla.

Range, Canadian river northward, including Cottonwood Springs.

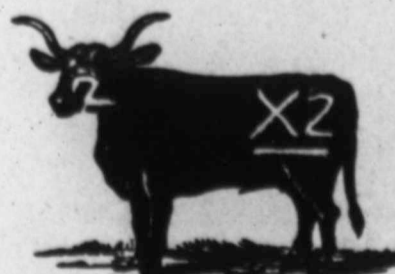


On left side or shoulder. Horses branded same as above.

R. C. EDMISSON.

Range on North Canadian, 15 miles south east of Curtis.

Horse range same.



Horse brand same as cattle. Mules branded on right jaw. Postoffice, Curtis, Oklahoma.

GOBER & PUGH.

Range Woodward county, O. T.

P. O.—Woodward Oklahoma.



MILLARD WORD.

P. O. Address, Grand, Day County, Oklahoma.

Range, on South Canadian, Red Bluff and Mosquite creeks, in Day county.

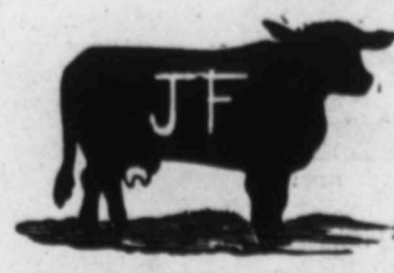


Ear mark: Crop the left and swallow-fork the right.

on left thigh.

J. F. FULLER.

P. O. Woodward, Okla. Range, eight miles east of Woodward on the North Canadian.



On right side or on right hip. Horses unbranded. Range same as cattle.

M. A. NATIONS.

P. O.: Kansas City, Mo. Range: 15 miles N. W. of Woodward on Beaver creek.



Horses branded plain N on left hip.

EPDDLMAN BROS.

P. O. address Woodward, Okla.

Range on Clear creek, 35 miles northwest of Woodward.



The above brand is regularly put on jaw and thigh; but sometimes on jaw, side and thigh; and on cattle having old brands it is put anywhere on left side, either on shoulder, loin or thigh.

We also have some cows with on left hip.



Some cattle

branded

on left side or thigh.

Horse brand same as main brand above.

Other

cattle

branded

WHITE & SWEARINGEN.

P. O. Address: Woodward, Okla. Range: On Sand creek, 5 miles north of Fort Supply.



OTHER BRANDS.

On right side, seven underbit each ear.

On both sides.

HORSE BRANDS.

On right shoulder.

GEO. W. CARR.
P. O. Address, Stone, O. T. Location of range on Turkey Creek, in Day county.



BRAND OF CATTLE.

On Left Hip.

On Left Hip.

All calves are branded same as cattle.

BRAND OF HORSES.

On left thigh.

Location of range same as cattle.

J. A. STINE & SON.

P. O.—Alva, Okla.

Range—Woods Co.



Brand shown above may be anywhere on animal. Horses, Same as cattle.

Anywhere on animal.