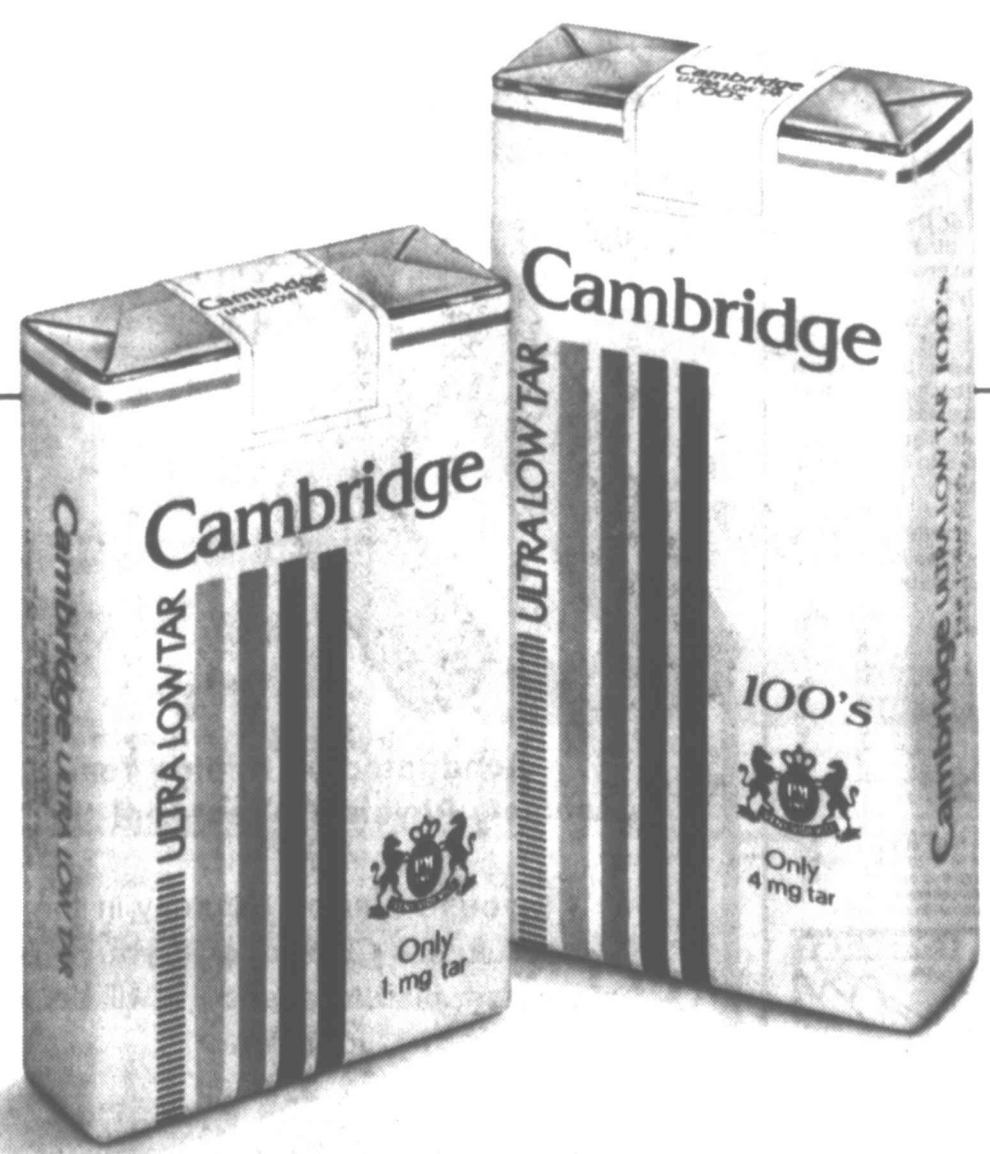


Introducing Cambridge Box:

No cigarette has ever been lower in tar.

Discover Cambridge contentment. The very special satisfaction of knowing that with Cambridge Box—less than 0.1 mg tar—you're getting the lowest tar cigarette ever made, yet still enjoying the unique pleasures of smoking.



Also available in Soft Pack and 100's.

Ultra low 1 mg Soft Pack, 4 mg 100's.

Warning: The Surgeon General Has Determined That Cigarette Smoking Is Dangerous to Your Health.

© Philip Morris Inc. 1980
Box: Less than 0.1 mg "tar", 0.01 mg nicotine—Soft Pack: 1 mg "tar", 0.1 mg nicotine—100's: 4 mg "tar", 0.4 mg nicotine av. per cigarette by FTC Method.

1
2

M
A
Y

1
2

ie, she
more?
ation,
to be
rthing
ie job.
don't
when
d they
other.
n you
e the
her."
id you
oman
e and
e and
ether
it that
ie job.
i who
e of a
rith a
rtion,
ned if
don't
at she
lo run
let's
swife.
urried
g and
f the
rages
past
y to
allows
h tax
gan's
s not
to-life
their
need-
pro-
over
Life-
etter,
and
s vote
rtion
— its
ent a
o-Life
aising
rning
ster in
asked
that
logue
of my
rw of
ink I
m as
have
ld do.
lot to
stinue
have
nior
that
con-
il in-
ne to
ident
it a
rade
vice
how
t."
smo-
l to
ican
d we
ndle
fittel
my
s in
tical
Tex.
tate-
sally
the
sage
k —
sews
if us
only
have
like
ould
may
win
Ann

FARM PAC MILK HALF GAL. CTN.
49¢

It's New! YOUR CHOICE
MINUTE MAID
 NATURAL OR PINK LEMONADE OR
 FRUIT PUNCH
 HALF GAL. **49¢**

GLADIOLA ALL PURPOSE FLOUR
 5 LB. BAG **39¢**

SMOKEY CANYON LUNCH MEAT
 6 VARIETIES
 2.5 OZ. PKG. **9¢**

DEODORANT SECRET SPRAY
 4 OZ. CAN **84¢**

Furr's SAVINGS with GOLD BOND STAMPS EASY AS 1 2 3



1 SAVE YOUR GOLD BOND STAMPS IN A SUPER SAVINGS BOOKLET. GET ONE GOLDEN TEN PER SPENT!

2 BRING A FEW CENTS WITH YOU AND YOUR FILLED SUPER SAVINGS BOOKLET!

3 AND YOU'LL TAKE HOME ANY ONE OF THIS WEEK'S SUPER SAVINGS SPECIALS!

For You!
 Prices Effective Through May 14, 1980
 STORE HOURS
 Mon. thru Sat. 8:00 A.M. to 10:00 P.M.
 Sun 9:00 A.M. to 10:00 P.M.

Oranges Valencia 4-Lb. Bag **\$1.09**
ONIONS FRESH ARIZONA EACH 5 For **\$1**
Squash Zucchini or Yellow Texas Grown Your Choice Lb. **39¢**
Watermelons Sweet Red Ripe **23¢**

Furr's Plant Department
Coleus
 4-inch Pot Each **\$1.29**

Nutritious
Beef Liver
 Rich In Iron Lb. **69¢**

Sigman's Sliced
Bacon
 First Grade Lb. **99¢**

Wilson's
Franks
 All Meat 12 OZ. PKG. **89¢**

Beer & Wine
BUDWEISER 6 PK 12 OZ. CANS. **1.99**
 Table Wines
CARLO ROSSI 1.5 LITER **2.09**

Furr's Proten Blade Cut
Chuck Steak Lb. **1.39**
 Furr's Proten 7-Bone Cut
Ranch Steak Lb. **1.79**
 Furr's Proten Arm Cut
Swiss Steak Lb. **2.09**
 Furr's Proten
Sirloin Steak Lb. **2.29**

Ground Beef
 "Ground Fresh Daily" Lb. **\$1.29**

Frozen Food Favorites
 Morton's
Fried Chicken 2-Lb. Pkg. **\$1.89**
 Fleischmann's
Egg Beaters 16-oz. Pkg. **99¢**
 Booth Fish Pkg.
Flounder Fillets **\$2.89**

Hunt's Whole Peeled
Tomatoes
 14 1/2-oz. Can 3 For **\$1**

Hunt's
Spinach
 13 1/2-oz. Can 3 For **\$1**

Cooking Oil
Wesson
 48-oz. Bottle **\$1.99**

Hunt's
Fruit Cocktail
 15-oz. Can **49¢**

Instant
Coffee
 Hi Point 4-oz. Size **\$2.69**

Soft 'n' Pretty Bathroom Tissue Assorted 6-roll Pkg. **\$1.09**
Dawn Liquid Detergent 20¢ Off Label 32-oz. **\$1.39**

Schilling
Black Pepper
 4 oz. can **89¢**

Vanilla Wafers
 Keeblers 12-oz. Pkg. **79¢**

Pinto Beans Arrow 4-lb. Bag **\$1.59**
English Muffins Farm Pac 6-ct. Package **49¢** **Sweet Peas** Equity Kit 17-oz. Can **29¢**

Clairel Condition
Shampoo
 Normal, Oily or Dry 16-oz. **\$1.34**
 Condition II Normal or Extra Body 16-oz. **\$1.79**

Hair Color
Clairese
 No Ammonia - Shampoo In Lotion Assorted Colors **\$2.59**

Taylor
Bedding 100% Polyester Stuffing Kit 1-Lb. Bag **\$1.29**
Kit Car Wax By Johnson 12-oz. **\$1.69**

Topcrest Pom Pon
Footlets
 Perfect For Joggers **59¢**
 Cushion foot Asst. Colors

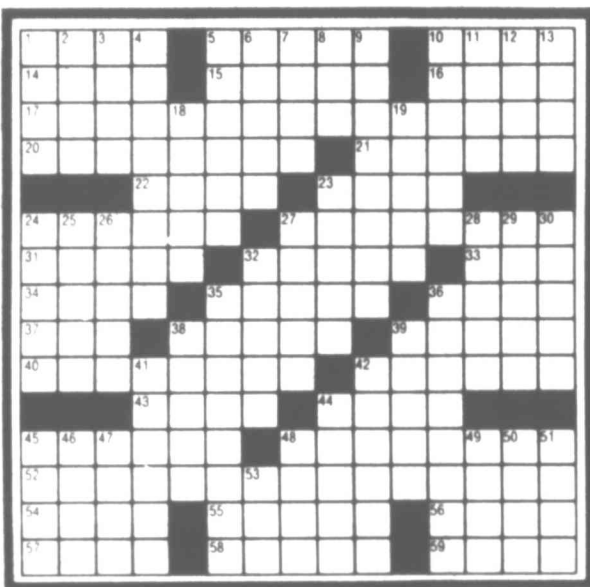
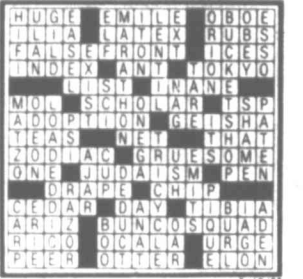
Hair Color
Frost & Tip
 From Clairel **\$4.49**

1
2
M
A
Y
1
2

CROSSWORD PUZZLE

- | | | | |
|---------------------|-----------------------------|------------------------------|-------------------------------|
| ACROSS | 32 Advanced | 52 Disregards | 19 Its capital is Sana |
| 1 Yarn | 33 Like some wit | 54 White-tailed bird | 23 Stengel |
| 5 Trumpetlike sound | 34 Deaden | 55 Walk | 24 Philippine island |
| 10 Butterne | 35 Grew ashen | 56 Implant | 25 Draw out |
| 14 Black | 36 Vindicator | 57 Dandelion, for one | 26 Estimated |
| 15 Rise up | 37 Hole in one | 58 Showy | 27 Hayley of films |
| 16 Walden, for one | 38 Virile | 59 Changes color | 28 Notions |
| 17 Disregard | 39 Sudden, heavy rain | DOWN | 29 Mountain ridge |
| 20 Demurring | 40 Detroit hockey team | 1 Georgia college, for short | 30 Harp relatives |
| 21 Thin film | 41 China port open pattern | 2 Competent | 32 Long-limbed |
| 23 Arrived | 42 Stages | 3 Anta the writer | 35 Vista |
| 24 Angel | 43 Muffin stuffin' | 4 Degree of darkness | 36 Toledo resident |
| 27 Relevant | 44 Muffin stuffin' official | 5 Shook a finger at | 38 Silent actors |
| 31 Saying | 45 Sports | 6 Bruce | 39 Degree of darkness |
| | 46 Bank, often | 7 Assist in crime | 41 Shook a finger at |
| | | 8 — adjudicator | 42 Favor |
| | | 9 Raised | 44 Pair |
| | | 10 Can of eye | 45 Multigan, for one |
| | | 11 Be an also-ran | 46 Remedy |
| | | 12 Grafted, in heraldry | 47 Caen's river |
| | | 13 Fragrance | 48 Penny |
| | | 18 Troop encampment | 49 Actor |
| | | | 50 Donahue Nebraska aborigine |
| | | | 51 Spots |
| | | | 53 Pluto |

Saturday's Puzzle Solved:



DENNIS THE MENACE



"If I HAD a kite, I'd go fly it, Mr. Wilson. How about MAKIN' me one?"

THE FAMILY CIRCUS



"Breakfast is ready for the rest of the week. I need the box for a project."

Your Daily HOROSCOPE

from the CARROLL RIGTER INSTITUTE

FORECAST FOR TUESDAY, MAY 13, 1980

GENERAL TENDENCIES: A good day to get ahead in your line of endeavor by using a new approach. You now find it possible to gain the goodwill of others who have the same line of thought as you.

ARIES (Mar. 21 to Apr. 19) You can plan the future well now with the aid of experts, so contact them early in the day. Avoid one who is jealous of you.

TAURUS (Apr. 20 to May 20) You are able to gain personal goals with relative ease at this time. Come to a better understanding with the one you love.

GEMINI (May 21 to June 21) A fine day for being gregarious, so contact good friends and allies and express happiness. Much good can come of this.

MOON CHILDREN (June 22 to July 21) Good day to contact influential persons and gain the favors you need. Don't neglect an important credit matter.

LEO (July 22 to Aug. 21) Gaining the goodwill of newcomers and meeting new ones is quite easy today. Follow through on ideas of loved one.

VIRGO (Aug. 22 to Sept. 22) Don't neglect money matters which could put you in an embarrassing position at this time. Avoid arguments with others.

LIBRA (Sept. 23 to Oct. 22) Try to please associates more and come to a much better understanding. Think along more constructive lines.

SCORPIO (Oct. 23 to Nov. 21) Start the new week with more enthusiasm and you accomplish a great deal. Follow your intuition which is accurate now.

SAGITTARIUS (Nov. 22 to Dec. 21) A fine day to bring your talents to the attention of higher-ups who can give the support you need. Be logical.

CAPRICORN (Dec. 22 to Jan. 20) Get busy on new plans for improving home conditions. Try to help a friend in need. Evening can be a happy one.

AQUARIUS (Jan. 21 to Feb. 19) Personal goals are easy to reach now, but don't neglect important business responsibilities. Avoid risky schemes.

PISCES (Feb. 20 to Mar. 20) Putting new plans to work can bring you added income in the future. Be more enthusiastic and get excellent results.

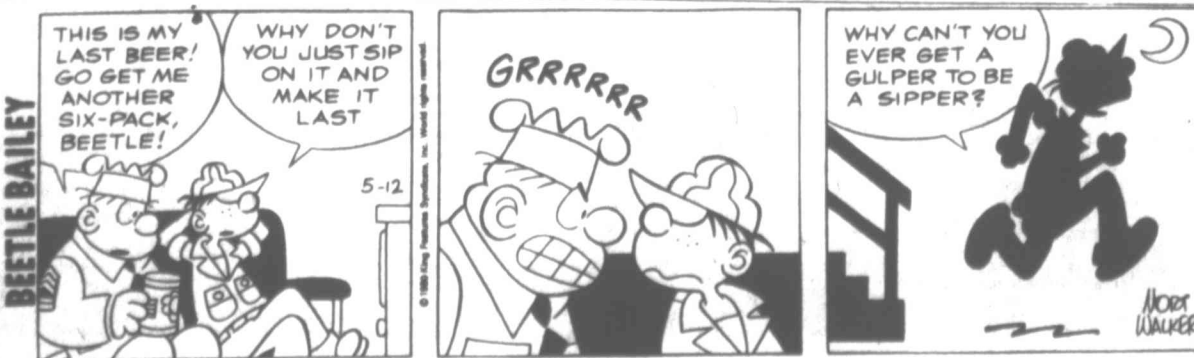
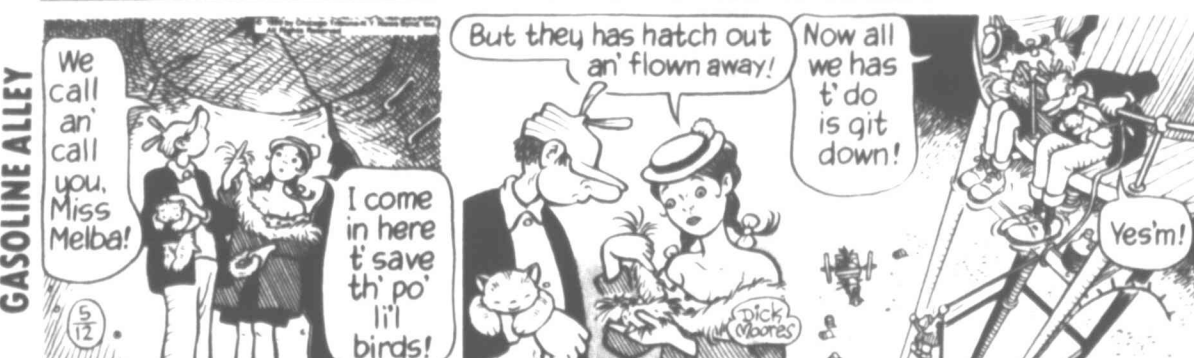
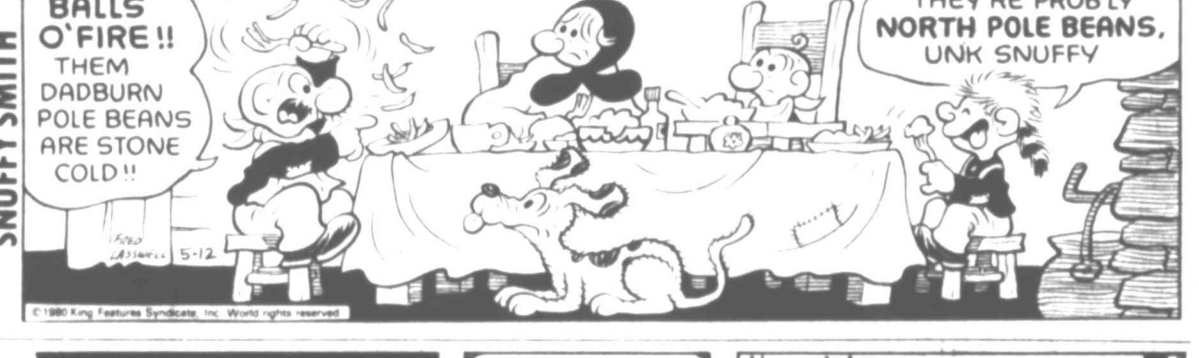
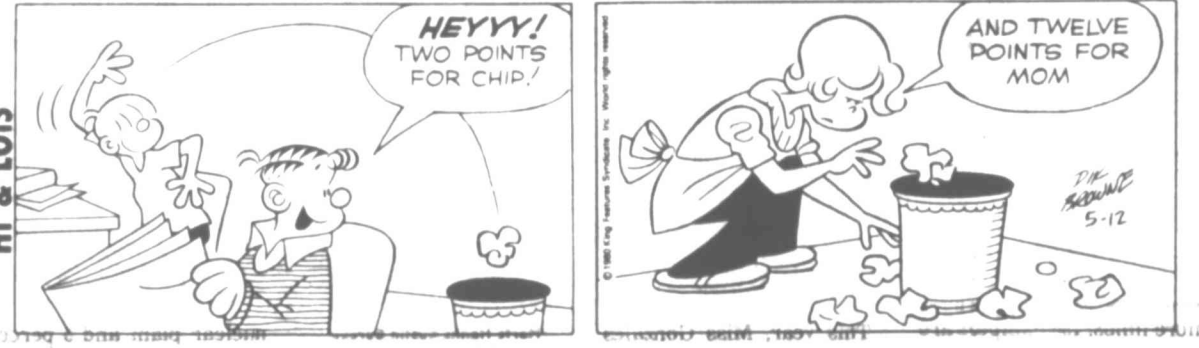
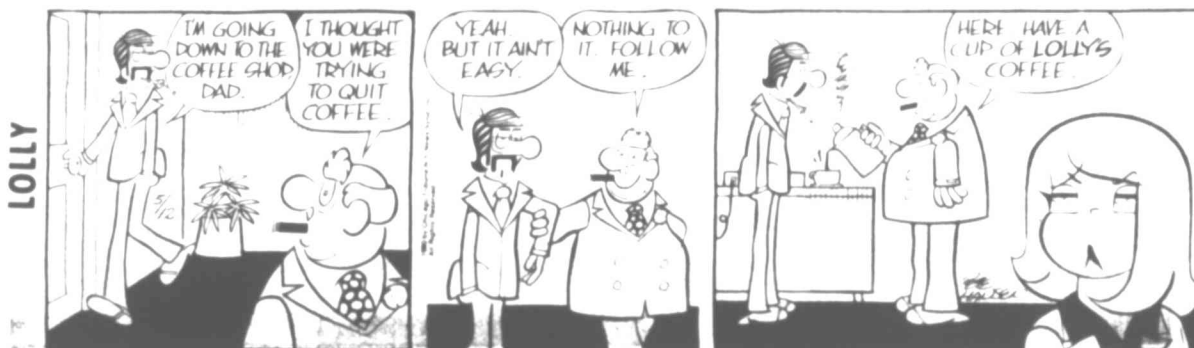
IF YOUR CHILD IS BORN TODAY... he or she will be endowed with a brilliant mind but will require a fine education in order to make the most of the fine talents in this chart. Spiritual and ethical training early in life is important here. Sports are a must.

"The Stars impel, they do not compel." What you make of your life is largely up to you!

NANCY



BLONDIE



In

It's almost candle time into the city!

RI

Rita

sch

COAH sales ha dictoria

Regi:

to be

GARD Lions Ch applicati Camp fo in Kerrvi

Four sessions througho beginnin range in. Eligibl blind or childre; impair handica; more lin assigned session.

A chick above t bowl an some d skills in are a guidelin

Camp supervis counselo clude i nature s athletics program childre; care and concern Camp. H will be i every ca

No ch parents believe i others portation can be a Club.

Texas history summer enjoyed capped camp.

Those Travis P

HONOR Greg M and Mi 2601 Spring summe a Bac degree Abiler Univer ACU, G intra-m was a Centuri

Alpha Honor s also the Phi Alp for 1971 to retur on his 1 He wa one of membe class.

