

We Now Have Our Big Stock of Light and Heavy Hardware in Our New Location in the Masonic Building

We are a bit mused up as yet arranging our goods but we want you to see what a splendid showing we are going to be able to make so drop in any time and look us over. We will carry complete lines of hardware, windmills, cream separators, farm implements and machinery, queensware, wall paper, stoves and ranges, washing machines, churns, ammunition, etc.

Plainview Hdw. Company
Phone 293

be plenty of music and a good time for all.

Our football team played a closely-contested game with the Lowrey-Phillips team Saturday. Our boys played a fine game, and showed they were the equals of their opponents in every respect. The score was 6 to 0 in favor of Lowrey-Phillips.

Each room is trying to see how few tardies we shall have this month. Superintendent Harrison has announced that if the record of any room shows no tardies this month, that room will get one-fourth of a holiday at the end of the month.

SCHOOL REPORTER.

SUMMARY OF WORLD NEWS OF THE WEEK.

The International Carnegie Commission, which has concluded its investigation of Balkan War atrocities, finds that horrible excesses were committed by the troops of all the warring Balkan states, but that the Bulgarians were the worst offenders.

President Wilson has designated Thursday, November 27, as Thanksgiving day. One of the things to be thankful for, he says, is the practical completion of the Panama Canal, which "promises the beginning of a new age, of new contracts, new neighborhoods, new sympathies, new bonds and new achievements, of co-operation and peace."

Estimates furnished to President Wilson by members of his Cabinet will be the basis for asking from Congress an appropriation of \$1,250,000,000 to run the Government from June 30, 1914, to June 30, 1915.

A fierce storm of disapproval has been aroused among German artists and architects by the action of Emperor William in sweeping aside the plans submitted by 272 of the best architects in Germany for the new Embassy building in Washington and disregarding the selection of the jury of award. He has accepted a drawing by Geheimrath Ernst von Ihme, the court architect, in accordance with which the building will be constructed in accordance with the style of an Eighteenth Century English house, being a copy of the building presented to the Duke of Wellington as a reward for his victory at Waterloo.

The faculty of the School of Education at the Missouri State University has decided that in all official correspondence and publications simplified spelling will hereafter be used. The faculty will introduce resolutions at the next meeting of the Missouri State Teachers' Association indorsing the simplified spelling.

Mrs. Cornelia Cole Fairbanks, wife of Charles Warren Fairbanks, former Vice President of the United States, died at her home, in Indianapolis, from pneumonia.

Dr. Woods Hutchinson, of Pittsburg, one of the leading writers on medical subjects in the country, has issued a statement that, in mercury poisoning, resulting from mistaking antiseptic tablets for medicine, antidotes are effective if the mistake is discovered at once. "The antidotes are," he says, "white eggs, given as rapidly as the patient will allow, and oil. Any kind of oil will do, sweet oil preferred. But do not hesitate to use olive oil. Only—hurry, hurry!"

A suit for \$10,000 brought by Joseph D. Pickett against the children of his wife, Mrs. Ollie S. Pickett, on account of the omission of his name from the tombstone of his wife's grave, has been decided against him by the sustaining of a demurrer in the Circuit Court at Marysville, Mo., but it has been appealed to the Supreme Court. The children placed the body of their mother and that of her first husband side by side, and the inscription referred to the woman as the wife of E. L. Pierce, the first husband.

President Mario Menocal of Cuba, in consequence of the refusal of the Cuban Congress to meet in extraordinary session to consider the presidential message urging a foreign loan of \$15,000,000, issued an appeal to the people, declaring that he may be compelled to have recourse to extraordinary measures in the event of continued obstinacy on the part of Congress. He does not say what the extraordinary measures will be.

Miss Mary Lodge McKee, of New York, daughter of Mr. and Mrs. James R. McKee and granddaughter of the late Benjamin Harrison, is to be married to Curt Reisinger, son of Mr. and Mrs. Hugo Reisinger and grandson of the late Adolphus Busch. The marriage will take place in New York November 15. On account of the recent death of Busch, it will be informal.

Mrs. Julius Rosenwald, wife of a millionaire Chicago philanthropist, received a letter which, according to the writer, contained germs which would be sure to infect her, and demand was made for \$2,500 for the only remedy that would cure her. Mrs. Frederick M. Steele, a wealthy widow of Highland Park, and a wealthy South Side woman also received similar letters. Post office inspectors are investigating the letters and trying to find the senders. On chemical analysis the germs were found to be harmless.

A cablegram from London states that there will be an addition to the family of King George and Queen Mary in the latter part of February.

Joint funeral services were held at Berlin over the bodies of 23 of the 28 victims of the Zeppelin airship disaster, at Johannisthal. The Emperor and his sons were present, accompanied by the Empress and the Crown Princess. About 1,000 officers of the army and navy attended, and the attaches of the foreign legations were there in full uniform.

The House of Bishops of the Protestant Episcopal Church, in session at New York, elected four missionary Bishops, as follows: Bishop of North Dakota, Hugh Burleson, of New York City; Bishop of Spokane, W. B. Capers, of Columbia, Tenn.; Bishop of Cuba, Milo H. Gates, of New York City; Bishop of New Mexico, F. C. Bowden, of Georgetown, D. C.

Miss Marie Collier, formerly a nurse at a leper colony, who disappeared from Chicago and was thought to have killed herself, on account of friends having shunned her in fear that she might have contracted the disease, has reappeared. She says she fully intended to kill herself, but was dissuaded by Miss A. Benjamin, of Milwaukee, a friend. She is trying to obtain another position in a leper colony, confident that she will never be allowed to return to society.

Lightning struck a column of the Sixth United States cavalry, marching between Texas City and Galveston,

Copy Service

For Those Who Desire It

HOW many, many times you have wished you had someone upon whom you could unload the vexatious tangle of detail which the planning and preparation of your advertising folders, booklets and catalogues involves. How much worry, time and money you have spent with printers who could not grasp and did not carry out your ideas.

You, therefore, will welcome our copy-writing department. We will interpret your wants intelligently and prescribe for them effectively, yet our services are always available at no cost to you beyond our regular price for printing the copy.

We can serve you as efficiently as though we occupied space in your office.

The Herald Publishing Co.

A. L. LANFORD

DEALER IN

Horses and mules and all kinds of feedstuffs. Wagon yard in connection; open day and night. Will appreciate your business.

Phone 457

Plainview, Texas

To Prevent Blood Poisoning apply at once the wonderful old reliable DR. PORTER'S ANTISEPTIC HEALING OIL, a surgical dressing that relieves pain and heals a wound in the same time. Not a liniment. 25c. 50c. \$1.00.

SEVERE BRONCHIAL COUGH

Doctors Feared Lung Trouble, Restored to Health by Vinol.

The medical profession does not believe that lung troubles are inherited, but a person may inherit a weakness or tendency to them.

Mrs. Kate Heckman, Springfield, Ohio, says: "A few years ago I was in a very bad run-down condition, and the physician told me I had consumption. I tried another physician, and he told me I had ulcers on my right lung. I quit the physicians and started on 'Vinol.' Today I am perfectly healthy, and that is why I recommend 'Vinol.'"

Vinol soothes and heals the inflamed surfaces and allays the cough, Vinol creates an appetite, strengthens the digestive organs and gives the patient strength to throw off incipient pulmonary diseases.

Try a bottle of Vinol with the understanding that your money will be returned if it does not help you.

P. S.—For any skin trouble try our Saxo Salve. We guarantee it.

WILLIAMSON HAFFNER CO. ENGRAVERS-PRINTERS



Phones: C. D. WOFFORD, Dentist

Rooms 14-16, Ware Hotel Bldg.

DR. E. O. NICHOLS

Specialist in Diseases of the Ear, Eye, Nose and Throat. Glasses Fitted.

Office in Finnie Building, Plainview, Texas.

ANNOUNCEMENT OF REMOVAL.

DRS. GUYTON & NICHOLS have moved their offices from the Finnie Building to the First National Bank Building. Phone 538.

Cures Old Sores, Other Remedies Won't Cure. The worst cases, no matter how long standing, are cured by the wonderful, old reliable Dr. Porter's Antiseptic Healing Oil. It relieves Pain and Heals at the same time. 25c, 50c, \$1.00.

HIGH SCHOOL NOTES.

This week is the beginning of the third month. Pupils have gotten down to work in earnest. It takes nearly two months to get under headway, and we have now reached that stage when from the reports of teachers we are doing some good work. Reports will be given out today, and according to advance notices from the faculty the reports show a better standard of work than last month. When the student see an "A" on his report card he thinks it is a very high standard, and indeed it is. The following High School students made "A" in all their studies this month: Hester Jordan, Kahleem Joiner, Ida Hill and Minnie Wolverton. The following pupils made 4 "A's": Elsie Ogden, Mary Knapp, Fay Garrison, Laura Knapp, Austin Miller, Josephine Rosser, Clarence Street. The following made 3 "A's": Ruth Harrison, Amand Struve, Florence Keys, Lela

McVicker, Ina Jordan and Pearl Bra-shears.

Nine hundred and three have enrolled in the schools this year.

A Debating and Declamation Club will be organized this week. The purpose of this club will be to train the boys in debating and public speaking, and at the same time prepare to take part in contests of the Texas Debating and Declamation League. A county contest will be held in the spring, and our High School boys hope to be victorious and represent Hale County in the District Contest. The club will hold its meetings on Friday night of each week.

Much interest is being manifested in the Halow'en party to be given at the High School Friday night by the Mothers' Club. There will be a number of booths, at which various articles of refreshment will be sold. There will

Money To Loan

We make loans on farm and ranch lands. Take up Vendor lien notes.

We will loan money on homestead lands to put in irrigation wells and other improvements.

We handle all business here at home. We can get Inspector at once. Abstract is not sent out of state for examination.

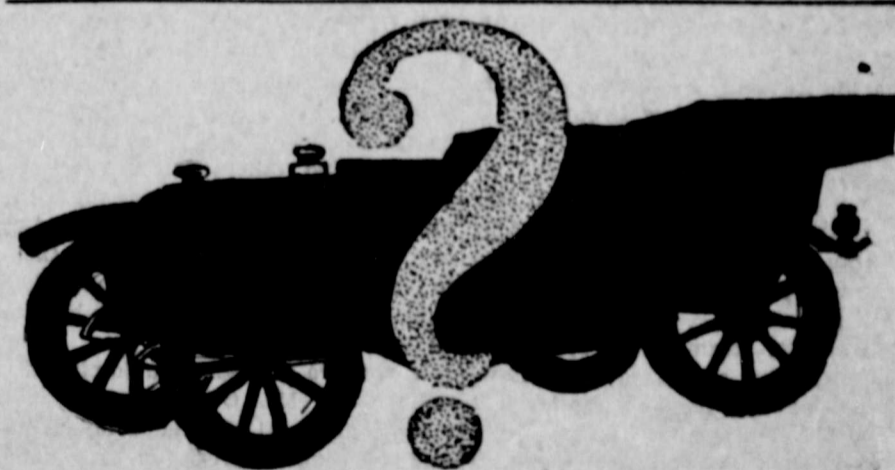
We write fire, tornado, hail, livestock, accident and liability insurance. Also make Bonds here in office.

If you want quick service see us.

J. M. MALONE

Plainview,

Texas



What does your car need?

Your car is like your home—to get the most comfort and pleasure out of it, its equipment must be renewed and added to from time to time.

What does your car need now? Whatever it needs, you will find this place the best place to come to.

We carry an extensive stock of auto accessories and supplies, and can undoubtedly show you what you are looking for.

Drop by here today, and see the new

GOODRICH SAFETY TIRE

Best in the Short Stop

FOR SALE BY

Plainview Rubber Co.



We May Be Losing A Little

by selling the high qualities of Groceries we do at the low prices, but the little we lose in one way we make up for in another by drawing the custom of so many satisfied patrons. All the goods we keep are standard articles, guaranteed by the manufacturers, and by us to be perfectly pure in every particular. We deliver all Grocery orders promptly as promised.

WRIGHT & DUNAWAY
PHONES 35 and 355

ton on the Arabic. There was \$60,000 worth of wearing apparel and \$40,000 worth of diamonds and jewelry. The question of duty turns on whether Mrs. Thompson is a resident of the United States. She says she is a nonresident. If she is found to be a resident she will have to pay duty. She is a granddaughter of John Jacob Astor.

Seven Mexican miners, entombed six days in the Vogel and Lawrence lignite workings, were found alive when rescuers gained the mine interior by drilling a 90-foot shaft. The men were imprisoned by a cave-in following a cloudburst which flooded the mine.

Col. Theodore Roosevelt was received with military honors when he stepped ashore from the steamer Van Dyck at Rio Janeiro, on his South American hunting trip. A procession, headed by Colonel Roosevelt and the representative of President Fonseca, proceeded to a reception room in the naval arsenal, where Roosevelt and the members of his party were introduced to officials. Later the President gave a breakfast to the Colonel.

Charles C. Craig, Democrat, of Galesburg, Ill., was elected Justice of the Illinois Supreme Court to fill out the unexpired term of Justice John P. Hand, who resigned because of ill health. He defeated Leslie D. Puterbaugh, of Peoria, the Republican candidate, by 3,640 votes.

On the strength of a petition signed by 5,000 persons, in behalf of Cortland D. Van Sickler, who is serving a sentence for murder in Honduras, Secretary of State Bryan has directed Solicitor Folk to take up with the Government of Honduras the pardon of Van Sickler. If the facts are found to justify such action. Van Sickler killed a man who insulted his bride.

The answer of the Filipinos to President Wilson's message was received by cable at Washington in the form of a resolution adopted by the Philippine Assembly. Belief in the right of the Filipinos to be free is expressed and the President's words are gratefully accepted "as a categorical declaration of the purpose of the Nation to recognize the independence of the islands."

The trial of Thomas E. Watson, at Augusta, Ga., on the charge of sending obscene matter through the mail, ended abruptly when Federal Judge Foster quashed the indictment, on the motion of the defense. The obscene matter was alleged to have been contained in an issue of Watson's magazine, consisting of questions alleged to be asked by Catholic priests in the confessional. Watson addressed the Court in his own behalf. Judge Foster explained that he quashed the indictment because it set forth only extracts from a complete article, whereas it should have set forth the entire article. He made it plain that he was not ruling on the question whether the articles were obscene, and said that the Government might indict if it saw fit.

Seventeen soldiers, the fireman and another member of the crew were killed, and more than 100 soldiers were injured when a Mobile & Ohio troop train, carrying 175 officers and men of the Coast Artillery Battalion, plunged through the Buckatunna trestle, between State Line and Buckatunna, Miss.

Secretary of War Garrison, his wife, and Gen. Erasmus M. Weaver, chief of the coast artillery, sailed from New York on the Colon to inspect the Panama Canal and put into effect there a more comprehensive employers' liability plan, which has been recommended by Colonel Goethals.

The Department of Agriculture has issued a statement that the crow is a friend of man and should be spared. He is declared to destroy enough grasshoppers, cut worms, white grubs and other injurious insects to make him valuable to the farmer. He has one bad habit. He eats little birds and birds' eggs.

Four charges of dynamite, exploded in the quadrangle at Washington University, at St. Louis, Mo., caused excitement until Prof. Francis E. Nipher, head of the Department of Physics, explained that he was experimenting with the magnetic needle by the use of the dynamite. He said he had verified his theory that variations in the earth's magnetic conditions, heretofore unaccountable, are caused by atmospheric disturbances, such as attend upon wind, rain or detonations.

The Rev. Dr. George F. Ayres, president of Lindenwood College, St. Charles, Mo., widely known in educational and church circles, died of cancer at his home, at the college. He was 48 years old. He had been president of the college since 1902.

A meeting of the Apple Growers' Congress will be held in St. Louis, Mo., November 13, in connection with the good roads convention, which will be held from November 10 to 15. The call for the apple growers' meeting is issued by Thomas C. Wilson, secretary of the Missouri State Board of Agriculture.

TAKING TOLL OF BABIES.

Each season of the year takes its toll of the babies, and to watch and safeguard them from common colds and coughs is a matter of importance to their parents. To keep Foley's Honey and Tar Compound in the house and use it promptly is to save the little ones from the serious effects of these colds, to ward off croup, bronchial coughs, hoarseness, stuffy, wheezy breathing and violent coughing spells. It is absolutely free of opiates and may be given to the little ones with no fear of harmful results. Refuse substitutes. R. A. Long's Drug Store. —Adv. 66

THE INFIRMITY OF WILL.

Discontent is the want of self reliance; it is the infirmity of will.—Emerson.

Our Lines of Candies, Cigars, Tobaccos and Fruits are Complete

Try them

Phone 263



North Pacific Street

We do not have for sale

FRESH OSTRICH EGGS

But we do have a full line of

HOT POINT APPLIANCES

Electric Percolators, Stoves, Chafing Dishes, Utility Sets, Toasters and Irons

We carry a small line of fixtures and do general housewiring.

Conner Electric Co.

Phone 13

FOR THE BEST SERVICE AND HIGHEST SALES

Ship Your Cattle, Hogs and Sheep to

DAGGETT - KEEN Commission Co.

E. M. Daggett, Cattle Salesman

Chas. Daggett, Cattle Salesman

We will give a prize to anybody shipping to us the best car of steers or hogs during the National Feeders and Breeders Show, Fort Worth, Texas, November 22nd to 29th, a handsome loving cup, stock to be sold on the open market in the usual way without any extra charge. Write us what you have.

Fort Worth, Texas

E. Cohn, Cashier

A. M. Keen, Hog and Sheep Salesman

HERE AGAIN!
Bigger and Better Than Ever
STATE FAIR of TEXAS
Dallas, October 18 to November 2



Will Authorize Usual Excursion Rates

See Your Local Agent for Particulars Concerning Special Rates and Train Service

A. D. BELL, Asst. Gen'l Passenger Agent, Dallas, Texas

GEO. D. HUNTER, Gen'l Passenger Agent

Texas, and killed three troopers, Monroe Morris, George Morris and John Zimmer.

Princeton University Graduate College and the Grover Cleveland Memorial Tower were dedicated at Princeton, N. J., in the presence of a distinguished company of learned men from Europe and America. The tower was presented to the university by the Cleveland Monument Association, which received gifts for the purpose from all over the country.

A bronze statue of the Indian Chief Keokuk was unveiled in Rand Park, Keokuk, Iowa, in connection with a conference of the Iowa Daughters of

the American Revolution. John Keokuk, great-great-grandson of the Chief, delivered a message from his people.

James D. Maher, of New York, who has been sworn in as Clerk of the United States Supreme Court, is the eighth person to serve in that capacity since the creation of that tribunal, in 1790. For nearly 48 years Maher has been an employee of the Supreme Court. He began as a page December 1, 1865.

Dutiable goods valued at \$100,000 were discovered in the 25 trunks of Mrs. May Van Alen Thompson, of New York when she landed at Bos-

WELL DRILLING
IN BOTH SHALLOW AND DEEP WATER BELTS

Well on Dr. A. C. Scott's Farm Pumping 3,000 gallons per minute. Drilled by Layne and Bowler.



It takes water to irrigate and not wells. We can deliver the water for less money Investigate.

We are the largest water developers in the world. Get our literature and quotations before contracting

LAYNE & BOWLER CO.
Plainview Texas Houston

RACINE TIRES

for Automobiles Motorcycles Bicycles

These Tubes and Casings are Guaranteed

Donohoo - Ware Hardware Co.

Plainview, Texas

Call The Herald for job printing.

WHAT SAVINGS



WILL DO

MANY MEN

have built comfortable homes with the money saved and deposited to their credit in this bank.

An objective like this is a very good incentive.

Open an account with us and see how much you can save.

Citizens National Bank
Capital \$100,000

MAJESTIC BULLETIN

No. 128
Thursday, Oct. 30
Flesh of His Flesh

Drama
-American
An Uuromantic Maiden
Comedy
-Thanhouser
Bashful Bachelor
Billie
Comedy
-Majestic

No. 129
Friday, Oct. 31
Success
Drama
In Two Parts
-Reliance
The Other Side of the Fence
Comedy
-Majestic

No. 130
Saturday, Nov. 1
For the Flag
Drama
In Two Parts
-American
The Lady Killer
Comedy
-Majestic

Majestic

The Photo Play House Ahead
ROSS D. ROGERS, Proprietor

LOCAL AND PERSONAL

Mrs. Aleen Benton went to Lubbock Monday.
Mrs. M. L. Linticum returned Monday from Hale Center.
Mrs. M. E. Queen went to Goldthwaite, Texas, Monday.
Rev. H. G. Finley, of Lockney, was a visitor in Plainview yesterday.
T. W. Sawyer went to Sweetwater Monday, on a ten days' business trip.
Karl Dahlgren, of Houston, came in Monday to visit H. L. King and family.
Mrs. J. B. Nance and little fellows went to Paris to-day to visit her mother, Mrs. J. M. Evans.
Walter Thatcher came over from Lockney last night to see the wrestling bout between Bob Manogoff and Chief Montour. Walter is employed on the Lockney Beacon.

Mrs. J. W. Weacoat went to Dallas to-day.
Dr. W. M. Curtis went to Hale Center to-day.
Mrs. F. Faulkner returned to-day from Tulla, Texas.
R. C. Joiner went to Amarillo yesterday, on business.
Judge W. B. Lewis went to Dallas today, to the Fair.
Miss Ona Rosser went to Dallas to-day to attend the Fair.
Mrs. Arthur Sparks, of Floydada, went to Crystal City to-day.
C. W. Morgan, of Petersburg, was a visitor in Plainview yesterday.
J. R. Weaver, of Lemesa, passed through Plainview yesterday.
Mrs. W. S. Runyon went to Lockney Tuesday to visit Mrs. Geo. Runyon.
Mrs. J. S. Hamilton came in Tuesday to visit her mother, Mrs. Haynes.
Homer Knowles, editor of the Hale Center Mirror, was looking over the county seat to-day.
Miss Glenna Burns visited friends at Lockney Sunday, and returned to her home Tuesday.
Mrs. C. J. Darsey, of Floydada, went to Amarillo to-day to visit her mother, Mrs. R. M. Barlow.
Karl Dahlgren, of Houston, was a guest Monday of Miss Irma King, and returned home Tuesday.
Mrs. A. L. Keller, of Hale Center, who has been visiting in Plainview, returned to her home Tuesday.
Mrs. W. H. Crouse, of Stephenville, Texas, who visited Mrs. Marvin Faulkner, returned to her home to-day.
Mrs. W. G. Brown, of Wallis, Texas, who visited Mrs. B. F. Smith, at Lockney, returned to-day to her home.
Mrs. S. E. Duncan, of Floydada, left Monday for Trinidad, Colorado, to visit her mother, Mrs. R. M. Word.
Mrs. J. W. Dunaway and daughter returned Monday from Dallas, where they have been attending the Fair.
Jessie and Hayden Mercer are expected in this week, from East Texas, to make their home in Plainview.
Mrs. Myrtle Sibley and son, who have been visiting Mrs. L. G. Wilson, returned Monday to their home, at Elvins, Mo.
Mrs. C. A. Joiner went to Fort Worth Monday to join her husband, who is already there in the Baptist Seminary.
Mrs. E. B. Miller and daughter returned yesterday from a visit with Mrs. Miller's sister-in-law near Lake Arthur, N. M.
Mrs. George W. Corlett and son, Robert, drove from Amarillo Saturday, in an Overland. They returned to Amarillo Saturday night with Mr. Corlett.
The ladies of Circle 5 of the Missionary Society of the Methodist Church will have a sale of home cooking at Sewell's Grocery Saturday afternoon.
-Adv. 66
Guy Gibbs, of Kansas City, Mo., has taken a position with the Texas Land and Development Company. Mr. Gibbs is a son of our townsman, Thomas Gibbs.

Mrs. E. O. Nichols returned to-day from Dallas.
Walter Crosssett, the Cadillac man, was in Plainview, from Amarillo, to-day.
J. M. Oakes, claim agent for the Santa Fe Railway, was in Plainview to-day.
Joe Hess, local sales manager for the Texas Land and Development Company, went to Central Texas yesterday.
Mrs. M. J. Alley, who has been in Plainview some days visiting her daughter, Mrs. Chas. Saigling, returned to-day to her home, at Hale Center.
L. M. Layne returned yesterday. He has been all through Oklahoma, Arkansas, Mississippi, Tennessee, Louisiana and Texas, visiting the various Layne & Bowler branches in these States.
TIME EXTENDED FOR SCHOOL CHILDREN PRIZE ESSAYS.
Gold and Silver Medals Offered to Children for Best Essay on Repair and Maintenance of Earth Roads.

Washington, D. C., Oct. 22.—The Director of the Office of Public Roads of the Department of Agriculture, Logan Waller Page, has announced that the time in which children may submit essays on the repair and maintenance of earth roads, in competition for the gold medal and the two silver medals, has been extended to March 2, 1914.

The conditions for the essay contest are as follows:
1. The Subject of the essay will be the Repair and Keeping up of Earth Roads.
2. It is open only to children from ten to fifteen years, inclusive, who are actually living on farms and who are actually attending some school.
3. The essay should be not more than eight hundred words in length, in the handwriting of the child, and should be written on only one side of the paper.
4. In the upper left-hand corner of the first page should appear the following statement: Essay on Earth Roads by (name of child; age of child; actual residence of child; school attended by child).
5. Children wishing to enter this contest may ask the advice of their parents, teachers, neighbors, highway commissioners, and other people, and read books or magazines giving information about the subject. They must not give the information they gain in this way in the exact words of an adult or the author of a book. They must express the ideas in their own language. They will not be expected to use technical terms, and any words that make the meaning clear will be acceptable.
6. Essays will be rated by an impartial committee according to the understanding of the subject shown by the child and according to the penmanship, English, and spelling. The writer of the best essay will receive a gold medal; the writer of the next best essay, a silver medal; and the writer of the third best essay, a silver medal.
7. All essays should be plainly addressed, in an envelope stamped with a two-cent stamp, to: Committee on Children's Road Essay Contest, Office of Public Roads, U. S. Department of Agriculture, Washington, D. C., and should be mailed to reach that office not later than 9 a. m. on Monday, March 2, 1914.
8. Children who have already submitted essays in that contest, which was originally announced to close October 15th, may, if they wish, submit a second essay.
As a help to children, the suggestions given below are made. Children need not follow these suggestions absolutely. They must not submit essays in the form of direct answers to these questions. They must not quote any of the following material word for word:

How to Tell a Good Road from a Bad Road.
To the Children: In getting facts to write your essays for the prize contest on the repair and maintenance of earth roads, use your eyes. Look at a bad piece of road and a good piece of road when both are dry. Study, particularly, the ruts and holes and uneven places in the road to see whether they make it easier or harder for the wheels of a loaded wagon to go along. Study the kind of footing that the two roads give to the horses.
Now, study the same stretches of road after a good rain-storm. You will see that one road holds small puddles, or pools, of water, that keep the road soft and so allow it to be cut up by the wheels of the wagons and hoofs of the horses. How do road builders keep water from gathering on the travelled way of a road? Should the road slope to the side ditches? How much higher should the center, or crown, of the road be than the outside edges of the road? Why do good ditches at the side of the road help make the center of the road better for hauling? What happens when ditches

get full of rubbish or weeds? When a ditch along a road holds water or collects it into pools, how does this injure the road?
Using a Dray on Earth Roads.
Have you ever seen a home-made road drag? It is made by splitting in two a log six or eight inches in thickness and about six or eight feet long. The two halves of the log set three feet apart with their smooth faces forward and upright. They are fastened together with braces. A pair of horses is hitched to a chain fastened to the front half of the log. Should these logs be drawn straight down the road, or should it be dragged at a slant, so that a little of the loose earth will slide toward the center of the road? Should the dragging be started next to the ditch, or at the center of the road? Should you drag the whole road in one way, or drag each half of it in an opposite direction? Should the dragging be done when the road is dry, or after it has rained? A good, strong pair of horses with a well-built drag can drag about three or four miles of road in a day. What would it cost a farmer to drag four miles of road? How would he be repaid for the cost of his labor?
Remember, children, you are not to answer these questions as if you were answering an examination paper. You are to think about the answers and ask people for information and watch people actually at work on roads, and then write a composition that will be just the same as if you were writing a letter to a friend, telling him, or her, how they made the earth road near you better, and kept it from getting full of holes, ruts and puddles.

ROOT CROPS DESIRABLE AS A SILAGE SUBSTITUTE.
Farmer Gets Excellent Tonnage and Feeding Results from Late-Sown Carrots.
It will be a long time yet before every one who needs a silo will feel able to have one. In the meantime we must do our best with such as we can afford, writes an Idaho dairyman in Farm and Fireside. For the small farm a root crop is a pretty good substitute. For irrigated sections we are not so sure but that it is more practical and economical than the silo, especially for sections where severe freezing is not the rule.
Last year we had our first experience in Idaho both with irrigation and with this sort of crop. About the middle of June we planted an acre of carrots. That is a little late if one expects to get the greatest tonnage; but, having weedy ground, we plowed it early and kept it cultivated until that date in order to kill as many weed crops as possible before planting the seed. By waiting this late the carrot crop came on a great deal faster and held its own with the weeds much better than it would have done earlier in the season.
We gave carrots the preference over sugar beets because they have as high a feeding value, and they are not covered with fine roots that cause so much dirt to cling to them. Carrots are especially rich in carbo-hydrates, which makes them balance well with alfalfa.
Our patch made about 18 tons. It would have been much larger had we had the pure white Belgian seed instead of a mixed lot. We planted the rows 22 inches apart and used a beet cultivator and dug them with a beet digger. We use a garden drill set to cover one-half to one inch and drill the seed in quite thick, using about five pounds per acre. They should be thinned to four inches in the row.
Let them stay in the ground as late as possible, then dig and store in a well-ventilated root cellar. It must be well ventilated; otherwise they are likely to rot. A moderate amount of freezing will not hurt them. In cut-

ting them for feed we use a corn knife and split them lengthwise.
A cow can handle a much larger piece if cut lengthwise than in cross sections. We are especially careful not to allow the small, round ones to be fed without splitting, as there is more danger of her choking on such pieces than on larger, irregular pieces.
Carrots are not only relished by the cows, but are a good feed for all other stock, especially for horses, sheep and geese. The white Belgian carrot has a large top, which is as good as the roots. It does not taint the cream and butter, but gives a rich color.
HOME AND LOVE.
Just Home and Love! the words are small,
Four little letters unto each;
And yet you will not find in all
The wide and gracious range of speech
Two more so tenderly complete;
When angels talk in heaven above,
I'm sure they have no words more sweet
Than Home and Love.
Just Home and Love! it's hard to guess
Which of the two were best to gain;
Home without Love is bitterness;
Love without Home is often pain.
No! each alone will seldom do;
Somehow they travel hand in glove;
If you win one you must have two,
Both Home and Love.
And if you've both, well then I'm sure
You ought to sing the whole day long;

It doesn't matter if you're poor
With these to make divine your song.
And so I praisefully repeat,
When angels talk in heaven above,
There are no words more simply sweet
Than Home and Love.
—Robert W. Service.

WHY SHE BOUGHT GLASSES.
An early morning customer in an optician's shop was a young woman with a determined air. She addressed the first salesman she saw. "I want to look at a pair of eyeglasses, sir, of extra magnifying power."
"Yes, ma'am," replied the salesman; "something very strong?"
"Yes, sir. While visiting in the country I made a very painful blunder, which I never want to repeat."
"Indeed! Mistook a stranger for an acquaintance?"
"No, not exactly that; I mistook a bumblebee for a blackberry."—Optical Journal.

Call The Herald for Business Cards.
1886 Time Tried and Fire Tested 1913
H. W. HARRELL
Insurance Agent
Fire, Tornado, Hail, Plate Glass, Liability, Life and Accident Insurance. Also make Bonds.
Office Front Room over Boyd Grocery Co.

Wouldn't An Old Fashioned "Mothers Kind" Fruit Cake Taste Good These Cool Days?
We have just received a shipment of the fruits that make them good.
Citron Peel, Orange Peel, Lemon Peel, Dates, Figs, and Seed-ed Raisins, all this year's crop.
We receive fish and oysters every week. We also have nice fresh cranberries and celery.
Warren & Scudder
Phones 145 and 244

High Fuel Bills
are cut in two by the use of
Cole's Hot Blast Heaters
and
Garland Stoves AND Ranges
They
Warm the house
Bake the bread
And roast the meat
That make the man
For Demonstration See
R. C. Ware Hardware Co.
Telephone 178

WHENEVER YOU NEED A GENERAL TONIC - TAKE GROVE'S
The Old Standard Grove's Tasteless chill Tonic is Equally Valuable as a General Tonic because it Acts on the Liver, Drives Out Malaria, Enriches the Blood and Builds up the Whole System. For Grown People and Children.
You know what you are taking when you take Grove's Tasteless chill Tonic as the formula is printed on every label showing that it contains the well known tonic properties of QUININE and IRON. It is as strong as the strongest bitter tonic and is in Tasteless Form. It has no equal for Malaria, Chills and Fevers, Weakness, general debility and loss of appetite. Gives life and vigor to Nursing Mothers and Pale, Sickly Children. Removes Bilioussness without purging. Relieves nervous depression and low spirits. Arouses the liver to action and purifies the blood. A True Tonic and Sure Appetizer. A Complete Strengthenner. No family should be without it. Guaranteed by your Druggist. We mean it. 50c.

WHENEVER YOU NEED A GENERAL TONIC - TAKE GROVE'S

Warren & Scudder
Phones 145 and 244



WHAT'S the use of putting off getting that new Winter Overcoat until Jack Frost nips you.

Wise ones buy now.

Carter-Houston Dry Goods Co.

The Home of Hart Schaffner & Marx Clothes

HOW THE SMALL FARMER CAN CUT MEAT PRICES.

Better Marketing of Eggs, Conservation of the Young Animals, More and Better Sheep, Poultry and Cattle.

The question has been asked, "What is feasible to increase the output of meat on the average farm?"

The output of meat on the average farm can be increased (a) by the prevention of waste, (b) by the use of more economical methods, and (c) by the increase of production, says George M. Rommel, Chief of Animal Husbandry Division, Bureau of Animal Industry, in Farmers' Bulletin No. 560.

(a) The amount of waste in animal production reaches very large totals. For example, it is estimated that 15 per cent, or \$45,000,000, of the annual value of our egg crop is lost on account of improper methods of handling. Of this amount, one-third, or \$15,000,000, is due to "blood rings."

Blood rings are dead embryos, and an embryo can only develop in a fertile egg. Hens which do not run with male birds do not lay fertile eggs, but they lay just as many eggs as if the males were with them. The presence of male birds, and that alone, causes all the blood rings in the eggs of commerce. Practically all of these eggs are produced on farms, and farmers can, therefore, add \$15,000,000 to their income annually and to the National food supply by eliminating the fertile eggs from trade.

Care of Young Pigs.

Mr. Rommel continues: "A much more important waste is the unnecessary loss of young animals. Take pigs, for example. When a sow farrows from 5 to 10 pigs, the owner does not grieve if three or four of them die. Probably 30 per cent of all pigs farrowed alive die shortly after birth from various causes. If the litter does not number more than 10, the sow can readily raise them all. Why, then,

allow four or five pigs to die from lack of attention or suitable quarters? Most little pigs die because they become chilled at or soon after birth.

"Sows should, therefore, have dry quarters for farrowing, sheltered from winds, with plenty of bedding. This does not mean expensive quarters, but dry and protected ones. Such shelters can be built at very little expense.

"Although the domestic animals of the United States are doubtless quite as healthy as those of any other country, the waste from disease and parasites is enormous. Attention has frequently been directed to the condemnation of carcasses and parts of carcasses in Federally inspected abattoirs. Large as is this direct loss in our meat supply, it is insignificant when compared with the actual losses on farms.

"Hog cholera, Texas fever, tuberculosis, infectious abortion, scabies and other parasites causes losses amounting to hundreds of millions of dollars annually, not only directly in the deaths of animals, but indirectly in diminished vitality and feeding value of those which do not succumb. The eradication of these diseases and parasites is commanding the extensive use of public funds. Their prevention is a matter of sanitation, largely in the hands of the average farmer.

More Economical Feeding.

"(b) The use of more economical and rational methods of breeding, raising and feeding live stock is imperative for the maintenance of the industry on high-priced lands. Grain can no longer be fed to meat animals with a lavish hand. Hay, fodder, silage and pasture are the cheapest feeds and will carry animals along with a minimum of grain. The use of straw and roots is coming. The farmer who keeps the frames of his young animals developing on these cheap feeds, withholding the full-grain ration until the finishing period arrives, will profit by such practice.

"The education of the farmer, to appreciate duly the importance of live stock in the maintenance of soil fertility, also deserves attention. The English and Scotch system, to feed for the manure, is sound. If farmers in those countries break even on their feeding, without calculating the value of the manure made, they rightly regard the feeding as profitable.

"Finally, feeding will not be profitable unless laid upon a foundation of rational breeding, which resolves itself in to the well-known slogan "Kill the scrub." The scrub is unprofitable. Consistent line breeding, using males of the same breed in succession, will give animals in a few generations of breeding up from native females, which are practically purebred, which are uniform in appearance and in feeding qualities and which are more salable on account of this uniformity.

Beef in Corn Belt.

"(c) Our meat supply can be maintained or even increased in the following ways:

"(1) By the revival of beef cattle raising in the corn belt and its extension in the Eastern States. Up to the time of the rapid increase in the price of farm lands, farms in the corn belt where beef cattle were raised were common. The rise in value of land and the increase in the price of corn caused pastures to be plowed up, and the beef cows disposed of. A reaction is now setting in which promises to become important. A similar movement is noticeable in the Eastern and New England States. Success depends on the utilization of pastures and cheap roughage.

"(2) By the use of dual-purpose cows. In strictly dairy sections, especially those producing market milk, the dairy cow is the only one to be considered. Her calf is an incident—a necessary evil. The production and marketing of milk is the dairy farmers' business, and he cannot afford to let his attention be diverted from the main matter in hand. On thousands of diversified farms, however, especially where cream is sold to centralized dairies, only a few cows are kept, and they are only part of the farmer's business; the milk is but one of several sources of income. In such cases the cows should produce calves that will make profitable feeders.

Profit in Sheep.

"(3) By raising sheep more extensively in the corn belt and in Eastern States. The importance of the wool industry causes farmers to overlook the value of sheep for mutton and as weed destroyers. A small flock of sheep of one of the mutton breeds should be kept on every farm, to graze the roadways, the stubble fields after grain is cut, and the corn fields after the corn is full grown. Both wool and lambs are salable.

"One of the best opportunities for sheep feeding will be found in the irrigated West. Proximity to the range and the great value of alfalfa hay for fattening sheep make this business attractive.

"(4) By increasing hog production on the irrigated farms of the West and by making pork production an adjunct of the creamery wherever conditions permit. The irrigation farmers have a splendid opportunity for the profitable production of pork of the highest quality. Pigs can be raised

at a minimum cost on alfalfa, and should then be finished on grain, such as barley and peas. A brood sow can be wintered on alfalfa hay and a few sugar beets daily, without grain.

"At creameries, where no use is made of skim milk or buttermilk, pig feeding should be an important side line. Corn and milk make an economical ration for fattening, and one which produces pork of excellent quality.

South a Great Field.

"(5) By increasing the production of beef cattle and hogs in the South. The South is the only section of the United States where cattle can still be raised, fed and sold at a profit of from 5 to 6 cents per pound. The tick has been almost the only drawback to cattle production in the South, but its passing is simply a question of time and industrious perseverance.

"The hog is the beef steer's boon companion. He is increasing in numbers in the South, and Southern farms will in time supply the pork eaten by Southern farmers, and perhaps a good deal for the market as well. The wonderful development of the boys' corn clubs is now being supplemented by the organization of boys' pig clubs. They boys of the South have been shown how to grow corn; they are now being shown how to feed it to hogs.

"(6) By increasing the poultry output of the farm. Poultry and poultry products have a profound influence on the meat supply, but less attention is probably paid by farmers to the breeding of farm poultry and their care than to any other animals. With easy possibilities for rapid improvement by the use of pure-bred males, our farm flocks still remain, as a class, decidedly underbred.

"Almost every section of the country can produce chickens. Every farm could maintain a larger and a better flock. The South offers unusual opportunities for the production of poultry on the farm, on account of the early laying season, and girls' poultry clubs now being organized as supplements to the canning clubs promise to become an important factor in the increase of the farm poultry industry, not only in the South, but in other sections of the United States as well."

WHY IT SUCCEEDS.

Nothing can be good for everything. Doing one thing well brings success.

Doan's Kidney Pills are for one thing only.

For weak and disordered kidneys.

Nothing "Just as Good" or as Economical for Doughnuts

- For Biscuit, Pies
 - Muffins, Waffles,
 - and Home Baking
- Success and Satisfaction

One Heaping Teaspoonful's Enough

Health Club is the purest, strongest and most economical Baking Powder obtainable at any price.



In 10, 15 & 25 Cans at all Good Grocers



Two More Excursions to DALLAS, TEXAS

Account THE TEXAS STATE FAIR

Fare for the round trip \$7.35 on sale Oct. 25th, good for return limit Oct. 28th, and again Nov. 1st, with return limit of Nov. 4th. Choice of route either Santa Fe All-the-Way, or Sweetwater, Texas & Pacific, or Amarillo and the F. W. & D. C.

Phone 224 For further information apply to R. F. BAYLESS, Agent

Here is Plainview evidence to prove their worth: Mrs. E. Vollintine, 200 Jones St., Plainview, Texas, says: "One of our family suffered terribly from kidney trouble and he tried all kinds of remedies, without benefit. He doctored steadily for a year, but got no better. As soon as he heard of Doan's Kidney Pills he discontinued the doctor's medicines and used this remedy according to directions. The first dose made him feel better, and after using several boxes he was cured. I also took Doan's Kidney Pills for back-ache, and was cured."

For sale by all dealers. Price, 50 cents. Foster-Milburn Co., Buffalo, New York, sole agents for the United States. Remember the name—Doan's—and take no other. —Adv. 64

ANNOUNCEMENT

We have purchased the grocery stock recently owned by Stephens and Sams and later by Winn and Lash and have moved same to our Store.

This addition to our own big stock puts us in a position to offer you a splendid line of groceries to select from and we solicit the patronage of the former customers of Stephens and Sams and Winn and Lash as well as the general public and assure you of prompt and courteous service and the best stock of groceries from which to make your order.

Wright & Dunaway

Phones 35 and 355

J. E. SLATON, President W. C. MATHES, Vice President
GUY JACOB, Cashier

The First National Bank

Plainview, Texas

CAPITAL STOCK \$100,000.00
SURPLUS AND UNDIVIDED PROFITS 170,000.00

SAFE DEPOSIT BOXES FOR RENT
Your business solicited, appreciated and protected.

Panhandle Planing Mill Company

A. J. POIRIER, Manager

Manufacturers of Sash, Doors, Frames, Moulding, Screens, Columns, Brackets, Store Fronts, Grills, Counters, Shelving. Also do turning and Band Sawing to order.

General Planing Mill Work of All Kinds

Wood Tanks Made to Order Plate Glass Carried in Stock
Bring Us Your Plans for Estimates
Telephone 596 N. Second and Harrison AMARILLO

WOULD HAVE RANKED HIGH AS AN ACTRESS

Sarah Mildred Willmer Draws Large Audience.

If Sarah Mildred Willmer had chosen the stage instead of the platform for her career there is little doubt but she would have ranked among the great actresses of the present day.

Many competent critics pronounce Mrs Willmer the greatest reader of



SARAH MILDRED WILLMER.

the present generation. Some of her successes are phenomenal. At one of the largest Chautauques in the middle west she drew a larger audience for her return appearance than did Madame Schumann-Heink, who also filled a return engagement.

Miss Willmer will appear at the Methodist Church Monday night, Nov. 3rd under the auspices of Seth Ward and Wayland Colleges and the High School as the second number of the Lyceum Course.

C. A. Grewe and family left Monday for San Francisco County, where they will make their future home.

The Herald's Classified Want Ad Section

LIVESTOCK

Let L. D. RUCKER PRODUCE CO handle your GREEN and DRY HIDES. -Adv. tf

JERSEY MILCH COWS FOR SALE. Full-blooded Jersey cows, fresh in milk; gentle, good colors and milkers. See S. S. DANIEL, two miles west, on Dr. Gidney's farm. -Adv. 70

Will trade good mares for young mules. SANSOM & SON. -Adv. 66

CATTLE FOR SALE.

At Sunny South Hereford farm, 10 miles north of Lockney, 27 head of richly-bred registered Herefords—9 two-year-old heifers, bred to Fulfiller 53rd; 9 heifer yearlings, and 9 bulls. This is a choice lot of Herefords. Priced in lots to suit purchaser. Call on or write E. C. DODSON, R. F. D. No. 1, Lockney, Texas. -Adv. 65.

REAL ESTATE

320-acre improved farm near Plainview, in Shallow Water Belt, to exchange for land in the Gulf Coast country or near Houston. E. E. WINN REALTY CO. -Adv. 65

FOR SALE: On easy terms, 11-room house, with fine young orchard; 3 1/2 lots. Phone DR. GUYTON. Ad. tf.

On account of my physical condition, and wishing to winter in lower altitude, I will sell at a specially low price, if sold soon, three nice homes in Plainview. If you contemplate buying, get my prices now. W. B. KNIGHT. -Adv. tf.

FOR SALE—Five to six thousand acres Shallow Water land in a solid body in the Plainview country, 12 miles of County Seat and railroad.

SHERIFF'S SALE.

THE STATE OF TEXAS.) County of Hale.)

BY VIRTUE of a certain Order of Sale, issued out of the Honorable District Court of Hale County, on the 4th day of October, 1913, by B. H. Towery, District Clerk of said County, against J. M. Murphy and W. W. Jones, for the sum of One Thousand Two Hundred and Seventy Dollars and Sixty Cents (\$1,270.60) and costs of suit, in cause No. 959 in said Court, styled J. L. Dorsett versus J. M. Murphy and W. W. Jones, and placed in my hands for service, I, J. C. Hooper, as Sheriff of Hale County, Texas, did, on the 4th day of October, 1913, levy on certain Real Estate, situated in Hale County, described as follows, to-wit:

Lot No. 20, Block No. 118, in the town of Abernathy, Hale County, Texas, as against Ferguson-Falonia Lumber Company, J. M. Murphy, W. W. Jones, W. C. Mathes and C. E. Hewett. And whereas the said Judgment is a foreclosure of a Deed of Trust Lien against all of the defendants, J. M. Murphy, W. W. Jones, C. E.

This entire tract is all choicest level land, 99 per cent tillable; lies perfect for irrigation. Pure water 40 to 50 feet of the surface. Without question, one of the most desirable tracts of this size that is to be had in the Shallow Water Belt surrounding Plainview. A genuine investment, and the price is way below the value of such land. For prices, descriptive literature, address, or better come and see. OTUS REEVES REALTY CO., Plainview, Texas. -Adv. (Tuesdays) tf.

COAL AND GRAIN

When you are thinking about buying or selling Grain, Feedstuffs and Coal, we are both thinking about the same thing. Come to see me, and let's make a deal. E. T. COLEMAN, Coal and Grain Dealer. Phone 176. Adv. 65

ALFALFA LUMBER CO. handles best Rockvale Coal and Niggerhead Coal. -Adv. tf.

ALFALFA LUMBER CO. handles

best Rockvale Coal and Niggerhead Coal. -Adv. tf.

Shorts and Bran mixed, Cotton Seed Meal and Cake, and as Good Flour as sold in Plainview, at \$1.30 per sack. Ninety families are using it, and not a sack returned. Buy it and save money.—C. E. WHITE SEED CO. -Adv. tf.

COAL STRIKE GROWING.

The Colorado Coal Strike continues to grow, and almost every Western coal field is closed. E. T. COLEMAN, Coal and Grain Dealer, has a good supply of Simon Pure Niggerhead Coals in stock at regular prices. Buy your winter's Coal now. -Adv. 65

NOTICES

The public is hereby notified that no camping, hunting or fishing will be permitted on Sections 111 and 102, Black A, Swisher County. Any one

trespassing on these lands will be prosecuted. -Adv. tf. OTUS REEVES.

HOUSEHOLD NECESSITIES

DICK'S TIN SHOP is prepared to put up your Stoves, and do all kinds of Repair Work. -Adv. tf.

ALFALFA LUMBER CO. handles best Rockvale Coal and Niggerhead Coal. -Adv. tf.

Ten-cent, 15-cent and 25-cent bundles of old papers at Herald office, to put under your carpets.

CAR OF APPLES on track. TYE & VAN DEVENTER. -Adv. tf.

LUMBER DIRECT FROM MILLS. "Lumber direct from Mills to consumer; wholesale price. Lumber, shingles, doors and windows. Write for Price List." KOUNTZE LUMBER CO., Kountze, Texas. -Adv. tf.

New crop DRIED FRUITS at PEOPLE'S SUPPLY STORE at less than you have been paying. -Adv. tf.

MISCELLANEOUS

REMEMBER—Osteopathic Essay. DR. PENNOCK. -Adv. 72

WANTED.

Clean rags at Herald Office. Ad. tf.

When it's Coal or Grain, see me first, and make us both money. E. T. COLEMAN, Coal and Grain Dealer. Adv. 65

ROOMS

FOR RENT—Rooms close in. Phone 183. MRS. M. F. BRASHEARS. Ad. tf.

Call The Herald for Business Cards.

F. & B. Cafe

for good things to Eat. We Feed The People Quick Service Our Motto--Quality We will appreciate your patronage

WE WANT YOUR

CREAM

We offer you a steady market and the best price PLAINVIEW CREAMERY CO.

PAINTING

and PAPER HANGING

Signs and Decorating

PHONE

425

Work Satisfactory

VAUGHN & ROREX

NEVER FAILS IN THE HOUR OF NEED

RENALT

A PURELY VEGETABLE REMEDY FOR

Kidney, Bladder and Stomach Troubles, Brights Disease, Catarrh, Rheumatism, Indigestion, Nervousness, Blood Disease or any breaking out of the skin.

NATURE'S GIFT TO MANKIND

If your druggist can not supply you accept no substitute, but send us \$1.00 in stamps, post-office order or express order and a full size bottle will be sent you prepaid.

PREPARED BY FERREL-SAUNDERS CO. FORT WORTH, TEXAS

COCHRANE'S STUDIO



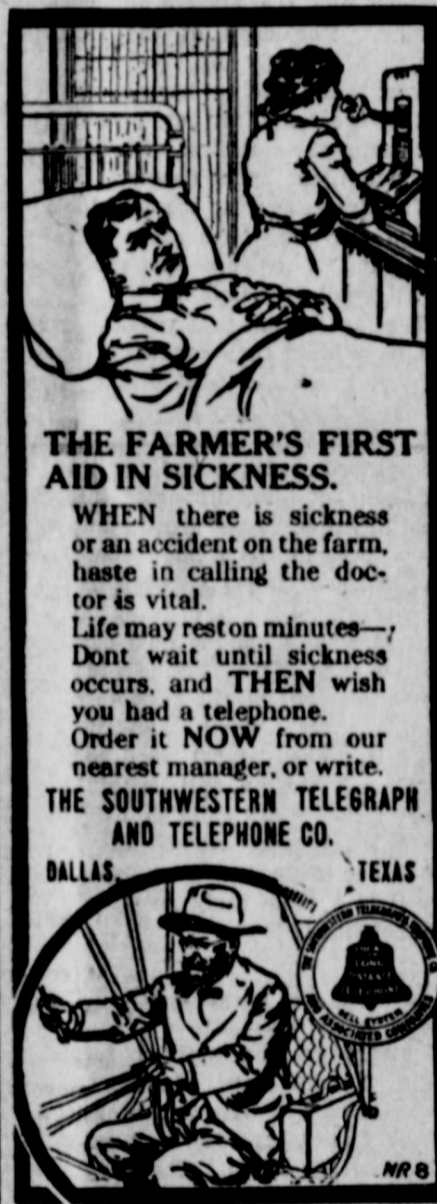
Where They Make HIGH GRADE PHOTOS

DR. C. B. BARR, Veterinarian

Office at Gilbert's Barre Phones: Office, 219; Res., 478 Plainview, Texas

We Solicit Accounts of merchants, trustees and individuals on the understanding that we do our utmost to be a help in business or be ready any time to give them the benefit or our advice or suggestions in all business transactions. We not only offer safety and strength but every possible courtesy.

Third National Bank



THE FARMER'S FIRST AID IN SICKNESS.

WHEN there is sickness or an accident on the farm, haste in calling the doctor is vital.

Life may rest on minutes—Don't wait until sickness occurs, and THEN wish you had a telephone. Order it NOW from our nearest manager, or write.

THE SOUTHWESTERN TELEGRAPH AND TELEPHONE CO.



Sale, issued out of the Honorable District Court of Hale County, on the 4th day of October, 1913, by B. H. Towery, District Clerk of said County, against S. A. Baugus and W. E. Armstrong, for the sum of Seven Hundred and Seventy-four Dollars and 64 Cents (\$774.64) and costs of suit, in cause No. 966 in said Court, styled Mrs. Samantha Wingo vs. S. A. Baugus and W. E. Armstrong, and placed in my hands for service, I, J. C. Hooper, as Sheriff of Hale County, Texas, did, on the 4th day of October, 1913, levy on certain Real Estate, situated in Hale County, described as follows, to-wit:

Lot No. Nine and the South Thirty feet of Lot No. Ten in Block No. 37 in Highland Addition to the town of Plainview, Hale County, Texas; said South 10 feet of said Lot No. 10 being described as beginning at the Southwest Corner of said Lot No. 10, thence North 30 feet, thence East 140 feet, thence South 30 feet, thence West 140 feet, to the place of beginning; as against S. A. Baugus, Grace Juanita Baugus, W. E. Armstrong and O. T. Rushing, and levied upon as the property of said parties as above stated. And on Tuesday, the 4th day of November, 1913, at the Court House door of Hale County, in the City of Plainview, Texas, between the hours of ten a. m. and four p. m., I will sell said property, at public vendue, for cash, to the highest bidder, as the property of said parties as above stated, by virtue of said levy and said Order of Sale.

And in compliance with law, I give

HOGS

What's the Use of Feeding

costly corn, kaffir or maize to a hog that will weigh 150 to 175 pounds at 8 months of age when the same amount of feed may be fed to a pure blood or high grade Duroc Jersey that will weigh from two to three hundred pounds at the same age.

It costs a little more to start but it pays to raise the best type of hogs. Duroc Jerseys are prolific, grow rapidly, have good disposition and attain enormous weights. The head of the herd at Helen Temple Farm is young, vigorous and at present weighs 840 pounds. Many of the dams weigh from 500 to 600

We now have a limited number of young registered boars and gets ready for sale. Prospective buyers are invited to visit our pens 5 miles northwest of Plainview, or write us for prices.

HELEN TEMPLE FARM

R. R. ROSS, Manager

Telephone Number 9-R11

THE STATE OF TEXAS.) County of Hale.)

BY VIRTUE of a certain Order of Sale, issued out of the Honorable District Court of Hale County, on the 2nd day of October, 1913, by B. H. Towery, District Clerk of said County, against John Gaynon, for the sum of Two Hundred and Sixty-Five Dollars and Ninety-Eight Cents (\$265.98) and costs of suit, in cause No. 967 in said Court, styled J. E. Fitzgerald versus John Gaynon, and placed in my hands for service, I, J. C. Hooper, as Sheriff of Hale County, Texas, did, on the 4th day of October, 1913, levy on certain Real Estate, situated in Hale County, described as follows, to-wit:

Known and described as Lots Nos. 1 and 2 and 3 in Block No. 47, in the town of Abernathy, Hale County, Texas, and levied upon as the property of said John Gaynon. And on Tuesday, the 4th day of November, 1913, at the Court House door of Hale County, in the city of Plainview, Texas, between the hours of ten a. m. and four p. m., I will sell said property at public vendue, for cash, to the highest bidder, as the property of said John Gaynon, by virtue of said levy and said Order of Sale.

And in compliance with law, I give this notice by publication, in the English language, once a week for three consecutive weeks immediately preceding said day of sale, in The Hale County Herald, a newspaper published in Hale County.

WITNESS my hand, this 4th day of October, 1913.

J. C. HOOPER, Sheriff, Hale County, Texas. By W. H. BOX, Deputy. Ad. 66

SHERIFF'S SALE.

THE STATE OF TEXAS.) County of Hale.)

BY VIRTUE of a certain Order of

