

The Hale County Herald

FIRST CLASS
JOB PRINTING
A SPECIALTY

BEST MEDIUM
FOR PUBLICITY
IN THE WEST

VOLUME TWENTY-THREE

PLAINVIEW, TEXAS, FRIDAY, NOVEMBER 8, 1912

NUMBER FORTY-FIVE

DOUBTFUL STATES GO TO WILSON

After Being Apparently Safe for Roosevelt, Illinois Swings into Democratic Column.

ROOSEVELT WINS MINNESOTA

California, Iowa and New Hampshire Cast Their Vote for New Jersey Schoolmaster.

Wilson and Marshall crested a tidal wave which swept states never before captured by Democrats in a Presidential contest. State offices, Congressional seats and control of Legislatures that will have the chance to oust many Republicans from the United States Senate, were won by the victors.

Only less in interest than the overwhelming victory of Wilson and Marshall was the strength shown by Roosevelt in Illinois, Pennsylvania, Michigan, Kansas and Washington.

Late returns indicate that Wilson will receive more than 439 of the 531 electoral votes, and that Roosevelt will receive fewer than 100. President Taft has received 12 votes—those of Idaho, Vermont and Utah.

Uncertainty as to the electoral choice in California and Illinois was the chief point of interest in election returns Thursday, although counting of ballots in several doubtful states was still under way.

Illinois is safely in the Wilson column. Wilson's plurality in California decreased during the day, but gained tonight, and his lead seemed safe.

After apparently holding Illinois for forty hours, Roosevelt lost its twenty-nine electoral votes by the State overcoming his lead in Chicago.

On the strength of incomplete returns of the popular vote for Wilson, Roosevelt and Taft, the estimate is made that Wilson will not have a majority of all the votes cast.

Probably the combined vote of Taft and Roosevelt will be a million more than that of Wilson.

The preliminary count of the popular vote gives Wilson 46 per cent, Roosevelt 29 per cent and Taft 25 per cent.

The returns from Minnesota confirm the claim of Roosevelt to its twelve electoral votes.

Nearly complete returns indicate that Wilson will win Iowa by twenty thousand votes.

The victory of Wilson in New

(Continued on Page Six.)

NAMES OF PRIZE WINNERS AT FAIR

E. DOWDEN WRITES OF HALE'S EXHIBIT AT TEXAS STATE EXPOSITION.

FIRST, 16 SECOND AWARDS

Late Arrival of Display Made Impossible to Give Exhibitors' Name in Entry.

I want to make a statement of facts through your columns and show how the work at the Dallas Fair was handled, and the right names of the parties who took premiums.

In the first place, the readers of this paper must realize that the Dallas State Fair is not only the biggest thing of its kind in Texas, but the biggest thing of all fairs in the United States—larger variety of farm, garden and orchard products; more cattle, horses, sheep and hogs; bigger display of farm implements, buggies and automobiles, than any State Fair in the world; hence the first few days of that great get ready fair it is the busiest place I was ever in.

We got our bill of lading for our car Friday morning; in no way could we get that car spotted to unload until Saturday noon. Then we had to get an extension of time from the superintendent to get our stuff unpacked, in place and entry sheets made out and filed with the clerk. The superintendent extended the time until Monday at 9 a. m. We sure had to hustle to make an entry sheet for each variety of products, and to sign the man's name who raised it was out of the question within the time limit, so I took an entry sheet for all varieties of apples, one for peaches, one for garden products, one for grain one for alfalfa, and so on down the line; then signed them all "Hale

(Continued on Page Two.)

BLAZE DOES LITTLE DAMAGE AT WAYLAND.

Prompt Response of Fire Boys Prevents Damage When Dormitory Catches on Fire.

More than considerable excitement among the college community, little damage was done when Wayland College dormitory caught fire early this morning. The alarm was turned in about 5 o'clock. The fire department made a quick run, and the flames were extinguished before much damage had been done.

It is thought that the fire started from a bucket of hot coals. The blaze burned through the floor of the room where it started and scorched the walls of one other room.

E. R. WILLIAMS SELLS FURNITURE TO LOCAL ELKS.

The Plainview Elks Lodge has ordered furniture for its new home through E. R. Williams. The boys say that their home will be even more attractive inside than it is without.

PREFER PLAINVIEW TO EDEN.

C. C. Brooks and wife, of Eden, came in Monday to make their home in Plainview.

J. C. Wolf, of Crawford, was returning home, from New Mexico, today.



PRESIDENT, AND VICE PRESIDENT-ELECT.

(Facsimile of Herald "Extra," which gave first Telegraphic News of National Election.)

EXTRA

EXTRA

The Hale County Herald

VOLUME TWENTY-THREE

THE HALE COUNTY HERALD, PLAINVIEW, TEXAS, FRIDAY, NOVEMBER 8, 1912

PRICE FIVE CENTS

WILSON AND MARSHALL WIN

Princeton Schoolmaster Will Receive More Than 300 Electoral Votes

266 NECESSARY TO CHOICE

New York and Ohio Vote Against "Native Sons"
T. R.'s. Personal Popularity May Win Ill.

ROOSEVELT AND WILSON NECK AND NECK IN PENNSYLVANIA

Taft Wins in Utah.

Reports received up to 3 o'clock this morning give assurance that Woodrow Wilson will be President of the United States after next March 4. The Democratic candidate carried New York, Ohio, Indiana, Wisconsin

and Oregon. A Democratic Legislature will choose Governor Wilson's successor when he resigns the Governorship to become President. New Mexico and Arizona cast their first electoral votes for Wilson and Marshall.

The Democratic State ticket seems to have run ahead in Illinois, where Col. Roosevelt's personal popularity polled many votes. A midnight dispatch from Philadelphia says that Wilson and Roosevelt are running neck and neck in Pennsylvania at that hour. The result is uncertain in California. Wilson won in Missouri.

Returns indicate that Wilson and Marshall have more than 300 votes in the electoral college—just how many more cannot yet be told. Col. Roosevelt carried Iowa, South Dakota, Washington, Michigan and Kansas. President Taft has carried Utah and perhaps New Hampshire and Maine.

Associated Press bulletin received at 2 o'clock this morning says in 1679 precincts out of 1730 in New York City, for Governor, Sulzer, Democrat, received 293,871; Strauss, Progressive, 187,643; Republican, 108,738.

A Newark, N. J., dispatch says that

Roosevelt 34,734, Taft 20,116.

29 precincts in the State of Washington give Taft 1214, Wilson 1418, Roosevelt 24,23. Seattle Associated Press says Washington goes for Roosevelt.

Yankton, S. D.—With half precincts missing, at 1 o'clock this morning returns indicate Roosevelt has carried the state by 5,000. 175 precincts in South Dakota give Wilson 8,882, Roosevelt 8,214.

Michigan, Too.

259 precincts outside of Detroit give Roosevelt 36,434, Wilson 30,669, Taft 23,059.

65 districts out of 106 in Salt Lake (Utah) County gives Republican nominee for Governor 10,754, Democrats 7,547, Progressives 6,781. 84 precincts out of 977 in the state give Taft 11,087, Wilson, 8,864, Roosevelt 8,133.

Fargo, N. D.—Returns from 189 scattering precincts give Wilson 4,361, Taft 3,151, Roosevelt 3,343. Grand Forks, complete, gives Wilson 708, Taft 385, Roosevelt 348. Democratic State Committee place Wilson's majority at 10,000.

A dispatch from Milwaukee says, out of 836 precincts, including 120 in Milwaukee, Wilson receives 72,490, Taft 51,035, Roosevelt 24,270. 39 precincts out of 2,212 give Wilson 32,185, Taft 23,695, Roosevelt 11,310. According to a St. Paul dispatch, 150 precincts in the state give Wilson 12,741, Roosevelt 10,512, Taft 10,133.

Incomplete returns from 12 out of 26 counties of New Mexico gives Wilson a plurality of 2,500 in that State. The Portland Oregonian says Oregon gives Wilson five electoral votes. Scattering returns from Florida give Wilson 35,000, Taft 3,000, Roosevelt, 7,000. Returns from 100 out of 135 districts in Rhode Island give Wilson 18,811, Taft 13,215, Roosevelt 7,585.

California Uncertain.

One hundred precincts complete in San Francisco give Wilson 5,141, Roosevelt, 4,427. 338 precincts in Los Angeles, incomplete, give Roosevelt 25,085, Wilson 20,558, Debs 7,057, Taft 903.

Cook County, Chicago.—Incomplete returns at 2 a. m. indicate that Democrats have swept Cook County for their entire ticket by pluralities ranging from 5,000 to 30,000.

Connecticut elects Democratic Congressmen in the First, Third, Fourth



Woodrow Wilson.

and Fifth Districts.

3 o'clock a. m.

Missouri.—1,034 precincts out of 3,300, including St. Louis, gives Wilson 108,803, Taft 65,188.

145 precincts out of 208 in Kansas City give Wilson 18,738, Roosevelt 13,850, Taft 3,247.

Chicago.—1,022 precincts out of 1,488 in Cook County give Dunne 118,628, Deneen 69,761, Funk Progressive 67,726, Kennedy (Socialist) 36,107. 480 precincts out of 2,788 in Illinois outside of Cook County give Dunne 45,291, Funk 35,935, Deneen 33,730.

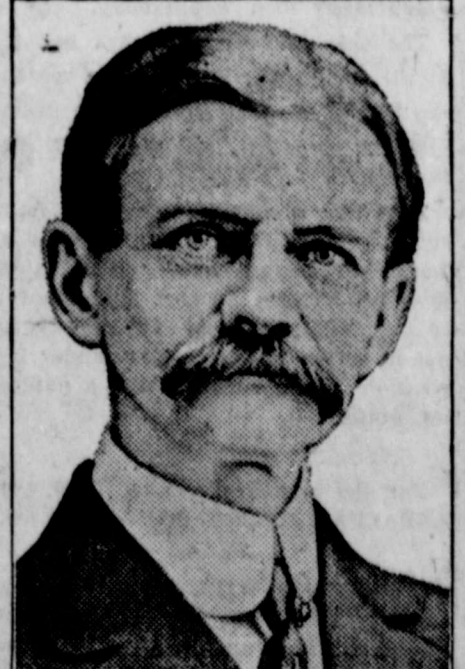
Milwaukee, Wisc.—1,072 out of 2,212 precincts in Wisconsin, including Milwaukee, complete: Wilson 91,271, Taft 66,459, Roosevelt 31,652.

Tacoma, Washington.—The Progressive State chairman claims the State for Roosevelt by 45,000.

Columbus, Ohio.—900 precincts out of 5,211 in the State give Wilson a plurality of 18,921.

Rev. J. M. Harder was a passenger to Amarillo Saturday. Mr. Harder will leave Amarillo Monday for the Convention at Fort Worth.

Rev. D. B. Doak and wife, of Seth Ward College, left Saturday to visit Mrs. Doak's mother, Mrs. E. A. Teague, at Clarendon, Texas.



Thomas R. Marshall.

NAMES OF PRIZE WINNERS AT FAIR

(Continued from Page One.)

County, E. Dowden, Manager," and filed with the clerk. Then I told the correspondent to the Dallas News, when he got the list of premiums, to put it all in the name of Hale County, and not in my name nor any other individual's; that we wanted Hale County used as often as possible, and after that the Dallas News has used my name forty or fifty times in their premium list, and I don't like that; so I have prepared a careful list of those who took first and second premiums and those who raised the stuff in our county who should and shall have credit for same. And I further want to say that the people of Hale County should appreciate and thank Dr. Hanby for his untiring and efficient work. While we were together, for the first ten days, oftentimes I would leave the judge's department, to get the next article ready in the catalogue, and say to myself, "We sure have lost that blue ribbon; maybe we will get a red," and soon look around and see "Doc" coming, reared back on his dignity, wearing a broad smile, saying "Here is another blue added to our string." And we kept that ribbon deal going for two and a half days—fifty-two in all, by that time.

The balance of the representatives of the twenty-two counties were so mad, it looked as though we were going to have a rough house for a while; However, they quieted down, met together, and went before the general superintendent and registered their complaints that Hale County was taking all the premiums, and dug up an old rule in the catalogue that any product entered for premiums in the Farm and Mill Department must remain in that department during the Fair, and not be entered for premiums in any other class, and the superintendent made that old rule good, and ordered us not to remove our stuff from the Farm and Mill Department back to our booth. So there we were—entered for the best county display, and fifty of our very best products gone; so there was no way in the world for us to get back into that game. In fact, about all we had left in our booth was blue and red ribbons and the satisfaction of knowing that Hale County had taken more premiums than any other ten counties combined. For instance, Wood County, whose exhibit was just across the aisle from our booth, had a beautiful display of farm and orchard products and one of the best and most everlasting boosters for his county I have ever met in Texas, and they had six men and spent eight hundred dollars on their exhibit, and Wood County only had seven ribbons—four blues and three reds—and that was above the average.

At all times when there was a question with the judges, with our stuff against all others, we never forgot to say, "Mr. Judges, cut that specimen; see its texture and taste its flavor; the outside looks good, but the inside is better," and nine times out of ten the flavor would do the work, and Hale County would get another honor.

And I want to say, in conclusion, that after the judges' work was all over, we thanked them most heartily, in the name of Hale County, for their good judgment and liberal distribution of blue and red ribbons for our citizens, who were at home harvesting their crops and filling their granaries to help feed the thousands of families, as we did last year, and will do again this year, who are not so fortunate as we who live in the best county of the great State of Texas.

Our judges in the Agriculture and Horticulture Department were Col. Kirkpatrick, for the west division; John Meier, the east division; and A. B. Conner, of College Station, south division. All three of these men are men of ability, gentlemen of the highest type, and men who knew exactly what they were brought there to do, and did their work quickly, fearlessly and gentlemanly, and in that great multitude of contestants, all working like ants to gain the best of it, if possible, and get all the glory they could for their own home counties, not one single word of complaint from any one with reference to the judges' decisions, and, summing up this year's work at the Dallas Fair with the three years past, I am satisfied, in my own mind, that Hale County will get more direct benefits and her name before more bona fide home builders than ever before.

Look carefully over this list of premiums and see if you find your name among the lucky ones; if not, we hope to see it there next year, in that greatest of fair lists of the Union. What do you say to getting ready next year, and taking that catalogue from a to z? We can sure do that very thing, and if the people of Hale County will take the interest during the entire season that they do a few days before the Fair opens, I believe we could win that Agricultural Bull-

ing, as a starter, for our Fair here at home.

The Premiums.

- Winesap Apples—L. G. Wilson, second.
- Jonathan Apples—W. P. Lash, first.
- Missouri Pippin Apples—W. P. Lash, second.
- Rome Beauty Apples—W. P. Lash, first.
- Limber Twig Apples—E. Dowden, first.
- Crab Apple—E. Dowden, first.
- Storm Proof Apples—W. P. Lash, first.
- Best plate Apples, any variety—W. P. Lash, second (Rome Beauty).
- Heath Cling Peaches—Mrs. W. T. Brashears, first.
- Horlocher Wonder Peach—E. Dowden, first.
- Best Plate October Peaches—W. P. Lash, first.
- Best Plate Peaches, any variety—Mrs. L. P. Halsey, first.
- Best and Largest Display of Ap-

ples—W. P. Lash, second.

Best and Largest Display of Peaches—Hale County, first.

Vegetables.

- Best Peck Irish Potatoes—E. C. Calloway, first.
- Best Ten Pumpkin Yams—D. C. Aylesworth, first.
- Best Ten White Yams—J. C. Wolverton, first.
- Best Yams, any variety—J. C. Wolverton, first.
- Best Beets—Wade James, second.
- Best Gallon String Beans—C. A. Workman, first.
- Best Gallon Dry Beans—J. C. Wolverton, first.
- Best Dozen Carrots—Bob Hulen, first.
- Best Dozen Parsnips—Charlie Vincent, first.
- Best Dozen Tomatoes—C. Vincent, second.
- Best Two Heads Cabbage—Mrs. Lewallen, first.
- Best Two Heads Cauliflower—D. C.

Aylesworth, first.

Best Dozen Radishes—Mrs. N. A. Price, first.

- Best Four Bunches Celery—R. C. Russell, first.
- Best Winter Squash—D. C. Aylesworth, first.
- Best Kershaw—J. W. Ray, second.
- Best and Largest Pumpkin—Mrs. R. B. Mitchell, first.
- Best Watermelon—R. H. Hooper, second.
- Best Two Cantaloupes (any variety)—D. C. Aylesworth, first; G. B. Simmons, second.
- Best Peck Onions—Mr. Millner, first.
- Best Peck Turnips—Mr. Millner, second.
- Best Collection Vegetables—Hale County, first.
- Best Ten Sugar Beets—Col. Smyth, first.
- Best One-fourth Bushel Nicaragua Wheat—A. B. Rosser, first.
- Best One-fourth Bushel Mediter-

ranean Wheat—J. P. Marlin, second.

Best One-fourth Bushel Wheat (any variety)—A. B. Rosser, first.

- Best One-fourth Bushel Rust Proof Oats—E. Graham, first.
- Best One-fourth Bushel Oats (any variety)—E. Graham, second.
- Best One-fourth Bushel Speltz—C. A. Workman, first.
- Best Dozen Stalks Broom Corn—Petersburg, first.
- Best Ten Heads Milo Maize—Hale County, second.
- Best Ten Heads White Milo Maize—Hale County, second.
- Best Ten Heads White Kaffir—Hale County, first.
- Best Display Kaffir and Maize—Hale County, second.
- Best Bale Alfalfa Hay—Robert Alley, first.
- A complimentary blue ribbon on pepper display and a blue ribbon on Sweet Mango Pepper.

EXPERIMENTS PROVE FOOD VALUE OF SILAGE.

Silo Enables Farmer to Save More Feed; Cattle Finish Better on It.

The work of the different experiment stations in demonstrating the value of corn silage in steer feeding offers convincing evidence of the value of this feed when used as part of a ration for fattening cattle, writes J. M. Fuller in Orange Judd Farmer. At the Illinois station experiments prove that silage is at least 30 per cent ahead of corn fodder in feeding value, if the land required for furnishing silage and fodder is considered.

The Indiana station conducted an experiment in which corn silage and clover hay were compared as roughages for fattening steers. The results of the test show that corn silage when fed as a roughage is more conducive to rapid and economical gains with fattening steers than clover hay or clover and silage combined.

The question of quality may come up in connection with silage fed steers. In the case of the experiment just given, and the results obtained were practically the same as those of two previous experiments, the silage fed steers showed a higher finish than the others. They showed a more even distribution of fat, shed their coats earlier, sold for a higher price and returned a greater profit.

The Virginia station found that silage fed heifers finished out better than dry fed heifers. Another experiment showed that silage fed steers made excellent gains. When shipped, they shrank no more than the dry fed cattle, showed an excellent quality of meat when killed, with fat and lean well blended. The station is of the opinion that there is no reason for opposing silage for finishing beef cattle.

The results of a recent experiment at the Iowa station would indicate that silage fed steers will show greater gains through the feeding period than when silage does not constitute a part of the ration. Cheaper gains were made with the silage fed steers. The ration having the largest proportion of silage was the most economical. The silage fed steers kept in better condition.

A recent experiment at the Indiana station would indicate that as much as twenty pounds of silage, together with clover hay, can safely and economically be fed as a roughness ration. There is some question as to what proportion silage should constitute of the whole ration. The experiments at this station indicate that silage is destined to be a big factor in beef production. The experiments at the Illinois station lead to a similar conclusion.

SUNDAY SCHOOL CLASSES ENTERTAINED.

Rev. and Mrs. Forsythe give Halloween Party for Sabbath School Pupils.

Rev. J. F. Forsythe and wife entertained their Sunday School classes on Friday night with a Halloween party. All came dressed as spooks, and spooks received them at the door. Halloween games and contests were enjoyed throughout the evening, after which the hostess served delicious refreshments.

RENT HOUSES ARE SCARCE.

Old Timers Never Saw Them So Scarce; Incoming Residents Say Must Build.

At no time during several years have houses been so scarce in Plainview as they are now, say those who have lived here from the beginning. And citizens coming in seem to have difficulty locating places to live.

J. F. Coan moved to Plainview last week, from Columbia, Mo. He looked nearly a week before finding a satisfactory home. Jim Hughes came in this week from Lubbock, and has not yet found a place. This means that new homes must be built. It is a situation which delights all.

HERALD ADVERTISEMENTS PAY.

White Says One Three-Line Reader Brought Seven Inquiries Next Day.

Do you believe that advertising brings results—that it pays? Herald advertisers assert that they make their best investments when they place copy in The Herald.

Two weeks ago C. H. White inserted a three-line Want Ad "House for Rent." Mr. White says that he never had so many inquiries for a house, and they came immediately. "It was the best 25c investment I ever made." A Plainview grocer advertised fresh Roe Herring, and says he sold out at once. People read advertisements. Those who advertise most say that advertising is their best investment for bringing in profits.

"Good Reading is the Foundation for Strong Character"

There will be a great many hours during the long winter evenings when something good to read will be your most welcome companion.

Uncle Remus's Home Magazine

Founded by Joel Chandler Harris

supplies just that. It brings you the best wit and humor; short stories that entertain; the literary efforts of the South's strongest writers. It makes Home Life different.

The Hale County Herald Offers You

- Uncle Remus 6 Months
- Southern Ruralist 1 Year
- Gentlewoman 1 Year
- Good Stories 1 Year
- The Hale County Herald 1 Year

ALL FOR \$1.25.

This combination gives you all of the reading you want during the Long Winter Evenings. It contains fiction, humor, literature, a discussion of the knotty problems that often worry father and brother; all of those little things that interest mother and sister. It means that when father comes in at night he may have the choice of humor, a good story, history or something concerning the farm. It means that when mother finishes her work for the day she may enjoy an hour by the fire reading just what she

likes. It means that brother, sister and friends may be provided with entertaining reading every day during the year.

The Hale County Herald prints all of the news about Hale County; it prints all of the news about Texas which most particularly interests you.

It's a different HOME if every member is supplied with the BEST good reading for every day. We offer you that for \$1.25.

Send your subscription NOW, so that you may enjoy the good things UNCLE REMUS has for THANKSGIVING.

The Herald Publishing Company

Painview, Texas

SINGING CONVENTION TO MEET AT LIBERTY.

The Hale County Singing Convention will convene at Liberty on the third Sunday in November. The kind ladies say they will have a good dinner and will expect a large audience. We always have a fine time with the Liberty people.

We urge that all classes have delegates on hand, as there will be some business to come before the Convention. Yours in song, L. D. GRIFFIN, Secretary.

AT THE PLAYHOUSE.

Mr. Gilmor Brown presented "The House of a Thousand Candles" at the Schick Monday night. The crowd was appreciative of Mr. Brown's acting. One or two of his assistants hesitated

over their lines. The marked merit of the play lies largely in the manner in which Mr. Brown, as "Bates, the Butler," presents this character.

WIDOW ON DRY CLAIM WINS.

Left with Four Small Children, Nervy Mother Faces Elements Successfully.

A woman left a widow on a dry claim, with a family of four small children, the oldest only nine years of age, Mrs. C. M. Brown, of Knowles, is one of those who have made good on a dry farm.

At his death, her husband left her a thousand dollars insurance, which he had carried in the Woodmen of the World. With only this capital to start on, she has not only brought the dry claim to the highest state of cultivation, but supported the family and

put money in the bank. When the husband died there was only the small house that the family lived in, without even a windmill or any fencing on the place.

This fact did not daunt the determined woman. Going to work, she first bought a windmill and had it erected. With this and a large earthen tank, she has put four acres of the desert under irrigation. On this tract this year she not only raised enough vegetables for the family use, but has sold \$200 worth of onions, and \$100 worth of sweet potatoes, besides other small truck which came to about a hundred dollars more.

With part of the thousand dollars left by her husband, she also purchased a few head of good cows, from which she has sold enough butter to more than pay the grocery bill of the family. With these and a few mares, she bids fair to have enough stock around her to make her an income

which many men would envy. The only help that she has had to do all this work, besides that which she has hired, was that of her nine-year-old daughter, the eldest of the children.

This year she will set out the four acres to orchard, and will put in a gasoline pumping engine, with which she will irrigate several acres more. In the course of time she intends to put in as much of her farm under irrigation as can be done with a pumping outfit.

For the best Nigger-Head Coal, see ALFALFA LUMBER CO. —Adv. tf.

HOW LONG WILL THE CANDLE BURN? Guess the correct number of hours, minutes and seconds and receive either first, second or third prize now on exhibition at DUNCAN'S PHARMACY. —Adv. tf.

Nothing 'Just as Good' or as Economical for Doughnuts

—For Biscuit, Pies
—Muffins, Waffle
—and Home Baking

Success as Satisfactory

One Heaping Teaspoon is Enough

Health Club is the purest, strongest and most economical Baking Powder obtainable at any price.



In 10, 15 & 25 Cans at all Good Grocers



TEXAS COTTON PALACE

Waco, Texas, Nov. 2 to 17. Tickets on sale Nov. 1 to 17 inclusive. Final return limit Nov. 19. Round trip fare \$14.70.

State Meeting Odd Fellows

San Antonio, Texas, Nov. 11 to 13. Tickets on sale Nov. 9 and 10. Final return limit Nov. 15th. Round trip fare \$20.10. Phone 224 **W. J. KLINGER, Agent**

PLAINVIEW BAKERY

Where you buy Bakery products that satisfy. Phone 482 when you want Bread, Rolls, Cake, Buns, and Pies. Quality first.

Every Customer Pleased

J. H. SLATON, President W. C. MATHES, Vice President
GUY JACOB, Cashier

The First National Bank

Plainview, Texas

CAPITAL STOCK \$100,000.00
SURPLUS AND UNDIVIDED PROFITS 170,000.00

SAFE DEPOSIT BOXES FOR RENT
Your business solicited, appreciated and protected.

NATURE'S ESSENCE...-Extracted From Forest Plants.

Nature's laws are perfect, but disease follows if these laws are not obeyed. Go straight to nature for the cure, to the forest; there are mysteries here that we can learn from. Take the bark of the wild-cherry tree, the root of mandrake root, Oregon grape root, queen's root, bloodroot and golden seal, make a scientific, non-alcoholic extract of them with just the right proportions and you have

Doctor Pierce's Golden Medical Discovery.

It took Dr. Pierce, with the assistance of two learned chemists, eight years of hard work experimenting to make this pure glyceric extract and alternative of the greatest efficiency and without the use of a particle of alcohol.

Just the sort of remedy you need to make rich, red blood, and cure that lassitude and feeling of nerve exhaustion. Dr. Pierce's Golden Medical Discovery bears the stamp of PUBLIC APPROVAL and has sold more largely in the past forty years than any other blood purifier and stomach tonic.

"Some time ago I got out of health—my stomach seemed to be the seat of the trouble," writes MR. E. W. WILLIAMS, of Belleville, Kan. "I commenced to doctor with all the doctors at home as well as with other specialists on stomach and digestive organs. None seemed to do any good—in fact, most of the medicines did me harm. Finally, I wrote to Dr. Pierce, Buffalo, N. Y., who replied, stating that I had liver complaint with indigestion and constipation, and advised Dr. Pierce's Golden Medical Discovery and 'Pleasant Pellets.' 'The Discovery' and 'Pellets' have 'put me on my feet again'—seemed to be just what I needed. I could not have recovered without them."

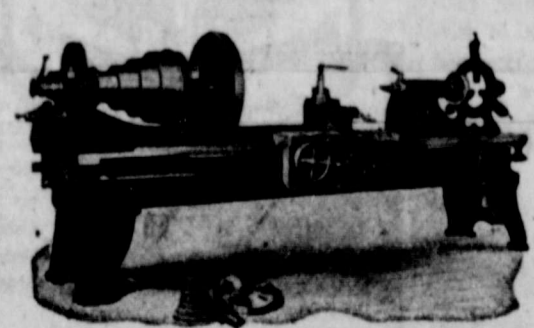


Dr. Pierce's Pleasant Pellets are for liver ill.

A. S. McAdams Lumber Co. Lumber and Paints

We can save you money on any kind of building material. Call and get our prices.

J. L. PEARCE, Mgr. Phone 205



All kinds of Machinery Repaired

Casing and Pipe of any size Threaded

J. D. Hatcher
Carriage and Machine Shop

210 East Main
Phone 133

L. A. Kerr returned home from Crosbyton Saturday.

Ask "Daddy" Phelps, of Plainview, and Mr. Allen, of Hale Center, if NASH can't sell stuff at auction for more than it is worth. —Adv.

J. H. McGehee, of Lockney, returned Saturday from a business trip to East Texas.

Mrs. E. P. Thompson, of Lockney, returned Saturday from an extended visit to Missouri.

WILSON FIRST DEMOCRAT SINCE CLEVELAND, IN '92.

Republicans Have Held Chief Magistracy of Nation During Sixteen Years.

Woodrow Wilson is the first Democratic President elected in twenty years. Since Grover Cleveland left the White House three Republicans have occupied the National mansion.

William McKinley, who fell by the assassin's bullet, in 1901, was succeeded by the Progressive candidate in this election. Col. Roosevelt served a total of seven years and a few months, giving place to the man chosen to carry out "my" policies, William Howard Taft. William Jennings Bryan has three times led the "lost cause;" Judge Alton B. Parker of New York was candidate against Roosevelt in 1904.

During that period our country has become a world power, and has increased in population from 65,000,000 to 100,000,000. A million women's votes have been added to the suffrage. The Nation seems to have outgrown "stand-patism," and the party of Lincoln is drifting into Toryism.

It is an open question whether the Progressives and Radicals will become two great parties in the future, of whether the Democratic party with the nomination and election of Woodrow Wilson, will attach to itself all real progressiveness and leave Republicanism as the haven of the interests.

MONTH'S EXPORTS FOR GALVESTON, \$40,717,718.

Clearance Manifests Account ofr 678,632 Bales Taken by Ships to 11 Foreign Countries.

Galveston, Texas, Nov. 2.—Galveston in October broke another port record when clearances for foreign ports at the custom house totaled 678,632 bales, valued at \$40,717,718. This is the best record by 124,425 bales, the previous record being made in December, 1906, when 554,207 bales were cleared. The foregoing figures do not represent the actual exports during the month, for some of the vessels clearing near the end of the period did not sail until after November 1. The actual exports, according to the Cotton Exchange daily statement, were 621,948 bales, which is not the record.

The following statement shows the bales cleared and the countries to which they are destined:

	Bales.	Value.
Great Britain	361,526	\$21,501,745
Belgium	23,437	1,436,433
France	108,138	6,553,156
Germany	118,101	7,162,668
Italy	33,309	2,011,044
Russia	6,437	390,955
Spain	23,871	1,430,768
Sweden	2,663	160,291
Netherlands	300	19,572
Norway	200	12,148
Portugal	650	38,938
Total	678,632	\$40,717,718

AT THE STATE FAIR.

While the great crowd at the State Fair was at its thickest Saturday afternoon a man bought a ticket at one of the windows and wavered through a turnstile into the grounds. He fell in line with the flow of people toward the Coliseum. At the exit gate to his left he drifted into another current of people leaving the grounds through that gate. He followed the line, and in less time than it takes to tell it was out in front of the main entrance again, looking blankly, and wondering how he got there.

After thinking the matter over for a few minutes the man seemed to decide he'd better try it again. He bought another ticket, walked through the same turnstile again, joined the same current headed for the Coliseum, eddied once more into the crowd making their exit, and for the second time found himself standing outside the grounds in front of the main entrance.

The man shoved his hat upon the back of his head, mopped his brow, and touseled his hair. He was evidently thinking deeply. Not seeming to find the answer, he set his jaws firmly, marched to the window, bought a third ticket, and again marched through the same turnstile gate. The crowd was headed for the Coliseum. He followed the crowd. At the approach to the exit gate, another crowd was rushing to get out. He joined the rush—and, lo, there more he was without the gates.

"Notwithstanding the great hustle and bustle, this man's queer performance had attracted the attention of the gateman. As he staggered through the turnstile for the fourth time the attendant took him gently, yet firmly, by the arm, and pointed straight down the main walk which leads to the central plaza, exposition building, etc. "Go that way," said the ticket man; "and you'll see the Fair." "Fine," muttered the citizen. "I wondered where it was."—Dallas News.



REPUBLICAN CANDIDATES.

(Deceased)

William Howard Taft has been called the "largest" man who ever sat in the White House. He carries more than 350 pounds of avoidpouls.

Mr. Taft studied the law at Yale University. He was conspicuously successful as Governor General of the Philippine Islands, and became Secretary of War under President Roose-

velt. Theodore Roosevelt chose him as disciple to carry out "my" policies, and he was elected President in 1908 by an enormous majority.

"Nobody Loves a Fat Man." As President, Mr. Taft has proven unpopular. His advisers seem to have led him first this way and then another. His unhappy choice of phrases was given emphasis when in

his Ohio address just before the National Convention—"a rat pushed to the corner will fight."

Mr. Taft declared for a tariff board, and then vetoed a tariff measure framed by the Democrats upon practically the lines suggested by his tariff board. It is fair to say, however, that he has fathered much constructive legislation.

TIMELY WARNING TO CALOMEL USERS.

Calomel is a Form of Mercury, and if It Stays in the Human System Its Effect is Terrible. Ask Your Doctor.

Any physician will tell you that mercury, if it remains in the body, will soften and rot the bones, a disease doctors call necrosis of the bones. Calomel is a form of mercury, and to keep clear of danger it's a safe plan to take no calomel at all, especially as there is a better remedy.

Both children and grown people will find a perfect substitute for calomel in Dodson's Liver-Tone, a pleasant, vegetable tonic that induces the liver to act and which never has any bad after-effects. In fact, Dodson's Liver-Tone will do everything that calomel does, without any of the dangers of calomel. A large bottle costs only fifty cents, and R. A. Long Drug Company's drug store will refund your money if you are not satisfied.

RANIER NATIONAL PARK THROWN OPEN TO MOTORISTS.

The State of Washington has thrown open Ranier National Park—in the center of which is the famous Nisqually Glacier—to tourists, according to advice received by Brown Motor Company yesterday.

Ranier National Park is one of the few National parks that automobiles will be allowed to tour in; as a consequence, the news of its opening has been received with expressions of agreeable surprise by motorists.

In connection with the opening is some interesting news relative to the first automobiles to enter the new park. A string of Hudson cars mastered the famous Nisqually Glacier. Photographs which have been received here of the string of Hudson cars at an elevation of about 4,000 feet above sea level show the immense size of the glacier, the entire center portion of which is an immense ice field, surrounded on three sides by growing vegetation. The glacier is continually melting from underneath, and in it the Nisqually River has its origin.

It is expected that tourists from many sections of the country who happen to be near Ranier Park will take in the wonderful scenery there, and spend a number of days enjoying the trips to some of the wildest sections of the National playground.

Miss Beulah Bales, of Fluvanna, came in Friday to visit at the home of J. A. Roberts.

Mrs. J. M. Fuller arrived Monday to be at the bedside of her brother, J. M. Carter, who is ill at his home, 512 West Third Street.

I. G. Mahan, 1921 Twelfth Street, Fort Smith, Ark., says: "I cannot say too much in favor of Foley Kidney Pills. I had kidney trouble with a pain in my back that hurt so sometimes I had to go sit down. When I started taking Foley Kidney Pills I was bent over. But now I can work every day, the pain is gone and I feel fine." Sold by R. A. Long's Drug Store. —Adv. 48

REMINGTON UMC
METALLIC CARTRIDGES
Shoot to Hit

The Remington Cubs hang up a new shooting record

More—Their Use Guarantees the Life—the Continued Accuracy of your Arm.
96 years of gun-making—50 years of cartridge-making have taught us—

To make cartridges noted for straight-shooting—hard-hitting—sure-fire. To attain ammunition accuracy without impairing gun accuracy. To make for each kind of arm the cartridge it requires to shoot its best—and to keep shooting its best.

There is a Remington-UMC cartridge specially made for your rifle—your pistol. Every Remington-UMC cartridge is tested in the arm for which it is made. Our Guarantee is behind these cartridges—and behind any standard arm, to the full extent of the maker's own guarantee, when these cartridges are used. Shoot the cartridges that shoot straight. Shoot the cartridges that keep your gun shooting straight. Shoot Remington-UMC cartridges.

Remington Arms-Union Metallic Cartridge Co.
230 Broadway New York City

For duck shooting these crisp mornings, or for larger game, you will get better results from Union Metallic Steel Lined Shells. We also have a complete stock of Remington guns for your selection.

Donohoo - Ware Hardware Co.

Northeast Corner Square

STOP PAYING RENT For Great Bargains in Farms, Ranches, and City Property, see W. W. Jones Land Co. before buying elsewhere if you want to save money, we deliver the goods write us. 211 North Pacific St., Plainview, Tex- W. W. Jones Land Co. as, Don't Forget the Number.

By ordering your winter supply now you will **Save Money and Delay**

Coal Will Be Higher When Winter Comes

You know that the demand for coal this winter will likely exceed that of any year in the history of Plainview. When the rush for coal begins delays in delivery will be un-reoidable. Fill your bins now and be prepared when cold weather comes.

We Also Buy and Sell Grain and All Kinds of Feedstuff

SHIPLEY & SHIPLEY

Moreland St. Phone 81



THEODORE ROOSEVELT

HIRAM W. JOHNSON

PROGRESSIVE CANDIDATES.

Theodore Roosevelt was born in New York City. He graduated from Harvard in 1880, and spent one year in Europe. In 1882 he was the youngest member of the New York Legislature. After six years he went West, hunting and ranching in Montana. He became Assistant Secretary of the Navy in 1897, and when war with Spain was declared he, in connection with Dr. Leonard Wood, organized the "Rough Riders," who played so conspicuous a part in that struggle.

The remarkable accuracy of American gunners in the naval battles with Spain was due to Mr. Roosevelt's insistence on target practice for the navy. He has always been a champion of civil service.

The Progressive candidate became Governor of New York, and was elected Vice President with Wm. McKinley. Upon President McKinley's death, in 1901, the Vice President became the chief magistrate of the land. He was elected President in 1904.

Mr. Roosevelt's administration was distinctly progressive. After his term

of office expired Mr. Roosevelt went for a hunting trip to Africa. Since his return to America he has been contributing editor to the Outlook Magazine, in New York City.

"Teddy" refused the call to become a candidate for President until it became imperative. He was "steam-rollered" at the Republican National Convention held in Chicago last June, and immediately announced plans for the formation of a new party.

Governor Hiram Johnson of California is Mr. Roosevelt's running mate.

"GREAT CAMPAIGN"—COLONEL.

Roosevelt Made Two Speeches Monday to "Home Folks" of Nassau County.

"It has been a great campaign," said Col. Roosevelt just before election day. "I don't know that there has ever been a campaign like it in this country."

Col. Roosevelt had brought his work to an end, so far as this election concerned him, but the fight, he said, is for a principle, and will go on. He made two short "speeches" Monday to "home folks" of Nassau County, after Sunday spent at Oyster Bay. Miss Frances A. Keller, a member of the Progressive Executive Committee and head of the New York State Bureau of Industry and Immigration,

took lunch with Colonel Roosevelt Sunday at Oyster Bay.

Miss Keller's visit prompted Col. Roosevelt to say that one of the features which had interested and pleased him most in the campaign was the part played by women. In states in which they have no votes, he said, they had worked with no less zeal than in equal suffrage states. One result of the participation of women, he went on, had been to modify the old "rough and tumble" political rallies, and he spoke of the presence of large numbers of women at the Progressive meetings.

Although Col. Roosevelt still is far from having recovered his normal strength, and was somewhat fatigued when he returned from New York last night, he arose fresh this morning and took a walk lasting nearly an hour.

SIX PARTIES HAD NATIONAL TICKETS

226 ELECTORAL VOTES WILL BE REQUIRED TO NAME NEXT PRESIDENT.

SENATORSHIPS INVOLVED

Seats of Thirty-Two Must Be Filled for Term Beginning March 4, 1913.

Six parties had National candidates to be voted for in the general election yesterday. The popular and electoral vote for President in 1908 and the new apportionment table are given below:

National Ticket.
Republican—President, William H. Taft; Vice President, James S. Sherman.

Democratic—President, Woodrow Wilson; Vice President, Thomas R. Marshall.

Progressive—President, Theodore Roosevelt; Vice President, Hiram W. Johnson.

Prohibition—President, Eugene W. Chafin; Vice President, Aaron S. Watkins.

Socialist—President, Eugene V. Debs; Vice President, Emil Seidel.

Socialist Labor—President, Arthur E. Reimer; Vice President, August Gilhaus.

Electoral Vote for 1912, Based upon New Apportionment.

States—	Electoral College.
Alabama	12
Arizona	3
Arkansas	9
California	13
Colorado	6
Connecticut	7
Delaware	3
Florida	6
Georgia	14
Idaho	4
Illinois	29
Indiana	15
Iowa	13
Kansas	10
Kentucky	10
Louisiana	10
Maine	6
Maryland	8
Massachusetts	18
Michigan	15
Minnesota	12
Mississippi	10
Missouri	18
Montana	4
Nebraska	8
Nevada	3
New Hampshire	4
New Jersey	14
New Mexico	3
New York	45
North Carolina	12
North Dakota	5
Ohio	24
Oklahoma	10
Oregon	5
Pennsylvania	28
Rhode Island	5
South Carolina	9
South Dakota	5
Tennessee	12
Texas	20
Utah	4
Vermont	4

A full line of Jewelry, Cut Glass, Silverware, Clocks, Optical Goods and Hand Painted China.

Wilbert Peterson

The Most Modern Garage in Northwest Texas

You would naturally expect such a garage to carry every accessory or repair part; also a corps of expert workmen. Yours servingly,

Plainview Machine and Auto Shop
E. E. ROOS, Proprietor

\$249,000.00

To Loan on Farm and Ranch Lands in Hale and Adjoining Counties.

W. B. Joiner
Plainview, Texas

"SUCH DELICIOUS Doughnuts!"

Cottolene makes delicious doughnuts—free from sogginess, grease and indigestion. The reason is that Cottolene contains vegetable oil—not animal fats—heats to a much higher degree than butter or lard, fries so quickly that it forms a crisp, dry crust over the dough and prevents the absorbing of the fat.

Cottolene

Cottolene is decidedly better than butter or lard for all shortening and frying. It is healthier, it is quicker, it is more economical.

Cottolene costs no more than lard, you use but two-thirds of a pound of Cottolene to do the work of a full pound of butter or lard.

POTATO DOUGHNUTS
Cream 3 tablespoons Cottolene, add 1/4 cup sugar and 3 yolks of eggs well beaten with 1 white. Stir in 1 cupful freshly mashed potato and 1/2 cup milk. Sift 2 1/2 cups flour with 3 teaspoons baking powder, 1/2 teaspoon each of salt and ground mace, also a little nutmeg, and add to first mixture, working in flour enough to handle lightly. Roll and cut before frying and have Cottolene hot enough to brown a bit of bread lightly in half a minute. Turn doughnuts as they come to the top, and again when nicely browned.

Made only by THE N. K. FAIRBANK COMPANY

Virginia	12
Washington	7
West Virginia	8
Wisconsin	13
Wyoming	3
Total	531
Necessary to elect	266

Popular Vote for President in 1908.

	Bryan.	Taft.
Alabama	74,374	25,305
Arkansas	87,015	56,760
California	127,492	214,598
Colorado	126,644	123,700
Connecticut	68,255	112,915
Delaware	22,071	25,014
Florida	31,104	10,654
Georgia	72,413	41,692
Idaho	36,162	52,621
Illinois	450,795	629,929
Indiana	338,262	348,993
Iowa	200,771	275,210
Kansas	161,209	197,216
Kentucky	244,092	235,711
Louisiana	63,568	8,958
Maine	35,403	66,987
Maryland	115,908	116,513
Massachusetts	155,543	265,940
Michigan	175,771	335,580
Minnesota	109,401	195,843
Mississippi	60,287	4,363
Missouri	336,574	347,203
Montana	29,326	32,333
Nebraska	131,099	126,997
Nevada	11,212	10,775
New Hampshire	33,655	53,149
New Jersey	182,567	265,326
New York	667,468	870,070
North Carolina	136,995	114,937
North Dakota	32,885	57,680
Ohio	502,731	572,312
Oklahoma	112,363	110,474
Oregon	38,049	62,530
Pennsylvania	448,778	745,779
Rhode Island	24,706	43,942
South Carolina	62,288	3,963
South Dakota	40,266	67,536
Tennessee	135,608	118,324
Texas	217,302	65,015
Utah	42,601	61,015
Vermont	11,496	39,552
Virginia	82,946	52,573
Washington	58,691	106,062
West Virginia	111,418	137,869
Wisconsin	166,632	247,747
Wyoming	14,918	20,846
Totals	6,409,104	7,678,908

Popular vote, Taft over Bryan 1,269,804
Popular vote, Taft over all 469,374
Taft's majority over Bryan in electoral college 159

Senate.
Total membership of the present Senate, 96; necessary for majority, 49.
Present membership: Republicans, 50; Democrats, 43. Vacancies, 3 (Illinois, Idaho and Colorado).
Terms of Senators in thirty-two States expire on March 3, next.
Of the thirty-two, thirteen seats are at present held by Democrats.

FARMERS' INSTITUTE TO MEET NOVEMBER 11.
J. W. Neill Will Speak on "The Russian Thistle," and Methods of Eradicating It.

J. W. Neill, conductor of Farmers' Institutes, will discuss "The Russian Thistle; Its Distribution and Effects; and Methods of Its Control and Eradication" at the Farmers' Institute to be held in the Court Houses in Plainview, Monday, November 11. Mr. Neill will also discuss other questions in which Hale County farmers may be interested.

Ed R. Kone, Commissioner of Agri-

Start Bulbs Growing Now

---they bloom in winter

Hyacinth, Narcissus, Tulip, Chinese Lily, Crocus.

We have decorating plants. Also cut flowers for all occasions.

Plainview Floral Company
Phone 195

culture for Texas, sends out an urgent appeal to farmers to bring their families and spend a whole day to careful study and discussion of the agricultural questions which they are working out. He also suggests that the State Department of Agriculture is issued, from time to time, valuable reports upon topics of vital interest to farmers. These are sent free to all institutes.

NASH'S NEW AND SECOND-HAND STORE has anything you want, at prices to suit the times, and especially on Cook Stoves and Heating Stoves and Hot Blast Heaters. —(Adv.)

Otus Realty Co.

640 acres improved land 6 miles of Plainview; all smooth, level land; fenced; small house, well and windmill; some sheds, and about 250 acres in cultivation. Price, \$26.50 per acre.

640 acres improved land 3 miles west of Plainview; fenced; good farm house; well and windmill; good sheds, and about 400 acres in cultivation. Price, \$42.50 per acre.

160 acres unimproved land near Plainview, on draw; all choice land; shallow water; about 60 acres in one body natural alfalfa valley land, with water about 15 feet. Price, \$30 per acre; good terms.

684 acres choice, smooth land in solid body southeast of Plainview. Price, \$16 per acre; good terms.

4 sections unimproved land in solid body 10 miles County Seat and railroad, with water about 45 feet of surface. This is one of the very choicest tracts of land in the Shallow Water Belt; lays smooth and almost free of any lakes. Price \$14 per acre; good terms.

640 acres improved land 8 miles of railroad station; fenced; fair farm house; well and windmill, orchard, etc., and about 125 acres in cultivation. Price, \$17.50 per acre; good terms.

1 to 3 sections unimproved land, all the very choicest level farm land, 6 to 8 miles County Seat. Price, \$10 per acre; good terms.

15 to 20 sections land in one body, 8 to 12 miles County Seat and railroad; located in the Shallow Water Belt; water 40 to 50 feet; all choice, smooth land; will sell in tracts to suit purchaser. Best colonization

Keep Your Eye on that Can

When Buying Baking Powder

For this is the baking powder that "makes the baking better."

It leaves the food evenly throughout; puts it up to airy lightness, makes it delightfully appetizing and wholesome.

Remember, Calumet is moderate in price—highest in quality.

Ask your grocer for Calumet. Don't take a substitute.

RECEIVED HIGHEST AWARDS. World's Pure Food Exposition, Chicago, Illinois, Paris Exposition, France, March, 1912.

NOT MADE BY THE TRUST

CALUMET

BAKING POWDER

CALUMET BAKING POWDER CO. CHICAGO

You don't save money when you buy cheap or big-can baking powder. Don't be misled. Buy Calumet. It's more economical—more wholesome—gives best results. Calumet is far superior to sour milk and soda.

proposition in the Plainview country. Price very low.

Other lands for sale in all parts of this country too numerous to mention.

For further information, descriptive literature, etc., address

OTUS REEVES,
Plainview, Texas.

**NEW INDIAN MOTORCYCLES
EMBODY MANY FEATURES.**

Cradle-Spring Frame Enables Wheel to Take Rough Places Without Effect on Body.

Following the "14 Important Improvements" of 1912, the Hendee Mfg. Company announce no less than a dozen additional new features in their 1913 model of the Indian Motorcycle.

By far the most significant feature of the new machine is the Cradle Spring Frame. It is something entirely new, a radical departure from the conventional bicycle and recent motorcycle systems of "springing." Briefly, the new device consists of the application to the rear wheel of the Indian Cradle Spring device as used on the front fork for the past three years.

Extending back horizontally from the frame joint cluster under the saddle, flanking the rear mud guard, are two 7-leaf Chrome Vanadium steel springs. The "C" shape curls at the rear end of these springs are connected by stays to bell-cranks on which the rear axle is hung. The forward end of the rear fork has a hinge joint which enables the rear wheel to yield to imperfections of road surface. All shocks are completely absorbed by the leaf springs. The rear wheel can go through almost any vertical motion without affecting the body of the machine. There is no "bottom" to this spring device. The life of the machine is greatly increased.

The Engineering Department of the Hendee Manufacturing Company devoted 18 months of exhaustive test to the Cradle Spring frame before finally deciding on its adoption for all models of the 1913 Indian.

In addition to the Cradle Spring Frame, the 1913 Indian embodies 10 other important improvements which will be appreciated by motorcycle

riders in general. Prices remain the same as last year.

New style, single clinch rims; larger tires, wider mud guards front and rear, with larger splashers; casing to upper stretch of transmission chain and curve of sprocket; larger luggage carrier in rear, fitted to all models; foot rests, as well as pedals, fitted to regular 4 h. p. and 7 h. p. models; foot brake lever fitted on left side now operates band brake as well as pedal action; larger size multiple disc clutch now fitted to all models alike; improved Indian type saddle.

All 1913 Indians will be chain driven, and finished in Indian red only.

DEAFNESS CANNOT BE CURED

by local applications, as they cannot reach the diseased portion of the ear. There is only one way to cure deafness, and that is by constitutional remedies. Deafness is caused by an inflamed condition of the mucous lining of the Eustachian Tube. When this tube is inflamed you have a rumbling sound or imperfect hearing, and when it is entirely closed, Deafness is the result, and unless the inflammation can be taken out and this tube restored to its normal condition, hearing will be destroyed forever; nine cases out of ten are caused by Catarrh, which is nothing but an inflamed condition of the mucous surfaces.

We will give One Hundred Dollars for any case of Deafness (caused by catarrh) that cannot be cured by Hall's Catarrh Cure. Send for circulars, free. F. J. CHENEY & CO., Toledo, Ohio.

Sold by Druggists, 75c. Take Hall's Family Pills for constipation. —Adv. 48

**FOLEY KIDNEY PILLS
FOR SACKACHE KIDNEYS AND BLADDER**

Crop Improvement

Treat your soil the same as you would a valuable animal—soil has life and limitations.

CORN FERTILIZER.

How to Build Up and Permanently Maintain the Fertility of the Soil—Rotate Crops—Use Natural Rock Phosphate, Lime and Farm Manure.

By Prof. C. G. Hopkins.

[National Crop Improvement Service.] Crop rotation is of value because it helps to avoid insect injury and fungus diseases; because it helps to distribute the farm labor over the season; and because it provides some fresh organic matter which decays quickly in the soil, and, by its stimulating action, thus liberates from the soil itself more plant food than would otherwise become available.

What are the essentials required in a system of farming that will increase and permanently maintain the fertility and productiveness of the common land? Phosphorus, organic matter, and limestone. Let these words be repeated and repeated until they find lodgment in the mind of the landowner.

How Much Phosphorus?

More than is required for the crops produced. What form of phosphorus? Any form, but if natural rock phosphorus is used, it should be so finely ground that at least 90 per cent of it will pass through a sieve with 10,000 meshes to the square inch. About one-half ton of good rock phosphate every four years will be ample to maintain the phosphorus content of the soil, even though large crops are removed but the first application may well be a ton or more per acre.

How Much Organic Matter?

Enough to maintain the nitrogen content of the soil. What form of organic matter? Farm manure or clover, or other legume crops.

How Much Limestone?

Enough to more than correct the acidity of the soil (if it is acid), and repeated applications of about two tons per acre every four years, in order to keep the soil sweet.

What Kind of Limestone?

Any kind that is high in carbonates. Phosphorus is the one element of fertility above all others which has a high absolute and permanent value to Illinois farmers. Nitrogen is free as air, and potassium is abundant in nearly all of the soils of the state, and both nitrogen and potassium remain in the straw and stalks, and in the farm manure to a considerable extent. Phosphorus, on the contrary, is present in nearly all soils in limited amounts, and it is being continually removed from the land.

KILLING CHINCH BUGS.

By H. A. Gossard, Ohio Exp. Station.

[National Crop Improvement Association.] When the chinch bugs are migrating from wheat to corn, just after the wheat harvest, resort to the following measures so far as practicable:

Have furrows all made around the corn field before the wheat is cut and a supply of road oil or tar on hand, so that nothing will need to be done when the insects commence to move, except to string the oil or tar.

Along the inside of the furrow next to the corn pour a slender line of road oil or coal tar fluxing oil. As soon as the first line has soaked into the ground go over the line and again distribute more of the oil. The road-binding oil can generally be obtained from any representative of the Standard Oil Company. The line should be renewed every two or three days or whenever it becomes so dried out that the bugs are able to cross over it.

CORN ROOT WORM.

200,000,000 Bushels Loss to Corn Crop Annually by this Pest.

[National Crop Improvement Association.] The damage done to corn in the corn belt is estimated to be 200,000,000 bushels annually.

Next to poor seed corn, the corn root worm is the greatest source of loss to the corn crop. "The remedy is rotation of crops, never growing more than two crops of corn continuously on the same ground," said Prof. P. G. Holden of Iowa. "Farmers may rest assured of this fact."

SPECULATION ACTS AS A GOVERNOR.

[National Crop Improvement Service.] Through the operation of speculation the great grain crops are not "dumped" on the market immediately after harvest at sacrifice prices but the far greater portion is absorbed in the filling of contracts made many months before the crops were harvested. Thus, speculation is an equalizer and steadier of prices, a fact of incalculable benefit to producer, manufacturer and consumer.

AMOUNT OF SEED CORN.

[National Crop Improvement Service.] From twelve to fifteen ears of corn are required to plant an acre. All corn should be germinated in the spring before planting, in order to test its vitality, and as a result of this test many ears which are weak are thrown out. For this reason it is advisable for every farmer to select at least a third more corn than will actually be required for his next season's planting.

Can Your Home Compete

IN ATTRACTIVENESS

With the Lure of the Outside World?

THE SUCCESSFUL MOTHER today realizes that she must associate herself with home furnishings that will not only afford every convenience and economy of time—but with furniture that will also give her home a distinctive air of good cheer, harmony and refinement.

Our showing of bedroom suits is complete. We have all the best finishes for your selection.

We are exclusive agents for Sealy Mattresses. You can't buy mattresses so comfortable or lasting anywhere else.

A line of Comfortors for these cold nights.

Axminster, Velvet and Tapestry Rugs. A complete line of linoleums.

For the Dining Room: Our round dining room tables in Mahogany, Early English Golden Oak and fumed are pieces of furniture you will be proud to possess.

Chairs to suit.

Buffet.

Have you known the convenience of a Cadillac library table?

The question of what to buy in furniture is easily settled if you visit our stock. Our carloads of new furniture were purchased after careful study of your wants.

No order is too big for us to fill; none is too small to receive our most careful attention.

You will enjoy a visit in our furniture store.

For Service

E. R. WILLIAMS

Just Across from the Postoffice

For Coupons Out of the Duke's Mixture Sack

Many men are getting untold pleasure out of the Liggett & Myers Duke's Mixture sack. One 5c package holds many pipefuls of pure, mild smoking—or, if you please, it will make many cigarettes of the good old-fashioned kind that you roll yourself.

Liggett & Myers
Duke's Mixture

Duke's Mixture, made by the Liggett & Myers Tobacco Co. at Durham, N. C., is the favorite with cigarette smokers. It's the tobacco that makes "rolling" popular with men who want the true taste of pure, mild, selected tobacco.

We're making this brand the leader of its kind. Pay what you will, you cannot get better granulated tobacco than Duke's Mixture.

You still get the same big one and a half ounce sack—enough to make many cigarettes—for 5c. And with each sack you get a book of cigarette papers and a present coupon. FREE.

Save the Present Coupons

With the coupons you can get many handsome, desirable presents—articles suitable for men, women, boys and girls. Something for every member of the household.

Special offer for February and March only—

Our new illustrated catalogue of presents will be sent Free to anyone who sends us their name and address.

Coupons from Duke's Mixture may be assorted with tags from HORSE SHOE, J. T. TINSLEY'S NATURAL LEAF, GRANGER TWIST, coupons from FOUR ROSES (1/2 tin double coupon), PICK PLUG CUT, FIDMONT CIGARETTES, CLIX CIGARETTES, and other tags or coupons issued by us.

Premium Dept.
Liggett & Myers Tobacco Co.
St. Louis, Mo.

First Class Service

Board and Room

THE FAIR HOTEL
MRS. M. J. HEALY, Mgr.

Rooms 50c

Nice, Clean Rooms 50c

\$1.50 Per Day

The Hale County Herald

BUFORD O. BROWN,
Editor and Publisher

Phones—Business Office, 72; Manager's Residence, 14.

Entered as second-class matter in the Post Office in Plainview, Texas, under act of March 3, 1879.

All communications, remittances, etc., should be addressed to THE HERALD PUBLISHING COMPANY, Post Office Box 368, Plainview, Texas.

NOTICE.

All announcements of any church, pertaining to services, are welcome to the columns of The Herald FREE; but any announcement of a bazaar, ice-cream supper, or any plan to get money, is looked upon as a business proposition, and will be charged for accordingly.

Subscription Price . . . \$1.00 per year (Invariably in advance)

It isn't soon to begin—swat the places that permit the fly to breed.

Something new under the sun—1,250,000 women votes for President yesterday

Did you ever notice how seldom a calamity howler ever helps to build up his town?

ANOTHER ELECTION.

Plainview citizens manifested that interest in election returns yesterday which is characteristic of Americans. It is an interest vital to self government. And, like ninety million other citizens, all are at their work today—all pulling toward that final goal—the brotherhood of man.

Saturday's election is far more vital to Plainview. The public-spirited citizens of Plainview usually get what they go after, observes the Childress Post. Bearing that remark in mind, one cannot conceive that Saturday's election should go against the bond issue.

Sidewalks are vitally necessary to Plainview; to the comfort of your wife, your mother, your sister, your sweetheart. The dust-covered path from depot to square is an introduction too unbecoming a town of 5,000 souls.

Is not mail delivery, alone, worth a five-cent increase in taxation? Furthermore, sidewalks will increase the value of your property far beyond the cost to you in increased taxes. Without sidewalks your property will decrease in value.

There can be no doubt of Saturday's election if every citizen does his duty.

WHO?

"Who is the candidate ahead, and gaining rapidly?" they said. "The one who dashes down the track with the others howling at his back?" "Why, that," said Hillies, Hopeful still, "Why, that's our man, I reckon—Bill."

"The one in running tights," they cried. "With a smelling bottle at his side, his backers greeting him with cheers, and his knee-caps fanning at his ears?"

"Why, that," said Mr. Bryan. "Yes—Why, that's our Jerseyman, I guess."

"The fast man raising all the dust?" They said in evident distrust.

"The fellow showing them his heels?" "Like a farmhand going to his meals?" "Why, that," the Roosevelters said, "Why, that's our lion hunter, Ted."

"The front one, galloping?" they whined. "With his coat-tails standing out behind, His brogans putting up the dirt, And a sandbur working in his shirt?"

"That's him!" they Separately said. "That's Bill!" "the Jerseyman!" And "Ted!"

CLINKSCALES LIKES PLAINVIEW.

F. W. Clinkscales and wife returned from a trip to Roswell late Friday. Mr. and Mrs. Clinkscales went out for a day's hunt, and drove on to New Mexico without advising any one. Their friends were just about to organize a search party when the wanderers came home.

After a thorough inspection of the "famed" Roswell irrigated districts, Mr. Clinkscales says Hale County looks better to him than it ever did.

For the best Nigger Head Coal see the ALFALFA LUMBER CO. tf.

DOUBTFUL STATES GO TO WILSON.

(Continued from Page One.)

Hampshire did not carry with it the control of the Legislature, which will elect a Republican United States Senator.

Wilson has a safe lead in Oregon, and Lane, the Democrat, appears to be elected United States Senator.

In Wyoming, 310 precincts out of 472 give Wilson 10,591, Taft 10,328 and Roosevelt 4,624. The Senatorial situation is in doubt, with the counties to hear from favoring the Democrats.

Roosevelt is holding his lead in South Dakota. The contest for Governor is neck and neck, but a Republican Legislature appears to have been elected.

Big Vote Recorded.

In the majority of states the vote was larger than at any previous Presidential election, and the final returns on the actual number of ballots cast for the three candidates is expected to exceed all records.

The defeat of Taft, the division of the Republican vote between Taft and Roosevelt, and the consequent division of Republican organizations, resulted in complete Democratic victories in many states. In New York, Democrats carried the State ticket and the Legislature. In Illinois the Democratic candidate for Governor had apparently carried the State. Democratic senators appeared certain as successors to Republicans from Colorado, New Jersey, Delaware, Montana and several other states.

A general increase in the Socialist party vote polled by Debs, the Presidential candidate, was accompanied by setbacks to the local Socialist organizations in two of their strongholds. In Wisconsin, Congressman Berger, the only Socialist in the House of Representatives, was defeated, with a number of other officeholders, and in Schenectady, N. Y., where the party had elected almost a complete local ticket the last election, practically all of its candidates were defeated.

Kentucky for Wilson.

Louisville, Ky., Nov. 6.—Most nearly complete returns available early today from yesterday's election in Kentucky credit Governor Wilson with a plurality of more than 100,000 over Taft. Apparently, Roosevelt ran third. Eighteen out of the 120 counties of the State were not reported in these returns, and, when heard from, together with the numerous precincts missing in reports from other counties, they may effect the Democratic lead and give Roosevelt second place.

Ten of Kentucky's Congressmen—eight Democrats and two Republicans—have been re-elected, and a Democrat has been chosen in the First District to succeed Senator-Elect Ollie James.

The vote as received: Wilson 194,934, Taft 91,450, Roosevelt 89,576.

BOND ELECTION MORE IMPORTANT.

(Continued from Page One.)

sure laborers to make street improvements. "Good streets," Mayor Dorsett says, "are show windows to the town. I think there is no question about the bond issue. It is for a small amount, and the walks mean so much to us all. A walk from the depot up North Pacific Street is imperative. It looks very badly to visitors to see a progressive town without a sidewalk on its principal street."

Then Mayor Dorsett called attention to Plainview's low tax rate—lower than that of nearly any other town in Texas the size of Plainview. But sidewalks would increase the value of property so much, and would make Plainview so much more attractive to the prospective home-builder that a slight increase in taxation for that purpose would be a fine investment for the property owner.

Numbers of workmen have suggested that they favored the bond issue because it would permit their wives to walk dry shod in muddy weather and their children could go to school without wading through mud and water.

Only property owners may vote.

THE OPERATION ON WILTERDING A SUCCESS.

Ashton Wilterding was operated on yesterday at Guyton Sanitarium, for appendicitis. The operation was a success, and Mr. Wilterding hopes to meet his friends again before long at Vines' barber shop.

WILL DOWDEN GOES WITH PEARSON SYNDICATE.

W. P. Dowden, until recently manager of the Knight Auto Garage, has taken work with the Texas Land and Development Co. Steve Struve has taken Mr. Dowden's place in charge of the garage.

NASH'S SECOND-HAND STORE will trade you New Iron Beds for your old ones; in fact, he is in the Trading Business. —(Adv.)

Richards Bros. & Collier
WHERE PEOPLE WHO DRESS BEST TRADE

-- ANNOUNCE --

CUT PRICES

-- IN --

LADIES AND MISSES

Ready to Wear Department

Cloaks, Suits, Dresses and Millinery.

Before Buying Learn What's Doing at the

Rich-lier

PLAINVIEW & LOCKNEY, TEXAS

STANDING OF CONTESTANTS IN THE \$400.00 PIANO CONTEST

of the R. A. LONG DRUG COMPANY.

Week Ending Wednesday, November 6, 1912.

1— 2,000	41— 2,000	81— 77,300	121— 2,000	161— 2,000
2— 2,000	42— 163,570	82— 2,000	122— 2,000	162— 58,405
3— 83,655	43— 54,015	83— 2,000	123— 92,290	163— 79,355
4— 2,000	44— 2,000	84— 2,000	124— 2,000	164— 52,300
5— 2,000	45— 77,500	85— 2,000	125— 379,370	165— 88,475
6— 2,000	46— 2,000	86— 119,010	126— 2,000	166— 528,690
7— 64,550	47— 2,000	87— 2,000	127— 2,000	167— 52,200
8— 2,000	48— 77,300	88— 124,715	128— 2,000	168—
9— 2,000	49— 2,000	89— 2,000	129— 54,000	169—
10— 57,085	50— 105,855	90— 2,000	130— 2,000	170—
11— 117,335	51— 55,000	91— 77,400	131— 2,000	171—
12— 108,760	52— 2,000	92— 2,000	132— 2,000	172—
13— 53,095	53— 2,000	93— 2,000	133— 83,646	173—
14— 175,520	54— 2,000	94— 100,220	134— 2,000	174—
15— 105,250	55— 57,095	95— 55,645	135— 2,000	175—
16— 2,000	56— 61,720	96— 2,000	136— 2,000	176—
17— 59,000	57— 58,120	97— 2,000	137— 2,000	177—
18— 2,000	58— 2,000	98— 691,285	138— 2,000	178—
19— 2,000	59— 2,000	99— 2,000	139— 2,000	179—
20— 52,000	60— 58,520	100— 2,000	140— 2,000	180—
21— 2,000	61— 2,000	101— 2,000	141— 2,000	181—
22— 52,000	62— 2,000	102— 638,305	142— 2,000	182—
23— 2,000	63— 2,000	103— 2,000	143— 53,000	183—
24— 2,000	64— 82,000	104— 77,200	144— 2,000	184—
25— 2,000	65— 2,000	105— 2,000	145— 2,000	185—
26— 2,000	66— 2,000	106— 2,000	146— 2,000	186—
27— 2,000	67— 77,400	107— 2,000	147— 100,355	187—
28— 61,745	68— 2,000	108— 2,000	148— 2,000	188—
29— 77,000	69— 85,845	109— 52,040	149— 2,000	189—
30— 53,880	70— 92,785	110— 2,000	150— 141,760	190—
31— 2,000	71— 2,000	111— 55,635	151— 77,000	191—
32— 2,000	72— 2,000	112— 52,000	152— 2,000	192—
33— 52,520	73— 53,030	113— 2,000	153— 2,000	193—
34— 77,600	74— 75,400	114— 76,705	154— 2,000	194—
35— 53,000	75— 54,365	115— 2,000	155— 2,000	195—
36— 7,750	76— 2,000	116— 2,000	156— 2,000	196—
37— 2,000	77— 2,000	117— 2,000	157— 2,000	197—
38— 57,610	78— 2,000	118— 2,000	158— 2,000	198—
39— 2,000	79— 2,000	119— 2,000	159— 2,000	199—
40— 2,000	80— 2,000	120— 55,020	160— 100,775	200—

We are issuing \$5.00 Trade Books that are good for 30,500 votes in our Piano Contest. These books are good for trade on any article in our store for one year from date of purchase. Call and get particulars regarding the contest. R. A. LONG DRUG CO.

Notice.—All orders given on us for votes by The Herald must be exchanged at our store for coupons the same week the order is issued. R. A. LONG DRUG CO.

Notice to Contestants.—This paper has arranged with the R. A. Long Drug Company to give with each, new or renewal, one dollar subscription to The Herald, 3,000 votes on the piano. Also, votes will be given on advertising and job work.

For the best Nigger Head Coal see the ALFALFA LUMBER CO. tf.

We do all kinds of Automobile Work at very reasonable prices. Ignition troubles our specialty. EGGE'S GARAGE. tf.

Don't Wait Until Too Late to Protect your cattle. They are too valuable. Vaccinate with a dose of Blacklegoid. We have it. J. W. WILLIS DRUG CO. Adv. tf.

The Herald for Job Printing.

PLAINVIEW READS HERALD BULLETINS

PEOPLE CROWD SCHICK OPERA HOUSE TO GET ELECTION RETURNS LAST NIGHT.

BAND FURNISHES MUSIC

Messrs. Tyrone and Bonner Run a Six-Reel Feature, and All Is Free.

The citizens of Plainview were guests of The Hale County Herald at the Schick Opera House last night. Election Bulletins were thrown on the screen as long as any one cared to remain. The house was filled before dark, and a good-humored crowd gathered in front of the office window, where returns were being placed on lantern slides.

Inviting the citizens to the Opera House proved popular. Heretofore bulletins have been posted on local boards; this is the first time that the town's leading play house has been thrown open to the public.

Band Boys Entertain. The band boys were there. They played outside while the crowd was coming, and were liberal with their entertainment inside the house. Plainview's band never fails to turn out when the boys can help. Give the band a boost, fellow citizens, whenever you can. It is the town's best advertisement. Support the boys.

Tyrone and Bonner Help. The management of the Schick gave another evidence of their willingness to co-operate in everything public-spirited by putting on a six-reel feature for the watchers. If it had not been for liberal co-operation on the part of Messrs. Tyrone and Bonner The Herald could not have given such an evening to the people. Their reel "Under Two Flags" was particularly appropriate for election night.

FORT WORTH WILL HAVE SILO FACTORY.

Michigan Manufacturing Concern Will Manufacture Silos in Weather City.

A silo factory costing \$50,000 and employing fifty men will be erected on the Fort Worth belt road between the Gulf Refining Company's plant and the packing houses, according to a letter received Monday by Secretary McCormack of the Chamber of Commerce, who has been working for the factory for about six months.

The letter was from F. P. Cory, vice president of the Farmers' Handy Wagon Company, Saginaw, Mich., manufacturers of the Saginaw silos.

The factory was brought to Fort Worth without promising any bonus, and without stock subscriptions, as a result of the freight rate showings and other statistics submitted Mr. Cory by the Chamber of Commerce. The building will be 6x200 feet and construction work will be started at once, according to Mr. Cory's letter. The site consists of five acres, leaving room for an additional building of the same size, which will be erected if the business flourishes.

Indications are that it will be a success from the start, according to Mr. Cory's letter. A Fort Worth banker and ranch owner has ordered fifteen silos in advance of the erection of the plant. Mr. Cory expects to do about a 700-car business during the first year.

You can save from one to two dollars on all Heating Stoves by walking from the square up to NASH'S NEW AND SECOND-HAND STORE. Don't buy till you see them. (Adv.)

REV. GEO. F. FAIR AND WIFE WILL SPEND WINTER ON COAST.

Rev. Geo. F. Fair and wife left yesterday for an extended trip to Central Texas and the Coast country.

BIG SALE ATTRACTS CROWD.

Shelton Brothers the Scene of Much Buying This Week.

Shelton Brothers' big sale has attracted many buyers during the past week. Last Saturday sixteen extra clerks—twenty in all—waited on the crowds. It was like a big fair, and good humored talk livened the humdrum of barter.

Mr. Shelton says that he expects to do even more business next week than he has done during the past seven days.

FRACTURED SKULL CAUSE OF DEATH.

E. N. Lanham Sustains Fatal Injury While Herding Cattle.

E. N. Lanham sustained fatal injury Monday while "cutting out" cattle in the Oton pasture, three miles southwest of Petersburg. Mr. Lanham was thrown headlong from his horse, fracturing his skull. He was brought in to the Guyton Sanitarium. It was thought possible that he might recover, until Wednesday afternoon, when death resulted.

Mr. Lanham will be taken to his former home in Tennessee for burial.

LOCAL VOTE IS LIGHT.

Primaries in July Made Final Vote a Mere Formality.

Returns last night accounted for only 452 votes in Plainview; Colquitt, for Governor, received 356 of these; the Progressive candidate came second, with 25 votes. The Socialists polled 14 votes for Comrade Andrews; Houston, Prohibition candidate, received 12 votes, and the Republican candidate received 16 votes.

John H. Stephens received 283 votes for Congress, against 21 for the Progressive candidate and 8 votes for the Republican nominee. In the vote for Congressman-at-Large, Garrett received 386 votes. The Progressive candidate dropped to 22 votes, and E. H. Coniber, Prohibition candidate, received 23 votes. Fourteen Socialist votes were polled for D. D. Richardson.

COMING EVENTS.

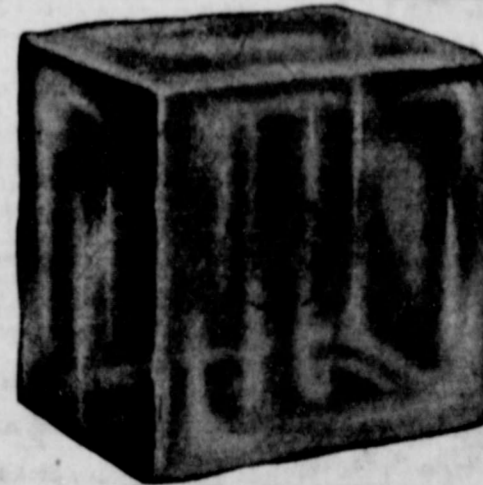
The President's regular Thanksgiving proclamation, advancing turkey about ten cents a pound, will be issued in a few days.

And then December's winds will rout The last leaf clinging to the tree, And the cider will become about What apple cider ought to be.

The doughty little Bahian states still measure courage with the Turks, and keep the harvester of dates attending strictly to his works. They'll make him pif; his bloomin' rugs as high as Haman for defense, and we'll be picking out the slugs a year or such a matter hence.

The only damage to accrue will be to fill the rugs with lumps, and buying them, as we will do, we'll wonder if they have the mumps. The baby every now and then will dig a bullet from the nap, and, having paid the doctor ten, we'll all exorcise the scrap.

The calf will show a redder flush, and take a tail-hold in the stack. The end will meet the center rush, and spring the hinges in his back. The hired man will bawl for more and thicker blankets in the night, and the wind will pry around the door to see if everything is tight.



Frozen Solid--But Still Running

South Bend Watches can be depended upon in every emergency. "South Bend" is a quality which marks all of my Cut Glass, Silverware, Optical Goods and Hand Painted China.

Wilbert Peterson

NORTH PACIFIC STREET

A MESSAGE FOR YOU

There won't be any more PRICES like

SHELTON BROTHERS

are giving in their BIG CUT-PRICE SALE.

LOCAL AND PERSONAL

D. C. McCord went to Claude today.

S. L. Seay returned to Amarillo Friday.

W. N. Collier left today for his ranch in Borden County.

Mrs. Girlie Wren went to Hale Center Monday.

W. J. Miller, of Austin, spent two days in Plainview last week.

Try a Broiled Steak for supper. OTTO has it. Phone 437. Adv. tf.

All kinds of Repair Work done at BRITTON & ROGERS. Adv. tf.

W. H. Sparks, of Lockney, went to Amarillo Wednesday.

Miss Lois Robinson went to Canyon City Tuesday, to enter school.

Miss Lessie Thompson went to Hale Center Saturday, to visit Miss Addie Koonsman.

Miss Lena Williams went to Tullia Friday, for a few days' visit with Miss Nellie Cobb.

Mrs. Geo. L. Yates, of Hale Center, came in Friday to visit Mrs. H. A. Wofford.

Mrs. Paul N. Humphries arrived Thursday from Washington, D. C., to visit her sister, Mrs. C. H. White.

Miss Grace Thatcher went to El Paso Saturday, to visit her uncle, C. E. McAllister.

Miss Lida Brown, of Tate Springs, Tenn., arrived Friday to visit her brother, T. H. Brown.

Clinton Malone, student at Wayland, went to Tullia Friday, to spend Sunday with home folks.

J. M. Vanderslice, of Tullia, spent Saturday in Plainview, visiting his father, John Vanderslice.

Misses Olga Thomas and Bessie Thompson, of Lockney, spent Saturday in Plainview, shopping.

Mrs. Amelia Brooks went to Giddings Monday, where she will spend the winter with Mrs. C. B. Hearea.

Captain Vaughn and wife and two boys went to Lubbock Saturday, to visit Frank Vaughn and family.

Mrs. M. L. Sander and little son, Fred, of Floydada, went to Waco Saturday, to attend the Cotton Palace.

Miss Ella Caraway, of Robert Lee, arrived Sunday to enter Seth Ward Business College. Miss Caraway is as sister of Mrs. A. E. Brooks.

Miss Harriet Morehead, of St. Louis, who is in Plainview visiting her brother, E. J. Morehead, went to Canyon City, for a short visit, Saturday.

B. L. Shrader, whose family has been in Fort Collins, Colo., since the burning of their residence north of Plainview, left Friday to join the family. Mr. Shrader says "We will return in the spring."

Do you know that the NECESSITY STORE is headquarters for Xmas Goods and headquarters for Bargain Prices on all kinds of Glass and Chinaware? Southeast corner of the Square. —Adv. tf.

Rev. G. I. Brittain and wife and Rev. G. W. Tubbs and daughter, Miss Stella, were passengers from Floydada Monday, en route to Fort Worth to attend the Baptist State Convention, in session there this week.

J. Q. Johnson went to Hale Center today.

Mrs. A. J. Hubbard returned home, to Hereford, today.

Mrs. J. B. Demie, of Kress, spent Thursday in Plainview, shopping.

C. Riggs went to Bell County Friday, where he will spend the winter.

Rev. C. W. Knight, of Tullia, was in Plainview Friday.

Mrs. D. Zimmerman, of Tullia, spent Friday in Plainview, shopping.

OTTO'S Sausage is fresh. Phone 437. Adv. tf.

Dr. H. E. Rogers, of Millford, Ellis County, is in Hale County this week, looking after his land interests.

Mrs. W. L. Harrington went to Lubbock Wednesday, to visit her daughter, Mrs. Scott Cochran.

Harry Gordon and wife, of Norfolk, spent Wednesday in Plainview, shopping.

J. R. Leatherman and Sam B. Vaughn, of Amarillo, were in Plainview Wednesday, on business.

Rev. J. P. Reynolds left Wednesday for Fort Worth, to attend the Baptist State Convention.

J. P. Howard has returned to Plainview, to accept a position with E. T. Coleman.

William Conover, of Chillicothe, returned home, from Floydada, Thursday.

Rev. W. M. Clark, of Rascos, arrived Friday. Rev. Clark officiated at the marriage of Miss Neva Stewart and G. E. Dallinger, Friday evening.

Mrs. E. R. Cobb, of Tullia, returned home Monday, after a visit to Miss Lena Williams and her mother, Mrs. Elliott.

Mrs. T. F. Gilliland returned Monday from Lockney, where she had been to attend the funeral of Mrs. J. C. Crawford.

S. V. Banard and wife, of Vernon, Texas, returned Saturday to their home, after a visit at the home of J. O. Abney and family, at Lockney.

When you are in town shopping, don't forget to visit THE NECESSITY STORE for all kinds of China, Glass, Tin and Enamelware at Bargain prices. S. E. Cor. Square.—Adv. tf.

Mrs. L. Hitchler, of Megrill, Wis., came in Thursday to join her husband. Mr. Hitchler has been in Plainview some time. They will make their future home in this city.

R. W. O'Keefe left Wednesday for Rochester, Minn., in response to a telegram from his sister-in-law, stating that his brother, Gus O'Keefe, was operated on some days ago at a sanitarium in Minnesota.

Mrs. M. J. Healy returned Wednesday from Farwell, where she has been to pack her household goods. Mr. and Mrs. Healy will make their future home in Plainview.

Mrs. Eva Alrey and Mrs. May Gilbert, of Harrold, Texas, daughters of Mrs. C. F. Crawford, who died at her home, in Lockney, Friday afternoon at 4 o'clock, arrived Saturday, en route to Lockney to attend the funeral of their mother.

Mr. and Mrs. Fair will stop over at Abilene to attend the M. E. Conference, and from there they will visit their children in Central Texas and will go on to the Coast, where they will spend the winter with their daughter, Mrs. J. D. Holmont, at Hereford, Texas.

A. C. Buchanan came in this week from Temple, Texas.

E. W. Bachelor, of Oklahoma, was a passenger to Amarillo Wednesday.

M. H. Mulia went to El Paso Wednesday.

J. R. McPeak, of Floydada, returned home from Kansas City Wednesday.

BRITTON & ROGERS—New and Second-Hand Furniture. Adv. tf.

M. F. Klattenhoff, of Slaton, was in Plainview Friday.

F. A. Bracher returned home, to Wichita Falls, Thursday.

C. L. Moss, of Lockney, was a passenger home from Dalhart Friday.

J. A. Garrison, of Floydada, went to California Monday.

J. F. Garrison and wife returned Friday from Temple and Belton.

OTTO'S Pork Chops are chopped to suit you. Phone 437. Adv. tf.

Henry Darden, of Abernathy, who spent some day in Plainview the first of the week, returned home Thursday.

Don't take chances on losing your cattle. We have Blackleg Vaccine. J. W. WILLIS DRUG CO. Adv. tf.

J. B. Lane and family left Wednesday for Cameron, where they will make their future home.

Mrs. W. H. Price, of Ardmore, Okla., went to Floydada Tuesday, to visit Mrs. W. B. Prestige.

Luther Cowen, who has been in New Mexico for some time, returned to Crawford, Texas, today.

J. A. Aycock and wife went to Des Moines, New Mexico, Thursday, to make their future home.

Dr. J. V. Guyton accompanied the remains of young Mr. Lanham to Abernathy today.

Get It Where They've Got It. We have it—Blackleg Vaccine. J. W. WILLIS DRUG CO. Adv. tf.

S. V. Banard and wife, of Vernon, Texas, returned Saturday to their home, after a visit at the home of J. O. Abney and family, at Lockney.

When you are in town shopping, don't forget to visit THE NECESSITY STORE for all kinds of China, Glass, Tin and Enamelware at Bargain prices. S. E. Cor. Square.—Adv. tf.

Mrs. L. Hitchler, of Megrill, Wis., came in Thursday to join her husband. Mr. Hitchler has been in Plainview some time. They will make their future home in this city.

R. W. O'Keefe left Wednesday for Rochester, Minn., in response to a telegram from his sister-in-law, stating that his brother, Gus O'Keefe, was operated on some days ago at a sanitarium in Minnesota.

Mrs. M. J. Healy returned Wednesday from Farwell, where she has been to pack her household goods. Mr. and Mrs. Healy will make their future home in Plainview.

Mrs. Eva Alrey and Mrs. May Gilbert, of Harrold, Texas, daughters of Mrs. C. F. Crawford, who died at her home, in Lockney, Friday afternoon at 4 o'clock, arrived Saturday, en route to Lockney to attend the funeral of their mother.

Mr. and Mrs. Fair will stop over at Abilene to attend the M. E. Conference, and from there they will visit their children in Central Texas and will go on to the Coast, where they will spend the winter with their daughter, Mrs. J. D. Holmont, at Hereford, Texas.

George Buckner, of New Mexico, went to Jayton today.

S. P. Brannen went to Waco, to the Cotton Palace, Thursday.

Wright Pace, of Lockney, spent the day in Plainview Saturday.

Mrs. Sarah Miller, of Canyon, was a passenger Saturday to Lockney.

Let OTTO send you a Roast that will roast. Phone 437. Adv. tf.

C. R. Hutchings, of Canyon City, spent Wednesday in Plainview.

Ralph C. Carpenter, of Plano, went to Fort Worth Thursday.

Mrs. Charles Epps went to Lubbock Thursday, to visit Mrs. H. B. Reed.

R. M. IRICK is still raising sand and gravel and giving the people dirt. —Adv. tf.

Cattle Dying Every Hour with Blackleg. Save yours with a dose of Blackleg Vaccine. We have it. J. W. WILLIS DRUG CO. Adv. tf.

Mrs. A. F. Stewart arrived Wednesday from Independence Mo., to visit her granddaughter, Mrs. J. W. Carter.

MRS. TANDY ENTERTAINS CALVARY PHILATHEA GIRLS.

The Philathea girls of Calvary Baptist Church were entertained Friday afternoon, from 4 to 6 o'clock, by their teacher, Mrs. C. W. Tandy, 305 Archer Street.

An invitation to Mrs. Tandy's is always received with delight. It means a good time coupled with sweet-spirited hospitality. About eighteen of the young ladies were present. "Progressive Peanuts" was one of the games that kept the girls "progressing" during the afternoon and afforded much fun for all.

Mrs. Tandy, assisted by Mrs. Cook, Mrs. Hairfield and Miss Alice Harrel, served delicious refreshments.

SANTA FE BRAKEMAN HURT.

H. E. Lindsey Bruised About the Head While Making Coupling; Taken to Amarillo Hospital.

Brakeman H. E. Lindsey, on the main line Santa Fe, was seriously bruised about the head while making a coupling on the switch track here last Saturday. The coupling did not work, and in some manner Lindsey's head was crushed between the cars. Dr. Wayland dressed his wounds, and the injured man was taken to

Amarillo for hospital treatment on the afternoon passenger train. His wounds are not considered dangerous.

TEXAS LEADS IN ACREAGE PRODUCTION OF BARLEY.

Total Yield 176,000 Bushels, Against 42,000,000 or Minnesota; 29.31 Bushels an Acre.

The total yield of barley in Texas this year, according to Washington report, was 176,000 bushels, as compared with 90,000 last year. Minnesota, California and North Dakota lead in the production of this cereal, with a total of 42,618,000, 41,760,000 and 34,927,000 bushels, respectively.

While the total production of Texas is comparatively insignificant, the increase is gratifying. In acre yield, Texas ranks first in barley production, with an average of 29.31 bushels an acre for 1912. Minnesota yielded only 28.2 bushels.

BRITTON & ROGERS—New and Second-Hand Furniture. Adv. tf.

S. E. Carter, of Lubbock, spent Sunday in Plainview.

B. T. Johnson, of Canyon, was in Plainview Wednesday, on business.

The Herald for Job Printing.

Give the People What they Want

"WE EAT TO LIVE"

Your bodily health and your ability to work depend very largely upon the food you eat. Your success in life depends not only upon your ambition and your effort; but also, and very largely so, upon your grocer. History says a plate of fried onions cost Napoleon Waterloo.

I have selected a careful line of groceries for you, Mrs. Housewife. Your eating problem is my constant thought. Let me help you make your meals more delicious. It will add much to the happiness of your home and to the efficiency of your entire family.

The High Cost of Living may be reduced by little savings all along the line. I will help you with those little savings.

Montgomery-Lash Gro. Co.

North Pacific Street L. D. SEWELL, Manager Telephone No. 139

Irick & Company's Millinery Sale

Big Ten Days Sale on Now $\frac{1}{2}$ OFF ON ALL HATS

LOCAL AND PERSONAL

Leroy Johnson was a passenger to Snyder Tuesday.

J. W. Perkins went to his home, at Lamesa, Tuesday.

Z. R. Fee, of Texline, came in Tuesday, to enter Seth Ward College.

A. J. Byars, a prominent business man of Lockney, was here yesterday.

OTTO has Fresh Oysters twice a week. Phone 437. Adv. tf.

D. C. McCord, of Dallas, was in Plainview Monday, en route to Floydada.

J. S. Hamilton, of Norfleet, spent some days in Plainview this week, on business.

Old Sewing Machines made to sew like new ones at BRITTON & ROGERS. Adv. tf.

John Imbody and E. E. Drown, of Marion, Ohio, arrived on the excursion train Thursday.

Mrs. C. N. N. Ferguson left Thursday to attend the Conference in session at Abilene this week.

Miss Amanda Hall, of Portales, New Mexico, came in Thursday. Miss Hall will make her future home in Plainview.

Mrs. S. S. Sloneker and children went to Many, La., Saturday, to visit her father, G. J. Smith, who is very ill.

Why be held up when you can buy at THE NECESSITY STORE at Bargain Prices every day. Southeast corner Square. Adv. tf.

Mrs. Belle Wallace, of Canyon, who has been in Plainview six weeks at the home of W. W. Wallace, returned home Saturday.

BUILDING FOR SALE.

The Masonic Building Committee will receive sealed bids for the old building until Nov. 15th. The Committee reserves the right to reject any or all bids.

Leave bids with H. C. Von Struve, Third National Bank. Adv. 45

Fred Crawford returned Thursday from Plemons.

John Rice, of Tulla, went to Oklahoma City Wednesday.

Bert McWhorter was up from Lubbock on business Wednesday.

Guy Ivey came in Tuesday from Canyon City, to visit home folks.

Call 191 if you want your Stove put up. BRITTON & ROGERS Adv. tf

J. Barrett and wife came in home Tuesday. Mrs. Barrett has been in Amarillo at a sanitarium.

W. E. Goldsmith and wife, of Commerce, Texas, went to Lockney Monday, to visit L. D. Weeks and family.

For your dinner table, WRIGHT & DUNAWAY have a complete line of Groceries and Cured Meats. Adv. tf.

Mrs. Josie Moore and daughter, Vida, of Floydada, were passengers to Waco Tuesday, to attend the Cotton Palace.

Dr. I. E. Gates, Rev. H. H. Street and Q. Brown left Tuesday for Fort Worth, to attend the Baptist State Convention.

E. J. Lowe, of Lillian, Texas, arrived Saturday. Mr. Lowe is looking over Hale County with a view to locating.

H. Mundy, of Shamrock, Texas, was in Plainview Monday, in the interest of a wholesale grain house of Fort Worth.

Read about the GIANT CANDLE CONTEST described elsewhere in this paper, now in effect at DUNCAN'S PHARMACY. Adv. tf.

R. L. Kerlin, of Little Rock, Ark., was in Plainview Tuesday. Mr. Kerlin will go out to Saigling's ranch prospecting.

Mrs. W. T. Noblett and Mrs. E. C. Nelson, of Floydada, were en route to Fort Worth Tuesday, to attend the Baptist State Convention.

Mrs. H. Moss arrived Tuesday from St. Elmo, Ill., to visit Z. E. Jenkins and family, and will then join her husband, at Oakland, Calif.

COBB & ELLIOTT buy Grain six days in the week, and talk about it on Sunday. Adv. tf.

J. A. Olive and wife left Tuesday for their home, at Snyder.

J. D. Barker, editor of The Tulla Herald, was in Plainview Monday.

B. L. Shook went to Waco Thursday, to attend the Cotton Palace.

For the best Nigger-Head Coal, see ALFALFA LUMBER CO. Adv. tf.

H. L. Crow and wife left Monday for Nara Vista, New Mexico, where they will make their future home.

L. A. West, of Wingate, Texas, went to Floydada Monday, to visit his brother, J. L. West.

We can supply your wants with the best Coal all the time. COBB & ELLIOTT. Adv. tf.

W. E. Goldsmith, of Commerce, Texas, came in Saturday to look over Hale County, with a view to locating.

C. H. White has rented his residence for the winter and moved to West First and Alexander Sts., in order to be nearer town.

Mrs. E. R. Cobb, of Tulla, spent the latter part of last week in Plainview, visiting Miss Lena Williams and her mother.

Mrs. Joe Vaughn and daughter, Viola, and Miss Ethel Roe, of Tulla, arrived Tuesday to visit at the home of R. J. Stepp.

W. D. Olton, of Abernathy, was in Plainview Tuesday to see his nephew, E. N. Lanham, who was seriously injured Monday, about 11 o'clock, while cutting cattle in the Olton pasture three miles south of Petersburg.

WHY HAVE CHAPPED HANDS, when twenty-five cents exchanged for a bottle of DUNCAN'S HAND LOTION will insure soft, white hands with only a few applications? Money refunded if not as claimed. DUNCAN'S PHARMACY. Adv. tf.

J. W. McClure, of Canyon, who has been in Plainview some days visiting at the home of Rev. J. M. Harder, returned home Friday.

THE NECESSITY STORE, southeast corner of the Square, for all kinds of Household Necessities. We save you money on everything you buy. Give us a call and see if we don't. Adv. tf.

A Wireless Dispatch

Woodrow Wilson says: "Profit Sharing is a great modern principle of successful business. It is the basis of true national greatness and prosperity."

MAY WE SHARE PROFITS WITH YOU MRS. HOUSEWIFE?

Our great reduction sale is a "Profit Sharing Proposition." It is more profitable for us to sell these groceries to you than it is to move them into our new store.

Our final "Removal Clean-Up Sale" gives you larger profits than you will again have opportunity to share. Many housewives have materially reduced the High Cost of Living by laying in a stock during this sale. The opportunity continues a little while longer.

"A dollar saved is the foundation of Independence."

Free Delivery, Courteous Treatment, the Best Groceries.

Vickery-Hancock Grocery Company Ware Building



A Pure Cream of Tartar Powder

Dr. Wm. Sedgwick Saunders, Medical Officer of Health of the city of London, Eng., was good enough to say that a long and universal experience has proved a cream of tartar powder the most efficient, safe and economical, making food which could not be deleterious to the most delicate stomach.

In England the sale of baking powder containing alum is absolutely prohibited.

WHEN BUYING BAKING POWDER, READ THE LABEL.

used as a hotel. This structure will be completed at an early date.

Fort Worth.—The Fort Worth Packing Company of this city has increased its capital stock from \$25,000 to \$50,000.

Mineola.—The First National Bank of this city is expending \$35,000 on the erection of an up-to-date, fire-proof bank building.

Mineola.—So far this year, Wood County has expended \$20,000 on the construction of good roads.

Cumby.—Cumby's new electric light plant is now in operation. This plant was recently erected, at a cost of about \$50,000.

Keller.—The Union Gin Company of this city has been granted a charter to do business, with a capital stock of \$4,000. The incorporators are M. W. Hovenkamp, J. Allen and J. Price, all of this place.

San Antonio.—The Higgins Company of this city has increased its capital stock from \$50,000 to \$100,000.

Waxahachie.—The Attorney General has approved the bonds for road improvement in Ellis County, in districts 8 and 9; amounts, \$75,000 and \$100,000 respectively. Construction work will start in the near future.

Austin.—The Pullman Company has just paid taxes amounting to \$10,602. The total amount of receipts for that company for business within the State during the past year amounted to \$212,000.

Kennedy.—This city is contemplating putting in a large cold storage plant for the purpose of handling fruit and vegetables that are raised in this section.

NASH'S SECOND-HAND STORE Mrs. Mollie W. Miliken, of New Waverly, Texas, who has been in Plainview some days visiting her brother and sister, Gene Williams and wife, returned home Saturday.

BIG PRIZE FOR COUNTY ERADICATING CATTLE TICK.

International Harvester Co. Offers Pure Bred Calf to County Which Eradicates Cattle Tick.

The illustration presented herewith shows "The Harvester," a pure bred calf which will be given to the county in the State of Mississippi that first eradicates the cattle tick in 1912.

His sire, Whitehall Marshall, was Grand Champion of the International Stock Show held in Chicago in 1905 and 1906. He was one of the greatest animals in America. The dam of this milker, Her sire, Woodberry's Pride, was bred by Gurlan, of Ohio, and was at the head of the celebrated herd of the late William Warfield, of Kentucky. It is said that there is no better bred calf in the United States than "The Harvester."

Mrs. Herbert L. Gifford, who has been in Plainview visiting Mrs. A. J. Crager and Mrs. M. Zackery, returned to her home at Canyon Saturday.

Rev. E. Recknagel went to Kress Saturday, to preach.

Frances Washington Steel Ranges, the best Range Stove on the market and for the least money; sold on a positive guarantee; six-hole, with 10-gallon reservoir and warming closet; complete, at \$27.50, at NASH'S SECOND-HAND STORE.

DON'T POISON YOURSELF WITH MERCURY.

That's What You May Do if You Take Calomel, Because Calomel Is a Form of Mercury.

If you ask a druggist for bi-chloride of mercury, he will give it to you in a red-label bottle marked POISON. Calomel is also a chloride of mercury, as your doctor will tell you, and, as everybody knows, mercury is a poison.

When you think you need a dose of calomel, instead of whipping your liver up with the mercury it contains, go to R. A. Long Drug Co.'s drug store and pay fifty cents for a bottle of Dodson's Liver-Tone, a pure vegetable liquid that starts the liver to action just as surely as calomel does, and is perfectly mild and harmless, with no bad after-effects. No restriction of habit or diet is necessary.

Dodson's Liver-Tone gives such perfect satisfaction in curing constipation and torpid liver that R. A. Long Drug Company will give the money back to any person who tries it and does not find it a perfect substitute for calomel.

Martha Arnold, Antioch, Texas, says: "My children had a deep-seated cough which the doctor feared might result in pneumonia. He advised me to get a large bottle of Foley's Honey and Tar Compound, and keep them on it. The result was like magic, and the cough was cured." Sold by R. A. Long's Drug Store.

Y. W. HOLMES LAWYER

Notary Public GENERAL CIVIL PRACTICE (Land Titles a Specialty)

Refer to Third National Bank

Wofford Bldg., Opp. Court House PLAINVIEW, TEXAS

J. G. Gilbert, of Lockney, went to Amarillo Saturday.

Twinges of rheumatism, backache, stiff joints and shooting pains all show your kidneys are not working right. Urinary irregularities, loss of sleep, nervousness, weak back and sore kidneys tell the need of a good, reliable kidney medicine. Foley Kidney Pills are tonic, strengthening and restorative. They build up the kidneys and regulate their action. They will give you quick relief and contain no habit-forming drugs. Safe and always sure. Try them. R. A. Long's Drug Store.

TEXAS INDUSTRIAL NOTES.

Austin.—Work on the new \$90,000 High School building is not yet completed, on account of the slow arrival of the material, but school will begin Monday. The structure will be completed as soon as possible.

Greenville.—One bank and forty-five new business firms mark the forward strides of this city during the past two years, and at present there is not a vacant business building in the city.

Palmer.—Palmer and Ferris districts of Ellis County have sold their \$175,000 good road bonds to a Chicago savings bank at par, and accrued interest. Work will begin immediately on the grading of the roads.

Port Lavaca. This city will hold an election some time in November for the purpose of voting on the issuance of good road bonds to the amount of \$150,000.

Normangee.—A Commercial Club has been organized here, and the following officers were elected: John Wren, president; A. E. Crawford, secretary.

Grand Saline.—A cypress is under construction in this city at a cost of \$25,000.

Grand Saline.—Stock is being subscribed for the erection of a cotton oil mill in this city, and already stock to the amount of \$12,000 has been subscribed by local people.

Austin.—The State Fire Insurance Board has allowed a 15 per cent reduction in insurance rates for the cities of Bastrop, Floresville, Elgin and Kerrville. The Chamber of Commerce is endeavoring to secure a reduction for this city, and a decision by the board is being held up awaiting the reports of three local agents.

Austin.—The following itineraries for farmers' institute work has been announced in the Department of Agriculture: B. H. Taylor—Pendleton, November 7th; Moody, November 8th; McGregor, November 9th; Wm. Connally—Lockhart, November 7th; Harwood, November 8th; Luling, November 9th.

Houston.—The Dow Coal Company of this city has filed an amendment to its charter increasing the capital stock from \$150,000 to \$200,000.

Hewitt.—The First State Bank of this place has been granted a license to do business. This bank has a reserve fund, and is capitalized at \$10,000.

Port Arthur.—The Port Arthur Ice and Refrigerator Company of this city has recently filed its charter in Austin. The capital stock of this concern is \$100,000, and its incorporators are E. J. Emerson, W. N. Monroe, of Beaumont, and C. W. Kellog, Jr., of Dallas.

Houston.—The Houston Securities Company of this place has been granted a charter to do business, with a capital stock of \$1,000,000. The incorporators are L. W. Martyr, T. H. Martyr and Joe Oliver, of Houston.

Mineola.—Mr. M. A. Bailey, of this place, has under construction a \$40,000, three-story brick building, to be

DO YOU WANT THIS PIANO FREE

IF YOU HAVE A PIANO

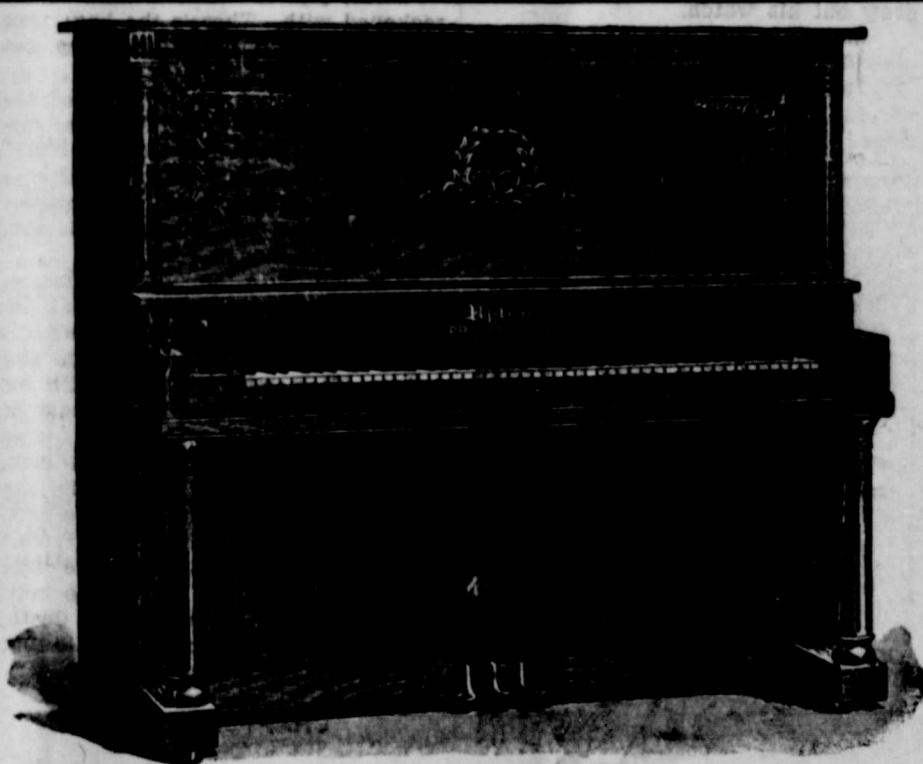
Then why not help someone win, by buying your needs at this store. You get votes with every cash purchase.

Contest

Closes

February

19, 1913



PRICE \$400.00

This is the PIANO we Give to You

Ask Your Friends to Subscribe for the Herald

We credit 3000 votes with every New or Renewal subscription to the HALE COUNTY HERALD. Ask your friends to subscribe; send the HERALD back home.

Standing of Contests will be published each week in the HALE COUNTY HERALD.

Be sure and ask for your Piano Votes.

Phone 327

R. A. LONG DRUG CO.

Phone 327

DR. E. O. NICHOLS, Specialist in Diseases of the Ear, Eye, Nose and Throat. Glasses Fitted.

Office in Stevens Building, Plainview, Texas.

C. D. WOFFORD, Dentist

Rooms 14-16, Ware Hotel Bldg.

Phones: Office, 197; Residence, 198

DR. C. B. BARR, Veterinary Surgeon and Dentist.

Calls Answered Day and Night.

PHONES: Office, 94; Room, 86. Plainview, Texas.

AGENTS WANTED

If you have anything to give our line a trial, we furnish you book of samples, catalogue, etc. FREE, and pay all express charges on your orders. Dress goods, umbrellas, white shirts, etc., now in the time to begin. Write NOW.

EMERSON AND MONROE COMPANY, 191 Pa. St., St. Louis, Mo.

AUCTIONEER

J. V. BOSTON

Live Stock and General Auctioneer

Terms Reasonable

For dates phone or write me

KRESS TEXAS

C. E. SJOGREN, Kress, Texas.

General Farm and Live Stock AUCTIONEER.

My references are those for whom I have conducted sales in past years.

Write Me for Dates.

DR. J. V. GUYTON,

Surgeon and

Consulting Physician.

Plainview, Texas

COCHRANE'S STUDIO



Where They Make HIGH GRADE PHOTOS

"PALACE OF SWEETS."

The Prodigal Judge

By Vaughan Keator

Copyright, 1911, The Bobb-Merrill Company

SYNOPSIS.

CHAPTER I.—The scene at the opening of the story is laid in the library of an old worn-out southern plantation...

CHAPTER II.—Nathaniel Ferris buys the Barony, but the Quintards deny any knowledge of the boy. Yancy to keep Hannibal...

CHAPTER III.—Trouble at Scratch Hill, Yancy's home, when Hannibal is kidnapped by Dave Blount, Captain Murrell's agent...

CHAPTER IV.—Yancy is served with a warrant for assaulting Blount. Yancy appears before Squire Balsam...

CHAPTER V.—Betty Malroy, a friend of the Ferrises, has an encounter with Captain Murrell...

CHAPTER VI.—Betty sets out for her Tennessee home. Carrington takes the same stage. Yancy and Hannibal disappear...

CHAPTER VII.—Hannibal arrives at the home of Judge Slocum Price.

CHAPTER VIII.—The Judge recognizes the boy, the grandson of an old time friend. Murrell arrives at Judge's home...

CHAPTER IX.—Cavendish family on raft rescue Yancy, who is apparently dead. Price breaks jail.

CHAPTER X.—Betty and Carrington arrive at Belle Plain.

CHAPTER XI.—Hannibal's rifle discharges some startling things to the Judge. Hannibal and Betty meet again.

CHAPTER XII.—Murrell arrives in Belle Plain. Is playing for big stakes.

CHAPTER XIII.—Yancy awakes from long dreamless sleep on board the raft.

CHAPTER XIV.—Judge Price makes startling discoveries in looking up land titles. Charley Norton, a young planter, who assists the judge, is mysteriously assaulted.

CHAPTER XV.—Norton informs Carrington that Betty has promised to marry him. Carrington bids Betty good-bye. Norton is mysteriously shot.

CHAPTER XVI.—More light on Murrell's plots. He plans uprising of negroes.

CHAPTER XVII.—Betty and Hannibal are made prisoners in a lonely cabin.

CHAPTER XVIII.—Murrell appears at the cabin and shows his hand.

CHAPTER XIX.—The Judge hears of the mysterious disappearance of Betty and Hannibal.

CHAPTER XX.—The Judge takes charge of the situation, and search for the missing ones is instituted.

CHAPTER XXI.—Carrington visits the judge and allies are discovered.

CHAPTER XXII.—Murrell is arrested for negro stealing and his bubble bursts.

CHAPTER XXIII.—Judge Price visits Colonel Ferriss, where he meets Yancy and Cavendish. Learns things of importance about the boy, dashes a glass of whiskey into the colonel's face and a duel is arranged.

CHAPTER XXIV.—The Judge and Mahaffy discuss the coming duel.

CHAPTER XXV.—Carrington makes frantic search for Betty and the boy.

CHAPTER XXVI.—Carrington finds Betty and Hannibal, and a fierce gun fight follows. Yancy appears and assists in the rescue.

CHAPTER XXVII.—Bruce Carrington and Betty come to an understanding.

CHAPTER XXVIII.—The Judge receives an important letter.

(Continued from last week.)

He hastily descended to the kitchen, lighted a candle, and stepped into the adjoining room. On the table was a neat pile of papers, and topping the pile was the president's letter. Being burdened by no false scruples, and thinking it might afford some clue to the judge's whereabouts, Mahaffy took it up and read it. Having mastered its contents he instantly

glanced in the direction of the City Tavern, but it was wrapped in darkness.

"Price is drunk somewhere," was his definite conclusion. "But he'll be at Boggs' the first thing in the morning—most likely so far gone he can hardly stand!"

The letter, with its striking news, made little or no impression on him just then; it merely furnished the clue he had sought. The judge was off somewhere marketing his prospects.

After a time Mahaffy went upstairs, and, without removing his clothes, threw himself on the bed. He was worn down to the point of exhaustion, yet he could not sleep, though the deep silence warned him that day was not far off. What it—but he would not let the thought shape itself in his mind. He had witnessed the judge's skill with the pistol, and he had even a certain irrational faith in that gentleman's destiny. He prayed God that Ferriss might die quickly and decently with the judge's bullet through his brain. Over and over in savage supplication he muttered his prayer that Ferriss might die.

Mahaffy watched for the coming of the dawn, but before the darkness lifted he had risen from the bed and gone downstairs, where he made himself a cup of wretched coffee. Then he blew out his candle and watched the gray light spread. He was impatient now to be off, and fully an hour before the sun, set out for Boggs', a tall, gaunt figure in the shadowy uncertainty of that October morning. He was the first to reach the place of meeting, but he had scarcely entered the meadow when Ferriss rode up, attended by Tom Ware. They dismounted, and the colonel lifted his hat. Mahaffy barely acknowledged the salute; he was in no mood for courtesies that meant nothing. Ware was clearly of the same mind.

There was an awkward pause, then Ferriss and Ware spoke together in a low tone. The planter's speech was broken and hoarse, and his heavy, blood-shot eyes were the eyes of a haunted man; this was all a part of Ferriss' scheme to face the world, and Ware still believed that the fires Hicks had kindled had served his desperate need.

When the first long shadows stole out from the edge of the woods Ferriss turned to Mahaffy, whose glance was directed toward the distant corner of the field, where he knew his friend must first appear.

"Why are we waiting, sir?" he demanded, his tone cold and formal.

"Something has occurred to detain Price," answered Mahaffy.

The colonel and Ware exchanged looks. Again they spoke together, while Mahaffy watched the road. Ten minutes slipped by in this manner, and once more Ferriss addressed Mahaffy.

"Do you know what could have detained him?" he inquired, the ghost of a smile curling his thin lips.

"I don't," said Mahaffy, and relapsed into a moody and anxious silence. He held dueling in very proper abhorrence, and only his feeling of intense but never-declared loyalty to his friend had brought him there.

Another interval of waiting succeeded.

"I have about reached the end of my patience; I shall wait just ten minutes longer," said Ferriss, and drew out his watch.

"Something has happened—" began Mahaffy.

"I have kept my engagement; he should have kept his," Ferriss continued, addressing Ware. "I am sorry."

"I know it, Solomon—I know it!" he moaned wretchedly.

"Price, you are still a man to be reckoned with. There's the boy; take your place for his sake and keep it—you can."

"I will—by God, I will!" gasped the judge. "You hear me? You hear me, Solomon? By God's good help, I will!"

"You have the president's letter—I saw it—" said Mahaffy in a whisper.

"Yes!" cried the judge. "Solomon, the world is changing for us!"

"For me most of all," murmured Mahaffy, and there was a bleak instant when the judge's ashen countenance held the full pathos of age and failure. "Remember your oath, Price," gasped the dying man. A moment of silence succeeded. Mahaffy's eyes closed, then the heavy lids slid back. He looked up at the judge while the harsh lines of his sour old face softened wonderfully. "Kiss me, Price," he whispered, and as the judge bent to touch him on the brow, the softened lines fixed themselves in death, while on his lips lingered a smile that was neither bitter nor sneering.

CHAPTER XXXII.

The Judge's Grandson.

In that bare upper room they had shared, the judge, crushed and broken, watched beside the bed on which the dead man lay; unconscious of the flight of time he sat with his head bowed in his hands, having scarcely altered his position since he begged those who carried Mahaffy up the narrow stairs to leave him alone with his friend.

He was living over the past. He recalled his first meeting with Mahaffy in the stuffy cabin of the small river packet from which they had later gone ashore at Pleasantville; he thanked God that it had been given him to see beneath Solomon's forbidding exterior and into that starved heart! He reviewed each phase of the almost insensible growth of their intimacy; he remembered Mahaffy's fine true loyalty at the time of his arrest—he thought of Damon and Pythias—Mahaffy had reached the heights of a sublime devotion; he could only feel ennobled that he had inspired it.

At last the dusk of twilight invaded the room. He lighted the candles on the chimney-piece, then he resumed his seat and his former attitude. Suddenly he became aware of a small hand that was resting on his

arm and glanced up; Hannibal had stolen quietly into the room. The boy pointed to the still figure on the bed.

"Judge, what makes Mr. Mahaffy lie so quiet—is he dead?" he asked in a whisper.

"Yes, dear lad," began the judge in a shaking voice, as he drew Hannibal toward him, "your friend and mine is dead—we have lost him." He lifted the boy into his lap, and Hannibal pressed a tear-stained face against the judge's shoulder. "How did you get here?" the judge questioned gently.

"Uncle Bob fetched me," said Hannibal. "He's down-stairs, but he didn't tell me Mr. Mahaffy was dead."

"We have sustained a great loss, Hannibal, and we must never forget the moral grandeur of the man. Some day, when you are older, and I can bring myself to speak of it, I will tell you of his last moments." The judge's voice broke, a thick sob rose chokingly in his throat. "Poor Solomon! A man of such tender feeling that he hid it from the world, for his was a rare nature which only revealed itself to the chosen few he honored with his love." The judge lapsed into a mo-



"Do You Mean We Ain't Going to Be Pore Any Longer, Grandfather?"

mentary brooding silence, in which his great arms drew the boy closer against his heart. "Dear lad, since I left you at Belle Plain a very astonishing knowledge has come to me. It was the Hand of Providence—I see it now—that first brought us together. You must not call me judge any more; I am your grandfather—your mother was my daughter."

Hannibal instantly sat erect and looked up at the judge, his blue eyes wide with amazement at this extraordinary statement.

"It is a very strange story, Hannibal, and its links are not all in my hands, but I am sure because of what I already know, I, who thought that not a drop of my blood flowed in any veins but my own, live again in you. Do you understand what I am telling you? You are my own dear little grandson—and the judge looked down with no uncertain love and pride into the small face upturned to his.

"I am glad if you are my grandfather, judge," said Hannibal very gravely. "I always liked you."

"Thank you, dear lad," responded the judge with equal gravity, and then as Hannibal nestled back in his grandfather's arms a single big tear dropped from the end of that gentleman's prominent nose.

"There will be many and great changes in store for us," continued the judge. "But as we met adversity with dignity, I am sure we shall be able to endure prosperity with equanimity—only unworthy natures are affected by what is at best superficial and accidental. I mean that the blight of poverty is about to be lifted from our lives."

"Do you mean we ain't going to be pore any longer, grandfather?" asked Hannibal.

The judge regarded him with infinite tenderness of expression; he was profoundly moved.

"Would you mind saying that again, dear lad?"

"Do you mean we ain't going to be pore any longer, grandfather?" repeated Hannibal.

"I shall enjoy an adequate competency which I am about to recover, it will be sufficient for the indulgence of those simple and intellectual tastes I propose to cultivate for the future." In spite of himself the judge sighed. This was hardly in line with his ideals, but the right to choose was no longer his. "You will be very rich, Hannibal. The Quintard lands—your grandmother was a Quintard—will be yours; they run up into the hundred of thousands of acres hereabout; this land will be yours as soon as I can establish your identity."

"Will Uncle Bob be rich too?" inquired Hannibal.

"Certainly. How can he be poor when we possess wealth?" answered the judge.

"You reckon he will always live with us, don't you, grandfather?"

"I would not have it otherwise. I admire Mr. Yancy—he is simple and direct, and fit for any company under heaven except that of fools. His treatment of you has placed me under everlasting obligations; he shall share what we have. My one bitter, unavailing regret is that Solomon Mahaffy will not be here to partake of our altered fortunes." And the judge sighed deeply.

"Uncle Bob told me Mr. Mahaffy got hurt in a duel, grandfather?" said Hannibal.

(Continued next week.)

Coal will be higher when winter sets in. These crisp mornings remind you that it is getting time for fires. Save money by ordering your coal now.

SOLE HANDLER OF

Simon Pure Nigger-heads, Rockvale and Domino Coals

I BUY AND SELL ALL KINDS OF GRAIN.

E. T. COLEMAN

COAL AND GRAIN DEALER

Between Depots

Phone No. 176

OFFICERS

J. E. Lancaster, President L. A. Knight, Vice-President H. M. Burch, Cashier L. G. Wilson, Vice-President H. C. Von Struve, Assistant Cashier

Third National Bank

of Plainview

Anslay Building, Northeast Corner Square

Capital \$100,000.00

DIRECTORS

R. W. OKEEFFE L. A. KNIGHT J. E. LANCASTER L. G. WILSON H. M. BURCH

Money To Loan

For the next 60 days, will loan money on farm and ranch lands, in Hale and adjoining counties, 8 per cent interest, three to ten years time. For particulars, address,

Hunsaker & Phillips

Or inquire at FIRST NATIONAL BANK

Let Us Figure

ON

Your Lumber Bill

We have the right kind of Lumber and the right price

Our Service Is Just a Little Better.

Plainview Lumber Company

Young Women

Read what Cardui did for Miss Myria Engler, of Faribault, Minn. She says: "Let me tell you how much good Cardui has done me. As a young girl, I always had to suffer so much with all kind of pain. Sometimes, I was so weak that I could hardly stand on my feet. I got a bottle of Cardui, at the drug store, and as soon as I had taken a few doses, I began to feel better. Today, I feel as well as anyone can."

TAKE The CARDUI Woman's Tonic

Are you a woman? Then you are subject to a large number of troubles and irregularities, peculiar to women, which, in time, often lead to more serious trouble.

A tonic is needed to help you over the hard places, to relieve weakness, headache, and other unnecessary pains, the signs of weak nerves and over-work.

For a tonic, take Cardui, the woman's tonic. You will never regret it, for it will certainly help you. Ask your druggist about it. He knows. He sells it.

Write to: Ladies' Advisory Dept., Chattanooga Medicine Co., Chattanooga, Tenn. for Special Instructions, and 64-page book, "Home Treatment for Women," sent free. 718

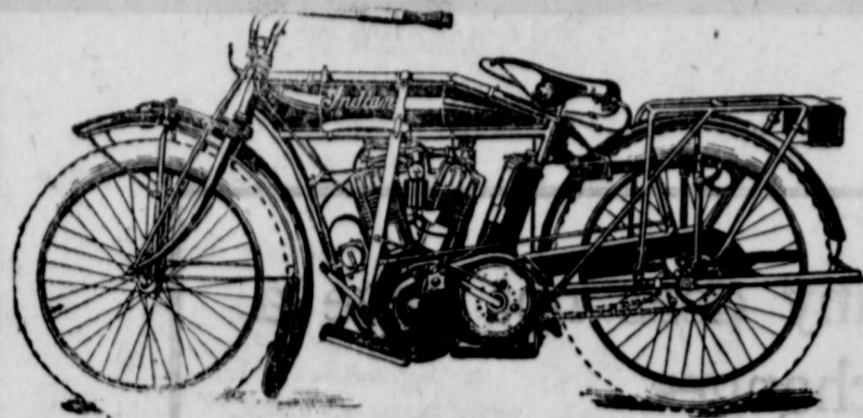
WANTED--100 More Young Men and Women

To take our Bookkeeping and Stenographic Courses, and to take up good paying positions. Have been established 23 years and have more than 150,000 graduates now holding positions. Don't you think it would pay you to take the Draughton Training? Write us to-day for our FREE Catalogue and information. It will tell you how to SUCCEED. Address

Draughton's Practical Business College

BOX NO. 873

AMARILLO, TEXAS



LOOK! LOOK! THE 1913 "Indian" Motorcycle

Cradle spring frame—no more jolts or bumps. When riding, you feel only the powerful engine gliding along. There's ten other great improvements we want to tell you about and show you that there's nothing to equal the Famous Indian for Comfort, Speed, Reliability, Durability and Beauty. We are placing agents for 1913 now over the Panhandle.

Write to us for new catalog and details to
T. M. CALDWELL, General Agent

114 West 5th Street, Amarillo, Texas

For Your Information and Convenience

The Herald is Establishing a Want "Ad" Page

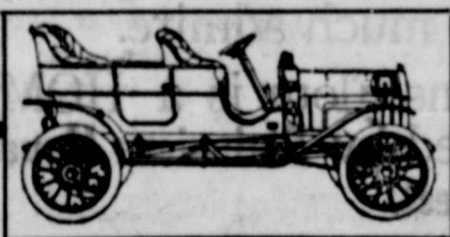
All advertisements for "Positions Wanted" will be carried two issues free of charge. Other "Want Ads" at our regular read-rate. But Herald Want Ads do not contain all the buying suggestions that this paper presents to its readers.

Herald advertisers are men on whose word you can stake. They are putting themselves behind their goods.

Goods advertised in The Herald have won a real reputation for money saving, quality and extra satisfaction.

You are a loser if you do not read Herald advertisements.

Each Herald "Want Ad" is a little salesman who will cry your wares to all the people.



Your Auto Tops Need Repairs. We Make or Repair Tops. Ask for Prices. **SAM B. VAUGHN, Amarillo, Texas**



For the best Rockvale Coal, see the **ALFALFA LUMBER CO.** Adv. tf. See **COBB & ELLIOTT** before you sell your Grain. Adv. tf.

For Vegetables in season, Poultry, Butter and Eggs, call **WRIGHT & DUNAWAY.** Adv. tf. **LOST:** Gauntlet glove for right hand. Finder return to **NASH'S SECOND-HAND STORE.** Adv. tf.

ANTI-TUBERCULOSIS ASS'N URGES COUNTY HOSPITALS.

Mrs. Colquitt Would Have Visiting Nurses Tell People How to Protect Themselves.

The Texas Anti-Tuberculosis Association, under the direction of the President, Mrs. O. B. Colquitt, is urging the construction of county hospitals in every county.

Dallas City and County are building a \$25,000 hospital for tuberculosis patients. Harris County has agreed to join the City of Houston in building a tuberculosis hospital, and McLennan County is willing to join with Waco for the same purpose. The city commissions of both cities are considering the matter. The need for tuberculosis hospitals is also being urged upon Austin, Fort Worth, San Antonio and Galveston.

In the counties where there are no large cities and no general hospitals, the Association urges that general hospitals be erected, with special and separate provision for the care of tuberculosis patients and other communicable diseases.

In connection with the county hospitals, the Association urges the establishment of an Out-Patient Department, or Dispensary, in the larger towns in each county, with a visiting nurse serving connection.

"When our plans are carried out," said Mrs. O. B. Colquitt, "and every county of 10,000 population and over has a hospital and every town of 3,000 or 4,000 has a dispensary, with visiting nurses looking after the sick in their homes, in both the cities and the rural districts, bringing them to the dispensaries and hospitals when necessary, teaching the people how to protect themselves from communicable diseases, then we shall see a remarkable decrease in the number of deaths and cases of tuberculosis and all contagious and infectious diseases."

FOR SALE

TELEPHONE EXCHANGE FOR SALE OR TRADE for Hale County, Texas, land. Telephone exchange with 600 Telephones; 400 miles of Rural and Toll lines with a net income of \$5,000.00. Consideration, \$60,000.00. Address **BILLINGS-RED ROCK TELEPHONE CO., Billings, Okla.** Adv. 44

FOR RENT: Five-room cottage two blocks south of square. Phone 146. Adv. tf.

FOR TRADE.—I have two sections of land, store and building, and other property, in Winkler County (shallow water) to trade for property in Hale County. Address **R. D. GUNN, Kermit, Texas.** Adv. 45-pd.

TO TRADE—Two city residences to trade for raw land. **BOX 27, Plainview, Texas.** Adv. tf.

WANTED—A woman or girl to do housework. Good wages. Light work. **C. S. WILLIAMS, Phone 56 or 103.** Adv.

LOST: Ladies' Mounting, Reconstructed 1-carat Ruby Ring. Return to Herald office and receive reward. Adv. 45-pd.

FOR RENT. High-grade Piano for rent or for sale; terms. Inquire at this office or address box 187. Adv. 44

STRAYED OR STOLEN: 2 bay, 1 sorrel, 1 brown; 1 bay coming two, 1 mule colt. All branded "F" on left jaw. Reward. **W. G. LOVE, Plainview.** Adv. 46-pd.

LAND FOR SALE BY OWNER.

113 acres, patented; 11 miles from Hale Center, 2 miles from post office, school and church; \$1,000 cash, balance 7 years, 6 per cent interest. Also 4 lots in 6 blocks of Court House in Plainview; \$200 cash will handle. **Y. W. HOLMES, Plainview, Texas.** Adv. tf.

Stove and Furniture Repairing. **BRITTON & ROGERS.** Adv. tf.

Ask yourself why **WRIGHT & DUNAWAY** sell more Groceries than any other merchant in Hale Co. Adv. tf.

List City Property with me at once. I have some buyers. **C. H. WHITE, Room 7, Stephens Bldg.** Adv. 46

OTTO can furnish you with a good Juicy Veal Loaf for your Sunday's dinner. Phone 437. Adv. tf.

DUNCAN'S HAND LOTION is positively guaranteed for chapped, rough hands and faces. Sold only by **DUNCAN'S PHARMACY.** Adv. tf.

We are still in the market, and are paying the highest prices for Kaffir and Milo Heads, Bulk Grain, Millet Seed and Cane Seed. **COBB & ELLIOTT.** Adv. tf.

HAPPY UNION.

Nov. 6.—The box supper here Saturday night was well attended. A good program was rendered by the literary and Seth Ward students.

Earl Berry's arm is mending very rapidly.

Clay Dunlap is up in this part of the country again.

Inez Boullier visited Edith McCall Saturday.

Miss Ethyl Tyler and Bert Buchanan attended church at Midway Sunday afternoon.

Jasper Neil and family spent Sunday with C. Pierson's.

Mrs. O. J. Tyler, of Mount Vernon; Bee Thomas and Ash Bailey, from near Plainview, attended the box supper.

Edith McCall, Inez Boullier, Sam Moore, Oscar Jones, Sam Long, Ralph McCall and Reuben Rothrock attended church at Stoneback Sunday afternoon.

Mrs. J. C. Halsey visited with Mrs. F. Weyl Monday.

Edna and William Weyl were thrown out of a buggy this week, but received no serious injuries.

You will like our Service, and our Groceries are Better. **WRIGHT & DUNAWAY.** Adv. tf.

A UNIQUE CONTEST.

Duncan's Pharmacy has inaugurated a new and interesting scheme to stimulate business. In their window they have a giant candle, 32 inches high, two inches in diameter, weighing two pounds, which will be lighted on December 15th and burned during business hours.

With each Twenty-five-cent purchase an estimate ticket will be given, on which the purchaser writes the number of hours, minutes and seconds that the candle will burn, in his estimation.

Three prizes will be given to the first three persons guessing the nearest to the length of time the candle burns. The first prize is a beautiful China Chocolate Set, hand-painted, new violet and gold design, valued at \$15.00. The second prize is a Visible-Loading Repeating Rifle, valued at \$12.00. The third prize is a large, dressed doll, with real hair and eyelashes, dressed in the height of fashion in a blue "creation" from Paris, wearing a hat to match trimmed with a real ostrich plume; value of doll is \$10.00.

These prizes will be awarded on the day the candle flickers out. Everyone is invited to call and secure estimates. Adv. tf.

MUST BELIEVE IT

When Well-Known Plainview People Tell It So Plainly.

When public endorsement is made by a representative citizen of Plainview, the proof is positive. You must believe it. Read this testimony. Every backache sufferer, every man, woman or child with any kidney trouble will find profit in the reading.

Mrs. E. Valentine, 260 Jones Street, Plainview, Texas, says: "I have used Doan's Kidney Pills for some time in our family. A member of our family had suffered terribly from kidney trouble, and he tried all kinds of advertised remedies without benefit. He doctored steadily for a year, but became no better. As soon as he heard of Doan's Kidney Pills, he discontinued the doctor's medicines and used Doan's Kidney Pills according to directions. The first dose made him feel better, and after using several boxes he was cured. I also took Doan's Kidney Pills for backache and was cured. It gives me pleasure to endorse them."

For sale by all dealers. Price, 50 cents. Forster-Milburn Co., Buffalo, New York, sole agents for the United States.

Remember the name—Doan's—and take no other. Adv. 45

MISSIONARY SOCIETY PLANS FOR THANKSGIVING DINNER.

Ladies of Methodist Church, South, Held Regular Meeting Monday; Program for Next Week.

The Woman's Missionary Society of the M. E. Church, South, met Monday in regular business meeting. The different committees for the turkey dinner on Thanksgiving were appointed.

The work of the different departments is going on nicely. Have you been attending lately to see how we need you?

Mr. Phelps made a liberal donation to foreign missions, which we appreciate very much.

The reading Course begins next Wednesday, November 13, at the parsonage. Come out and hear it.

Program for Monday, Nov. 11:

Prayer.

Bible Lesson—Mrs. Truelove.

Prayer.

Song (No. 646)—"Council Hymn."

Roll Call. (Respond with missionary items.)

"Memorial of Sophia Mann Chine"—Mrs. Truelove.

"Who Will Go to Fill Her Place?"—Mrs. Shipley.

Prayer for Missionaries—Mrs.

Phelps.

Prayer for some one to fill the vacancy—Mrs. Hal Wofford.

MRS. D. D. SHIPLEY,
Press Reporter Pro Tem.

You will like our Service, and our Groceries are Better. **WRIGHT & DUNAWAY.** Adv. tf.

ANNOUNCEMENT.

J. M. HYDEN, Scientific Optician, Amarillo, Texas, will be at the Hotel Plainview one week, beginning Monday, November 18th. Eyes examined free. Glasses Fitted, Lenses Changed, Frames Repaired, Lenses put in your old frames.

I fit the "Kryptok" Invisible Bifocal Lenses. If your eyes give you trouble or your glasses are not right, come and see me. I make regular visits to Plainview, and will make all work satisfactory.

Hours, 10 to 12 a. m.; 3 to 6 p. m. Prices reasonable for first-class work. Adv. 46

I C U R

wanting to sell your residence.

have several customers if it's a snap.

C. H. WHITE

Stephens Building
Room 7

THE STOVE QUESTION

These crisp mornings suggest that it is stove time. Manufacturers may build better stoves than you will find at Donohoo-Ware's—they haven't done it yet.

Majestic Ranges and Heating Stoves

... TO SUIT EVERY NEED ...

Our general line of hardware, kitchen conveniences, farm implements and supply parts are, as complete as our stove line. Our business is studying your wants and then to find the best in the hardware line for you. You will like our clerks. They study your wants, too.

Donohoo-Ware Hardware Co.
NORTHEAST CORNER SQUARE

Many people wonder why Plainview Mercantile Company does not have a Cut Price Sale Every time the moon changes.

“THERE IS A REASON”

WE USE OUR BEST JUDGMENT IN BUYING

Correct merchandise bought at the Right Price and marked at a Legitimate Profit to begin with is not entitled to be cut and slashed right in the heart of the season.

You people who think, don't be misled by extravagant statements. We have an up-to-date stock of goods and while we expect a Legitimate Profit we guarantee never to overcharge you.

We guarantee satisfaction on any and everything you buy of us--what more could you ask? Put Us To The Test--Think for yourself and the result will be satisfactory to both of us.

Yours for legitimate merchandising,

Plainview Mercantile Company

P. S.--Unless you are a "New Comer" you have learned when we do put on a sale it means something more than a Slight reduction.

Social Happenings

MISS MAYHUGH ENTERTAINS IN HONOR OF MRS. COOK.

Miss Edna Mayhugh gave a pretty autumn party on Wednesday afternoon in honor of Mrs. William Cook, of El Paso. Gorgeous yellow chrysanthemums were effectively arranged about the rooms--lending their yellow about the rooms--lending their golden splendor to the merry guests around four tables of "42."

Those to enjoy Miss Mayhugh's cordial greetings were Mesdames William Cook, the guest of honor; C. W. Tandy, H. W. Harrel, J. O. Wyckoff, G. C. Keck, Hulen, J. L. Mayhugh, W. Rushing, A. G. Hinn, L. T. Mayhugh, John Elliott, F. N. Catto, de Graffenried, and Misses Alice Harrel, Rosa Fowle and Cora Roundtree.

A delightful two-course luncheon, consisting of a salad course and dessert, was served by the hostess.

MRS. E. H. HUMPHRIES ENTERTAINS HIGHLAND CLUB.

The Highland Club met in regular session yesterday afternoon, with Mrs. E. H. Humphries, corner of Prairie and Second Streets. Five tables were placed for the fascinating game of "42," and the time passed only too fast for the delighted players.

Besides the regular members, Mrs. Humphries had as guests of the club Mesdames W. R. Simmons, J. I. Clingman, D. S. Sansom, Elnor Sansom and Mrs. J. R. Kerley.

The hostess served delightful refreshments, consisting of two courses.

ANNOUNCEMENTS.

The "As-You-Like-It" Club meets this afternoon with Mrs. J. M. Adams.

The Antilogian and Me Sigma Rho Societies of Wayland College will give a banquet this evening in the dining room of the main building.

The Ladies' Aid Society of the First Presbyterian Church will meet next Friday afternoon and sew for their Thanksgiving Bazaar.

SETH WARD CHANGES DATE OF NEXT LYCEUM.

Ernest Gamble Company Will Come to Plainview November 23, One Week Earlier.

According to information received from the Dixie Lyceum Bureau, President Pearce announces a change of date in the next number of the Seth Ward Lyceum. The Ernest Gamble Concert Company will fill its engagement in Plainview on November 23, instead of November 30, coming one week earlier than originally announced.

SERVICES AT ST. MARKS.

Rev. Edwin Weary will hold services at St. Mark's Episcopal Church Sunday evening, at 7:30 o'clock; also celebration of holy communion Monday morning, at 10 o'clock.

STODDARD CLUB WILL STUDY NORWAY.

The Stoddard Club will meet tomorrow in the club rooms at the Court House, from three to five o'clock, p. m. The study topic is "Norway."

Miss Bertie Roebuck is leader, and will conduct a round table at the close of the program.

Miss Gertie Hooker will give a brief "Synopsis of the History of Norway."

Mrs. L. T. Mayhugh has "Norse Mythology," and Mrs. Thomas Abraham will give a description of the midnight sun.

Miss Lena Williams is reader for the afternoon.

EPISCOPAL GUILD SEW WITH MRS. BROMLEY.

The Episcopal Guild met Monday with Mrs. J. J. Bromley, 314 Grover Street. The ladies are sewing for their bazaar which will be given on December 14 and 15.

"THE BIBLE IN DAILY LIFE."

Members of the B. Y. P. U. of Calvary Baptist Church will render the following program at the meeting of their Union on Sunday evening, November 10:

Subject—"A Bible Christianity."
Leader—Mrs. Charlie Brown.
Scripture—2 Kings 23:1-20.
Song (No 48).

Prayer.

Paper—Mrs. Tandy.

Piano Solo—Prudence Bowers.

Paper—Stewart Barnes.

"Bible Loving"—D. T. Dillingham.

"Bible Reverencing"—Emma Pool.

Duet—Miss Hattie Dillingham and Mr. Smith.

"The Bible in Daily Life"—

(1) "How Keep It There?"—

Mrs. Harvey.

"Why Keep It There?"—Morris

Murphy.

"Why Keep It There?"—Brother

Foley.

Closing Exercises.

PARENT-TEACHERS TO RESPOND WITH EPIGRAMS FOR ELECTION.

The following is the program that has been arranged for the Parent-Teachers Association meeting on Friday, November 15, at the High School Building, at 4 o'clock:

Response to Roll Call—Sayings incident to the National election.

Paper—"Money in Character Development"—Mrs. Fred Brown.

Address—"The Opportunities and Possibilities of Plainview's Parent-Teachers' Association"—B. O. Brown, Editor, Hale County Herald.

Reading—Emma Leach.

"Why My Child Was Not Promoted"—Mrs. J. H. McKee.

Open Discussion of Welfare Association.

MISS E. ROBINSON.

MRS. S. W. MEHARG.

MRS. C. R. HAIRFIELD,

Committee.

WILL PLAY ON VIOLIN MADE IN FIFTEENTH CENTURY.

Theobald Is Great Treat Wayland College Offers Music Lovers, November 18.

Theobald! The coming of Theobald to Plainview, November 18, is one of the greatest compliments that has ever been paid our town. Theobald is the possessor of 62 gold medals and decorations. At his entertainment in Plainview, as the second number of the Lyceum Course of Wayland College, he will play on his favorite "Caspar da Salo" violin, made in 1592. The violin is valued at \$25,000, and is claimed by connoisseurs to be one of the most famous violins in the world.

Mrs. E. Bryant, who has been at Lockney visiting, returned home, to Keller, today.

“Bread is the Staff of Life”

Good Bread is the basis of a satisfying meal. You eliminate other things from your menu--bread is eaten every meal. For the **Best Bread** you want the **Best Flour**. Milling alone can't make good flour. It requires superior wheat.

Hale County Wheat won first and second prizes at the **Texas State Fair**.

Pride of the Plains Flour is made of Hale county wheat.

Order "Pride of the Plains" Flour and you may be sure of light bread or biscuits or pastry of the sort that so much delights you. It makes cakes of that "quality" texture which you so much admire.

Pride of the Plains Flour is a **HOME PRODUCT** and is used by **Plainview Housewives** who select the best.

We have fresh meal all the time

We handle all kinds of Feedstuffs

Harvest Queen Mills

Near Santa Fe Tracks

Phone No. 151