

SOCIETY

THE MIDLAND REPORTER-TELEGRAM, TUESDAY, JANUARY 20, 1953-3

Mothers Club Will Sponsor Children's Play

The St. Ann's Mothers Club will sponsor a Midland showing of the Edwin Strawbridge Lyric Theater production of "Prince Swinehead" on Saturday, February 21.

Based on a Hans Christian Andersen story, the play is a fairy tale full of humor, music, dances and adventure designed to please children of pre-high school age.

Pictorial scenery, colorful costumes, music, dances and feats of magic are all used to tell the story of a prince, a princess and a dancing pig.

Edwin Strawbridge has won national fame through his Lyric Theater productions since he first saw the need for children's entertainment. This is the twelfth consecutive year that his productions have toured America.

Advertise Or Be Forgotten.

TODAY—TOMORROW—ours is a respected name.

Newnie W. Ellis
Funeral Home
SERVING MIDLAND 64 YEARS
PHONE 2-4315

Symphony Sets Final Rehearsals

Final rehearsals are being held this week for the Midland Symphony and Choral Association's first full concert to be presented Saturday in the San Jacinto Junior High School.

The time will be 8:15 p.m. Conductor, Mathys Abas, came to the United States in 1951 to study at the Berkshire Music Center and the University of Illinois. Last Spring he played for the Netherlands Society of New York. He has participated in performances under many of today's leading conductors, including Charles Munch, Leonard Bernstein and Rafael Kulelik.

Organized last Fall, the group consists of approximately 25 vocalists and 25 instrumentalists plus a number of guest artists from the Abilene and Lubbock Symphonies.

Programs sponsored earlier by the association include an evening of chamber music, featuring Abas, violinist, and Charlotte Barrier of Lubbock, pianist, and a lecture by Dr. Gene Hemmle, head of the music department of Texas Technological College in Lubbock.



ATTEND ARIZONA SHOW—Mr. and Mrs. Foy Proctor of Midland, who attended the recent Arizona National Livestock Show in Phoenix, were among the out-of-city visitors feted by the Valley National Bank at a cocktail party. Pictured, left to right, are Mrs. W. R. Wayland, wife of the chairman of the board of the bank; Mr. and Mrs. J. H. Kieckhefer, Prescott, Ariz., ranchers, and the Proctors.

Meetings Feature Badge, Craft Work

Badge and craft work were the features of three Girl Scout meetings Monday in the Little House.

Peggy Clay was hostess to Brownie Troop 72. The girls made paper sit-upons. Troop 74 made plans for a cookie bake to be held Monday in the Little House. The group also discussed its Brownie friends overseas. Refreshments were served by Rosemary Curry.

Intermediate Troop 43 worked on activities for its literature and dramatics badge.

Scouts Learn Game, Work On Scrapbook

Learning a Japanese game and working on a scrapbook were highlights of Girl Scout troop meetings last week.

Brownie Troop 65 learned a game which is played by the Brownie troops in Japan. They also learned how to fold an American flag properly. Brownie Troop 66 worked on a Christmas card scrapbook to be sent to a Texas Tuberculosis Sanatorium. Linda Caffrey became a new member of Brownie Troop 51 Thursday. The girls held a salute rally. Brownie Troop 37 worked on plaques at its Thursday meeting and Intermediate Troop 11 talked about major and minor badges.

Coming Events

WEDNESDAY

The Midland Gamma Phi Beta Alumnae Chapter will meet at 10 a.m. in the home of Mrs. John Cornwall, 801 North A Street. All Gamma Phis are invited to attend.

The Play Readers will meet at 3 p.m. in the home of Mrs. J. E. Beakey, Andrews Highway. Mrs. J. D. Martin will be the reader.

Zeta Tau Alpha Alumnae will meet at 8 p.m. in the home of Mrs. E. Sherman White, 408 East Pecan Street.

Asbury WSCS Circles Hold Study Meetings

The Asbury Methodist Woman's Society of Christian Service met in circles Monday for study lessons.

Mrs. R. M. Smith led the business session and continued the circle's study on Africa when the Builders Circle met in the home of Mrs. T. I. Miller, 611 South Colorado Street.

Mrs. O. W. Damron led the opening prayer and Mrs. Preston Pirtle gave the devotional.

Others present were Mrs. Theo Ferguson, Mrs. J. S. Keller, Mrs. Grace Wright, Mrs. Dennis Ford and a visitor, Mrs. J. W. Rosenberg.

LET Dr. W. G. Petteway

We give you triple service — A scientific eye examination by a competent, qualified optometrist... Precision ground lenses correct for your vision problem... Smartly styled frames to enhance your appearance. You can depend on us!

MAKE YOUR GLASSES



STYLE QUALITY VALUE

Convenient Credit Terms

Dr. W. G. Petteway, Optometrist
With Offices in Kruger Jewelry Co.
104 North Main Dial 3-3773

West Side WMU has Pink, Blue Shower

The West Side Woman's Missionary Union held a pink and blue shower for Mrs. R. L. Christian Monday in the home of Mrs. W. H. Christian.

Those attending were Mrs. Morris Snider, Mrs. Walter Bingham, Mrs. George Madison, Mrs. S. J. Manly, Mrs. J. W. Stovall, Mrs. W. R. Province, Mrs. Thomas, Mrs. Agnes McGee, Mrs. Frank Whitley, Mrs. F. D. Spratt, Mrs. Bertie Christian and Mrs. J. C. Bradley.

P-TA Study Group To Meet Wednesday

The home decoration study group of the David Crockett Parent-Teacher Association will meet from 9:30 until 11:30 a.m. Wednesday in the home of Mrs. James Range, 110 West Pecan Street.

Projects for the group are to include demonstrations on cutting and sewing a slip cover and on making drapes. The group also will work on slip covers for members.

RETURNS TO ALABAMA
Pvt. George Mayes has returned to Camp Rucker, Ala., after spending a 10-day leave in Midland with his parents, Mr. and Mrs. J. C. Mayes. Pvt. Mayes is employed at headquarters, 47th Infantry Division.

The Halliburton Wives Club will hold a luncheon at 1:30 p.m. in the Ranch House. Reservations may be made by calling one of the hostesses, Mrs. C. O. Pace, telephone 2-2470, or Mrs. Noble Perkins, telephone 2-3955.

The BPOE Drove 83 will meet at 7:30 p.m. in the Elks Lodge. Members may bring guests.

The Junior Woman's Wednesday Club will meet at 3 p.m. in the home of Mrs. John McKinley, 1301 West Illinois Street.

The Swing Away Square Dance Club will meet at 7 p.m. in the American Legion Hall for a dance and pot luck supper.

The sewing room of the Midland Memorial Hospital will be open from 9 a.m. until 4 p.m. for anyone interested in sewing for the hospital.

The Green Thumb Garden Club will meet at 9:30 a.m. in the home of Mrs. Paul Jordan, 1203 Bedford Drive.

The Woman's Wednesday Club will meet at 3 p.m. in the home of Mrs. Ernest Sidwell, 1907 West Indiana Street.

Circles of the First Methodist WSCS will meet as follows: May Tidwell Circle, 9:30 a.m., home of Mrs. Joe Smith, 1602 West Louisiana Street; Edwyna Kirk Circle, 9:30 a.m., home of Mrs. John Knox, 106 East Parker Street.

The First Baptist WMS will hold a tea at 3 p.m. in the church honoring all women newly-affiliated with the church. Speaker will be the Rev. Clem Hardy, missionary from Brazil.

The AAUW Education Study Group will meet at 10 a.m. in the home of Mrs. Charles Henderson, 1202 West Storey Street.

The Modern Study Club will meet in the home of Mrs. Carl Westlund, 801 North Martenfeld Street. Hostess will be Mrs. J. W. Brown, daughter of Mrs. Westlund.

The home decoration study group of the David Crockett P-TA will meet at 9:30 a.m. in the home of Mrs. James Range, 110 West Pecan Street.

HAS MISSIONARY PROGRAM
The Junior Girls Auxiliary of the First Baptist Church held a missionary program Monday on the topic, "East and West Meet." The devotional was given by Mrs. Billie Gilbert. Others taking part on the program were Betsy Monroe, Janey Seifert, Roberta Hadlip, Marsha Woodard, Iris Neill, Gretchen Schrauber and Mrs. A. L. Smith.

MEETING PLANS CANCELLED

Plans for the meeting of the San Houston Parent-Teacher Association Tuesday afternoon were canceled because of the large number of cases of illness in the city, it was announced. However, the group's executive board held its scheduled meeting at 10:30 a.m. Tuesday in the school principal's office.

THETAS TO ELECT OFFICERS
The Kappa Alpha Theta Alumnae Association will elect officers at a business meeting Tuesday in the home of Mrs. Bill Matthews, 2410 West Kansas Street. The time will be 8 p.m.

Read The Classifieds.

Do CRAMPS give you that monthly look? Why let men see that you are suffering from monthly cramps? Try a little Cardui each day as thousands of women do. Let it help build strength and resistance so you have less and less misery each month. Some go through periods without feeling any discomfort at all. Also helps relax jittery nerves—sleep better. Look, feel, act younger, more normal all month. Ask for Cardui. (Say: "card-goo-ee")

MONTHLY CRAMPS CHANGE OF LIFE

Steinway
Instrument of the Immortals
Prestige Perfection Permanence
Wemple's
Next to Post Office
Est. 1923 Midland

shop these Food Specials

TUESDAY AND WEDNESDAY!

Golden Harvest King CORN 2 1 lb. cans 29¢	EGGS Grade A Large—Doz. 59¢	Coffee All Brand—Lb. tin 79¢
Jack Spratt Sauer- KRAUT 2 14 oz. cans 25¢	Salmon Twin Harbor 35¢	Coffee Dinty Moore 49¢
Imperial SUGAR 5 lb. bag 45¢	Chili Wolf Brand No. 2 can 59¢	Stew Beef, 1 1/2 lb. 49¢
Armour's Star Pure LARD 3 lb. ctn. 35¢	Oleo Meadolake 1 lb. 27¢	Juice Grapefruit, Jack Spratt, 46 oz. 19¢

PORK Chops 1 lb 49¢	GREEN Onions bun. 5¢
SHORT Ribs 1 lb 29¢	10 lb. bag 49¢
Armour Star Sausage 1 lb 29¢	Potatoes 10¢
Budget Sliced Bacon 1 lb 23¢	Fresh Bananas 10¢
Fresh-Dressed Fryers 1 lb 49¢	Cabbage 1 lb 1¢
	Firm Head Lettuce ea. 5¢

Horton's CASH Grocery

506 E. Florida — "The Biggest Little Store in Town" — Ph. 4-9122

STOP that DUST

Now and Improved Koraseal Weatherstripping For Casement Windows

AMERICAN WINDOW COMPANY

319 N. Colorado Dial 3-3731

Important Notice

To Those Who Own and Love Inactive Sterling Silver Patterns!

The following suspended Sterling patterns are available on a special order basis for a limited time. We urge you to place your order now for items needed to complete your service. Orders will be sent in immediately, as received, to permit any necessary clarification of sizes, weights and knife blade styles. Do not delay.

ALL ORDERS MUST BE PLACED BEFORE MARCH 1

The Following Patterns Are Being Offered:

GORHAM—

ADAM, BEAD, CHATHAM, CINDERELLA, CHESTERFIELD, CHRISTINA, CROMWELL, CHRYSANTHEMUM (Durgin), CLERMONT, COLFAX, COVINGTON; DOLLY MADISON, DUKE OF YORK, EDGEWORTH, ESSEX, EVENTIDE, FLORENTINE, IMPERIAL CHRYSANTHEMUM, KING ALBERT, LENOX, LIVINGSTON, LADY BALTIMORE, LANCASTER, LANSDOWNS, LILY, LILY OF THE VALLEY (Whiting), LUXEMBOURG, MADAM JUMEL, MADAM MORRIS, MOTHERS, NORFOLK, NEWCASTLE, NEW STANDISH, OLD LONDON, PARIS, PLYMOUTH, PORTSMOUTH, PRINCESS PATRICIA, ROSE MARIE, ST. DUNSTON (Chased), SHAMROCK V, SPOTSWOOD, TOILETRIES, VICTORIAN, VIOLET, VIRGINIA, WREATH, GOVERNOR'S LADY, HUNT CLUB, IMPERIAL QUEEN, JEFFERSON, KING EDWARD (Whiting), LOUIS XV, MADAM ROYALE, MANDARIN, MYTHOLOGIQUE, ORIANA, POPPY, POMPEIAN, PORTLAND, SHEAF OF WHEAT, THREADED ANTIQUE STRATFORD.

INTERNATIONAL—

CAMEO
CHIMES
RADIANT ROSE
ROSALIND
WINDERMERE
BEACON HILL
BERKELY
BRANDON
DEERFIELD
DORCHESTER
ELEGANCE
ELSINORE
FRONTENAC
GEORGIAN MAID
LADY BETTY
MAINTENON
NOSEGAY
OLD ENGLISH
ORCHID
PANTHEON
PRIMROSE
RHAPSODY
SIMPLICITY
SPRING BOUQUET
THESEUM
TRIANON
WEDGEWOOD
WELLESLEY

ALVIN—

CHIPPENDALE (new)
APOLLO
BRIDAL ROSE
CELLINI
MAJESTIC
MARYLAND
MISS AMERICA
OLD ORANGE BLOSSOM
ENGLISH ROSE
FLORENCE NIGHTINGALE
FRANCIS I
GAINSBOROUGH
MISS ALVIN
MASTERCRAFT
MODERN COLONIAL
WILLIAM PENN
HAMILTON
HAMPTON
JOSEPHINE
LORNA DOONE
REGENT
MAYTIME
RICHMOND
WINCHESTER

WATSON—

KENMORE
JOHN ADAMS
GOVERNOR DUMMER
DORIAN ROSE
COMMONWEALTH
LAUREL
LADY WELLESLEY
KING PHILIP
ETIQUETTE
MAGNOLIA
CHIPPENDALE
COLONIAL
CARROLLTON
NAVARRE
MOUNT VERNON
WENTWORTH
WEDDING ROSE
TUSCANY
OLD COLONY
BRIDAL FLOWER
MARTHA WASHINGTON
MARTHA HILTON
MARLBOROUGH
LILY
LIBERTY
ROCHAMBEAU
QUEEN LOUISE
PRISCILLA ALDEN
DORIAN

LUNT—

GRANADO
DIRECTOIRE
CHASED CLASSIC
REGENCY
FESTIVAL
PENDANT OF FRUIT
EARLY AMERICAN (Engraved)
CORONET
HOMES
CHATEAU
MONTICELLO

WALLACE—

ANTIQUE
CARMEL
GEORGIAN COLONIAL
KING CHRISTIAN
VIOLET
LARKSPUR
PRINCESS MARY
RENAISSANCE
RHYTHM
WASHINGTON

FRANK SMITH—

BOSTONIA
COUNTESS
CHIPPENDALE (Lincoln)
ISLEWORTH
MARTHA WASHINGTON
PILGRIM
WINSLOW

Deliveries Will Be Made Beginning July, 1953.

Kruger's
104 North Main, Midland, Texas.

Please order the following pieces of Inactive Silver patterns for me.

Name of Manufacturer _____

Kind and Number of Pieces _____

Name _____

Street Address _____ City _____

Kruger
JEWELRY CO.

A GREAT NAME IN DIAMONDS

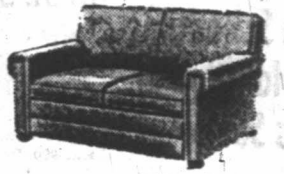
104 North Main Midland, Texas

MAIL
ORDERS
RECEIVE
PROMPT
ATTENTION

NO
INTEREST
OR
CARRYING
CHARGES

ORDERED SOLD!!!

\$35,000. STOCK OF HIGH QUALITY FURNITURE



at a

**P
U
B
L
I
C**

AUCTION SALE

**S
T
A
R
T
I
N
G**

**TUESDAY
JAN.
20th
7:30 P.M.**

The entire stock of the McBride Furniture Company has been placed in the hands of the auctioneer with instructions to dispose of this stock at once. Every item, every suite, every piece of this beautiful stock of home furnishings is to be hurled out over the auction block to the high bidder.

**ALL NEW UP
TO DATE FURNITURE**

**FIRST SALE TONITE AT 7:30 P.M.
TWO SALES DAILY AND CONTINUING
2:30 P.M. 7:30 P.M.
UNTIL STOCK IS SOLD!**

TERMS:

CASH

**IT WILL PAY YOU
TO TRAVEL MANY
MILES TO ATTEND
THIS SALE!**

**NO PRIVATE SALES
OF MERCHANDISE**

**LYLE SWEET,
AUCTIONEER**

**FREE
Prizes
EACH AUCTION
NOTHING TO BUY
JUST BE HERE**

CAR LOADS

of living room, bedroom and dinettes
suites; platform rockers, lamps, mattresses,
beds, springs, rugs, chairs, pictures, un-
finished furniture, heaters, gas ranges, all
types of tables, hassocks, mirrors—IN FACT
just about any and everything for the home.

**There Will Be Chairs For Your
Comfort And Bargains For All.**

FREE

**BEAUTIFUL BEDROOM
SUITE TO BE GIVEN
AT CONCLUSION
OF AUCTION**



McBRIDE FURNITURE CO.

507 EAST FLORIDA ON GARDEN CITY HIGHWAY
MIDLAND, TEXAS PHONE 3-3201



Permian Basin Oil And Gas Log—

the hole after the acid treatment. Operator was taking spinner survey in an attempt to locate the source of the water. It is believed that it is coming from back of the casing through channels in the cement.

Location is 1,900 feet from north and 600 feet from west lines of section 22, block D-14, C&MRR survey. It is eight miles north of Tokio and two miles northeast of production in the Prentice area.

Officials of the chapter urge all contractors and contractor representatives in the Permian Basin to attend the meeting. Dinner tickets and membership cards for the current year will be available at the door Wednesday night.

Magnolia Schedules Deep Exploration In SE Chaves Sector

Three more wildcat explorations have been staked, or started in Southeast New Mexico.

Magnolia Petroleum Company spotted location for a 12,000-foot project in Southeast Chaves County. It will be dug as No. 1 Shaw-Federal, 600 feet from south and east lines of section 6-13-31e. It is approximately 26 miles east of Roswell.

L. O. Burscough was moving in cable tools to spud No. 1 Kerr Land & Cattle Company, 4,500-foot granite test in Hidalgo County.

It will be drilled 710 feet from south and 610 feet from west lines of section 23-24-30v.

F. William Carr No. 1 Gentry-State is a new wildcat in Sierra County, 640 feet from north and 1,620 feet from east lines of section 32-15-3v. It was drilling below 89 feet on granite contact.

Two Ellenburger Wildcats Set In Schleicher Areas

Two wildcats have been staked for immediate drilling in Schleicher County.

Rocco Oil Company of Midland has filed application to drill its No. 1 Thad A. Thomson, Jr., and others, a wildcat in Central-South Schleicher County.

The test will be drilled with rotary tools to 7,200 feet.

Drillsite is five miles south of Eldorado and 1,800 feet from south and east lines of section 43, block A, H&W survey. It is two and three-quarters miles northwest of a 7,815-foot Ellenburger failure.

In Northeast Schleicher County, E. W. Berry of Tulsa and others will drill No. 1 A. B. Thomason and others as a 6,100-foot rotary wildcat.

It is scheduled to test the Ellenburger.

Location is 600 feet from north and east lines of section 65, block H, GH&SA survey and two and seven-eighths miles northeast of the one-well Butler (Canyon) field and one and one-quarter miles south of the Schleicher-Tom Green County line.

Phillips To Drill Wildcat In Loving

Phillips Petroleum Company No. 1-A Dodson is to be drilled as a 5,000-foot wildcat in Northwest Loving County.

It is to be dug 975 feet from west and 330 feet from south lines of section 2, block 55, T-2, T&P survey.

It is five miles east of the Tunstall field.

The 5,000-foot bottom will allow for tests of the Delaware.

Operator Trying To Locate Water Source In Terry

Great Western Drilling Company No. 1 Brit Clark, wildcat and indicated producer from the Glorieta in Northwest Terry County, was bottomed at 5,819 feet with operator trying to locate source of water developed on snabbing test after open hole from 5,907 to 5,919 feet had been acidized with 5,000 gallons.

Prior to the acid treatment, operator drilled plug to 5,919 feet after setting casing at 5,907 feet. Open hole was swabbed natural at the rate of 20 to 30 barrels of clean oil per hour.

The water started coming into

Burns M. Crotty
GEOLOGICAL CONSULTANT
Appraisals Exploration
Well Siting Sample Logging
Phone 3-3607, 2300 College Ave.

STUDDERT ENGINEERS, INC.
Registered Civil Engineers in Arizona, Colorado, Idaho, Louisiana, New Mexico, Oklahoma, Texas, Utah and Wyoming.
221 South Colorado Street, Midland

Are You Ready?
Be prepared for the anticipated oil activity in the Permian Basin in 1953 with new down-to-date oil maps.
MIDLAND MAP COMPANY
BETTER MAPS—FASTER SERVICE
412 N. Big Spring C. E. Prichard, Mgr. Dial 2-1603

as the third producer for the area. Operator acidized open hole from 5,905 to 5,855 feet with 3,000 gallons. After swabbing out load oil and acid water, the project was swabbed for 46 barrels of 43-gravity oil in 21 hours. There was a good blow of gas after each run of the swab. Testing continued.

Location is 600 feet from north and 1,900 feet from east lines of section 27-12-33e.

Completion Attempt Scheduled For Test In NW Dawson Area

Stanolind Oil & Gas Company No. 1 Claasen, north offset to production in the Mungerville (Pennsylvanian reef) field in Northwest Dawson County is to bottom at 8,700 feet in lime, set casing and test and try to complete.

The project had developed oil, gas and water in the reef lime.

It was drilled stem tested at 8,644-56 feet. The tool was open two hours and three minutes. Gas came to the surface in 27 minutes. There was no gauge or estimate on the gas volume.

Recovery was 600 feet of clean oil and 90 feet of oil and gas cut drilling mud. There were no signs of formation water. Open flowing bottom hole pressure was 250 pounds.

Shutin bottom hole pressure after 15 minutes was 3,100 pounds.

Forest Plugs Back To Pennsylvanian At Ector Wildcat

Forest Oil Corporation has plugged back to test the Pennsylvanian at No. 1-L TXL, wildcat in North-Central Ector County, after sulphur water developed on drillstem tests in the Ellenburger.

That formation was topped at 11,818 feet, no elevation reported.

Drillstem test was taken from 11,804 to 11,847 feet. Tool was open three hours. Recovery was 2,100-foot water blanket used, 1,440 feet of slightly gas-cut sulphur water and 150 feet of sulphur water cut mud.

Drillstem test taken from 11,847 to 11,902 feet, open two hours, recovered 1,170-foot water blanket, 90 feet of slightly oil-cut sulphur water and 7,780 feet of salty water.

Operator has plugged back to 8,768 feet in the Pennsylvanian. A section above that point, which had a good show of oil, will be tested.

If the wildcat falls in the Pennsylvanian, operator will go on back up the hole and test the Permian.

Location is 600 feet from north and east lines of section 31, block 45, T-1-N, T&P survey. It is one and three-quarter miles southwest of the North Cowden Deep field.

West Steputo To Midland Discovery Drilling Strawn

Plymouth Oil Company No. 1-E Foster, long west steputo to the discovery well of the Hallanhan (Strawn) field in Central-West Midland County, was drilling below 10,868 feet in shale and lime of the Strawn.

The top of the Strawn called at 10,495 feet, elevation 2,908 feet. It is 44 feet high on top of the Strawn to Plymouth No. 1-A Foster, the discovery well, and 380 feet low to Texas Gulf No. 1 Headlee, discovery well of the Headlee (Ellenburger) field.

No shows have been reported in the Strawn.

Location is 600 feet from south and east lines of section 4, block 41, T-2-S, T&P survey and in Central-East Ector County.

Additional Shows Developed At Test In C-E Schleicher

Carter & Carter of San Antonio No. 1 J. F. Webster, wildcat in Central-East Schleicher County, developed shows of possible production on another drillstem test in the Pennsylvanian.

Last test run was in the interval from 4,270 to 4,295 feet. Tool was open one hour. Recovery was 90 feet of heavily oil and gas-cut mud and one quart of oil.

The project showed oil and gas on drillstem tests from 4,000 to 4,057 feet and from 4,098 to 4,128 feet. Recovery on those tests was slightly oil and gas-cut mud.

More hole was being made below 4,297 in lime.

Location is 330 feet from north and east lines of the southeast quarter of section 1, block 8, TW&NG survey. It is 25 miles east of Eldorado.

Underground LPG Storage Hole To Be Dug In Howard

Reef Fields Gasoline Corporation of Houston is to drill its No. 1 Reef Fields as a 2,000-foot project in Central-East Howard County.

It is to be an underground storage reservoir for liquefied petroleum gas products.

Reef Fields Gasoline Corporation is building a gasoline plant in Northeast Howard County to handle the flare gas from the East Vealmoor and adjacent oil fields.

The 2,000-foot hole will be used to store products from that plant.

Tom Green Wildcat Given New Location

La Gloria Corporation and H. Bryan Poff of Corpus Christi have filed an amended application with the Railroad Commission of Texas to change the name and location of a wildcat in Southeast Tom Green County.

It is No. 1 Joe H. Halfman Estate and is located 2,033 feet from south and 2,028 feet from east lines of section 153, district 11, SFRS survey and five and one-half miles southeast of Wall.

It was previously reported as No. 1 Mrs. E. Hoffman and was located 600 feet from north and west lines of the southeast quarter of section 153.

Rotary tools will be used to drill the wildcat to 5,000 feet for a test of the Strawn. Operations will begin at once.

West Texans Get Important Committee Posts In Senate

AUSTIN—Senators from West Texas will head eight of the 37 standing committees of the State Senate. Complete list of committee appointments was announced Monday by Lt. Gov. Ben Ramsey.

Committee chairmen include: George Moffett, Chillicothe, Agriculture; Carlos Ashley, Llano, Highways and Motor Traffic; Harley Sadler, Abilene, Internal Improvements; Wayne Wagonseller, Bowie, Labor; J. T. Rutherford, Odessa, Military and Veterans Affairs; Kilmer Corbin, Lubbock, Public Health; Andy Rogers, Childress, Stock and Stock Raising; and Dorsey Hardeman, San Angelo, Water Rights, Irrigation and Drainage.

Serving on the various committees of the Senate will be these West Texans:

Aeronautics—Corbin, vice chairman; Moffett, Sadler.

Agriculture—Moffett, chairman; Rogers, vice chairman; Sadler and Wagonseller.

Banking—Ashley.

Civil Jurisprudence—Hardeman, vice chairman; Ashley.

Commerce and Manufacturing—Corbin, Sadler.

Congressional Districts—Moffett.

Constitutional Amendments—Ashley.

Contingent Expenses—Ashley, Moffett.

Education—Rogers.

Engross and Enrolled Bills—Sadler.

Finance—Ashley, vice chairman; Hardeman Moffett, Sadler.

Game and Fish—Ashley.

Highways and Motor Traffic—Ashley, chairman; Rutherford, Wagonseller.

Insurance—Sadler, Corbin, Wagonseller.

Internal Improvements—Sadler, chairman; Corbin, Rogers.

Interstate Cooperation—Moffett.

Labor—Wagonseller, chairman; Ashley.

Military and Veterans Affairs—Rutherford, chairman; Moffett, Rogers.

Nominations of the Governor—Moffett, Rutherford, Sadler.

Oil, Gas and Conservation—Moffett, Rutherford, Sadler, Wagonseller.

Privileges and Elections—Ashley.

Public Buildings and Grounds—Corbin, Sadler.

Public Debts, Claims and Accounts—Corbin.

Public Health—Corbin, chairman; Ashley.

Public Lands and Land Office—Moffett.

Public Printing—Corbin, vice chairman; Rogers.

State Affairs—Ashley, Hardeman, Moffett, Rutherford, Wagonseller.

State Institutions and Departments—Sadler.

Stock and Stock Raising—Rogers, chairman; Moffett, Sadler.

Towns and City Corporations—Rutherford.

Water Rights, Irrigation and Drainage—Hardeman, chairman; Moffett, Rogers.

Water Pipe Proves Uncomfortable Prison

ARCADIA, CALIF. —(AP)— Four-year-old Heather McLaughlin has discovered that a 10-inch water pipe can be a most uncomfortable prison for a little girl.

She stepped into the pipe Monday and was held fast in it two hours. An electric saw had to be used to cut the pipe.

This Is The Right Way
For Merchants To Carry Adequate Customer Supplies... Yet Have A Minimum Of Stock!

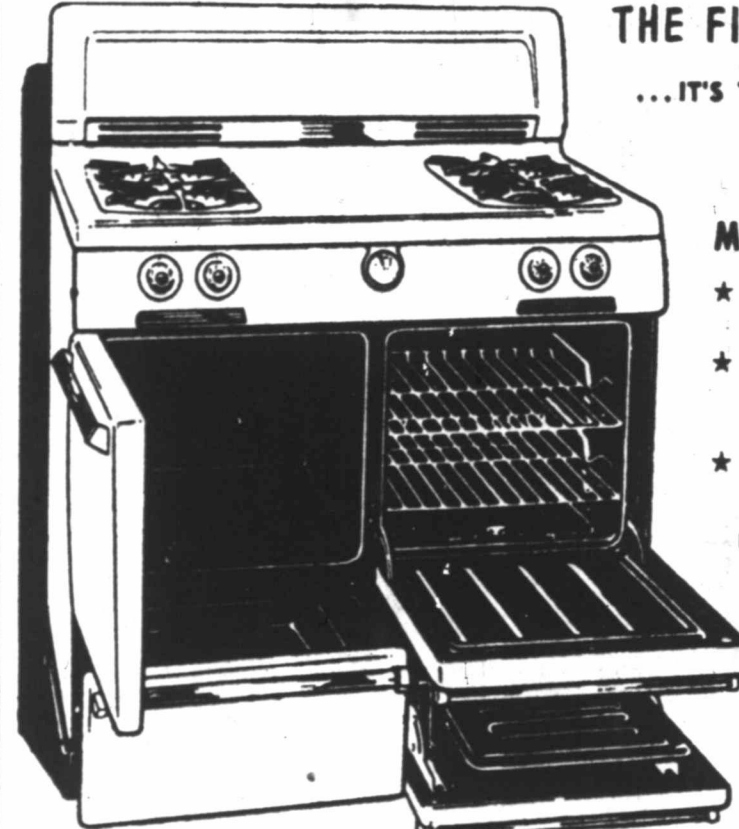
Keep a small inventory—and call us for prompt and dependable delivery service whenever needed—on cigars, cigarettes, candy, drug sundries and international paper products.

Ponca Wholesale Merc. Co.
405 East Indiana Phone 4-4961



"GREATER-THAN-EVER" VALUES at WHITE'S!

SHOP FOR THE HOME... and SAVE MORE at WHITE'S!



THE FINEST OF CAREFREE COOKERY
...IT'S THE FAMOUS
DETROIT JEWEL
MODERN DIVIDED-TOP GAS RANGE!

- ★ Automatic top burner lighters; porcelain drip pans under top burners.
- ★ Porcelain finished EVEN-TEMP oven with chrome-plated safety-stop oven racks.
- ★ Oven completely insulated with Fiberglas.
- ★ Large utility compartment with convenient utility drawer equipped with roller bearings.
- ★ Drawer-type FLA-VER-SEAL broiler, rolls out on roller bearings.
- ★ Range is finished in white and black porcelain, with base in black glass ebonite.

MODEL 8200-N ILLUSTRATED
Now Only
159⁹⁵
CONVENIENT, EASY TERMS
ARRANGED TO SUIT YOU!

Detroit Jewel, the finest brand on any range! This deluxe range features the big, dependable EVEN-TEMP oven with heat control, extra-strong door. Drawer-type broiler has smokeless broiler pan. Also, there are the four FLEX-HEET top burners, automatic top burner lighters. See it today at White's... for easier cooking in '53!

EUREKA Roto-Matic
SWIVEL-TOP CLEANER

Exciting!
Thrill to the ease of cleaning sheers, fabrics without pulling!

LOOK!
No Dust Bag to Empty!

LOOK AT THE CLEANER!
LOOK AT THE PRICE!

Now Only
69⁹⁵
WITH ATTACH-O-MATIC CLIP-ON TOOLS!

New!
So easy! Eureka's exclusive rag nests gets MORE dirt, faster, easier—and with full floating brush, whisks away dog hair, threads, lint.

Convenient swivel-top—exclusive Attach-O-Matic Clip-On Tools—tremendous cleaning power—throw-away paper dust bag—deluxe attachments—these exclusive, desirable features have all been combined in this beautifully designed new Eureka Roto-Matic.

CONVENIENT, EASY BUDGET TERMS: AS LITTLE AS \$1.25 WEEKLY!

Look! Big Full-size
HAAG WASHER

New! Super Agitation... gets ALL your clothes cleaner—easier—cheaper! New! Gentle Action Wringer... positive-pressure cleaning! New! Hydra-flow Design... removes dirt faster! Engineered for dependability... extra strong to last extra long! Haag... built for satisfied customers since 1894!

Now Only
119⁹⁵

★ 10-YEAR REPLACEMENT BOND
★ LIFETIME WARRANTY

Terms Arranged to Suit Your Budget!



MODEL 252E

YOUR MONEY BACK IF YOU CAN BUY IT ELSEWHERE FOR LESS!

WHITE'S
Auto Stores
THE HOME OF GREATER VALUES
207 W. Wall Dial 3-3369

Look at these Features!

- ★ Curved-type tub, completely self-draining!
- ★ Hi-Wing, 3-Vane Agitator!
- ★ Super Washing Action—Gets clothes cleaner!
- ★ Gentle Action Wringer!

HAAG AUTOMATIC WASHER PRICED AT ONLY **299⁵⁰**

WEDNESDAY IS DOUBLE D. W. GREEN STAMP DAY!



AT YOUR FAVORITE
PIGGLY WIGGLY

On All
Purchases
of \$3.00
and over.

★
Prices
Good
for
Wednesday
Only
at
ALL
3

Conveniently
Located
Stores



CIGARETTES

All Popular
Brands, Carton . . . \$1.75

FLOUR
LIGHT CRUST

5 Lb. Bag 39^c

MILK

PET or CARNATION

2 Large Cans 25^c

EGGS

HI-CO MEDIUM
GRADE A

Doz. 59^c

OLEO

HOLLANDALE
COLORED

Lb. In Quarters 15^c

Peaches
MONARCH

303 Can 15^c

Pineapple Juice Dole's 46 Oz. 29^c

Patio Beans Mexican Style 3 15 Oz. Cans 25^c

Farm Fresh Vegetables & Fruits

Idaho POTATOES 10 Lb. Bag 59^c

Snow White Cauliflower 2 Lbs. 25^c

Firm Crisp Heads LETTUCE . . . 2 Lbs. 25^c

Green ONIONS 2 Bchs. 15^c

Delicious APPLES 2 Lbs. 29^c

Harvard Beets Monarch, Lb. Jar 19^c

Green Beans Libby's Whole No. 303 Can . . 25^c

Corn-on-Cob Monarch, 14 Oz. Can 29^c

SUGAR

PEAS

Monarch, 8 Oz. Cans

3 For 25^c

Best Quality Meats For Your Table!

BACON Armour's Star Sliced, Pound 59^c

FRYERS

Fresh Dressed, 2 to 3 lb. avg.

Pound 49^c

Pork Chops

Nice Lean Lb.

49^c

Pork Roast Boston Butt Pound 45^c



PIGGLY WIGGLY

37 YEARS OF PROGRESS

Store No. 1

200 East Texas Dial 2-2851
Hours: Daily 8 A.M. to 6:30 P.M.
Saturday 8 A.M. to 8 P.M.

Store No. 2

308 N. Marienfeld Dial 2-3391
Hours: Daily 8 A.M. to 7:30 P.M.
Saturday 8 A.M. to 8 P.M.

Store No. 3

800 West Missouri Dial 4-7191
Hours: Daily 8 A.M. to 7:30 P.M.
Saturday 8 A.M. to 8 P.M.

Truman Cleans Office Desk, Ready To Leave Washington

WASHINGTON — (AP)—Retiring President Truman, content to rest the case for his Administration with history, was packed and ready to leave Washington Tuesday after turning over the nation's leadership to a Republican.

The 68-year-old Democrat who

fought from coast to coast in a futile attempt to stem the GOP tide in November, yielded with a smile on his face and a "goodspeed" to his successor, Dwight D. Eisenhower. That word was given in Truman's farewell State of the Union message to Congress.

Bataan Survivor's Wife Is Rescued From Pacific Ocean

SAN FRANCISCO — (AP)—Mrs. Alice S. Trappell, 46, identified by the Army as the wife of Brig. Gen. Thomas J. H. Trappell, was rescued from the Pacific Ocean here Monday night.

Patrolman Paul McGoran said it was a suicide attempt, but the woman's mother, Mrs. Hulda N. Snow, discounted that possibility, saying:

"I think she must have fainted on the beach. She often goes for walks there."

Tuesday night, he heads back to Missouri to try his hand at loafing for awhile, perhaps pick out a new line of work and try to figure out a way for a party comeback.

He cleaned out his office desk at the White House at 4 p.m. Monday—a desk at which he had served for almost eight years of recurring crises—and walked over to the living quarters to spend his last night there as Chief Executive.

Nothing remained but to ride to the Capitol for the inauguration of Eisenhower.

From the oath-taking, Truman and Mrs. Truman planned to slip away from the scenes of Republican rejoicing to the Georgetown home of Dean Acheson, outgoing secretary of State, for a farewell luncheon with the Cabinet, and thence to the apartment of Presidential Secretary Matthew J. Connelly to rest until time to take a train home to Independence, Mo.

The train departs at 6:30 p.m., but the Trumans planned to arrive at the presidential private car, made available by Eisenhower, 30 minutes early for last good-byes with political associates and personal friends. The train is due at Independence at 8:20 p.m. Wednesday.

Cancer Authority To Speak Tuesday Before Midlanders

Dr. Leonard P. Eller, director of activities having to do with clinical investigation of neoplastic disease at the Oklahoma Medical Research Foundation, Oklahoma City, will be the guest speaker Tuesday night at a meeting sponsored by the Midland Diagnostic Cancer Clinic. The meeting will follow a buffet supper to be served at 7:00 p.m. in the Directors' Room at the Midland Memorial Hospital.

Dr. Eller will discuss "Metabolic Alterations in Neoplastic Disease of Bone." Prior to joining the staff of the Oklahoma Medical Research Foundation, he was engaged for a number of years in cancer research with the Sloan-Kettering Institute at Memorial Hospital, New York City, and is widely recognized in this field.

Midlander Pledged By Social Fraternity

NORMAN — Tom Linn, Midland, was pledged recently to Sigma Phi Epsilon, national men's social fraternity at the University of Oklahoma.

Linn is the son of Mr. and Mrs. S. J. Linn, 118 East Parker, Midland, and is a freshman in The University College.



HE'S "REAL BOY OF AMERICA"—Danny Holt, 13, left, proudly shows his 1953 "Real Boy of America" award to Eddie Ashby, 11, after being presented with the plaque at ceremonies in New York. The North Haven, Conn., youth, who was stricken with polio eight years ago, received the honor for saving Eddie from drowning when he fell through the thin ice of a skating pond.

Egypt Red Roundup Nets 213 Suspects

CAIRO, EGYPT — (AP)—A roundup of suspected plotters against the government of Premier Maj. Gen. Mohammed Naguib has netted 213 persons, including 48 Communists, in Egyptian Cabinet minister announced Monday night.

Fuad Galal, minister of national guidance, said 39 others of those seized were suspected of having relations with foreign powers "which have the interest of creating agitation in Egypt." The foreign countries were not specified.

Canada's C-C Urges Open Door To Settlers

OTTAWA — (AP)—Canada's Chamber of Commerce urged the government Tuesday to open the nation's doors wide enough to immigrants to give Canada a population of 30,000,000 by 1978.

But the Chamber also urged the Cabinet to continue its "selective" policy of trying to get more settlers from Britain, France and the United States.

Canada's population now is estimated at 14,000,000 persons.

U. S. Navy Abandons Hunt For 11 Missing On Planes

TAIPEI, FORMOSA — (AP)—Allied planes and warships have abandoned search for 11 U. S. airmen in the Formosa Strait, where Chinese Reds shored batteries shot down a Navy patrol plane and fired on a U. S. destroyer.

Ten survivors were plucked from the choppy seas by a U. S. destroyer—seven from the Neptune patrol plane and three from a U. S. Coast Guard PBM Mariner. The Mariner crashed, burned and sank trying to take off after rescuing 11 of the 13 Neptune crewmen. There were eight in the Mariner crew.

The two planes were lost Sunday six miles northeast of the Red China port of Swatow.

U. S. Naval officers at Hong Kong speculated that some of the missing fliers might be prisoners of the Communists. These officers, of the patrol frigate Everett, said any survivors with life rafts had a fair chance of reaching the China coast. This could mean trial and imprisonment by Reds.

A spokesman at Pacific Fleet headquarters at Pearl Harbor said Chinese Communist shore guns shot

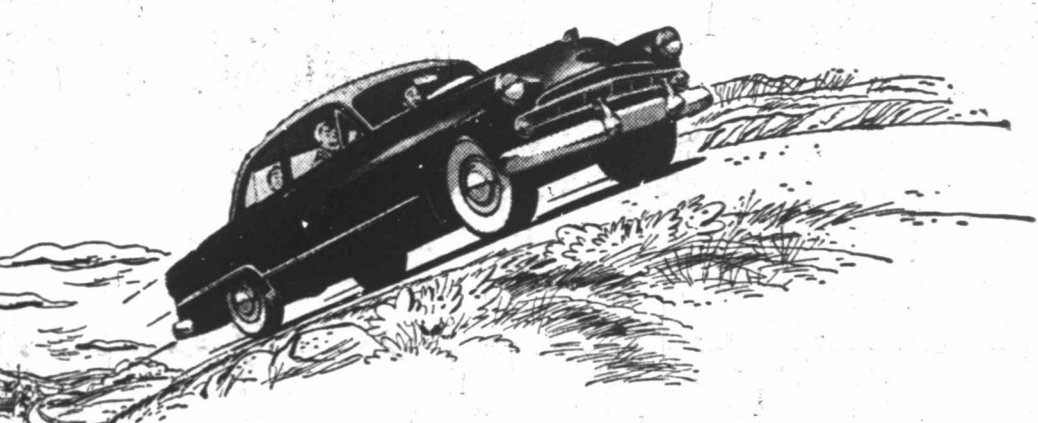
WEST TEXAS
 Leading Printers
 and
 Office Outfitters
the HOWARD CO.
 Leading Office Outfitters
 114 S. Lorraine Dial 4-5566

Fly big, powerful Pioneer Pacemasters to
LUBBOCK
 2 flights daily • 39 minutes

PIONEER
 AIR LINES

Timed by Baylor Phone 2-4355 for reservations

You've Got to Drive It to Believe It!



Road Test and Rate the New Dodge V-Eight

You've heard talk about how this new Dodge performs. About the new 140-h.p. Red Ram V-Eight engine. About the new design that does away with "deadweight." And about the new feeling of mastery. So you say to us, "How about that Road Test Ride you're offering?" You step in. You take over. And from that moment on, all your ideas about motor car performance are changed. Your own Road Test Rating will convince you.

Come on in . . . today!

Here's How To Make Your Own ROAD TEST RATING

Get your free check list. Road Test a Dodge. Rate Dodge on these 12 key points. Then compare with any other car.

Inaugural Address

HORIZONTAL	4 He formerly was a top-ranking U.S. Army (ab.)	5 Hours (ab.)	8 Abounded	7 Capitalizes	8 Louise egg	9 War god	10 Kite end	11 Volcano	12 Layer of stones (Scott.)	13 He has served as president of Columbia University	14 Clad in an outer garment	15 Withdrawal	16 Everlasting (poet.)											
14 Venerate	15 Proboojer	16 Banish asport	17 Spots	18 Psalms (ab.)	19 Miss West	20 Lord Advocate of Scotland (ab.)	21 Covered	22 Voyaged in a light boat	23 Greek gravestone	24 Play the part of host	25 Alterations	26 Violin maker	27 Western cattle show	28 Cubic meter	29 Penetrates	30 Fjords	31 Note in Glinka's scale	32 Blackbird of cuckoo family	33 First woman in his home is in Abilene	34 Hurler	35 Lure	36 Click-beetle	37 Percolated slowly	38 Restrains
39 YETICAL	1 Let fall	2 Marries	3 American inventor	4 Railroad stations	5 Cum testamento annexo (ab.)	6 Limbs	7 Tidy	8 Vein of ore	9 River in Germany	10 Goddess of the dawn	11 Expunged suffix	12 Perched	13 He was born Denison, Texas	14 Pieces out	15 Narrow road	16 Poker stake	17 Italian city	18 Swerve	19 Strays	20 Slight taste	21 Chemical			

FOOT SPECIALIST
Dr. Virginia Y. Johnson
 306 No. Main CHIROPODIST Dial 3-3521

DO IT NOW!
Get Your Ducts FOR AIR CONDITIONING Before Hot Weather WE ARE READY

(And give a pint of blood to the blood bank, too)

The Fitzgerald Company
 Ph. 4-5801 2906 W. Wall Ph. 4-7525

1 Roominess Check on the extra legroom, head-room. Less waste space. Curved one-piece windshield, wrap-around rear window. Up to 24 sq. inches more glass area.	2 Acceleration Feel the surging power of new Red-Ram V-8 engine. High power-to-weight ratio through Dynamic Design. Gyro-Torque Drive gives greater "break-away."	3 Manoeuvring Ability Check on the feeling of complete control in traffic. Modern design and compact engine eliminate "meaningless metal." See if Dodge isn't the nimblest car of all.	4 Cornering Discover how Dodge "hangs down" on curves like a sports car. Less roll, less sway. Body and chassis form a compact unit. New suspension gives great "roadability."	5 U-Turnability Shorter turning radius lets you complete a U-turn in limited space. You'll find most cars cumbersome by comparison. Center-Balance Steering cuts wheel effort.	6 Hill-Ability When you come to a steep grade, let her out a bit. You're not hauling "deadweight" around. Power goes into performance . . . and there's loads of power to spare!
7 "Scat" Action Today's driving calls for a car that really "digs in" when you need pick-up. Just wash off you try the "Scat" gear! Red Ram power gives added "margin of safety."	8 Highway Handling Important on vacation, long-haul trips. Dodge design cuts wind-wander, side-sway, wheel lift. You sit in better position. You're in control all the way.	9 Smooth Ride Pick out any kind of road: Gravel, "washboard," rutted. See how matches Outlaw ride control makes you the master. Tamps bumps. Levels the road.	10 Brake Safety Positive brake control with two brake cylinders in each front wheel. No "deadweight" to stop—less dip, less sway. You get extra stops with less pedal pressure.	11 Parking Easy parking is an important "by-product" of Dodge nimbleness. You can "cut her sharp," slip into spaces that you'd pass by in a more cumbersome car.	12 All-Round Economy Dodge performs on "regular" gas. Command the most efficient engine design in any car—no "deadweight." Drive The Action Car for Active Americans.

Specifications and equipment subject to change without notice.

New '53 Dodge
 All New

MACKAY MOTOR COMPANY • 200 S. Lorraine • Phone 4-7822

☆ BUYERS AND SELLERS OF HOMES, LOTS, FARMS AND RANCHES GET TOGETHER EVERY DAY ON THESE PAGES! ☆

EVERYTHING FOR THE BUILDER!

- Hardware Heaters
Plumbing Supplies
Roofing Materials
Brick Floor Tile
Reinforcing Mesh
All kinds of Power and Hand Tools

C. L. CUNNINGHAM COMPANY

Plenty of Parking Space
2404 W. Wall Dial 2-2597

Cash and Save
2x4 and 2x6 10 feet \$6.00
1x8 Fir Sheathing 5.50
4x7 1/2 Sheetrock 4.25

Veazy Cash Lumber Co.

Snyder, Texas Lubbock, Texas
Phone 1573 Phone 3-4004

REAL ESTATE

HOUSES FOR SALE
1202-1205-1207 East Maple and
1202 East Oak-Very nice two-bed-

WANT INCOME PROPERTY-Close in
on North Weatherford - One-half
block from business zone-3 nice

LOOK
Three large bedrooms with double
closets, bath with shower and dress-

NEW HOME BY OWNER
Individually constructed two bedroom
and garage. Asbestos siding with brick

OWNER must sell Your opportunity to
own a good 2-bedroom home. Tile bath.

GI HOME-READY NOW!
Extra-large 2-bedroom home, located
at 1103 East Spruce, paved. Double

BY OWNER
Two-bedroom GI home, ducted for
air conditioning, wired for automatic

The Nation's Leader
PARTAN AIRCRAFT MOBILE HOMES
Built up to a standard
Not down to a price

HOUSES FOR SALE
TODAY'S BEST
AMAZING VALUE-3 bedrooms-
brand new. File in kitchen and bath.

SEE TRUHLAND TODAY-GI & FHA 2
and 3-bedroom homes full of ex-
tras. GI-low as \$550 down, closing

MIDLAND REALETERIA
1404 N. Big Spring
Dial 3-3571 anytime
An Affiliate of
ALLIED COMMERCIAL SERVICES

CHOICE LOCATION
1901 W. Louisiana Nice 3-bedroom
home concrete block fence, paved

3-BEDROOM GI HOME
Bath and a half. Well built brick
and frame, with attached garage

Nelson & Hogue
104 Fidelity Union Bldg.
Day 2-3778
Night Phone 3-3498

NEAR COUNTRY CLUB
Two bedrooms and knotty pine den.
Excellent condition. Large friendly

BARNEY GRAFA
Loans-REALTOR-Insurance
215 W. Wall Dial 4-6602 or 2-4272

GI HOME-READY NOW!
Extra-large 2-bedroom home, located
at 1103 East Spruce, paved. Double

BY OWNER
Two-bedroom GI home, ducted for
air conditioning, wired for automatic

3-BEDROOM HOME
907 Andrews Hwy. Well-built brick
with attached garage. Close to school.

3-BEDROOM HOME
2614 W. Wall Dial 4-5642 or 4-5116

3-BEDROOM HOME
907 Andrews Hwy. Well-built brick
with attached garage. Close to school.

AUSTIN STONE HOME with attached
rental apartment, now bringing in
\$65 per month. Unfurnished. 1,700

HOUSES FOR SALE
Key, Wilson & Maxson's
REAL ESTATE
Bulletin Board
REPORTING THE TOP NEWS
IN REAL ESTATE

THE BOSS-MAN ASKED ME to count up
the number of homes that we have
sold since December. Being

FASHIONFUL OF NEW ENGLAND,
because this exquisite home is on
Ridgela, where the trees are taller

IF I WERE Eloquent with words
I would attempt a description of the
home that is available on Country

ONLY TWO LEFT ON KESSLER
STREET from an original 19 which
were constructed. We have taken

VETERANS
See Glendale Addition before you
buy! Two and three-bedroom homes,

BARNEY GRAFA
Loans-REALTOR-Insurance
215 W. Wall Dial 4-6602 or 2-4272

404 WEST JAX
Nice three-bedroom home on paved
street. Tile fence, huge back

BARNEY GRAFA
Loans-REALTOR-Insurance
215 W. Wall Dial 4-6602 or 2-4272

CLARK SMITH
2614 W. Wall Dial 4-5642 or 4-5116

Key, Wilson & Maxson
For complete real estate,
loan and insurance service.

HOUSES FOR SALE
STAR LISTINGS
EXCELLENT LOCATION, close to De-
vised Crockett school, 1507 North

TO BE CONSTRUCTED, for veteran
only: 3-bedroom brick veneer,
with carport. To be located 2900

BRAND NEW 3-bedroom Austin
stone home. Completely carpeted.

Harlan Court
HOWELL & THOMPSON
113 Central Bldg. Dial 4-5587

DOUGLAS STREET
Three large bedrooms, den with cork
floor, fireplace, carpeted, two tile

BARNEY GRAFA
Loans-REALTOR-Insurance
215 W. Wall Dial 4-6602 or 2-4272

GI - FHA
Large 2-bedroom homes with hard-
wood floors, texture walls, venetian

NEW HOME
Three lovely bedrooms, two tile
baths, fireplace, large kitchen, paved

BARNEY GRAFA
Loans-REALTOR-Insurance
215 W. Wall Dial 4-6602 or 2-4272

Why Are Classified
Ads So Little
Classified Ads are little because

TO PLACE A
Classified Ad
JUST DIAL
DIAL 3-3344

LARRY BURNSIDE
Real Estate Sale & Service-A Broker-Not a Builder
Integrity is my watchword

DURRELL-STONE & CO.
PHONES:
405 N. Big Spring • 4-6674
4-5242
EVENINGS AND SUNDAY, DIAL 4-8418, 2-3825 Or 4-5242

LOTS FOR SALE
5 CHOICE LOTS IN
RESTRICTED URBANDALE
Facing east on North J Street, be-
tween Community Lane and Golf

SCENIC HEIGHTS. Don't take the risk.
That unattractive neighborhood de-
velopment will devalue your new home.

SMALL DAVIS MT. RANCH
10 sections very best ranch land in
Highland Hereford Area, 6 miles from

FOR SALE
3.85 ACRES GRASSLAND for lease,
\$1 per acre. Plenty of water. Contact

COMMERCIAL LOTS 75'x120' located in
the center of the fastest growing little

FOR SALE
158 ACRES black land farm, 6-room
home, big barn, all-weather road. One

FOR SALE
COMMERCIAL or INDUSTRIAL
100'x150' lot for sale on South
Camp Street, R. W. Easterwood, 1600

FOR SALE
100'x150' lot for sale on South
Camp Street, R. W. Easterwood, 1600

FOR SALE
100'x150' lot for sale on South
Camp Street, R. W. Easterwood, 1600

FOR SALE
100'x150' lot for sale on South
Camp Street, R. W. Easterwood, 1600

FOR SALE
100'x150' lot for sale on South
Camp Street, R. W. Easterwood, 1600

Durrell-Stone's REAL ESTATE
HIT PARADE
"NO PARKING PROBLEMS"

Are you thinking of selling your home? Do you need a larger home?
Many of our customers are willing to trade... Our staff is qualified
to appraise your home... Call us TODAY. We will be glad
to discuss our financing arrangements with you. We represent in-
vestors who are making TOP LOANS in this area... Let us help
you select your home.



First Arrivals of Spring!

Spring Coats

in luscious pastels!

Spring toppers... new of line and beautiful of fabric... smart straight cut backs you will adore... colors, luscious in Springtime pastels simply exciting to wear!

29.98 up to 79.98

GRAMMER-MURPHEY

Midland's Store for Men and Women!

March Of Dimes Challenge Goes Begging In Midland

The challenge hurled at Midland Monday by Brooks Harmon, Ector County chairman of the March of Dimes, had no takers at mid-morning. This disheartened statement came from Ray Gwyn, county campaign director.

Complete Text Of Inaugural Address—

(Continued From Page One) The grover of rice in Burma and the planter of wheat in Iowa, the shepherd in Southern Italy and the mountaineer in the Andes. It confers a common dignity upon the French soldier who dies in Indochina, the British officer killed in Malaya, the American life given in Korea.

Texas, Texans Play Prominent Role In Eisenhower Inaugural Festivities

By TEX EASLEY WASHINGTON—(AP)—Texas went all out Tuesday, in her characteristic way, to make sure nobody overlooked the fact that she gave Dwight D. Eisenhower, the thirty-fourth President, to the nation.

show up at Monday night's festival at which stage, screen, radio and television stars entertained. One of the main attractions in the whole procession were the Kilgore College Rangemasters. The Rangemasters were probably the only non-professional group picked to appear on the festival program Monday night.

High School band in its bright uniforms and the famous Hardin-Stimmons University band from Abilene, Texas, just back from a tour of military centers in Europe. One of the unusual groups was the Hockley County Sheriff's posse. A long limousine at the head of one of the 10 parade divisions was reserved for Mrs. Oveta Culp Hobby, Houston Post publisher, who is to be Federal Security Administrator.

Central Texas county's schools all open once more. Rotan Incidence Up Influenza absenteeism in Abilene schools declined from 2,664 Friday to 1,131 Monday and Supt. A. E. Wells said, "We're getting back to normal. We hope."

More Deadly Form Of Flu Grips Wide Area In Texas

By The Associated Press A more deadly form of influenza had struck in South Texas with vicious force Tuesday while a milder type over much of the state appeared to be waning.

had made his drastic recommendations after consultation with about two-thirds of the county's 75 physicians. Schools at Mission and La Joya were closed but Edinburg schools reported Monday that absenteeism had dropped from 37 per cent to 18 per cent.

At Aspermont, Stonewall County Health Officer A. R. Manzille said the flu is bordering into an epidemic. The Aspermont hospital was reported overflowing with patients on cots in the halls and X-ray room.

Sidney Nicks Gets Monahans JayCeers' Third DSA Citation

MONAHANS—The third annual Distinguished Service Award, sponsored by the Monahans JayCeers, was presented to Sidney P. Nicks, vice president of a bank here Monday night.

Gathering To Decide Future Of Proposed Midland YMCA

Midland will decide on the night of February 3 whether it will have a Young Men's Christian Association. That was the date set Monday night for a general mobilization meeting, after an area representative of the YMCA reported on the results of a survey made in the city.

Dallas Negro Held As Theft Suspect

A 28-year-old Dallas negro was being held by police Tuesday in connection with the theft of more than \$150 worth of articles Monday night from a parked automobile.

Army Asks 53,000 Draftees In March

WASHINGTON—(AP)—The Army wants 53,000 men called through Selective Service in March — and the Defense Department has indicated monthly calls may continue at about that level through June.

Comfort and Blanket Values For Cold Weather Sleeping

Chintz Coverlets and Dust Ruffles Pretty Chintz Coverlets and dust ruffles in either single or double bed size in colors of pink, blue, green and yellow.

Satin Bed Spreads They are available in either single or double bed size in colors of rose, cedar, gold and green. Priced for sale to Wednesday shoppers.

Satin Wool Filled Comforts Beautifully quilted satin covered wool filled comforts in colors of 'chartruese, rust, wine, flamingo, green. Priced regularly to \$24.50.

Chatham All Wool Blankets Warm cozy all wool blankets 72x84 in soft colors of yellow, rose, light green, hunter green, geranium red or blue.

Dunlap's Your SCOTTIE REDEMPTION CENTER FREE DELIVERY - TWICE DAILY

Pledges Earth Of Peace—

(Continued From Page One) for strength. Never to placate an aggressor. To intimidate no other people. To help those who help themselves.

Midlanders Injured As Auto Overturns On Odessa Highway

A police radio dispatcher and a 22-year-old Midland woman were injured Monday afternoon when the automobile in which they were riding overturned eight miles west of the city on U. S. Highway 80.

Four Children Here Receive Treatment For 'Play' Injuries

Midland children, four in all, almost monopolized the emergency treatment room Monday at Midland Memorial Hospital in a series of unusual home accidents.

Now Open For Business WATCH REPAIRING 3 Day Service JEWELRY REPAIRING MONOGRAMMING and ENGRAVING JENKINS Luggage and Jewelry 216 North Main Dial 3-3811

Livestock

FORT WORTH—(AP)—Cattle 2-100; calves 800; slow and weak; stocker cows and high grade stock calves and yearlings about steady; good and choice slaughter steer and yearlings \$18-\$23; medium to medium \$10-\$18; beef cows \$12.50-\$15; good and choice slaughter calves \$18-\$22; common and medium \$13-\$17; good and choice stocker calves \$19-\$24.50; stocker and feeder steer yearlings \$15-\$22.50; stocker cows \$12-\$18.50.

Eisenhower—

(Continued From Page One) voice and carried it across the seas. Chief Justice Fred M. Vinson administered the oath. Richard M. Nixon was sworn in as vice president just before Eisenhower assumed his office.

Cotton

NEW YORK—(AP)—Tuesday noon cotton prices were 25 to 70 cents a bale higher than the previous close. March 33.00, May 33.51 and July 33.90.

Rickett Proclaims Polio Funds Need

Mayor Perry Rickett issued a proclamation Tuesday officially dedicating the last two weeks of January to the fight against polio and to the support of the 1953 March of Dimes drive.

The proclamation follows:

WHEREAS, the year 1952 witnessed the worst nation-wide epidemic of infantile paralysis in all recorded history wherein more than 55,000 unfortunate children and adults were stricken, and,

WHEREAS, this was the fifth consecutive year of unprecedented high polio incidence, demonstrating that no city or town in our great

period ever known to man, and,

WHEREAS, the only hope for continuing epidemic service, extensive programs of patient care and scientific research is through unstinting support of the March of Dimes, and,

WHEREAS, the 1953 March of Dimes is being conducted the last two weeks of January in the City of Midland,

SO THEREFORE, I Perry Rickett, Mayor of Midland, do hereby proclaim the weeks heretofore indicated be dedicated to our mutual fight against polio, and do call upon every resident of this city to support this critical fight through generous contributions to the March of Dimes.

Signed Perry Rickett
MAYOR
Date: January 20, 1953

Blind Woman, 87, To Spend Vacation In 'Scenic' Region

This Summer Mrs. Oscar White, 305 West Hamby Street, plans to go on a "scenic" vacation. Mrs. White is 87 and blind.

"I will have a cabin all to myself and God. The birds will sing from above. Trees will surround my cabin. There will be a stream nearby. Don't you think that a mocking bird is a choir by itself? I think it sings for us with God's instruction."

Mrs. White, a widow, survives her two children. She has been blind the last eight years.

"I put flowers to my nose, and I smell wonderful, sweet odors. I really see those flowers. I went blind after my husband passed away. I was very despondent. I knelt by the side of my bed and said, 'God, what have you done to me?' I never complained after that. I began to see God as he is for the first time. I found that living in a little hut—in a world within yourself—also can be a very beautiful."

She cautions many persons "not to climb the ladder of golden stairs since not everyone can be happy at the top of a ladder."

She says many people are successful but do not know it. "If you have friends, and have conducted yourself right, and you keep good company, you are very successful," she states.

Mrs. White does her own cooking and housekeeping.

"I am only old," asserts Mrs. White, "when you have given up your most cherished ambitions. Life is not too short. Every hour has sixty beautiful diamonds in it. We must learn to polish each diamond and put most of its sparkle into our lives."



NAVAL AND AIR AIDES—President Eisenhower has Cmdr. Edward L. Beach, 34, of Palo Alto, Calif., left, as his White House Naval aide. Beach is captain of the submarine "Trigger," at right is Maj. William G. Draper, 32, of Silver Springs, Md., who is Eisenhower's White House Air Force aide. Major Draper has been personal pilot for Eisenhower since 1942.

★ DR. JORDAN SAYS ★

Search For Infection Is Begun When Rheumatic Pain Lingers

By EDWIN F. JORDAN, M. D.
Written for NEA Service

Perhaps there is nothing which so astonishes a physician who was in practice even as recently as 20 years ago as what has happened to labor pneumonia. This formerly common infection of the lungs used to be known as the "old people's friend" because it so often proved an easy and painless final illness.

Today, lobar pneumonia is almost "rare disease" and when it does occur recovery is the rule. The speed with which this occurs is amazing to all those who remember what it used to be.

It is interesting, and even now important, to discuss this disease.

A typical case starts suddenly with a severe chill which may last for as long as half an hour. Soon after the chill, the temperature begins to go up and it rises rapidly to around 104 or 105 degrees. At the same time a person coming down with pneumonia may have general aches and pains with headache.

Pain in the chest or side like that which is present in pleurisy, also is common. Cough which produces pain, and does not bring up much mucus, starts early. The breathing becomes rapid and each breath is shallow.

These symptoms can be confused with other conditions, but certainly are suspicious of lobar pneumonia. Examination of the chest by a physician and especially taking an X-ray film generally bring a diagnosis early.

Unless steps are taken to treat the condition promptly, the typical signs develop by the second or third day. By this time cold sores around the lips are likely to be present, the facial expression shows anxiety, the pain in the side or chest is severe and the breathing is rapid. Cough brings up a fair amount of sputum which is likely to be tinged with blood. The temperature stays high, at 104 or 105 degrees.

Penicillin Brings Relief

Penicillin and its relatives almost always bring remarkable improvement in a short time. A quick fall in temperature and relief of the cough and pain occur promptly. The breathing becomes slow and normal and no longer is it necessary to wait for the crisis to know what the outcome will be.

Today there is only about one chance in 20 or 25 of dying from the disease instead of one chance in three. Lobar pneumonia has dropped from being one of the most important causes of death to being one of the least important of the major diseases.

But remember, the diagnosis must be made early and treatment started promptly, because the results are much more likely to be favorable than if pneumonia has been present for several days.

Plane Constructed From Wood, Bamboo

MANILA—(AP)—A plane made of bamboo and wood—the first of its kind built entirely of Philippine material—will undergo tests soon.

Antonio J. de Leon, aeronautical engineer who designed the craft, says the project was undertaken to determine whether aircraft bodies could be manufactured in the Philippines without imported material. The Philippines Air Force and the Institute of Science and Technology have joined in the project.

QUALITY DESKS

By Nationally Known Manufacturers

• STEEL
• WOOD
• Aluminum

WEST TEXAS OFFICE SUPPLY
Odessa, 7-3535 MIDLAND, 4-9851

The Need Is Great! The Time Is Now!



GIVE YOUR BLOOD...

...THAT OTHERS MAY BE SAVED!

Make an appointment NOW with the
MOBILE BLOOD UNIT

DIAL 2-2639 - 3-3618 - 4-6161

Located at the Red Cross Building at 619 W. Indiana
During January 21st and 22nd



You need only be between the ages of 19 and 59 and weigh more than 110 pounds! Your blood is urgently needed to give life in Korea... needed to do battle against polio paralysis at home! A few minutes of your time and you've brought a gallant American soldier from the brink of death... saved a child from extreme polio paralysis. You'll be proud to have done your part... give your pint of blood NOW!



Your blood is vitally needed in Korea and in fighting the dreaded polio paralysis! Give your pint of blood NOW!

FOR APPOINTMENT DIAL 2-2639-3-3618-4-6161

This Series Of Ads Sponsored By The Following Midland Merchants
And Professional People—

- | | | |
|---------------------------------|-------------------------------|--|
| Arthur Murray Dance Studio | Frances Cole Fashions | McMullen's |
| C. R. Anthony's | The Fair Department Store | Military Order of the Cooties, Pup Tent 48 |
| Bein Supply Co. | Farmer's Insurance Group | Midland Appliance |
| Blue Star Inn | The First National Bank | Midland Hardware & Furniture Co. |
| Bob's 5c & 10c | Firestone | Midland Studio & Camera Shop |
| Branch Roofing Co. | Fowler Drug | Midland Lumber Co. |
| Broadway Motors | Fashion Cleaners | Owens-Bagwell Furniture-Carpets |
| Brookner Hotel | Greene Furniture Co. | Palace Jewelry Co. |
| Brooks Stores | Grammer-Murphy | Pylant Sign Advertising |
| BAW Food Market | Goyne's Draperies | Pellier Shoes |
| Bill Wood Prescription Pharmacy | Hood's | Panther City Office Supply |
| Bob Fine Office Equipment Co. | House of Carpets | Pennney's |
| Brewer's Hardware | Hughes Jewelry Co. | Pieper's Appliances & Furniture |
| Bateman's | Harry Fitch Studio | Pryor Auto Supply |
| Buddy's Flowers | H&D Skally Service Station | Ray Gwyn Office Supply |
| Caffey Appliance Co. | Habit Cleaners | SBQ Clothing |
| Cox Appliance Co. | Heath Plumbing | Snowwhite Bakery |
| Crain Office Supply | Hyde's | Sam Logan's Chevron Station |
| Creddick's Drug | Hi-D-Ho Drive In | Seltris Furniture |
| City Transfer & Storage | Hargrove Motor Co. | Shaddix & Rodgers |
| Cecil Dennis Chapel | Hospital Pharmacy | Sentary Plumbing |
| Cam-Worth Drug | Jenkins Luggage & Jewelry | Stewart Furniture Co. |
| City Finance | Key, Wilson & Maxson | Tull Drug |
| Dele's Laundromat | K&K Tire Co. | Vineyard Landscaping Co. |
| Dunlap's | Kruger's | Vossler's |
| Eddie Davis Upholstery Shop | Lead's Shoe Store | Veterans of Foreign Wars, Post No. 4149 |
| Eubanks Auto Parts | Mayes Electric Co. | Western Auto Associate Stores |
| East End Wrecking Yard | Murray-Young Motors, Ltd. | West Texas Office Supply |
| Ever Ready Auto Service | The Midland Reporter-Telegram | West-Tex Equipment Co. |
| Excel-Sure Cleaners | McClintock's Babylon Studio | Woodford-Drugs |
| Frank Miller Studio | Michay-Darmon Star Tire Co. | West-Tex Food Mart |
| Franklin's | The Midland National Bank | West End Magnolia Service |
| | | Wilson's |

NIX CLEANERS



Nationally Advertised

GUS NIX—OWNER AND OPERATOR
PICK-UP AND DELIVERY SERVICE

Phone 2-5092 307 Andrews Hwy

Erskine To Attend Automotive Conclave

Stanley Erskine, city automobile dealer and West Texas director of the National Automobile Dealers Association, plans to attend that organization's convention in San Francisco February 14-18.

More than 15,000 persons are expected to attend the convention which will discuss how the retail automobile industry can better serve the motoring public in 1953.

There will be 10 major business sessions during the five-day conclave, and dealers will be addressed by more than 30 speakers, all outstanding in the automotive field.

for Children Only

BETWEEN THE AGES OF 7 and 16

an EASY, PRACTICAL way

to provide a foundation for the boy's or girl's future life insurance program. This FOUNDATION POLICY furnishes the protection necessary when the child is still dependent upon the family, and provides an automatic increase in the amount of protection at age 21 AT NO INCREASE IN COST!

Both protection and savings are combined in this policy at a premium which makes it a very attractive buy for the parent. Each \$1,000 of insurance taken out in one of the foundation policies automatically increases to \$3,000 at age 21 and pays \$3,000 in cash at age 65, but the premium remains the same throughout the life of the contract.

STATE RESERVE LIFE INSURANCE CO., N. P. ANDERSON BLDG., FORT WORTH

Please send full particulars, without obligation, on your Foundation Policy for children.

MY CHILD'S NAME _____

DATE OF BIRTH _____

MY NAME _____

DATE OF BIRTH _____

ADDRESS _____

CITY _____ STATE _____

Clip and mail the coupon today or call your State Reserve agent and get full details, without obligation, on this unique policy.



"THE COMPANY OF CHARACTER"
Nell P. Anderson Building Fort Worth, Texas

REACTIONS ARE UNINHIBITED—

'Scaled Down' Symphonies Please Midwest Small Fry

By MARY C. FLYNN
NEA Staff Correspondent
KANSAS CITY, MO. — An amiable orchestra conductor who began his own musical education at the age of five now scores as hero to the pigtails and bobbiex sets for his "scaled-down" symphony concerts.

To thousands of Kansas City kiddies, smiling Hans Schwieger, musical director and conductor of the Kansas City Philharmonic orchestra, is to the magic realm of music what cowboy heroes are to television.

Last season the orchestra performed for almost 50,000 youths of elementary, junior high and high schools in Kansas City and surrounding areas. Similar success is in prospect for this season's series of 19 young people's concerts.

Small Fry Speak

Educational leaders and civic groups have teamed with the Kansas City Philharmonic orchestra annually since its establishment 20 years ago to acquaint the city's small fry with classical music. As a result, such music is familiar, enjoyed and respected by the children.

Schwieger observed that he never has heard a child use the expression, "long hair," in describing symphony music.

"A child will admit that a certain composer bored him, but in general he enjoys the concerts," he commented.

Sense Of Values

The German-born maestro, one of the leading young conductors in America today, personally conducts the young people's concerts. "Children have a discerning sense of values and like to feel they rate

the same as adult audiences," he explained. "After all, the youngsters are the orchestra's future audiences and contributors."

Apart from the honest regard, Schwieger takes deep satisfaction in participating actively in the various phases of the orchestra's program for children. His aptitude for the work is reflected in the joyful response of the young concert-goers. They write "masses" of letters to their lovable Pied Piper. Each letter is answered and each personally signed by the conductor.

Uninhibited While Schwieger realizes his youthful audiences respond more freely to rhythmical performances and only "politely listen" to melodic works, he introduces the latter, too, but with care not to give an "overdose."

The uninhibited reactions of elementary school pupils to the concerts take various forms. They seem to make an endurance game of clapping for numerous bows by the youthful guest soloists, raise their hands in classroom manner when Schwieger puts a question, peer through telescopes and go through imaginary conducting gyrations.

They applaud vigorously for themselves after singing during the programs and indicate with unremitting sounds of acclaim that the harp is their favorite instrument. All this the conductor takes in stride. But he comes up with a number of surprises of his own, too.

"Game" Starts Show He usually opens the season's programs by popping up from the midst of the juvenile audience after someone calls from the stage, "Where's the conductor?" Crouching down in a seat somewhere on the

orchestra floor, he is pointed out by a group of children who gleefully shout out their discovery.

Frequently he calls on a little "guest conductor," contacted only minutes before.

"Don't tell them how easy it is to conduct or I lose my job," Schwieger whispers into the microphone to the pint-sized maestros.

Student Artists Children are prepared for their concerts by radio and television shows intended to give entertaining instruction and by a preparatory program in the schools.

Music department special assistants distribute in advance the program to be played by the orchestra, together with phonograph records, moving picture films and a "symphony concert preparatory sheet" of program notes for follow-through by teachers. The programs vary to fit the interests of the various age groups.

Each Fall the orchestra auditions student artists to choose guest soloists to be featured on the young people's concert programs the following season. The contest age groups or 12 to 16 and 14 to 18.

"Something Worthwhile" As only nominal admission fees are charged at the concerts the Kansas City Philharmonic Association makes up an annual deficit of about \$20,000 for the young people's program.

Schwieger considers the charges an important part of the program. "It is well to impress young people with the fact that symphony music is something worthwhile to buy—and not just something to be found on the streets," he said.



THE PRESIDENT IS A "GOOD SCOUT"—When President Dwight D. Eisenhower took his oath of office he also became Honorary President of the Boy Scouts of America. Like all presidents beginning with William Howard Taft, he automatically became the Scout's titular head upon taking the oath. He is the second President to have had an active relationship with the Scouts before entering the White House, sharing the distinction with the late President Roosevelt. President Eisenhower has been a member of the Boy Scout's National Executive Board since 1948. In 1946 he received Scouting's highest award, the Silver Buffalo, "for distinguished service to boyhood." Above, the then General Eisenhower joined hands with fellow scouts during the National Boy Scout Jamboree at Valley Forge in July of 1950, when Eisenhower was guest of honor and principal speaker at the celebration.

RED VETS RECALLED

HONG KONG —(AP)— Communist soldiers who were demobilized two years ago in South China's Kwangtung province and who are still under 35 are being called back to active service, according to reports from Canton. The newspaper Kung Sheung Jih Pao said in a Canton dispatch that about 2,500 recalled soldiers have been sent there for training.

Two Boys Take Crack At Safe

PORTLAND, ORE. —(AP)— A couple of boys, aged 9 and 10, were surprised recently by a company employee who caught the pair busily trying to break open a safe with hammer and screwdriver.

In their midnight foray in the sporting goods store the boys had originally planned to steal a bow and arrow set but when the safe was spotted they decided to have a crack at it. They claimed the job was masterminded by an "old-timer," a 13-year-old who waited outside.

Unicorns once were supposed to have the head and body of a horse, the hind legs of an antelope and the tail of a lion.



Not TV cowboys but real symphony music is what holds the rapt attention of the youngsters above, listening to (and watching) a scaled down performance of the Kansas City Philharmonic Orchestra. One boy (right background) even brought a telescope for a better view.

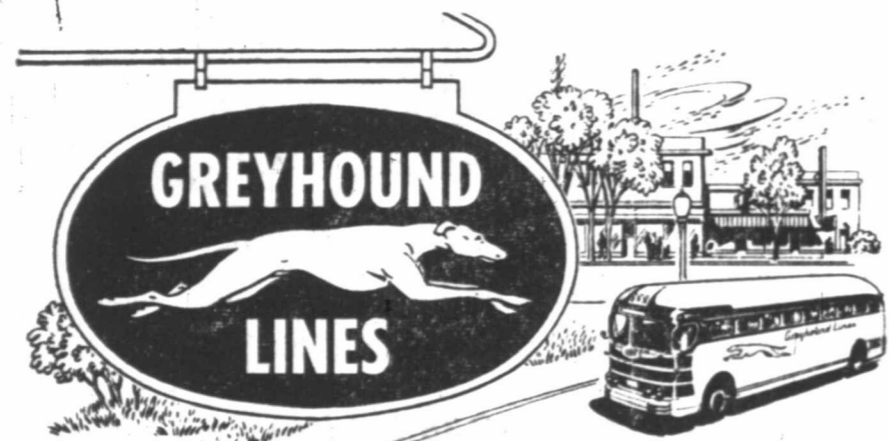
LESTER A. WALSH, D.S.C.

Chiroprapist — Chiropradial Surgeon
Announces the opening of his office for the practice of Chiropradial Surgery — treatment of foot ailments.

709 North Colorado St.
Phone 2-3648

German Consulate Reopening Planned

SINGAPORE —(AP)— Germany is to reopen her consulate here early in 1953 after almost 14 years, a German consular official said recently. Gottfried Kaumann, German consular general designate to Thailand, disclosed that by the middle of 1953 the North German Lloyd and Hamburg-American Lines will begin regular passenger-cargo services between Yokohama and Germany via Singapore.



SYMBOL of SERVICE
to West Texans for a quarter century

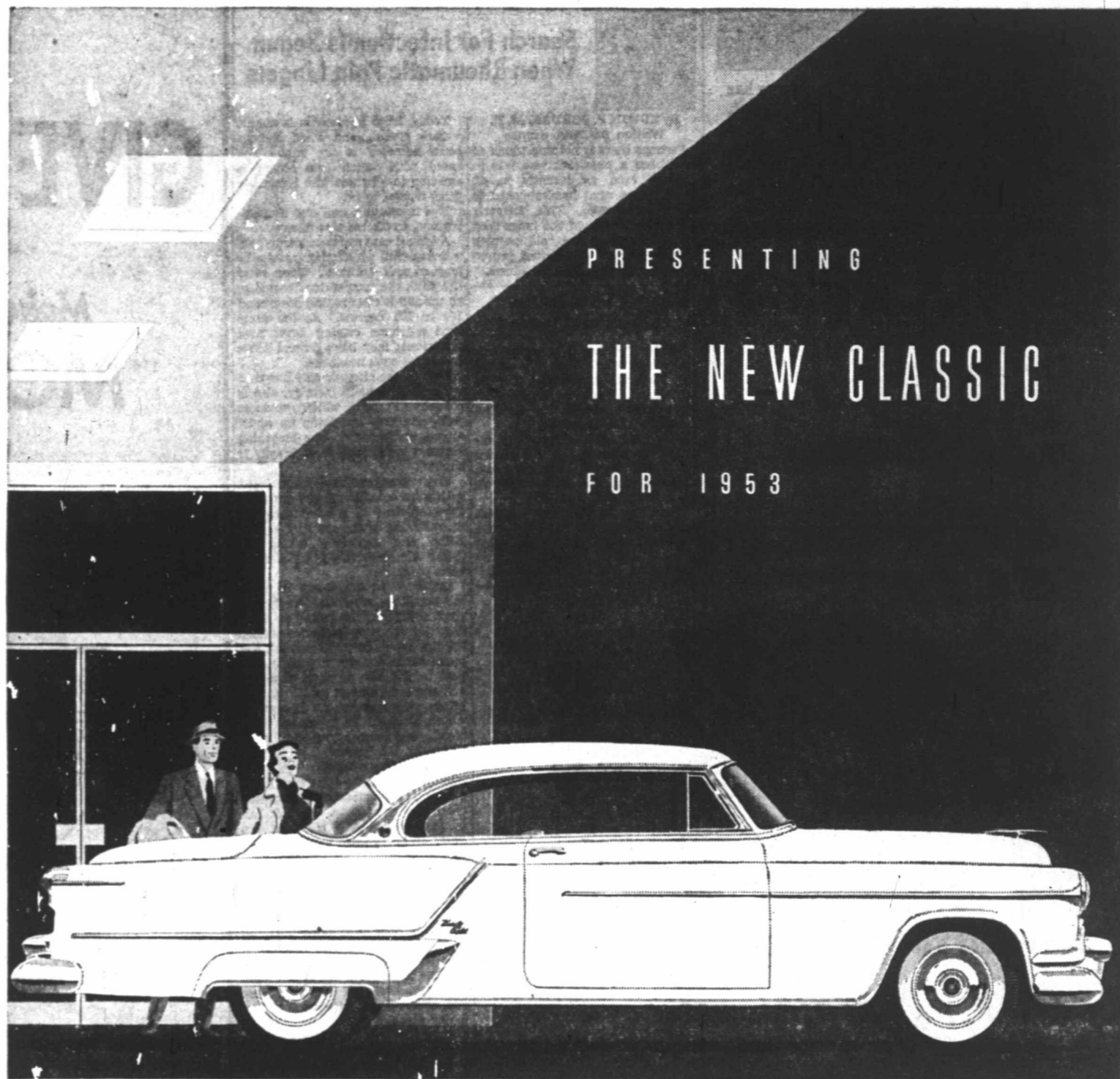
Greyhound buses and Greyhound people — including, of course, scores of West Texans — have served West Texas continuously for a quarter century!

Greyhound is proud of these years of friendly intimate association and of its part in the growth of West Texas. We shall strive to provide the finest service possible, so that we may continue to merit the confidence of West Texans who, by their support over the years have made "Greyhound" a name signifying the finest in highway travel.

GREYHOUND BUS TERMINAL

211 W. Indiana Phone 2-2761

GREYHOUND



Car illustrated above: Ninety-Eight Holiday Coupé. New Super "88" for 1953 also now on display at your dealer's. A General Motors Value.

Ladies and gentlemen, here is Oldsmobile's candidate for the best-looking, best-driving car of all for 1953. It's the glamorous new Ninety-Eight—the last word in "Rocket" engineering and Classic styling. That distinctive, long rear deck is balanced by a new longer "power" hood. The front-end is new, more dramatic. The chrome trim is new, more distinctive. The whole silhouette is new, more exciting. The interiors have been enhanced and "entranced" by new upholstery and Custom-Lounge Cushions*. Even the "Rocket" Engine is NEW— with higher power (165 hp.), higher compression (8:1), higher voltage (12-volt ignition). And to match this super performance, there's a new Power-Ride Chassis, new Pedal-Ease Power Brakes*, Power Steering*, and even Frigidaire Car Conditioning*! We're so sure that you'll fall in love with this newest Classic—this Oldsmobile Ninety-Eight for 1953—that we urge you to see and drive it soon. It's on display in our showroom now!

*Optional at extra cost.

"ROCKET" ENGINE

OLDSMOBILE

Ninety-Eight

SEE YOUR NEAREST OLDSMOBILE DEALER

ELDER CHEVROLET COMPANY • 701 W. Texas • Phone 2-3731

The output of soft coal in U. S. mines is about seven tons per man-day, which is an increase of 50 per cent in 15 years. It has been estimated that only about seven per cent of human physical variations can be assigned to causes other than inheritance.

• FLY CONTINENTAL AIRLINES •

BE THERE

instead of en route

Fly **CONTINENTAL**

ALBUQUERQUE
2 Hrs., 41 Mins.

DENVER
5 Hrs., 58 Mins.

OKLA. CITY
2 Hrs., 50 Mins.

Call your travel agent or Midland 3-3397.
Airport Ticket Office.

One of the scheduled airlines of the U.S.
CONTINENTAL AIR LINES

DEEPER GROW THE PRICE CUTS!... AS SHORTER GROWS THE TIME!

YOUR LAST AND FINAL OPPORTUNITY TO SAVE AS NEVER BEFORE

All Sales Tags Will Be Removed Saturday at 9 p.m.!

STORE RESTOCKED FROM END TO END

WORKING FAR INTO THE NIGHT—MOVING IN FRESH NEW STOCKS! MERCHANDISE PILED HIGH ON DISPLAY COUNTERS EVERYTHING PRICED EASY TO BUY THIS FINAL WEEK!

EVERY ITEM IN STORE MARKED WITH BOTH ORIGINAL AND SALES PRICES CLEARLY INDICATING THE HUGE SAVINGS!

Cash If You Have It! Credit If You Want It!

WHAT YOU SEE... IS WHAT YOU BUY WHAT YOU GET! FREE DELIVERY 100 MILE RADIUS!

Bentley's

THE "WONDER" STORE IN THE HEART OF DOWNTOWN STANTON, TEXAS

NO REFUNDS OR EXCHANGES NO PHONE ORDERS OR C.O.D. ORDERS. NO TRADE-IN'S ALL SALES FINAL

LAST AND FINAL 4 DAYS

GREAT \$100,000.00 STOCK LIQUIDATION SALE

Final Opportunity To Save Up To 60%

SWINGING INTO THE FINAL 4 DAYS IN A BARGAIN BLAZE OF GLORY!

When the clock strikes 9 Saturday night the hour TERMINATES the close of one of the GREATEST Furniture and Appliance Sales ever witnessed in West Texas. Crowds from adjoining counties—adjoining states participated in this SALE of SALES. People from Miles around CAME—SAW—BOUGHT. People descended upon BENTLEY'S—the "Wonder" Store—like a swarm of locusts. New and old customers alike went home happy. There must be a reason. Although thousands of dollars in fine FURNITURE—Appliances and Accessories went the first week there still remains COUNTLESS BARGAINS. Prices have been slashed UNMERCIFULLY for the grand finale. Easy credit terms to all even at these LOW LOW Prices. Regardless of traveling distance, it will pay you to shop this final parade of BARGAIN GEMS at BENTLEY'S—just 18 miles East of Midland on Highway 80. Don't miss it.

26 ONLY... NATIONALLY ADVERTISED BED ROOM SUITES All Must Go Wednesday thru Saturday! Dozens of Quality modern and conventional suites await your approval at the Bentley Galleries for the finale. Prices will thrill and amaze you—all on easy terms. MAHOGANY - LIMED OAK - WALNUT - MAPLE 119.50 to 299.95 VALUES ORDERED SOLD LAST 4 DAYS 89.95 To 249.50



THERE MUST BE A REASON FOR CROWDS LIKE THESE! THIS AD LISTS IN CAPSULE FORM ONLY A SMALL PORTION OF THE UNBELIEVABLE BUT TRUE VALUES ON SALE!

WEDNESDAY... JANUARY 21st... AT 8:30... BEGINS THE FINAL THRILLING CHAPTER!!!!

By Popular Demand Repeat Shipment Regular 9.95 TABLE LAMPS Modern - Conventional Plasti-Silk Shades Practical - Economical OUT THEY GO! 3.49	Final Opportunity Regular 23.95 FINE PLASTIC PLATFORM ROCKERS Mahogany Arm WHILE THEY LAST! 14.50	Comparable To 39.50 Value INNERSPRING MATTRESSES 180 Coil - A.C.A. Tick Quantity Limited— HURRY! 19.88	Final Chance! Regular 12.95 FLOOR LAMPS Practical - Decorative 6-Way Beauties BY SPECIAL PURCHASE! 5.95	Large Stock UNFINISHED FURNITURE BOOKCASES - DESKS DRESSING TABLES BAR BEDS - STOOLS RECORD CABINETS BENCHES - CHAIRS, ETC. 20% Off!	Regular 164.95 Famous Make ELECTRIC WASHER Deluxe Model Complete With Pump Time is Short!— HURRY! 129.95	All "Firestone" SEAT COVERS Auto - Truck - Pickups OUT THEY GO! 1/2 Price!
---	--	---	---	---	--	--

Tappan - Chambers - Philco Firestone - Okeefe & Merritt NATIONALLY ADVERTISED
GAS RANGES
124.95 to 339.50 Values
LAST 4 DAYS!
109.95 to 169.50

NEW SHIPMENT! NATIONALLY ADVERTISED
HIDE-A-BEDS
Reg. 259.50 Sellers
Finest Construction—6 Choice Covers
A Value Deluxe! **219.50**

Regular 359.95
4-Pc. Bleached Mahogany
BED ROOM SUITES
Bar Bed - Double Dresser - Hollywood Styled - Final Reduction
Save \$100.00 **259.95**

SMALL APPLIANCES
SENSATIONALLY REDUCED!

19.95 T-master Waf. Irons 14.95
21.95 Proctor Elec. Toasters 17.50
37.50 S'beam Cof. Makers 24.95
32.50 Asst. Waffle Makers 23.95
46.50 Universal Mixmstrs. 34.95
26.50 S'beam Elec. Toasters 21.95
23.50 Canfield Elec. Tostrs. 18.95
37.95 Presto Dixie Fryers 27.95
14.95 Nat. Adv. Elec. Irons 11.50

CHAIRS! - ROCKERS!
AT FINAL PRICE CUTS!

79.50 Plastic Plat. Rocker, 39.50
79.50 Frieze Spot Chair 39.50
89.50 Ranch Lounge Chair 49.50
89.50 Frieze Lounge Chair 49.50
29.95 Plastic Plat. Rockers 17.50
49.50 Platform Rockers 39.50
29.95 Tapestry Spot Chairs 19.95
23.95 Platform Rockers 14.95
59.50 Occasional Chairs 39.50
79.50 Rub. Foam Spot Ch. 59.95

MISCELLANEOUS

5.95 Enameled Bathroom Heaters 4.25
6.95 Non-Skid 24x45 Shag Rugs 3.95
5.95 Sturdy Folding Card Tables 3.95
6.95 9x12 Size Felt Base Rugs at 4.88
6.95 All-Wool Throw Rugs - 27x54 4.95

Entire Stock LINOLEUM Sacrificed!

24.95 Circulator Space Heaters 19.95
59.50 "Cavalier" Cedar Chests at 49.50
29.95 Thermolaire Space Heaters 24.65
29.95 Nat. Adv. Circulator Heaters 24.65
59.50 Spring Air Innerspring Mattresses 49.50
69.50 Mahogany Knee-Hole Desk at 49.50
89.50 Walnut Knee-Hole Desk at 69.50
249.50 2-pc. Wool Frieze Living Room Suites 169.50
229.50 2-Pc. Frieze-Velour Liv. Rm. Suites 149.50

249.95 "Domestic" Console Elec. Sew. Mach. 199.95
119.95 "New Home" Elec. Sewing Machines 99.50
129.95 Elec. Portable Sewing Machines 99.95

All Linoleum—Inlaid Linoleum—Reduced!
ALL COOK'S-ACME PAINTS 10 TO 20% OFF
ALL SOUTHLAND BATTERIES 20% OFF

REFRIGERATORS
AT FINAL REDUCTIONS!
249.95 8-Cu Ft. 199.00
319.95 11 Cu. Ft. Refrigerator 269.00

APPLIANCES
SACRIFICED IN PRICE!

449.95 Hot Point Elec. Range 399
299.95 Maytag Gas Ranges 269
176.95 Tappan Gas Range 149
124.95 Firestone Gas Range 109
109.95 Apartment Ranges 89
169.95 Electric Washers 129.00
89.95 Hoover. Vac. Cleaner 69.00

FAMOUS NAME BRAND
TELEVISION SETS
AND
Console Combinations
NEW 1953 MODELS
ALL TO GO AT SALE PRICES
339.50 Slightly Used Okeefe-Merritt Gas Range **169.50**

SPECIAL SHIPMENT, JUST UNCRATED!
2-PC. - NAME BRAND
SOFA BED SUITES
WOOL FRIEZES - MOHAIRS
Metallic Weaves - Velours
ALL KINDS - TYPES - STYLES
139.95 to 189.50
LAST CHANCE!
104.50 to 149.00
Sofa opens into full size bed!

Living Room TABLES
MAHOGANY - LIMED OAK - WALNUT
END-STEP-OCCASIONAL
TIER-CONSOLE-CORNER
11.50 To 49.50 Values
Last Chance—Final Opportunity
7.50 to 36.50

ALL THAT REMAINS IN FAMOUS... "FIRESTONE" Nationally Advertised
TIRES AND TUBES
20% Off!

Table Model RADIOS
21.41 Motorola's to go at 17.95
38.95 R.C.A. Vic.—going at 32.50
42.87 Zenith Port.—Choice 36.95
53.66 Tbl. Mod. Clock Rad. 44.95
39.95 Table Mod. Radios at 24.95
40.82 Motorola Clock Rad. 34.95

FAMOUS BRANDS
TO BE FOUND IN THIS GREAT SALE
—featuring Furniture and Appliances of Distinction... everything from the best that's good... to the finest made.

MENGEL - VIRGINIA HOUSE
BASSETT - SIMMONS - PHILCO
WESTINGHOUSE - HOT POINT
MAYTAG - ADMIRAL - NORGE
CHAMBERS - DIXIE - VIRTUE
MOTOROLA - ZENITH - BENDIX - R.C.A. VICTOR
COOK'S AND ACME PAINTS
COMPLETE LINE FIRESTONE PRODUCTS

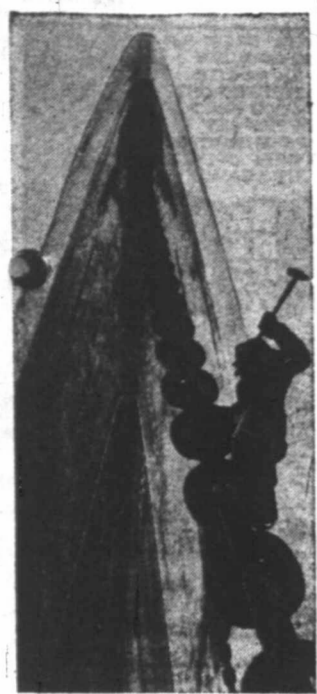
16 Only... 5-Piece Famous... "VIRTUE"
CHROME DINETTES
Assorted Colors - Plastic Tops
89.50 To 159.50 Values
FINAL 4 DAYS
69.50 to 129.50
NEW SHIPMENT—JUST RECEIVED!

CONCERNING DELIVERIES:-

The first 6 days of this selling event was a mad scramble of confusion. Everything was in a state of turmoil and confusion. Tens of thousands of dollars in fine merchandise was sold. This taxed our delivery department to the utmost. We have had 2 trucks in constant motion, however, and most sold merchandise has been delivered. If you have not received yours—it will be there soon. Please bear with us a little longer! Thanks.

FREE DELIVERY - 100 Mile Radius

SHOP!... COMPARE!... CHECK AND DOUBLE-CHECK!... TRY TO EQUAL THESE FINAL VALUES! REGARDLESS OF TRAVELING DISTANCE... DON'T MISS THIS FINAL PARADE OF BARGAINS!!



CHAIN DRIVE—Shipyard worker Alfred Johnson begins the long task of chipping rust from the Queen Elizabeth's 330 fathoms of bow anchor chain, as the huge liner lies in drydock at Southampton, England. The ship is getting an extra-special going-over in preparation for her Coronation Year sailings.

JACOBY ON CANASTA

By OSWALD JACOBY
Written for NEA Service

Every experienced Canasta player understands how important it is to make a base at an early stage of the play. This early base puts you in position to attack or defend, as circumstances may dictate.

A base consists of four or more natural cards in a single meld. For example, you may have four kings, or four queens, or four of anything else. You need at least four natural cards in any canasta, so those four natural cards are the base upon which you can add three more cards (either wild or natural) in order to complete the canasta.

A hand is seldom really hopeless when your side has made a base. As you and your partner accumulate wild cards, you can add them to this base to complete a canasta. Armed with that canasta you may find it possible to meld out and thus end the slaughter.

The really disastrous hand occurs when your side cannot meld a canasta and therefore cannot meld out.

The value of a base is chiefly defensive, but a base is useful also in the large number of hands in which both sides seem to have equal chances. At the beginning of such a hand you cannot tell whether you will be attacking or defending as the game progresses.

A base will not hinder your attack, and it will prove absolutely invaluable if you find it necessary to defend.

A base is not nearly so necessary if it is absolutely clear that your side is attacking. For example, if you happen to pick up the first large discard pile, your side can carry the attack to the enemy.

The opponents will try to meld out quickly, but your side will try to prolong the hand as long as possible. In this situation you don't need an early base, but you can usually afford to make one or two bases simply because you have cards to spare.

Q—We were playing Cut-Throat Canasta, and one of the players took the discard pile. I had a score of 3500 points, and my partner had a score of 1600 points. What do we need for the initial meld?

A—It depends on the score of the player who melds. Your partner, with a score of 1600, needs 90 points for the initial meld. You, with a score of 3500 points, need 120 points for the initial meld. It usually doesn't matter because in this game you get so many cards that you can easily meet any minimum count requirement.

Ban Is Sought On Bull Fights

TOKYO—(AP)—There is no bull fighting in Japan, but the Japanese Society for the Prevention of Cruelty to Animals is asking the government for a ban against the Spanish and Mexican sport. The SPCA's announcement said it was seeking the ban because of word from Spain that a group of bull fighters planned to come to Japan to introduce the sport.

Garbage Becomes Feed For Animals

CHICAGO—(AP)—Garbage is now fed and ground into saleable animal feed in Omaha, Neb., reports the American Public Works Association here.

The work is done by a local alcohol plant which is subsidized by the city at a monthly rate of \$2,500. The sterile feed produced from the dried garbage has 12 to 14 per cent protein content and resembles tankage, the report states. Omaha officials began experimenting with the drying system after the state legislature prohibited feeding raw garbage to hogs.

First dirigible powered by an electric motor, built in 1883, was the work of Albert and Gaston Tissandier, of France.

Daddy Ringtail

Daddy Ringtail And Would You Believe It?

On a dark, dark night, in a strange and dangerous part of the Great Forest—somewhere outside the circle of light that came from the campfire—a voice was cackling a dangerous laugh of a witch. "Cackle-ack-ack!" cackled the voice. "I am a witch!" There the voice came near and ever nearer to the fire where Daddy Ringtail was sleeping on the ground all rolled up in his blanket.



"Cackle-ack-ack!" laughed the witch. Daddy Ringtail sat up. He knew that a witch was a something that wasn't. He knew there weren't any witches. He said he knew it, but then the witch flew into a rage. Yes sir, she knew that a witch was something there wasn't any of. She knew there wasn't any witches.

Oh, but she thought maybe if Daddy Ringtail could see her, then he would think she was real. She said some magic words. Said she: "Ralls and snails and puppy dog tails! Skies and flies and hot apple pies!"

That's what the witch was asking Daddy Ringtail. "Now do you believe I'm a witch?" she asked. "Well," Daddy Ringtail said in a voice that showed he didn't believe it at all. "Welllll." The witch flew into another rage.

By Wesley Davis

and then she hopped on a broom and rode it around in the air—not high in the air, because she wanted to be seen by the light of the campfire, but still high enough that her feet wouldn't catch on the tops of the bushes. Around and around she rode, dodging between trees.

"Cackle-ack-ack!" laughed the witch that wasn't. Oh, she was happy indeed with trying to prove she was, and who would believe it? Daddy Ringtail didn't, and I don't either, and you shouldn't believe it, you know, but it's always fun to pretend as if it is right now. It is lots of fun. I think, don't you? Happy day!

(Copyright 1953, General Features Corp.)

Miss Your Paper?

If you miss your Reporter-Telegram, call before 6:30 p.m. weekdays and before 10:30 a.m. Sunday and a copy will be sent to you by a special carrier.
DIAL 3-3344

The BIBLE

-Can You Quote It?

LAVINA ROSS FOWLER

Copyright 1953

1—Hide not thy face from me in the day when I am in

Psalms 102:2.

2—For my thoughts are not your thoughts, neither are your ways...

Isaiah 55:8.

3—Sit on my right hand, until I make thine enemies thy

Hebrews 1:13.

4—For ye were as sheep going astray; but are now

I Peter 2:25.

5—Hast thou an arm like God? or canst thou thunder with

Job 40:9.

6—Rejoiceth not in iniquity, but rejoiceth in the

I Corinthians 13:6.

7—And if I go and prepare a place for you, I will

St. John 14:3.

8—Six correct—excellent. Four correct—good.

For wisdom, courage and peace read the Bible daily.

CONQUEST BANKERS

The House of Rothschild, famed money-lending organization, supplied the rulers of several European countries with resources to carry on their conquests.

OUR BOARDING HOUSE With MAJOR HOOPLE OUT OUR WAY

By J. R. WILLIAMS



HE WENT DOWN LIKE A DUSTED BATTER! I SHOULD PULLED THAT PUNCH—HIS FACE HAS GOT THAT CAULIFLOWER SHADE!

AM I OKAY? EGAD, SIR, CERTAINLY I'M OKAY, STRANGER!—BUT I SHOULD HAVE EXERCISED BETTER JUDGMENT THAN TO VENTURE OUT ON SUCH ICY STREETS WITH-OUT MY GALOSHES!

ARE YOU OKAY, MAJOR?

OKAY, YES, BUT A LITTLE BIT DREAMY—



DON'T EVER HANG ALL THE MEAT ON ONE BUILDIN', SODA—SCATTER IT AROUND!

WOODS SO DIED OUT IN THIS COUNTRY THAT TH' MINUTE WES STEPPED OUT O' TH' COOK SHACK IT TIPPED UP!—EVEN ONE QUARTER OF BEEF OPENS TH' SEAMS!

"NIGHT HERDIN"

J. R. WILLIAMS

SIDE GLANCES



"I'll tell the boys at the club I dropped in on you, Charley!"

CARNIVAL



"We're going to sponsor a little contest this month—the one who sells the most sweepers gets to keep his job!"



CHRIS WELKIN



WELKIN!



VIC FLINT



WASH TUBBS



WASH TUBBS



RED RYDER



RED RYDER



ALLEY OOP



ALLEY OOP



BOOTS



BOOTS



BUGS BUNNY



BUGS BUNNY



BUGS BUNNY

FRECKLES



FRECKLES



FRECKLES



FRECKLES



FRECKLES



PRISCILLA



PRISCILLA



PRISCILLA



PRISCILLA



HOMER HOOPER



HOMER HOOPER



HOMER HOOPER



HOMER HOOPER



DICKIE DARE



DICKIE DARE



DICKIE DARE



DICKIE DARE

French Weapons Too Small For Robbery, Ludwig Says, But Swiss Hotels Are Nice

By WADE JONES
NEA Staff Correspondent
PARIS — Ludwig Bemelmans, painter, sketcher, expert on hotels, and one of America's funniest writers—was not in what you would call a hilarious mood this day.

He had just finished a big re-creation project on Paris crime. "I'm only faintly funny thing I came across," he said, "was the way French thugs try to stage a hold-up."

"In the first place their guns are little .25-caliber affairs about the size of a cigarette lighter. When you see them you want to laugh. It's like someone pointing a match at you."

"Also, the French are so stingy the hold-up just doesn't work here. The victims would rather get shot with those little guns than give up their money. Attempted hold-ups usually result in arguments and the thug gets disgusted and goes away."

Bemelmans, a stocky, bald man in his late forties, was holding forth this particular afternoon at the Hotel Ritz, where he lives while in Paris and which he says is the best hotel in the world, bar none.

"While I was working on the crime business a steady stream of gangsters and thugs and detectives came through the hotel on the way to my room. The Ritz people were horrified, I guess, but they tried to look the other way."

"Also, there's a tremendous amount of cruelty to children in Paris. Partly this is economic. When a whole family lives in one room and one of the children cries the father is likely to get crazy and the child will get hurt. I have seen children in chains here."

Bemelmans can't stay off the subject of hotels for long. Which is natural, considering the fact he practically was raised in the six hotels which his family owns in Europe. And he once worked at the Hotel Ritz in New York, jumping from bus boy to a manager's job in one leap.

Unique Gadget Hooks Ride On Rocket To Examine Sun

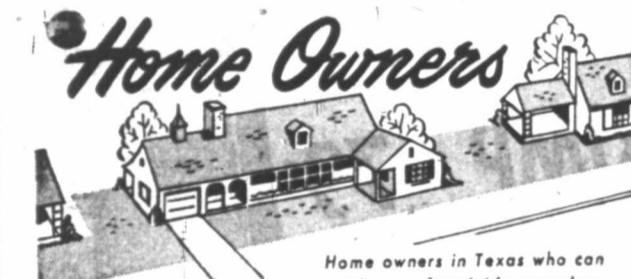
BOULDER, COLO.—(AP)—A rocket has carried an instrument designed by University of Colorado scientists 50 miles above the earth for the first pictures of the sun's spectrum in extreme ultraviolet wavelengths.

The rocket was fired last month at Holloman Research and Development Center, New Mexico, and results of the tests were announced later by W. B. Pietenpol, head of the university's physics department. He also is supervisor of the upper atmosphere research program.

city physicists have worked three years to perfect what he said is a sun-seeking device, or pointing control for high-altitude rockets. The electronic-mechanical object is designed to hold an instrument pointed at the sun while a rocket rolls and yaws in flight.



FROZEN FURY—On the thin edge of being airborne, a North American FJ-2 Fury is arrested by the camera as the swept-wing jet fighter is catapulted from the deck of the U. S. S. Coral Sea. Designed to operate at a speed of approximately 650 miles per hour, the Fury mounts four 20-mm. cannon.



Home Owners
Home owners in Texas who can qualify as preferred risks can reduce their fire, automobile and other property insurance costs by insuring with the Employers Casualty Company. Call the nearest district office and ask for full information about direct-writing plan which saves you money.

EMPLOYERS CASUALTY CO.
Serving TEXANS for over 30 YEARS
810 Wilkinson-Foster Bldg. MIDLAND Telephone 2-3741



BEMELMANS: Of disgraced thugs and excellent hotels.
by such artists as Toulouse-Lautrec, Renoir, and Matisse.
"What a man of taste! I said to myself. Then I found they were all imitations which the police had confiscated. But some were better than the originals."
He has decided that crime here

ITCH

Don't Suffer Another Minute
No matter how many remedies you have tried for itching eczema, psoriasis, infections, athlete's foot or whatever your skin trouble may be—anything from head to foot—WONDER SALVE and Wonder Medicated Soap can help you.
Developed for the boys in the Army—now for you folks at home.
WONDER SALVE is white, greaseless, antiseptic. No stinging. Safe for children. Get WONDER SALVE and WONDER MEDICATED SOAP—Results or money refunded. Truly wonderful preparations. Try them. Jar or Tube.
Sold in Midland by Cameron's, City, Palace, and Midland Drug Stores, or your hometown druggist.

TRAVEL CONTINENTAL TRAILWAYS

IT'S CHEAPER BY FAR THAN DRIVING YOUR CAR!

SAN ANGELO	\$2.55
BALLINGER	\$3.35
BROWNWOOD	\$4.90
STEPHENVILLE	\$6.30
FT. WORTH	\$6.95
DALLAS	\$7.70
CHICAGO	\$23.60
NEW YORK	\$35.20

plus Fed. Tax.

BUS TERMINAL
300 E. Wall Phone 4-8902

Get a Studebaker truck and cut costs in '53

Get stand-out gas mileage!

Save on upkeep, too!

Put your hauling costs on the downgrade all the way this year. Get a Studebaker truck and get pulling power that's earning power.

You get the big torque of the Studebaker Power-Plus engine for hefty hauling—the amazing efficiency of the Studebaker Econo-miser engine for lighter duty service.

Stop in and let us show you a Studebaker truck exactly suited to your needs.

A Studebaker's good looks pay off in good will

The streamlined design of a Studebaker truck attracts favorable attention. Your choice of 3/4, 1 and 1 ton pick-ups or stakes or powerful 1 1/2 and 2-ton models.

BROADWAY MOTORS
125 W. Missouri Phone 2-1671

WAKE UP Pepped up!

SLEEP COZY AND RELAXED UNDER ELECTRIC BED COVERING!

What a wonderful way your electric service helps you get the most out of life! A good night's sleep every night of the winter. The coldest weather never bothers your rest when you have electric bed covering... for with lightweight electric bedding you control night time weather with a flick of a switch. Make the best possible contribution to your family's health... assure them the sleep they need by spreading their beds with automatic electric bed covering, proved for over a decade in millions of homes. You'll find that all electric sheets, blankets and comforters come in an assortment of decorator colors to harmonize with many color combinations... and so important, you'll wake up to the wonderful fact that electric bedding costs so little to use.

Select automatic electric sheets, blankets and comforters at your favorite electric appliance dealer... and enjoy life!

TEXAS ELECTRIC SERVICE COMPANY
R. L. MILLER, Manager Phone 4-6641

At **FURR'S**

SUPER MARKET IN MIDLAND

We Reserve the Right to Limit Quantities.

MARYLAND CLUB
COFFEE Any Grind 1-Lb. Can . . . **69^c**

KLEENEX 200 Ct. Box . . . **10^c**

ORANGE JUICE
 TROPIC GOLD
 46 Oz. Can **25^c**

Food Club
Fruit Cocktail No. 303 Can **24^c** Waldorf
Tissue 2 Rolls **15^c**

Alaska Chum
SALMON Dixie Tall Can **33^c**

Betsy Ross
GRAPE JUICE 24-oz. Bottle **29^c**

Macaroni
SKINNER'S 7-oz. Pkg. **11^c**

Food Club
PEAS Sweet No. 303 can **19^c**

CLOROX Quart **17^c**

Spaghetti Skinner's 7-oz. pkg. **11^c**

BABY FOOD
 GERBER'S
 3 Cans **25^c**

NIBLETS
 CORN
 12-Oz. Can **18^c**

POTTED MEAT
 LIBBY
 Can **9^c**

Corn Beef Hash
 LIBBY
 No. 303 Can **32^c**

AVOCADOS
 California Salad King, Each . . . **12½^c**

CARROTS
 Fresh and Crisp Bunch **5^c**

FANCY PINKS TOMATOES Cello Ctn. **19^c**

NICE and FRESH BROCCOLI Pound . . **19^c**

CALIFORNIA ICEBERG LETTUCE Pound **12½^c**

FRYERS



FRESH DRESSED
 Pound **49^c**

FISH 39^c
Boneless Perch—Lb.

Frankfurters Skinless Pound **39^c**

BABY BEEF LIVER lb. **55^c** **FRESH SHRIMP** lb. **79^c**

BACON Tray Pac KC, Pound . . **49^c** **SAUSAGE** Farm Pac 1 Lb. Roll . . . **39^c**

Modart Shampoo
 87c Size **29^c**

WILDROOT CREME OIL, Reg. 75c size . . . **49^c**

JOY SUDS Bubble Bath **25^c**

HAIR TONIC Baker's Best, Reg. \$1.00 **89^c**

BROCCOLI
 Snow Crop Chopped Frozen, 10-oz. pkg. . . **15^c**

Strawberries Naturipe, 10½-oz. pkg. **25^c**

Corn Food Club whole kernel—10-oz. pkg. **19^c**

Peas Food Club—10-oz. pkg. **19^c**

Grape Juice Food Club—6-oz. can **19^c**