



Hotel sniper kills two in Wichita

WICHITA, Kan. (AP) — An 11-minute hail of sniper bullets from the top floor of a Holiday Inn raked shoppers and workers in Wichita's downtown area, killing two persons and wounding seven.

The gunfire on Wednesday from the top of the tallest building in Kansas ended when five police officers fired a volley of shots through a wall, wounding a 19-year-old man armed with two rifles.

The man, identified as Michael Soles of Sand Springs, Okla., was under guard at a hospital. He was reported in fair condition with leg wounds. Charges were expected to be filed today.

Victims of what witnesses said was apparently random firing from the 26th floor of the Holiday Inn Plaza included workmen and office

workers, shoppers, teenagers waiting to buy tickets to a rock concert and a news photographer who had rushed to the scene.

Dead were Joe Goulart, 56, a free-lance photographer killed when a bullet smashed through the windshield of his car the hotel; and Elmer W. Hensley, 57, a glass company worker, who died after he was struck in the back by a bullet as he stood on the roof of an adjoining building.

One of the seven persons wounded was in critical condition and two were listed as in serious condition.

Soles was described by relatives in Oklahoma as a "deeply religious boy" who had no history of trouble. A welder by trade, he had gone to Wichita several months ago seeking work, they said.

Friends and neighbors in

Wichita described Soles as friendly and personable, a chunky, red-haired young man who helped one man fix his car and was a babysitter for the children of the minister with whom he was staying. The minister, the Rev. Timothy Hutton, would not talk with reporters.

Scores of police converged on the Holiday Inn within minutes of the first shooting report at 2:54 p.m. Wednesday. Shots were already raining down on the street as police opened fire. Bullets spattered buildings and streets during a light drizzle.

"I must have heard 30 or 35 shots," said Dan Bachmann, an attorney in a neighboring building. "Then I saw him (the gunman) throw down what appeared to be two rifles. The next thing I saw up there were two or three police officers."

Among the seven wounded was Mark Falen, 23, a bank loan officer, who was in critical condition with a neck wound he received while walking to his office.

In serious condition were Arnold Merritt, 51, another glass worker who was hit in the chest and knee, and Denise Guseman, 16, of Derby, Kan., who was hit in the neck.

Penny Guseman, 17, sister of Denise, was treated and released after receiving superficial wounds on her

right arm and left leg. Also released were Janice Goodwin, 14, Chris Hoy, 24, and Larry Ade, 25, of Augusta, Kan.

At least two other persons were injured by flying glass during the shooting.

Witnesses said later they

had seen a man carrying two weapons, identified as a 30-30 bolt-action rifle and a .22 caliber semiautomatic with a telescopic sight, from a car to the hotel.

Local firm wins contract

SWEETWATER — A Big Spring company has been awarded a contract for the rehabilitation of seven buildings on the Rolling Plains Campus of Texas State Technical Institute in Sweetwater.

K-Lain Inc., submitted a bid of \$85,000, lowest of four submitted bids. The board of regents awarded the contract Monday.

The Sweetwater campus is one of four in the TSTI system which train students in a number of technical and vocational skills.

PHOTOGRAPHER KILLED — Joe Goulart, 56, a photographer whose zeal is chasing the news was legend, became a victim of his own news-hound instincts Wednesday when he rushed into the sights of a sniper atop a downtown Wichita hotel. He died instantly when a bullet hit him in the chest as he drove to the scene. He is shown here in 1974 photo.

DOUBLE GREEN STAMPS SATURDAY



Piggly Wiggly LOW PRICES

Prices good thru August 14, 1976. We reserve the right to limit quantities. None sold to dealers.

"Each of these advertised items is required to be readily available for sale at or below the advertised price in each store, except as specifically noted in this ad."



Piggly Wiggly

ICE CREAM
89^c

1/2-Gal. Ctn.

Piggly Wiggly
Liquid Bleach 1/2-Gal. Btl. **29^c**

Carol Ann
Salad Dressing Qt. Jar **49^c**

All Flavors
Wagner Drinks Qt. Btl. **29^c**

All Varieties (Except Hams) Frozen

Morton's Dinners
49^c

11-oz Pkg.



Heavy Aged Beef, Chuck

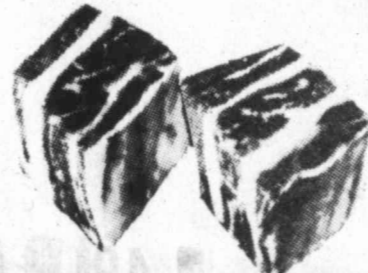
BONELESS ROAST
98^c

Lb.

Heavy Aged Beef
Rib Steaks Lb. **98^c**

Farmer Jones, (2-Lb. \$2.57)
Roll Sausage Lb. **\$1.29**

Columbia River, 1 or 2 Lbs. Each
Baby Salmon Lb. **\$1.17**
Salmon Steaks Lb. **\$1.19**



Lean Meaty Beef

SHORT RIBS
59^c

Lb.

Dry Cure, Shank, or Butt Portions, Cry-o-Vac For Flavor, Farmer Jones
Smoked Hams Lb. **89^c**

Banquet
Chicken Livers 1-Lb. Cup **79^c**

Delicious
Fillet Turbot Lb. **\$1.07**
Gorton's Ocean
Perch Lb. **\$1.45**



Pure Vegetable

PIGGLY WIGGLY SHORTENING
89^c

3-Lb. Can

Piggly Wiggly
Fresh Butter 1-Lb. Ctn. **\$1.19**

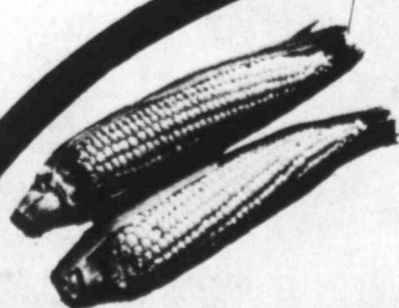
Kounty Kist Vacuum Packed, Whole Kernel
Golden Corn 12-oz. Cans **5 \$1**

Skin Care Cream
Rose Milk 8-oz. Btl. **\$1.13**

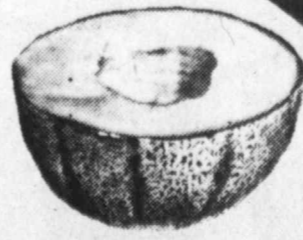
Piggly Wiggly Grade A

MEDIUM EGGS
59^c

Doz.



Fresh Field-ripe
Colorado Corn 8 Ears **\$1**



Great With Ice Cream
Pecos Cantaloupe Lb. **19^c**

Tony's Pizzas (All Varieties)

20^c OFF Reg. Price

WORKING TO SAVE YOU MONEY IS OUR JOB EVERY DAY



WE RESERVE THE RIGHT TO LIMIT QUANTITIES PRICES EFFECTIVE THRU 8-14-76.

WE REDEEM USDA FOOD STAMPS

CORN
CALIFORNIA GOLDEN BANTAM, EAR **7/1⁰⁰**

CANTALOUPE
CALIFORNIA'S FINEST LB. **19¢**

APPLES WASHINGTON RED DELICIOUS LB. **39¢**

BANANAS LB. **5/1⁰⁰**

PEACHES CALIFORNIA FREESTONE LB. **49¢**

CARROTS CELLO BAG EA. **5/1⁰⁰**

ROUND STEAK FURR'S PROTEN, LB. **98¢** ADV. SPECIAL

RIB STEAK FURR'S PROTEN, LB. **98¢** ADV. SPECIAL

CHUCK STEAK FURR'S PROTEN, LB. **69¢** ADV. SPECIAL

RANCH STEAK FURR'S PROTEN, LB. **79¢** ADV. SPECIAL

BEEF ROAST FURR'S PROTEN 7-BONE SHOULDER CUT, LB. **69¢** ADV. SPECIAL

PORK CHOPS FAMILY PACK ASSORTED FIRST CENTER CUTS, LB. **1⁴⁹**

SIRLOIN STEAK FURR'S PROTEN, LB. **98¢** FURR'S PROTEN FOR CHICKEN FRY, LB. **1⁷⁹**

CLUB STEAK FURR'S PROTEN, LB. **1⁴⁹** **ARM ROAST** FURR'S PROTEN ROUND BONE, LB. **98¢**

T-BONE STEAK FURR'S PROTEN, LB. **1⁵⁹** **PORK CHOPS** CENTER CUT, LB. **1⁸⁹**

STEW MEAT FURR'S PROTEN LEAN BONELESS CUBES, LB. **99¢** **PORK LOIN** COUNTRY STYLE RIBS, LB. **1²⁹**

CORN NIBLET'S GREEN GIANT 12-OZ. CAN **3/1⁰⁰**

NESTEA INSTANT TEA 3-OZ. JAR **1⁴⁹**

PREM LUNCH MEAT 12-OZ. CAN **99¢**

TIDE DETERGENT 49-OZ. BOX **1²⁹**



DOUBLE STAMPS ON SAT.

Frozen Food Favorites

ORANGE JUICE
100% ORANGE JUICE FROM FLORIDA. TOPFROST FRESH FROZEN, 6-OZ. CAN

4/1⁰⁰

COOKIES
KEEBLER RICH'N CHIPS OR PECAN SANDIES, 14-OZ. **79¢**

COFFEE MATE
11-OZ. SIZE **89¢**

STORE HOURS
Monday through Saturday 8:00 A.M. to 10:00 P.M.
Sundays 9:00 A.M. to 10:00 P.M.

HAMBURGER BUNS FROST 8-COUNT PACKAGE **3/1⁰⁰**

POTATO CHIPS PLANTER TWIN 9-OZ. **79¢**

DOG BURGERS TOPCO 72-OZ. SIZE **1⁹⁹**

GREEN BEANS FOOD CLUB CUT, NO. 303 CAN **4/1⁰⁰**

MAYONNAISE KRAFT QUART JAR **1¹⁹**

VANILLA EXTRACT SCHILLING'S 2-OZ. **69¢** **ICE TEA MIX** NESTEA 24-OZ. **1⁹⁹**

PARKAY
MARGARINE QUARTERS LB. **39¢**

PEANUTS
PLANTER'S COCKTAIL, 12-OZ. **98¢**
OLD FASHION, 11-OZ. **1⁰⁵**

SYRUP HERSHEY'S CHOCOLATE, 16-OZ. **47¢**

SYRUP BRER RABBIT BROWN LABEL, 24-OZ. **1¹⁹**

JUICE WELCH, GRAPE 24-OZ. **77¢**

PAM DRY FRY 9-OZ. **99¢**

NOVELTY TUBE SOCKS
MEN'S & LARGE, BOYS' EX-HEAVY. EACH SOCK HAS A PICTURE OF A SPORTS FIGURE STRIPE TOPS, PAIR **1⁴⁹**

BOYS' TUBE SOCKS
100% COTTON ASS'T. STRIPE TOPS 3-PAIR PACKAGE **1⁶⁹**

KNEE-HI SOCKS
GIRLS' FASHION FANCY, CHOOSE FROM A WIDE ASSORTMENT OF FASHION COLORS & PATTERNS PAIR **79¢**

CRAYOLA CRAYONS
BINNEY & SMITH 16-COUNT **48¢**

TOPCO SCHOOL PASTE
SNO-DRIFT 5 OZ. **23¢**

PENCIL TABLET
BIG CHIEF BY ST. REGIS, 8x12 **40¢**

holeproof SHEER KNEE HIGHS
COMFORT TOP BAND ASS'T. SHADES 1 SIZE FITS ALL 2-PAIR PKG. **49¢**

holeproof VENTILATED PANTY HOSE
NEW! COTTON CROTCH 3 BEAUTIFUL COLORS 2 SIZES FIT ALL PAIR **79¢**

holeproof ALL-NUDE PANTY HOSE
AMPLON, THE FIT THAT WON'T QUIT 3 COLORS 2 SIZES FIT ALL PAIR **2/1⁰⁰**

COMPOSITION BOOK
40-SHEET, 5-HOLE POLY WRAP PKG. OF 3 **1¹⁶**

NOTEBOOK PAPER
5-HOLE 300 COUNT **1⁰⁹**

SHOP Furr's MIRACLE PRICES

PECOS MELONS 5\$1 FOR

VINE RIFE CANTALOUPE

FLOUR
BIG K 25 LB. BAG \$2.69

BACON COLUMBIA SLICED 12 OZ. PKG 59¢

FRYERS

STEAK ROUND SIRLOIN CLUB YOUR CHOICE LB. 1.09

Fresh Dressed **PLUS** 43¢ LB.

TOMATOES

VINE RIFE LB. 19¢

HOME-GROWN VEGETABLES

FROM THE GARDEN OF BENNIE McCHRISTIAN — PICKED FRESH HOURLY — SO FRESH THEY SEEM TO HAVE BEEN GROWN WHILE YOU WAIT — DELIVERED TO OUR STORE 5 TIMES. EACH DAY. **PLUS**

OKRA • PEPPERS • FRESH PINTO BEANS • ZUCHINI • GREEN BEANS • BLACKEYES • SUMMER SQUASH • TOMATOES • BANANAS SQUASH • CUCUMBERS • ONIONS • PEACHES • APPLES • FRESH GREENS • FRESH ONIONS • FRESH PEAS • FRESH CORN • FRESH DILL • WAX BEANS

ONIONS

NEW CROP YELLOW SWEET LB. 5¢

SQUASH

YELLOW BANANA LB. 7 1/2¢

GRAPES

THOMPSON SEEDLESS "THE SWEET ONES" LB. 39¢

SQUASH

WHITE-TENDER-SUMMER FROM BENNIES' GARDEN FRESH HOURLY LB. 5¢

CABBAGE

FRESH CRISP LB. 3 1/2¢ **PLUS**

POTATOES

NEW CROP RUSSETS 10 LB. BAG 69¢

CHEER GIANT 49 OZ. BOX \$1.19

HAMS HORMEL BONELESS 3 LB. CAN 4.69

ICE CREAM GANDY 5 QT. BUCKET \$2.98

JEWEL GIANT 42 OZ. CAN 89¢

PEACHES DEL MONTE GIANT 49-OZ. CAN 49¢

GREEN BEANS DOUBLE LUCK 15 OZ. CANS 6 FOR \$1

CORN OR PEAS JOAN OF ARC GOLDEN SWEET CREAM STYLE CORN 16 OZ. CANS 4 FOR \$1

CRISCO 3 LB. CAN \$1.29

CORN DEL MONTE 16 OZ. CANS 3 FOR \$1

PINTOS BULK SACK YOUR OWN 4 LBS. \$1

PARKAY 1 LB. QUARTERS

GREEN BEANS DEL MONTE — CUT 16 OZ. CANS 4 \$1

TOMATO JUICE TOMATO 46 OZ. 49¢

PEACHES ARCO GIANT 29 OZ. CAN 39¢

SPINACH DEL MONTE 16 OZ. CAN 4 For \$1

SUGAR HOLLY 5 LB. BAG 99¢

PEARS DEL MONTE GIANT 29 OZ. CAN 59¢

FRUIT COCKTAIL DEL MONTE 29 OZ. CAN 59¢

CAKEMIX PILLSBURY 4 VARIETIES 49¢

MIRACLE WHIP KRAFT FULL QUART 89¢

SUPPLIES FOR HOME CANNING AND FREEZING

FLOUR GLADIOLA 5 LB. **PLUS** 69¢

NEWSOMS

DOUBLE STAMPS FRIDAY AND SATURDAY



CHUCK POT ROAST
USDA CHOICE BEEF CHUCK
BLADE CUT
LB. **68¢**



SLICED BACON
PEYTONS DEL NORTE HICKORY SMOKED
LB. PKG. **\$1.49**



7-BONE CHUCK STEAK
USDA CHOICE BEEF CHUCK
LB. **98¢**



SAUSAGE
SIGMANS PURE PORK OR DOUBLE DELITE
12 OZ. PKG. **69¢**



Kids love
tyson WIENERS
made with chicken
TASTES LIKE THE OTHER KIND—ONLY BETTER
LOW IN CALORIES—HIGH IN PROTEIN DELICIOUS AND MONEY-SAVING, TOO!
69¢

MEAT SPECIALS
FOODWAY DISCOUNT FOODS

ARM CHUCK ROAST USDA CHOICE BEEF CHUCK LB. **98¢**
BEEF FOR STEW USDA CHOICE LEAN BONELESS LB. **\$1.09**
LAMB SHANKS NEW ZEALAND GENUINE SPRING EXCELLENT FOR COOKOUTS LB. **79¢**
LONGHORN CHEESE BLOCK STYLE LB. **\$1.39**
CORN DOGS LITTLE BOY BLUE LB. **99¢**
FISH FILLETS VAN DEE CAMPS HEAT & EAT 24 OZ. **\$2.62**
HALIBUT VAN DEE CAMPS HEAT & EAT 20 OZ. **\$3.45**

SUPER SPECIALS!

NO PEST STRIPS SHELL EACH **\$1.79**
SUGAR C&H CANE 5 LB. **99¢**
FREE 2 32-OZ. COCA-COLA WITH PURCHASE OF 4 32-OZ. MR. PIBB FOR **99¢**

SUPER SPECIALS!

EGGS KOUNTRY FRESH GRADE AA MED. DOZ. **65¢**
NAPKINS ZEE 100 CT. **3 FOR \$1**
MARGARINE BLUE BONNET LB. 1/4's **39¢**

LIQUOR DEPARTMENT

OLD MILWAUKEE BEER 6 PK — 12 OZ. CANS By The Case **\$4.49**
BEER TEXAS PRIDE 6 Pk. — 11 Oz. N.R.'s **1.09**
WINE (Red Mountain Decanter (Rose — Chablis — Burgandy) Litre **1.39**
CHAMPALE 4 Pk. 8 OZ. BOTTLES Qt. **1.59**
GOOD ONLY AT STORES WITH LIQ. DEPTS

BETTY CROCKER TUNA HELPER
8 OZ. **59¢**

CHICKEN OF THE SEA CHUNK LIGHT TUNA
6 1/2 OZ. **2 FOR \$1**

GANDY'S SHERBET All Flavors
1/2 GAL. **89¢**

JOAN OF ARC CORN WHOLE KERNEL OR CREAM STYLE
4 FOR \$1.00
PEAS **5 FOR \$1.00**

FRUIT-VEGETABLE SPECIALS

FRESH NECTARINES LB. **29¢**
BARTLETT PEARS LB. **29¢**
FRESH PEACHES LB. **29¢**
SWEET RED PLUMS LB. **29¢**

APPLE BUTTER KOUNTRY FRESH 16 OZ. **39¢**

VIENNA SAUSAGE SWIFTS 5 1/2 OZ. **3 FOR \$1**

CAT FOOD FRISKIES 15 OZ. **6 FOR \$1**

DOG FOOD HUSKEY 15 3/4 OZ. **8 FOR \$1**

WE ACCEPT USDA FOOD STAMPS

GREEN CHILIES MT. PASS DICED 4 OZ. **3 FOR \$1**

TISSUE MARINA BATHROOM 4 ROLL **69¢**

PRESERVES KOUNTRY FRESH STRAWBERRY 18 OZ. **79¢**

CASCADE KING SIZE 20" OFF LABEL 50 OZ. **1.29**

ERA GIANT LIQUID 32 OZ. **1.19**

MOTOR OIL MOBILE 30 WT. QT. **57¢**

DAIRY SPECIALS

BLUE BONNET MARGARINE (SOFT) 2-8 OZ. TUBS OR LB. TUB YOUR CHOICE **66¢**
COLBY Kraft 12 OZ. **1.29**
BISCUITS Big K 10 CT. **5.59¢**
MILK Kountry Fresh GAL. **1.59**
COTTAGE CHEESE GANDY'S 24 OZ 99¢ 12 OZ. **49¢**
WHIPPING CREAM GANDY'S 1/2 PT. **39¢**

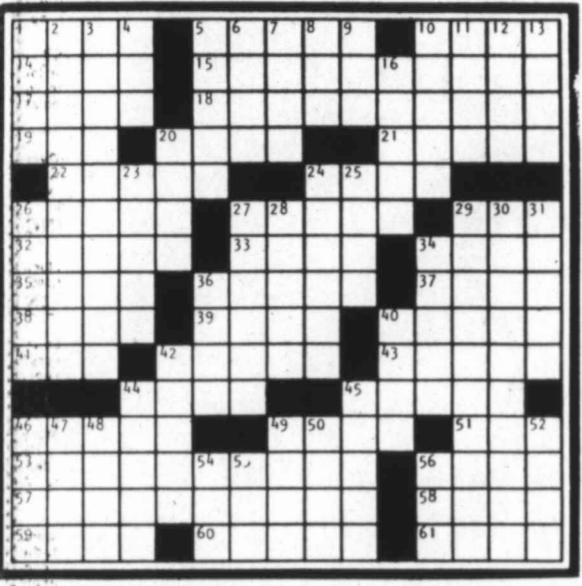
FROZEN FOODS

MORTON'S DONUTS GLAZED or JELLY 9 OZ. **69¢**
ORANGE JUICE Libby's 6 OZ. **3.87¢**
LEMONADE LIBBY 6 OZ. **5.51**
BROCCOLI SPEARS Kold Kountry 10 OZ. **43¢**
PEAS or CUT CORN Kold Kountry 10 OZ. **4.51**
PIZZA Totino's (Cheese, Sausage Hamb., Pepperoni) 13 OZ. **99¢**

et
host school
dian Lee,
ian Angelo
ined boys'
t was ap-
ril 15 at the
ol in the 5-
volleyball
and girls'
ace in San
atus
adjourned
accept the
s—who as
rd Raskind
at Forest
y through a
ats will be
ther or not
pete in the
RBI triple
l's two-run
Dierker
as his most
ST. LOUIS
abr h bi
npry of 5010
plein as 4000
k if 4120
yans c 4020
anz lb 3010
spon r 4011
inger 2b 3000
ruz 3b 4000
ny p 1010
awtd ph 1000
is p 0000
xsky p 0000
ris p 1010
ace p 0000
ty ph 1000
al 35191
100 000 000-8
000 000 000-1
ron 1, ST. Louis
ouis 9, 28-Her-
Al, Harris, 30-
H R R B B 50
7 4 3 1 1
3 3 3 3 2 2
3 2 1 1 0 0
2 0 0 1 1

CROSSWORD PUZZLE

- ACROSS 1 on (reg-ster) 5 Miles 10 Kind of talk 14 "Yes..." 15 Hawaii's nickname 17 Dead: Fr. 18 Painter's field 19 Tarradiddle 20 Marshy places 21 Perch 22 Ageient Celtic priest 23 Bird 26 Angles Yesterday's Puzzle Solved: 27 Dress up 29 Kind of blanket 32 Dark 33 Dress trimming 34 Hack 35 Computer input: abbr. 36 Acts the angel 37 Relative of etc. 38 Back talk 39 Noted writer 40 " - of robins..." 41 Letters 42 Nerve 43 Military group 44 European river 45 Mel of song 46 La -- Milan 49 Name in fashions 51 Historical time 53 Brando movie locale 56 King 57 Prophetic revelation etc. 58 By -- (from memory!) 59 Leaning tower 60 Musical signs 61 Understood

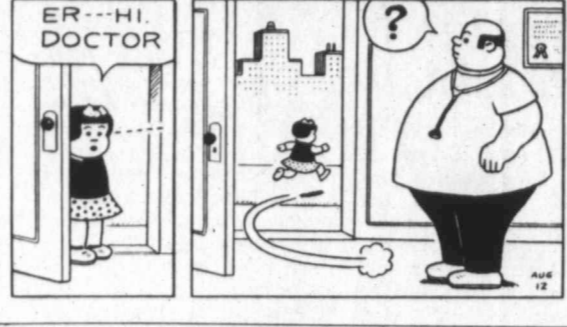


DENNIS THE MENACE



AN TWO BANANA SKINS AN A PEACH SEED SEE? WE'RE NOT TRYIN' TO STEAL NOTHIN'!

NANCY



BLONDIE

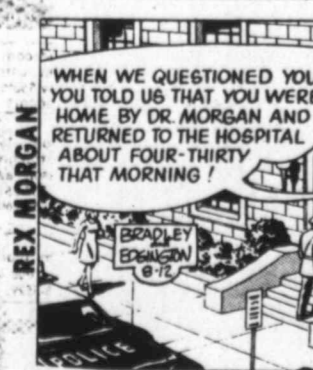
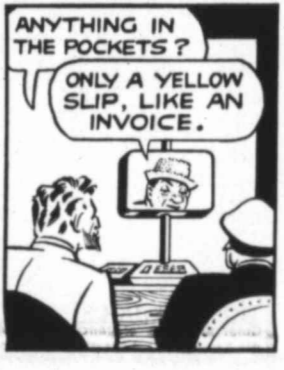


Your Daily HOROSCOPE from the CARROLL RICHTER INSTITUTE

FORECAST FOR FRIDAY, AUG. 13, 1976
GENERAL TENDENCIES: You have new ideas which are generally good but there are some obstacles that need to be worked out...

JUMBLE - that scrambled word game

Unscramble these four Jumbles, one letter to each square, to form four ordinary words.
RAPAK
MYKOS
HALTEL
SHATAM



Real Estate and other advertisements on the right margin, including '3 Bed garage Heating through per c Locate and the makin Ben O' San Ar' and 'W F'.

