

# the Spearman



# REPORTER

VOLUME 64, NO. 44 THE SPEARMAN REPORTER, Hansford County, Texas 79081 THURSDAY, SEPTEMBER 20, 1973

## SPORTS ROUNDUP

**BIG FOOTBALL WEEK-END COMING UP**---Footballs will fill the air in Spearman this week-end. First, the varsity will journey to Sunray for a real challenge, as they meet another of those classy Class A teams in the area. The 9th grade is scheduled to play Dalhart Saturday at 11:30 Saturday. The "B" team will also journey to Dalhart for a 9:30 a. m. game, Saturday morning. The 7th and 8th grades will play here Thursday at 5 p. m.

### Mrs. Wilma Clark Suffers Injury

School teacher, Mrs. Wilma (Don) Clark received a broken leg in a fall at the school house Tuesday noon. The break was extensive, and Mrs. Clark was taken to the local hospital, where the leg was set.

### Revival Services To Feature Two Local Musicians

Rev. Winston J. Barker, Pastor of the Apostolic Faith Church at 9th and Drensen announces a Revival to start September 19, Wednesday night at 7:30, with Rev. Roland Busch of Katy doing the preaching each evening. Wednesday and Thursday night, will feature Mr. Eddie Gail Martin's singing and playing the organ and piano. Friday and Saturday and Sunday nights, Miss Rosemary Burkhart will be featured with her singing.

### Homecoming Dance Planned For Sept. 28

A Homecoming dance will be held September 28 after the football game in the Community Building. The dance is being sponsored by the cheerleaders, and co-sponsored by the junior and senior classes. Cost is \$3.00 per person or \$5.00 per couple. The musical group "Friends" will be playing for the dance which will be held from 10 to 1 Friday night.

### Two Men Jailed After Disturbance

Two men were jailed here for fighting this week. Lynn Mark Crooks, and Danny Lawson Darden, both 18 years old were jailed by city police for aggravated assault on a peace officer. The disturbance allegedly took place in front of the 7-11 in Spearman, Sunday night. City Patrolmen Bill Martin and Jim Ratliff, made the arrest. Deputy Martin was injured and had to have 7 stitches in his hand after the fight with the boys. The two were charged in both municipal court and county court. The municipal court fined them \$50.00 each for being drunk. County court fined them \$200.00 for aggravated assault on a peace officer, plus court costs \$30.80 and each was given 6 months in jail, to be served in full, at the Spearman jail, Hansford County.

Two drunks were arrested early Wednesday morning. Andrew Jake Templeton, 46 and Cecil Wright, 57, were both arrested for allegedly being drunk Wednesday morning, on a DWI.

At about 10 a. m. Wednesday morning, a small boy was found walking between Spearman and Gruver, about 3 miles West of Spearman. The boy had left school at Spearman, and deputies soon found his parents and he was returned to them. He had just "up and left school for no reason".



Rick Higgins, manager of the Spearman Oil-Products office, is shown above with a used bouquet of flowers. The new used car dealer is going full swing at his new Spearman plant.

### Weather

Date	Hi	Low	Prec.
Sept. 12	85	63	
13	92	54	
14	87	55	
15	83	59	
16	71	45	.05
17	61	44	.09

### Markets

WHEAT	34.65
MILK	4.20
CORN	2.45
BARLEY	1.90

## Robert Cochran Is Semi-Finalist In National Scholarship Program



ROBERT COCHRAN

Principal Kenneth McKay has announced that 1 student from Spearman has been named Semifinalist in the 1974 National Merit Scholarship Program.

The student is Robert Cochran. He will compete for about 3,100 Merit Scholarships to be awarded in the spring. In the eighteen annual competitions completed to date, 34,450 students have won Merit Scholarships valued at more than \$95.5 million.

According to Edward C. Smith, president of National Merit Scholarship Corporation (NMSC). "The approximately 15,000 Semifinalists are representative of the nation's most academically talented young people, and they bring honor not only to themselves, but also to their families, their teachers, and their communities."

"From this group will come many future leaders in business, industry, and the professions," he said. "The future success of these young people will, however, depend upon their ability to become productive at the high intellectual levels that they are capable of attaining."

The Semifinalists were the highest scorers in each state on the Preliminary Scholastic Aptitude Test/National Merit Scholarship Qualifying Test (PSAT/NMQST) administered last October to over one million students in about 17,000 schools nationwide. These students, who constitute about one-half of one percent of the graduating secondary school seniors in the United States, will complete high school and enter college in 1974.

NMSC identifies the Semifinalists to all regionally accredited U. S. colleges and universities. Many Semifinalists find this recognition useful in seeking financial aid from sources other than the Merit Program and in the process of gaining admission to college.

Semifinalists must qualify as Finalists to advance in the competition for Merit Scholarships. To become Finalists, the Semifinalists must fulfill the requirements that include receiving the endorsement of their schools, confirming their high PSAT/NMQST scores on a second examination, and by providing evidence of their academic and other accomplishments. Ninety percent or more of the

### Oscar Donnell Injured In Wreck

Oscar Donnell was injured over the week-end, when he had a blow-out East of Spearman. Donnell was returning home from a trip visiting his folks, when a tire blew out on the car, and the car smashed through the fence, into a listed field. The accident occurred near the Northern Natural plant, Southeast of Spearman. Donnell did not turn-over, and managed to get on home. He went to bed, and awoke the next morning, to find that he had a broken arm, and numerous bruises. He was taken by ambulance to the hospital in Spearman, where he is recovering at this time.

## LOCAL TAXABLE PROPERTY IS \$5,639 PER CAPITA

What is the assessed value of property in Hansford County? To what extent has this total, which serves as the base for local taxes, changed in the last few years?

With people all over the country concerned over their steadily mounting property taxes, a look at the local assessment situation is in order.

Such a look has just been taken by the Census Bureau as part of a nationwide survey of state and local government operations that it makes every five years. The findings, just released, are contained in its "1972 Census of Government."

They show that, in Hansford County, where the property tax is the principal source of revenue for local government needs, the assessed value of property subject to such tax amounted to \$37,223,000. This compares with the total reported five years ago, \$31,518,000.

It was an increase of 18 percent. Elsewhere in the United States assessments went up 43 percent, on average, and in the State of Texas, 46 percent.

Assessed valuations are not to be taken as true market values, it is noted, since property is assessed in most communities for tax purposes at something less than actual value.

The tax rate that is applied to the assessed value is the other factor in determining how big the tax bills are.

In terms of population, the tax base in Hansford County was equivalent last year to \$5,639 in taxable property per local resident.

Throughout the United States, the average was \$3,061 per person and, in

the Southern States, \$2,772. Property assessments, as well as tax rates, have been increased in most parts of the country in the last few years as local communities, confronted with bigger operating costs, were forced to seek additional revenue.

Nationally, the assessed valuation of locally-taxable

property has jumped from its 1967 figure of \$442 billion to a total of \$641 billion. As a result, property taxes collected by local communities in the past year amounted to \$36.7 billion, a 46 percent increase over the \$25.2 billion collected five years ago.

## Hansford County Receives Cancer Society Award

Members of the Board of the Hansford County American Cancer Society met Monday evening in the Conference Room of Judge Johnny Lee president of the governing body this year to discuss objectives for the year's activities.

Reports were submitted by various committee chairmen outlining goals to be reached during the year. A report by the Treasurer Freeman Barkley indicated that Hansford County has received the Golden Achievement Award for an all time high reached during last spring's crusade. Also included in this type of award is that a county must raise at least 35¢ per capita and Hansford County succeeded in raising almost \$1.00 per capita a feat which is indicative of the support ACS receives in Hansford County for the work which they are carrying on. There were eleven out of the 20 counties in District 15, of which Hansford County is a member receiving the Golden Achievement Award.

Hansford County with Mrs. James Stejda as Crusade Chairman received commendation also for turning in a total of \$5,563 which is 103% of the best year prior to this and accomplished the amazing feat of attaining 243% of the Division Goal for the year. Of the total, \$4,511 was accrued during the Crusade campaign and \$1,052 was from Memorial funds.

Report of the Health and Education Chairman Mrs. Elmo McClellan, Jr. was presented in absentia by Mrs. A. R. Bort with other chairmen. Service, Mrs. Blanche Taber; Public Information, Mrs. Vivian Clark; Publicity, Mrs. W. L. Maupin; Memorials, Mrs. Ted McClellan being presented during the evening for the Board's ultimate approval.

John Altus, Executive Director from Amarillo, gave a report on the Annual District meet in Lubbock during the summer where 24 people from District 15 were present. Important was the previewing of the American Cancer film "Learning to Live" documentary by the University of Texas as available for use by groups during the year such as PTA, and other community groups. He followed this with a report of the Division Annual Meeting held in Houston.

The group voted to hold meetings on the 2nd Monday every other month with the next two, November and January, set for Spearman and then alternating between Spearman and Gruver with all people from Spearman, Gruver, Morse, and the County invited to attend. A special event for October will be the Bikeathon--with details of this project to be publicized in the near future.

Attending the Board meet were Judge Johnny Lee, Mr. Freeman Barkley, both of Spearman; Mesdames Ted McClellan, Vivian Clark, Blanche Taber, W. L. Maupin, and A. R. Bort from Gruver; John Altus, Amarillo, and Mrs. Earl Riley of Spearman, a guest.

### HOSPITAL NEWS

Patients in Hansford Hospital are Louis Smith, Edythe Curlee, Russell Townsend, Vernon Southerland, Jackie Sampson, Wilma Clark, Davonna Harris, George Buzard, Ward Spivey, Sammie Bishop, Joan Weaver, and Oscar Donnell.

Dismissed were B. J. Grayson, Jimmy Beeson, Gordon Parrish, Esperanza Puentes and daughter, Dale Reger, Virginia Martin and son, Dan Nethery, Bob Collier, Rae Butler, Eleanor Sanders, Dave Hand, Sr., Phyllis Sturgeon, Rita Underwood and Bertie Lewis.

### Robert Stayton Seriously Ill

Robert Stayton was reported late Tuesday as slightly improved in the Cardiac Intensive Care Unit on the 2nd Floor of St. Anthony's Hospital in Amarillo. The Unit requests no flowers and no visitors except family--however, there is a lounge nearby where family may visit with friends.

**DON'T MISS SEEING THE NEW CARS IN SPEARMAN THIS WEEK-END...**



This interior view of the new "Bunkhouse" gives shoppers an idea of the beauty of the new store, which held open-house last Saturday. The new western-shopping center is owned by Edward Dear, and Dr. Wesley Garnett. It is located on main-street, in down-town Spearman.

### BULLETIN

Late word from officials in Spearman stated that Sheriff Cooke was not expected to live through the day. The Sheriff suffered a severe stroke at about 10:00 A. M., Tuesday. He was rushed to High Plains Baptist Hospital Tuesday afternoon and at 10:00 A. M., Wednesday morning word was received that he was not expected to live through the apparent stroke.

### Services Held For Ella McGuiney

Funeral services were held Saturday morning at the United Methodist Church for Miss Ella McGuiney, Spearman resident.

Rev. Wesley W. Lynch, pastor of the church, officiated. Miss McGuiney was 64 years old. Friday morning services were held at her home where she had resided for six years.

She was in Hansford County under the direction of the Brothers Funeral Home.

Bearers were great-nephews, Lynn Davis, Tom Womble, David Reid, Bill Womble, Lynch, Honorary nephews, Clay Gibney, Ben Barkley, Ben Upchurch, W. H. Gandy, P. A. Hart, and T. I. Hartbour. Miss McGuiney was born in Spearman and came to Hansford County with her late husband in 1911. They later lived in Hansford County and lived with her late Dan McGuiney until 1944 when they moved to Spearman.

She was a member of the United Methodist Church and her survivors include a niece, Mrs. Lynch of Spearman, nephews, L. M. Womble, both of Spearman, and Henry Reid of Spearman and service Reid of Spearman.



# School Board One Of Top Six

The Board of Education of the Spearman Independent School District has been chosen as an "Honor School Board" and as such is a nominee for the "Outstanding School Board of Texas" award for the 1972-73 school year. The outstanding school board will be selected from the six honor boards and will receive recognition and a plaque at the joint convention of the Texas Association of School Administrators and the Texas Association of School Boards on Sunday, September 30, in San Antonio. Each honor board will also be recognized and presented an award at that time.

The awards program for school boards is a relatively new honor since it was inaugurated in the 1971 convention. The purpose of the award is to recognize and focus attention upon the dedicated and ethical service rendered by boards of education as exemplified by the Honor Boards and Outstanding Boards selected each year.

Some of the qualities considered in the selection of honor boards were: (1) the extent to which the board functions as a policy making and appraisal body, (2) the adoption and circulation of written policies, (3) the financial support provided for operating the educational programs, (4) service and actions which indicate that the board puts the welfare of the children and school above personal and political motives, (5) the participation by the board in activities designed to improve their performance, (6) the loyalty of the board members to decisions made by the board as a whole and (7) adherence by individual board members to the code of ethics adopted by the Board of Directors of the National School Boards Association.

When judged by this cri-

teria the Spearman board was selected as one of the top six school boards in the state. The Spearman school board was particularly cited for construction of a new field house, all-weather track, and air conditioning all school buildings, expanding the vocational programs, maintaining the pupil-teacher ratio at 1-16, maintaining salary schedule at \$1,000 above State minimum, providing complete central libraries on all school campuses, and adding additional staff members to provide better service.

## Bob Bullock Says Comptroller Office Should Be Elective

AUSTIN, TEXAS--Bob Bullock, candidate for State Comptroller, said today "The taxpayers of Texas can expect a mess of pork-barrel spending if the Office of Comptroller is made appointive."

The Constitutional Revision Commission, overruling its staff and committee recommendations by a vote of 14 to 13, has suggested that the Legislature determine whether the office be elected or appointed by the Governor.

"One of the fundamental principles of our present Constitution, which the Revision Commission has voted to retain, is the pay-as-you-go plan. Under this system of budgeting, which has succeeded in keeping Texas out of debt, the Legislature cannot spend more money than it

collects in taxes and the Comptroller must certify that revenue will be available to pay for the spending bills," said Bullock.

"Thus, the Comptroller is a valuable element in our system of checks and balances when it comes to State spending and protecting the taxpayers."

"If the Comptroller is appointed by the Governor, subject to Senate confirmation and not directly responsible to the voters, he will be under intense pressure to certify every pet spending procedure and rigors of Senate confirmation, it will take more than some appointed political crone, favored because of his loyalty and campaign assistance, to stand the heat."

"Frankly, elected officials are nearly always more responsive to the needs of the people than appointed officials, who owe allegiance only to those responsible for the appointment. In my campaign, I have been out among the people in more than 150 Texas cities, and the people want elected officials, not appointed bureaucrats who run their government by remote control."

"If Texas is to retain its pay-as-you-go balanced budgeting system and not engage in deficit spending as the Federal government and so many other states do, it is essential that the Comptroller be elected."

## news from your HOME DEMONSTRATION AGENT

by Nellie Evans

We hope you have reserved September 28 on your calendar. To do so may save your life or that of someone you love.

A Heart Seminar will be held at the high school auditorium in Perryton on Friday, September 28 from 9:00 a.m. to 3:30 p.m. Doctors Bluford Johnson and Eugene Waide of Perryton have assisted the Family Living Committees of Hansford, Ochiltree, Hemphill and Lipscomb Counties and the American Heart Association in planning the valuable program.

Here's the program for the day: 9:00 a.m. - Registration, 9:30 a.m. - "American Heart Association Research and Education" Betty Musick, Regional Director, American Heart Assn., Amarillo; 10:00 a.m. - "What Mended Hearts Inc. Can Do For The Community" Elnor Gammage, Amarillo, Vice-president of Mended Hearts Assn.; 10:30 a.m. - "The Heart and Nutrition" Dr. Mina Lamb, Professor of Nutrition, Texas Tech University, Lubbock; 11:30 a.m. - Lunch; 12:30 p.m. - "Children's Heart Diseases" Dr. John Jones, Amarillo; 1:15 p.m. - "Coronary Artery Disease" Dr. Henry E. Martinez, Thoracic and Cardiovascular Surgery, Amarillo; 2:00 p.m. - "Diagnosis and Evaluation of Coronary Artery Diseases" Dr. R. E. Guide, Cardiologist, Amarillo; 2:45 p.m. - Panel 0 Above speakers and Dr. Bluford Johnson, Perryton and Dr. Eugene Waide, Perryton. Lunch will be served at

11:30 a.m. at the Perryton First Christian Church. If you want to make a reservation call us at 659-2030 or 733-5057 by 9 a.m. on September 26th.

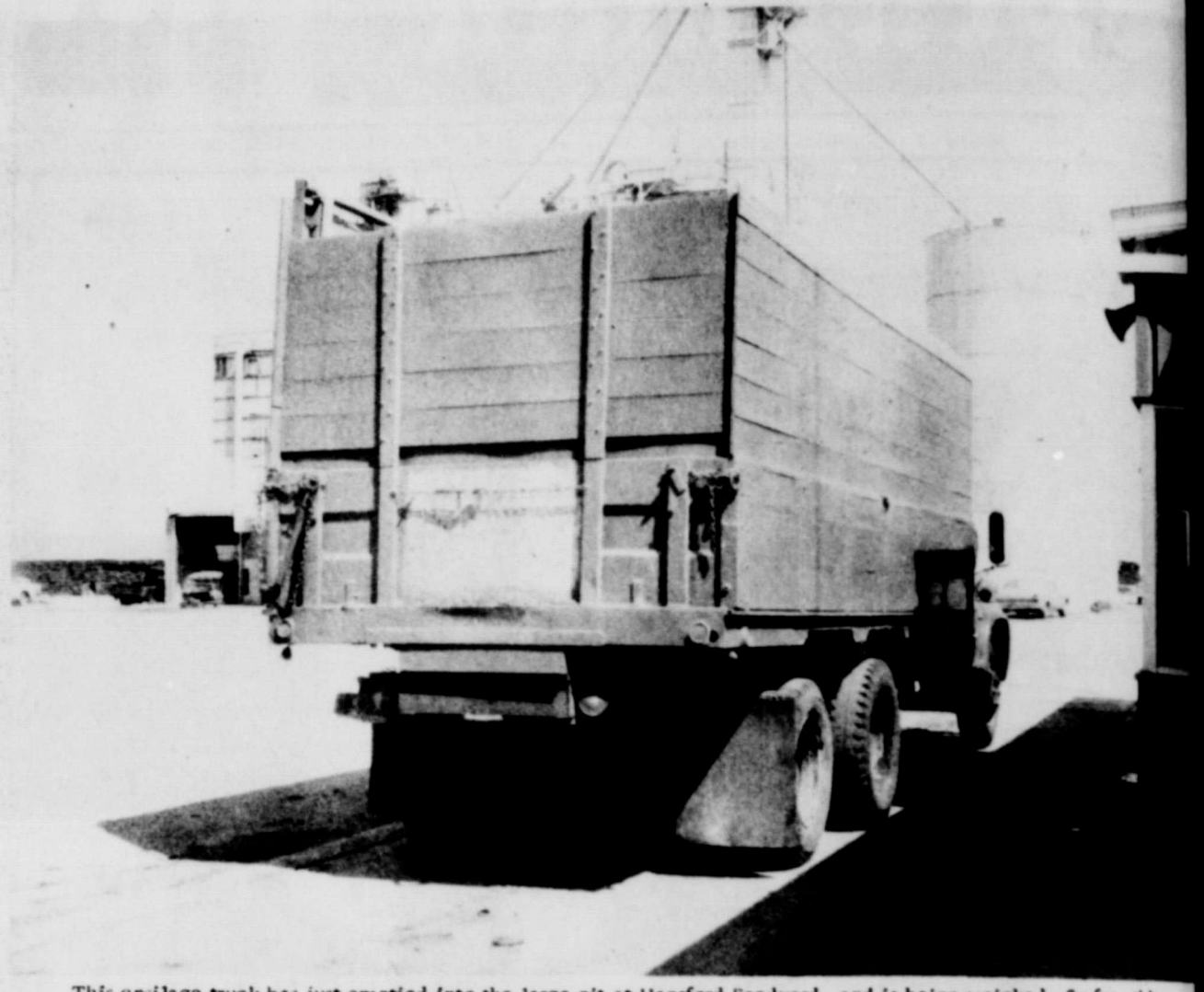
The Seminar is free and anyone who is interested is invited to attend. You will find this to be a most informative program. It is patterned after February's seminar in Amarillo. Even if you attended the

Amarillo program this will be worthwhile as advances have been made and the section on Children's Heart diseases is new.

## Frank Phillips Col. Enrollment Is 640

Total enrollment at Frank Phillips College, Borger, of this fall semester is 640 stu-

dents. At this time last year it was 580. This makes an increase of 10.3%. There is about a 20% increase in contact hours. 175 students are enrolled in Voc. Tech. courses. This increase is due to 12 new areas of instruction, an intense publicity campaign, and an organized local effort to help Frank Phillips College.



This ensilage truck has just emptied into the large pit at Hansford Feedyard, and is being weighed. So far, this year, the yard has hauled in 20,527 tons of ensilage. These large 10 wheel trucks are the kind that are being used.

## PUBLIC NOTICE SUMMARY OF PROPOSED CONSTITUTIONAL AMENDMENTS SPECIAL ELECTION NOVEMBER 6, 1973

### NUMBER ONE ON THE BALLOT (S.J.R. 8)

Article III, Sections 5, 24 and 49a and Article VIII, Section 6 of the Texas Constitution are amended to: Provide for regular annual sessions of the Legislature. The regular session in each odd-numbered year would be for a period not to exceed 180 days. The regular session in each even-numbered year would be for a period not to exceed 60 days and would be limited to consideration of fiscal matters and any emergency matters submitted by the Governor. The 60 day session could be extended by the Governor for a period not to exceed 30 days.

Provide an annual salary for members of the Legislature not exceeding \$15,000 per year and a per diem not exceeding \$15 per day for each day of each regular session or special session. Provide that no appropriation of money shall be made for a longer term than one year and direct the Comptroller to make annual estimates of anticipated revenue rather than biennial estimates.

The wording of the proposed amendment as it will appear on the ballot is as follows:

"The constitutional amendment to provide for annual regular sessions of the legislature; and to provide an annual salary of \$15,000 and per diem for the members of the legislature, effective in January, 1975."

### NUMBER TWO ON THE BALLOT (H.J.R. 7)

Article XVI, Sections 50 and 51 of the Texas Constitution are amended to:

Include within the scope of homestead protection the real property of a single adult person which meets the other requirements of homestead property, and to provide that a family homestead may not be abandoned except with the consent of both spouses.

Presently a single adult person is not entitled to claim a homestead exemption and a married man can abandon a family homestead without the consent of his wife.

The wording of the proposed amendment as it will appear on the ballot is as follows:

"The constitutional amendment to include within the scope of homestead protection the real property of a single adult person which meets the other requirements of homestead property, and to provide that a family homestead may not be abandoned except with the consent of both spouses."

### NUMBER THREE ON THE BALLOT (S.J.R. 13)

Article VIII, Sections 1-a and 1-b of the Texas Constitution are amended to: Extend the \$3,000 ad valorem tax exemption to the residential homesteads of unmarried adults.

The wording of the proposed amendment as it will appear on the ballot is as follows:

"The constitutional amendment to extend the \$3,000 ad valorem tax exemption to the homesteads of unmarried adults."

### NUMBER FOUR ON THE BALLOT (S.J.R. 1)

Article XVI, Section 59, of the Texas Constitution is amended by adding a new Subsection (e) which:

Provides that no law creating a conservation and reclamation district shall be passed unless a copy of the proposed law is delivered to the commissioners court of each county and to the governing body of each incorporated city or town in whose jurisdiction said district or any part thereof is or will be located. Each such commissioners court and governing body may file its written consent or opposition to the proposed law with the Governor, Lieutenant Governor and Speaker of the House of Representatives. Each special law creating such a district must comply with general laws then in effect relating to creation by political subdivisions to the creation of such districts.

The wording of the proposed amendment as it will appear on the ballot is as follows:

"The constitutional amendment establishing certain requirements relative to the enactment of laws creating certain conservation and reclamation districts."

### NUMBER FIVE ON THE BALLOT (S.J.R. 12)

Article XI, Section 7 of the Texas Constitution is amended to:

Provide that all counties and cities bordering on the coast of the Gulf of Mexico are authorized to levy a tax to pay for bonds issued for the construction of sea walls and breakwaters upon a majority vote of the resident property taxpayers. Counties and cities are presently authorized to levy such taxes and this amendment only changes the required vote from a two-thirds majority to a simple majority.

The wording of the proposed amendment as it will appear on the ballot is as follows:

"The constitutional amendment authorizing counties and cities bordering on the Gulf of Mexico to issue bonds for the construction of sea walls and breakwaters upon a majority vote of the resident property taxpayers."

for the construction of sea walls and breakwaters upon a vote of the resident property taxpayers."

### NUMBER SIX ON THE BALLOT (S.J.R. 26)

Article V, Section 8 of the Texas Constitution is amended by adding a new paragraph which:

Provides that the district court, concurrently with the county court, shall have the general jurisdiction of a probate court and in a probate proceeding shall also have the jurisdiction otherwise conferred on it by law. It also provides that the legislature may increase, diminish, or eliminate the jurisdiction of probate matters, and may provide that all appeals in probate matters shall be to the courts of civil appeals.

The wording of the proposed constitutional amendment as it will appear on the ballot is as follows:

"The constitutional amendment stating that the district court concurrently with the county court shall have the general jurisdiction of a probate court, and providing the jurisdiction thereof, and further providing that in any probate proceeding the district court shall also have jurisdiction otherwise conferred upon it by law, and further providing that the legislature may increase, diminish or eliminate the jurisdiction of the district court or county court in probate matters, and further providing that all appeals in such matters shall be to the courts of (civil) appeals."

### NUMBER SEVEN ON THE BALLOT (H.J.R. 6)

Article III, Section 49-b of the Texas Constitution is amended to:

Provide for an additional \$100 million in bonds or obligations of the State of Texas for the Veterans' Land Fund. This amendment increases the present \$400 million authorization to \$500 million.

Remove the present provision which permits buying of land only by those veterans who served between September 16, 1940 and the date of formal withdrawal of United States troops from the armed conflict in Viet Nam. This amendment would allow all veterans who serve after September 16, 1940 to buy land from the Veterans' Land Fund, provided they are otherwise qualified.

Provide that, in the event of the death of an eligible

Texas veteran after the veteran has filed with the Board an application and contract of sale to purchase through the Board the tract selected by him or her and before the purchase has been completed, then the surviving spouse may complete the transaction.

The wording of the proposed amendment as it will appear on the ballot is as follows:

"The constitutional amendment to provide for an additional \$100 million in bonds or obligations of the State of Texas for the Veterans' Land Fund."

### NUMBER EIGHT ON THE BALLOT (S.J.R. 29)

Article XI of the Texas Constitution is amended by adding a new Section 5(a) which:

Authorizes and requires incorporated cities, towns, and villages, regardless of population, to pay the principal of and interest on, when due, the general obligations hereinafter issued by the city, town, or village. The legislature is empowered to limit by general or special law the total principal amount of general obligations which may be issued, but unless and until the legislature acts to do so, the limitations established by statute with respect to the total principal amount of bonds which may be issued by independent school districts shall apply as the rate limitation on cities, towns, and villages.

The wording of the proposed constitutional amendment as it appears on the ballot is as follows:

"The constitutional amendment to authorize cities, towns, and villages to levy such ad valorem taxes as are sufficient to pay the principal of and interest on their general obligations hereafter issued subject to the restrictions provided by law."

### NUMBER NINE ON THE BALLOT (S.J.R. 25)

Article VIII of the Texas Constitution is amended by adding a new Section 2C which:

Allows the Legislature, by general law, to exempt all real and personal property used by non-profit water supply corporations or cooperatives from all property taxes. The exemption would apply only to such property as is reasonably necessary to conduct the business of a non-profit water supply corporation or cooperative.

The wording of the proposed constitutional amendment as it will appear on the ballot is as follows:

"The constitutional amendment authorizing the legislature to exempt from property taxes certain property used by a non-profit water supply corporation or non-profit water supply cooperative."

## It's Show Time

for the new 1974 Buicks Pontiacs & G.M.C. Pickups.

This is our 11th year to show you the new models.

You're invited to visit with us today.

# NORTH PLAINS TRUCK & IMPLEMENT CO.

BE OUR GUEST



Largest spider ever found to the Therapsida which has a leg span 10 inches.



About 100,000 men labored to build a single pyramid in ancient Egypt.





SHOP WHERE YOU GET BIG SAVINGS  
BY THE SACKFULL! WE INVITE YOU TO...

# Come get your Idealsworth!



PRICES EFFECTIVE THRU SATURDAY, SEPT. 22, 1973. NONE SOLD TO DEALERS. LIMIT RIGHTS RESERVED.

Mon. - Fri.  
8 a. m. to 11 p. m.  
Sundays  
9 a. m. to 9 p. m.

QUARTER SLICED

**Pork** 9 TO 11 CHOPS **\$1.09**  
**Loins**..... LB.

FARM-FRESH FRYER PARTS

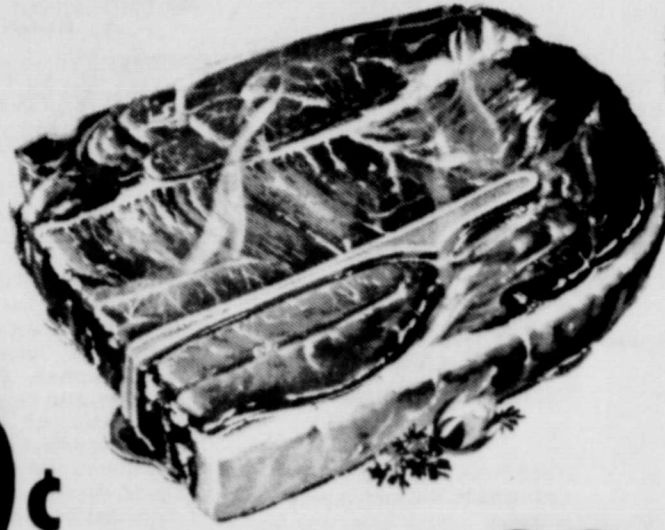
**Box-O-Chicken**..... LB. **59¢**  
RIBS ATTACHED

**Fryer Breasts**..... LB. **99¢**  
PLUMP, TENDER

**Thighs or Legs**..... LB. **89¢**  
MEADOWDALE, ALL-MEAT

**Skinless Franks**..... 12-OZ. PKG. **89¢**  
COUNTRY STYLE

**Pork Spareribs**..... LB. **\$1.09**



## U.S.D.A. CHOICE BEEF CHUCK ROASTS

BLADE CUTS

**89¢**  
LB.

U.S.D.A. CHOICE, 7-BONE  
**Chuck Roasts**..... LB. **99¢**

U.S.D.A. CHOICE, SEMI-BONELESS  
**Pot Roast**..... LB. **\$1.09**

U.S.D.A. CHOICE, CHUCK CUT  
**7-Bone Steaks**..... LB. **\$1.09**

CAMELOT ASSORTED  
**Chiffon Desserts**..... 22-OZ. CTN. **49¢**

U.S.D.A. CHOICE, CENTER CUTS  
**Chuck Steaks**..... LB. **99¢**

U.S.D.A. CHOICE, BONELESS  
**Chuck Roast**..... LB. **\$1.29**

U.S.D.A. CHOICE, CENTER CUT  
**Arm Roast**..... LB. **\$1.19**

BREADED, PRE-COOKED  
**Beef Patties**..... LB. **99¢**

HICKORY SMOKED, SLAB CUT  
**Sliced Bacon** 2 TO 3 LB. PKGS. LB. **\$1.19**

GRANULATED BEET OR CANE

## SUGAR

10-LB. BAG

**\$1.28**

WITH COUPON BELOW  
AND \$5 PURCH.

LIMIT 1

AN IDEAL  
COUPON  
CASH-SAVER



VALUABLE COUPON

BEET OR CANE  
**Sugar** 10-LB. BAG **\$1.28**  
LIMIT 1 WITH THIS COUPON  
AND \$5 OR MORE PURCHASE  
EXPIRES 9-22-73

IDEAL FOODS!

FRESH GRADE A

## MEDIUM EGGS

DOZ.

**69¢**

HEINZ

## Keg-O-Ketchup

32-OZ. JUG **57¢**

GREAT NORTHERN

## Camelot Beans

1-LB. PKG. **35¢**

ALL-TEMPERATURE

## Cheer

FAMILY SIZE BOX

**\$2.48**

WILDERNESS CHERRY

## Pie Mix

21-OZ. CAN **48¢**

FOR NON-STICK FRYING

## Pam Spray

9-OZ. CAN **\$1.00**

VALUABLE COUPON

GOOD FOR **40¢ OFF** ON 3-LB. CAN OF  
**FOLGER'S COFFEE**  
LIMIT 1 COUPON PER CUSTOMER  
EXPIRES 9-22-73

IDEAL FOODS!

VALUABLE COUPON

GOOD FOR **.30¢ OFF** ON 2 PKGS. DUNCAN HINES  
ANGEL FOOD **CAKE MIX**  
LIMIT 1 COUPON PER CUSTOMER  
EXPIRES 9-22-73

IDEAL FOODS!

VALUABLE COUPON

GOOD FOR **10¢ OFF** ON 13-OZ. BOX POST CEREAL  
**ALPHA BITS**  
LIMIT 1 COUPON PER CUSTOMER  
EXPIRES 9-22-73

IDEAL FOODS!



## VELVEETA

2 -LB. LOAF **\$1.18**

LIMIT 1 WITH \$5.00 OR MORE PURCHASE

IDEAL SMALL OR LARGE CURD

## Cottage Cheese

24-OZ. CTN. **64¢**

IDEAL

## Chocolate Milk

2 QUART CTNS. **66¢**

FAIRMONT

## Orange Drink

4 QUART CTNS. **45¢**

KRAFT TWIN TUB

## Diet Parkway

1-LB. CTN. **42¢**

KRAFT PLAIN

## Cheez Whiz

16-OZ. JAR **94¢**

ALL FLAVORS

## Fairmont Yogurt

2 8-OZ. CTNS. **51¢**

Thrif-T Low Prices

MILE HIGH WHOLE OR CREAM

## Golden Corn

5 16-OZ. CANS **89¢**

MILE HIGH

## Whole Tomatoes

5 16-OZ. CANS **\$1**

AMERICAN BEAUTY MACARONI & CHEESE

## Instant Dinner

7 7 1/2-OZ. BOX **28¢**

THREE VARIETIES

## Keebler Cookies

14-OZ. PKG. **53¢**

VAN CAMP'S

## Pork & Beans

29-OZ. CAN **38¢**

HIDDEN VALLEY RANCH

## Dressing Mix

PKG. OF 2 ENVELOPES **75¢**

WEIGHT-WATCHERS ASSORTED

## Soft Drinks

12-OZ. CAN **15¢**

BLUE MIST

## Windex Cleaner

15-OZ. CAN **63¢**

DRAN-O

## Drain Cleaner

12-OZ. CAN **83¢**

## BATH TISSUE

4 2-ROLL PKGS. **\$1**

KLEENEX DESIGN

## Paper Towels

3 JUMBO ROLLS **\$1**

NORTHERN ASSORTED

## Paper Napkins

16¢ PKG. OF 60

## ICE MILK

FAIRMONT DAIRY FAIR

HALF GALLON

**64¢**

Thrif-T Frozen Foods

BIRDS EYE DESSERT TOPPING

## Cool Whip

9-OZ. CTN. **57¢**

MIX OR MATCH SALE

Birds Eye Vegetables

BROCCOLI SPEARS, PEAS AND ONIONS IN CREAM SAUCE, PEAS IN CREAM SAUCE, PEAS AND ONIONS

3 10-OZ. PKGS. **\$1**

CHOPPED BROCCOLI OR CUT CORN

4 10-OZ. PKGS. **\$1**

Thrif-T Quality Products

CAMELOT

## Pancake Mix

2-LB. PKG. **42¢**

PREAM

## Coffee Creamer

16-OZ. JAR **68¢**

### CHECK & COMPARE THESE THRIF-T VALUES ...

MEADOWDALE CUT

**GREEN BEANS**..... 5 16-OZ. CANS **\$1**

HUNT'S

**TOMATO JUICE**..... 6 15-OZ. CANS **\$1**

STAR-KIST LIGHT

**CHUNK TUNA**..... 2 6-OZ. CANS **88¢**

MEADOWDALE

**SPINACH**..... 5 16-OZ. CANS **89¢**

## IDEAL PRESERVES

4 VARIETIES  
**38¢**

APRICOT, PINEAPPLE-APRICOT, PINEAPPLE, SEEDLESS BLACK BERRY

18-OZ. JAR

MEADOWDALE IMITATION

**Peanut Butter**..... 3-LB. JAR **\$1.18**

Thrif-T Health & Beauty

LISTERINE, REG. \$1.79

**Mouth-wash**..... 20-OZ. BTL. **\$1.13**

DIAL DEODORANT OR

**Anti-Perspirant**..... 6-OZ. CAN **78¢**

REG. \$1.75

**Bufferin Tablets**..... BTL. OF 100 **\$1.22**

CALIFORNIA VALENCIA

## ORANGES

4 LBS. **\$1.00**

U.S. FANCY

**Jonathan Apples**..... 4 LBS. **\$1**

COLORADO

**Bartlett Pears**..... 5 LBS. **\$1**

OCEAN SPRAY

## Cranberries

1-LB. BAG **39¢**

CALIF. HONEY DEW

## MELONS

EACH **69¢**

U.S. NO. 1 SOUTHERN

## YAMS

4 LBS. **\$1.00**



# USE CLASSIFIED ADS TO BUY, SELL, SWAP RENT OR HIRE

## CALL 659-3434

WE SELL:



Office Supplies and Furniture



Business Machines also



Printing



Cleaned & Repaired WE MAKE: Magnetic Signs

PHONE: 659-3434

THE SPEARMAN REPORTER

106 E. Kenneth

**Boxwell Bros.**  
Funeral Home and Flower Shop  
Day-Night Phone 659-2212  
Spearman, Texas

**Cummings Refrigeration And Air Conditioning**  
Phone 659-2721  
GORDON CUMMINGS

**UNITED PENTECOSTAL CHURCH**  
106 S. Bernice  
Services 10:00 a.m. and 7:00 p.m. Each Sunday  
Spearman, Texas

**Listen to HARVEST TIME**  
9:00 A.M. SUNDAY  
K8MF  
United Pentecostal Church  
Sponsor

**HANSFORD LODGE 1040 A.F. & A.M.**  
Regular Communication  
2nd & 4th Mondays 8 p.m.  
Jerry Gee, W. M. Genl. Bator, Secy.

**SERVICES**  
Hansford County Planned Parenthood  
26 S. Haney  
659-2483  
Spearman  
Mon.-Fri. 9-11 a.m.-1-3 p.m. 305-rtn

**RUTH'S CRAFT SHOP**--Now signing for classes in:  
Decoupage  
3-Dimensional Tole  
3-Dimensional Glass Painting  
Beginners China Painting.  
Call 659-2688.  
44T-1tc

Mary Kay Cosmetics. Call 659-2119. Malolah Fullbright.  
32S-rtn

**TREE SURGEON**--Now spraying for Elm Leaf Beetles. Free estimates. Bob Welsh, Farnsworth, Texas. 38S-10tp

WELL kept carpets show the results of regular Blue Lustre spot cleaning. Rent electric shampooer \$2. GORDON'S DRUG.

**FOR SALE**

**FOR SALE**-- Saddle tanks for 1972 Ford pick-up. 40 gallon capacity. Call 654-2468.  
43S-rtn

**FOR SALE**--2 bedroom and den home, carpets, drapes, dishwasher, toothbrush, nice location, fenced yard. TV Tower. Loan assumption available. Emmett R. Sanders, real estate broker, 659-2516, nights 659-2601.  
41-rtn

A Trash and Treasure sale will be held on Friday, September 28th and 29th on Friday and Saturday in the double garage behind Alsop's 7-11 Grocery. Many drapes, utensils etc. are included. It is sponsored by the Phelco Circle of the First Christian Church.  
rtn-4tc

**GARAGE SALE**--Saturday, September 22 from 9 to 5 at 103 Barkley. A desk, hand-painted china, lots of dishes and miscellaneous items have been added.  
44T-1tp

**FOR SALE:** 2 Bedroom house, newly painted and new carpet throughout with 2 bedroom apartment in back. 721 Bernice. Call 659-3269 or 659-3669.  
36S-rtn

**FOR SALE:** 3 bedroom home, carpeted, utility room, disposal, nice fenced yard, large storage building. Good location in walking distance downtown. Emmett R. Sanders, Real Estate Broker, 659-2516, nights 659-2601.  
36T-rtn

**HOUSE FOR SALE**--121 S. Townsend, carpeted, 2 bedroom, stove, dishwasher, garbage disposal, refrigerated air, floor furnace, and TV antenna. 659-3069.  
30T-rtn

**NO DOWN PAYMENT**--3 bedroom House at 114 S. Brandt will sell for \$8,500.00, monthly payments, \$75 or would rent for \$85 per month. Russell Beckwith, Berger, Texas, phone 274-4795  
44T-1tp

**FOR SALE:** Australian Shepherd. Male. One year old. Out of good working stock. Call 659-3374.  
42S-rtn

**A & B MOBILE HOMES** now carries LANCER on the Guymon Lot in addition to SKYLINE AND MANATEE HWY 54 N. E. Guymon, Oklahoma, 338-8553. HWY 83 S., Canadian, Texas, 323-6469.  
41S-rtn

**3 Family Garage Sale**--College wardrobe, tires, clothing, full size bed. 424 S. Bernice, Thursday, Friday, Saturday, beginning at 9 a.m.  
44-1tc

**FOR SALE:** 12 X 60 American Mobile Home. Furnished. Can be seen at 315 Archer, after 5:00 P. M.  
44-2tc

Leaving Town--must sell washing machine, refrigerator, stove, table, chest of drawers, double bed. Call 659-3007 after 6 p.m.  
44T-3tc

For sale or rent--3 bedroom double wide trailer, lot and patio, storage shed, cyclone fence. 203 S. James or call 435-2089, Perryton.  
44T-4tp

**FOR SALE**--1967 Ford Galaxie 500, 2 door hardtop. Contact Dale Davis, 659-2489.  
44T-2tp

**Garage Sale**--Sept. 22, 23, and 24. 1119 Townsend. Opening 9 a.m. Sat and Mon. Sunday at 1 p.m.  
44T-2tc

**WANTED**

**HELP WANTED:** For inside and outside workers, apply in person at Rogers Sales and Service, Waka, Texas.  
19T-rtn

**Male Help Wanted**--Garnett Veterinary Clinic. 659-2569.  
43T-rtn

**WANTED:** Baby sitting in my home for working mothers. Mrs. Larry Lee, call 2105.  
42-rtn

**Salesmen wanted,** experience not necessary, but some knowledge of farming and/or farm equipment desirable. For personal interview. Send brief resume with telephone number to Box 10182, Amarillo, Texas 79106. All replies will be contacted.  
43S-2tc

**NEEDED:** Lady for housework. Call 3124.  
43S-3tc

**WANTED**--Land to rent. Would lease with option to buy. James White, 659-3569.  
42-8tc

**WANTED**--Baby sitting in my home for working mothers. Phone 659-2105.  
42-rtn

**Help Wanted for Pallet plant** around work. Unit Door Co. Industrial Park, Berger, Texas. 274-5246.  
44T-2tc

**FOR RENT**

**FOR RENT:** Furnished apt. 606 S. Bernice Street. Phone 659-2652 or 2452.  
28S-rtn

**FOR RENT**--Furnished apartment, Central air-conditioned, T.V. available, across from Ideal. Call 3245.  
49T-rtn

**FOR RENT:** 1 bedroom house, extra large bath and walk in closet. Bills paid. Call 659-2082.  
44-rtn

**To Give Away**

**TO GIVE AWAY**--3 cute female puppies. Call 659-2294.  
43S-2tc

**TO GIVE AWAY**--2 small female puppies. Call 659-3532 after 5 or weekends.  
43-2tc

**Card Of Thanks**

I wish to take this means of thanking all my friends, neighbors, and relatives for their kindness and thoughtfulness in helping me celebrate my birthday. God bless all of you.  
Aunt Jessie Tompkins

We wish to express our appreciation to our friends for the cards, flowers, visits, memorials, food and other acts of kindness shown to us at the death of our loved one. A special thanks to Dr. R. L. Kieberger and the nurses at Pioneer Manor for their wonderful care during her illness.  
The family of Miss Ella McGuiney

**Card Of Thanks**

We wish to express our appreciation to our friends for the cards, flowers, visits, memorials, food and other acts of kindness shown to us at the death of our loved one. A special thanks to Dr. R. L. Kieberger and the nurses at Pioneer Manor for their wonderful care during her illness.  
The family of Miss Ella McGuiney

I wish to thank my friends for the flowers, prayers, visits, cards and other kind deeds during my stay in Hansford Hospital following my accident. May God bless each of you.  
B. J. Grayson

**LEGAL NOTICE**

**CITATION BY PUBLICATION THE STATE OF TEXAS TO: BOB OWENS**  
Greeting: YOU ARE HEREBY COMMANDED to appear before the Honorable District Court of Hansford County at the Courthouse thereof, in Spearman, Texas, by filing a written answer at or before 10 o'clock A.M. of the first Monday next after the expiration of forty-two days from the date of the issuance of this citation, same being the 22nd day of October A.D. 1973, to Petitioner's Petition filed in said court, on the 7th day of September A.D. 1973, in this cause, numbered 2040 on the docket of said court and styled IN RE: MINORS, ADOPTION.

A brief statement of the nature of said petition being as follows: A petition for adoption of minors, as is more fully shown by Petitioner's Petition on file in this suit. If this citation is not served within ninety days after the date of its issuance, it shall be returned unserved.

The officer executing this writ shall promptly serve the same according to requirements of law, and the mandates hereof, and make due return as the law directs. Issued and given under my hand and the seal of said court at Spearman, Texas, this the 7th day of September A. D. 1973.

Attest: Norma Jean Covell, Clerk; District Court Hansford County, Texas  
43T-4tc

**ART LESSONS** by B. JOYE WATSON  
All ages, teen and children, a speciality.  
Call 659-3585  
1114 S. Drexler  
44-2tp

**LARGE PRINT MAGAZINE**

New York, N. Y. -- The Xavier Society for the Blind, the National Catholic Press and Library for the Visually Handicapped, announces the publication of a new monthly magazine, THE LARGE PRINT CATHOLIC REVIEW, to help those who find the print used in newspapers and magazines too small for easy reading. THE CATHOLIC REVIEW is a 66-page magazine containing articles of religious and general interest, non-controversial in nature, selected from current newspapers and periodicals. The magazine is printed on a special glare-free paper in the type size used in the above headline.

The Xavier Society also supplies a lending library service of books in Braille, LARGE PRINT and recorded on tape. For further information or to obtain sample pages of the above magazine without cost or obligation, write to: THE XAVIER SOCIETY FOR THE BLIND, 154 East 23rd Street, New York, N. Y. 10010

**CWF BAZAAR-DEC. 1**

**MAIZE TOPPING**

Hux High-Topper Machines

**RANDY HUNT**

Call Equity Elevator or Baker Hotel, Spearman

**CONGRESSMAN BOB PRICE 10TH DISTRICT TEXAS**

The Internal Revenue Service has seriously threatened the cattle industry by the proposed disallowance of prepaid feed as a business deduction. For example, if feed is bought and paid for in one year but not consumed until the following year, it cannot be deducted until it is consumed, "commented Representative Bob Price (R-Texas) after attending a meeting with Members of Congress and cattle industry representatives on Capitol Hill today.

The Panhandle Congressman further stated that, "if this action by the IRS is allowed to remain, it will have a widespread effect on the cattle industry as a whole. It, in fact, could cause further price increases to consumers as well as reduce the supply of beef available for consumption."

The action came in the form of a "memorandum of technical advice" from the Washington Office of the IRS to its District Director in Dallas, Texas, and concerned limited partnerships operated by Western Cattle Fund, Inc., of Amarillo, Texas.

Price further added that, "prepaid feed, bought and deducted in one year but not used until the following year, has been an issue for many years. But in most cases the courts have refused to support the IRS action."

To cite a recent case, as brought out in an article appearing in the Wall Street Journal, "an Iowa farmer gave a feed dealer a check for \$20,731 on December 31 one year as payment for feed that wasn't to be delivered and consumed by the farmer's animals until the following year. He deducted the payment for the year he made it, but the IRS balked."

It ruled the outlay wasn't a current expense but rather a deposit on a later purchase, and thus wasn't deductible until the farmer received and used the feed. The tax agency noted the dealer retained title to the feed until well into the following year. A United States Appeals Court, however, recently gave the farmer his deduction for the year he had taken it. The court pointed out that he paid the money under a binding contract to purchase feed. It asserted the law doesn't require that a buyer acquire title to a commodity before he can deduct his payment for it.

A contrary statement some time ago by the IRS's Los Angeles District Director though it didn't figure directly

ly in the Iowa case, was assailed by the appeals court. The IRS official's statement the court said, is "wholly untenable."

Representative Price also indicated that the Treasury Department submitted similar proposals to the House Ways and Means Committee last spring. But, cattlemen were told that any change in the tax laws would not become effective until such proposals were enacted by the Congress. "It would appear," the Congressman added, "that the IRS is taking over the prerogative of the Congress by this action."

"As a result of the increase in price of feeder cattle and feed grains during the last 12 month," Price said, "it will require an additional \$100 million of equity capital plus about \$300 million of borrowed capital just to maintain cattle production in the state of Texas at the same level as a year ago. In addition, the consumer wants the cattle industry to increase beef supplies!"

The cattleman has to look to the investment community for equity capital and this action by the IRS will seriously curtail that source of funds," Price continued. "The cattle industry must have a constant flow of new capital just as other industries. Beef production will not expand if the rate of consumer demand by the Internal Revenue Service is allowed to stand. Price concluded.

The U.S. Department of Agriculture has announced changes in food distribution program regulations which permit the use of Federal donated foods in nutrition programs for the elderly. The recently announced rule changes will permit nutrition programs for the elderly to get the same food that USDA donates to charitable institutions, but without regard to whether the elderly people served are needy.

The Nutrition Program for the Elderly is administered by the U. S. Department of Health, Education and Welfare (HEW) in cooperation with state agencies on aging. The Food Distribution Program is administered by USDA's Food and Nutrition Service (FNS).

The revised USDA regulations implement amendments to the Older Americans Act contained in Public Law 93-29 which the President signed May 3, 1973. The amendments were scheduled for publication in the Federal Register on Monday, Sept. 10, and will become effective on publication.

**Our agents plan business insurance as if they owned your business. Presumptuous? Professional.**  
Southwestern Life  
Happiness is what we sell.  
614 S. TOWNSEND 659-3294

**EQUITY**

**TAKE NOTE...**

During the bountiful harvest, our mill, elevator and warehouse facilities have remained open seven days a week for the past six months to accommodate our customers. We are now returning to our regular schedule. Monday through Friday--7 a.m. to 6 p.m. Saturday--7 a.m. till 12 noon During the milo harvest we will again stay open longer hours to accommodate you.



representatives on Capitol Hill today. As a result of the increase in price of feeder cattle and feed grains during the last twelve months," Price said, "it will require an additional \$100 million of equity capital plus about \$300 million of borrowed capital just to maintain cattle production in the state of Texas at the same level as a year ago. In addition, the consumer wants the cattle industry to increase beef supplies!"

**USDA Announces Change In Food Program For Elderly**

The U.S. Department of Agriculture has announced changes in food distribution program regulations which permit the use of Federal donated foods in nutrition programs for the elderly. The recently announced rule changes will permit nutrition programs for the elderly to get the same food that USDA donates to charitable institutions, but without regard to whether the elderly people served are needy.





NEW OFFICERS OF P-TA- 1 to r, Mrs. Jerry Don Ford, first vice president, and Mrs. Wallace Berner, president, welcomed members to the first meeting of the year for the organization Monday evening, Sept. 17. Those present enjoyed a salad supper and meeting the new teachers.

**P-TA MEMBERS ENJOY SALAD SUPPER MONDAY**

The Spearman PTA held a salad supper Monday, Sept. 17 in the high school cafeteria. Rev. Windsorfer opened with the invocation. Those attending enjoyed a large

variety of delicious salads. New teachers in the school system were introduced by superintendent James Cunningham, principals Eddy Clemmons and Allen Alford. Everyone enjoyed visiting and getting better acquainted with teachers and parents.

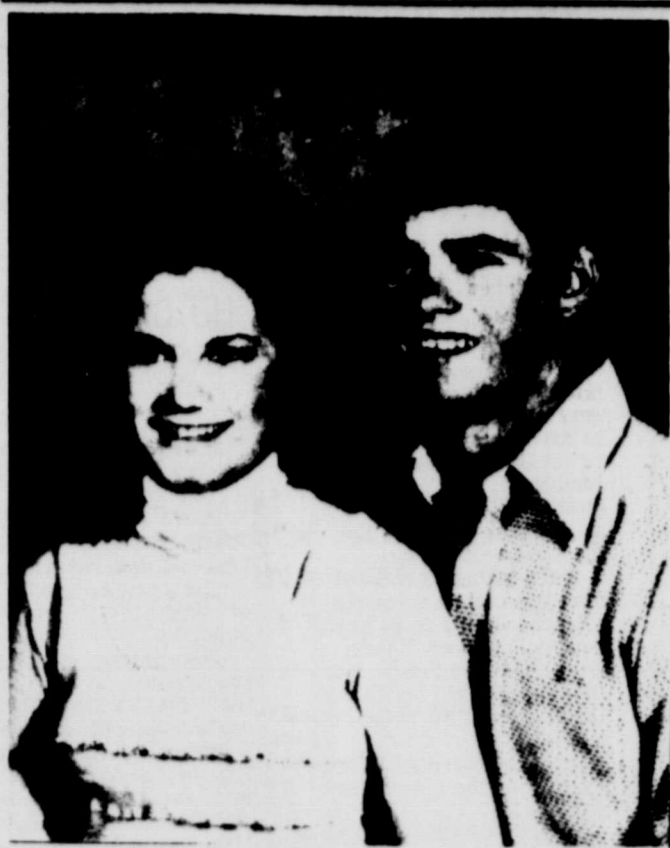
**Women's Division Of C of C Plans Christmas Scene**

The Women's Division of the Chamber of Commerce met Monday for their regular monthly luncheon and business meeting in the meeting room of Hansford Library. The group is ordering 10 large trash receptacles and 13 small ones that will be placed on main street and other locations. The city has agreed to maintain them. The trash receptacles have been donated by businessmen of Spearman. The women hope to be able to get more placed around town in the future.

They also began work on the Christmas scene that will be on the courthouse lawn during the holiday season. Anyone having plywood, wall-board or masonite 3/8" thick that they would donate for this project are asked to call the Chamber office. Present were the president, Susie Hand, secretary, Celestine Thompson, and members Dorothy Roden, Kacie Rupprecht, Altha Townsend, Mary Lou Wysong and Janie Hand.

**Grange-Rhew Marriage Canceled**

By mutual consent the marriage of Jill Grange and Frank Rhew has been called off.



**DECEMBER WEDDING SET**—Mr. and Mrs. J.C. Lively of Laverne, Oklahoma, announce the engagement and approaching marriage of their daughter, Connie Lynn, to Benny Scott Rupprecht, son of Mr. and Mrs. G.K. Rupprecht of Spearman. The wedding is set for December 28 at 6:30 o'clock in the First Methodist Church at Laverne. The bride-elect will graduate from Northwestern State College at Alva, Oklahoma with business and sociology majors at the end of the fall term. The prospective groom, formerly of Perryton, received his degree from Northwestern State College last spring and is a coach and math teacher at Canadian High school. The young people will live in Canadian.

**Mrs. Jesse Tompkins Honored On Birthday**

Mrs. Jessie Tompkins spent last week in Amarillo visiting in the home of her daughter, Mr. and Mrs. Jim Sutherland, and her granddaughter, Mr. and Mrs. Clarence Cordle and children and Mr. and Mrs. Sam Mormom and children. Mrs. Sutherland and Mrs. Mormom and children and Carla Stanley came home with her Saturday afternoon. On Sunday Mrs. Sutherland took her out to dinner. Mrs. Tompkins realized her daughter took her to dinner to celebrate her 88th birthday but she had not expected what met her eyes when she entered her home on returning. Her house was beautifully decorated with birthday cake and cookies, cut flower arrangements and pot plants sent by relatives and friends, and also was filled with guests to help her celebrate her birthday.

Among those attending were Jake and Lucille Clifton of Clayton, N.M.; from Morse were Mrs. Ella Parks, Luthera Dixon, Elva Jean Dixon, Mack Dortch and Bessie Henderson; from Oakland, Calif. was Harry Forrester; from Stinnett were Ernest and Ruby Lieb; from Stratford were LeRayne Doneison and Mrs. Alta Mitts; from Amarillo were Mrs. Eileen Sutherland, Clarence and Jo Cordle and children, Andy and Windy, Sue Mormom, Jamie and Joy, and Carla Stanley. From Spearman were Ray and Marie Weckesser, Becky Crooks, Garland Hopper, Ruth Caldwell, Elsie Mathews, Helen Fisher, Alta Morse, Deta Blidgett, Adalyn Barnes, Raymond and Grace Kirk, Mrs. J. R. Collard, Mrs. R.E. Townsend, Mildred Martin, Jean Sheets, Eleanor Reed, Owen and Babe Pendergraft, LaRue Branstetter, Maude Rosson, Chris Arnold, Mrs. Fred Brandt, Melba Jackson, Woodville and Verna Jarvis, Mozelle Sparks, Mrs. Ella Cypert, Lucy Mundy and Mildred Chamberlain.

Mrs. Tompkins received numerous gifts and cards and enjoyed telephone calls in the afternoon. It was really "JESSIE TOMPKINS DAY" and she relished every minute of it.

**Bridal Shower For Donna Volden Set**

A bridal shower honoring Donna Volden, bride elect of Ed Goodrich, will be held Saturday, September 22 from 7 to 8:30 p.m. at the Parish Hall of the Sacred Heart Catholic Church here. Ladies of the parish are hosting the courtesy.

**SS Class Enjoys Pot Luck Supper**

Saturday night, September 15, the Young Married Class of the First Baptist Church held a pot luck supper in the Fellowship Hall for class members and their families.

Following supper, the group enjoyed playing ping-pong and cards and visiting. Guests attending were Rev. and Mrs. T. J. Gamble. Members attending were Mr. and Mrs. Douglas Box and son, Mr. and Mrs. Marcus Connelly, Mr. and Mrs. Preston Graham, and Girls, Mr. and Mrs. Glen Gray and children, Mr. and Mrs. Ralph Newton and son, Mr. and Mrs. Luke Stewart, Mr. and Mrs. Eugene Yarbrough and children and Mr. and Mrs. Wilton Youngblood and daughter.



**October Wedding Is Planned**

Mr. and Mrs. Wardell Volden of Spearman, Texas announce the engagement of their daughter, Donna Lea, to Howard Edward Goodrich, son of Mr. and Mrs. Howard Goodrich of 314 Womble Ave., Gruver, Texas. The bride elect is a senior at Spearman High School. Her fiancé is a graduate of Gruver High School. The wedding has been set for Oct. 13, 1973, at 5:00 p.m. in the evening, at the Catholic Church in Spearman.

**NEW SHIPMENT**

**LADIES LONG DRESSES**

**PANTS**                      **BLOUSES**

**Douglas Duds**

216 Main Street      Spearman, Texas

**BUTTONS** now on sale for

**PSC's \$10,000 HOMECOMING CELEBRATION**

Oct. 11, 12, & 13 - Goodwell, Okla.

GET YOUR HOMECOMING BUTTON BY SENDING CHECK OR MONEY ORDER TO THE: STUDENT SENATE, PANHANDLE STATE COLLEGE, GOODWELL, OKLAHOMA, 73939; OR CALL 349-2611-EXT. 268

**THE BUTTONS ARE \$5.00 EACH AND ARE YOUR ADMISSION TO:**

- Parade
- Pageant
- Barbecue
- Football Game
- Dances
- Big Show

**ORDINANCE #316 OF THE CITY OF SPEARMAN, TEXAS, STATES:**

Should any owner of any lot within the City of Spearman, Texas, who shall allow weeds, rubbish, brush or any other unsightly, objectional or insanitary matter to grow or accumulate thereon, fail and/or refuse to cut down and/or remove such weeds, rubbish, brush or other unsightly, objectionable or insanitary matter, as the case may be, within ten days after notice to said owner to do so, in writing, or by letter addressed to such owner at his post office address, or within ten days after notice by publication as many as two times within ten consecutive days in any newspaper in Texas, the City of Spearman, Texas, may do such cutting down and/or removing such weeds, rubbish, brush or any other unsightly, objectionable or insanitary matter, or cause the same to be done and may pay therefor, and charge the expenses incurred in doing such work or having such work done or improvements made to the owner of such lot or lots or real estate; and, if such work is done or improvements made at the expense of the City of Spearman, Texas, then such expenses shall be assessed on the real estate, or lot or lots upon which such expense was incurred.

**new ARRIVALS**

Mr. and Mrs. Chub Gross of Canyon are the parents of a son, Mitchell Duane, born Sept. 7 at McCall Hospital at Canyon. He weighed 7 lbs. 10 oz. and was 20 1/2 inches long. Maternal grandparents are Mr. and Mrs. Ben Cook of Spearman and paternal grandparents are Mr. and Mrs. James Gross of Gruver.

Mr. and Mrs. Phil Sanders are the parents of a daughter, Suzanne Kay, born September 8 at Oehlert General Hospital. She weighed eight pounds 6 1/2 ounces. Maternal grandparents are Mr. and Mrs. Ronnie Schaefer and paternal grandparents are Mr. and Mrs. R. E. Sanders, Jr., all of Spearman.

**your local Used Cow Dealer is**

**Spearman Bi-Products**

**Farmers Ranchers Gentlemen:**

**Seven days a week dead stock removal please call as soon as possible. Thank you 659-3544**

**Ford introduces the 74's. The news is big, medium and small. At your Ford Dealer's.**

**Ford Mustang II. A new class of small car: First Class.**

Mustang II is 19 inches shorter than last year's Mustang... even a bit shorter than the original one. It's more than a new Mustang. It's a whole new class of small car: First Class. In every way. From its jewel-like exterior to its handsomely appointed interior, the new Mustang II gives you a luxurious level of standard equipment you probably never expected to find in a small car. Yet Mustang II still carries an economical small-car price. Mustang II comes in two different body styles, four different models. See them soon.

**1974 Ford Torino. The solid mid-size.**

Torino's got a new young look this year. Excitingly restyled outside... exciting new features inside. And lots of solid car to go with them. A new young look, a smooth and steady ride. That's Torino '74.

**1974 Ford LTD. The quiet full-size.**

Quiet, luxurious, beautifully built: that's LTD for '74. A high level of craftsmanship wherever you look, from the fit of the doors, hood and trunk to the impressive list of LTD features. Steel belted radial tires. Automatic transmission. Power steering. Power brakes, and more. All standard on LTD for '74.

**FORD**

**See all the 74's from Ford on September 21. The closer you look, the better we look.**

**JOE TRAYLER FORD**

SPEARMAN, TEXAS



## GIRL SCOUT NEWS

Girl Scout Troop 190 opened its 1973-74 Cadette year September 5 at the Scout House with leader Mrs. Jack Moran present.

Girls present were Sue Close, Jamie Thomas, Joyce Cummings, Jennifer Umphress, Jonell Moran, Tracie Keetch, Sherrie Cook and Cindy Cook. Refreshments were served by Jonell Moran.

The troop made plans for a trip to Black Mesa. Permission slips were filled out, menu planned, transportation discussed and activities arranged.

Ground rules were made for a trip to Austin the troop will make in 1974-75. Dues were set and a goal for nut and cookie sales was decided on.

September 12 at the Spearman Scout House was the time and place for the second meeting of Cadette Troop 190. Mrs. Jack Moran was the leader present. Girls present were Jonell Moran, Jamie Thomas, Jamie Morley, Sherrie Cook, Cindy Cook, Jennifer Umphress, Tracie Keetch, Joyce Cummings, Connie Bentley and Sue Close. Refreshments were served by Jamie Thomas.

Final plans for the Black Mesa trip were made. Work was begun by the girls in the Cadette Handbook. A discussion was held on the aims and goals of girls in the Cadette year.

Girl Scout Cadette Troop 190 attended a Cadette Camporee sponsored by the Yucca Girl Scout Council in Black Mesa Sept. 14 thru Sept. 16. The troop departed from Spearman on the 14th. Transportation was furnished by Mr. and Mrs. Billy Close, Mrs. Harold Frost, and Mrs. Jim Thomas. These parents and the troop's leader, Mrs. Jack Moran remained with the troop for the weekend outing.

Girls attending were Sue Close, Jamie Thomas, Jonell Moran, Jennifer Umphress, Cindy Cook, Sherrie Cook, Joyce Cummings, Tracie Keetch, Connie Bentley, Jamie Morley and guests Terrie, Gary and Stacy Thomas.

Upon arrival at the State Park cabin area the troop was assigned cabins then they went to join in a campfire activity.

Saturday began with a quick

breakfast, then a short ride over to climb the Mesa. 160 girls from 5 Councils enjoyed the 2 hour climb and descent from the Mesa. Lunch was enjoyed down by a creek under the trees.

Upon returning to the cabins the girls started preparations for the evenings "Foreign Flavor Fest" which consisted of Italian Salad, American Chow Mein, French Bread, Swedish Puffs, Iced Ceylon Tea.

After supper the clean up committee was busy while the other girls prepared for the evening of square dancing, round dancing and polkas.

Sunday, even though damp and cold, the girls cooked breakfast on campfires then all attended church services.

Final clean up followed and then the girls left for home.

Girls and leaders from Amarillo, Dumas, Phillips, Borger, Guymon, Liberal, Boise City, Perryton, Dalhart and Spearman enjoyed the camporee.

Spearman Neighborhood Council held its first meeting for 1973-74 at the scout house September 12. Mrs. R. L. McClellan, neighborhood chairman, presided at the meeting. Other leaders present were Mmes. Melvin Swann, Bill Watts, Jim Davis, Jack Moran, and Guymon Field Advisor Mrs. Kent Schaffer.

Mrs. Moran had visited several of the local clubs during the summer in search of financial aid for the Spearman Girl Scouts. A report was given on the results.

Cookies and nut sales for the year was discussed and Mrs. Davis was named chairman of the sales. Sale of nuts will be in November.

New registration forms were presented and studied. A Yucca Council schedule of events was also presented.

Troop meeting days were set-Monday-3rd year Juniors-Mrs. McClellan; Tuesday-1st and 2nd year Juniors-Mrs. Swann and Mrs. Joe Bynum; Wednesday-1st year Cadettes-Mrs. Moran; Thursday-1st year Brownies-Mrs. Albert Baker; Friday-2nd year Brownies-Mrs. Davis and Mrs. Watts.

The next meeting will be October 10.

Visiting in the home of Mr. and Mrs. Luke Stewart and girls over the weekend was his parents, Mr. and Mrs. H. S. Stewart of Electra, Texas.

## Sorority Purchases Trash Container

Xi Zeta Upsilon chapter of Beta Sigma Phi met September 13 in the home of Mary Brock. President Elaine Floyd presided over the brief business meeting. The club approved the purchase of a trash container to be located at the mall. This is in conjunction with a project by the Women's Division of the Chamber of Commerce.

The program was given by Mary Brock on the recent Blood Drive. She explained the way the blood is used and the various benefits derived from donating blood.

Refreshments of cake, tea, and coffee were served to Barbara McClellan, Elaine Floyd, Joan Stewart, Toni Archer, Dodie Beedy, Deta Blodgett, Mary Brock, Charlene Bulls, Scarlett Jackson, Mary Lee, Judy Martin, Altha Townsend and Linda Umphress.

## P-TA Executive Meeting Set

There will be a P-TA executive meeting October 15 at 9 a.m. in the junior high cafeteria.

The meeting will be open to anyone who would like to help with P-TA or anyone having any questions or comments about the organization.

The P-TA magazine is a very informative one and is helpful with ratings of TV shows listed. Anyone interested in subscribing to the magazine may contact Mrs. Richard Laird.

Officers for the year are president-Mrs. Wallace Berner, 1st vice president-Mrs. Jerry Don Ford, 2nd vice president-Mrs. Roy bulls, secretary-Mrs. Tommy Russell, treasurer-Mrs. Earl Novak, historian-Mrs. Bernard Barnes, parliamentarian-Mrs. Preston Smith.

Committee Chairmen are Membership, Sandra Ladd; Yearbook, Mrs. Roy Bulls; Budget and Finance, Mrs. Don Windsorfer; Spiritual Education-Mrs. Roger Odegaard; Health and Safety-Mrs. Ben McIntyre; Publicity and Publication-Mrs. Richard Laird; Hospitality-Mrs. Jimmy Vernon.

## Catholic Women Met Sept. 10

The Sacred Heart Catholic Women's Guild met Monday, September 19 at 7:30 P. M. in Parish Hall with Jeanette Bort, president, presiding at the business session.

Joanne Farr reported on the Diocesan deanery meeting to be held in Amarillo, October 31 at the Quality Motel. Members voted to send two representatives to this meeting and to pay their expenses. They also voted to have a nationally renowned speaker, Fr. Bertrand Roll, president of the Archconfraternity of Christian Mothers, speak to the Guild in lieu of the January meeting.

Main business consisted of discussion of the forthcoming Mexican dinner to be held Sunday, October 21 from 12:00 P. M. to 5:00 P. M. Tickets will sell for \$2.00 for adults and \$1.00 for children 6-12.

Fr. Rusch gave an informative talk on the sacrament of Penance.

Coffee and cake was served to the members present by hostesses Frances Ortega and Emma Lopez. Attending were Mmes. Joe T. Veneman, Jeanette Bort, Kenneth McKay, Gus Renner, Phillip Renner, Bob Farr, Don Allen, Mary Cowan, Dwight Sumner, John Veneman, Mary Sullins, Gerry Davis, Jim Miller, Edith Volden, Olivia Cazares, Cheddo Anchondo, Emma Lopez, and Frances Ortega.

Mrs. Garnett Is HD Club Hostess

The Spearman Home Demonstration Club met Friday, September 14 in the home of Mrs. B. J. Garnett. Mrs. W. H. Farbox presided over the meeting.

Minutes of the previous meeting were read and approved. Home Demonstration Agent, Nelie Evans gave the program on "Family in Tomorrow's World."

It was decided club members would meet at Mrs. Virgil Hull's home September 28 and attend the Healthy Heart Seminar at Perryton in the Perryton High School Auditorium at 9:30.

Mrs. Garnett served cake

and coffee to members, Mesdames: Richard Shedeck, A. D. Reed, W. E. Hacker, Frank Davis, W. A. Schubert, Virgil Hull, Joe Smith, W. H. Tarbox, and Altha Groves, and to guests Mrs. Ana Laura Batson from Pampa, Mrs. H. L. Boyd from Gruver and Mrs. Nellie Albrecht from Gruver.

## HD CLUB HAS SOCIAL

The Happy Homes Home Demonstration Club held an ice cream social Saturday, Sept. 15 in the Home Demonstration Clubroom for members and their families.

The group enjoyed a variety of homemade ice cream and cake.

After eating, those attending enjoyed playing Bingo with the White Elephant gifts members had brought as prizes.

Attending were guests, Mrs. Dwight Sumner and Mr. and Mrs. Larry Lee and family, and members, Mesdames, Fernand Schubert, Burton Schubert and family, Jessie Francis and family, Richard Laird and family, Mrs. Charles Hall and children, Mrs. James Nicholson and children and Mrs. Calvin Tension.

## Rebekah Lodge Plans Dance

The Spearman Rebekah Lodge #290 met Thursday, September 13 in the IOOF Hall.

Rose Cummings, Noble Grand and Ruth Caro, Vice Grand called the meeting to order.

It was decided the Spearman Lodge will help financially the three new lodges organized in Texas this year.

The Rebekahs will sponsor a Western Dance in October, with the exact date to be released at a later time.

Bernice McBride served refreshments in the dining hall following lodge.

All members are reminded lodge starts at 7:30 beginning in September.

The next meeting will be September 27 in the IOOF Hall.

## BRIDGE PARTIES

The Ladies Dinner Bridge Club met Monday, Sept. 17 in the home of Mrs. Sid Evans.

Mrs. Troy Sloan had high score and Mrs. Bill K. Jackson second high. Mrs. Allen Simpson won the traveling prize.

Members present were Mmes. Simpson, Sloan, Evans, Jim Evans, Jackson, Don DeArmond, Glen Mackie, and a guest, Mrs. Clark Mires.

The Blue Monday Bridge Club met Monday, Sept. 17 in the home of Mrs. L. S. McLain for their first meeting of the year.

Election of officers was held and Mrs. Pope Gibner was elected president with Mrs. Fred Daily, secretary-treasurer.

Mrs. Pope Gibner had high score.

Refreshments were served by the hostess to Mmes. Willie Seitz, Major Lackey, Vester Hill, Bill Gandy, Fred Daily, Roy Russell, Pope Gibner and Deta Blodgett.

The next meeting will be October 1 in the home of Mrs. Roy Russell.

## Arts & Craft Guild Met In Daily Home

The Arts and Crafts met Friday, September 14 in the home of Mrs. Fred Daily.

Members present were Mesdames: W. L. Russell, Sada Hoskins, Kiff White, Sr., Guy Fuller, Deta Blodgett, Nolan Holt, Bill Gandy, C. A. Gibner, Pope Gibner, P. A. Lyon, Sr., and hostess Mrs. F. J. Daily.

The next meeting will be Friday, September 21 in the home of Mrs. Bill Gandy.

## More College Students Named

Additional college students that were not listed last week are: TEXAS A & M Billy Brown; SOUTH WESTERN UNION COLLEGE, Keene, Texas-Jerry Tope; TEXAS WOMEN'S SCHOOL OF NURSING-Carol Booth; TEXAS TECH-Nancy Anderson, Tony Hester, Stephen Crooks, Edgar Womble and Suelien Womble.

NORTH TEXAS STATE UNIVERSITY-Lee Cooper; WEST TEXAS STATE UNIVERSITY-Gerry Harnish; EAST TEXAS STATE UNIVERSITY-Debi Daniel, CLARENDON JR. COLLEGE-Cheryl Evans.

Recent guest of W.O. Coe were Mrs. Patty Sparke of Oklahoma City and son, and Mr. and Mrs. John Rudd and daughter of Fort Worth.

Lunching at the Dutch in Perryton Sunday were Deta Blodgett, Velma Beck, Edna or Reed, Edna Hays, Ruth Hill, Lucy Mundy and Alva Morse.

Visiting in the home of Mr. and Mrs. Arthur Addison the past week were their daughter and family, Mr. and Mrs. James Woods of Colesia, who were here on vacation.

Mr. and Mrs. L. L. Anthony spent the Labor Day weekend at their cabin at Valley Escarpment, N.M. with Mr. and Mrs. Roscoe Nelson and Rhonda and Cheryl Gibson as their guests.

Mr. and Mrs. Eugene Yarbrough and children and her mother, Mrs. Aaron Love enjoyed an outing to pick wild grapes Sunday afternoon.

Visiting in the home of Mr. and Mrs. Boyd Dean and family Thursday through Tuesday was her brother, Mr. and Mrs. Farris McDonald of Carlsbad, New Mexico.

## CPF BAZAAR-DEC. 1

Call 800-325-5000 toll-free

We help you select

GiftAmerica conquers time and space.

Call toll-free 800-325-5000

GIFTAMERICA

Almost anywhere in the U.S. within hours.

**GORDON'S DRUG**

4 Roll Assorted

# Delsey 49c

8-Track

# Stereo Tapes \$2.99

200

# Kleenex 2 for 79c

Swifts Round or Square

# Ice Cream 89c

1/2 Gallon

# Crisco \$1.09

3Lb.

# Miracle Whip 69c

Quart

Shurfresh gallon

# Milk \$1.29

Giant Size

# Tide 79c

# KICK OFF FALL FOOD VALUES

Boneless Club Steak \$2.29 LB.	Arm Roast 99c LB.	Sirloin Steak \$1.79 LB.
Tenderized Steak \$1.59 LB.	7-Bone Chuck Roast 89c LB.	Stew Meat \$1.09 LB.
Sirloin Tip Steak \$1.59 LB.	Fine For Barbecue Boneless Briskett \$1.39 LB.	Ground Chuck \$2.09 LB.
T-Bone Steak \$1.69 LB.	Chuck Roast Blade Cut 83c LB.	Hamburger \$1.79 2 LB.

\$\$\$\$

# Bread

Meads Super Value

# 3 Loaves 99c

# M. & M. Grocery

SPEARMAN, TEXAS

Prices good thursday, Friday, Saturday & Sunday

**DOUBLE STAMPS ON SUNDAY WITH \$5.00 CASH PURCHASE**





The new Spearman Hi-Products building is pictured above. Located on the Gruver highway, the new business has a total crew of 5 men already working. Rick Riggins, son of Mr. and Mrs. C. D. Riggins, is in charge of the used cow business. Others employed are Warren Burgess, David Chapa, Ruben Rojas, and Joe Mascareñas. This newspaper joins in welcoming this new cattle-associated plant to Spearman. We especially want to compliment the beautiful western wood finish on the new building. It is just outstanding.

head of cattle and calves on feed for slaughter market in Texas on September 1. This is 10 percent above a year ago and 1 percent above a month ago. Placements into Texas feedlots during August totaled 366,000 head. These placements are 4 percent below August 1972 but 3 percent above the previous month. Marketings of fat cattle during August totaled 354,000 head, which is 13 percent below August 1972 and 9 percent below marketings for July.

area. The Chamber office has recently received new City Directories for: Dallas, Fort Worth, Houston, Lubbock and New Orleans.

The 1973 Directory of Texas Manufacturers and the 1973 Survey of Buying Power are also new to our library.

Dr. Bill Barnum is Chairman of our Rodeo Committee. If you have any suggestions concerning the rodeo grounds, please contact Dr. Barnum.

The Women's Division of the Chamber of Commerce will order the Litter Receptacles this week. These will be placed around town where needed. Thanks to all the businesses and clubs that have helped purchase these receptacles. The Women's Division is also working on a Nativity Scene to be placed on the Court House Lawn during the month of December. Members will meet Thursday at 7:30 p.m. at the Community Building to work on the Christmas scene. Any one with scraps of plywood call the Chamber office.



The Chamber of Commerce has had a busy summer and now that fall has arrived seems as tho we have not slowed down.

If you have not attended one of the meetings in the Chamber office, please do. We need your suggestions regarding the activities which could and should be undertaken by the Chamber to help make Spearman a better place to live. You do not have to be a member to attend. The meetings are held each Tuesday, Wednesday and Thursday mornings at 10:30. Plan now to attend!

WELCOME NEW MEMBERS: Rauscher Texaco Service John Hutchison

The Chamber will host a luncheon Thursday noon at the Home Demonstration Clubroom. This is a very important meeting concerning the future of Spearman. Mr. Maxie Davie, Industrial Director with Community Public Service will speak to those who are interested in the future of this

Don't forget we still have some 1973 Mailing Lists available—only \$1.00.

The Chamber office has had many calls recently for rent property. Please call 3330 if you have anything available to rent!!!!

Mr. L.D. (Pete) Mead has recently been transferred from Spearman and has been very active on the Board of Directors of the Chamber of Commerce. He was one of those people that if he had a job to do he did it! Always ready to help in any way possible, Pete will be missed by everyone on the board.

Marilee Ooley is working in the Chamber office now as office assistant. Stop by and say hello to Marilee when you are downtown.

The Retail Merchants Committee of the Chamber of Commerce has had several meetings recently planning the Christmas

program. They also set new closing hours, 5:30 p.m. will be observed by most merchants.

How about changing our slogan from Spearman-Spearhead of the North Plains to SPEARMAN---WEED CAPITAL OF THE WORLD!

Mowing these vacant lots is the responsibility of the property owner. So if everyone would mow one more time they wouldn't have to mow again until Spring.

Let's all work together to make Spearman a better and cleaner place to live--Community Pride is a must!!!

Remember--It takes TWO, Your Chamber of Commerce and YOU!!!!

### J. B. Cooke In Critical Condition At High Plains

Sheriff J. B. Cooke was taken to the Hansford Hospital at 10:00 A. M. Tuesday morning, with apparent symptoms of pneumonia and a stroke according to reports. The Sheriff got progressively worse, and was taken to Amarillo shortly after-noon on Tuesday. Reports late Tuesday indicated that the Sheriff was critical at High Plains Baptist Hospital, Amarillo.

### Local Man's Father Dies In Wildorado

Services were held Thursday, September 13 for Turner McDade, 66, a resident of Wildorado most of his life, at 11:00 A. M. in Wildorado United Methodist Church. He was the father of Walter McDade of Spearman. Officiating was Rev. Jim Hawthorne of Tulla and Rev. Philip Hadley, pastor. Burial was in Palo Duro Cemetery by N. S. Griggs and Sons Funeral Directors. Mr. McDade, born in Channing, was dead on arrival at 11:15 A. M. Tuesday at Northwest Texas Hospital

in Amarillo. He was a retired employee of Western Grain Elevator, was a member of Palo Duro Baptist Church and the Woodmen of the World. Other survivors include his wife, Floris; another son Robert of Amarillo; a daughter, Mrs. Jimmy Valentine of Wildorado; a brother, Dee McDade of Wildorado and six grandchildren.

### Girlstown To Celebrate Anniversary

The Borger Campus of Girlstown, USA will host her 6th Annual Open House on September 22, 1973. The Open House will begin at 2:00 p.m. with a program scheduled for 3:00 p.m. Also planned is a bar-b-cue from 4:00 p.m. to 7:00 p.m.

Six years ago Girlstown opened with one cottage, one housemother and 6 girls. Today Girlstown has two cottages and is licensed to care for 19 girls. Each friend of Girlstown is sincerely invited to visit with us and tour our campus.

We feel we have a very fine program outlined. The program will have musical selections by the Misty Futures. This group is comprised of girls who live at Girlstown. Our Miss Girlstown of 1974 will also be crowned. Miss Girlstown is selected by the youngsters living at Girlstown. Everyone is also encouraged to stay for our bar-b-cue. Tickets are only \$1.00 and we feel you will not be disappointed.

Mrs. Wesley Garnett, Sr. spend the last two weeks in Irving, Texas with her daughter, Mr. and Mrs. Andy Riley, Jr. to help them move to Plainview where he will be District Manager of General Motors, Chevrolet Division.

## FARM & RANCH NEWS

County Agricultural Agent

The weather has changed drastically the last week, which leaves most farmers and cattlemen a little apprehensive about the coming fall and winter weather. We won't have a repeat of the 1972. This is Tri-State Fair week in Amarillo. I want to thank you who helped furnish some crop and garden space for our Hansford County booth at the fair. Your assistance at the booth would not be appreciated. Texas livestock producers are faced with new regulations on brucellosis control. A statewide public hearing in Austin on October 1, to obtain further information on the program and to voice any concerns they may have about the proposed changes.

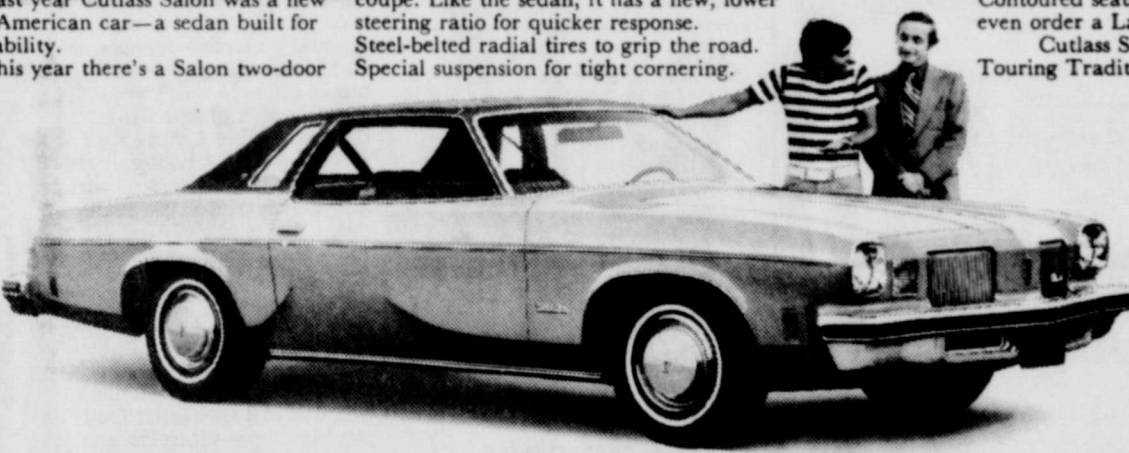
Health Commission so that Texas will be able to move toward a "certified-brucellosis free status" and thereby be able to comply with the standards of other states to which cattle are shipped. The major changes in the brucellosis testing program follow: 1. Testing of all animals two years of age and over at local auction markets rather than just testing those that terminate at slaughter. 2. Maintaining cattle in groups until they are tested and found clean or are quarantined, with testing expense to be paid by the seller. 3. Herds found to have the disease will be tested until they have two negative tests, not to exceed 120 days apart.

4. Retesting must be done within 60 days. 5. Animals may move from ranch to ranch owned by the same individual within a county or similar certified area without testing. 6. Animals moving and changing ownership must be tested. Numerous other conditions and procedures are also specified in the proposed changes. To get all the details on the new brucellosis program, producers can come by the County Extension office to review a copy of the proposed regulations. Livestock producers are invited to attend the public hearing in Austin on October 1, to obtain further information on the program and to voice any concerns they may have about the proposed changes.

increase from the 9,122,000 head on feed a month ago and 6 percent more than the 8,681,000 head on feed a year ago. Placements for these 7 States for August were 1,464,000 head, which is 29 percent above the 1,132,000 head placed the preceding month but 85,000 head less than a year ago. Marketing for these 7 states were 1,420,000 head for August, compared with 1,501,000 head marketed the preceding month and 1,782,000 head marketed a year ago. There were 2,314,000

# Come see the '74 Oldsmobiles.

"But dad, all you said was that Cutlass Salon had reclining seats. You didn't say it came in a new coupe, too."



"Look Walter! Now we can get an air conditioner that filters smells."

Not only does Tempmatic regulate temperature inside your car to a preset level, it also charcoal filters the air. The filter acts to reduce many offensive odors from the air entering the car. It's available on all full-size Oldsmobiles. The '74 Delta 88 coupe has a brand new roofline. Hydraulic bumper systems, front and rear. And underneath—a suspension system that's as tough as ever. Olds Delta 88. It's really put together. More than just another pretty car.

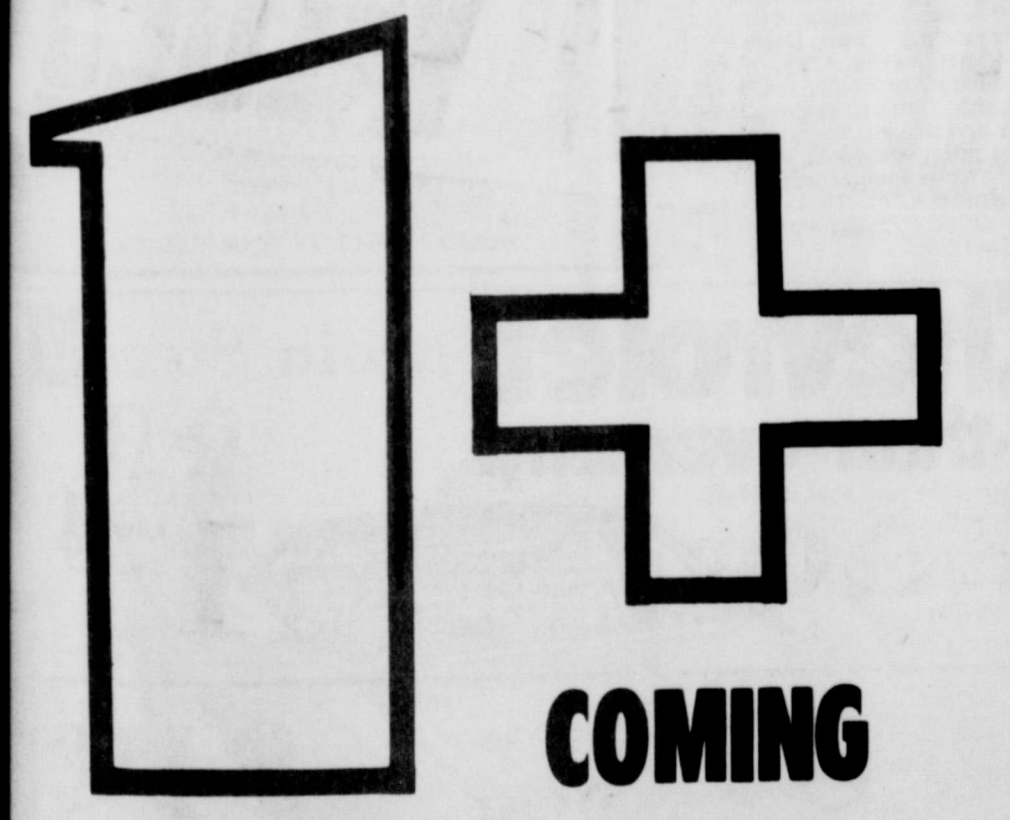


"Hey! I didn't know we could get these new little windows in the Toronado."

Order a Toronado with an opera roof and you get opera windows and a padded canopy of oxen-grain vinyl. You can also order a new interior with rich velour upholstery, a high-energy ignition system, and True-Track braking. The 1974 Toronado has a new instrument panel with a message center that lights up to warn you when certain things such as your gas, oil pressure, seat belts, etc., require your attention; there's even an exceptionally accurate digital clock, with quartz-crystal controlled movement. Front-wheel drive Toronado. Engineering can be beautiful.



Stop in at your Olds dealers. He's got surprises for every member of the family in all the other '74s, too: Ninety Eight Regency, Cutlass S and Supreme, Omega and station wagons.



1+ Dialing is coming to Spearman beginning October 6, 1973. 1+ Dialing, sometimes called Direct Distance Dialing or DDD, is a modern long distance service pioneered by General Telephone. With 1+ Dialing you can dial all of your station-to-station long distance calls to most points in the Continental United States, Alaska and Canada. This modern telephone convenience will not raise long distance rates from their present low levels. In fact, regardless of the time of day, 1+ Dialing is the cheapest way to call long distance. Your instruction card for using 1+ Dialing will be mailed just prior to October 6. Start using 1+ Dialing on Saturday, October 6.

GENERAL TELEPHONE COMPANY OF THE SOUTHWEST





## Bob Bullock Campaigned In Spearman Monday

Bob Bullock, former Secretary of State, and now a candidate for State Comptroller, campaigned in Spearman this week. Bullock, 44, is the first Democratic candidate to announce for state office.

Born in Hillsboro, Bullock received his bachelor's degree from Texas Tech in 1955 and earned his law degree in 1958 from Baylor Law School.

He served two terms as a member of the Texas House of Representatives, Chief of the Anti-Trust and Consumer Protection Division of the Attorney General's Office and Chief Legal Counsel for the Governor.

Most noteworthy, however, was Bullock's tenure as Secretary of State of Texas. There, he worked hard to clean up campaign financing in Texas and developed a fair and economical elections system.

During his tour, Bullock said, "Texas taxpayers are losing \$82,500,000 in tax dollars each year because some retailers are pocketing the state and local sales taxes they collect instead of reporting it to the Comptroller."

Frankly, I think it is ridiculous to talk of taxing food and medicine when ten percent (10%) of the sales taxes are now being paid by our citizens is not being recovered by the State.

"As Comptroller, I will work to see that the taxes we now pay, are not lost to some unscrupulous retailer because of faulty collection procedures by the State."

Bullock, a veteran of the

Korean Conflict, resides in Austin with his wife and two children.

Bob Bullock says what he feels and does what he believes is right. No one has ever put a muzzle on him. His straight talk probably results from his beginnings 44 years ago in Hillsboro, a small Central Texas town, which, like so many communities throughout Texas, builds strong and determined men and women, who have a sense of purpose.

For him no job has been too small to be important or too big to handle. His extensive experience in government includes two terms as a member of the Texas House of Representatives, from 1956 to 1959, during which time he served on Revenue, Taxation, Oil and Gas, Constitutional Amendments and Highways and Roads Committees.

While engaged in the private practice of law in 1963, he was appointed by the Governor to serve as a member of the Texas State Historical Survey Committee.

Returning to government service in 1967, Bob Bullock served as Chief of the Anti-Trust and Consumer Protection Division of the Attorney General's Office, prior to becoming Chief Legal Counsel for the Governor.

Mr. and Mrs. J. L. Brock visited their son Kim at Texas Tech Saturday and Sunday.



Mrs. Jack Atchison is shown with three of the tomatoes Jack has raised in his backyard this summer. The largest one weighed 13 oz. and was 13 inches around. All three of these shown weighed 2 1/2 lbs.

### Services Pending For Brother Of Andy Rhodes

Word was received here Tuesday of the death of Avis Rhodes of Port Aransas, brother of Andy Rhodes of Spearman.

Tentative plans are for the funeral and burial to be in Clarendon Thursday.

Mr. Rhodes died Tuesday after a lingering illness.

Mr. and Mrs. Rhodes left Tuesday for Clarendon.

will be served. Tickets are \$1.50 for adults and \$1 for children. Tickets may be purchased from any Baker & Taylor wife or at the door that evening.

Proceeds from this chili supper will go toward the purchase of toys for the underprivileged children of Spearman.

### You Name It by Billy Miller

As one of the ex-county tennis champions of Hansford County, I must dedicate this column this week to the big tennis match Thursday night, at Houston's Astrodome. We have been in shock at the paper this week, because Beth Fox, and Faye Lynch, have both bet a quarter on Billie Jean King. They are betting against Eugene Yarbrough, who has picked Bobby Riggs to win the big match. I pleaded with Yarbrough not to bet, because he has never won a bet, and this might cause Bobby's defeat Thursday night. And, remember, the game will be televised on Channel 7, and I plan to be watching. One of my secret ambitions is to see the Houston Astrodome before I die. And, I do believe that I would go to this tennis match if it were at all possible, but of course I can't go.

Now, I must pick a winner in the big match; I think that the famous Bobby Riggs, with his vast experience will win; but don't count Billie Jean out. She is game, and all of the women in the world are praying for her. It should be a real match.

Remember, however, that Dr. Cooley has given Bobby a heart-check and says he is sound as a dollar. He has a \$15,000 pill specialist feeding him super vitamins and pills, which will make him some 30 years younger at game time! He will be so full of energy, he may jump the net and "take after" Billie Jean! (Bulletin: the big tennis match starts at 7:00 P. M. on Channel 7).

We have managed to interview some of the local tennis players and they are very divided on the big match.

Mrs. Frank Davis brought the Lions Club program recently on the Library at Spearman. The Lions enjoyed the program and we want to congratulate all of the Library board which consist of; Chairman, Mrs. Peyton Gibner, Vice Chairman, James Cunningham, Treasurer, J. L. Brock, Secretary, Mrs. Henry Cornelius, and members Mrs. Frank Davis, R. E. Lee, Richard Countiss and P. A. Lyon.

Also, at the last Tuesday noon meeting, Kerry Evans brought the program on his exchange-student year spent in Belgium. He has a wonderful assortment of color slides, explaining the time he spent in Belgium. It was a great program, and Kerry will be glad to show it to all clubs in the area!

### Bingham Now Deputy Sheriff For Ochiltree Co.

Z. Q. Bingham, former city police sergeant here, joined the Ochiltree County Sheriff's Department on September 1.

Bingham has 11 year's experience in law enforcement, having been a deputy sheriff in Hereford County from 1962-68.

The family which includes three children moved to Perryton the first of September. Mrs. Bingham will continue her employment here in Dr. Thomas' office.

### From The Faith Lutheran Church

We have implemented our new schedule at Faith with the 1st of September. Junior choir practice has been incorporated into the Sunday morning worship at Faith is at 9:30, followed by the Sunday School Hour beginning at 10:30. Junior choir practice begins at 11:15 and ends about 11:45. This should make it possible for more of our youth to participate in Junior Choir. The Choir has started taking an active part in the morning worship. We encourage our youth to be regular in their attendance on Sunday morning.

The ladies of the FLCW will have a work day at the church on Wednesday, September 26. Our worship of God is that which gives a sense of direction and stability to life. New forms are good at times, but if the worship is really to express the strength of our faith; the older, more familiar forms seem to convey this to us. God & His will do not change with every wind that comes. God's love is sure & comes regularly to us as we need.

There will be a Family Night at Faith on Sunday, September 30 beginning at 7 p.m. The theme of the evening will be music & singing. The old familiar as well as the new and different will be used. Come and enjoy the evening with us.

If you have no church home, we invite you to worship with us at Faith, Morning Worship at 9:30 with Sunday School for all ages following at 10:30.

### Eta Alpha Initiates Mrs. Francis Hudson

Eta Alpha, Chapter of Delta Kappa Gamma held their formal initiation dinner at the Perryton Club September 16 at 6:00 p.m., with Francis Hudson as initiate. Those taking part in the ceremony were Mrs. Fred Zachary, Mrs. Joe Champion, Mrs. Doug Fiskin, Mrs. Don Clark, Mrs. W. W. Weaver and Mrs. James T. Hoy. Mrs. Ray Robinson served as Pianist for the ceremony. Miss Dorothy Roden sang, "Symbols of Delta Kappa Gamma", accompanied at the piano by Mrs. Don Clark. This was followed by group signing the official Delta Kappa Gamma song, also accompanied by Mrs. Clark. The ceremony was concluded when Mrs. Hudson and the above ladies formed a receiving line and were greeted by the other members. Karon Bennett, a newly transferred member to Eta Alpha was introduced and welcomed to the group.

Plans were discussed for the regional meeting which will be held at Booker on October 13. Eta Alpha chapter which includes members in the counties of Ochiltree, Hansford and Lipscomb, will be host for the regional meeting which covers other chapters in the eastern portion of the Texas Panhandle.

### 2 County Accidents Investigated Here

The Texas Highway Patrol investigated two accidents on rural highways in Hansford County during the month of August according to Sergeant C. Henderson, Highway Patrol supervisor of this area.

These crashes resulted in no persons killed and three persons injured.

The rural traffic accident summary for this county during the first eight months of 1973 shows a total of eight accidents resulting in no persons killed and eight persons injured.

The rural traffic accident summary for the 60 counties of the Lubbock Department of Public Safety Region for August, 1973 shows a total of 586 accidents resulting in 24 persons killed and 328 persons injured as compared to August, 1972, with 593 accidents resulting in 28 persons killed and 359 persons injured. This was 7 less accidents, 4 less fatalities, and 31 less injured in 1973 at the same period of time.

The 24 traffic deaths for the month of August, 1973, occurred in the following counties: Montague, four; Armstrong, Castro, Dallam, Swisher, Baylor, Clay, Wise counties, two each; and Deaf Smith, Donley, Parmer, Haskell, Lubbock, and Lynn counties, one each.

The Veteran Sergeant reminds you, the Texas motorist, to Drive Friendly, the Texas Way!

the **Spearman** REPORTER

213 Main Spearman, Texas 79081 Box 458 659-3434

Published Weekly at 213 Main Street Spearman, Texas 79081

Owner-Publisher . . . . . William M. Miller

Second Class Postage Paid at Spearman, Texas

Any erroneous reflection upon the character of any person or firm appearing in these columns will be gladly and promptly corrected upon being brought to the attention of the management.

SUBSCRIPTION RATE--Hansford, adjoining counties, in combination with The Hansford Plainman, \$7.00 yr. Other points in combination with The Hansford Plainman, \$9.00 yr.

### Memorial Service Held For Ford Infant

A memorial service for Travis Lee Ford, infant son of Mr. and Mrs. Teddy Ford, was held Saturday September 8 at the Baptist Church in Gruver with the Reverend Bill Butts of San Angelo, former pastor of the church, officiating. Burial was in Gruver Cemetery.

The baby was born Wednesday Sept. 5 at Ochiltree Hospital in Perryton and died Thursday. Survivors include his parents, two brothers, Richie and Michael and grandparents, Mr. and Mrs. G. W. Ford of Gruver and Mr. and Mrs. Lewis Hill of Farnsworth.

The young parents wish to express their gratitude to all who called, sent flowers and food, or otherwise helped with a special appreciation going to the women of the Baptist Church who were so helpful during this time.

### 4-H News

The Future Finders 4-H Club met in the County Extension office. The following officers were elected: President, Gina Hutchins; Council Delegate, Taml Farr; Secretary-Reporter, Diane VanZandt.

Members discussed possible National 4-H Club Week ideas and a trip to the State Fair of Texas to attend the State 4-H Dress Revue in Dallas. The trip will be October 5 and 6.

All interested girls who will be 14 by January 1, 1974 are invited to attend the next 4-H meeting October 1 in the County Extension office. Interested girls who may have questions about joining this club for Senior 4-H members should call Mrs. Nellie Evans, 659-2030 or 733-5057.

## Shamrock Station

FORMERLY BILL'S SHAMROCK  
501 W. Kenneth  
UNDER NEW MANAGEMENT

NOW  
Cook's Shamrock  
Operated By CARROLL COOK

WITH 14 YEARS EXPERIENCE TO SERVICE YOUR VEHICLE

- WASH AND GREASE
- BRAKE AND MUFFLER WORK
- MINOR TUNE-UPS
- TRUCK FLATS
- FOR PICKUPS AND DELIVERY
- UNDER NEW MANAGEMENT
- CALL 659-9979
- OPEN 7 DAYS A WEEK
- 6:00 A. M. TO 9:30 P. M.
- WOULD APPRECIATE YOUR BUSINESS

### COW POKES

By Ace Reid

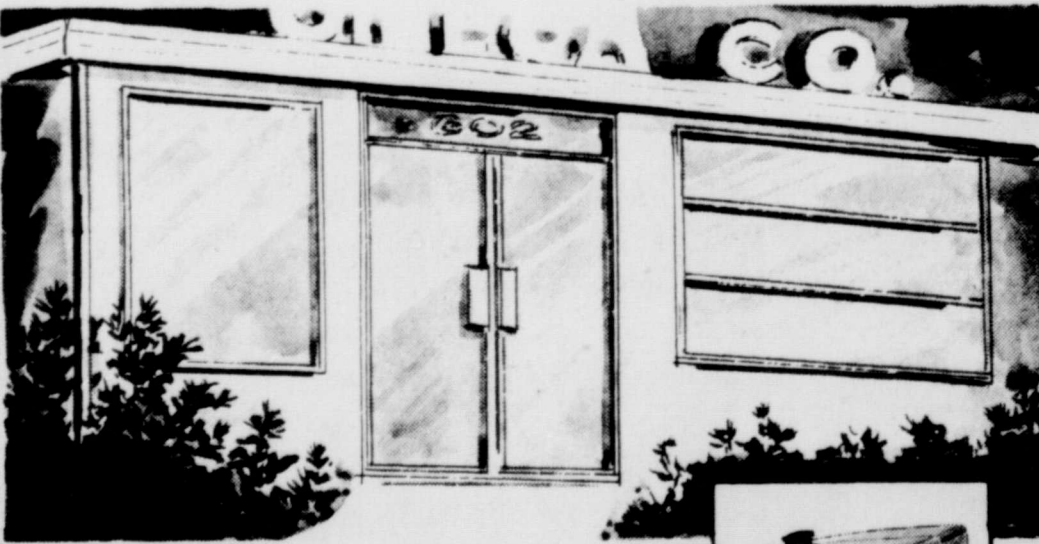


"You got in there, you dang old coyote bait, now come on out."

You can always get your money out when you have a saving or checking account here.

**FDIC**  
**FIRST STATE BANK**

SPEARMAN, TEXAS



### NOW...for pennies a night ...you can lease a DIRECTED Floodlight.

Leased floodlighting service can provide safety and security against accidents, vandals and prowlers around your business. It can be directed where the light is needed. Directed floodlighting will be installed and maintained by Community Public Service Company at a reasonable fixed rate per month. Call Community Public Service Company soon for more information on the leased floodlighting service.

**COMMUNITY PUBLIC SERVICE**  
Your Electric Light & Power Company  
An Equal Opportunity Employer



## 1974 Chevrolet A better-than-ever way.

When the wheel belongs to you, the road goes anywhere you say. And it's so much better with a '74 Chevrolet.

**Caprice Classic.** Introducing an elegant motor car, just asking to be enjoyed. Outside: an imposing new grille, and on the Coupe, a distinctive new roof line. Inside: peace, quiet and convenience. With standard power steering to do most of the turning, standard power front disc brakes to do most of the stopping, and a standard Turbo Hydra-matic transmission to do the shifting. If you want the luxury and comfort of a car that leaves little else for you to do but enjoy the ride, you don't have to look beyond the '74 Caprice Classic. However, the freedom of the open road begins with the freedom of choice:

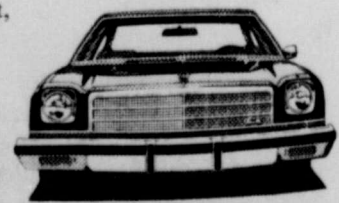
**Vega GT.** This year's version of last year's Motor Trend Economy Car of the Year. 1 And Car and Driver Readers' Choice as Best Economy Sedan for the last three years. With a reshaped nose, bigger bumpers, nicer carpeting, new stripes and new colors. Plus more good things to make it better. See what it's like to drive a winner.



**Camaro.** The way it looks is the way it goes. Quick, sleek and nimble. With a low, wide stance, responsive steering. And comfort that's rare in a car that handles so well. Plus classic new styling, and plushness from the cut-pile carpeting up.

**Malibu Classic.** A luxury Chevelle, new this year. With full foam seats. A fold-down front armrest. Wood-grained vinyl accents. Elegant inner door panels. Extremely tasteful upholstery and cut-pile nylon carpeting.

That's just inside. The exterior is just as classic, in character and in detail, as the interior. Yet, it remains mid-size. And, it remains all Chevelle. With Chevelle handling and at a Chevelle price. Now that you've looked, come and see the new Malibu Classic--and all the 1974 Chevrolets. The ones shown here, plus Impala, Monte Carlo, Nova, Corvette, pickups, vans and all our new cars and trucks.



**Chevrolet**  
Building a better way to see the U.S.A.

At your Chevrolet dealer's Sept. 20





Texas size ensilage pit: This is only half of the pit at Hansford feedyard. Believe it or not, but at one time, as many as 9 tractors were being used to pack the 20, 527 tons of fresh ensilage at the pit. Ensilage is turning out to be one of our biggest cash crops for farmers in the area.

2 one-year certificate programs.

Two-year programs include Farm and Ranch Management; Fashion Merchandising; Law Enforcement; and Auto Mechanics and Mechanical Technology.

One-year programs include Auto Mechanics and Mechanical Technology, and Fashion Merchandising.

All new programs and courses are to be offered effective the second semester.

The college has already had two two-year vocational programs in effect in the Division of Business, i. e., two-year Clerical and two-year Stenographic.

There has been a strong demand in recent years for vocational education, and it was felt that the addition of these one and two-year vocational programs would serve the needs of many people in the Oklahoma Panhandle. The two-year programs in Business have been very popular at the college and have been responsible for the training of many very fine young people which gave them the opportunity to enter the business field in this area.

The Auto Mechanics and Technology Program should be very popular. Automobile mechanics keep the country's cars and trucks in good operating condition. They perform maintenance jobs, diagnose breakdowns, and make the 1970's. The training programs in Auto Mechanics and Technology are of great assistance to young people in entering the job market. They soon advance to job foreman or other more responsible positions which have higher paying and more fringe benefits.

Fashion Merchandising should be of interest to many young people because of the great opportunities in the Retail Sales area. Retail businesses are successful because of their trained sales people. Courteous and efficient sales people satisfy customers and build a strong reputation. In selling many items such as wearing apparel or carpets or appliances, the salesman's primary job is to create an interest in the merchandise the store has to offer. The sales person renders an invaluable service in helping customers by answering the questions

about the products sold and by demonstrating their use or uses. The training programs in Fashion Merchandising at Panhandle State College are designed to develop these skills in the people participating in the program.

The farm and ranch management program is designed to develop management skills which are the keys of success in modern farming and ranching. The program at Panhandle State College is designed to give a student a higher level of knowledge and skills in the development of farm and ranch management. The courses the student will take should provide him with the basic knowledge and skills for him to be able to enter his chosen occupation at a satisfactory level.

The Law Enforcement or related protected services, police science courses at the college level are a necessity. In the past 50 years, police service in the United States has progressed from simple patrol work to a highly skilled occupation. The college accredited programs and certificates in police science are based on a well-established body of knowledge.

For further information, please write to: Dr. Royal H. Bowers, Dean of Instruction, Panhandle State College, Goodwell, Oklahoma, 73939.

### Contract Approved By City Council

Neve council... with a fe evening, with a lo minutes ht fall and 0, 13, load first are read crossing or shoot at a hosed Ricochetting nt city carry long dis killing power. roval. Even a small... has considerabk.

was re-appointed City Health Officer. Swimming pool bids were discussed, with October 8 being set as the deadline for bids.

Mr. Garrison, supervisor of the city dump ground, had his contract extended for a 6 month period.

Council members voted to fence the recently purchased land adjacent to the golf course.

There was a call for bids for a 1974 police sedan cruiser.

October meeting dates were set for the 8th and 23rd, the latter date being on a Tuesday instead of the regular Monday date.

PURPLE F PURPLE PI

Dere Varse:

Me and Mag has bin a g whin we git a flat out on driver which he give us b the tar over the rim.

### To Begin October 6

We wuz wunderin if yew Owens Servants Center to a ground it down on the end s, arn.

s have expressed a desire and we recognize and wood like fer yew to order community needs it, " case yew don't remember the se arrar.

Yew mite better see if you canew service is called too of cole oil which we nedo to is Dialing" since it it gits too cold and freezes, cessary to dial "1" Yores Trewly-Chester L. Peabody

ea code (if differ ur own) and the umber to com-

and billing in- be automati-

**Snider & Pearson C**  
Wholesale  
Phone 659-3555

### Twentieth Century Club Begins 43rd Year

Embracing the theme "Today Shapes Tomorrow", the Twentieth Century Club began its 43rd year on September 13th with a Federation breakfast meeting in the lovely and artistically decorated home of the President, Mrs. Gay Fuller.

members do (or do not) conduct themselves, was presented by Verna Gail Keim, Johanna Kleeberger and Kathleen Sutton.

The President's Project for the year is to be the purchase of a metal filing cabinet to be placed in the Library for the retaining of records, awards and history of the Club. Money for this project will be raised with a "Fund Day" on October 25th. This will be an auction of various types of art and handiwork donated by members.

Also, Hansford County Li-

brary will be a continuing project as it has been since its beginning. An outstanding report was given by Mrs. Frank Davis on the Library. In it she mentioned that circulation for the Library in the month of August was 2,156, as compared to 350 for the same month five years ago. She also mentioned that the Thriftship, which was begun in 1967 by Twentieth Century Club as a means of aiding the Library financially and has since become a community project, has earned a total of \$17,297.70, all of which has gone in some way to help the Library.

Co-hostesses Mrs. J. R. Keim and Mrs. C. A. Kleeberger assisted Mrs. Fuller in serving a breakfast as pleasing to the eye as to the palate, of muffins, melon balls, and

assorted fresh fruit, tea and coffee, to Mesdames: J. R. Stump, Frank Davis, L. L. Anthony, Deta Blodgett, C. U. Pope, Olin Sheets, D. E. Spoonmore, Claude Newell, E. L. Garner, Bill Watson, Harold Shaver, O. C. Holt, Wayne Hutchison, P. A. Lyon, Woodville Jarvis, Tommy Russell, Dick Kilgore, and Tom Sutton.

The next meeting will be September 27th in the Library Clubroom.

### PSC Offering New Programs

The Oklahoma State Regents for Higher Education approved 4 two-year certificate degree programs and

### Hunting Safety

A special note to the thousands of hunters taking to the fields and woods this fall in search of game--

Before you pull the trigger, know what you're firing at.

Sporting arms--from a single-shot .22 calibre rifle to a heavy big game weapon to a fast-shooting automatic scatter-gun--are designed to kill birds and animals. They also can easily kill humans.

The Texas Medical Association reminds that nearly every year several hunters return from fall outings via hearse. Hundreds of others return with a load of bird shot or a rifle bullet to be dug out by a doctor. Behind almost every hunting

# Baker & Taylor Drilling Company

## Rates its employees No. 1



WAYNE REAGAN



WAYNE REAGAN is the Baker & Taylor employee of the week. Wayne is a toolpusher with Baker & Taylor. He is married, and his wife's name is Marie. They have 2 boys, Mitchell age 19 and Russell age 15, and one girl, Terri, who is 20. Wayne doesn't have any special hobbies, like so many men now; but he says that his wife Marie does like to sew as a hobby. We made a special trip to the new Baker & Taylor yards in Canadian to get this picture, and if any of you happen to be driving near the Canadian area, drop by and see the new yards at Canadian. They are complete with even a storm cellar, and numerous storage garages and oil storage systems. The main office is located at the entrance to the Baker & Taylor complex. The unit is about one mile South of Canadian. This newspaper joins in saluting Wayne Reagan, as the Baker & Taylor employee of the week.



659-3434  
M. Miller  
Texas  
my person  
y and  
tion of  
ies,  
7.00  
ford  
News  
inders 4-H  
County Ex-  
The follow  
elected  
Hutchison  
re, Tam  
Reporter,  
t.  
ussed post-  
H Club  
a trip to  
Texas to  
4-H Drea  
The  
ober 5 and  
girls who  
nuary 1,  
l to attend  
ecting Octo-  
my Extr-  
erested  
ave quest-  
ing this  
4-H mem-  
Mrs. Nelle  
or 733-  
ion  
VT  
ock  
OK  
UR VEHICL  
DELIVERY  
GM  
ar. With  
grained  
y  
he USA



# THRIFTWAY

Prices Effective  
Sept. 20 thru Sept. 22  
WE RESERVE THE RIGHT TO LIMIT

AFFILIATED

## The Consumer Alert

by John L. Hill  
Attorney General

AUSTIN--As prices keep spiraling upward, the hapless consumer is having such a hard time stretching the dollar as far as his or her needs demand that most of them are looking for every available budget expander.

It is a difficult, and time-consuming, pursuit, because most people are part-time buyers, whereas the retailers from whom they buy are full time sellers. And at this point in our economy, the merchants--who also are consumers--are complaining that they, too, are having a hard time making ends meet.

The consumer's search for bargains and the merchants' desire for new customers have resulted in some unique retailing systems, such as the old-fashioned cooperative, and the "membership" purchasing plan.

In most cases, membership retailing seems to be working to the satisfaction of both member-buyers and member-merchants. Under this type of program, a group of people affiliated through employment, fraternal organization, credit union or other mutual bond, arrange to patronize certain retailers in exchange for a set discount.

The consumer club issues identification cards to its members, and publicized the participating merchant's products among its membership in exchange for the discount privilege.

The buyer can benefit through reduced costs, and the seller has the chance to gain a new market.

But the Consumer Protection Division of the Attorney General's office has received complaints which indicate that some so-called purchaser clubs are operating solely to the benefit of the operators.

The complaints usually have centered on schemes in which salesmen are recruited to sell discount membership cards, after making a personal monetary investment in the plan, and are promised large commissions in return.

The salesman's job is to call on merchants and talk them into buying lots of the cards, and getting their own customers to buy into the plan. The merchants allegedly are told that they not only will increase their clientele, but they will be paid a commission on each membership they sell. And, we are told, the merchants are promised the bonus of free advertising in exchange for their participation.

The consumer, who may be asked to pay as much as \$40 or \$50 to belong to the "club", is promised large discounts and "huge annual savings."

When this sort of plan is not operated properly, our Consumer Protection Division receives complaints from every participant--the salesman, the merchants and the consumers. Merchants have charged that they did not receive their commissions, and/or did not reap any advertising benefits. Salesmen have complained of failing to receive commissions. And consumers have stated that the discounts they received were minuscule in comparison to what they had been promised.

Some of these cases are under investigation by this office. Other ceased the deceptive practices when informed of the complaints. In the case of one club card, a Dallas trial court enjoined the operator from making any fraudulent misrepresentations about its services.

One of the problems noted by the court in that case was that the defendant promoted tours, and required cash advances for them, but frequently cancelled the tours--while the would-be travelers were at the airport for anticipated departures. Some members complained that they could not get refunds, but the firm went into bankruptcy and their money cannot be recovered.

The prudent consumer always should examine every offer to be certain that it not only is a real bargain, but with an eye to determining whether it is a product or service of actual use to that individual.

Clay tablets dating from about 2000 B.C. show that in Babylonia valuables were deposited for a service charge of 1/16th of what they were worth. Interests on loans ran as high as 33-1/3 percent!

**A THRIFTY WAY TO SERVE YOUR FAMILY FINE MEALS! TRY IT, YOU'LL LIKE IT**

**BEEF WITH HYDRATED VEGETABLE PROTEIN MIX**

**PROTEIN AND BEEF MIX LB. 79¢**

Krafts Pint **Sandwich Spread 49¢**

BREAKFAST, BONELESS CENTER CUTS  
**HAM SLICES .....LB. \$1.79**

USDA Fresh Dressed Whole  
**FRYERS 55¢**  
lb.

USDA Fresh Dressed Cut-up lb.  
**FRYERS 65¢**

**WILSON'S SAVORY BRAND BONELESS HALF HAMS**

3 to 4-LB. AVERAGE  
**\$1.59 LB.**

OSCAR MAYER  
**FRANKS 1-LB. VAC PAC PKG. \$1.19**

**FRESH FRYING CHICKEN PARTS**

BREASTS FRESH WHOLE .....LB. 89¢  
DRUMSTICKS FRESH WHOLE .....LB. 69¢  
Thighs ESH .....LB. 79¢

OSCAR MAYER VAC PAC BOLOGNA, ROUND OR SQUARE, OLIVE LOAF, PICKLE & PIMENTO LOAF LIVER CHEESE, COTTO SALAMI  
**LUNCHEON MEAT 8-oz. PKG. 79¢**

**FROZEN FOODS**

LEMONADE Shurfine 12 oz. Concentrate **23¢**

CAKES Colonial Ass't Fully Baked-17 oz. ea. **79¢**

BROCCOLI Shurfine Chopped-10 oz. **24¢**

TATER TOTS Ore-Ida 2 lb. **49¢**

**DAIRY**

Shurfresh Whipping-8 oz. **39¢**  
Cream

Shurfresh Sort lb. Tub **39¢**  
Oleo

Shurfresh Sliced Colby-10 oz. **59¢**  
Cheese

Shurfresh 10 to 16 Can each **8¢**  
Biscuits

WOW LOOK AT THIS

Shurfine Full Flavor lb. Can  
**COFFEE 68¢**

Shurfresh All Flavors-Half Gallon  
**Ice Milk 47¢**

5-LB. PAPER BAG  
**SHURFINE ENRICHED FLOUR FIRST ONE 59¢**  
LIMIT 1 WITH \$5.00 PURCHASE THEREAFTER REG. PRICE

6-OZ. CANS  
**2/88¢**

WITH COUPON  
1-LB. CAN  
**79¢**

**Pepsi Colas**  
32 oz. Bottle Plus Deposit  
**5 for 99¢**

Shurfine 16 oz. Carton **59¢**  
FROZEN HALVES STRAWBERRIES

10-OZ. SIZE **35¢**  
TOPPING

**APOTHECARY**  
Decanter 20 oz. **\$1.19**

**PRODUCE**

COLORADO BARTLETT PEARS LB. **19¢**

Jonathon Red Tart 4 lbs. **Apples \$1.00**

Large White or Yellow lb. **Onions 11¢**

U.S. NO. 1 RUSSET POTATOES 5-LB. POLY BAG **49¢**

48 oz. Decanter  
**Crisco Oil \$1.09**

Gerbers Strained  
**Baby Food 8¢**

Liptons Instant-3 oz.  
**Tea 99¢**

Apricots Food King Whole-no. 2] can **39¢**

Del Monte 46 oz. Can  
**Pinneapple Juice 37¢**

Del Monte 303 Can  
**Spinach 19¢**

Hunts Whole-Tail Can  
**Tomatoes 19¢**

Shurfresh Saltrines-lb. Box  
**Crackers 25¢**

Food King 2 lb.  
**Grape Jam 44¢**

Shurfine Full Flavor  
**Soup CHICKEN NOODLE 15¢**

Crafted in Staffordshire-England  
**Doverstone**  
Fine Imported Stoneware.

Create your own exciting combinations.  
Heather Gates.

The week's special  
**Cup 49¢**  
WITH EVERY 15<sup>th</sup> PUR.

**BLEACH**  
Purex 1/2 Gal  
**34¢**

**TOWELS**  
SoftIn Jumbo Roll  
**25¢**

CUT RATE  
**THRIFTWAY**

Plains Shopping Center  
Spearman, Texas

OPEN 7 until 8 CLOSED SUNDAY

**VALUABLE COUPON**

MAXWELL HOUSE COFFEE 1-LB. CAN **79¢**

WITH THIS COUPON THRIFTWAY FOOD STORES VOID AFTER SEPT. 22, 1973

**VALUABLE COUPON**

MAXWELL HOUSE COFFEE 2-LB. CAN **\$1.57**

WITH THIS COUPON THRIFTWAY FOOD STORES VOID AFTER SEPT. 22, 1973