

Lynx Looking At First Un-Defeated Season Lynx Here Friday Night, 7.30

Member
the TEXAS PRESS ASSOCIATION
Spearman

REPORTER

VOLUME 63, NO. 50

THE SPEARMAN REPORTER, Hansford County, Texas 79081

THURSDAY, NOVEMBER 2, 1972

Art, Antique Show Set for Weekend



SHOW DEDICATED TO RUTH HUTTON

The public is invited to attend the third annual Arts, Crafts & Antique show to be staged here November 4 and 5, in the Library building on Main Street.

Sponsored by the Dahlia Flower Club of Spearman, the show will feature outstanding exhibits in the above named categories, with many articles for sale.

Everyone is urged to bring in, craft work or antiques for exhibit. There is no charge for exhibiting.

All exhibitors are to have exhibits in place by 11 a. m. Saturday. The Library building will be open from 2 to 6 p. m. Friday so displays may be set up during these hours.

There will be no admission charge for the show. However, there will be a silver offering tray available for those who wish to donate money. Proceeds will go to help install an elevator at the Library.

One feature of the show interesting to viewers, is the fact that door prizes will be given away each hour, on the hour. Many pieces of hand painted china, etc. have been donated for this purpose.

The Dahlia Flower Club is dedicating this show to Mrs. Bill (Ruth) Hutton. A special ceremony in her honor will be held at 2:30 Sunday.

Mrs. Hutton, a long-time Spearman resident, has been teaching oil and china painting for more than 20 years. She is well known all over this area for her outstanding talent as well as her ability to instruct.

Most of the artists in this community began their art work under her tutorage.

The public is urged to view the art, craft & antique show between the hours of 1 to 5 p. m. this Saturday and Sunday at the Hansford Library building.

Art, craft, antique show, Nov. 4, 5

This year's show will be dedicated to Ruth Hutton, local artist. She is shown above with a portrait of her husband, Bill, which she painted several years ago.

Nov. 7 Election Boxes Named

When Texas voters go to the polls November 7 they will be asked to make decisions on a whopping 14 proposed amendments to the State Constitution as well as voting their choice of the various National, State and County candidates--25 in all.

For this Presidential election, County Clerk Norma Jean Covel reports an all time record number of persons voting absentee. One-hundred and nineteen absentee ballots had been cast as of Tuesday, October 31. Absentee voting ends Friday, November 3.

Local races of interest in Hansford County include two commissioners contests and the State Representative race. Jack Hart, a Gruver citizen asking to be elected on the Republican ticket to the State Representative, Dist. 64 post, is opposed by Democrat Dean Cobb.

Joe Day, asking for re-election for County Commissioner Precinct One, a position he has held for some 20 years, is being opposed by A.E. (Junior) Lusby on the Republican ticket. Lusby, a Spearman resident, deals in heavy machinery. He owns the Junior Lusby "Cats" Company.

County residents of Precinct 3 (Gruver) will make their choice for commissioner between incumbent B. W. Ren-

ner, Democrat, and Leon Red, Republican candidate for the office.

Next Tuesday, polls open at 8 a. m. and close at 7 p. m. Voters must present their Voter's Registration form at the following voting boxes:

Precinct 1, Spearman court-house, E. J. Copeland judge. Precinct 2, Renner Ranch, Mary Ellen Saltzman judge. Precinct 3, Gruver Elevator, Mrs. Elmo McClellan judge. Precinct 4, Gruver High School, Sonny Riley judge. Precinct 5, Oslo, Jane Stedje judge. Precinct 6, Morse School, Willard McCloy judge. Precinct 7, Spearman Jr. High School, R. L. McClellan judge.

For newcomers to Hansford County, your voter certificate will indicate which precinct you will vote in.

Mr. and Mrs. Louis Burkhardt, Donnie Burkhardt and Mr. and Mrs. Porky Holland motored to Canyon Sunday afternoon to attend concerts presented by The University Chorales, Rosemary Burkhardt and David Holland are both members of the college choral groups. Hugh Sanders, associate professor of music at WTSU, presented the concert at 3 p. m. in the Fine Arts Theatre at Canyon.

Two Rural Accidents

The Texas Highway Patrol investigated two accidents on rural highways in Hansford County during the month of September, according to Sergeant C. E. Henderson, Highway Patrol supervisor of this area.

These crashes resulted in no persons killed and two persons injured.

The rural traffic summary for this county during the first nine months of 1972 shows a total of 23 accidents resulting in one person killed and six persons injured.

Region 5 of the Texas Department of Public Safety shows a total in September, 1972 of 561 accidents resulting in 21 persons killed and 335 persons injured as compared to the same month in 1971 with 499 accidents resulting in 33 persons killed and 268 persons injured. This was 62 more accidents, 12 less fatalities and 67 more injured in 1972 at the same period of time.

The Highway Patrol supervisor reminds you that speed is one of the main factors in accidents on the highway. Slow down a little and live a lot. Drive friendly the Texas way!

Families Are Larger In Hansford County

How do Hansford County families compare in size with families in other sections of the country? Are they larger or smaller than they were ten years ago?

Interest in the subject has been heightened recently from two directions. On the one hand, the ecologists, alarmed at what the present rate of population growth is doing to our natural resources and our environment, warn of the need to conserve and protect.

The Census Bureau, on the other hand, has just announced that, for the first time in history, the nation has had a six-month period of zero population growth.

What it means is that the number of births during that period just balanced the number of deaths.

If that rate were sustained for a long time, the number of children ever-born would be 2.1 per woman, which is sufficient to keep the population fixed. In recent years, however, it has been close to 3.1.

In Hansford County, families tend to be larger in size than in most communities. Census Bureau figures show that

there are 316 persons per 100 households locally.

The average in the United States is 311 per 100 households and, in the West South Central States, 315.

Since 1960, local families have changed somewhat in size. At that time there were 339 persons per 100 households, as compared with the current ratio of 316 per 100.

Although the nation's fertility rate has dropped temporarily to the replacement level of 2.1 children per woman, the real end of population growth cannot be expected until that rate has been maintained for a number of years, the experts point out.

The reason is that the numbers of births depends on both the rate and on the number of females of child-bearing age and younger in the population.

Not until every girl now born completes her child-bearing years and her daughters have held to the 2.1 rate, would births offset deaths on a permanent basis.

When that happens, say the ecologists, a long step will have been taken to stop the steady deterioration of the environment through air pollution, water pollution and the like.

Here Today, 4:00

U.S. Representative Bob Price of Pampa along with several other Republican candidates will fly to Spearman Thursday for a 4:00 p. m. meeting at the Cattleman's Cafe, located downtown Spearman.

Janet Parnell of Canadian, Republican candidate for the State Board of Education, will be on hand as will Jack Hart, Leon Red and A. E. (Junior) Lusby.

Hart is a candidate for State Representative. Leon Red and Junior Lusby are seeking commissioner posts on the Republican ticket.

Mrs. Bob Price will meet friends at a tea at the Hansford County Library at 5 p. m. Congressman Price will tour Spearman main street and pay a visit to the newly opened Nixon-Agnew headquarters next to the Cattleman's Cafe.

Every voter in Hansford County is invited to come to the cafe and talk with the Congressman at 4 p. m. Thursday, Nov. 2, (today).

BULLETIN: THE SUN IS SHINING VERY BRIGHTLY IN SPEARMAN WED. MORN. THE STORM IS OVER.

The thing that the farmers and business men in the area feared most, came into being Tuesday of this week. A bad ice storm hit the area, and it virtually had all traffic snarled by 10 a. m., Tuesday morning. The road between Spearman and Gruver, notably Old Hansford Hill, had already clamed a truck and a car, which slid into the ditch as a result of poor visibility, high winds, and slick icy roads. Schools in the area were preparing to turn out shortly after the students had been fed, and at least to start closing the schools down by 2 p. m. on Tuesday. Weather-men were issuing heavy snow warnings for the county by 11 a. m. Tuesday morning, and residents of the county were just standing by to see what the results would be.

Oil crews, cattlemen, and farmers who have to be out in the severe weather, were dreading this storm.

The maize, which is dead ripe, and ready for the harvest, is standing in a frozen state, and we hope that it is still standing when this ice storm is over. There is no doubt about it, there will be some damage to the maize, and it is going to be as result of ice and high winds. The temperature is at the very worst degree, just warm enough for it to rain, and cold enough for it to freeze on the ripe maize heads.

No bad wrecks have been reported, and the highway crews out of Gruver, have put salt and gravel on the hill at Old Hansford, but ice and snow have drifted in about as fast as the gravel and salt was applied. The word in Hansford County, is just stay put, unless you have to get out.

It may be a little bit premature, but the Lynx children of Coach Mires, may be looking at the first undefeated season, in the school's history since they have been in class AA. Maybe, the first one in the school's history, as records are rather sparse. Of course, each game must be played as they roll around on Friday night, but the Lynx have been so successful this year, that no one gives them a chance of being upset the remainder of the season. This Friday night, the Lynx entertain the Boys Ranch Roughriders and the Lynx will be so "high" that it might be rough on the roughriders! This fine praying team of Coach Mires has prayed and played their way through one of the toughest seasons in the school's history. The only easy game they have had was with Canyon of AAA, and Dalhart of AA. They sure did have their hands full with the District 1-A teams that they played this year. And, of course, the tie at Panhandle in the Aquamarine bowl, was very discouraging to the Lynx, but both Panhandle and Spearman played so well, they deserved a tie in the muddy affair.

Can anyone beat the Panthers or the Lynx? Of course they can, but Spearman has the best remaining schedule. Panhandle must beat both Phillips and Dalhart, and

Spearman has only Phillips to worry about; a team that Dalhart has already eliminated! Everything is shaping up for a play off between the Lynx and Childress, if Panhandle will just drop a game, and the Lynx can win their remaining 3 relatively easy games! The weather, however, can be a big factor in the final district results. Stratford will be tough at Stratford, if the Lynx meet them in an ice storm. They have a good team! A big team, that can probably play on a wet field with any team in the district. And, Spearman cannot play up to par on a wet field, because of the speed that their backfield has.

Fans are urged to come out Friday night at 7:30 and see this great defensive unit that held Dalhart to 29 yards last Friday night. This probably was an all-time record for a Spearman team! It sure was against a Dalhart team! Coach Mires team seems to be improving with each week, and one of the brightest part of this team, is the fine group of reserves that has backed up the starting units. They are a great bunch of kids, who still give the "Lord" the credit for their fine season, and they are a fine Christian group of kids! Come out and watch them this Friday. You will not be disappointed!

State Champions open season: Lynxettes To Play At Plainview Clinic

PLAINVIEW--The fifteenth annual Flying Queen Basketball Clinic will begin at 9 a. m. on Saturday, Nov. 4, 1972. The site will be the new Hershon Center on the Wayland College campus. The morning program will feature outstanding high school coaches using their own players in floor demonstrations. The world famous Flying Queens will present fundamentals and game tactics that should prove interesting to players, coaches and spectators.

Starting at 3 p. m. Saturday afternoon, some of the outstanding high school basketball teams will begin a series of games. Schools that will be playing will be Spearman, Friona, Canyon, McCamey, McLean, Hale Center, Slaton and Valley. Four games will be played with each school participating in one. Teams have not been matched up as of now. Game times are at 3:00, 4:30, 6:00 and 7:30.

Admission to the games is \$1.00 for adults and .50 for students.

This is one of the best girls basketball clinics in the nation. A record number of players, coaches and spectators are expected.

Nov 4 Poppy day

Poppy Day as a memorial to American war dead and a tribute to disabled servicemen originated after the first World War.

Tower Committee Appointees Named

U.S. Senator John Tower announced today the appointment of 5 outstanding citizens to the Hansford County Steering Committee of Texans for Tower. Named as chairman was Robert E. Lee of Spearman.

"We are delighted that so many Democrats and Independents are teaming up with us and putting the best interests of Texas and the United States above party labels," said Tower, who has 11 years seniority in the Senate.

"Now, more than ever before, Texas needs a strong, effective voice on both sides of the aisle in the Senate," he declared. "I appreciate the efforts of these fine Texans, who realize the importance of having a Texas Senator who can work closely with the White House."

Named to the committee were: Everett Tracy, Bob Cluck, Ila Jo Hart, Kenneth Irwin and Erlis Pittman.

Art Lynch and Joe Bob Grayson, students at NTSU, Denton, were home over the weekend visiting their parents and friends.

Mr. and Mrs. Lynn Kemper have returned to Spearman to live, while Lynn does his 9 weeks practice teaching in Per-ryton.



A HEAVY COATING of ice topped with snow made driving conditions very hazardous in Spearman Tuesday as the season's first wintry spell swept across the Panhandle area. Temperatures were down to the low 20's Monday night, coating trees, power lines and streets with ice from drizzling rain which continued to fall throughout Tuesday. Weather-men predicted heavy snow accumulations before the storm passed.

Miss Warminski gives winter sweater forecast

Wearers with new looks will top winter fashion according to most forecasters.

Miss Warminski, a clothing specialist with the Agricultural Extension Service of Texas A&M University, viewed the trend with an imaginative sweater shopping spree.

"The big looks in sweaters for fall and winter are dolman and kimona sleeve sweater jackets, puffed sleeves, crew necks, short midriff sweaters and knitted vests--most designed to create the multi-layer look.

"Newest in line is the sweater coat, made into long, belted cardigans or heavy shawl collared coats.

"American designers pronounce cashmere sets back in fashion.

"Matching cashmere cardigan sets go short or long and travel to almost every occasion--from casual coffee clatch to formal evening wear.

"Many different textured yarns and fibers make today's sweaters, with emphasis on soft, hairy and nubby surfaces.

"Included in these are wool, polyester, textured nylon, cotton, mohair, acrylic, angora, cashmere and increased use of metallic fibers."

Miss Warminski classified sweaters as either pullover or cardigan.

As its name implies, the pullover pulls over the head, while the cardigan fastens down the front. Pullovers are popular as midriff toppers, tank tops and turtle necks.

With her for the shopping spree, the clothing specialist took a handful of hints on seams, edges of ribbing, and reinforcement stays--all indications of quality, she said.

They are as follows:

1. Look at seams. In the best grades of sweaters, the bands are joined to the sweater by hand looping, which continues the knitting without a seam.
2. Good strong neck finishes are important. Select a sweater with a double-loop neck finish.
3. Examine seams and buttonholes. Avoid crooked or uneven seams and buttonholes with a tendency to ravel.
4. If the sweater is long sleeved, be sure the cuff is well-finished on the reverse side to allow turning up.
5. Look for a firm reinforcement of either ribbon facing or knit basting. It's necessary to prevent buttonholes from pulling out.

"Select a sweater two sizes larger than your blouse size," Miss Warminski concluded, advising shoppers always to try on sweaters before buying, since sizes aren't standardized.

Emergency loan benefits Farmers

Texas farmers and ranchers who have suffered crop, livestock, or property losses from a natural disaster since June 30, 1971, may be eligible for benefits from Public Law 92-385, J. Lynn Futch, State Director of Farmers Home Administration, Texas, announced today.

Provisions of this law, signed by President Nixon on August 16, 1972, are now fully operative, Futch said.

Benefits are divided into two time frames:

1. Farmers and ranchers who received loans from Farmers Home Administration as the result of losses due to a natural disaster that occurred between June 30

and December 31, 1971, may be eligible for a cancellation of up to \$5,000 of the principal of the loan. Interest on the remaining loan would be three percent.

2. Those who received loans as the result of losses from natural disaster that occurred after December 31, 1971, are also eligible for a cancellation of up to \$5,000. Interest on the outstanding balance would be charged at one percent.

Futch emphasized that it is not necessary for those who are entitled to benefits to contact the local FHA office. There are blanket provisions applicable to all who have received loans, and each will be contacted and

told of the action he should take.

Futch also advises that any farmer or rancher who receives an Emergency loan from Farmers Home Administration between now and June 30, 1973, may have up to the first \$5,000 of the loan cancelled, with the balance at a one percent interest rate. The amount

of cancellation is limited to the loss or damage not compensated by insurance or otherwise.

SURPRISINGLY, AS MANY AS 28 PERCENT OF TODAY'S IMMOBILIZED HOSPITAL PATIENTS DEVELOP BEDSORES WHICH ARE GENERALLY CAUSED BY INSUFFICIENT BLOOD FLOW TO THE AFFECTED AREA DUE TO PRESSURE ON THE BODY UNTIL RECENTLY, THEY WERE DIFFICULT TO TREAT AND SLOW TO HEAL.

Art, craft, antique show, Nov. 4, 5

TEXHOMA LIVESTOCK COMMISSION COMPANY, INC.

Under Federal Supervision - Bonded For Your Protection
LIVESTOCK AUCTION - EVERY FRIDAY
PHONES - (area 405) 423-2031 & 423-3251

Customer and Producer: October 28, 1972

Yesterday, Friday October 27th was a wonderful day for a cattle auction in Texhoma. The "action" began at 11:00 A.M. and completed at 5:00 P.M. 3257 cattle and calves were sold to the arena. Consignors were here from Texas, New Mexico, Colorado, Kansas, Oklahoma and other states much farther away. Buyers and Order Buyers were here from several states also to make the offering in very good order.

It was a very active auction from start to finish. Calves and light replacement cattle active and fully steady. Feeder heifers 50# to 75# very. All classes of cow and bull calves active and fully steady.

- Some representative sales as follows:
- Blk WF Heifer Calves - Avg. Wt. 352# \$951.00 per cwt.
 - Blk WF Heifer Calves - Avg. Wt. 310# \$751.00 per cwt.
 - Blk WF Heifer Calves - Avg. Wt. 513# \$750.00 per cwt.
 - Blk WF Steer Calves - Avg. Wt. 361# \$757.30 per cwt.
 - Blk WF Steer Calves - Avg. Wt. 347# \$756.75 per cwt.
 - Blk WF Steer Calves - Avg. Wt. 311# \$761.25 per cwt.
 - Blk WF Steer Calves - Avg. Wt. 415# \$753.20 per cwt.
 - Charl's Steer Calves - Avg. Wt. 470# \$747.60 per cwt.
 - Blk WF Steer Calves - Avg. Wt. 511# \$751.40 per cwt.
 - Blk WF Steer Yearlings - Avg. Wt. 535# \$750.75 per cwt.
 - Charl's Yearling Steers - Avg. Wt. 572# \$747.75 per cwt.
 - Blk & Blk WF Steers - Avg. Wt. 475# \$745.10 per cwt.
 - Blk & Blk WF Steers - Avg. Wt. 712# \$744.30 per cwt.
 - Blk WF Steers - Avg. Wt. 759# \$743.20 per cwt.
 - Blk and Fw Blk WF Steers - Avg. Wt. 690# \$744.20 per cwt.
 - Blk and Blk WF Steers - Avg. Wt. 558# \$748.60 per cwt.
 - Blk and Blk WF Steers - Avg. Wt. 500# \$752.20 per cwt.
 - Blk WF Steers - Avg. Wt. 830# \$740.20 per cwt.
 - Mixed Steers - Avg. Wt. 843# \$738.30 per cwt.
 - Blk & Blk WF Steers - Avg. Wt. 834# \$737.75 per cwt.
 - Blk WF Steers - Avg. Wt. 719# \$744.10 per cwt.
 - Mixed Yearling Heifers - Avg. Wt. 496# \$741.75 per cwt.
 - Blk Feeder Heifers - Avg. Wt. 580# \$738.50 per cwt.
 - Blk Feeder Heifers - Avg. Wt. 596# \$740.30 per cwt.
 - Blk Feeder Heifers - Avg. Wt. 675# \$739.60 per cwt.
 - Blk and Blk WF Feeder Heifers - Avg. Wt. 671# \$738.90 per cwt.
 - Blk and Blk WF Feeder Heifers - Avg. Wt. 586# \$740.50 per cwt.
 - Mixed Heifers - Avg. Wt. 586# \$740.60 per cwt.

The Cattle & Bull market steady with last week. Stock replacement cows sold mostly from \$25.00 to \$31.00 per cwt.

Next Friday, November 3rd will be another Special Calf Sale. Friday, November 10th our first Special Cow Sale for the year. Next Tuesday October 31, we are mailing a "Special Information card" pertaining to our November schedule. Watch it and save for your future reference.

Sincerely, Cliff Augustine

Art, craft, antique show, Nov. 4, 5

What is ELR?

An Equal Legal Rights Amendment to the Texas Constitution which will appear as NUMBER 7 on the ballot of the General Election, November 7, 1972. It will read as follows:

"The Constitutional Amendment to provide that EQUALITY UNDER THE LAW SHALL NOT BE DENIED OR ABRIDGED BECAUSE OF SEX, RACE, COLOR, CREED OR NATIONAL ORIGIN."

The Amendment will repeal all laws which:

1. Permit the husband alone to designate and declare the homestead;
2. Permit the husband alone to abandon the Homestead, even over the wife's protest;
3. Declare that the wife's domicile is the same as her husband's, even if she does not actually live there;
4. Reduce the penalty of a married woman who violates a criminal law to one-half the usual penalty if her husband persuades her to commit the crime;
5. Limit the hours of work for women only and which limit the premium pay they might receive, thereby placing them at a disadvantage in the competitive market;
6. Make the father alone the guardian of minor children as long as the marriage continues (Section 109 (a) Probate Code);
7. Require physically and morally healthful conditions for working women only, or require legislation extending the same "protection" to men;
8. Deprive the married woman who is not gainfully employed outside the home of control of her half of the community property;
9. Provide that it is justifiable homicide if a man kills his wife's paramour when she is taken in adultery, but it is MURDER if the wife kills under the same circumstances.

The Amendment will prevent the passage in the future of any laws which discriminate against men or women or which discriminate because of race, color, creed or National origin.

Equal Legal Rights--a Matter of Simple Justice!

McGOVERN SPEAKS

FRIDAY 9: 30 p. m. Channel 10

SUNDAY 10: 30 a. m. Channel 10
12: 00 noon Channel 7 (Shriver)

MONDAY 7: 30 p. m. Channel 7
9: 00 p. m. Channel 10

Would It Hurt To Listen ?

Pol. Adv. Paid For By Jean Porter



Elect

HENRY C. (HANK) GROVER

For GOVERNOR

A man who takes a stand; a real Texan. His loyalty is to the people of Texas. He's against George McGovern.

COMPARE THE RECORDS . . . and you'll vote GROVER FOR GOVERNOR.

HENRY C. (HANK) GROVER

DOLPH BRISCOE

- in sixth year in state Senate. Served six years in State House of Representatives.
- conservative voting record for all 12 years in legislature.
- led against busing and is co-author of constitutional amendment to outlaw busing.
- led against amnesty for draft dodgers and deserters.
- always voted against a state income tax. Will veto a state income tax if elected governor.
- led against Caesar Chavez and the lettuce boycott.
- led fight against increased welfare spending.
- led against considering the Sharpstown banking bill.
- excellent Farm Bureau voting record; member of Farm Bureau of Lavaca County.
- forty-five years old; fourth generation Texan.

1. For George McGovern for President. Voted for George McGovern at the Democratic National Convention. Recently welcomed George McGovern to Texas.
2. Dropped out of state government nearly 15 years ago.
3. Very liberal voting record as member of House of Representatives.
4. Refused to oppose busing at Democratic State Convention in Houston.
5. George McGovern wants total amnesty for draft dodgers and deserters and Dolph Briscoe supports George McGovern.
6. Refused to take a stand against state income tax at Democratic State Convention
7. Took a stand for Caesar Chavez and the lettuce boycott at Democratic State Convention
8. George McGovern's platform will destroy the military defense of the United States and Dolph Briscoe voted for that platform.

LETTERS To The Editor

RUBY LAIR ENTERTAINS XI ZETA UPSILON

Xi Zeta Upsilon Chapter of Beta Sigma Phi met in the home of Ruby Lair October 12, 1972.

President, Karen Countiss, presided over the business meeting. Upcoming social events were discussed and the success of the window decorating for the past homecoming weekend.

A very interesting program was presented by Mrs. R. E. Lee, "Preparation for Travel". Mrs. Lee is an Honorary Member of Xi Zeta Upsilon.

Those attending the meeting were: Karen Countiss, Elaine Floyd, Altha Townsend, Anne Archer, Dottie Beedy, Charlene Bulla, Linda Davis, Glenda Guthrie, Judy Martin, Joan Stewart, Mona Beth Windom, Hostess, Ruby Lair, and honorary member, Mrs. R. E. Lee.

Dear Sir:

The real reason Barefoot Sanders is running a smear campaign against Senator John Tower is because he has nothing to offer the people of Texas.

He claims to be the hero of ethics and reform, yet he voted three times against ethics measures when he was in the Texas legislature. He refuses to say how much he collected in legal fees for representing defendants in the Sharpstown scandal.

He says he would be more effective than Senator Tower, yet a Democratic-controlled Senate twice refused to confirm his nomination for federal judge.

He won't discuss issues, yet he supports McGovern and took \$2,000 from Ramsey Clark for his campaign this year.

I don't believe Sanders mud-slinging will fool the people of Texas. His lack of qualifications are a matter of public record. About all he can claim in recent government service is the fact he lobbied for forced busing in 1968.

I hope Texans will vote for a man who has proven qualifications and a sound record of service, Senator John Tower.

H. Y. Cornelius

Military Wedding Unites Miss Crooks, Lt. Needham

In a ceremony performed by Chaplain Albert J. Rowell in the Medina Base Chapel at San Antonio, Texas, Miss Leslie Anne Crooks became the bride of Second Lieutenant Don Mack Needham. Captain Rowell read the double-ring rites at 10:30 a. m. on October 7.

The bride is the daughter of Mr. and Mrs. Harold Crooks of Spearman. Parents of the groom are Mr. and Mrs. R. D. Needham of Cross Plains, Texas.

Mrs. Melinda Sasser, Spearman, served her sister as Matron of Honor. She wore a floor-length dress of pale blue dotted swiss. Styled in the empire style, the bodice was designed with short puffed sleeves. She carried a long-stemmed yellow rose tied with long blue ribbons.

Michael J. McGuffin of Austin, Texas was best man. Ushers were Gene Renuart of Laredo, Texas, Terry Clark, or Laredo and Robert Crooks, brother of the bride, of Spearman.

The bride was attired in a white formal gown fashioned from white cotton eyelet. The empire bodice featured Juliet sleeves. Her headpiece was a full, white, elbow-length veil and she carried a bouquet of white daisies and baby's breath.

Mrs. Crooks was attired in a pale blue double knit dress. The groom's mother wore a navy blue double knit dress. Both mothers wore white carnation corsages.

A reception followed the ceremony in the home of the groom's sister, Mrs. Carol Ann Watson of San Antonio. The brides' table was covered in white and centered with a bouquet of white daisies and baby's breath. Other hostesses included Mrs. Becky Crooks and Mrs. Carolyn Crooks, both sisters-in-law of the bride, of Spearman.

The bride, a graduate of Spearman High School, attended Texas Tech University. A native of Cross Plains, Texas, the groom is a graduate of Texas Tech, with a DDA degree in Business Administration.

The couple is at home in Laredo. Texas where Lt. Needham is stationed with the U. S. Air Force as a student pilot.

Out-of-town guests at the wedding included: Mr. and Mrs. Harold Crooks, Mr. and Mrs. Robert Crooks, Mr. and Mrs. Stephen Crooks, Mr. and Mrs. H. H. Crooks, Mr. and Mrs. Richard Sasser, all of Spearman. Also, Mr. and Mrs. Russ Graham, Michael J. McGuffin and Miss Mary Ann Baggett all of Austin, Mr. and Mrs. Terry Clark, Mr. and Mrs. Gene Renuart, Don Ingle, all of Laredo, Mr. and Mrs. R. D. Needham, Ted Souder, all of Cross Plains, Mr. and Mrs. Bill Watson, Mr. and Mrs. Rex Tackett, and Mrs. A. O. Bruchmiller, of San Antonio.

CLUB MEMBERS ENJOYED TOUR OF ART GALLERIES

Eleven members of the Twentieth Century Club recently enjoyed a tour to Taos, N.M., and El Valle Escondido. They stayed in the L.L. Anthony and Mrs. Wayne Hutchison cabins at Valley Escondido.

In Taos, the Spearman women visited the Shriver Art gallery, Mrs. Pat Shriver, a very gracious hostess, showed them through her lovely home of Indian and Spanish decor. Mrs. Shriver owns an outstanding collection of art and artifacts, all displayed in her home.

The women enjoyed touring the Millicent A. Rogers Foundation and Museum, a 17 room adobe home. A guide took them through the home, which is a "must" for all people to see. The home houses over 600 Indian works of art. Among the magnificent jewelry collection was a turquoise necklace weighing 4 lbs. It is valued at \$27,500.00. Many woven rugs and hand-made pottery pieces, made by various Indian tribes were on display. Mrs. Rogers, heir to the Standard Oil fortune, found money no problem and so her collection is one of the best in the world. She died at the age of 51 years. The museum today stands as a monument to Indian peoples and a woman who genuinely loved Indian culture and tradition.

The group drove out to the Rio Grande bridge, which stands 900 feet above the Colorado. They enjoyed a stroll across the bridge.

At the Stables Gallery, the group was honored at a coffee by the gallery hostess.

Those enjoying the weekend trip included Mmes. L. L. Anthony, C. A. Kleeberger, Olin Sheets, C. U. Pope, J. R. Stump, J. R. Keim, Tom Sutton, Harold Shaver, Wayne Hutchison, Fred Holt and Claud Newell.

FOR SALE-The annual staff has a Durst M200 darkroom enlarger for sale. Contact Orville Latham, High School Business Office. 497-rtm

Campbells Moving To Okla. City

Mr. and Mrs. M. K. Campbell will be moving soon to Oklahoma City where Lucky has been employed by a National Drilling Company. He will be working in the Oklahoma City territory. The Campbells have been Spearman residents for many years. Mrs. Campbell (Viola) an employee of McClellan Grain Co. for a long time, said she would be moving about the 15th of this month.

HOSPITAL Notes

Patients in Hansford Hospital are Hiram Wilbanks, Dutch Arbsland, Grace Lawson, Sara Rex and son, Donna McKenzie, Reba Bennett, Grace Bennett, Wyatt Adkins, Mary Sparks, Jenny Massad, Sharon Ellis, Marvin Chambers, Larry Day, Don Nolen. Dismissed were Mary Boyd, John Bolling, John Campbell, Margie Shelton, Orville Taylor, Cora Babbs.

A vote for AMENDMENTS

I & III

IS A VOTE OF CONFIDENCE
You can do no less!

Tuesday, November 7, 1972



Let Me See by Sybil...

Son "What's a traitor in politics, dad?"

Father "A man who leaves our party and goes over to the other side."

Son "Well, what about a man who leaves his party and comes over to ours?"

Father "A convert, son, a convert."

WISDOM: beware of political candidates who promise pie-in-the-sky. They plan to use your dough.

IT SEEMS A little ridiculous, but this country was originally founded as a protest against taxation.

LADY TO pollster "My opinion is that whoever is elected, my husband will be furious."

RECEIVED BY A Congressman

CATTLE AND LIVESTOCK BUYERS

WE NEED MEN IN THIS AREA.
Train to buy cattle, sheep and hogs.

We will train qualified men with some livestock experience. For local interview, write today including complete background, address, and phone number.

WESTERN MEAT PACKERS TRAINING, INC.
4318 Woodcock, San Antonio, Texas 78228

Why You Should Re-Elect President Richard Nixon Nov. 7

LET'S LOOK At AGRICULTURE And STOCK RAISING

WE HAVE one of the most abundant supplies of food in history. Our exports of livestock, fresh meats, grain sorghums and grain are going to add many dollars to the general economy.

WE'RE SELLING COMMODITIES of which we've had surpluses—and we're helping provide jobs on trucks and ships at the same time.

HERE ARE SOME OF THE REASONS

PRESIDENT NIXON'S AGRICULTURAL ACT OF 1970 gave producers more flexibility and freedom in operations.

PRESIDENT NIXON'S ADMINISTRATION has turned around the farm situation that saw farmers get an increase in income of 6 per cent between 1951 and 1969 while wage rates went up 6 per cent every year.

PRESIDENT NIXON gave agriculture one of the most effective spokesmen in recent history by appointment of Earl Butz as Secretary of Agriculture.

FOR YOUR OWN GOOD

RE-ELECT THE PRESIDENT

AND REMEMBER

The Only Way to Have Your Say

IS TO

Get Out and Vote Nov. 7

Pol. Adv. Sponsored by Texas Media Committee for Nixon, Sam Kinch, Chairman

COUNTY GOVERNMENT IS BIG BUSINESS

I Would Like To Continue To Serve You After 20 Years of Experience

VOTE FOR EXPERIENCE.....

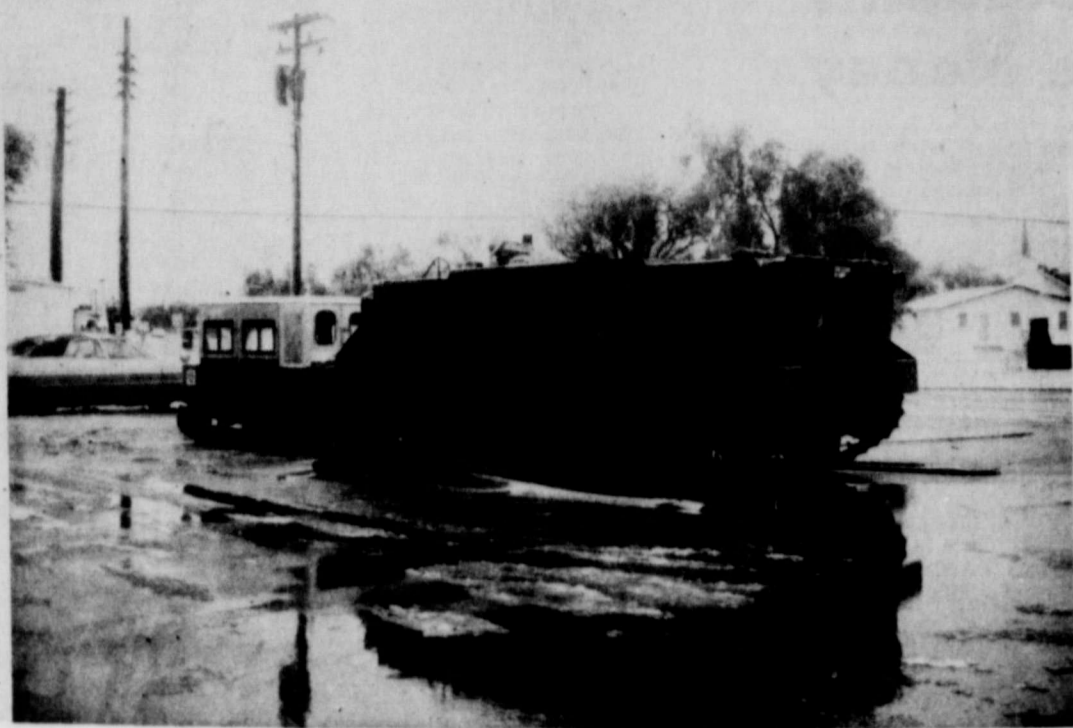
B.W. RENNER

Candidate For County Commissioner Precinct 3

Pol. Adv. Paid for by B.W. Renner

COBB SAYS NO TO CHARGES

In a phone call to the Spearman Reporter Tuesday evening, Dean Cobb informed this paper of the charges by Jack Hart Gruver, that Rep. Dean Cobb sent state postage fees for political mailings were branded as malicious lies. Cobb, in political advertising over the 10th district charged that Cobb mailed out 11,174 pieces of mail with state postage meter spending, \$706.84 to promote Cobb campaign. "This is a lie," Cobb said. "Every mailing, sent out by my office using state postage was approved in advance by the state administration committee and cleared for state mailing purposes." This is a matter of public record. During the special session just completed Cobb's office mailed out several thousand newsletters and letters of general information, the mailing of political folders or cards was not mailed at state expense. "Apparently my opponent is attempting to create an issue at a time when it would be difficult to cover it, this being the last day of the paper before election day. I don't think the people of this district will buy it."



TWO OF these giant vehicles were obtained this week by Hansford County's Civil Defense unit for use as emergency equipment. If it floods, they are amphibious... 18-foot snow drifts? They crawl over the top. One is stationed in Gruver, one in Spearman.

Giant Vehicles Ready

Hansford County's Civil Defense organization has received two M-59 U.S. Army Personnel Carriers as a loan for 5 years, with no cost to the county.

These 19-ton machines, powered with brand new GMC 305 engines, are used to climbing right over the top of 18-foot snow drifts. Although countians

hope this is never necessary on the local scene, these giants are available in case the area is isolated due to blizzard conditions.

County Judge Johnnie Lee, president of the Hansford Civil Defense organization, said "any time these track vehicles are needed anywhere in the county, they are ready."

One will be stationed in Gruver, one in Spearman.

In 1958, these carriers were new and cost the U.S. Government \$33,441.00 each.

Hansford County will use them for five years. Then another 3-year extension will be permitted and after that, the machines belong to the County. The only stipulation

is that "Property of U.S. Government" be stenciled on the sides of each vehicle.

The back end lifts up on this personnel carrier, making room for at least 16 people, plus the driver and a co-pilot. Judge Lee said he already knew how to pilot one, but that any trained army man could navigate the 38,000 lb. vehicle which has power enough to pull a crawler-type tractor from a mud-hole or a snow drift.

Let it snow, this county's civil defense unit can now make tracks!

ROTARY CLUB BOARD MET

The Spearman Rotary Club held a board meeting following the regular Monday luncheon this week.

Wesley Garnett, Jr., president, presided over the meeting attended by board members Don Hergert, Peyton Gibner, Ellzey Vanderburg and Chet Wise.

President Garnett announced his intention to begin laying the groundwork for a community chest program for the City of Spearman.

The board voted to expend \$100 to be matched with another \$100 by Rotarian John R. Collard, Jr. The money will be used to send a local scout to the National Jamboree this summer.

Another \$100 was voted to help the Home Demonstration women pay for the new floor covering in the hall.

The president noted that, although the local club is recognized as a 100% club many other clubs in the district are, two three and five hundred percenters. Rotary Clubs gain their percentage levels by contributions to Rotary International.

A unique plan was adopted for raising funds to increase the Spearman clubs contributions to Rotary International. The plan is to let each member, if he so desires, contribute a dollar at each meeting. A drawing will be held and the winning Rotarian will receive half of the pot. The other half will be contributed to the International fund.

Ellzey Vanderburg was appointed to set up a date for the forthcoming Rotary spaghetti dinner.

John Howard Payne, composer of "Home, Sweet Home," was the first American to play the role of Hamlet.

IN REMEMBRANCE



...



TODAY AND TOMORROW

Each year millions of Americans proudly wear the Red Poppy in memory of the men who lost their lives in our nation's wars. These small flowers are offered to the public by the women of the American Legion Auxiliary who donate their time and effort for this purpose.

This is a story of how the poppy came to be the memorial flower--contribute and wear it proudly this Saturday, November 4, for it has a valiant background. From 1914 until 1918 the battlefields of Europe were trampled by the boots of millions of fighting men.

As American troops advanced through France and Flanders the only touch of life and beauty they often saw were the wild red poppies that bloomed amid the rubble of war.

Along the trenches, around the shell craters, and among the tangled barbed wire and wreckage the little poppies grew and bloomed. The tiny blossoms also covered the graves of American fighting men who had fallen on the battlefield and it was not long before the red flower became a symbol of sacrifice to the living.

Other wars have been fought since that time, some of the battles taking place on the same fields of Europe--some on fields a world-away. Thousands of American fighting men have served in these past wars and are ever now serving on foreign soil. The poppy has become the symbol of our honored war dead and it is recognized as the emblem of the high ideals for which these fighting men gave their lives and many of their comrades suffered injury.

Thus the Poppy has become a symbol for a tribute to both the dead and the living American servicemen. The poppies still cover the fields of France beneath which many of them lie. Make their sacrifice worthwhile--buy a Poppy, Saturday, November 4, in Hansford County.

LEST WE FORGET

Saturday, November 4 will be observed in Hansford County as "Poppy Day" and hospitalized veterans invite you to help them honor the Nation's war dead by wearing the red poppy over your heart. The poppies, made by disabled Veterans, will be distributed by the American Legion Auxiliary workers with all contributions going to veterans and their families.

Of the amount received during the Poppy Day Drive in this area this Saturday, 2/3 of the total received will stay in Hansford County and the remaining 1/3 will go to Headquarters in Austin, Texas. Funds are used to help provide gifts for the veterans and their families at Christmas time--a service especially for those veterans who are hospitalized--as well as assisting them throughout the year.

The Hansford County American Legion Auxiliary women who are assisting with the Poppy Day Sale Saturday, November 4, include Mesdames Blanche Taber, and Mary Gillispie who will be in the Morse area; Mesdames Elmo McClellan, Sr., Arthur Bort, Harley Alexander, Ed Rafferty, Sr., and H.L. Boyd, all to be in the Spearman area. In the Gruver area will be Mesdames Everett Sullins, Ken Wilmeth, Ralph Reynolds, O.V. Walker, Jr., Margie Barkley, and Albert Bakehouse. Give your contributions and a smile to the Red Poppy Saleswomen this Saturday--November 4, 1972.

Arts & Craft Guild Met

The Arts & Craft Guild met Friday Oct. 27 in the home of Mrs. P.A. Lyon.

Present were Mmes. Mildred Daily, Bill Gandy, Bruce Sheets, Nolan Holt, Joe Trayler, Bill Russell, and Clay Gibner.

The meeting on November 3 will be held in the home of Mrs. Sada Hoskins.

Dean Cobb works!

Keep him working for the Top of Texas. Re-elect Dean Cobb State Representative, 64th Legislative District.

Dean Cobb has been a highly effective representative for the people who live in the Texas Panhandle since election to his first term in 1968.

Water: During his four years as our State Representative, Dean Cobb has sponsored or co-sponsored every piece of water development and control legislation presented to the Texas House.

Law and Order: After the campus riots, Dean Cobb authored the campus disorder bill, successfully passed into law. Dean, a former county attorney, has sponsored or co-sponsored almost every law and order bill introduced during his two terms in the legislature.

Insurance: Dean's position on the high cost of automobile and home insurance is well known. He has pressed for lower, competitive insurance rates since he first entered the Texas House.

State Spending: One of Dean's greatest concerns is excessive state spending. He has continually spoken out for cost control and fiscal efficiency in state government operations. Dean believes our state government should be run like a business. We are the stockholders, and those who operate our government should answer to us.

Dean Cobb works for us in Austin. Let's keep him on the job!



dean cobb
Democratic Candidate for State Legislature.



WANTED TO RENT

Apartments, 1 Bedroom
Houses, Living Quarters
For Baker And Taylor
Employees.

Call Jack Carroll
659-2504
Spearman, Texas

Is Our Wheat Feeding The Enemy?

by U.S. Rep. Graham Purcell
Is American wheat being turned into flour and given to the North Vietnamese? Probably not directly, but a news report that Russian ships were shipping flour to North Vietnam via China hit the Chicago press last week. I immediately asked for confirmation from the Department of State. At this time it appears that it is possible that our wheat now entering Russia could be freeing their own supplies for shipment to the North Vietnamese. I believe the sale was beneficial for America in the long run, but this Soviet shipment of wheat to North Vietnam raises further questions as to the good judgement employed on the part of the Administration.

When I called hearings before the House Livestock and Grains Subcommittee to investigate the Russian wheat sale, I was primarily concerned with determining why the American wheat producers had been excluded from the financial benefits of the sale. However, during the hearings I recall that Agriculture Secretary Earl Butz said that he didn't mind seeing the United States sell food to our major Communist adversary because "every dollar they spend on food is a dollar they can't spend on weapons."

I'll buy this concept. Not only would expenditures for U.S. wheat reduce the resources available for armaments expenditure but it brings badly needed American dollars back to the United States. However, if this wheat is then used to feed our enemies, or to free the Russian-grown supplies of wheat for export to those who daily take the lives of U.S. servicemen, I must strongly object.

We should not stand idly by while food grown in America feeds those who are engaged in armed conflict with the United States. I don't care how many hands the flour may go through before it reaches the North Vietnamese, I care little about how indirect the path may be, if we feed or help to feed those who wish to defeat us, we act not only irrationally but immorally.

The State Department has confirmed that the Soviet government does have standing commitments to other Iron Curtain countries, including North Vietnam. These commitments require that the Soviets supply their Communist allies with several commodities, including wheat and wheat foods. In 1971, for instance, TASS (the official Soviet news agency) reported that over 3 million tons of wheat flour was shipped to North Vietnam. In light of this year's dismal Russian harvest, I suggest it would have

been difficult, if not impossible, for them to meet their commitment without the aid of our harvest.

If the State Department confirms that U.S. wheat is ending up in North Vietnamese hands, or is freeing the Russian supply for those purposes, I am prepared to ask that Export Control Act authority be exercised to put an immediate stop to it.

If all of this proves to be totally true, there is a great lesson to be learned about international food trading. This Soviet wheat sale was agreed upon by U.S. grain companies and the Soviet government. It wasn't until after the agreement was sealed by our private companies that the U.S. Government knew of its scope. If we had known in advance, we may have been able to make such stipulations in the deal that disallowed our wheat from going any further than the Soviet borders. However, as with so many aspects of this sale, we simply found too many things out, too late. I, for one, will be ready to stop this feeding of the enemy, if it becomes necessary. I cannot stand by while our labor and efforts provide nourishment to those who kill our men in Vietnam.

Rule helps Medicare Patients

Under the "carry-over" rule of the medical insurance part of Medicare, doctor bills for October, November, and December may in some cases count toward the \$50 annual deductible for both 1972 and 1973, according to Howard L. Weatherly, social security branch manager in Pampa.

The medical insurance part of Medicare helps pay for doctor bills and a variety of other medical expenses of almost everyone 65 and over. Before payments from Medicare begin, the patient must meet the annual deductible—the first \$50 of covered medical expenses accumulated in a calendar year.

"The carry-over rule helps the Medicare patient who might otherwise have to pay the \$50 deductible twice in a short period of time," Weatherly said. "Once at the end of one year, again at the beginning of the next year. Under the carry-over rule, doctor bills for October,

November, and December which can be counted toward your \$50 deductible for 1972, can apply to the deductible for both 1972 and 1973.

Even if a Medicare patient hasn't met the 1972 deductible before October, he should send in all of his medical bills for covered services for the last 3 months of 1972, according to Weatherly.

"The carry-over amount will be credited to your deductible for 1973," he said.

The bills should be sent in with a Request for Medicare Payment form, available at most doctors' offices and all social security offices. They should be sent to Blue Cross/Blue Shield in Dallas, the health insurance organization that handles medical insurance payments in Texas.

The medical insurance part of Medicare pays 80 percent of the reasonable charges for covered services after the deductible has been met. The program is funded by individual premiums matched by the Federal Government.

GI-Bill Students Get More Money

More than one million GI Bill trainees will receive checks averaging nearly \$450 during November as a result of an increase in their educational assistance allowances approved by the President on October 24, 1972.

Administrator of Veterans Affairs Donald E. Johnson said that VA computer personnel are making every effort to complete the necessary changes to get the checks out near the first of the month.

Because the new law permits the VA to make the monthly payments to students in advance rather than at the end of each month of training, November checks will include both the November advance and the October payment which was due at the end of the month under the old system. The increases are retroactive to September 1, so those who were enrolled in September and continued in school through October 24,

will receive the difference between the old and new rates for any part of September they were attending school.

Students need not contact VA if they are already on VA rolls as GI Bill students, Johnson emphasized. Those who are already certified by their schools will receive the higher payments automatically.

December checks and all subsequent checks will be paid at the new rate at the first of the month.

The new rates start at \$220 per month for a single trainee going to school full-time. Those with one dependent will get \$261. Those with two dependents will get \$298 and \$18 a month more will be paid for each dependent in excess of two.

Payments for apprenticeship and on the job training under the GI Bill will start at \$160 a month for single veterans.

Eligible wives, widows and children under the dependents educational assistance program in approved full-time training will receive \$220 per month.

Based on estimates that more than two million will be enrolled under the program during fiscal year 1973 (ending June 30, 1973) the Veterans Administration estimates that the total cost will be \$2.6 billion for the fiscal year. September enrollment was 806,000—23% above last year's figure.

The October 24, law does much more than raise training allowances and authorize advance payment, Administrator Johnson, pointed out.

These are the changes of greatest interest to students: Rules on tutoring are liberalized to make it easier for students in need of tutoring to qualify for special allowances.

New protection is provided for those who sign up for correspondence courses.

Eligible wives, widows and children under the dependents educational assistance program are given broader latitude in choosing training programs to include on the job training and enrollment in foreign institutions

of higher learning. Tutoring for those who need it is also included, and correspondence courses and high school courses are available for wives and widows.

Women veterans may now claim their husbands as dependents in order to qualify for higher benefits on the same basis as married veterans. Widowers of female veterans will now receive the same training rights as widows.

Lump sum payment of allowances is authorized for wives, widows and children enrolled in educational programs on less than half-time basis.

Next time you're at a golf course or ball field—or near a doctor or plumber—surprised if you hear an electronic beep coming from a box the size of a pack of cigarettes.

The beeper, known as the Digital Paging System, is getting word to a man on the move that he has a telephone call. The way it works is that a miniature electronic computer at a paging terminal alerts salesmen, executives, tradesmen and others to call their homes or offices.

Martin Marietta Corp., producer of the system designed for hazardous duty, changed General Electric LEXAN resin as a key material, because of its strength, high heat resistance and virtual unbreakability. The new system is getting an excellent reception.

Soldiers
returning from Europe in 1918 were familiar with the wild poppies which bloomed in the battlefields of France and Flanders. The American Legion Auxiliary says the first national Poppy Day in the United States was held in 1921.

Art, craft, antique show, Nov. 4, 5

T.G. & Y.



STORE HOURS MON.-FRI. 8:30-6:00
SATURDAY 8:30-8:00
PRICES GOOD THRU SATURDAY
We Reserve The Right To Limit Quantities.

Large selection of
TAPES
Eight Track
\$2.99

1 3/8 oz. Box
Cracker Jacks
7¢

Teflon 11 7 pc.
Cookware Set
Gold-Red-Avocado
\$9.99

Golden T
Paper Towels
23¢

10 Roll
Bathroom Tissue
Golden T
51¢

Rubando Pistola
Rubber Band Gun
66¢

Large Selections of
TOYS
boys & girls
57¢

yellow and green
TRIKE
sturdy steel construction
\$7.77

Golden T
Facial Tissue
200 count
21¢

50 Count
Foam Cups
Hot or Cold
33¢

Heavy Duty
Reynolds Wrap
18" x 25' large roll
53¢

Golden T 30 Count
Disposable Diapers
Daytime
\$1.17

Golden T
Anti-Freeze
Permanent Type
\$1.47
Gallon

10W30
Pennzoil
High Detergent
with -7
47¢
quart

Texize
Janitor In A Drum
New Fresh Scent
67¢
1 qt. Size

Chocolate Covered
Cherries
12 oz. Box
21¢
For



Aid to Schools

DAVE LLEWELLYN

The First Amendment requires, "Congress shall make no law respecting an establishment of religion or prohibiting the free exercise thereof..." With this weapon the warriors on the Supreme Court have cut down all attempts by government and private citizens to obtain public money to subsidize church-related schools. The efforts of President Nixon, Sen. McGovern, the Ohio Legislature, and many of us little people notwithstanding.

One popular belief finds the Court's position nonsensical on the grounds that the intention of the Constitution was to prohibit the establishment of a state religion and the consequent banning of other beliefs. This different wording for the First Amendment was suggested, however: "Congress shall make no law respecting an establishment of one religious sect or society in preference to others." It was defeated.

"Exempt from Cognizance"
James Madison, the sponsor of the First Amendment, emphasized the total separation of church and state intended by our country's founders, declaring that "religion is wholly exempt from the cognizance of Civil society."

Unquestionably, the Supreme Court has gone to great lengths to defend our religious liberty, but I think they have not gone as far as the First Amendment intended!

As I read the First Amendment, the government is supposed to disregard religious establishments altogether, not even to notice them. Madison's

statement confirms this. Government should not be cognizant of religions. Contrarily, the Supreme Court peers at religious groups as through a microscope.

As I see it, the First Amendment gives the government the right to help any school that fully performs all of the requirements of public education. Whatever it does in addition, if supported by private money, should not concern the government. It is the equivalent, for example, of permitting churches and religious groups to meet in public buildings, just as any other civic group might be permitted.

Church and state should be given different kinds of devotion. Jesus taught us to "render unto Caesar the things that are Caesar's and unto God the things that are God's"—even if the current "Caesar," our federal government, seems to have claimed a little more responsibility for itself than constitutionally required.

Private Schools Valuable
All methods of education teach values. It's dangerous for Christians to entrust all education to non-believers, no matter how honest or well-intentioned they are. Private schools also perform valuable services to their students and society by preserving the independence and special points of view necessary for the kind of informed public democracy needs. And church-related schools save tax money.

Let's try to get public support for church-related schools. Meanwhile support them privately.

Copyright Dave Llewellyn 1972

Bail Increased for arrested Pets

Perry Pittman, Municipal Judge, announced that the Dogs and Cats caught running at large in the future will suffer a severe penalty than in the past. The policy has been changed so that owners will be fined \$50 for each offense with an additional \$2.50 collected for the Criminal Justice Fund plus the pound fee. The pound fee is \$1.00 each and every dog or cat impounded and \$1.00 each day such dog or cat is in the City Pound. In the future the first offense will carry a fine of \$5.00 on the pound fee and the Criminal Justice Planning

Fund fee with the fine being increased by \$5.00 for each additional offense.

"At Large" means any dog or cat (1) not under the control of the owner either by leash, chain, cord, or other suitable material attached to a collar or harness; or (2) not restrained securely within an enclosure or fence.

(Note: The \$2.50 Criminal Justice Planning Fund fee which is charged on EVERY fine assessed, except on pedestrian or parking violations, is in accordance with a new State law which has been in effect since January. This money is sent in to the State.)



FB Queen To State

Miss Terri Bell of Sherman County will represent District 1 in the state finals of the 1972 Texas Farm Bureau Queen Contest to be held Monday evening, Nov. 13 in

Houston. Daughter of Mr. and Mrs. E.R. Bell of Stratford, Miss Bell was selected to represent this area in a recent district elimination.

The District 1 nominee will compete with 11 other district winners at the state contest which will be held in conjunction with the 39th annual meeting of the Texas Farm Bureau. The state winner will receive expenses for herself and a matron escort to attend the American Farm Bureau Federation convention to be held in Los Angeles during December.

A 17 year old senior in Stratford High School, Miss Bell is 5'6" and has blond hair and green eyes.

Miss Bell is very active in school activities as head cheerleader, and competing in varsity girls basketball, U.I.L. debate, tennis, U.I.L. one-act play and a member of the Speech Club. She has a long list of achievements including Lion's Club Sweetheart, Scholastic Achievement Award, Outstanding Teenager of America from Stratford High School, Who's Who in speech and Spanish, All-Star U.I.L. Cast, All-District guard, Basketball Queen Attendant, and Home-

coming Queen Attendant. Miss Bell's hobbies include snow-skiing, reading, and drama.

The District 1 Queen plans to attend college next year and major in foreign languages.

Teachers Endorse No 12

The Texas Association of College Teachers (TACT) has endorsed proposed Texas constitutional Amendment 12 which would permit state employees to serve on local non-salaried governing boards.

The amendment is one of 14 coming before the voters at the Nov. 7 general election.

"At present such communities are denied the services of these employees in elective, non-salaried positions, such as city councils and school boards," said Dr. H. H. Snyder, president of the West Texas

State University TACT chapter.

Several Texas courts have held that a person whose salary is derived wholly or in part from state funds cannot serve in elected public service positions without giving up his state pay.

Snyder said the state association feels "these 300,000 Texans are deprived of their right to hold elective public office."

He added, "This group includes public school teachers, police, firemen, university and college faculties and staff and many others."

Adoption of Amendment 12 will be of "particular benefit to the smaller cities and towns of Texas where state colleges or universities and other state institutions employ a sizeable percentage of the citizenry," Snyder said.

TACT expresses special concern that the wording on the Nov. 7 ballot may lead some voters to conclude that Amendment 12 constitutes a legalization

THE SPEARMAN REPORTER
Spearman, Texas 79081
213 Main Box 458 659-3434
Published Weekly at 213 Main Street Spearman, Texas 79081
Owner-Publisher William M. Miller
Second Class Postage Paid at Spearman, Texas

Any erroneous reflection upon the character of any person or firm appearing in these columns will be gladly and promptly corrected upon being brought to the attention of the management.

SUBSCRIPTION RATE--Hansford, adjoining counties, \$7.00 yr. Other points in combination with The Hansford Plainman, \$9.00 yr.

of 'moonlighting,' he said. "As a matter of fact, the amendment specifies that state employees may not serve in salaried elective positions.

The American Legion Auxiliary, in order to protect the memorial poppy from commercialism, adopted a national poppy program at the St. Paul, Minnesota convention in 1924 which eliminated the commercial poppy.

Art, craft, antique show, Nov. 4, 5

Reduction On Car Insurance

You can do something about bringing the insurance rates on your automobile.

Eighteen local drivers completed the first defensive driving course here Saturday.

These graduates will receive a 10% discount on their insurance premiums, effective immediately.

The defensive driver's course, sponsored by the Spearman Association of Insurance Agents and the Texas Safety Association, is approved by the State Board of Insurance Credit.

The course consists of 8 hours of instruction; lectures and film showings. There is actual driving required.

Instructors, Sid Evans and John R. Collard of Spearman, conduct these two-hour sessions. A \$10 fee is charged for the course, which is open to every driver 25 years of age and older.

The next defensive driving course will be held in Gruver at the Gruver High School on these dates: Nov. 14, 18, 29 and December 29. The first class begins at 7 p.m. and lasts until 9 p.m. You must be present at the first session.

In Spearman, the next course is scheduled December 8, 9, 13 and 15 in the Junior Hi cafeteria. The first class starts at 7 p.m.



WRATH OF GOD RATED VIOLENT

The Spearman PTA uses "Parent's Magazine" as their source for rating "The Wrath of God." This is an overly violent movie taking place South of the Border in the 1920's. It is rated P1 which means parental guidance should be used. It may not be suitable for pre-teens and is definitely not for children.

Linda Sanders
Spearman PTA

CHARLES McLAIN JOINS U.S.A.F.

Charles Dean McLain, son of Mr. and Mrs. R.D. McLain of Spearman, enlisted on Oct. 1 in the United States Air Force, according to Sgt. Bob Reddy, local Air Force Recruiter.

Charles was a 1972 graduate of Spearman High School and selected the administrative aide area. For information about the opportunities available in the United States Air Force, contact Sergeant Bob Reddy at Courthouse employment office each Thursday 9:30 a.m. or call 376-5151 or 2147 in Amarillo.

The American Legion was the first national organization to adopt the poppy as its Memorial Flower. This action was taken by the Legion at its National Convention in Cleveland, Ohio, Sept. 27-29, 1920.

The American Legion Auxiliary adopted the poppy as its Memorial Flower at the organization's first convention in Kansas City in 1921. After taking this action the Auxiliary pledged that 100% of the Poppy Day contributions would go to welfare work for servicemen and members of their families.

Farmers who expect good service have got our number 659-3033

FREE

Call us for fast delivery of Good Gulf Gasoline, Gulf Diesel Fuel, Gulf oils and greases, and Gulf Universal Tractor Fluid for tractor common fluid systems. Every customer of Gulf Diesel Fuel gets a free Purolator filter unit to keep the fuel dry. With the first filter element free too. There are lots more reasons you should know our number. Come in and find out more Or call our number.

Alton Ellsworth Distributor

Gulf

500 COLLARD 659-3033

IDEAL FOOD STORES

MON - SAT 8:AM - 11:PM
SUNDAYS 9:AM - 9:PM

DEL MONTE ROUND-UP

DEL MONTE TOMATO CATSUP 5 \$1 14-OZ. BTL.
LIMIT 5 BOTTLES WITH \$5.00 OR MORE PURCHASE.

DEL MONTE CUT, FRENCH STYLE OR SEASONED Green Beans 4 89¢ 303 CANS

DEL MONTE Tomato Juice 3 \$1 46-OZ. CANS

DEL MONTE WHOLE OR CREAM Golden Corn 5 \$1 303 CANS

DEL MONTE STEWED OR Whole Tomatoes 4 \$1 303 CANS

DEL MONTE HALVES OR SLICES Cling Peaches 3 \$1 NO. 2 1/2 CANS

DEL MONTE SWEET OR PEAS 4 \$1 303 CANS

DEL MONTE WHOLE OR CREAM Fruit Cocktail 3 79¢ 303 CANS SLICED OR HALVED

DEL MONTE Pears 3 \$1 303 CANS

DEL MONTE Sliced Pineapple 3 \$1 NO. 2 1/2 CANS

DEL MONTE Sweet Peas 6 \$1 303 CANS

DEL MONTE Cottage Cheese 47¢ 12-OZ. CTN.

DEL MONTE Longhorn Cheese 54¢ 10-OZ. PKG.

DEL MONTE Buttermilk 49¢ 1/2 Gal.

DEL MONTE American Slices 68¢ 12-OZ. PKG.

DEL MONTE Soft Oleo 3 \$1 1-LB. TUB

DEL MONTE Canned Hams 5 \$4.99 LB. CAN

DEL MONTE Skinless Franks 59¢ 12-OZ. PKG.

DEL MONTE Sliced Bologna 69¢ 12-OZ. PKG.

DEL MONTE COVERED WAGON ASS'T. Smoked Meats 3 \$1 3-OZ. PKG.

DEL MONTE FISHER BOY BULK PACK PRE COOKED Fish Sticks 49¢ 1-LB. PKG.

DEL MONTE Sliced Bacon 1 \$1 2-LB. PKG.

DEL MONTE Sirloin Steak 1 \$1 LB.

DEL MONTE T-Bone Steaks 1 \$1 LB.

DEL MONTE Rib Steaks 99¢ LB.

DEL MONTE Ham 5 \$4.99 5-LB. CAN

DEL MONTE Canned Hams 5 \$4.99 LB. CAN

DEL MONTE Skinless Franks 59¢ 12-OZ. PKG.

DEL MONTE Sliced Bologna 69¢ 12-OZ. PKG.

DEL MONTE COVERED WAGON ASS'T. Smoked Meats 3 \$1 3-OZ. PKG.

DEL MONTE FISHER BOY BULK PACK PRE COOKED Fish Sticks 49¢ 1-LB. PKG.

DEL MONTE Sliced Bacon 1 \$1 2-LB. PKG.

DEL MONTE Sirloin Steak 1 \$1 LB.

DEL MONTE T-Bone Steaks 1 \$1 LB.

DEL MONTE Rib Steaks 99¢ LB.

DEL MONTE Whole Fryers 29¢ LB. CUT-UP FRYERS LB. 33¢

DEL MONTE BOX-O-CHICKEN 29¢ 2 BREAD QUARTERS 2 LEG QUARTERS 2 WINGS AND 2 GIBLETS LB.

DEL MONTE Fryer Breasts 69¢ LB.

DEL MONTE Fryer Thighs 59¢ LB.

DEL MONTE Fryer Legs 59¢ LB.

DEL MONTE Pork Loins 89¢ LB.

DEL MONTE Tom Turkeys 49¢ 18 TO 22-LB. AVG. LB.

DEL MONTE Sliced Bacon 79¢ 1-LB. PKG.

DEL MONTE Hen Turkeys 59¢ 10 TO 16-LB. AVG. LB.

DEL MONTE RUSSET POTATOES 10 59¢ LB. BAG

DEL MONTE Grapefruit 5 69¢ 5-LB. BAG

DEL MONTE Rome Apples 4 69¢ 4-LB. BAG

DEL MONTE Navel Oranges 5 70¢ 5-LB. BAG

DEL MONTE Pascal Celery 25¢ 10 TO 16-LB. AVG. BAG

DEL MONTE Southern Yams 17¢ 1-LB. BAG

DEL MONTE Apple Cider 89¢ 1/2 GAL.

DEL MONTE Reynolds Wrap 28¢ 25-FT. ROLL

DEL MONTE Arrid Extra Dry 1 33 14-OZ. CAN

DEL MONTE Gleem Toothpaste 84¢ 4-OZ. TUBE

DEL MONTE Tuna 3 \$1 6-OZ. CANS

DEL MONTE Pineapple Juice 3 \$1 46-OZ. CANS

DEL MONTE Sliced Pineapple 3 \$1 NO. 2 1/2 CANS

DEL MONTE Sweet Peas 6 \$1 303 CANS

DEL MONTE Coffee 68¢ 1-LB. CAN

DEL MONTE Ice Cream 59¢ HALF GALLON

DEL MONTE Flour 74¢ 10-LB. BAG

DEL MONTE POT PIES 6 \$1 8-OZ. PKG.

DEL MONTE BANQUET PIES 4 \$1 20-OZ. PKG.

DEL MONTE Orange Juice 5 \$1 6-OZ. CANS

DEL MONTE Banquet Dinners 39¢ 11-OZ. PKG.

DEL MONTE Reynold's Wrap 28¢ 25-FT. ROLL

DEL MONTE Arrid Extra Dry 1 33 14-OZ. CAN

DEL MONTE Gleem Toothpaste 84¢ 4-OZ. TUBE

DEL MONTE Tuna 3 \$1 6-OZ. CANS

DEL MONTE Pineapple Juice 3 \$1 46-OZ. CANS

DEL MONTE Sliced Pineapple 3 \$1 NO. 2 1/2 CANS

DEL MONTE Sweet Peas 6 \$1 303 CANS

DEL MONTE Coffee 68¢ 1-LB. CAN

DEL MONTE Ice Cream 59¢ HALF GALLON

DEL MONTE Flour 74¢ 10-LB. BAG

DEL MONTE POT PIES 6 \$1 8-OZ. PKG.

DEL MONTE BANQUET PIES 4 \$1 20-OZ. PKG.

DEL MONTE Orange Juice 5 \$1 6-OZ. CANS

DEL MONTE Banquet Dinners 39¢ 11-OZ. PKG.

DEL MONTE Reynold's Wrap 28¢ 25-FT. ROLL

DEL MONTE Arrid Extra Dry 1 33 14-OZ. CAN

DEL MONTE Gleem Toothpaste 84¢ 4-OZ. TUBE

Named to "Who's Who" List



Marcia Shieldknight

Twelve seniors at Wayland Baptist College have been selected for inclusion in the 1973 edition of Who's Who Among Students in American Colleges and Universities, according to an announcement from Paul Butler, dean of students at the college.

Those selected include

Gary Abercrombie, Amarillo; Kent Brienstine, Albuquerque, N.M.; Rocky Clindaniel, Plainview; Jan Cryer, Lee, Fla.; Deborah Evans, White Deer; Gerry Rodgers Hunter, Abertney; Tommie Sue King, Plainview; Christy Morris, Plainview; Anne Rapp, Estelina; Marcie Shieldknight, Spearman; Sherry Stark, Quitaqui; and Minnie Woods, Alamo-gordo, N.M.

All are expected to graduate in May with the exception of Miss Woods, who will complete her work in December.

The president of Student Foundation, Miss Shieldknight, is the daughter of Mr. and Mrs. Jimmy Shieldknight, 724 Gibner, Spearman. She is a 1969 graduate of Spearman High School. Miss Shieldknight has served as officer in Theta Alpha Psi sorority and in her residence hall. She is a member of Hutcherson Flying Queens, women's basketball team, and has won numerous recognitions in sports including Outstanding Physical Education student last year.

Hansford Library Joins Panhandle Group

Hansford Library officials were notified this week that the local facility is now a member of the Panhandle Library System, which covers 26 counties of the Texas Panhandle.

The local library board applied for membership last year, and were notified that several standards had to be met before being accepted. Stipulations were that this library had to be incorporated, with a 10,000 book volume stock, a County Library certificate and open at least 20 hours per week, plus receiving so much tax support money.

When these standards were reached, the application was accepted. As a member of the Library System, Hansford Library will benefit in several ways. It will be able to purchase books at a

special discount. These books will be pre-catalogued and ready to go on the shelf, through the base library at Amarillo. The local library will be able to receive six-month loans and even permanent book loans of up to 200 volumes from the Texas State Library, Austin.

Also, if the Texas Legislature passes the bill, and State funding becomes a reality, the Hansford Library will be eligible for State funding.

The Spearman community is very proud of the Hansford County Library. It is one of the best facilities in this area. Members of the governing board of Hansford Library are: Mmes. Peyton Gibner, Jack McWhirter, Frank Davis, Ec Lee, Henry Cornelius, C. A. Kleebenger. Also James Cunningham, J. L. Brock and Dick Countiss.



Dorothy Roden Attends Meet

Miss Dorothy Roden was one of about 80 librarians from the 25 Panhandle counties attending the first meeting of the District II of Texas Library Association. The meeting was presided over by Miss Maxine Merriman, Chairman and Coordinator of the Amarillo Public School System Libraries.

Mrs. Catherine S. Franklin of Austin, president of the Texas Library Association, asked members to inform the public on the association's plans and fiscal needs.

Bringing greetings from the Texas State Library was Dr. Dorman H. Winfrey of Austin, Director.

Mrs. Bonnie Merriman of Amarillo, managing editor of the Globe-News, was guest speaker, using the theme "Communication."

She said that library work in itself is a form of communication, but challenged the librarians, as individuals, to measure up as communicators.

"Individual communication is important," she said. "But it also is important for us to communicate in a larger area." She suggested that by going outside special interest groups, an individual can eliminate the risk of becoming ingrown.

Following lunch at the WTSU Cafeteria, members met in sectional sessions on public librarians, school librarians, college-university-special librarians and library trustees-Friends of the Library.

Entertaining at the luncheon was the "Young Blood," a vocal instrumental group of WTSU students.

Pampa was selected for the 1973 annual meeting with the Lovett Memorial Library as host and Mrs. Barbara Cockrell, Librarian of the Pampa Library as 1972-73 Chairman.

The American Legion Auxiliary reports that wearing a poppy on Poppy Day will honor the more than half-million Americans who died and the nearly one-million wounded during both World Wars and the Korean Conflict.

AAUW To Meet In Borger Nov. 6

The Borger branch of the American Association of University Women will meet at 7:30 p.m. November 6 at the Hutchinson County Library auditorium in Borger.

Mrs. Fritz Thompson, Mrs. G. C. Bogan, Mrs. W. C. Barkdale, all of Borger, will serve as hosts.

The program, "Current Literature for University Women", will be presented by the Book Study Group of the Borger branch of AAUW.

The reporter for this branch is Mrs. Emmett R. Sanders, who is also Corresponding Secretary and Status-of-Women Chairman. Mrs. Sanders is a Spearman resident.

The American Association of University Women, founded in 1882, is open to all women who hold baccalaureate or a higher degree from a college or university on the AAUW list of qualified institutions. Membership in the AAUW enables women to continue their intellectual growth, to further the advancement of women, and to discharge their special responsibilities to society.

The Texas Division of the AAUW has 7800 members in 92 branches. The branch nearest to Spearman is the

Borger branch. Membership may be obtained at any time. As a community service, the Borger branch invited women eligible for membership to join one of both of its study groups, the Book Group and the Art Group. For information contact Mrs. Emmett R. Sanders, Box 944, Spearman, Texas.

The red crepe paper memorial poppies worn throughout the nation on Poppy Day are made by veterans in hospitals and work shops in 40 states. These disabled service men are paid for each hand-made poppy they make, and the materials are furnished free by the American Legion Auxiliary in the states where the hospitals are located.

On Poppy Day each year more than 25 million poppies made by disabled veterans are distributed throughout the country under supervision of the American Legion Auxiliary. Approximately 125 thousand volunteer workers from the Auxiliary and other organizations take part in this annual program.

TEAM	WON	LOST
10-16-72		
Rexall Drug	15	5
Joe's Enco	1	9
Snider-Pearson	9	11
Hay's Trucking	5	15
HIGH TEAM GAME		
Rexall Drug	522	
Snider-Pearson	516	
Joe's Enco	513	
HIGH INDIVIDUAL SERIES		
Carolyn English	508	
Charlie Baker	411	
Joanne Eaton	383	
HIGH INDIVIDUAL GAME		
Carolyn English	213	
Charlie Baker	170	
Frances Garrard	139	
10-23-72		
TEAM	WON	LOST
Rexall Drug	6	8
Joe's Enco	14	10
Snider-Pearson	10	4
Hay's Trucking	8	16
HIGH TEAM SERIES		
Hay's Trucking	1427	
Joe's Enco	1387	
Rexall Drug	1379	
HIGH TEAM GAME		
Hay's Trucking	503	
Joe's Enco	491	
Snider-Pearson	459	
HIGH INDIVIDUAL SERIES		
Carolyn English	439	
Shirley Messer	390	
Jackie Tiner	368	
HIGH INDIVIDUAL GAME		
Carolyn English	168	
Jackie Tiner	152	
Sharon Freeman	143	



First year 4-H members Mylinda Groves, Johnnie Eaton, Angela Francis and Tara McLain have met in the home of their leader, Mrs. Charles Eaton on Oct. 16, Oct. 23 and Oct. 31. They are studying nutrition. October 16 they learned about eggs and how to fry an egg; October 23 they learned about milk and how to make a milkshake and Oct. 31 studied fruits and made a fruit salad and also played a nutrition game.

They made a trip to the grocery store and learned how to compare prices.

Youth Social Friday

There will be a get-together at the First Baptist Church Friday night after the game. A religious rock group called "Youngblood" from West Texas State University will be there to entertain. There will be plenty of refreshments for everyone. All youth are invited to attend.

Introducing **NORELL**

THE FIRST GREAT AMERICAN GRANCE. ELEGANT... ENDURING. A BEAUTIFUL REFLECTION IN "FRAGRANCE" OF THE ORIGINALITY OF NORMAN NORELL.

Bath Powder
Perfume
Cologne
Soap
Bodyluster
Bath Oil

Spearman Rexall Drug
PHONE FOR FREE DELIVERY

659-2226 Two Registered Pharmacists GRUVER NUMBER 733-2021

He wants the big things in your life to be happy.

Don R. Knox
Box 1016 Tel. 659-3294
Spearman, Texas

Southwestern Life
LIFE • HEALTH • ANNUITIES

HOUSE SPEAKER CARL ALBERT SAYS

"When Graham Purcell talks, Congress listens"



In Washington, Graham Purcell can get things done for our district because he is respected as—

- A seasoned national legislator of 11 years' experience.
- The author of 26 public laws.
- The Chairman of the House Subcommittee on Livestock & Grains.
- The man in position to be next Chairman of the full House Agriculture Committee.
- A Native Texan, experienced lawyer, former judge and church lay leader.

FOR A VOICE AS WELL AS A VOTE IN CONGRESS

RE-ELECT

GRAHAM PURCELL

HE'S ON YOUR SIDE

"Paid for by Purcell for Congress Committee, Jay Baylor, Chairman"

I stand upon my past record and qualifications in serving the citizens of precinct one in Hansford County

I ask for your vote on Tuesday November 7th

so that I can continue to serve

as your

County Commissioner

Joe Day

Political Adv. Paid For By Joe Day

Spearman Girl Wins Contest



Jonell Moran

A Spearman girl has won a contest sponsored by the American Girl Magazine, a national publication designed for girls of all ages. The magazine, published by Girl Scouts of America organization, covers America, Pan America and Canada.

In a letter Monday from the magazine Jonell was notified that she had won the contest, and that her contribution to the Zodiac contest would be carried in the December American Girl. Also, a \$5.00 check is being mailed to her.

XI ZETA UPSILON MEET IN HD CLUB ROOM OCT. 26TH

Xi Zeta Upsilon Chapter Beta Sigma Phi met in Home Demonstration Room, October 26, 72, with Helen Erter and Jim Garnett as hostesses. The business meeting was conducted by the President, Ben Countiss. The upcoming social event for the chapter members will be Exemplar Ritual Luncheon. Helen Erter was elected the chapter Valentine sweetheart.

FUNERAL HELD SUNDAY FOR GRUVER MAN

Funeral services for Edd H. Snow, 63, a Gruver resident for 40 years, were held Sunday afternoon at 4:00 in the First Methodist Church at Gruver.



NEW ARRIVALS

Mr. and Mrs. Jerry Don Rex of Spearman are the parents of a son born October 30 in Hansford Hospital. He weighed 9 lbs. 8 3/4 oz.

ATTENTION ALL CATTLEMEN

FRIDAY, October 27, we sold 3257 cattle and calves thru the arena. The action started promptly at 11 AM and was completed at 5 PM. Buyers were here from many states to absorb the offering.

OUR NOVEMBER SCHEDULE

- 1. Friday, November 3 will be our next SPECIAL CALF SALE for the fall, selling mixed cattle until 1:00 PM. At 1:00 we will start selling all of the calves and continue with this until all calves in the yards are sold. Followed by Feeder Steers and Feeder Heifers and closing the auction on that date with the balance of the jackpot.
2. Friday, November 10 will be our first SPECIAL COW SALE of the fall. We will start selling cows that are in the groups and load-lots at 1:00 PM, selling mixed cattle of all kinds until that time, followed by consignments of Feeder Steers and Feeder Heifers in the order consigned.
3. Friday, November 17 is being arranged as another SPECIAL CALF SALE, the same as outlined in #1 above.
4. Friday, November 24 is being arranged as the second SPECIAL COW SALE for the fall--as outlined in #2 above.

--For further details--

Contact any of our personnel, either in the cattle dept. or the office.

TEXHOMA LIVESTOCK COMMISSION, INC., CO.

TEXHOMA, OKLAHOMA 73949

P.O. Box 70

Phone (405) 423-3251

(This is our November Schedule. Keep it for further reference.)



FARM & RANCH NEWS

By Joe Van Zandt

County Agricultural Agent



Time to Control Peachtree Borers--Masses of gum found around the base of the trunk of peach trees are a good indication that the peachtree borer larva is causing its damage. Peachtree borer larva feed in the trunk of the peach tree at or near the ground level causing large amounts of gum to build up at the ground line. Infested trees may be killed in one to three years depending on the number of larvae present and the size of the tree.

Paradichlorobenzene (PDB) crystals (Moth crystals) placed around the infested trees will control peachtree borers when applied properly. All weeds and grasses should be removed from around the tree trunk for about a foot. Then the PDB crystals are placed in a circular band around the tree about 2 inches from the trunk.

A mound of dirt 6 to 8 inches high should then be packed against the tree. Care should be taken to make sure crystals are not placed in contact with the tree since damage to the trunk will result. Next spring the mound should be leveled back to the original ground line.

Place 1/2 ounce of PDB crystals around 2 to 3 year old trees, 3/4 ounce around 4 to 6 year old trees and 1 ounce around older trees. This procedure should be carried out during the next few weeks when the soil temperature is above 55F and the soil is relatively dry.

CATTLE ON FEED UP 10 PERCENT--Cattle and calves on feed for slaughter market on October 1, 1972 in 23 major feeding states is estimated at 11,764,000 head--10 percent above a year earlier. The number on feed decreased 6 percent from July 1 to October 1 this year compared with a 2 percent decrease during the same quarter last year.

There were 6,226,000 cattle and calves placed on feed July through September in the 23 states--slightly below the number placed during the same period in 1971. Marketings of fed cattle for slaughter during July through October totaled 6,919,000 head--up 5 percent from the same period in 1971 in the 23 states.

Cattle feeders plan to market about 6,621,000 head during October, November and December. The anticipated marketings are 7 percent higher than those actually sold during the same period last year.

FEED GRAIN PRODUCTION ESTIMATE--Grain sorghum production in Texas is estimated at 391,600,000 bushels compared with 303,004,000 bushels in 1971. Yield is expected to average a record 61 bushels per acre compared with 52 bushels in 1971. For the U.S. total sorghum production in 1972 is estimated at 867,960,000 bushels compared to 895,349,000 bushels produced in 1971.

Corn production in the U.S. for 1972 is estimated at 5,265,817,000 bushels compared to 5,540,253,000 bushels produced in 1971. The 1972 corn production estimate is 5 percent below the 1971 production and the sorghum level is 3 percent lower this year. The combination of corn and grain sorghum production in the U.S. for this year is 4.7 percent lower than the production in 1971. These estimates were made by the Crop and Livestock Reporting Service as of October 1 conditions.

NEW MEMBERS IN REBEKAH LODGE

The Rebekah Lodge, Spearman chapter number 290, met in regular order Thursday, October 26.

Following the regular procedure, the Drill Team conducted the initiation of two new members.

Tentative plans for a dinner honoring State President Betty Adams, set for 6 p.m. November 8 in the IOOF Hall, were made. Hostesses for the social hour included Ruth Caro, Dorothy Longley and Martha Delon Allison.

Art, craft, antique show, Nov. 4, 5

Miss Renner Is Sorority Pledge

Miss Amy Elizabeth Renner, daughter of Mr. and Mrs. C. J. Renner of Spearman, has pledged the Gamma Xi chapter at Texas Tech University, Lubbock, Texas. Amy is a freshman this year at Tech.

with Lowell's nephew, Mr. and Mrs. Ben Gill spie near Arnett, Okla. They had a wonderful trip but were glad to get home.

Mrs. Ray Syster and family of Augusta, Kans were weekend guests of her parents Mr. and Mrs. Fred Holt.

Mr. and Mrs. Gearold Gray of Ulysses, Kansas and Mr. and Mrs. Owen Pendergraft recently visited the Alabaster Caverns at Freedom, Okla. The Sand Dunes at Waynoka, and the Great Salt Plains at Cherokee, Okla. The Grays returned home Monday night with the Pendergrafts. Then on Tuesday Mrs. Gray's parents, Mr. and Mrs. Eugene Ottaway of Tyrone, Okla. accompanied the Grays and Pendergrafts to Lake Meredith to finish the remaining ten days of their vacation. The Ottaways returned home Thursday. The Grays spent Saturday night with the Pendergrafts and returned home Sunday afternoon.

Mrs. Bob Stewart of Spearman spent Friday night with a brother, Mr. and Mrs. Buck Bullen at Erick, Okla. Saturday she visited another brother, Ray Bullen, who had surgery at Hobart. She spent the night with Mrs. Ray Bullen at Mountain View at Hobart. Mrs. Stewart came back to Erick and spent Sunday night with the Buck Bullens and returned home Monday.

Glenda Mayfield of Amarillo College spent the weekend with her parents, Mr. and Mrs. Richard Gaines, Peggy and Freddie.

Mr. and Mrs. Jack Whitson Sunday dinner guests were Francis Whitson of Perryton and Alta Morse and Fronzy Close of Spearman.

Mr. and Mrs. J.D. Schick of WTSC of Canyon were weekend guests of Mr. and Mrs. Bob Lamb of Pringle, Mr. and Mrs. Curtis Harbour of Spearman and other relatives.

Mr. and Mrs. Ira Harbour went Tuesday to Chromo, Colo. to visit friends, Mr. and Mrs. Ed King and also did some deer hunting. They returned home Thursday.

The first memorial poppies distributed by The American Legion and Auxiliary following World War I were made of silk by French widows and war orphans.



news from your HOME DEMONSTRATION AGENT

by Nelle Evans

Even leftover Halloween pumpkins don't have to be wasted. If used within two or three days after cutting, jack-o-lantern pumpkins can be cooked, cooled and frozen into quantities suitable for one meal.

One pound of pumpkin will yield one cup when cooked. One pint of cooked pumpkin usually makes three to four servings, while one and one-half to two cups of it will make a nine-inch pie.

Store cooked pumpkin in the refrigerator in a covered container. For best flavor, plan to use it within two or three days.

To cook this "fun squash" first wash and peel it, then cut it into pieces. Boil in a small amount of water in a covered container until tender. Either mash the cooked

pumpkin or put it through a sieve or blender, and season, if desired.

Baking is another way of preparing pumpkin. First cut the pumpkin in half or into quarters and remove the seeds. Place the desired section, cut side down, in a shallow pan and bake at 350 degrees F. until tender.

A second method of baking involves sealing the pumpkin in foil and baking it in a 350 degree oven.

Once done, scoop the flesh from the shell, mash or put through a sieve or blender. At this point, the cooked pumpkin is ready for use in a favorite recipe.

Steaming is still another way of preparing this versatile product. To steam, place the pumpkin on a wire rack over boiling water in a covered container. Steam until it's tender.

POSTAGE STAMPS

Bought on Official State Expense Accounts

Can pay for a Pickup Truck or for a Campaign Mailing!

And where is the difference?

A former State Representative from Amarillo was convicted earlier this year on a charge of paying for a used pickup truck with \$850 in stamps drawn on his Legislative expense account.

The present "TOP TEN" district State Representative used \$706.84 in STATE POSTAGE -- charged to his Legislative expense account -- in October, 1972, to mail out 11,174 pieces of campaign material to voters in the district, asking them to re-elect him!

11,174 Letters Three Weeks Before Election!

Most of the mailings, if not all -- made in his own official and state-purchased envelopes -- contained the campaign brochure shown here. You probably received one as a voter in the 64th Legislative District. Unmistakably, your vote was solicited by mail in this way -- and you, as a taxpayer, picked up the charge for it!

Is there a difference in buying a pickup truck and in using tax money to perpetuate yourself in office?

IT'S TIME FOR A CHANGE!

VOTE FOR A FRESH START!

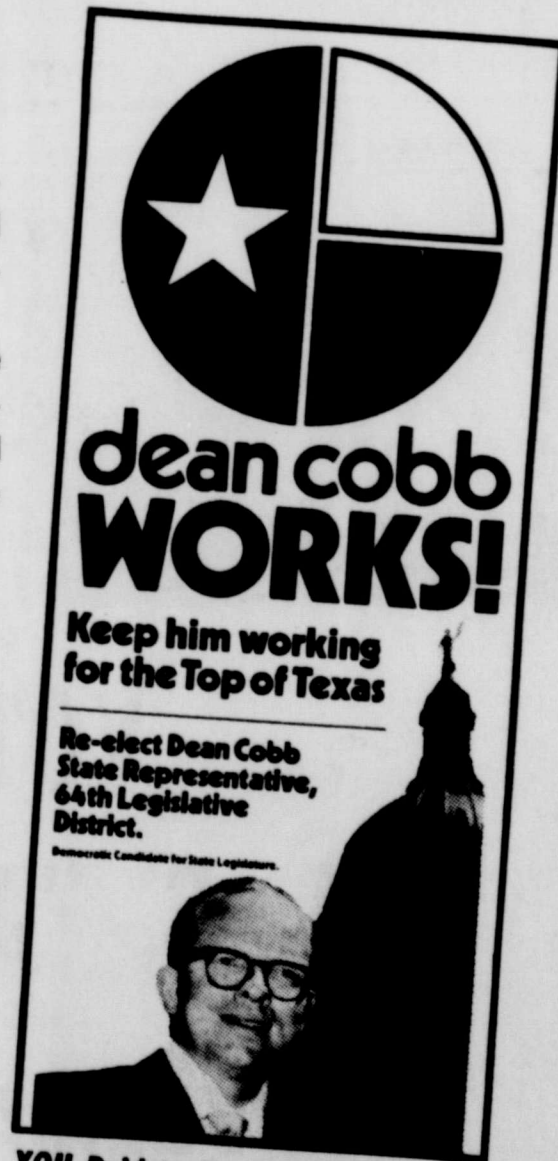
WITH

JACK HART

for State Representative

District 64 - "THE TOP 10"

(POL. ADV. PAID FOR BY THE JACK HART CAMPAIGN FUND)



YOU Paid to Have This Campaign Piece Mailed to You!

- THE RECORD: After cases of State Representatives trading commercially postage stamps furnished on their expense accounts, the amount of stamps that a House member could draw was limited to \$120 a month.
But no limit was put on the amount of postage that could be sent through the House postage meter -- a meter that prints on each stamp the identification "PD Meter 805708."
The mailings concerned here were sent out in official state-furnished envelopes of Rep. Dean Cobb and carried the House meter identification number. Two of the "letters" were mailed under the House bulk mailing permit at .05 each, three at .08 each.
A House employee did the mailing, on authority of Stamp Requisitions from State Rep. Dean Cobb. Mailings were made in the following amounts and on the dates shown:
Oct. 10, 1972: 1,343 pieces, \$107.44 (8c each)
Oct. 11, 1972: 3,787 pieces, \$189.35 (5c each)
Oct. 11, 1972: 3,218 pieces, \$257.44 (8c each)
Oct. 12, 1972: 2,448 pieces, \$122.45 (5c each)
Oct. 20, 1972: 377 pieces, \$30.16 (8c each)



Fig. 1



Fig. 1-A



Fig. 2



Fig. 3

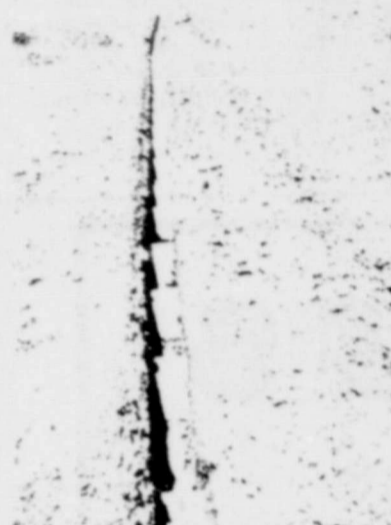


Fig. 4



Fig. 5

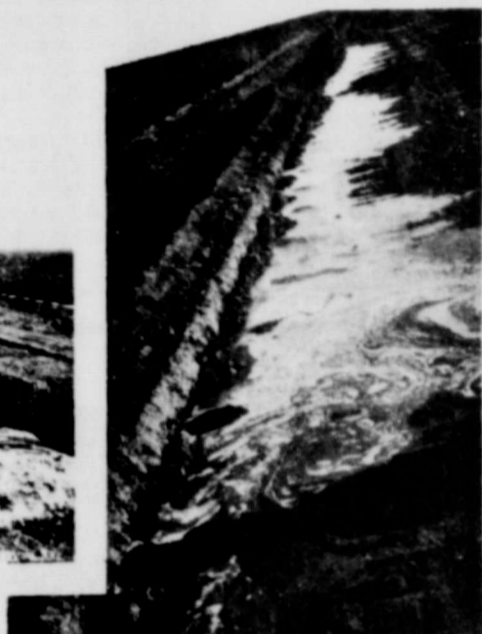


Fig. 6

NORTH PLAINS WATER PUBLICATION FEATURE

New Irrigation System Promises Many Advantages

There may not be anything new under the sun but sometimes there is something different.

Such is the new type of irrigation system installed by Chalmers Porter (fig. 1 on page at right) just east of Spearman in Hansford County.

Automated furrow irrigation without the necessity of moving pipe, setting tubes or digging ditches was the idea. The idea involved many hours of thought, planning, design and construction.

Embedded in the earth 18 to 20 inches, the entire system can be forgotten and the usual farming operations can be carried out over it.

Standing at the well, looking out over the system, you see no evidence of what may be entirely new concept in irrigation.

Water pumped from the well moves into an 8" P.V.C underground line where it is released into 4" diameter lateral lines. This operation is controlled with water operated valves designed and constructed by Mr. Porter (fig 1-A).

After passing the valves, the water moves through the lateral lines into spreader lines which are long enough to cover 32 rows. Beneath the head of each row the spreader line is perforated and the perforations shielded to prevent plugging (fig 2). Above each opening on the spreader line, short columns of coarse gravel were plac-

ed in order to provide an easy channel for the movement of water to the surface.

The gravel was held in place with short sections of wood so that the ditch could be filled and water-packed without disturbing the gravel columns (fig 3 & 4).

Figure 5 shows Mr. Porter laying the small diameter water lines that control the operation of the valves. These lines run from the valves back to the control point at the well.

Figure 6 shows the water bubbling up through the gravel and earth fill in the spreader line ditch during the testing and water-packing operations.

After the ditch was filled and water-packed, the lister ridges were extended back over the ditch and the system was given the final test.

Valves were operated on the first two 32 row sets, and we watched, water bubbled up through the earth like 64 small springs and started down the rows as would water from tubes or gated pipe.

Mr. Porter is now planning refinements on the next system that will make it operate more efficiently. This, coupled with a tail water return system will operate with a minimum labor requirement.

The farm laborer shortage in this area justifies the use of such a labor saving system.

Mr. Porter was justly proud when the system operated and performed as he had planned. In the near future anyone wishing to observe this system in operation, should contact Mr. Porter, as it will be well worth your time. I would like to add that this is really something to see.

TCTA State board Endorses ConCon

If you haven't heard the term "ConCon" you evidently are not part of the education world. Differences of opinion concerning the education scene today promise to intensify during the month of November. These differences center around the ratification of the proposed constitution and by-laws--ConCon--of the Nation-

al Education Association. During the first three weeks of November the 1.1 million members of NEA will decide whether or not to accept the constitution via the largest mail ballot of its type ever conducted.

Con Con is the No. 1 controversy in the education profession today. It seems to in-

spire strong partisanship among educators--whether they are for or against the document.

Like scores of other professional education associations across the nation, the Texas Classroom Teachers Association finds itself on the positive side of the question. At a meeting of the State Board of Directors of TCTA in Houston on October 21 that body voted to endorse the proposed constitution. The 51 members of the TCTA Board are all members of NEA.

Representing 46,000 classroom teachers in Texas, the Board issued a statement to

the effect that ConCon is for classroom teachers. The statement recognizes that proposed constitution creates an independent professional organization, gives equality to all segments of the education profession, and "grants recognition of the importance of the teacher in the learning process..."

Other provisions of the constitution listed as favorable in the statement concern the man one-vote concept, proportionate representation, minority involvement, establishment of a judicial branch, a board of directors with in accountability.

The nation's education community will have to wait sometime in January to know what the future of their national organization will be. The ballots are being handled by Price-Waterhouse--the winners of the Academy Award announcements--and they calculate that it will be there before they can compute the results.

Through the American Legion Auxiliary poppy program more than \$300,000 is paid annually to needy and disabled service men and women who make the memorial flowers. All contributions received from Poppy Day go directly to aid disabled war veterans or members of their families.

Children of war veterans left in need by the disability of their fathers benefit directly from Poppy Day, according to the American Legion Auxiliary. Contributions received from Poppy Day go directly into the rehabilitation and child welfare programs of the American Legion and Auxiliary.

Briscoe's Position on Taxes: "State government must take better care of your tax dollars..."



Dolph Briscoe's position on taxes is both progressive and realistic. By employing sound management controls and strict budgetary procedures in state government, your taxes can be used wisely. Economy in government is one of the most significant planks of the Briscoe platform. He will propose legislation to create a constitutional Budget Commission to eliminate the dual budgetary system and put efficient and modern fiscal management into our state government. Briscoe knows that careful budgeting and coordination of state projects can eliminate much of the waste and duplication in government, and give you more good government for every tax dollar.

elect DOLPH BRISCOE governor

Let's work together for Texas!

Paid for by Edwin King, Campaign Treasurer



- ★ QUALIFIED
- ★ CAPABLE
- ★ CONCERNED

VOTE For
A. E. "Junior" Lusby
REPUBLICAN CANDIDATE
FOR
COUNTY COMMISSIONER
PRECINCT ONE

Pol. Adv. Paid For by A. E. (Junior) Lusby

Spearman native has Busy, interesting life



Helen prepares salmon by spreading it with mayonnaise, sprinkling with chopped celery, onions, fresh lemon juice.

type vegetation which grows on farms. This is what his job is all about.

The Bloomfield Hills district maintains a School Farm, providing school pupils an opportunity to see "real live animals and growing things." Don supervises the farm and takes school children there on field trips.

Helen Hollums related one interesting story to her mother about a family they hired to live at the farm and help supervise work there. These people would not eat the eggs which the farm chickens produced, preferring to buy their eggs at the store. They simply found out "where eggs came from" for the first time in their lives!

When each term of school is out, the Hollums family heads for Alaska's glacier-studded mountains. Come September they return to Bloomfield Hills and a home surrounded by 32 acres of trees, a small lake and every variety of plant, animal and bird found in southeastern Michigan.

Hollums works for the U.S. Forest Service as chief naturalist in the Chugach National Forest 50 miles south of Anchorage during the summer. The rest of the year he coordinates outdoor education for Bloomfield Hills schools. The job includes directing the Farm and Garden Center and the Eugene L. Johnson Nature Center. The family lives in the residence at the nature center.

The fishing in Alaska is absolutely unbelievable, and the Woman's Page story in the Detroit newspaper shows Helen in her kitchen preparing a huge salmon for company dinner. They have a cupboard and freezer full of Alaskan salmon to remind them of the summer.

Like most Alaskans they smoke a large portion of their salmon. Don combines equal parts of brown sugar and salt, sprinkles some of the mixture in the bottom of a plastic container, then layers salmon fillets with the mixture until the container is full. It stands about 8 hours. The sugar and salt draw moisture from the fish and in about 8 hours they wash off the fish and hang fillets from hooks to drip dry. When fillets become glazed and bright red, they are ready for smoking. The Hollums' use a friend's smokehouse in Alaska. The longer you smoke the fish the drier it becomes. "When smoked, it's hard and chewy," Don says. Once smoked, the salmon keeps at least a month if stored in a cool dry place.

The Hollums also canned about 70 pounds of fresh salmon. The canning method is time-consuming but is relatively easy. They put up 48 cans while in Alaska, and also brought back whole frozen salmon. Helen likes to bake or grill these and she saves all the bones and scraps of meat for a hearty, delicious homemade chowder. She bakes whole salmon smothered with onions and celery and serves it with broccoli (with a puffed cheesy topping), baked potatoes, and a creamy fruit salad and crisps rolls--ah, it's good!

The page in the Detroit newspaper featured Helen's own recipe for baked salmon, for Broccoli Sunburst and her delicious fish chowder.

PRICE IS RIGHT FOR TEXAS



Bob Price is a full time congressman. His attendance record on voting of 93% is one of the highest in the Congress. By comparison his opponent has the second worst attendance record in the entire Texas delegation.

Bob Price has approached legislation with a conservative and careful outlook. He has earned a 90% rating by the ACA, compared to his opponents 42%.

Bob Price has worked hard to bring new industry, expand present firms and to thereby create new jobs. The Panhandle's "Business Index" is one of the highest in Texas.

Bob Price has introduced or co-sponsored 36 pieces of legislation that have become public laws. These are a matter of record, in spite of his opponent's clever misrepresentations.

Bob Price fights against inflation. He has an 88% rating by the National Associated Businessmen's Economy. His opponent only 50%.

Bob and Mary own their own home in Pampa. Two of their children attend the Pampa public schools. Bob is a graduate of Okla. State. He returned to Pampa after the Korean War. Before his election to Congress he was active as a business leader, in civic affairs and taught Sunday School in the First Baptist Church in Pampa.

He was first elected to Congress in 1966. Was reelected in 1968 and because of his popularity had no opponent in 1970. When a man earns this respect from both political parties it is proof of his ability and hard work.

It's easy to see why people feel Price is right for Texas. He is an honest sincere person who stands up for his principles. Thank goodness, his principles are the same as made this country great.

On the October 25 issue of Detroit, Michigan FREE PRESS, a full-page spread featured a Spearman woman. Complete with pictures and facts, the article related interesting facts about the life of Mr. and Mrs. Don Hollums and their three children. Mrs. Hollums is the former Paul Taylor, daughter of late Paul Taylor and the late Paul Taylor, long-time Spearman residents.

The Hollums family live in Bloomfield Hills, near Detroit, where Don is Director of Outdoor Education, associated with 16 schools in that district. Don's job is very interesting. Many city children have never seen a cow or horse, never seen chickens or any

COVER YOUR WHEAT PASTURE CATTLE FOR THE WINTER SEASON FOR:

1. FIRE AND/OR LIGHTNING.
2. WINDSTORM, CYCLONE, TORNADO, HAIL, EXPLOSION, RIOT ATTENDING A STRIKE, CIVIL COMMOTION.
3. COLLAPSE OF BRIDGES AND CULVERTS.
4. THEFT, BUT EXCLUDING ESCAPE OR MYSTERIOUS DISAPPEARANCE.
5. ACCIDENTAL SHOOTING, EXCEPT BY THE INSURED OR EMPLOYEES OF THE INSURED.
6. DROWNING.
7. ARTIFICIAL ELECTRICITY.
8. ATTACK BY DOGS OR WILD ANIMALS.
9. COLLAPSE OF BUILDINGS.
10. SMOTHERING
11. BLIZZARD
12. FREEZING
13. ANIMAL COLLISION

DEDUCTIBLE:

ONE HEAD DEDUCTIBLE PER OCCURRENCE; HOWEVER, SHOULD TEN (10) OR MORE ANIMALS DIE AS A RESULT OF ONE OCCURRENCE, THERE WILL BE NO DEDUCTIBLE APPLIED.

Cost is 90¢ Per Head

Covers Cattle

From Nov. 1, 1972 to April 1, 1973



J. L. BROCK AGENCY
206 MAIN STREET
SPEARMAN, TEXAS
PHONE 659-2514

Christian women Meeting, Nov. 6

Mrs. Virginia Saucier of Borger, Texas, will be the speaker for the November 6 luncheon meeting of the Amarillo Christian Women's Club. Mrs. Saucier is well known in the area having spoken at many women's groups.

The Special Feature will be "How to Decorate Your Christmas Tree" by Margie Bast. Mrs. Bast has decorated Christmas trees for photographing in the Family Circle magazine.

There will also be special music by Mrs. Gene Lorey. The meeting will be at the Villa Inn at 12:00 noon. Price of luncheon \$3.25. Nursery free by reservation. For reservations telephone Mrs. John Pipkin 3093 in Spearman or write Mrs. Larry Stokes, 3320 Janet, Amarillo, Texas 79109.



He's A Panhandle Man.....

Be Sure To VOTE!

Paid for by the Price for Congress Committee, Billy B. Davis, Chairman.

**THRIFTWAY
LOW
LOW
PRICES!**

- Whiting Aluminum Foil..... 4 12x25 \$1.00
- Shurfine Apple Butter.... 3 28-oz. \$1.00
- Shurfine Spears Cut Asparagus 2 14 1/2-oz. Can. 79c
- Soft Toilet Tissue 2 Ply 10 Roll 79c
- Shurfresh Sweet or Buttermilk Biscuits... 13 Cans \$1.00
- Shurfine Fresh Shell Blackeyes 6 15-oz. Size \$1.00
- Shurfine Cake Mix 4 18 1/2-oz. Boxes \$1.00
- Shurfine Catsup... 3 20-oz. Btl. \$1.00
- Shurfresh Hartmann LH City Cheese..... Pkg. 59c
- Shurfine Vac Pak Coffee..... 16-oz. Size 79c
- MC 2 All Purpose Detergent... 49-oz. Box 59c
- Soft Overnight Disposable Diapers..... 2 1/2 Box 69c
- Bony Dog Food 10 15 1/2-oz. Cans \$1.00
- Shurfresh Vac Pak Franks..... 12-oz. Pkg. 49c
- Shurfine Grapefruit Juice..... 2 48-oz. Cans 89c
- Shurfine Green Cut Beans 5 16-oz. Cans \$1.00
- Shurfresh Margarine 6 18-oz. Size \$1.00
- Shurfine Evaporated Milk..... 6 14 1/2-oz. Cans \$1.00
- Shurfine Frozen Juice Orange... 5 5-oz. Cans \$1.00
- Shurfine Yellow-Cling Peaches... 3 28-oz. Cans \$1.00
- Shurfine E.M. Sweet Peas..... 4 17-oz. Cans 89c
- Shurfine Fresh Pak Pickles... 3 16-oz. Jar \$1.00
- Shurfine Park & Beans... 6 16-oz. Cans \$1.00
- Shurfine Whole Irish Potatoes... 6 16-oz. Cans \$1.00
- Shurfine Whole Sweet Potatoes... 4 16-oz. Cans \$1.00
- Shurfine Strawberry Preserves 2 18-oz. Jars \$1.00
- Shurfine Medium Rice..... 3 32-oz. Boxes \$1.00
- Shurfine Plum Grape Preserves 2 18-oz. Jars 79c
- Shurfine All Vegetable Shortening... 48-oz. Can 69c
- Shurfine Spinach... 6 15-oz. Cans \$1.00
- Shurfine Tomato Juice Fancy... 2 48-oz. Cans 79c
- Shurfine Flour 5 lb. 39c
- Fruit Shurfine 16 oz.
- Cocktail 4 for \$1
- Shurfine Chunk Tuna 2 for 79c
- Tomato Shurfine 8 oz.
- Sauce 10 for \$1
- Tomato Shurfine 8 oz.
- SOU D Tall 8 for \$1

BRACH'S WINDOW BOX CHOCOLATES
CHOCOLATE COVERED PEANUTS
CHOCOLATE PEANUT CLUSTERS
MILK CHOCOLATE STARS
CHOCOLATE CASHEW CLUSTERS
CHOCOLATE COVERED MALTED MILK BALLS
CHOCOLATE COVERED BRIDGE MIX
CHOCOLATE COVERED CREME DROPS

**MIX 'N MATCH
3 FOR \$1.00**

CLOROX
Bleach 1 Gal. **34c**

DASH
20 lb. Home Laundry Size **\$4.39**



THRIFTWAY

SECOND WEEK OF
SHURFINE CARNIVAL

PRICES EFFECTIVE NOVEMBER 2ND THRU NOVEMBER 4 TH

CHECK OUR PRICE ON BEEF CUT AND WRAPPED FOR YOUR FREEZER



WE SELL ONLY U S D A CHOICE BEEF

U S D A CHOICE BEEF CHUCK

R O A S T
CENTER CUTS lb. **79c**

Hamburger
Helpers BETTY CROCKER ASSORTED Pkg. **49c**

U.S.D.A. CHOICE
CHUCK ROAST
BLADE CUT
LB. **59c**

U.S.D.A. CHOICE
ARM ROAST
LB. **89c**

SHURFINE FULLY COOKED
BONELESS HAM
3-LB. CAN **\$2.99**

Please Register each Day at our Market For Minimum of 250 lb. Size Half Carcass of U.S.D.A. CHOICE BEEF Cut & Wrapped to Winners' Specification. Drawing Saturday Nov. 11th 7:30 p.m.

FREE BEEF

HAM
WILSON TENDERMADE BONELESS FULLY COOKED 2 to 6 lbs.
\$1.29

BACON
WILSON CERTIFIED 2 lb. Pkg.
\$1.59

PORK CHOPS
Center Cut Family Pak
89c 79c

Tendercrust Ranch Style
BREAD
1 1/2 lb. loaf **27c**

Shurfresh...
ICE MILK
Half Gallon **44c**

PEPSI COLA
10 oz. Bottles Carton of 6 Plus Dep.
39c

Gerbers Strained Glass Pak.
BABY FOOD
9c

ALL PURPOSE
RUSSET POTATOES
10-LB. POLY BAG **49c**



New Crop Emerald
Walnuts
lb. **59c**

California Long Golden Cello Pac
CARROTS
15c

New Crop Thin Shell
Pecans
lb. **69c**

RED ROME
APPLES
3lb. Bag **54c**

Sunkist Large
Lemons
lb. **25c**

TEXAS NEW CROP FRESH UICY
ORANGES
FULL OF VITAMIN C 5-LB. CELLO BAG **45c**

Sunshine Krispy 1b.
Crackers **32c**
Shurfine Fancy "No Beans"
CHILI **44c**
Mac. & Cheese 7 1/2 oz.
Kraft Dinners **19c**

Shurfine Pure Large
Black Pepper 4 Oz. **29c**
Krafts Margarine 1b.
Soft Parkay **39c**
Roxey "Instant Gravy" 25 lb. Bag
Dog Food **\$2.39**

"CLOSED SUNDAY"
LIMIT RIGHTS RESERVED

Shurfresh Heavy Fresh
WHIPPING
CREAM
8 oz. Carton **29c**

FRUIT DRINKS
HI-C
46 oz. Can **25c**

JOHNSTON Deep Fruited
PUMPKIN PIES
EXTRA LARGE
32 oz. Size **69c**

Birdseye 10 oz. Box
Peas or Corn **19c**
Mortons 1b. Bag Twin Pak
Bread Dough **35c**
Mortons 9 oz. Box
Honey Buns **35c**
Mortons All Varieties each
Meat Pies **19c**

CUT RATE
THRIFTWAY
BUCCANEER STAMPS
Plains Shopping Center
Spearman, Texas

VALUABLE COUPON
3 LB. 2 OZ. Family Size
Cascade
Only **84c**
GOOD ONLY AT THRIFTWAY
OFFER EXPIRES Nov. 17, 1972
WITHOUT THIS COUPON **\$1.09**