

BALLOON CRASHES!

Member
TEXAS PRESS ASSOCIATION

the Spearman

REPORTER

VOLUME 63, NO. 48

THE SPEARMAN REPORTER, Hansford County, Texas 79081

THURSDAY, OCTOBER 19, 1972

ELECTION '72

Q-A

A SAMPLE BALLOT, COURTESY of First State Bank, is carried in this issue of the Spearman Reporter. Save it, so you can become familiar with voting procedure come Nov. 7.

Q. What is involved in voting absentee?

A. Absentee voting allows people who cannot be at their polling place on election day to cast a ballot. The period for absentee voting begins October 18 and ends November 3.

If for some reason you expect to be out of the county on election day, you may write for and receive an absentee ballot. It then must be filled out and returned by mail to the county clerk's office. You may also go in person to the clerk's office to fill out your ballot.

If you are ill or disabled and cannot go in person to the polling place on November 7, you may vote absentee also. However, a certificate, signed by your physician, stating that you cannot be present at the polls must accompany your request for a ballot.

If you will be out of the county during the entire absentee voting period, as well as on Nov. 7, you may write the clerk's office for a ballot, and give the address outside the county where you want it sent. If the application is mailed on or after October 16, it must be postmarked from outside the county. The ballot must be returned to the clerk's office before Nov. 6.

Be sure to enclose your registration slip with the request for a ballot, then be sure to fill out the ballot in the presence of a notary public.

If you do not come in person to the clerk's office to vote absentee, be sure to mail in both the request and the ballot. Any other form of delivery will result in your ballot being thrown out.

If you have not voted absentee or duly requested a mailed ballot by Nov. 3, there is no way you can vote except in your own precinct on Nov. 7.

However, there is no penalty for voting absentee and then finding yourself in your home county after all on election day. It is better to vote absentee if there is a chance you will be out of town, than to miss voting entirely. Your vote is too important.

FRESHMEN-B TEAMS PLAY HERE THURSDAY

After the heartbreaker lost to Phillips last week the Freshman-B team will play host to Panhandle tonight at Lynx stadium. This is the second game the Lynx will play with and the Lynx defeated them in the first contest.

The B-Freshmen team has only lost one game thus far and it is the only game that a Spearman High School team has lost this year. The team is ready to get back on their winning streak and to beat Panhandle twice in one season.

LYNX ARE READY

In an interview with coach Clark Mires, he had these views about the Spearman-Panhandle game. "I have been coaching for 20 years and I believe that the Monday workout was the best that I have ever had in my coaching career. The Lynx are in the best spirit ever this year physically, mentally and emotionally."



RESCUE WORKERS cut ropes to reach two men in downed balloon. Randy Schell, and Tommy Lovett grabbed rope and tried to stop balloon from dragging the two men in the basket.



DEPUTY MESSER feels for a pulse, and realizes that both men are still alive, after the crash of the manned balloon, on the Kiff White-J. R. Keim fence line, Southwest of Spearman, at about 4:30 p. m., Saturday.



RESCUE WORKERS giving aid to the injured men.

"I am very sorry our experiment failed, but I am not sorry we landed in Spearman."

These were the words of Kurt Stehling, 52 year old Government Science Consultant, as he spoke from his bed in Hansford Hospital Monday. Stehling was recuperating from injuries he received when he and his co-pilot Arthur Swanson force-landed their helium balloon near Spearman late Saturday evening.

The 30,000 cubic foot helium balloon was first spotted over Spearman Saturday afternoon as it swept along on the north wind about two miles west of Spearman. Several residents noticed that the craft was descending rapidly and that the fliers were waving to on-lookers to follow them.

Several cars did follow and were near when the balloon dropped to the earth about five miles south of town.

Kurt Stehling related the following account to this reporter Monday afternoon:

The private, quasi-private balloon flight, with some U. S. Government interests, originated in Sioux Falls, South Dakota Friday, October 13 at 7 p. m.

With doctorate degrees in both Astronomy and Physics, Stehling has been associated with U.S. Government science projects since 1948 when he became involved with rocket engines. In 1955 he was invited to assist with the Vanguard Project--the first satellite launching endeavor for this nation. A native of Germany, Stehling came to Canada in 1950. Very familiar with "rocket" engines, he said he became the senior official on the Vanguard project and continued in the field of rocket engines.

With his knowledge of this science, Stehling said he is trying, singlehandedly, to revive the art and science of "manned ballooning" in order to gain more accurate measurements of meteorology. He pointed out that balloon flights allow this because of several reasons: it is cheaper than airplane flight; it provides absolute quiet; no air-speed motion allows certain type of instruments to work best in this type of environment.

This was the reason for the flight launched Friday night at Sioux Falls, S.D. It originated at that city because there are helium depots there.

Equipped with weather bureau instruments (and other equipment belonging to firms and groups he would not mention by name) the two men launched their flight about 7 p. m.

The balloon, a surplus from the Navy, belonged to Arthur Swanson. Acting as co-pilot because of his long experience with balloon flight, Swanson joined Stehling in the experiment. Both men are officials of the Balloon Fliers of Akron, Ohio.

Stehling said you cannot "plan" where you are going in your balloon; other than scanning a current weather map of the USA. Noting all the weather patterns on the map, you can pretty well guess at the trajectory of flight.

Their weather date Friday evening showed they should drift south by southeast toward Omaha, swing down into Arkansas, over the Carolina states, then swing north again--according to the mapped weather fronts. They simply had to "go with the wind"; there is no control over the balloon except "up or down" manipulation.

At 3 a. m. Saturday morning they drifted right over the weather tower at Omaha. At 2,000 feet altitude he was glad no aircraft were around at that moment! He remembered how beautiful it was; completely quiet, millions of stars and the city of Omaha laid out below them in lighted patterns.

Then the wind began to pick up considerably, and they began to drift southwest, instead of southeast as the weather data said they might!

The 5 x 6 foot gondola basket swinging below the huge helium filled balloon, was heavily loaded. 35 bags of sand. A small stove, and table (they cooked a hot breakfast.) Several gallons of water--at that altitude it is very dry and you

are always thirsty--lots of clothing (we were very cold) and instruments of all types: barographs, altimeters and other measuring devices; a radar transponder, two chairs (we sit up to sleep and only had a 10-minute nap that night.)

"By that afternoon (Saturday) we could see that we were drifting steadily southwest and this flight pattern would put us over the New Mexico Mountains, and we were not interested in mountain country--or else we would wind up over Mexico, and this did not interest us either."

So, rather than endanger their lives over mountains, they decided to land. Quietly floating over Hansford County (although they did not know just where they were) Stehling said they manipulated the balloon from 7,000 feet down to 4,000. "Through my binoculars I saw we were over what looked like a friendly little city." The German-born scientist said he seemed to always have a feeling about whether a city was friendly or not while viewing them from above.

"We began to throw overboard all the heavy acid batteries, all our gear, chairs, etc."

What they did not know of course, was that the velocity of the wind on the ground was much stronger than the current they were sailing in up to four to seven thousand feet.

Stehling said in their anxiety of the landing procedure, the rip-panel was pulled too late and when all the gas left the huge balloon, the craft landed with a very hard impact. "We are always prepared for this big jolt however, with knees flexed, so we took the hard landing o. k."

It was the next unexpected thing which happened that scared them to death. It is the thing you always hope will not occur.

Just as the basket gondola hit the ground with a bang, the high wind caught the balloon which acted as a sail and began pulling them along the ground. "It was really horrible. He said they gave up hope."

The men, trapped inside the closely spaced ropes which hold the basket to the balloon, were dragged along the rough terrain for at least a half a mile. According to Stehling, Arthur Swanson, 66 years old, tried to pry his way out between the ropes and his head was caught once between the basket and the ground.

The fliers were helplessly being drug face down along the ground until the balloon caught against a fence and collapsed. Both were semi-conscious when a group of Spearman men reached them. They had to be cut from the gondola-mangled ropes.

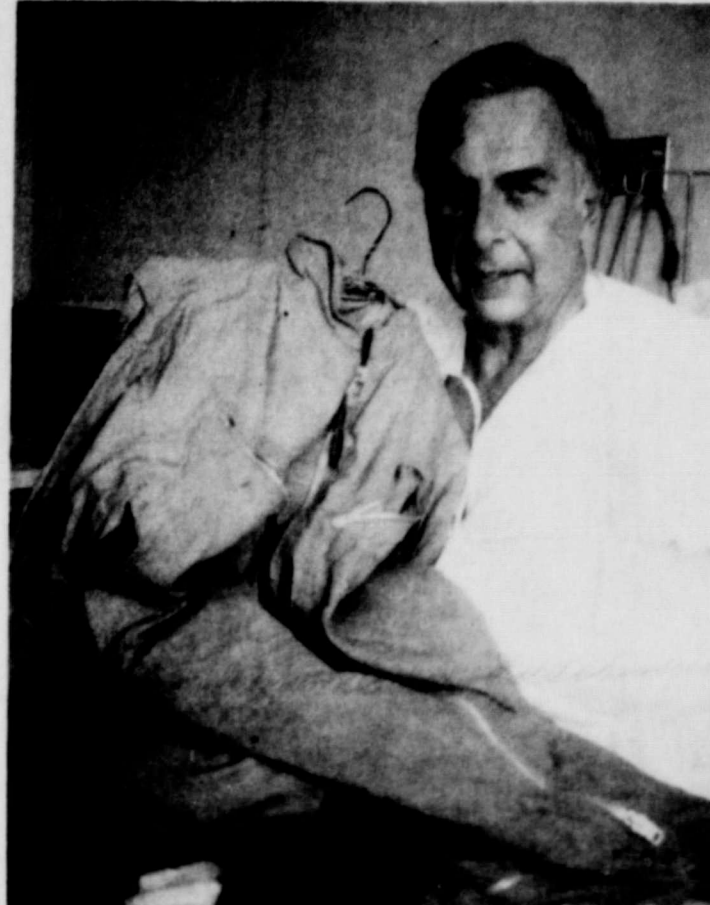
He praised the efforts of Tommy Loveday, Rondal Schell and Ed Zschiesche, who at one point grabbed hold of the basket and tried to stop it. He also said Deputy Tom Messer was to be thanked for his kindness and assistance.

"These people were risking broken limbs, and endangering their lives and we certainly did appreciate their help," Kurt said.

Both men were rushed to Hansford Hospital in the ambulance. Arthur Swanson was transferred to an Amarillo hospital where his condition is listed as "critical" at this writing.

Kurt Stehling received many bruises and abrasions and a broken collar bone. He said he hoped to catch a plane for home Wednesday, Oct. 18.

His home is Chevy Chase, Maryland, a suburb of Washington, D.C. where he is employed. Stehling said he had published many papers on scientific data, and had authored 5 books.



KURT STEHLING, 52-year old German born scientist, examines his torn and mangled flight suit in his bed at Hansford Hospital Monday. He was pilot of the balloon which crashed in a farm field south of Spearman Saturday. His co-pilot remains in critical condition in an Amarillo hospital.

er met." His travels have taken him around the world many times. He says Europeans have the idea that American people are "rough people, interested in crime, and so-forth, but I know for a fact that this is not true. If all youth were like the boys I have named--we would have no problems."

"I am sorry our experiment failed, but I am not sorry we landed in Spearman." The flight was not a complete failure--they did chart valuable data on their 1000-mile ill fated flight.

When asked if he would try such a flight again soon, he said he thought perhaps the Good Lord was trying to tell him something on this unlucky flight.

"These are very useful experiments, but I think I will let the other fellows make the flights, and I shall just act like the wise old owl--and just teach and instruct from now on."

He said "my poor wife will be glad to hear me say this, for she nearly has a heart attack every time I go up."

Special Veteran's Program, Monday

The Spearman PTA is sponsoring a special Veteran's Day Program October 23 at 10 a. m. in the vanity gym which is located on the grade school campus.

A varied program has been planned. The general public is urged to attend this special program, designed to remember and honor veterans of all wars, a group that numbers more than 39 million of whom more than 28.7 million are still alive. It is also designed as a time to again stand together to uphold the honor of our Nation.

All school students will attend the special program. All attending the program will receive American flags, courtesy of the Spearman Lions Club.

Music and songs will be furnished by the 1st, 5th, 6th, 7th and 8th grade choirs, the high school choir, and the high school band. Mrs. Dick Courtiss will sing a solo.

Mrs. Travis Davis will present Myong Chun Noble, the Spearman resident who has recently become a citizen of the U. S. A. Mrs. Noble will recite the oath she memorized in order to become a new citizen.

A representative of each Girl Scout troop will form the group which will present the Colors at the Program. Speeches will be given by Jimmy Haden, 3rd grader, Jim Jones, 5th grader, Jim Curtis Vernon, 6th grader. These boys have written their own speech on the topic "Why I Am Glad to Live in America."

Parents of these youth are Mr. and Mrs. Billy Haden, Mr. and Mrs. Hershel Jones, and Mr. and Mrs. Jimmy Vernon.

The program will be closed with "taps" in honor of soldiers who have died defending our priceless heritage of freedom.

The program will be over by 11:45 a. m. Monday, October 23. Everyone is urged to attend.

Stew Supper Oct. 27

The Spearman high school Spanish Club has planned a stew supper for Oct. 27 at the junior high cafeteria from 5 to 7 p. m. This will be prior to the Lynx-Dalhart game. The tickets will be \$1.50 for adults and \$1.00 for children under 12.

Halloween Carnival

The Halloween Carnival will be held Tuesday, October 31. It will be at the community building and is sponsored by the High School Student Council. Price for all booths will be \$15.00. To reserve a booth you may call Coach Mires at 659-2584 or Teresa Beck at 659-2618. Reservations should be made before October 24th.

The community building will be open from 10 until 3 on Saturday, the 28th, for the more elaborate booths to decorate. It will be open from 12 to 6 on October 31 for the setting up of all booths.

COURTHOUSE CLOSED
County Judge Johnnie C. Lee announced today that the court house offices would be closed Monday, Oct. 23 in observance of Veteran's Day.

Spearman PTA Hears Panel

Spearman PTA met in regular session October 16 in the Junior High Cafeteria at 7:30. Troop # 51 presented the colors. Invocation was given by Rev. B. T. Shoemaker of the First Baptist Church.

The PTA plans to publish a resume of the ratings on movies to be shown in our local area, as a guide for parents. They are concerned about the type of pictures presented to the public.

Mrs. Clark's third grade choir presented several numbers to the enjoyment of those present.

A panel discussion moderated by Mr. Kenneth McKay, high school principal on "Moral and Ethical Behavior". Panel members were ministers Bill Osborne and Bill Shoemaker, teachers Beth Bourland and Clark Mires, students Jeanie Porter and Scott Latham.

Refreshments were furnished by the first grade mothers. Room count was won by Mrs. Niven's third grade room. Study the issues of the coming election and vote in November.

ARTS & CRAFTS GUILD MEETING

Mmes. P. A. Lyon, Ned Turner, Annie Allen, Bruce Sheets, Joe Traylor and Clay Giber met last Friday in the home of Mrs. Pope Giber to enjoy an afternoon of china painting.

This Friday, Oct. 20, the Arts & Crafts Guild members meet with Mrs. Nolan Holt.

Coach Mires feels that if we will hold Levee QB, and Millican TB to a total under 200 yards we will walk away with the victory.

Clark said "Panhandle is a sound team in general with the line that will average 190 lbs. to our line who is only 175 lbs. average. The Lynx has a much faster backfield and the backs run harder than do the panthers. Panhandle run their offense from the I formation and also the slot T which is similar to

ours. We have watched all five films of Panhandles games and know their every move. The Lynx are ready for this game and I feel that the winner of this game will be the 1972 district CHAMPIONS.

Coach Mires feels very confident that the Lynx will play the best game ever this Friday night in Panhandle, so make plans to be there and let's give our Lynx our support.



PRICES EFFECTIVE THRU SATURDAY, OCTOBER 21, 1972. WE RESERVE THE RIGHT TO LIMIT QUANTITIES. NONE SOLD TO DEALERS.

COUPON SAVINGS

SAVE 60¢

WHEN YOU PURCHASE NORTHERN BATH TISSUE AND MARYLAND CLUB COFFEE WITH COUPONS BELOW



VALUABLE COUPON

GOOD FOR **40¢ Off** ON THREE 4-ROLL PKGS.

Northern Bath Tissue
LIMIT 1 COUPON PER CUSTOMER
EXPIRES 10-21-72

IDEAL FOODS!

VALUABLE COUPON

GOOD FOR **20¢ Off** ON 1-LB. CAN OF

MARYLAND CLUB
LIMIT 1 COUPON PER CUSTOMER
EXPIRES 10-21-72

IDEAL FOODS!

Thrif-T Soaps & Cleaners



ALL TEMPERATURE

Cheer Detergent FAMILY SIZE **\$2.59**



FOR SPARKLING DISHES

Ivory Liquid GIANT SIZE **56¢**



CONCENTRATED LOW SUDS

Dash Detergent GIANT SIZE **73¢**



FOR AUTOMATIC DISHWASHERS

Cascade Detergent FAMILY SIZE **76¢**

Store Hours

Mon. - Sat.
8:AM to 11PM
Sundays
9:AM to 9PM

Family Circle COOKING

Thousands of triple-tested recipes from the kitchens of Family Circle Magazine

Your Ready Reference for a lifetime of Good Eating...

VOLUME 1 ON SALE NOW 29¢
VOL. 2-16 EA. \$1.69

KOUNTY KIST WHOLE KERNEL

Golden Corn

6 303 CANS **\$1**

LIMIT 6 CANS WITH \$5.00 OR MORE PURCHASE

FOR SALADS & COOKING

Wesson Oil

53¢ 24-OZ. BTL.

LIMIT 1 BTL. WITH \$5.00 OR MORE PURCHASE

HUNT'S PEELED

Whole Tomatoes

5 300 CANS **\$1**

LIMIT 5 CANS WITH \$5.00 OR MORE PURCHASE

MACARONI & AND CHEESE

Kraft Dinner

18¢ 7 1/4-OZ. BOX

LIMIT 4 BOXES WITH \$5.00 OR MORE PURCHASE

KRAFT'S SALAD DRESSING

Miracle Whip QT. JAR **58¢**

HAWAIIAN PUNCH ASSORTED

Fruit Drinks 3 46-OZ. CANS **\$1**

HUNT'S

Tomato Sauce 8 8-OZ. CANS **\$1**

HUNT'S HALVES OR SLICES

Cling Peaches 3 No. 2 1/2 CANS **\$1**

Everyday Favorites

- KRAFT CHEESE Pizza Mix... 15-Oz. Pkg. 69¢
- KRAFT ITALIAN Spaghetti Dinner... 8-Oz. Box 39¢
- KRAFT French Dressing... 43¢
- HUNT'S WITH MUSHROOMS Tomato Sauce... 22¢
- HUNT'S WITH CHEESE Tomato Sauce... 2 2-Oz. Cans 29¢
- HUNT'S Tomato Paste... 2 2-Oz. Cans 35¢
- HUNT'S Stewed Tomatoes... 33¢
- HUNT'S BIG JOHN Chili & Beans... 22 1/2-Oz. Can 89¢
- THREE VARIETIES Keebler Cookies... Pkg 49¢

Thrif-T Low Prices

- KRAFT 7-OZ. Marshmallow Creme... JAR 24¢
- HUNT'S 32-Oz. Tomato Ketchup... Jug 48¢
- HUNT'S 200 Cans 1 Tomato Juice... 8
- SEMI-SWEET OR SWEET Hershey Dainties... 12-Oz. Pkg 43¢
- GREEN GIANT'S Lindy Peas... 5 303 500 1
- MEADOWDALE CUT Green Beans... 6 303 500 1
- ASSORTED Gala Towels... 2-Roll Pkg 38¢

Thrif-T Frozen Foods

BIRDS EYE PEAS OR CORN **5** 10-OZ. PKGS. **\$1**

MEADOWDALE

French Fries BIG 5-LB. BAG **79¢**

- BIRDS EYE Orange Plus... 9-Oz. Pkg 59¢
- SARA LEE Pound Cake... 12-Oz. Pkg 89¢
- BIRDS EYE Broccoli Spears... 3 10-Oz. Pkg. 1

Thrif-T Quality Products

- SWEETHEART 7-OZ. Cold Cups... PKG. OF 100 **68¢**
- DIXIE 5-OZ. Riddle Cups... Pkg. OF 30 **41¢**

Thrif-T Health & Beauty

- STYLE REG. OR HARD-TO-HOLD Hair Spray REG. 89¢ **58¢** 13-OZ. CAN
- REG. \$1.75 Bufferin Tablets... BTL. OF 100 **\$1.38**
- REG. \$1.29 JOHNSON & JOHNSON Baby Lotion... 9-OZ. BTL. **88¢**
- REG. \$1.05 CLOSE-UP Toothpaste... Family Size **85¢**



U.S.D.A. CHOICE BEEF

ROUND STEAKS

CENTER SLICES

99¢ LB.

RIB STEAKS

U.S.D.A. CHOICE TABLE TRIMMED LB. **99¢**

T-BONE STEAKS

U.S.D.A. CHOICE KING OF STEAKS LB. **\$1.39**

SIRLOIN STEAKS

U.S.D.A. CHOICE CENTER SLICES LB. **\$1.09**

HONEYSUCKLE OR BUTTERBALL

Tom Turkeys 18 TO 22-LB. AVERAGE **49¢** LB.

Thrif-T Priced



- HONEYSUCKLE OR BUTTERBALL 10 TO 16 LB. AVG. LB. **59¢**
- CHECKERBOARD FARMS GRADE A 20-OZ. SIZE **89¢**
- Cornish Hens... Ea. **89¢**



SWIFT'S PREMIUM, FULLY-COOKED & BONELESS

Canned Ham 5 LB. CAN **\$4.99**

MEADOWDALE HICKORY SMOKED

SLICED BACON 1-LB. PKG. **79¢**

QUARTER SLICED PORK LOINS 9 TO 11 CHOPS **89¢** LB.

- MEADOWDALE HICKORY SMOKED 2-Lb. **\$1.57**
- MEADOWDALE, ALL-MEAT Sliced Bacon... Pkg **1**
- MEADOWDALE, ALL-MEAT Sliced Bologna... 12-Oz. Pkg **69¢**

- RODEO, ALL-MEAT 12-Oz. **59¢**
- BOOTH PORTION PACK Skinless Franks... Pkg **59¢**
- 24-Oz. **1**
- Fish Steaks... Pkg **1**

Thrif-T Dairy Foods

Kraft's Parkay MAXI-CUP MARGARINE **3** 1-LB. TUBS **\$1**

Limit 3 Tubs With \$5.00 Or More Purchase

INDIVIDUALLY WRAPPED, 3 VARIETIES

- Kraft Slices** 12-OZ. PKG. **64¢**
- IDEAL LARGE OR SMALL CURD Cottage Cheese... 24-Oz. Ctn **49¢**
- FAIRMONT Whipping Cream... Half Pint **36¢**
- KRAFT HALF MOON Longhorn Cheese... 10-Oz. Pkg **64¢**
- BALLARD OR Pillsbury Biscuits... 6-Oz. Cans **49¢**
- ALL FLAVORS Fairmont Yogurt... 2 Ctn **47¢**
- KRAFT, ALL FLAVORS Cheez Whiz... 2 8-Oz. Jars **89¢**

U.S. NO. 1 **Russet Potatoes**

69¢ 10-LB. BAG.

GREEN Cabbage... lb. **10¢**

MEDIUM YELLOW Onions... 2 lbs. **25¢**

PURPLE TOP Turnips... 2 lbs. **35¢**

WASHINGTON RED DELICIOUS OR GOLDEN DELICIOUS

APPLES 4 lbs. **\$1.00**

CALIFORNIA Carrots... 1-lb. BAG **19¢**

Arts, Crafts, Antiques Show November

The general public is reminded of the fabulous Arts, Crafts and Antiques show slated for the weekend of November 4 & 5.

Sponsored annually by the Dahlia Flower Club, proceeds from the free will donations, will go to help install an elevator at Hansford Library.

It is hoped that everyone who has an antique collection of any sort, will exhibit this year. The show is open for exhibits in the following divisions: paintings (all mediums), porcelains, arts & crafts, needlework, collections, etc. The field in the Hansford Library building at Spearman, rules for the show are listed below: All rules of the Library concerning the use of the Library building will be observed. One of these rules is that the Library is to receive 20% of the proceeds of any article sold. All sales will be strictly between the buyer and the seller with the library clerk to collect the 20% of the sale. If the seller wants \$100.00 for a picture, he should price it \$120.00, and designate whether or not the frame is included.

Every division of the show will have a committee, and these committees will be in complete charge of their divisions. Their decision will be final.

Each division committee may put restrictions on the number of exhibits by a dealer depending on the room available.

Each exhibitor is to furnish his or her bridge table or other accessories, and set up his or her exhibit. No charge will be made for showing.

All tables are to be uniformly covered with white paper furnished by the Dahlia Flower Club. All articles are to be registered by the division entry committee. (List before hand.)

All exhibits are to be in place by 11 a.m. Saturday, Nov. 4, and are to be removed by 6 p.m. Sunday, Nov. 5. These may be made Friday afternoon from 2 till 6, and on Saturday morning from 9 until 11.

The Dahlia Flower Club will not be responsible for any articles lost or broken, but extreme care will be used in their handling.

The proceeds of the Silver Tea will be donated to the library to be applied on the elevator. All donations will be appreciated.

Johnnie C. Lee Named Head of Spelling Bee

Johnnie C. Lee, County Judge, Spearman, Texas, has been named to direct the activities of the 1973 Spelling Bee for Hansford County.

The 1973 Regional Bee--the Silver Anniversary Bee--co-sponsored by the Amarillo Globe-News and West Texas State University--will climax in Amarillo on April 28, 1973 with the naming of the Golden Spread Champion.

More than 11,000 students in the eighth and lower grades are expected to participate and the area includes 46 counties in the Panhandle. There are 26 Texas counties, 10 in Oklahoma, four in New Mexico and three in Kansas.

The rules of the National Spelling Bee stipulate that any boy or girl who has not reached his 16th birthday or passed beyond the eighth grade by June 1, 1973, is eligible to enter.

Each county director has complete control over the respective county and may conduct the contests as a verbal "battle of the words," or it may be by a written test. However, the regional bee in Amarillo will be conducted verbally.

The study book, compiled by the National Spelling Bee, New York City, contains more than 3,000 words, many of which have been used in the annual national contests. New in design and context, the booklet is available from the Amarillo Globe-News, P.O. Box 2091, Amarillo, Texas, 79105. The price is 25 cents.

The 1972 champion from Hansford County was Raymie Porter. His parents are Mr. and Mrs. Raymond C. Porter of Spearman. A student in the 7th grade of the Spearman school, he placed 10th in the 1972 regional competition.

The only secondary contest conducted within the area of the National Spelling Bee is also sponsored by the Amarillo newspapers and the University.

To acquaint boys and girls in the sixth and lower grades, a junior division contest is conducted. These county winners are special guests of the sponsors on Bee Day in Amarillo. Unless they hold a dual title, they do not spell.

The 1972 junior division champion was Kyle Ramsey and his parents are Mr. and Mrs. Bob Ramsey of Spearman. A list of prizes to be awarded will be made available at a later date.

The deadline for ALL county contests is March 31, 1973.

The grand winner will receive an all-expense paid trip to Washington, D.C. June 4 through 8. In the nation's capital the lucky youngster will compete in the 45th National Spelling Bee along with other boys and girls from all over the United States, as well as Guam and Puerto Rico.

Spelling Bee coordinator is Jack W. Edmondson, Director of Public Services, West Texas State University, Canyon.

The morning session was held in the auditorium, presiding was Miss Margaret Ann Garlin, State Chairman, Research Regional Director, Invocation, Mrs. Mildred Hickox, Introduction, Mrs. Lucille Kimmins, hostess president of Gamma Theta. Welcome, J. W. Dillard, president Frank Phillips College. Official Delta Kappa Gamma Song, directed by Mrs. Patti Ball, accompanied by Mrs. Shirley Leimer. Roll call of Chapters, Miss Margaret Ann Garlin. Chapters represented were Beta Delta, Gamma Theta, Gamma Kappa, Gamma Xi, Eta Alpha, and Theta Delta.

The theme for the day was "Don't Just Stand There! Do Something--And Let's Do It Right". Short dramatic skits were presented by each chapter present: "Do Something About Membership"--Beta Delta; "Do Something About Orientation"--Theta Delta; "Do Something About Fellowship"--Gamma Alpha; "Do Something About Music"--Eta Alpha; "Delta Kappa Gamma Protocol"--Gamma Xi.

Luncheon was served in the college cafeteria at 12 a.m. Presiding was Mrs. Lucille Kimmins; Invocation, Mrs. Fae Graves; Music, Volal Solo, Mrs. Dick Countiss, (wife of District Attorney, accompanied by Mrs. Wilma Clark, president, Eta Alpha.) Mrs. Countiss sang several selections from "The Sound of Music".

Address, Miss Adele Barns, State Chairman, Professional Affairs Regional Director, also instructor at Amarillo College.

Announcement that the 1973 Regional Meet will be held in Perryton.

Present from Eta Alpha Chapter were Mmes. Violeta Mahood, Mabel Bowen, Glen Phillips, Violet Igou, Irene Hollister, Thelma Vaughn, Zady Belle Walker, Katie Price, Henry Bechthold, A. M. Lemons, Ray Robinson, Marietta Jones, Don Clark, B. L. Hance, J. T. Hoy, Roy Pennington, Joe Champion, F. N. Flatners, Gordon Stedje, W. W. Weaver, Miss Floy Stepp and Miss Dorothy Lee Roden.

Attend Regional

Delta Kappa Gamma, Alpha State Regional meeting was held on October 14, at Frank Phillips College, Borger, with Gamma Theta, hostess chapter. The day began with an 8:00 a.m. breakfast at Sands Motel with presidents, directors, and vice-presidents attending. The program began at 9 with registration in the Fine Arts Building lounge. Coffee and sweet rolls were served.

The morning session was held in the auditorium, presiding was Miss Margaret Ann Garlin, State Chairman, Research Regional Director, Invocation, Mrs. Mildred Hickox, Introduction, Mrs. Lucille Kimmins, hostess president of Gamma Theta. Welcome, J. W. Dillard, president Frank Phillips College. Official Delta Kappa Gamma Song, directed by Mrs. Patti Ball, accompanied by Mrs. Shirley Leimer. Roll call of Chapters, Miss Margaret Ann Garlin. Chapters represented were Beta Delta, Gamma Theta, Gamma Kappa, Gamma Xi, Eta Alpha, and Theta Delta.

The theme for the day was "Don't Just Stand There! Do Something--And Let's Do It Right". Short dramatic skits were presented by each chapter present: "Do Something About Membership"--Beta Delta; "Do Something About Orientation"--Theta Delta; "Do Something About Fellowship"--Gamma Alpha; "Do Something About Music"--Eta Alpha; "Delta Kappa Gamma Protocol"--Gamma Xi.

Luncheon was served in the college cafeteria at 12 a.m. Presiding was Mrs. Lucille Kimmins; Invocation, Mrs. Fae Graves; Music, Volal Solo, Mrs. Dick Countiss, (wife of District Attorney, accompanied by Mrs. Wilma Clark, president, Eta Alpha.) Mrs. Countiss sang several selections from "The Sound of Music".

Address, Miss Adele Barns, State Chairman, Professional Affairs Regional Director, also instructor at Amarillo College.

Announcement that the 1973 Regional Meet will be held in Perryton.

Present from Eta Alpha Chapter were Mmes. Violeta Mahood, Mabel Bowen, Glen Phillips, Violet Igou, Irene Hollister, Thelma Vaughn, Zady Belle Walker, Katie Price, Henry Bechthold, A. M. Lemons, Ray Robinson, Marietta Jones, Don Clark, B. L. Hance, J. T. Hoy, Roy Pennington, Joe Champion, F. N. Flatners, Gordon Stedje, W. W. Weaver, Miss Floy Stepp and Miss Dorothy Lee Roden.

FARM & RANCH NEWS

By Joe Van Zandt

County Agricultural Agent

Lights that dim when large appliances and machines go on, fuses blowing frequently, electrical tools that act balky.

Electricity acting this way is trying to tell its users something.

It's a call for help, and Fire Prevention Week, October 8-14, is an ideal time to answer electricity's "S.O.S." distress signal on your farm and in your home.

Dimming lights and blowing fuses mean overloaded and possible faulty circuits. The help needed in this situation is to use fewer appliances and tools--not bigger fuses--and to have wiring and everything powered by electricity checked by an expert.

If recommended, modernize service facilities on your property to meet present-day National Electrical Code standards.

Balky tools and appliances may be acute fire and shock hazards. Take them out of service immediately, and repair or replace them. Watch for--and replace--the most common of hazards: frayed cords and broken plugs.

Be alert to danger signals, and keep your farm and home

out of the annual statistics of electrical fires.

ADVANTAGES IN FALL FERTILIZATION--Fall application of fertilizers for next year's crop has some real advantages over waiting until next spring.

Jim Valentine, area Extension soil chemist in Lubbock, identifies some of the factors in favor of the practice.

Of first importance it is a scientifically proven fact that phosphorus, potassium and other plant nutrients are relative immobile in the soil. When fall applied they stay there ready for plant use next year.

Except on sandy soils fall applied nitrogen loss is negligible. Research with grain sorghum shows equal yield response from fall and spring application on the heavier soils.

Anytime after sorghum or corn harvest is a good time to fertilize. Generally soil moisture conditions are favorable for ammonia application retention. If you are concerned about residue decomposition, the combination of warm soil, moisture and the addition of nitrogen are in your favor.

Now that much of the ferti-

lizer is custom applied in bulk with heavy equipment there is less danger of compaction in the fall. Good weather generally prevails making the job easier for all concerned. Availability of materials and equipment is a distinct advantage and quite possibly there may be price incentives also.

The kind and amount of fertilizer needed can best be determined by having a soil test made and interpreted in light of research that has been conducted in your area.

Valentine points out that the Extension Soil Testing Laboratory has recently added considerable equipment for soil testing. In addition to determining nitrate nitrogen, six other tests are routinely made. The micro-nutrients zinc, iron and manganese are made on request.

Prompt attention can be given soil samples received in the fall but it may take a little longer in the early months of next year. Information on how to collect and mail soil samples can be obtained from our office in the courthouse basement.

Mr. and Mrs. Clyde Lehenbauer, Mrs. H.R. McGuirk of Borger spent the weekend with Mr. and Mrs. Ricky Howarter and Robbie of Gruver and visited here with Mr. and Mrs. R.H. Gray.

Mrs. Leniel Goff was in Howe, Okla. Monday visiting her mother, Mrs. Hattie Larimore.

Defensive Driving Course Begins Oct. 23

The Spearman Association of Insurance Agents, which also includes Gruver insurance agents, is sponsoring defensive driving courses beginning Oct. 23 at the junior high cafeteria.

This is a 8 hour course. The time will be Monday, 6:30 to 9:30; Wednesday 6:30 to 9:30; Saturday 8 to 10.

Cost of the course is \$10.00 per person. The successful completion of this course will entitle you to a 10% discount on your automobile insurance.

The course is open to the general public. You may enroll by contacting your insurance agent or the teacher of the course, Sid Evans, 713 Steele Drive, 659-3109. The class will be limited to 35.

Other courses will be offered at a later time.

Mr. and Mrs. Eddie Gates had as their guest over the weekend Bryan Witten of Pona. He was here for the Lay Witness Mission.

Mr. and Mrs. Verlin Hagerman and family visited her brother, George Caudell and family in Guymon, Okla. and his brother Dale Hagerman and family Saturday.

Mr. and Mrs. David Harris were in Woodward, Okla. Saturday for the horse cutting show. Mr. and Mrs. Jamie Creamer were also there. He showed a horse in the show.

Mrs. Orville Fullbright spent the weekend in Dumas with her uncle and aunt, Mr. and Mrs. Ben Archer. He was in the hospital there.

MARKETS

OATS \$.70
BARLEY 1.02
CORN 1.33
WHEAT 2.03
MILO 2.20
SOYBEANS 3.15

He wants the big things in your life to be happy.



Don R. Knox
Box 1016 Tel, 659-3294
Spearman, Texas

Southwestern Life
LIFE • HEALTH • ANNUITIES

The Spearman Post Office will be closed Monday, October 23, in observance of VETERANS DAY. No deliveries will be made on city or rural routes.

CONSOLIDATED REPORT OF CONDITION OF FIRST STATE BANK of Spearman, Hansford County, Texas 79081 at the close of business, on October 10, 1972

State Bank No. 1107

Federal Reserve District No. 11

ASSETS

Cash and due from banks (including \$134,112.44 unposted debits)	\$ 2,296,549.54
U.S. Treasury securities	904,350.00
Obligations of other U.S. Government agencies and corporations	686,917.56
Obligations of States and political subdivisions	2,001,184.51
Other securities due from banks, C.D.	500,000.00
Federal funds sold and securities purchased under agreements to resell	1,200,000.00
Other loans	8,232,171.23
Bank premises, furniture and fixtures, and other assets representing bank premises	101,042.10
Real estate owned other than bank premises	1.00
Other assets	583.14
TOTAL ASSETS	\$15,922,799.08

LIABILITIES

Demand deposits of individuals, partnerships, and corporations	\$ 8,221,510.55
Time and savings deposits of individuals, partnerships, and corporations	4,819,937.39
Deposits of United States Government	85,042.92
Deposits of States and political subdivisions	909,194.44
Certified and officers' checks, etc.	112,267.37
TOTAL DEPOSITS	\$ 14,147,952.67
(a) Total demand deposits	9,036,130.07
(b) Total time and savings deposits	5,111,822.60
Other liabilities	269,615.52
TOTAL LIABILITIES	\$14,417,568.19

RESERVES ON LOANS AND SECURITIES

Reserve for bad debt losses on loans	\$ 199,235.55
TOTAL RESERVES ON LOANS AND SECURITIES	\$ 199,235.55

CAPITAL ACCOUNTS

Equity capital, total	\$ 1,305,995.34
Common stock-total par value	200,000.00
(No. shares authorized 20,000) (No. shares outstanding 20,000)	
Surplus	400,000.00
Undivided profits	705,995.34
TOTAL CAPITAL ACCOUNTS	1,305,995.34
TOTAL LIABILITIES, RESERVES, AND CAPITAL ACCOUNTS	\$15,922,799.08

MEMORANDA	\$13,939,381.09
Average of total deposits for the 15 calendar days ending with call date	8,466,715.93

I, Freeman Barkley, Vice President & Cashier, of the above-named bank do solemnly swear that this report of condition is true and correct, to the best of my knowledge and belief.

Attest: Freeman Barkley

C.A. Gibner
R.E. Lee
Peyton Gibner } Directors

State of Texas, County of Hansford,
Sworn to and subscribed before me this 17th day of October, 1972, and I hereby certify that I am not an officer or director of this bank.

My commission expires 6-1-73

Felma B. Evans, Notary Public

A tuning fork that executes 261 vibrations a second produces a middle-C note. But so does a buzz saw if run at a speed where 261 teeth cut into the wood every second.

More than 6,000 business changes daily are recorded in each edition of Dun & Bradstreet's financial reference book, which comes out every 60 days with 200,000 new items of information.



Let Me See
by Sybil...

I hereby re-use that Orvil Brummett take my name off his happy birthday list. He reads these over the air daily --and I think its nice, except I simply do not wish to be reminded of my birthday anymore! Evidently some heard it announced, for I received several very pretty cards--with nice, comfortable wishes.

I also received the annual greetings from my insurance man, Mr. E. K. Snider. But some how this year his greetings didn't do much to lift my aging spirits! Perhaps E. K. was in a hurry when he tried to jot down all the things he thought it was necessary to remind me of on this, my birthday. I've had this policy with him some 29 years--mercy! how could that be? It must have taken him the best part of a week to go through the various changes I needed to make on these policies (due to my age). However long it took him, he didn't miss a one I'll tell you! You can lie to everyone about your age--except God, and your insurance man. E. K. has a record of all my accidents, sicknesses, stays in the hospital, surgeries including what they removed and the condition of organs left intact! He knows all my secrets. So on Oct. 15, 1972 he simply sat down and wrote me a very lengthy epistle and let me have it--whan,

just like that.

Because of my age, says he, I need to take a long, hard look at the future. Increase your monthly disability benefits--he says. Also your hospital benefits are way too low! Your life insurance portion of the policy will expire soon--at age 65--and you need to convert this to "permanent" NOW. Since you are at the age when you won't be employed now, (little does he know) your loss-of-time policy needs to be converted to permanent life insurance, for this covers suicide! Turn this into an interest-earning policy so it can accumulate and be used to help with your "final" expenses--which are always so very large. (cherry thought) And if you do not suffer a long, final illness, this money can be used to pay your funeral debt--or simply returned as Death Benefit, (gee, thanks, that makes me feel just great) Death is a cinch for you (he continues in this jovial mood) and it is only a matter of time--so take care of these important matters immediately--if not sooner!

Talk about serious thinking--after reading this birthday greeting, I felt as if I had just scanned my obituary! Seriously, I know E. K. meant well--as he always does, but I just had to poke a little fun at him and at the same time urge him to change his policy of reminding policy holders that life is running out and they should change their policy. Or something like that.

Mr. Snider, is 73 years old and is still making "my own living" as he puts it. He is not like most men, who retire as soon as they reach 65 and can draw social security. He says he refused to quit and accept SS when he reached that age...but at age 73 E. K. said he received a note from Social Security that it was not optional, he now had to accept Social Security income.

Mr. Snider raised his family in Spearman, but in 1941 moved to Lubbock, and later to Canyon, but has continued his Spearman calls every week since that time. He has always sold according to his "golden rule", what's best for the buyer, instead of best for the salesman. So he has made many customer friends down through the

years and now he is selling to their kids, their grand-kids, and even writing great-grand-child policies. E. K. says he had rather write up life policies for friends than go fishing--even if they were biting.

However, I still don't understand about that "permanent" life insurance. His letter to me didn't leave me believing I was going to be here very long...so what in the world do I need with permanent life insurance?

I'd like to read his guarantee. Orvil--you remove my name from your Happy Birthday list. Next year come October, if I'm still here, you can (in a very casual manner) simply make that announcement.

by Harold Schonberg was presented by Mrs. Rafoed Clark. A piano solo by Debbie Green was enjoyed. She played Liebestraum by Litz. A piano solo, Consolations #2, also by Litz, was performed by Mrs. Clark.

Guests present included Mrs. John Booth and Mrs. Paul Reimer.

Members present included Mmes. Roy Bulls, Rafoed Clark, Malcolm Kirkland, Dean Leigh, Rue Sanders, Ronnie Schaefer, Carl Scroggs, Russell Townsend, J. D. Wilban's, James Cummings and Phil Sanders.



3RD GRADERS LOOK AT FIRE EQUIPMENT
Lee Phillips Earl Goodheart and Terry Phillips, firemen show the equipment.

To end the Fire Prevention Week activities at the Elementary school, the Spearman Fire Department brought the fire truck and demonstrated how it worked. The Spearman Study Club presented the students who won in the Fire Prevention Poster contest, awards.

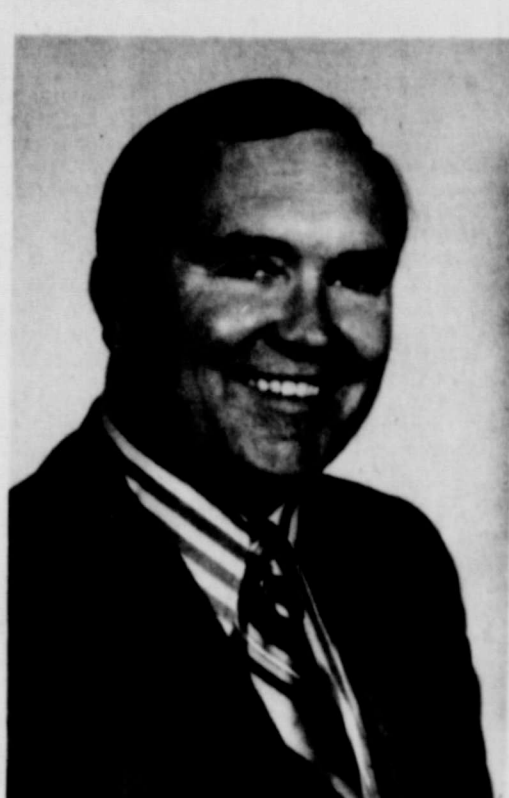
P.A. Lyon Insurance Agency presented Fire Hats for the children in the First and Second grades and material on Fire Prevention.

John Collard Insurance Agency presented Fire Prevention material for the children during the week to work on. The Spearman Elementary school would like to thank the above people for the material and awards they presented to help make it a successful week.

FBC In Revival Oct. 22-29



WAYNE BRISTOW
Evangelist



JESSE SUTTON
Music Director

The First Baptist Church, Spearman, will be engaged in revival services October 22-29 according to B. T. Shoemaker, pastor. Services will be held daily at 10 a.m. and 7:30 p.m.

Evangelist, Wayne Bristow of Lubbock, Texas will do the preaching and Jesse Sutton, Music and Educational Director of Trinity Baptist Church of Amarillo will conduct the singing.

At 36, Mr. Bristow is a veteran of more than 300 evangelistic crusades throughout the world. These campaigns have ranged from local church meetings to missions on major university campuses and massive area-wide endeavors.

He recently participated in a nation-wide crusade in India.

A native of West Texas, Mr. Bristow is a graduate of Wayland College, Plainview, Texas. He is an ordained Southern Baptist minister and served two years as a pastor prior to entering a full-time ministry of itinerant evangelistic preaching in March of 1963.

Married and the father of one son, Mr. Bristow often extends his ministry to include Bible conferences, personal evangelism clinics, youth retreats and radio and television. He is especially popular with student groups and always gives at least one

night of every crusade to a youth emphasis.

Jesse N. Sutton, music director for the revival, is a graduate of Quitman, Texas high school. He attended Hardin Simmons University and is a graduate of Southwestern Baptist Theological Seminary, 1957.

He is married and has three daughters. He has served as Minister of Music-Education in Baptist churches at Bedford, Irving, Ranger, Freeport, Canyon and currently serving Trinity Baptist Church, Amarillo, where he has been since 1966.

The general public is cordially invited to attend each and every one of these evangelistic services.



FRESHMAN PLAYER OF THE WEEK

Cary Collier, a 5'8 1/2" freshman has earned this week's player of the week.

Cary was an outstanding player in the game against Phillips last Thursday night.

He is an offensive halfback and a defensive safety. He carried the ball 10 times and gained 79 yards. He was praised by his coaches for the fine job on defense.

This young athlete is the son of Mr. and Mrs. Bob Collier.

Church Women Working On Christmas project

Women of the Fellowship Baptist Church met for their regular meeting October 13 in the home of Mrs. Donald Bowen. Mrs. Buddy Sparks served as hostess.

Mrs. Jerry Nivens presided

at the business meeting and asked Mrs. Willie Taylor to read the minutes. She appointed Mrs. Bowen to prepare the Bulletin board for future meetings.

Mrs. Nivens also presented the lesson on Why Study Doctrine?

The Oct. 20 meeting will be at 2:30 in the home of Mrs. Bowen when women will work on the Christmas project.

COVER YOUR WHEAT PASTURE CATTLE FOR THE WINTER SEASON FOR:

1. FIRE AND/OR LIGHTNING.
2. WINDSTORM, CYCLONE, TORNADO, HAIL, EXPLOSION, RIOT ATTENDING A STRIKE, CIVIL COMMOTION.
3. COLLAPSE OF BRIDGES AND CULVERTS.
4. THEFT, BUT EXCLUDING ESCAPE OR MYSTERIOUS DISAPPEARANCE.
5. ACCIDENTAL SHOOTING, EXCEPT BY THE INSURED OR EMPLOYEES OF THE INSURED.
6. DROWNING.
7. ARTIFICIAL ELECTRICITY.
8. ATTACK BY DOGS OR WILD ANIMALS.
9. COLLAPSE OF BUILDINGS.
10. SMOTHERING.
11. BLIZZARD.
12. FREEZING.
13. ANIMAL COLLISION.

COST IS \$1.00 PER HEAD
COVERS CATTLE TO APRIL 1, 1972

B J. L. BROCK AGENCY
206 MAIN STREET
SPEARMAN, TEXAS
PHONE 659-2514

REVIVAL SERVICES

First Baptist Church

Oct. 22-29



WAYNE BRISTOW--Evangelist



JESSE SUTTON--Music Dir.

Services Daily. .

10.00 a.m. 7:30 p.m.

Everybody Welcome

GRUVER STUDENT IN P S C DRAMA

The first theatrical production of the year at Panhandle State College will be "The Happiest Days of Your Life," directed by Mr. Fred Short. The production will run four evenings, October 23 through October 26, in Hughes-Strong Auditorium at 8 p.m.

The play was written by John Dighton and its first performance was in London in the Apollo Theatre in April of 1948.

The setting of the play is in England just after World War II. The story is a fast-moving farce about a boys' school's involvement with a girls' school that is to be evacuated to the campus of the boys' school.

Dave Winters, Abilene, Texas, plays the headmaster for the boys' school while Zane Witry, Boise City, plays the headmistress of the girls' school. Others in leading roles are Darla Dabney, Boise City; Debbie Wadsworth, Gruver, Texas; and Ron Wolf, Woodward. Rounding out the remainder of the cast are Lana Burnett, McLean, Texas; Barbara Brewer, Hadesy; Danny Batterman, Guyton; Ernest Ruther, Goodwell; Joe Woods, Gage; Don Pavy, Calumet; Phil Duncan, Hugoton, Kansas; and Jim Clements, Liberal, Kansas.

The production will be presented in arena theatre style. The audience will be seated upon the stage in a circle around the performers.

FFA SWEETHEART

Miss Teresa Beck, 17 year old daughter of Mr. and Mrs. Woody Beck, and a senior at Spearman High School has been named the 1972-73 Sweetheart of the FFA Chapter here. In the regular monthly meeting of the Future Farmers of America, elected Teresa as their sweetheart. The outgoing sweetheart was Miss Karen Kunselman. Miss Beck is also a member of the Lynxettes. Our congratulations to Miss Beck for this honor.

Mr. and Mrs. Pat Gates and her sister Mr. and Mrs. Clarence Vaught of Amarillo all returned Sunday from a week's vacation. They attended the dog races at Memphis, Tenn. and from there drove through various states, for a long way down the Mississippi River.

Mr. M. W. Walker celebrated his 70th birthday Sunday. The Walker's children, Mr. and Mrs. Milton Tyson, Cindy and Cathy; Mrs. Preston Tredwell, Mat and Annett arrived with a beautiful birthday cake and gifts to celebrate his birthday.

Pianists Perform For Music Club

The Spearman Music Club, a member of the State and National Federation of Music Clubs, met October 10 in the HD Clubroom with Mrs. James Cummings and Mrs. Phil Sanders as hostesses.

Mrs. Dean Leighnor, president, announced that District I Music Club convention would be held November 4 in Amarillo at the Federation of Women's Clubroom. Guests are welcome.

Mrs. Russell Townsend opened the meeting with the story of the hymn of the month, "I Sing the Almighty Power of God," written by Isaac Watts. Following the background history of the hymn, club members joined in singing the anthem, with piano accompaniment by Mrs. Rue Sanders.

A portion from the study course "The Great Pianists"

SPECIAL NOTICE

RANCHERS ----- **FARMERS** ----- **FEEDLOT OPERATORS**

Friday, Oct. 13 we sold 4009 cattle and calves. The action started at 11:00 AM and was completed at 6:45 PM.

A SPECIAL CALF SALE--Being arranged for Friday, Oct. 20--selling mixed cattle until 1:00 PM, then selling all the calves, available in the yards by that time, in the order consigned. Followed later by Feeder Steers and Feeder heifers in their order.

Friday, October 27--will be a REGULAR CONSIGNMENT SALE--selling all classes of mixed cattle until approximately 2:00 PM, then starting on the loads in the order consigned.

For additional information contact Chf. Augustine Here at Texhoma or Lamar, Colo. Phone (303) 336-3512

Sam Elliott--Amarillo, Texas (806) 383-4864

Raymond Choate--Drew Jensen--or Euline Smith Here at the office (405) 423-3251 Your Cattle Auction with "Action"

TEXHOMA LIVESTOCK COMMISSION CO., INC.
Texhoma, Oklahoma P. O. Box 70

EVERYBODY READS THE WANT ADS 659-3434



106 E. Kenneth

Boxwell Bros. Funeral Home and Flower Shop

Cummings Refrigeration and Air Conditioning

Phone 659-2721

CLASSIFIED ADS GET RESULTS

HANSFORD LODGE 1040 A.F. & A.M.

Regular Communication 2nd & 4th Monday of each month.

SERVICES

COMPLETE POODLE GROOMING, Shirley Bell, 659-3000.

SAVE Big! Clean rugs and upholstery with Blue Lustre.

Does your tailwater pit need cleaning? Draglines, dozers, curvalls, graders, Call Lee Roy Mitchell 806-733-2384.

WE BUY PIGS. CALL 659-3177 or 659-3381 AFTER 6 P.M.

Call 659-2861 for the latest in hair styling for men and women.

CESSPOOL PROBLEMS-Town & Country Drilling Service, Amarillo, 383-0907.

Anything in Monuments, Markers, Curbing, Lettering in Cemetery, Best workmanship, material and lowest prices.

Roy's Ditching Service Foundations, gas, water and sewer lines dug.

Put Your Best Face Forward. Call for a complimentary facial--in your own home--also complete line for men.

FOR SALE

FOR SALE-Mobile home 12 by 60, Melody Home, fully carpeted, 2 refrigerated air conditioners, 3 bedroom, with skirting to box in.

FOR SALE - 1968 BelAir Chevrolet, 4 door, Radio, heater, air conditioner, power steering, radial tires.

FOR SALE-1971 23" Zenith TV. Beautiful mahogany Cabinet Mediterranean Style, 11 months warranty left on Chromacholor picture tube.

FOR SALE-Good Used color T.V. Call 2871 or 3363.

FOR SALE-8' x 43' Trailer House-1970 Model. See at 211 N. Endicott, Phone 659-2726.

GARAGE SALE-Friday & Saturday, Oct. 20-21. Various items, some furniture and clothing.

1962 COMET - 4 DOOR - Good Shape \$350.00 Call 3434.

FOR SALE-30 in. Kenmore gas range. Like new. Call 733-2935 after 5:30.

FOR SALE-3 bedroom home, 1 3/4 baths, central heating & cooling, attached garage, corner lot, enclosed backyard.

FOR SALE-Twin beds with mattresses and springs. Call 659-2482.

FOR RENT

FOR RENT-furnished apt. 606 S. Bernice Street, Phone 659-2652 or 2452.

NOTICE

I WILL NOT be responsible for any debts other than my own, public or private.

REAL ESTATE

FOR SALE-Two bedroom, dining room, small basement, fenced yard, close to city.

FOR SALE-Good section of land. One irrigation well. Collard Real Estate, 405 Davis, 659-2501.

FOR SALE-NO DOWN PAYMENT, nice 3 bedroom-120 S. Brandt, priced at \$9,500.

FOR SALE - Three Bedroom brick home, immediate possession, shown by appointment.

FOR SALE-10 x 50 mobile home and lot, Greenbelt Lake, Clarendon, Texas.

FOR SALE: 100' by 140' trailer park with ten trailer spaces. Priced to sell.

FOR SALE: 3 bedroom house with 3 room rental in back. Large 3 bedroom house storage house - chain link fence.

FOR SALE: Brick home on 80' corner lot. Fenced yard, attached garage, central heat, air carpet throughout.

FOR SALE: 90% loan available to qualified buyer on this 3 bedroom home, carpets, central heat, ducted air, carport attached, fenced, near school in quiet neighborhood.

Real Estate

FOR SALE Commercial building on Main.

Good residential lots. 80 ft. highway frontage improved with 2 BR stucco house.

Good irrigated section North of Gruver; 2 wells. Terms. Your listings appreciated.

EMMETT R. SANDERS Broker 659-2516 nights 659-2601 46T-rtm

FOR SALE: Price reduced on this lovely 3 BR, 2 bath home, near high school. Includes quality carpets and drapes, self cleaning range, disposal, dishwasher, central heat and air.

COLLARD REAL ESTATE FOR SALE-Three bedroom home, dining room, central heat, large garage, space for shop. Fenced backyard.

FOR SALE-Three bedrooms, carpeted throughout good location. 405 Davis 659-2501 47S-rtm

WANTED

KEY PUNCH OPERATOR wanted, experience preferred. Apply Data 2000, 802 S. Main, Perryton, Texas, Mr. Williams.

Would like to lease small lot for FFA pig. Call 659-3509.

Will do baby sitting in my home. 659-2632, 45S-rtm

Help Wanted--Retired Couple to operate Service Station in Spearman Texas. Free trailer space and utilities. Contact Atex Oil Co. 2740 S. W. 45th St. Amarillo, Texas. 46T-rtm

Cards of Thanks

The Volunteer Fire Department of Spearman wishes to thank the following Future Homemakers of SHS for assisting with Sunday's open house festivities.

To the many friends who have been so kind in expressing their sympathy throughout Vester's illness and at the time of his death, we say thank you. May God bless you.

Mr. and Mrs. Thomas Gwin, Jennifer, Stephanie and Cindy Mr. and Mrs. Joe Mack Hill, Greg, Becky and Duane

POLITICAL ANNOUNCEMENTS

DEMOCRATIC TICKET COUNTY ATTORNEY J.E. (Chunky) Blackburn DISTRICT ATTORNEY Richard (Dick) Countiss REPRESENTATIVE 64TH LEGISLATIVE DISTRICT Dean Cobb COMMISSIONER, PRECINCT 1 Joe Day COMMISSIONER, PRECINCT 3 B.W. Renner JUDGE, 84th JUDICIAL DISTRICT Max Boyer

REPUBLICAN TICKET COUNTY COMMISSIONER, PRECINCT 1 A.E. "Junior" Lusby

MOTORCYCLES Mini Mini \$259.00 Jr. Cross Auto-50cc 309.00 Jr. Cross 4 Sp.50cc 339.00 Indian 4 sp. 50 cc 315.00 Super Enduro SE 74cc 399.00 USED 175 Honda \$475.00 100 Honda 150.00 Many accessories in stock Expert Cycle Repair JOE'S EXXON 659-3032 opposite Patton Motel Hwy 207 47S-rtm

GOSPEL PREACHING & SINGING SUNDAY, OCT. 22 at FELLOWSHIP BAPTIST CHURCH Spearman Panhandle Area Singers Musicians-Former "Texas Playboys" All Invited To Attend 10-12 a.m. 3-9 p.m. 47S-2tc

UNITED PENTECOSTAL CHURCH 106 S. Bernice Services 10:00 a.m. and 7:00 p.m. Each Sunday Spearman, Texas

Listen to HARVEST TIME 9:00 A.M. SUNDAY K.B.M.F. United Pentecostal Church Sponsor

YAMAHA 1972 CLOSE OUT SALE JT2MX-60 cc.....\$299.00 JT2-60 cc.....339.00 LT2-100cc.....429.00 AT2-125cc.....499.00 CT2-175cc.....599.00 DT2-250cc.....749.00 RT2-360cc.....889.00 G7S-80cc.....329.00 LS2-100 Twin.....399.00 DS7-250 Twin.....649.00 DT2MX-250cc.....889.00 RT2MX-360cc.....939.00

1973 CT3-175cc. . . 679.00 1973 AT3MX-125 cc. . . 639.00 9 a.m. to 8 p.m. Weekdays 9 a.m. to 5 p.m. Saturday

SEARS in Perryton & Spearman has INSTALLED Carpeting Fencing Central Air For Free Estimate Call Dewayne Click 659-2573

Ed Wheeler Office: 659-2613 Home: 659-2951 Spearman, Texas

1 section irrigated land, 3 wells, excellent tail water pit. Perfect section of land, \$325.00 per acre. 1 1/2 mi. underground pipe. 142 acres, irrigated near Morse, Texas, 122 acres cultivated. 1 8 inch well. \$315.00 per acre. We have buyers for houses and land. Would appreciate your listings. Associated with Golden Spread Real Estate. 45T-rtm



MRS. GRAHAM PURCELL, left, presented two books to Hansford Library Tuesday afternoon. Accepting the lovely gift is Mrs. Celestine Thompson, librarian. Mrs. Purcell, on a tour through the Panhandle, was honored with a coffee at the library. Hostesses were Mrs. Dick Countiss, Mrs. Britt Jarvis and Mrs. J.L. Brock.



Mr. Lee McClellan and Mrs. J.B. Cooke, shown right, were just two of the many Spearmanites present to meet Mrs. Graham Purcell here Tuesday afternoon.

Books to Library

Nancy Attebury Purcell, wife of Congressman Graham Purcell, visited in Spearman, on Tuesday, and presented two books to Mrs. Celestine Thompson for placing in the Hansford County Library. Mrs. Purcell pointed out that the books chosen, "We the People" and "Mount Vernon" are particularly useful for every citizen to read and see vividly portrayed some of our richest heritage and how our nation's capitol serves all of us. She described "We the People" as portraying the capitol where, "Graham has spent most of his time during the past eleven years". "Mount Vernon" is an illustrated handbook on the beautiful estate of our nation's first president, George Washington. When Congress is in session, the Purcells live in an area which was once a part of President Washington's farm. When friends visit from Texas, they enjoy taking them throughout the area. The buildings and monuments in Washington are beautiful and lovely gardens and flowers abound. They travel daily on the George Washington Parkway, a scenic drive along the Potomac River. "These books were chosen because the topics are very near and dear to the Purcell family. Graham works at the capitol and we live at Mount Vernon", Mrs. Purcell stated. "Graham and I want all of you to come to see us and let us give you the Purcell tour of these historic places", she concluded.

BRUSHING UP ON MEN'S HAIR



Not only the length of a man's hair but the manner of dressing it has varied picturesquely over the years. Many American Indian braves slicked down their hair with bear grease! And the Samurai (military leaders) of old Japan could be recognized not only by their fancy sword, but by the lacquer they applied to their locks. The Polynesian male wound his long hair into pigtails or buns, or if he chose, shaved off part of his hair and wove a complicated culture out of the remaining tatch. Perhaps the most "hot-headed" men in the world were the Mayas of ancient Mexico who actually burned a bare spot on the tops of their heads and braided the rest of their hair around the burn. Behind this elaborate arrangement dangled a long queue. In our own country today, the care a man gives to his hair contributes much to his appearance. Many well-tressed American men are now using a new grease-less, natural grooming hair dressing. Known as Venture and produced by Beecham, Inc. it does not leave hair stiff and sticky and it has a mild, masculine aroma head and shoulders above others. When an American man wears the "tangled bush cut" as opposed to the neat "brush cut," he is regarded as one of two types: the unadjusted beatnik or the authentic genius like the late Albert Einstein or the late Frank Lloyd Wright, whose untamed manes symbolized their preoccupation with what went on inside their gifted heads! But the rest of us, like those of the past, should be groomed for our jobs.

ARJONA'S CAFE Now Open 28 So. Haney st. Spearman. MEXICAN FOOD at its best. Phone 3613 we also prepare orders to go. Stella Arjona

TG&Y SPECIALS GOOD IN ALL T.G.&Y. 54 TO 81 STORES & FAMILY CENTERS THRU SATURDAY - WHILE QUANTITIES LAST! STORE HOURS: MON.-FRI. 8:30-6:00 SATURDAY 8:30-8:00 119 MAIN SPEARMAN

CLIP THIS COUPON VASOLINE INTENSIVE CARE LOTION 10 oz. 67c

CLIP THIS COUPON Hair Spray MISS BRECK 47c

CLIP THIS COUPON KOTEX SUPER OR REG. 12 COUNT 33c

CLIP THIS COUPON DOWNY 17 oz. 33c

CLIP THIS COUPON PAMPERS DAYTIME 30 \$1.47

CLIP THIS COUPON JANITOR IN A DRUM 66c

CLIP THIS COUPON Ivory Chocolates by BORDENS 4 for \$1.00

CLIP THIS COUPON Lysol Spray 14 oz. 99c

CLIP THIS COUPON Shredded Foam 1 lb. Bag 37c

CLIP THIS COUPON Wall Paint GOLDEN T 2 GAL FOR \$5.00

CLIP THIS COUPON Foam Cups HOT OR COLD 51 CT. 27c

SECOND INCOME Collect and refill machines in Company secured locations. Choice of: Postage Stamps, Welch's Juices, Mixed Nuts, and other well-known High Profit items. Route 1-\$495 investment earns up to \$50 or more per month. Route 2-\$995 investment earns up to \$100 or more per month. Route 3-\$2,495 investment earns up to \$250 or more per month. Can start part time. Age or experience not important. Men or Women. Repeat Income. Must have auto and 3 to 8 spare hours weekly. Send References, name, address and telephone number to: P.S.I. 300 Interstate North, N.W. Atlanta, Georgia 30339



To Be Honored Sunday

The Golden wedding anniversary of Mr. and Mrs. Harley N. Elledge will be celebrated Sunday, October 22 between the hours of 2-5 o'clock with a reception at their home NW of Waka.

Friends and relatives of the family are invited to attend the reception which is being hosted by their children: Mr. and Mrs. LeRoy Reeves of Battle Mountain, Nevada, Mr. and Mrs. Jack Elledge of Pueblo, Colorado and Mr. and Mrs. Don Elledge of Pampa.

The couple has six grandchildren and two great-grandchildren.

Mr. and Mrs. Elledge have lived in this area since their marriage 50 years ago, October 18. They were married at Clinton, Okla. Mrs. Elledge was the former Lena Forney of Thomas, Okla. Their present home was built just five years ago.

Salvation Army Campaign Begins

The Salvation Army Service Unit will kick off its annual fund raising campaign in Spearman on Oct. 19, 1972, it was announced by George Young, campaign chairman.

Funds collected in the drive will be used to pay for The Salvation Army's services to the underprivileged in Spearman through the current fiscal year.

"Our campaign workers and Service Unit committee members are in harness for the big drive. We know that the people of Spearman will come through with flying colors as they have consistently in the past," Young said.

The Spearman Service Unit Committee, composed of business and civic leaders, carries out a year-around program to help with emergency needs. In the name of The Salvation Army whom it represents, the committee pays for food, lodging, utilities and such basic necessities that families or individuals may require in a temporary crisis.

The Service Unit also acts as liaison for The Salvation Army's state-wide program, which includes summer outings for boys at Camp Hoblitzelle, care for unwed mothers at the Home and Hospital in San Antonio, help for paroled prisoners, relief in major disasters, and other services.

Members of the committee in Spearman are: Judge J. C. Lee-Chairman, Allen Alford-Vice Chairman, J. W. Gibner-Treasurer, Sheriff J. B. Cooke, Bruce Sheets, Emmett Sanders, Mrs. Elsie Mathews and Mrs. Dickie Robinson.



Foliage Tour

Canadian's ANNUAL FOLIAGE TOUR will commence the week-end beginning Saturday, October 21st and run through Sunday October 29th.

Come to Canadian to see the flora and fauna along scenic Canadian River Road to Lake Marvin.

Also scheduled is a musical presentation, "CANADIAN SINGS", under the very able direction of Max Presnell of Pampa, Texas. "Canadian Sings" will be presented at the High School Auditorium, Saturday evening the 21st of October at 8:00 P.M. Cost will be \$1 for adults and 50¢ for children under the age of 12. Proceeds from the sale of tickets and advertising will go into a fund for the improvement of Canadian Pioneer Museum.

And then on Sunday, after an early morning drive down Lake Marvin Road, you are cordially invited to attend the Church of your choice. Sunday afternoon at 2:00 P.M. the CANADIAN HOBBY SHOW will display its wares at the new Fire Station located across the street from City Hall. This arts and crafts show is the work of local and area citizens. You will not find a Michelangelo, a Da Vinci, or even a Rockwell, but you will enjoy seeing what these men and women can produce.

At the same time you can pick up a travel guide to the scenic and historical spots in and around Canadian. Each spot is clearly marked on your map. These maps can be picked up at the Pioneer Museum or at the Lake Marvin Road turn-off.

Remember, come to Canadian this year for Annual Foliage Tour, Head Canadian Sings, visit the Arts and Crafts Hobby Show and make the Tour of Canadian's Historical Spots.

Waka PTA Met Monday, Oct. 16

The Waka P-TA met Monday Oct. 16 at 7:30 p.m. in the school cafeteria. Social committee included Messrs. and Mrs. Tommy Jacobs, Kenneth Word, Jimmy Blain.

Mrs. Alvin Buschman, president, presided at the regular monthly meeting.

The program was presented by Mrs. Bob Sifrit, leader on "We Can Learn To Talk Together." The meeting opened with devotional "The Wise Creator" by H. S. Bosch. This was presented by Marie Lightfoot. The school song was sung followed by the pledge of allegiance led by Bruce Simpson.

The unit will send \$1 gift to 63rd birthday of Texas PTA. Membership committee chairman Mrs. Tommy Jacobs reported 63 members. She urged that this figure be brought up to 70 so that the organization might reach its evaluation points.

Supt. Allen Jones urged all parents and interested patrons to remember American Education Week Oct. 23-27. A suggested schedule for eating with the children during the noon hour was set up as such 1-2 grades, Mon.; 3-4 grades Wed.; 5-8 grades, Fri., but parents may come any days that fit into their schedule.

A Halloween skit was presented by grades 1 and 2 under the direction of the teacher, Margaret Thompson.

A very interesting session by 3 adult and one teenage groups was held on "We Can Learn to Talk Together" with problems between parents and teenagers and how to cope with them discussed.



MK, MRS MILLER HEAD REVIVAL AT UNION CHURCH

Evangelists LeRoy and Stephanie Miller of Madison, Wisconsin will be conducting an Evangelistic Crusade at the Union Full Gospel Church in Spearman, Texas, beginning Wednesday, October 18, and continuing nightly through October 20th at 7:30.

The Millers have traveled extensively throughout the United States and Jamaica, and have pastored a number of churches. The services will emphasize the ministry of the Holy Spirit in the 20th Century Renewal of the Church. There will be prayer for the sick at each service.

Mrs. Miller and their 10 year old daughter Rhoda will be ministering in music.

The public is invited to attend these services.

LOCAL TEACHER SORORITY NAMES NEW OFFICERS

The Alpha Delta Kappa Teacher's sorority met October 12 in the home of Mrs. Lena Nivens.

Eva Lee Sheets presided over this Founder's Day meeting and program which was very enjoyable.

Officers for the year were named as follows: Elva Lee Sheets-president, Wilma Johnson-vice president, Ruth Mary Whitson-recording secretary, Mathilde Entrekint-treasurer, Louise Archer-historian, Lena Nivens-corresponding secretary, Fern West-sergeant at arms, Laverne Parks-chaplain, Dee Deere-reporter, Wilma Johnson-membership, Lena Nivens-year book, Georgiana Hutchison-altruistic.

Waka PTA Sponsors Education Week

Waka PTA is sponsoring American Education Week Oct. 23-27 at the Waka School. All parents and interested patrons urged to visit school during this week. All classes will be held in their regular routine. Visitors are asked to let Supt. Allen Jones know if they plan to eat dinner with the students.

A suggested plan for parents to eat with children is 1-2 grades, Monday; 3-4 grades, Wednesday; and 5-8 grades Thursday.

DRAMA CLASS TO PRESENT PLAY

The drama class of Spearman High School will present on Oct. 28 the play "Hansel and Gretel". The class is under the direction of Mrs. June Porter. There will be no charge to see the play in the high school auditorium.

Open House Sunday

The public is invited to attend an open house showing of the all-electric dwelling just completed at 1113 Lynn Drive, Spearman.

Viewing hours will be 2-5 p.m. Sunday, October 22.

Community Public Service Company and Roscoe Nelson, builder, are sponsoring the open house.

The spacious home, with 2,460 square feet of living space, is completely fitted with the latest in electrical

appliances: various kitchen appliances, hot water heaters, overhead garage doors, cooling and heating system, etc.

Carpeted throughout, except for one bathroom and the utility room, the three bedroom luxury home features dark walnut paneling cabinets and woodwork and an abundance of kitchen cabinets and closets. Paneled den with fireplace, living room, 3 baths (one has separate dressing room) large kitchen-

dining area, utility room and an over-sized 2 car garage make this home very desirable.

The brick home is ideally located, in an area of town surrounded by all new homes, and which suffers no drainage problems as does some parts of Spearman. The home is also fitted with storm windows, features a large patio and a 100 foot lot.

The residence is for sale by Nelson Builders of Spearman.

Spearman PTA Rates Local Movies

The Spearman PTA uses "Parents Magazine" and "The PTA Magazine" as sources to inform the general public of current movies being shown at the Lyric Theatre. These magazines have reviewed the movies and rated them according to quality and suitability for children's viewing. Symbols used by the Motion Picture Association of America, which the two magazines base their ratings on, are:

X-under 17 not admitted
R-Restricted-under 17 must be accompanied by parent or adult guardian.

PG-Parental Guidance-may not be suitable for pre-teenagers.

The two pictures showing next are "The New Centurions" and "The Last Picture Show".

"The New Centurions" is rated R and is based on a book about the Los Angeles police force. It contains nudity and cursing. Not suitable for children and pre-teens.

"The Last Picture Show" is also rated R. It is a drama of a small town in Texas. It contains nudity, sex and cursing. Not suitable for children and pre-teens.

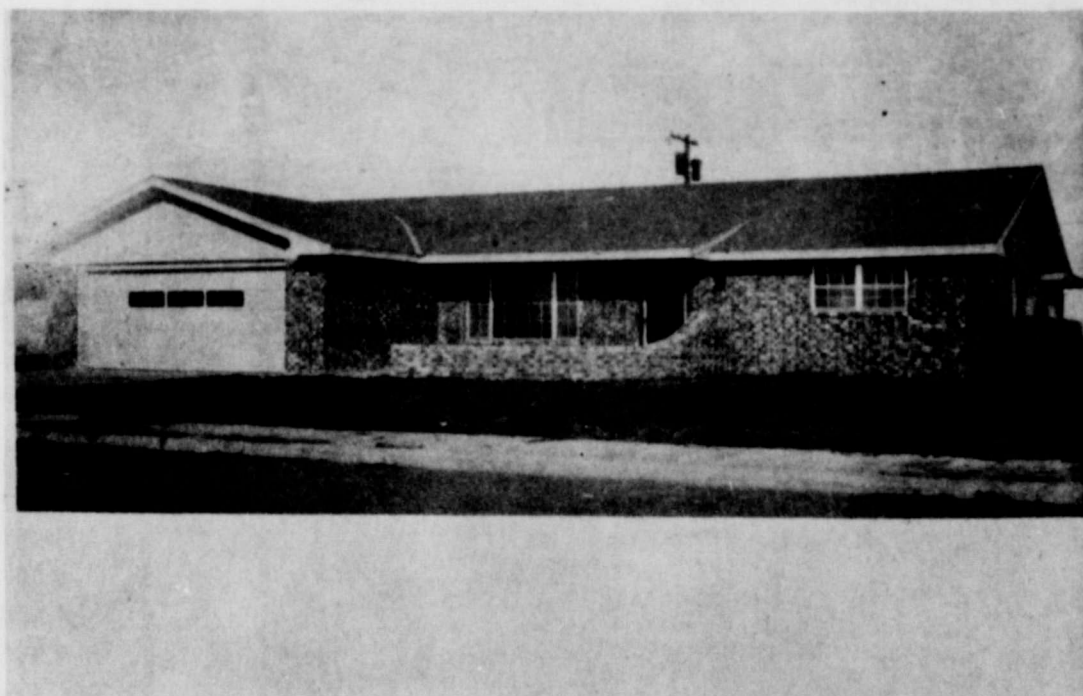
School Spirit Is Building For The Big Game

The Spearman High School hall is beginning to become scary. The spirit and enthusiasm is getting so tremendous that you wouldn't think it is a school.

The students are just as excited about the game tomorrow night as the Lynx are. They are not ready to lose a game because now they count toward the district crown. The spirit in the student body is so great, and the townspeople need to get some of this spirit. Let's all attend the game in Panhandle Friday night and boost our LYNX to the district crown.

Mr. and Mrs. Bruce Sheets spent the long Columbus Day weekend at Tinkler Lake in Okla. Their daughter, Mr. and Mrs. Jeff Noel and son Chris from Dallas met them there. They enjoyed the visit-but fishing was no good.

Open House Sunday October 22nd



ROSCOE NELSON CONTRACTOR
1113 Lynn Drive

VISITORS WELCOME FROM 2-5 P.M.

Make the wise move to a TOTAL ELECTRIC HOME

and enjoy the many comforts and conveniences of modern electric living

You'll be delighted with the living pleasure of a total electric home. That's where electricity does everything for your comfort and convenience.... heats and cools the entire house, cooks, washes dishes, heats water, provides proper lighting and operates work-saving appliances. If you're planning to build or buy, make the smart move to a TOTAL ELECTRIC HOME.

COMMUNITY PUBLIC SERVICE
Your Electric Light & Power Company



Farmers: Fill your oil and grease needs at discount prices.

FREE

Now you can buy Gulf oils and greases for the farm in any combination totaling 60 gallons and qualify for volume discounts.



Buy Gulf Super Duty Motor Oil, Gulfube Motor Oil XHD, Gulf All Purpose Farm Grease, Gulflex Grease, and any other oil or grease.

So long as your combination totals 60 gallons, you qualify for volume discounts.

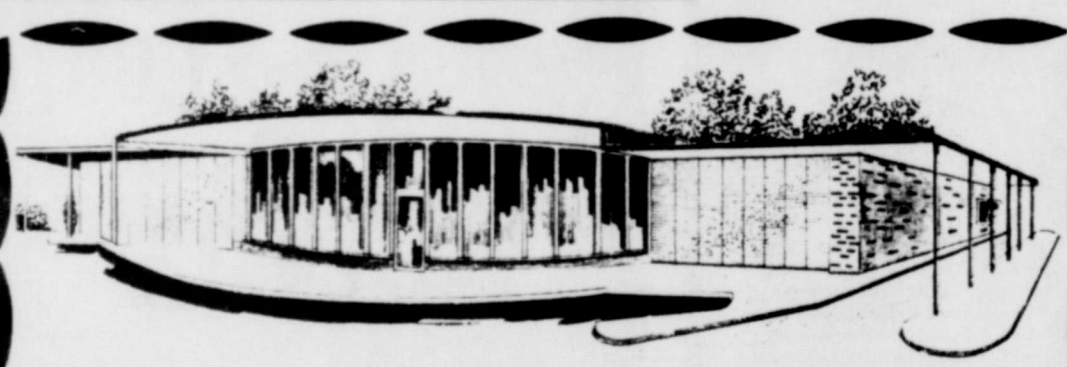
Come by soon and look over our selection of products. And if you're a Gulf Diesel Fuel customer, be sure to pick up your free Purolator filter unit.



Alton Ellsworth
Distributor

500 COLLARD

659-3033

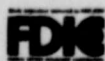


We Will Be
Closed Monday
In Observance Of
Veterans Day

"Built on Confidence
Growing on Service"

FIRST STATE BANK

SPEARMAN, TEXAS



No 0

SAMPLE

GENERAL ELECTION

Hansford County, Texas

November 7, 1972

OFFICIAL BALLOT

No 0

GENERAL ELECTION
Hansford County, Texas

November 7, 1972

Notes: Voter's signature to be affixed on the reverse side.

INSTRUCTION NOTE: Vote for the candidate of your choice in each race by placing an X in the square beside the candidate's name.

You may vote a straight ticket (that is, vote for all the candidates of a certain party, and for no candidates outside that party's column) by placing an X in the square beside the name of the party of your choice at the head of the party column. (If you use this straight-ticket method of marking, do not mark squares beside the names of individual candidates.)

Candidates for:	<input type="checkbox"/> Democratic Party	<input type="checkbox"/> Republican Party	<input type="checkbox"/> Socialist Workers	<input type="checkbox"/> Raza Unida Party	Write-In
President and Vice President	<input type="checkbox"/> GEORGE MCGOVERN and R. SARGENT SHRIVER	<input type="checkbox"/> RICHARD M. NIXON and SPIRO T. AGNEW	<input type="checkbox"/> LINDA JENNESS and ANDREW PULLEY		
U. S. Senator	<input type="checkbox"/> BAREFOOT SANDERS	<input type="checkbox"/> JOHN G. TOWER	<input type="checkbox"/> TOM LEONARD	<input type="checkbox"/> FLORES AMAYA	
U. S. Representative, 13th Congressional District	<input type="checkbox"/> GRAHAM PURCELL	<input type="checkbox"/> BOB PRICE			
Governor	<input type="checkbox"/> DOLPH BRISCOE	<input type="checkbox"/> HENRY C. (HANK) GROVER	<input type="checkbox"/> DEBORAH LEONARD	<input type="checkbox"/> RAMSEY MUNTZ	
Lieutenant Governor	<input type="checkbox"/> BILL HOBBY		<input type="checkbox"/> MEYER ALEWITZ	<input type="checkbox"/> ALMA CANALES	
Attorney General	<input type="checkbox"/> JOHN HILL		<input type="checkbox"/> THOMAS KINCAID		
Comptroller of Public Accounts	<input type="checkbox"/> ROBERT S. CALVERT		<input type="checkbox"/> ANNE SPRINGER		
State Treasurer	<input type="checkbox"/> JESSE JAMES	<input type="checkbox"/> MAURICE ANGLY JR.		<input type="checkbox"/> RUBEN SOLIS, JR.	
Commissioner of General Land Office	<input type="checkbox"/> BOB ARMSTRONG		<input type="checkbox"/> HOWARD PETRICK		
Commissioner of Agriculture	<input type="checkbox"/> JOHN C. WHITE				
Railroad Commissioner	<input type="checkbox"/> BYRON TUNNELL	<input type="checkbox"/> JIM SEGREST		<input type="checkbox"/> FRED R. GARZA	
Chief Justice, Supreme Court	<input type="checkbox"/> JOE GREENHILL				
Associate Justice, Supreme Court, Place 1	<input type="checkbox"/> PRICE DANIEL				
Associate Justice, Supreme Court, Place 2	<input type="checkbox"/> SAM JOHNSON				
Judge, Court of Criminal Appeals	<input type="checkbox"/> WENDELL A. ODOM				
State Senator, District 31	<input type="checkbox"/> MAX SHERMAN				
State Representative, District 64	<input type="checkbox"/> L. DEAN COBB	<input type="checkbox"/> JACK HART			
Member, State Board of Education	<input type="checkbox"/> HERBERT O. WILLBORN	<input type="checkbox"/> JANET PARNELL			
Chief Justice, Court of Civil Appeals, District 7	<input type="checkbox"/> JAMES A. ELLIS				
District Judge, 84th District	<input type="checkbox"/> MAX W. BOYER				
District Attorney, 84th District	<input type="checkbox"/> RICHARD N. COUNTISS				
County Attorney	<input type="checkbox"/> J. E. BLACKBURN				
Sheriff, Tax Assessor-Collector	<input type="checkbox"/> J. B. COOKE				
Commissioner, Pct. 1	<input type="checkbox"/> JOE DAY	<input type="checkbox"/> A. E. LUSBY, JR.			
Commissioner, Pct. 3	<input checked="" type="checkbox"/> B. W. RENNER	<input checked="" type="checkbox"/> LEON RED			

PROPOSED CONSTITUTIONAL AMENDMENTS

Instruction Note: Place an X in the square beside the statement indicating the way you wish to vote.

No. 1	<input type="checkbox"/> FOR <input type="checkbox"/> AGAINST	The constitutional amendment to provide annual salaries of \$8,400 for members of the Senate and House of Representatives.	No. 8	<input type="checkbox"/> FOR <input type="checkbox"/> AGAINST	The constitutional amendment to provide a four-year term of office for the Governor, Lieutenant Governor, Attorney General, Comptroller of Public Accounts, Treasurer, Commissioner of the General Land Office, Secretary of State, and certain statutory State officers.
No. 2	<input type="checkbox"/> FOR <input type="checkbox"/> AGAINST	The constitutional amendment abolishing the Lamar County Hospital District.	No. 9	<input type="checkbox"/> FOR <input type="checkbox"/> AGAINST	The constitutional amendment to provide that directors of soil and water conservation districts are not disqualified from holding or being compensated for more than one office.
No. 3	<input type="checkbox"/> FOR <input type="checkbox"/> AGAINST	The constitutional amendment to require the commissioners court in all counties of the state to compensate all justices of the peace on a salary basis.	No. 10	<input type="checkbox"/> FOR <input type="checkbox"/> AGAINST	The constitutional amendment revising provisions on the time and method of proposing amendments to the state constitution and the time and method of publishing notice of proposed amendments.
No. 4	<input type="checkbox"/> FOR <input type="checkbox"/> AGAINST	The constitutional amendment providing for a constitutional revision commission which precedes the convening of the members of the 63rd Legislature as a constitutional convention in January, 1974, for the purpose of submitting to the voters a new constitution or revisions of the existing state constitution.	No. 11	<input type="checkbox"/> FOR <input type="checkbox"/> AGAINST	The constitutional amendment to provide a salary of \$22,500 for the Lieutenant Governor and the Speaker of the House of Representatives.
No. 5	<input type="checkbox"/> FOR <input type="checkbox"/> AGAINST	The constitutional amendment allowing certain tax exemptions to disabled veterans, their surviving spouses and surviving minor children, and the surviving spouses and surviving minor children of members of the armed forces who lose their life while on active duty.	No. 12	<input type="checkbox"/> FOR <input type="checkbox"/> AGAINST	The constitutional amendment permitting State employees, who are not State officers, to serve as members of the governing bodies of school districts, cities, towns, or other local governmental districts, without forfeiting their State salary, and specifying exceptions to the constitutional prohibition against payment of State funds for compensation to any person who holds more than one civil office of emolument.
No. 6	<input type="checkbox"/> FOR <input type="checkbox"/> AGAINST	The constitutional amendment providing that the various political subdivisions of the State may exempt not less than Three Thousand Dollars (\$3,000) of the value of residence homesteads of all persons sixty-five (65) years of age or older from ad valorem taxes under certain conditions.	No. 13	<input type="checkbox"/> FOR <input type="checkbox"/> AGAINST	The constitutional amendment to set a six percent (6%) weighted average annual interest rate for bonds issued pursuant to constitutional authority presently having a specified interest ceiling.
No. 7	<input type="checkbox"/> FOR <input type="checkbox"/> AGAINST	The constitutional amendment to provide that equality under the law shall not be denied or abridged because of sex, race, color, creed, or national origin.	No. 14	<input type="checkbox"/> FOR <input type="checkbox"/> AGAINST	The constitutional amendment to allow a county to reduce its county permanent school fund and distribute the money to independent and common school districts on a per scholastic basis.

FIRST STATE BANK



SPEARMAN, TEXAS

Families Here Do More Moving

Residents of Hansford County on the move, changing their addresses more often than people in most parts of the United States.

Because of the frequency with which they pick up and move to new locations, the population is considered more mobile than average.

As for the reasons that people move, sometimes it is to live in better style. With their incomes on the rise, many of them switch to fancier, more modern houses than they were able to afford previously.

In other cases, a move becomes desirable because of change in marital status or because of employment opportunities that open up in other areas.

The extent to which Hansford County residents are giving up their old homes and moving is revealed in a report from the Department of Commerce, based upon data gathered in the recent census. It covers a five-year period.

The figures show that 2,860 people in the local area, over the age of five, were living in different houses than they had been occupying five years earlier.

Of this number, 1,213 were changed to other locations within the county. The other 1,647 were newcomers who came from other places to live up residence in the area.

As for the number who may have left the county to live elsewhere, no figures are available.

What it boils down to is that out of every 100 persons in Hansford County over the age of five, five have changed their addresses at least once since 1965.

This mobility rate was greater than the rate in the United States as a whole, the average being 47 percent.

In the West South Central area the rate was 43 percent and, in Texas, 46 percent.

The frequency with which Americans pack up their belongings and move is indicated

ed in the latest government figures, which show that, in the past year alone, more than 36 million changed their addresses.

That means that nearly one person out of every five in the nation moved last year.

The peak mobility rate, it is pointed out, is to be found among persons in their early 20's. This is the age group that is going to college, finding employment, serving in the armed forces and setting up new households.

DEATH CLAIMS MRS A.C. GREEN

Funeral services for Mrs. Euga Leita Green, 75, were conducted Wednesday at 10 a.m. from the Spearman Church of Christ. Bill Osborne, pastor, officiated.

Burial was in Hansford Cemetery conducted by Boxwell Brothers Funeral Home of Spearman.

Mrs. Green was dead on arrival at Hansford Hospital Sunday about 2 p.m. She was a member of the Church of Christ.

A native of Centralia, Mo., Mrs. Green came to the Oklahoma Territory in 1914 and lived there until 1922 when she moved to Brownsville. She had been a Spearman resident since 1944.

Survivors include her husband, Arthur of the Spearman home; two sons, Austin of Santa Fe and Richard of Columbia Falls, Mont.; two daughters, Mrs. Helen Mitchell of Redding, Calif. and Mrs. Dorothy Blackwell of Eugene, Ore.; two sisters, Mrs. Nellie Allinger of Prescott, Mich. and Mrs. Gladys Fuller of San Jose, Calif.; four brothers, Hugh Jennings of Kansas City, Mo., Marvin Jennings of Sturgeon, Mo., Leon Jennings of San Jose and LeClie Jennings of Columbia, Mo.; and eight grandchildren.

4-H'ers Dream, Sew, Create Own Fashions in 4-H Clothing



SPECIAL - "It's frequently proclaimed that clothes make the man (or woman), but in 4-H it's somewhat reversed. Young people make many of their own clothes and some for other members of the family too," says Lois Howard, home economist with the National 4-H Service Committee, Chicago.

4-H's most popular program - clothing - boasts an enrollment of more than three quarters of a million members. With the supervision of the Cooperative Extension Service and the support of Coats & Clark Inc., 4-H members see the program as an outlet for creativity. They also learn new sewing and clothing construction skills and gain satisfaction by developing a wardrobe that compliments their personalities, reports Miss Howard.

Beverly Schenler, of Arcata, Calif., one of six

1971 national winners in the 4-H clothing program, taught mentally retarded girls to use sewing as a creative outlet in a pilot 4-H program involving handicapped young people. Says Miss Schenler, "The girls expressed themselves best through their sewing."

Coats & Clark have supported the 4-H clothing program for over 32 years, with various incentives and recognition for 4-H'ers. County winners receive medals of honor, while each state awards an expense-paid trip to the National 4-H Congress in Chicago, Nov. 26-30. At the 4-H event, six national winners receive \$700 scholarships given by Coats & Clark.

The company also provides 4-H members with instruction booklets on various sewing techniques.

For more information about the 4-H clothing program contact the county extension office.

GIRL SCOUTS HONORED MOTHERS

The Spearman Neighborhood Girl Scouts honored their mothers with a tea Wednesday October 10 at 7 p.m. in the Methodist Church fellowship hall.

Brownies and Girl Scouts presented a comedy fashion show, modeling fashions they had made themselves. These comedy-type costumes were adorable, and mothers enjoyed the show very much.

Commentator for the style show was Miss Kate Crawford, Cadet Girl Scout. Various musical numbers were furnished by Mrs. Kenneth McKay.

Pink and white carnations centered the serving table which was draped in pink overlaid with white crocheted cloth.

Punch and cookies were served to 82 girls and 60 mothers.

Hostesses were leaders: Barbara Pingleton, Reba Ooley, Irene Baker, Doris Perkins, Barbara McClellan, Jean Close and Barbara Moran.

GIFT BAZAAR NOV. 15 BY LUTHERAN S

Faith Lutheran Church ladies met Wednesday at 7:30 p.m. in the Parrish Hall.

Selma Reneau opened with devotions and prayer. Ruth Knutson gave the lesson on True Neighborliness, reading from Luke 10:25-27.

Mrs. Reneau announced an afternoon work day for November 2 at the Parrish Hall. She reminded the group of the November 15 bazaar, when all sorts of home made gifts, plus baked goods, will be displayed at the Home Demonstration clubroom. The sale items will be ideal for Christmas gifts.

Ruth Knutson served refreshments to Mmes: Delma Barnun, Nancy Meyer, Jance Ward, Delphine Kople, Betsy Ward, Selma Reneau, Ronda Ward, Fern Welch, Ruth Knutson, Almy Ward and Dorthea Tackett.

THE SPEARMAN REPORTER
Spearman, Texas 79081
Box 458 659-3434

Published Weekly at 213 Main Street
Spearman, Texas 79081

Owner-Publisher, William M. Miller

Second Class Postage Paid at Spearman, Texas

Any erroneous reflection upon the character of any person or firm appearing in these columns will be gladly and promptly corrected upon being brought to the attention of the management.

SUBSCRIPTION RATE--Hansford, adjoining Counties, \$7.00 yr. Other points in combination with The Hansford Plainman, \$9.00 yr.

TOM SAWYER STAMP ON SALE TODAY

The 8-cent Tom Sawyer Commemorative stamp goes on sale at the Spearman Post Office on Thursday, October 19.

This stamp shows a replica of the celebrated fence whitewashing episode. Given the unpleasant task of whitewashing a fence, Tom pulled a psychological ploy on his companions, convincing them that this was fun. He made them pay for the privilege of applying the brush, the brush, collecting such items as an apple, 12 marbles, a brass doorknob and six firecrackers.



Patients in Hansford Hospital are Hiram Wilbanks, Albert Clark, Stella Massengill, Reba Bennett, Buena Lyon, John Booth, William Lieb, Cora Babbs, C.T. West, Wyatt Adkins, Mary Boyd, Caroline Jones, Geneva Guthrie, Carl Tucker, Sr.

Dismissed were Glen Lesly, Charles Wicker, Pherba Phipps, Minnie Southern, Tim Woodington, Seth Hall, Ronnie Stinson, Fred Van Buskirk, L.W. Arbsland, Charles Winchell, James Smith, Kurt Stehling.

WARREN BLACK TO SPEAK HERE OCTOBER 23rd

The regular monthly meeting of the local chapter, Full Gospel Business Men's Association, will be at 8 p.m. in the Catholic Church Parish Hall, October 23.

Mr. Warren Black of Kansas City, Mo. will be the guest speaker for the evening.

Mr. Black was head accountant for the Nazarene Publishing House for 20 years. A graduate of Oklahoma University, he was a member of the Showers of Blessing radio choir and quartet for some time. He is now a nationwide speaker in many churches and FGBM chapters.

He has a healing ministry. For over 30 years he stammered so badly it was impossible for him to speak in public. He claims miraculous healing for this, for a lung condition and a severe hernia.

Mr. Black says, "One day while earnestly praying, I stopped, drew a circle on the floor, stepped into it and made a vow to God to seek Him until personal revival came. Little did I realize what all God had prepared for me as result of that act, and I am alive today because of this important decision."

His wife and teen age son Ward, will be present Monday, Oct. 23 and will appear on the program.

The general public is cordially invited to attend.

Bankers Return From Jamaica

Mr. and Mrs. Peyton Gibner and Mrs. Verna Lee Schnell returned Sunday from Montego Bay, Jamaica where they enjoyed a four-day vacation lazing in the sun.

These Spearman officials of the First State Bank attended the TBA convention last week in Dallas, and this Jamaica trip was a feature of the convention. Most years, visiting bankers are treated to a breakfast--this year they were treated with a trip to Jamaica!

It was a planned tour, with deep sea fishing trips, etc. The Spearman party especially enjoyed a bus trip up the mountain to the fabulous hotel Try-all.

PTA COUNTY COUNCIL MET

PTA County Council met in Gruver Friday morning, Oct. 13 at 9:30 a.m. in the high school.

Meeting was called to order by the president, Doris Clawson. Nine members were present with one guest.

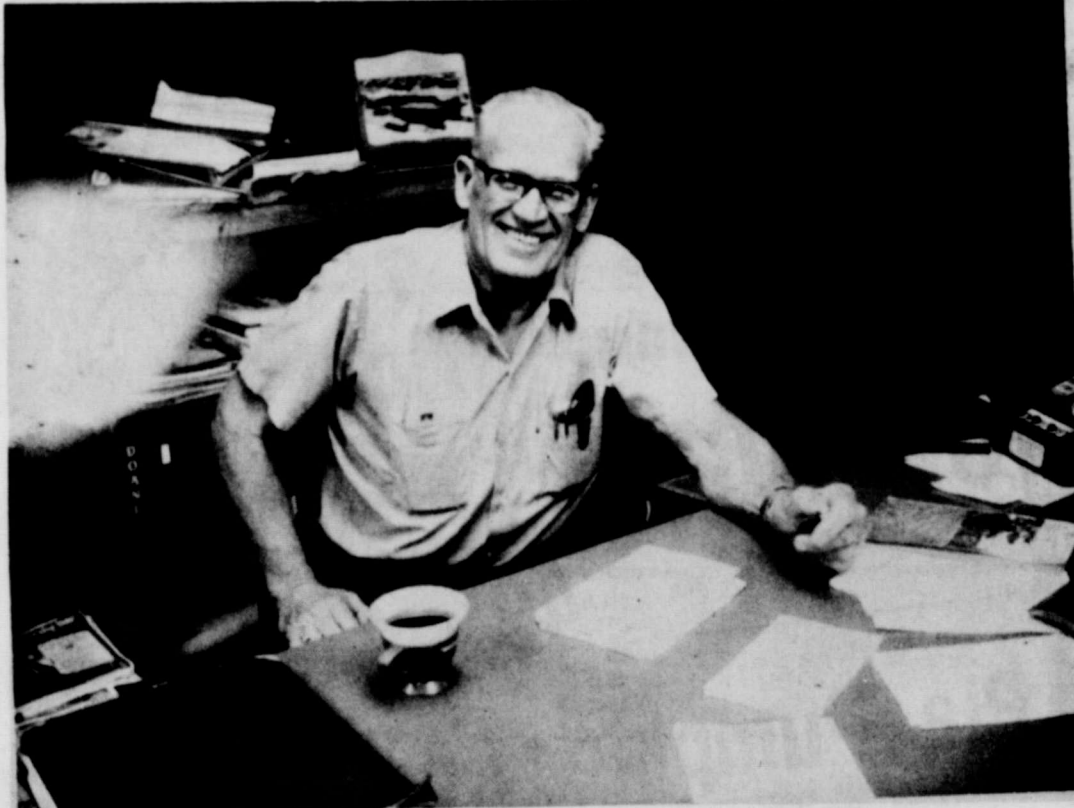
Minutes of the previous meeting were read and approved.

Report was given from each local unit present.

Faye Gillispie gave a report on the Fall Workshop held in Gruver. Safety Chairman Kervin Roper of the Gruver local PTA gave a talk on safety in the school and what it meant to the parents and the town.

Refreshments were served by the Gruver PTA.

The next meeting will be held in Morse Friday Dec. 1 in the auditorium.



DICK HUDSON

We Take This Opportunity to Inform the Public That

MR. DICK HUDSON

Has Been Hired as the New Manager at

CONSUMERS SALES CO.

In Spearman----Come in This Week and Get Acquainted with Mr. Hudson

MIKE GARNETT
PRES. CONSUMERS SALES CO.
SPEARMAN, TEXAS

Antique Pressed Glass CANDLES

CANDLE LIGHT

A candle's but a little thing--
It starts with just a bit of string,
Yet clipped and dipped with patient hand,
It gathers wax upon the strand.
Until, complete and snowy white,
It gives at last a lovely light.

Life seems so like that bit of string--
Each deed we do, a simple thing.
Yet day by day, of on life's strand,
We work with patient heart and hand,
It gathers joy, make dark days bright,
And gives at last a lovely light.

Author Unknown

- *Cinnamon
- *Ginger Spice
- *Bay Berry
- *Pine
- *Strawberry
- *Lemon
- *Cranberry

Spearman Rexall Drug

PHONE FOR FREE DELIVERY

659-2226 Two Registered Pharmacists
GRUVER NUMBER 733-2021

Is now the time to build or improve?

A new home, modern buildings, increased efficiency for handling crops and livestock, land improvements--investments like these are too important to postpone. A Land Bank Loan, made for extra years and at reasonable cost, often makes such things possible. May we review your goals? We usually can find ways to get you started toward greater income and a more comfortable living without unnecessary waiting.

Federal LAND BANK

Spearman-Pampa FLBA
J. E. Gunn, Manager

1972 WORLD FINALS

AMARILLO, TEXAS
OCT. 20, 21, 22

DRAG RACING'S OFFICIAL WORLD CHAMPIONSHIPS

NHRA
NATIONAL HOT ROD ASSOCIATION
DRAG RACING



COUNT THE SAVINGS AT THRIFTWAY



BAR S FULLY COOKED BONELESS HAM

HALVES **\$1.29**

LB.

Betty Crocker Layer

USDA Choice Beef Center Cuts **Round STEAK 99¢**

SIRLOIN STEAK **\$1.09**

T-BONE STEAK **\$1.19**

RUMP ROAST **89¢**

PIKES PEAK ROAST **98¢**

HORMEL **BLACK LABEL SLICED BACON**

89¢

LB. PKG.

Bordens Tub Pac **ICE CREAM**

Half Gallon **78¢**

Bordens Flavors **YOGURT**

8 oz. **33¢**

Shurfine Whole **Sweet Pickles**

22 oz. Jar **49¢**

Dromedary **Pitted Dates**

16 oz. **49¢**

Shurfine RSP **Pie Cherries**

16 oz. Can **25¢**

Mortons Frozen **Pie Shells**

Pkg. of 2 **29¢**

CAKE MIX **29¢**

Imperial Cane 5lb.

SUGAR **58¢**

Imperial Cane 5lb.

BREAD **27¢**

1 1/2 lb. Loaf

endercrust "Ranch Style"

EGGS **39**

Grade A Large-Dozen

Shurfresh

PECAN MEATS **\$1.79**

1b. Bag

Del Cerro Shelled

SNOWDRIFT **58¢**

-3 lb. Can

Shortening

KRAFT HALFMOON LONGHORN CHEESE

69¢

10-oz. PKG.

Del Monte Whole-303 Can **Green Beans** **25¢**

Del Monte Cling-no. 2 1/2 can **Peaches** **29¢**

Del Monte-303 can **Pumpkin** **19¢**

Our Darling English-303 can **Peas** **2 for 39¢**

CHICKEN OF THE SEA LIGHT **CHUNK TUNA** **39¢**

6 1/2-oz. CAN

SUNSHINE **KRISPY CRACKERS** **33¢**

16-oz. BOX

PRODUCE SPECIALS

Washington "Extra Fancy" Red Delicious **APPLES** **25¢**

.. LB.

TEXAS **CUCUMBERS** **7¢**

EACH

CALIFORNIA **BELL PEPPERS** **7¢**

EACH

DELICIOUS **YELLOW ONIONS** **11¢**

.. LB.

Texas Full-o-Juice*

ORANGES **49¢**

5 lb. Bag

Fresh Small Plump **Pie Pumpkin** **8¢**

lb.

CALIFORNIA GREEN SKIN **AVOCADOS** **29¢**

70 SIZE

EA.

Carnations "Special Morning" **BREAKFAST** **59¢**

Instant Pakg. of 4's

Carnation Tall Can **MILK** **16¢**

15¢ OFF LABEL **COLD POWER** **59¢**

GT. BOX

Detergent

Roxey "Instant Gravy" **DOG FOOD** **\$2.39**

25 lb. Bag

Fabulous GOLD TABLEWARE

24 Karat Dinner FORK **69¢**

WITH EACH \$5.00 PURCHASE

Mortons Apple-Cherry-Pumpkin or Peach **FRUIT PIES**

3 FOR 79

Birdseye Topping-4 1/2 oz. **Cool Whip** **29¢**

Martinelli Apple **Cider** **99¢**

Half Gallon

Shurfine Golden-2 lb. **Pop Corn** **25¢**

Fabric Softener **Downey** **\$1.19**

King Size

Barthroom **Delsey** **48¢**

4 roll Pac

Jumbo Roll **Teri Towels** **38¢**

THRIFTWAY

CUT RATE

BUCCANEER STAMPS

PLAINS SHOPPING CENTER

SPEARMAN, TEXAS

"CLOSED SUNDAYS"

Values Good Thru, Saturday

VALUABLE COUPON

15¢ OFF LABEL

MARYLAND CLUB COFFEE

WITH 1-LB. COUPON CAN **69¢**

COUPON GOOD THRU OCT. 21 AT THRIFTWAY STORES ONLY

VALUABLE COUPON

40¢ OFF LABEL

MARYLAND CLUB COFFEE

WITH 3-LB. COUPON CAN **\$2.07**

COUPON GOOD THRU OCT. 21 AT THRIFTWAY STORES ONLY