

the SPEARMAN Reporter

VOLUME 62, NO 14 THE SPEARMAN REPORTER, Hansford County, Texas 79081 THURSDAY, FEBRUARY 25, 1971



The shopping center was snowed-in over the week-end and this large drift was located just south of Anthony Electric. Mr. Anthony used his 4-wheel drive to "get around" during the blizzard.

Spearman Digs Out! And, this is the way the main street looked on Tuesday of this week, after the big "blizzard" of '71.

BLIZZARD VICTIMS DIG OUT

home and when they did not, he gathered a rescue party and began to search for them. Jim went to the wrong place however, and the boys could not be found.

Rodney said his truck slid into the snow filled ditch and stalled. Luck was with them and they were able to endure the raging storm in comfort from the warmth of a butane burner which had been stored in the pickup for months. The boys had enough sense to stay with the pickup, Rodney said they had to switch a few rubber hoses in order to get the burner to work and soon found that just a few trips back and forth to the rear of the truck made them feel exhausted.

After 12 hours in their stalled truck, they were rescued about 10 a. m. Monday by a helicopter piloted by Jim Wattenburg, who was scouting the country side and noticed the stalled truck.

The massive winter storm closed schools, churches and business houses. All scheduled activities were called off.

Spearman schools were closed Monday and Tuesday. The school marks off two (2) snow days for the year. One of these were used up Friday when students were dismissed to attend the Regional basketball tournament in Lubbock, Monday (a real snow day) used up the second day, so students will have to make up the other day by attending school on Saturdays sometime between now and the last week of the school term.

The revival scheduled for this week at the First Baptist Church had to be cancelled all-together.

Some of Spearman's business men walked to the stores Monday afternoon, cleared the snow from the walks, and returned home. Grocery stores, unable to get bread and milk deliveries, sold lots of flour and powdered milk to customers brave enough to walk after it.

The people who suffer most from a storm such as this one, are the ranchers who must get hay to stranded cattle. Those with tractors and wagons made it o. k. Others have to wait until graders can clear the roads.

Cattle on wheat pasture fenced in by a single hot wire were scattered over the country side. A heard numbering some 200 was reported to be out just 3 miles South of Waka.

A number of cattle from wheat fields north of the city pushed southward by the storm, were found Monday inside the Spearman city limits. A storm of this intensity always causes problems with drifting cattle.

Ambulance drivers and city firemen held their breath during the blizzard. If a call came, it would be almost impossible to get vehicles out. No emergency was reported.

Although Sunday's blizzard was not a "drouth breaker" the moisture content was good. Some fields were swept clean of snow by the strong winds, while others with some cover crop caught a goodly supply.

Snow plows and state-highway maintainers worked over time Monday and Tuesday trying to clear the roads but snowbanks, some as high as 6 feet, made the going slow.

The Panhandle area will be digging out for several days.

City Police officials reported "no accidents" through Tuesday. This of course was due to the fact that autos could not be moved.

You can look for the snow to be around for some time to come. With the sun melting it some through the day time, and cold temperatures freezing it during the night, travel will be pretty scarce around Spearman for some time to come.

Panhandle residents are used to blizzards such as this one. And had as they seem, one citizen summed up the feelings of most folks, when he said, "between the earth quakes in California, and the twisters in Louisiana, I'll take a good blizzard any time."

BULLETIN

If you have stray cattle located, note the brands and call Sheriff J. B. Cooke who will assist in finding the owners.

TRAP SHOOT
Sunday Feb. 28
at 2 p. m. Sponsored by Hansford Rod & Gun Club. This will be a jack-pot shoot.

THERE WILL BE NO SCHOOL THIS FRIDAY.
Friday is Teacher Work-Day at Spearman Schools....

Drug Program For Parents

If you have been noticing the "Get Involved" fillers in this newspaper from time to time and wondered what it was all about, the story has now come to light.

A program for adults only has been scheduled for 7 p. m. Saturday, March 6 at the high school auditorium in Spearman.

The purpose for this important meeting is to educate the adults, both parents and teachers and all interested persons, in looking forward to next year when Spearman schools will begin teaching Drug Education in grades five through twelve.

Teachers feel that parents

will need to be informed in order to re-inforce at home what is being taught in school.

Special speakers and experts in the field of drug abuse will take part in the March 6 program. Watch this newspaper for more information next week.

The program is being sponsored jointly by Hansford Masonic Lodge, the Lions and the Rotary Clubs and the Order of Eastern Star organizations.

Special committees from these clubs are preparing the program.

The meeting is of great importance to parents and all are urged to attend.

Fugitive Gives Up

William A. Spencer, wanted for some time by the Hansford Sheriff's department, was arrested here Tuesday morning.

Spencer was indicted by the Grand Jury in the September 1970 term of court on a charge of embezzlement of a sum of money over \$50, he allegedly took from the Fina Service Station. He was the Station manager at the time.

He had been arrested one week ago in Alabama on a fugitive complaint for the Sheriff's office here. He made bond there and was released.

Tuesday morning Spencer walked into the Sheriff's office here and gave himself up.

He is being held in jail in lieu of a \$1,000 bond and is awaiting trial.

FUNERAL RITES ARE PENDING FOR A. R. WITCHER

Mr. A. R. Witcher, 66, died early Sunday morning in the Southside District Hospital at Mesa, Arizona.

Mr. and Mrs. Witcher, Spearman residents for some 20 years, left Spearman in January on a vacation trip which was to last several months. Mr. Witcher, now retired, was the Santa Fe Depot Agent in Spearman for 20 years. He had worked with Santa Fe for 40 years. The Witchers have spent most of their time traveling since his retirement several years ago.

Mr. Witcher was born Sept. 29, 1904 in Lipscomb, Texas. Survivors include his wife of the home; a son Robert of Shawnee, Okla.; two daughters Mrs. Harry Mason of Enid, Okla. and Mrs. Robert Pendleton of Oklahoma City.

The body was shipped to Spearman from Arizona and arrived here Wednesday.

At press time for this newspaper no funeral details had been learned. Services are pending with Boxwell Brothers funeral home of Spearman.

Mr. Witcher was a member of the First Baptist Church of Spearman.

LYNXETTES LEAVE FOR AUSTIN THURSDAY

The Spearman Lynxettes will meet the Waco Robinson team, at 1:00 p. m. Friday in Gregory Gym, Austin, for the opening round of girls AA basketball. This is the only team to defeat the Spearman girls in the past two years, and local fans are pleased that the Lynxettes get a shot at Waco Robinson the first time. The finals of the state tournament will be played at 3 p. m., Saturday.

The Spearman basketball team will leave at 2:30 from the Amarillo Air terminal, Thursday for Austin. They will arrive in Austin at 5:15, and work-out in Gregory Gym at 7:30 p. m. Thursday night. The Spearman girls will stay at

the Rodeway Inn, No. 2, in Austin.

Due to the blizzard in Spearman, it has almost been impossible to contact any of the local fans, or players, concerning the trip to Austin. However, in talking with several basketball fans, apparently most of the fans will leave by car Thursday, if the weather permits.

This will be the 6th consecutive appearance of the Lynxettes at the State tournament, and is an all-time record for girls basketball. Local fans feel that Coach Weese and his girls will defeat the fine Waco team this year, as his guards have improved so much since the Duncanville tournament.

Claude Draws Deweyville, Spearman Waco

AUSTIN (UPI)—The University Interscholastic League Monday announced pairings for the annual state girls' basketball tournament to be held in Austin Feb. 26, 27. The pairings: Feb. 26—Class A, Glen Rose vs. Moulton, 8:30 a.m., and Deweyville vs. Claude, 10 a.m. Class AA, Spearman vs. Robinson, 1 p.m., and Calallen vs. Buna, 2:30 p.m. Class AAA, Canyon vs. Carthage, 7 p.m., and Victoria vs. Brenham, 8:30 p.m. Feb. 27—Class B, Roundtop—Carmine vs. Wells, 8:45 a.m., and Grandview vs. Folieth, 10 a.m. Class A finals 1:30 p.m., Class AA finals 3 p.m., Class AAA finals 7 p.m., and Class B. Finals 8:30 p.m.

Shurfine YOUNG MOTHER HUBBARD

PRICES GOOD THRU SAT. MARCH 6.

COME FILL YOUR BARE CUPBOARDS...FOR LESS!



SPECIALS

Shurfine 16 oz. can
Fruit Cocktail 4 for \$1

Shurfine 32 oz. jar
Salad Dressing 39¢

Shurfine RSP 16 oz. can
Cherries 4 for \$1

Shurfine Red Alaska
Salmon 89

Shurfine Evaporated
Milk 14 oz. can 6 for \$1

Shurfine
Pork & Beans 16 oz. cans 8 for \$1

Shurfine cut
Green Beans 16 oz. cans 6 for \$1

Shurfine Early Harvest
Peas 17 oz. can 5 for \$1

Shurfine
Catsup 20 oz. bottle 3 for \$1

Shurfine Fresh Pak.
Cucumber Chips 16 oz. jar 3 for \$1

Apricots
Shurfine Halves Unpeeled 16 oz. can 4 for \$1

Shurfine Fresh Shelled
Blackeyed Peas 15 oz. can 6 for \$1

Spinach
Shurfine 15 oz can 6 for \$1

Shurfine
Tomato Sauce 8 oz. cans 11 for \$1

BATHROOM **Tissue**
Softlin 2 Ply White/Pink/Yellow/Aqua Roll Pac 10 79¢

Energy
Powdered Detergent 49oz. Box 49¢

Roxev Canned
Dog Food 15 oz. 13 for \$1

SPECIAL
Shurfine Enriched
FLOUR
5# Paper Bag 39¢

Shurfine Chicken
SOUP 10 oz. Can 6 for \$1

Shurfine
Apple Butter 28 oz. jar 3 for \$1

URNS YOU ON SPECIAL

Shurfine Cream Style
CORN
or Whole Kernel 17 oz. can 5 for \$1

FILL YOUR BARE CUPBOARD...FOR LESS!

COFFEE
Shurfine Vac Pak Regular/Drip/Electric Perk Pound can 79¢

PEACHES
Shurfine yellow cling Halves or Sliced 29 oz. can 3 for 89

TOMATOES
Shurfine 16 oz. can 5 for \$1

Shurfine
Apple Sauce 16 oz. can 5 for \$1

Shurfresh Saltine
CRACKERS 16 oz. box 2 for 49¢

Shurfine Frozen
ORANGE JUICE 6 oz. cans 6 for \$1

Shurfresh
Biscuits Buttermilk or Sweetmilk 8 oz. cans 13 for \$1

TOMATO JUICE
Shurfine Fancy 46 oz. can 3 for \$1

MARGARINE
Shurfresh Quarters 16 oz. 5 for \$1

BONUS BUCCANEER COUPON
100 FREE BUCCANEER STAMPS
With this coupon and Purchase of \$7.50 & over
1 Coupon per customer Good only at Cut Rate Grocery Expires Saturday Feb. 27th

JACKPOT THIS WEEK \$100.00

LAST WEEKS WINNER Mrs. Jim Nicholson \$150.00

The Friendliest Store In The Panhandle
Cut Rate GROCERY
PLAINS SHOPPING CENTER
SPEARMAN, TEXAS

MEMBER AFFILIATED

Klondike Gold MELMAC DINNERWARE

TODAY'S MOST POPULAR COLOR!

39¢

EACH PIECE WITH \$3 PURCHASE

HEAVY
BREAK RESISTANT
& MORE DURABLE
FASHION IN HEAVY
MELMAC
DECORATOR FLUTED
RIGHT FOR EVERY

FRYERS

29¢

Prices Good Thru Saturday

HAMS

14 to 17 Lb.

49¢

BACON

59¢

Round Beef

48¢

ANKS

12 oz. Pkg.

43¢

Cream

Half Gallon

78¢

Cola

44¢

Fabulous Offer!! MELMAC DINNERWARE!

• DISHWASHER SAFE
• HEAVIER & MORE DURABLE
• GUARANTEED BREAK RESISTANT

39¢

FEATURED THIS WEEK

EGGS

Shurfresh USDA Grade A Medium Size Whites

34¢

SUGAR

Shurfresh Pure Cane

\$1

10 lb. Bag

TOMATOES

Vine Ripened Deep Red

39¢

no. 1 lb.

Onions

19¢

Celery

15¢

Oranges

19¢

POTATOES

Colorado Russet

39¢

10 lb. Bag

GRAPEFRUIT

Texas no. 1 Ruby Reds

39¢

5 lb. Bag

2 PICTURES FREE SELECT ONE PICTURE FREE EACH WEEK FOR 12 WEEKS with coupons as dated below

SAVE UP TO 50% ON QUALITY FRAMES FROM AFFILIATED

See Cut Rate Mailer for Details

Affiliated presents a wonderful opportunity of decorate your home with some of the world's most famous art. Each subject is reproduced in a fine brush stroke technique with an oil-like finish. Hundreds of subjects to choose from

COORS OFFERING 1¢ FOR BOTTLES

GOLDEN, Colo. -- In a major move designed to further combat litter and solid waste, Adolph Coors Company has announced that all Coors beer bottles will be returnable for one cent each.

The program begins in Texas immediately. The returnable bottle plan was announced in Colorado in early January, and subsequently went into effect in Arizona, California, Idaho, Kansas, Nevada, New Mexico, Oklahoma, and Utah and Wyoming. "We believe this move is essential to help maintain the kind of environment we all want for America," said William K. Coors, president of the regional brewery.

All bottles marketed by Coors in 24-cans or 6-packs are returnable under the cent-a-bottle plan. So are quarts. No sizes are excluded.

In 1970, Coors marketed more than 630-million bottles of beer in 24-cans, 6-packs and quarts. The company sold about 35-million bottles of beer in Texas. Coors markets its beer in West Texas and in the Dallas-Fort Worth area.

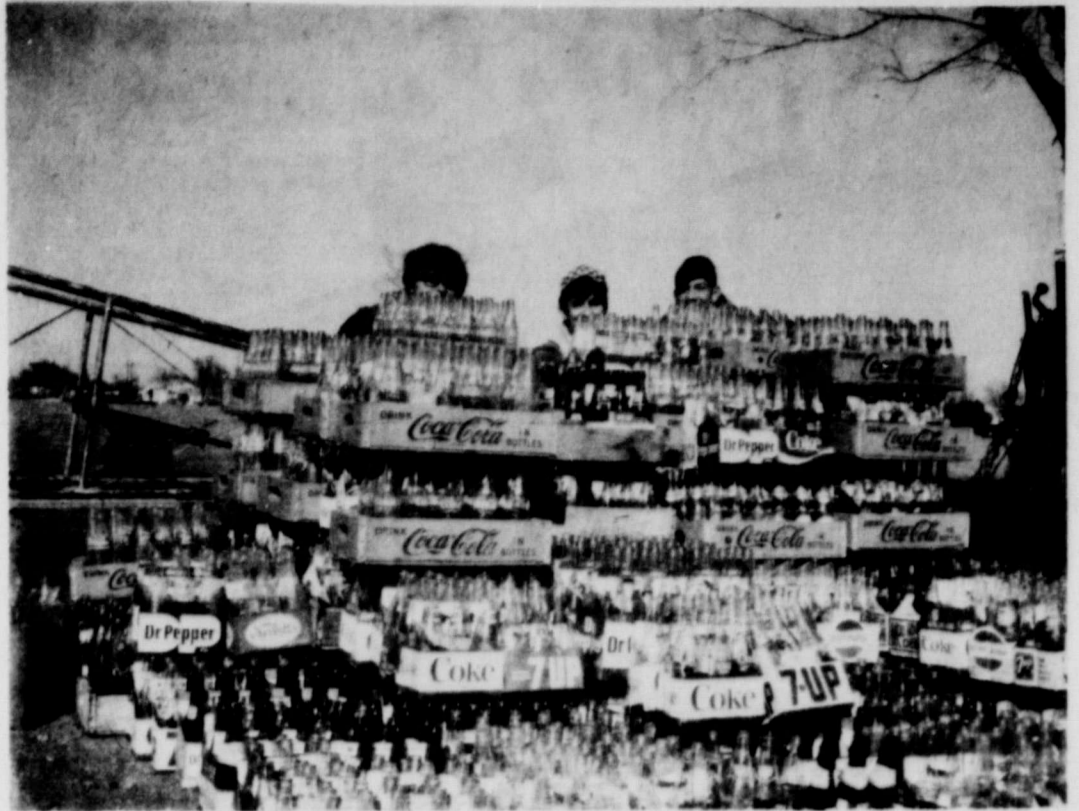
Announcement of Coors' returnable bottle plan follows by one year the brewery's announcement of plans to fight litter and solid waste by paying a dime a pound for aluminum cans... Coors or any other brand.

The program which operates through the company's 166 distributors, resulted in recovery and recycling during 1970 of 6,222,078 pounds of aluminum... more than 143-million cans. The youth, civic and service groups and individuals who picked up those cans were paid \$622,207 for doing so.

Texas Coors distributors, during 1970, received 1,195,414 pounds of aluminum... more than 27-million cans. They paid \$119,541 to those who collected the cans.

During 1971, Coors plans to discontinue use of its 15-oz. tinplate can, and will replace it with a 16-oz. aluminum can. Coors already uses the aluminum tall can in California, and will begin using it in other states later in the year. When that changeover is complete, all canned beer marketed by the company will be in aluminum cans, worth 10¢ a pound under terms of the Coors cash-for-cans offer.

Adoption of the returnable bottle system and conversion of the company's tall can to aluminum will mean that all Coors cans and bottles will have a cash return value.



SHS SPEECH STUDENTS canvassed the country side the past weekend for Coke bottles and when all were collected they had gleaned over 3,000. These will be sold for five cents each and the money will come in handy for the class various activities. Barely visible above the mountain of glass are Lynn Pierce, Buddy Dossert and Ken McEllan.



J. L. Pierce and Rev. Christensen get their dune buggy ready to go Austin, if it comes another snow. Mr. Pierce has large truck chains on this snow buggy, and carried the news photographers around the area to get pictures of the snow after the blizzard. All of us at the Reporter office thank J. L. The local dune buggy club pulled out 17 stranded motorists on Monday of this week.



A pickup loaded with hay for cattle, and three down-town business men survey the situation, after the big blizzard. Guess who the three are?



Melvin Southern, who works for H and H Water Well Service in Spearman, says "I finally made the paper after 42 years." And, Mr. Southern is pictured above, on the Reporter Photo Snow Buggy, in front of the Presbyterian Church. The snow was about 6 feet deep at this part of the road, in front of the church.



Unable to move, this corvair just wasn't made for this kind of weather, and was abandoned in Spearman.



Valuable transportation above! Ralph Blodgett had good transportation and a good way to shovel snow, with his four wheel front loader. The speedy little Bobcat loader made excellent transportation after the "Blizzard of 71"



Another view of the Shopping Center... Cut Rate Grocery is having its annual "Mother Hubbard" sale, and Mr. Fisher reports that all the snow is now cleared away.

THE FAMILY LAWYER

Oust Student Demonstrators?

May a college student be suspended or expelled from school for taking part in a campus demonstration? The question arises nowadays with growing frequency, and courts are beginning to lay down some guidelines in this sensitive area.

To start with, students have the same freedom of speech, press, and assembly as everyone else in the community. They do not bargain away their constitutional rights just by enrolling in college. Take this case:



A state college decided to nip trouble in the bud by requiring permits for any and all "parades, celebrations, and demonstrations." When students staged a peaceful demonstration without a permit, they were promptly suspended.

But in a court test, the permit rule was struck down as a violation of the freedom of assembly. The court said:

"Colleges, like all other institutions, are subject to the Constitution."

But if colleges are subject to the Constitution, so are students. If college powers are limited, so are student rights.

In another case, some students were suspended for forcibly blocking access to the campus placement office. In court, they invoked their freedom of speech, arguing that blocking the office was simply one way of expressing their opinions.

But a court decided that freedom of speech did not stretch that far. The judge said:

"They have rights guaranteed by the First Amendment. Those rights, however, are not a license to trample upon the rights of others, the enjoyment of which is equally precious."

Likewise, the Fourteenth Amendment — against discrimination — does not prevent the college from exercising reasonable flexibility in meting out punishment.

In another case of student violence, the college imposed tougher penalties on graduate students than on undergraduates. This was challenged in court as discriminatory, on the theory that students who commit the same offense should get the same punishment.

However, the court decided the school's "discrimination" was reasonable enough under the circumstances. The judge said it made sense to expect greater responsibility from older students than from younger students.

A public service feature of the American Bar Association and the State Bar of Texas. Written by Will Bernard.

© 1971 American Bar Association

food

Superb Italian Tuna Quickie

ITALIAN TUNA AND PEPPERS

- 1/4 cup olive or salad oil
- 2 medium onions, sliced
- 3 green peppers, thinly sliced
- 2 teaspoons dried leaf basil
- 1 1/2 teaspoons salt
- 1/2 teaspoon Tabasco pepper sauce
- 1 can (1 pound) tomatoes
- 2 cans (6 1/2 or 7 ounces each) tuna in vegetable oil

Heat oil in skillet. Add onion and peppers; cook until tender, 5-8 min. Add next 4 ingredients; bring to boil. Simmer 10 min. Add tuna and heat through. YIELD: 4-6 servings

PERFORMANCE TESTED

BULL SALE

Tue., March 16, 1971

Panhandle State College Goodwell, Okla.

100 Head Big Yearlings

Herefords, Polled Herefords

Angus, Charolais, & Short-horn

Fertility Checked & Guaranteed

Proven Gainability

Performance Certified

Soundly Conditioned On High-Enslace Ration

BUY WITH CONFIDENCE

For Catalogue, Write or Call M. V. England,

Panhandle State College Goodwell, Oklahoma 73939

Phone: (405) 349-2611;

Ext. 228

Can Tooth Decay Be Cured?

The most common chronic disease in the world today may be tooth decay. About 98 per cent of Americans are affected by it.

Common as it is, though, both the cause and cure are unknown. Scientists know you can't get cavities unless certain bacteria are in the mouth along with fermentable carbohydrates.

If decay-causing bacteria thrive because of the food we eat, should we change our eating habits and give up jelly beans and sugar cookies?

Not so fast, say researchers. Changing eating habits is as impossible as changing human nature. Besides, we need carbohydrates in our diet—sugar and starches—for good health and nutrition.

But the scientists are making headway. Tests using certain adhesives to seal up pits and fissures in grinding surfaces of teeth are being conducted with nearly perfect results. Bacteria-counteracting mouth washes are under study. Many dental experts find fluoridation is a dependable weapon against decay.

The National Institute of Dental Health believes that with continued research the disease is ultimately preventable. Have a lollipop and don't forget to brush your teeth! (NP Features)



SNOW ICE CREAM... was on the menu at the Cattleman's Cafe Monday morning after the big blizzard, and cooks had plenty of ingredients

Let us Precondition Your Calves or Grow Your Cattle

On cheap Rations— Complete Cattle Services Barnes & McCammond

BARNES FEEDLOT

Spearman, Texas 659-3638 659-3393

NEED FOR L-V NURSES

Are you interested in a nursing career? There is a need for licensed vocational nurses in the Amarillo area today.

The School of Vocational Nursing at Amarillo College will train you in one year to become a competent licensed vocational nurse. You may choose medical-surgical nursing, care of the elderly, maternal and child care, or psychiatric nursing. Employment opportunities are available (as a licensed vocational nurse) in hospitals, convalescent centers, private homes, or doctors' offices.

Amarillo College School of Vocational Nursing is now accepting applications for the spring class to begin March 15, 1971.

For more information telephone Amarillo College, 376-5641, today!

GROW POWER

NITROMITE... Shamrock's Fine Brand of Anhydrous Ammonia... produces better yields and higher profits all across the great Central Plains grain belt!

See your NITROMITE dealer soon.

Spearman Super Service

S. HIGHWAY 207 SPEARMAN

A Product of Equipment-Shamrock Oil and Gas Company
Distributed by Engstrom & Co.
A Subsidiary of Equipment-Shamrock Corporation.

How to get more out of your paycheck.

Simple. Take 5% out of every paycheck, just a nickel out of every dollar you earn, and put it into a savings account with us. With the interest we pay, you'll feel rich in no time.

Perryton Savings

& LOAN ASSOCIATION

Full Service Mobile Office Spearman

Mon., Wed., & Friday PLAINS SHOPPING CENTER Phone 659-2344

MEMBER FEDERAL SAVINGS AND LOAN INSURANCE CORPORATION WHERE YOU SAVE DOES MAKE A DIFFERENCE®

funny after a couple of days. And this has been our situation here due to the "blizzard of 1971" -- the term the news commentators have been using.

We oldtimers who have lived in this country all our lives have learned to be surprised at anything in the form of weather. We have learned better than to forecast, or at least to know that "your guess is as good as anyone's". And when those who make a living at weather prognostication come up with a blizzard prophesy, we don't pay too much attention. At least we do not pay too much attention. At least we do not make any provision. So when the weather men said as early as Friday that the Panhandle was due for some heavy snows, who believed them? After all, Saturday was a beautiful day, not a cloud in the sky. Heavy snows? Phooey!

We went to the show Saturday evening about 7:30 p.m. and laughed our way through "It's a Mad, Mad, Mad, Mad, World." The movie ended about 9:30 and we pushed the theatre doors open to face a

blinding, raging, snow storm. The ground was already covered with at least an inch of snow. In two hours!

We rushed in the house and tuned in the TV and began to hear further warnings of a terrific storm with "much" snow. We got in a good supply of fireplace wood and watched and listened to the growing intensity of the storm until around midnight when we retired.

Just before going to bed I reviewed once more my Sunday School lesson for the next morning, though I doubted anyone would make it out. Strange as it may seem the lesson covered the parable about the houses built on sand, or rock, and how they either stood or fell when the storm raged or the wind blew. I said a silent prayer that our house would stand through this raging wind. The way it was whistling around the corners I began to wonder.

We awoke Sunday morning to a full fledged, major blizzard which did not let up the whole day, nor into the late night hours. We made our way

once more to the snow covered wood pile.

What is there to do through a day when you have to stay inside? Eat. And eat we did. I never washed so many dishes for two people in my life. Cold weather calls for bread, so I made biscuits. It also calls for bacon and eggs, and pots of steaming coffee.

I read a book and busied myself with doing needlepoint. Billy paced. From the windows to the doors. Finally the snow packed in the windows until you couldn't see out. The door screens were also covered. So we tried opening doors just enough to look out... and they couldn't be moved. The front door was closed tight by a huge snowbank. We pushed and shoved until the back door gave a few inches, enough to reach through and fill a big pan with snow. I made snow ice cream. What memories that brought back. Hand't tasted snow ice cream since I was a kid. I wondered how many gallons of that stuff was made here Sunday by mothers trying to keep restless children satisfied.

Sunday was a long day and finding things to keep your mind busy gets to be a game. I enjoyed it though. I'm in hog-heaven (whatever that is) during a snow storm. Winter is my time of year... there is nothing like the feeling I get when I am all snug and warm, curled up with a good book listening to the storm rage. But my conscience bothered me knowing that many were not safe and warm inside. TV reported thousands of vehicles stranded and I knew that every rancher who could, would be out trying to see about drifting cattle. They shouldn't but they do. Late Sunday night we went to bed to winds still gusting from 50 to 60 MPH and snow still falling.

But just as quickly as Panhandle blizzards strike, they cease when Monday morning dawned, the wind was gone and the sky was clear. And the beauty of the landscape surpassed description. The trashy, cluttered lot next to me was covered with a clean, glittering white blanket of snow. It was a thick blanket too, at least 24 inches deep. All the unrighteous objects which litter the ground were suddenly not there. All the harsh angles had been changed to picturesque curves and the ugliness of the country side was now made beautiful, hidden from view under a cover of snow. The only thing showing in my back yard was the top of the bird bath.

By noon Monday the city began to dig out. The only

vehicles able to move were tractors and a few dune buggies. On main street, one drug store was open, plus the restaurants whose people were not able to get home on Sunday. Highways were closed. The hospital operated for emergency cases only. We had no mail service. If people needed a doctor, an ambulance the fire truck, etc. it was just too bad.

I got a chuckle over our State Gov. Preston Smith calling out the National Guard to assist with rescue work... it was a nice gesture but the guard simply couldn't get here.

Our newspaper staff finally made it to work (by walking) Tuesday noon, so absence of news in this issue will be noted. However, we will print plenty of pictures to fill up space. Anyway, "one picture is worth 10,000 words."

One thing keeps bothering me... how long will it be before city trash trucks are able to make their rounds. My alley is one big snow bank, about 5 feet deep in places. It will be shame to litter all this snow with bags upon bags of trash. Guess what we all need is one of those nifty trash disposals which will hold as much as a week's supply of trash and garbage. Or we might urge the City dads to equip our trash truck with snow shows. In a few days the mountains of snow in our alleys will be turned into mountains of trash... for the dogs to scatter. I for one am anxious for the city to install our new containerized trash system.

AMBULANCE ALERT

We explained in an earlier feature but it bears repeating. The H & S Ambulance Service (Hansford-Spearman) is manned by members of the Spearman Volunteer Fire Department.

To give you an idea as to past services rendered by this group of men let's look at the period from March 1st 1969 to Dec. 31st 1969.

During that period of time the H & S Ambulance Service made a total of 95 runs. These runs included 24 to Amarillo 66 local, 2 to Borger, 2 to Perryton and one to Wellington. The Ambulance traveled 5,790 miles and a total of 338 man hours were spent in the total operation.

The new ambulance was acquired in January of 1970. During that year the Corps made a total of 136 runs. These included 50 to Amarillo 82 Local, one to Canadian, 2 to Perryton and one to Morse.

Total mileage for 1970 was 9,992 miles and 1574 man hours were involved.

Dispatches for the ambulance service are on duty 24 hours a day. The number to call for ambulance service, day or night, is 659-3537.



Babies born in Hansford hospital the past week were: Samuel Dale, son of Mr. and Mrs. Herbert Dale Hall of Perryton. They youngsters arrived Feb. 21 at 7:50 p.m. and weighed 11 lbs. 3/4 ozs. and measured 22 inches long. Lisa Marie, daughter of Mr. and Mrs. Jerry Ring of Spearman, was born Feb. 21 at 9:55 a.m. She weighed 7 lbs. 3/4 ozs. and measured 18 1/2 inches long. Crista Lee, daughter of Mr. and Mrs. William Larry Campbell of Spearman, was born Feb. 20 at 3:55 p.m. She weighed 8 lbs. 15 ozs. and was 21 inches long.

Mr. and Mrs. Jimmy Hall of Fritch are proud parents of a new baby daughter, their first child. Sherry Lee was born February 22 in the Borger hospital. She weighed 7 lbs. 3 ozs. Maternal grandparents are Mr. and Mrs. Aaron Love of Spearman. Paternal grandparents, Mr. and Mrs. George Lee Hall, live in Dumas.

"GET INVOLVED"
"GET INVOLVED"
"GET INVOLVED"
"GET INVOLVED"

Important Meeting For County Farmers

County Agent Robert Adamson announced this week an upcoming grain sorghum & corn production meeting of interest to all Hansford County farmers.

The meeting has been set for 2 p.m. on Thursday, Feb. 25 at the Home Demonstration Clubroom, 309 Bernice St., Spearman.

The following Extension Specialists will be on hand to discuss these items:

- James Valentine, Area Soil Chemist-Soil Fertility.
- Bill Clymer, Area Entomologist-Insects.
- Robert Berry, Area Plant Pathologist-Diseases.
- Frank Petr, Area Agronomist-Cultural practices, planting rate and date.

Allan Wiese, Agronomist, Bushland experiment station to discuss weed control.

Adamson said this would be a great opportunity for farmers to receive needed information concerning grain sorghum and corn production. The agent said these men are not biased in their thinking and their primary objective is to help the farmer.

"These specialists," he said, "can help the farmer get to the bank with more net profit."

The School Science Fair will be held March 2 on Back-To-School evening.

Robert Wilbanks Jr. Pastor Of Church

The Rev. Robert Wilbanks, Jr., of Corpus Christi, Texas, began as pastor of Evergreen Baptist Church in Graceville, Florida February 14.

Before moving to Graceville in 1969 to enroll at Baptist Bible Institute as a ministerial student, Mr. Wilbanks lived in Cavin, La. and worked for an oil refining company. By trade he was a refrigeration mechanic.

He was a lay preacher for 15 years and also sang in revival services before formally entering the ministry. This is his first pastorate.

Robert Wilbanks was born in Spearman, the son of Mr. and Mrs. R. A. Wilbanks now of Corpus Christi, Texas. He attended elementary school in Spearman.

Mrs. Wilbanks, who was Helen Colwell, of Corpus Christi, is enrolled in the religious education course at BBL. They have two daughters, ages 5 and 3. The family will live in their mobile home on the BBL campus.



HOSPITAL NEWS

Patients in the hospital include Tracy D.

Patients in the hospital include Tracy Keetch, Dennis Selby, Charley Langston, AN Weant, Dona Hall and son, Roscoe Parks, Bernice Weant, Will Ella Martin, Marvin Chambers, Ruby McCullough, Evelyn Mackie, Frances Ring and daughter, Glenda Campbell and daughter, L. D. Pierce, Irvin Hester and Norman Saeger.

James Lair is the only patient dismissed since the last report.

Singing Group At Methodist Church Mar. 6

The Methodist Church will have the "New Hope" singers, at the Spearman Methodist Church, March 6th. The public is invited to attend. No Charge - Free Will offering will be taken.

Douglas' Host Couples Club

Couples Bridge met Saturday 20 in the BBL Douglas. Guest for the evening were Mr. and Mrs. Don Smith and members were; Messrs. and Mrs. Chalmers Porter; Garland Head; Ray Robertson; Bill Douglas; and Pat Gates. High scores of the evening were Silva Robertson and Chalmers Porter.



Brownie Troop 14 met February 16 at the scout house with leaders Jean Close and Dolores Kenrick.

The Brownies made sit-ups in the time of the meeting. Refreshments were served by Juliann Farr to: Jeanne Close; Teresa Collins; Karen Davis; Stacy DeWitt; Sandra Dry; Tammy Jo Malze; Monte Jean Kenrick; Mauri Lindsay; Becky Lusby; Jackie Reed; Lisa Sheets; Tracy Smith; Angela VanBuskirk; and Laura V. Bson.

AUTOMOTIVE TALES FROM



Answers to Auto Quiz...

HERE ARE THE ANSWERS TO THE AUTO QUIZ IN LAST THURSDAY'S SPEARMAN REPORTER.

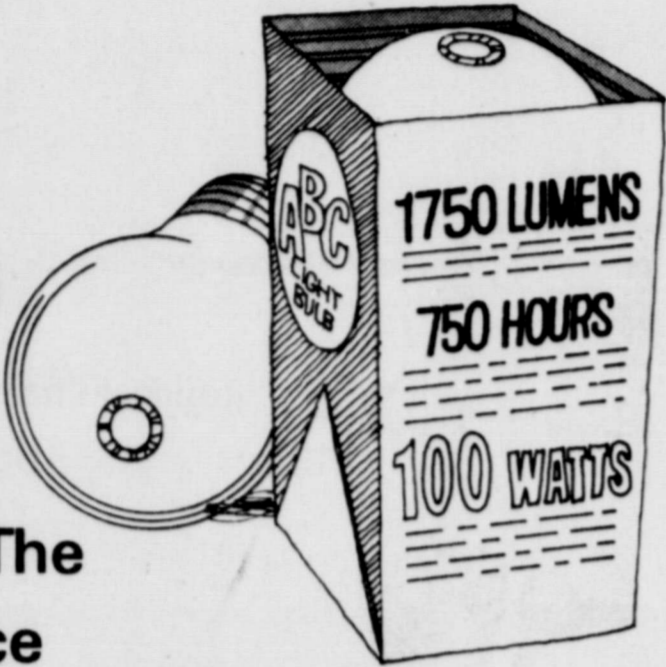
1. The car you were asked to identify was the first automobile sold by Henry Ford. It was a model A and the year was 1903.
2. The invention that changed motor car history was the Ford Assembly line 1913.
3. The cheapest car ever built was the 1926 model T Ford. The price, \$365.00
4. The 1905 invention that became a permanent feature on all cars was the bumper invention by Simms.
5. The two momentous events of 1903 - Ford sold his first car and the Wright brothers first flew at Kitty Hawk.
6. The car in production one year longer than the Model T was the Rolls Royce Silver Ghost, 1907-1926

Remember, the part you need for your car or truck is as close as OWENS SALES COMPANY in Spearman.



Me See Sybil...
...all the people in...
...feel they have ex...
...ed a lost weekend. I...
...complete isolation from...
...the world ceases to be

New Labeling Helps You Choose The Right Bulb For The Right Place



New labeling on the jackets of electric light bulbs can help you choose the bulb that will serve you best. For work, study and reading areas you'll want a bulb with a high "lumens" (brightness) rating. In areas that require less light or where bulbs are more difficult to replace you'll want to use the "longer life" bulbs. While the watts, or electricity used, may be the same for both bulbs, the high lumens bulb has been designed to provide more brightness and the longer life bulb has been designed to last longer but usually will provide less brightness. For the best value in buying bulbs, choose the bulb designed to fit your purpose.

COMMUNITY PUBLIC SERVICE

Your Electric Light & Power Company
An Equal Opportunity Employer



For people who can't decide between full-size comfort and small-car savings-



Oldsmobile introduces a new Cutlass Hardtop that gives you both.

There you are, caught right in the middle. You want to have your cake and eat it, too.

You want a car with a lot of room, a lot of comfort, a lot of class, but you also want the kind of savings and economy you normally only get in a small car.

Where do you go from there?

Straight to your nearest Oldsmobile dealer. He's got a new Cutlass Hardtop that gives you the best of both.

This new Cutlass model, the lowest priced hardtop Olds offers, gives you things like:

- A big, solid Body by Fisher with sporty Moroccan interiors and room for six grown-ups.
- A great coil-spring ride, computer-matched to each car's weight and equipment. Specially tuned body mounts for a quieter ride.
- A pollution-fighting engine that runs efficiently on no-lead, low-

lead or regular gas (either six-cylinder or V-8).

- Aluminized exhaust system, front-fender inner panels, anti-corrosion battery that lasts longer.
- Flo-Thru Ventilation that brings in outside air for interior comfort, so you arrived refreshed and un-ruffled.
- Bias-ply, belted tires for improved traction, longer tread life.
- Side-guard beams in each door for extra security, plus a long list of other GM safety features.

So why compromise? Get full-size Olds comfort and everything that goes with it—plus low price and exceptional economy, too.

Now! Special savings during Olds Cutlass Step-Ahead Sale!

Right now your Olds dealer is offering some very attractive frosting for a very attractive cake. During his Step-Ahead Sale on this Cutlass Hardtop, he's offering special

savings on these six "extras": Vinyl top! Louvered hood! Whitewall tires! Wheel opening moldings! Plus nylon carpeting! All yours at real savings right now.



Oldsmobile
ALWAYS A STEP AHEAD

OWN A MONTGOMERY WARD CATALOG STORE FRANCHISE

How would you like to start your own business...and open the doors with a trusted 96-year reputation the very first day? Now you can! Here's a unique opportunity for you to become your own boss in a bold new business...a business that offers virtually risk free income, from a remarkably small capital investment.

Montgomery Ward is looking for Sales Agents. If you're a stable, ambitious man...or a husband-wife team, with an urge to break out on your own in a catalog store we're looking for you. We've developed a unique program requiring a very small initial investment in which all the agent immediately supplies is the location—leased or owned—plus a portion of the expenses and his ability and strong desire to sell! We make available everything from store fixtures and display material to free management training and plenty encouragement. We want you to succeed. You'll retain a favorable percentage of the profits, so the size of your earnings is determined by your ability to run an efficient business.

If you're interested, we're interested in you! Write today to arrange a personal interview.

Please send personal qualifications.

MONTGOMERY WARD & CO.
J. E. BELDEN
1902 W. MICHIGAN
MIDLAND, TEXAS

BEAT

WACO

★ 1-AA District Champions

★ Bi-District Champions

★ Regional Champions

GOOD


LUCK

LYNXETTES

WIN

CINDERELLA BEAUTY SALON Ph. 659-3413			
CHALMERS PORTER			
CARL M. ARCHER	SPEARMAN REPORTER		
BILLY MILLER	TUCKER WATER WELL SERVICE	NORTH PLAINS TRUCK & IMP.	HANSFORD IMPLEMENT - John Deere
HANSFORD FEED YARDS	EXCEL BODY SHOP	EXCEL CHEVROLET OLDS	CLIFTON CATTLE CO. Waymon Etheredge

THIS ADVERTISEMENT SPONSORED BY THE FOLLOWING EXCELLENCE BOOSTERS

WHITE HOUSE LUMBER CO.	ANTHONY ELECTRIC	EQUITY	SPEARMAN JEWELRY
CATES MEN & BOYS WEAR	CUMMINGS REFRIGERATION	JUNIOR LUSBY CATS	GIFT BOX
	R. L. McCLELLAN & SONS, INC.	 J. L. Brock Agency Insurance 206 MAIN STREET — SPEARMAN, TEXAS	WARDROBE CLEANERS

R. L. McCLELLAN GRAIN CO., INC
THE GOLDEN THIMBLE



Pictured above from left to right bottom row Patricia Schnell, Sharalyn Schell, Teresa Beck, Rhonda Jones, Debi Daniel. Top row Liz Hohertz, Sheryl Evans, LeAnn Shieldknight; Anita Smith, Sheila Patterson, Linda Ricketts, Dalynn Brummett.

	GOLDEN SPREAD SALES COMPANY
P. A. LYON INSURANCE, AGENCY	DOUGLAS DUDS

MORE AND MORE SATISFIED CUSTOMERS ARE POINTING WITH PRIDE TO THEIR

Thrif-T Ideal Food Store



the home of THRIF-T-Prices

IDEAL

FOOD STORES

PRICES EFFECTIVE THRU SATURDAY, FEB. 27, 1971. LIMIT RIGHTS RESERVED. NONE SOLD TO DEALERS.

WE GIVE GUNN BROS. STAMPS

HURRY! ONLY ONE WEEK LEFT TO COMPLETE YOUR SET...

SHEFFIELD IMPORTED PORCELAIN CHINA
Cake Plate or Mug **99c** With \$3.00 Purch.

COSCO REG. \$12.50

Folding Table **99c** When You Have Purchased 4 Folding Chair At \$5.99 Ea.

BULK-PACK FISH VALUES

- BULK PACK COOKED Perch Fillets **69c** LB.
- BULK PACK Fish Sticks **69c** LB.
- BULK PACK Fish Cakes **49c** LB.



U.S.D.A. GRADE A, FRESH DRESSED

Whole Fryers... LB. 29c

FRESH AND LEAN, 3-LB. PKGS. OR MORE

Ground Beef..... LB. 59c

TASTY, LEAN, 7 TO 9-LB. AVG.

Smoked Picnic LB. 39c

CENTER CUT, LEAN AND TENDER

Pork Chops..... LB. 89c

PAN READY, SLICED Smoked Picnics..... **45c** LB.

COUNTRY STYLE Spare Ribs..... **69c** LB.

BAR-S BRAND Pork Sausage..... **49c** 1-LB. ROLL

OHSE. BY THE PIECE Braunschweiger..... **59c** LB.

MEADOWDALE Skinless Franks..... **58c** 12-OZ. PKG.

MEADOWDALE Sliced Bologna..... **59c** 12-OZ. PKG.

Soaps & Detergents AT LOW DISCOUNT PRICES



HEAVY DUTY Super Suds **49c** GIANT BOX

POWERFUL LIQUID Ajax Cleaner **53c** 28-OZ. BTL.



ROSE LOTION Liquid Vel **46c** 22-OZ. BTL.

ENZYME DETERGENT Active Punch **77c** GIANT

THRIF-T SAVINGS!

Baby Food **15c** FOR 4-OZ. JARS

NABISCO CRACKERS Honey Grahams.... **43c** 1-LB. BOX

MOTT'S Apple Sauce..... **39c** 25-OZ. CAN

FAULTLESS Spray Starch **63c** 22-OZ. CAN

FAULTLESS SPRAY Fabric Finish..... **69c** 20-OZ. CAN

COOK BOOK Contadina Sauces 3 **1.00** 15-OZ. CANS

Fresh Dairy AT LOW THRIF-T PRICES

SOFT CORN OIL Parkay Oleo..... **49c** 1-LB. CTN.

IDEAL Chocolate Milk..... **29c** QT. CTN.

FAIRMONT, ALL FLAVORS Dip and Snack..... **33c** 8-OZ. CTN.

CRACKER BARREL Kraft Cheese..... **69c** 10-OZ. STICK

THRIF-T SAVINGS!

IDEAL Cottage Cheese **37c** 24-OZ. CTN.

Quality Products AT LOW THRIF-T PRICES

STOKELY CUT Green Beans **5c** FOR 16-OZ. CANS

STOKELY WHOLE OR CREAM Golden Corn..... **5c** FOR 17-OZ. CANS

Health & Beauty Aids AT LOW DISCOUNT PRICES

REG. \$1.09 Bayer Aspirin **58c** BTL. OF 100

REG. \$1.59 MOUTHWASH Listerine..... **88c** 20-OZ. BTL.

THRIF-T SAVINGS!

Fruit Drinks **4c** FOR 46-OZ. CANS

WELCH'S CRANBERRY Cocktail Juice..... **49c** 32-OZ. BTL.

FISHER'S Spanish Peanuts... **39c** BAG

STRONGHEART Dog Food **10c** FOR 15-OZ. CANS

PUSS'N BOOTS Cat Food **6c** FOR 6 1/2-OZ. CANS

KEN-L-RATION BURGER Dog Food..... **1.69** 72-OZ. BAG

FAMOUS 3-Minute Oats..... **35c** 18-OZ. BOX

NESTLE'S Chocolate Chips... **49c** 12-OZ. PKG.

FOR MEATS, FISH OR FOWL A-1 Sauce..... **69c** 10-OZ. BTL.

Frozen Foods AT LOW DISCOUNT PRICES

ORE-IDA Tater Tots..... **29c** 1-LB. PKG.

WELCH'S Grape Juice **39c** 12-OZ. CAN

BIRDSEYE ORANGE Awake Drink..... **39c** 9-OZ. CAN

CHEF BOY-AR-DEE Cheese Pizza..... **75c** 12 1/2-OZ. SIZE

CHEF BOY-AR-DEE Sausage Pizza..... **85c** 13 1/4-OZ. SIZE

THRIF-T SAVINGS!

Hunt's Peaches **4c** FOR 30-OZ. CANS

MAMA BEAR Bradshaw Honey **39c** 12-OZ. BTL.

SKINNER'S Raisin Bran..... **43c** 14-OZ. BOX

WILDERNESS Pie Filling **3c** FOR 20-OZ. CANS

QUAKER Corn Meal **28c** 24-OZ. BOX

LARSEN VEG-ALL Mixed Vegetables **25c** 16-OZ. CAN

THRIF-T SAVINGS!

Cake Mixes **4c** FOR 19-OZ. BOXES

COLLEGE INN Chicken & Noodles **49c** 15-OZ. CAN

PINK BEAUTY Pink Salmon..... **59c** 6-OZ. CAN

CAMELOT Ice Cream **69c** HALF GAL.

MAIN DISH Lipton Dinners..... **69c** 11-OZ. PKG.

VAN CAMP'S Beanie Weenies.... **39c** 15-OZ. CAN

SAVE 20c ON 3-LB. CAN OF Folger's Coffee

WITH COUPON AT RIGHT Clip and Save!

VALUABLE COUPON GOOD FOR **20c OFF** ON PURCHASE OF 3-LB. CAN OF Folger's Coffee

LIMIT 1 COUPON. EXPIRES 2-27-71. IDEAL FOODS!

FRESH GELATIN SALADS..... CAMELOT ASSORTED 1-PINT CTN 39c

"TAKE-ME" SPECIALS!		MARTHA WHITE MIXES!	
WESTERN MAID Preserves Strawberry 2-Lb. Jar 58c	CAMELOT INSTANT Potatoes 15-Oz. Pkg. 48c	MARTHA WHITE'S QUICK AND EASY	
SKYLAND CHERRY Pie Filling 20-Oz. Can 47c	CAMELOT TOMATO Juice 46-Oz. Cans 3 For 1.00	• BIX MIX • CORN MUFFIN	
		• FLAP STAX • SPUD FLAKES	
		MIX OR MATCH 5 49c PKGS.	

THRIF-T SAVINGS!

STOKELY'S FINEST Tomato Catsup **29c** 20-OZ. BTL.

THRIF-T SAVINGS!

GILLETTE REG. PLATINUM PLUS **99c** 10 BLADES

THRIF-T SAVINGS!

RHODES FROZEN Dinner Rolls **3c** FOR PKGS. OF 24

CRISP, GREEN **LETTUCE** **2 FOR 33c** LARGE HEADS

WASHINGTON DELICIOUS APPLES **1.00** 4 LBS.

MEDIUM YELLOW ONIONS **29c** 3 lbs.

FRESH GREEN ONIONS **2 25c** bunches

WELCH'S CHILLED GRAPE JUICE **79c** 1/2-GAL.

BUNNY POP CORN **39c** 4-lb. bag

WE WANT ADVERTISERS
LOOK TO BUY IN THE
WANT ADS

Would like to do typing for you in my home. Phone 659-2404.
12T-4tc

INCOME TAX SERVICE-316 S. Bernice, Phone 659-3175 after 5 weekdays and weekends 11T-rtm

PLUMBING SERVICE-All Your Plumbing Needs. 659-2452. Bill Newingham.
13T-rtm

Barbed Wire Fence Construction. Corner guaranteed to hold. For estimate call Scroggs Bros. 435-4891, Peryton.
13T-rtm

Pet Grooming-Caroline Billingsley, 509 S. Endicott, Ph. 659-3401.
13T-4tc

Fiddle-Free Color TV by RCA



106 E. Kenneth

Boxwell Bros. Funeral Home and Flower Shop

Day-Night Phone 659-2212 Spearman, Texas

Gordon Cummings Refrigeration and Air Conditioning

Phone 659-2721
Phone 659-2441

White House Lumber Co.

Building & Plumbing Supplies

PHONE 659-2818

Hansford Lodge

1040

A.F. & A.M.

Regular Communication 2nd and 4th Monday of each month

Daniel Faries, W.M.
Cecil Batton, Secy.

SERVICES

Bulaco-Hodako Motorcycles, Sales & Service, The Cycle Shop, Stinnett, Texas. Phone 806-878-2298.
9S-rtm

BOOTS MADE at Woody's. Two boot makers, Woody's Boot Shop, Higgins, Texas.
49S-rtm

LOCK SERVICE-I will be out of town most of the time Monday through Friday for a time. If you have a lock which needs servicing or new keys, leave lock at the White House Lumber Co. and I will repair it on Saturday. Business or Residence Phone 2942, E.D. Mundy.
48S-4tc-1T

FREE SURGEON-Pruning, electrical or removal. Evergreen Trimming also, dormant spraying, Spading and rototilling. Call Bob Welch, 435-3438 Box 48, Farnsworth, Texas.
10S-9tc

PAINT SALE

Latex Wall Paint \$3.99
Latex House Paint \$4.95

PANELING SALE

FOXWORTH GALBRAITH LUMBER CO

LAND FOR SALE: South 1/3 of Section 154, Block 4T, Southwest of Spearman. Call or write George M. Whitson, 1706 Imperial Lane, Findlay, Ohio 45840.
13S-8tc

FOR SALE 3 BR Home Dressen St. Luxury home, Blodgett Dr. 2 BR, near school, nice 2 BR, corner lot
13T-rtm

Trailer park & small house 3 BR, 2 bath home, SW Spearman
4 Unit Apt. Zoned Retail Choice residential lots 4 1/2 acres E. Kenneth
Airport Lot on Pavement
EMMETT R. SANDERS
BROKER
659-2516
8T-rtm

Card Of Thanks

We wish to thank everyone who participated in life in the effort to rescue us from our stalled vehicle in the blizzard.
Rodney Strawn
Junior Medina

CARD OF THANKS

I would like to say "thank you" for all the visits, cards and flowers I received while in the hospital and since I have returned home.
Crocket Giles.

Help Wanted

WANTED: Two experienced, dependable persons, male or female to clean and maintain my office. After 6 p.m. work only, 2 to 3 times a week. Apply in person during my office hours. R. L. Kleeberger, M.D. 16 SW Court Street, Spearman, Texas.
13S-rtm

LEGAL NOTICE

THE STATE OF TEXAS COUNTY OF HANSFORD CITY OF SPEARMAN ORDINANCE #344

AN ORDINANCE REGULATING THE USE OF BICYCLES ON THE PUBLIC STREETS OF SPEARMAN, TEXAS, PROVIDING A PENALTY FOR VIOLATION OF THIS ORDINANCE, REPEALING CONFLICTING ORDINANCES, PROVIDING A SAVING CLAUSE AND DECLARING AN EMERGENCY.

Passed and approved this the 11th day of February, 1970, s/ Dr. D.E. Hackley Mayor

ATTEST: s/ Robert Ragsdale City Secretary
13T-14T-c

Tips for Winter Drivers

No winter driver wants to set out anticipating a life or death situation. It makes sense, however, to be prepared should a problem develop. Winter driving is fatiguing. Any winter driver worth his snow tires looks after his car and starts out with a full tank of gas and a bucket or box of sand in his trunk. People matter, too, and a good driver exhibits the same precautionary concern over his own well being and that of his passengers. A Thermo brand vacuum bottle or two filled with a sweetened hot beverage, such as hot chocolate, hot cider or hot lemonade, provides a source of instant energy and keeps everyone alert. This is not a time to be concerned with calories so forget the diet and be safe rather than sorry. If you are driving long distances, particularly with children, pack a picnic in a Thermo should storms or heavy traffic cause delays.
(NP Features)

FRANK PHILLIPS COLLEGE

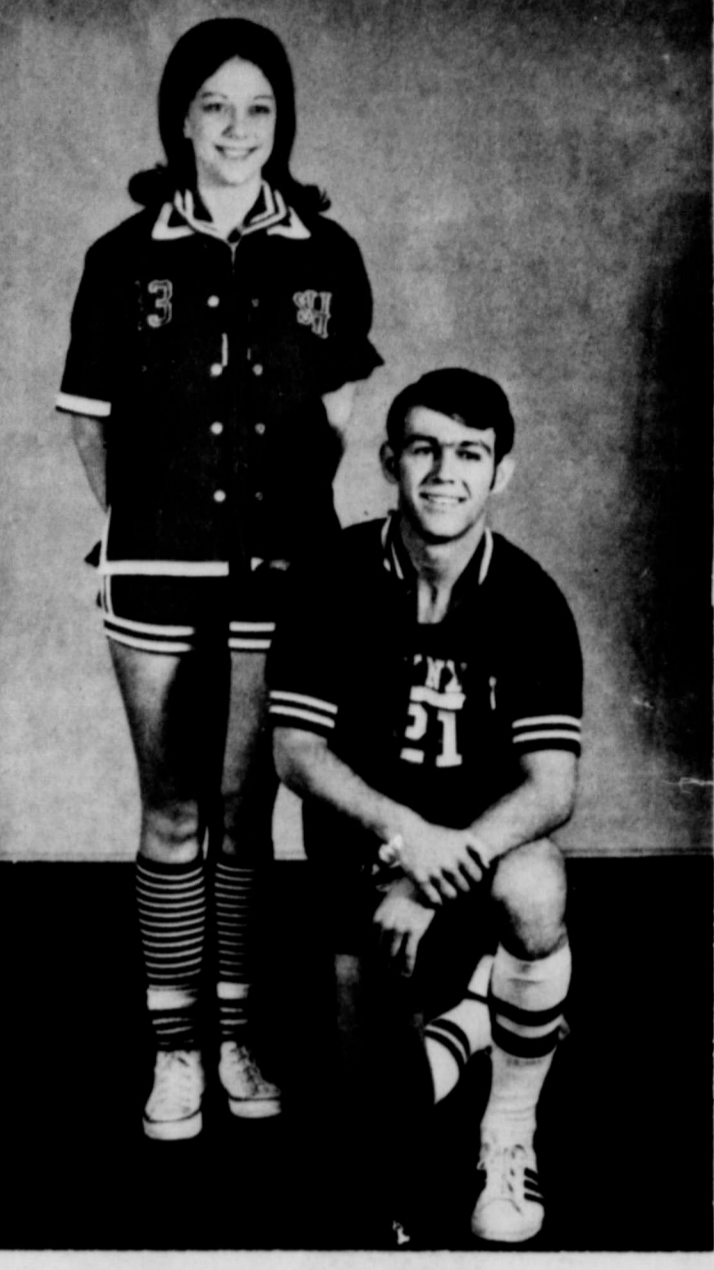
Borger, Texas

Fall Registration

Aug. 26th & 27th

DORMITORIES

MAXINE GOINS HALL
W.G. STEPHENS HALL



BASKETBALL ROYALTY

Senior forward Anita Smith, daughter of Mr. and Mrs. Preston Smith, and Tony Harper, Senior guard, son of Mr. and Mrs. Carroll Harper, were recently named Basketball King and Queen by members of the Lynx and Lynette squads. Pictures made by the newspaper photographer at the homecoming festivities were ruined in the dark room. This picture is printed by courtesy of C. and B Studio.



Sparks Laundry was temporarily closed during the blizzard of 71, and a large tractor was employed to shove the snow away from the front of the laundry.

TEXAS PRESS ASSOCIATION

Member Since 1970

THE SPEARMAN REPORTER

213 Main Spearman, Texas 79081 659-3434

Published Weekly at 213 Main Street, Spearman, Texas 79081

Owner-Publisher William M. Miller

Any erroneous reflection upon the character of any person or firm appearing in these columns will be gladly and promptly corrected upon being brought to the attention of the management.

SUBSCRIPTION RATE--Hansford, adjoining counties, \$7.00 yr. Other points in combination with The Hansford Plainsman, \$9.00 yr.

PUBLIC NOTICE

Proposed **CONSTITUTIONAL AMENDMENT**

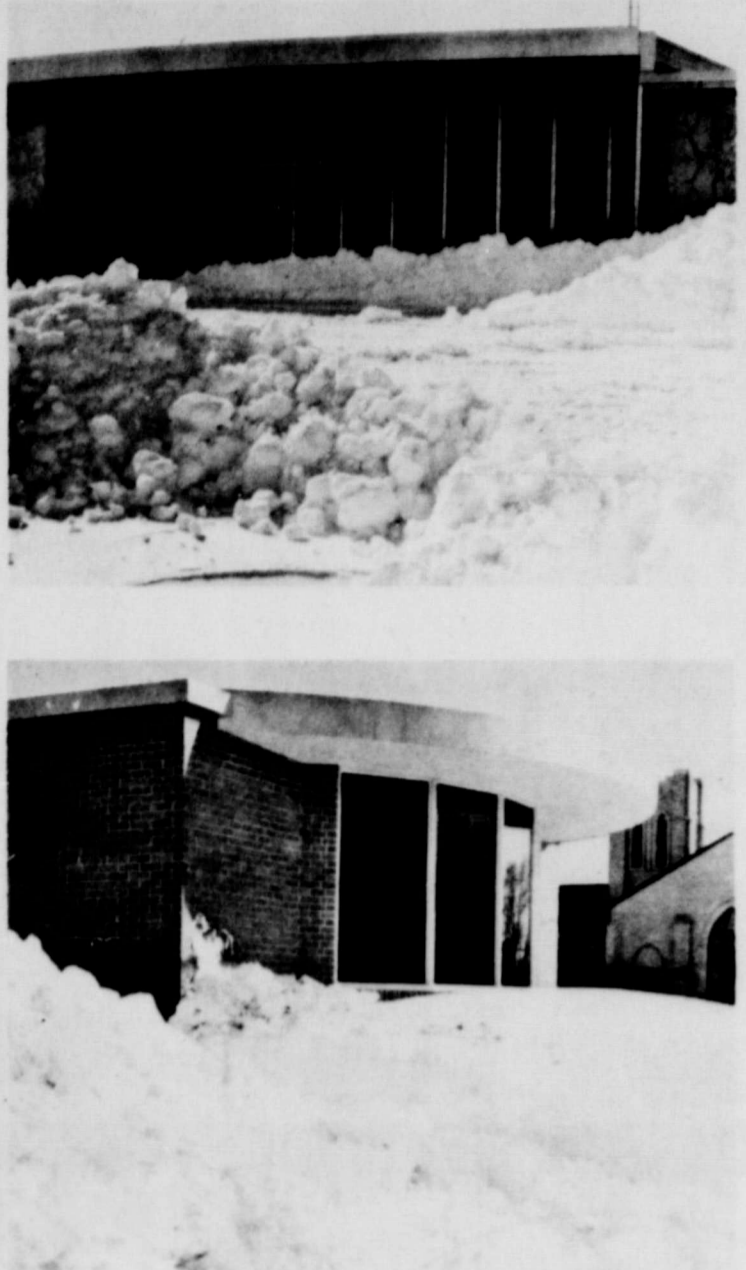
NUMBER TWO ON THE BALLOT (HJR 21)

Special Election May 18, 1971

BE IT RESOLVED BY THE LEGISLATURE OF THE STATE OF TEXAS:

Section 1. That Article XVII, Section 1, of the Texas Constitution, be amended to read as follows:

"Section 1. The Legislature by a vote of two-thirds of all the members elected to each House, to be elected by years and may on the journals, may propose amendments to the Constitution, to be voted upon by the qualified electors for members of the Legislature, which proposed amendments shall be duly published once a week for four weeks, commencing at least three months before an election, the time of which shall be specified by the Legislature, in one weekly newspaper of each county, in which such a newspaper may be published; and it shall be the duty of the several returning officers of said election, to open a poll for, and make returns to the Secretary of State,



Frozen Assets! That is what Banker C. A. Gibner said after he opened the bank Tuesday of this week.

Gruver Man Named State "Corn" Champion

Raymond Walker of Gruver, Texas has been named Texas State Champion in the second annual Funk's-G Project: 200 national corn growing contest. His winning average of 171.7 bushels per acre was made with High Oil 24382. More than 2,400 entries were submitted for the 1970 contest.

Project: 200 was established two years ago by the Producers of Funk's G-Hybrids. At that time, it was felt there was a need for more than just a high corn yield production contest.

To qualify for Project:200 growers were required to harvest a minimum of two acres with conventional harvesting equipment. This yield is then converted to number 2 corn in the typical on-the-farm measuring system.

Project:200 was designed to be educational as well as rewarding. Information regarding cultural practices was supplied by each grower who entered this contest. This information was carefully fed into a computer and the re-

sulting summary of valuable corn growing information has been made available to all corn growers.

As an example of the type of agronomic information obtained from Project:200 entries in 1970, it was found that slightly over 50 percent of the growers fall plowed their corn land. Most of the phosphate and potash used last year was applied as preplant. Two-thirds of the growers planted their corn between the first and tenth of May and the most popular row width was 38 inches. Thirty inch rows were second in popularity.

Eighty-four percent of the growers used a herbicide and 50 percent used insecticides. A majority sidedressed nitrogen with 101 to 125 pounds per acre as the most frequently used rate. Most of the growers cultivated and over 50 percent of the top producers harvested early. The average moisture at harvest fell between 20 and 21 percent, while the average harvest stand was between 24 and 25,000 plants per acre.

Raymond Walker is not an average corn grower, as his state Championship yield attests. He planted his contest corn on April 4 in 40 inch rows. His seeding rate was 28,000 per acre.

For fertilizer, he applied 245 pounds of 82-0-0 per acre as a preplant and 60 pounds of 82-0-0 as a sidedress. Walker cultivated his contest corn once and irrigated seven times. He applied 1 1/2 pounds of herbicide per acre.

At harvest on October 13, his plant population was 23,000 plants per acre. The moisture test on his corn was 16.76 percent. Walker harvested 3.1 acres to qualify for the contest.

In recognition of his State Championship yield, he will be presented with a beautiful plaque by Funk Bros. Seed Co. of Lubbock.

PUBLIC NOTICE

Proposed **CONSTITUTIONAL AMENDMENT**

NUMBER ONE ON THE BALLOT (SJR 15)

Special Election May 18, 1971

BE IT RESOLVED BY THE LEGISLATURE OF THE STATE OF TEXAS:

Section 1. That Article III, Section 24, of the Texas Constitution, be amended to read as follows:

"Section 24. (1) The State Ethics Commission is created as an agency of the State. The commission consists of nine members. Three members shall be appointed by the Chief Justice of the Supreme Court of Texas with the advice and consent of the Associate Justices serving on the Court, three members shall be appointed by the Presiding Judge of the Court of Criminal Appeals of Texas with the advice and consent of the other Judges serving on the Court, and three members shall be appointed by the Chairman of the State Judicial Qualifications Commission with the advice and consent of the other members of the commission. No more than two shall be attorneys engaged in the active practice of law. In addition thereto there shall be two ex officio members, one from the House of Representatives and one from the Senate to be elected on the first day of each Regular Session of the Legislature by a majority of the membership of each House for a term ending on the first day of the next Regular Session.

"(2) With the exception of the initial appointees, each member shall hold office for a term of six (6) years and until his successor is appointed and has qualified. In making the initial appointments, each appointing officer shall designate one (1) appointee to serve a term of two (2) years, one (1) appointee to serve a term of four (4) years, and one (1) appointee to serve a term of six (6) years. Interim vacancies shall be filled in the same manner as vacancies due to expiration of a full term, but only for the unexpired portion of the term in question. The membership shall designate one of its members to serve as chairman for a period of two (2) years.

"(3) The members of the commission shall be reimbursed for actual and necessary expenses incurred in the performance of their duties.

"(4) The commission shall recommend the compensation, per diem, and mileage allowance of members of the Legislature, and may recommend the salary of the Speaker of the House of Representatives and the Lieutenant Governor

REVIVAL SERVICES SET THIS WEEK AT THE FIRST BAPTIST CHURCH HAVE BEEN CANCELLED DUE TO THE SNOW STORM.

proved before that day by resolution of either House of the Legislature.

(b) All rates of compensation, mileage allowances or per diem rates and all changes and recommendations made by the commission thereof shall not take effect until approved section by section by resolution of both Houses of the Legislature.

"All votes on these resolutions or parts thereof shall show the individual votes in the respective journals of both Houses.

"(8) The commission shall investigate any alleged violation of any rule of ethics promulgated by it and report its findings to the appropriate State agency, official, legislative body, grand jury or district attorney.

"(9) Until otherwise provided by the commission, each member of the Legislature shall receive from the public treasury an annual salary of Four Thousand, Eight Hundred Dollars (\$4,800) per year and per diem not exceeding Twelve Dollars (\$12) per day for the first 120 days only of each Regular Session and for 30 days of each Special Session of the Legislature. No Regular Session shall be of longer duration than 140 days. In addition to the per diem, the members of each House shall be entitled to mileage in going to and returning from the seat of government, which mileage shall not exceed Two Dollars and fifty cents (\$2.50) for every twenty-five (25) mile distance to be computed by the nearest and most direct route of travel, from a table of distances prepared by the Comptroller to each county seat now or hereafter established; no member to be entitled to mileage for any extra session that may be called within one day after adjournment of the Regular or Called session.

"(10) The commission is further authorized to recommend to each Legislature changes which will update, improve, and effect economy in the legislative process."

Sec. 2. The foregoing constitutional amendment shall be submitted to a vote of the qualified electors of this State at an election to be held on the 18th day of May, 1971, at which election the ballots shall be printed to provide for voting for or against the proposition: "The constitutional amendment to create a State Ethics Commission empowered to set rules of ethics for members of the Legislature, State officers and legislative officers, to investigate violations thereof, and to recommend compensation for members of the Legislature and the Lieutenant Governor and to recommend improvements and economy in the legislative process."



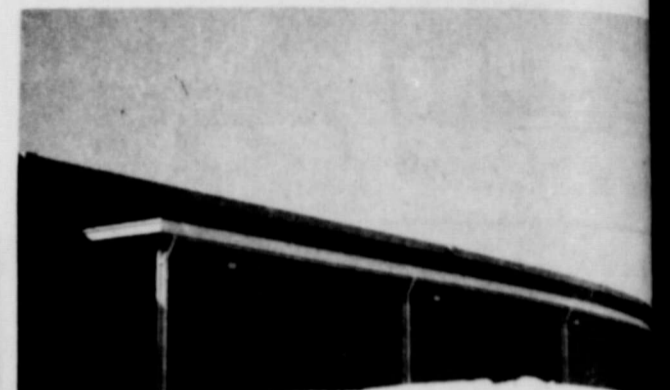
The Hansford Hospital remained open during the blizzard, and Andy Anderson, hospital manager, said we just were able to "handle mostly emergencies." They did a fine job, along with the highway, and local officers in the county.



THIS is an actual picture of Cates Men and Boys store, made Monday morning after the blizzard of "71." The snow reached to top of the awning on the East side. We were unable to get to the White House Lumber Company, to make a picture, due to the heavy snow drifts....



The mail must go through. Redge Robertson sorts mail on Tuesday of this week, and Postmaster Jacobs put it on his pickup Monday, and personally put up the mail. Our thanks to all of the postal employees.



This is what the front of the Spearman High School looks like Tuesday of this week... after a lot of snow had been moved.

A
complete
Sewing Center
to serve
you

SALE



★
Creative Stitching Kits.....25%off

★
Crochet Cottons, Mohair Yarns, Knitting Yarns, Afghan Kits, Tapestry Wool Nylon Yarns, Large selection of Knitting Yarns, Lace.

★
Imported, unpainted China, Paints patterns and Brushes.

★
Teach Yourself to Knit Kits.

★
Beeds, and Beeding, Belt Backing Bucilla Needle Point, instruction and idea Booklets, Flower Looms, Neck and Sleeve bands for Knit Shirts.

A COMPLETE SELECTION OF
BUTTONS, SEWING MACHINE
ACCESSORIES, INVISIBLE
ZIPPERS, REGULAR ZIPPERS

Sewing
threads.

8¢ 15¢
Assorted Threads 325 Yard Spools

THE GOLDEN THIMBLE

303 MAIN

Free Knitting Classes Will
Start March 9th 7: 30 P. M.

KNOW YOUR SPEARMAN FIREMEN...



Fireman for today is Vernon Thompson.

He joined the Spearman volunteer fire department in 1961 and has served with the department for eight years.

Vernon has been employed by Community Public Service Company for 12 years. He worked on a line crew for the company in Alamogordo New Mexico and also in Perryton.

Thompson is presently a class A Service man for the company in Spearman.

He was born and raised in Gorman, Texas and joined the Air Force at the age of 17. He served 4 years in the Air Force.

Vernon and his wife Shirley are parents of three children: a girl "Brenda" age 15, a boy "Galen" age 13 and a daughter Christine age 12.

Their church affiliation is the Primitive Baptist Church.

Thompson's hobbies are hunting, fishing and family camping.

Massad's

DOWNTOWN SPEARMAN