

The Spearman Reporter

VOLUME 60 NO. 7

THE SPEARMAN REPORTER, Hansford County, Texas 79081

THURSDAY, JANUARY 9, 1969

MARKETS
Wheat \$1.30
Milo \$1.70
Soybeans \$2.25
Oats \$.70
Corn \$1.08
Barley \$.85

Open House To Be Sunday At Hansford County Library

Lula Grace Erdman Here For Open House

Members of the Board of Directors of Hansford County Library will serve as hosts Sunday January 12 at 2 P. M. at open house for the public to view the facilities of the recently occupied library at the corner of Main & Hancock streets.

It is hoped that a large number of people will visit Sunday afternoon at 2 P. M. to see what has been done inside the building and to view the spaciousness of the new facility. Many have already visited and made use of the library since it has been remodeled and occupied a few months ago.

The idea of the first library in Spearman was conceived by a few members of the Twentieth Century Club in the early 1930s. It was organized and housed in the City Hall with Mrs. Pearl Reed as the librarian. In the 1950s it was moved to three small rooms in the basement of the Courthouse. Mrs. Gladys Richardson has been librarian since that time.

In November of 1967, through donations from interested persons, the present building was purchased by the Library Board at a cost of \$31,000. Some \$14,000 of the debt is still owing. Some remodeling was necessary in order to fit the building for use as a library. From the beginning, the maintenance of the library and salaries have been provided for through financial help from the Lions Club, the City and in the budget of Hansford County.

The twentieth Century Club has continued to be very active in its support of the library, through the gift of books in addition to sponsoring many bake sales, stew dinners, art auctions, etc. Each Saturday from 1-5 P. M. the club sponsors a rummage sale in the rooms located at the rear of the library.

Spearman Art Class members are now in the process of remodeling the upstairs and through proceeds from an art auction have put in ceilings, lights and heaters.

The new building has more than tripled the actual library space, provided a comfortable reading area, a spacious office and work center for the librarians. The children's section contains reading tables, low shelves for small readers and plenty of room for the addition of books to maintain an up-to-date library.

When the library building can be made free of debt, other features of the completed facility will include a County Museum, Community meeting room with kitchen facilities, an Art Gallery, as well as conference rooms, bindery, etc.

The facilities are adequate for the present circulation and allows for future growth in order to maintain current literature, periodicals and reference materials which are needed by a progressive community.

Present for the open-house Sunday afternoon at 2 P. M. will be Lula Grace Erdman, well known Amarillo author and publisher, Dr. Marvin Hirsch, president of the Amarillo Library Friends group, and Miss Alice Greene, head librarian for Amarillo library.

Friends of the Library are those individuals in any community who have a common concern for the welfare of libraries in general, and their own library in particular.

They see the library's potential as a dynamic agency for the continuing education of all people young and old. They believe that the quality of a library is a revealing image of the concerns and goals of the community which supports it. AND, they are willing to support this belief by working to improve their library.

JONES DEVELOPES SOUND CONSERVATION PROGRAM
Rex Jones has assisted the sisters of St. Josephs in applying a well round conservation program under the Great Plains Conservation Program. During the past three years he has established a sound irrigation system through the use of land leveling, installation of pipeline, and good management of irrigation water.



Loula Grace Erdman, well known area author, will be in Spearman at the open house ceremonies for the new Hansford County Library.

The public is invited to attend the 2 P. M. ceremony January 12, when several of Miss Erdman's books will be on display for sale. The author is giving her percentage of the sale to Hansford County Library building fund.

Miss Erdman, a Missourian by birth and rearing, is a Texan by adoption. She came directly from the University of Wisconsin to teach, first in Amarillo public schools, later at West Texas State University in Canyon where she is now an instructor in creative writing.

She began writing as a hobby. Her first novel, THE YEARS OF THE LOCUST, which had a Missouri setting, won the Dodd, Mead-Redbook \$10,000 prize in 1947. Her first Texas book, THE EDGE OF TIME, dealt with homesteaders of the Texas Panhandle. Other novels have been LONELY PASSAGE, THREE AT THE WEDDING, THE FAR JOURNEY, THE SHORT SUMMER and MANY A VOYAGE. Miss Erdman has also written several popular novels for young people as well as many short stories and novelettes for magazines.

Successfully combining the careers of writer, teacher, lecturer and homemaker, Loula Grace Erdman has always been able to find time to entertain, to make new friends and to listen to the stories of the last of the Texas pioneers, many of whom are still living.

Funeral services for Mrs. Lelia Estelle Nash, 81, a resident here the past six months, were held January 5 at 3 p. m. in the First Methodist Church, Wheeler, Texas. She was a native of that city.

The Rev. Wilber Gaede, pastor, officiated and was assisted by Rev. Wesley Daniel of the Spearman Methodist Church and the Rev. Amos R. Meador, pastor of the Nazarene Church in Borger. Burial was in Wheeler Cemetery.

Mrs. Nash died Saturday morning at Northwest Texas Hospital in Amarillo after an illness of two months. Born in Pocahontas, Ark., she married Charles B. Nash in 1906 at Erant. He died in 1925. She moved to Spearman six months ago from Wheeler and re-



MRS. LELIA ESTELLE NASH

Mrs Nash Succumbs

Funeral services for Mrs. Lelia Estelle Nash, 81, a resident here the past six months, were held January 5 at 3 p. m. in the First Methodist Church, Wheeler, Texas. She was a native of that city.

The Rev. Wilber Gaede, pastor, officiated and was assisted by Rev. Wesley Daniel of the Spearman Methodist Church and the Rev. Amos R. Meador, pastor of the Nazarene Church in Borger. Burial was in Wheeler Cemetery.

Mrs. Nash died Saturday morning at Northwest Texas Hospital in Amarillo after an illness of two months. Born in Pocahontas, Ark., she married Charles B. Nash in 1906 at Erant. He died in 1925. She moved to Spearman six months ago from Wheeler and re-

Lynx Teams To Gruver

Spearman's Jynxing Lynx teams will travel to Gruver Friday night, and play their cross-county rivals, the Gruver Greyhounds in a double-header affair. The Hounds are coming along fast, and big Mike McLain paced the Hounds to a rather convincing victory over Texhoma early this week.

The girls game will begin at 7 p. m. and the boys game at 8 p. m. Friday night, in the Gruver High School gymnasium. The next home game will be the Lynxettes vs. Texhoma, January 18 at 7 p. m.

Tony Hester returned Saturday from a weeks visit with Rev. and Mrs. Leslie Pugh. He also visited with Elye Hamilton in Houston.



PREPARING FOR OPEN HOUSE at the new Hansford Library are members of the board, left to right: Mrs. Tom Etter, Mrs. Dick Kilgore, Mrs. Frank Davis and Mrs. Bill Massie. Members met Tuesday to set up the display of Erdman books which will be for sale during festivities scheduled for 2 P. M. Sunday January 12. Proceeds from book sales will be presented to the Library building fund.

Eagles Win From Lynx

Canyon's high flying basketball teams made a clean sweep of it at Canyon Tuesday night, when they defeated the Spearman girls 53-46, and the Spearman boys 71-61.

Marsha Shieldknight displayed some of the finest long-distance shots in history, as she hit one from 30 feet out, and one from 40 feet out. The Lynxettes caught the Canyon team at 18-3, 29-29, and the half-time score was 31-29, in favor of Canyon. But, the Spearman guards seems to go to pieces after the half, as they let the ball on several turnovers and the Spearman forwards couldn't get a re-bound the entire second half. The Canyon girls not only out-shot the Lynxettes, but they completely dominated the back-boards. Big Mike Davis led the

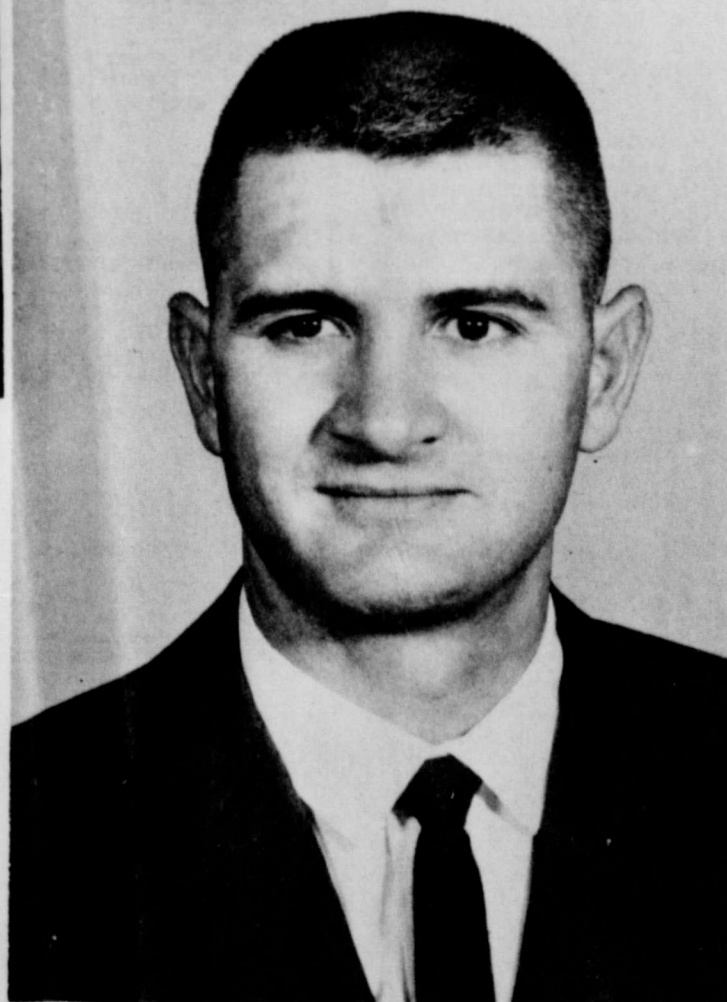
Lynx scoring for the night, with 18 points, followed by Joe Hutchinson, who had his best night of the year, with 15. Although the Lynx trailed by only 5 points at the half, 33-28, they never did catch the Eagles. Both the Lynx and Lynxettes lost their ball games in the third quarters, when they came back from the half-time extremely cold!

GIRLS - at Canyon

NAME	POINTS
Shuffelt	15
Shieldknight	28
White	2
Patterson	2

BOYS SCORE - CANYON

Davis	18
Scheil	10
Mozier	4
Shaver	11
Vanderburg	1
Hutchison	15



Weese Is Coach Of The Year

Spearman's fine girls basketball coach has been named "Basketball Coach of the Year." The following letter was received by the Spearman school system December 31st.

Mr. Dean Weese
Spearman High School
Spearman, Texas

Dear Mr. Weese:
On behalf of the Amarillo Y's Men's Club and Chamber of Commerce, I want to pass along our sincere congratulations on your be-

ing named by the Hall of Fame Selection Committee as the recipient of the "Basketball Coach of the Year Award."

All of us will be looking forward to meeting and visiting with you at this year's annual presentation of awards of the Panhandle Sports Hall of Fame on Sunday, February 2, at 2 P. M., held at the new Amarillo Civic Center Auditorium.

Sincerely,
/s/ John Heetland
Committee Chairman

Bank Assets, Deposits Reach New Record High

Banks deposits and loans in Spearman were at an all-time high at the close of business December 31, 1968 according to the Statement of Condition released from the First State Bank.

Deposits at the close of business Dec. 31 were listed as \$12,058,278.67, up nearly half a million dollars over the October statement. This compares with deposits at the end of 1967 which were \$11,036,965.87 and at the end of 1966 which were \$10,203,924.15.

The comparison shows that citizens of the Spearman area went into 1969 with the

best financial record in history, surpassing last year's record high by slightly over \$1 million. The accumulated wealth on hand in the First State Bank is attributed as a general rule to good harvests, but banking officials say that this year's deposits are the results of "just good general county-wide business."

Also higher than the past two year's figures was the loans and discounts which total at the end of 1968 \$7,782,496.16 as compared

to 1967 \$7,281,719.28 and in 1966 \$6,970,675.41. The record high loans came primarily from the abundance of cattle now grazing the plentiful wheat pasture throughout the county.

The First State Bank is entering its 52nd year of service to area customers.

Locke Services Today

W. W. Locke, 78, died midnight Tuesday January 7 in North Plains hospital in Borger where he had been a patient for the past month. Funeral services will be held (today) Thursday January 9 from the Wesley Methodist Church in Borger with burial in Holt cemetery.

A retired truck farmer, Mr. Locke had lived in the Muleshoe community many years. He had been a resident of Borger for the past 10 years.

Survivors include his wife of the Borger home, a daughter Emma Lou Douglas of Borger; 3 grandchildren; 4 sisters, Mrs. Delon Kirk of Spearman, Mrs. C. L. McKinley of San Angelo, Mrs. Julia McBryer of Waco and Mrs. L. D. Tipton of Plainview; one brother, Frank M. Locke of Waco.

Ann Thom Has Paintings On Display Here

Mrs. Ann Thom of Gruver is the artist for January whose exhibit is on display at the Beedy Furniture gallery showroom on the mall at Plains Shopping Center.

Mrs. Thom is the wife of Bob Thom, a director of Gruver State Bank. She is an accomplished artist and teacher. The public is invited to visit the exhibit during the month of January.

NOTICE

RUMMAGE SALE--The Thrift Shop will re-open Saturday afternoon at 1-5 P. M. and be open each Saturday at this time. In Rooms back of Library bldg. on main street. New merchandise is needed, especially mens clothes and winter clothing. Proceeds to Library Building Fund. Sponsored by friends of the Library.



Those admitted to Hansford Hospital are: Ruth Lee, Bertie McNabb, Emma Bruce, Dillard Keim, Claude Sloan, Mary Skinner, Jenna V. Ownbey, Ellen Babbs, Annabelle Parrish, Maude Mathews, Marvin Anderson, Ella Cypert, Bambi Burger, W. M. Lieb, Marg Green, Sharon Mauldin, Chester Sorenson, Tisha Pearch, Eddie Faye Miller, Joy Day, Lilly Sloan, Gladys Watson, Louis Reyes, Irene Barker.

Dismissed were: Loraine Davidson, Laura Ballard, Valdense Mabery, Thelma Hart, Mattie Davis, Sandra Collier, Ed Vernon, Maurine Eting, Linda Milam, Edna Shead, Herb Howe.

Mr. and Mrs. L. J. Head of Denver visited in the home of his brother and family, Mr. and Mrs. Garland Head and children, over the past weekend.

Tony Hester spent the past week in Houston visiting with friends and doing some sight seeing.

Mrs. Bruce sheets visited with her daughter and husband Mr. and Mrs. Jeff Noell, in Dallas during the holidays.

BUILDING ACTIVITY SLOW IN SPEARMAN

Building permits totaled \$201,600.00 in Spearman during the past year, one of the smallest yearly volumes recorded in recent years.

Residential building was \$48,000.00 for two new houses and commercial building totaled \$105,000.00. There was \$48,600.00 in additions and remodeling during the year.

The rising cost of materials, combined with the effects of the nationwide "tight money" situation undoubtedly had its effect upon the construction trade during the year.

The largest construction project during the year was the two new apartment buildings located on Cooke street. The buildings, constructed & owned by Roscoe Nelson, called for a building permit of \$43,000.00 and was applied for January 29, 1968. The buildings were completed in the early summer.

The next largest construction was the addition to the Church of Christ on Haney St. The building called for a \$37,000.00 permit.

Another large commercial permit was taken out by Conoco Oil Company for the new station located at the corner of Dillon & Collard Streets. Completed in Dec-

ember the building called for a \$35,000.00 permit.

Cantrell Flying Service had a \$10,000 permit for a new repair shop at the airport; Delozier Welding shop was issued a \$12,000 permit; Cut Rate Grocery had one issued for \$4,500 for a warehouse and Raymond Sparks took one out for \$500 addition to his laundry.

In six months of the past year, no permits at all were issued. Most of the building permits were issued during the first 3 months and the last 3 months of 1968.

Guests in the home of Jenna V. Ownbey, Jane and Bill over the Christmas holidays included: Mrs. Earl Archer & Kimmer, Mr. and Mrs. Craig Hutchinson, and Mrs. Lena Stephenson all of Spearman; Mr. and Mrs. Jim Ownbey & Timmie, Bryan A&M; Mr. and Mrs. Jim Archer & family from El Paso; Donna & James Ownbey Austin UT; Roy Reese, Austin UT; Mr. and Mrs. Larry Butt, Canyon WT; Coach Dick Monroe, Calgary, Alberta; L. L. Block, Amarillo; and Dr. Sam Albright, Wichita, Kansas.

Junior High Boys And Girls Win Gruver Tournament!

The Spearman Jr. High Boys and Girls, under Coaches Perry Coursey and Miss Bussard, sizzled to the finals in the big Jr. High Tournament at Gruver over the weekend, and won both the boys and girls championships.

The Spearman boys defeated Texhoma, 42-23, with Beedy popping in 20 points to lead the Lynx scoring. In their semi-final game against Fritch

the Kittens won 46-17 with Beedy and Schell dropping in 15 points apiece. The final game against the Gruver Pups was a toughie, and the Kittens won by 3 points, 27-24, with the game neck-and-neck until the final whistle. Beedy scored 10 points, with Schell making 9 to win the championship game.

The Spearman girls, about the finest team in the state, waltzed through

this tourney rather easily. Teresa Beck burned the nets for 31 points in the Fritch-Spearman game, to lead the Kittens to a 60-22 semi-final win. In the finals, the Spearman girls defeated Gruver 27-17, with Shieldknight hitting 11, Rickettes 10, and Beck 6. Beck's 31 point performance in the semi-final game, was one of the highest of the year for Jr. basketball.

Cummings
 Refrigeration
 And Air
 Conditioning
 Phone 659-2721
 Phone 659-2441

NOTICE--WE DON'T GUESS WE KNOW auto repairing. Boyd's Engine Service. 102 Kenneth. 659-3613 6T-rtm

PROTECT YOUR TREES against disease and insects. Dormant Spray, Top and Shape, Removal, Tree Surgeon, Bob Welsh, Box 47, Farnsworth, Texas. 79033. 6S-2tp 11S-2tp

Gordon Cummings
 For Your

Insurance Needs
 See Your
Farm Bureau
 TOMMY GOOCH
 Phone 659-3131
 Spearman, Texas

KNITTING LESSONS Beginning Tuesday, January 21 9:30 A.M. Once a week for about 6 weeks. For more information write or call the **NEEDLEWORK NOOK WAKA** 7T-4tc



Let Me See ... by Sybil

The first week in the new year is probably the most dreadful one of the whole year. People are tired and worn out after the holidays, Christmas bills are due, income tax time is just around the corner. Merchants at this time of year don't seem too anxious to wait on their customers. In fact they cringe each time they see one coming in. Its all because they are taking inventory. Thats a most distasteful job, but its sorta like death and taxes. Maybe death and taxes are inevitable, but death doesn't get worse every time Congress meets. In taking inventory of the past year, I couldn't help but dwell on the idea of just how false everything seems to be. Have you really ever considered just what a pseudo world we do live in? You simply can't trust man or beast anymore it seems.

How about the new stuff you see on the grocery shelves that looks, smells and tastes like crisp bacon--the poor hog didn't have anything to do with it, its man made. The powdered stuff you put in your coffee does not come from the cow even though it does taste like cream. Or the powdered drink you mix for breakfast--it didn't grow on an orange tree. Even the lowly little silk worm and the humble sheep are being pushed aside for beautiful materials made by man to look and feel exactly like expensive silks and woolsens.

Take that beautiful blonde most men admire as she slithers down the street. I bet if you could examine her most closely you would find most of her was FALSE--false eyelashes, false fingernails, false hair etc. With so much make-up on the market to make the gals look more beautiful, nobody can tell for sure! But most of them still look 42-in-the daylight, 31-in the lamplight - and 25-in a blonde wig and the spotlight.

You can't even trust your clothing manufacturers anymore when it comes to the reason most women buy the more expensive line of clothing is because the designer sizes them smaller! That just simply means that the size 12 I bought the other day is really a 16. (Its the truth that hurts.)

Its got to where you really can't trust your doctor either. He's got you pegged from the beginning as being among those millions of Americans who suffer from some psychosomatic illness and chances are he'll dispense to you a sugar pill. The strange thing is -- the pill usually does the job too. Take this little old friend of mine, she is way past her middle years, and she worries all day long that she probably won't sleep that night so at the end of each day her nurse brings her a "sleeping" pill which immediately transports her to dream land. It really is a sugar pill! I guess it all boils down to the simple fact--what you DON'T know can't hurt you.

I THINK I'll just chuck it all and apply for a job on the St. Louis BUGLE, published by Don Fanetti who bills himself in the masthead as editor, publisher and janitor. Calling his 12-page tabloid a "Journalistic Monarch" Fanetti says he's been spoofing the public for 20 years and they love it. In a desperate alternative to going to work, he started the Bugle right after World War II and says its "been more fun than a barrel of monkeys."

Under a headline of "City Parks Without Toilets, Boat Lakes Without Boats" Fanetti writes this editorial: "Nobody seems to mind about the johnny doors being locked until someone gets an urgent call from nature. Then the picture changes to terror and panic... the doors are locked and nobody's got the key. While we claim to be a civilized race, there's only one thing left to do... And on a warm day the lake at Carondelet Park will rise an inch or two unless somebody can locate the magic key... Other nuggets contained in the Bugle include: Opinions expressed in this periodical are not necessarily condoned or even understood by the editorial staff. We don't like narrow-minded folks who think words can be spelled only one way. This newspaper is a member of the Assassinated Press. Paying close attention to what you read in this newspaper will not benefit you in the slightest. Reading the Bugle every week helps you to become better misinformed. The publisher of this newspaper is different than most (he's sane enough to know he is nuts.) The Bugle folded 4 times the long way, is perfect for killing cockroaches, mosquitos and flies. The front page also contains an advise column on problems of life, love, learning... given free of charge by Iben Truederopes. Typical question and answer: Dear Iben: I am having some difficulty in my English class. How would you punctuate the following sentence: "Entirely naked the buxom blonde ignoring the crowd ran naked down the road?" Signed Al Glasser. Dear Al Glasser: "I'd make a dash after the blonde."

FOR SALE

FOR SALE--3 bedroom, 903 S. Townsend, available in June, Contact Dr. R.H. Barker, 2408 Pruetz, Austin, Texas 78703. 6T-16tc

Must pick up Baldwin spinet piano and organ, will refine to responsible party; also several good used pianos. Write Brier-Hale Music, 424 N. Kansas, Liberal, Kansas or call 316-624-5149. 6T-6tc

RESIDENCE FOR SALE--due to my wife's health, we must live with our children in La. We are offering our residence for sale. Located at 107 Barkley St. in choice neighborhood. For information write J. H. Nichols, 1441 Chateau Circle N., Lake Charles, La. 70601 2-rtm-nc

BEAUTIFUL PICTURE FRAME MOLDING We frame any size picture or painting. C & B Studio, Spearman. 34-rtm

GOOD USED combination washer-dryer for sale. Phone 659-3464. 7T-2tp

FOR SALE-- 2 bedroom house on 2 lots. 34 N. Snider. Call 659-2750. 7T-2tc

CATERING & CAKES, Mrs. Bobby Gruver, 733-2514, Gruver. 48T-rtm-3tp

RENTALS

FOR RENT--Furnished, clean, air conditioned. TV's available. Downtown Apts. Phone 2269. 10T-rtm

FOR RENT--Furnished apt. 606 S. Bernice St. Telephone 659-2652. 2-rtm

FOR RENT--1 bedroom trailer house. \$50 month, \$15 week, Gas & Water furnished. Phone 3517. 6S-rtnc

WANTED--Garage and yard cleanup for spring cleaning. Carl Singamon, 659-2826, 310 South Hoskins. 7T-rtm

WHEAT PASTURE WANTED--100 to 200 calves. Ted Harbour, Ph. 435-4289. Perryton. 6S-4tp

CARD OF THANKS

We take this opportunity to express our sincere thanks to all our Spearman friends who expressed in so many ways your sympathy to us at the loss of our loved one. Your kind deeds will be forever remembered.

Families of Harold Nash, Shelton Nash, Wm. E. Pettit

TAX MAN SAM SEZ

The Statistics of Income indicate that many taxpayers who are over 65 years of age do not claim the extra exemption allowed them for age. Occasionally you hear of the little lady who didn't want the computer to know that she was that old--but this can't be the real answer. A good "guesstimate" would be most of us feel so young (except when we want to fuss about feeling so old) that we forget all about being over 65, especially when we are in a rush to file our income tax return. In case you forgot about having slipped past the 65 year mark last year, the Internal Revenue Service will still give you credit, adjust your tax bill, and send you a refund, if you tell them about it. (Simply send IRS a 1040X). On that 1968 tax return, take a memory pill and remember your age and go ahead and fill out your return.

Fashion Facts For Men and Boys

The yearly inventory has been taken and new merchandise is arriving at Cates Mens and Boys Wear. On my last visit, I noticed a number of new additions to the Cates family of new merchandise. Some mighty attractive new gloves are now on hand for the comfort of your hand. The turtle and mock turtle neck sweaters are retaining their popularity and you'll find all sizes and colors available. That rack of special priced corduroy jackets is dwindling fast. Spring is certainly not too far away and, as the season approaches, you'll find more and more of that in-style clothing for the well dressed men and boys. You can get a pretty good preview right now if you take the time to visit Cates Mens & Boys Wear.



221 Main, Spearman

strong united effort. In his proclamation, Governor Connally pointed out that agriculture is vital to the economic well-being of this State and Nation. About 40 percent of all Texans depend upon agriculture, either directly or indirectly, for their livelihood, he said. The Governor praised the productive efficiency of today's farmer, explaining that Americans enjoy the highest standard of living the world has ever known, in part, because of it. The average U. S. family spends less than one-fifth of its income for food, he said. A statewide membership report meeting will be held Jan. 22 in Austin in conjunction with the TFB's legislative conference. County presidents, membership and legislative committee chairmen are invited to attend.

Hutchinson Co. Livestock Show
 January 10-11

More than 120 head of stock will be exhibited Friday and Saturday, January 10, 11, 1969, as the Hutchinson County Junior Livestock Show and Sales gets underway at the Aluminum Dome Coliseum. About 100 youngsters are expected to the Show. Judging is scheduled to begin Friday afternoon at 3:00 p. m. for the Lambs and Barrows. Mr. L. M. Hargraves, Texas Tech, Lubbock, will serve as judge. The Steers will be judged Saturday morning beginning at 10:00 a. m. with Mr. Bill Struck, Clinton, Oklahoma serving as judge. Minimum bids during the sale will be 35 cents per pound for steers, 30 cents for hogs and 40 cents for sheep. Committee members must sell around 23 steers, 62 hogs and 5 sheep, and commitments for most of these animals have already been received. County Agent Charles Beedy reported. Show officials said that persons interested in viewing the activities need not

worry about the current cold weather since the entire show will be conducted inside the Dome. Final grooming procedures will be performed late Thursday and early Friday, and show authorities have predicted one of the finest shows in years. The show, held each year for Hutchinson County's 4-H and FFA representatives, is one of the biggest highlights for Junior Livestock Showmen. Besides the show and sale, another highlight of this year's activities will be a barbecue to be held at 6:30 p. m. Saturday in the Bunnivista Cafeteria. Cost will be \$4 per plate, but all exhibitors will be admitted free. Barbecue officials said that the \$4 will not only go to pay for the beef to be eaten Saturday but that much of the money will go toward offsetting the loss on animals sold below the average price and toward future 4-H and FFA projects. Tickets are available from all members of the Board of Directors of the Livestock Show and are at the office of the County Agent.

GI Insurance Dividends To Be Paid On Policies

More than 200,000 Texas World War I and World War II veterans holding GI insurance policies will receive \$12,192,200 in dividends during 1969, Jack Coker, Manager of the Veterans Administration Regional Office in Waco announced today. Beginning January 1, dividends will be paid on the anniversary dates of the policies, Coker said. Nationally, VA will pay out \$236 million in dividends in 1969, to approximately 4,250,000 veterans holding National Service Life Insurance (NSLI) and United States Government Life Insurance (USGLI) policies. This is \$13 million more than the 1968 dividend payment of \$223 million, Coker explained. The VA Regional Office Manager said that the 192-, 308 World War II veterans

ROTARY DRILLING CREWMAN

Jobs located with crews in Spearman, Perryton and Pampa, Texas.

Drillers ... \$3.24 *\$3.79
 Derrickmen \$2.68 *\$3.23
 Motormen \$2.48 *\$3.03
 Floormen \$2.36 *\$2.91

30c to \$1.00 per hour Bottom Hole and Performance Bonus.

*Includes an average Bottom Hole & Performance Bonus of 55c per hour paid for completion of well.

\$10.00-\$15.00 Per Day paid to Driver of Crew to and from Rig.

Will accept some inexperienced men willing to work and learn.

CONTACT PERSONNEL DIRECTOR

Baker & Taylor Drilling Co.

CALL COLLECT (AC/806) 659-2504 Spearman, Texas



PANELING IS PERMANENT!



Real wood walls save you time and money on patching, painting, and repainting. Patented baked-in the wood finish will not crack, chip, or peel. Your walls have permanent beauty.

4X8 SHEET \$3.88 WHITE HOUSE LUMBER CO.

BAKE SALE
 Sponsored by the **SHS SPEECH DEPT.**
AT
 Cut Rate Grocery
8:00 AM
 until all goods sold
Saturday, Jan.11



THE SPEARMAN REPORTER
 P. O. Box 458, 213 Main Street, Spearman, Texas 79081

William M. Miller, Editor & Publisher
 Successor to the Hansford Headlight, Published Thursday each week in Spearman, Texas 79081

THE SPEARMAN REPORTER
 Published every Thursday at Spearman, Texas. Second class postage paid at Spearman Post Office, 79081

Any erroneous reflection upon the character of any person or firm appearing in these columns will be gladly and promptly corrected upon being brought to the attention of the management.

SUBSCRIPTION RATE--Hansford, adjoining counties \$7.00 yr. Other points, \$5.00 or in combination with The Hansford Plainsman, \$9.00 yr.

Advertising rates on request.

in Texas who hold NSLI policies will receive \$11,254,800 in dividends in 1969. Nationally, NSLI dividends in 1969 will total \$218 million, with payments averaging about \$53 to 4,100,000 World War II veterans. The dividend to be paid the 8,487 World War I veterans in Texas who hold USGLI policies will total \$847,400. Some 185,000 World War I veterans nationally will receive \$18 million in 1969 USGLI dividends, with payments averaging \$97, up \$18 over the 1968 average payment of \$79. Increased interest earnings on government life insurance funds made possible the higher 1969 dividends, Coker said.

Nationally, NSLI dividends in 1969 will total \$218 million, with payments averaging about \$53 to 4,100,000 World War II veterans. The dividend to be paid the 8,487 World War I veterans in Texas who hold USGLI policies will total \$847,400. Some 185,000 World War I veterans nationally will receive \$18 million in 1969 USGLI dividends, with payments averaging \$97, up \$18 over the 1968 average payment of \$79. Increased interest earnings on government life insurance funds made possible the higher 1969 dividends, Coker said.

Mr. and Mrs. Raymond Kirk joined the family of Raymond's sister, Mr. and Mrs. Charles Stowell of Pampa and their son and family, Capt. and Mrs. Dibrell Stowell and baby, at Stuphens in Berger last Wednesday evening for dinner and a belated Christmas gift exchange. Capt. Stowell has been transferred from the Philippines to Salt Lake City recently.

THREE GREAT GASOLINES

Good Gulf
 No-nox
 Diesel Fuel

WASHING GREASING TIRE BALANCING ROAD SERVICE

Gulf
 Kerosene
 BRAKE SERVICE M. JFFLER SERVICE

THE SIGN OF OILS AND GREASES

FRIENDLY SERVICE, QUALITY PRODUCTS

WORLD'S FINEST MOTOR OIL

ALTON'S GULF SERVICE Ph. 659-2422 Retail

ELLSWORTH OIL COMPANY Ph. 659-3033 Wholesale

What's Going On In HANSFORD County

WHAT'S GOING ON IN HANSFORD COUNTY

THURSDAY, JANUARY 9--Morse Jr. High Basketball Teams versus Flemons at Morse. Games will start at 7:00 P. M.

THURSDAY, JANUARY 9--Spearman's Seventh and Eighth Grade Boys and Freshman Boys Basketball Teams will play Panhandle there starting at 6:00 P. M.

THURSDAY, JANUARY 9--Spearman Seventh and Eighth Grade Girls Basketball Teams will play Panhandle here starting at 7:00 P. M.

THURSDAY, JANUARY 9--Gruver Jr. High Teams will play Sunray at Gruver. Games will start at 4:00 P. M.

FRIDAY, JANUARY 10--Spearman Lynx A Teams and B Teams will play Gruver in the Greyhound Gym. Games will start at 4:00 P. M, with B Teams playing first and followed by both A Teams.

SUNDAY, JANUARY 12--Open House for new Library at 2:00 P. M.

What's Going On At HANSFORD Implement Co.

SERVICE

THAT'S THE HANSFORD IMPLEMENT CO. DIFFERENCE

We're proud of our John Deere parts and service men. They are very important people to you and to us. They're professionals; they never stop learning, in the classroom or on the job. Come by and get to know our men, fourteen men, men to know when you need information, prompt help.

JOHN DEERE
 John Deere

HANSFORD IMPLEMENT CO.
 Sales - JOHN DEERE - Service
 Phone 659-2712
 Berger Highway, Spearman, Texas

COMMENTS

Loren Simmons
 ALWAYS speak WELL of your ENEMIES... remember YOU probably MADE THEM.

Then I Said, Let's Not Go To
Simmons Chevron
 U. S. Highway 15, South
 Phone 659-9985

Hospitalization
 POLICIES OF THE WHITE CROSS PLAN
BANKERS LIFE & CASUALTY COMPANY
 M. C. KUYKENDALL
 PHONE: FL 6-3226
 4712 CHEROKEE TRAIL
 AMARILLO, TEXAS

holt news

New Year's dinner guests of Mr. and Mrs. C. W. Kirk were Mrs. Richard Gaines, Glenda Louise and Peggy, Mr. and Mrs. Owen Pendergraft, Mr. and Mrs. Travis Reger, Debbie and Dale and Maude Rosson.

Mrs. Berda Holt returned home Tuesday from Houston after visiting a week with her daughters, Mr. and Mrs. Arch Marshall and Mr. and Mrs. Charles Farrington.

Freda LaFoe of Tokyo, Japan, spent Christmas week with her mother, Mr. and Mrs. Ceril Batton. She left Thursday for Nashville, Tenn. to finish the first semester of college. She will leave the states March 1 for Tokyo.

Mmes. Ernest Lieb and Maudie Henderson of Pringle were Saturday afternoon callers of Mr. and Mrs. Dan Terry.

Mmes. Fronye Close and Blanche Lamb of Spearman

were Sunday visitors of the Bud Jackson's of Wheeler.

Mrs. Mabel Edwards of Spearman was hostess to a salad supper and "42" party Saturday night. Present were Alta Groves, Mmes. Willie Wallis, Carrie Clement, Gladys Richardson, Matilda Entekin, Cleo Taylor, Abbye Ownbey, Mildred Chamberlain, Addie Novak, Hazel Loftin of Spearman and Martha Batton.

Richard Gaines spent a week visiting his father, Bob Gaines, who is in the Wesley Hospital in Wichita, Kansas. He is getting along as well as could be expected.

Mmes. Carrie Clement, Addie Novak and Mabel Edwards of Spearman and Martha Batton visited Sunday, Bill Russell and Mattie Davis. They are in the Northwest Hospital in Amarillo.

NOTICE
Mrs. Garrett will be hostess for the Friday January 10 meeting of the Arts and Crafts Guild, in her home.



KENDRICK - MAIZE VOWS EXCHANGED

In a double ring ceremony at 3 P.M. Saturday, December 14 in the First Methodist Church of Spearman, Lynanne Remy Kendrick, daughter of Mr. and Mrs. Guy W. Remy of Spearman became the bride of Don Maize, also of Spearman, son of the late Mr. and Mrs. Ben Maize.

The Rev. Wesley Daniel, pastor, directed the exchange of vows before an altar decorated with baskets of white gladiola, white mums and red carnations.

Mrs. Bill Strawn, organist, played traditional wedding music and accompanied Mrs. Dick Countiss as she sang "Whither Thou Goest" and "The Lord's Prayer".

Escorted to the altar and given in marriage by her father, the bride wore a white three piece knit suit with white pill box hat and veil and matching shoes. She carried a cascade bouquet of red roses.

Mrs. James Evans was Matron of Honor and was attired in a long sleeve, street length dress of red wool.

Neil Jameson served as best man.

Geri Lynn and Tammi Jo, daughters of the bride, were flower girls and wore red velvet A-line dresses trimmed in white lace. They carried white fur muffs pinned with red velvet holly springs.

Mrs. Remy chose for her daughters wedding a two piece suit of gold knit with gold accessories. Her corsage was of white carnations.

The brides parents were hosts for the reception held

in the Fellowship Hall, immediately following the ceremony. A red and white color scheme was carried out. The serving table was laid with a red net cloth over white and was centered with a candelabra arrangement of red poinsettias and greenery. A drape of red roping across the front was centered with miniature white wedding bells and tied at either end with red velvet bows. The traditional 3 tiered wedding cake was decorated with red roses and topped with a bride and groom. Crystal and silver completed the setting.

Mrs. Sid Evans served the cake and presiding at the punch bowl was Mrs. James Evans.

Miss Susan Shields of Satanta, Kansas, niece of the groom, registered the guests in a white leather bound bride's book.

Ushers were Severn Roberts of Amarillo, cousin of the bride, and Mike Cox, nephew of the groom.

When the couple left on a honeymoon trip to New Mexico, the bride wore her wedding suit with a red rose corsage lifted from the bridal bouquet.

The bride is employed by the First State Bank and will continue her work there. The groom is service manager for Excel Chevrolet.

After December 21 they will be at home at 26 S. Drensen in Spearman.

Cummings Host Pinochle Club

Mr. and Mrs. Gordon Cummings were hosts Saturday evening January 4, to the local Pinochle Club, in their home.

Dinner was served to those attending the evening of Pinochle games. The menu consisted of Mexican foods.

Those attending were members, Mr. and Mrs. James Cummings, Mr. and Mrs. Burton Schubert, Mr. and Mrs. Jim Nicholson, Mr. and Mrs. Earl Goodheart and the hosts, Mr. and Mrs. Gordon Cummings, guests, Mr. and Mrs. Wesley Brinkley.

Mrs Healer Is Bridge Hostess

Mrs. Eddie Healer was hostess January 2 in her home for the regular monthly meeting of the Undecided Luncheon Bridge Club.

Winning high score prize was Mrs. Ray Gressett, 2nd high prize went to Mrs. Dick Countiss, and 3rd high to Mrs. Eddie Healer.

Those present were Mmes. Bobby Archer, Kent Guthrie, Dick Countiss, Ray Gressett, Tom Latta, Steve Mathews, Jim McLain, Bill Strawn, Bill Wilmet, Bob Meek, one guest, Larry Butt and the hostess.

Mrs. Bill Strawn will be hostess for the club meeting of February 6.

Arts & Crafts Guild Meeting

The Arts and Crafts Guild met in the Freeman Barkley home December 20 for their annual Christmas party. Mrs. F. J. Daily and Mrs. Pal Lyon were co-hostesses with Mrs. Barkley.

President Blanche Fuller presided over a short business meeting during which the following officers were elected; President Annie Allen; secretary-treasurer Ruby Barkley; reporter Freda Sheets; and the election of a new member, Mrs. Bill Gandy.

The Barkley home was beautifully decorated in the holiday theme.

Members of the guild, for the 12th year, exchanged gifts of hand-painted china plates.

Lovely holiday refreshments were served to Sada Hoskins, Lula Womble, Annie Allen, Deta Blodgett, Blanche Fuller, Quaba Gandy, Lemmie Russell, Alene White, Margaret Gibner, Jewel Turner, Freda Sheets, Hazel Gibner, Atholie Traylor and Ruth Hutton by the hostesses.

Mr. and Mrs. George Jackson entertained friends in their home Saturday evening, December 28, with games of "42" and Pitch.

Holiday refreshments were served to Mr. and Mrs. Pat Jackson, Mr. and Mrs. Eddie Stewart and Mr. and Mrs. Dan Pearson by the hosts.



PINBENDERS LEAGUE 12-20-1968

TEAM	WON	LOST
McClellan Gr.	38	18
Harveys Aerial	34	26
Brook Insurance	31	28
Bowl Mor	31	29
Thomas Cleaners	25	26
Vernons	23	36
Beauty by Mary K	23	29
Farm Bureau Ins.	21	34

HIGH TEAM SERIES

Thomas Cleaners	1271
Brook Ins.	1229
McClellan Gr.	1191

HIGH TEAM GAME

Brook Insurance	457
Thomas Cleaners	444
Harveys Aerial	435

HIGH INDIVIDUAL SERIES

Jewel McClellan	494
Patty Spoonmore	456
Virginia Head	421

HIGH INDIVIDUAL GAME

Jewel McClellan	187
Patty Spoonmore	161
Myrt Bohanan	161
Jewel McClellan	161

OES Meeting January 3rd

The Order of the Eastern Star met in regular session the evening of January 3 in the Masonic Lodge Hall with presiding officers, Worthy Matron Joyce Lackey and Worthy Patron Joel Lackey.

The Grand Officers of the OES were recognized. Seventeen officers, one Pro Tem, six members and 2 visitors were present.

Those attending were served refreshments in the dining room by Doris Holland and Cindy Henderson.

SEARS YEAR END Inventory SALE

Kenmore Classic Gas Range **\$279.88**

Kenmore 5 cycle Washer **\$209.88**

Kenmore Matching Dryer **\$179.88**

Thirty Gal. Gas Water Heater **\$59.88**

Cold Spot Avc. side by side Refrigerator **\$50** off of Reg. Price

Double Door Coppertone Ice Maker now only Refrigerator **\$359.88**

Port Stereo was \$109.88 now Record Player **\$89.88**

with chest was \$45.88 now Socket Set **\$39.99**

Sears Sale Now On Mid Winter Sale Catalog available at office phone 659-2573

KENDRICK - MAIZE VOWS EXCHANGED

In a double ring ceremony at 3 P.M. Saturday, December 14 in the First Methodist Church of Spearman, Lynanne Remy Kendrick, daughter of Mr. and Mrs. Guy W. Remy of Spearman became the bride of Don Maize, also of Spearman, son of the late Mr. and Mrs. Ben Maize.

The Rev. Wesley Daniel, pastor, directed the exchange of vows before an altar decorated with baskets of white gladiola, white mums and red carnations.

Mrs. Bill Strawn, organist, played traditional wedding music and accompanied Mrs. Dick Countiss as she sang "Whither Thou Goest" and "The Lord's Prayer".

Escorted to the altar and given in marriage by her father, the bride wore a white three piece knit suit with white pill box hat and veil and matching shoes. She carried a cascade bouquet of red roses.

Mrs. James Evans was Matron of Honor and was attired in a long sleeve, street length dress of red wool.

Neil Jameson served as best man.

Geri Lynn and Tammi Jo, daughters of the bride, were flower girls and wore red velvet A-line dresses trimmed in white lace. They carried white fur muffs pinned with red velvet holly springs.

Mrs. Remy chose for her daughters wedding a two piece suit of gold knit with gold accessories. Her corsage was of white carnations.

The brides parents were hosts for the reception held



The Gift Box is moving into the New Year with the most versatile stock in their history.

At the moment, there are a number of items that have been especially sale priced for quick removal.

Some of this merchandise includes discontinued pieces in fine china and crystal-ware.

All Christmas goods have been drastically reduced including all cards and decorations.

You'll find one big table loaded down with sale priced gifts of every description and you'll have lots of fun-browsing over this merchandise.

Of course, you'll want to see all the new and attractive gifts that are arriving daily.

Visiting the Gift Box is always a treat at any season of the year and you'll surely enjoy your next visit.

The Gift Box

LAST CHANCE

to change your

TELEPHONE DIRECTORY LISTING

The new telephone directories are coming out soon. We're ready to make any changes. Right now. We'll change your address. Add your wife's and children's names to your listing. Do anything within reason. But, call now.

GENERAL TELEPHONE

A Member of the GT&E Family of Companies

ANNIVERSARY SALE

This is Jim Neelys 20th ANNIVERSARY

And

This is the Sale of all Sales

Select from our biggest inventory in history

Ladies Values up to 55%

MENS VALUES UP TO 1/2 PRICE

NOT JUST A SALE

THIS IS AN APPRECIATION EVENT FOR YOU - OUR CUSTOMERS

1969 Caprice Coupe

No clowns. No hoopla. No funny hats.

This is an event for the serious car buyer. The man who has X number of dollars to spend and is determined to get his money's worth and maybe more.

Come to a Chevrolet Showroom during our Value Showdown.

Ask the man to show you, on paper, how you can order most any

1969 Chevrolet with a big V8 and automatic transmission for less than you could last year.

Come in and spend some time. Dig, probe, ask questions, take notes. You owe it to yourself to be thorough. Go for a drive.

Get a free sample of Chevrolet's luxurious full-coil, cushioned ride. Shut the windows and see how fresh the interior stays, thanks to Astro

Ventilation. Feel the kick of the biggest standard V8 in our field.

Then go down the street or across town and see how we stack up against Those Other Cars.

We think you'll wind up with a Chevy.

More people do, you know.

Putting you first, keeps us first.

The Chevrolet Value Showdown is on.

**VA Deadline On
Income Reports
January 15**

The new year could begin with a financial jolt for thousands of veterans and widows on the Veterans Administration's pension rolls who thus far have failed to return their annual income questionnaire to VA.

Totally and permanently non-service-connected disabled veterans and wartime veterans' widows who meet income limitations are eligible for pensions, according to Jack Coker, Manager of the VA Regional Office in Waco.

The law requires these beneficiaries to report their income each year in order that the VA can determine the amount of pension, which is related directly to income, to which they are entitled. The questionnaire requesting data on 1968 income received and 1969 income estimated was sent to 2,039,000 pension recipients about the first of November. Deadline for returning the questionnaire to VA was set at January 15.

With this deadline fast approaching, approximately 645,000 pensioners have not returned the questionnaire.

Until the VA receives 1969 income estimates from these beneficiaries, it can not determine or pay any pension benefits in 1969 to them.

And in 1969, discontinuance of pension payments could be more costly for many of these beneficiaries than in the past, Coker said.

Starting January 1, VA pensions will be completely restructured. Income limits will be raised \$200 for all pensioners. Further, the present three income levels used in determining the amount of benefits a recipient may be paid will be increased to between 13 and 28 income levels in \$100 increments.

For approximately 1.2 million beneficiaries on the VA pension rolls, this restructuring will mean higher monthly payments in 1969.

Thus, failure to return the income questionnaire could mean the loss of \$110 a month in pension payments in 1969, compared with the present rate of \$104 for the veteran with no dependents and little or no income. The loss could be \$130 a month instead of the present \$119 for the veterans with three dependents and little or no income, Coker said.

He urged those who have not returned the questionnaire to complete it and mail it in the self-addressed envelope without delay. Any information and assistance they may need in completing the questionnaire may be obtained from their nearest VA office.

IDEAL... LEADER IN FRESHNESS!



SWIFTS PROTEN BEEF
CHUCK ROASTS

FIRST CUTS
49¢
Lb.

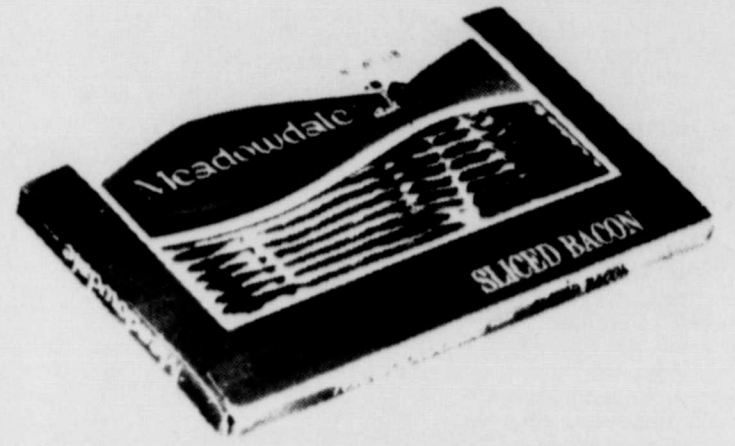
- Swift's Protén Beef **Chuck Roasts** CENTER CUTS Lb. **59¢**
- Swift's Protén Beef **Center Cut Arm Roast** Lb. **69¢**
- Swift's Protén Beef **Boneless Chuck Roast** Lb. **79¢**
- Swift's Protén Beef **Standing Rib Roast** 5TH, 6TH RIB CUT Lb. **89¢**



HICKORY SMOKED
WHOLE PICNICS

6 To 8-Lb. Average
39¢
Lb.

- HICKORY SMOKED **Sliced Picnics** Lb. **43¢**
- D.A.K. **Canned Hams** 1 1/2-Lb. Can **\$1.99**
- D.A.K. **Canned Picnics** 1 1/2-Lb. Can **\$1.59**
- VIRGINIA REEL CENTER CUT RIB **Smoked Pork Chops** Lb. **99¢**



MEADOWDALE HICKORY SMOKED
SLICED BACON

2-Lb. Pkg. **\$1.19**

- CHUCK WAGON **Sliced Bacon** 1-Lb. Pkg. **59¢**
- MEADOWDALE OR BAR-S **Skinless Franks** 1-Lb. Pkg. **59¢**
- MEADOWDALE ASSORTED SLICED **Luncheon Meats** 6-Oz. Pkg. **29¢**
- CUDAHY, BY-THE-PIECE **All Meat Bologna** Lb. **49¢**

**Farmers Have Jan.
Deadline To File
S.S. Reports**

(Dallas, Texas)—Farmers have until January 31 to file reports on the Social Security taxes withheld from their employee wages, Ellis Campbell, Jr., District Director of Internal Revenue for Northern Texas, said today.

The reports should be filed on Form 943, Employer's Annual Tax Return for Agricultural Employees.

Mr. Campbell said that any farmer who pays an employee cash wages of \$150 or more a year must withhold Social Security taxes. Taxes must also be withheld on wages under \$150 for any person hired 20 days or more a year.

For tax purposes, a farm employer includes anyone who furnishes and pays workers to perform agricultural labor on his behalf or for someone else. Mr. Campbell said a "crew leader" is an employer under this definition.

The 1968 tax rate is 8.8 percent of the first \$7,800 of taxable wages paid a farm employee. Half the tax is paid by the farmer and the other half by the employee.

Farmers should remember to give a W-2 wage and tax statement to every worker they pay \$600 or more a year. Employees paid less than \$600 should receive a statement covering their Social Security taxes Mr. Campbell said.

More detailed information is available in IRS Publication 51, "Agricultural Employer's Social Security Tax Guide." Send a post card to Supply, Internal Revenue Service, P.O. Box 1736, Dallas, Texas 75221, for a free copy.

BETTER FOOD FOR LESS
IDEAL FOOD STORES

DISCOUNT SAVINGS ON
FAMOUS HEALTH & BEAUTY
AIDS

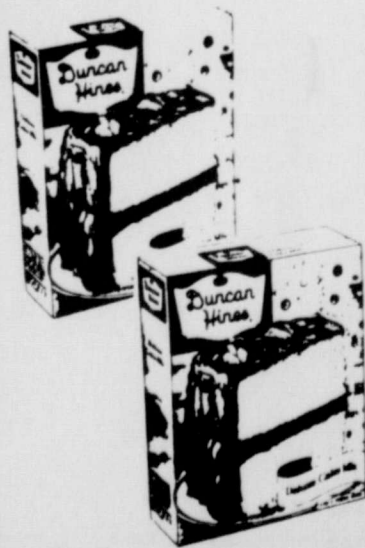
REGULAR \$1.49
CONTAC COLD CAPSULES
Pkg. Of 10 **77¢**

REGULAR \$2.39
BAYER ASPIRIN
Bottle Of 300 **\$1.66**

REGULAR \$1.15 MOUTHWASH
MICRIN ANTISEPTIC
12-Oz. Btl. **77¢**



SWIFT'S JEWEL
SHORTENING
3 -Lb. Can **48¢**



DUNCAN HINES LAYER
CAKE MIXES
3 18-Oz. Boxes **89¢**
DUNCAN HINES **Angel Cake Mix** 16-Oz. Pkg. **59¢**

NABISCO
SALTINE CRACKERS
1-Lb. Box **29¢**

HEINZ
PORK and BEANS
6 No. 1 Cans **69¢**

CAMELOT
TOMATO SAUCE
6 300 Cans **\$1.00**

Camelot Whole BlueLake
GREEN BEANS
4 303 Cans **\$1.00**

IDEAL...LEADER IN SAVINGS!

PLANS ARE ANNOUNCED FOR TEXAS INAUGURAL FESTIVAL

A lively and colorful "Texas Inaugural Festival" is being planned to highlight the inauguration of Preston Smith and Ben Barnes as governor and Lieutenant governor.

"We are planning big, friendly and entertaining festivities surrounding the inauguration," said Gov.-elect Smith, "and, we're emphasizing that they're strictly for the people of Texas and open to the public."

Six inaugural balls, a record number, will climax the festivities following the inauguration at noon on January 21.

The activities begin with a Victory Dinner on January 20 with entertainment by Glen Campbell, the leading male vocalist and one of the leading singers in the nation at this time.

These details were made public recently by Dr. Elmer C. Baum and former Lt. Gov. Ben Ramsey, chairman of the Inaugural committee.

The complete Texas Inaugural Festival will include the following:

January 20 -- 7 p.m. -- Victory Dinner in the Austin Municipal Auditorium. Master of Ceremonies will be Cactus Pryor, an Austin Humorist who is a favorite of President Johnson. The featured performer will be Glen Campbell, who has recently gained his own television show and for the past two years has recorded songs which have consistently gained public approval, including "Wichita Lineman" and "By the Time I Get to Phoenix."

January 21 -- 7:30 a.m. -- Prayer Breakfast at the Terrace Motor Hotel. Noon -- Official Inauguration ceremonies on the front steps of the Capitol Building. The Texas Technological College Band, designated as the official inaugural band, will play the State Song, "Texas, Our Texas."

3:00 p.m. -- Inauguration Parade featuring about 100 marching and performing groups and floats from all over the state, including an Alabama-Coushatta Indian group.

8:00 p.m. -- Six Inaugural Balls at the following locations: 1. Municipal Auditorium, featuring music by Henry King and his Orchestra, one of the best dance bands in the nation, has played for Washington Inaugurals and other notable events.

The Grand March will be at the Auditorium. The ball at the auditorium is formal, and all the other balls are with optional dress.

2. Austin Coliseum, featuring Buck Owens and the Buckeroos, for the past three years voted the number one male country and western performers and Number one band.

3. Terrace Motor Hotel, featuring Ray Price, one of the all-time greats of country and western music.

4. Driskill Hotel, featuring Charley Pride, recently named one of the top five singers by the Country Music Association.

5. Stephen F. Austin Hotel, featuring the Caston Brass, a rollicking, modern, mariachi-type band with a beat.

6. Commodore Perry Hotel, featuring a top "rock" band called "John Fred and the Playboy Band", which has performed on The Tonight Show with Johnny Carson and has been successful with some of the top "rock" recordings.

Jimmy Dean, singing star of records and television, will tour all the inaugural balls for performances. He will precede and introduce Gov. and Mrs. Smith and Lt. Gov. and Mrs. Barnes who will tour all of the dances. King, Owens, Price, Dean and the Casino Brass are all native Texans.

Tickets for the formal ball at the Auditorium, the Victory Dinner and the Prayer Breakfast may be obtained by writing the Governor's Inaugural Ball Committee, 702 Brown Building, Austin, Texas, 78701. All the inaugural balls except the formal ball will be open to the public and free of charge with the type of dress optional.

GREAT PLAINS CONSERVATION PROGRAM ASSISTANCE

The Great Plains Conservation Program is set up to aid in the conservation of our most valuable resources, soil & water. Through the Great Plains Program farmers & ranchers can receive cost share assistance in applying conservation practices on their land.



DELICIOUS TROPICAL FRUIT
GOLDEN BANANAS

2 19¢
Lbs.



U.S. NO. 1
RUSSET POTATOES

10 59¢
Pound Bag



Prices Effective thru Saturday, Jan. 11, 1969. Limit Rights Reserved.



RUBY RED, SWEET AND JUICY
TEXAS GRAPEFRUIT

5 39¢
-Lb. Bag

- OWENS Country Sausage 2-Lb. Pkg. **\$1.49**
- CAMELOT Cod Fillets 1-Lb. Pkg. **49c**
- HOLLAND TANGY Gouda Cheese 1-Lb. **49c**
- OSCAR MAYER ASSORTED Sliced Lunch Meats 8-Oz. Pkg. **49c**

- Ripe, Juicy D'Anjou Pears lb. **25¢**
- Red York Apples lb. **25¢**
- Calavo Imported Dates lb. **39¢**
- Tart, Juicy Sunkist Lemons lb. **25¢**

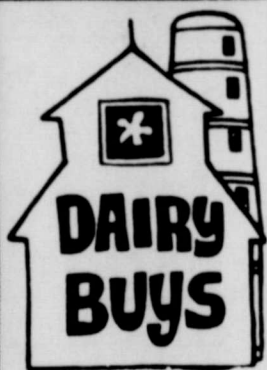
- Garden Fresh Acorn Squash lb. **19¢**
- Golden Southern Yams lb. **19¢**
- Fresh Parsnips 1-lb. Bag **19¢**
- Roasted in the Shell Fresh Peanuts 3 lbs. **\$1.00**

SARA LEE FROZEN PASTRIES

- MADE WITH BUTTER BLUEBERRY, MAPLE COFFEE CAKE 12-Oz. Pkg. **69¢**
- RASPBERRY COFFEE RINGS 10-Oz. Pkg. **59¢**
- SARA LEE POUND CAKE 12-Oz. Pkg. **69¢**

MORE LOW PRICES ON MORE ITEMS!

- CHOC., BANANA, COCOANUT Bremner Pies 1-Lb. Box **49c**
- TENDERLEAF Instant Tea 3-Oz. Jar **\$1.29**
- FRITOS Bean Dip 10-Oz. Can **29c**
- SPICED LUNCHEON MEAT Swift's Prem 12-Oz. Can **59c**
- AUNT JANE'S Dill Pickles 32-Oz. Jar **49c**
- FANTASTIC Spray Cleaner 22-Oz. Btl. **79c**



IDEAL DAIRY DELIGHTS

A whole world of good health is at your fingertips in Ideal's large, modern dairy department. Avail yourself of this Cornucopia of Goodness from our finest dairy farms. Enjoy guaranteed freshness and quality plus thrifty low prices every day!

- KRAFT CHEESE-WHIZ 16-Oz. JAR **69¢**
- TASTY LOAF IMITATION CHEESE FOOD 2-Lb. Loaf **69¢**
- CRACKER BARREL HALF-MOON Longhorn Cheese 10-Oz. Pkg. **57c**
- FLEISCHMANN'S Soft Margarine 1-Lb. Ctn. **47c**
- GRADE A Ideal Buttermilk 1/2-Gal. Ctn. **39c**

DAIRY FAIR
ICE MILK 49¢
1/2-Gal. Ctn.

ASSORTED ICE CREAM NOVELTIES 59c 6-Pack **49¢**

TABBY TREAT

CAT FOOD
6 66¢
6 1/2-Oz. Cans

CONTAINS BLEACH

AJAX CLEANSER
2 29¢
Lge. Cans

POWDERED LAUNDRY DETERGENT



COLD POWER
69¢
GIANT BOX

HYGRADE CANNED MEATS

- VIENNA SAUSAGE 5 1.00**
5-Oz. Cans
- HYGRADE POTTED MEAT 5 5 1/2-Oz. Cans **\$1**
- HYGRADE DEVILED MEAT 3 3/2-Oz. Can **29c**
- HYGRADE CORN BEEF HASH 15-Oz. Can **49c**
- HYGRADE BEEF STEW 24-Oz. Can **69c**

TAPE WATCHER'S DIET

Reduces Fat Food Bills

We Sell Only **USDA CHOICE BEEF**
Cry-o-Vac'd and Flavor Sealed

PORK CHOPS 98¢
Center Cuts cured lb.

ROAST 79¢
Tender USDA Choice Rump lb.

STEERING HENS 29¢
Swifts Premium lb.

BACON 65¢
Swifts Premium lb.

GROUND BEEF 49¢
Fresh Daily lb.

ROUND STEAK 89¢
Full Cuts USDA Choice lb.

SIRLOIN STEAK 98¢
USDA Choice Beef Semi-Boneless lb.

ROAST 98¢
Boneless Sirloin Tip lb.

LUNCH MEATS

Mix or Match - 6 oz. bags sliced
Shurfresh Bologna
Pickle Loaf
Oliver Loaf
Spanish Loaf
Souse
Spiced Luncheon

SUGAR 10 \$1
Imperial Cane lb. Bag

ORANGE DRINK 3 for 88¢
Hi-C 46 oz. Can

VELVEETA 87¢
Krafts Cheese Spread 2 lb. Loaf

Salad Dressing 37¢
Shurfine Full Quart

TUNA 25¢
Shurfine Chunk-Style Shurfine Tomato - 14 oz.

Apple Sauce 2 for 39¢
Shurfine - 303 Can

CHERRIES 29¢
Shurfine RSP-303 Can

OLEO 6 for 98¢
Shurfresh Premium Grade lb. Yellow Qtrs.

ICE CREAM 48¢
Lanes' Mardi Gras 1/2 Gal.

SPINACH 2 for 37¢
Del Monte-303 can

COFFEE 65¢
Shurfine lb. Can

Fiddle Faddle 3 for \$1
Caramel Corn

Baby Food 3 for 29¢
Gerbers Strained

BOLD 99¢
King Size Detergent

HAIR SPRAY 48¢
Rayettes Aqua Net -Large

PRODUCE

APPLES 19¢
Washingtons Fancy Red Delicious lb.

POTATOES 20 78¢
Russets lb. Bag

TOMATOES 25¢
Always Fresh No. 1 Quality lb.

Lettuce 17¢
Crisp Fresh Large Heads lb.

Avacodas 2 for 39¢
Large Fuertes

ONIONS 15¢
Large White Sweet Crystal Wax lb.

KLEENEX 4 for 88¢
Facial Tissue - 280 2 ply

FROZEN FOODS

HONEY BUNS 25¢
Mortons 9 oz.

STRAWBERRIES 27¢
Shurfine Sliced Sweet 10 oz.

POUND CAKE 69¢
Sara Lee

BROCCOLLI 29¢
Shurfine Whole 10 oz.

BRUSSEL SPROUTS 29¢
Shurfine Whole 10 oz.

MEMBER AFFILIATED FOOD STORES

"Week-End Values for Friday & Saturday"

Cut Rate GROCERY

BUCCANEER STAMPS

Vehicle Records To Be Computerized

AUSTIN--Inmates of the Texas Department of Corrections at Huntsville this month are expected to complete the first phase of a sweeping modernization of Texas motor vehicle records. The Corrections unit was "billed" by the Texas Highway Department to help

with the computerization of millions of vehicle records. Inmates are learning new skills and the taxpayers are netting a substantial savings in the course of the work.

Involved in the project are the matching of approximately 6, 5 million 1968 vehicle registration records

with current certificates of title, and converting the combined records by a typing operation into a format suitable for electronic input into computer storage.

Conversion to data processing will increase the efficiency of vehicle registration. By late in 1969, owners of more than seven million vehicles in Texas will receive computer-printed registration renewal forms. One copy of the form will be validated by the local county

tax assessor-collector and returned to the Highway Department's Motor Vehicle Division. This copy will then be placed in a document scanner that "reads" the information and automatically updates registration data in computer storage. Another copy will serve as a receipt for the vehicle owner, and a third copy will be filed in the county tax office.

Also late in 1969, the Division and other authorized agencies will be able to retrieve any current registration or title record electronically in a matter of seconds. This capability particularly will be valuable to law enforcement personnel. While following a vehicle a patrolman will be able to identify the owner by means of his radio and the police teletype keyed to Motor Vehicle Division's computer storage. Ultimately, the system will be coordinated with similar equipment in other states in a nationwide network for clearing titles and tracing stolen cars.

However, the chief concern is to simplify the renewal of vehicle registrations and applications for title, or to provide more efficient service for vehicle owners in Texas.

More than 500 inmates at Huntsville are working on the records. They were selected on the basis of aptitude, and they received special instruction to prepare them for the work. Spokesmen for the Motor Vehicle Division say the bulk of the 1968 records were converted ahead of schedule. What remains now is only miscellaneous "clean up" work.

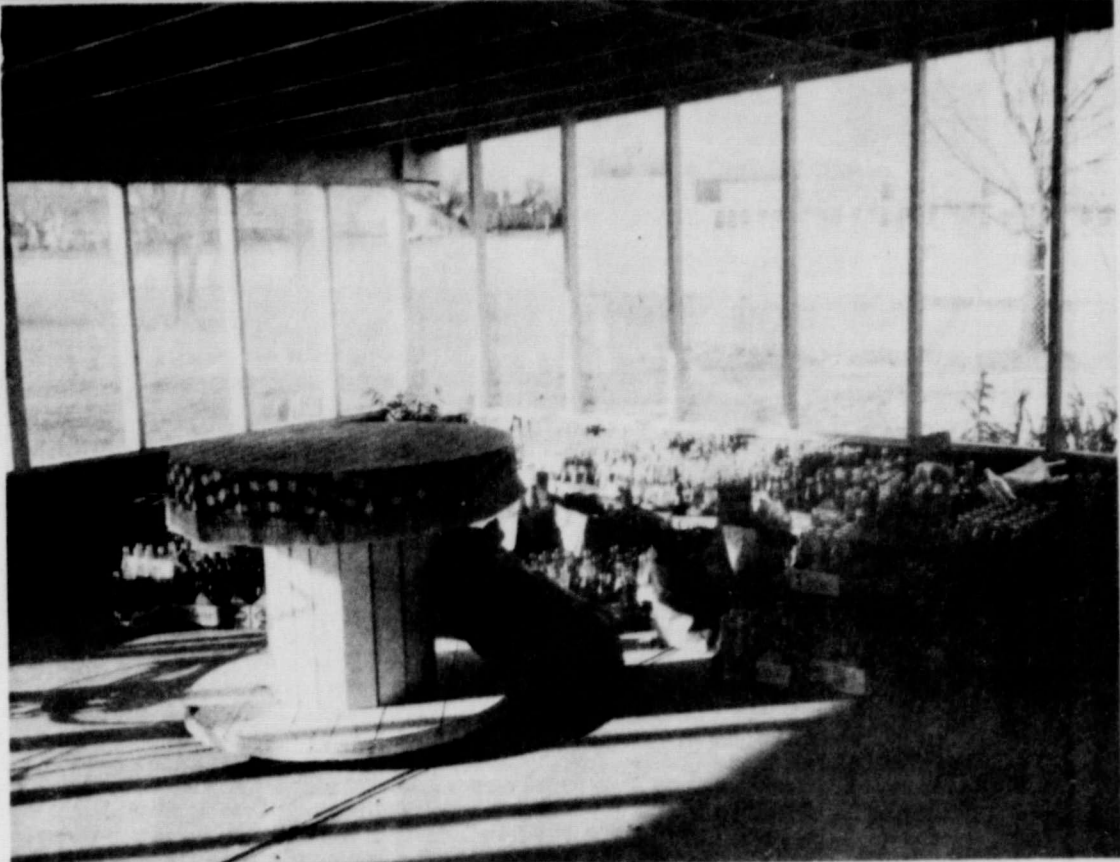
Early in February, with receipt of the first 1969 registration data from county tax offices, work will begin to update the master records, using the

1969 data.

Vehicle owners should make certain their correct residence mail address appears on 1969 registration records. This will make renewal of registration for 1970 simple and virtually automatic.

School Lunch Menus

- MONDAY, JANUARY 13
- Corndogs - Mustard
- Buttered potatoes
- Cheese Wedge
- Blackeyed Peas with Bacon
- Combination Green Salad
- Banana Cake
- Bread - Milk
- High School Meat Choice
- Catfish steaks - tartar sauce
- TUESDAY, JANUARY 14
- Stewed Chicken with Egg Noodles - Buttered Corn
- Seasoned Green Beans
- Dill Pickle Spears
- Citrus Fruit Cup
- Honey-Peanut Butter Spread
- Hot Rolls-Butter-Milk
- High School Meat Choice
- Beef Cubes in Sauce
- WEDNESDAY, JANUARY 15
- Deep Sea Doodles
- Mashed Potatoes
- Seasoned Green Peas
- Cabbage-Pickle Relish Slaw
- Brownies - Milk
- High School Meat Choice
- Grilled Cheese Sandwich
- THURSDAY, JANUARY 16
- Sliced Franks
- Baked Sauerkraut
- Seasoned Pinto Beans
- Chopped Onions
- Sweet Pickle Relish
- Chocolate Pudding
- Cornbread-Butter-Milk
- High School Meat Choice
- Braised Ham Shanks
- FRIDAY, JANUARY 17
- Student Holiday



Staff Photo-by Steve Hicks

THE STATES No. 1 Speech department, at Spearman High School has been collecting coke bottles, and pictured above on Mrs. Porters back porch, is the loot! Richard Tracy and the rest of the Speech Dept. will use the funds from these coke bottle drives for extra-curricular speech activities!

FOR EXTRA WARMTH WHEREVER YOU NEED IT...



PLUG IN A CHILL-CHASING PORTABLE ELECTRIC HEATER

Hard to heat areas in your house during cold weather? A portable electric heater would bring real comfort to your family. Lightweight and easy to carry, it can be used anywhere there's an electric outlet. Plug it in and clean, radiant electric heat quickly dispels the chill. Today, many models have a thermostat to automatically maintain the temperature you want . . . also a tip-over safety switch and circulating fan. See the new portable electric heaters at your dealers' soon. Have extra warmth when and where you need it at home this winter.

COMMUNITY PUBLIC SERVICE

Your Electric Light & Power Company



We are very pleased to exhibit for your pleasure paintings - - by

Ann Thom Gruver artist



Exhibit hangs through January in our show rooms on the Mall

BEEDY FURNITURE CO.

Plains Shopping Center

CONSERVATION THROUGH THE GREAT PLAINS PROGRAM R. D. & D. L. McClellan have completed a sound conservation program that provides a combination of land use changes, management, and conservation practices needed to solve the conservation problems on their farm. Some of the conservation practices established under the Great Plains Conservation Program were grassed waterways and a diversion terrace. Other conservation practices were the use of high residue crops such as wheat and grain sorghums and the leaving of crop residues for protection against wind erosion and for increasing the water intake rate.



50-YEAR MEMBER--A 50-year American Legion membership pin was presented to World War I Veteran C. C. Miller at a special meeting in Canadian last week. Making the presentation was another veteran of WW I, Mrs. Jess Lindley who served in the US Army Nurses Corps during that conflict. Mr. Miller is owner of the Oasis Cafe in Canadian, and a former Spearman Cafe man.

'69 Ford. Spend 15 minutes inside the year's most talked about car.

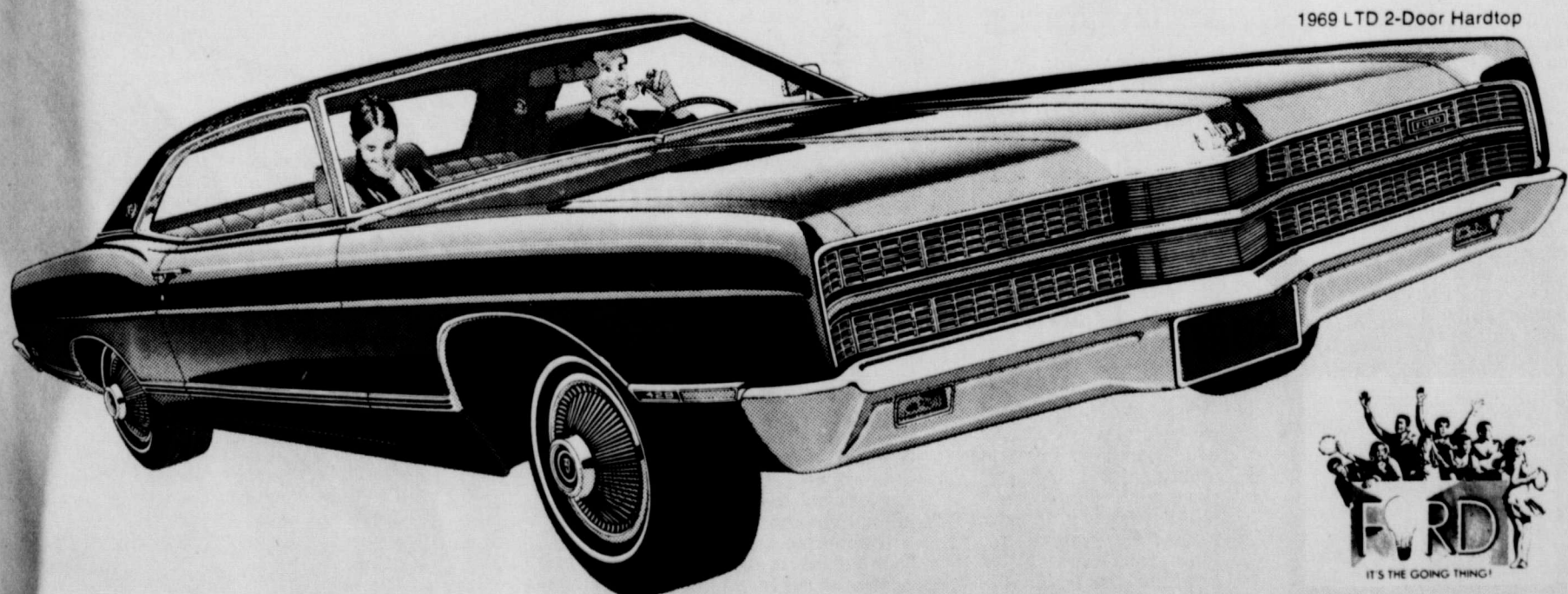
The '69 Ford LTD is the best-selling car in its class. Because it offers you so much more than the others.

Take a test drive. Fifteen minutes will show you what makes Ford so special. A front seat area so spacious it's called the Front Room. A wheelbase longer than Chevrolet's for an extra-smooth ride. The road-holding grip of a track as wide as Cadillac. All wrapped up in a car that's amazingly agile. Ford's turning circle is even smaller than Plymouth's.

The 1969 LTD was designed to ride quieter than the LTD that was quieter than a Rolls-Royce. Come in now. Talk it over. Try it out. Take it home.



Then try to talk yourself out of it.



1969 LTD 2-Door Hardtop



IT'S THE GOING THING!

The place you've got to go to see what's going on—your Ford Dealer! Save at his Pop-Option Sale!

T.G.&Y. STORE HOURS: MON-FRI 8:30-6:00 SATURDAY 8:30-8:00
 5 TO 10 STORES
 Prices Good Thru Sat. While Quantities Last
 119 Main Spearman, Texas

ANNUAL CLEARANCE ONLY ONCE-A-YEAR!

KNITTING YARN \$1.29 value **88¢**
 Golden T 3 1/2 & 4 oz. Skeins - Beautiful colors

PLASTIC DRAPES complete w/valance size 36" x 89" **2 FOR 99¢**
 98¢ value sets

COTTON KNITS Tubular Fall Fabrics Clearance Regular \$1.57 yd. **66¢** yds.

FALL SUITINGS 44"x45" widths Reg. 99¢ yd. **46¢** yds.

BONDED KNITS 54"x60" widths Reg. \$1.99 yd. **96¢** yds.

GINGHAM FANCIES Fall colors 44"x45" Widths - Compare at 79¢ yd. **37¢** yd.

LINENS "Country Manor" 54" widths - Reg. \$1.99 yd. **96¢** yd.

DRAPERY FABRICS 45" wide Reg. 99¢ yd. **2 \$1.00** yds for



RED CROSS SCHOOL CHEST PROGRAM

Schools in disaster areas and depressed regions often need school, recreational, and health supplies. To help meet these needs, the student council has decided to send the Red Cross a Chest. They have asked all clubs, organizations and individual classes to donate money for this chest. The money will be used by the student council to buy recreational equipment, musical instruments and first aid kits to put into the box. The box is being made by the FFA department and money donations have been made by the National Honor Society and the Senior Class.

"BIG BOOM"

By Richard Booth
On January 6 Mr. Butcher asked how Jane's heart was beating and if she could withstand any kind of explosions. The next morning as Jane came into the chemistry room, Mr. Butcher had a joke worked out for her. Mr. Butcher fixed a piece of paper that would explode when touched and put it in front of Jane's desk, taking for granted that she would sit in her seat with her feet in front of her instead of in the aisle. Then Jane reached down and picked up the paper, which exploded in her hand.

STUDENT COUNCIL MEETS

By P. A. Lyon
The Student Council of Spearman High School met January sixth to decide upon money making projects. The Council decided that they would sponsor a dance on February 15. For another project the Council will sell Spearman bookcovers at school and stadium cushions at home basketball games. All of the proceeds from the above will be used for a foreign exchange student coming to Spearman in the next school year.

M. Y. F. MEETS

The Methodist Youth Fellowship has undertaken a project for the Methodist Churches in the Philippine Islands. The group is planning to buy a portable organ for the Bulacan District.

The portable organ will make it possible for each church in the district to have music for some of its services.

To raise the necessary funds, MYF'ers will be visiting homes on January 17 to ask for donations.

GAME # 1

F	Shieldknight	17	13	1	47
O	Shufelt	7	2	3	16
R	White	3	0	2	6
W	Rosenbaum	1	0	0	2
A	Patterson	0	1	3	1
R	Smith A.	0	0	0	--
D	Greene	2	0	0	4
S	Brummett	0	0	1	--
S	Kirkland	0	0	4	--

GAME # 2

F	Shieldknight	10	7	1	27
O	Shufelt	4	1	4	22
R	White	2	0	0	4
W	Rosenbaum	0	0	0	--
A	Patterson	0	2	0	2
R	Greene	0	0	0	--
D	Brummett	0	0	0	--
S	Kirkland	0	0	0	--
S	Callaway	0	0	3	--

G	Callaway	0	0	0	--
U	Jones	0	0	1	--
A	Hohertz	0	0	2	--
R	Craig	0	0	1	--
D	Smith, M.	0	0	2	--
S	Sloan	0	0	2	--

Semi-Finals

F	Shieldknight	13	6	0	32
O	Shufelt	3	1	4	11
R	White	1	0	0	2
W	Rosenbaum	4	0	0	8
A	Greene	0	0	0	--
R	Brummett	0	0	0	--
D	Kirkland	0	0	0	--
S	Callaway	0	0	0	--
S	Hohertz	0	0	1	--

G	Jones	0	0	3	--
U	Craig	0	0	0	--
A	Sloan	0	0	5	--
R	Smith	0	0	0	--
D					--
S					--

Duncanville-Semi Finals
Comanche 62-Spearman 53

3rd Place

F	Shieldknight	10	10	1	30
O	Shufelt	7	3	0	17
R	White	0	0	0	--
W	Patterson	1	16	0	18
A	Rosenbaum	0	0	0	--
R	Greene	0	0	0	--
D	Brummett	0	0	0	--
S	Kirkland	0	0	0	--
S	Callaway	0	0	1	--

G	Hohertz	0	0	3	--
U	Jones	0	0	2	--
A	Craig	0	0	4	--
R	Sloan	0	0	0	--
D	Smith	0	0	0	--
S					--

Duncanville - 3rd Place
Spearman 65 - Klondike 56

Basketball

SPORTS ROUNDUP

Just how tough was the Duncanville tournament? This is the toughest girls basketball tournament in the state, and the Lynxettes have always fared well in this 24 team tourney. This is the AAU tournament where the top B, A, AA, and AAA girls teams are all thrown together, to see who can win. Although the Lynxettes won third place this year, they were somewhat disappointed that Comanche defeated them in the semi-finals. However, fans stated that Comanche just out-shot the Lynxettes, and the Lynxettes just couldn't keep up with them, as they hit a fabulous percentage of their shots.

Highlights of the Duncanville tournament, included the beauty contest, with Sue Sloan one of the 6 finalists out of 48 girls chosen for the beauty contest.

Spearman did bring home quite an honor, along with their Klondike win. Shelia Patterson was picked from the Lynxette team to enter the free throw contest. Each team in the tourney (24 of them) pick their best free throw artist for this contest. In order to qualify for the finals, Shelia Patterson hit 14 out of 15 shots. Shelia won the contest with an unbelievable 18 out of 20 free throws, to bring this honor home to Spearman. We are especially proud of Shelia, as this is the first time that anyone in the Panhandle has ever won a sharp-shooting free throw basketball contest. And, to top this off, Shelia made 16 out of 16 free throws in the Klondike third place contest to shoot 100% from the free throw line, during the ball game!

The Spearman Lynxettes are now rated as the No. 1 AA team in the State of Texas. Be sure and check the double page on the Lynxettes and their fine coach in this weeks paper!

As you can probably tell, we have re-vamped our Sports Department starting this year, and are going to carry much, much better sports coverage than in the past. We have printed up 1,000 game forms, and they will be used to cover the basketball games starting this week! The news staff is through with their holidays, and we are going to place more emphasis on basketball than in the past. We think you will be real happy with our sports coverage, starting with this weeks paper.

This new sports coverage will include the grade school and Junior High teams! If your boy or girl plays on a team in the Spearman School system, and we don't have a story on it, you get in touch with us, and we will guarantee you coverage on the game. We think we can please everyone; if your boy or girl is on the traveling squad, played a game, and it isn't in the paper, call us, and we will get the story, or die trying. The coaches, and teachers in this school are extremely cooperative with both of our papers, and we feel sure with our new scoring system, we can get EVERY game that is played, and if we can't get it, we will hire enough help to get it done! Just call Billy Miller, at 3434, and we will take care of any game we might have overlooked.

I was real disappointed that I didn't get to cover the Duncanville tourney. I had color films in my camera, and was going to get pictures of the team, the beauty contest, and our two all-tournament girls, Marilyn Smith and Marsha Shieldknight. These two girls were two of the first six girls named to the all-tournament team at Duncanville. I did get within a few blocks of the Duncanville Gym, but, didn't make it all the

way because of the flu epidemic in Dallas!

During the holidays, I was privileged to watch the best boys basketball game I ever saw, when the Lynx tangled with the Canyon Eagles during the Borger tournament. The final score was 80-76 in favor of Canyon, but the score just didn't do the Lynx justice! Canyon had three or four, maybe five boys, who just couldn't miss the basket! Every time they shot, they made two points. The Lynx played their fine, slow, smooth, style of ball, and almost won the game, despite having to overcome some flu problems, and just plain bad luck. I don't imagine anyone can beat Canyon at Canyon, but we will see!

Sure would like to see Roy Pennington's fine Ranger team in action this year. Roy is head basketball coach at Perryton, and he has one of the greatest teams in the state! He had Borger beat on their own court during the Borger tourney, but ran into some foul trouble. It sure would be nice to see the Rangers and the Lynx at Austin this year.

How about those Jr. High teams winning the Gruver Tournament Saturday night. Of course, we knew that they would, but Coach Coursey and Miss Bussard are to be congratulated for their fine showing at this outstanding tournament. Gruver has been real good to Spearman, having such fine tournaments this year. And, we mean this seriously, 'cause those Gruver Pups almost got the Kittens Saturday night! Complete details on this fine game are in this paper!

We might mention also, that the reason that the Lynxettes are the No. 1 rated team in the state, is because of such players as Wanda Greene. This fine girl has virtually given up an "outstanding" career as a rodeo performer, to play with the Lynxettes. Sue Sloan, the state Farm Bureau Queen, still rates basketball as her greatest interest, and when you have Texas NO. 1 girls basketball coach, and determination like this, you just can't expect anything but the best!

Lynxettes Top Team In State For December

In the December "Texas High School Girls Basketball Coaches Association" magazine, the Spearman Lynxettes were picked as No. 1 AA team in the State of Texas.

- The top 10 in order were:
1. Spearman
 2. Rivercrest (Bogata)
 3. Friona
 4. Goliad
 5. Midway (Waco)
 6. Hale Center
 7. Little Cypress
 8. Powderly
 9. Comanche
 10. Robinson (Waco)

SECOND TEN: 11. Brownsboro, 12. Granbury, 13. Floydada, 14. George West, 15. Bellville, 16. Abernathy, 17. Cooper, 18. Bridgeport, 19. Buna, 20. Lyford.

Spearman Loses To Dumas

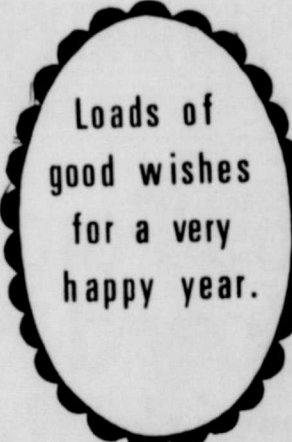
The Spearman B-Team boys lost 52-34 to Dumas here Friday night. Dumas early lead gave them an extra lift to run the score on up.

Lynxettes Win Over Darrouzett

by R. Burke
The Spearman Lynxettes pranced to a 66-45 win over Darrouzett last Friday night here in Lynx Gym. Once again Sr. Marcia Shieldknight hit 36 points to lead the Lynxettes to their victory over Darrouzett. Sandra Shufeldt had 17 points, Marsha White had 6, while Dalynn Brummett scored 5 points and Vickie Rosenbaum had 2 points. B-TEAM LOSES TO DARROUZETT BOYS
Spearman lost 41-35 to Darrouzett Friday night.

Lynx Blast Demons of Dumas

by R. Burke
The early lead that Spearman accumulated in the first period proved to be a helping factor as the Lynx dropped Dumas 46-34 here Saturday night. The Lynx jumped to an 8-0 lead in the first period to end the third game of these two teams meeting. The Demons have beaten the Lynx twice before by 10 pts. and 19 pts. The Lynx's Mike Davis tallied up 17 pts. as Lee Shaver and Bobby Mosier tied with 8 each. Rondal Schell had 6 pts, Joe Vanderburg 5 pts, and Joe Hutchison 2 pts. The Lynx will end their non-conference season tomorrow night at 8:00 p.m. in Gruver.



Greetings and sincere good wishes to all.

TEXAS HIGH SCHOOL GIRLS BASKETBALL COACHES ASSOCIATION
STATE - WIDE EDITION
DECEMBER, 1968

ASSOCIATION ADOPTS
CLASS AA TEAM OF THE MONTH
EAST CHAMBERS HIGH SCHOOL

At the 1968 Girls Basketball Coaches Association meeting in Merfield, Texas, the Lynxettes were named the Class AA Team of the Month. The Lynxettes were chosen from 100 teams in the state. The Lynxettes were the only team from the South All-Star District to be named a team of the month.

ASSOCIATION ADOPTS
The line across the center of the map shows the South All-Star District. The line across the center of the map shows the South All-Star District. The line across the center of the map shows the South All-Star District.

Mr. Walter...
The line across the center of the map shows the South All-Star District. The line across the center of the map shows the South All-Star District. The line across the center of the map shows the South All-Star District.

CLASS B: STATE TOP TEN
1. High Island... 108
2. Round Top... 106
3. Klondike (Lamesa)... 102
4. Depert... 98
5. Mauriceville... 85
6. Quitaque... 76
7. Oakwood... 76
8. Sundown... 67
9. Austwell-Tivoli... 51
10. Academy (Temple)... 30
SECOND TEN: 11. Brockford... 25
12. Neches... 13.
13. Eisdale... 13.
14. Collins... 13.
15. Tolar... 16.
16. Cotton Center... 17.
17. Wells... 18.
18. Estelline... 19.
19. Follett... 20.
20. Graford... 20.

CLASS A: STATE TOP TEN
1. Springdale... 115
2. Deweyville... 90
3. Stratford... 87
4. Grapeland... 87
5. Grandview... 73
6. Ralls... 71
7. Wylie (Abilene)... 69
8. Dilley... 69
9. Cushing... 46
10. Jourdan... 35
11. Carroll (South)... 26
12. Three Rivers... 19.
13. Leavelle... 15.
14. Milledge... 15.
15. Moulton... 15.
16. Wylie... 17.
17. Rogers... 18.
18. Happy... 18.
19. Koonsevelt (Lubbock)... 20.
20. Agua Dulce... 20.

CLASS AA: STATE TOP TEN
1. Spearman... 103
2. Rivercrest (Bogata)... 100
3. Friona... 97
4. Goliad... 97
5. Midway (Waco)... 91
6. Hale Center... 88
7. Little Cypress... 81
8. Powderly... 78
9. Comanche... 64
10. Robinson (Waco)... 51
11. Brownsboro... 40
12. Granbury... 14.
13. Floydada... 14.
14. George West... 14.
15. Bellville... 16.
16. Abernathy... 17.
17. Cooper... 18.
18. Bridgeport... 19.
19. Buna... 20.
20. Lyford... 20.

CLASS AAA: STATE TOP TEN
1. Deer Park... 104
2. Tulla... 99
3. Angleton... 91
4. Stephenville... 91
5. Tuloosa-Midway (Goprus)... 72
6. Victoria... 64
7. Gatesville... 64
8. Straman (Victoria)... 47
9. Canyon... 45
10. Burleson... 30
11. Gregory-Port... 21
12. Cartage... 21
13. Gregory-Port... 21
14. Duncanville... 13.
15. Plano... 13.
16. Clear Creek (Weslaco City)... 17.
17. Jasper... 18.
18. Weslaco... 19.
19. Raymondville... 19.
20. Lake View (San Angelo)... 20.

1968 At A Glance

HANSFORD COUNTY, 1968 - births, deaths, marriages, politics, moisture recordings, farm & ranch news, --- highlights of local news is briefly told here:

The beginning of 1968 brought low temperatures to Spearman on January 2 with ice coating everything in the city, making it look like a winter wonderland.

The first baby born in Hansford County wasn't one, but twins, born January 2 to Mr. and Mrs. Don Dillow of Gruver.

A draft call of 12 men for January was the highest in many months for the area with several boys from Spearman being called. The board announced the quota for 1968 was being raised.

City manager Darce Foshee announced the completion of the new water well in the city. City set up scheduled trash service.

Hansford County Library board met Jan. 17 for re-organization and naming of committee heads and members. Emmett Sanders named chairman. Frances Kilgore vice chairman and Helen Etter secretary. A total of \$10,188.00 had been contributed to the Library building fund.

Borger officials of the Chamber of Commerce toured Spearman making stops at Baker & Taylor, the Airport, High School and Hansford Hospital.

Twenty-three boys from the Spearman FFA entered stock in the Fort Worth Fat Stock Show, with several bringing home ribbons.

Flu epidemic raged in Spearman during the second week of January.

Robert Adamson, Hansford County agricultural agent won first place in the District I awards of the Texas Planned Food Educational Society.

Spearman Lynx leading the district in wins in basketball. The Lynxettes place third in the Duncaneville Tournament with Linn Ann Robinson and Marsha White named among the top ten finalists for tournament queen.

Seventy-five irrigation wells were completed in Hansford County bringing the total wells to 888.

Boys leaving for Vietnam were Arnold Richardson, Gary Prachar, Cary Quinn, Kenneth Payne in Thailand, Jim Johnson writes from Korea, Johnny Holland wounded in Vietnam.

Voter sign-ups breaks former record with 2,841 registered for 1968. Rosemary Burkhardt performs with All-State Choir in Austin.

Judge Joy and Malouf Abraham visit city.

Right of Way cleared for highway between Spearman and Gruver with the contract let to improve it.

Sheriff Cooke announced car owners must bring title to car in order to receive tags for 1968.

Four area farmers among top 20 producers of grain sorghum, Tommy White, Cliff White, and John Cole of Spearman, Robert Ferguson of Gruver.

JANUARY

Spearman High School basketball king and queen, Linn Ann Robinson and Carol Day, crowned, both from district winning teams. Lynx lose bi-district to Quannah, 64-55.

MARCH

Chamber of Commerce pleading for entries for talent show to raise money for the library.

Mrs. Clay Gibner exhibiting art work at Beedy Furniture Store during the month of March.

Reed's Shoe Store opened for business March 2 on Main St.

Local women charged with shop lifting and fined \$20 plus court costs.

James Lemons and Linnie Bollinger named to represent Spearman at Boys State and Girls State in Austin.

Debbie Smith, daughter of Mr. and Mrs. Eldon Smith is County Spelling Bee Champion.

Spearman School District filed suits to enforce tax collections against ten resident taxpayers.

Spearman speech students bring home a second in sweepstakes from the Texas Tech Tournament held March 1 and 2.

Joe Vanderburg first place in lightweight Shorthorn Div. and Kim Boone first place in the lightweight Angus Div. at the Houston Fat Stock Show.

Airman Virgil Reynolds goes to Korea. Private Michael Uptergrove, Private Andy Rhodes, and Sgt. Larry Babbs go to Vietnam.

Wes Nivens purchased Bob's Sales and Service.

Nine candidates file for school board vacancies.

Explorer Scout Troop re-organized in Spearman after several years of non-existence.

City council authorizes planting of trees and shrubs and installing of fountains in parks.

Spearman students win high ratings at the Science Fair held at Panhandle State College.

Gladys Hopper graduated from Scott and White Memorial Hospital of Professional Nursing at Temple, Texas, March 8.

Lynxettes are 1AA bi-District champions, went to Austin bringing home a third place, with Lynette Callaway named to the all-state team.

Kenneth Banks receives Grand Champion award at County Livestock Show with Angus calf. Phil Sanders had Grand Champion Hampshire Hog, the Walker boys of Gruver showed the Grand Champion lambs.

Funeral services held for Dr. F. J. Daily March 22. Dr. Daily was a longtime resident Dentist moving to Spearman in 1926.

Mrs. Kate Gray honored on her 90th birthday with an open house by her daughters.

Mrs. E. A. Greever publishes book of poetry.

APRIL

Spearman hosts the 2nd Annual THDA District Convention here.

Spearman High School track team runner up at the Borger Bulldog relays. Speech department wins UIL Sweepstakes.

Sgt. Carrol Richards returned home from Vietnam.

Spearman Chamber of Commerce recruits 112 new members.

City elections revealed; Mayor-Hackley, Councilmen-Copeland and Holton, City Council calls bond election for residents to vote on water and sewer improvements totaling \$250,000.00.

Marvin Jones, Chalmers Porter and Ira Harbour chosen from nine candidates for seats on local school board.

Vicki Rosenbaum and Rebecca Hutchison will go to the International Science Fair in Detroit, at the Amarillo Science Fair.

Local men growing beards for Spearman Celebration.

Spellers win 2nd in UIL contest at Borger, with team members Cindy Cochran, Darlene Waggoner and Marsha Schumann.

Little League Baseball begins organization for season under the direction of president, James Lair.

Thel Daniel elected state president of the Future Homemakers of America.

Hospital Corpsman 3rd Class Richard Smith, USN, awarded the Navy Commendation Medal with Combat "V".

Police announce city thefts on increase.

Slogan chosen for Spearman "Spear Head of the North Plains", by CC, suggested by Mrs. Mary Schumann. The CC donated \$617.55 to the Hansford Library.

MAY

Open House held at Hansford Hospital May 5.

Primary balloting set for May 4.

Bond election for city improvements carried with a vote of 251 for and 40 against.

Honor students named for Sr. Class, Rebecca Hutchison and Susan Uptergrove, Jr. High honor students Patricia Schnell and Sharalyn Schell.

L. D. (Pete) Mead named as new District Manager for Northern Natural Gas Co., to live in Spearman.

Insects infesting city's shade trees, many trees dead because of infestation.

Sue Sloan crowned Farm Bureau Queen.

Pfc. Marvin Tharp of Hardesty goes to Vietnam.

Linnie Bollinger and Lisa Curry brought home State honors for debating, for the third straight year.

Mike Cox to Texas Nuclear Science Symposium in Austin.

Jr. High Band wins sweepstakes in Gruver.

Seventy-five Seniors and 82 Jr. High students graduate from Spearman Schools.

Larry Cline of Gruver killed in car accident six miles east of Spearman.

Water rates increased in Spearman according to City Council.

Library building fund still growing with contributions from local organizations.

Geir Overland of Norway, former exchange student, visits in Spearman.

Oil and gas adds approximately \$13.9 million to economy of Hansford County.

Sheriff Cooke issues warning to shoplifters, prevalent in the city stores in May.

Debbie Smith in regional Spelling Bee.

Funeral rites for Vietnam casualty, Chief Warrant Officer Bobby R. Williams, husband of the former Monette Washington, May 31.

\$75,000.00 apartment bldg. almost ready for occupants, located at 501 Cooke St.

Thelma Groves receives degree in social work from Tulane in New Orleans.

Commissioners Court passed ordinance that farmers must stop using bar ditches for tail water irrigation.

C. A. Gibner honored as charter member of the Lions Club, Ed Munday received 15 year pin for perfect attendance, Oscar Donnell and Dr. R. L. Kleeberger each received 18 year perfect attendance pins.

JUNE

Law enforcement offices in Spearman began giving 24 hour radio service to residents.

Jr. high principal James Pendergraft resigns his position.

Veterinarian Dr. Tom Latta moves to Spearman to work with Dr. Rinker at the Panhandle Veterinary Clinic.

Mr. and Mrs. Britt Jarvis graduate from SMU May 26th.

Hansford Celebration underway with 2000 lbs. of beef in bar-b-que pits.

J. E. Blackburn graduated from St. Mary's University School of Law.

Pfc. Andy Rhodes and Pfc. Clayton Cochran were wounded in action in Vietnam.

Rainfall for the year to date of June measured 8.40.

Recreational program reported in financial trouble.

Guided tour of historical sites, barbecue and beauty contest highlight county celebration.

Mrs. Don Archer, formerly Doris Slaughter, graduates as an RN from Northwest Texas Hospital in Amarillo June 10.

Cloetta Fullbright receives part in the drama "Texas."

School board talks of change in school song; students and exes protest.

Spearman merchants urge customers to pay as you go, to help them pay as they go.

Miss Diane Stedje named Miss Hansford County.

Supt. B. E. Reeves resigns from Spearman schools along with L.L. Laws, counselor.

G. W. Robinson employed as new Jr. High principal.

Joyce Lackey named as new Worthy Matron of local Eastern Star.

First load of wheat for the season was delivered from the A. L. Buzzard farms on JUNE 13.

Two local artists get merit awards at Oklahoma Regional Art Show June 14. They were Ruth Skinner and Vera Beth Hicks.

Red Cross sent 300 ditty bags to servicemen.

Cindy Hutchison was crowned bake queen at the county bake show.

Seldon Hale was appointed campaign manager for Paul Eggers.

Road construction begins on road between Spearman and Gruver.

Jeanette Davis and Mrs. Ann Black enter nurses training in Amarillo.

Teresa Beck and Scott Beedy won top honors in the Amarillo tennis tournament.

Marsha Schumann to participate in the All-Star basketball game.

Robert Ragsdale hired as new City Judge-deputy tax collector, bookkeeper and office clerk.

Gifford Hill plant marks 1 million ft. production.

Telephone Co. calls public meet for discussing rate increases.

Judge Boyer dismissed injunction on gas company.

Mae Floyd named as new president of BP&W club.

Average wheat yield in area was 35-40 bushels per acre.

JULY

City council demands answers from telephone company in public meeting.

Pfc. Gerald Harnish home from Vietnam.

Winners of Little League season were the Jets and the Sox.

Bloodmobile in city July 11.

Thompson Flying sold to Aaron B. Cantrell, Jr.

Thel Daniel attended the 1968 National meeting of the Future Homemakers of America in Miami Beach, Florida.

Farmers were warned of maize disease invading the fields of grain sorghum.

Linda and Barbara Hand to make European tour.

Jim Beeson received discharge from U.S. Army and returned home July 8.

Eddie Gail Martin also discharged from the army July 3.

Paul Eggers, candidate for governor visits Spearman.

James Cunningham hired by school board to be Supt. of schools.

Postal service in city cut due to national tax bill.

Church of Christ begins work on \$40,000 addition to their church plant.

Jaycees donate \$200.00 to Little League program.

AUGUST

Jaycees name key man of the year, Jim Evans.

Local Mule Train makes front cover of the New Mexico magazine.

Lynx cheerleaders go to Commerce to attend a pep-squad school.

Reporter received award for Distinguished Service given by the Vocational Agriculture Teachers Association.

Reduced long distance rates given telephone customers.

Lady Fair Dress Shop purchased by Mrs. Lloyd Buzzard and Mrs. Mona Beth Windom.

Gulf Oil Corporation filed its No. 1 Thonda Hart which opened the North Gruver Field, 2 miles northeast of Gruver.

Greenbugs plague area maize crop, the bug count running high and doing considerable damage to crops.

DeAnna Sheets named as delegate to the Texas Youth conference in Austin.

Hansford County Republican Women protest Abe Fortas appointment as Chief Justice to the Supreme court.

New insurance firm Texas American Life Insurance Co., names John R. Collard president.

Mrs. O. C. Raney honored on her 87th birthday with open house.

Marine Pvt. Ronnie Gray goes to Vietnam, Lt. Bob Whitson returned from 12 month tour in Vietnam.

Schools opened August 28 with a total of 1071 students enrolling in Spearman.

Pvt. 1st Class Billy Womble now serving with the Marines in Vietnam.

Golf Club members give nod to country club project, by voting for a working agreement with the board for the new country club.

County commissioners announce no increase in county tax rate.

Spearman school board approves \$1,002,025. budget.

SEPTEMBER

City Council considers library aid in their new budget.

Sue Sloan is District I Farm Bureau Queen.

1968-69 football team looked good to citizens.

Nelda Sheets had art work to place in the "40 Best Show" in Amarillo.

Twentieth Century Club working for money to donate to Library.

Elzey Vanderburg of the Hansford ASCS said the total of payments made to farmers in Hansford Co. would be over one million dollars for 1968.

Local Methodist pastor, Rev. Wesley Daniel goes to Manila to preach in the Philippines.

City merchants had Krazy Daze Sept. 14 with sidewalk sales and crazy costumes.

The number of college students from Spearman was the largest in many years.

First load of milo delivered Sept. 20.

City councilmen give OK to hike in gas rates for the city, also gives nod for purchase of miracle space ship for Blodgett-Linn Park at cost of \$1,650,000. City budget of \$449,325.00 approved by council.

Largest broom sale in history staged by Spearman Lions Club.

Ab Abston won the best putter award after the summer tournament.

Marine Private Ronald Bogle sent to Vietnam.

Methodist church women raise \$1,280 for Rev. Daniel trip to the Philippines.

Lometa Sparks won the prize for the craziest costume on Krazy Daze as a Happy Hippie.

E. S. Uptergrove celebrates 85th birthday.

Thrift Shop open in library building to help raise funds for the library.

The late Dr. F. J. Daily was honored by the Panhandle District Dental Society at its annual fall meeting, citing him for his many years of service to the dental profession.

OCTOBER

Noted author Evelyn Pierce Nace of Pampa speaks to Spearman Study Club and guests.

Interest sparked by Borger Rotarians for a Rotary Club to be formed in Spearman.

Hansford County Library moves to new home.

Oldest retail firm in Spearman, Smith Variety Store, announced a quitting business sale.

Alan Dixon killed in truck accident. Mr. Dixon was a resident of the Morse community.

Republican headquarters opened in Spearman.

Jettie Lou Davis opens Antique Shop at 301 W. Kenneth.

Red Cross workers in Spearman sent 152 Diddy Bags filled with gifts for servicemen in Vietnam.

Homecoming crowd watches as Lynx down Gruver 29-12.

Football sweetheart, Penny Sanders is crowned by Joe Hutchison.

Spearman received 4.90 inches of rain.

October 18 was city's first frost.

Police car bid goes to Ford Co. of Spearman.

Mrs. Larry Hays named woman of the year by HD Clubs.

Fred Fewin and Arthur Adkison were presented awards by Skelly.

Wanda Brown named as vice president for Panhandle Police Communications Association.

Pot Pourri Sale held by Twentieth Century Club of Spearman--presented \$3,500 to new Library.

Community Public Service installs 75 new mercury lights in City.

Lee McClellan honored on 80th birthday by his children.

NOVEMBER

City Council calls sales tax election for December 14.

Nixon wins in Hansford County with Wallace coming in second. Ballot splitting was the order of the day for many Hansford voters.

Mrs. Hettie Davis was honored on her 92nd birthday.

Sue Sloan wins State Farm Bureau Queen contest.

Edwin Pearce is chosen "Teacher of the Year".

Arnold Richardson received Distinguished Flying Cross for extraordinary achievement in Vietnam.

Mr. and Mrs. Virgil Hull leave for Germany to visit their grandson.

Library board pays \$5,000 on building fund.

\$4,000 raised at Art Auction to remodel the community room, upstairs at the Library Building.

George Collard underwent heart surgery in Houston.

Weather delays maize harvest in county.

City wide Thanksgiving service held November 25.

Thieves at work on early shoppers. Gifts purchased early were stolen from home in Spearman.

Four town basketball teams organized in Spearman.

Willard McCloy of Morse was named "Outstanding Conservation Farmer" at the Bankers Award Banquet.

Cindy Hutchison chosen to attend the National 4H Congress in Chicago.

Lynx made all-district football team. Ronnie Lusby, Steve Holton, Bobby Smith, Robert Archer, Richard Booth, Joe Hutchison and Mike Davis.

DECEMBER

Construction to begin soon on feedlots by Caprock Industries in Hansford County.

Old time resident of Spearman, J. H. Nichols, will make his home in Louisiana due to ill health.

Donna Helms and Joan McClellan named among outstanding young women of America.

Spec. 4 Darrel Adkison was assigned to the 17th cavalry in Vietnam.

1968 graduating seniors of Spearman High School pre-

sented \$35 to the local Library Fund.

Location staked by Carl M. Archer for Lynx No. 1 an oil and or gas well to be drilled in the city limits of Spearman.

Bruce Motor Co. was razed by fire Saturday, Dec. 7.

Sgt. Larry Babbs wounded in Vietnam.

Car-motorcycle accident claimed the life of Tommy Henderson, local 17 year old high school senior, Dec. 7.

Hansford County Commissioners approved a \$980,000 budget for 1969.

New conference room completed in Hansford Hospital.

Lynx basketball team captures honors at Gruver tournament.

Christmas business was reported good by local merchants.

New Conoco Station opened Dec. 21 with Vance Snider and Muri Pearson as owners.

1st City Sales tax passed in Dec. by 131 to 100.

Cattleman's Steak House received major damage in a fire.

Pvt. Jerry D. McGhee is sent to Vietnam with the Marines.

Dr. Wesley Garnett Jr. opens new veterinary clinic December 23.

Lynxettes head for Dallas and the Duncaneville Tournament.

Years rainfall totals 21.82 for the year of 1968.

Jaycees name Mike Crawford as president and Chris Boserker as vice-president for 1969.

Major Arnold Richardson returns to Spearman after 12 months in Vietnam.

Lloyd Gilley resigns as Chamber of Commerce manager's job to move to Kermit, Texas where he will accept a similar chore.

Ed. note: Looking through the 104 papers of 1968, we found that most of the news worthy items were made by High School students from Spearman. They are the ones who are putting Spearman on the map.



GOOD LUCK '69

May all your days in all ways be filled with happiness.



This PAGE compliments OF YOUR Newspaper STAFF

ONCE AGAIN --- THANKS --- AND Happy 1969 ---

J.M. Miller, Editor, Reporter

**ANNUAL
WINTER**

Clearance

LIVING ROOM

	Regular	Sale
Four cushion wood arm Spanish Sofa	409.50	339.95
Olive velvet Contemporary Sofa	449.50	379.95
Traditional quilted orange, beige & brown Sofa	489.50	379.95
Gold tufted back traditional Sofa	298.50	239.95
Modern olive Sofa	259.95	179.95
Blue quilted 3 cushion Sofa	289.95	229.95
Three cushion loose pillow back turq. Sofa	269.95	219.95
Loose pillow back turq. loveseat (matches above Sofa)	179.95	139.95
Modern blue & green Sofa	349.95	279.95
Early American gold tweed Sofa	329.50	269.95
Early American pine frame loose cushion Sofa	389.50	298.50
Early American orange & brown tweed Sofa	299.50	249.95
Beige & brown quilted Traditional Sofa	489.50	379.95
Four pc gold Mediterrean Sectional	779.95	629.95
Crushed velvet gold Mediterrean Sofa	444.50	369.95
Crushed velvet green Mediterrean Sofa	469.50	398.50
Blue & Green quilted Mediterrean Sofa	389.95	298.50
One pair beige Traditional chairs	179.95 ea	129.95 ea
French provincial turq chair (shopworn)	149.50	98.50
Italian provincial gold & blue chair	129.50	89.95
One pair corduroy occasional chairs	129.50 ea	98.50 ea
One pair gold velvet occasional chairs	149.50 ea	119.95 ea
Blue & green traditional chair	119.50	89.95
One pair turq Traditional chairs (shopworn)	169.50 ea	119.95 ea
Modern turq Occasional chair	99.95	69.95
Modern green Occasional chair	109.50	79.95
Modern print occasional chair	129.95	79.95
Modern green & gold chair & ottoman	139.95	89.95
One pair green occasional chairs	119.50 ea	89.95 ea
Green velvet occasional chair	129.50	98.50
Gold Italian provincial loveseat (shopworn)	159.50	98.50
Early American orange occasional chair	149.95	98.50
One pair Early American orange & gold quilted chairs	139.95 ea	98.50 ea
Early American gold wing occasional chair	129.50	89.95
Early American pine frame Pheasant print chair	169.95	139.95
Early American pine frame patchwork rocker	176.50	139.95
Early American gold fireside chair	149.50	119.95

RECLINERS

	Regular	Sale
Orange tweed rocker-recliner by Burriss	144.50	98.50
Brown vinyl recliner by Stratolounger	216.50	179.95
Early American orange tweed Stratorester	129.95	89.95
Brown vinyl recliner by Stratolounger	189.50	139.95
Blue & green traditional La-Z-Boy	229.50	184.50
Early American orange La-Z-Boy	219.95	179.95
Maple Arm green vinyl La-Z-Boy	225.95	179.95
Oak arm red tweed La-Z-Boy	239.95	198.50
Brown vinyl traditional La-Z-Boy	246.50	197.50
Green print traditional La-Z-Boy	229.95	179.95
Orange traditional La-Z-Boy	239.95	199.95
Gold fabric traditional La-Z-Boy	239.95	199.95
Oak Arm red vinyl La-Z-Boy	229.95	179.95
Green vinyl La-Z-Boy	229.95	184.00

MISCELLANEOUS ITEMS

	Regular	Sale
Early American gun cabinet	159.50	119.95
Fruitwood curio stand	54.50	29.95
Early American roll top desk	134.50	98.50
Fruitwood fern stand	46.00	35.00
Traditional muffin stand	32.00	24.50
Antique green plant stand	36.50	27.50
Oak dictionary stand	58.00	45.00
Glass shelf brass teacart	99.95	69.95
Marble top antique gold plant stand	59.95	45.00
Marble top cigarette table	39.95	29.95
Modern walnut window table	79.95	49.95
Set of 4 formica top TV tables w/stand	49.95	37.50
Set of 2 formica top TV tables w/stand	39.95	29.95
Luggage stands	11.25	9.95
Fruitwood valets	14.50	11.95

DINNING ROOM

	Regular	Sale
Mediterrean china, octagonal table & 4 chairs	762.50	579.95
Mediterrean china, rectangle table & 4 green chairs	689.50	519.95
Mediterrean 42" round table & 4 chairs	557.95	447.95
Mediterrean buffet (matches above table & chairs)	339.95	274.50
Early American 48" round formica top table & 4 chairs	334.50	269.95
Early American harvest table	99.95	79.95
Early American table & 4 chairs	317.50	259.95
Early American 44" round pedestal table & 4 chairs	399.95	319.95
Seven pc bronzotone dinette	179.50	139.95
Five pc Spanish dinette	198.50	159.95
Five pc Mediterrean dinette	289.95	229.95

BEDROOM

	Regular	Sale
Spanish triple dresser, mirror, chest, full size bed and night stand	402.00	329.95
Mediterrean triple dresser, mirror, king size headboard and two night stands	719.80	559.95
Italian provincial dbl dresser, mirror, chest, full size bed & one night stand	620.00	496.50
Italian provincial triple dresser, mirror, king size headboard and two night stands	564.45	453.00
Oak & pecan triple dresser & mirror (discontinued)	249.95	179.95
Spanish triple dresser, mirror, king size bed & two night stands	499.50	399.95
Spanish double dresser, mirror chest & twin beds	510.45	409.50
Mediterrean triple dresser, mirror, chest, queen size bed & night stand	558.90	449.95
Mediterrean triple dresser, mirror, chest, queen size bed & two night stands	985.95	794.50
Traditional triple dresser, mirror, full size bed & two night stands	835.00	675.00
French provincial antique white powder table	129.95	89.95
Early American bunk beds	149.95	119.95
Early American triple dresser, mirror, full size bed & two night stands	404.90	323.95

BEDSPREADS

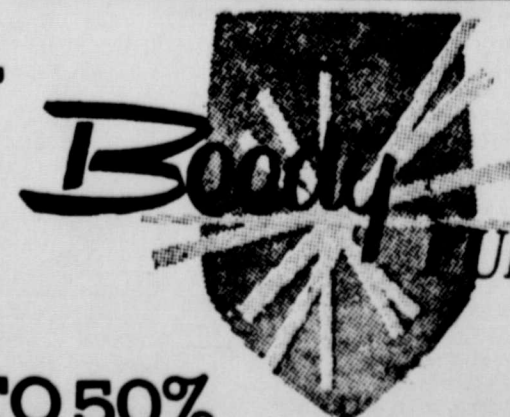
	Regular	Sale
Green & gold print full size	39.95	29.95
Blue & green stripe quilted full size	42.00	32.50
Green quilted full size	59.95	39.95
Blue quilted full size	49.95	35.00
Yellow quilted full size	59.95	39.95
Green print quilted full size	37.50	29.95
Orange & yellow quilted full size	34.50	24.50
Multi-colored quilted full size	42.00	36.50
Green & gold stripe quilted full size	42.00	32.50
Gold quilted full size	39.00	29.95
Green quilted king size	59.00	47.50
Blue & green print quilted king size	64.50	49.95

**ALL PICTURES
AND WALL
ACCESSORIES
REDUCED 20%
OR MORE**

**TERMS :
NOTHING DOWN,
36 MONTHS TO PAY**

ALL MATTRESSES & SPRINGS
INCLUDING FAMOUS NAME
BEAUTYREST REDUCED
FOR THIS SALE.

**ALL TABLE,
FLOOR &
HANGING
LAMPS
REDUCED
FROM 20% TO 50%**



BEAUTY FURNITURE CO.

PLAINS SHOPPING CENTER

659-3044

VOLUME 60,

LOUL
graph
royalt
Cecil
for th

The Hans
brary Boar
embers of
entury Clu
iff, served
ternoon at
ends of th
e facilitie
rary build
The libr
increased
sted by a
ople from
th several
gnitaries f
Present fo
ere Loui
ell known
her, Dr.
esident of
brary Frie
lice Greer
r Amarill
Miss Erdn
spirations
owd, said
ing you h
brary proj
t a life it
at what wi
Miss F
rious con
hich are s
ngotten b
nd knowle
lways. "I
ie Twenti
r its final
ld the me
helped to
hich will
nity."
Dr. Hir
ie audien
f organizi
ie Library
ie import
day.
"With th
on in thi
an it has
npossible
ith it, bu
ndeavor t
uilding o
rst step."
In regar
ish said
rea are n
ape, an
entary."
"From t
e stated,
ie world
uble ev
because r
g so rap
In comi
this are
ich a fac
ncluded
xuries,
sl."
The cre
ntly oc
odeled
e peopl
nferenc
en corr
Jenna
emory
bert J.
carpet
l with s
airs.
being
i as a p
an Jay
rt Glas
ishin
y meet
rently
shing
ent.
Other